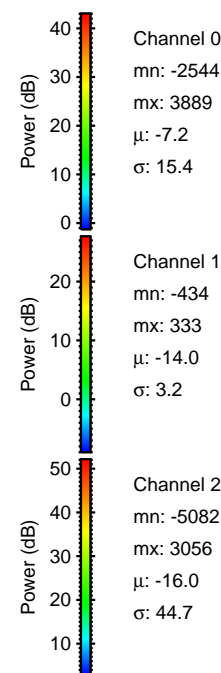
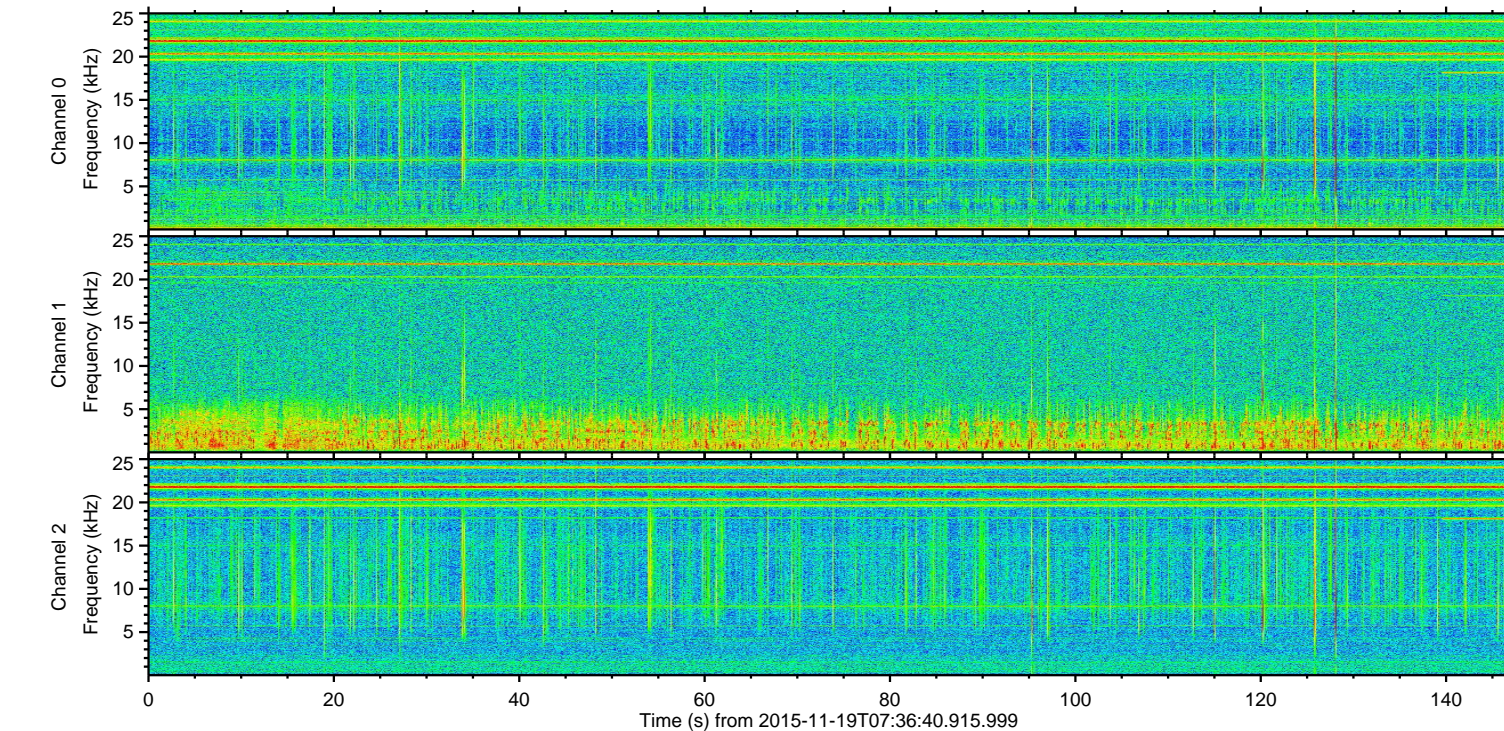
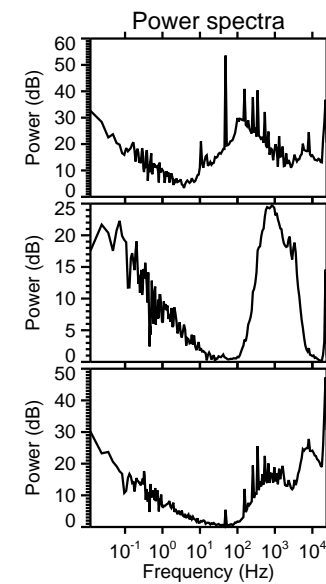
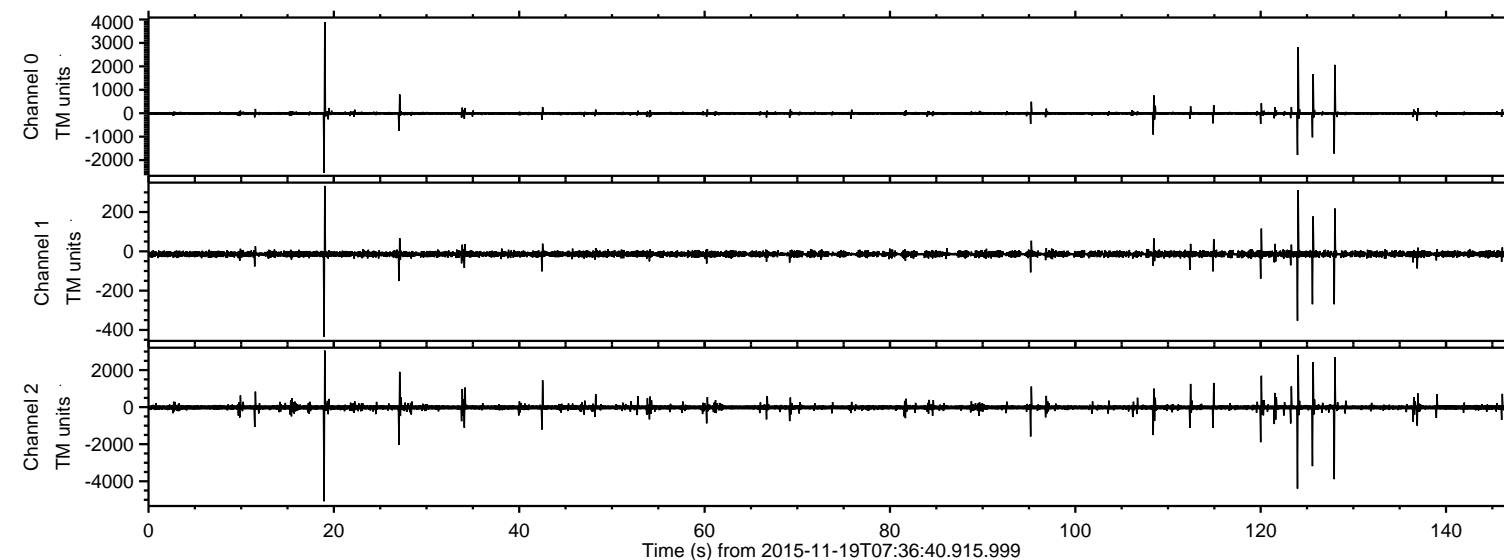
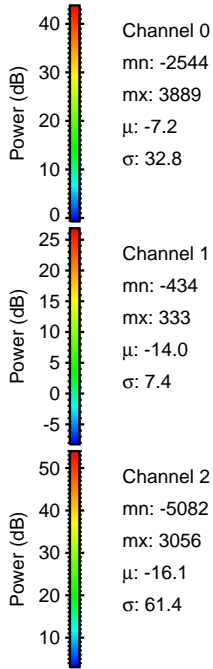
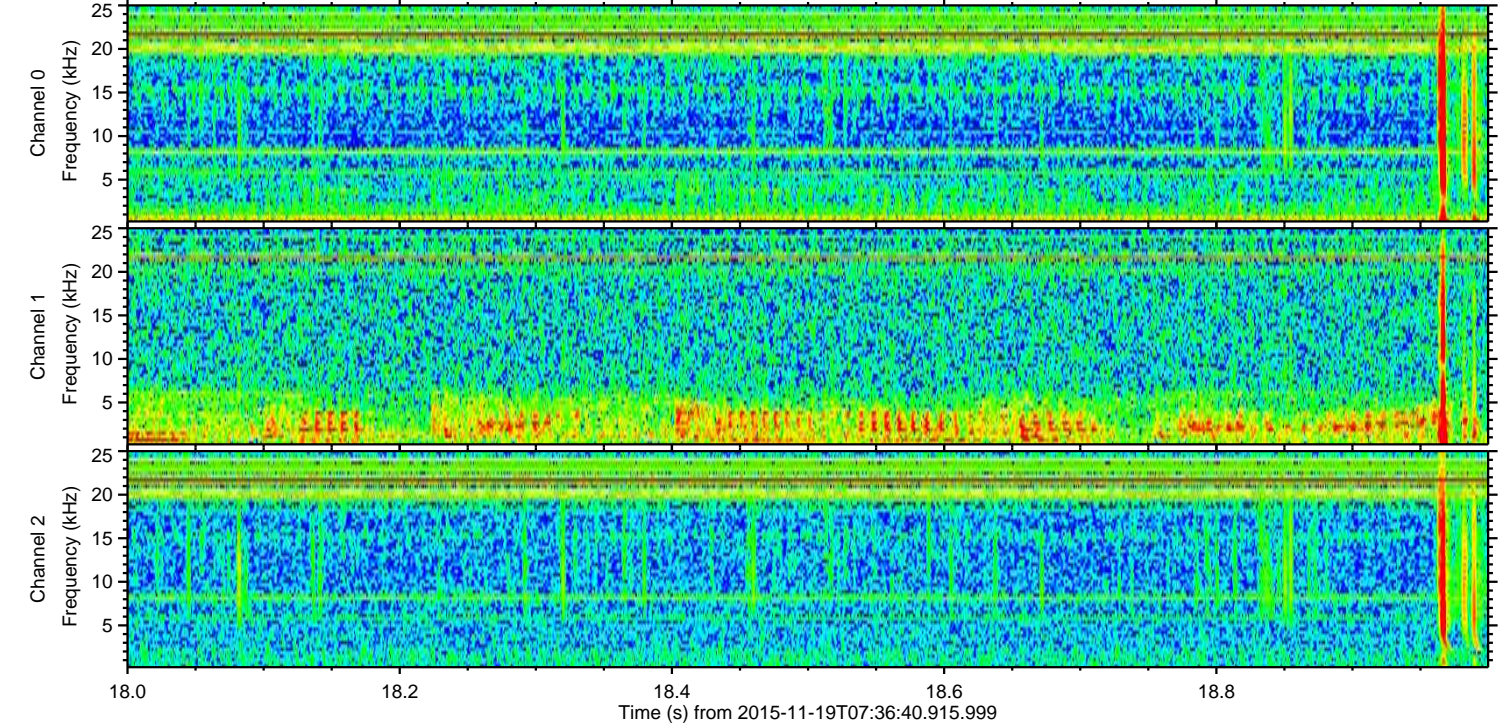
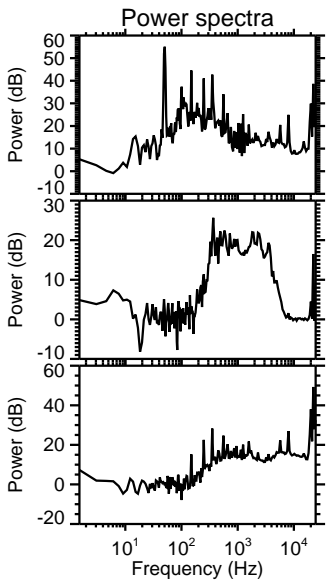
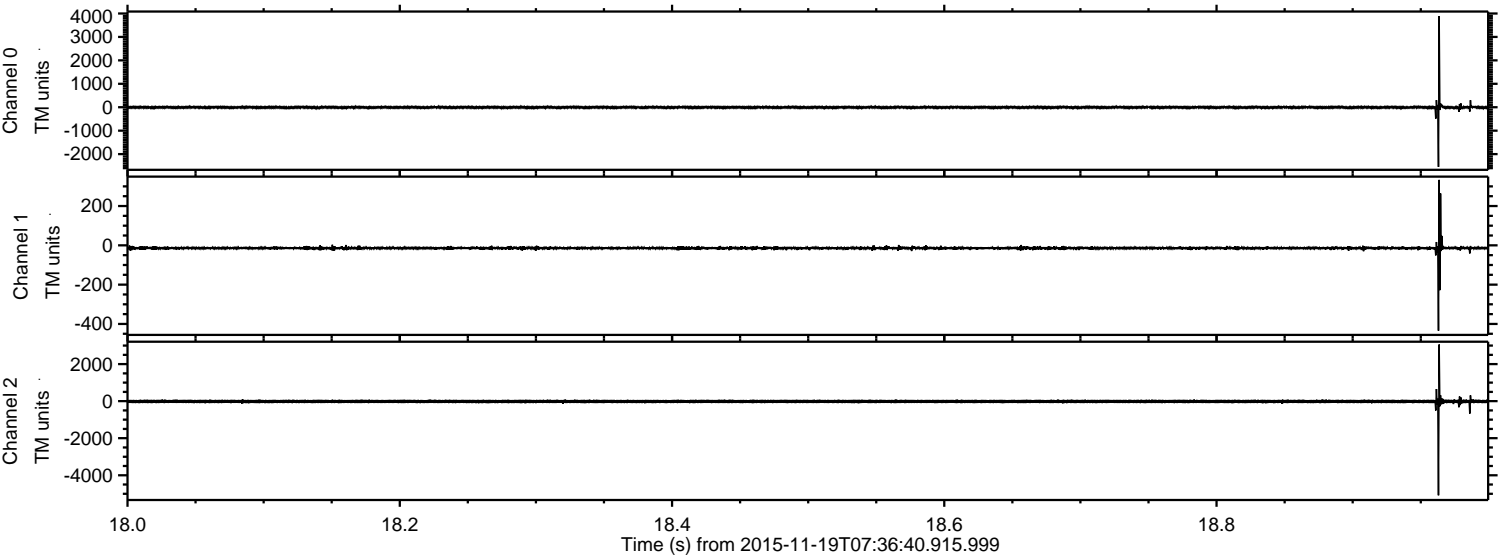


ELMAVAN 3D WAVEFORMS (Measured data sampled at 50 kHz) 51000 packets of 144 samples from 2015-11-19T07:36:40.915.999.

Processed Thu Nov 19 08:44:40 2015 by ELM ver.2012-10-06 from 001__elm20151119_073639__dat00.bin

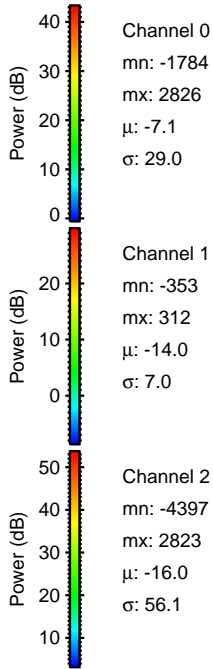
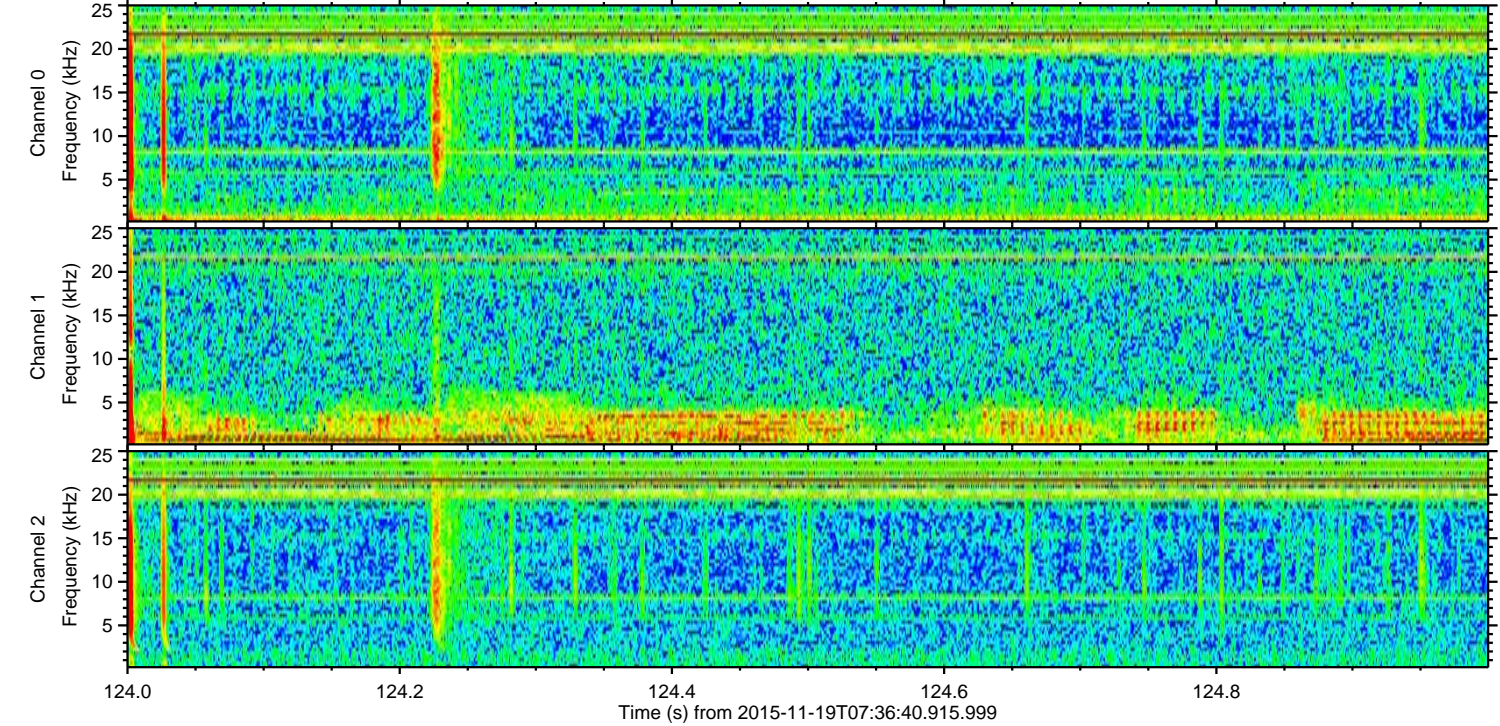
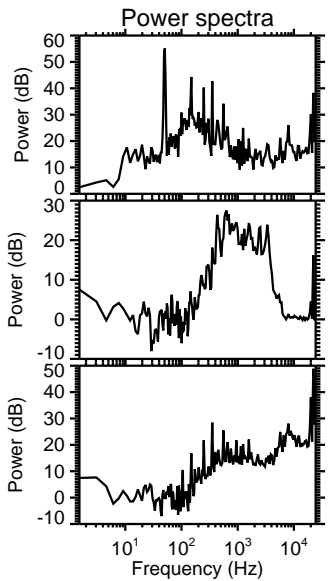
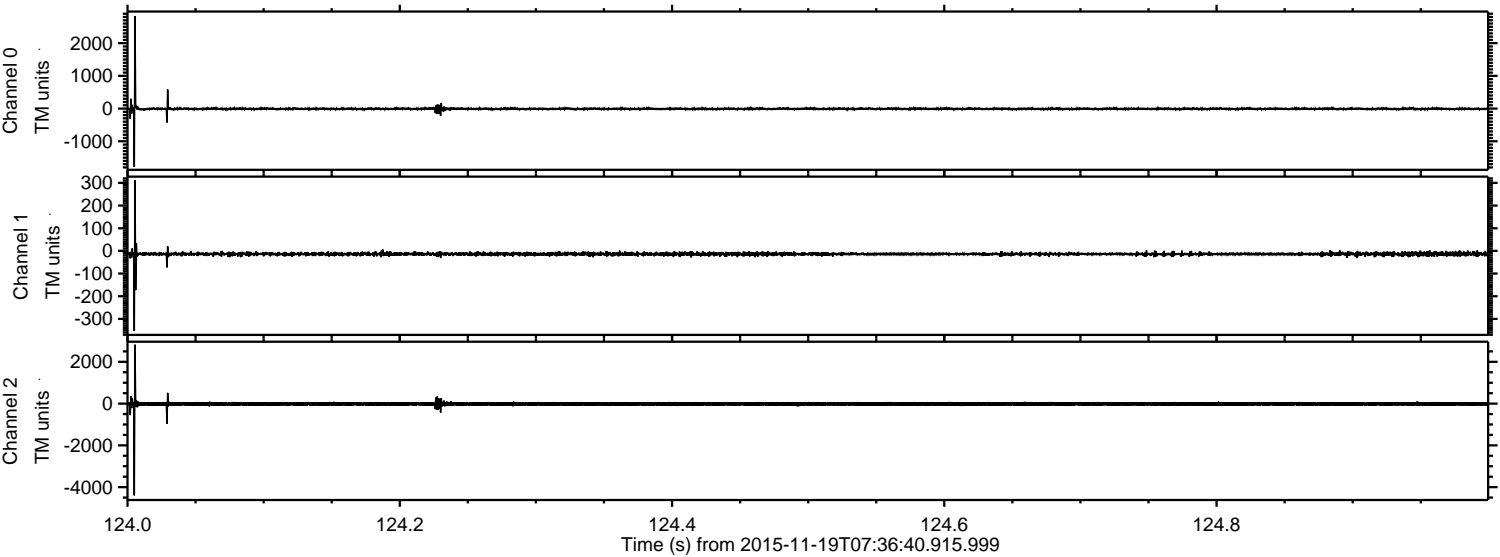


Processed Thu Nov 19 08:44:55 2015 by ELM ver.2012-10-06 from 001__elm20151119_073639__dat00.bin



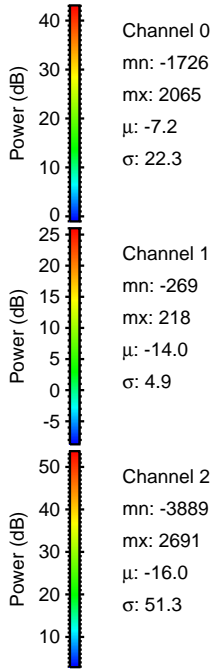
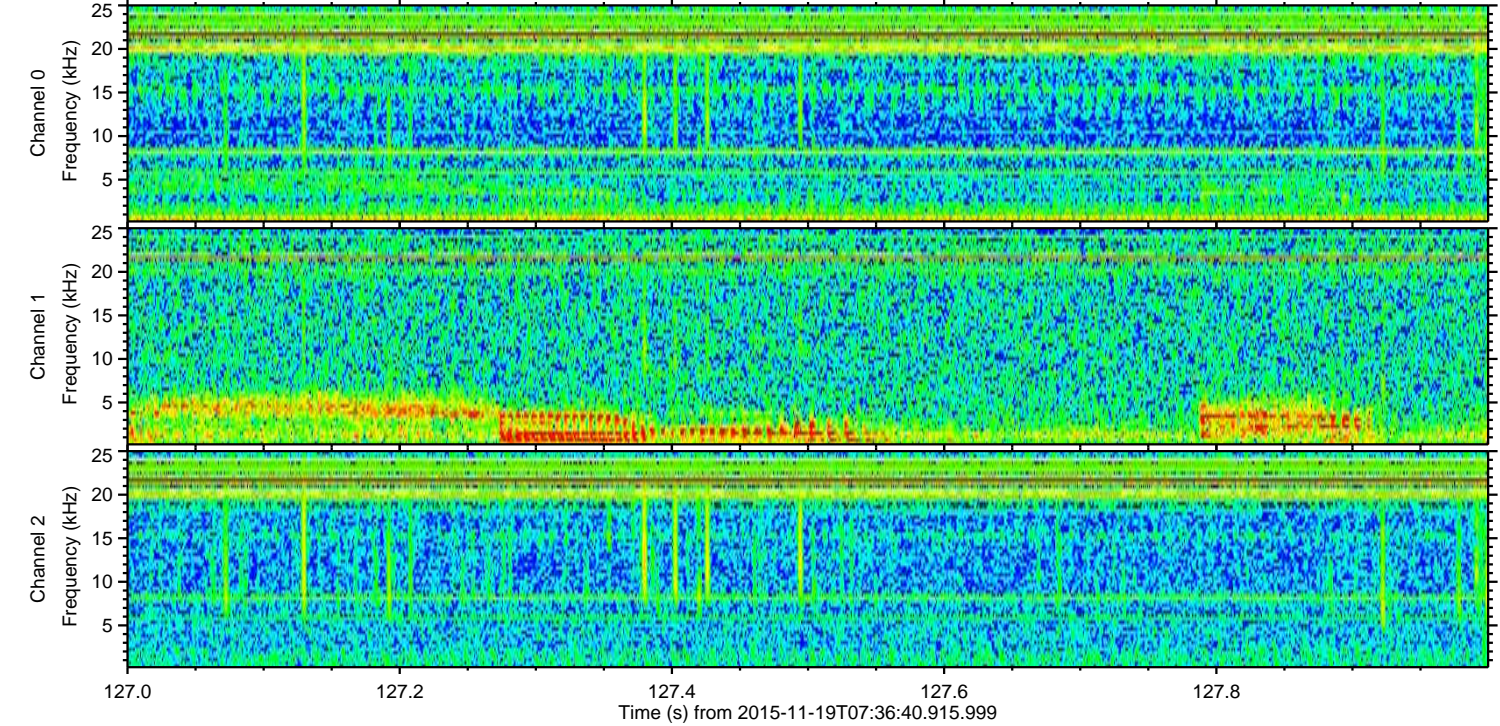
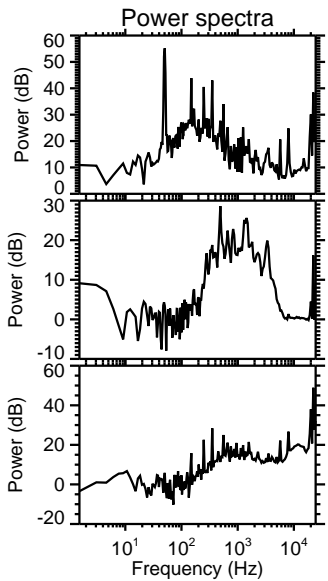
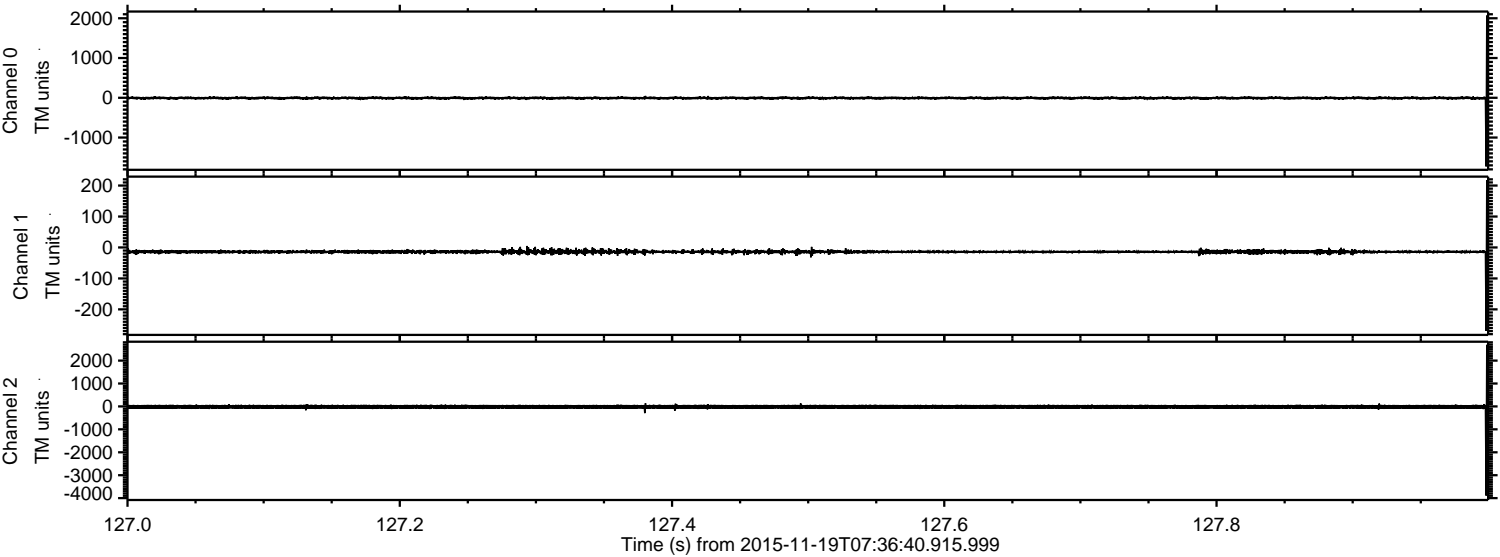
ELMAVAN 3D WAVEFORMS (Measured data sampled at 50 kHz) 51000 packets of 144 samples from 2015-11-19T07:36:40.915.999. Part 125/147

Processed Thu Nov 19 08:44:56 2015 by ELM ver.2012-10-06 from 001__elm20151119_073639__dat00.bin



ELMAVAN 3D WAVEFORMS (Measured data sampled at 50 kHz) 51000 packets of 144 samples from 2015-11-19T07:36:40.915.999. Part 128/147

Processed Thu Nov 19 08:44:57 2015 by ELM ver.2012-10-06 from 001__elm20151119_073639__dat00.bin



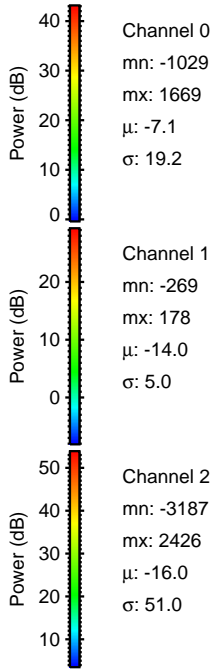
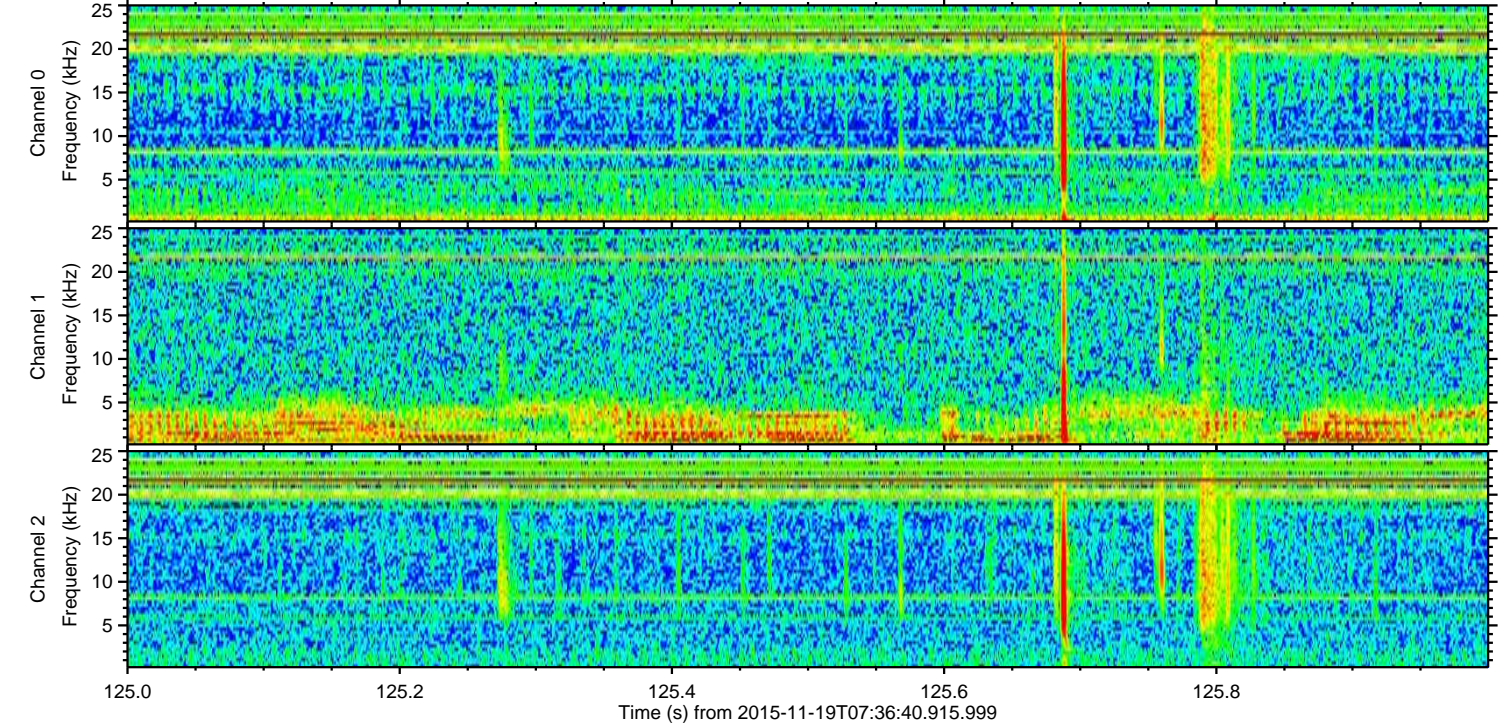
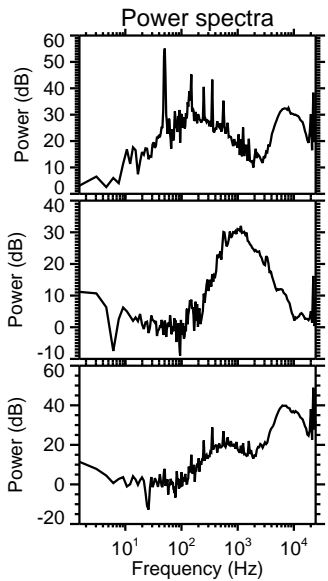
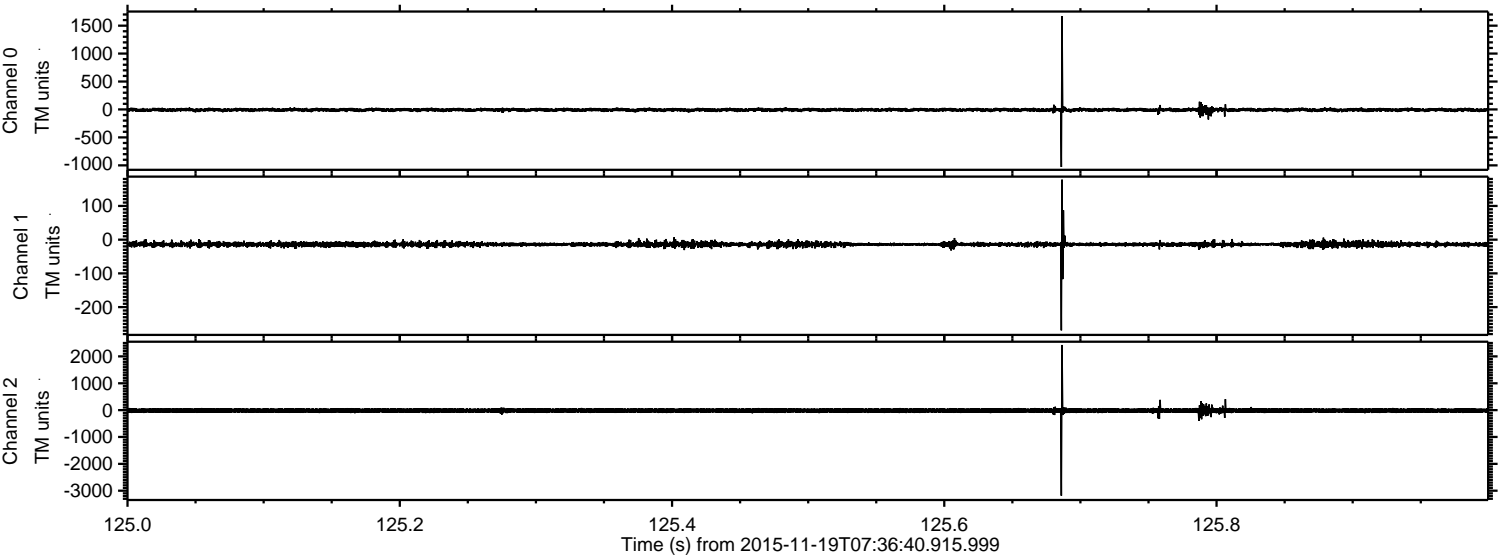
Channel 0
mn: -1726
mx: 2065
 μ : -7.2
 σ : 22.3

Channel 1
mn: -269
mx: 218
 μ : -14.0
 σ : 4.9

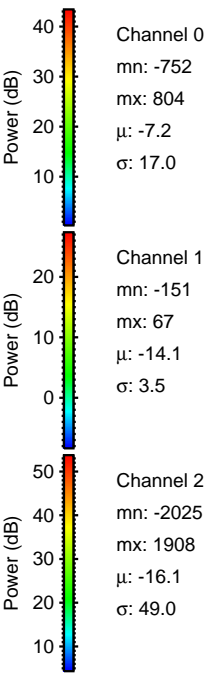
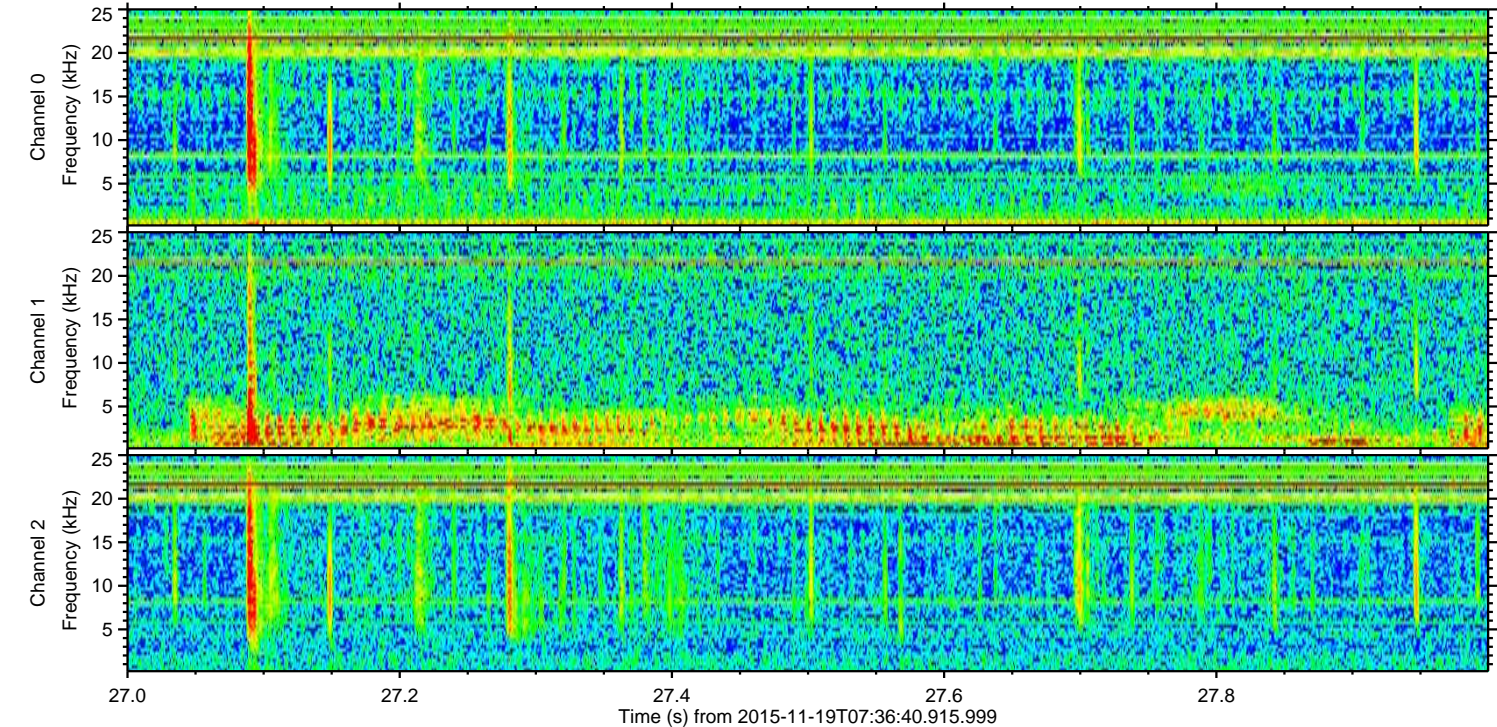
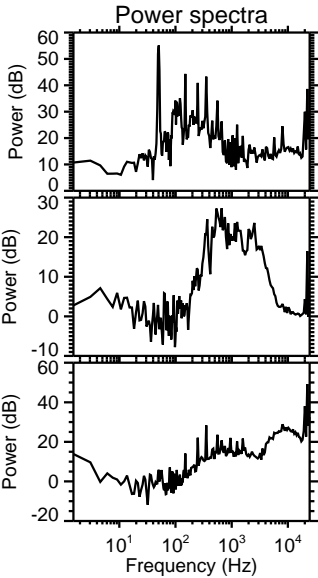
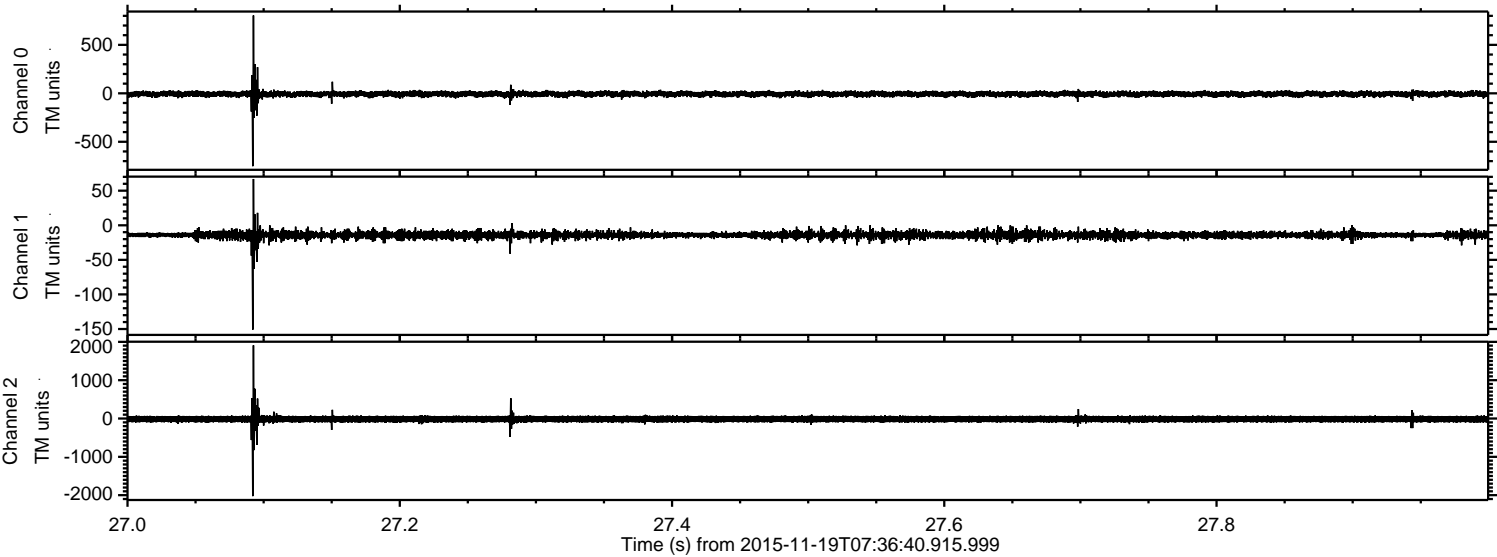
Channel 2
mn: -3889
mx: 2691
 μ : -16.0
 σ : 51.3

ELMAVAN 3D WAVEFORMS (Measured data sampled at 50 kHz) 51000 packets of 144 samples from 2015-11-19T07:36:40.915.999. Part 126/147

Processed Thu Nov 19 08:44:58 2015 by ELM ver.2012-10-06 from 001__elm20151119_073639__dat00.bin

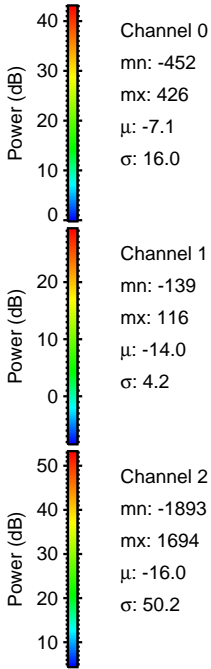
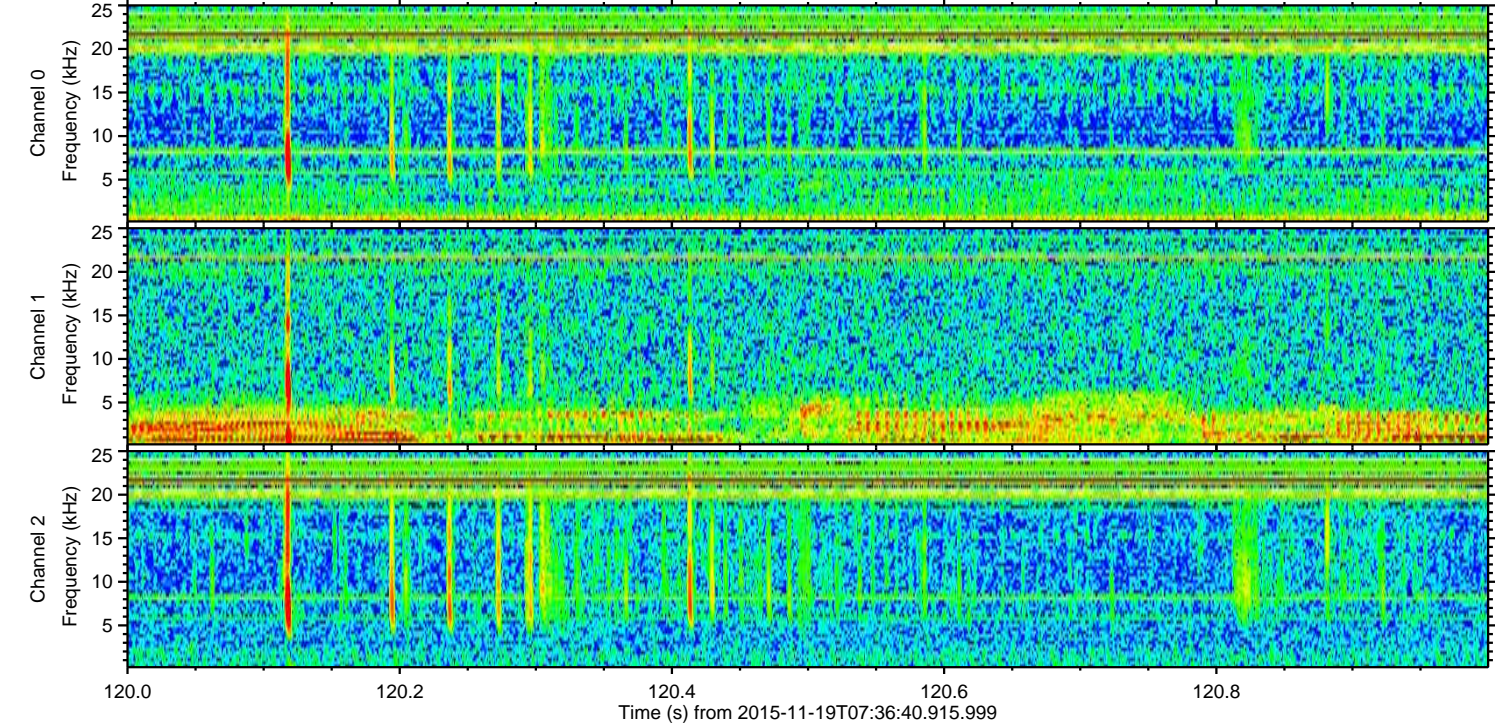
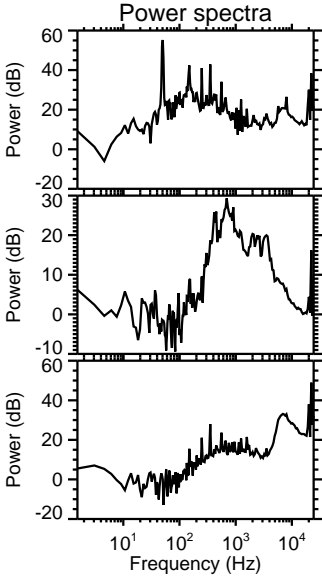
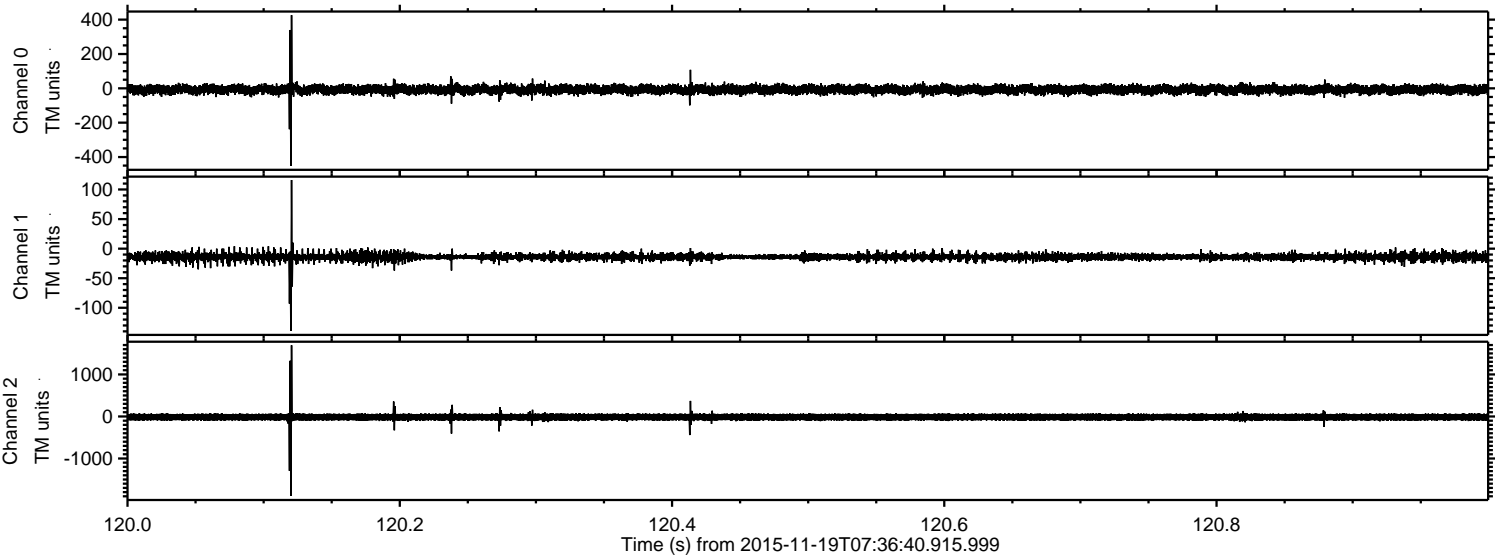


Processed Thu Nov 19 08:44:59 2015 by ELM ver.2012-10-06 from 001__elm20151119_073639__dat00.bin

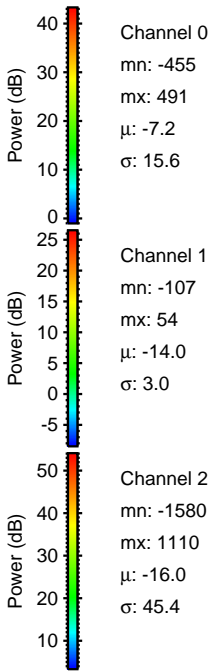
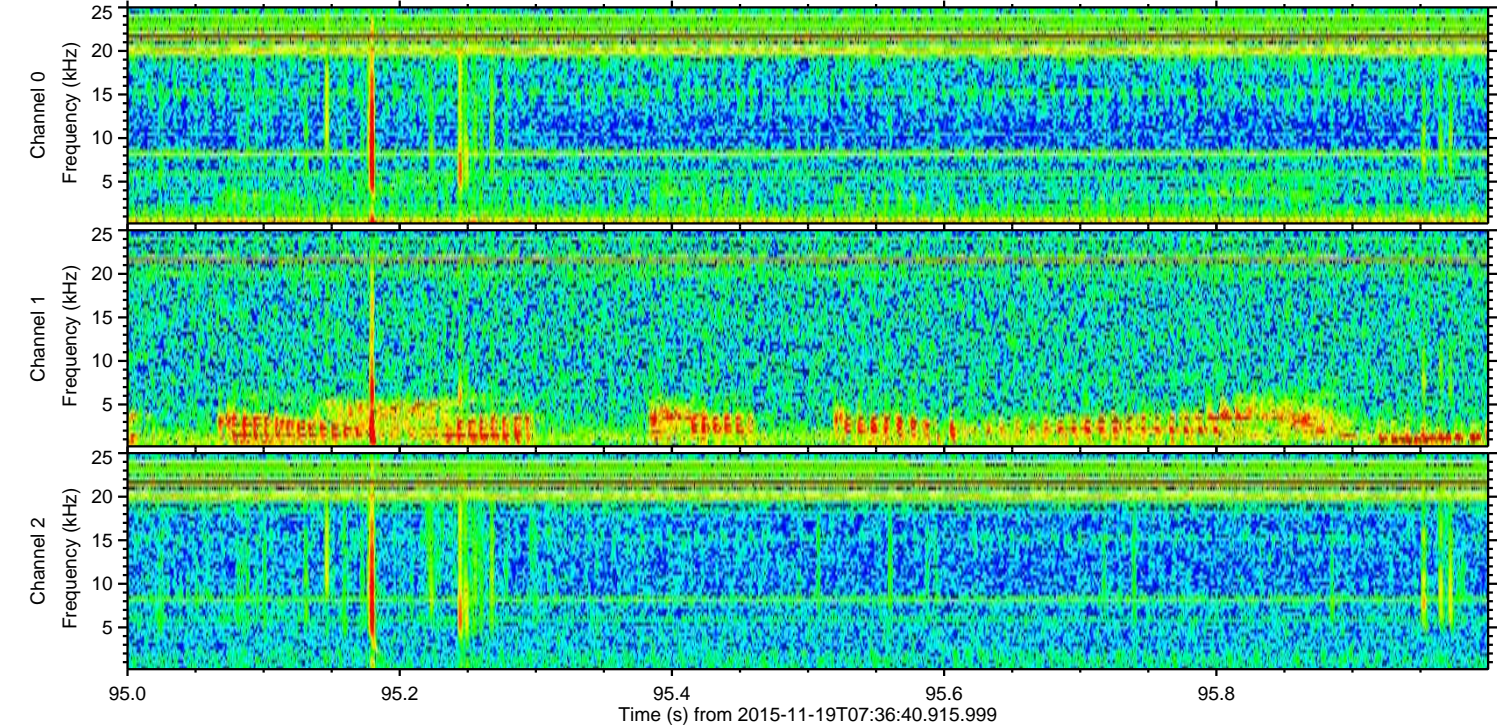
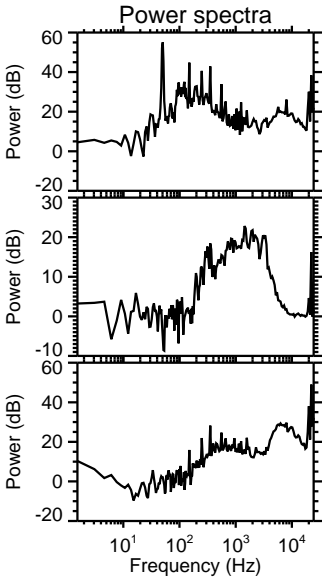
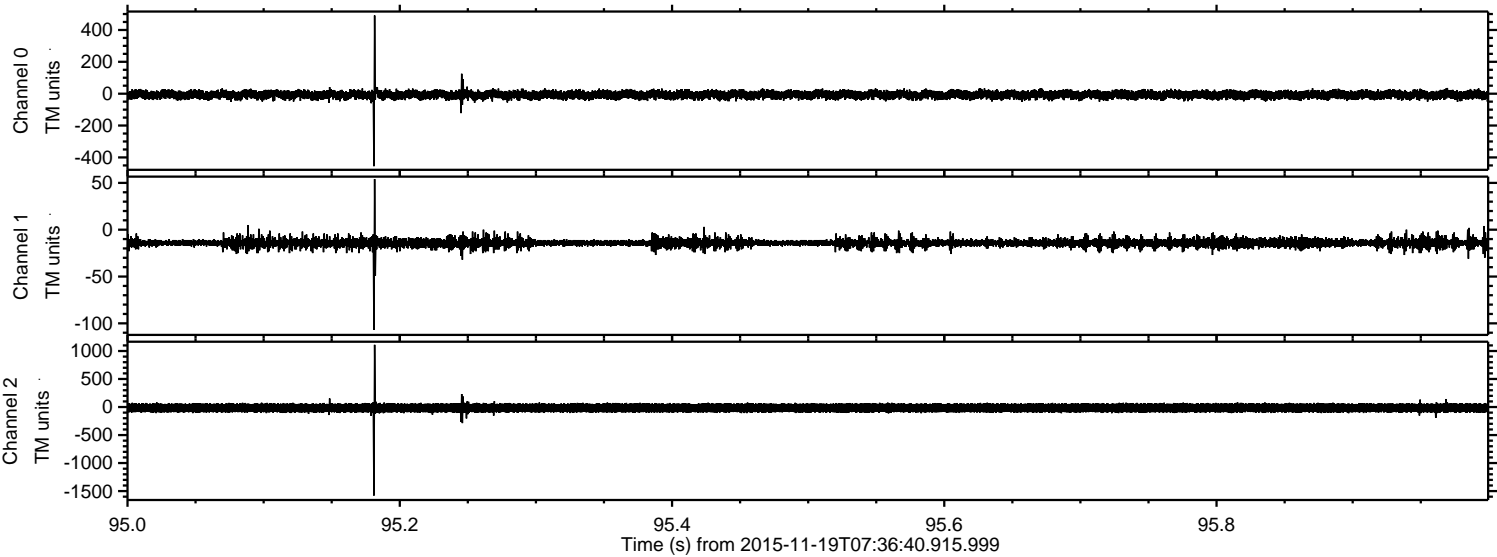


ELMAVAN 3D WAVEFORMS (Measured data sampled at 50 kHz) 51000 packets of 144 samples from 2015-11-19T07:36:40.915.999. Part 121/147

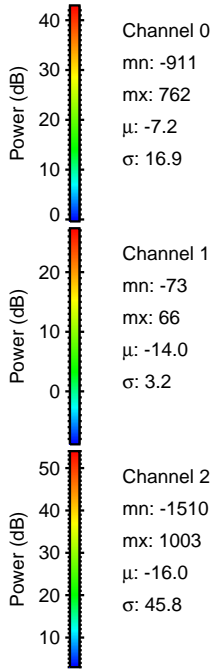
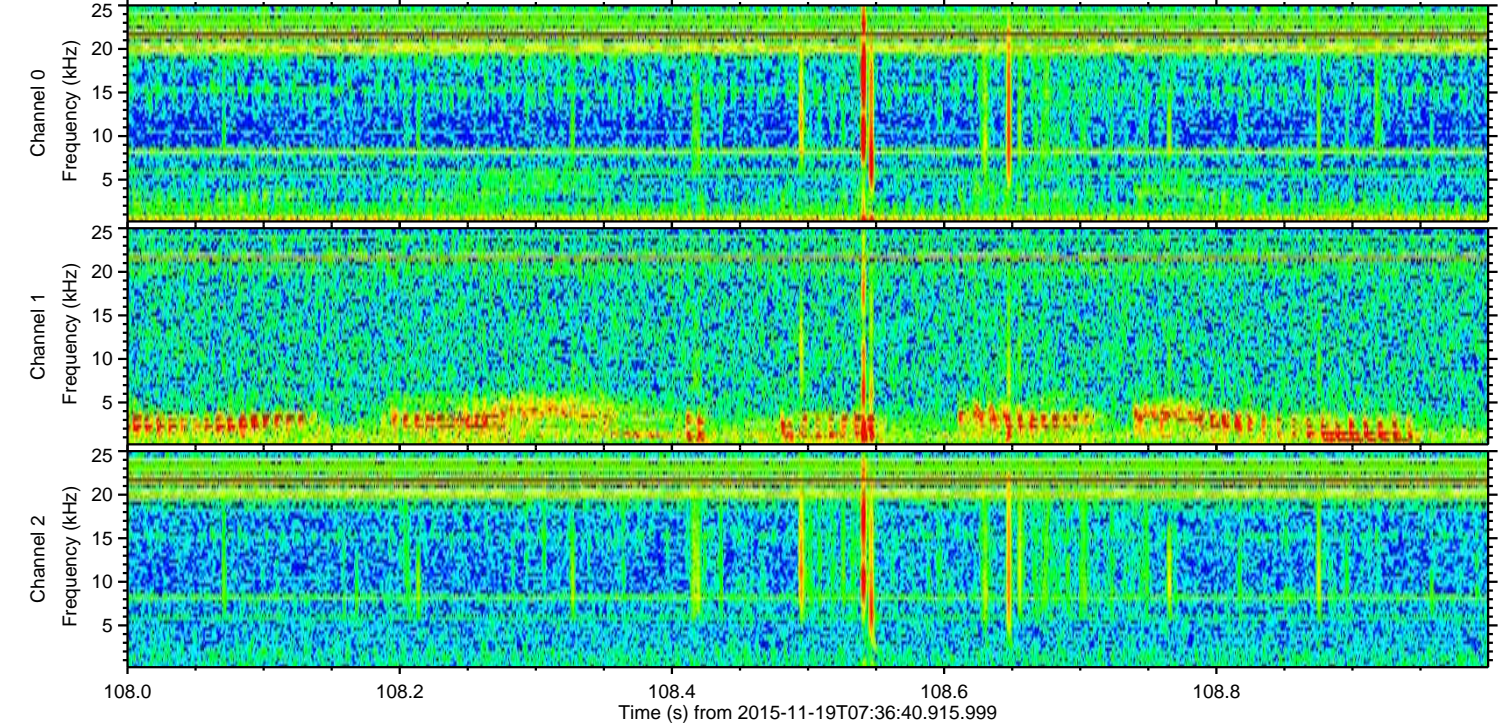
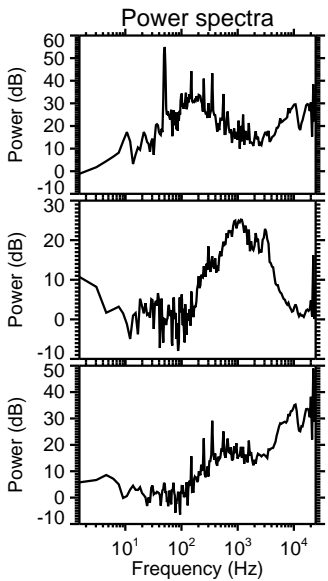
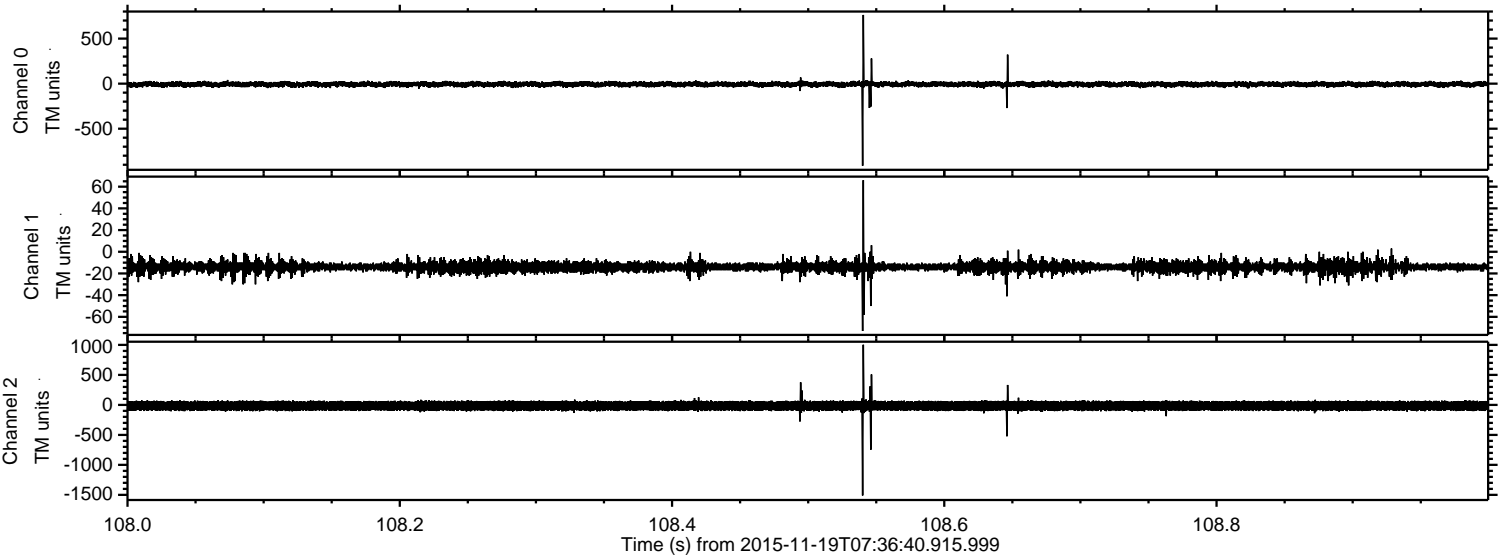
Processed Thu Nov 19 08:45:00 2015 by ELM ver.2012-10-06 from 001__elm20151119_073639__dat00.bin



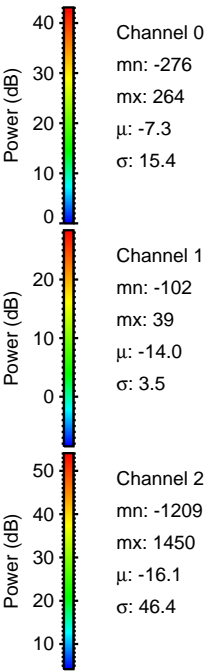
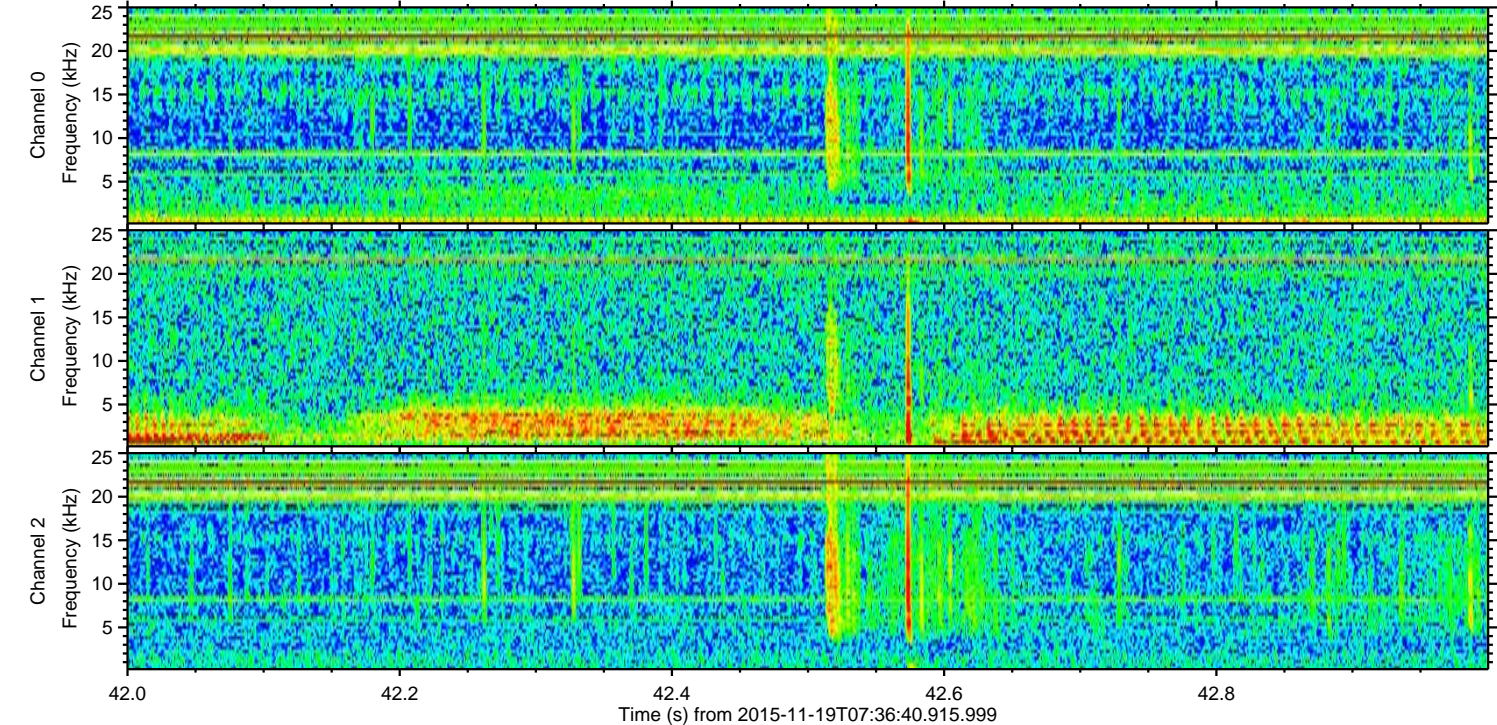
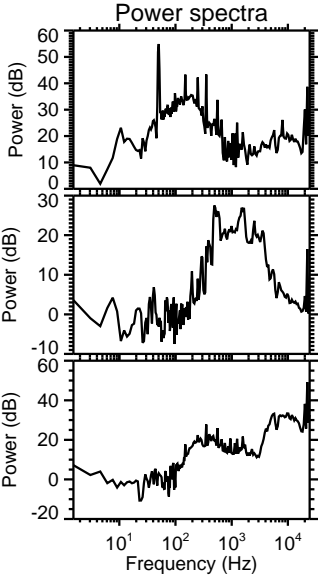
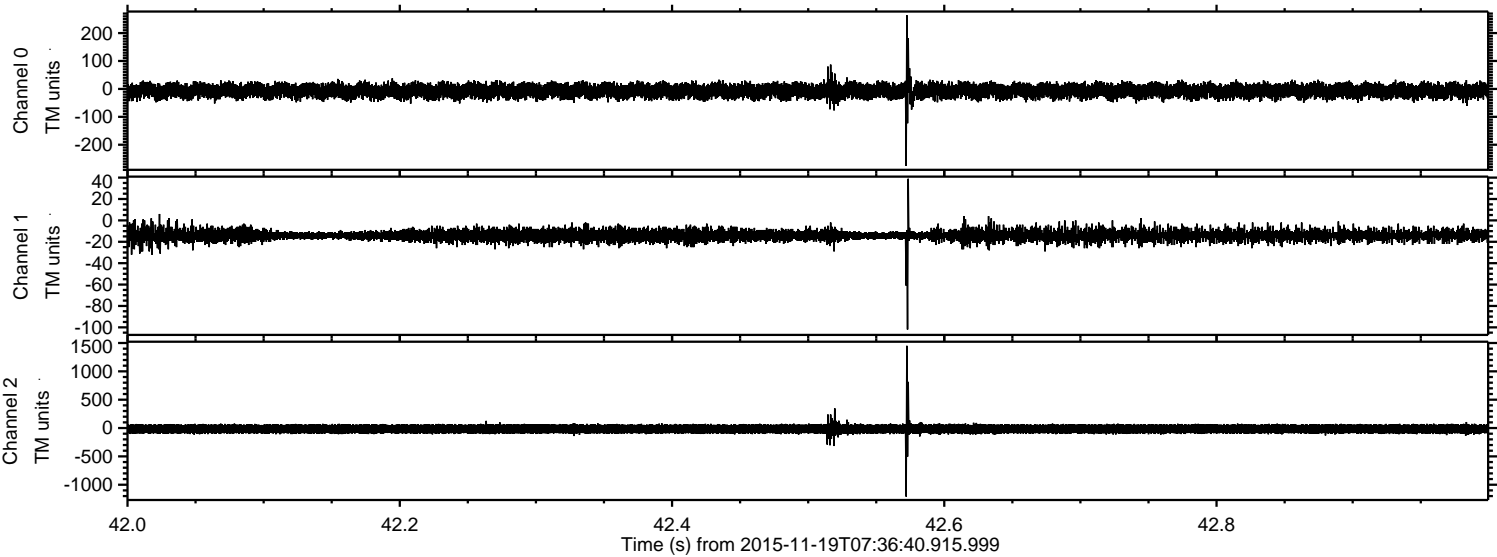
Processed Thu Nov 19 08:45:01 2015 by ELM ver.2012-10-06 from 001__elm20151119_073639__dat00.bin



Processed Thu Nov 19 08:45:02 2015 by ELM ver.2012-10-06 from 001__elm20151119_073639__dat00.bin



Processed Thu Nov 19 08:45:04 2015 by ELM ver.2012-10-06 from 001__elm20151119_073639__dat00.bin



Processed Thu Nov 19 08:45:05 2015 by ELM ver.2012-10-06 from 001__elm20151119_073639__dat00.bin

