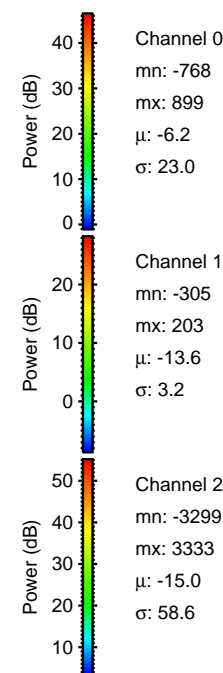
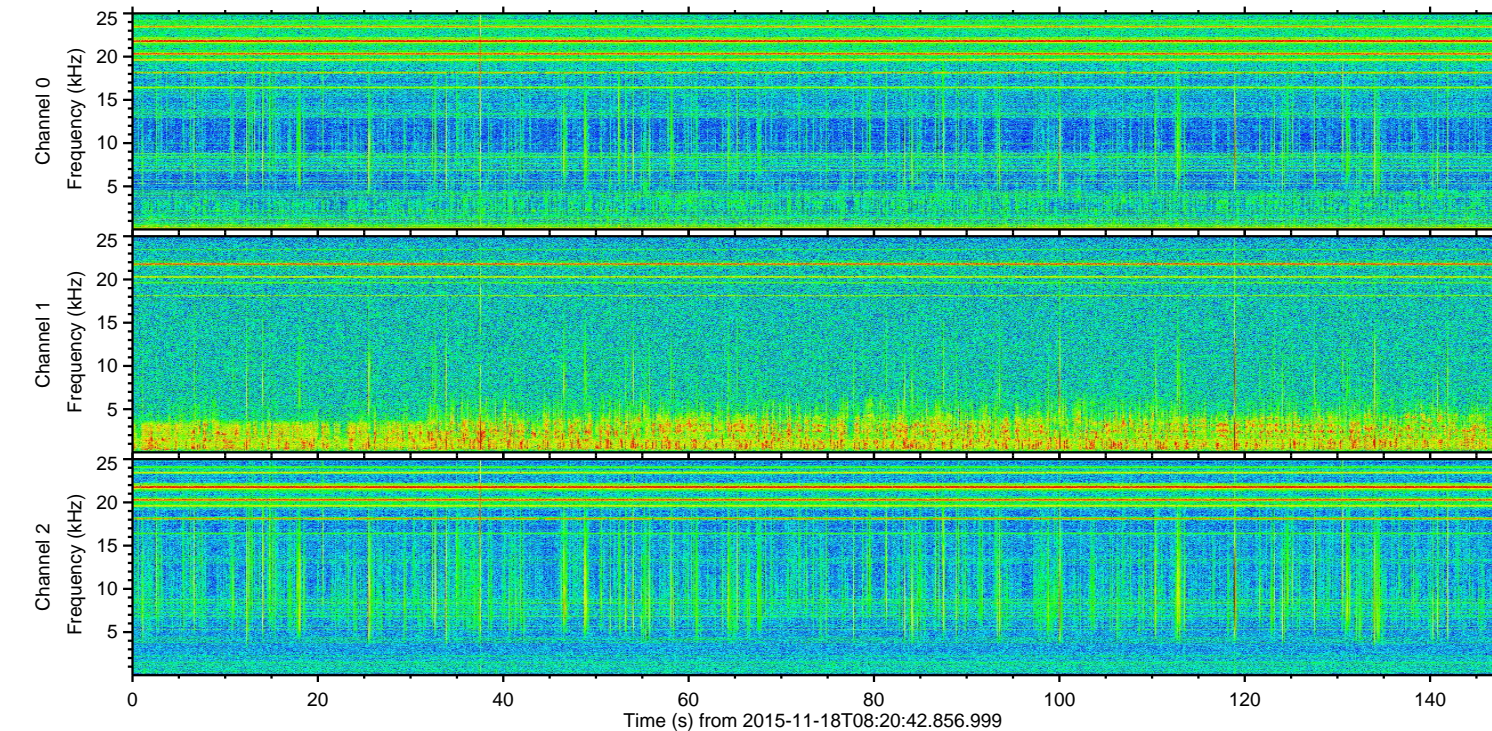
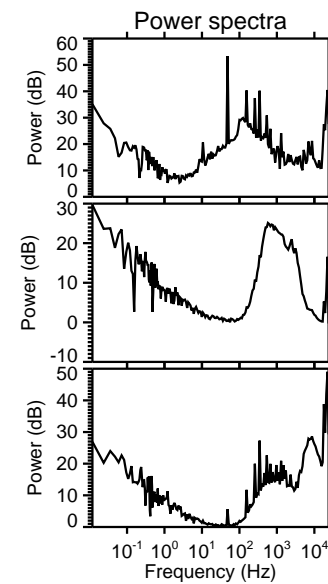
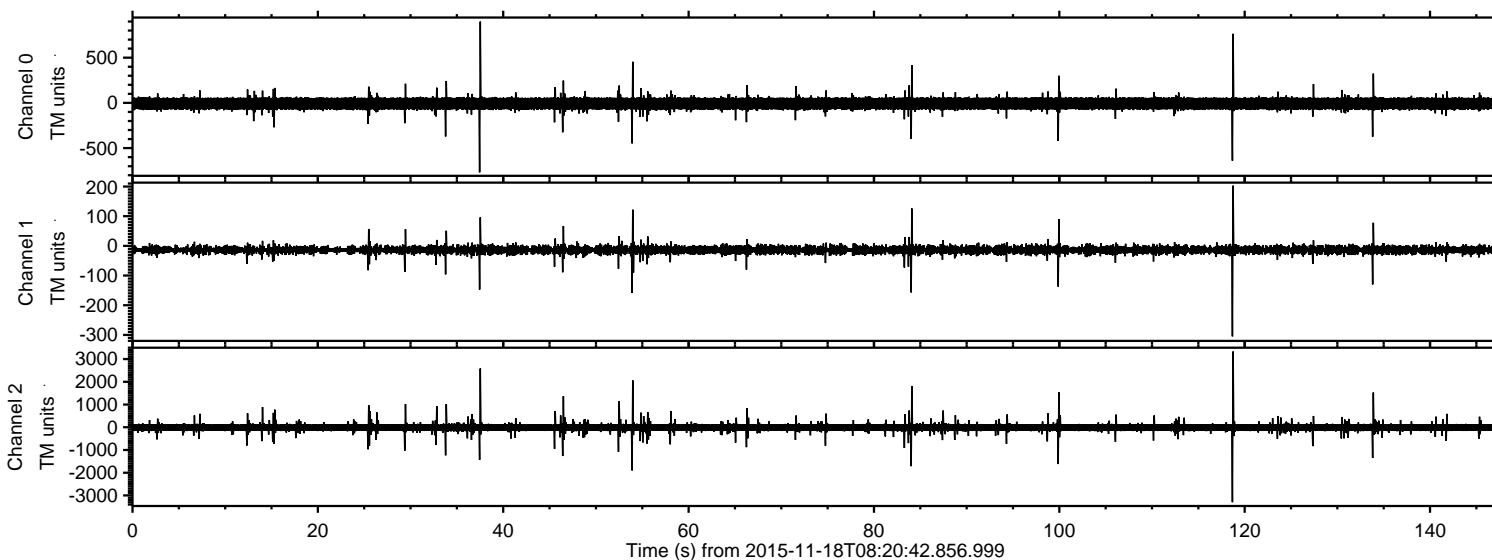


ELMAVAN 3D WAVEFORMS (Measured data sampled at 50 kHz) 51000 packets of 144 samples from 2015-11-18T08:20:42.856.999.

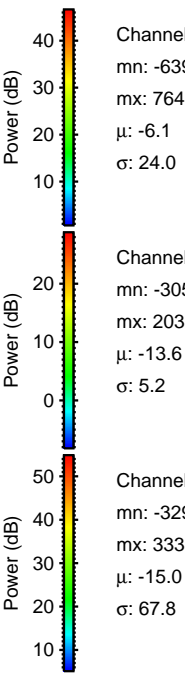
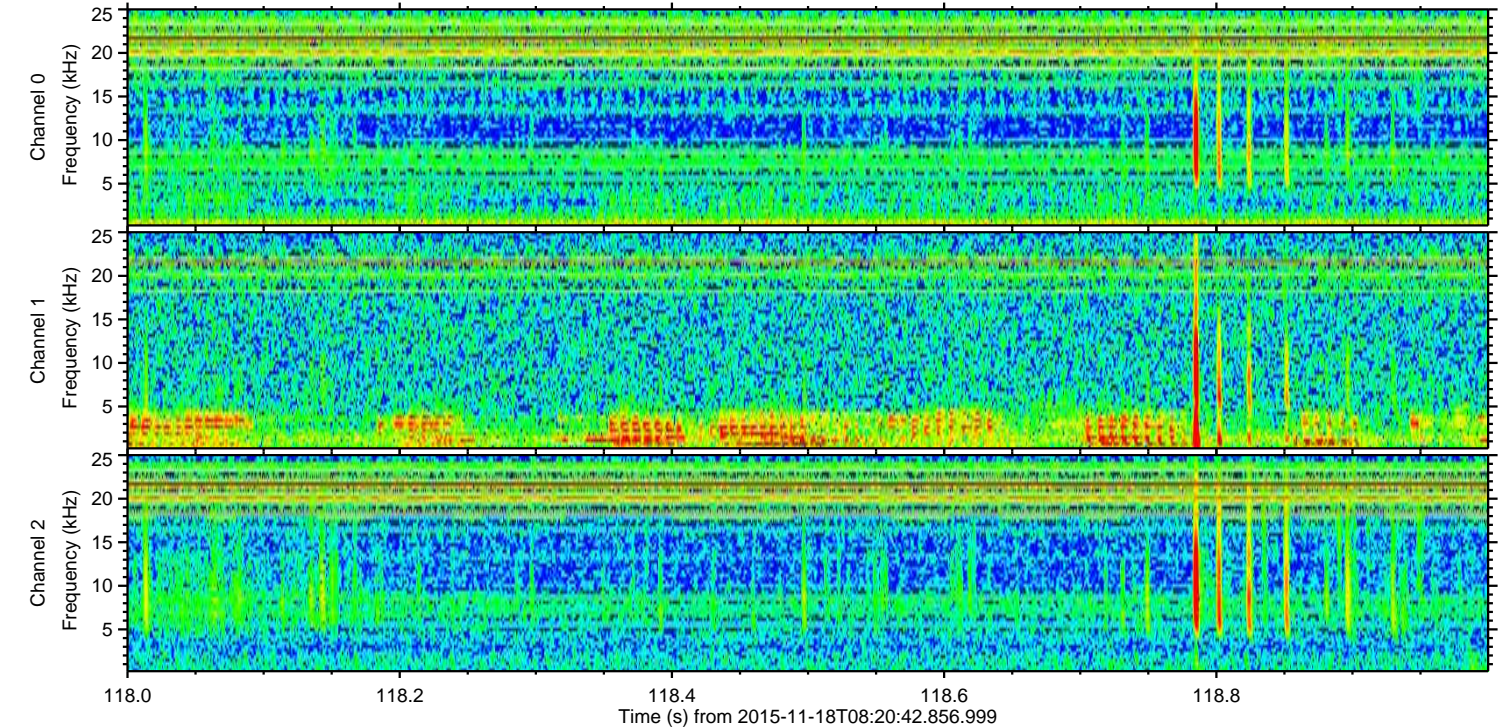
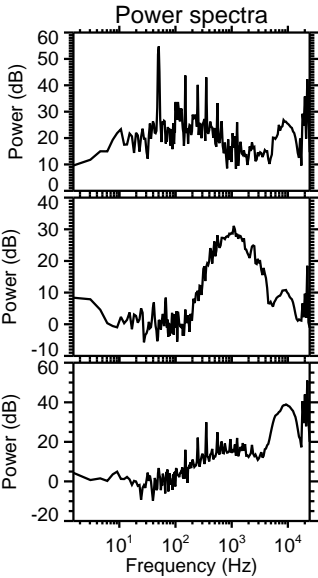
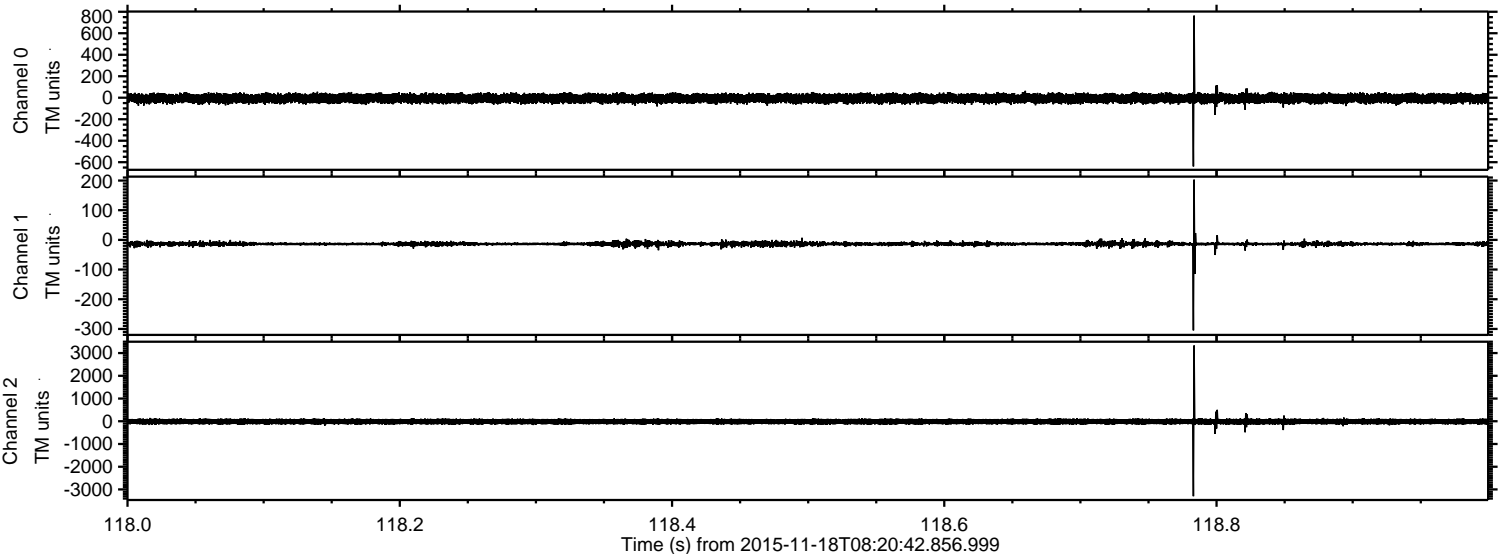
Processed Wed Nov 18 09:27:16 2015 by ELM ver.2012-10-06 from 001\_\_elm20151118\_082041\_\_dat00.bin





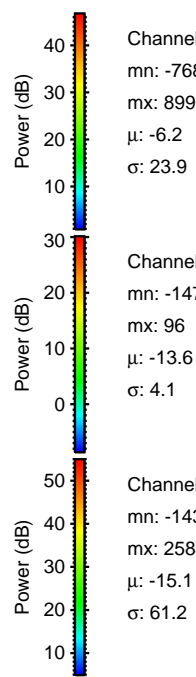
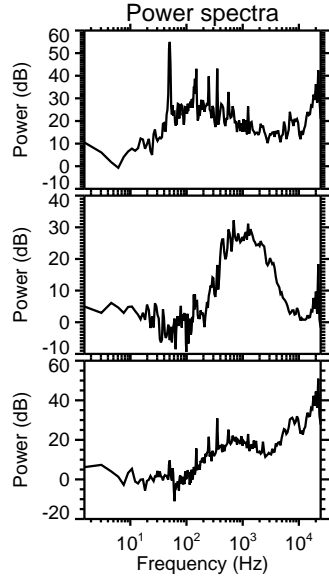
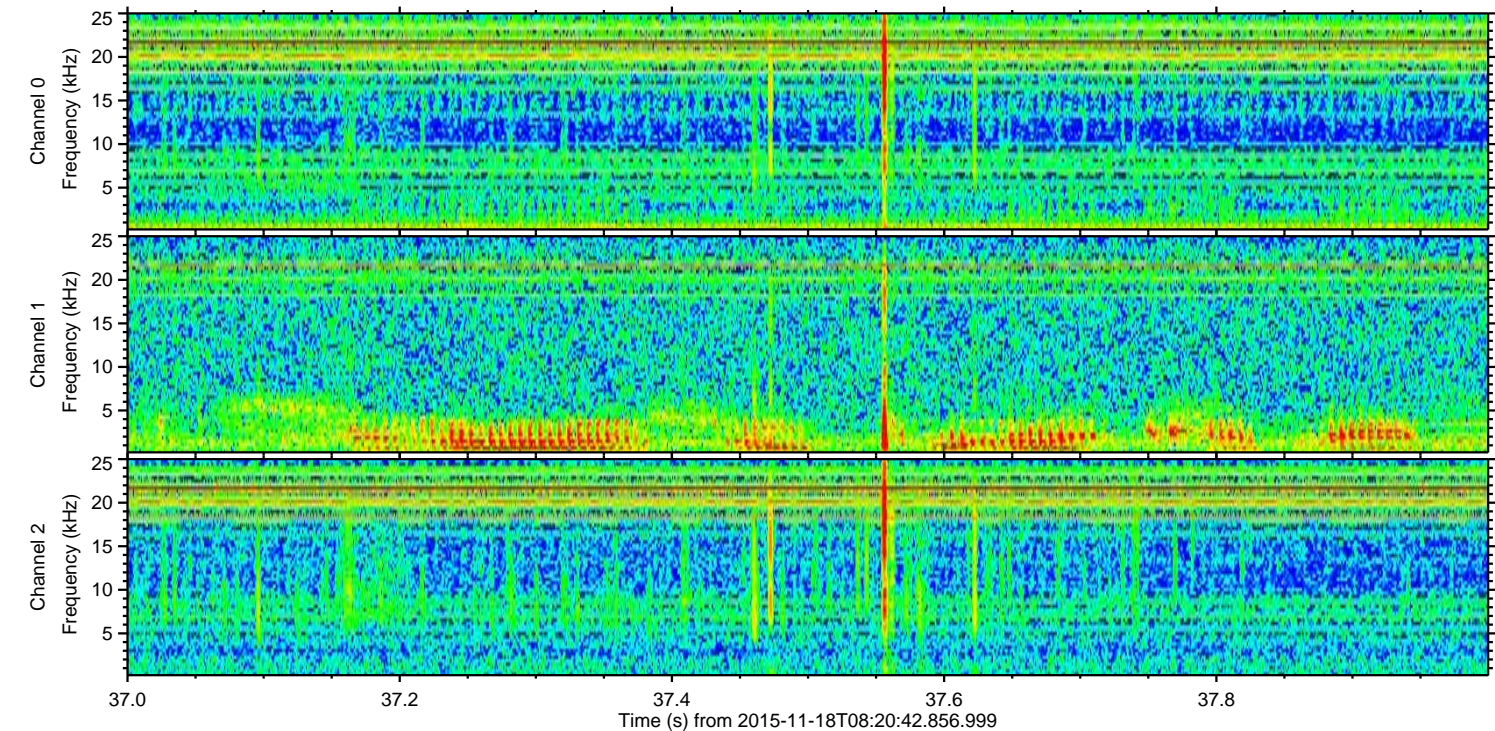
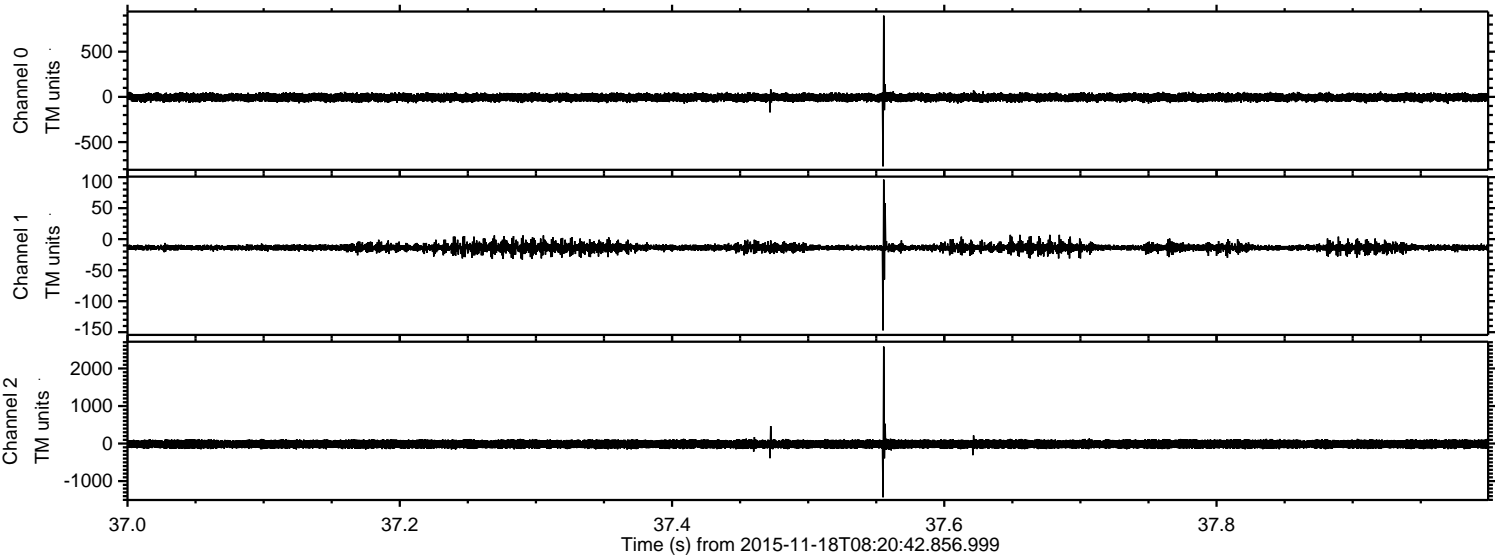
ELMAVAN 3D WAVEFORMS (Measured data sampled at 50 kHz) 51000 packets of 144 samples from 2015-11-18T08:20:42.856.999. Part 119/147

Processed Wed Nov 18 09:27:28 2015 by ELM ver.2012-10-06 from 001\_\_elm20151118\_082041\_\_dat00.bin





Processed Wed Nov 18 09:27:29 2015 by ELM ver.2012-10-06 from 001\_\_elm20151118\_082041\_\_dat00.bin



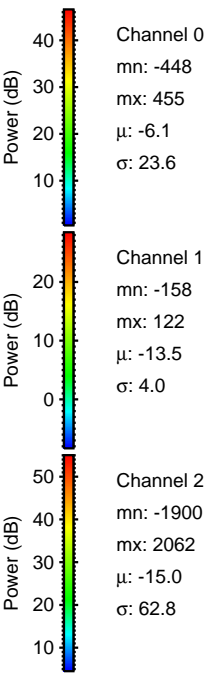
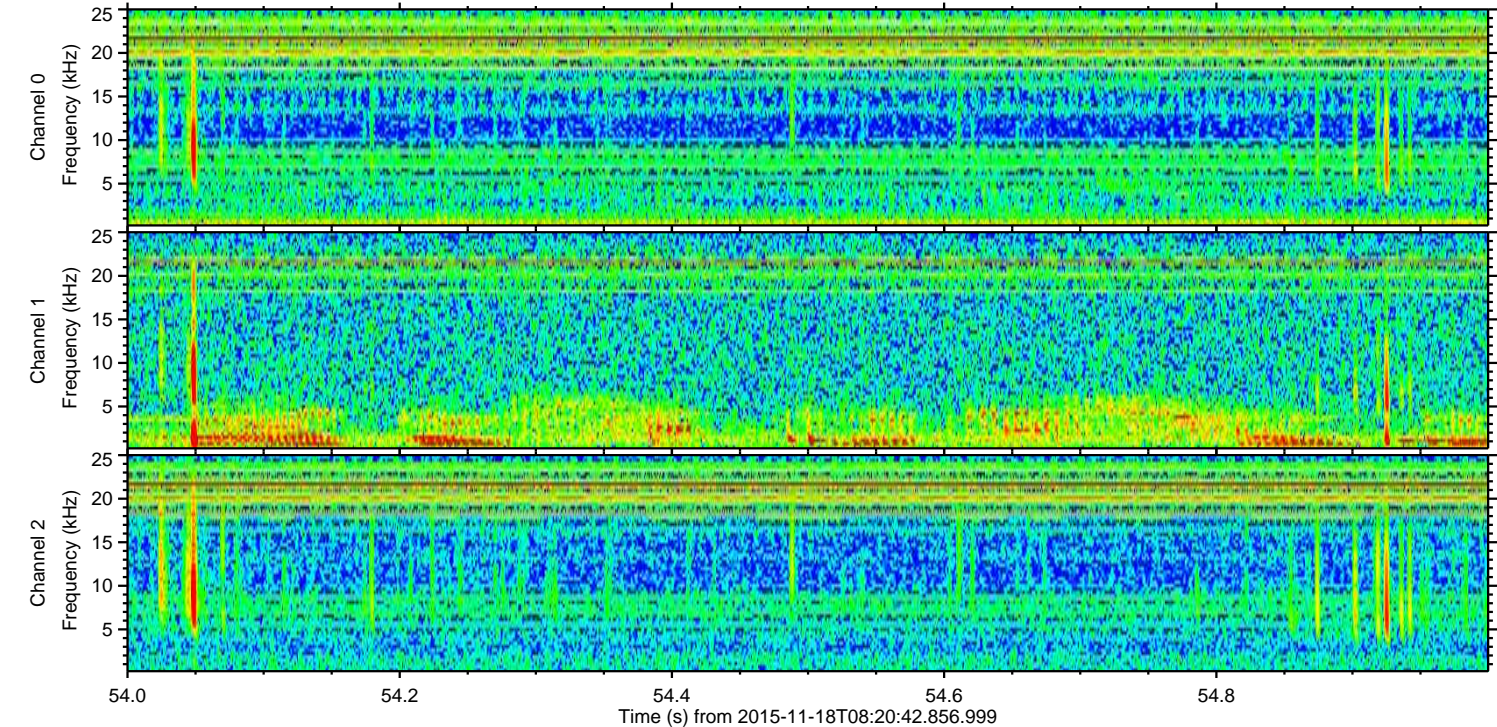
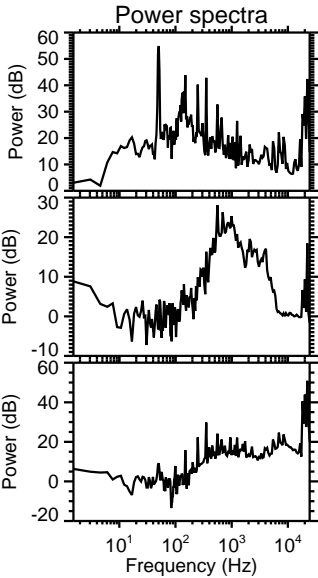
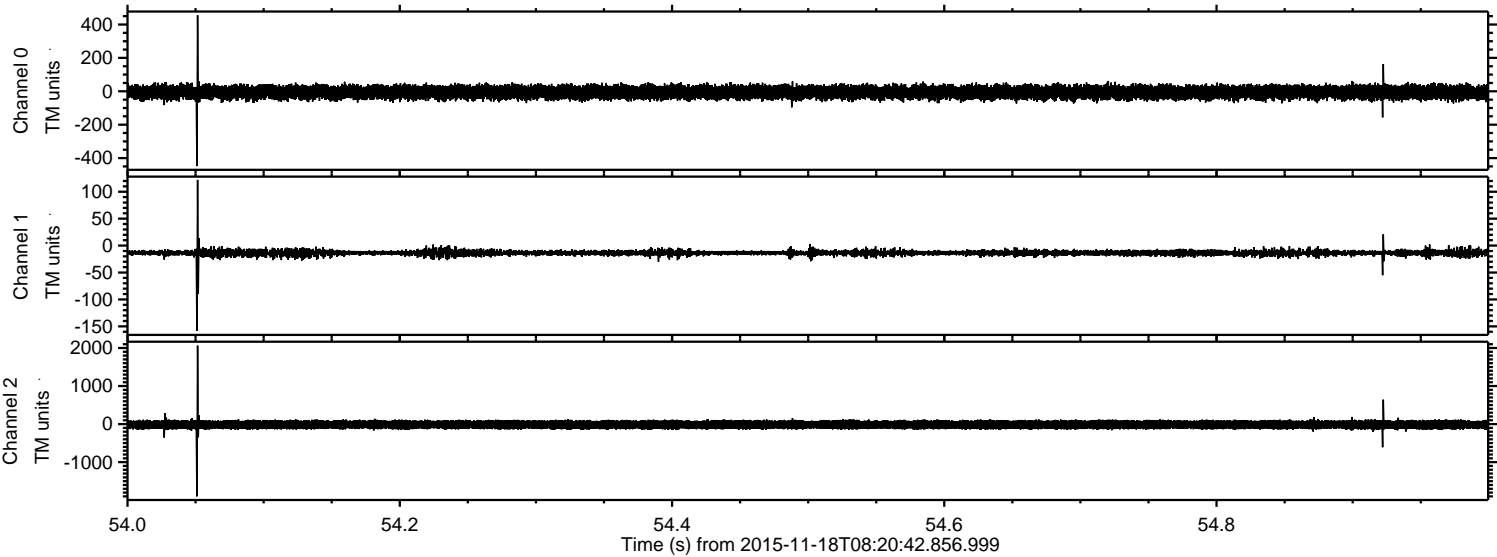
Channel 0  
mn: -768  
mx: 899  
 $\mu$ : -6.2  
 $\sigma$ : 23.9

Channel 1  
mn: -147  
mx: 96  
 $\mu$ : -13.6  
 $\sigma$ : 4.1

Channel 2  
mn: -1432  
mx: 2584  
 $\mu$ : -15.1  
 $\sigma$ : 61.2

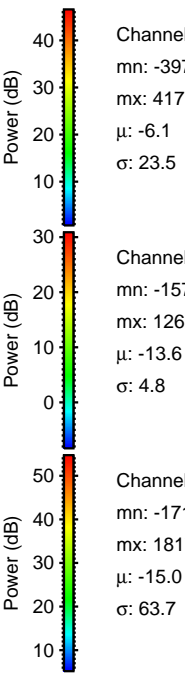
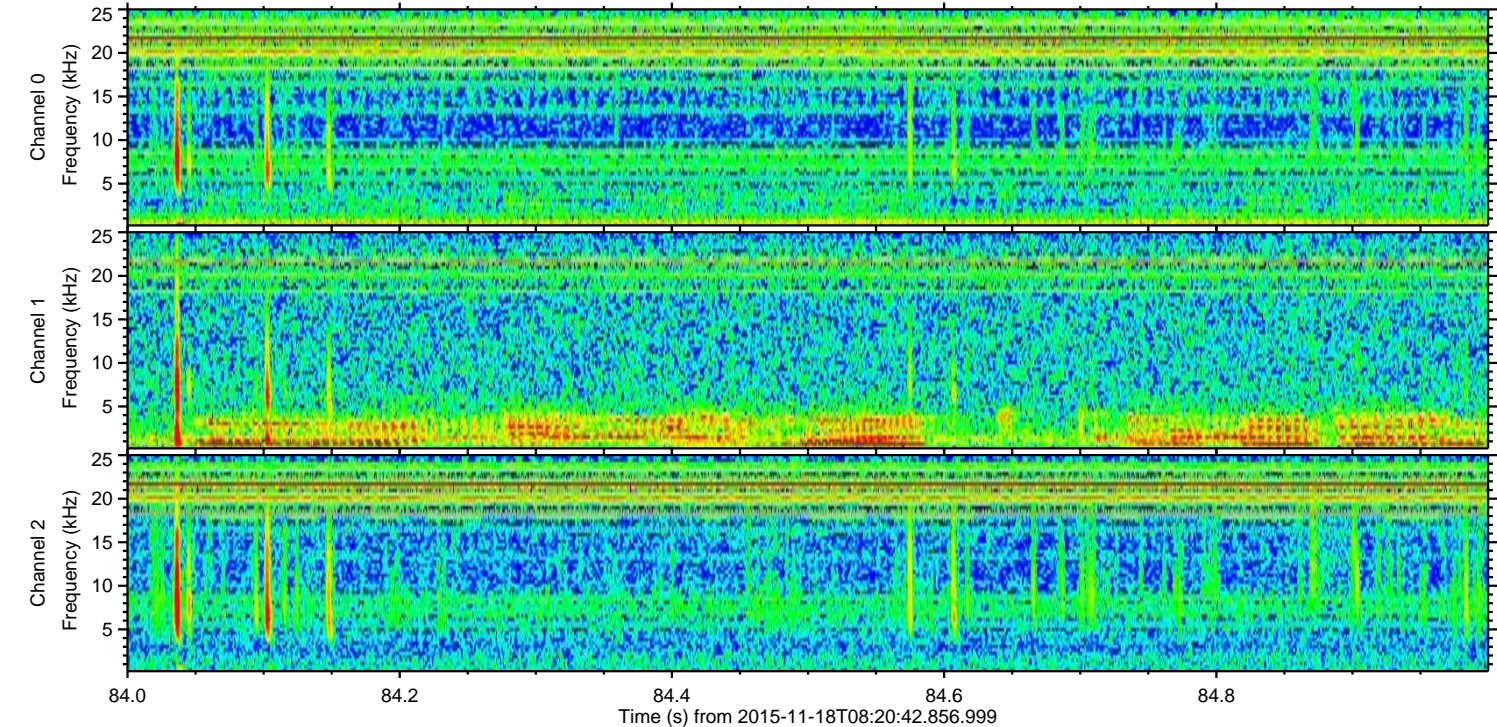
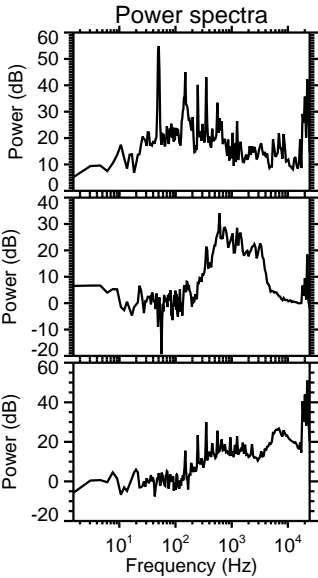
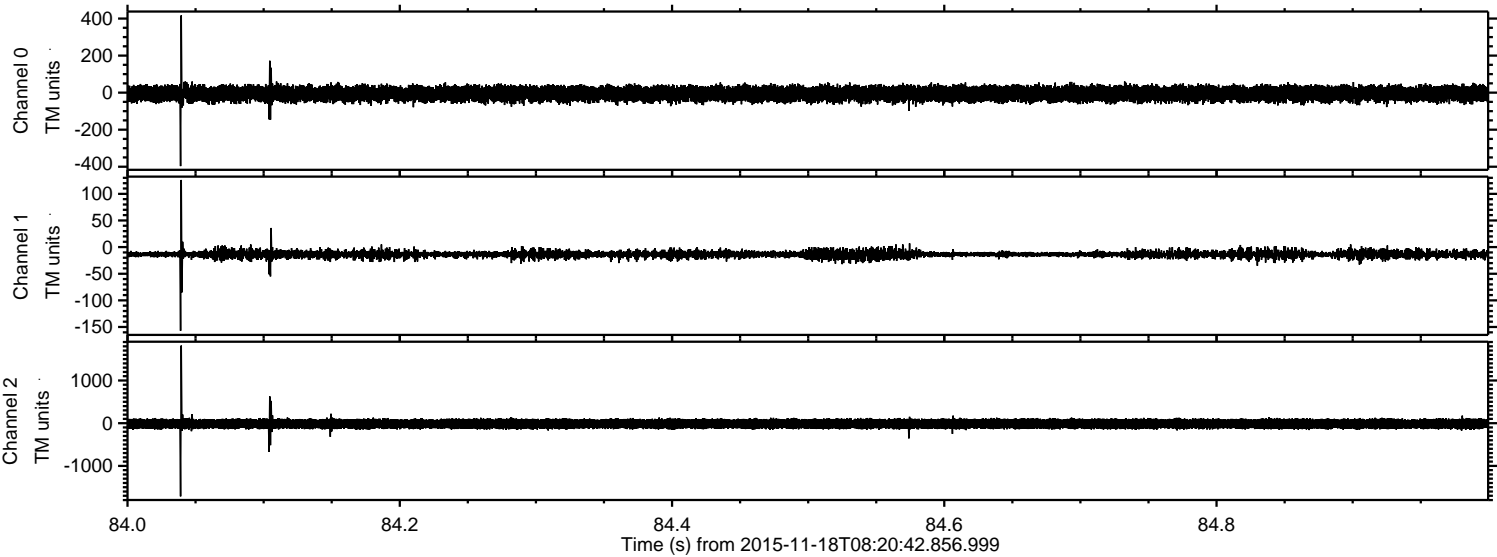


Processed Wed Nov 18 09:27:30 2015 by ELM ver.2012-10-06 from 001\_\_elm20151118\_082041\_\_dat00.bin





Processed Wed Nov 18 09:27:31 2015 by ELM ver.2012-10-06 from 001\_\_elm20151118\_082041\_\_dat00.bin



Channel 0  
mn: -397  
mx: 417  
 $\mu$ : -6.1  
 $\sigma$ : 23.5

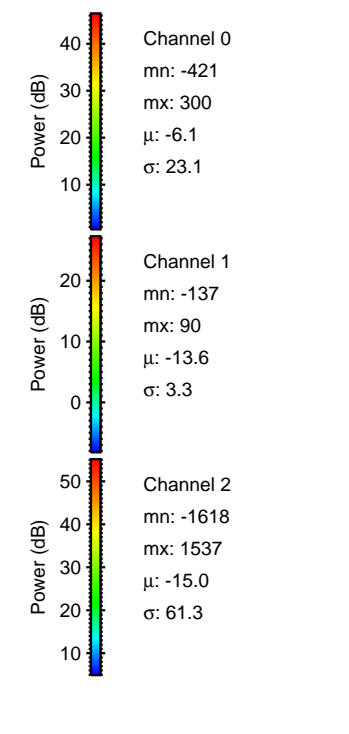
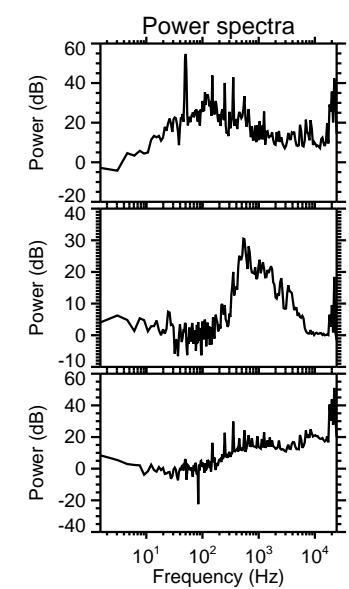
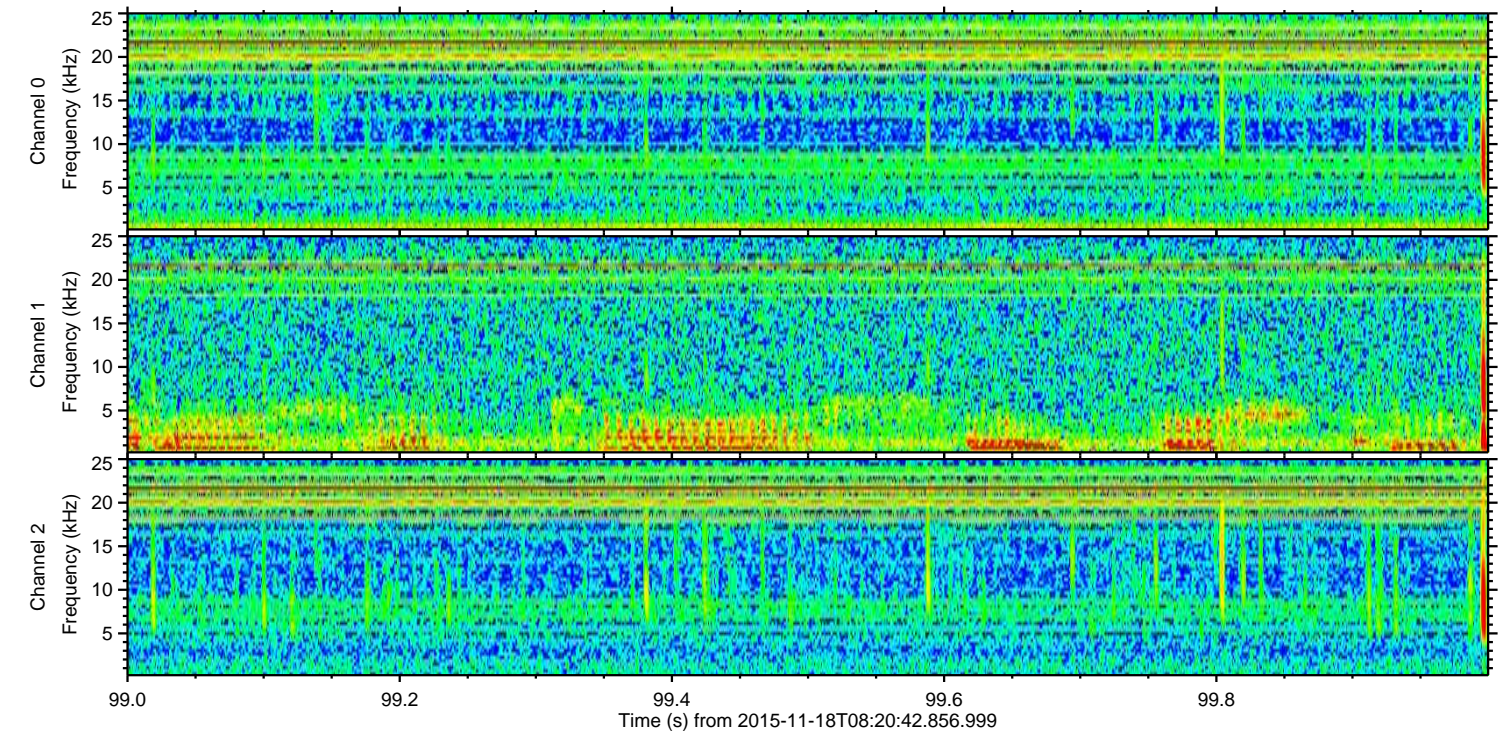
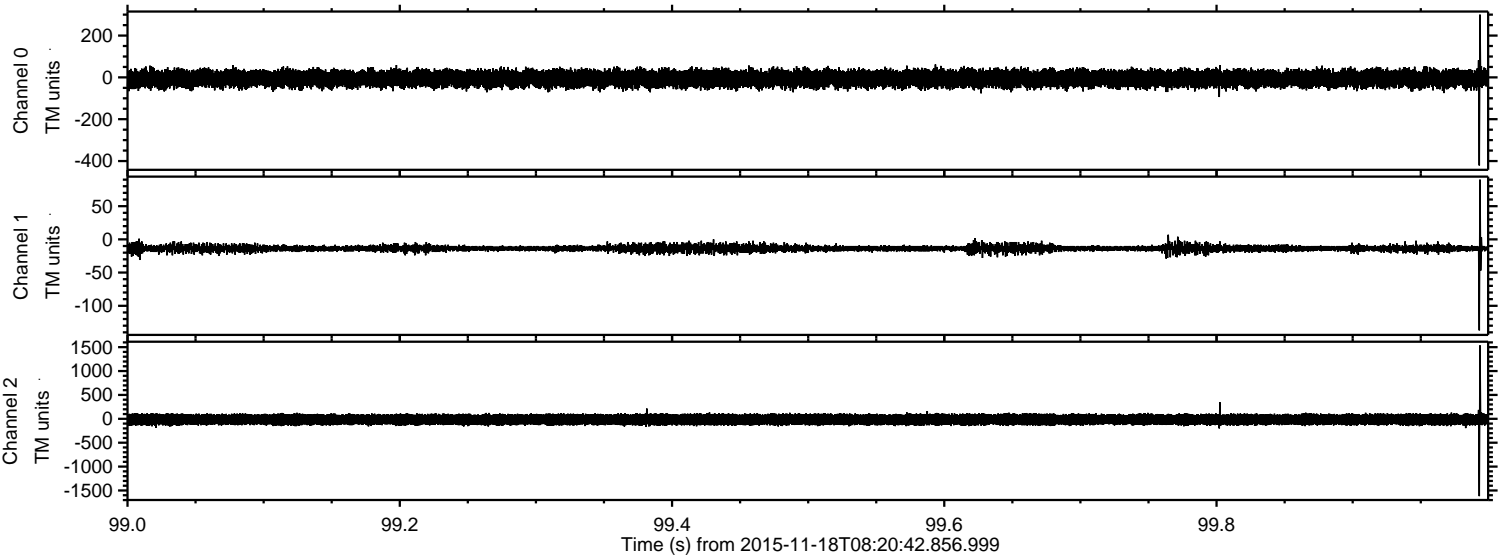
Channel 1  
mn: -157  
mx: 126  
 $\mu$ : -13.6  
 $\sigma$ : 4.8

Channel 2  
mn: -1713  
mx: 1817  
 $\mu$ : -15.0  
 $\sigma$ : 63.7



ELMAVAN 3D WAVEFORMS (Measured data sampled at 50 kHz) 51000 packets of 144 samples from 2015-11-18T08:20:42.856.999. Part 100/147

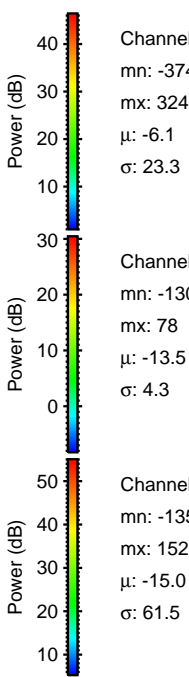
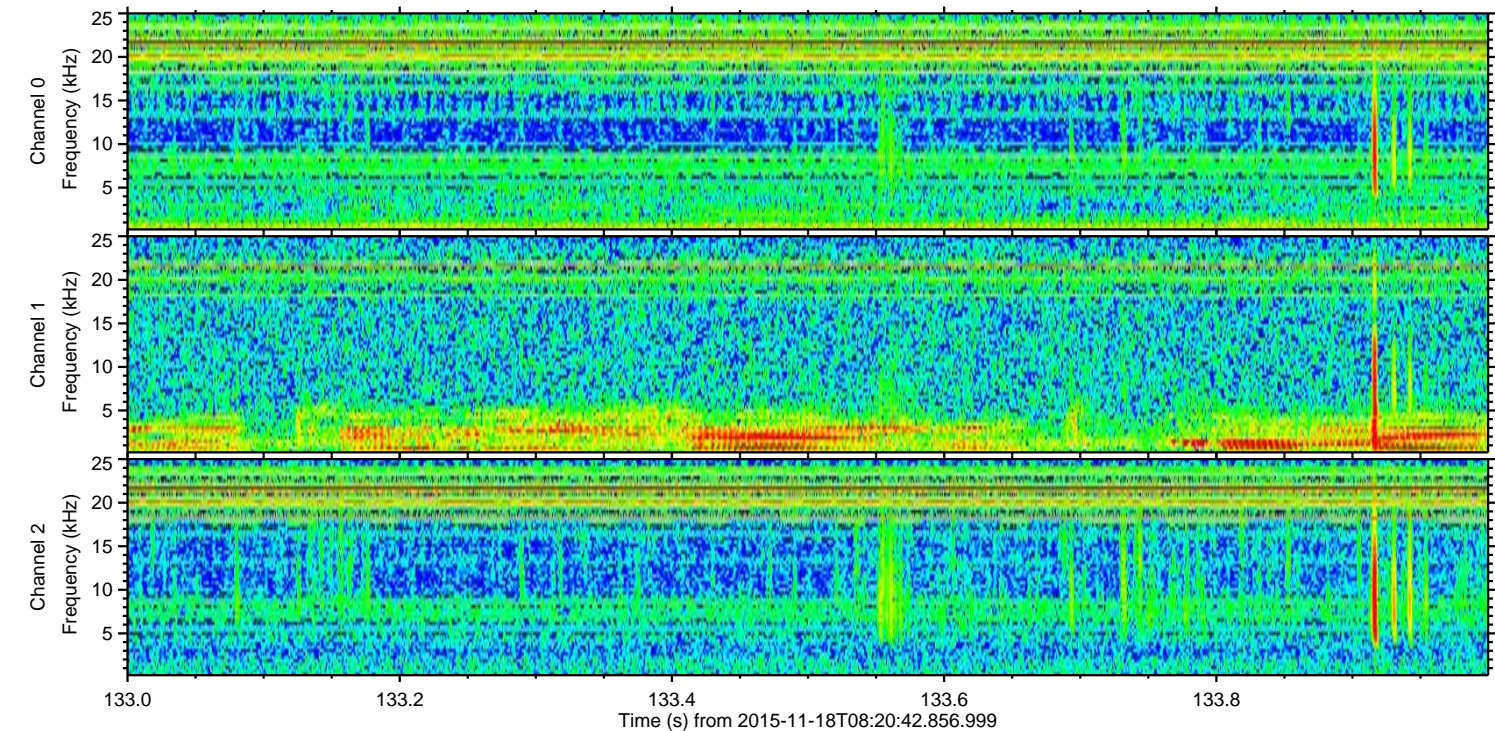
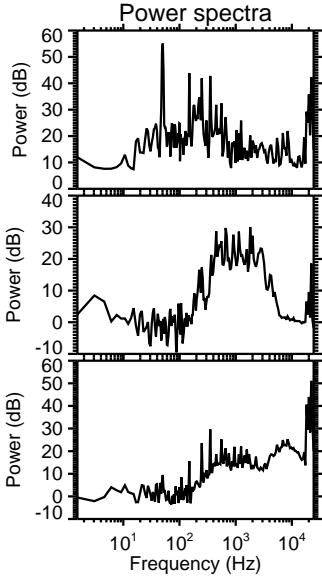
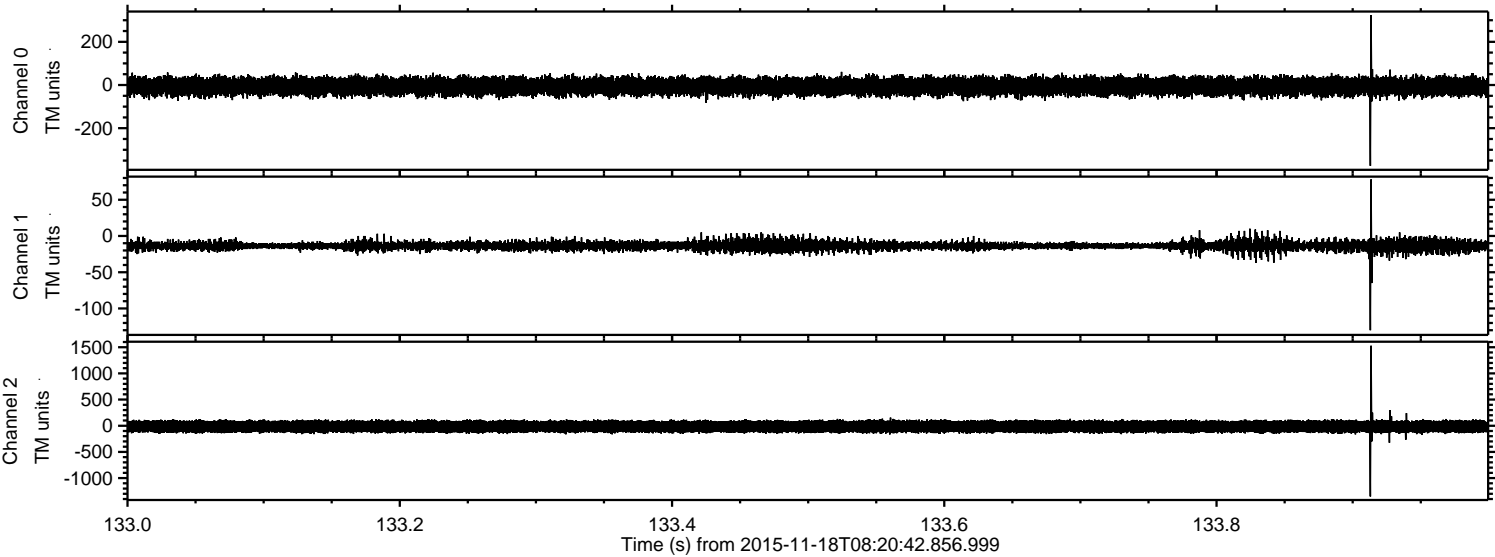
Processed Wed Nov 18 09:27:32 2015 by ELM ver.2012-10-06 from 001\_\_elm20151118\_082041\_\_dat00.bin





ELMAVAN 3D WAVEFORMS (Measured data sampled at 50 kHz) 51000 packets of 144 samples from 2015-11-18T08:20:42.856.999. Part 134/147

Processed Wed Nov 18 09:27:33 2015 by ELM ver.2012-10-06 from 001\_\_elm20151118\_082041\_\_dat00.bin



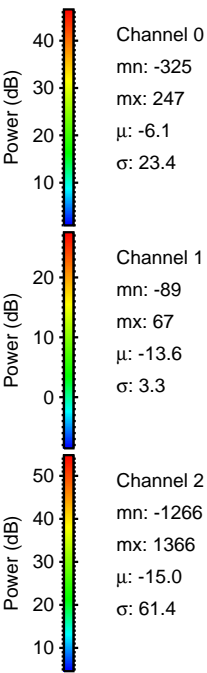
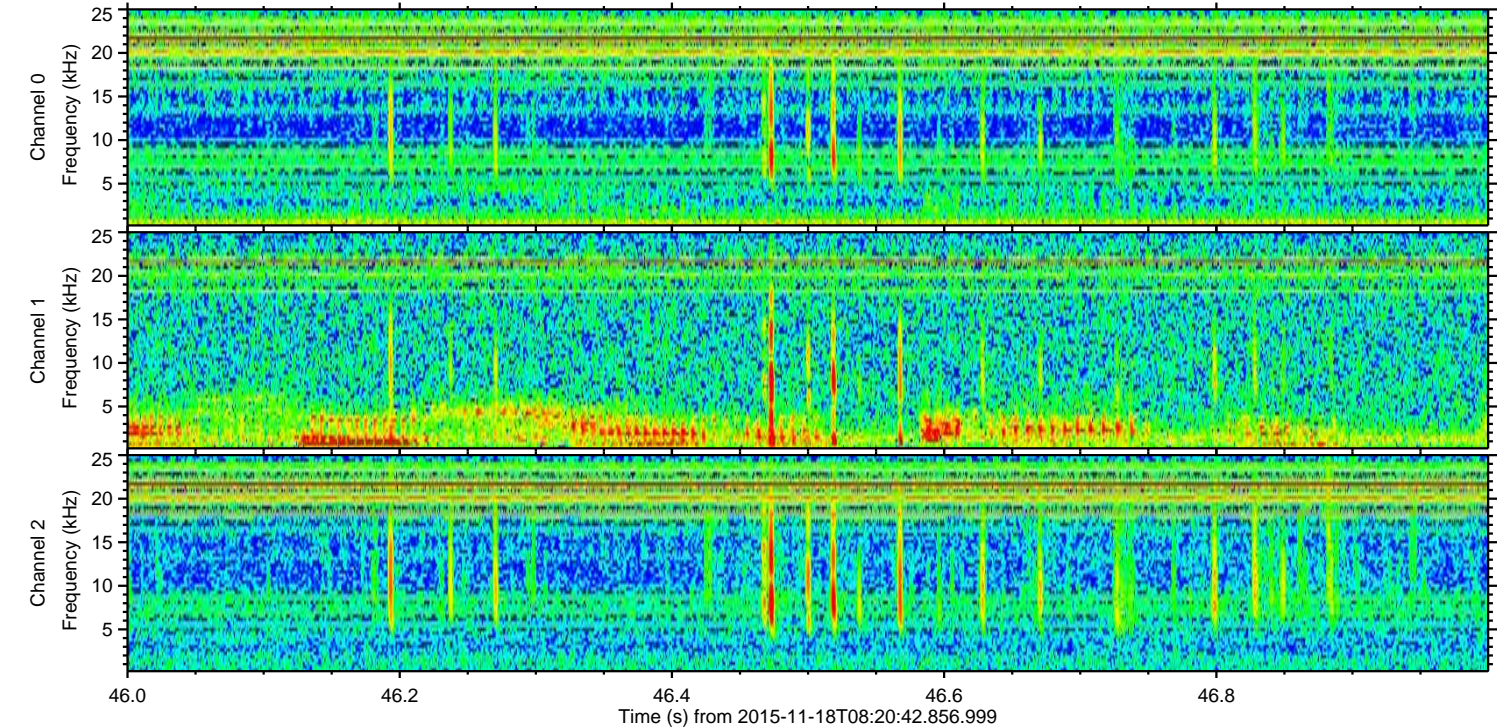
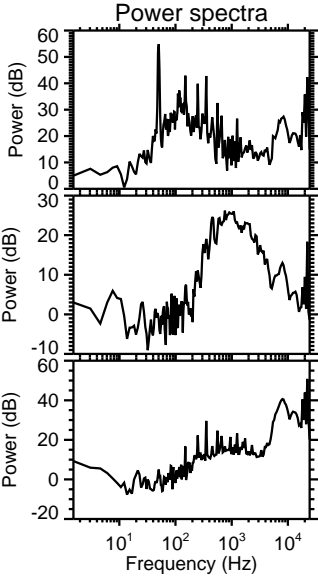
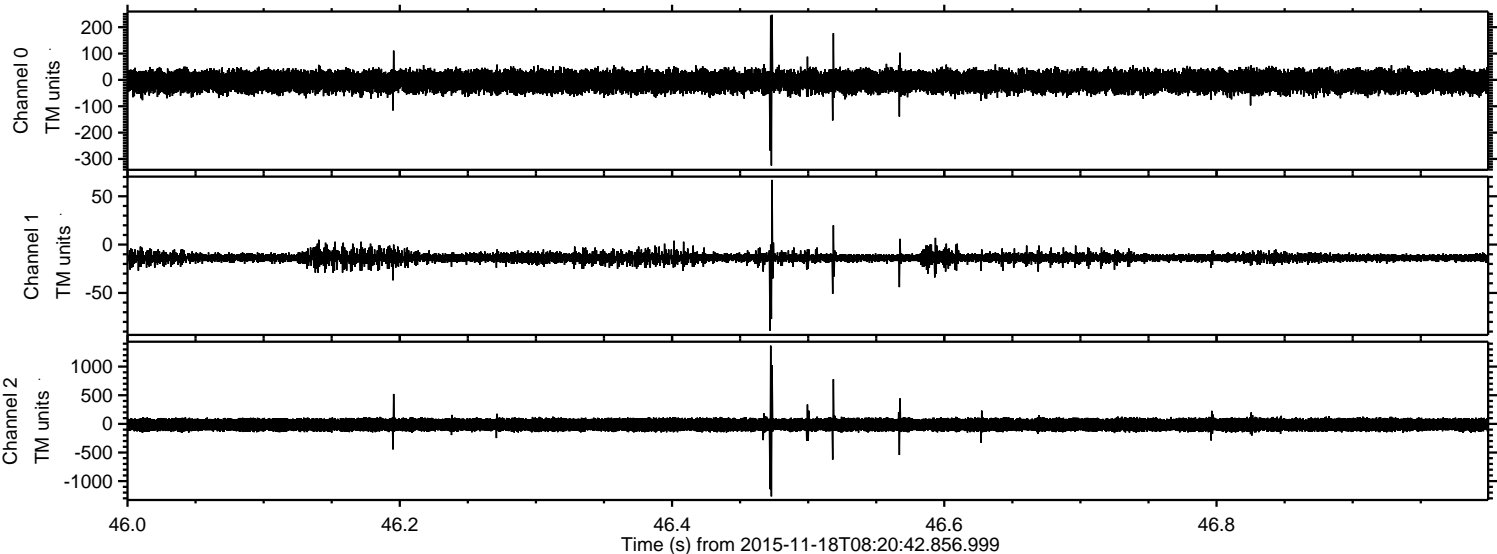
Channel 0  
mn: -374  
mx: 324  
 $\mu$ : -6.1  
 $\sigma$ : 23.3

Channel 1  
mn: -130  
mx: 78  
 $\mu$ : -13.5  
 $\sigma$ : 4.3

Channel 2  
mn: -1351  
mx: 1529  
 $\mu$ : -15.0  
 $\sigma$ : 61.5

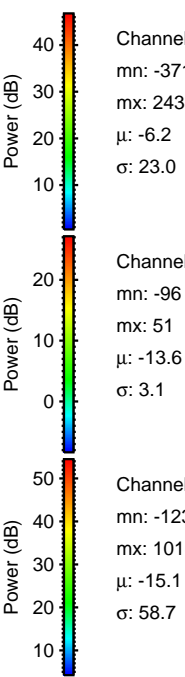
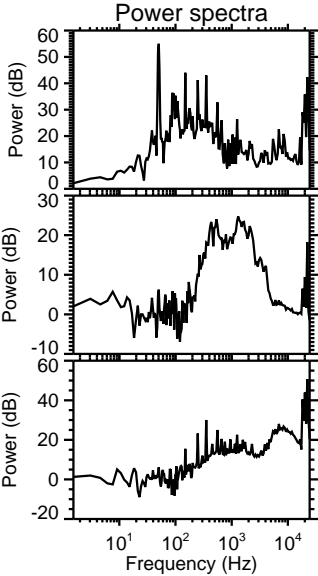
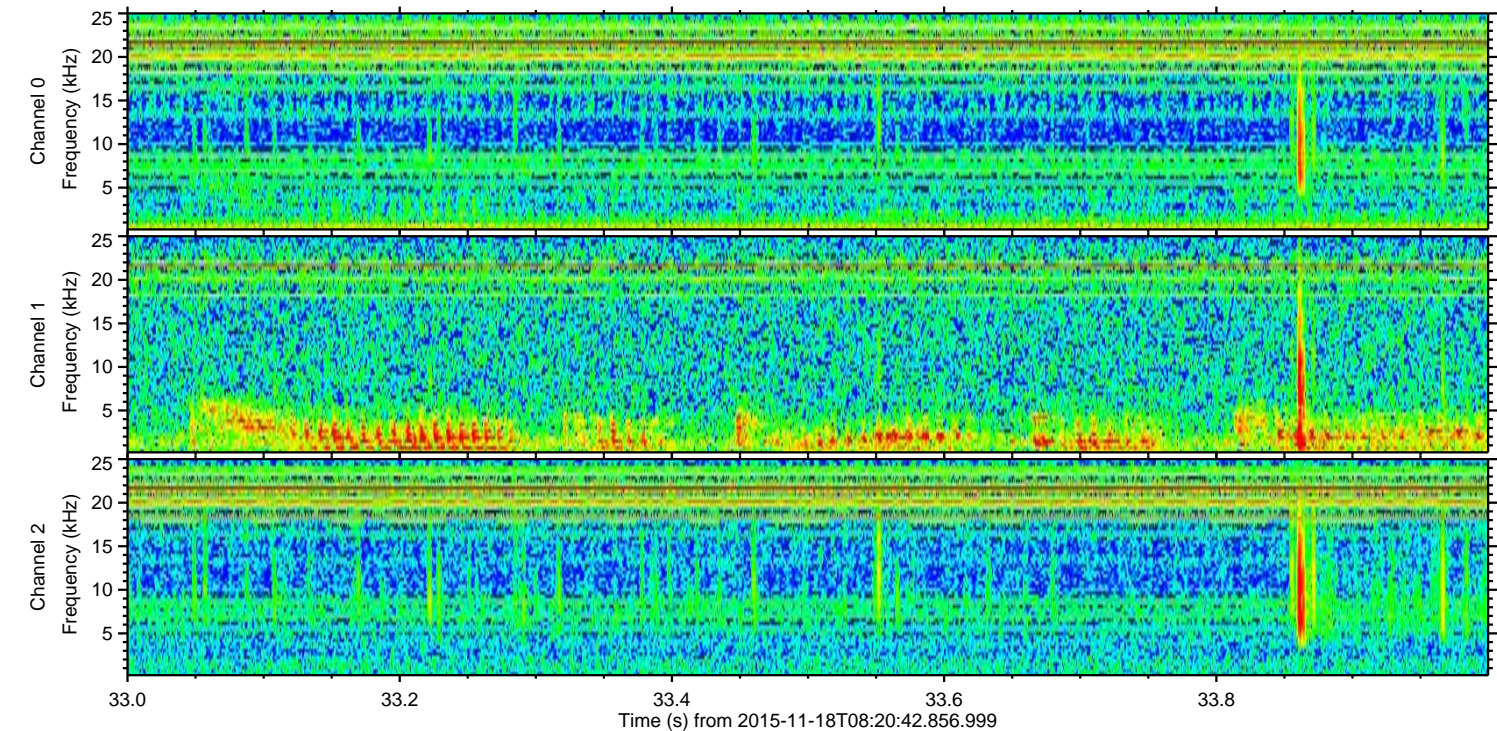
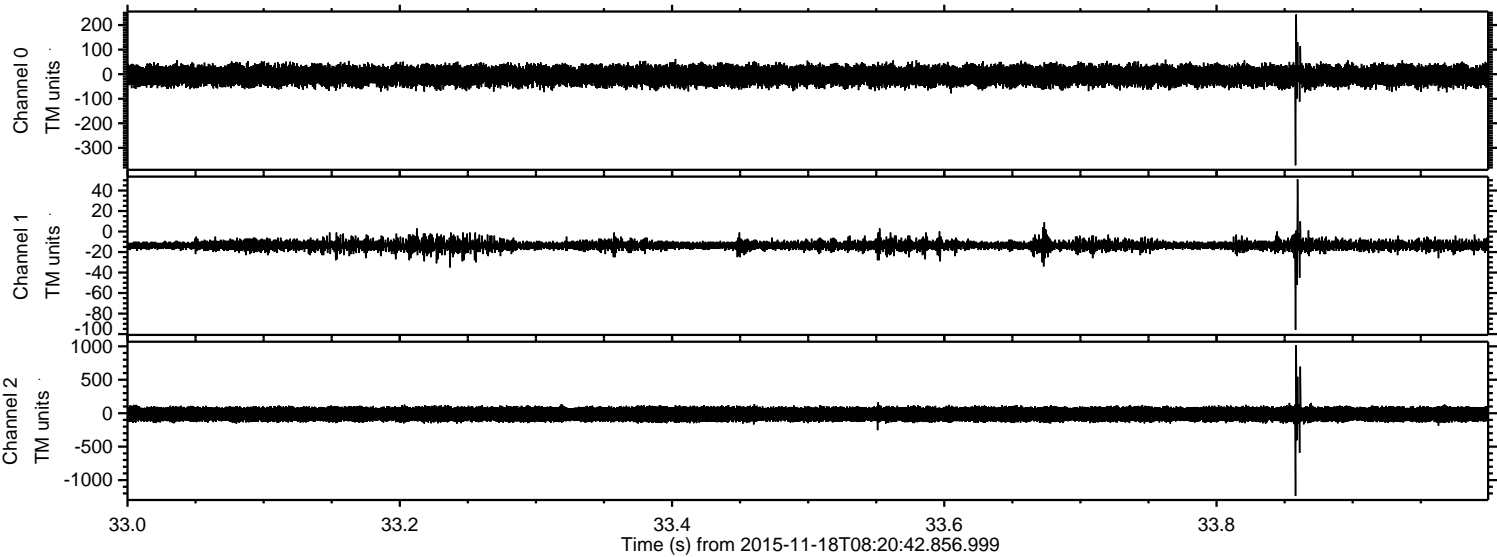


Processed Wed Nov 18 09:27:33 2015 by ELM ver.2012-10-06 from 001\_\_elm20151118\_082041\_\_dat00.bin



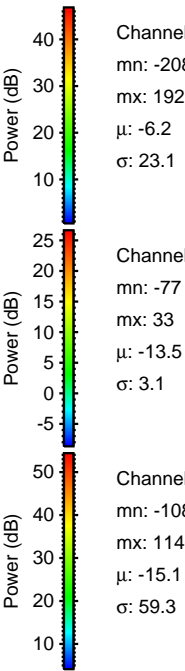
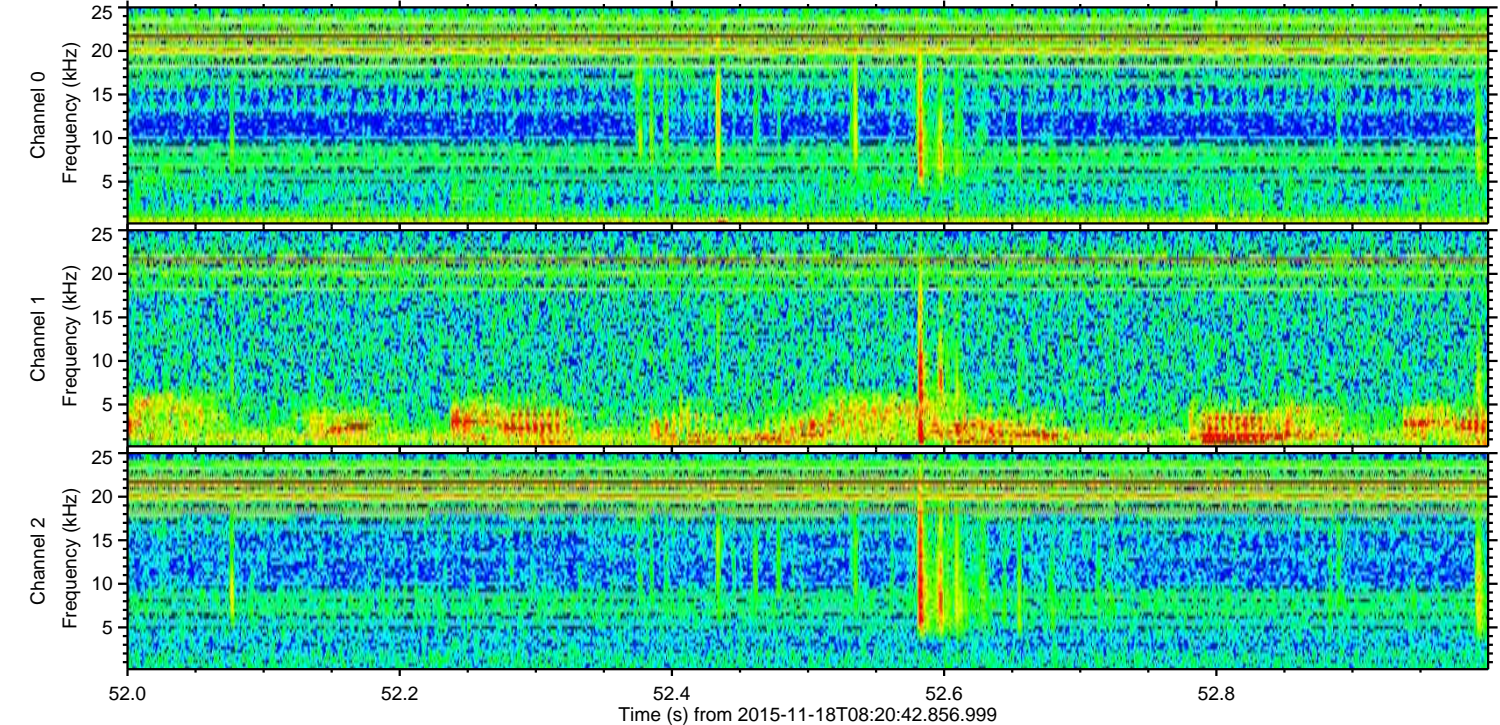
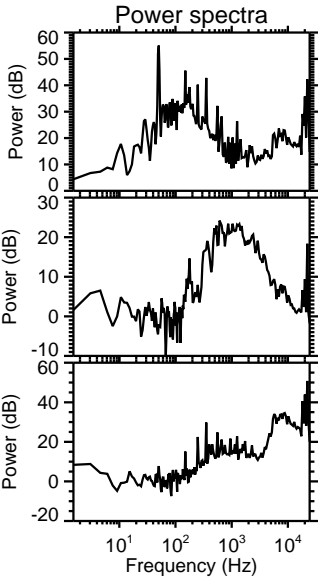
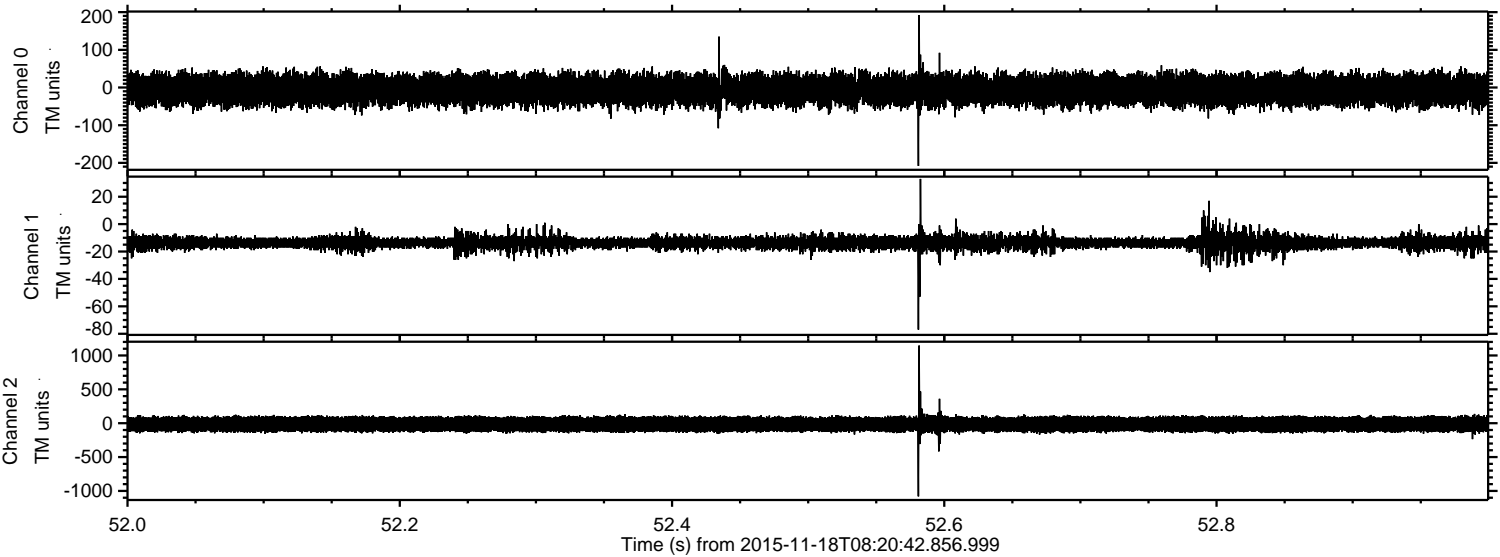


Processed Wed Nov 18 09:27:34 2015 by ELM ver.2012-10-06 from 001\_\_elm20151118\_082041\_\_dat00.bin





Processed Wed Nov 18 09:27:35 2015 by ELM ver.2012-10-06 from 001\_\_elm20151118\_082041\_\_dat00.bin





Processed Wed Nov 18 09:27:36 2015 by ELM ver.2012-10-06 from 001\_\_elm20151118\_082041\_\_dat00.bin

