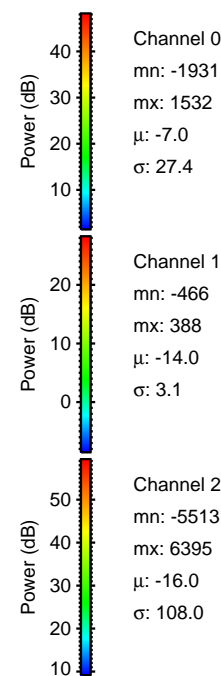
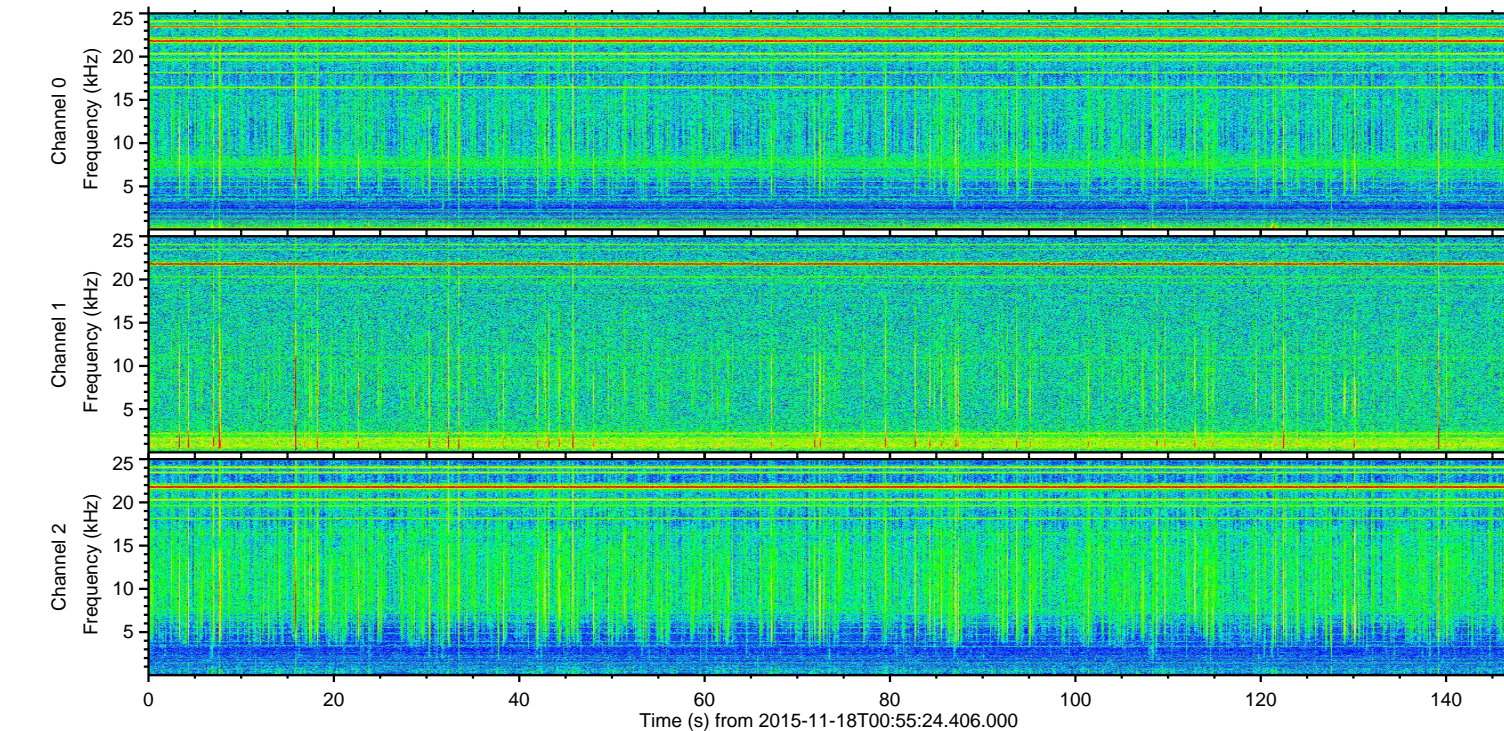
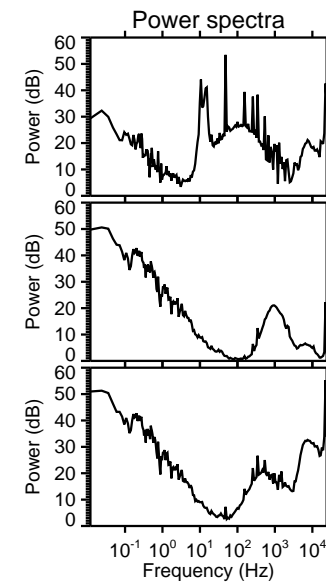
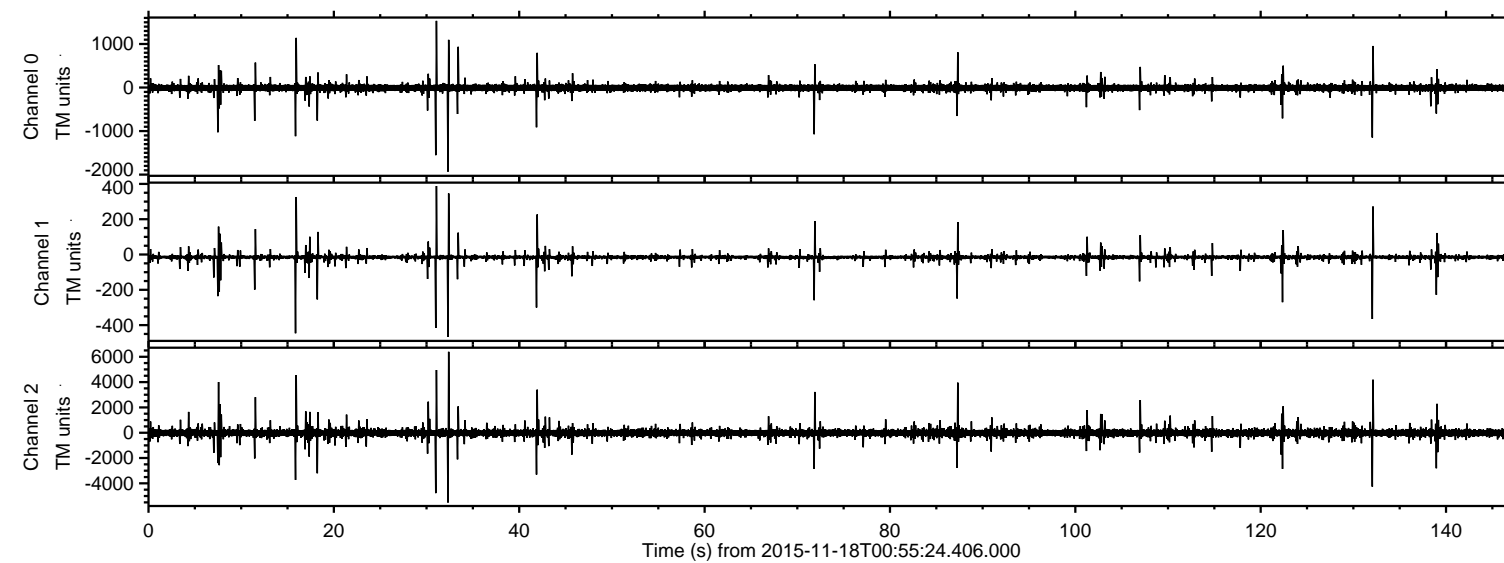
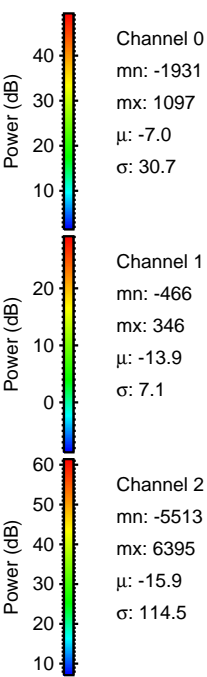
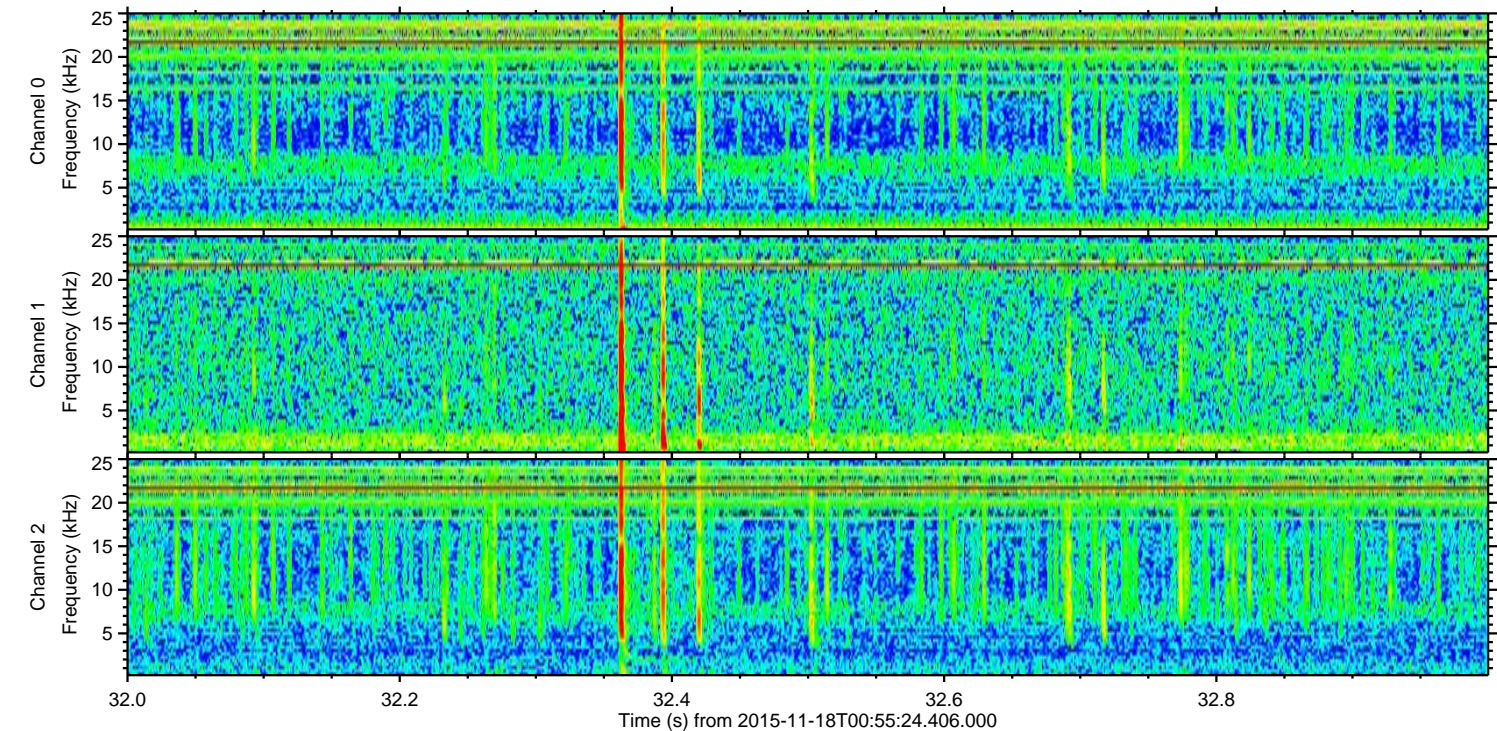
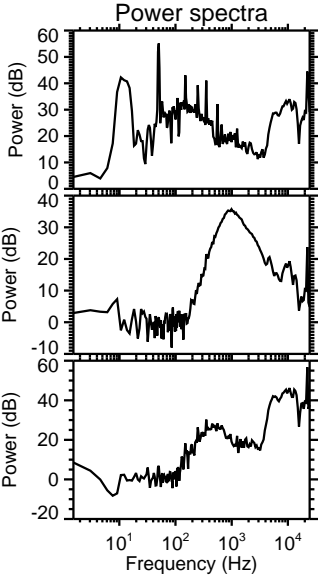
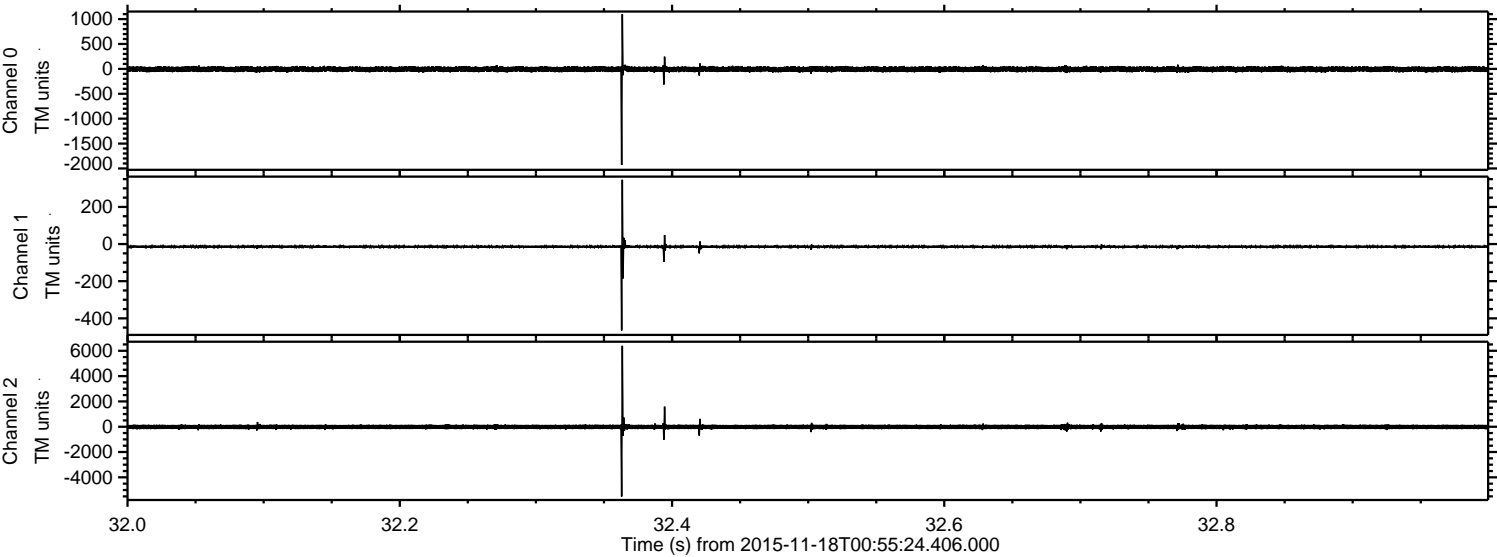


ELMAVAN 3D WAVEFORMS (Measured data sampled at 50 kHz) 51000 packets of 144 samples from 2015-11-18T00:55:24.406.000.

Processed Wed Nov 18 02:01:23 2015 by ELM ver.2012-10-06 from 001__elm20151118_005523__dat00.bin



Processed Wed Nov 18 02:01:34 2015 by ELM ver.2012-10-06 from 001__elm20151118_005523__dat00.bin

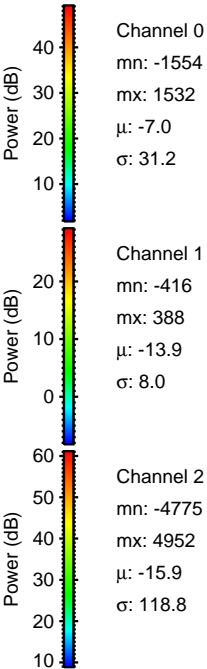
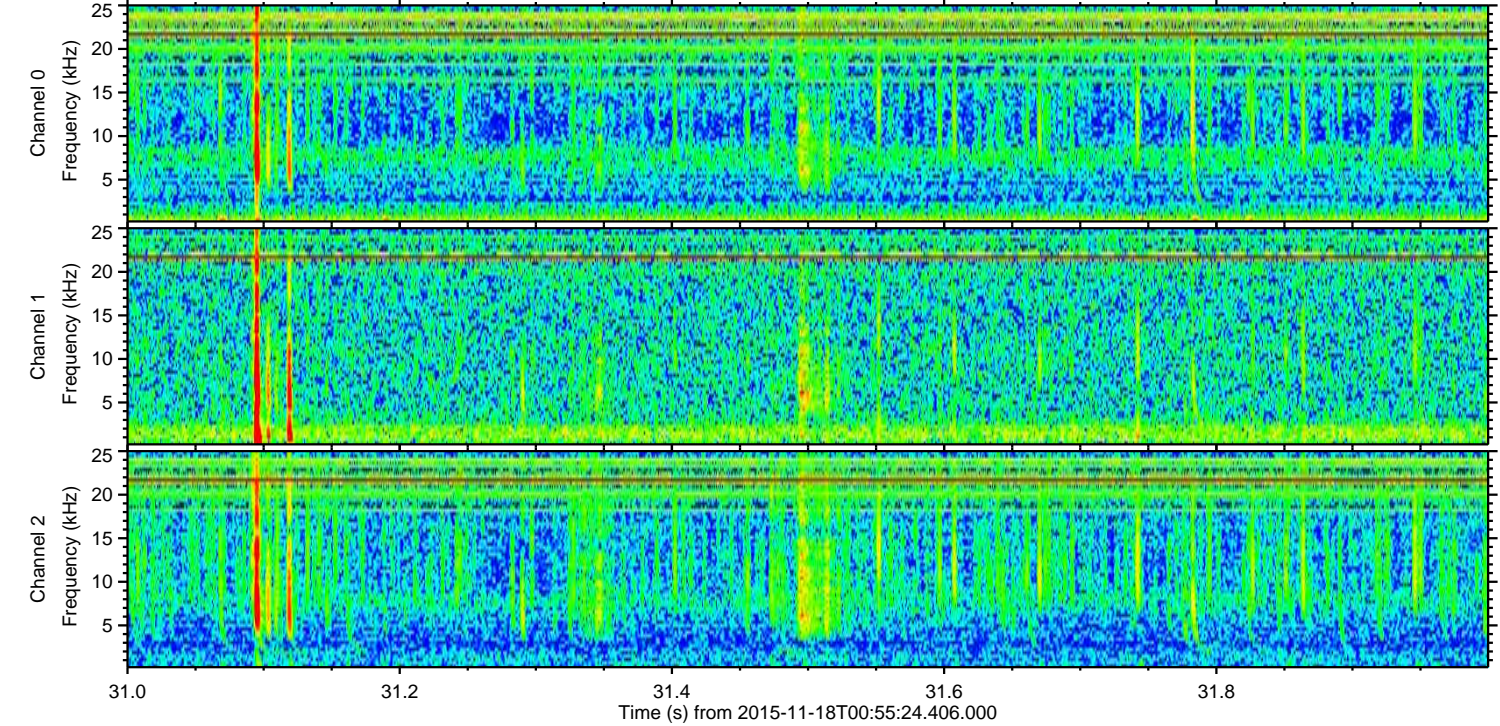
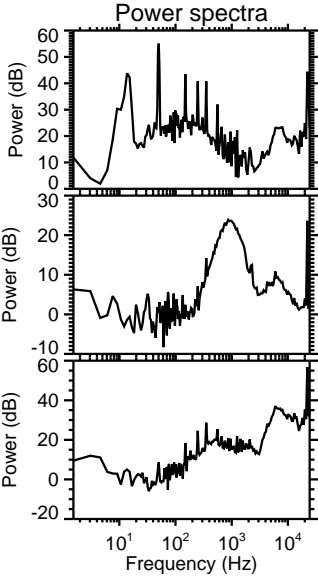
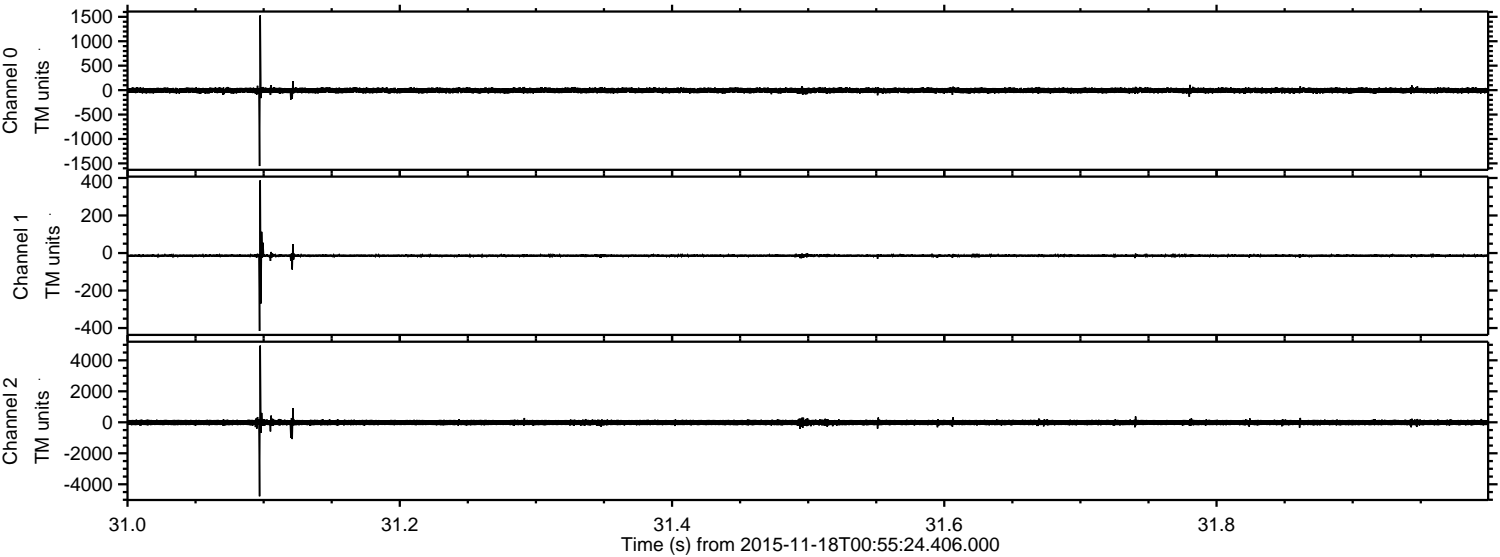


Channel 0
mn: -1931
mx: 1097
 μ : -7.0
 σ : 30.7

Channel 1
mn: -466
mx: 346
 μ : -13.9
 σ : 7.1

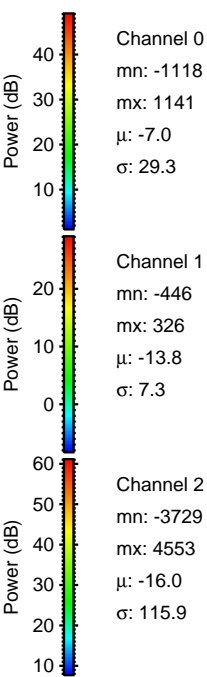
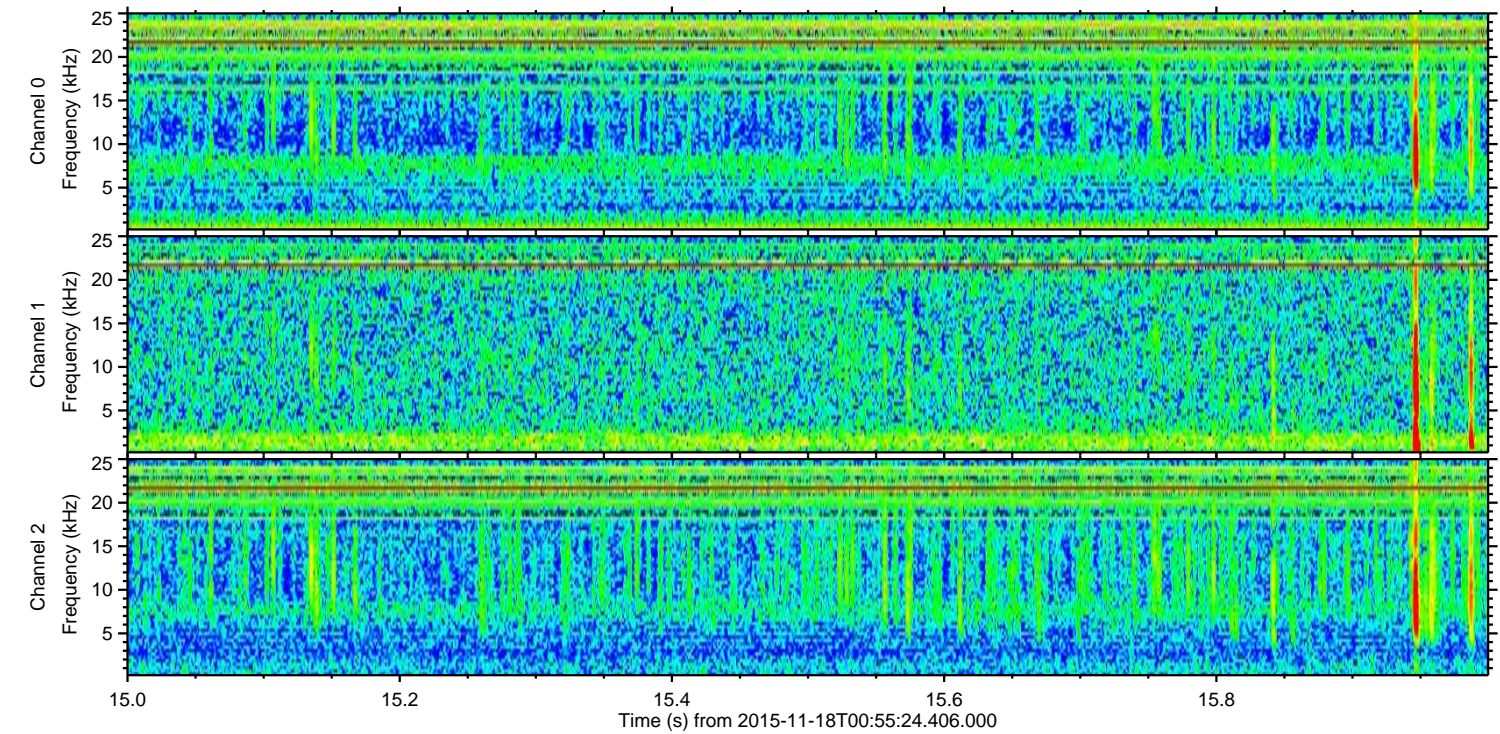
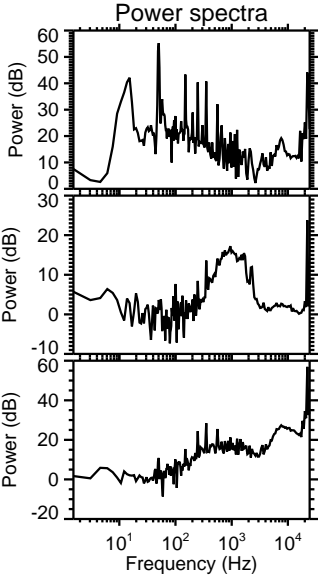
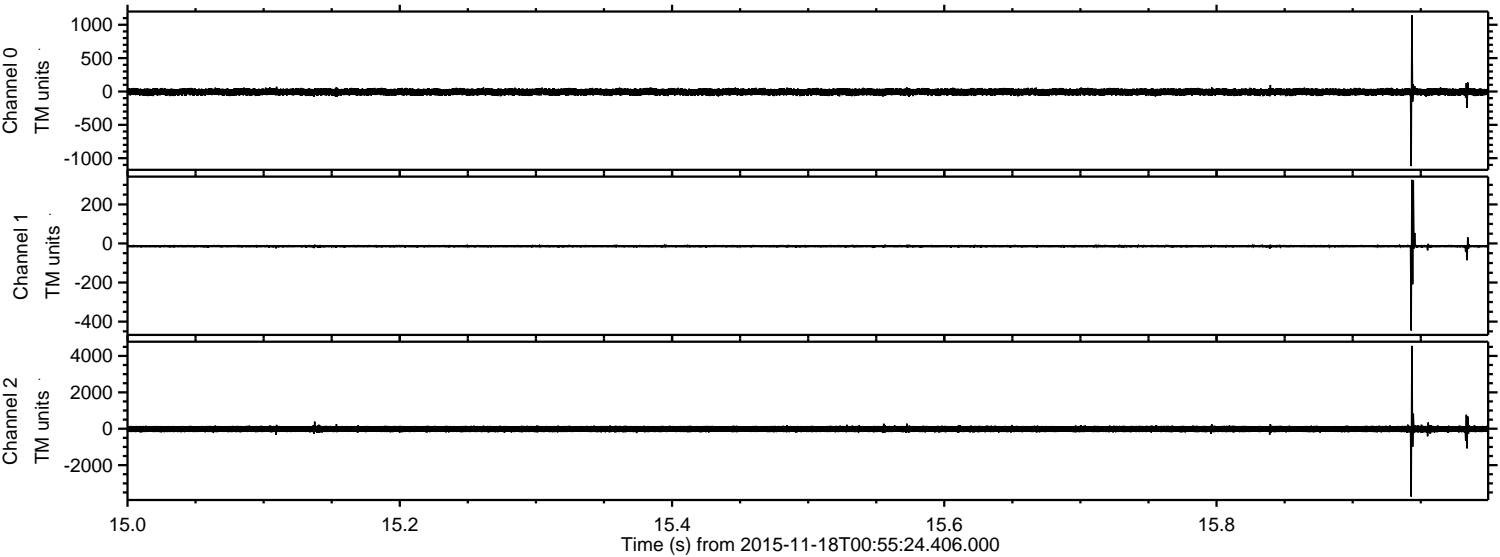
Channel 2
mn: -5513
mx: 6395
 μ : -15.9
 σ : 114.5

Processed Wed Nov 18 02:01:35 2015 by ELM ver.2012-10-06 from 001__elm20151118_005523__dat00.bin



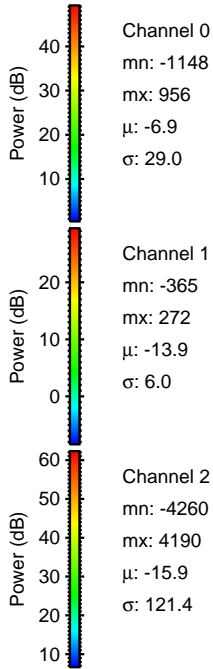
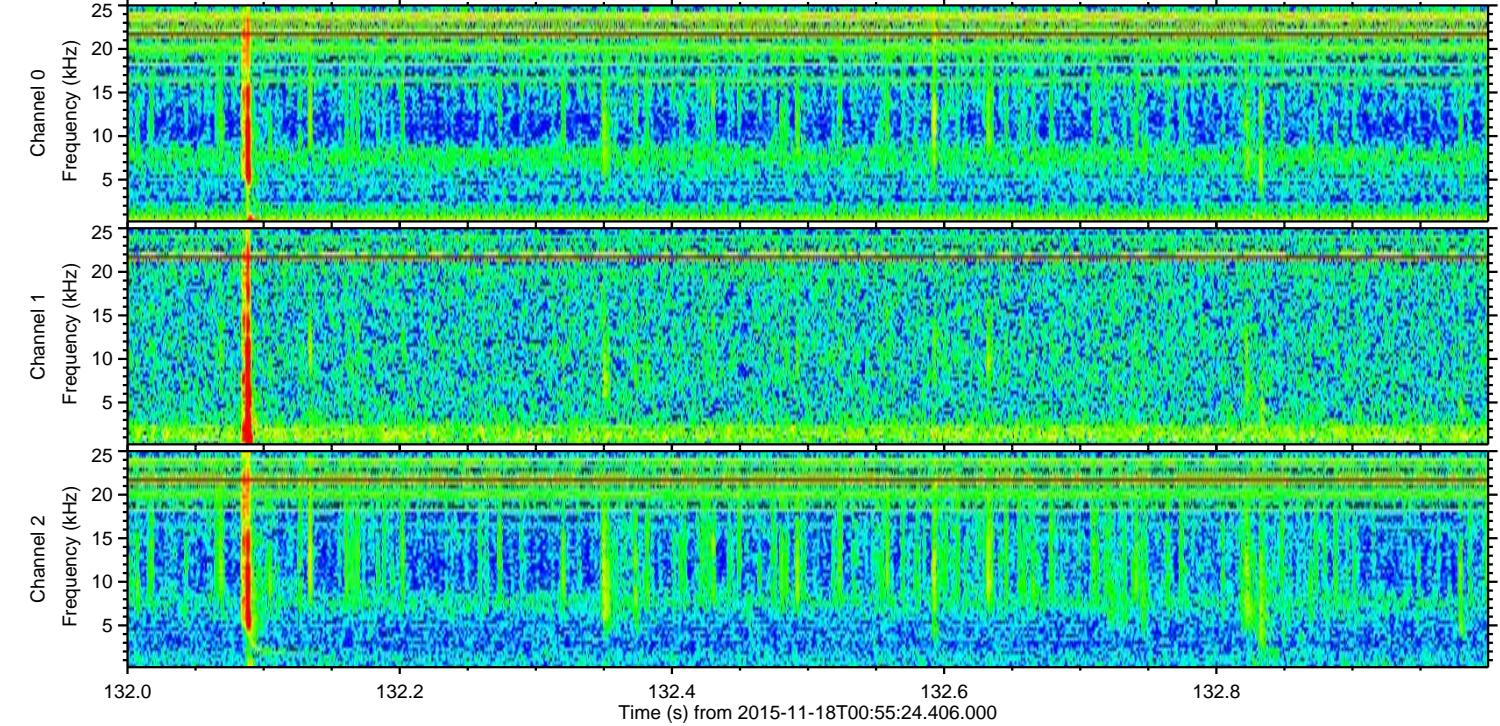
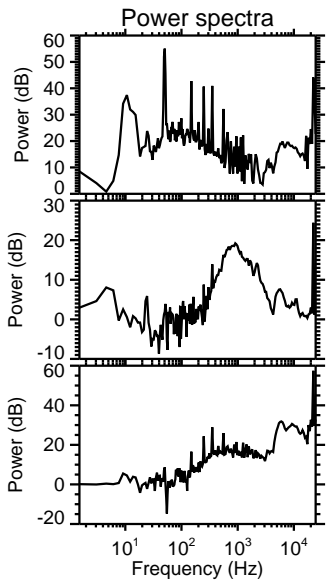
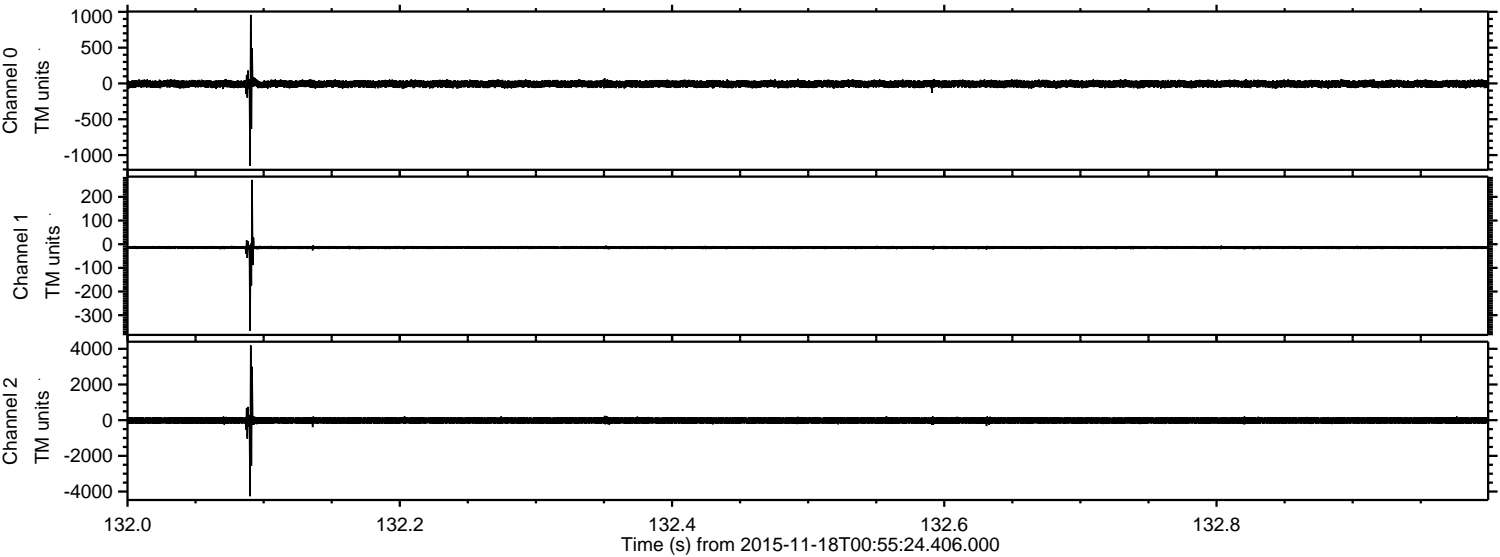
ELMAVAN 3D WAVEFORMS (Measured data sampled at 50 kHz) 51000 packets of 144 samples from 2015-11-18T00:55:24.406.000. Part 16/147

Processed Wed Nov 18 02:01:36 2015 by ELM ver.2012-10-06 from 001__elm20151118_005523__dat00.bin

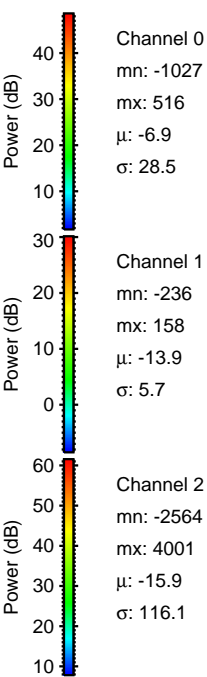
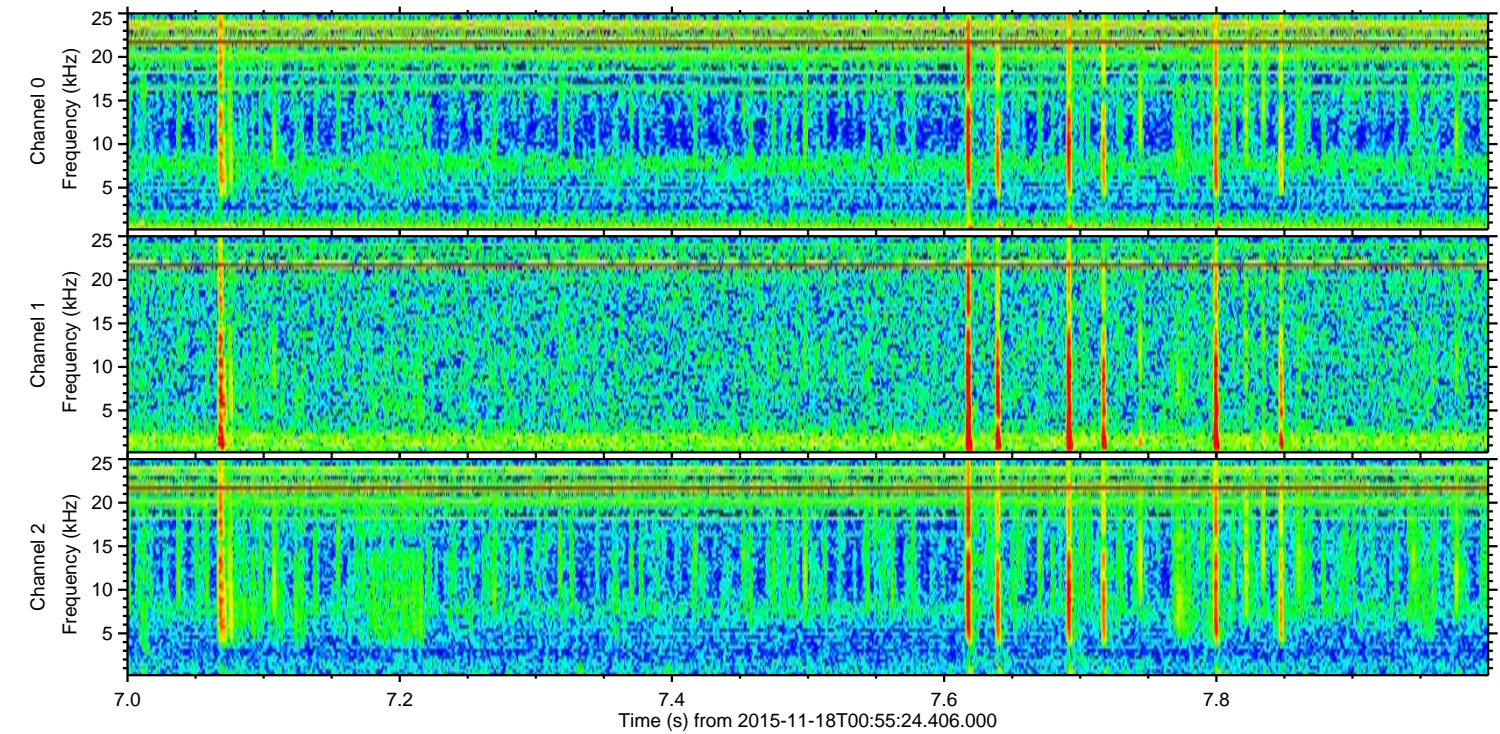
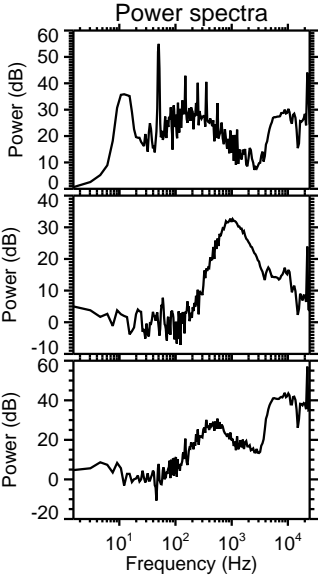
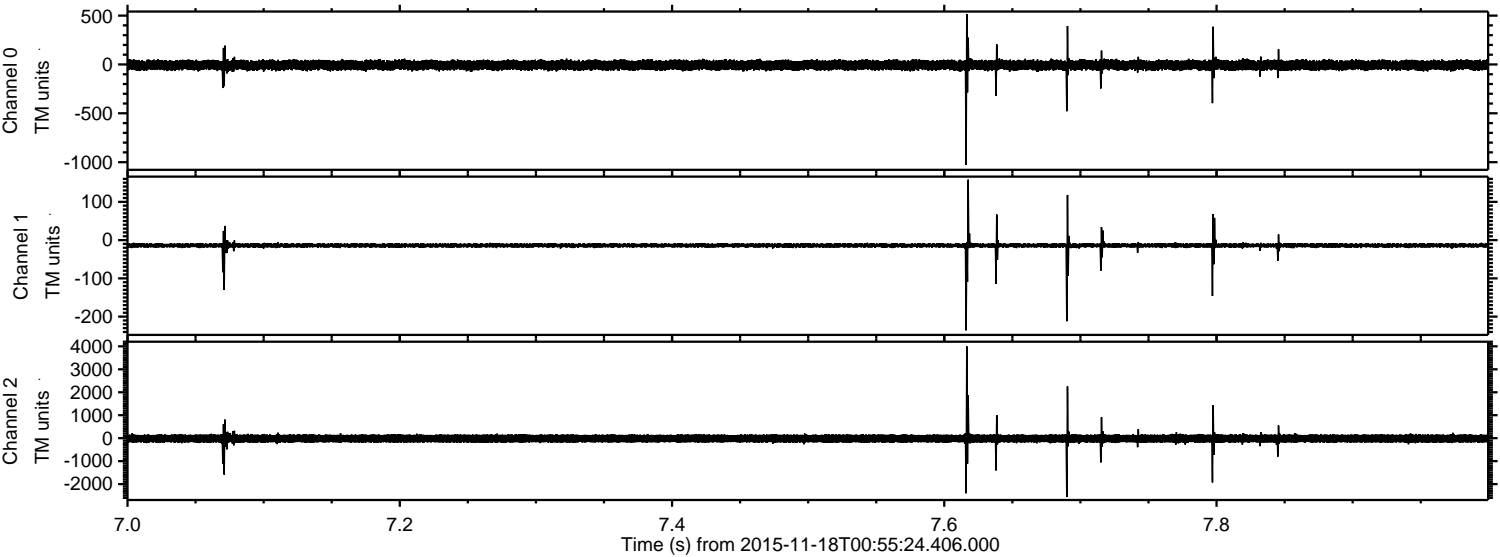


ELMAVAN 3D WAVEFORMS (Measured data sampled at 50 kHz) 51000 packets of 144 samples from 2015-11-18T00:55:24.406.000. Part 133/147

Processed Wed Nov 18 02:01:37 2015 by ELM ver.2012-10-06 from 001__elm20151118_005523__dat00.bin



Processed Wed Nov 18 02:01:38 2015 by ELM ver.2012-10-06 from 001__elm20151118_005523__dat00.bin

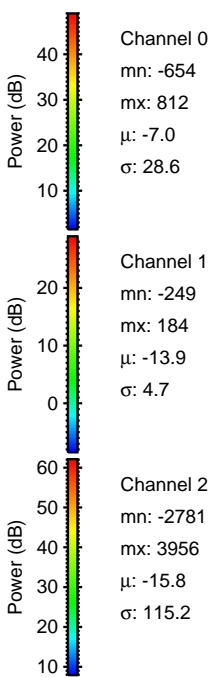
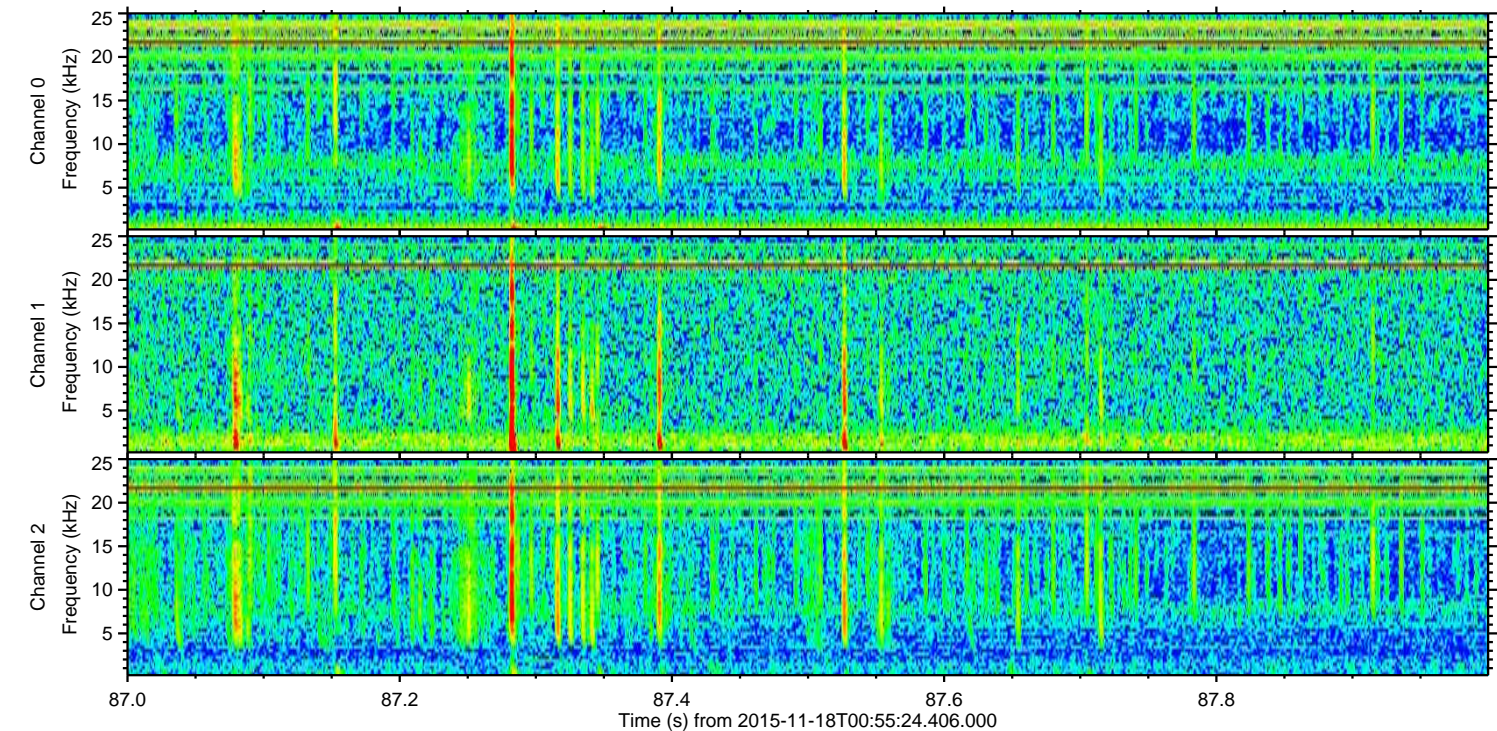
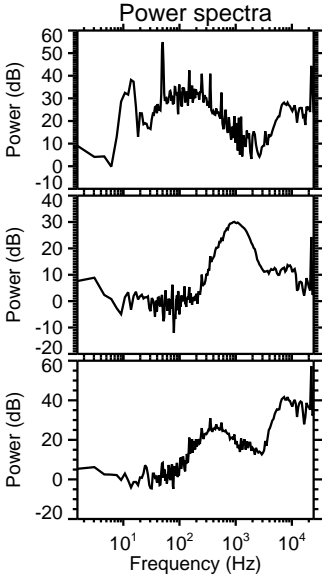
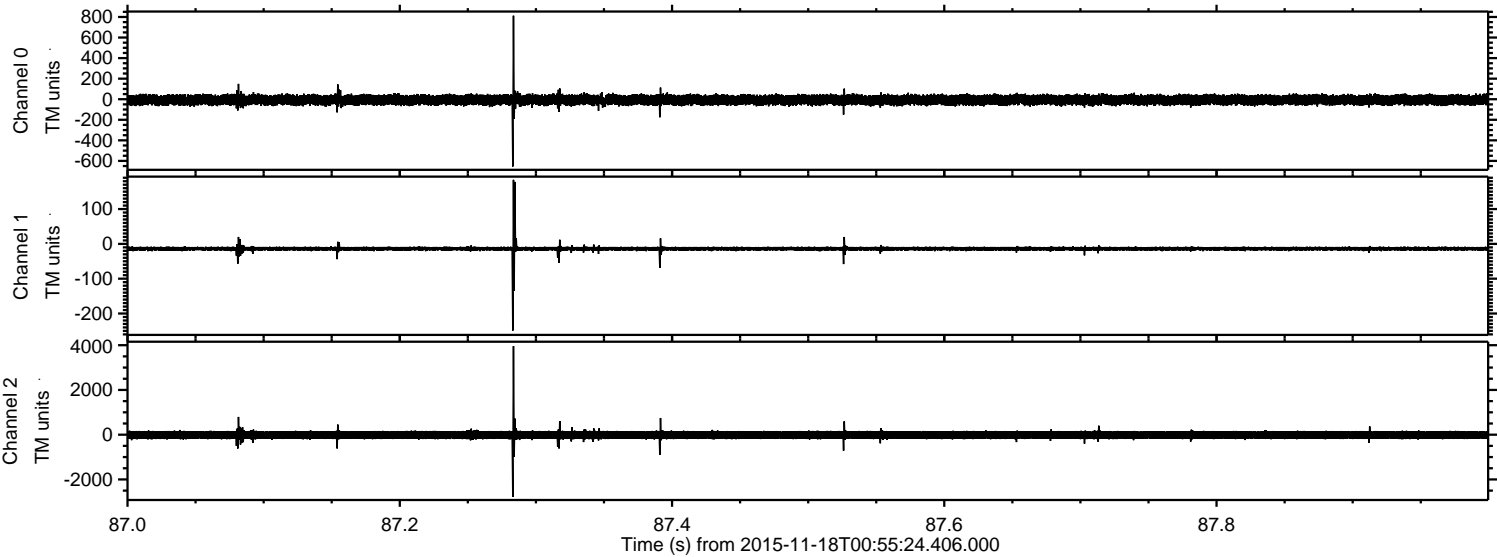


Channel 0
mn: -1027
mx: 516
 μ : -6.9
 σ : 28.5

Channel 1
mn: -236
mx: 158
 μ : -13.9
 σ : 5.7

Channel 2
mn: -2564
mx: 4001
 μ : -15.9
 σ : 116.1

Processed Wed Nov 18 02:01:39 2015 by ELM ver.2012-10-06 from 001__elm20151118_005523__dat00.bin

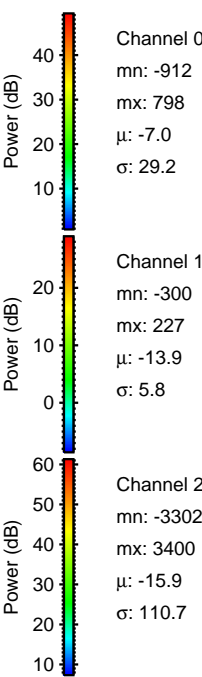
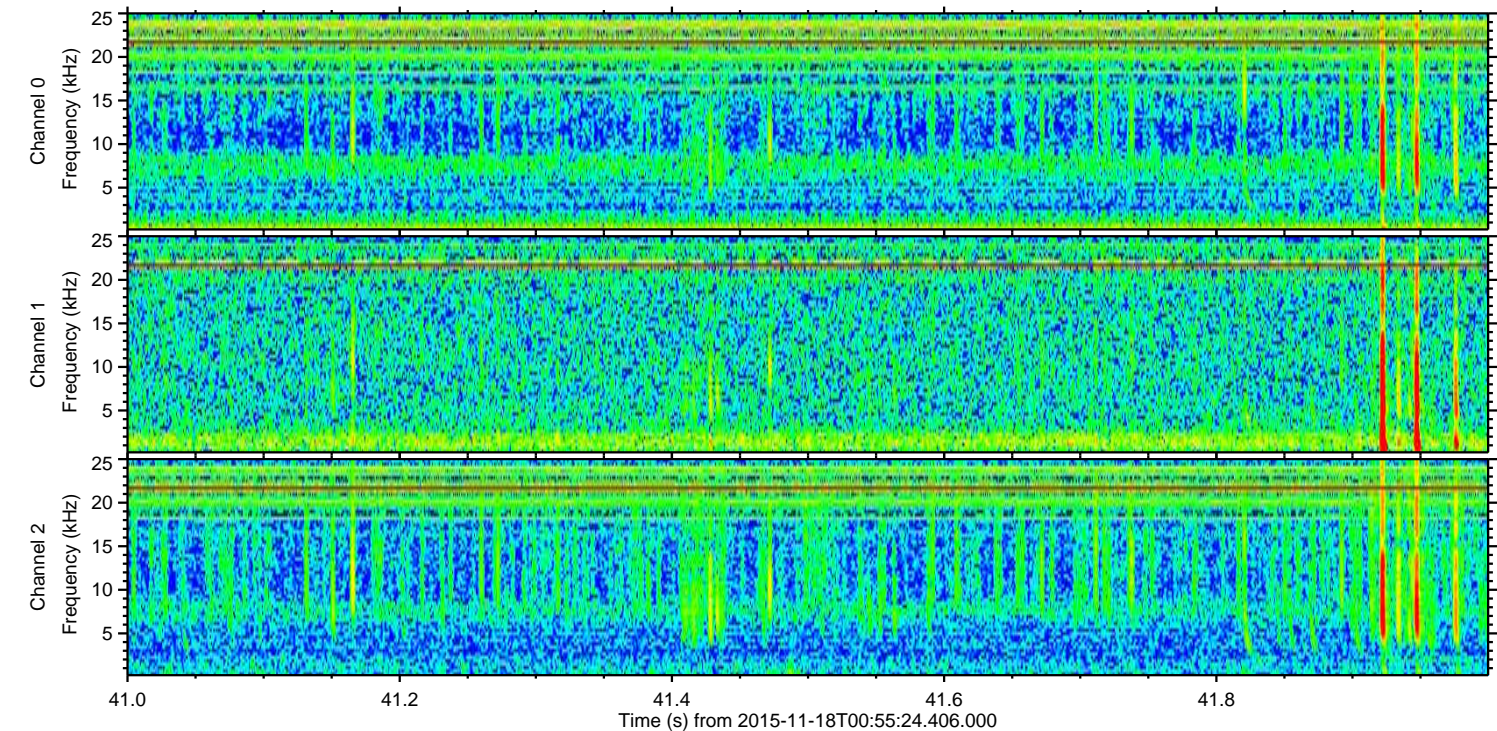
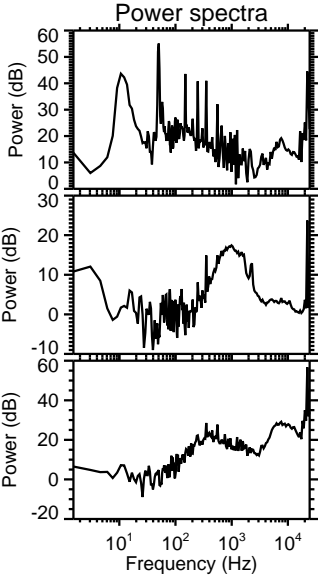
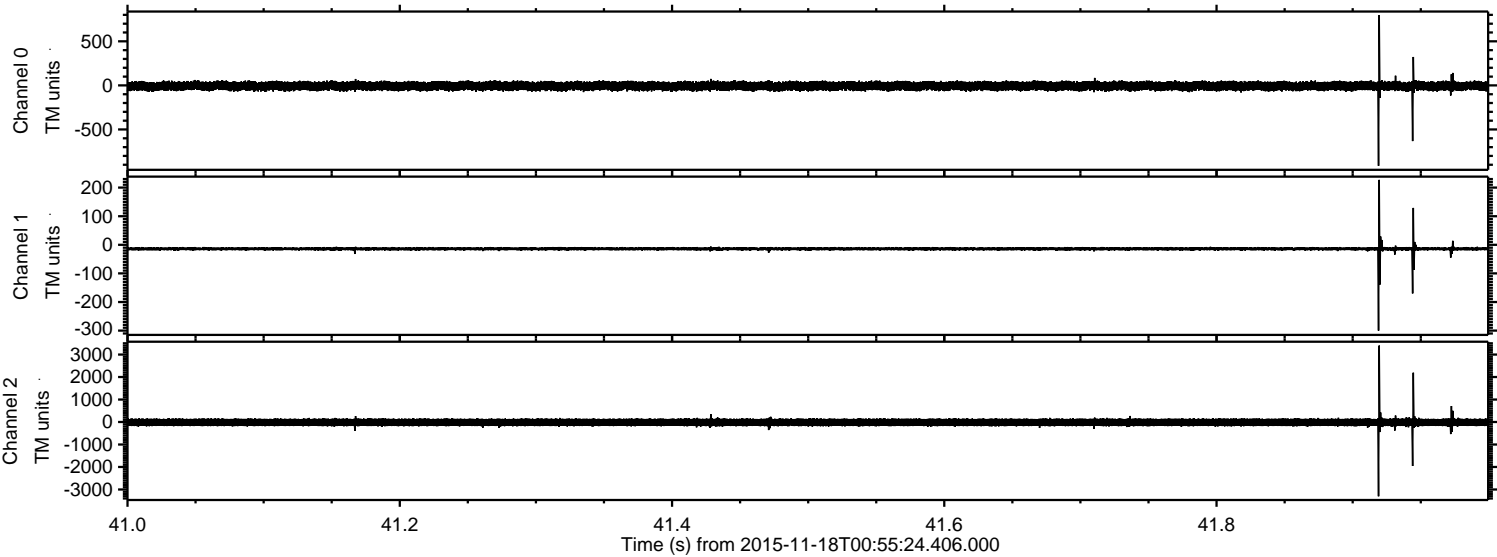


Channel 0
mn: -654
mx: 812
 μ : -7.0
 σ : 28.6

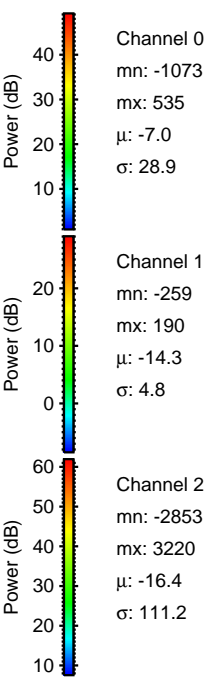
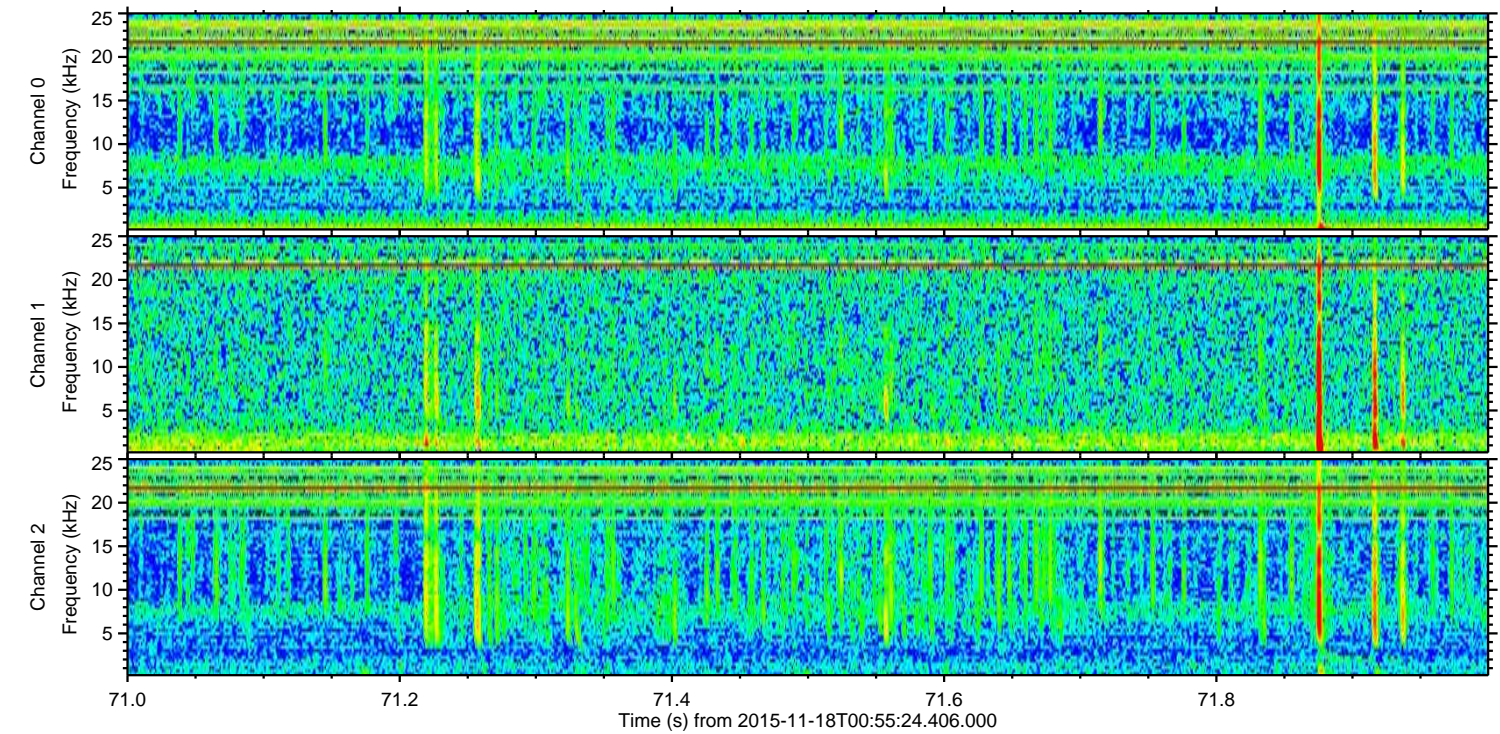
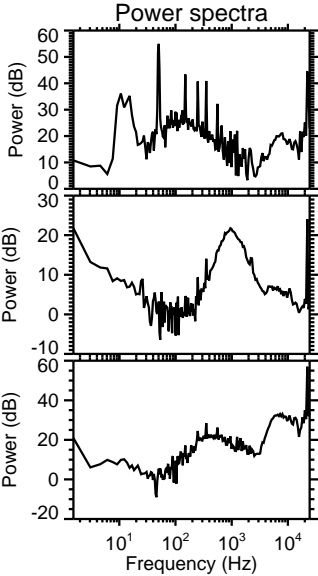
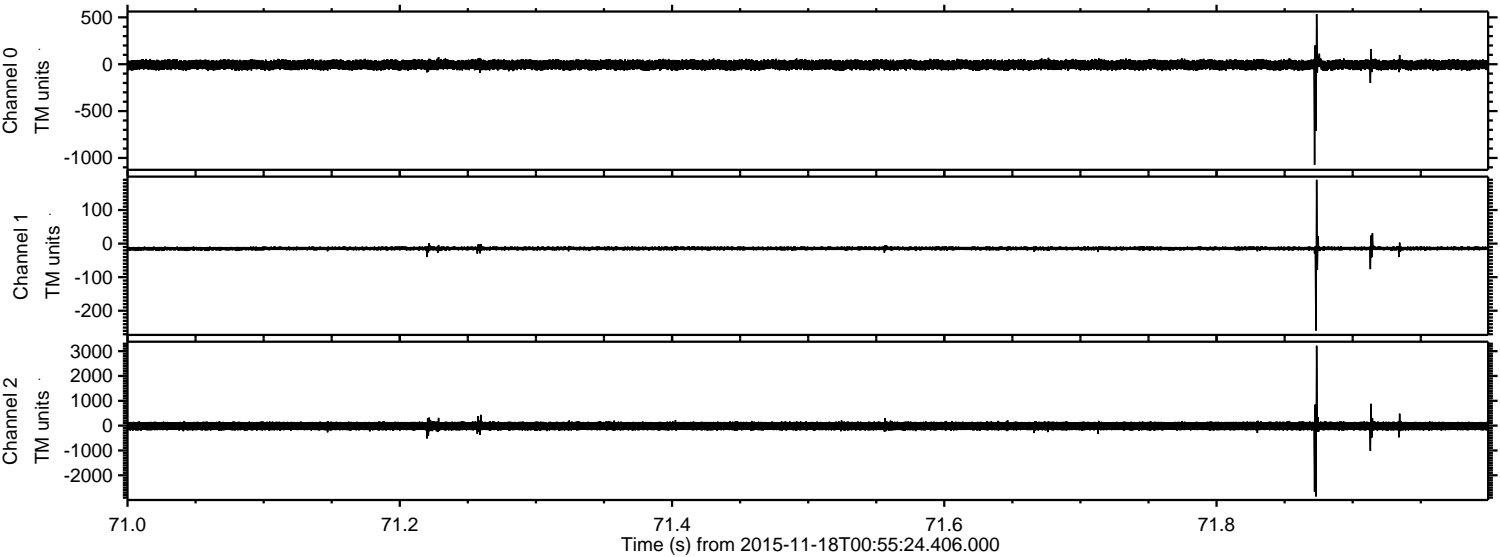
Channel 1
mn: -249
mx: 184
 μ : -13.9
 σ : 4.7

Channel 2
mn: -2781
mx: 3956
 μ : -15.8
 σ : 115.2

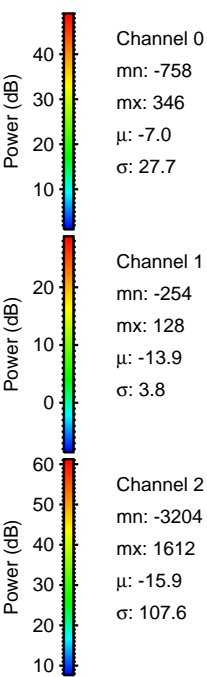
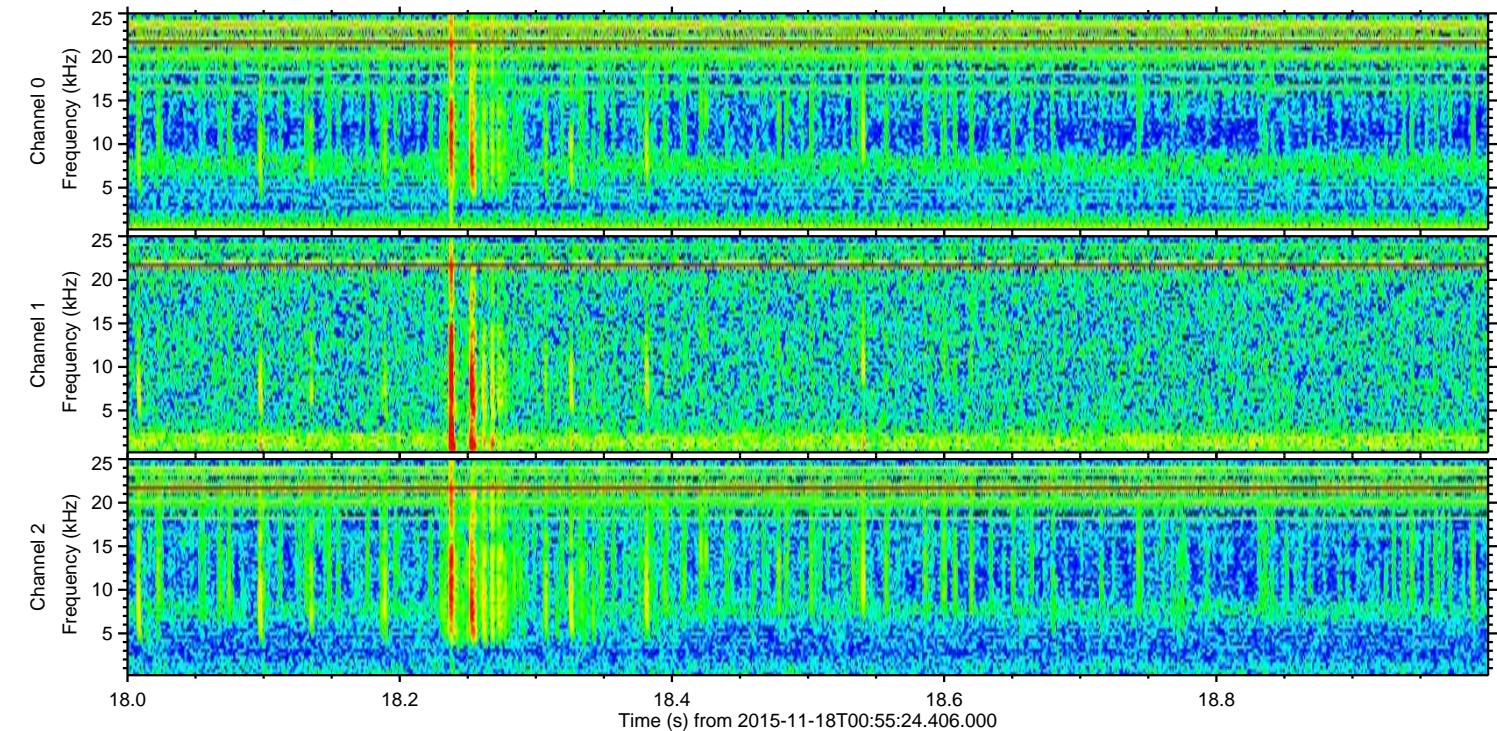
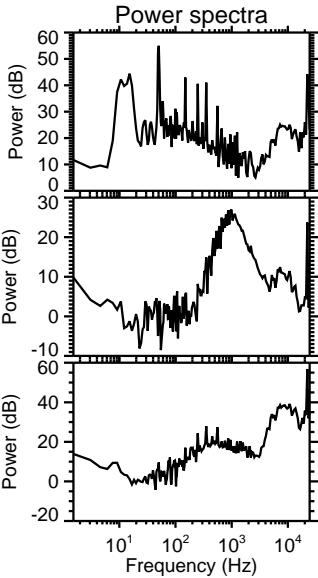
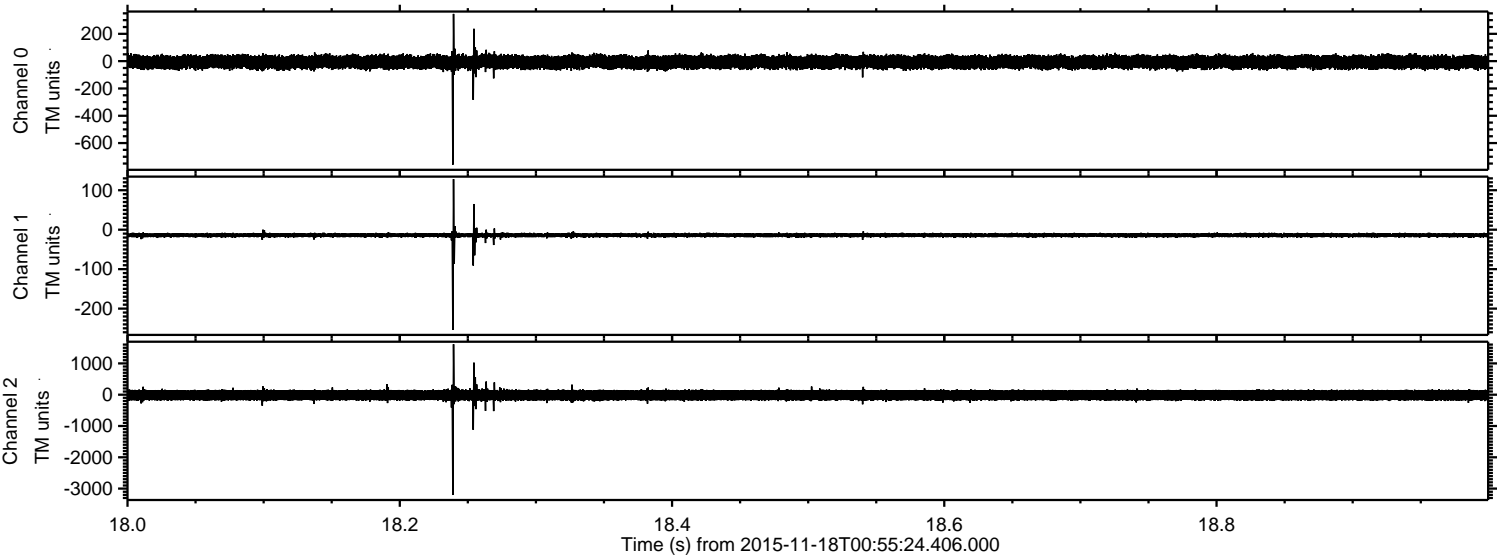
Processed Wed Nov 18 02:01:40 2015 by ELM ver.2012-10-06 from 001__elm20151118_005523__dat00.bin



Processed Wed Nov 18 02:01:41 2015 by ELM ver.2012-10-06 from 001__elm20151118_005523__dat00.bin



Processed Wed Nov 18 02:01:42 2015 by ELM ver.2012-10-06 from 001__elm20151118_005523__dat00.bin



Processed Wed Nov 18 02:01:43 2015 by ELM ver.2012-10-06 from 001__elm20151118_005523__dat00.bin

