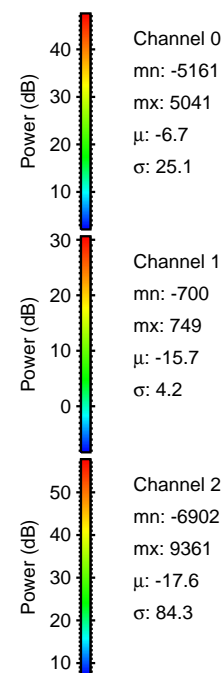
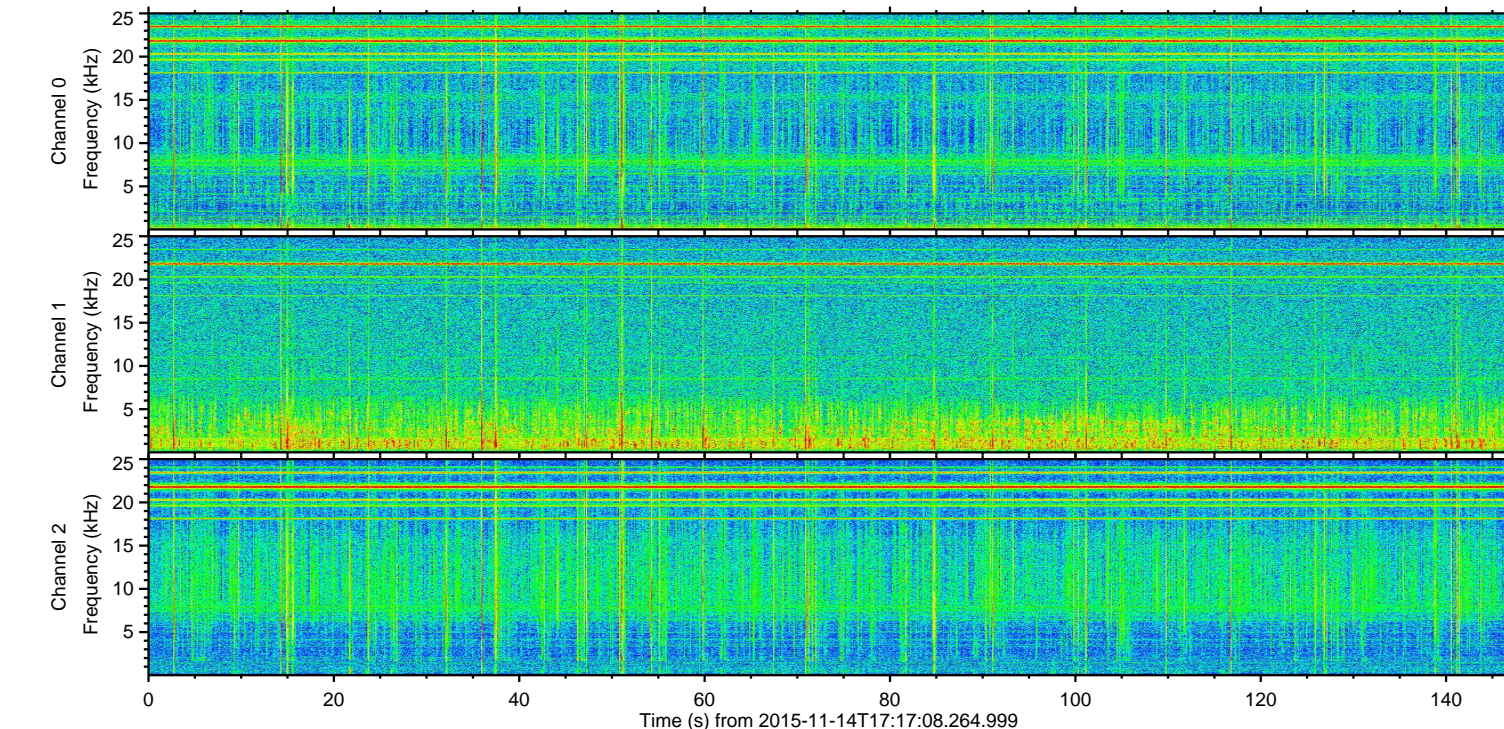
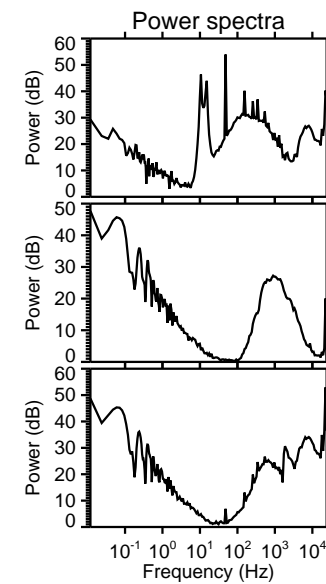
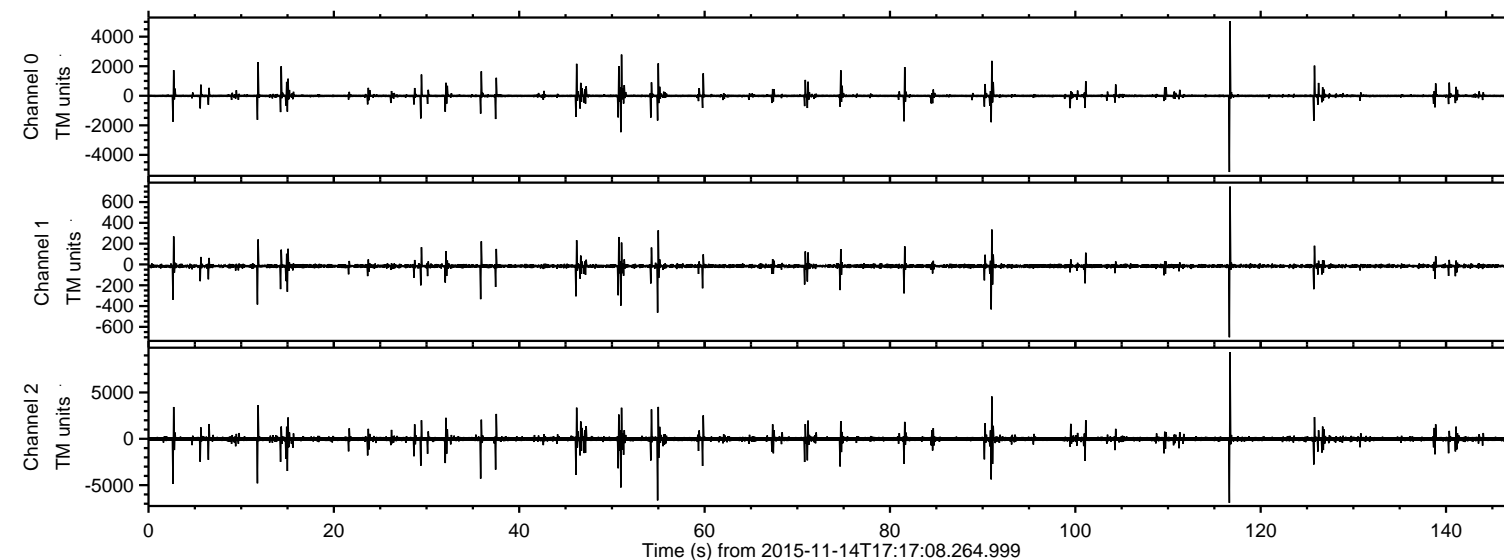


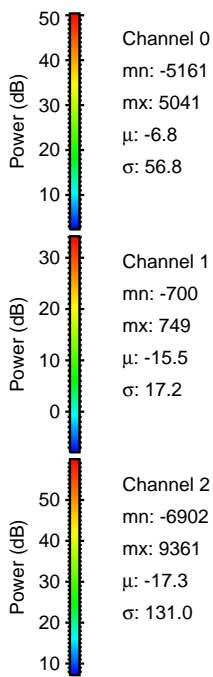
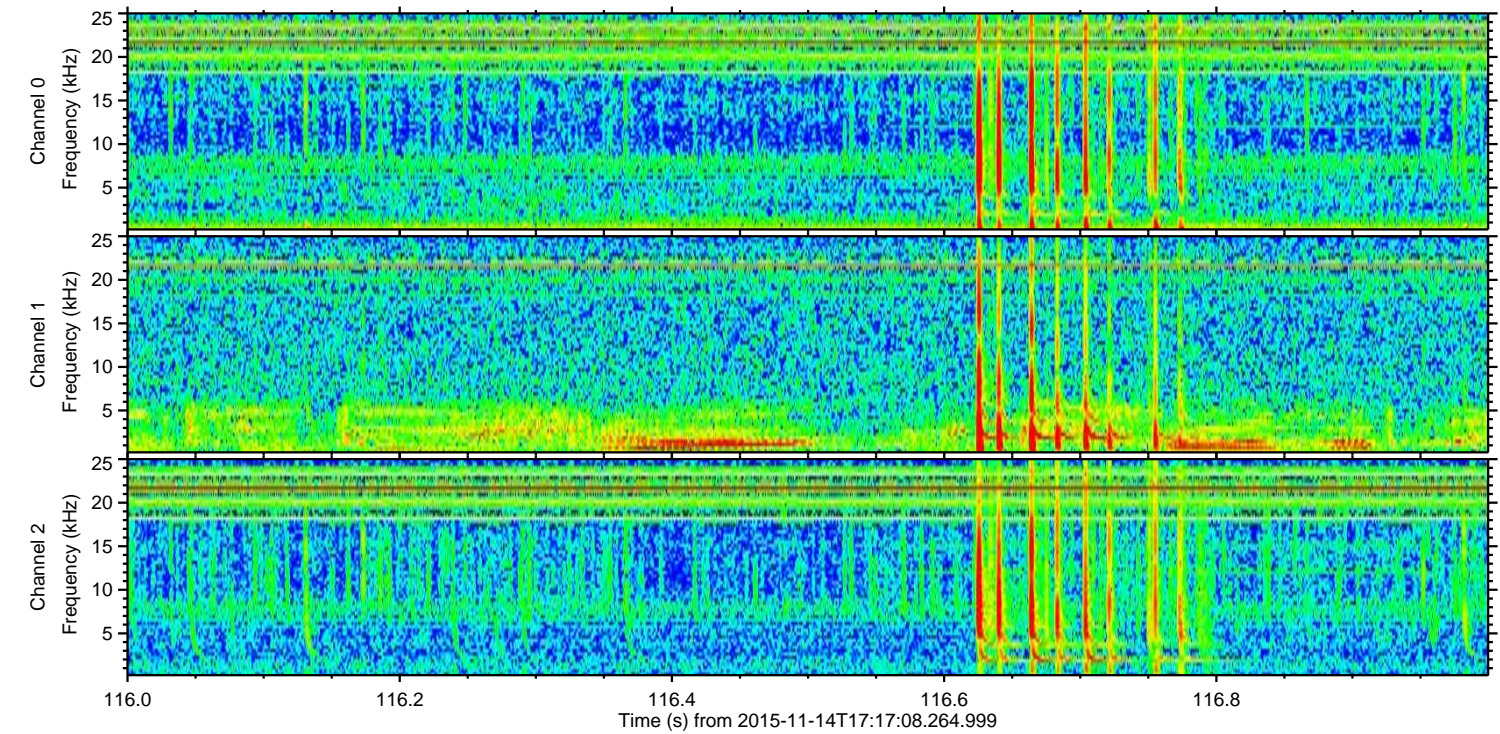
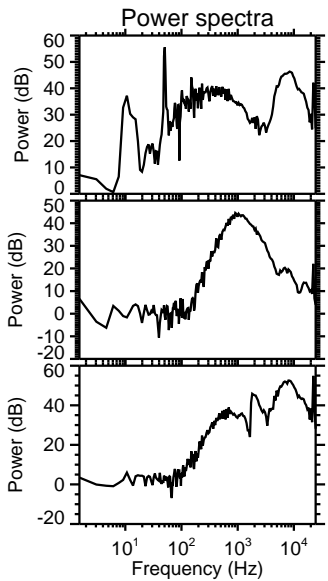
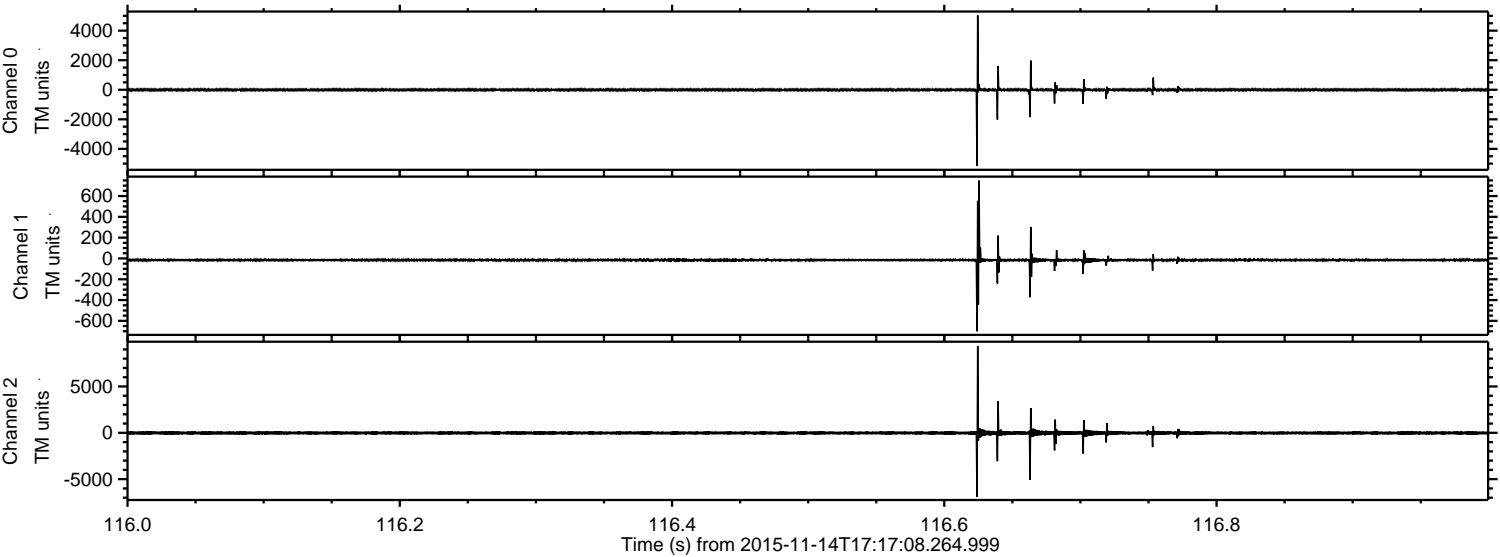
ELMAVAN 3D WAVEFORMS (Measured data sampled at 50 kHz) 51000 packets of 144 samples from 2015-11-14T17:17:08.264.999.

Processed Sat Nov 14 18:24:03 2015 by ELM ver.2012-10-06 from 001__elm20151114_171707__dat00.bin



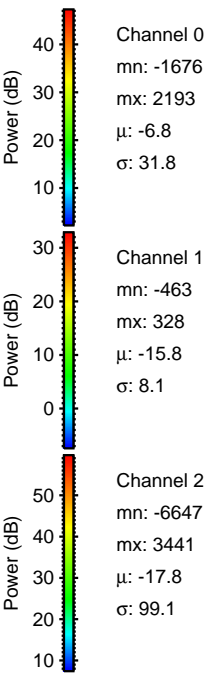
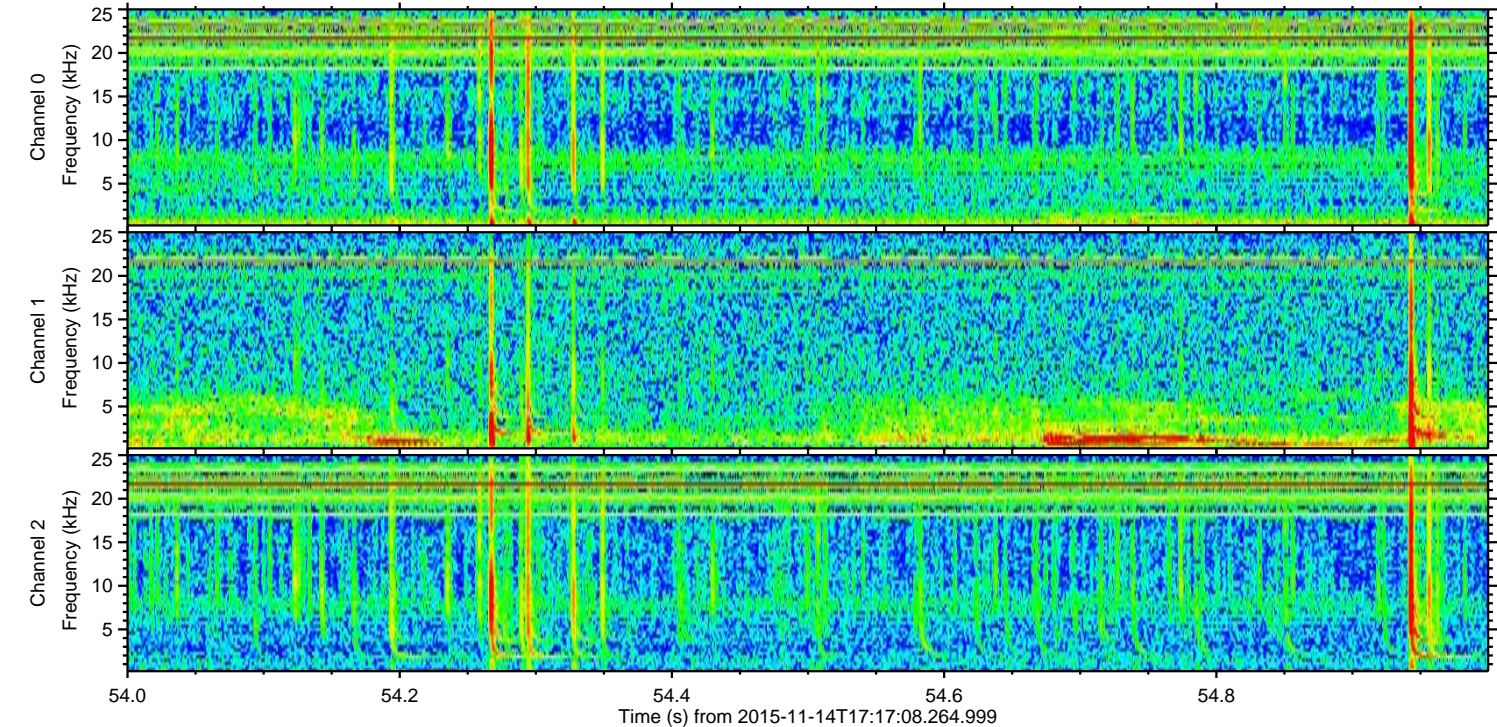
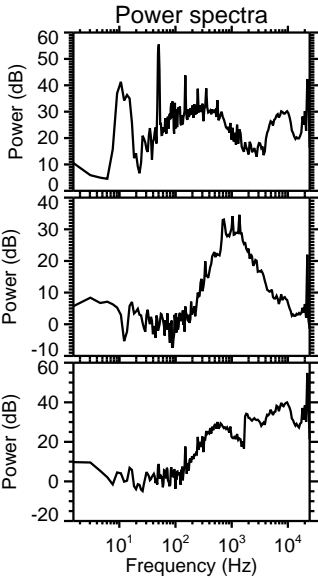
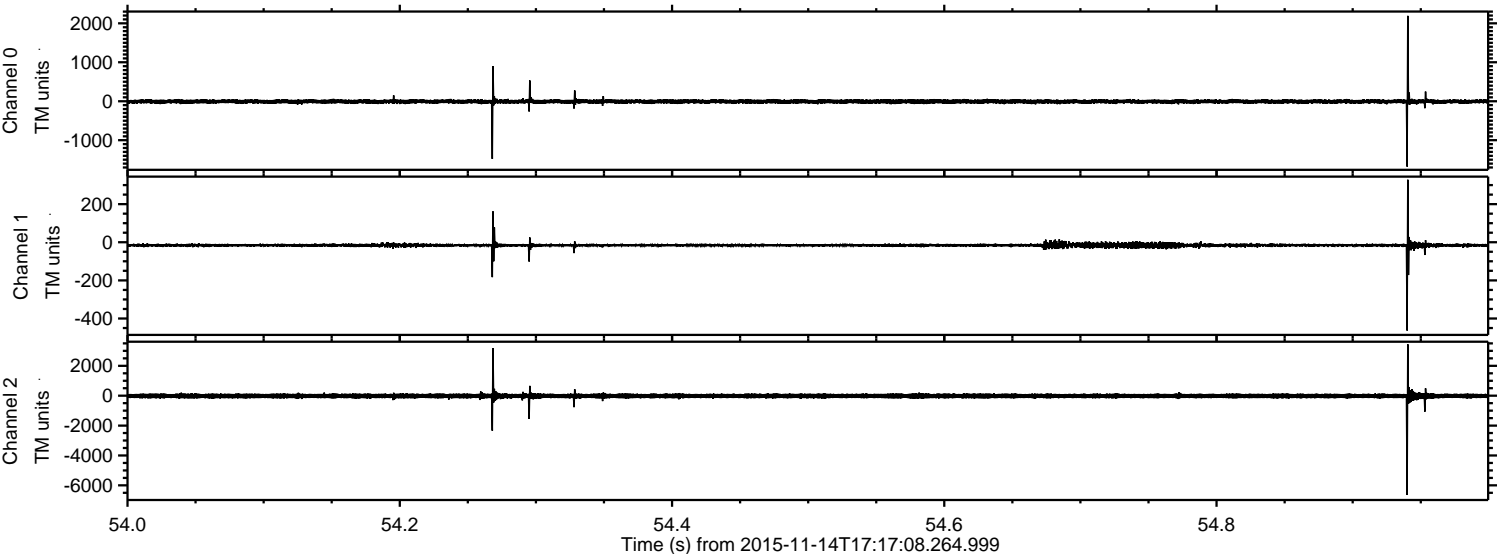
ELMAVAN 3D WAVEFORMS (Measured data sampled at 50 kHz) 51000 packets of 144 samples from 2015-11-14T17:17:08.264.999. Part 117/147

Processed Sat Nov 14 18:24:15 2015 by ELM ver.2012-10-06 from 001__elm20151114_171707__dat00.bin



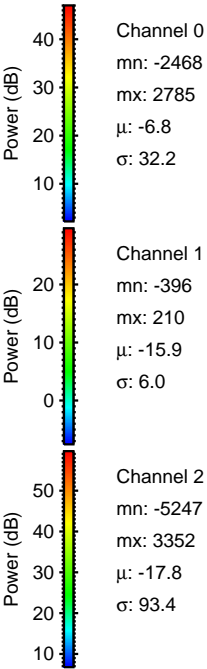
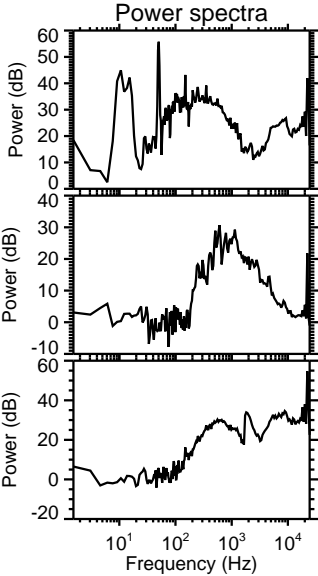
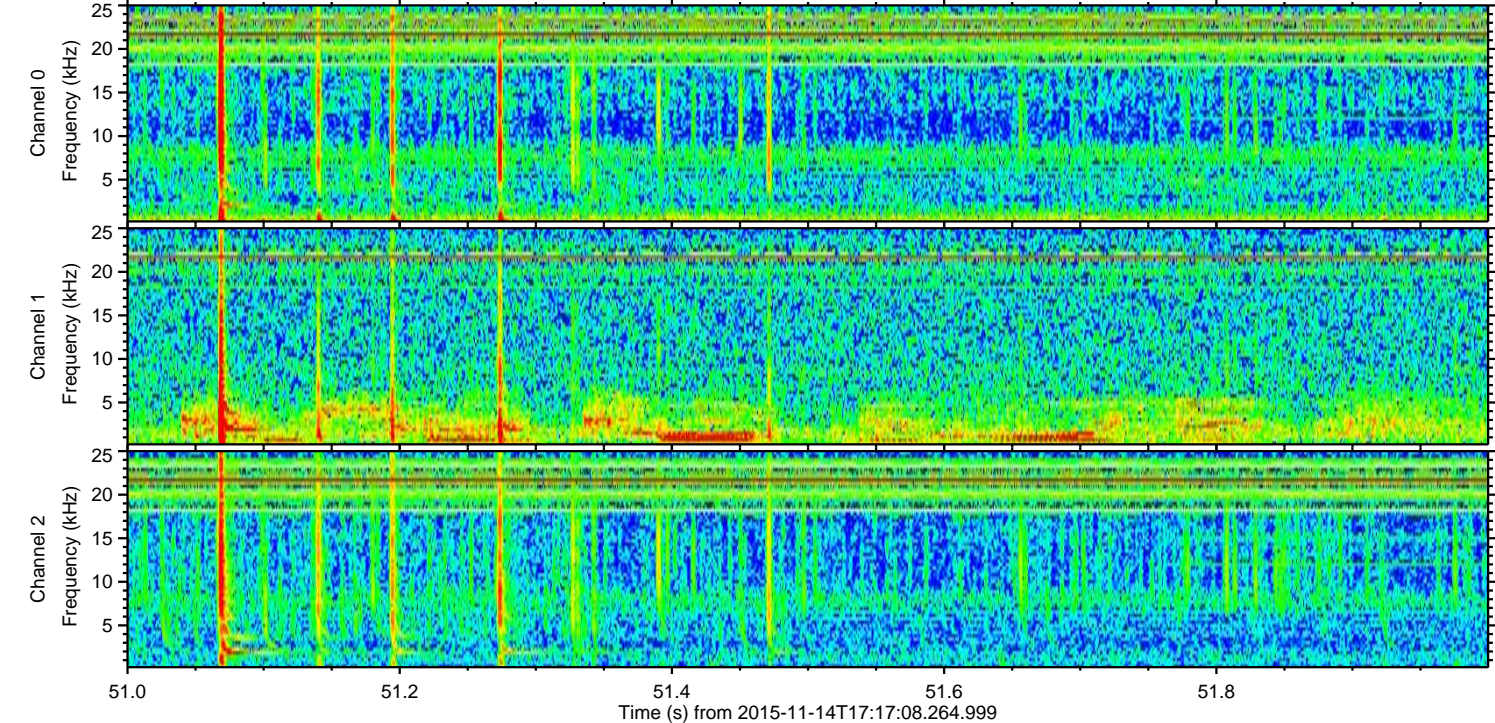
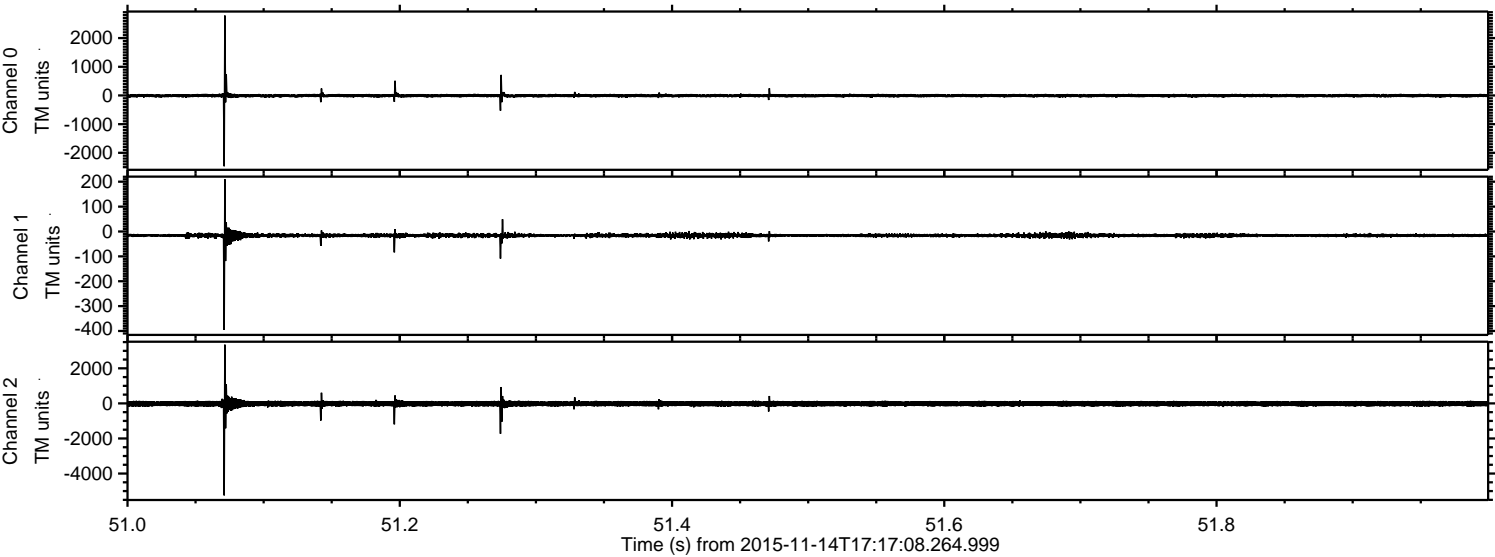
ELMAVAN 3D WAVEFORMS (Measured data sampled at 50 kHz) 51000 packets of 144 samples from 2015-11-14T17:17:08.264.999. Part 55/147

Processed Sat Nov 14 18:24:16 2015 by ELM ver.2012-10-06 from 001__elm20151114_171707__dat00.bin



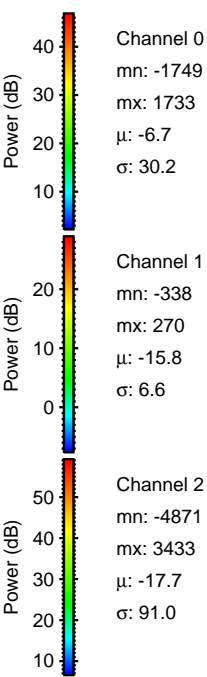
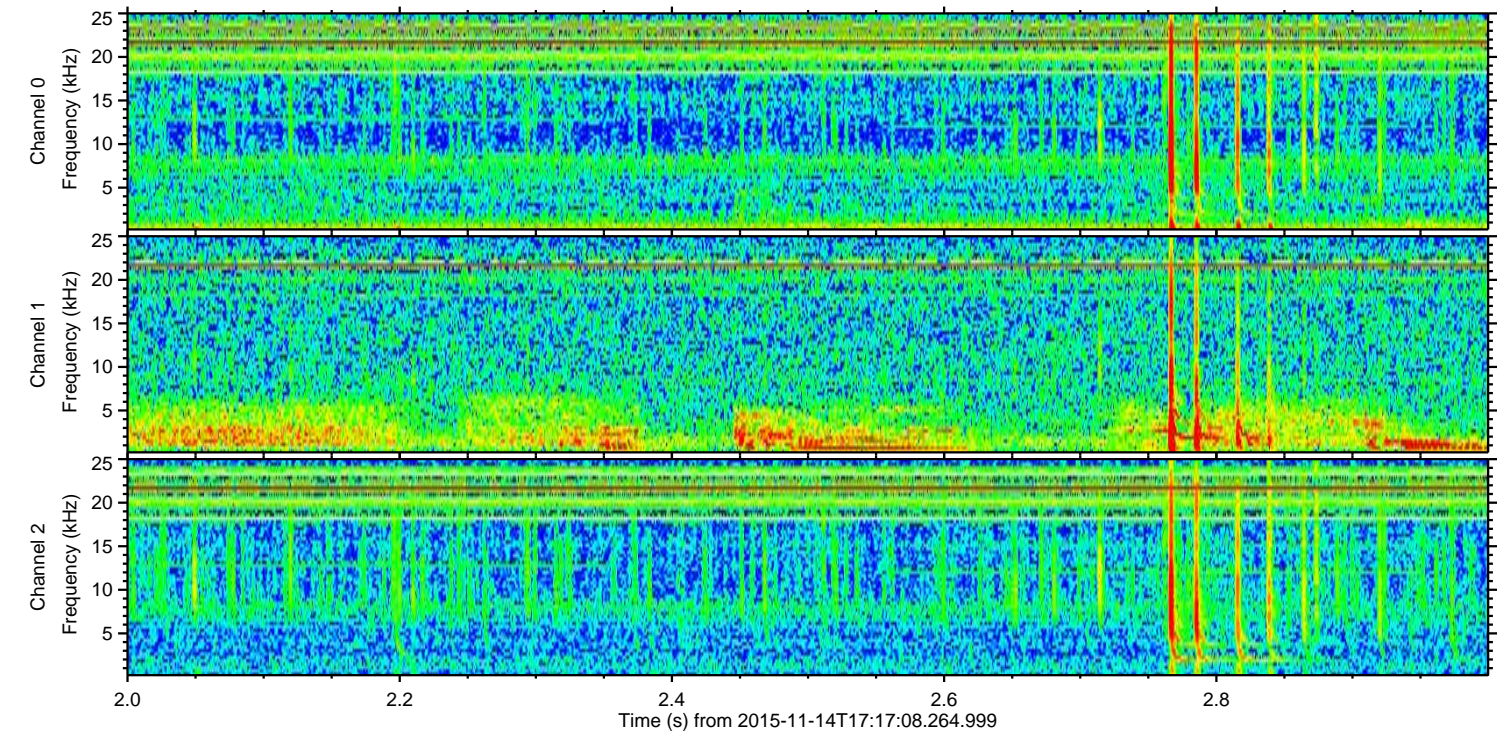
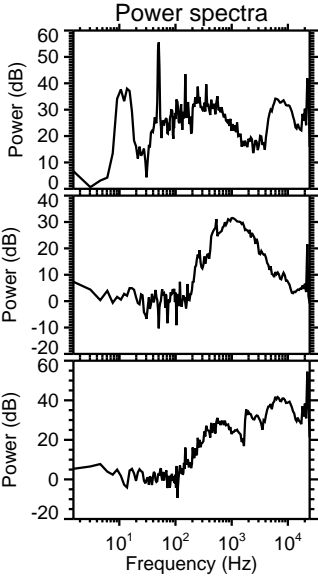
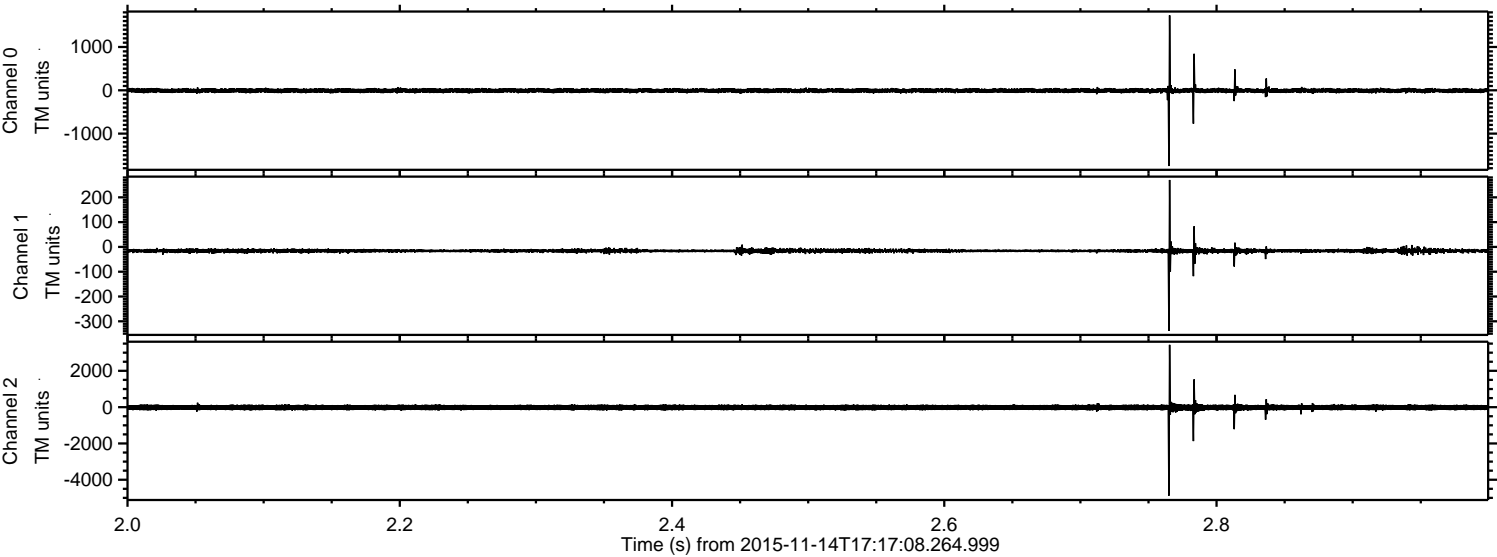
ELMAVAN 3D WAVEFORMS (Measured data sampled at 50 kHz) 51000 packets of 144 samples from 2015-11-14T17:17:08.264.999. Part 52/147

Processed Sat Nov 14 18:24:17 2015 by ELM ver.2012-10-06 from 001__elm20151114_171707__dat00.bin



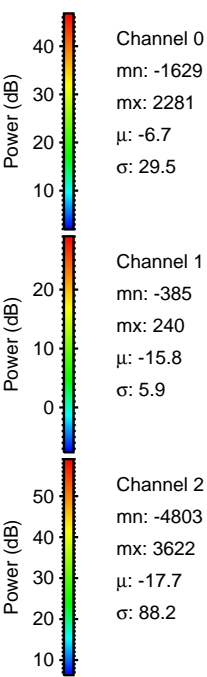
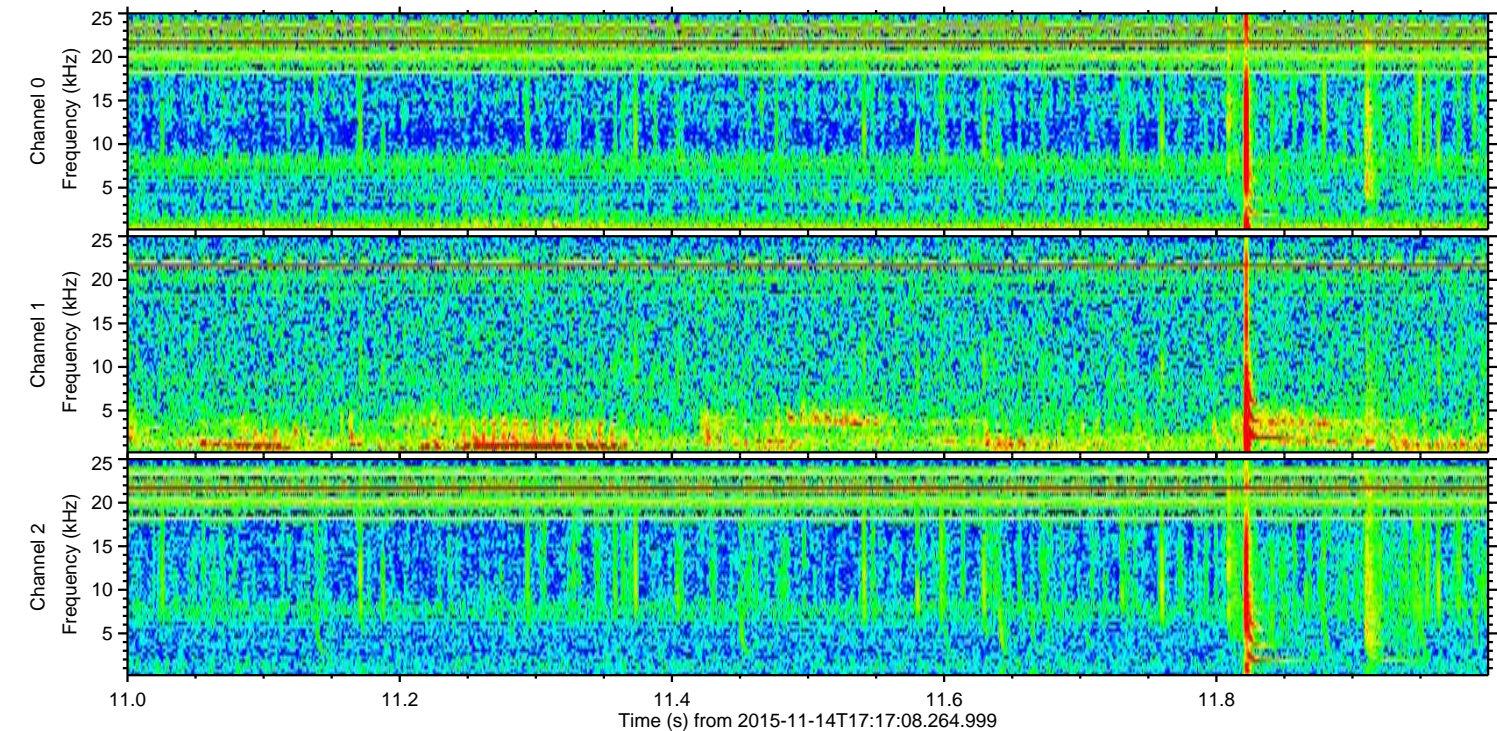
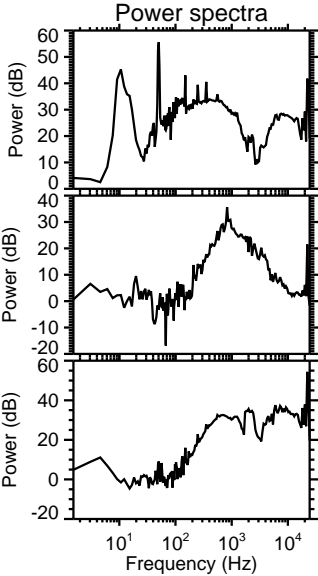
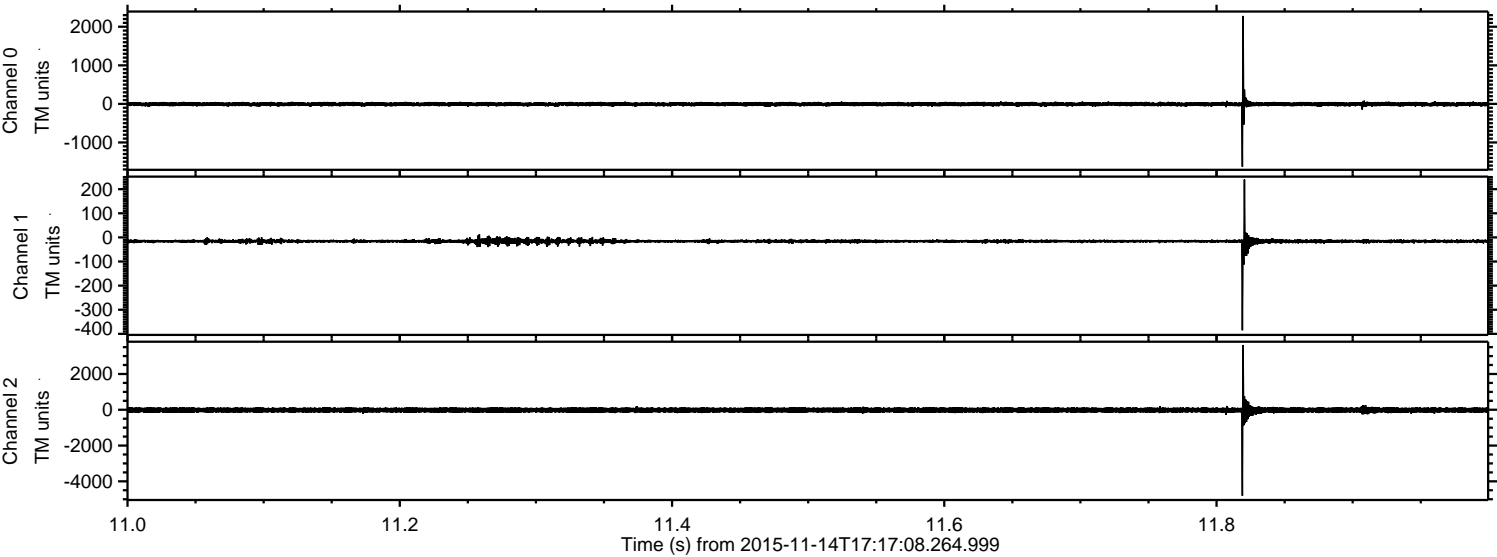
ELMAVAN 3D WAVEFORMS (Measured data sampled at 50 kHz) 51000 packets of 144 samples from 2015-11-14T17:17:08.264.999. Part 3/147

Processed Sat Nov 14 18:24:17 2015 by ELM ver.2012-10-06 from 001__elm20151114_171707__dat00.bin

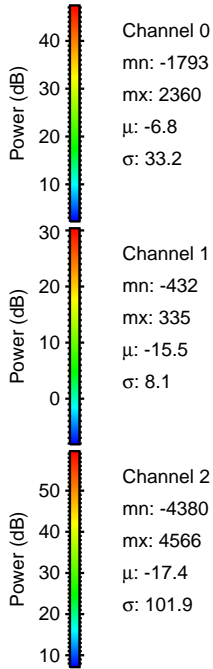
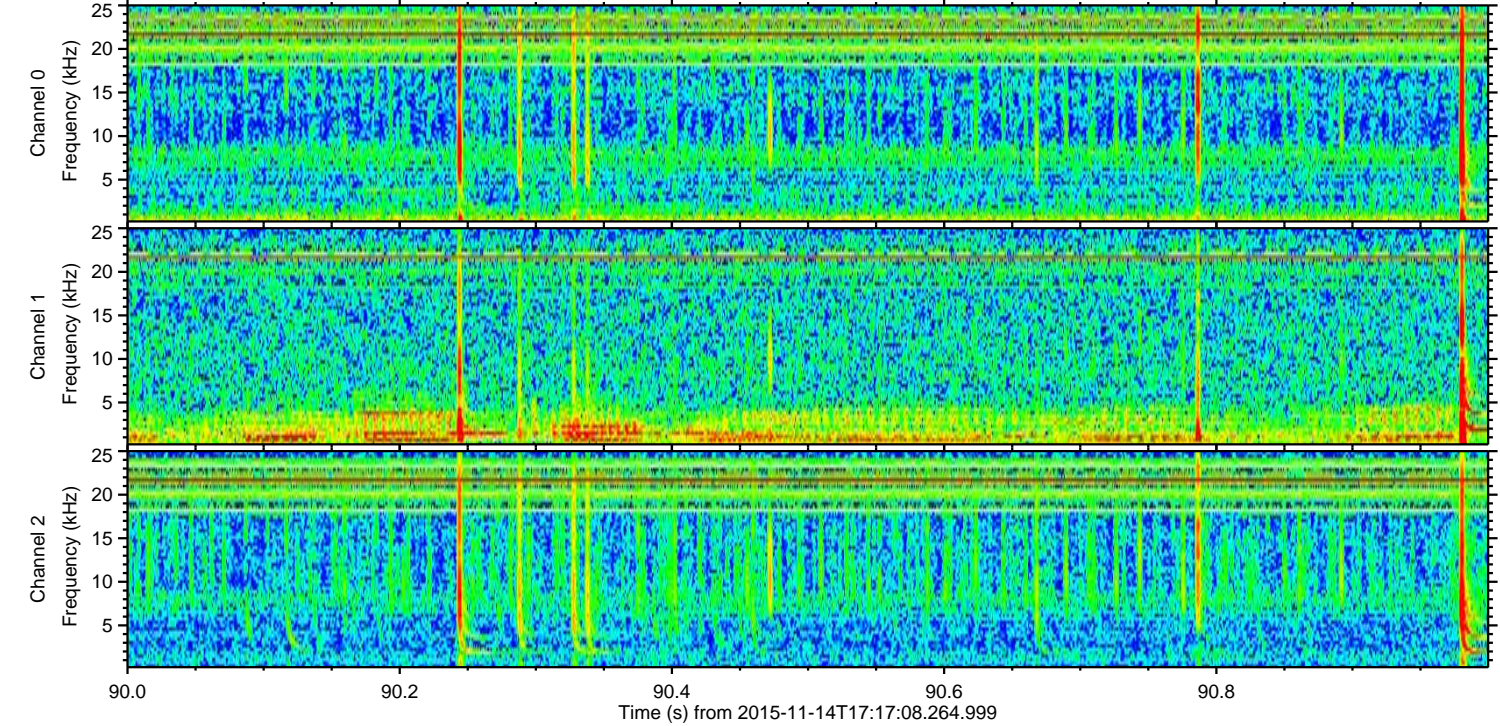
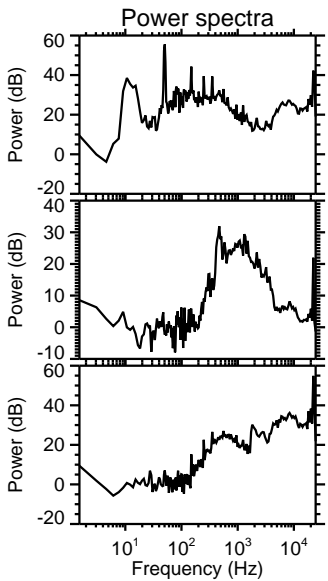
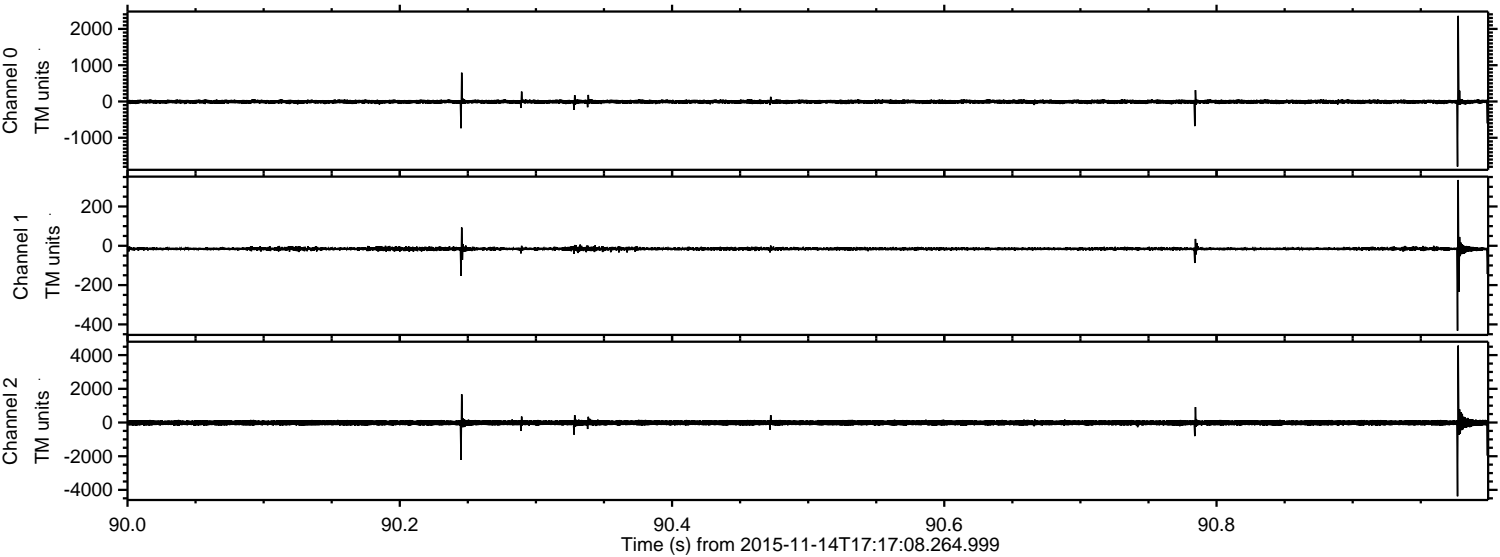


ELMAVAN 3D WAVEFORMS (Measured data sampled at 50 kHz) 51000 packets of 144 samples from 2015-11-14T17:17:08.264.999. Part 12/147

Processed Sat Nov 14 18:24:18 2015 by ELM ver.2012-10-06 from 001__elm20151114_171707__dat00.bin



Processed Sat Nov 14 18:24:19 2015 by ELM ver.2012-10-06 from 001__elm20151114_171707__dat00.bin

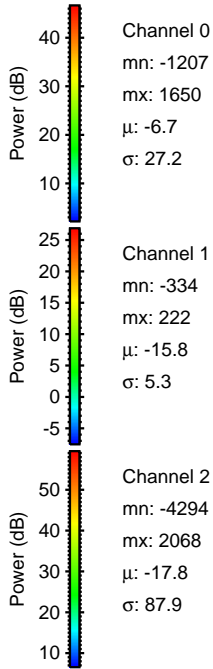
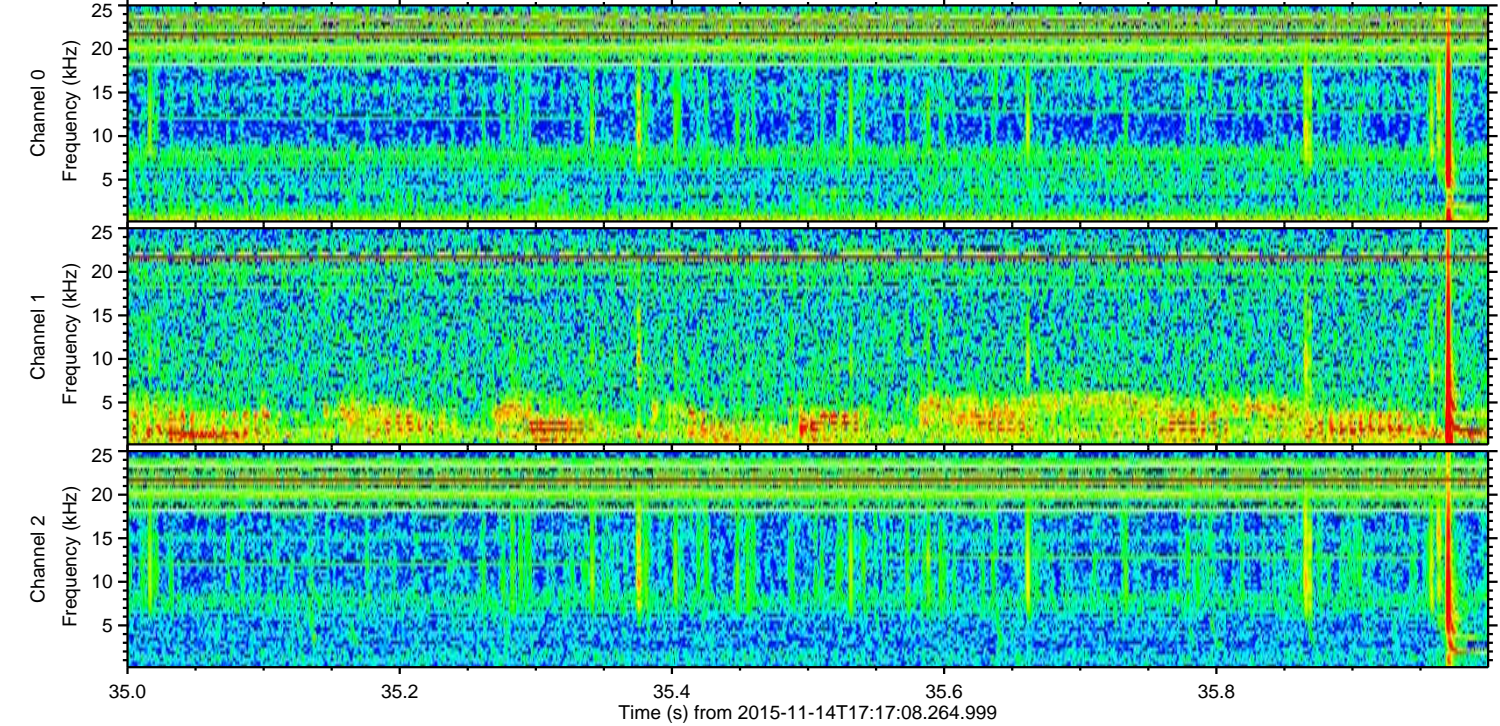
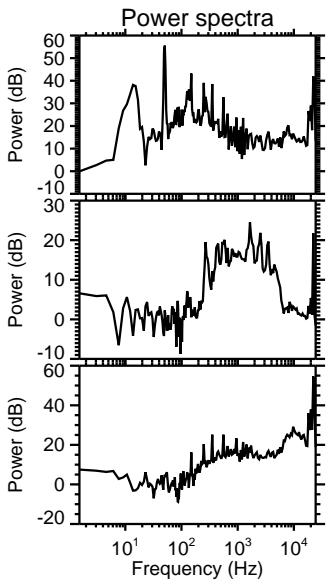
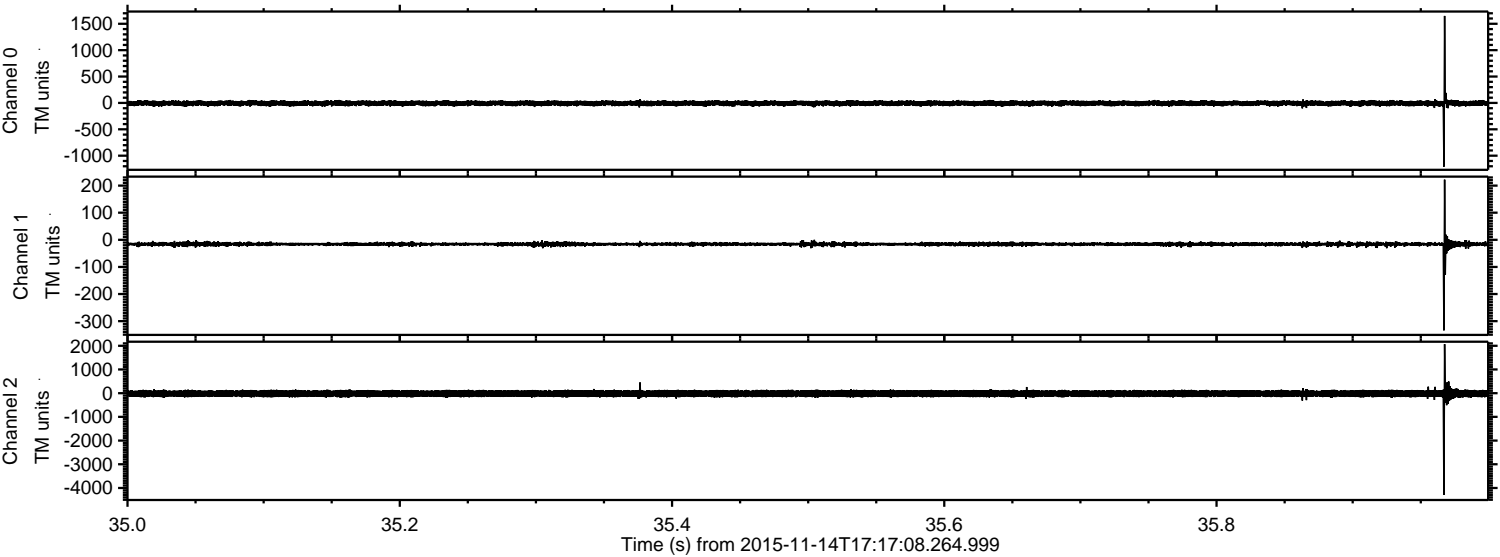


Channel 0
mn: -1793
mx: 2360
 μ : -6.8
 σ : 33.2

Channel 1
mn: -432
mx: 335
 μ : -15.5
 σ : 8.1

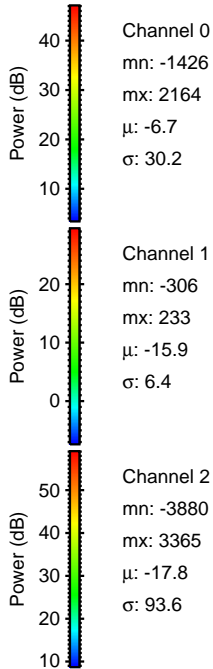
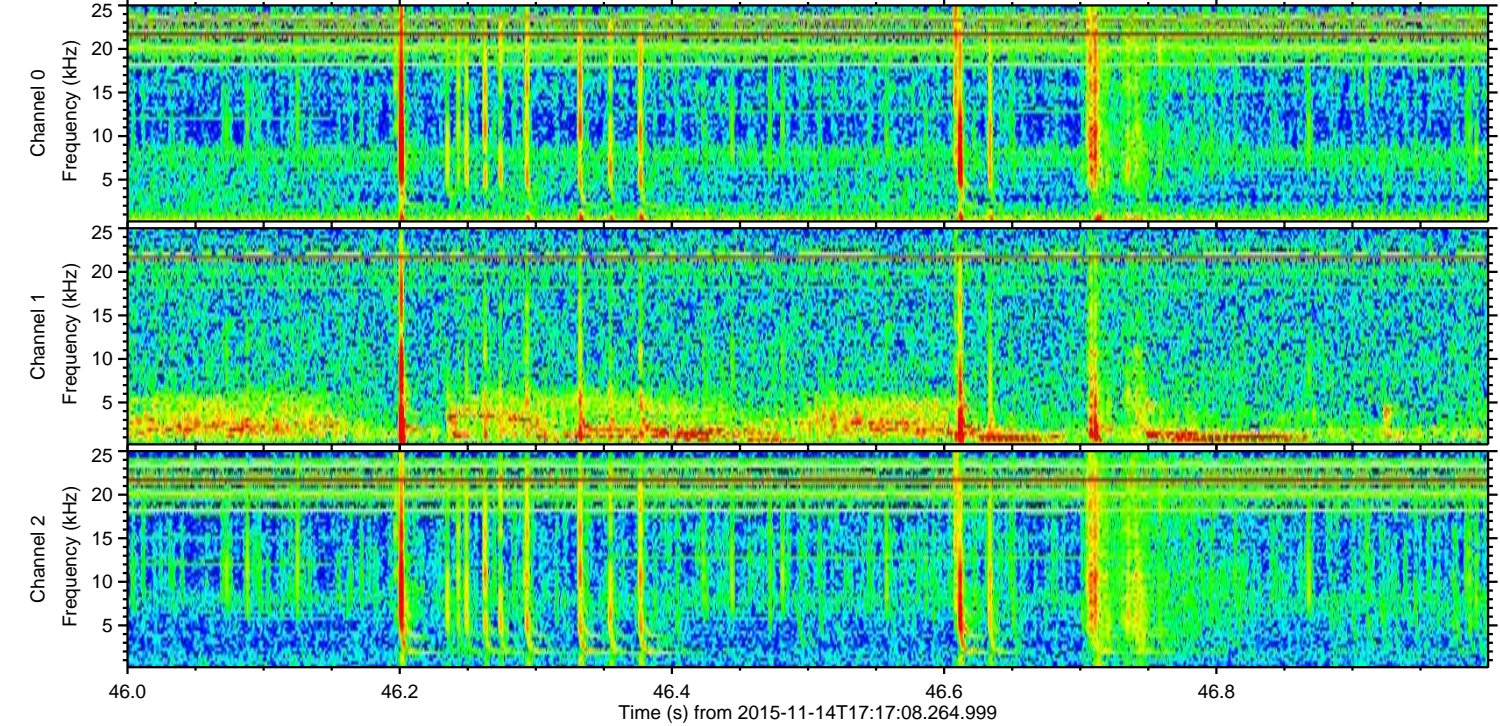
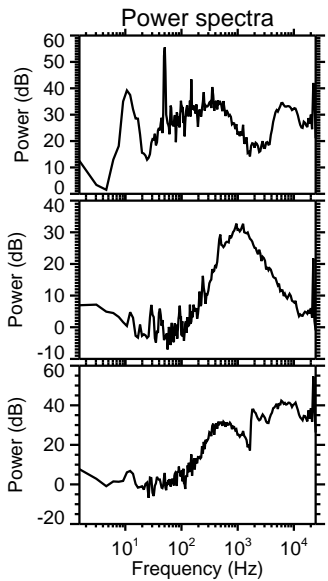
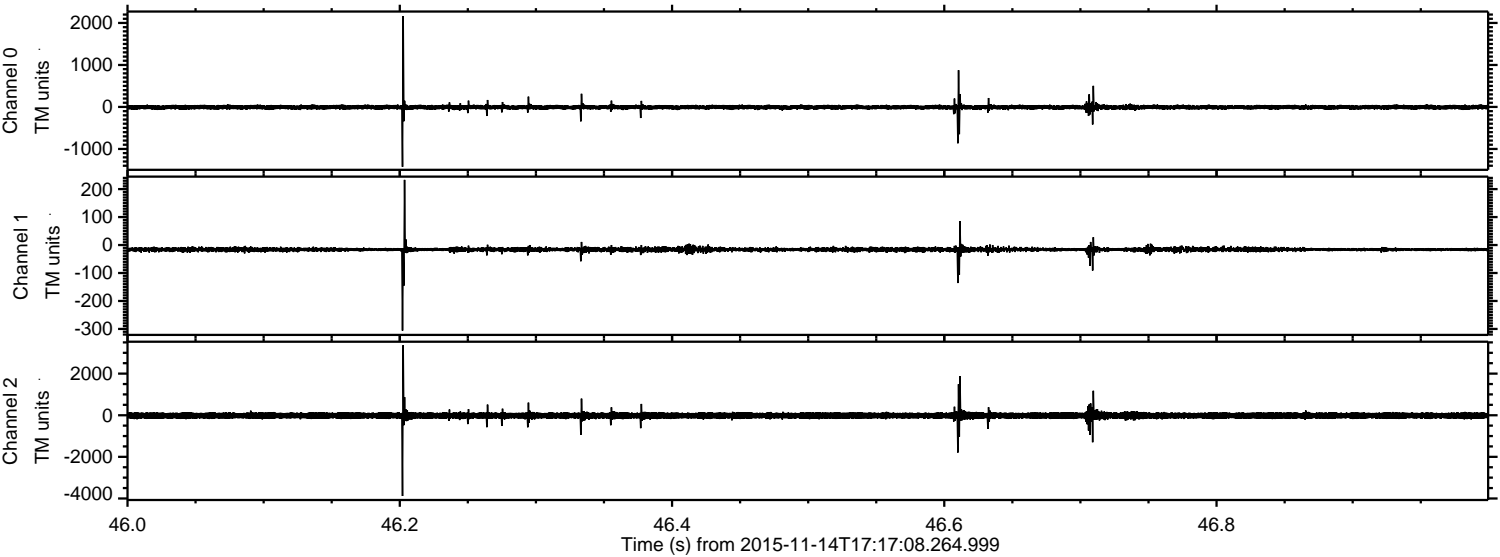
Channel 2
mn: -4380
mx: 4566
 μ : -17.4
 σ : 101.9

Processed Sat Nov 14 18:24:20 2015 by ELM ver.2012-10-06 from 001__elm20151114_171707__dat00.bin



ELMAVAN 3D WAVEFORMS (Measured data sampled at 50 kHz) 51000 packets of 144 samples from 2015-11-14T17:17:08.264.999. Part 47/147

Processed Sat Nov 14 18:24:21 2015 by ELM ver.2012-10-06 from 001__elm20151114_171707__dat00.bin



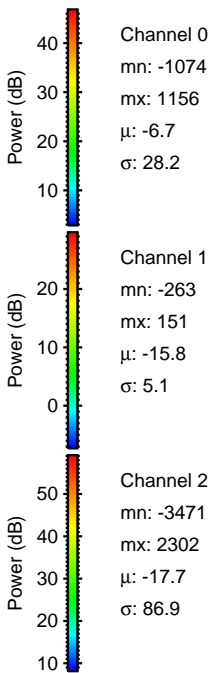
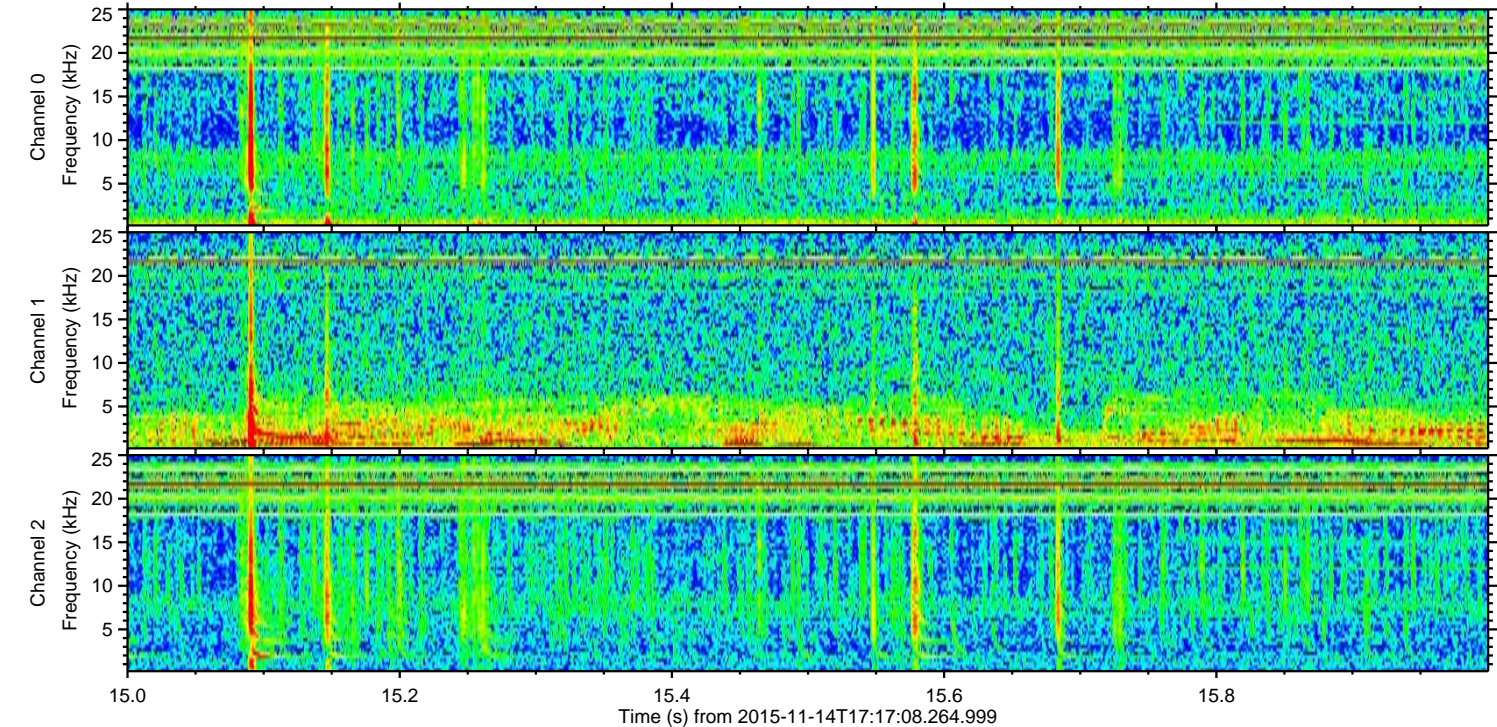
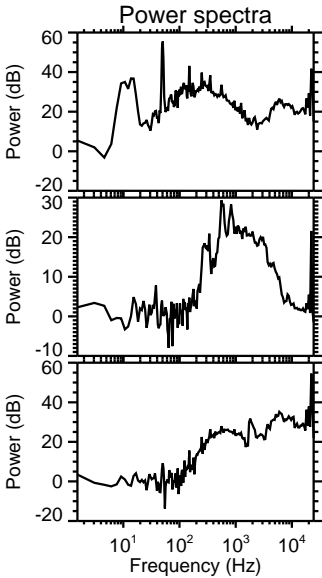
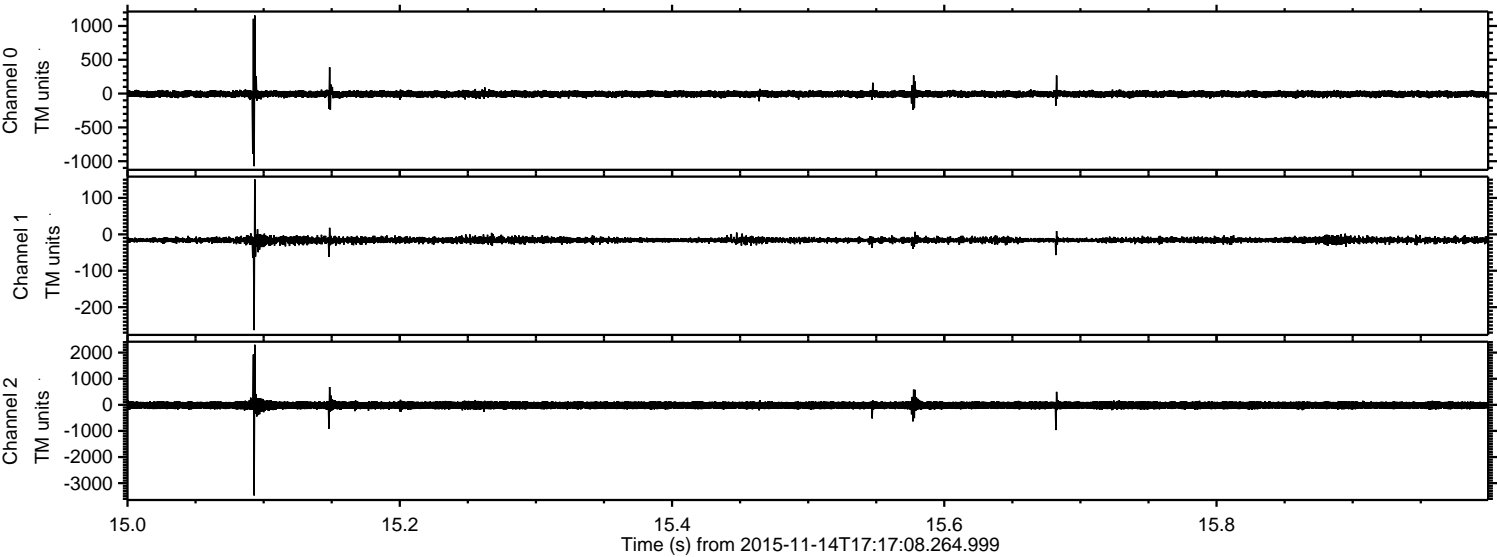
Channel 0
mn: -1426
mx: 2164
 μ : -6.7
 σ : 30.2

Channel 1
mn: -306
mx: 233
 μ : -15.9
 σ : 6.4

Channel 2
mn: -3880
mx: 3365
 μ : -17.8
 σ : 93.6

ELMAVAN 3D WAVEFORMS (Measured data sampled at 50 kHz) 51000 packets of 144 samples from 2015-11-14T17:17:08.264.999. Part 16/147

Processed Sat Nov 14 18:24:22 2015 by ELM ver.2012-10-06 from 001__elm20151114_171707__dat00.bin



ELMAVAN 3D WAVEFORMS (Measured data sampled at 50 kHz) 51000 packets of 144 samples from 2015-11-14T17:17:08.264.999. Part 98/147

Processed Sat Nov 14 18:24:23 2015 by ELM ver.2012-10-06 from 001__elm20151114_171707__dat00.bin

