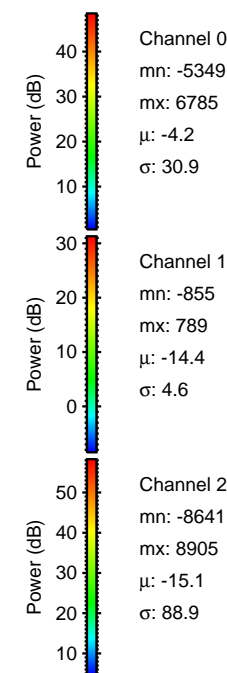
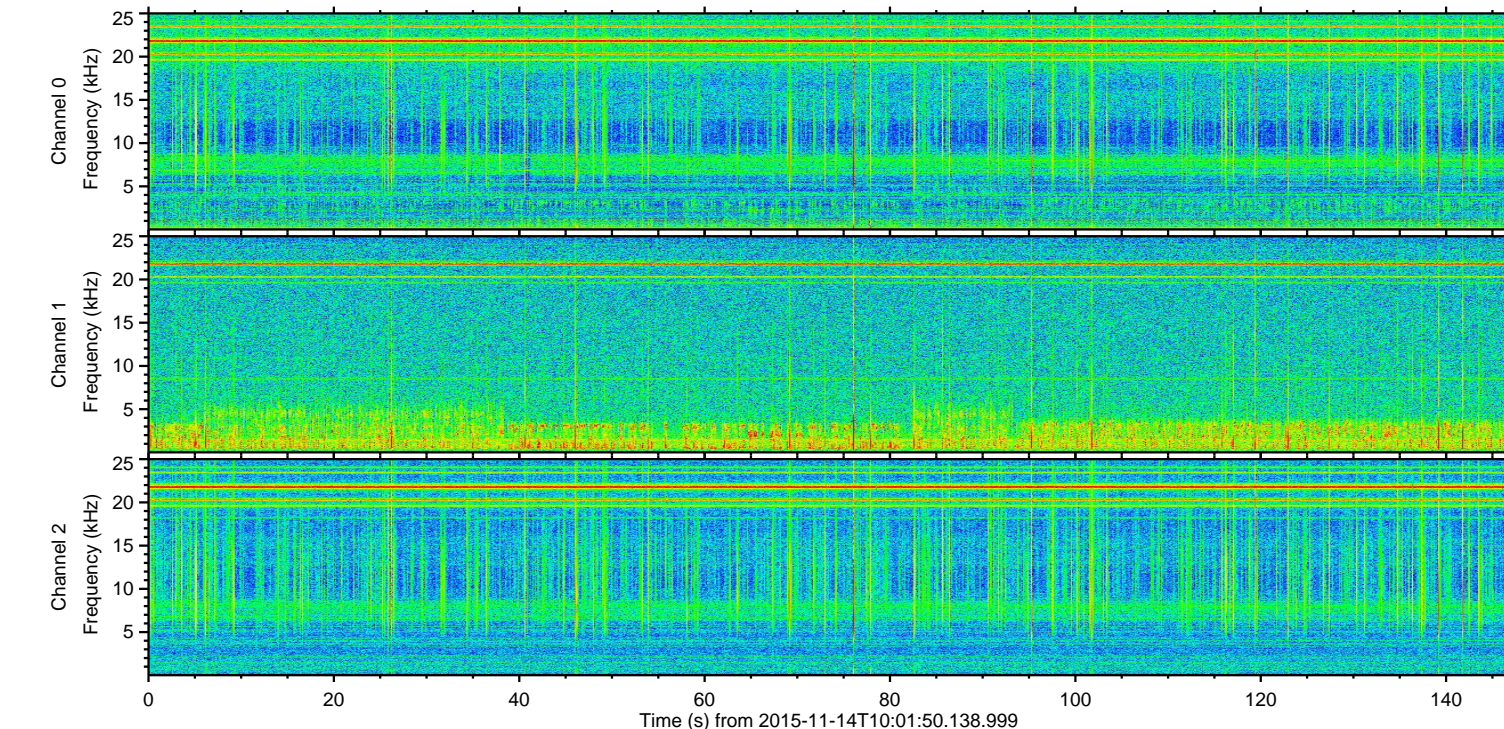
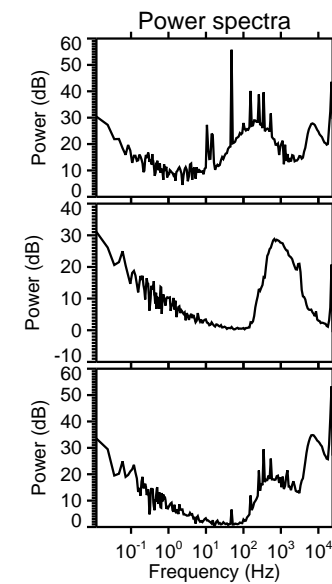
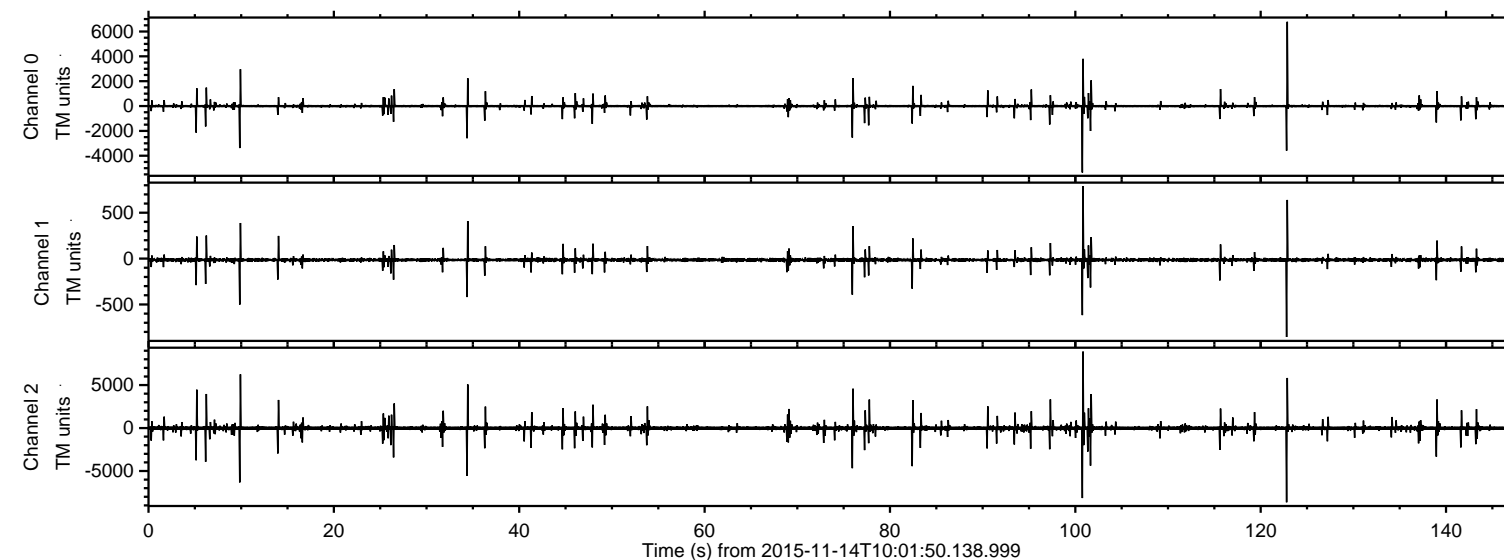


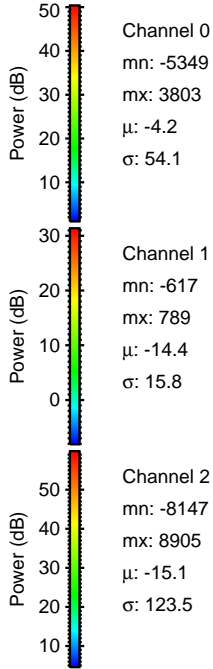
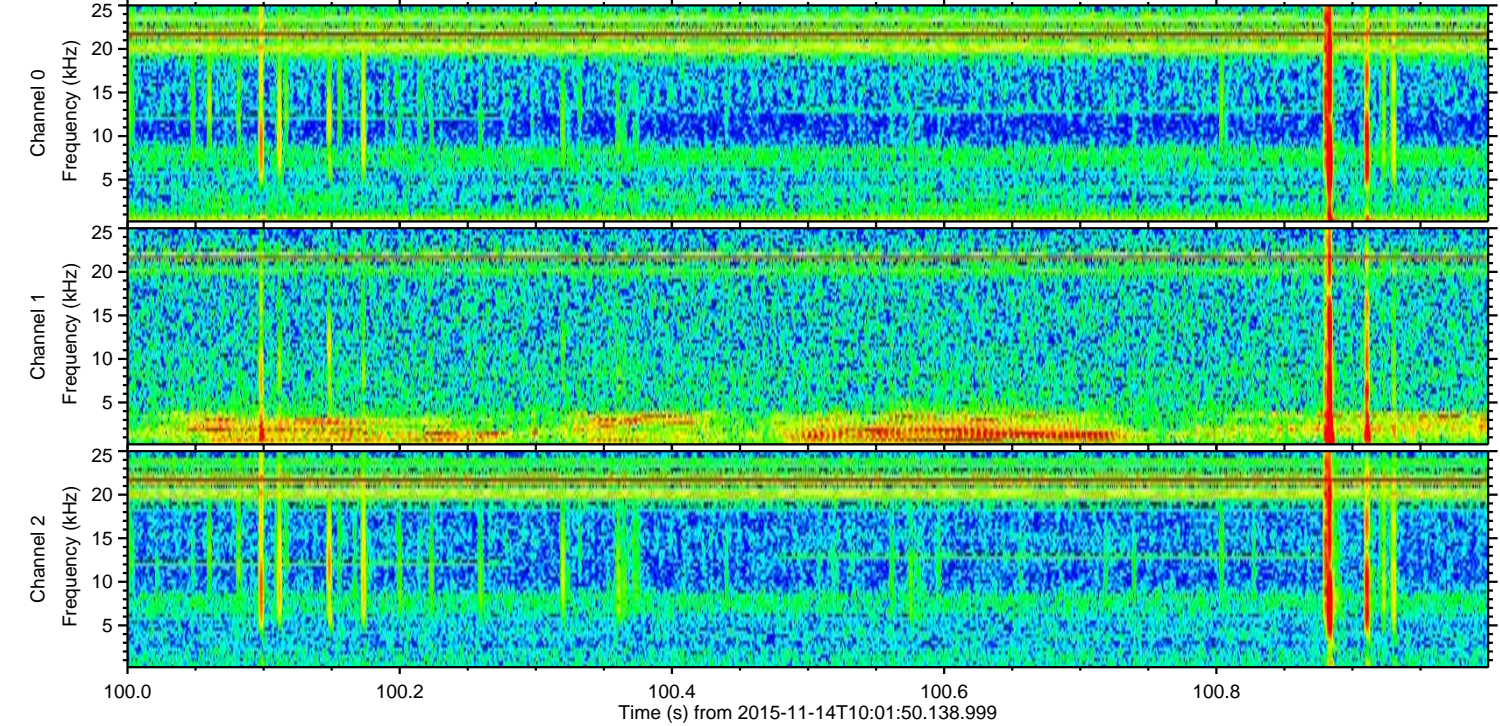
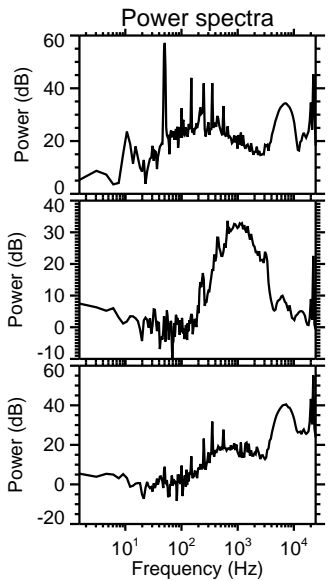
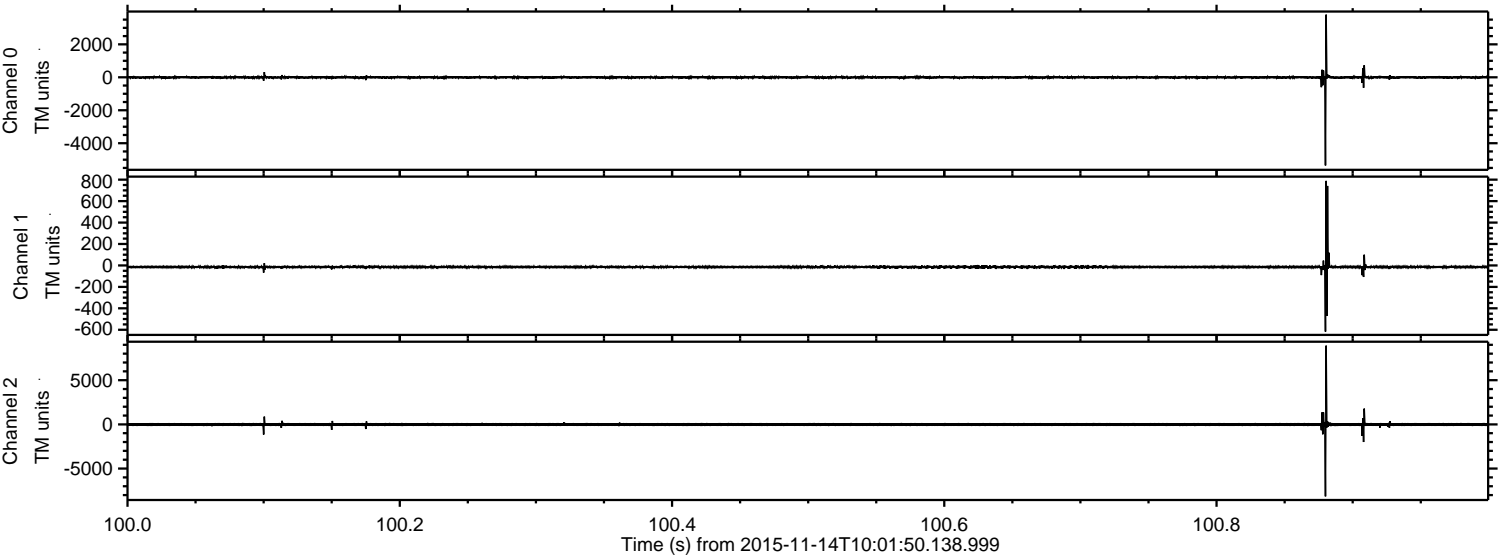
ELMAVAN 3D WAVEFORMS (Measured data sampled at 50 kHz) 51000 packets of 144 samples from 2015-11-14T10:01:50.138.999.

Processed Sat Nov 14 11:08:04 2015 by ELM ver.2012-10-06 from 001__elm20151114_100149__dat00.bin



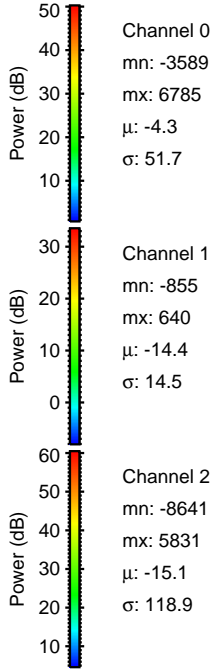
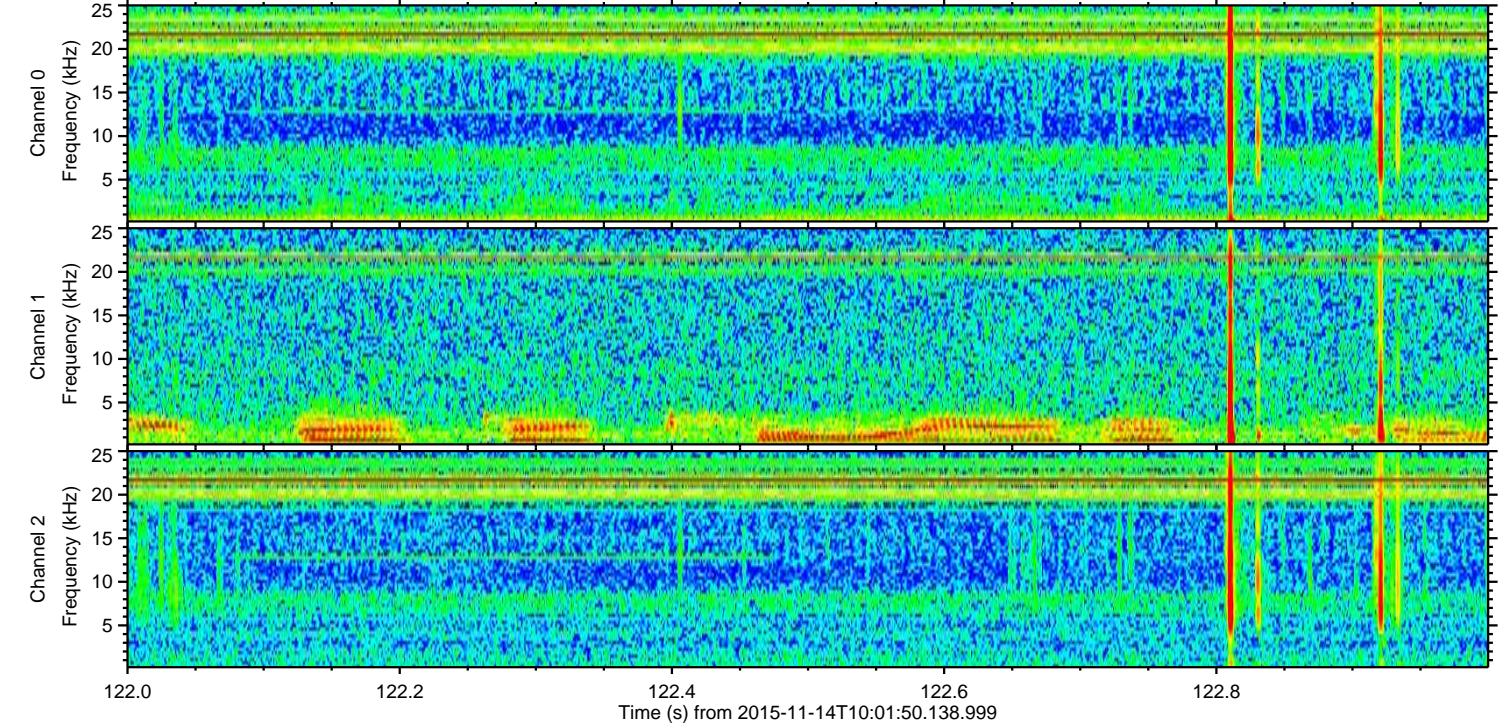
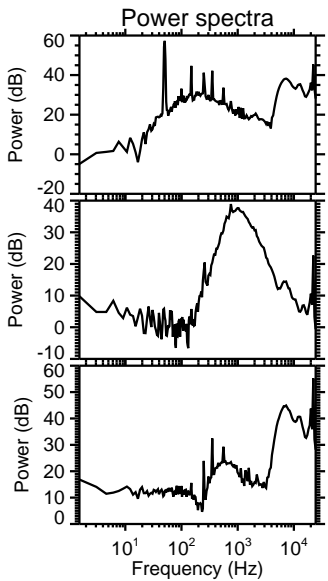
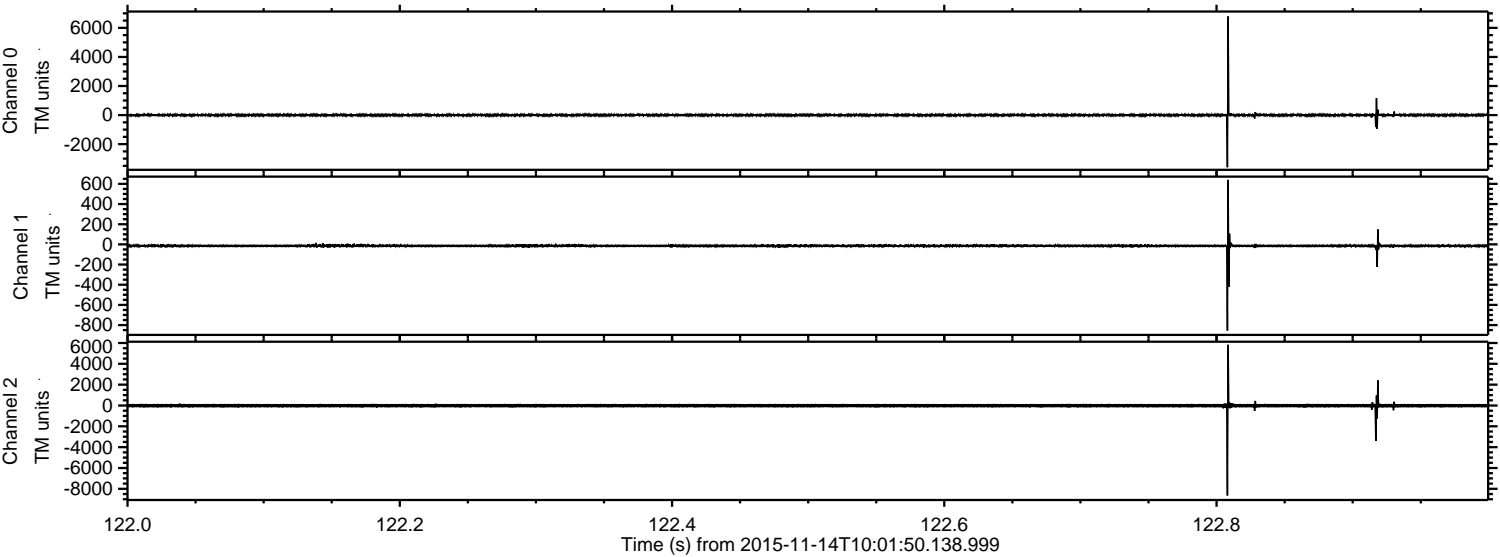
ELMAVAN 3D WAVEFORMS (Measured data sampled at 50 kHz) 51000 packets of 144 samples from 2015-11-14T10:01:50.138.999. Part 101/147

Processed Sat Nov 14 11:08:16 2015 by ELM ver.2012-10-06 from 001__elm20151114_100149__dat00.bin



ELMAVAN 3D WAVEFORMS (Measured data sampled at 50 kHz) 51000 packets of 144 samples from 2015-11-14T10:01:50.138.999. Part 123/147

Processed Sat Nov 14 11:08:17 2015 by ELM ver.2012-10-06 from 001__elm20151114_100149__dat00.bin



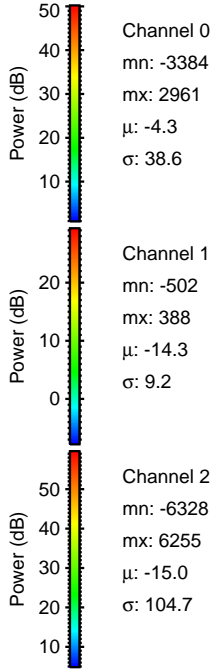
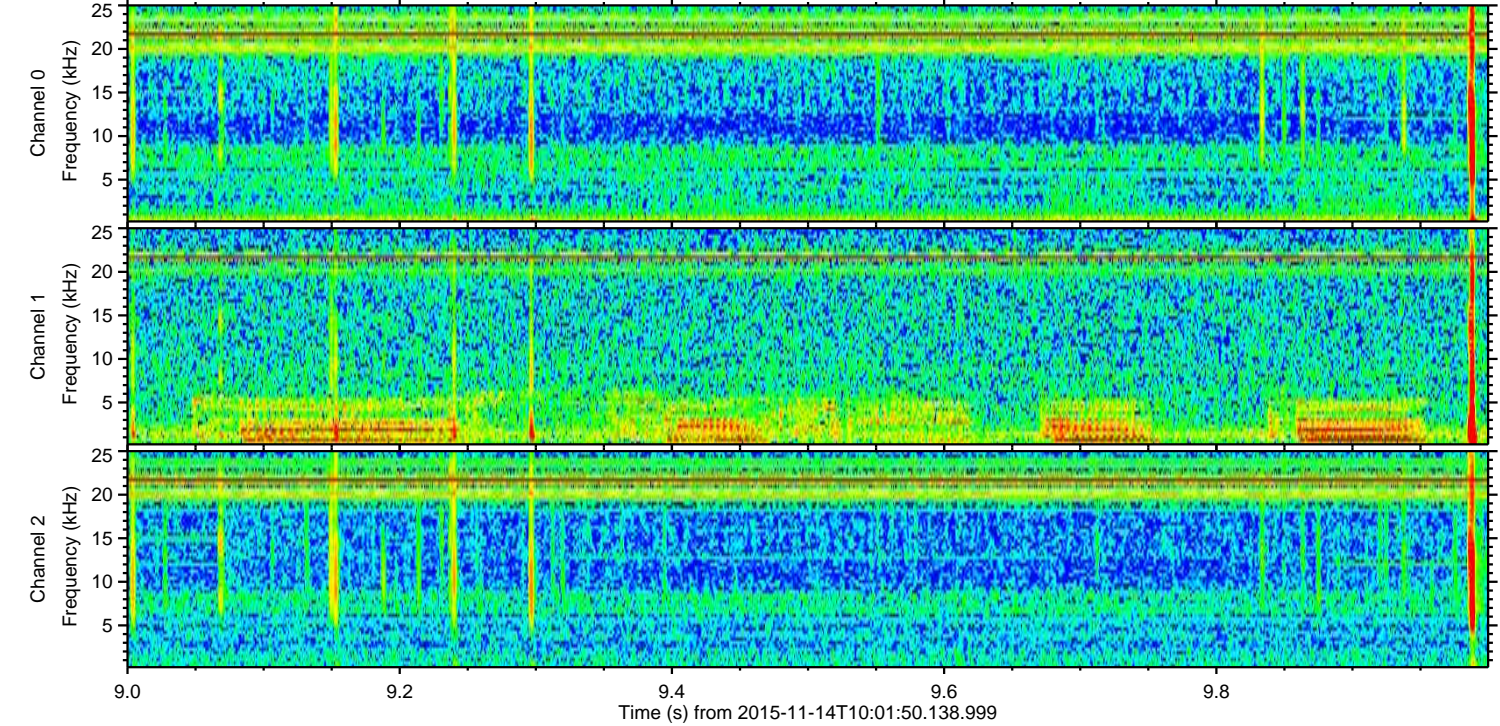
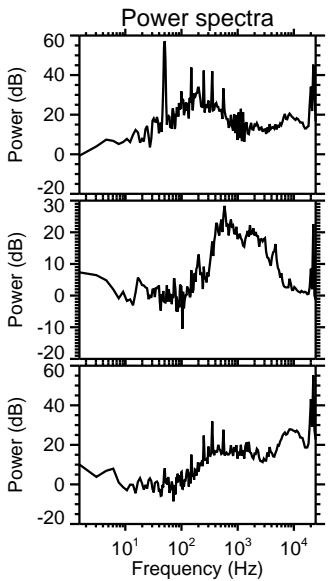
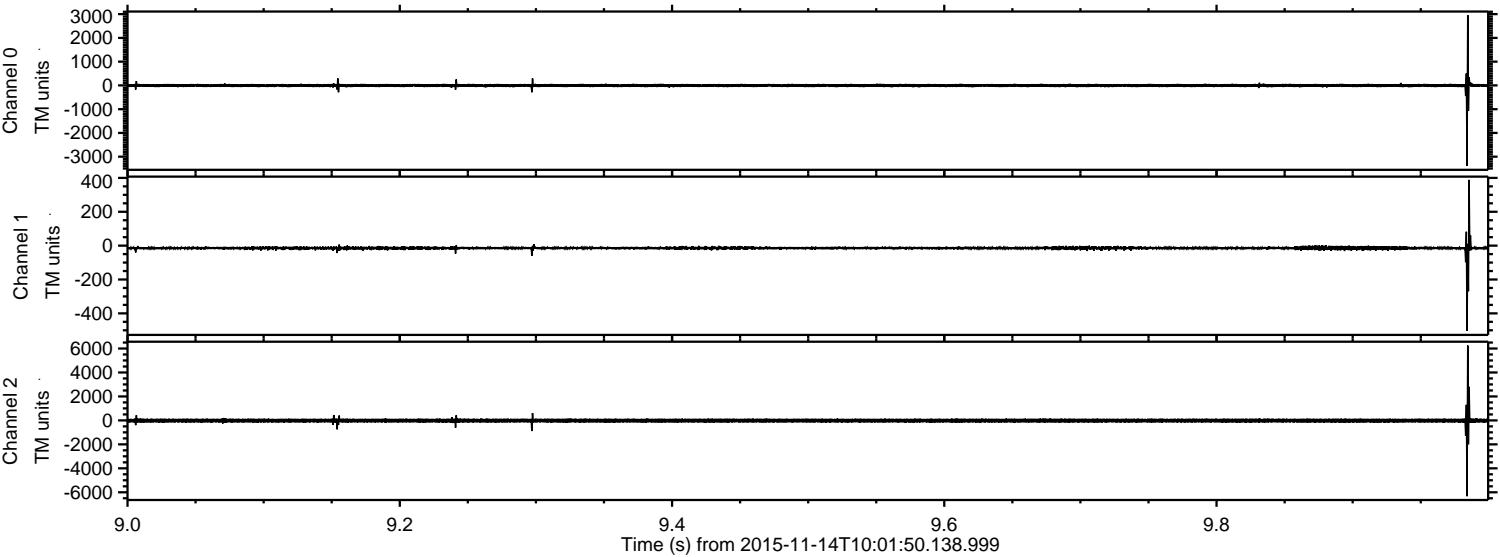
Channel 0
mn: -3589
mx: 6785
 μ : -4.3
 σ : 51.7

Channel 1
mn: -855
mx: 640
 μ : -14.4
 σ : 14.5

Channel 2
mn: -8641
mx: 5831
 μ : -15.1
 σ : 118.9

ELMAVAN 3D WAVEFORMS (Measured data sampled at 50 kHz) 51000 packets of 144 samples from 2015-11-14T10:01:50.138.999. Part 10/147

Processed Sat Nov 14 11:08:18 2015 by ELM ver.2012-10-06 from 001__elm20151114_100149__dat00.bin



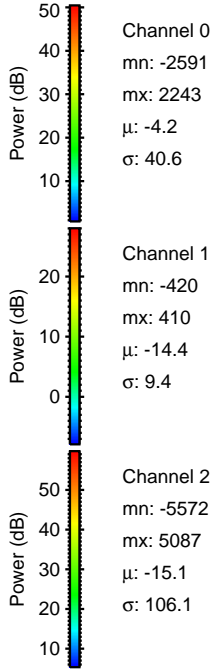
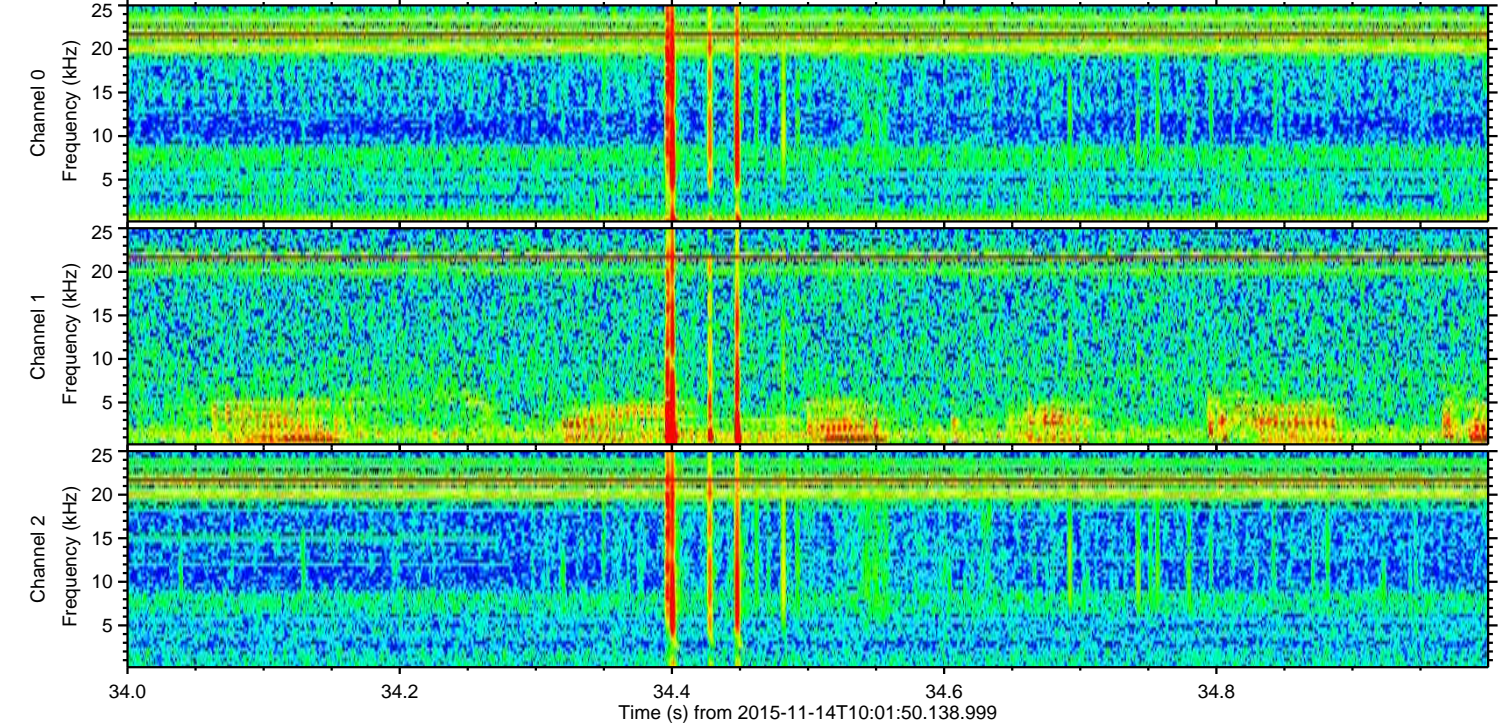
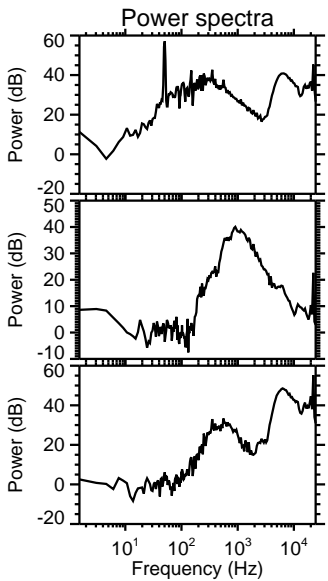
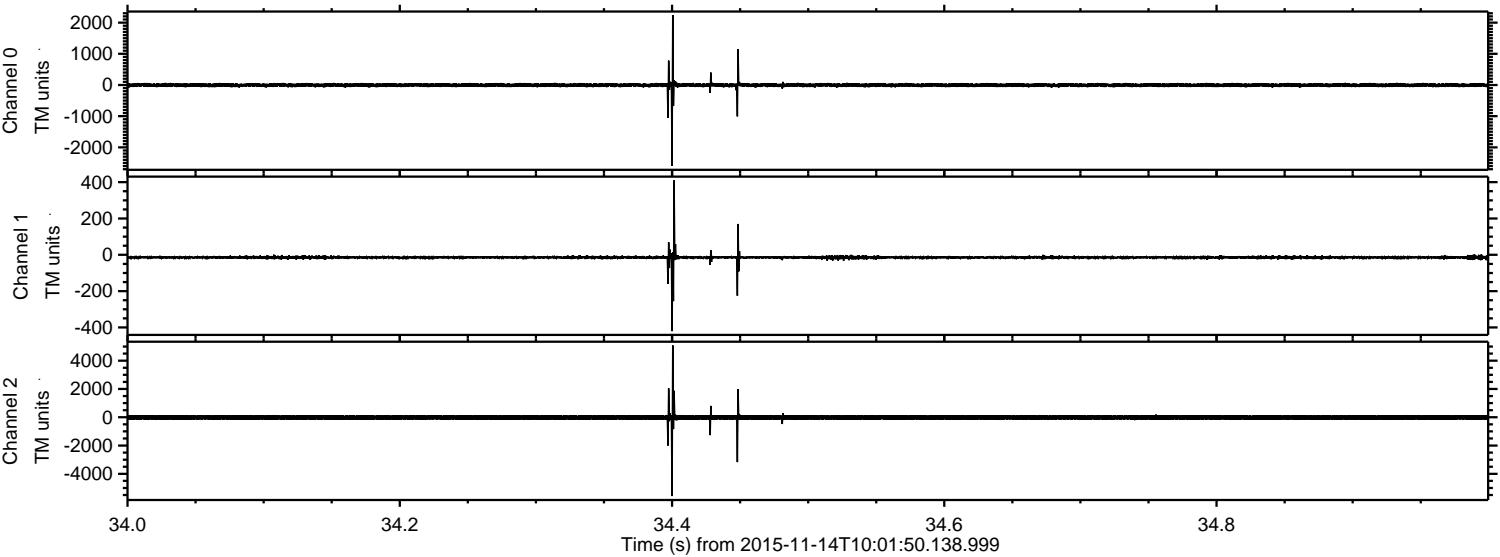
Channel 0
mn: -3384
mx: 2961
 μ : -4.3
 σ : 38.6

Channel 1
mn: -502
mx: 388
 μ : -14.3
 σ : 9.2

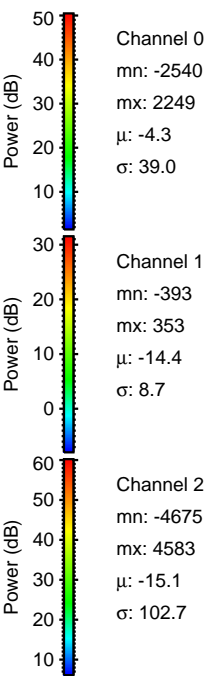
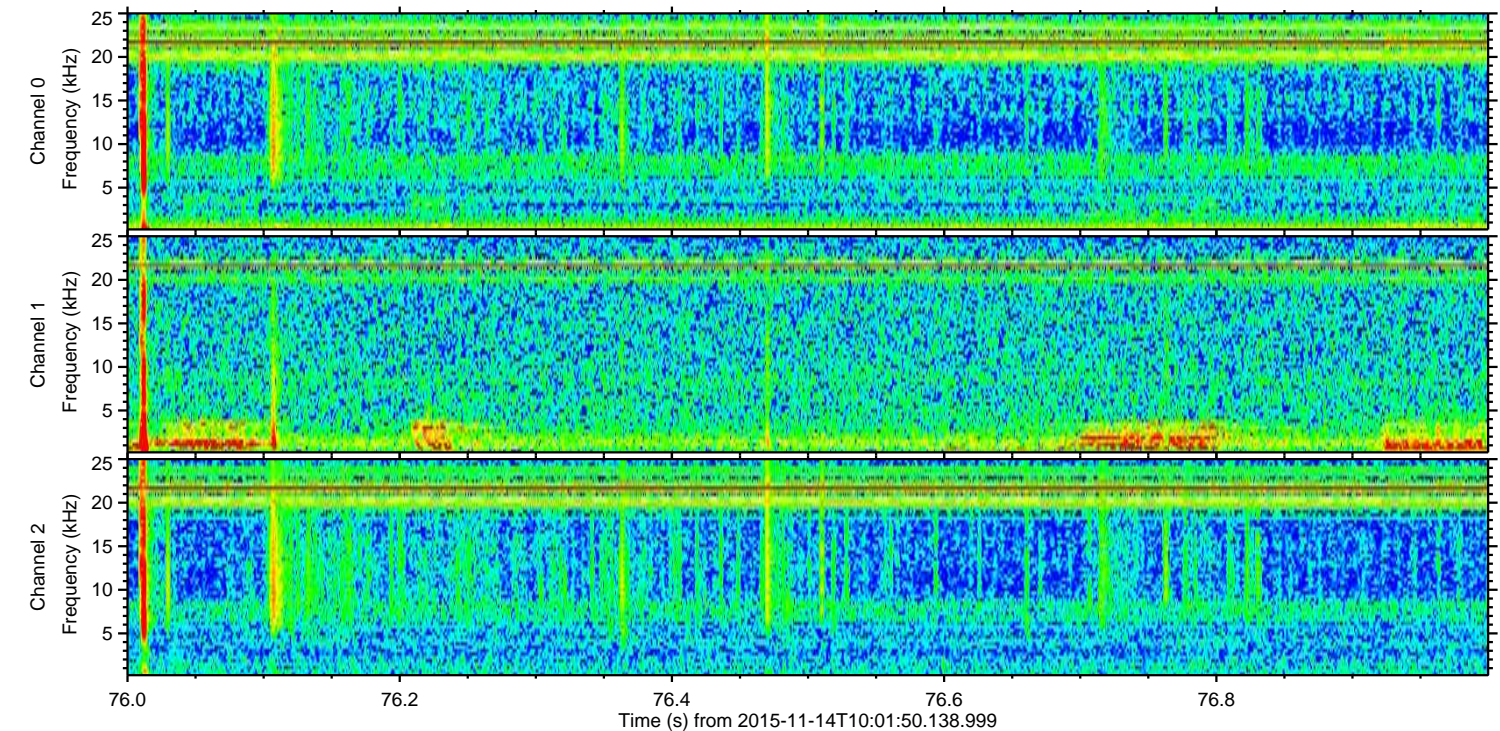
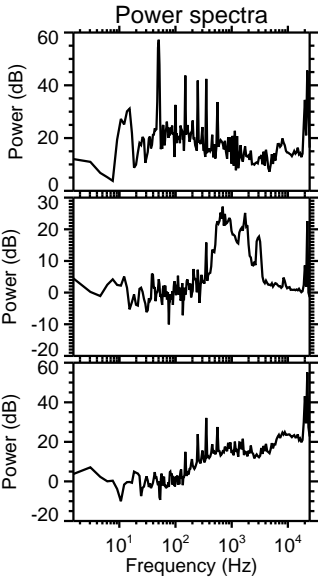
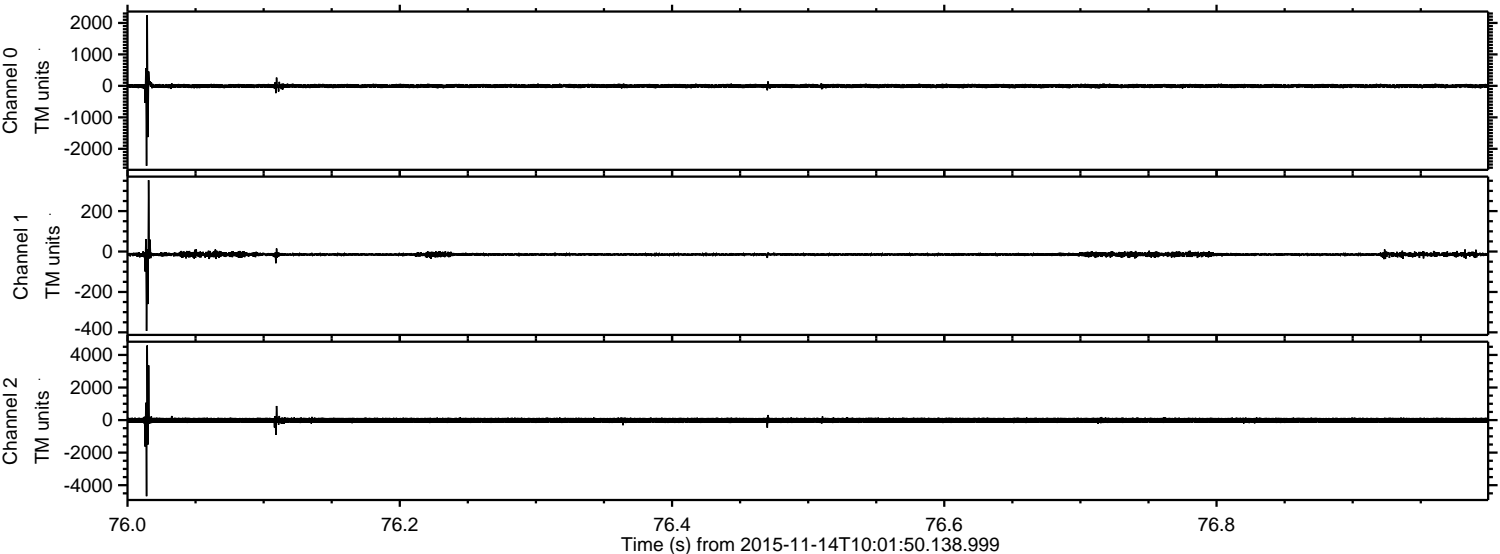
Channel 2
mn: -6328
mx: 6255
 μ : -15.0
 σ : 104.7

ELMAVAN 3D WAVEFORMS (Measured data sampled at 50 kHz) 51000 packets of 144 samples from 2015-11-14T10:01:50.138.999. Part 35/147

Processed Sat Nov 14 11:08:19 2015 by ELM ver.2012-10-06 from 001__elm20151114_100149__dat00.bin

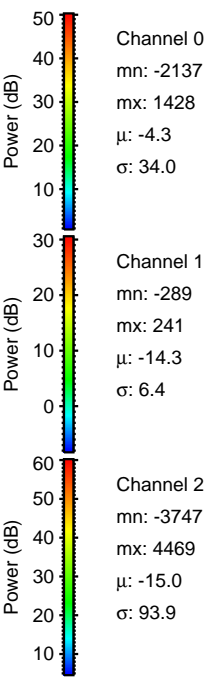
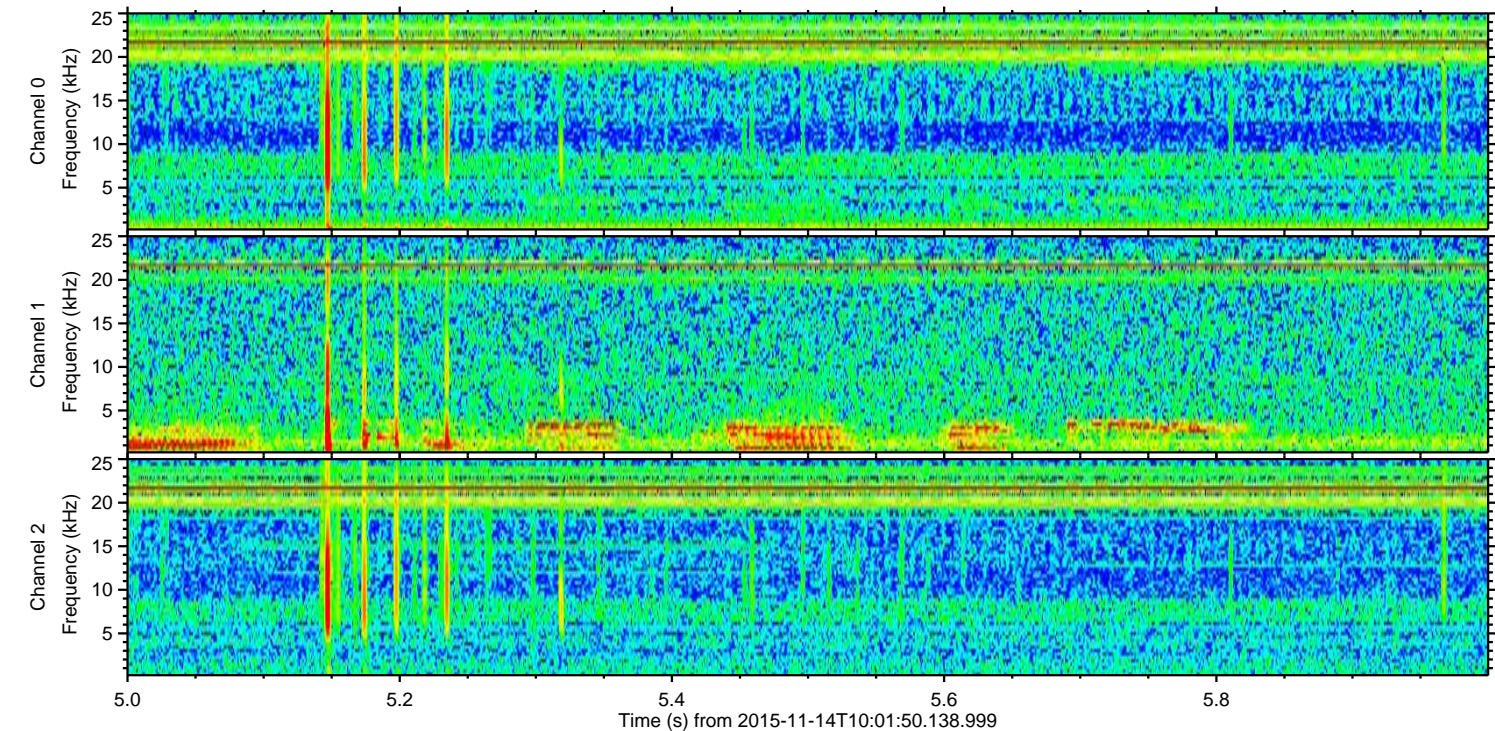
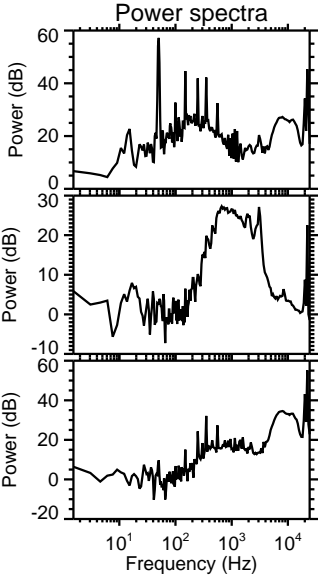
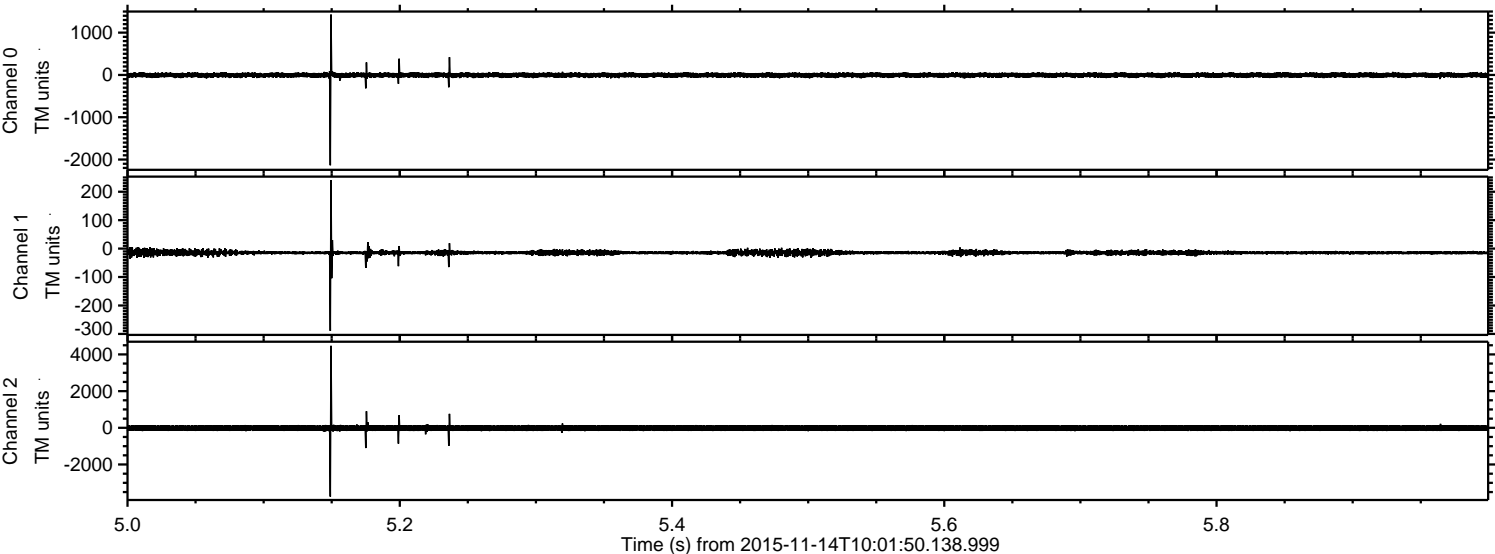


Processed Sat Nov 14 11:08:19 2015 by ELM ver.2012-10-06 from 001__elm20151114_100149__dat00.bin



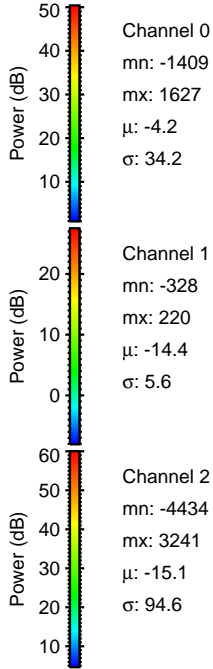
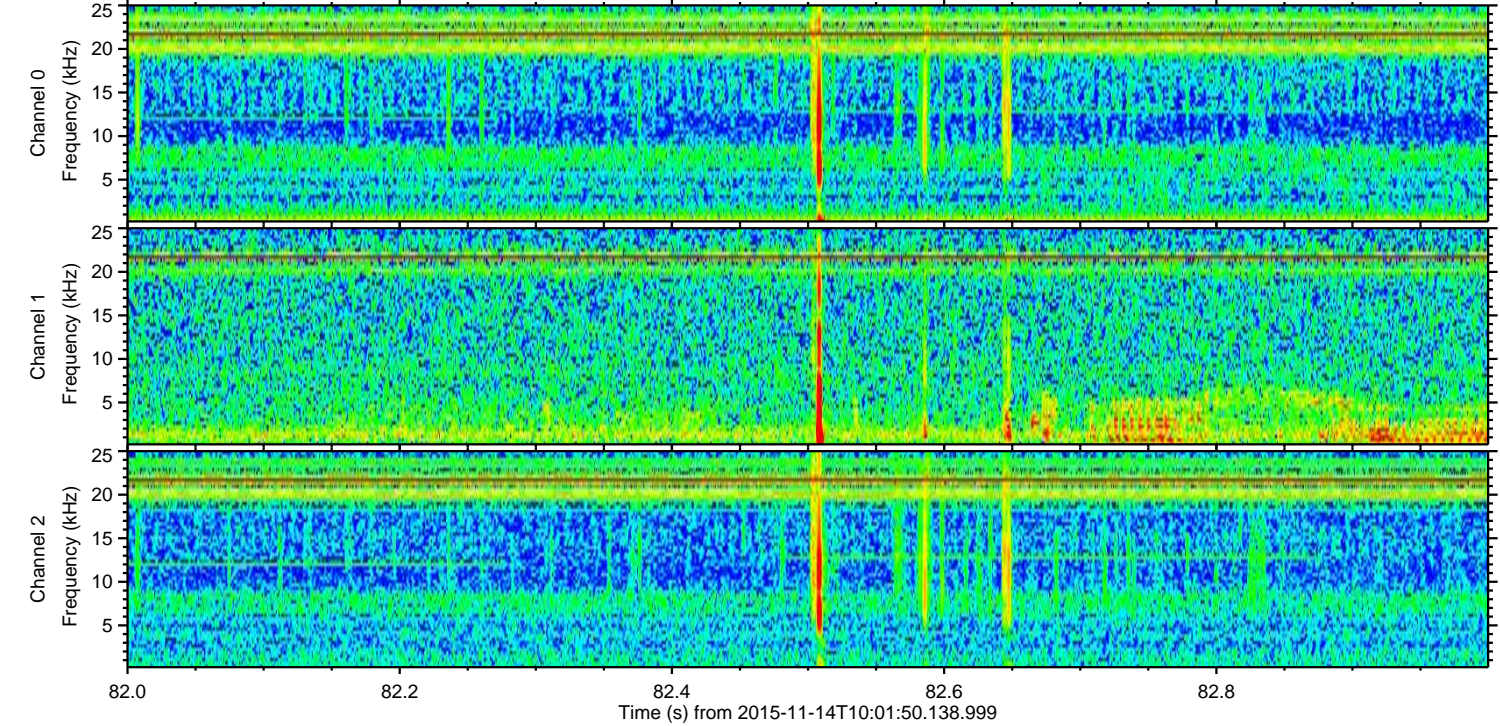
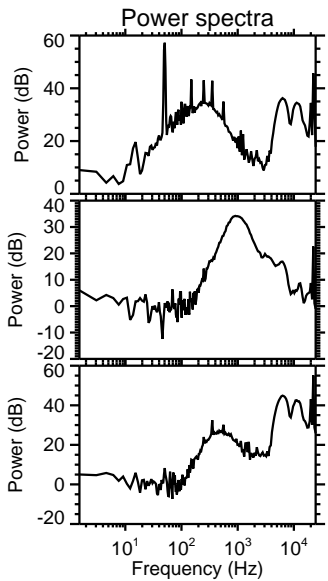
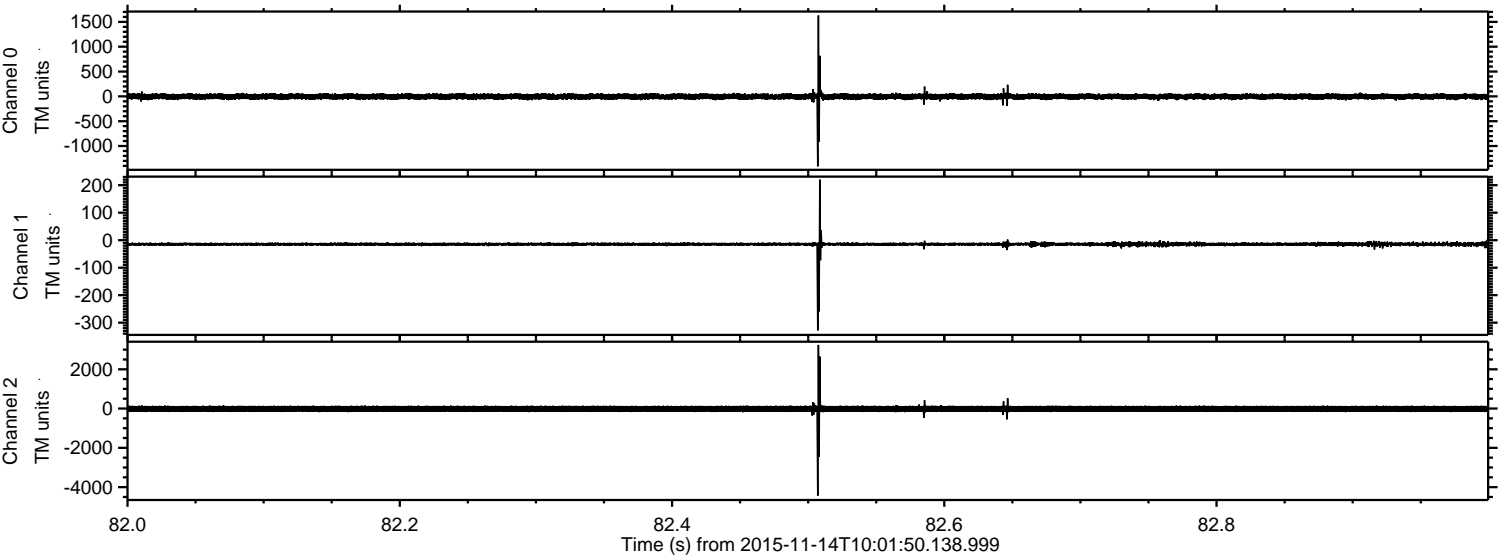
ELMAVAN 3D WAVEFORMS (Measured data sampled at 50 kHz) 51000 packets of 144 samples from 2015-11-14T10:01:50.138.999. Part 6/147

Processed Sat Nov 14 11:08:20 2015 by ELM ver.2012-10-06 from 001__elm20151114_100149__dat00.bin



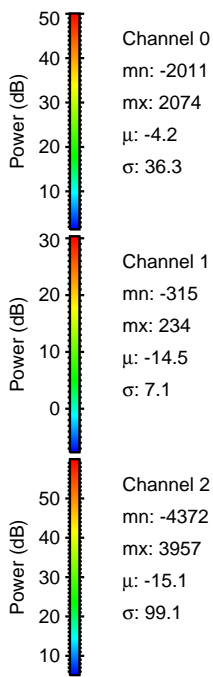
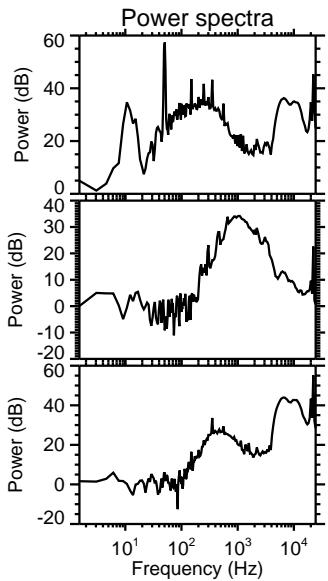
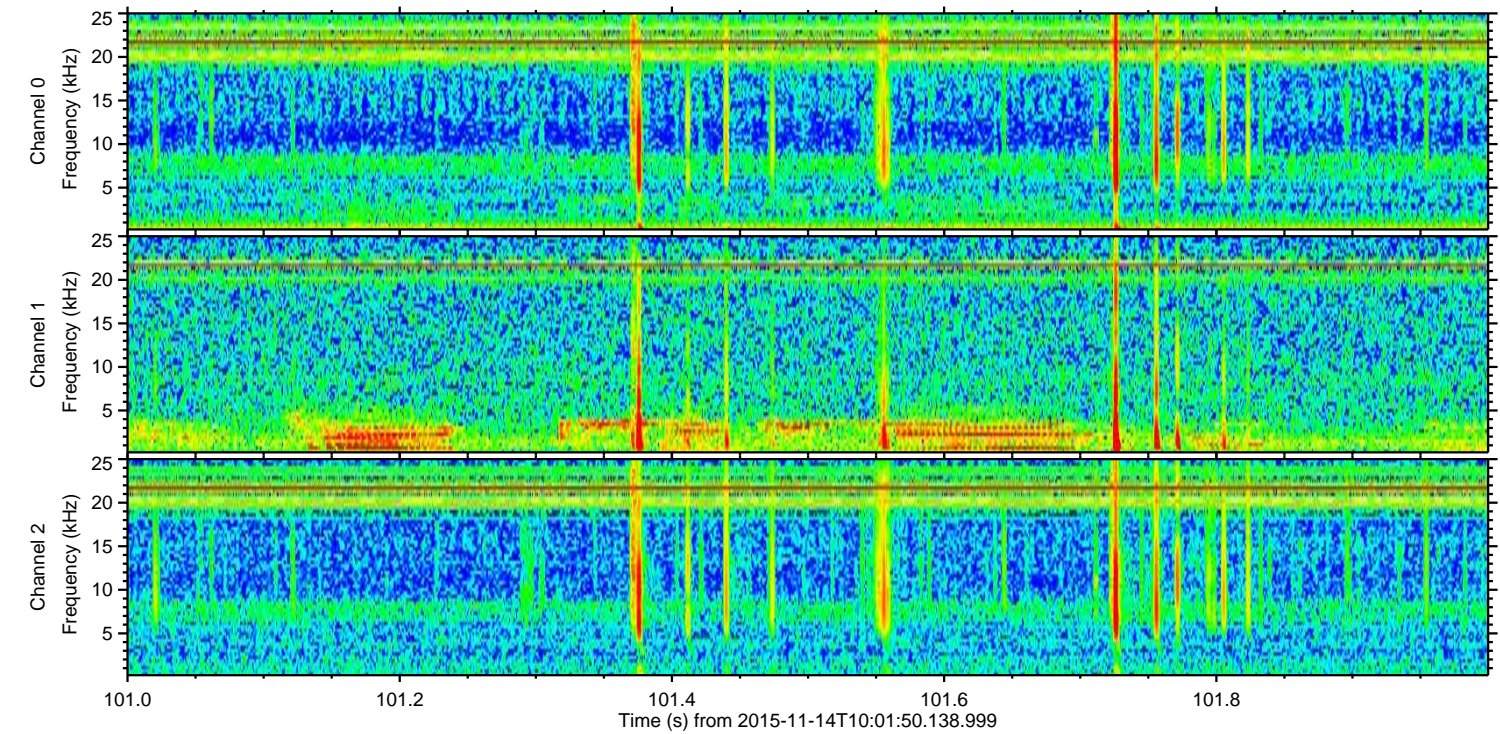
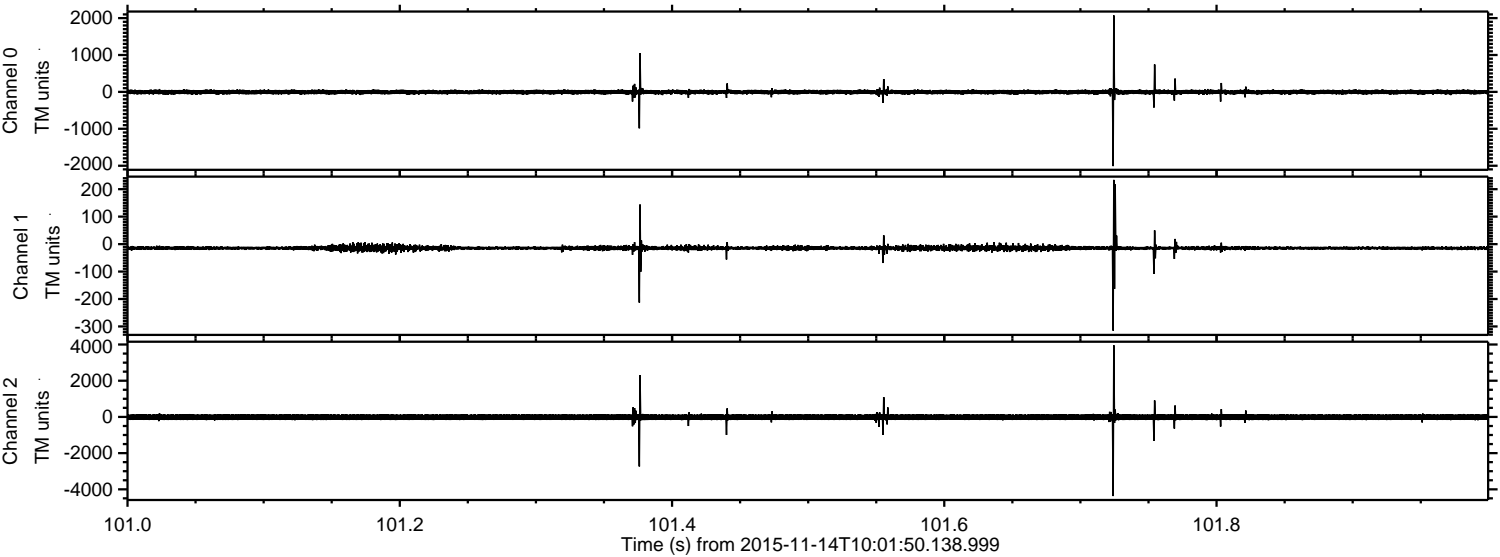
ELMAVAN 3D WAVEFORMS (Measured data sampled at 50 kHz) 51000 packets of 144 samples from 2015-11-14T10:01:50.138.999. Part 83/147

Processed Sat Nov 14 11:08:21 2015 by ELM ver.2012-10-06 from 001__elm20151114_100149__dat00.bin



ELMAVAN 3D WAVEFORMS (Measured data sampled at 50 kHz) 51000 packets of 144 samples from 2015-11-14T10:01:50.138.999. Part 102/147

Processed Sat Nov 14 11:08:22 2015 by ELM ver.2012-10-06 from 001__elm20151114_100149__dat00.bin



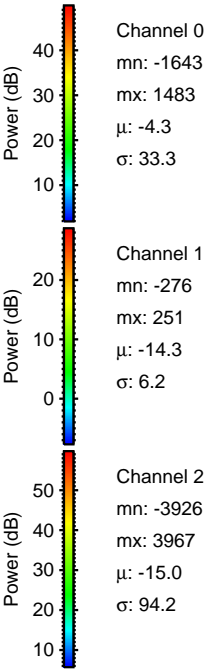
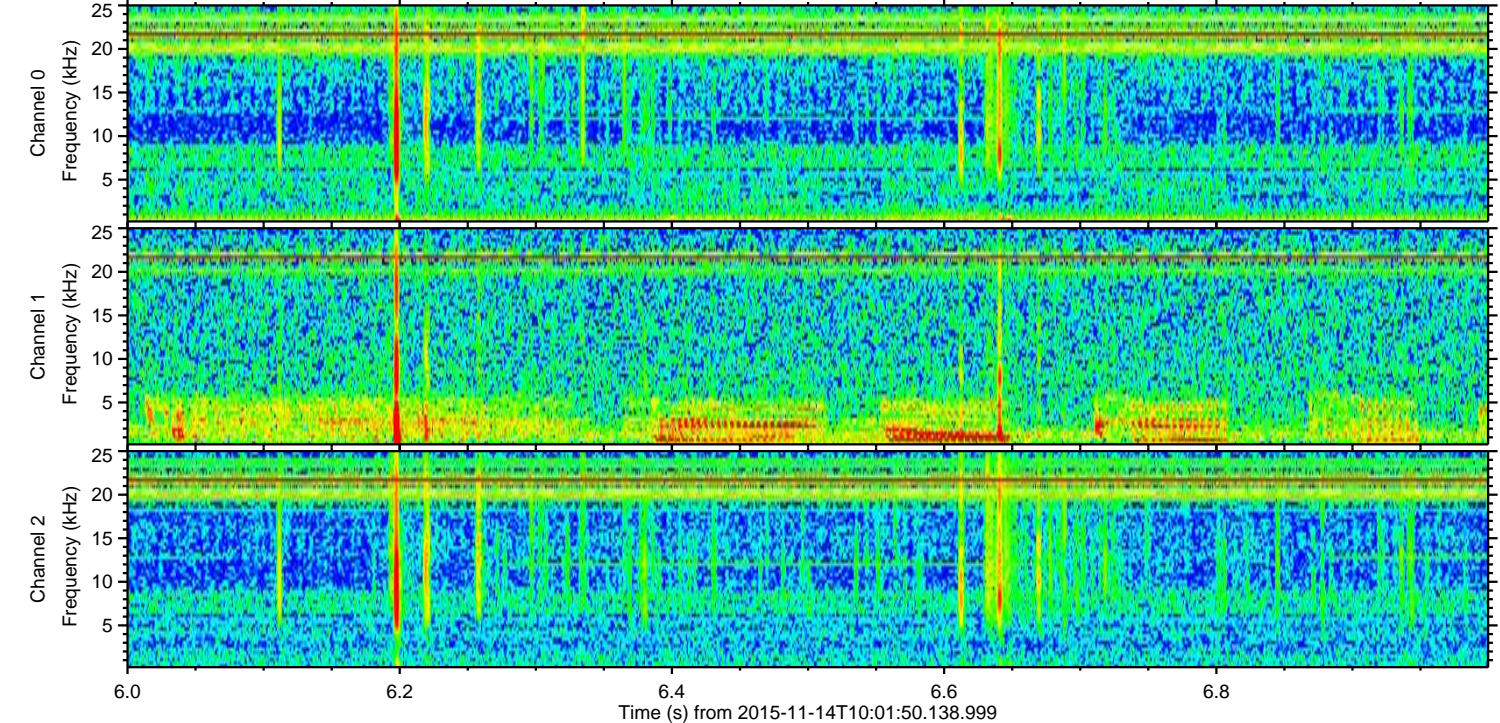
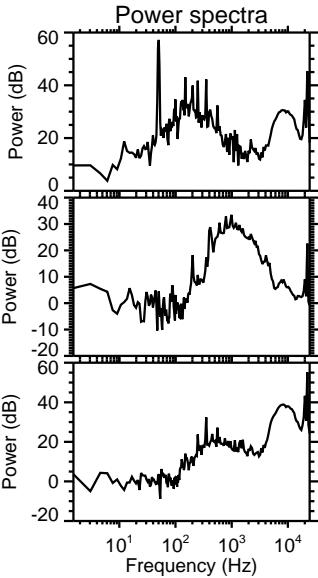
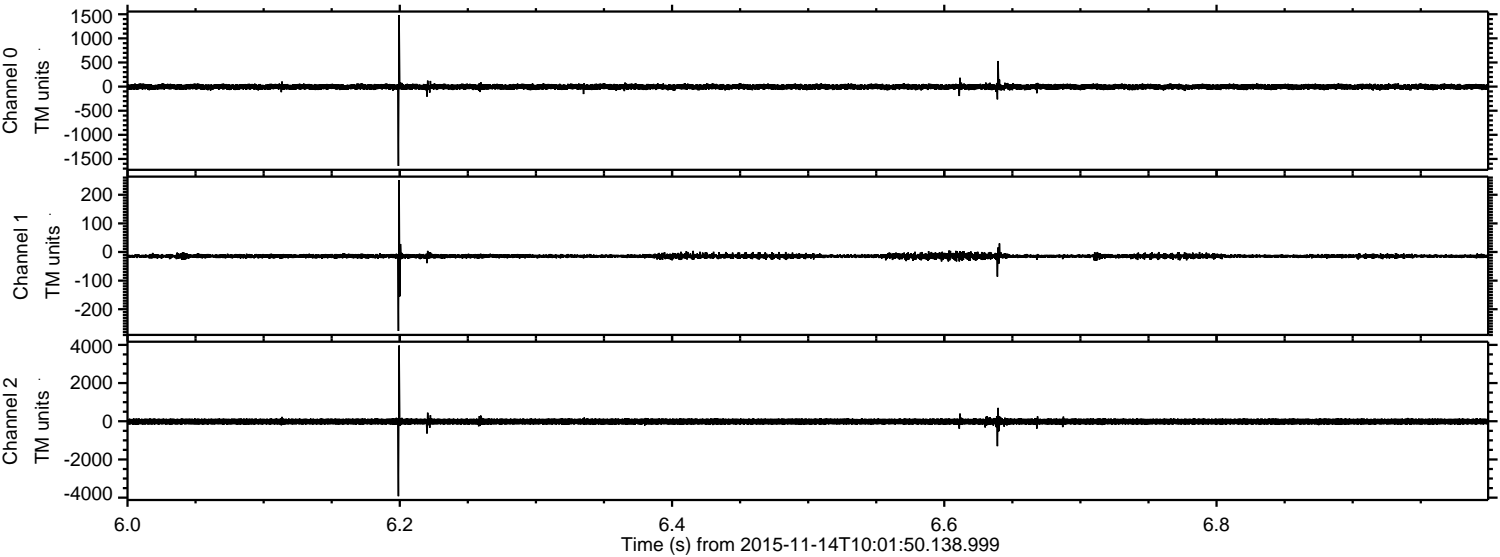
Channel 0
mn: -2011
mx: 2074
 μ : -4.2
 σ : 36.3

Channel 1
mn: -315
mx: 234
 μ : -14.5
 σ : 7.1

Channel 2
mn: -4372
mx: 3957
 μ : -15.1
 σ : 99.1

ELMAVAN 3D WAVEFORMS (Measured data sampled at 50 kHz) 51000 packets of 144 samples from 2015-11-14T10:01:50.138.999. Part 7/147

Processed Sat Nov 14 11:08:23 2015 by ELM ver.2012-10-06 from 001__elm20151114_100149__dat00.bin



ELMAVAN 3D WAVEFORMS (Measured data sampled at 50 kHz) 51000 packets of 144 samples from 2015-11-14T10:01:50.138.999. Part 31/147

Processed Sat Nov 14 11:08:24 2015 by ELM ver.2012-10-06 from 001__elm20151114_100149__dat00.bin

