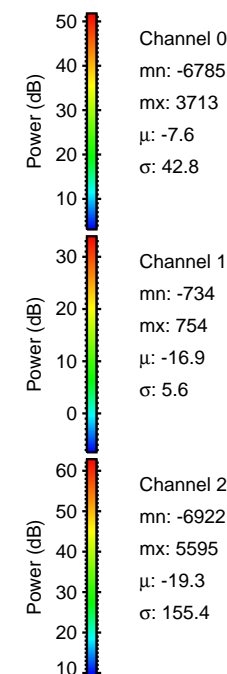
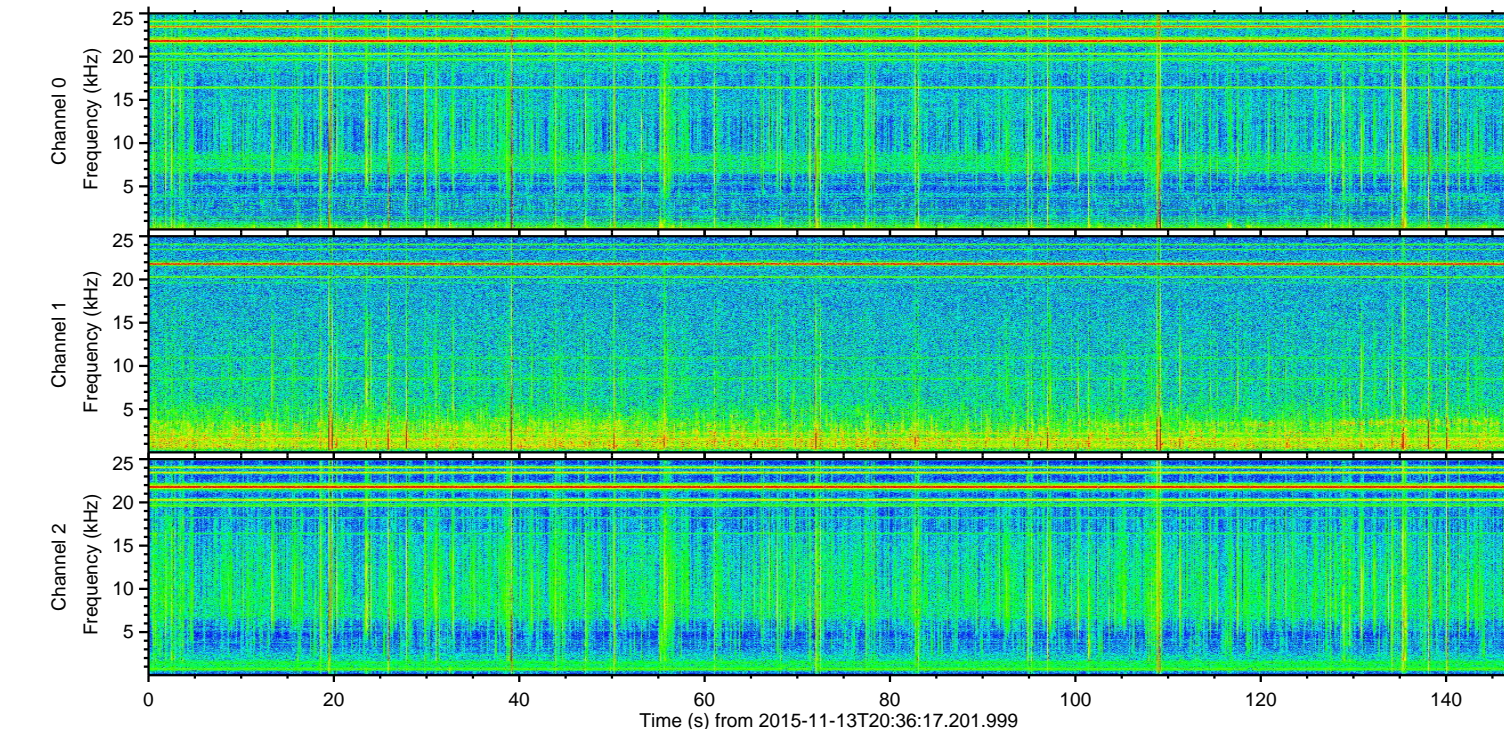
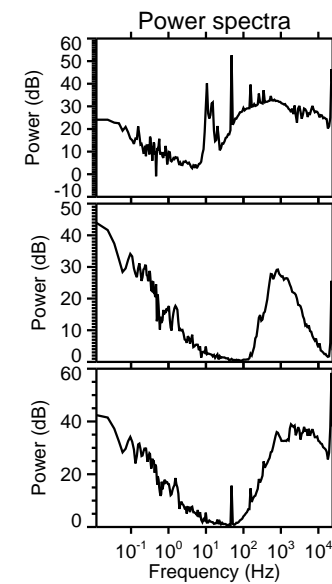
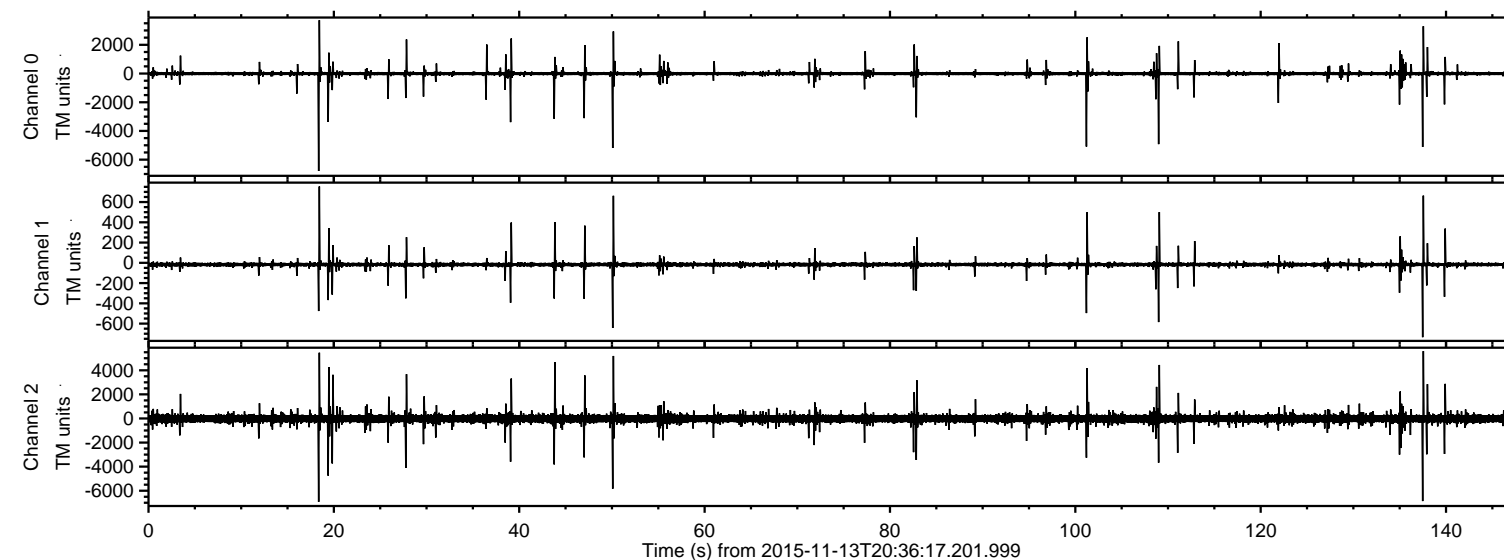
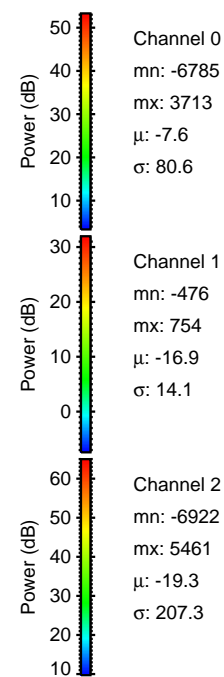
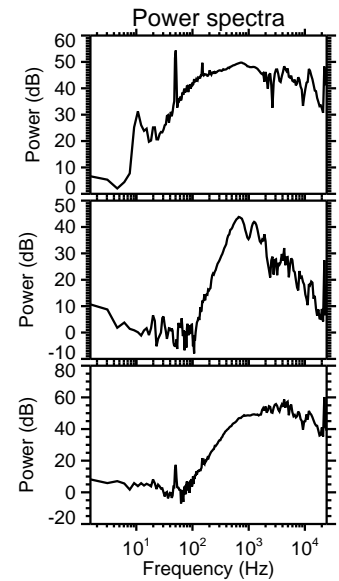
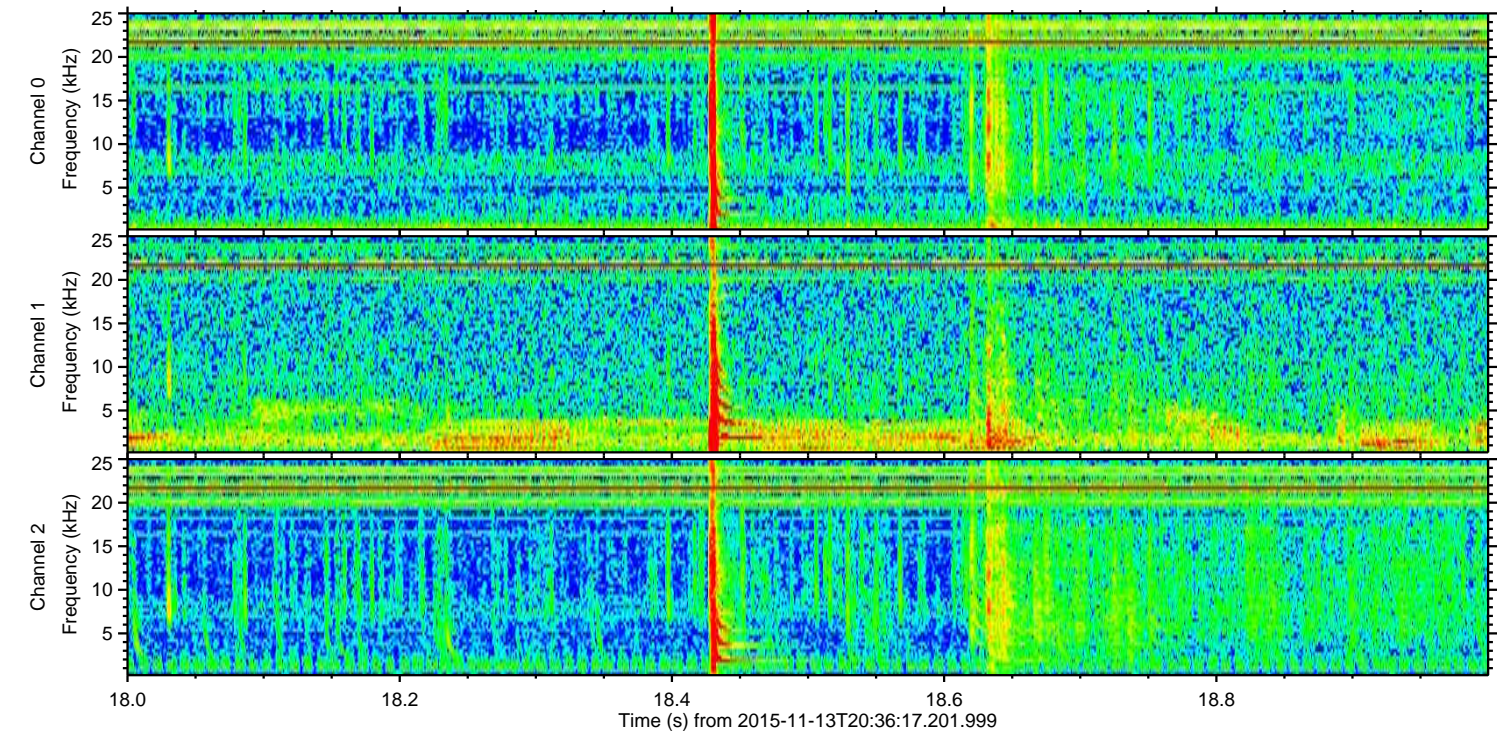
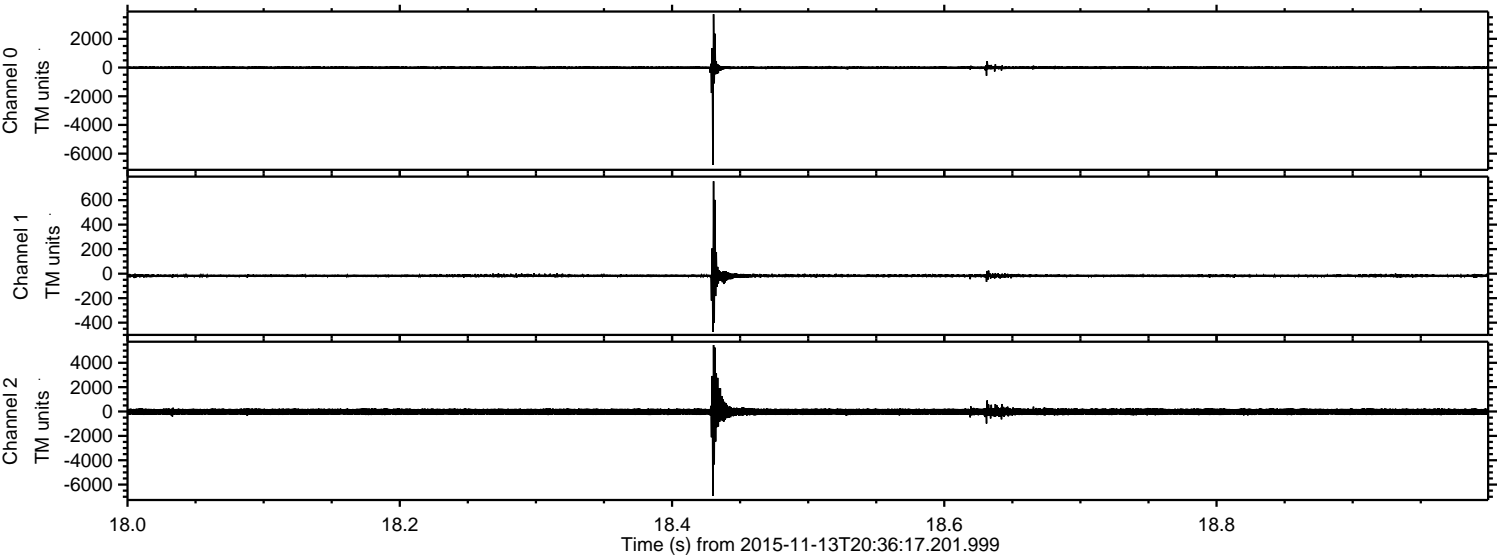


ELMAVAN 3D WAVEFORMS (Measured data sampled at 50 kHz) 51000 packets of 144 samples from 2015-11-13T20:36:17.201.999.

Processed Fri Nov 13 21:42:57 2015 by ELM ver.2012-10-06 from 001__elm20151113_203616__dat00.bin

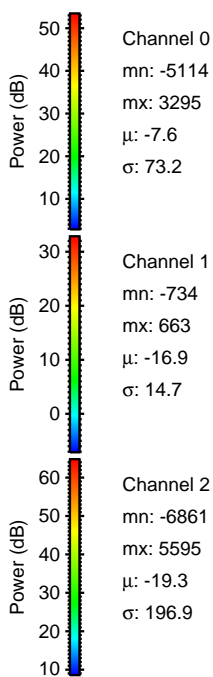
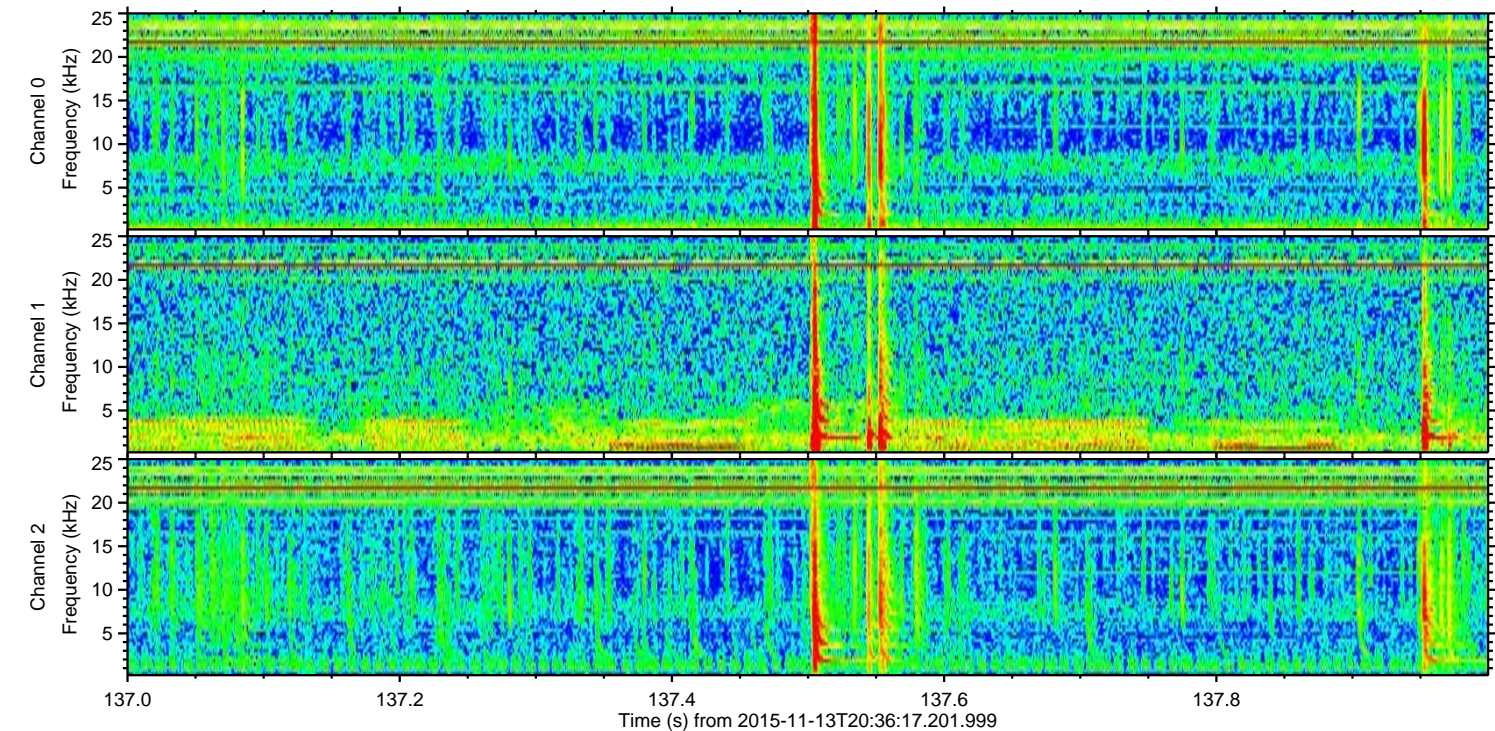
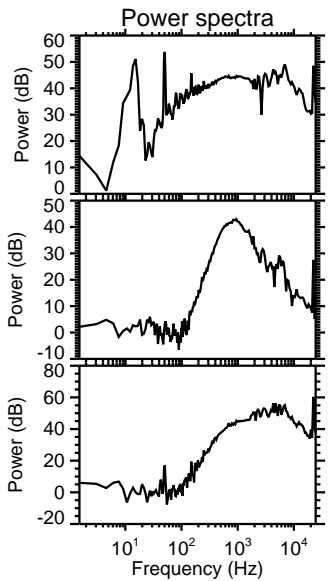
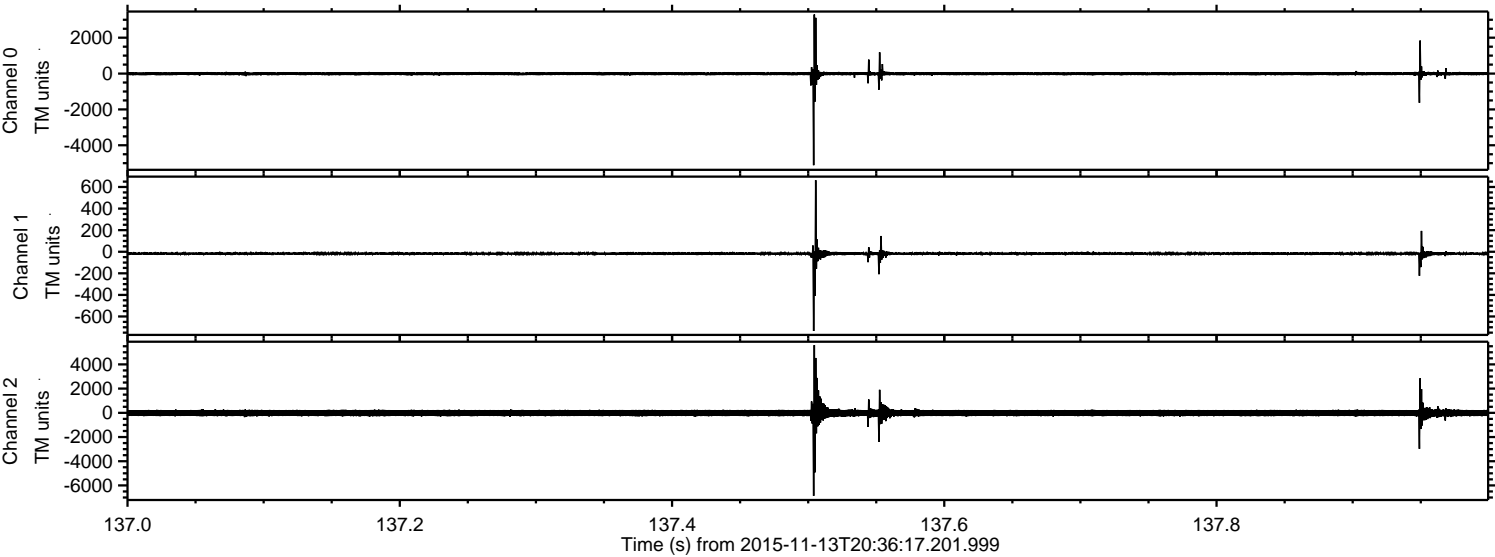


Processed Fri Nov 13 21:43:09 2015 by ELM ver.2012-10-06 from 001__elm20151113_203616__dat00.bin



ELMAVAN 3D WAVEFORMS (Measured data sampled at 50 kHz) 51000 packets of 144 samples from 2015-11-13T20:36:17.201.999. Part 138/147

Processed Fri Nov 13 21:43:10 2015 by ELM ver.2012-10-06 from 001__elm20151113_203616__dat00.bin

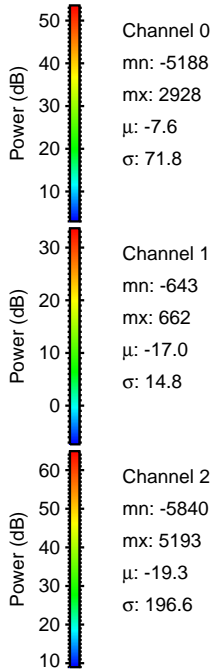
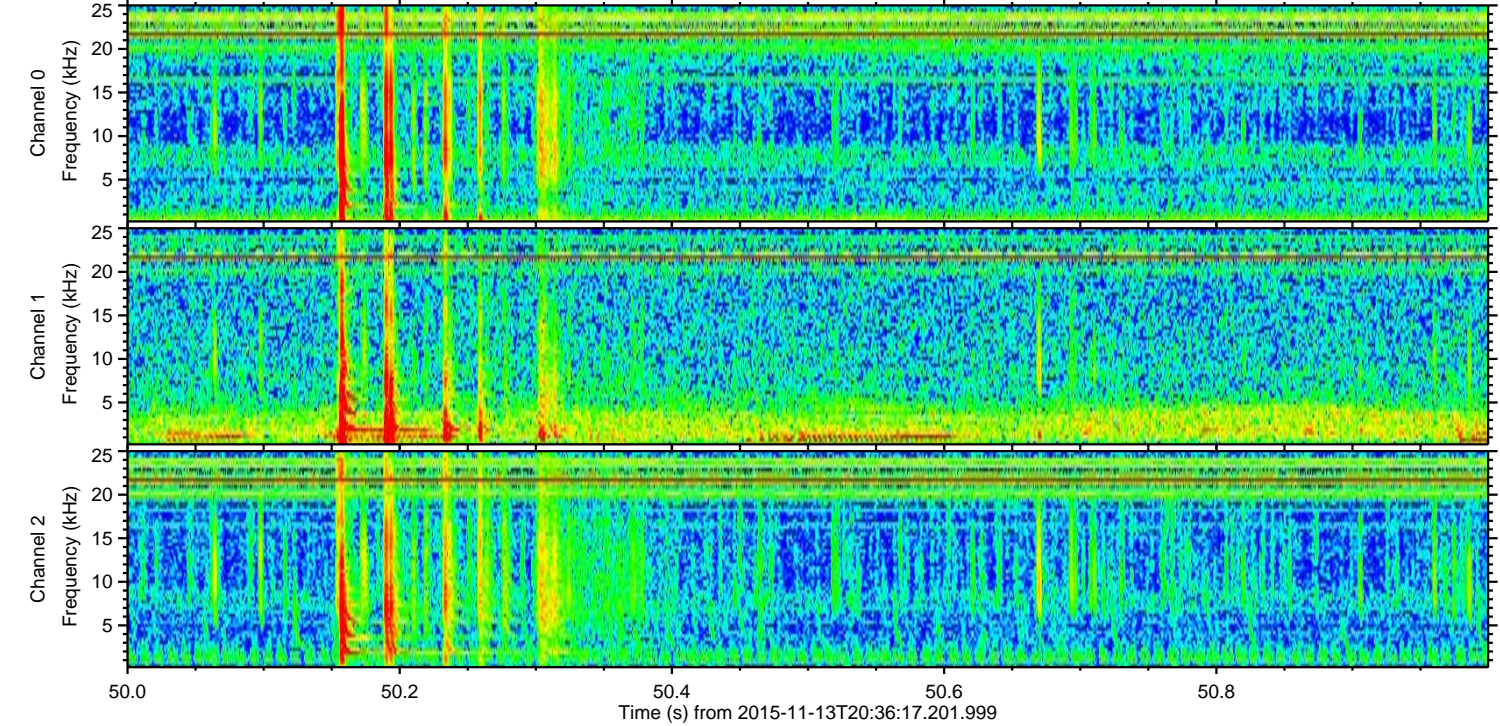
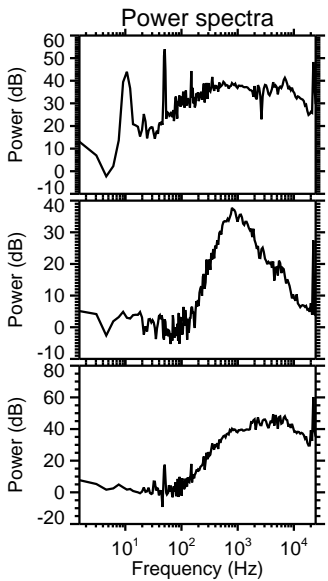
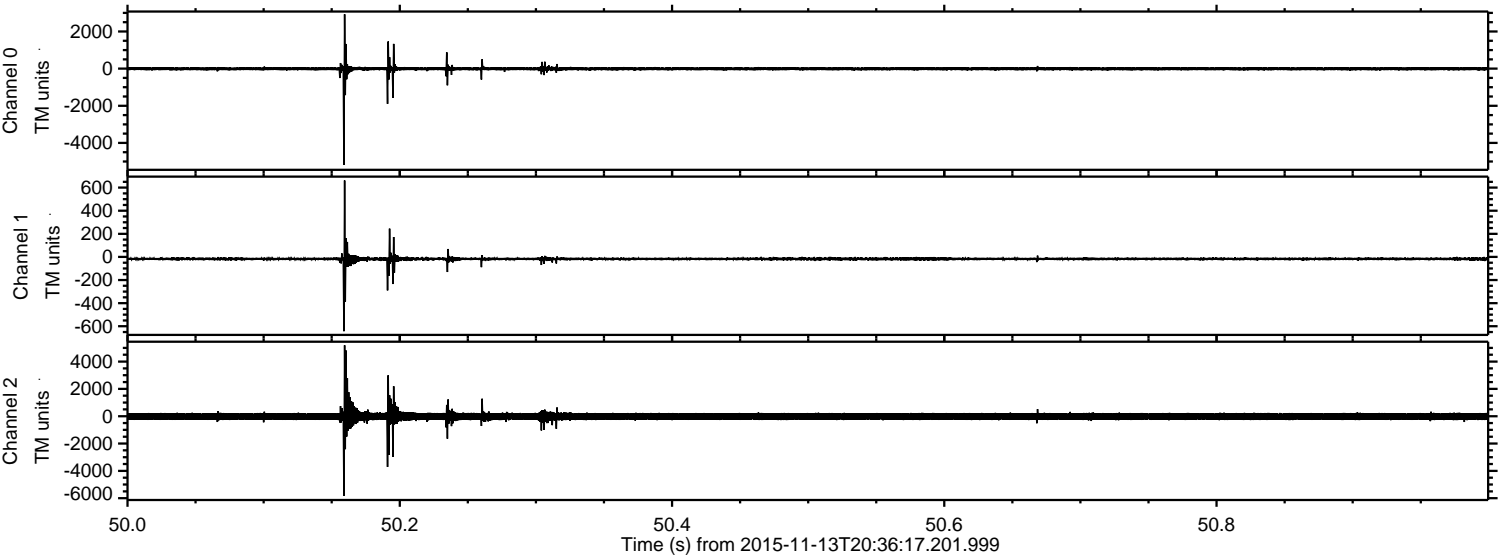


Channel 0
mn: -5114
mx: 3295
 μ : -7.6
 σ : 73.2

Channel 1
mn: -734
mx: 663
 μ : -16.9
 σ : 14.7

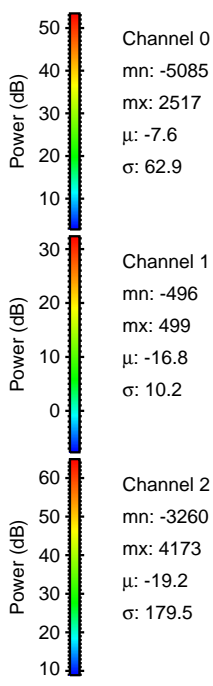
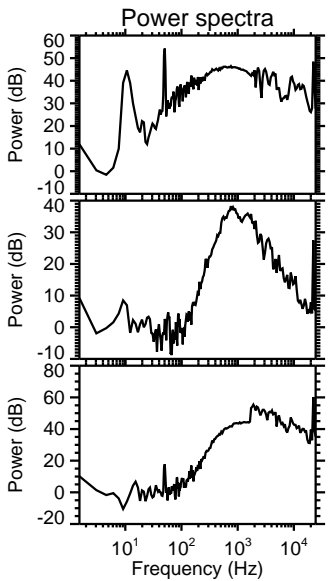
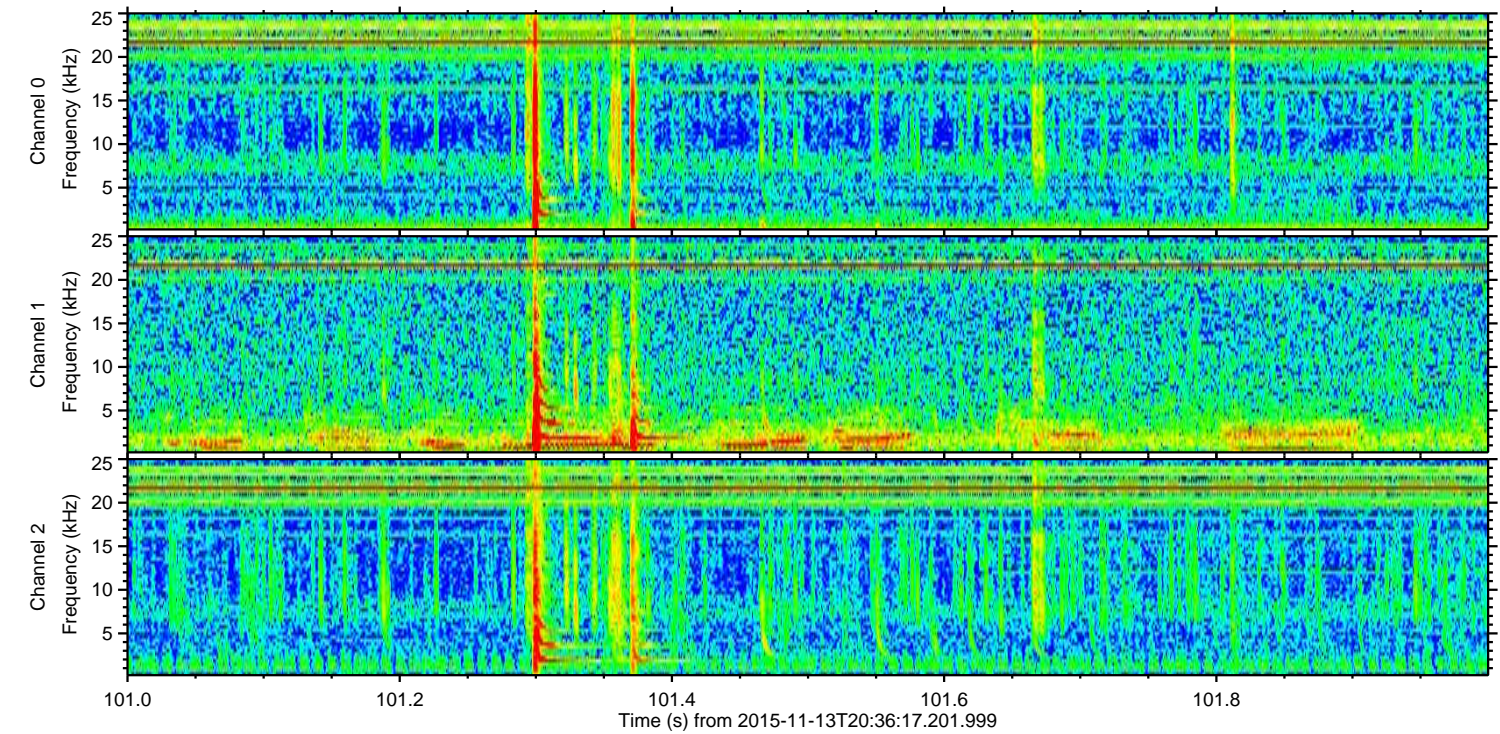
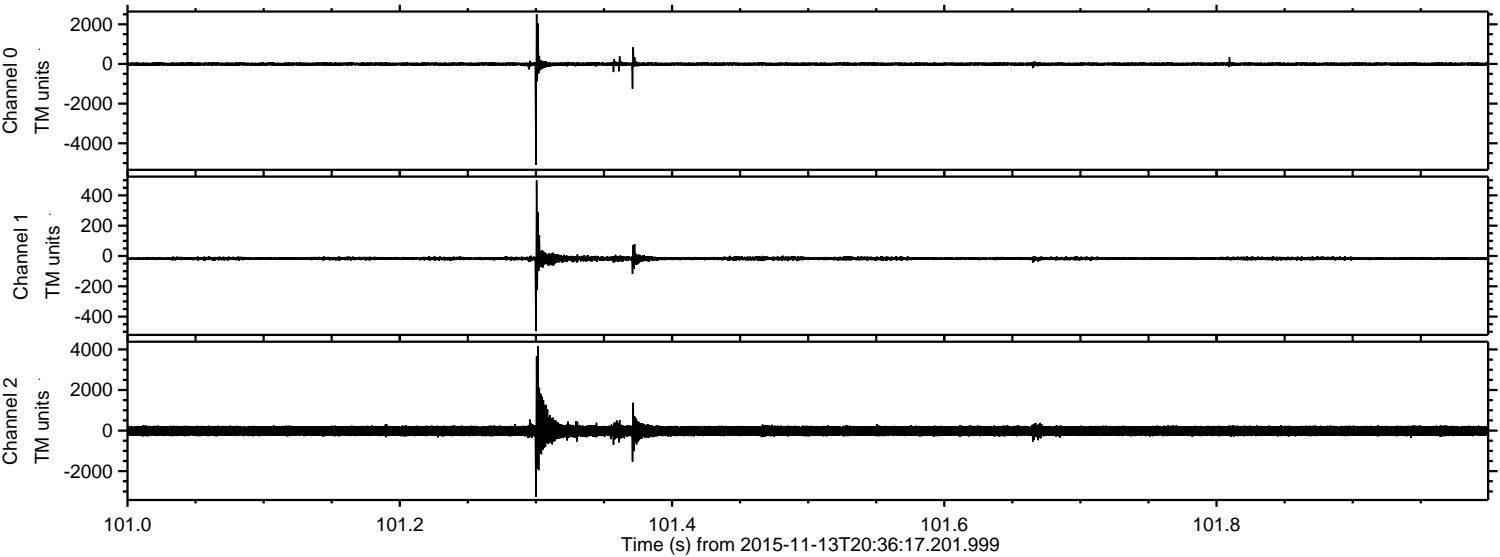
Channel 2
mn: -6861
mx: 5595
 μ : -19.3
 σ : 196.9

Processed Fri Nov 13 21:43:11 2015 by ELM ver.2012-10-06 from 001__elm20151113_203616__dat00.bin



ELMAVAN 3D WAVEFORMS (Measured data sampled at 50 kHz) 51000 packets of 144 samples from 2015-11-13T20:36:17.201.999. Part 102/147

Processed Fri Nov 13 21:43:12 2015 by ELM ver.2012-10-06 from 001__elm20151113_203616__dat00.bin



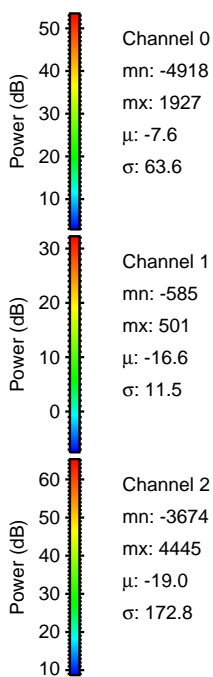
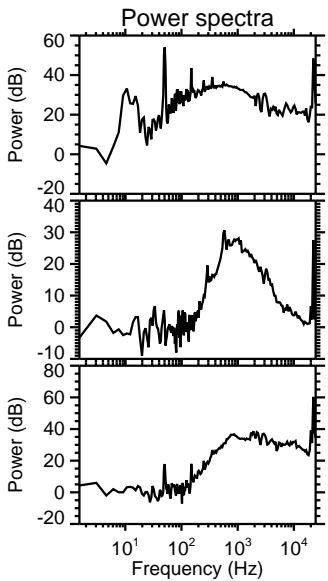
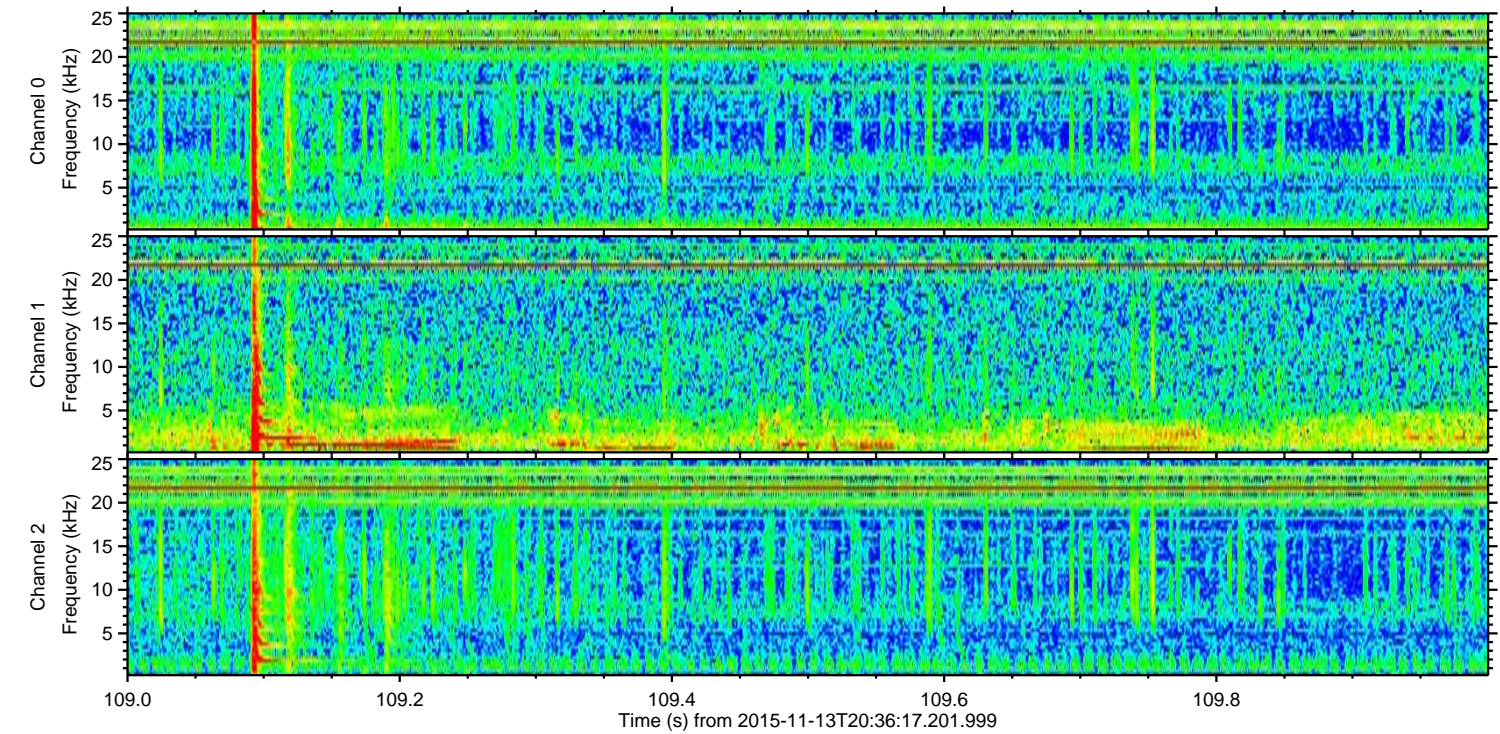
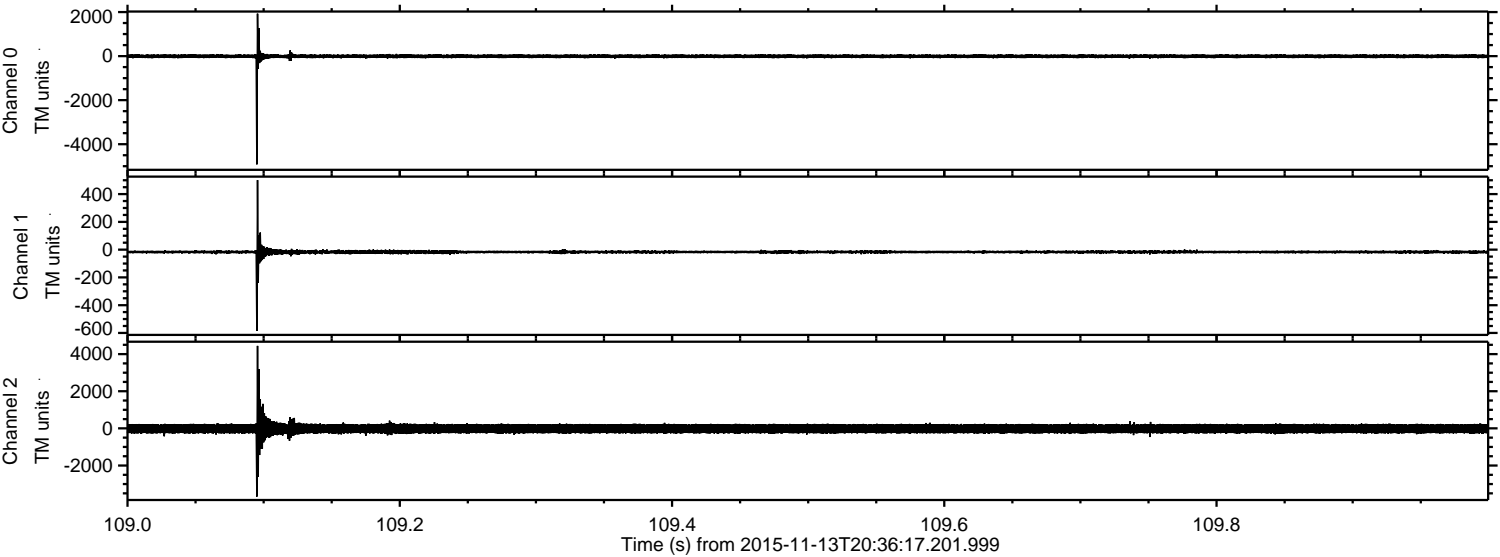
Channel 0
mn: -5085
mx: 2517
 μ : -7.6
 σ : 62.9

Channel 1
mn: -496
mx: 499
 μ : -16.8
 σ : 10.2

Channel 2
mn: -3260
mx: 4173
 μ : -19.2
 σ : 179.5

ELMAVAN 3D WAVEFORMS (Measured data sampled at 50 kHz) 51000 packets of 144 samples from 2015-11-13T20:36:17.201.999. Part 110/147

Processed Fri Nov 13 21:43:13 2015 by ELM ver.2012-10-06 from 001__elm20151113_203616__dat00.bin

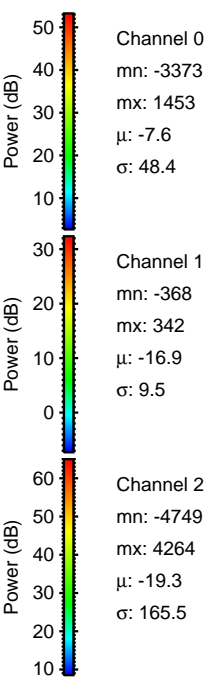
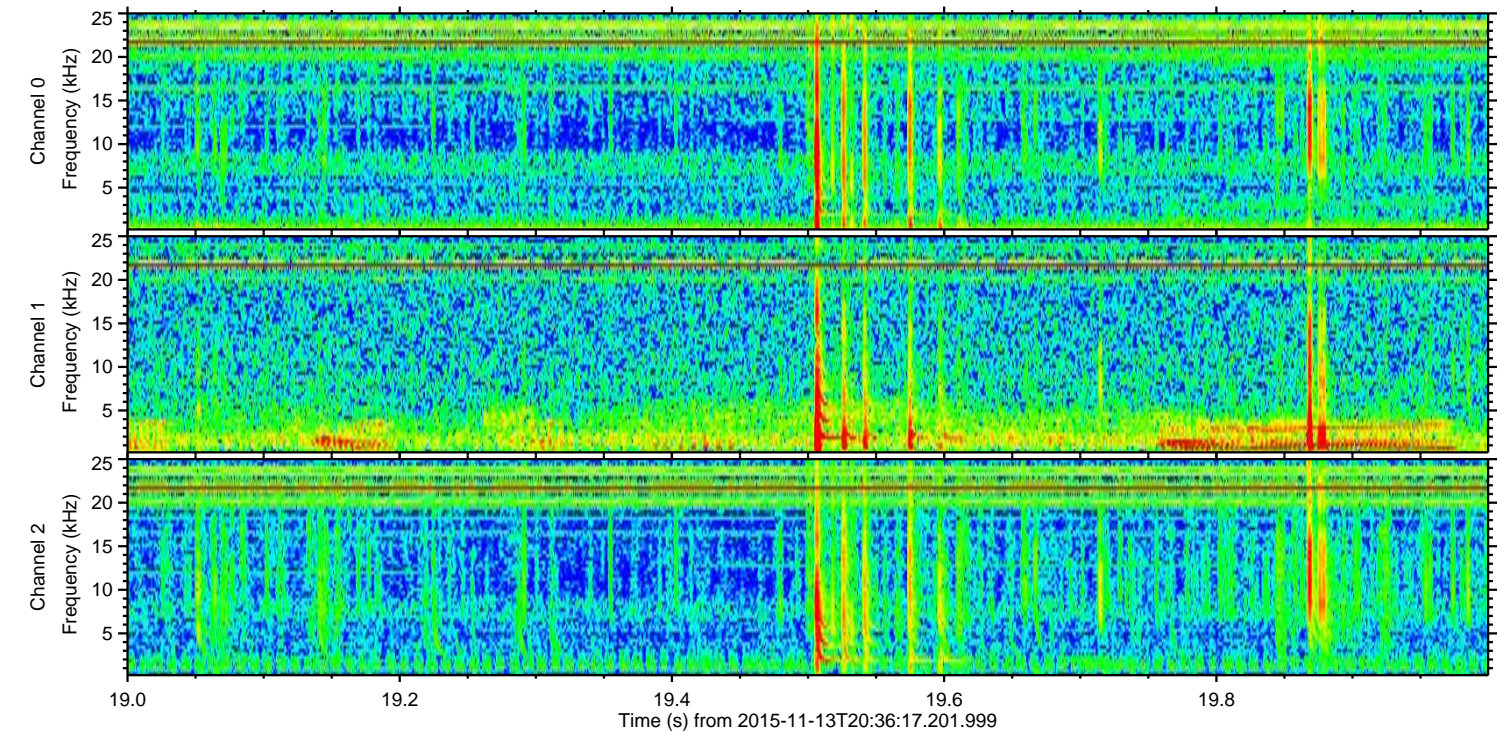
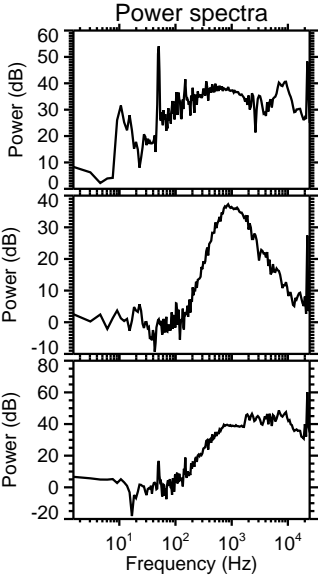
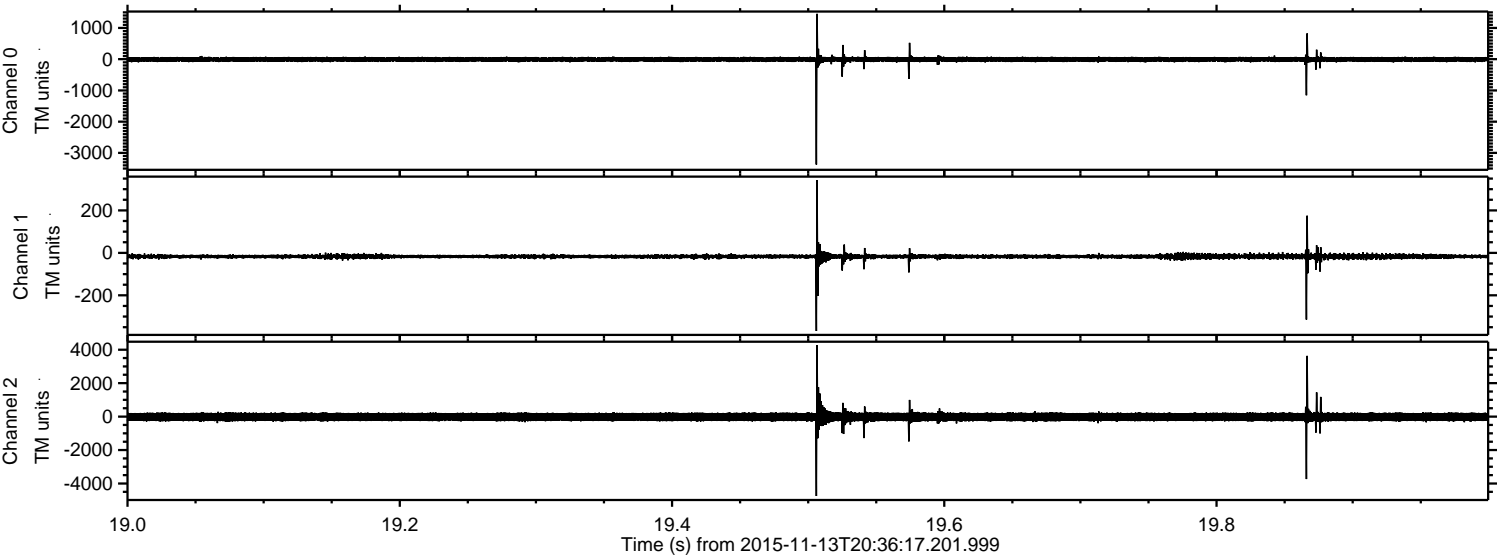


Channel 0
mn: -4918
mx: 1927
 μ : -7.6
 σ : 63.6

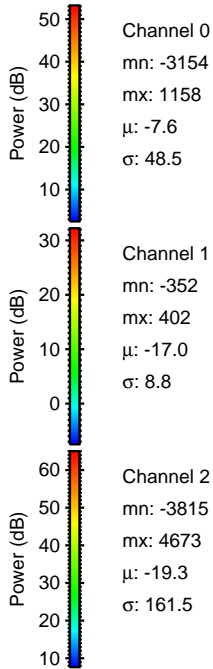
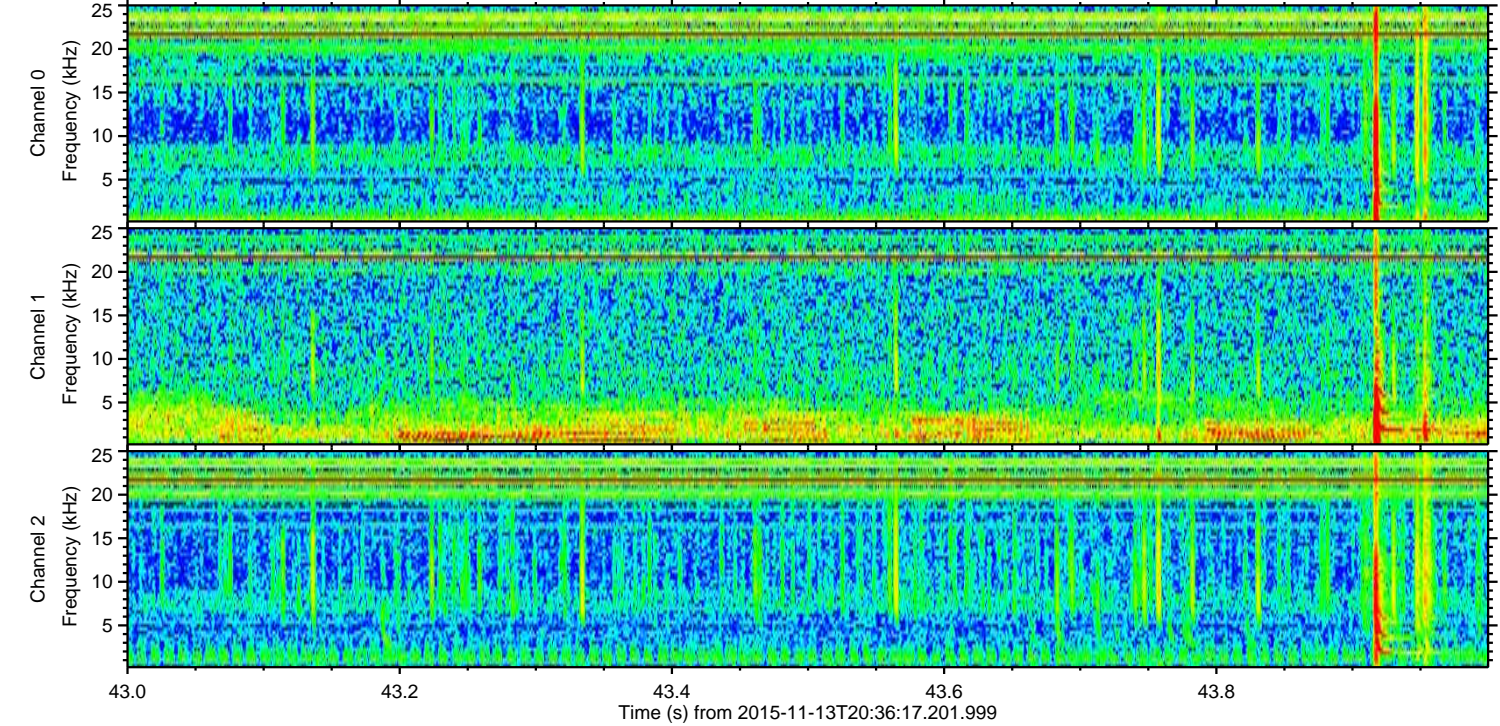
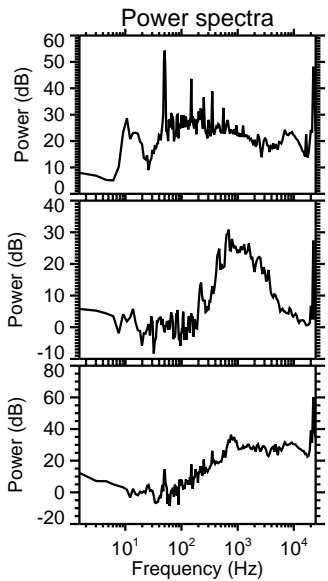
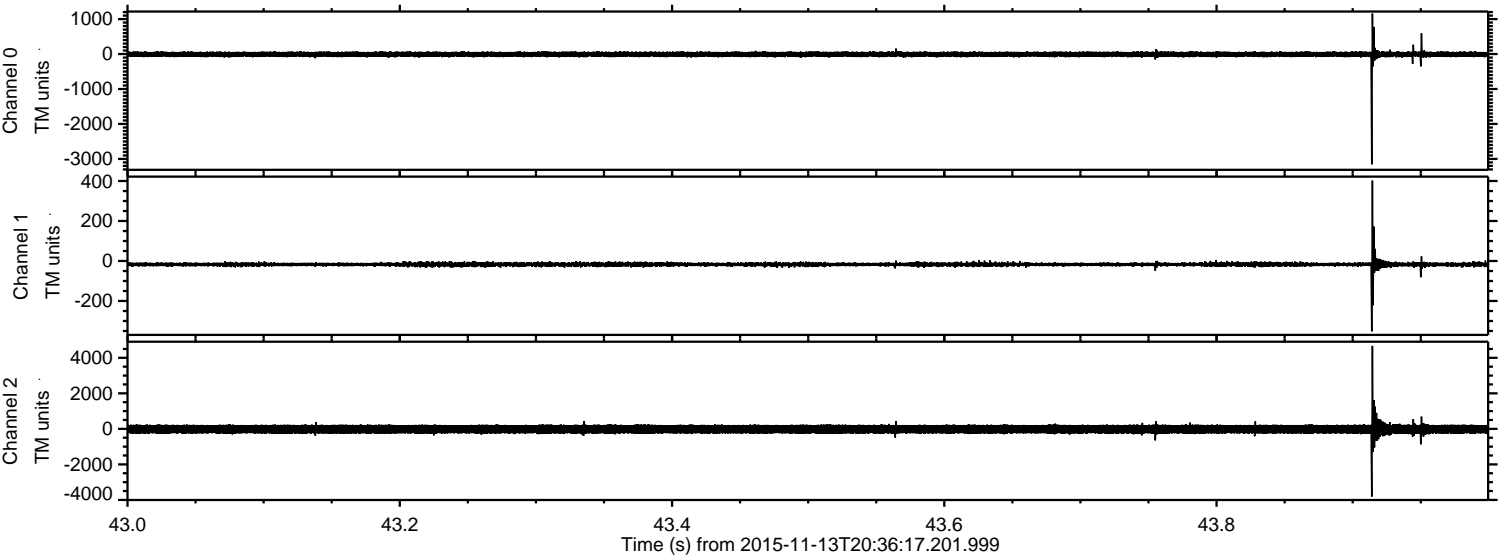
Channel 1
mn: -585
mx: 501
 μ : -16.6
 σ : 11.5

Channel 2
mn: -3674
mx: 4445
 μ : -19.0
 σ : 172.8

Processed Fri Nov 13 21:43:13 2015 by ELM ver.2012-10-06 from 001__elm20151113_203616__dat00.bin



Processed Fri Nov 13 21:43:14 2015 by ELM ver.2012-10-06 from 001__elm20151113_203616__dat00.bin

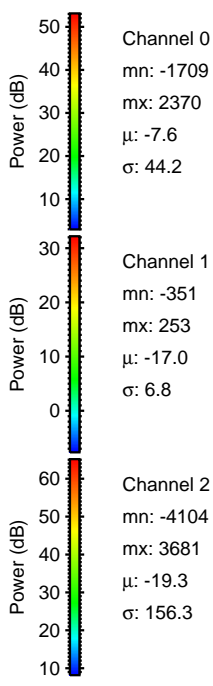
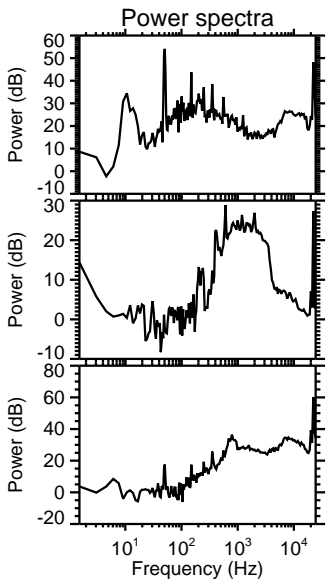
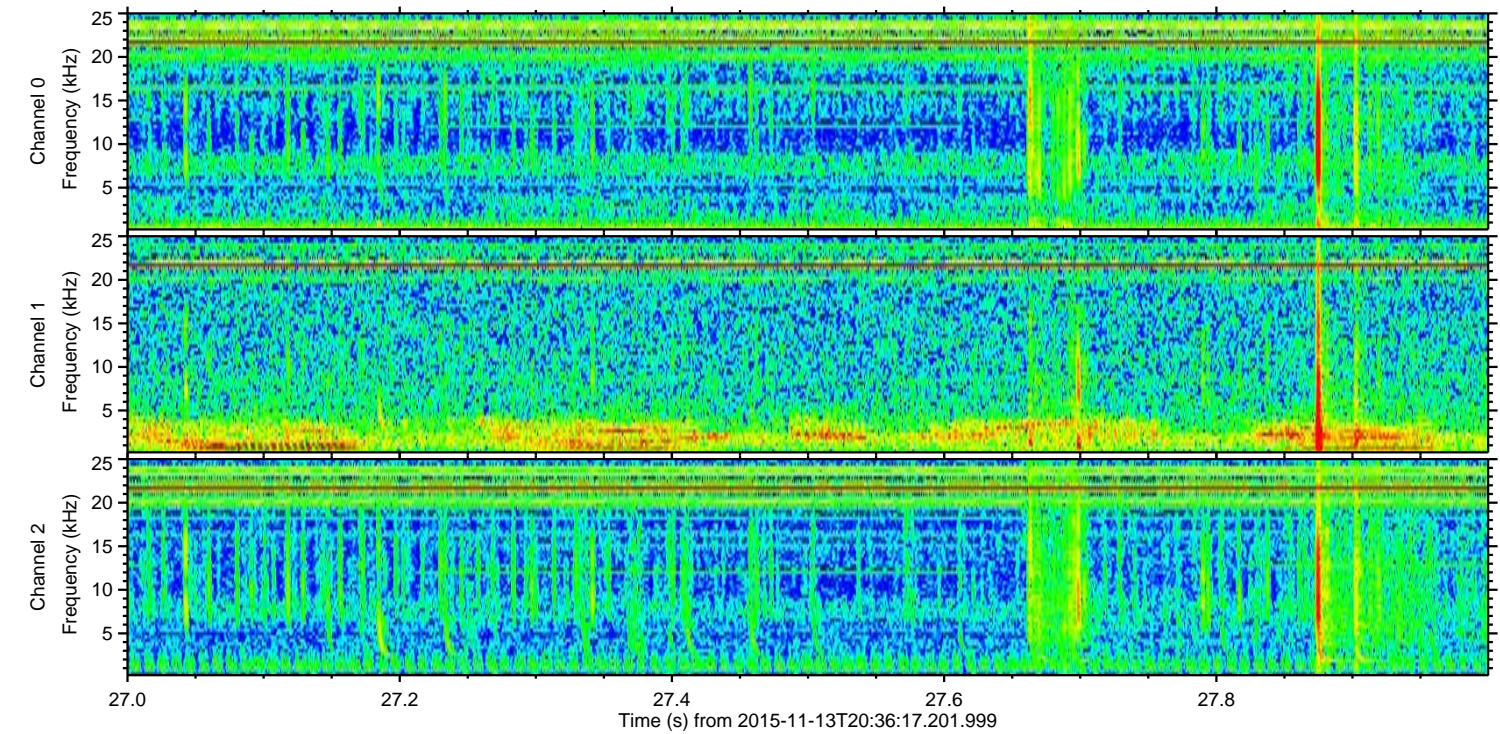
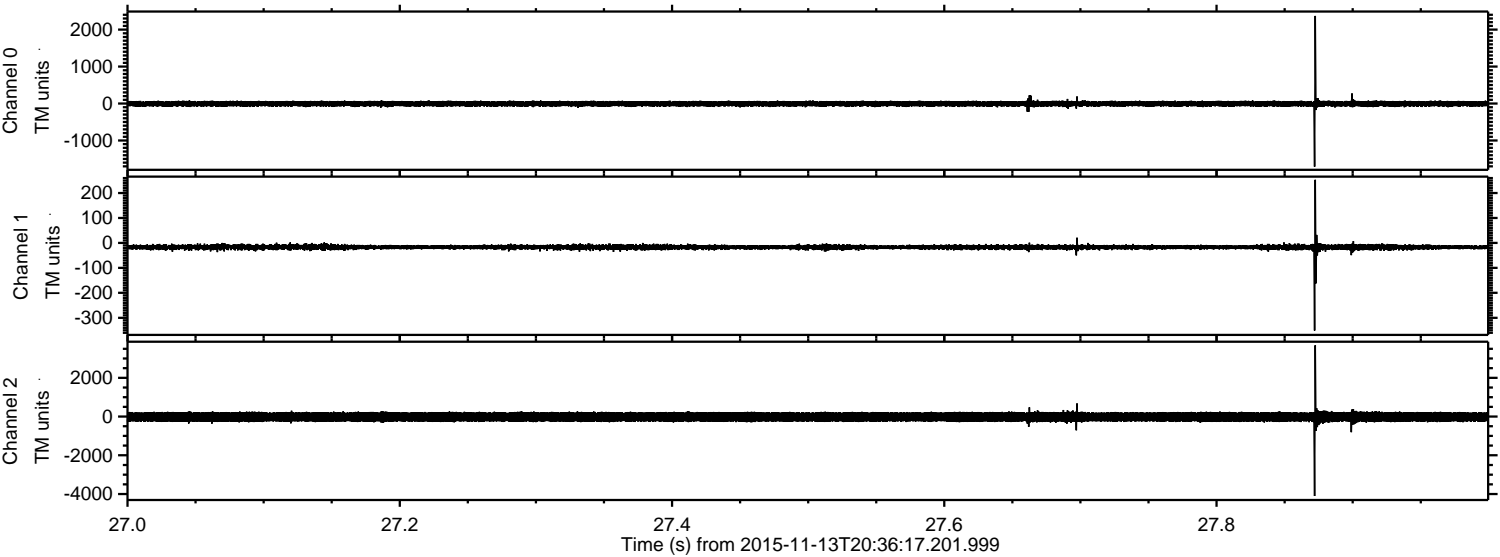


Channel 0
mn: -3154
mx: 1158
 μ : -7.6
 σ : 48.5

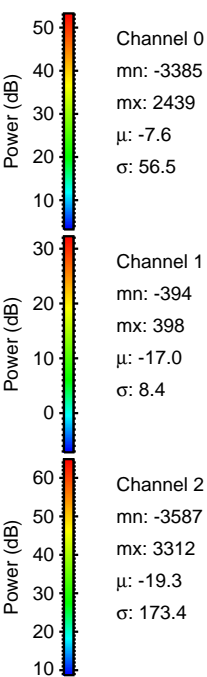
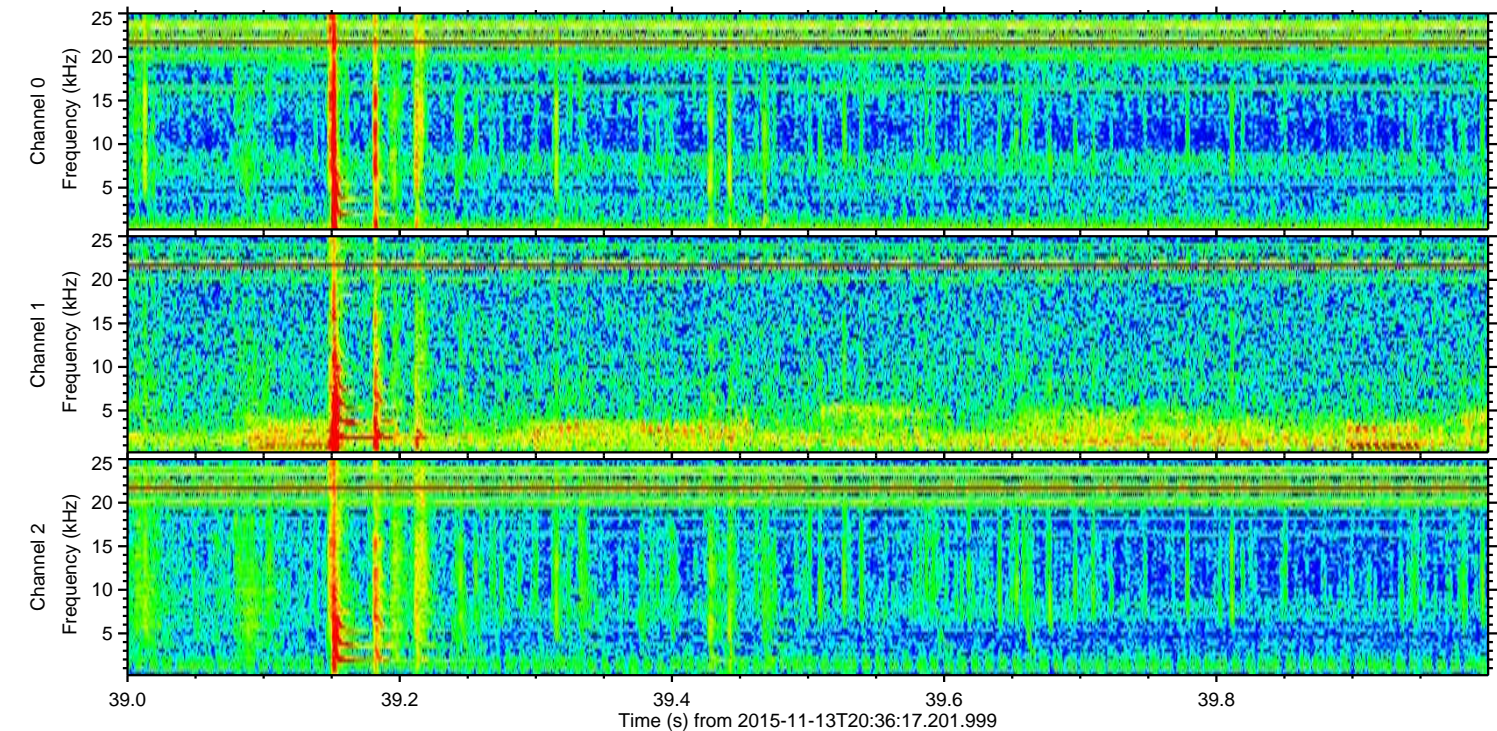
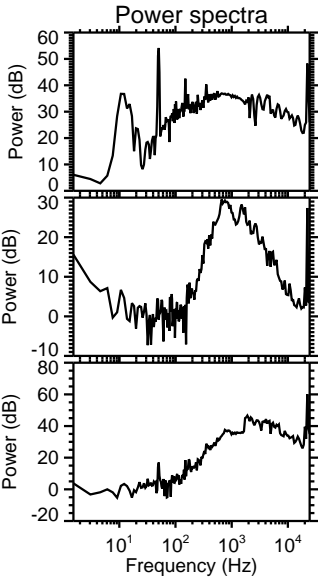
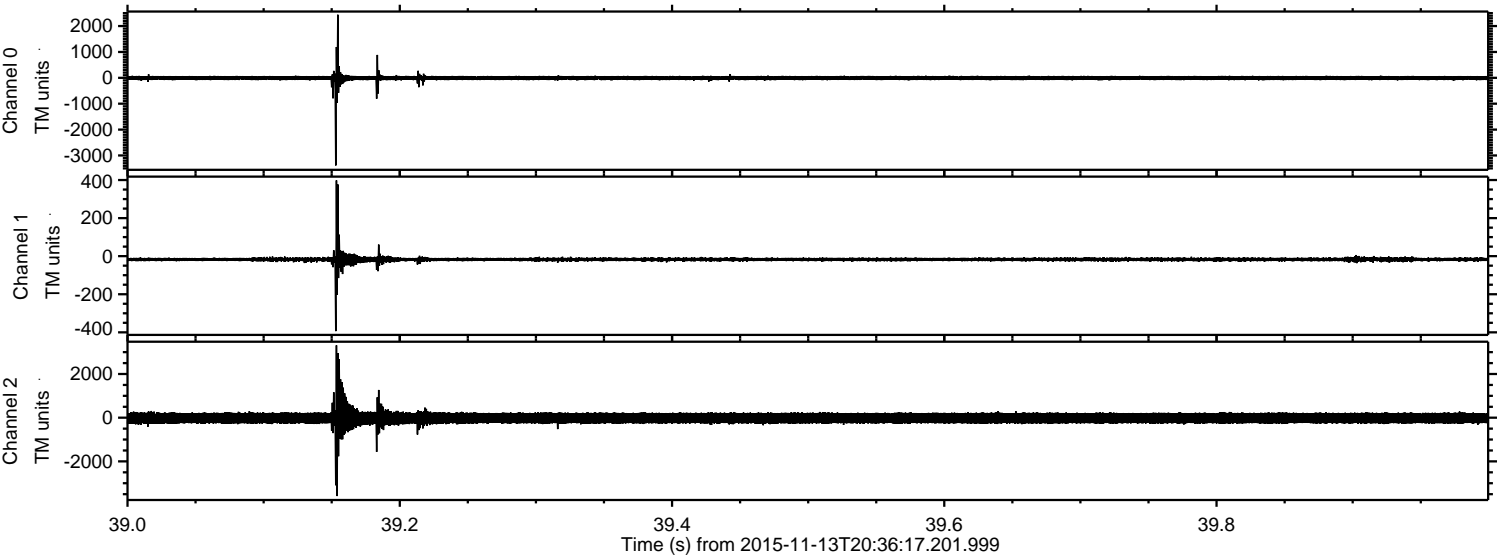
Channel 1
mn: -352
mx: 402
 μ : -17.0
 σ : 8.8

Channel 2
mn: -3815
mx: 4673
 μ : -19.3
 σ : 161.5

Processed Fri Nov 13 21:43:15 2015 by ELM ver.2012-10-06 from 001__elm20151113_203616__dat00.bin



Processed Fri Nov 13 21:43:16 2015 by ELM ver.2012-10-06 from 001__elm20151113_203616__dat00.bin



Processed Fri Nov 13 21:43:17 2015 by ELM ver.2012-10-06 from 001__elm20151113_203616__dat00.bin

