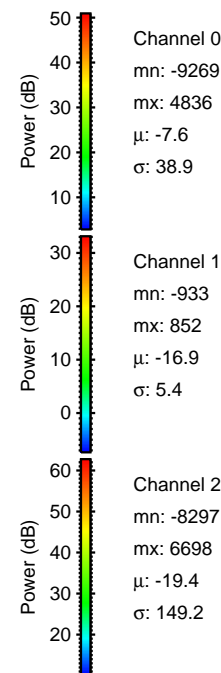
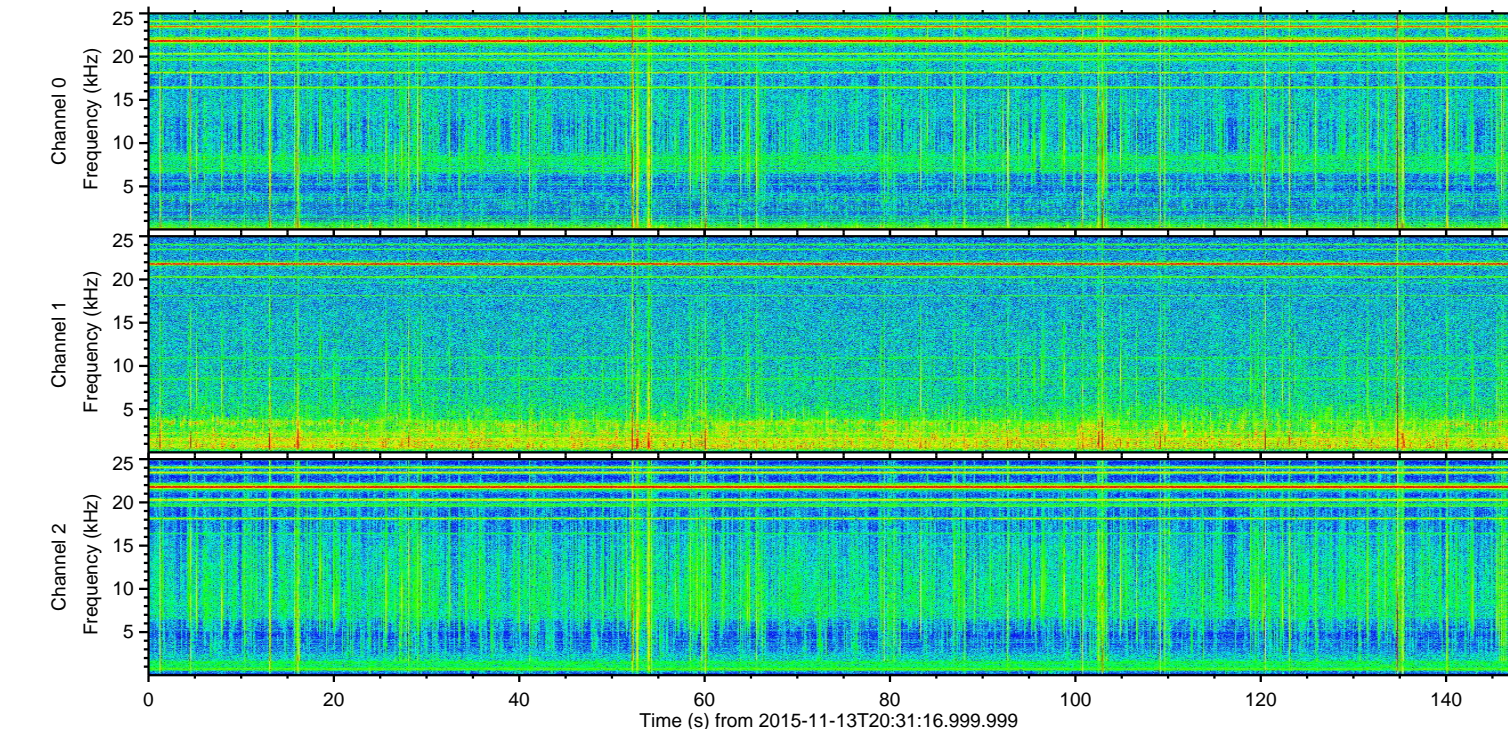
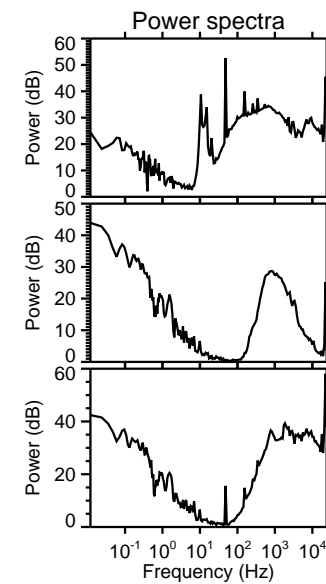
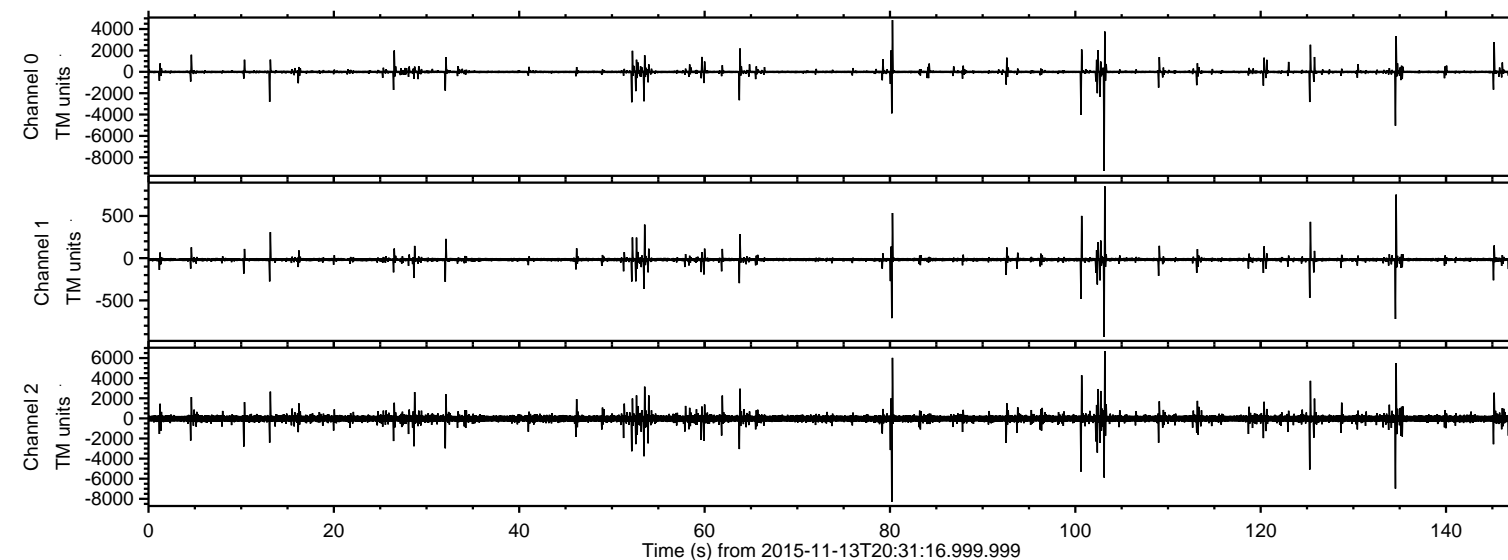


# ELMAVAN 3D WAVEFORMS (Measured data sampled at 50 kHz) 51000 packets of 144 samples from 2015-11-13T20:31:16.999.999.

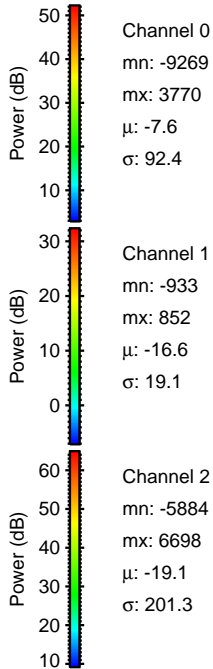
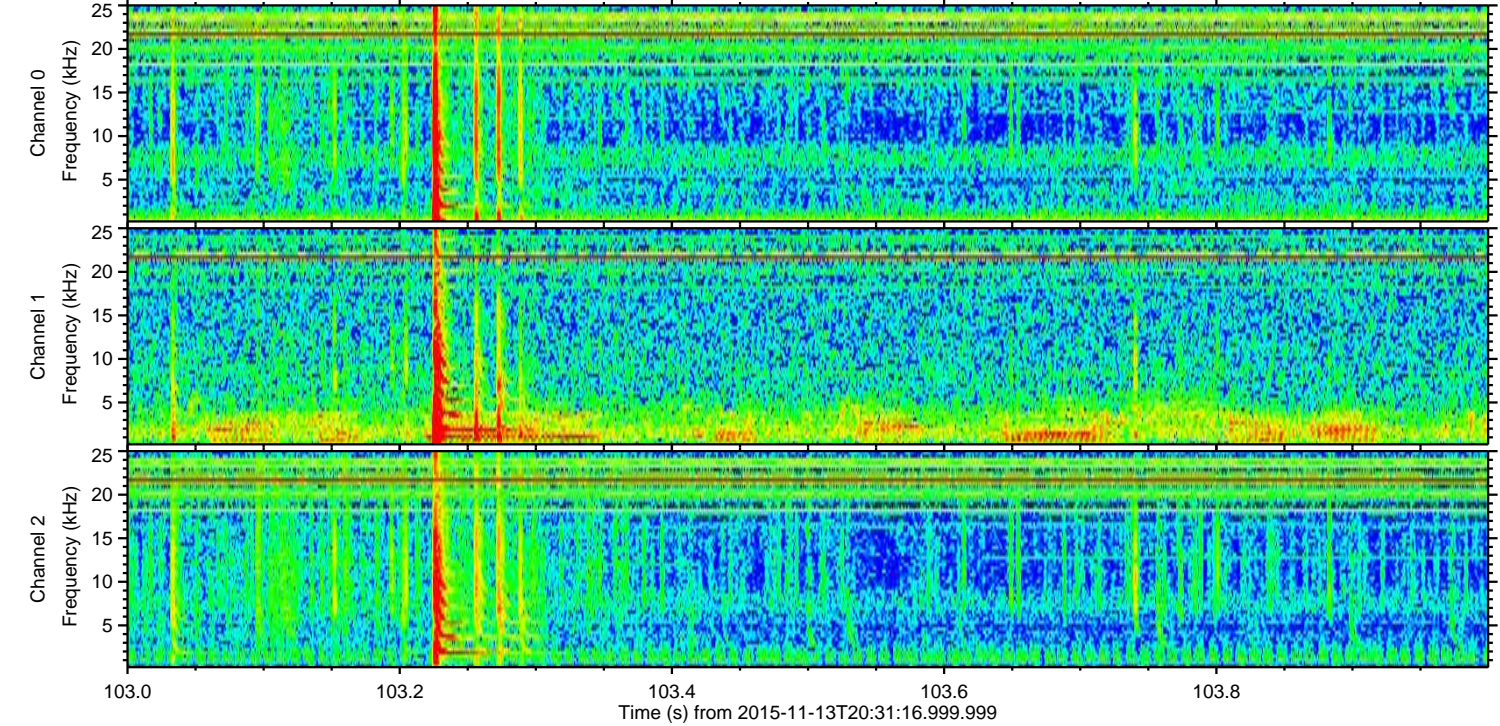
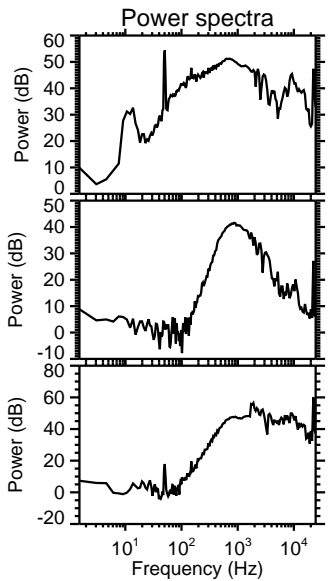
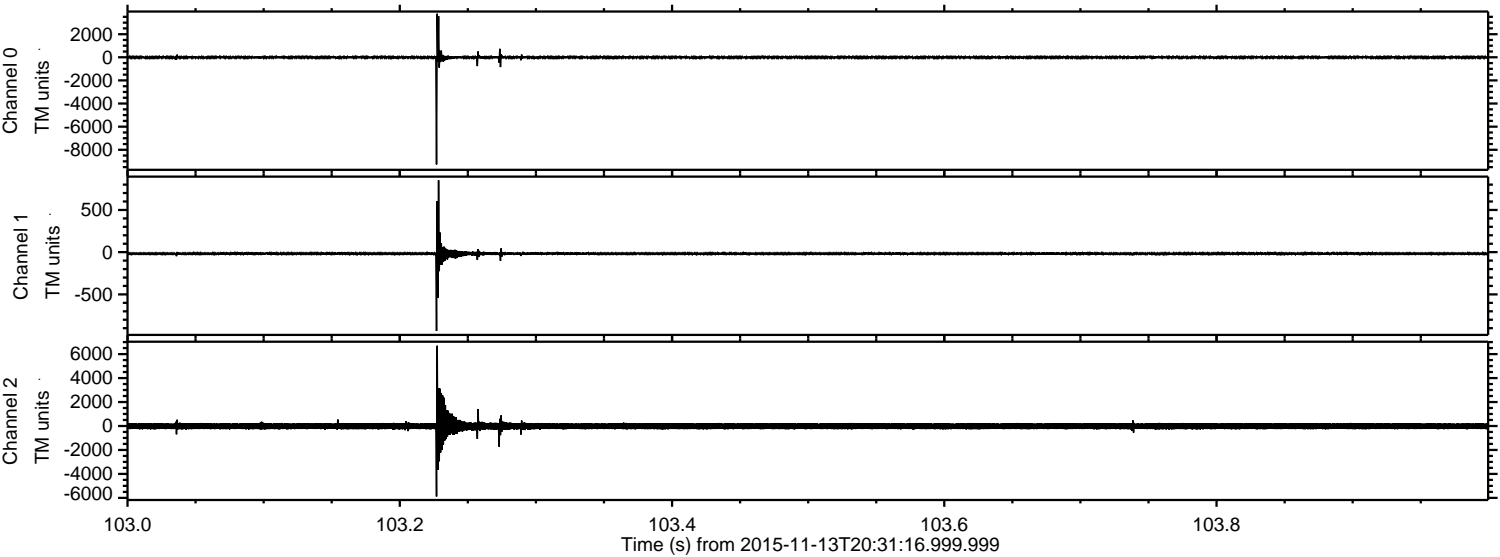
Processed Fri Nov 13 21:37:40 2015 by ELM ver.2012-10-06 from 001\_\_elm20151113\_203115\_\_dat00.bin





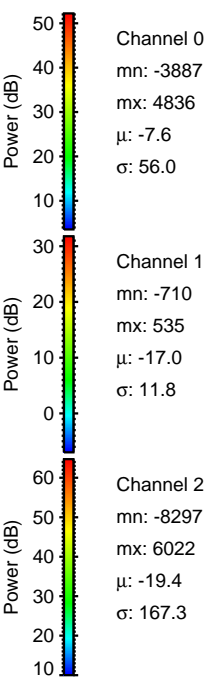
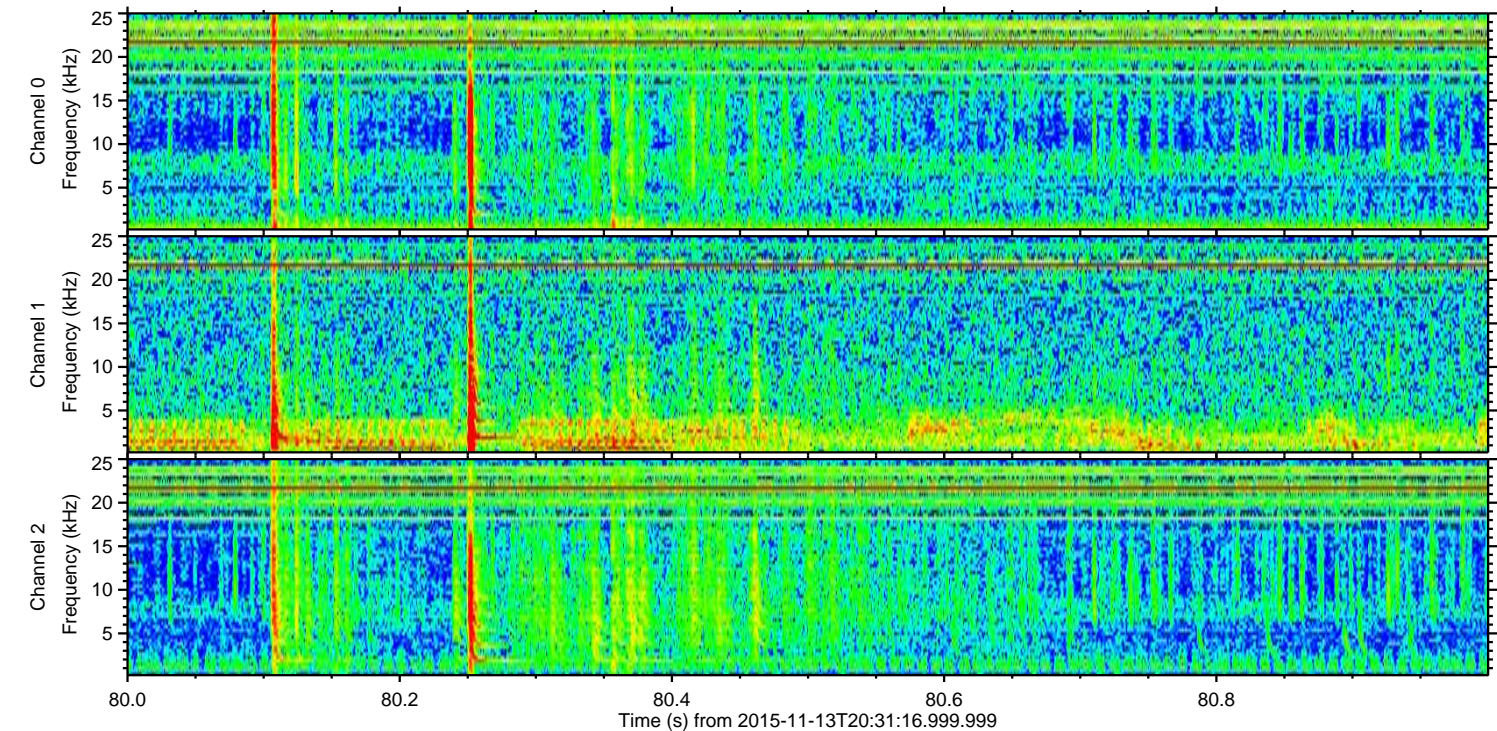
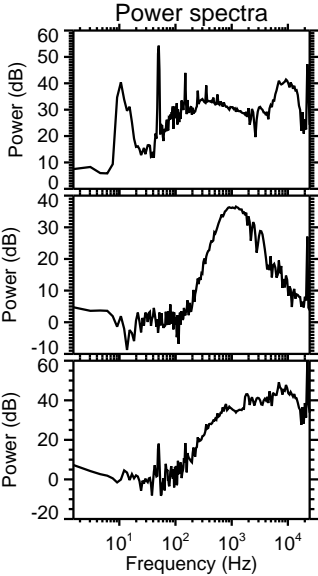
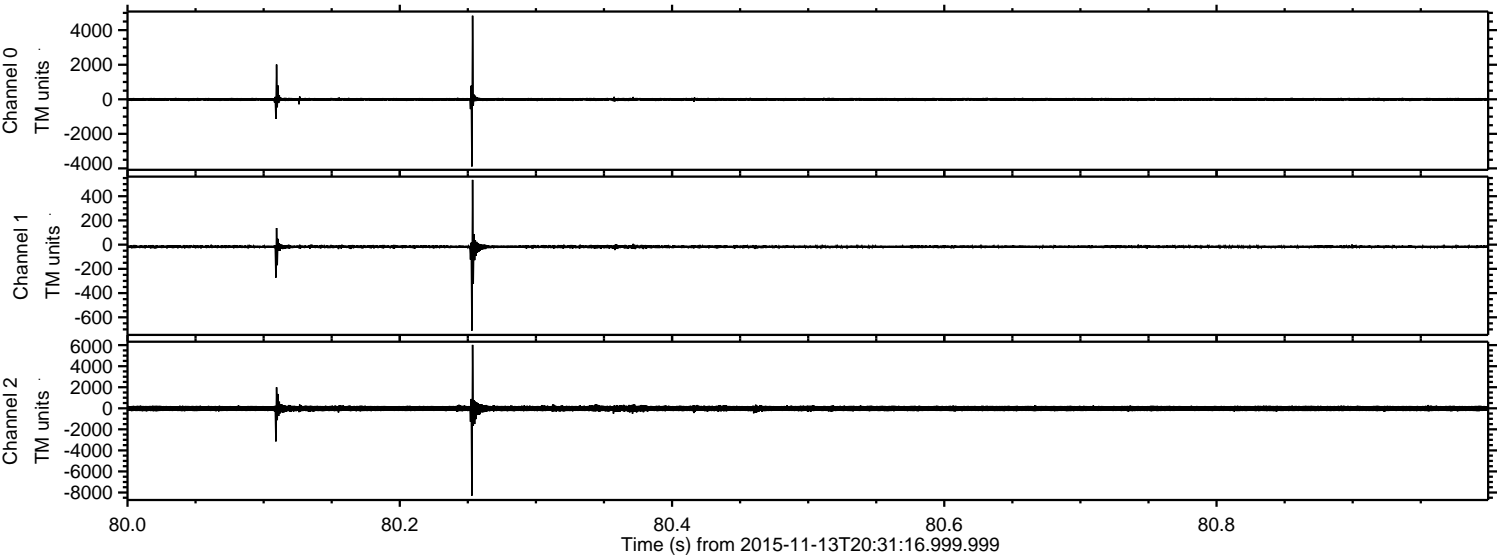
ELMAVAN 3D WAVEFORMS (Measured data sampled at 50 kHz) 51000 packets of 144 samples from 2015-11-13T20:31:16.999.999. Part 104/147

Processed Fri Nov 13 21:37:55 2015 by ELM ver.2012-10-06 from 001\_\_elm20151113\_203115\_\_dat00.bin





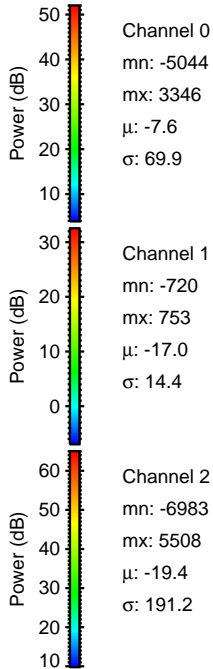
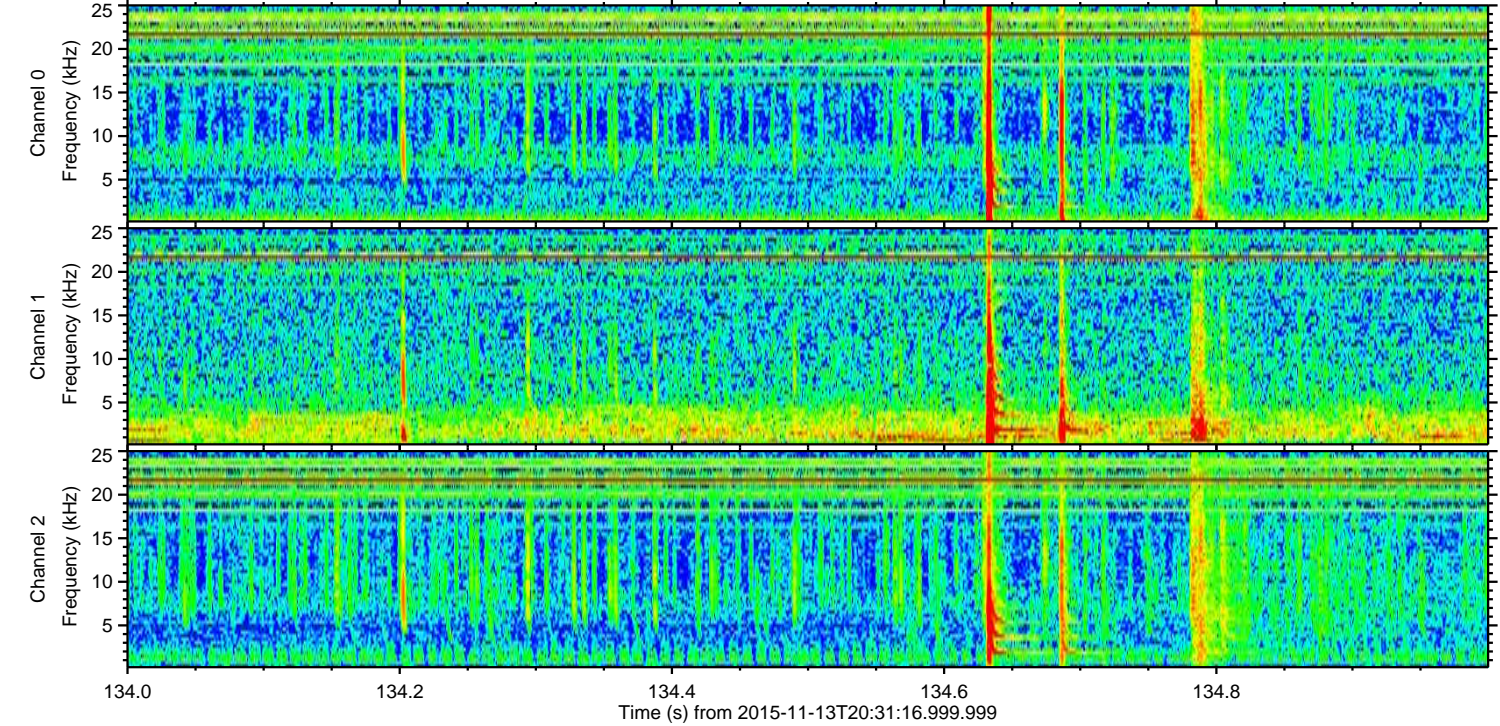
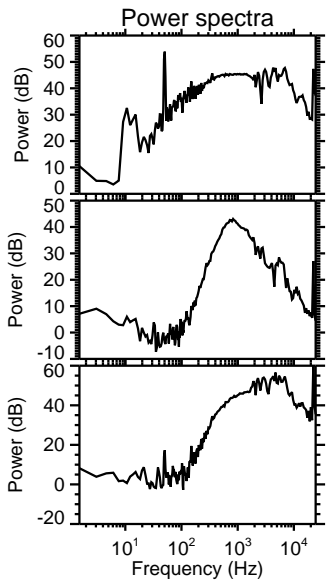
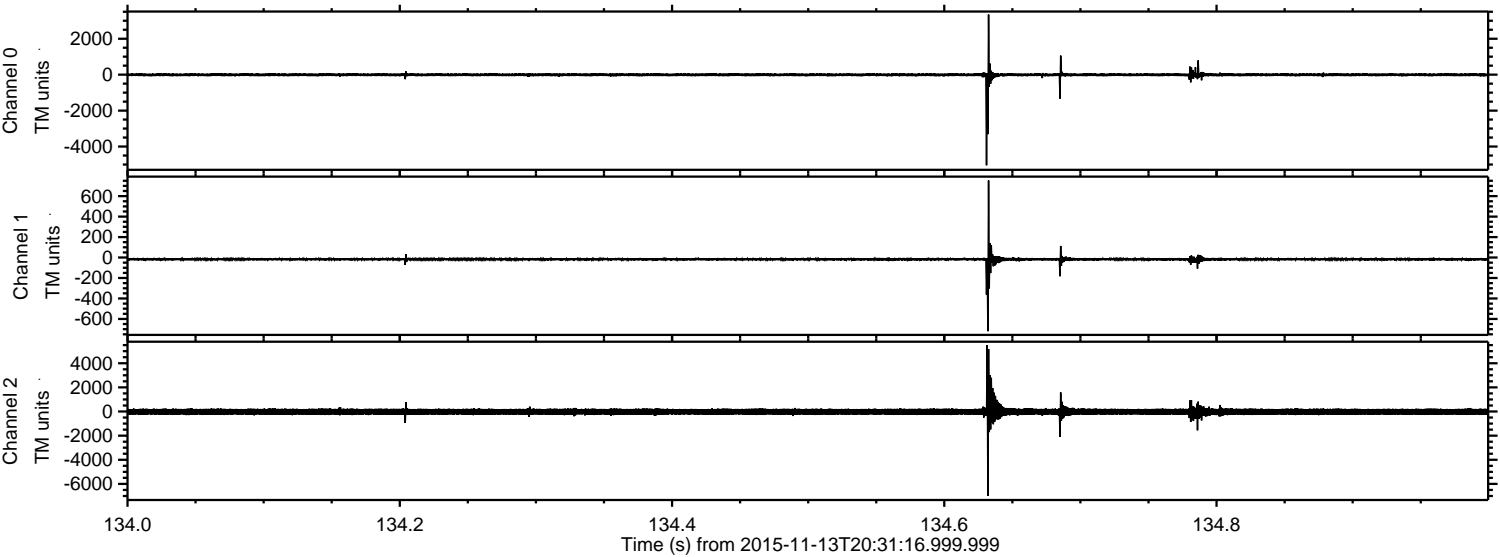
Processed Fri Nov 13 21:37:57 2015 by ELM ver.2012-10-06 from 001\_\_elm20151113\_203115\_\_dat00.bin





ELMAVAN 3D WAVEFORMS (Measured data sampled at 50 kHz) 51000 packets of 144 samples from 2015-11-13T20:31:16.999.999. Part 135/147

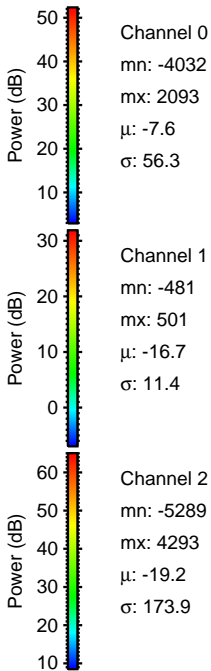
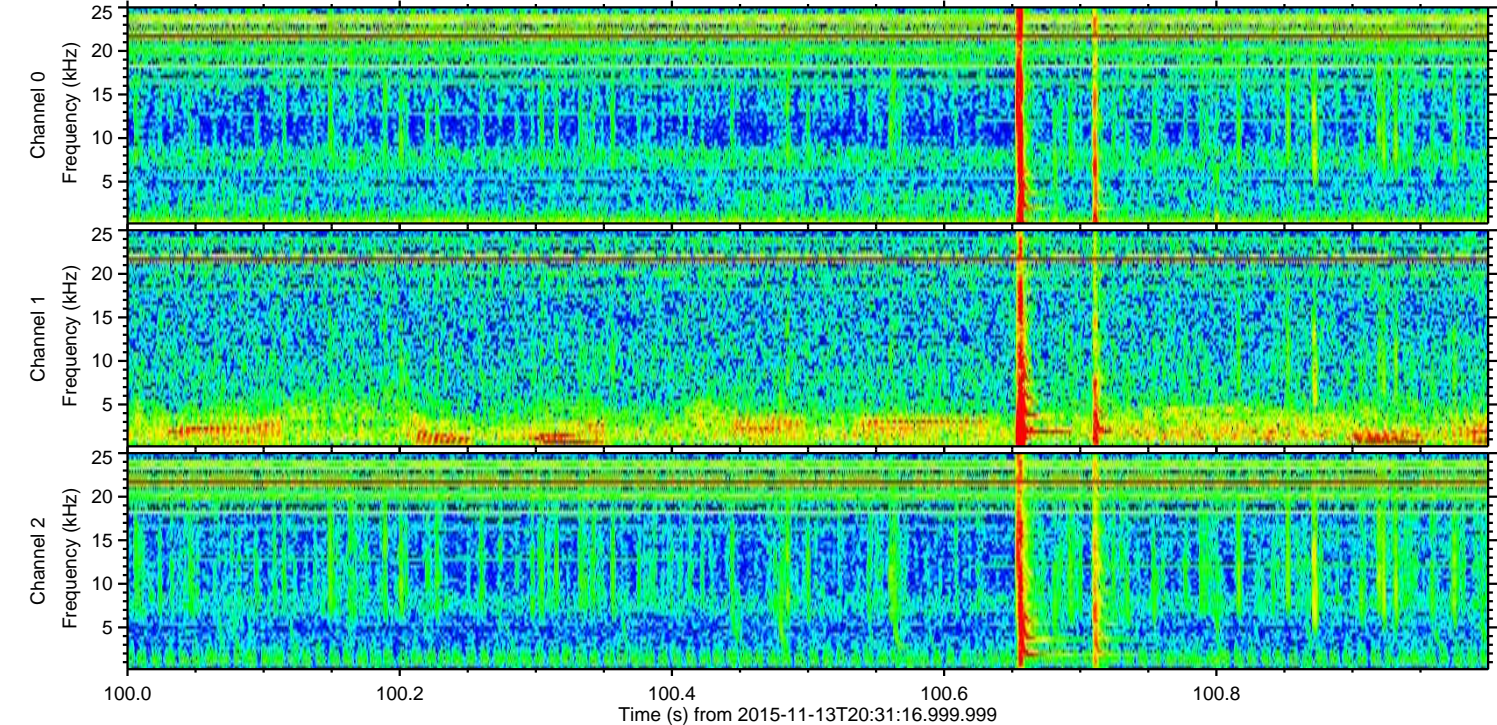
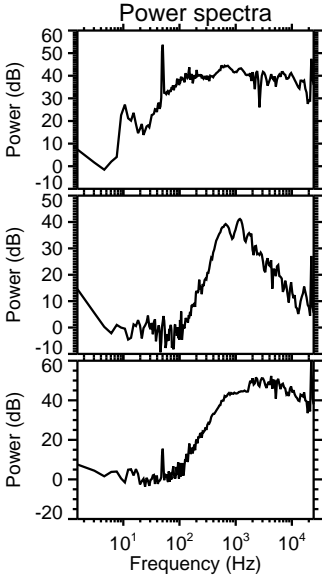
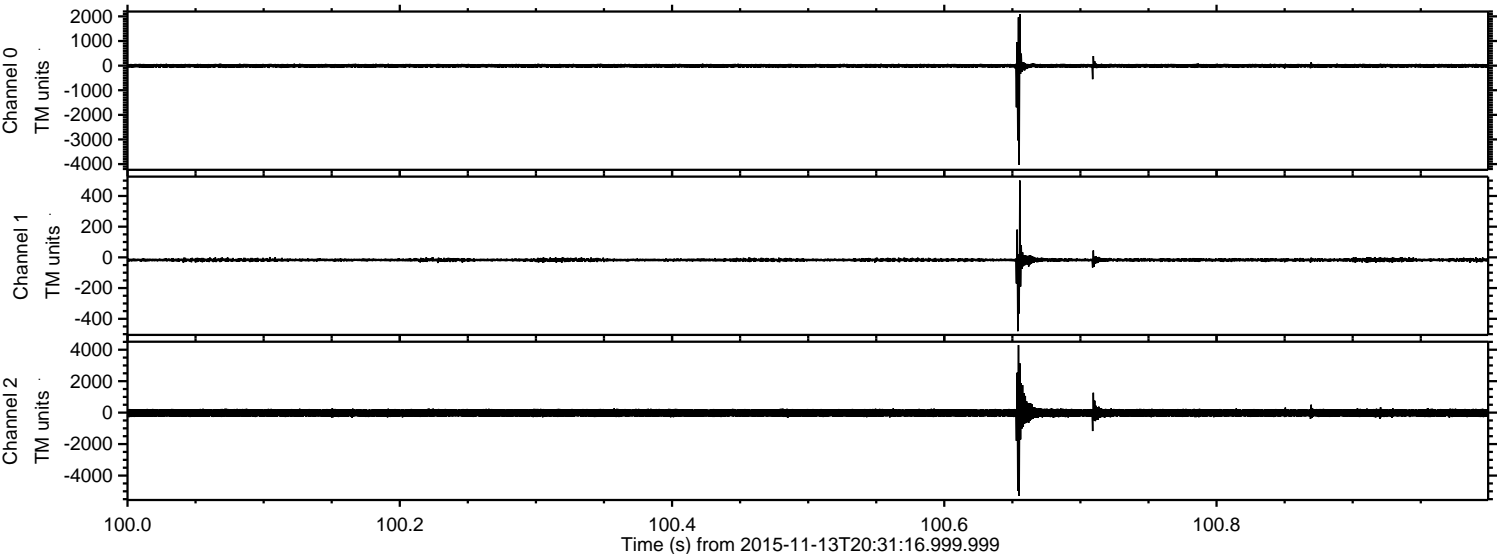
Processed Fri Nov 13 21:37:58 2015 by ELM ver.2012-10-06 from 001\_\_elm20151113\_203115\_\_dat00.bin





ELMAVAN 3D WAVEFORMS (Measured data sampled at 50 kHz) 51000 packets of 144 samples from 2015-11-13T20:31:16.999.999. Part 101/147

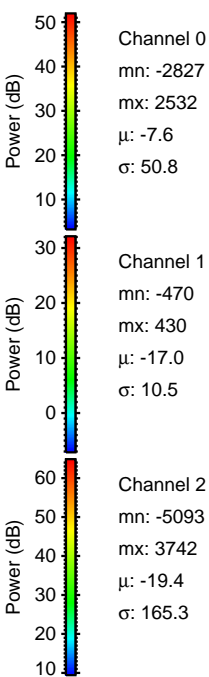
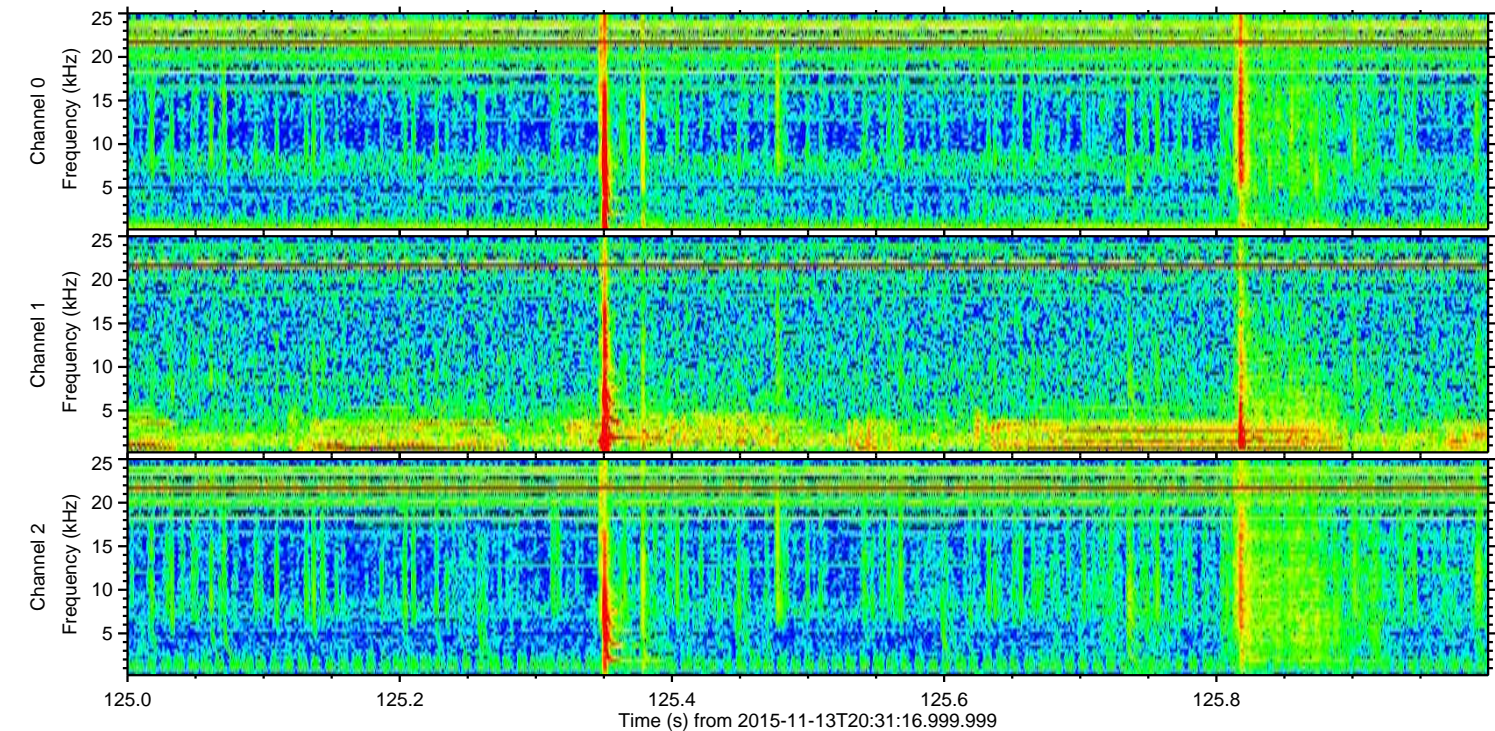
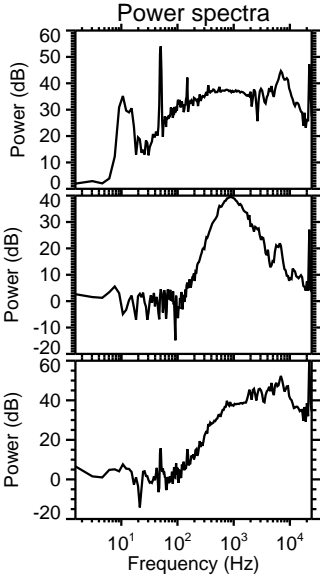
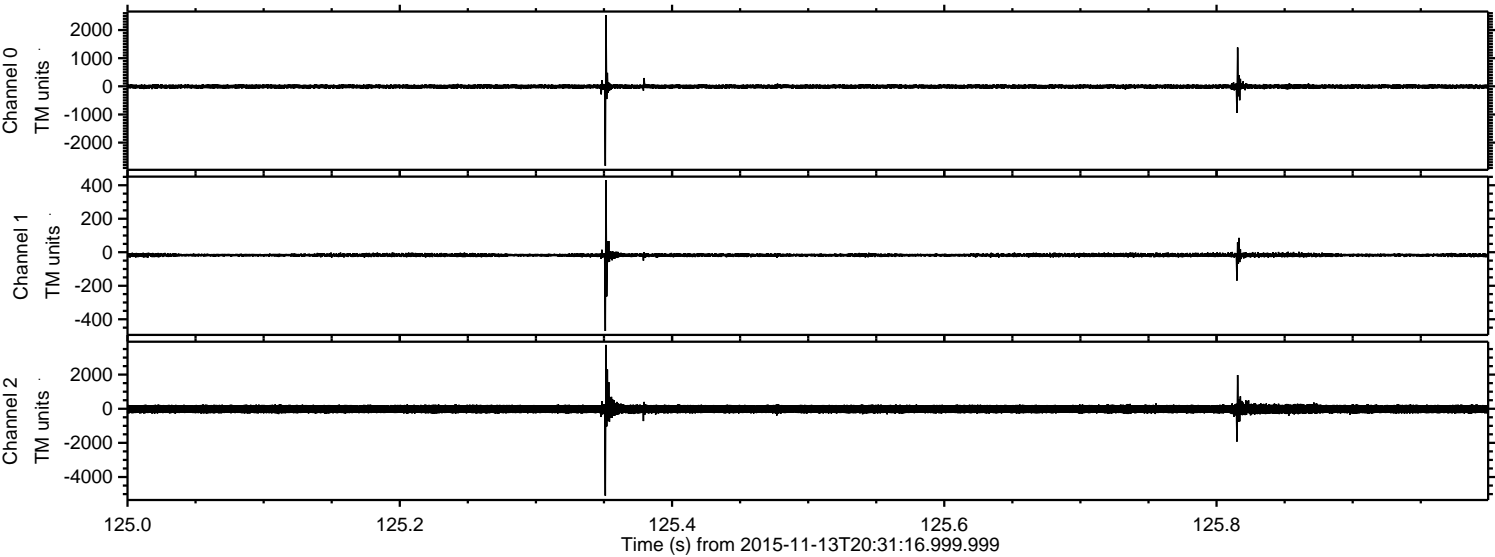
Processed Fri Nov 13 21:37:59 2015 by ELM ver.2012-10-06 from 001\_\_elm20151113\_203115\_\_dat00.bin





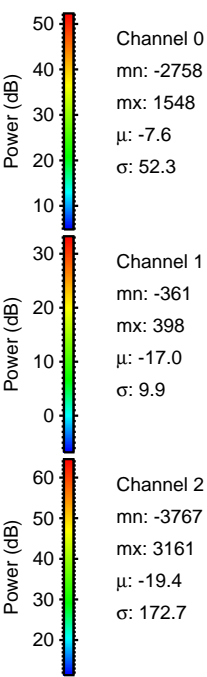
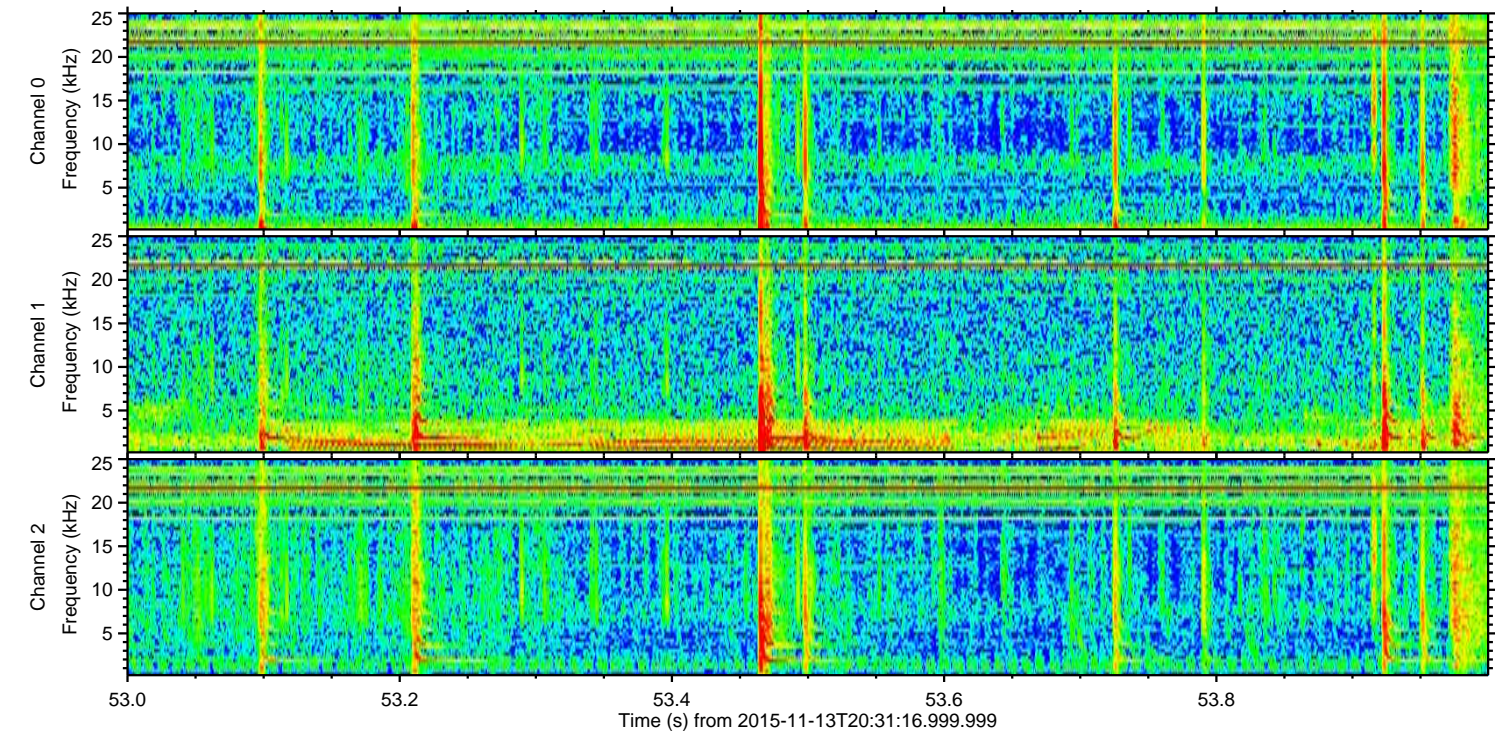
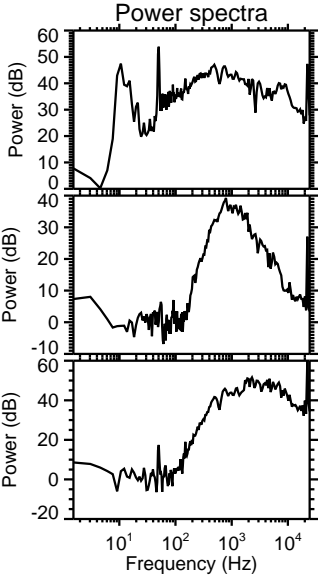
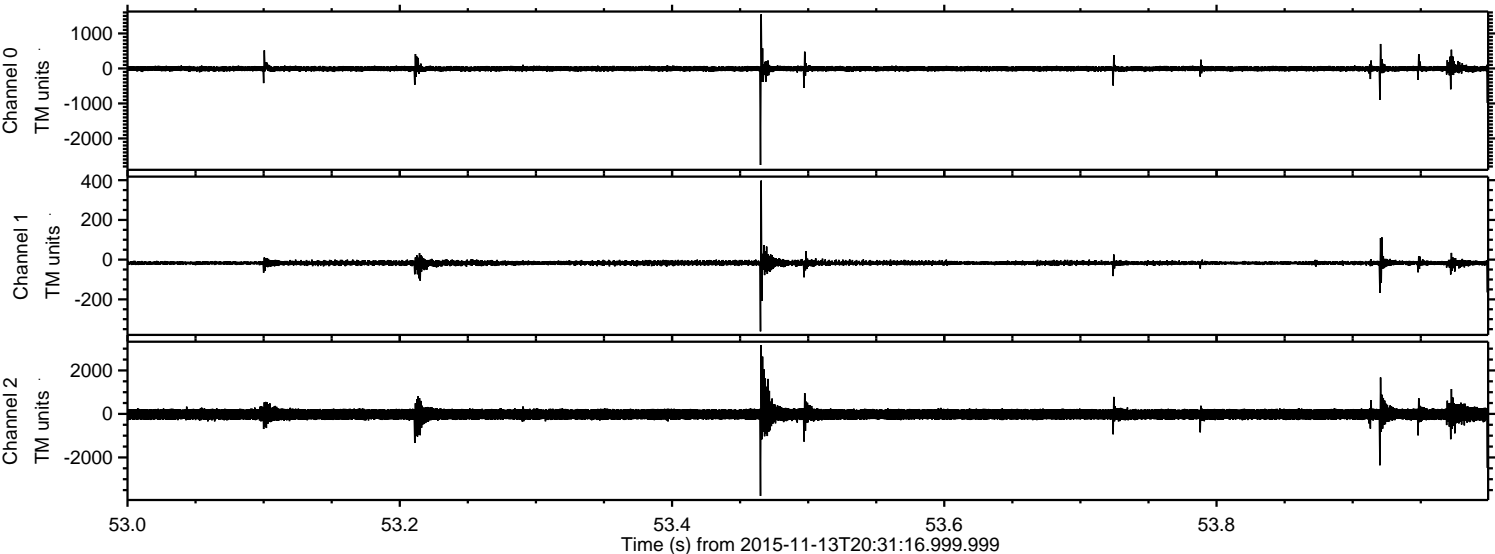
ELMAVAN 3D WAVEFORMS (Measured data sampled at 50 kHz) 51000 packets of 144 samples from 2015-11-13T20:31:16.999.999. Part 126/147

Processed Fri Nov 13 21:38:00 2015 by ELM ver.2012-10-06 from 001\_\_elm20151113\_203115\_\_dat00.bin





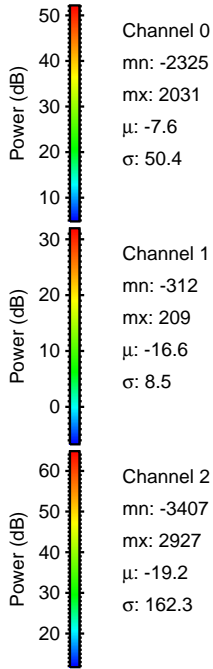
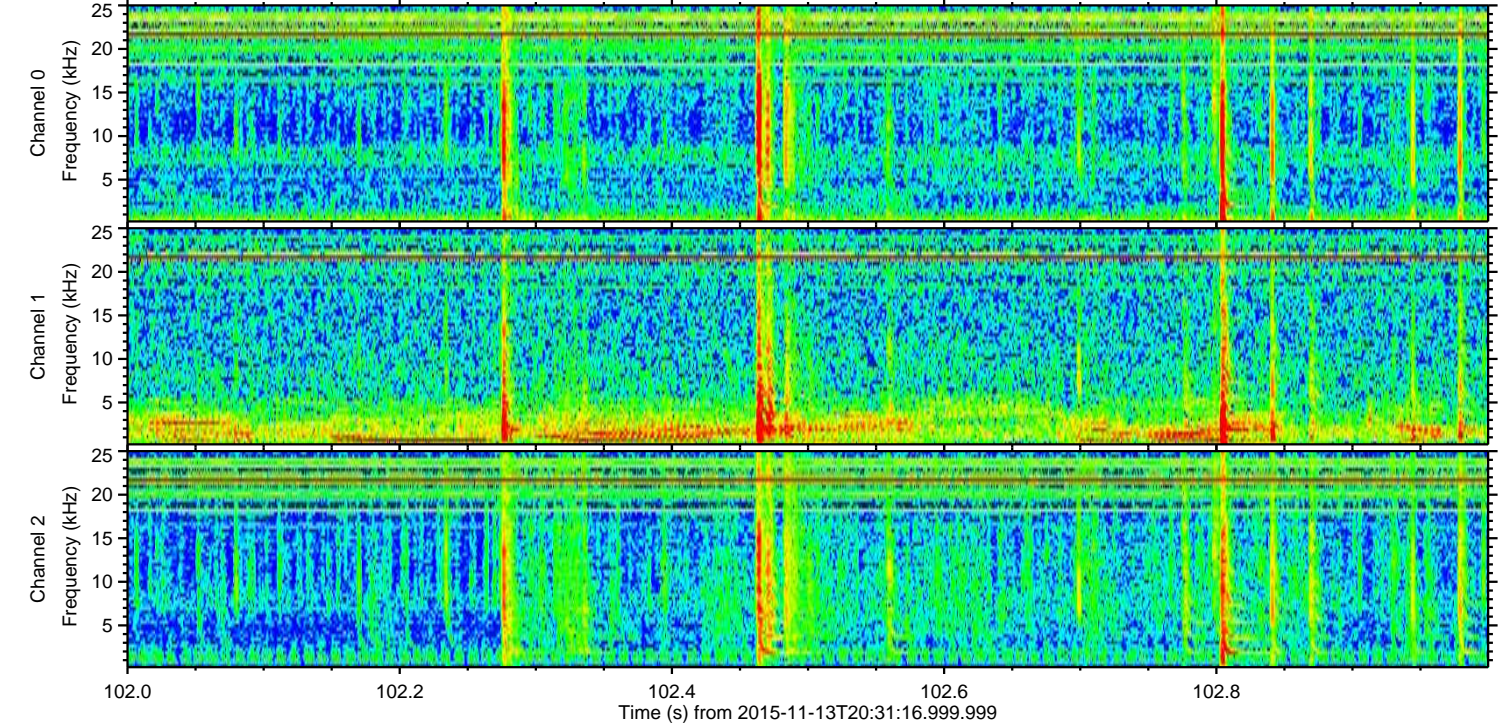
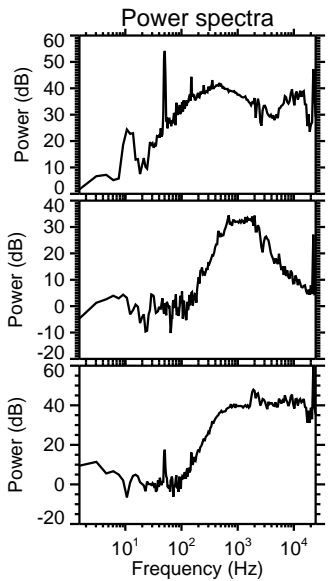
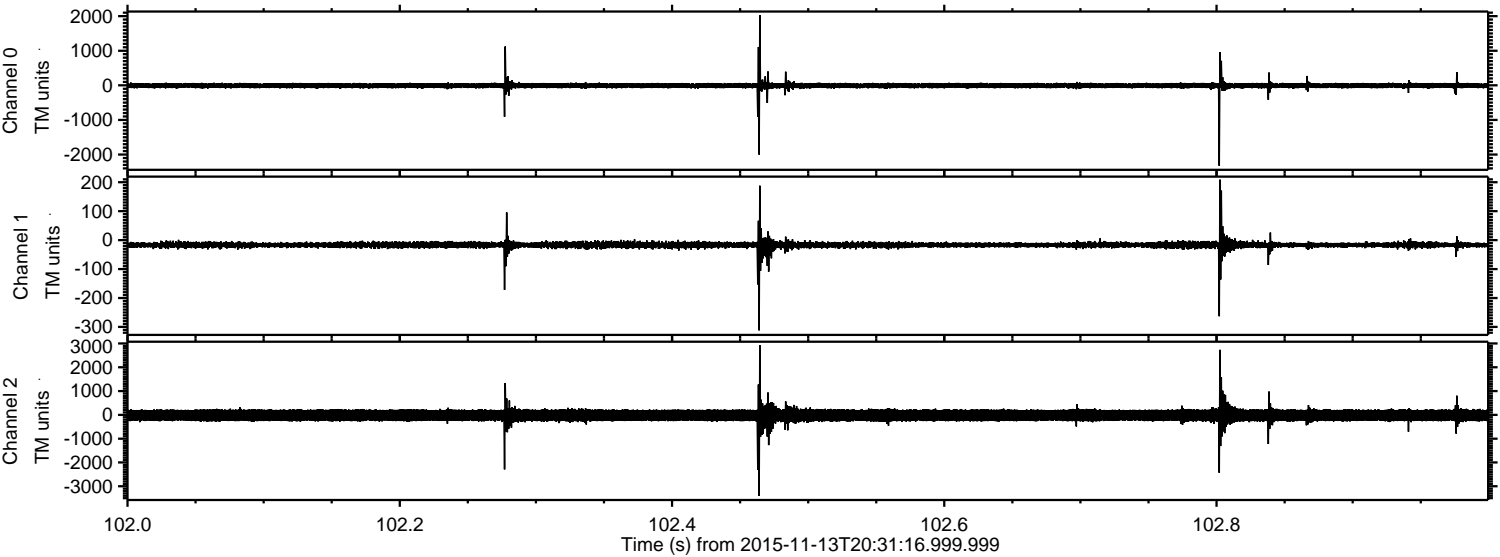
Processed Fri Nov 13 21:38:01 2015 by ELM ver.2012-10-06 from 001\_\_elm20151113\_203115\_\_dat00.bin





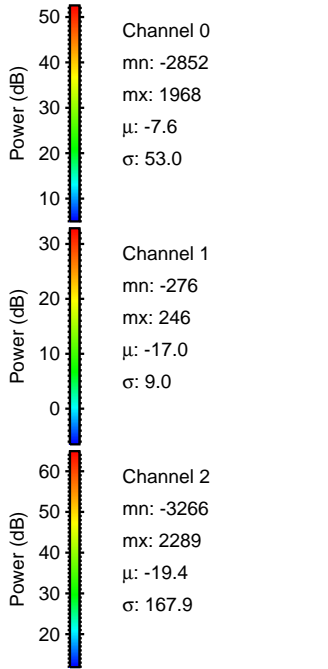
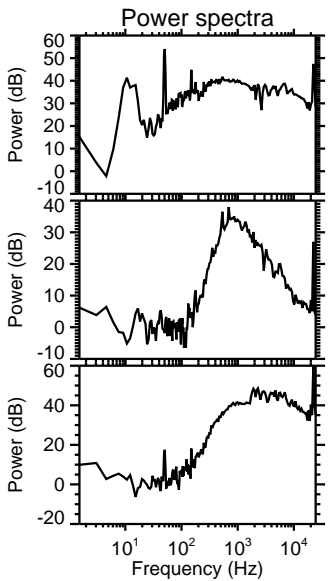
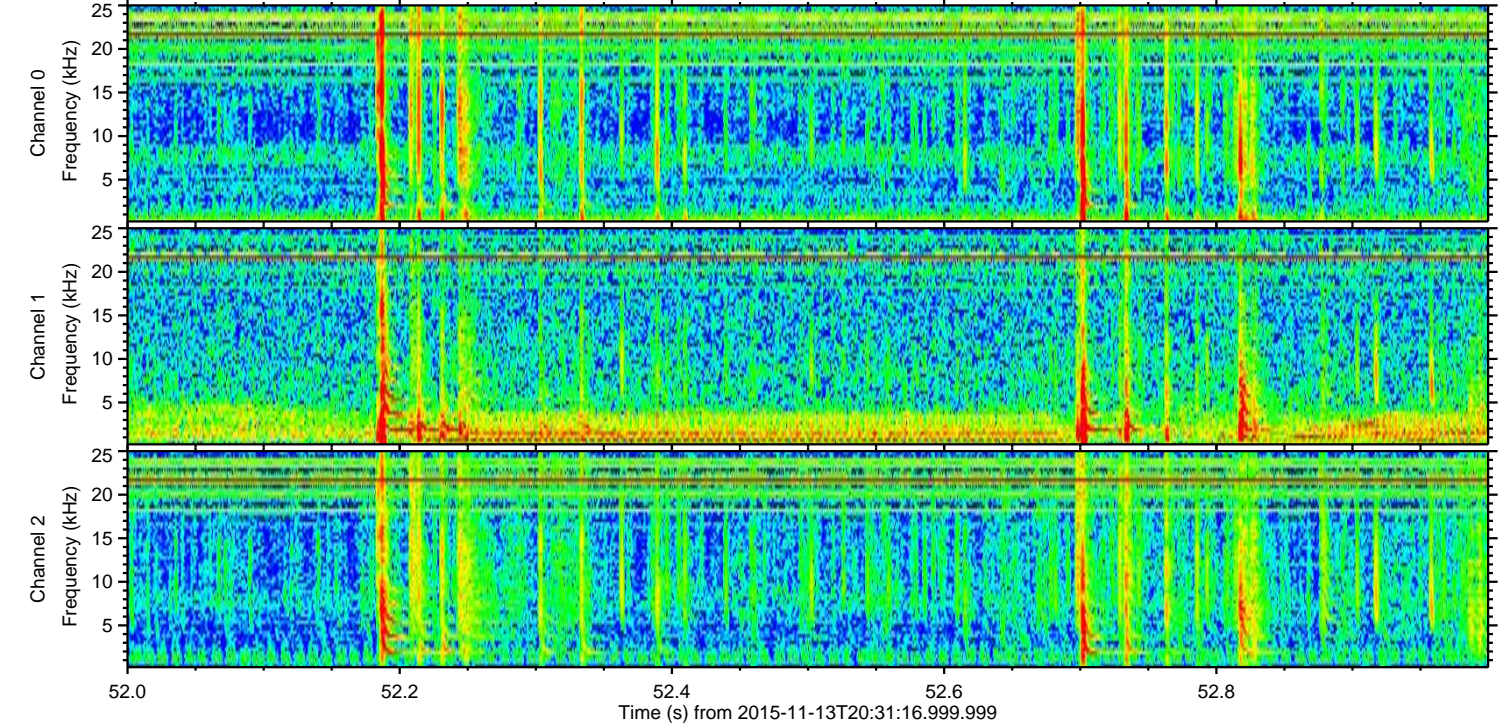
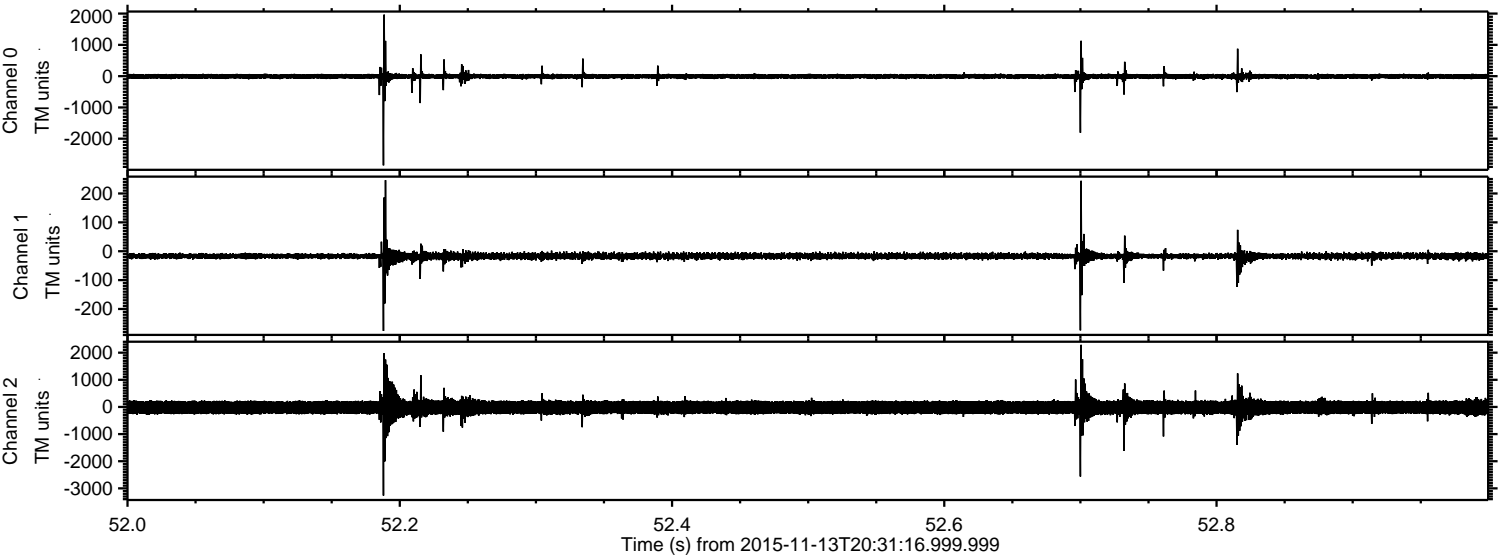
ELMAVAN 3D WAVEFORMS (Measured data sampled at 50 kHz) 51000 packets of 144 samples from 2015-11-13T20:31:16.999.999. Part 103/147

Processed Fri Nov 13 21:38:02 2015 by ELM ver.2012-10-06 from 001\_\_elm20151113\_203115\_\_dat00.bin



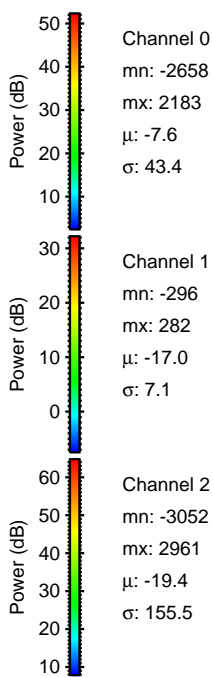
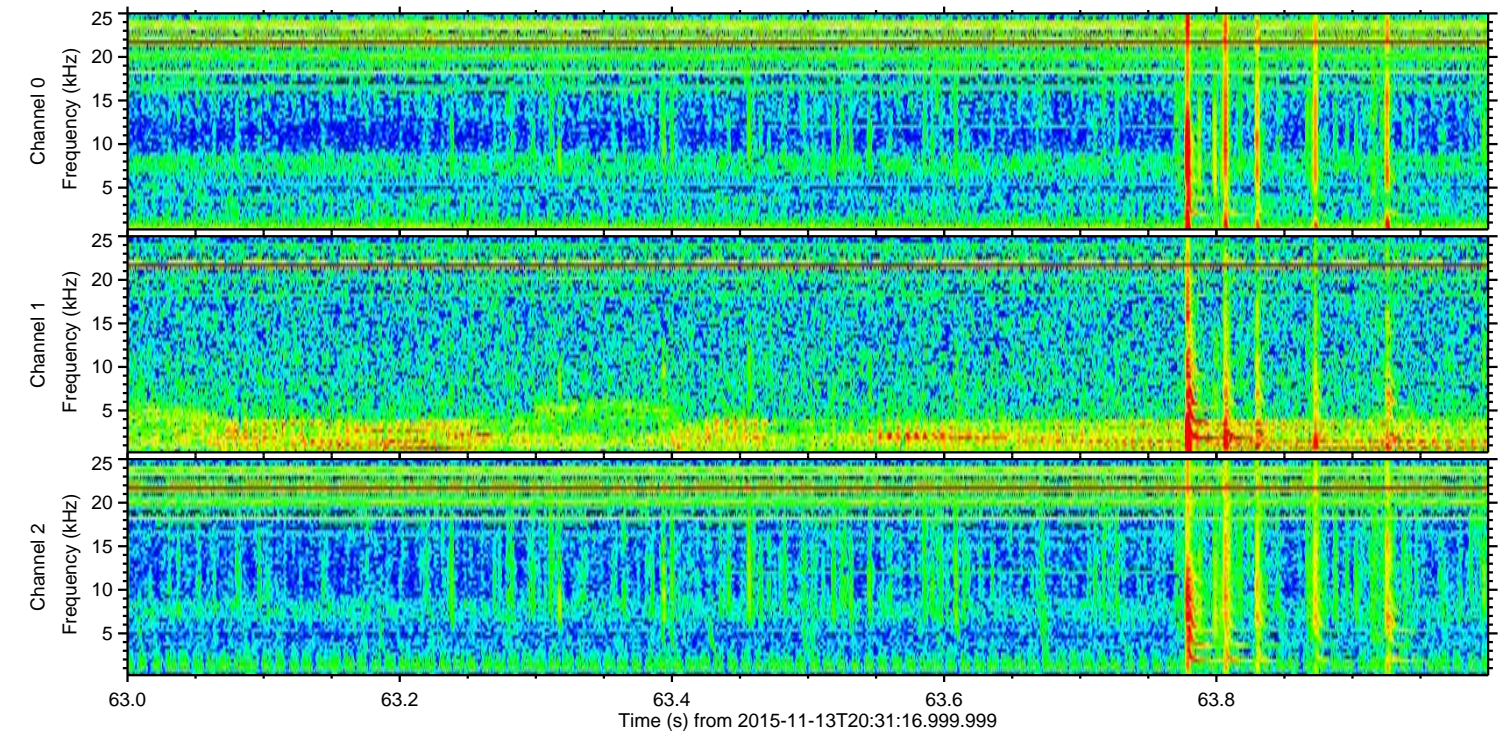
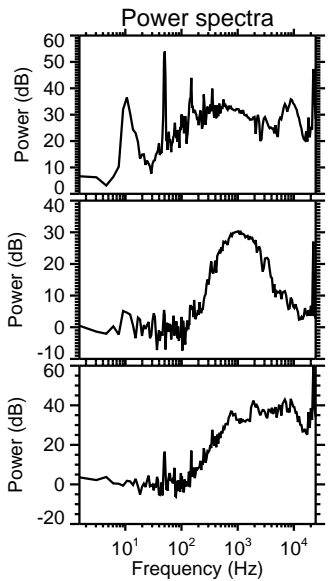
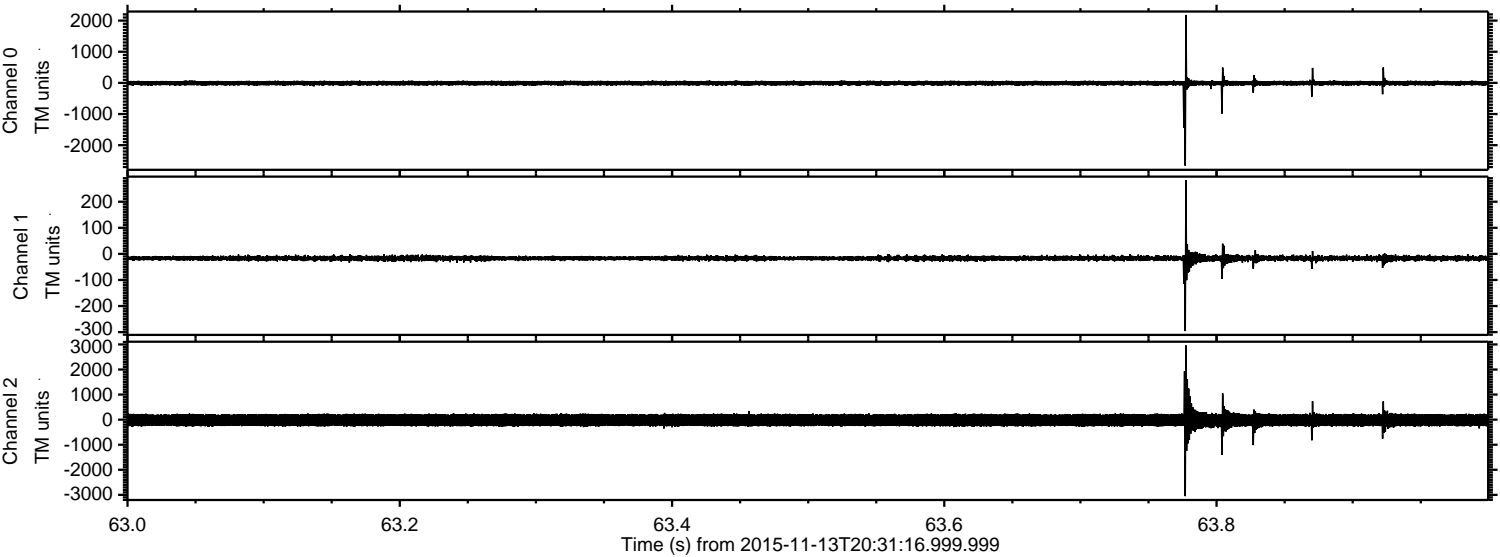


Processed Fri Nov 13 21:38:03 2015 by ELM ver.2012-10-06 from 001\_\_elm20151113\_203115\_\_dat00.bin





Processed Fri Nov 13 21:38:04 2015 by ELM ver.2012-10-06 from 001\_\_elm20151113\_203115\_\_dat00.bin



Channel 0  
mn: -2658  
mx: 2183  
 $\mu$ : -7.6  
 $\sigma$ : 43.4

Channel 1  
mn: -296  
mx: 282  
 $\mu$ : -17.0  
 $\sigma$ : 7.1

Channel 2  
mn: -3052  
mx: 2961  
 $\mu$ : -19.4  
 $\sigma$ : 155.5



Processed Fri Nov 13 21:38:05 2015 by ELM ver.2012-10-06 from 001\_\_elm20151113\_203115\_\_dat00.bin

