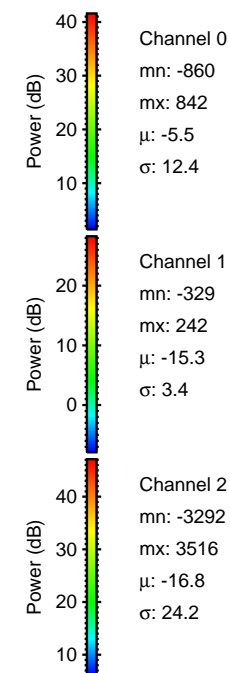
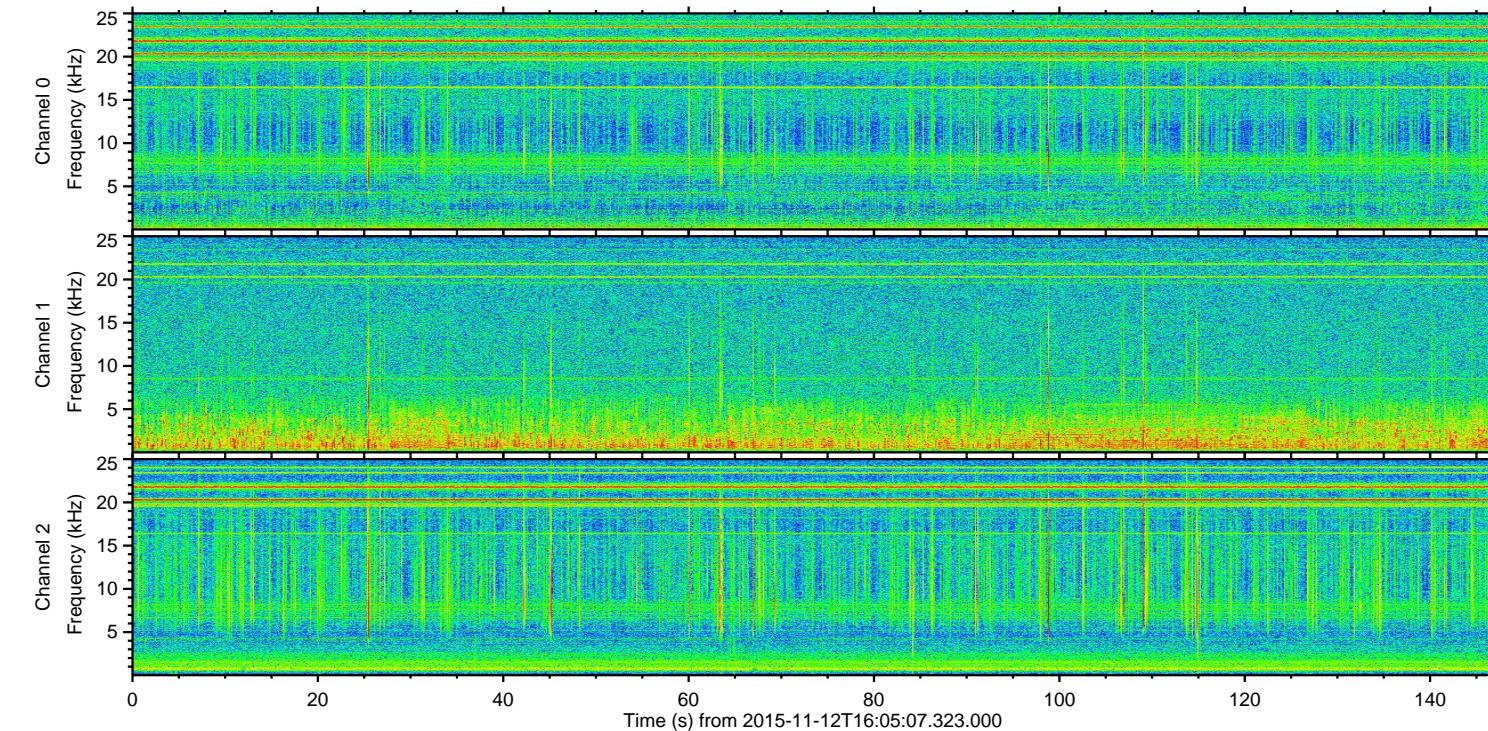
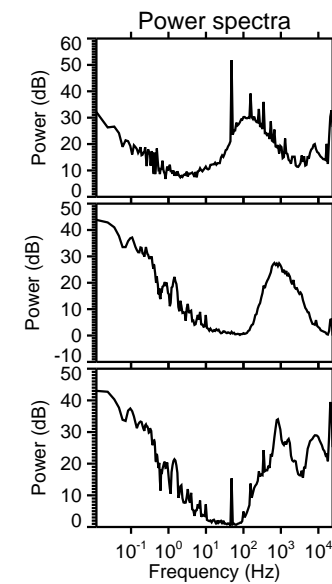
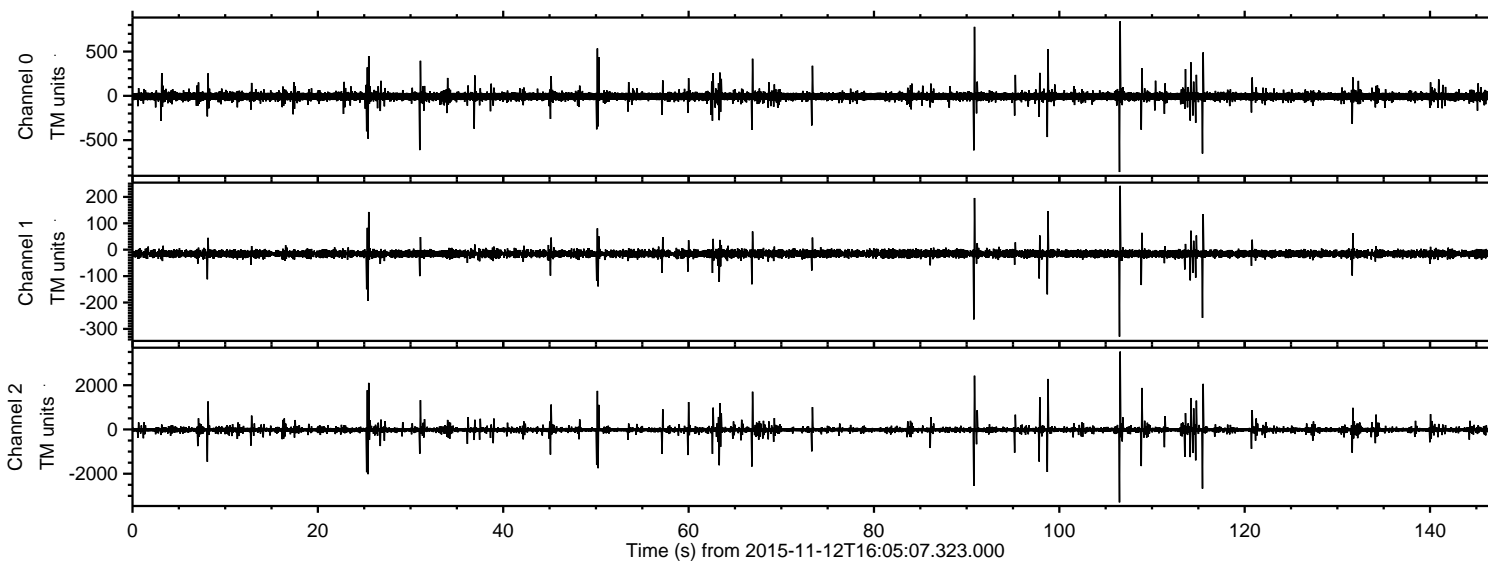


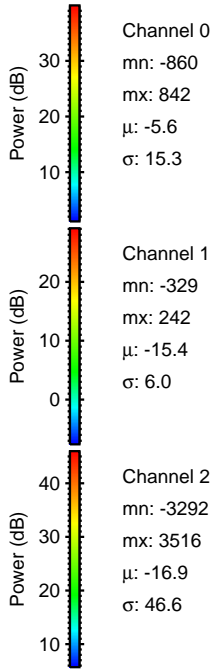
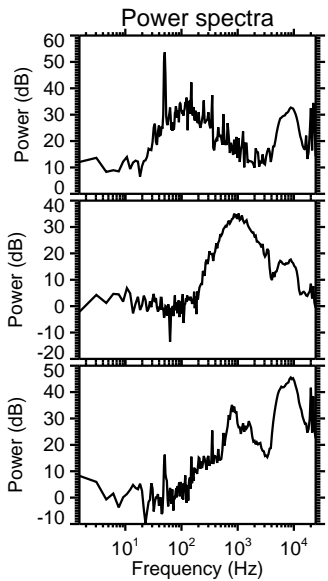
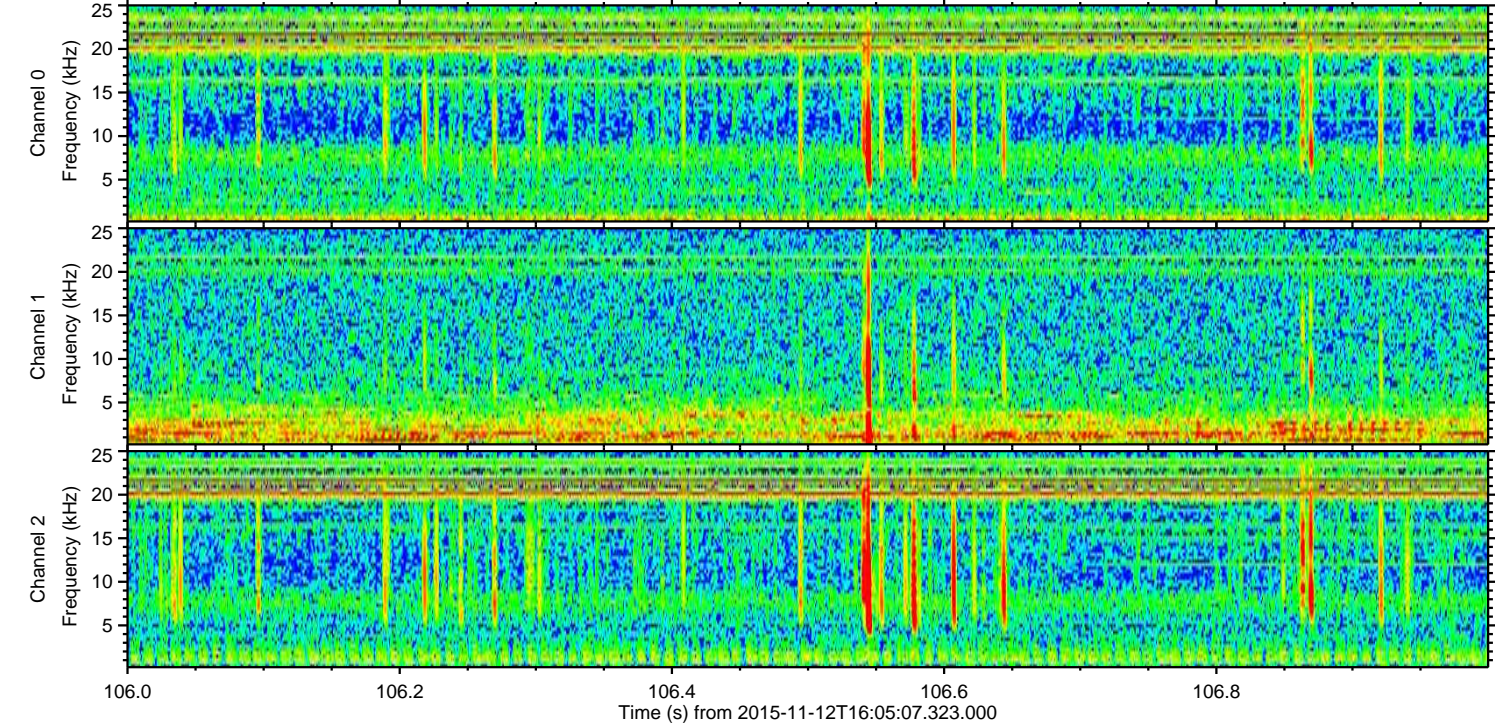
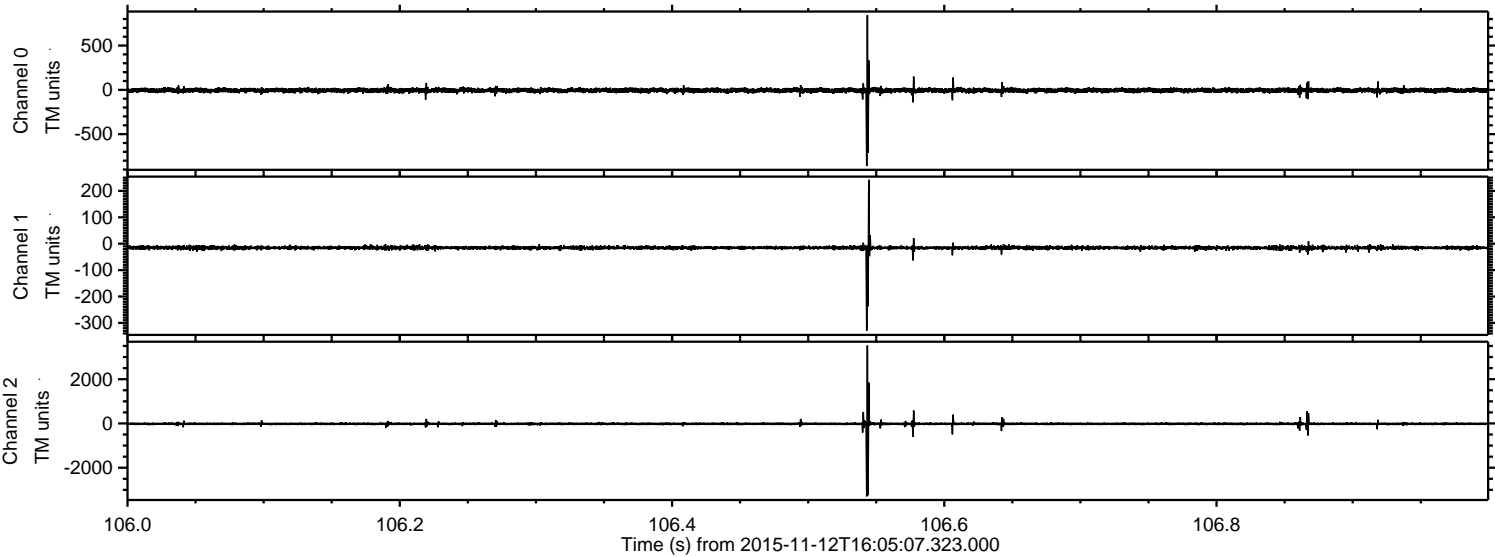
# ELMAVAN 3D WAVEFORMS (Measured data sampled at 50 kHz) 51000 packets of 144 samples from 2015-11-12T16:05:07.323.000.

Processed Thu Nov 12 17:11:15 2015 by ELM ver.2012-10-06 from 001\_\_elm20151112\_160506\_\_dat00.bin



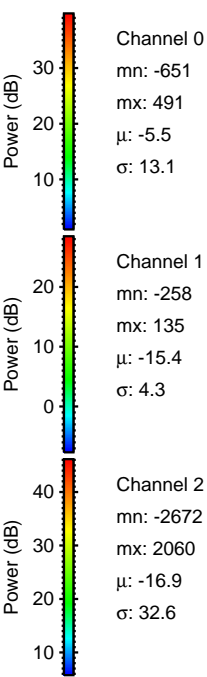
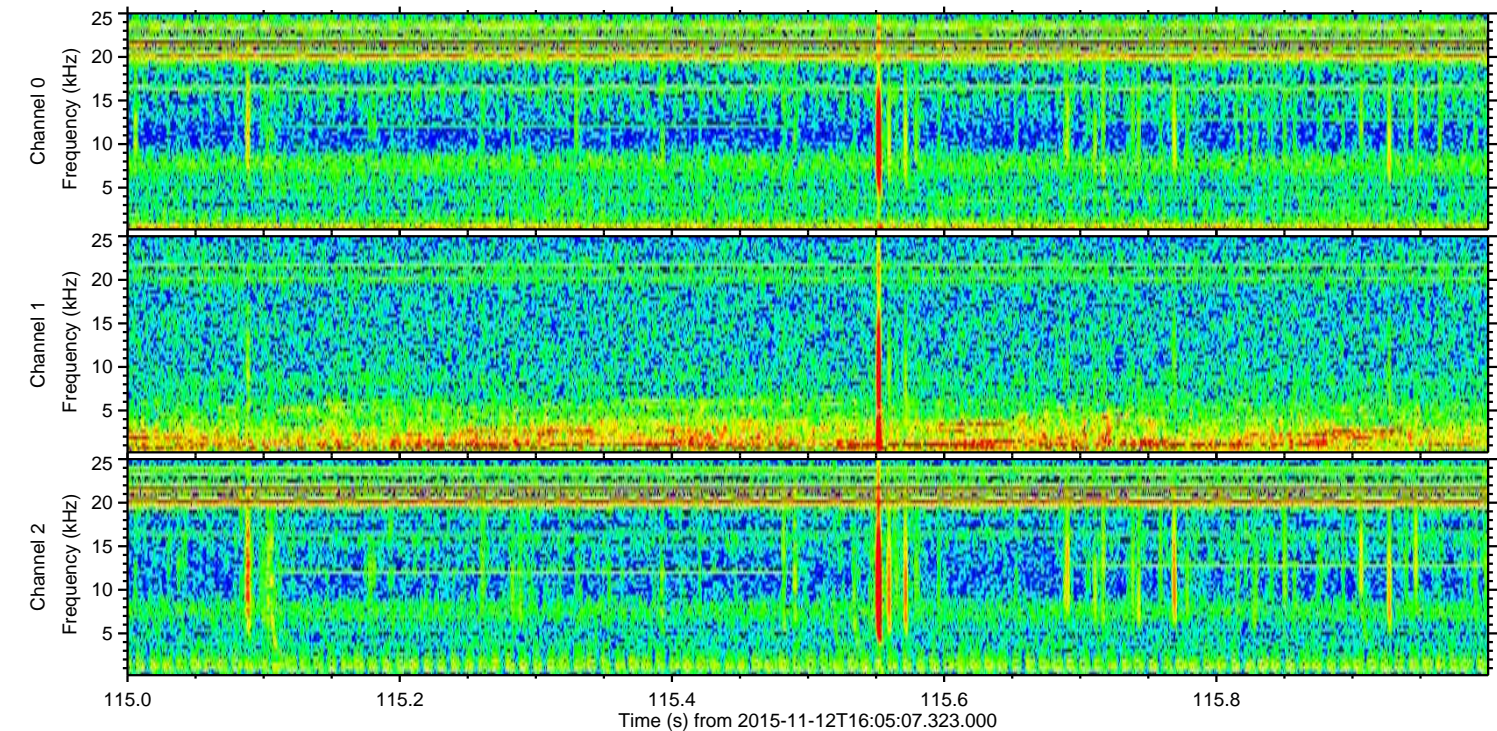
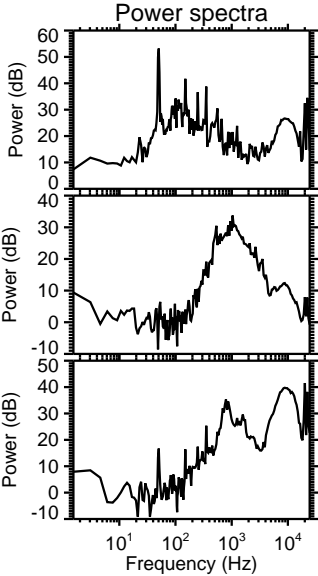
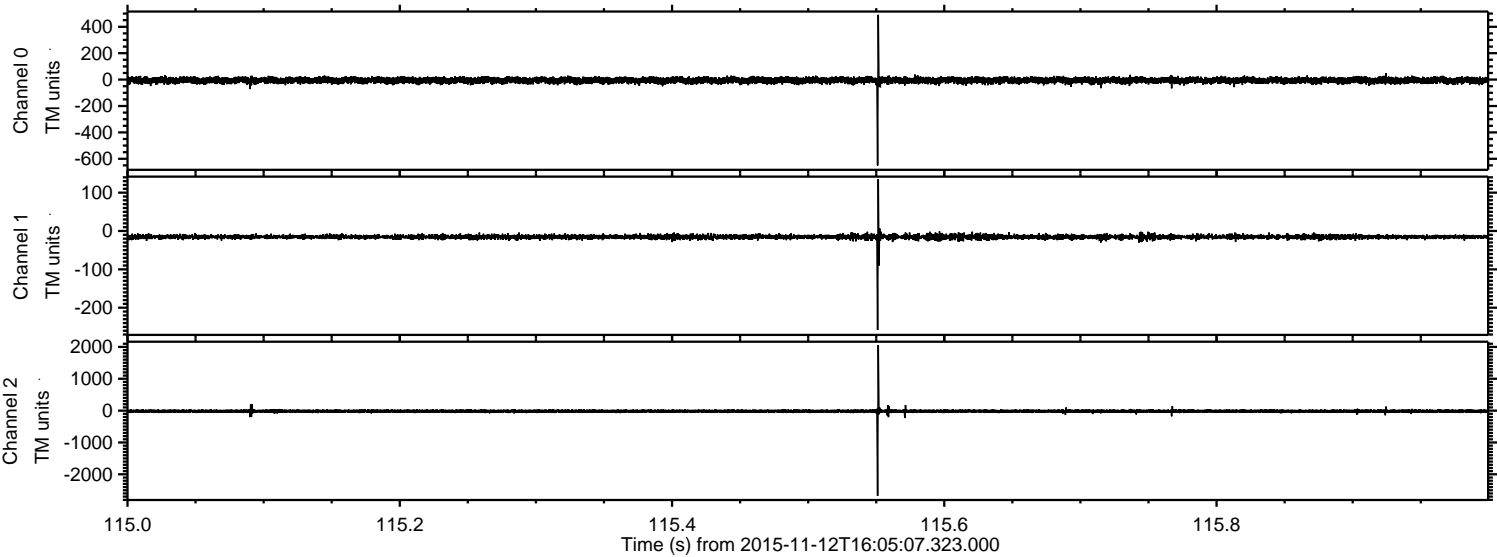
ELMAVAN 3D WAVEFORMS (Measured data sampled at 50 kHz) 51000 packets of 144 samples from 2015-11-12T16:05:07.323.000. Part 107/147

Processed Thu Nov 12 17:11:27 2015 by ELM ver.2012-10-06 from 001\_\_elm20151112\_160506\_\_dat00.bin



ELMAVAN 3D WAVEFORMS (Measured data sampled at 50 kHz) 51000 packets of 144 samples from 2015-11-12T16:05:07.323.000. Part 116/147

Processed Thu Nov 12 17:11:28 2015 by ELM ver.2012-10-06 from 001\_\_elm20151112\_160506\_\_dat00.bin

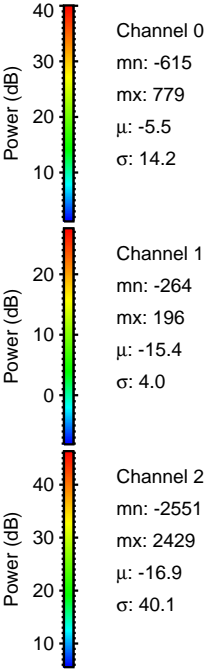
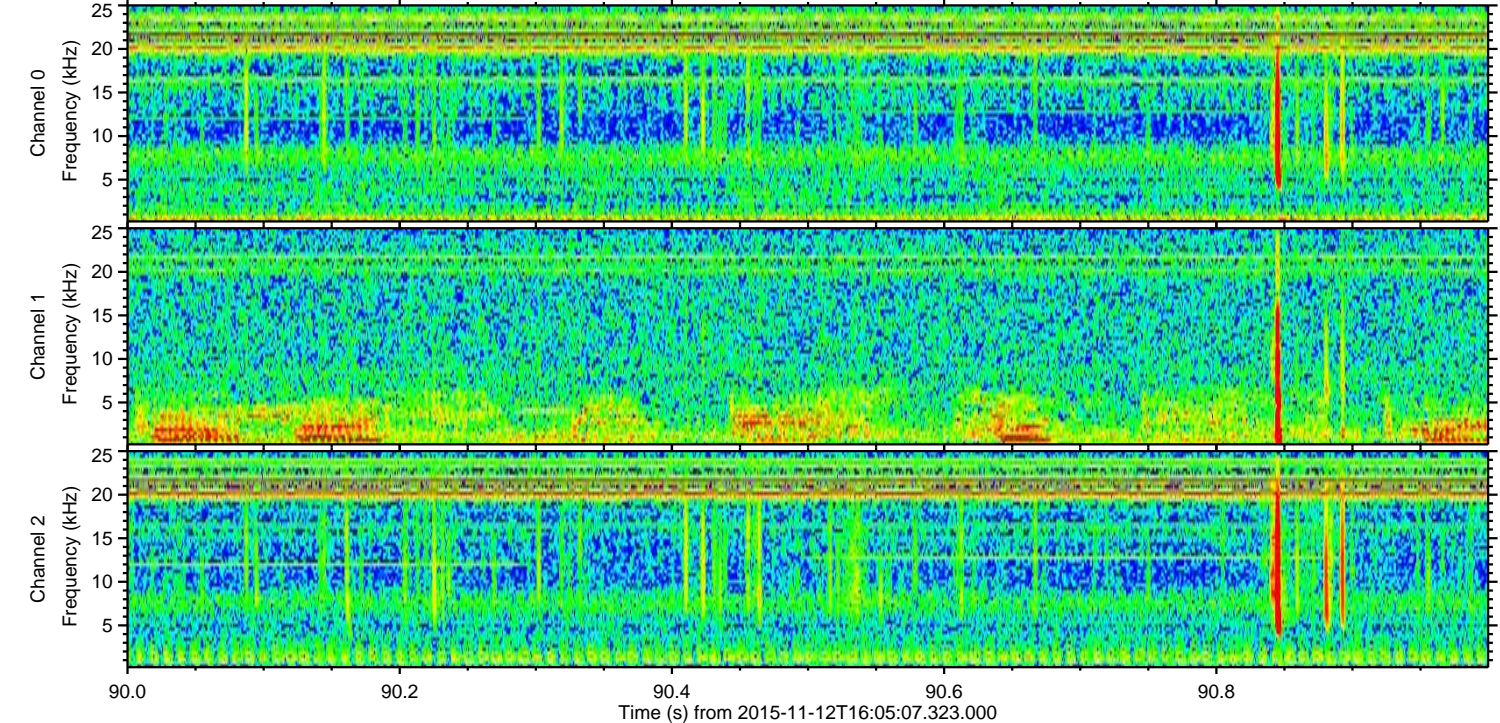
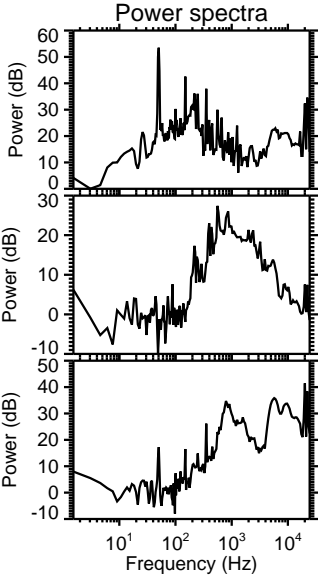
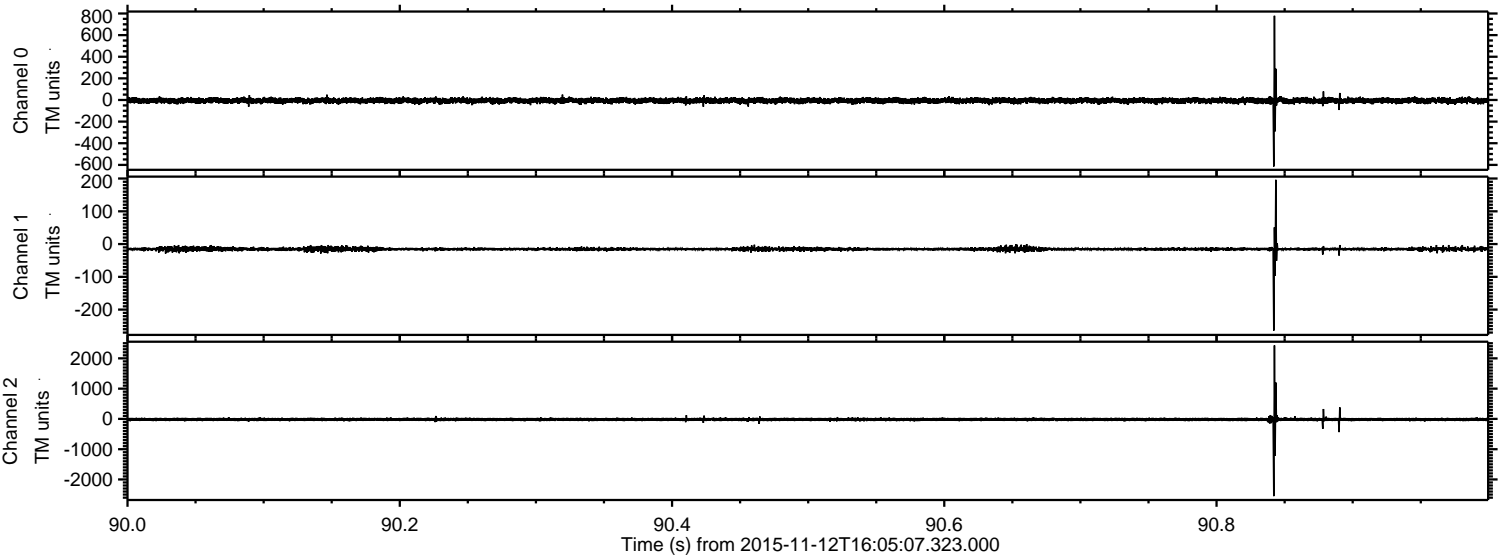


Channel 0  
mn: -651  
mx: 491  
 $\mu$ : -5.5  
 $\sigma$ : 13.1

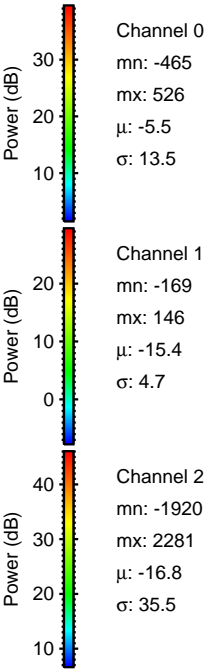
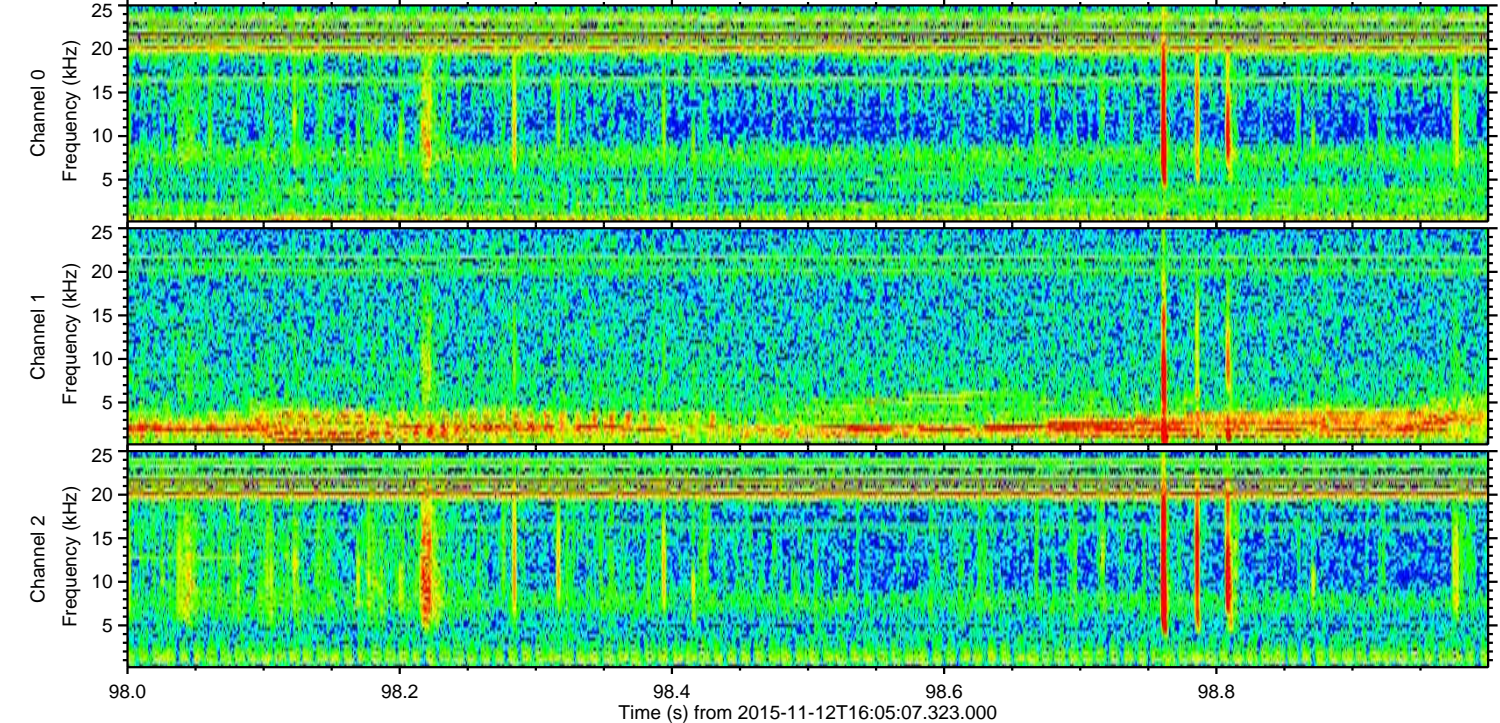
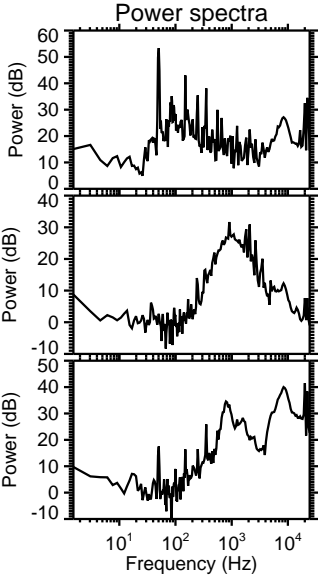
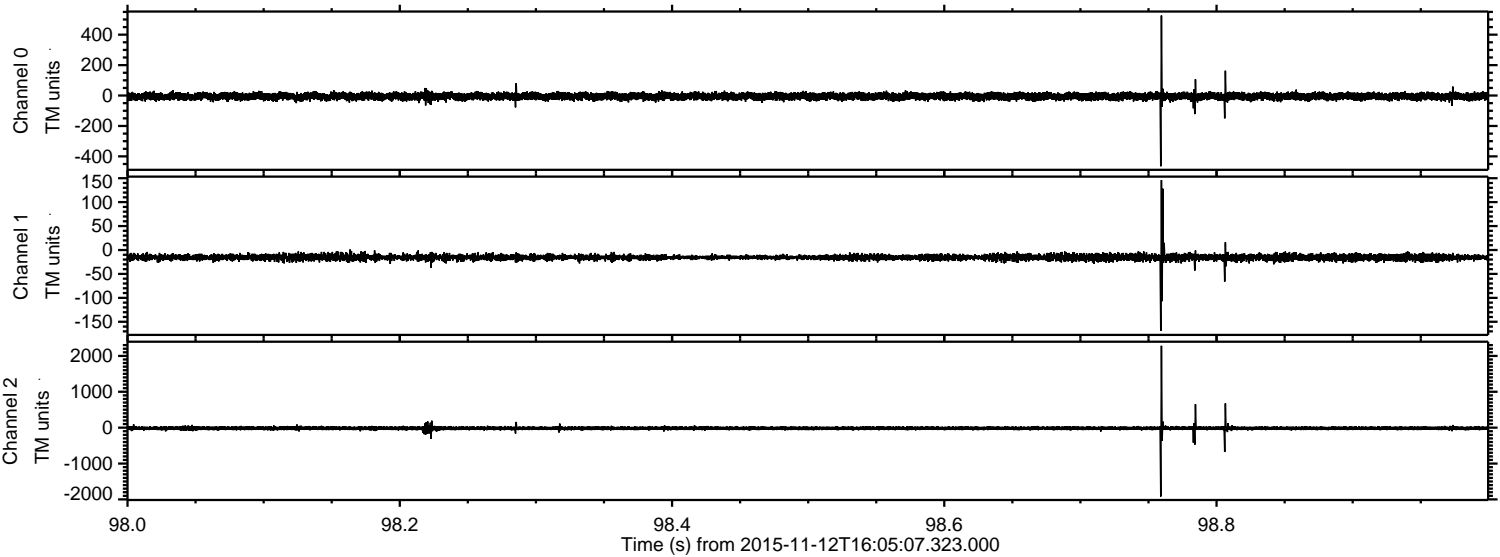
Channel 1  
mn: -258  
mx: 135  
 $\mu$ : -15.4  
 $\sigma$ : 4.3

Channel 2  
mn: -2672  
mx: 2060  
 $\mu$ : -16.9  
 $\sigma$ : 32.6

Processed Thu Nov 12 17:11:29 2015 by ELM ver.2012-10-06 from 001\_\_elm20151112\_160506\_\_dat00.bin



Processed Thu Nov 12 17:11:30 2015 by ELM ver.2012-10-06 from 001\_\_elm20151112\_160506\_\_dat00.bin

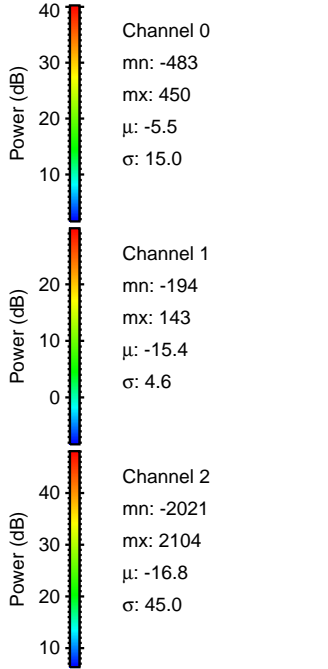
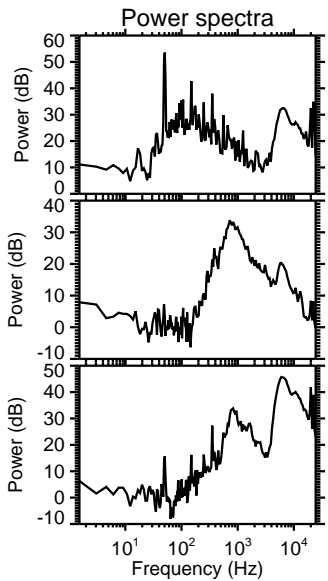
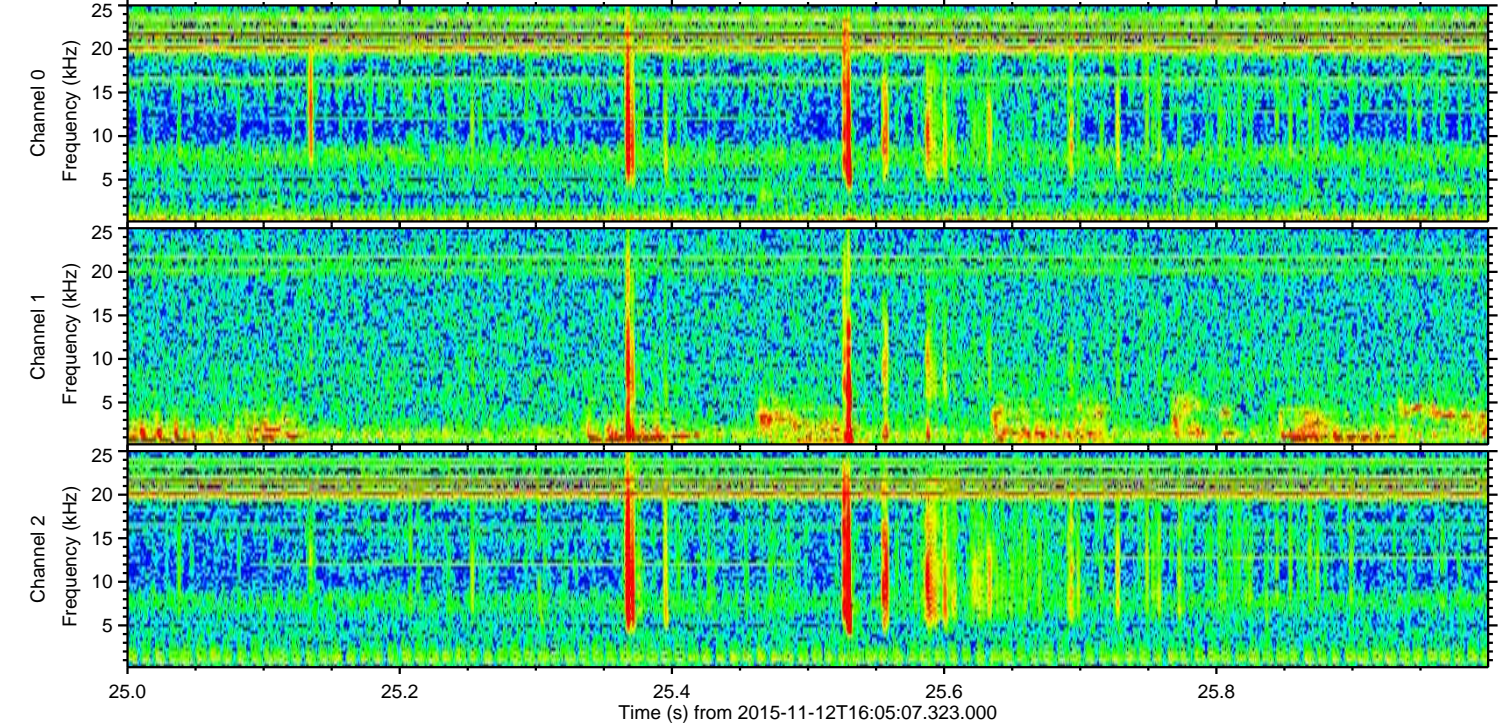
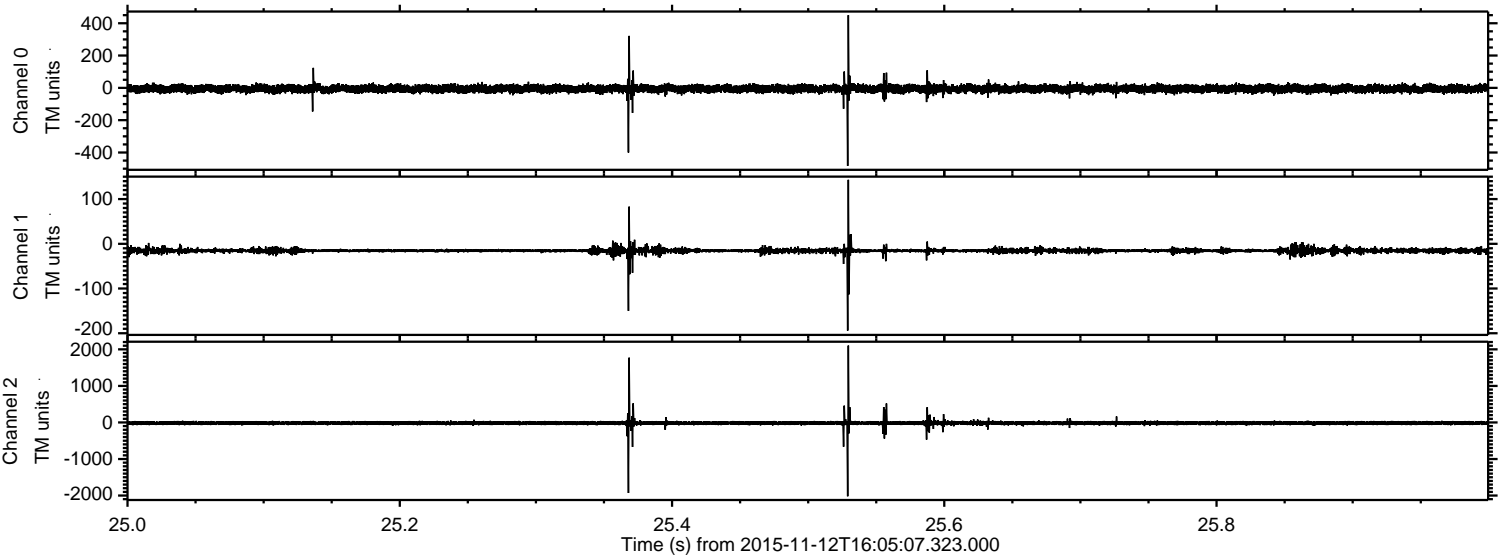


Channel 0  
mn: -465  
mx: 526  
 $\mu$ : -5.5  
 $\sigma$ : 13.5

Channel 1  
mn: -169  
mx: 146  
 $\mu$ : -15.4  
 $\sigma$ : 4.7

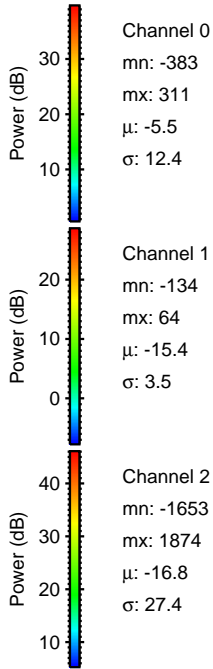
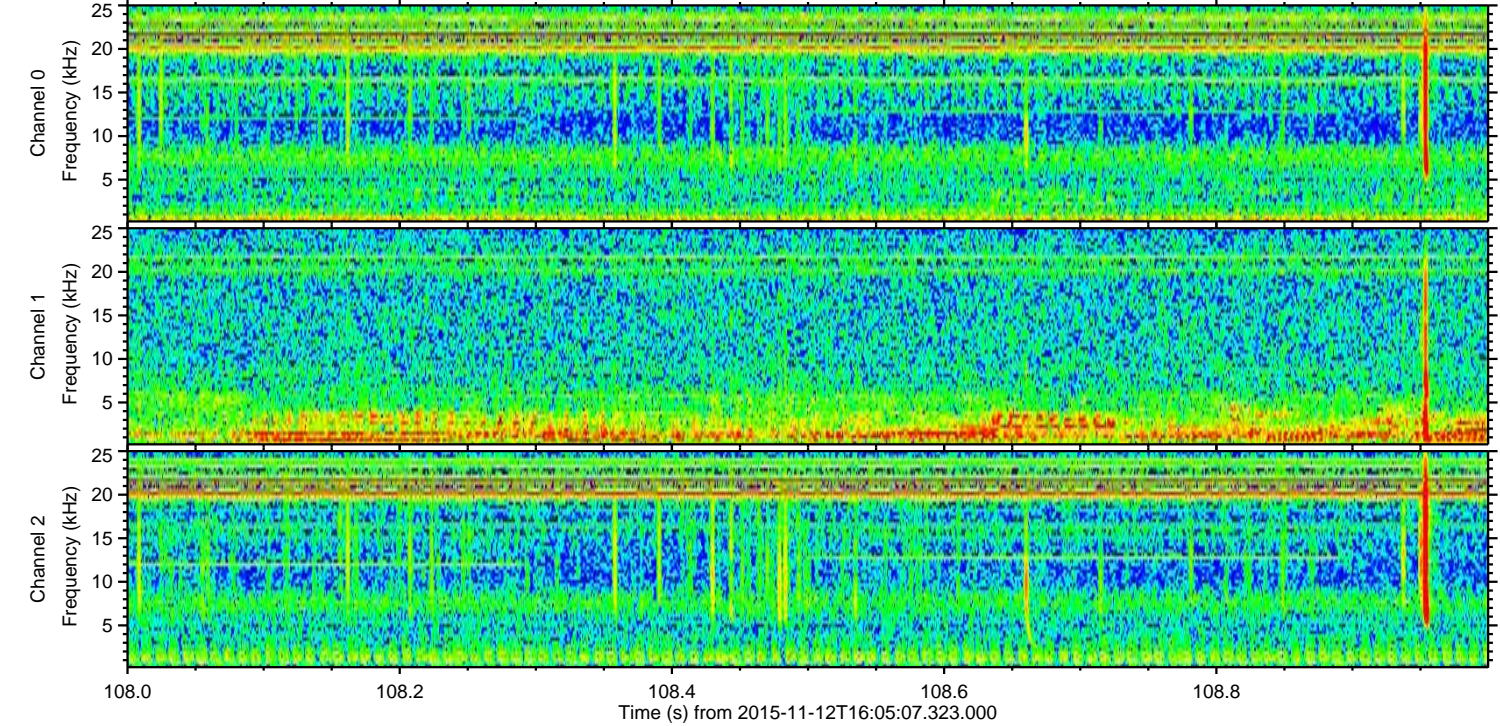
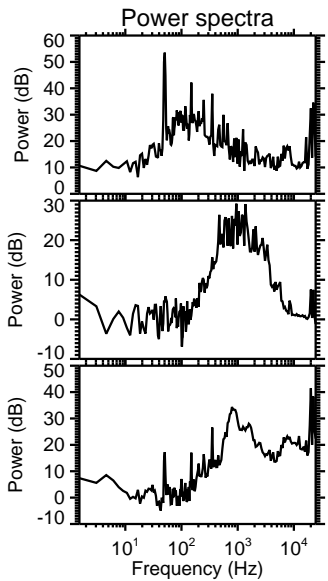
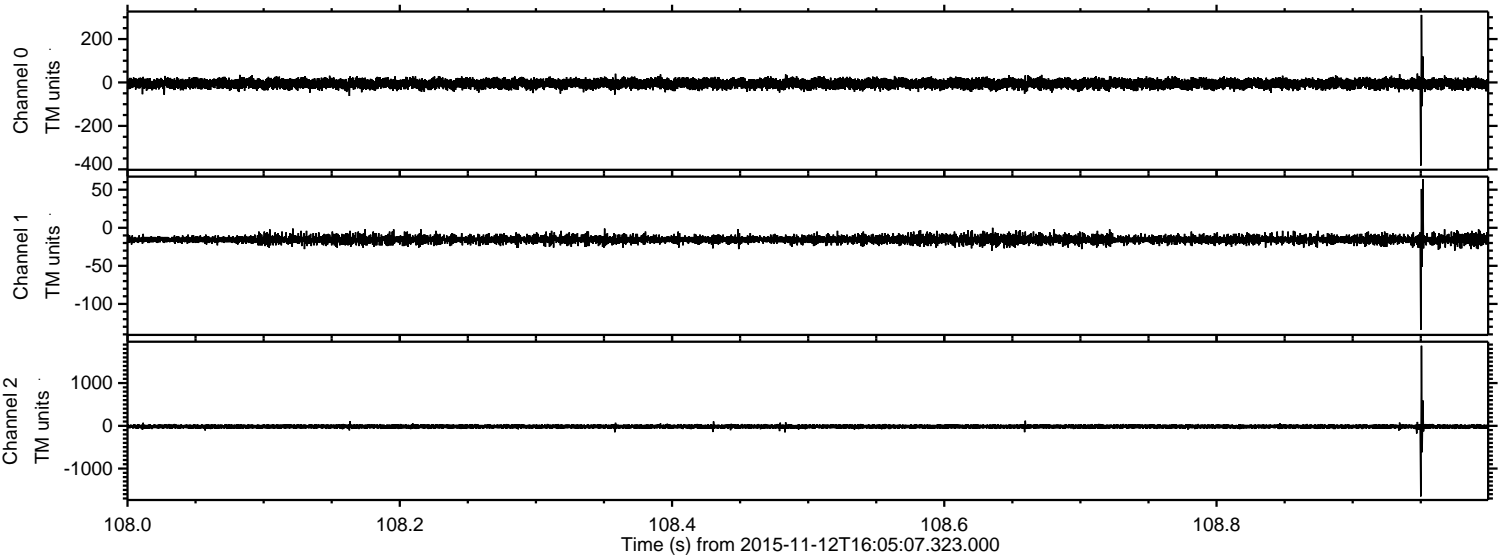
Channel 2  
mn: -1920  
mx: 2281  
 $\mu$ : -16.8  
 $\sigma$ : 35.5

Processed Thu Nov 12 17:11:31 2015 by ELM ver.2012-10-06 from 001\_\_elm20151112\_160506\_\_dat00.bin



ELMAVAN 3D WAVEFORMS (Measured data sampled at 50 kHz) 51000 packets of 144 samples from 2015-11-12T16:05:07.323.000. Part 109/147

Processed Thu Nov 12 17:11:32 2015 by ELM ver.2012-10-06 from 001\_\_elm20151112\_160506\_\_dat00.bin

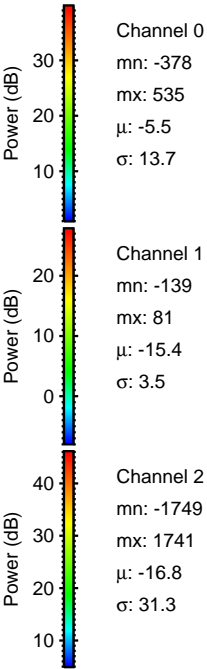
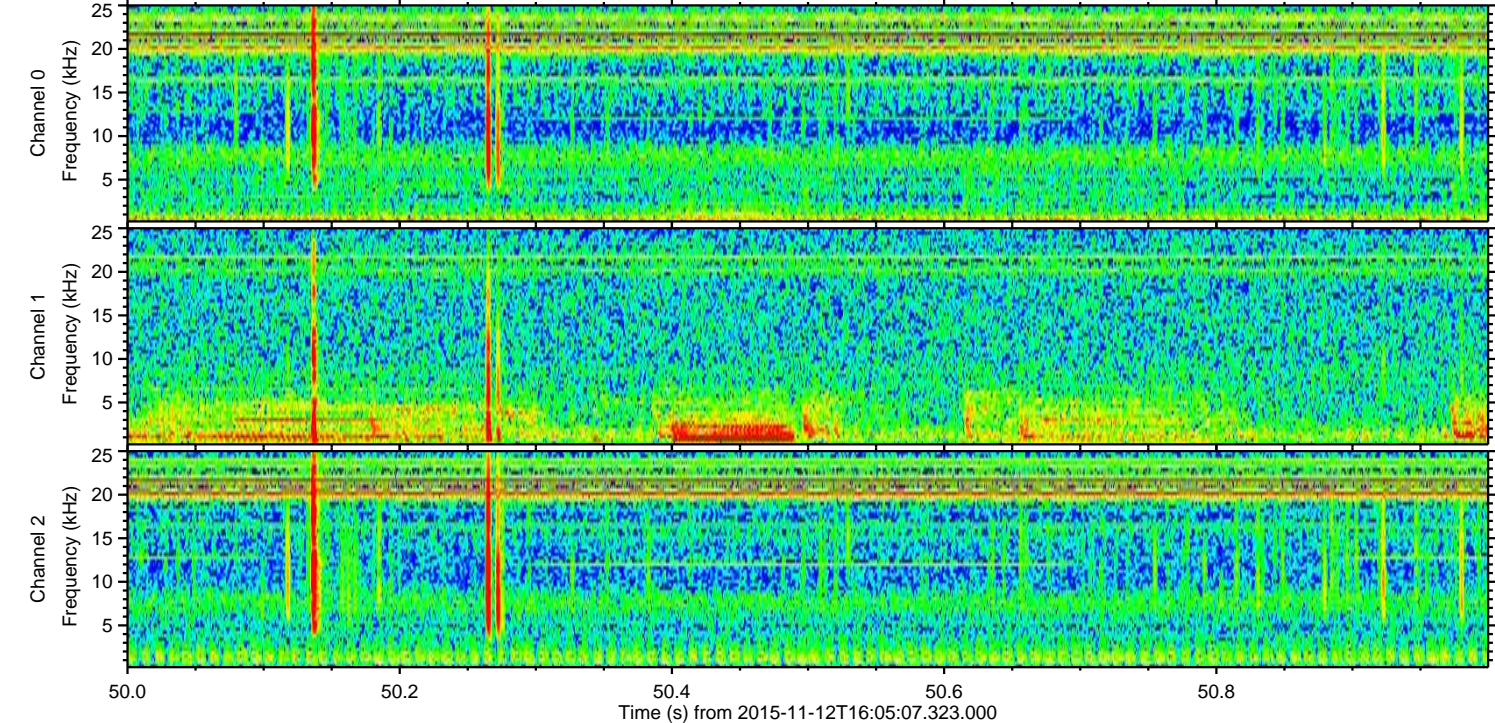
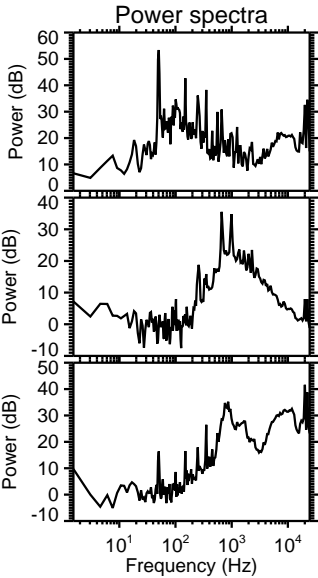
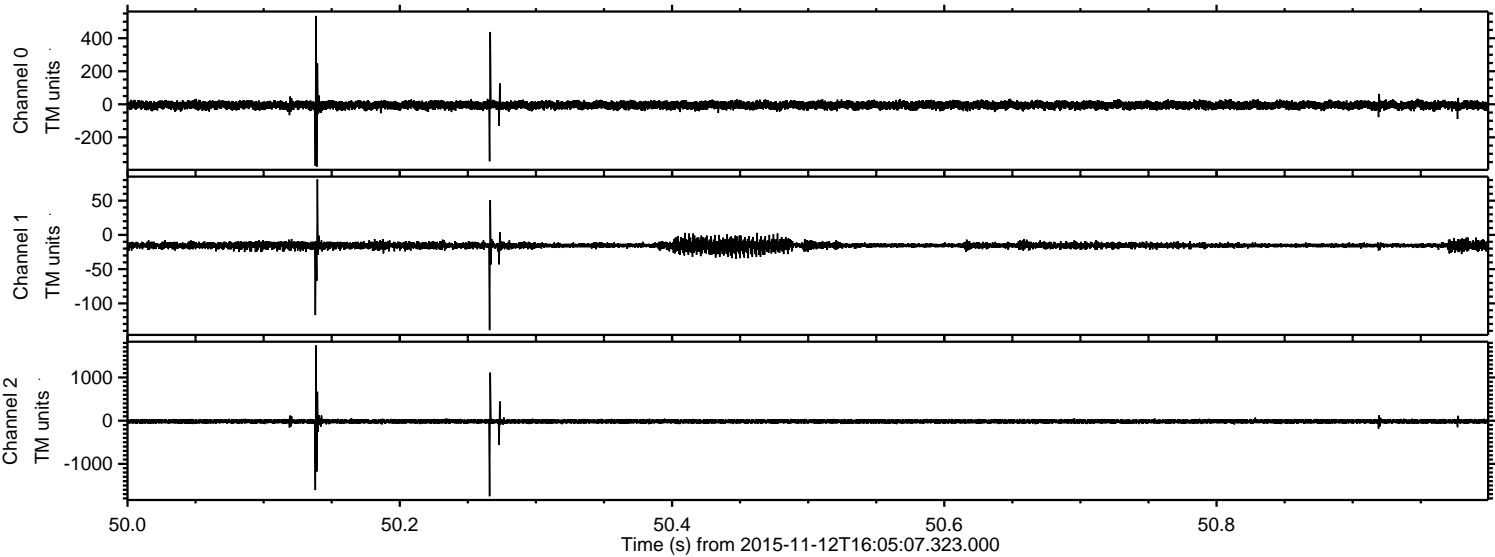


Channel 0  
mn: -383  
mx: 311  
 $\mu$ : -5.5  
 $\sigma$ : 12.4

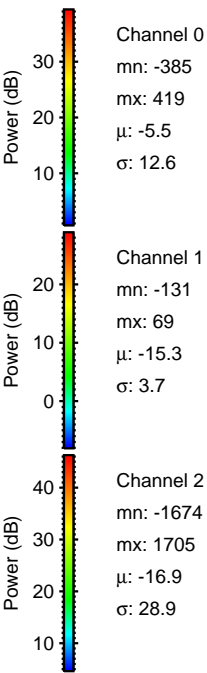
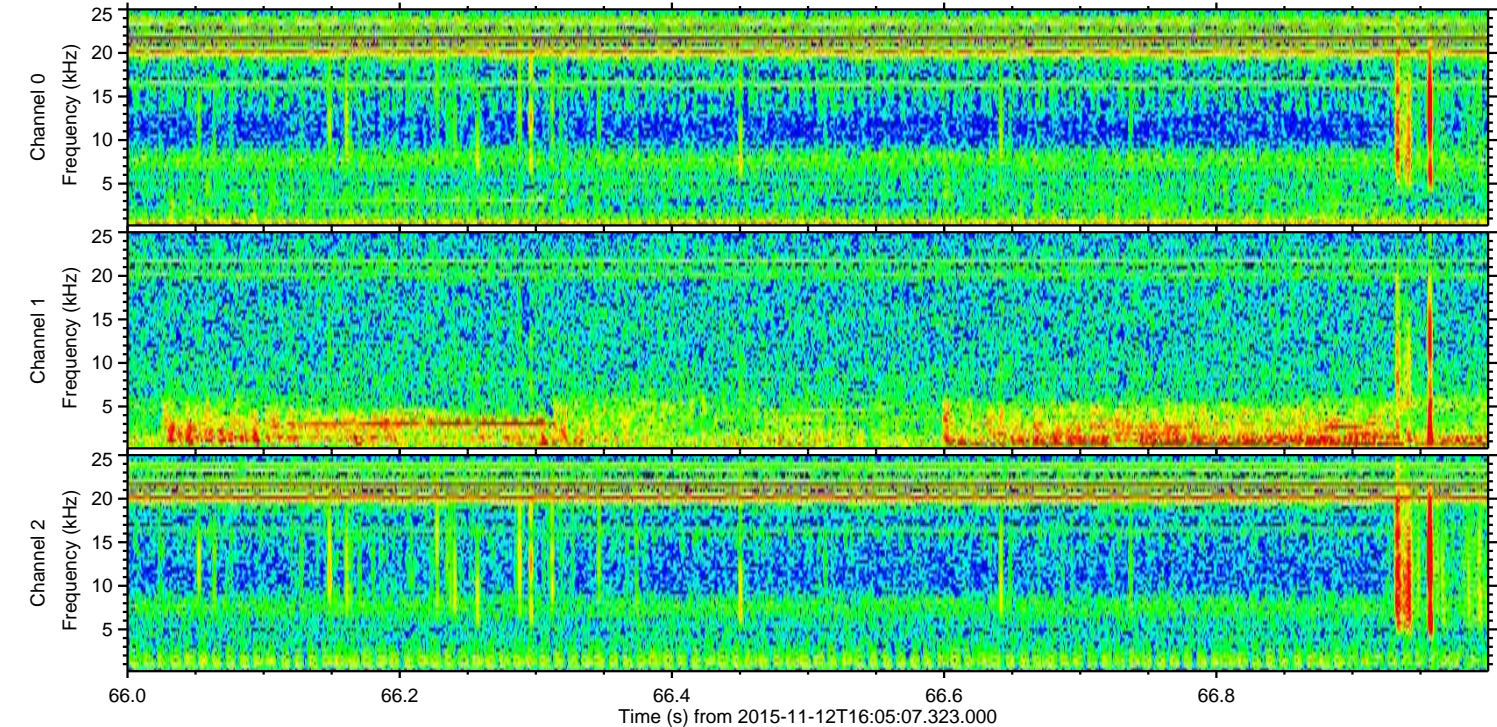
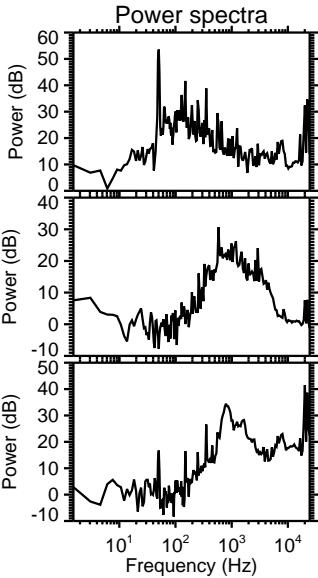
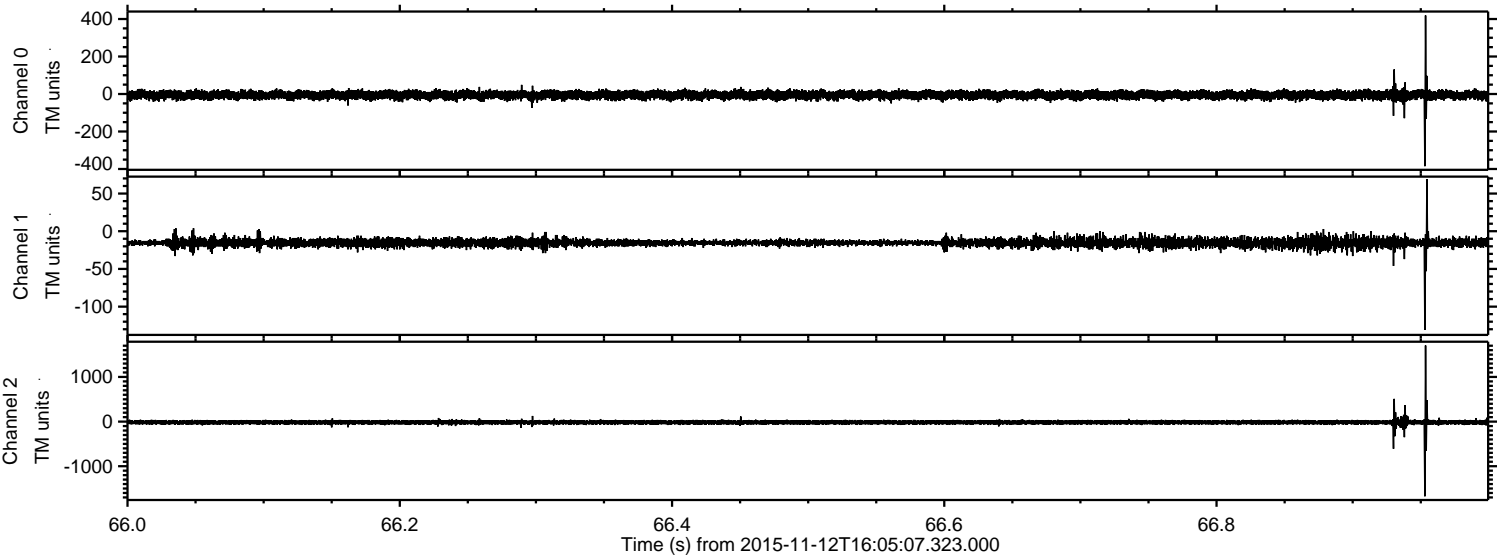
Channel 1  
mn: -134  
mx: 64  
 $\mu$ : -15.4  
 $\sigma$ : 3.5

Channel 2  
mn: -1653  
mx: 1874  
 $\mu$ : -16.8  
 $\sigma$ : 27.4

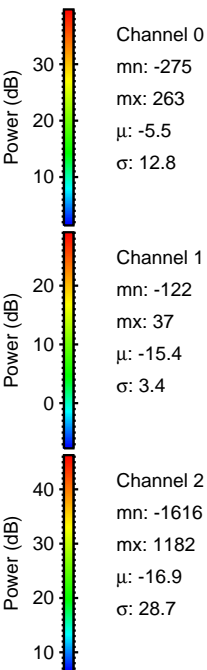
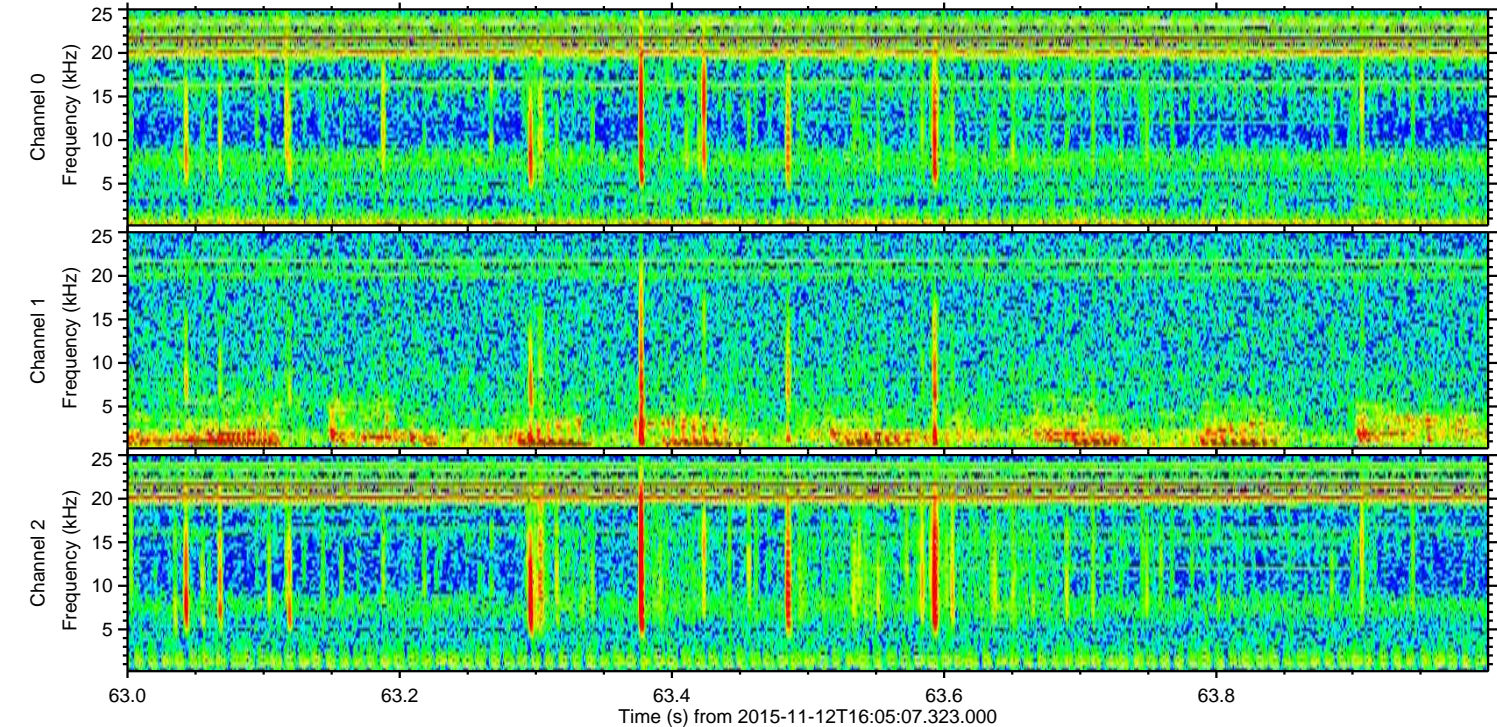
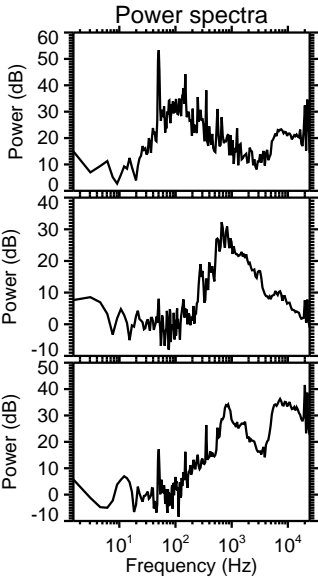
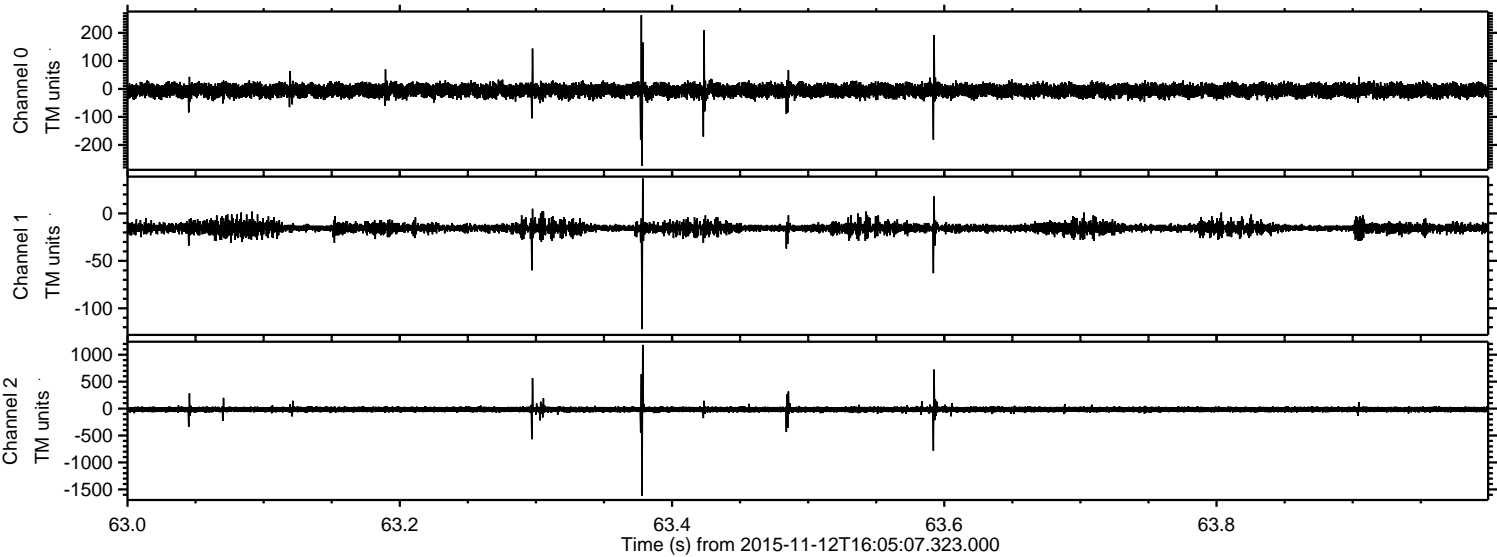
Processed Thu Nov 12 17:11:32 2015 by ELM ver.2012-10-06 from 001\_\_elm20151112\_160506\_\_dat00.bin



Processed Thu Nov 12 17:11:33 2015 by ELM ver.2012-10-06 from 001\_\_elm20151112\_160506\_\_dat00.bin



Processed Thu Nov 12 17:11:34 2015 by ELM ver.2012-10-06 from 001\_\_elm20151112\_160506\_\_dat00.bin



Processed Thu Nov 12 17:11:35 2015 by ELM ver.2012-10-06 from 001\_\_elm20151112\_160506\_\_dat00.bin

