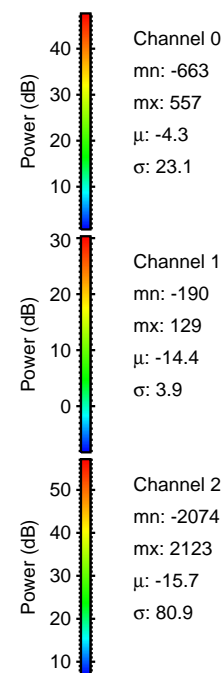
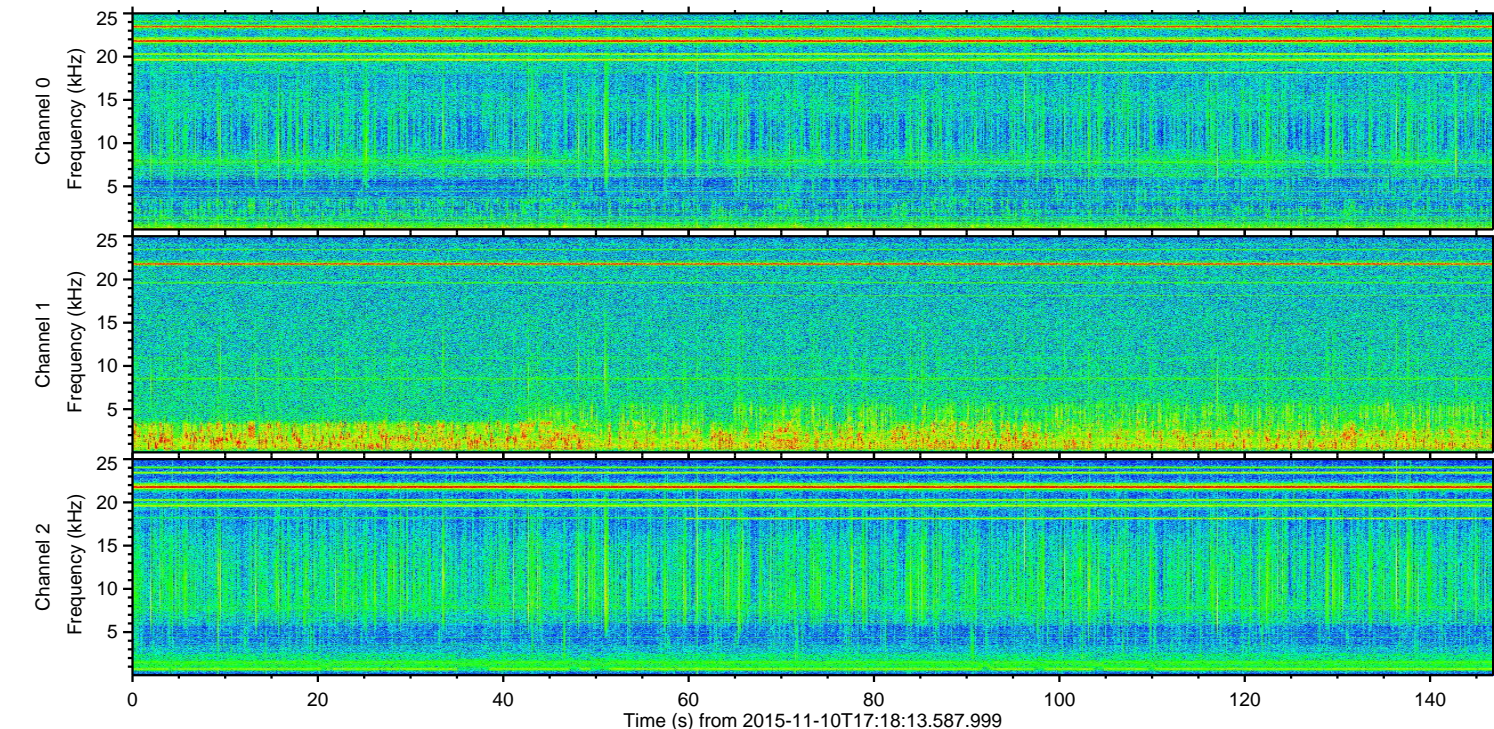
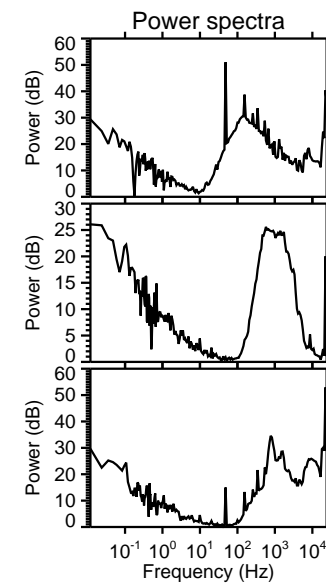
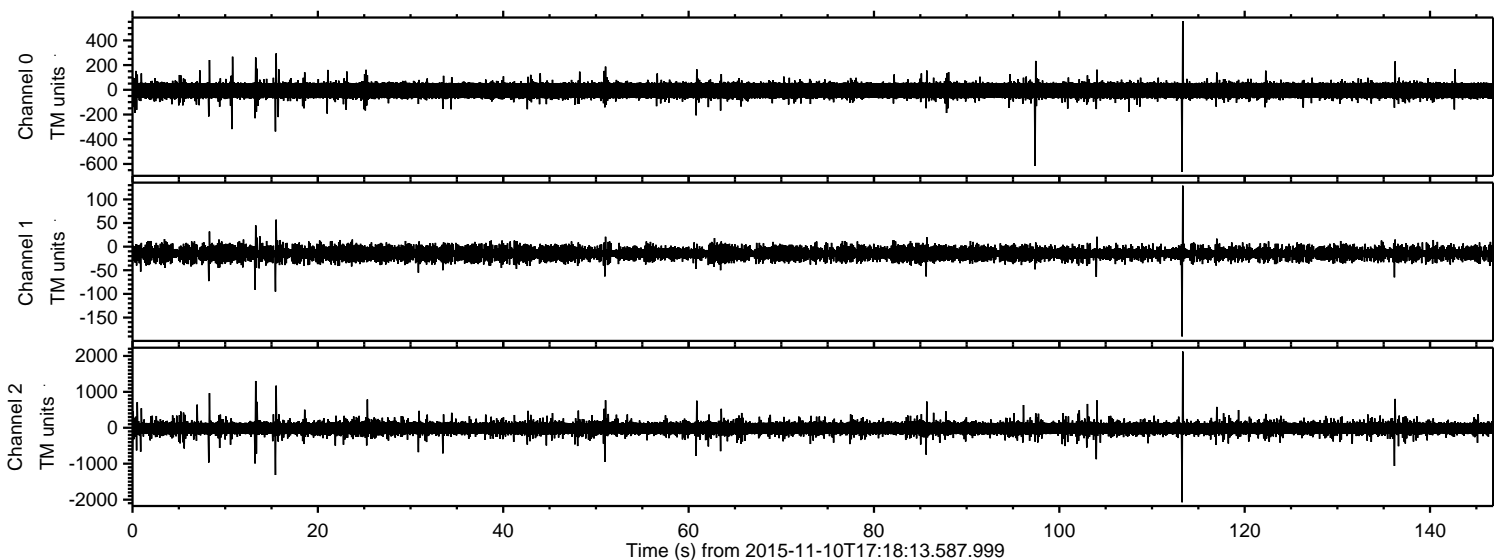


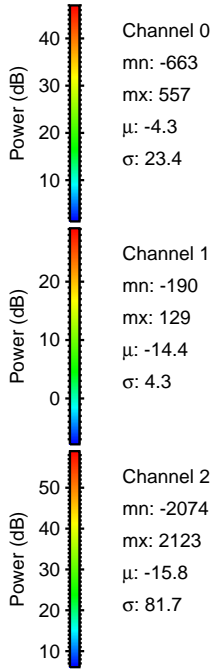
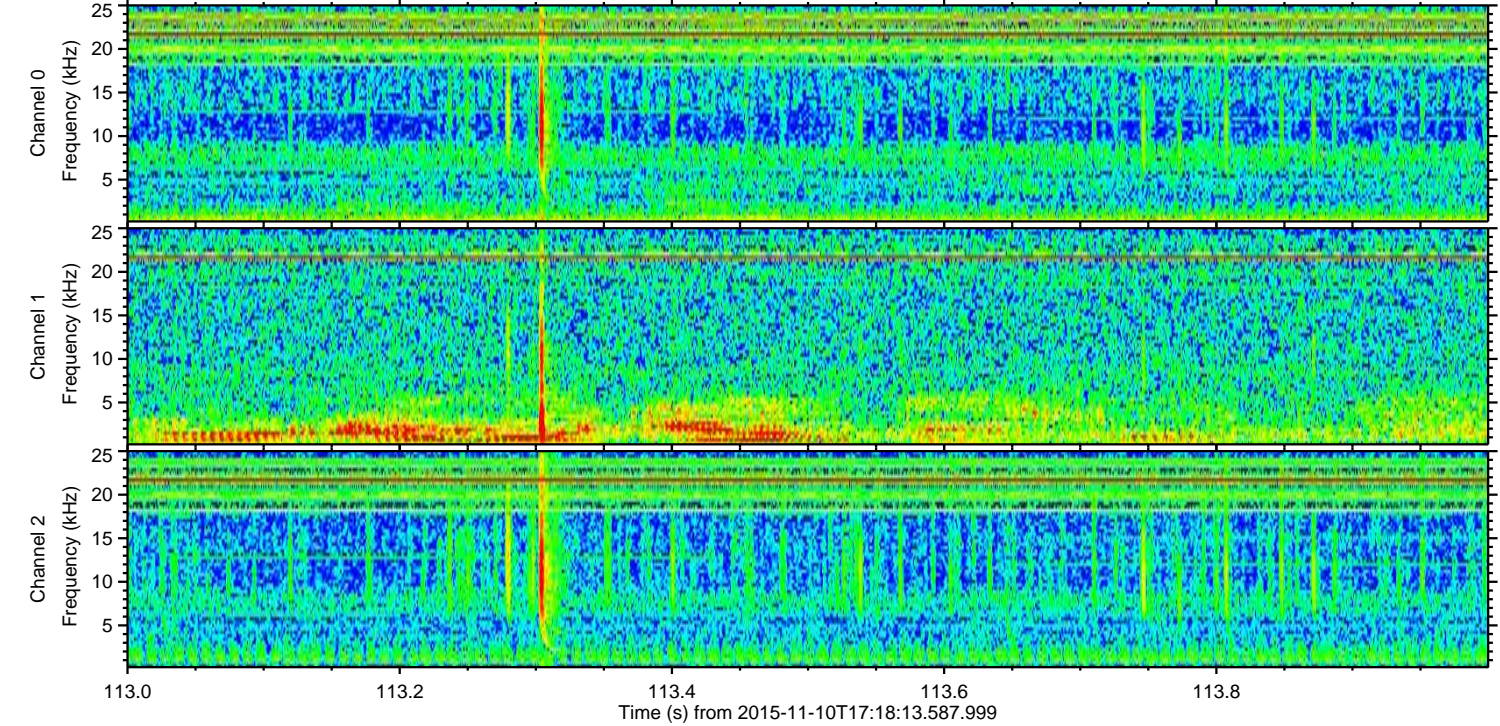
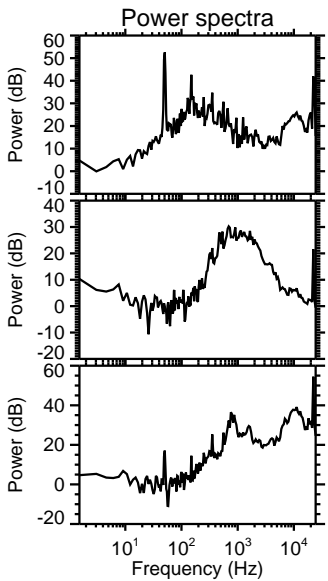
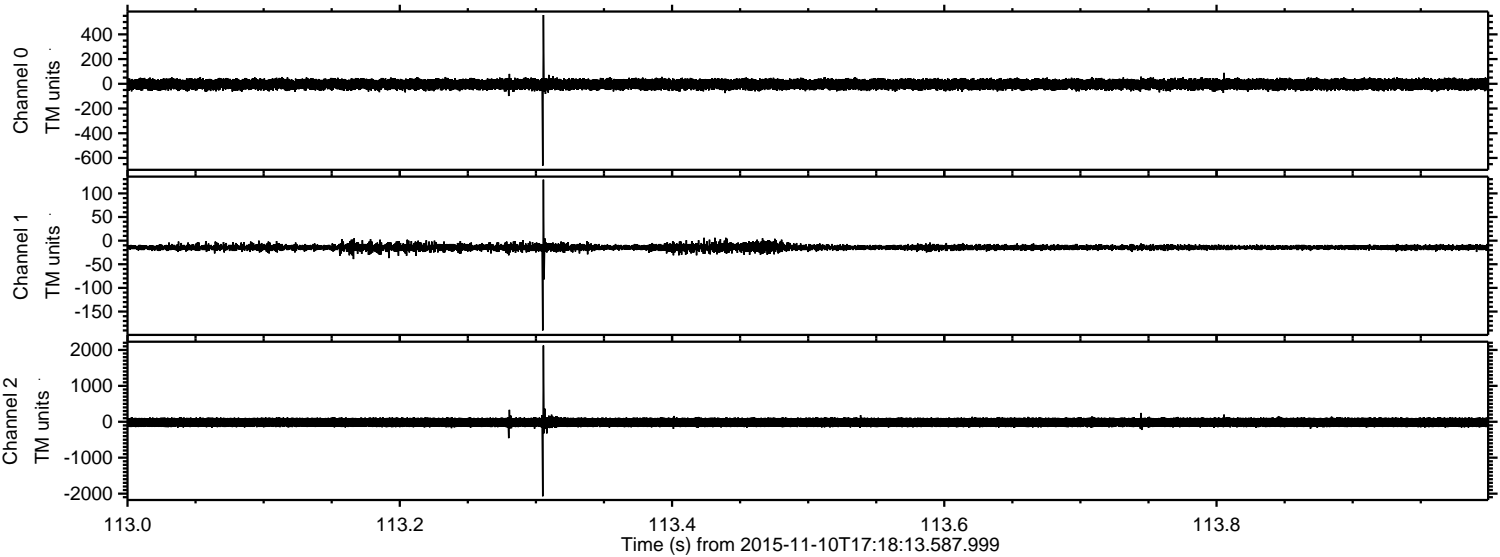
ELMAVAN 3D WAVEFORMS (Measured data sampled at 50 kHz) 51000 packets of 144 samples from 2015-11-10T17:18:13.587.999.

Processed Tue Nov 10 18:25:14 2015 by ELM ver.2012-10-06 from 001__elm20151110_171812__dat00.bin



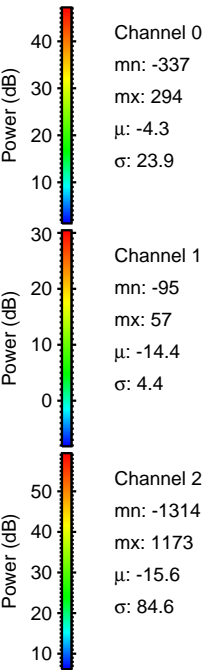
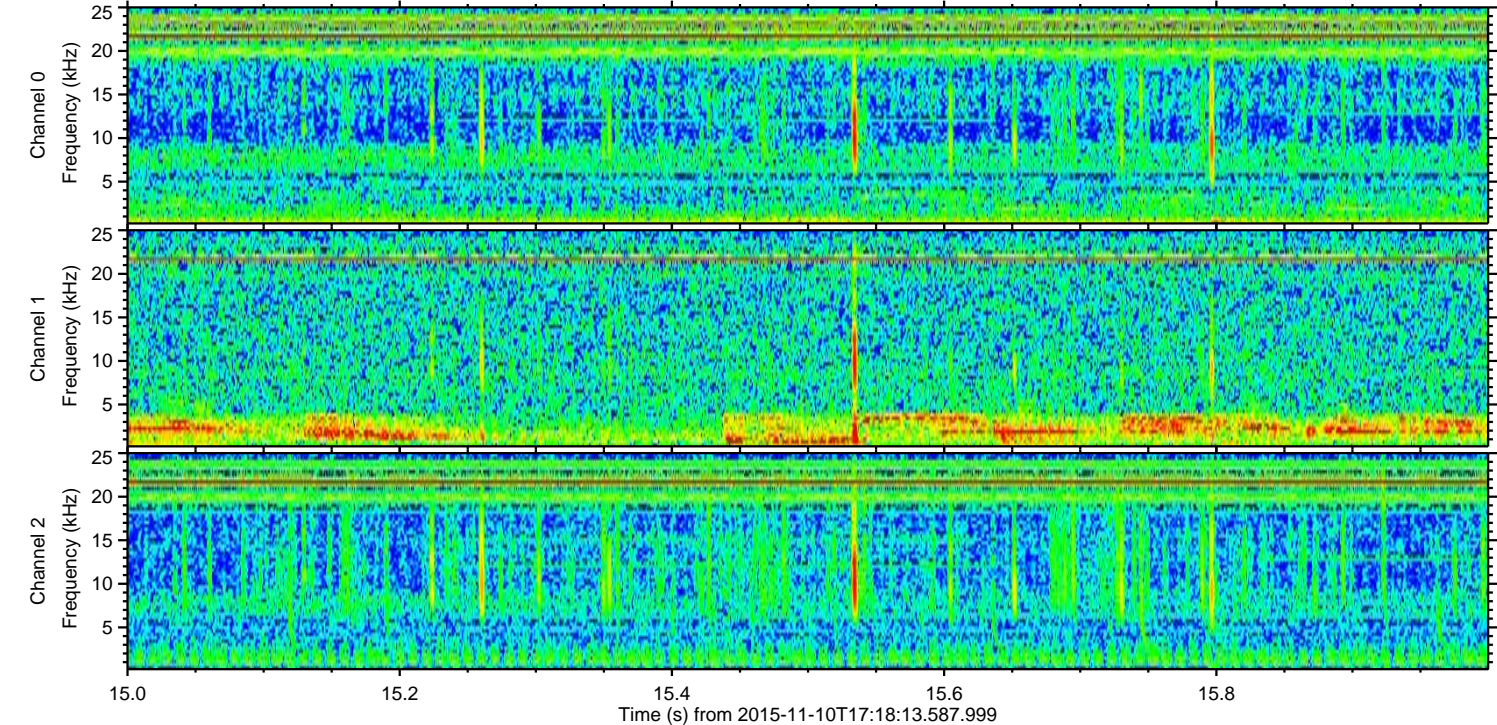
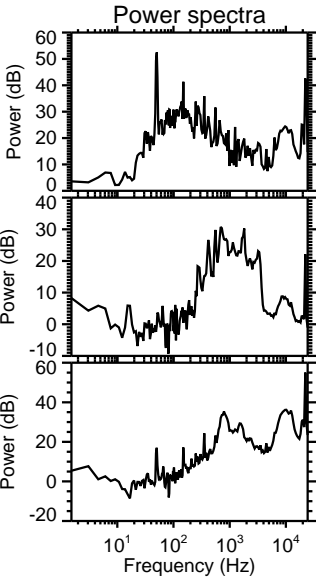
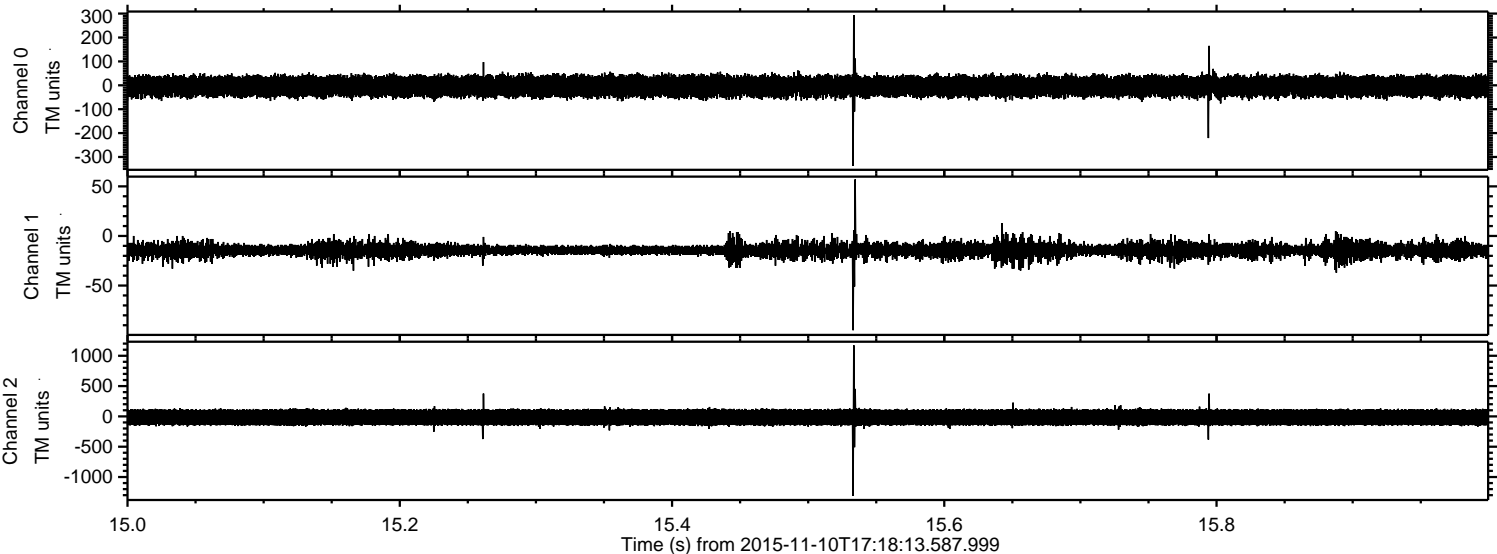
ELMAVAN 3D WAVEFORMS (Measured data sampled at 50 kHz) 51000 packets of 144 samples from 2015-11-10T17:18:13.587.999. Part 114/147

Processed Tue Nov 10 18:25:31 2015 by ELM ver.2012-10-06 from 001__elm20151110_171812__dat00.bin

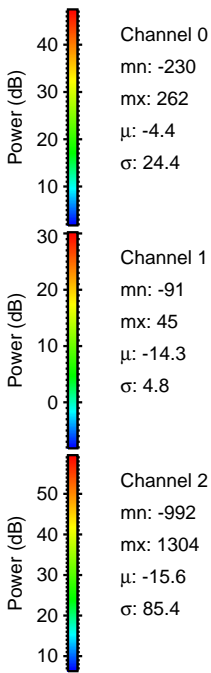
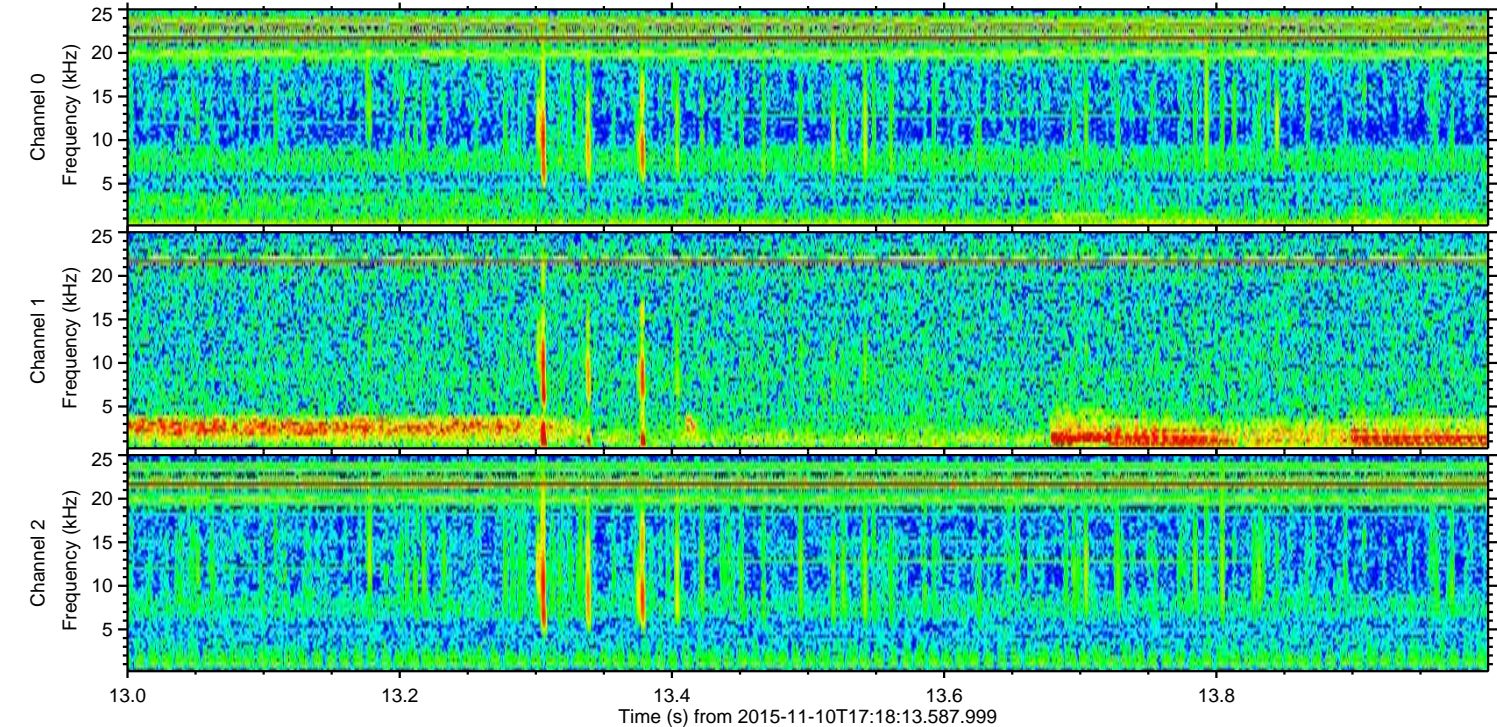
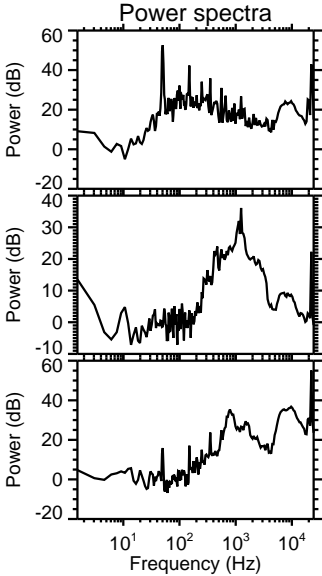
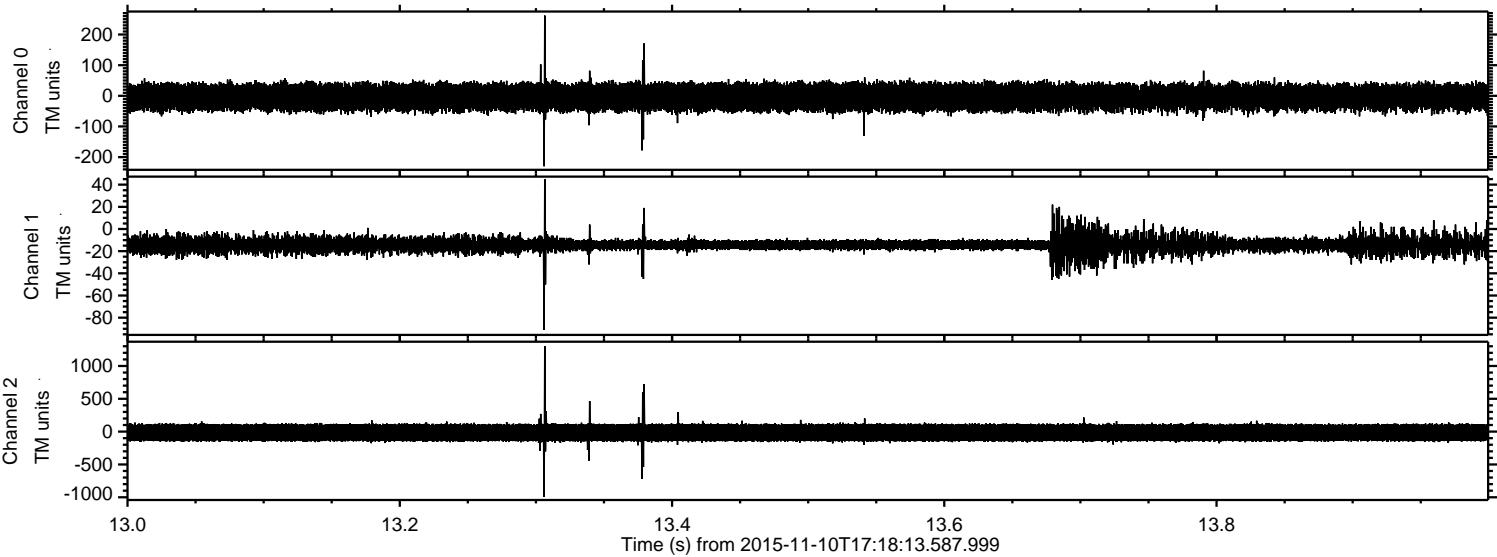


ELMAVAN 3D WAVEFORMS (Measured data sampled at 50 kHz) 51000 packets of 144 samples from 2015-11-10T17:18:13.587.999. Part 16/147

Processed Tue Nov 10 18:25:32 2015 by ELM ver.2012-10-06 from 001__elm20151110_171812__dat00.bin

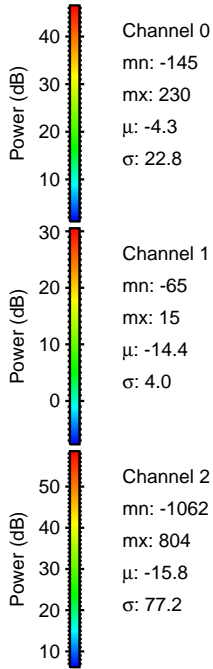
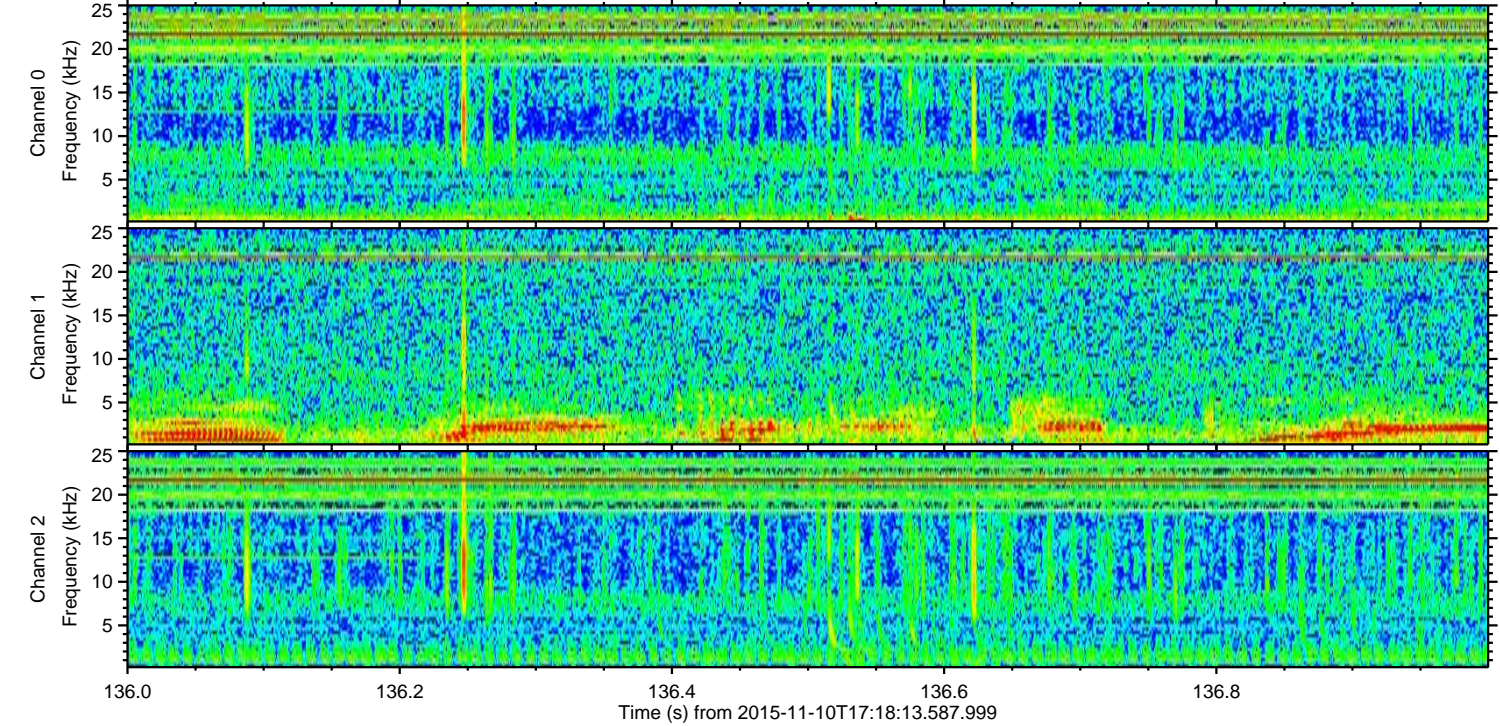
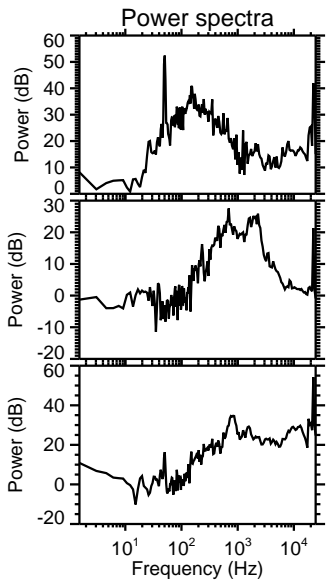
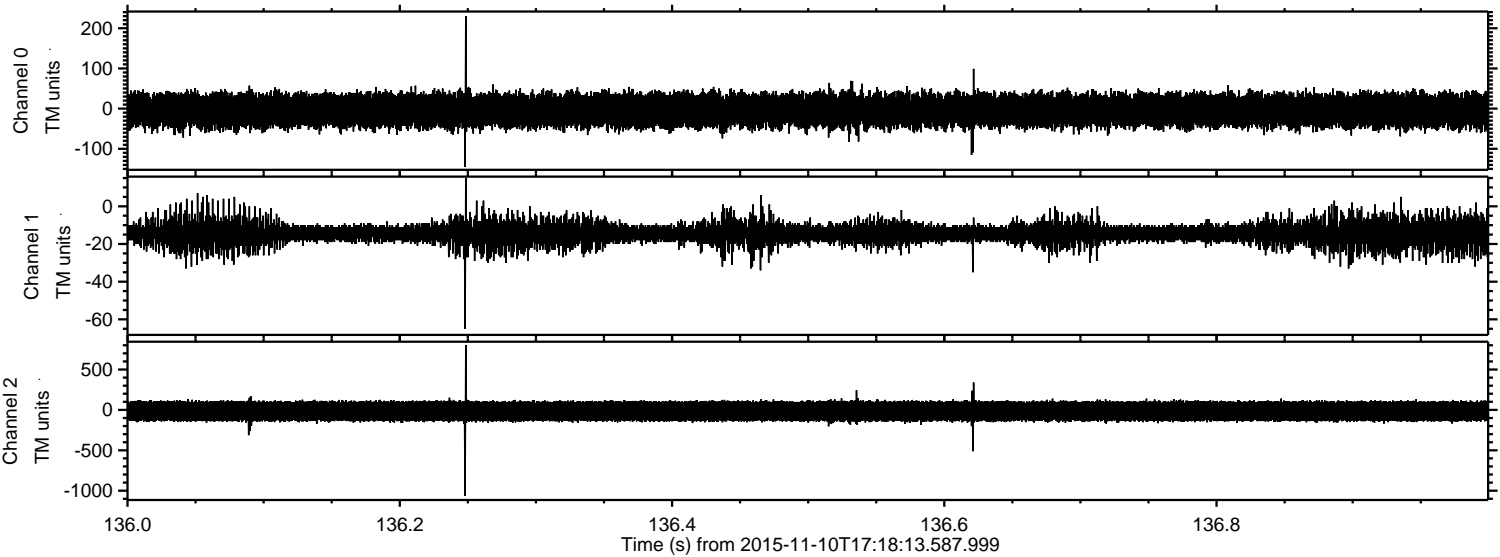


Processed Tue Nov 10 18:25:33 2015 by ELM ver.2012-10-06 from 001__elm20151110_171812__dat00.bin

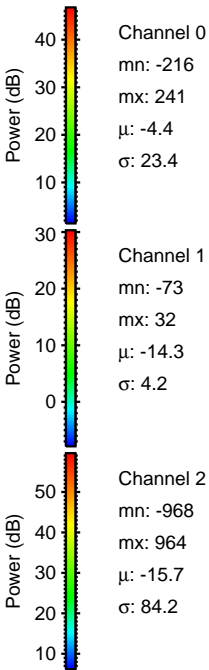
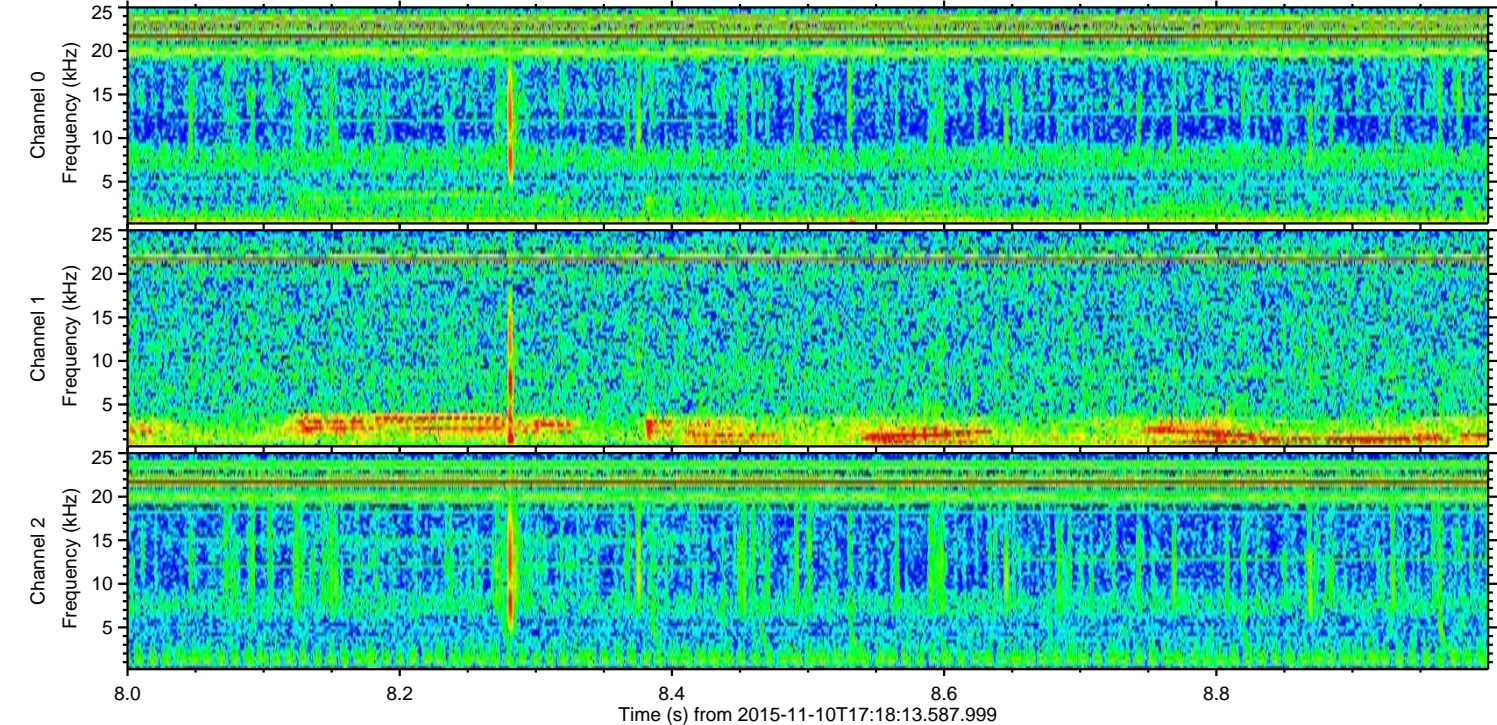
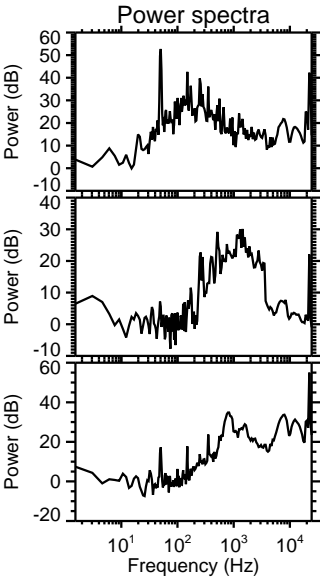
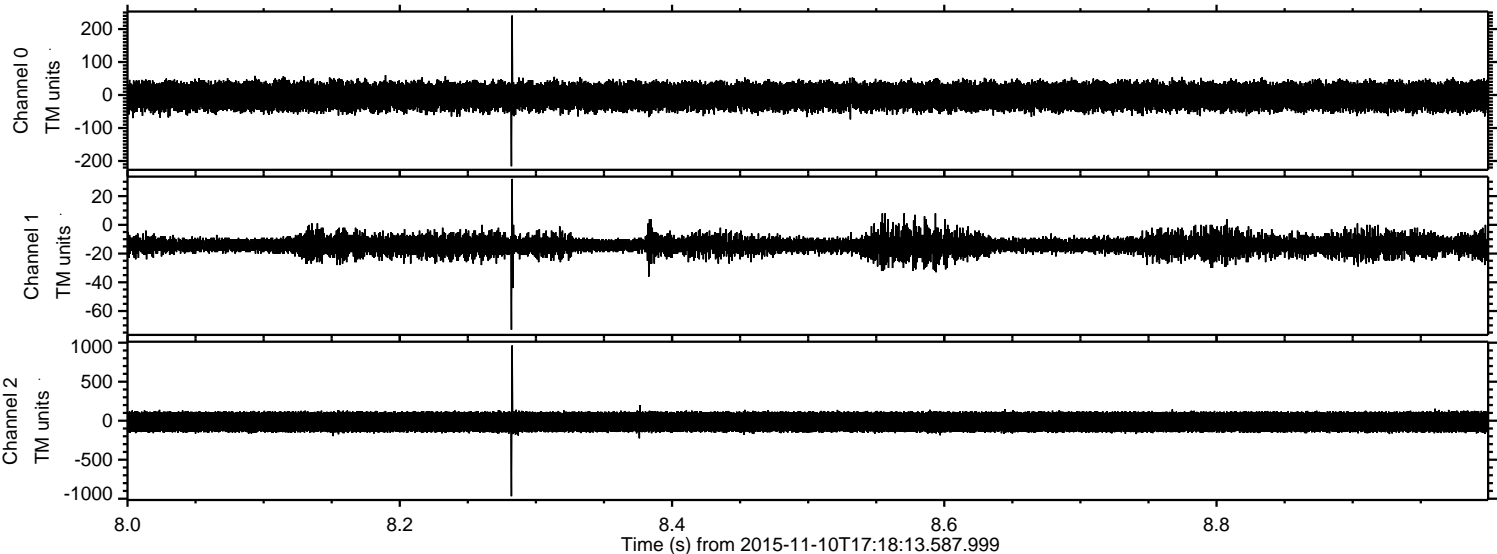


ELMAVAN 3D WAVEFORMS (Measured data sampled at 50 kHz) 51000 packets of 144 samples from 2015-11-10T17:18:13.587.999. Part 137/147

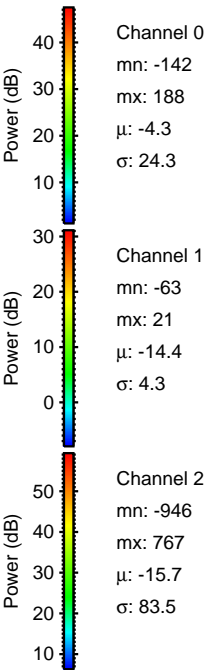
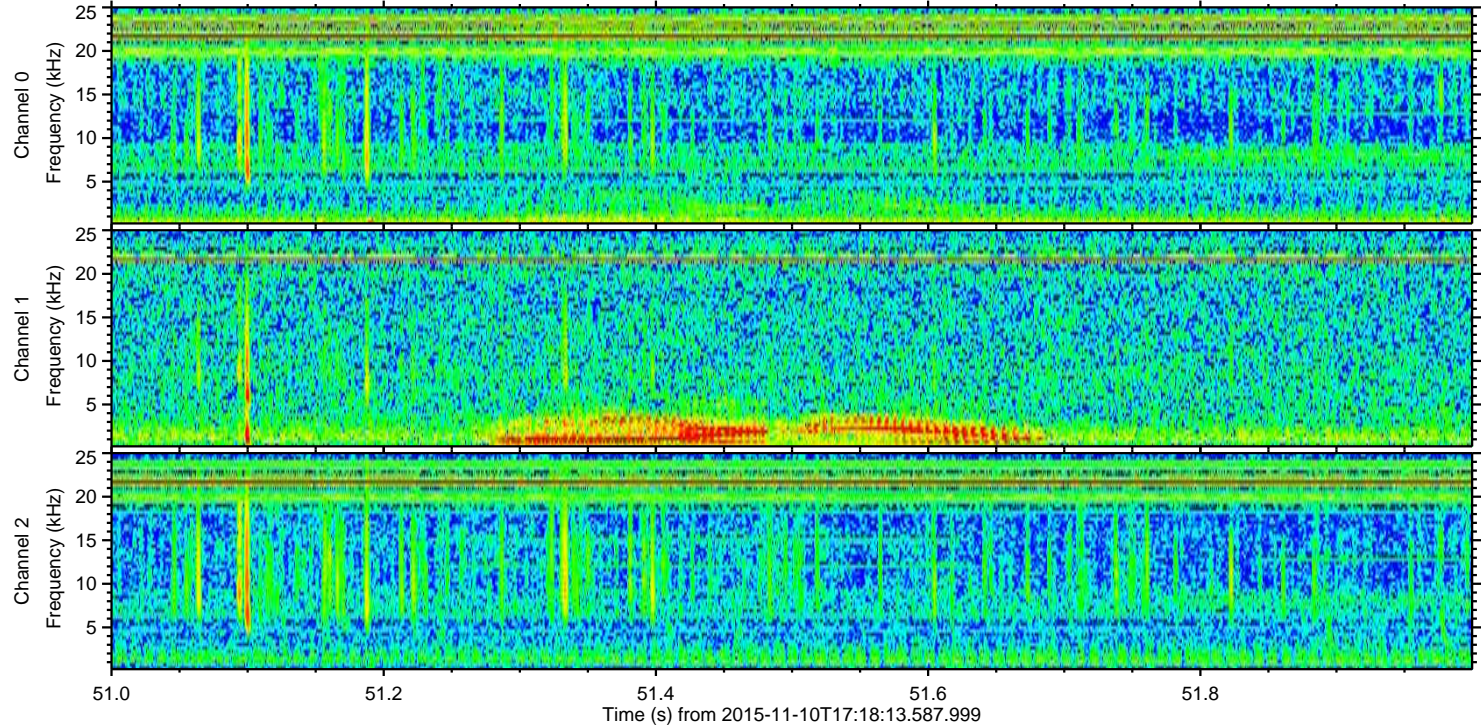
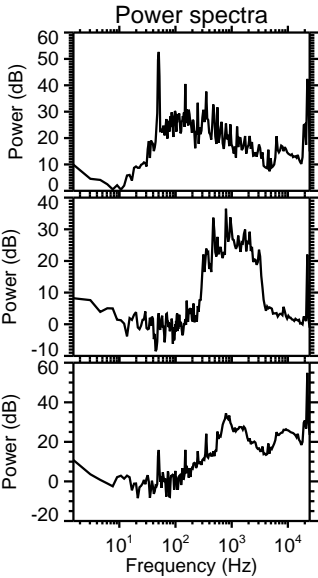
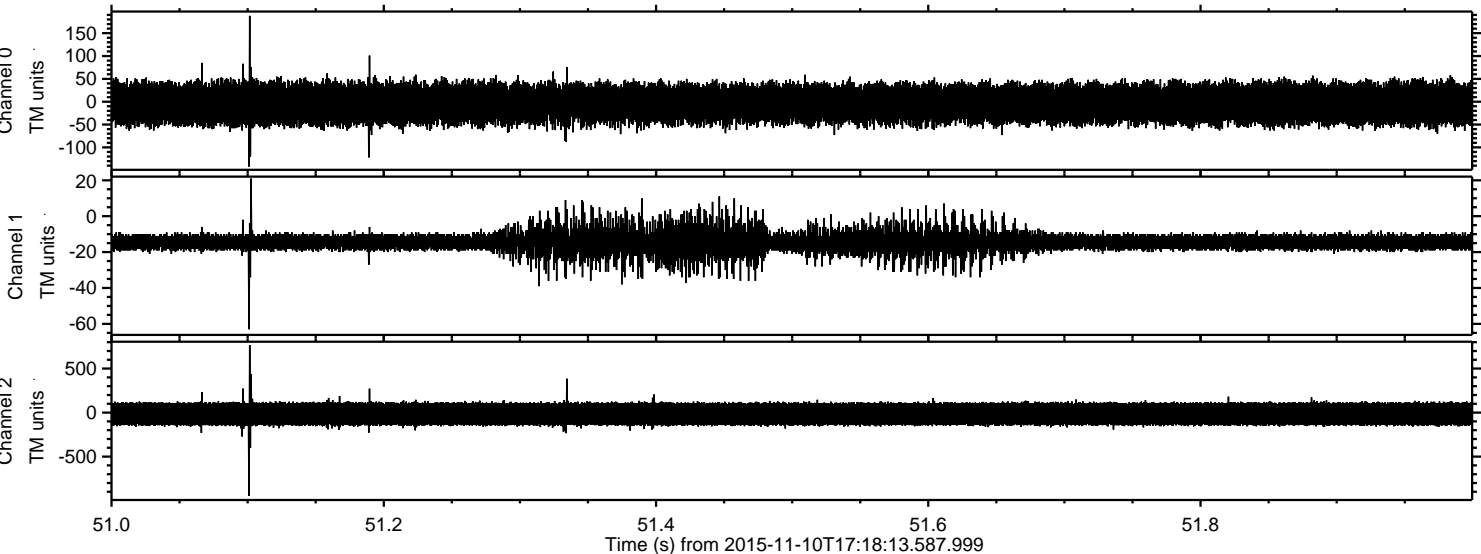
Processed Tue Nov 10 18:25:34 2015 by ELM ver.2012-10-06 from 001__elm20151110_171812__dat00.bin



Processed Tue Nov 10 18:25:35 2015 by ELM ver.2012-10-06 from 001__elm20151110_171812__dat00.bin

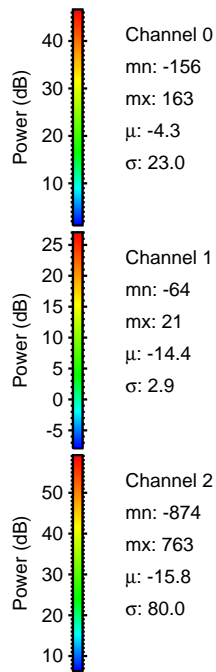
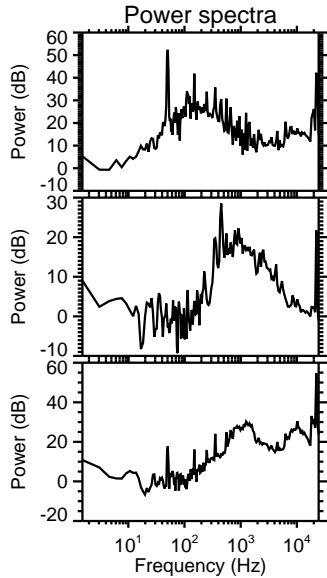
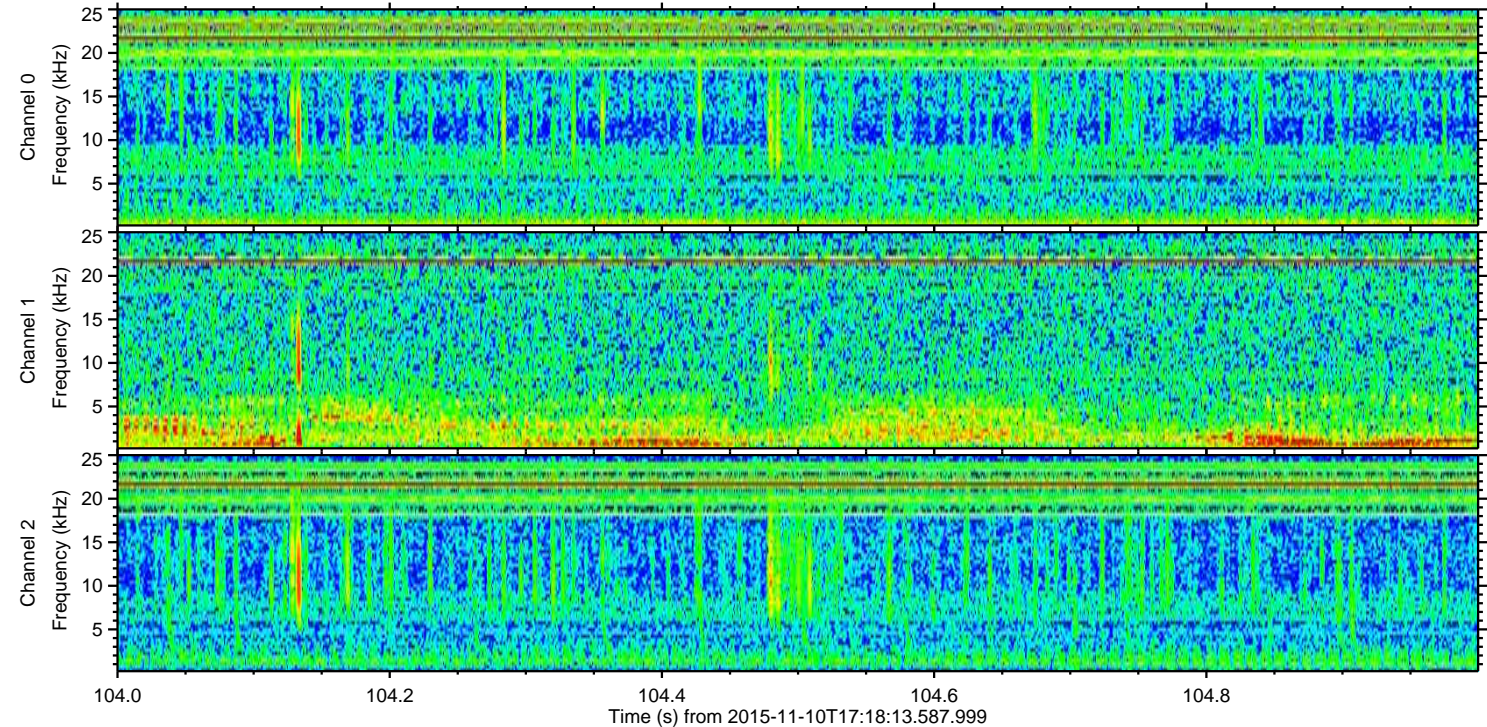
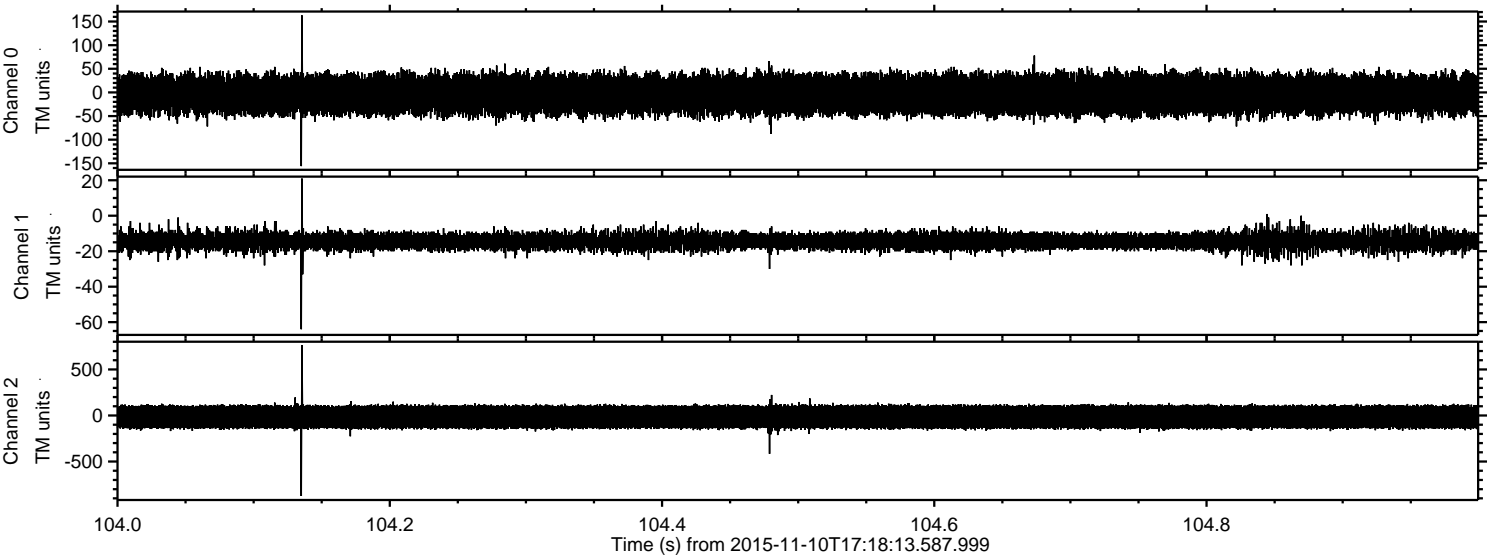


Processed Tue Nov 10 18:25:36 2015 by ELM ver.2012-10-06 from 001__elm20151110_171812__dat00.bin

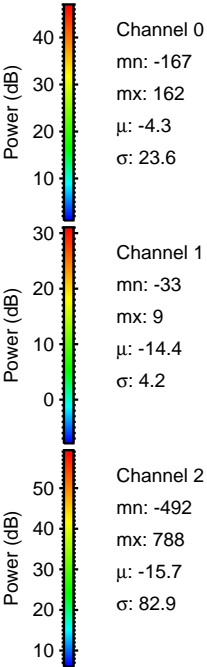
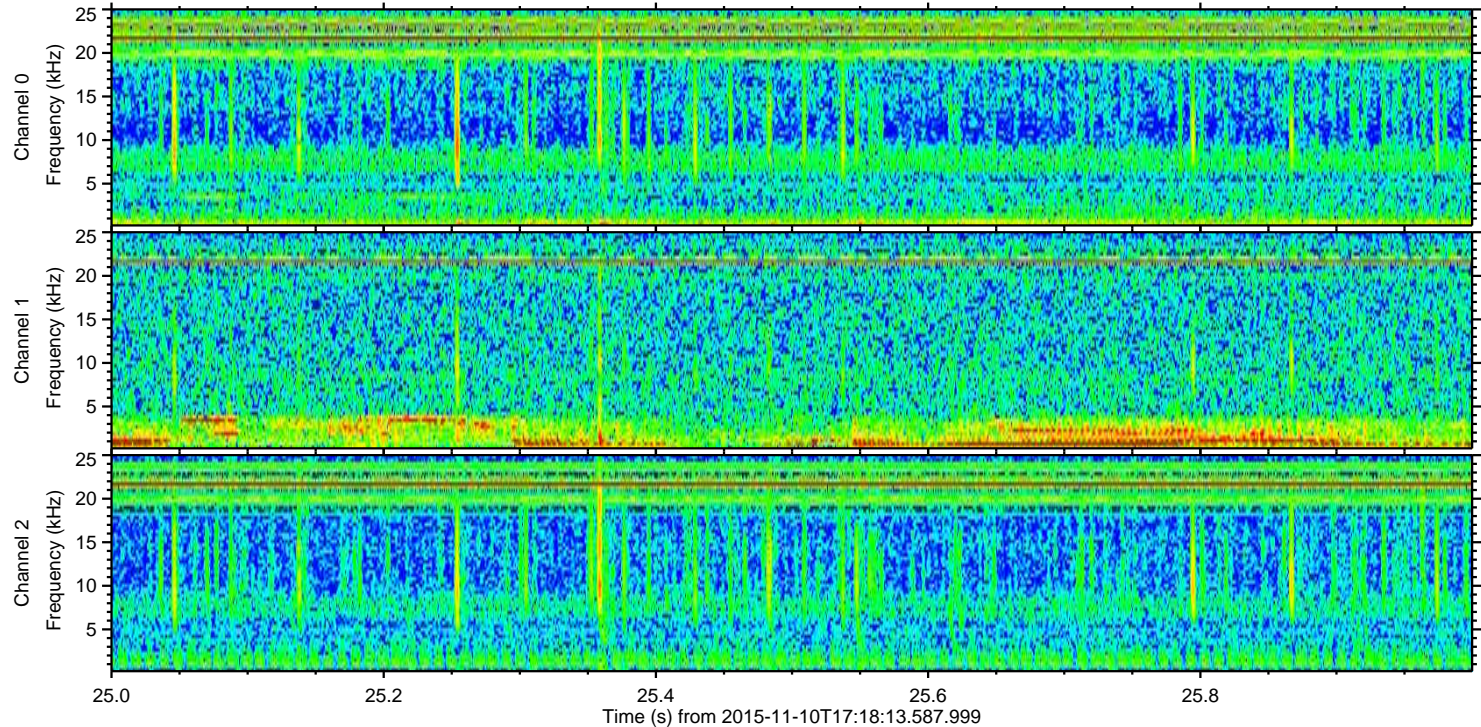
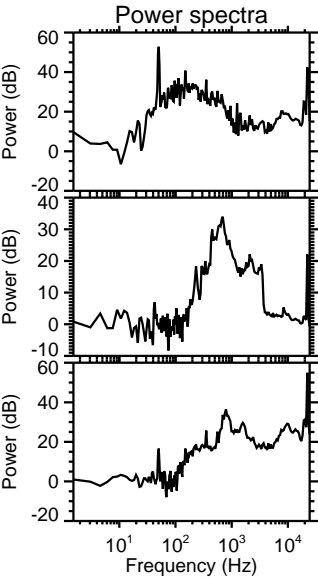
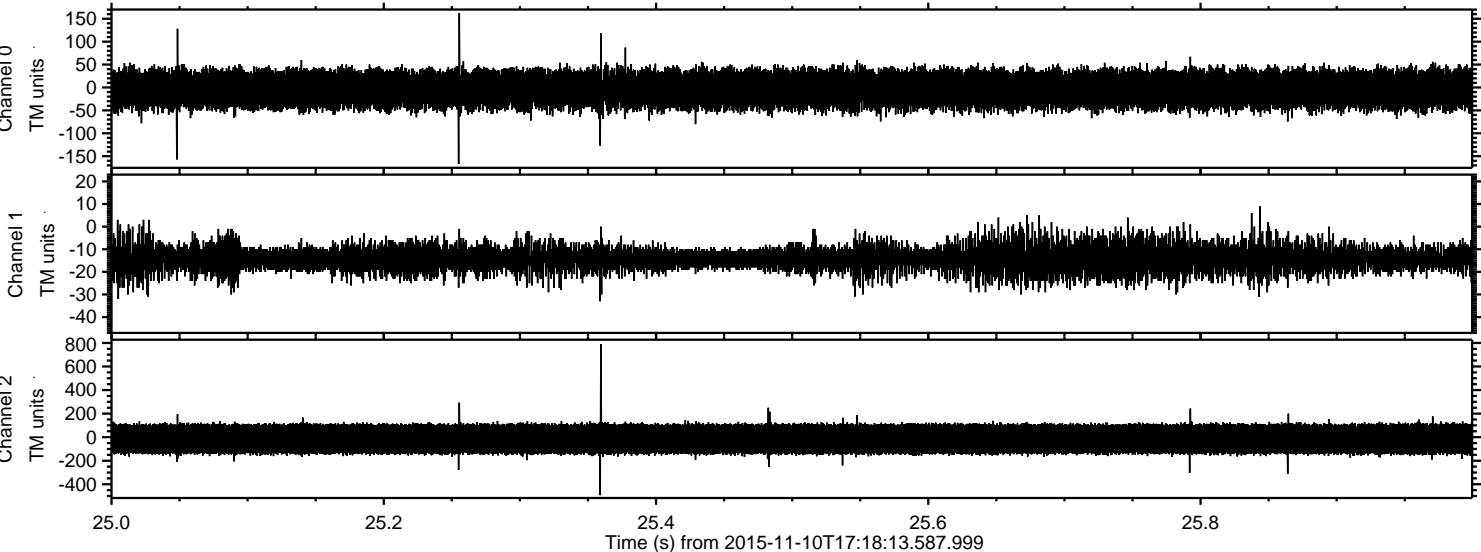


ELMAVAN 3D WAVEFORMS (Measured data sampled at 50 kHz) 51000 packets of 144 samples from 2015-11-10T17:18:13.587.999. Part 105/147

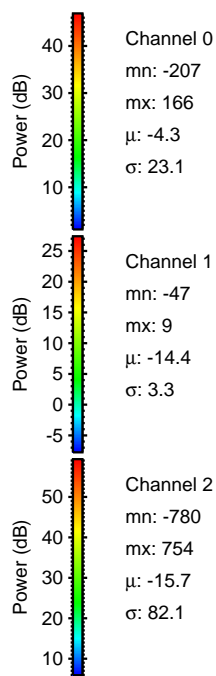
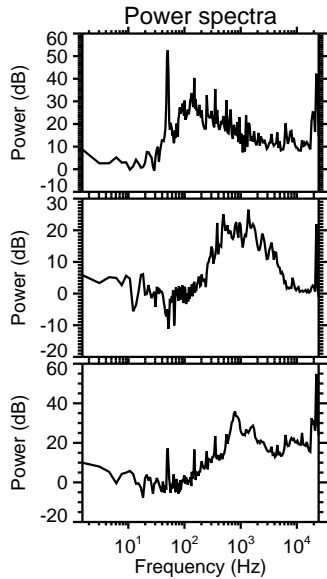
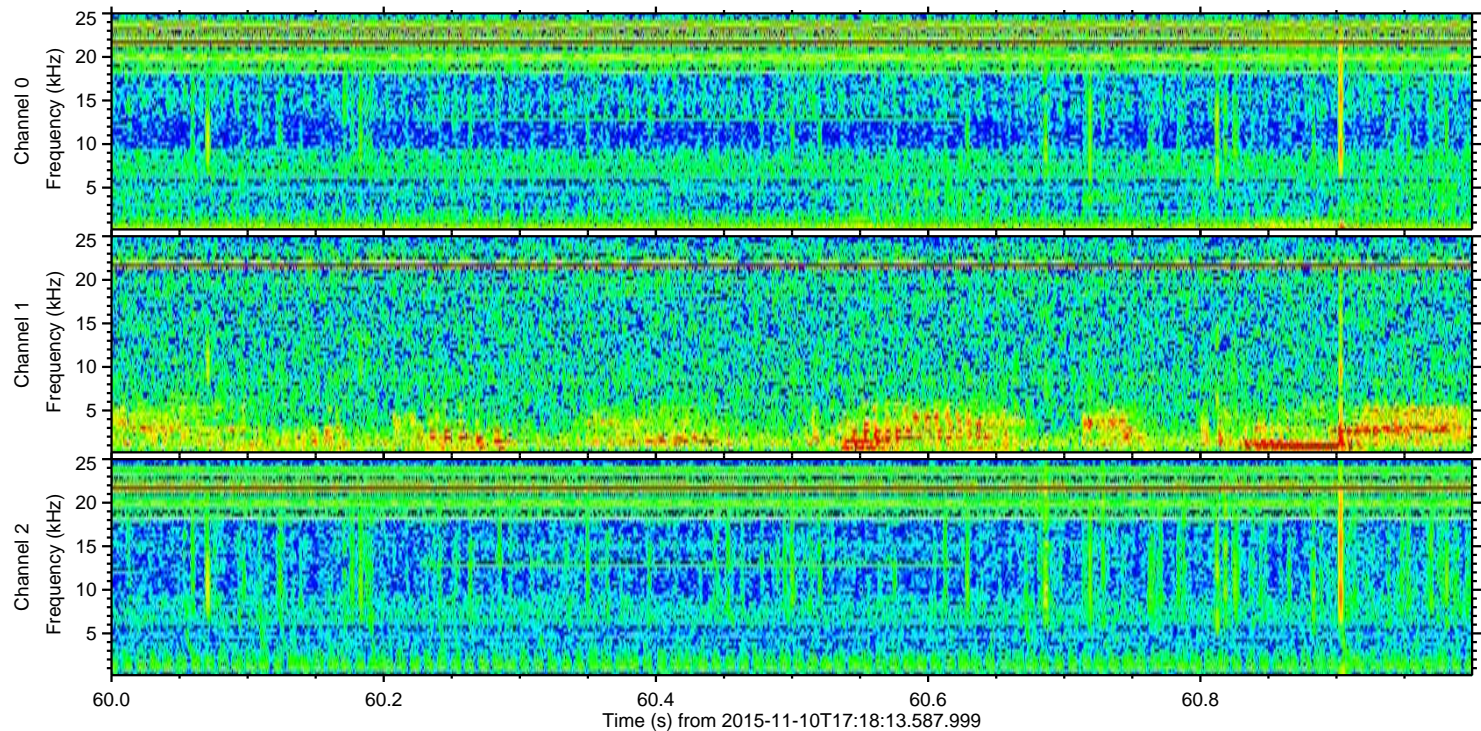
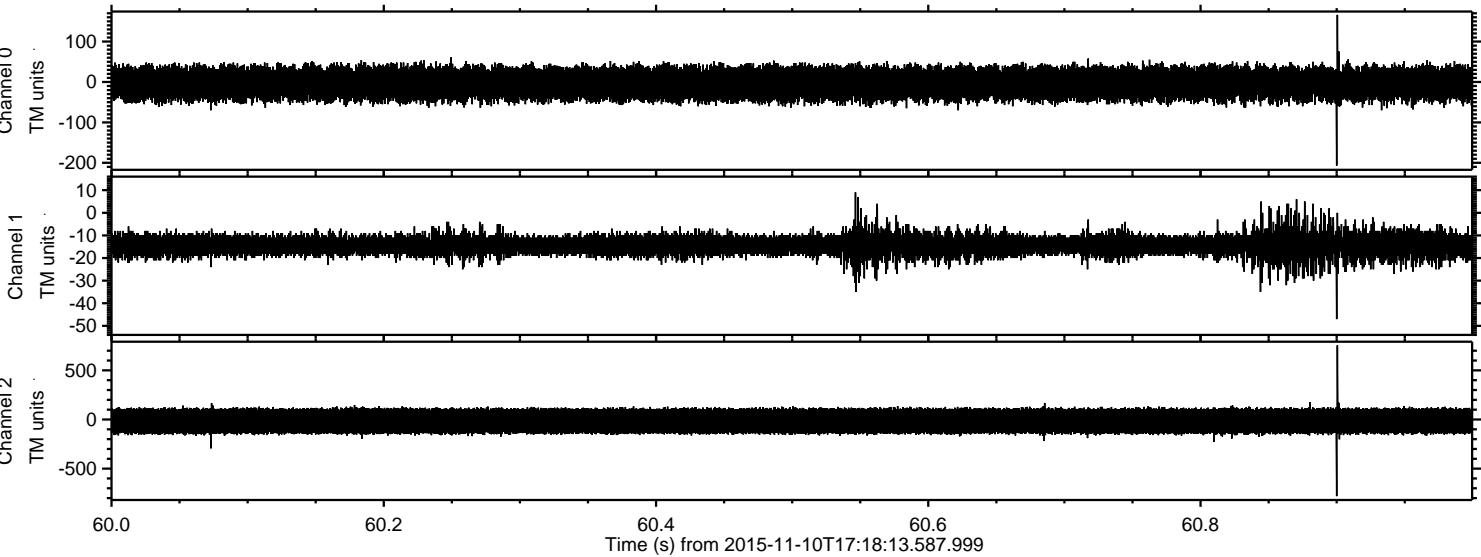
Processed Tue Nov 10 18:25:37 2015 by ELM ver.2012-10-06 from 001__elm20151110_171812__dat00.bin



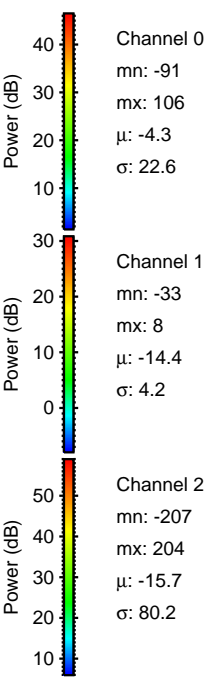
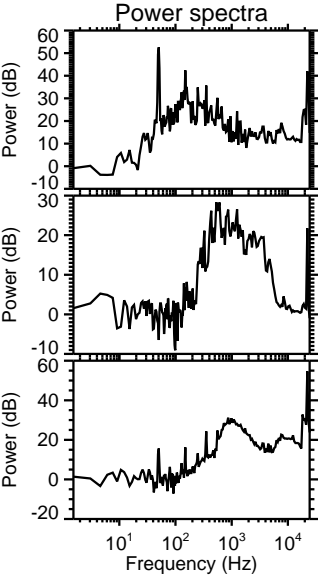
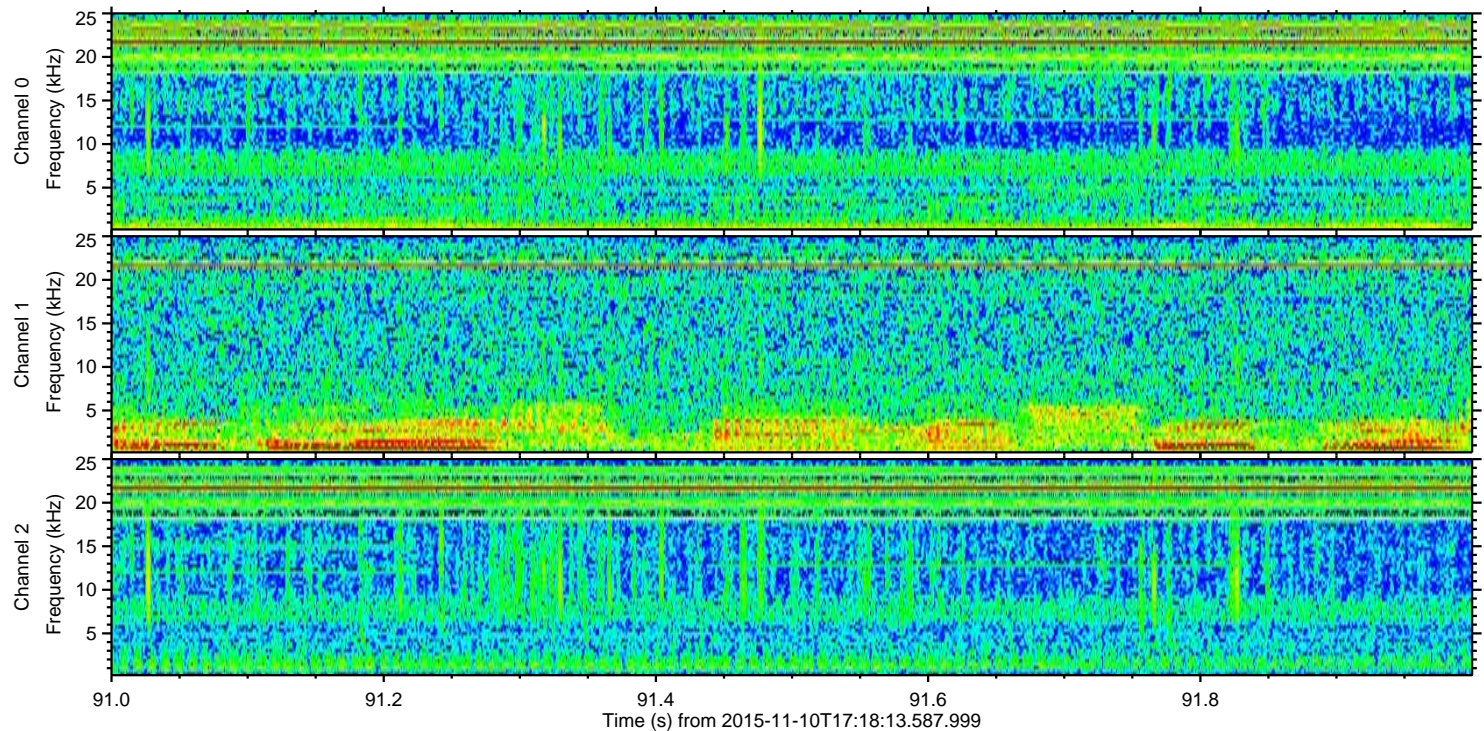
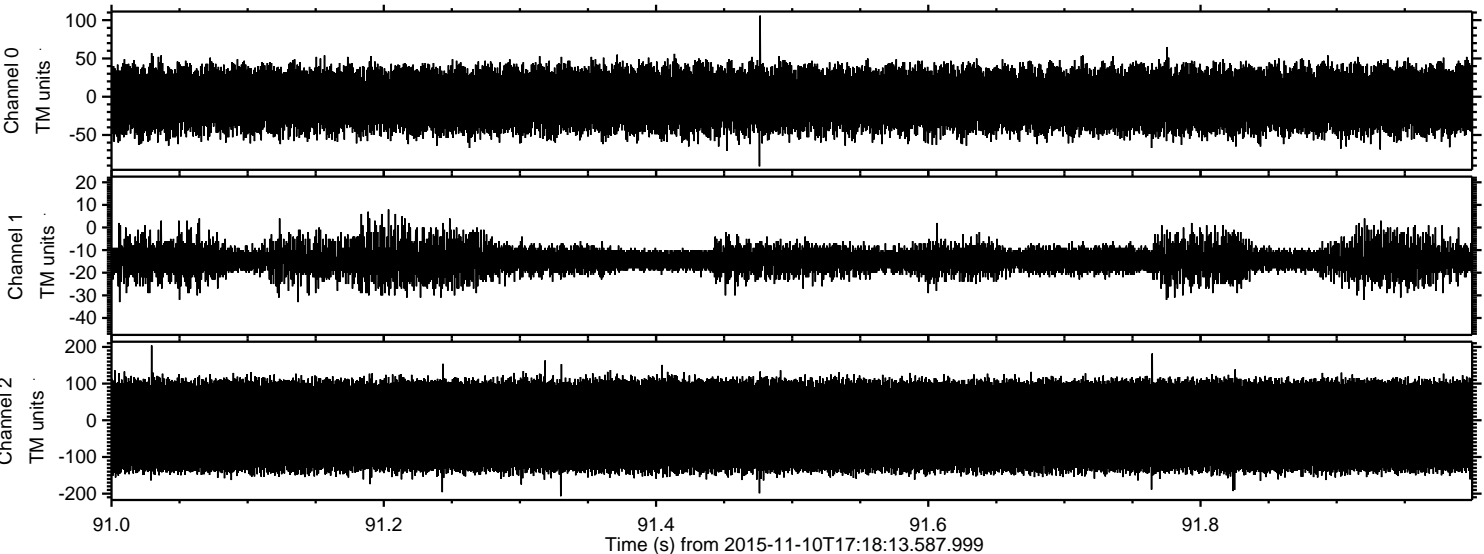
Processed Tue Nov 10 18:25:38 2015 by ELM ver.2012-10-06 from 001__elm20151110_171812__dat00.bin



Processed Tue Nov 10 18:25:39 2015 by ELM ver.2012-10-06 from 001__elm20151110_171812__dat00.bin



Processed Tue Nov 10 18:25:40 2015 by ELM ver.2012-10-06 from 001__elm20151110_171812__dat00.bin



Channel 0
mn: -91
mx: 106
 μ : -4.3
 σ : 22.6

Channel 1
mn: -33
mx: 8
 μ : -14.4
 σ : 4.2

Channel 2
mn: -207
mx: 204
 μ : -15.7
 σ : 80.2