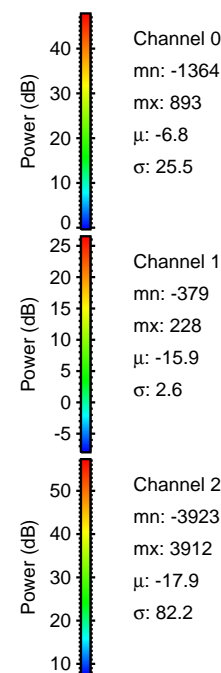
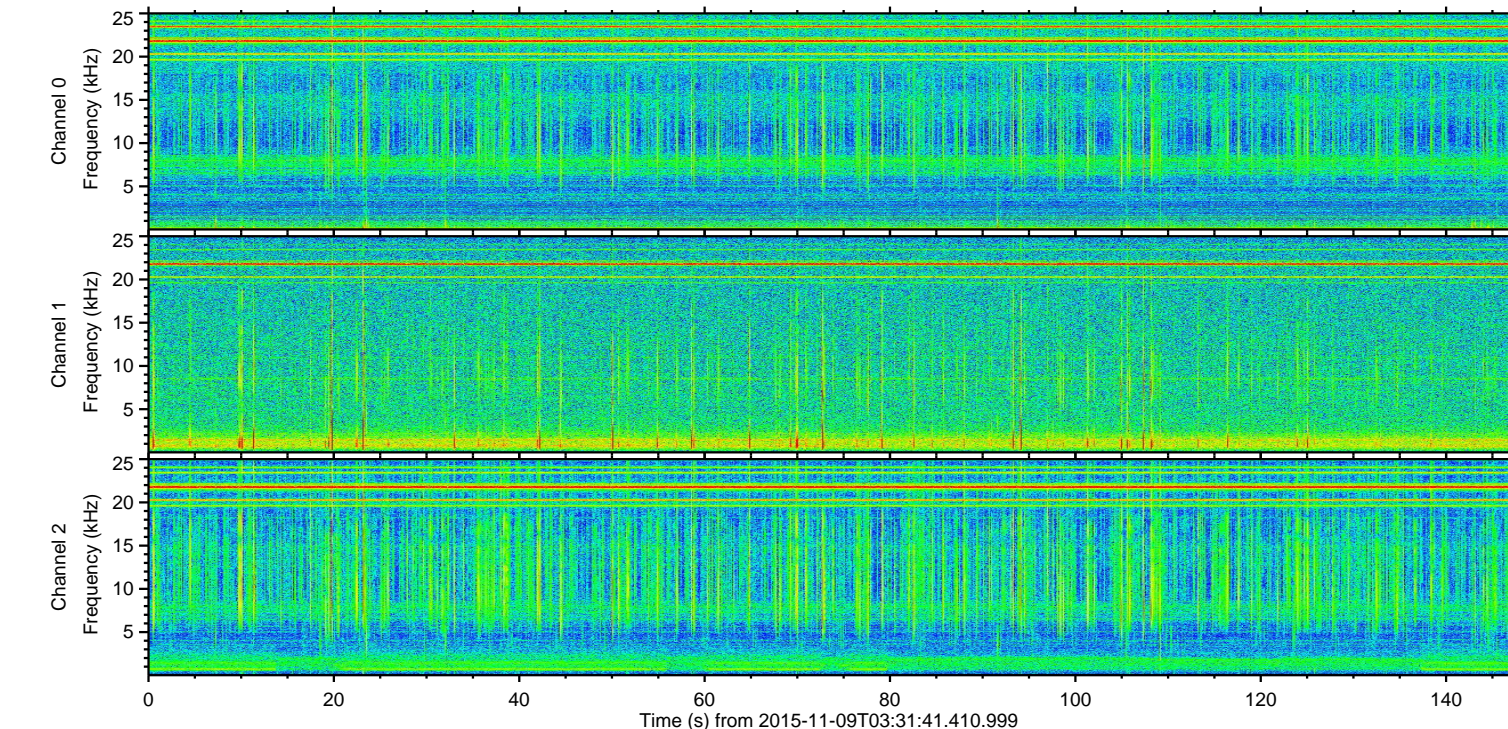
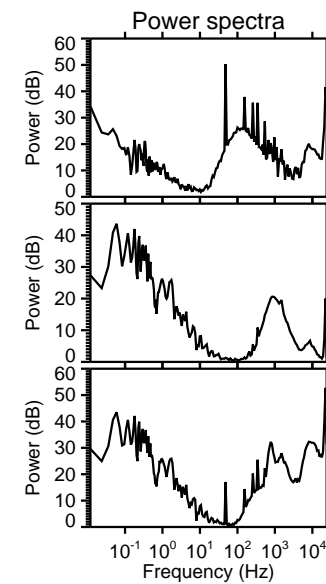
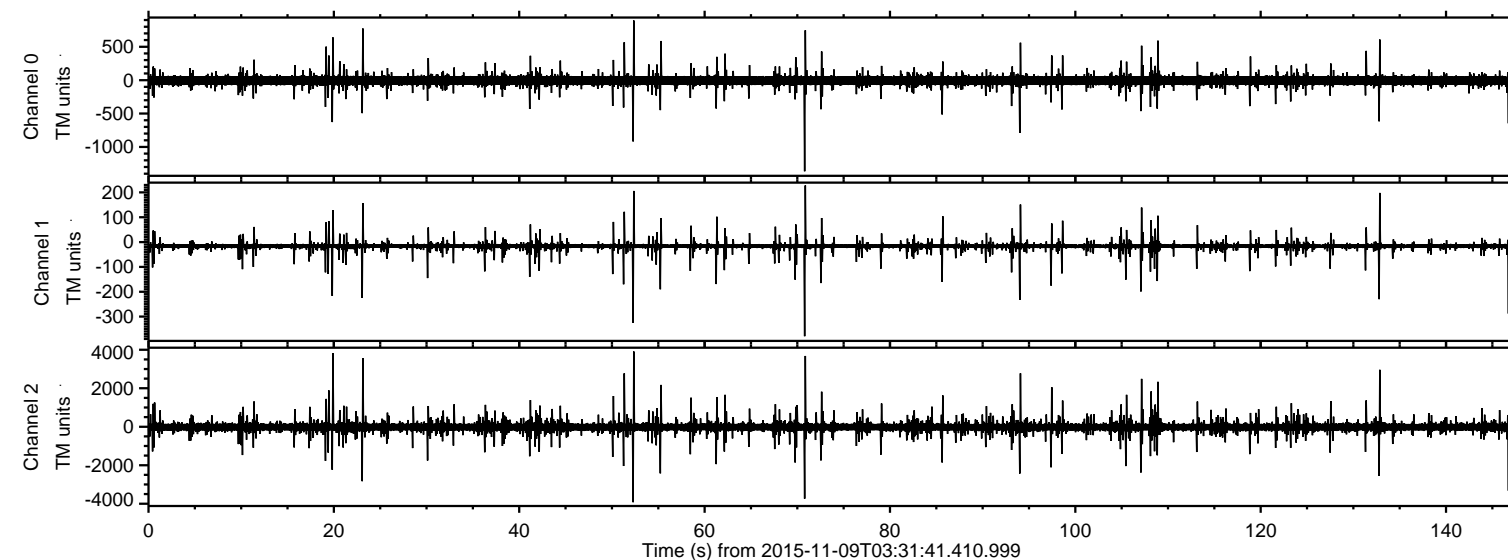


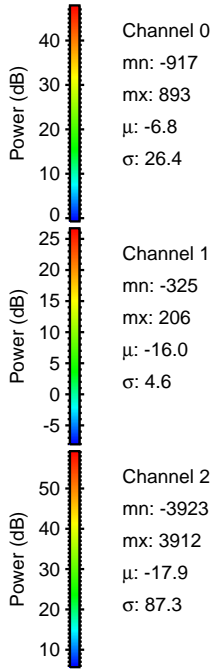
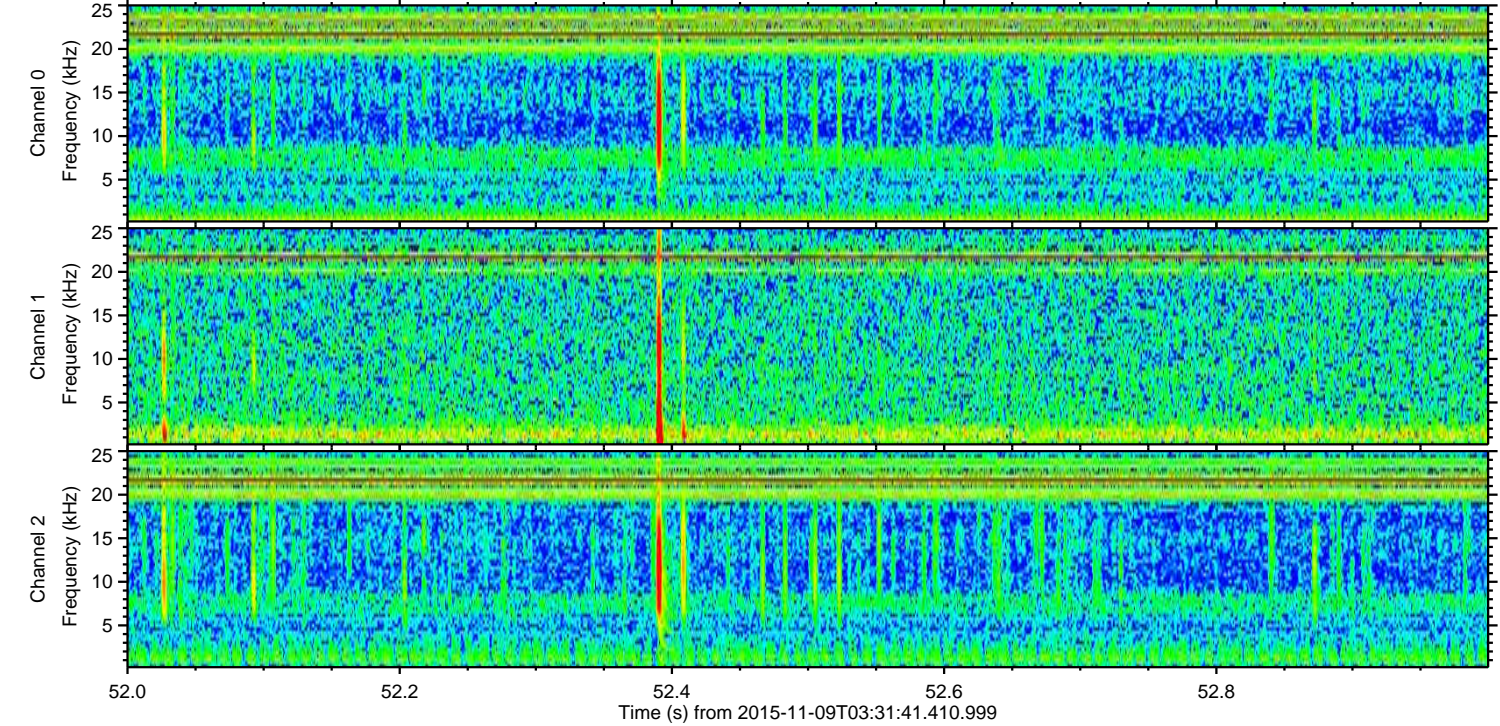
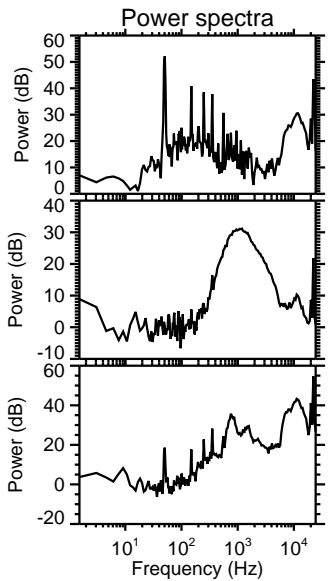
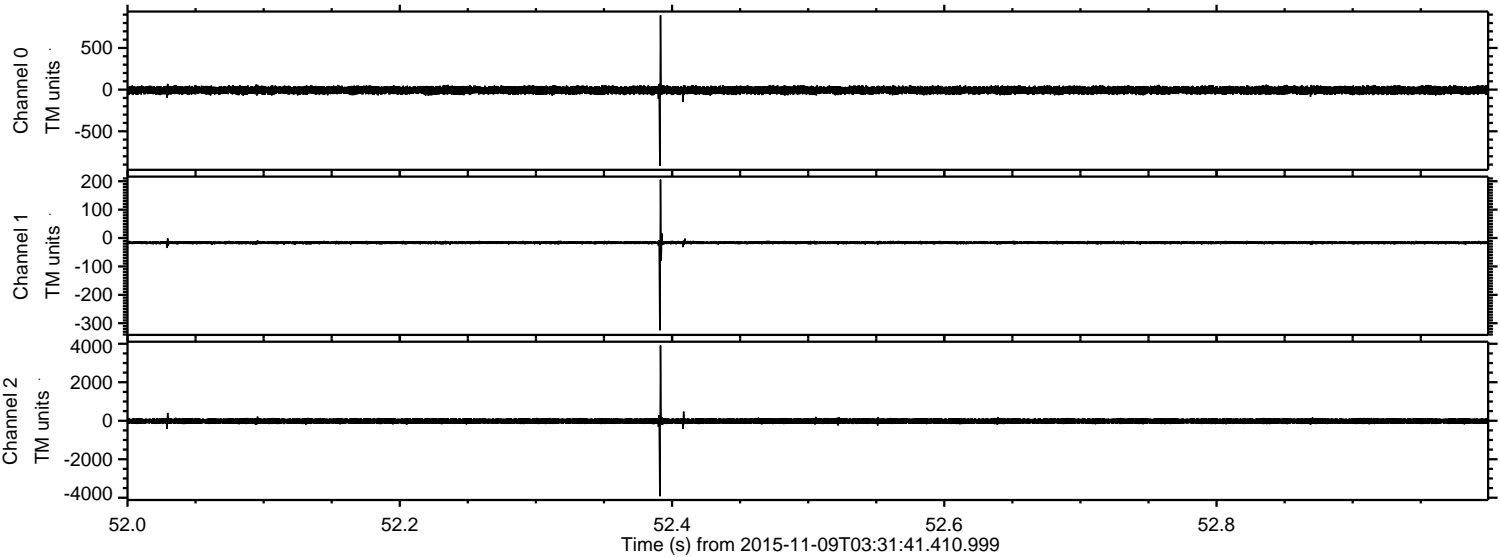
# ELMAVAN 3D WAVEFORMS (Measured data sampled at 50 kHz) 51000 packets of 144 samples from 2015-11-09T03:31:41.410.999.

Processed Mon Nov 9 06:03:57 2015 by ELM ver.2012-10-06 from 001\_\_elm20151109\_033140\_\_dat00.bin



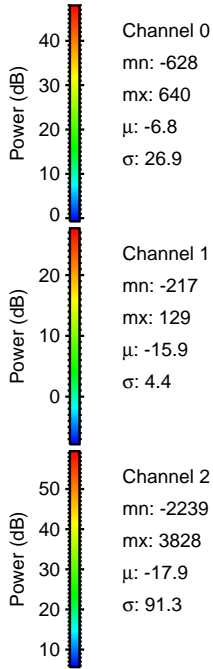
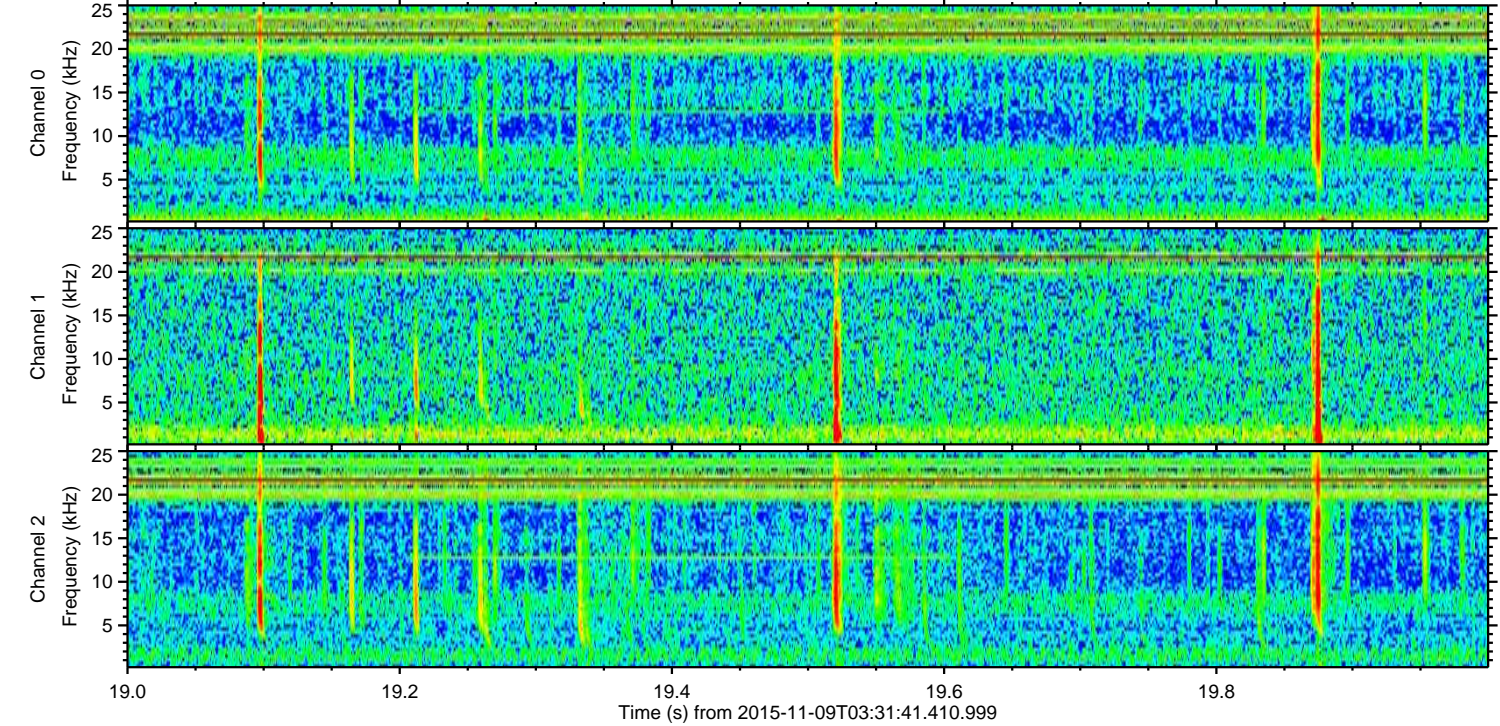
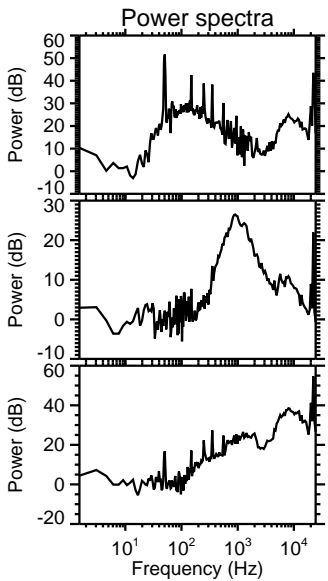
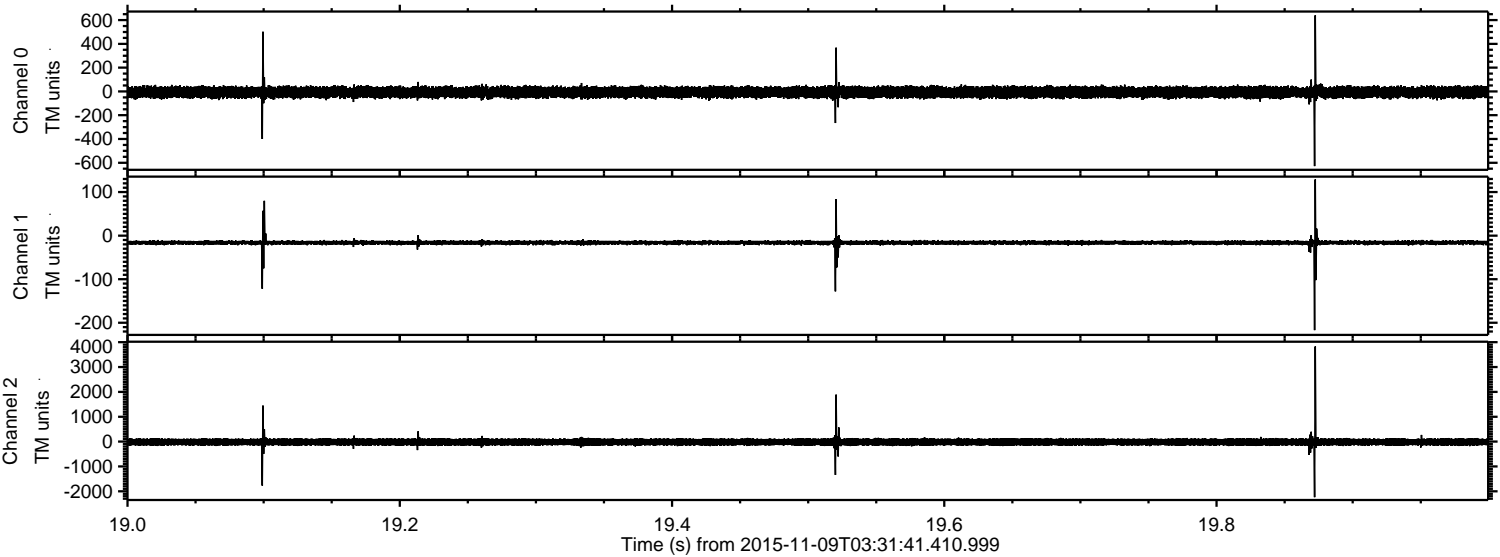


Processed Mon Nov 9 06:04:11 2015 by ELM ver.2012-10-06 from 001\_\_elm20151109\_033140\_\_dat00.bin



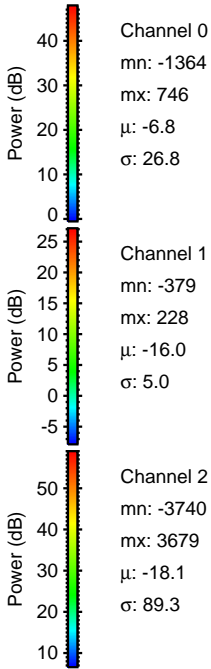
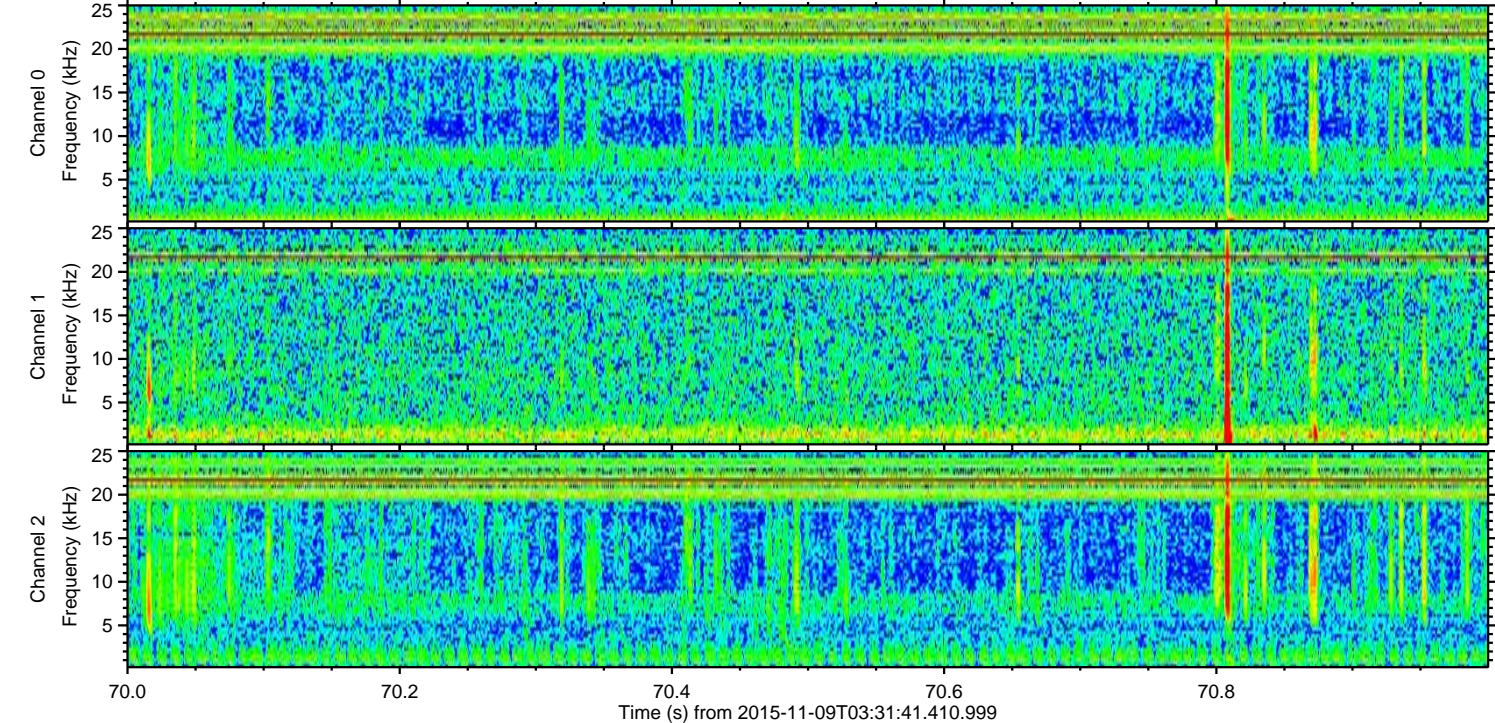
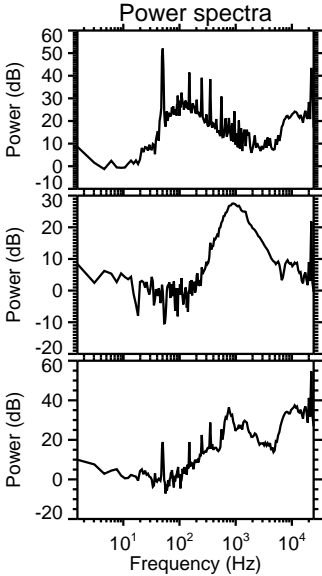
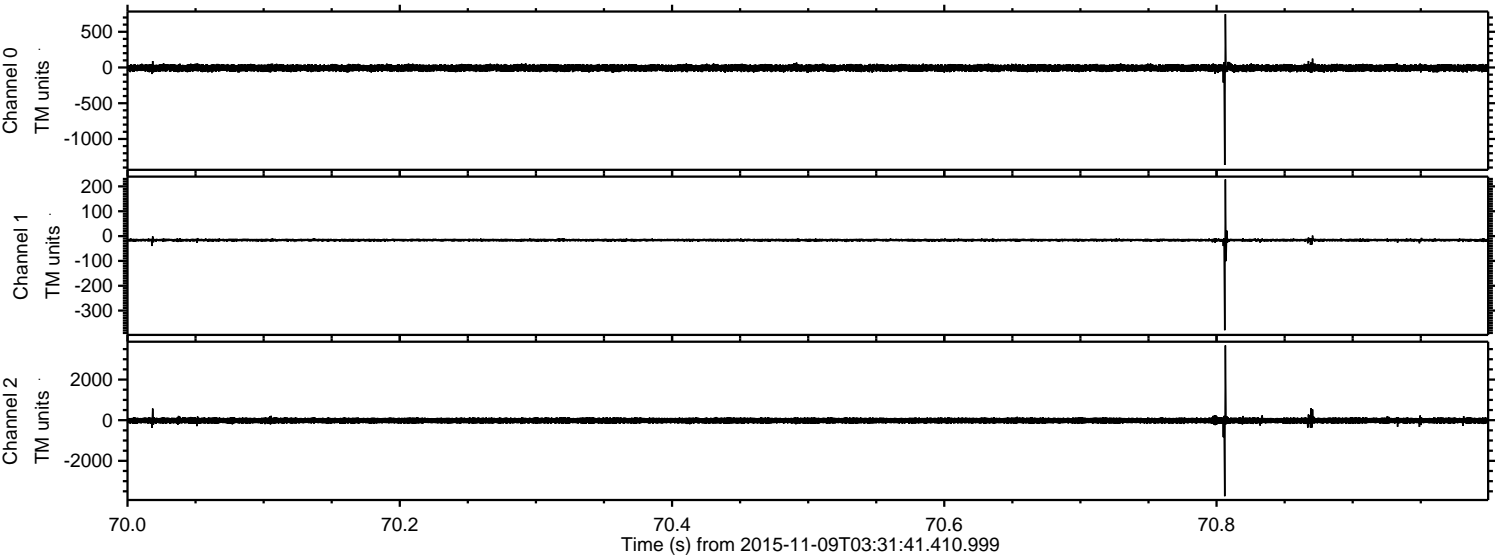


Processed Mon Nov 9 06:04:12 2015 by ELM ver.2012-10-06 from 001\_\_elm20151109\_033140\_\_dat00.bin



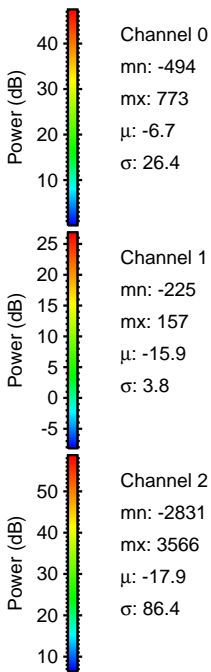
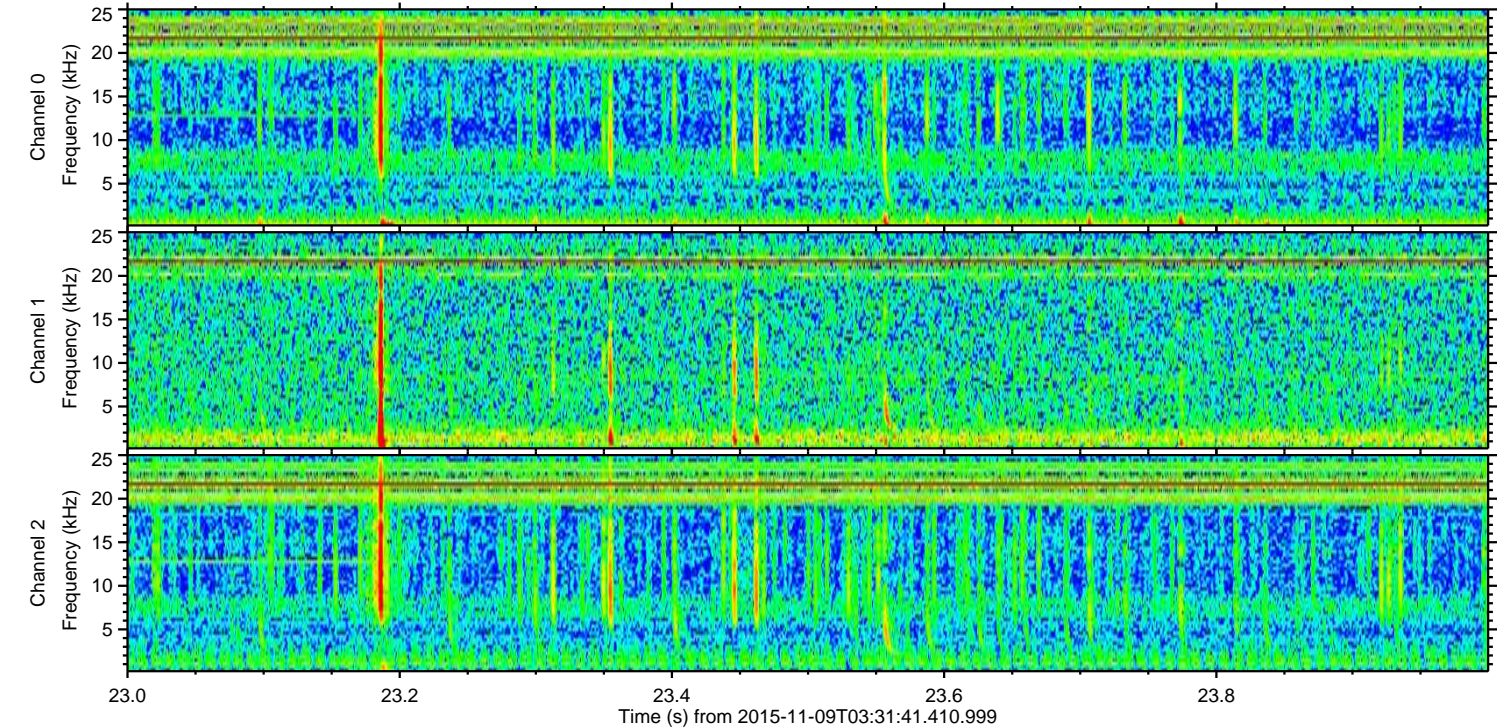
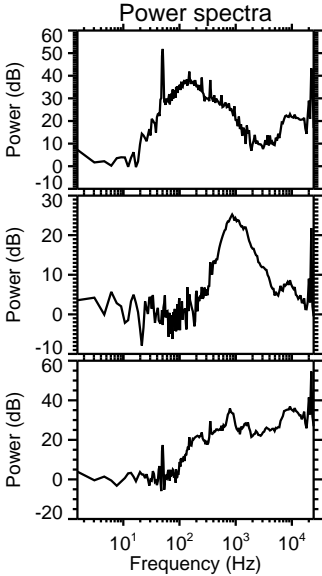
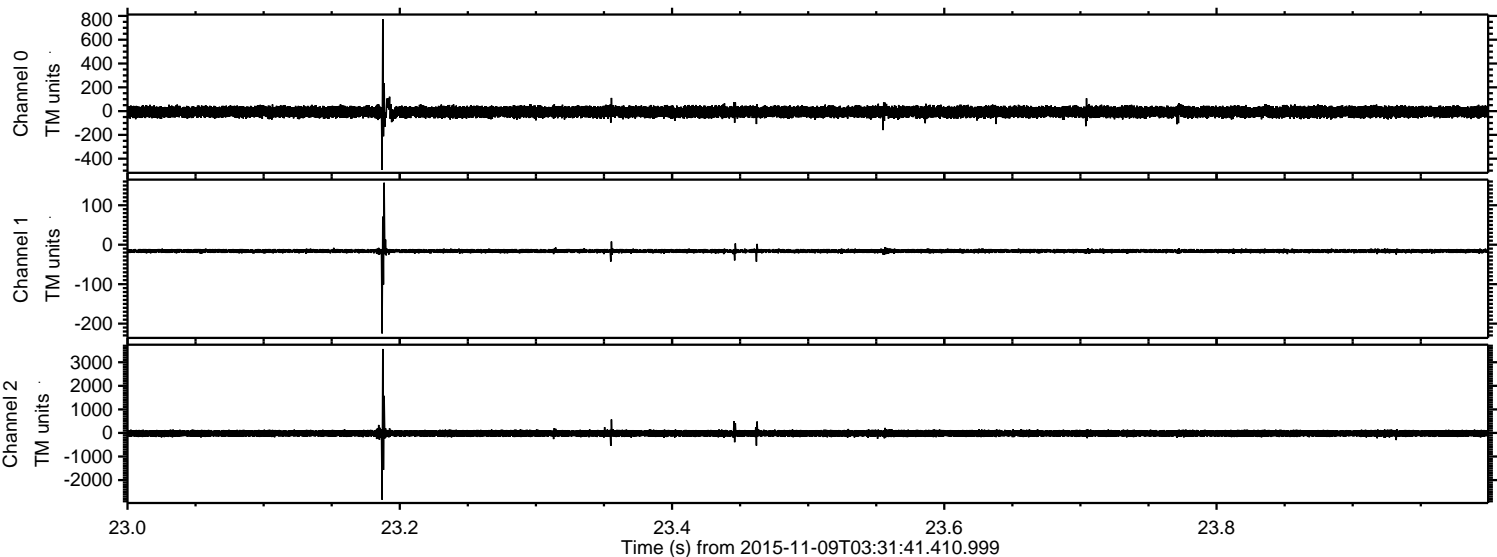


Processed Mon Nov 9 06:04:13 2015 by ELM ver.2012-10-06 from 001\_\_elm20151109\_033140\_\_dat00.bin





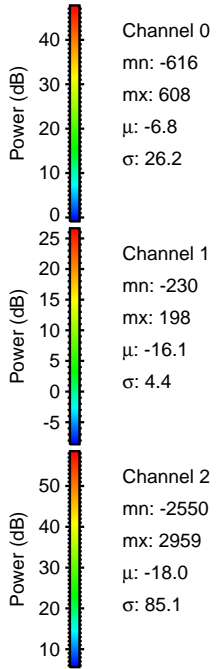
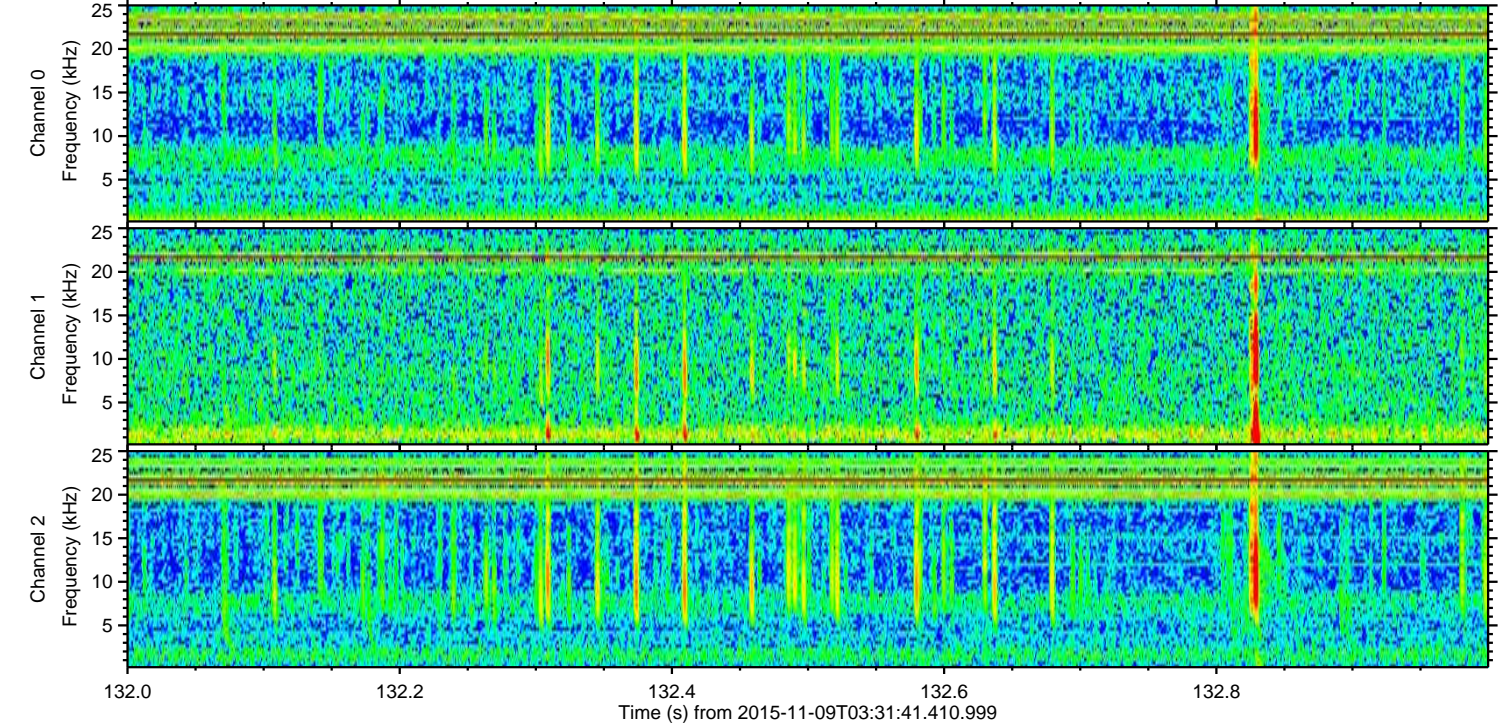
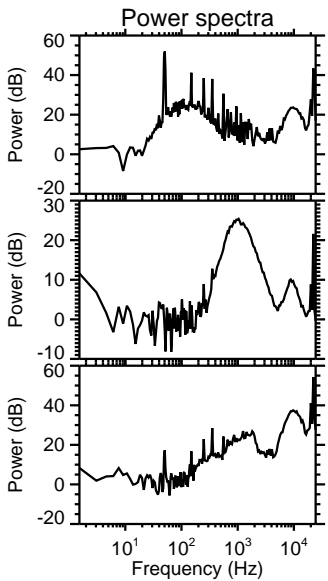
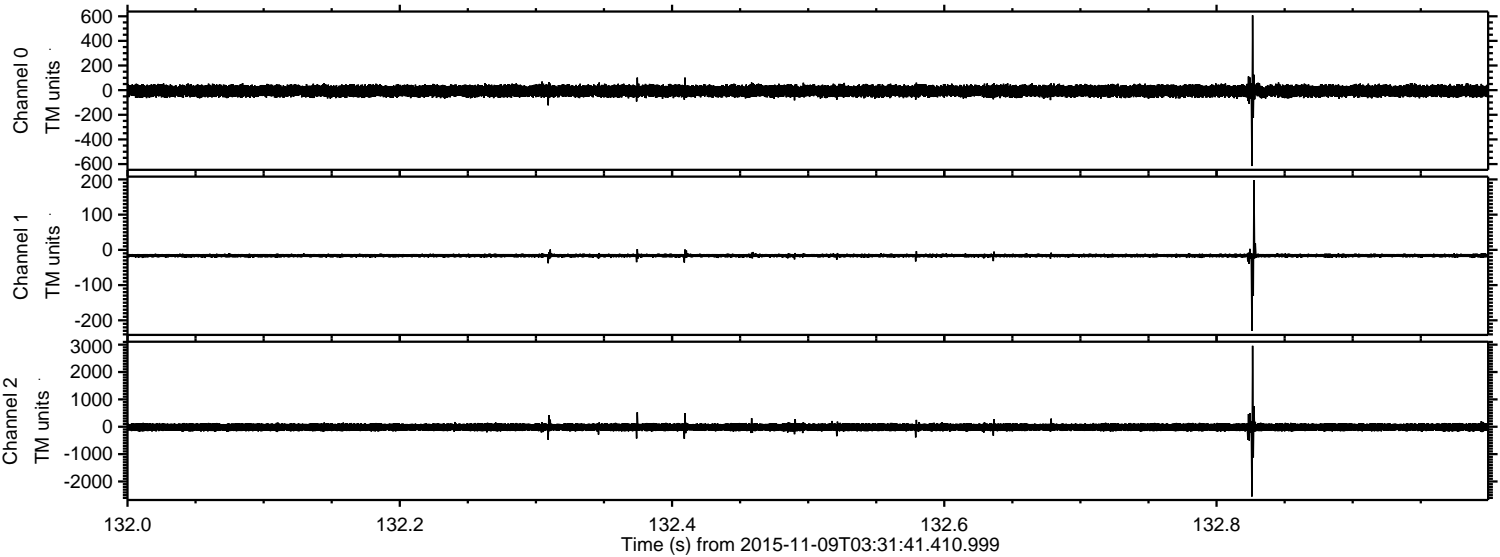
Processed Mon Nov 9 06:04:14 2015 by ELM ver.2012-10-06 from 001\_\_elm20151109\_033140\_\_dat00.bin





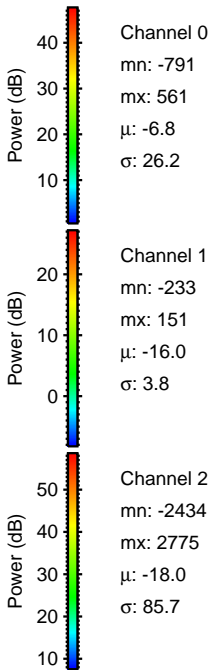
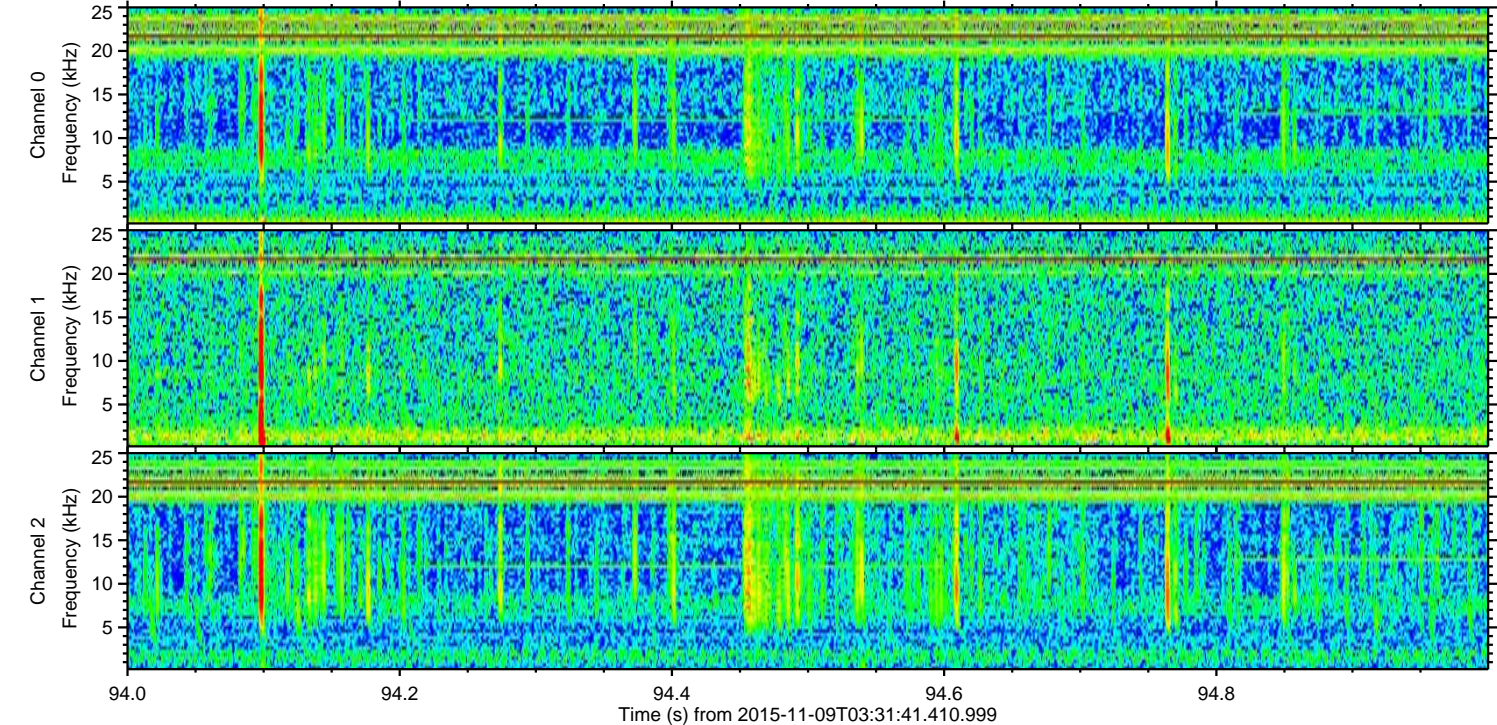
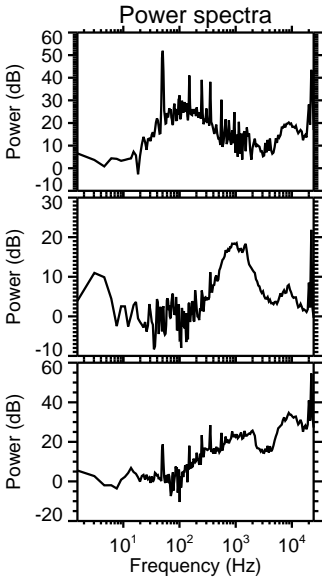
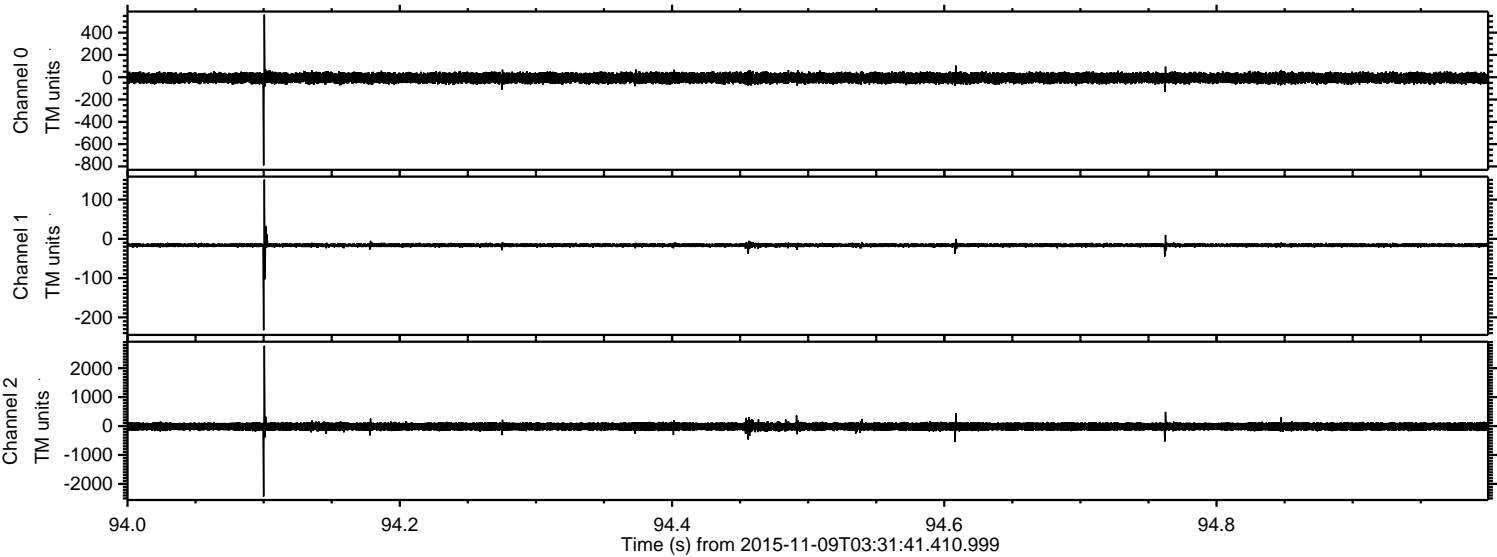
ELMAVAN 3D WAVEFORMS (Measured data sampled at 50 kHz) 51000 packets of 144 samples from 2015-11-09T03:31:41.410.999. Part 133/147

Processed Mon Nov 9 06:04:15 2015 by ELM ver.2012-10-06 from 001\_\_elm20151109\_033140\_\_dat00.bin



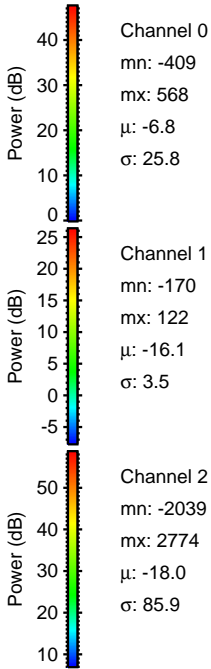
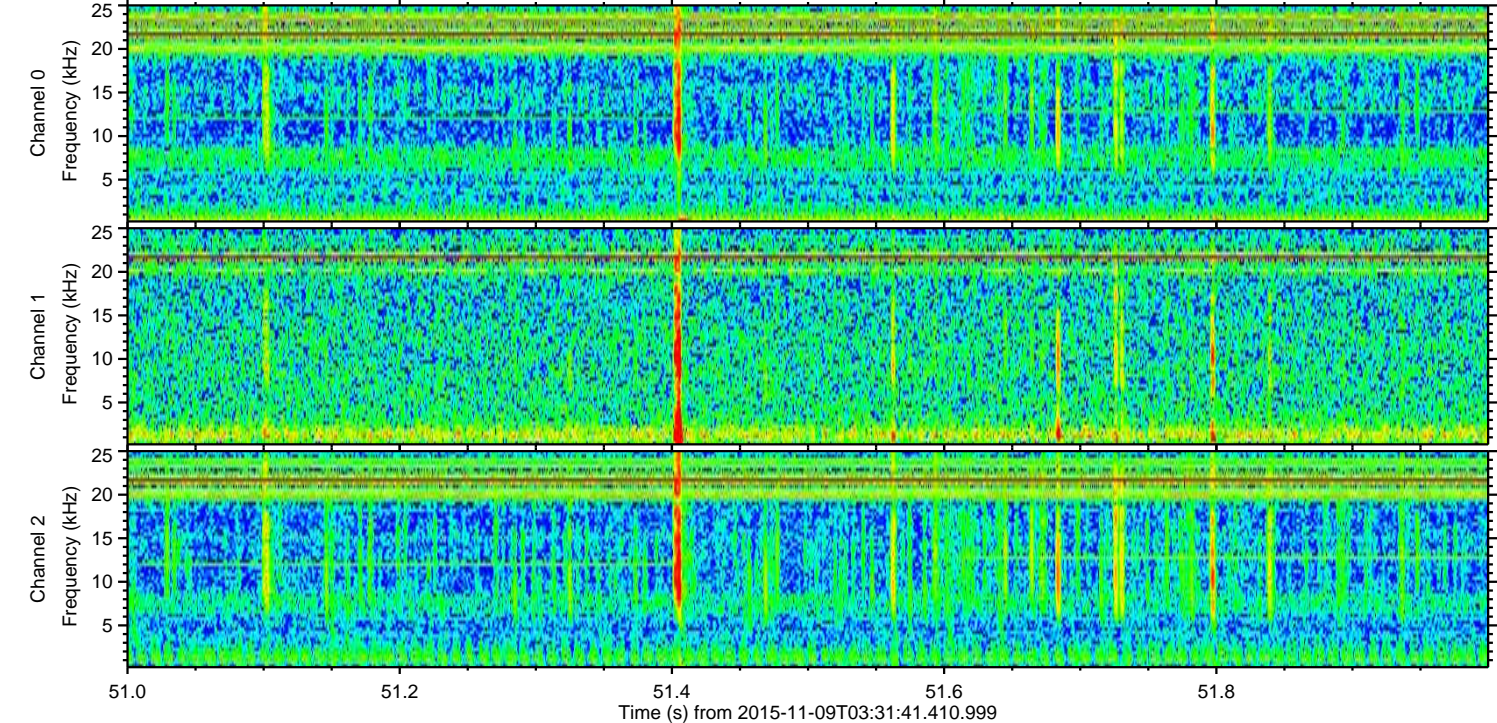
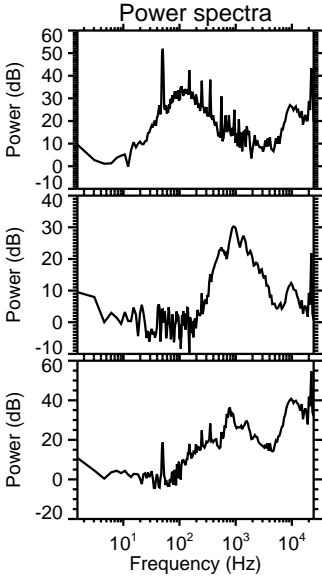
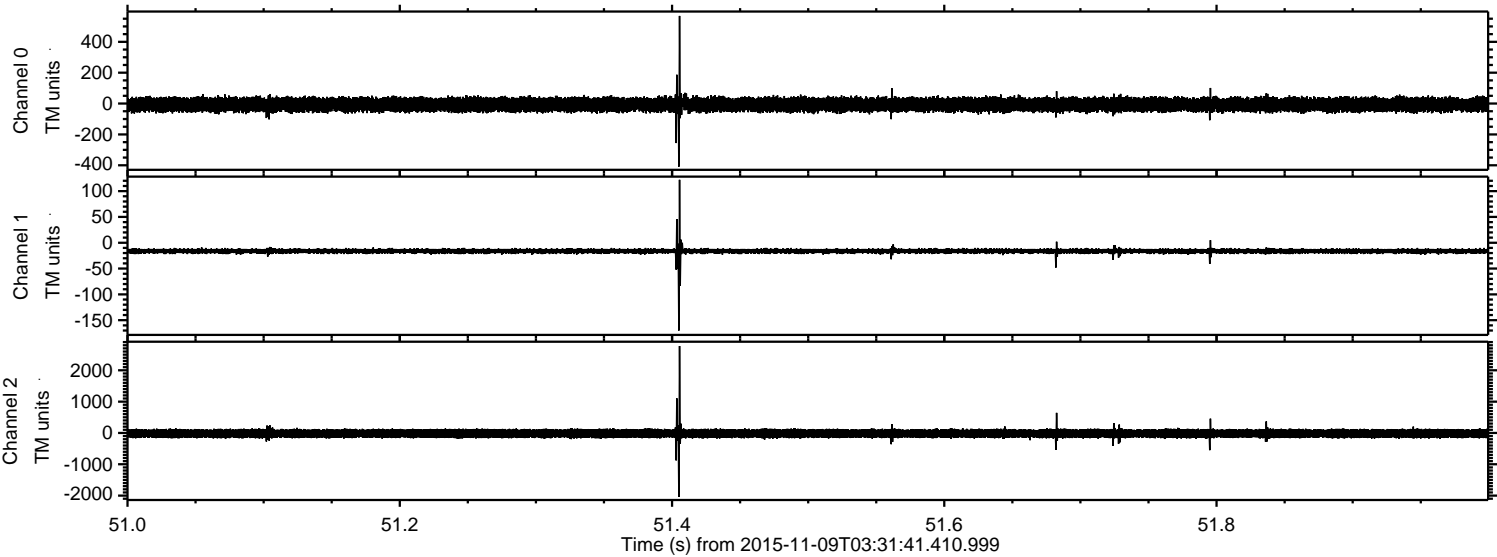


Processed Mon Nov 9 06:04:16 2015 by ELM ver.2012-10-06 from 001\_\_elm20151109\_033140\_\_dat00.bin





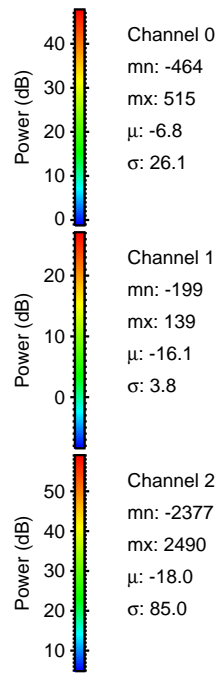
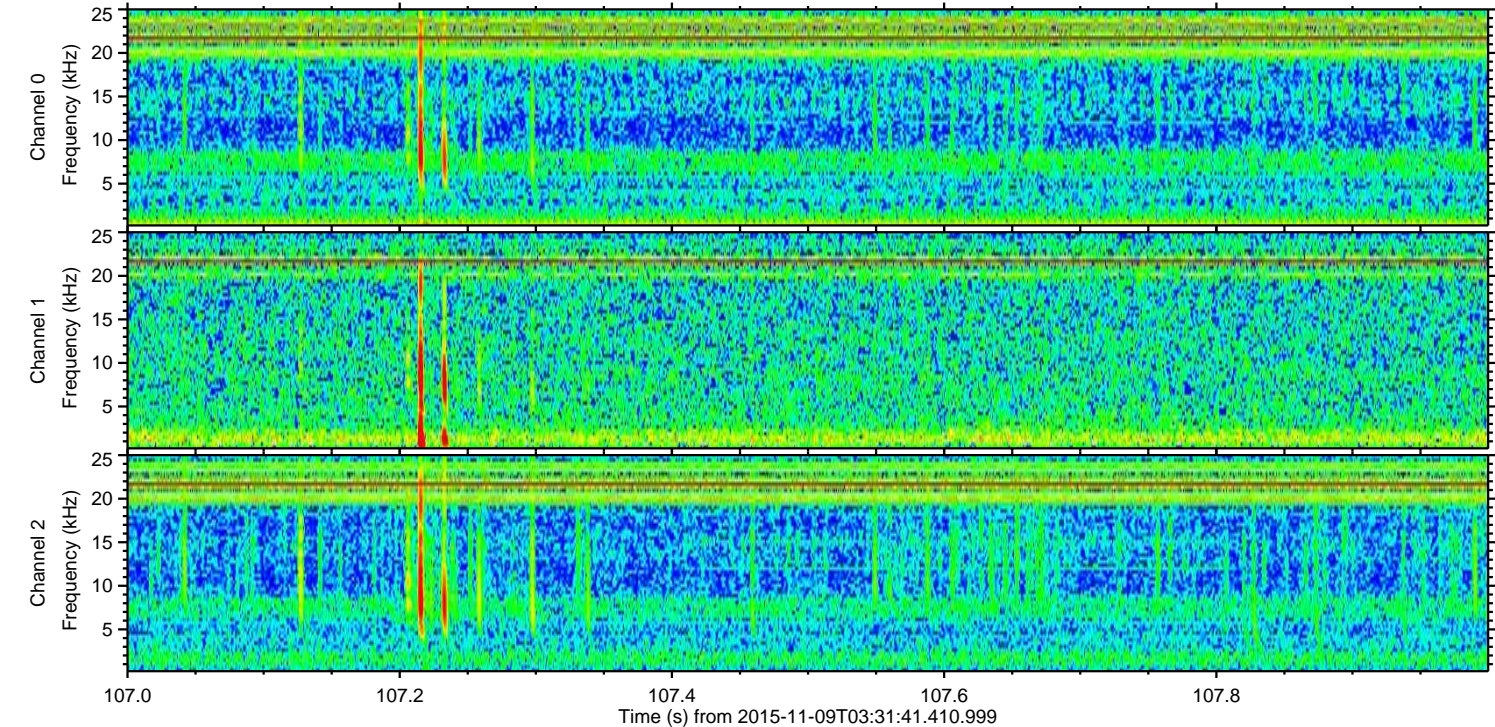
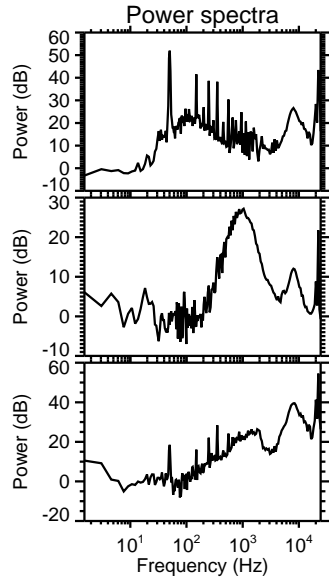
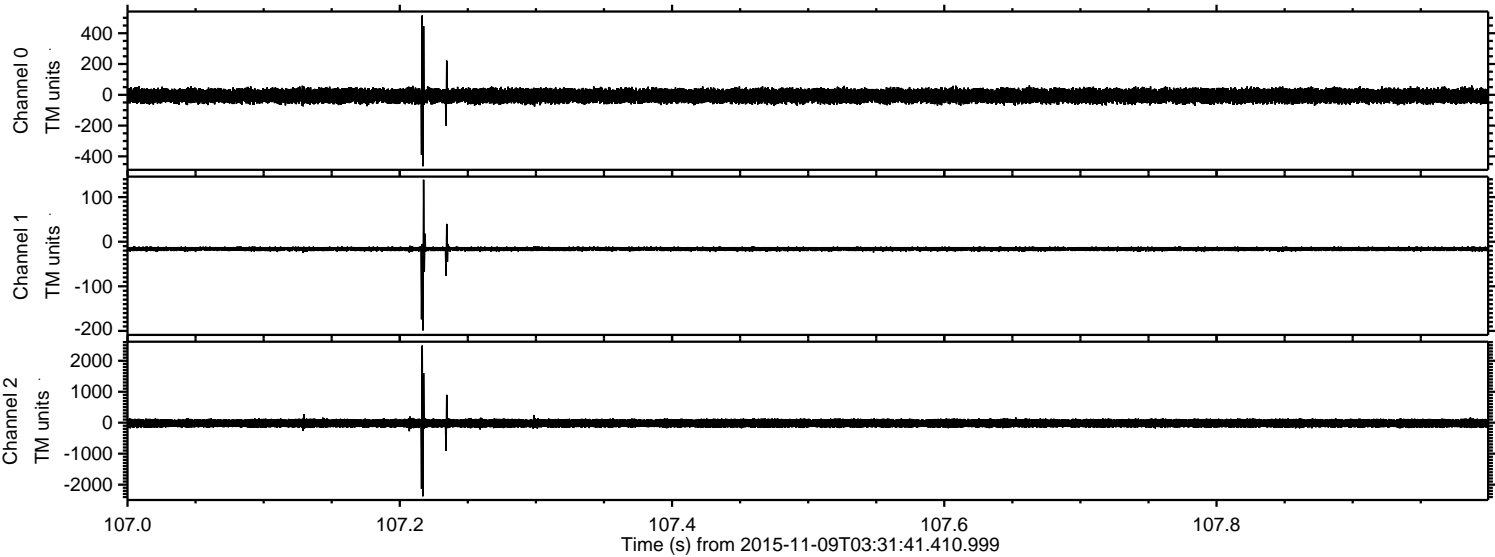
Processed Mon Nov 9 06:04:17 2015 by ELM ver.2012-10-06 from 001\_\_elm20151109\_033140\_\_dat00.bin





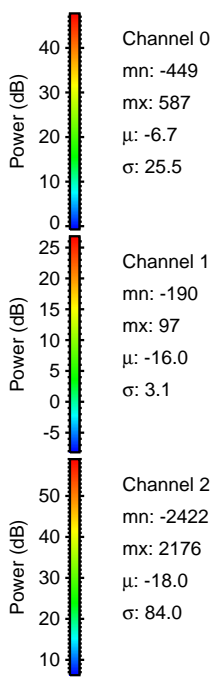
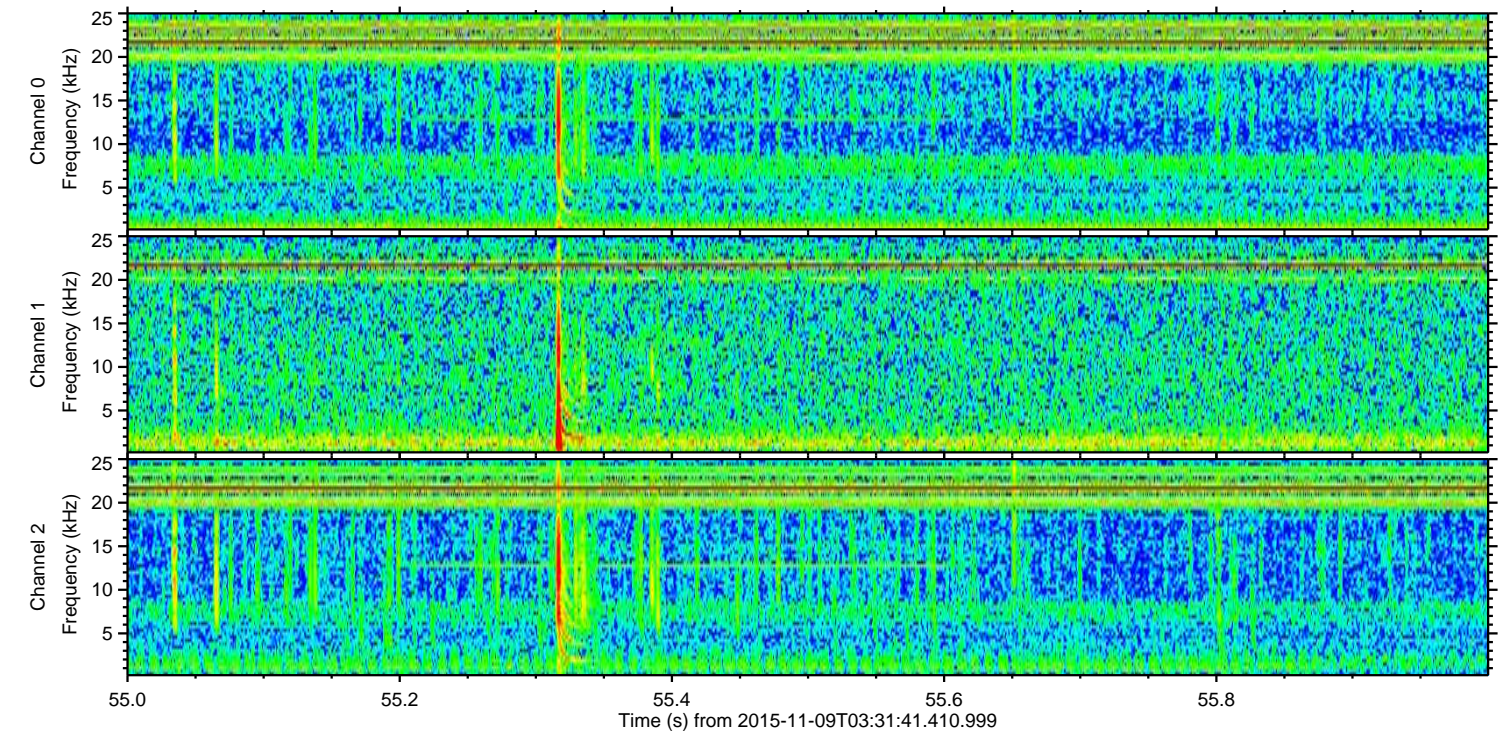
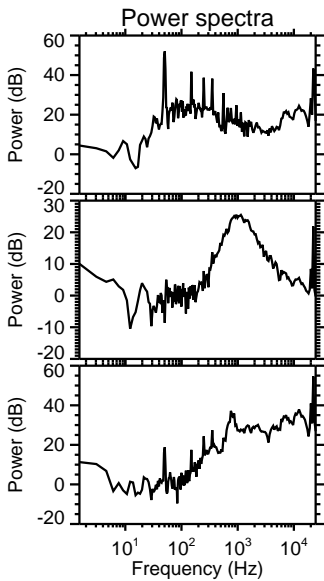
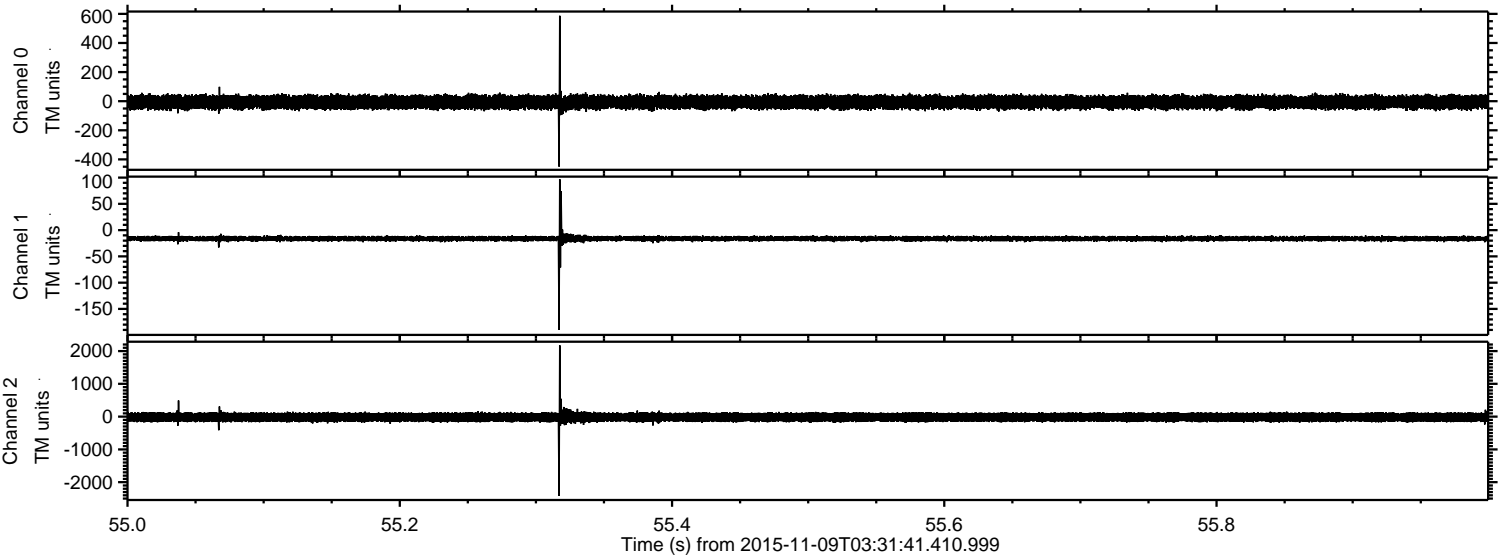
ELMAVAN 3D WAVEFORMS (Measured data sampled at 50 kHz) 51000 packets of 144 samples from 2015-11-09T03:31:41.410.999. Part 108/147

Processed Mon Nov 9 06:04:18 2015 by ELM ver.2012-10-06 from 001\_\_elm20151109\_033140\_\_dat00.bin





Processed Mon Nov 9 06:04:19 2015 by ELM ver.2012-10-06 from 001\_\_elm20151109\_033140\_\_dat00.bin



Channel 0  
mn: -449  
mx: 587  
 $\mu$ : -6.7  
 $\sigma$ : 25.5

Channel 1  
mn: -190  
mx: 97  
 $\mu$ : -16.0  
 $\sigma$ : 3.1

Channel 2  
mn: -2422  
mx: 2176  
 $\mu$ : -18.0  
 $\sigma$ : 84.0



Processed Mon Nov 9 06:04:20 2015 by ELM ver.2012-10-06 from 001\_\_elm20151109\_033140\_\_dat00.bin

