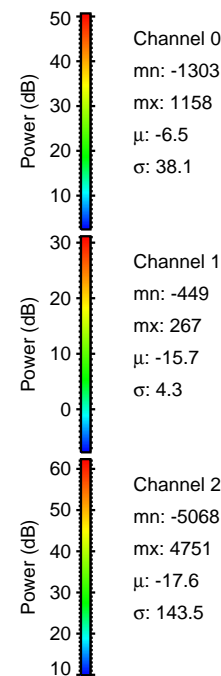
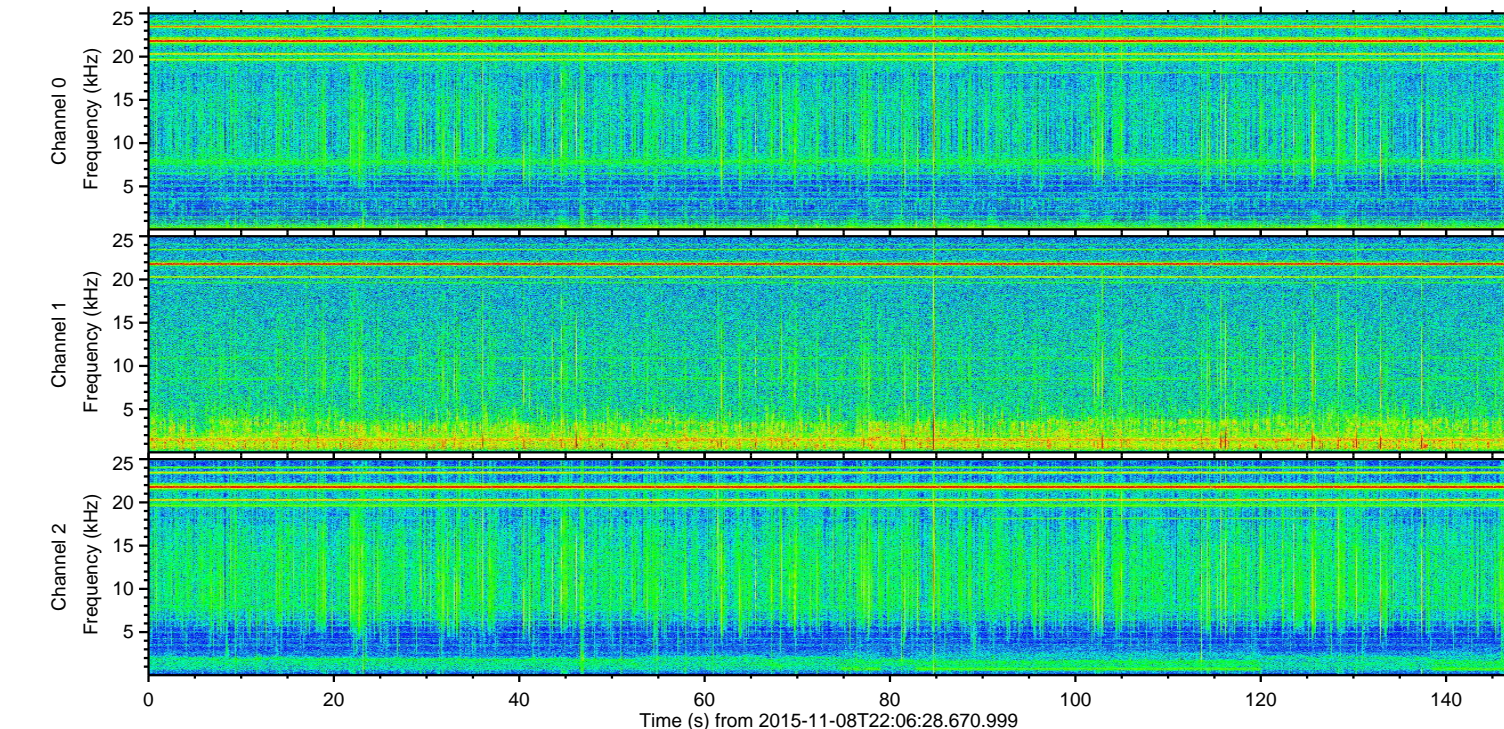
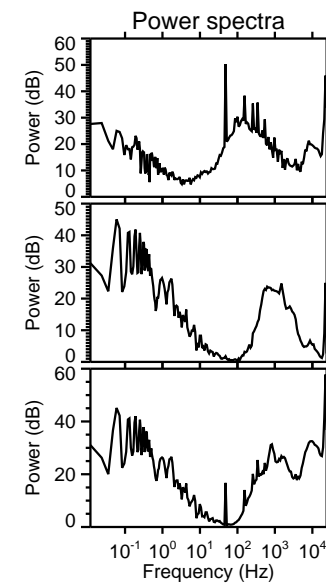
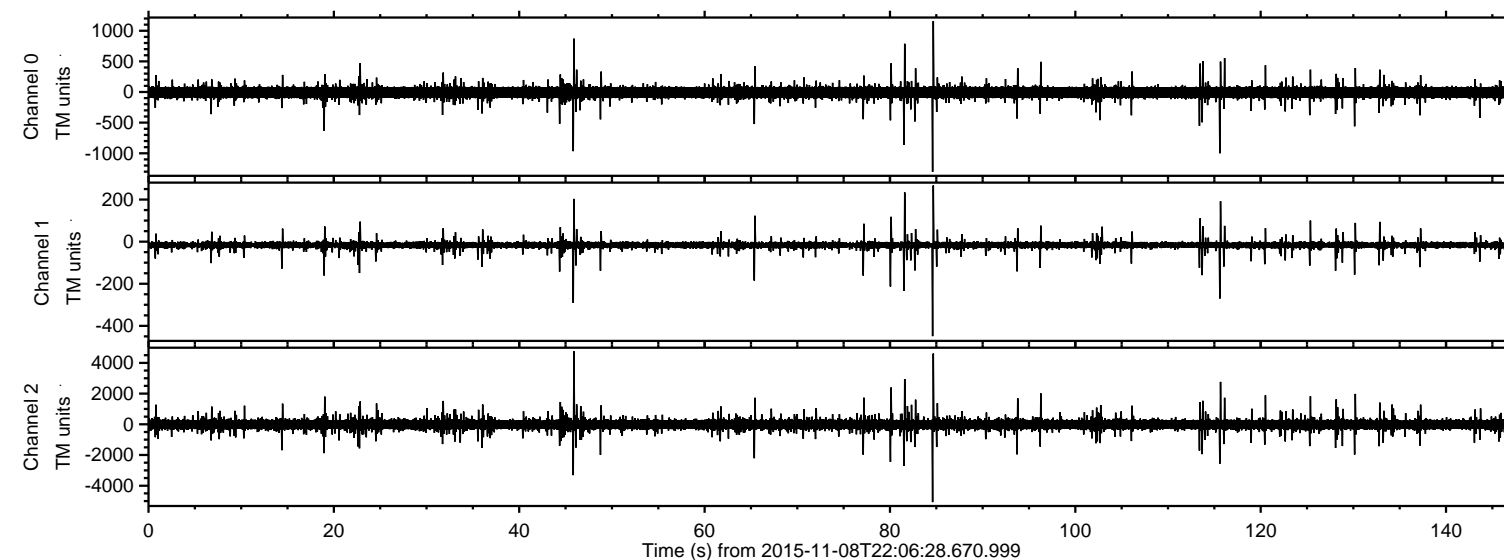
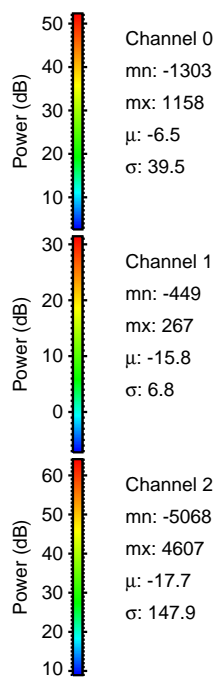
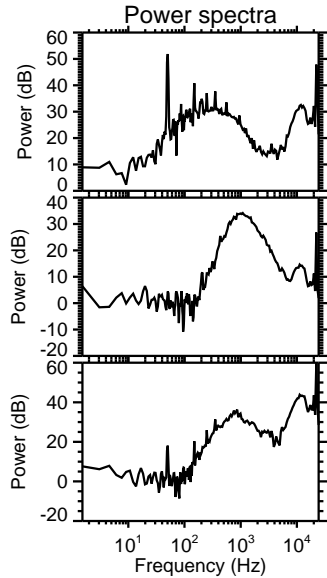
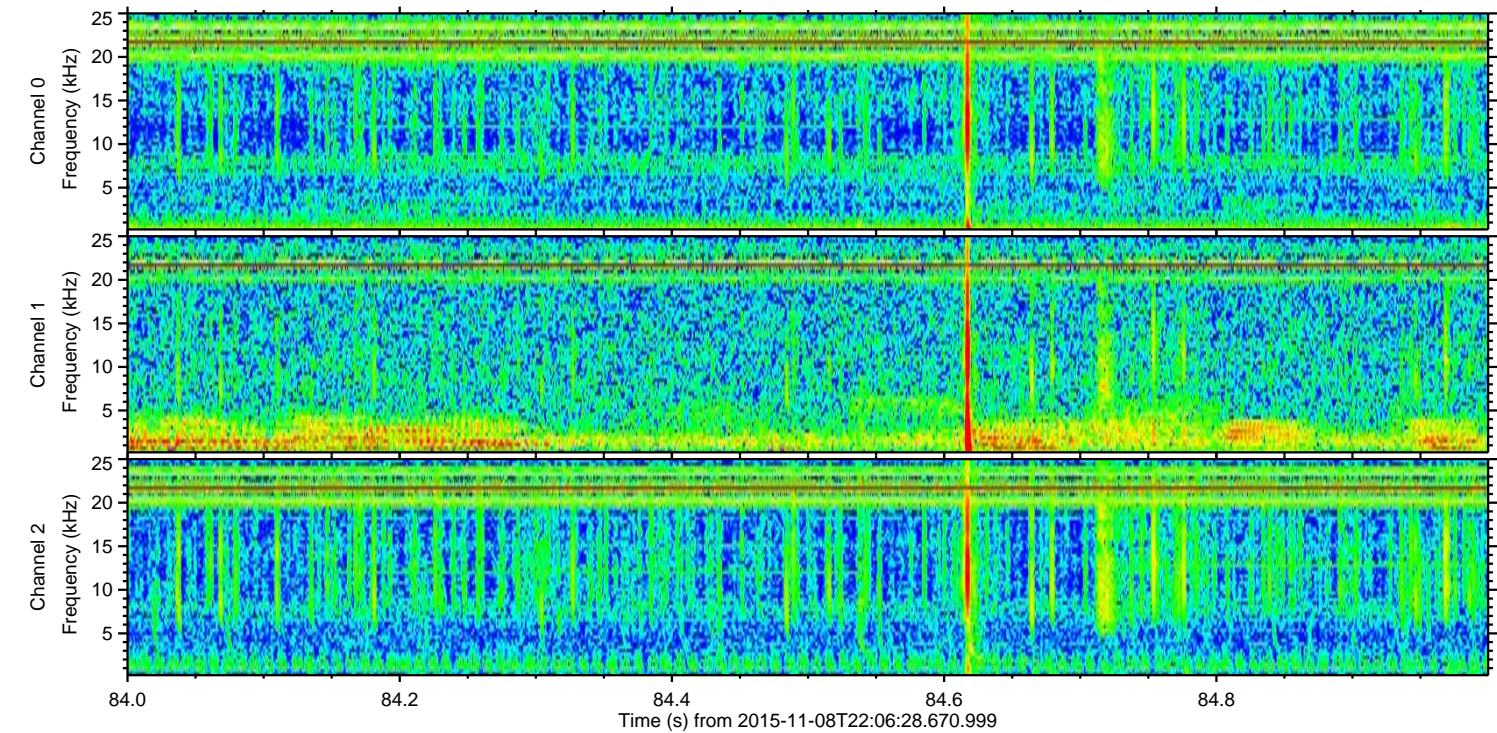
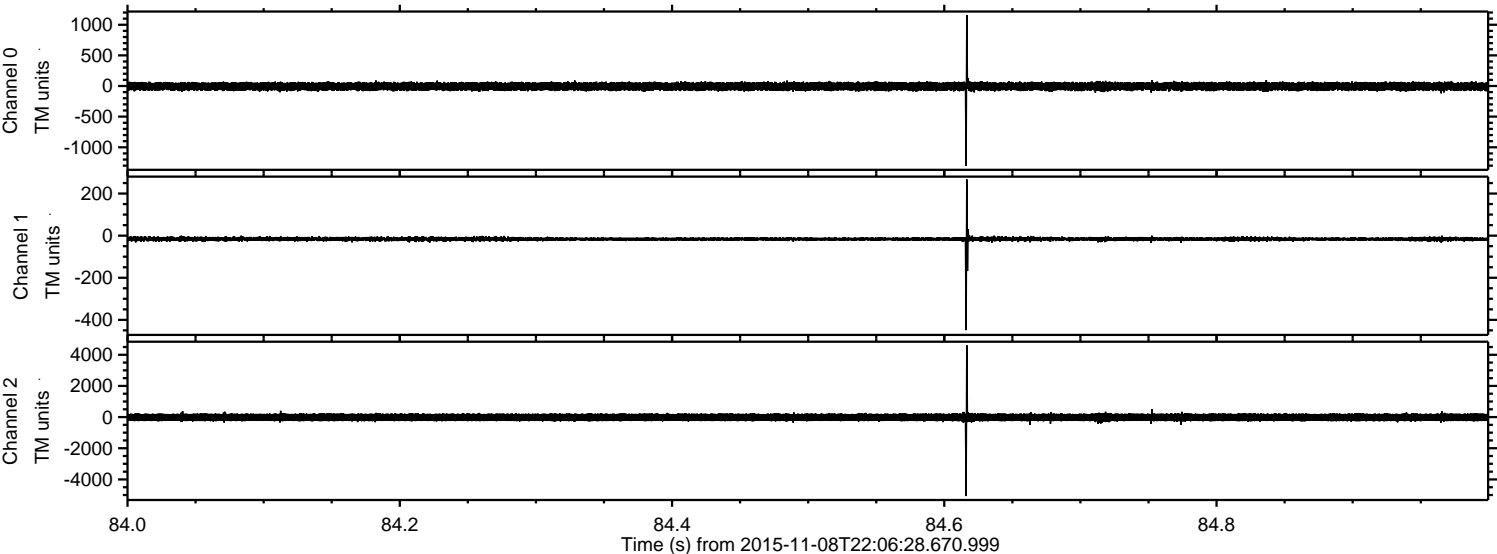


ELMAVAN 3D WAVEFORMS (Measured data sampled at 50 kHz) 51000 packets of 144 samples from 2015-11-08T22:06:28.670.999.

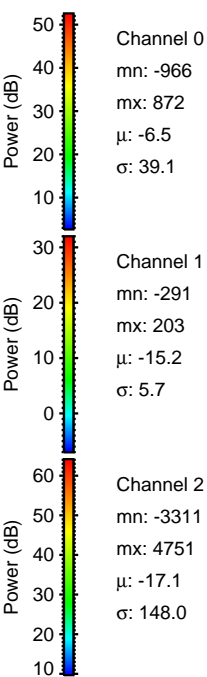
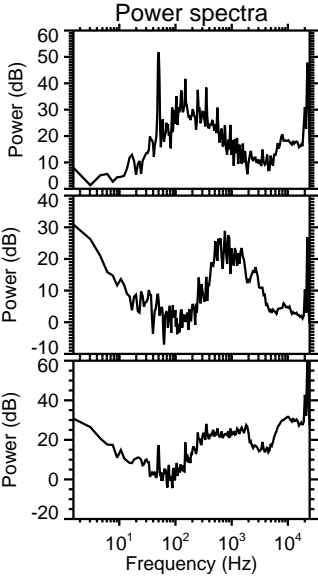
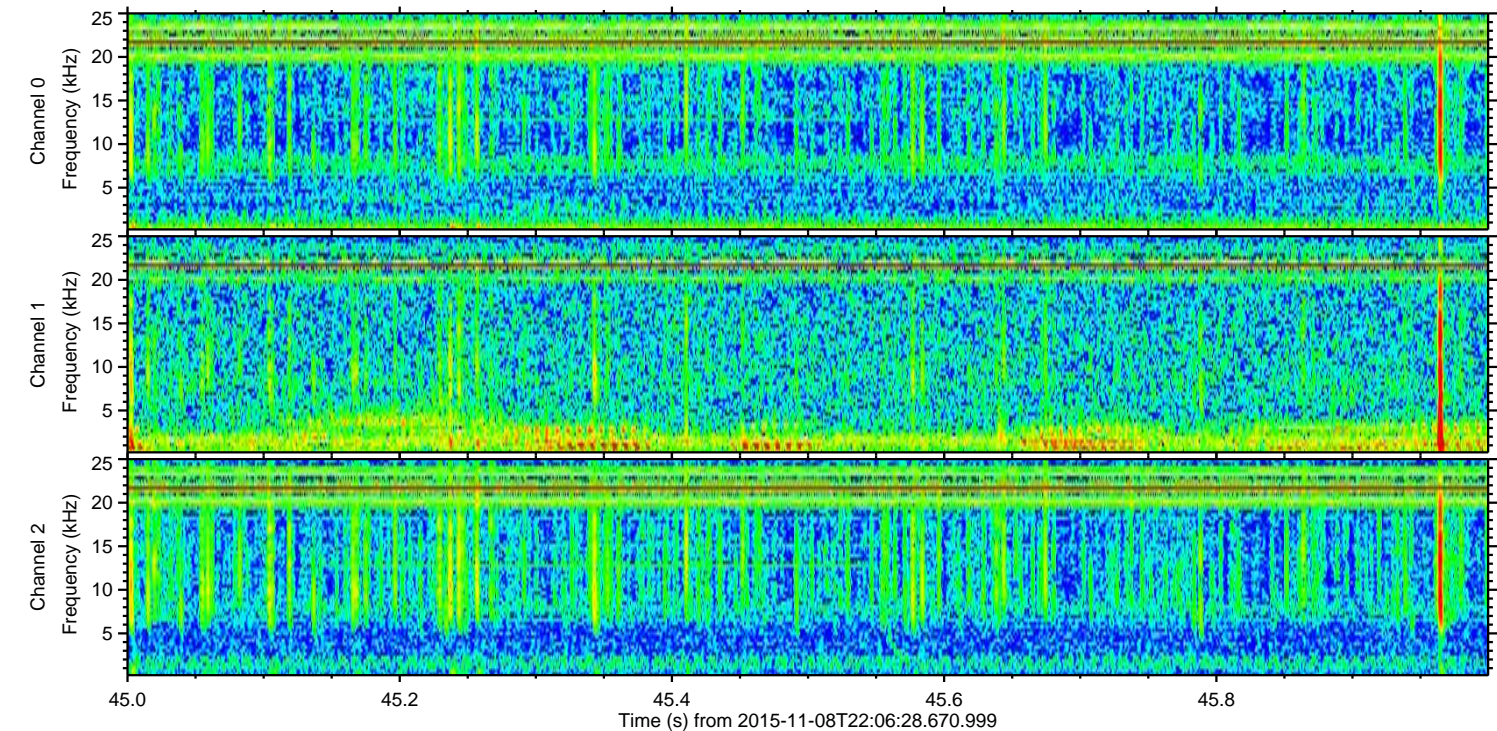
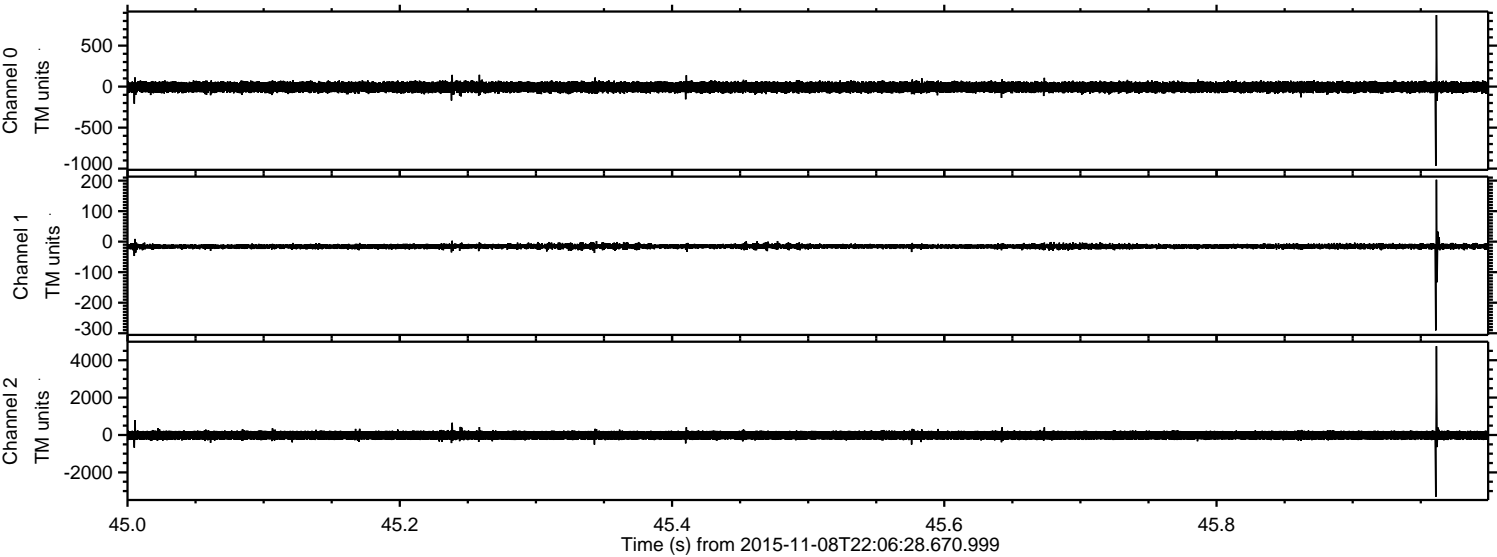
Processed Sun Nov 8 23:12:25 2015 by ELM ver.2012-10-06 from 001__elm20151108_220627__dat00.bin



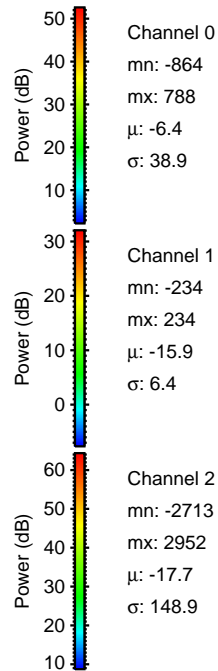
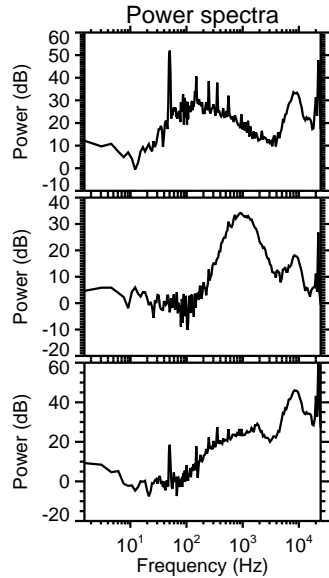
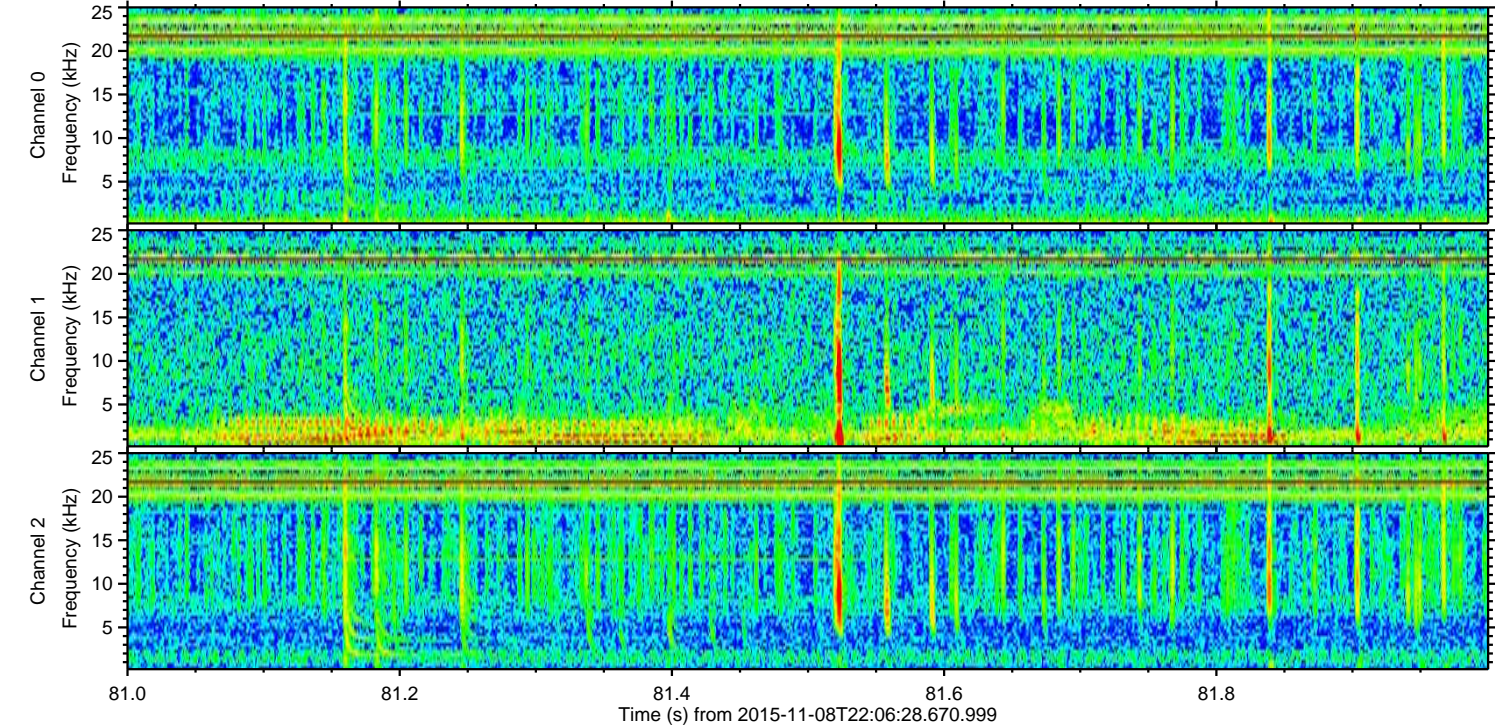
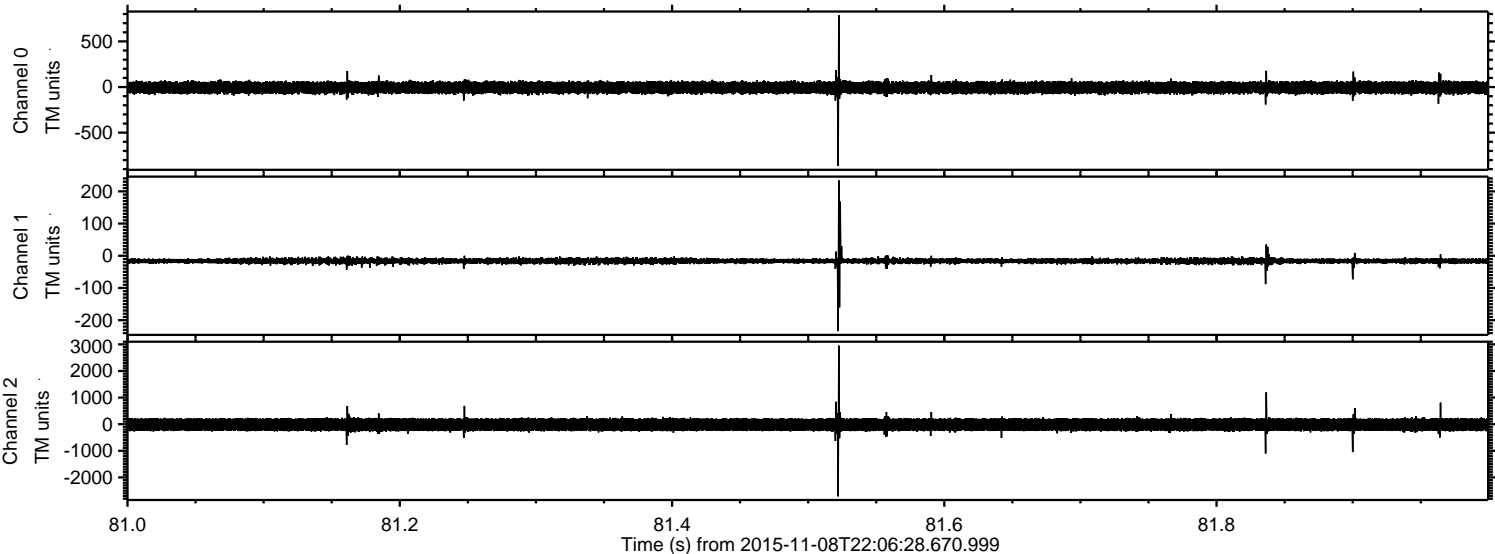
Processed Sun Nov 8 23:12:40 2015 by ELM ver.2012-10-06 from 001__elm20151108_220627__dat00.bin



Processed Sun Nov 8 23:12:41 2015 by ELM ver.2012-10-06 from 001__elm20151108_220627__dat00.bin

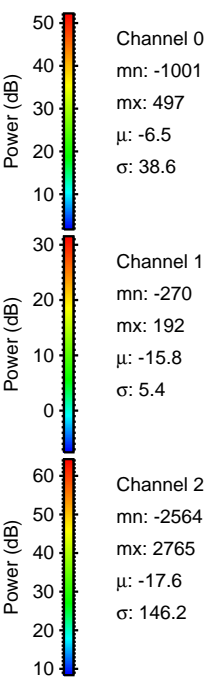
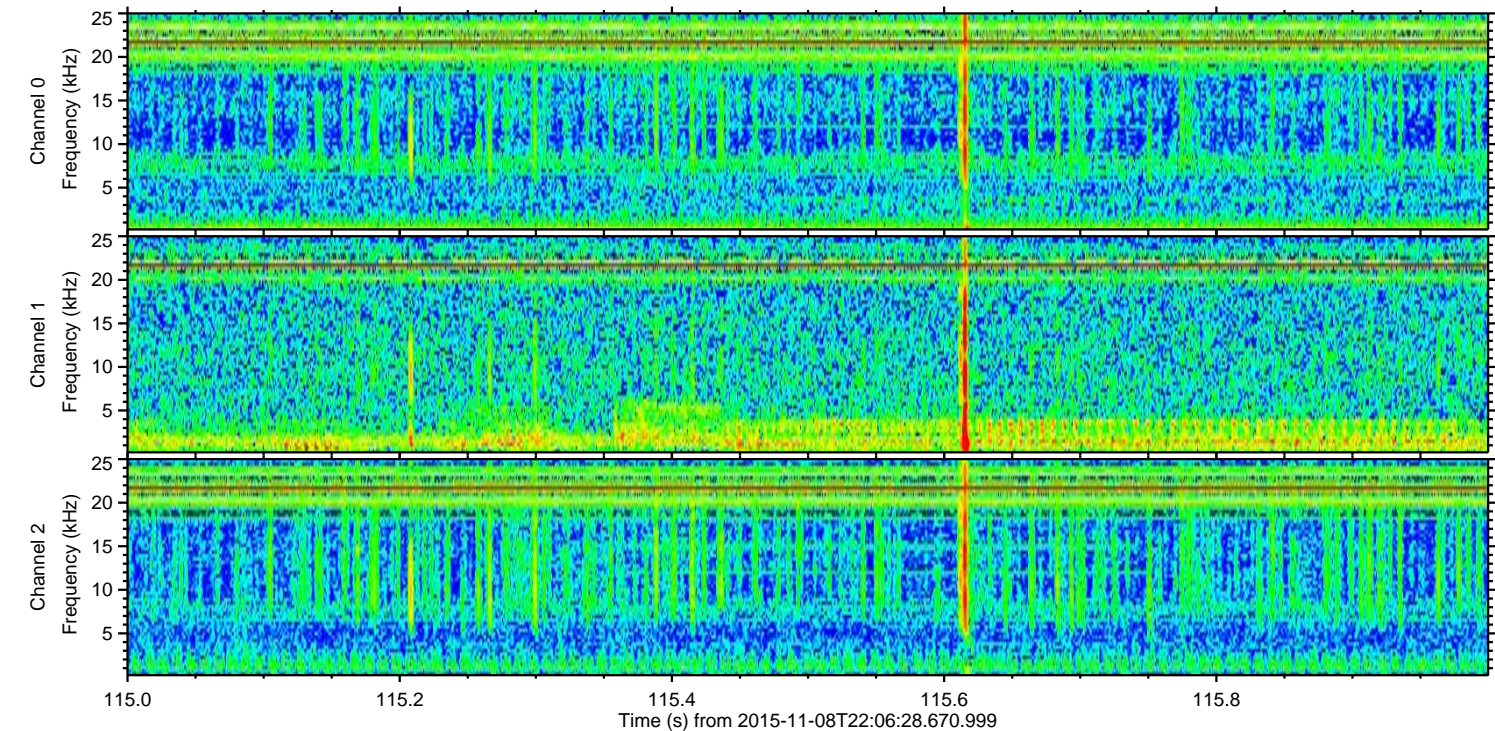
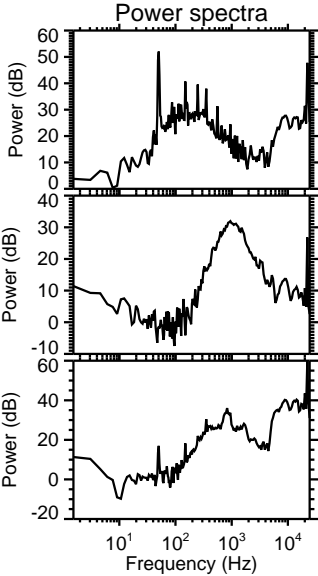
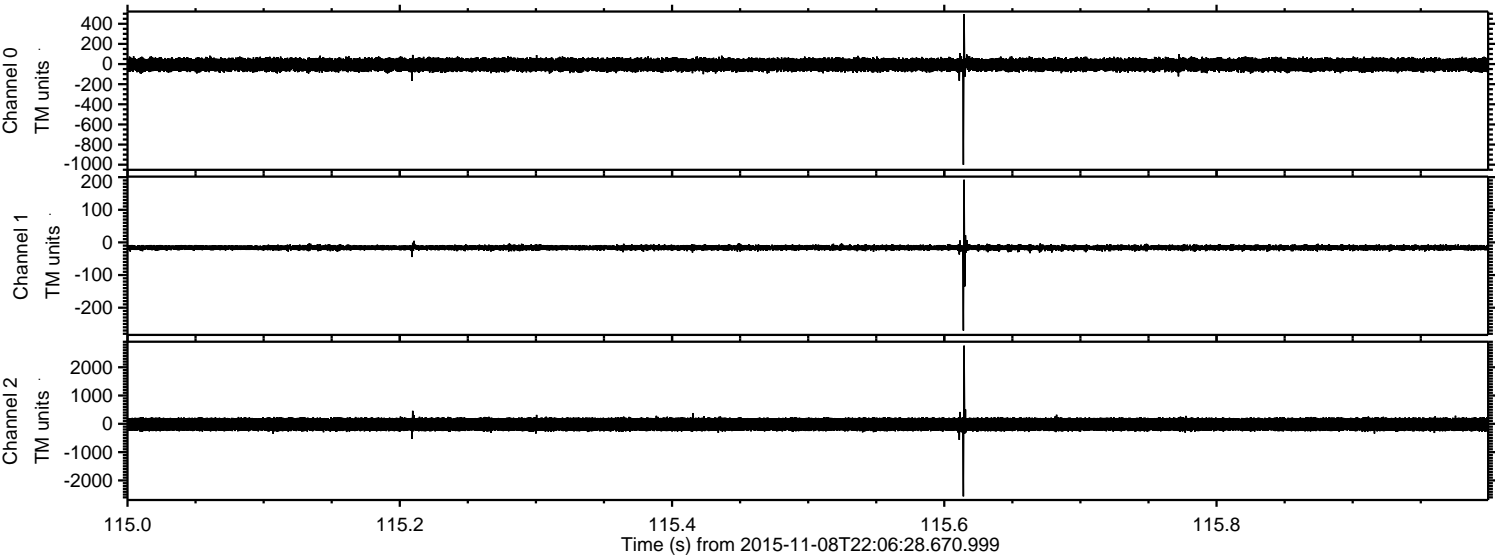


Processed Sun Nov 8 23:12:42 2015 by ELM ver.2012-10-06 from 001__elm20151108_220627__dat00.bin

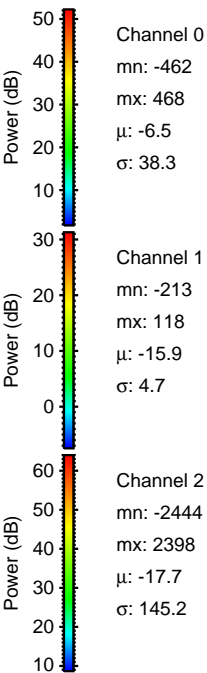
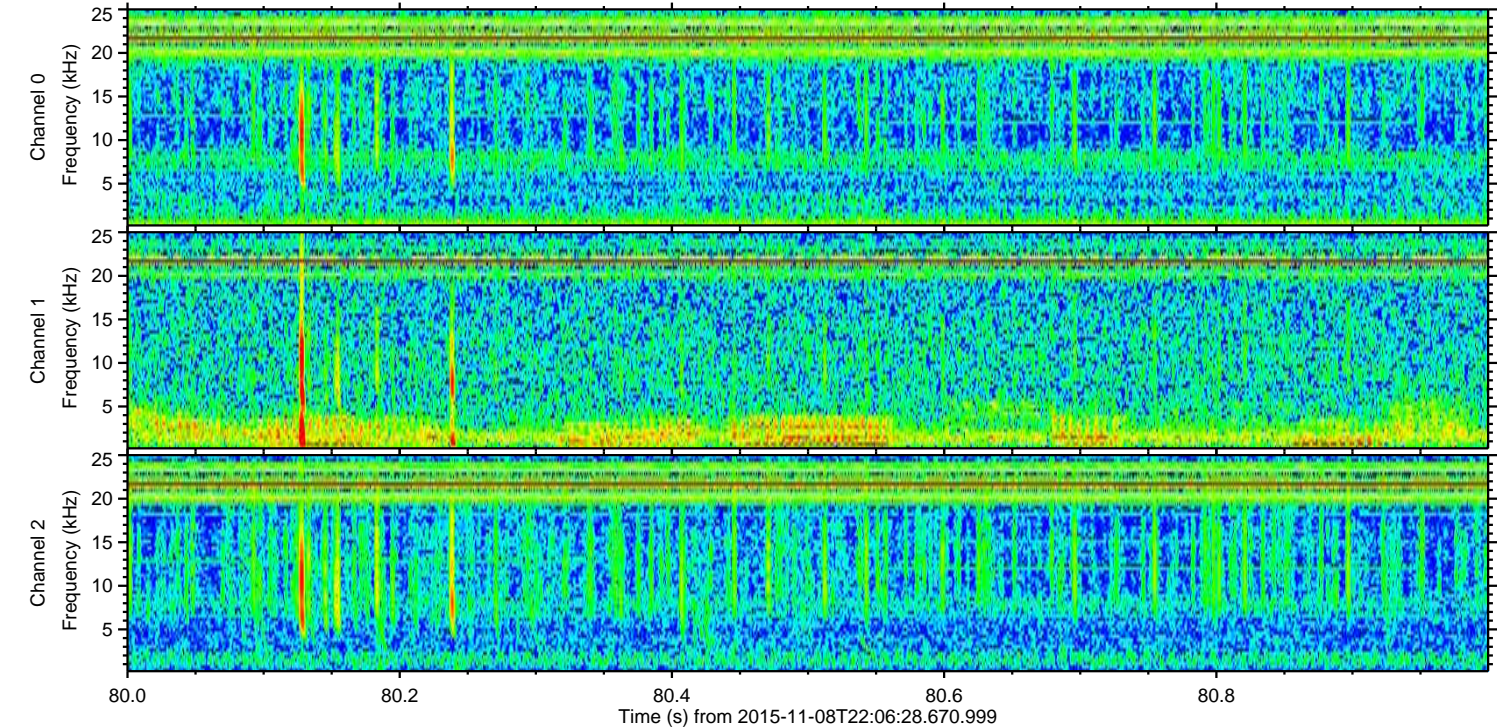
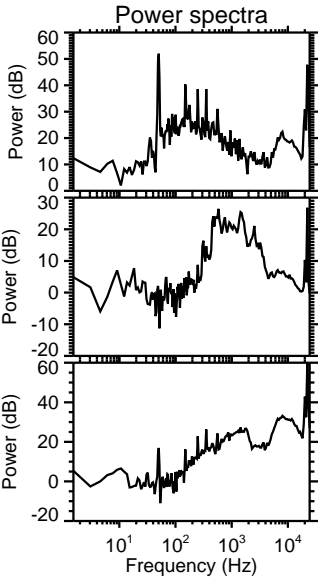
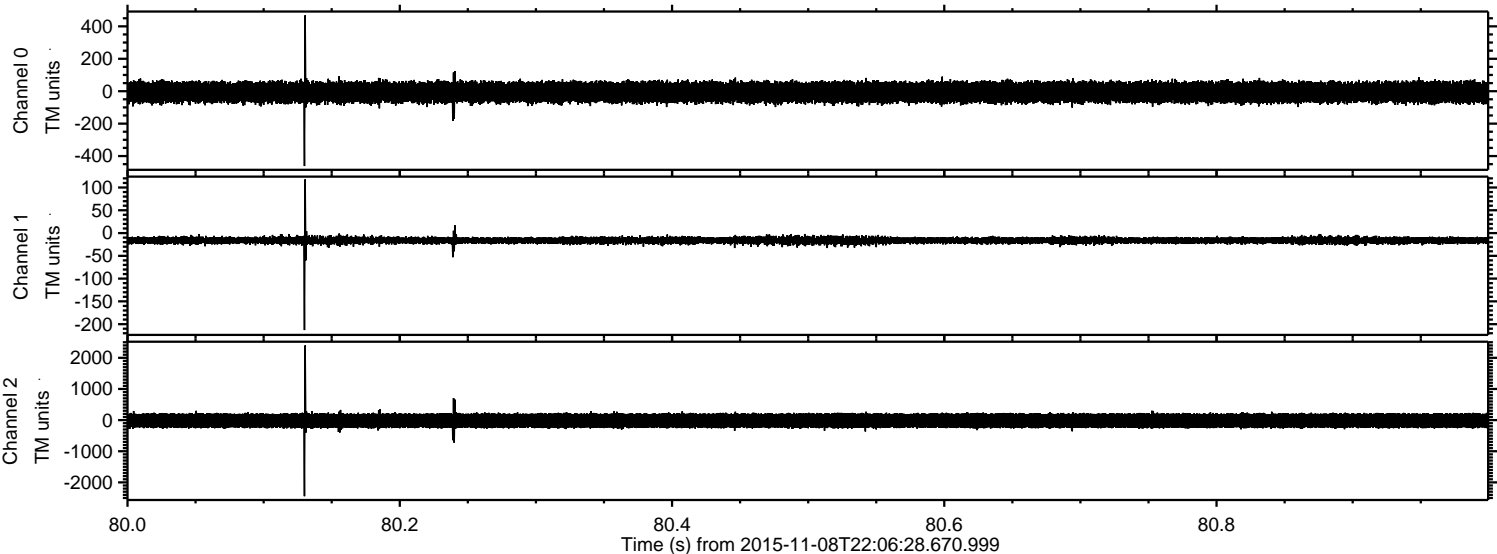


ELMAVAN 3D WAVEFORMS (Measured data sampled at 50 kHz) 51000 packets of 144 samples from 2015-11-08T22:06:28.670.999. Part 116/147

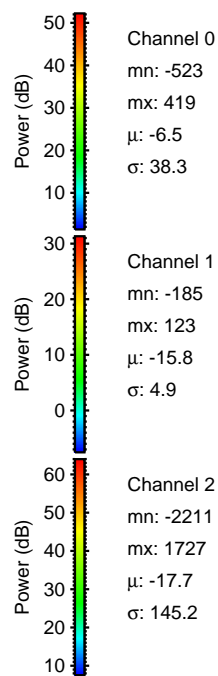
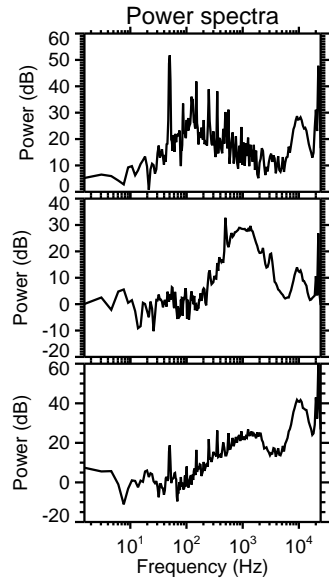
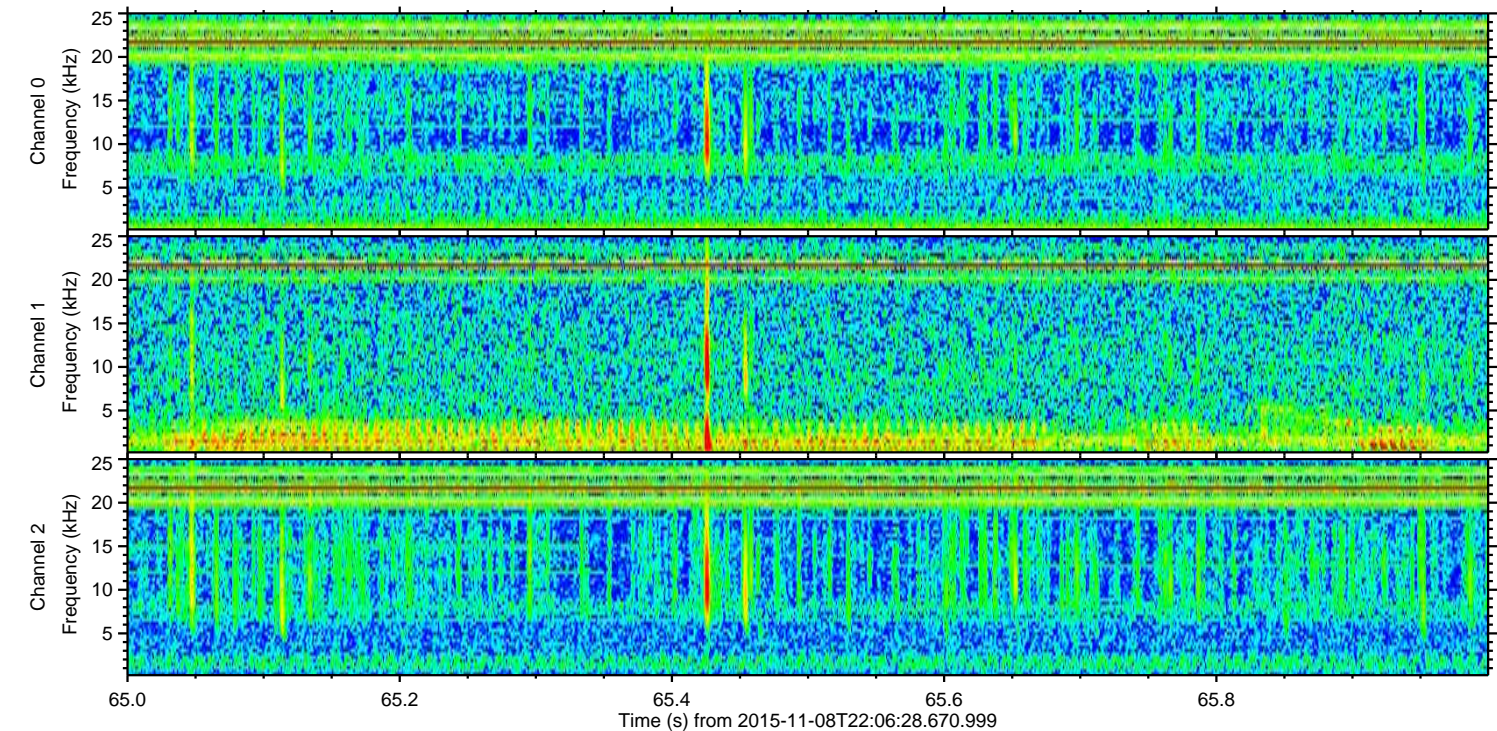
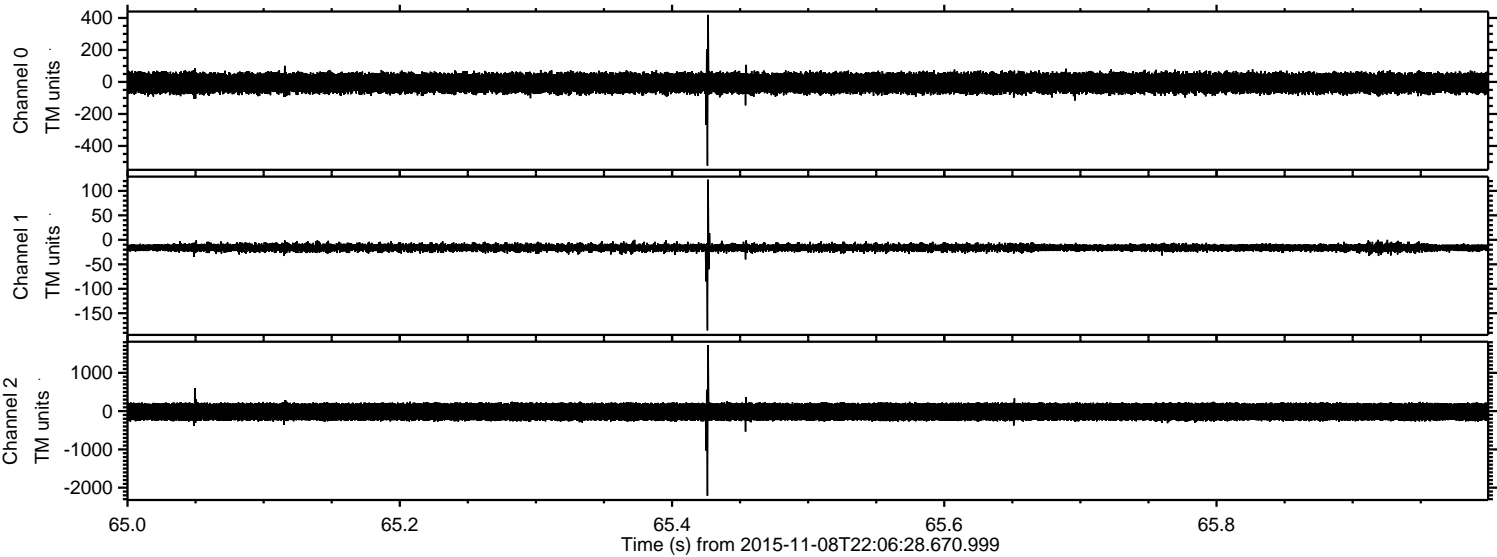
Processed Sun Nov 8 23:12:43 2015 by ELM ver.2012-10-06 from 001__elm20151108_220627__dat00.bin



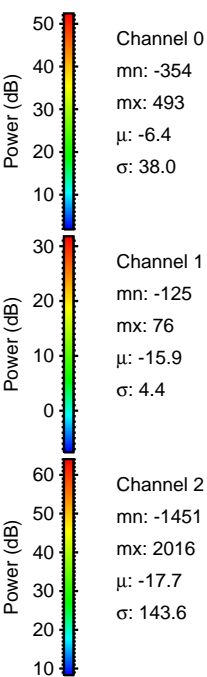
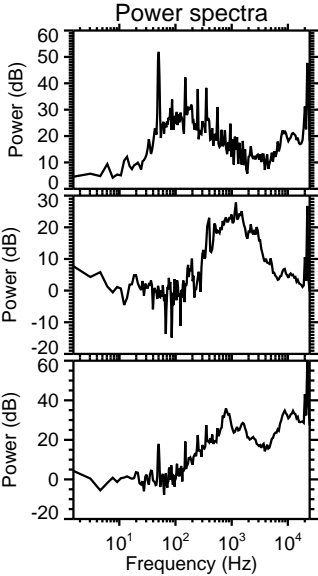
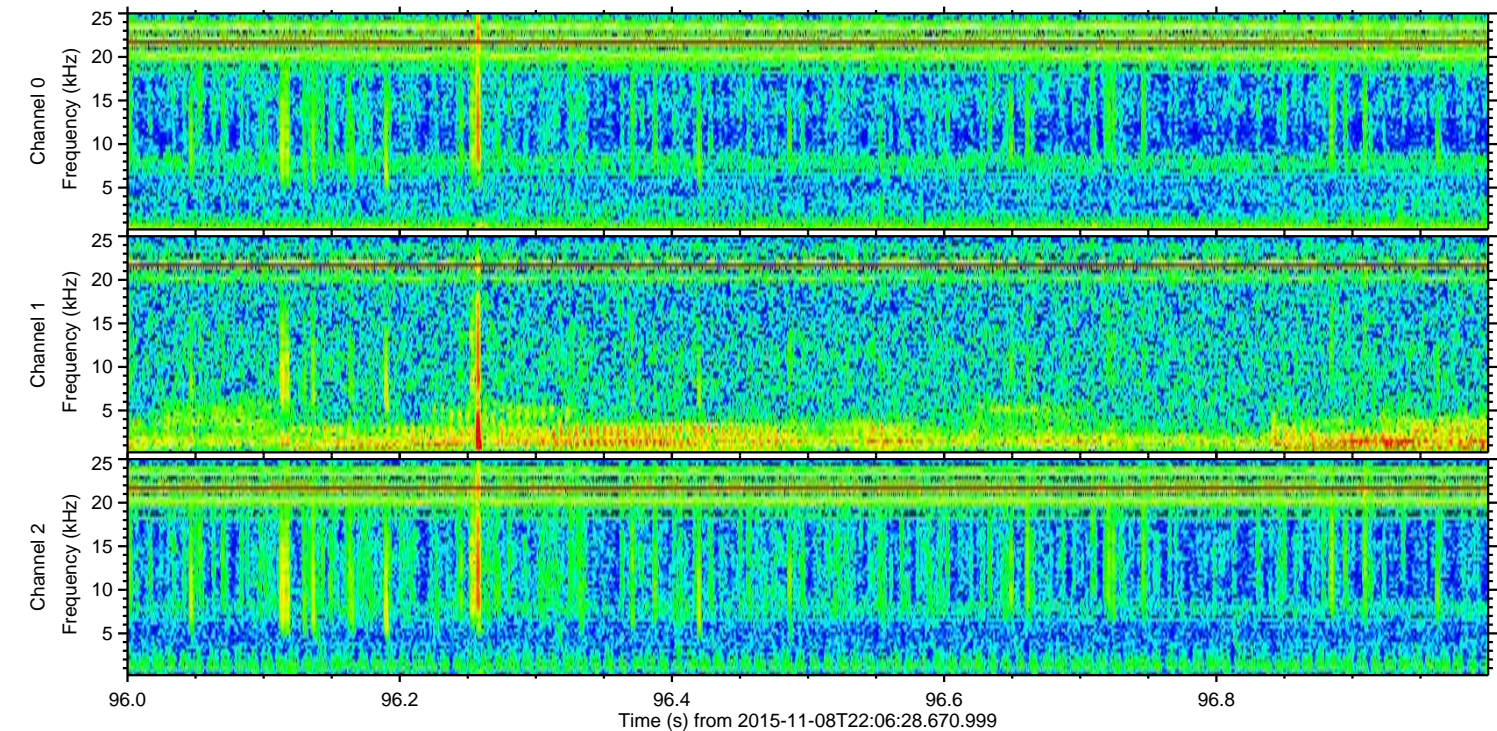
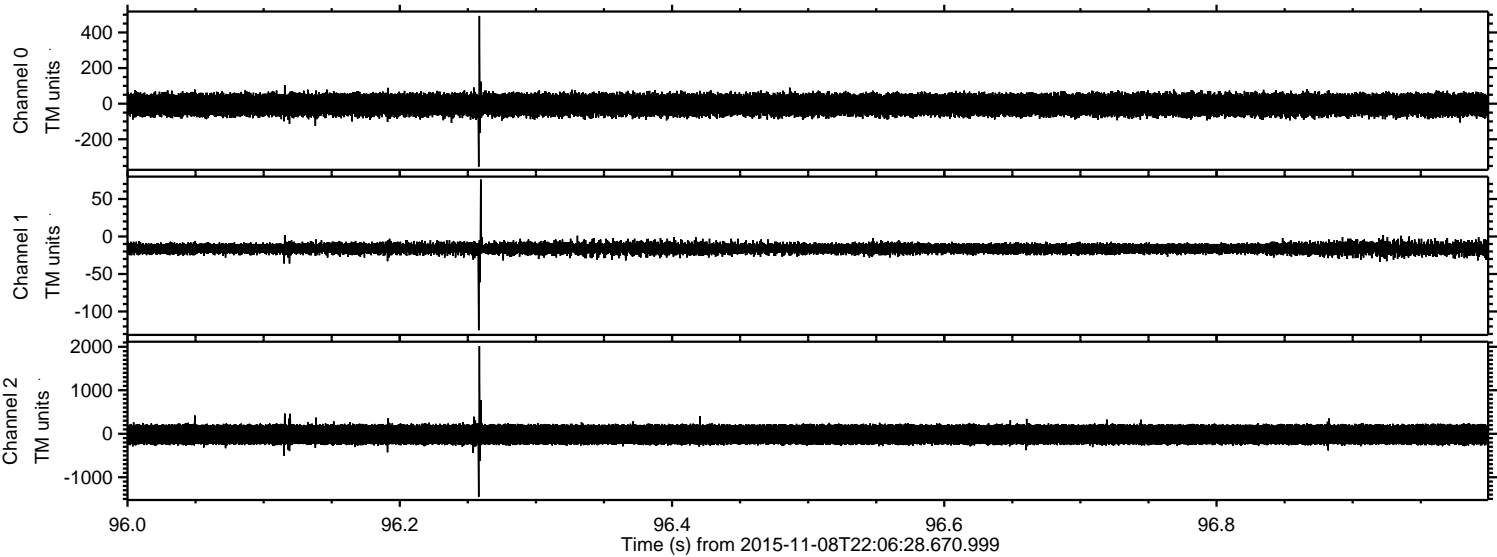
Processed Sun Nov 8 23:12:44 2015 by ELM ver.2012-10-06 from 001__elm20151108_220627__dat00.bin



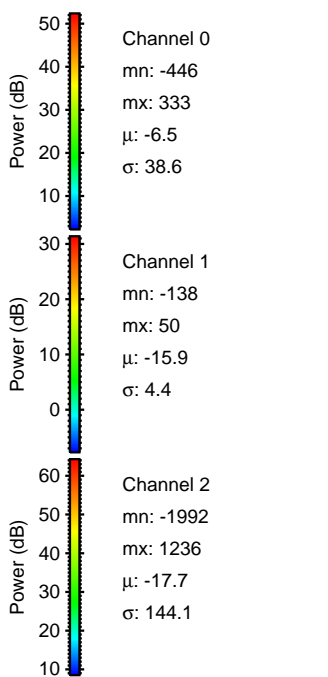
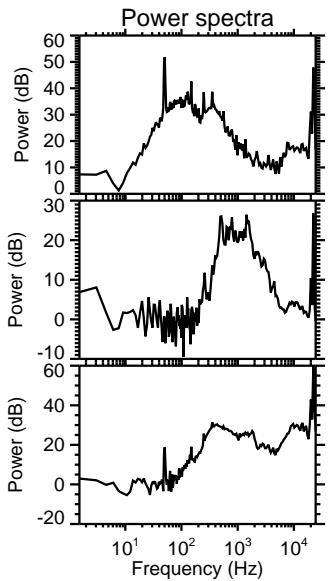
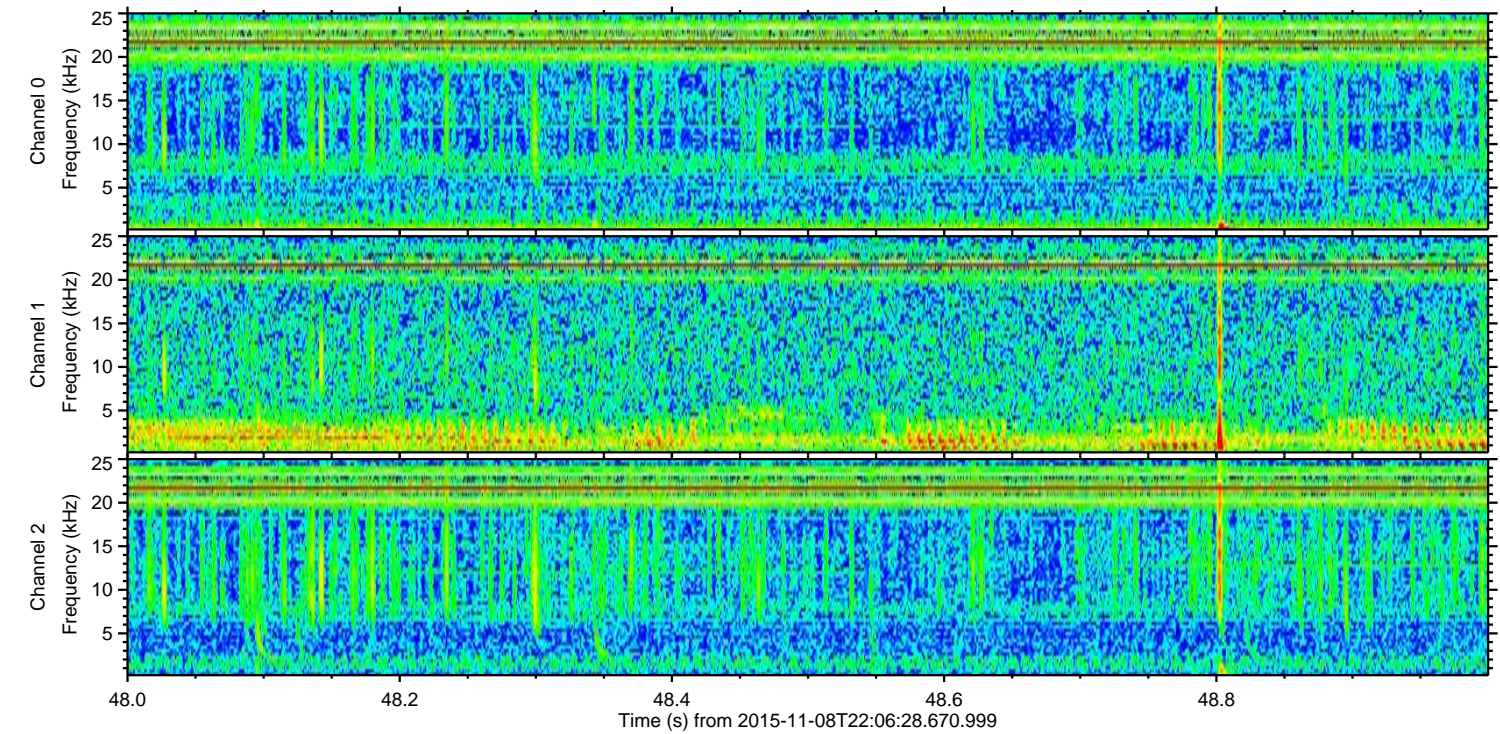
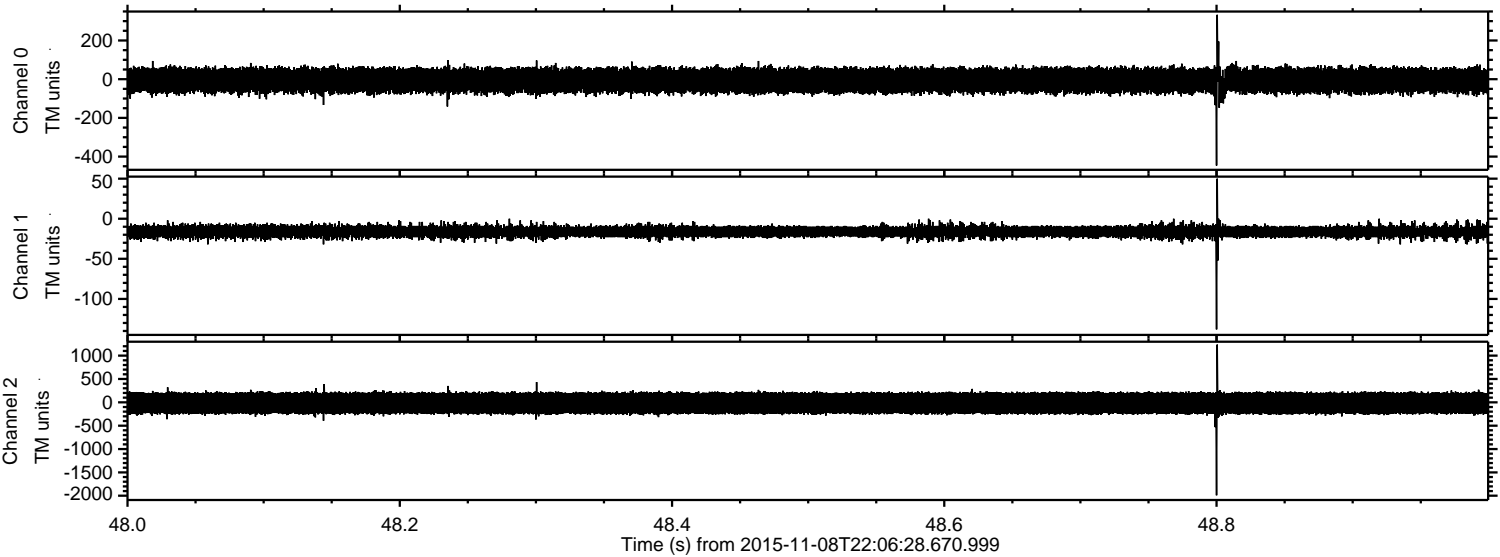
Processed Sun Nov 8 23:12:45 2015 by ELM ver.2012-10-06 from 001__elm20151108_220627__dat00.bin



Processed Sun Nov 8 23:12:46 2015 by ELM ver.2012-10-06 from 001__elm20151108_220627__dat00.bin

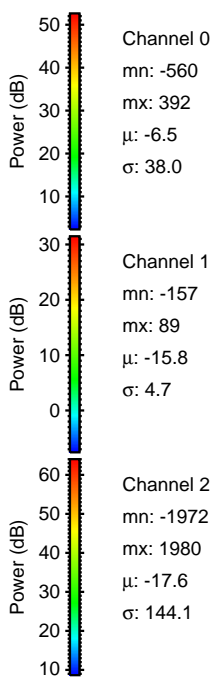
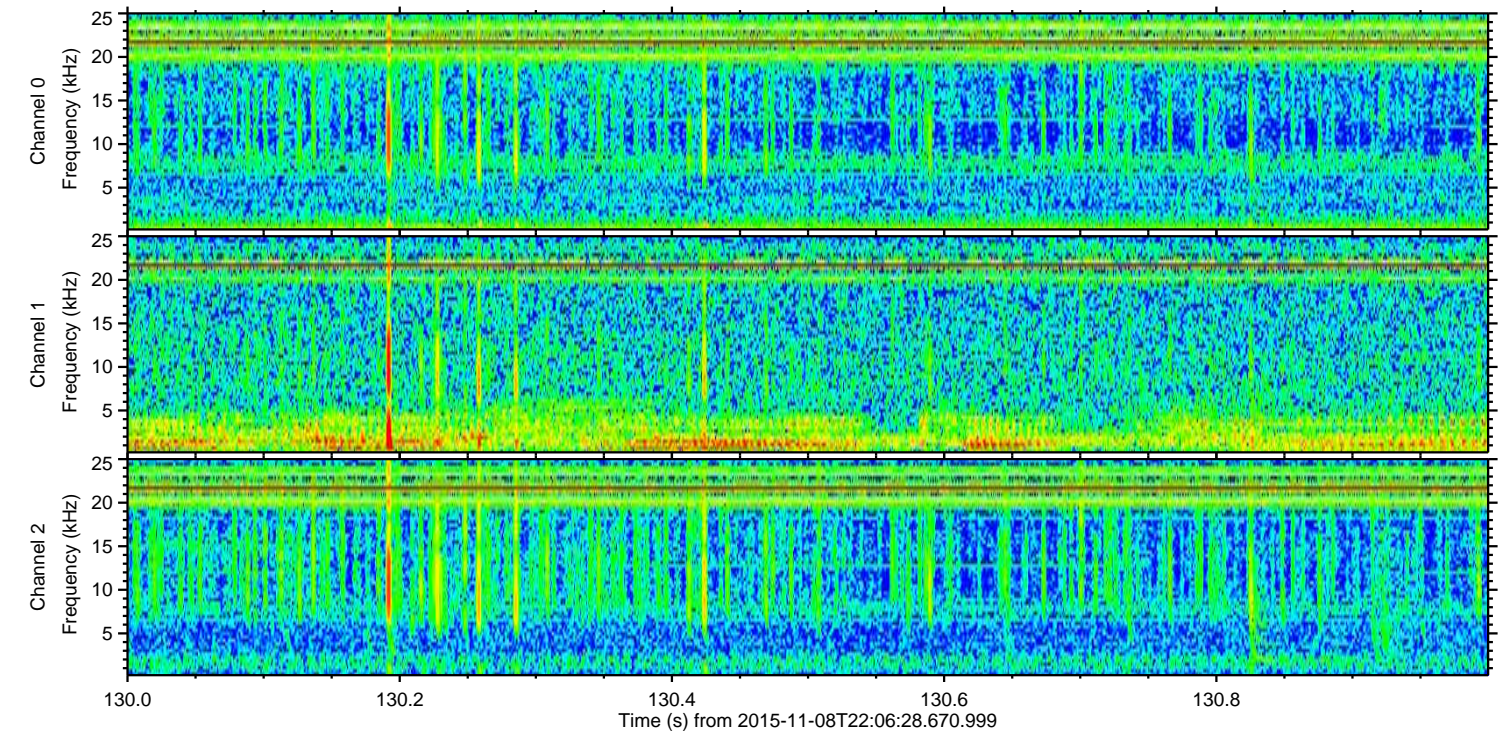
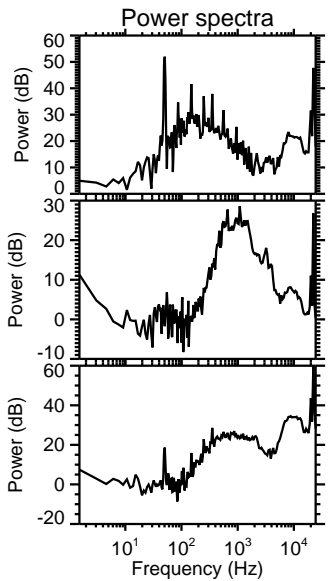
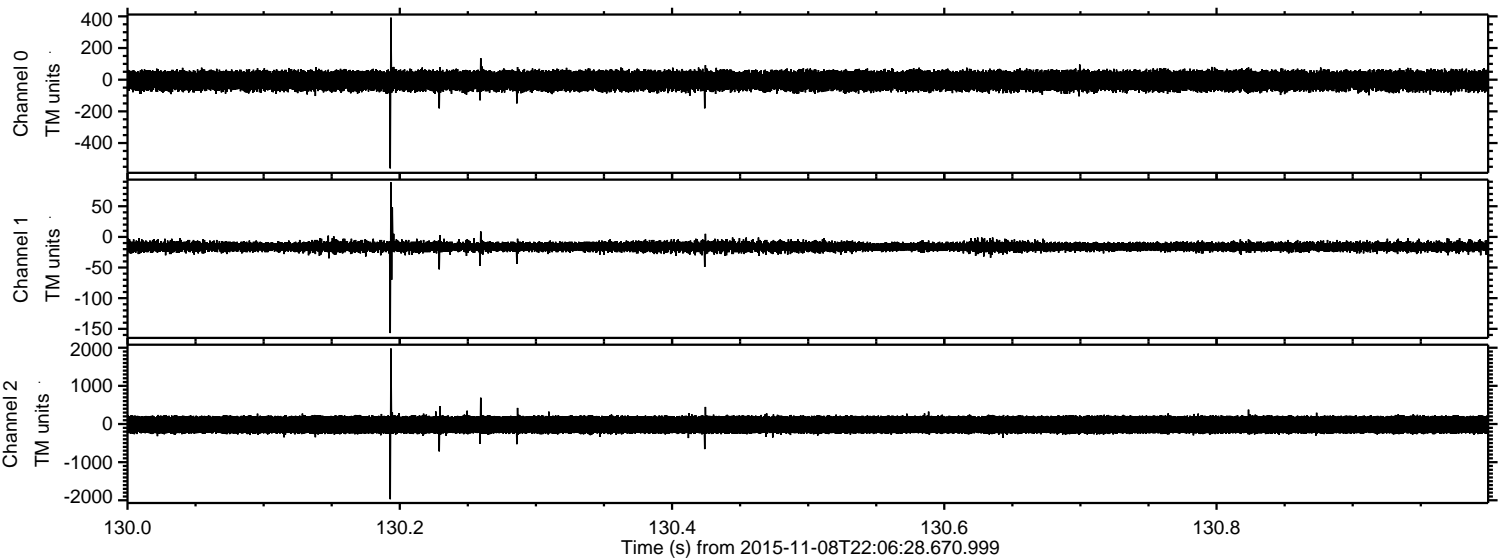


Processed Sun Nov 8 23:12:47 2015 by ELM ver.2012-10-06 from 001__elm20151108_220627__dat00.bin



ELMAVAN 3D WAVEFORMS (Measured data sampled at 50 kHz) 51000 packets of 144 samples from 2015-11-08T22:06:28.670.999. Part 131/147

Processed Sun Nov 8 23:12:48 2015 by ELM ver.2012-10-06 from 001__elm20151108_220627__dat00.bin



Channel 0
mn: -560
mx: 392
 μ : -6.5
 σ : 38.0

Channel 1
mn: -157
mx: 89
 μ : -15.8
 σ : 4.7

Channel 2
mn: -1972
mx: 1980
 μ : -17.6
 σ : 144.1

Processed Sun Nov 8 23:12:49 2015 by ELM ver.2012-10-06 from 001__elm20151108_220627__dat00.bin

