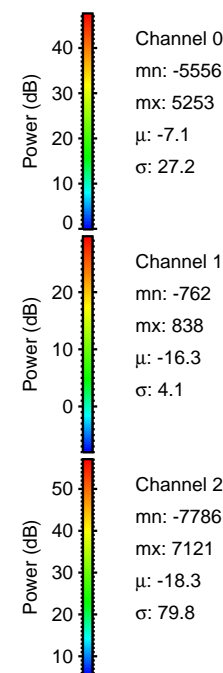
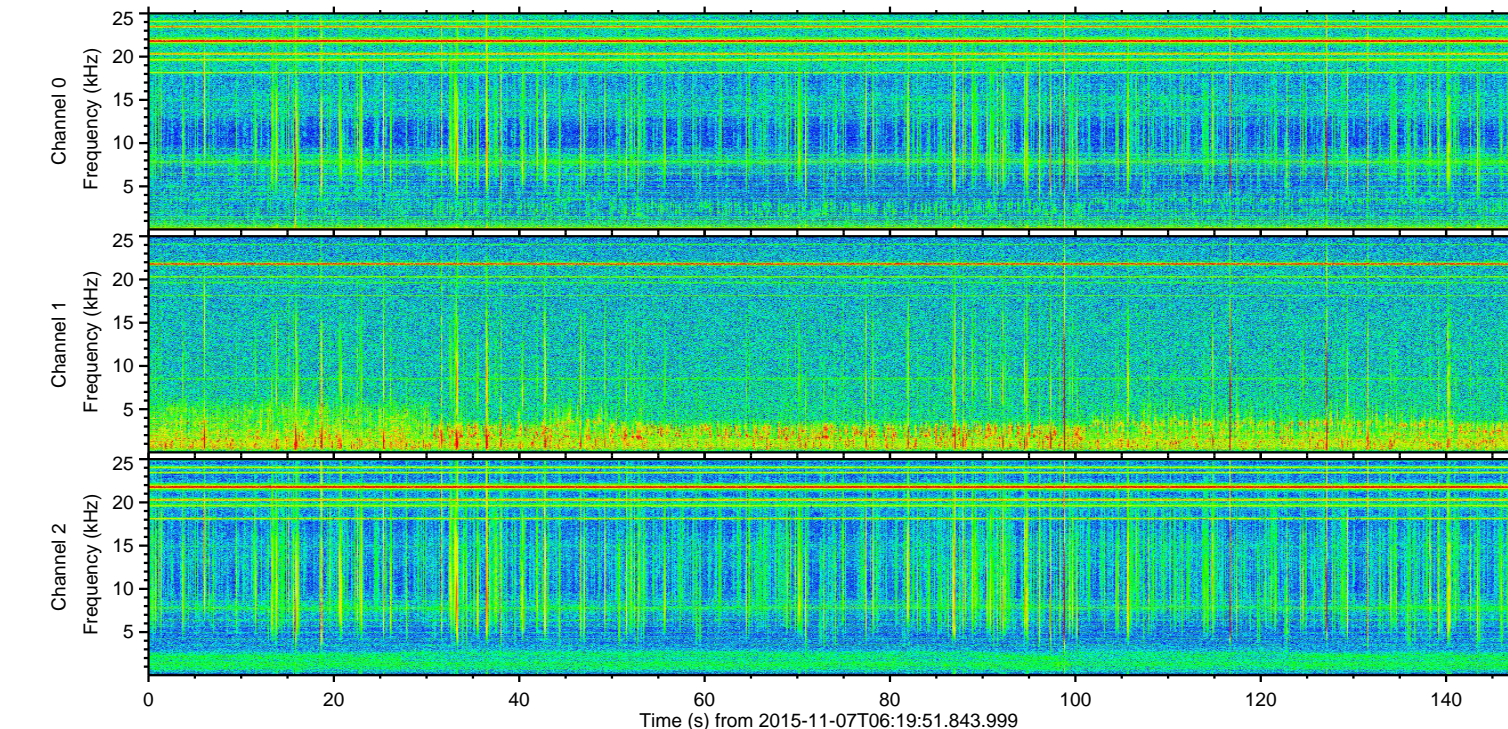
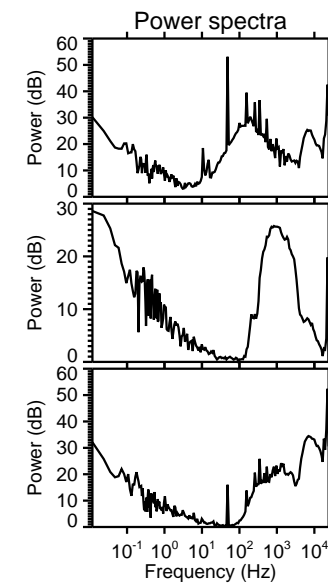
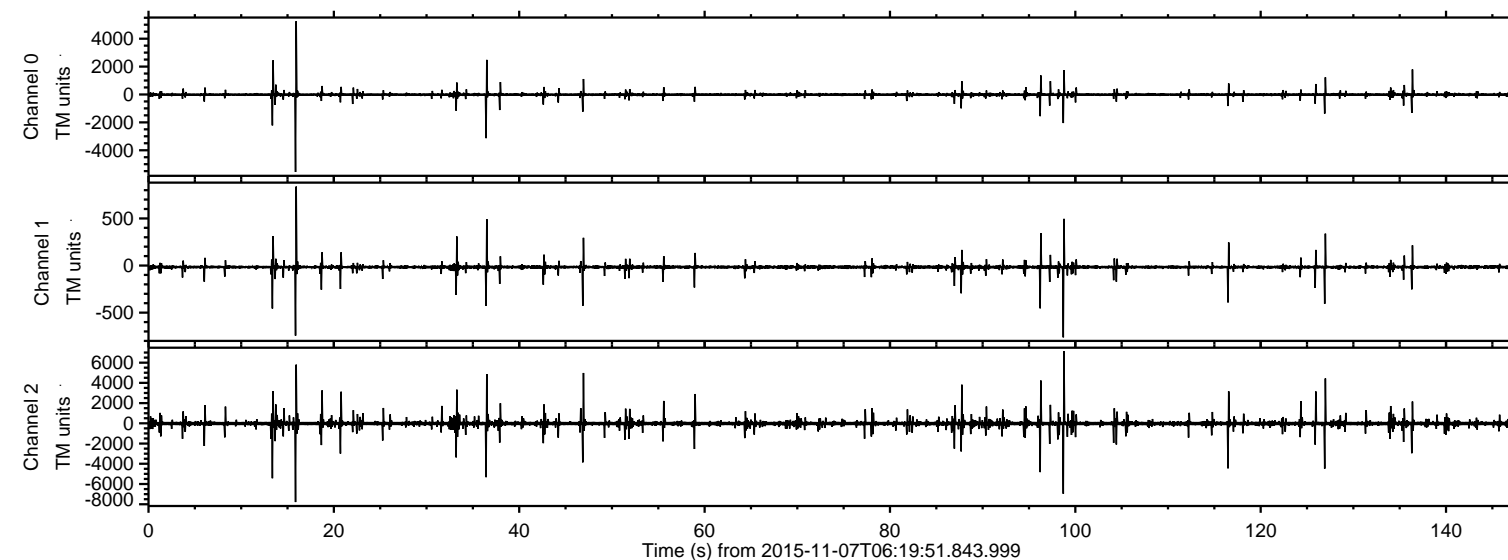


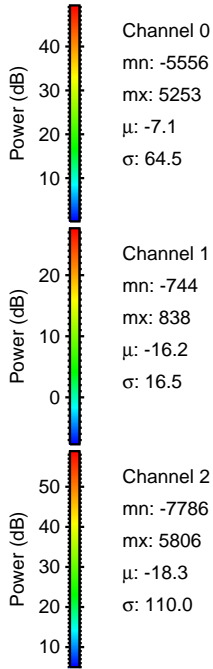
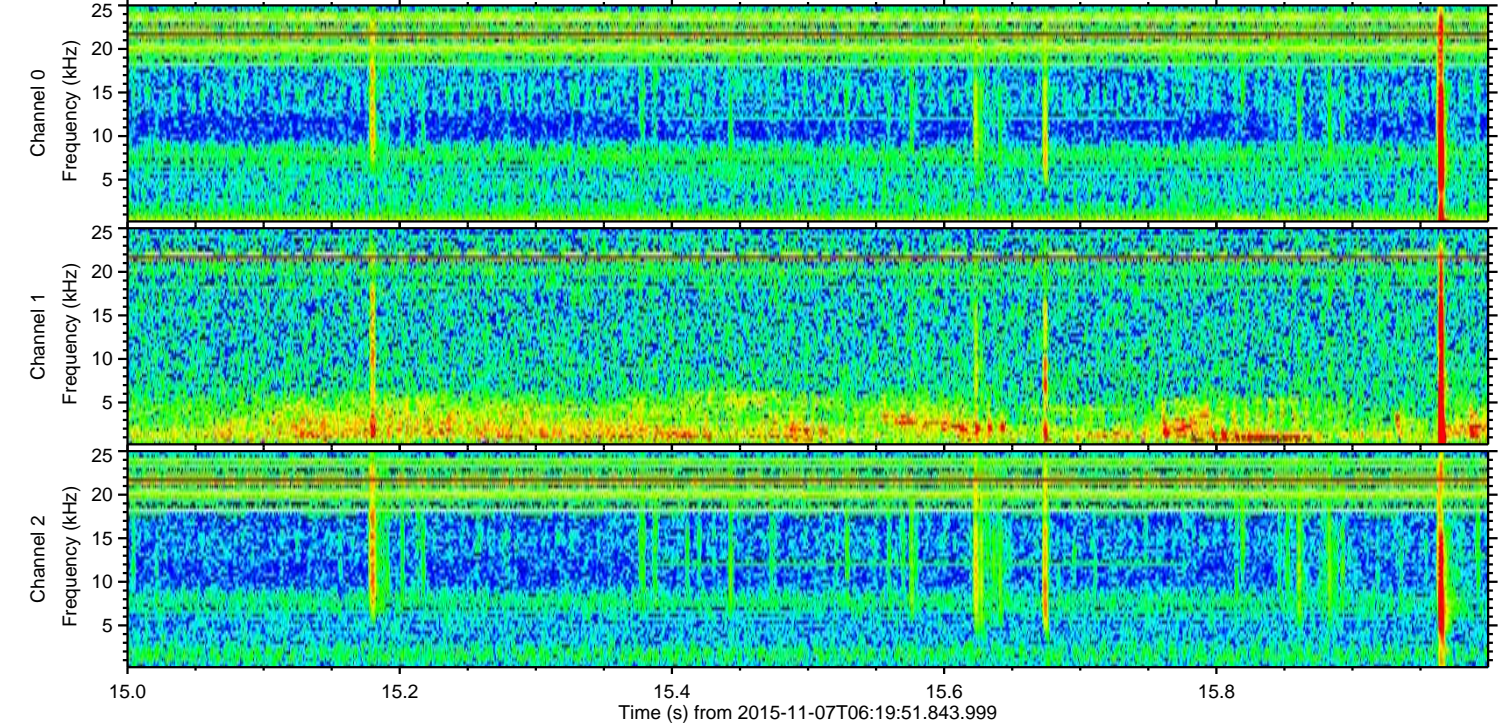
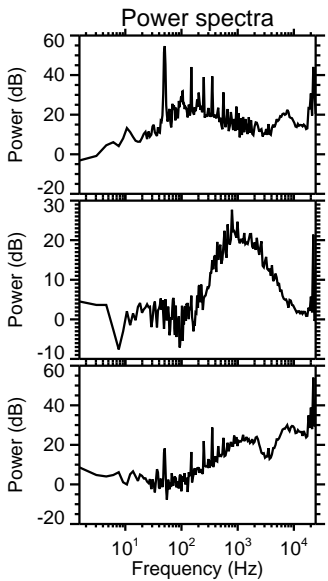
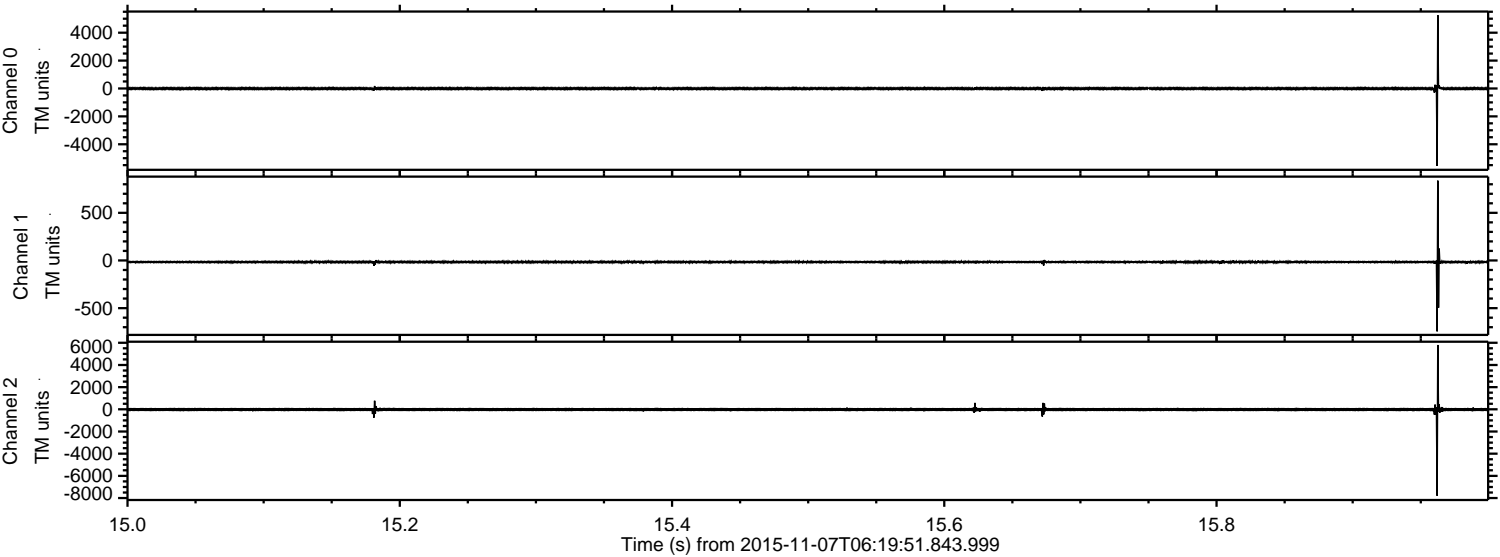
ELMAVAN 3D WAVEFORMS (Measured data sampled at 50 kHz) 51000 packets of 144 samples from 2015-11-07T06:19:51.843.999.

Processed Sat Nov 7 07:26:44 2015 by ELM ver.2012-10-06 from 001__elm20151107_061950__dat00.bin



ELMAVAN 3D WAVEFORMS (Measured data sampled at 50 kHz) 51000 packets of 144 samples from 2015-11-07T06:19:51.843.999. Part 16/147

Processed Sat Nov 7 07:26:56 2015 by ELM ver.2012-10-06 from 001__elm20151107_061950__dat00.bin

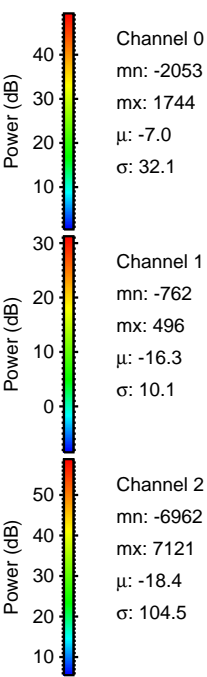
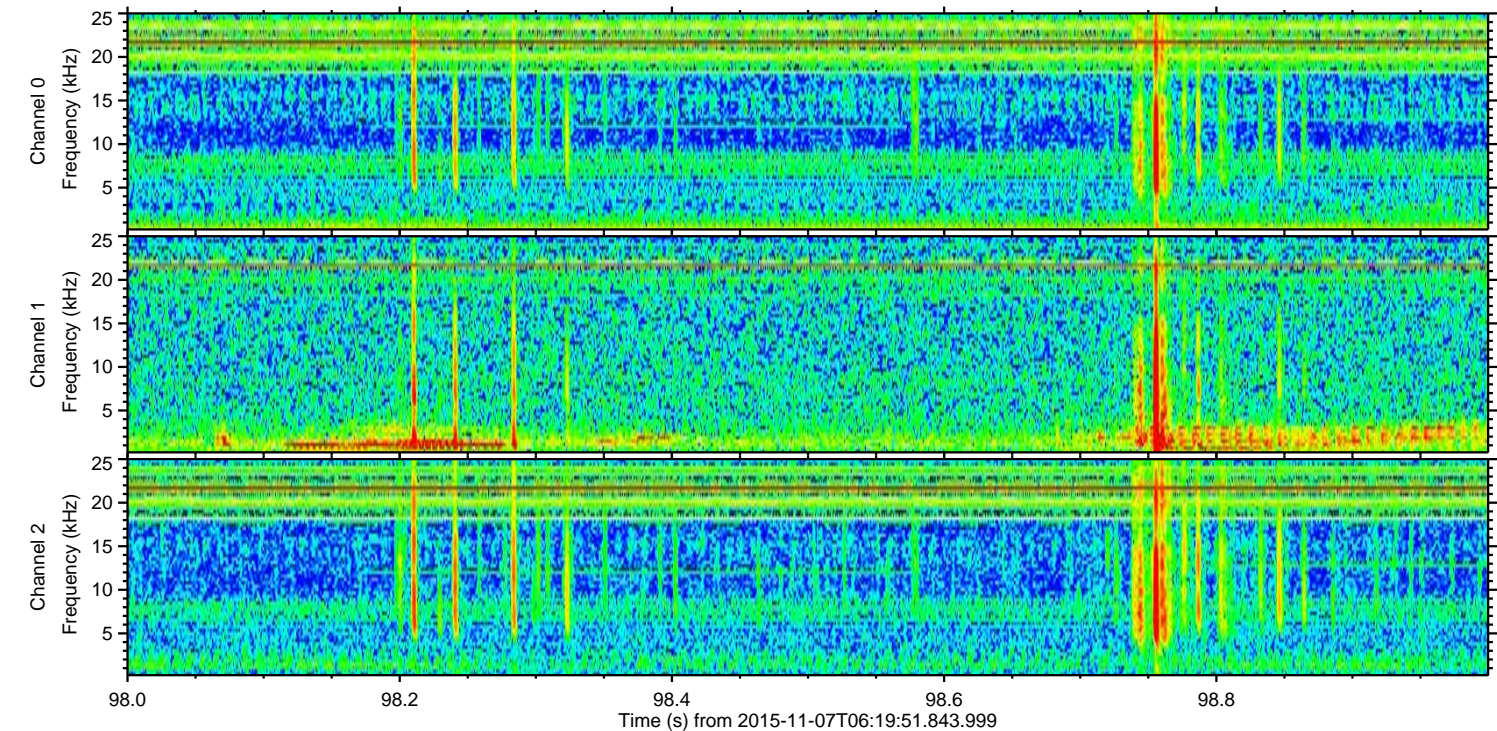
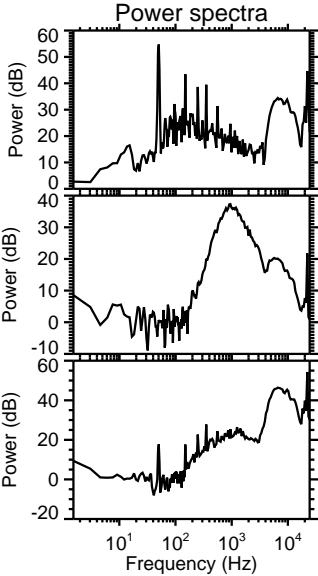
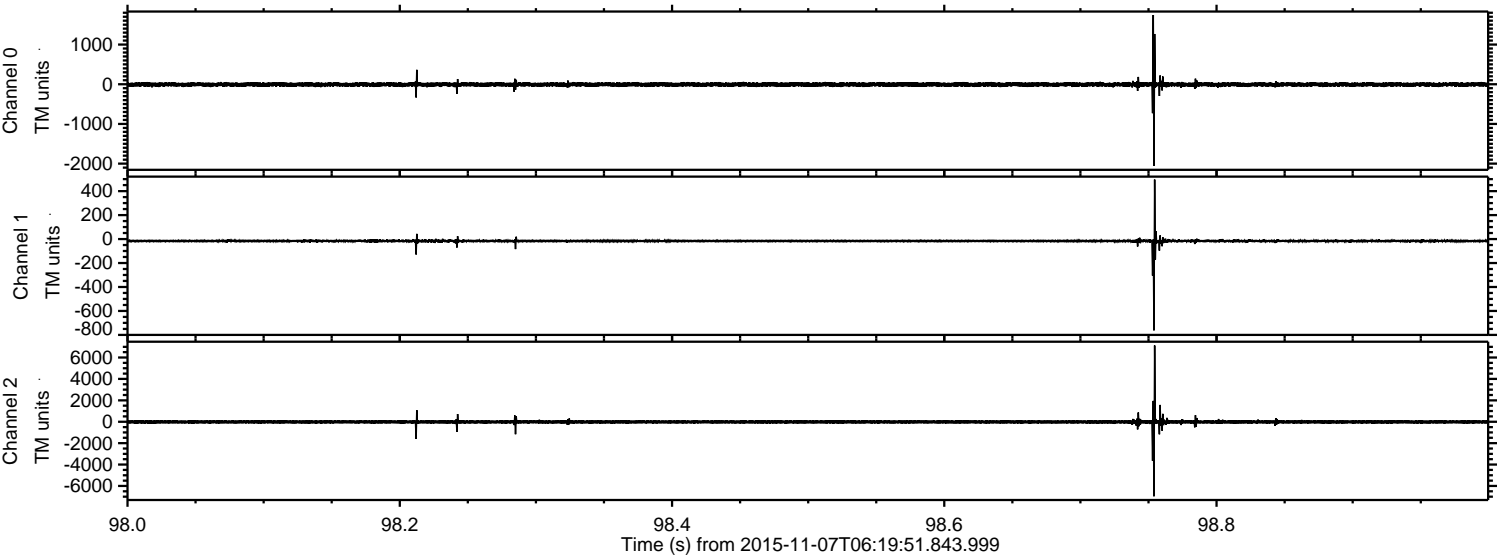


Channel 0
mn: -55.56
mx: 52.53
 μ : -7.1
 σ : 64.5

Channel 1
mn: -7.44
mx: 8.38
 μ : -16.2
 σ : 16.5

Channel 2
mn: -77.86
mx: 58.06
 μ : -18.3
 σ : 110.0

Processed Sat Nov 7 07:26:57 2015 by ELM ver.2012-10-06 from 001__elm20151107_061950__dat00.bin



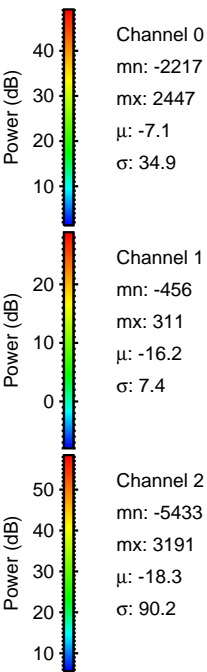
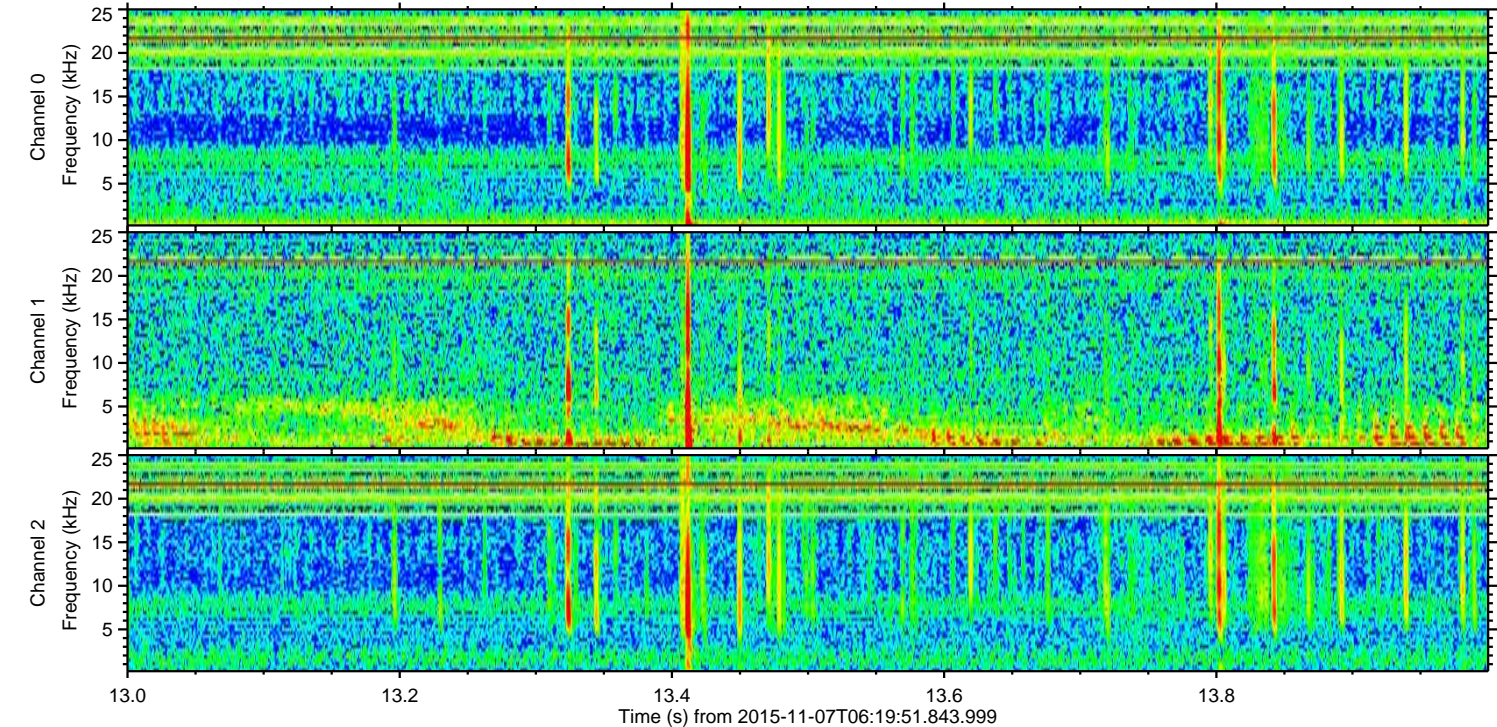
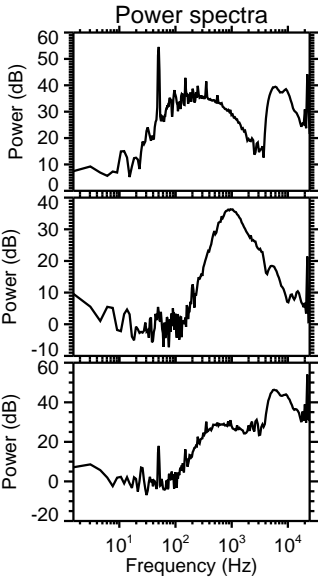
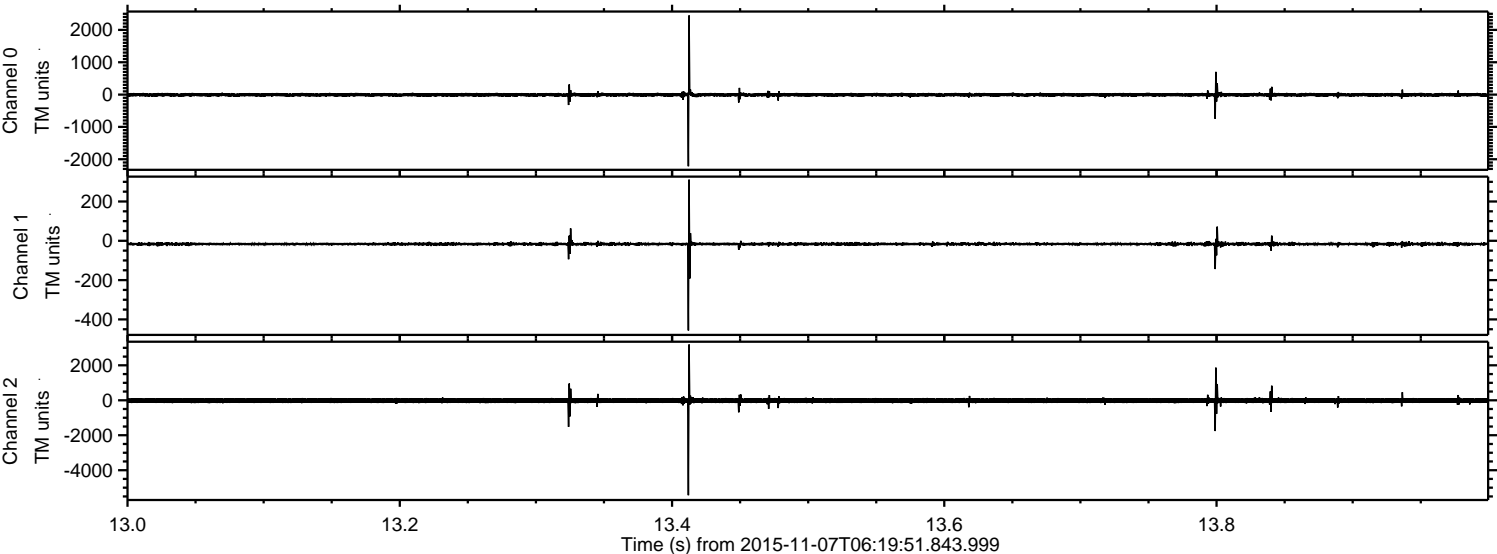
Channel 0
mn: -2053
mx: 1744
 μ : -7.0
 σ : 32.1

Channel 1
mn: -762
mx: 496
 μ : -16.3
 σ : 10.1

Channel 2
mn: -6962
mx: 7121
 μ : -18.4
 σ : 104.5

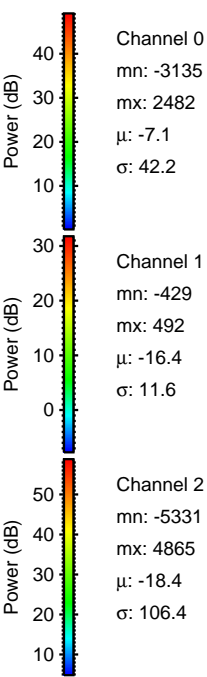
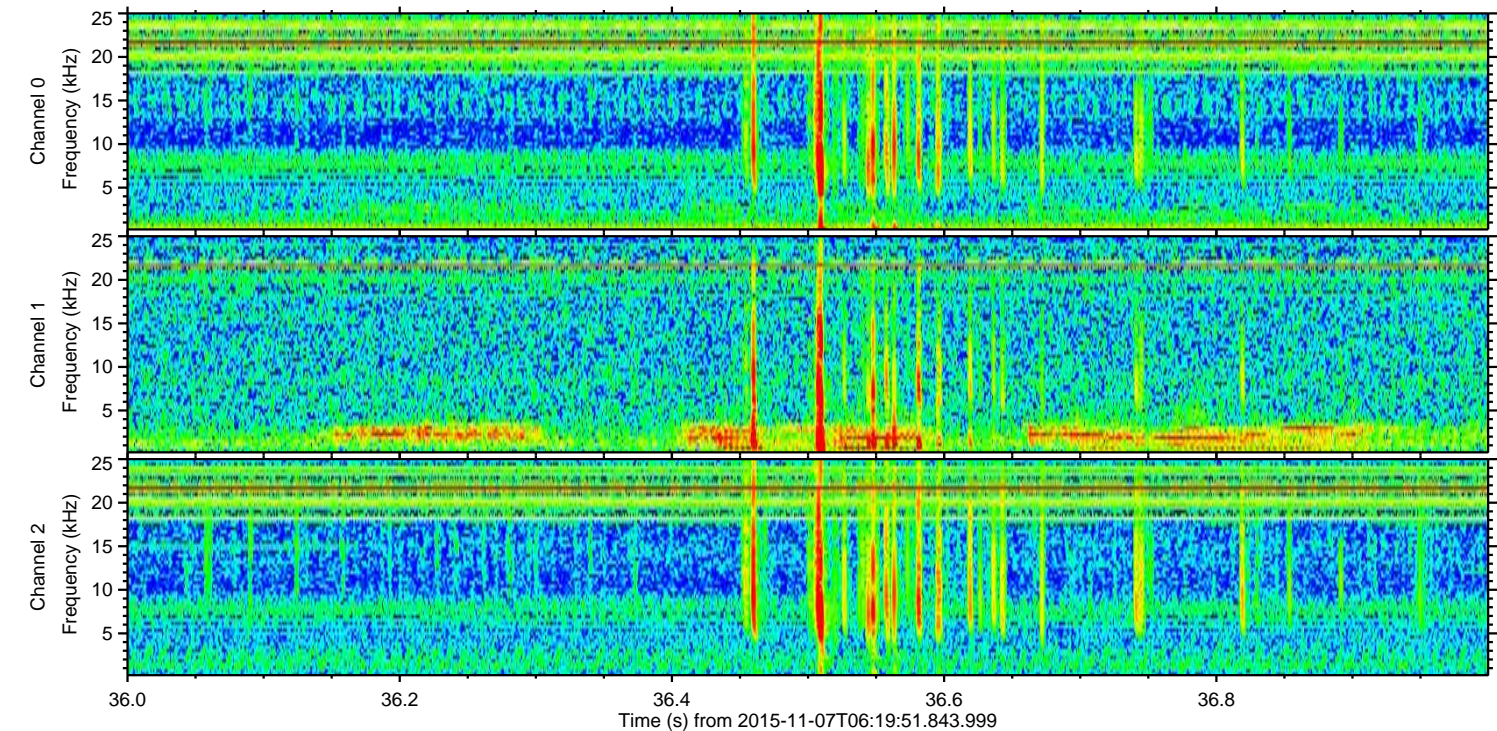
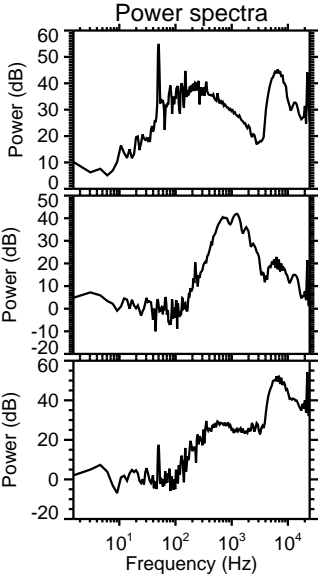
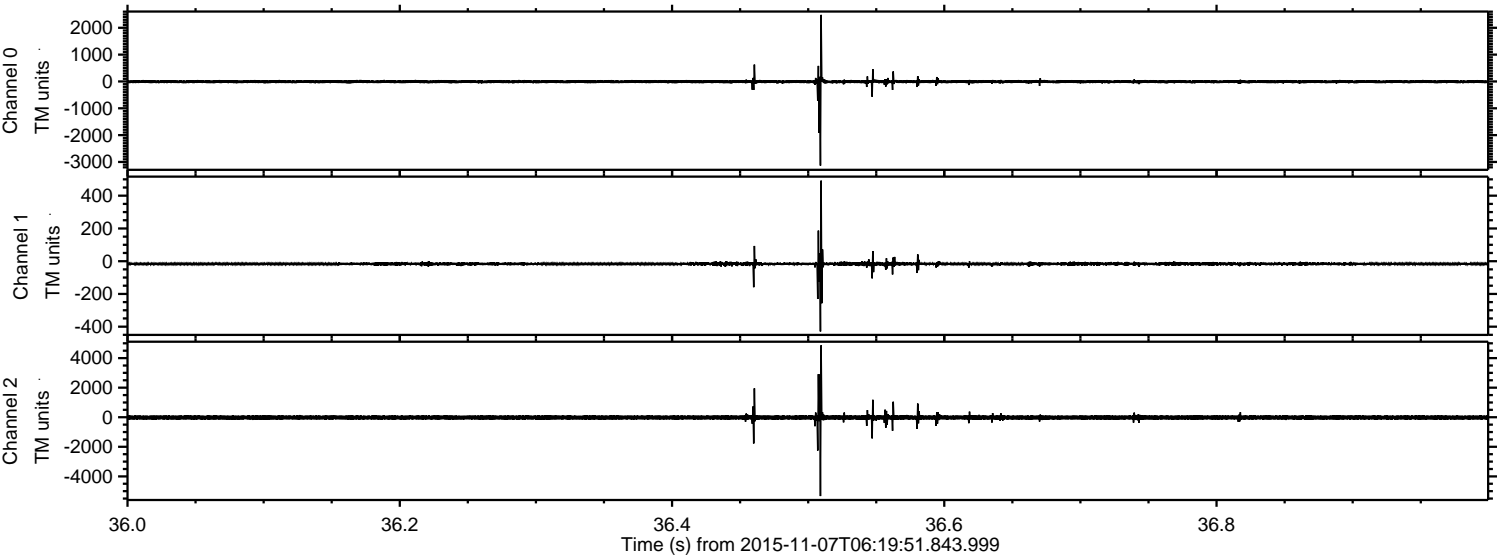
ELMAVAN 3D WAVEFORMS (Measured data sampled at 50 kHz) 51000 packets of 144 samples from 2015-11-07T06:19:51.843.999. Part 14/147

Processed Sat Nov 7 07:26:57 2015 by ELM ver.2012-10-06 from 001__elm20151107_061950__dat00.bin



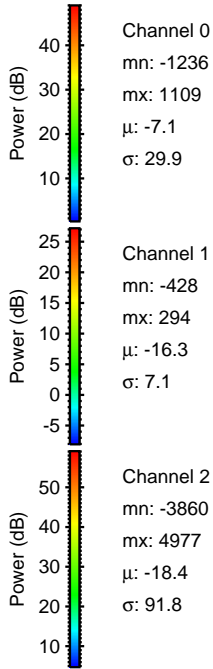
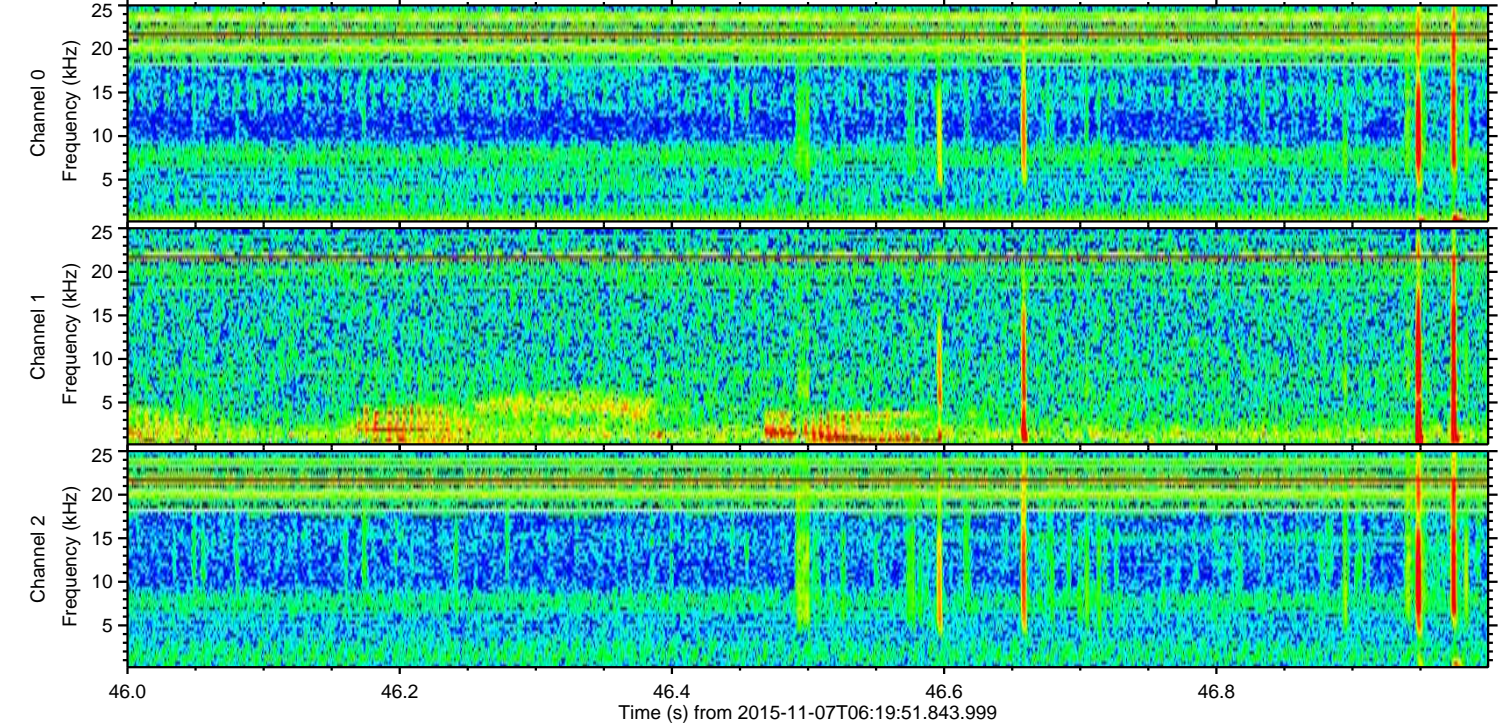
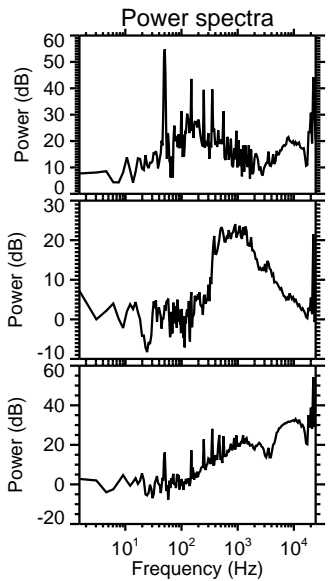
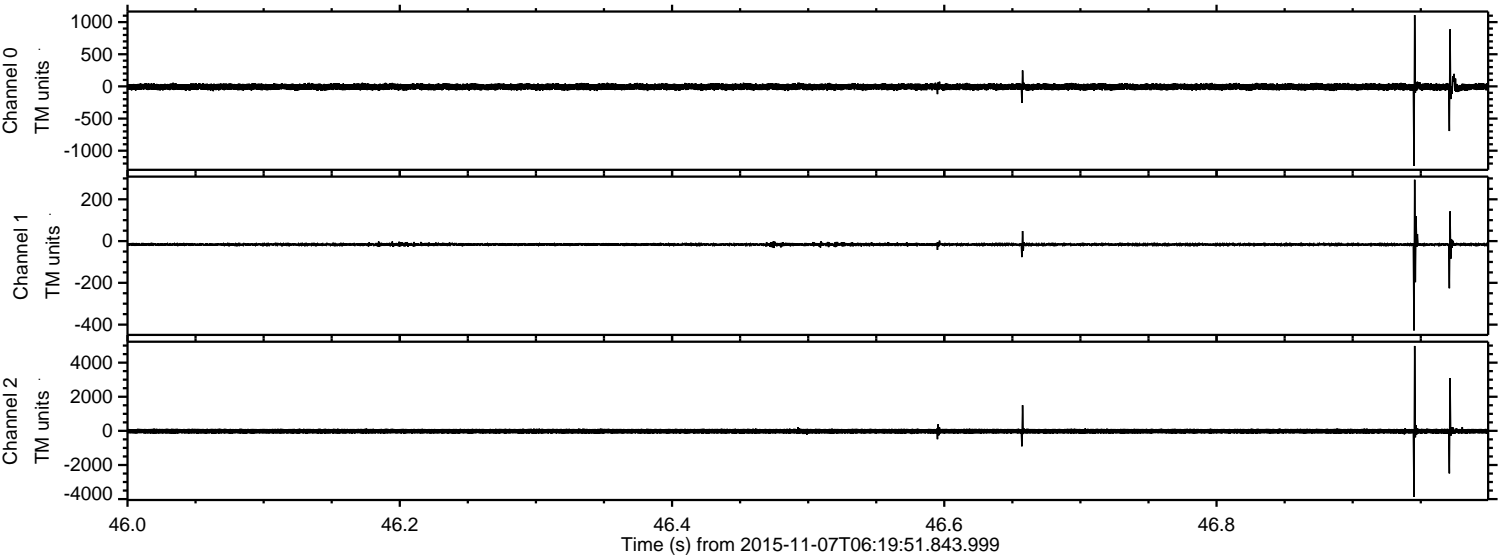
ELMAVAN 3D WAVEFORMS (Measured data sampled at 50 kHz) 51000 packets of 144 samples from 2015-11-07T06:19:51.843.999. Part 37/147

Processed Sat Nov 7 07:26:58 2015 by ELM ver.2012-10-06 from 001__elm20151107_061950__dat00.bin

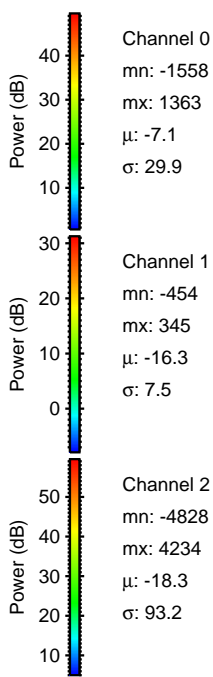
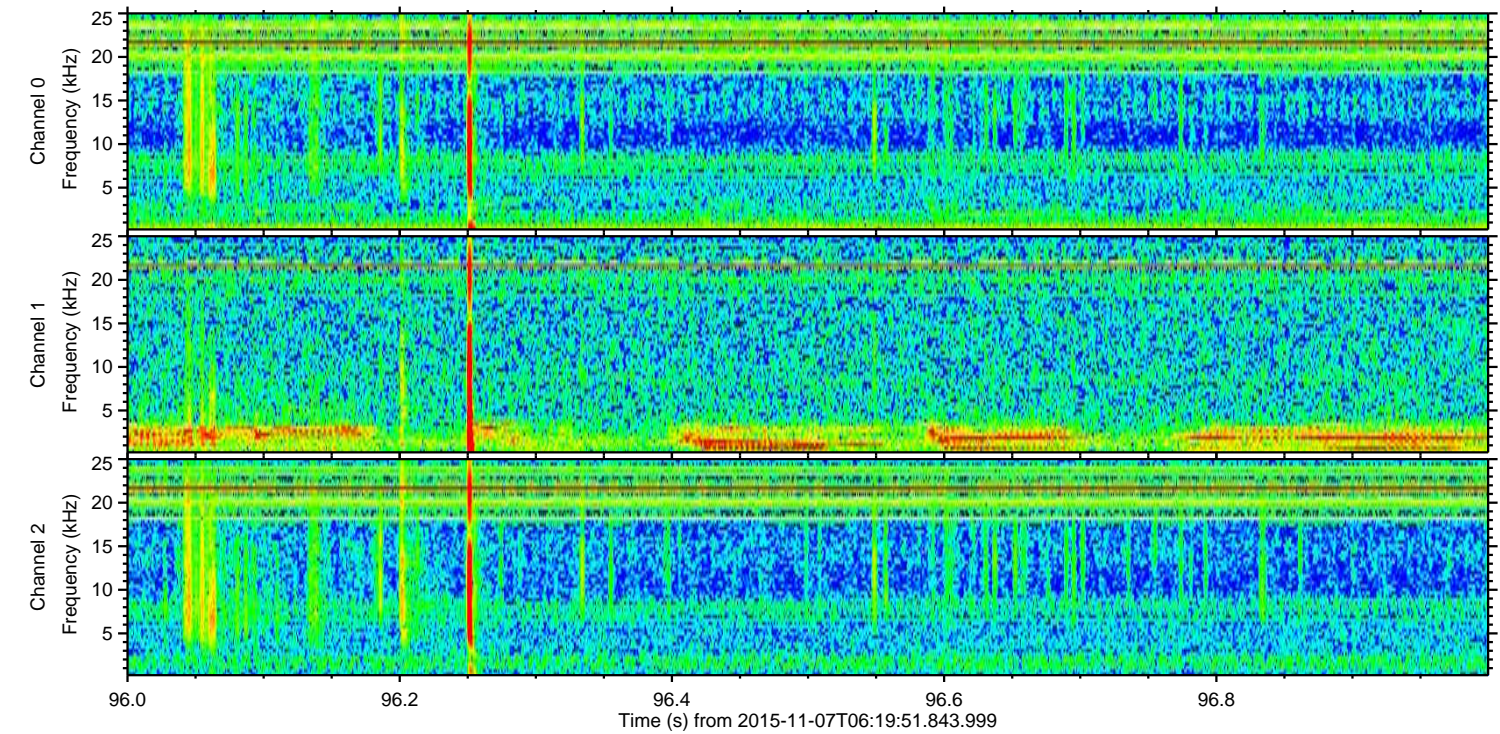
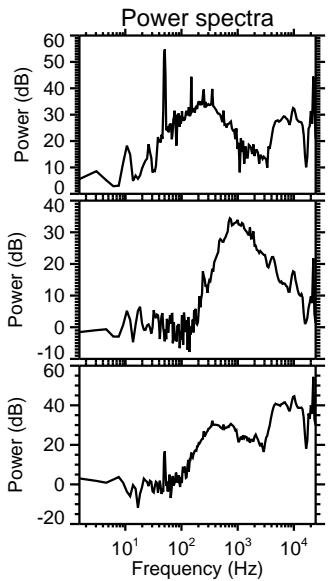
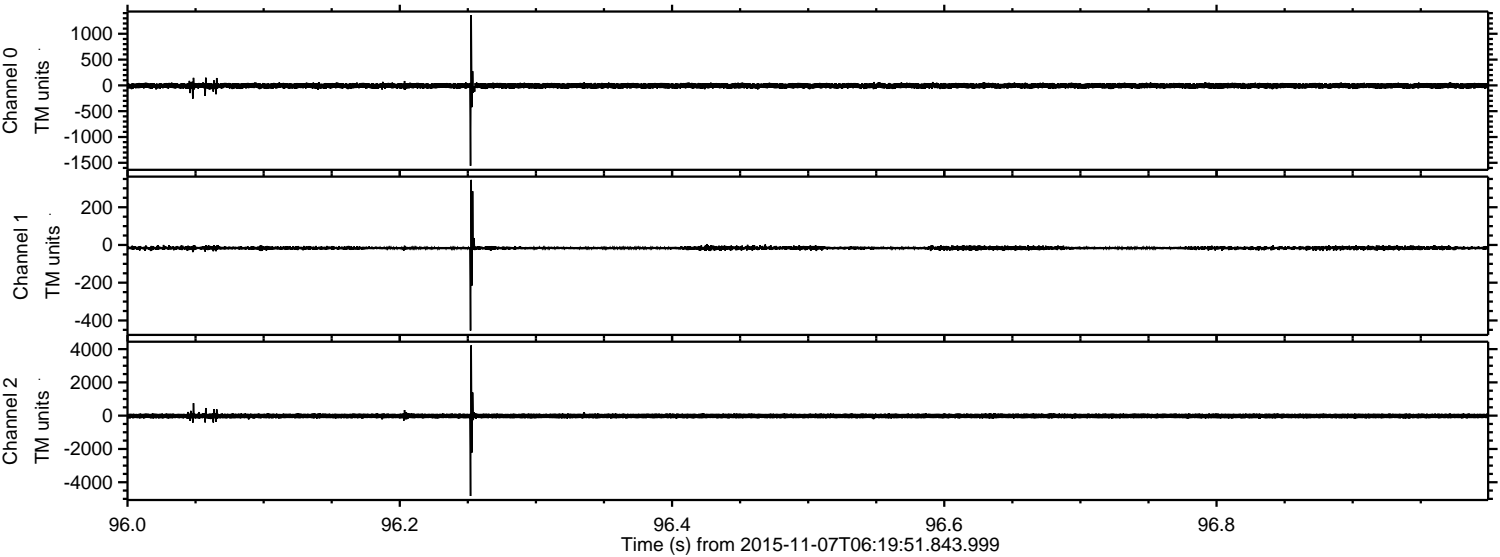


ELMAVAN 3D WAVEFORMS (Measured data sampled at 50 kHz) 51000 packets of 144 samples from 2015-11-07T06:19:51.843.999. Part 47/147

Processed Sat Nov 7 07:26:59 2015 by ELM ver.2012-10-06 from 001__elm20151107_061950__dat00.bin



Processed Sat Nov 7 07:27:00 2015 by ELM ver.2012-10-06 from 001__elm20151107_061950__dat00.bin



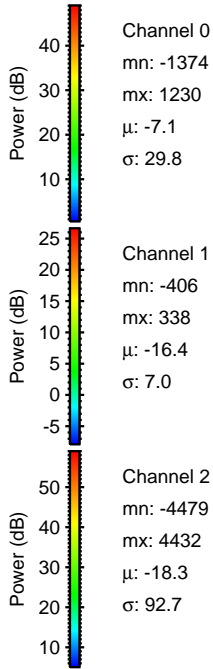
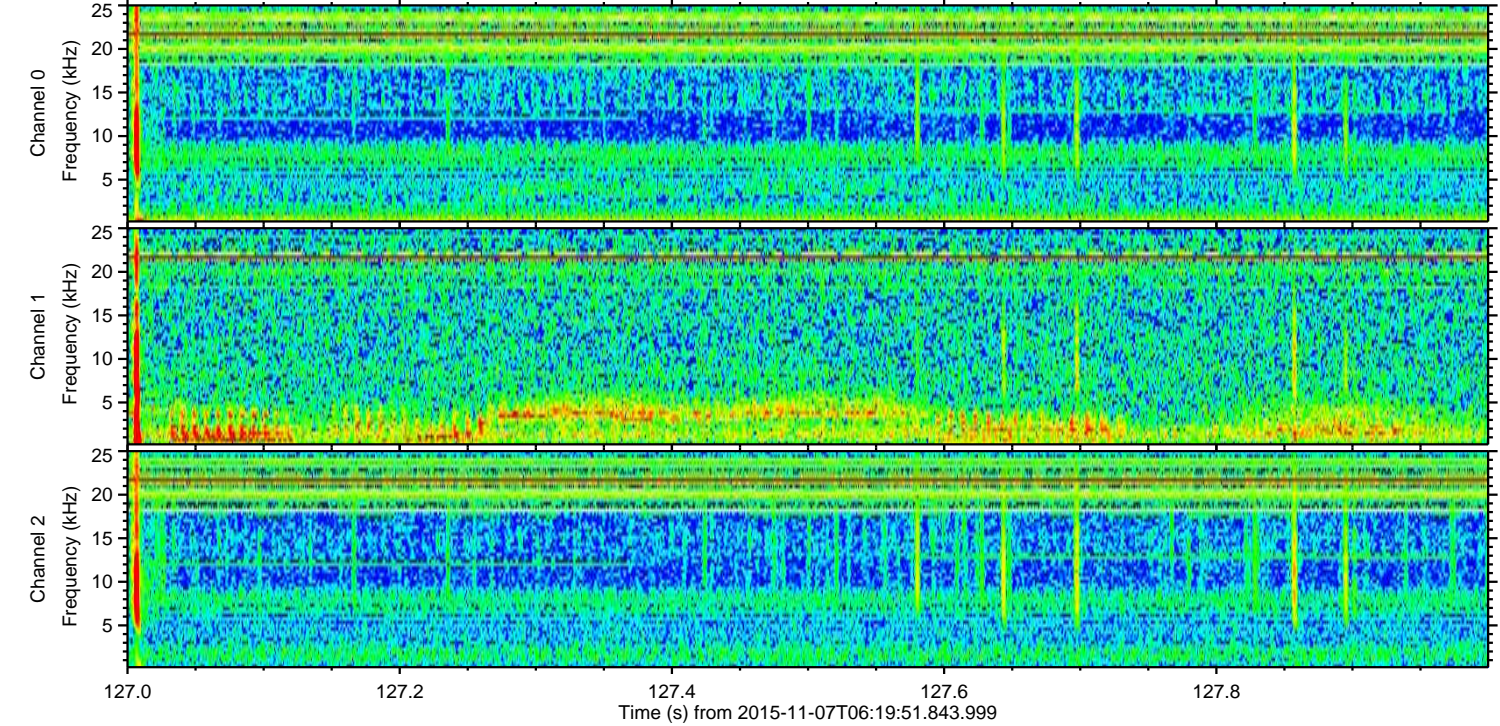
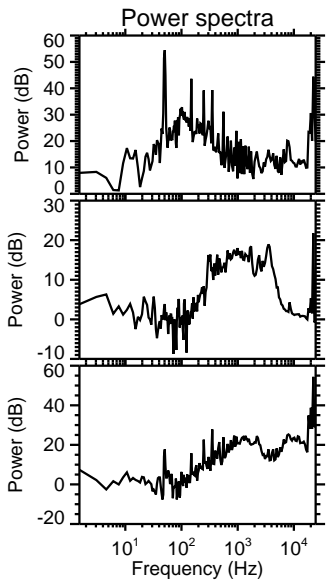
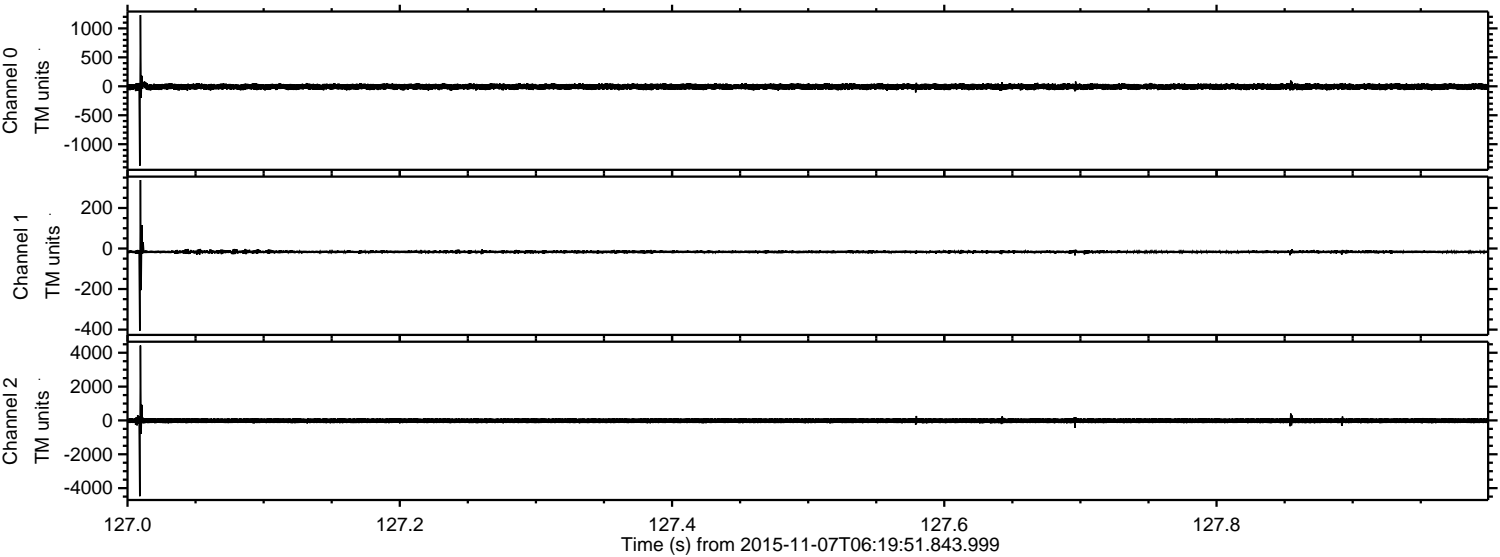
Channel 0
mn: -1558
mx: 1363
 μ : -7.1
 σ : 29.9

Channel 1
mn: -454
mx: 345
 μ : -16.3
 σ : 7.5

Channel 2
mn: -4828
mx: 4234
 μ : -18.3
 σ : 93.2

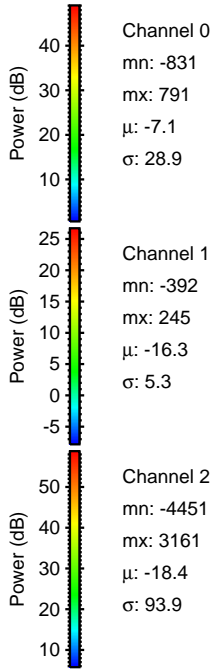
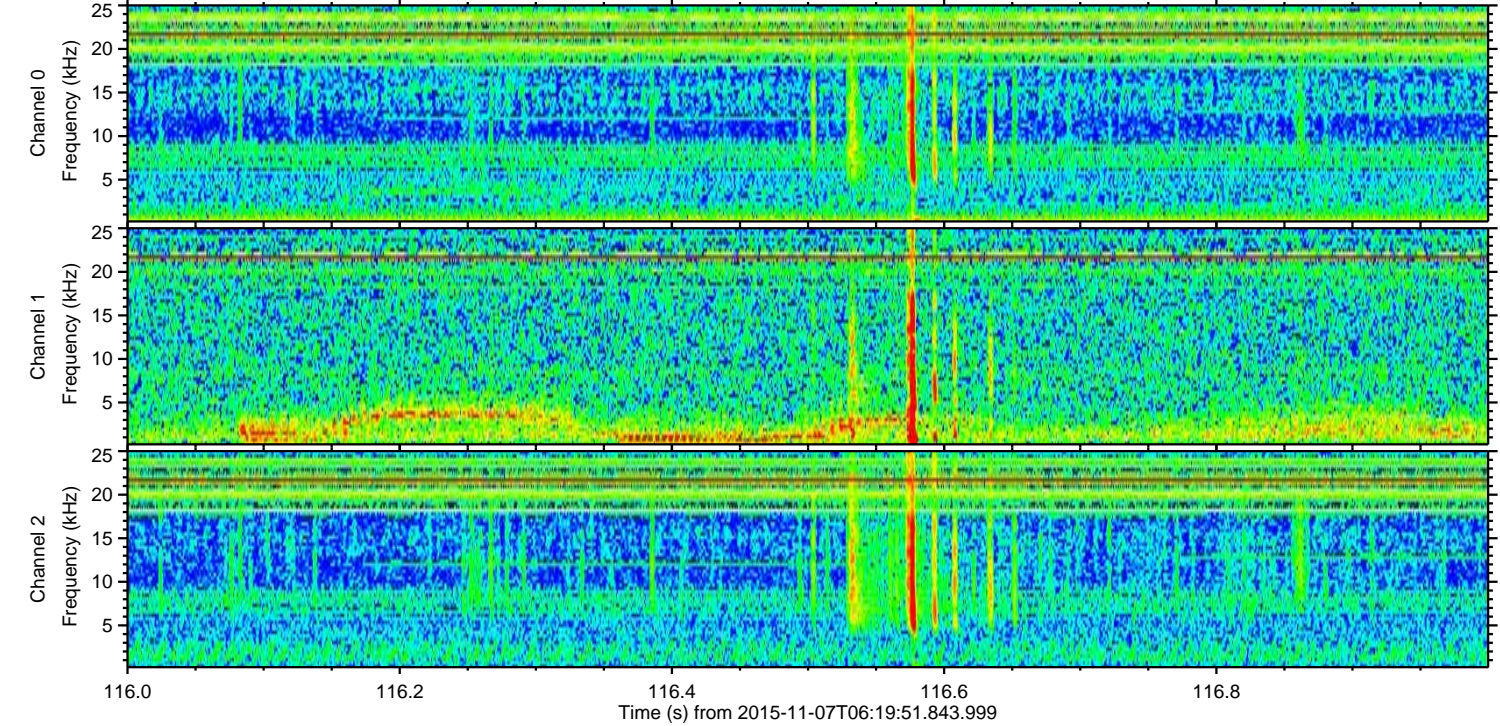
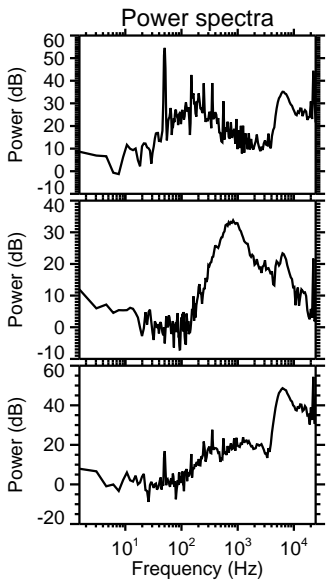
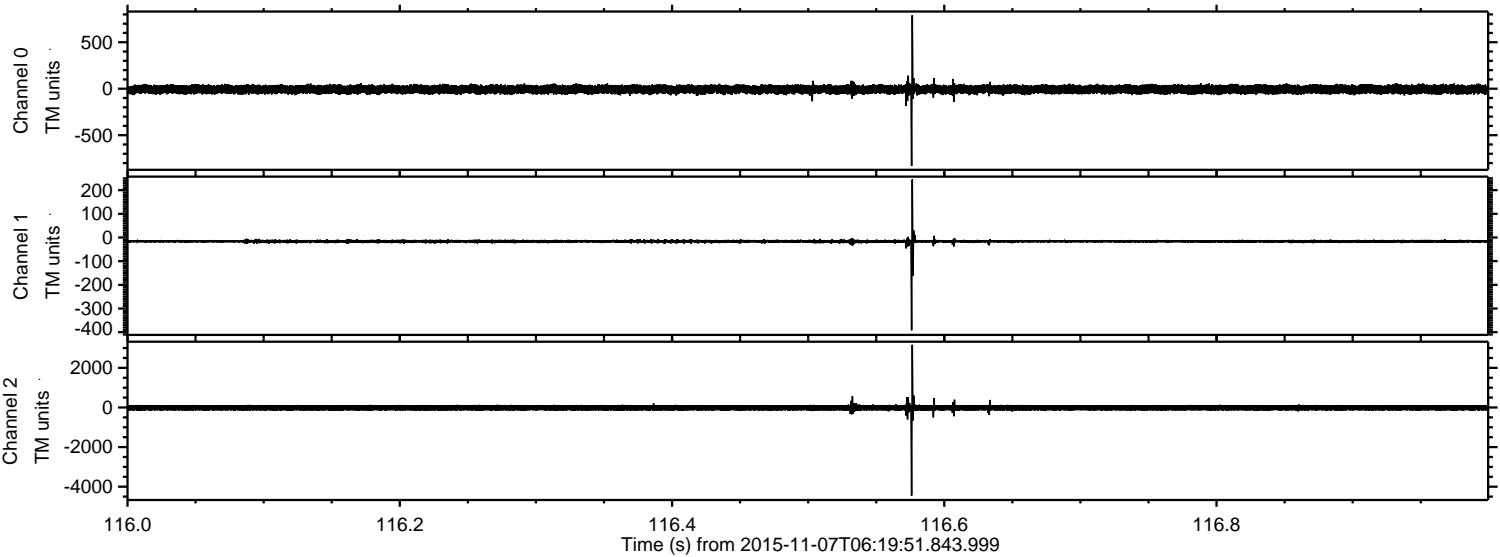
ELMAVAN 3D WAVEFORMS (Measured data sampled at 50 kHz) 51000 packets of 144 samples from 2015-11-07T06:19:51.843.999. Part 128/147

Processed Sat Nov 7 07:27:01 2015 by ELM ver.2012-10-06 from 001__elm20151107_061950__dat00.bin



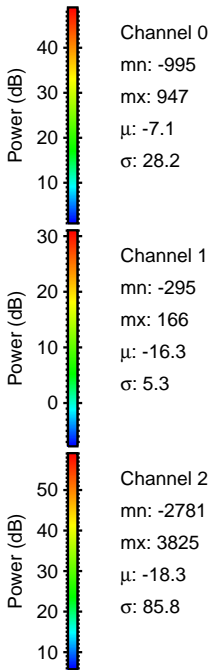
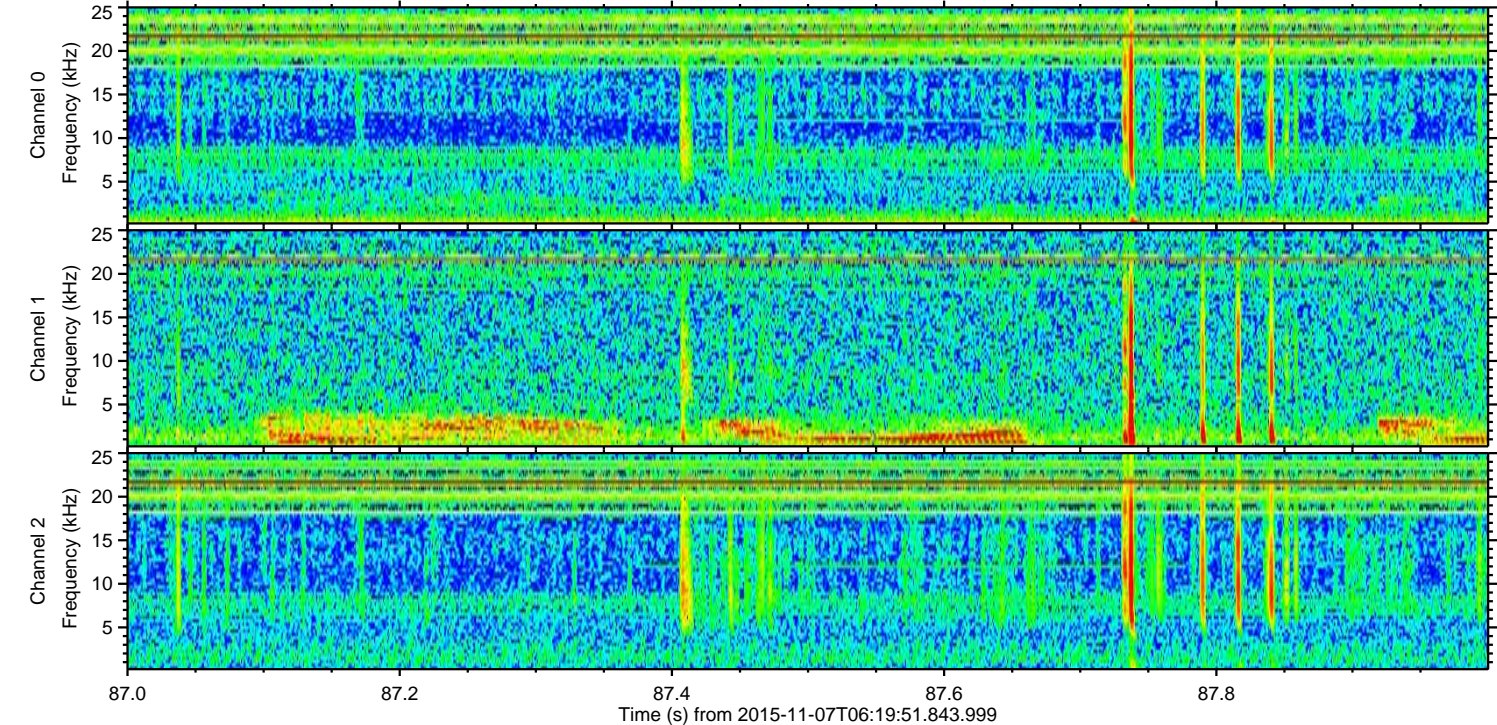
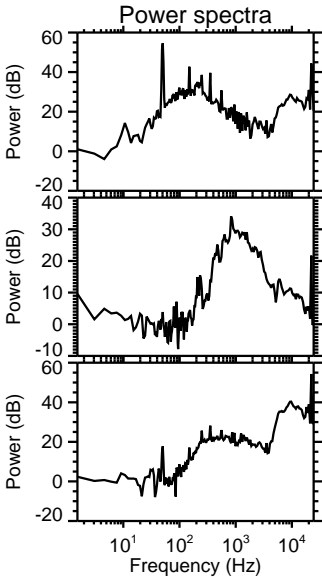
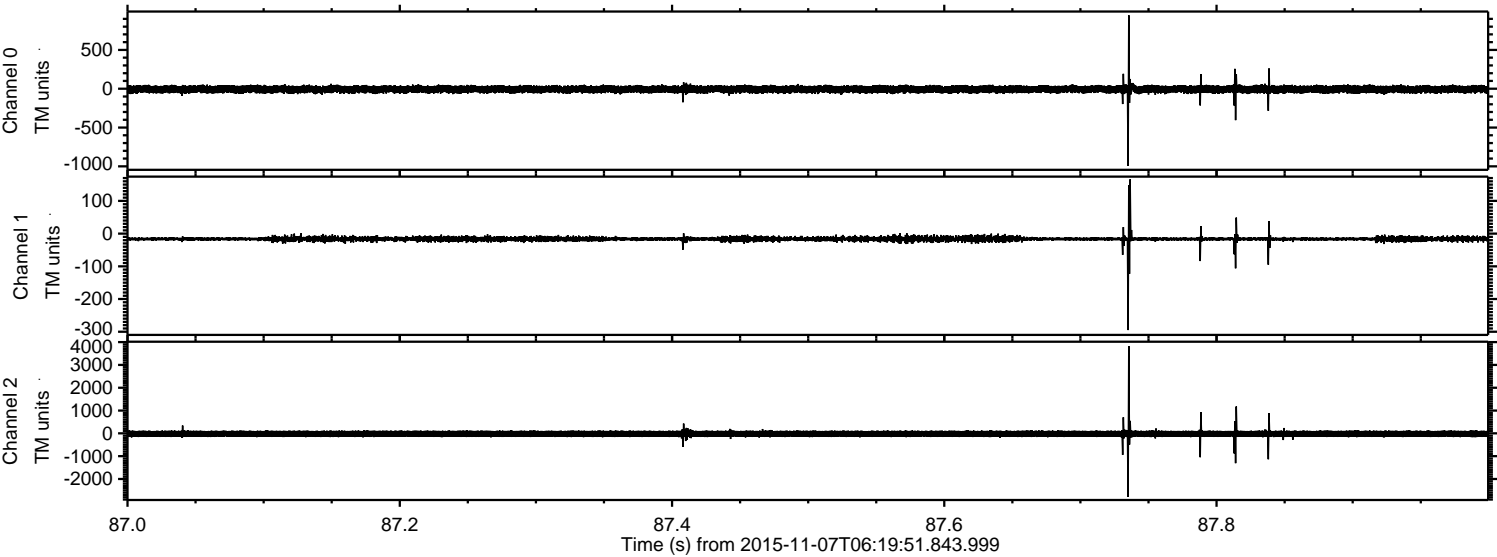
ELMAVAN 3D WAVEFORMS (Measured data sampled at 50 kHz) 51000 packets of 144 samples from 2015-11-07T06:19:51.843.999. Part 117/147

Processed Sat Nov 7 07:27:02 2015 by ELM ver.2012-10-06 from 001__elm20151107_061950__dat00.bin



ELMAVAN 3D WAVEFORMS (Measured data sampled at 50 kHz) 51000 packets of 144 samples from 2015-11-07T06:19:51.843.999. Part 88/147

Processed Sat Nov 7 07:27:03 2015 by ELM ver.2012-10-06 from 001__elm20151107_061950__dat00.bin



ELMAVAN 3D WAVEFORMS (Measured data sampled at 50 kHz) 51000 packets of 144 samples from 2015-11-07T06:19:51.843.999. Part 8/147

Processed Sat Nov 7 07:27:04 2015 by ELM ver.2012-10-06 from 001__elm20151107_061950__dat00.bin

