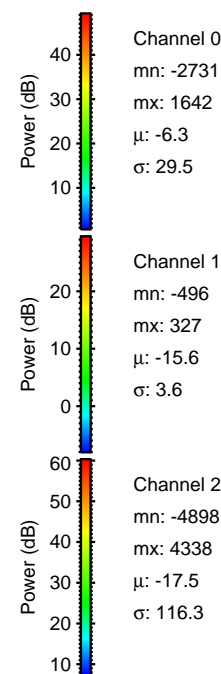
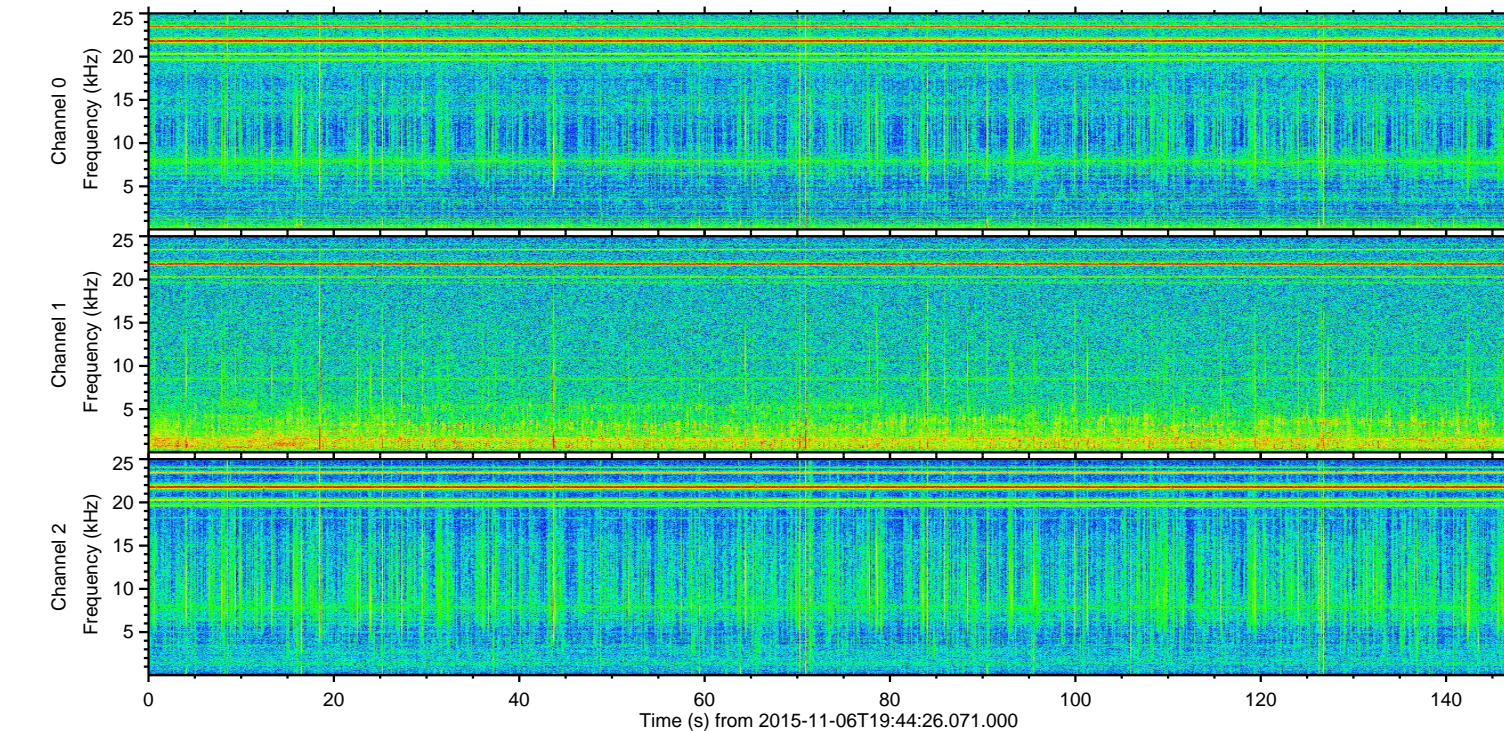
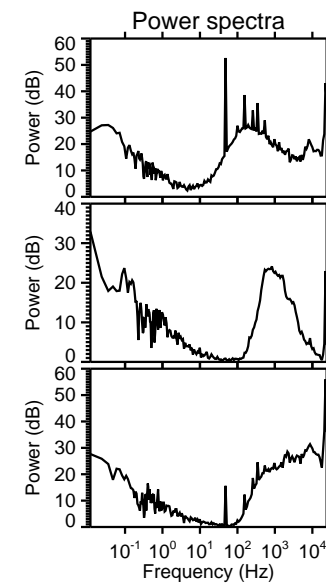
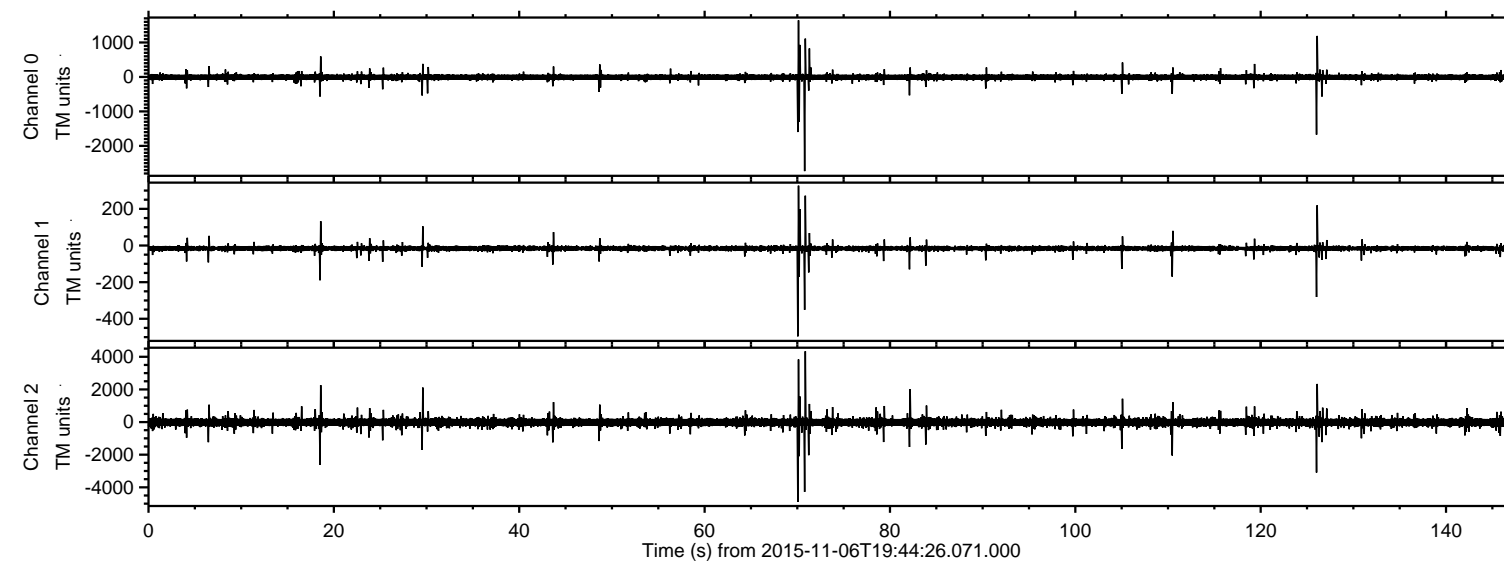


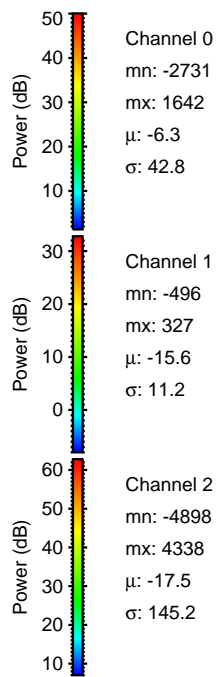
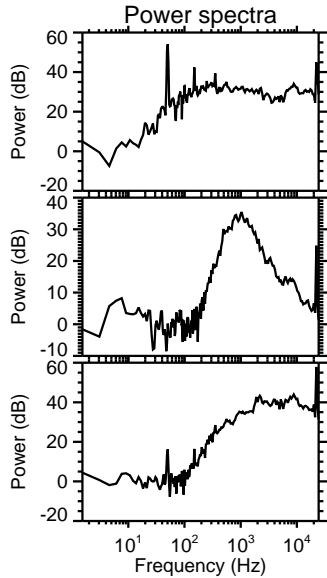
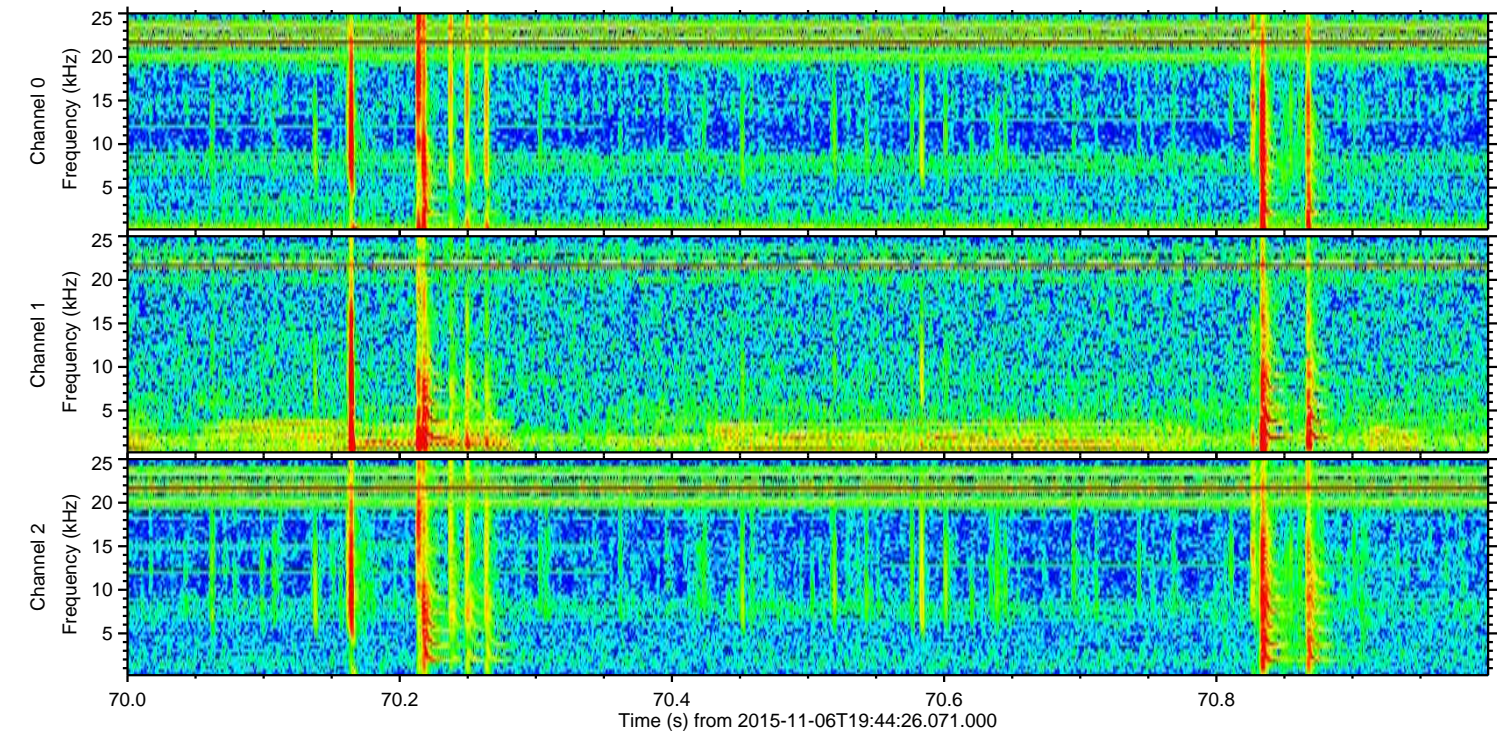
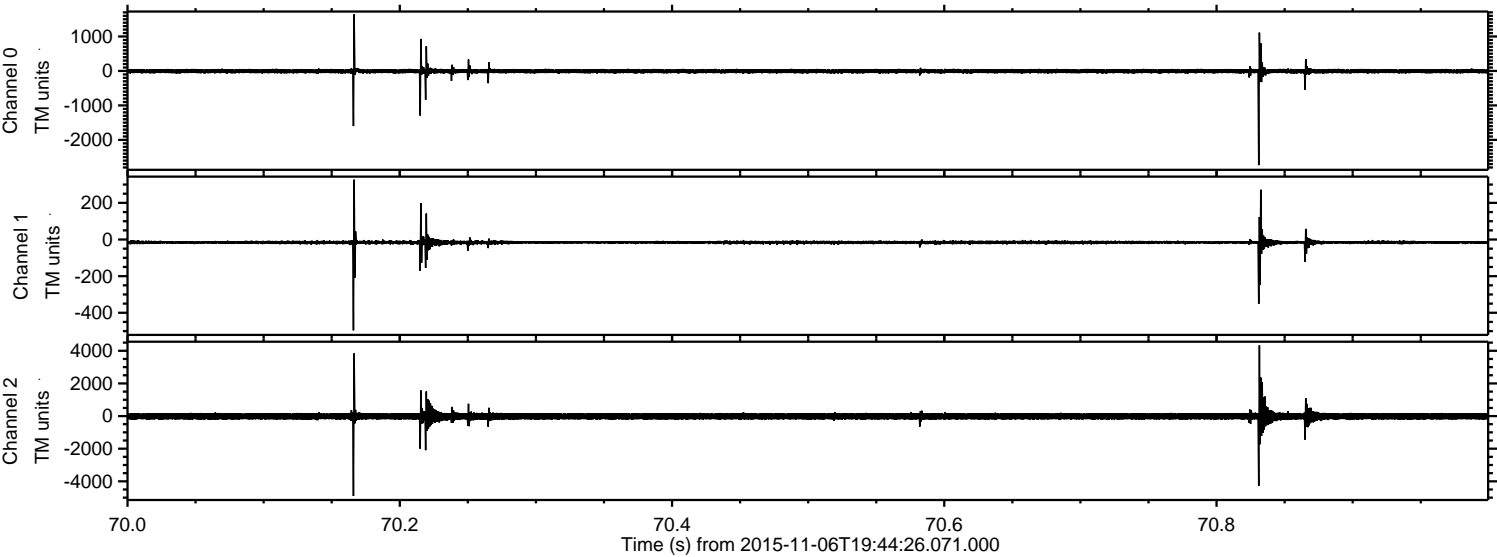
ELMAVAN 3D WAVEFORMS (Measured data sampled at 50 kHz) 51000 packets of 144 samples from 2015-11-06T19:44:26.071.000.

Processed Fri Nov 6 20:50:25 2015 by ELM ver.2012-10-06 from 001__elm20151106_194425__dat00.bin



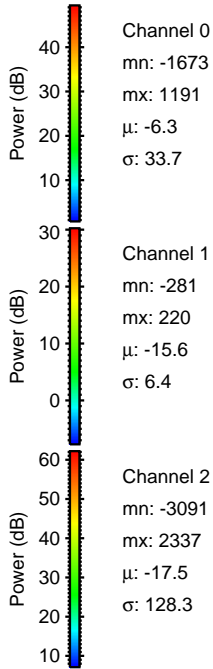
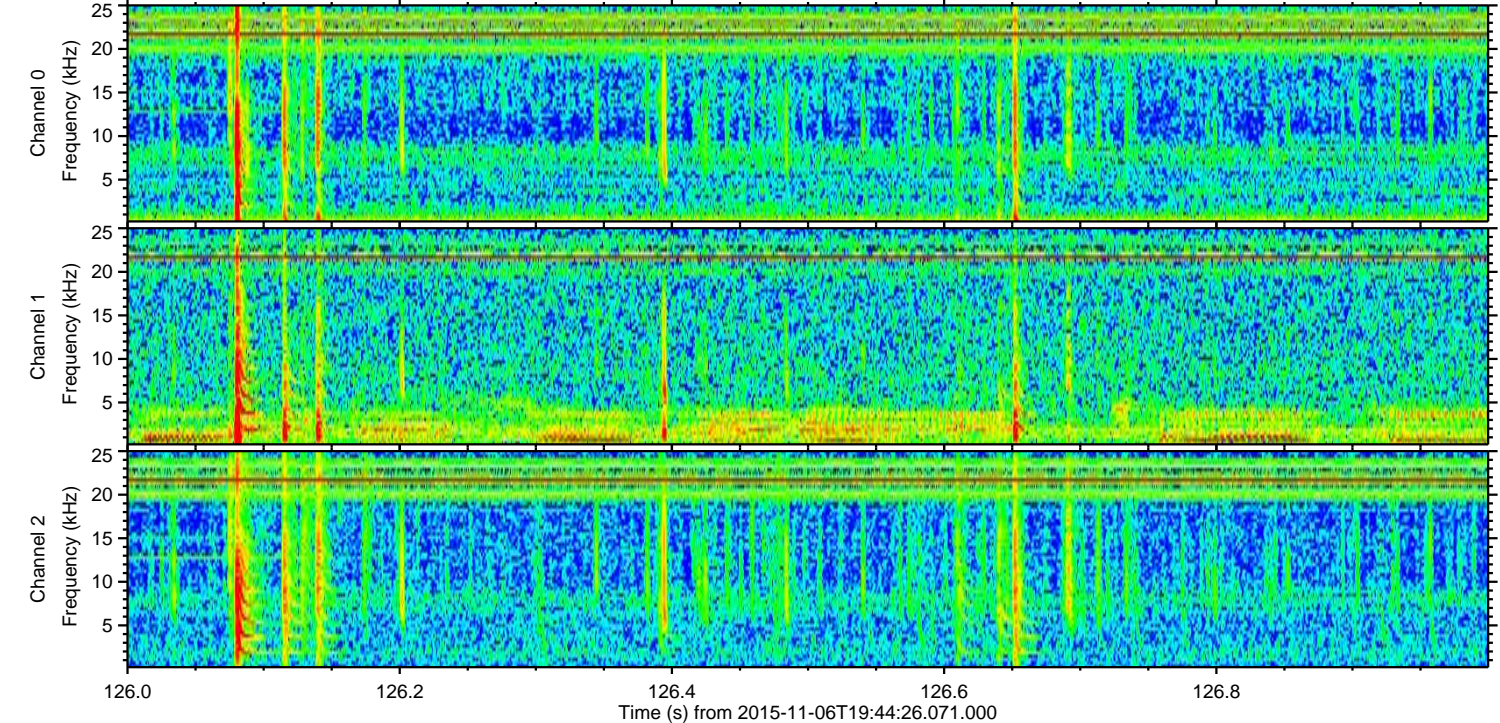
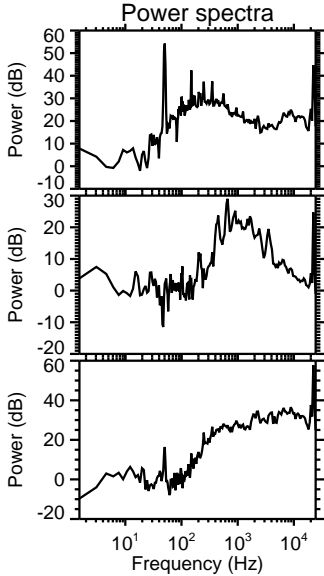
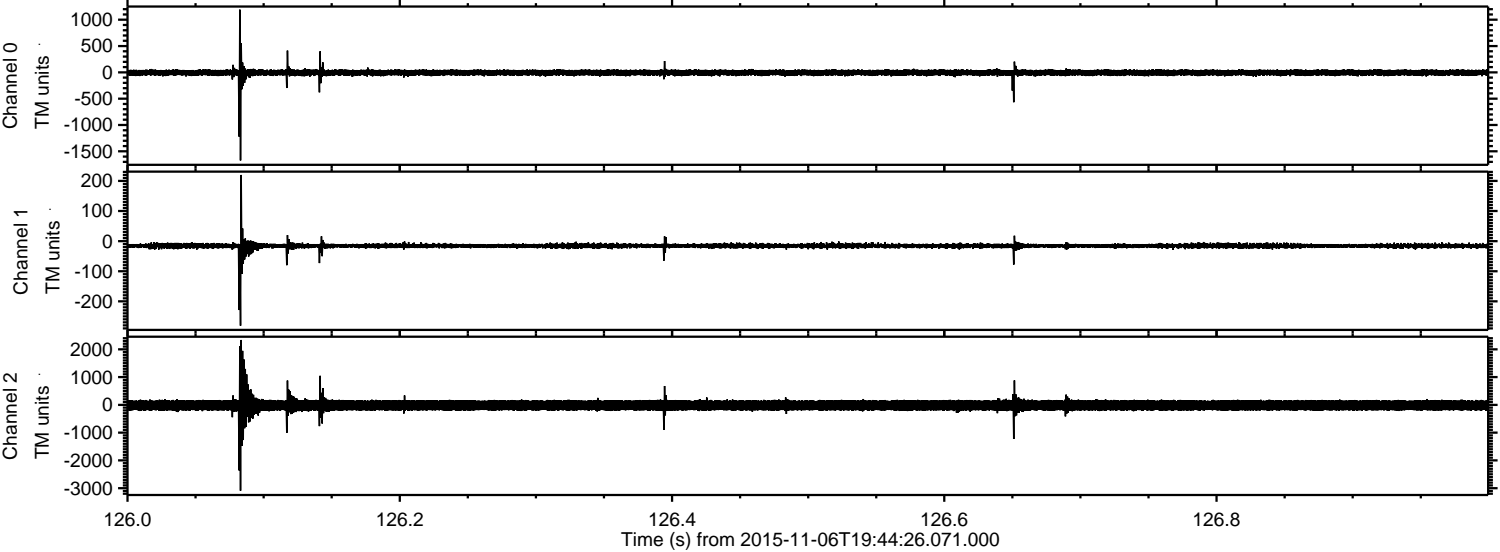
ELMAVAN 3D WAVEFORMS (Measured data sampled at 50 kHz) 51000 packets of 144 samples from 2015-11-06T19:44:26.071.000. Part 71/147

Processed Fri Nov 6 20:50:37 2015 by ELM ver.2012-10-06 from 001__elm20151106_194425__dat00.bin

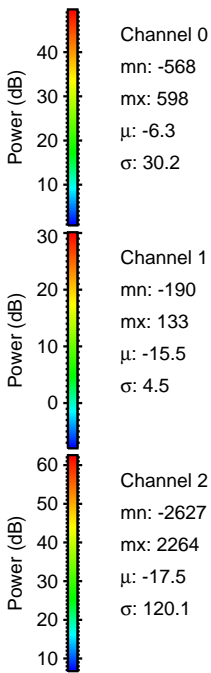
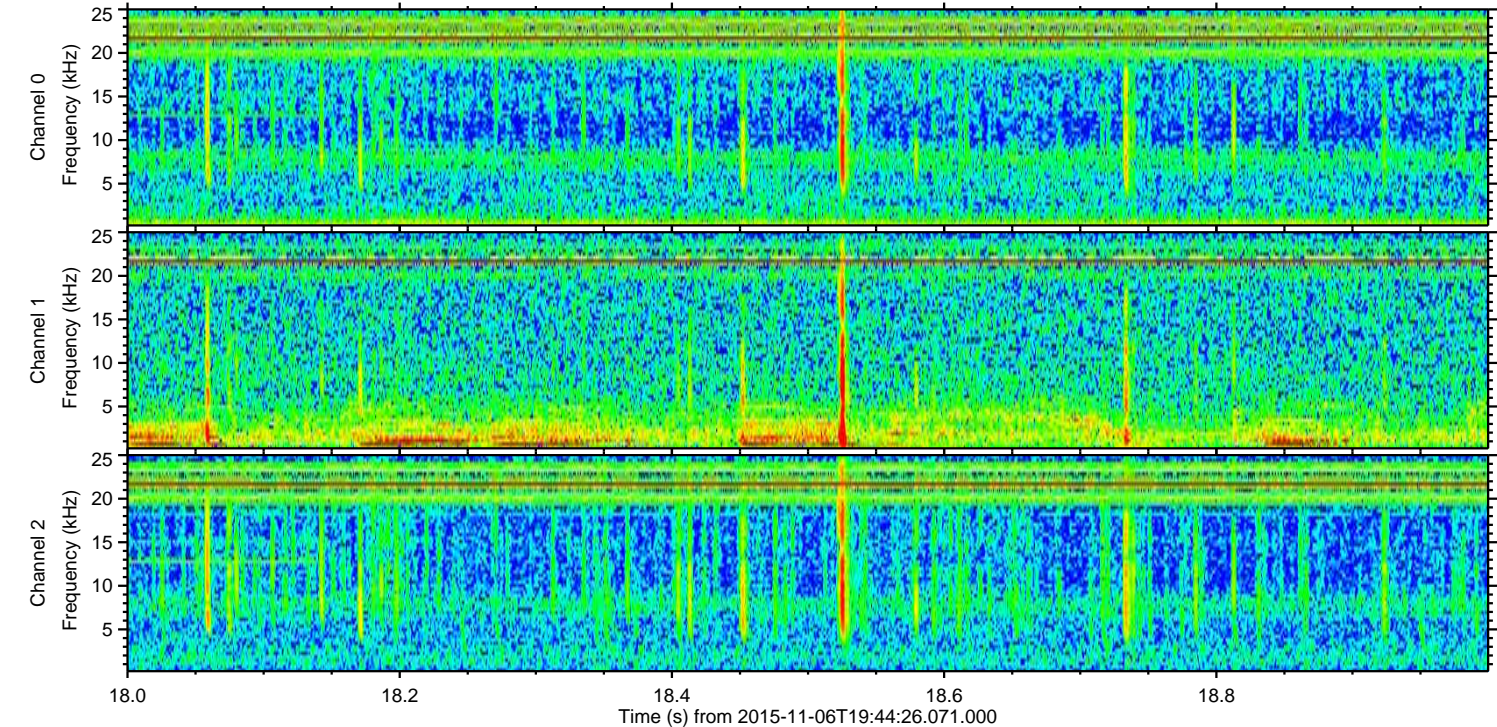
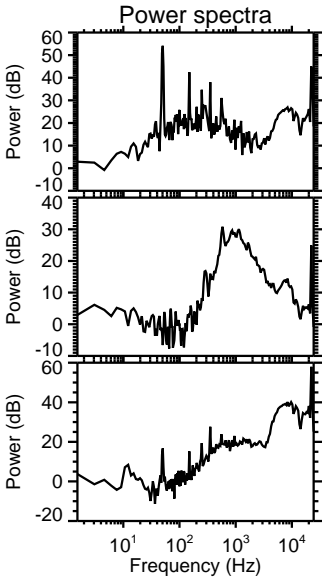
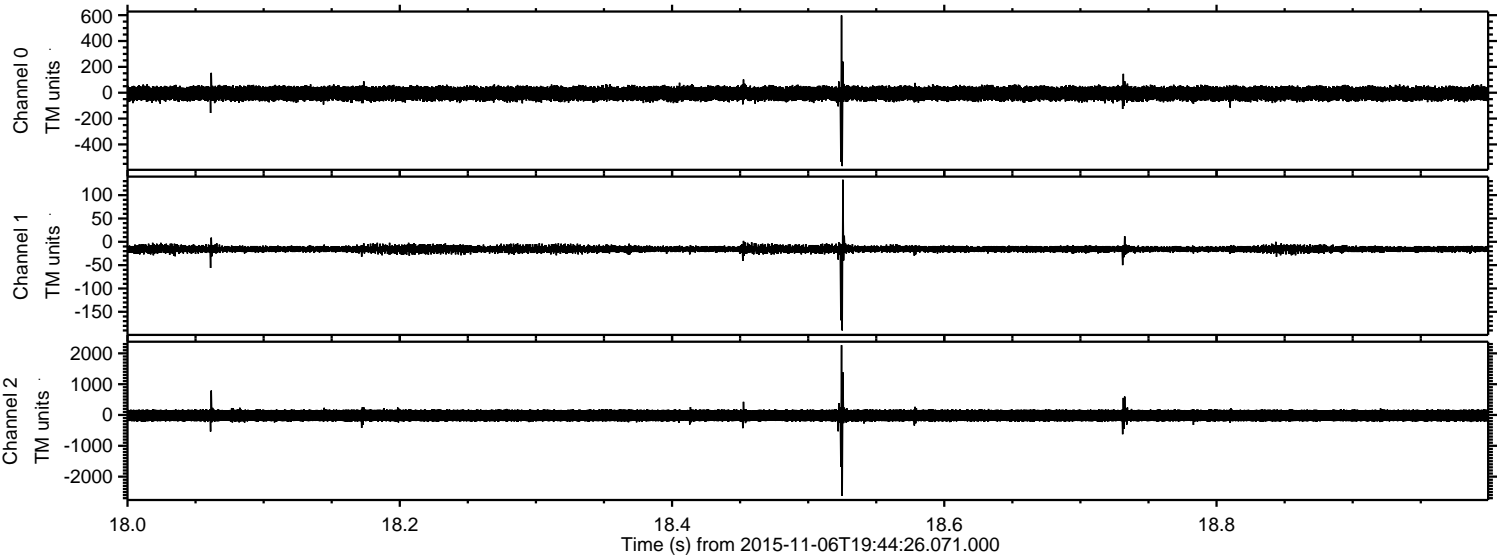


ELMAVAN 3D WAVEFORMS (Measured data sampled at 50 kHz) 51000 packets of 144 samples from 2015-11-06T19:44:26.071.000. Part 127/147

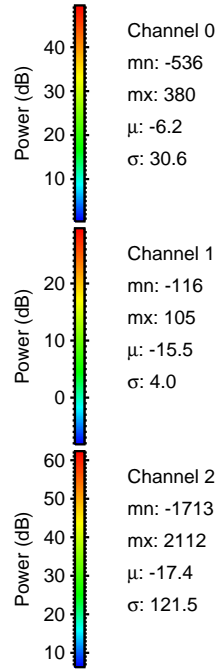
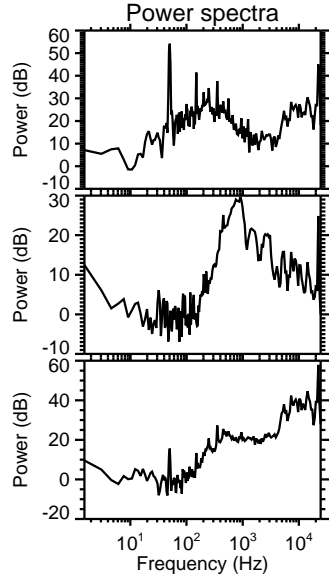
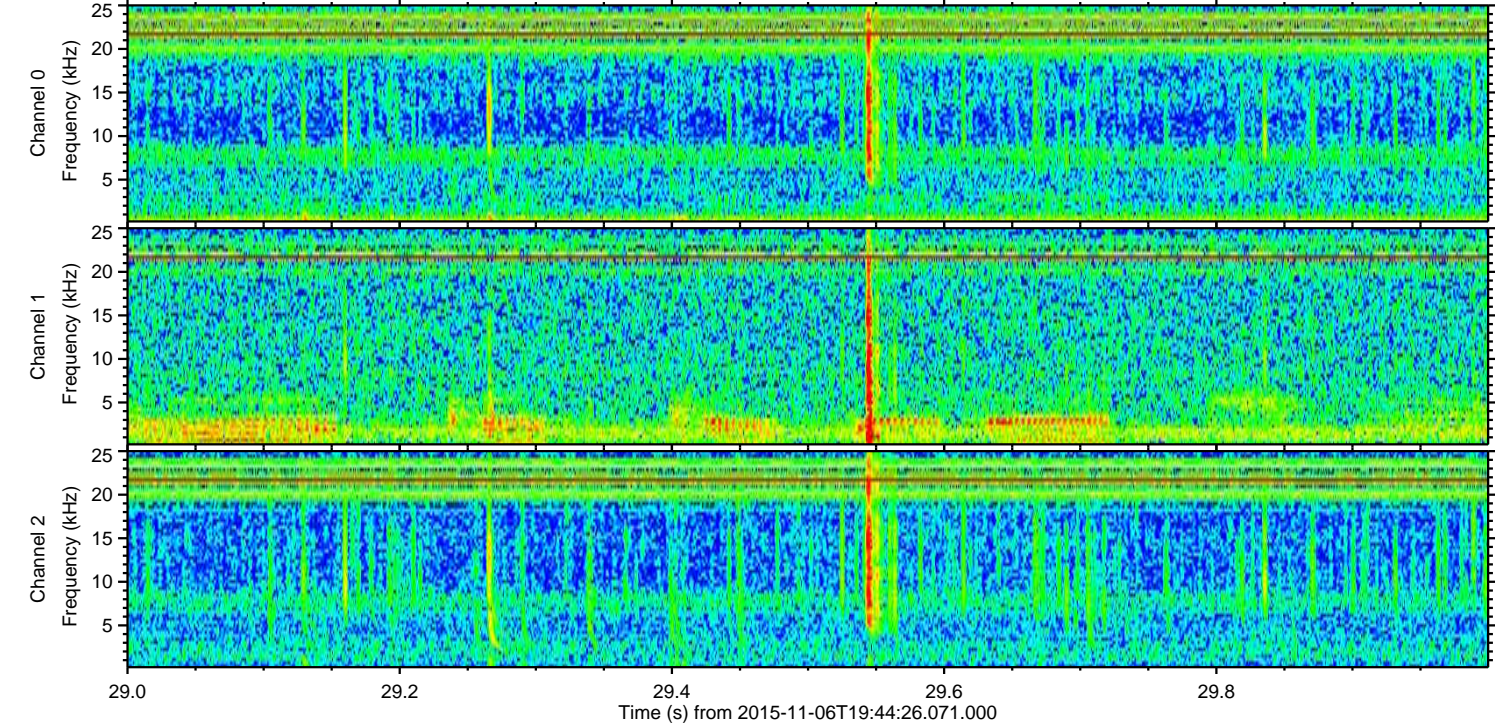
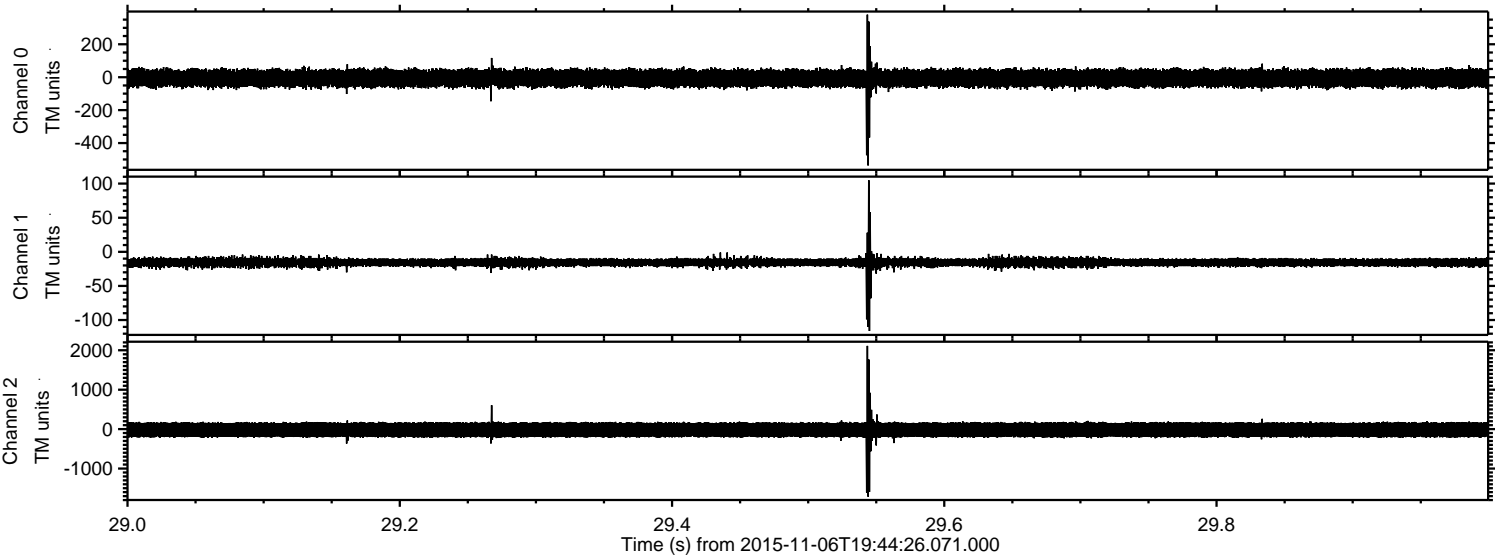
Processed Fri Nov 6 20:50:38 2015 by ELM ver.2012-10-06 from 001__elm20151106_194425__dat00.bin



Processed Fri Nov 6 20:50:38 2015 by ELM ver.2012-10-06 from 001__elm20151106_194425__dat00.bin

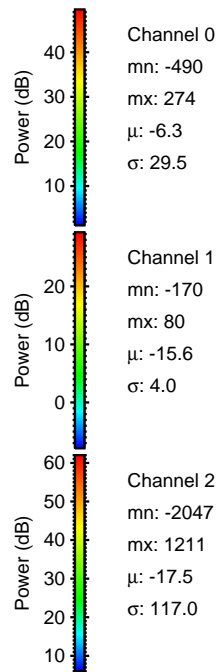
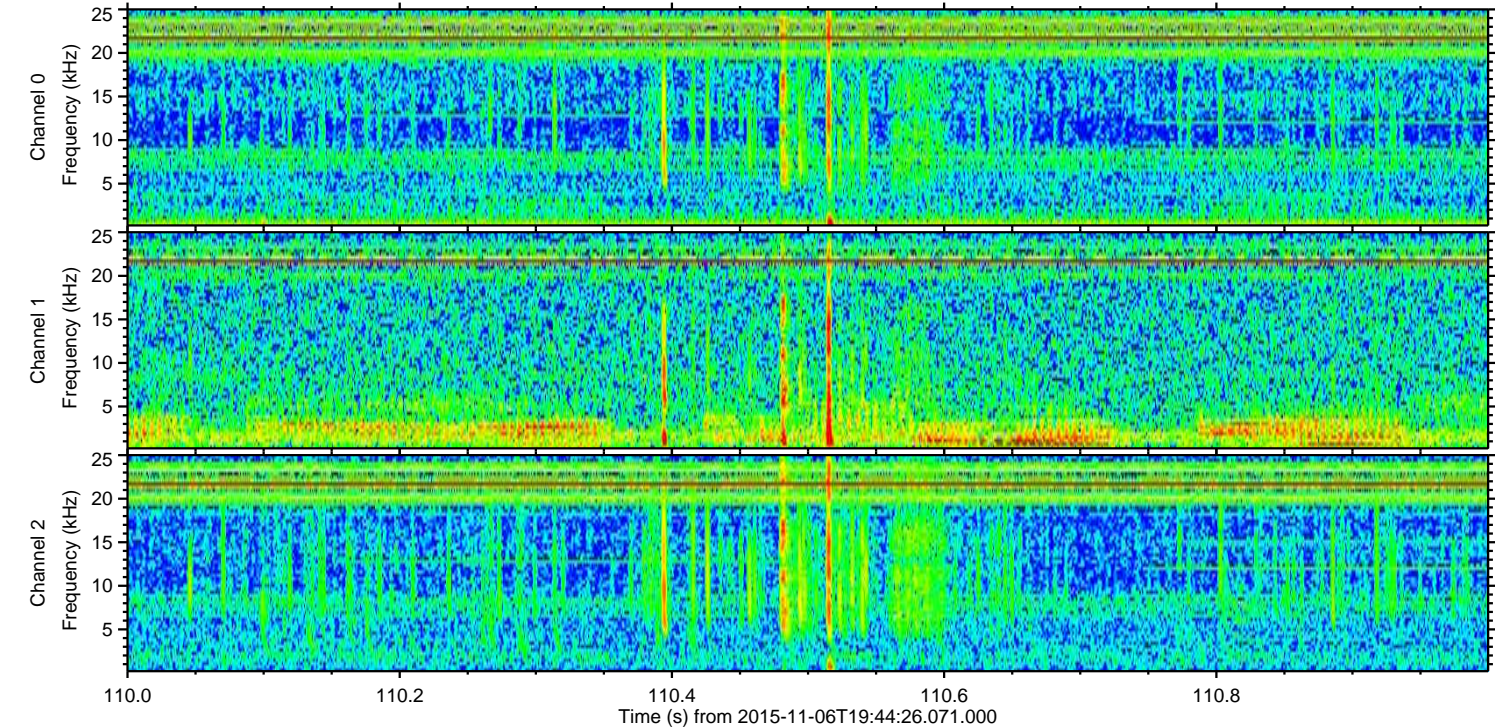
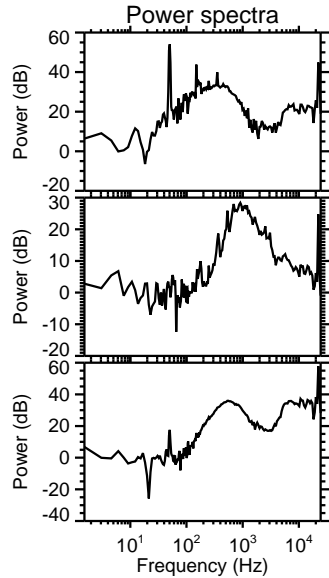
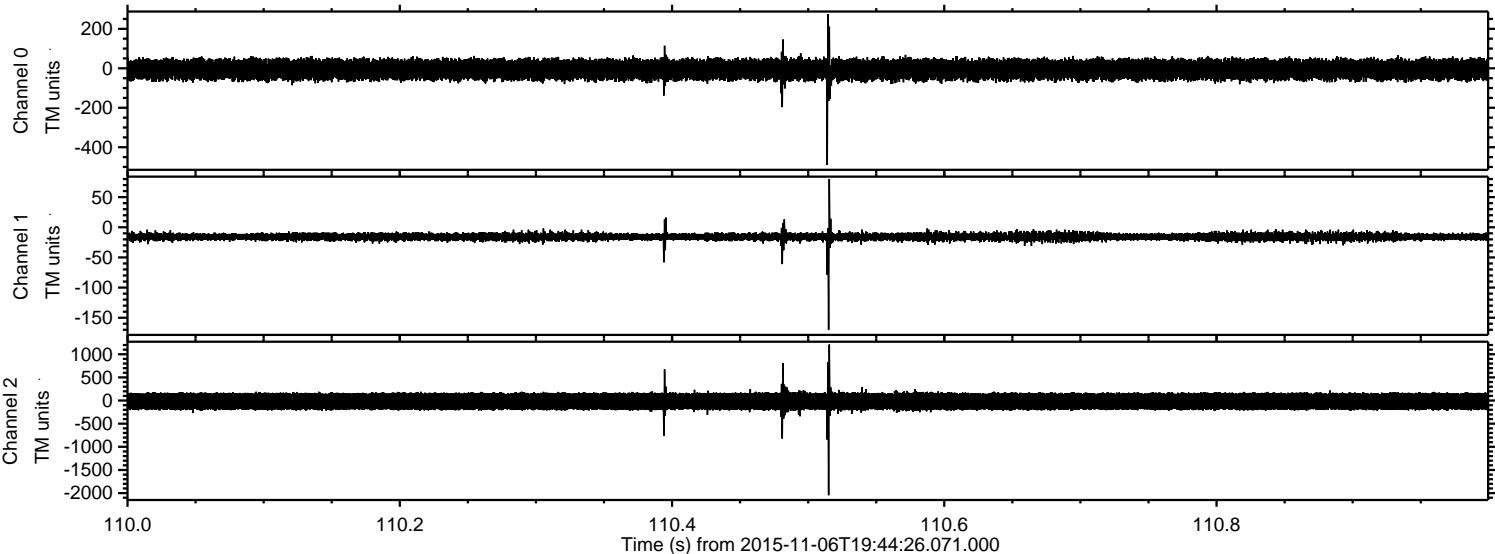


Processed Fri Nov 6 20:50:39 2015 by ELM ver.2012-10-06 from 001__elm20151106_194425__dat00.bin

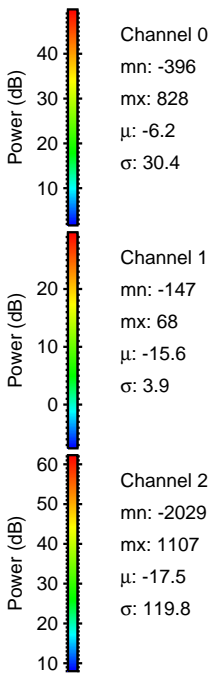
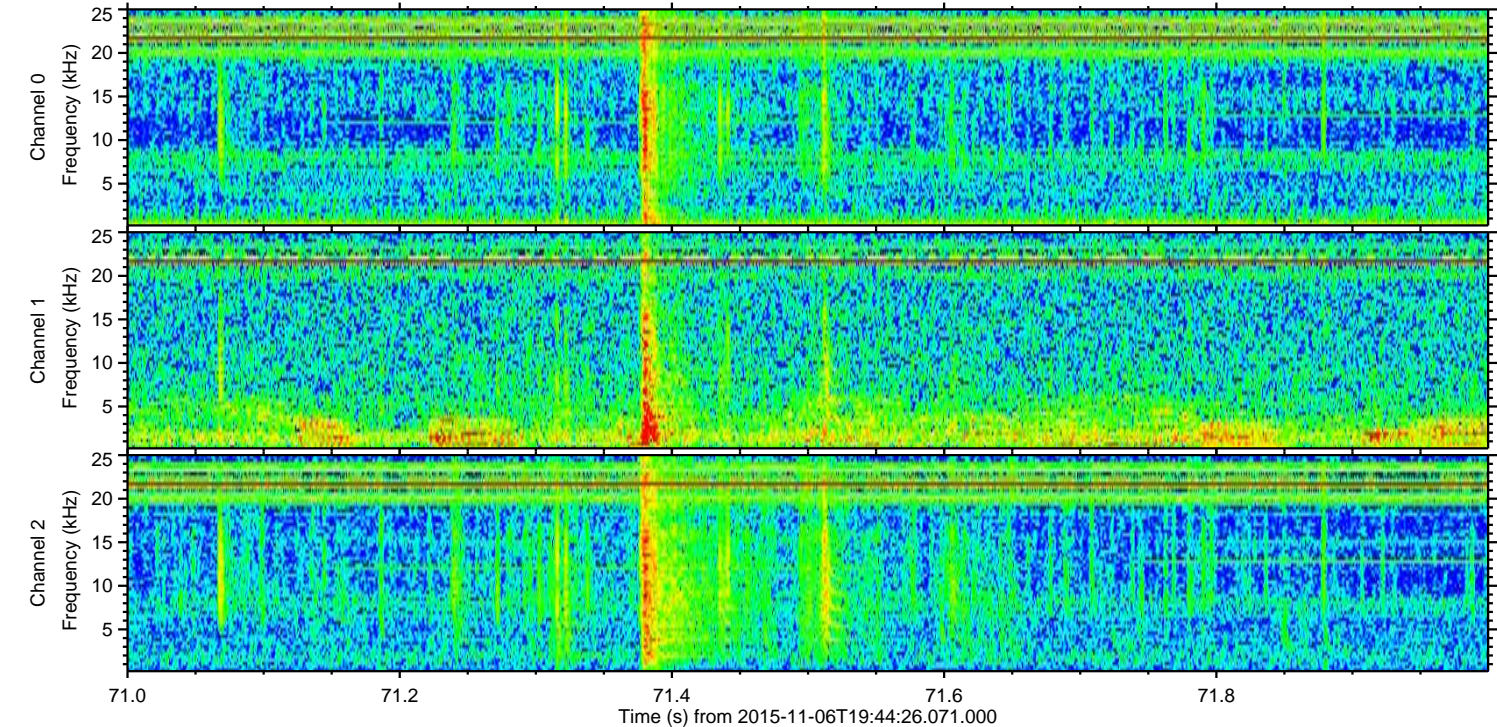
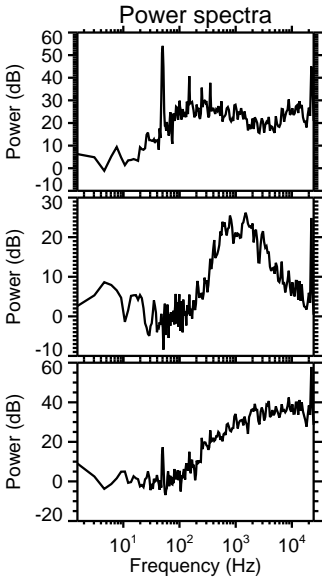
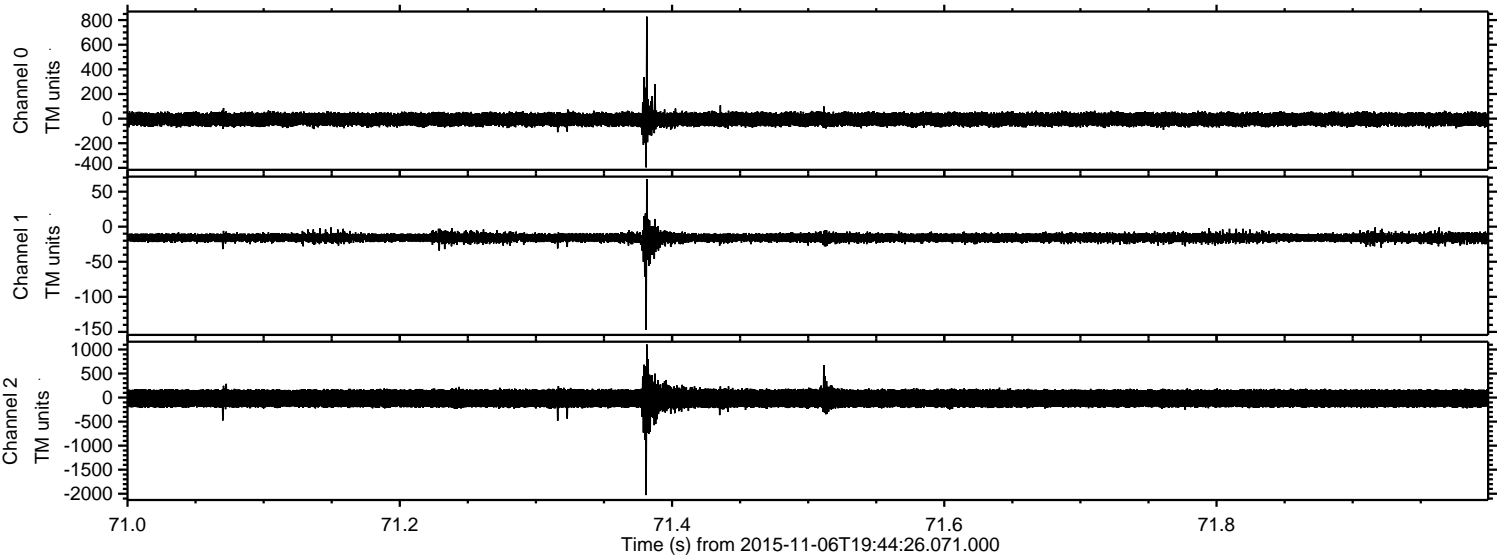


ELMAVAN 3D WAVEFORMS (Measured data sampled at 50 kHz) 51000 packets of 144 samples from 2015-11-06T19:44:26.071.000. Part 111/147

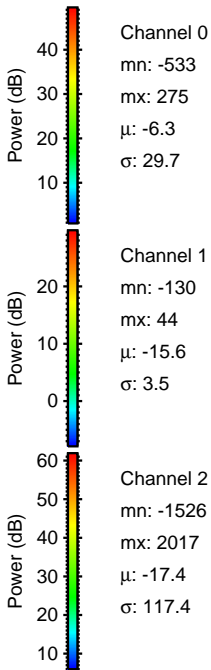
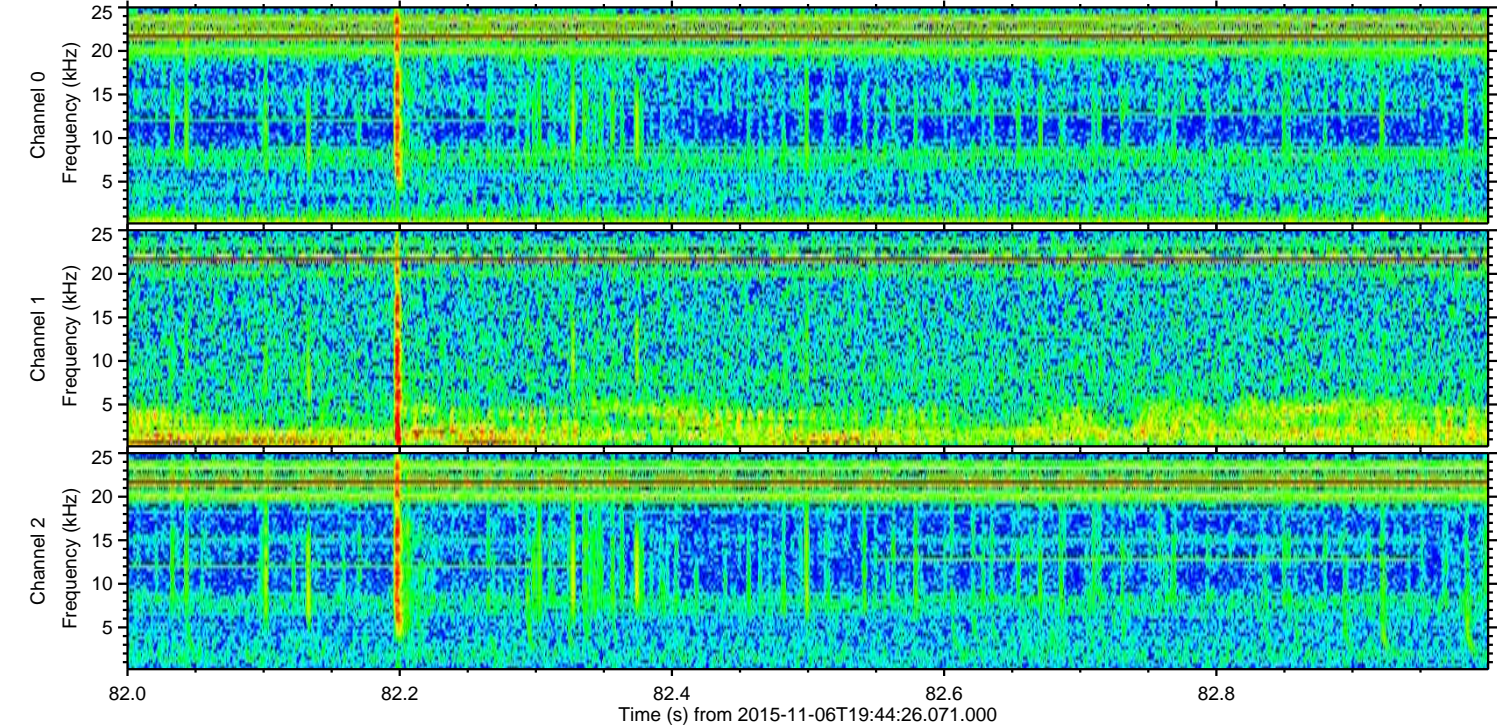
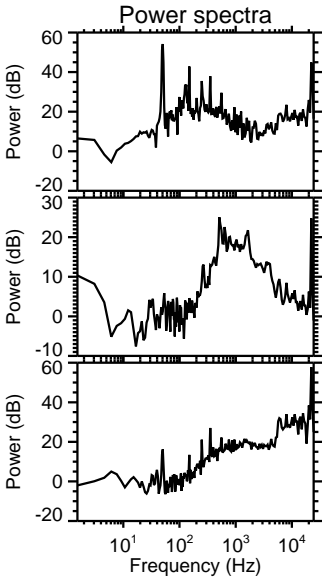
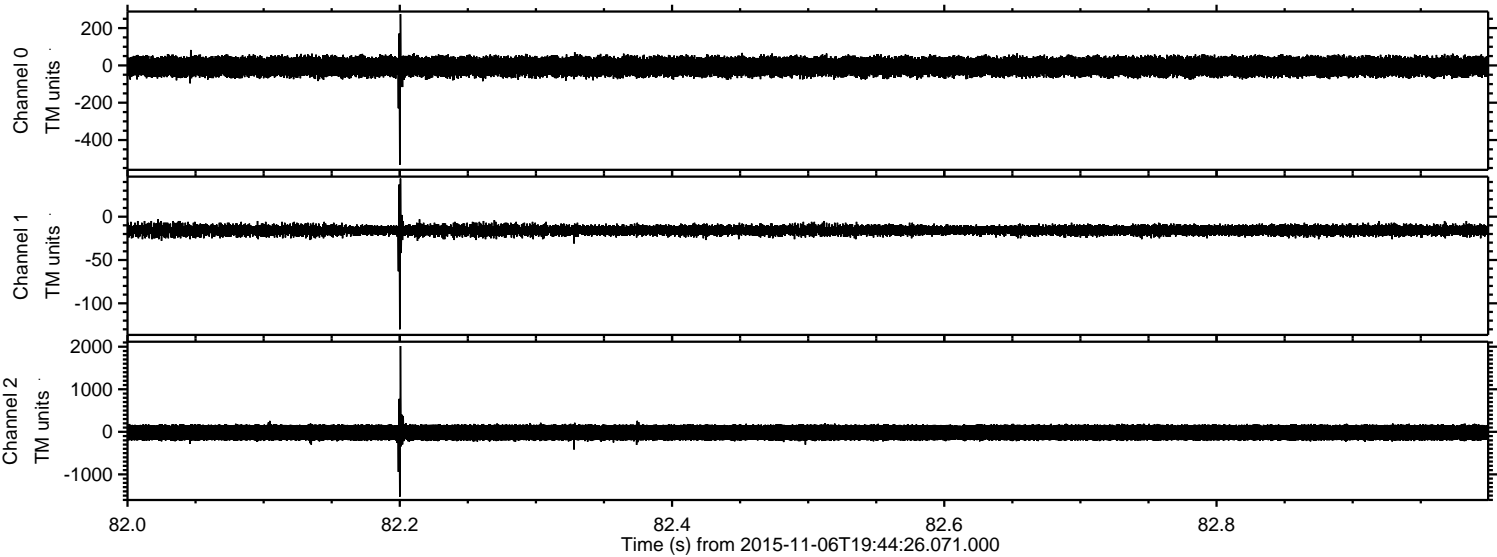
Processed Fri Nov 6 20:50:40 2015 by ELM ver.2012-10-06 from 001__elm20151106_194425__dat00.bin



Processed Fri Nov 6 20:50:41 2015 by ELM ver.2012-10-06 from 001__elm20151106_194425__dat00.bin

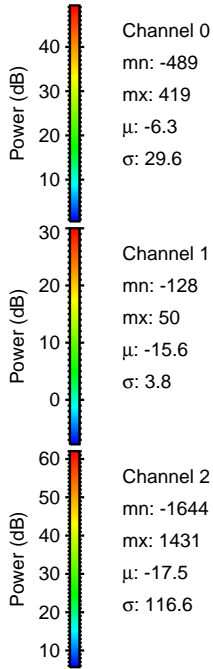
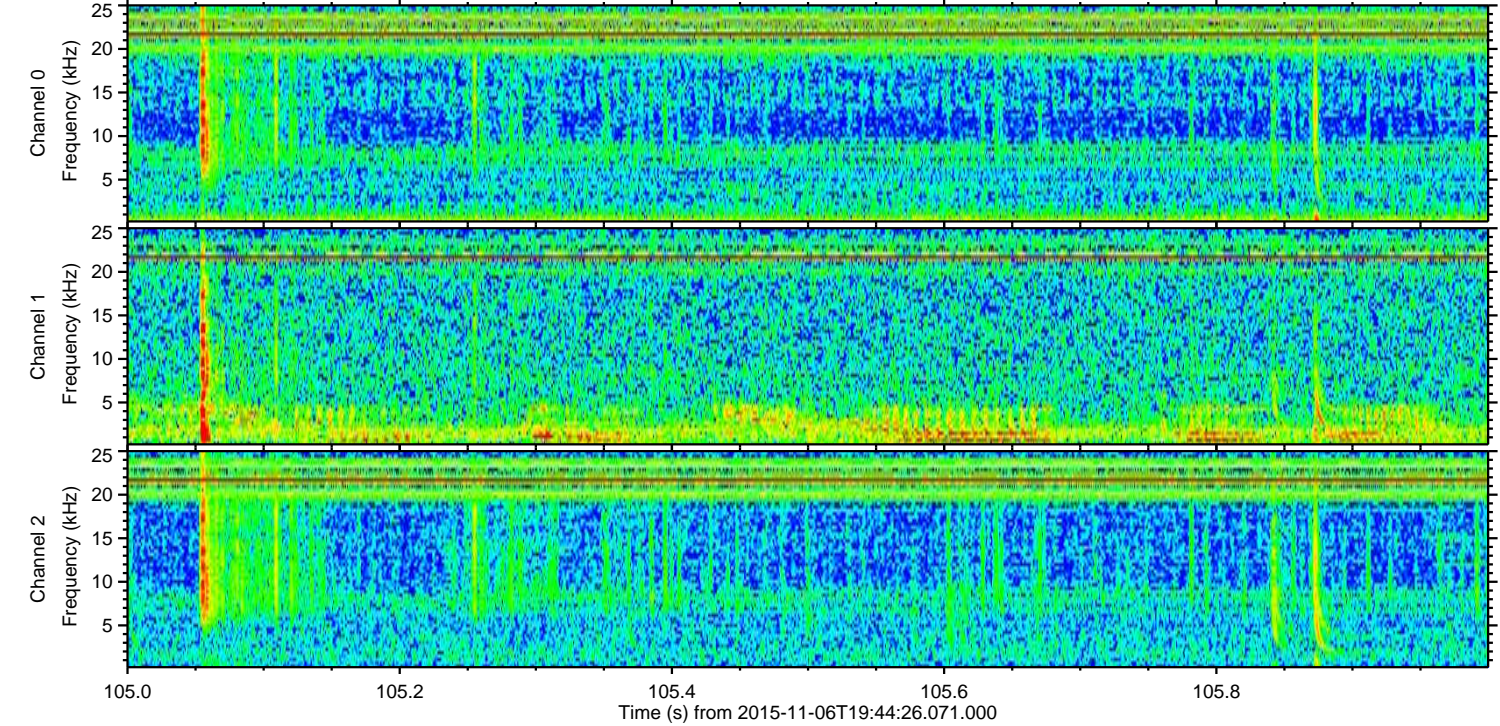
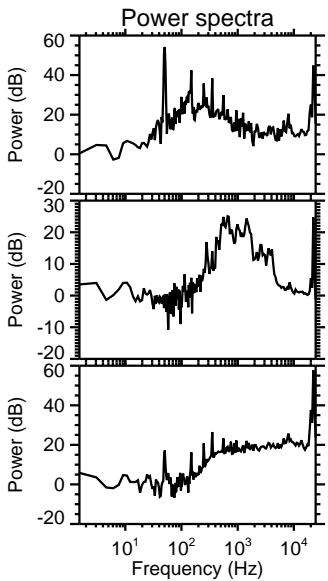
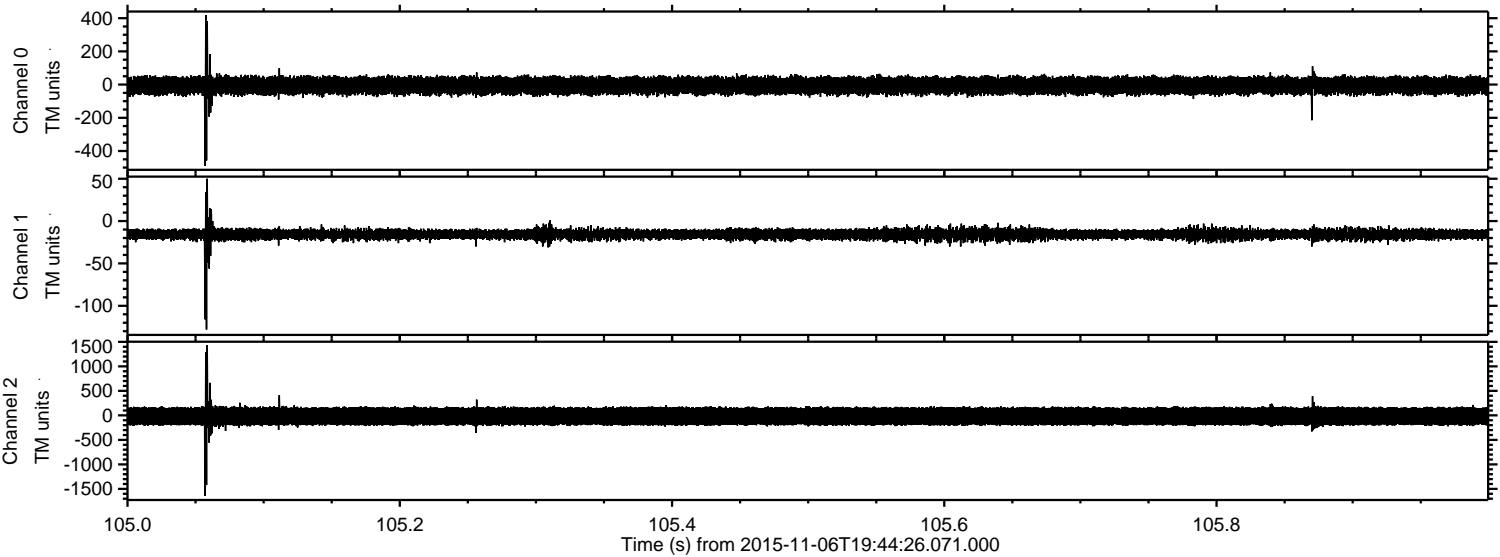


Processed Fri Nov 6 20:50:42 2015 by ELM ver.2012-10-06 from 001__elm20151106_194425__dat00.bin



ELMAVAN 3D WAVEFORMS (Measured data sampled at 50 kHz) 51000 packets of 144 samples from 2015-11-06T19:44:26.071.000. Part 106/147

Processed Fri Nov 6 20:50:43 2015 by ELM ver.2012-10-06 from 001__elm20151106_194425__dat00.bin



Channel 0
mn: -489
mx: 419
 μ : -6.3
 σ : 29.6

Channel 1
mn: -128
mx: 50
 μ : -15.6
 σ : 3.8

Channel 2
mn: -1644
mx: 1431
 μ : -17.5
 σ : 116.6

Processed Fri Nov 6 20:50:44 2015 by ELM ver.2012-10-06 from 001__elm20151106_194425__dat00.bin

