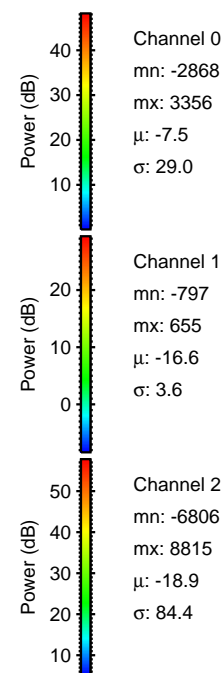
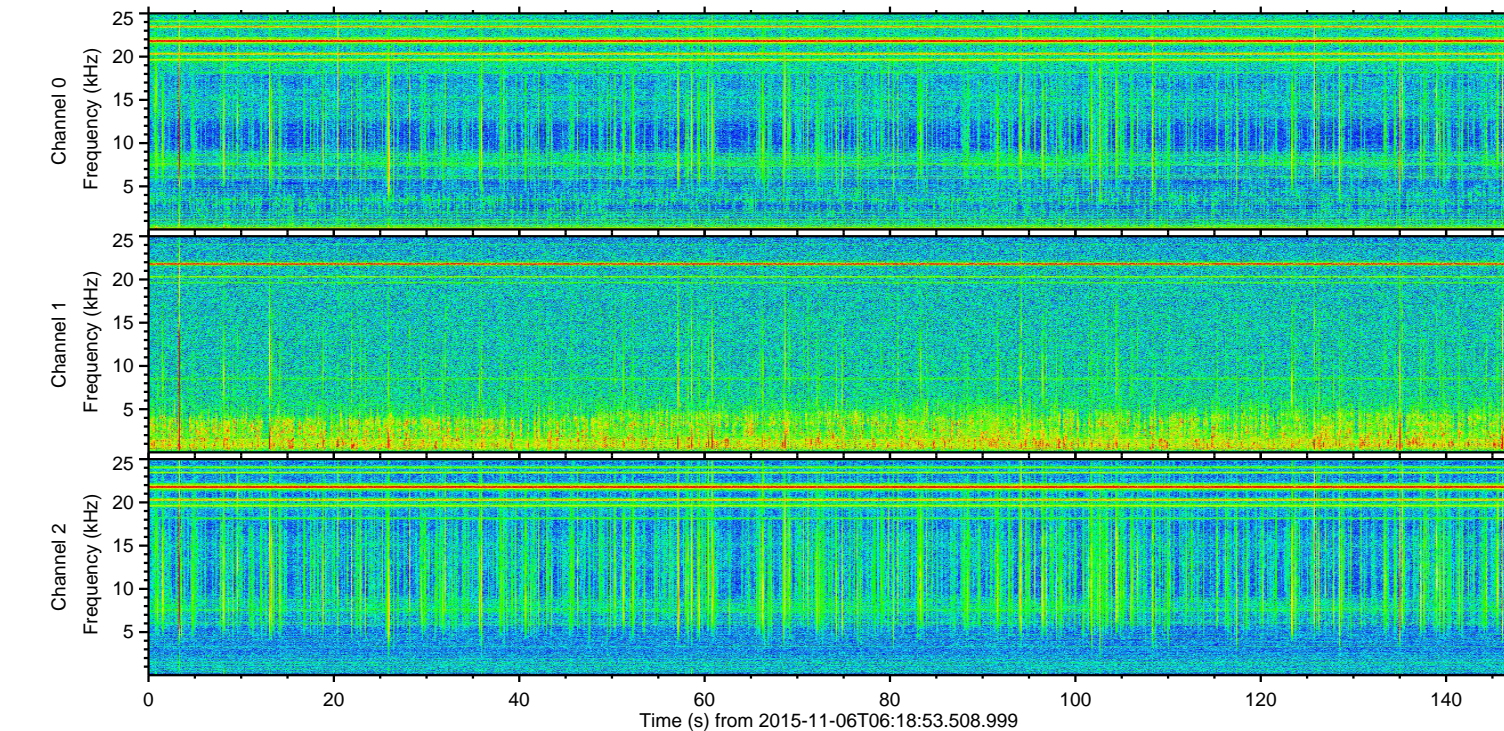
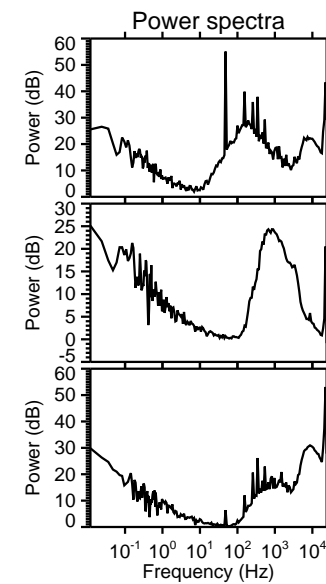
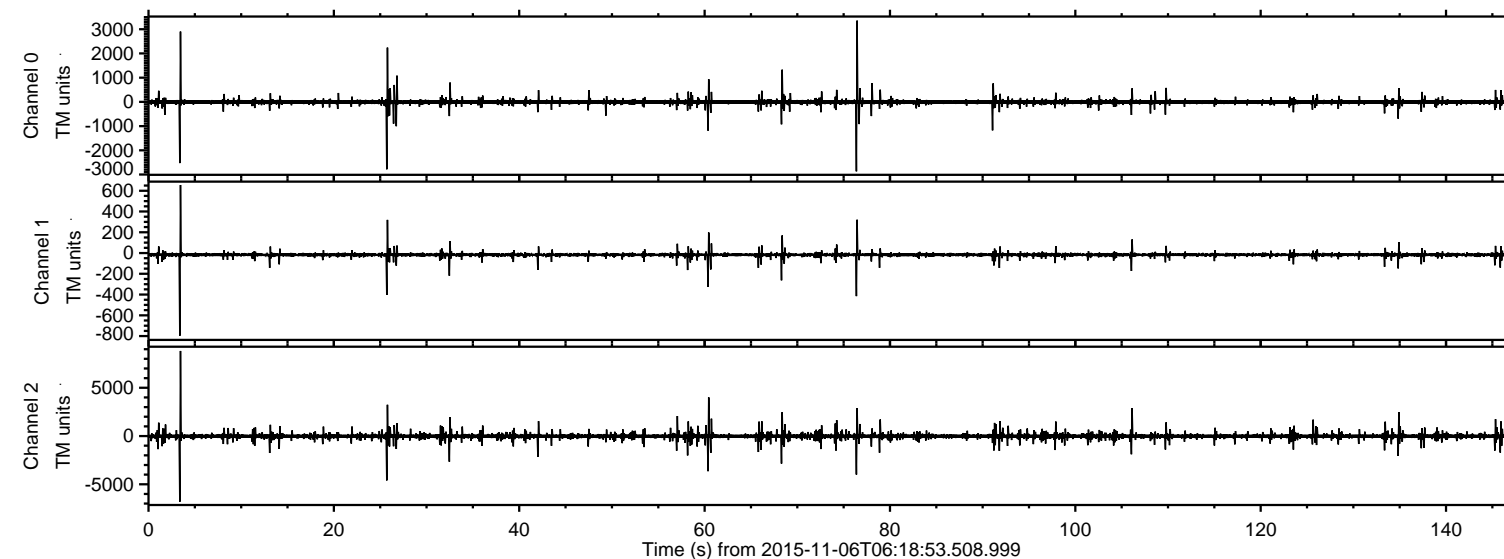


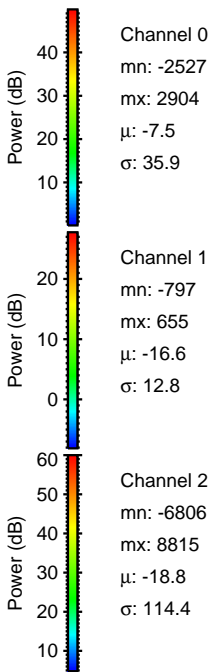
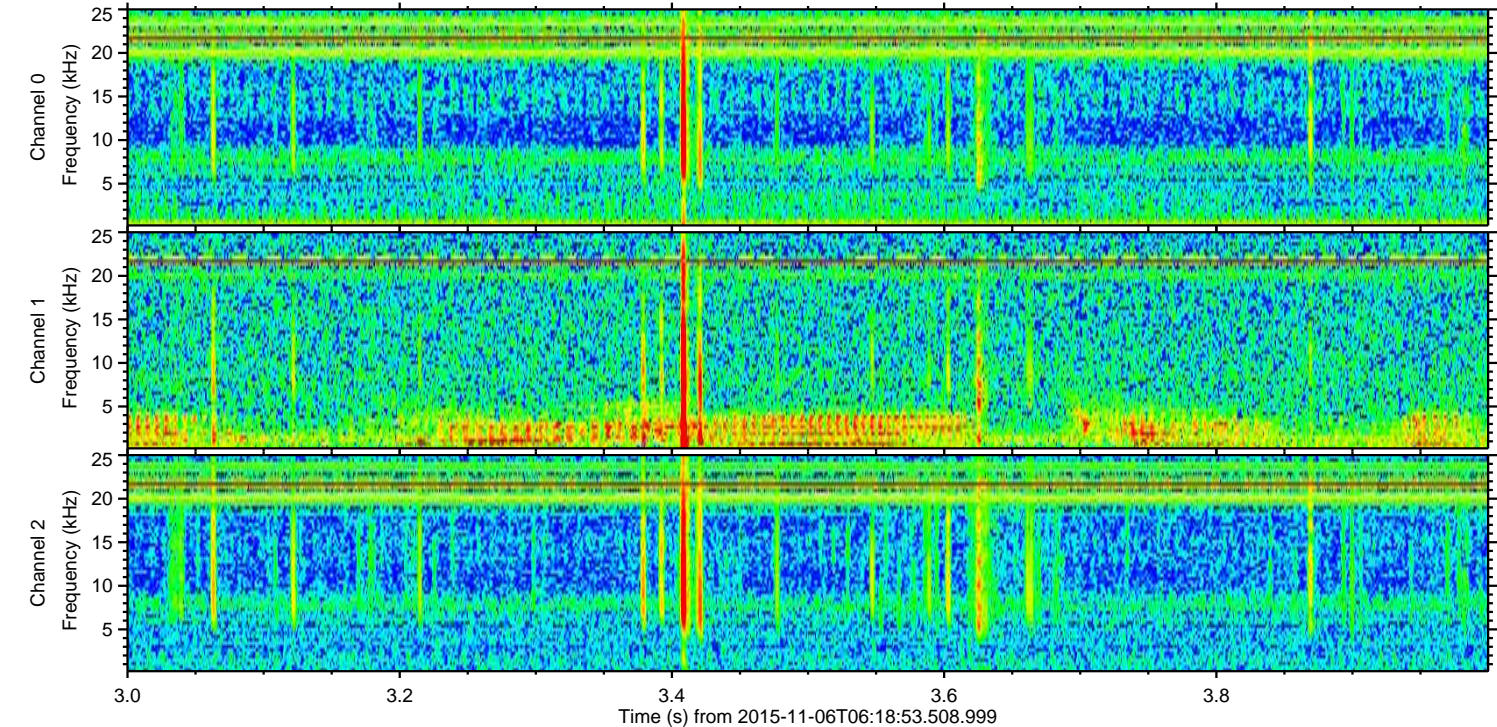
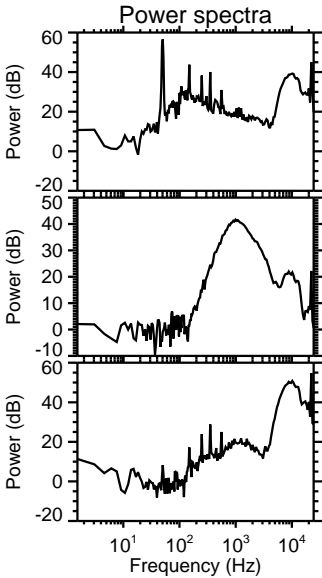
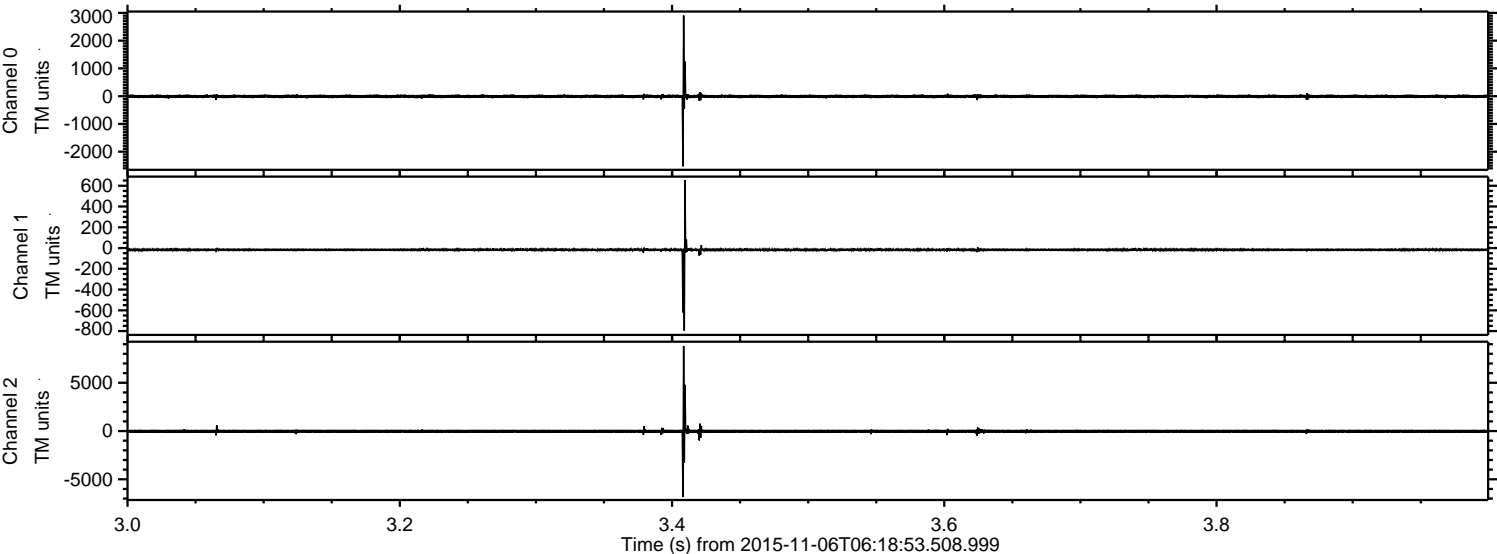
ELMAVAN 3D WAVEFORMS (Measured data sampled at 50 kHz) 51000 packets of 144 samples from 2015-11-06T06:18:53.508.999.

Processed Fri Nov 6 07:25:42 2015 by ELM ver.2012-10-06 from 001__elm20151106_061852__dat00.bin



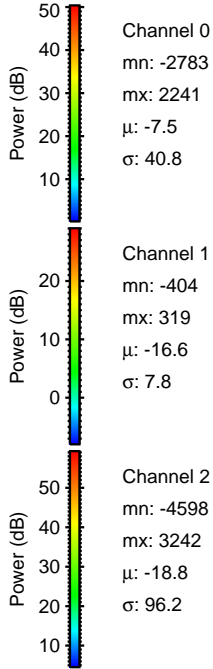
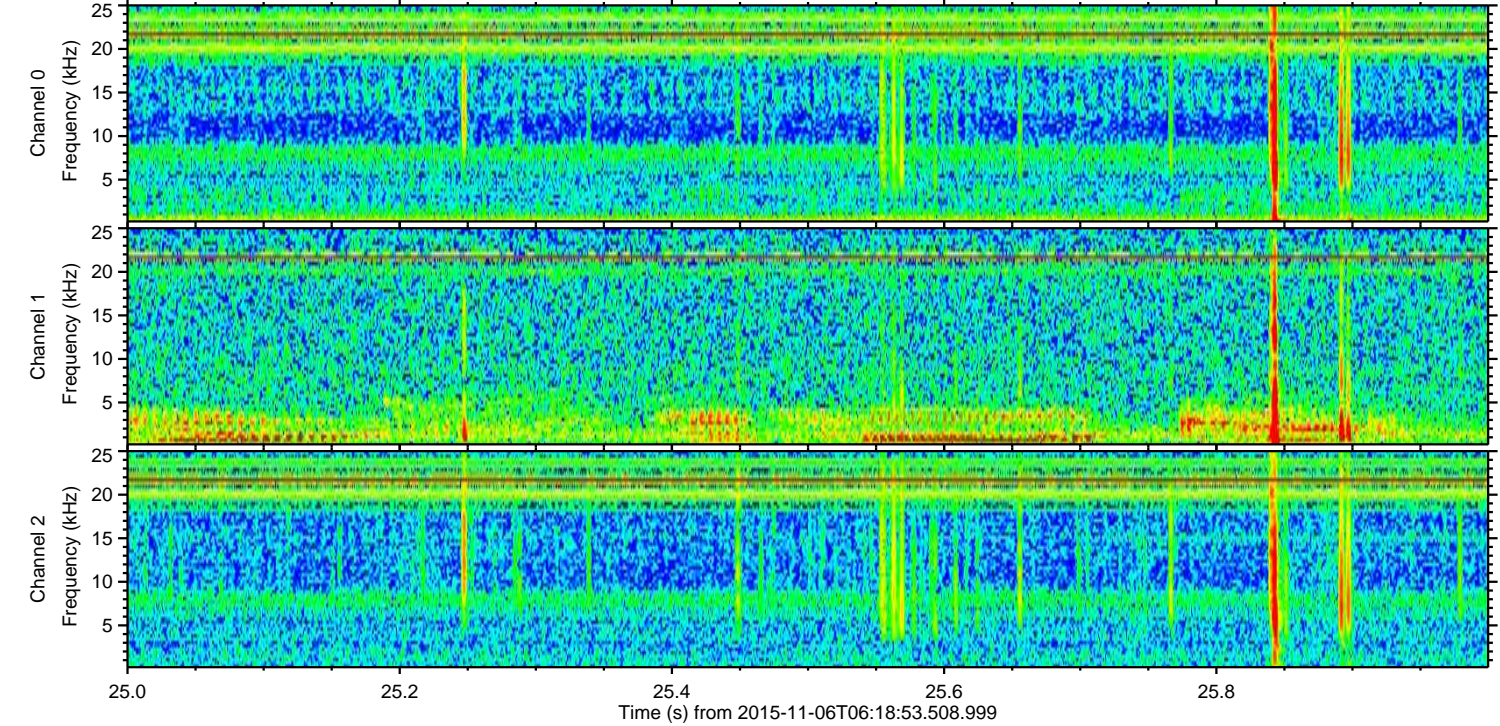
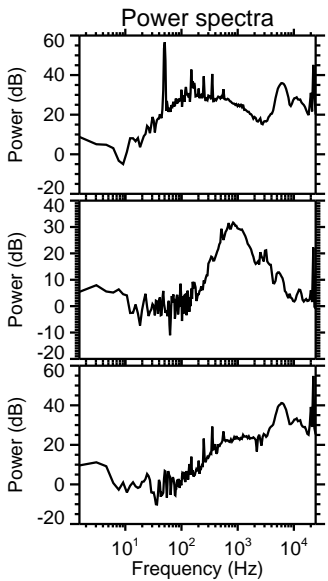
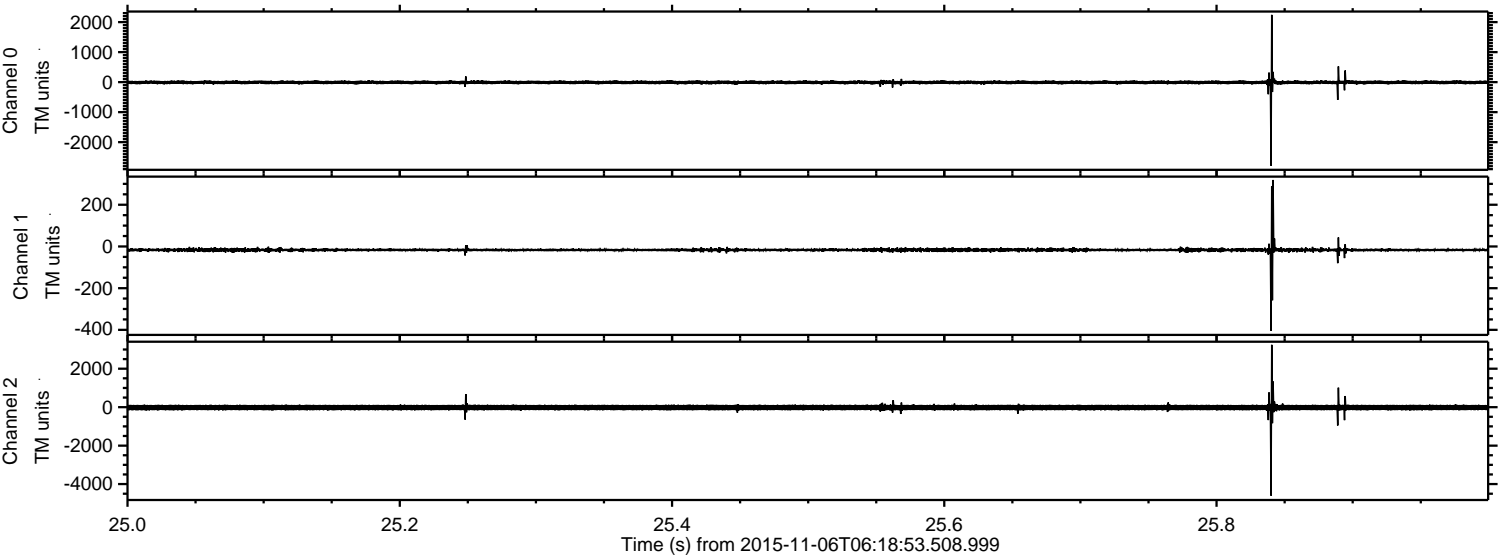
ELMAVAN 3D WAVEFORMS (Measured data sampled at 50 kHz) 51000 packets of 144 samples from 2015-11-06T06:18:53.508.999. Part 4/147

Processed Fri Nov 6 07:25:53 2015 by ELM ver.2012-10-06 from 001__elm20151106_061852__dat00.bin

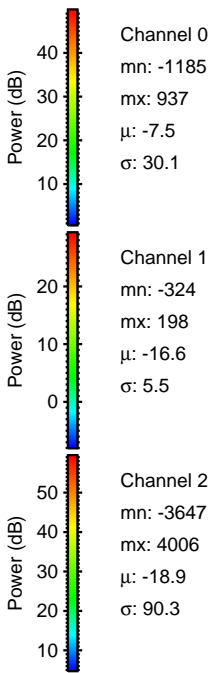
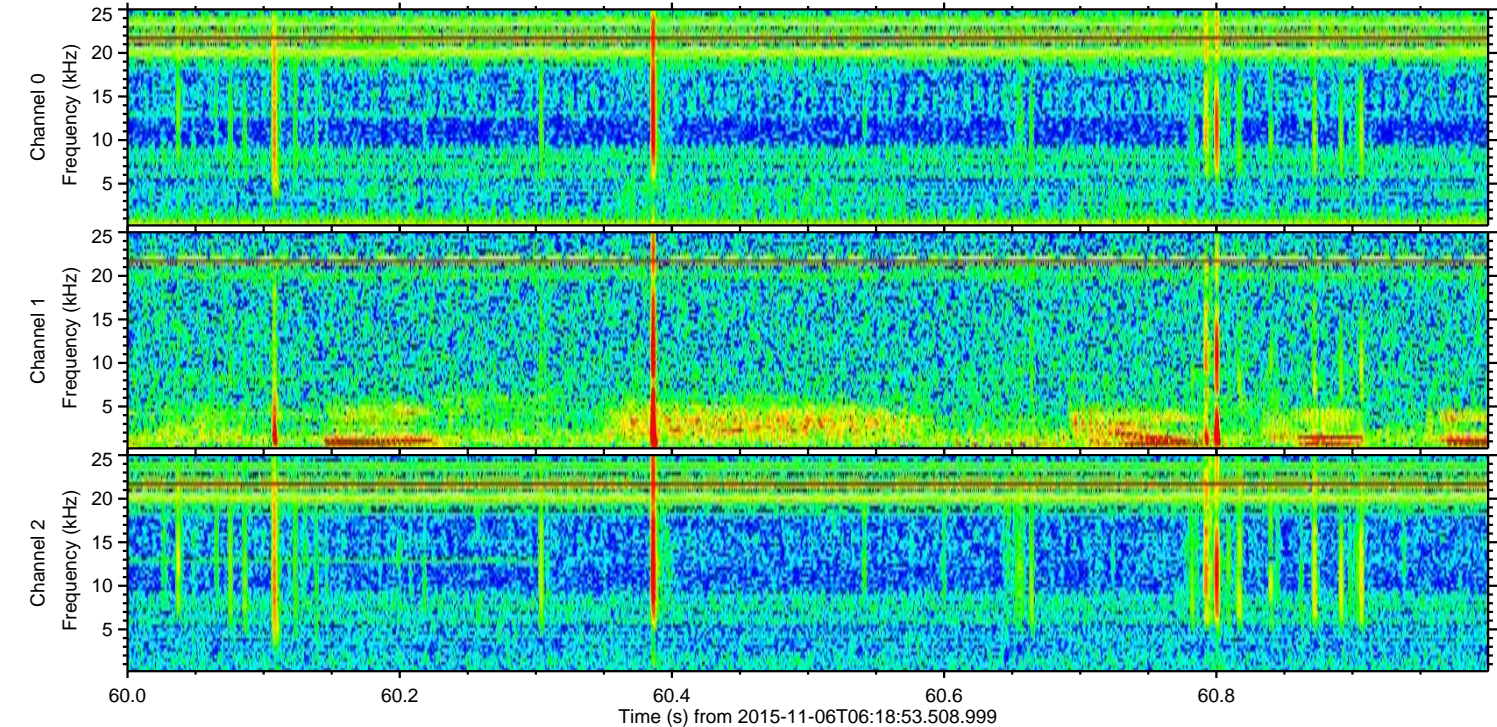
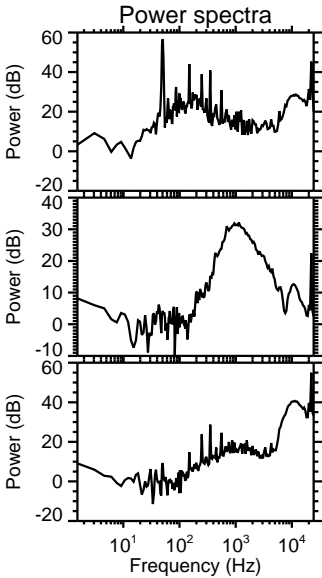
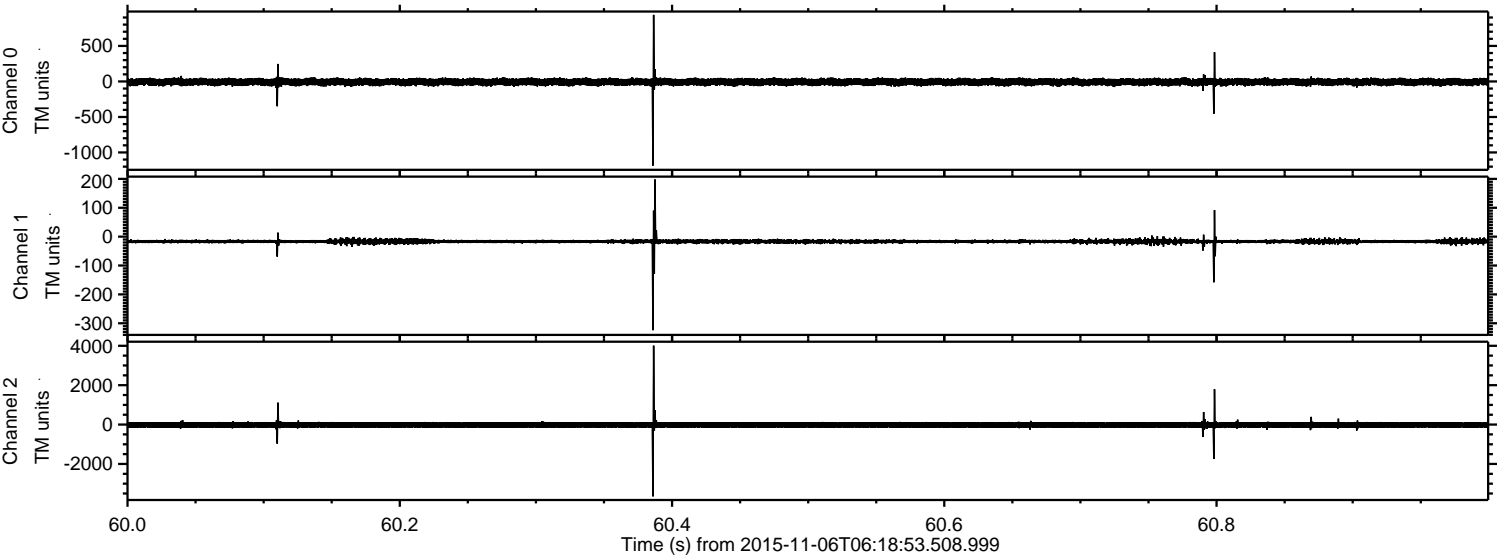


ELMAVAN 3D WAVEFORMS (Measured data sampled at 50 kHz) 51000 packets of 144 samples from 2015-11-06T06:18:53.508.999. Part 26/147

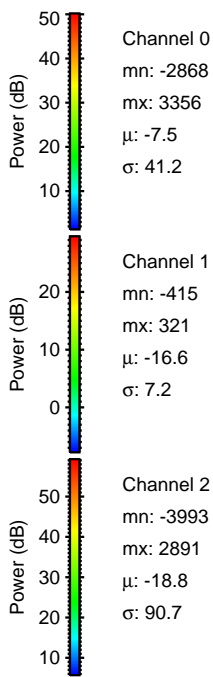
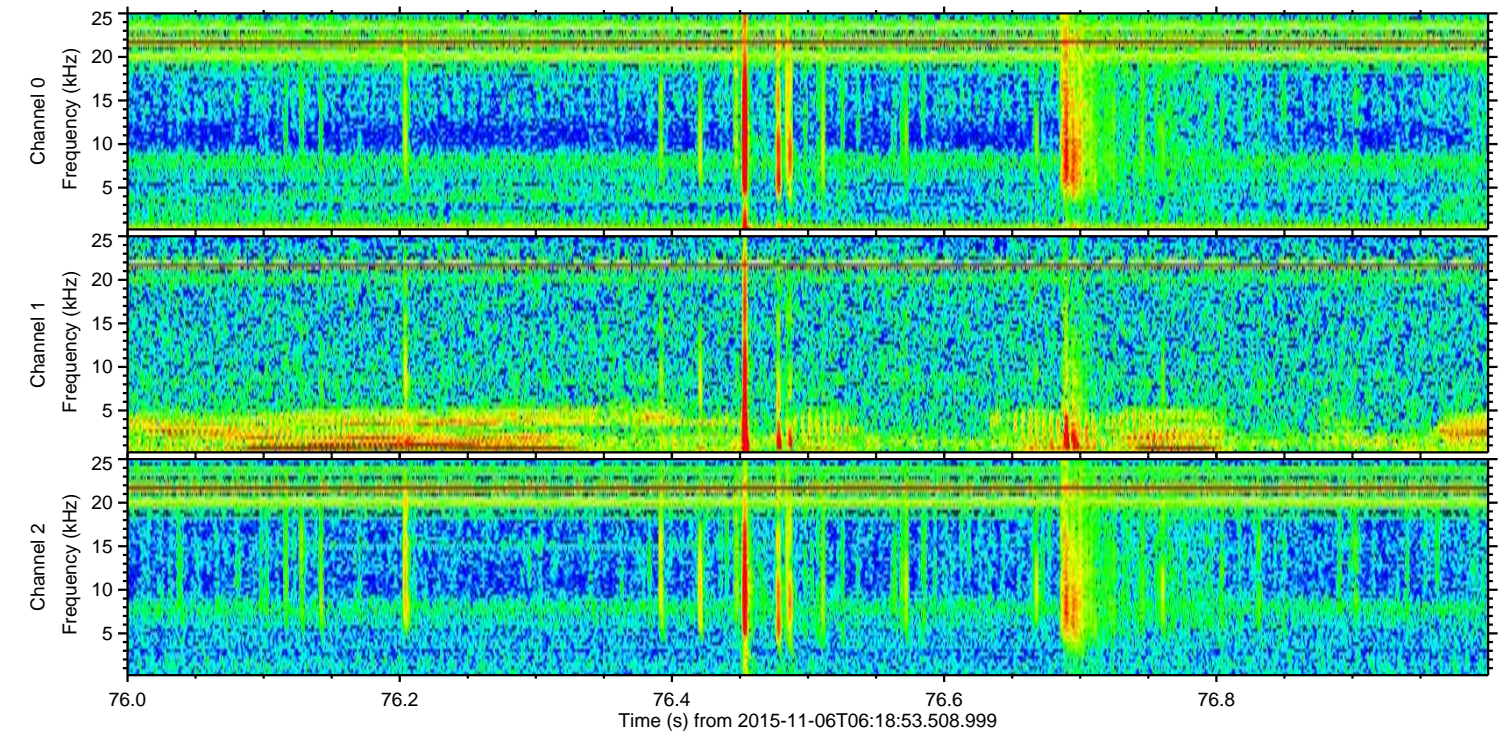
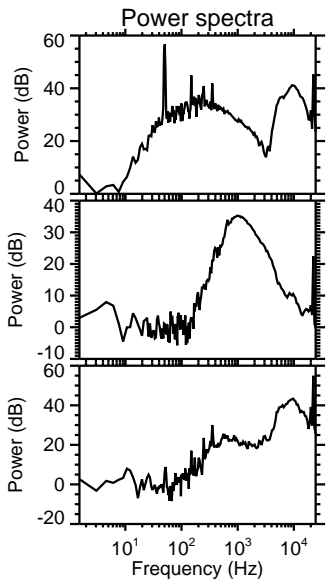
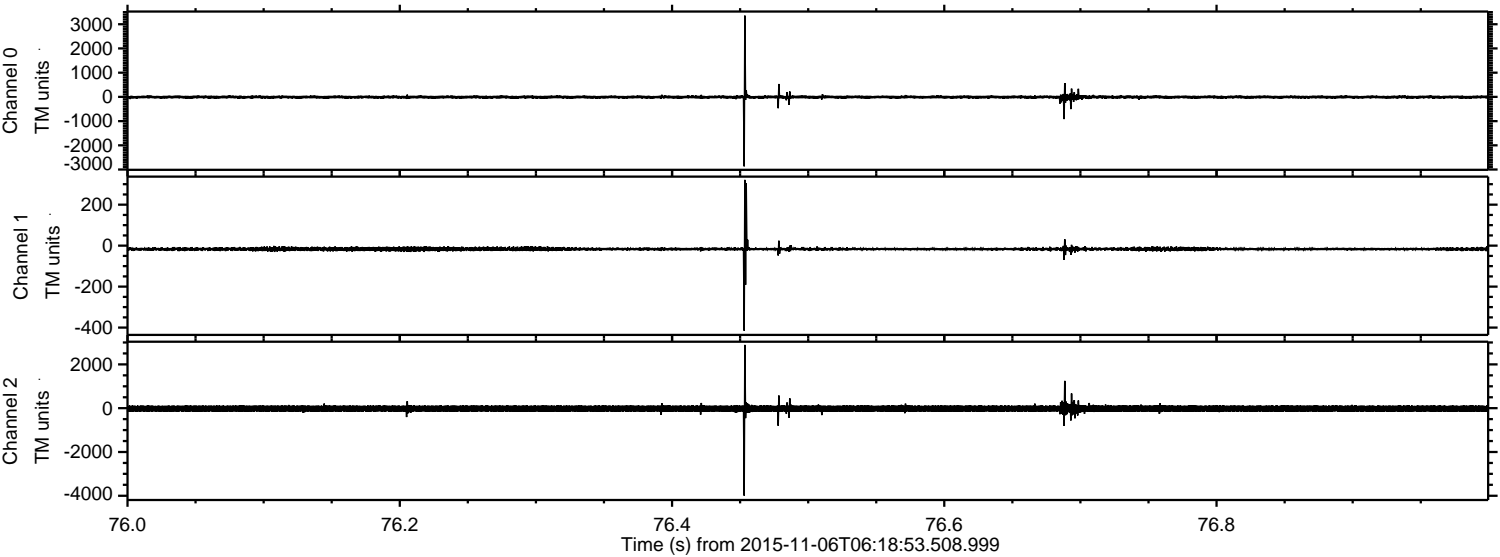
Processed Fri Nov 6 07:25:54 2015 by ELM ver.2012-10-06 from 001__elm20151106_061852__dat00.bin



Processed Fri Nov 6 07:25:55 2015 by ELM ver.2012-10-06 from 001__elm20151106_061852__dat00.bin

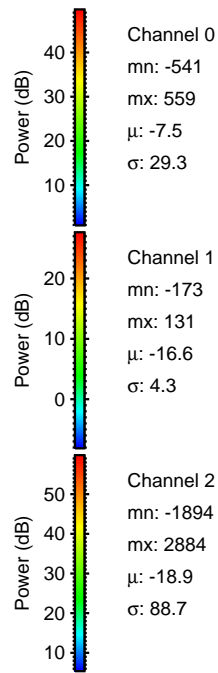
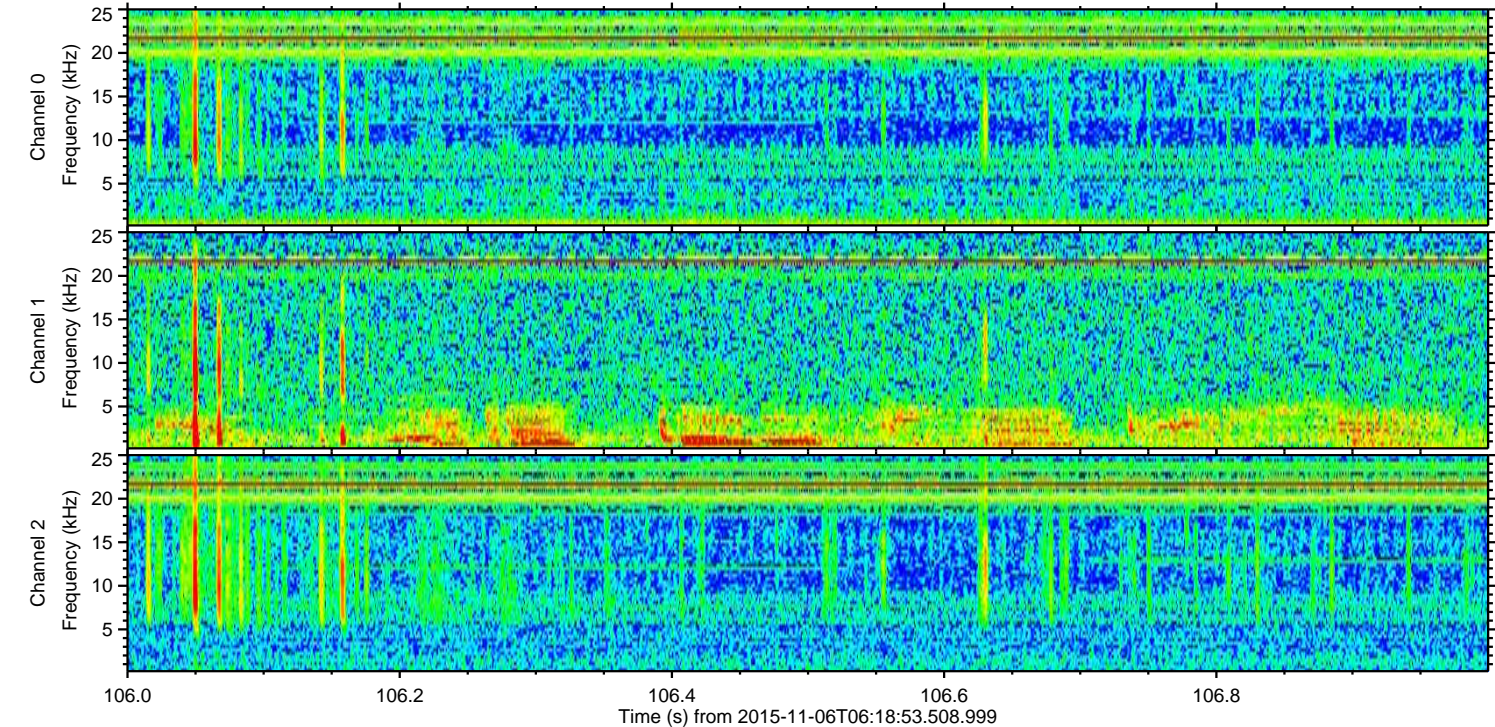
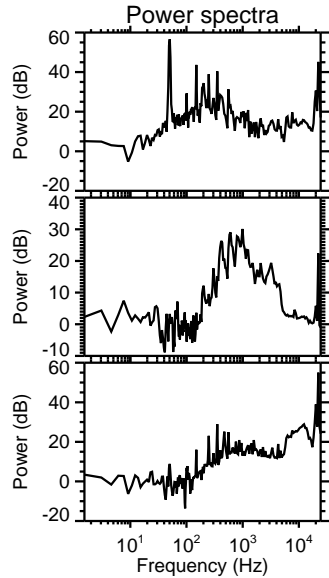
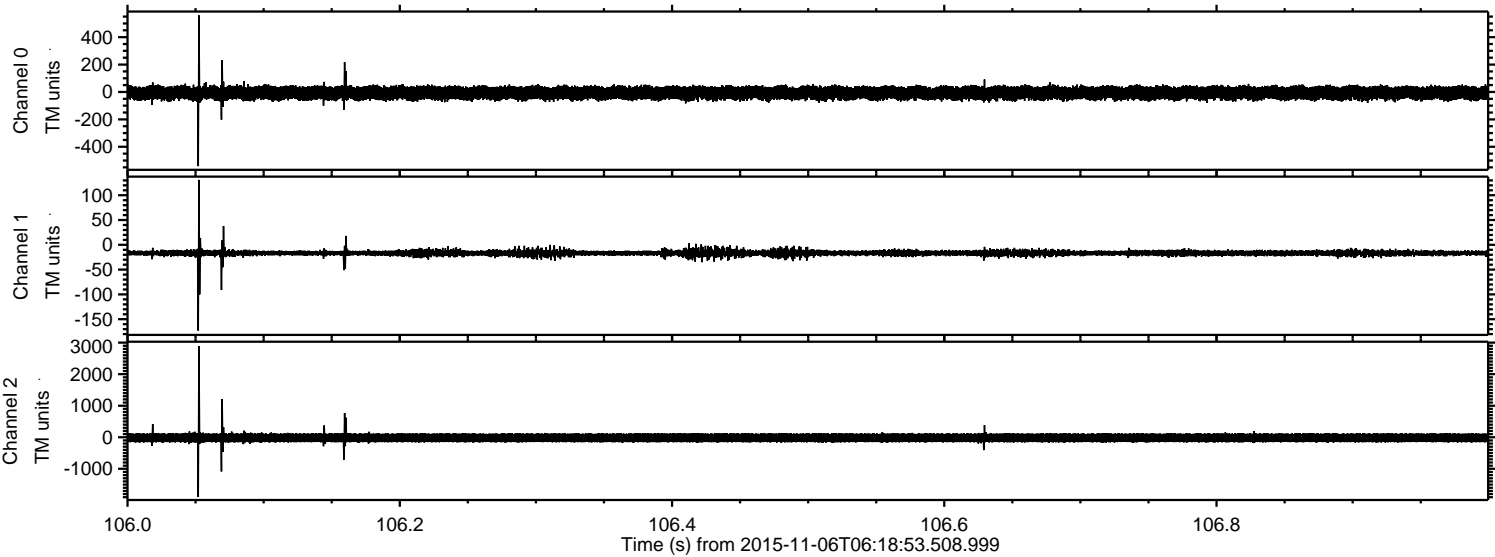


Processed Fri Nov 6 07:25:56 2015 by ELM ver.2012-10-06 from 001__elm20151106_061852__dat00.bin

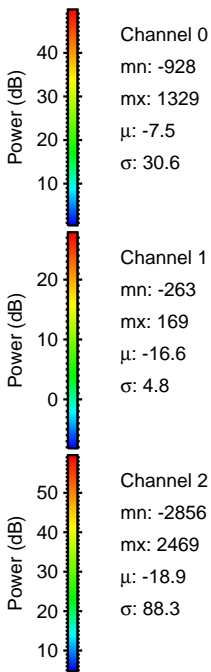
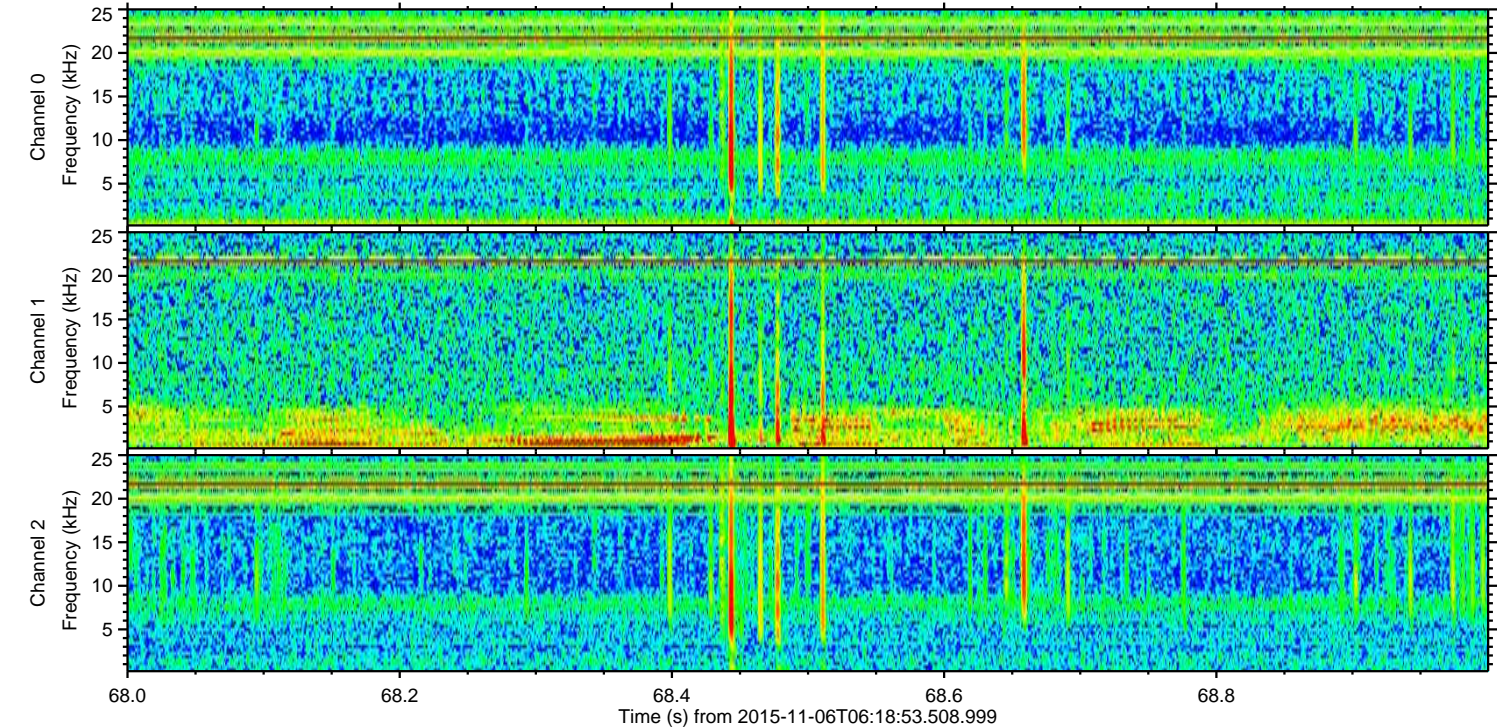
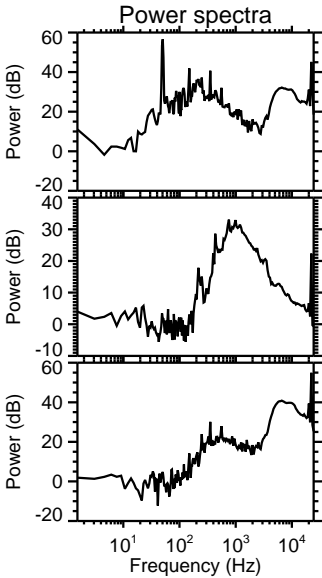
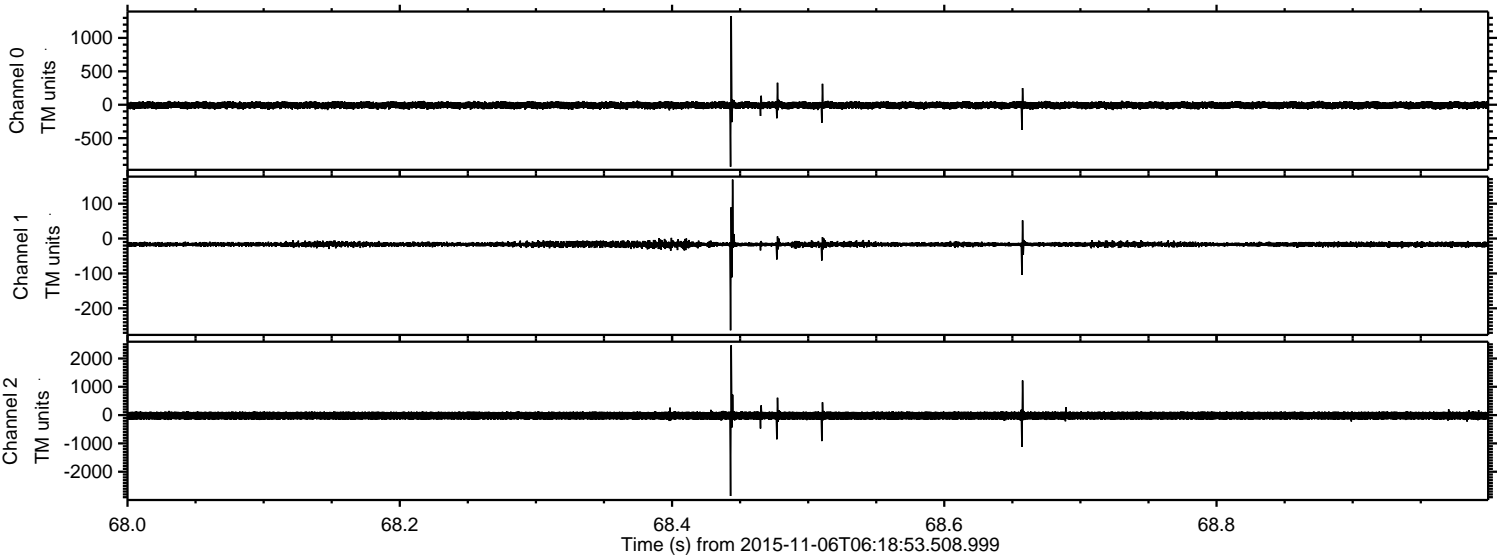


ELMAVAN 3D WAVEFORMS (Measured data sampled at 50 kHz) 51000 packets of 144 samples from 2015-11-06T06:18:53.508.999. Part 107/147

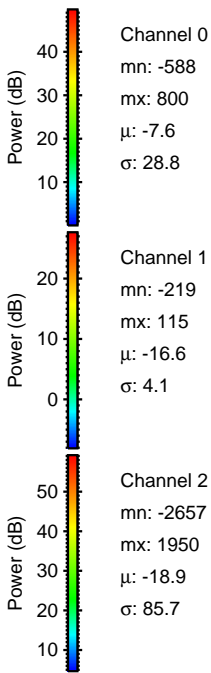
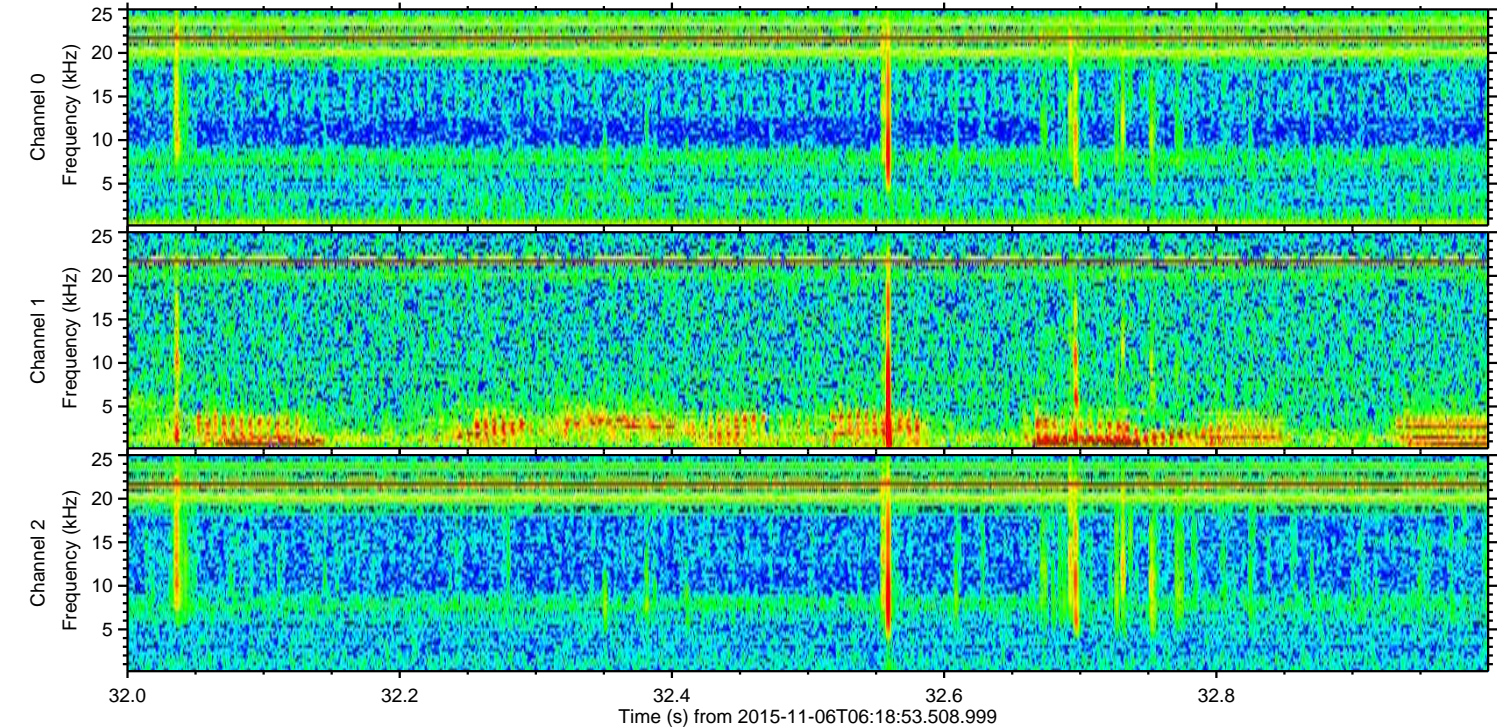
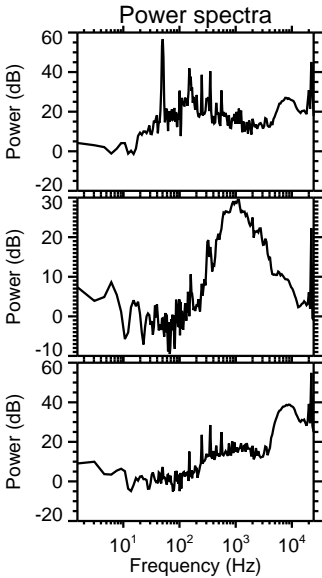
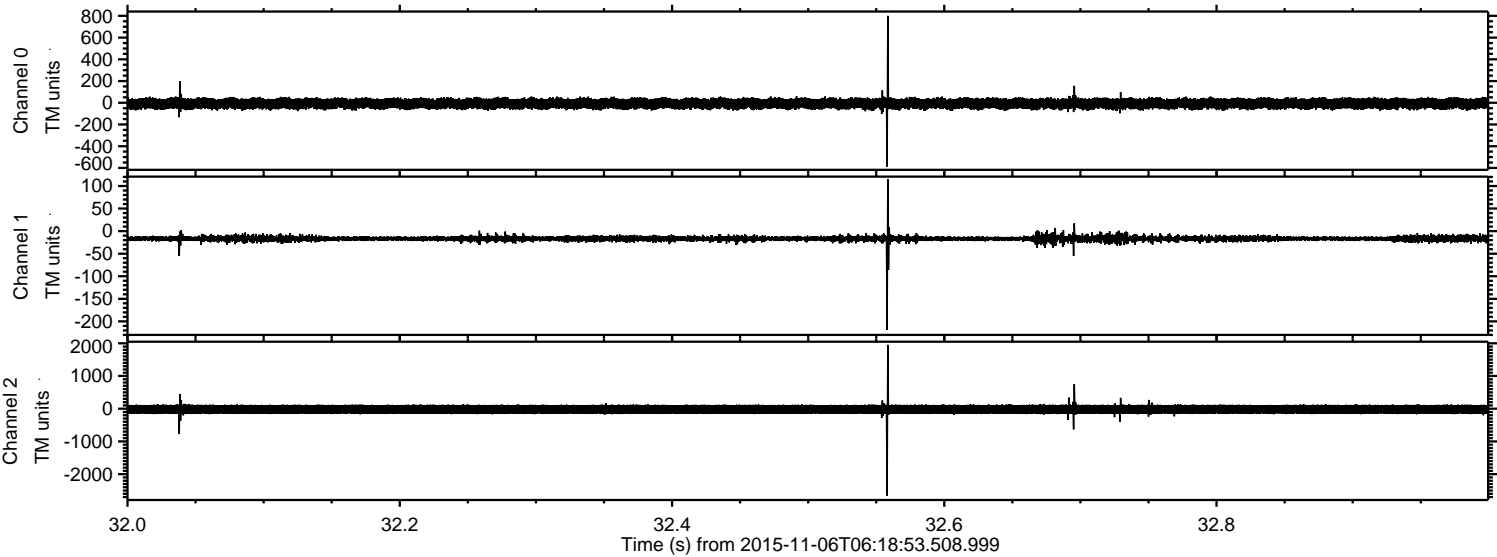
Processed Fri Nov 6 07:25:57 2015 by ELM ver.2012-10-06 from 001__elm20151106_061852__dat00.bin



Processed Fri Nov 6 07:25:58 2015 by ELM ver.2012-10-06 from 001__elm20151106_061852__dat00.bin

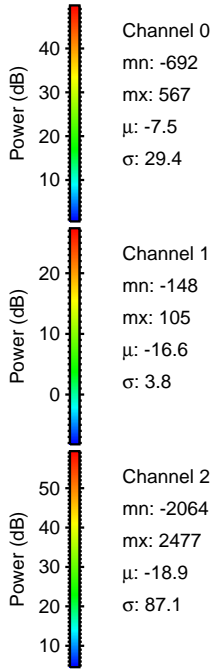
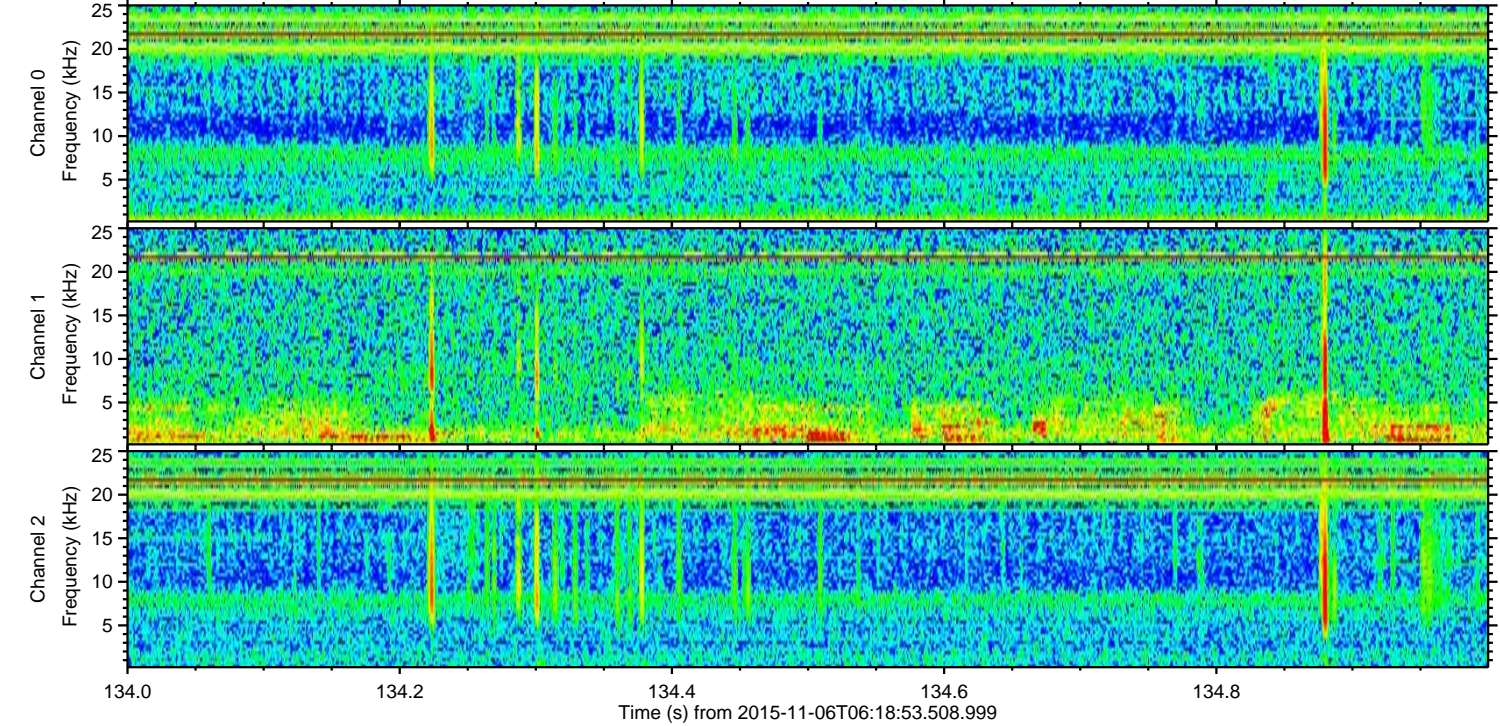
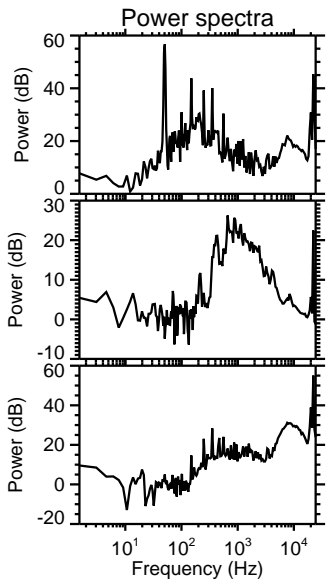
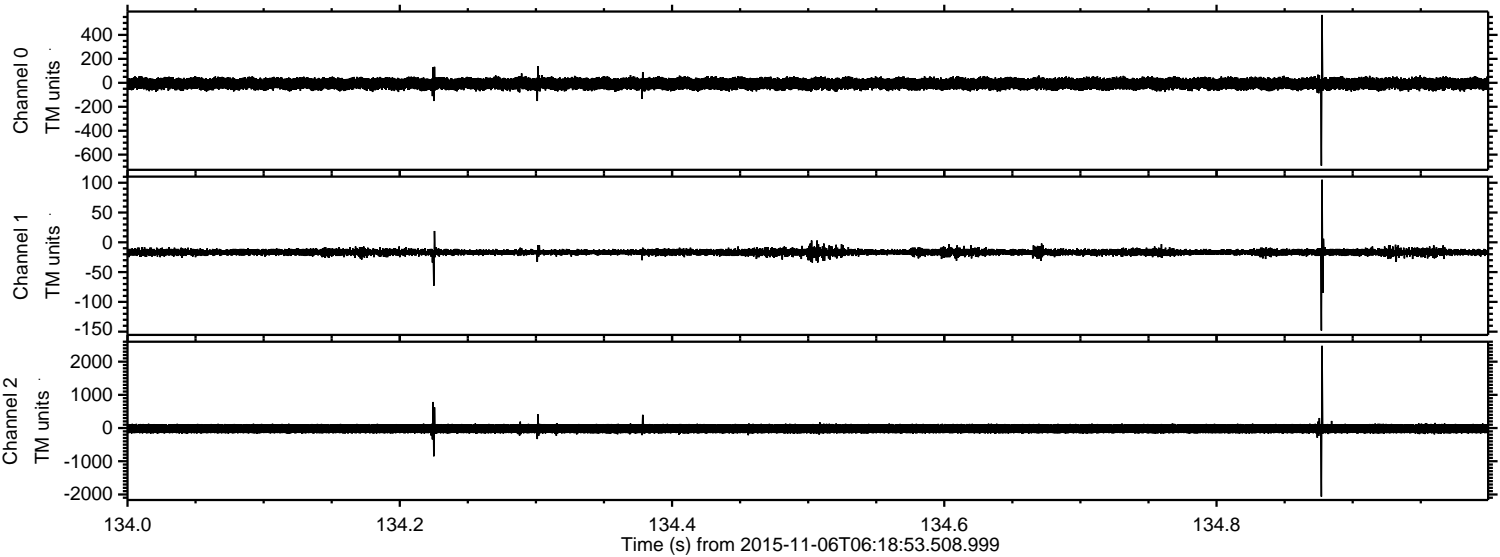


Processed Fri Nov 6 07:25:59 2015 by ELM ver.2012-10-06 from 001__elm20151106_061852__dat00.bin

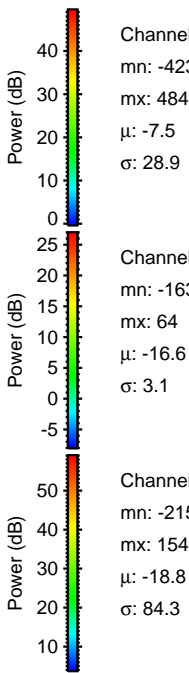
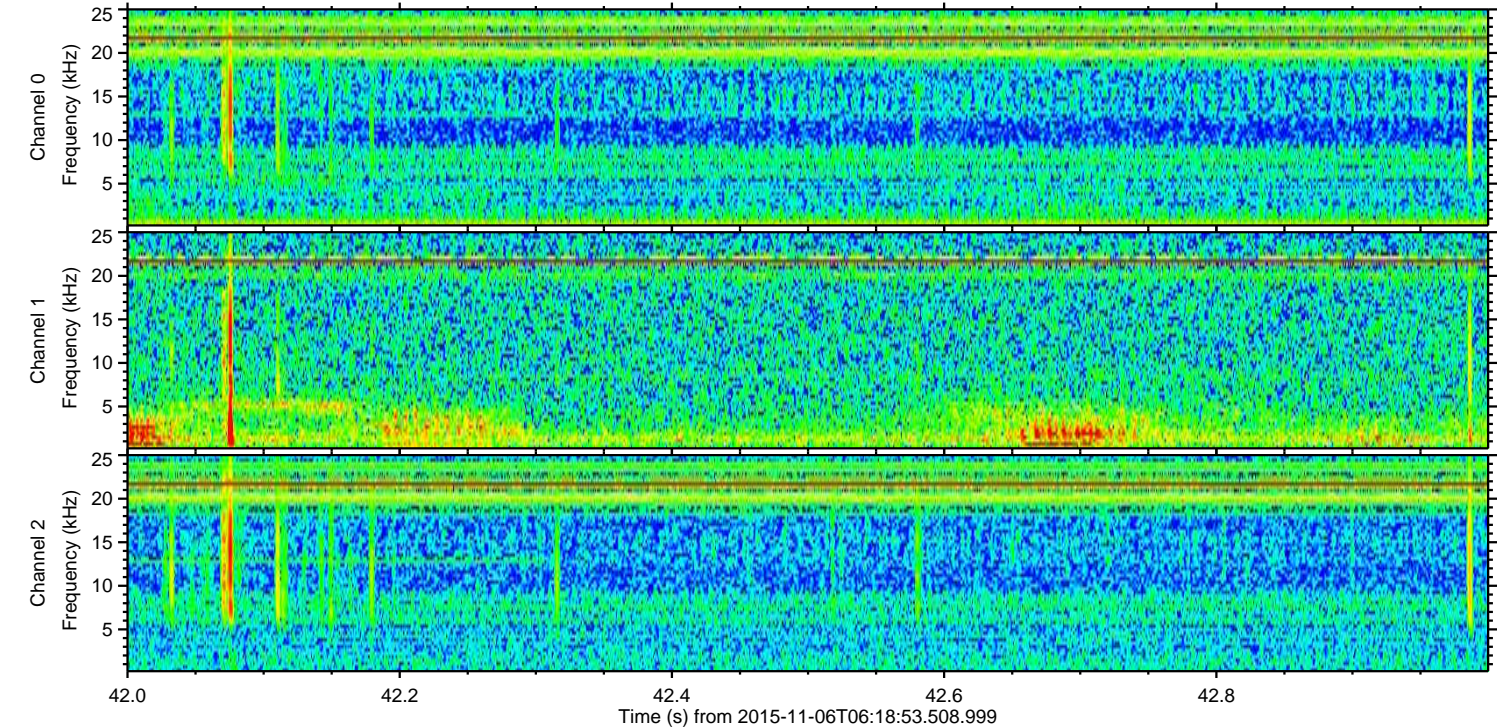
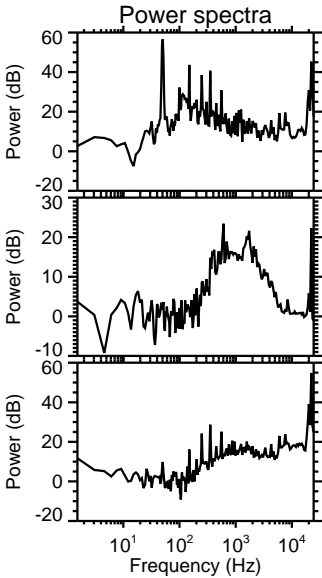
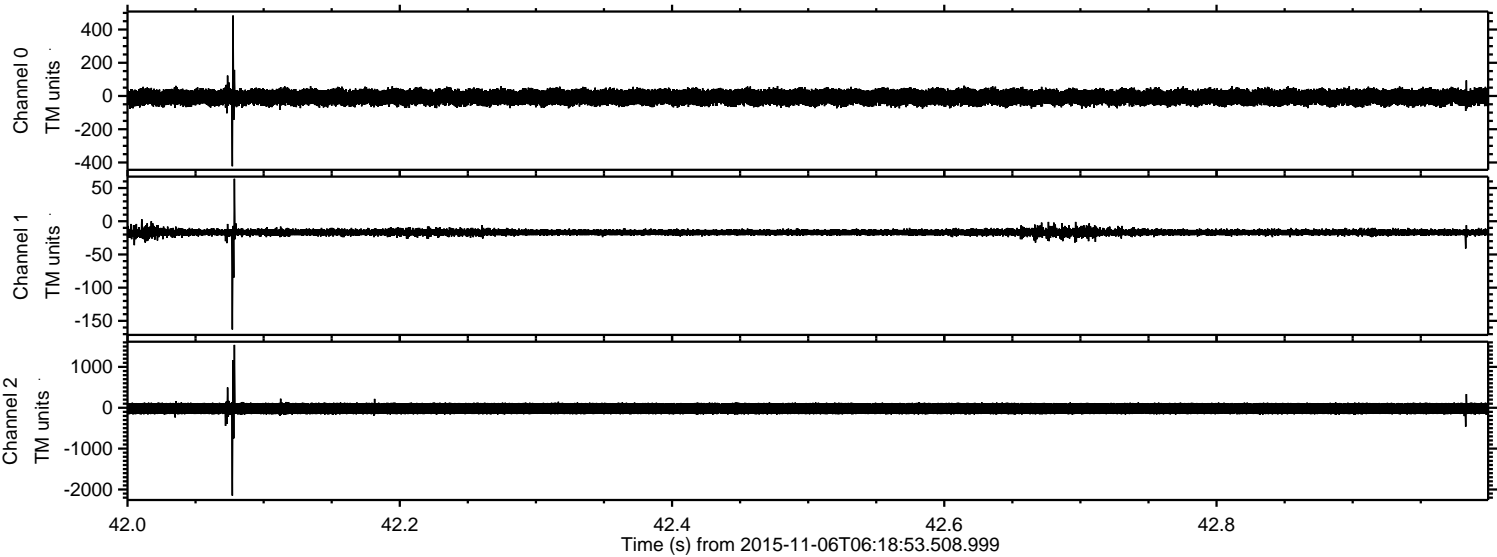


ELMAVAN 3D WAVEFORMS (Measured data sampled at 50 kHz) 51000 packets of 144 samples from 2015-11-06T06:18:53.508.999. Part 135/147

Processed Fri Nov 6 07:26:00 2015 by ELM ver.2012-10-06 from 001__elm20151106_061852__dat00.bin



Processed Fri Nov 6 07:26:01 2015 by ELM ver.2012-10-06 from 001__elm20151106_061852__dat00.bin



Channel 0
mn: -423
mx: 484
 μ : -7.5
 σ : 28.9

Channel 1
mn: -163
mx: 64
 μ : -16.6
 σ : 3.1

Channel 2
mn: -2150
mx: 1540
 μ : -18.8
 σ : 84.3

Processed Fri Nov 6 07:26:02 2015 by ELM ver.2012-10-06 from 001__elm20151106_061852__dat00.bin

