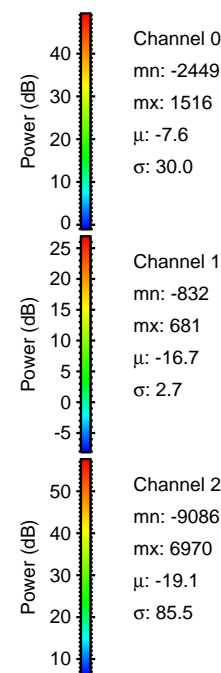
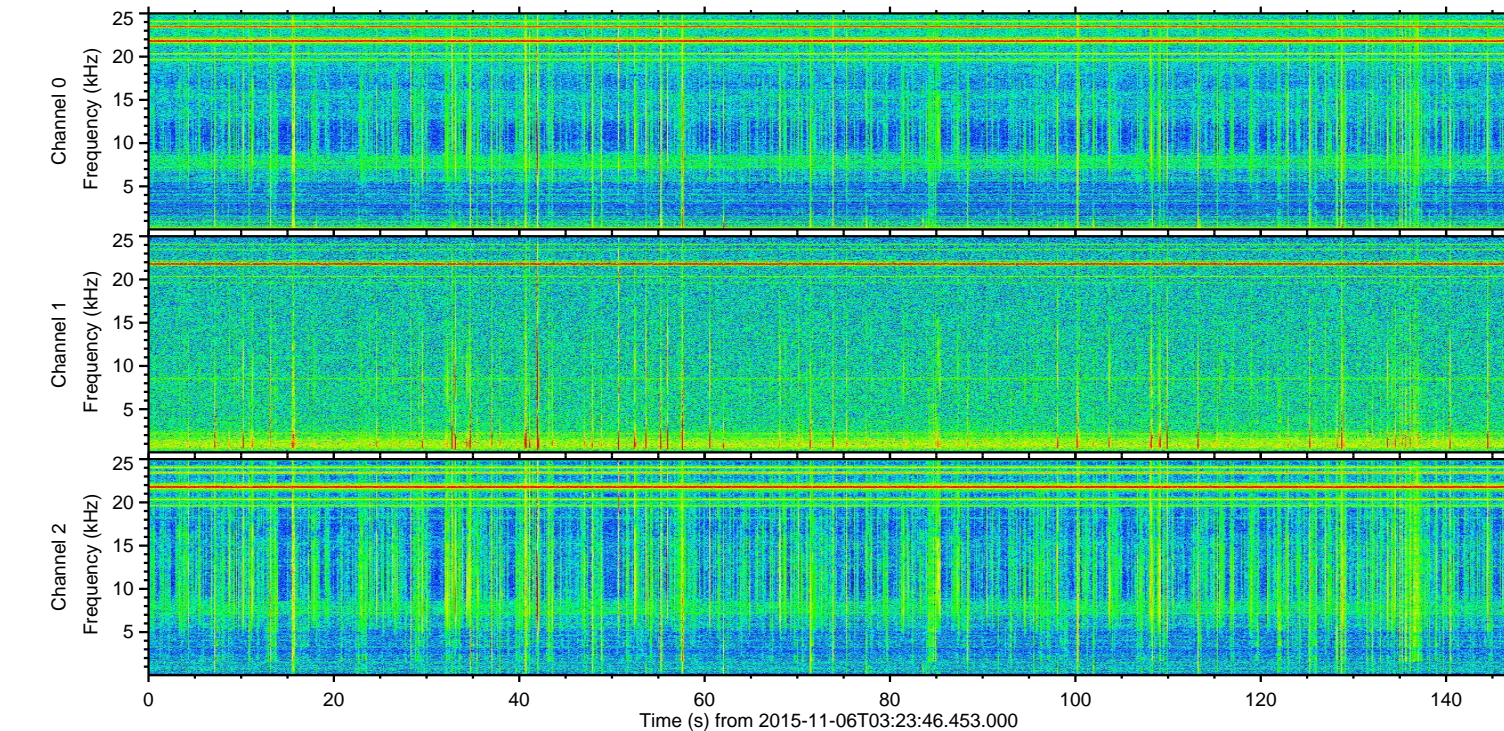
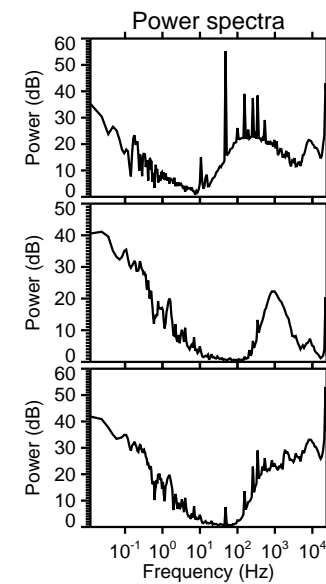
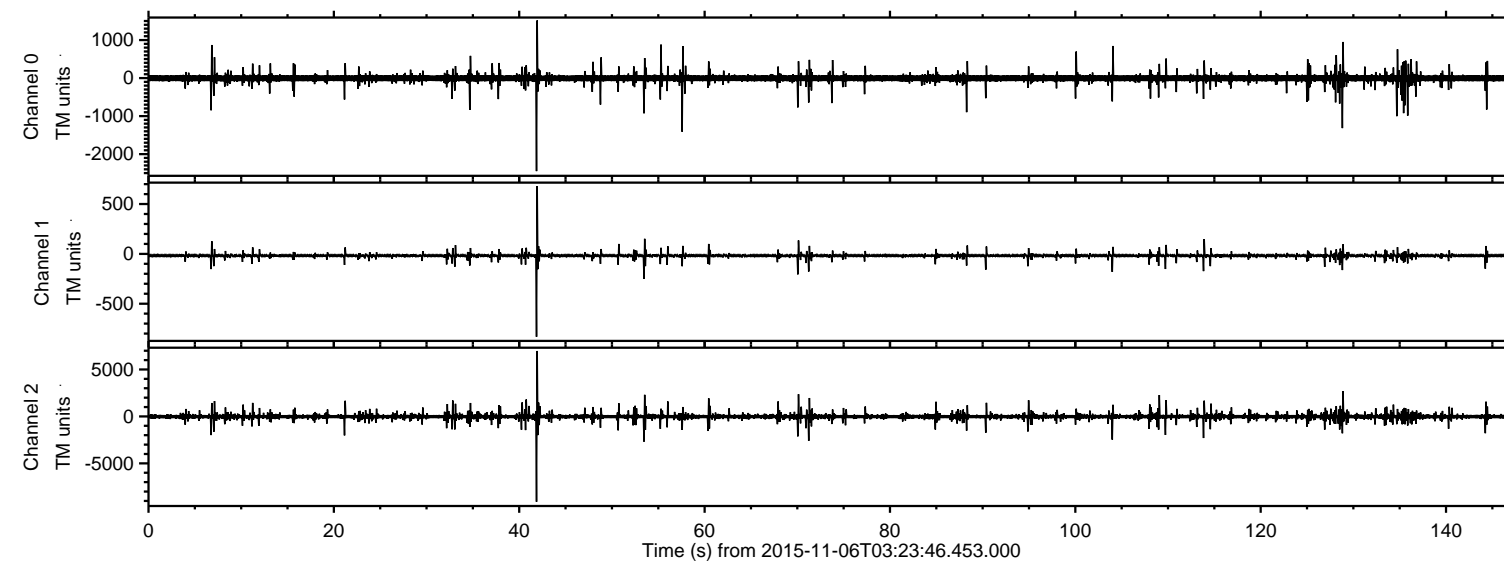
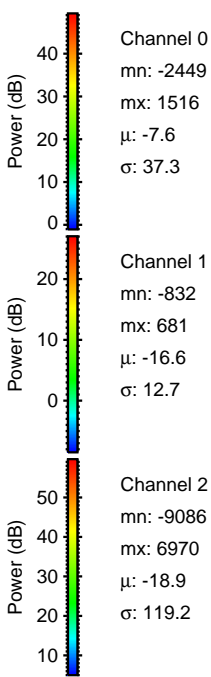
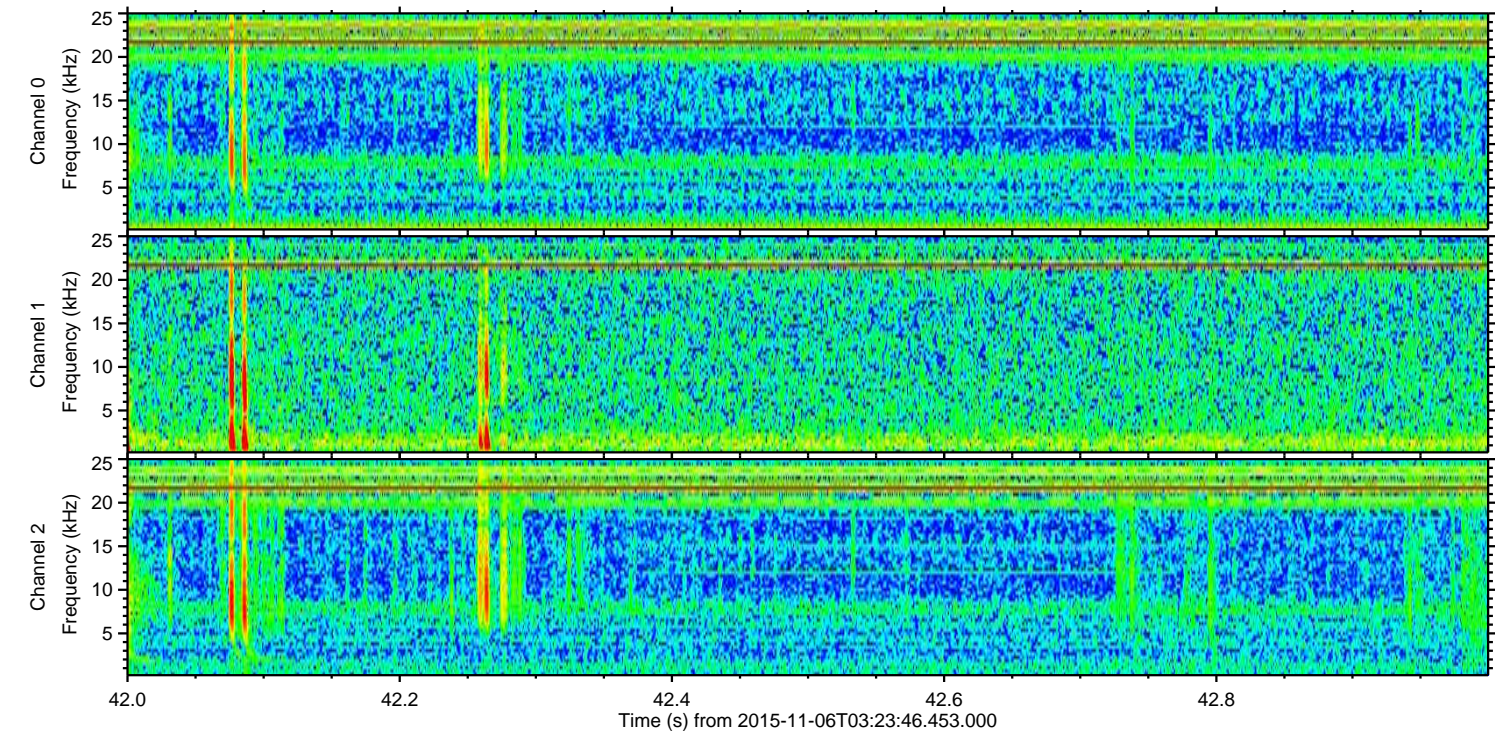
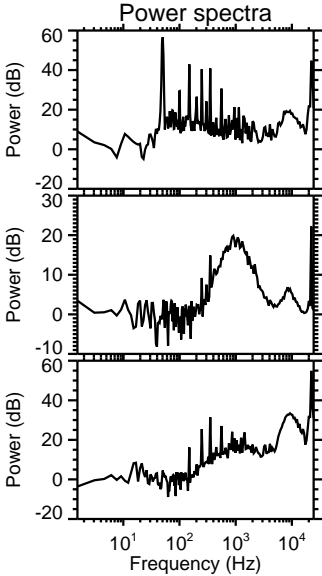
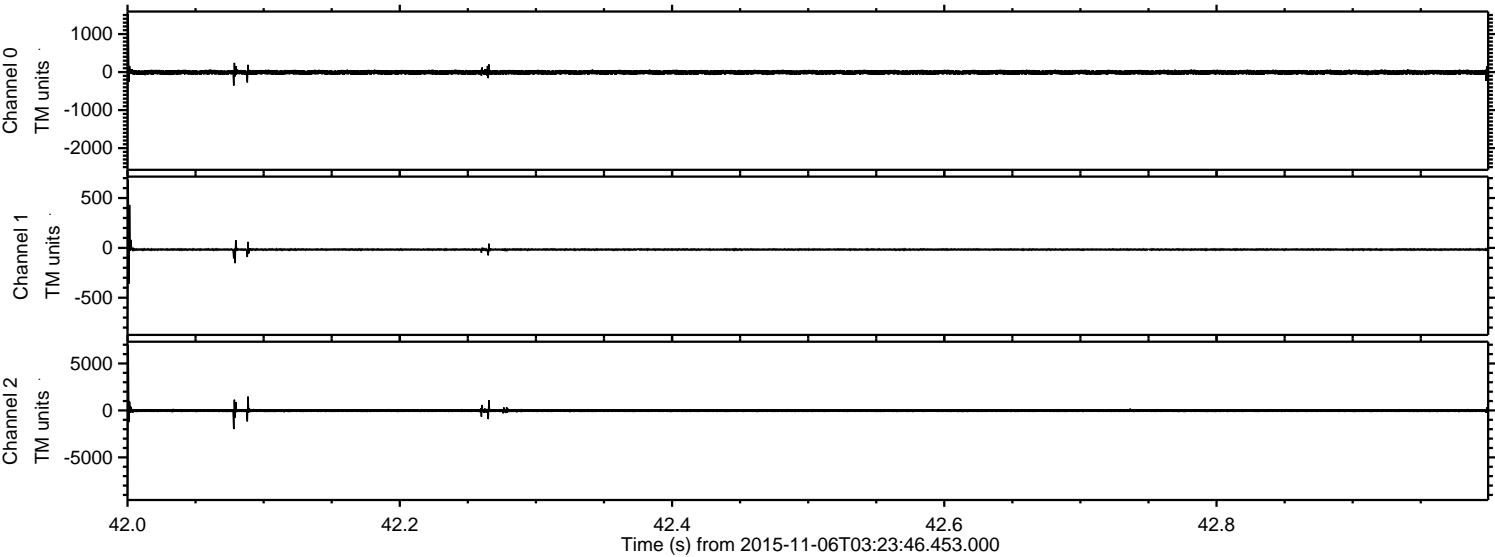


ELMAVAN 3D WAVEFORMS (Measured data sampled at 50 kHz) 51000 packets of 144 samples from 2015-11-06T03:23:46.453.000.

Processed Fri Nov 6 04:30:53 2015 by ELM ver.2012-10-06 from 001__elm20151106_032345__dat00.bin

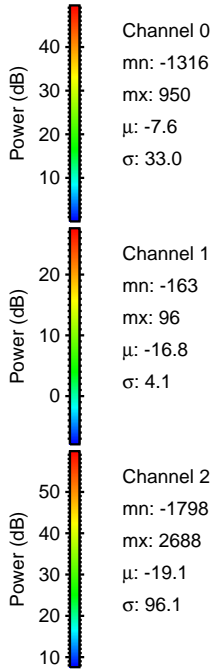
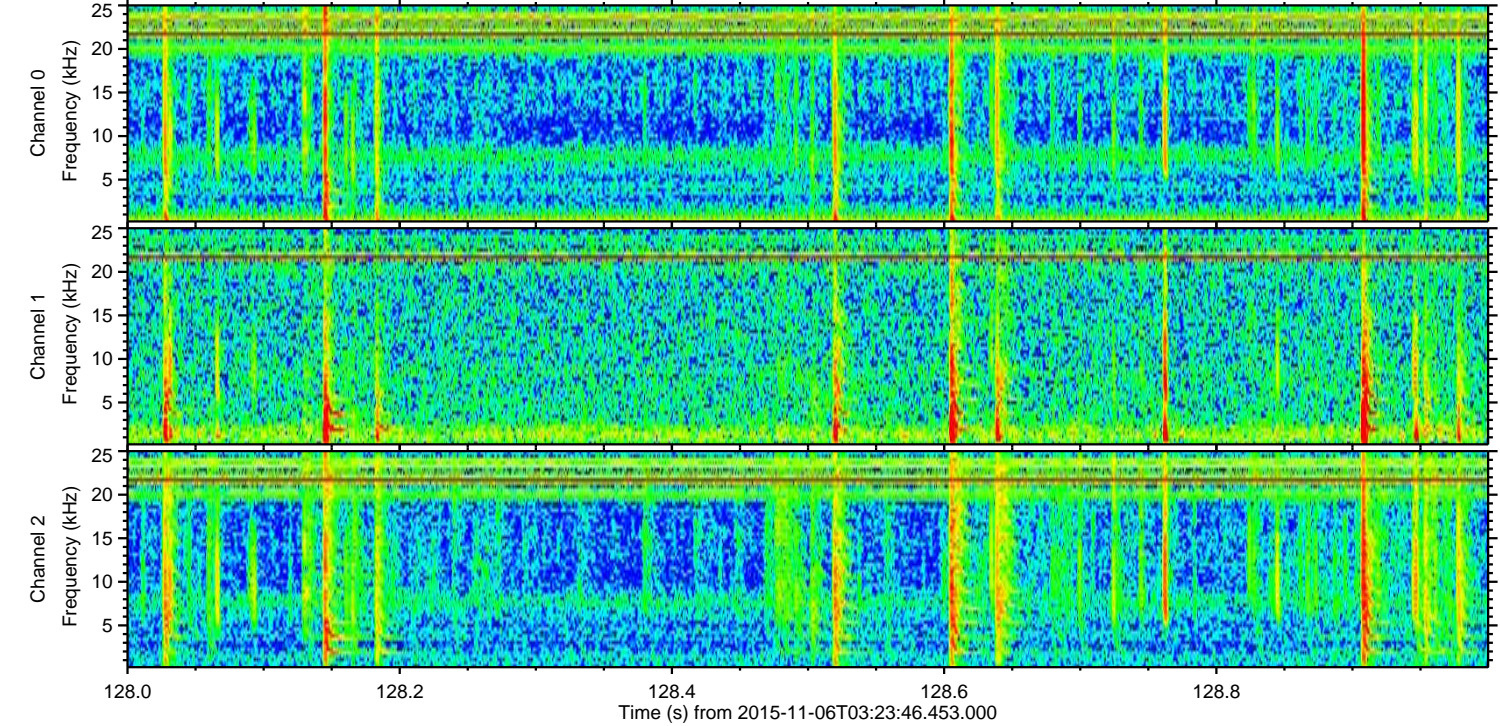
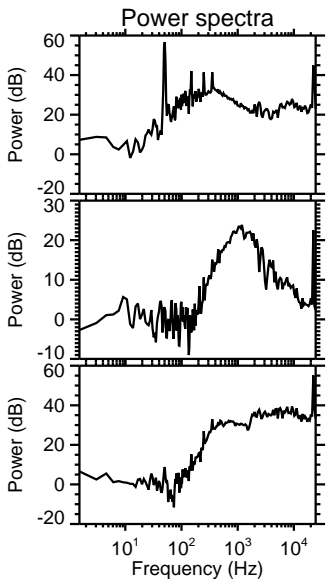
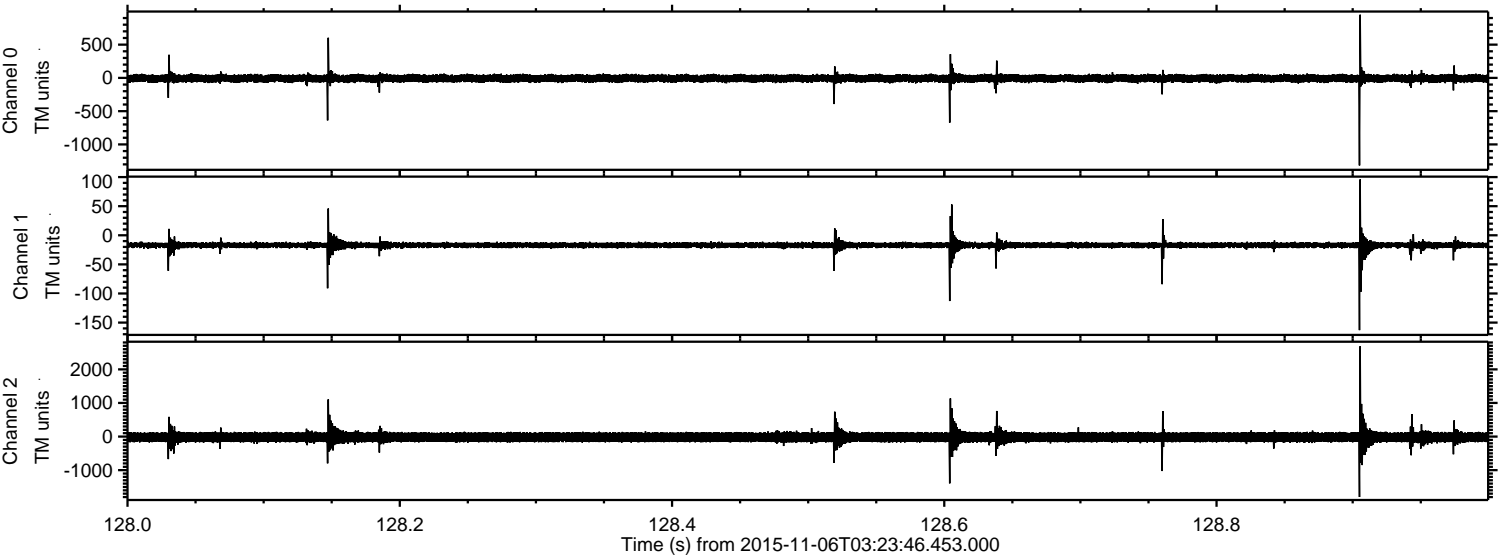


Processed Fri Nov 6 04:31:05 2015 by ELM ver.2012-10-06 from 001__elm20151106_032345__dat00.bin

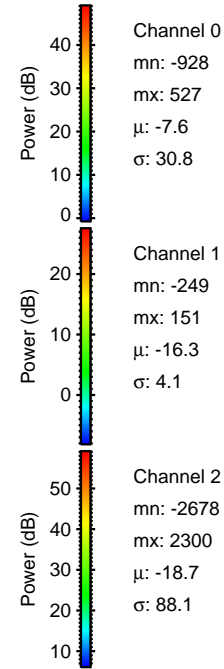
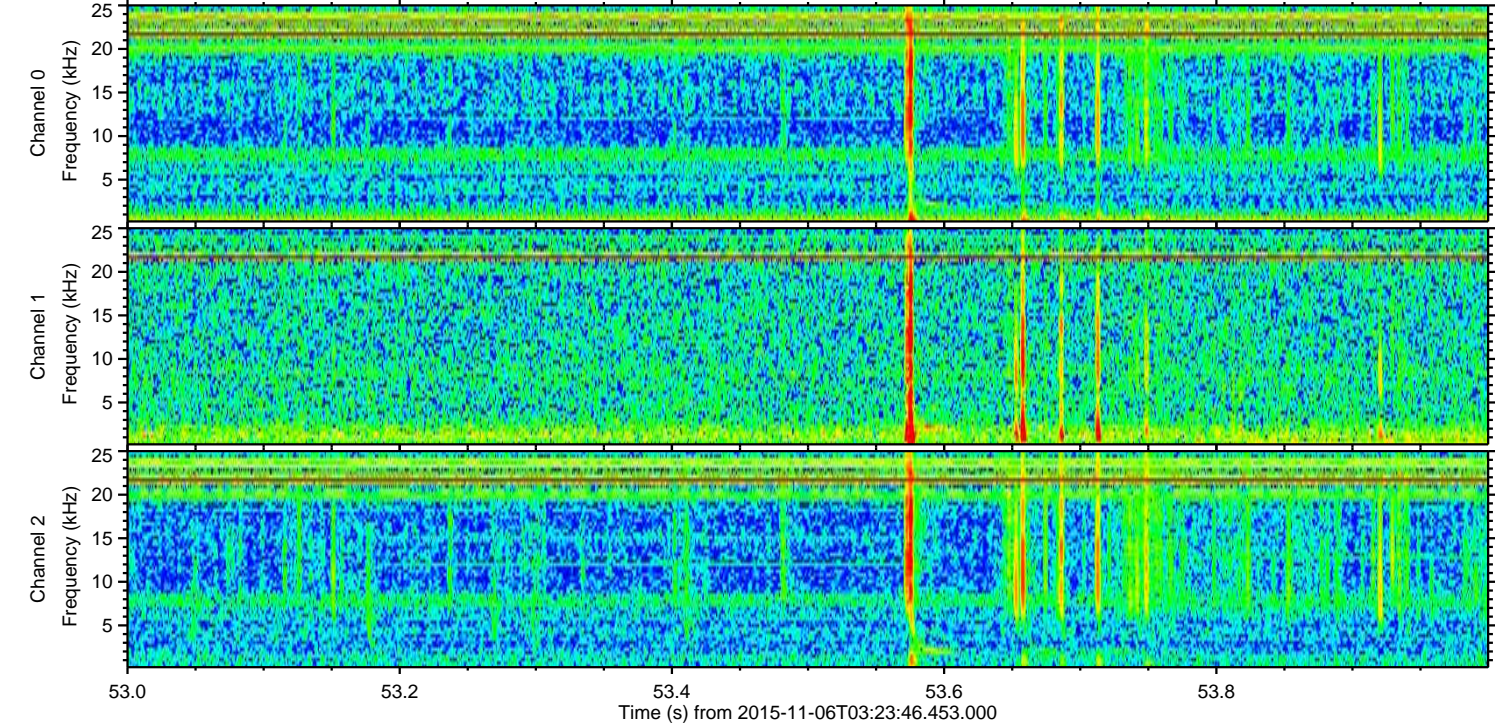
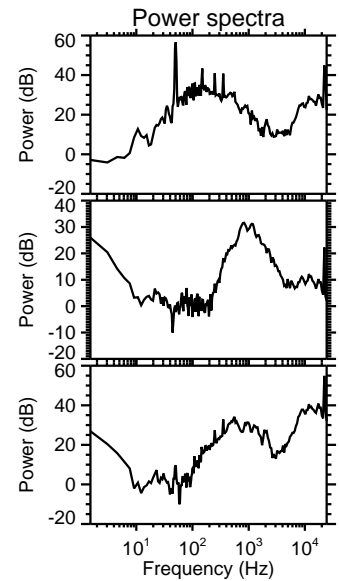
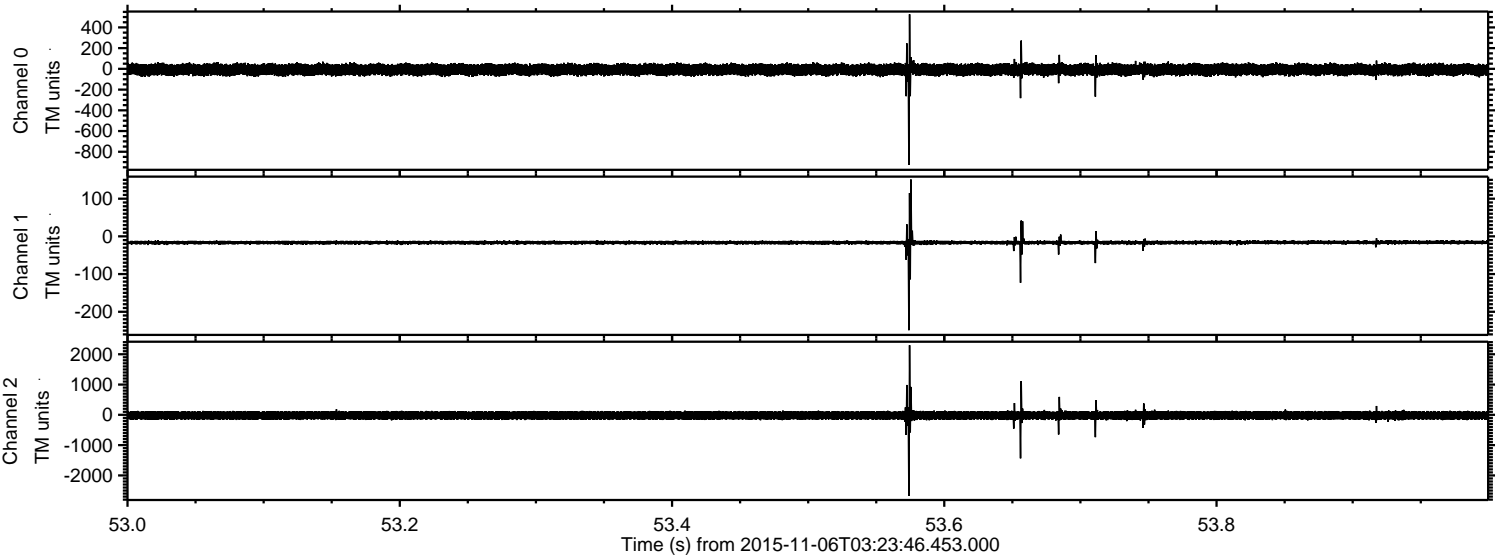


ELMAVAN 3D WAVEFORMS (Measured data sampled at 50 kHz) 51000 packets of 144 samples from 2015-11-06T03:23:46.453.000. Part 129/147

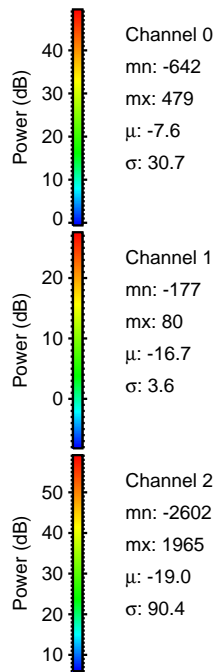
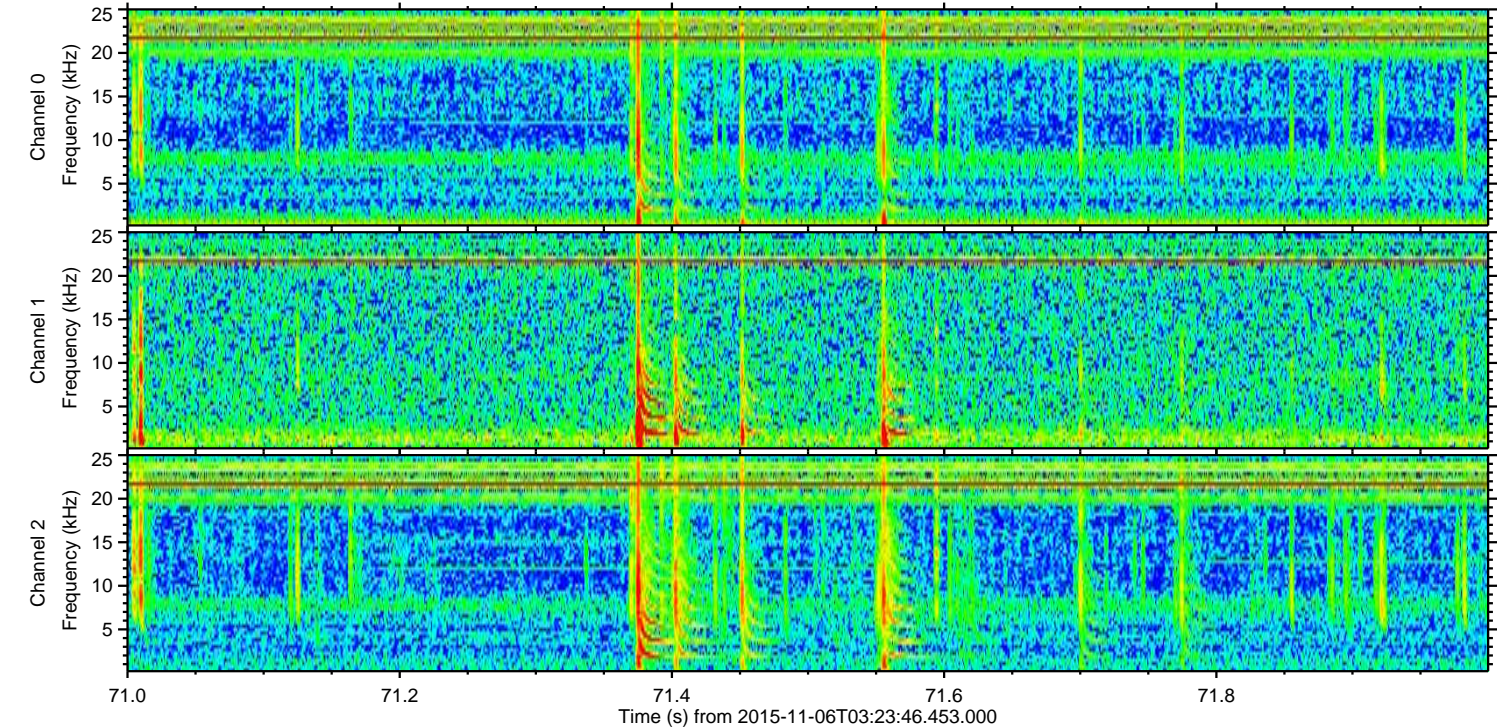
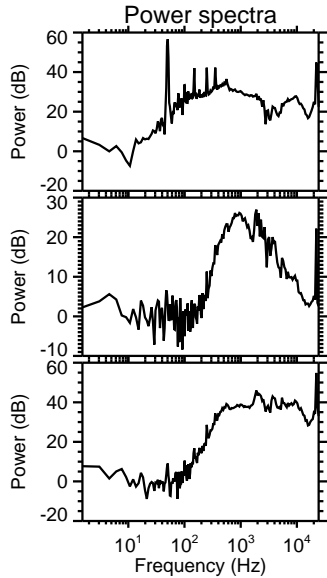
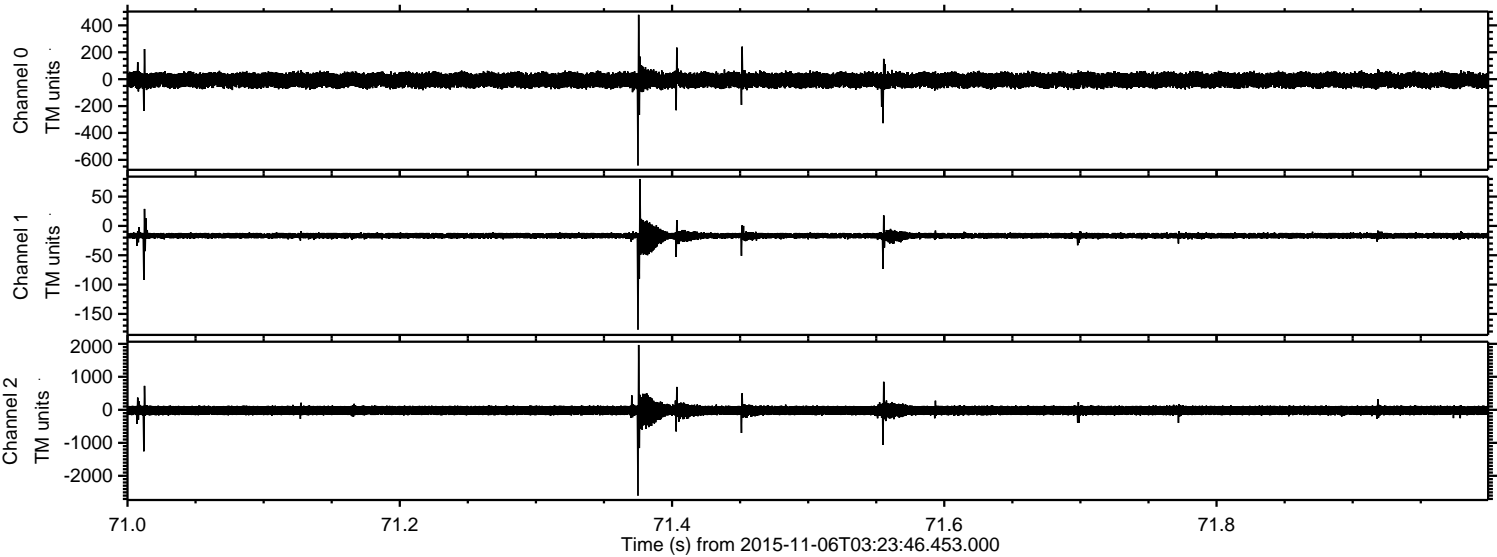
Processed Fri Nov 6 04:31:06 2015 by ELM ver.2012-10-06 from 001__elm20151106_032345__dat00.bin



Processed Fri Nov 6 04:31:07 2015 by ELM ver.2012-10-06 from 001__elm20151106_032345__dat00.bin

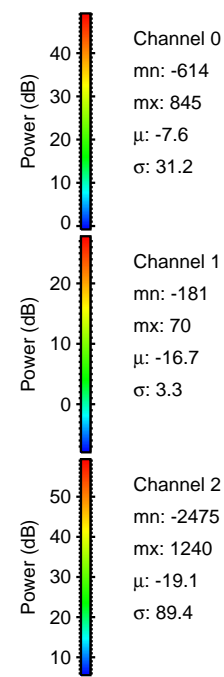
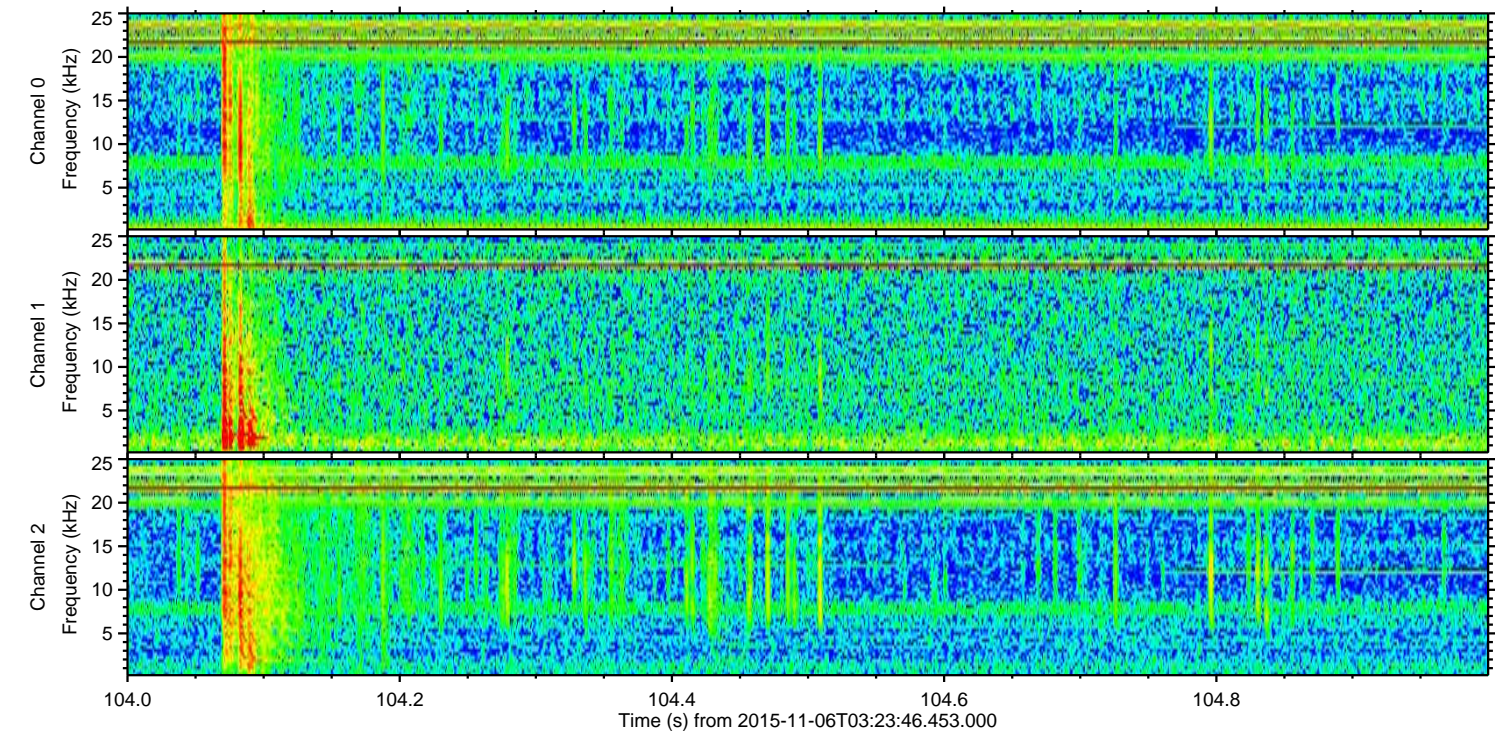
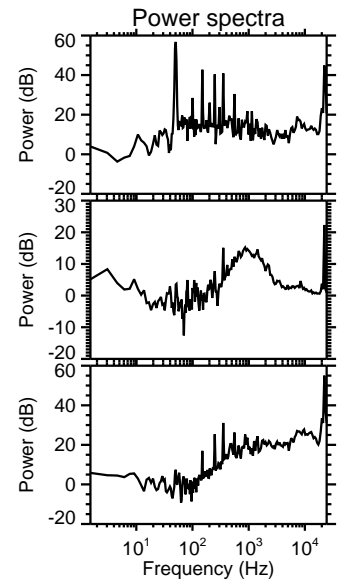
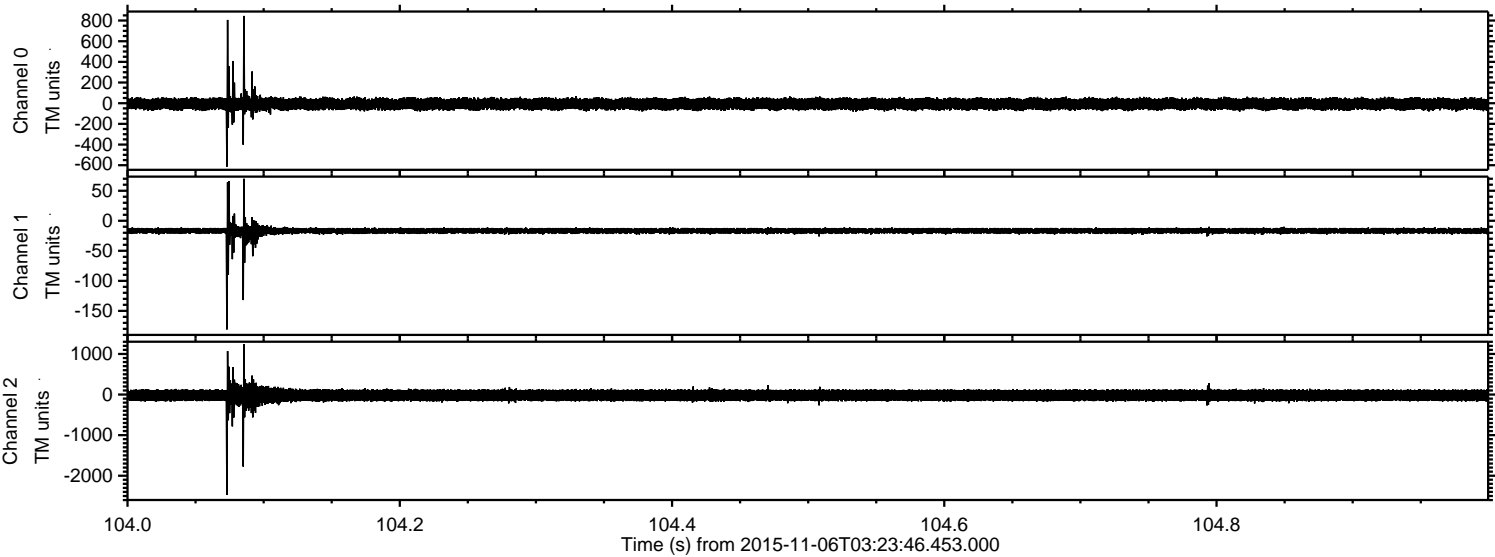


Processed Fri Nov 6 04:31:08 2015 by ELM ver.2012-10-06 from 001__elm20151106_032345__dat00.bin

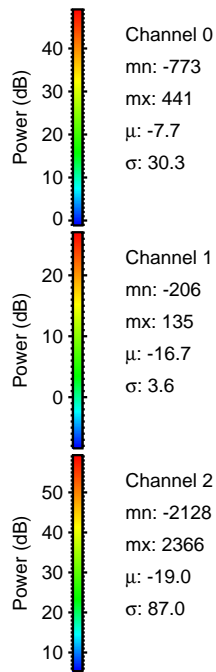
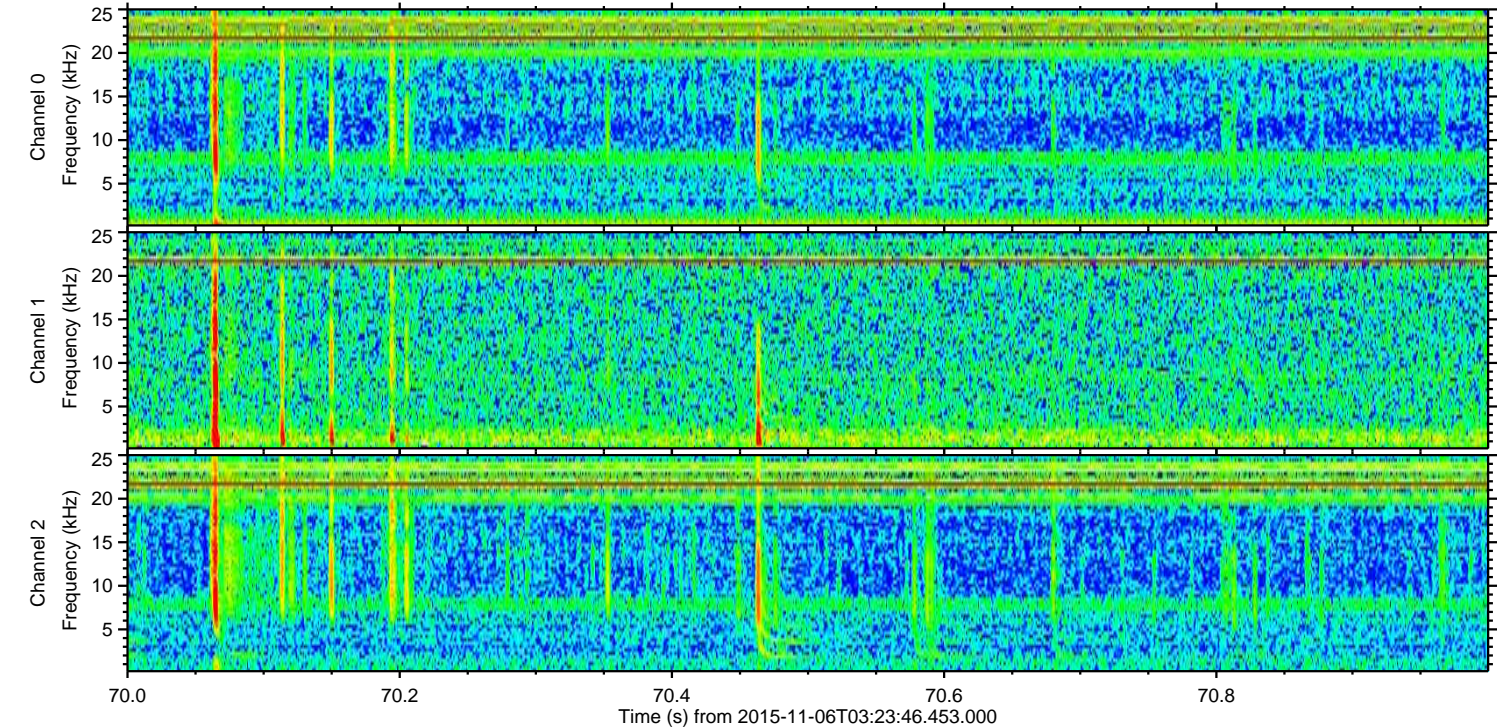
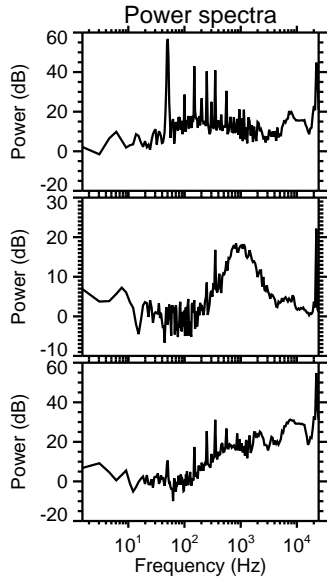
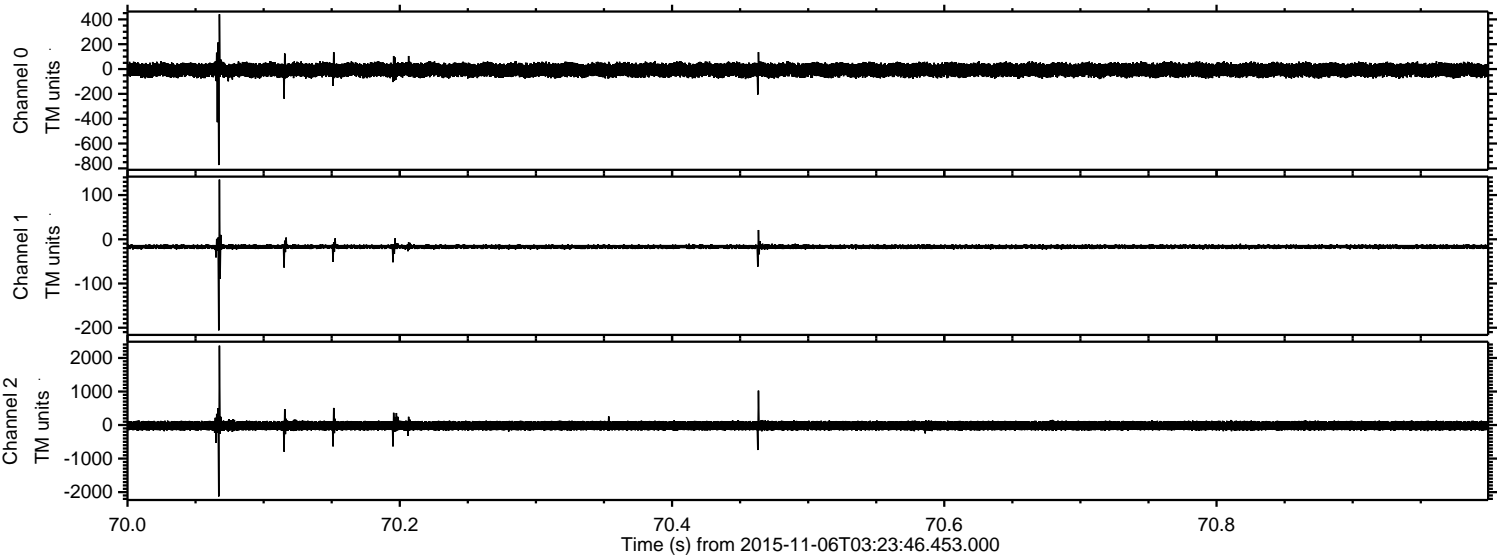


ELMAVAN 3D WAVEFORMS (Measured data sampled at 50 kHz) 51000 packets of 144 samples from 2015-11-06T03:23:46.453.000. Part 105/147

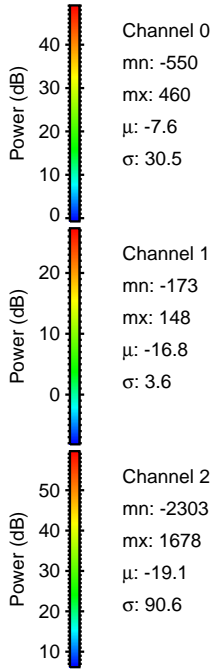
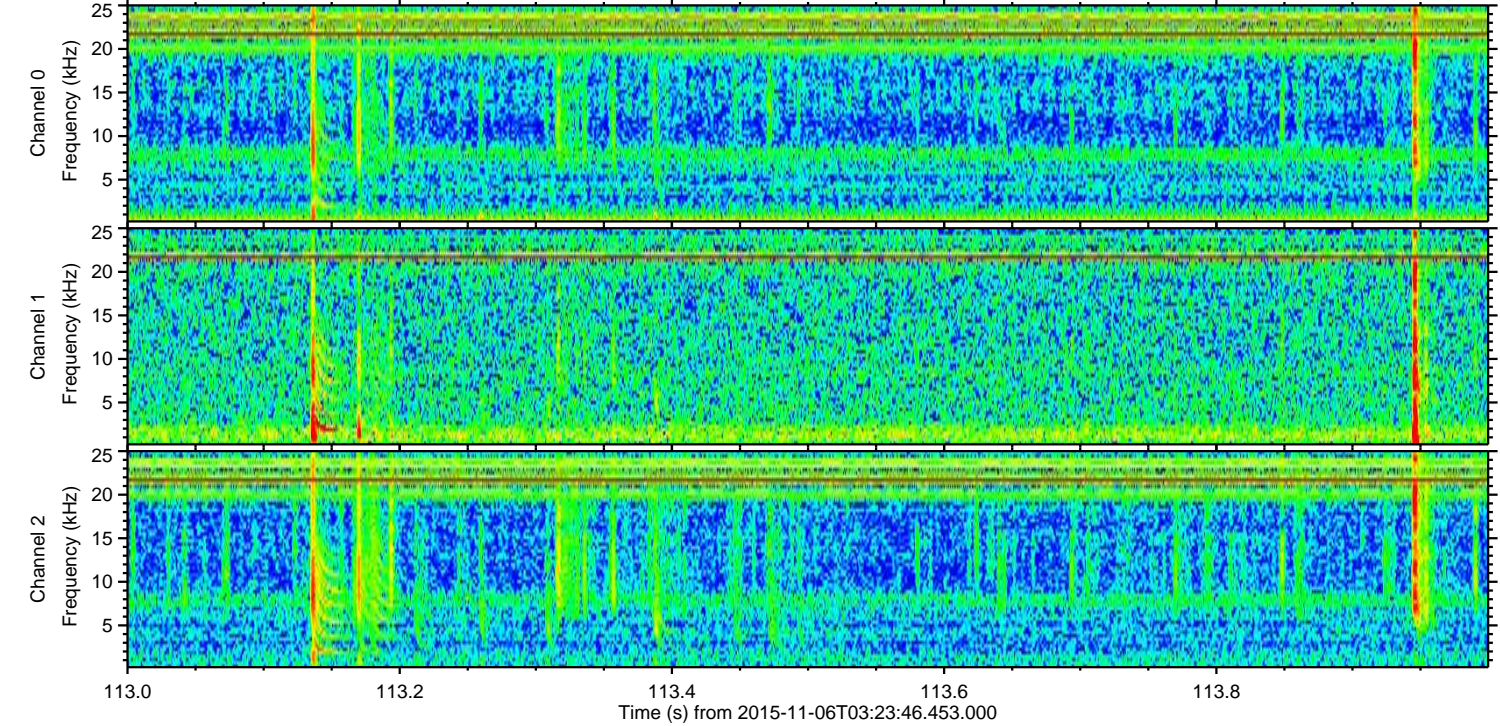
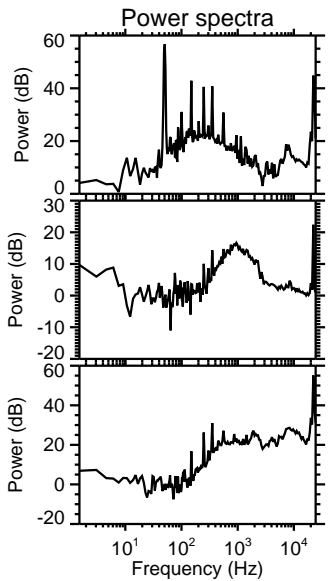
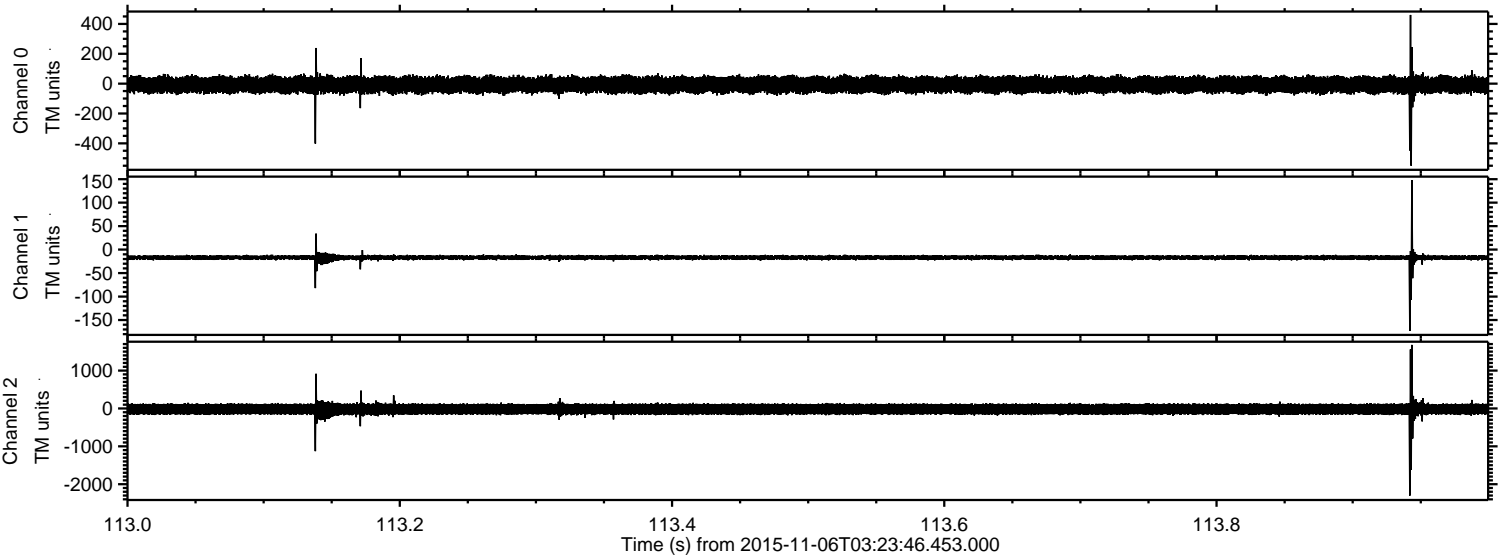
Processed Fri Nov 6 04:31:09 2015 by ELM ver.2012-10-06 from 001__elm20151106_032345__dat00.bin



Processed Fri Nov 6 04:31:10 2015 by ELM ver.2012-10-06 from 001__elm20151106_032345__dat00.bin

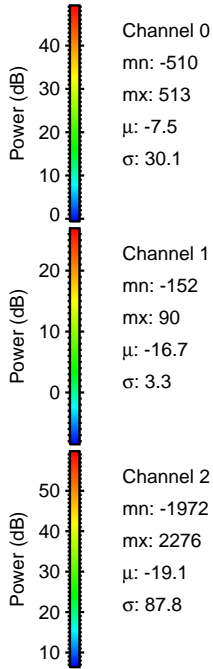
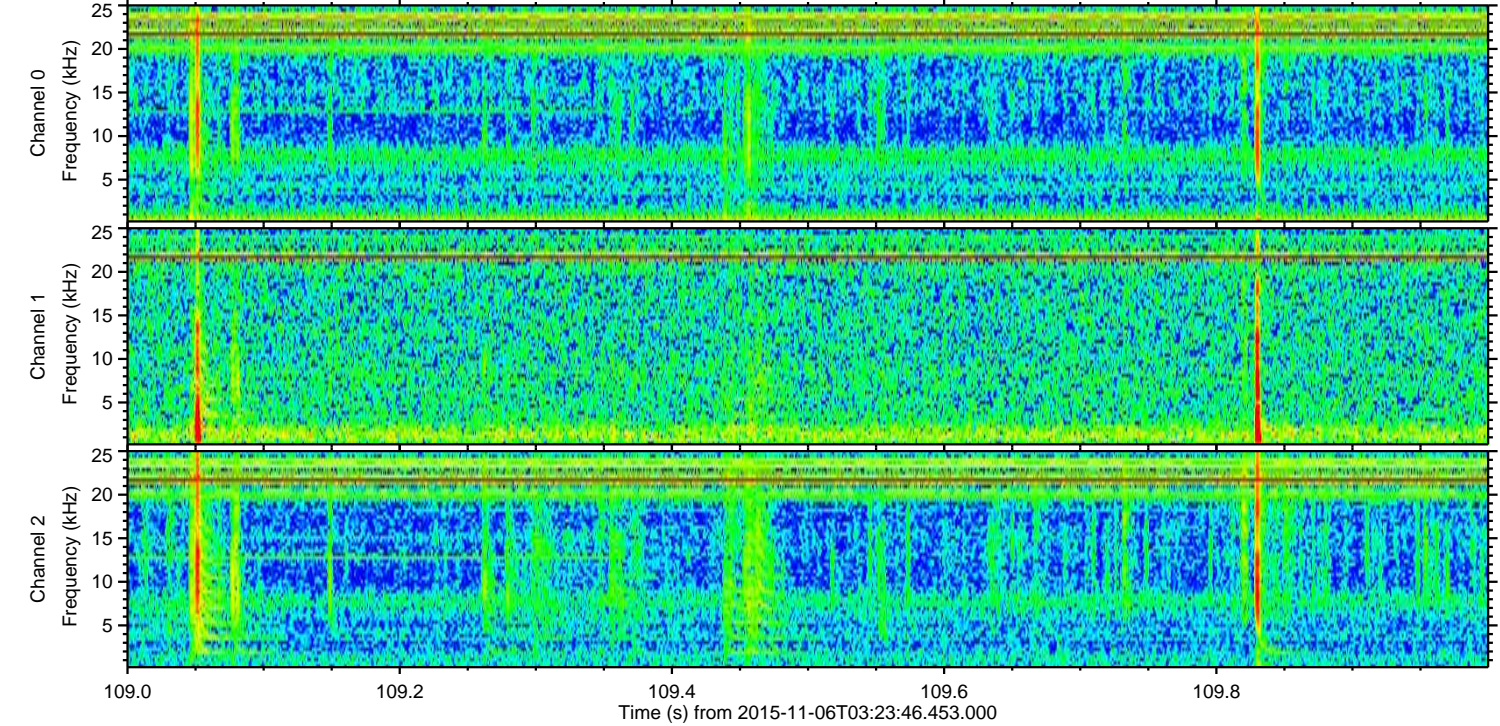
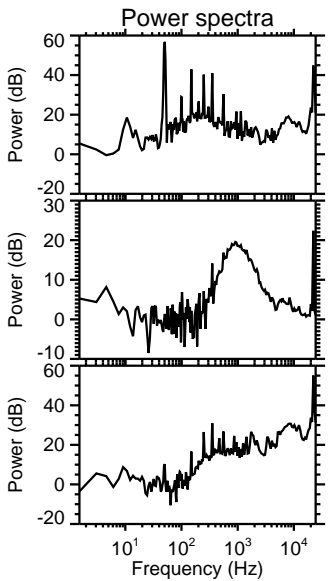
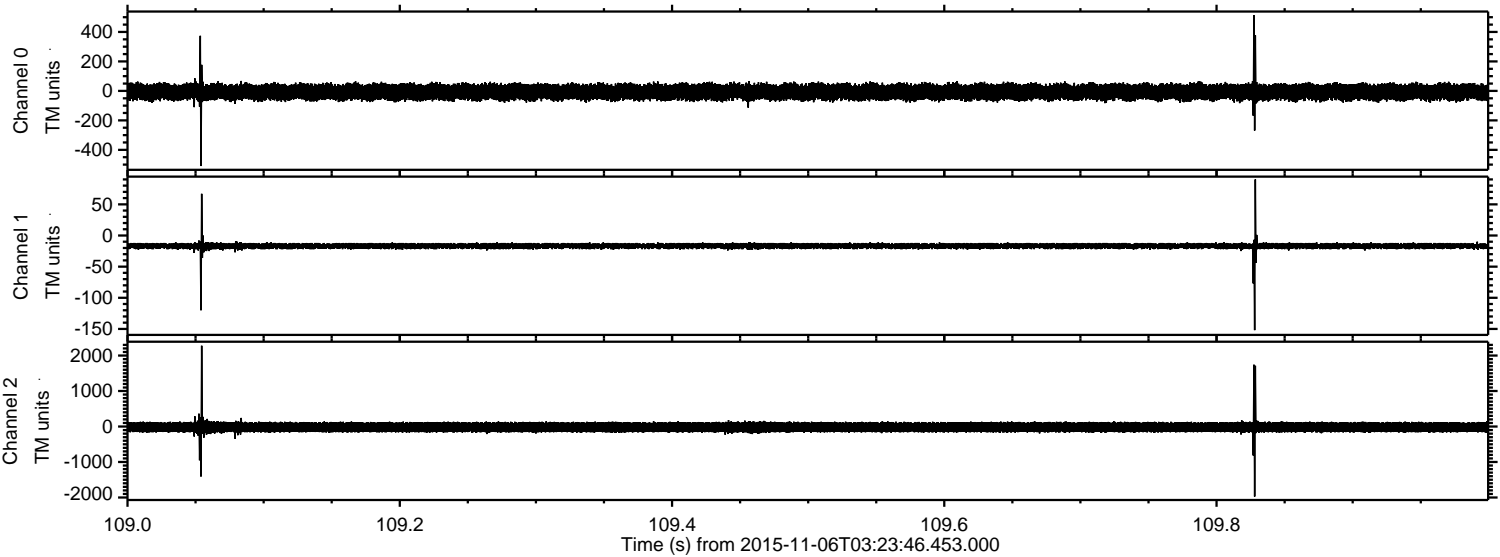


Processed Fri Nov 6 04:31:11 2015 by ELM ver.2012-10-06 from 001__elm20151106_032345__dat00.bin



ELMAVAN 3D WAVEFORMS (Measured data sampled at 50 kHz) 51000 packets of 144 samples from 2015-11-06T03:23:46.453.000. Part 110/147

Processed Fri Nov 6 04:31:11 2015 by ELM ver.2012-10-06 from 001__elm20151106_032345__dat00.bin

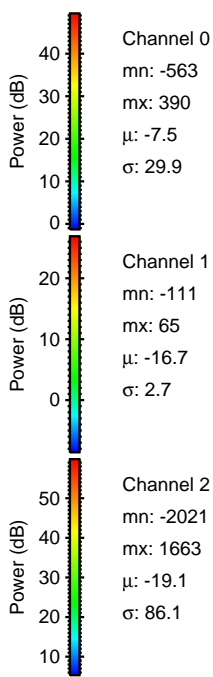
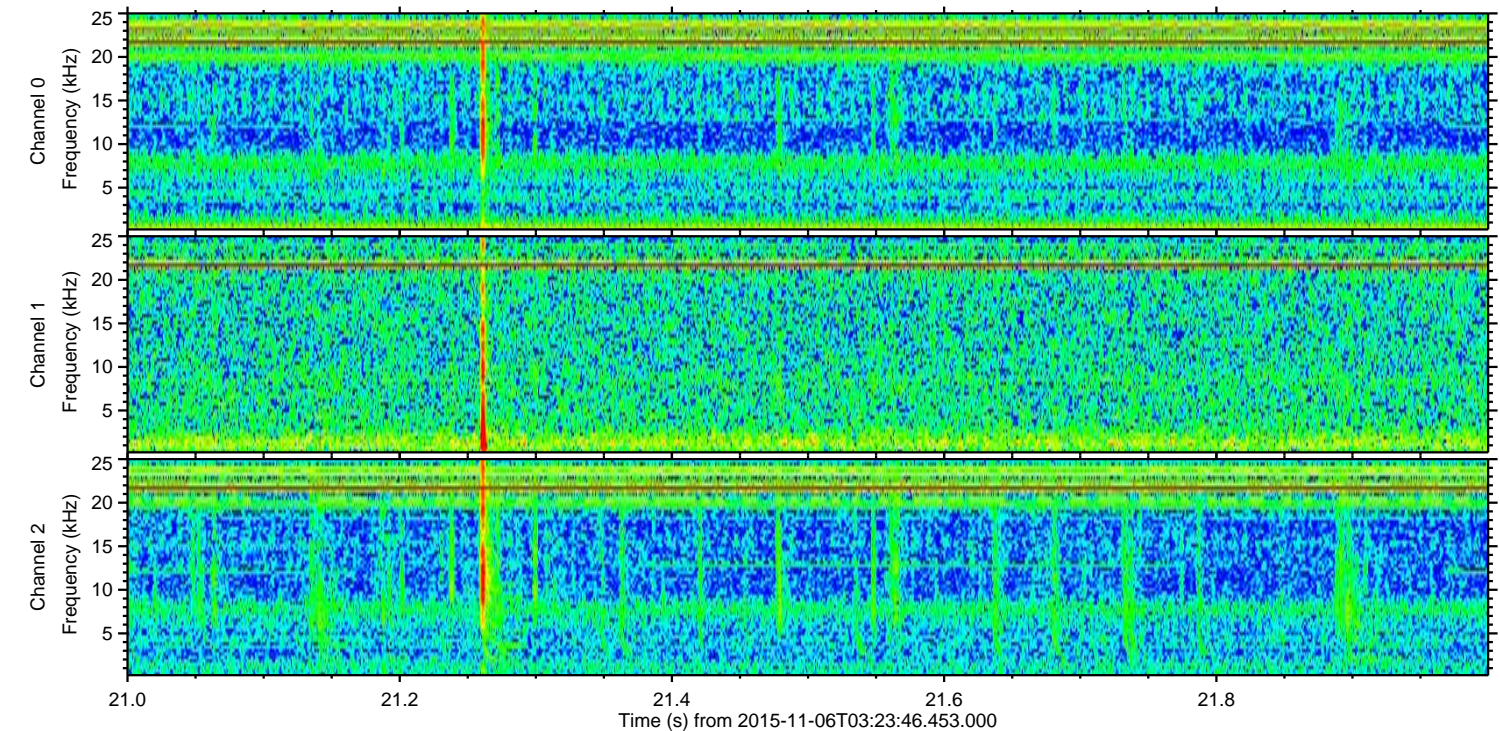
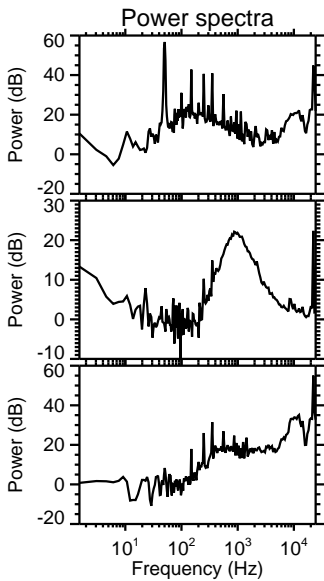
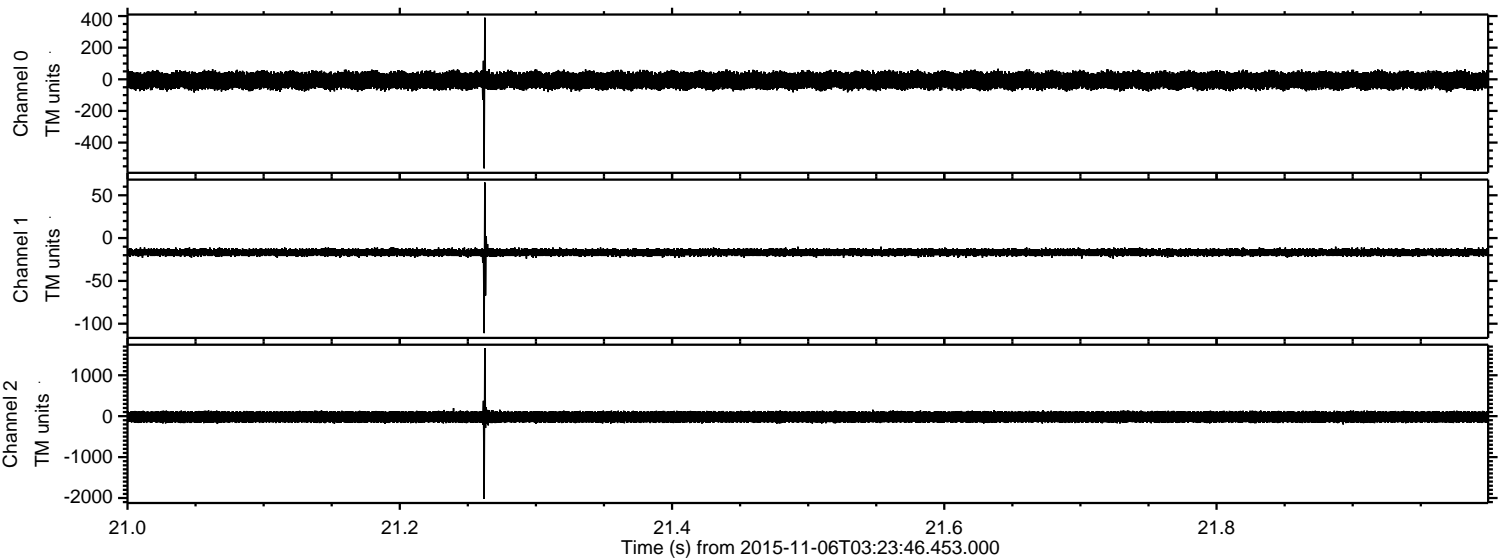


Channel 0
mn: -510
mx: 513
 μ : -7.5
 σ : 30.1

Channel 1
mn: -152
mx: 90
 μ : -16.7
 σ : 3.3

Channel 2
mn: -1972
mx: 2276
 μ : -19.1
 σ : 87.8

Processed Fri Nov 6 04:31:12 2015 by ELM ver.2012-10-06 from 001__elm20151106_032345__dat00.bin



Processed Fri Nov 6 04:31:13 2015 by ELM ver.2012-10-06 from 001__elm20151106_032345__dat00.bin

