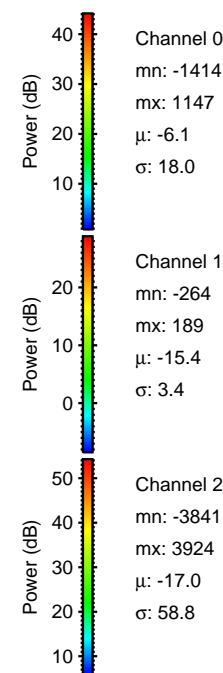
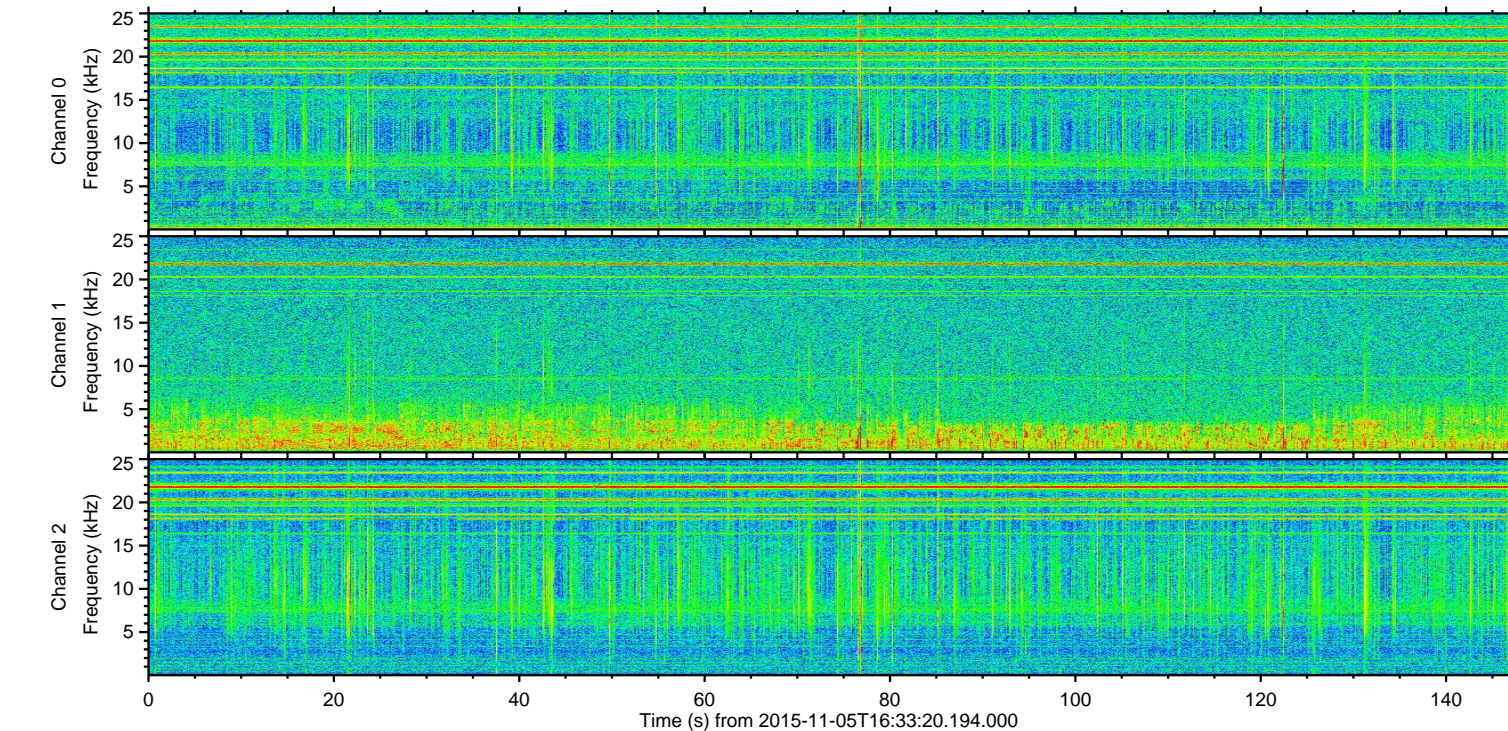
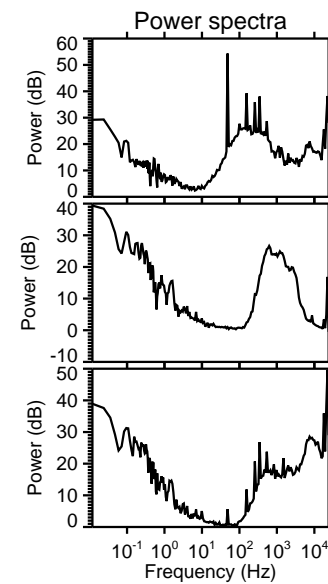
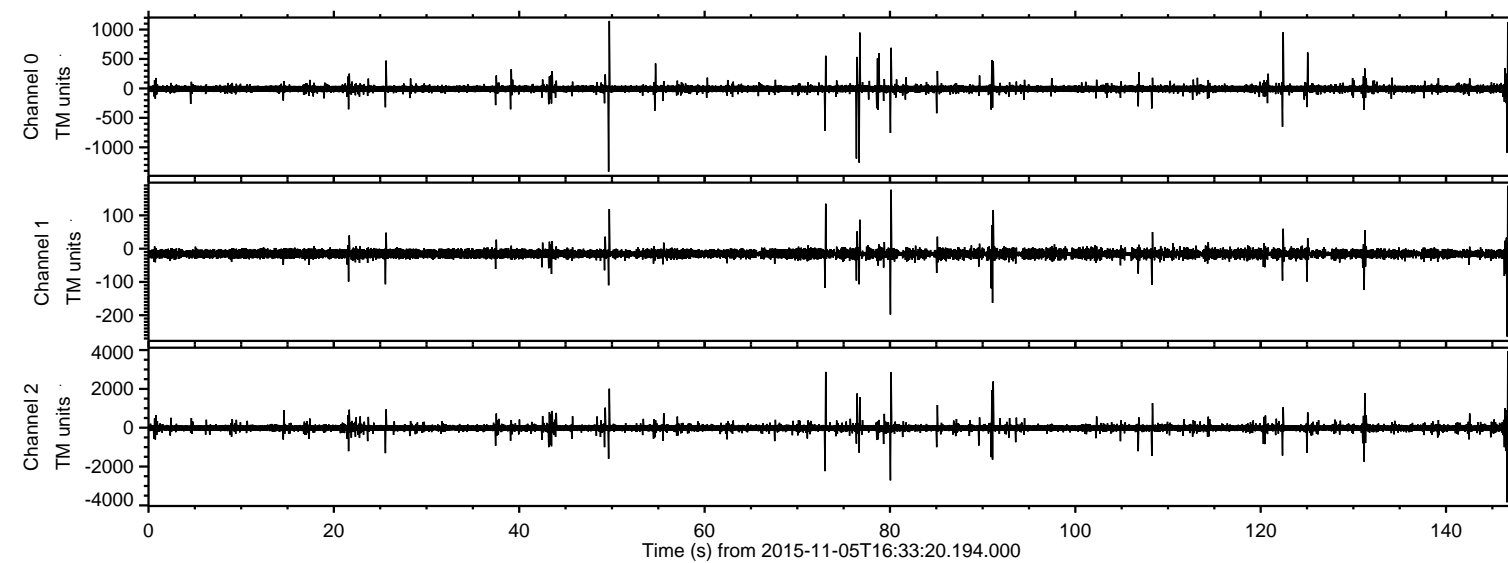
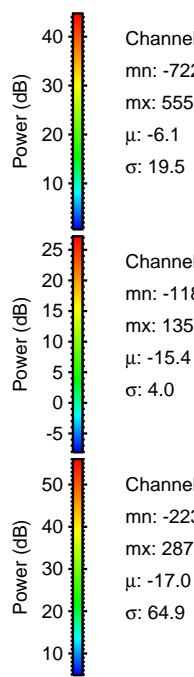
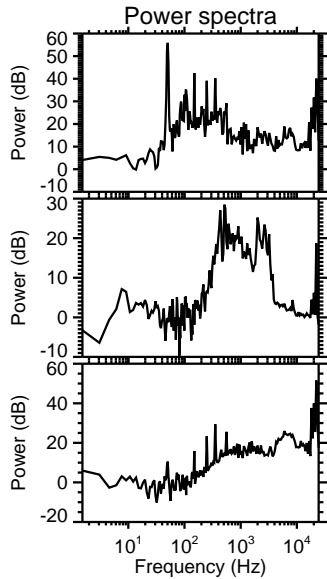
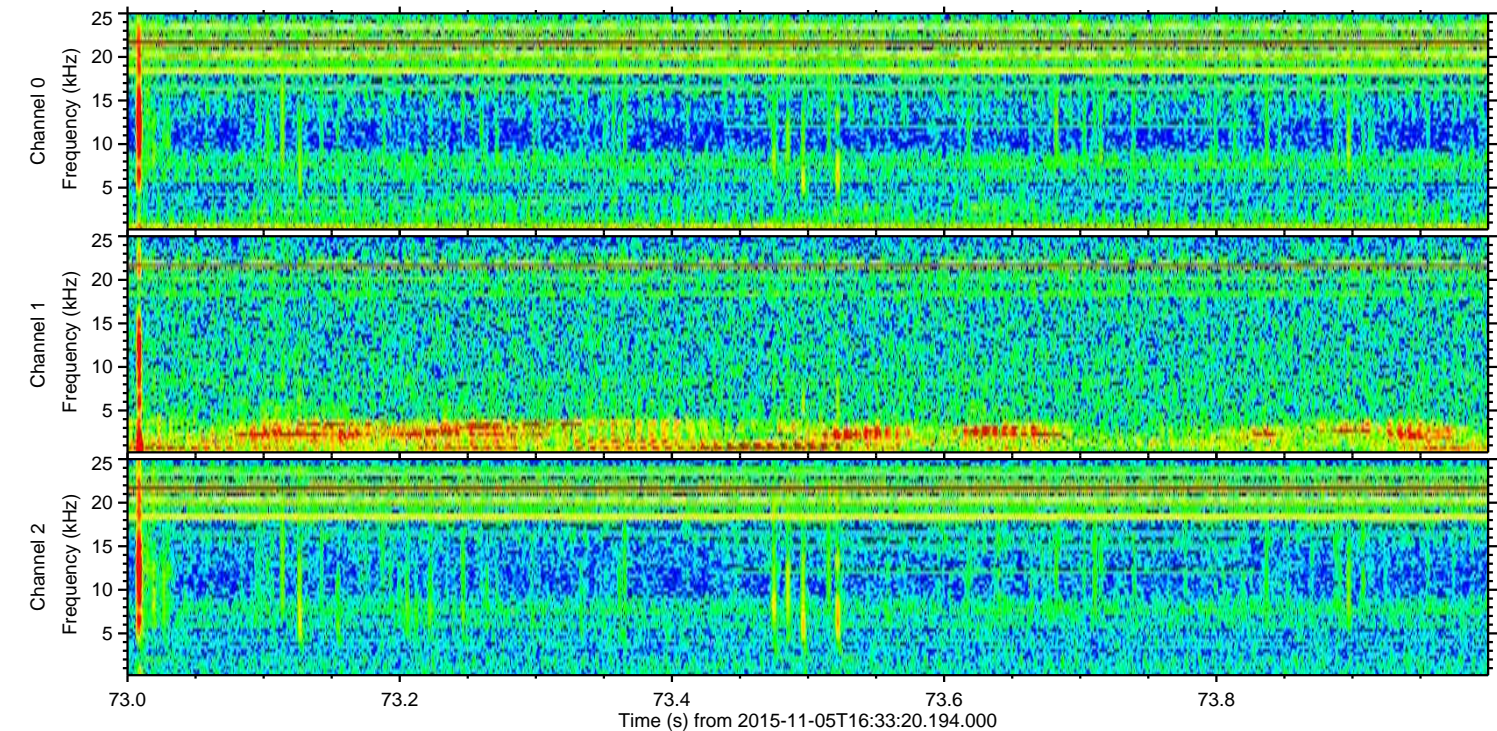
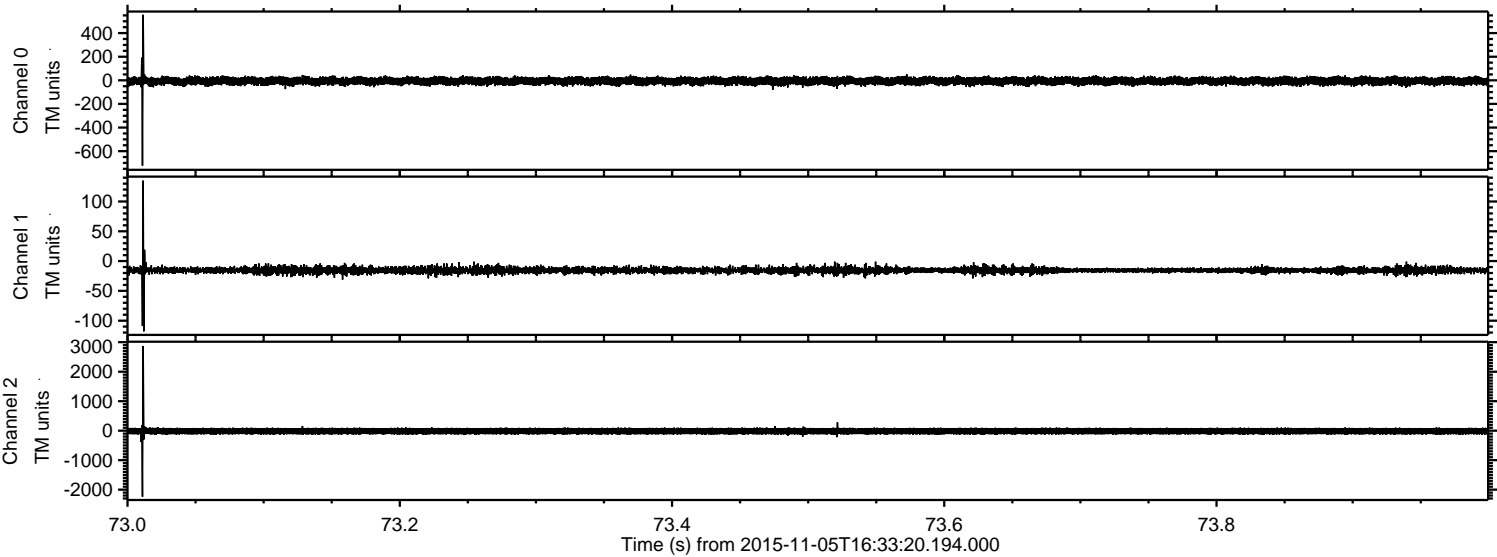


ELMAVAN 3D WAVEFORMS (Measured data sampled at 50 kHz) 51000 packets of 144 samples from 2015-11-05T16:33:20.194.000.

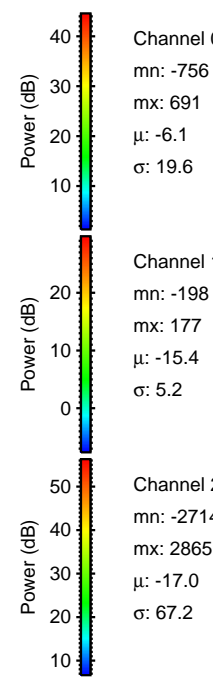
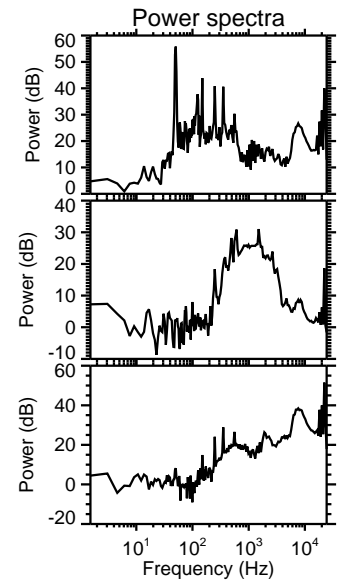
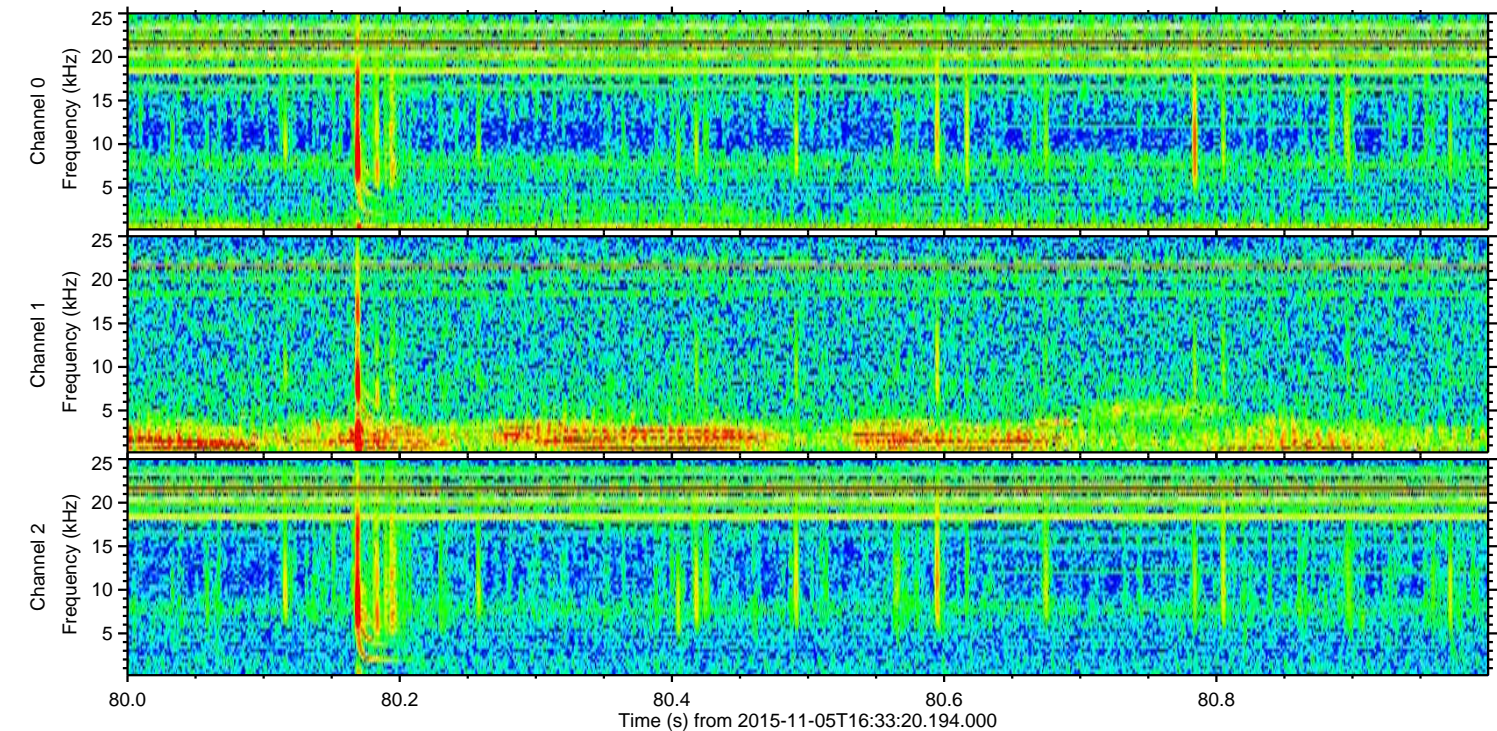
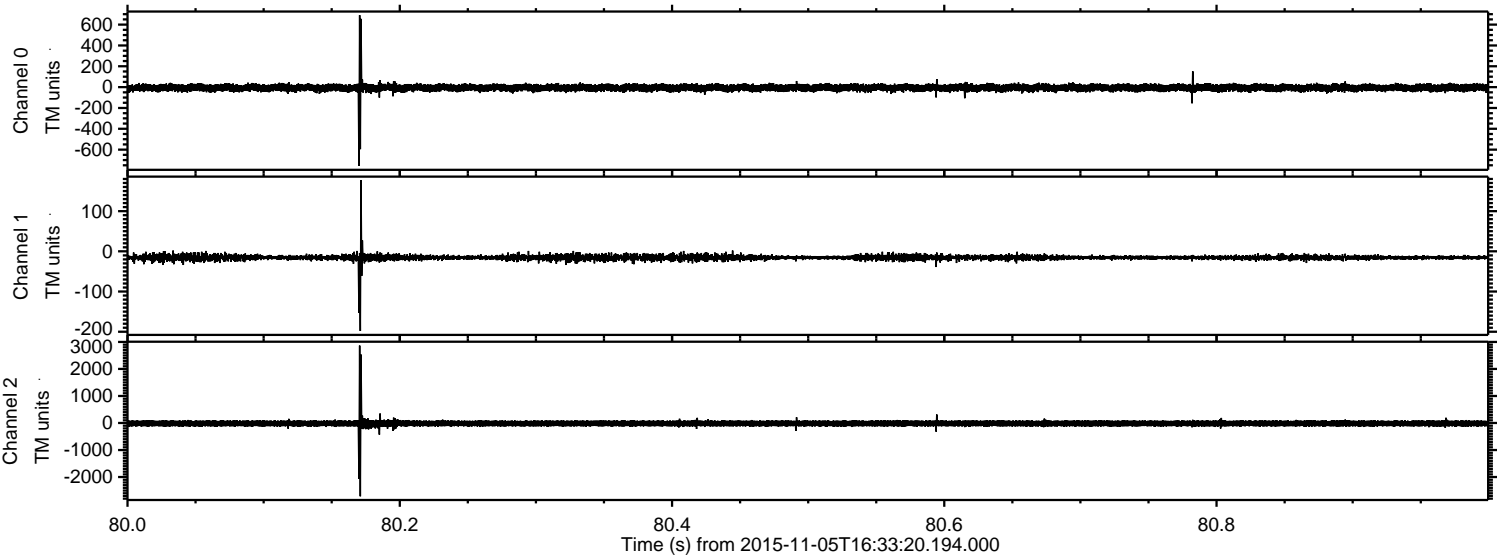
Processed Thu Nov 5 17:40:07 2015 by ELM ver.2012-10-06 from 001__elm20151105_163319__dat00.bin



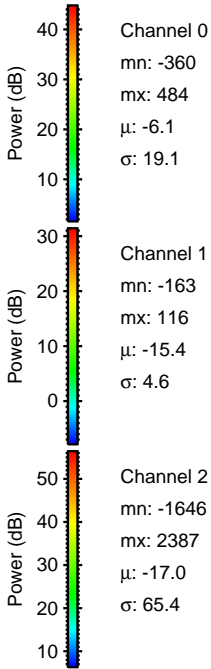
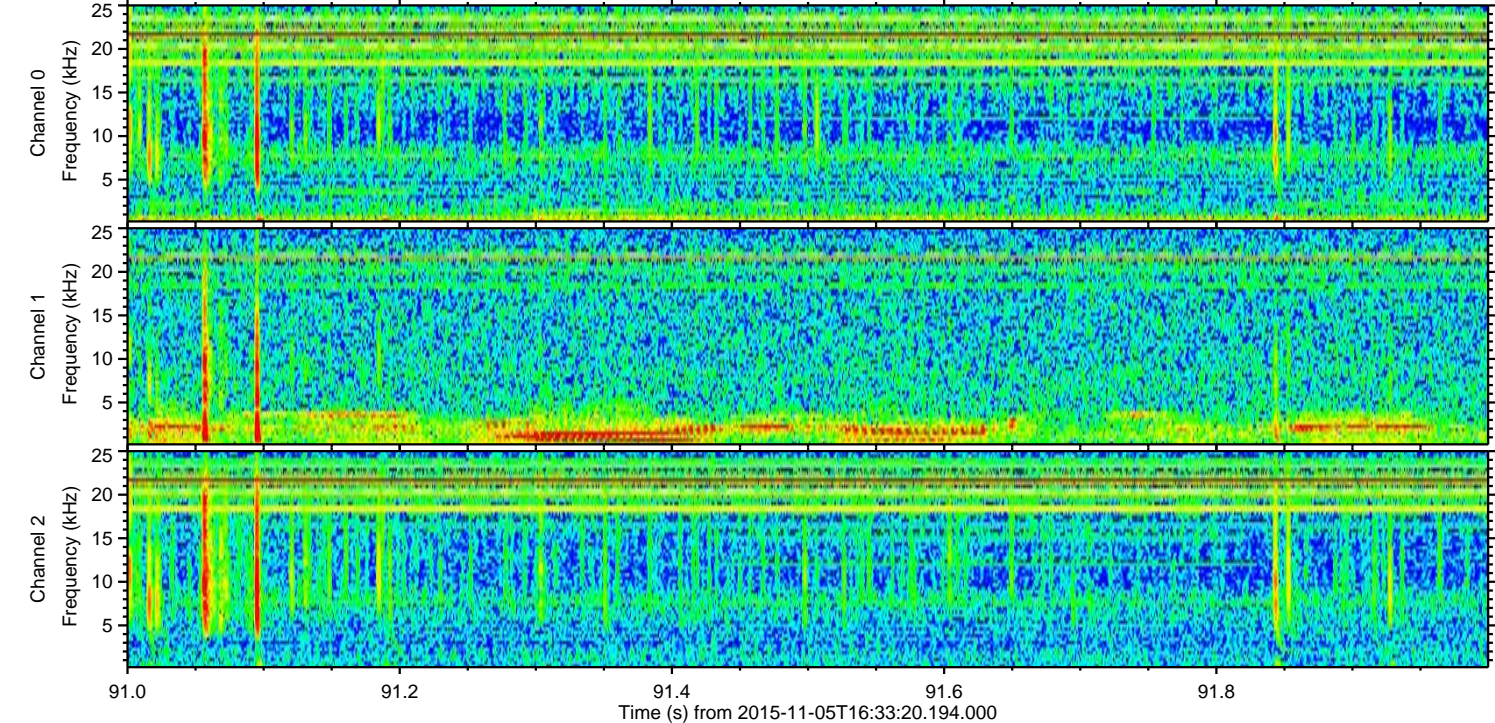
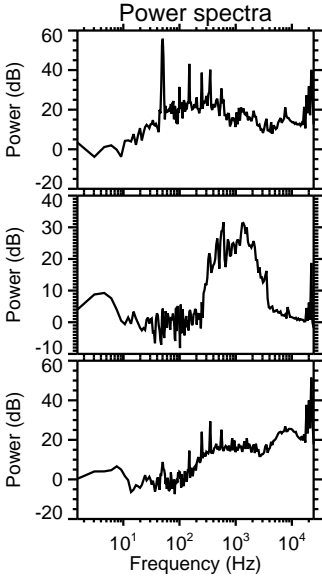
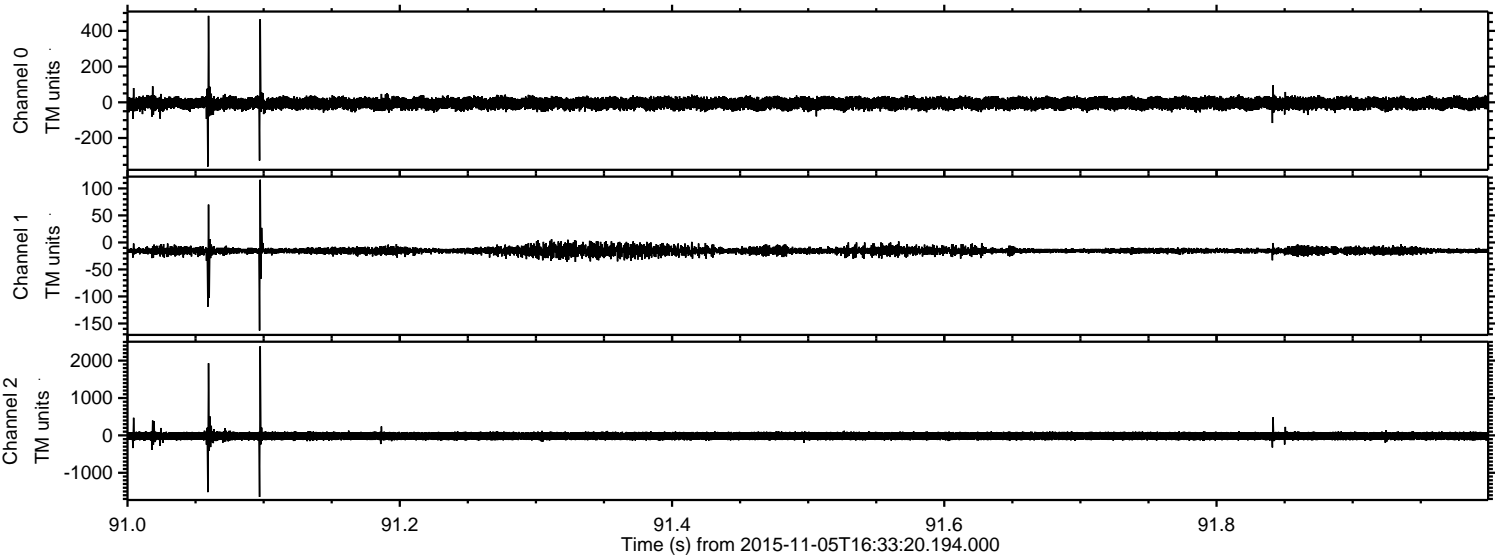
Processed Thu Nov 5 17:40:18 2015 by ELM ver.2012-10-06 from 001__elm20151105_163319__dat00.bin



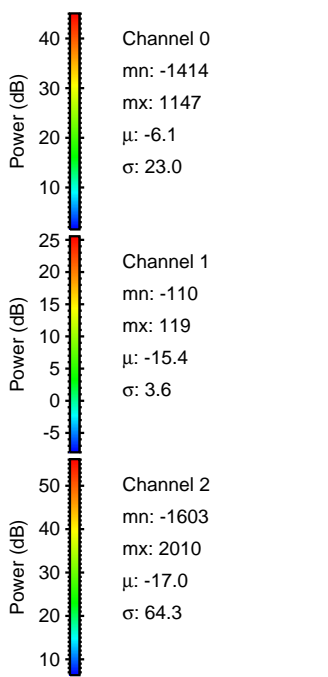
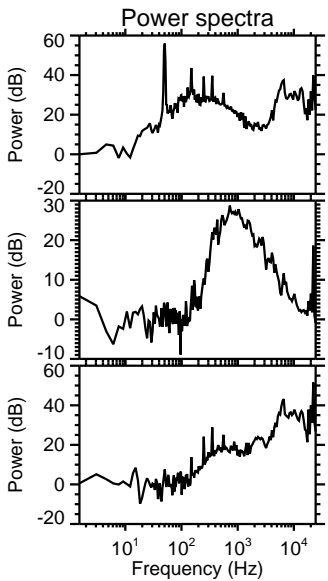
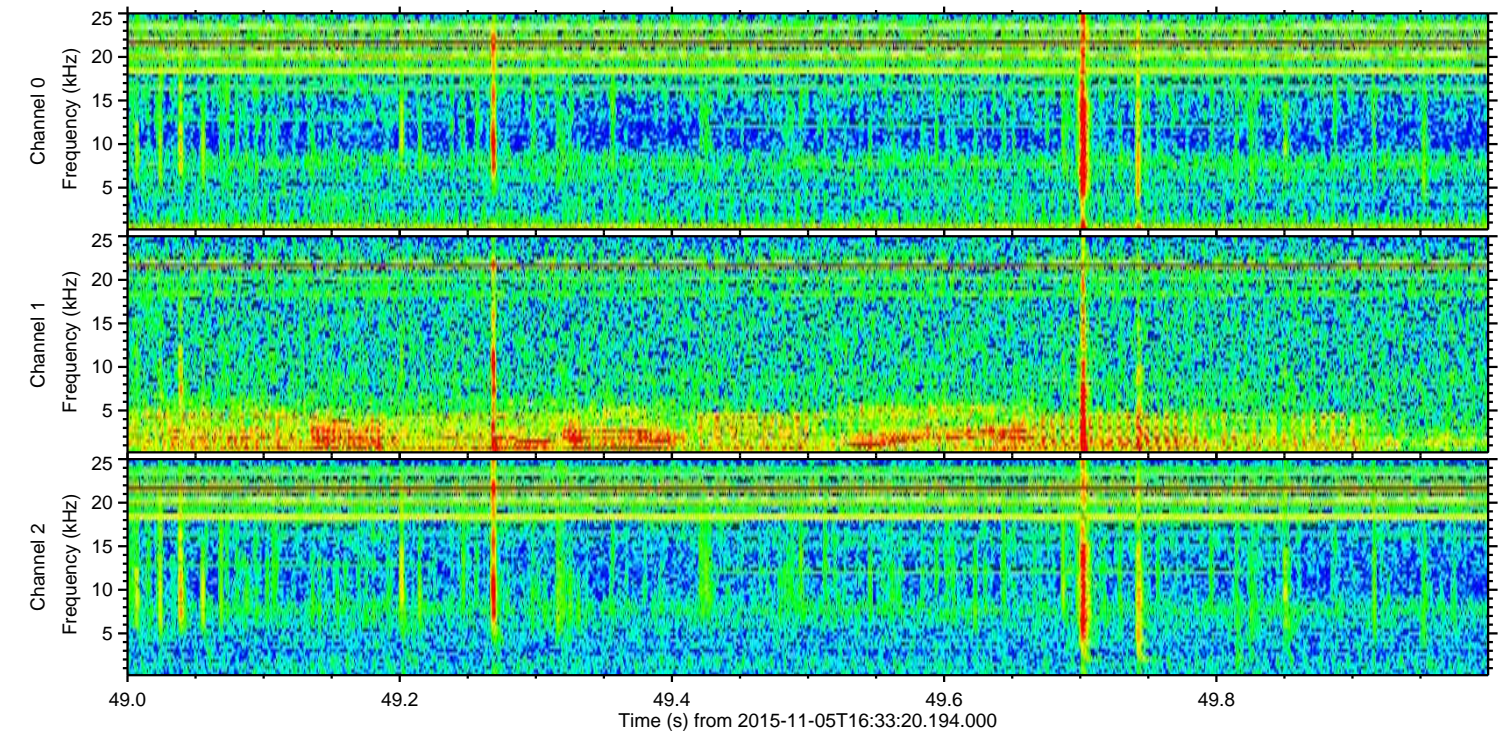
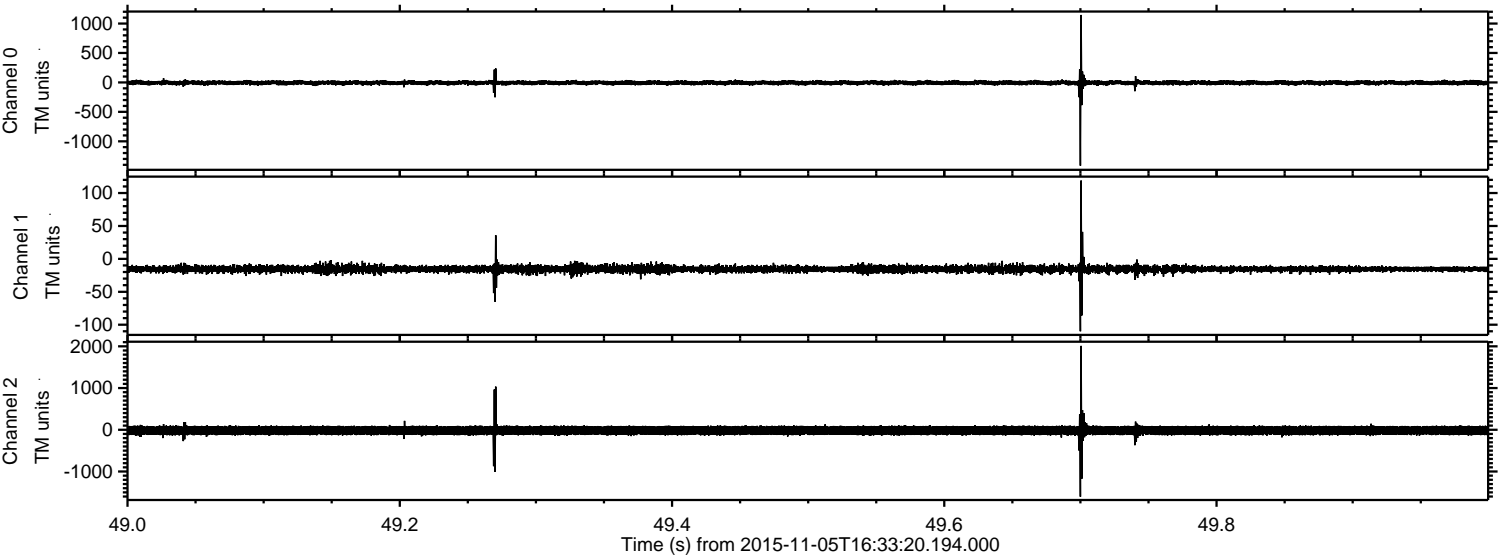
Processed Thu Nov 5 17:40:19 2015 by ELM ver.2012-10-06 from 001__elm20151105_163319__dat00.bin



Processed Thu Nov 5 17:40:20 2015 by ELM ver.2012-10-06 from 001__elm20151105_163319__dat00.bin

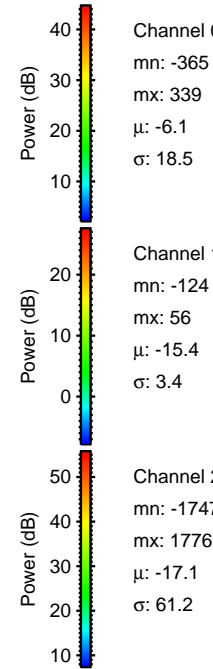
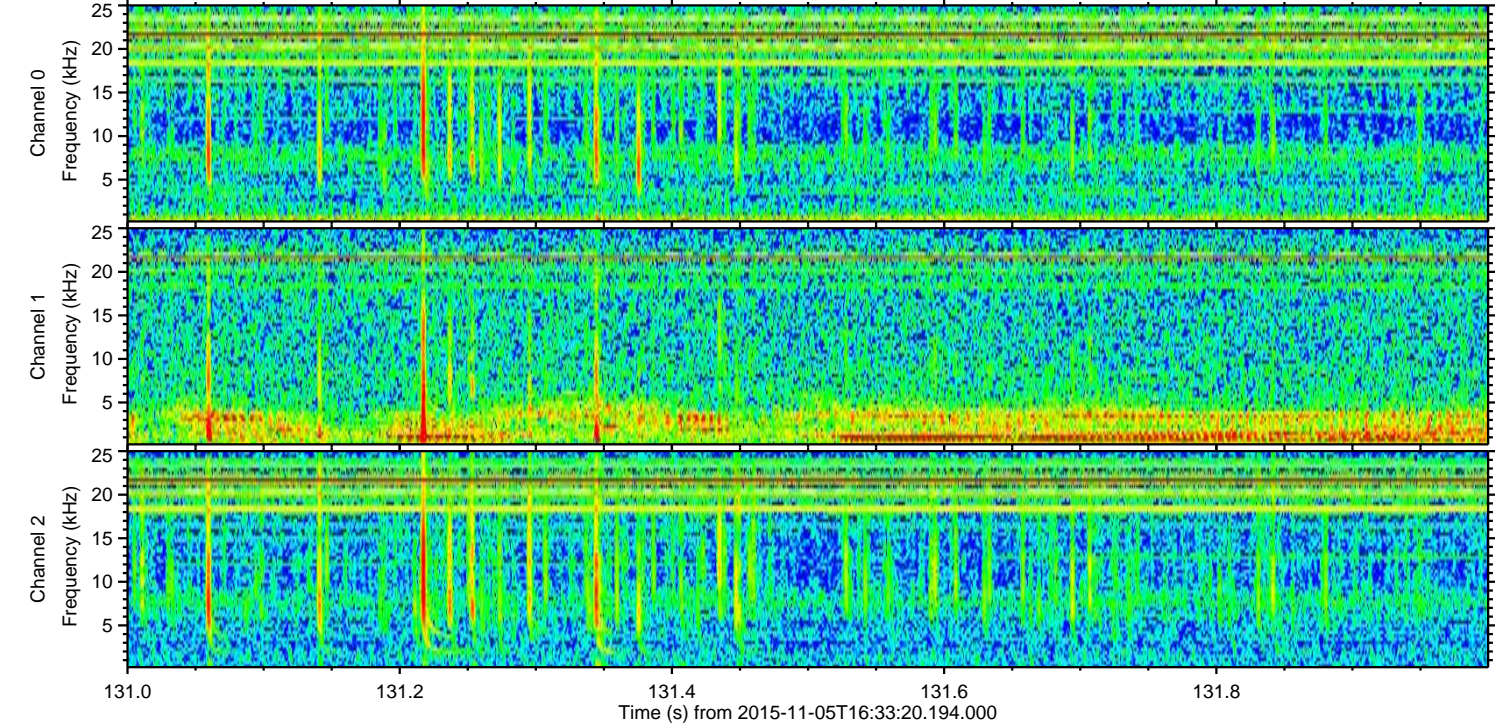
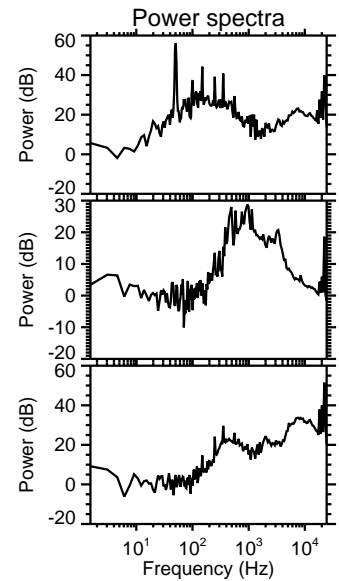
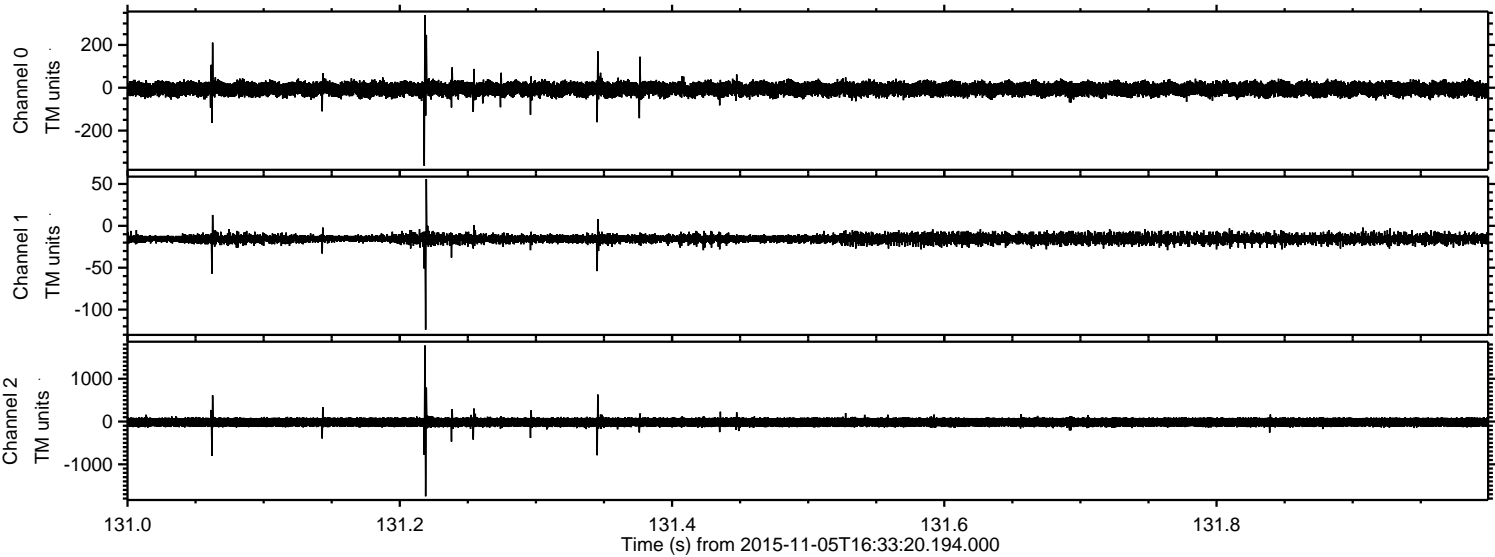


Processed Thu Nov 5 17:40:21 2015 by ELM ver.2012-10-06 from 001__elm20151105_163319__dat00.bin

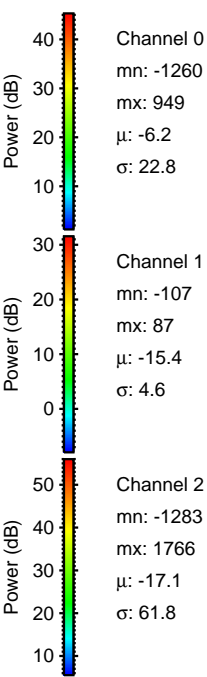
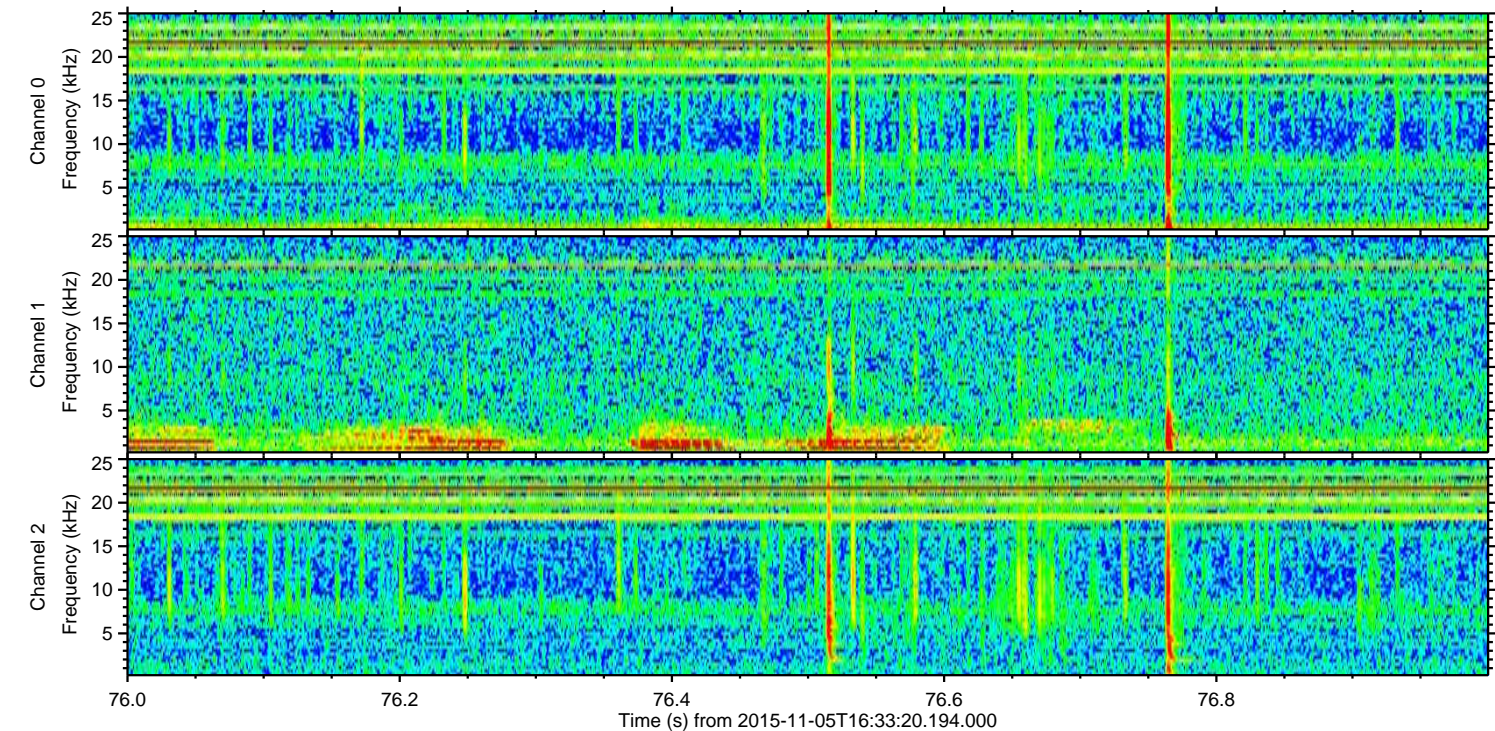
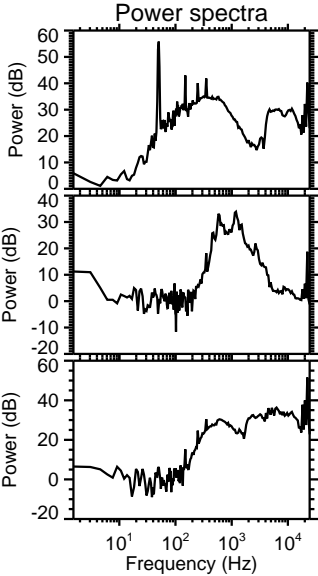
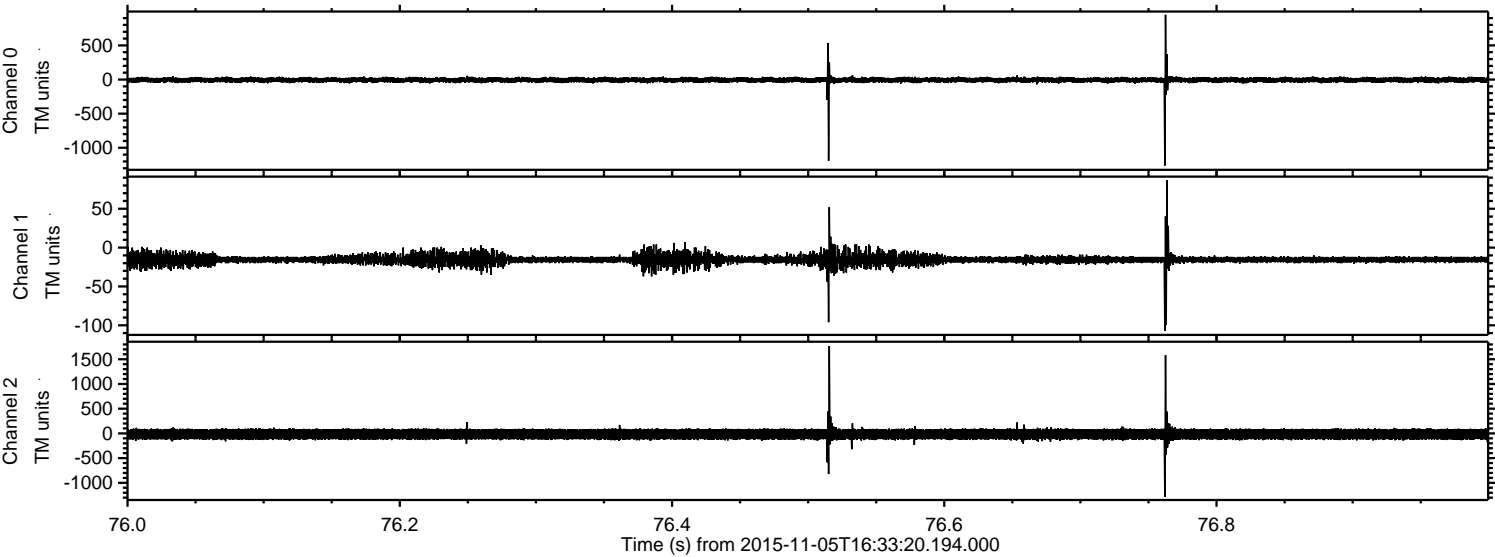


ELMAVAN 3D WAVEFORMS (Measured data sampled at 50 kHz) 51000 packets of 144 samples from 2015-11-05T16:33:20.194.000. Part 132/147

Processed Thu Nov 5 17:40:22 2015 by ELM ver.2012-10-06 from 001__elm20151105_163319__dat00.bin

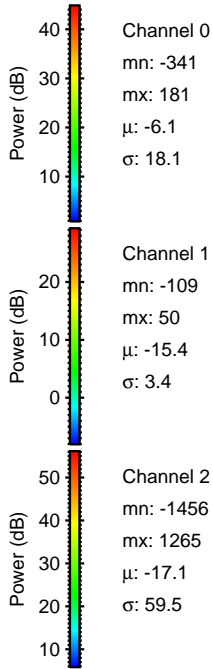
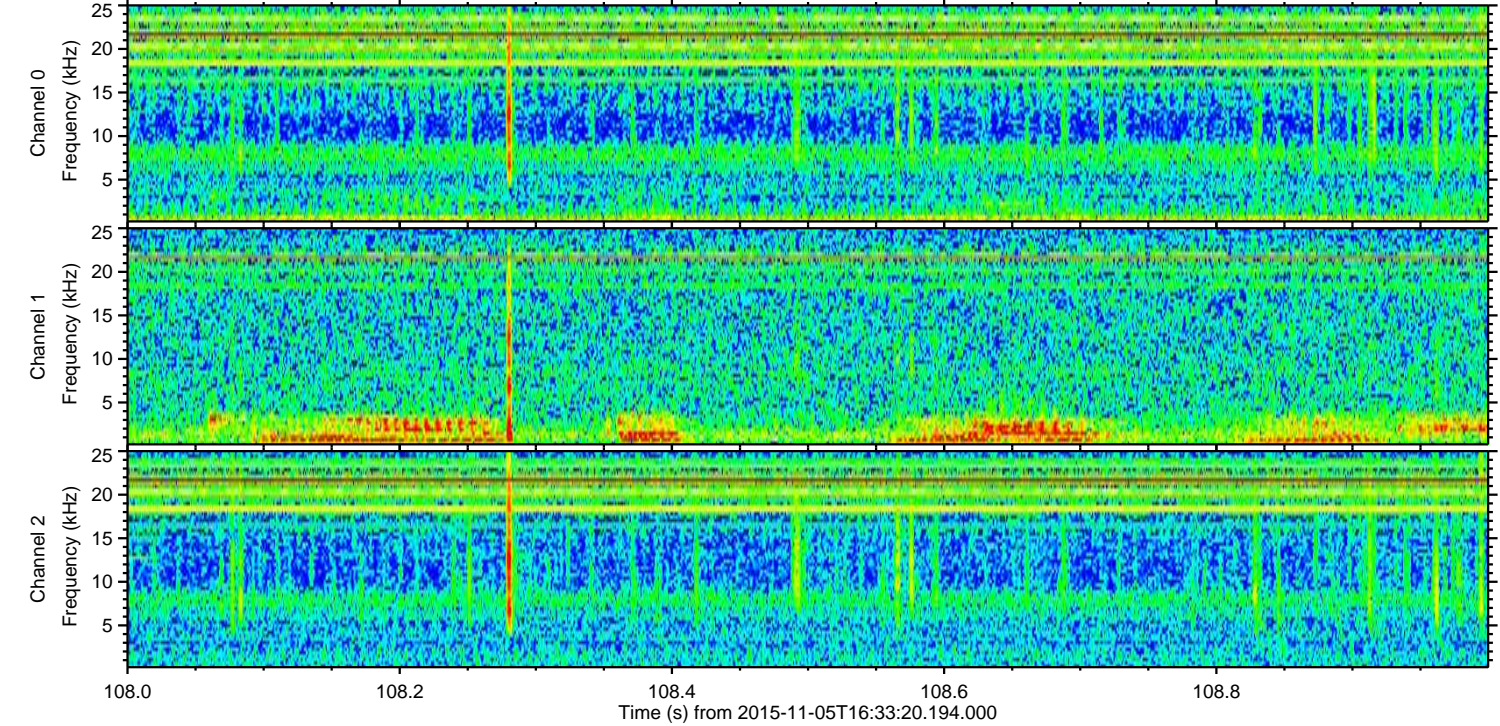
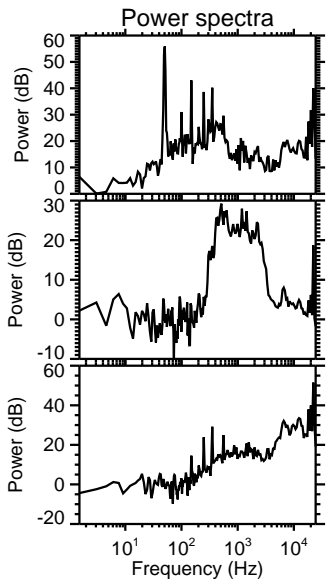
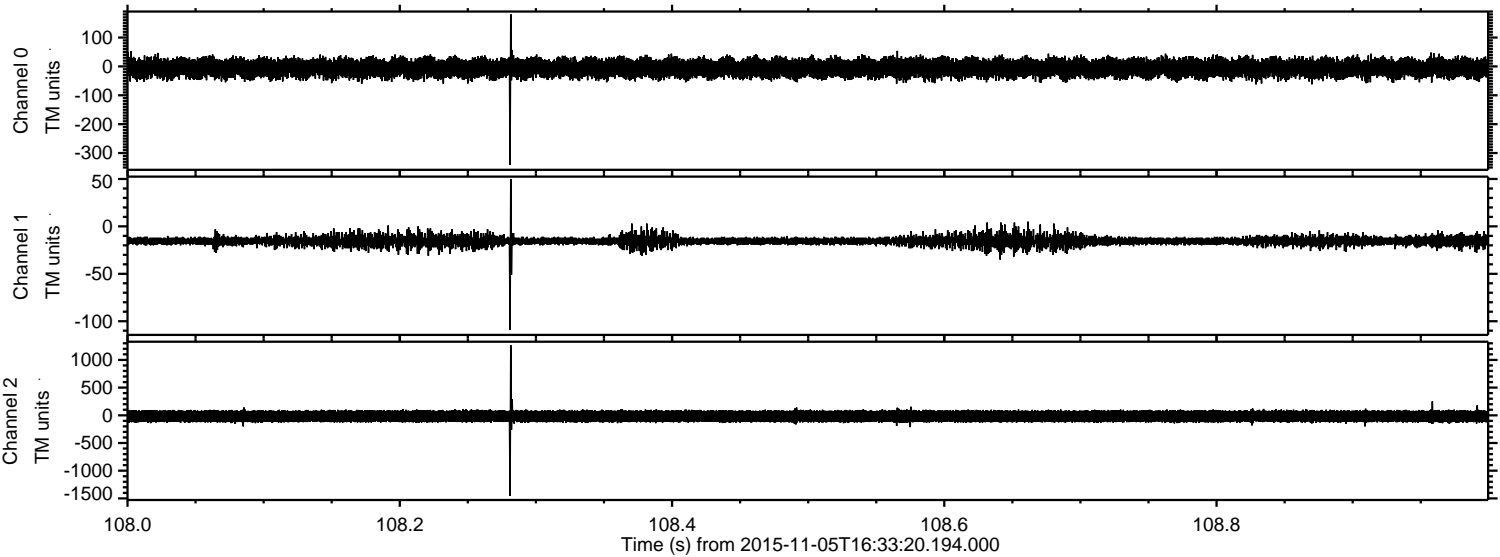


Processed Thu Nov 5 17:40:23 2015 by ELM ver.2012-10-06 from 001__elm20151105_163319__dat00.bin

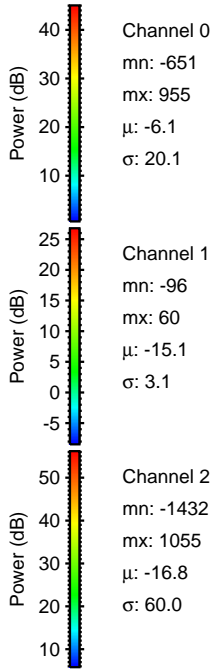
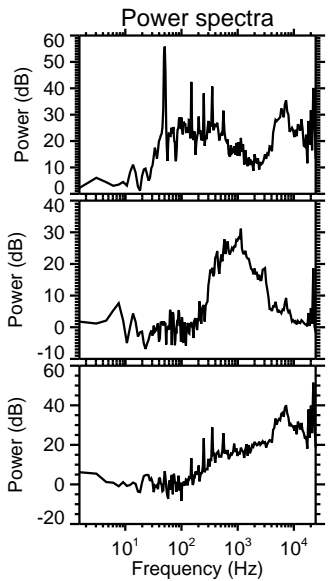
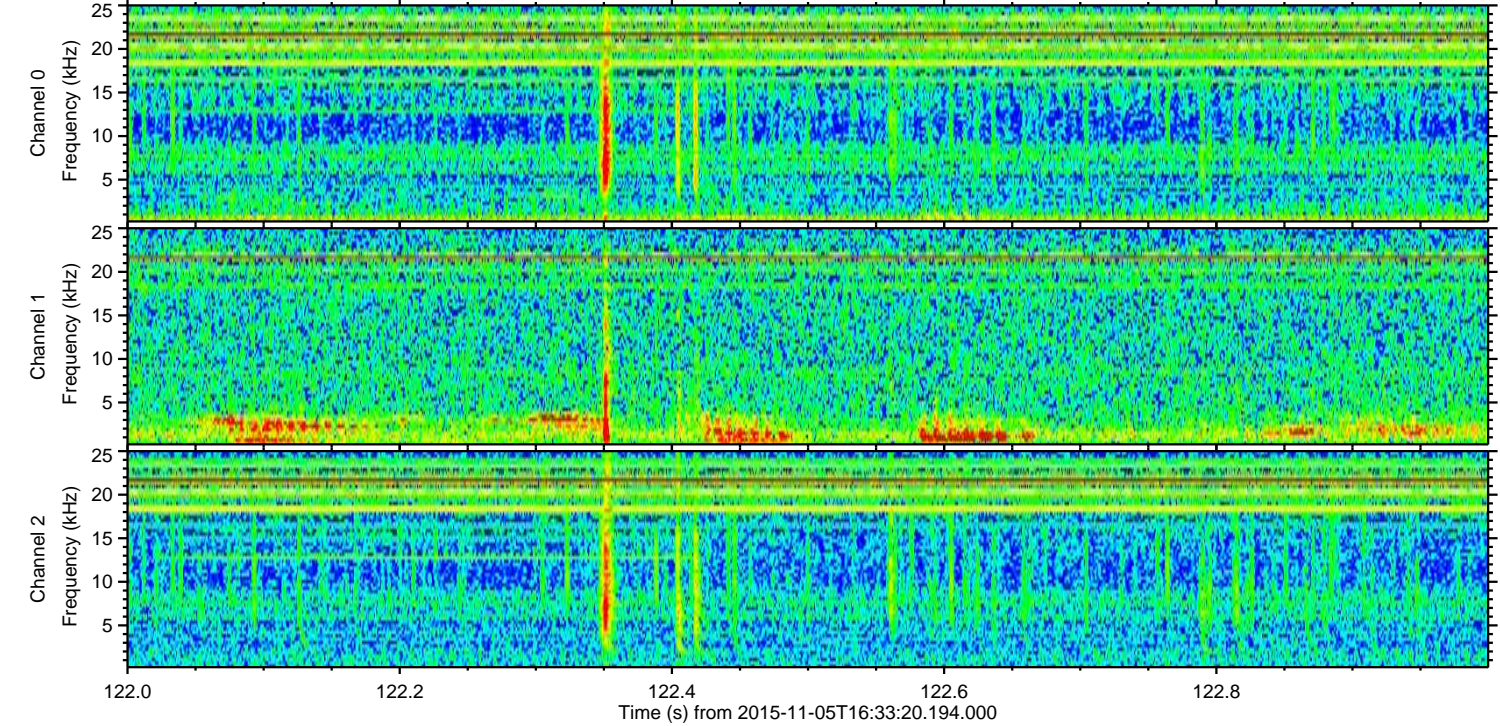
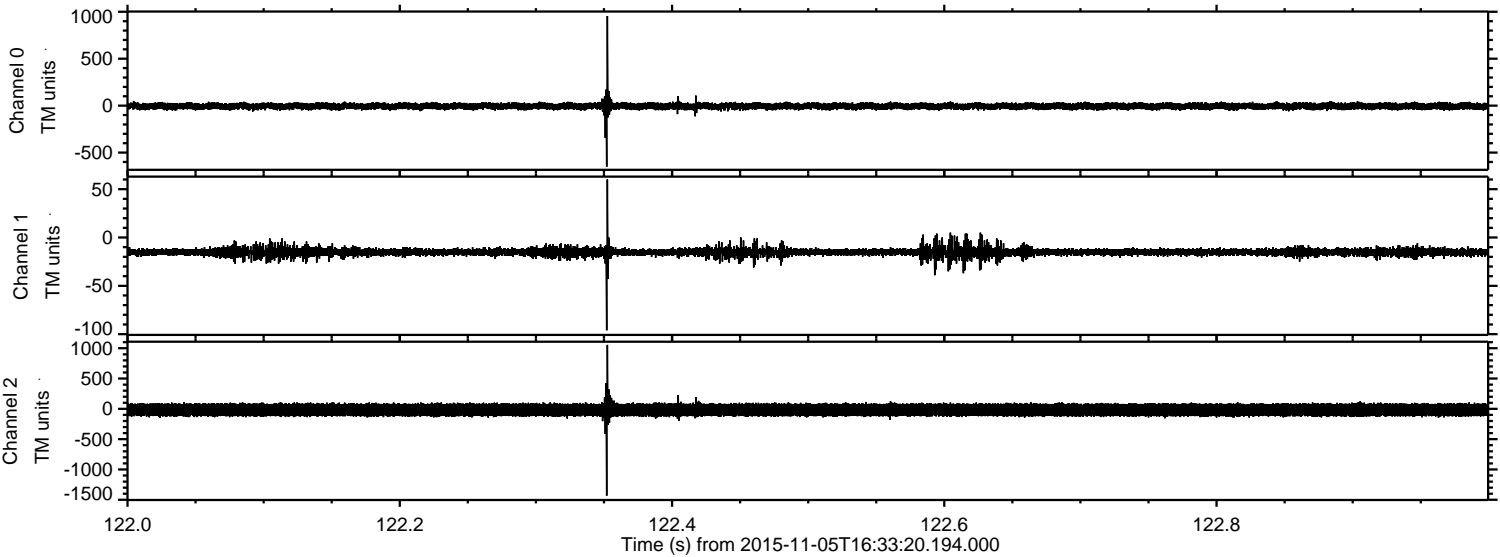


ELMAVAN 3D WAVEFORMS (Measured data sampled at 50 kHz) 51000 packets of 144 samples from 2015-11-05T16:33:20.194.000. Part 109/147

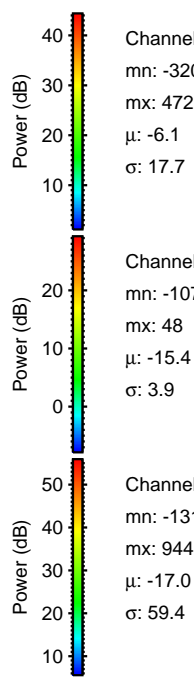
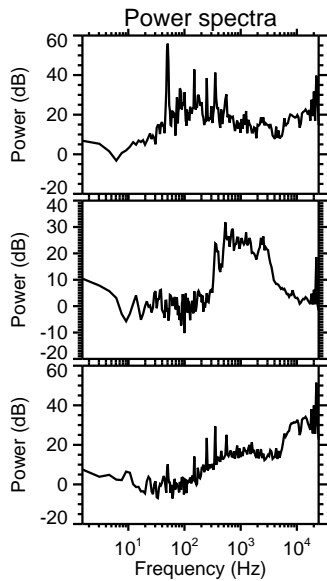
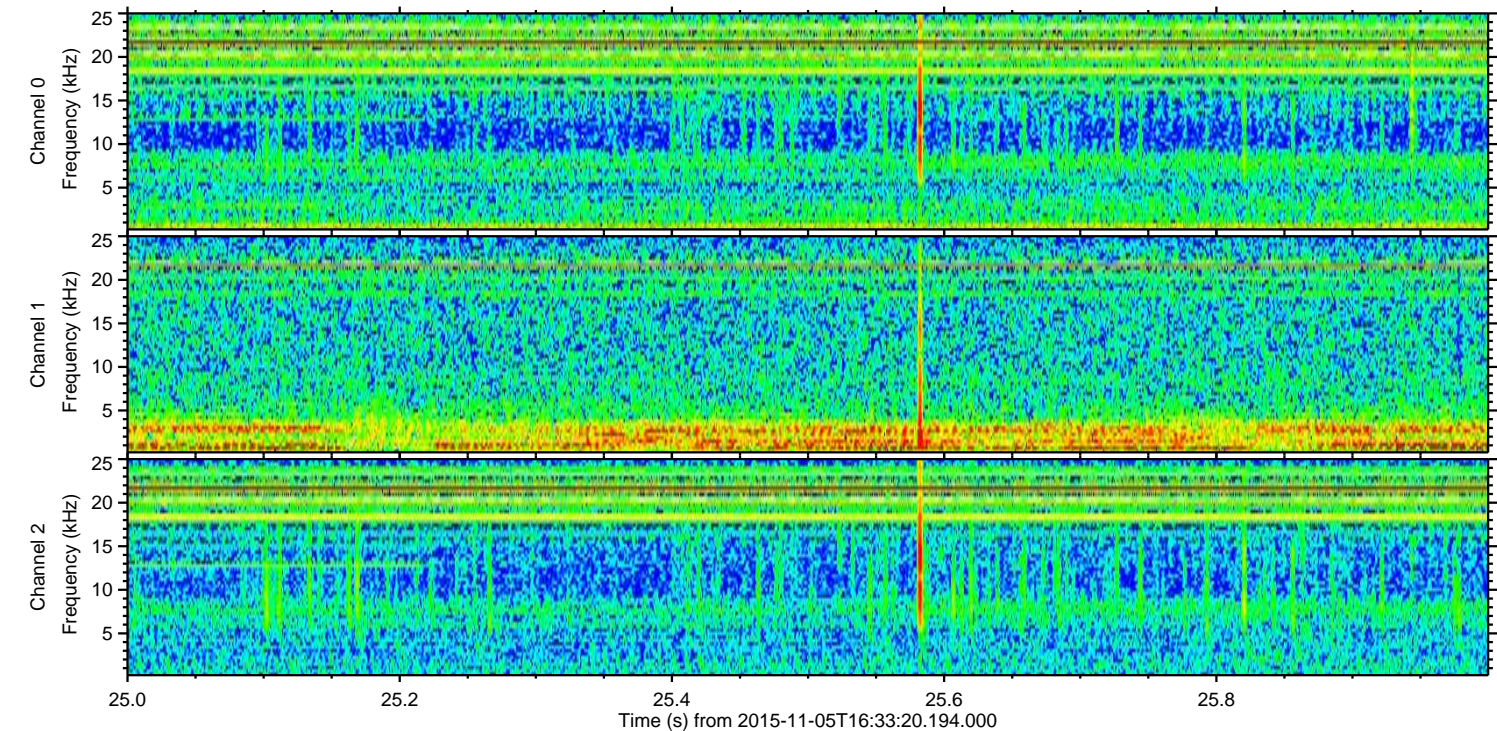
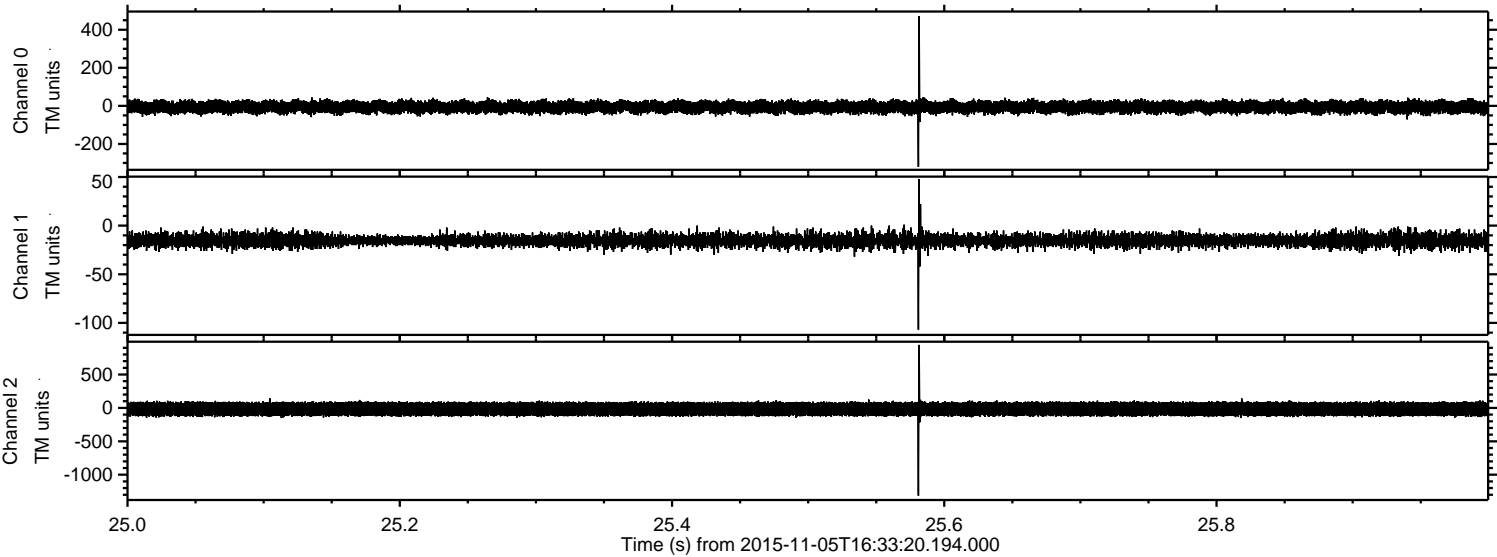
Processed Thu Nov 5 17:40:24 2015 by ELM ver.2012-10-06 from 001__elm20151105_163319__dat00.bin



Processed Thu Nov 5 17:40:25 2015 by ELM ver.2012-10-06 from 001__elm20151105_163319__dat00.bin



Processed Thu Nov 5 17:40:26 2015 by ELM ver.2012-10-06 from 001__elm20151105_163319__dat00.bin



Channel 0
mn: -320
mx: 472
 μ : -6.1
 σ : 17.7

Channel 1
mn: -107
mx: 48
 μ : -15.4
 σ : 3.9

Channel 2
mn: -1313
mx: 944
 μ : -17.0
 σ : 59.4

Processed Thu Nov 5 17:40:27 2015 by ELM ver.2012-10-06 from 001__elm20151105_163319__dat00.bin

