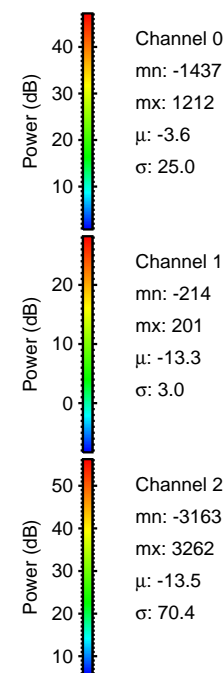
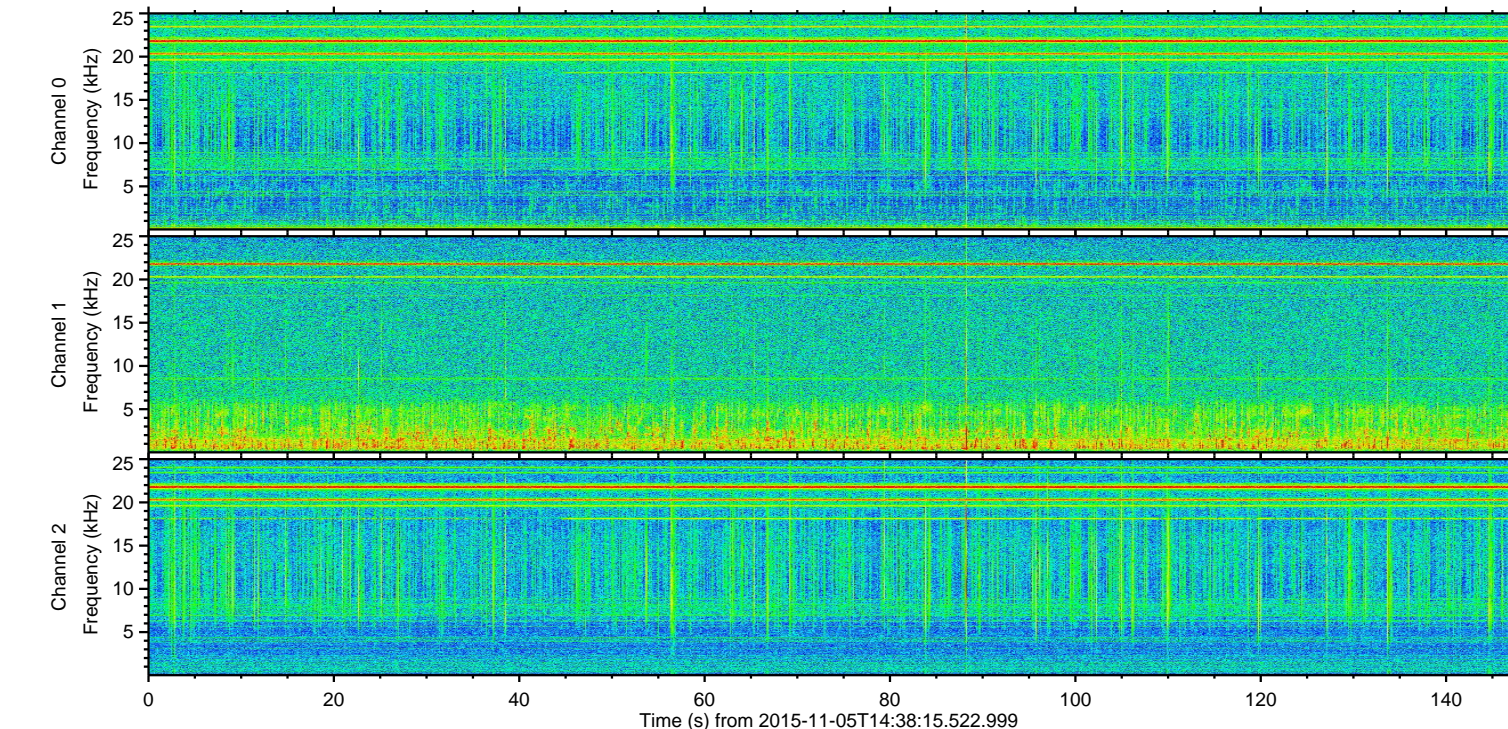
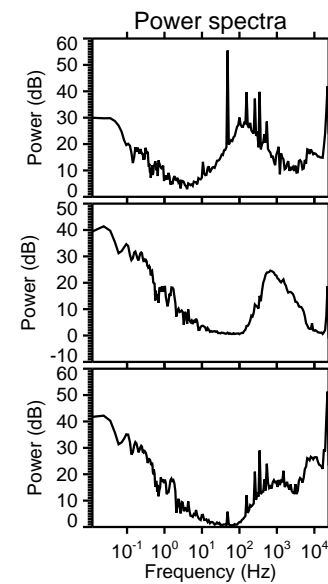
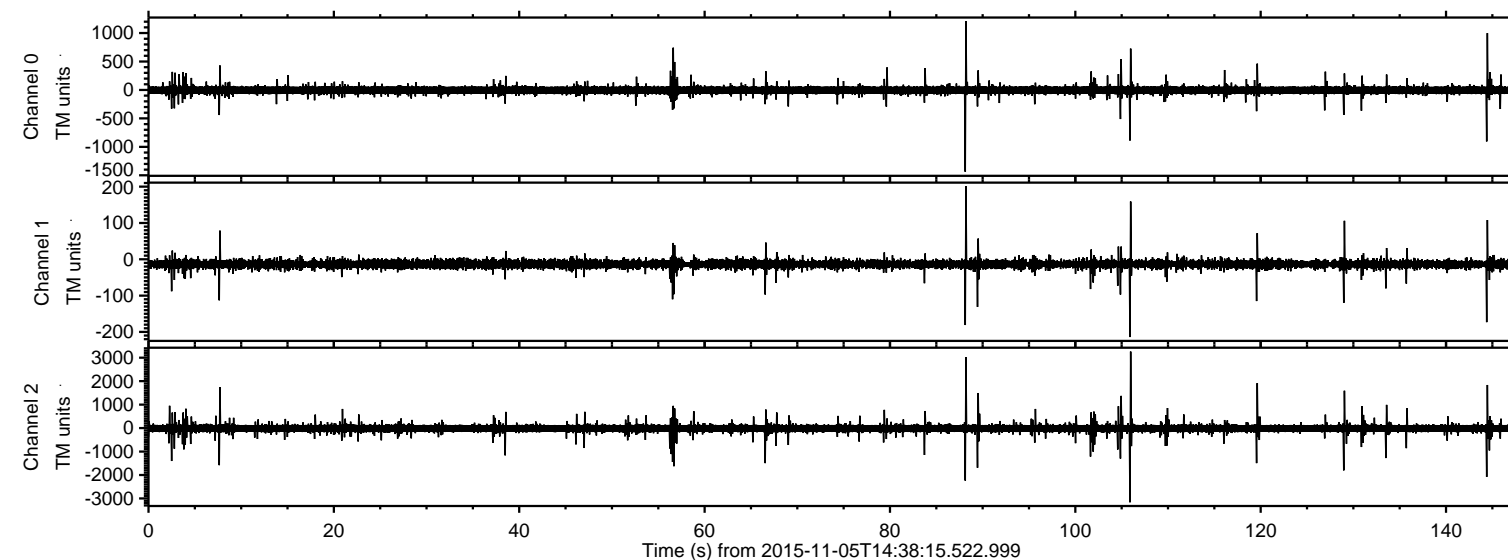


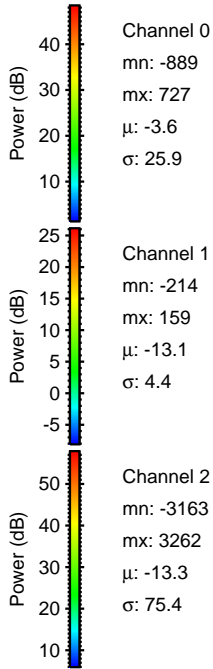
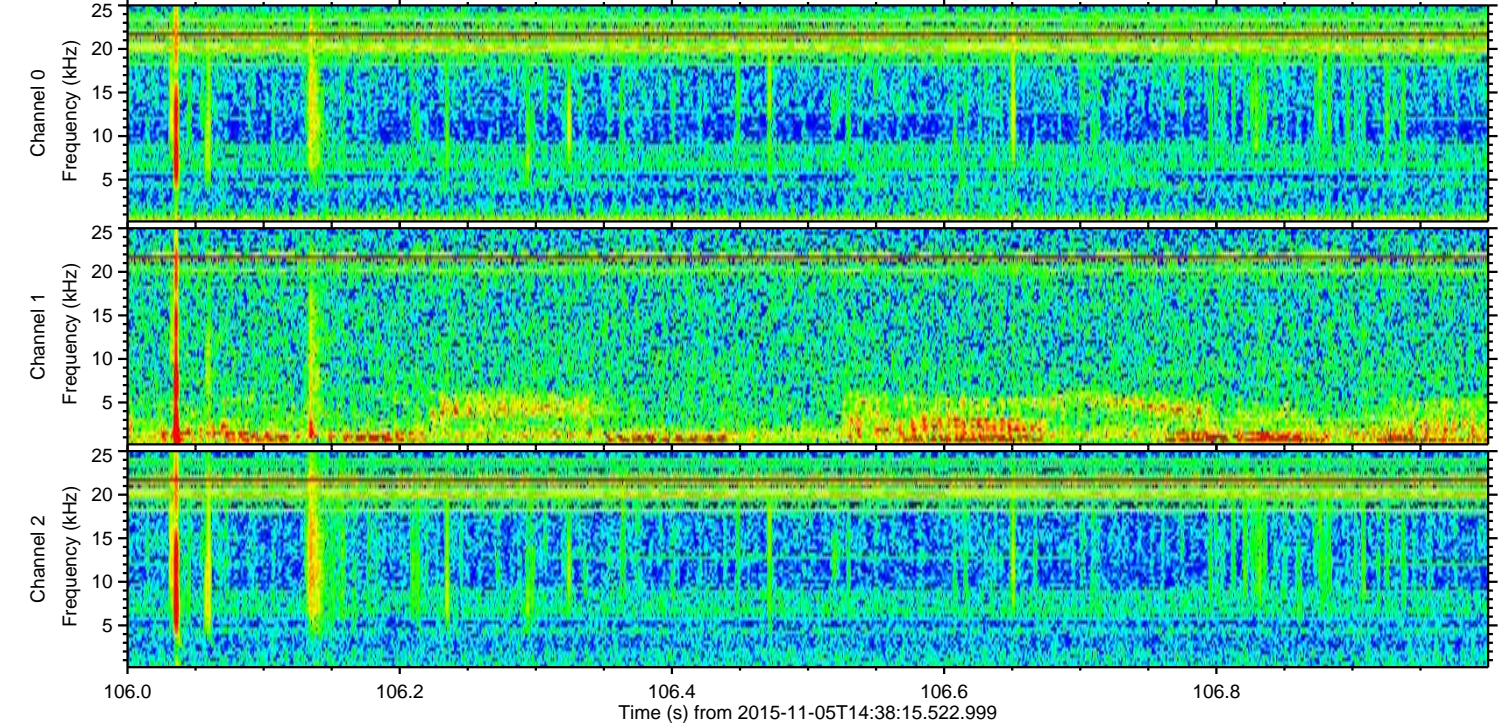
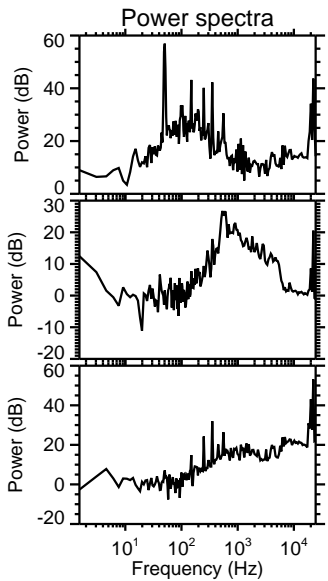
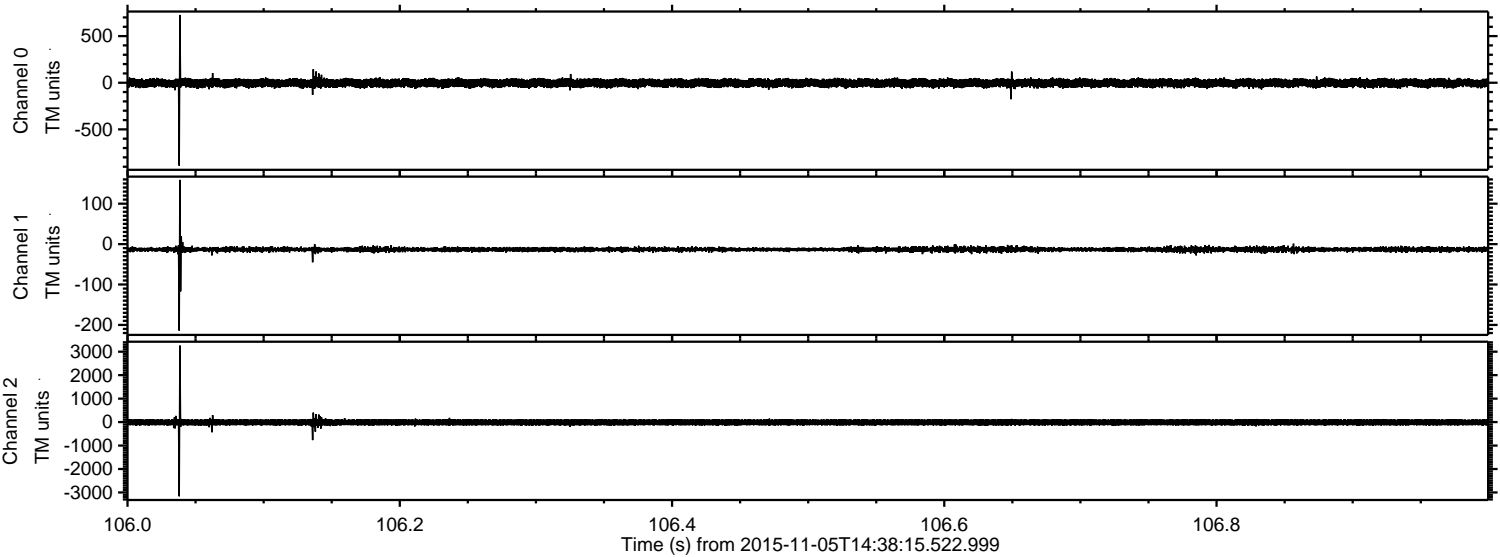
ELMAVAN 3D WAVEFORMS (Measured data sampled at 50 kHz) 51000 packets of 144 samples from 2015-11-05T14:38:15.522.999.

Processed Thu Nov 5 15:45:08 2015 by ELM ver.2012-10-06 from 001__elm20151105_143814__dat00.bin

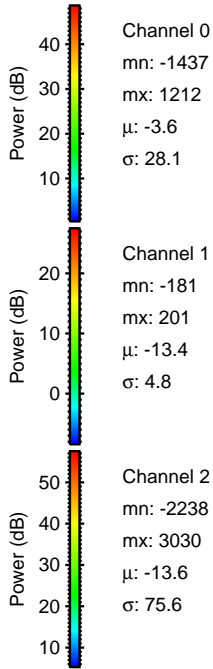
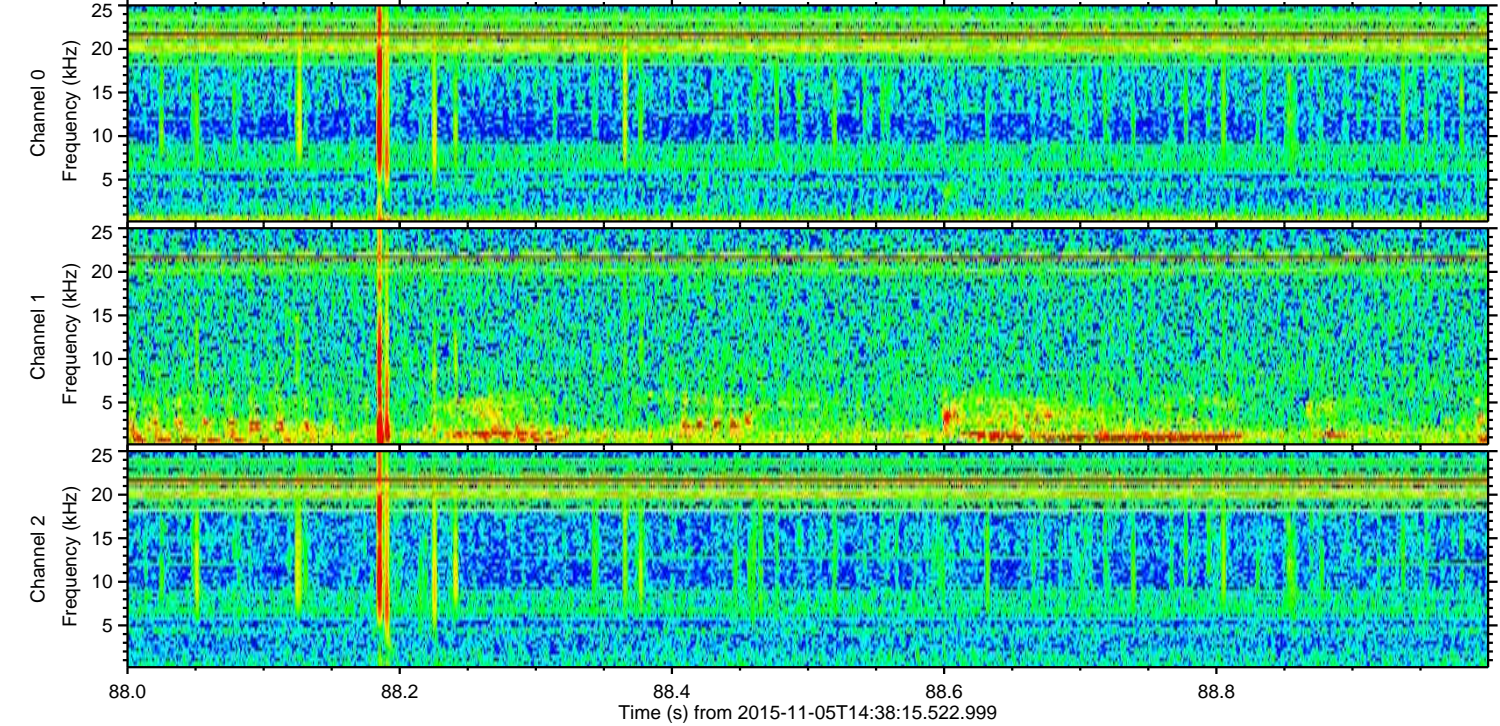
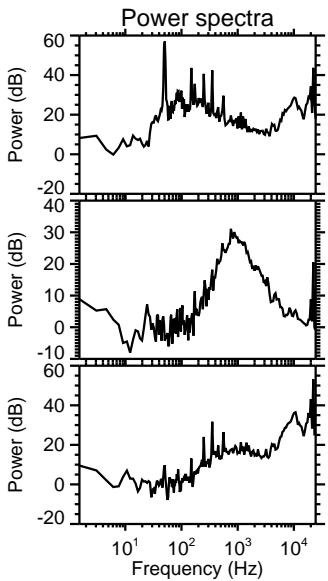
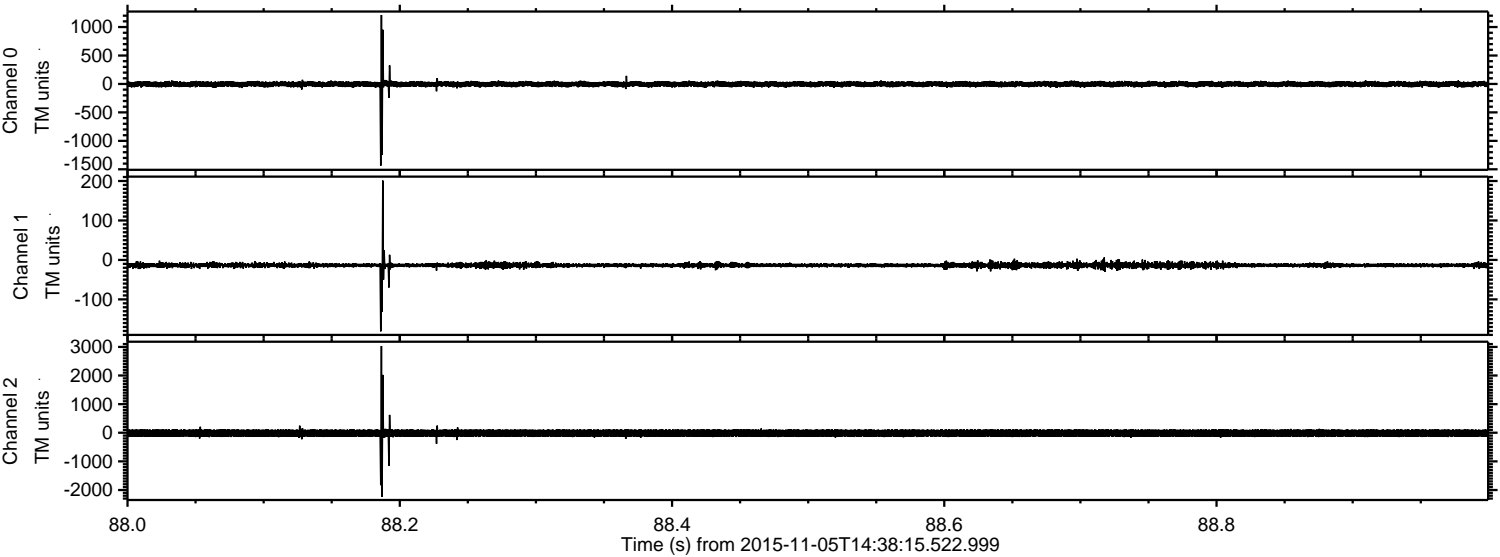


ELMAVAN 3D WAVEFORMS (Measured data sampled at 50 kHz) 51000 packets of 144 samples from 2015-11-05T14:38:15.522.999. Part 107/147

Processed Thu Nov 5 15:45:19 2015 by ELM ver.2012-10-06 from 001__elm20151105_143814__dat00.bin

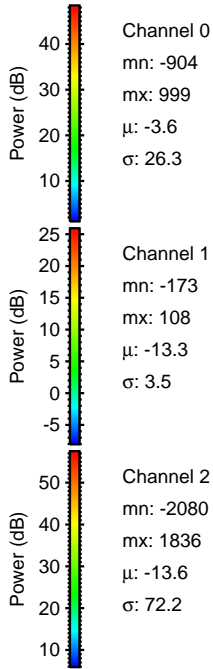
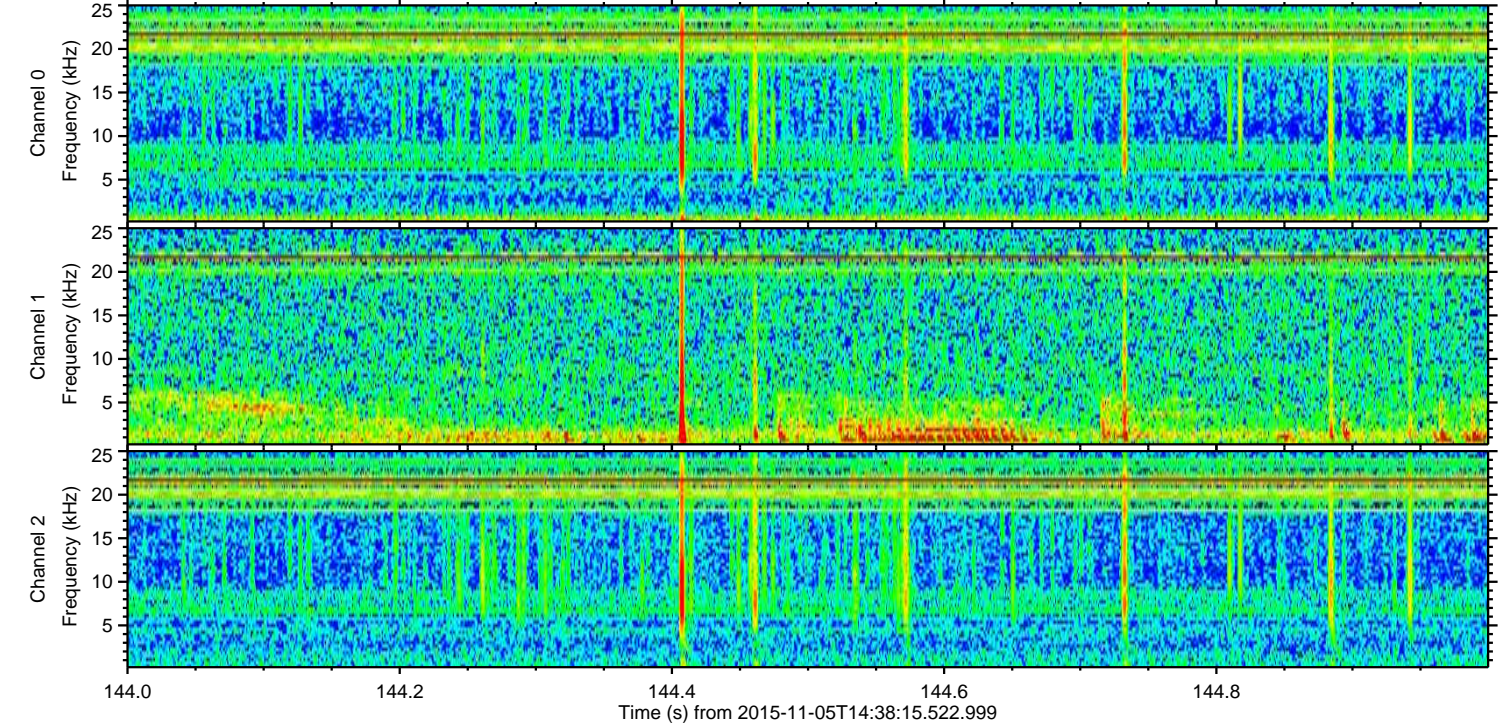
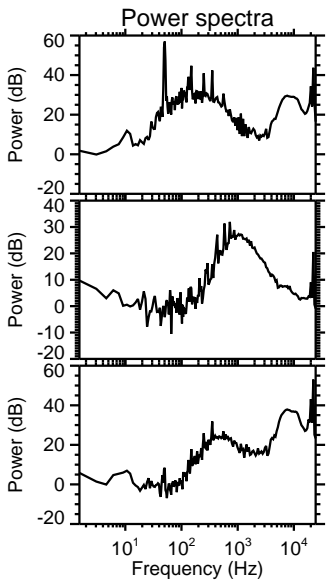
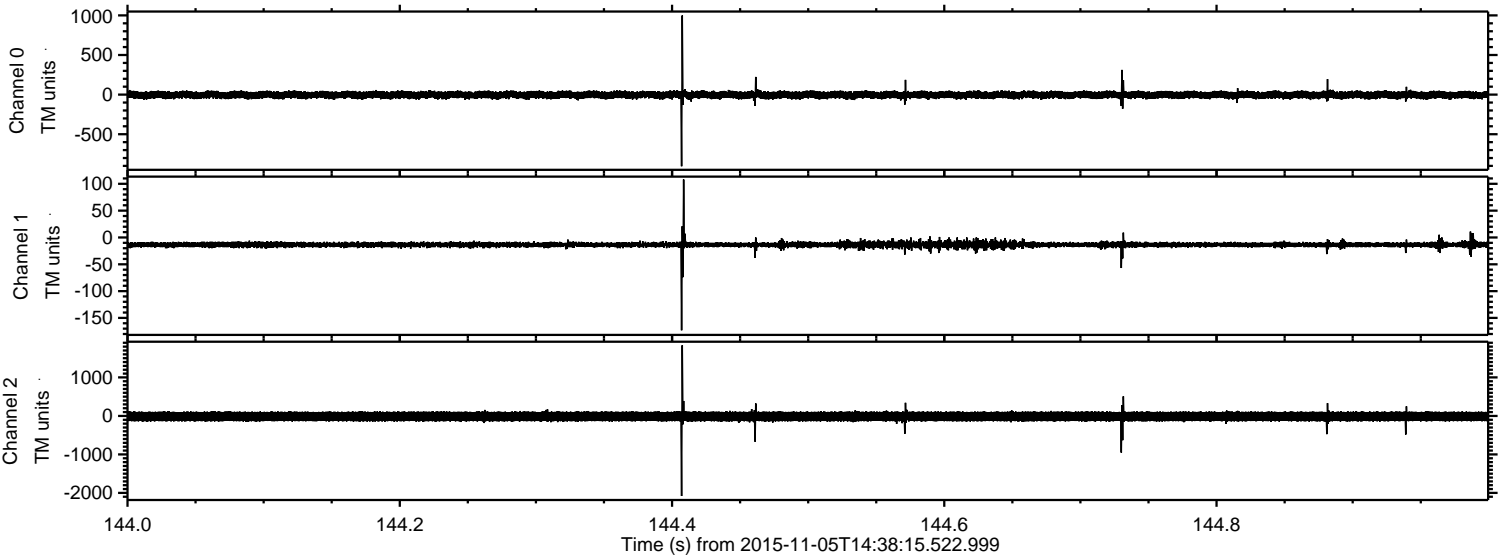


Processed Thu Nov 5 15:45:20 2015 by ELM ver.2012-10-06 from 001__elm20151105_143814__dat00.bin



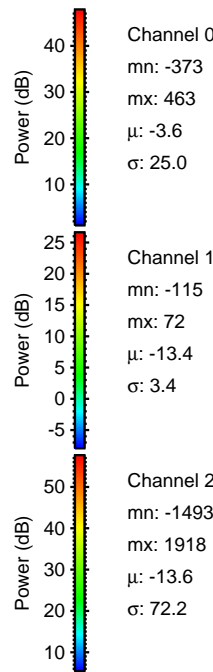
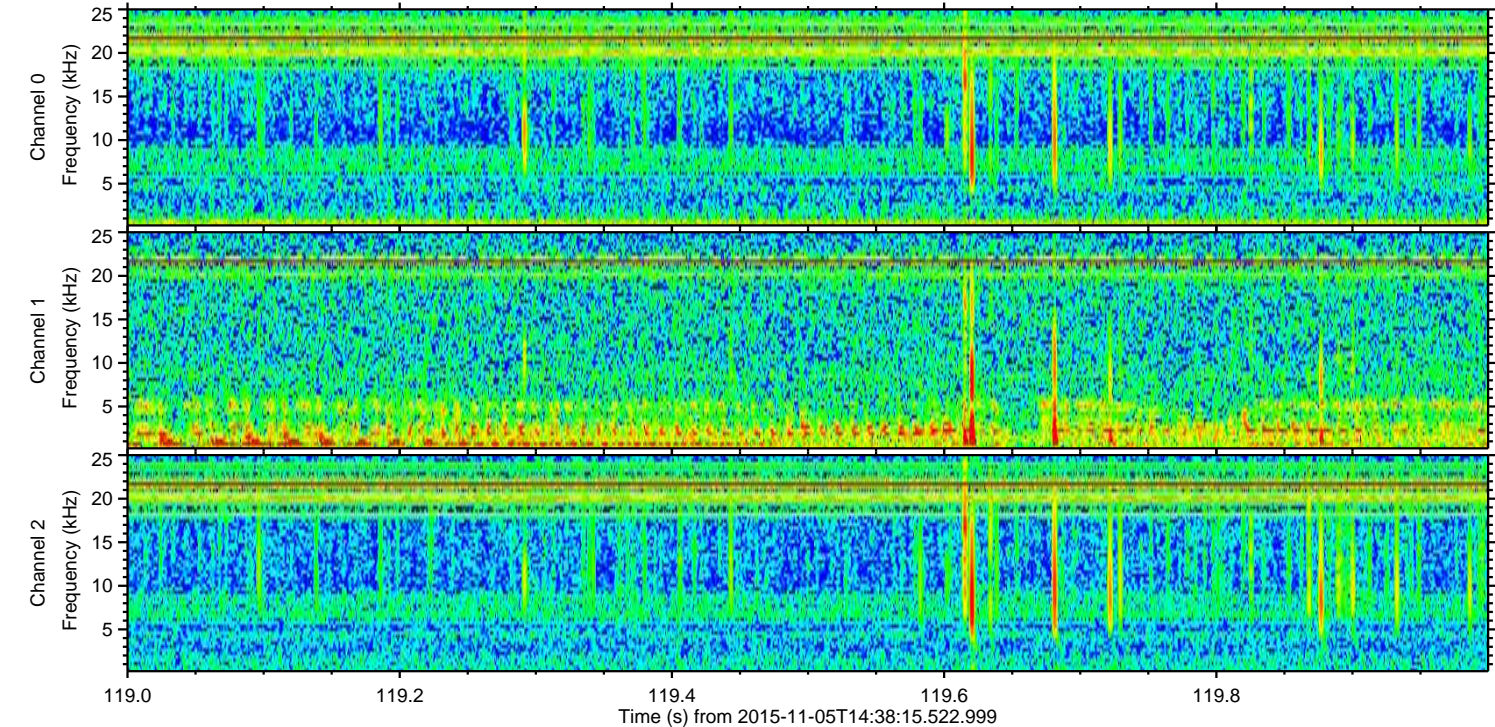
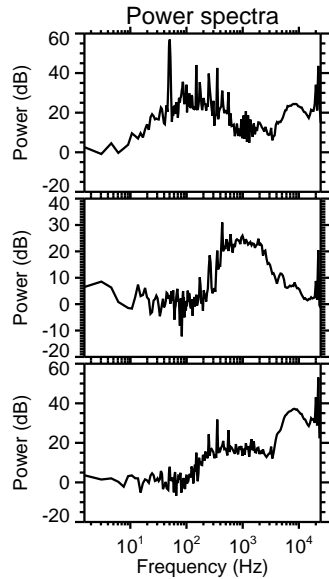
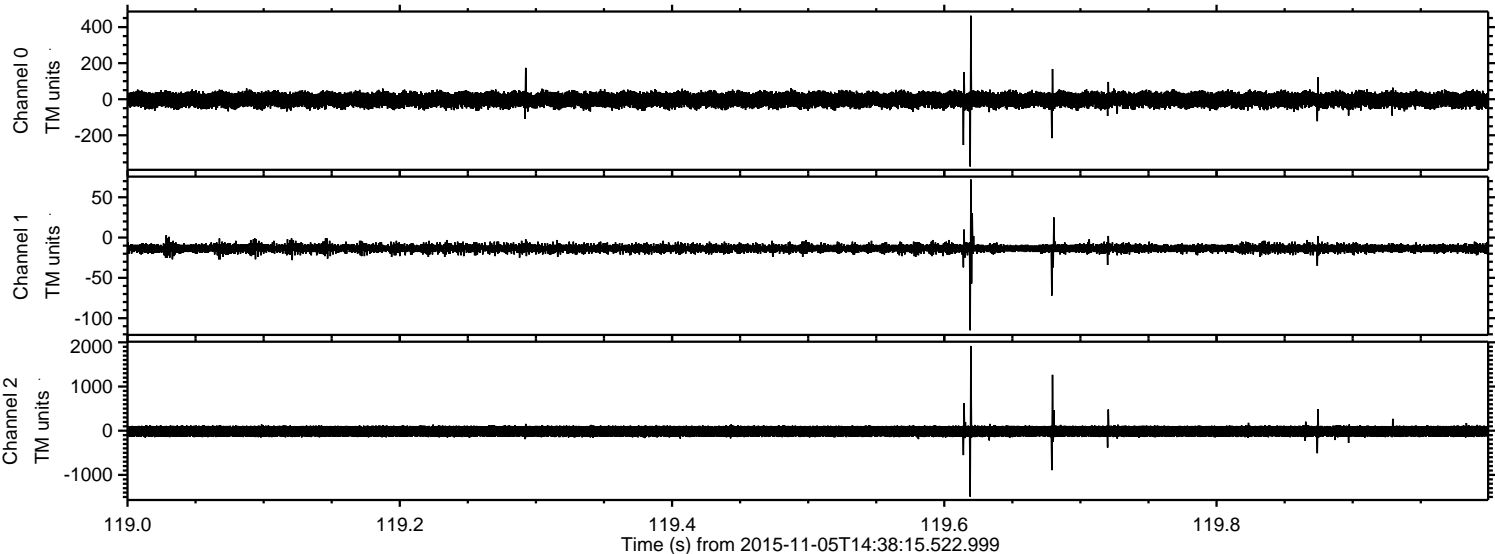
ELMAVAN 3D WAVEFORMS (Measured data sampled at 50 kHz) 51000 packets of 144 samples from 2015-11-05T14:38:15.522.999. Part 145/147

Processed Thu Nov 5 15:45:21 2015 by ELM ver.2012-10-06 from 001__elm20151105_143814__dat00.bin



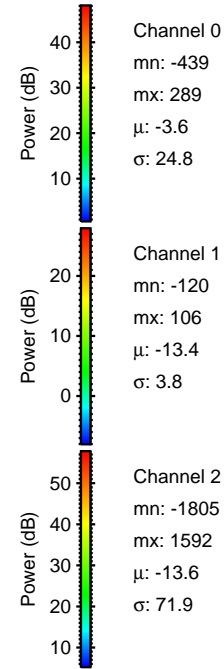
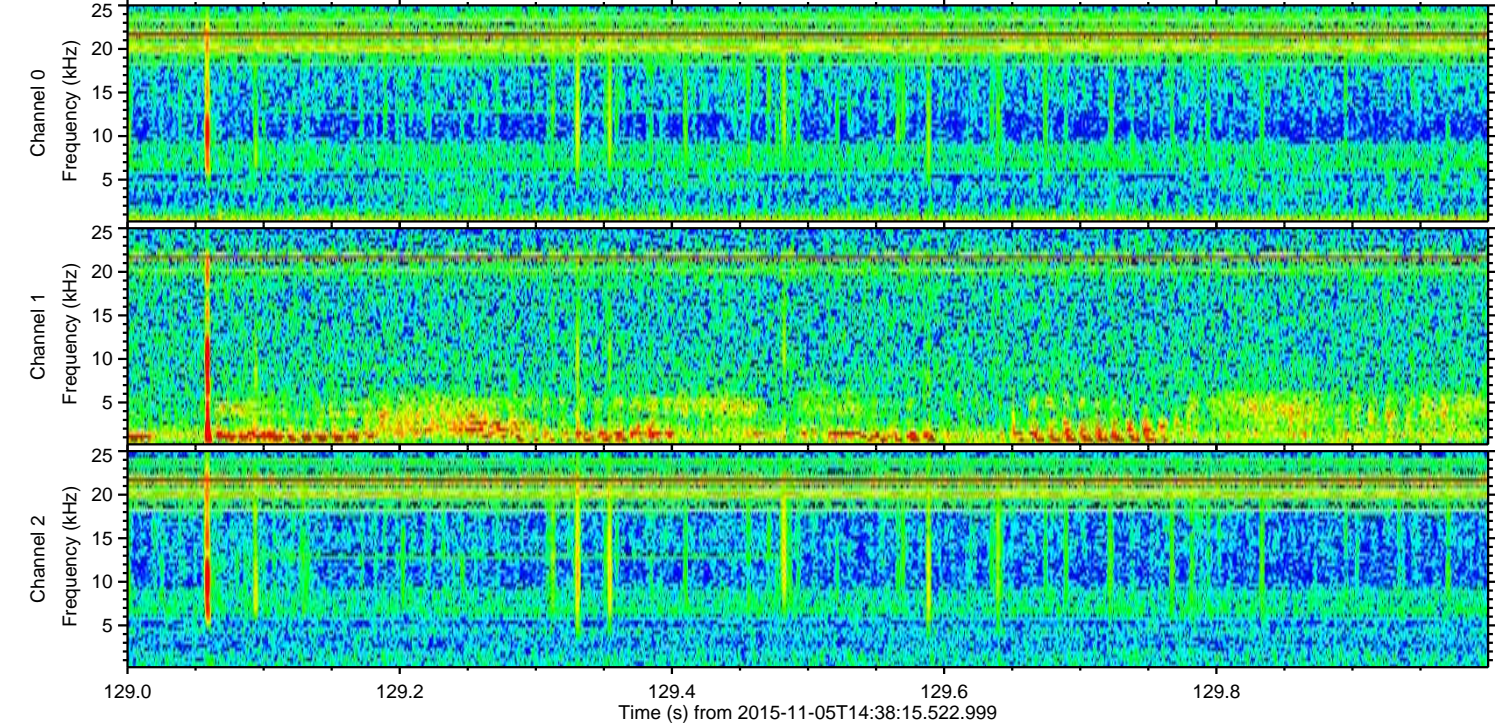
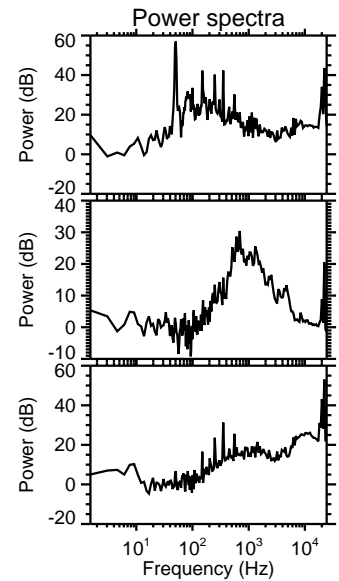
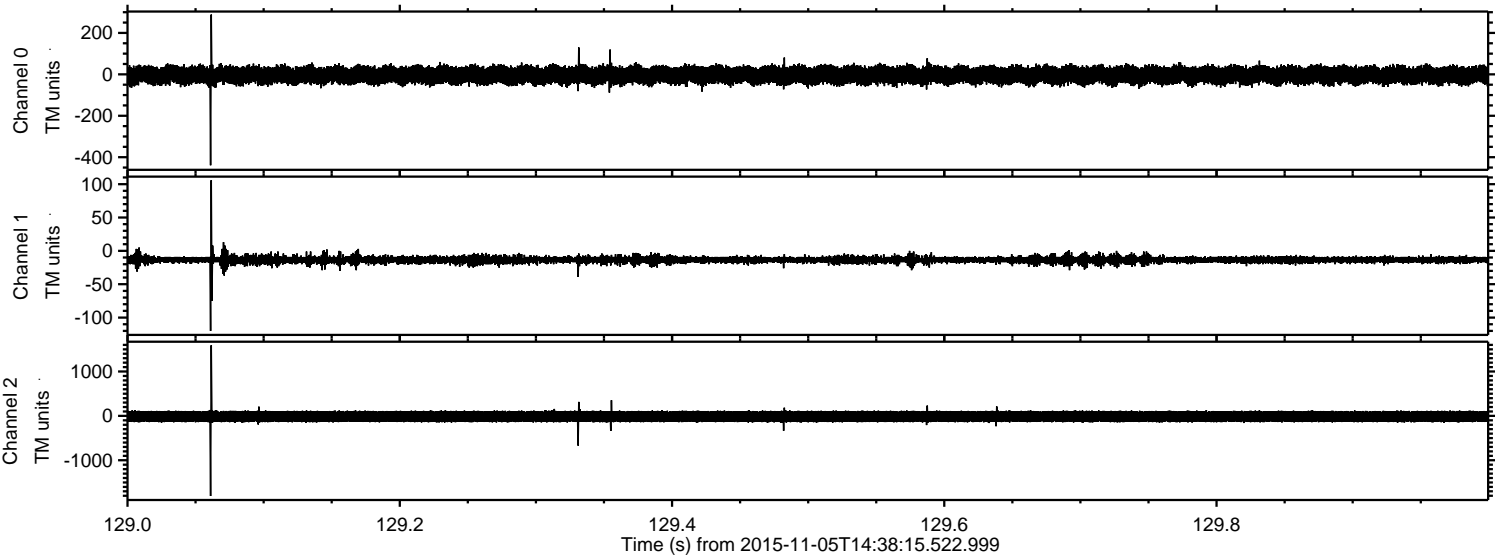
ELMAVAN 3D WAVEFORMS (Measured data sampled at 50 kHz) 51000 packets of 144 samples from 2015-11-05T14:38:15.522.999. Part 120/147

Processed Thu Nov 5 15:45:22 2015 by ELM ver.2012-10-06 from 001__elm20151105_143814__dat00.bin

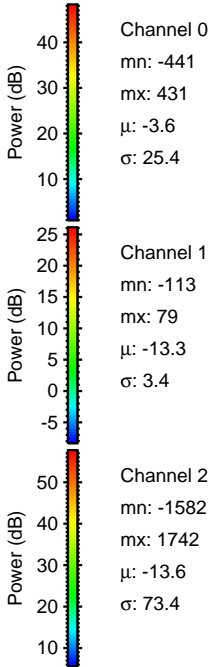
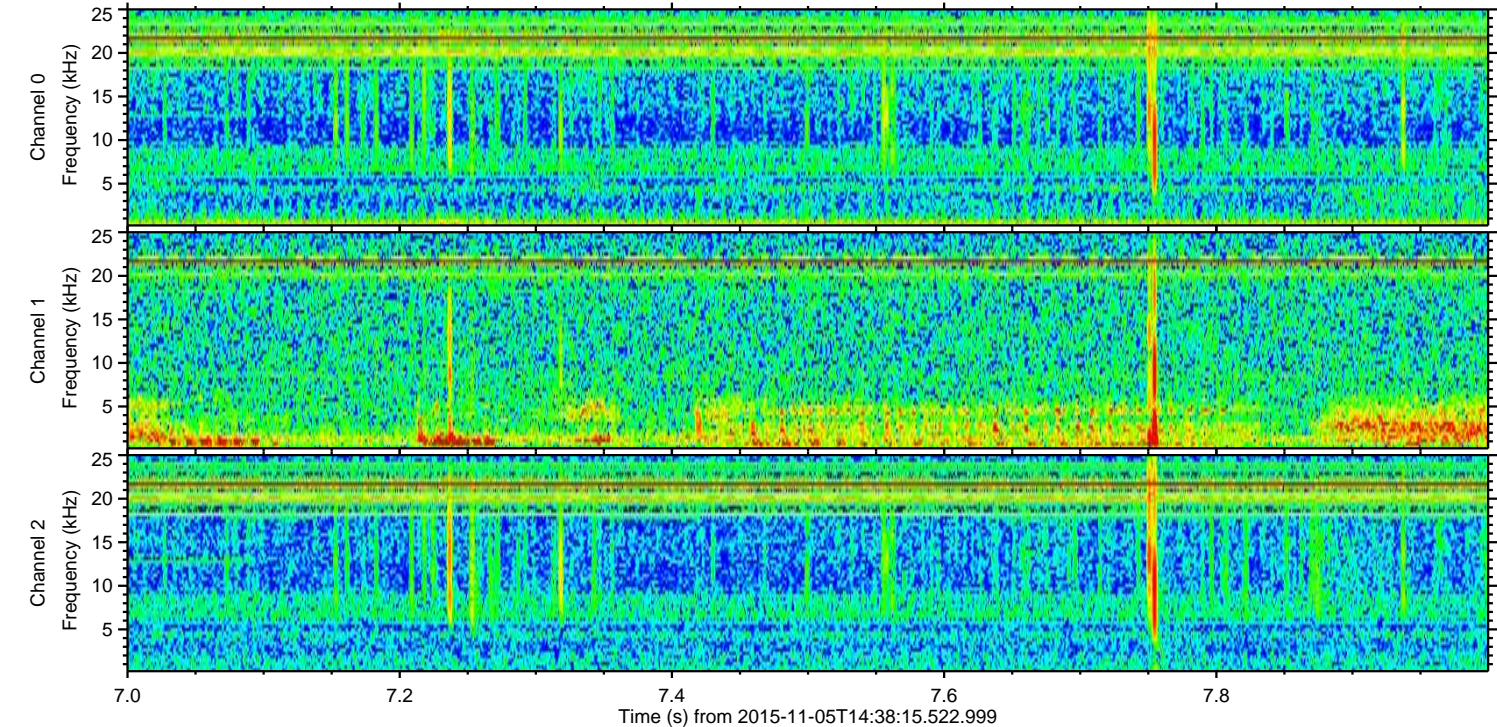
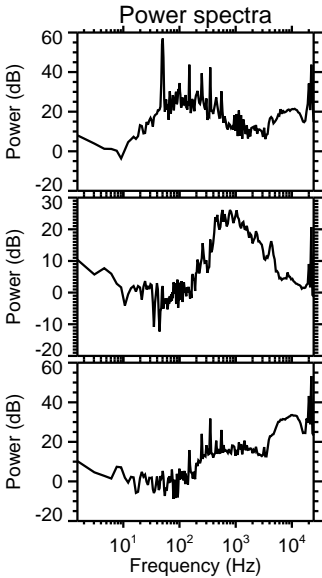
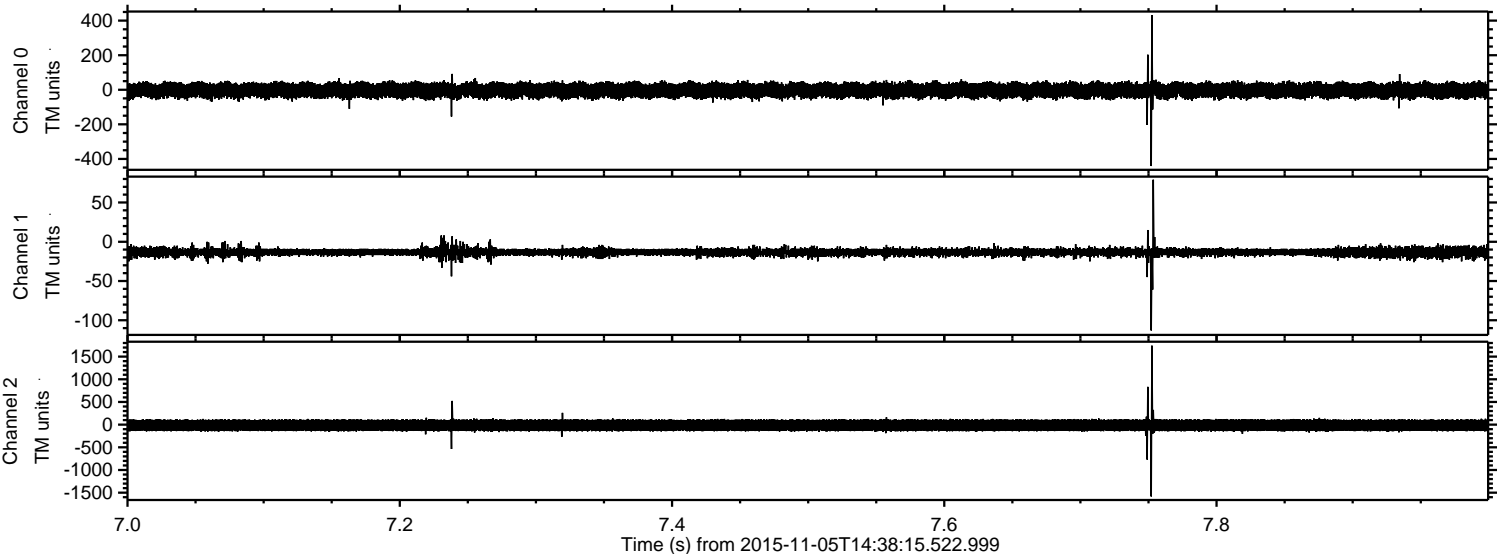


ELMAVAN 3D WAVEFORMS (Measured data sampled at 50 kHz) 51000 packets of 144 samples from 2015-11-05T14:38:15.522.999. Part 130/147

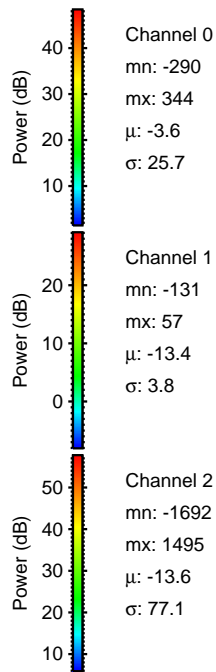
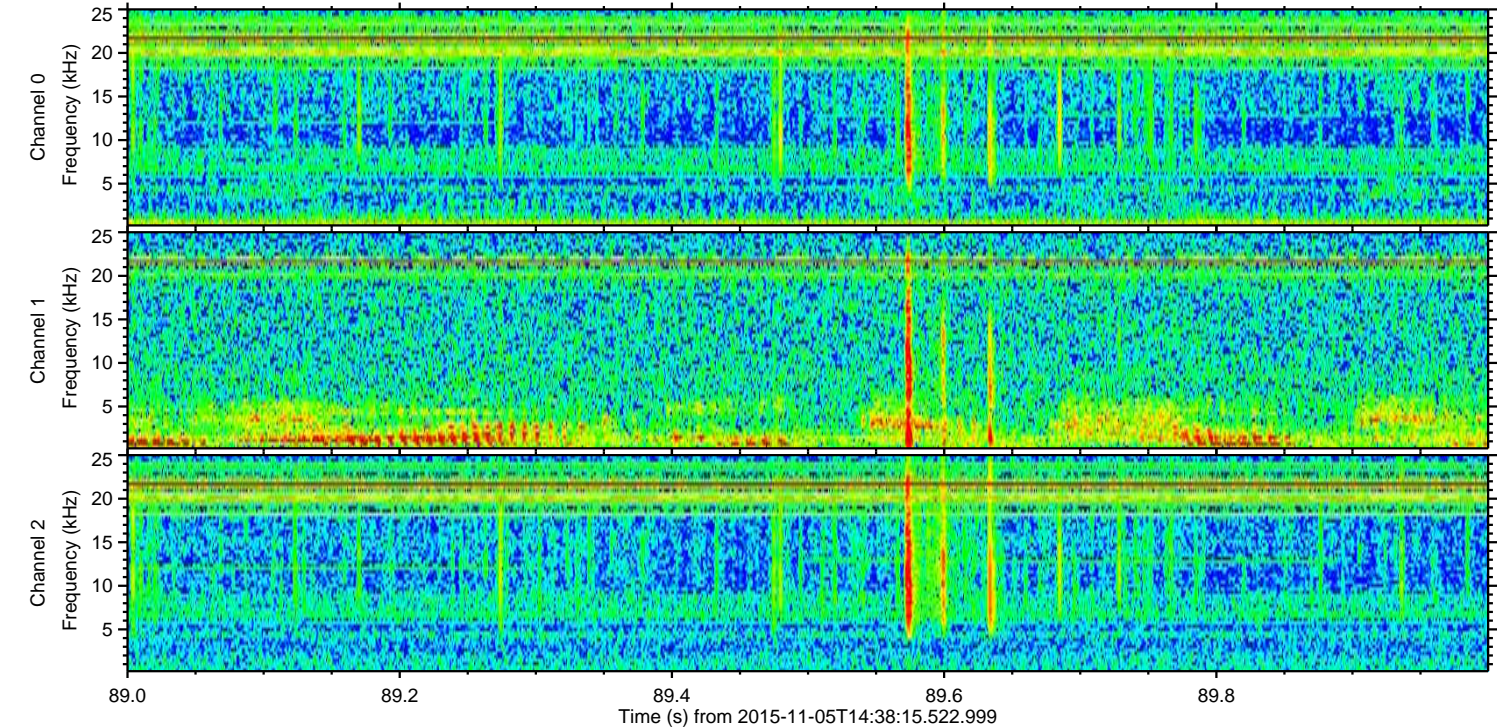
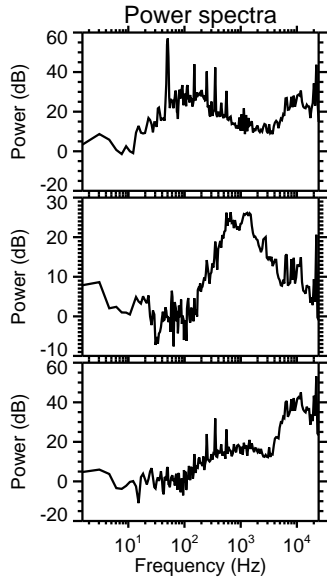
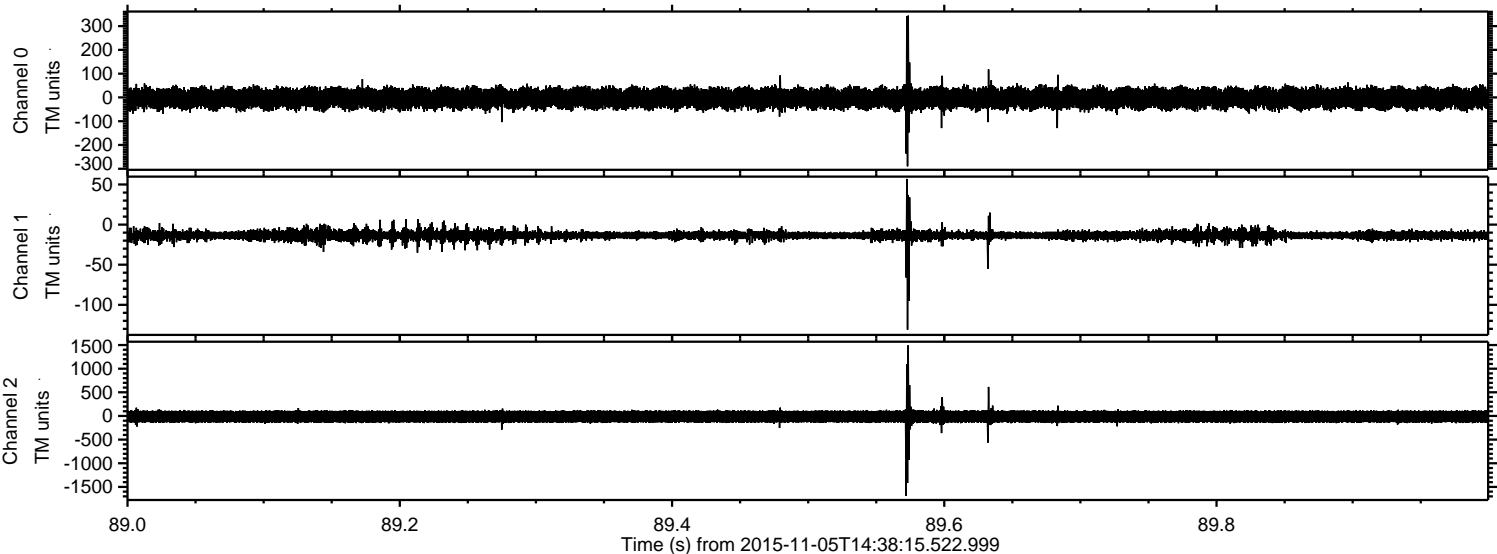
Processed Thu Nov 5 15:45:23 2015 by ELM ver.2012-10-06 from 001__elm20151105_143814__dat00.bin



Processed Thu Nov 5 15:45:24 2015 by ELM ver.2012-10-06 from 001__elm20151105_143814__dat00.bin



Processed Thu Nov 5 15:45:25 2015 by ELM ver.2012-10-06 from 001__elm20151105_143814__dat00.bin

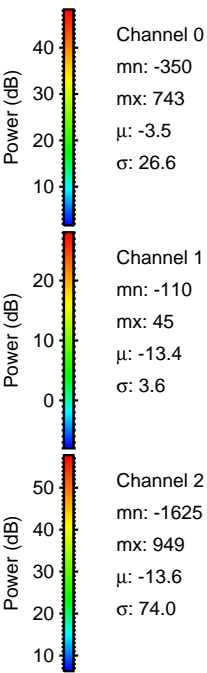
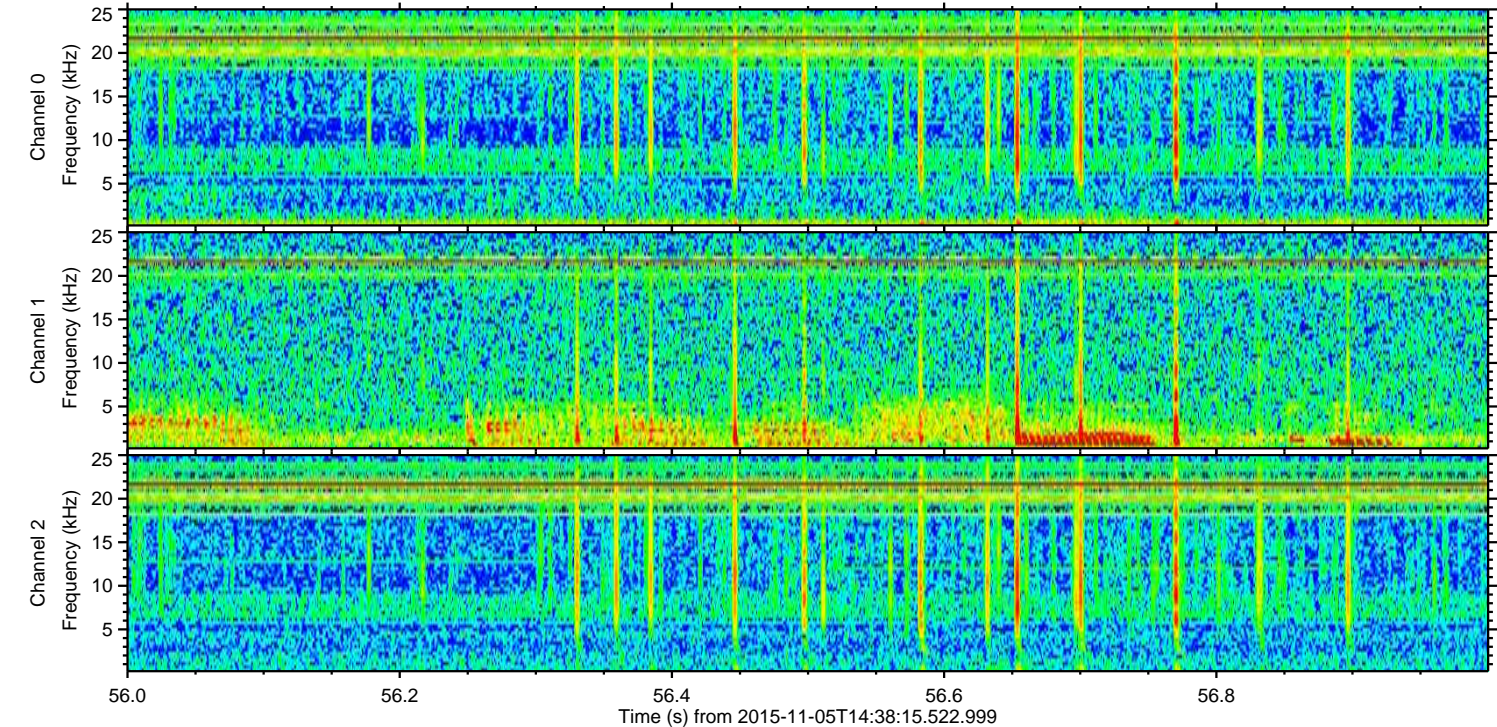
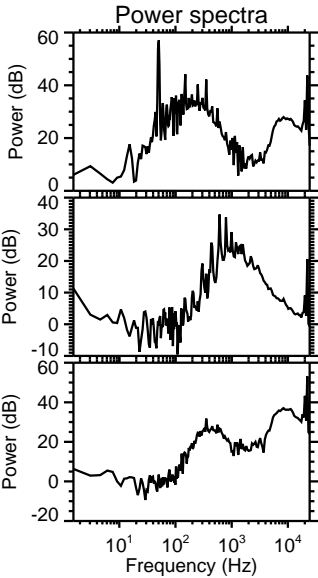
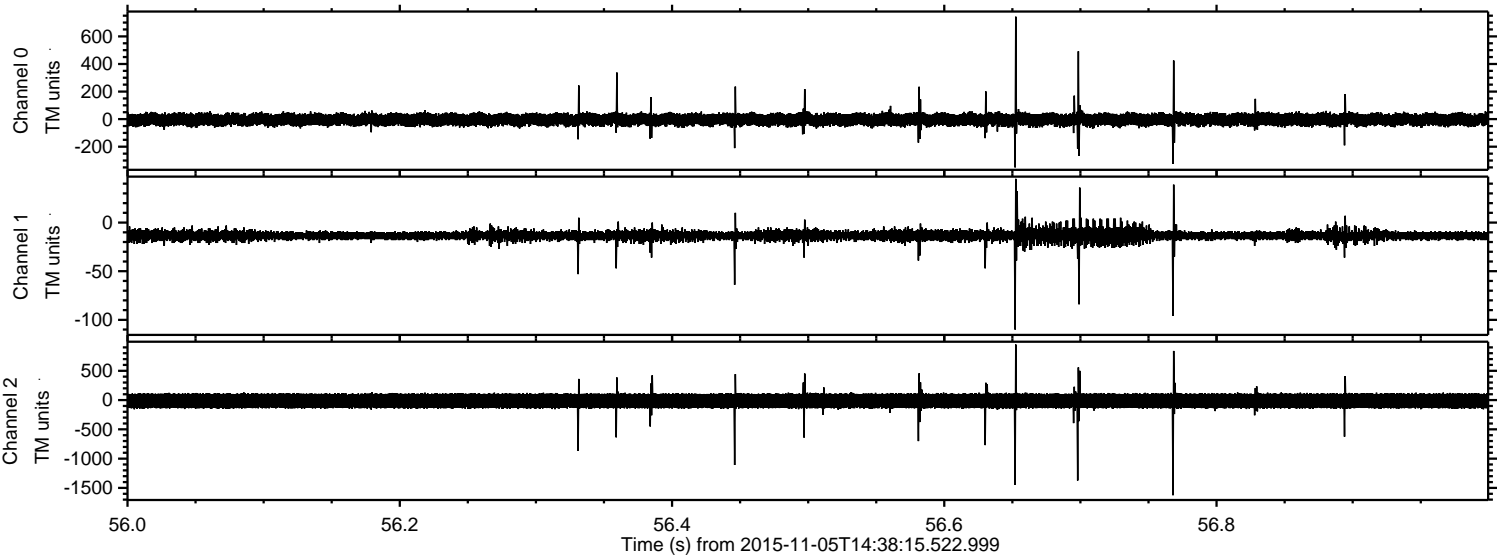


Channel 0
mn: -290
mx: 344
 μ : -3.6
 σ : 25.7

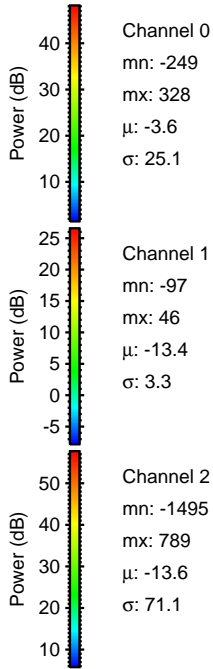
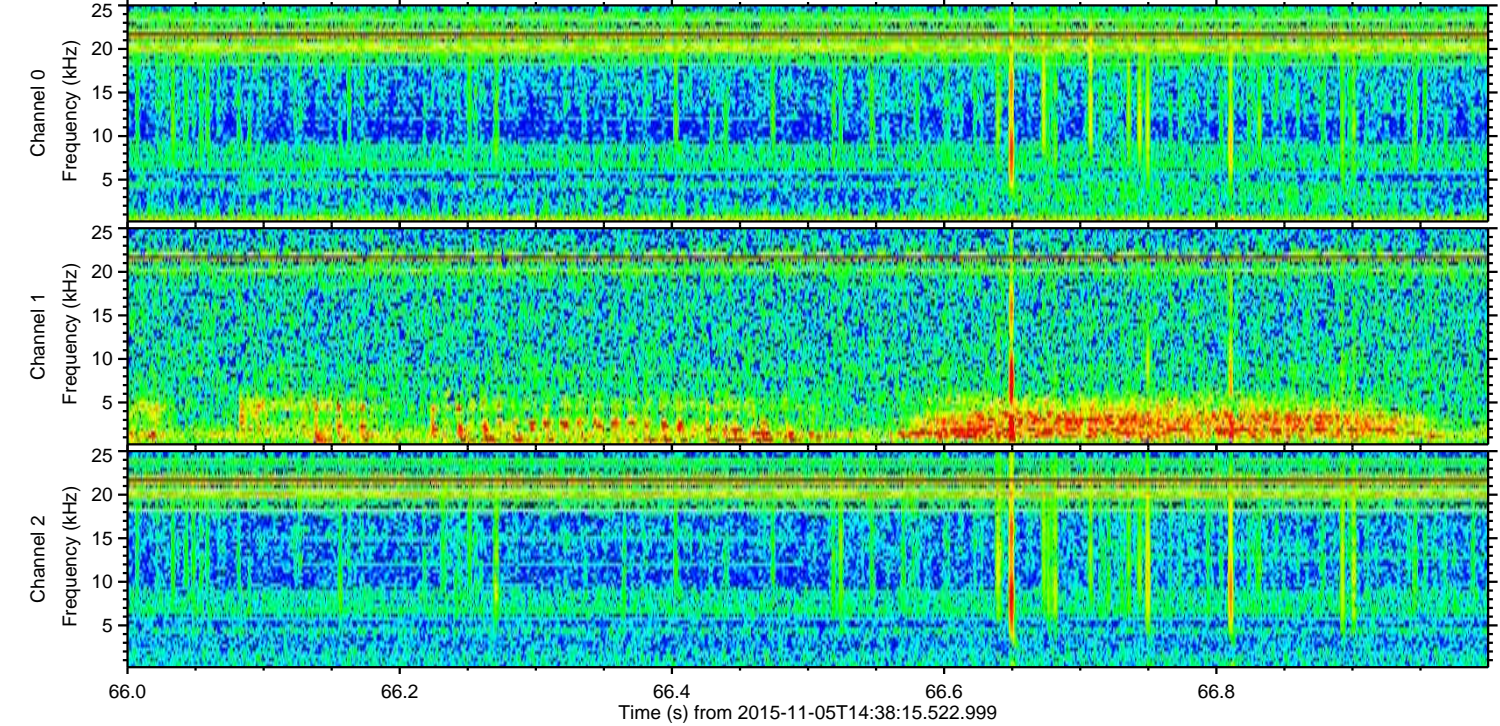
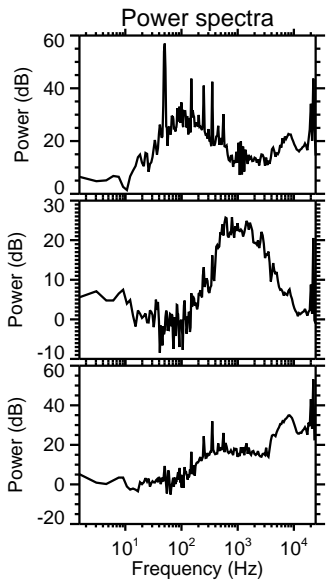
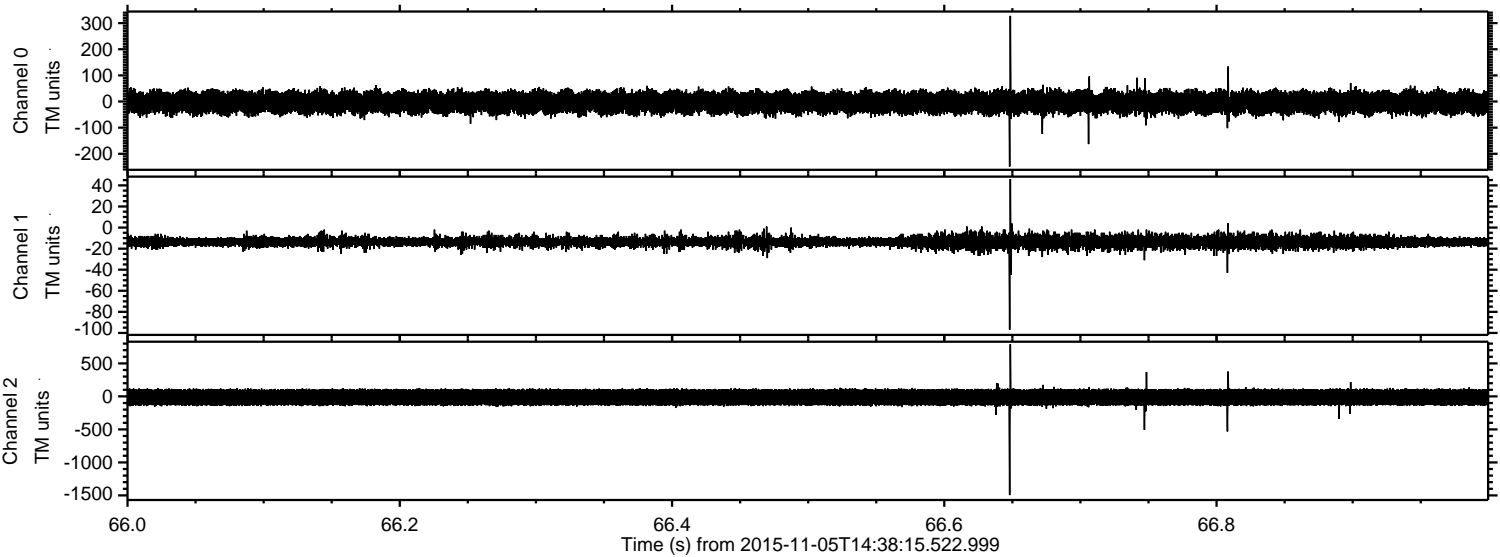
Channel 1
mn: -131
mx: 57
 μ : -13.4
 σ : 3.8

Channel 2
mn: -1692
mx: 1495
 μ : -13.6
 σ : 77.1

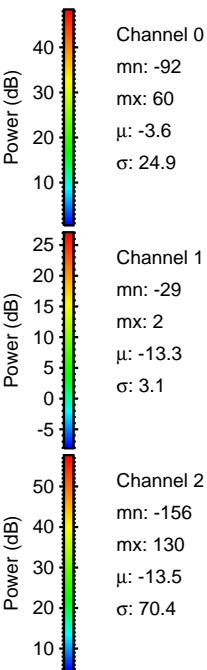
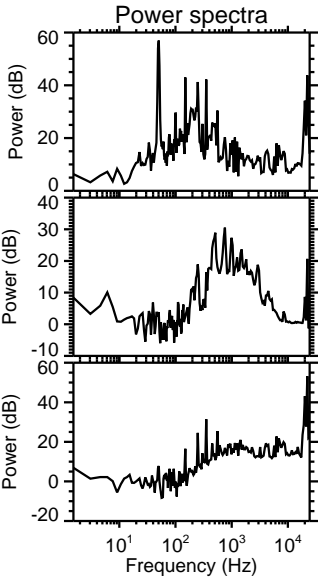
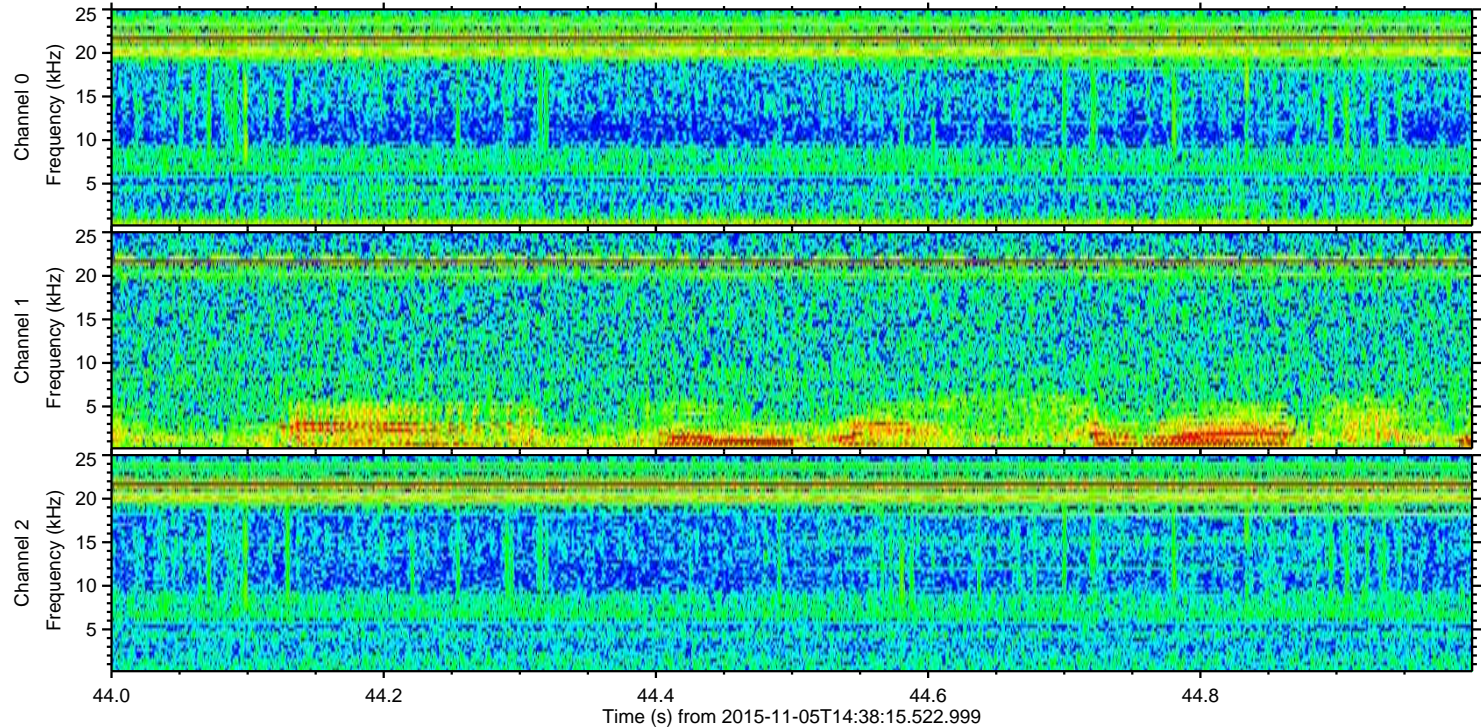
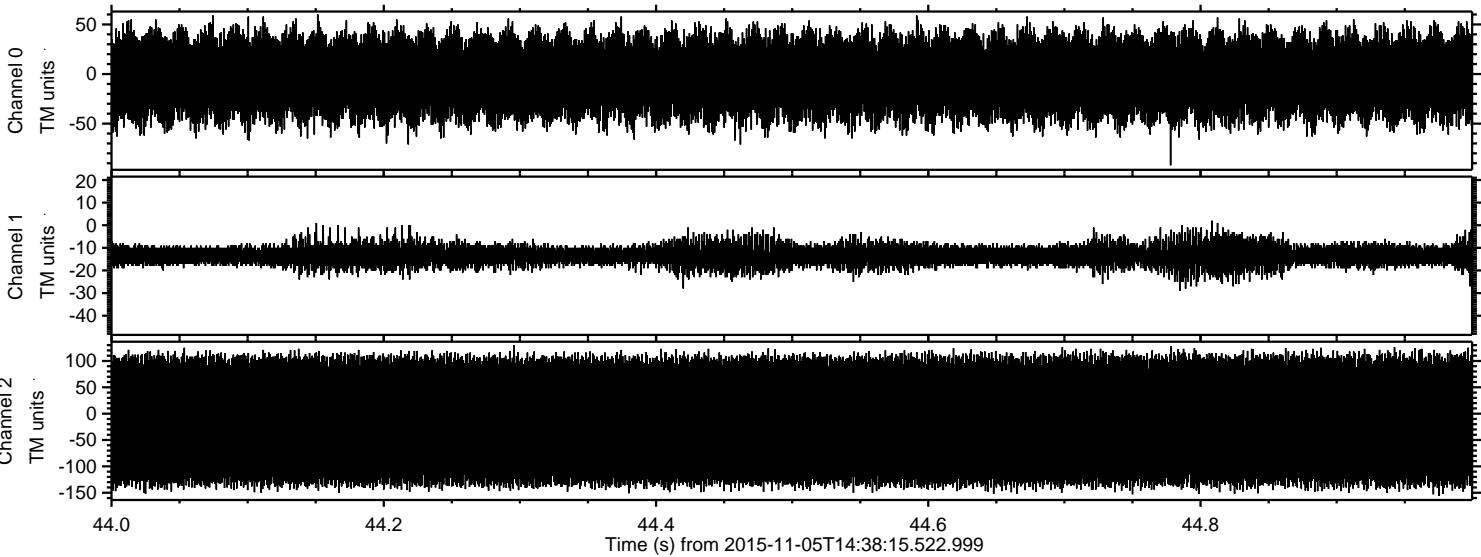
Processed Thu Nov 5 15:45:26 2015 by ELM ver.2012-10-06 from 001__elm20151105_143814__dat00.bin



Processed Thu Nov 5 15:45:26 2015 by ELM ver.2012-10-06 from 001__elm20151105_143814__dat00.bin



Processed Thu Nov 5 15:45:27 2015 by ELM ver.2012-10-06 from 001__elm20151105_143814__dat00.bin



Channel 0
mn: -92
mx: 60
 μ : -3.6
 σ : 24.9

Channel 1
mn: -29
mx: 2
 μ : -13.3
 σ : 3.1

Channel 2
mn: -156
mx: 130
 μ : -13.5
 σ : 70.4