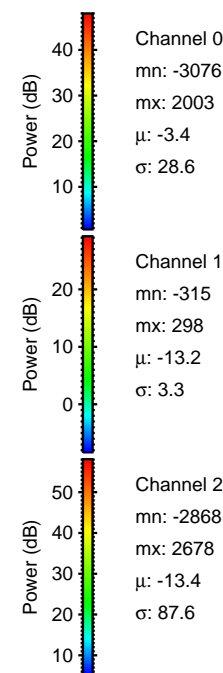
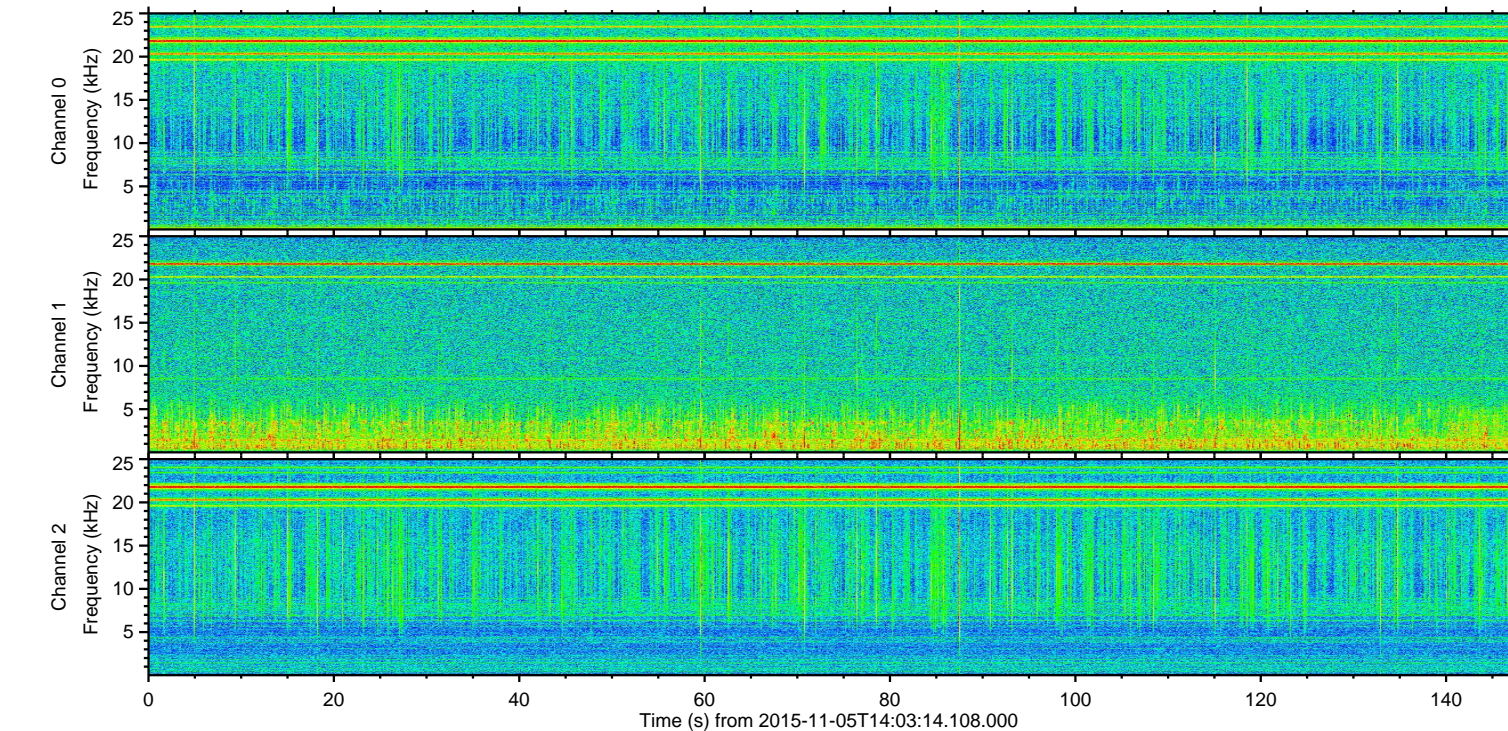
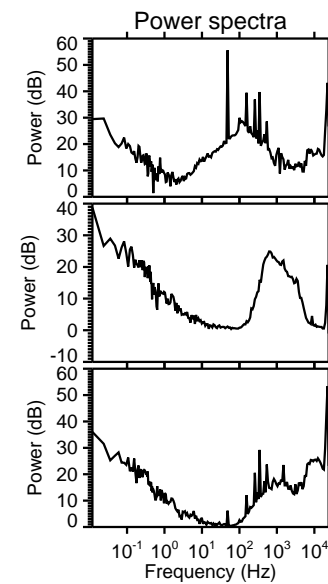
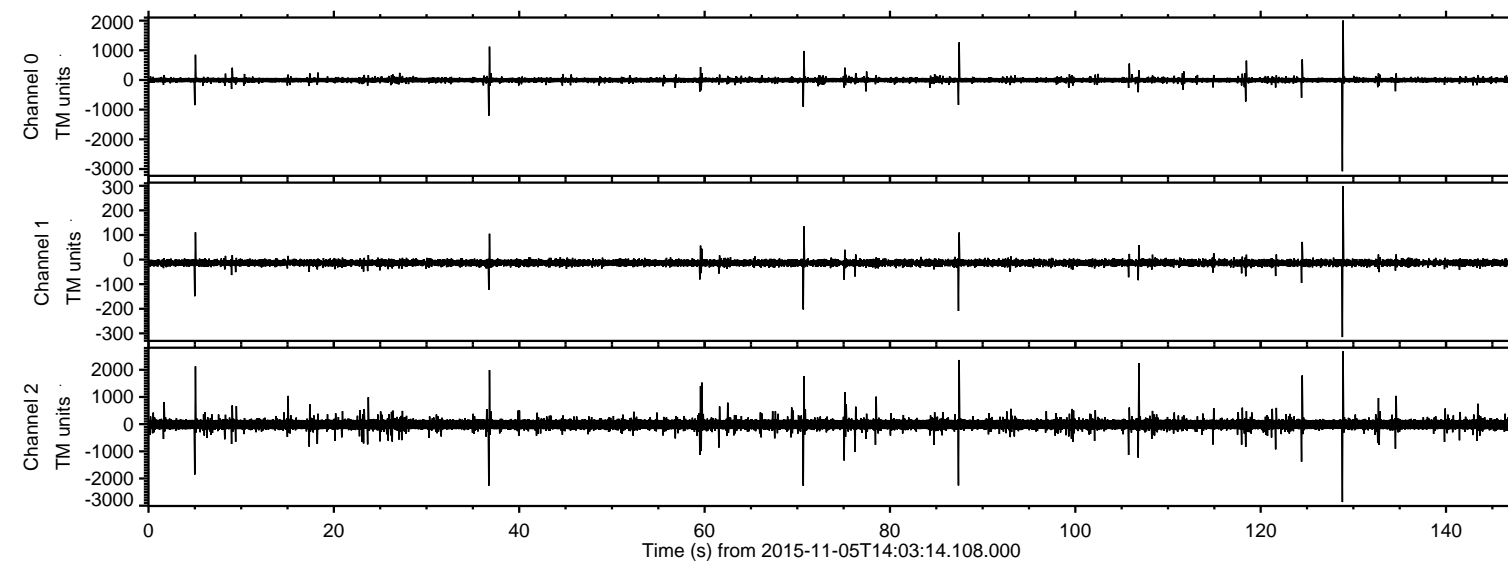


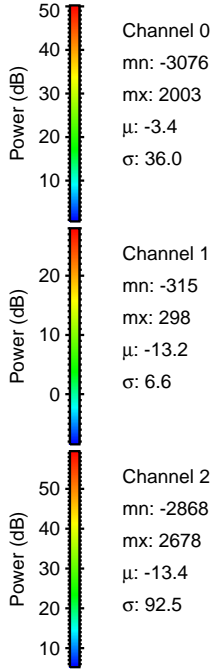
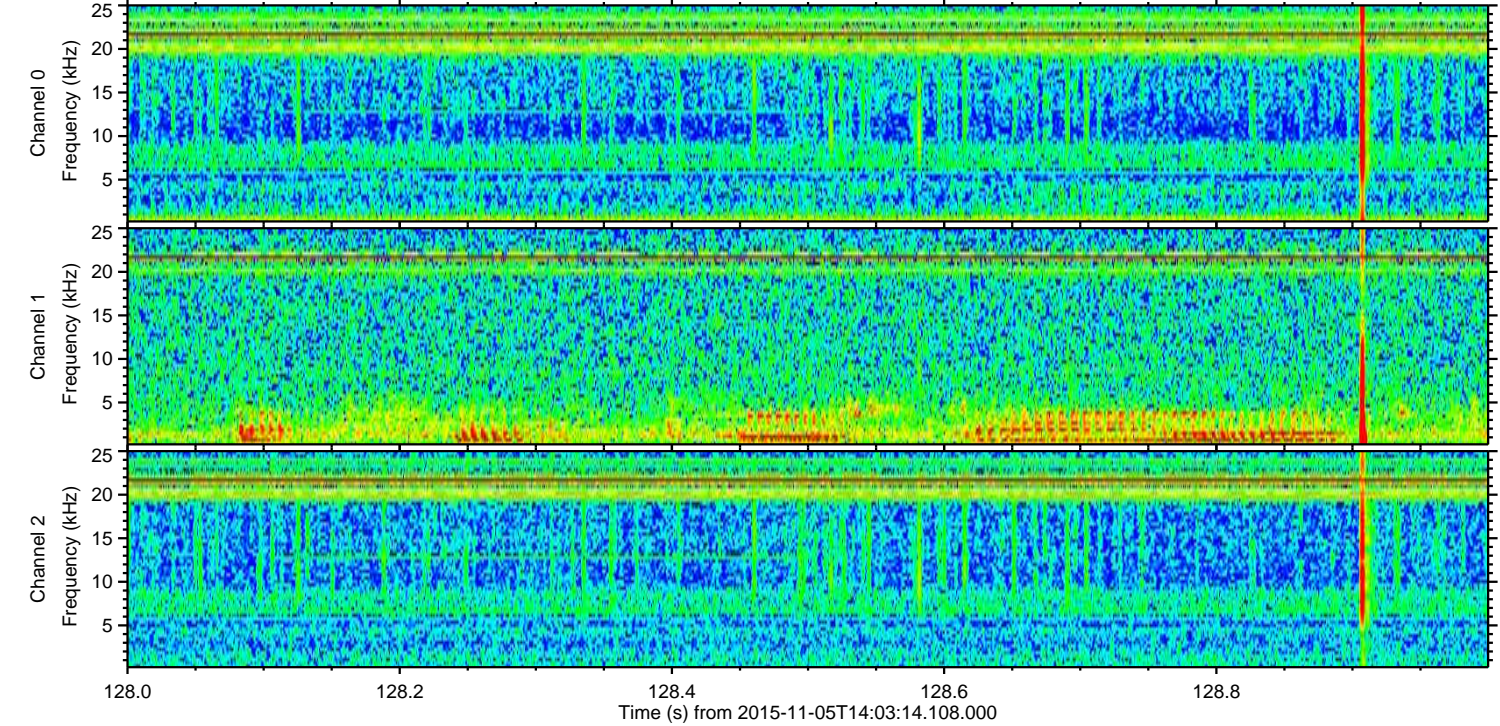
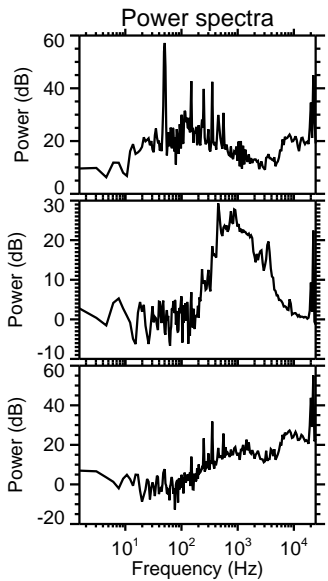
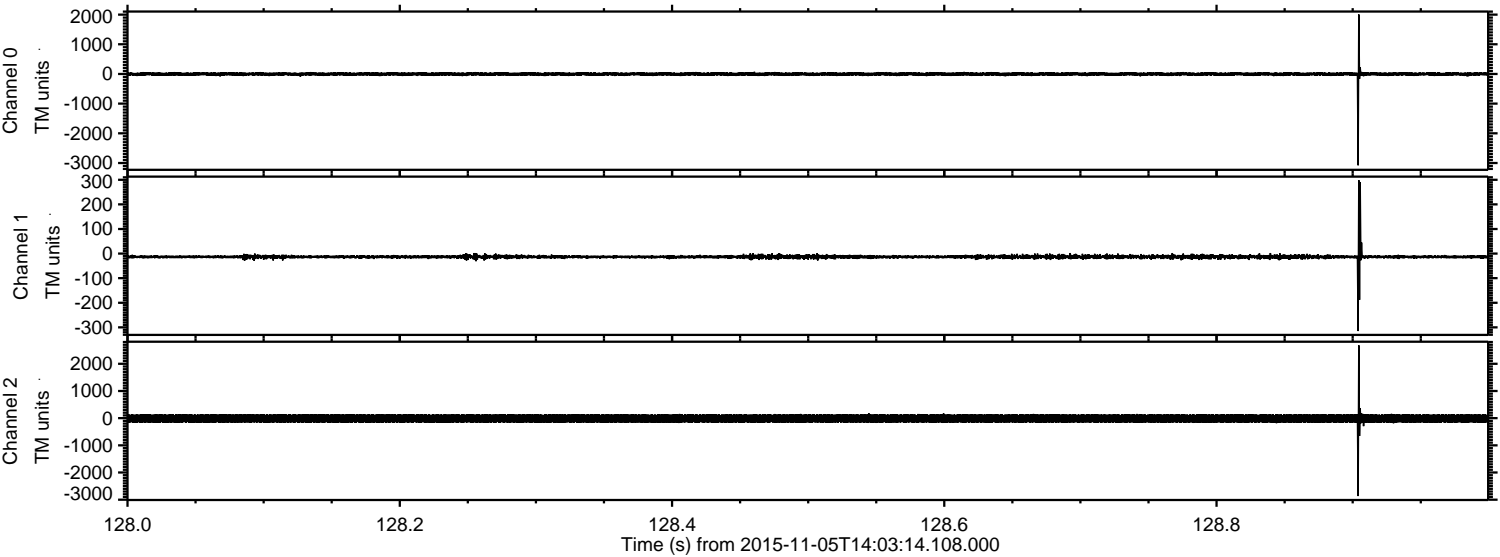
ELMAVAN 3D WAVEFORMS (Measured data sampled at 50 kHz) 51000 packets of 144 samples from 2015-11-05T14:03:14.108.000.

Processed Thu Nov 5 15:09:04 2015 by ELM ver.2012-10-06 from 001__elm20151105_140313__dat00.bin

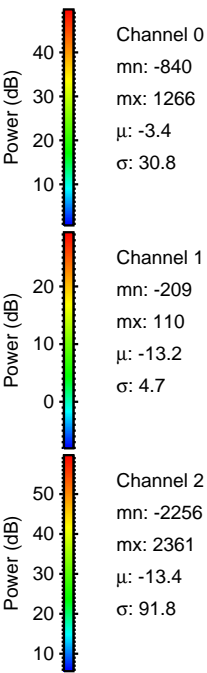
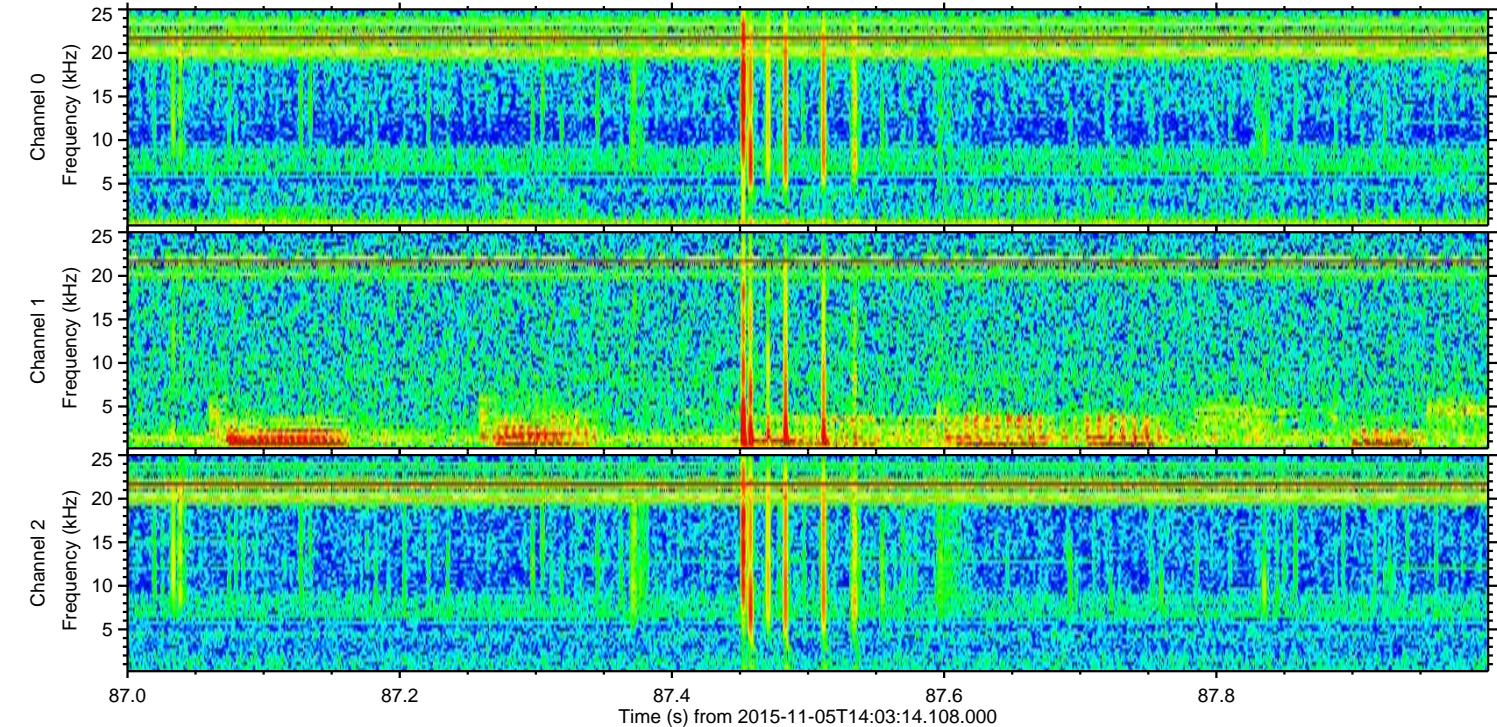
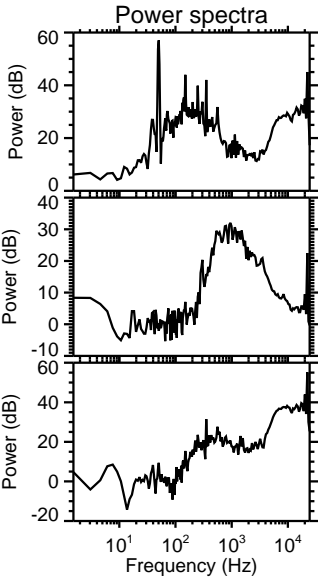
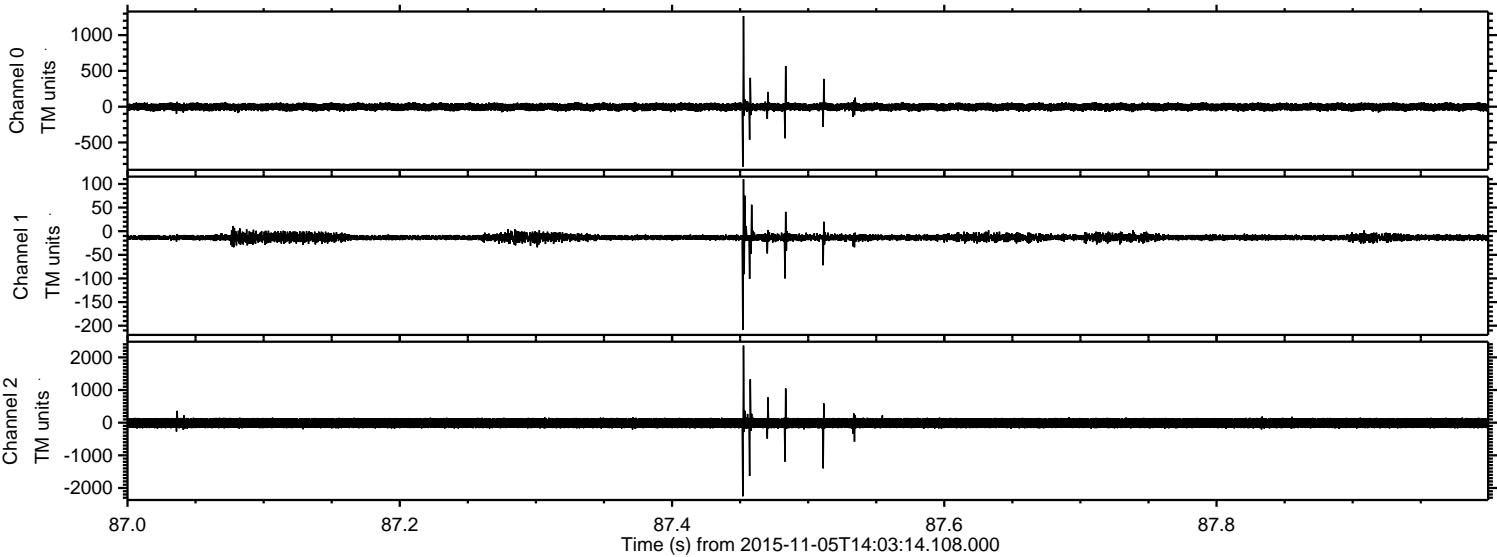


ELMAVAN 3D WAVEFORMS (Measured data sampled at 50 kHz) 51000 packets of 144 samples from 2015-11-05T14:03:14.108.000. Part 129/147

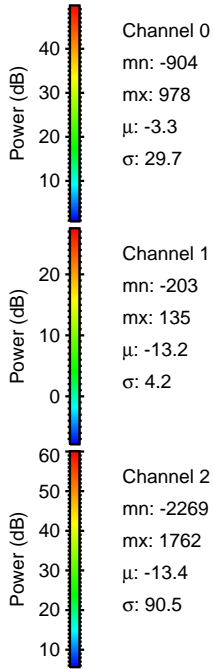
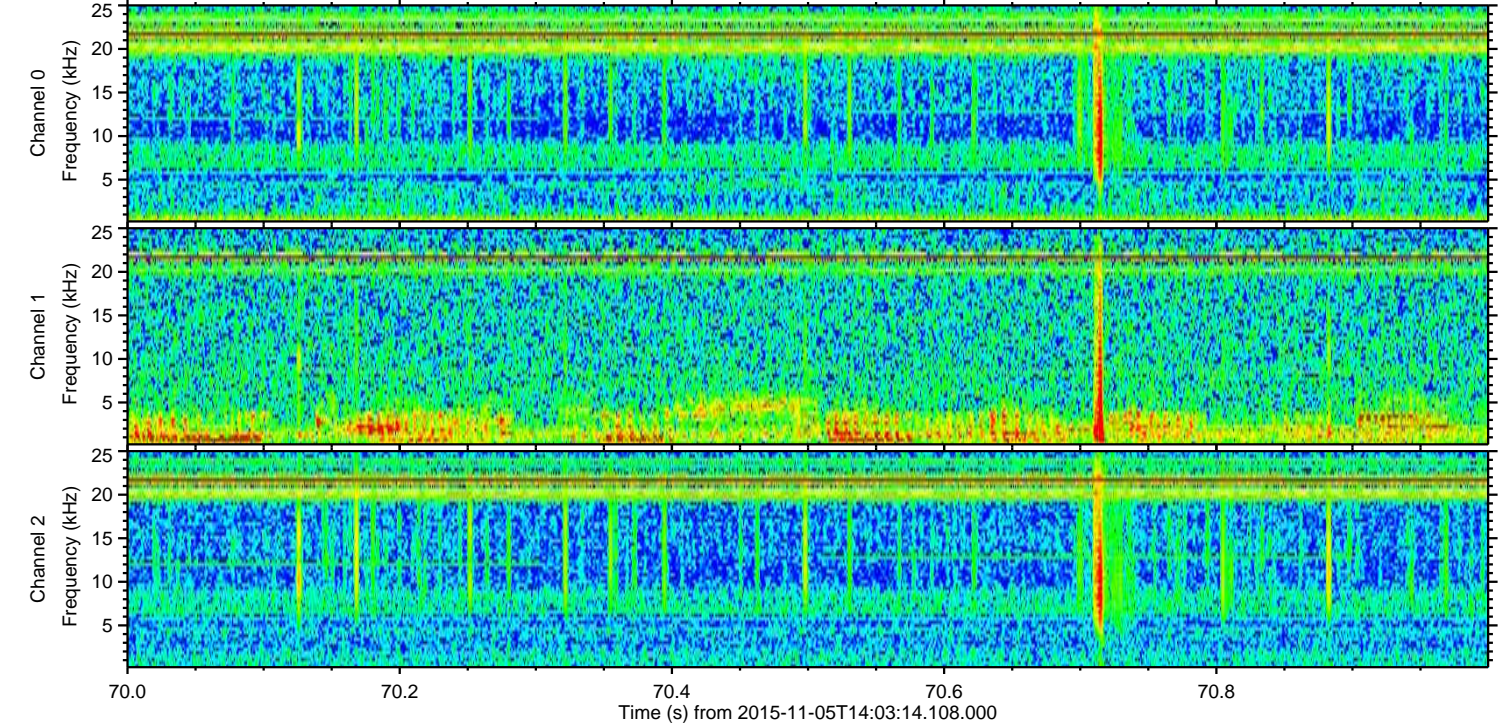
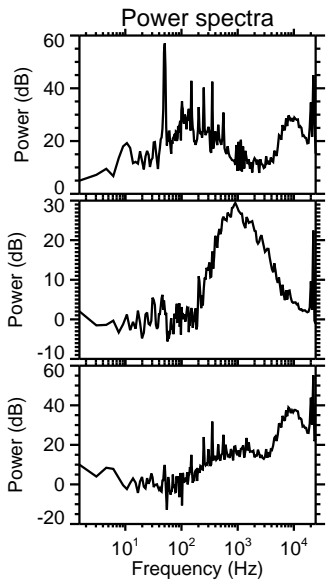
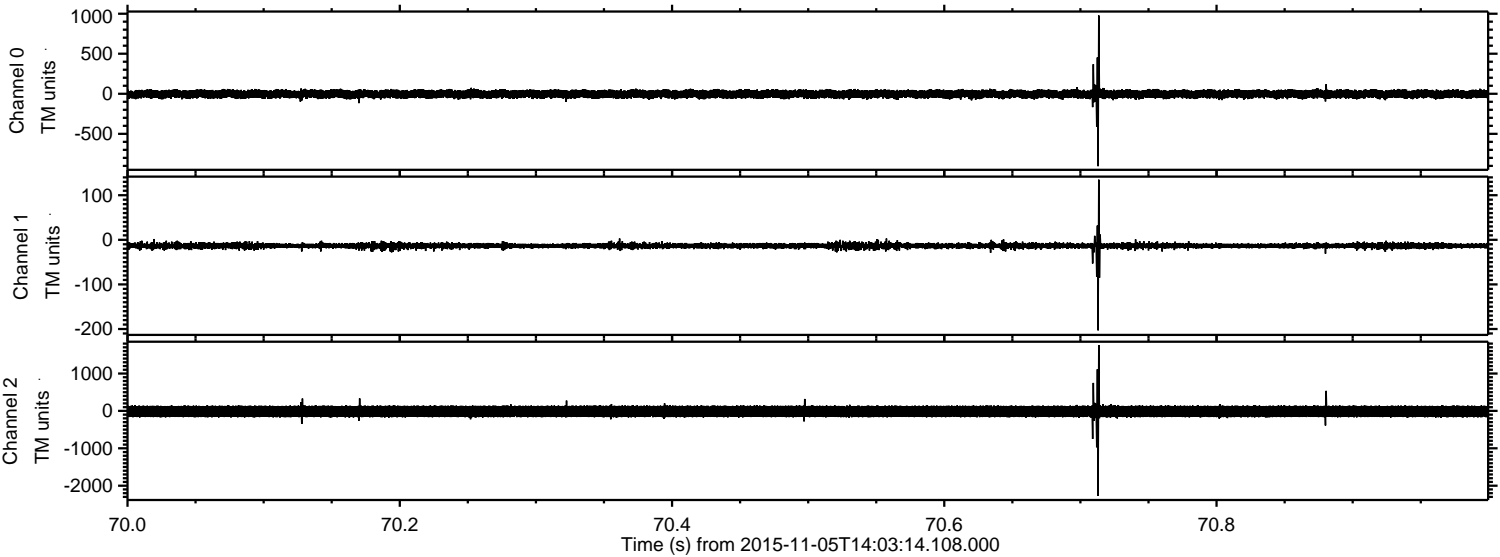
Processed Thu Nov 5 15:09:15 2015 by ELM ver.2012-10-06 from 001__elm20151105_140313__dat00.bin



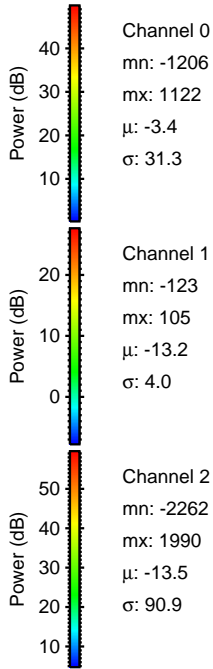
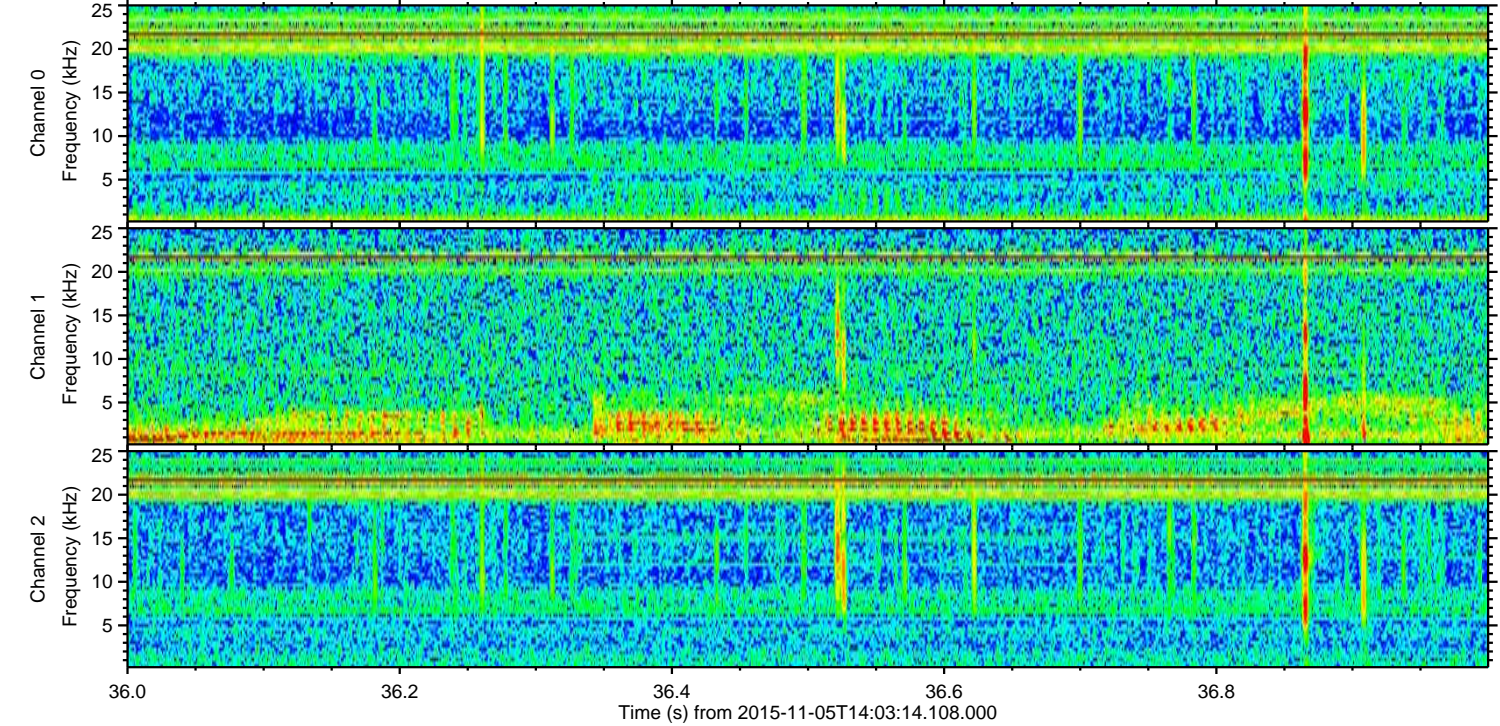
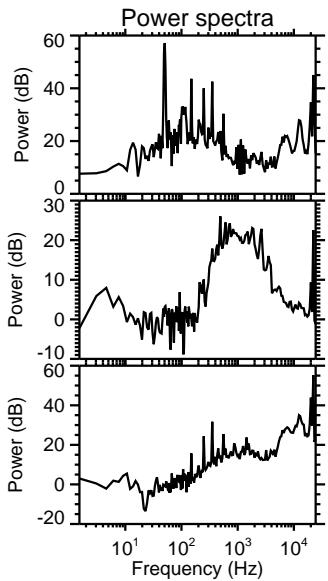
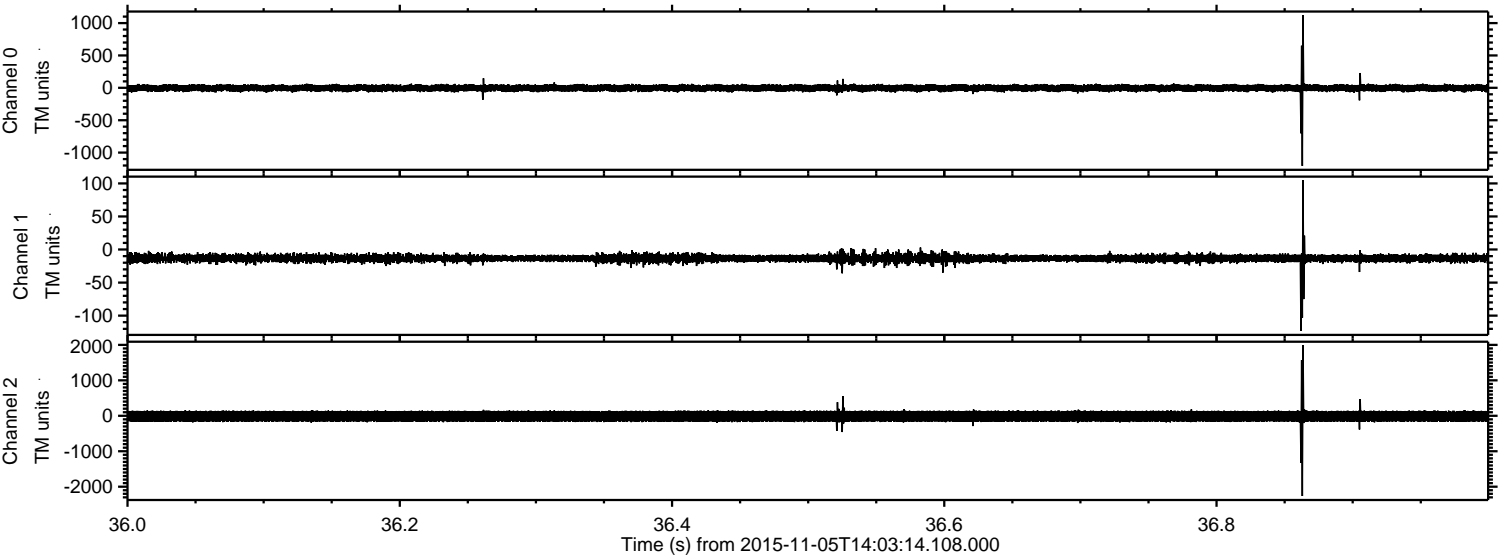
Processed Thu Nov 5 15:09:16 2015 by ELM ver.2012-10-06 from 001__elm20151105_140313__dat00.bin



Processed Thu Nov 5 15:09:17 2015 by ELM ver.2012-10-06 from 001__elm20151105_140313__dat00.bin

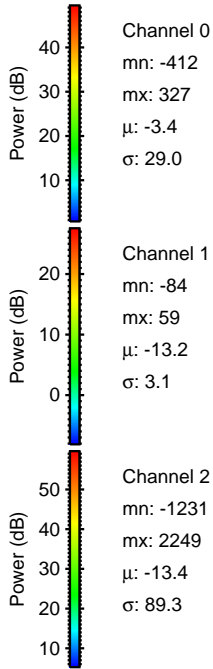
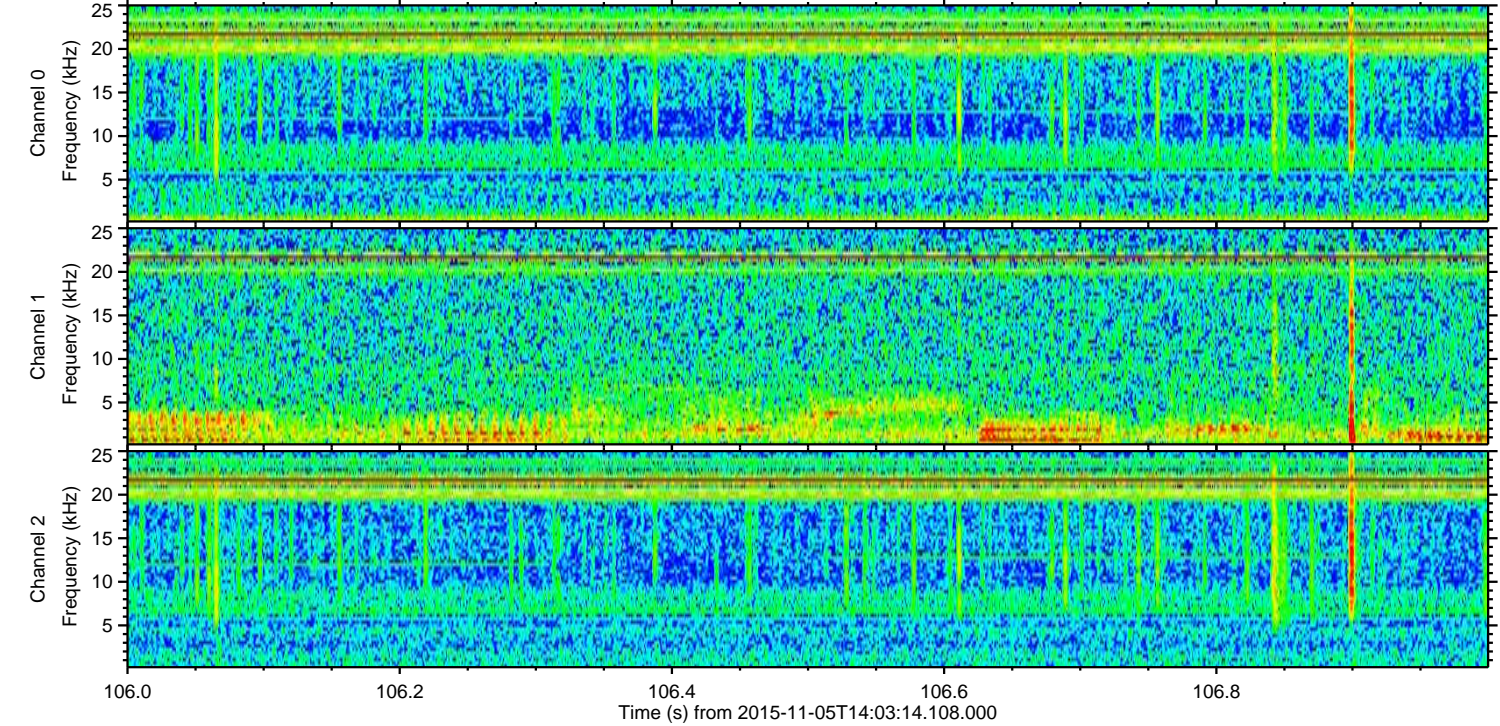
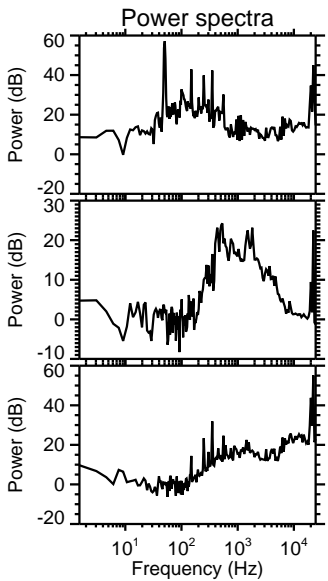
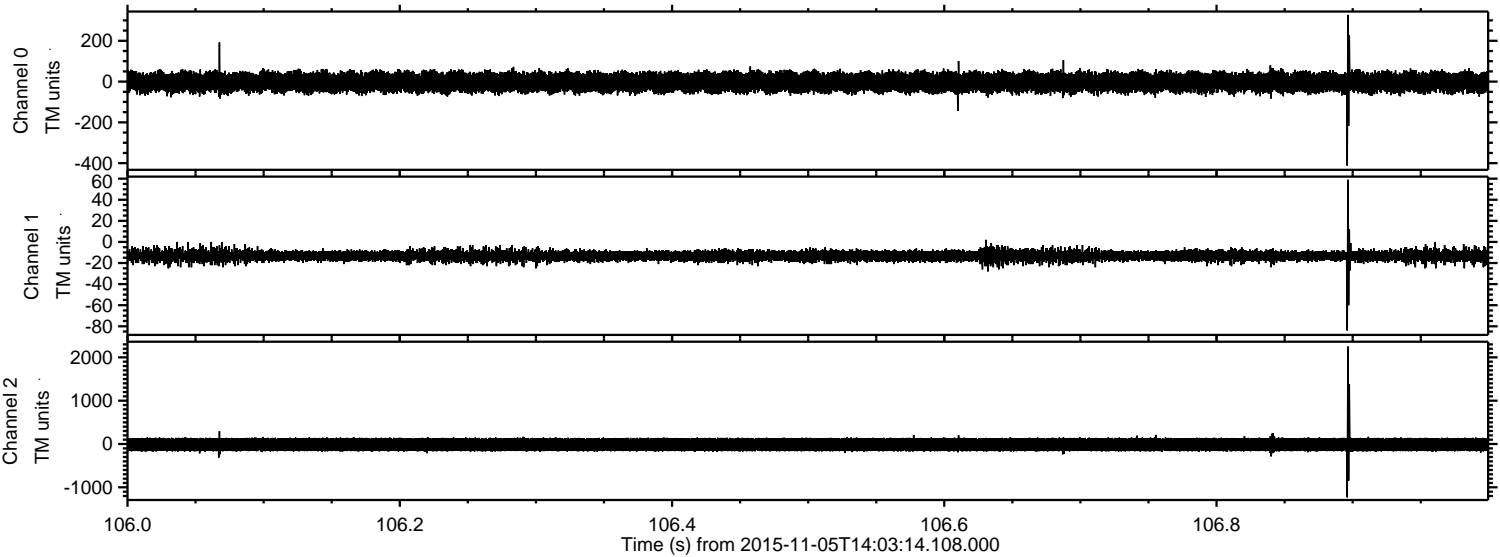


Processed Thu Nov 5 15:09:18 2015 by ELM ver.2012-10-06 from 001__elm20151105_140313__dat00.bin

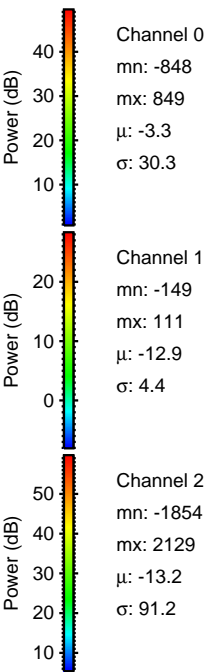
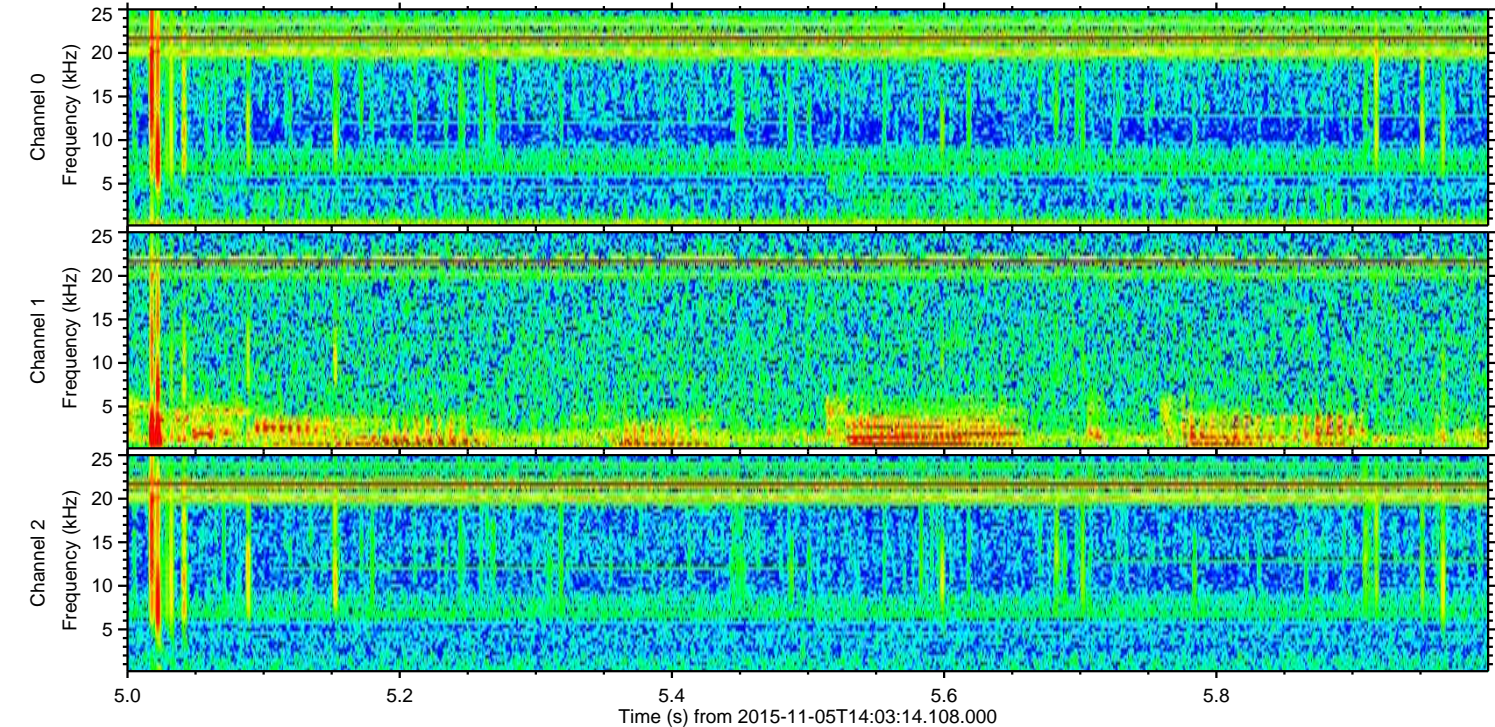
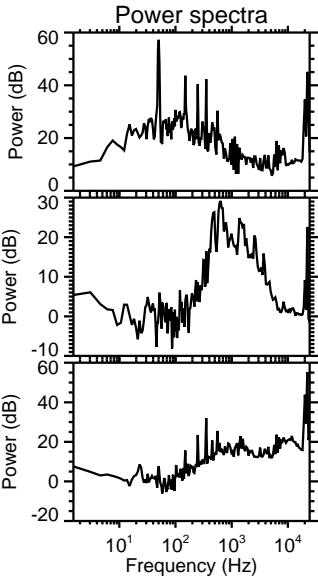
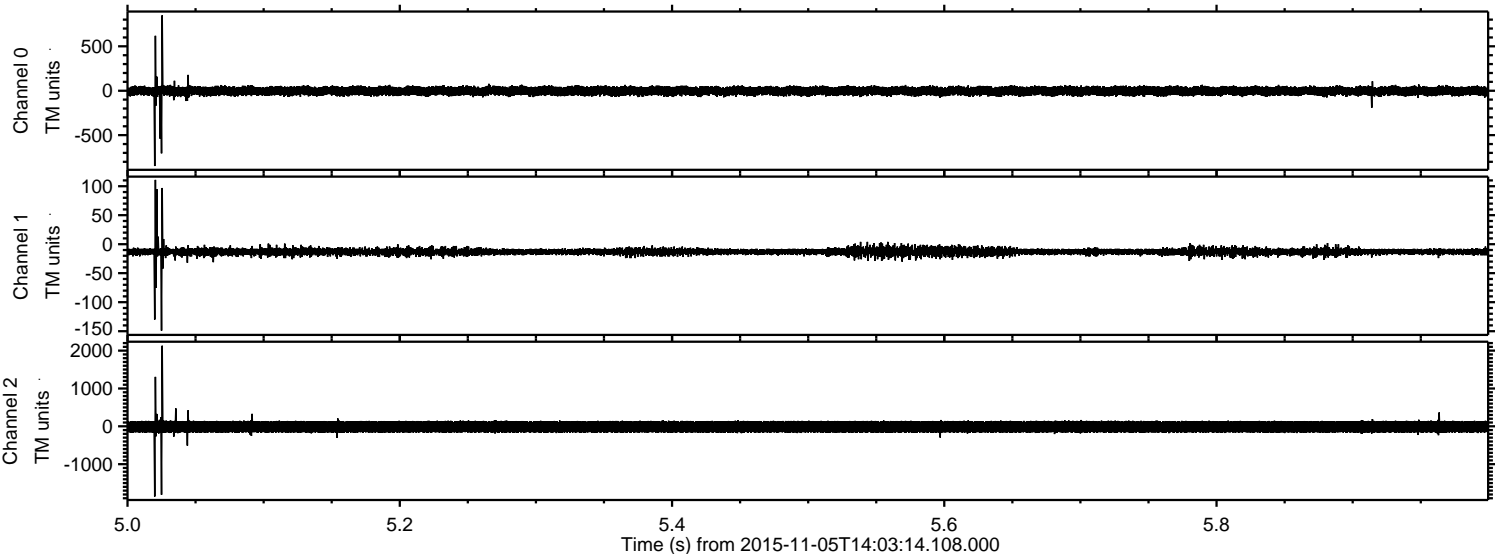


ELMAVAN 3D WAVEFORMS (Measured data sampled at 50 kHz) 51000 packets of 144 samples from 2015-11-05T14:03:14.108.000. Part 107/147

Processed Thu Nov 5 15:09:19 2015 by ELM ver.2012-10-06 from 001__elm20151105_140313__dat00.bin

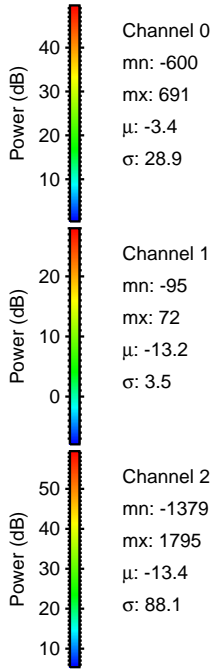
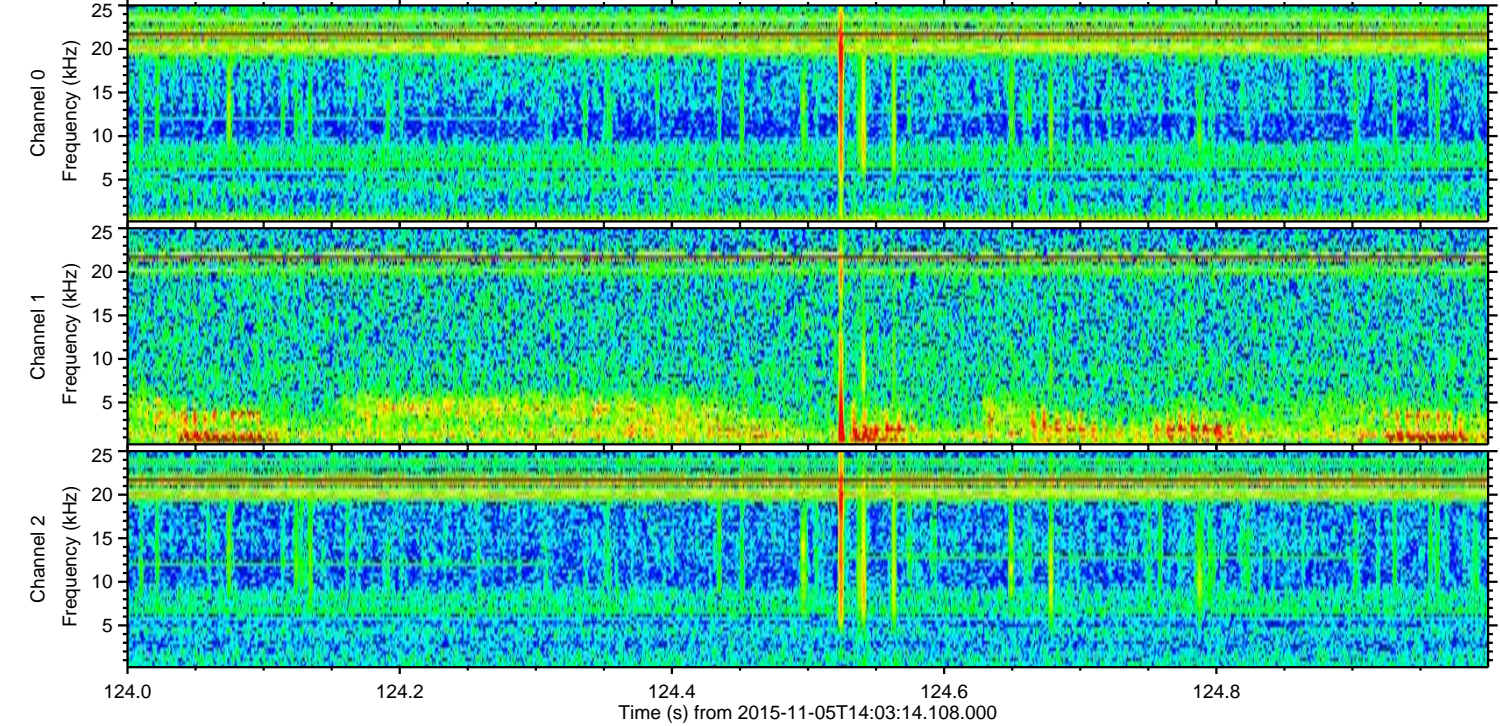
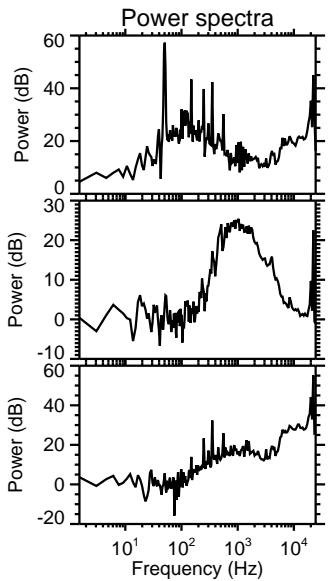
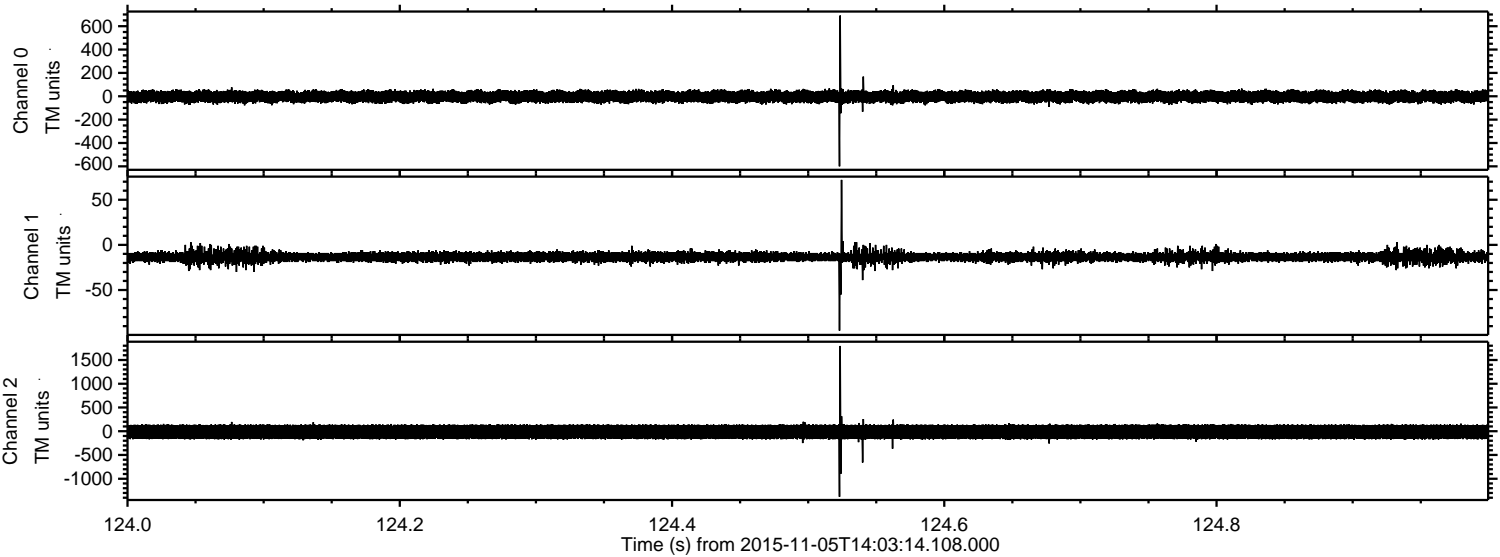


Processed Thu Nov 5 15:09:20 2015 by ELM ver.2012-10-06 from 001__elm20151105_140313__dat00.bin

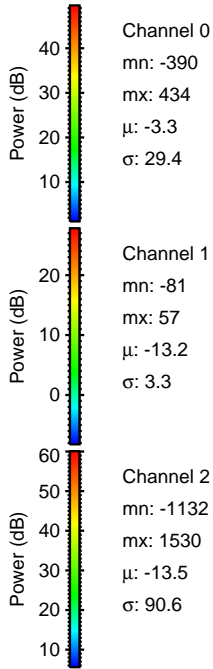
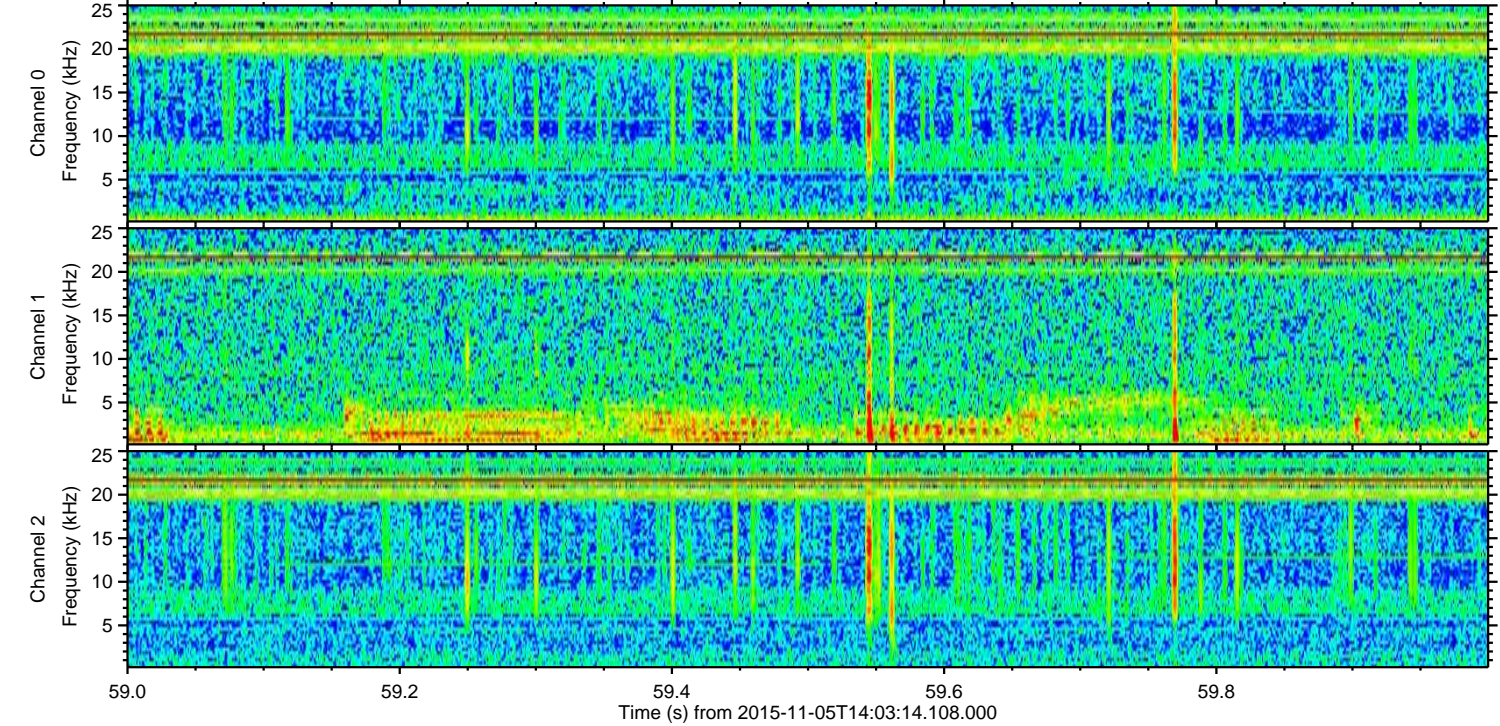
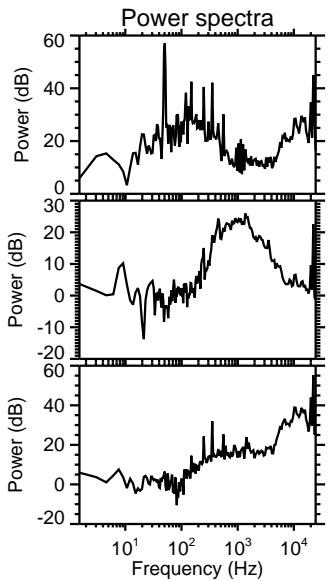
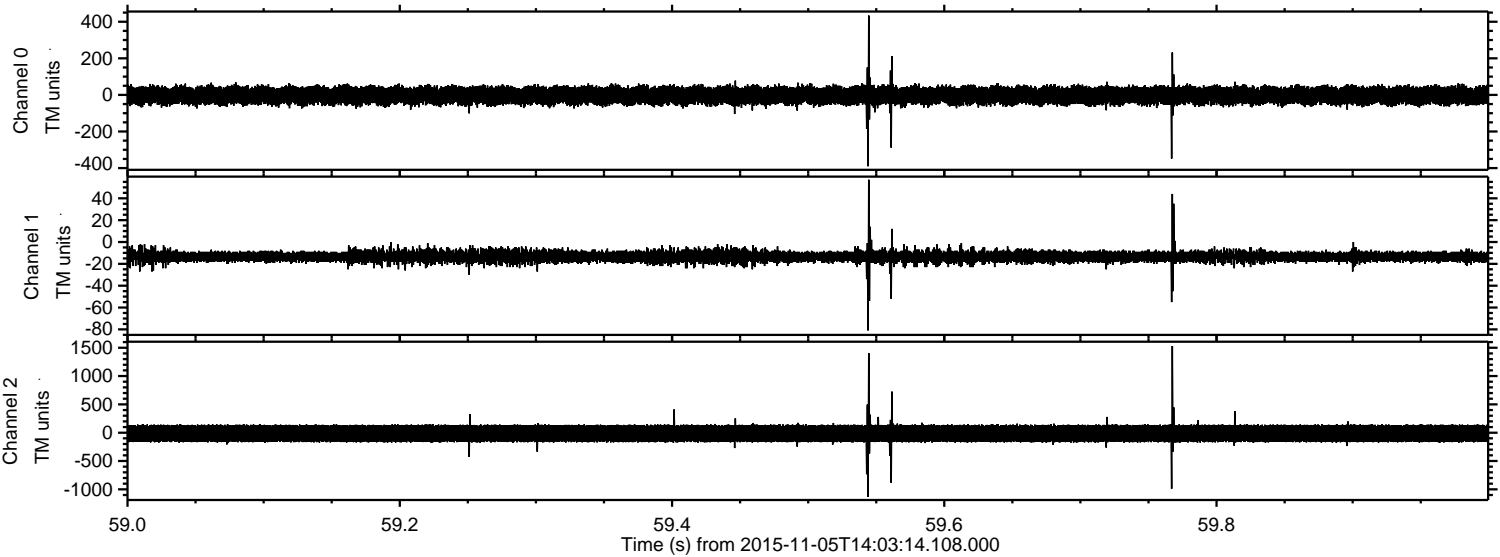


ELMAVAN 3D WAVEFORMS (Measured data sampled at 50 kHz) 51000 packets of 144 samples from 2015-11-05T14:03:14.108.000. Part 125/147

Processed Thu Nov 5 15:09:21 2015 by ELM ver.2012-10-06 from 001__elm20151105_140313__dat00.bin



Processed Thu Nov 5 15:09:22 2015 by ELM ver.2012-10-06 from 001__elm20151105_140313__dat00.bin

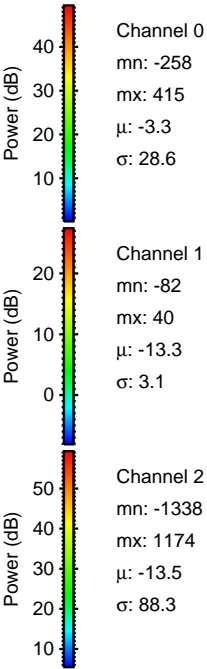
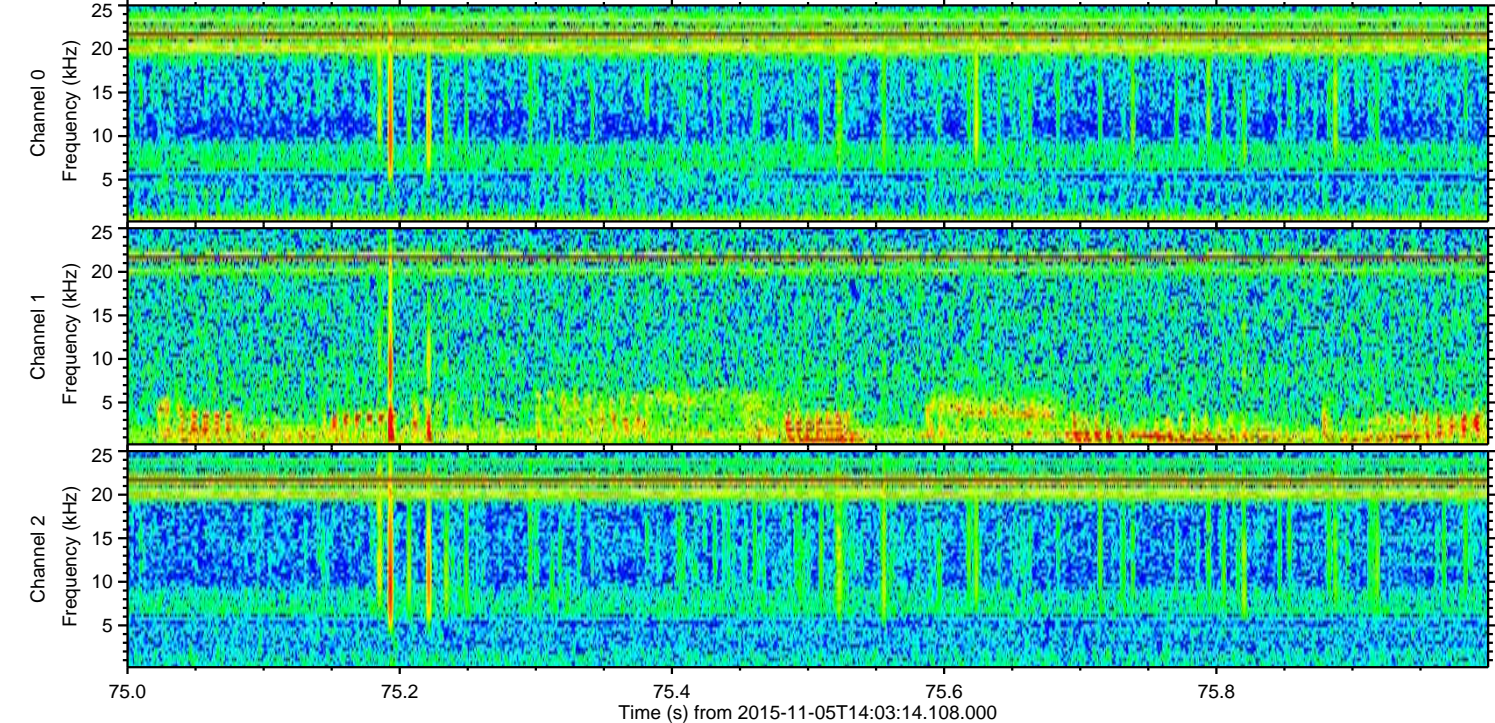
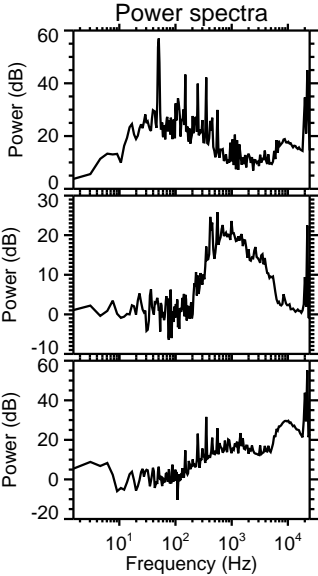
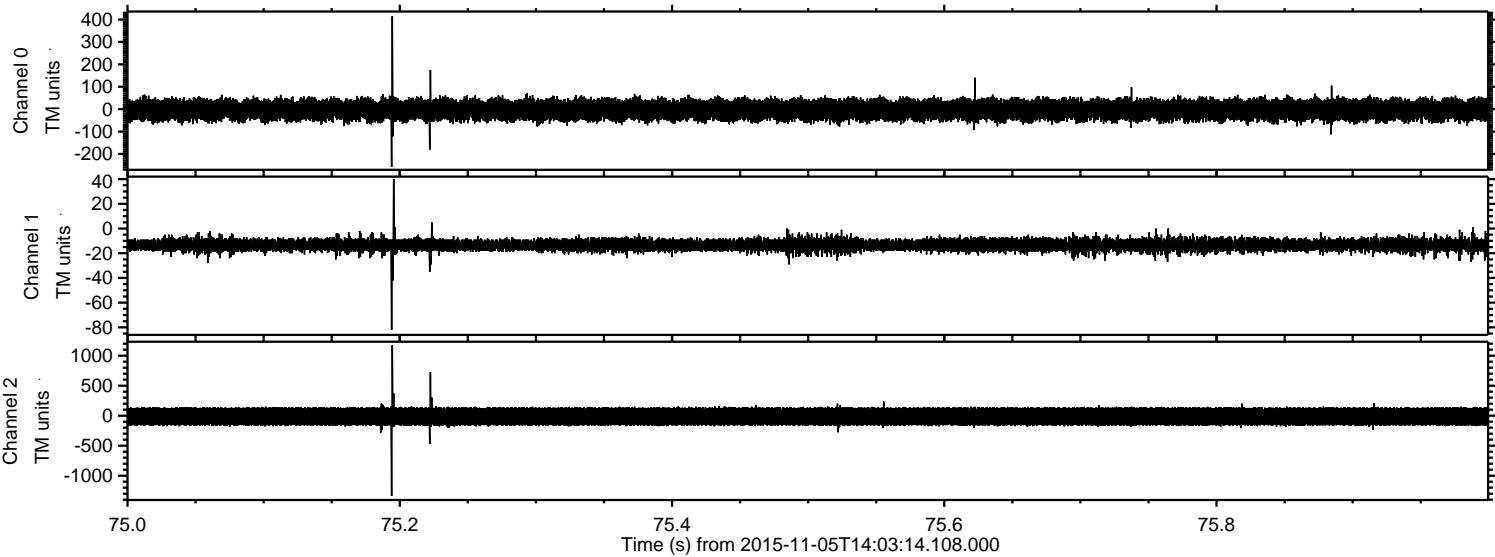


Channel 0
mn: -390
mx: 434
 μ : -3.3
 σ : 29.4

Channel 1
mn: -81
mx: 57
 μ : -13.2
 σ : 3.3

Channel 2
mn: -1132
mx: 1530
 μ : -13.5
 σ : 90.6

Processed Thu Nov 5 15:09:23 2015 by ELM ver.2012-10-06 from 001__elm20151105_140313__dat00.bin



Processed Thu Nov 5 15:09:24 2015 by ELM ver.2012-10-06 from 001__elm20151105_140313__dat00.bin

