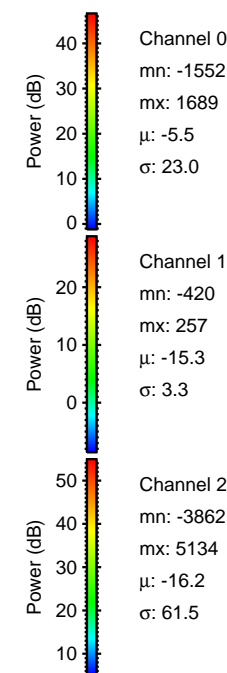
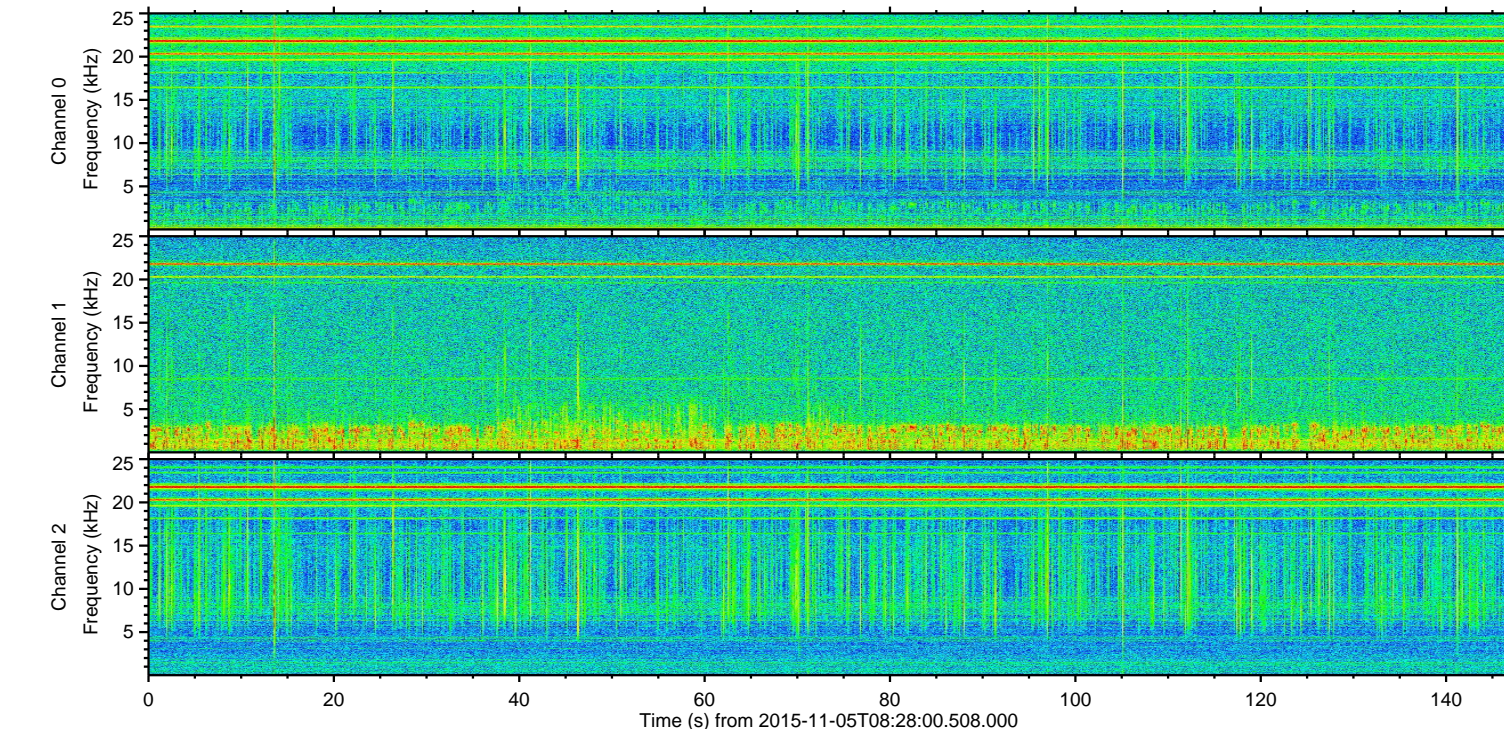
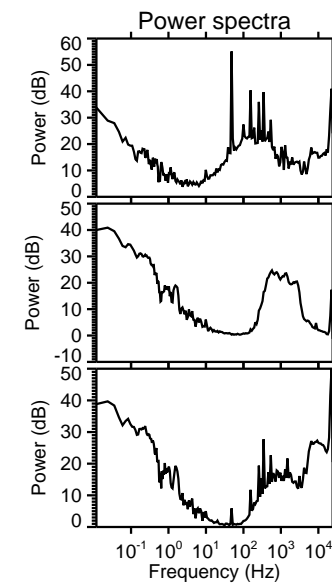
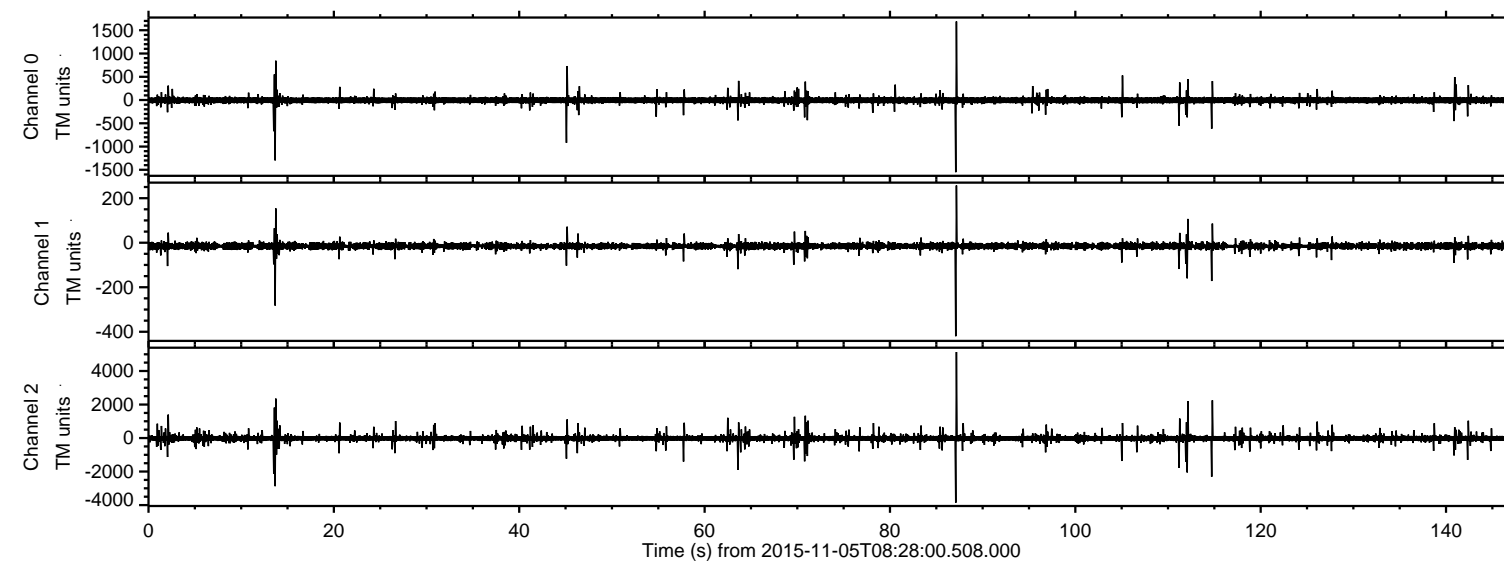
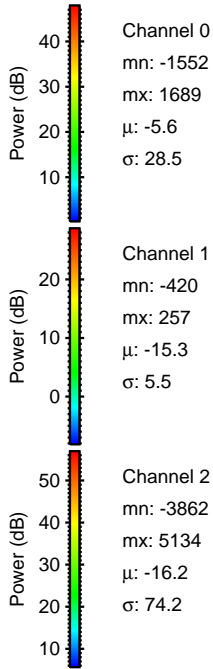
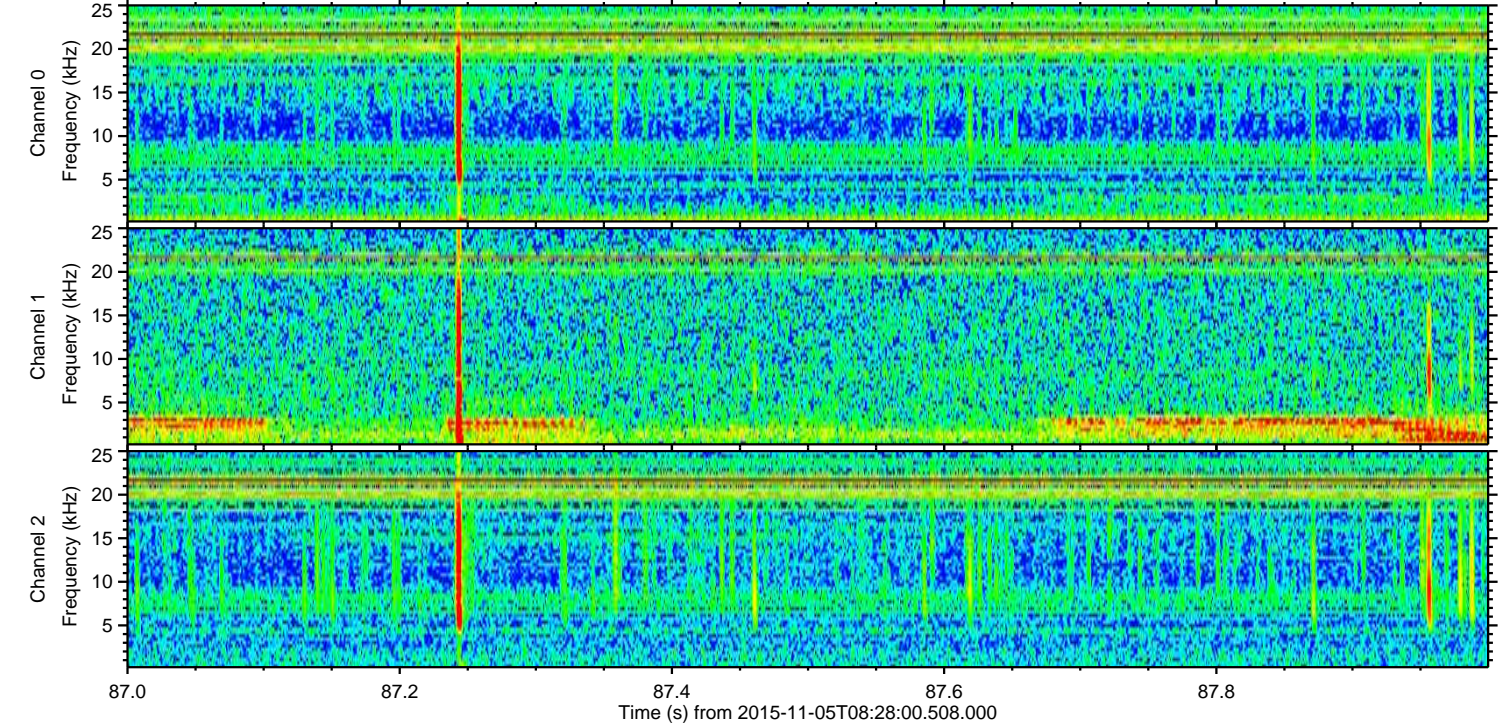
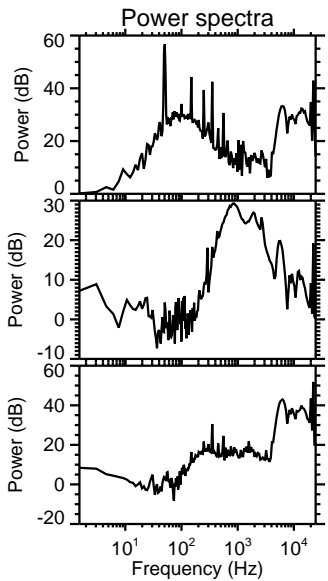
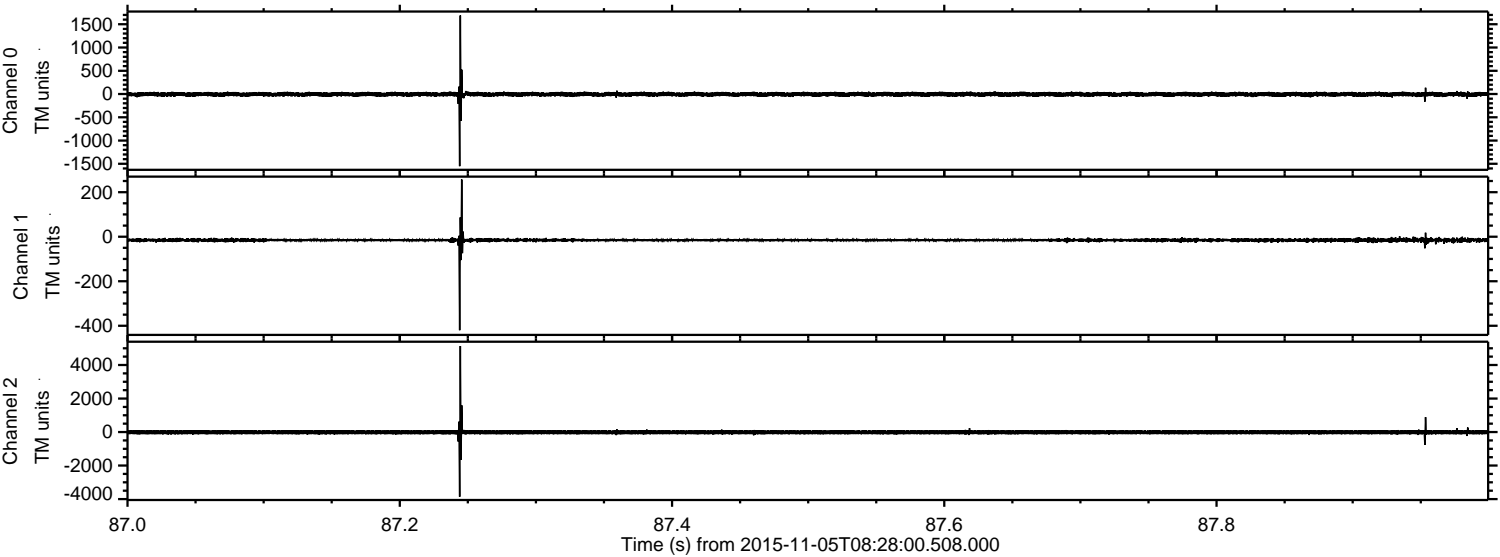


ELMAVAN 3D WAVEFORMS (Measured data sampled at 50 kHz) 51000 packets of 144 samples from 2015-11-05T08:28:00.508.000.

Processed Thu Nov 5 09:35:14 2015 by ELM ver.2012-10-06 from 001__elm20151105_082759__dat00.bin

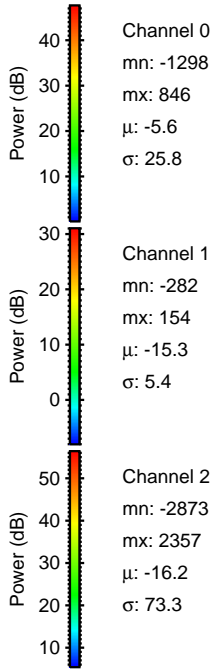
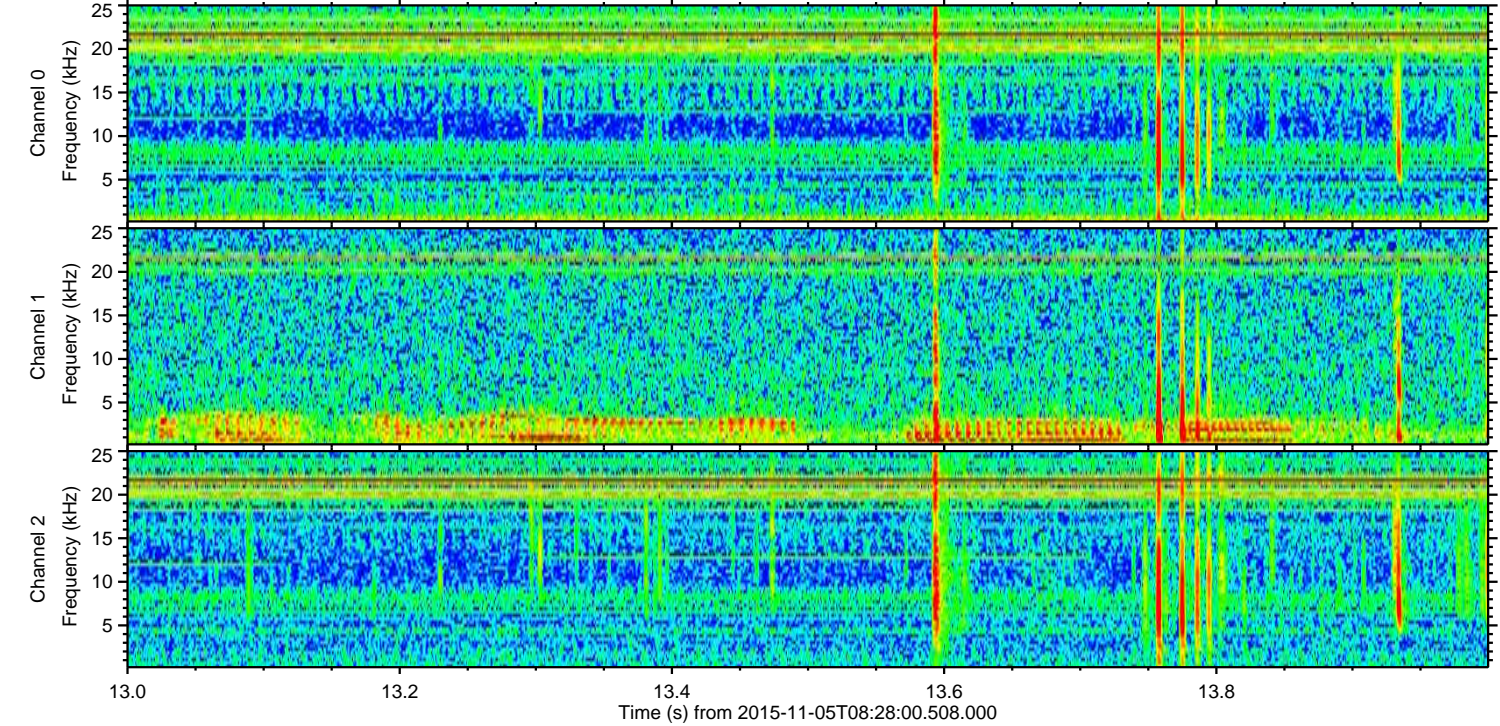
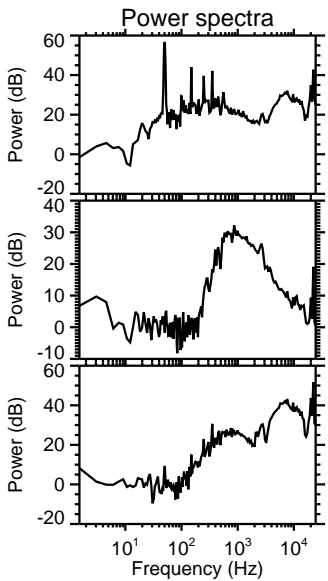
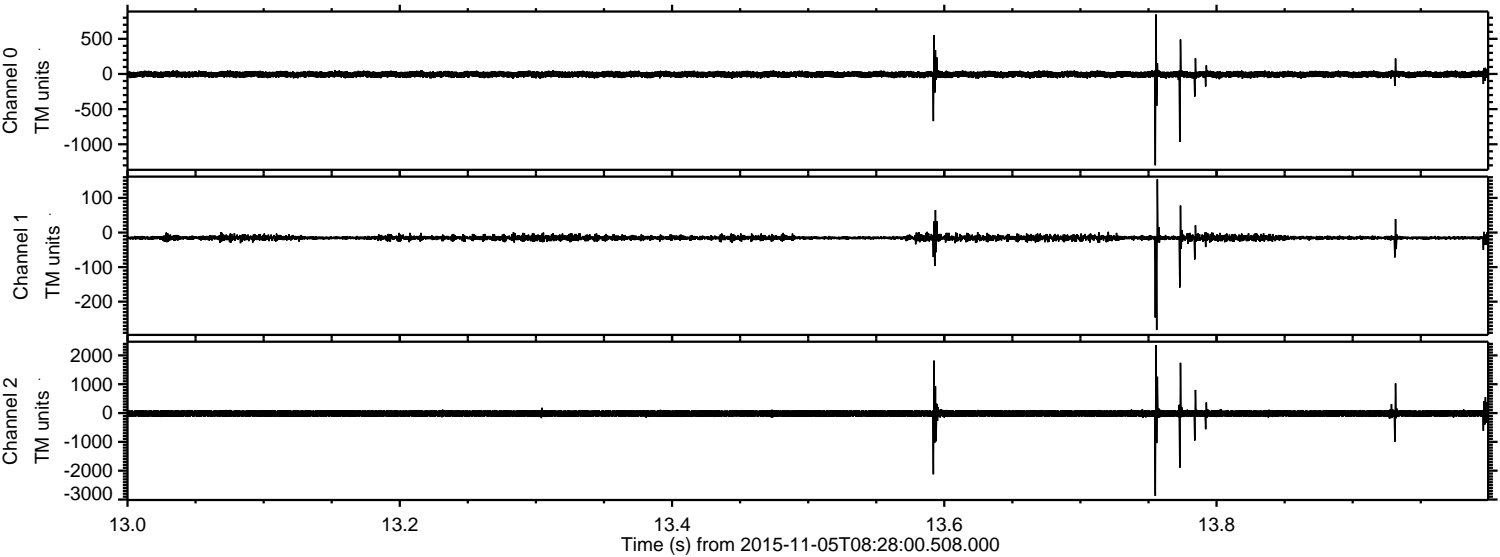


Processed Thu Nov 5 09:35:25 2015 by ELM ver.2012-10-06 from 001__elm20151105_082759__dat00.bin



ELMAVAN 3D WAVEFORMS (Measured data sampled at 50 kHz) 51000 packets of 144 samples from 2015-11-05T08:28:00.508.000. Part 14/147

Processed Thu Nov 5 09:35:26 2015 by ELM ver.2012-10-06 from 001__elm20151105_082759__dat00.bin



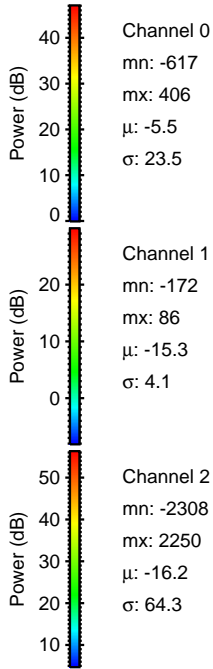
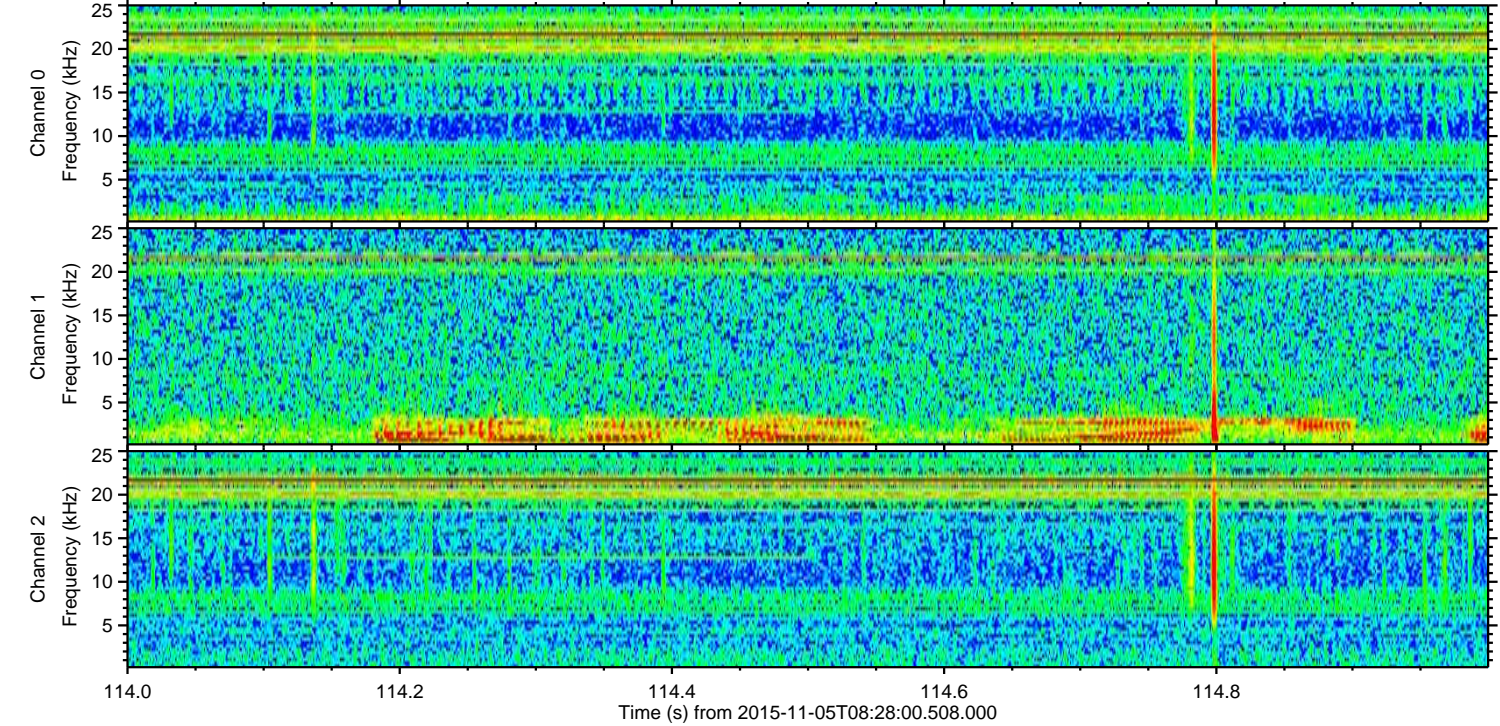
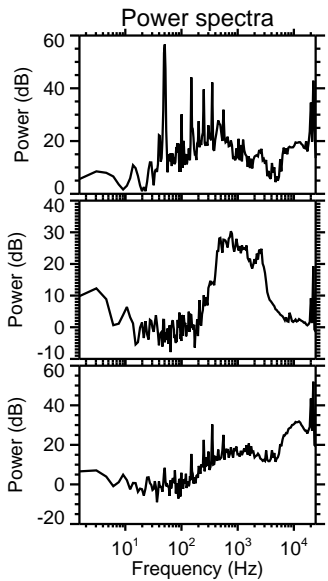
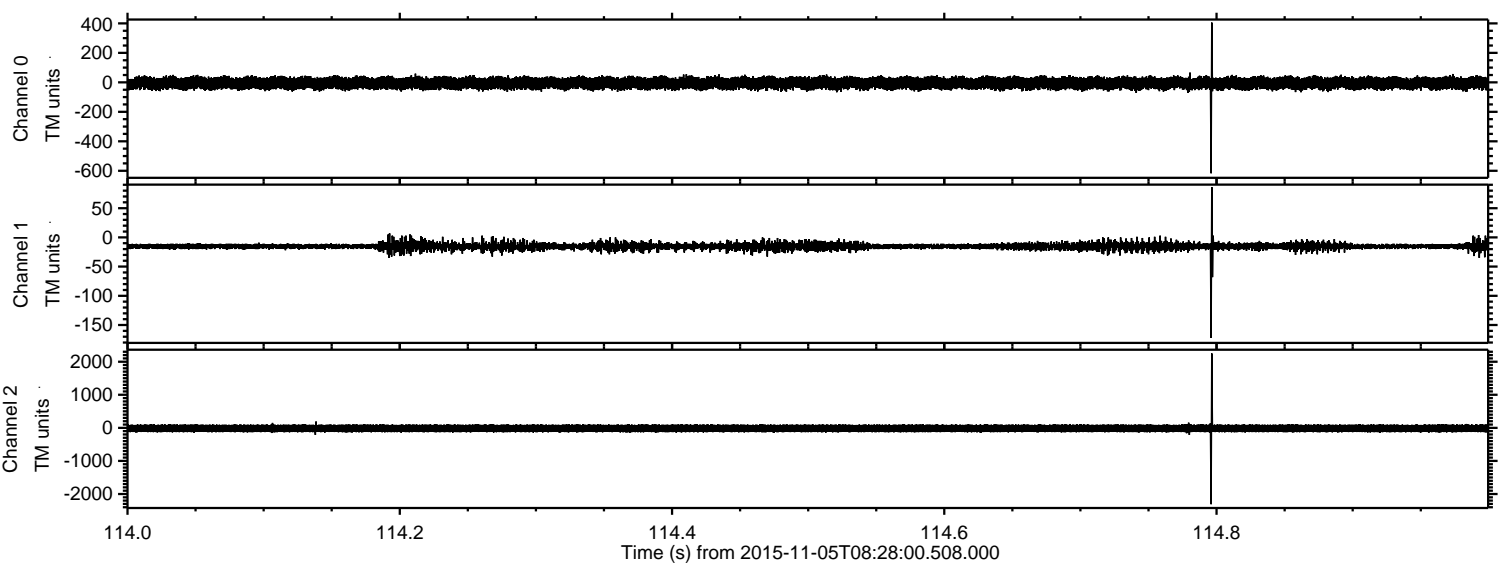
Channel 0
mn: -1298
mx: 846
 μ : -5.6
 σ : 25.8

Channel 1
mn: -282
mx: 154
 μ : -15.3
 σ : 5.4

Channel 2
mn: -2873
mx: 2357
 μ : -16.2
 σ : 73.3

ELMAVAN 3D WAVEFORMS (Measured data sampled at 50 kHz) 51000 packets of 144 samples from 2015-11-05T08:28:00.508.000. Part 115/147

Processed Thu Nov 5 09:35:27 2015 by ELM ver.2012-10-06 from 001__elm20151105_082759__dat00.bin



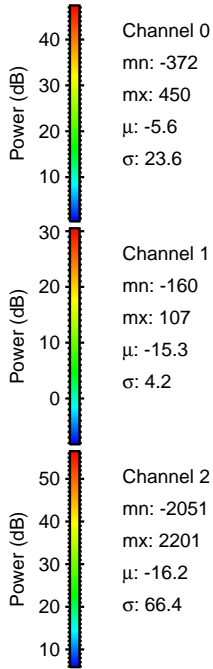
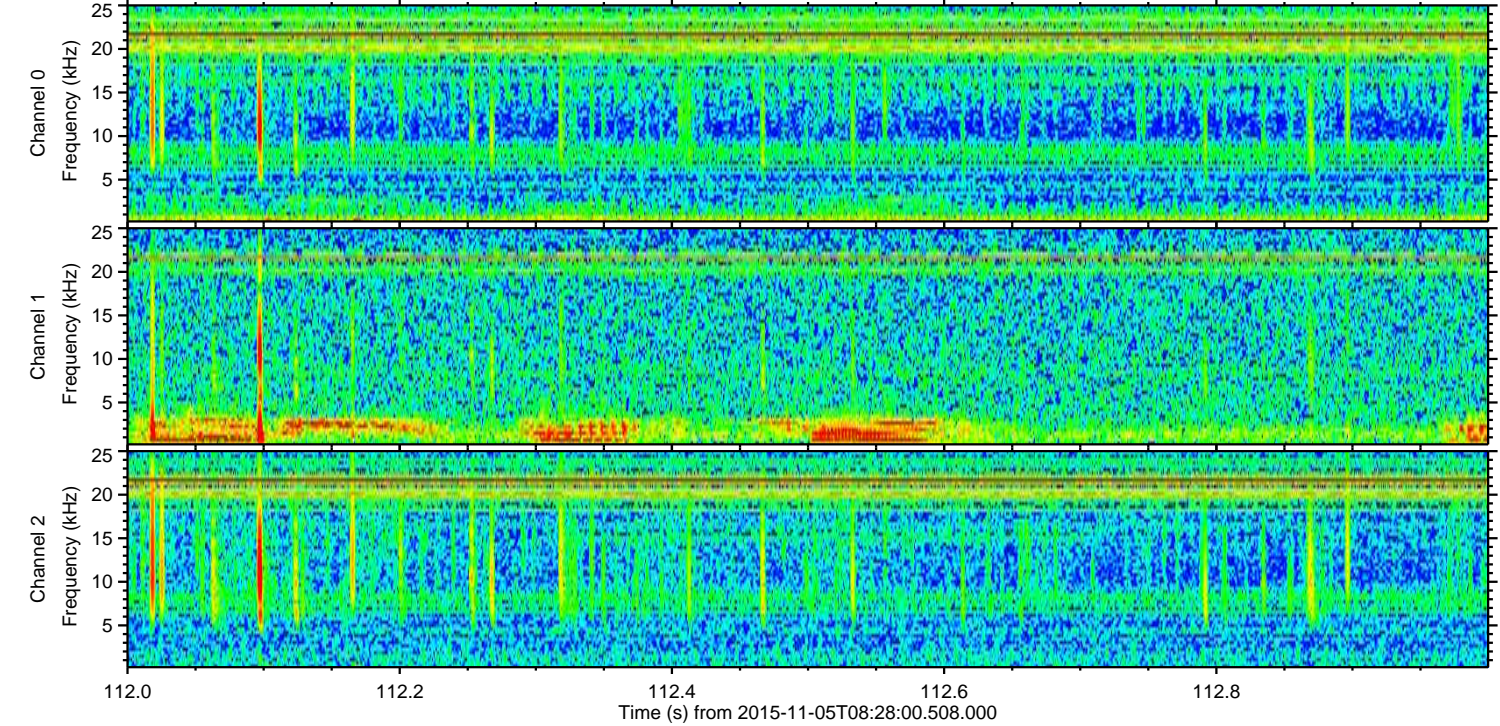
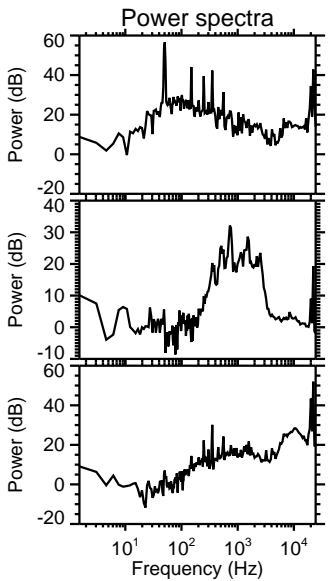
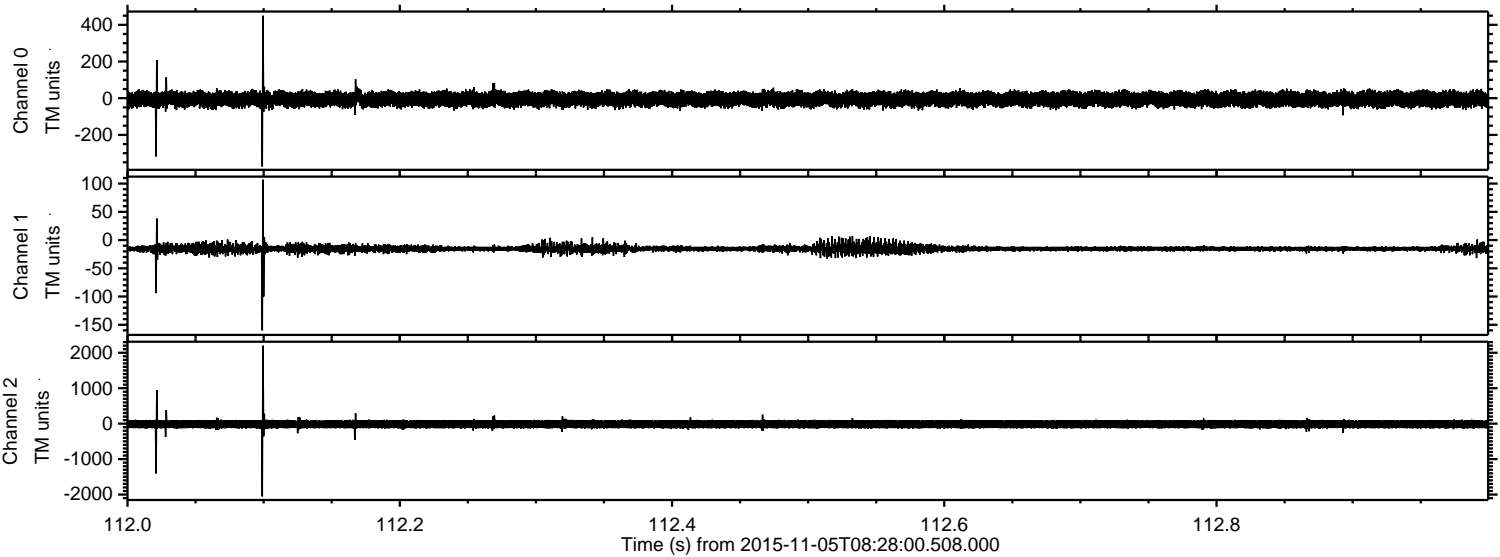
Channel 0
mn: -617
mx: 406
 μ : -5.5
 σ : 23.5

Channel 1
mn: -172
mx: 86
 μ : -15.3
 σ : 4.1

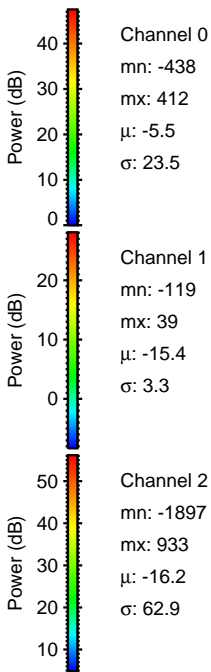
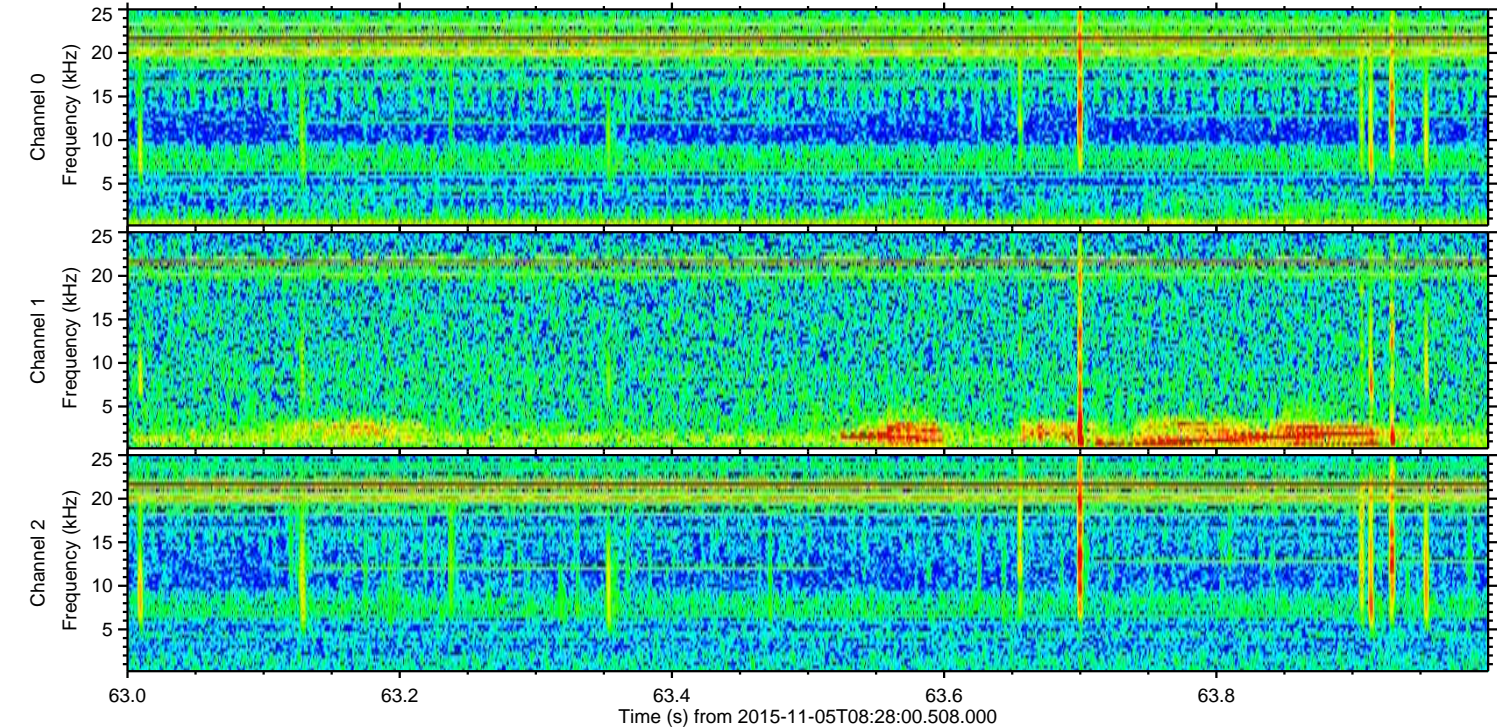
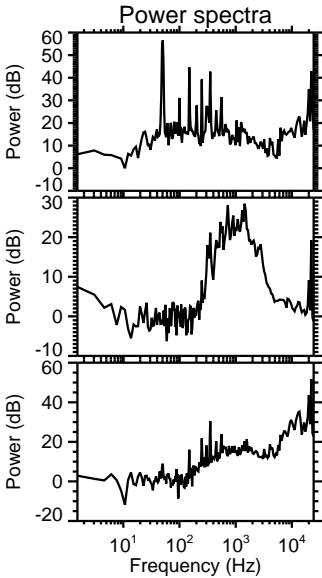
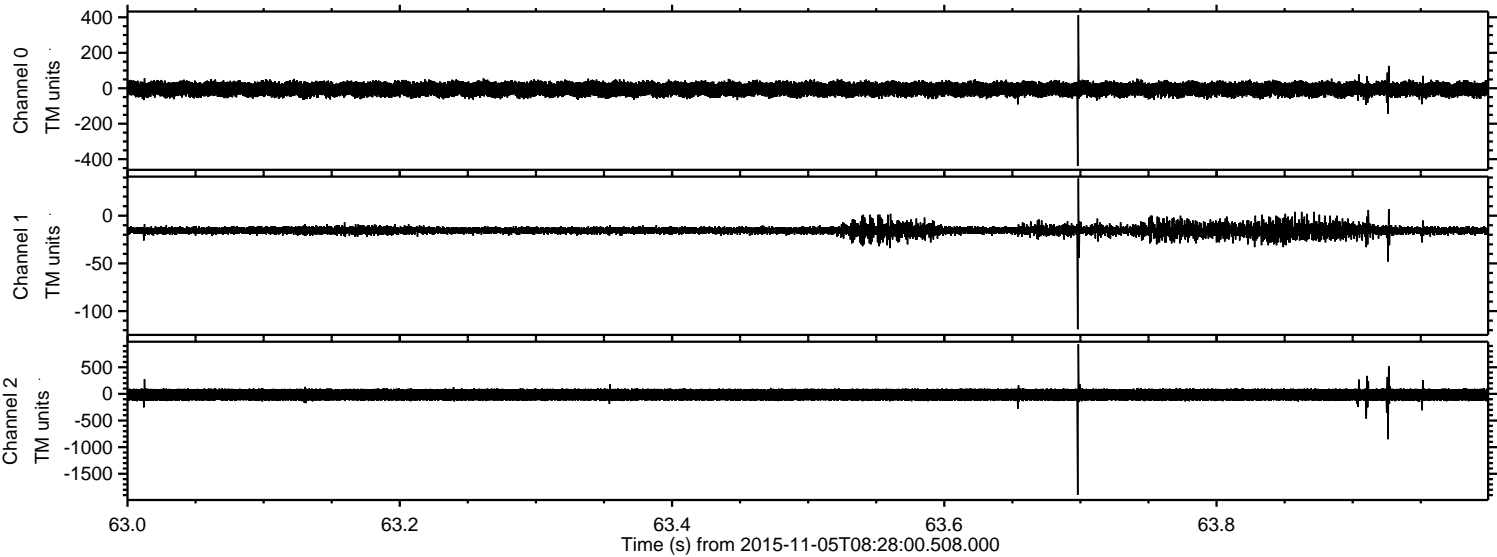
Channel 2
mn: -2308
mx: 2250
 μ : -16.2
 σ : 64.3

ELMAVAN 3D WAVEFORMS (Measured data sampled at 50 kHz) 51000 packets of 144 samples from 2015-11-05T08:28:00.508.000. Part 113/147

Processed Thu Nov 5 09:35:28 2015 by ELM ver.2012-10-06 from 001__elm20151105_082759__dat00.bin

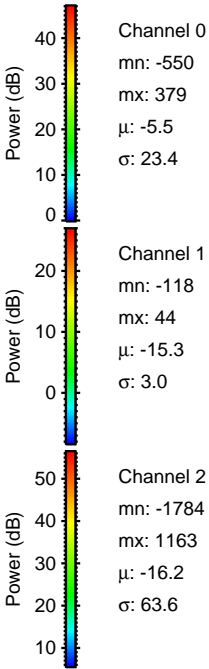
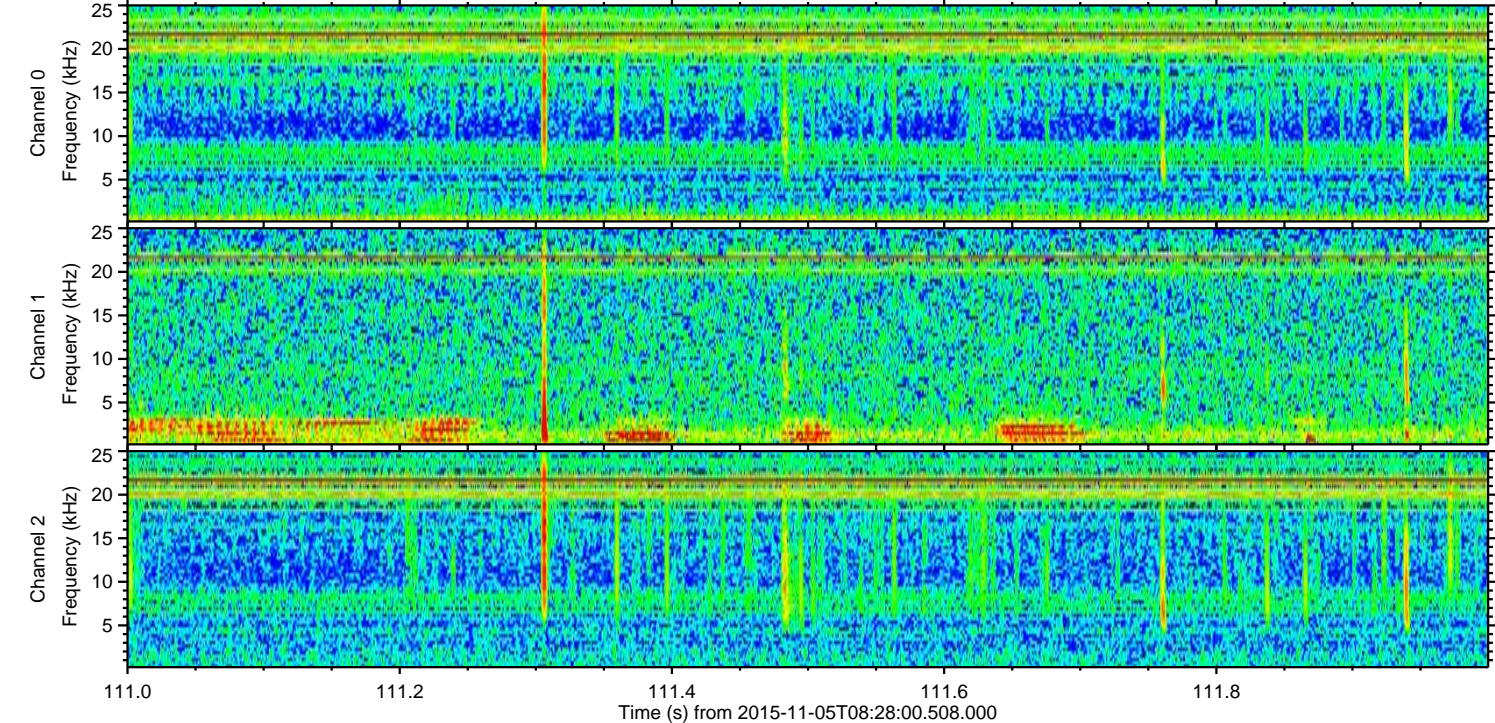
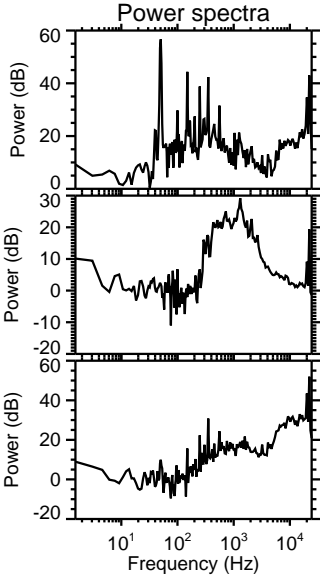
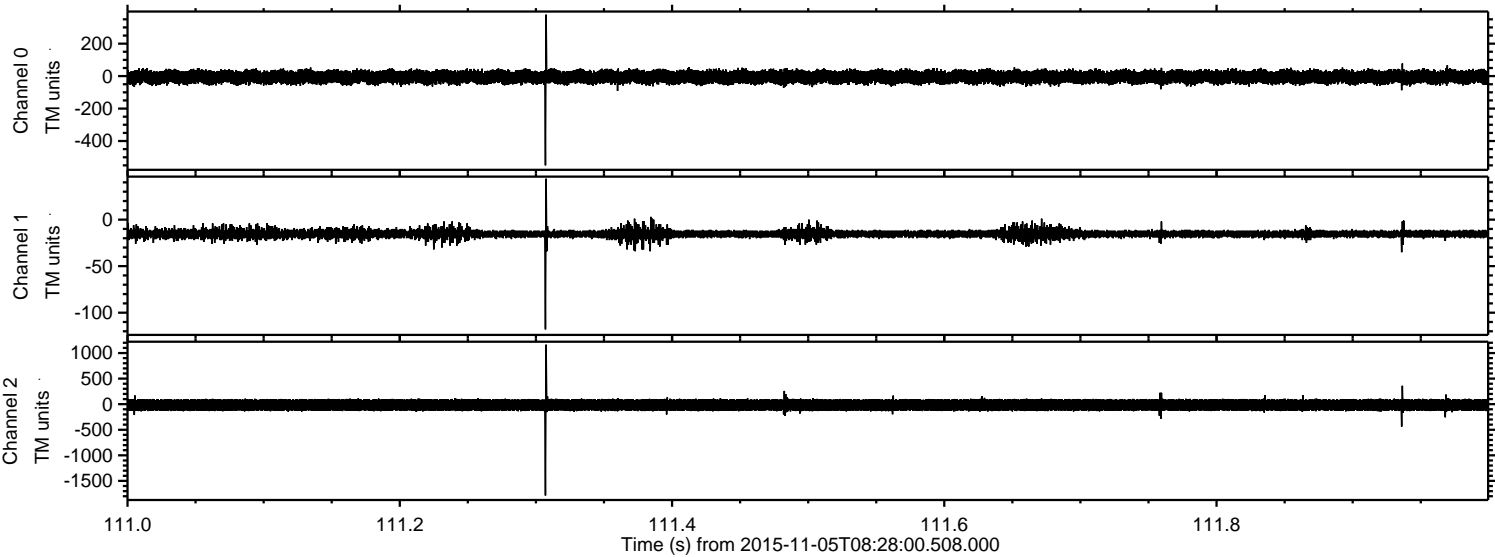


Processed Thu Nov 5 09:35:29 2015 by ELM ver.2012-10-06 from 001__elm20151105_082759__dat00.bin

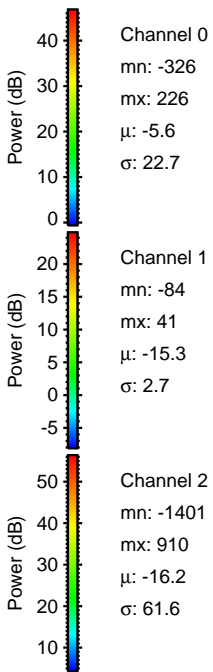
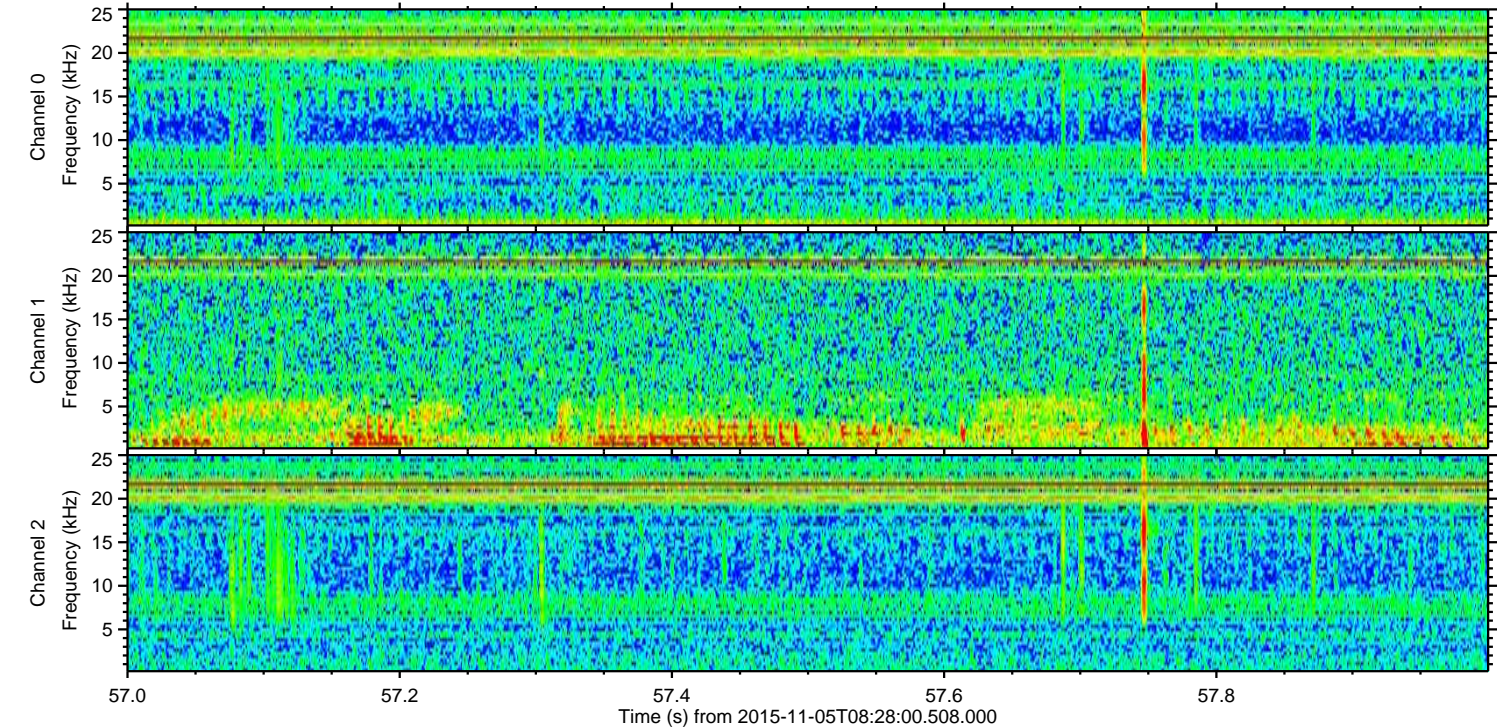
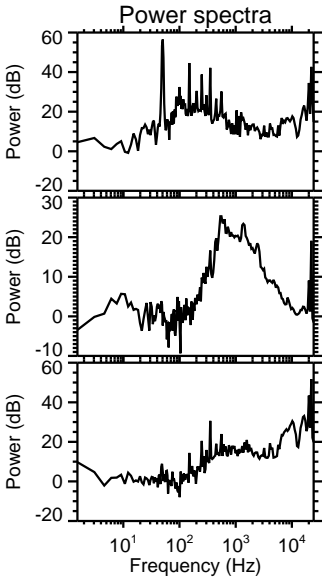
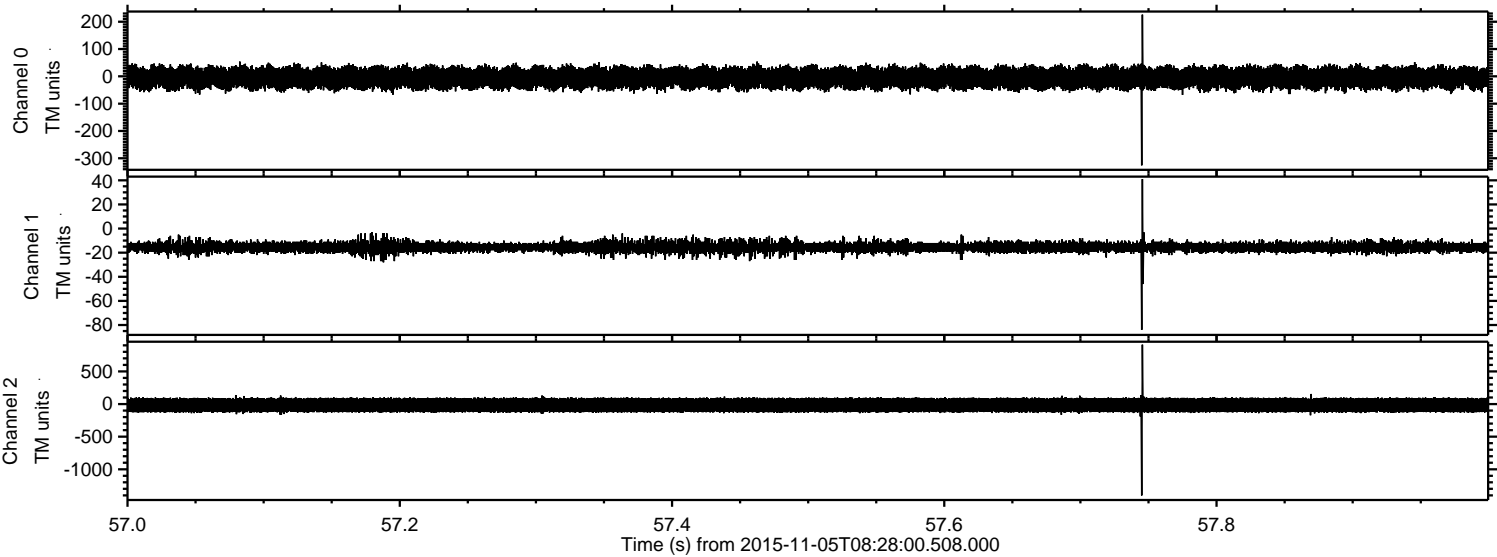


ELMAVAN 3D WAVEFORMS (Measured data sampled at 50 kHz) 51000 packets of 144 samples from 2015-11-05T08:28:00.508.000. Part 112/147

Processed Thu Nov 5 09:35:30 2015 by ELM ver.2012-10-06 from 001__elm20151105_082759__dat00.bin



Processed Thu Nov 5 09:35:31 2015 by ELM ver.2012-10-06 from 001__elm20151105_082759__dat00.bin



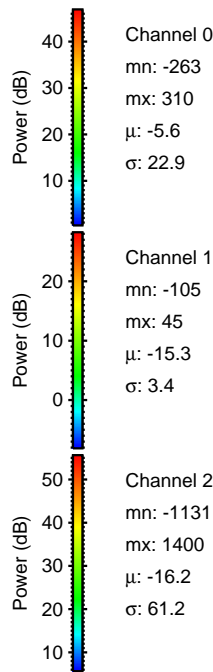
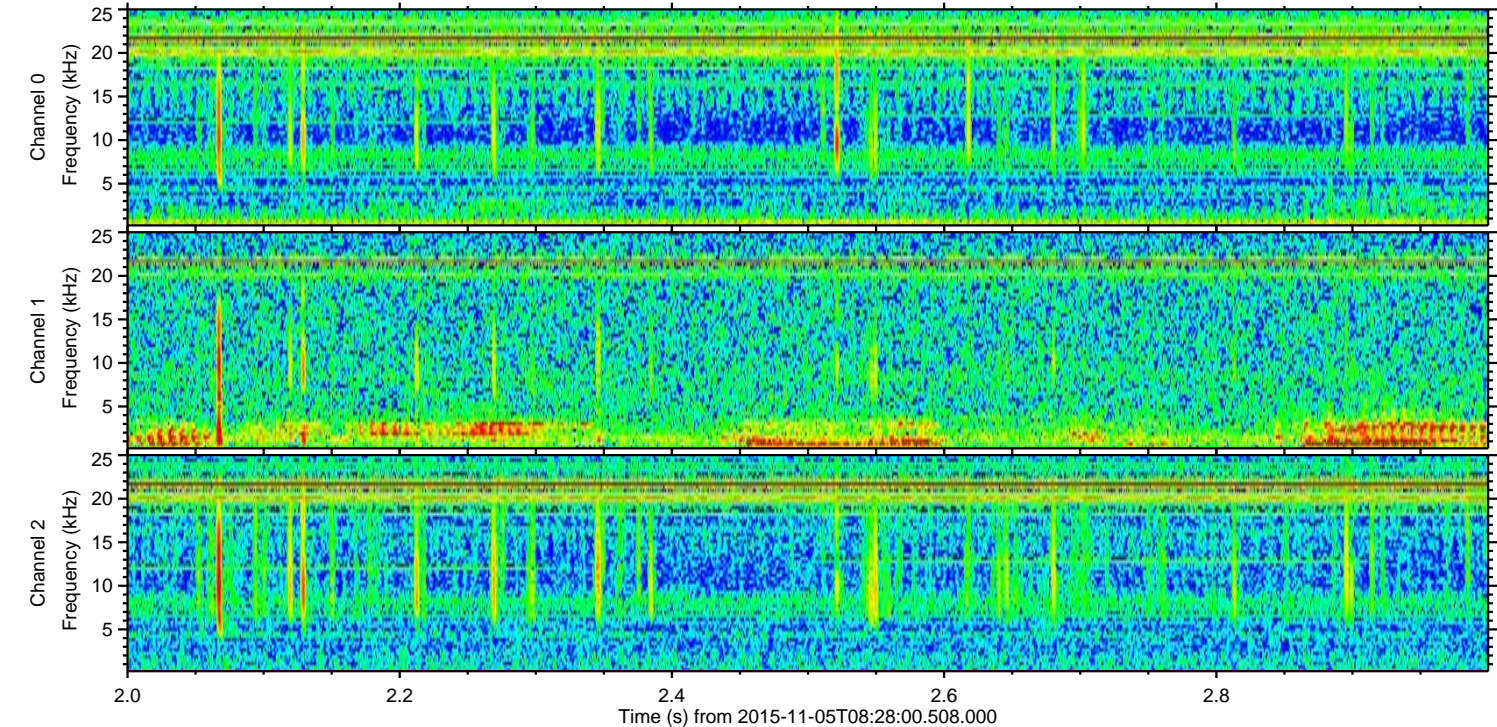
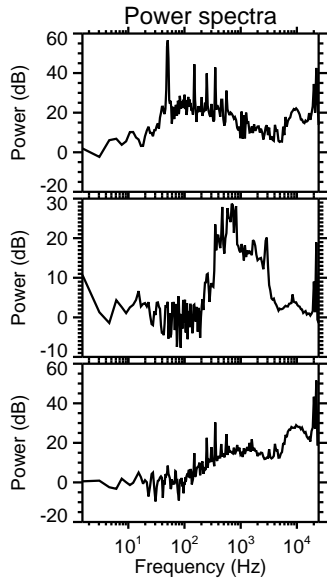
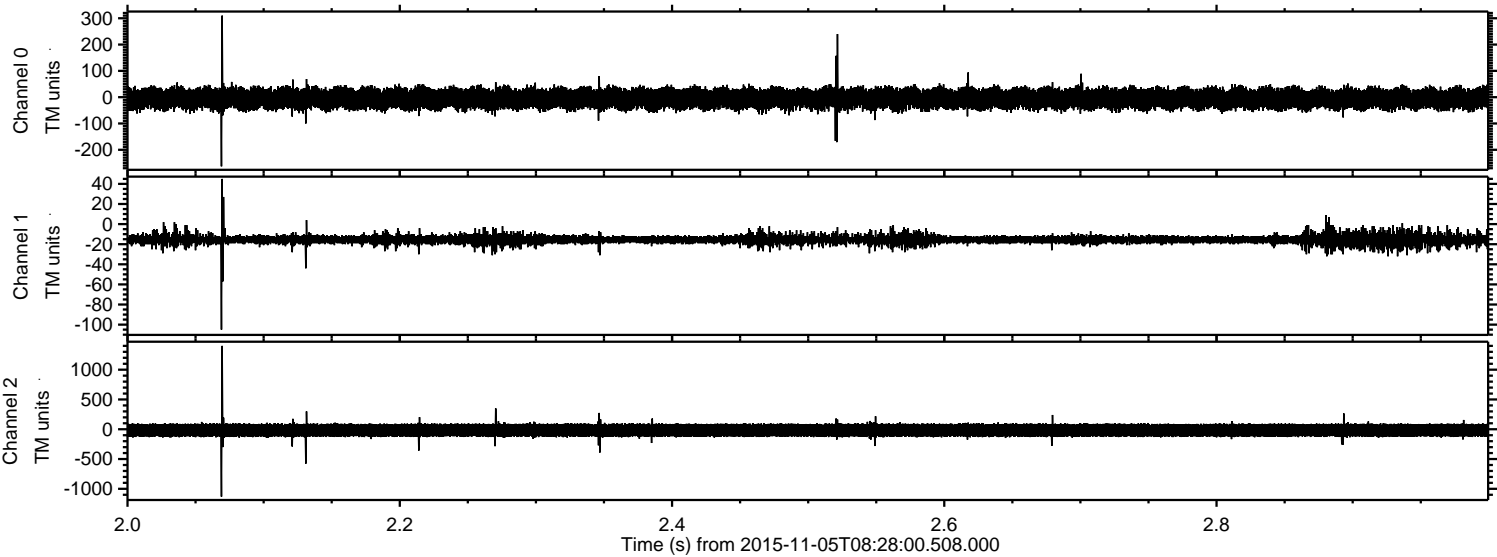
Channel 0
mn: -326
mx: 226
 μ : -5.6
 σ : 22.7

Channel 1
mn: -84
mx: 41
 μ : -15.3
 σ : 2.7

Channel 2
mn: -1401
mx: 910
 μ : -16.2
 σ : 61.6

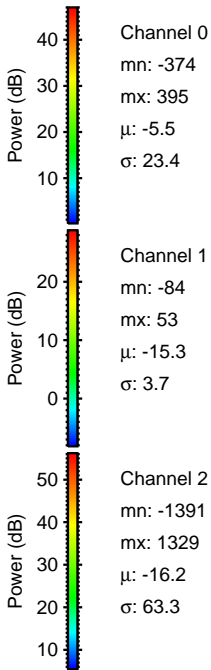
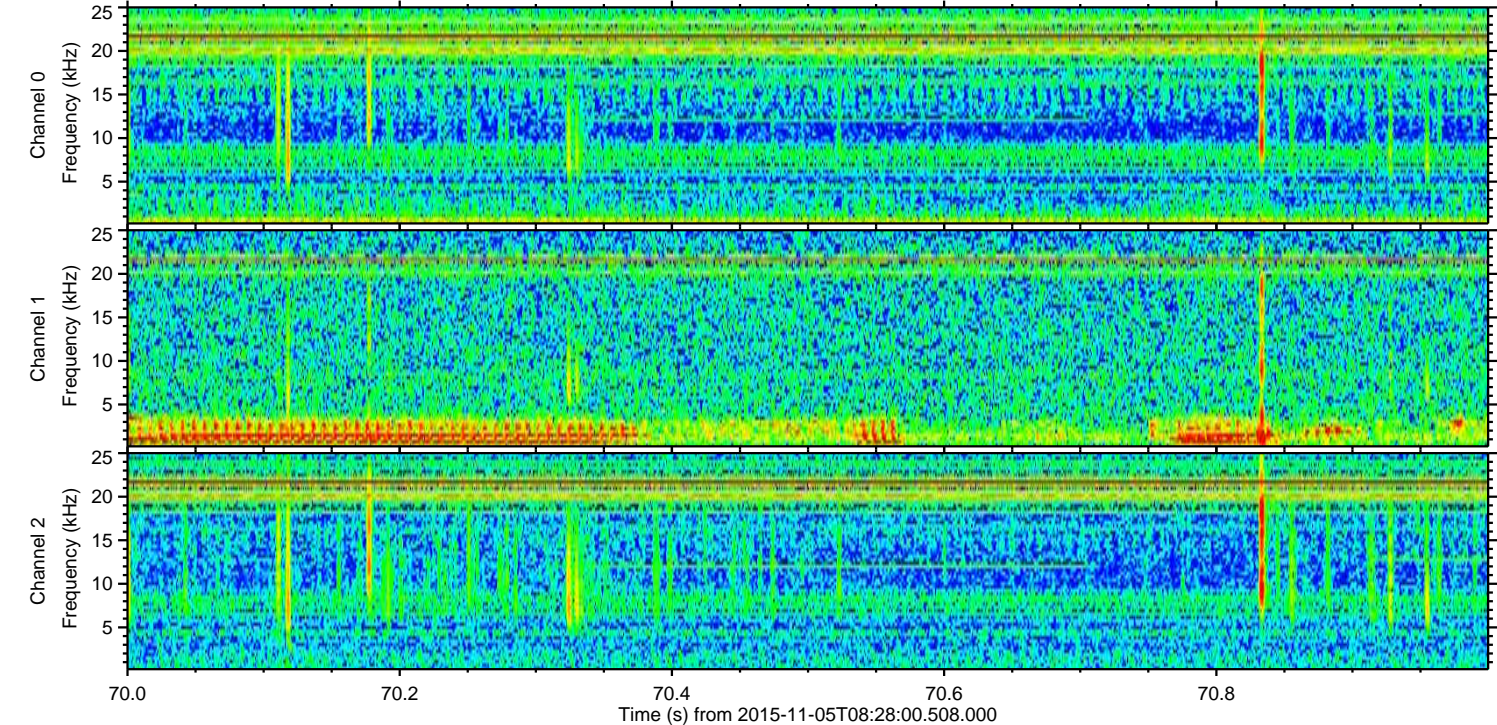
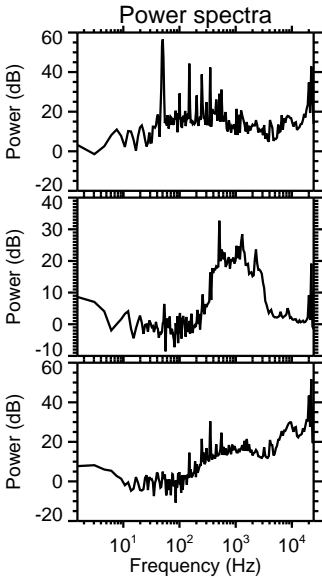
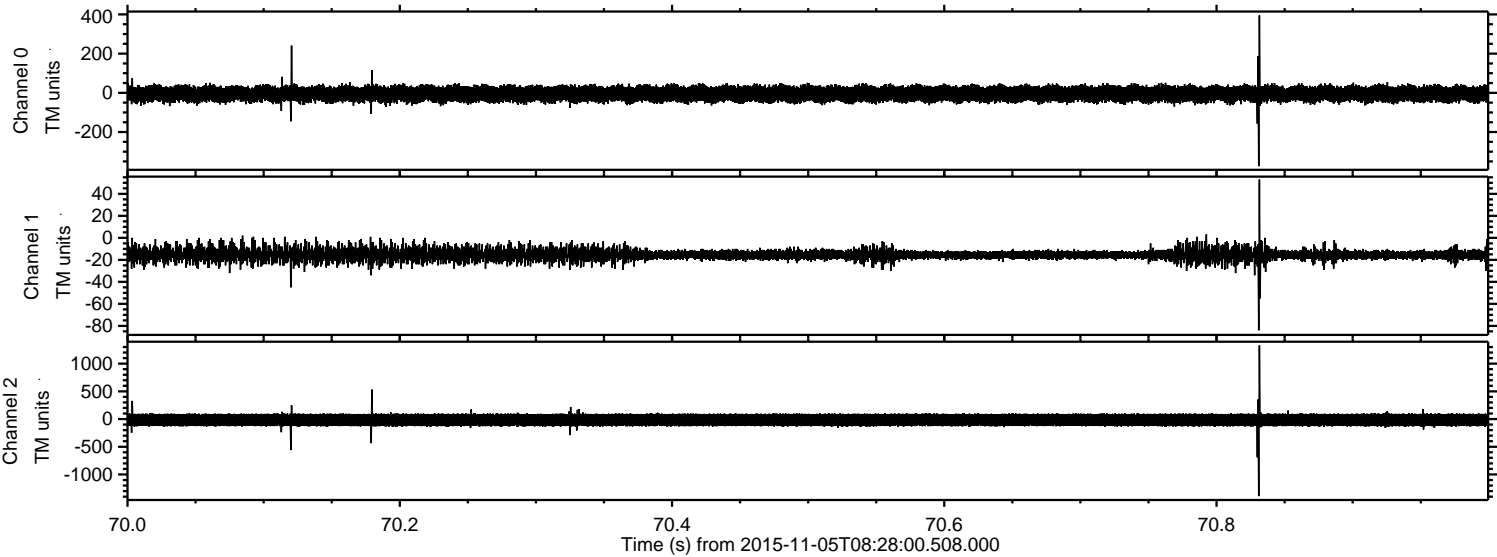
ELMAVAN 3D WAVEFORMS (Measured data sampled at 50 kHz) 51000 packets of 144 samples from 2015-11-05T08:28:00.508.000. Part 3/147

Processed Thu Nov 5 09:35:32 2015 by ELM ver.2012-10-06 from 001__elm20151105_082759__dat00.bin



ELMAVAN 3D WAVEFORMS (Measured data sampled at 50 kHz) 51000 packets of 144 samples from 2015-11-05T08:28:00.508.000. Part 71/147

Processed Thu Nov 5 09:35:33 2015 by ELM ver.2012-10-06 from 001__elm20151105_082759__dat00.bin



Channel 0
mn: -374
mx: 395
 μ : -5.5
 σ : 23.4

Channel 1
mn: -84
mx: 53
 μ : -15.3
 σ : 3.7

Channel 2
mn: -1391
mx: 1329
 μ : -16.2
 σ : 63.3

Processed Thu Nov 5 09:35:33 2015 by ELM ver.2012-10-06 from 001__elm20151105_082759__dat00.bin

