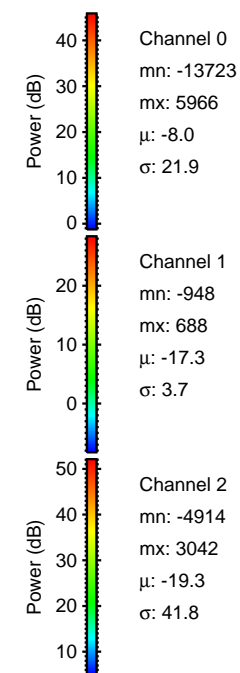
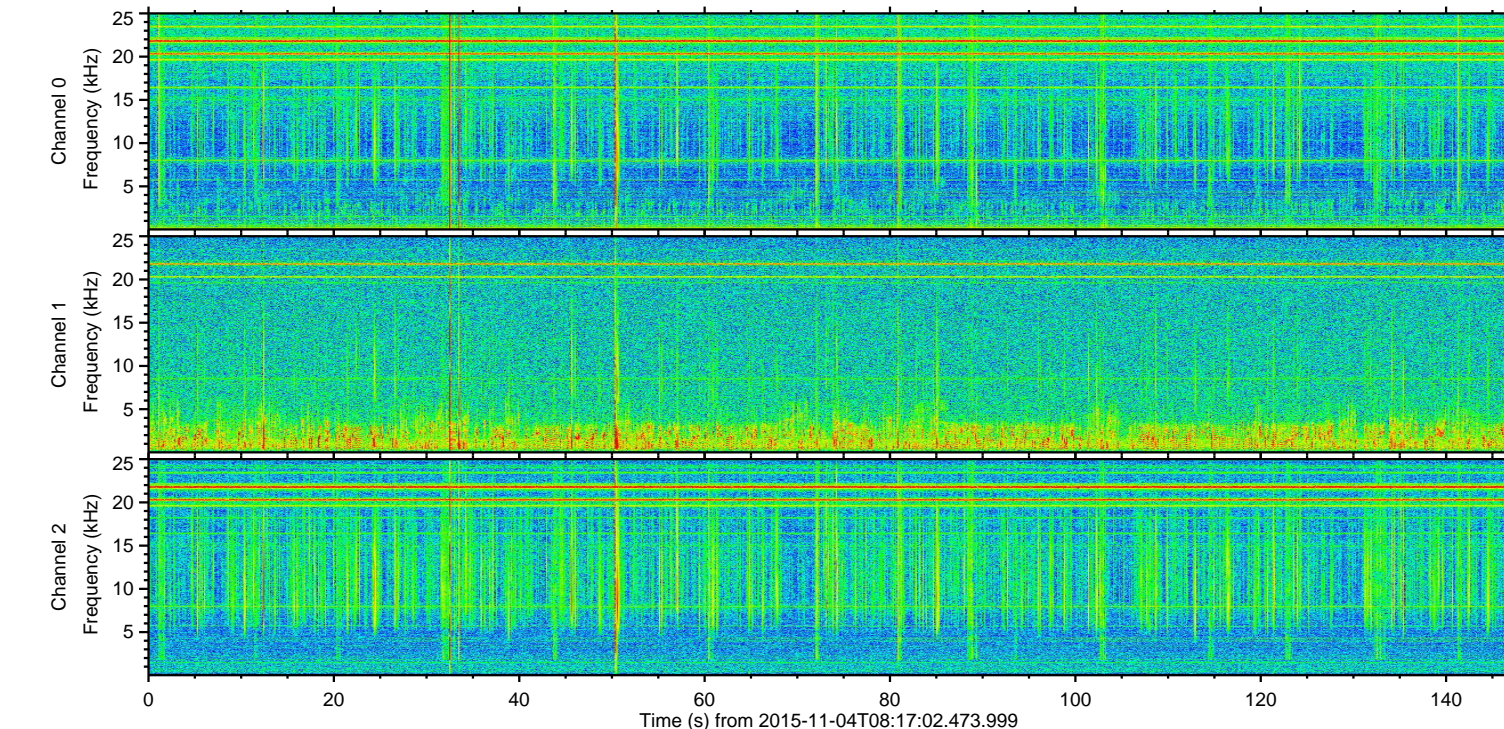
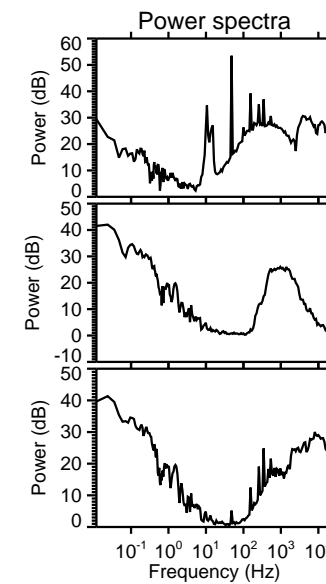
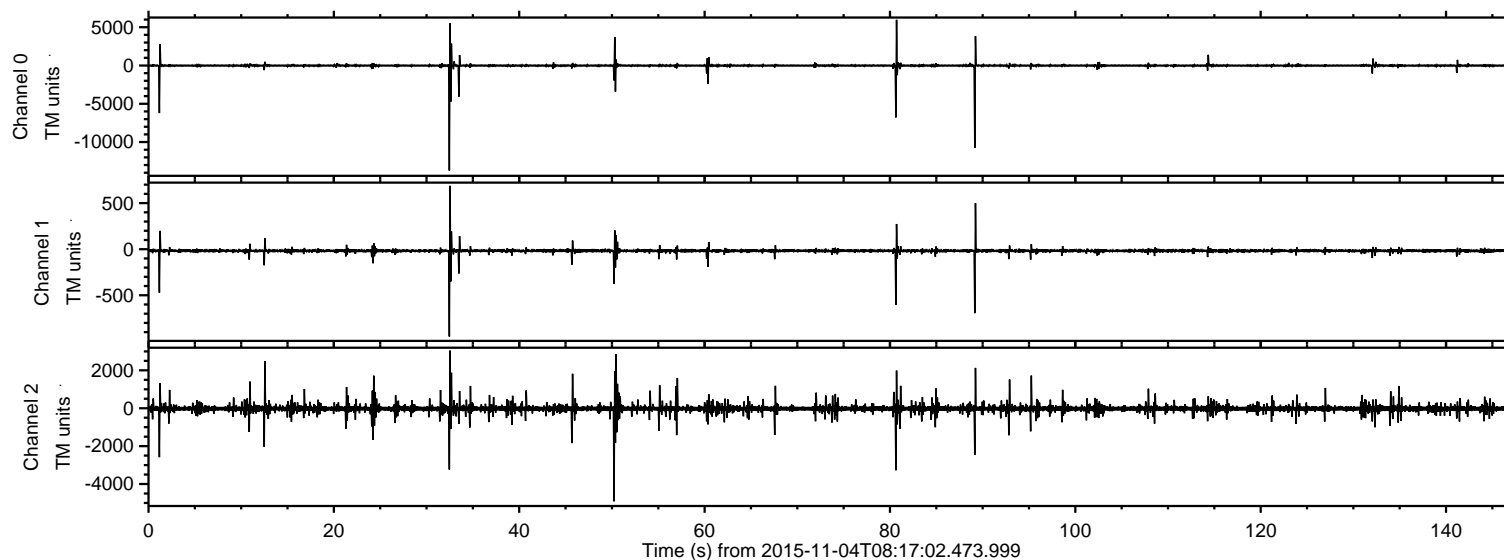
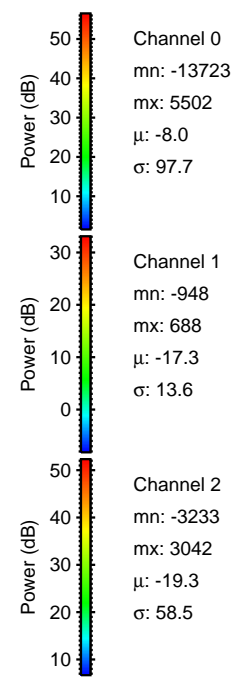
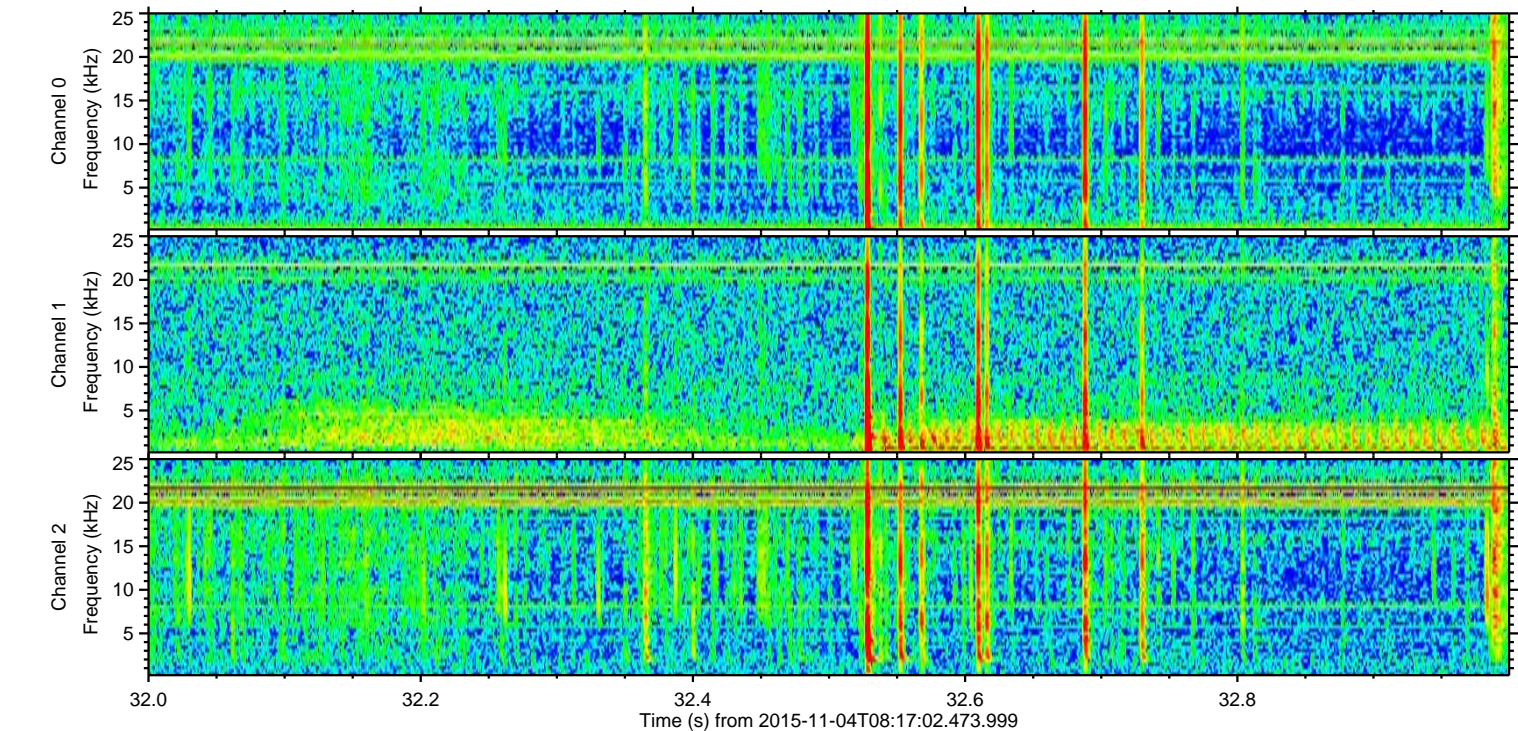
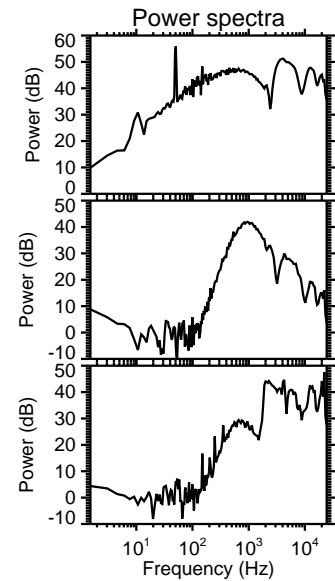
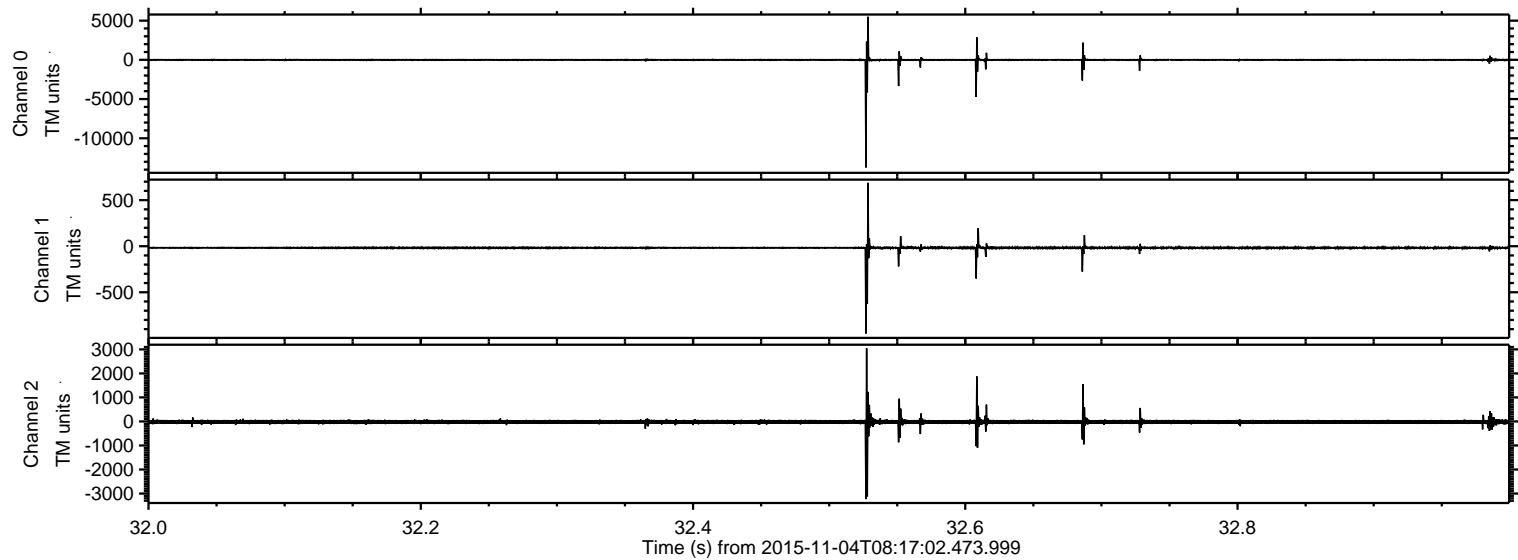


ELMAVAN 3D WAVEFORMS (Measured data sampled at 50 kHz) 51000 packets of 144 samples from 2015-11-04T08:17:02.473.999.

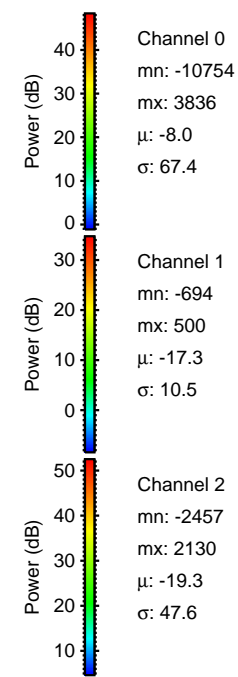
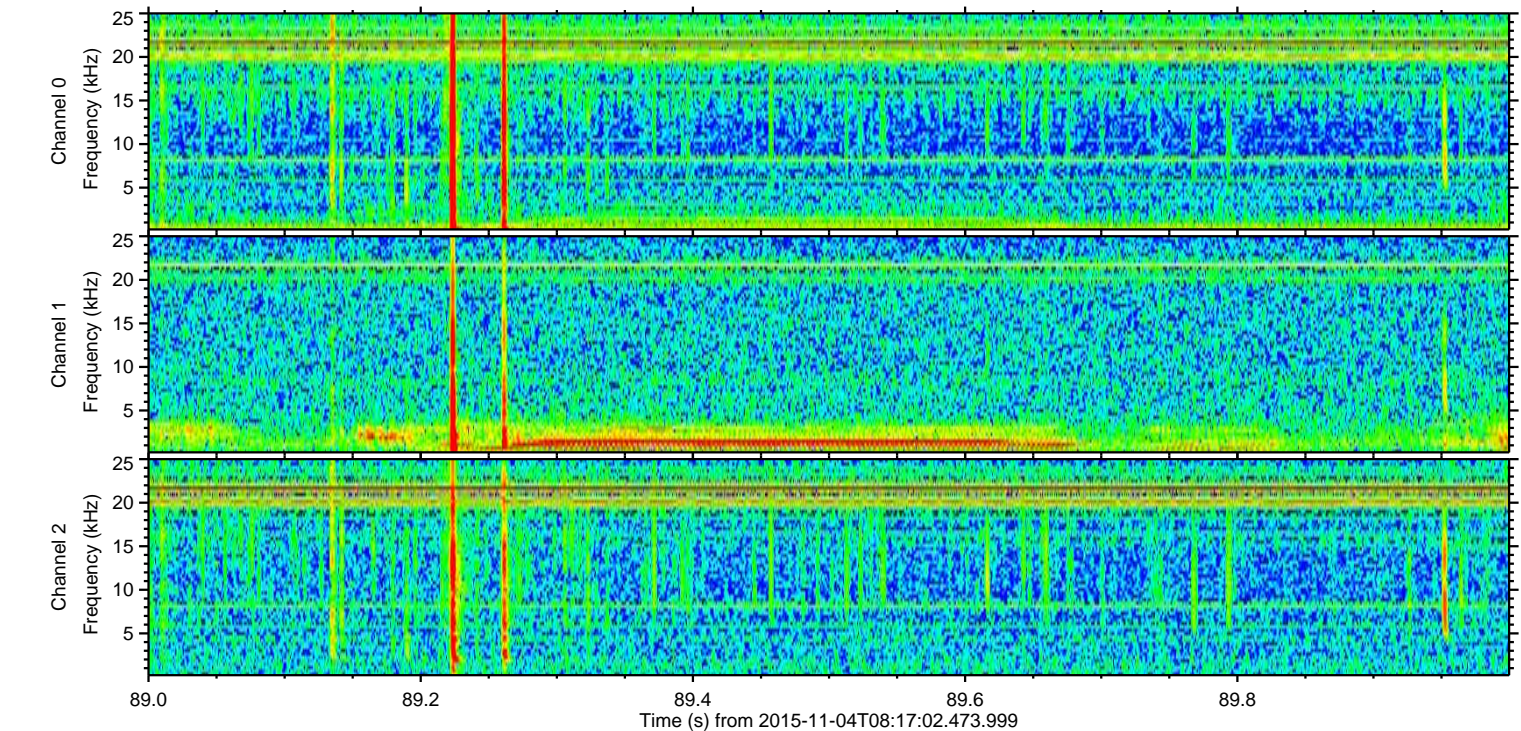
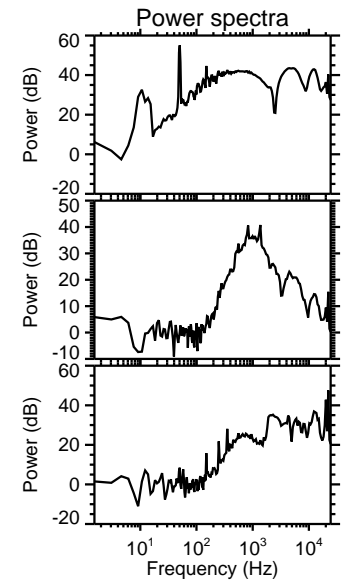
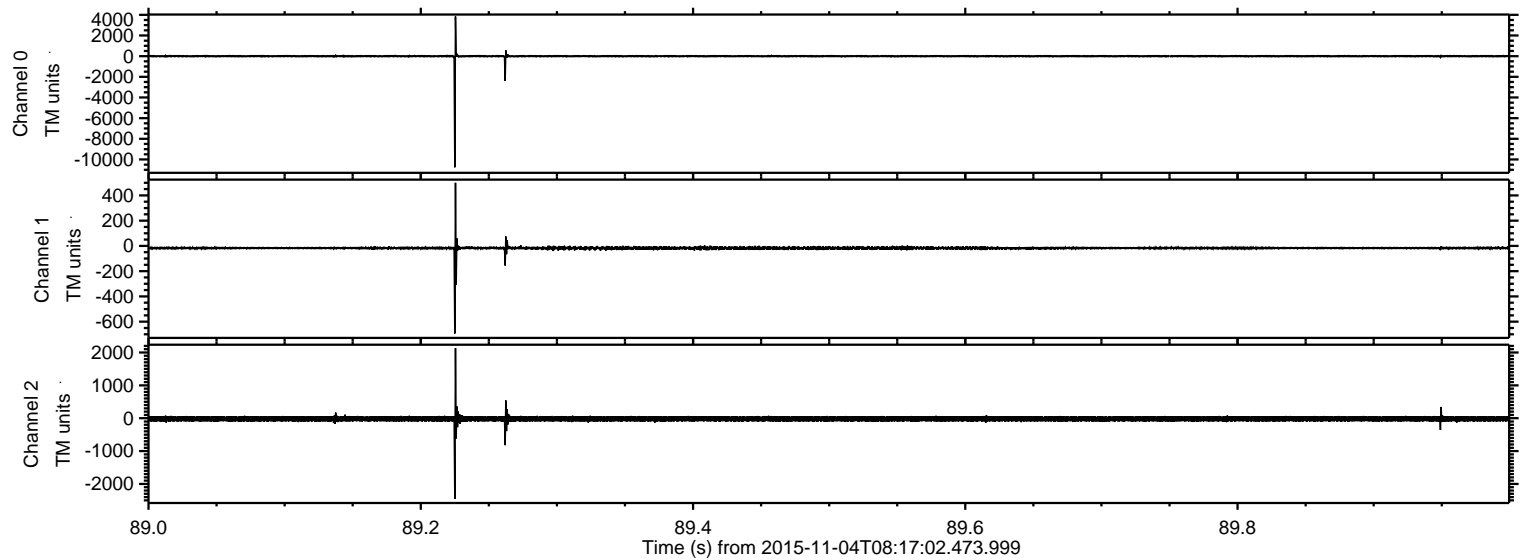
Processed Wed Nov 4 10:32:45 2015 by ELM ver.2012-10-06 from 001__elm20151104_081701__dat00.bin



Processed Wed Nov 4 10:32:59 2015 by ELM ver.2012-10-06 from 001__elm20151104_081701__dat00.bin

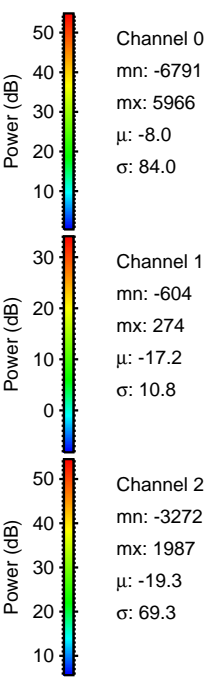
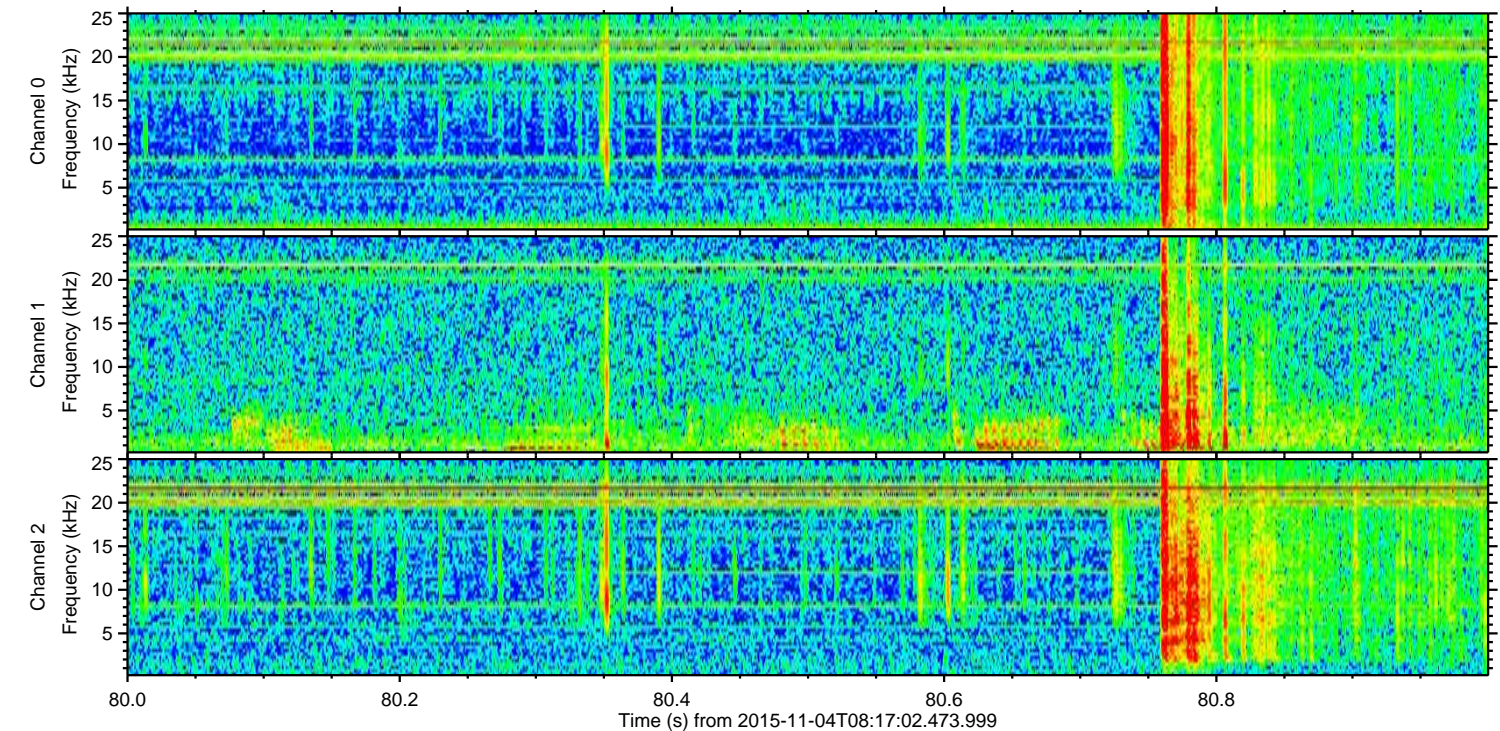
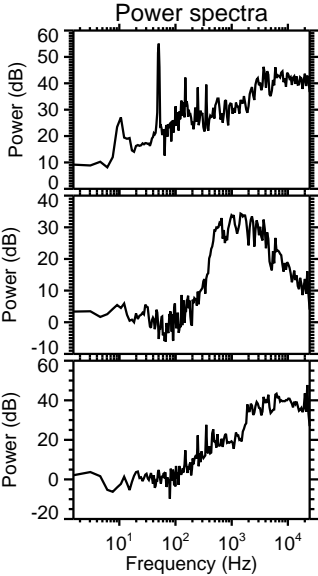
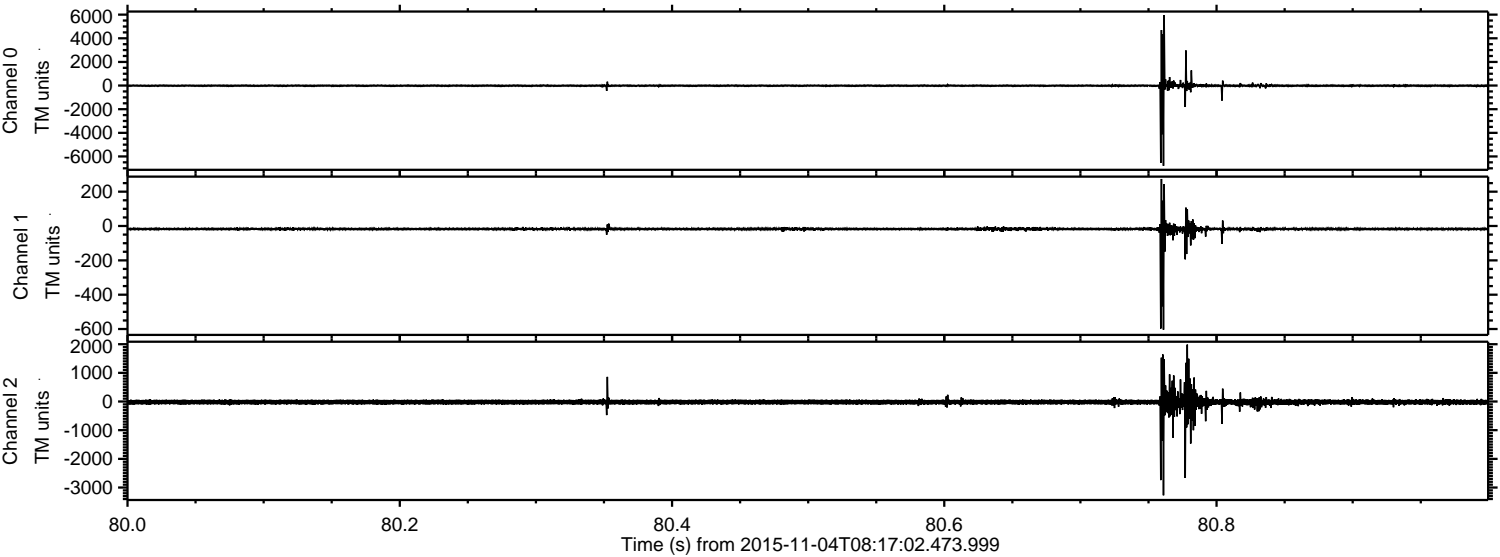


Processed Wed Nov 4 10:33:00 2015 by ELM ver.2012-10-06 from 001__elm20151104_081701__dat00.bin



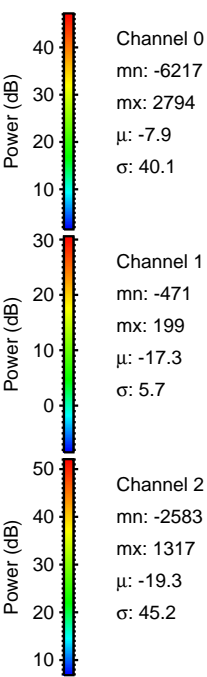
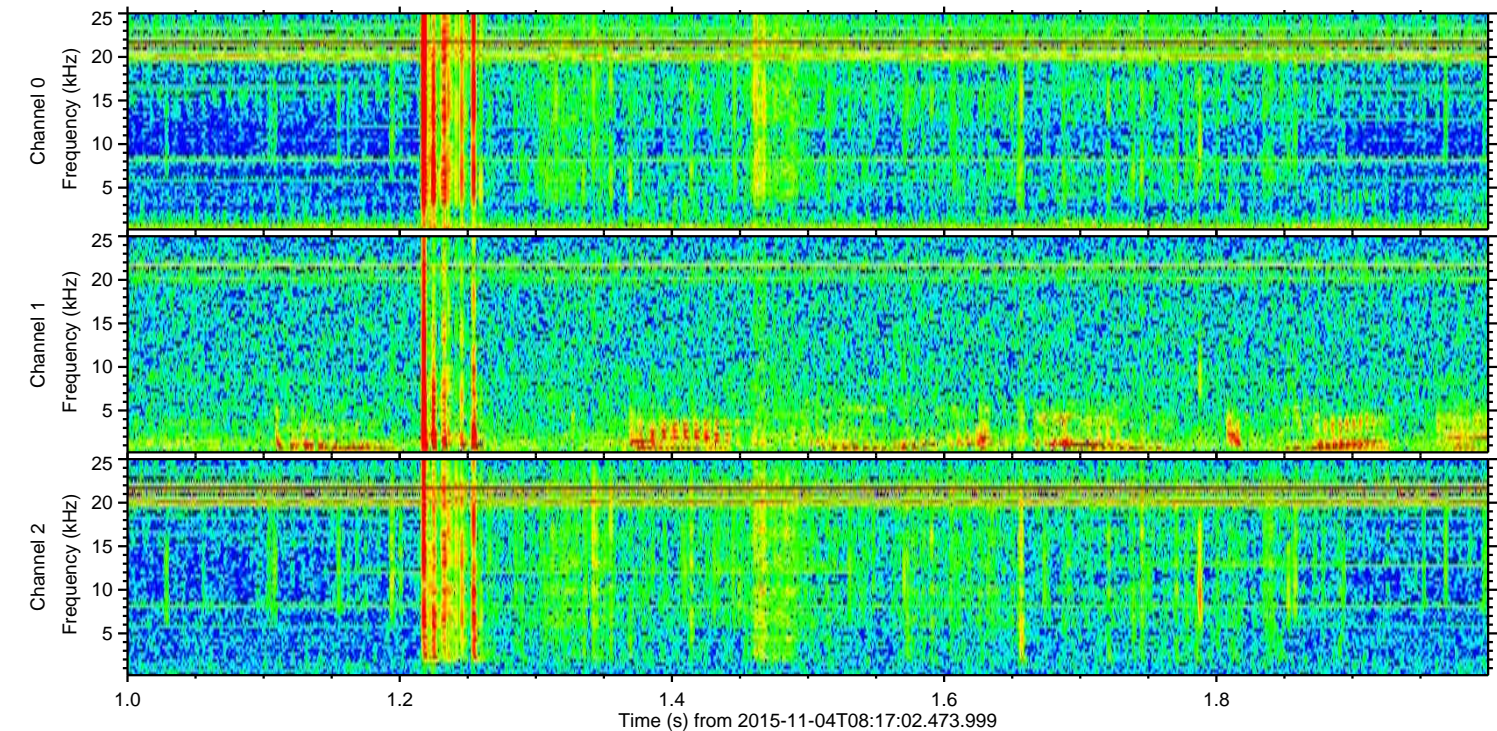
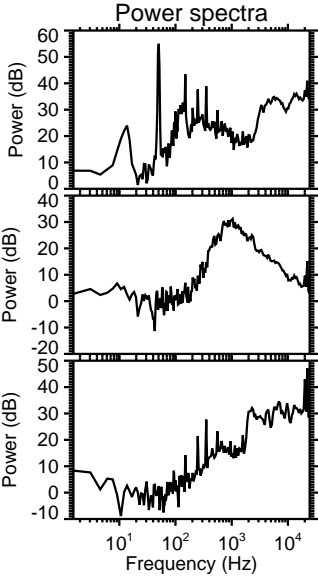
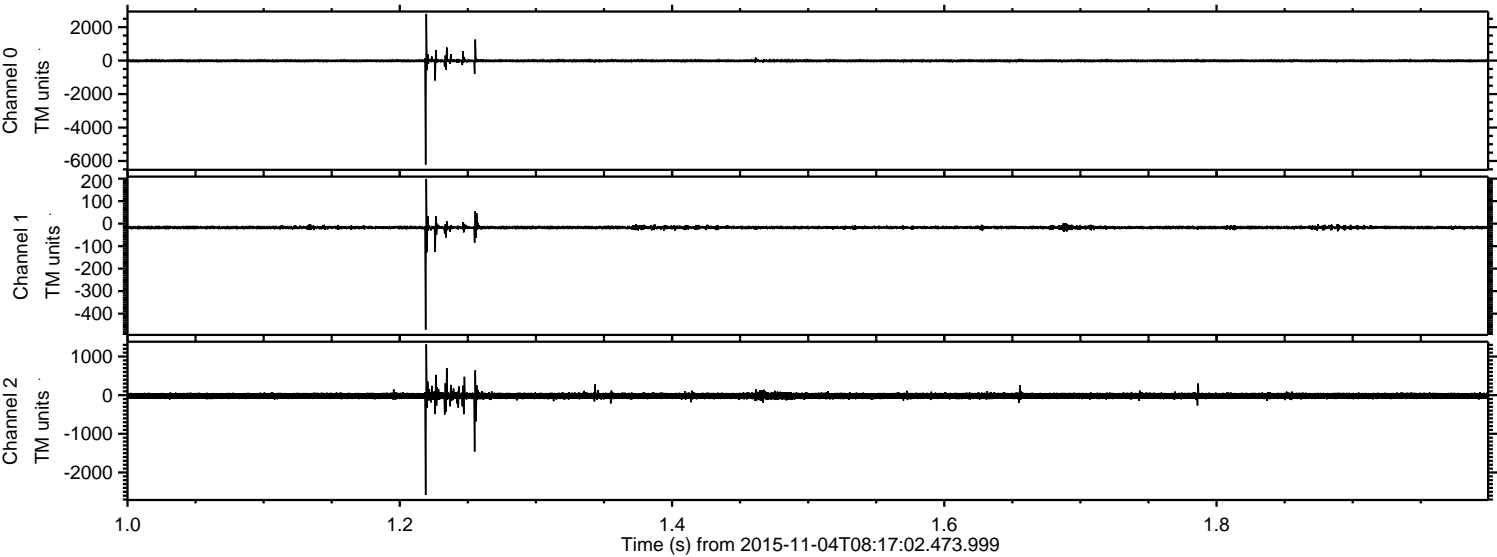
ELMAVAN 3D WAVEFORMS (Measured data sampled at 50 kHz) 51000 packets of 144 samples from 2015-11-04T08:17:02.473.999. Part 81/147

Processed Wed Nov 4 10:33:01 2015 by ELM ver.2012-10-06 from 001_elm20151104_081701__dat00.bin

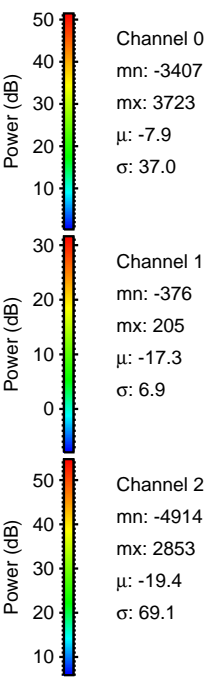
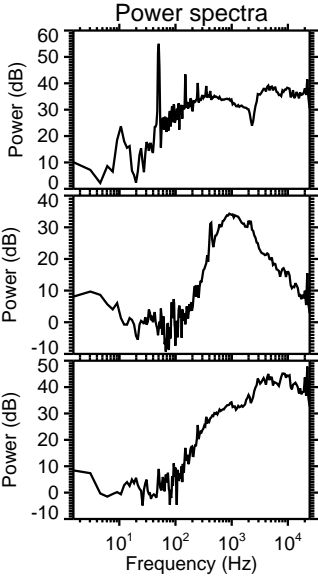
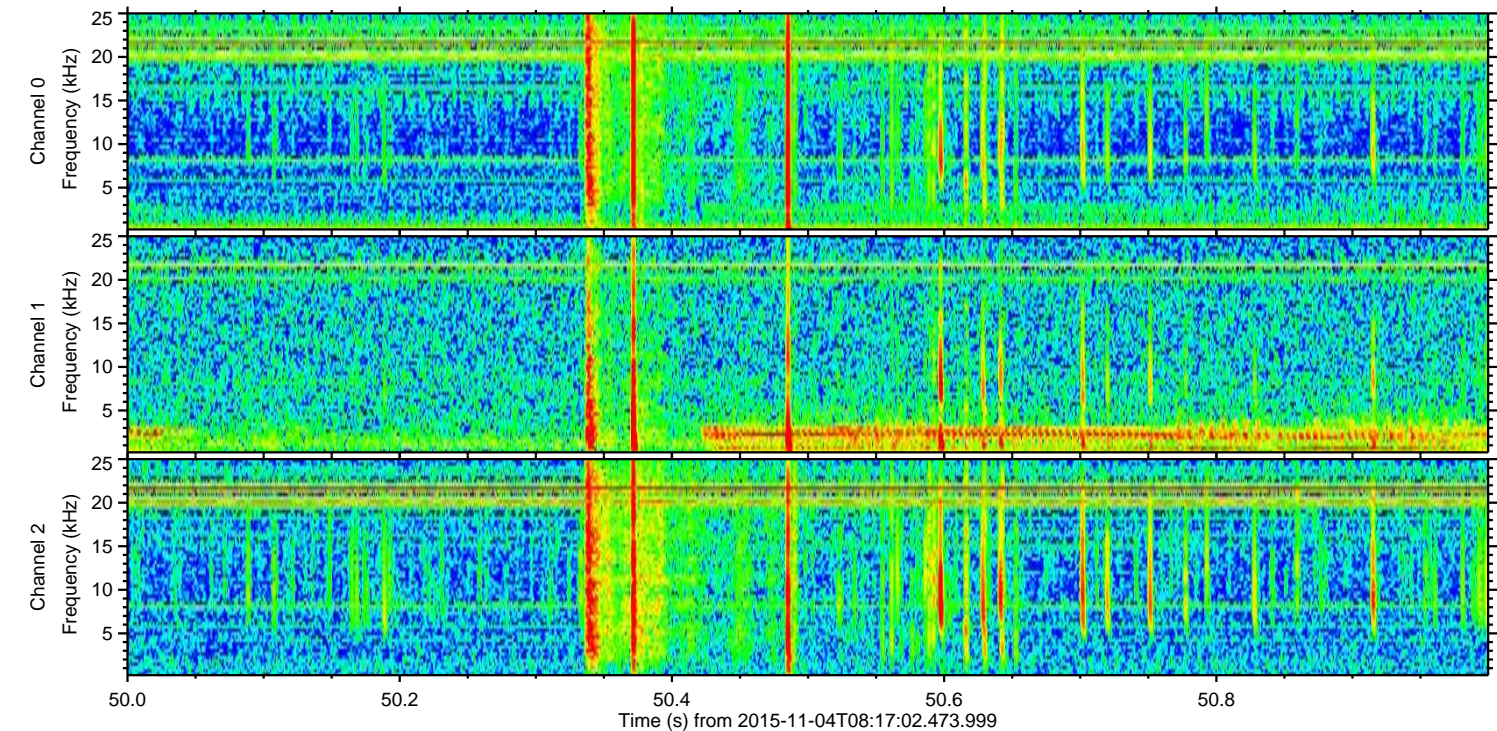
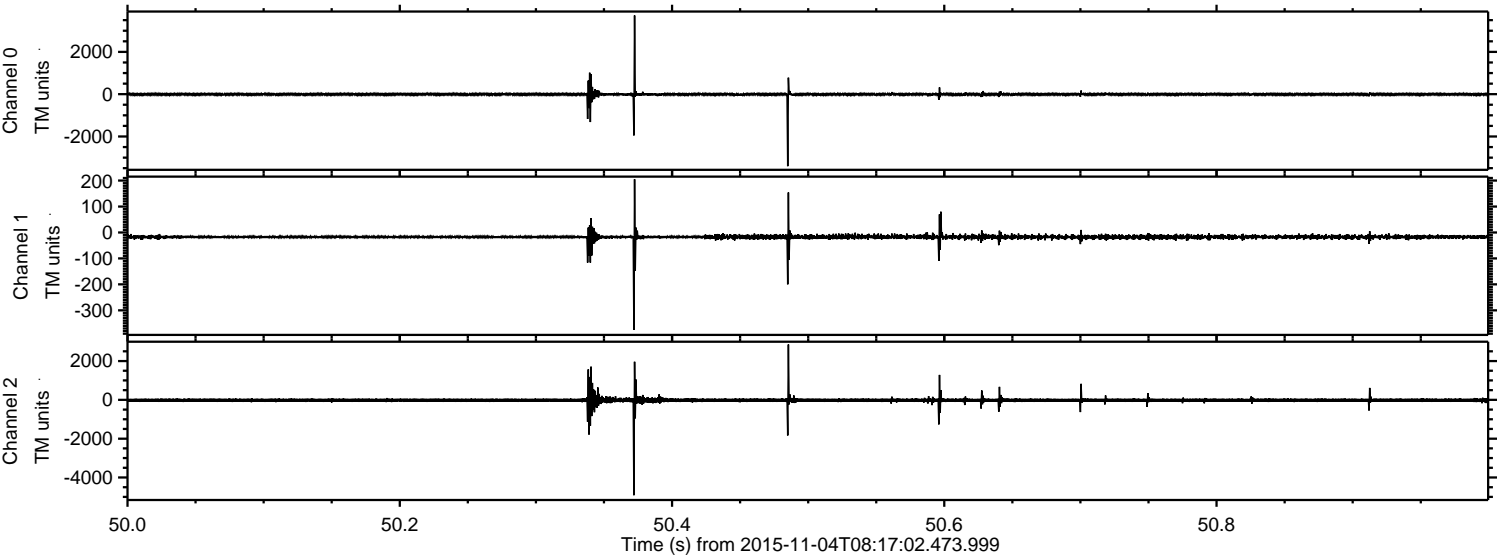


ELMAVAN 3D WAVEFORMS (Measured data sampled at 50 kHz) 51000 packets of 144 samples from 2015-11-04T08:17:02.473.999. Part 2/147

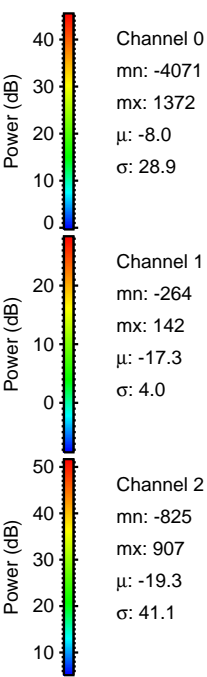
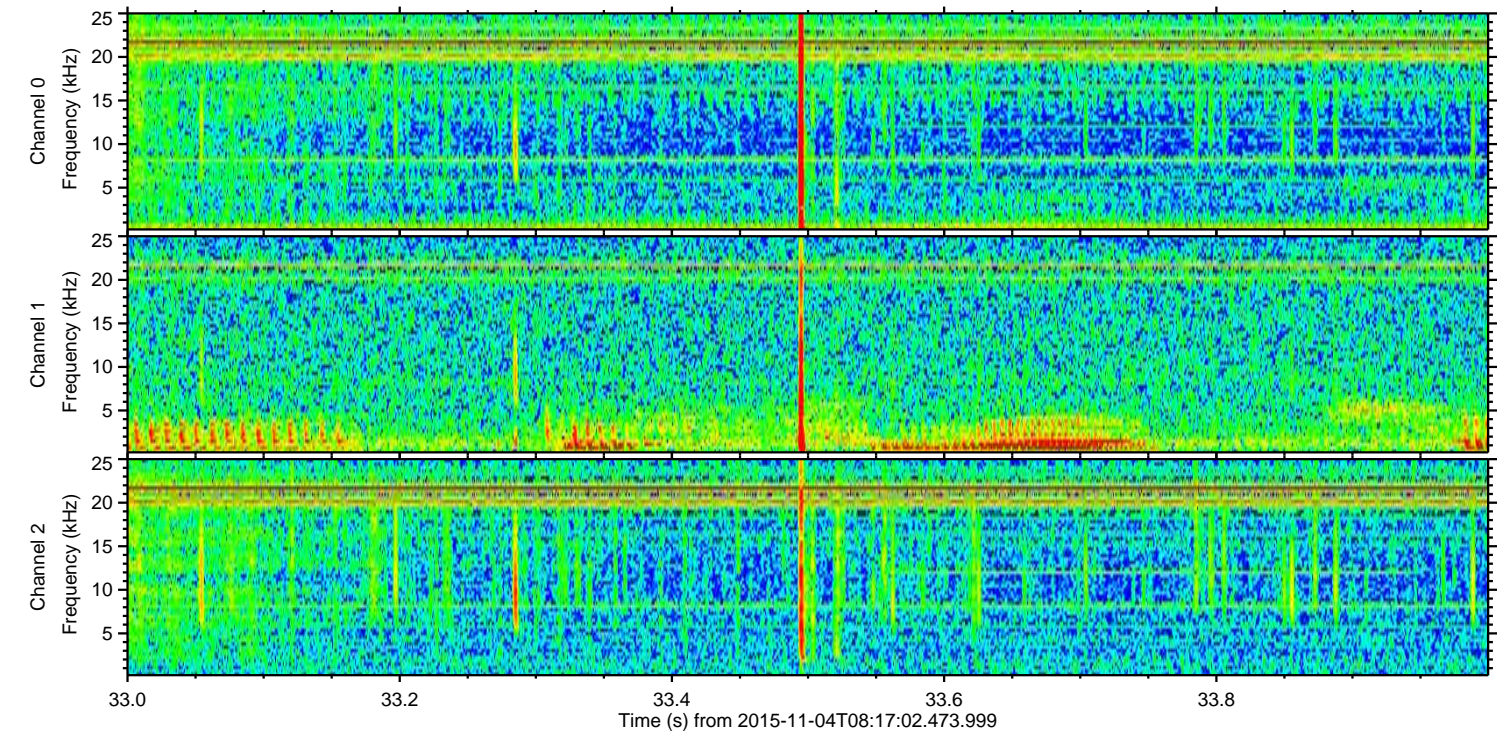
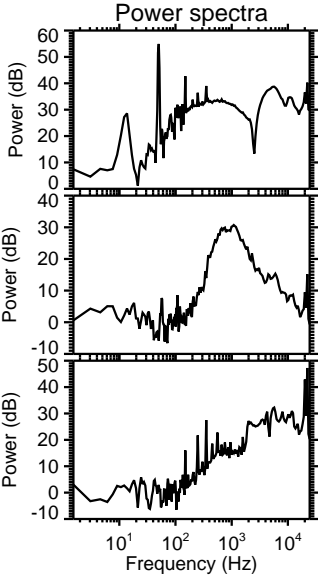
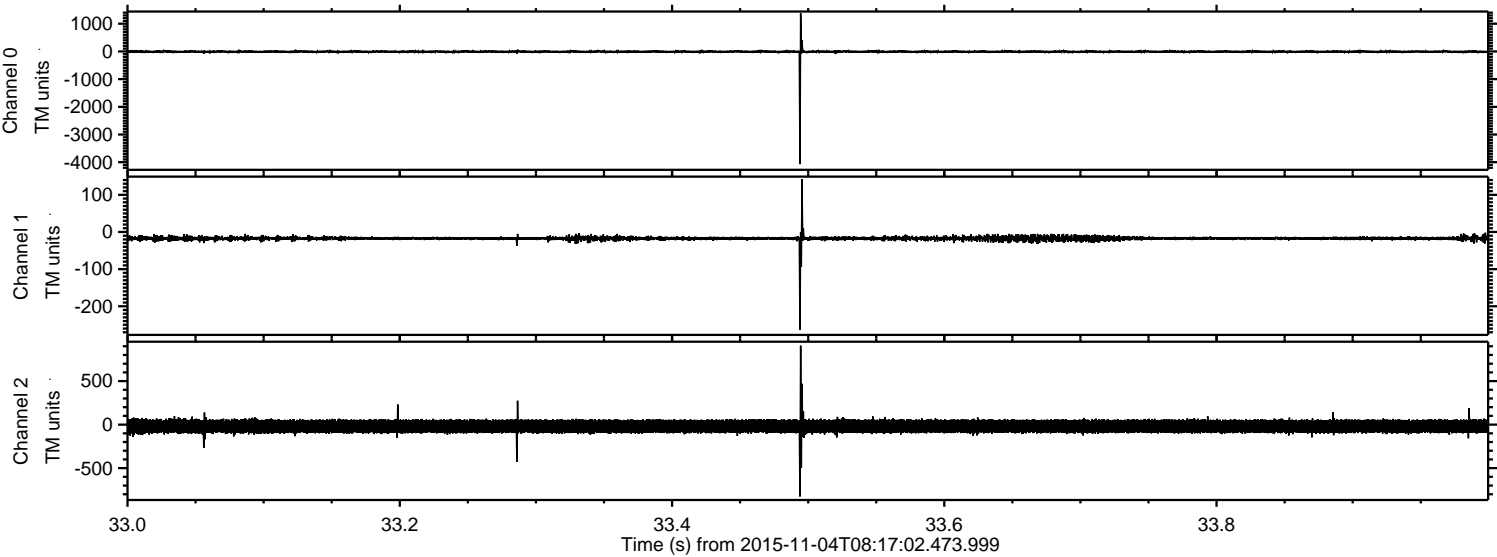
Processed Wed Nov 4 10:33:02 2015 by ELM ver.2012-10-06 from 001__elm20151104_081701__dat00.bin



Processed Wed Nov 4 10:33:03 2015 by ELM ver.2012-10-06 from 001__elm20151104_081701__dat00.bin

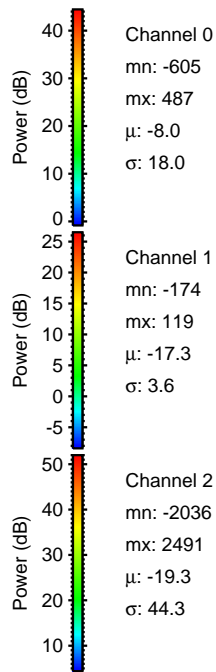
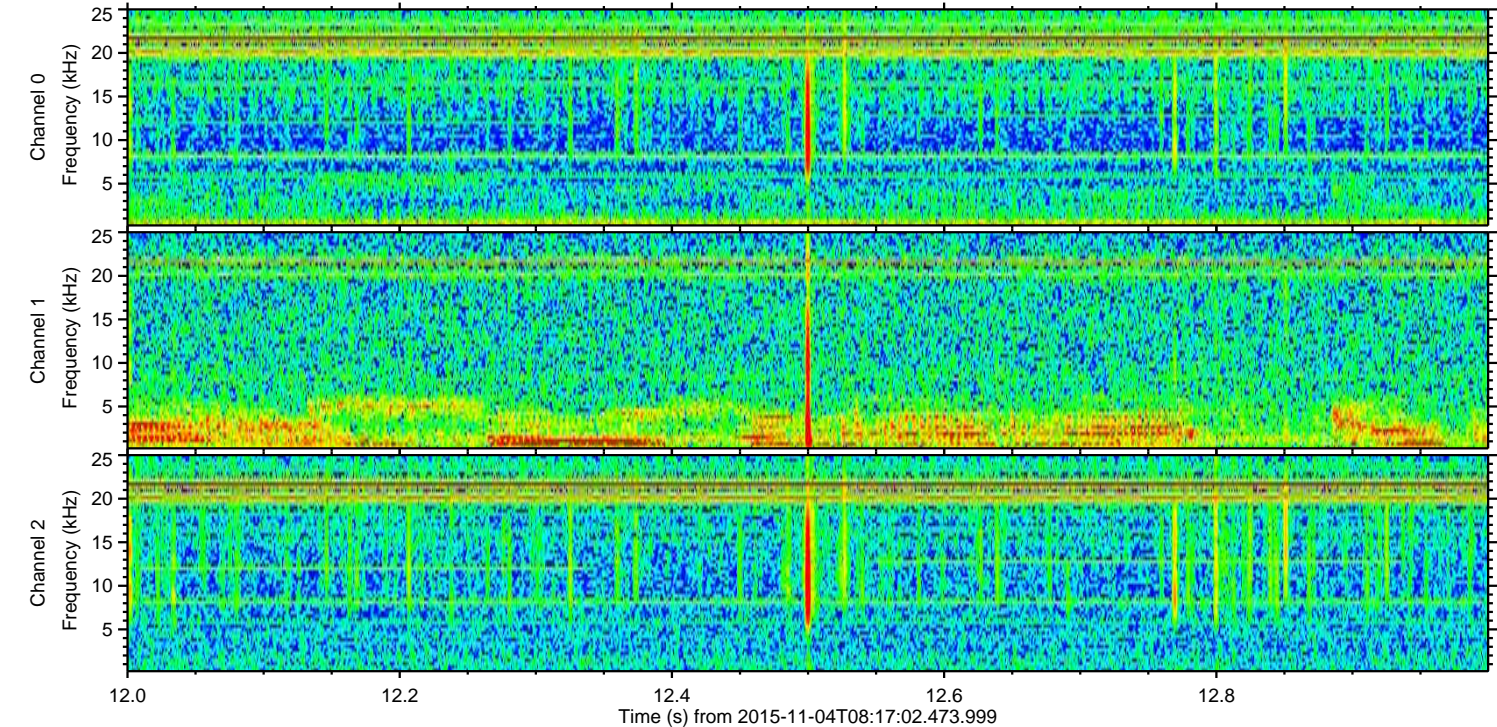
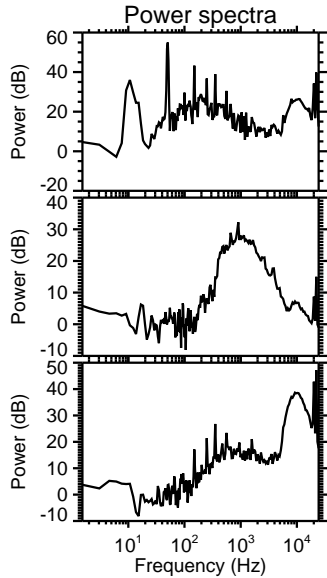
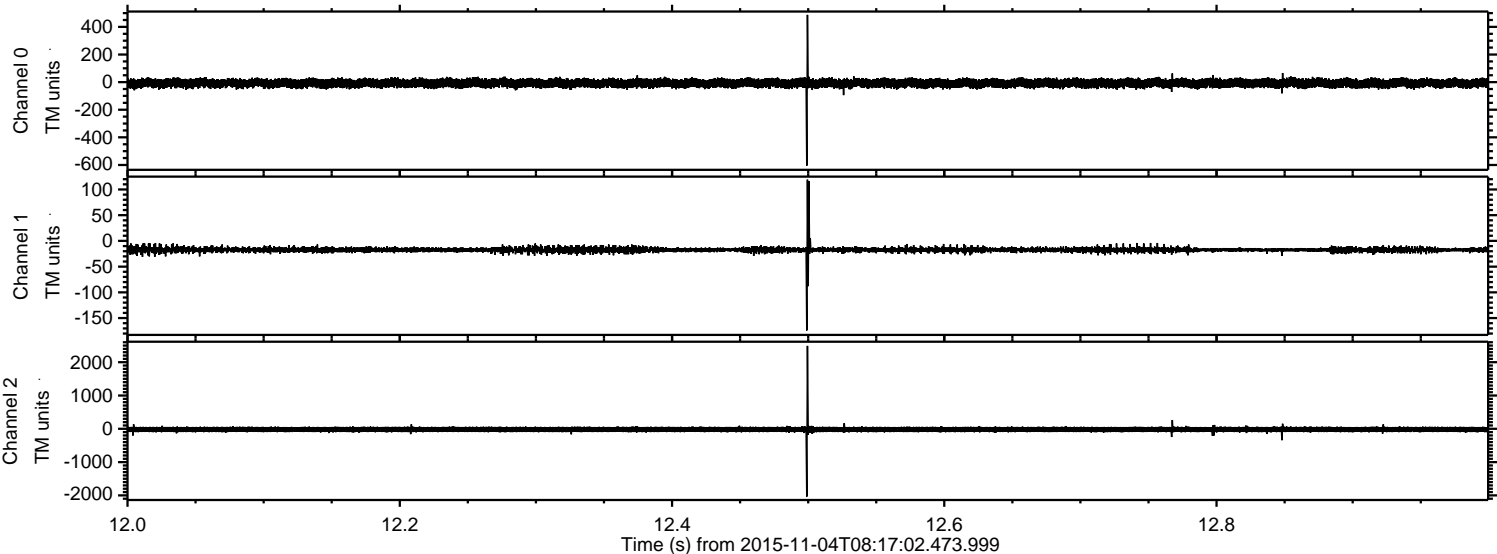


Processed Wed Nov 4 10:33:04 2015 by ELM ver.2012-10-06 from 001__elm20151104_081701__dat00.bin

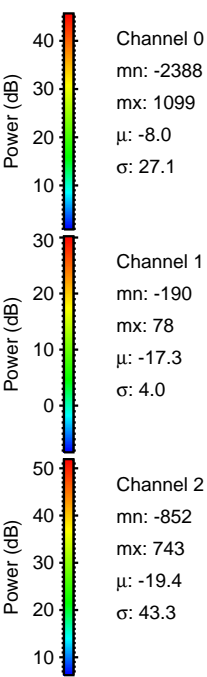
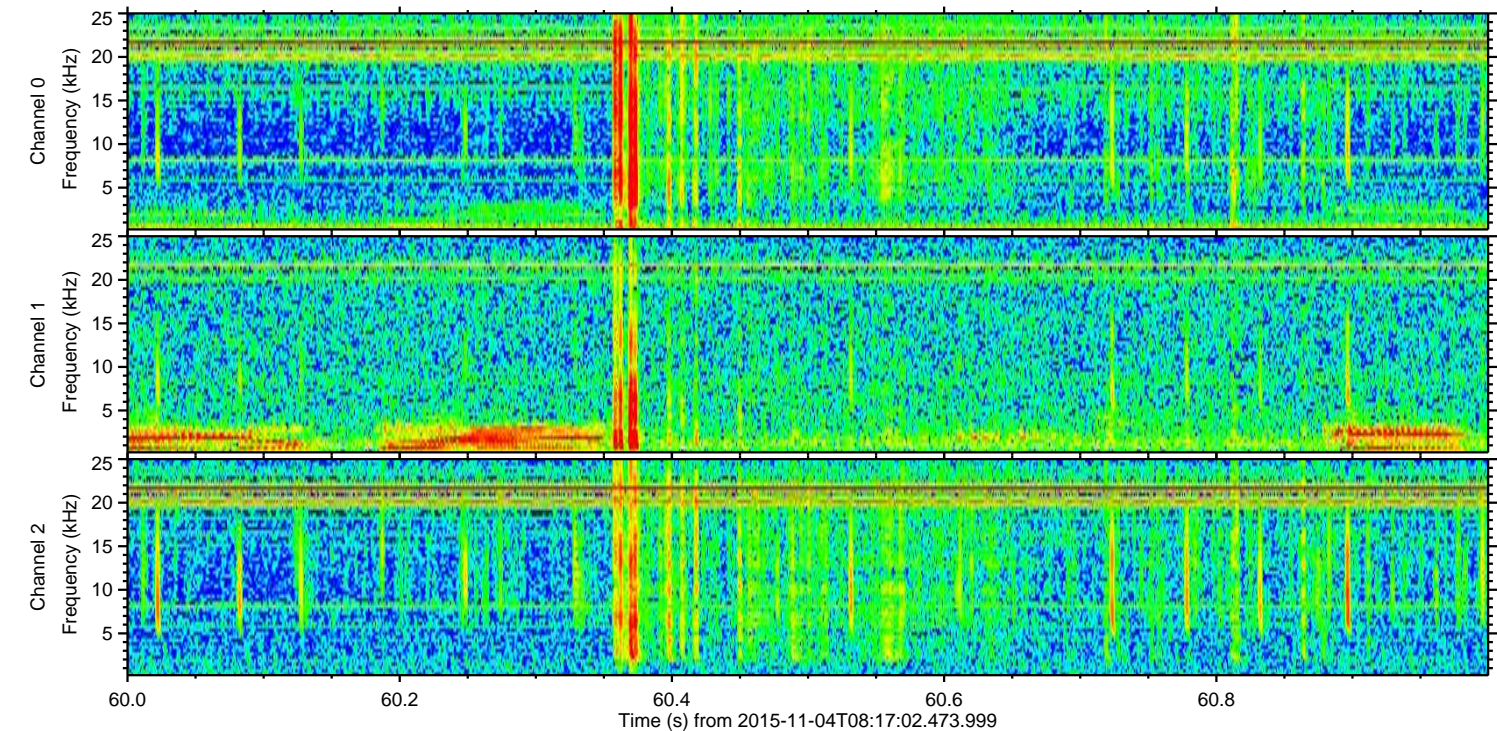
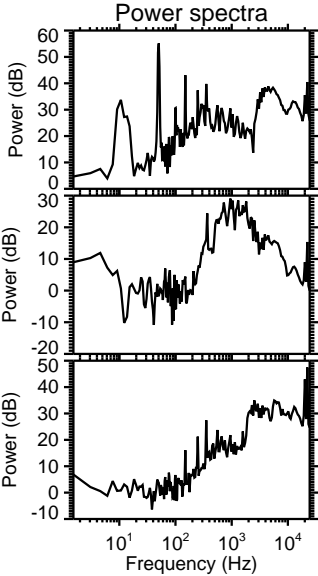
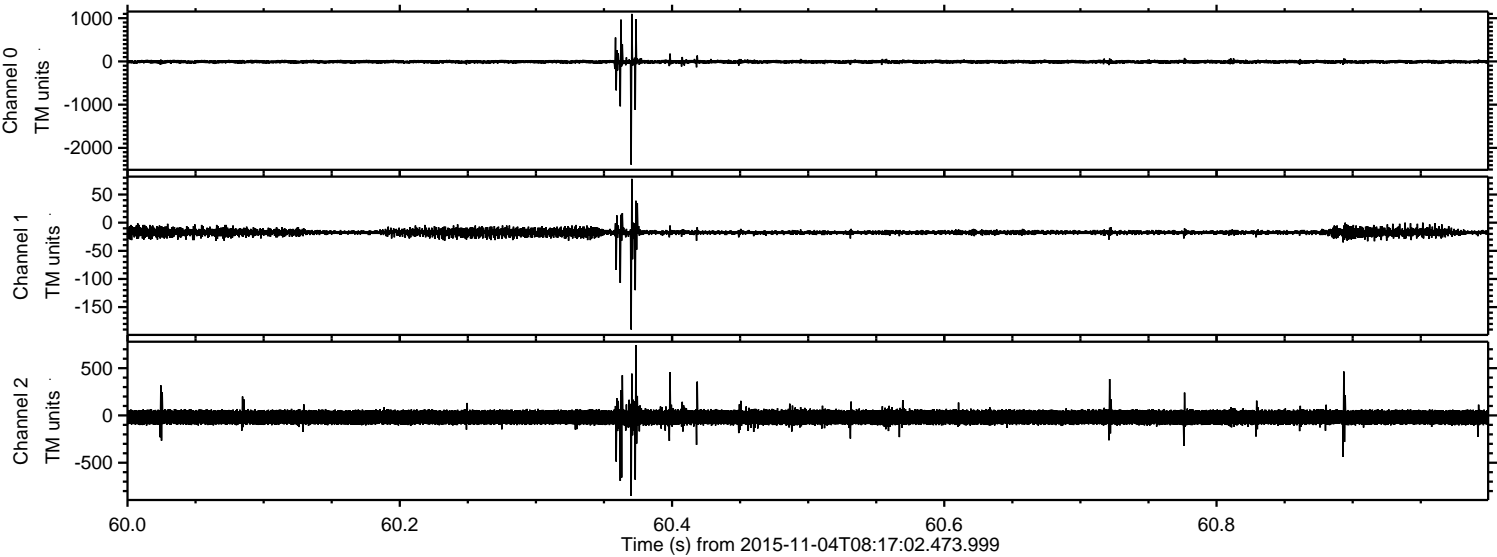


ELMAVAN 3D WAVEFORMS (Measured data sampled at 50 kHz) 51000 packets of 144 samples from 2015-11-04T08:17:02.473.999. Part 13/147

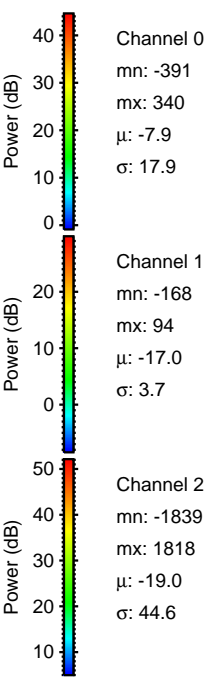
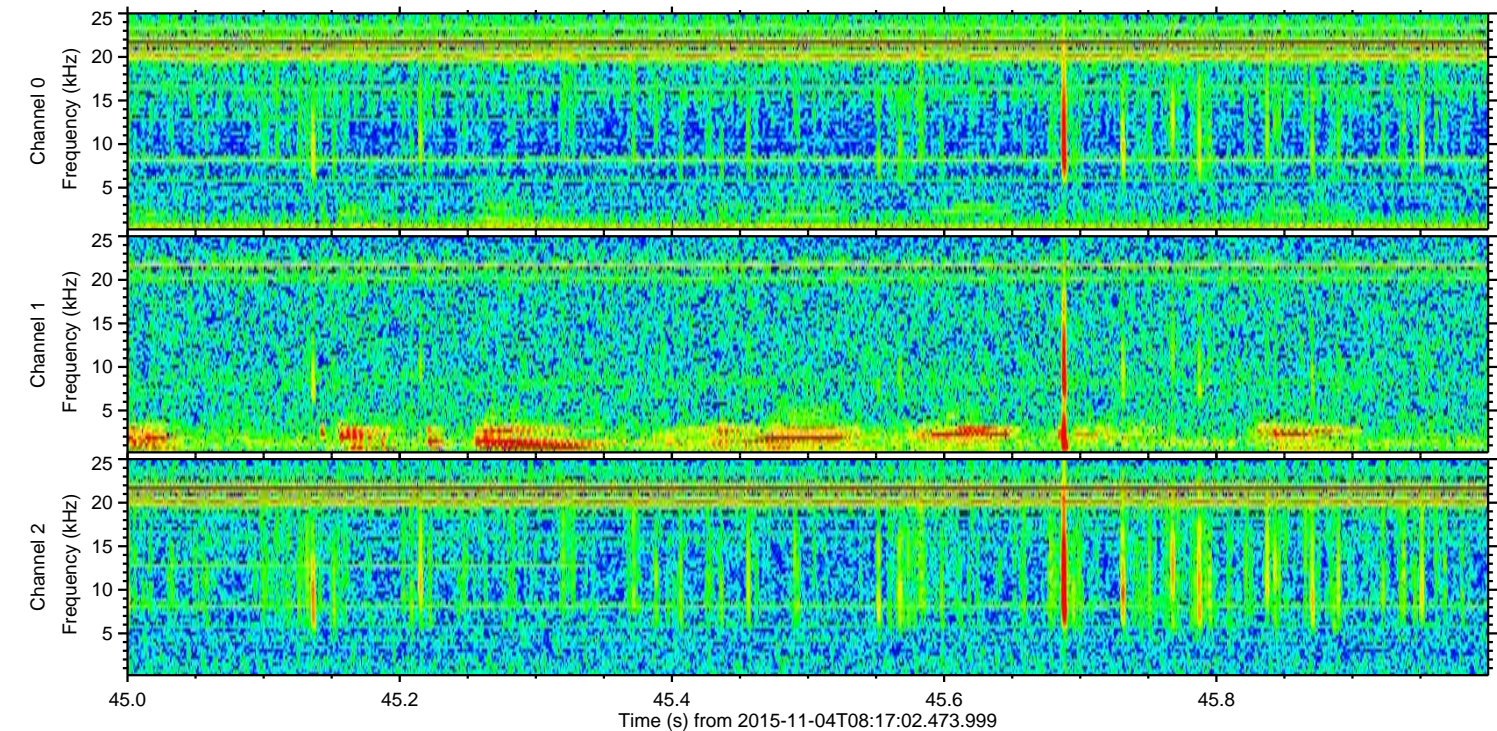
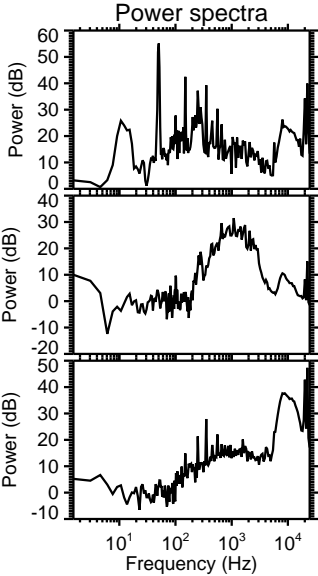
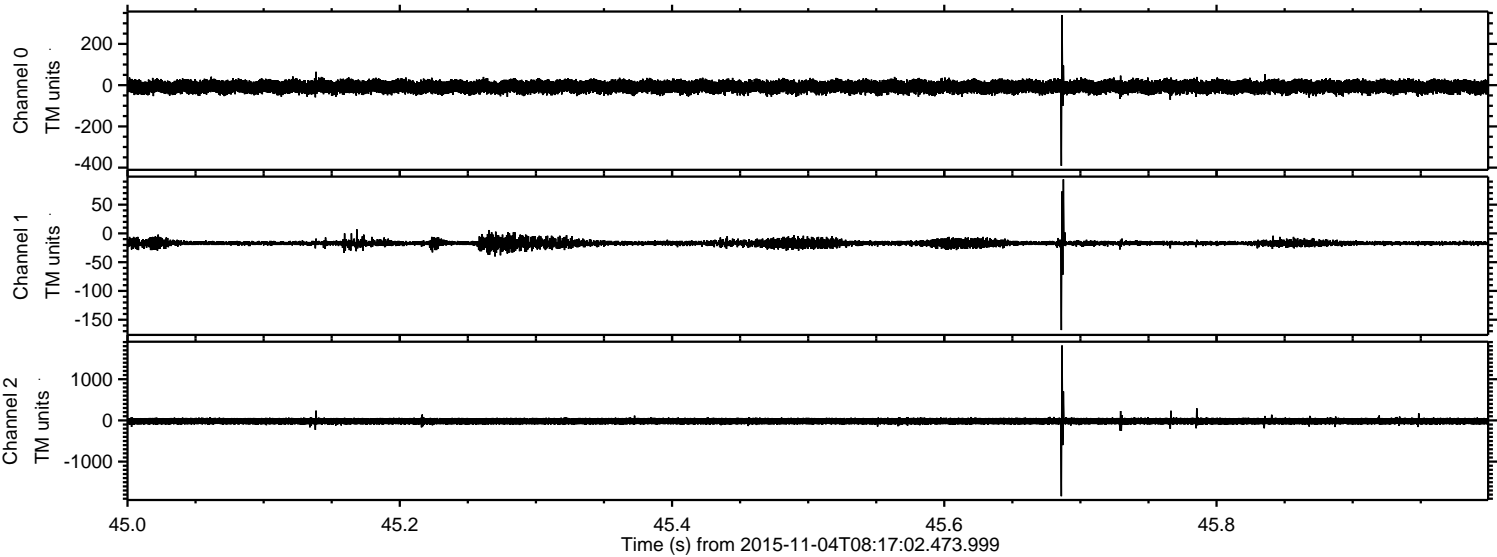
Processed Wed Nov 4 10:33:05 2015 by ELM ver.2012-10-06 from 001__elm20151104_081701__dat00.bin



Processed Wed Nov 4 10:33:06 2015 by ELM ver.2012-10-06 from 001__elm20151104_081701__dat00.bin



Processed Wed Nov 4 10:33:07 2015 by ELM ver.2012-10-06 from 001__elm20151104_081701__dat00.bin



Channel 0
mn: -391
mx: 340
 μ : -7.9
 σ : 17.9

Channel 1
mn: -168
mx: 94
 μ : -17.0
 σ : 3.7

Channel 2
mn: -1839
mx: 1818
 μ : -19.0
 σ : 44.6

Processed Wed Nov 4 10:33:09 2015 by ELM ver.2012-10-06 from 001__elm20151104_081701__dat00.bin

