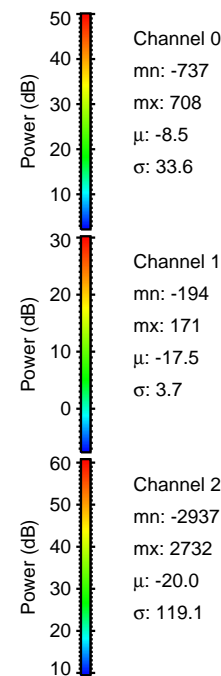
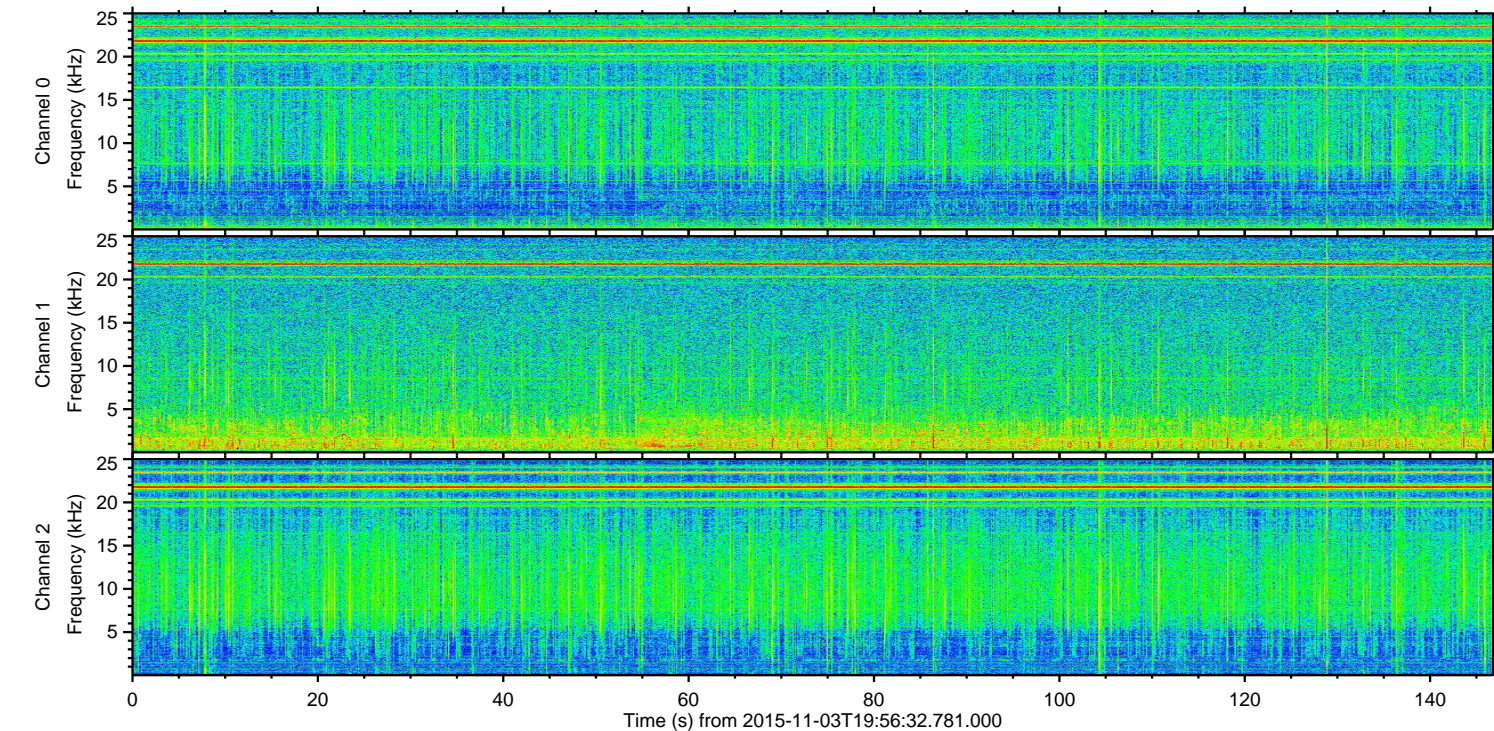
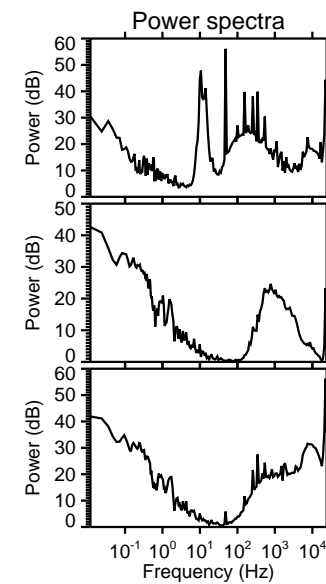
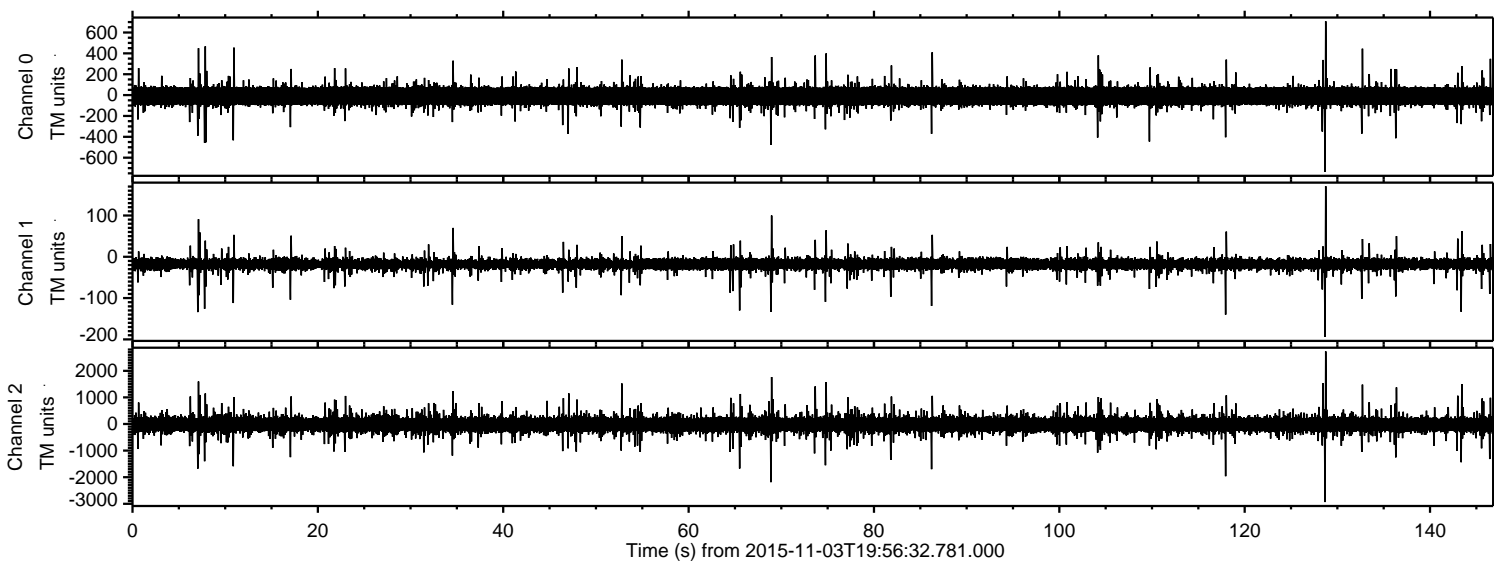


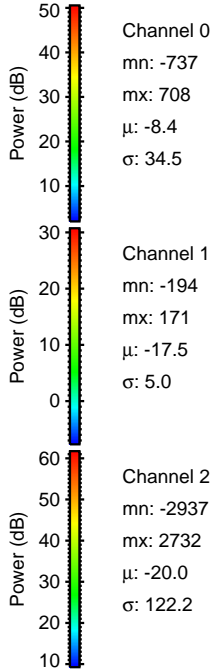
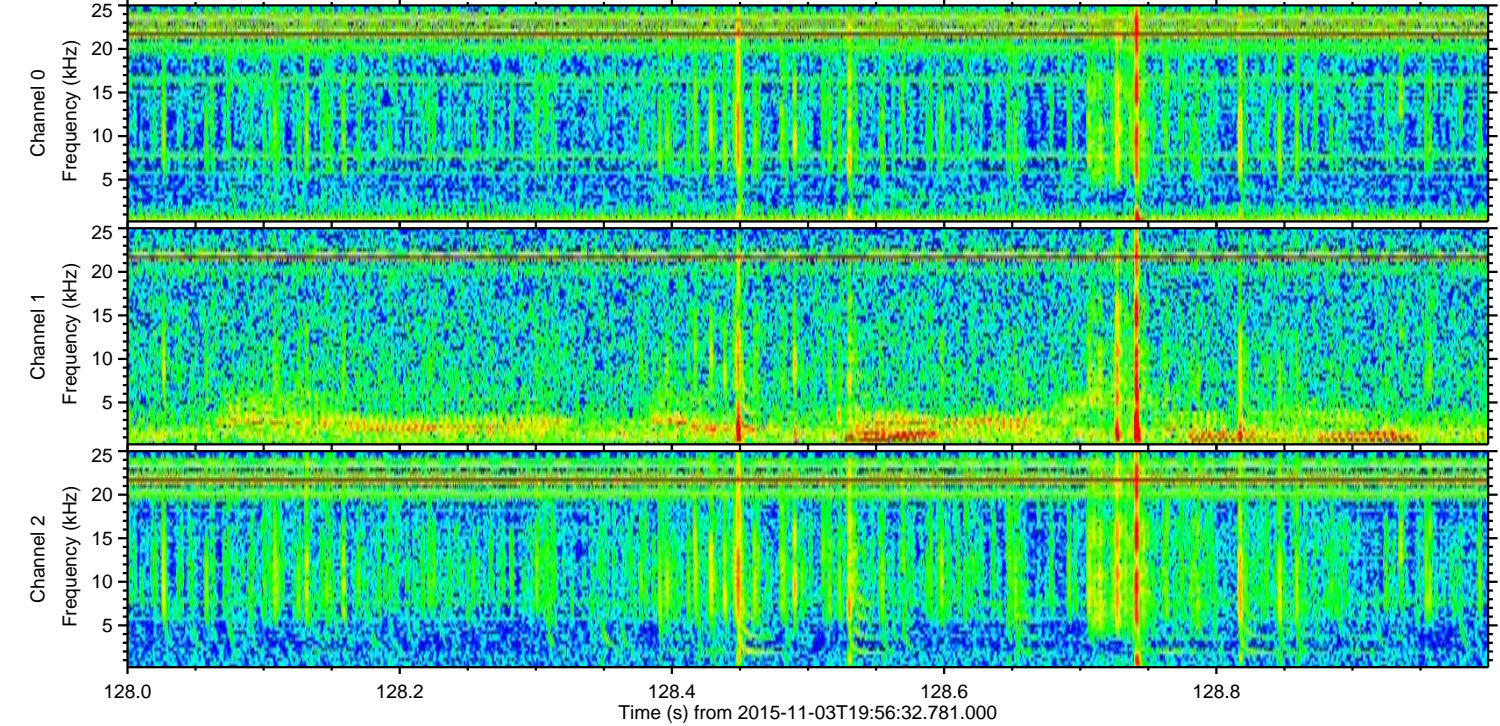
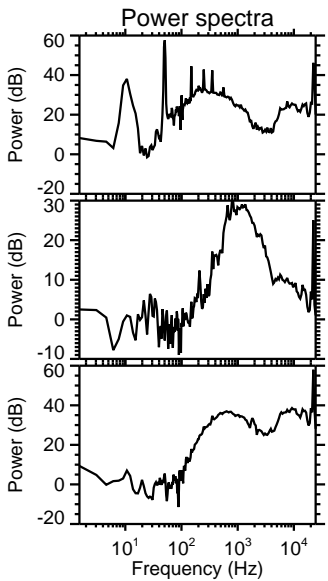
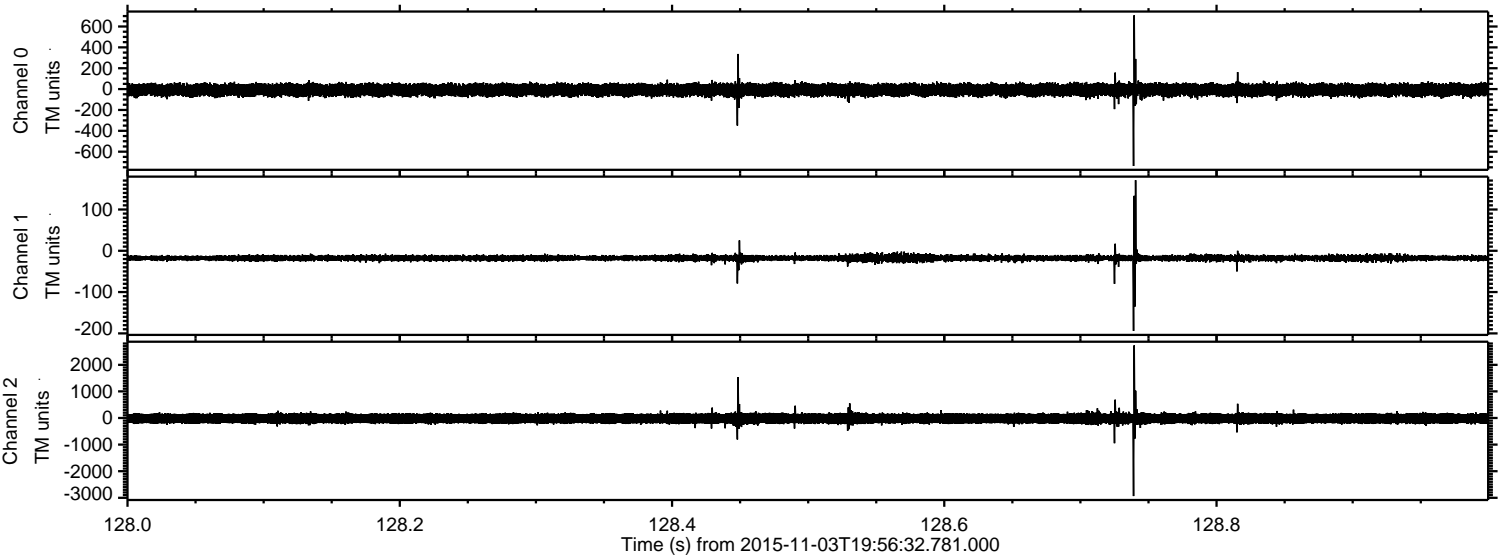
ELMAVAN 3D WAVEFORMS (Measured data sampled at 50 kHz) 51000 packets of 144 samples from 2015-11-03T19:56:32.781.000.

Processed Tue Nov 3 21:04:35 2015 by ELM ver.2012-10-06 from 001__elm20151103_195631__dat00.bin

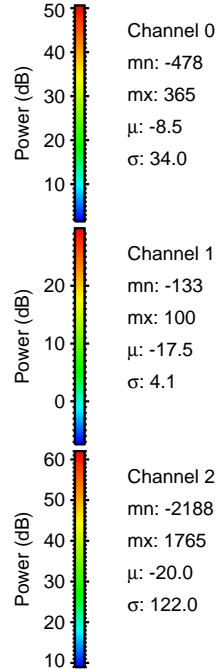
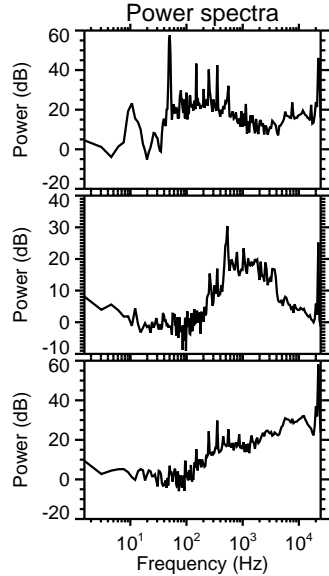
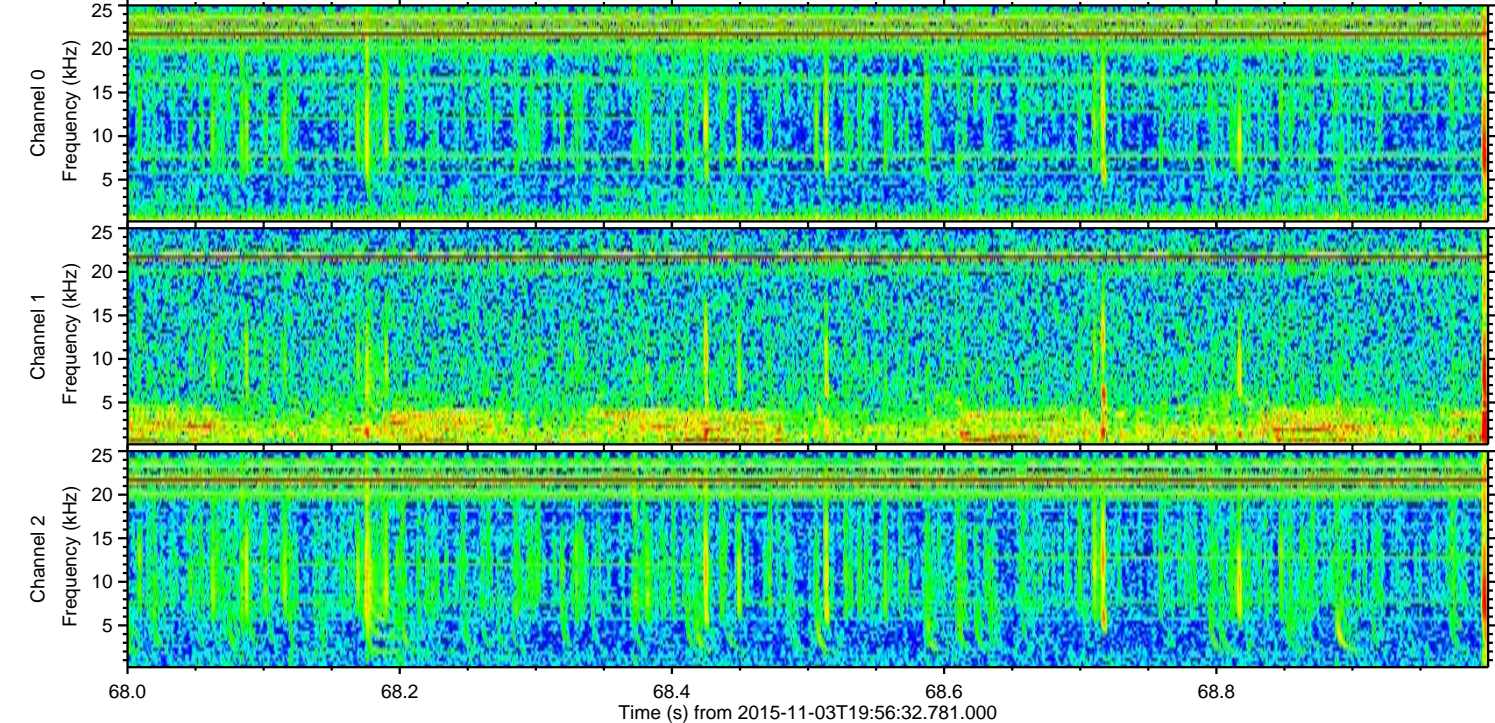
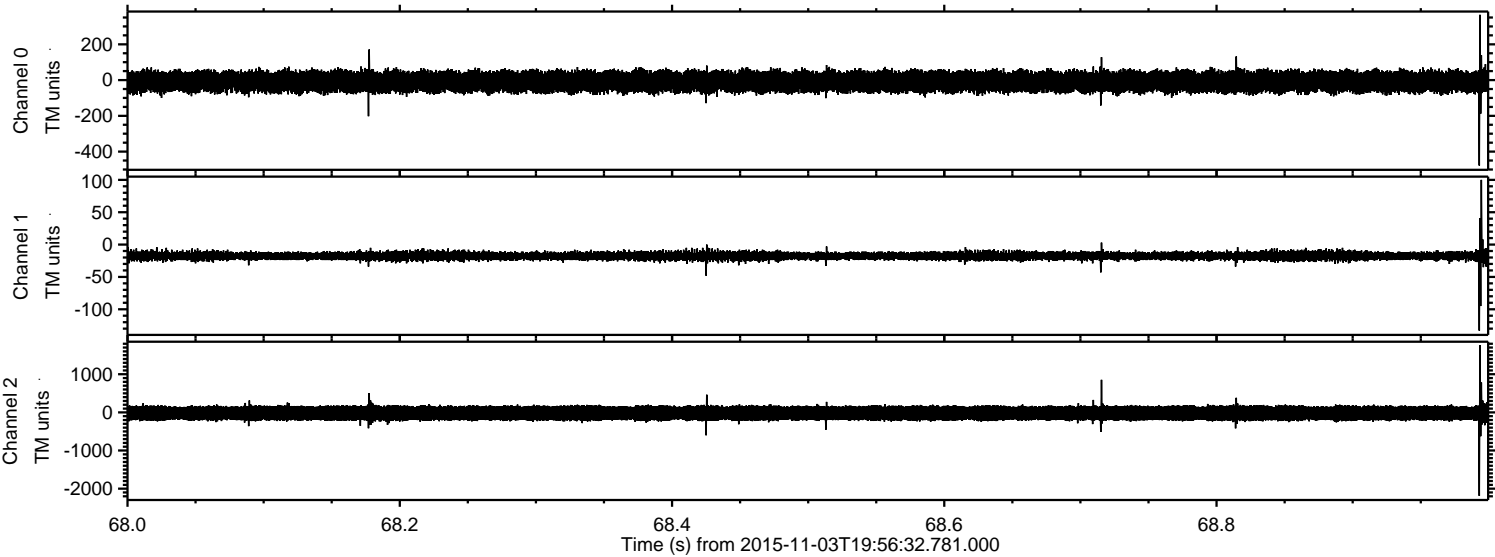


ELMAVAN 3D WAVEFORMS (Measured data sampled at 50 kHz) 51000 packets of 144 samples from 2015-11-03T19:56:32.781.000. Part 129/147

Processed Tue Nov 3 21:04:46 2015 by ELM ver.2012-10-06 from 001__elm20151103_195631__dat00.bin

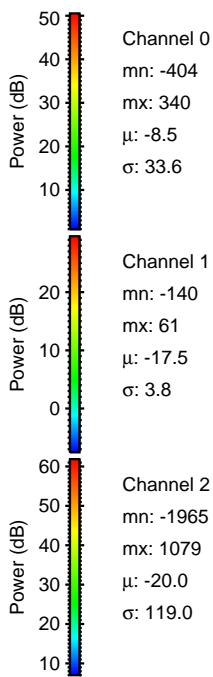
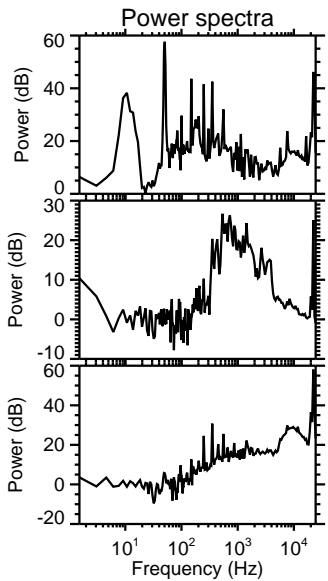
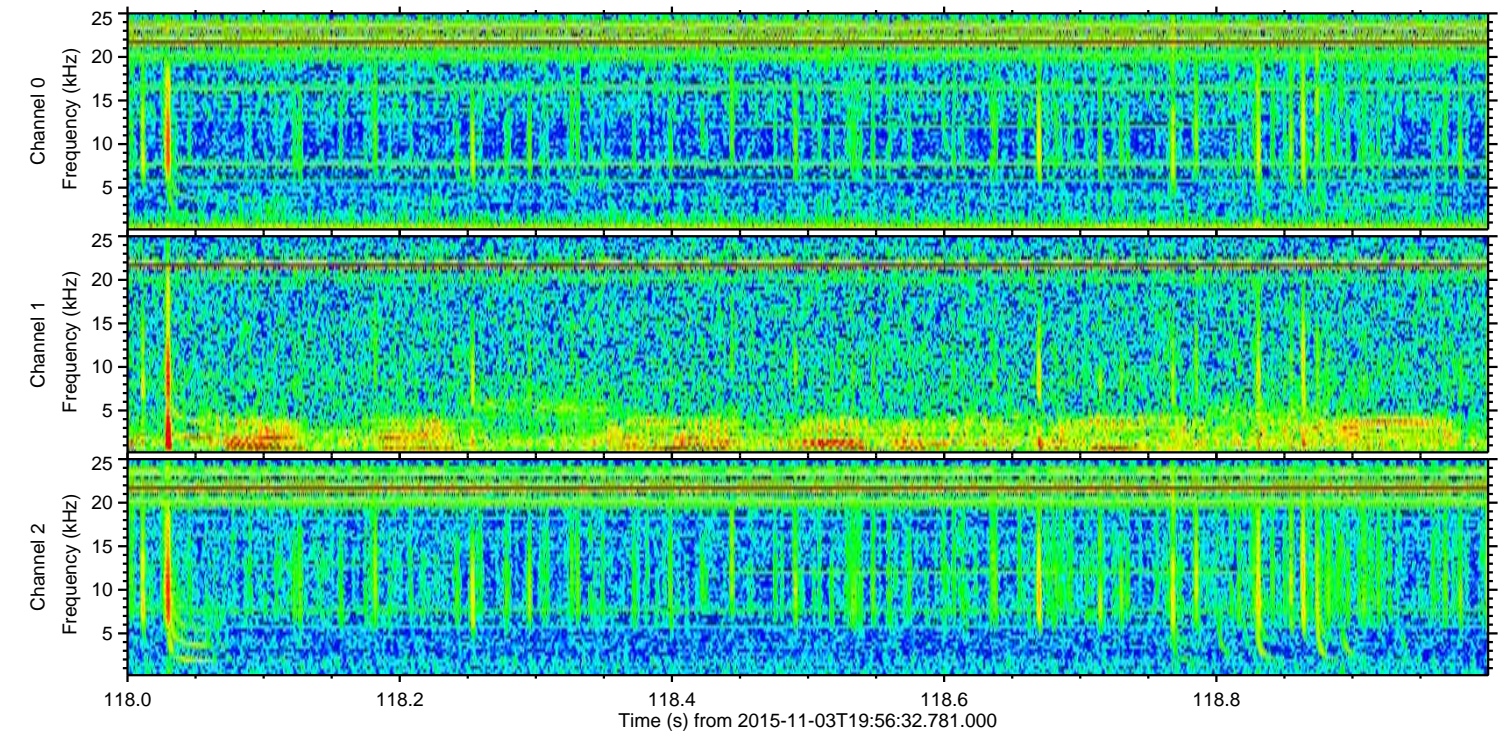
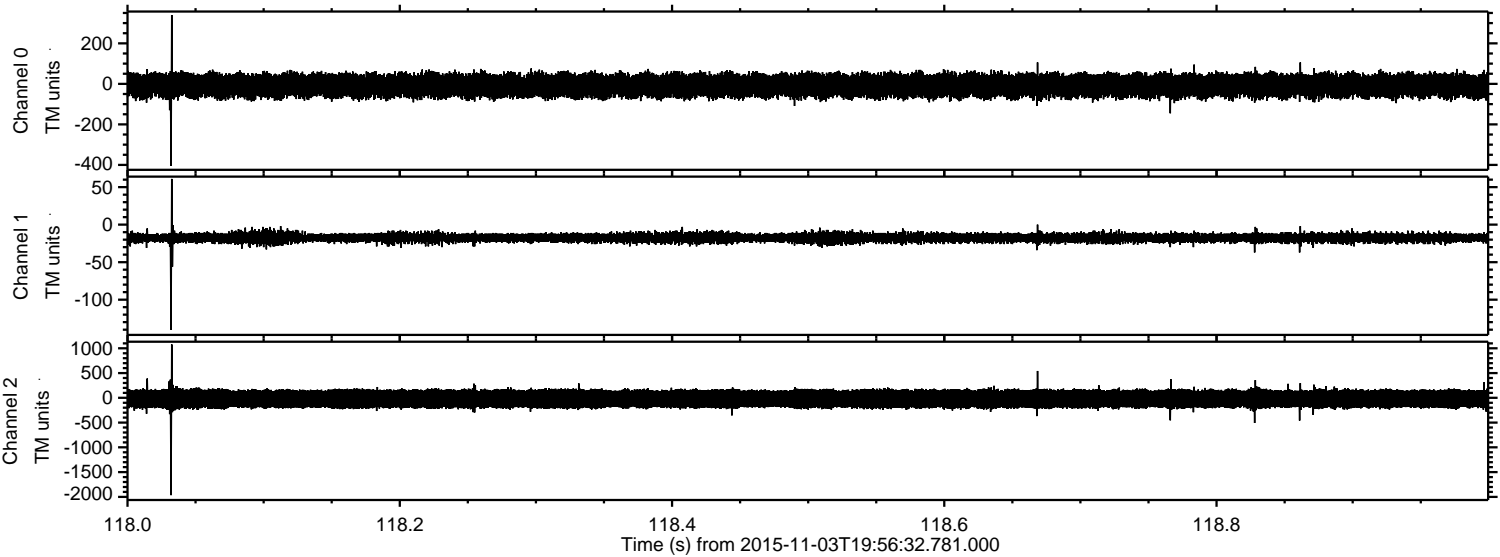


Processed Tue Nov 3 21:04:47 2015 by ELM ver.2012-10-06 from 001__elm20151103_195631__dat00.bin

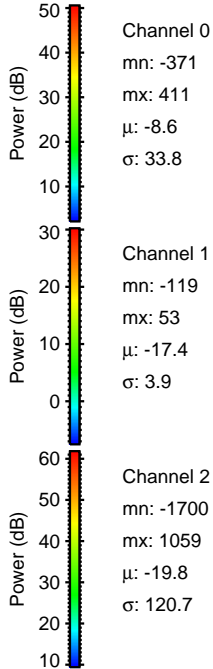
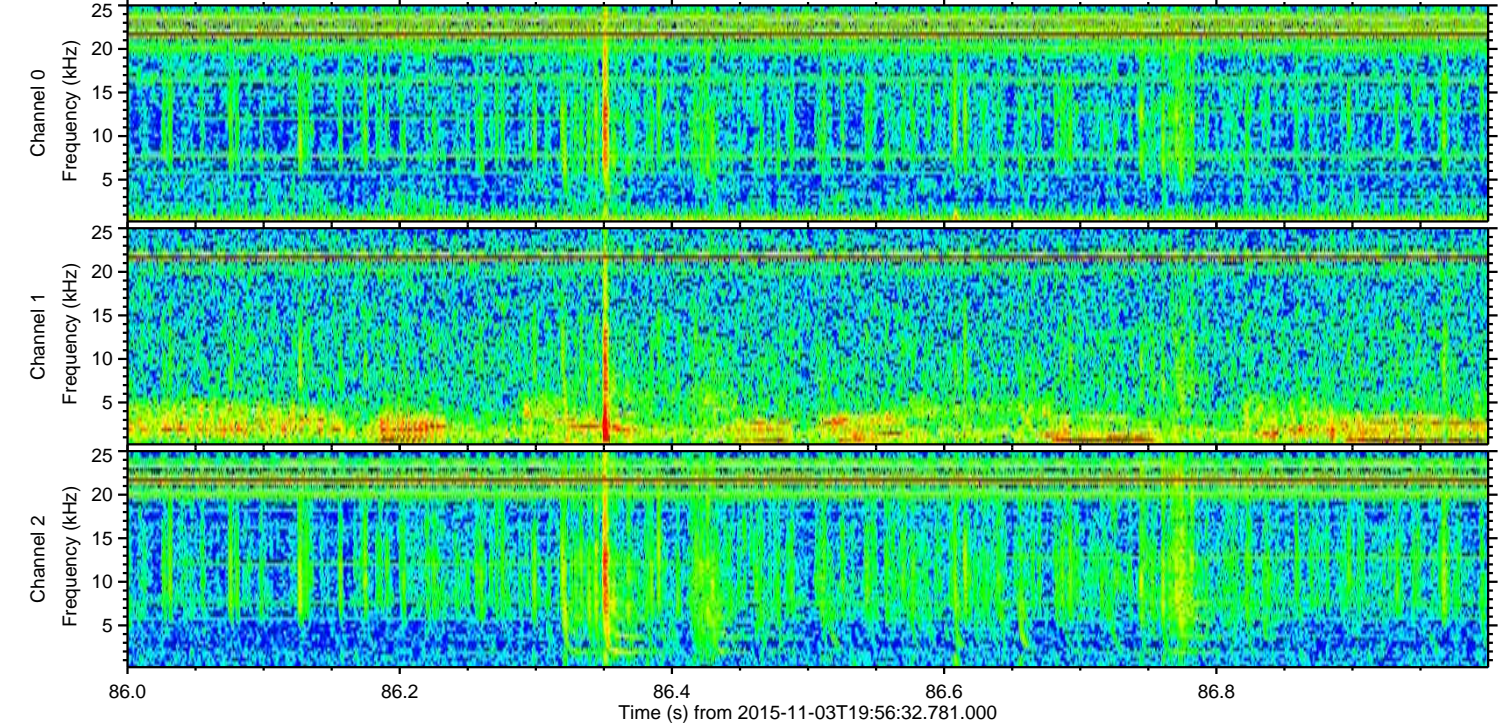
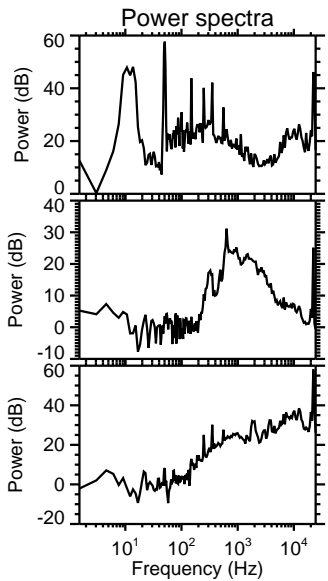
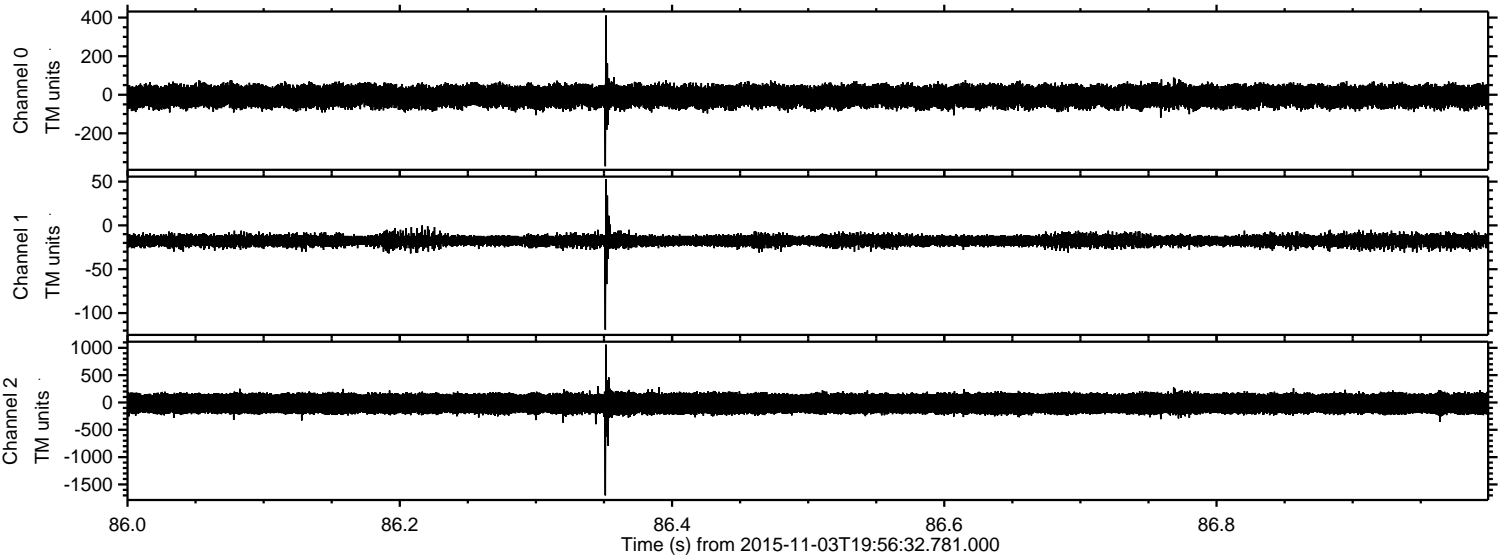


ELMAVAN 3D WAVEFORMS (Measured data sampled at 50 kHz) 51000 packets of 144 samples from 2015-11-03T19:56:32.781.000. Part 119/147

Processed Tue Nov 3 21:04:48 2015 by ELM ver.2012-10-06 from 001__elm20151103_195631__dat00.bin



Processed Tue Nov 3 21:04:49 2015 by ELM ver.2012-10-06 from 001__elm20151103_195631__dat00.bin

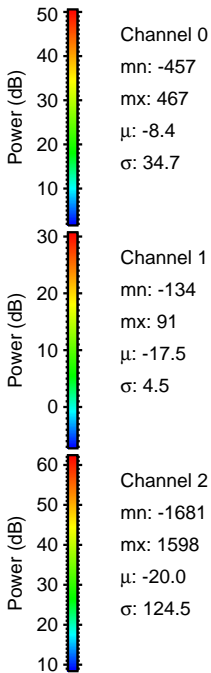
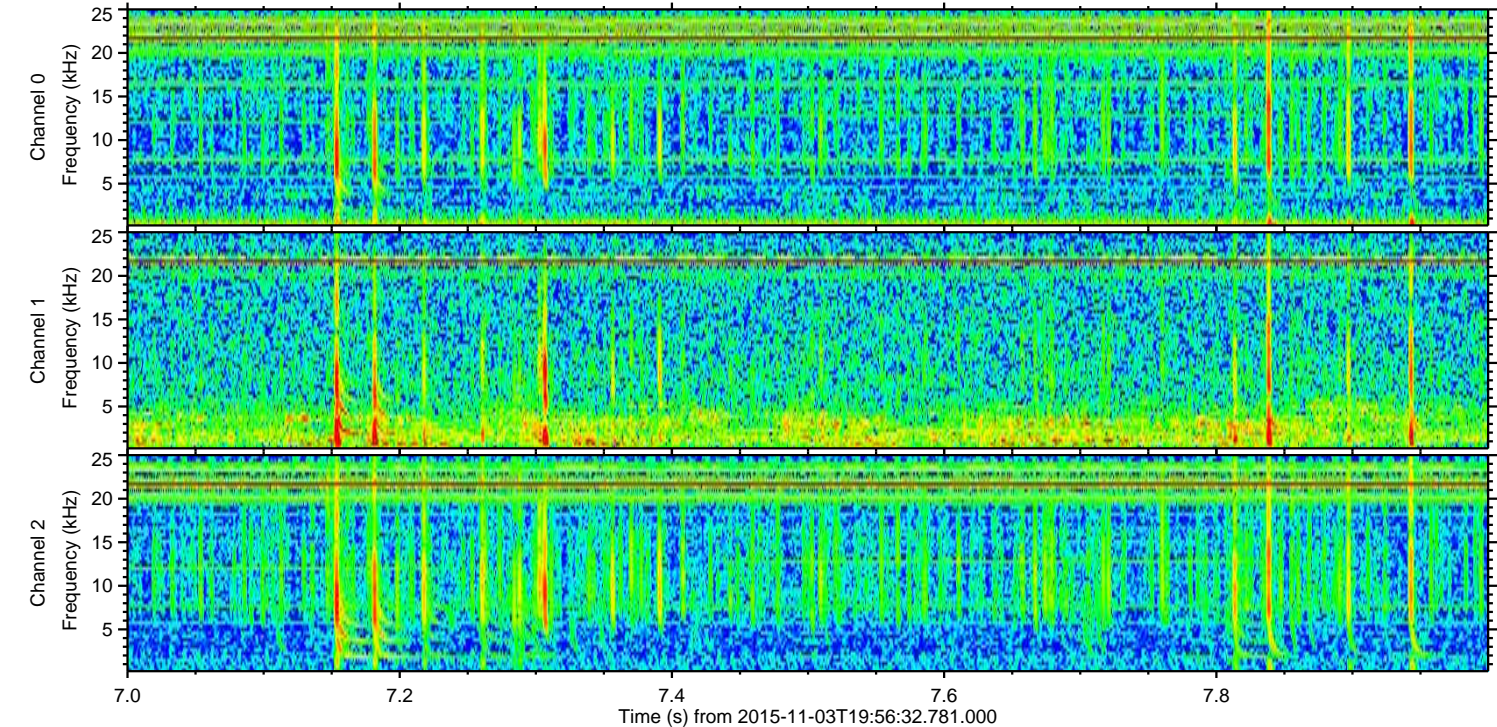
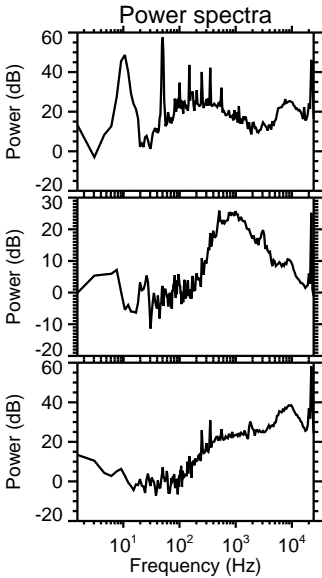
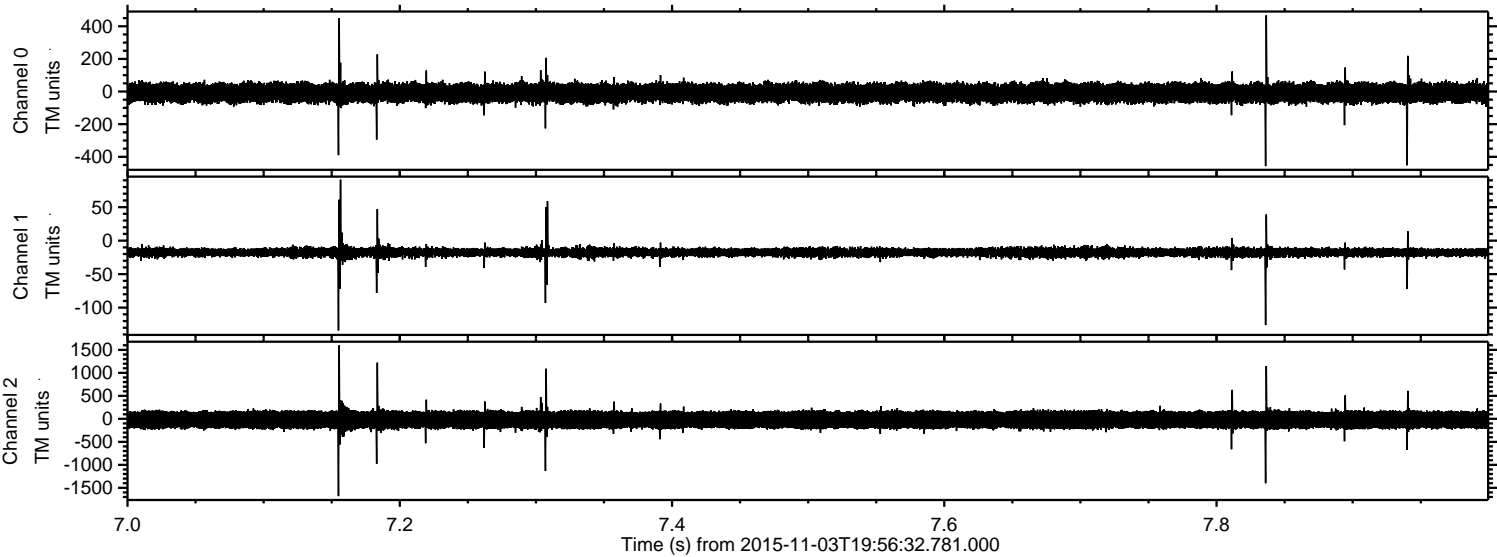


Channel 0
mn: -371
mx: 411
 μ : -8.6
 σ : 33.8

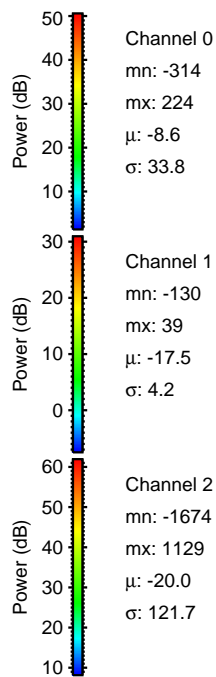
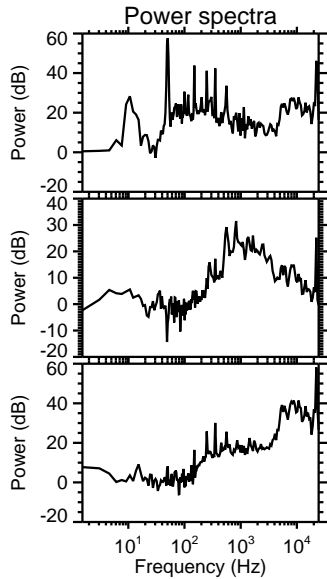
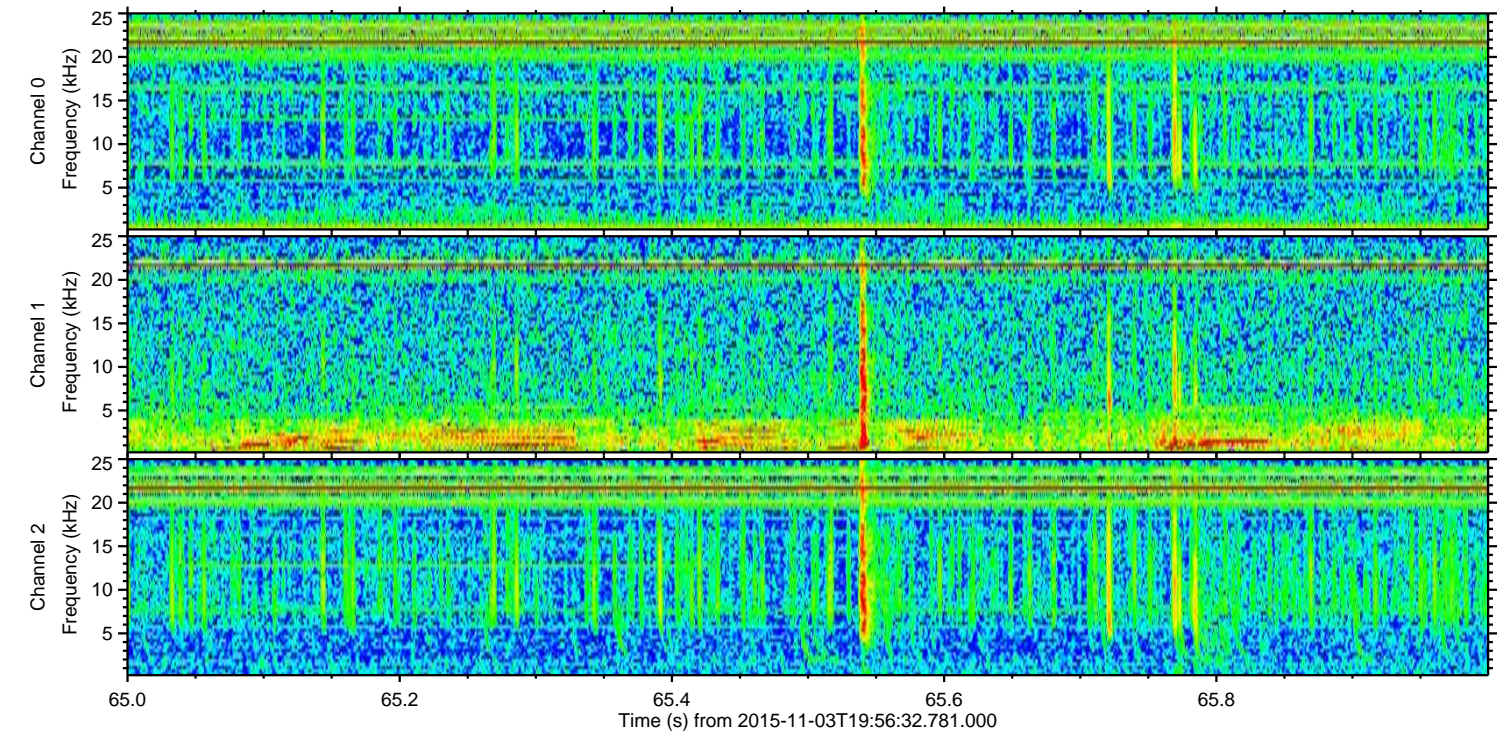
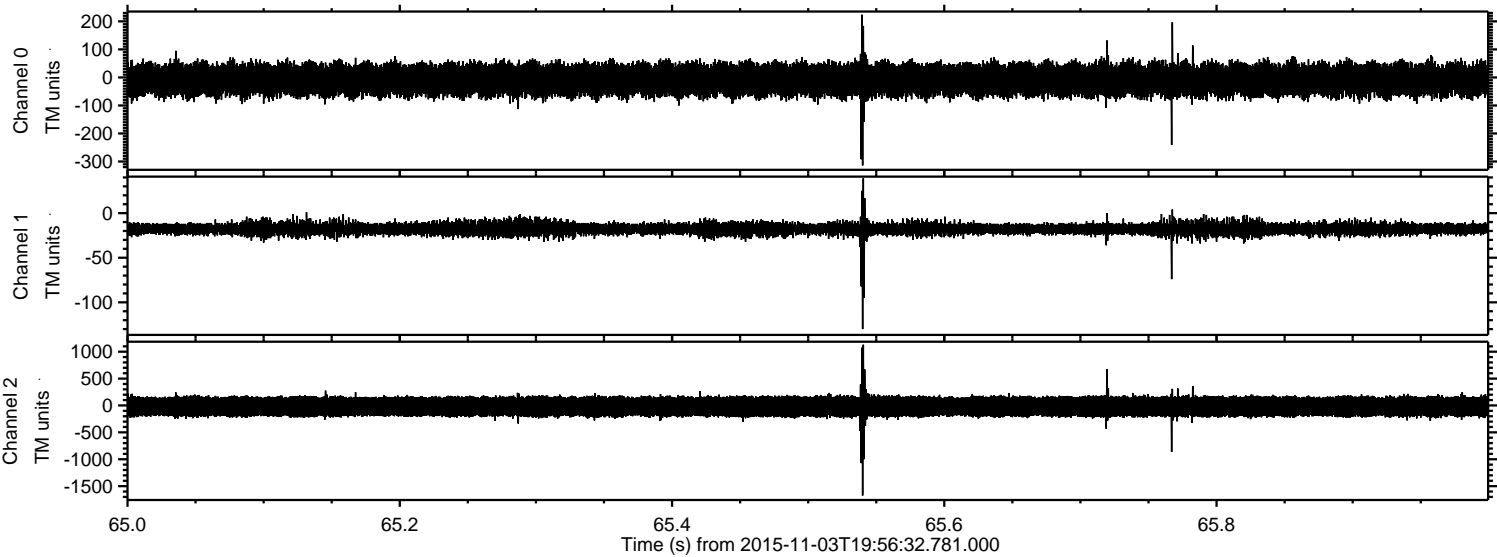
Channel 1
mn: -119
mx: 53
 μ : -17.4
 σ : 3.9

Channel 2
mn: -1700
mx: 1059
 μ : -19.8
 σ : 120.7

Processed Tue Nov 3 21:04:50 2015 by ELM ver.2012-10-06 from 001__elm20151103_195631__dat00.bin

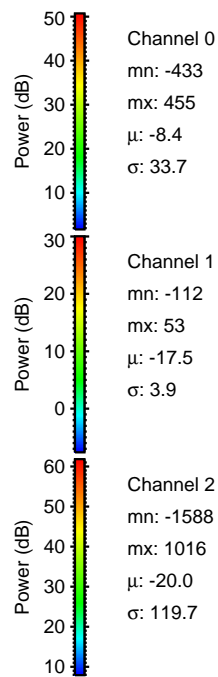
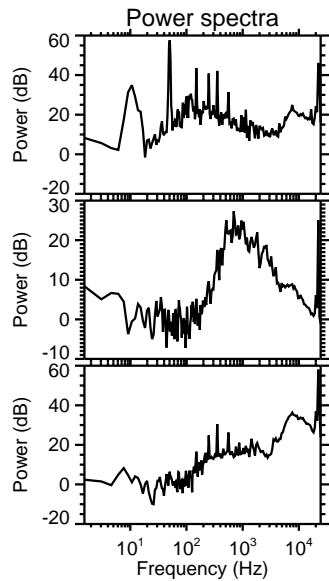
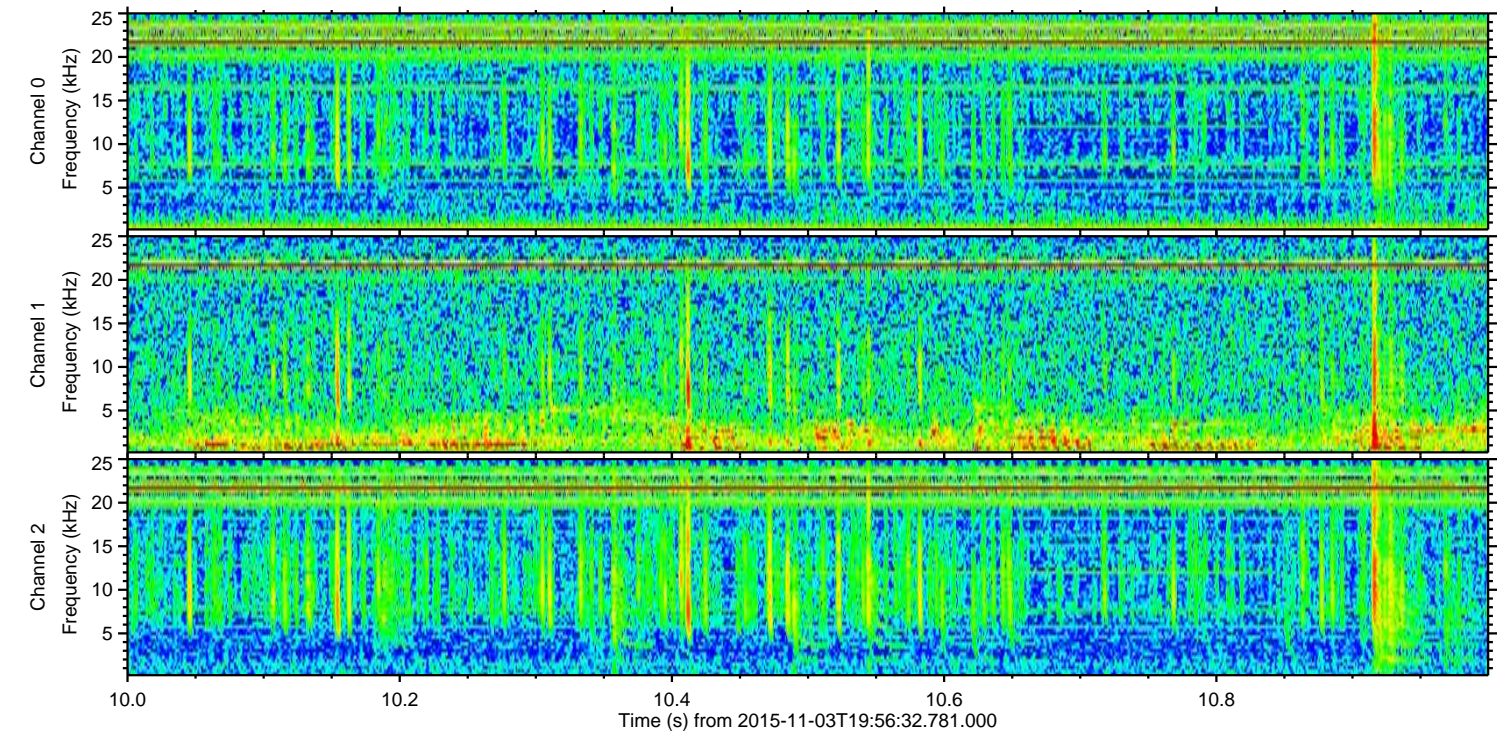
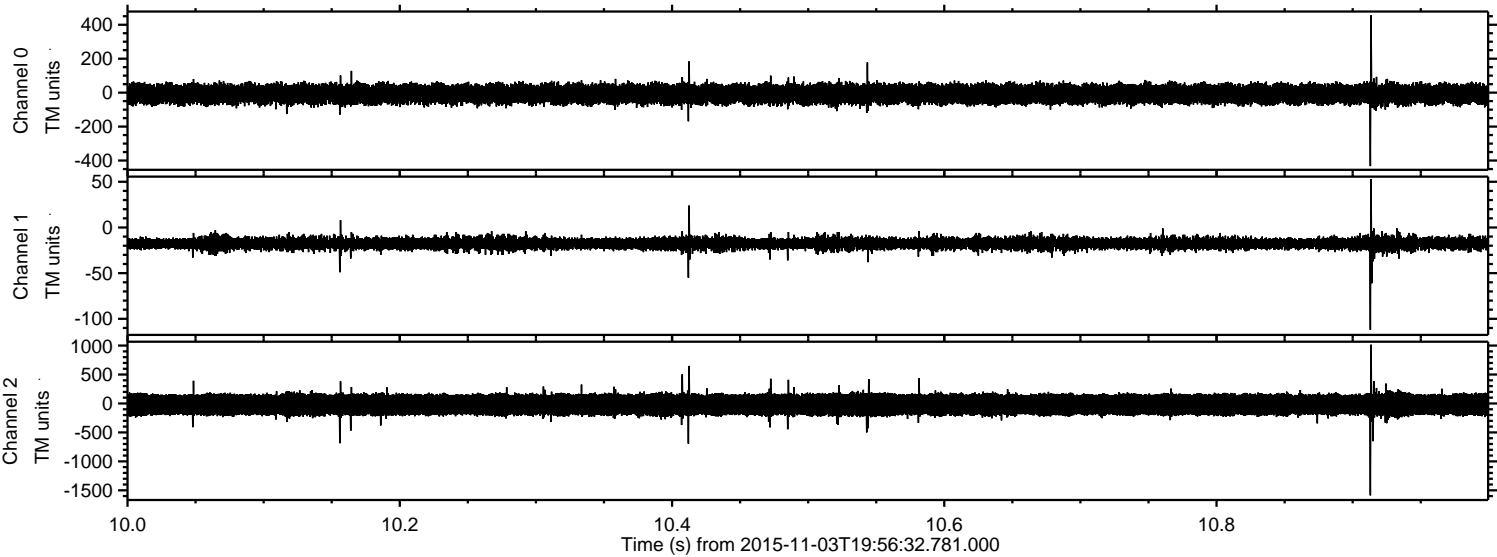


Processed Tue Nov 3 21:04:51 2015 by ELM ver.2012-10-06 from 001__elm20151103_195631__dat00.bin



ELMAVAN 3D WAVEFORMS (Measured data sampled at 50 kHz) 51000 packets of 144 samples from 2015-11-03T19:56:32.781.000. Part 11/147

Processed Tue Nov 3 21:04:52 2015 by ELM ver.2012-10-06 from 001__elm20151103_195631__dat00.bin

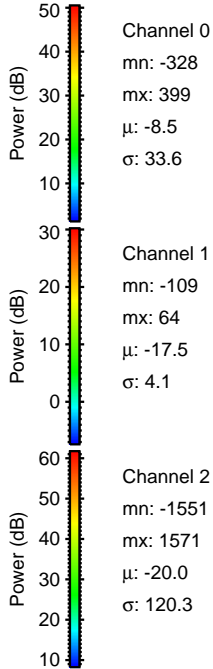
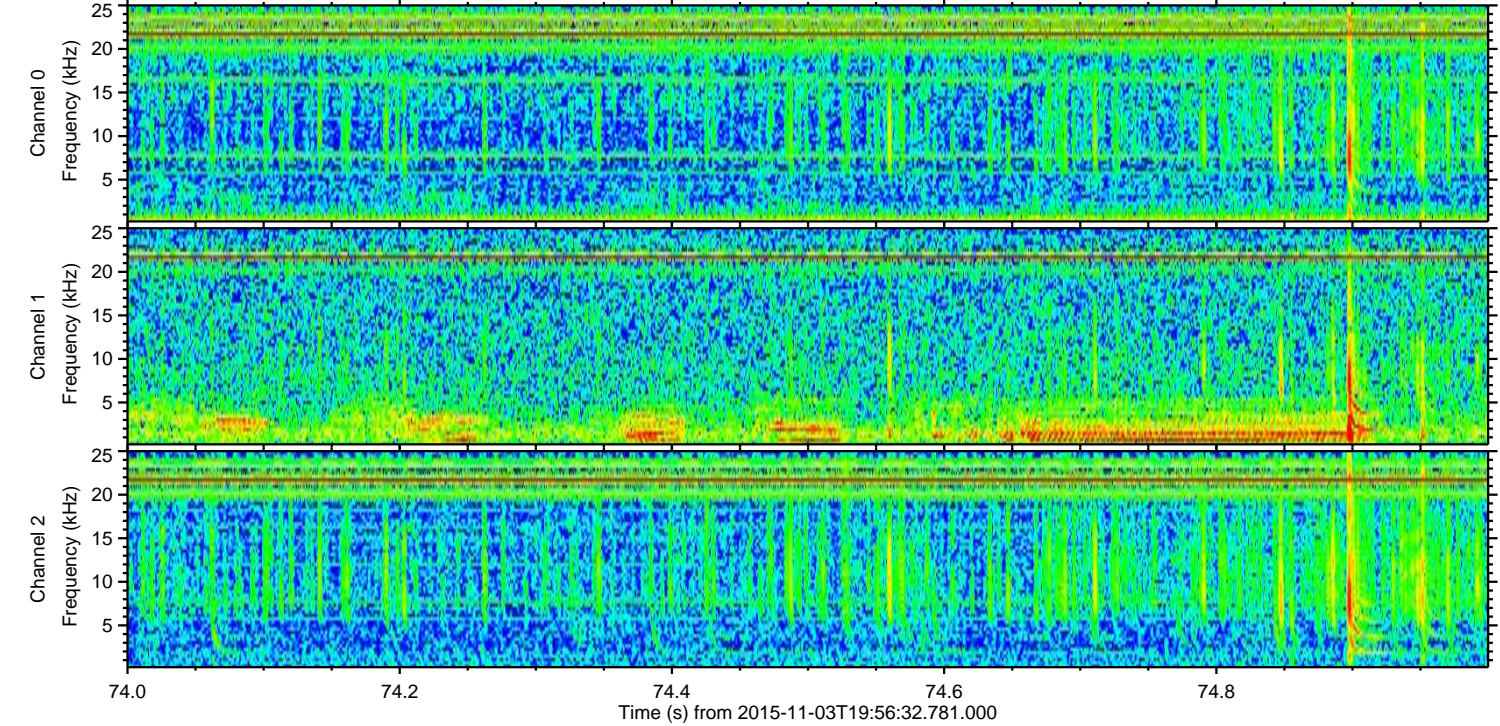
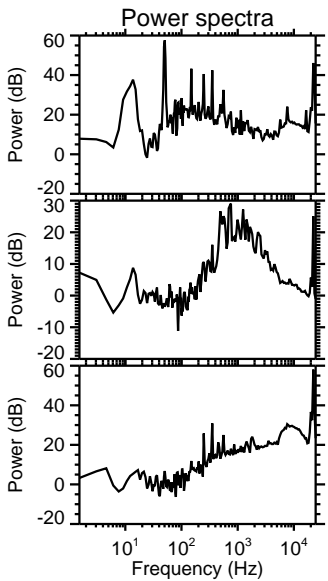
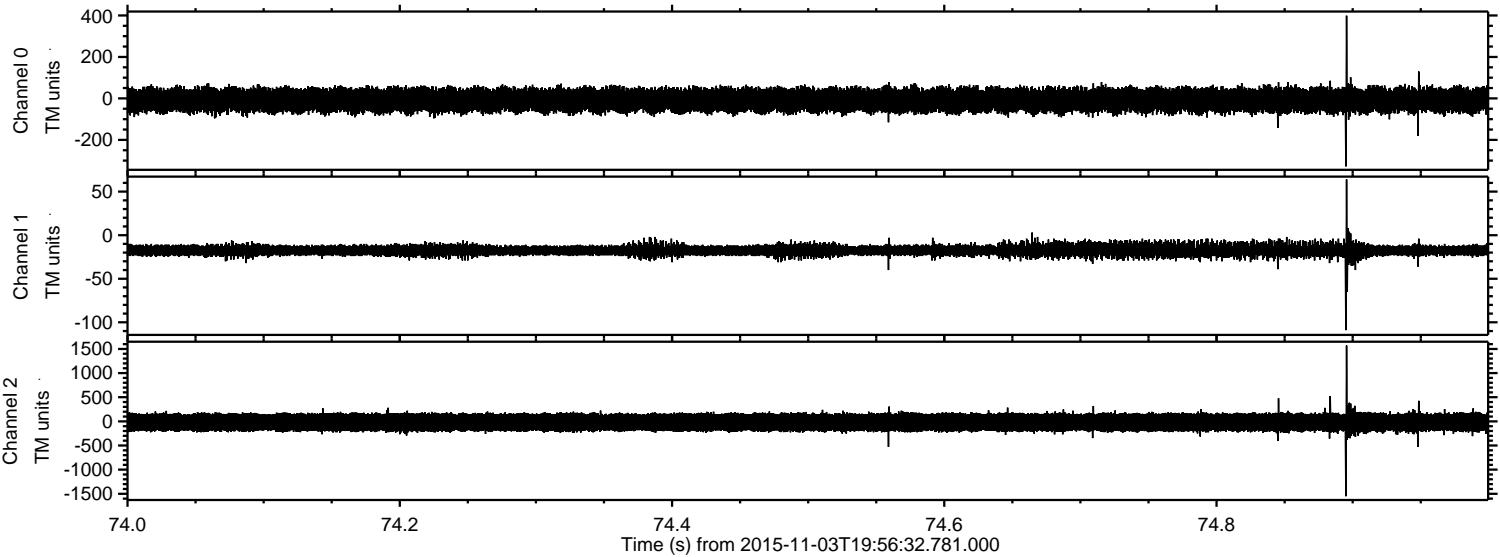


Channel 0
mn: -433
mx: 455
 μ : -8.4
 σ : 33.7

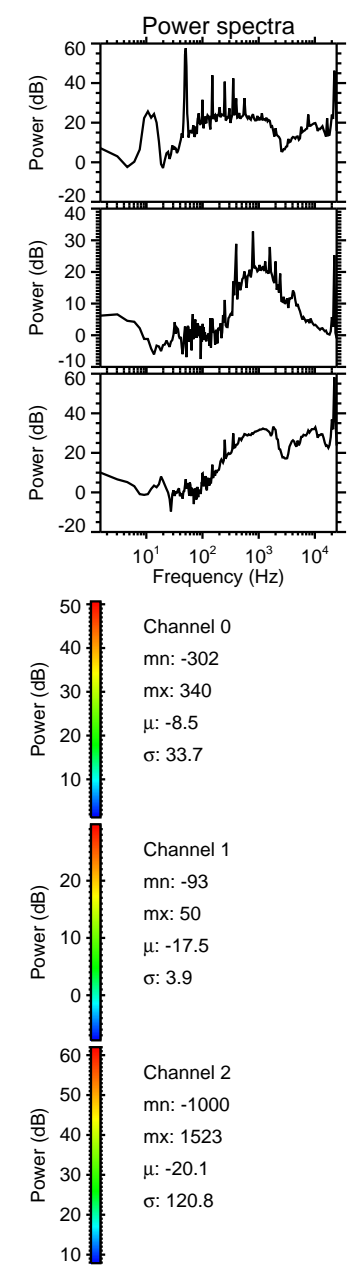
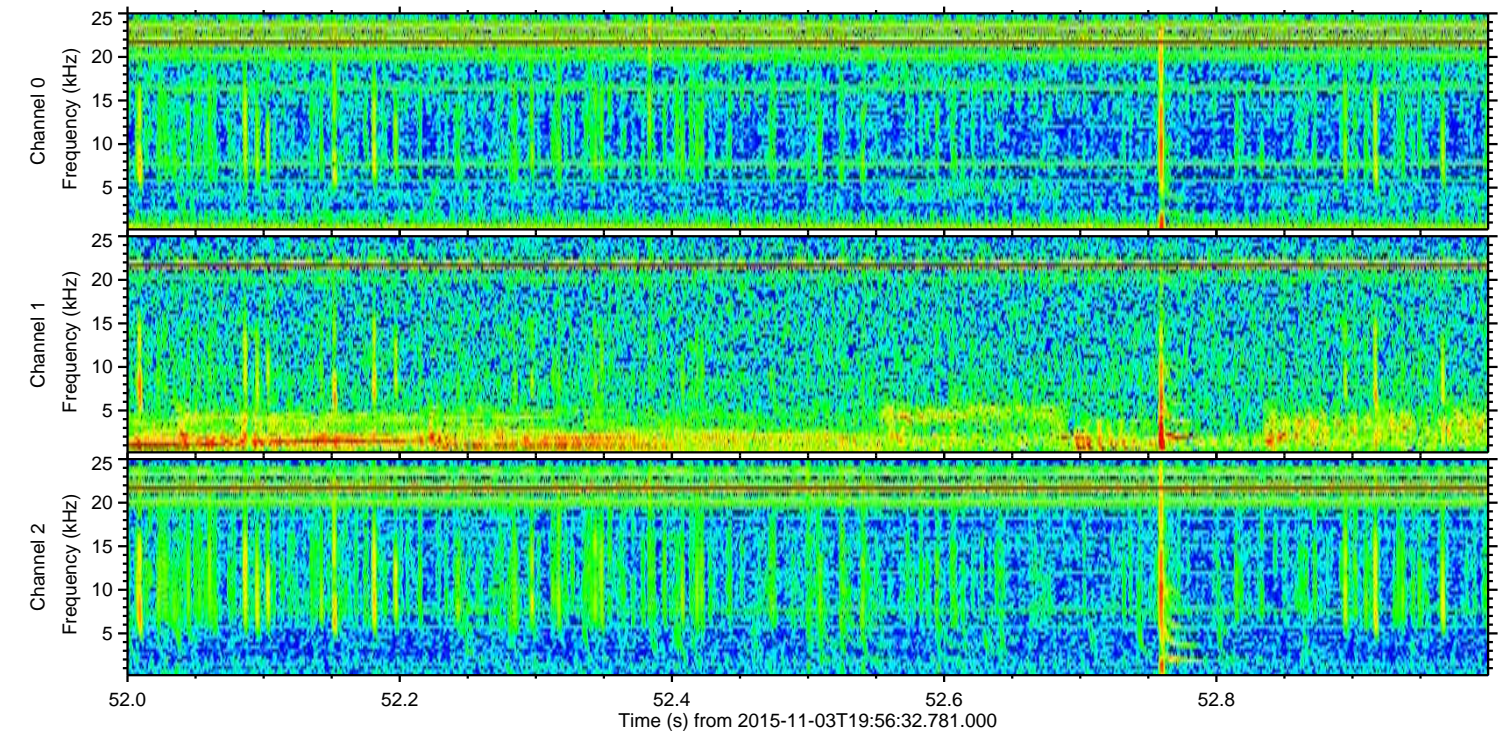
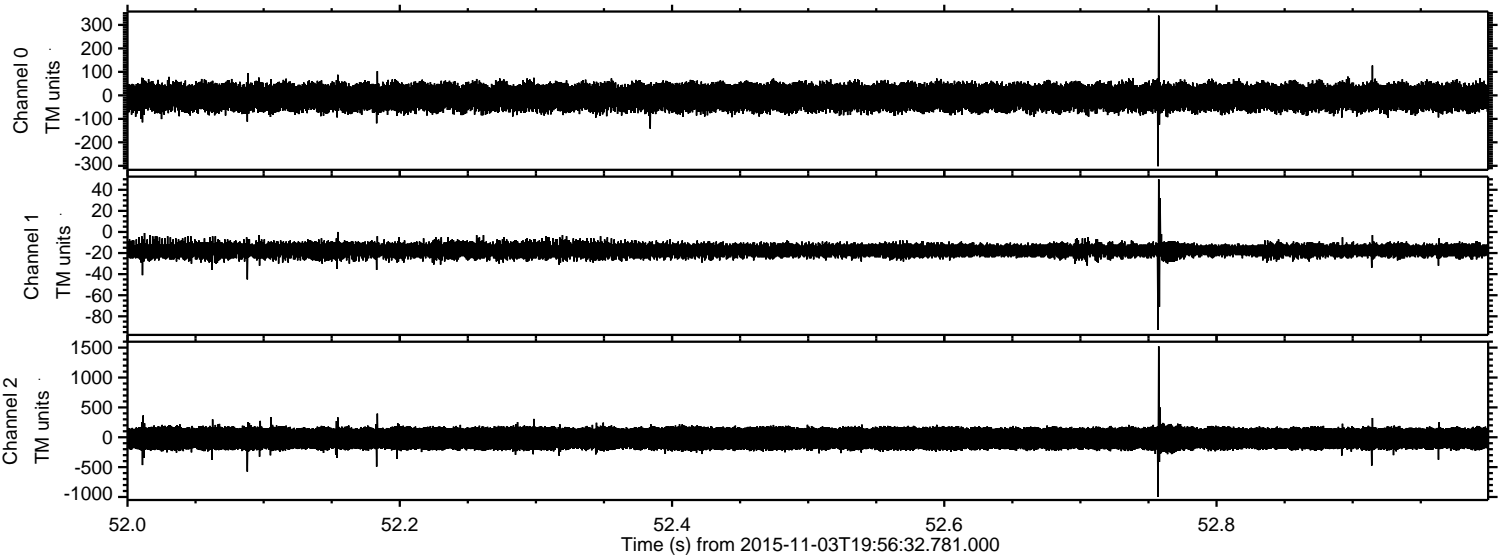
Channel 1
mn: -112
mx: 53
 μ : -17.5
 σ : 3.9

Channel 2
mn: -1588
mx: 1016
 μ : -20.0
 σ : 119.7

Processed Tue Nov 3 21:04:53 2015 by ELM ver.2012-10-06 from 001__elm20151103_195631__dat00.bin



Processed Tue Nov 3 21:04:54 2015 by ELM ver.2012-10-06 from 001__elm20151103_195631__dat00.bin



Processed Tue Nov 3 21:04:55 2015 by ELM ver.2012-10-06 from 001__elm20151103_195631__dat00.bin

