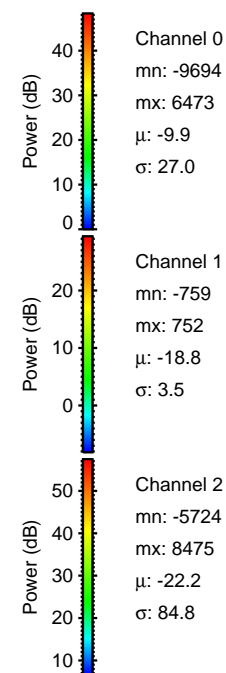
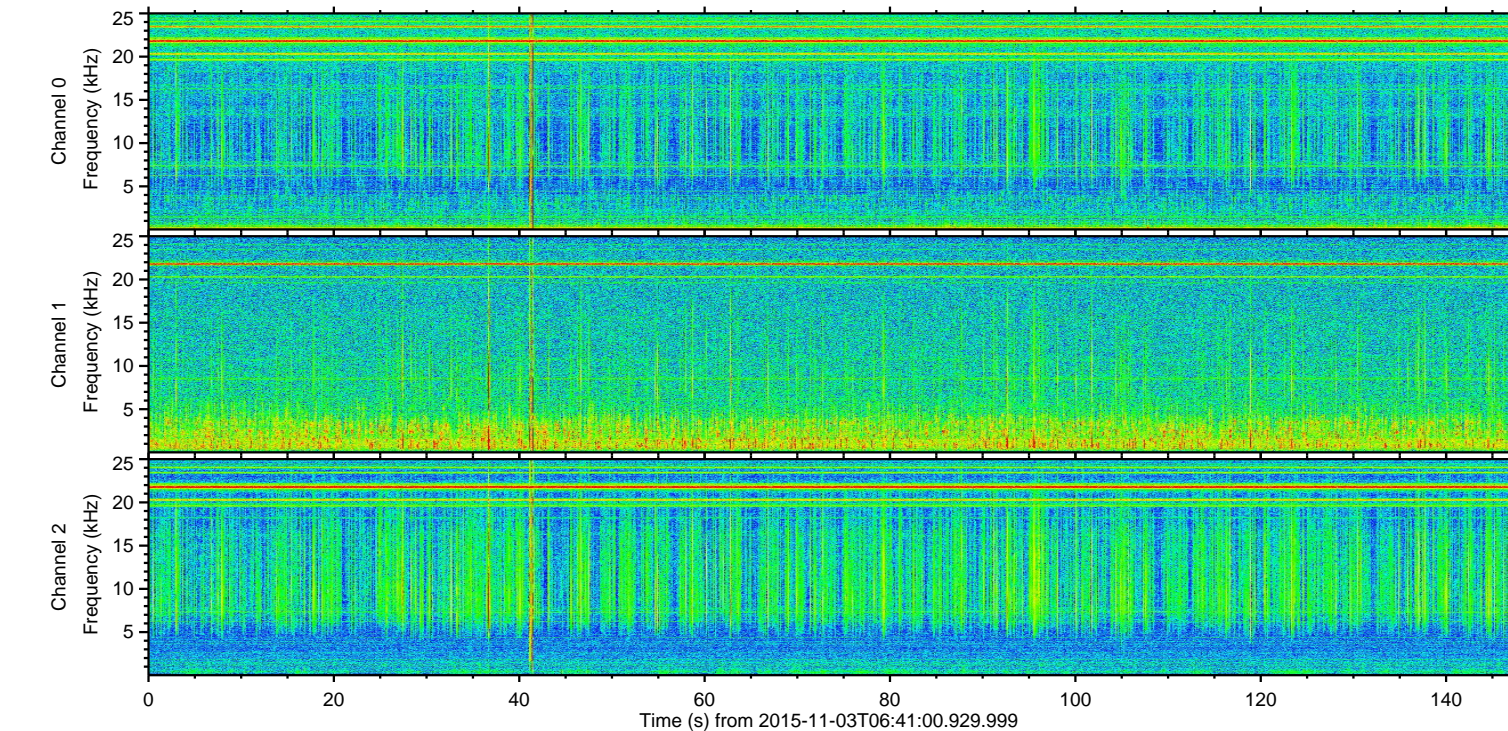
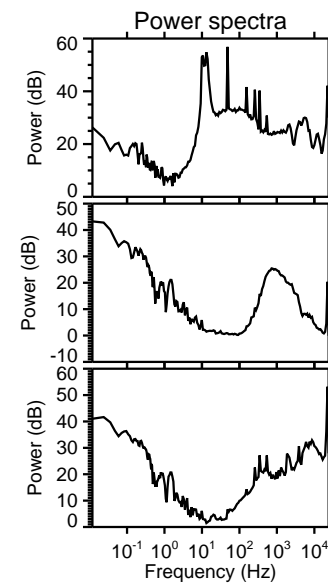
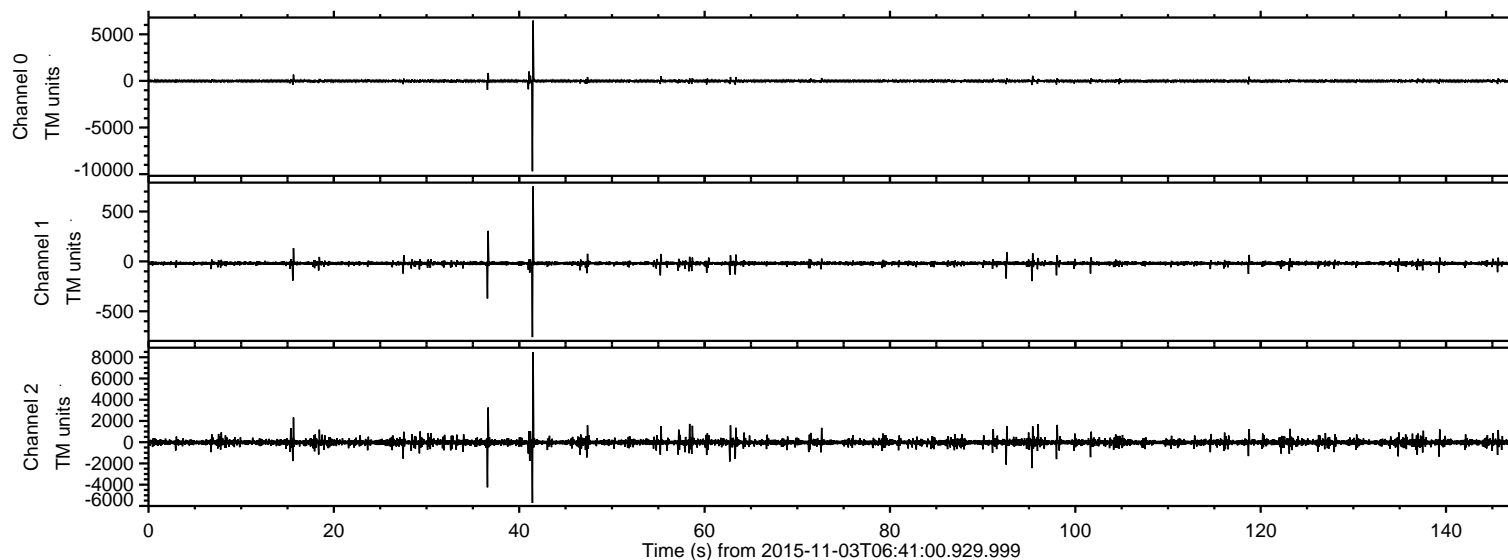


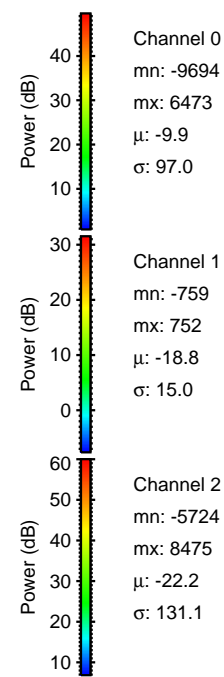
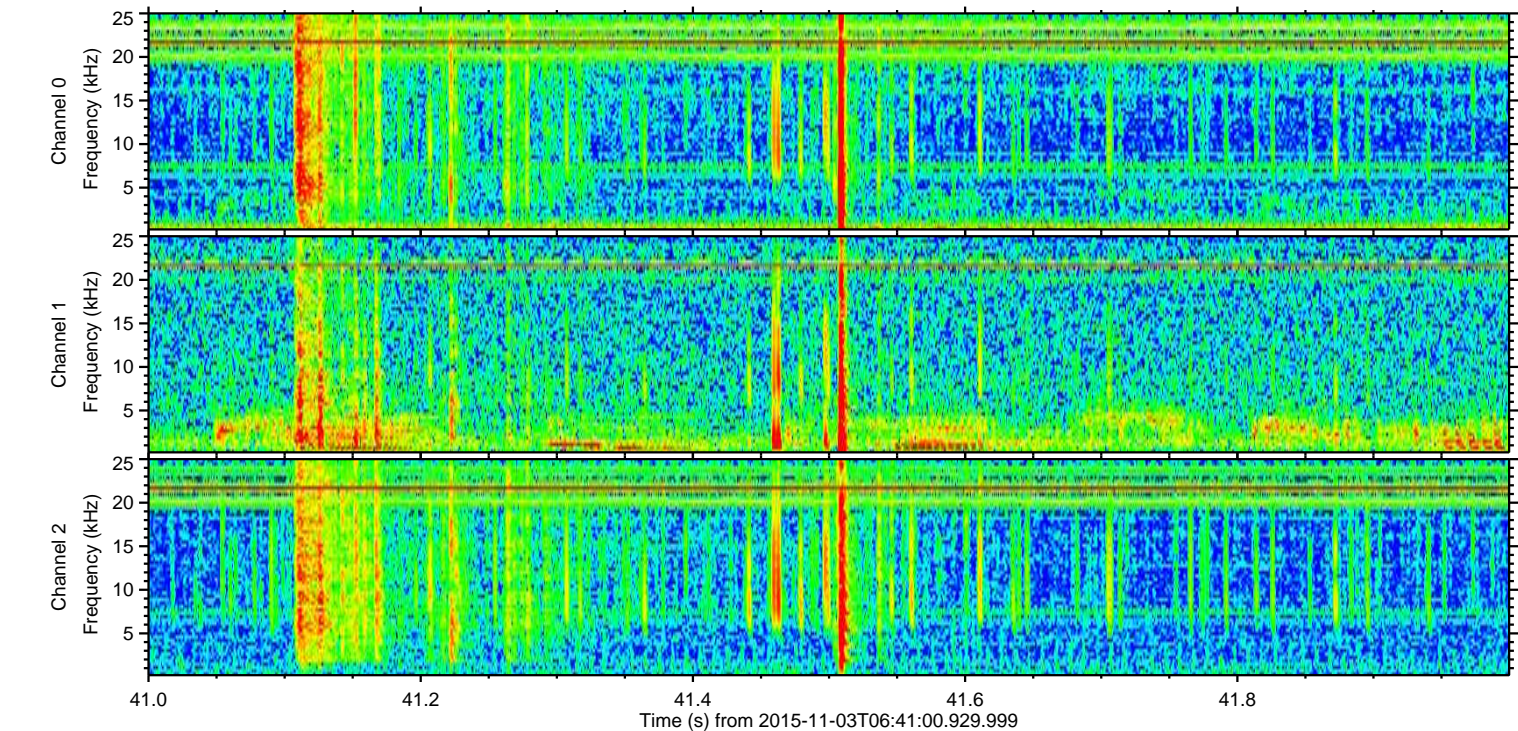
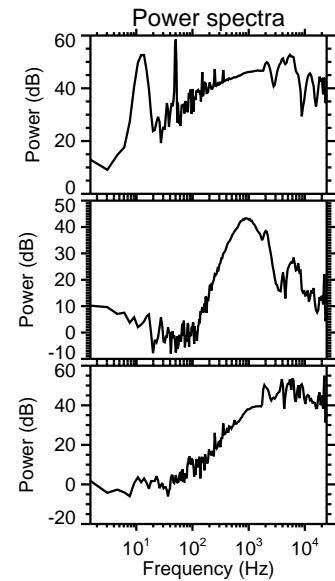
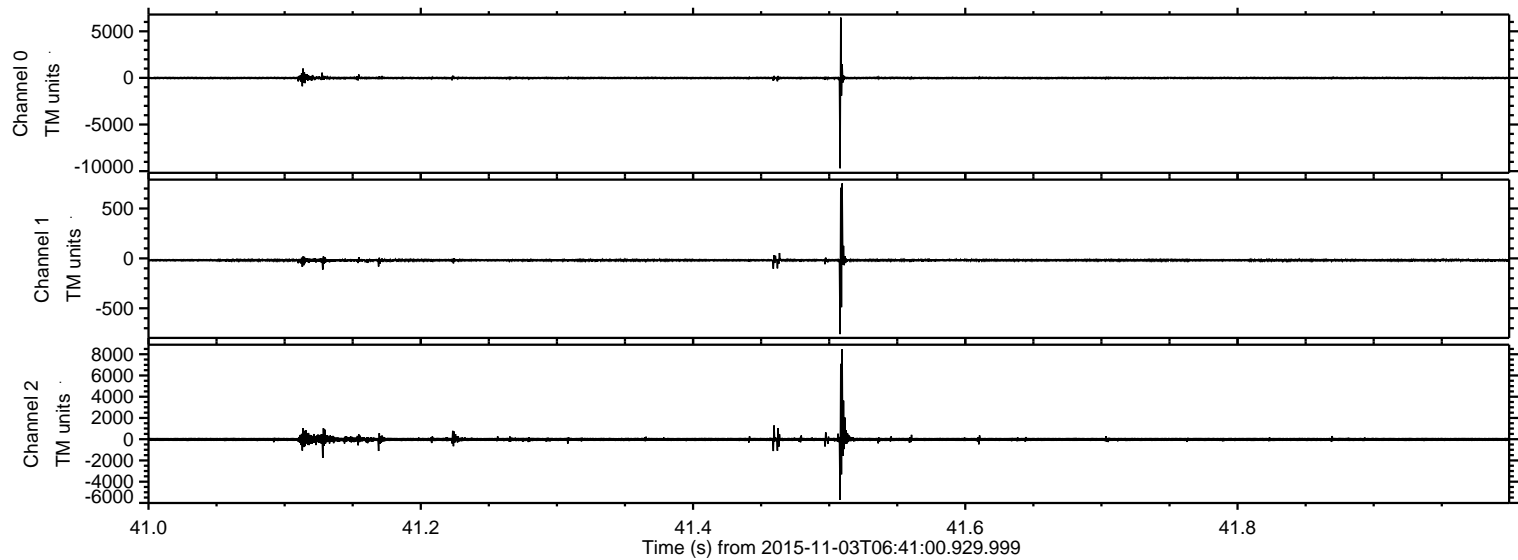
ELMAVAN 3D WAVEFORMS (Measured data sampled at 50 kHz) 51000 packets of 144 samples from 2015-11-03T06:41:00.929.999.

Processed Tue Nov 3 11:12:02 2015 by ELM ver.2012-10-06 from 001__elm20151103_064059__dat00.bin



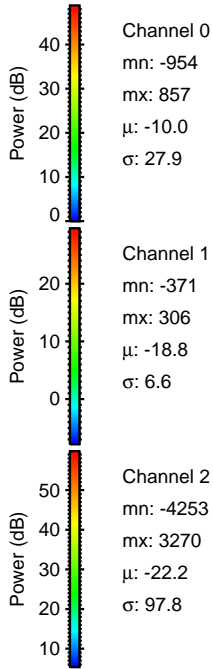
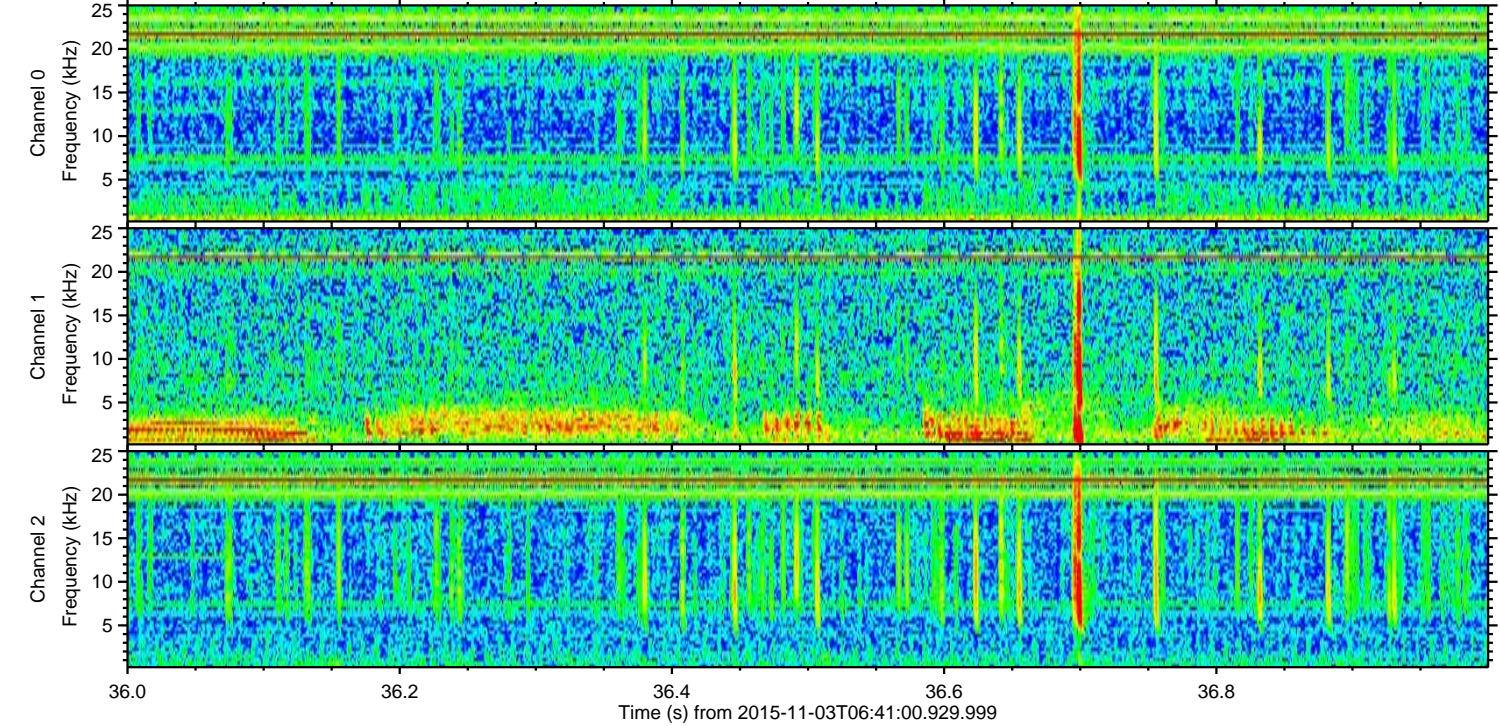
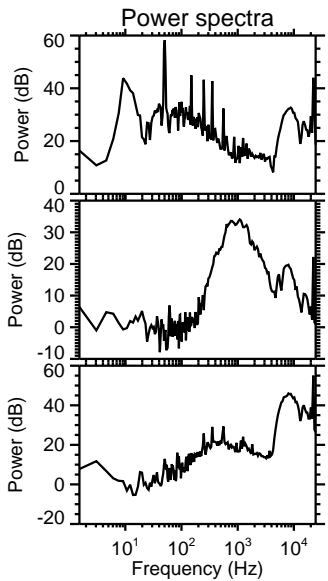
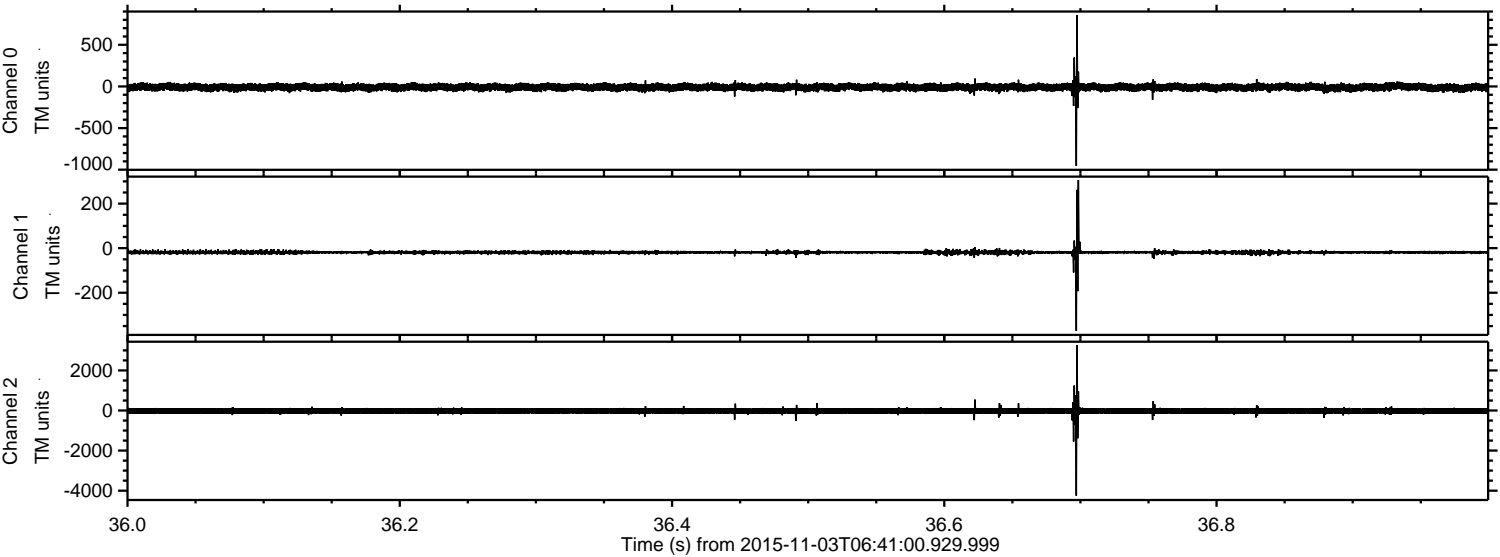
ELMAVAN 3D WAVEFORMS (Measured data sampled at 50 kHz) 51000 packets of 144 samples from 2015-11-03T06:41:00.929.999. Part 42/147

Processed Tue Nov 3 11:12:19 2015 by ELM ver.2012-10-06 from 001__elm20151103_064059__dat00.bin

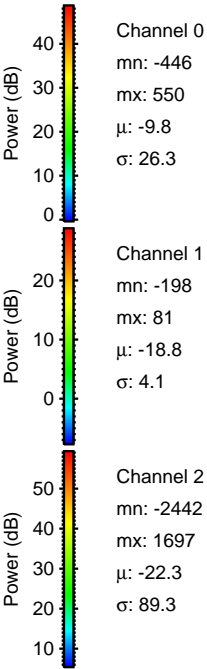
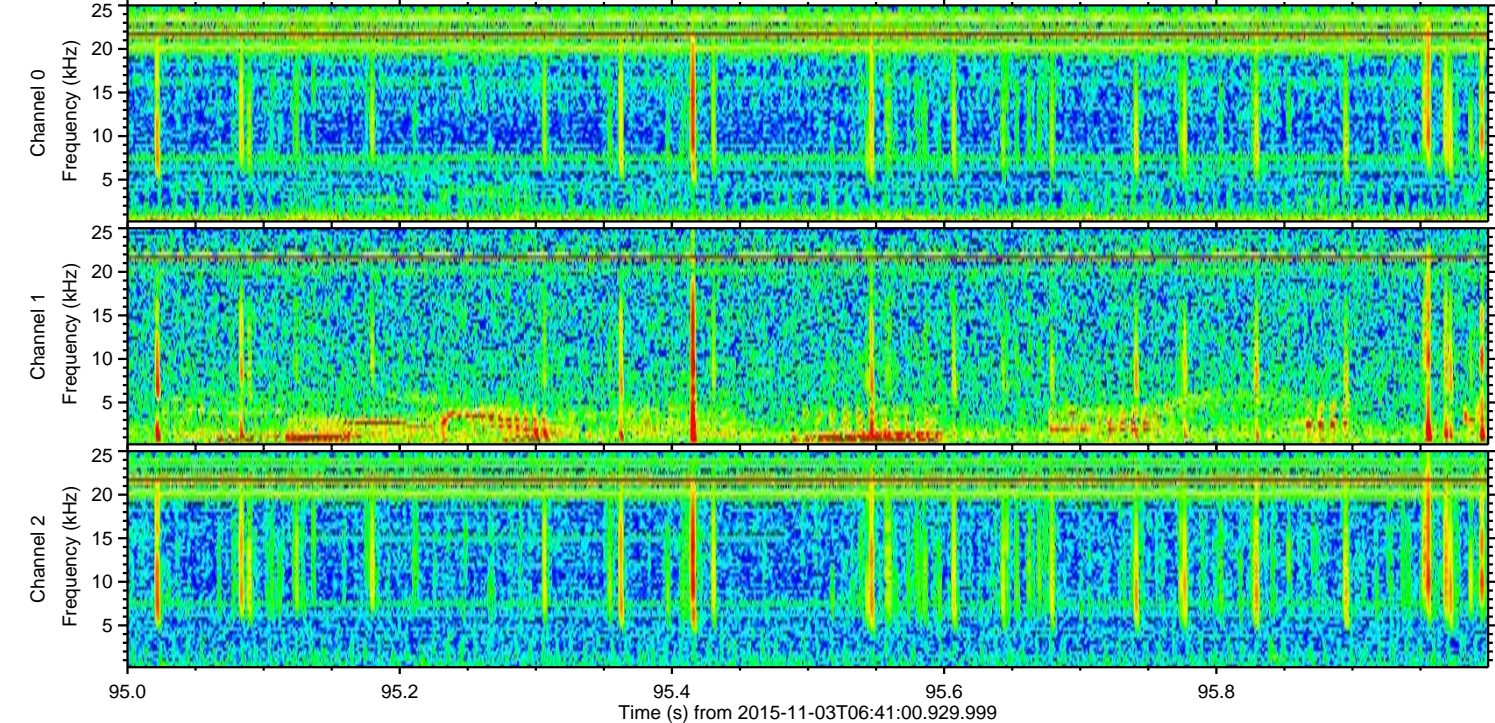
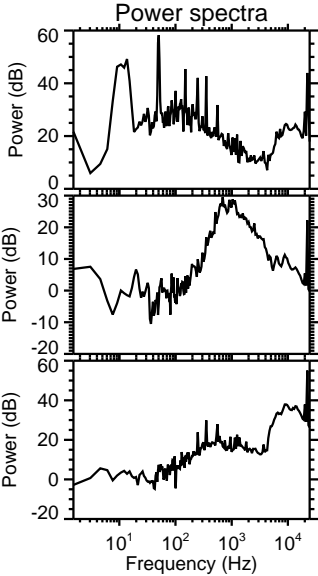
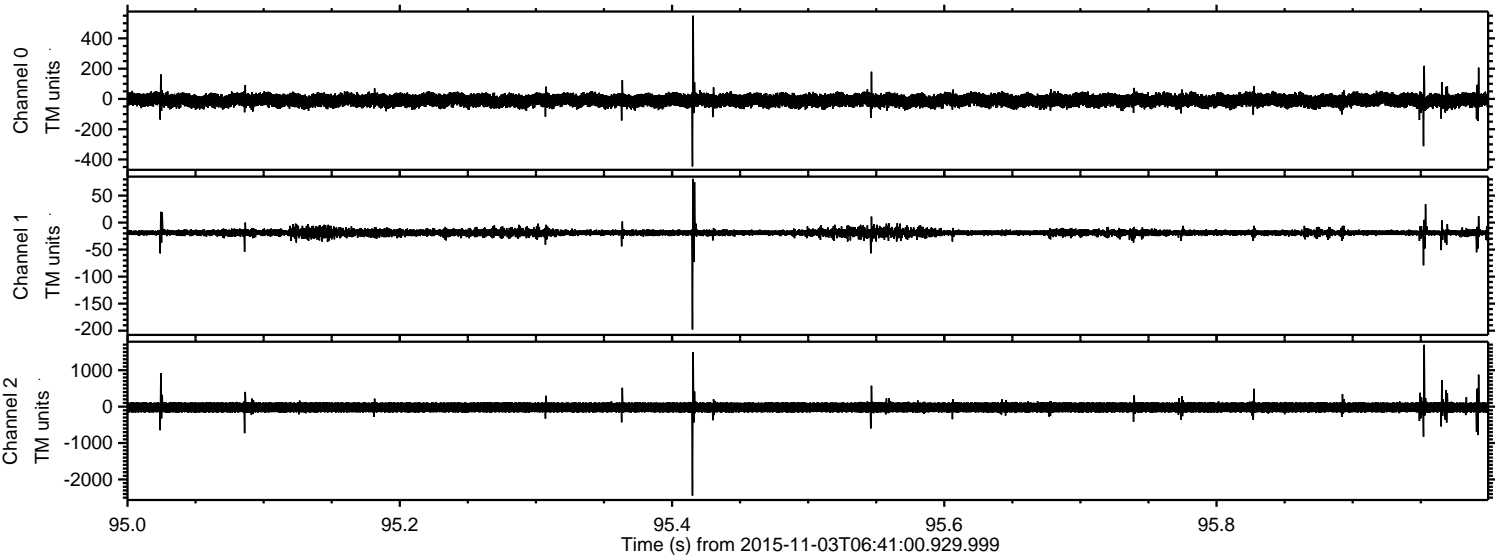


ELMAVAN 3D WAVEFORMS (Measured data sampled at 50 kHz) 51000 packets of 144 samples from 2015-11-03T06:41:00.929.999. Part 37/147

Processed Tue Nov 3 11:12:20 2015 by ELM ver.2012-10-06 from 001__elm20151103_064059__dat00.bin

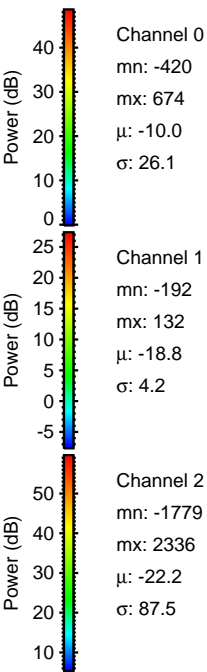
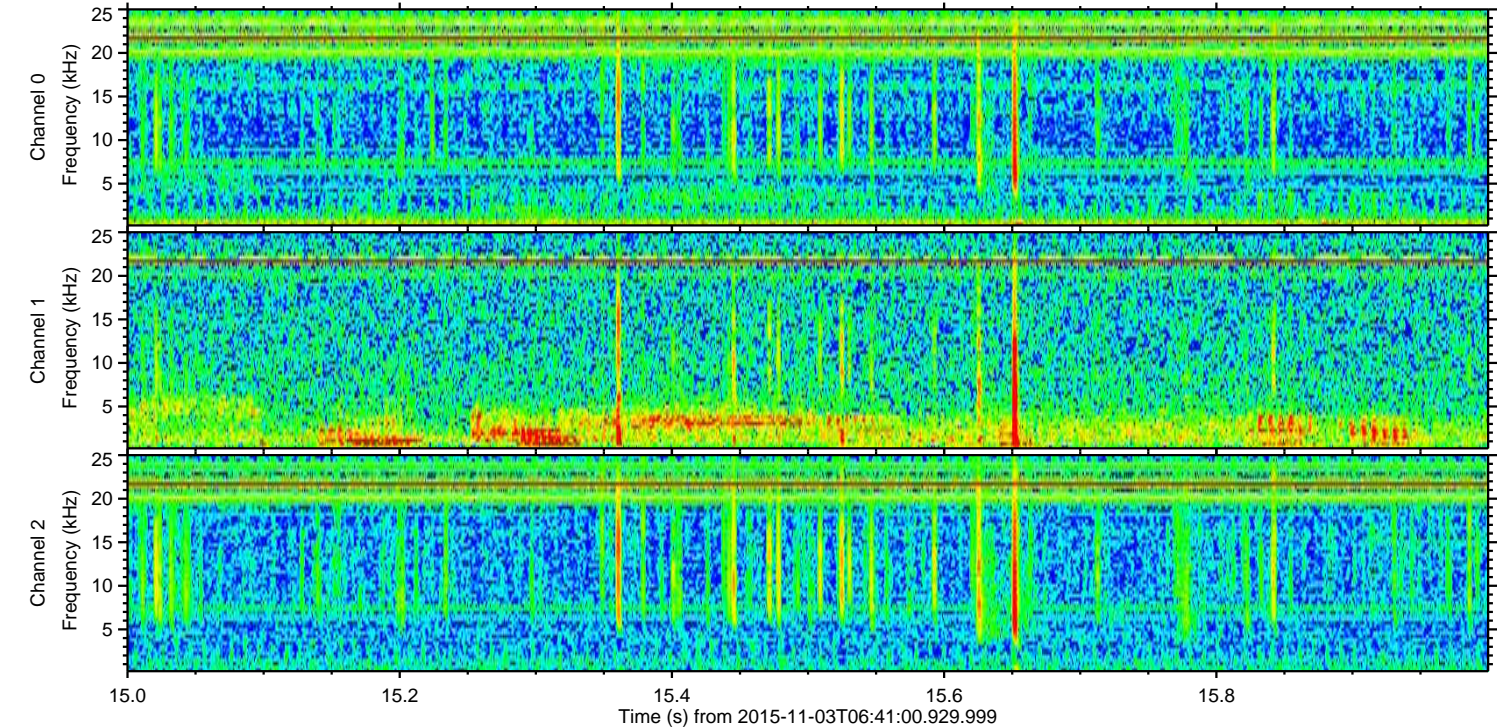
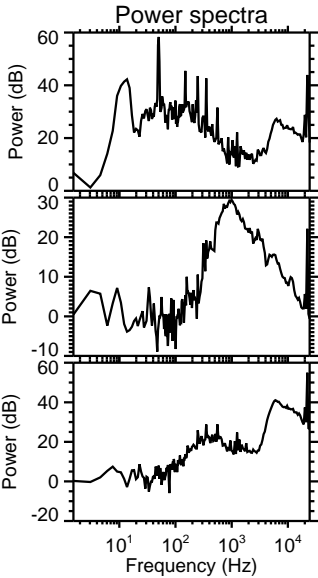
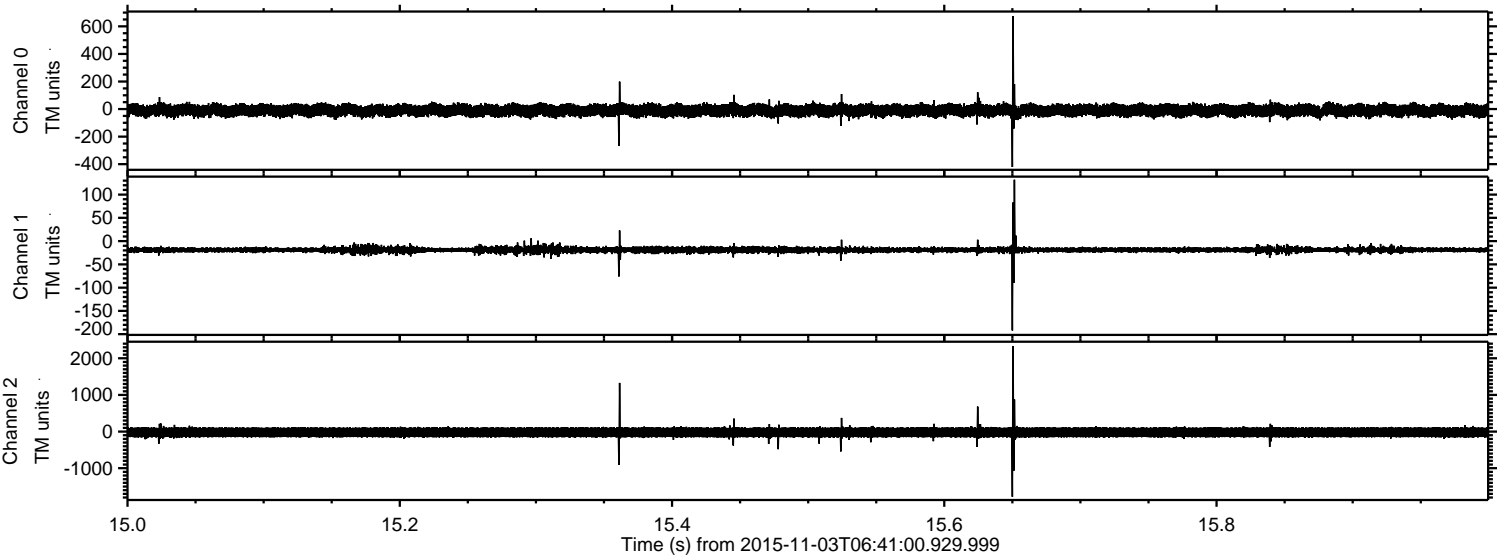


Processed Tue Nov 3 11:12:21 2015 by ELM ver.2012-10-06 from 001__elm20151103_064059__dat00.bin

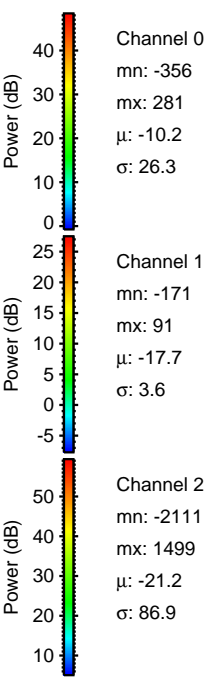
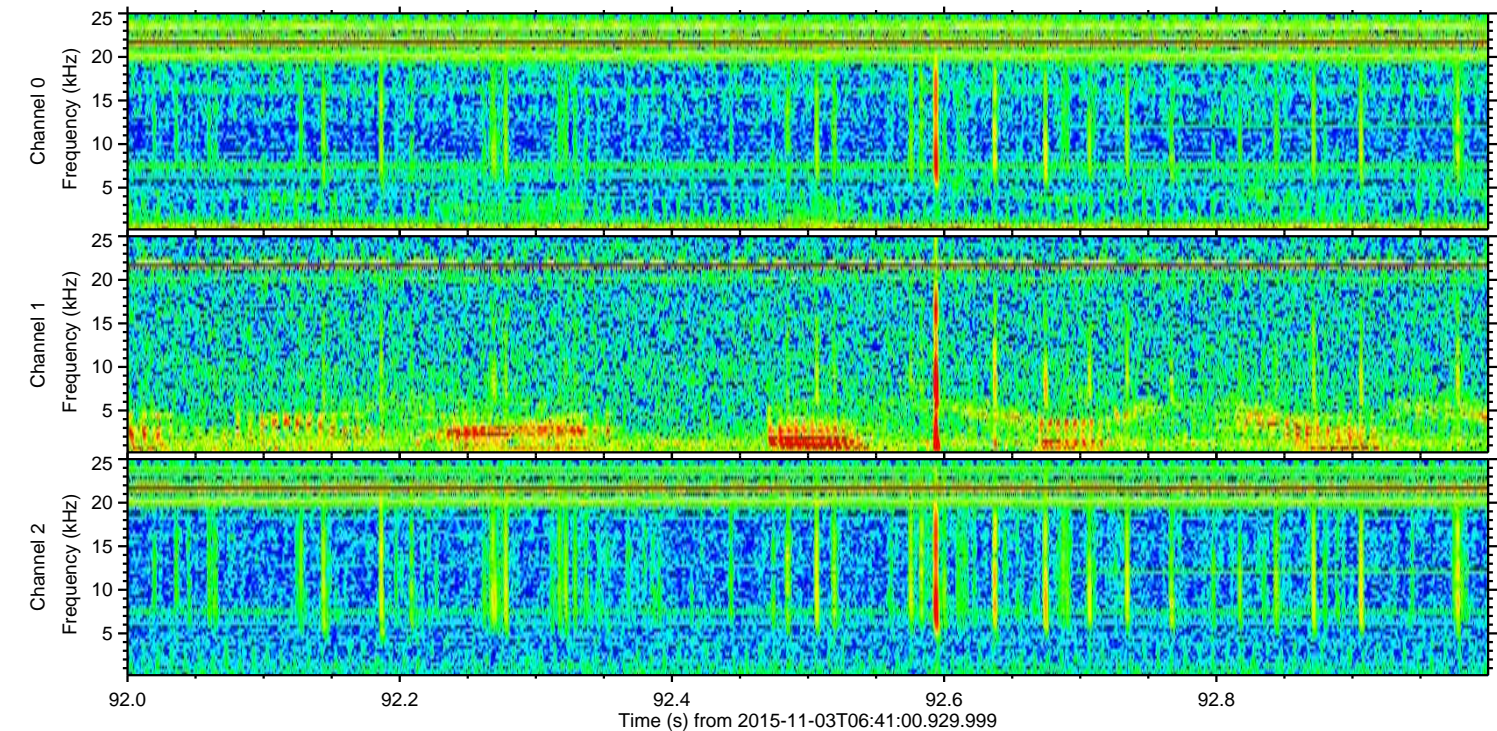
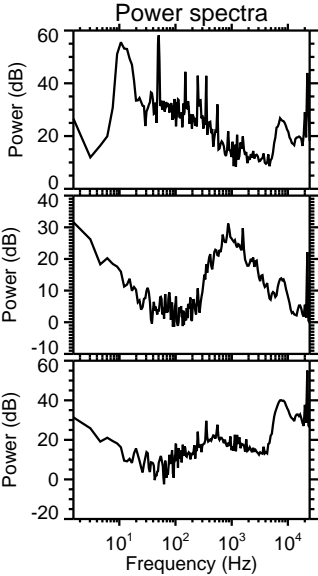
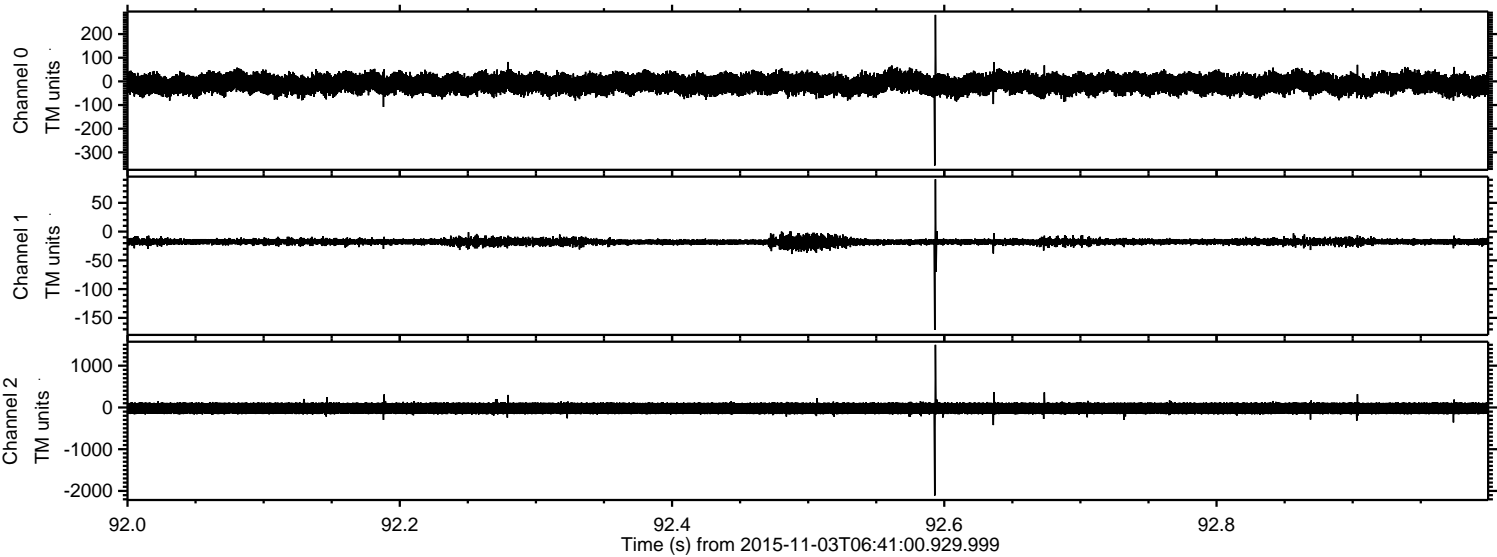


ELMAVAN 3D WAVEFORMS (Measured data sampled at 50 kHz) 51000 packets of 144 samples from 2015-11-03T06:41:00.929.999. Part 16/147

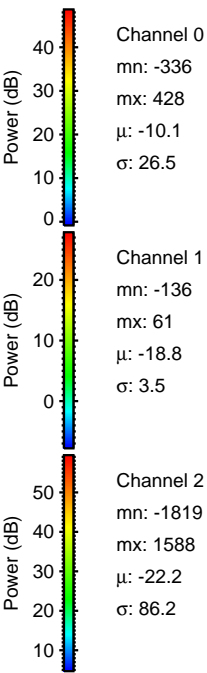
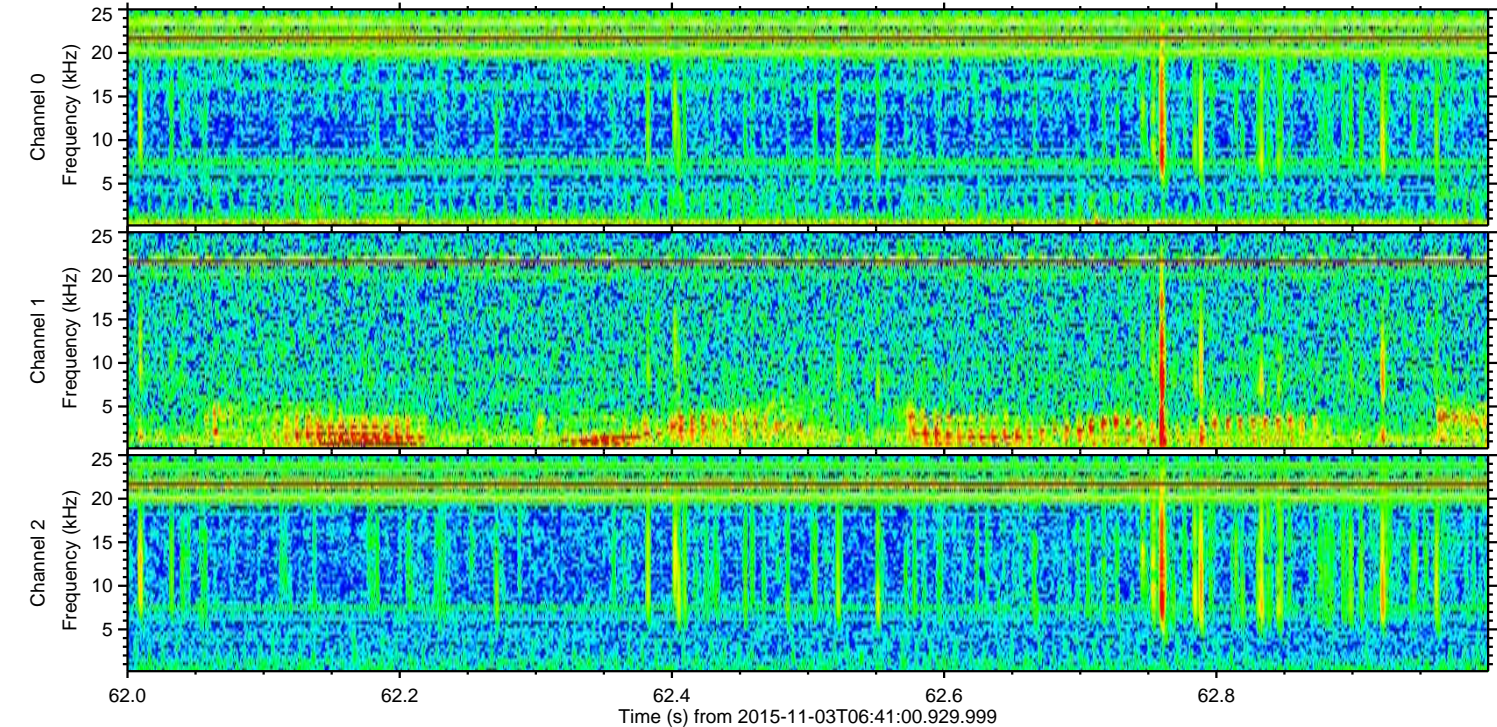
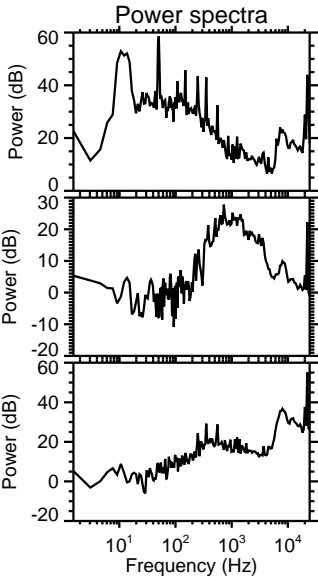
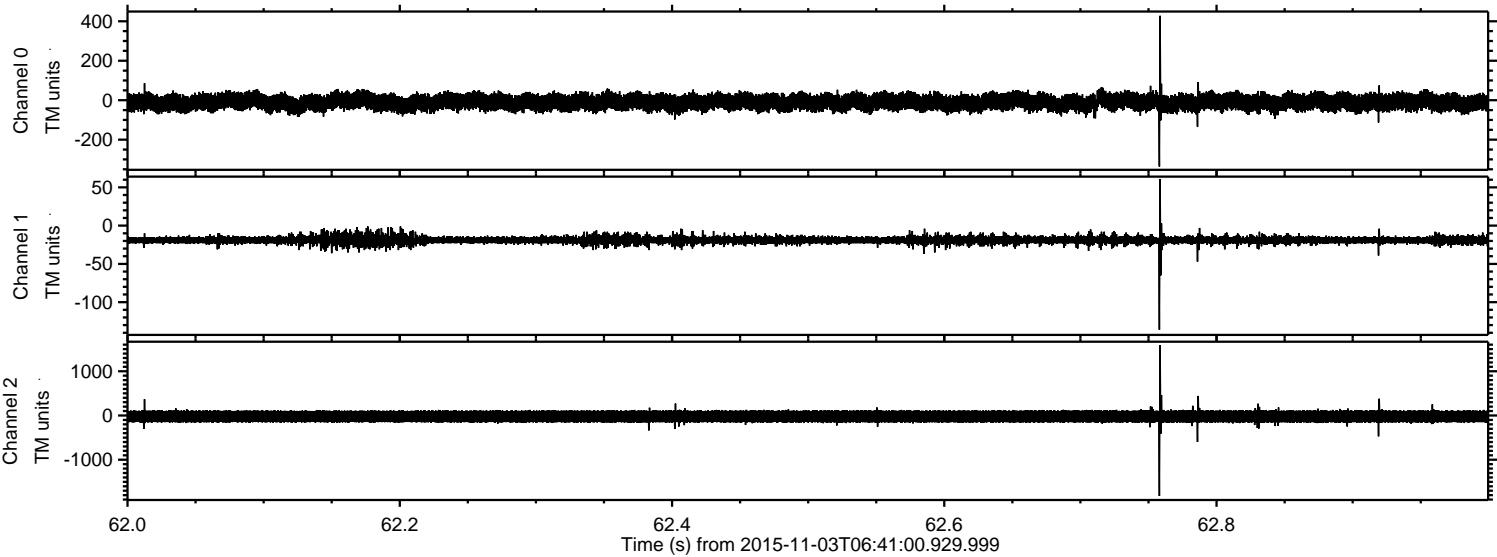
Processed Tue Nov 3 11:12:22 2015 by ELM ver.2012-10-06 from 001__elm20151103_064059__dat00.bin



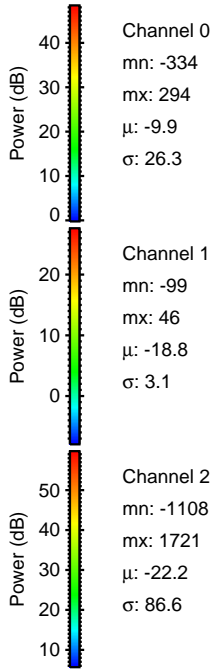
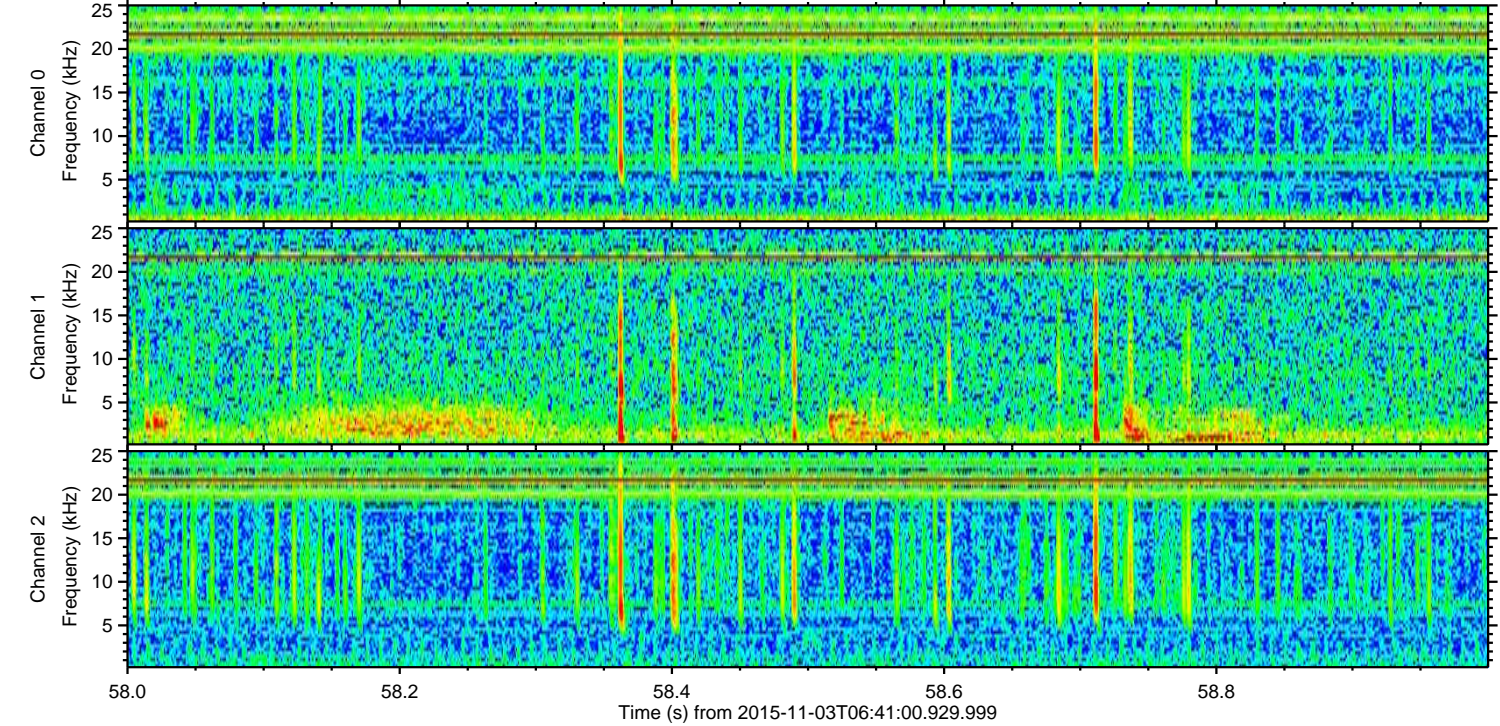
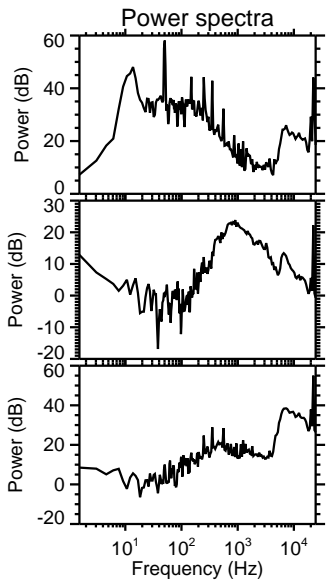
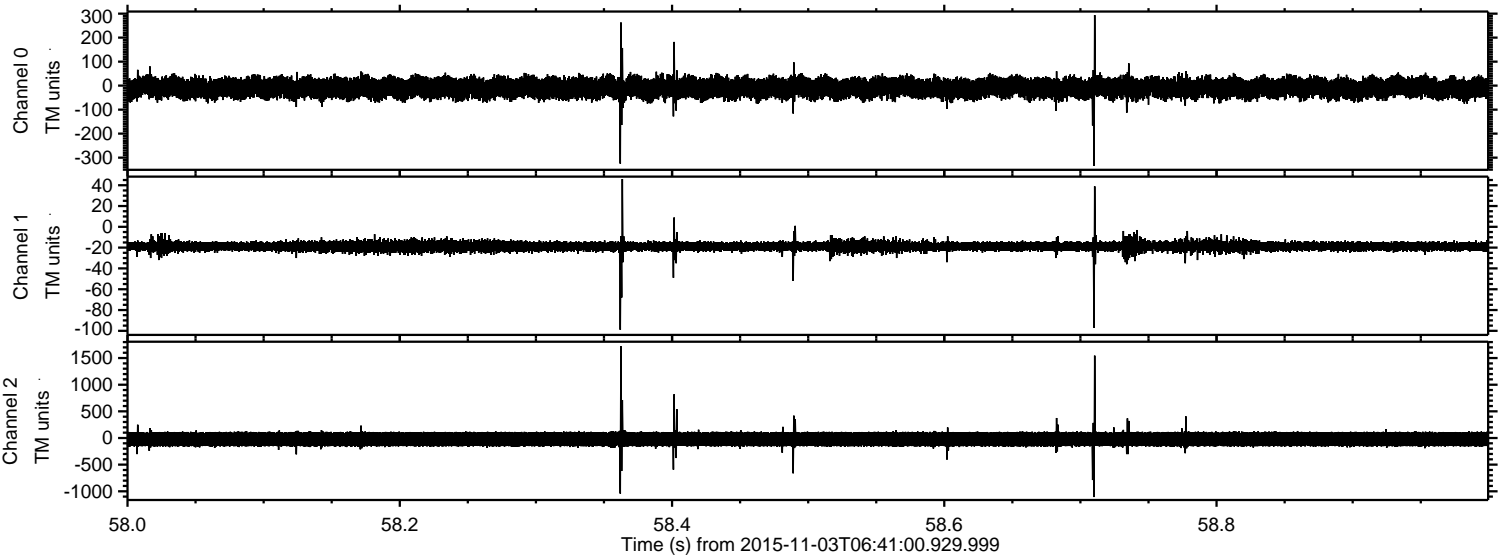
Processed Tue Nov 3 11:12:23 2015 by ELM ver.2012-10-06 from 001__elm20151103_064059__dat00.bin



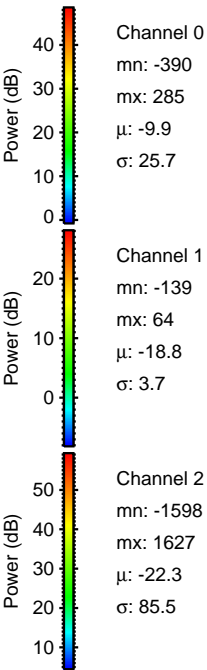
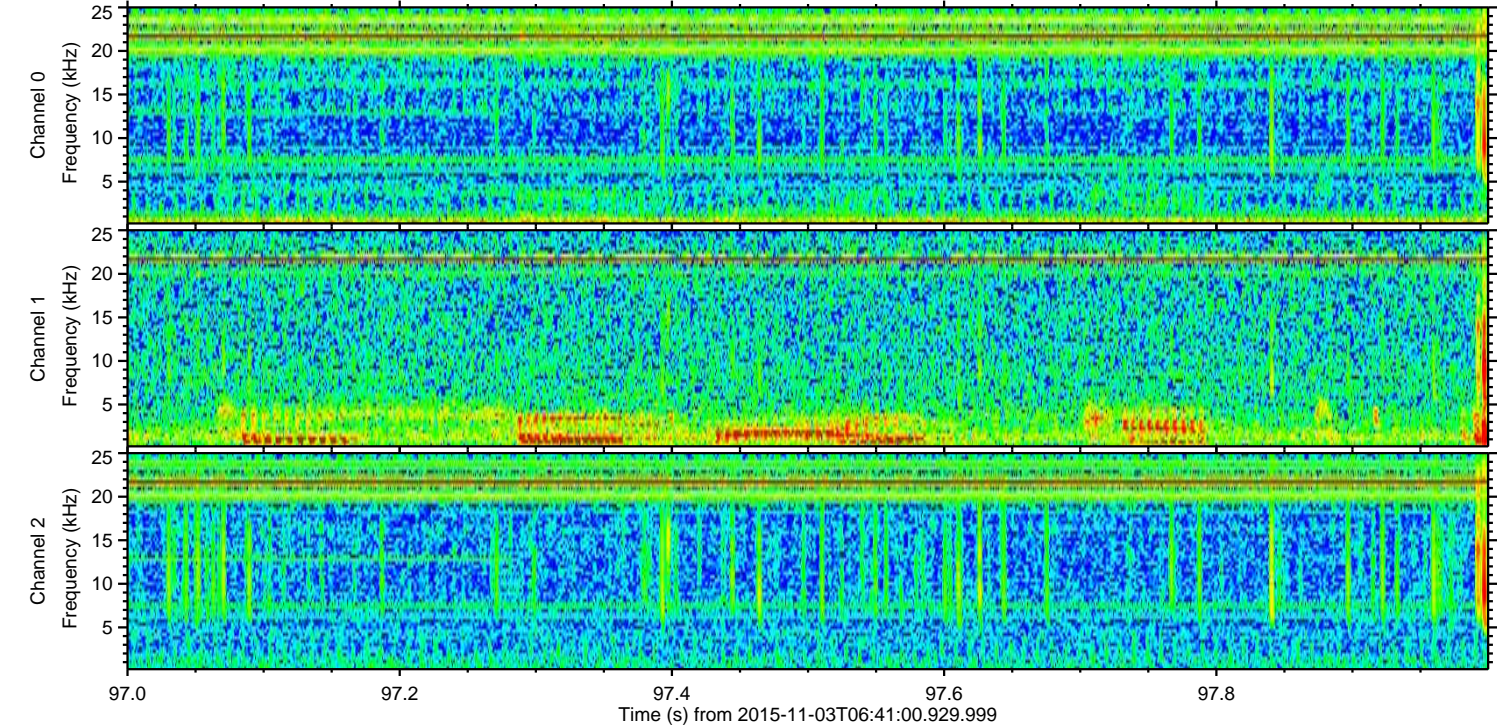
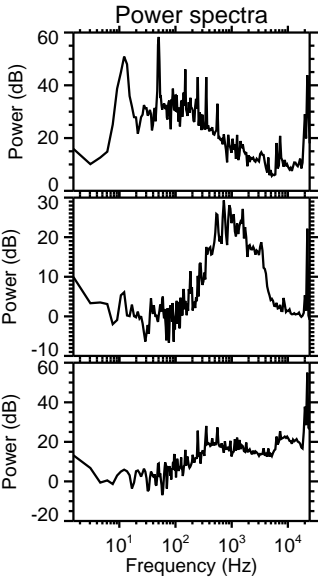
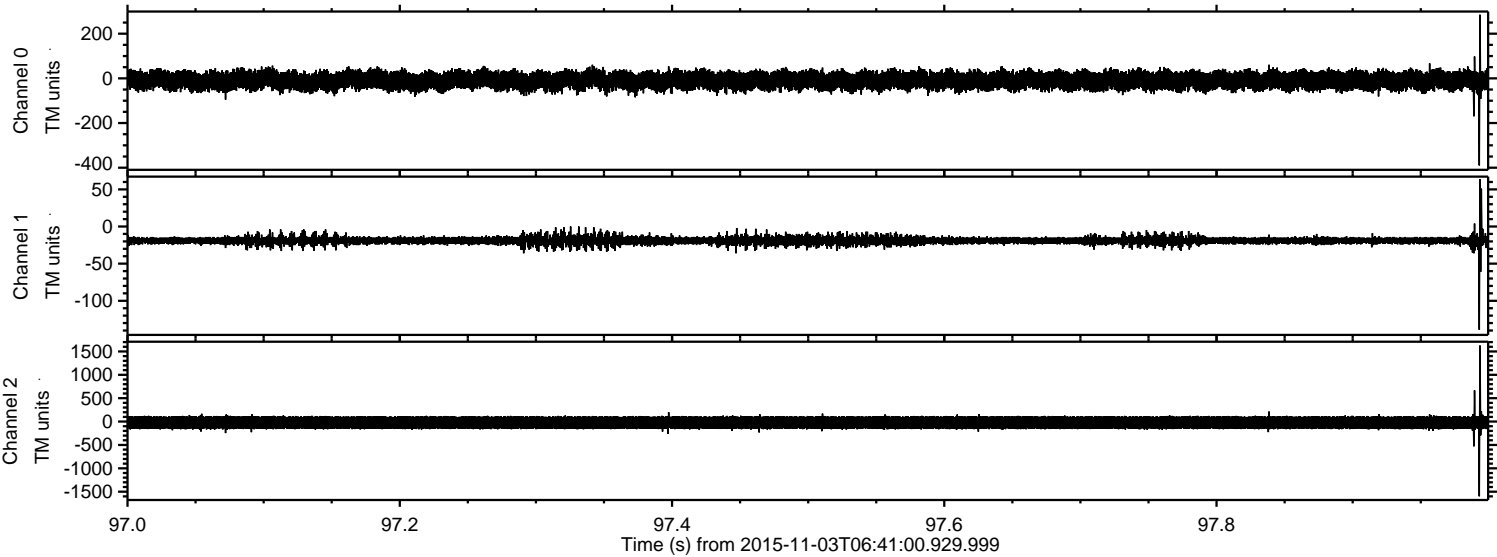
Processed Tue Nov 3 11:12:24 2015 by ELM ver.2012-10-06 from 001__elm20151103_064059__dat00.bin



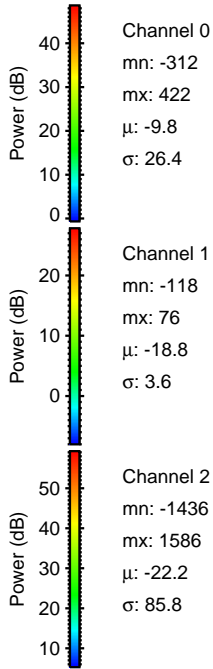
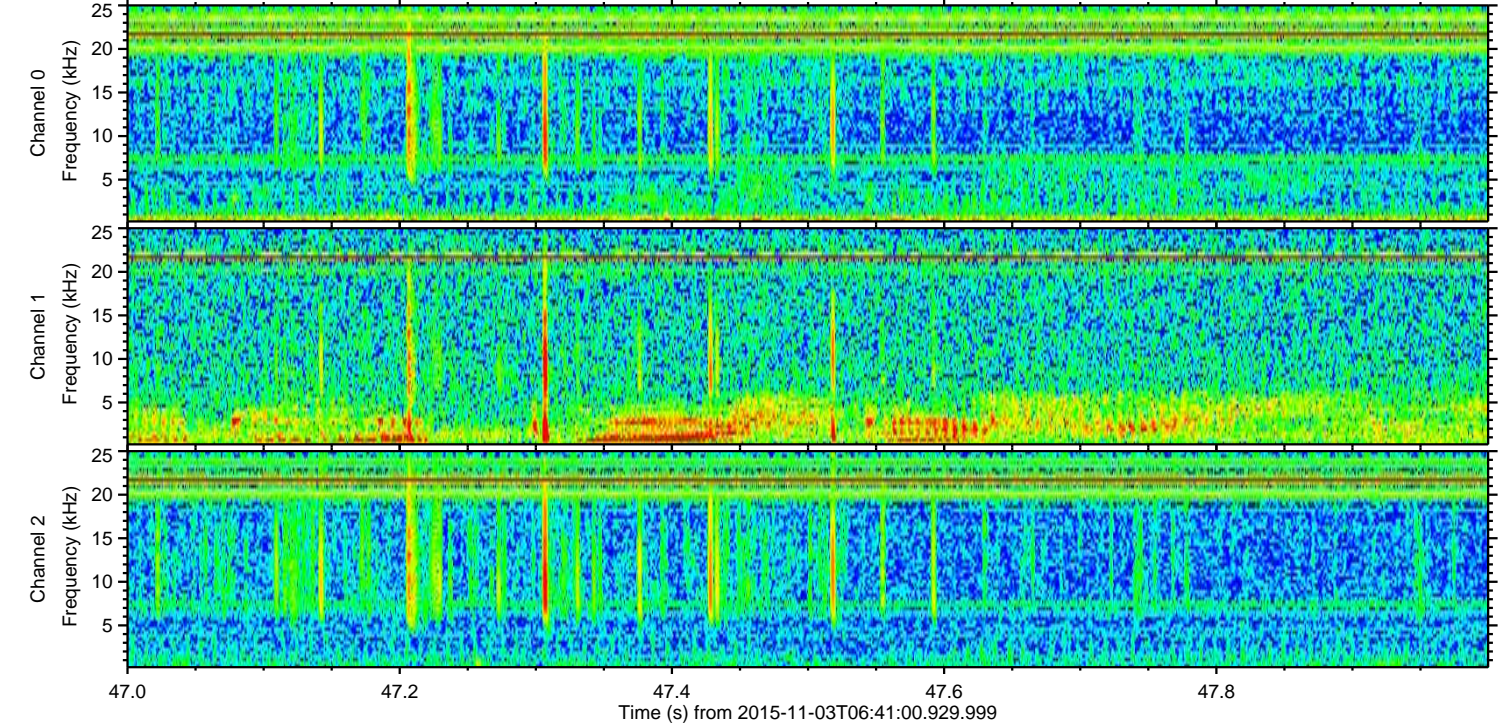
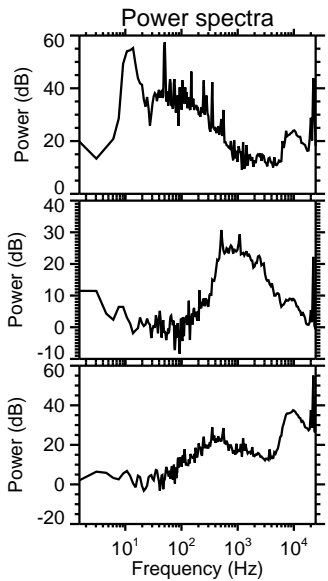
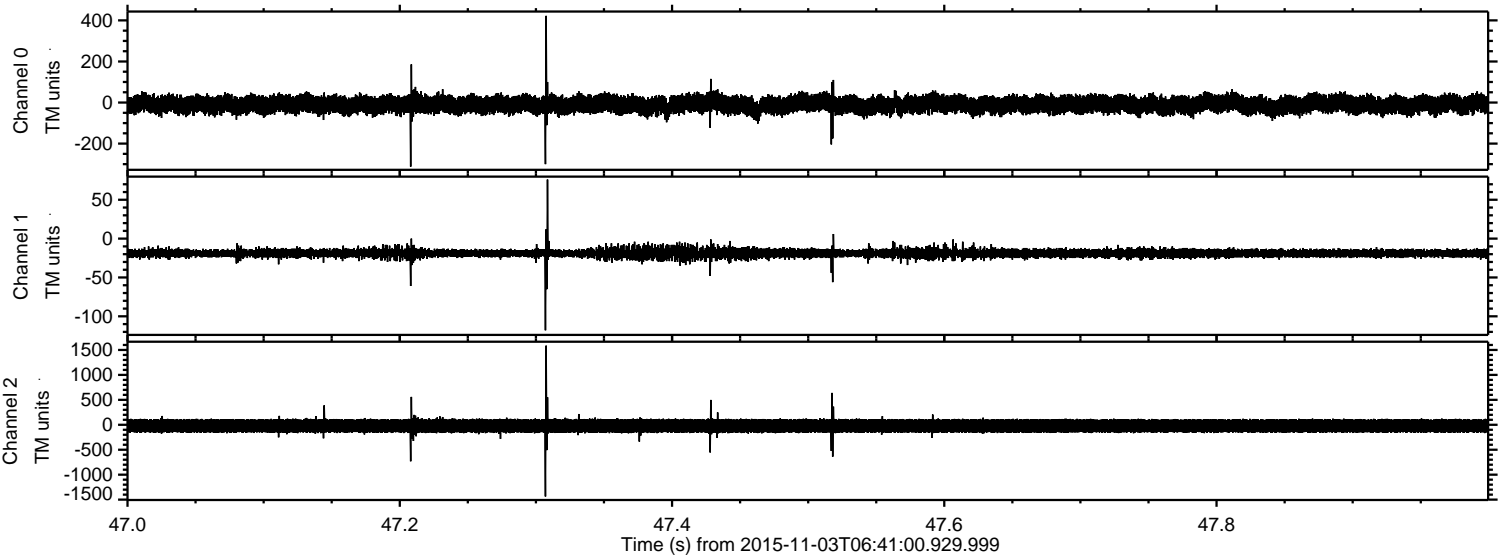
Processed Tue Nov 3 11:12:26 2015 by ELM ver.2012-10-06 from 001__elm20151103_064059__dat00.bin



Processed Tue Nov 3 11:12:27 2015 by ELM ver.2012-10-06 from 001__elm20151103_064059__dat00.bin



Processed Tue Nov 3 11:12:28 2015 by ELM ver.2012-10-06 from 001__elm20151103_064059__dat00.bin



Channel 0
mn: -312
mx: 422
 μ : -9.8
 σ : 26.4

Channel 1
mn: -118
mx: 76
 μ : -18.8
 σ : 3.6

Channel 2
mn: -1436
mx: 1586
 μ : -22.2
 σ : 85.8

Processed Tue Nov 3 11:12:29 2015 by ELM ver.2012-10-06 from 001__elm20151103_064059__dat00.bin

