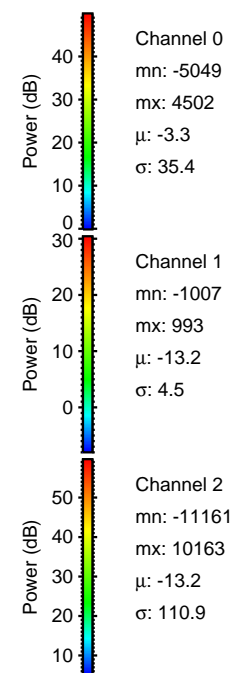
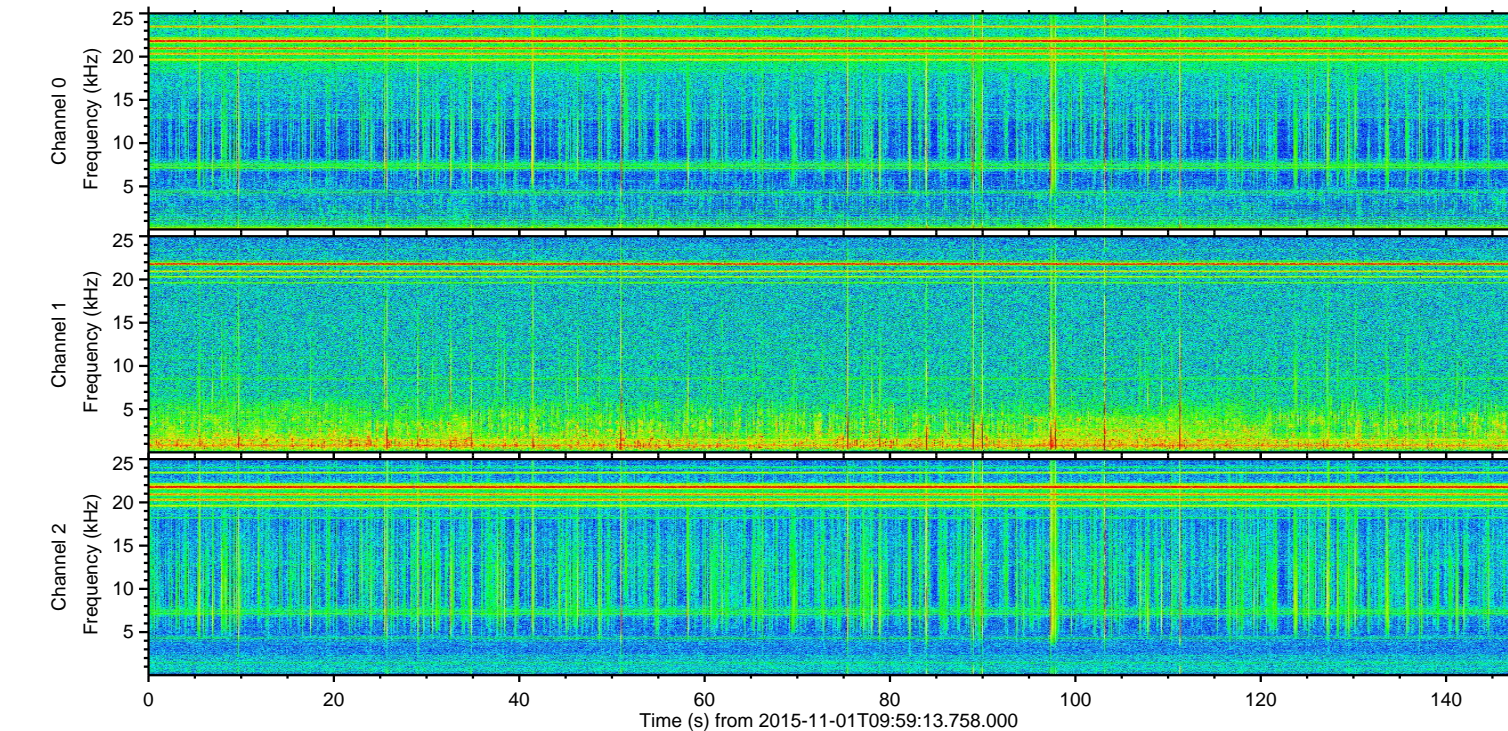
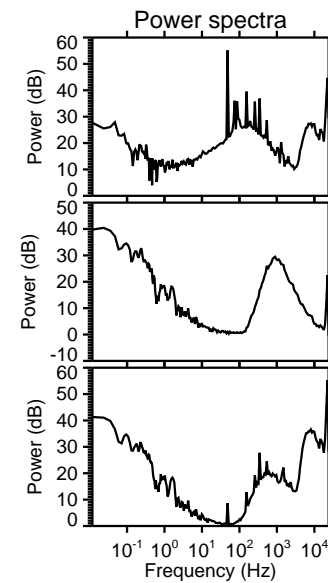
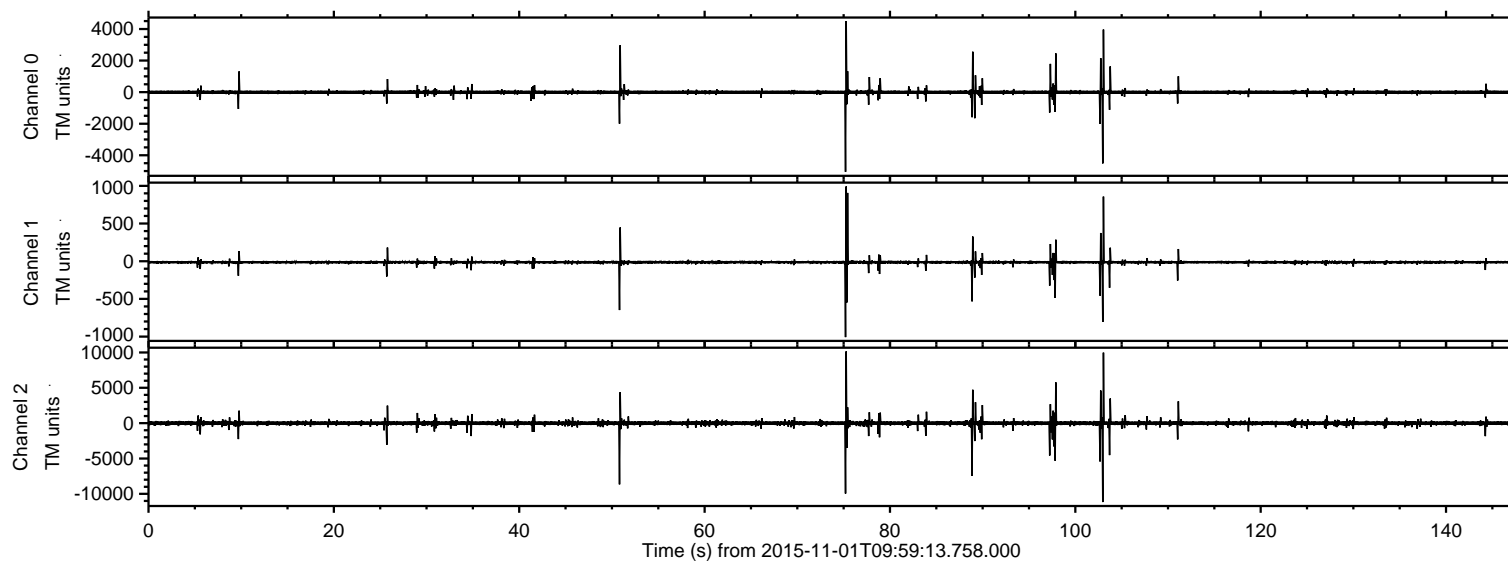


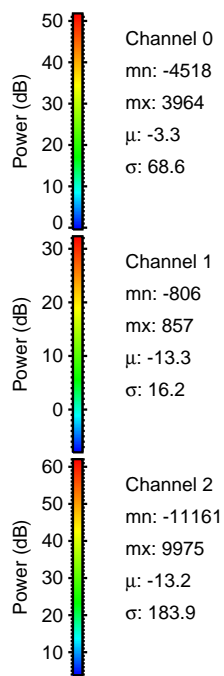
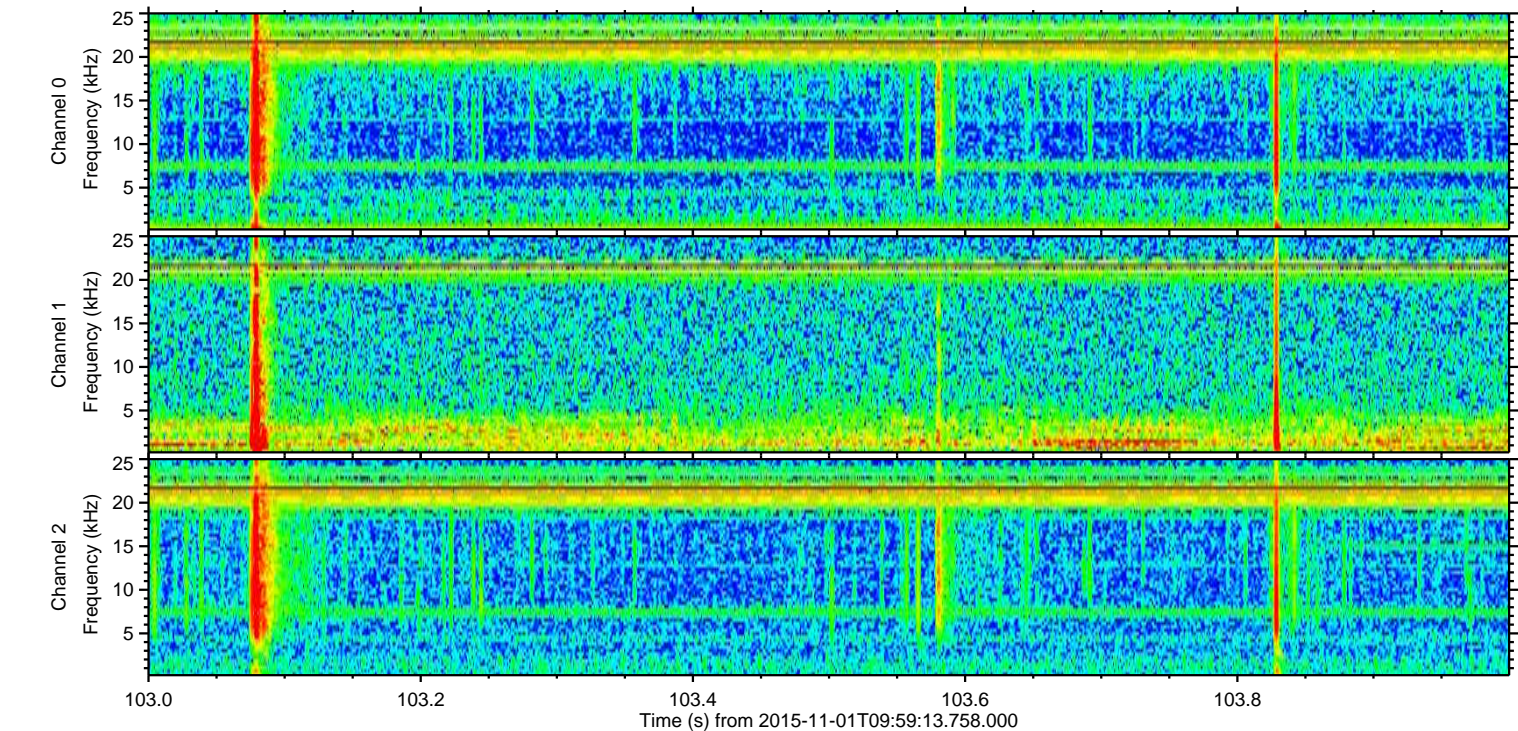
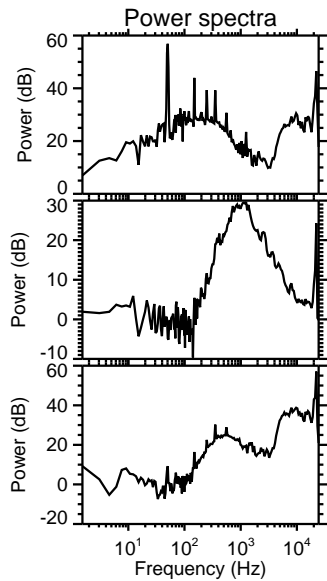
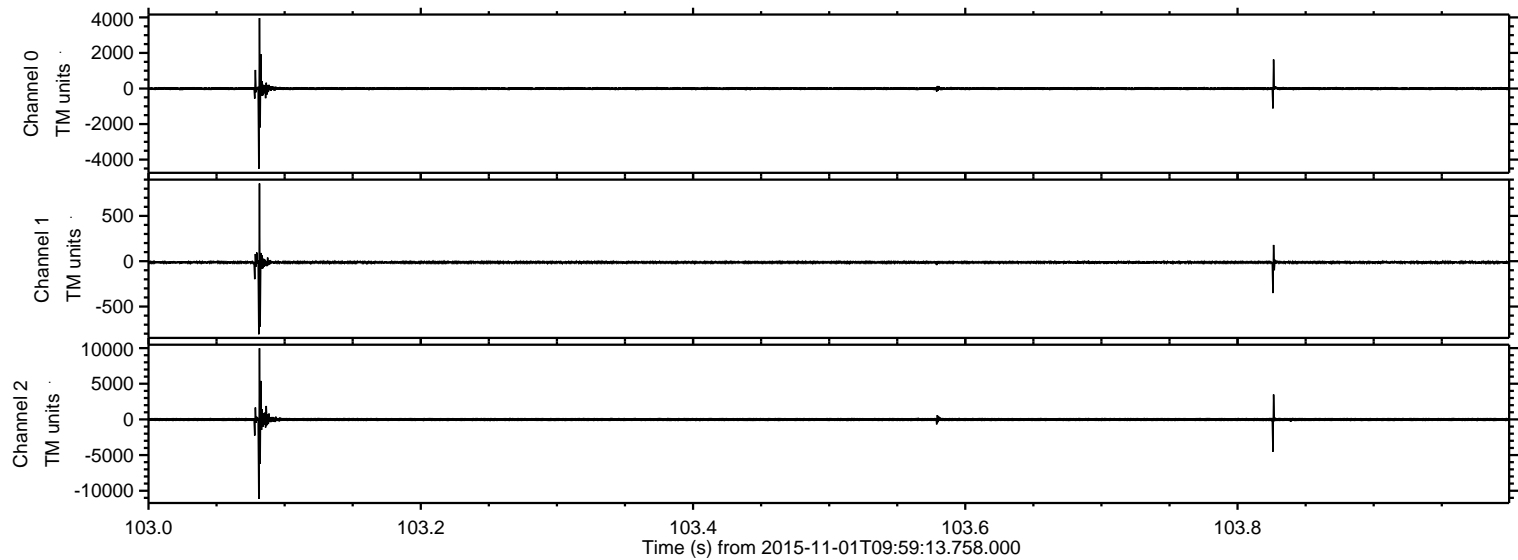
ELMAVAN 3D WAVEFORMS (Measured data sampled at 50 kHz) 51000 packets of 144 samples from 2015-11-01T09:59:13.758.000.

Processed Sun Nov 1 11:05:41 2015 by ELM ver.2012-10-06 from 001__elm20151101_095912__dat00.bin

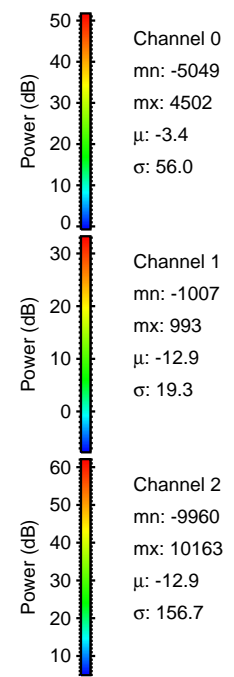
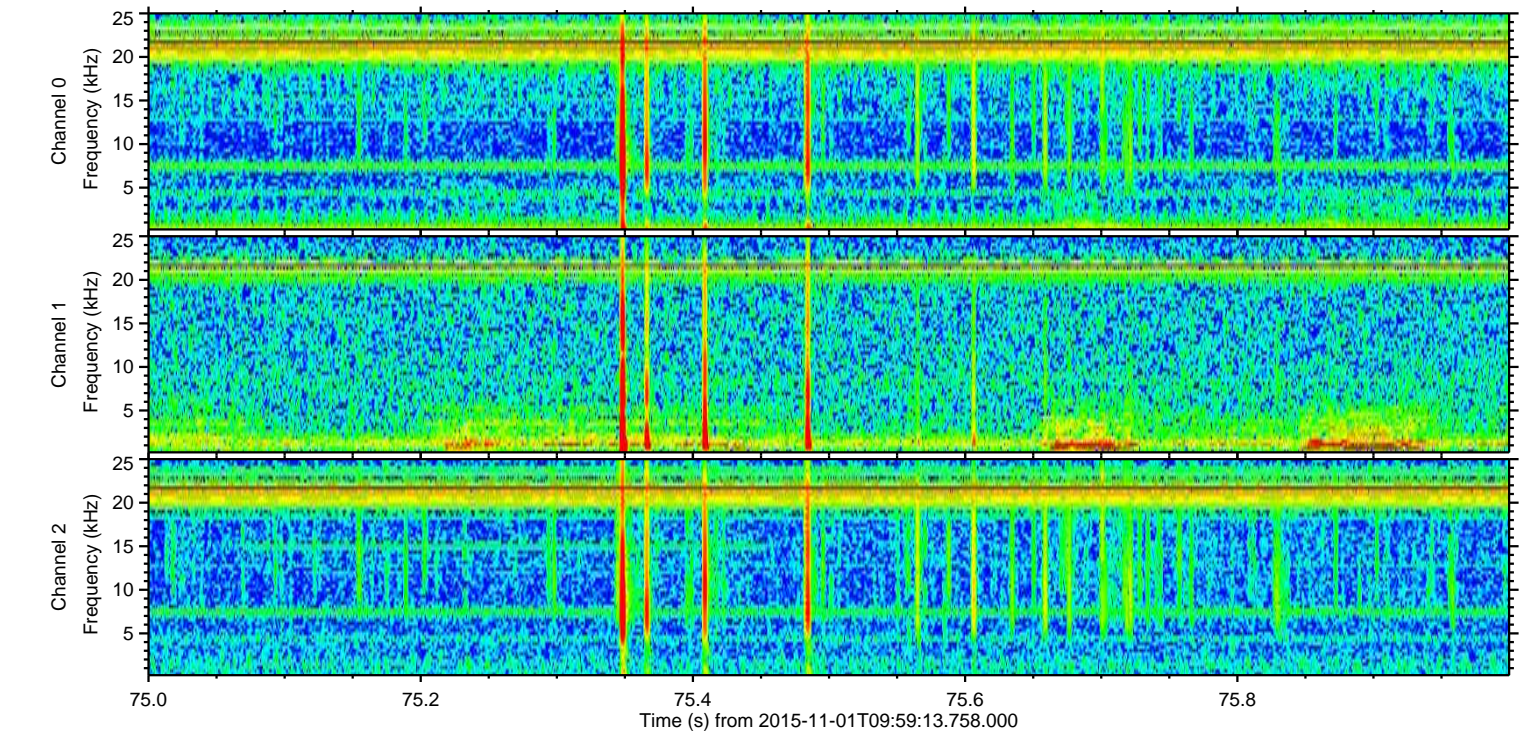
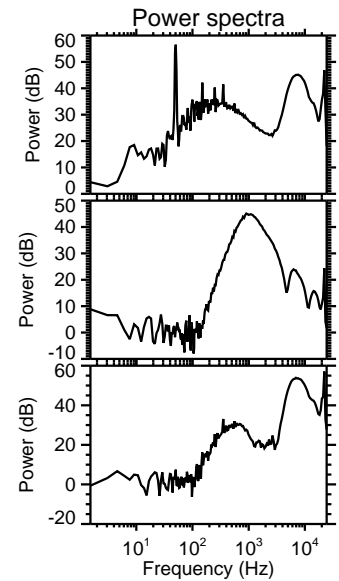
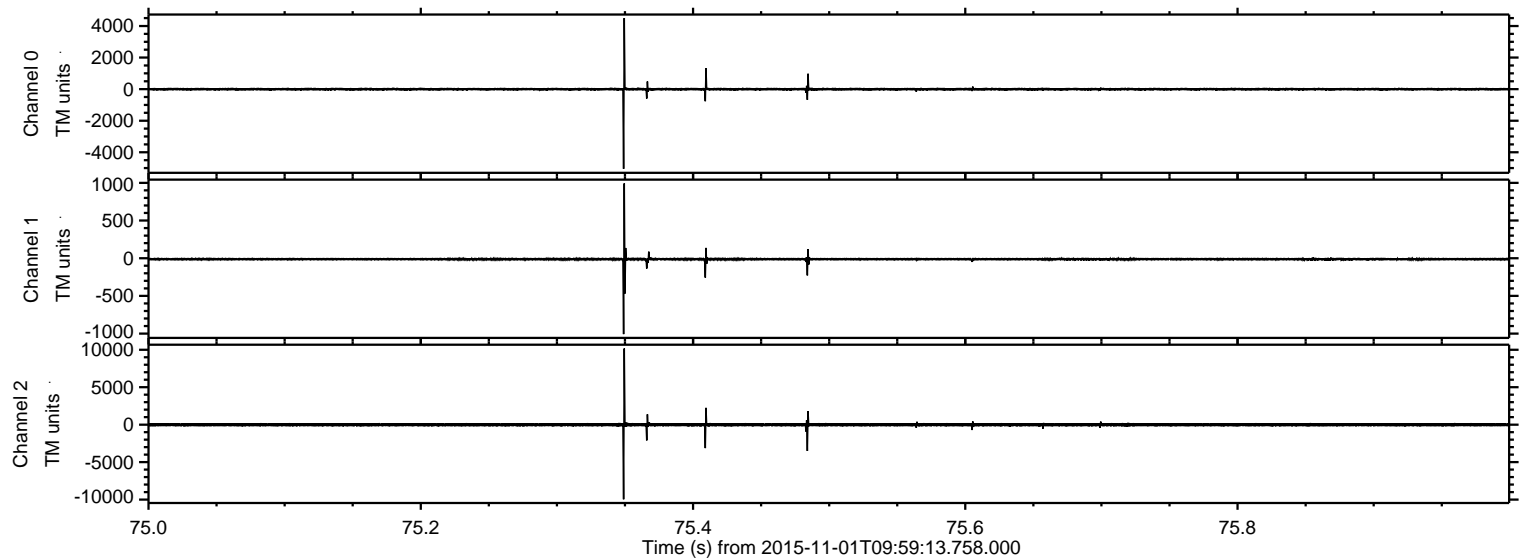


ELMAVAN 3D WAVEFORMS (Measured data sampled at 50 kHz) 51000 packets of 144 samples from 2015-11-01T09:59:13.758.000. Part 104/147

Processed Sun Nov 1 11:05:56 2015 by ELM ver.2012-10-06 from 001__elm20151101_095912__dat00.bin

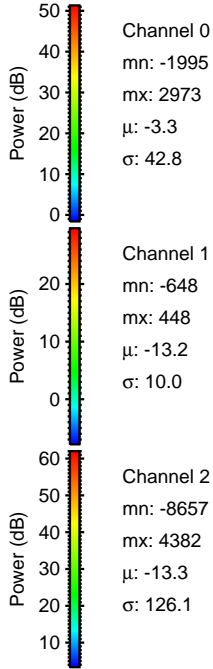
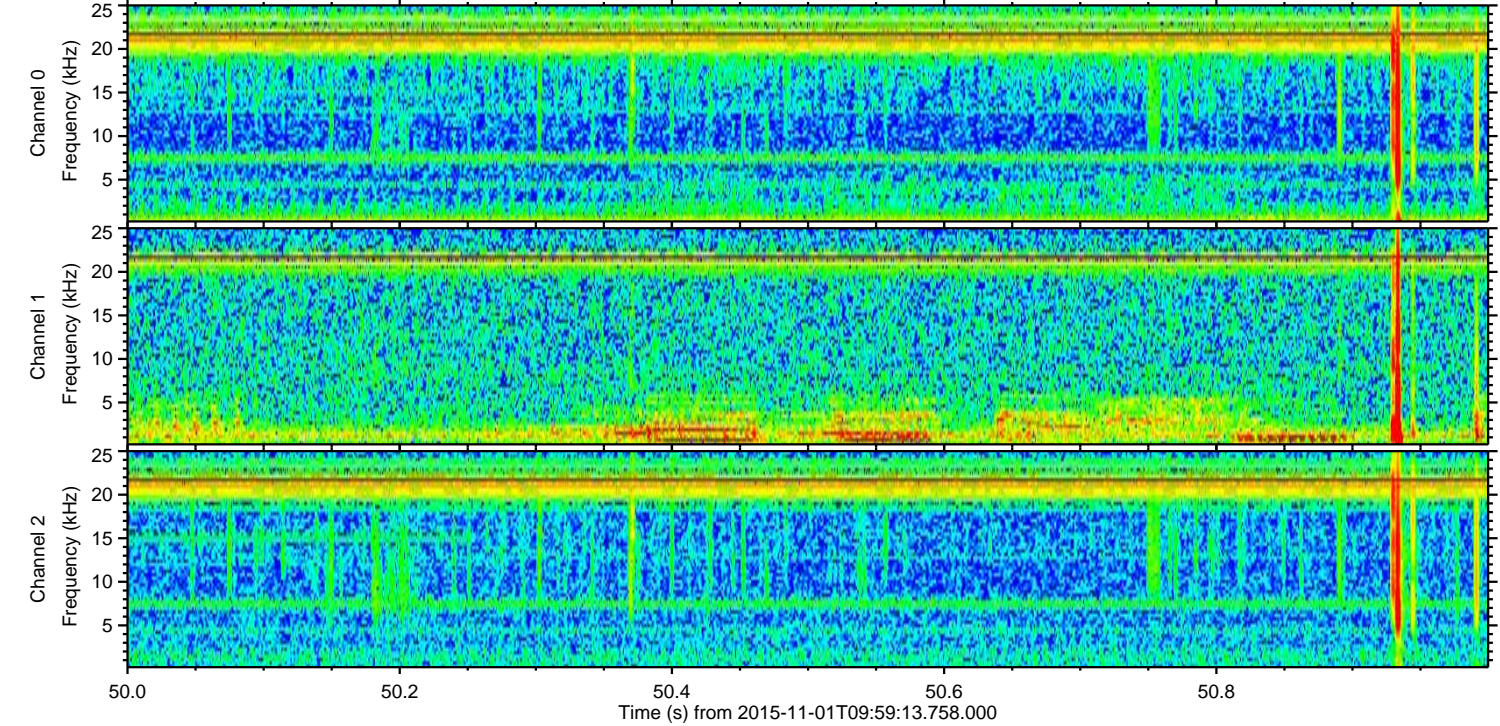
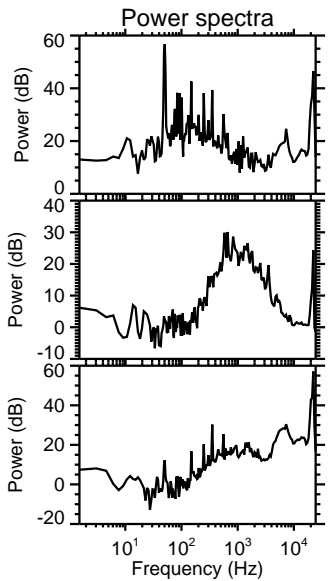
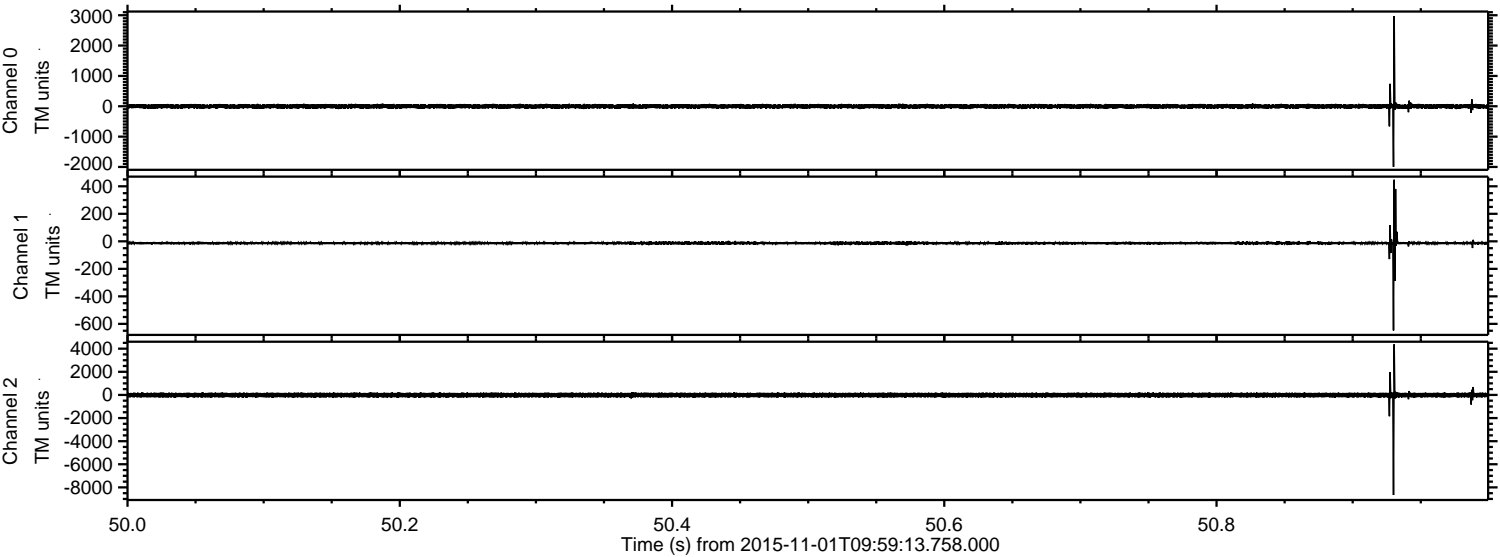


Processed Sun Nov 1 11:05:57 2015 by ELM ver.2012-10-06 from 001__elm20151101_095912__dat00.bin

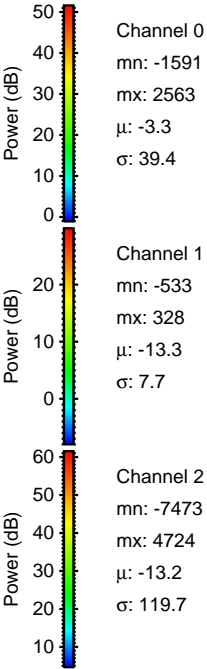
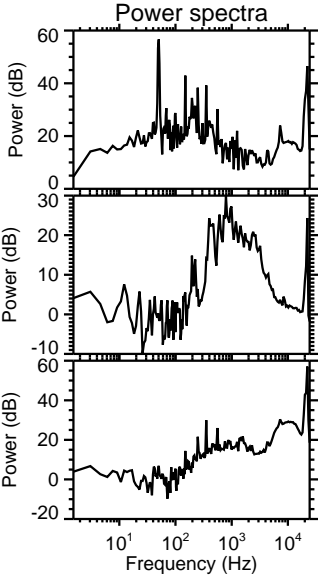
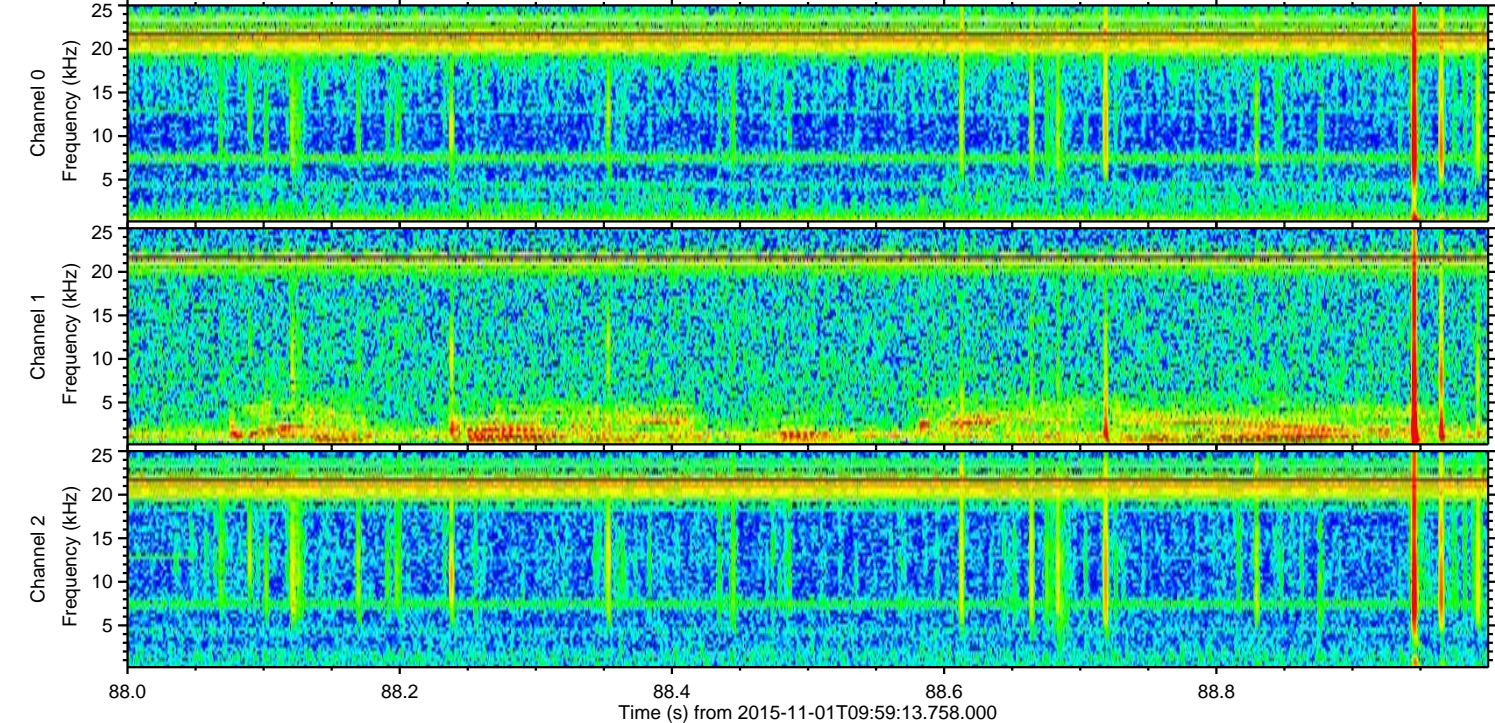
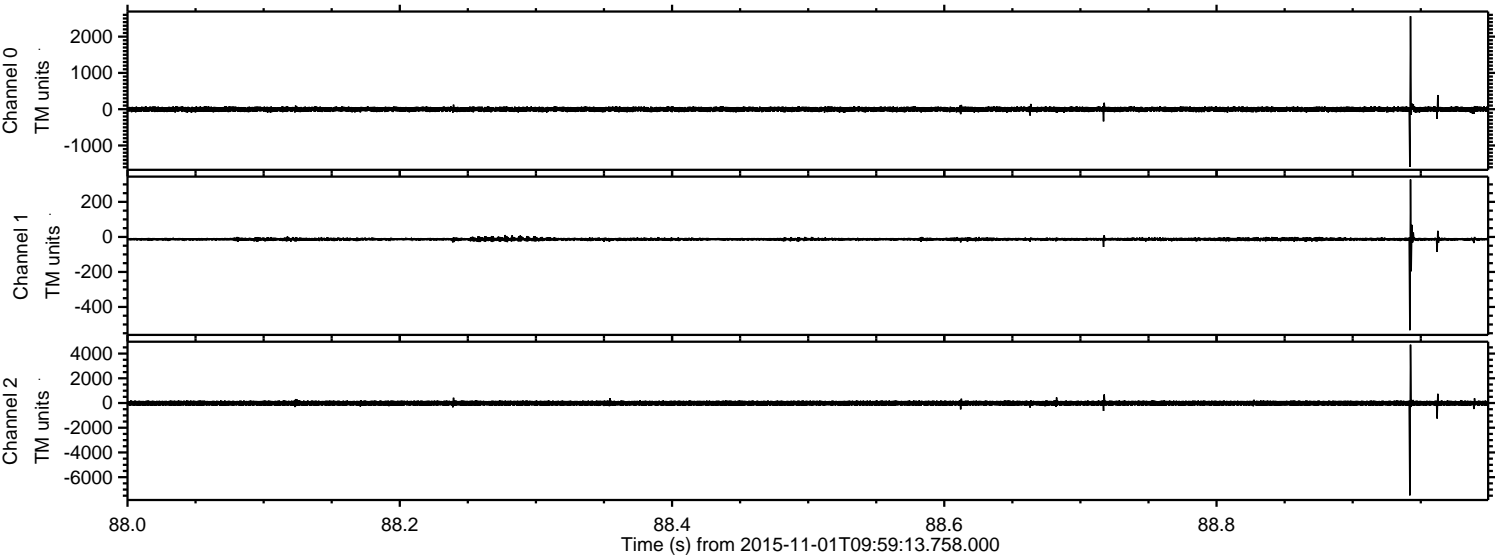


ELMAVAN 3D WAVEFORMS (Measured data sampled at 50 kHz) 51000 packets of 144 samples from 2015-11-01T09:59:13.758.000. Part 51/147

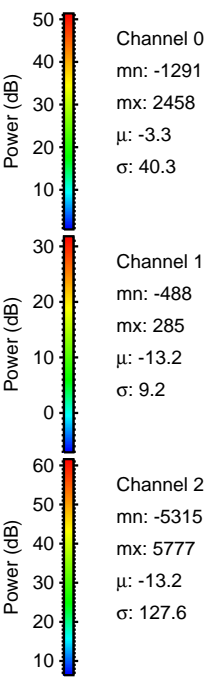
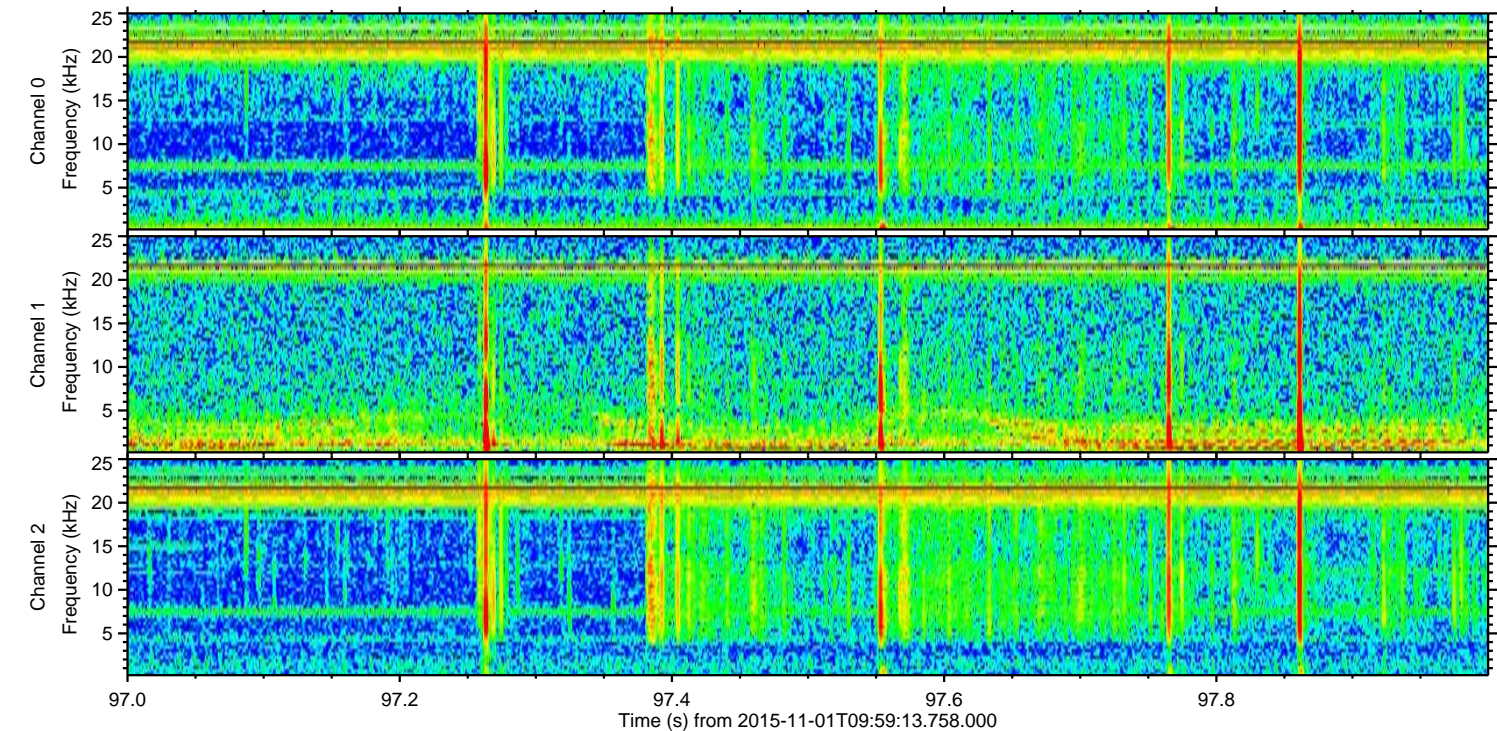
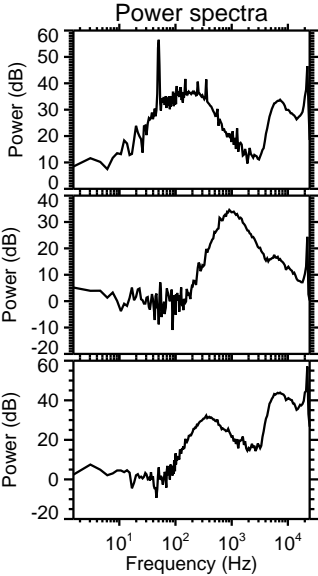
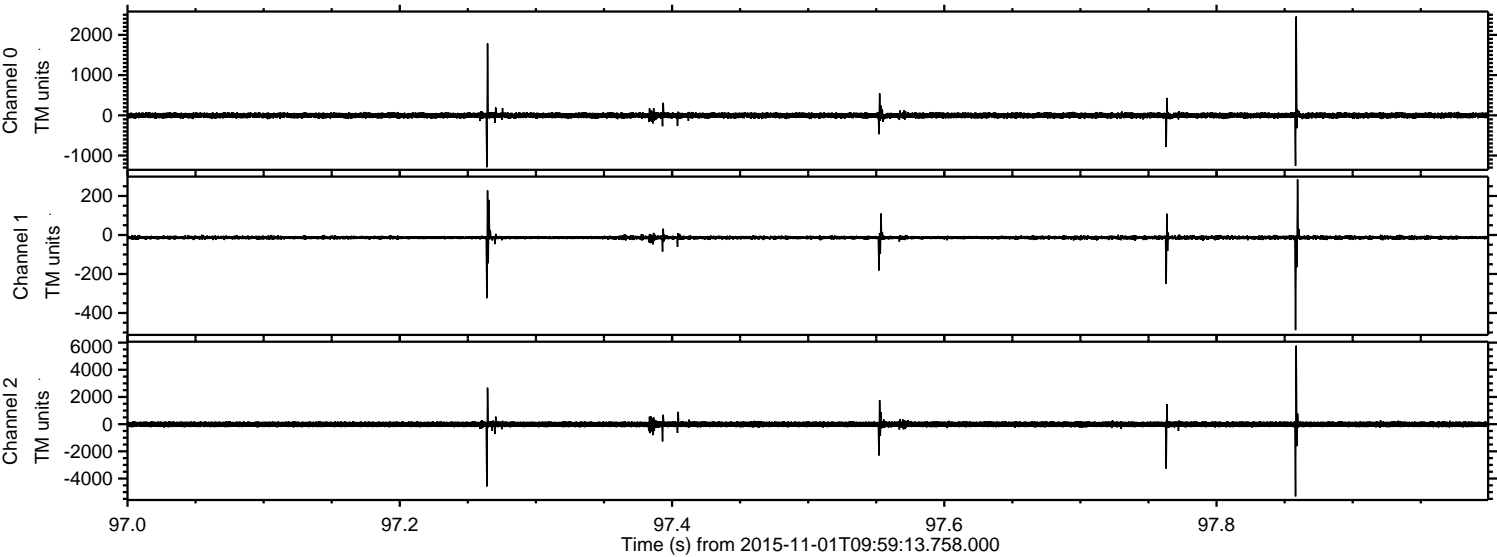
Processed Sun Nov 1 11:05:59 2015 by ELM ver.2012-10-06 from 001__elm20151101_095912__dat00.bin



Processed Sun Nov 1 11:06:00 2015 by ELM ver.2012-10-06 from 001__elm20151101_095912__dat00.bin

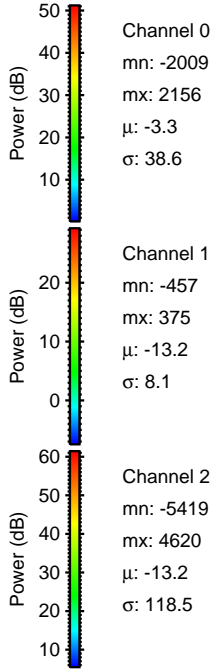
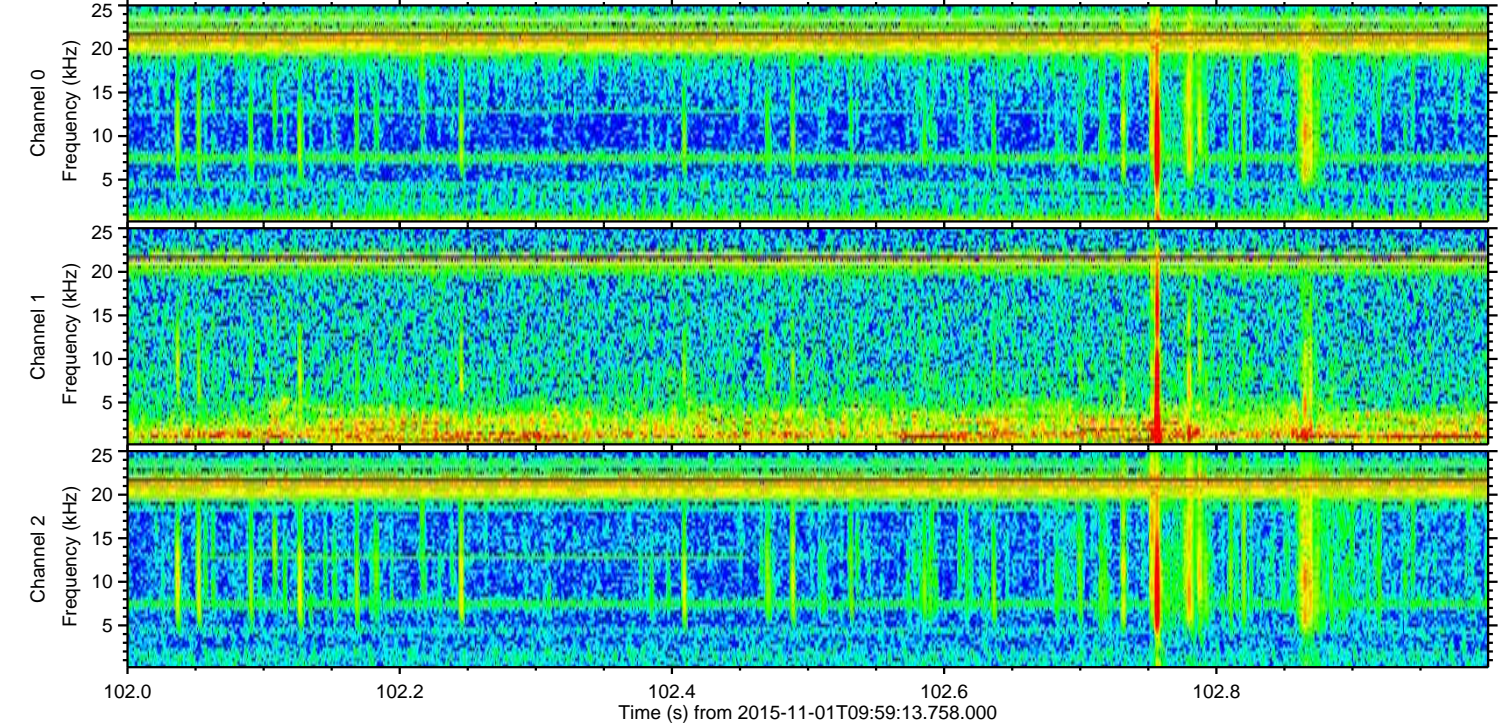
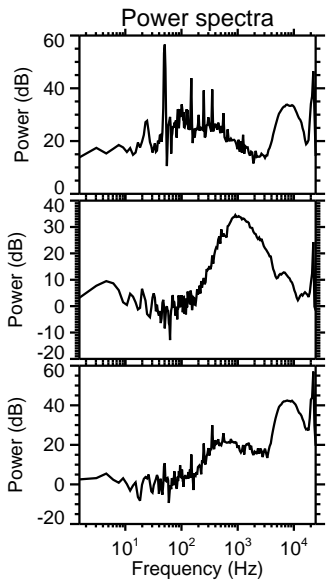
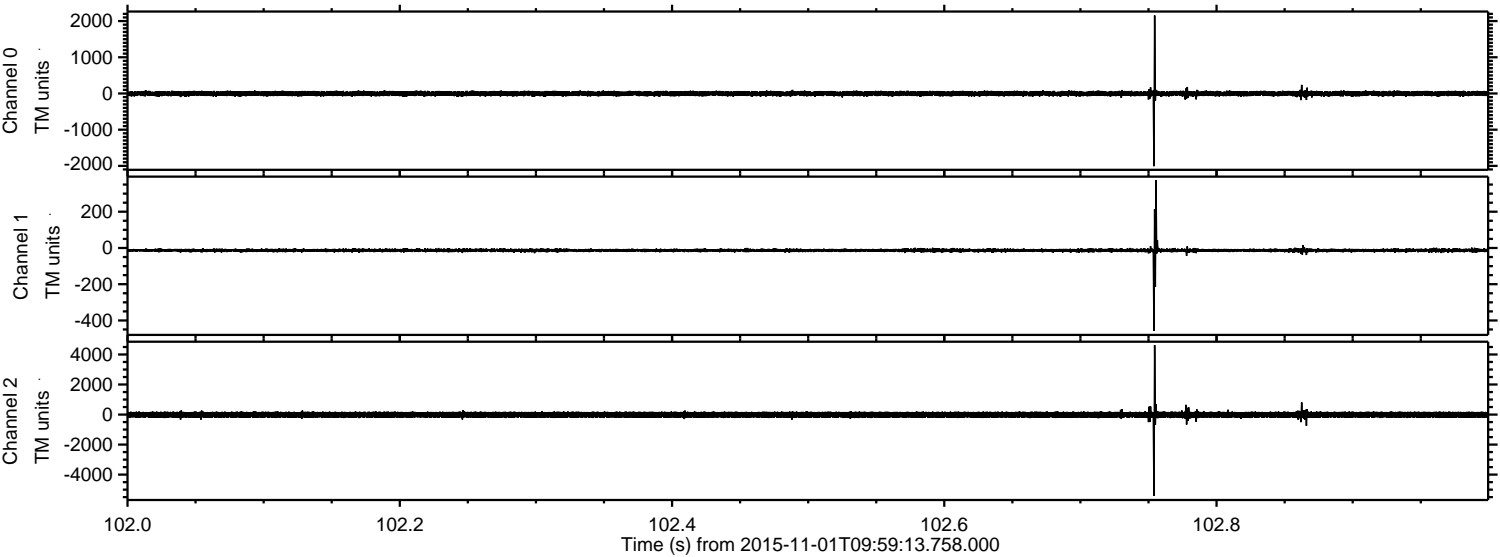


Processed Sun Nov 1 11:06:01 2015 by ELM ver.2012-10-06 from 001__elm20151101_095912__dat00.bin



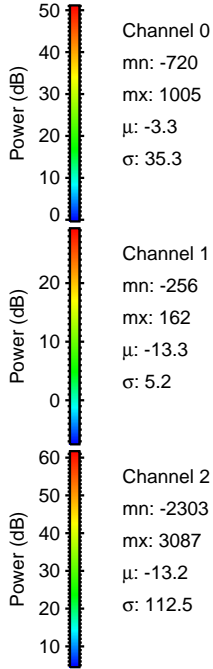
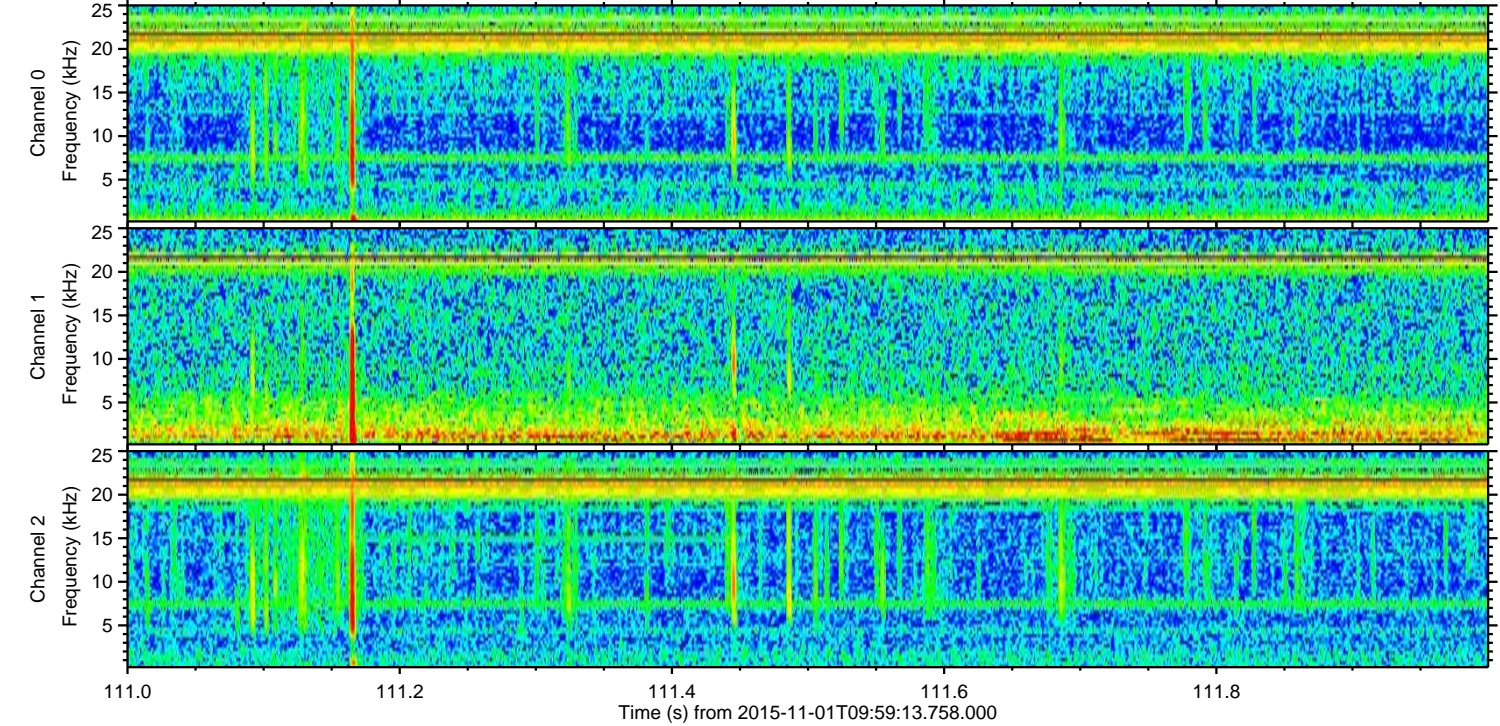
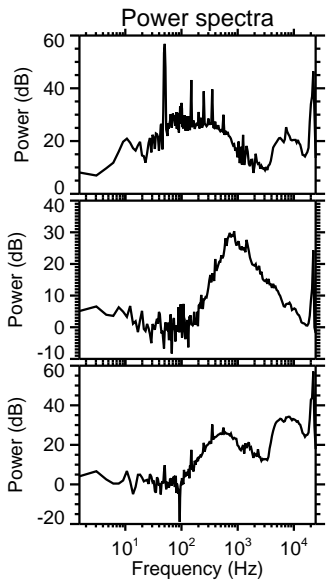
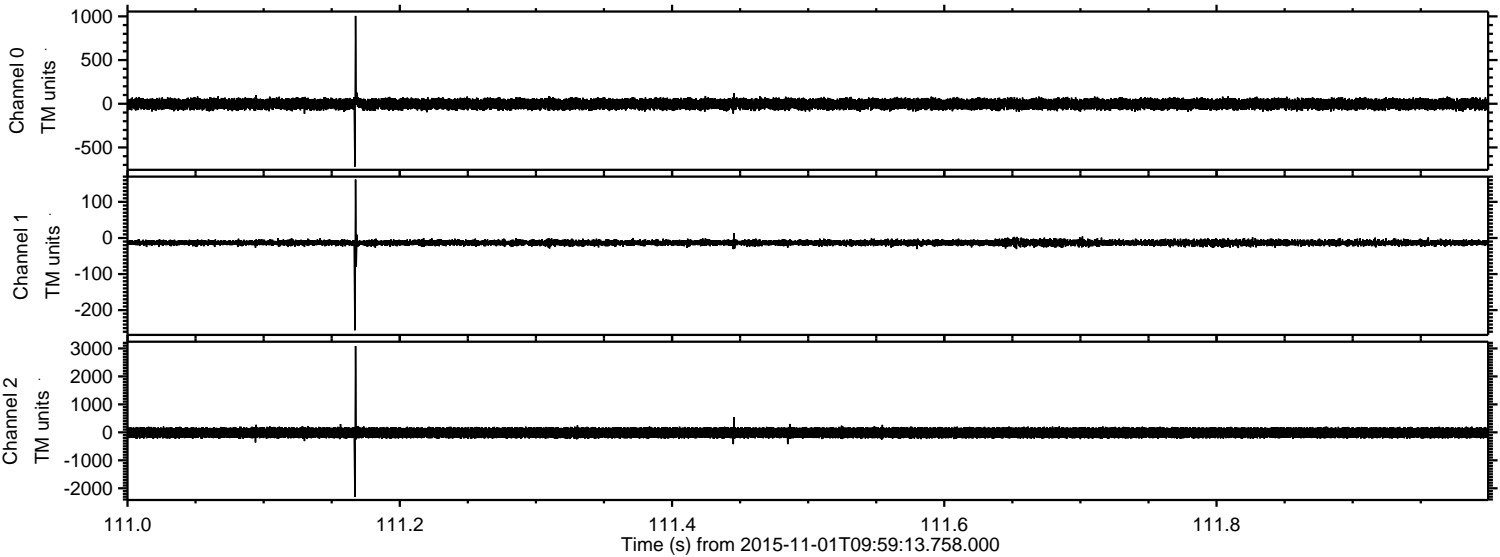
ELMAVAN 3D WAVEFORMS (Measured data sampled at 50 kHz) 51000 packets of 144 samples from 2015-11-01T09:59:13.758.000. Part 103/147

Processed Sun Nov 1 11:06:02 2015 by ELM ver.2012-10-06 from 001__elm20151101_095912__dat00.bin



ELMAVAN 3D WAVEFORMS (Measured data sampled at 50 kHz) 51000 packets of 144 samples from 2015-11-01T09:59:13.758.000. Part 112/147

Processed Sun Nov 1 11:06:03 2015 by ELM ver.2012-10-06 from 001__elm20151101_095912__dat00.bin

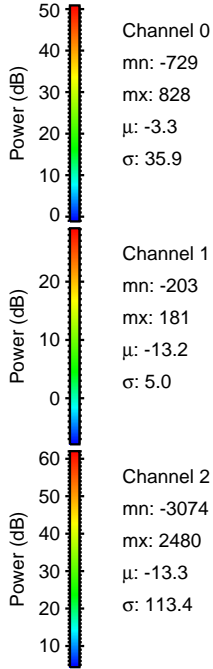
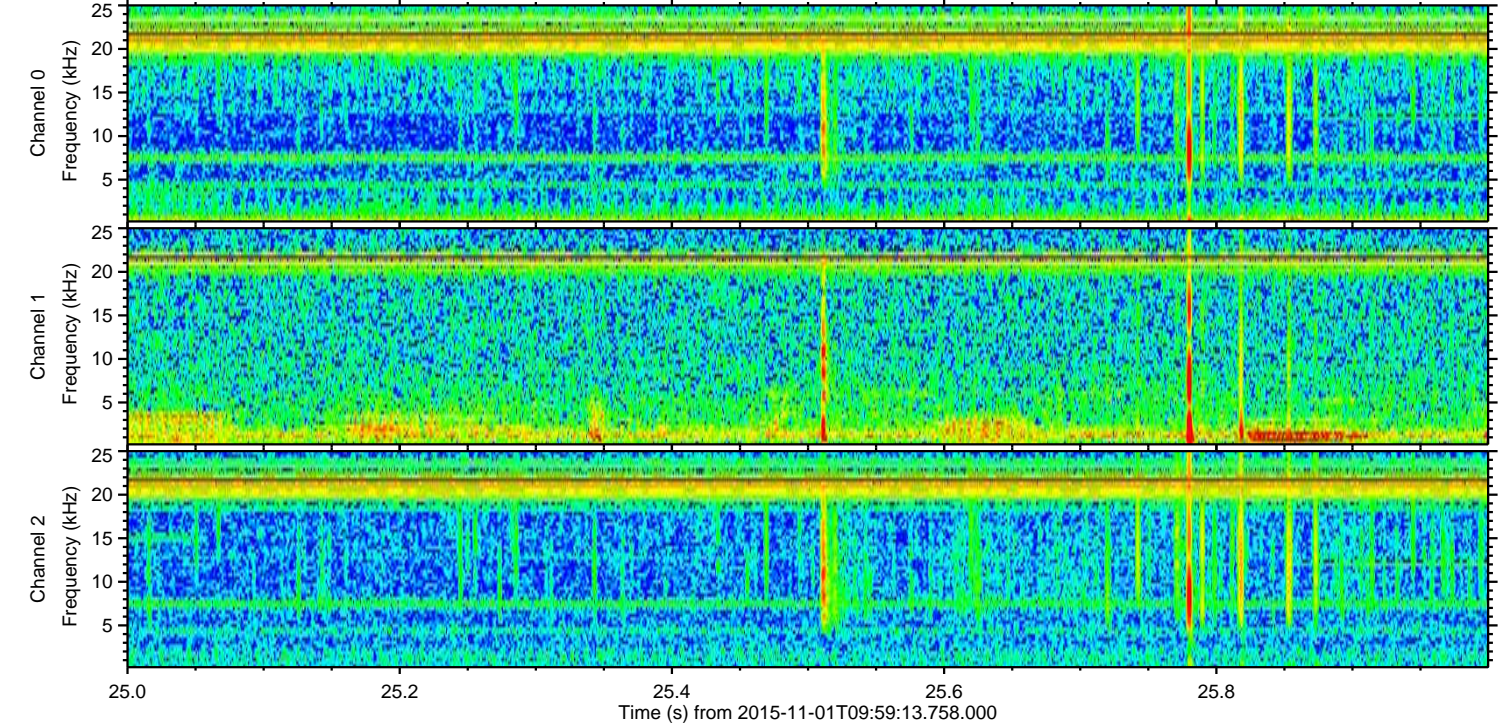
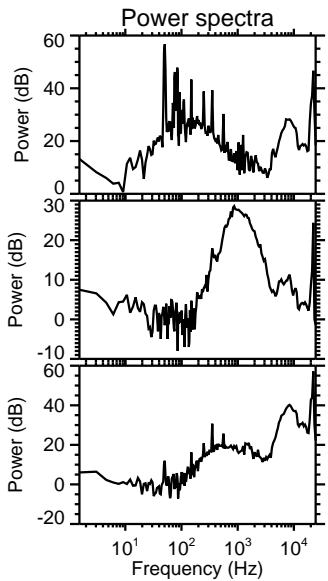
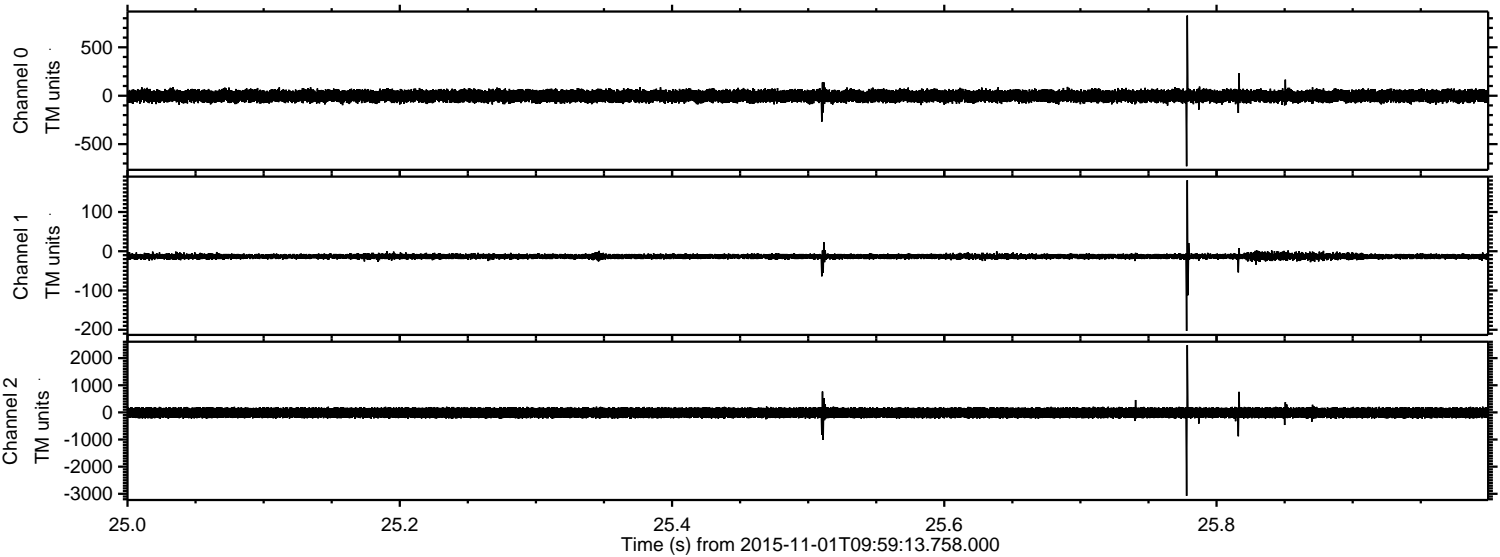


Channel 0
mn: -720
mx: 1005
 μ : -3.3
 σ : 35.3

Channel 1
mn: -256
mx: 162
 μ : -13.3
 σ : 5.2

Channel 2
mn: -2303
mx: 3087
 μ : -13.2
 σ : 112.5

Processed Sun Nov 1 11:06:04 2015 by ELM ver.2012-10-06 from 001__elm20151101_095912__dat00.bin



Channel 0
mn: -729
mx: 828
 μ : -3.3
 σ : 35.9

Channel 1
mn: -203
mx: 181
 μ : -13.2
 σ : 5.0

Channel 2
mn: -3074
mx: 2480
 μ : -13.3
 σ : 113.4

Processed Sun Nov 1 11:06:05 2015 by ELM ver.2012-10-06 from 001__elm20151101_095912__dat00.bin

