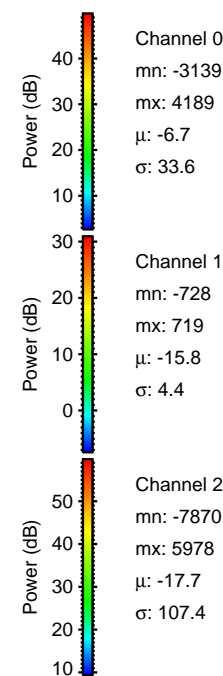
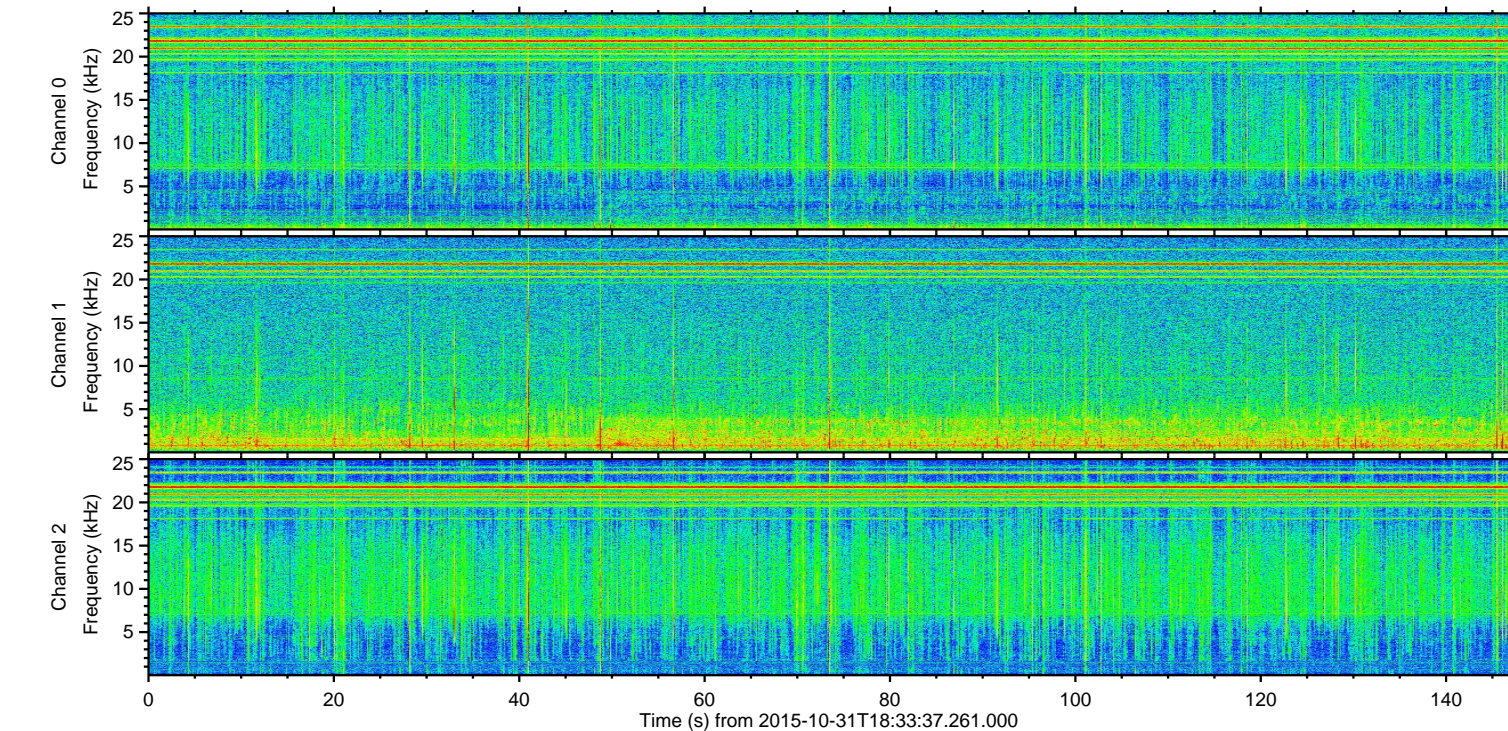
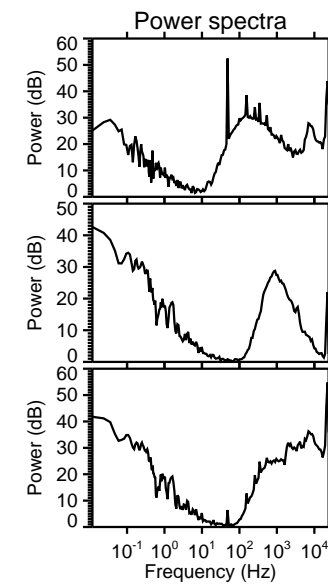
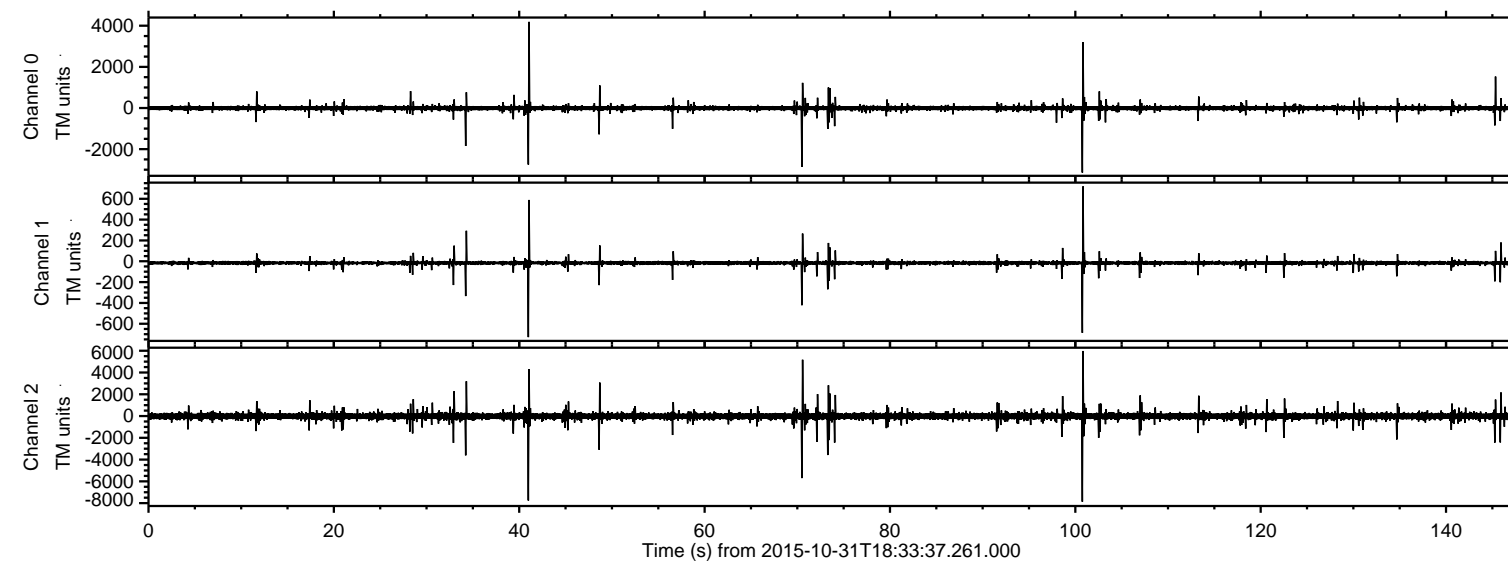


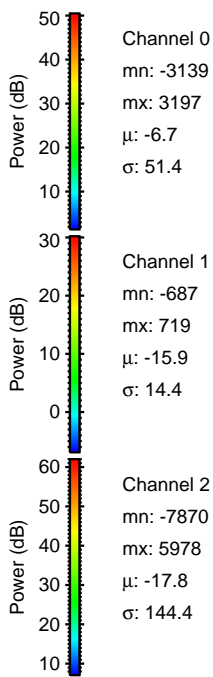
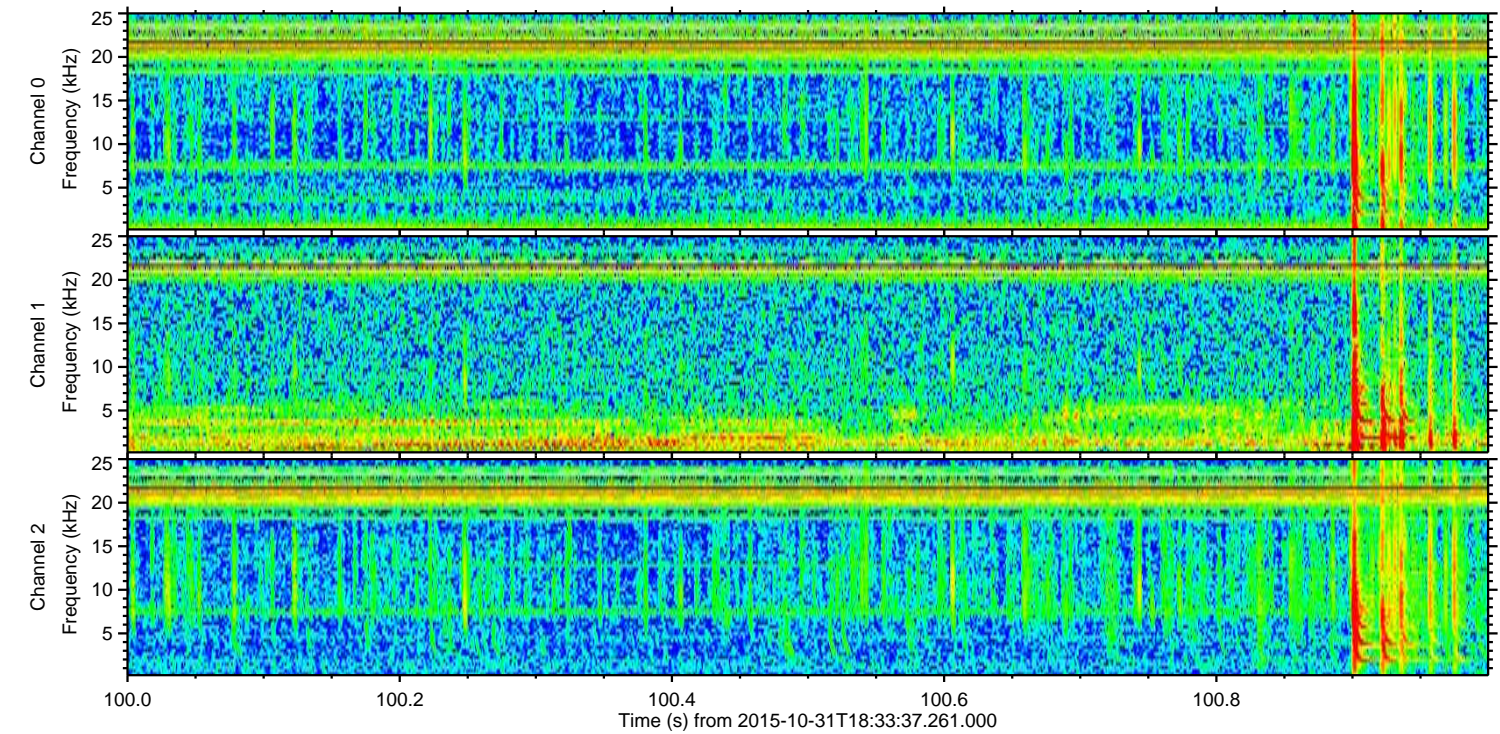
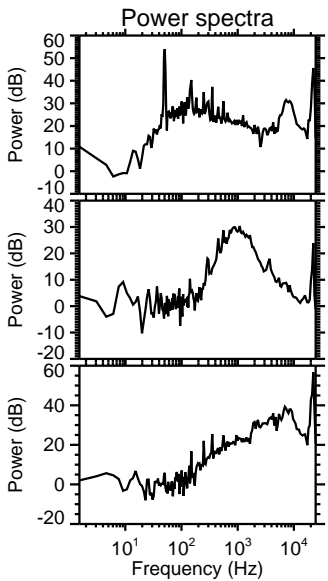
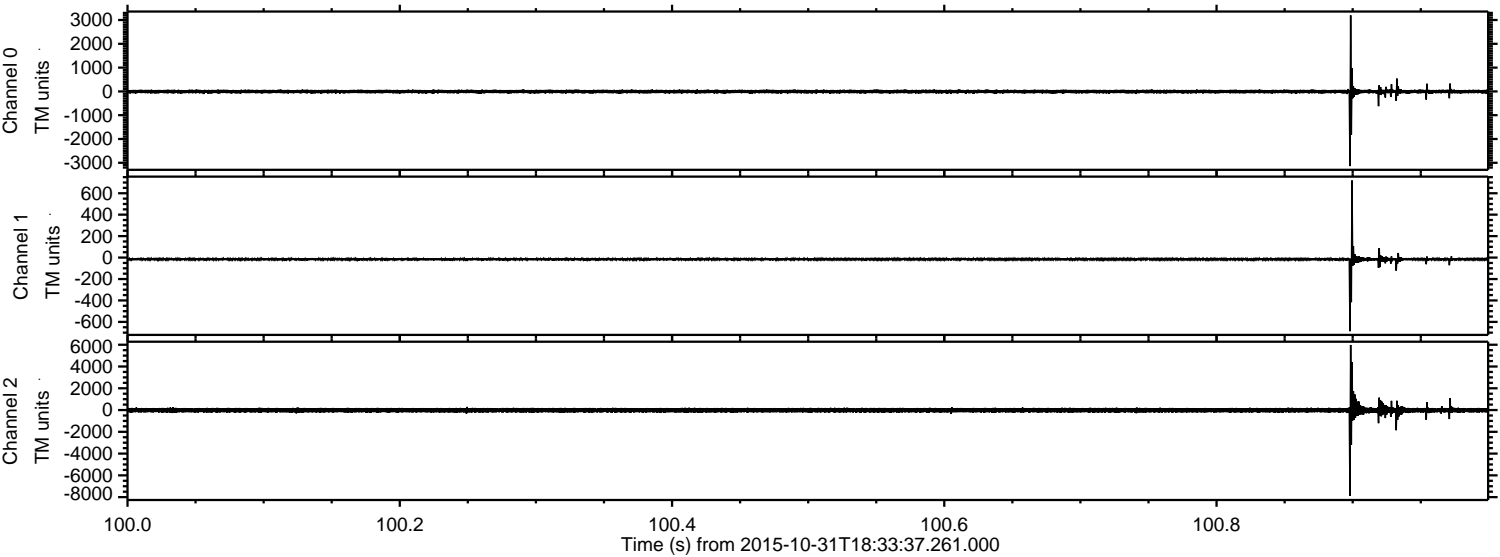
ELMAVAN 3D WAVEFORMS (Measured data sampled at 50 kHz) 51000 packets of 144 samples from 2015-10-31T18:33:37.261.000.

Processed Sat Oct 31 19:39:36 2015 by ELM ver.2012-10-06 from 001__elm20151031_183336__dat00.bin

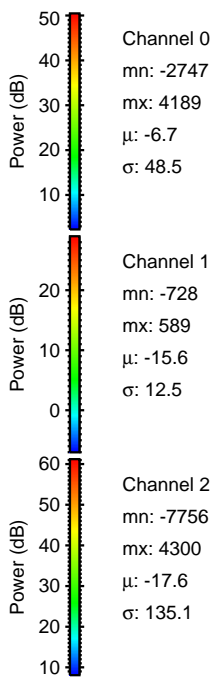
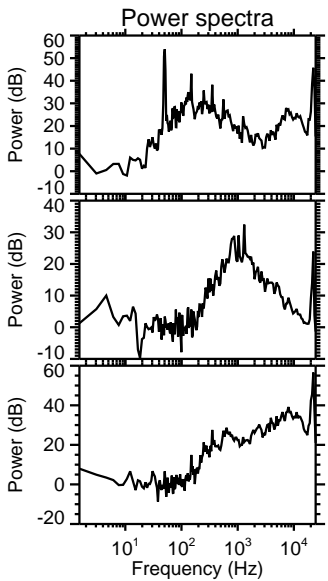
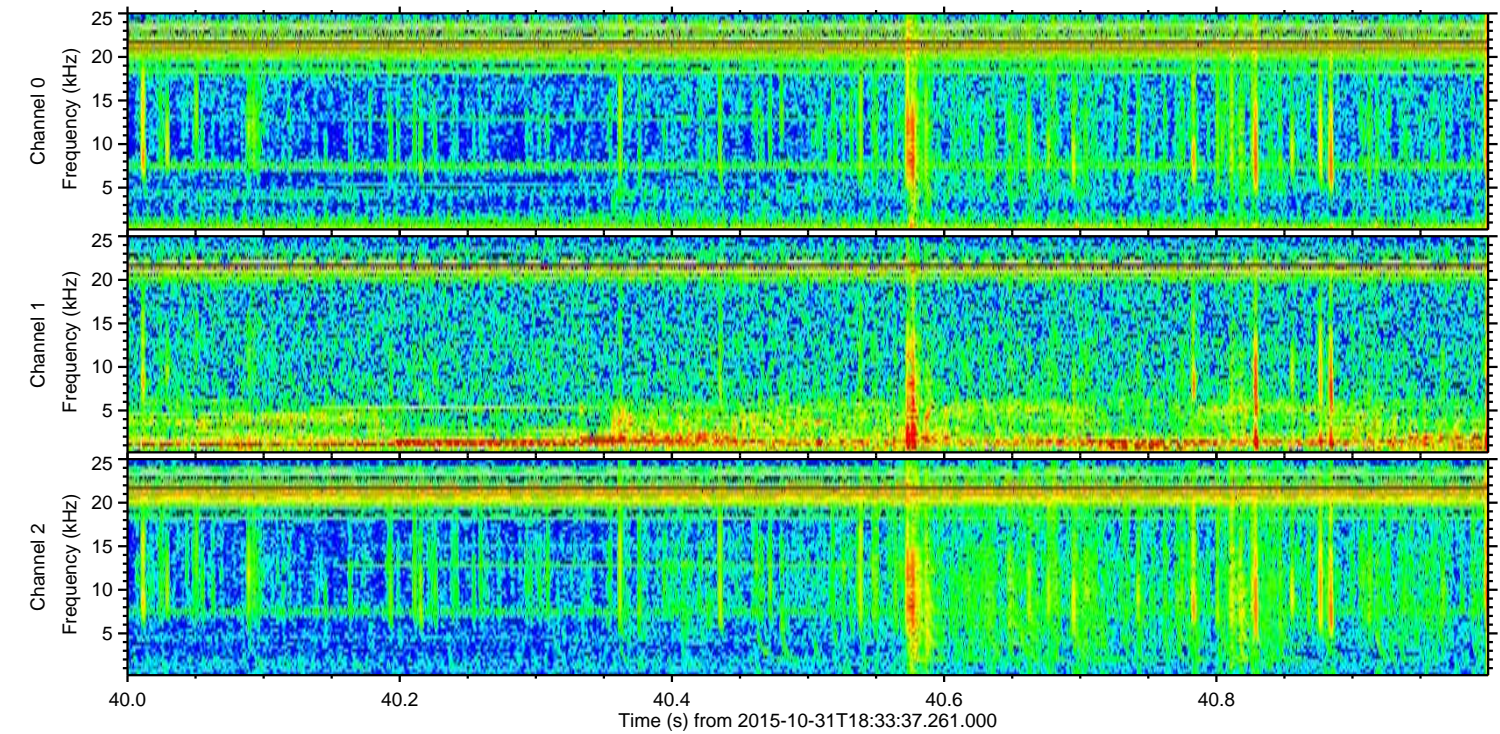
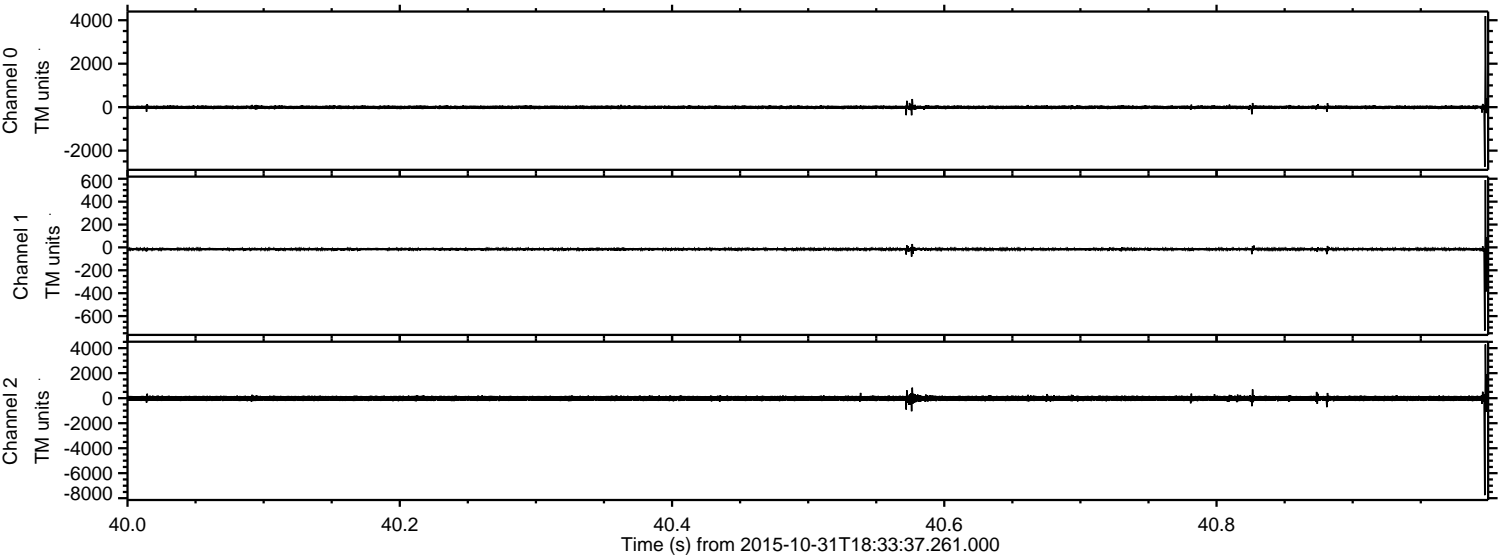


ELMAVAN 3D WAVEFORMS (Measured data sampled at 50 kHz) 51000 packets of 144 samples from 2015-10-31T18:33:37.261.000. Part 101/147

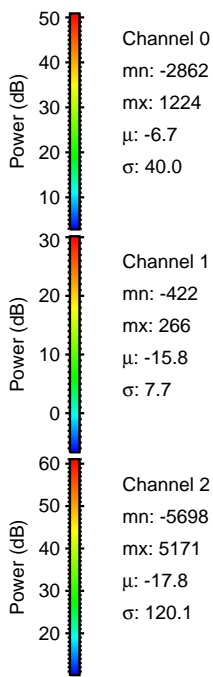
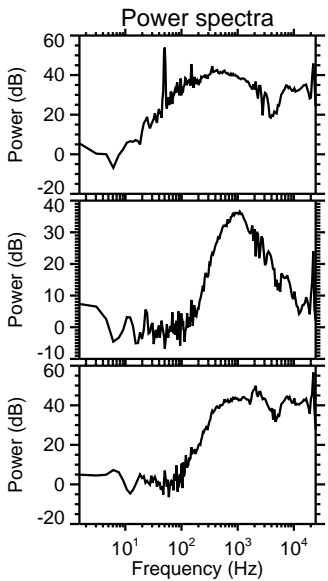
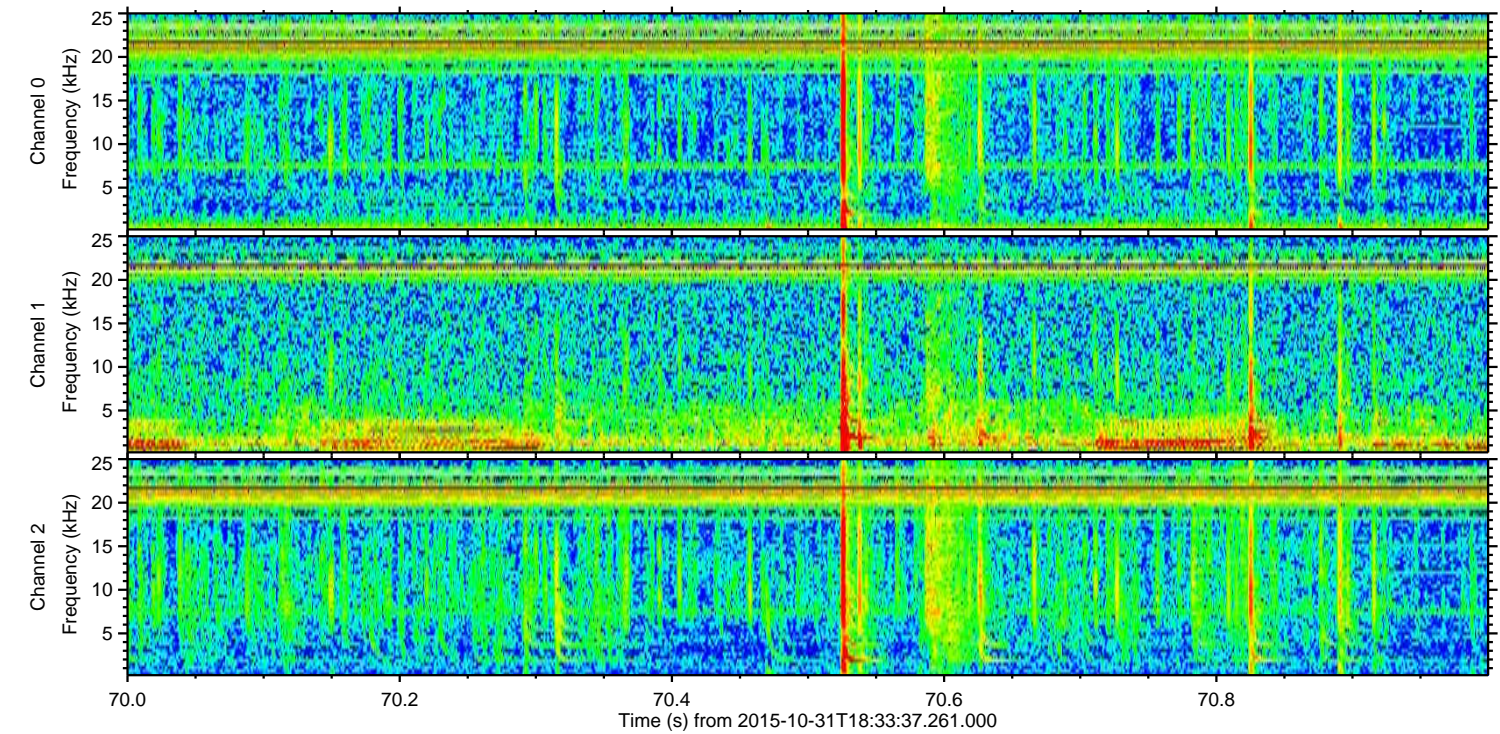
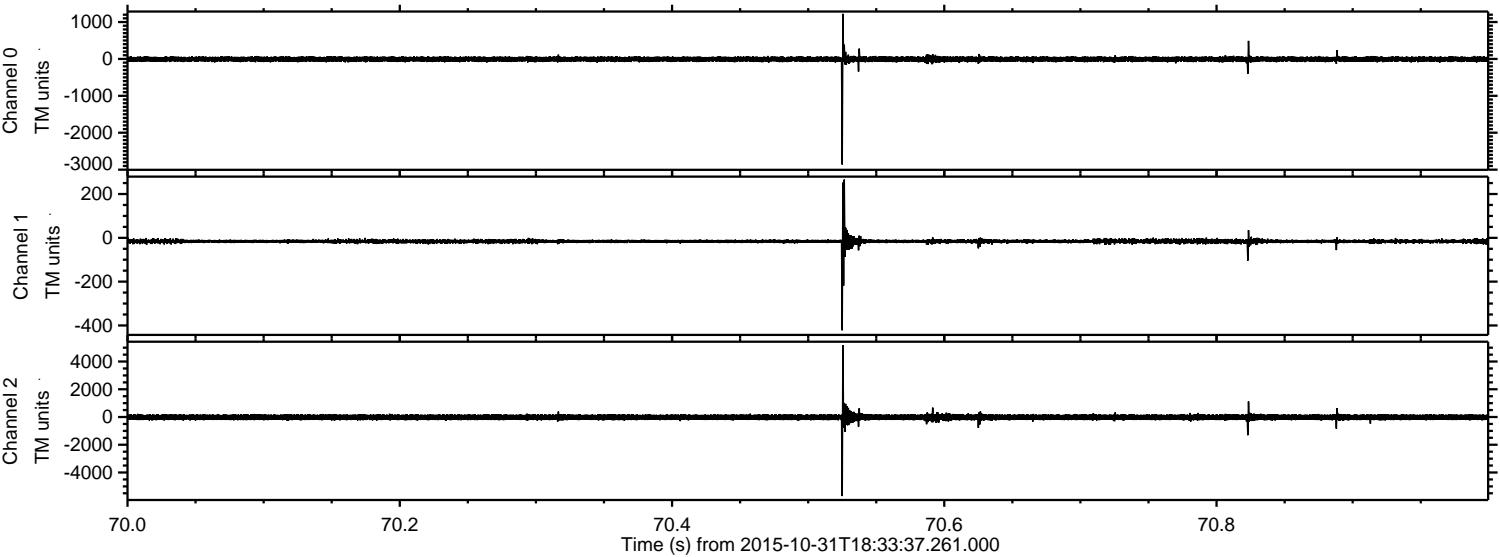
Processed Sat Oct 31 19:39:51 2015 by ELM ver.2012-10-06 from 001__elm20151031_183336__dat00.bin



Processed Sat Oct 31 19:39:52 2015 by ELM ver.2012-10-06 from 001__elm20151031_183336__dat00.bin



Processed Sat Oct 31 19:39:53 2015 by ELM ver.2012-10-06 from 001__elm20151031_183336__dat00.bin

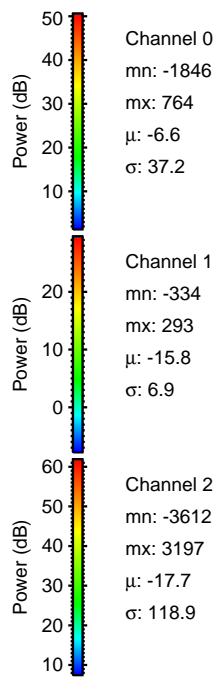
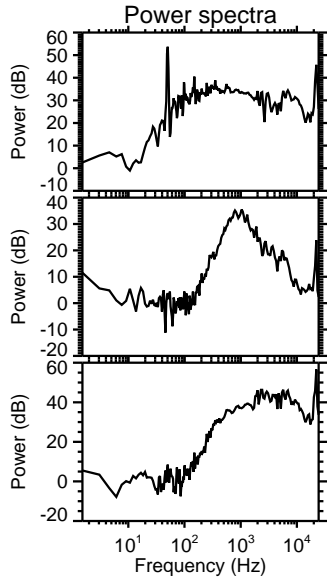
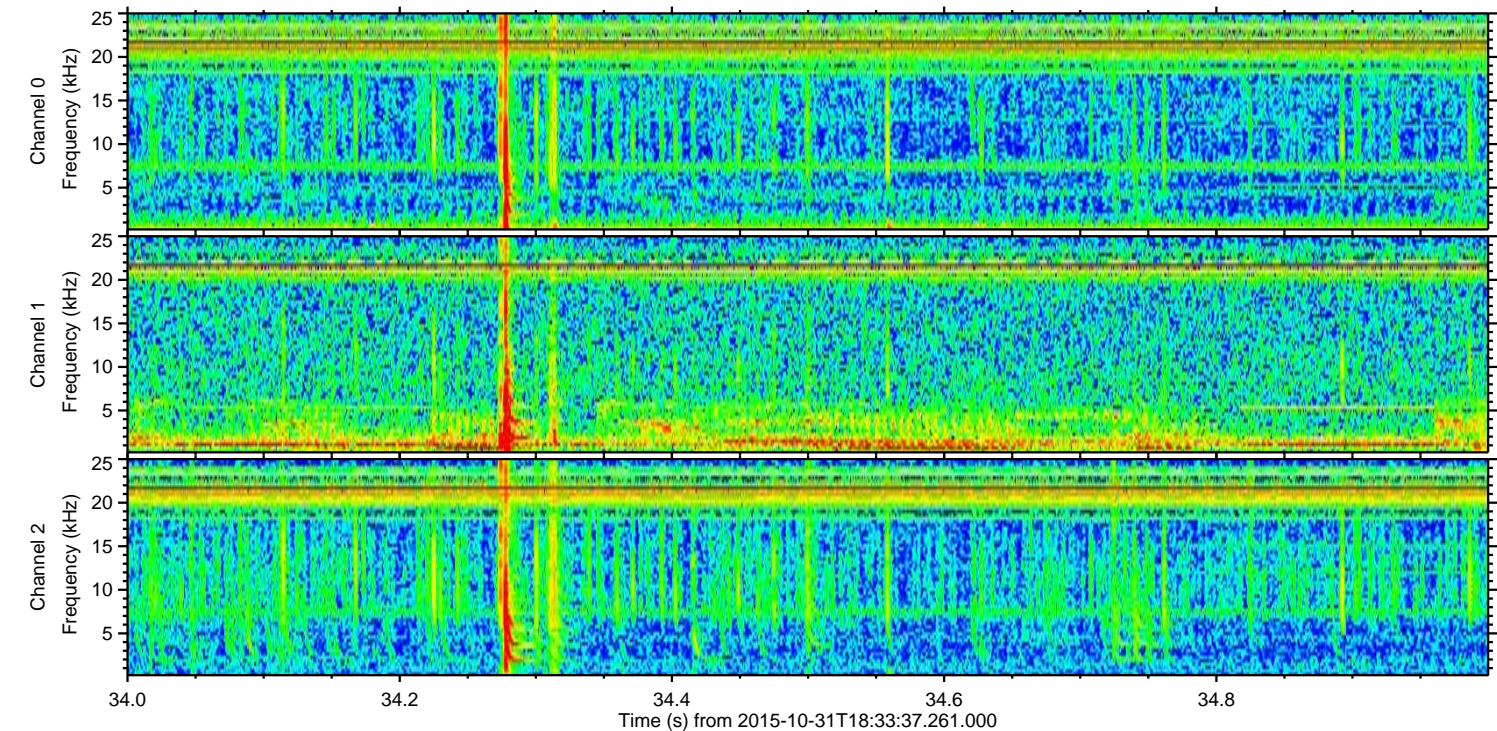
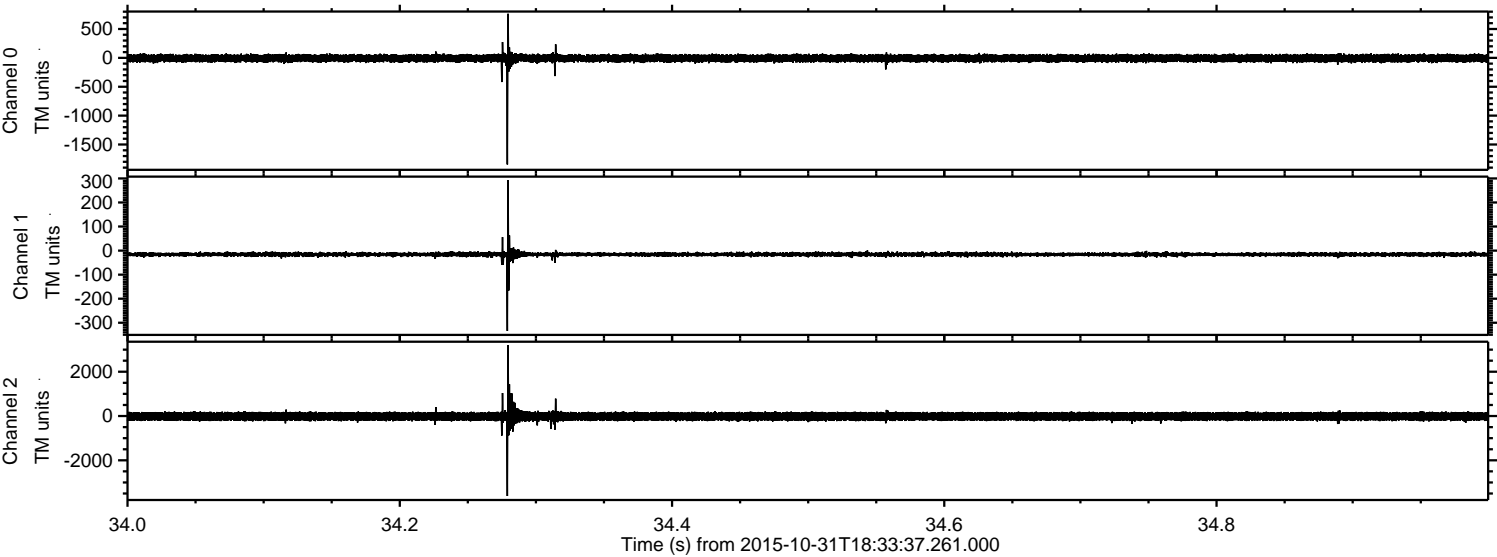


Channel 0
mn: -2862
mx: 1224
 μ : -6.7
 σ : 40.0

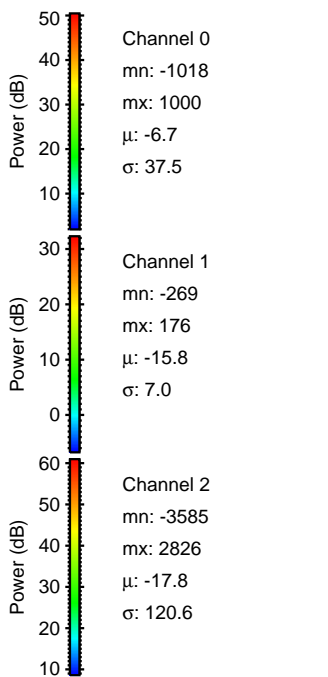
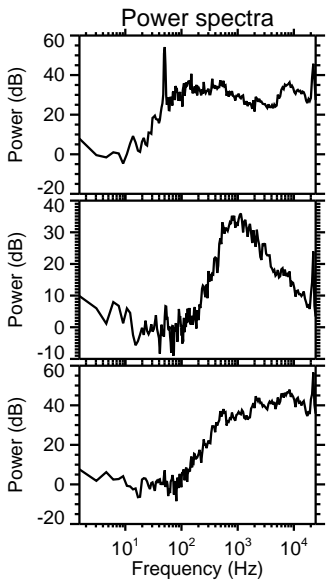
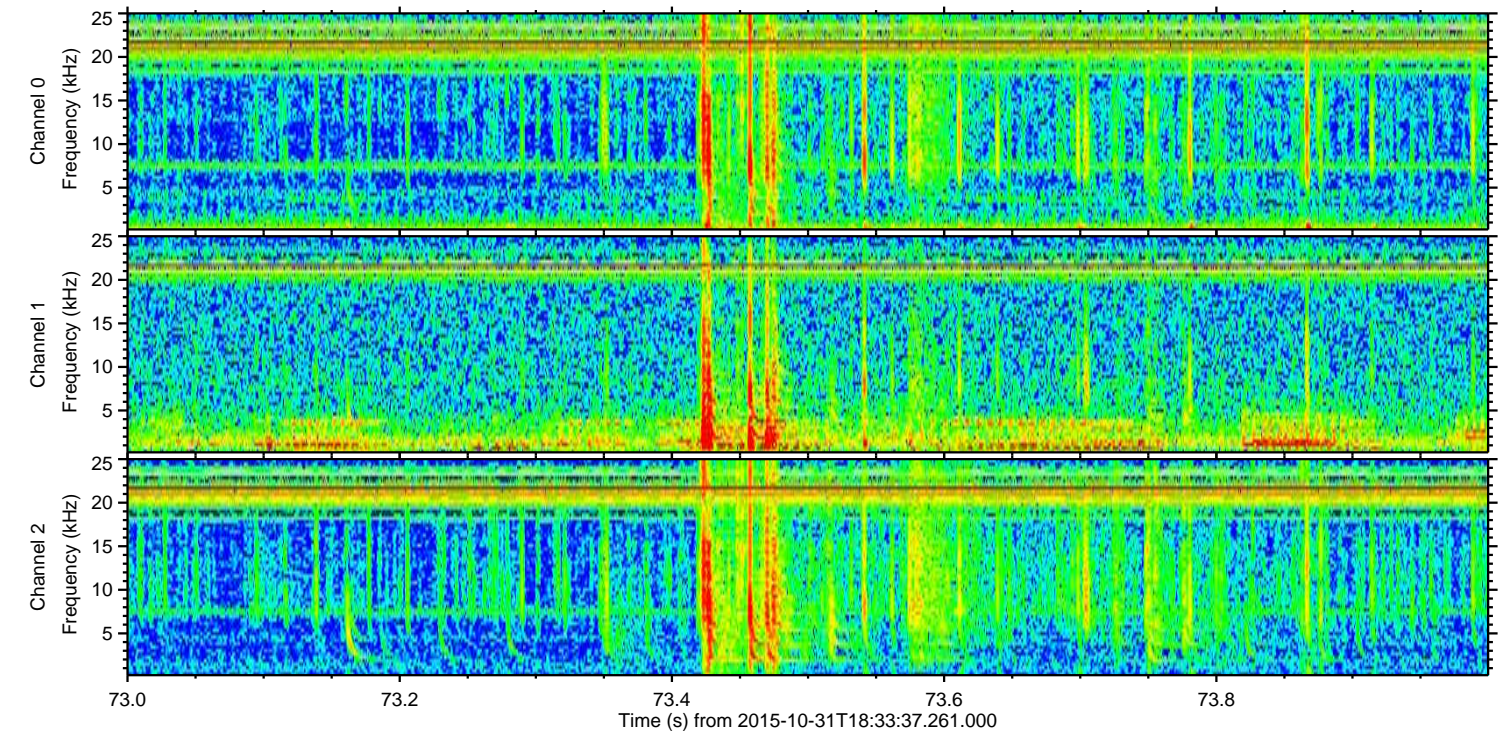
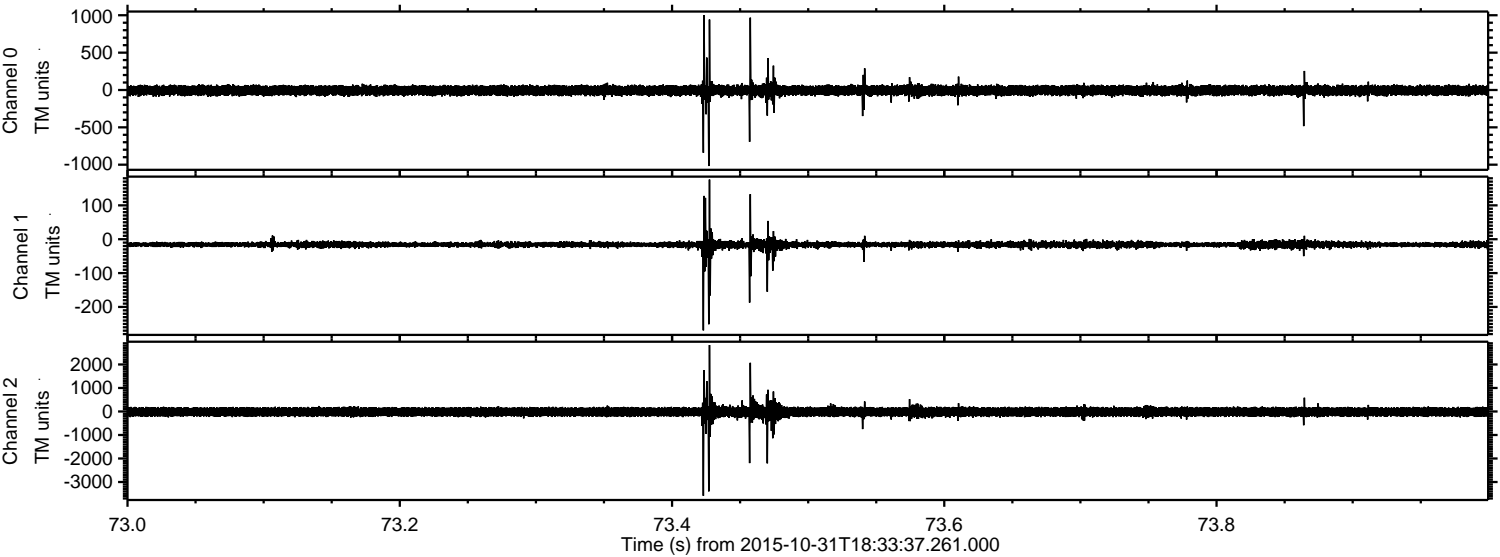
Channel 1
mn: -422
mx: 266
 μ : -15.8
 σ : 7.7

Channel 2
mn: -5698
mx: 5171
 μ : -17.8
 σ : 120.1

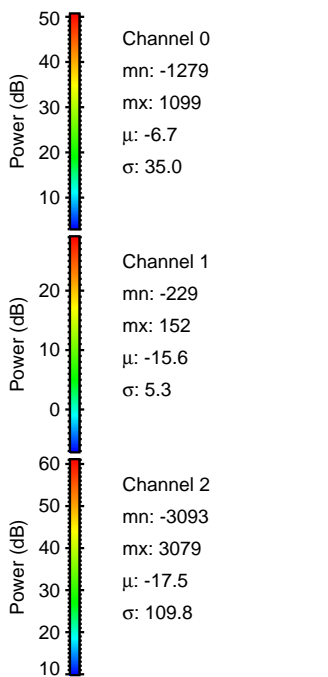
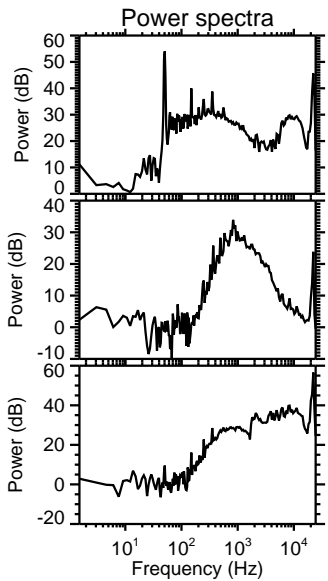
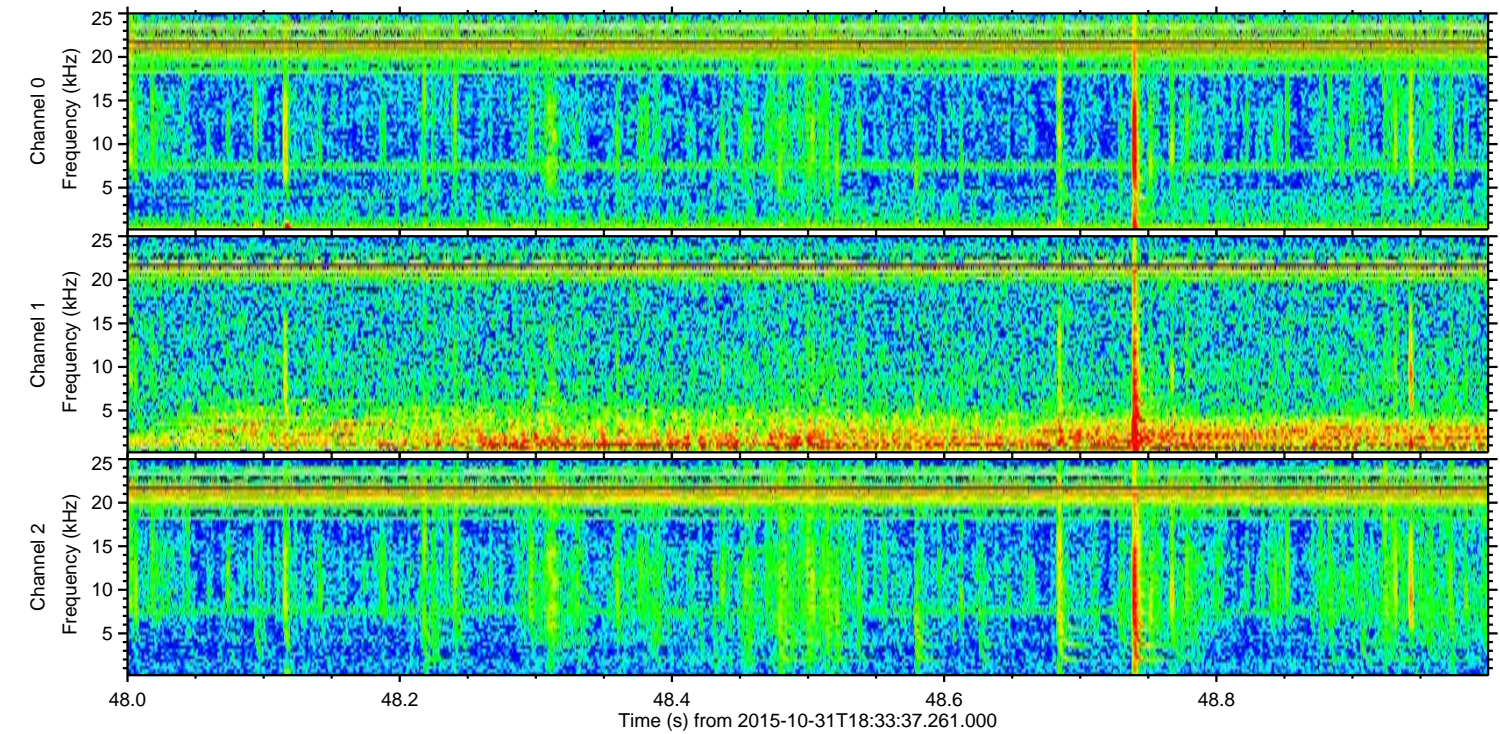
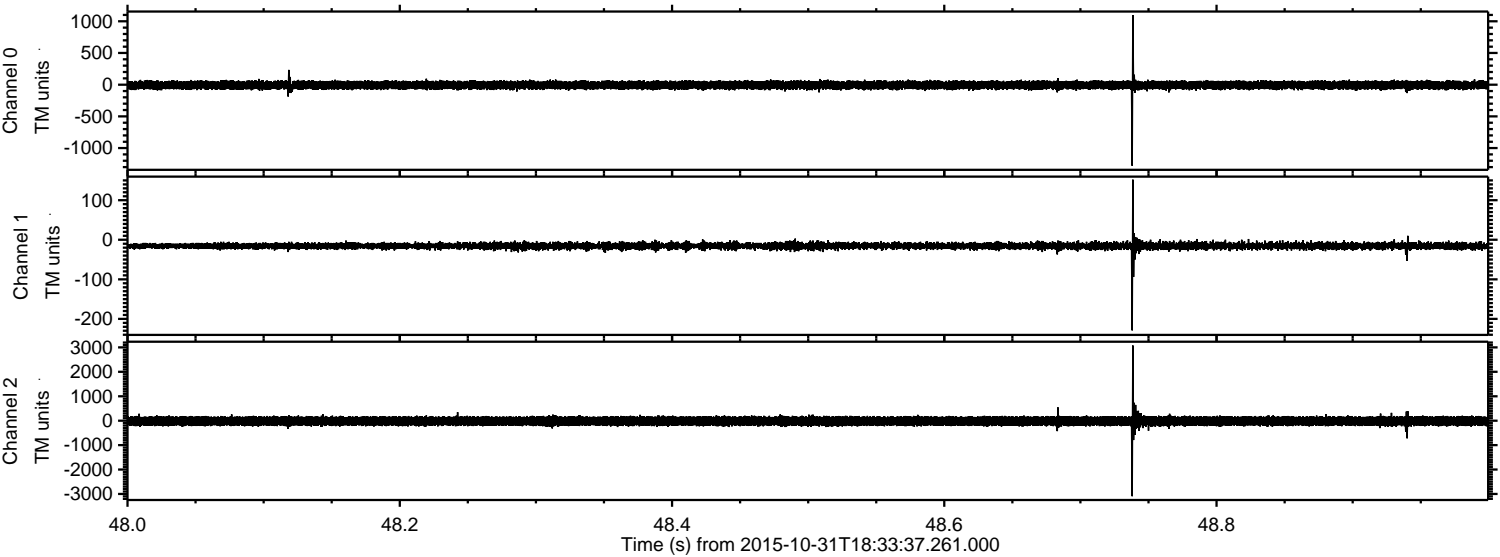
Processed Sat Oct 31 19:39:54 2015 by ELM ver.2012-10-06 from 001__elm20151031_183336__dat00.bin



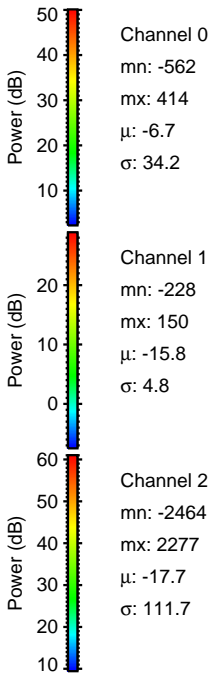
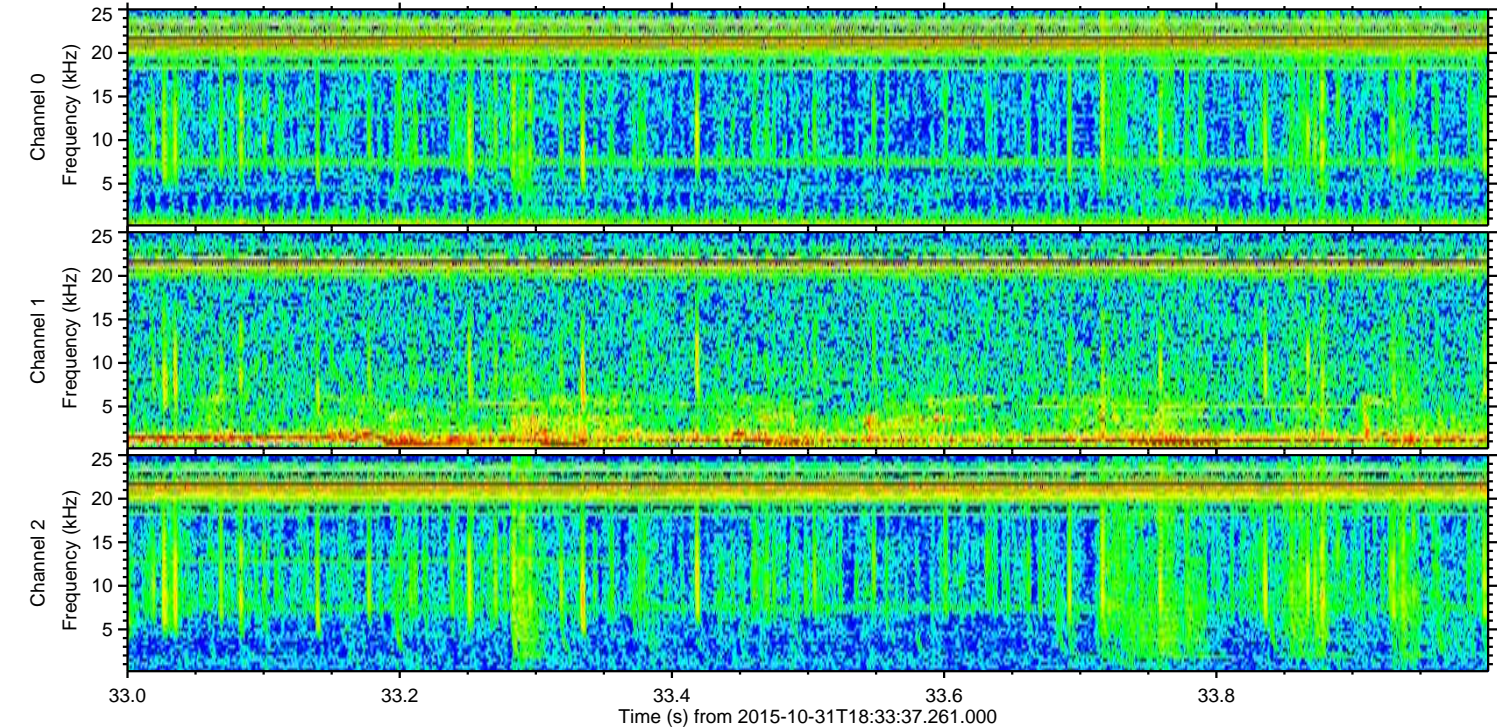
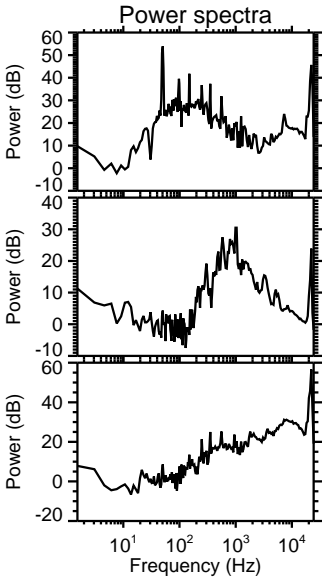
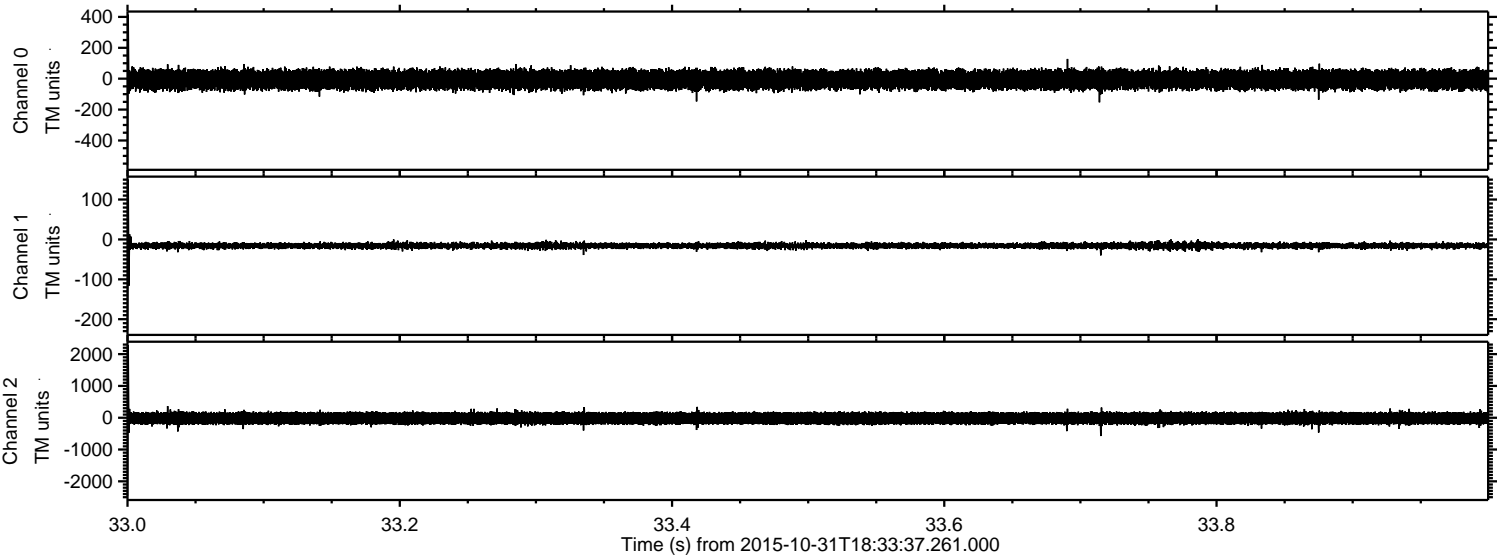
Processed Sat Oct 31 19:39:55 2015 by ELM ver.2012-10-06 from 001__elm20151031_183336__dat00.bin



Processed Sat Oct 31 19:39:56 2015 by ELM ver.2012-10-06 from 001__elm20151031_183336__dat00.bin

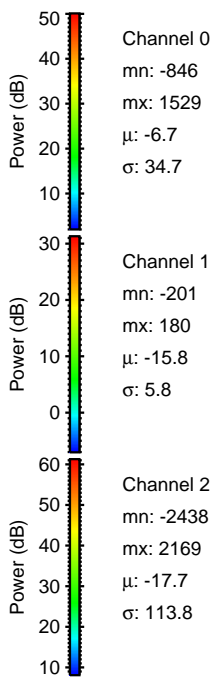
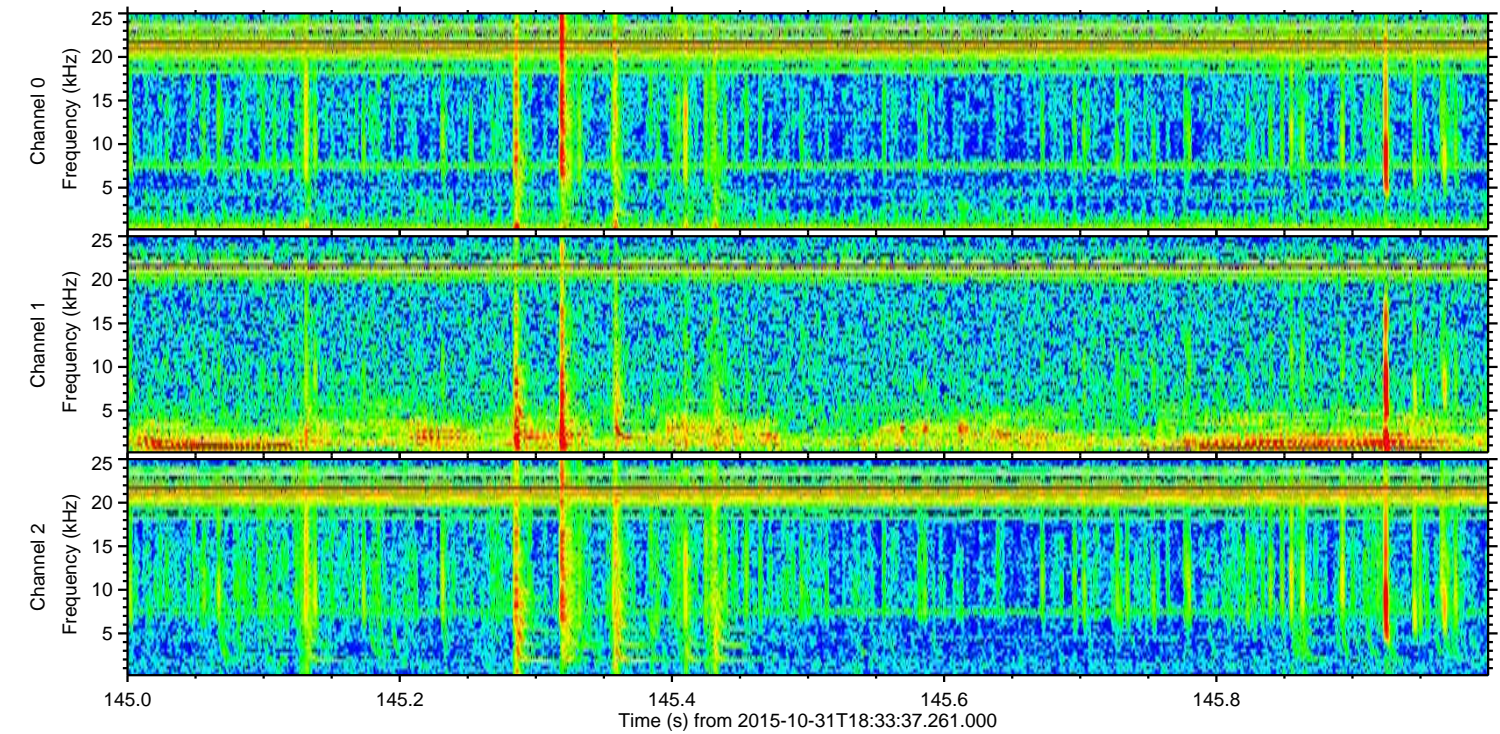
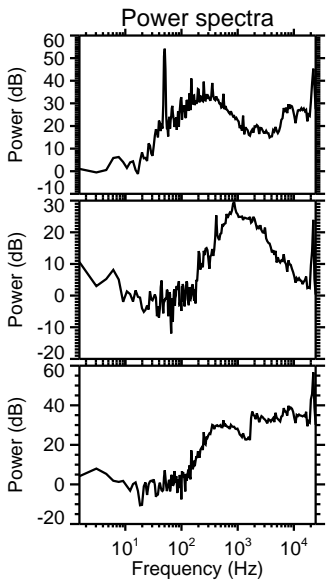
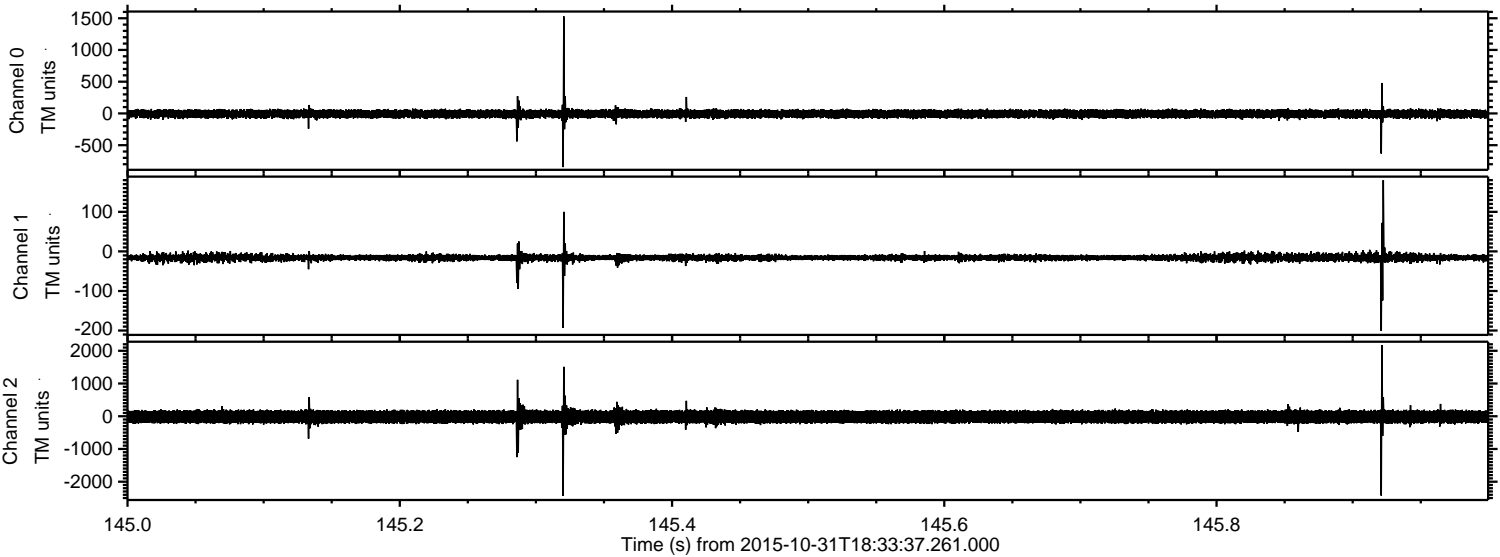


Processed Sat Oct 31 19:39:57 2015 by ELM ver.2012-10-06 from 001__elm20151031_183336__dat00.bin

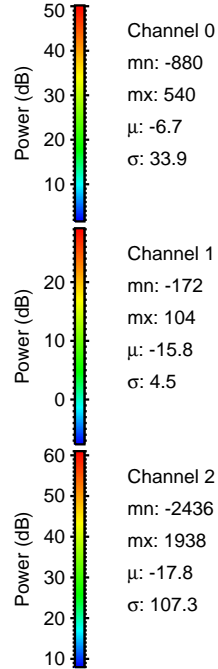
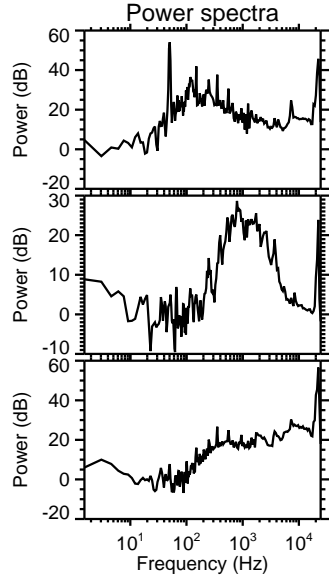
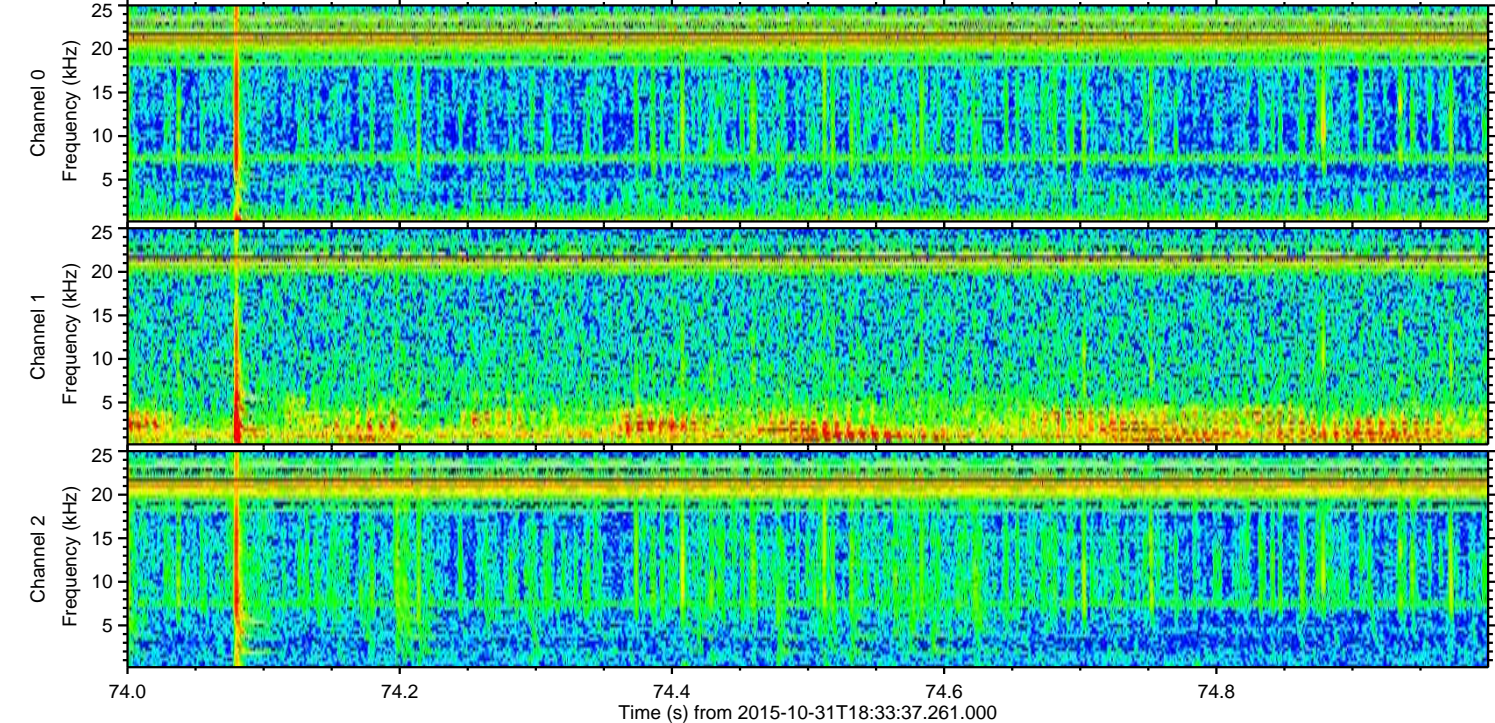
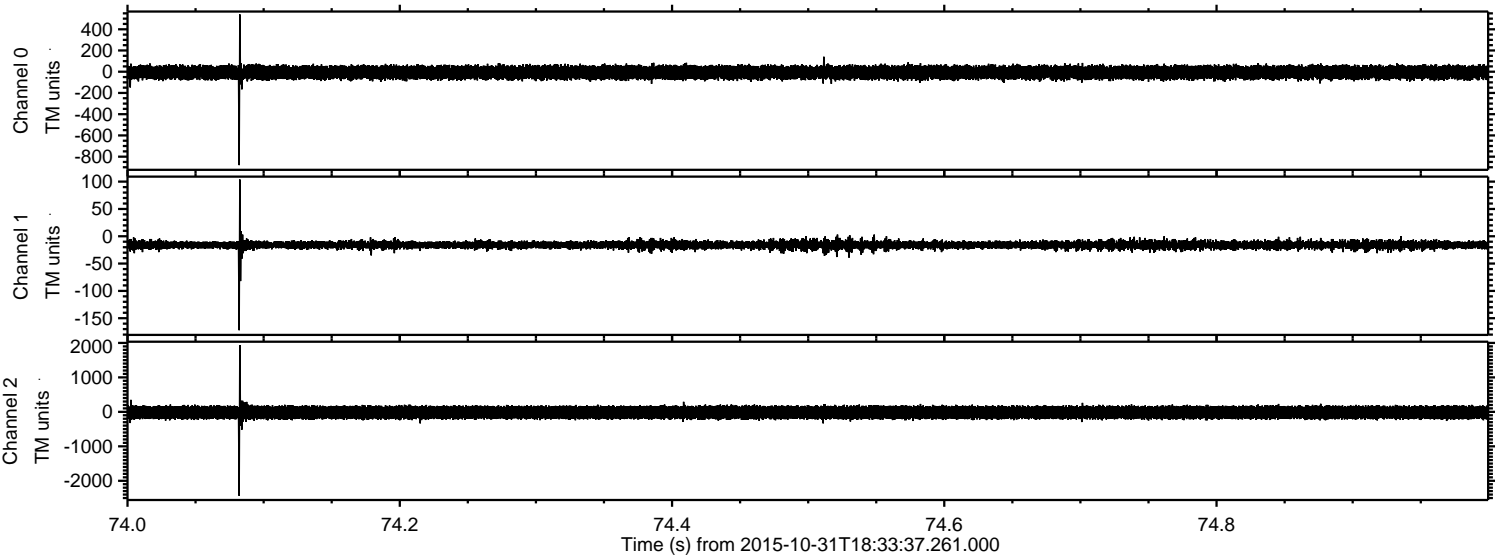


ELMAVAN 3D WAVEFORMS (Measured data sampled at 50 kHz) 51000 packets of 144 samples from 2015-10-31T18:33:37.261.000. Part 146/147

Processed Sat Oct 31 19:39:58 2015 by ELM ver.2012-10-06 from 001__elm20151031_183336__dat00.bin



Processed Sat Oct 31 19:39:59 2015 by ELM ver.2012-10-06 from 001__elm20151031_183336__dat00.bin



Channel 0
mn: -880
mx: 540
 μ : -6.7
 σ : 33.9

Channel 1
mn: -172
mx: 104
 μ : -15.8
 σ : 4.5

Channel 2
mn: -2436
mx: 1938
 μ : -17.8
 σ : 107.3

Processed Sat Oct 31 19:40:00 2015 by ELM ver.2012-10-06 from 001__elm20151031_183336__dat00.bin

