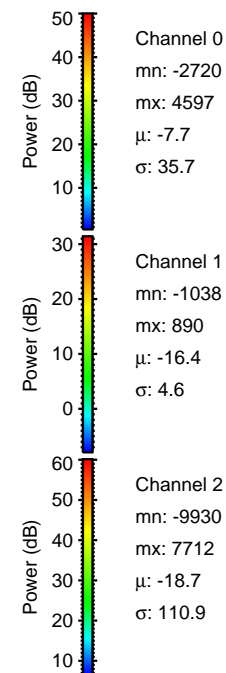
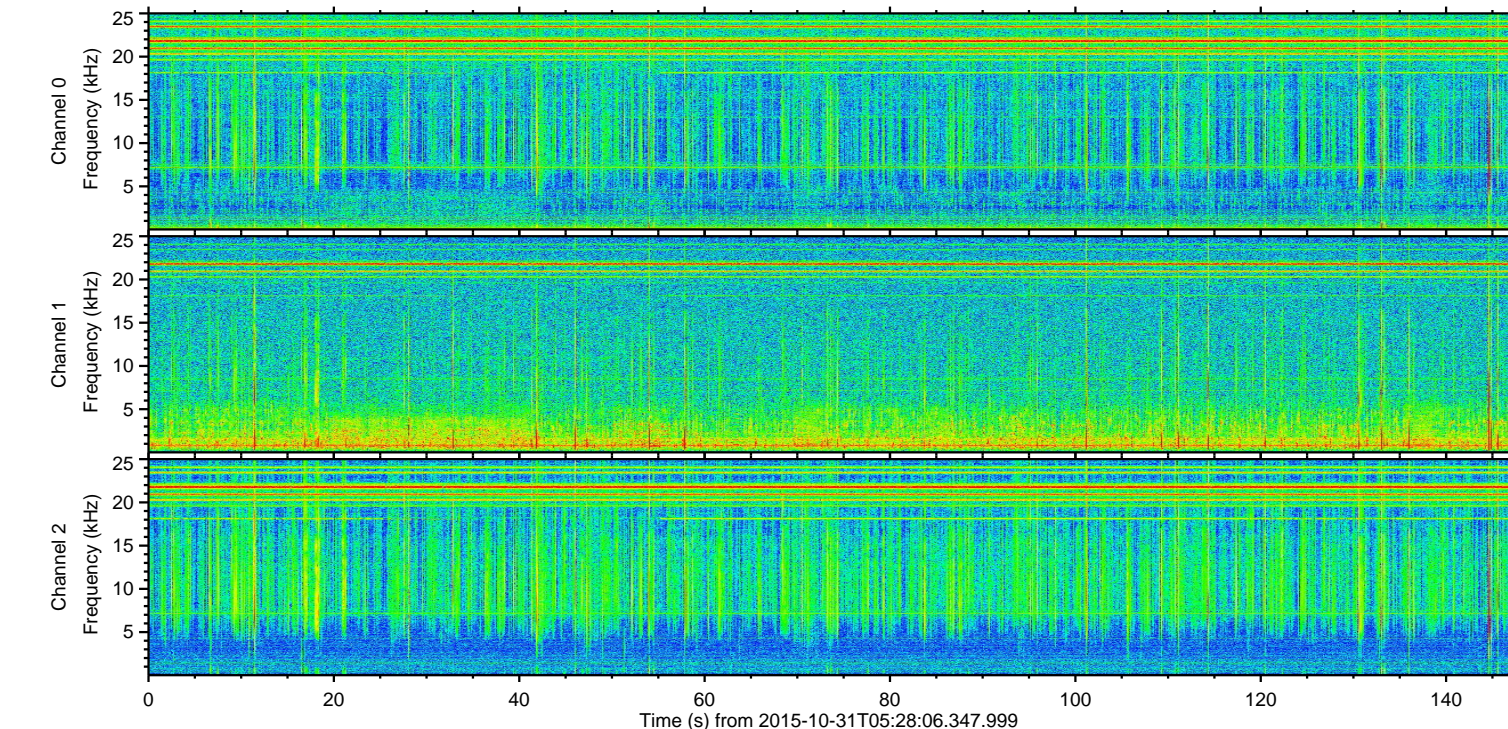
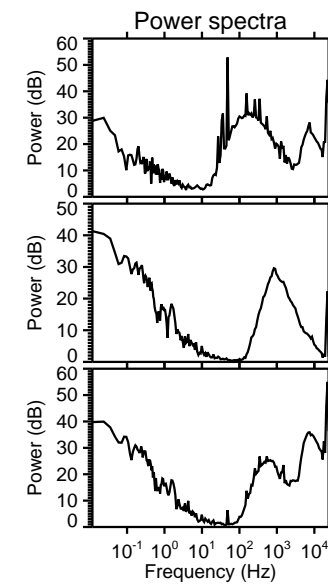
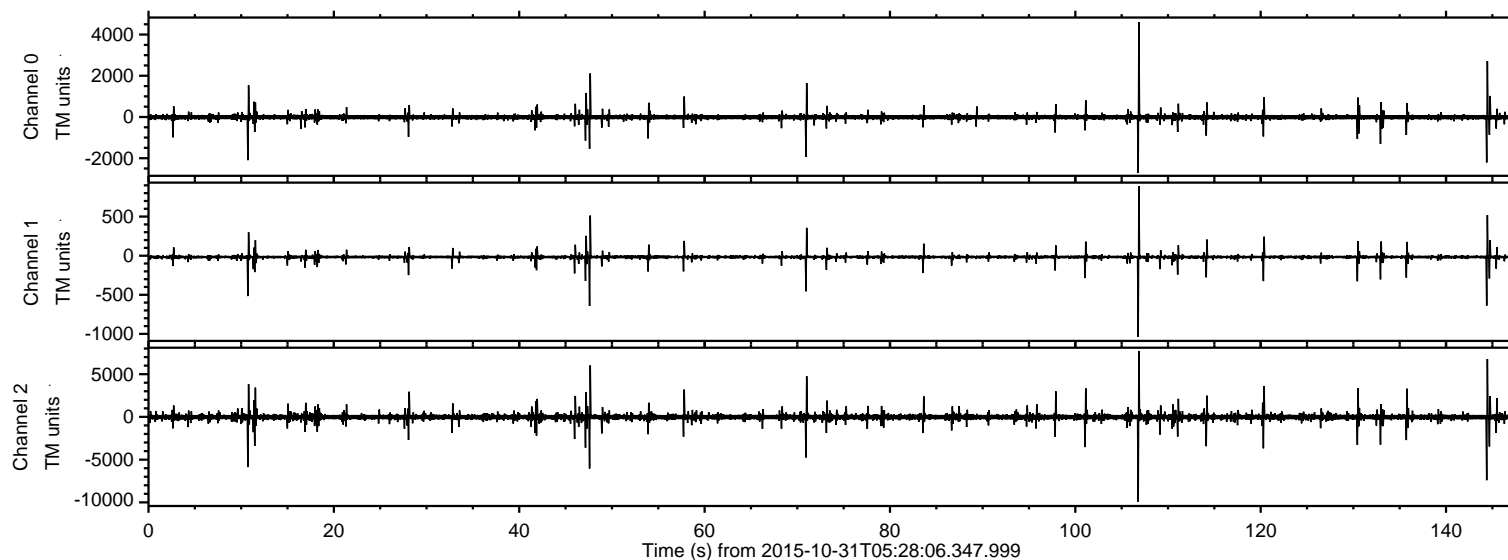


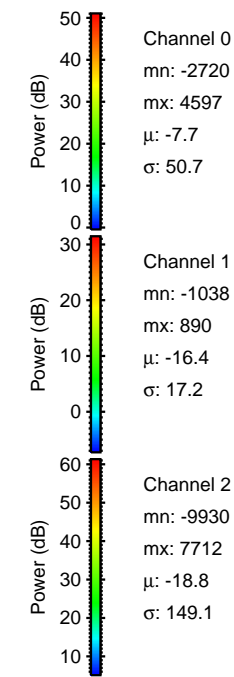
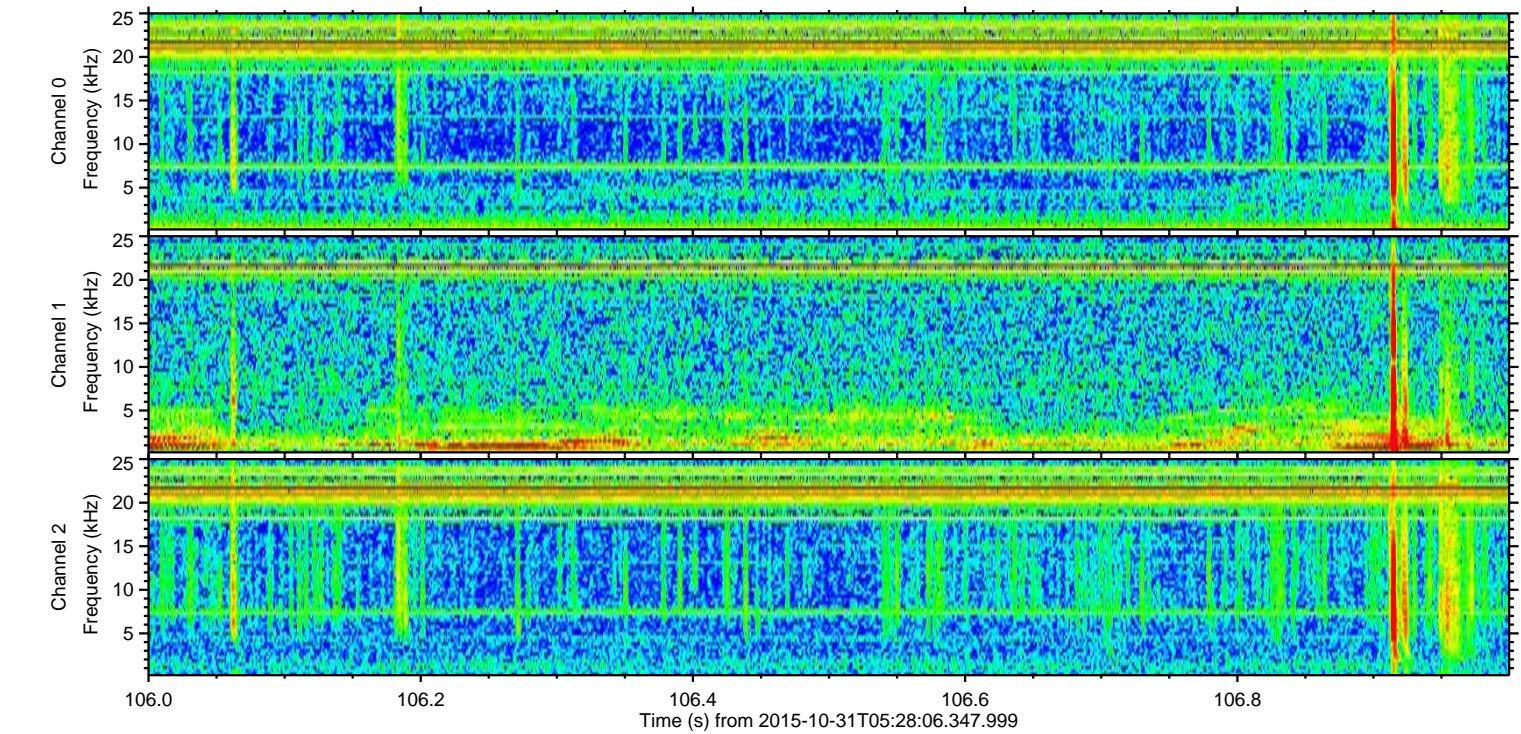
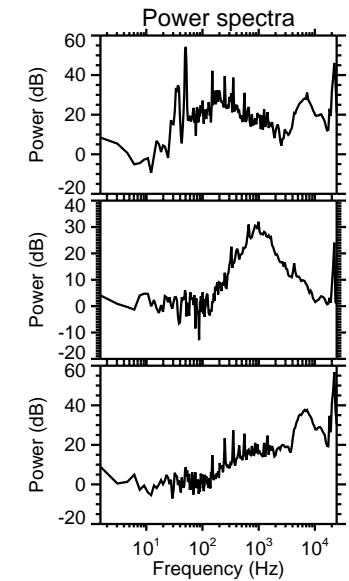
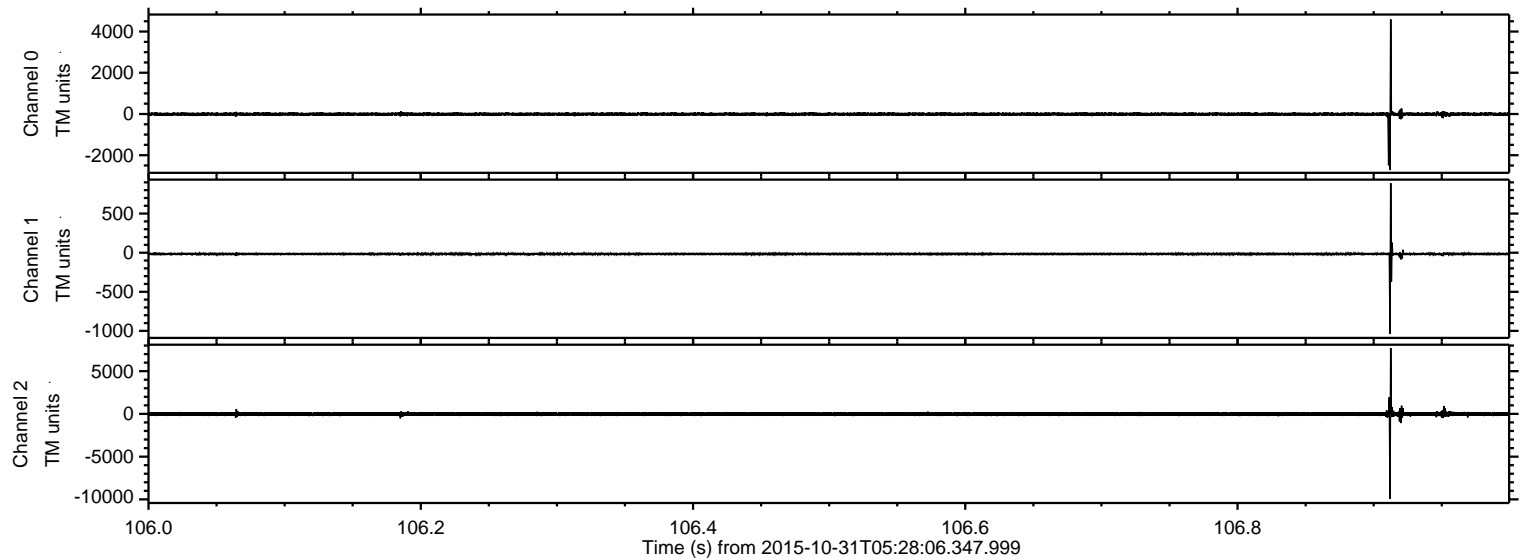
ELMAVAN 3D WAVEFORMS (Measured data sampled at 50 kHz) 51000 packets of 144 samples from 2015-10-31T05:28:06.347.999.

Processed Sat Oct 31 09:29:55 2015 by ELM ver.2012-10-06 from 001__elm20151031_052805__dat00.bin



ELMAVAN 3D WAVEFORMS (Measured data sampled at 50 kHz) 51000 packets of 144 samples from 2015-10-31T05:28:06.347.999. Part 107/147

Processed Sat Oct 31 09:30:17 2015 by ELM ver.2012-10-06 from 001__elm20151031_052805__dat00.bin



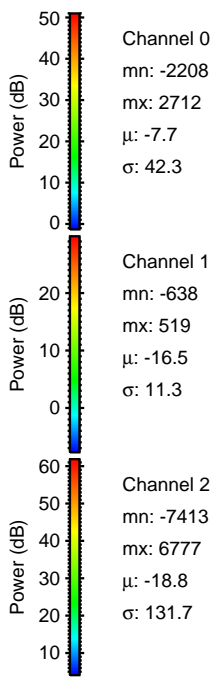
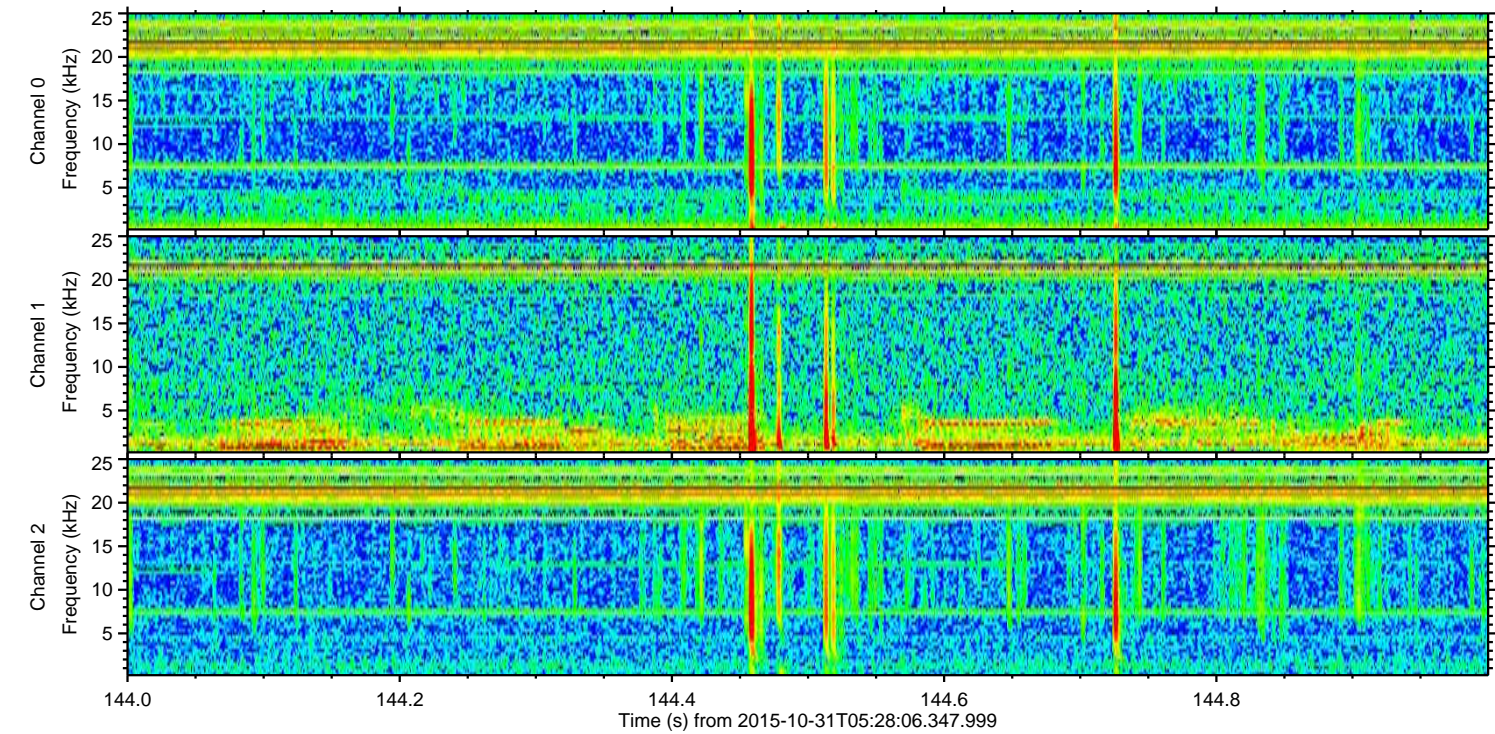
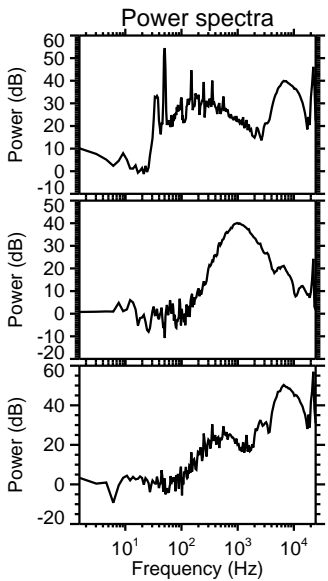
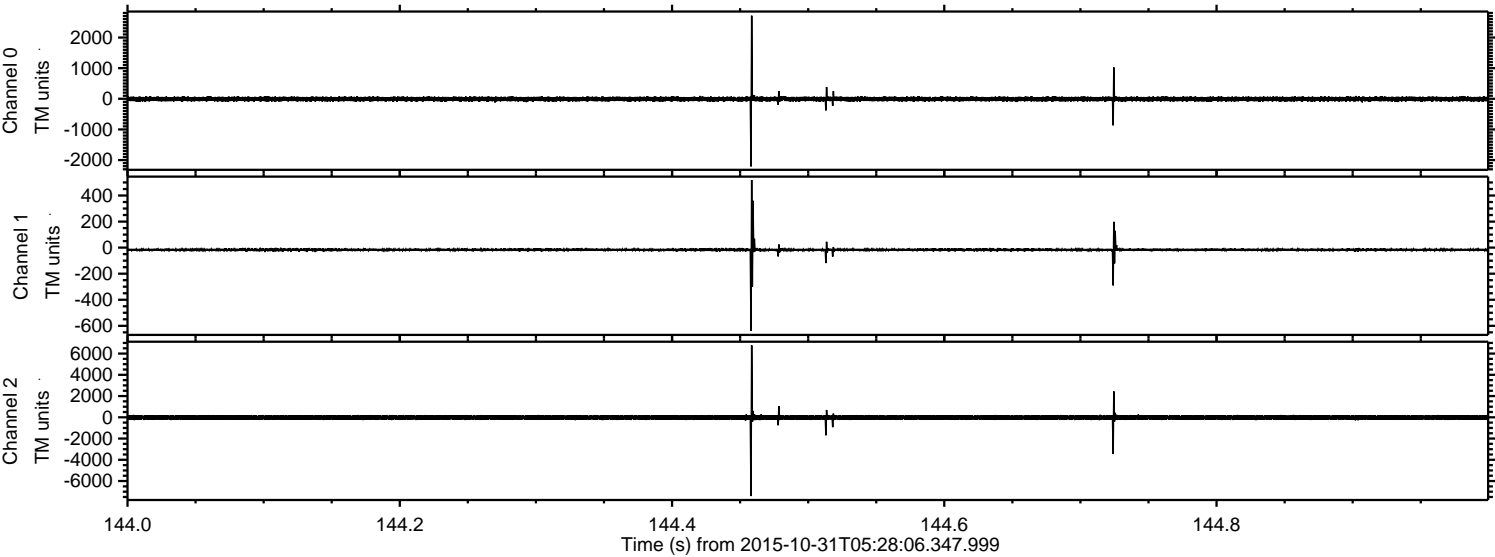
Channel 0
mn: -27.20
mx: 45.97
 μ : -7.7
 σ : 50.7

Channel 1
mn: -10.38
mx: 8.90
 μ : -16.4
 σ : 17.2

Channel 2
mn: -9.930
mx: 7.712
 μ : -18.8
 σ : 149.1

ELMAVAN 3D WAVEFORMS (Measured data sampled at 50 kHz) 51000 packets of 144 samples from 2015-10-31T05:28:06.347.999. Part 145/147

Processed Sat Oct 31 09:30:18 2015 by ELM ver.2012-10-06 from 001__elm20151031_052805__dat00.bin

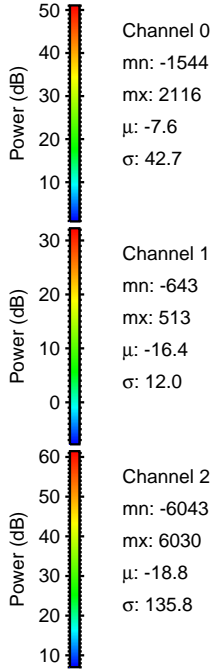
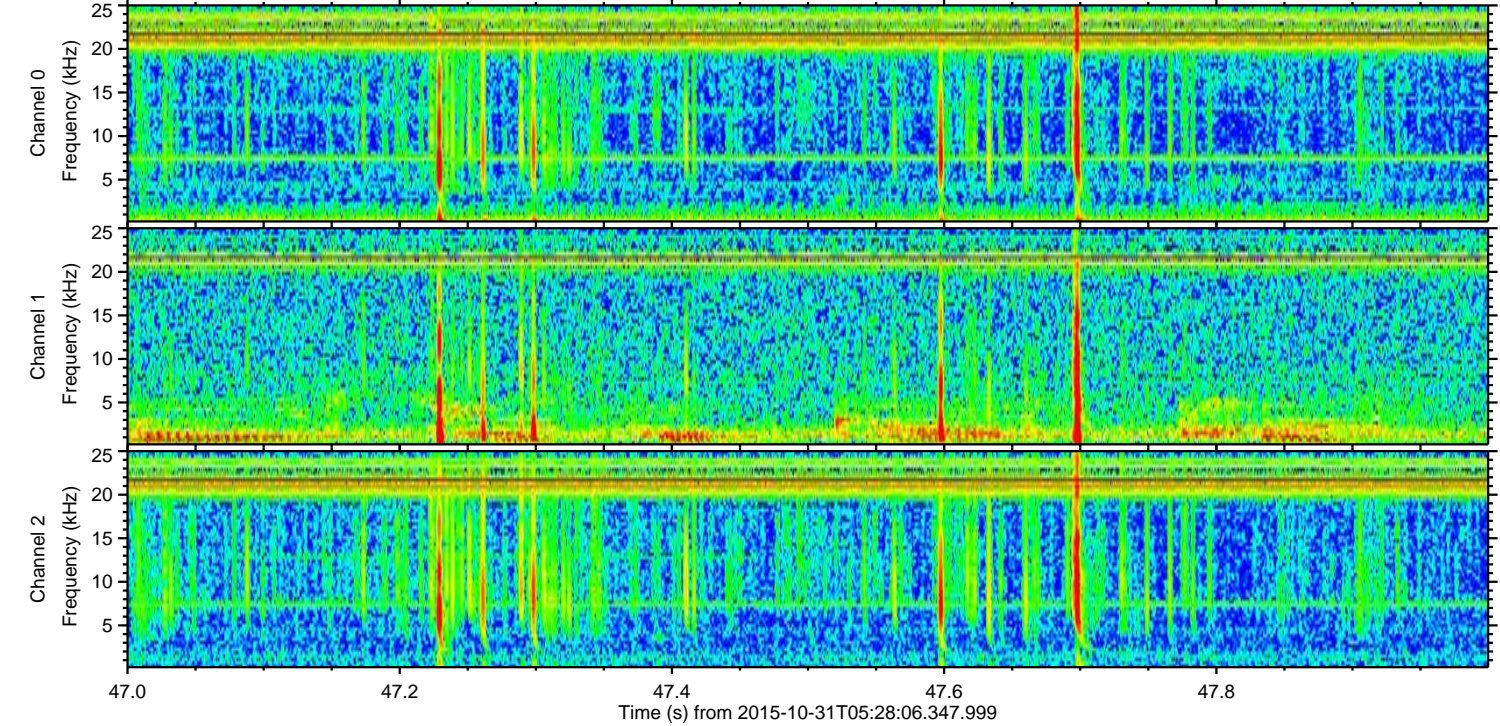
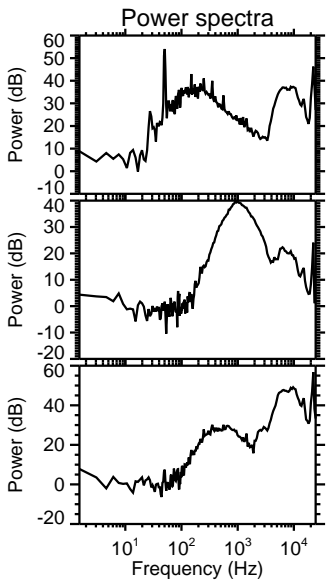
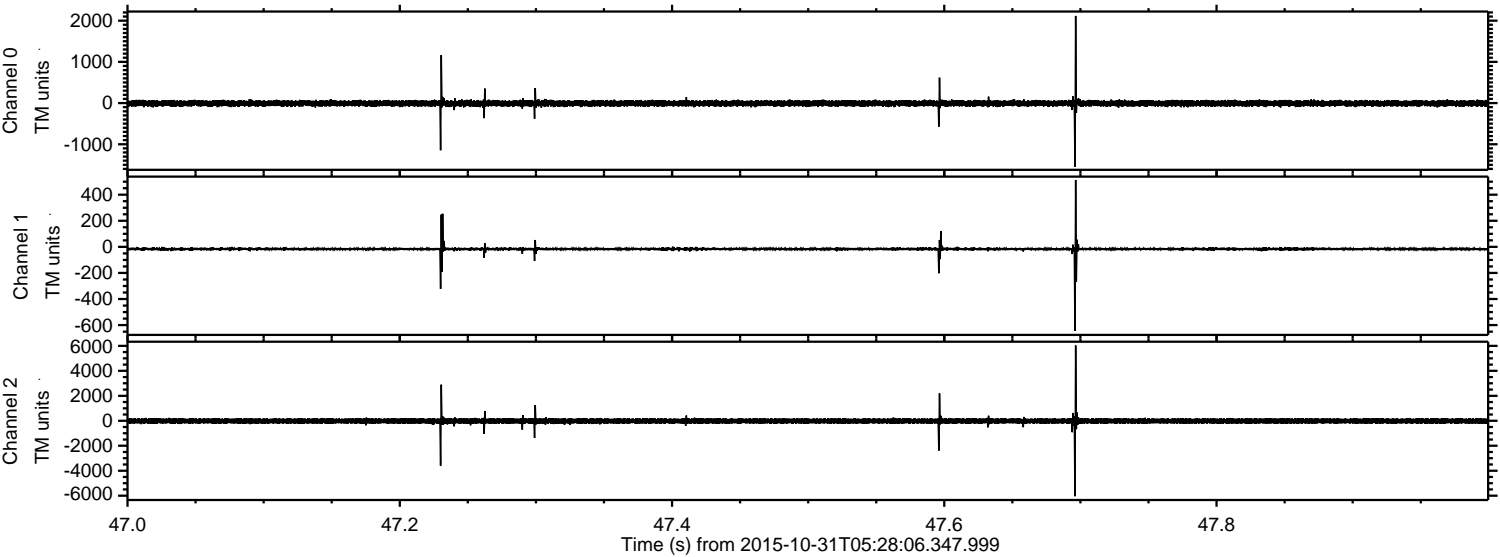


Channel 0
mn: -2208
mx: 2712
 μ : -7.7
 σ : 42.3

Channel 1
mn: -638
mx: 519
 μ : -16.5
 σ : 11.3

Channel 2
mn: -7413
mx: 6777
 μ : -18.8
 σ : 131.7

Processed Sat Oct 31 09:30:19 2015 by ELM ver.2012-10-06 from 001__elm20151031_052805__dat00.bin



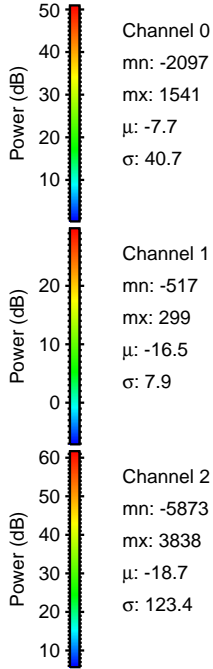
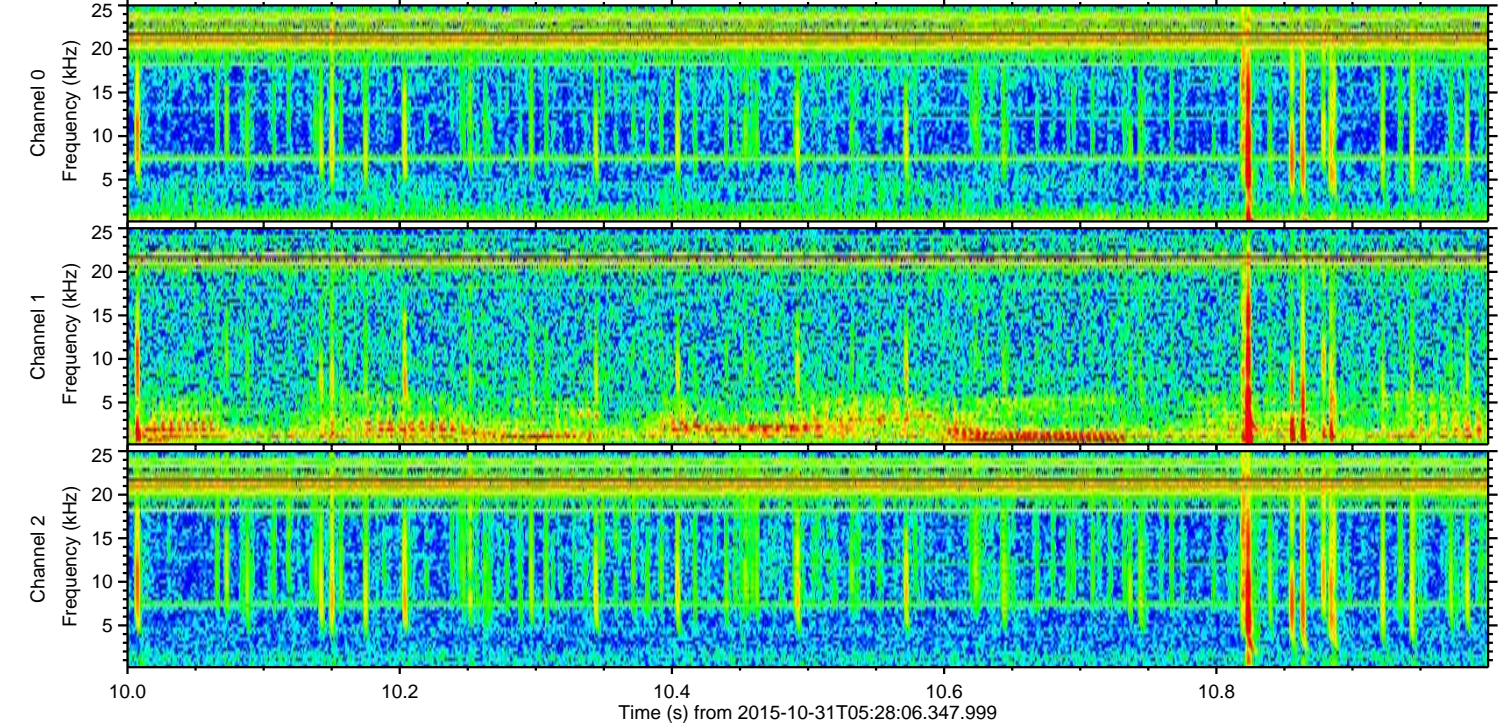
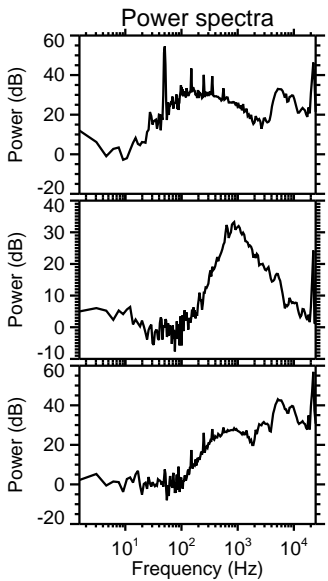
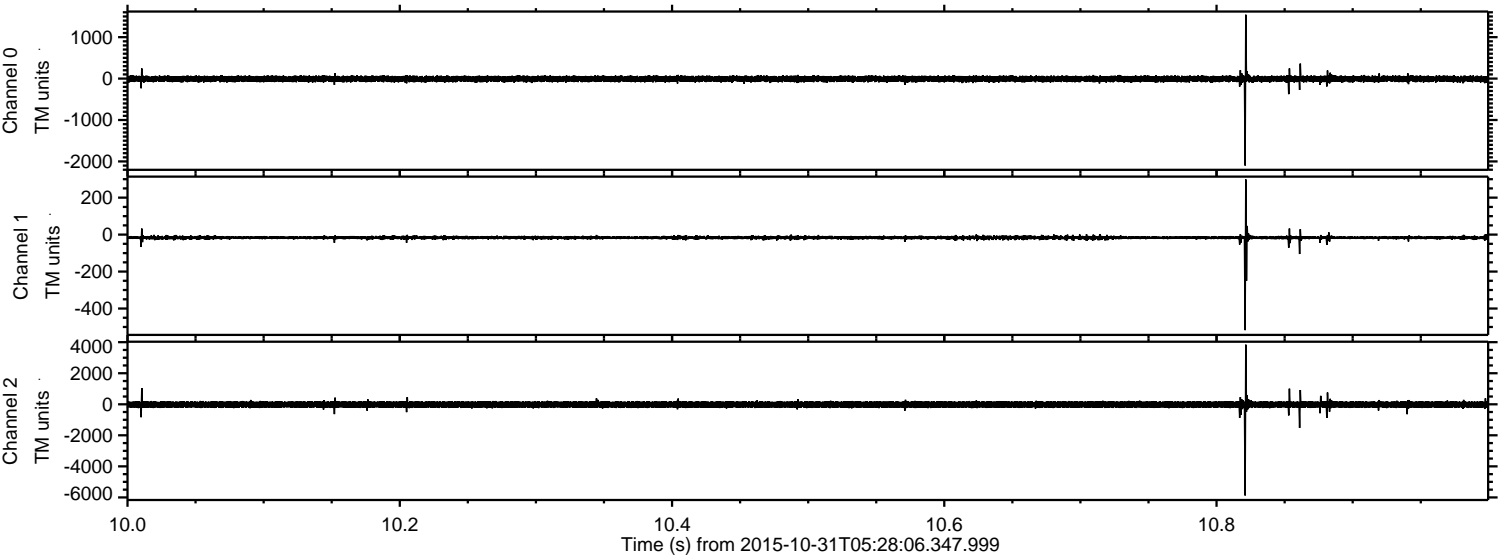
Channel 0
mn: -1544
mx: 2116
 μ : -7.6
 σ : 42.7

Channel 1
mn: -643
mx: 513
 μ : -16.4
 σ : 12.0

Channel 2
mn: -6043
mx: 6030
 μ : -18.8
 σ : 135.8

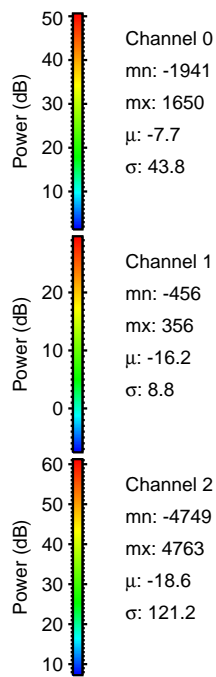
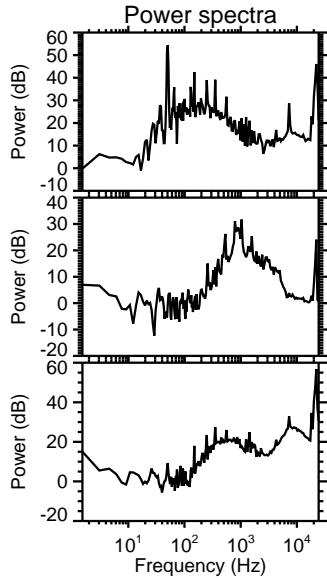
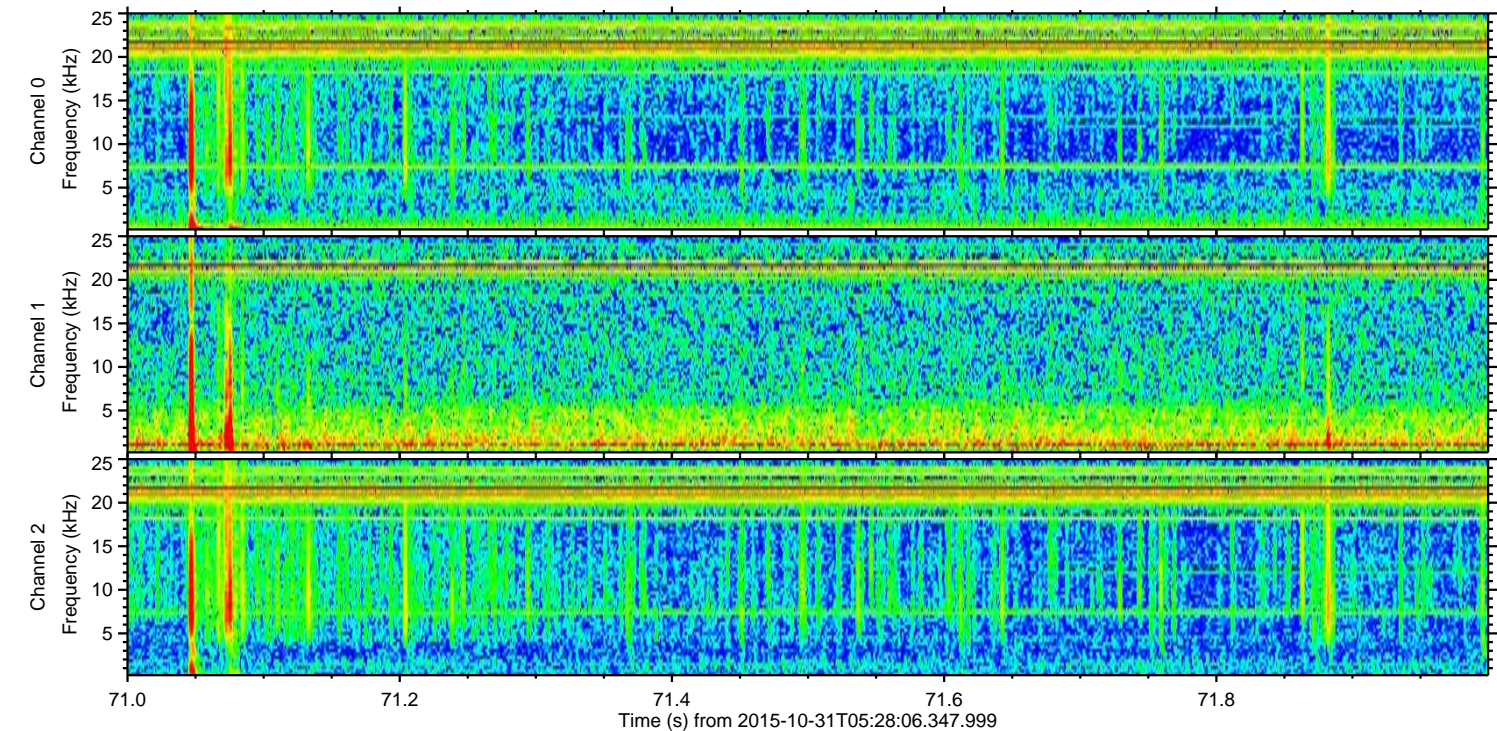
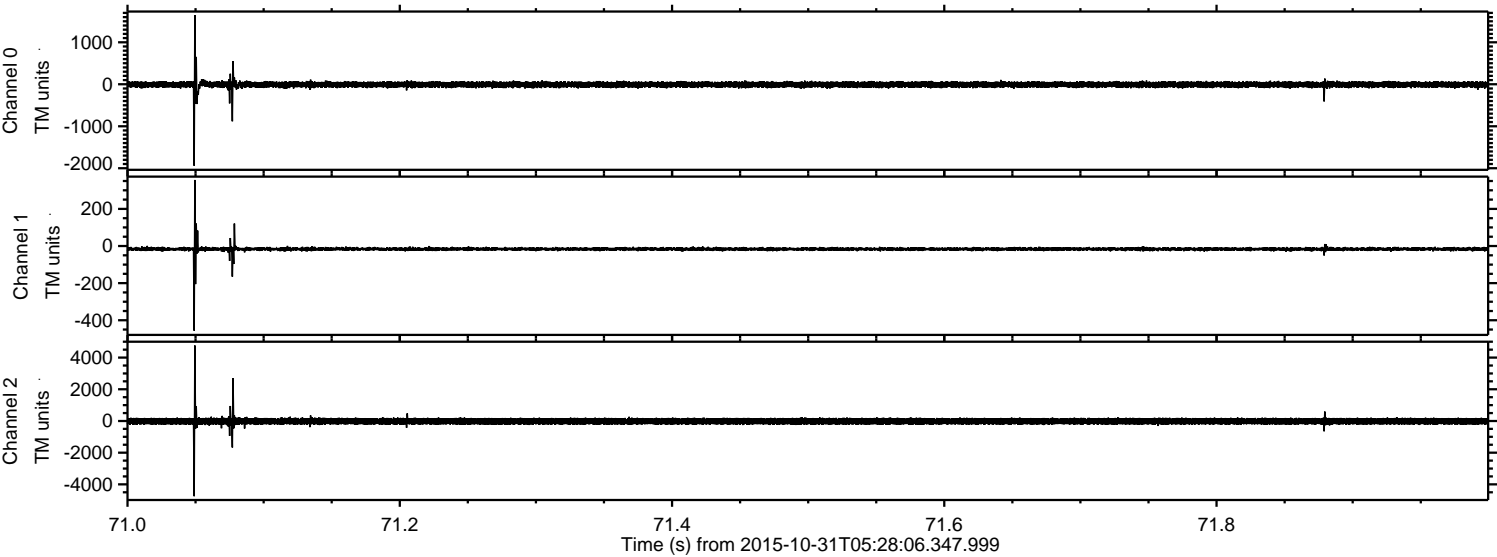
ELMAVAN 3D WAVEFORMS (Measured data sampled at 50 kHz) 51000 packets of 144 samples from 2015-10-31T05:28:06.347.999. Part 11/147

Processed Sat Oct 31 09:30:20 2015 by ELM ver.2012-10-06 from 001__elm20151031_052805__dat00.bin



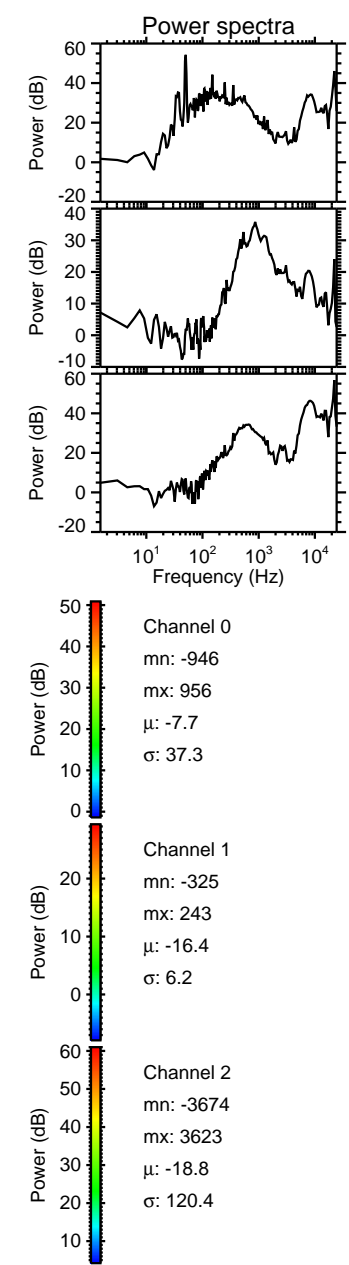
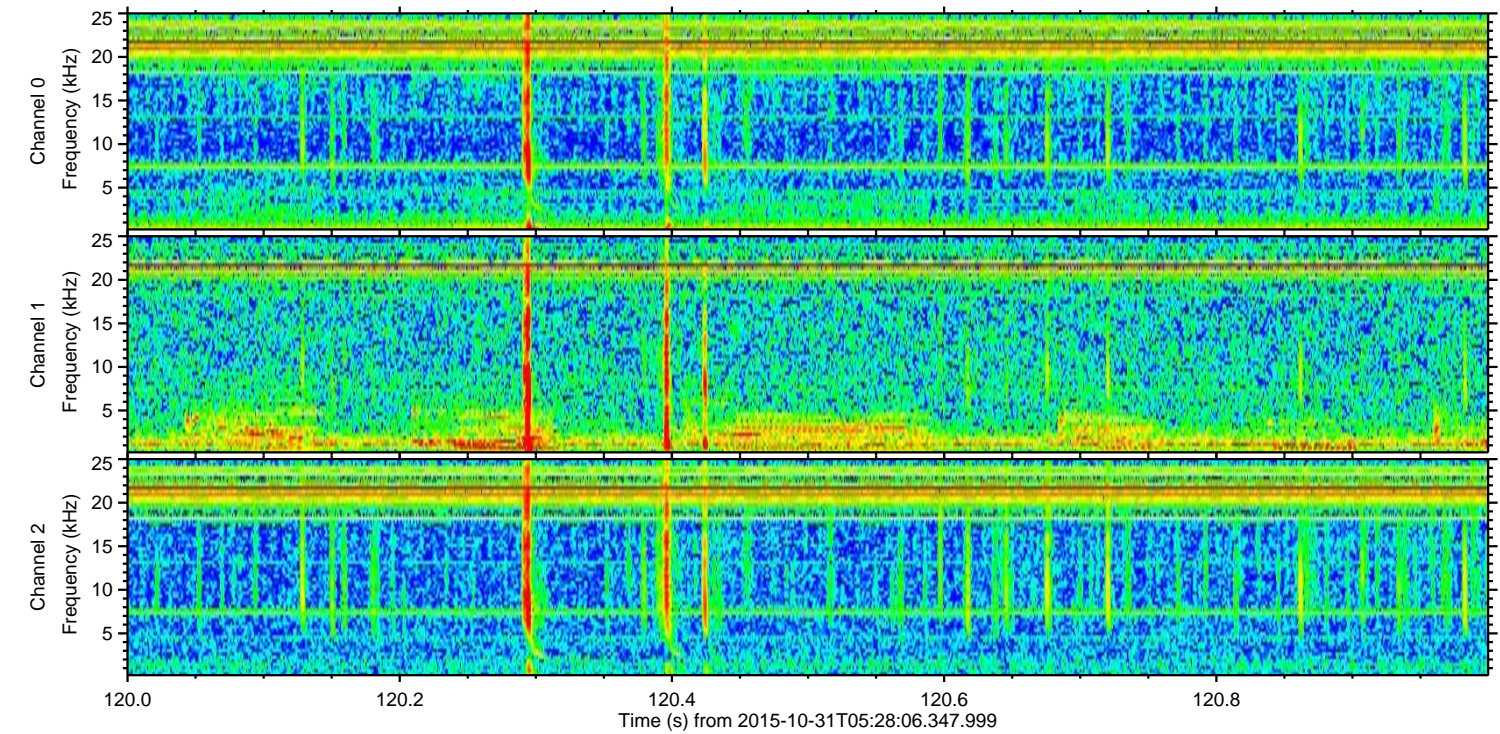
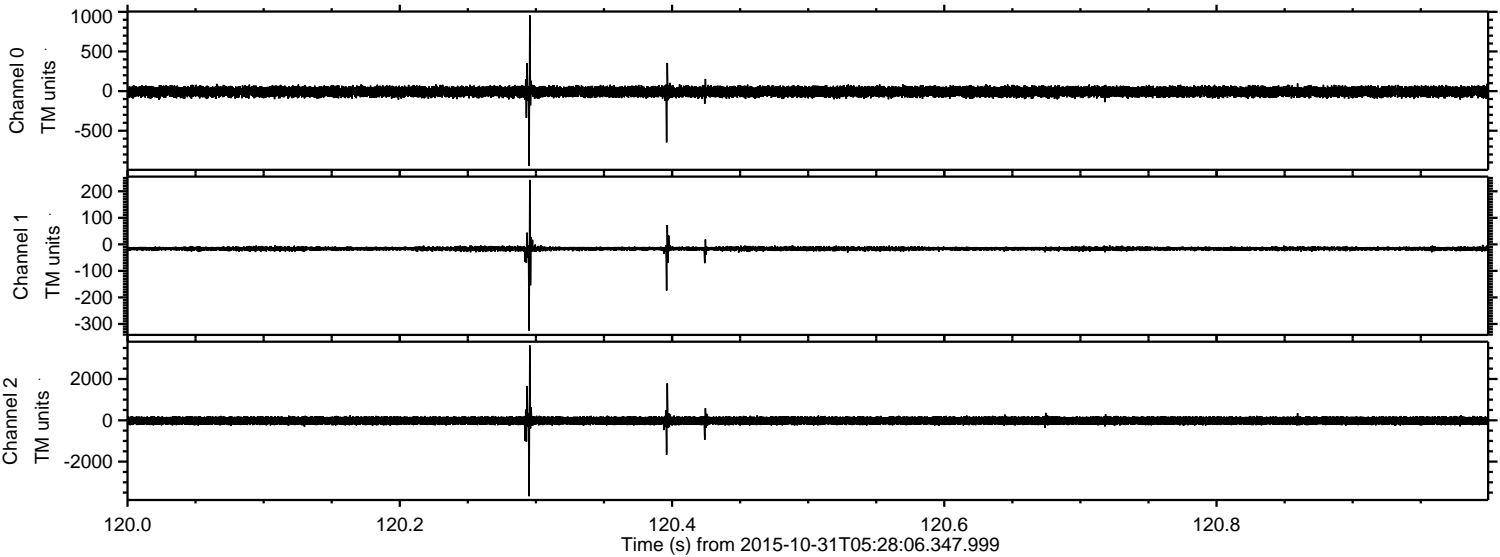
ELMAVAN 3D WAVEFORMS (Measured data sampled at 50 kHz) 51000 packets of 144 samples from 2015-10-31T05:28:06.347.999. Part 72/147

Processed Sat Oct 31 09:30:22 2015 by ELM ver.2012-10-06 from 001__elm20151031_052805__dat00.bin



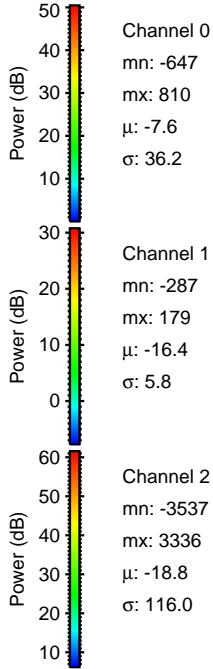
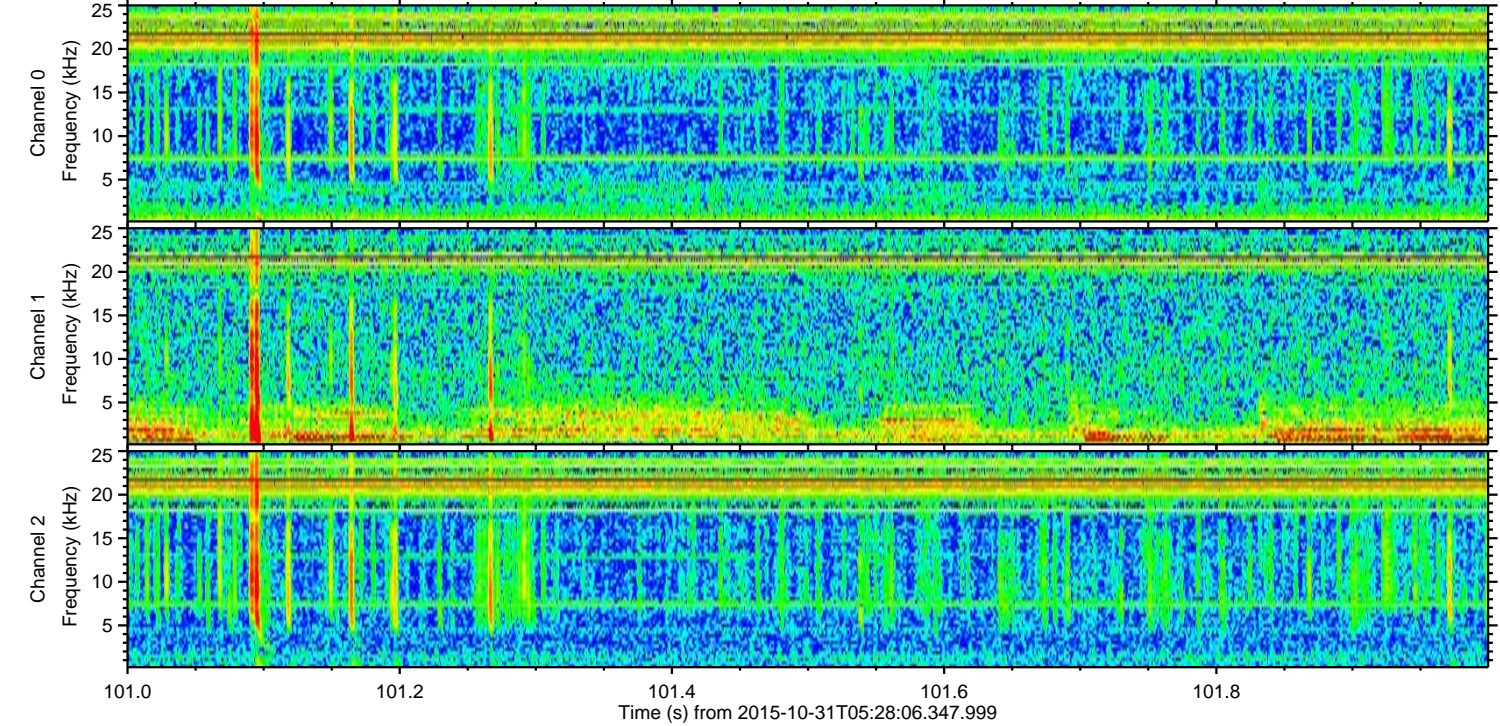
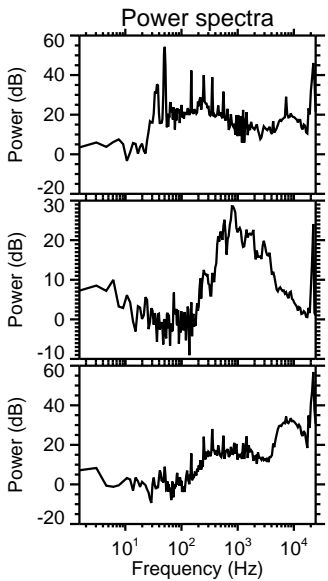
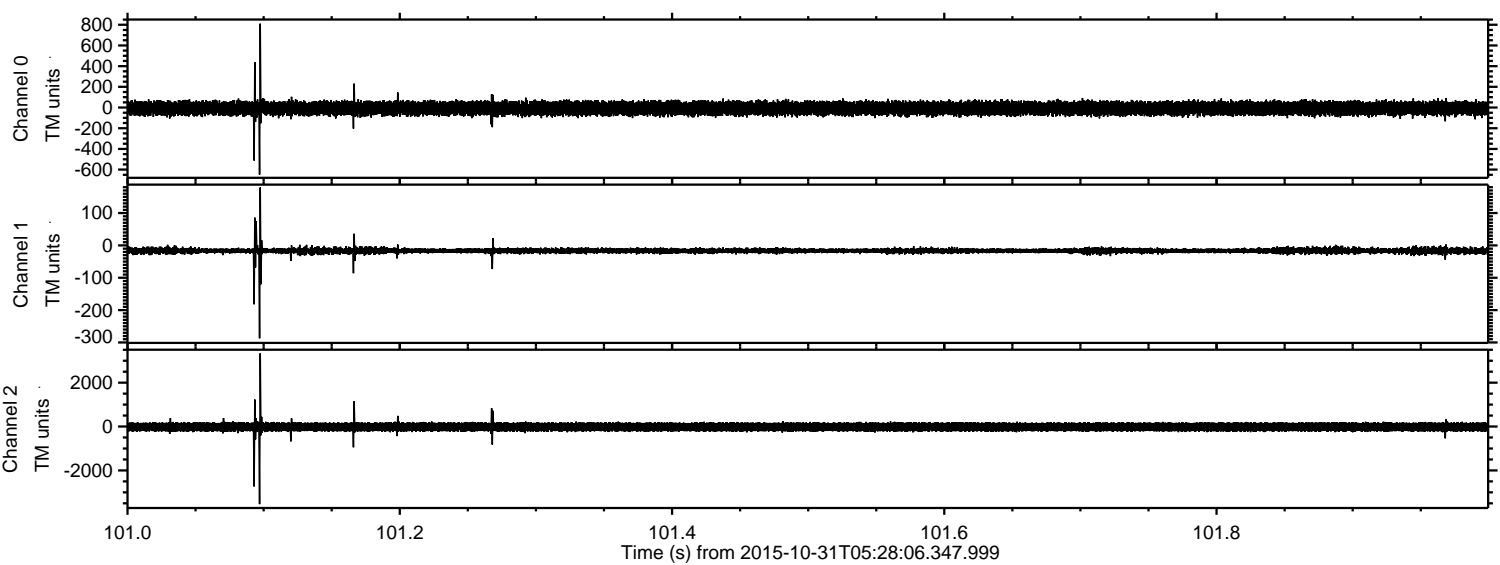
ELMAVAN 3D WAVEFORMS (Measured data sampled at 50 kHz) 51000 packets of 144 samples from 2015-10-31T05:28:06.347.999. Part 121/147

Processed Sat Oct 31 09:30:23 2015 by ELM ver.2012-10-06 from 001__elm20151031_052805__dat00.bin



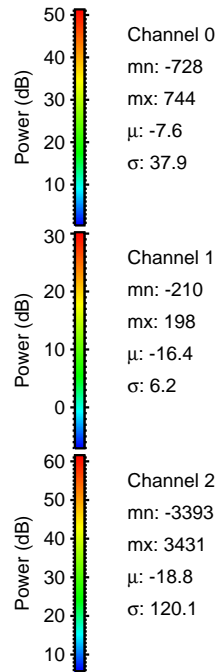
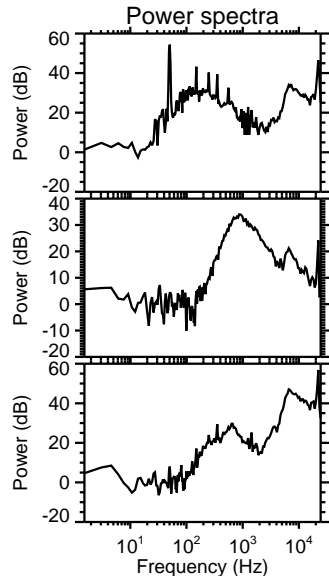
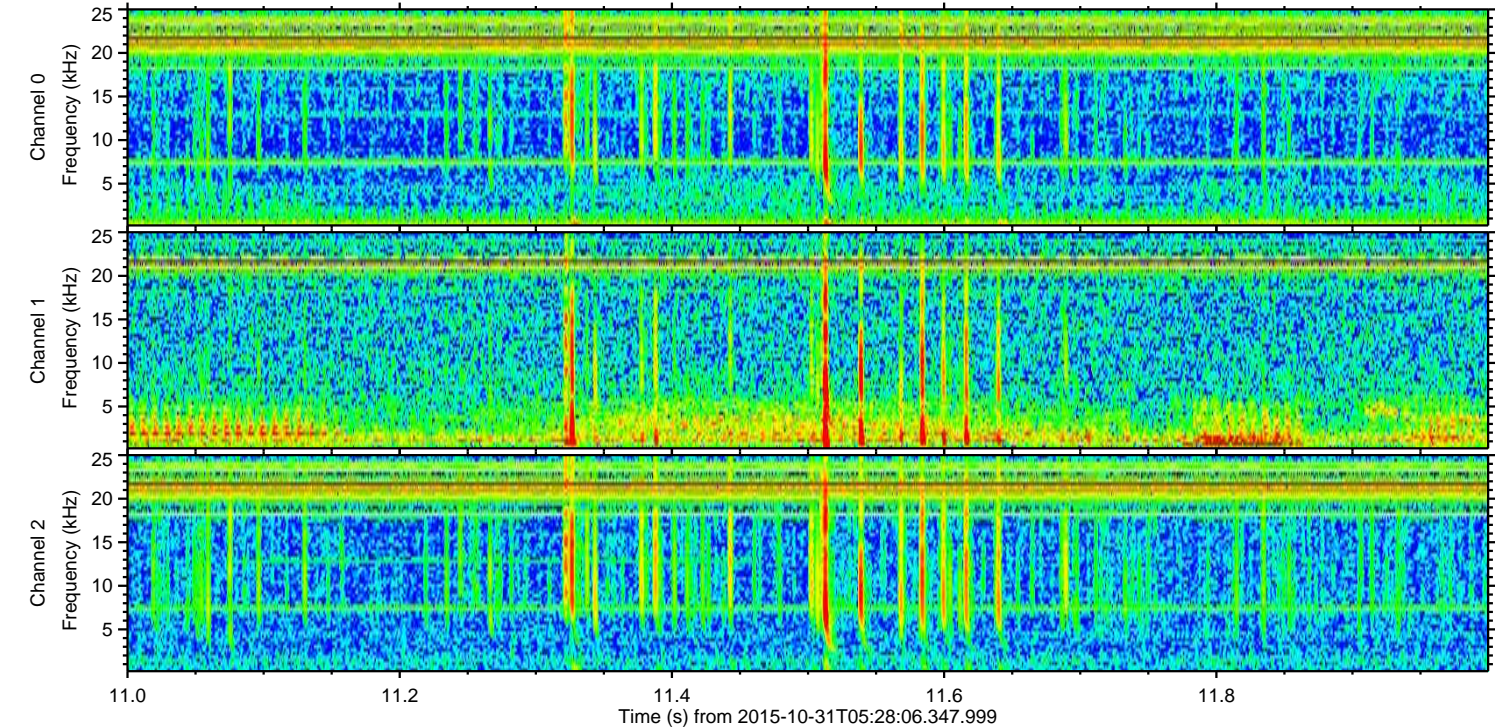
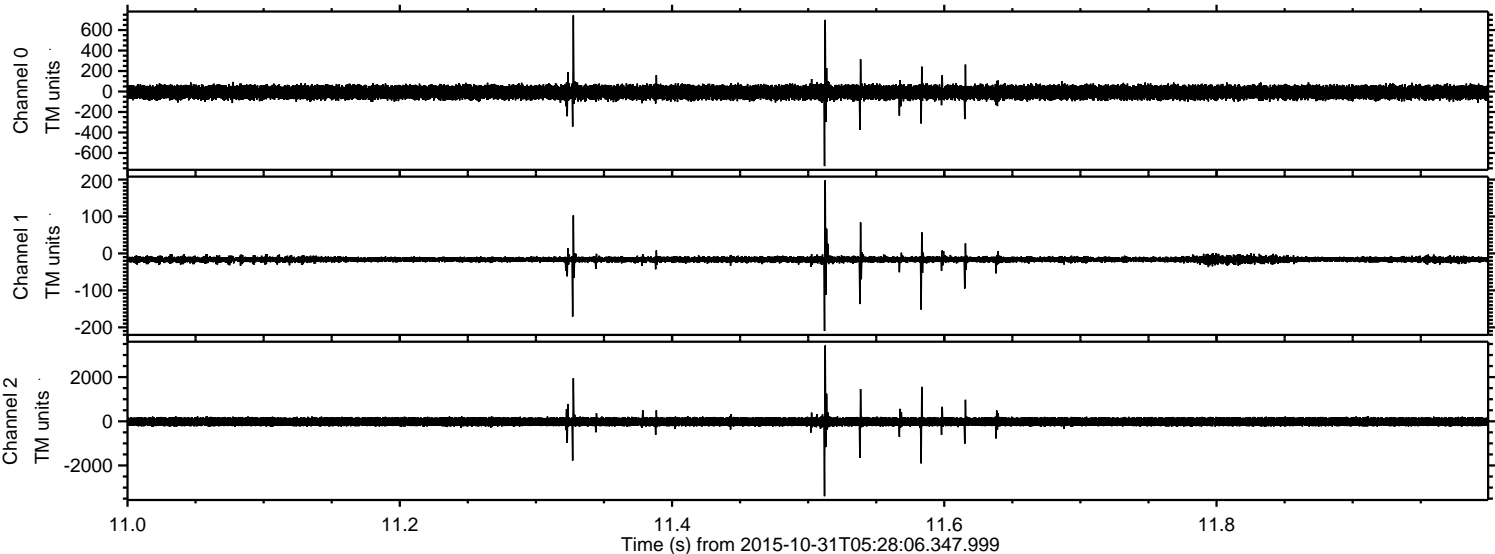
ELMAVAN 3D WAVEFORMS (Measured data sampled at 50 kHz) 51000 packets of 144 samples from 2015-10-31T05:28:06.347.999. Part 102/147

Processed Sat Oct 31 09:30:24 2015 by ELM ver.2012-10-06 from 001__elm20151031_052805__dat00.bin



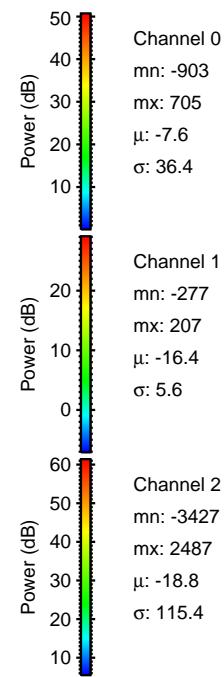
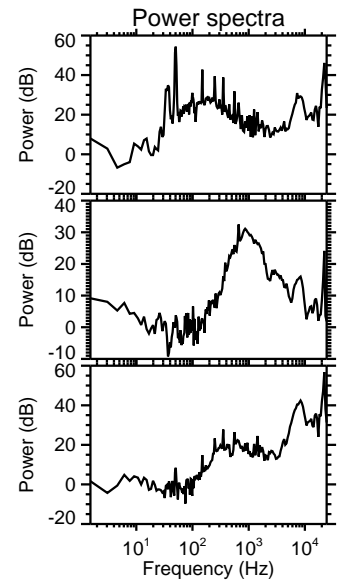
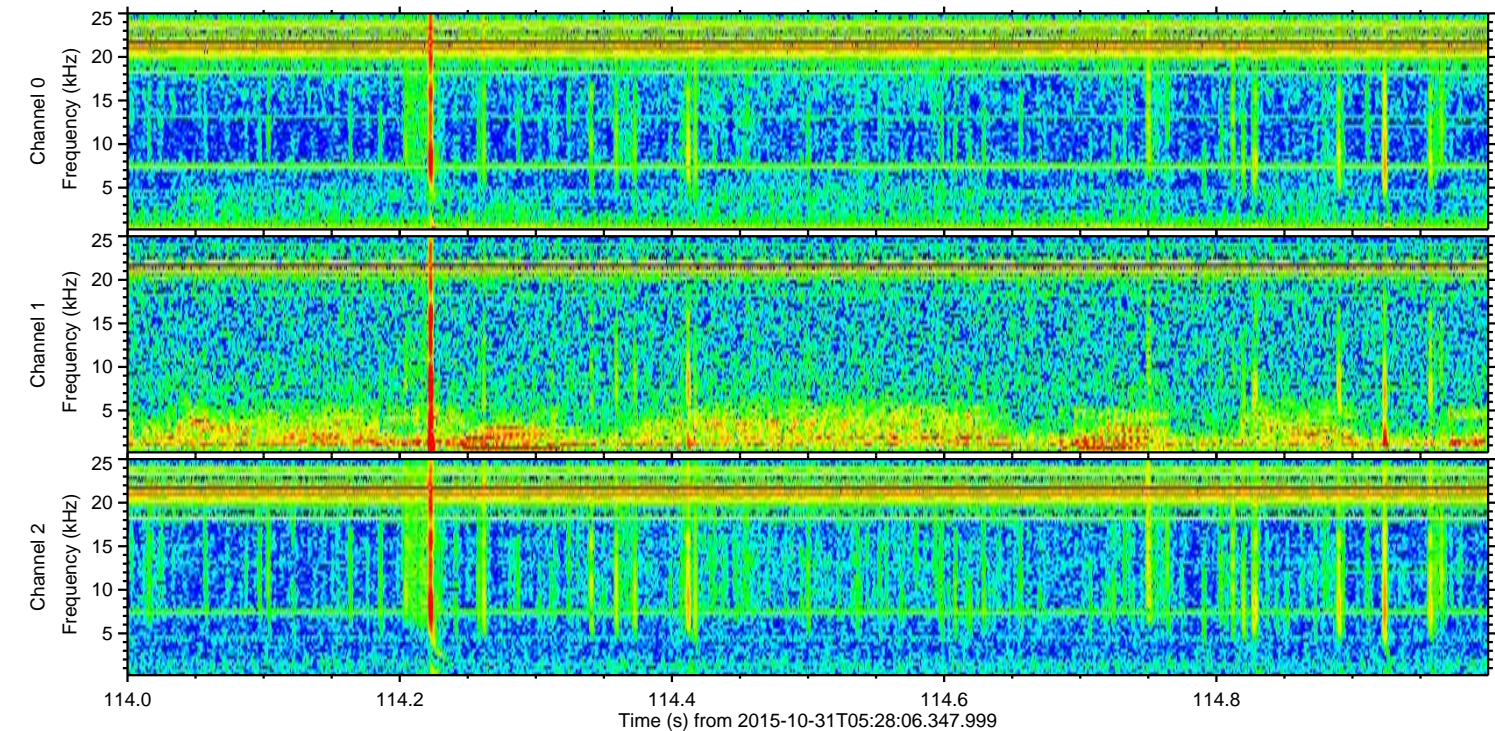
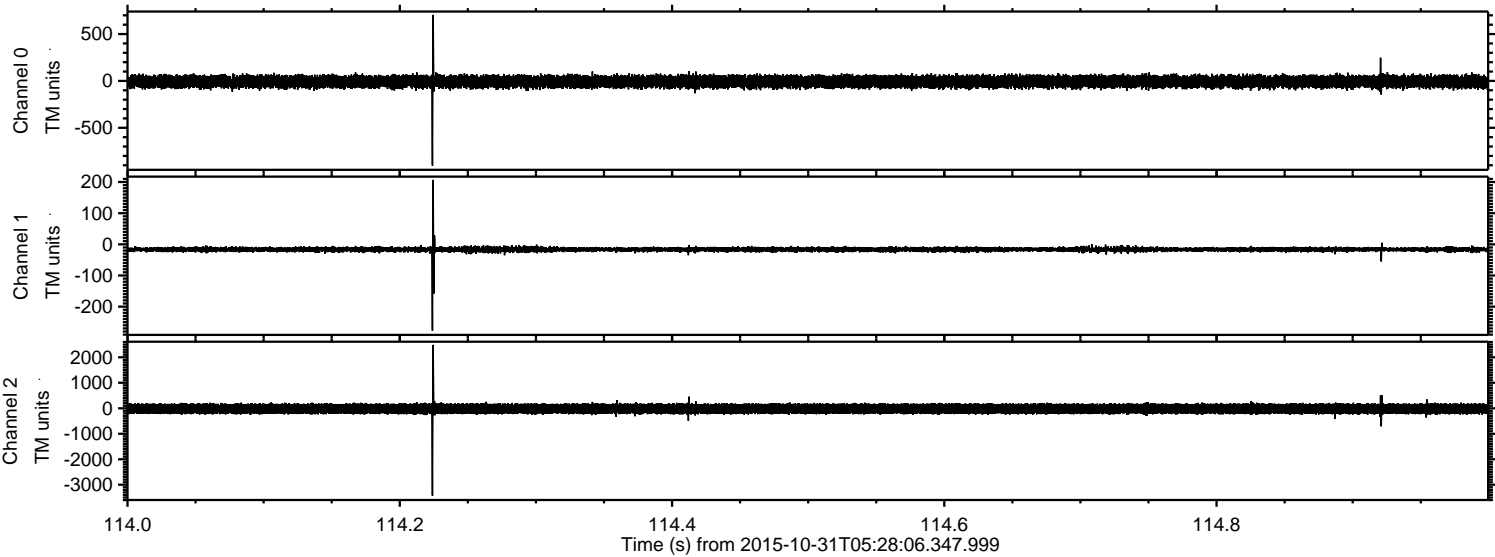
ELMAVAN 3D WAVEFORMS (Measured data sampled at 50 kHz) 51000 packets of 144 samples from 2015-10-31T05:28:06.347.999. Part 12/147

Processed Sat Oct 31 09:30:25 2015 by ELM ver.2012-10-06 from 001__elm20151031_052805__dat00.bin



ELMAVAN 3D WAVEFORMS (Measured data sampled at 50 kHz) 51000 packets of 144 samples from 2015-10-31T05:28:06.347.999. Part 115/147

Processed Sat Oct 31 09:30:26 2015 by ELM ver.2012-10-06 from 001__elm20151031_052805__dat00.bin



ELMAVAN 3D WAVEFORMS (Measured data sampled at 50 kHz) 51000 packets of 144 samples from 2015-10-31T05:28:06.347.999. Part 144/147

