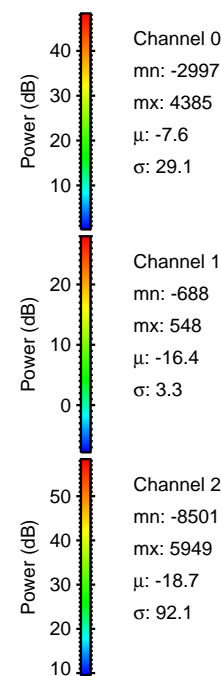
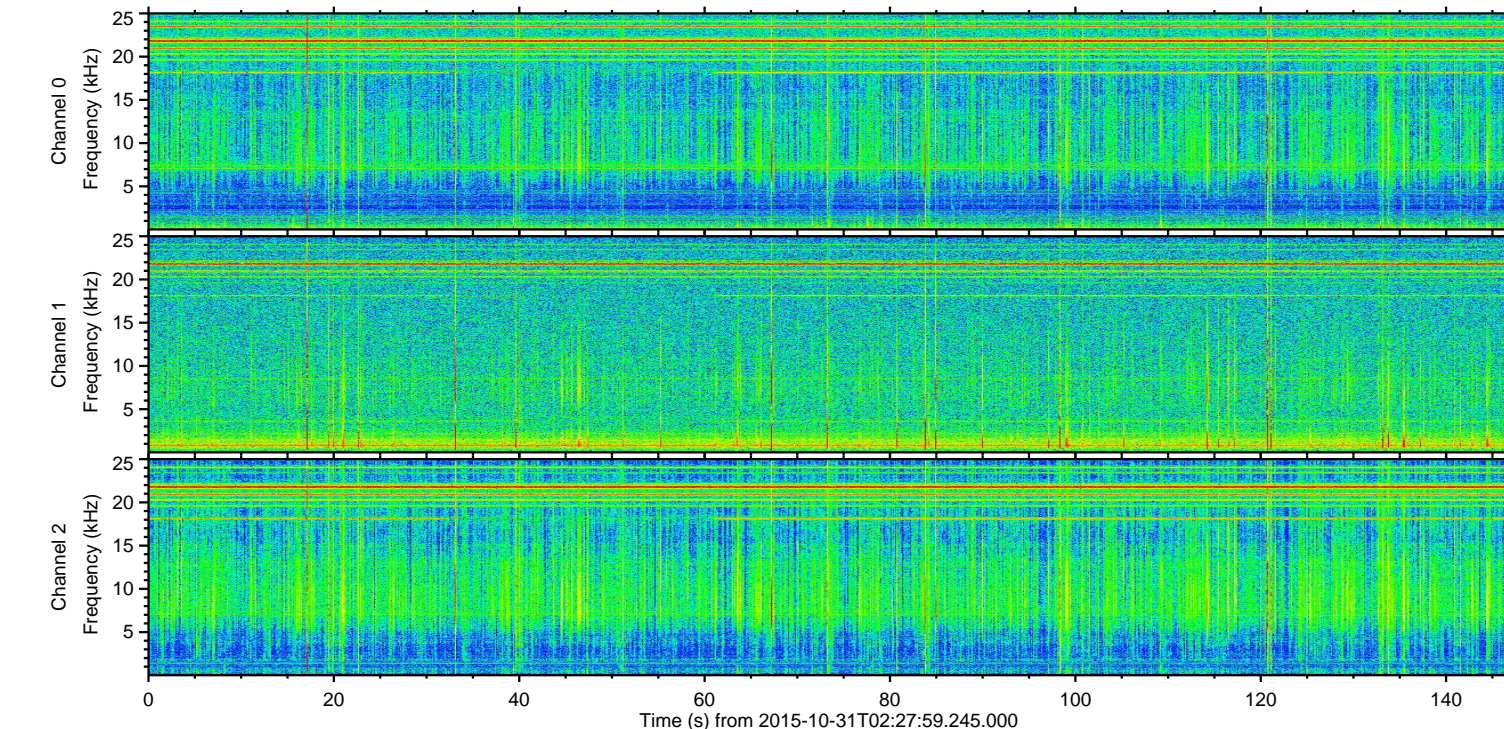
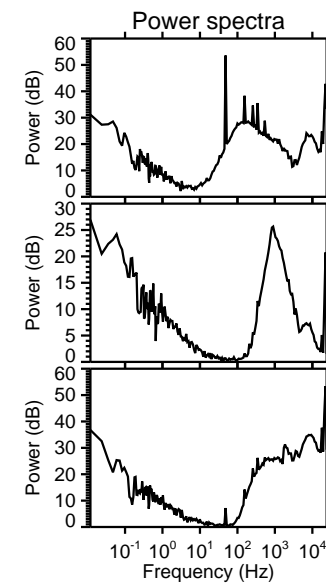
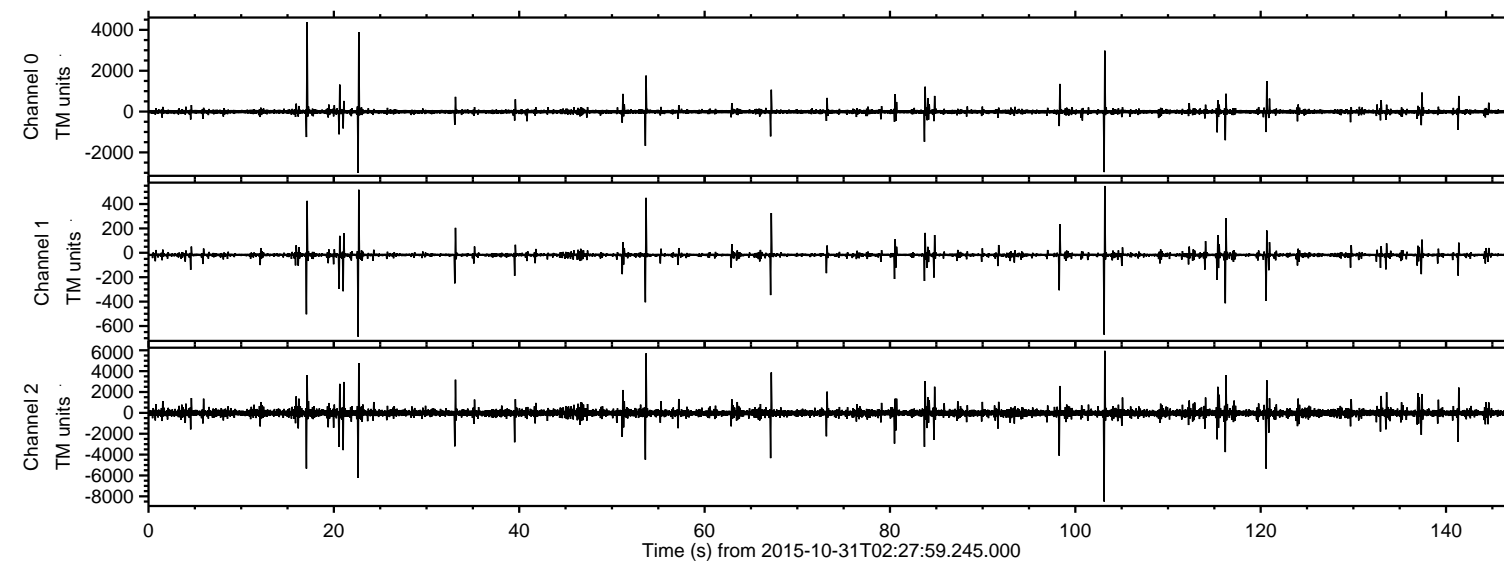


# ELMAVAN 3D WAVEFORMS (Measured data sampled at 50 kHz) 51000 packets of 144 samples from 2015-10-31T02:27:59.245.000.

Processed Sat Oct 31 08:24:02 2015 by ELM ver.2012-10-06 from 001\_\_elm20151031\_022758\_\_dat00.bin



Channel 0  
mn: -2997  
mx: 4385  
 $\mu$ : -7.6  
 $\sigma$ : 29.1

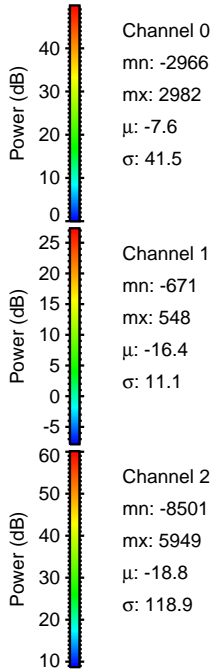
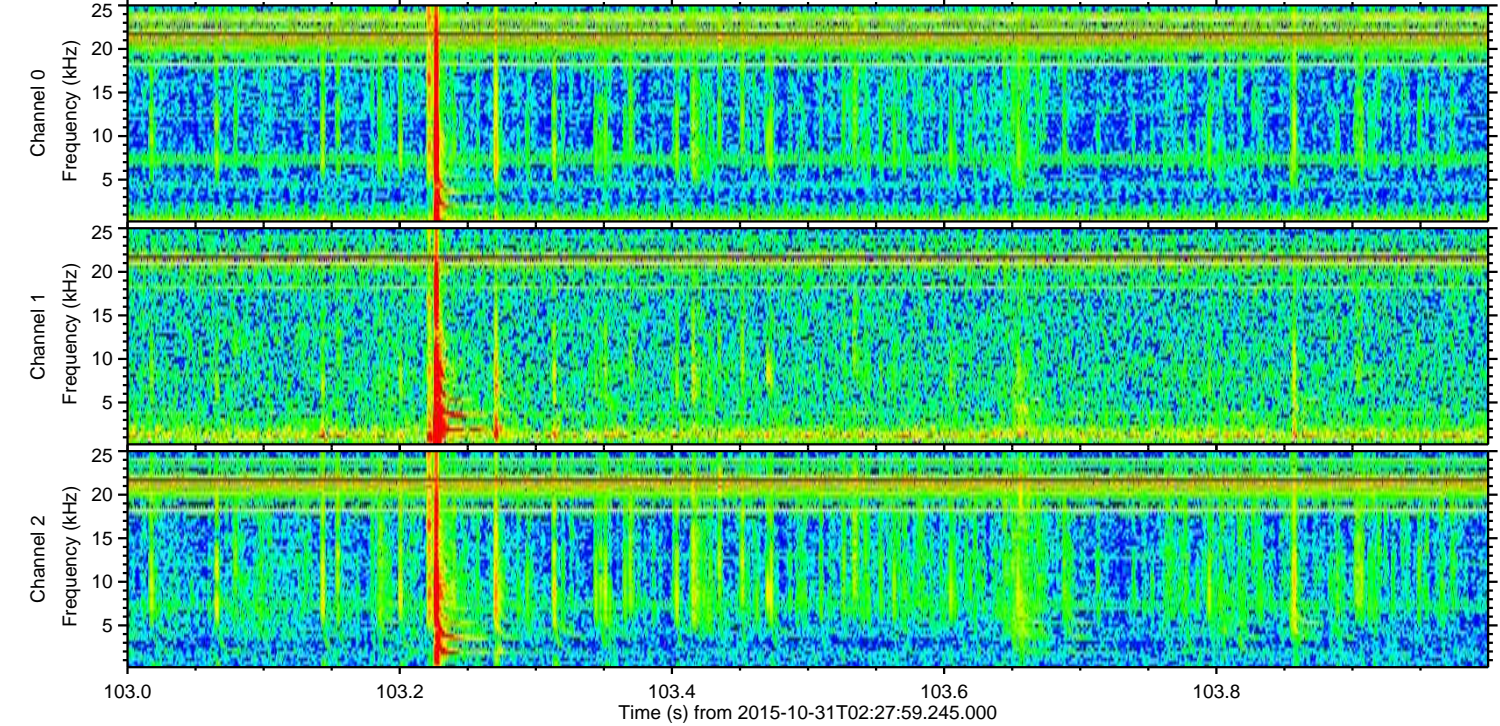
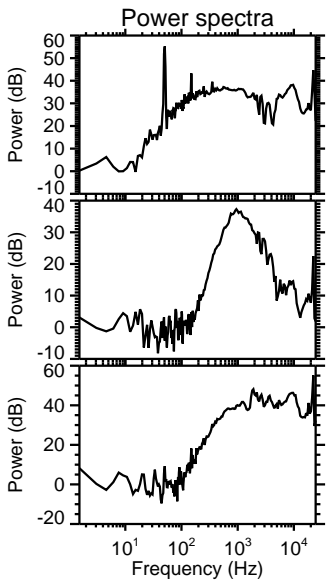
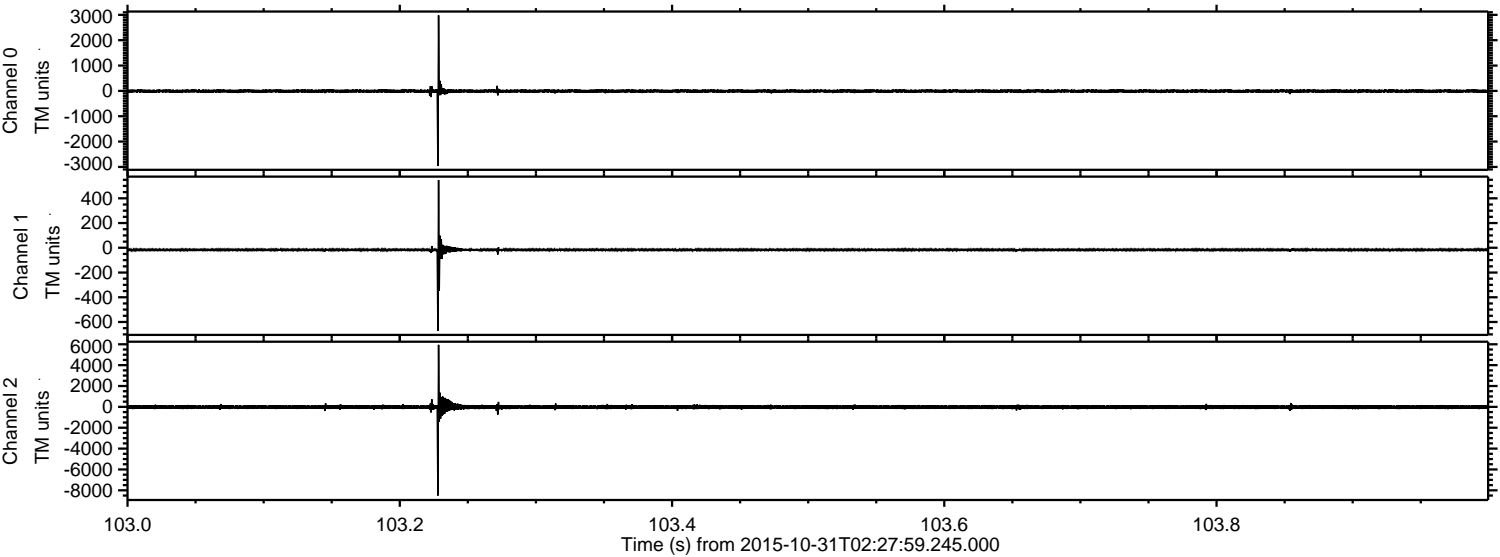
Channel 1  
mn: -688  
mx: 548  
 $\mu$ : -16.4  
 $\sigma$ : 3.3

Channel 2  
mn: -8501  
mx: 5949  
 $\mu$ : -18.7  
 $\sigma$ : 92.1



ELMAVAN 3D WAVEFORMS (Measured data sampled at 50 kHz) 51000 packets of 144 samples from 2015-10-31T02:27:59.245.000. Part 104/147

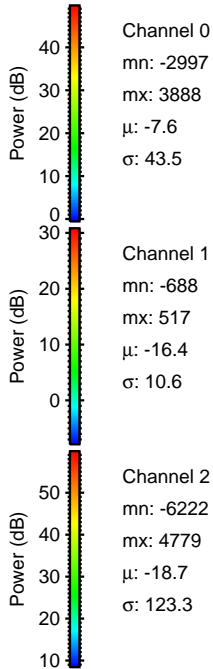
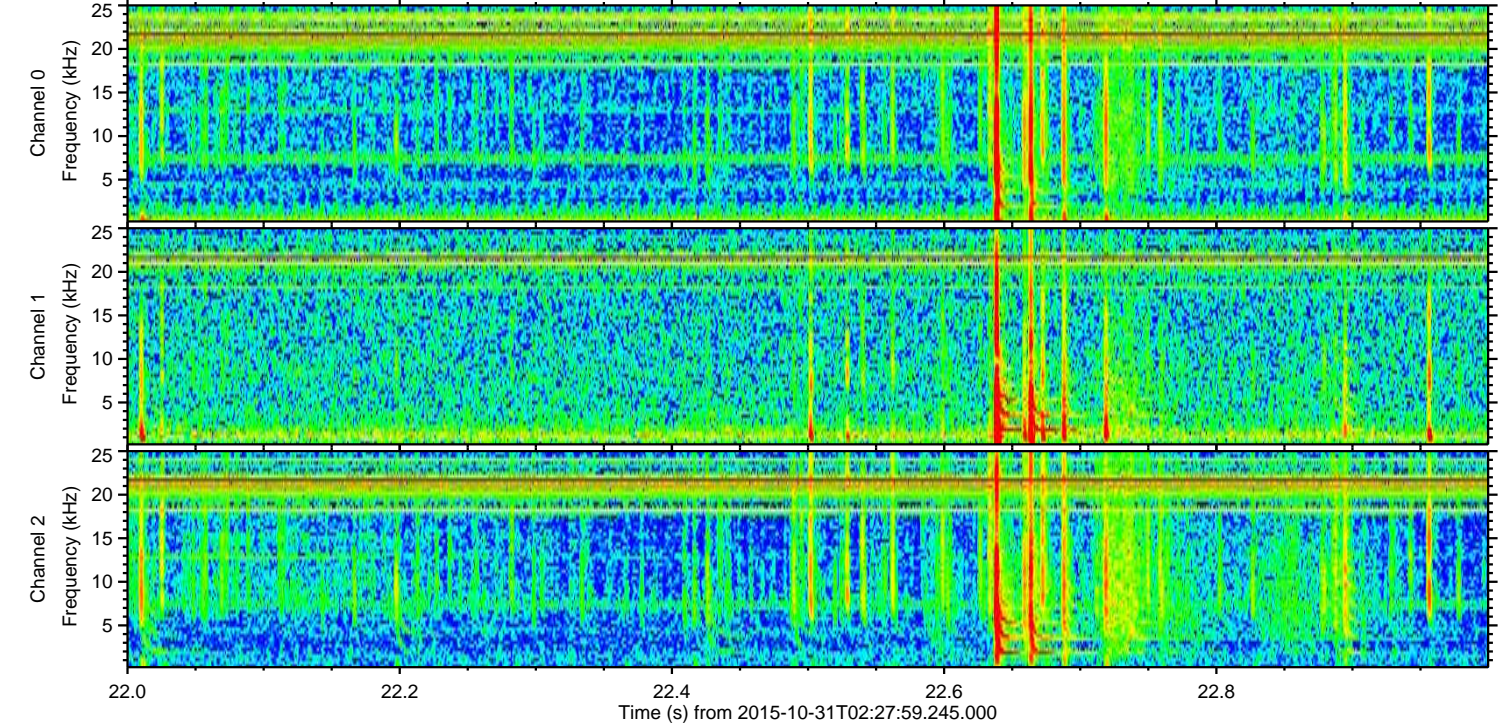
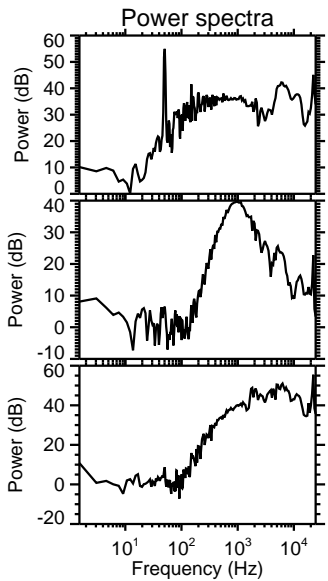
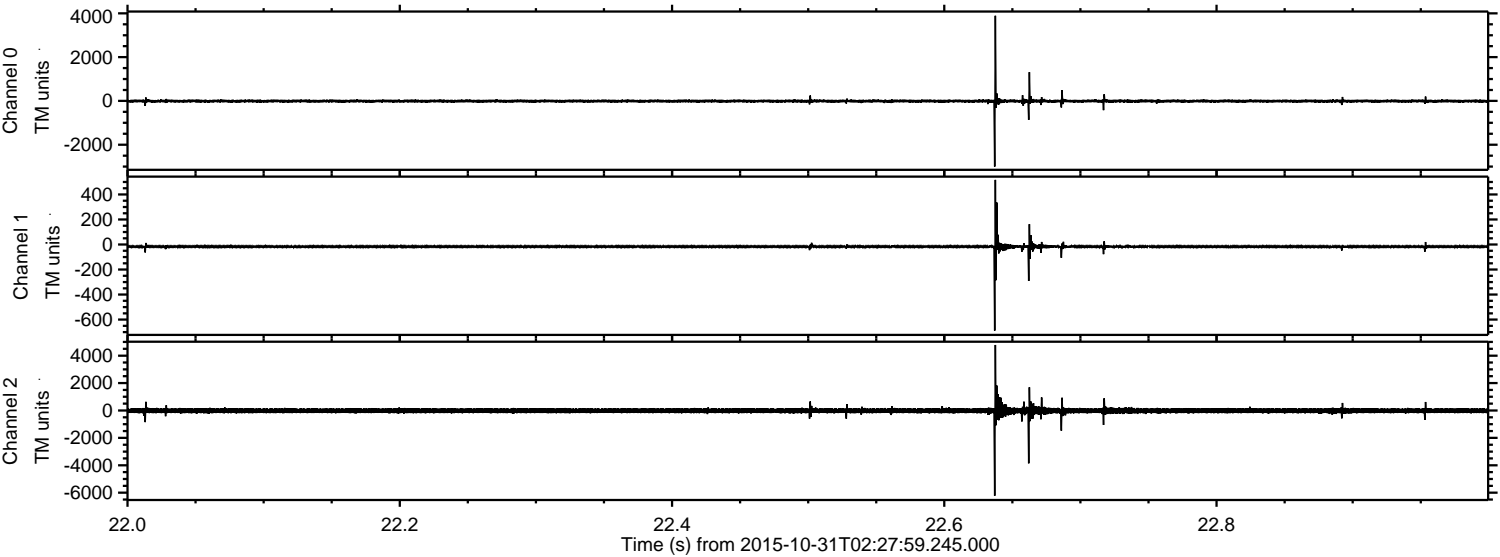
Processed Sat Oct 31 08:24:22 2015 by ELM ver.2012-10-06 from 001\_\_elm20151031\_022758\_\_dat00.bin





ELMAVAN 3D WAVEFORMS (Measured data sampled at 50 kHz) 51000 packets of 144 samples from 2015-10-31T02:27:59.245.000. Part 23/147

Processed Sat Oct 31 08:24:24 2015 by ELM ver.2012-10-06 from 001\_\_elm20151031\_022758\_\_dat00.bin



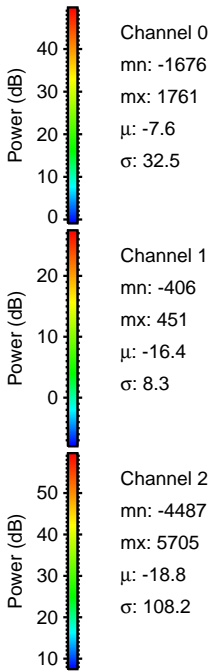
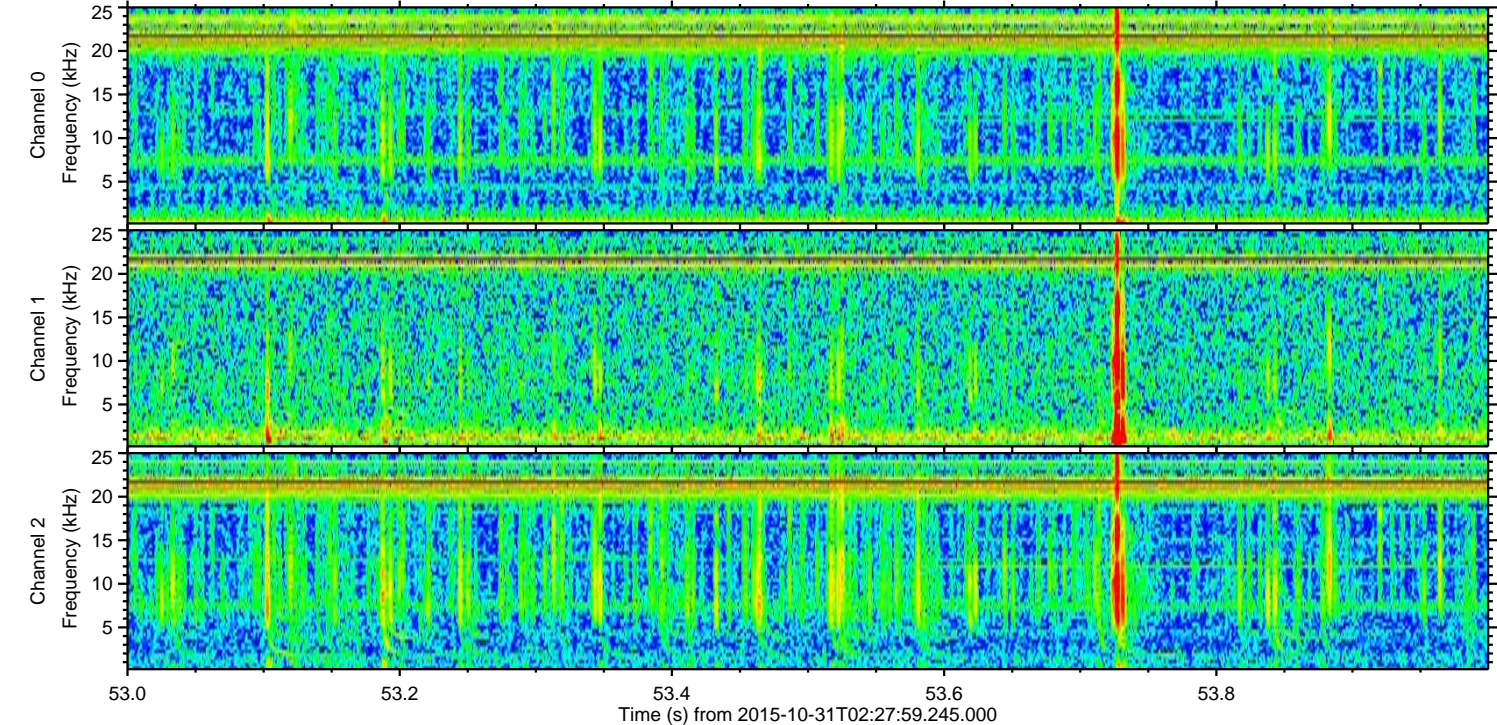
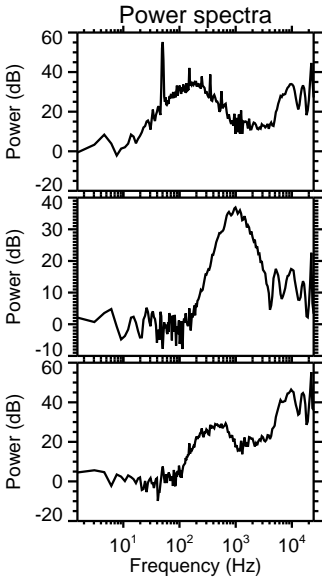
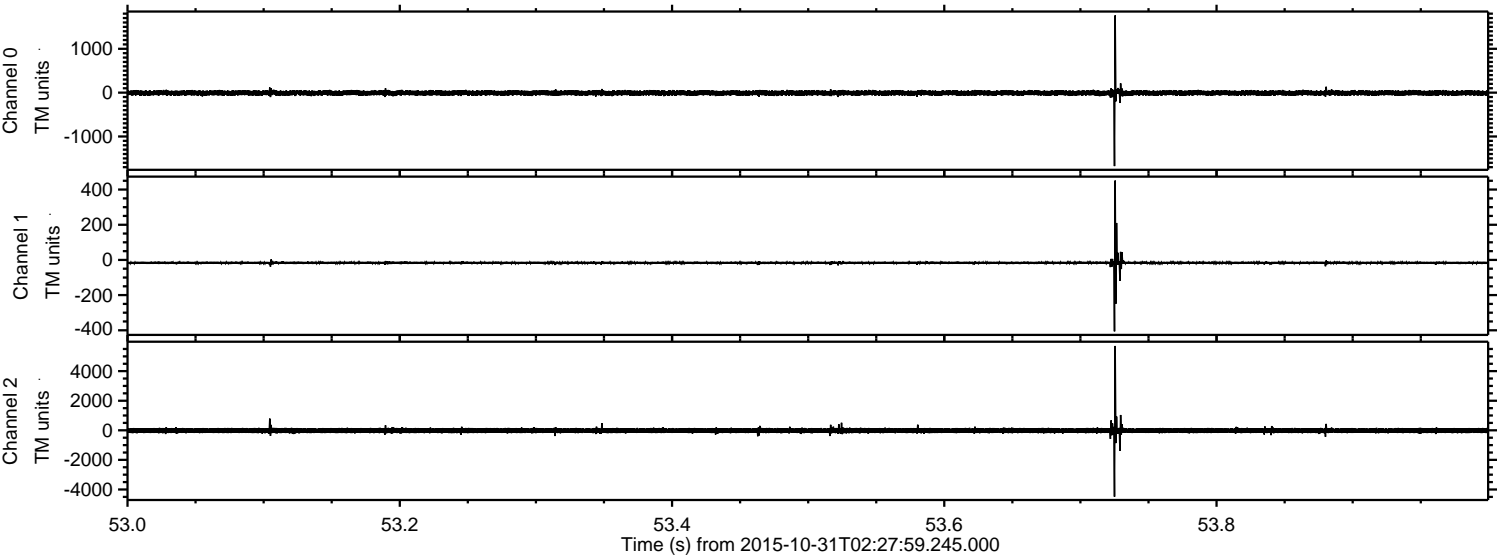
Channel 0  
mn: -2997  
mx: 3888  
 $\mu$ : -7.6  
 $\sigma$ : 43.5

Channel 1  
mn: -688  
mx: 517  
 $\mu$ : -16.4  
 $\sigma$ : 10.6

Channel 2  
mn: -6222  
mx: 4779  
 $\mu$ : -18.7  
 $\sigma$ : 123.3



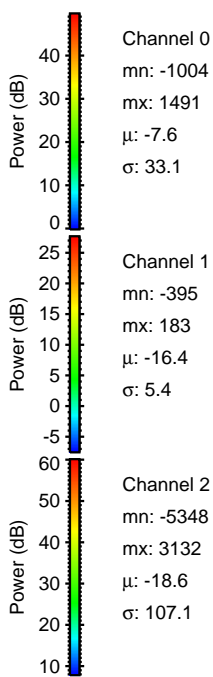
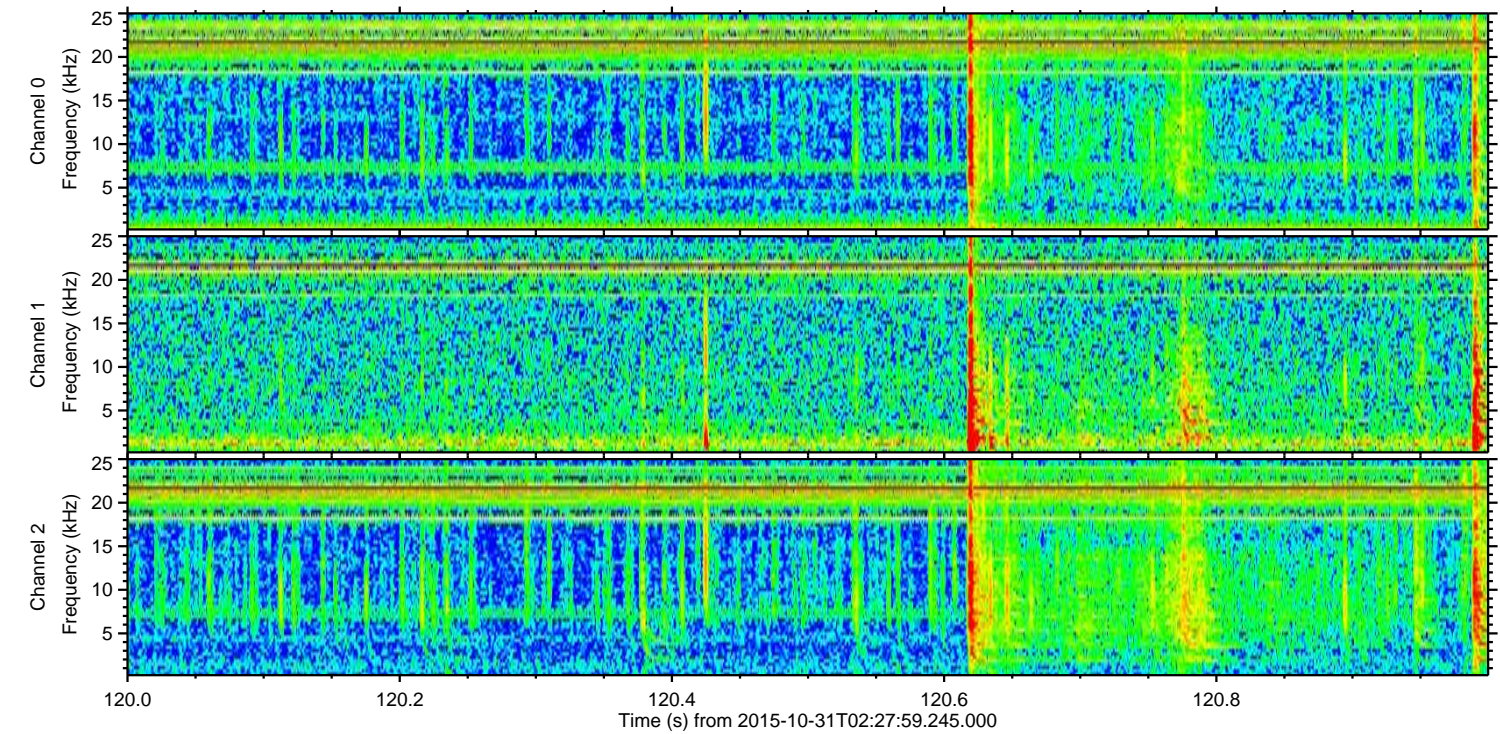
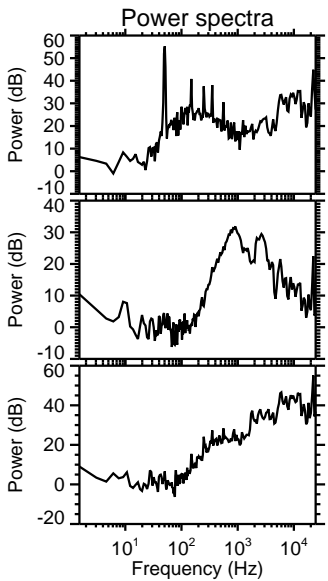
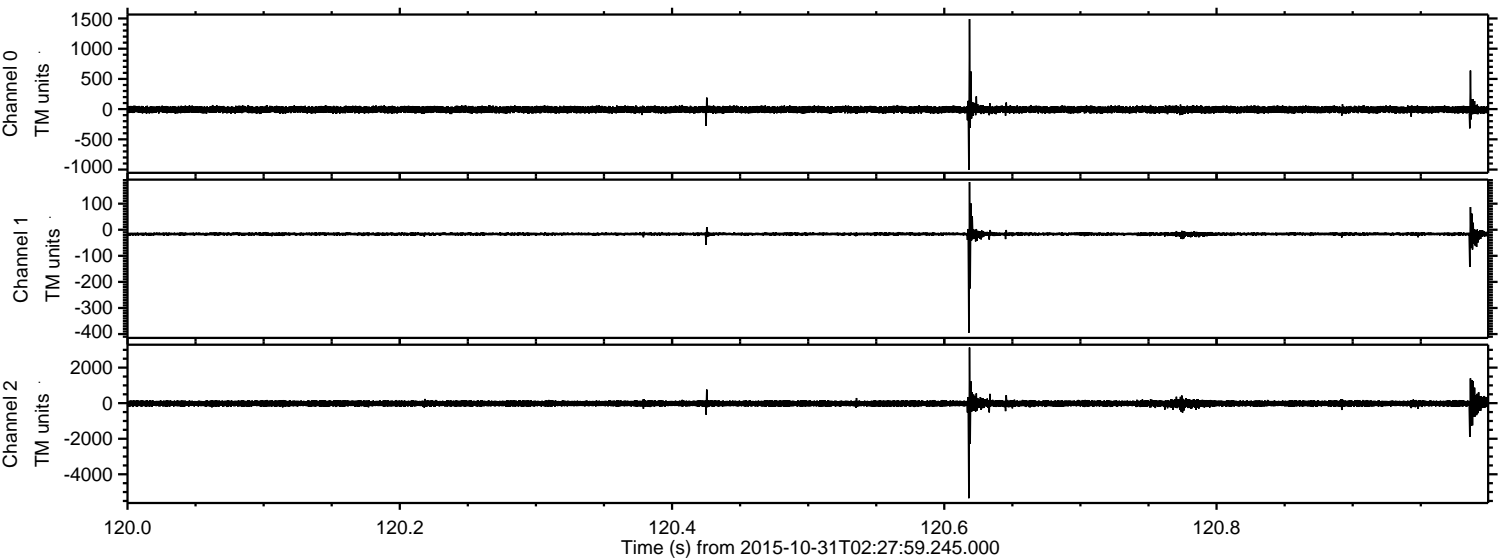
Processed Sat Oct 31 08:24:26 2015 by ELM ver.2012-10-06 from 001\_\_elm20151031\_022758\_\_dat00.bin





ELMAVAN 3D WAVEFORMS (Measured data sampled at 50 kHz) 51000 packets of 144 samples from 2015-10-31T02:27:59.245.000. Part 121/147

Processed Sat Oct 31 08:24:27 2015 by ELM ver.2012-10-06 from 001\_\_elm20151031\_022758\_\_dat00.bin



Channel 0  
mn: -1004  
mx: 1491  
 $\mu$ : -7.6  
 $\sigma$ : 33.1

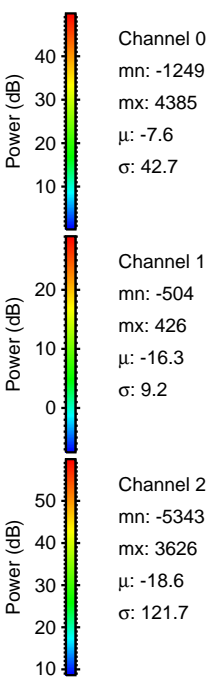
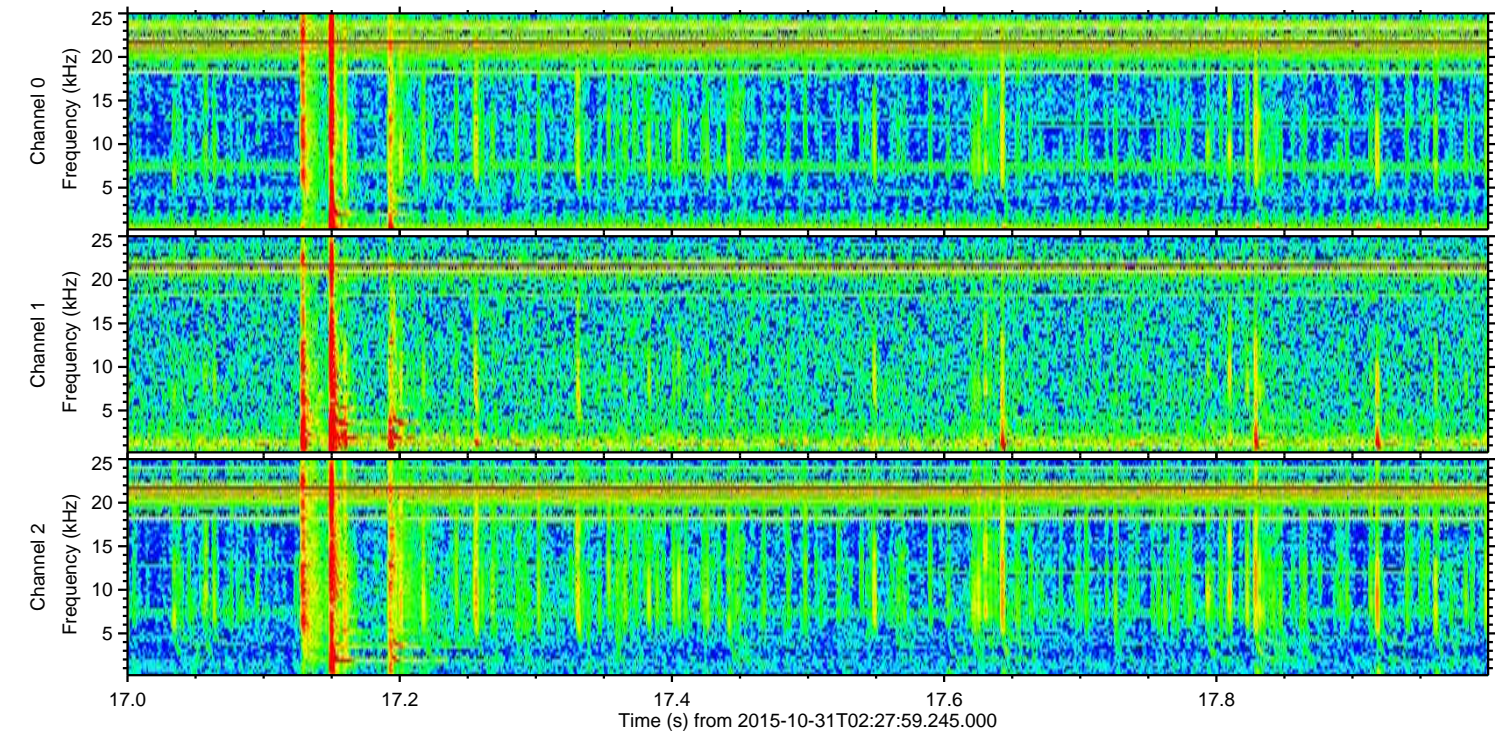
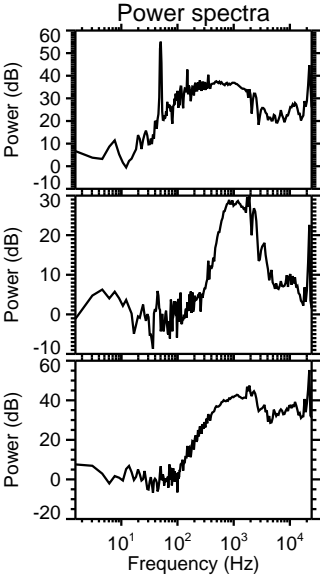
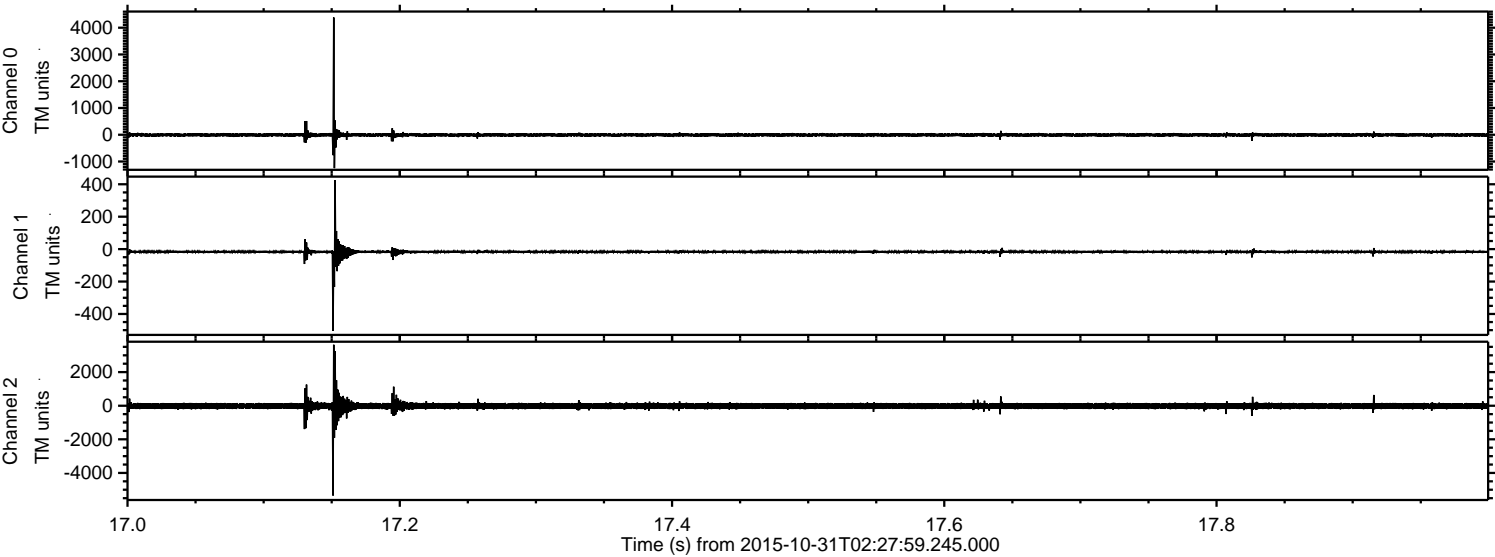
Channel 1  
mn: -395  
mx: 183  
 $\mu$ : -16.4  
 $\sigma$ : 5.4

Channel 2  
mn: -5348  
mx: 3132  
 $\mu$ : -18.6  
 $\sigma$ : 107.1



ELMAVAN 3D WAVEFORMS (Measured data sampled at 50 kHz) 51000 packets of 144 samples from 2015-10-31T02:27:59.245.000. Part 18/147

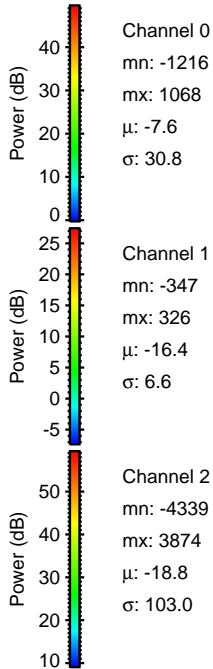
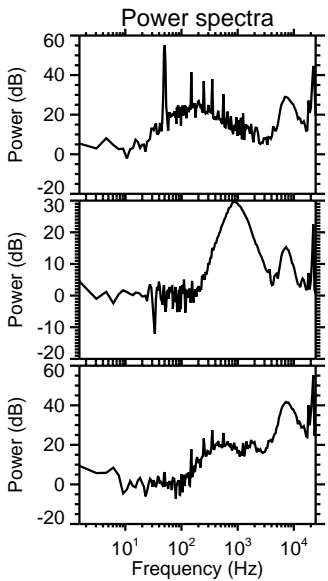
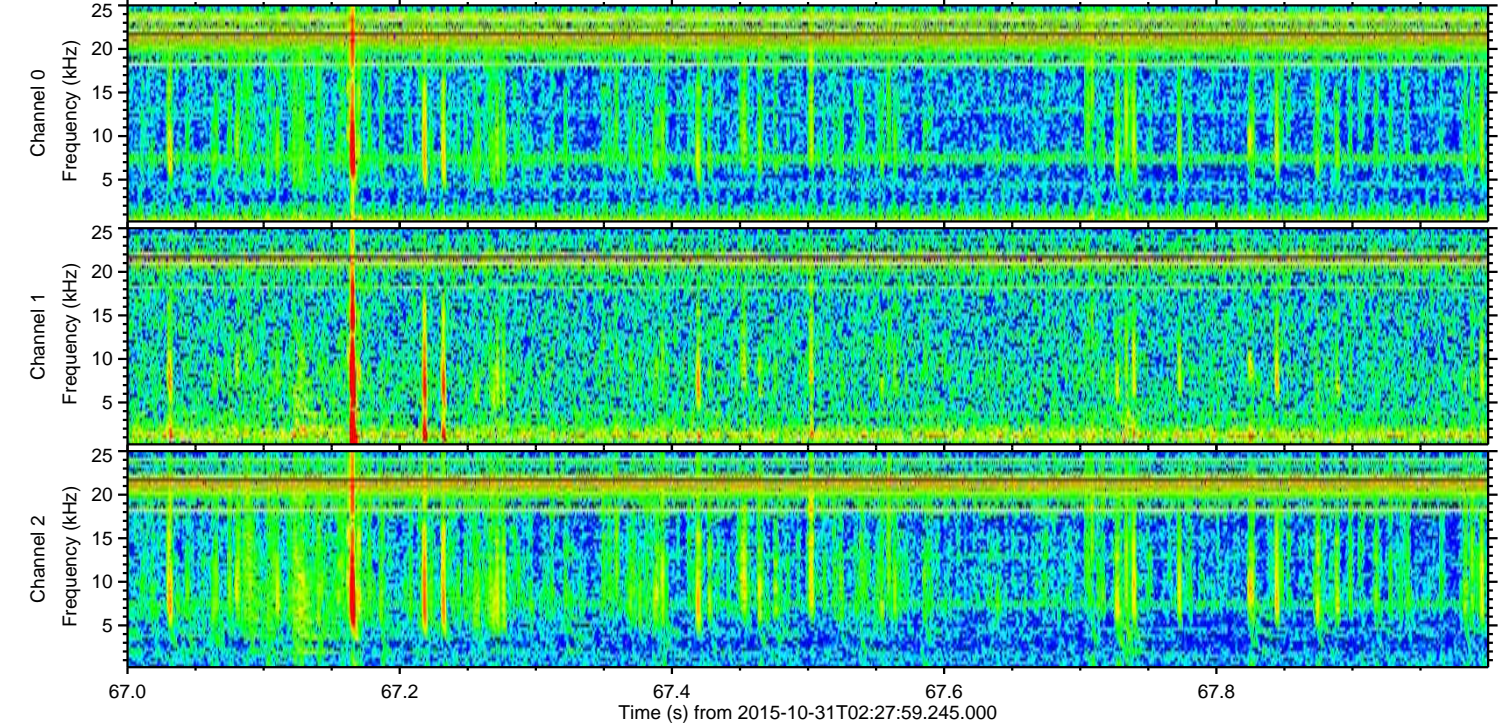
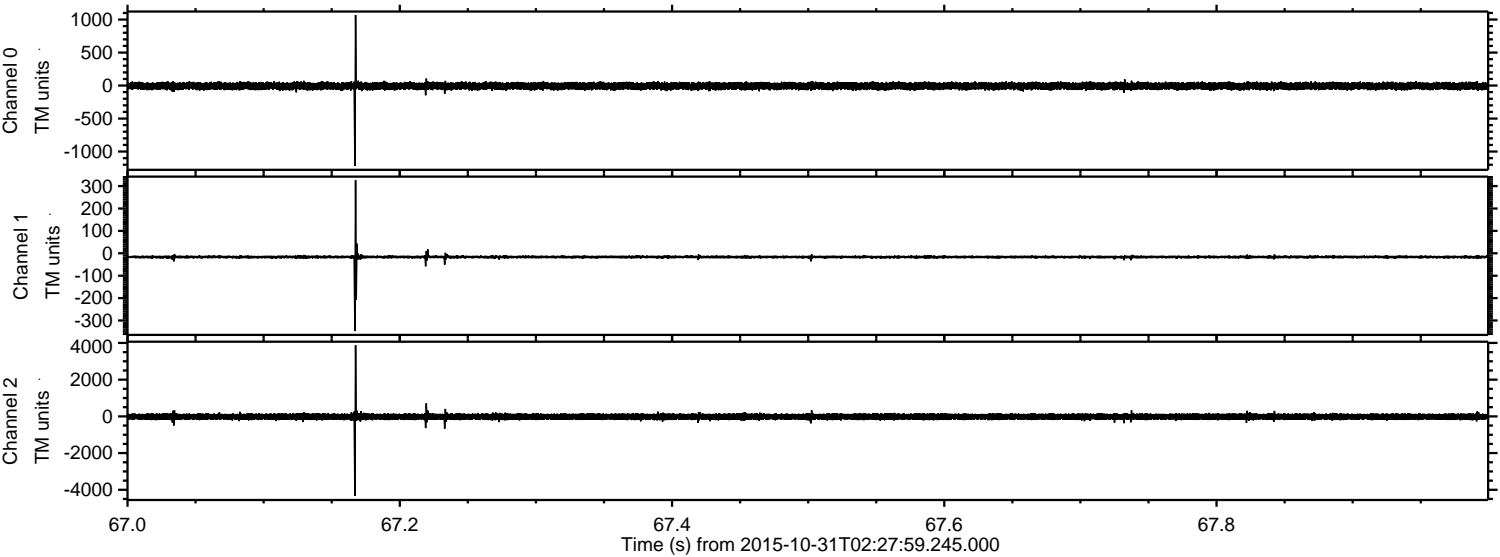
Processed Sat Oct 31 08:24:29 2015 by ELM ver.2012-10-06 from 001\_\_elm20151031\_022758\_\_dat00.bin





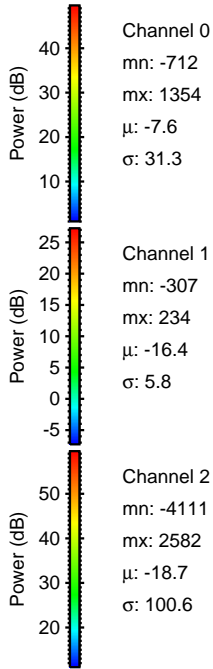
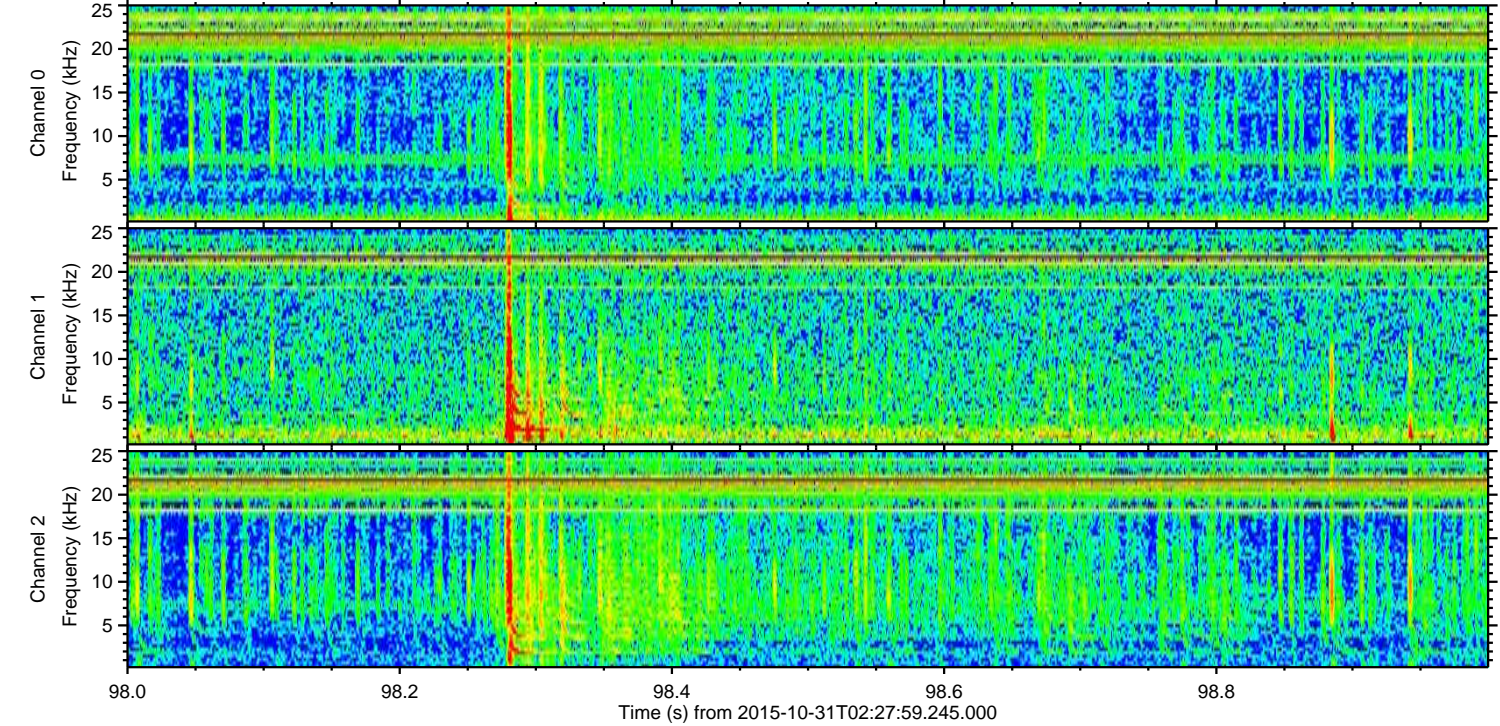
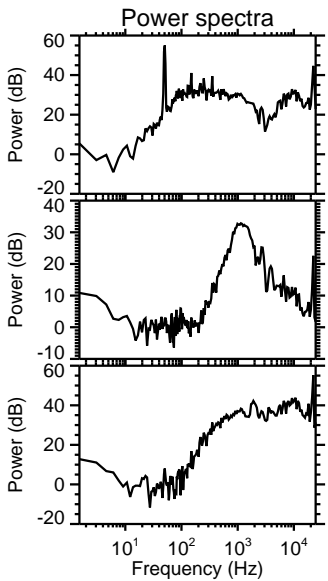
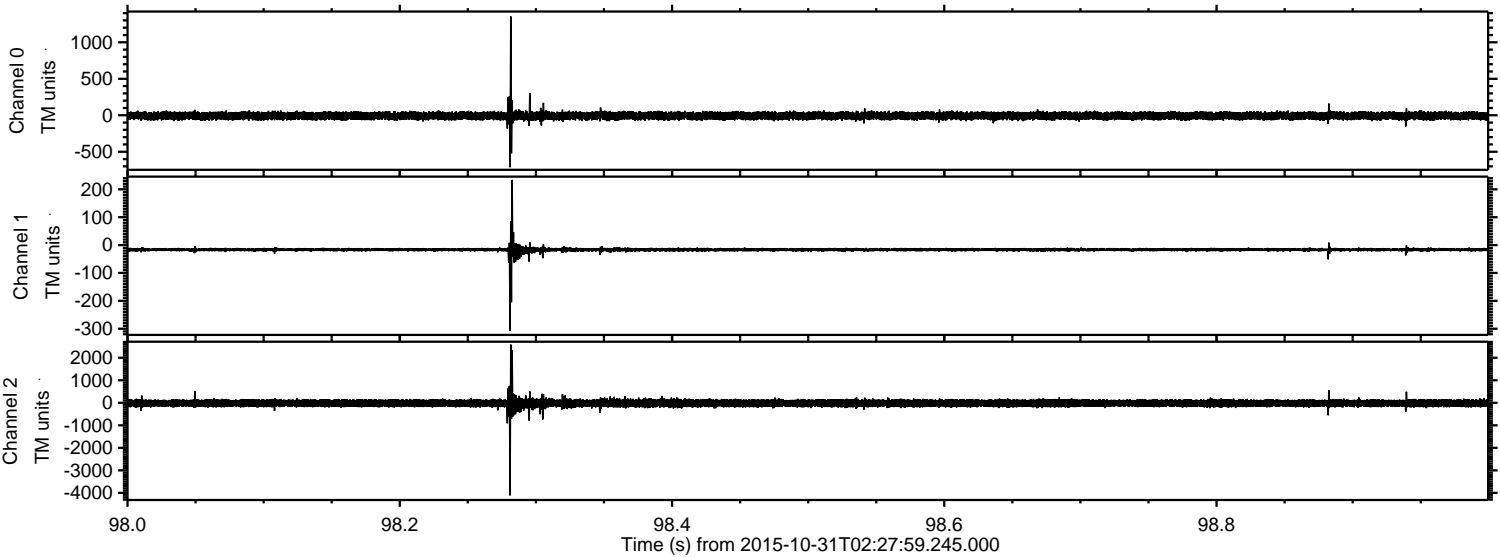
ELMAVAN 3D WAVEFORMS (Measured data sampled at 50 kHz) 51000 packets of 144 samples from 2015-10-31T02:27:59.245.000. Part 68/147

Processed Sat Oct 31 08:24:30 2015 by ELM ver.2012-10-06 from 001\_\_elm20151031\_022758\_\_dat00.bin





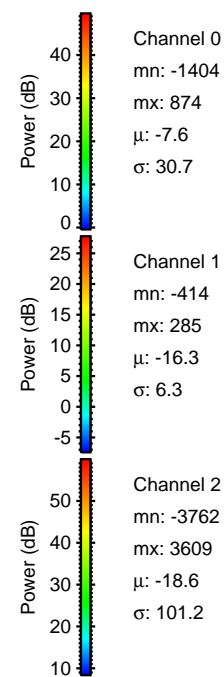
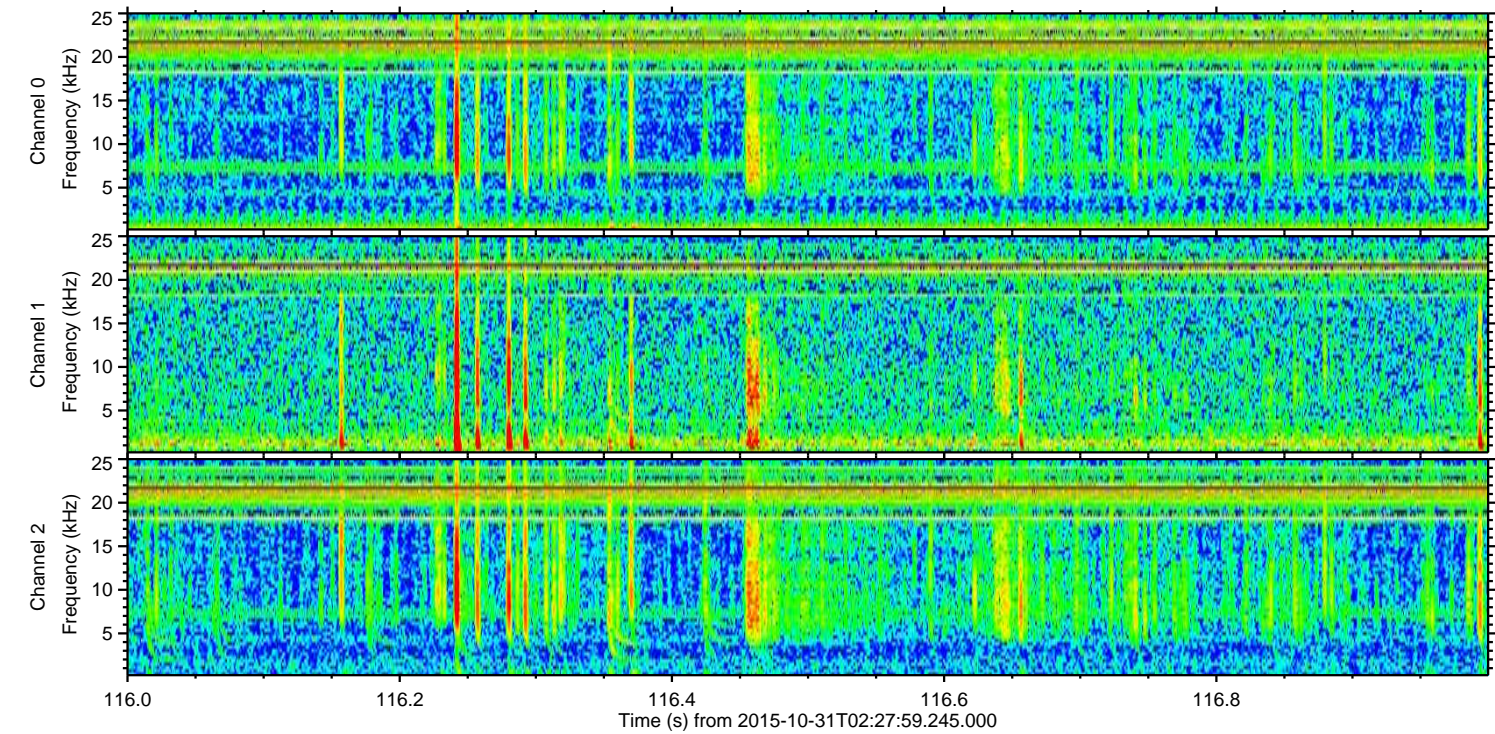
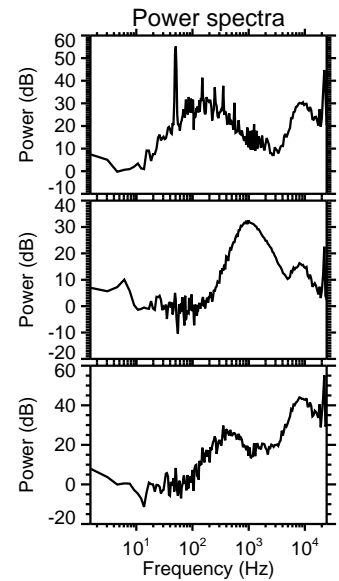
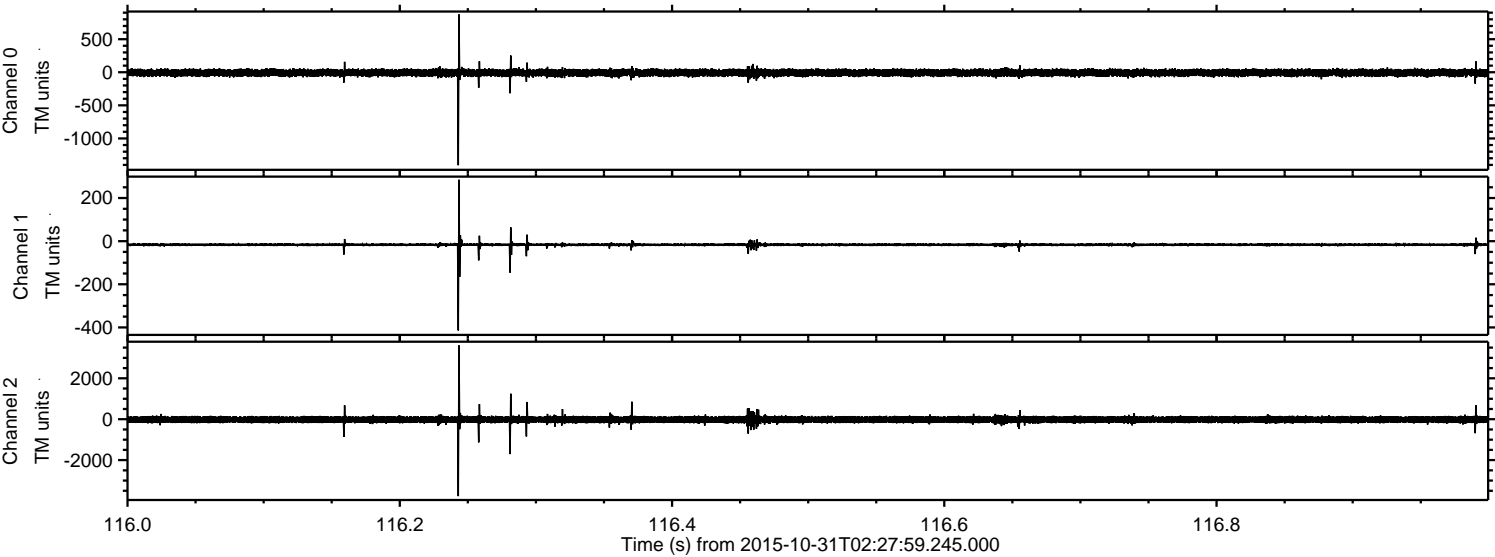
Processed Sat Oct 31 08:24:32 2015 by ELM ver.2012-10-06 from 001\_\_elm20151031\_022758\_\_dat00.bin





ELMAVAN 3D WAVEFORMS (Measured data sampled at 50 kHz) 51000 packets of 144 samples from 2015-10-31T02:27:59.245.000. Part 117/147

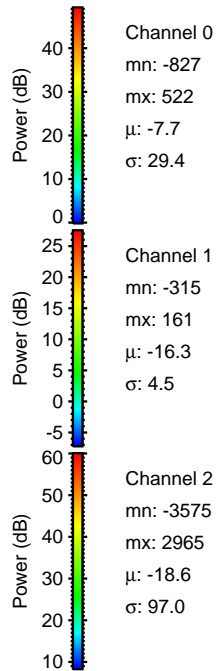
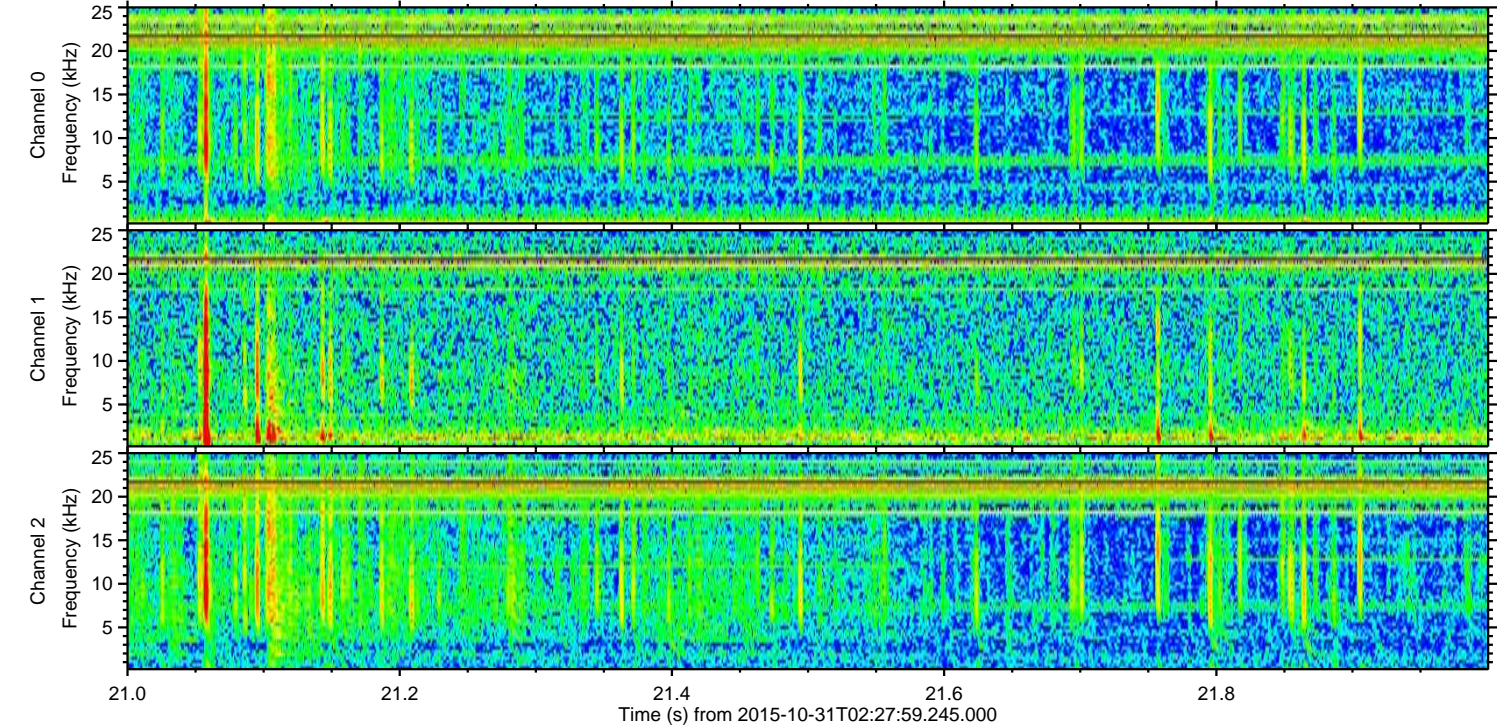
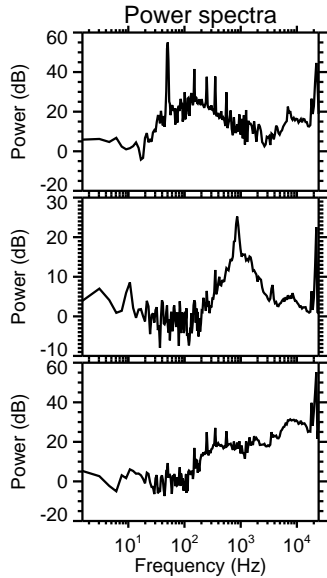
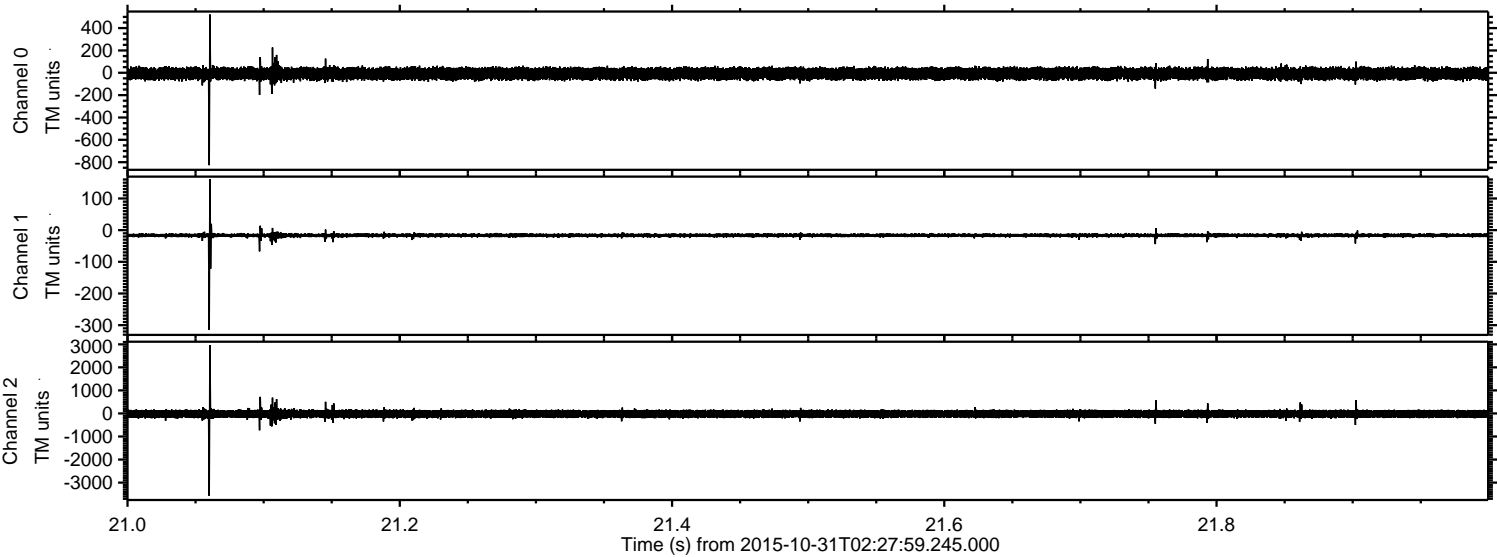
Processed Sat Oct 31 08:24:33 2015 by ELM ver.2012-10-06 from 001\_\_elm20151031\_022758\_\_dat00.bin





ELMAVAN 3D WAVEFORMS (Measured data sampled at 50 kHz) 51000 packets of 144 samples from 2015-10-31T02:27:59.245.000. Part 22/147

Processed Sat Oct 31 08:24:34 2015 by ELM ver.2012-10-06 from 001\_\_elm20151031\_022758\_\_dat00.bin



Channel 0  
mn: -827  
mx: 522  
 $\mu$ : -7.7  
 $\sigma$ : 29.4

Channel 1  
mn: -315  
mx: 161  
 $\mu$ : -16.3  
 $\sigma$ : 4.5

Channel 2  
mn: -3575  
mx: 2965  
 $\mu$ : -18.6  
 $\sigma$ : 97.0



Processed Sat Oct 31 08:24:35 2015 by ELM ver.2012-10-06 from 001\_\_elm20151031\_022758\_\_dat00.bin

