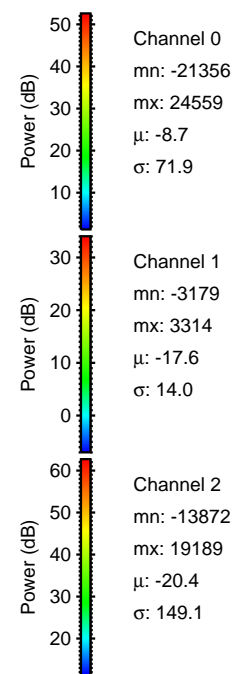
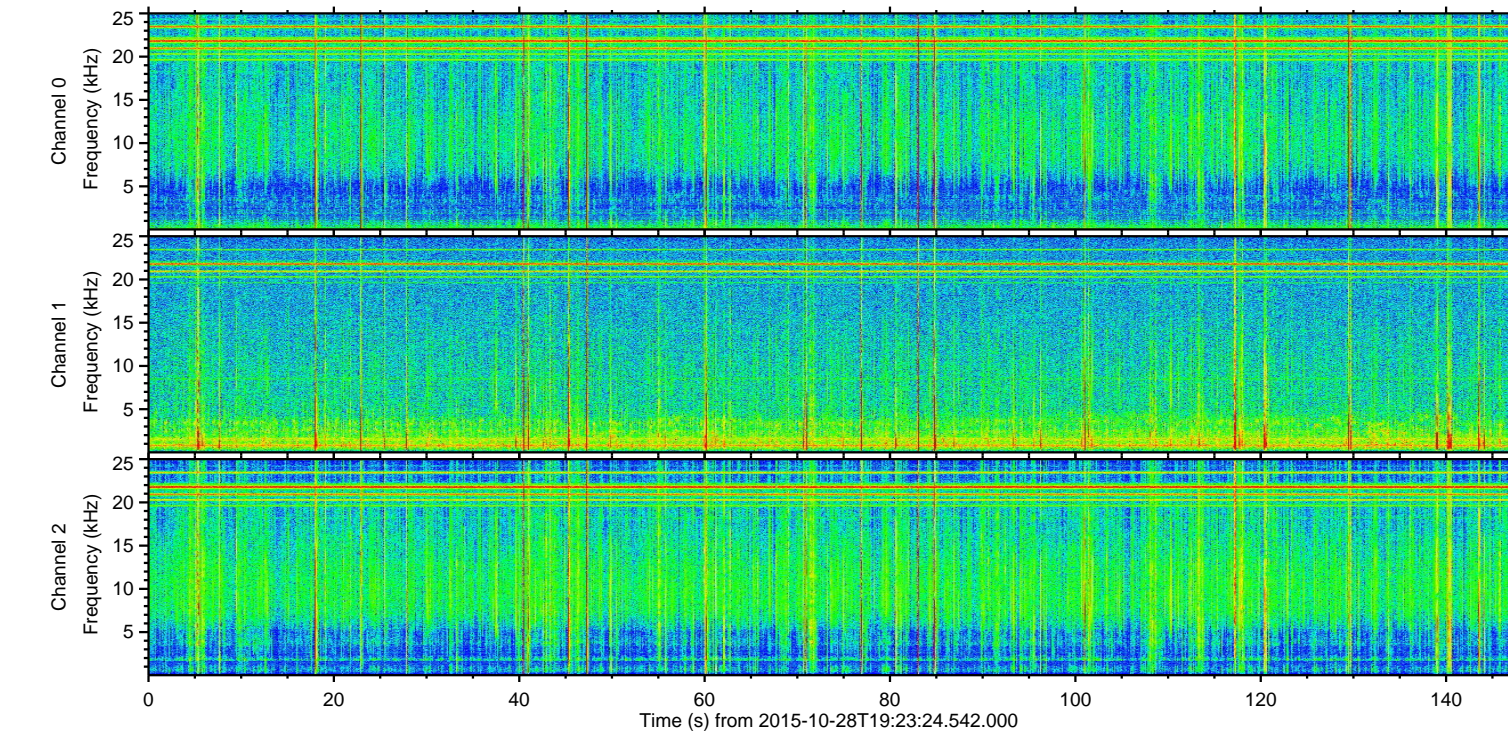
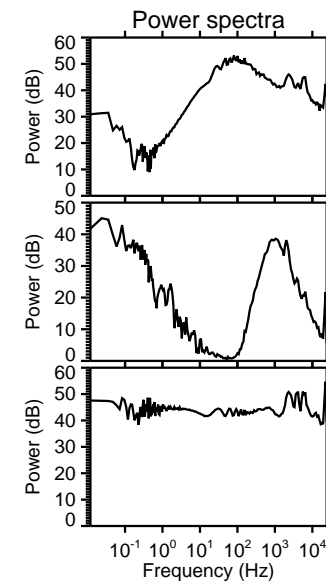
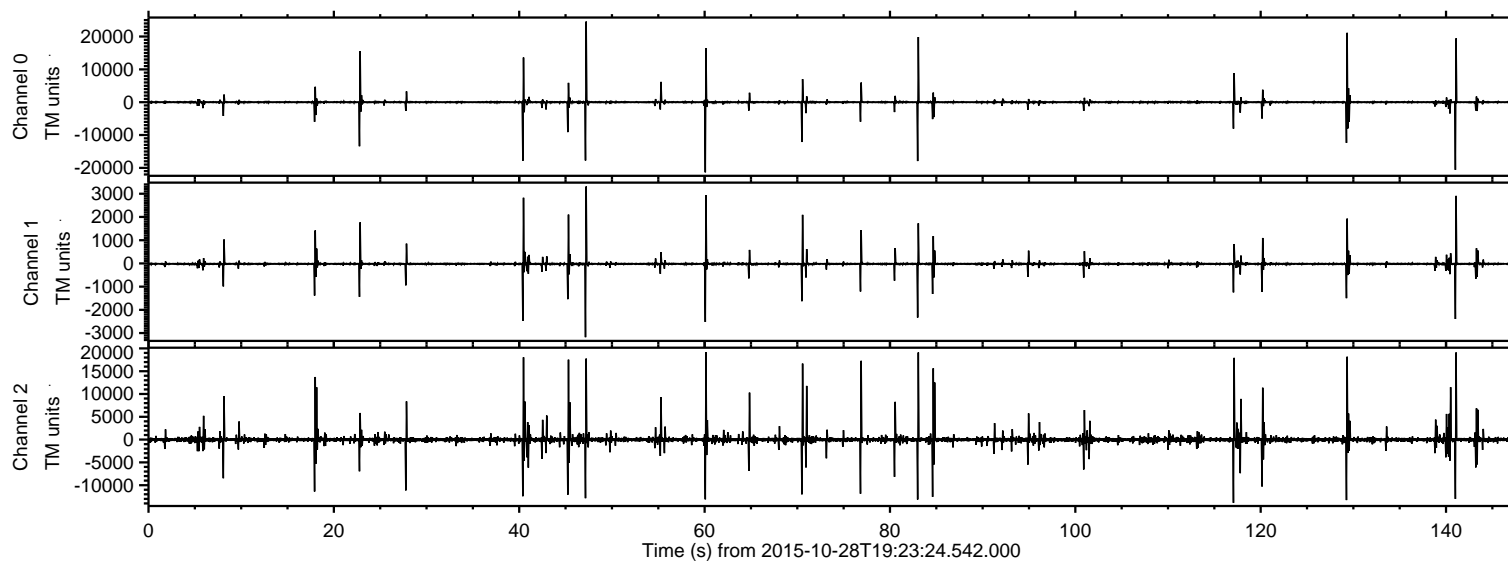


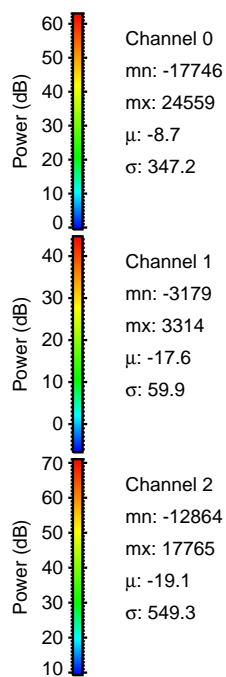
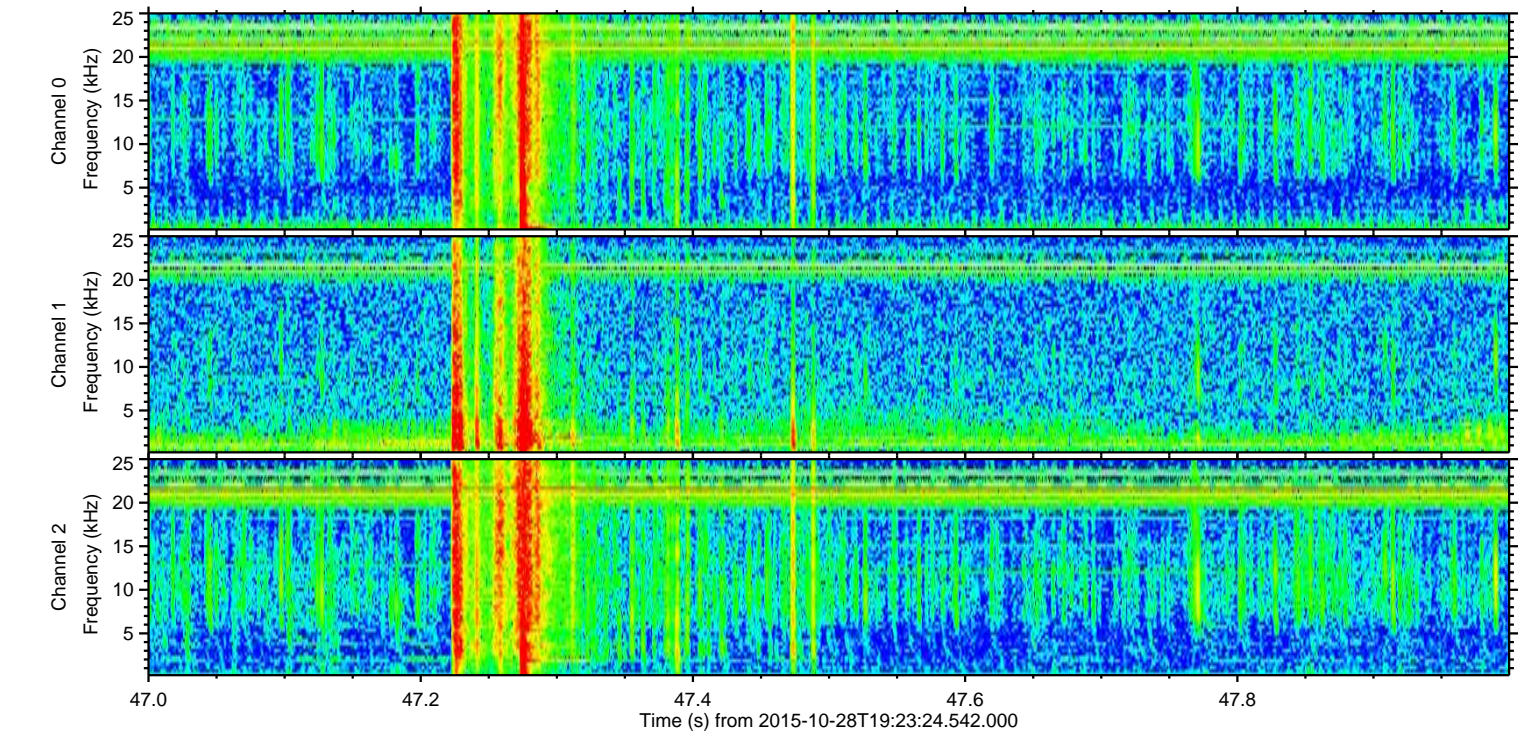
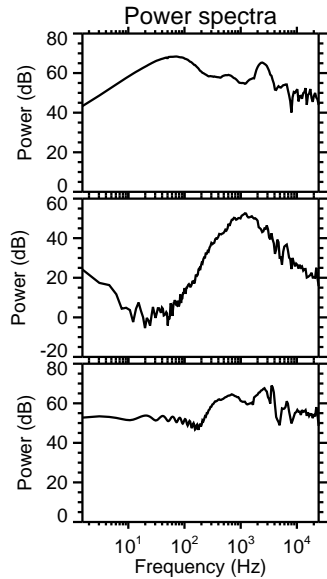
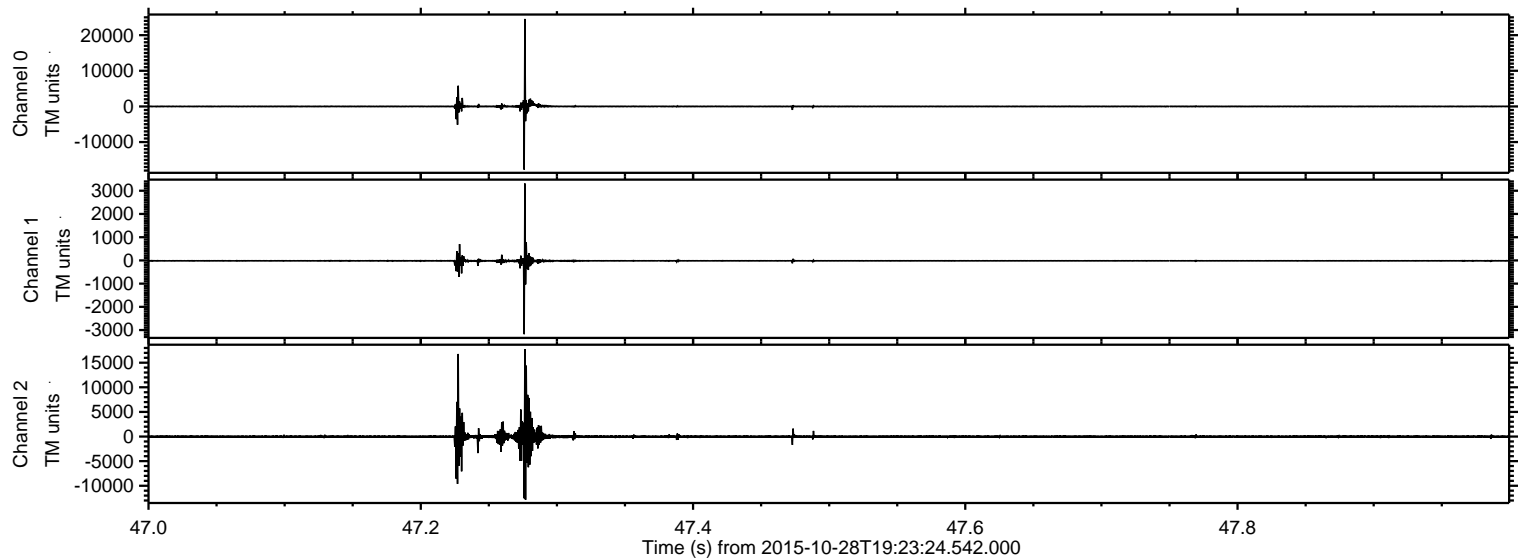
ELMAVAN 3D WAVEFORMS (Measured data sampled at 50 kHz) 51000 packets of 144 samples from 2015-10-28T19:23:24.542.000.

Processed Fri Oct 30 20:12:06 2015 by ELM ver.2012-10-06 from 001__elm20151028_192323__dat00.bin

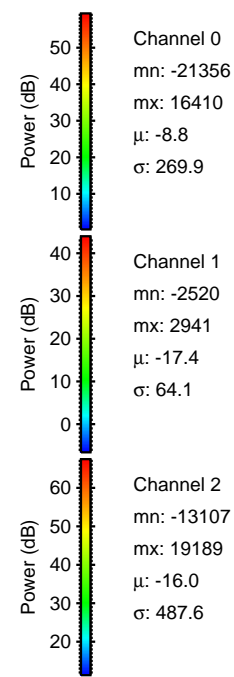
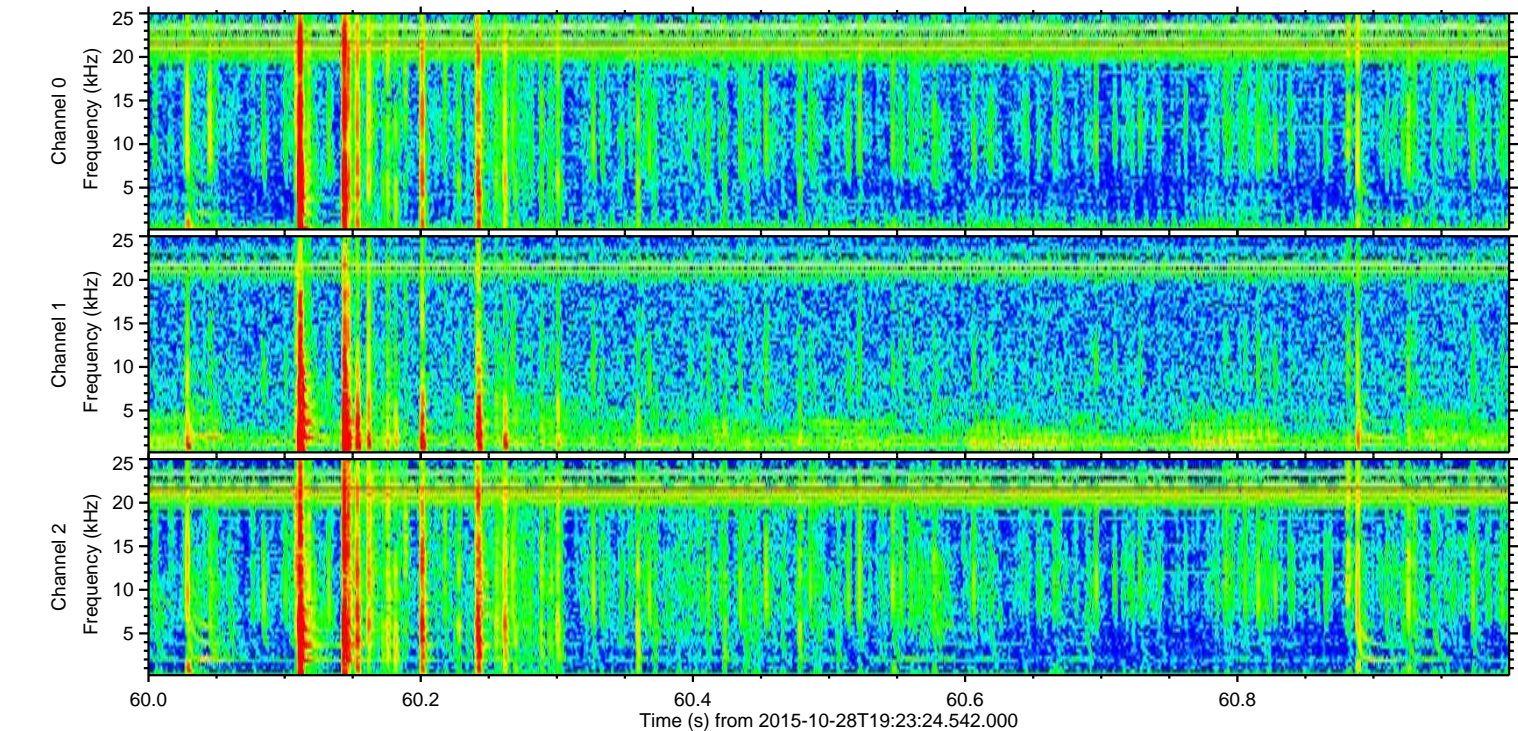
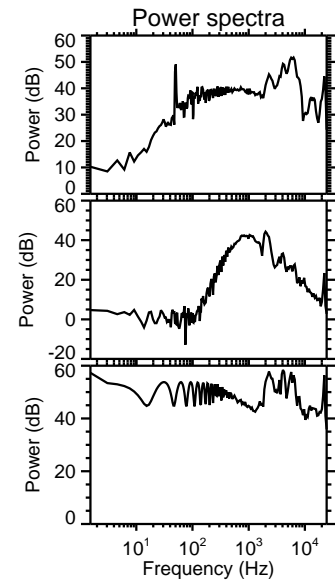
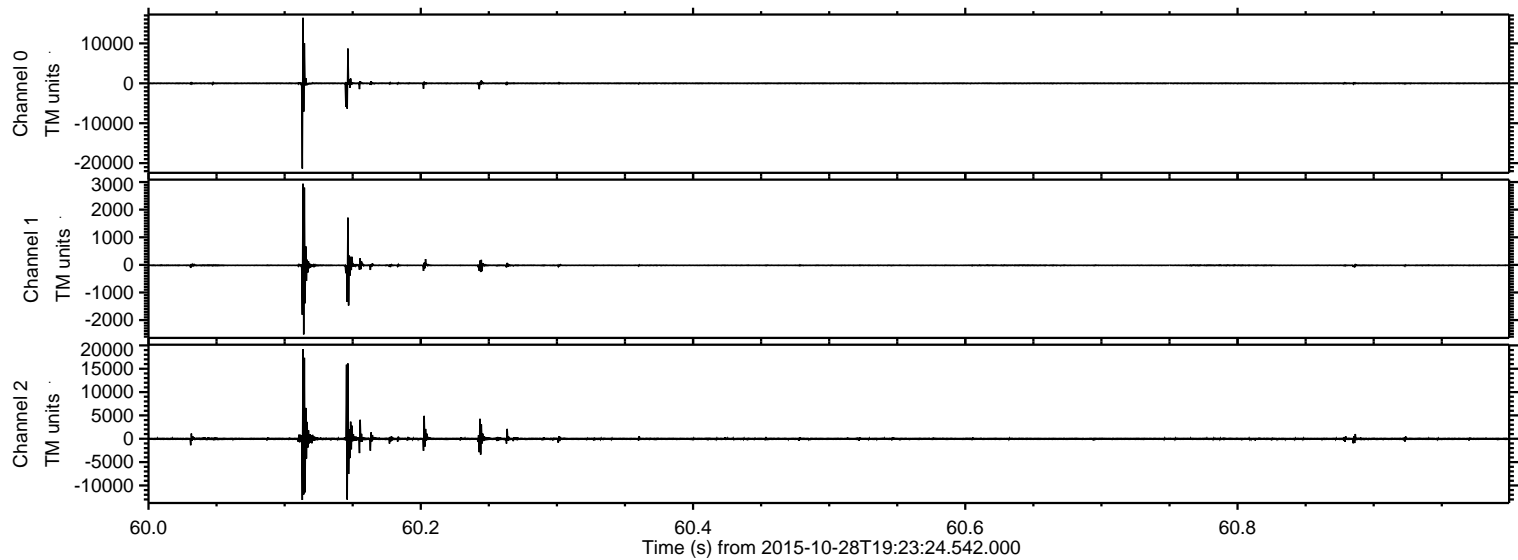


ELMAVAN 3D WAVEFORMS (Measured data sampled at 50 kHz) 51000 packets of 144 samples from 2015-10-28T19:23:24.542.000. Part 48/147

Processed Fri Oct 30 20:12:28 2015 by ELM ver.2012-10-06 from 001__elm20151028_192323__dat00.bin

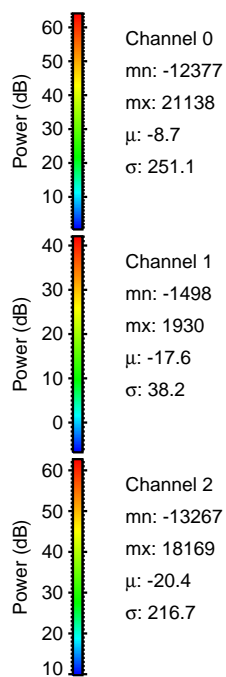
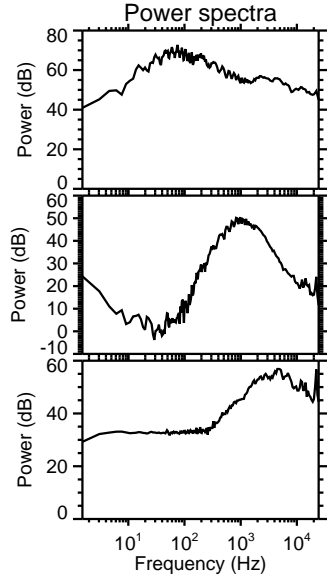
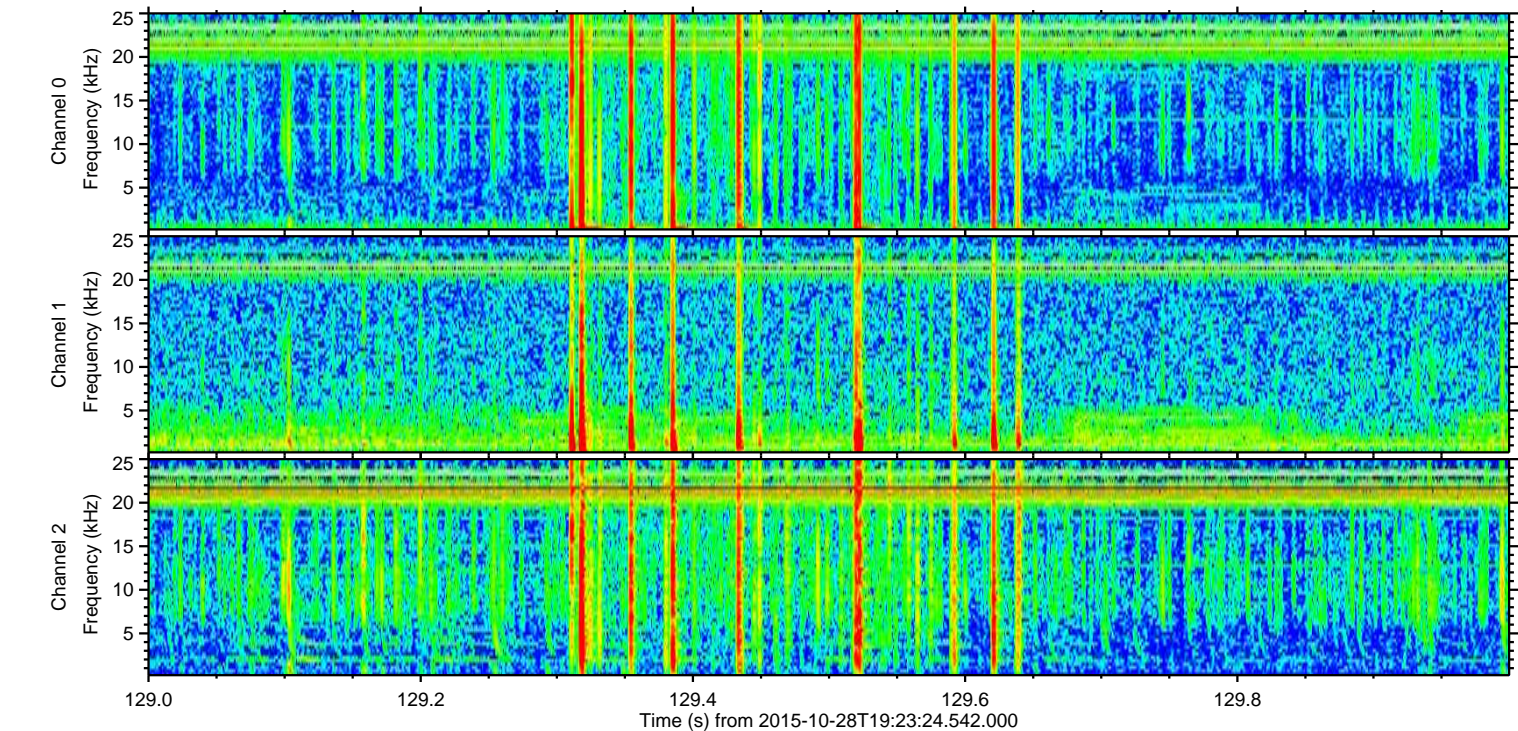
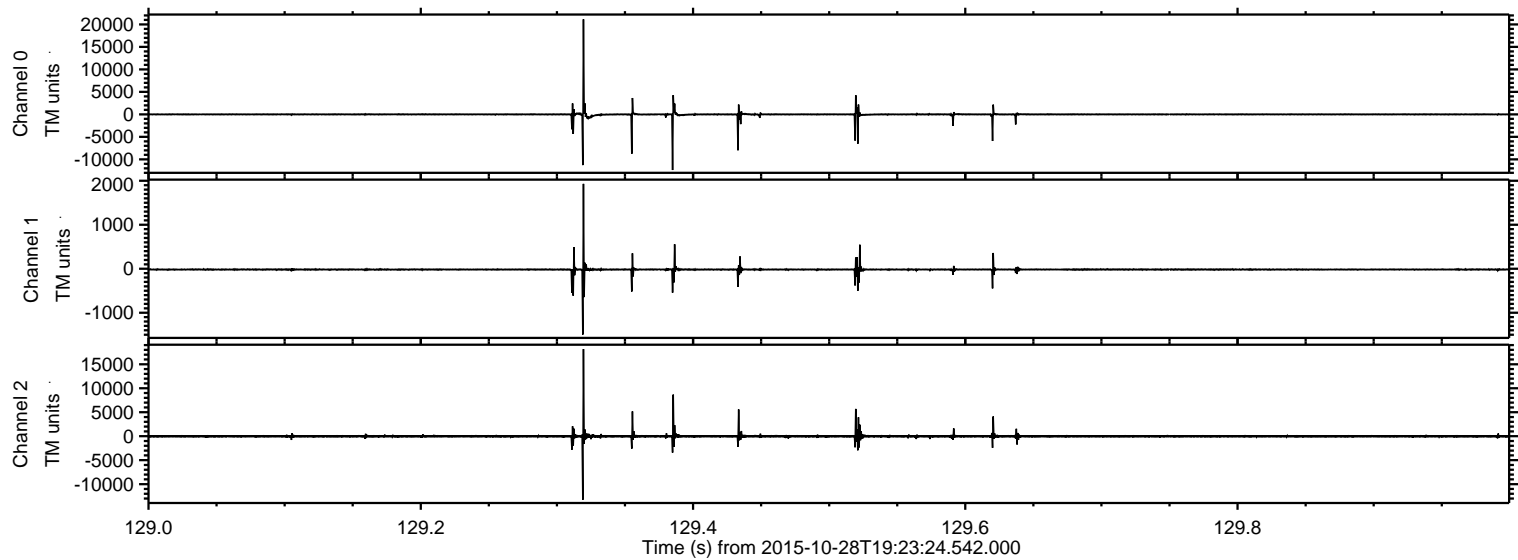


Processed Fri Oct 30 20:12:30 2015 by ELM ver.2012-10-06 from 001__elm20151028_192323__dat00.bin



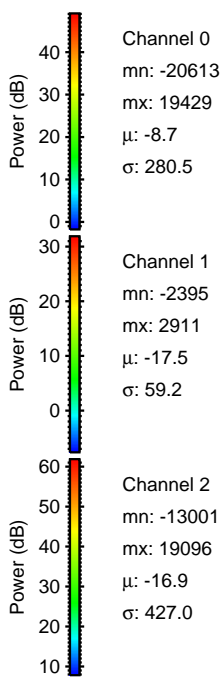
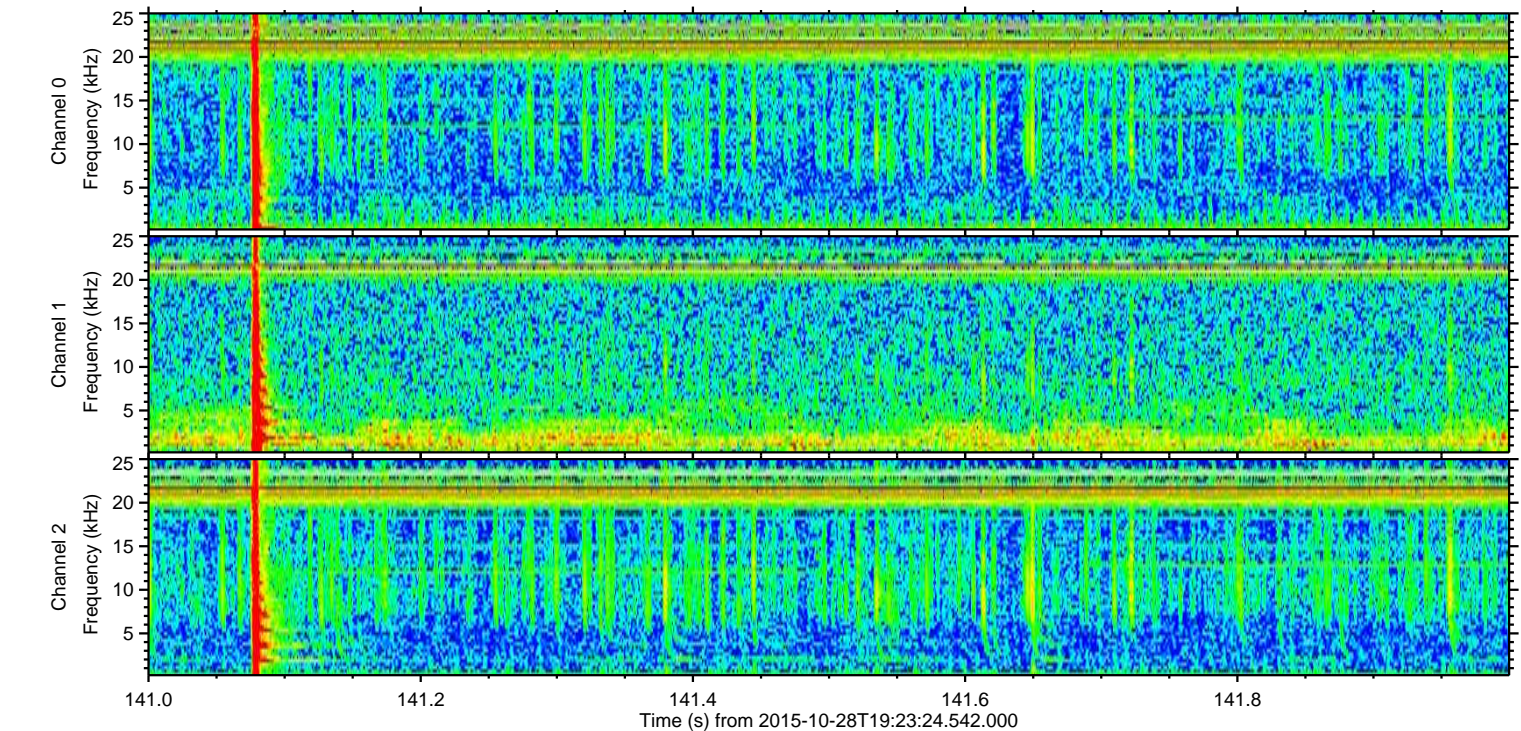
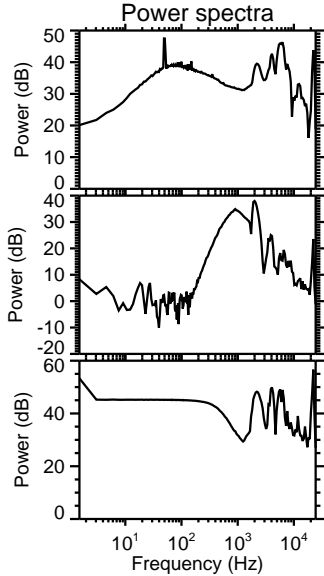
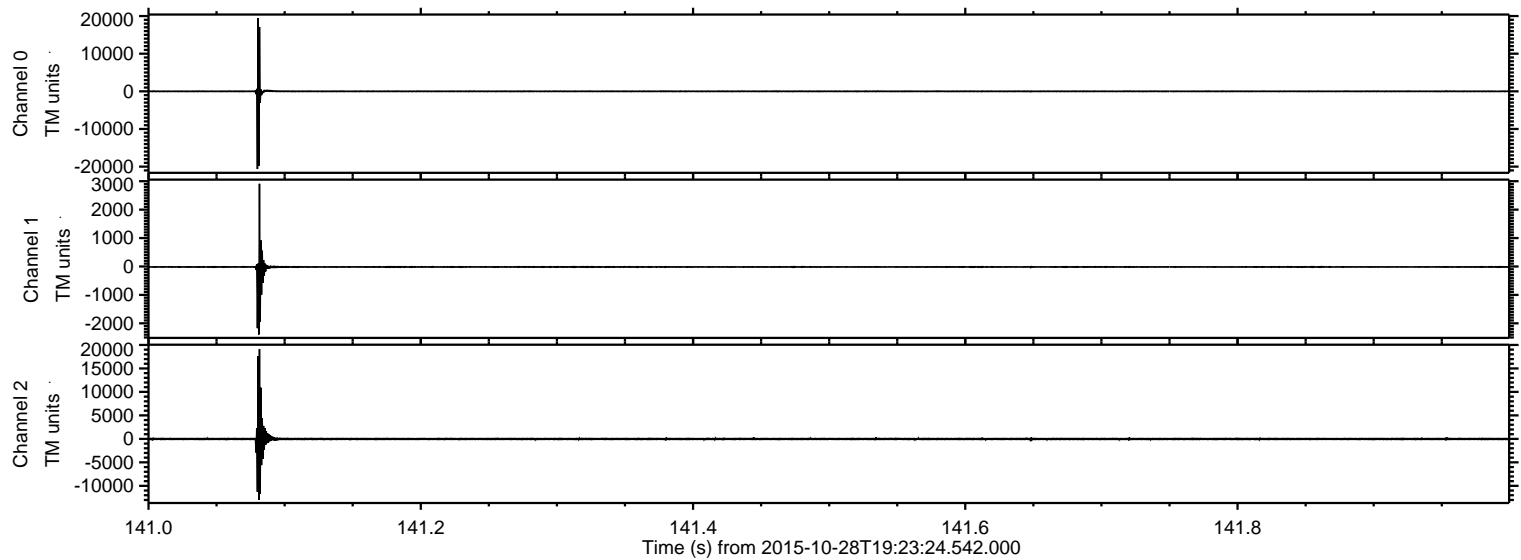
ELMAVAN 3D WAVEFORMS (Measured data sampled at 50 kHz) 51000 packets of 144 samples from 2015-10-28T19:23:24.542.000. Part 130/147

Processed Fri Oct 30 20:12:31 2015 by ELM ver.2012-10-06 from 001__elm20151028_192323__dat00.bin

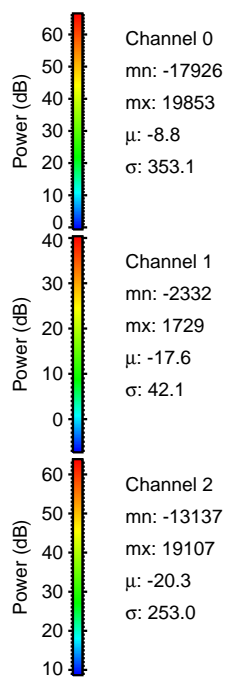
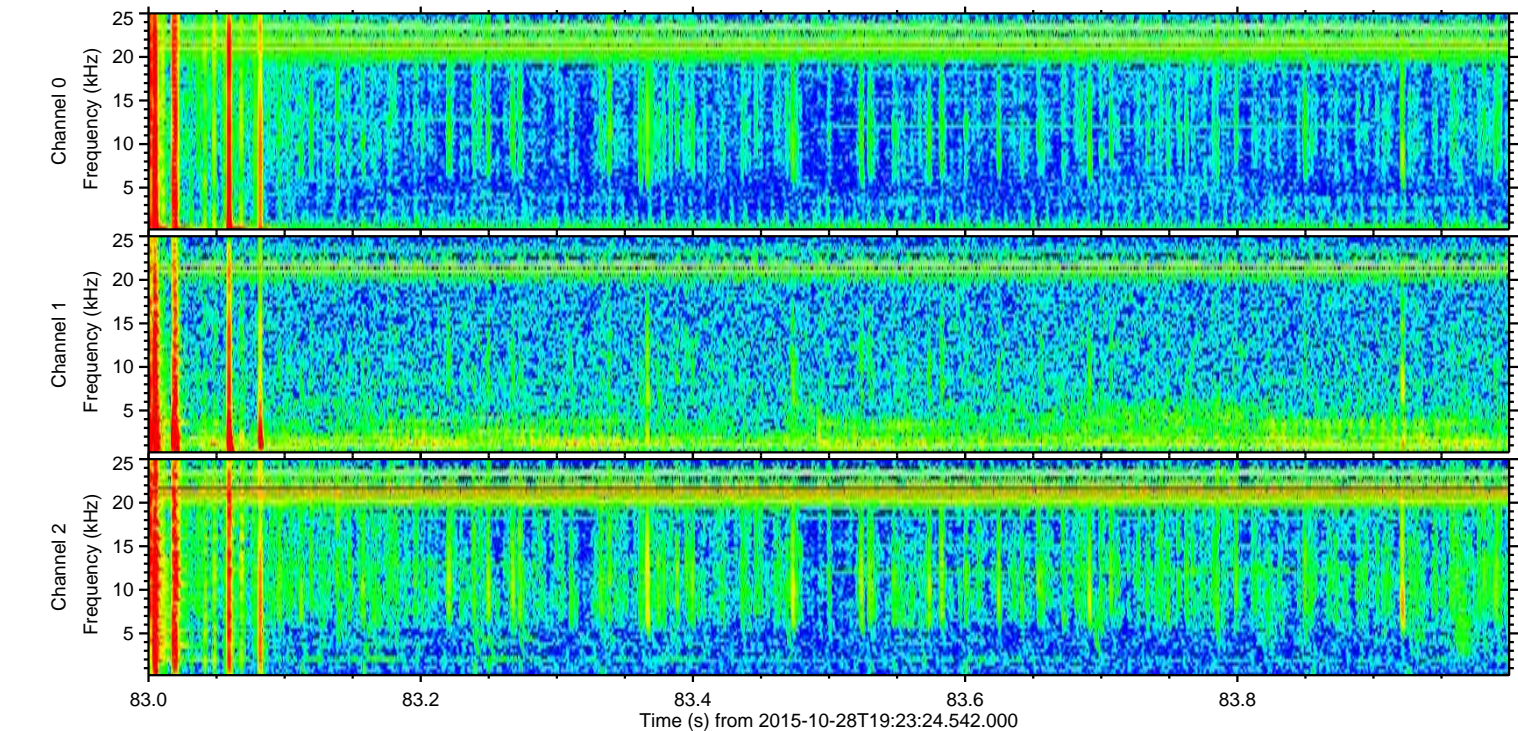
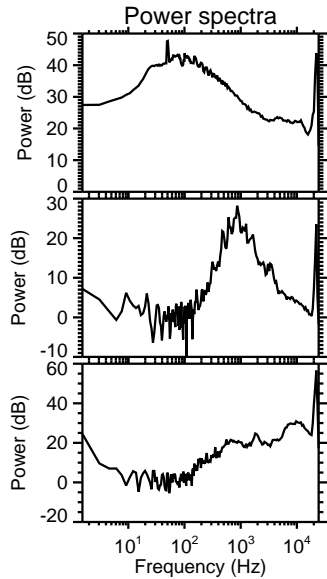
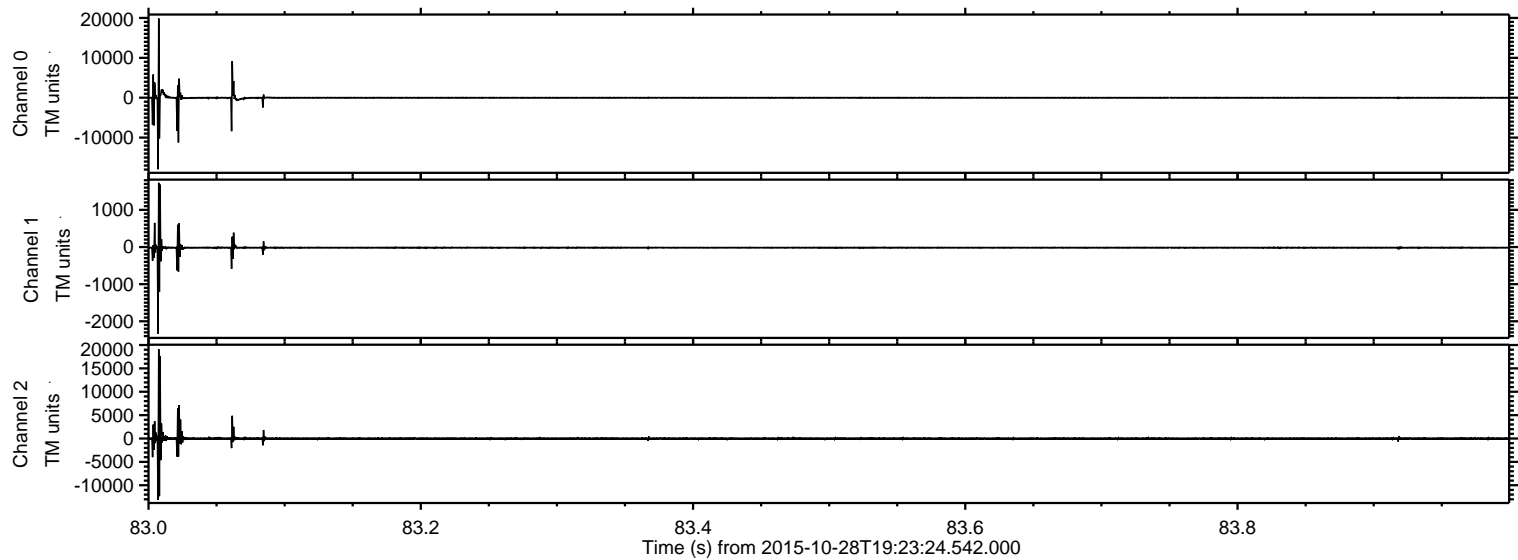


ELMAVAN 3D WAVEFORMS (Measured data sampled at 50 kHz) 51000 packets of 144 samples from 2015-10-28T19:23:24.542.000. Part 142/147

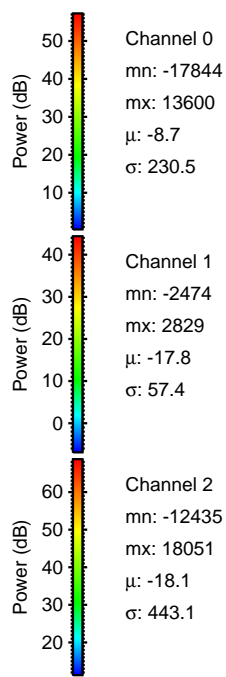
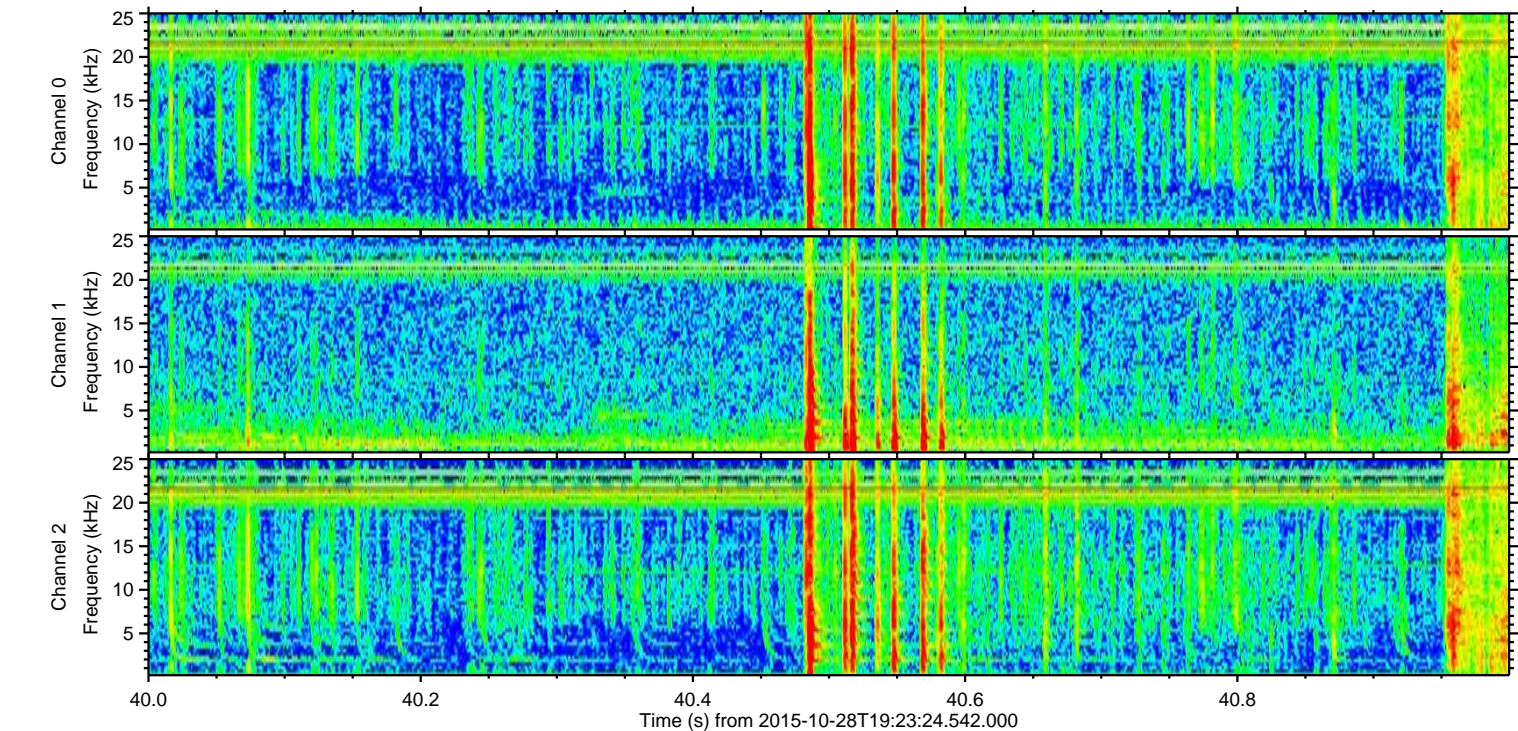
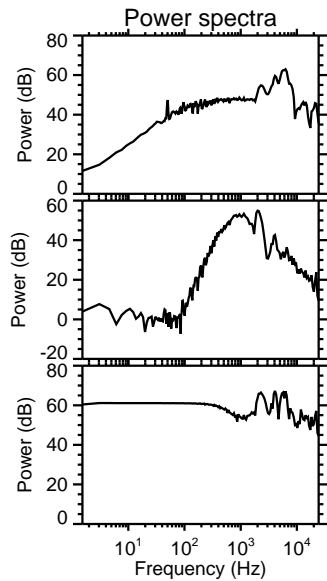
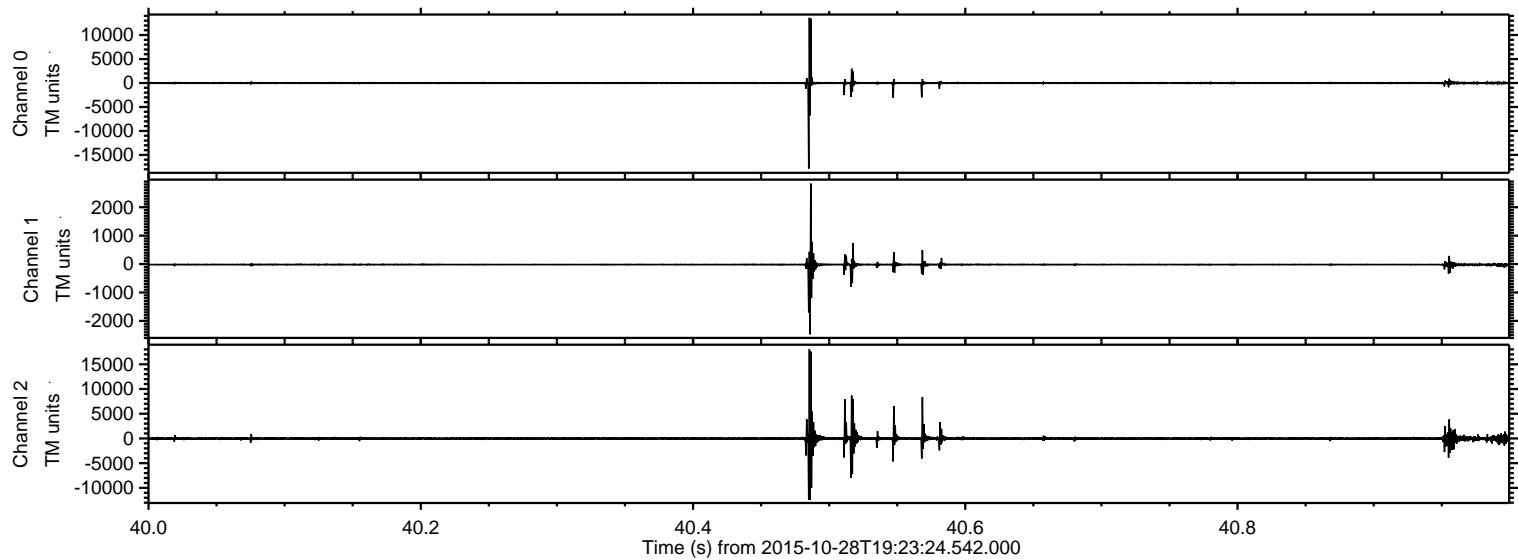
Processed Fri Oct 30 20:12:33 2015 by ELM ver.2012-10-06 from 001__elm20151028_192323__dat00.bin



Processed Fri Oct 30 20:12:34 2015 by ELM ver.2012-10-06 from 001__elm20151028_192323__dat00.bin

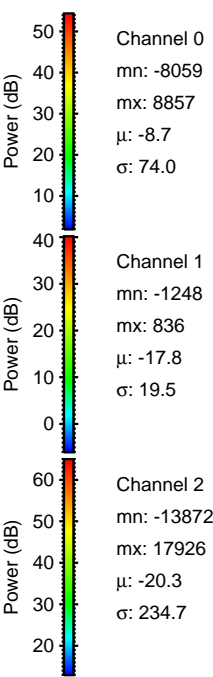
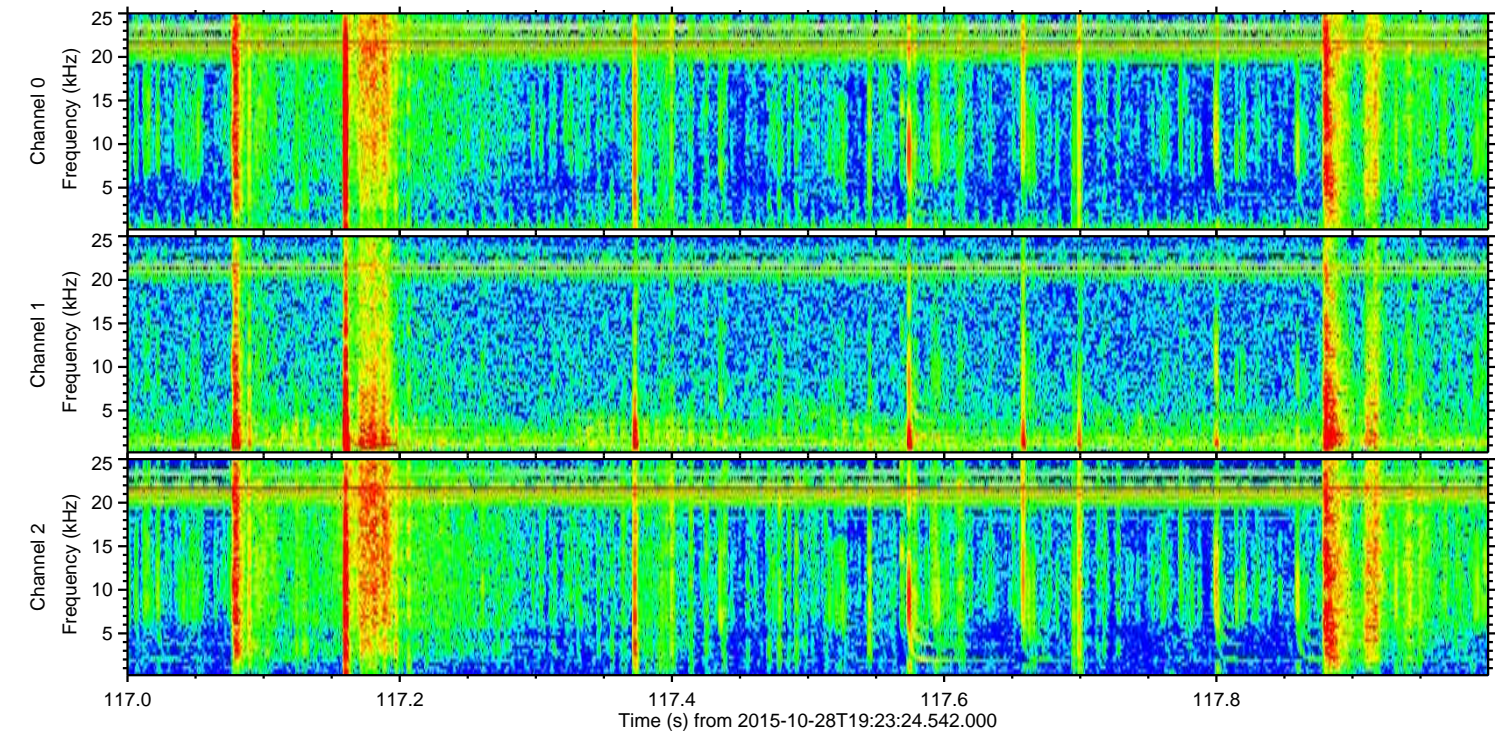
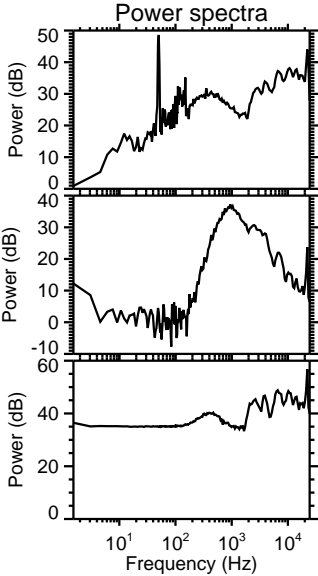
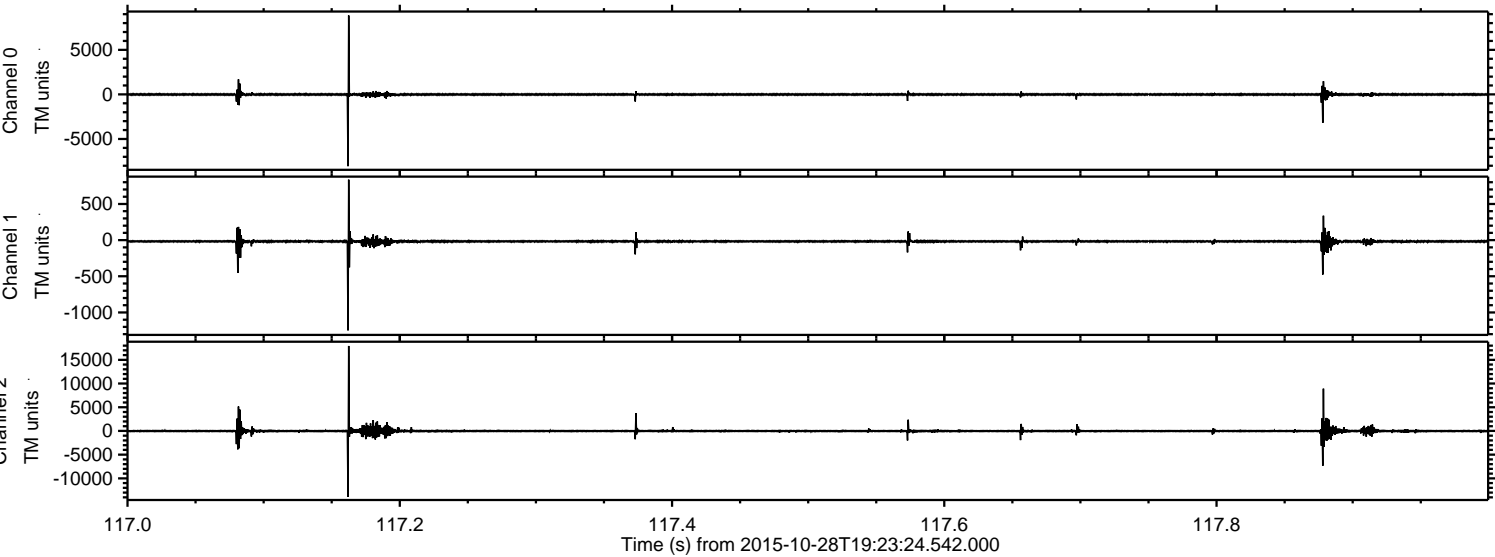


Processed Fri Oct 30 20:12:35 2015 by ELM ver.2012-10-06 from 001__elm20151028_192323__dat00.bin



ELMAVAN 3D WAVEFORMS (Measured data sampled at 50 kHz) 51000 packets of 144 samples from 2015-10-28T19:23:24.542.000. Part 118/147

Processed Fri Oct 30 20:12:36 2015 by ELM ver.2012-10-06 from 001__elm20151028_192323__dat00.bin

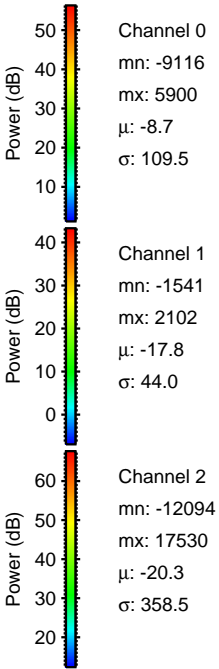
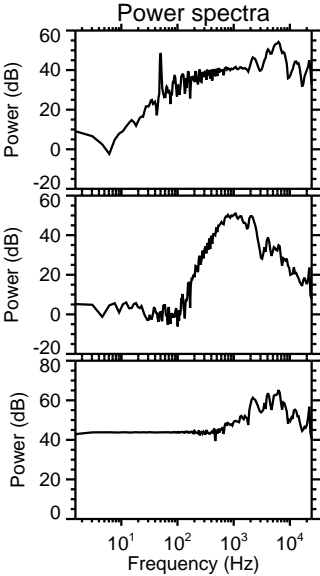
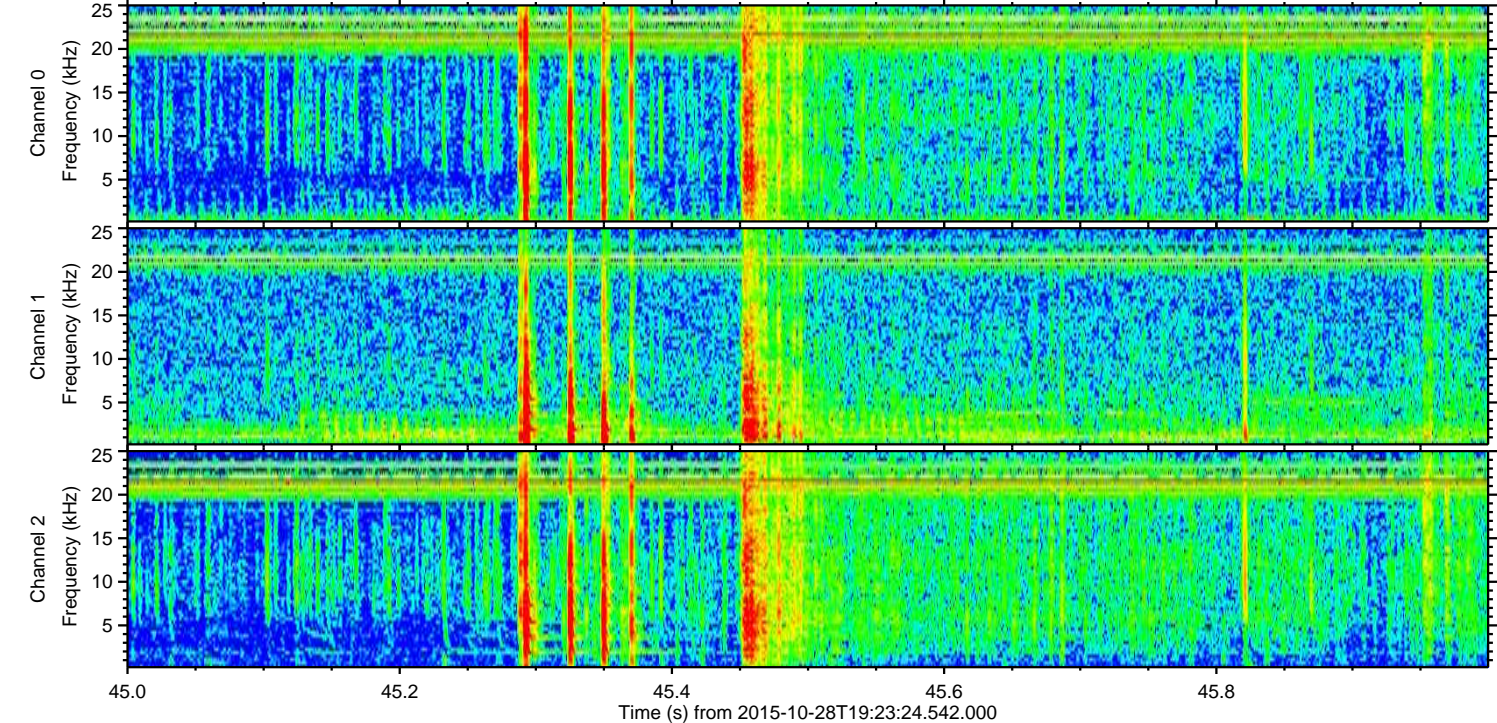
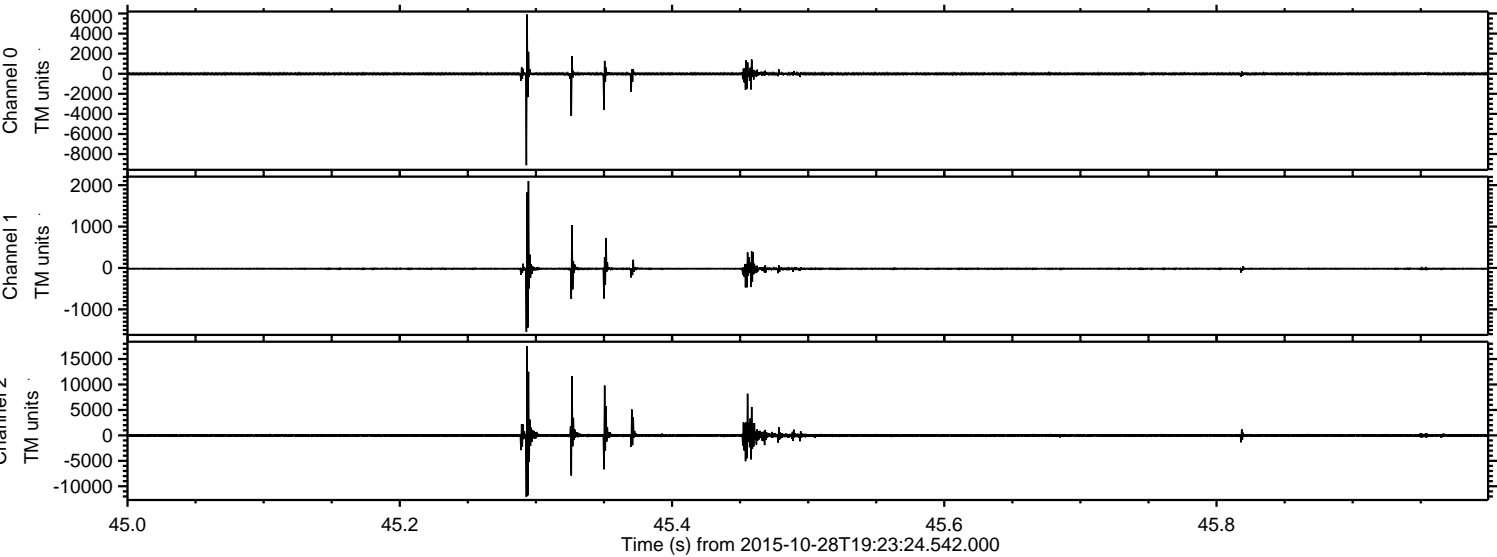


Channel 0
mn: -8059
mx: 8857
 μ : -8.7
 σ : 74.0

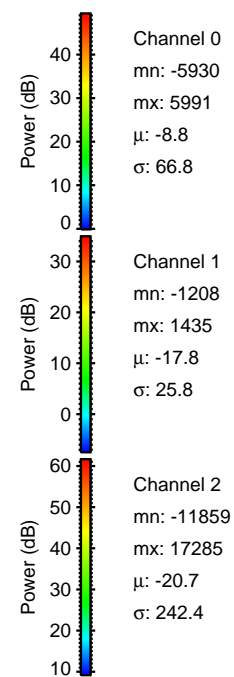
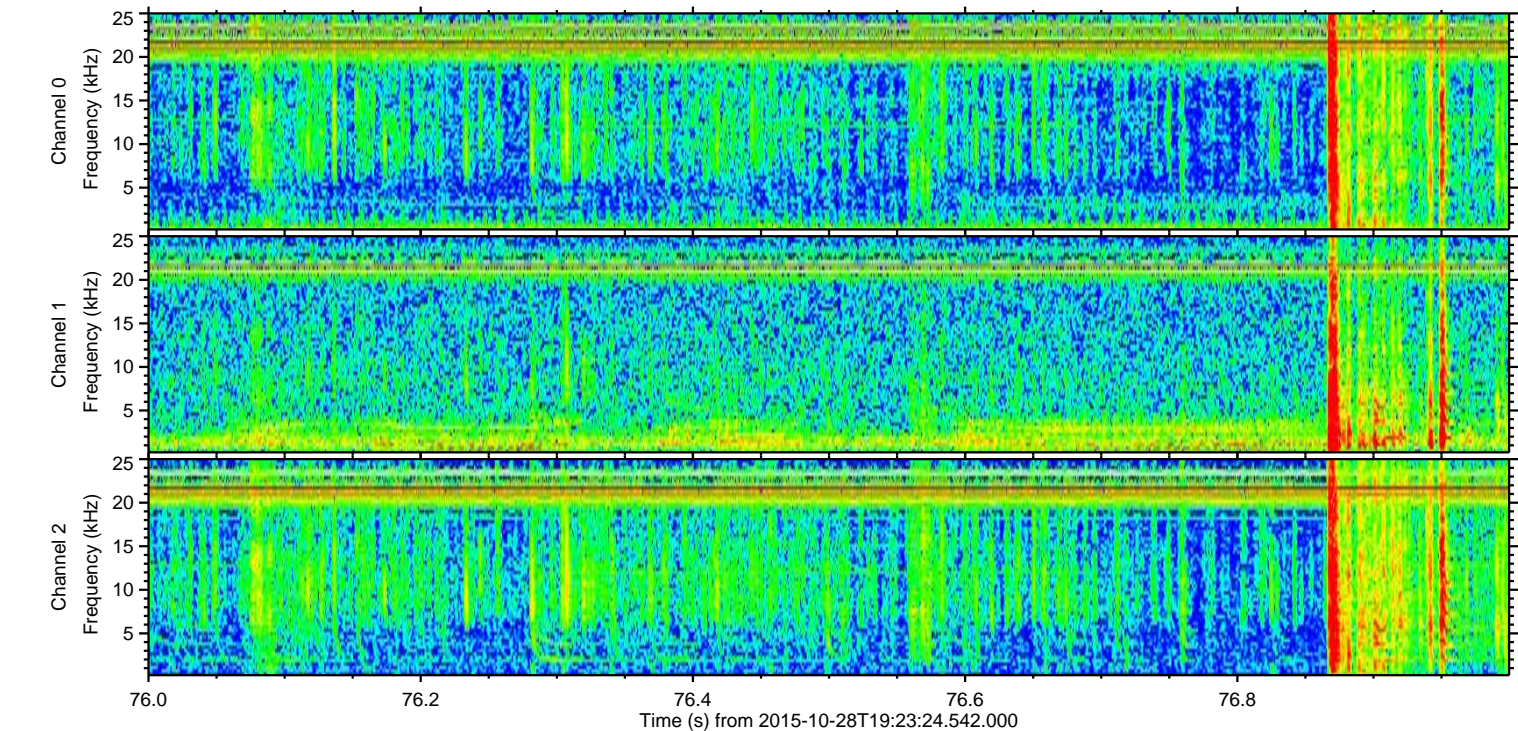
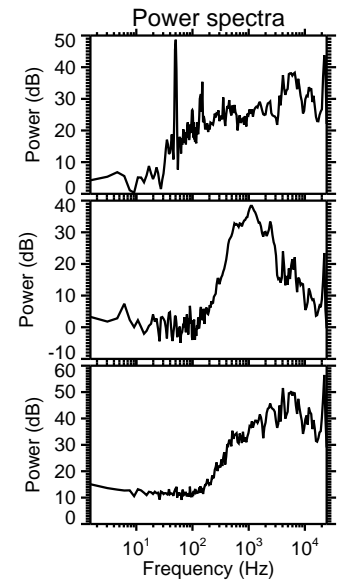
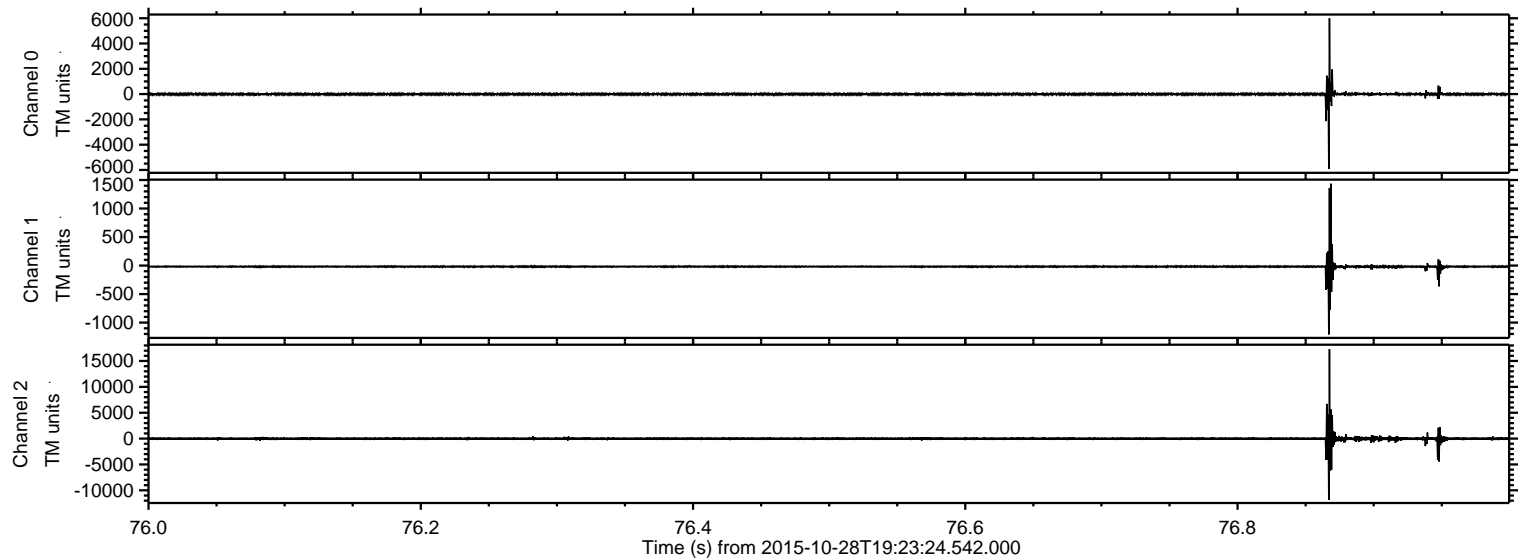
Channel 1
mn: -1248
mx: 836
 μ : -17.8
 σ : 19.5

Channel 2
mn: -13872
mx: 17926
 μ : -20.3
 σ : 234.7

Processed Fri Oct 30 20:12:37 2015 by ELM ver.2012-10-06 from 001__elm20151028_192323__dat00.bin



Processed Fri Oct 30 20:12:38 2015 by ELM ver.2012-10-06 from 001__elm20151028_192323__dat00.bin



Processed Fri Oct 30 20:12:40 2015 by ELM ver.2012-10-06 from 001__elm20151028_192323__dat00.bin

