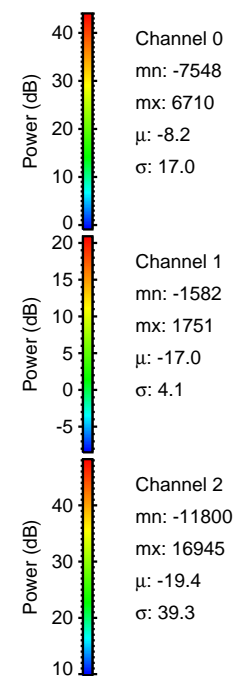
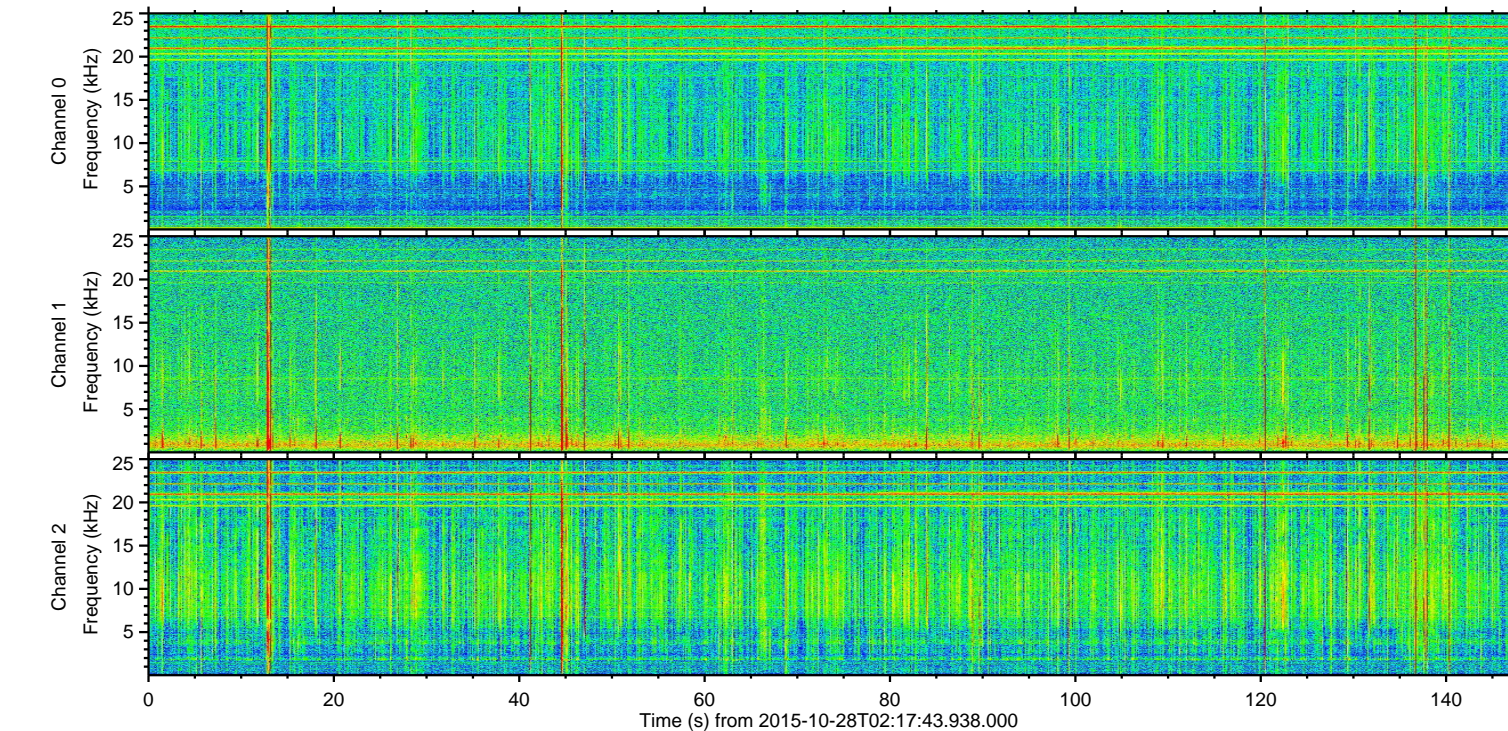
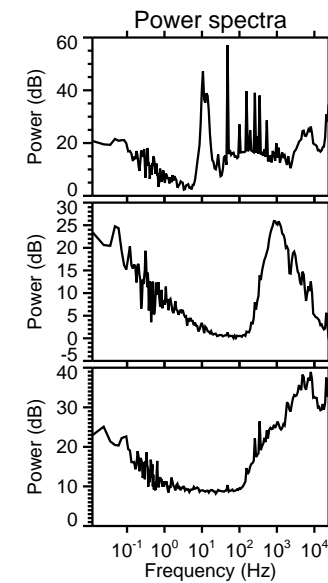
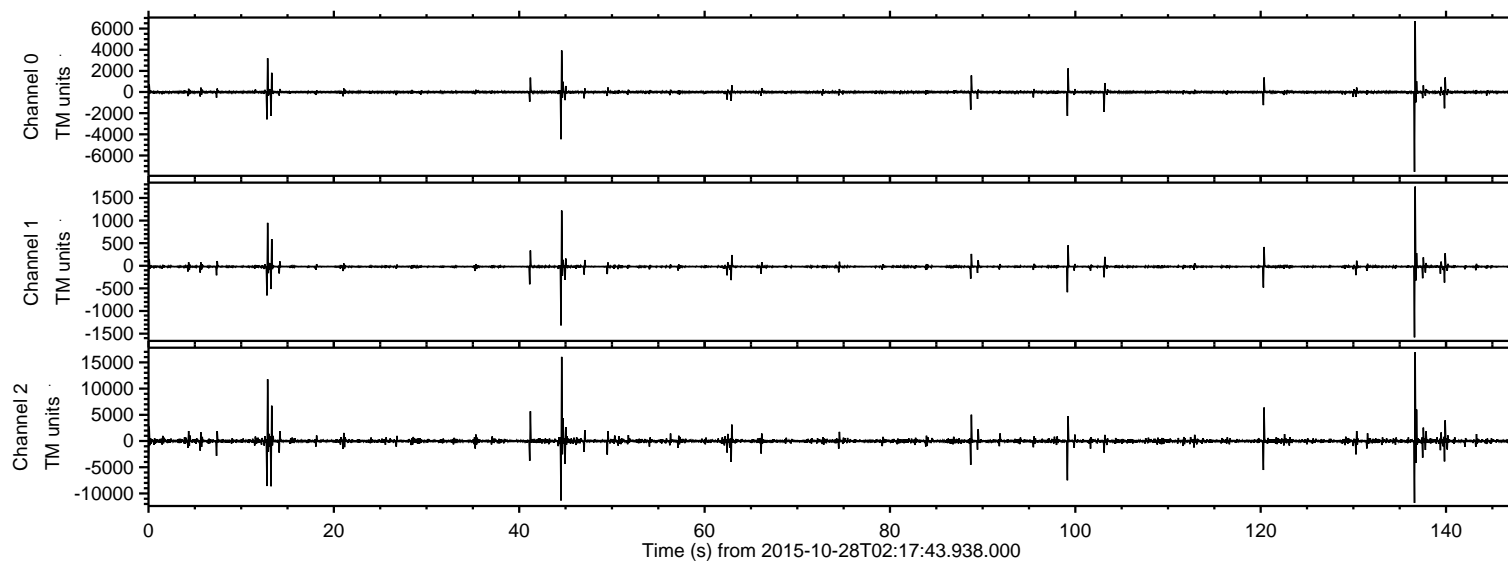


# ELMAVAN 3D WAVEFORMS (Measured data sampled at 50 kHz) 51000 packets of 144 samples from 2015-10-28T02:17:43.938.000.

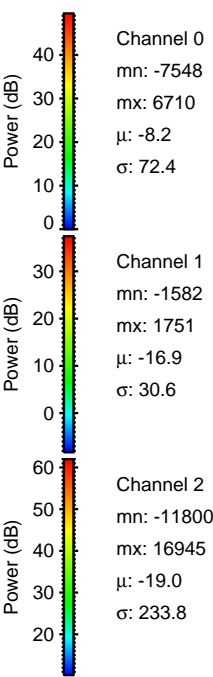
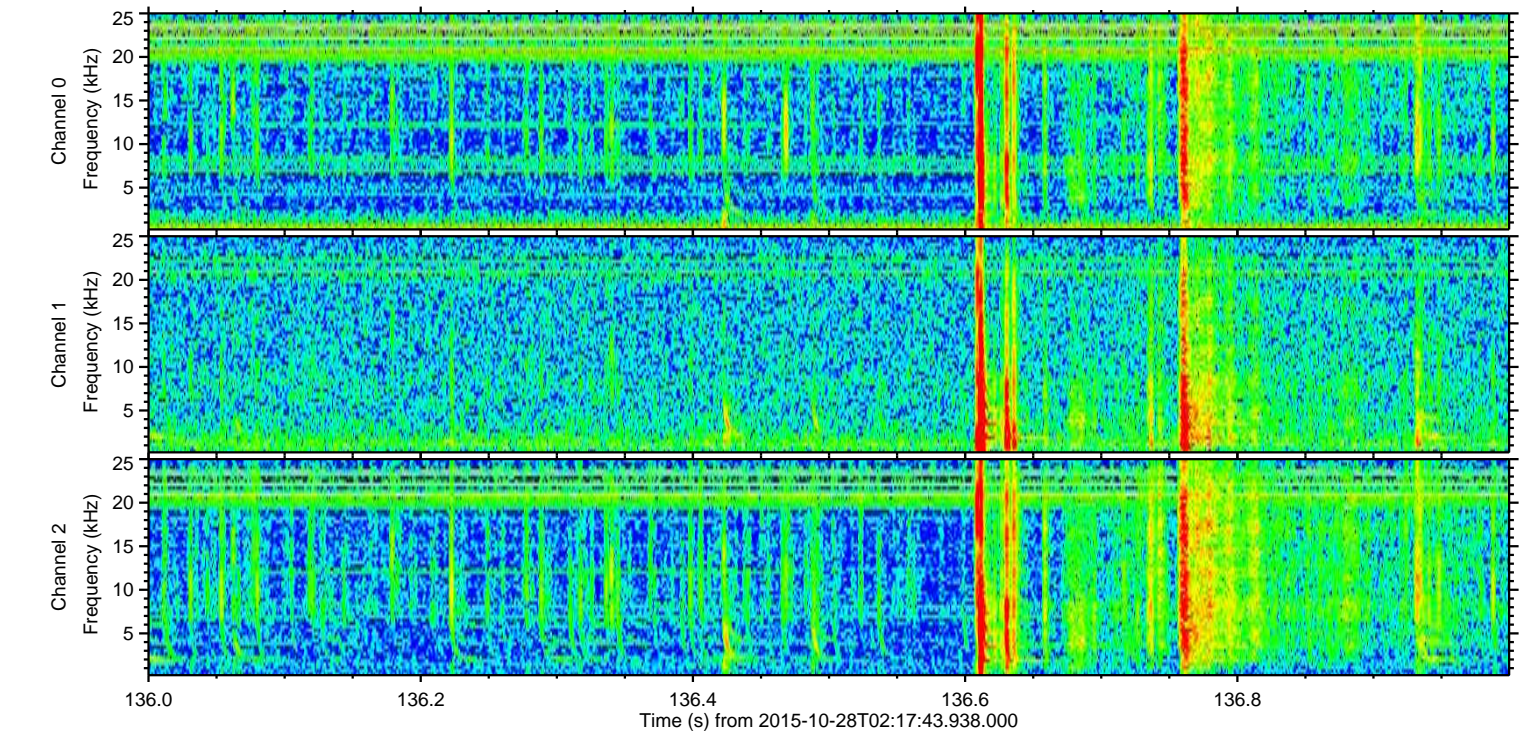
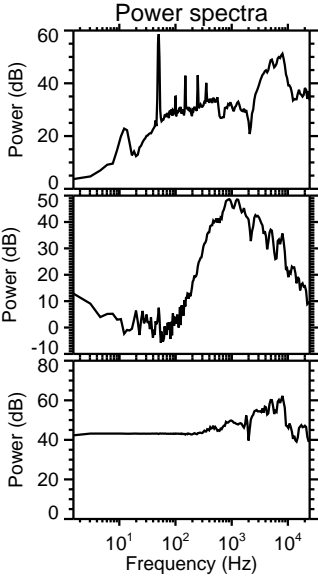
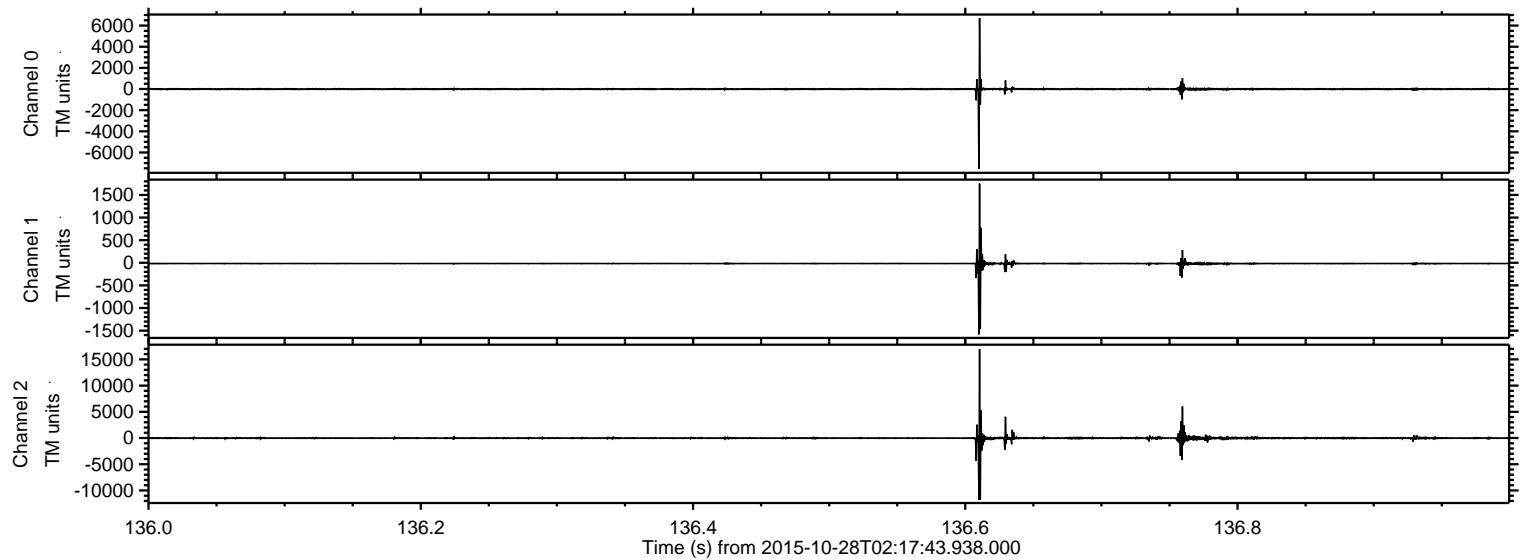
Processed Wed Oct 28 13:59:55 2015 by ELM ver.2012-10-06 from 001\_\_elm20151028\_021742\_\_dat00.bin





ELMAVAN 3D WAVEFORMS (Measured data sampled at 50 kHz) 51000 packets of 144 samples from 2015-10-28T02:17:43.938.000. Part 137/147

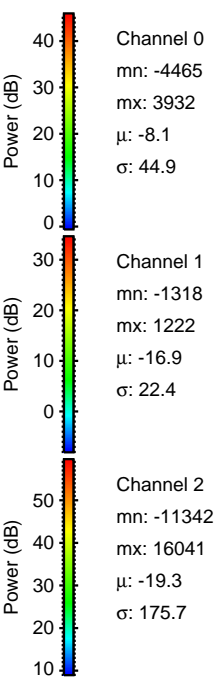
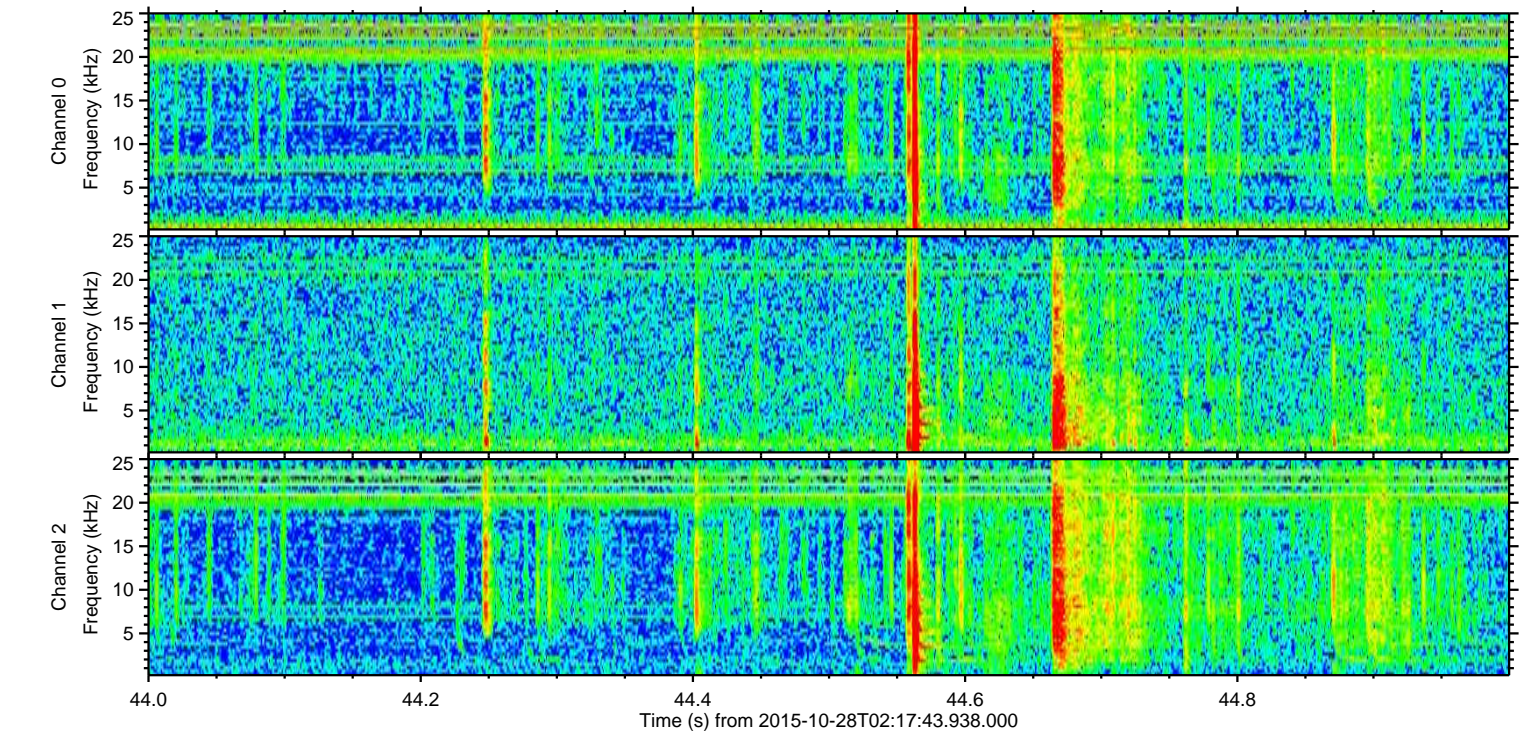
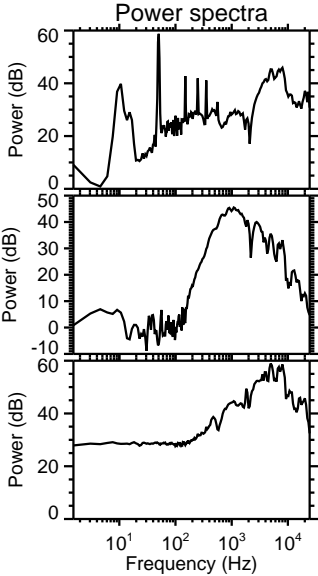
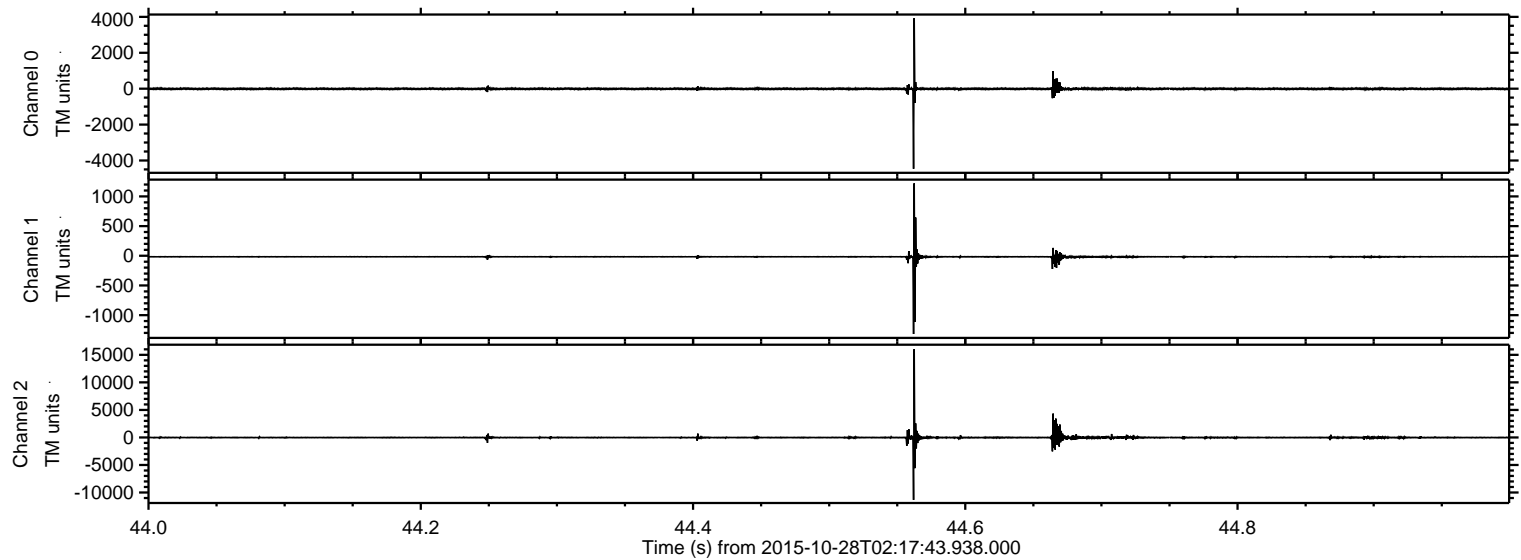
Processed Wed Oct 28 14:00:11 2015 by ELM ver.2012-10-06 from 001\_\_elm20151028\_021742\_\_dat00.bin





ELMAVAN 3D WAVEFORMS (Measured data sampled at 50 kHz) 51000 packets of 144 samples from 2015-10-28T02:17:43.938.000. Part 45/147

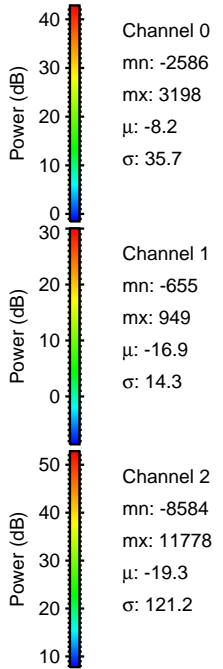
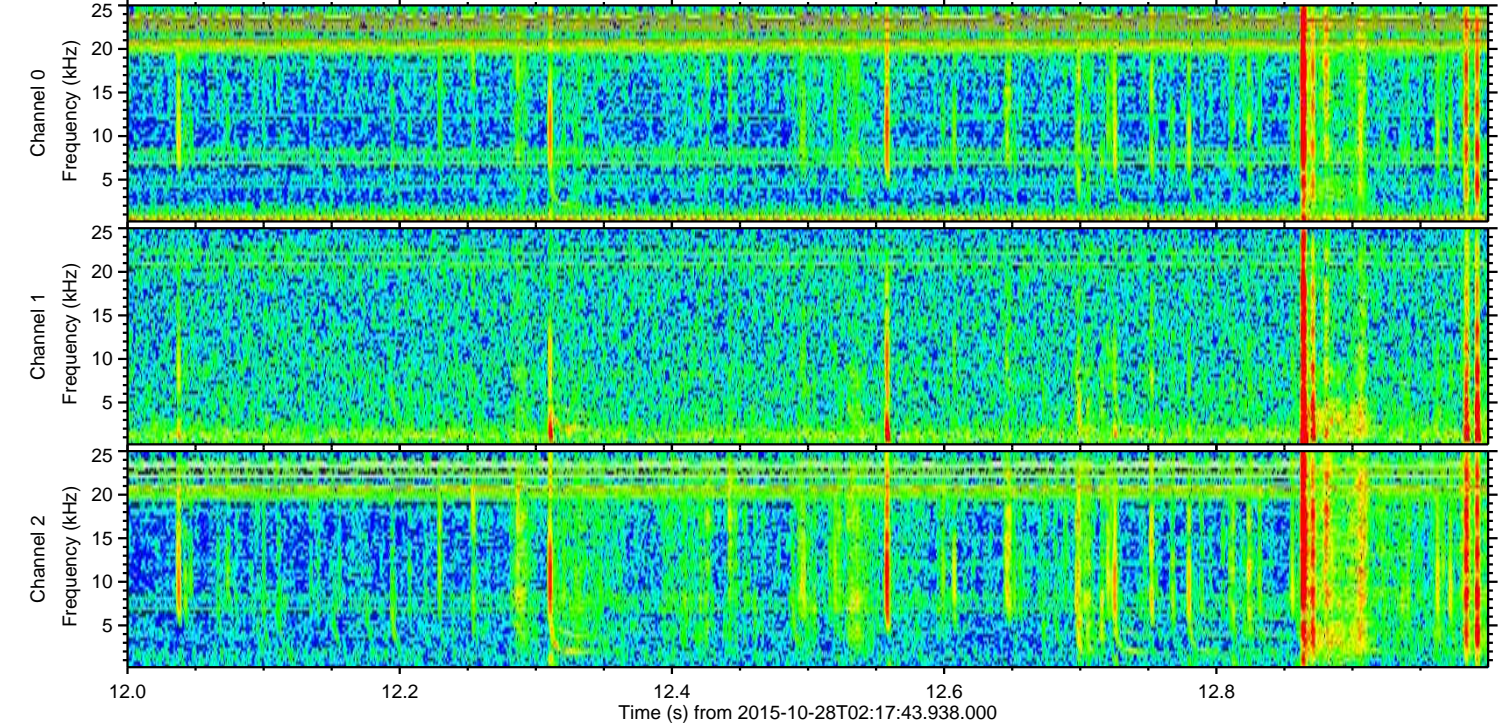
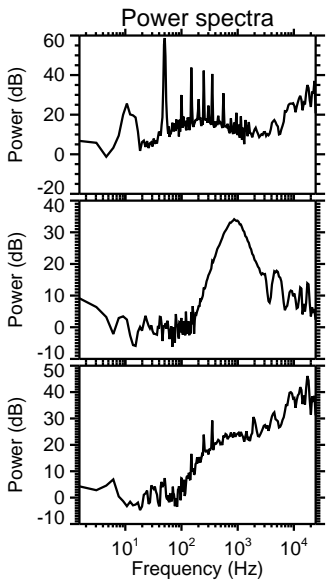
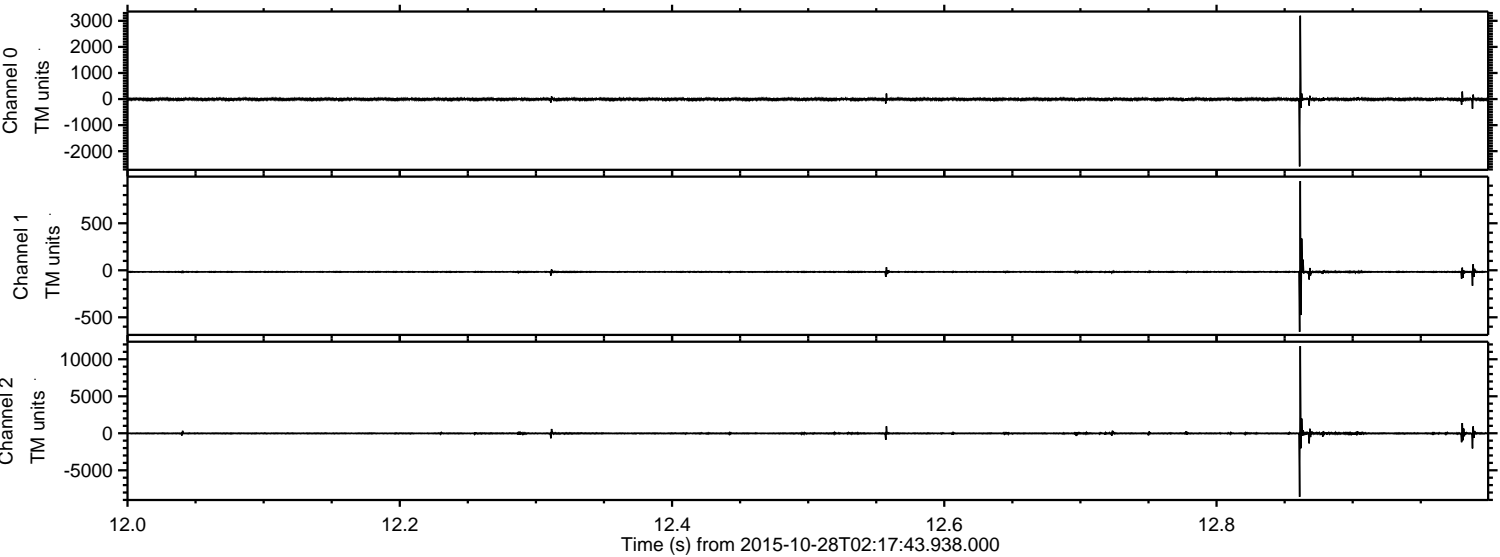
Processed Wed Oct 28 14:00:12 2015 by ELM ver.2012-10-06 from 001\_\_elm20151028\_021742\_\_dat00.bin





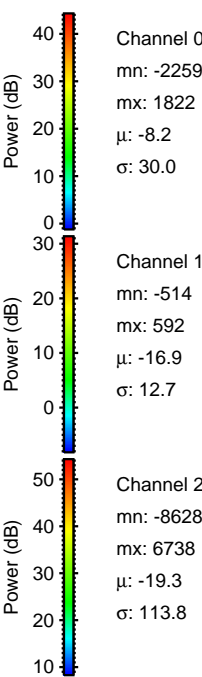
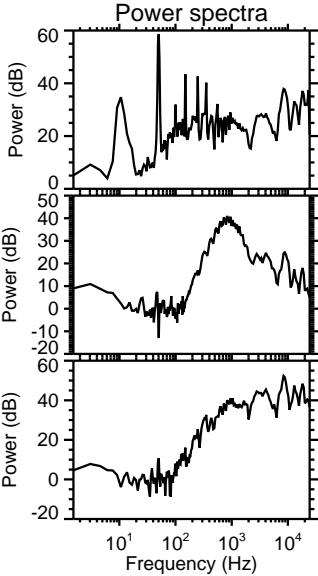
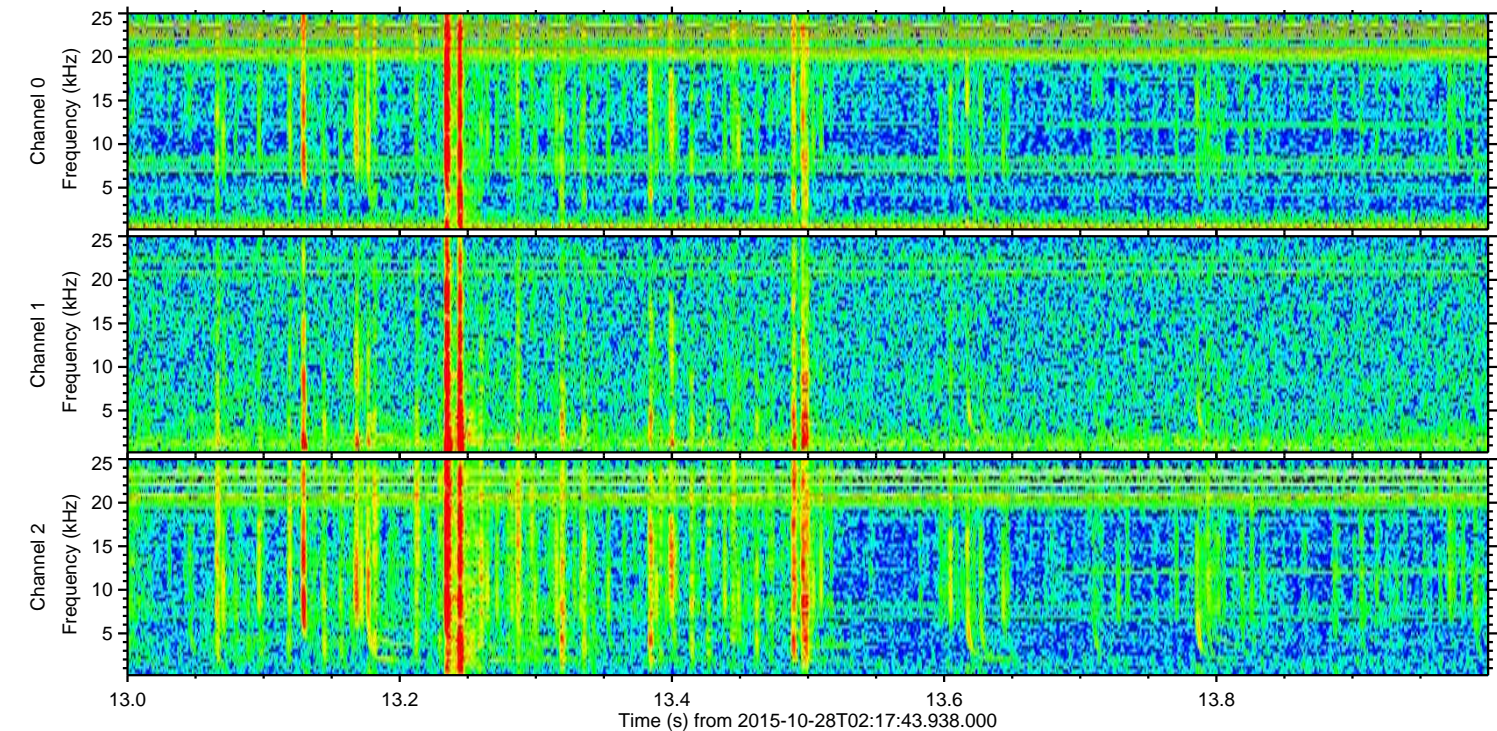
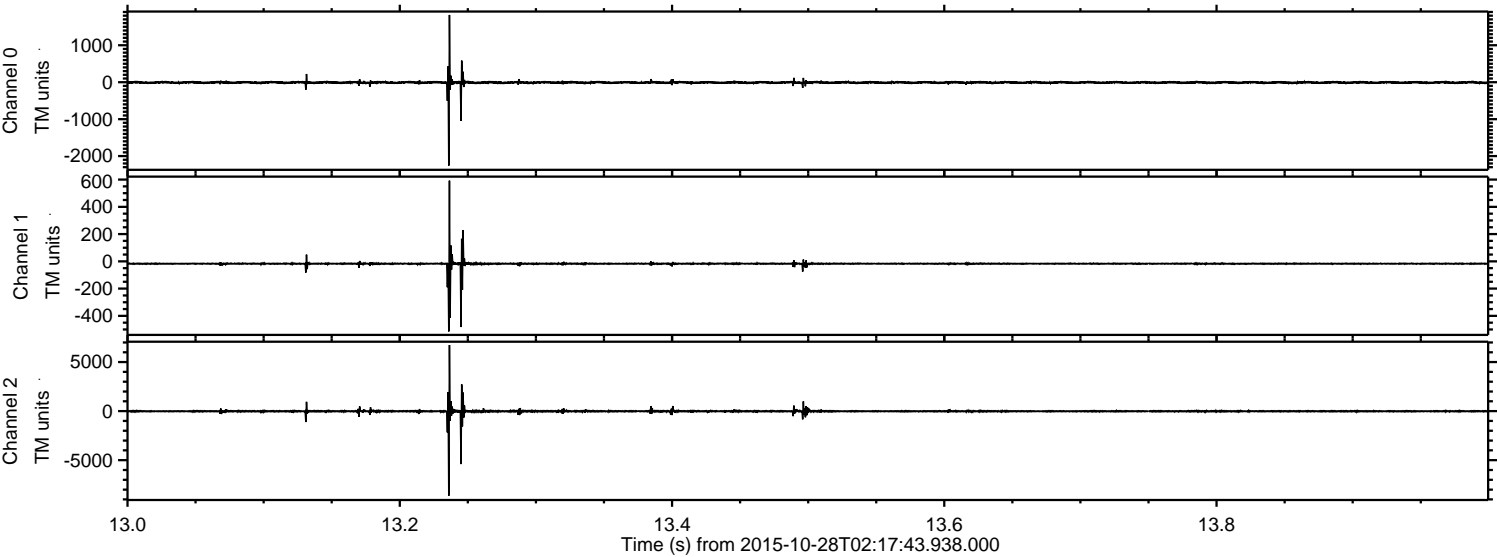
ELMAVAN 3D WAVEFORMS (Measured data sampled at 50 kHz) 51000 packets of 144 samples from 2015-10-28T02:17:43.938.000. Part 13/147

Processed Wed Oct 28 14:00:14 2015 by ELM ver.2012-10-06 from 001\_\_elm20151028\_021742\_\_dat00.bin





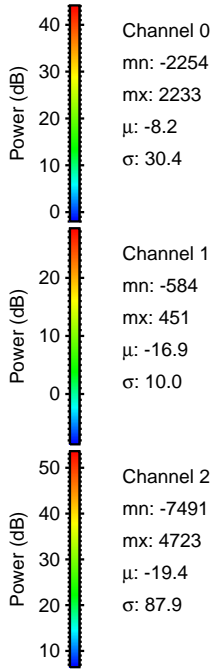
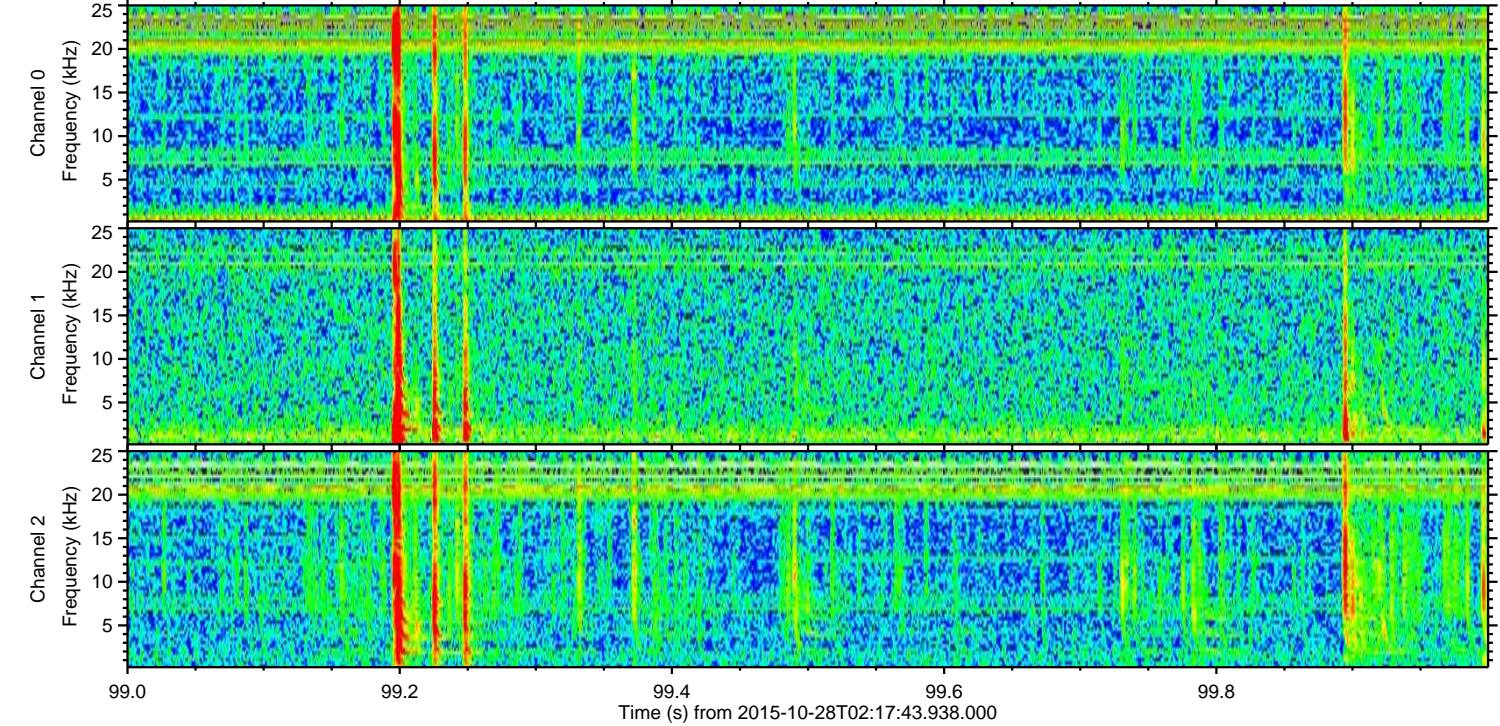
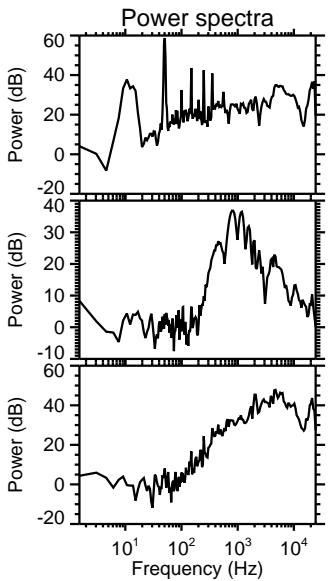
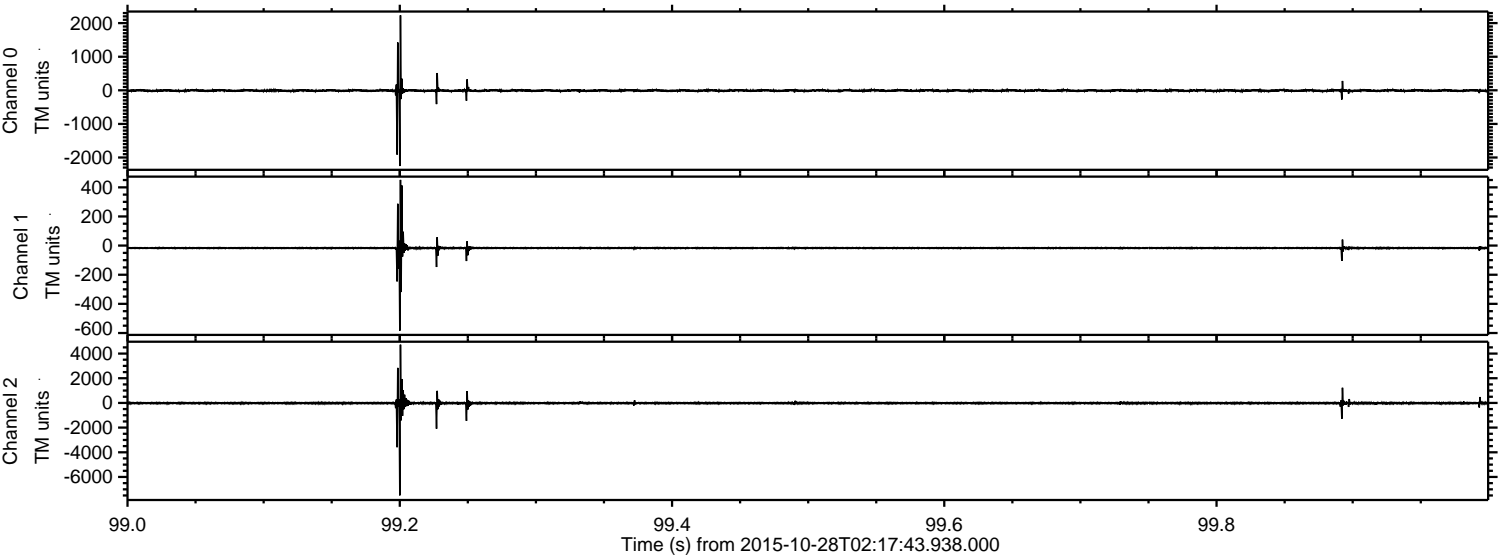
Processed Wed Oct 28 14:00:15 2015 by ELM ver.2012-10-06 from 001\_\_elm20151028\_021742\_\_dat00.bin





ELMAVAN 3D WAVEFORMS (Measured data sampled at 50 kHz) 51000 packets of 144 samples from 2015-10-28T02:17:43.938.000. Part 100/147

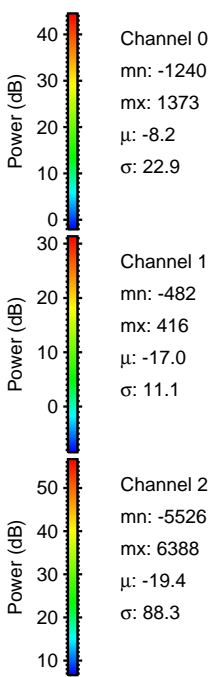
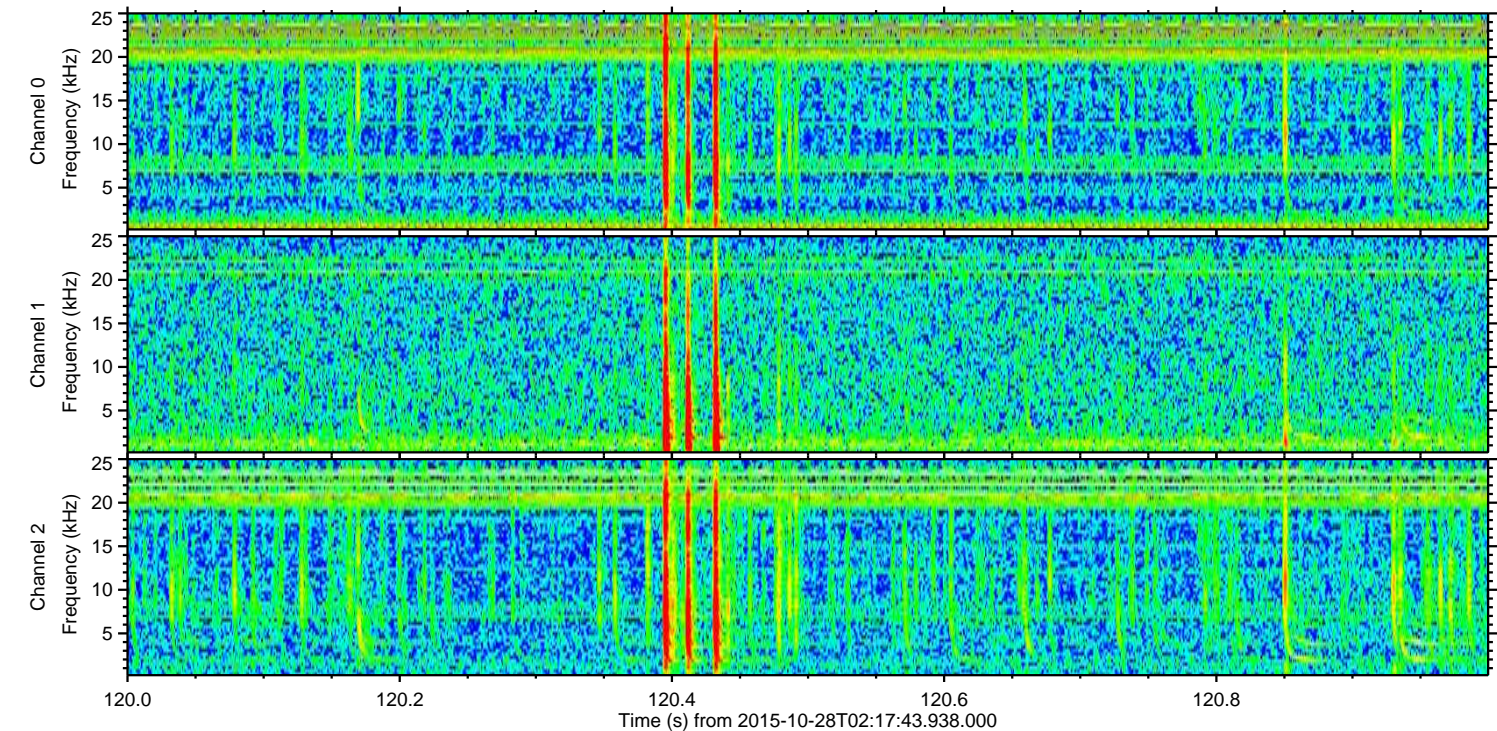
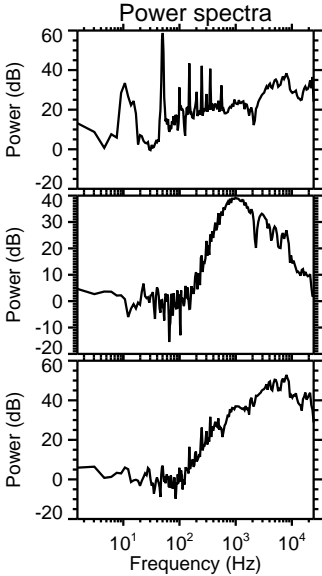
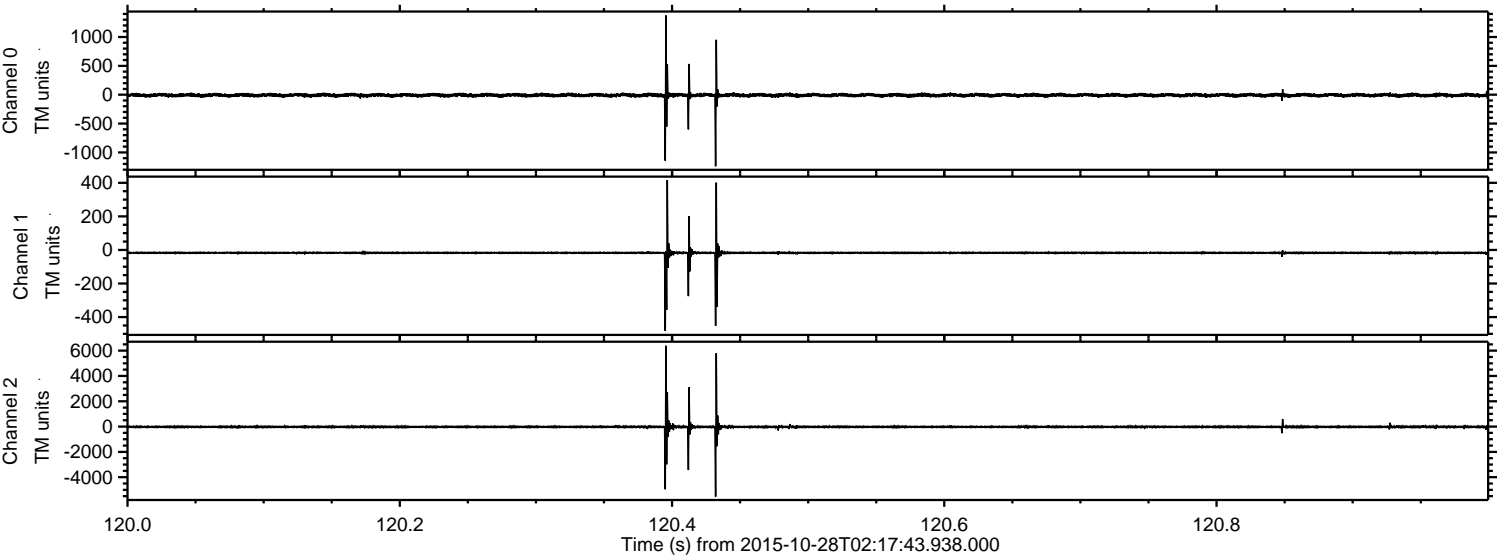
Processed Wed Oct 28 14:00:16 2015 by ELM ver.2012-10-06 from 001\_\_elm20151028\_021742\_\_dat00.bin





ELMAVAN 3D WAVEFORMS (Measured data sampled at 50 kHz) 51000 packets of 144 samples from 2015-10-28T02:17:43.938.000. Part 121/147

Processed Wed Oct 28 14:00:17 2015 by ELM ver.2012-10-06 from 001\_\_elm20151028\_021742\_\_dat00.bin



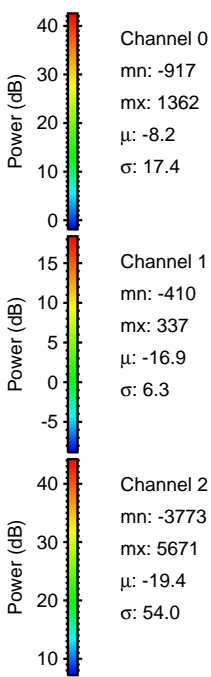
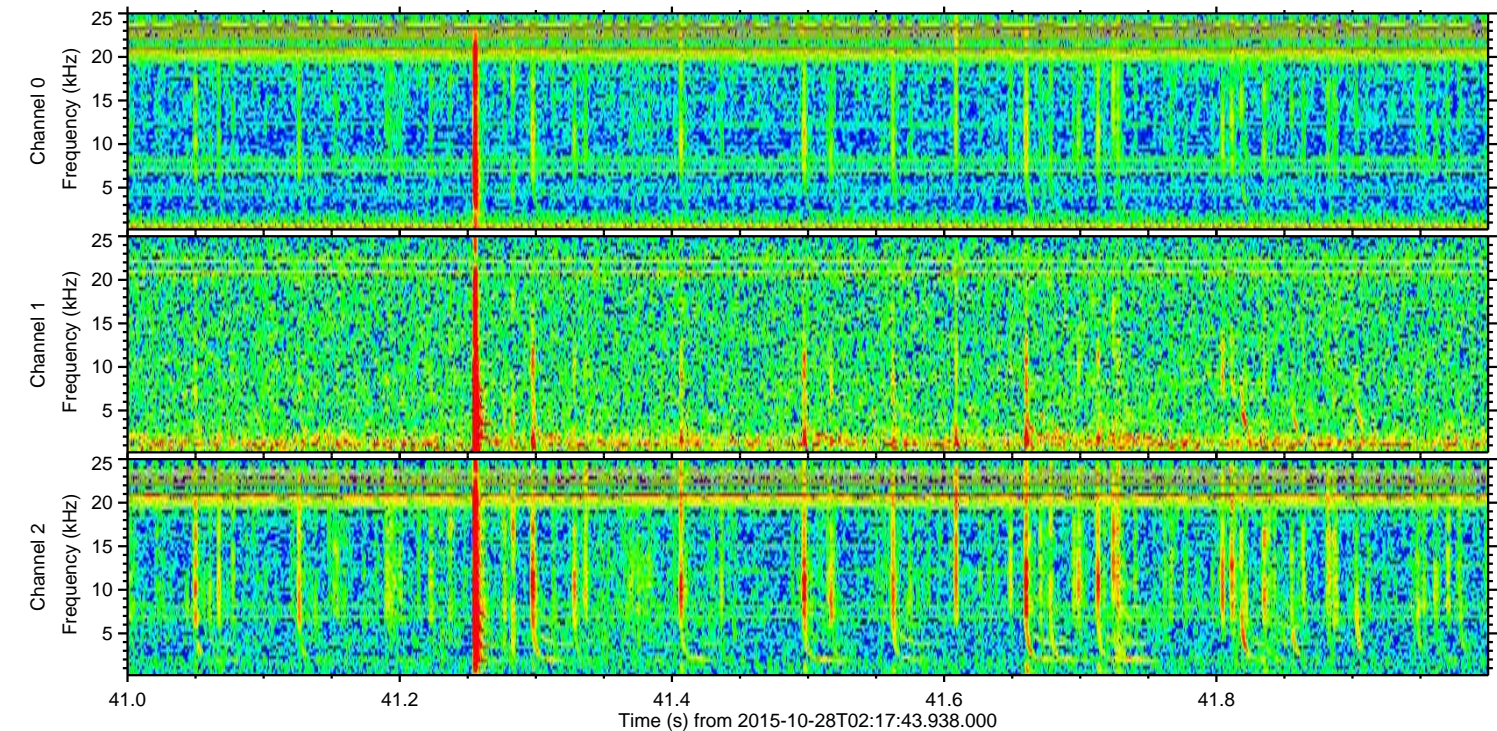
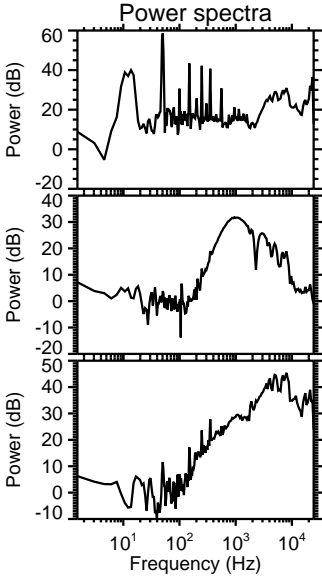
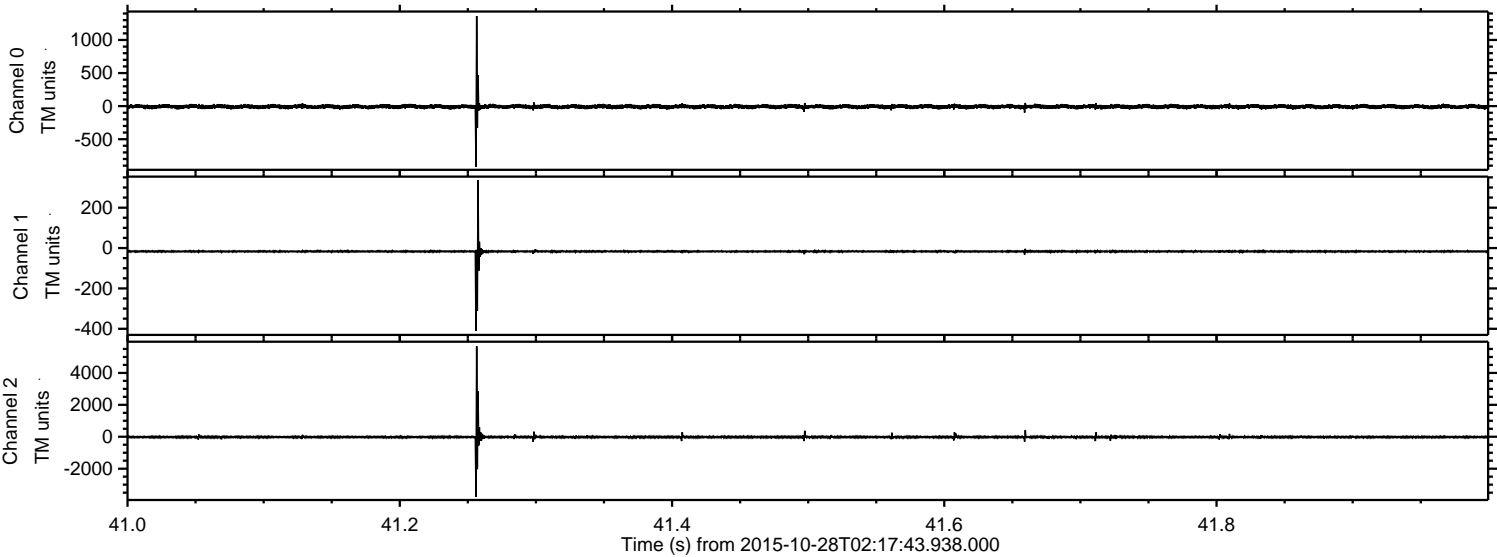
Channel 0  
mn: -1240  
mx: 1373  
 $\mu$ : -8.2  
 $\sigma$ : 22.9

Channel 1  
mn: -482  
mx: 416  
 $\mu$ : -17.0  
 $\sigma$ : 11.1

Channel 2  
mn: -5526  
mx: 6388  
 $\mu$ : -19.4  
 $\sigma$ : 88.3

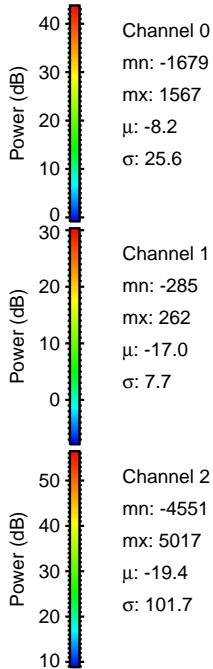
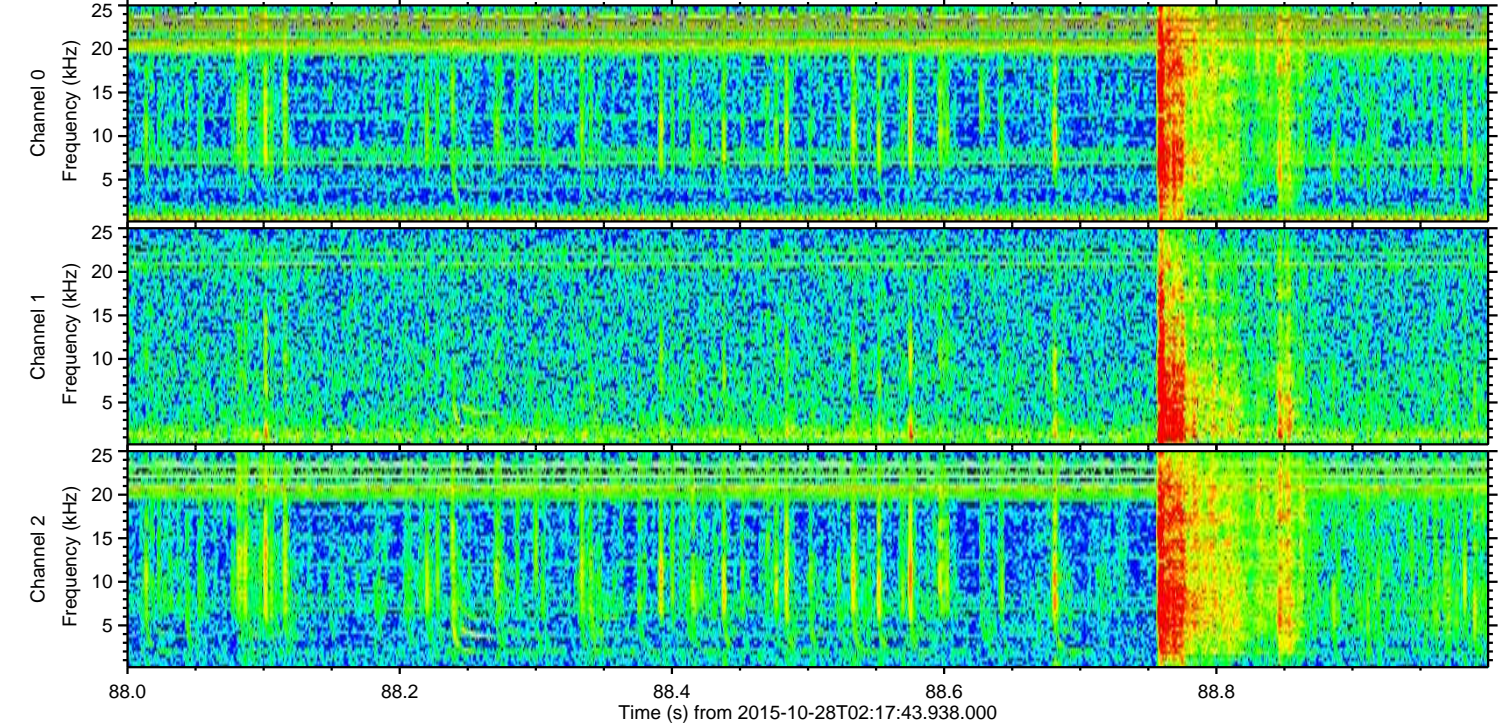
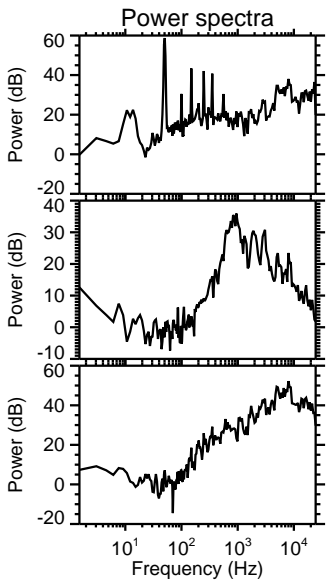
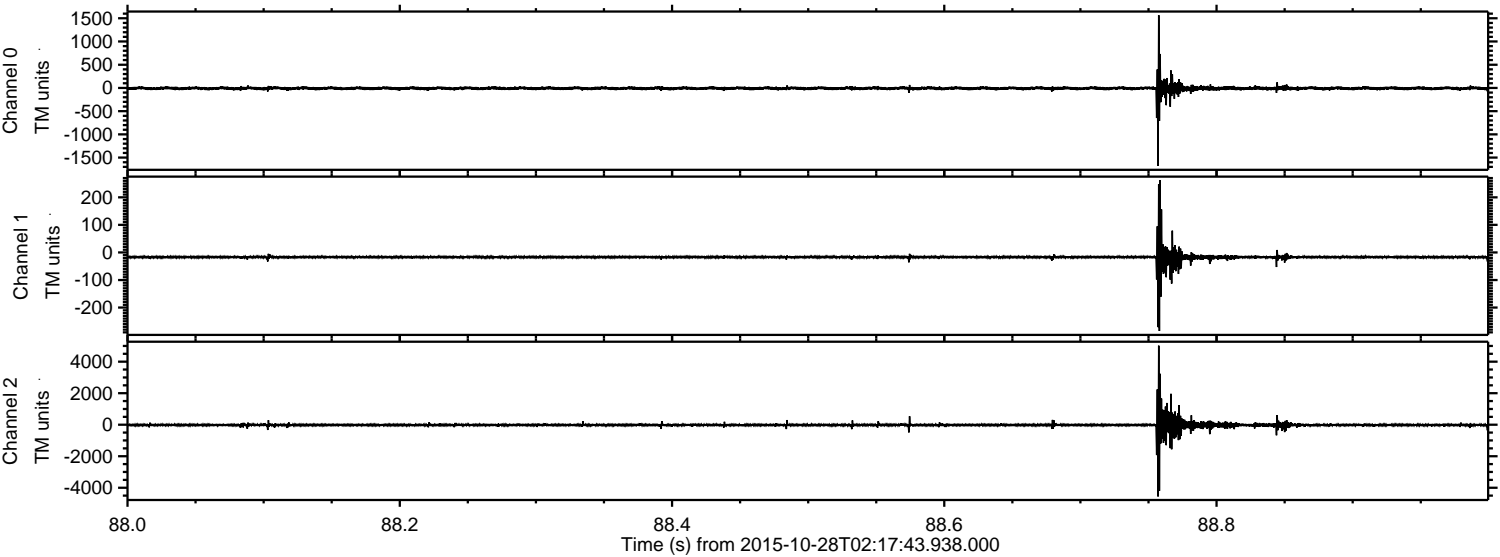


Processed Wed Oct 28 14:00:18 2015 by ELM ver.2012-10-06 from 001\_\_elm20151028\_021742\_\_dat00.bin



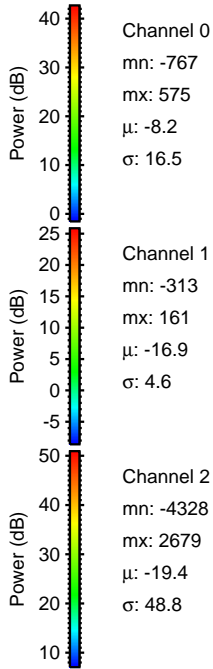
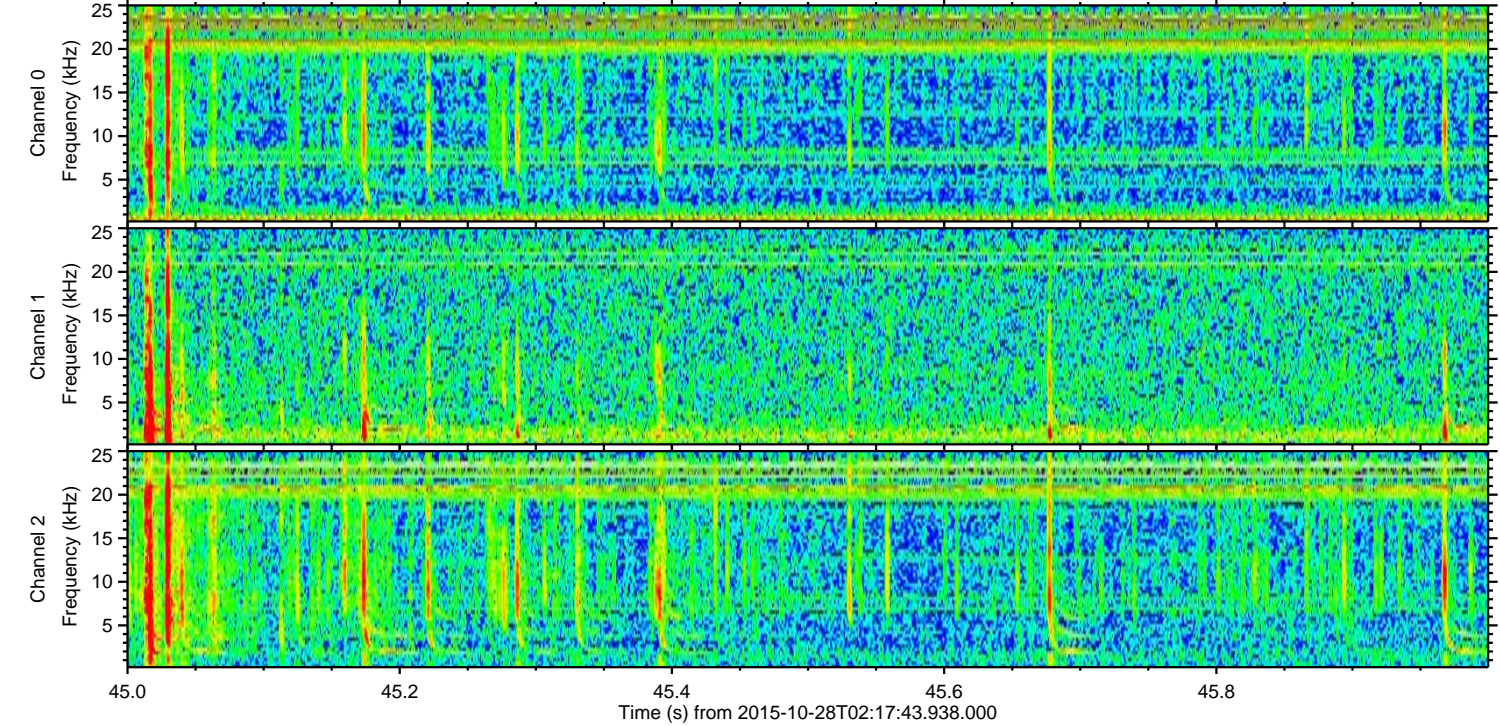
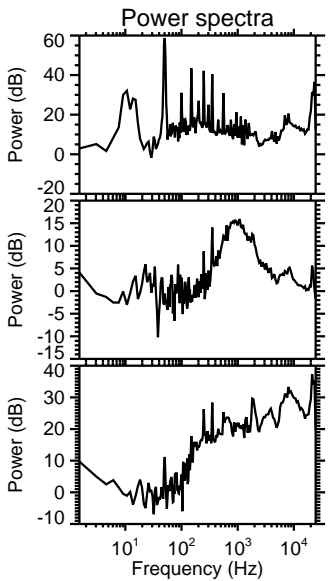
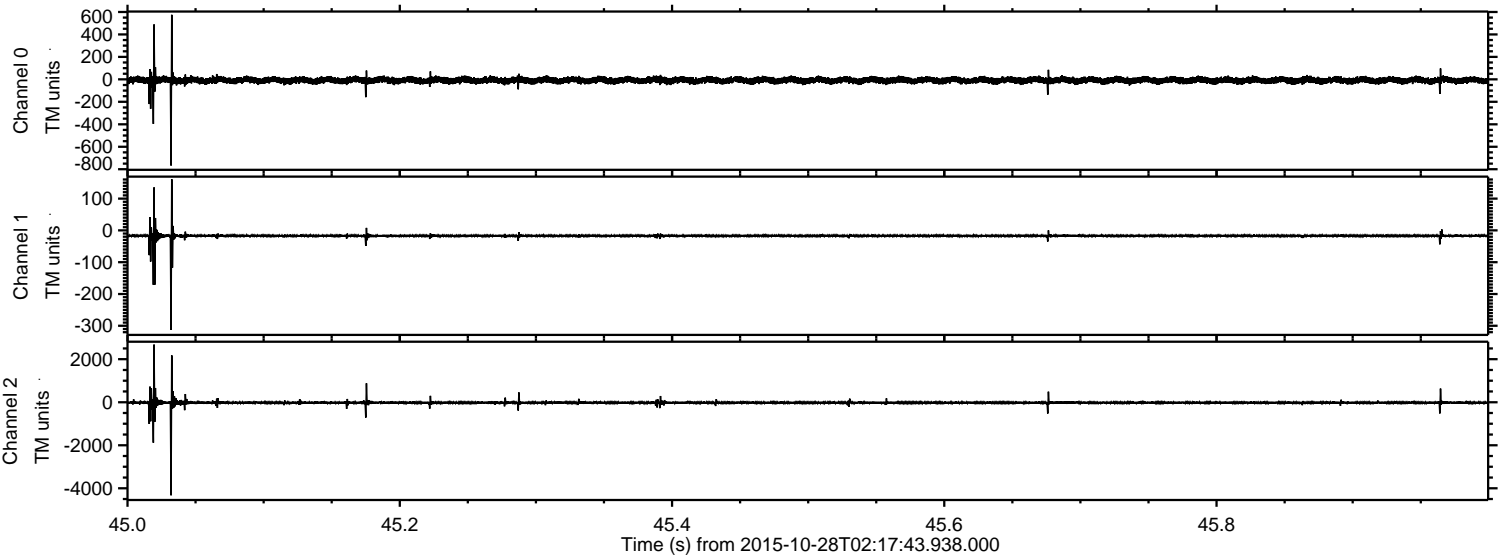


Processed Wed Oct 28 14:00:19 2015 by ELM ver.2012-10-06 from 001\_\_elm20151028\_021742\_\_dat00.bin





Processed Wed Oct 28 14:00:21 2015 by ELM ver.2012-10-06 from 001\_\_elm20151028\_021742\_\_dat00.bin





Processed Wed Oct 28 14:00:23 2015 by ELM ver.2012-10-06 from 001\_\_elm20151028\_021742\_\_dat00.bin

