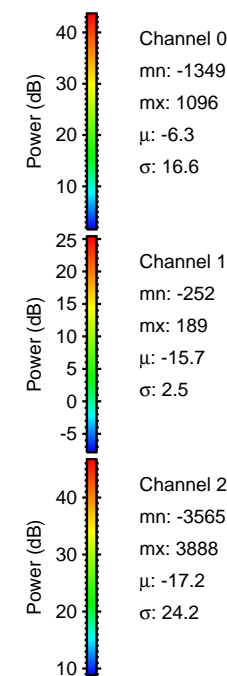
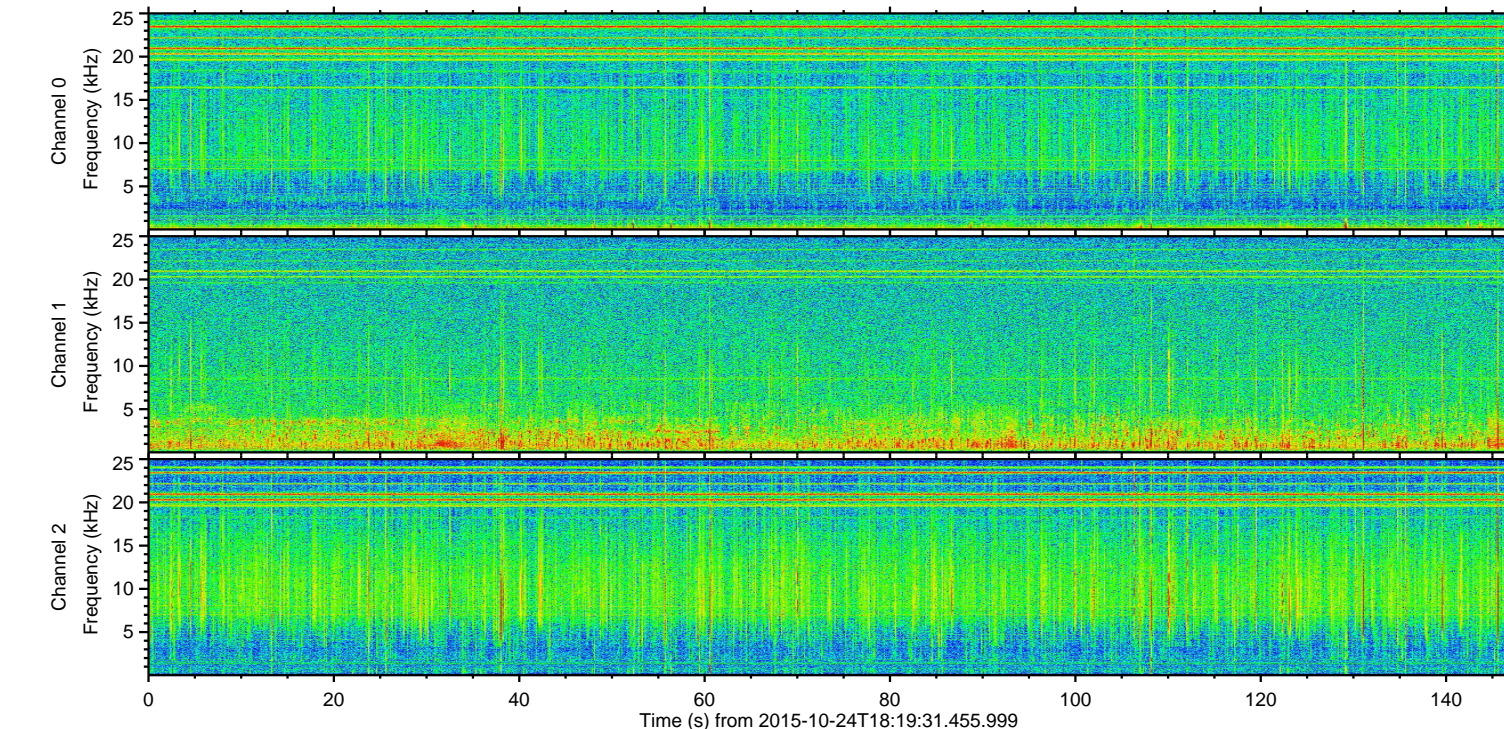
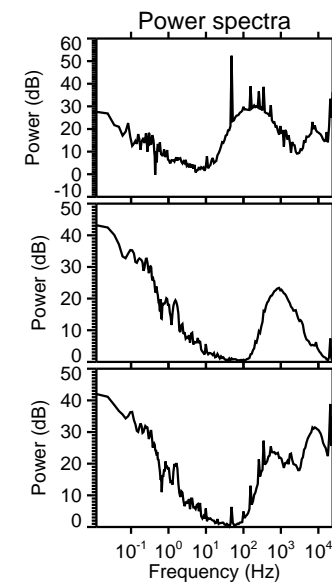
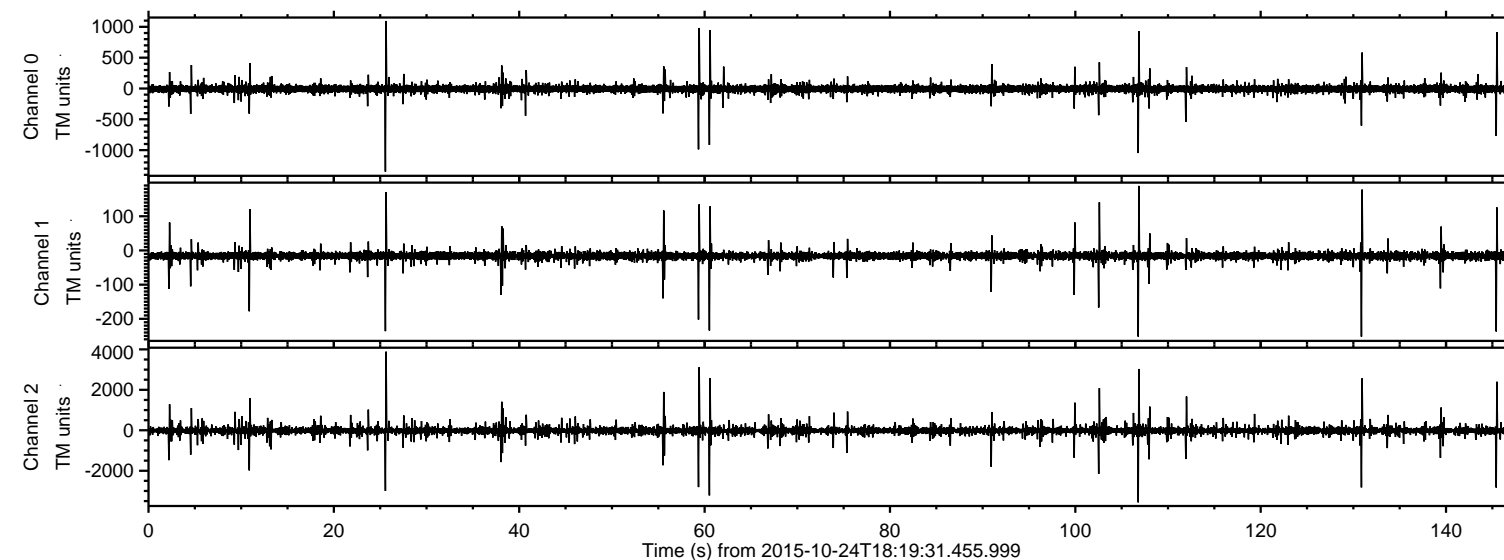


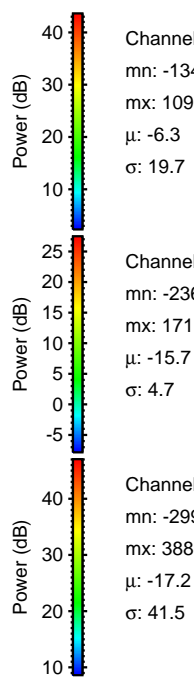
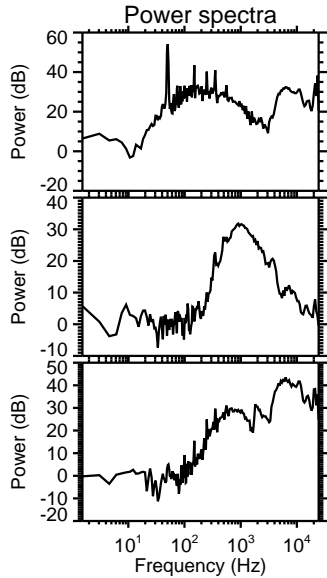
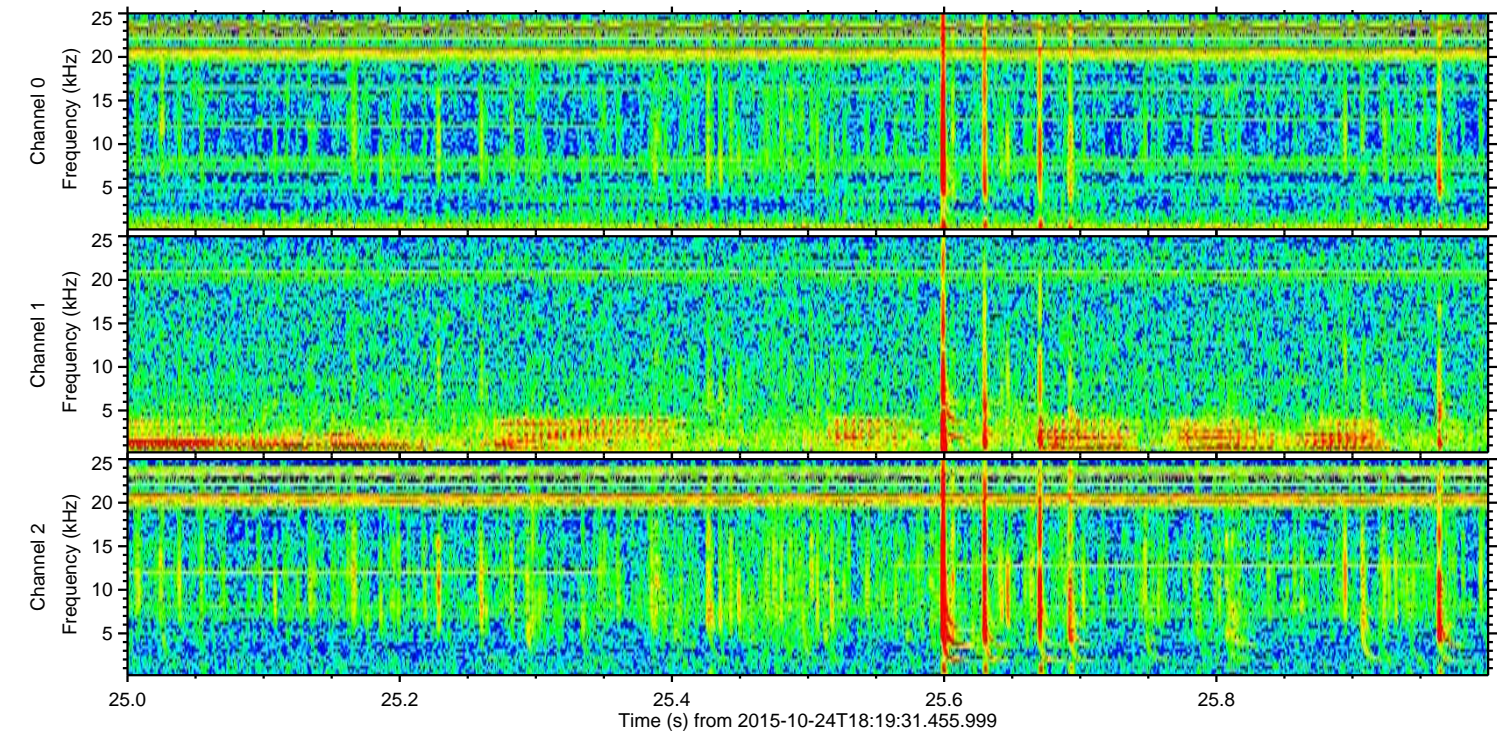
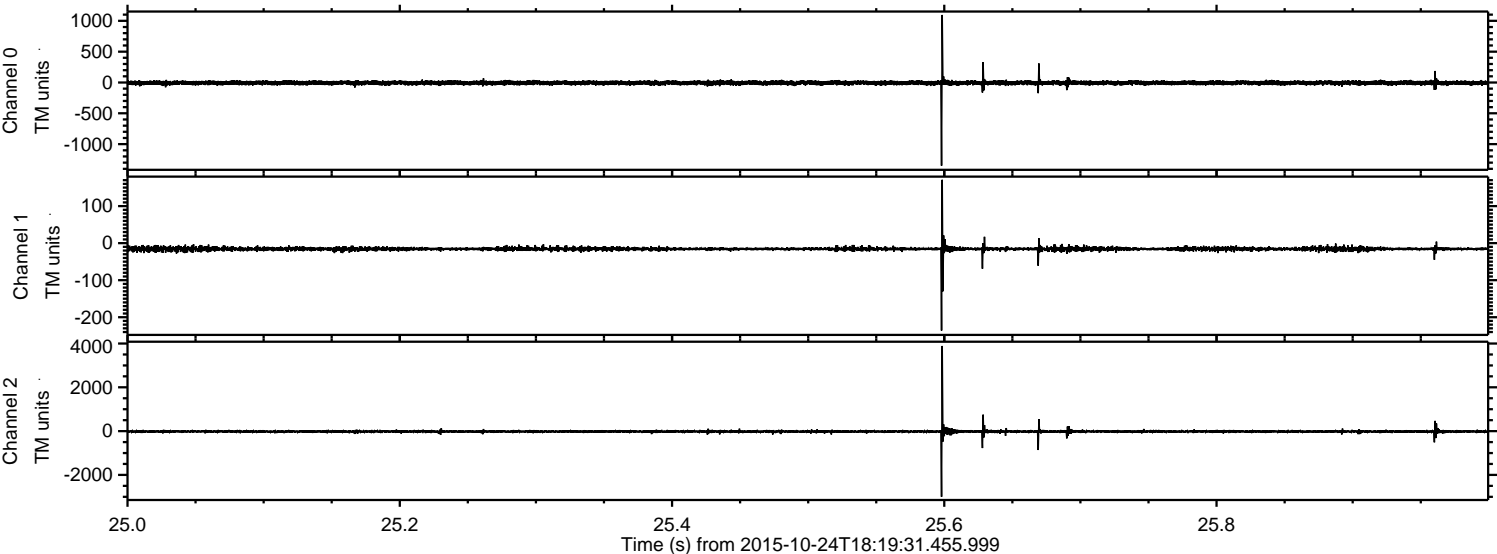
ELMAVAN 3D WAVEFORMS (Measured data sampled at 50 kHz) 51000 packets of 144 samples from 2015-10-24T18:19:31.455.999.

Processed Sat Oct 24 20:25:52 2015 by ELM ver.2012-10-06 from 001__elm20151024_181930__dat00.bin



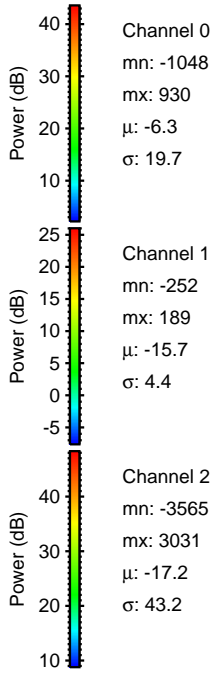
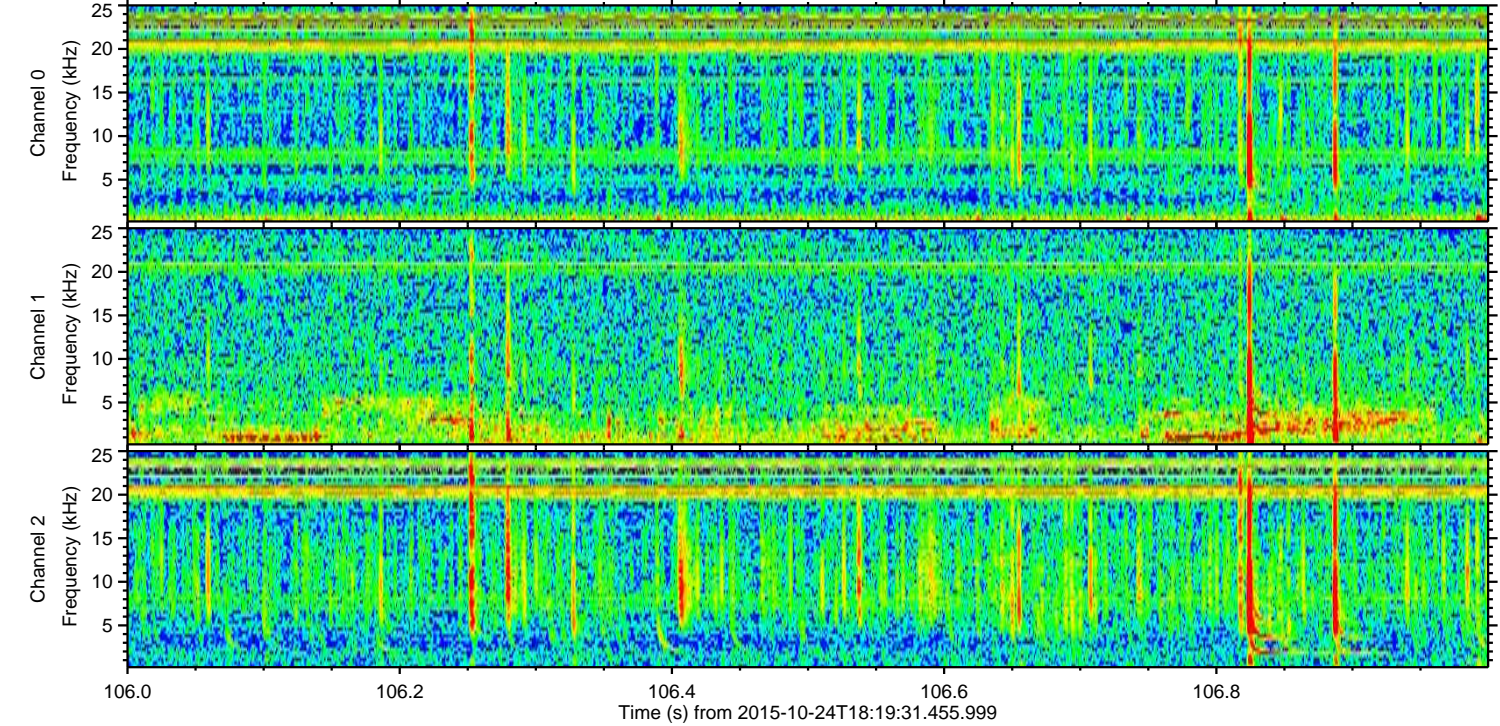
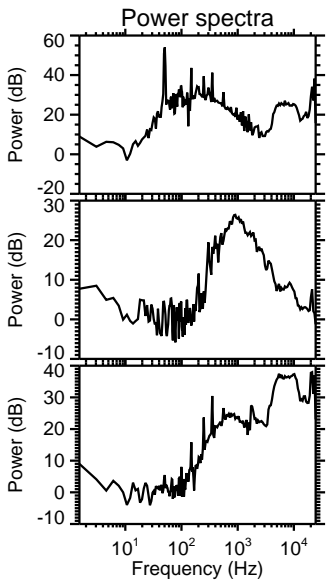
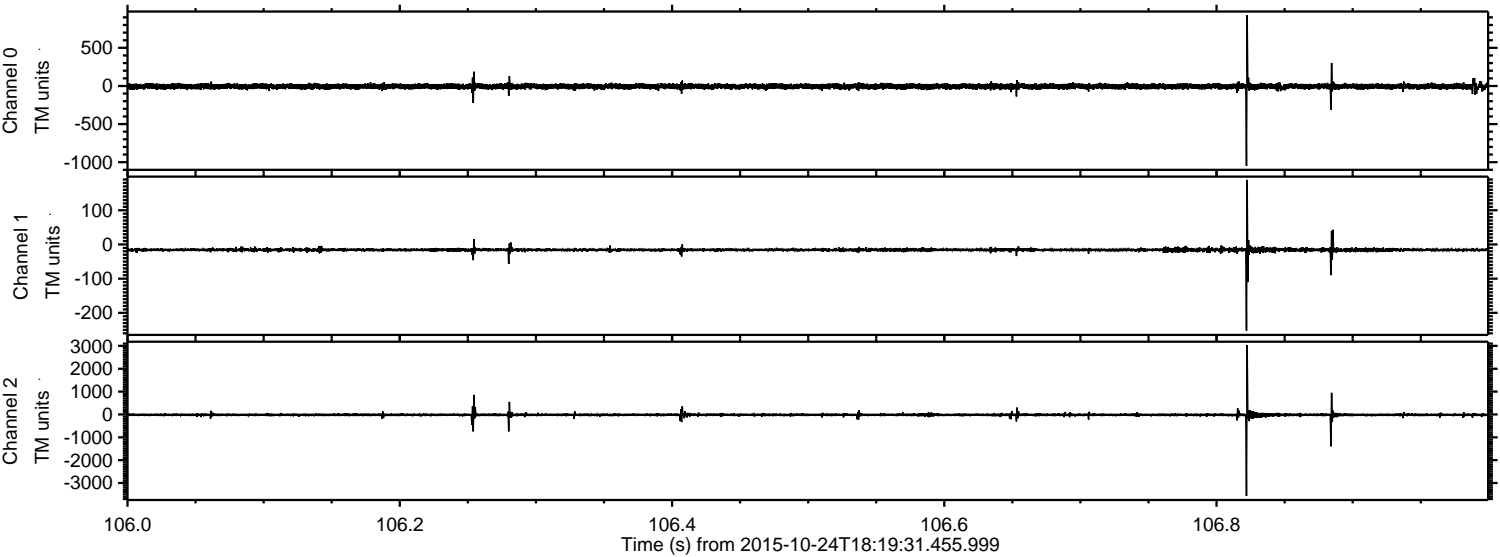
ELMAVAN 3D WAVEFORMS (Measured data sampled at 50 kHz) 51000 packets of 144 samples from 2015-10-24T18:19:31.455.999. Part 26/147

Processed Sat Oct 24 20:26:08 2015 by ELM ver.2012-10-06 from 001__elm20151024_181930__dat00.bin



ELMAVAN 3D WAVEFORMS (Measured data sampled at 50 kHz) 51000 packets of 144 samples from 2015-10-24T18:19:31.455.999. Part 107/147

Processed Sat Oct 24 20:26:09 2015 by ELM ver.2012-10-06 from 001__elm20151024_181930__dat00.bin

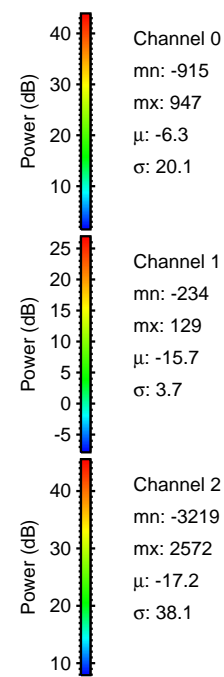
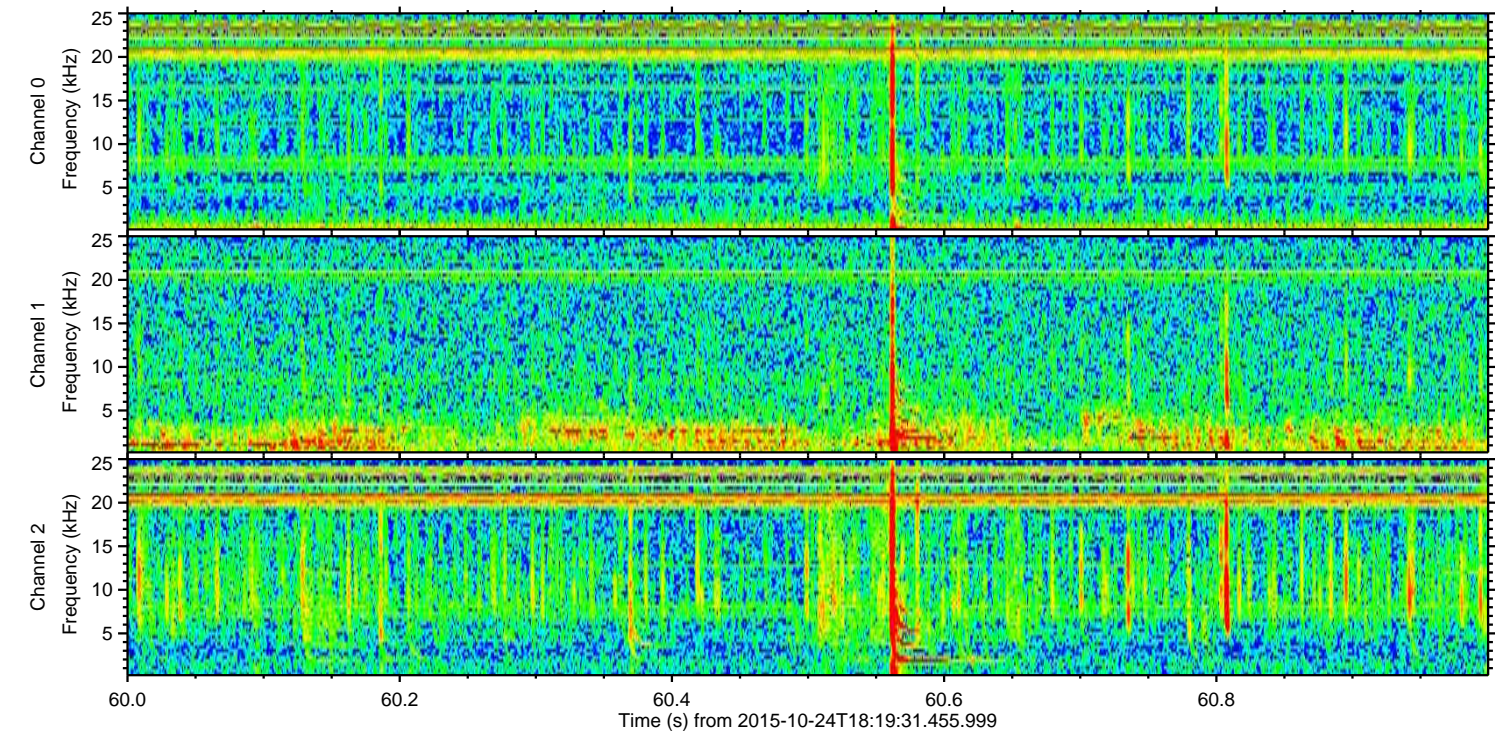
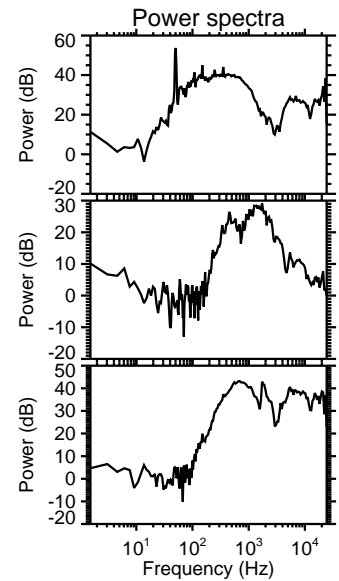
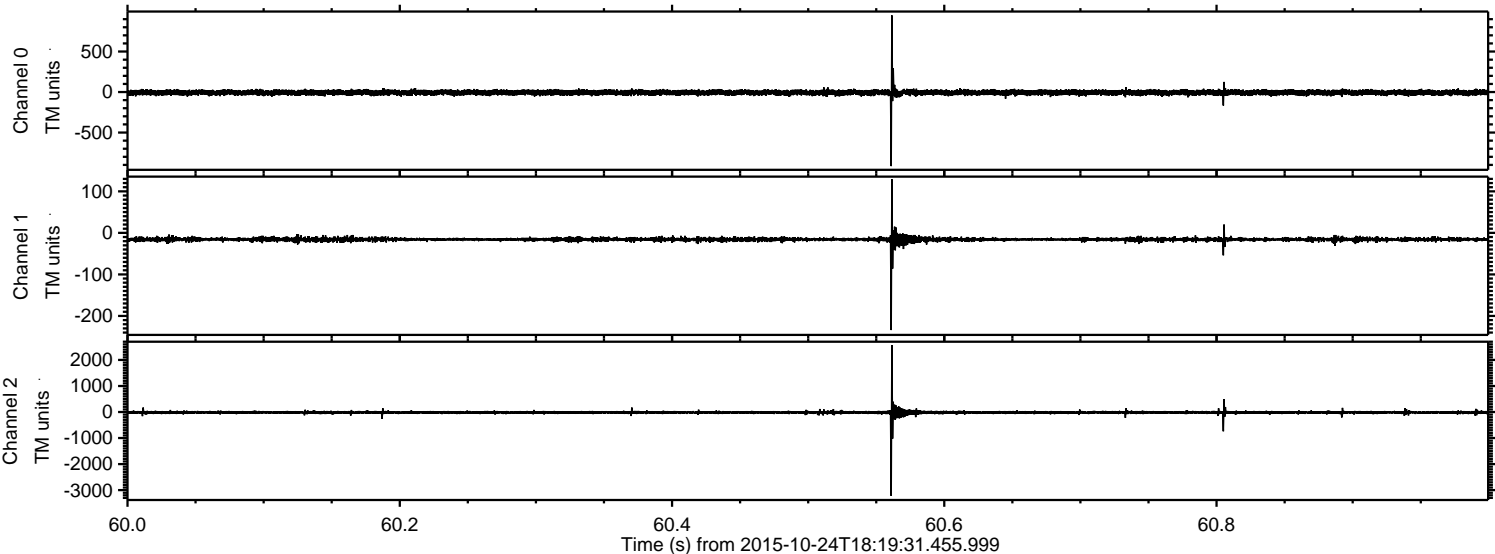


Channel 0
mn: -1048
mx: 930
 μ : -6.3
 σ : 19.7

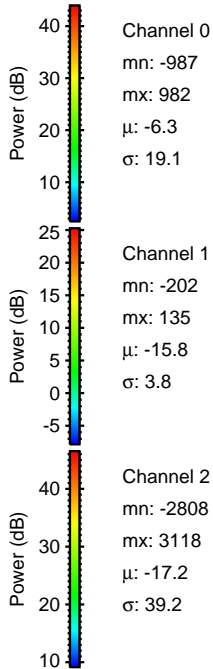
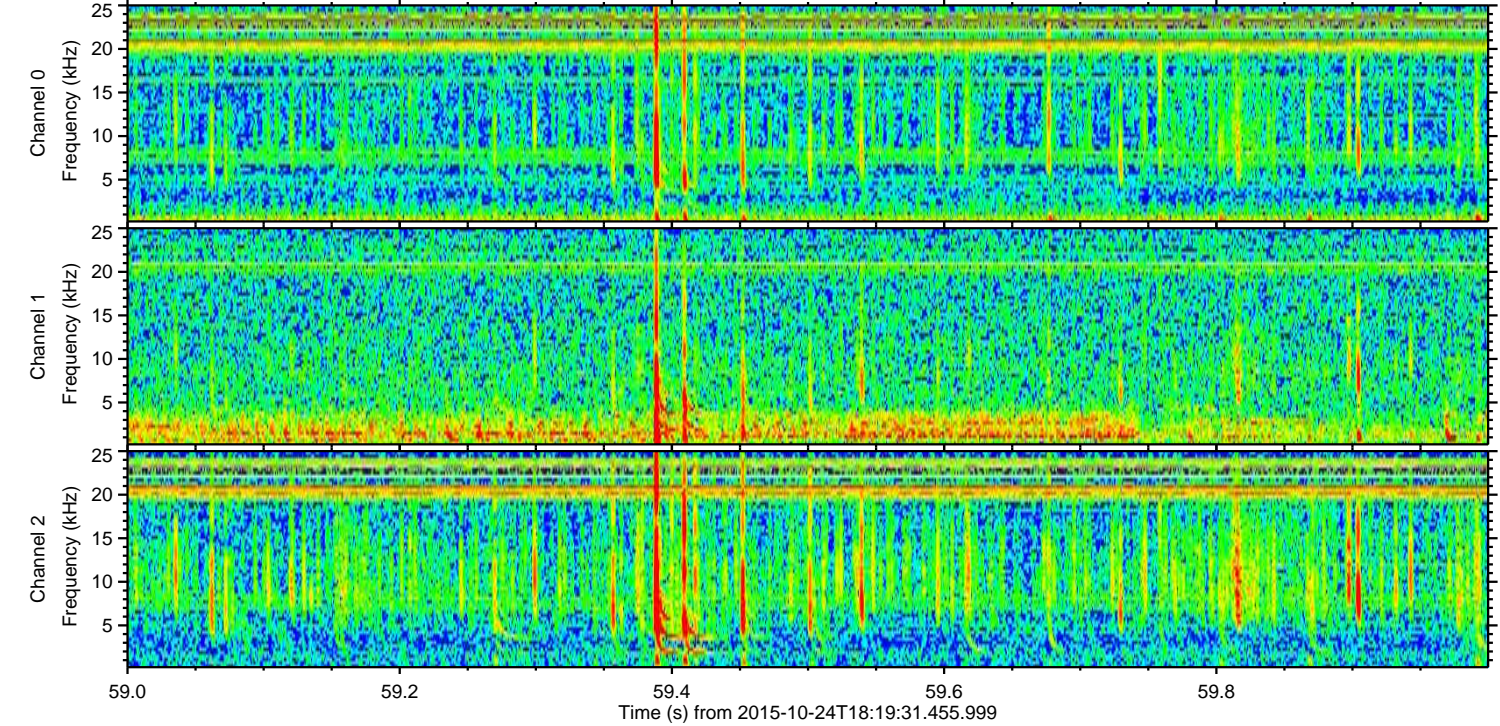
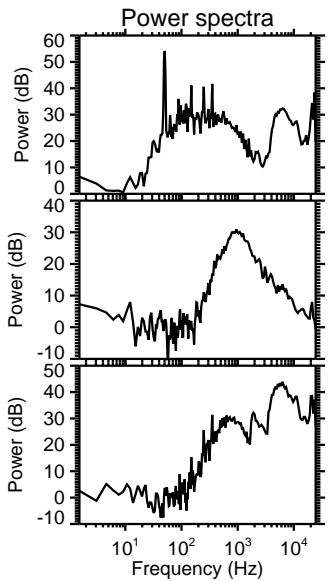
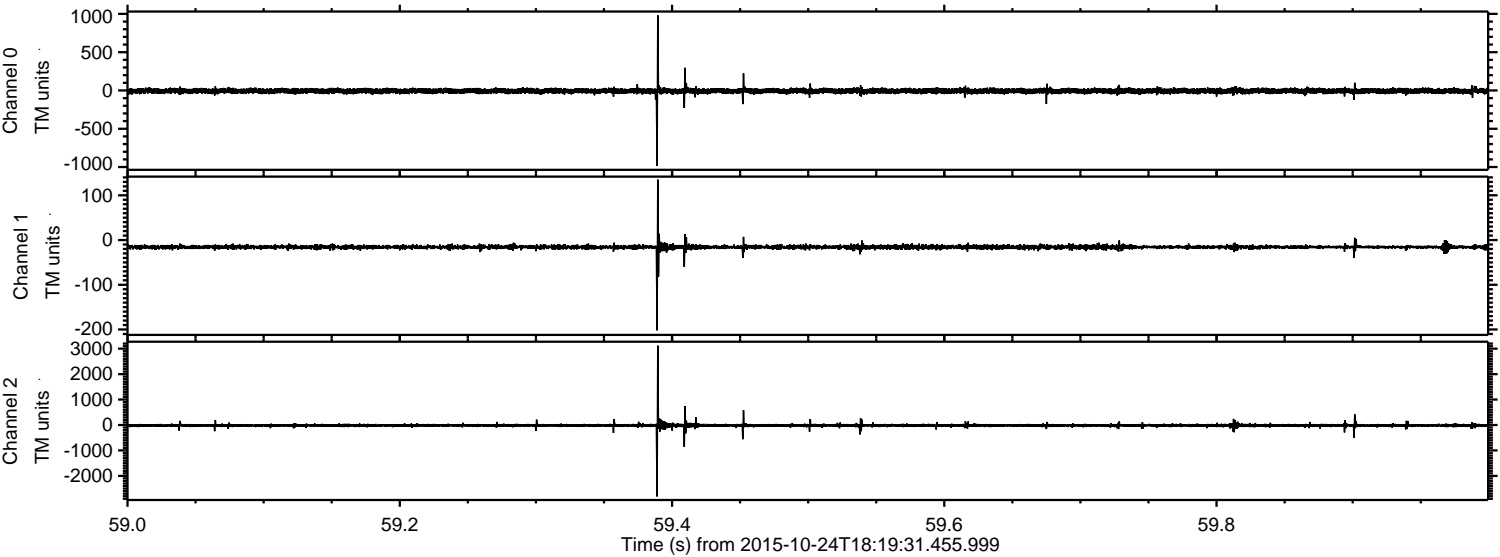
Channel 1
mn: -252
mx: 189
 μ : -15.7
 σ : 4.4

Channel 2
mn: -3565
mx: 3031
 μ : -17.2
 σ : 43.2

Processed Sat Oct 24 20:26:10 2015 by ELM ver.2012-10-06 from 001__elm20151024_181930__dat00.bin

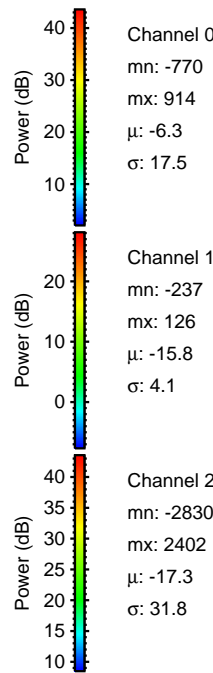
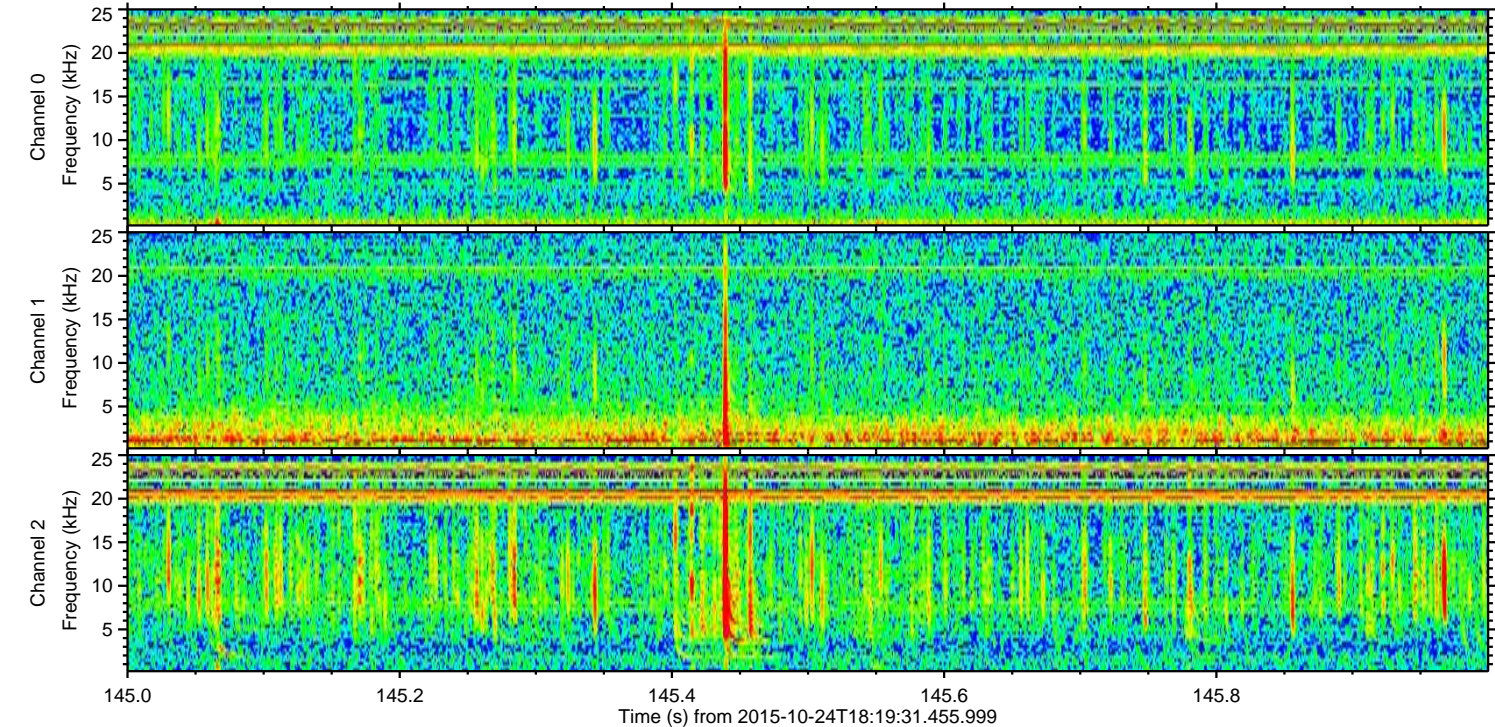
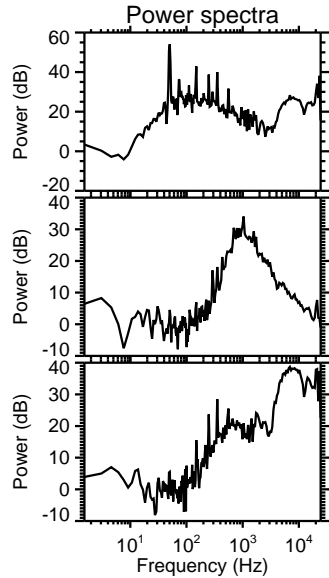
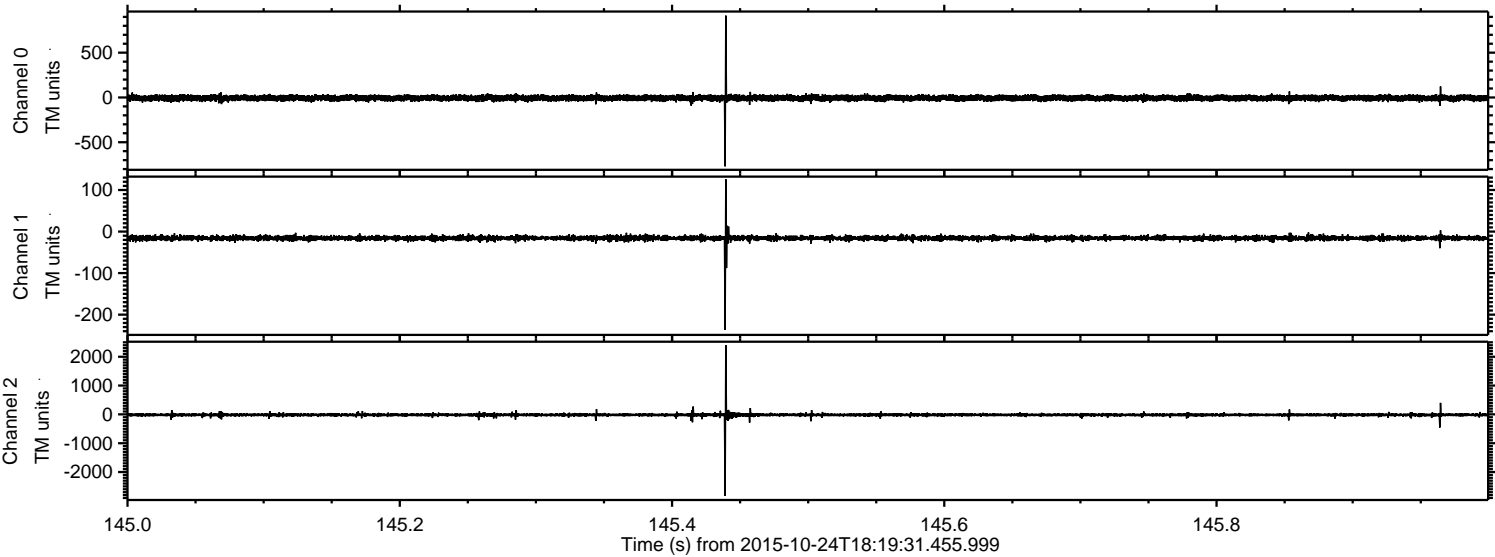


Processed Sat Oct 24 20:26:11 2015 by ELM ver.2012-10-06 from 001__elm20151024_181930__dat00.bin



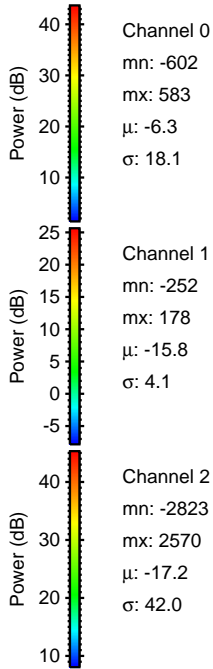
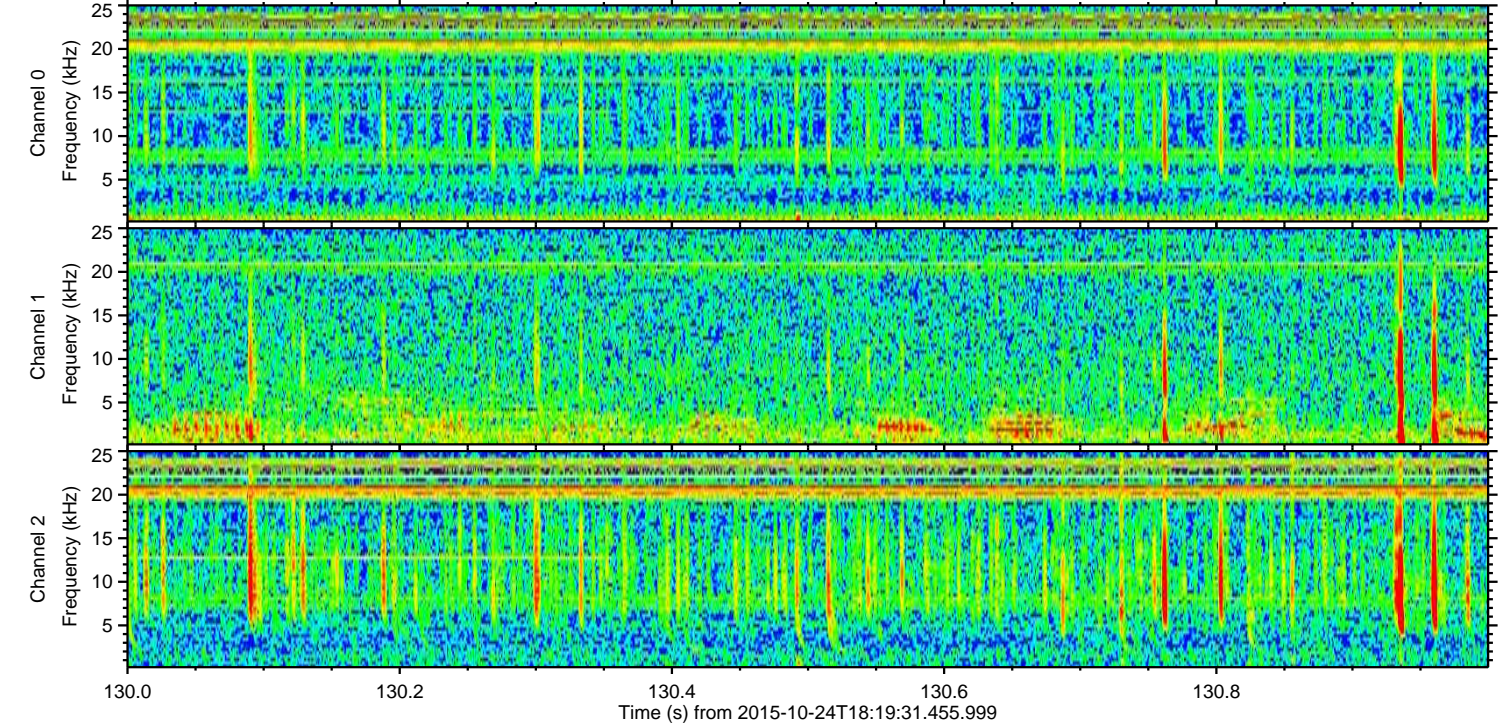
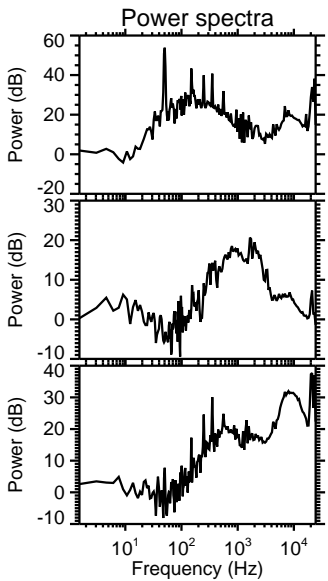
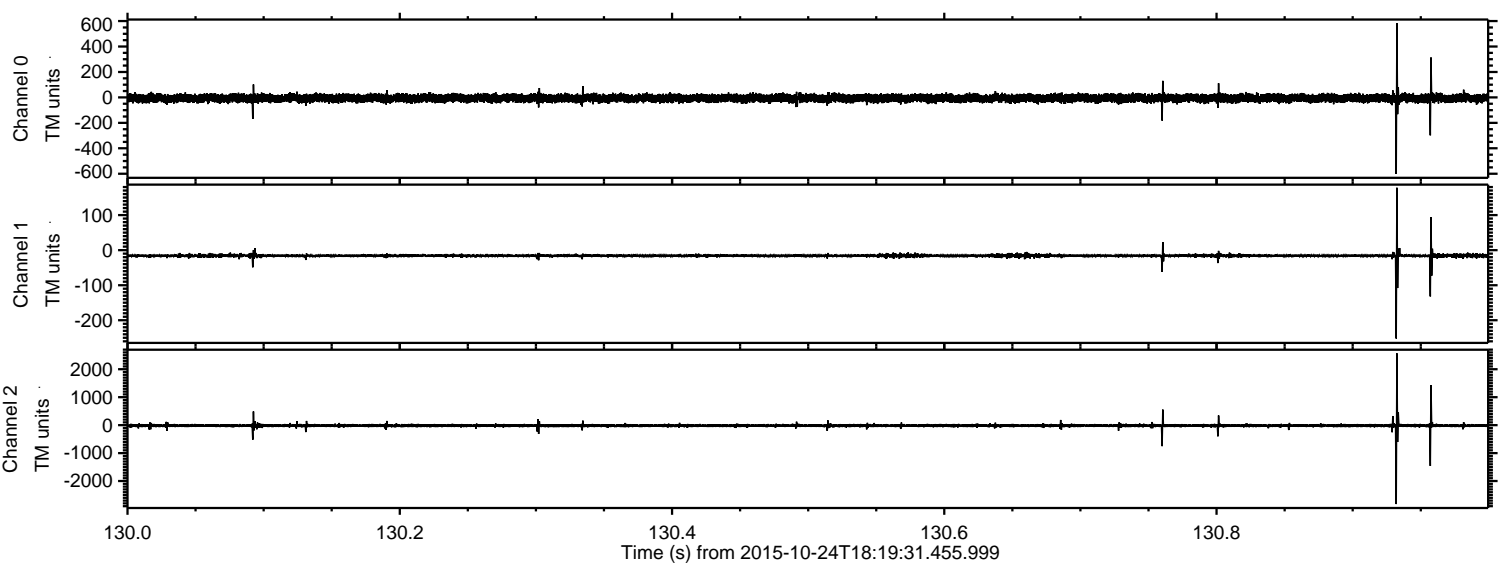
ELMAVAN 3D WAVEFORMS (Measured data sampled at 50 kHz) 51000 packets of 144 samples from 2015-10-24T18:19:31.455.999. Part 146/147

Processed Sat Oct 24 20:26:12 2015 by ELM ver.2012-10-06 from 001__elm20151024_181930__dat00.bin



ELMAVAN 3D WAVEFORMS (Measured data sampled at 50 kHz) 51000 packets of 144 samples from 2015-10-24T18:19:31.455.999. Part 131/147

Processed Sat Oct 24 20:26:13 2015 by ELM ver.2012-10-06 from 001__elm20151024_181930__dat00.bin



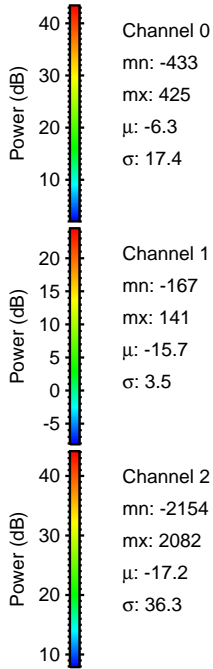
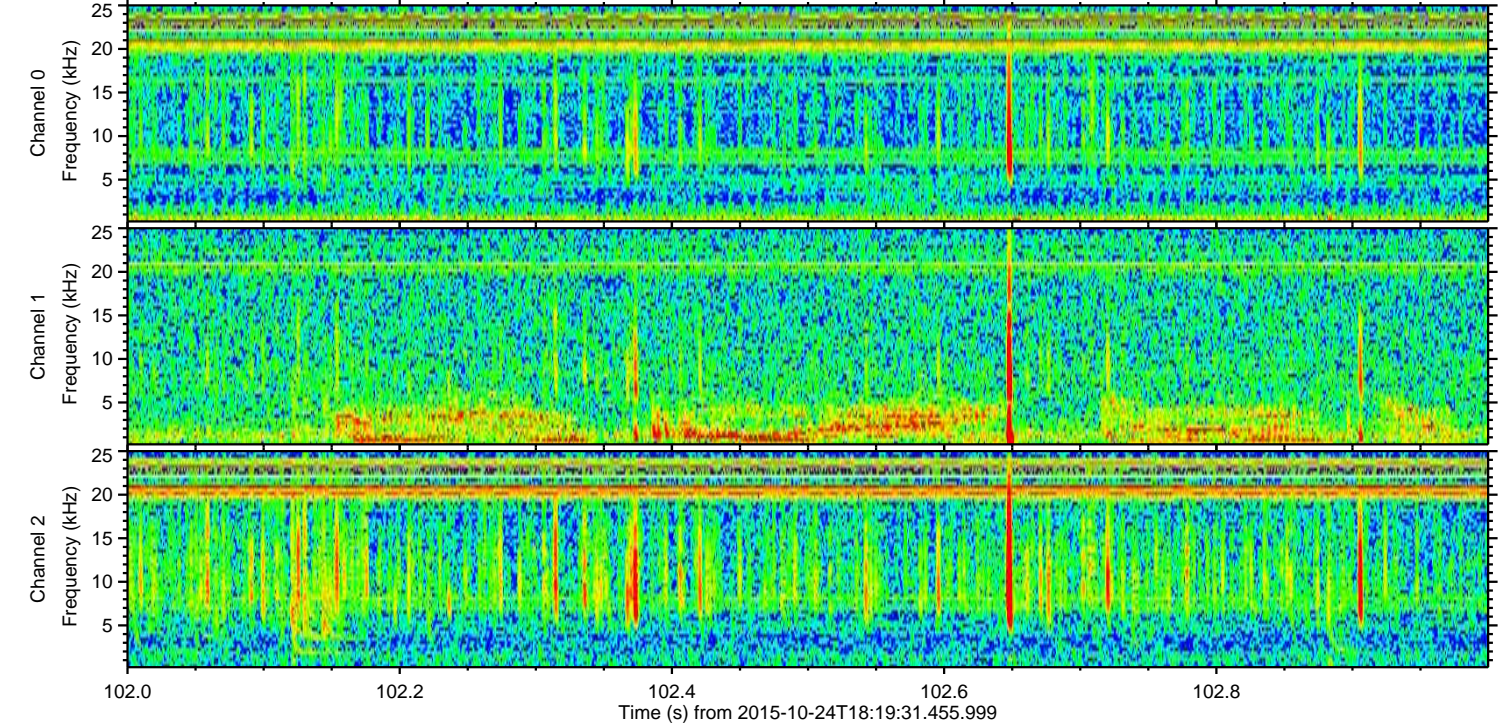
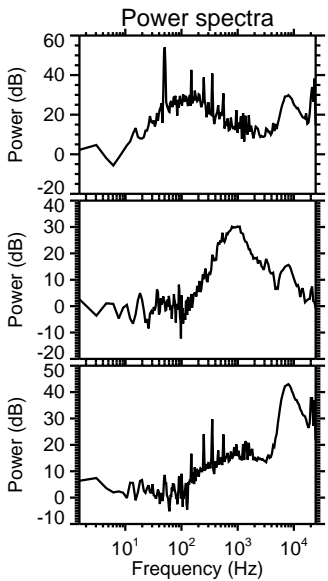
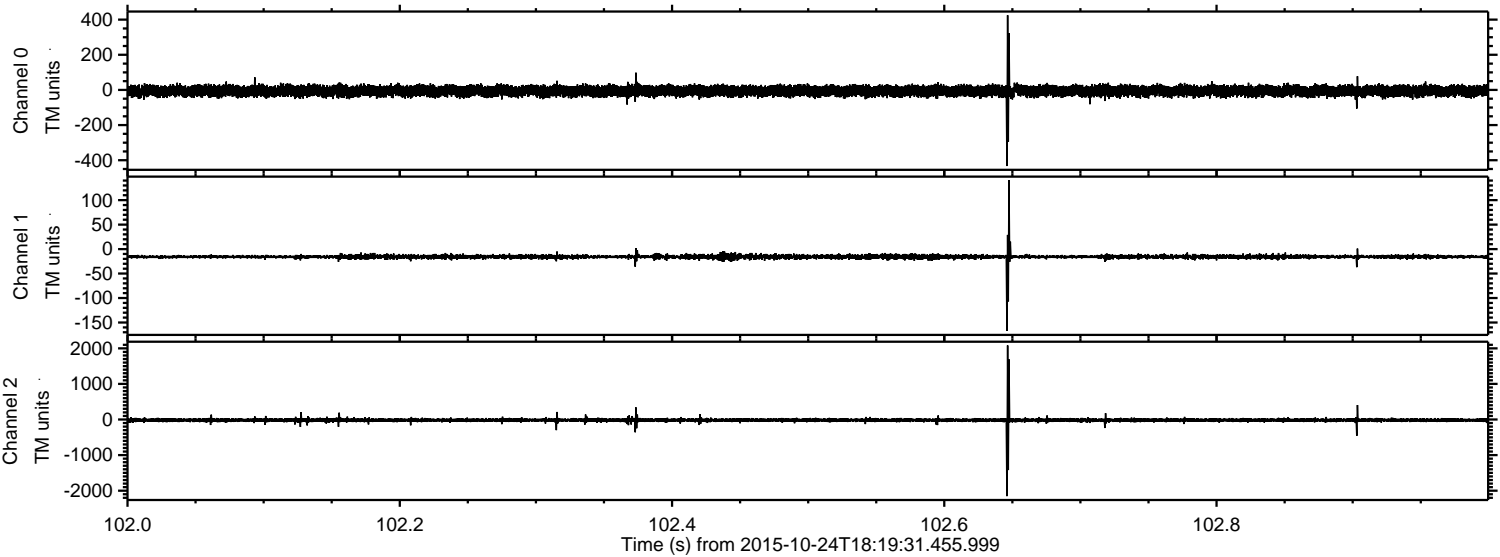
Channel 0
mn: -602
mx: 583
 μ : -6.3
 σ : 18.1

Channel 1
mn: -252
mx: 178
 μ : -15.8
 σ : 4.1

Channel 2
mn: -2823
mx: 2570
 μ : -17.2
 σ : 42.0

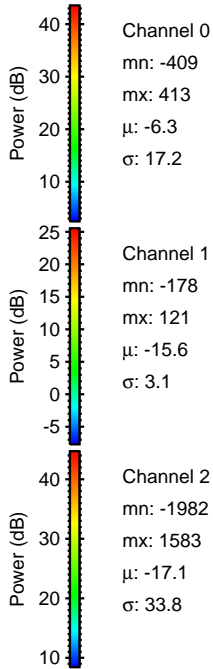
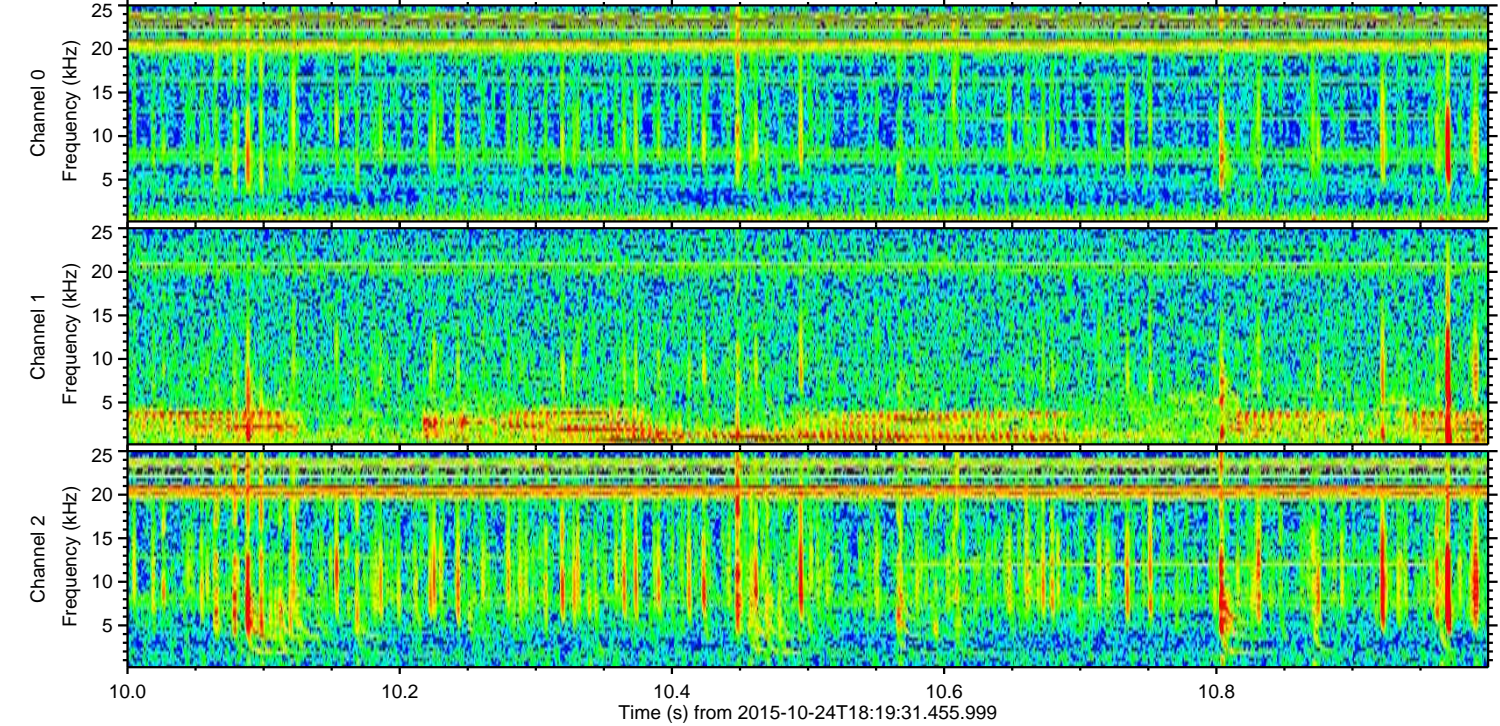
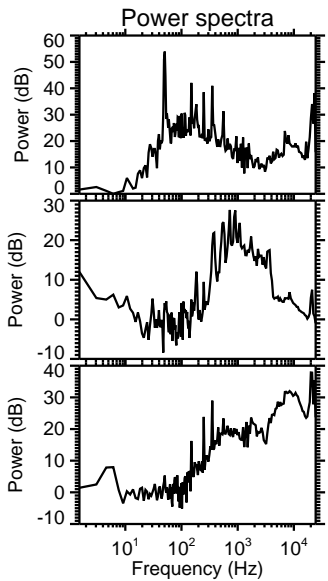
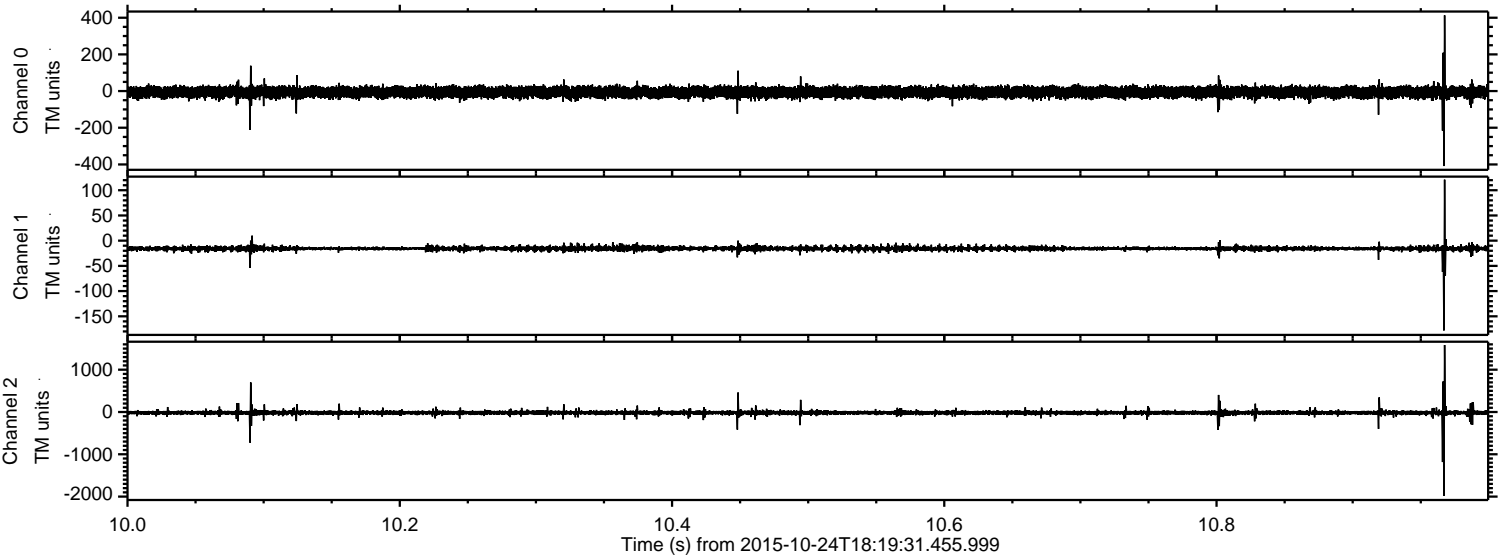
ELMAVAN 3D WAVEFORMS (Measured data sampled at 50 kHz) 51000 packets of 144 samples from 2015-10-24T18:19:31.455.999. Part 103/147

Processed Sat Oct 24 20:26:14 2015 by ELM ver.2012-10-06 from 001__elm20151024_181930__dat00.bin



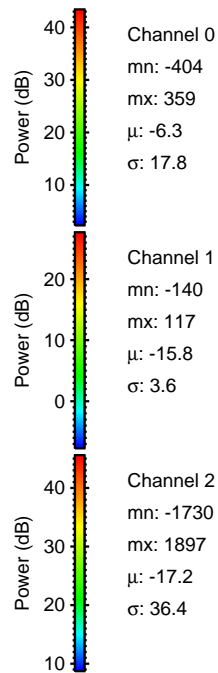
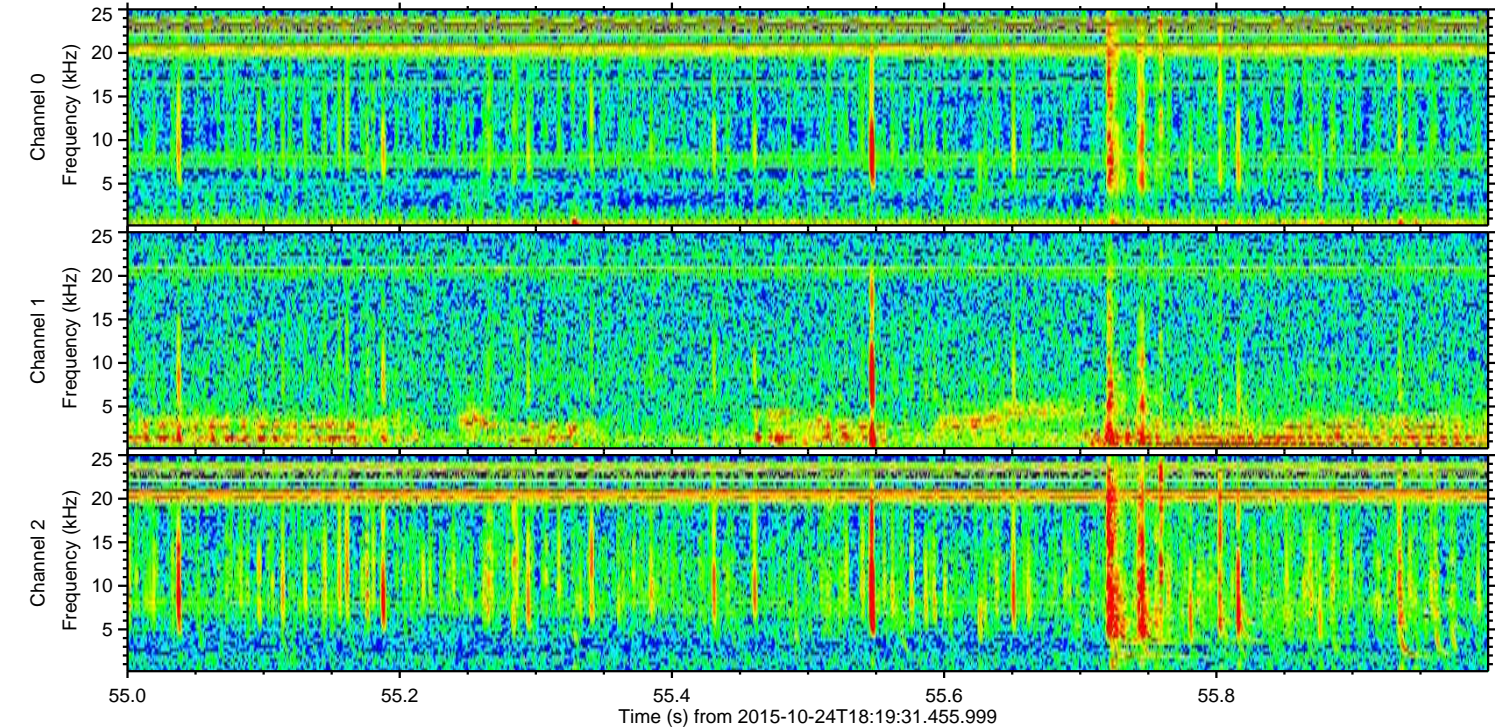
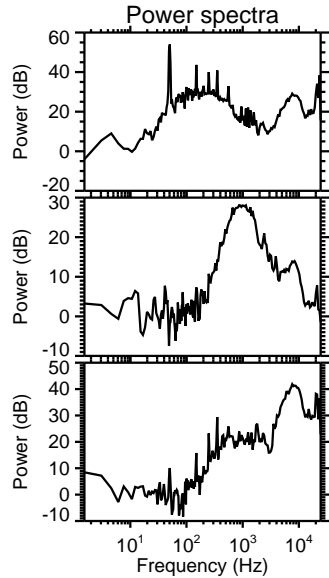
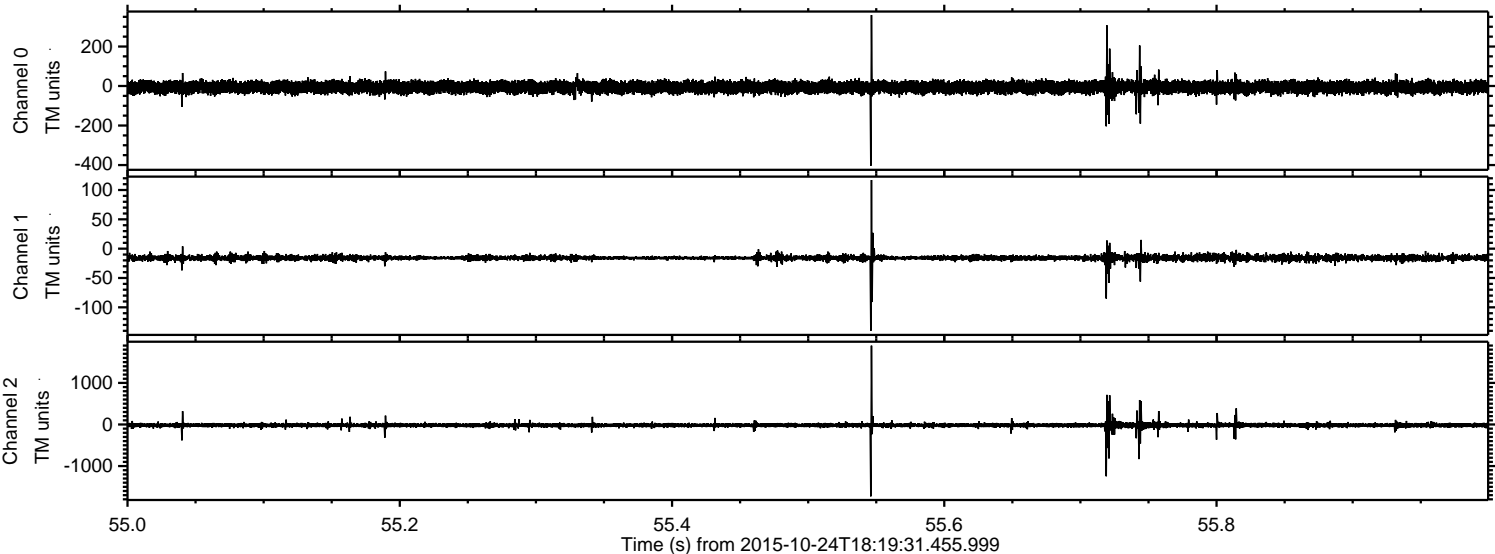
ELMAVAN 3D WAVEFORMS (Measured data sampled at 50 kHz) 51000 packets of 144 samples from 2015-10-24T18:19:31.455.999. Part 11/147

Processed Sat Oct 24 20:26:15 2015 by ELM ver.2012-10-06 from 001__elm20151024_181930__dat00.bin



ELMAVAN 3D WAVEFORMS (Measured data sampled at 50 kHz) 51000 packets of 144 samples from 2015-10-24T18:19:31.455.999. Part 56/147

Processed Sat Oct 24 20:26:16 2015 by ELM ver.2012-10-06 from 001__elm20151024_181930__dat00.bin



ELMAVAN 3D WAVEFORMS (Measured data sampled at 50 kHz) 51000 packets of 144 samples from 2015-10-24T18:19:31.455.999. Part 40/147

Processed Sat Oct 24 20:26:17 2015 by ELM ver.2012-10-06 from 001__elm20151024_181930__dat00.bin

