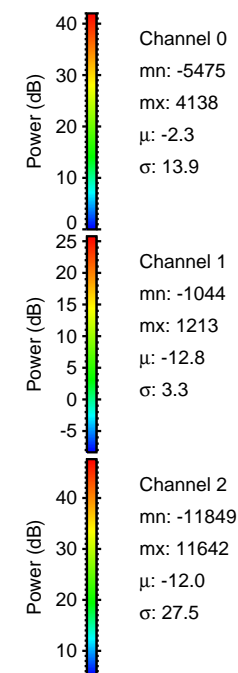
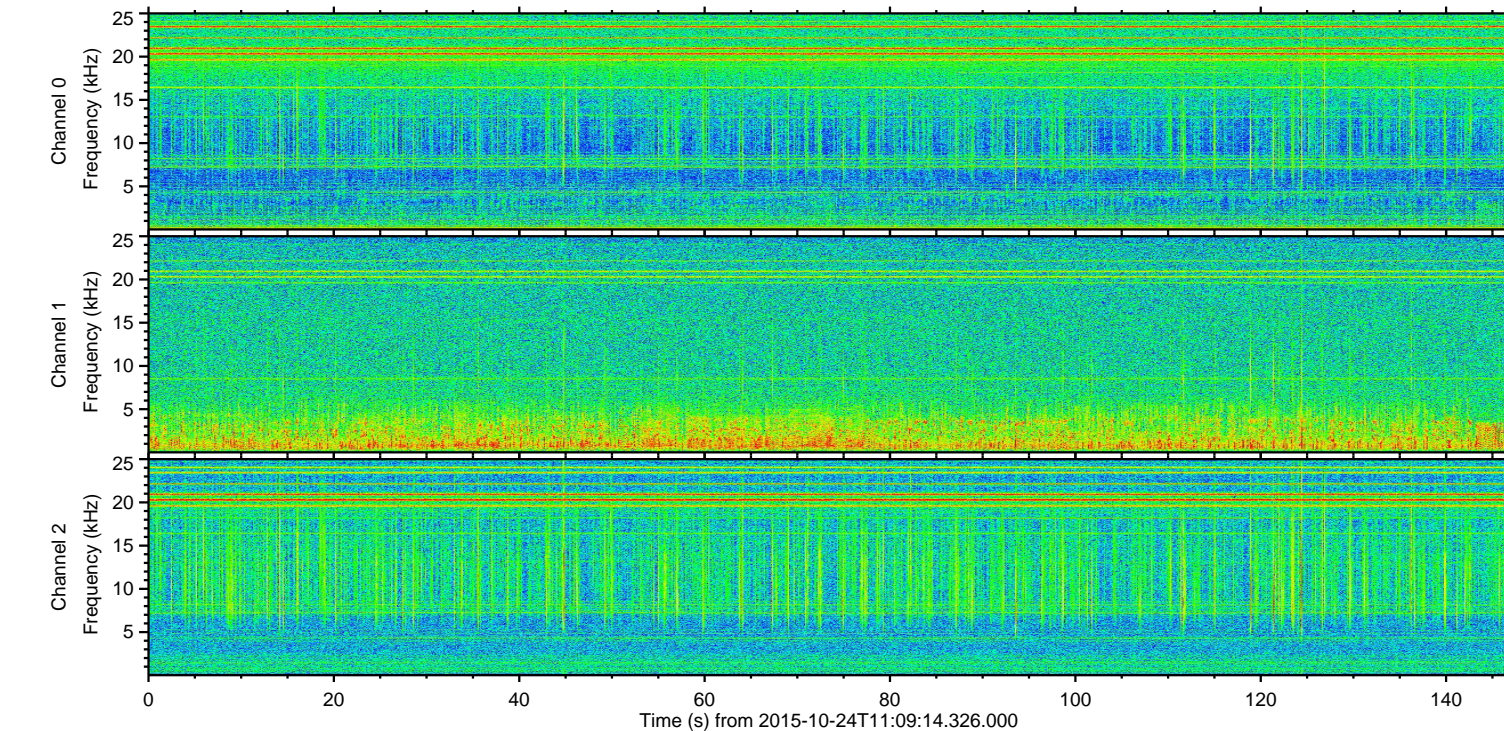
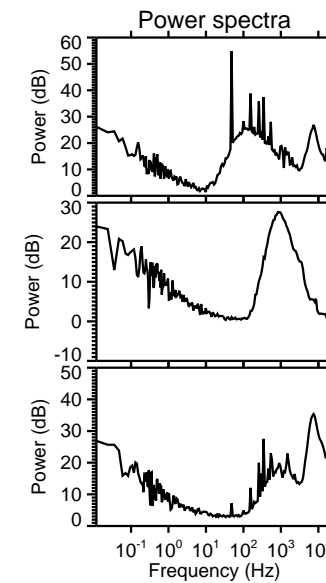
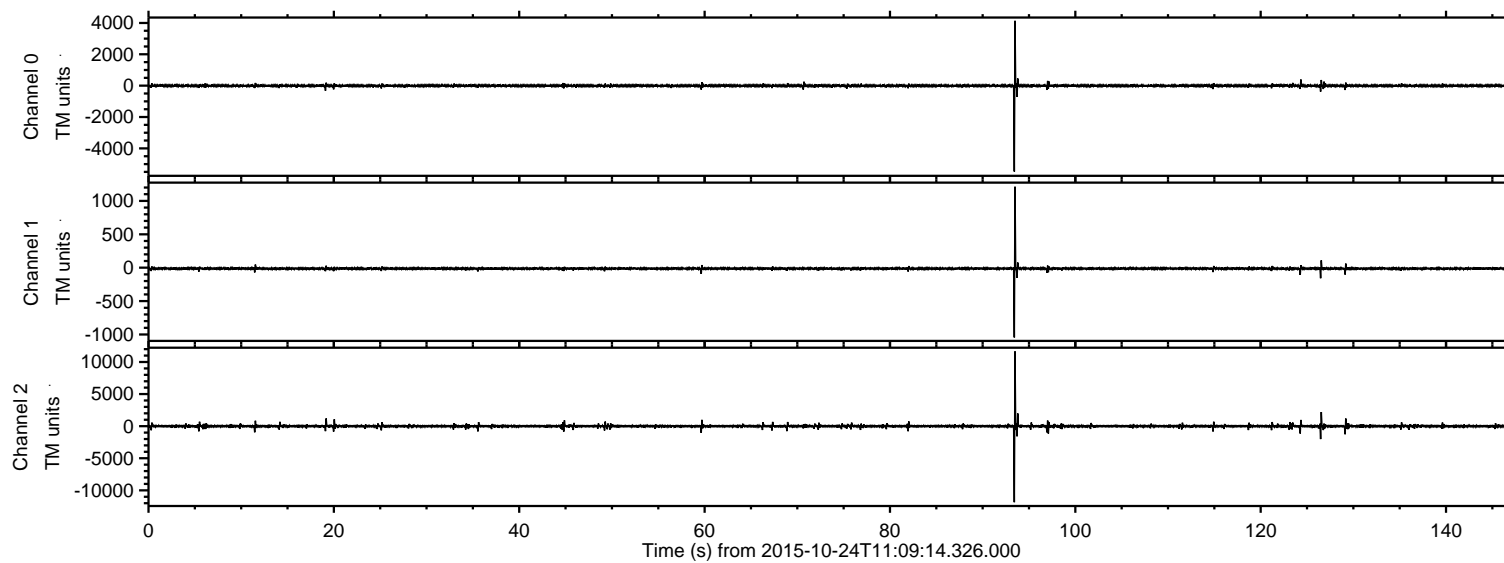


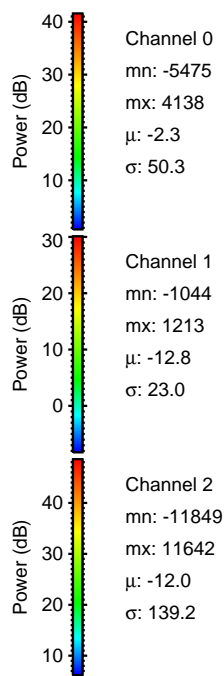
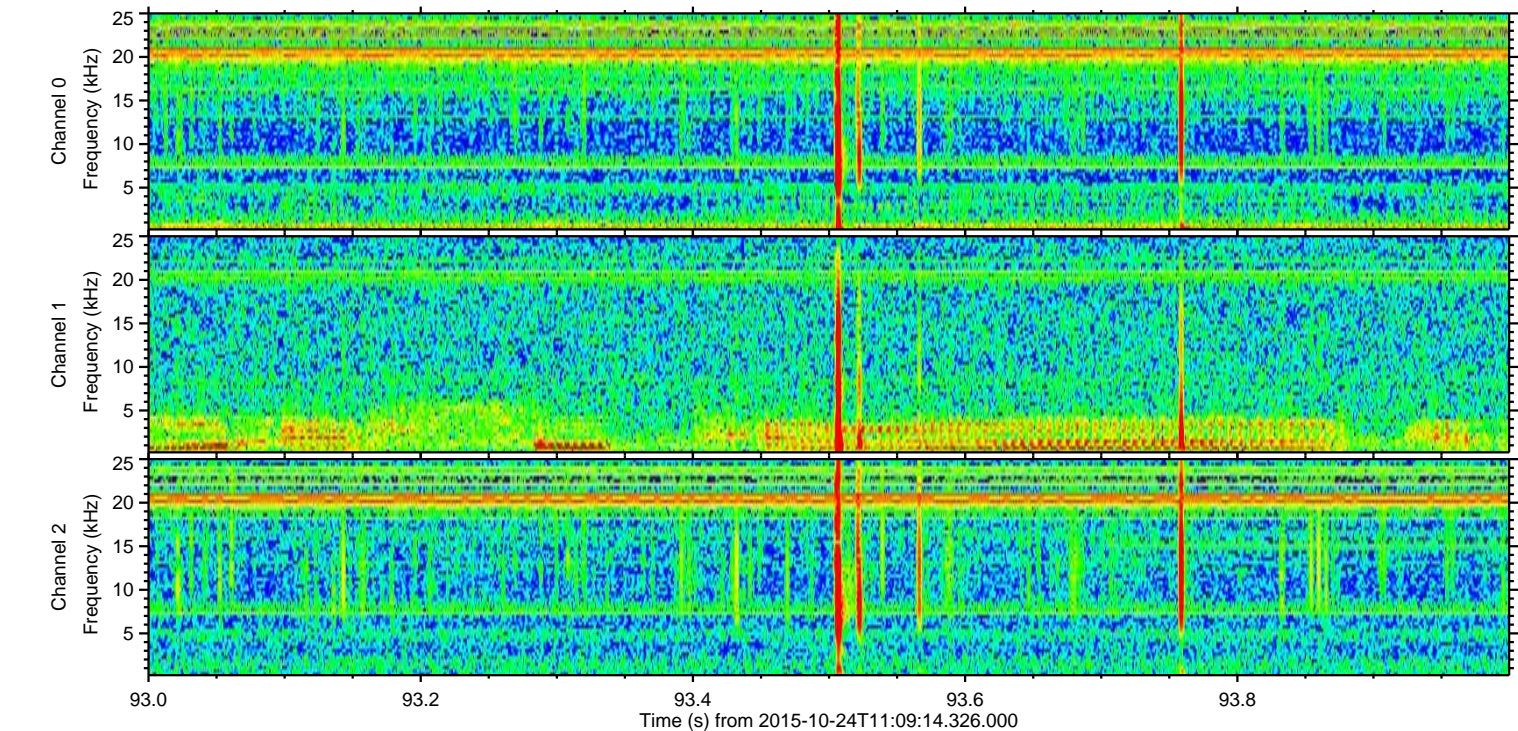
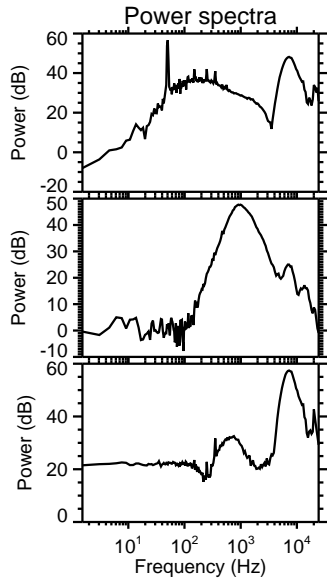
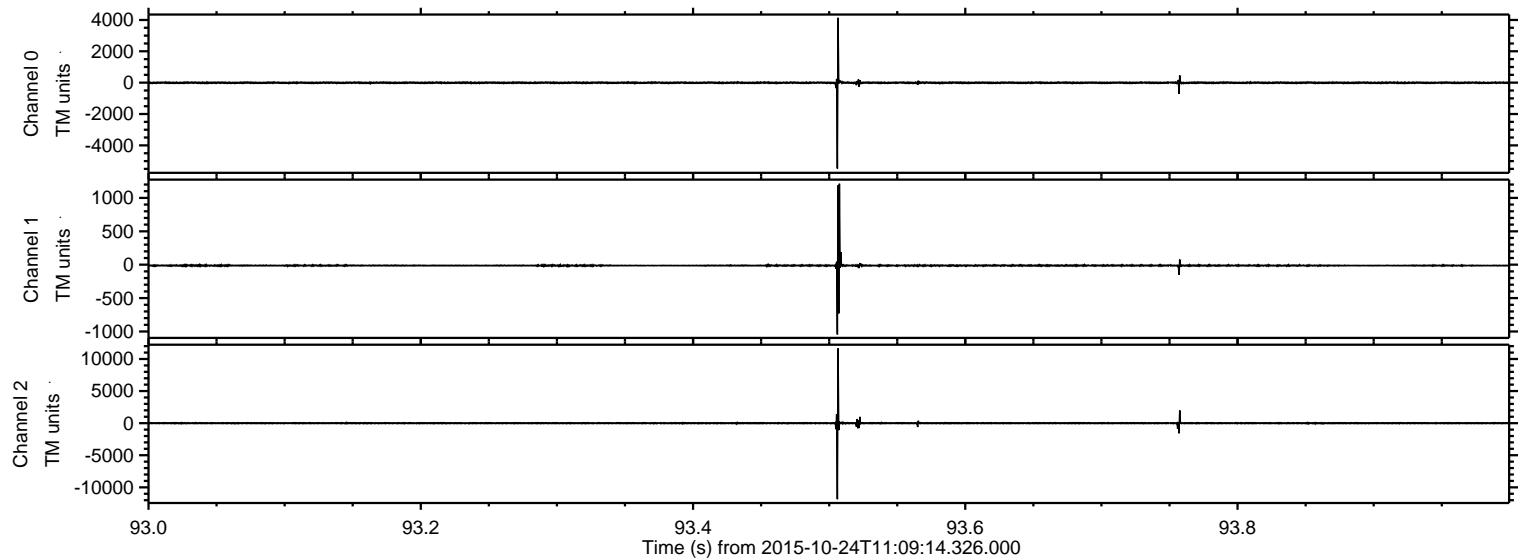
# ELMAVAN 3D WAVEFORMS (Measured data sampled at 50 kHz) 51000 packets of 144 samples from 2015-10-24T11:09:14.326.000.

Processed Sat Oct 24 13:15:15 2015 by ELM ver.2012-10-06 from 001\_\_elm20151024\_110913\_\_dat00.bin





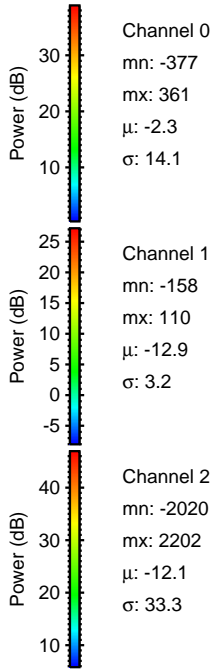
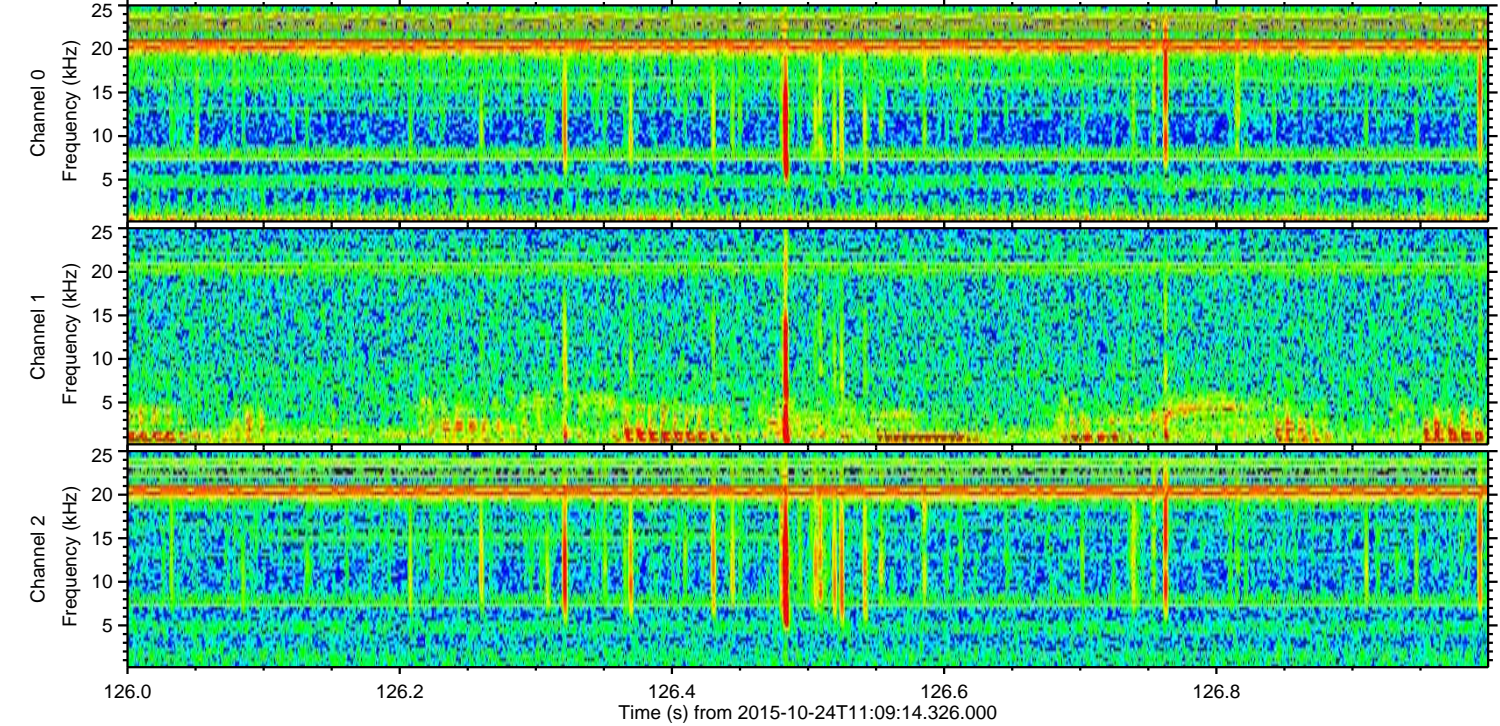
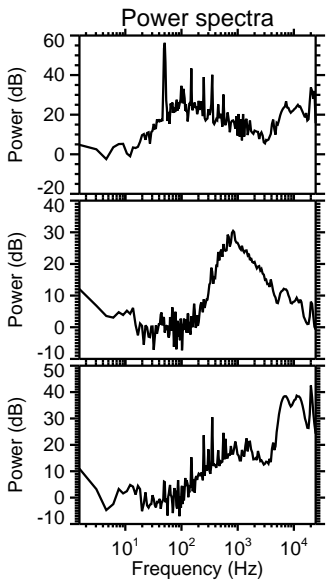
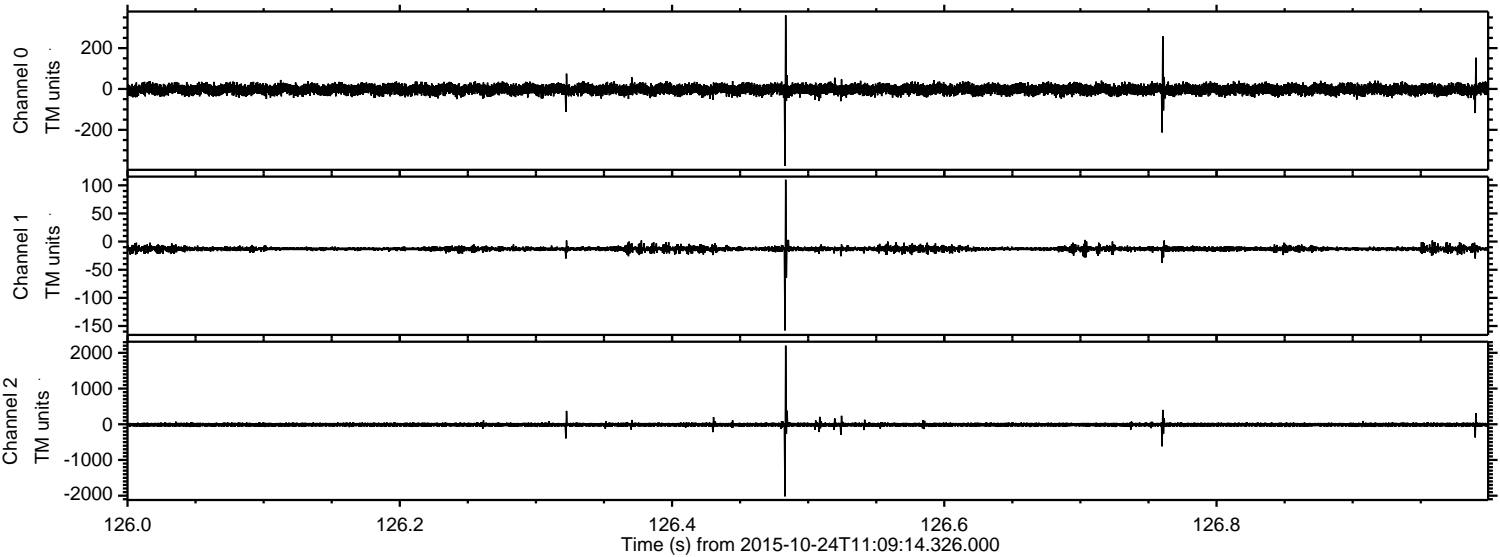
Processed Sat Oct 24 13:15:30 2015 by ELM ver.2012-10-06 from 001\_\_elm20151024\_110913\_\_dat00.bin





ELMAVAN 3D WAVEFORMS (Measured data sampled at 50 kHz) 51000 packets of 144 samples from 2015-10-24T11:09:14.326.000. Part 127/147

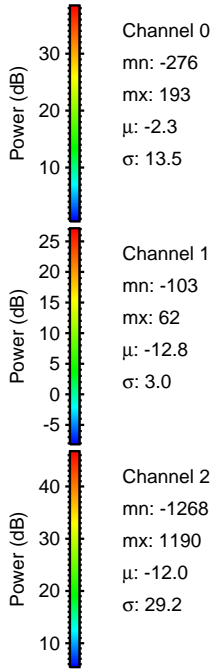
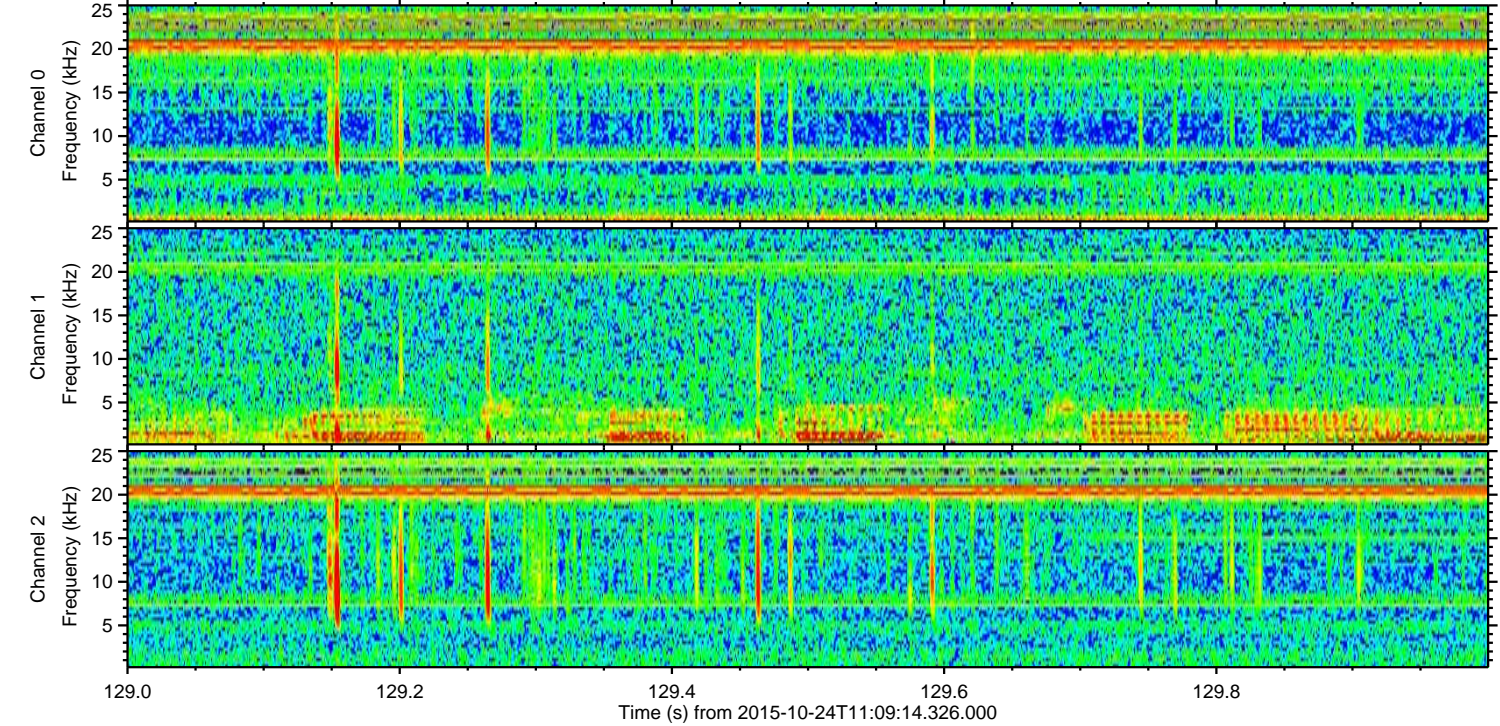
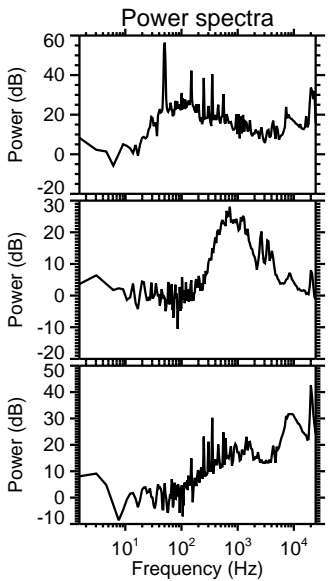
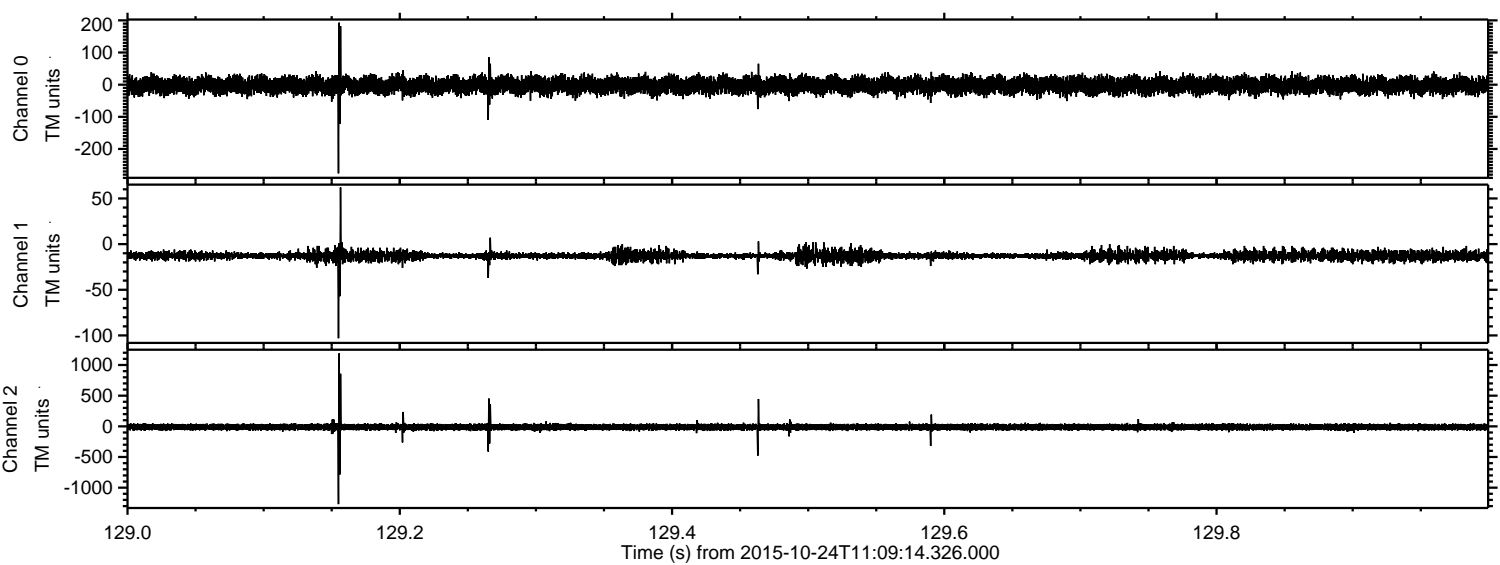
Processed Sat Oct 24 13:15:31 2015 by ELM ver.2012-10-06 from 001\_\_elm20151024\_110913\_\_dat00.bin





ELMAVAN 3D WAVEFORMS (Measured data sampled at 50 kHz) 51000 packets of 144 samples from 2015-10-24T11:09:14.326.000. Part 130/147

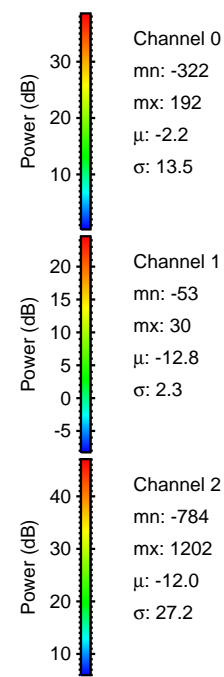
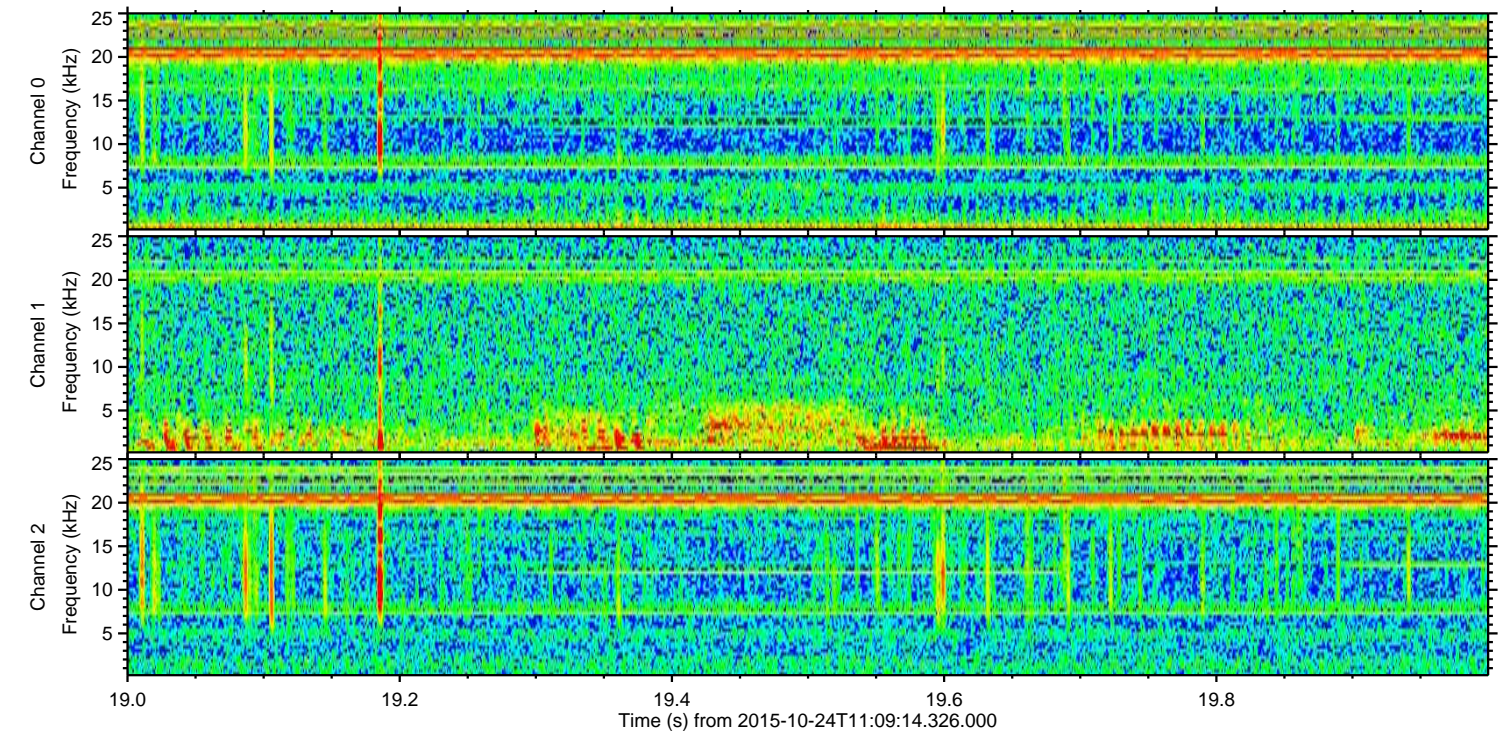
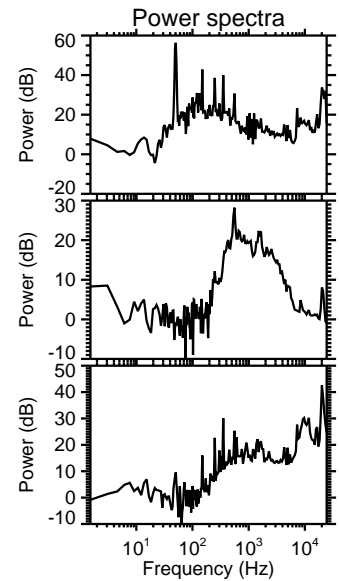
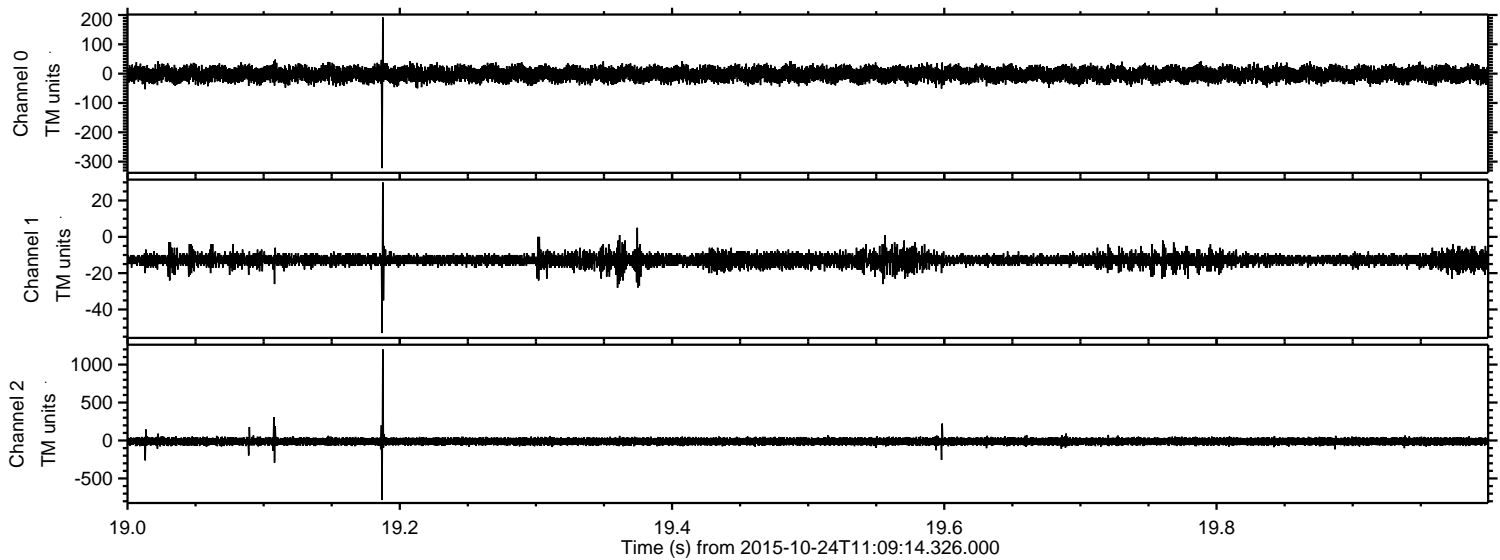
Processed Sat Oct 24 13:15:32 2015 by ELM ver.2012-10-06 from 001\_\_elm20151024\_110913\_\_dat00.bin





ELMAVAN 3D WAVEFORMS (Measured data sampled at 50 kHz) 51000 packets of 144 samples from 2015-10-24T11:09:14.326.000. Part 20/147

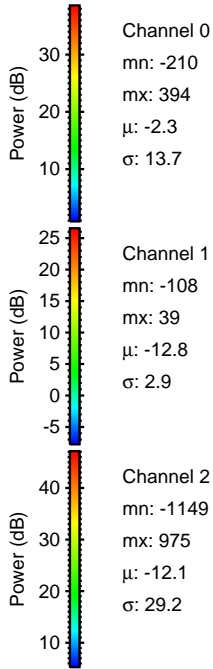
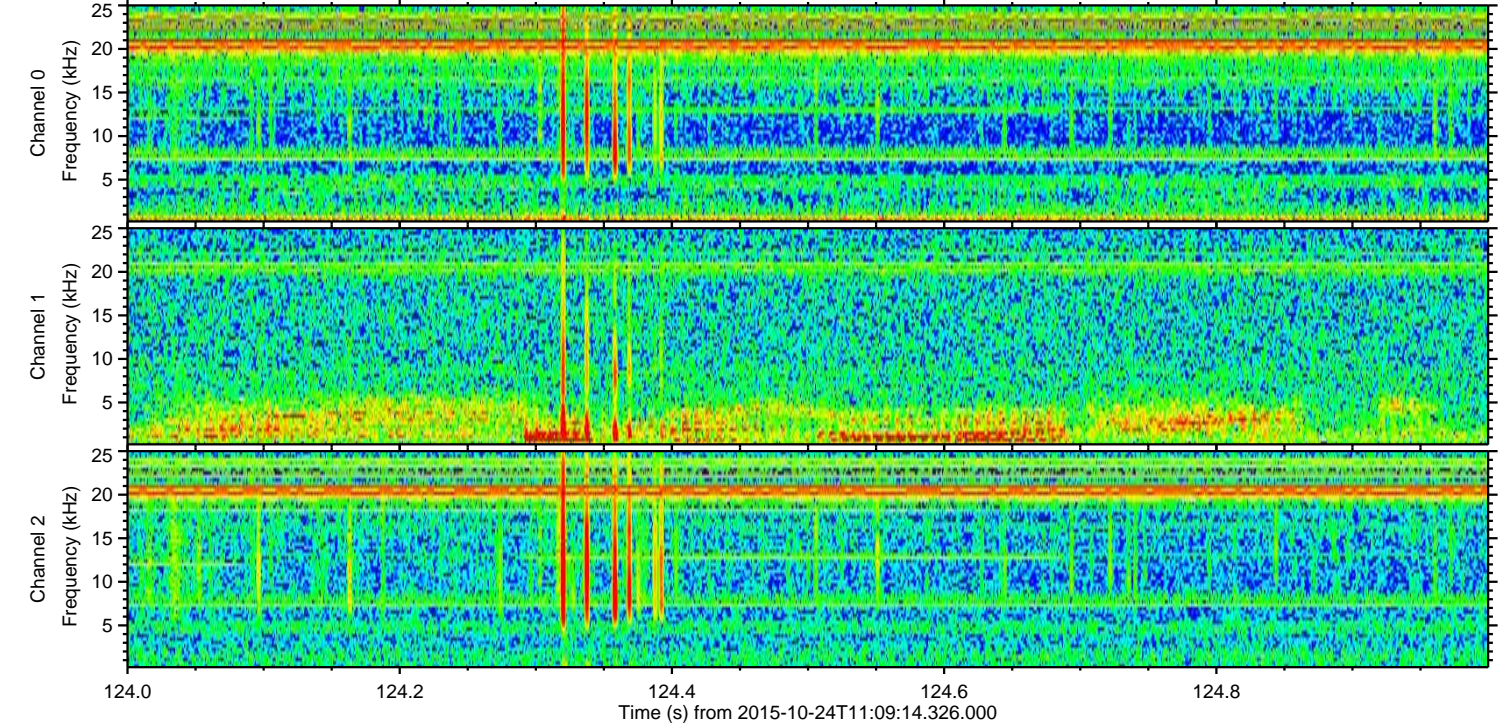
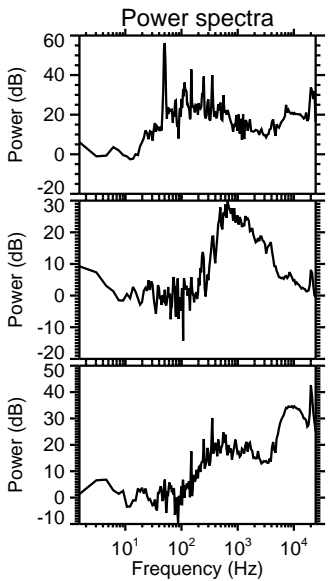
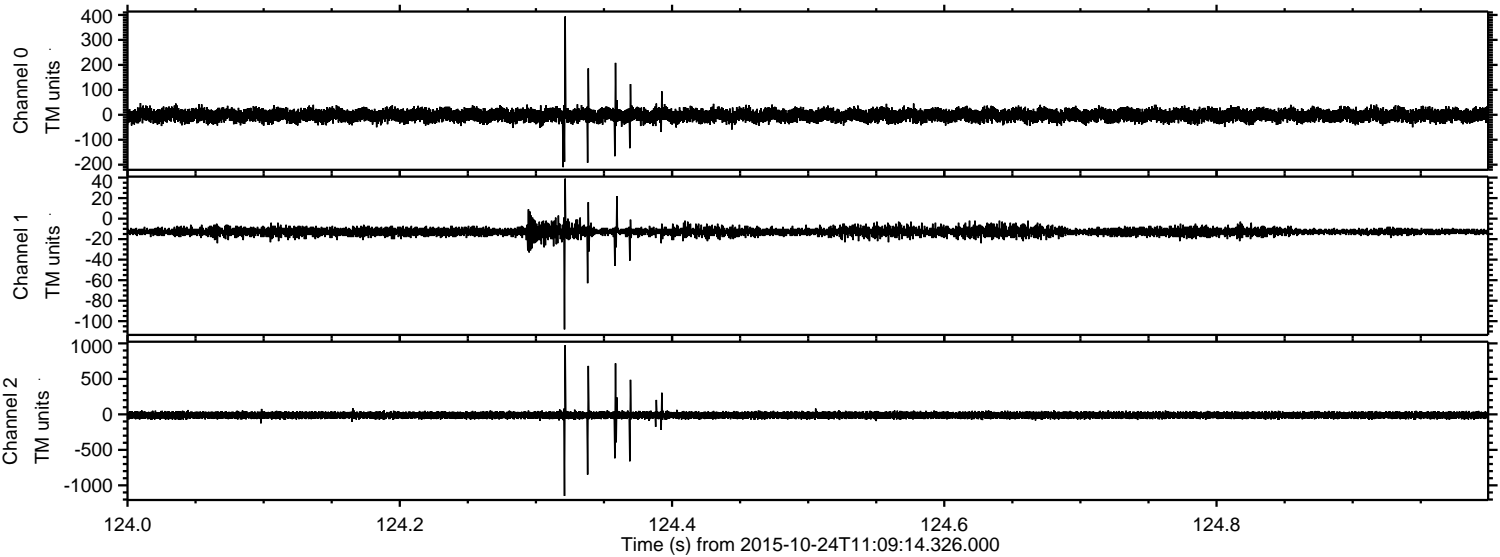
Processed Sat Oct 24 13:15:33 2015 by ELM ver.2012-10-06 from 001\_\_elm20151024\_110913\_\_dat00.bin





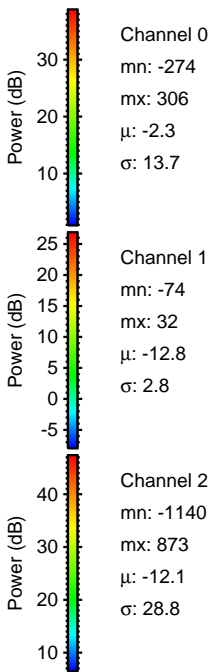
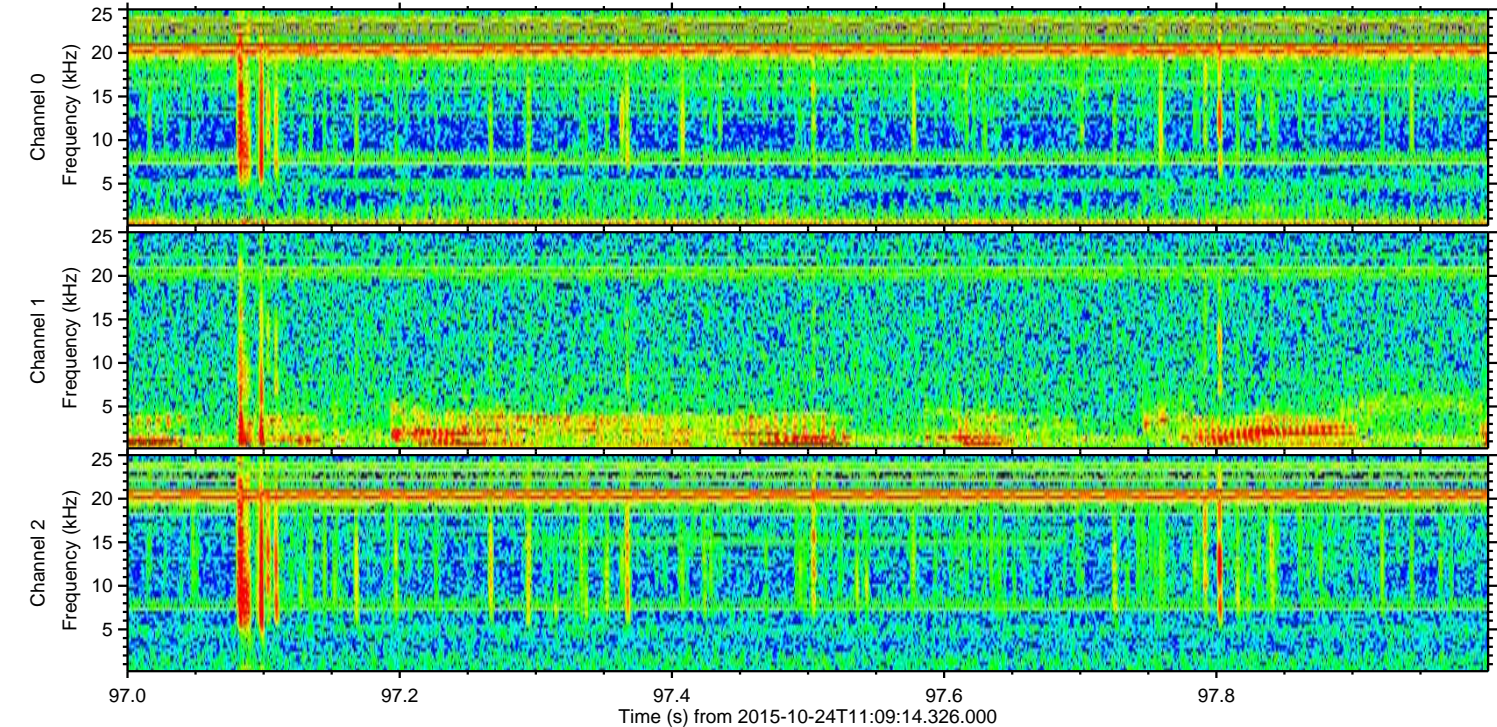
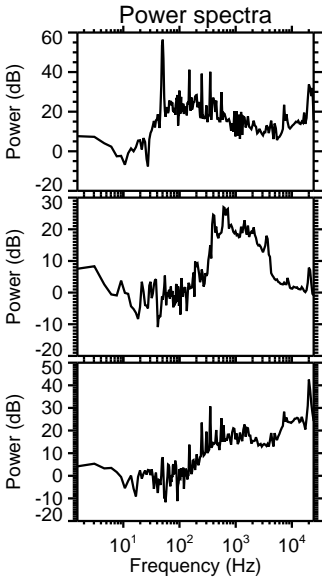
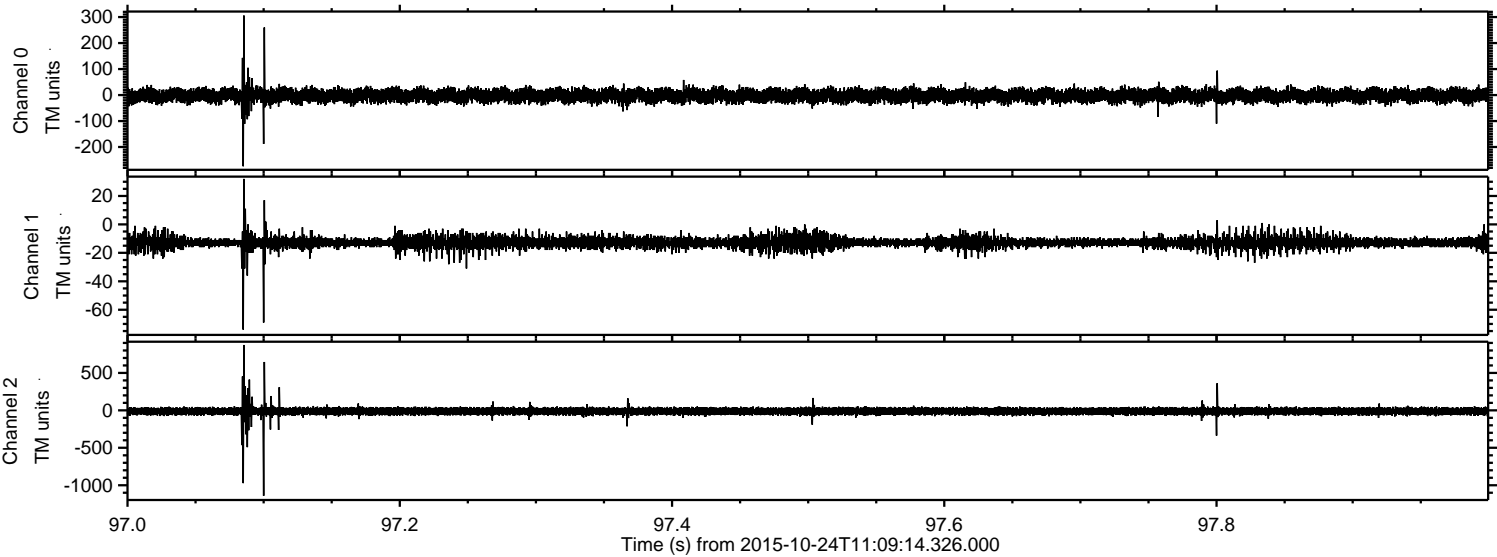
ELMAVAN 3D WAVEFORMS (Measured data sampled at 50 kHz) 51000 packets of 144 samples from 2015-10-24T11:09:14.326.000. Part 125/147

Processed Sat Oct 24 13:15:34 2015 by ELM ver.2012-10-06 from 001\_\_elm20151024\_110913\_\_dat00.bin



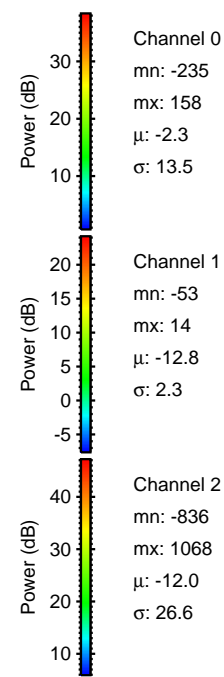
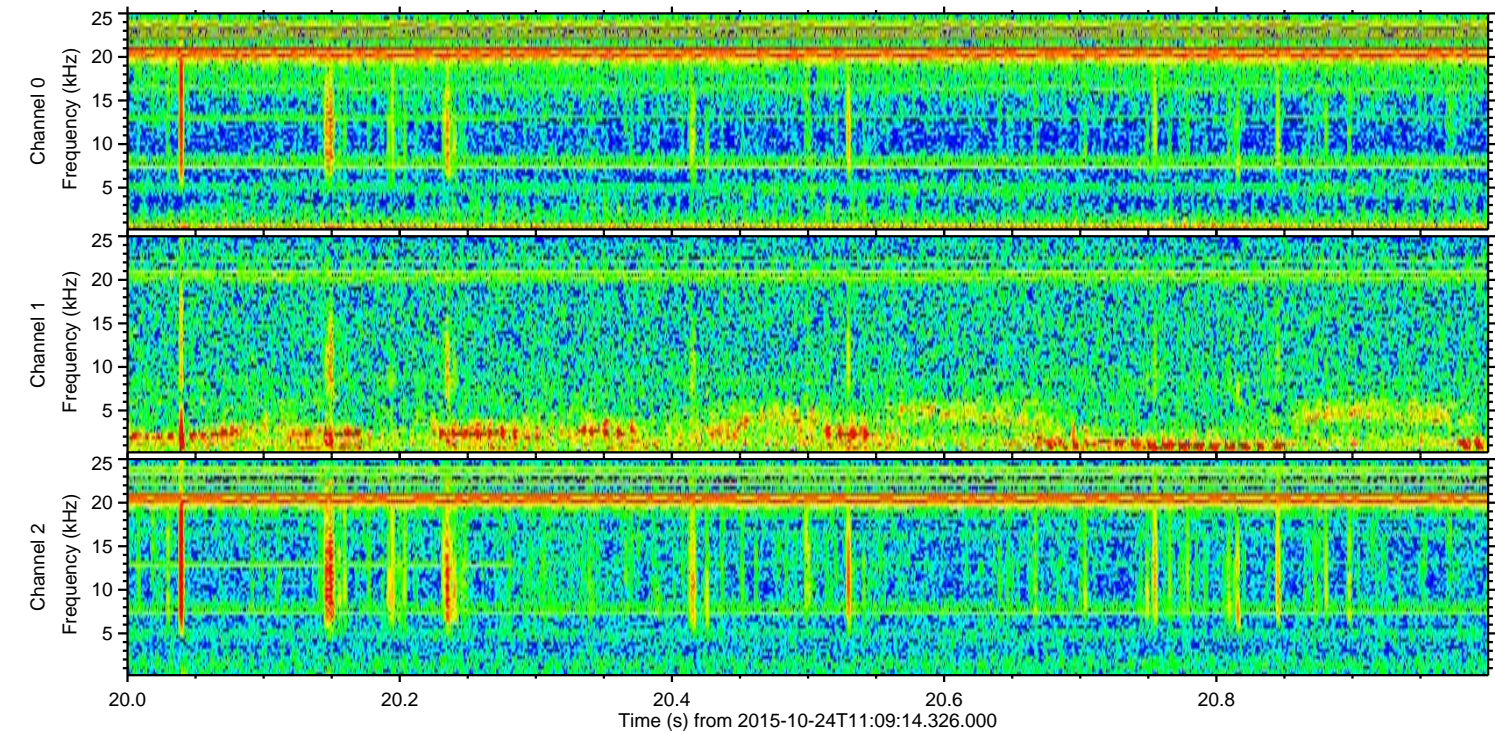
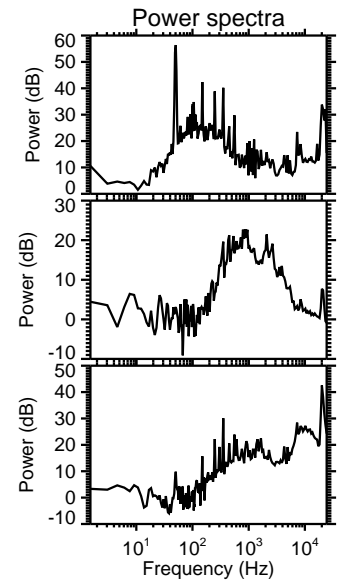
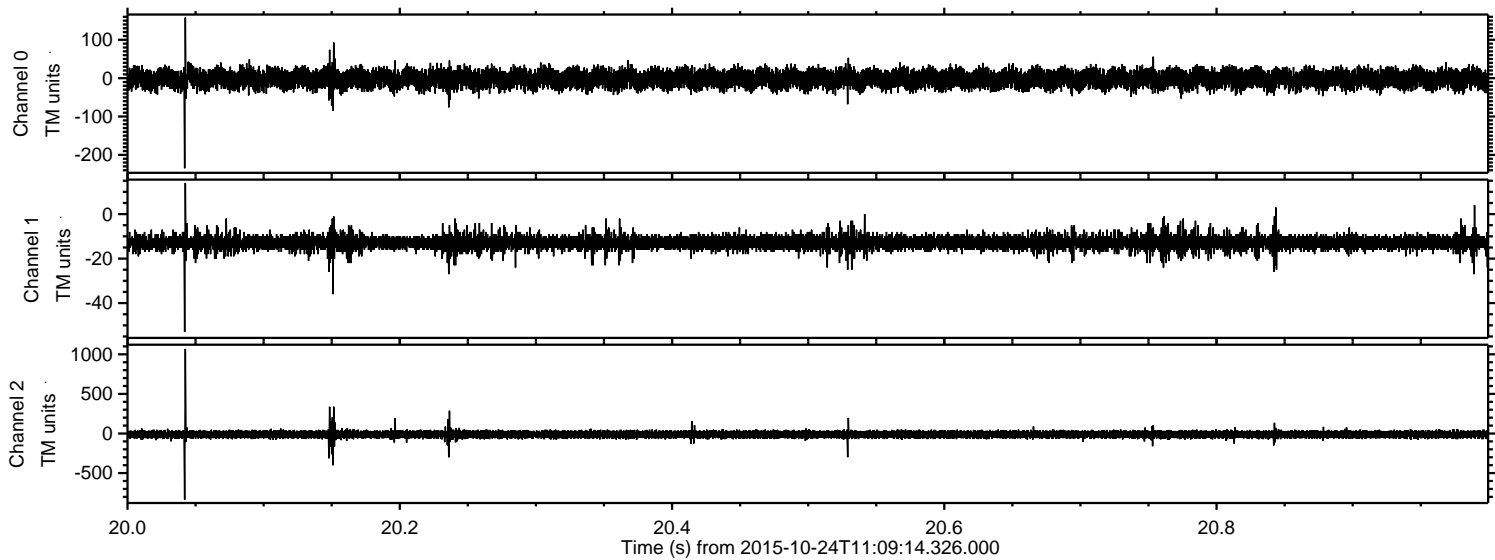


Processed Sat Oct 24 13:15:35 2015 by ELM ver.2012-10-06 from 001\_\_elm20151024\_110913\_\_dat00.bin



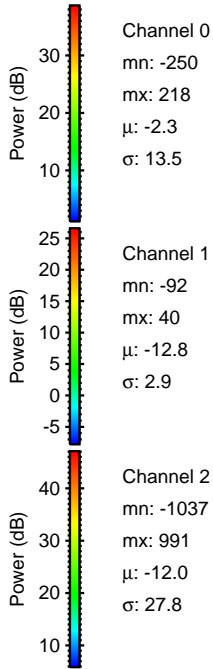
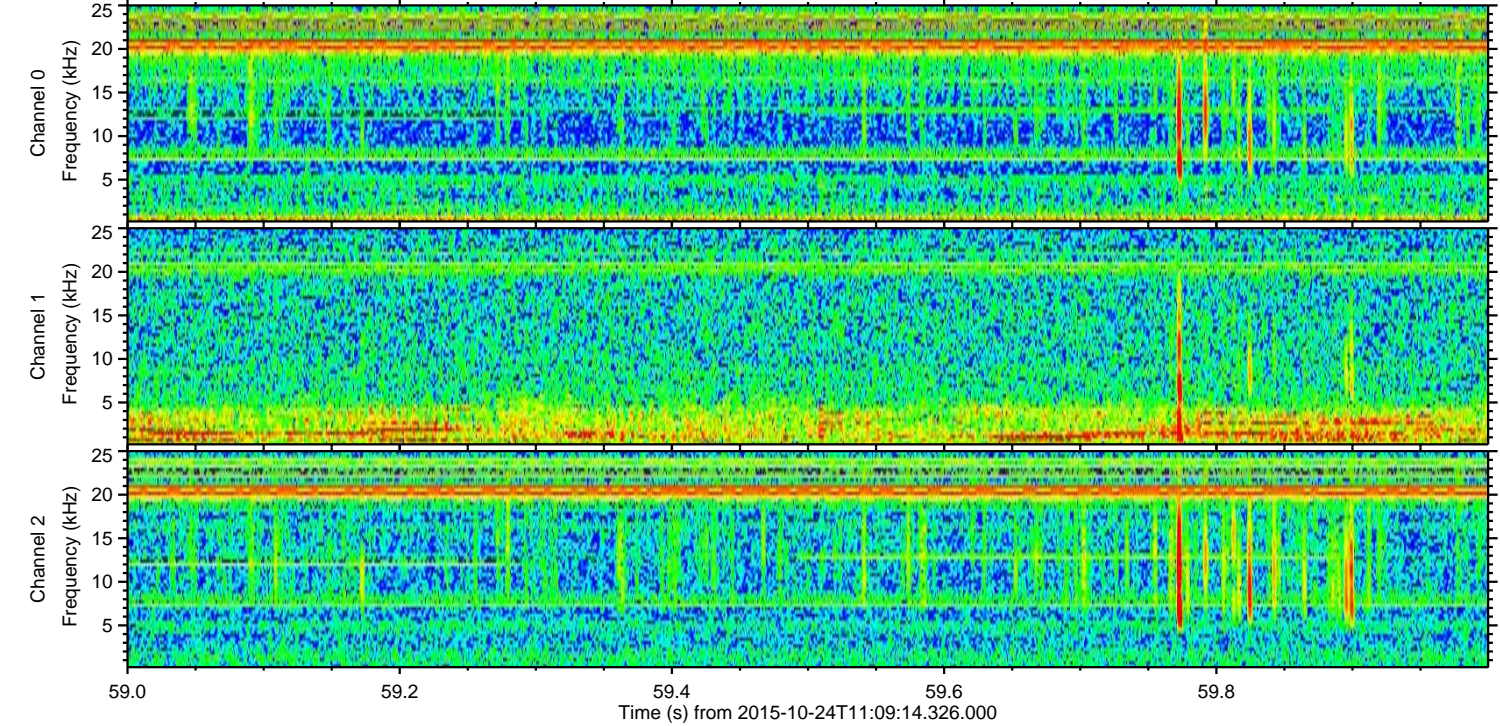
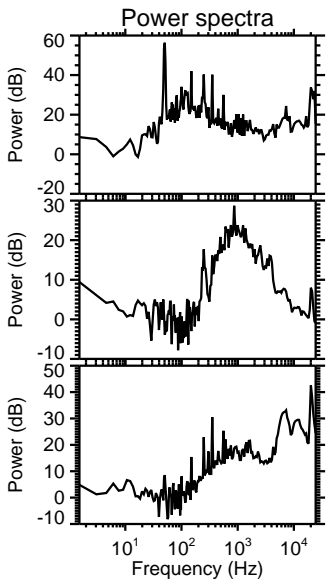
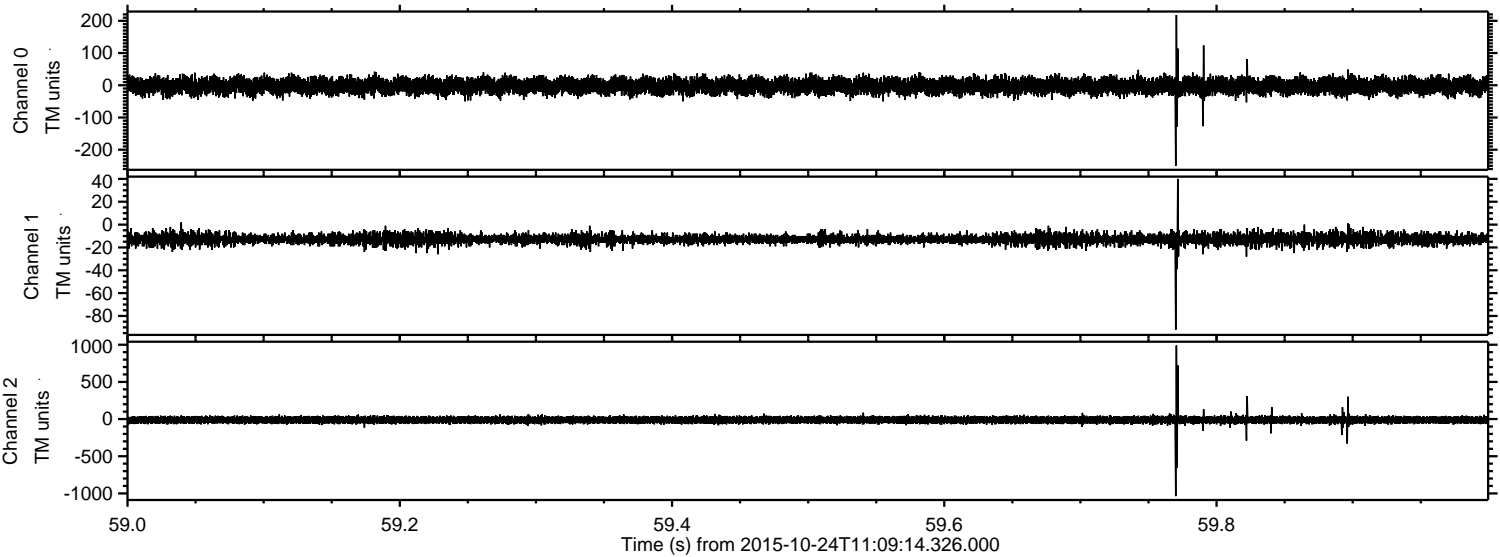


Processed Sat Oct 24 13:15:36 2015 by ELM ver.2012-10-06 from 001\_\_elm20151024\_110913\_\_dat00.bin





Processed Sat Oct 24 13:15:37 2015 by ELM ver.2012-10-06 from 001\_\_elm20151024\_110913\_\_dat00.bin





Processed Sat Oct 24 13:15:38 2015 by ELM ver.2012-10-06 from 001\_\_elm20151024\_110913\_\_dat00.bin

