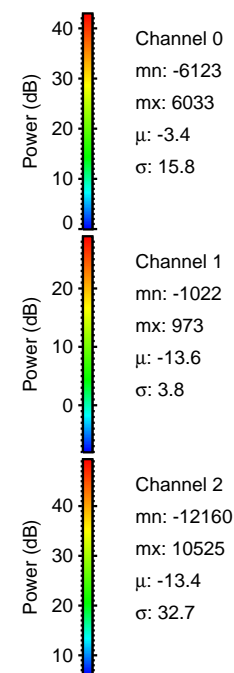
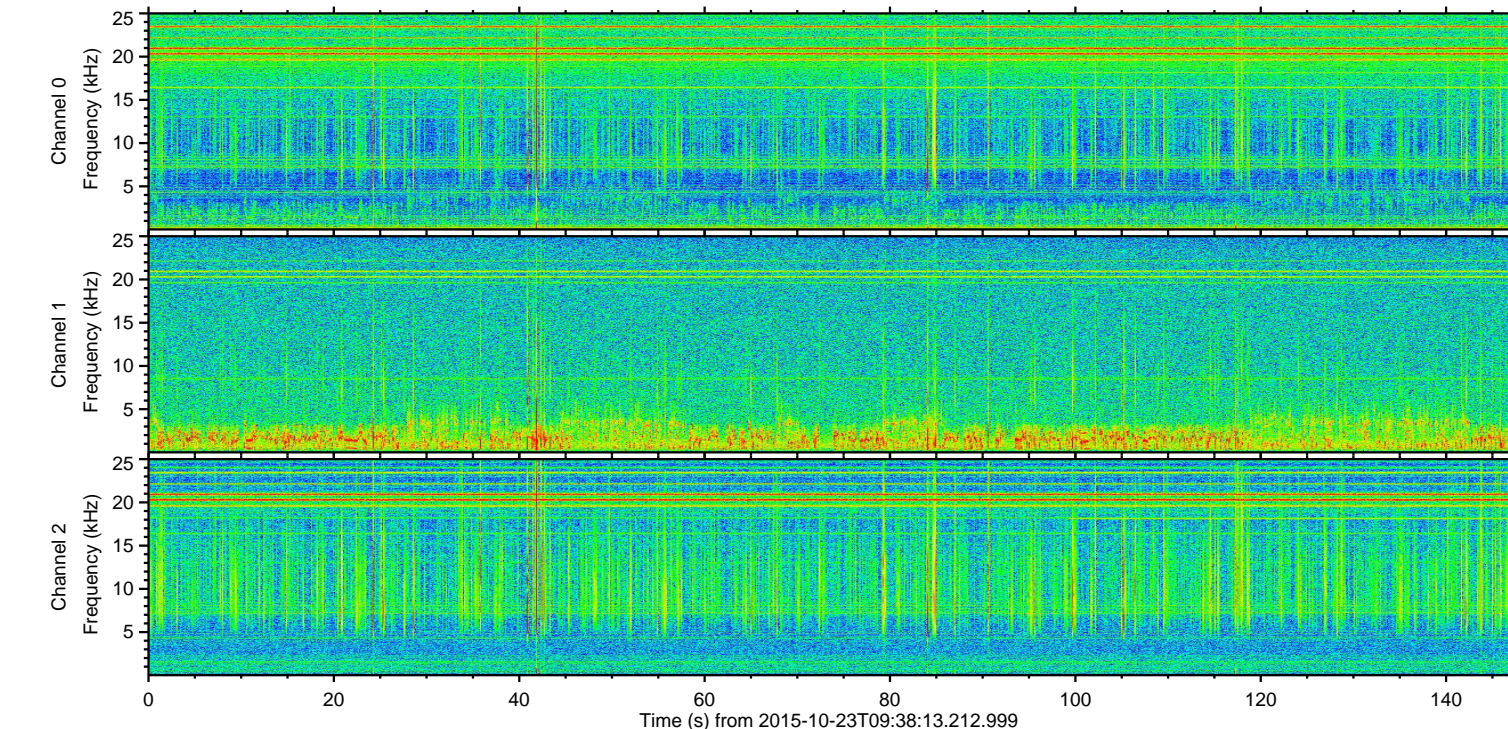
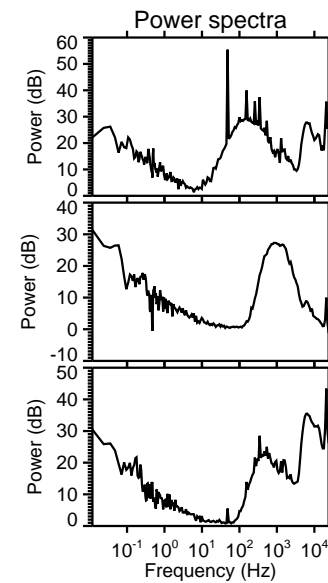
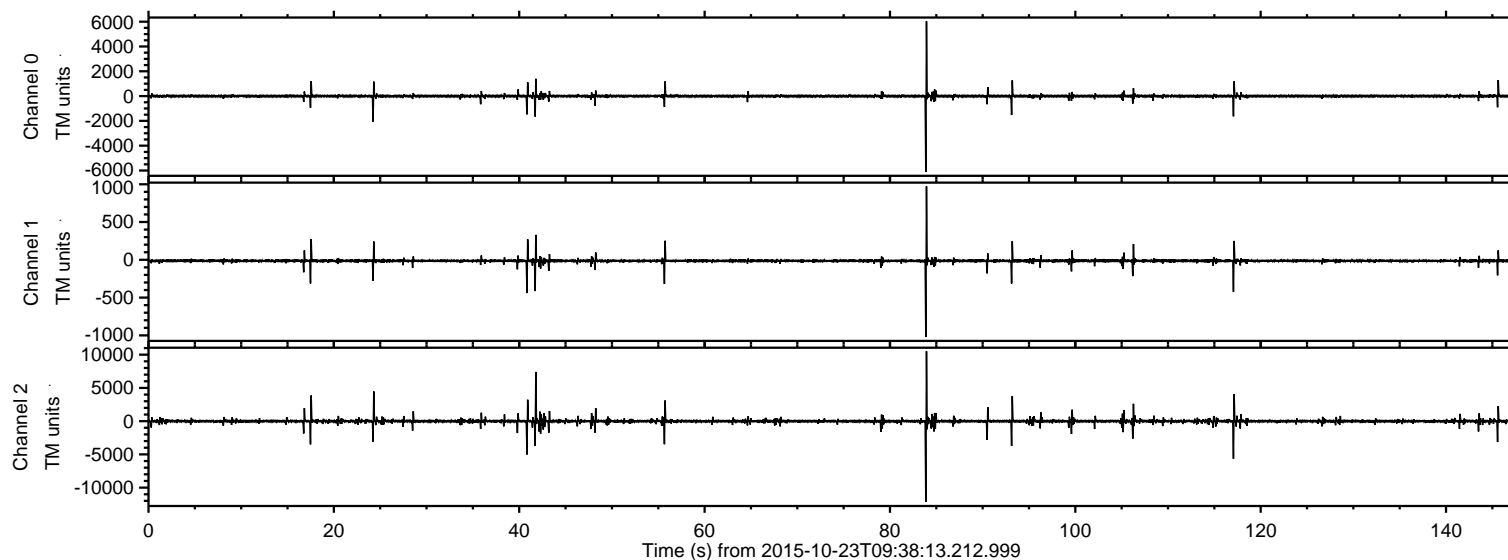
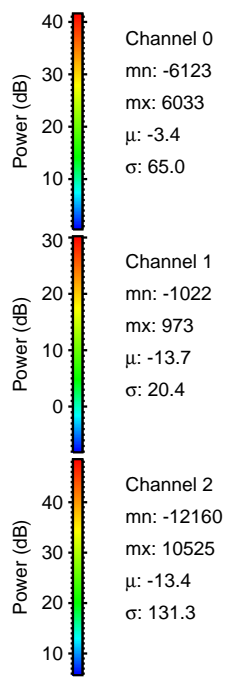
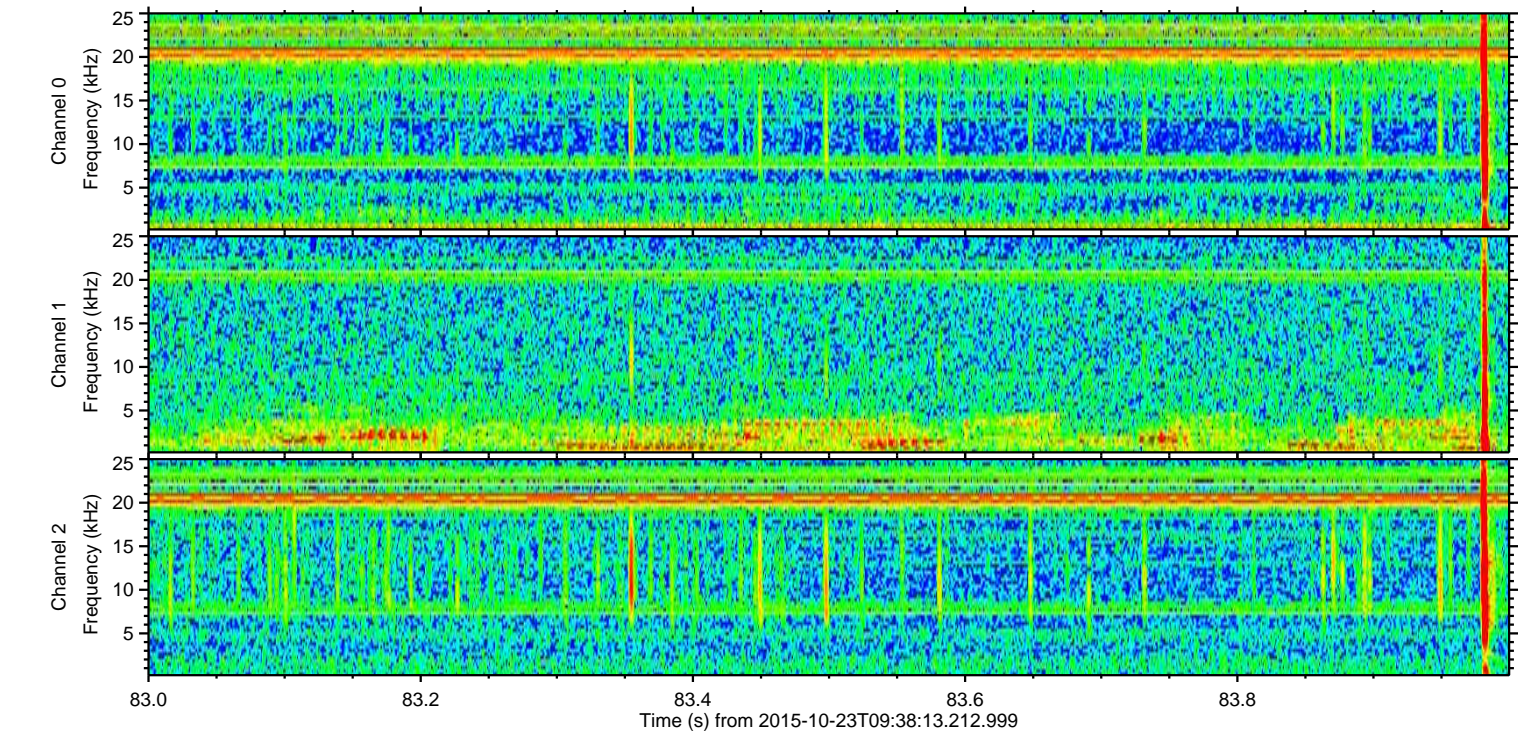
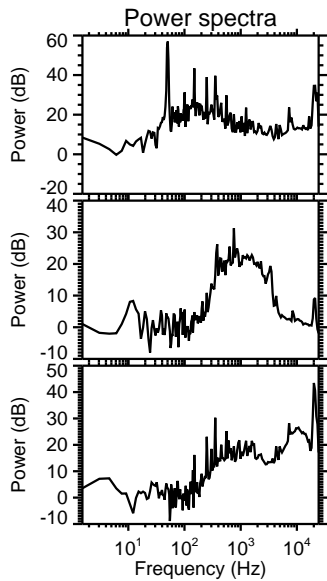
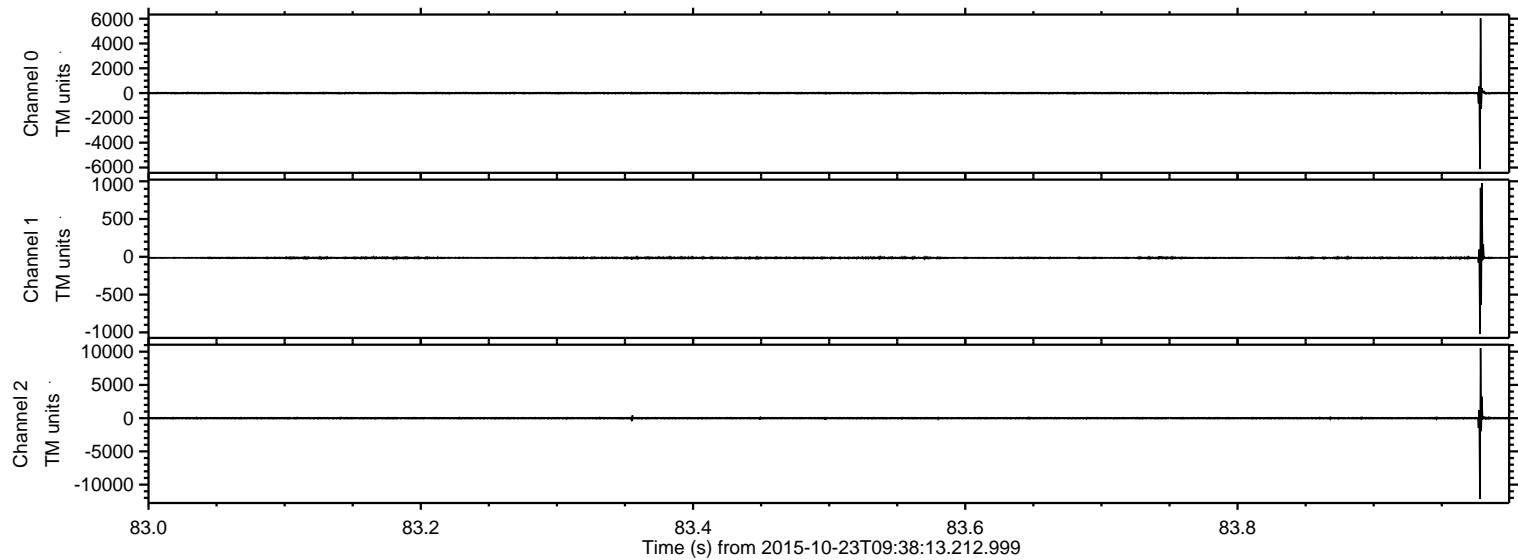


ELMAVAN 3D WAVEFORMS (Measured data sampled at 50 kHz) 51000 packets of 144 samples from 2015-10-23T09:38:13.212.999.

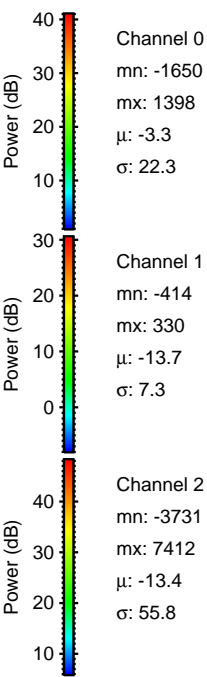
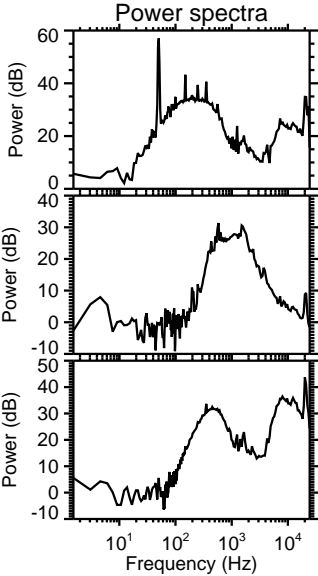
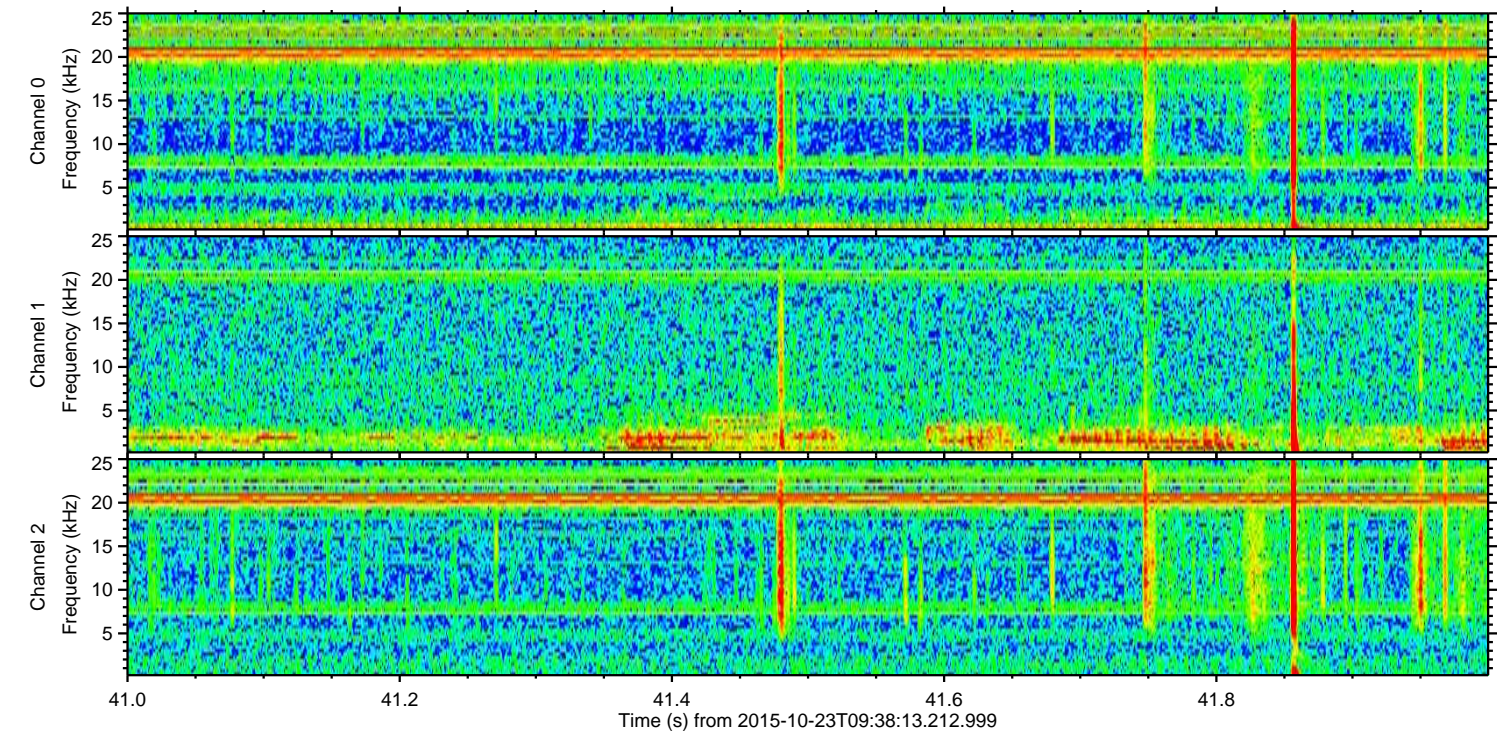
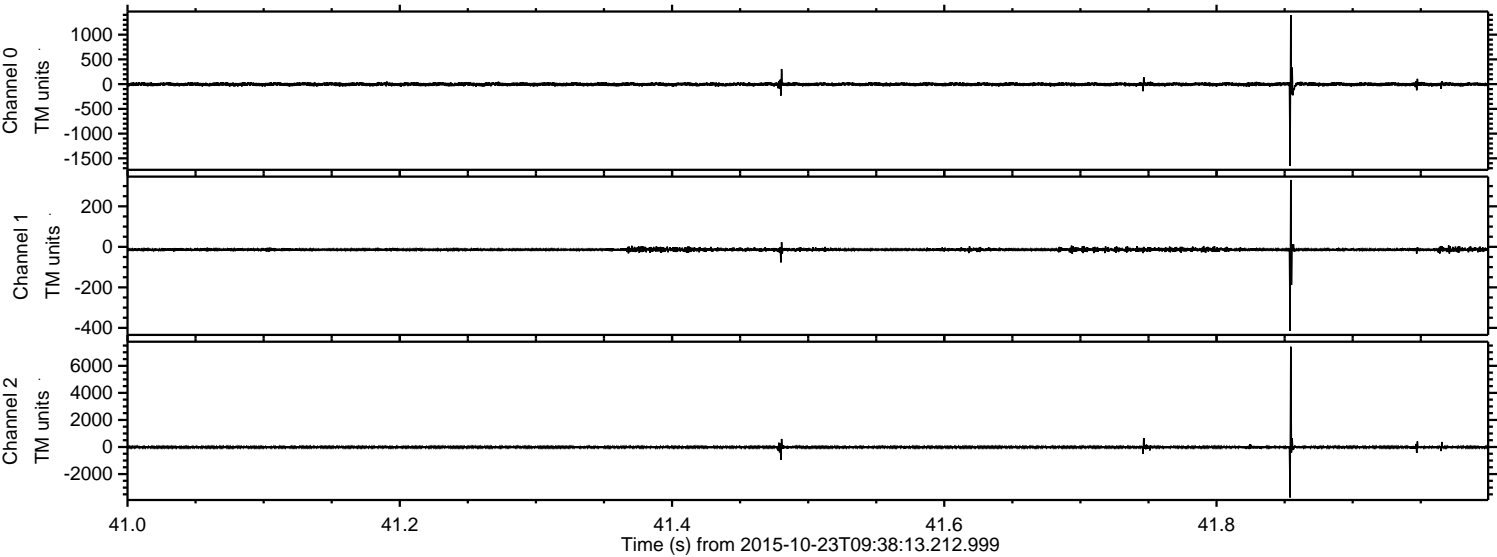
Processed Fri Oct 23 11:44:57 2015 by ELM ver.2012-10-06 from 001__elm20151023_093812__dat00.bin



Processed Fri Oct 23 11:45:12 2015 by ELM ver.2012-10-06 from 001__elm20151023_093812__dat00.bin

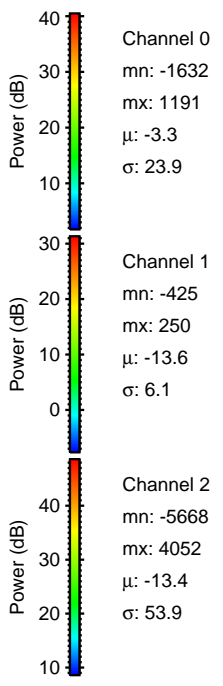
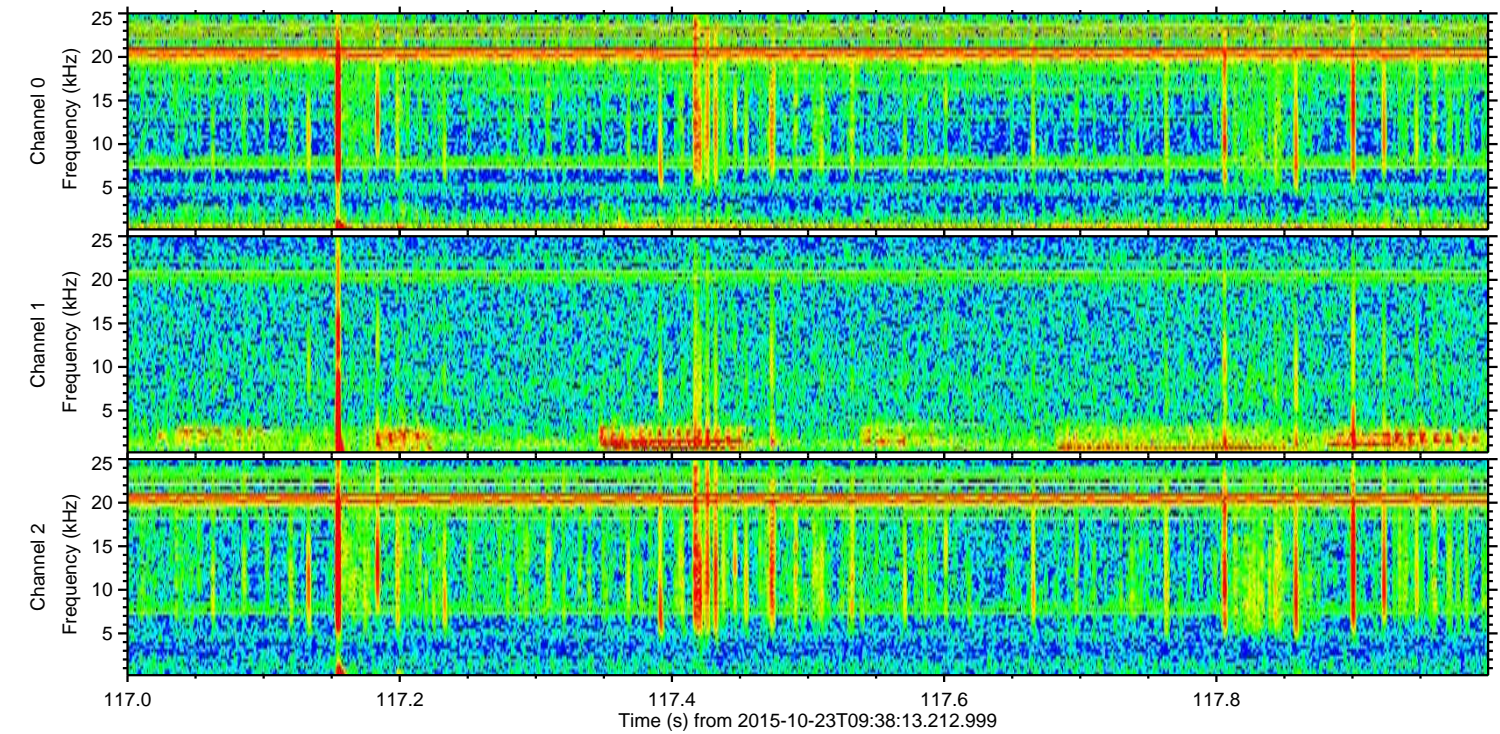
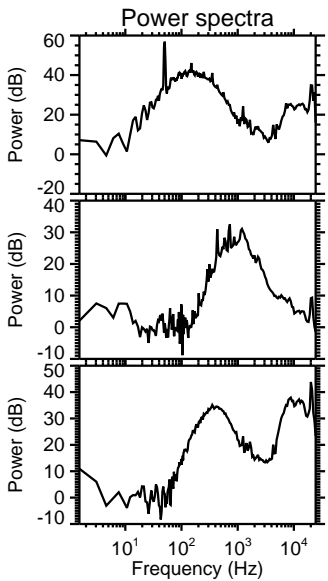
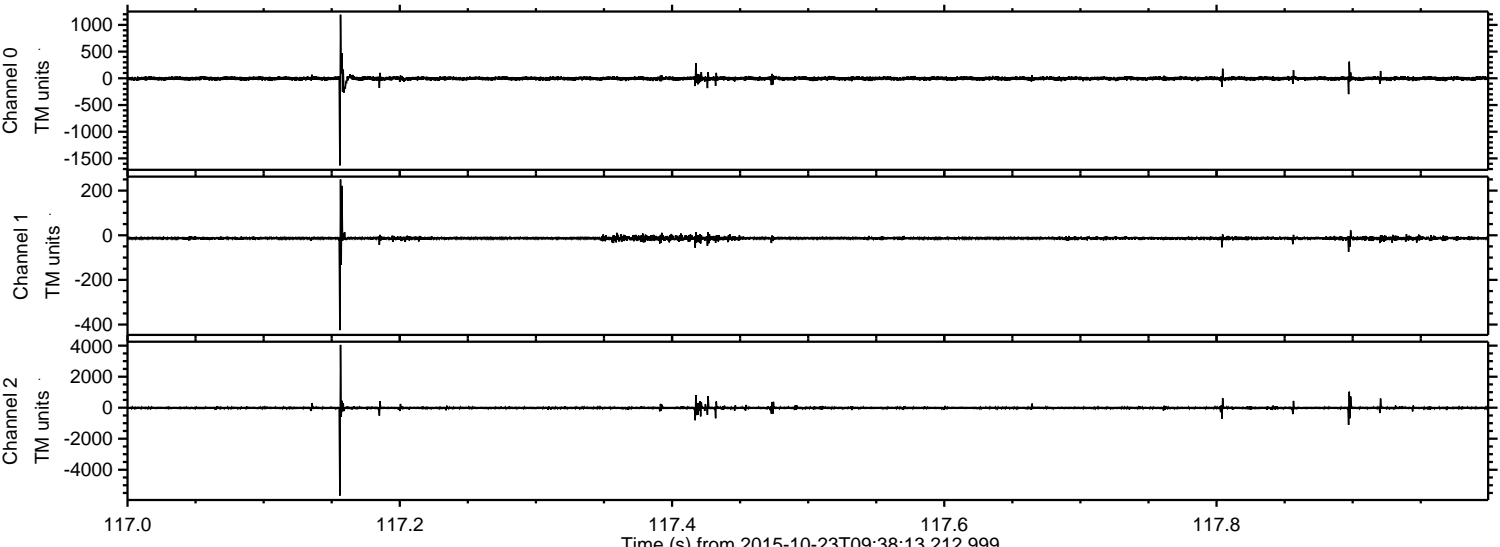


Processed Fri Oct 23 11:45:13 2015 by ELM ver.2012-10-06 from 001__elm20151023_093812__dat00.bin

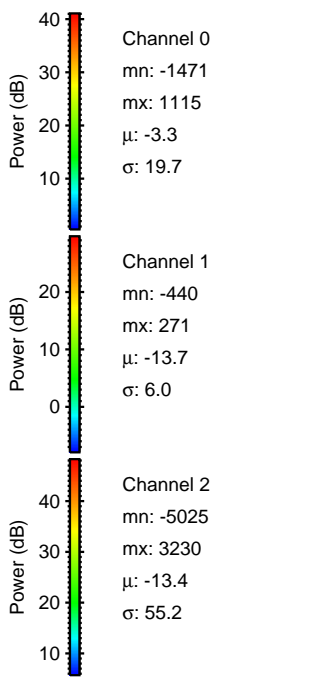
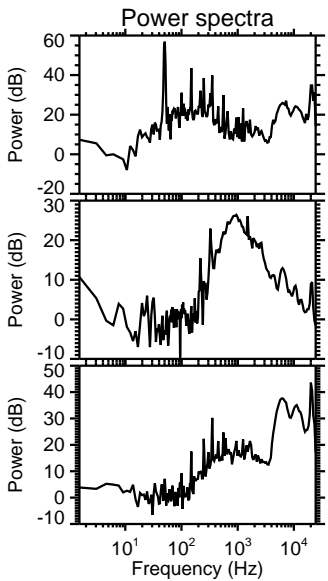
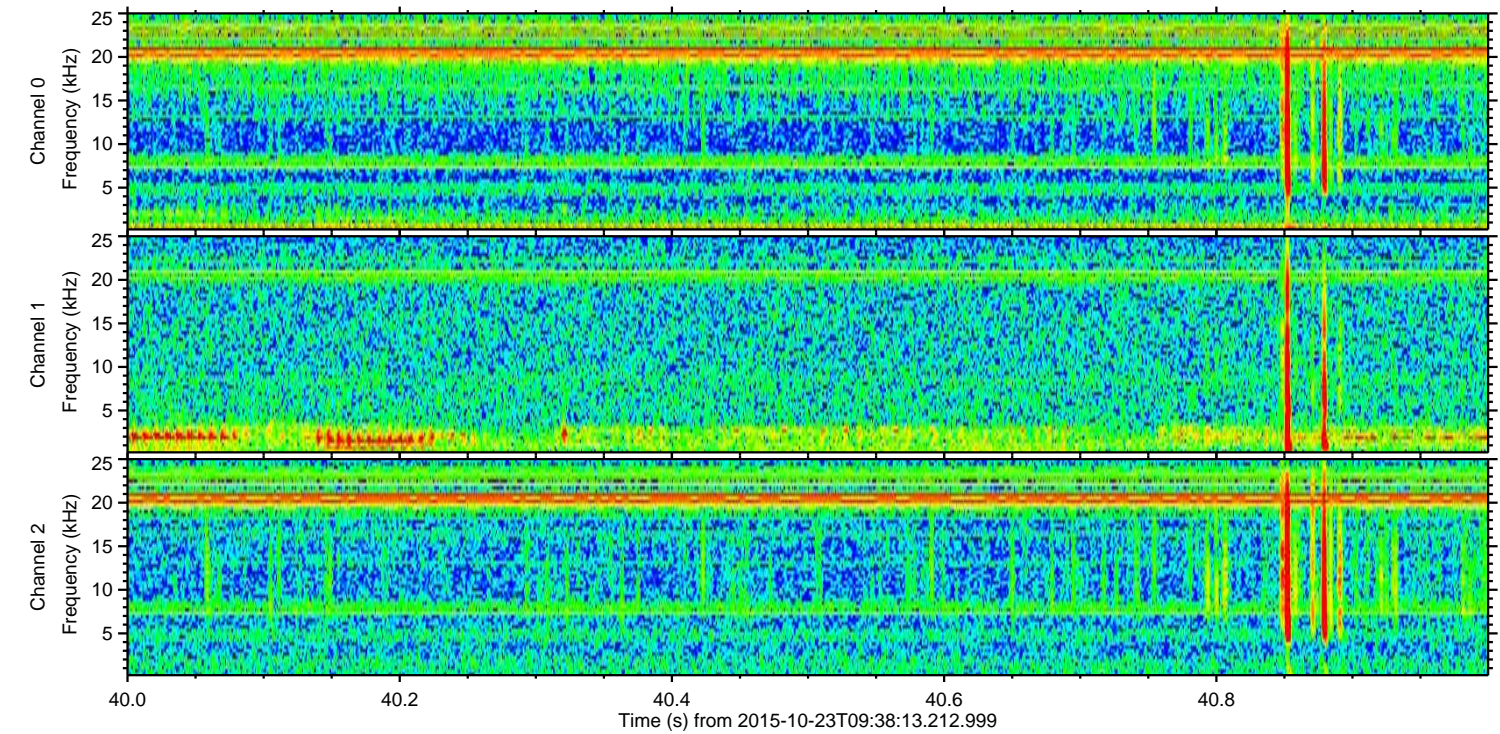
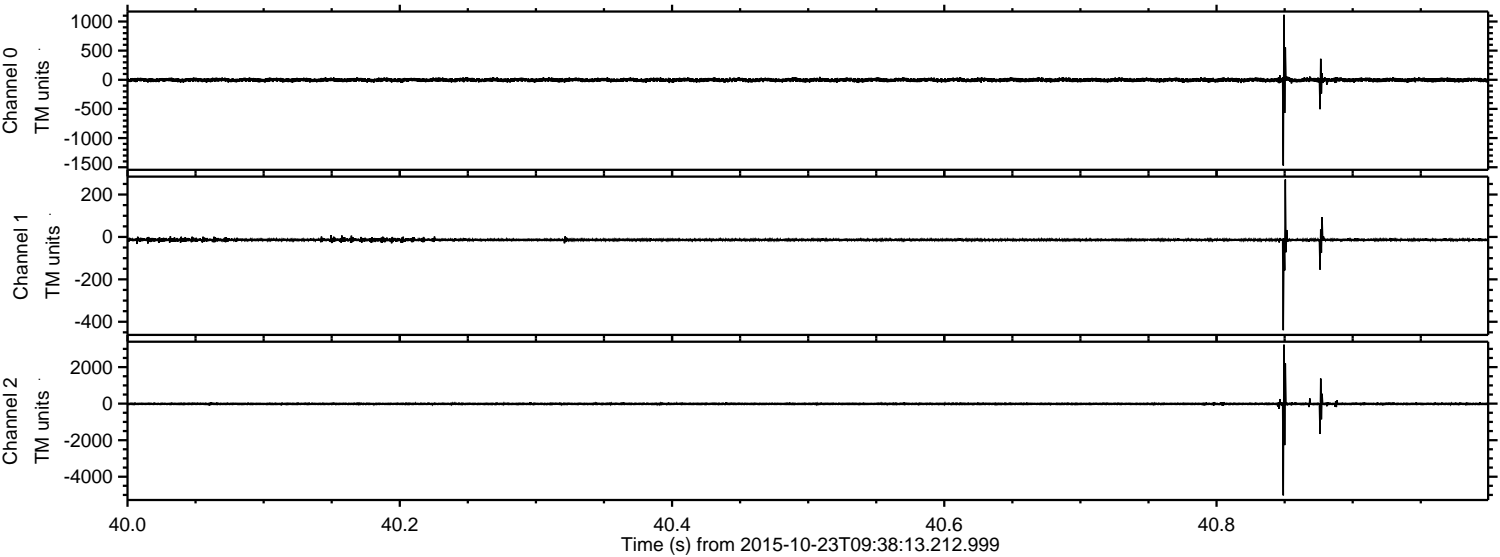


ELMAVAN 3D WAVEFORMS (Measured data sampled at 50 kHz) 51000 packets of 144 samples from 2015-10-23T09:38:13.212.999. Part 118/147

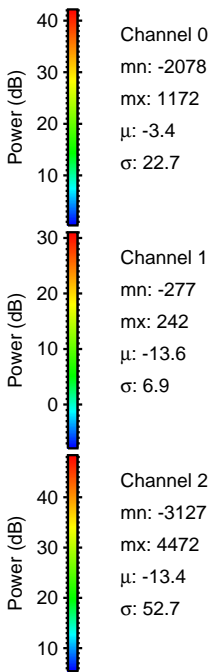
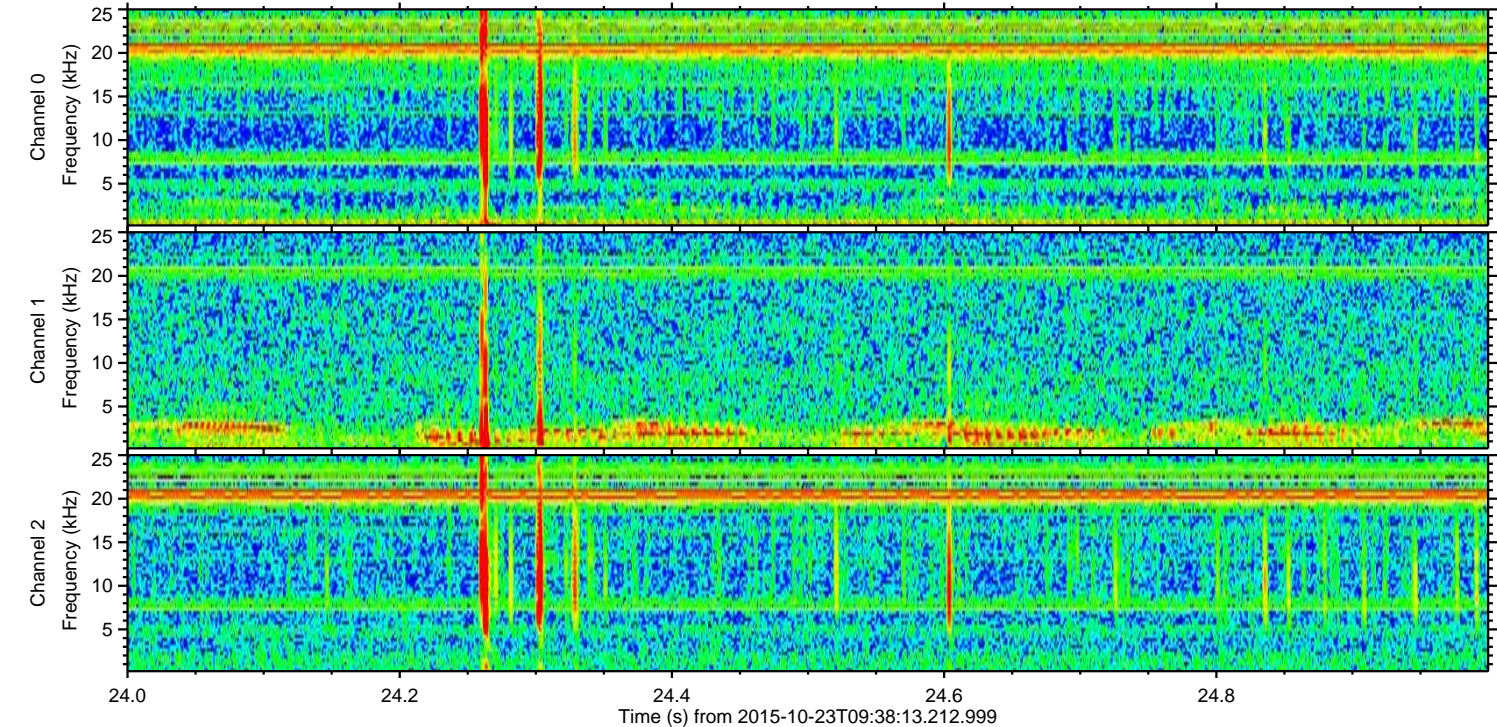
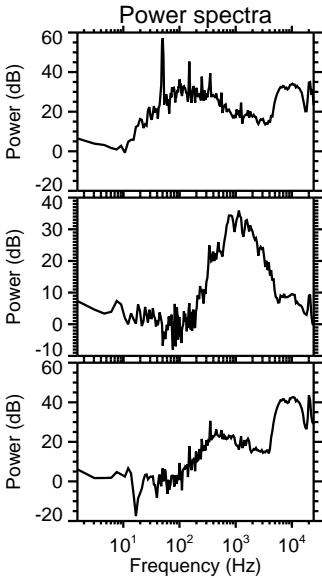
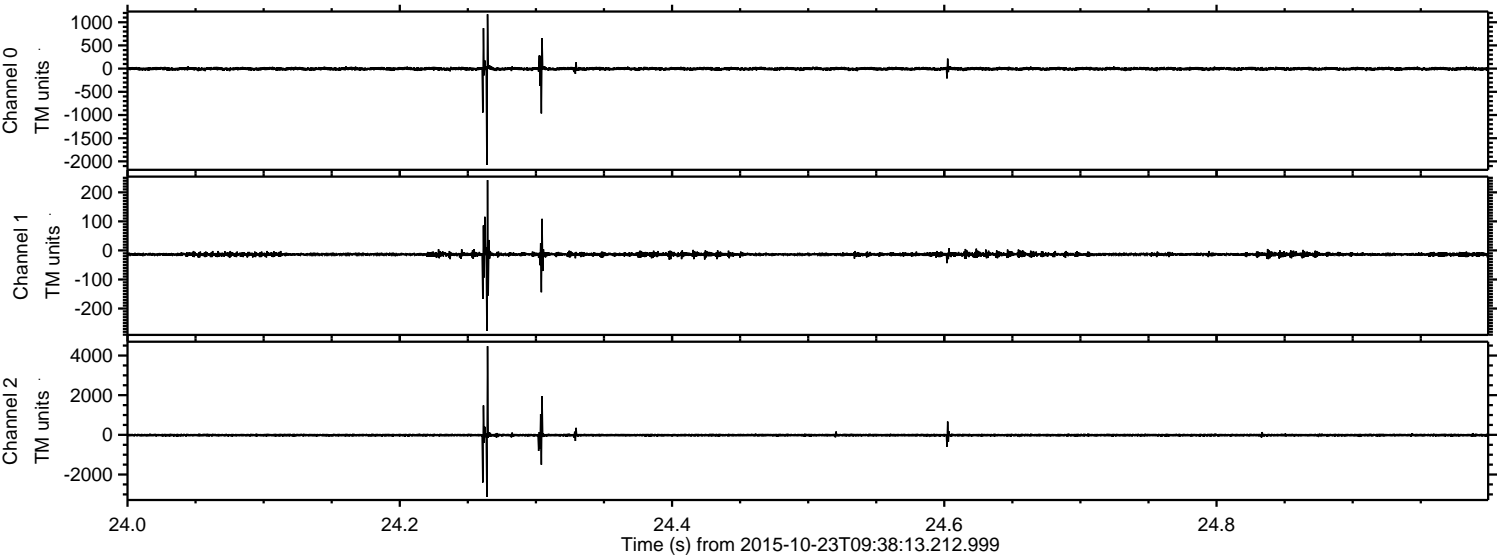
Processed Fri Oct 23 11:45:15 2015 by ELM ver.2012-10-06 from 001__elm20151023_093812__dat00.bin



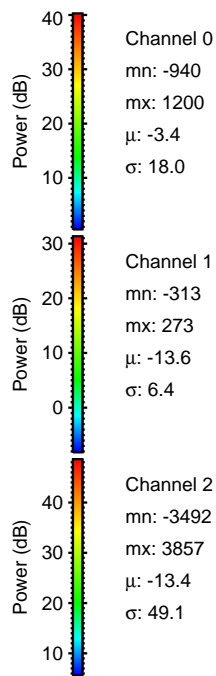
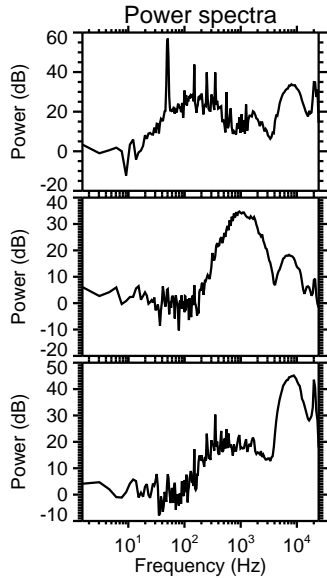
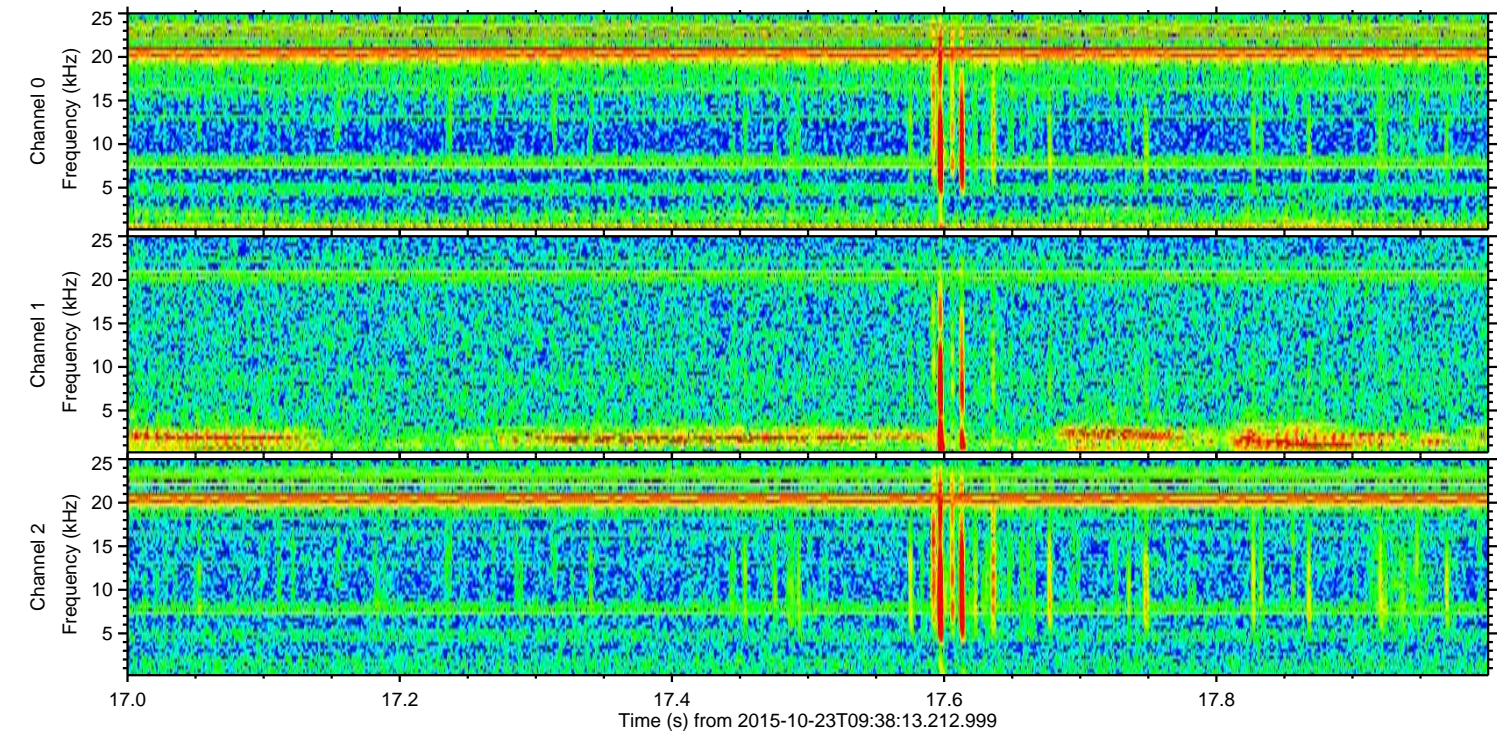
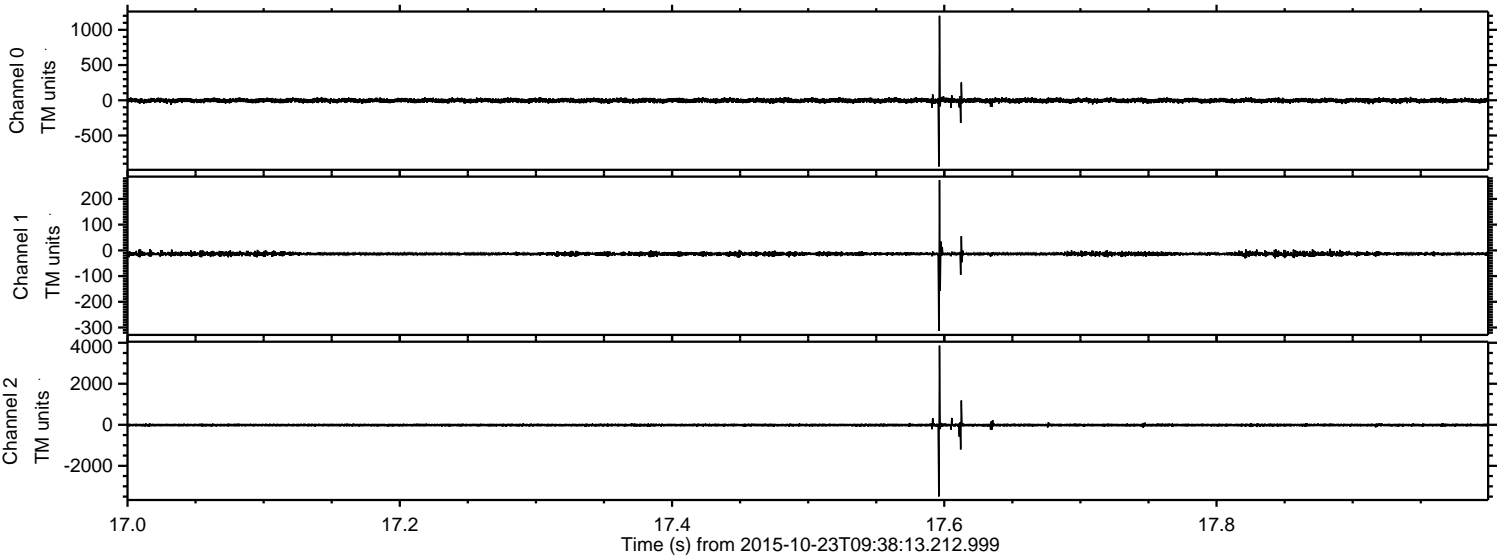
Processed Fri Oct 23 11:45:16 2015 by ELM ver.2012-10-06 from 001__elm20151023_093812__dat00.bin



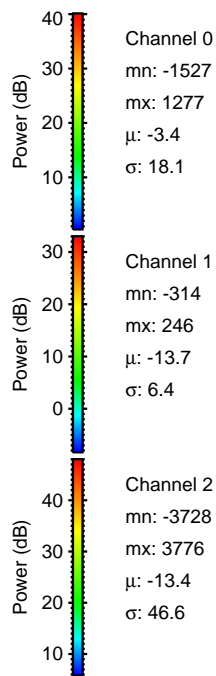
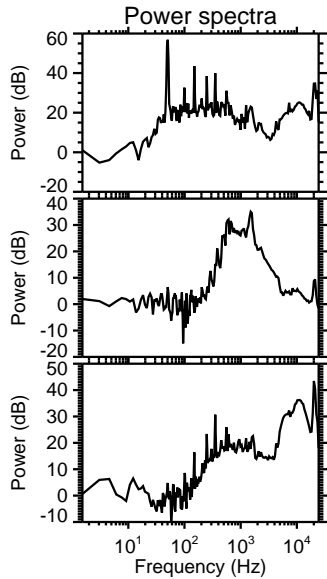
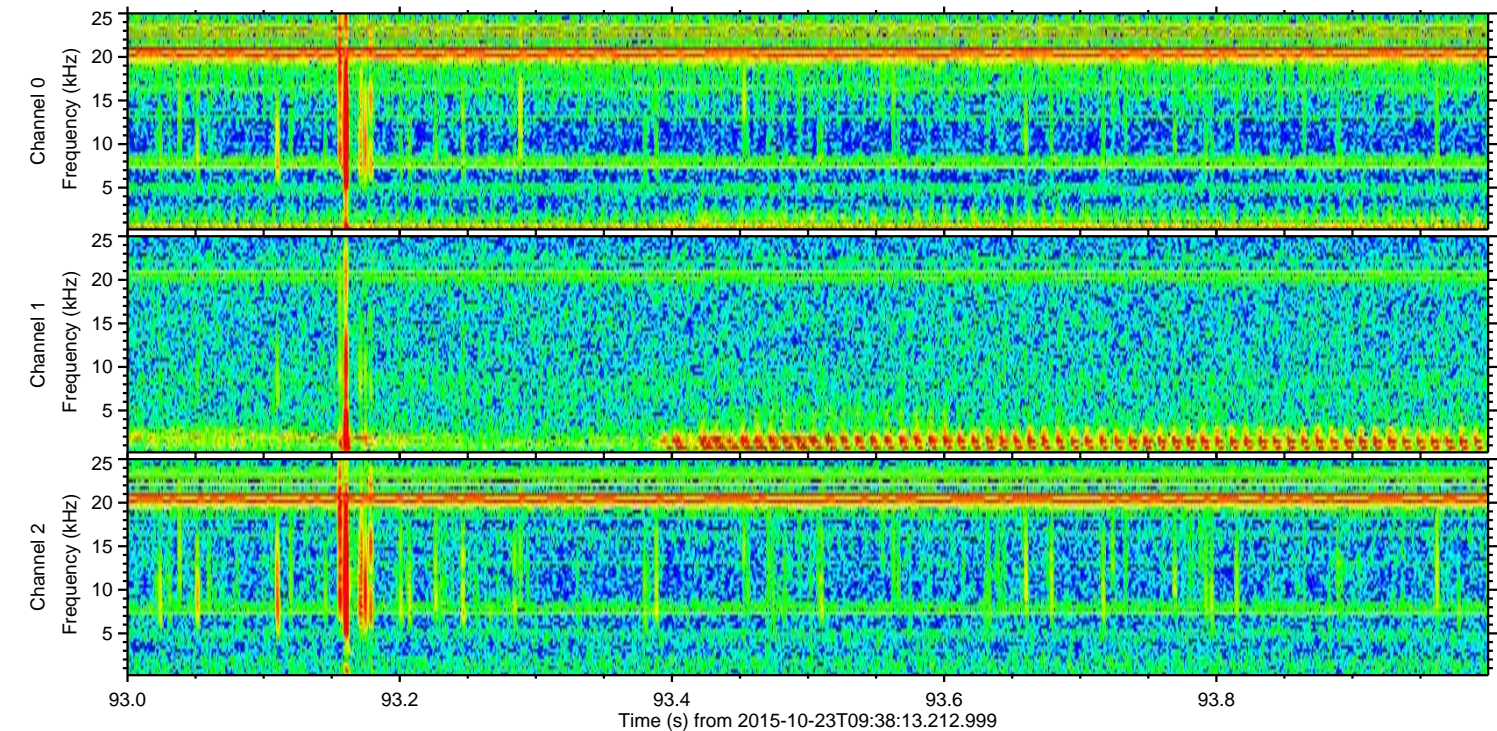
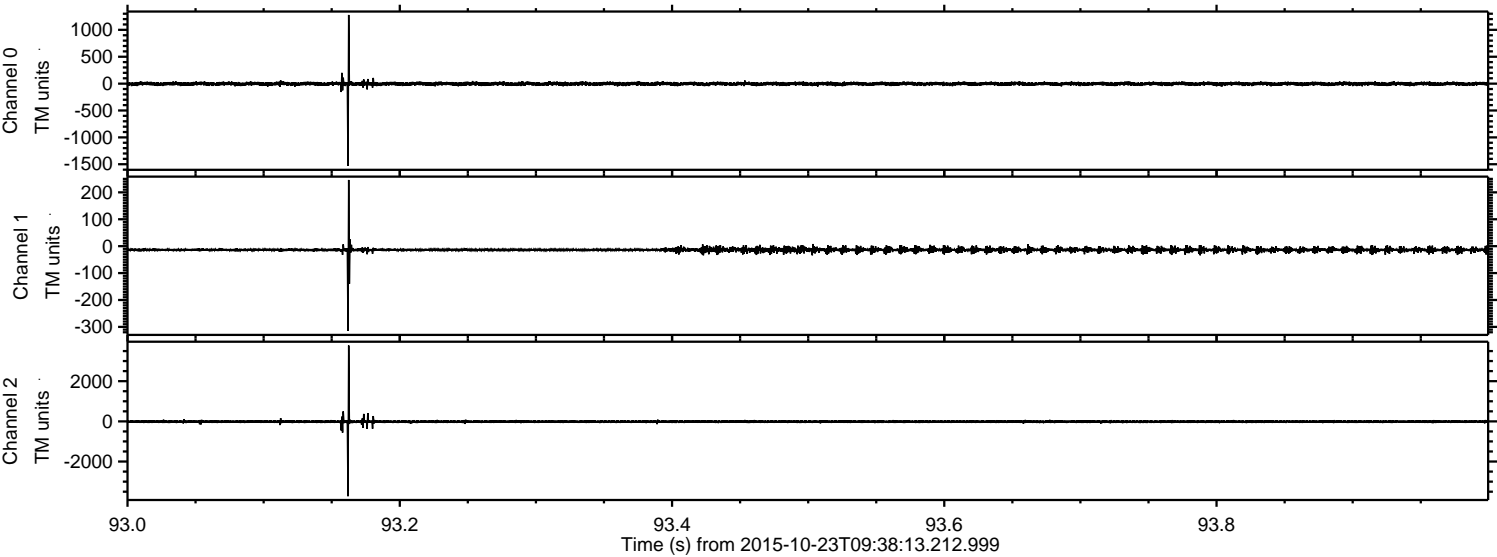
Processed Fri Oct 23 11:45:17 2015 by ELM ver.2012-10-06 from 001__elm20151023_093812__dat00.bin



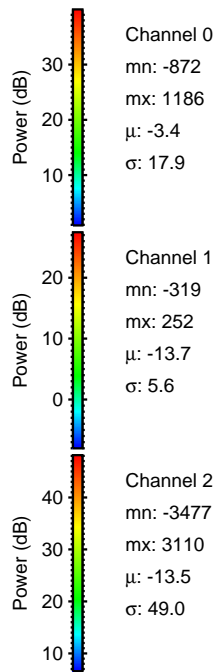
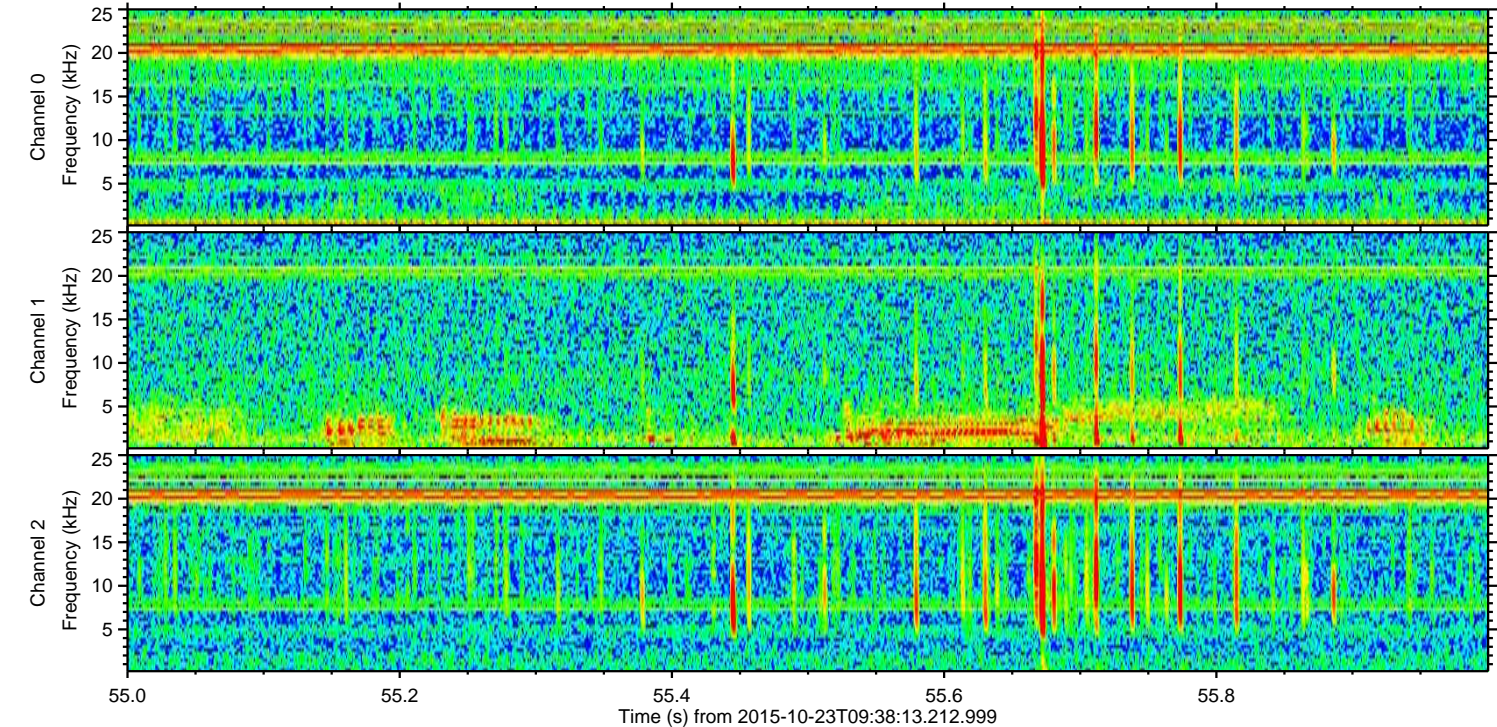
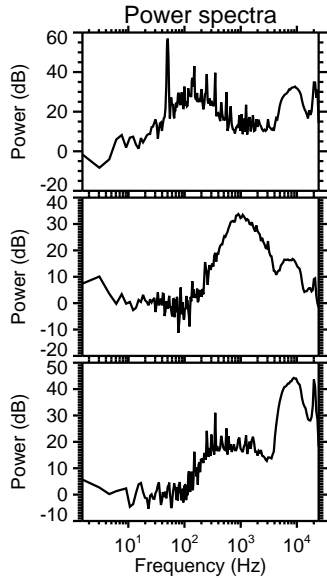
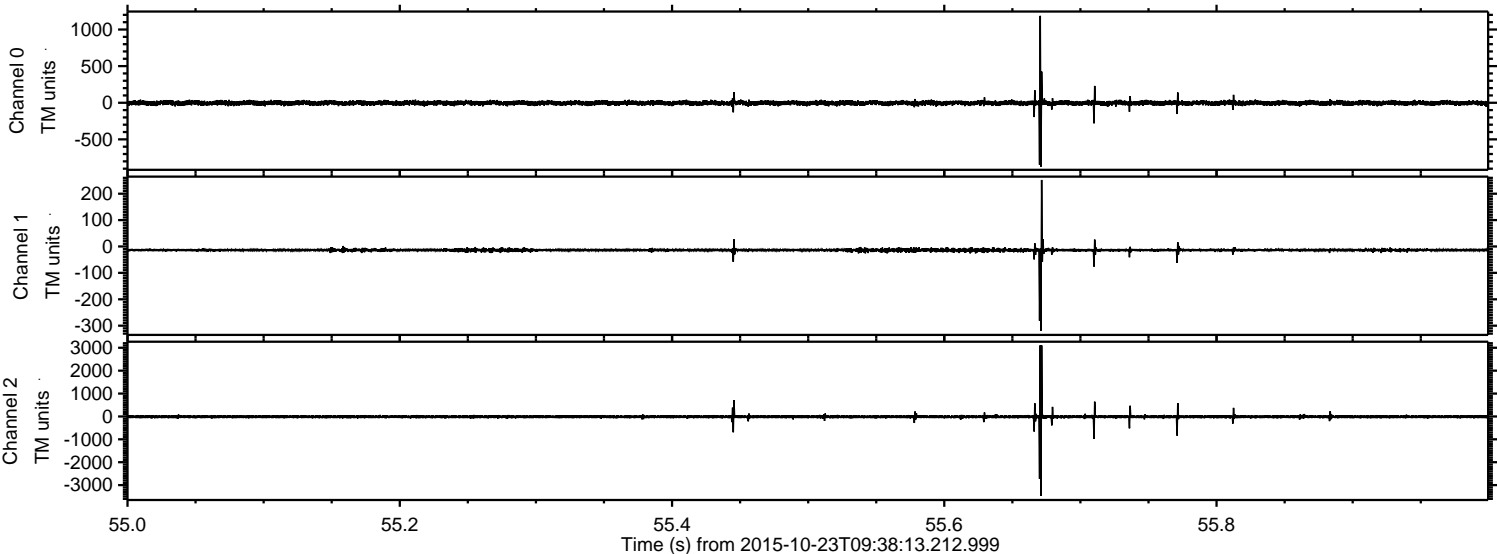
Processed Fri Oct 23 11:45:18 2015 by ELM ver.2012-10-06 from 001__elm20151023_093812__dat00.bin



Processed Fri Oct 23 11:45:19 2015 by ELM ver.2012-10-06 from 001__elm20151023_093812__dat00.bin

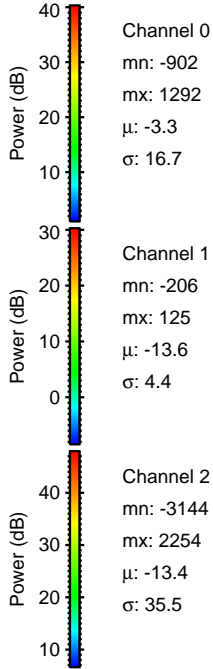
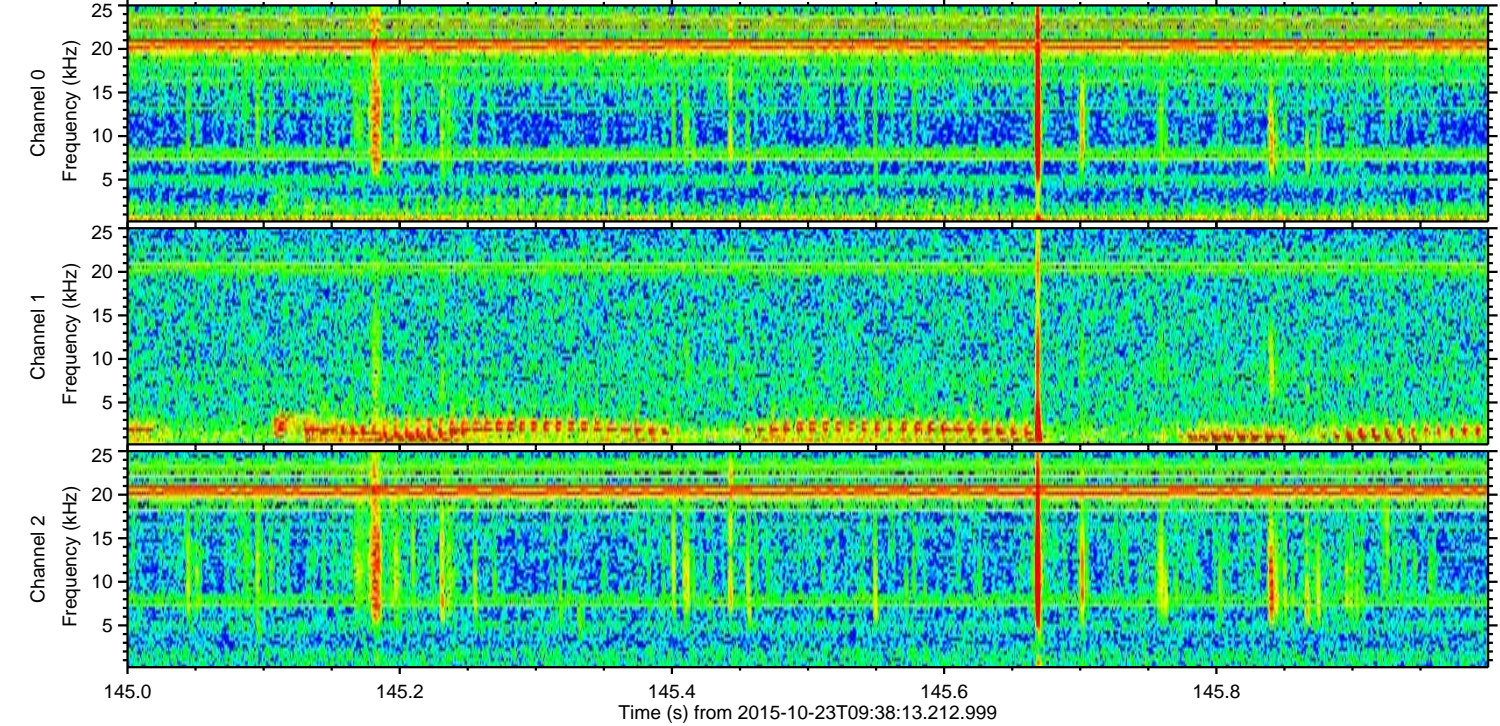
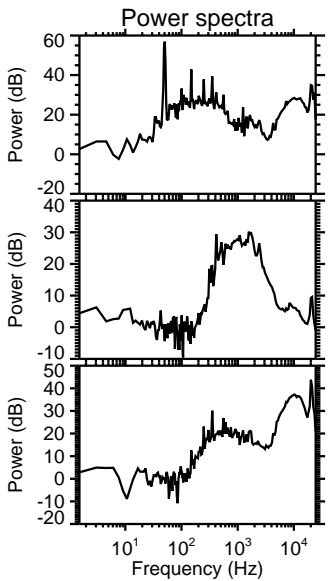
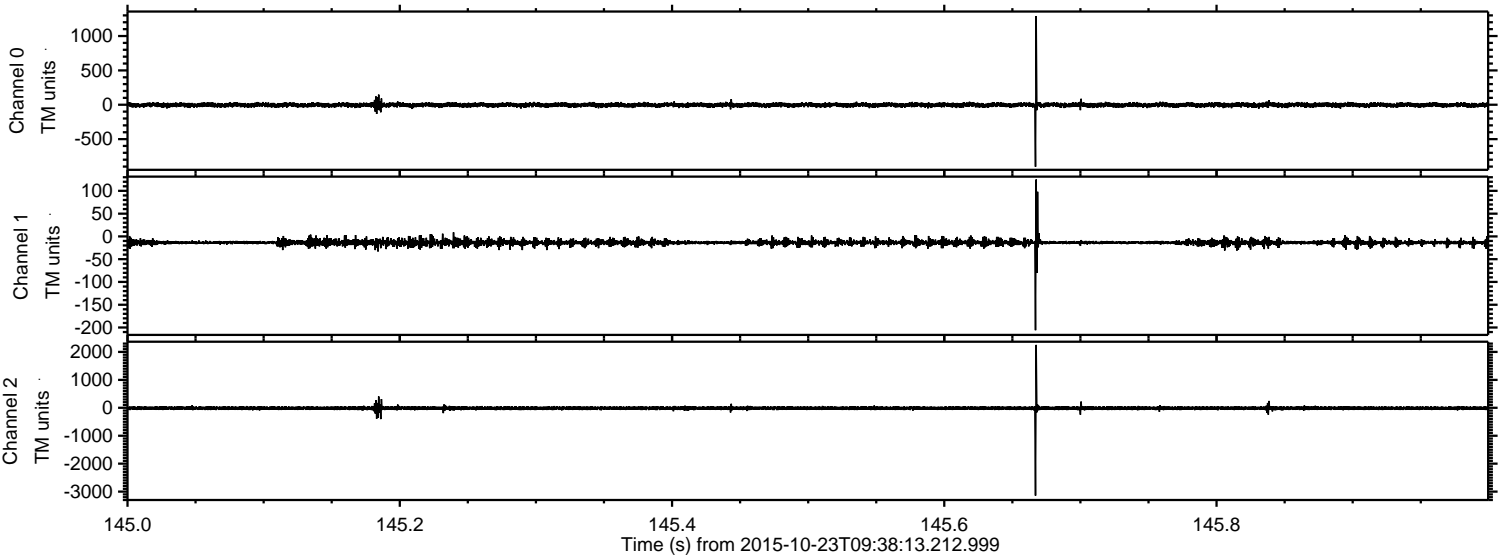


Processed Fri Oct 23 11:45:20 2015 by ELM ver.2012-10-06 from 001__elm20151023_093812__dat00.bin



ELMAVAN 3D WAVEFORMS (Measured data sampled at 50 kHz) 51000 packets of 144 samples from 2015-10-23T09:38:13.212.999. Part 146/147

Processed Fri Oct 23 11:45:21 2015 by ELM ver.2012-10-06 from 001__elm20151023_093812__dat00.bin



Channel 0
mn: -902
mx: 1292
 μ : -3.3
 σ : 16.7

Channel 1
mn: -206
mx: 125
 μ : -13.6
 σ : 4.4

Channel 2
mn: -3144
mx: 2254
 μ : -13.4
 σ : 35.5

