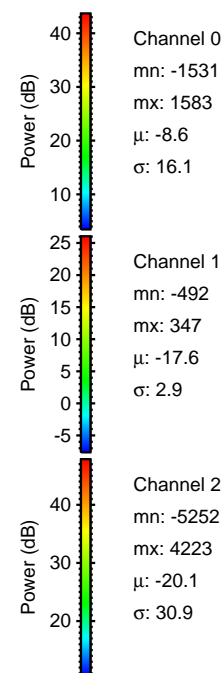
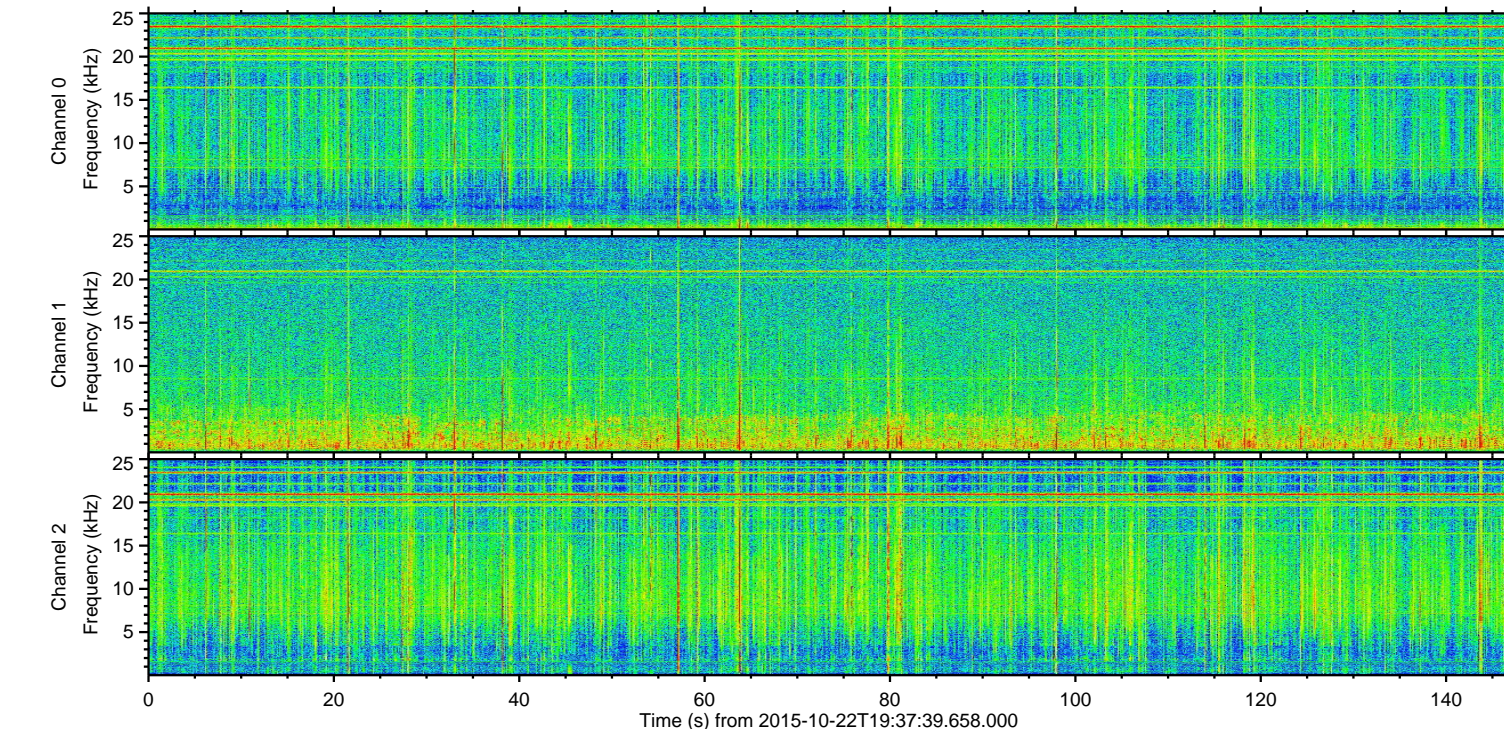
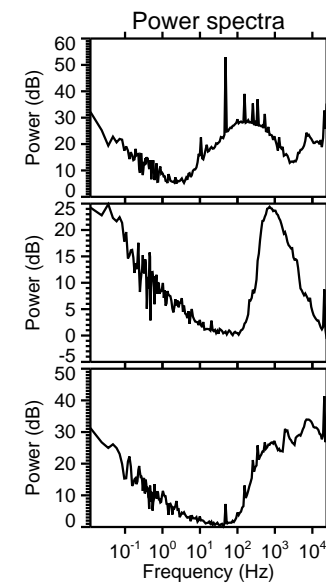
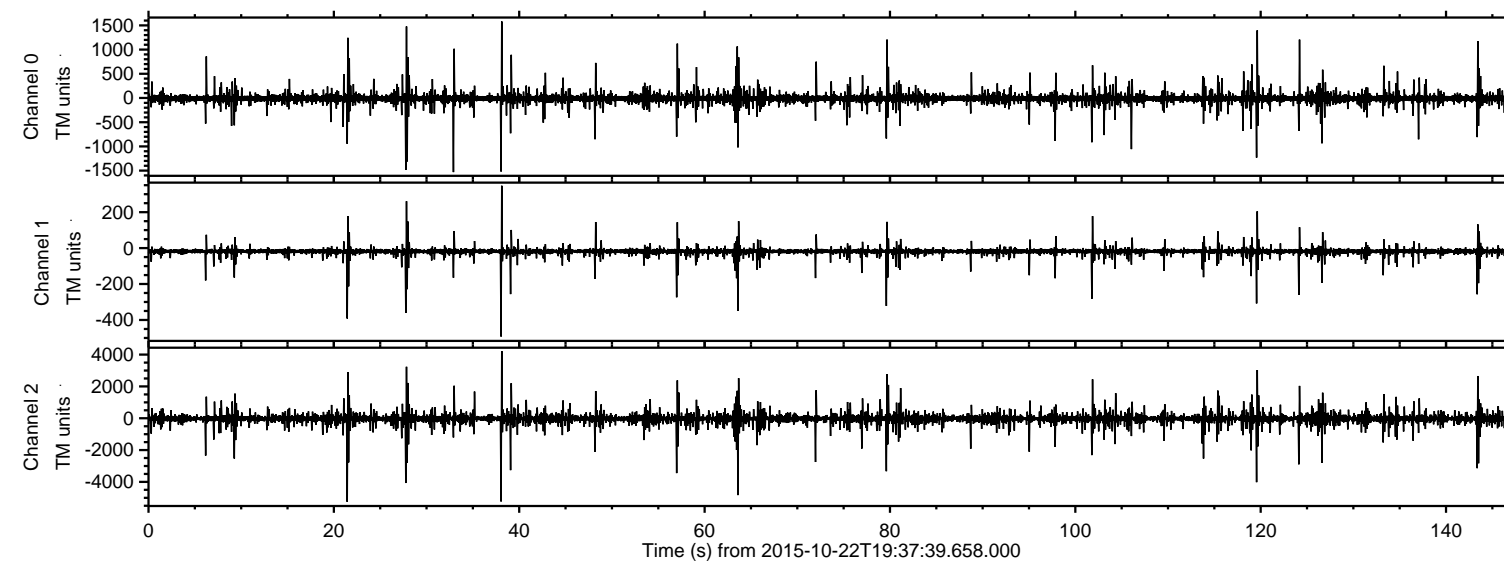
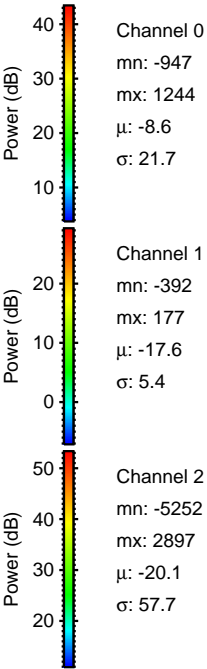
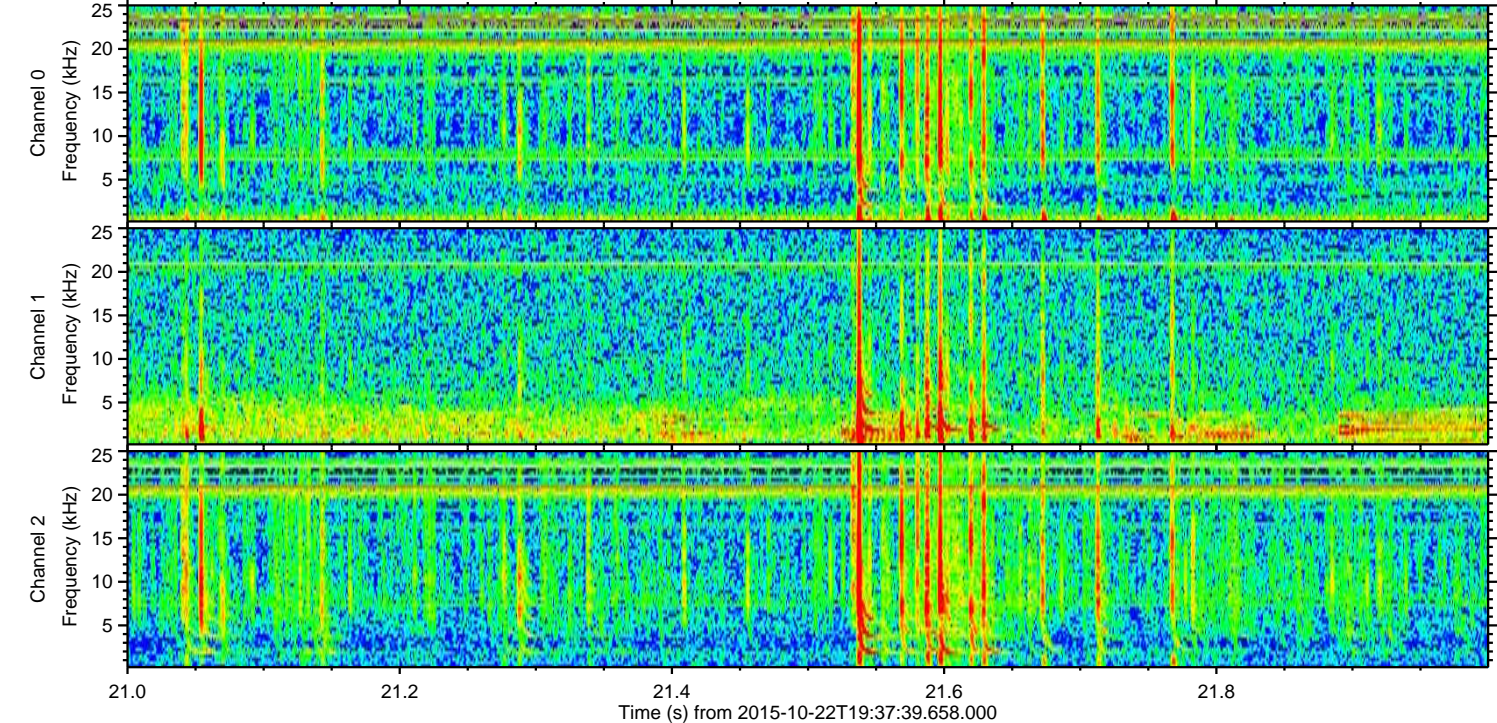
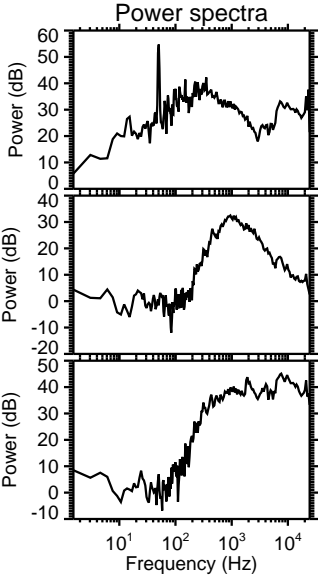
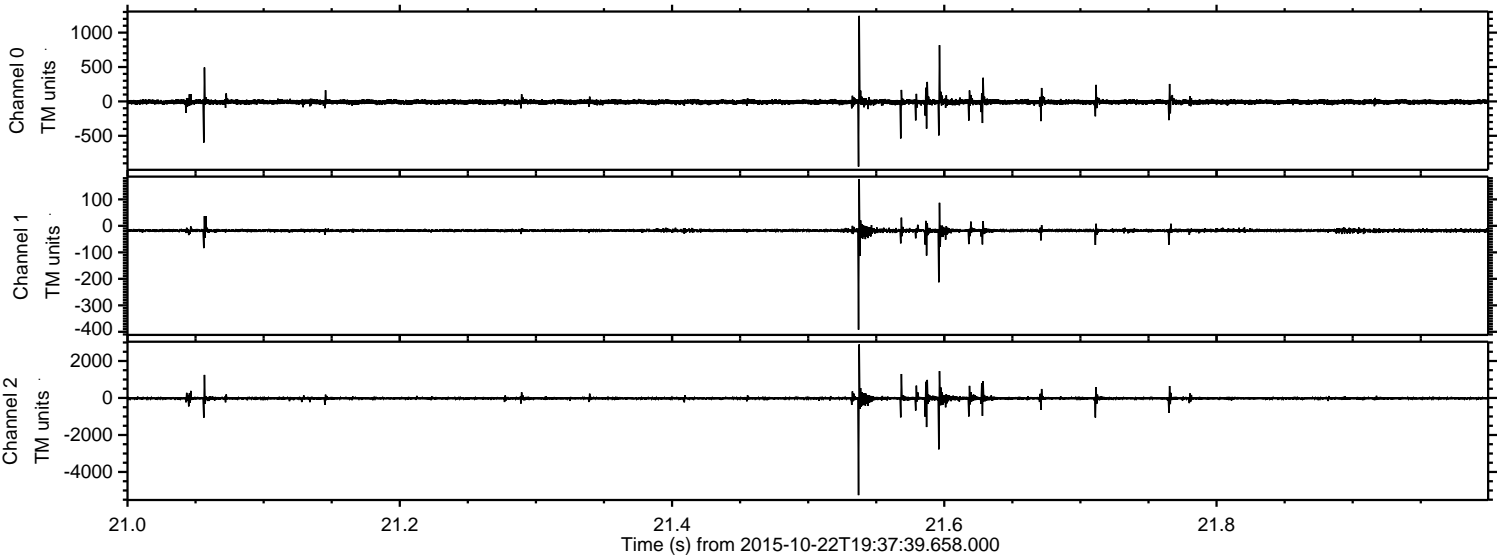


ELMAVAN 3D WAVEFORMS (Measured data sampled at 50 kHz) 51000 packets of 144 samples from 2015-10-22T19:37:39.658.000.

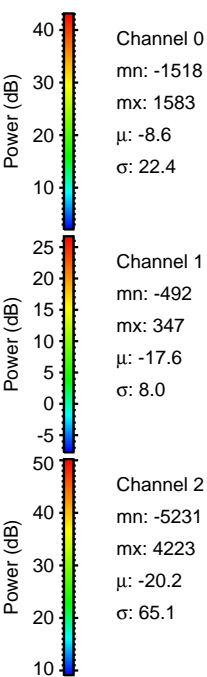
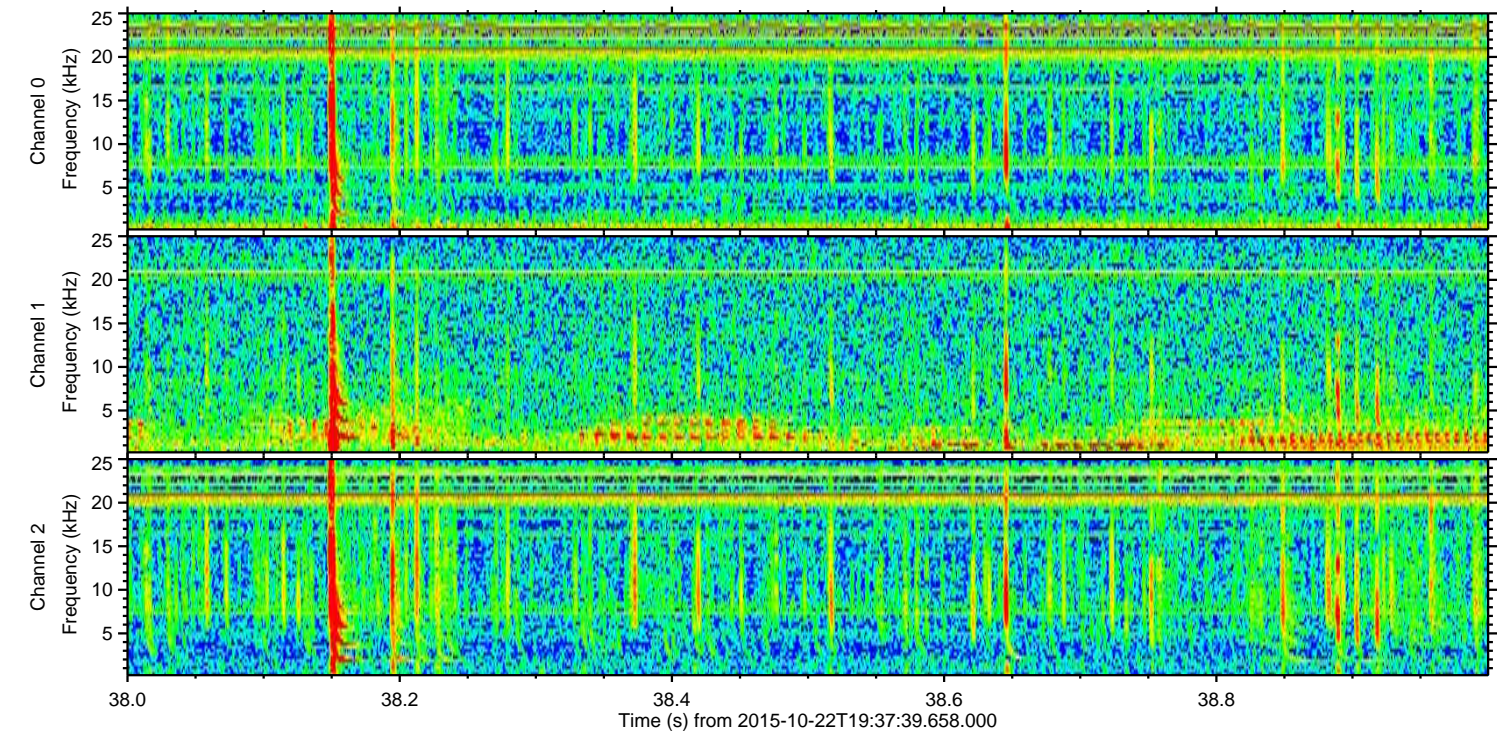
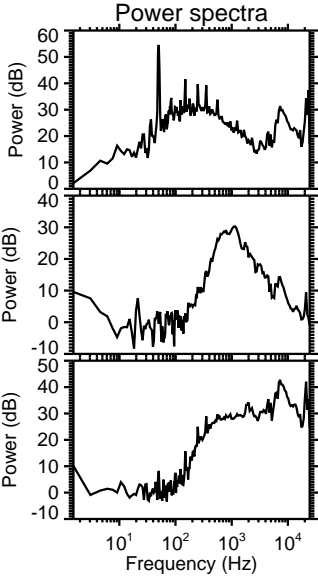
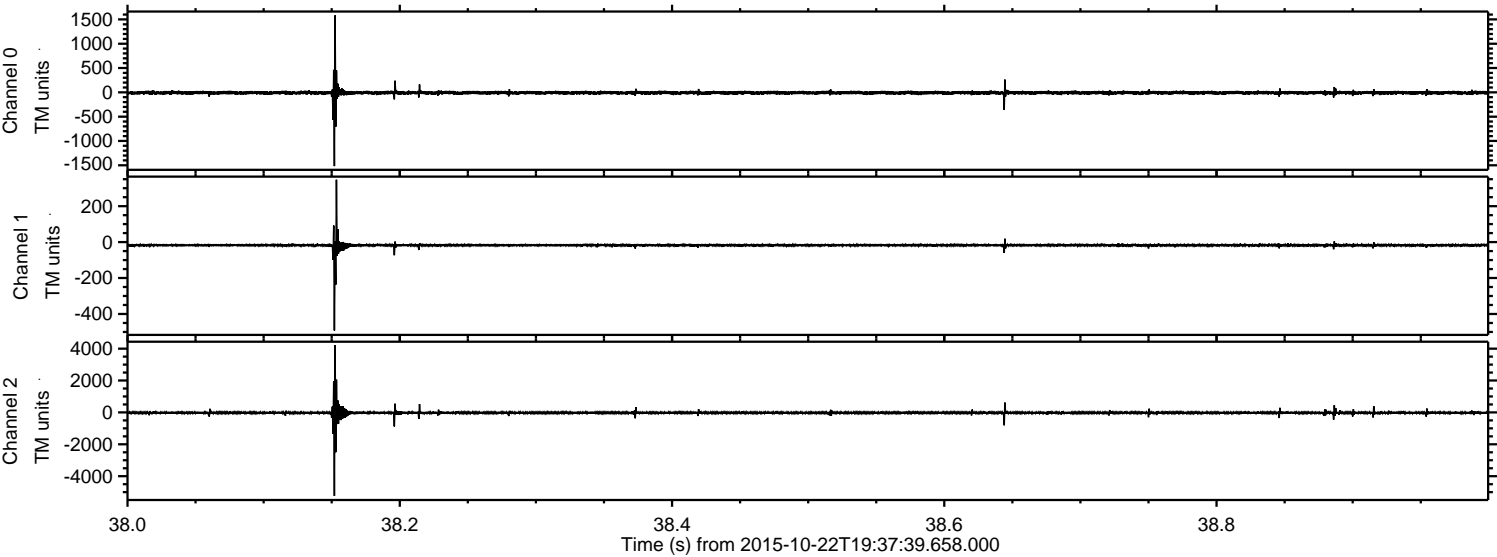
Processed Thu Oct 22 21:43:51 2015 by ELM ver.2012-10-06 from 001__elm20151022_193738__dat00.bin



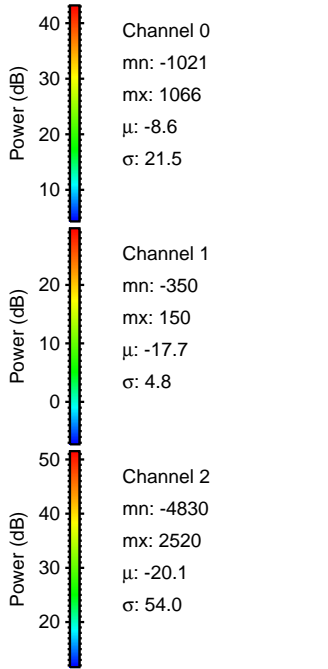
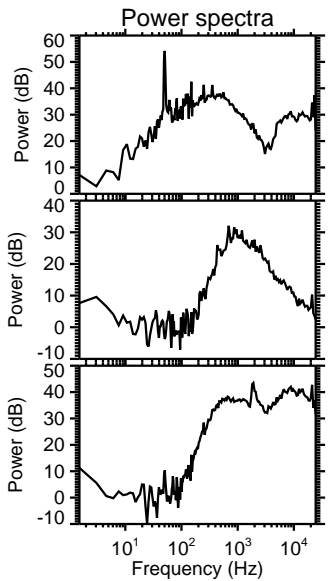
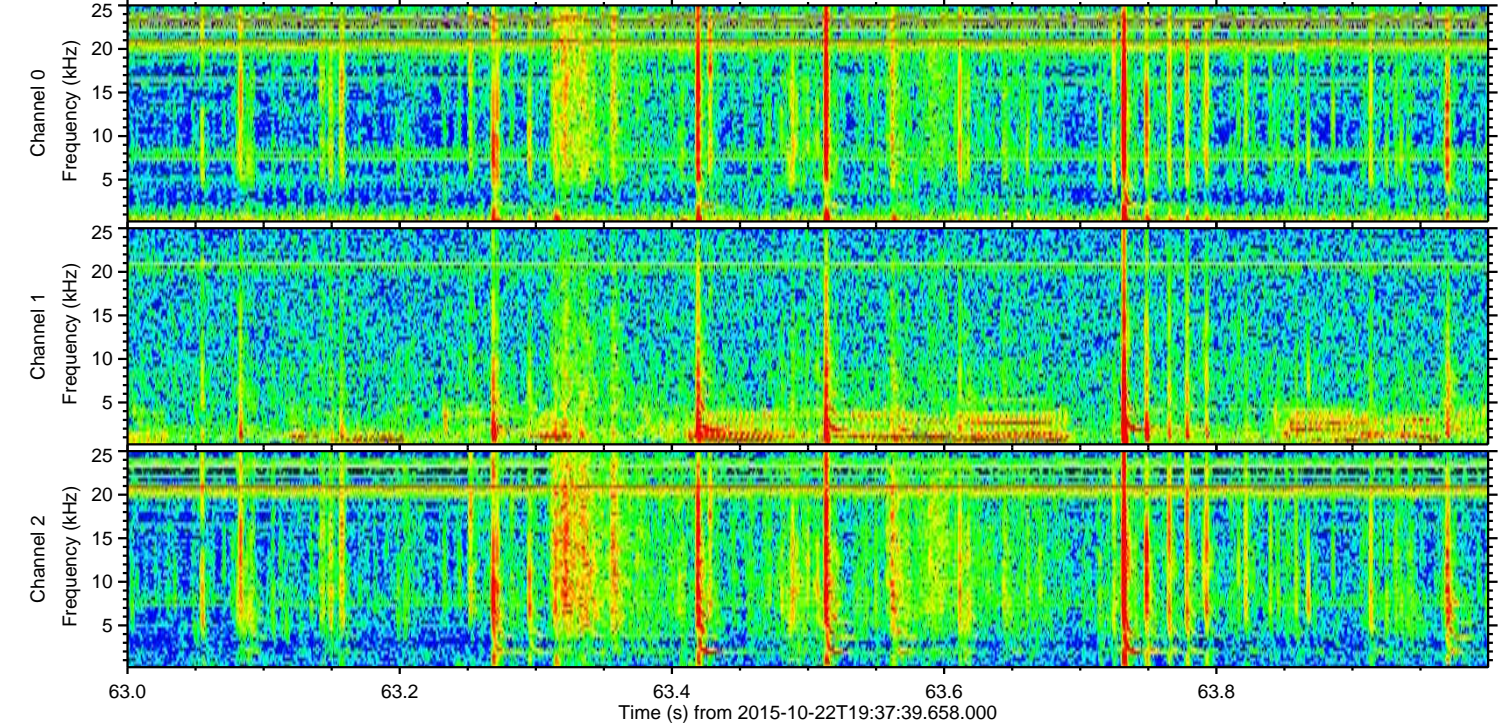
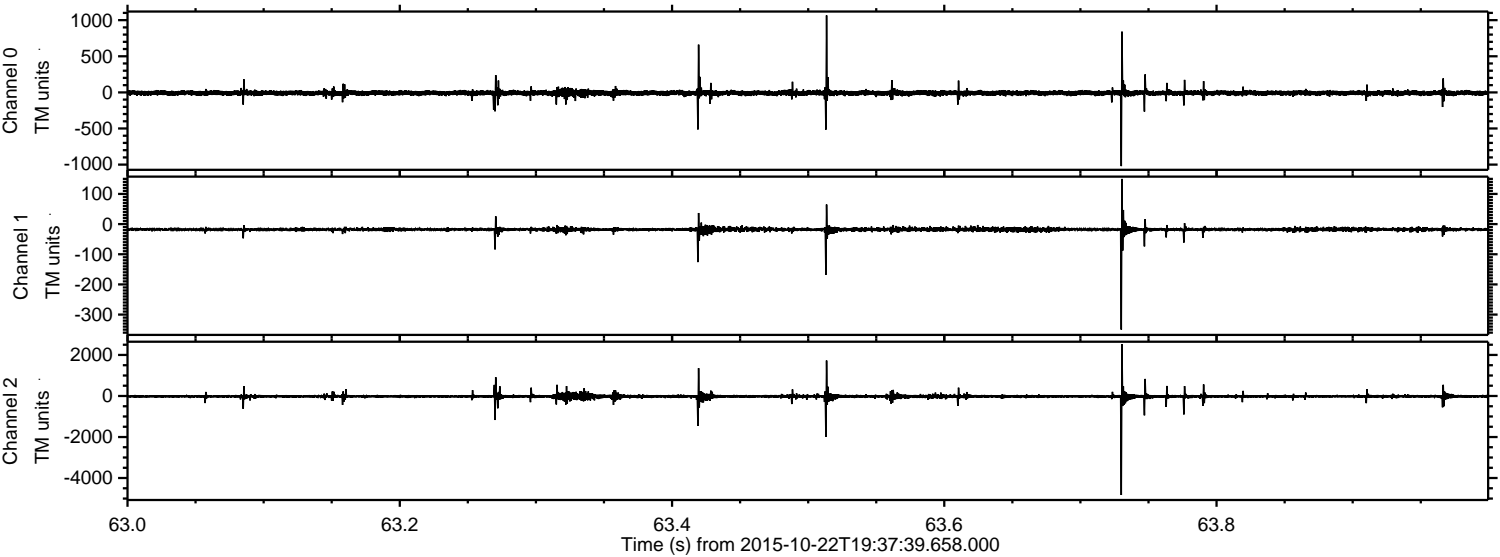
Processed Thu Oct 22 21:44:10 2015 by ELM ver.2012-10-06 from 001__elm20151022_193738__dat00.bin



Processed Thu Oct 22 21:44:11 2015 by ELM ver.2012-10-06 from 001__elm20151022_193738__dat00.bin

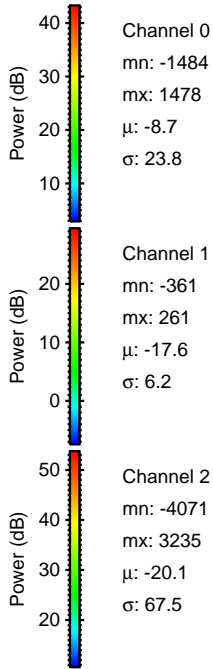
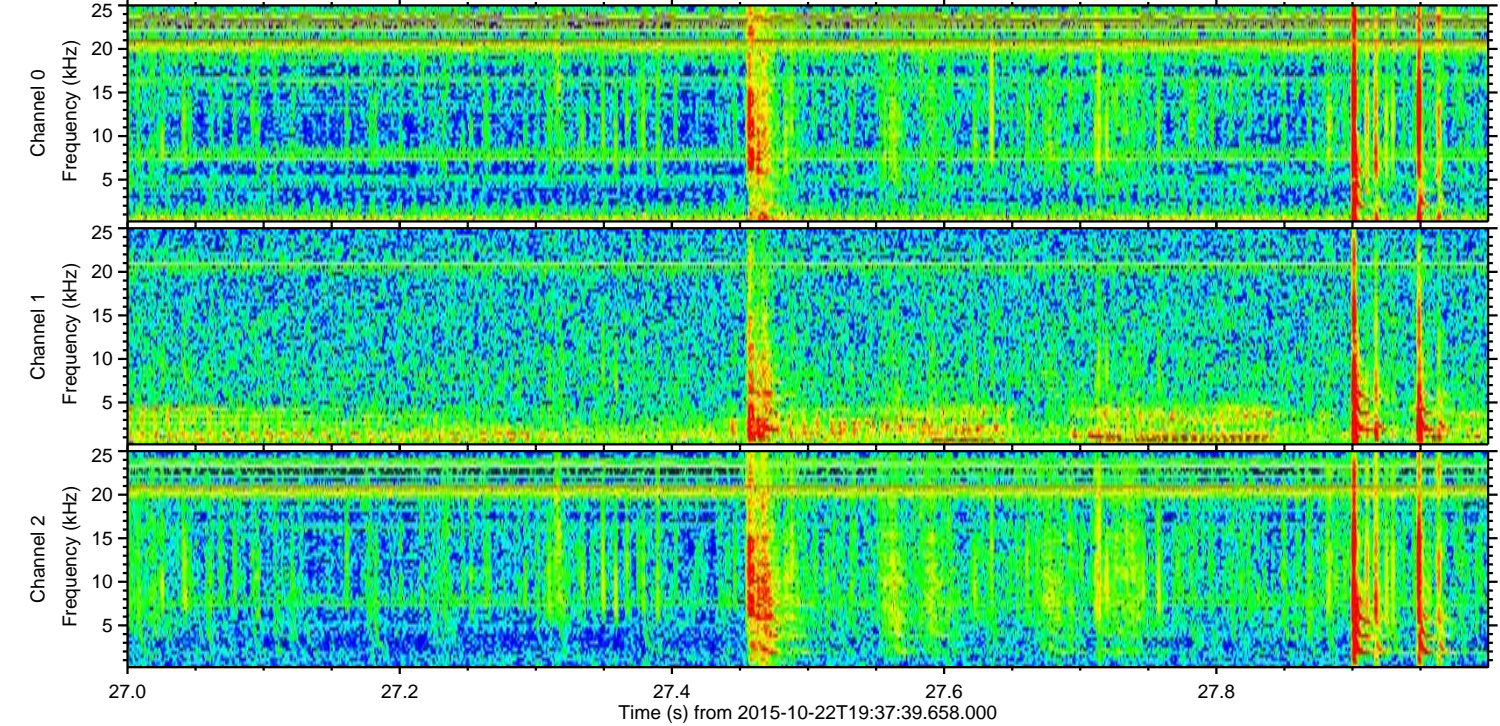
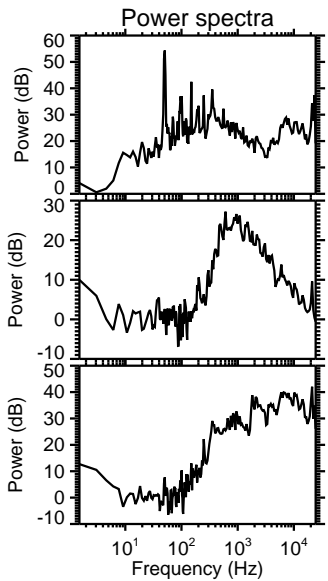
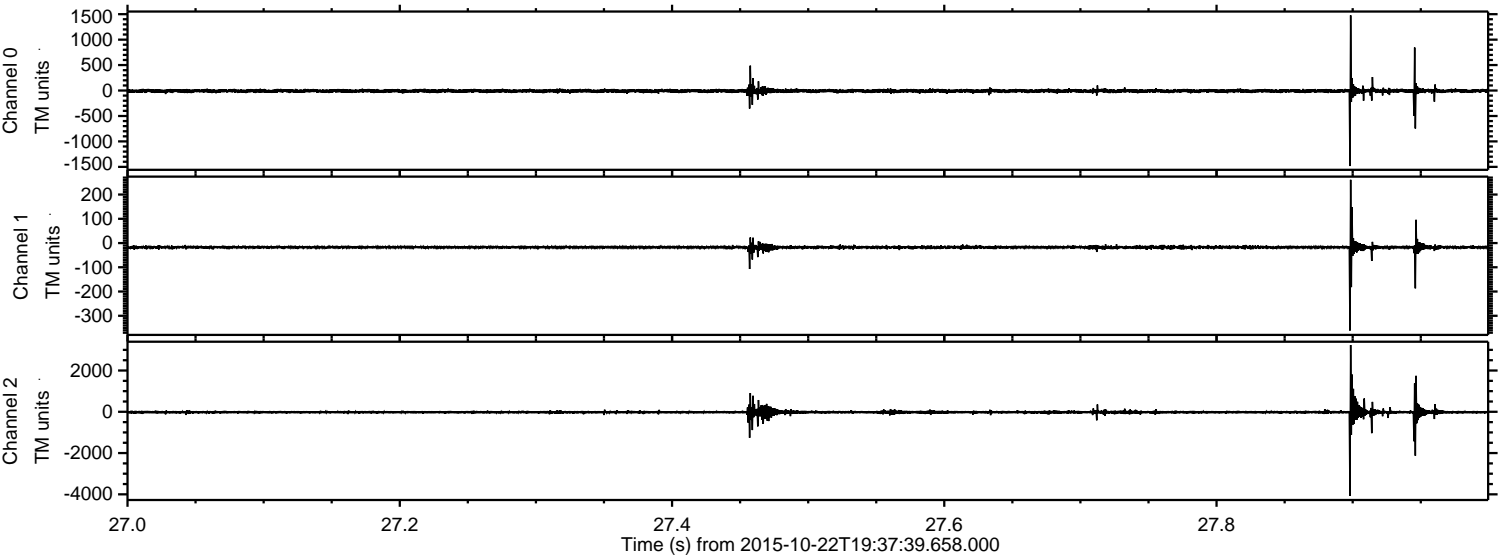


Processed Thu Oct 22 21:44:12 2015 by ELM ver.2012-10-06 from 001__elm20151022_193738__dat00.bin



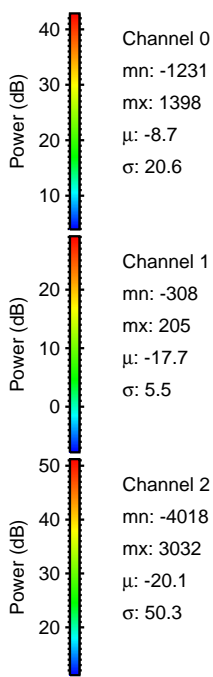
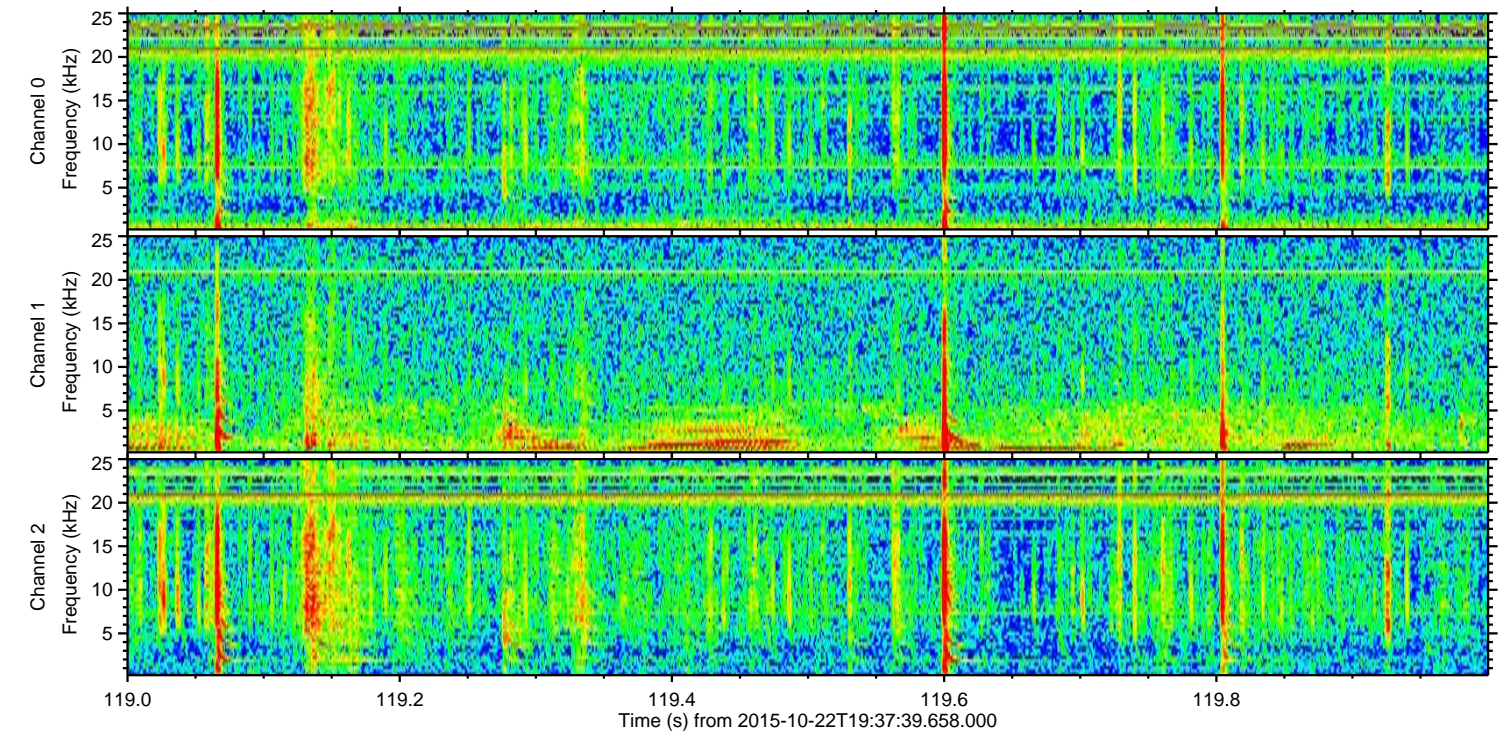
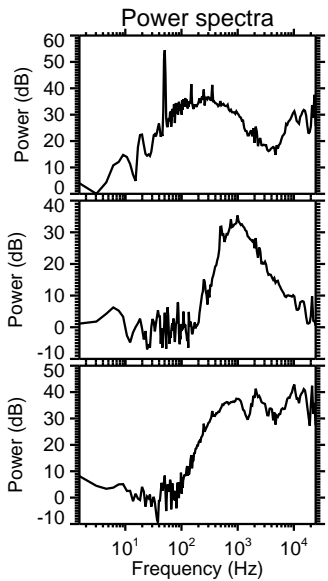
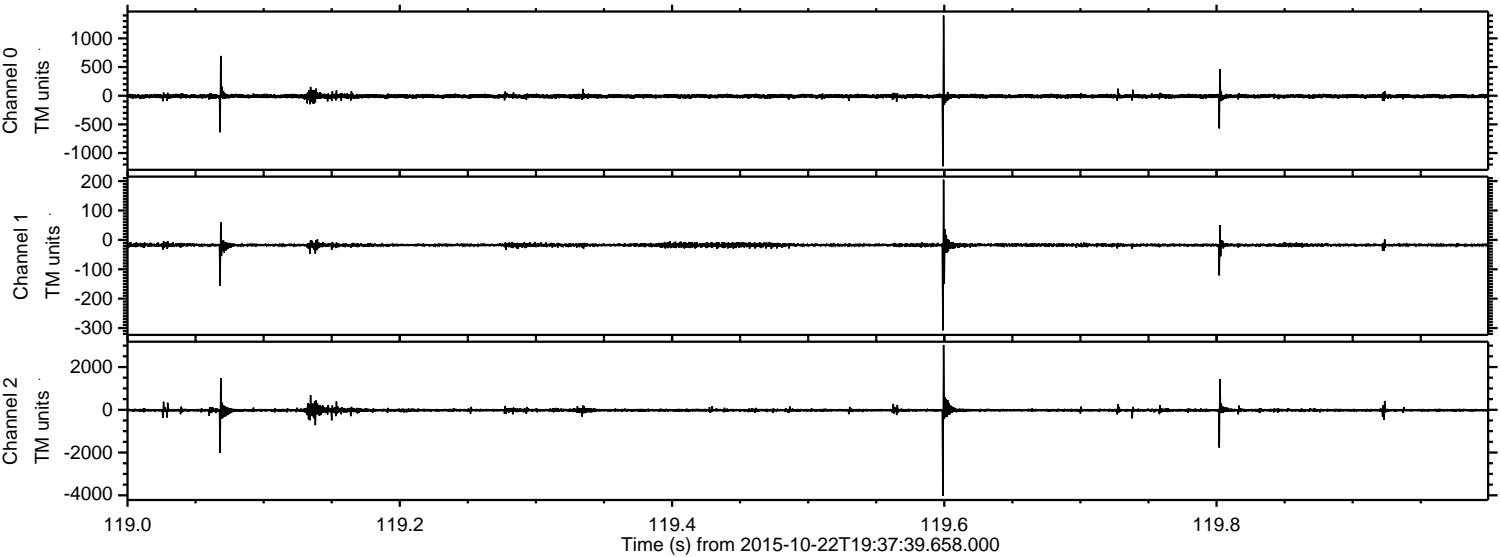
ELMAVAN 3D WAVEFORMS (Measured data sampled at 50 kHz) 51000 packets of 144 samples from 2015-10-22T19:37:39.658.000. Part 28/147

Processed Thu Oct 22 21:44:13 2015 by ELM ver.2012-10-06 from 001__elm20151022_193738__dat00.bin

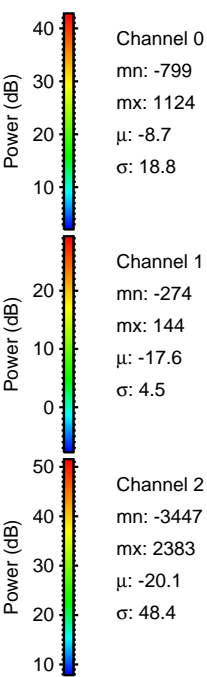
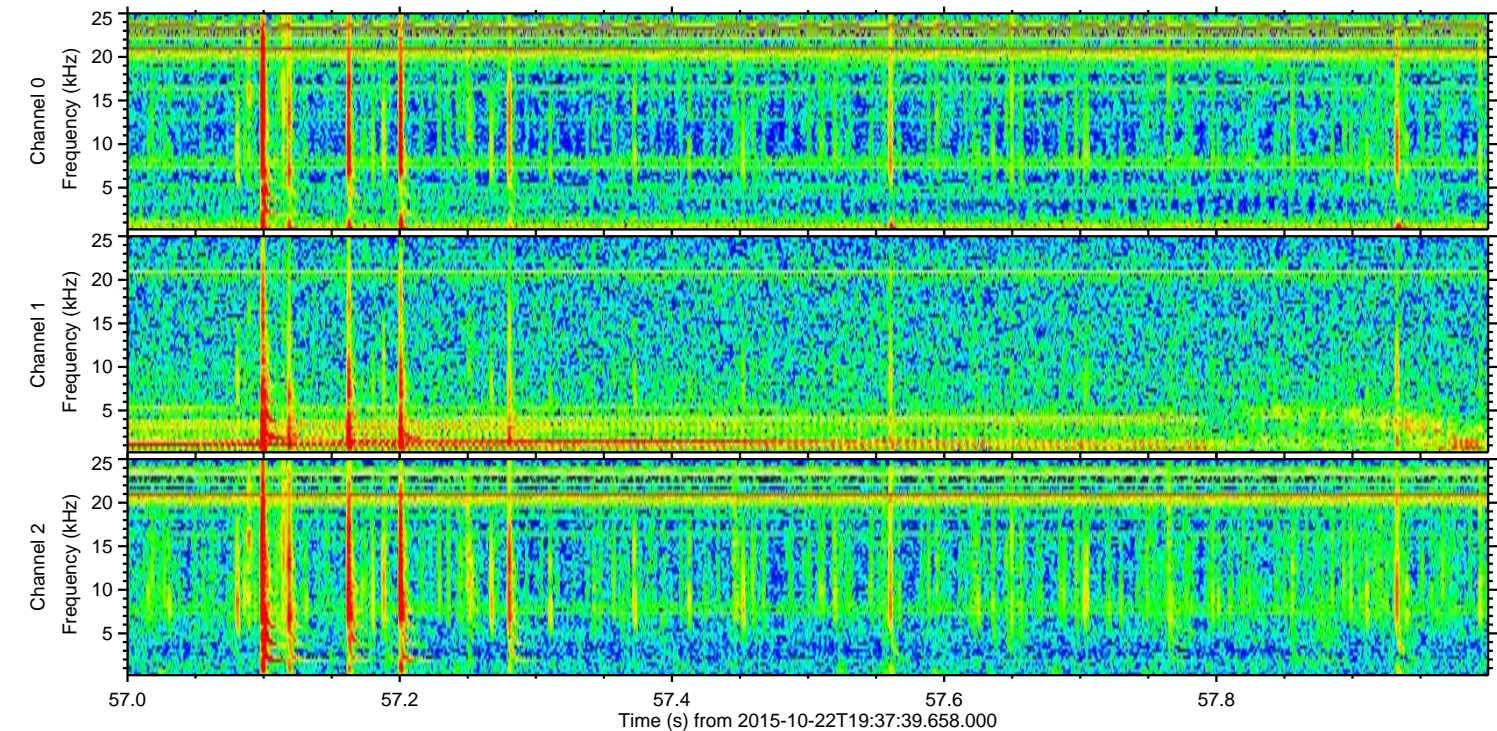
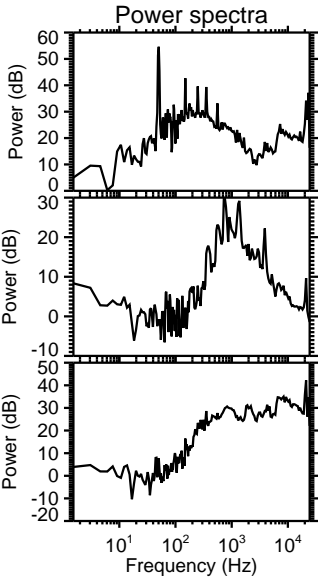
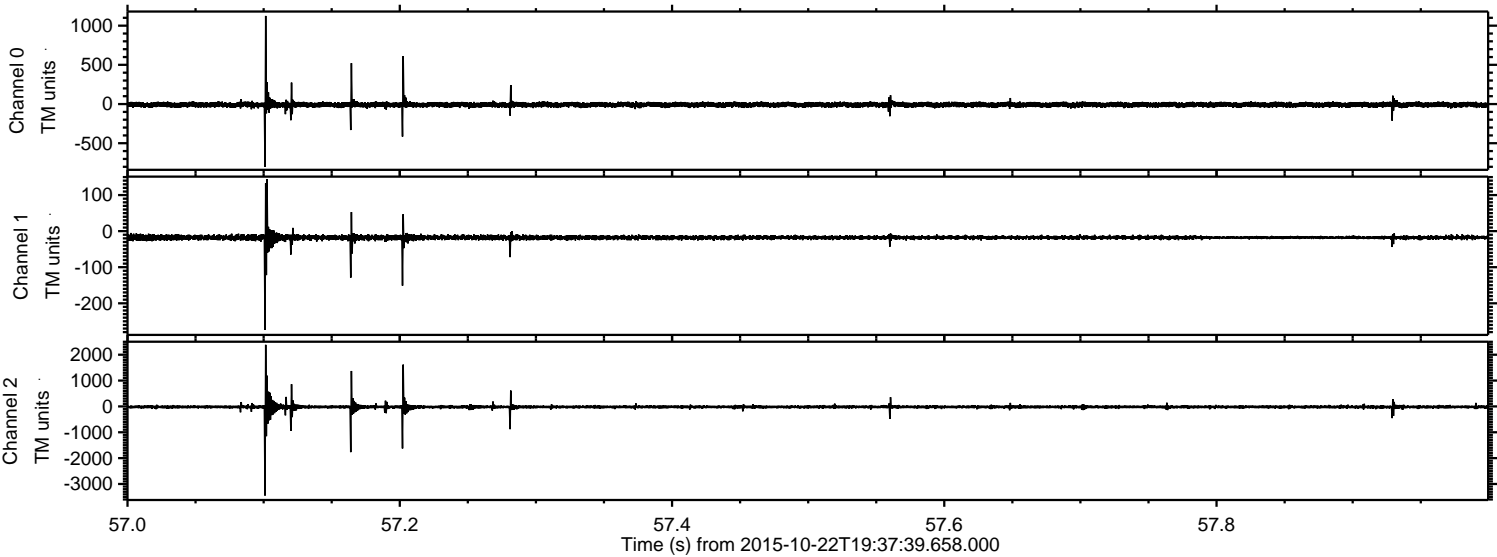


ELMAVAN 3D WAVEFORMS (Measured data sampled at 50 kHz) 51000 packets of 144 samples from 2015-10-22T19:37:39.658.000. Part 120/147

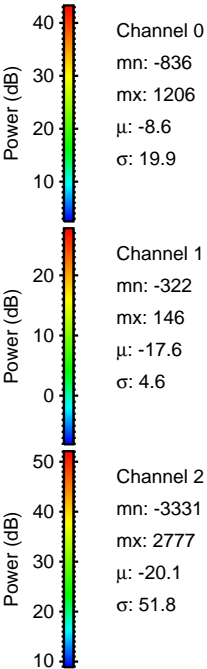
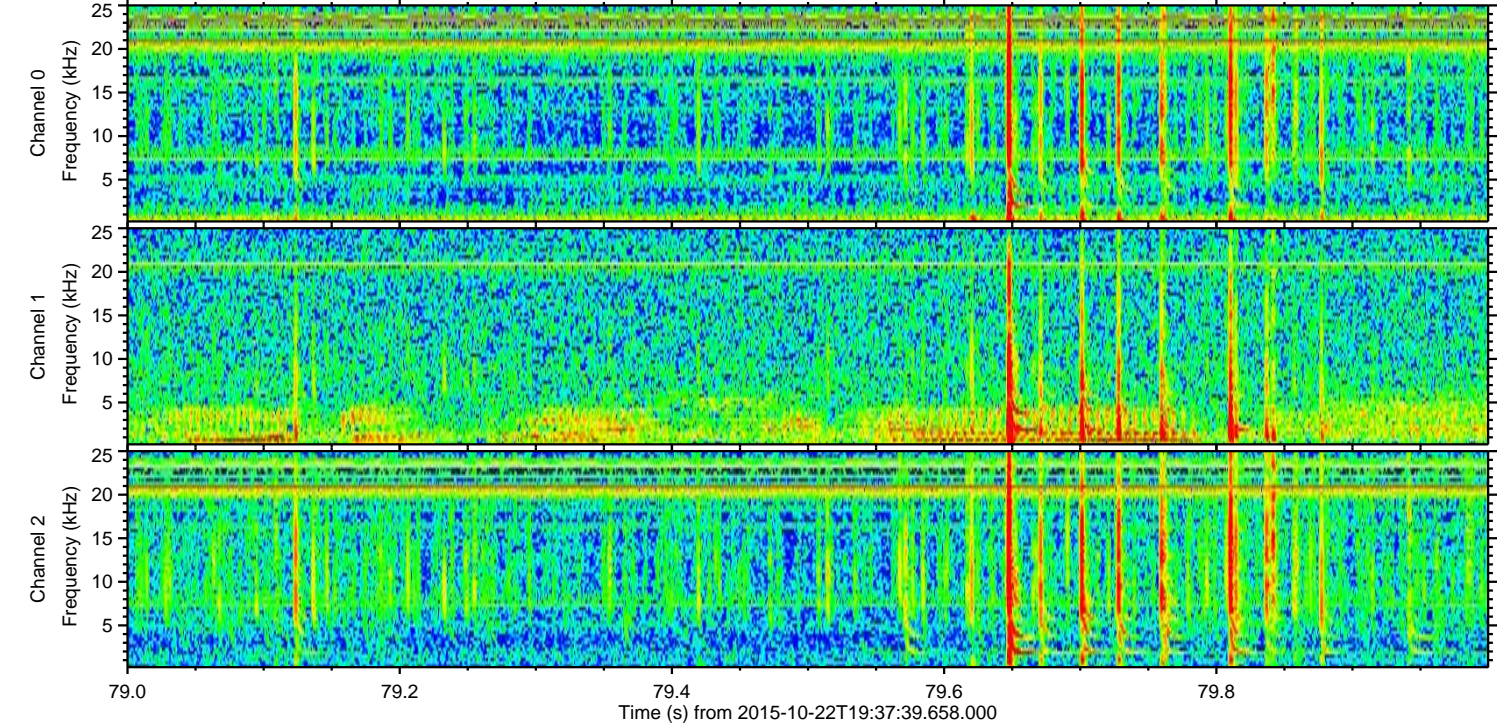
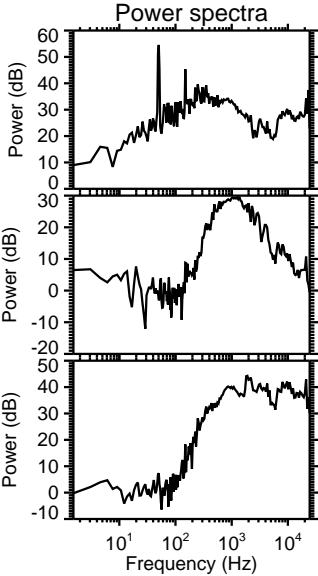
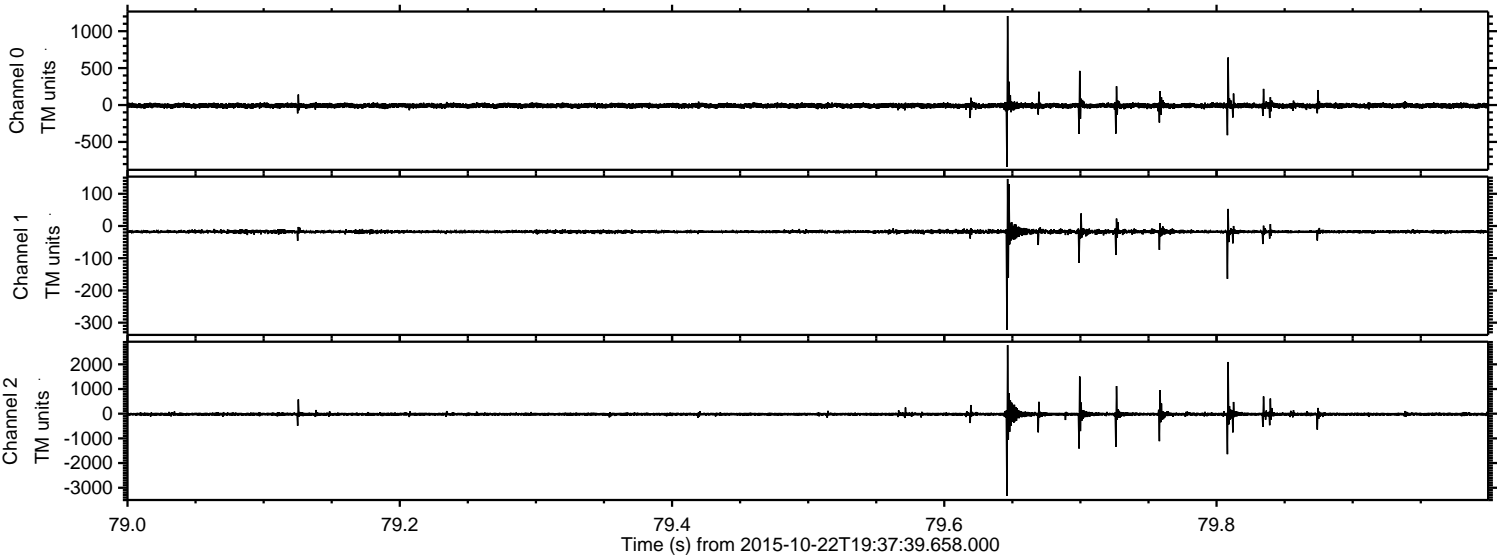
Processed Thu Oct 22 21:44:14 2015 by ELM ver.2012-10-06 from 001__elm20151022_193738__dat00.bin



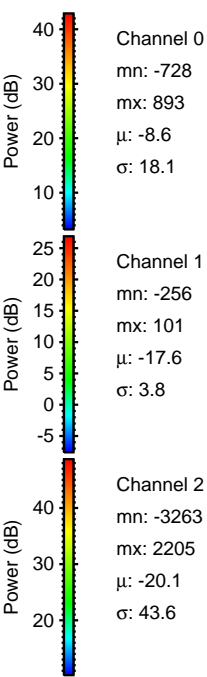
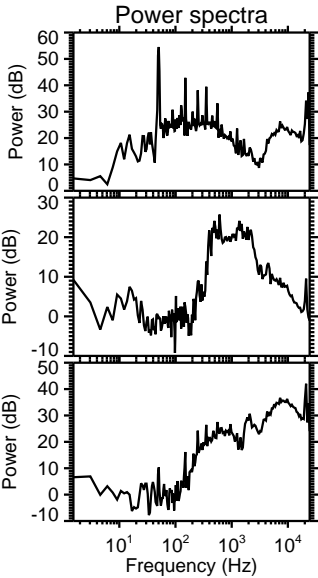
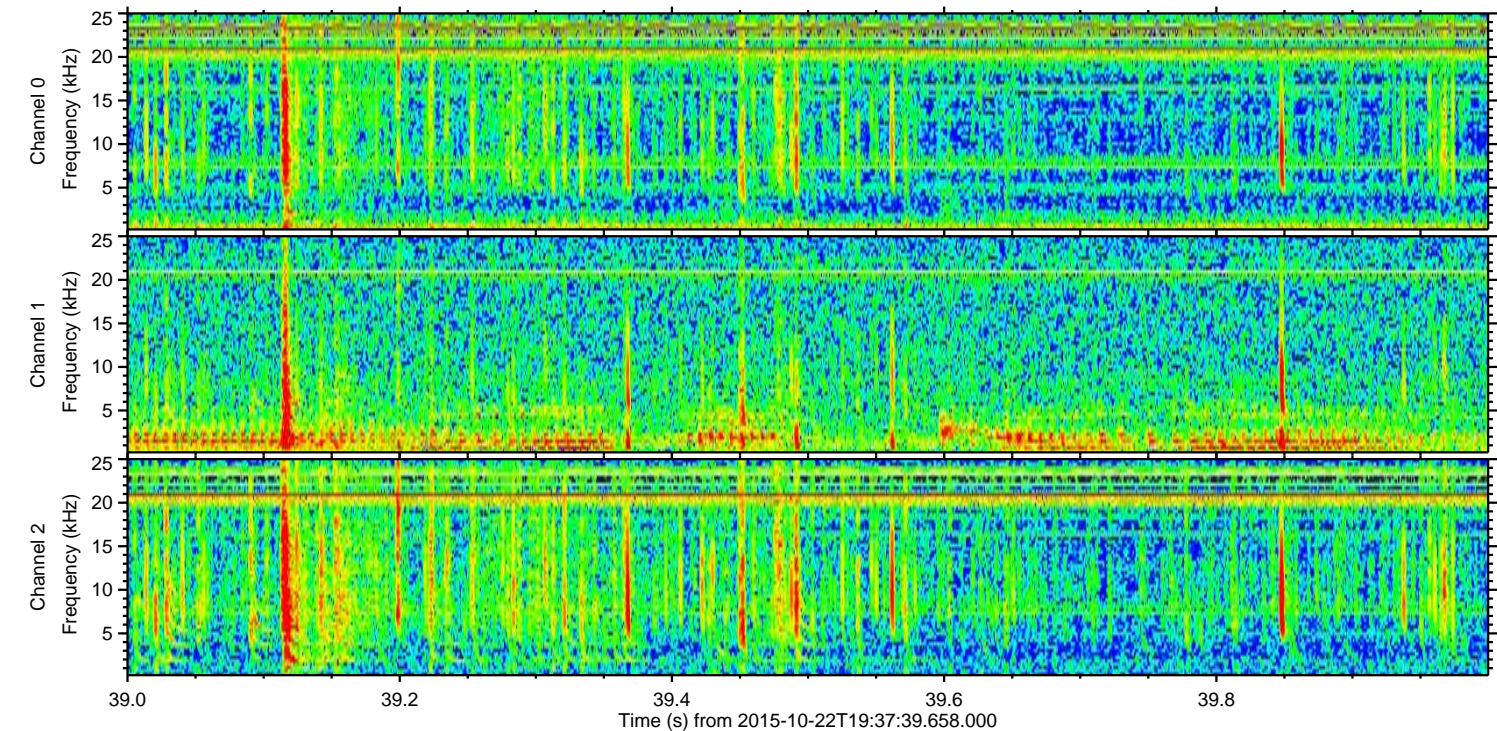
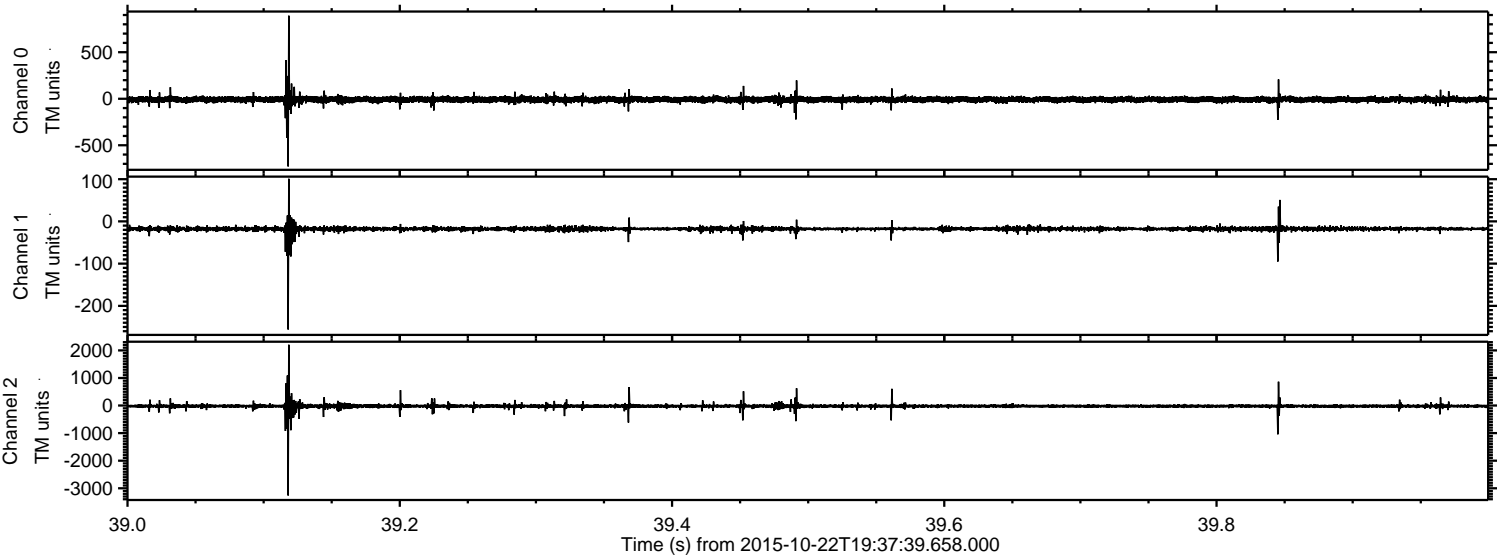
Processed Thu Oct 22 21:44:15 2015 by ELM ver.2012-10-06 from 001__elm20151022_193738__dat00.bin



Processed Thu Oct 22 21:44:15 2015 by ELM ver.2012-10-06 from 001__elm20151022_193738__dat00.bin

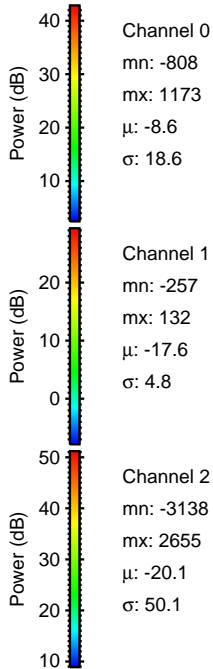
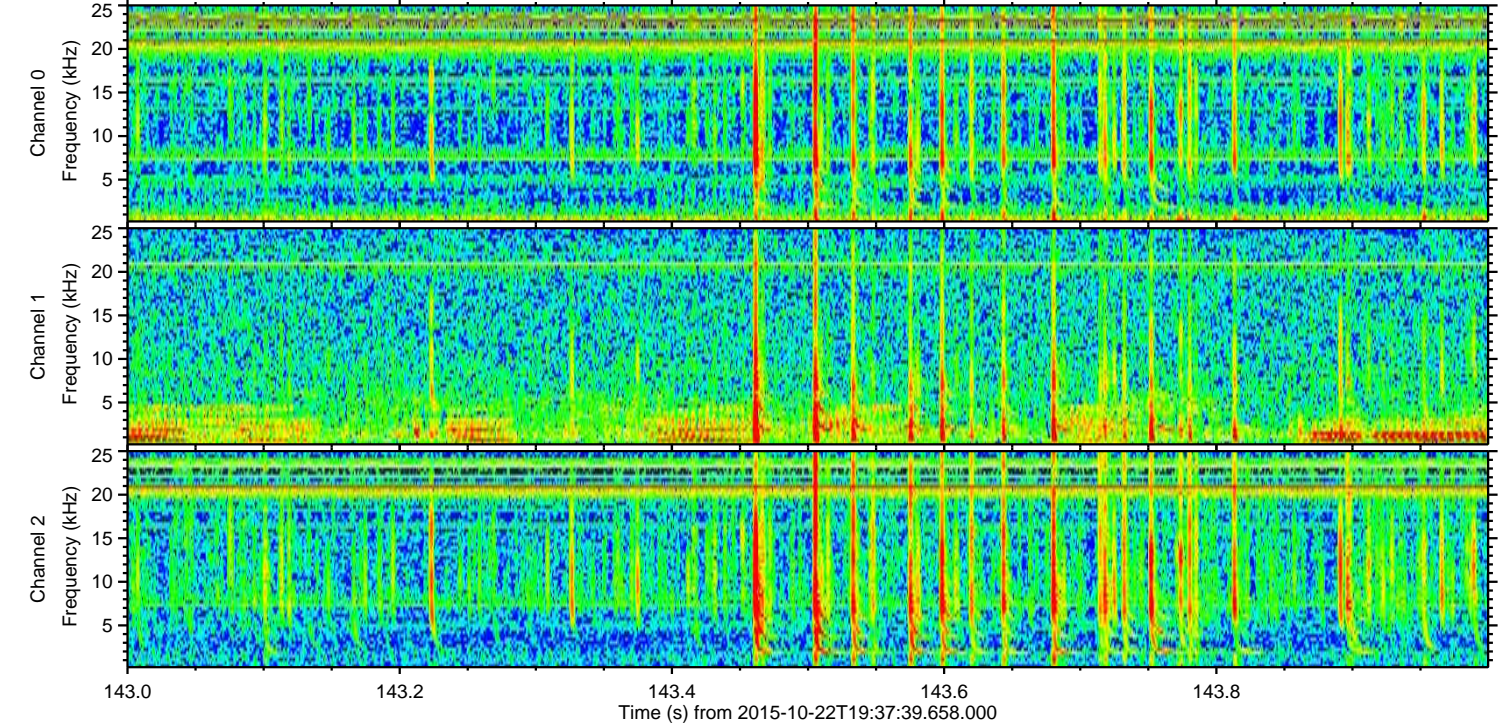
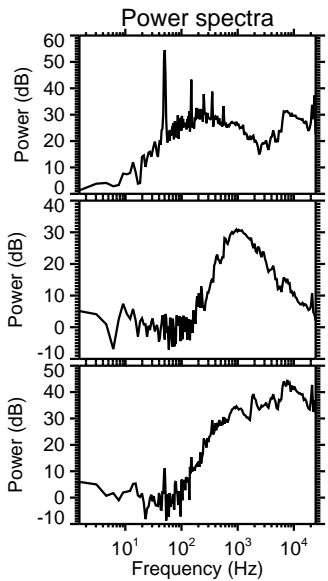
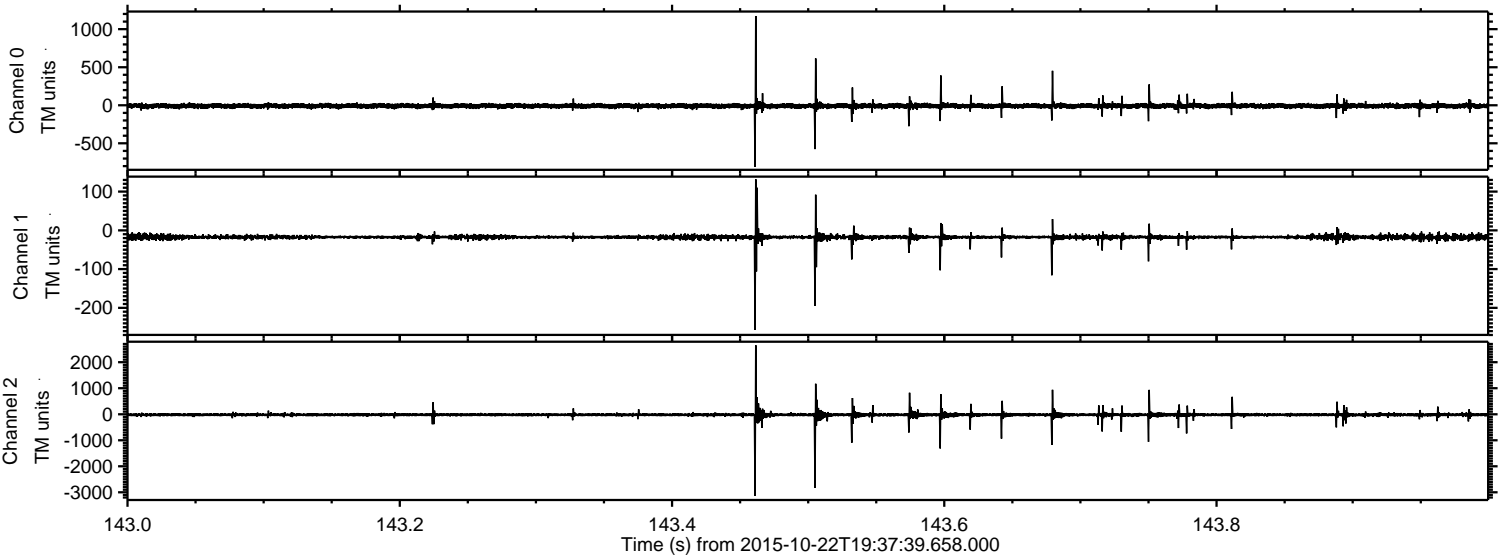


Processed Thu Oct 22 21:44:16 2015 by ELM ver.2012-10-06 from 001__elm20151022_193738__dat00.bin



ELMAVAN 3D WAVEFORMS (Measured data sampled at 50 kHz) 51000 packets of 144 samples from 2015-10-22T19:37:39.658.000. Part 144/147

Processed Thu Oct 22 21:44:17 2015 by ELM ver.2012-10-06 from 001__elm20151022_193738__dat00.bin



Channel 0
mn: -808
mx: 1173
 μ : -8.6
 σ : 18.6

Channel 1
mn: -257
mx: 132
 μ : -17.6
 σ : 4.8

Channel 2
mn: -3138
mx: 2655
 μ : -20.1
 σ : 50.1

Processed Thu Oct 22 21:44:18 2015 by ELM ver.2012-10-06 from 001__elm20151022_193738__dat00.bin

