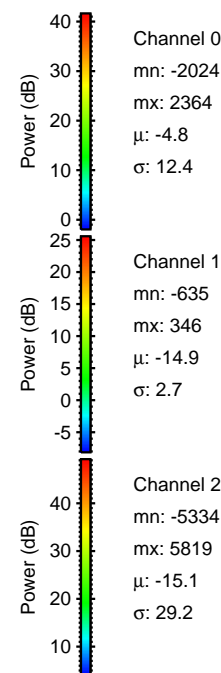
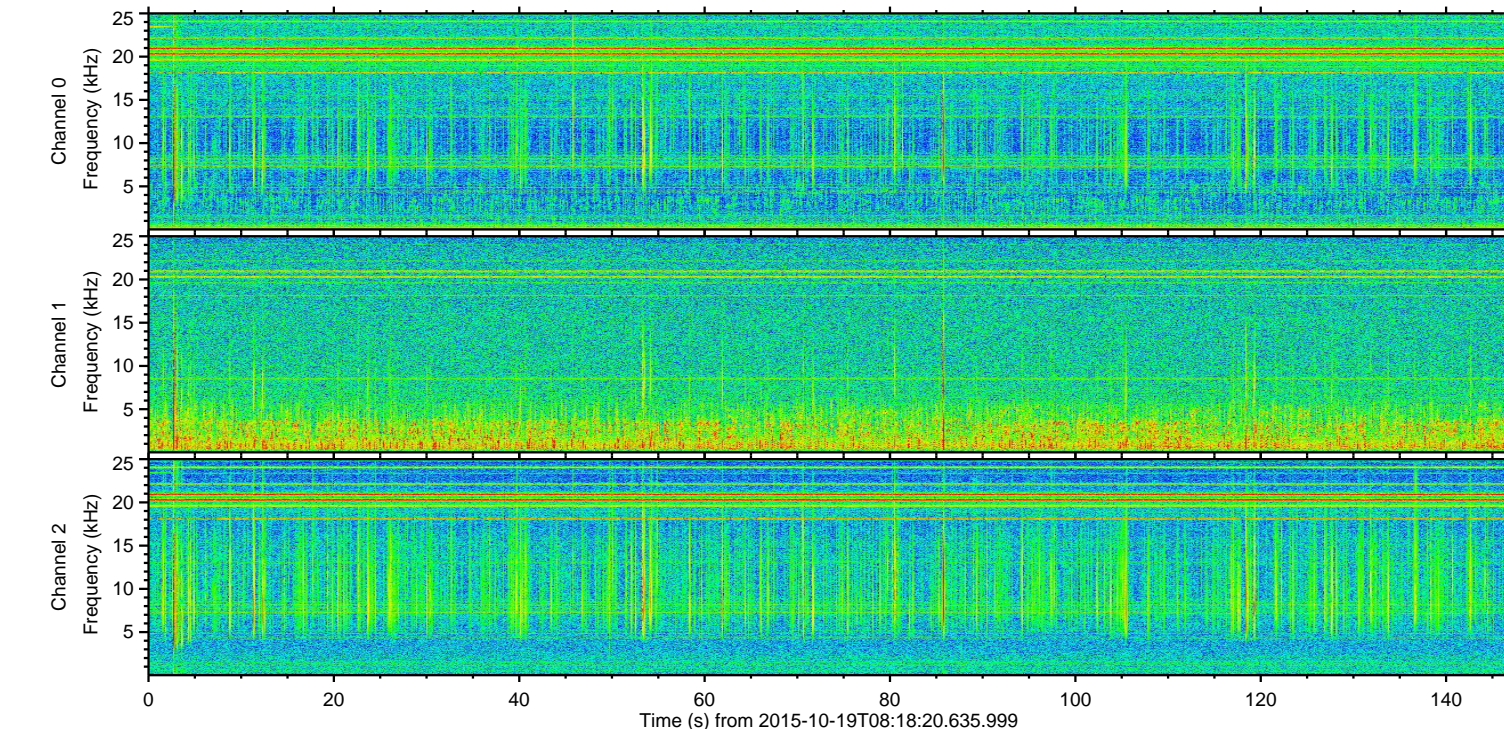
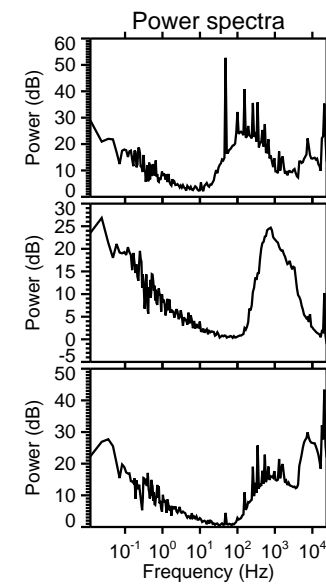
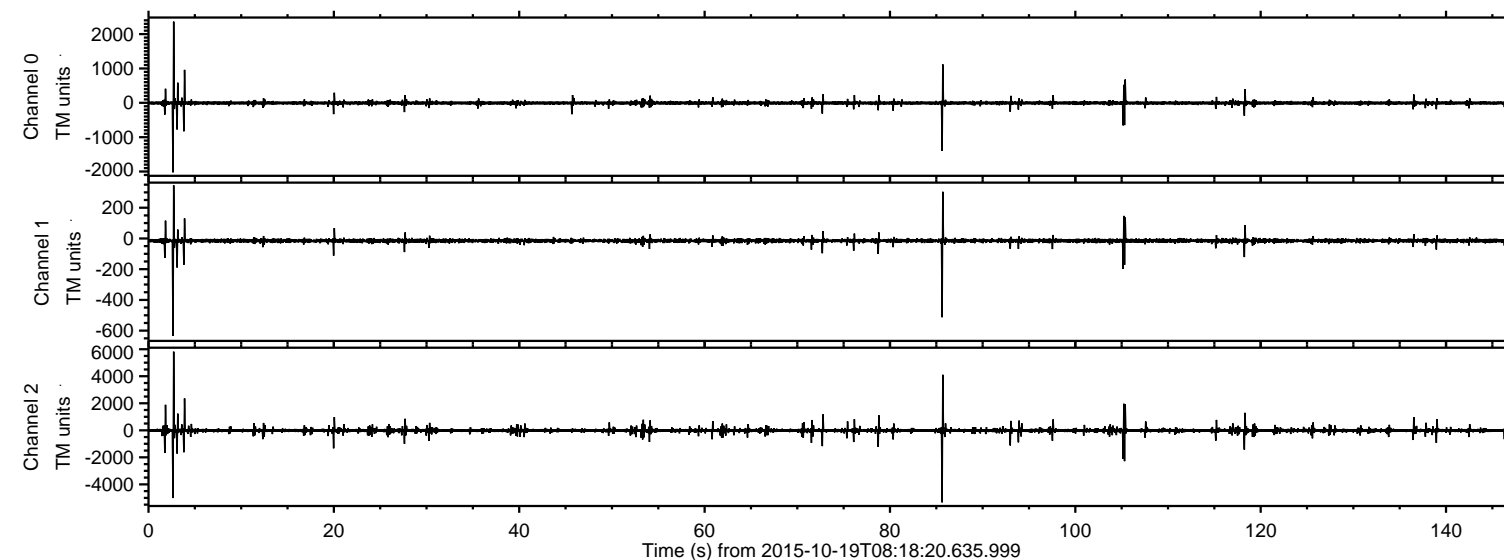


# ELMAVAN 3D WAVEFORMS (Measured data sampled at 50 kHz) 51000 packets of 144 samples from 2015-10-19T08:18:20.635.999.

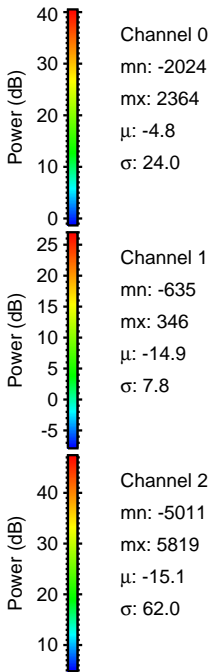
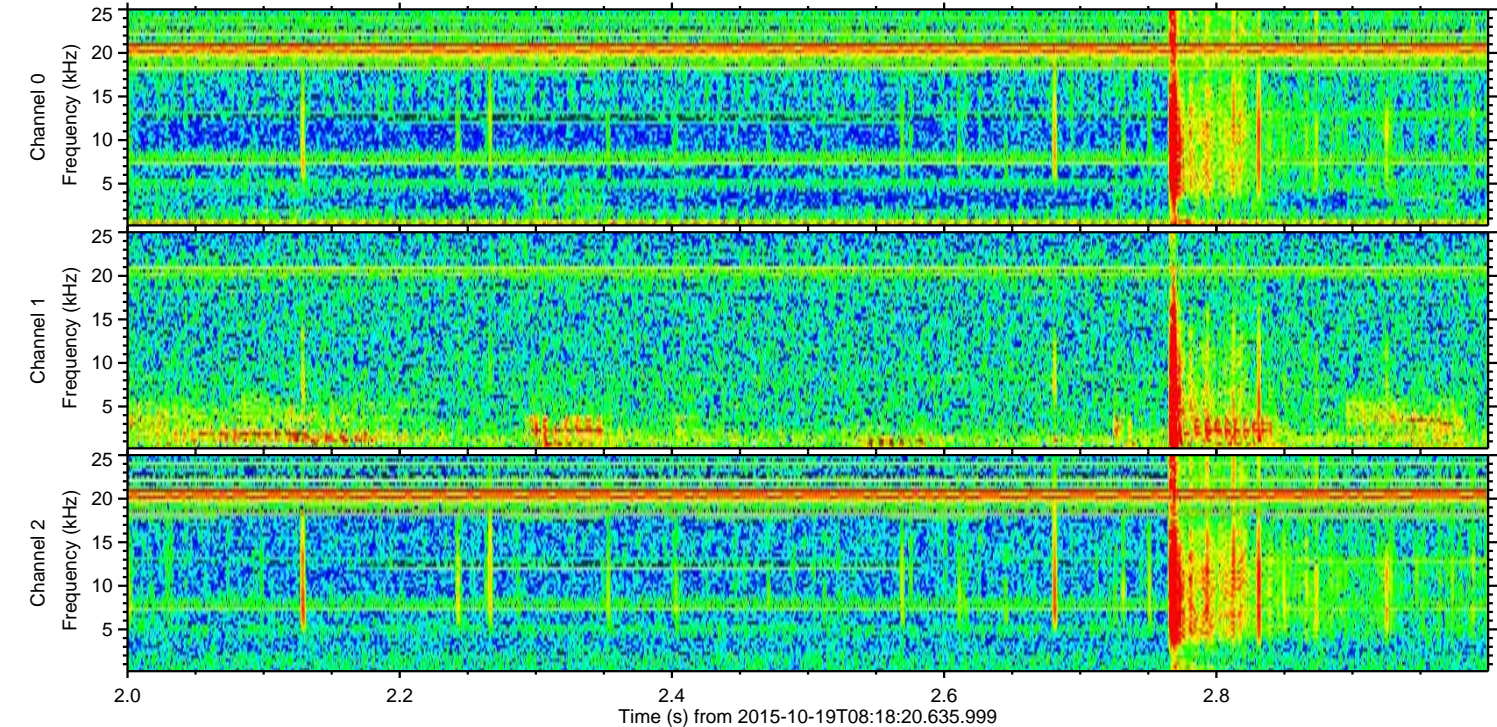
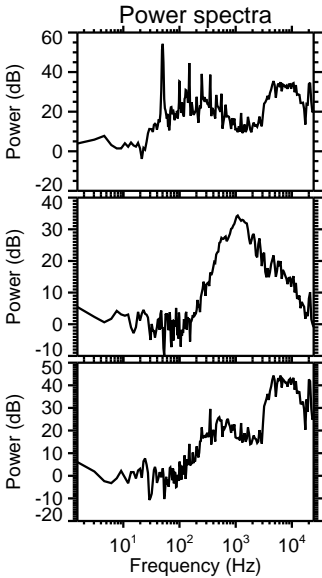
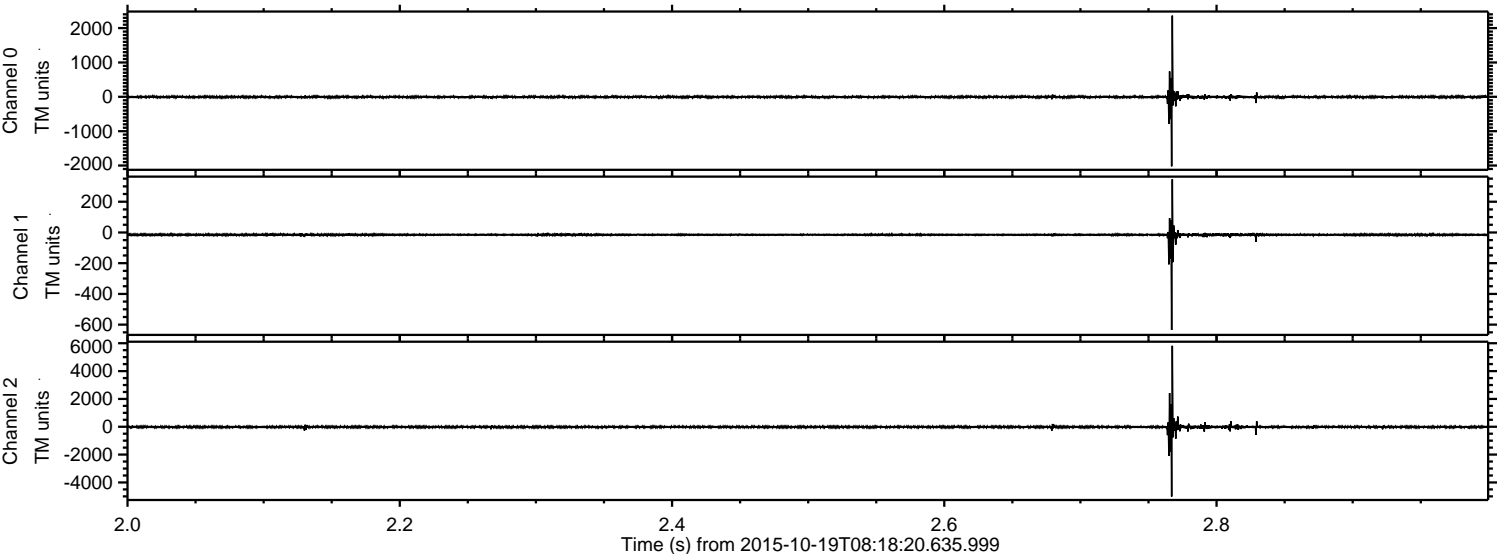
Processed Tue Oct 20 16:34:55 2015 by ELM ver.2012-10-06 from 001\_\_elm20151019\_081819\_\_dat00.bin





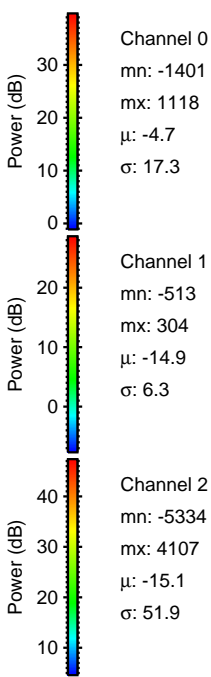
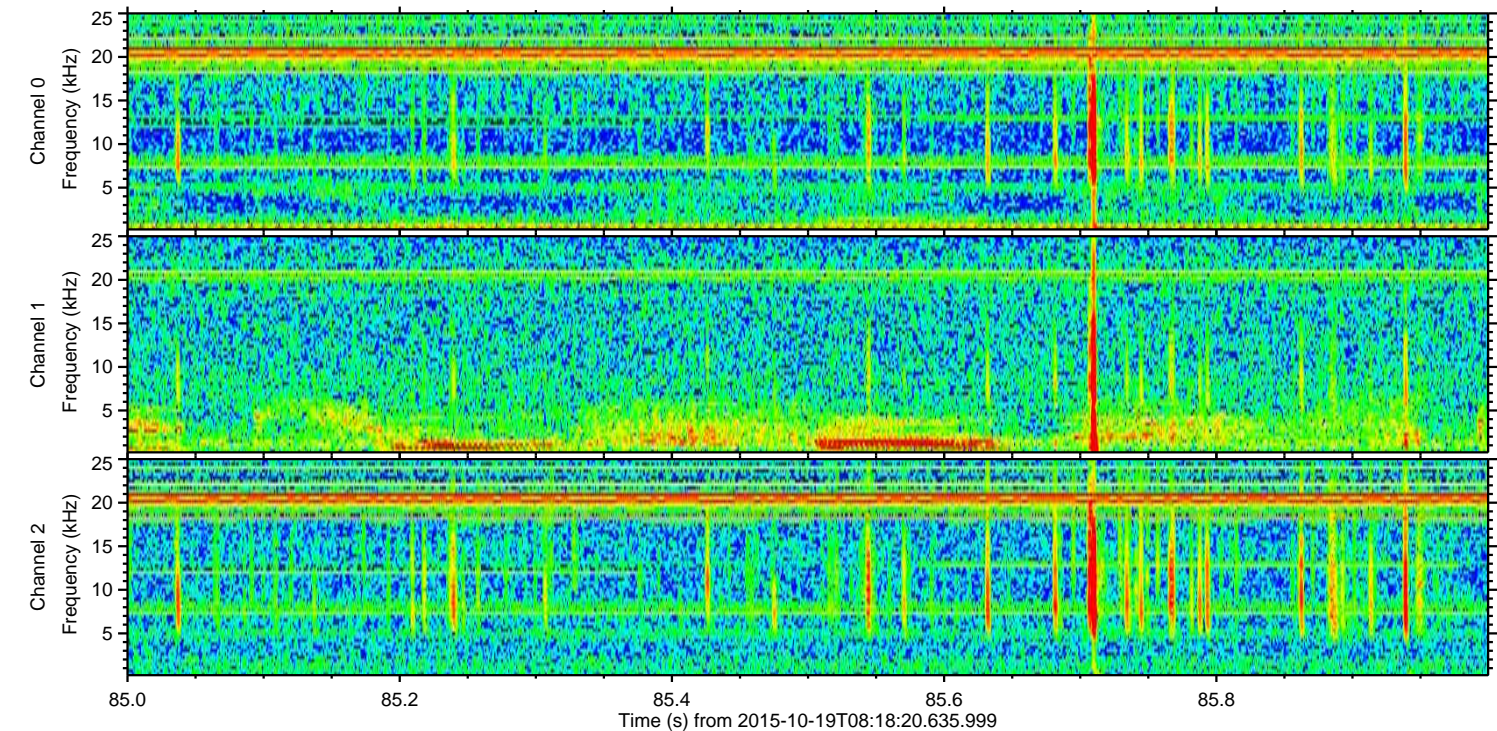
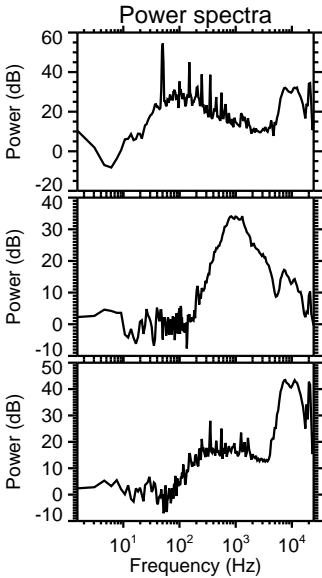
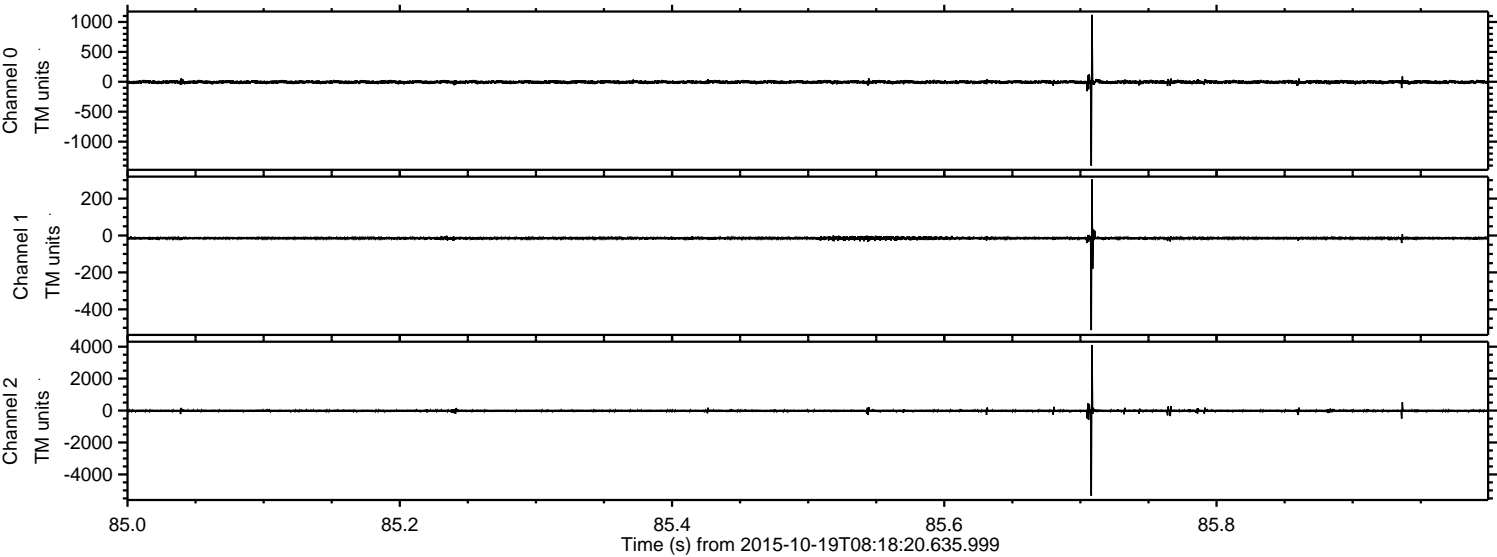
ELMAVAN 3D WAVEFORMS (Measured data sampled at 50 kHz) 51000 packets of 144 samples from 2015-10-19T08:18:20.635.999. Part 3/147

Processed Tue Oct 20 16:35:11 2015 by ELM ver.2012-10-06 from 001\_\_elm20151019\_081819\_\_dat00.bin



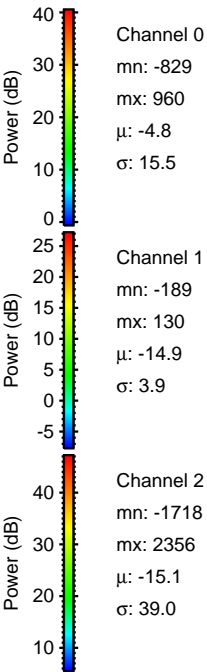
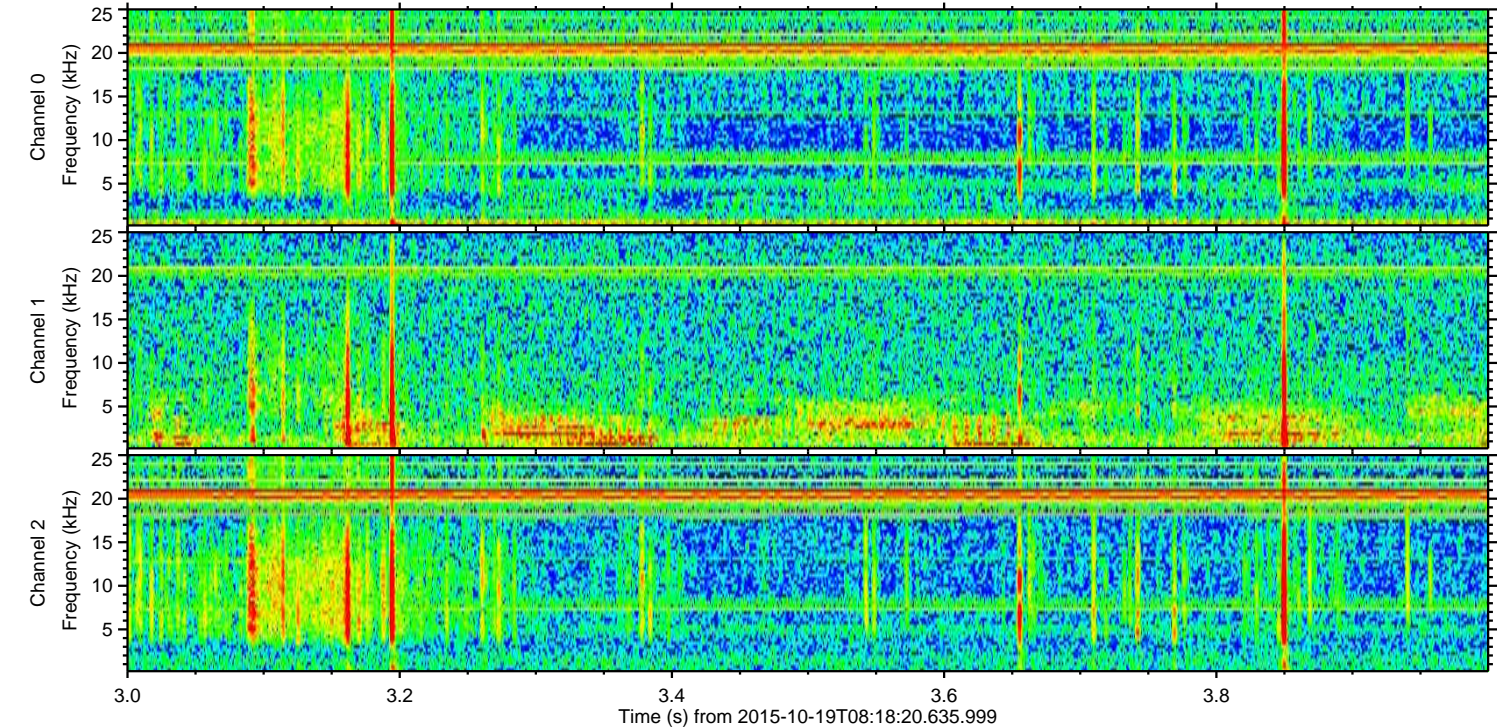
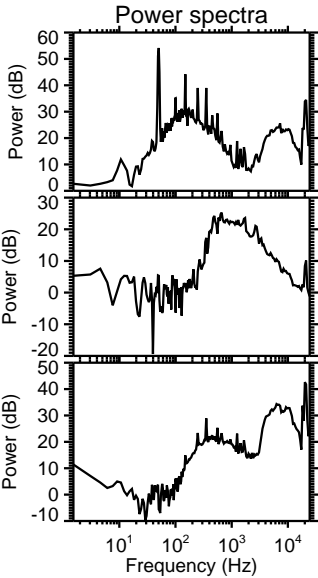
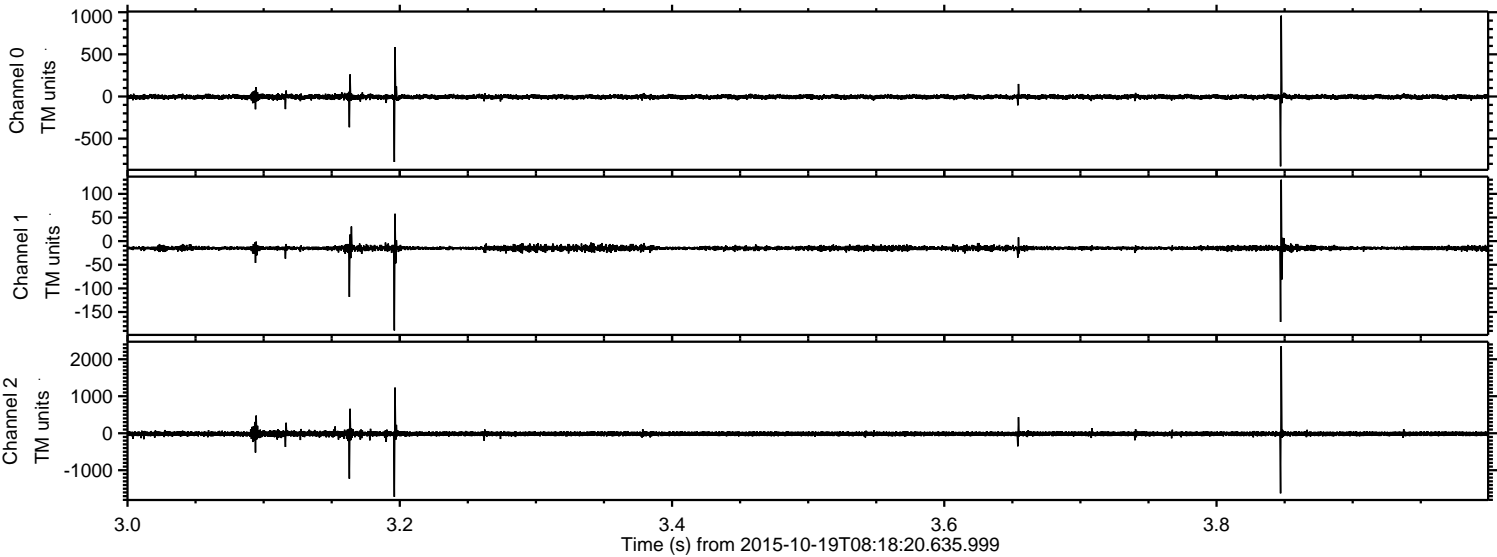


Processed Tue Oct 20 16:35:12 2015 by ELM ver.2012-10-06 from 001\_\_elm20151019\_081819\_\_dat00.bin





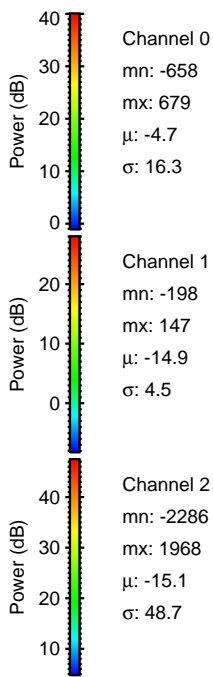
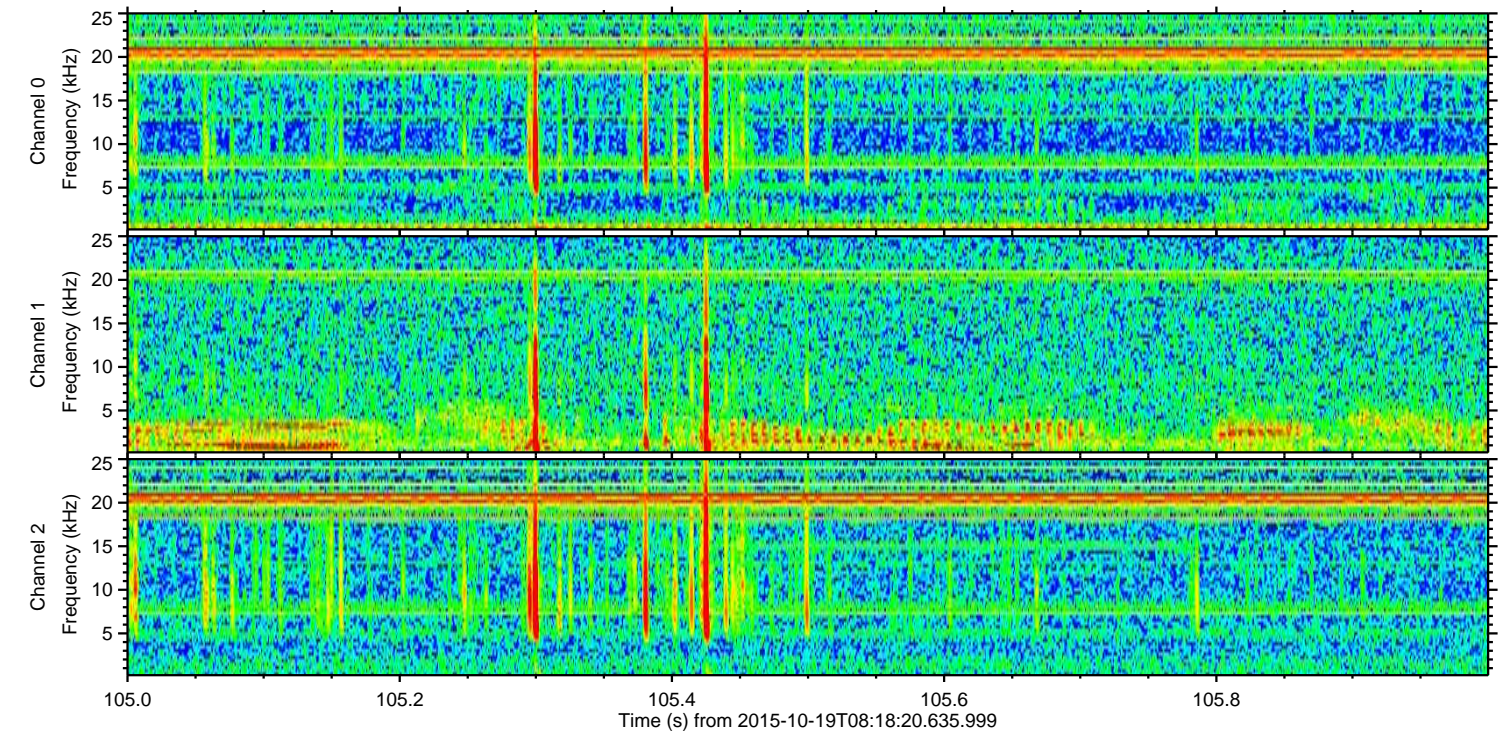
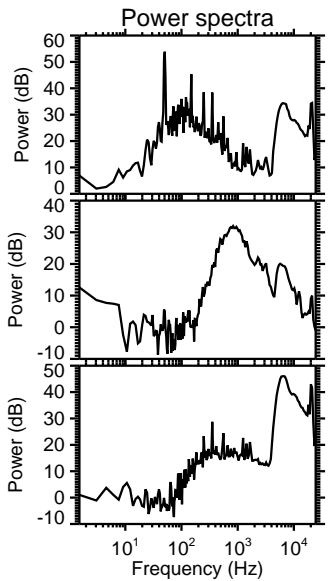
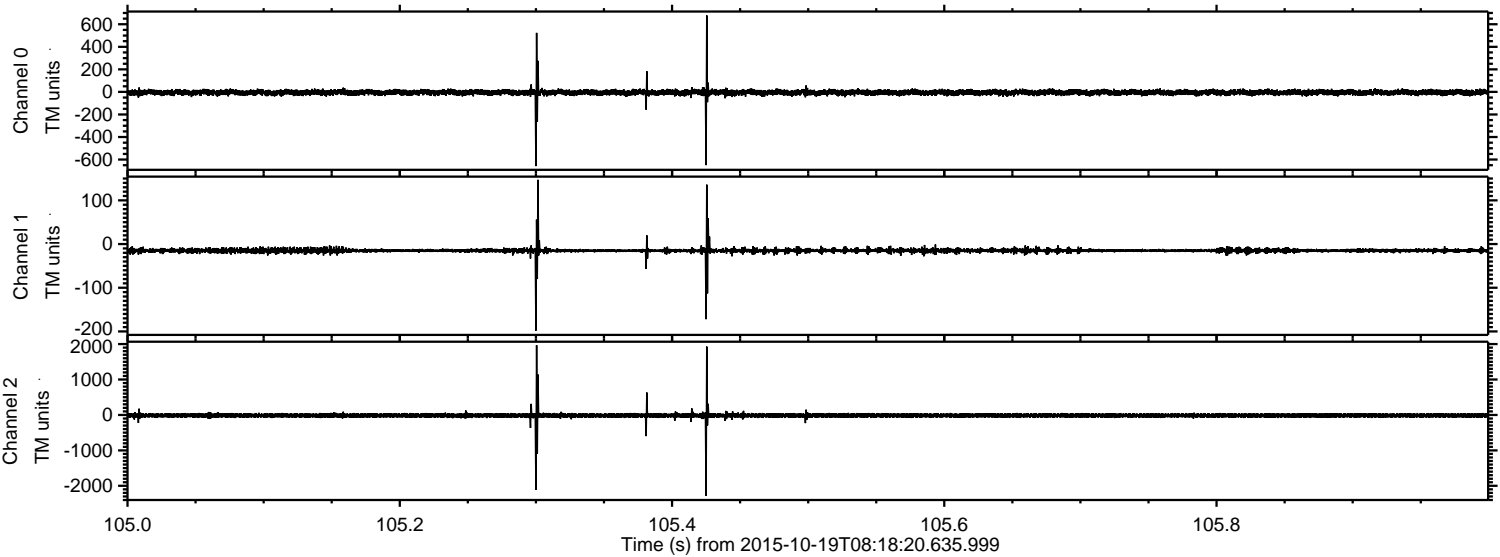
Processed Tue Oct 20 16:35:13 2015 by ELM ver.2012-10-06 from 001\_\_elm20151019\_081819\_\_dat00.bin





ELMAVAN 3D WAVEFORMS (Measured data sampled at 50 kHz) 51000 packets of 144 samples from 2015-10-19T08:18:20.635.999. Part 106/147

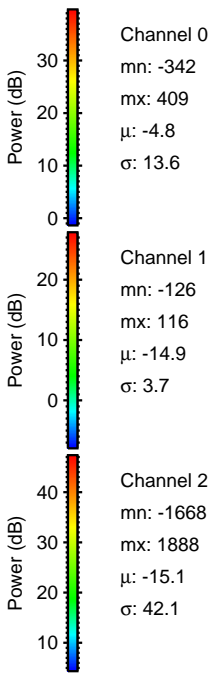
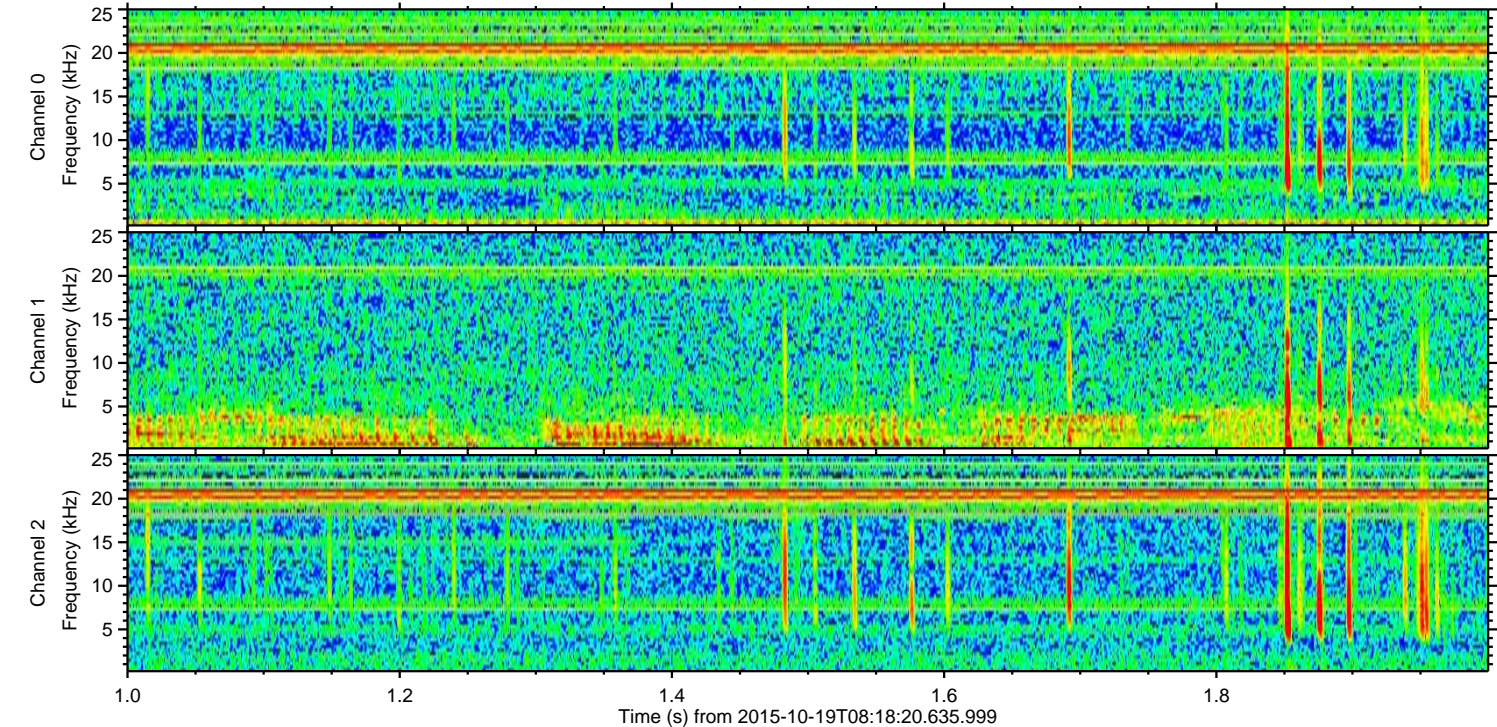
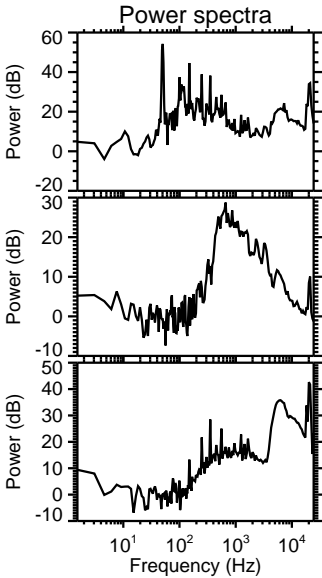
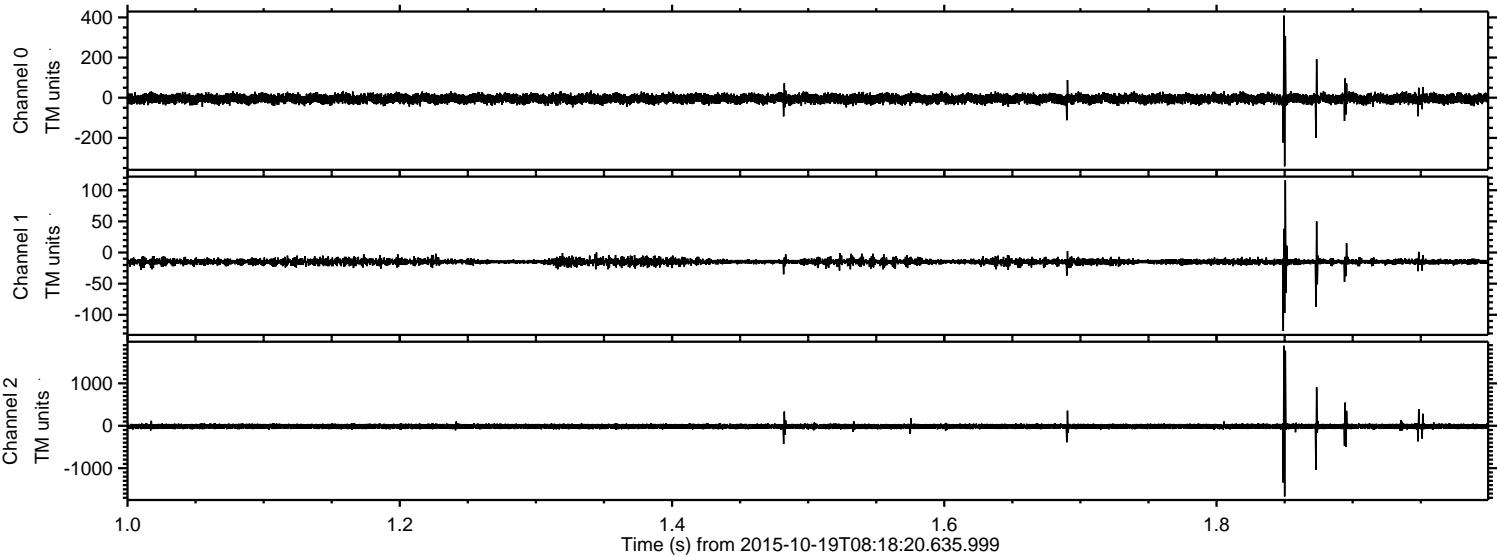
Processed Tue Oct 20 16:35:14 2015 by ELM ver.2012-10-06 from 001\_\_elm20151019\_081819\_\_dat00.bin





ELMAVAN 3D WAVEFORMS (Measured data sampled at 50 kHz) 51000 packets of 144 samples from 2015-10-19T08:18:20.635.999. Part 2/147

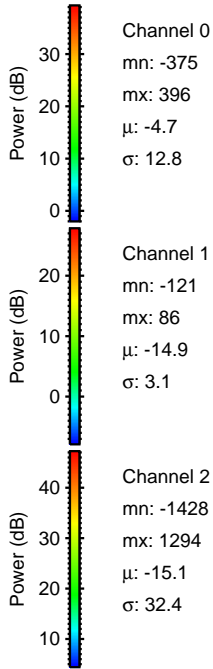
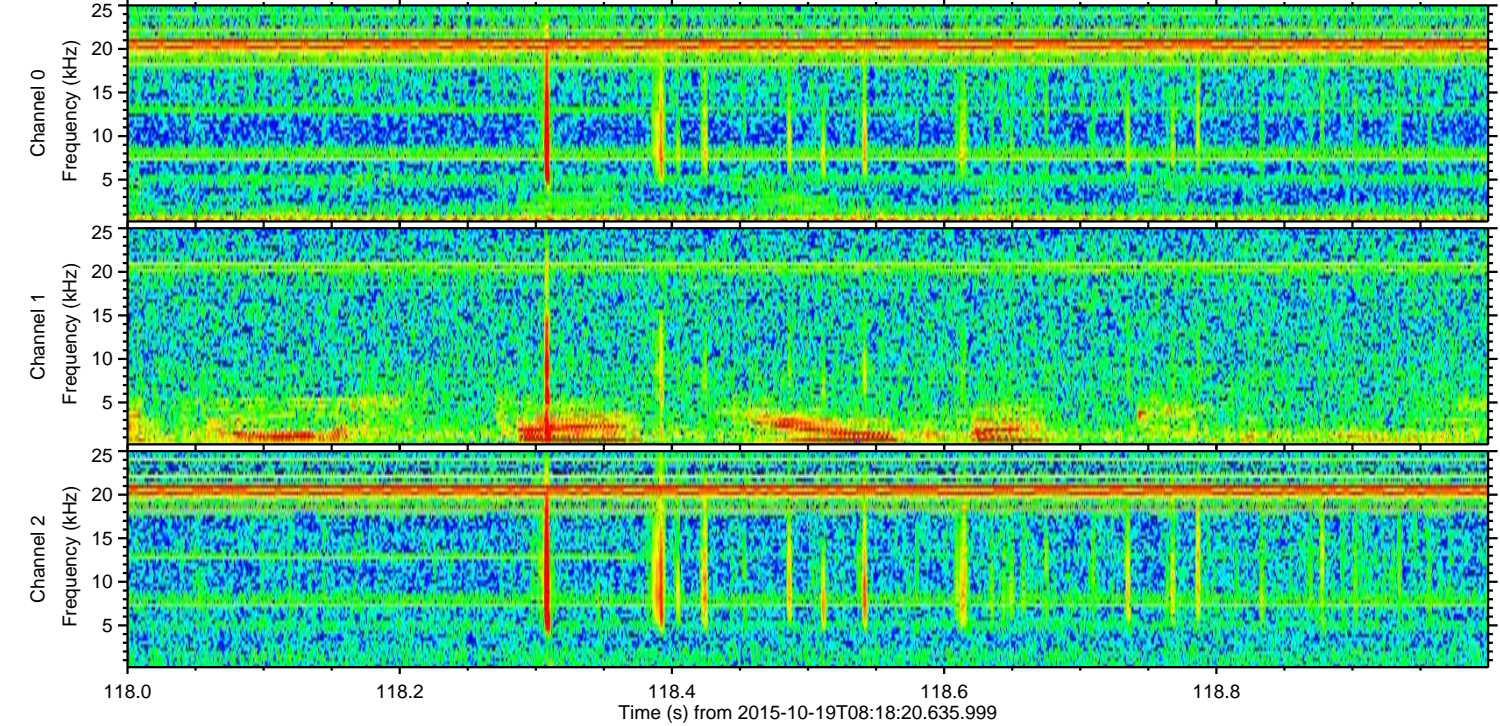
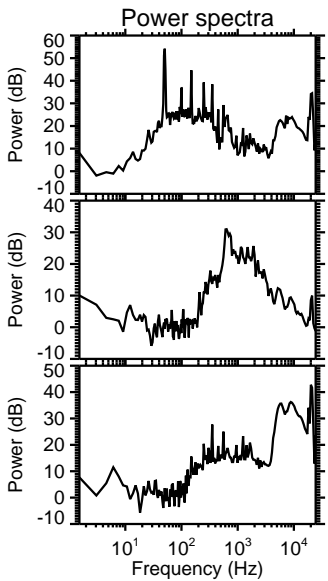
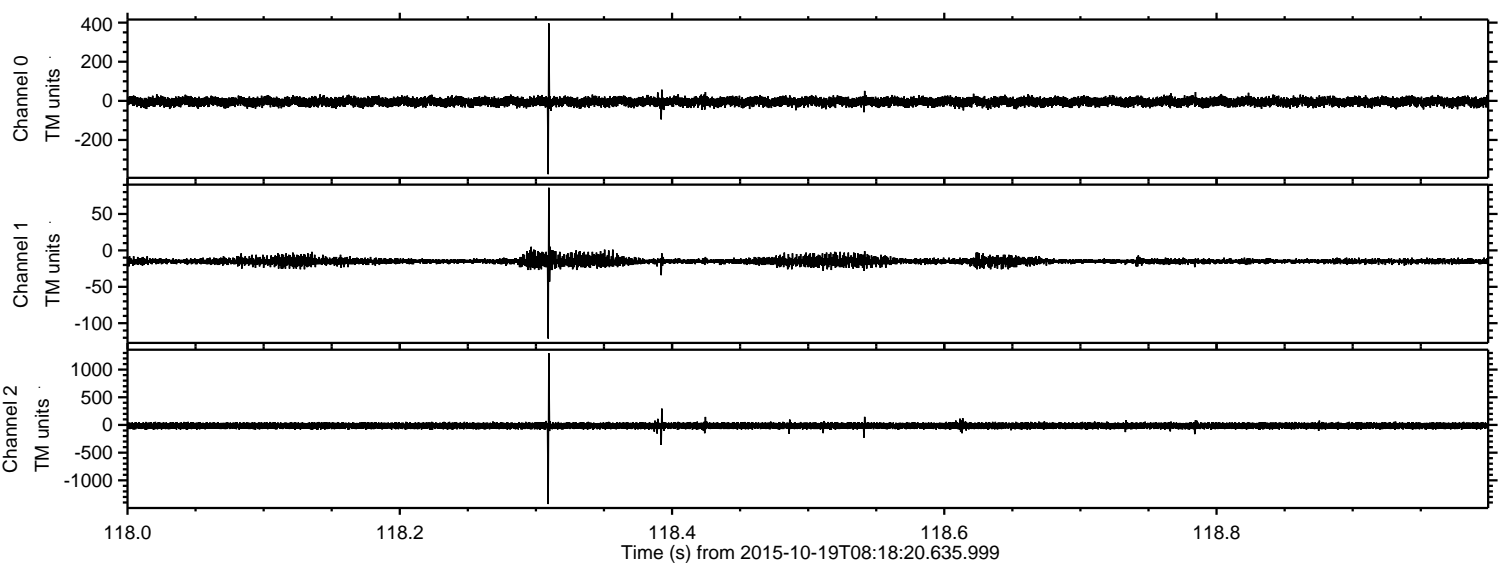
Processed Tue Oct 20 16:35:15 2015 by ELM ver.2012-10-06 from 001\_\_elm20151019\_081819\_\_dat00.bin





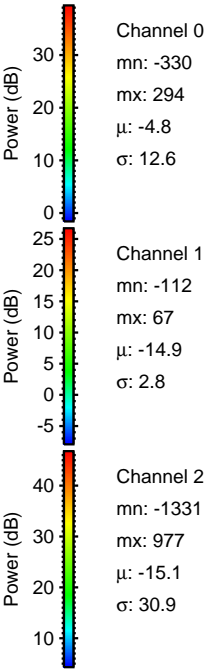
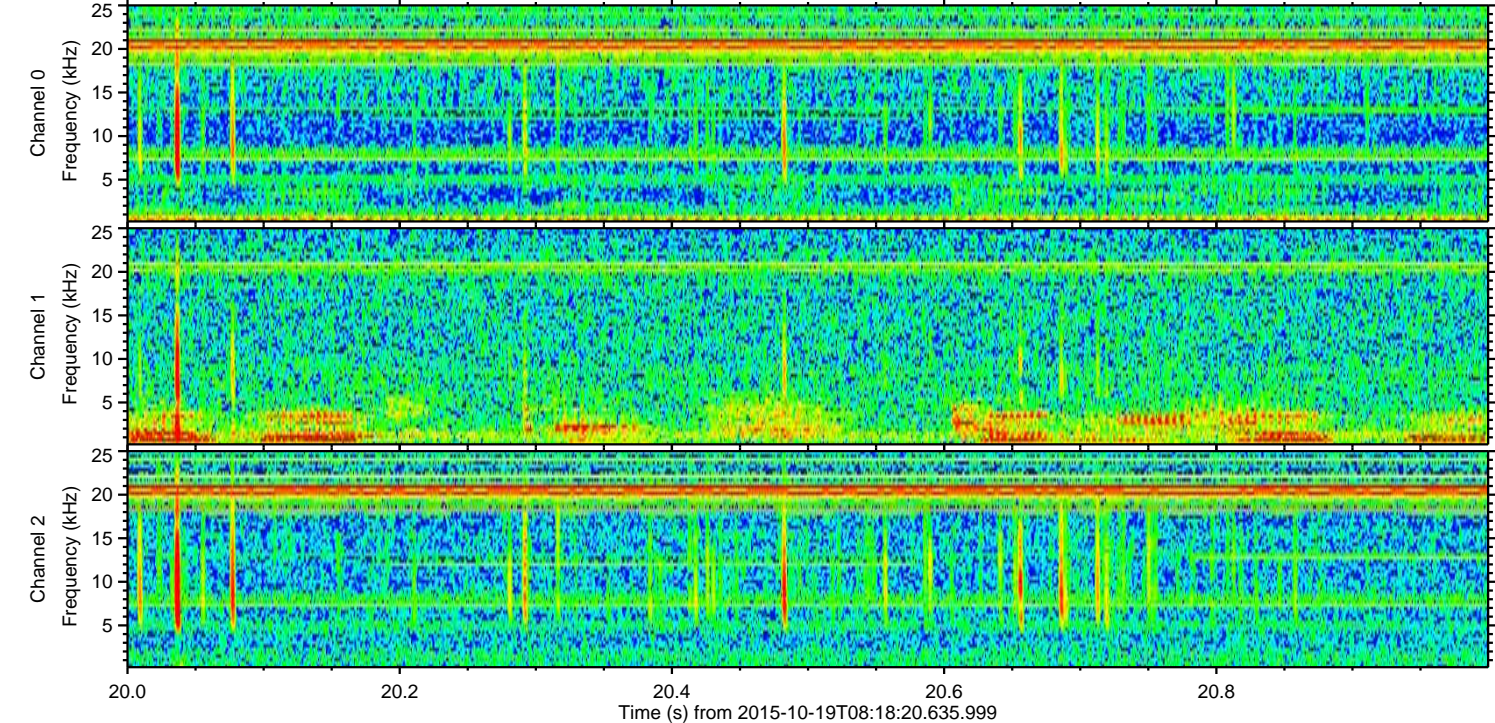
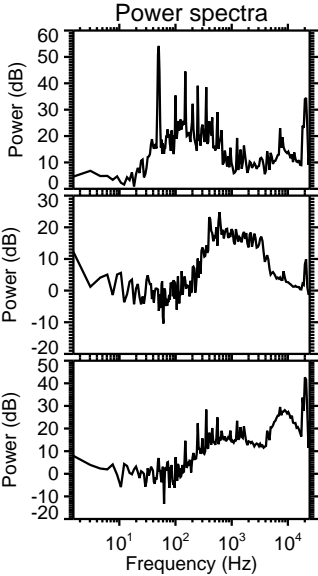
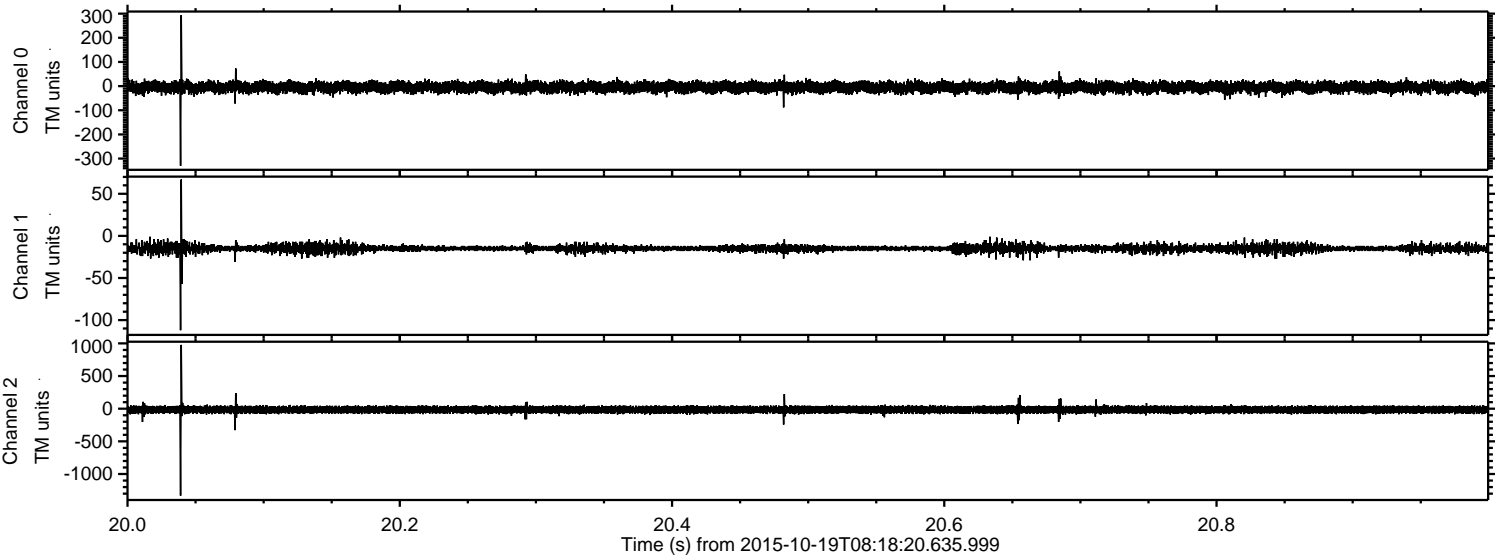
ELMAVAN 3D WAVEFORMS (Measured data sampled at 50 kHz) 51000 packets of 144 samples from 2015-10-19T08:18:20.635.999. Part 119/147

Processed Tue Oct 20 16:35:16 2015 by ELM ver.2012-10-06 from 001\_\_elm20151019\_081819\_\_dat00.bin



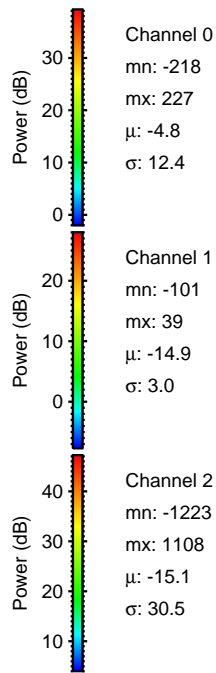
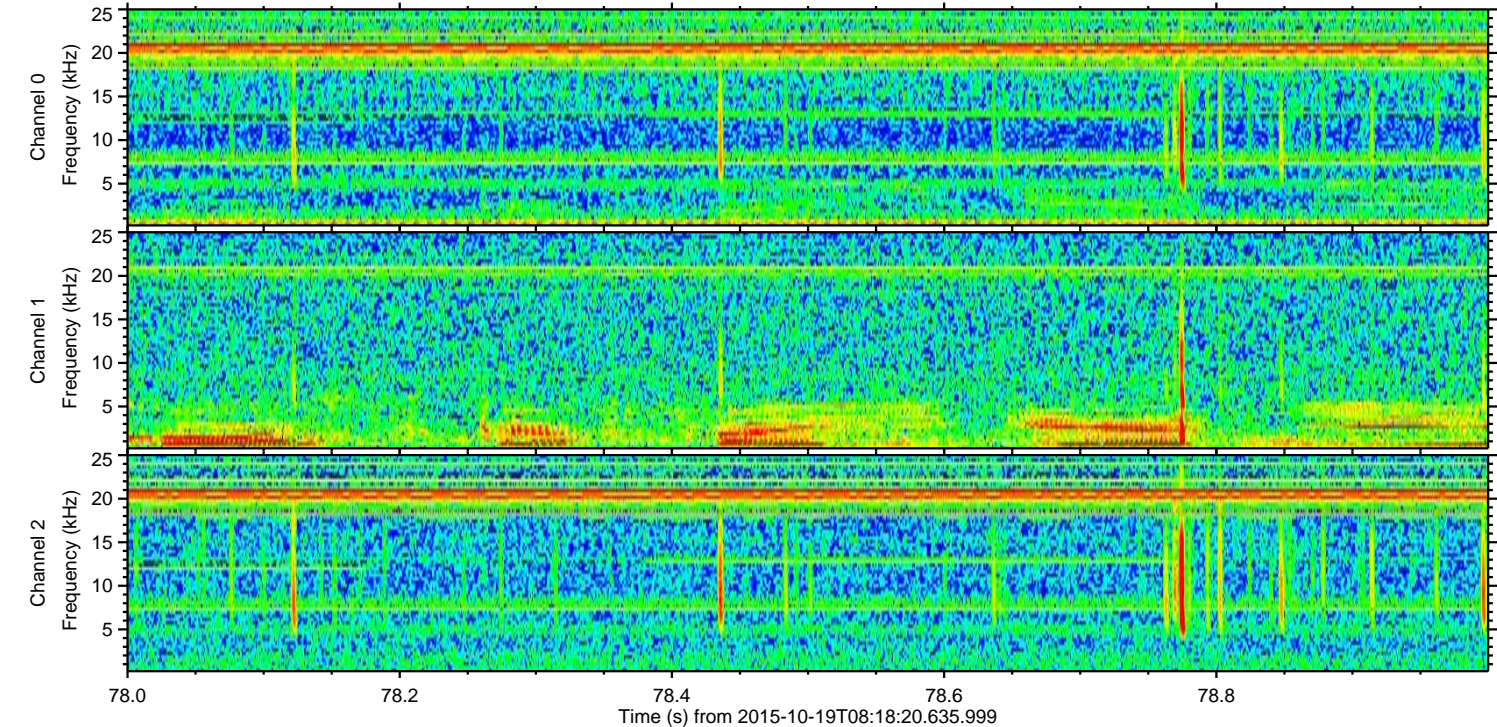
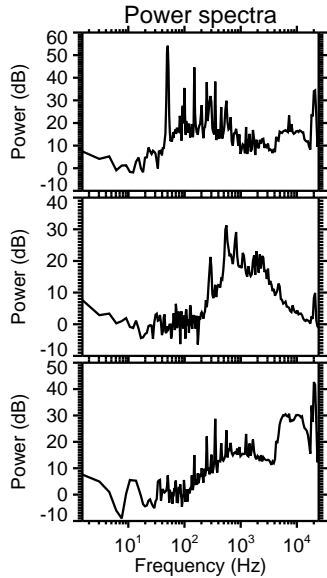
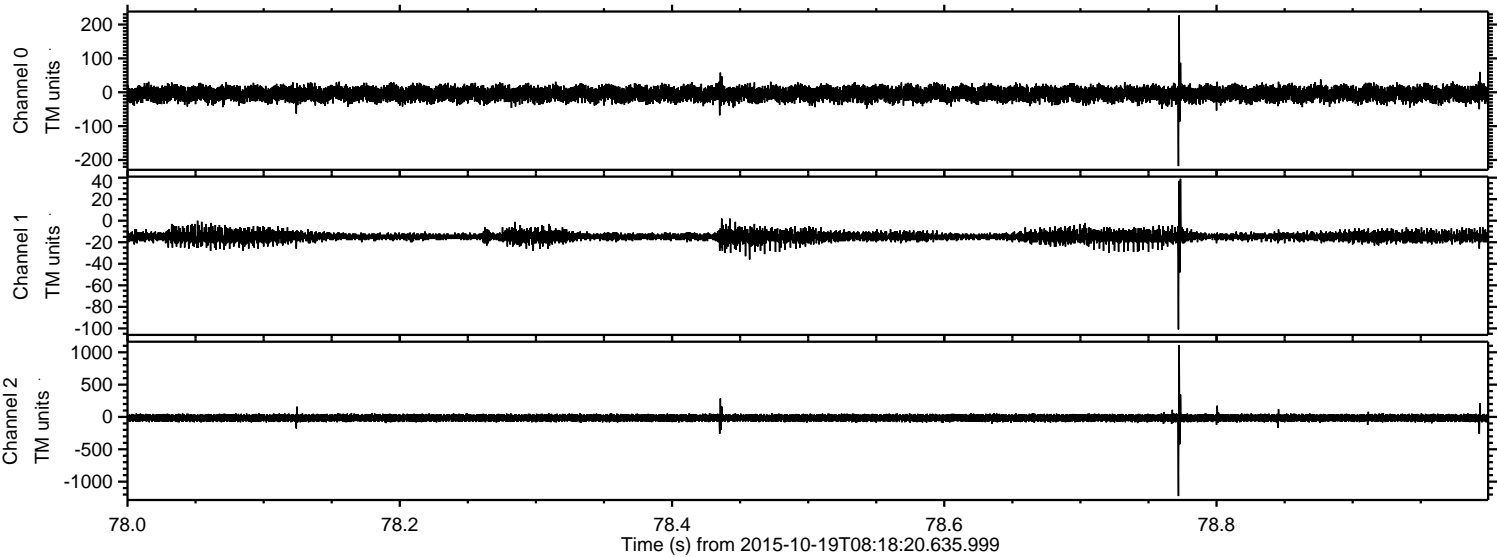


Processed Tue Oct 20 16:35:17 2015 by ELM ver.2012-10-06 from 001\_\_elm20151019\_081819\_\_dat00.bin



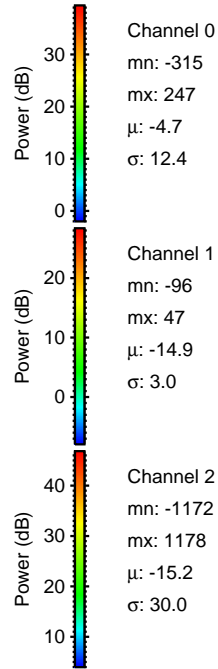
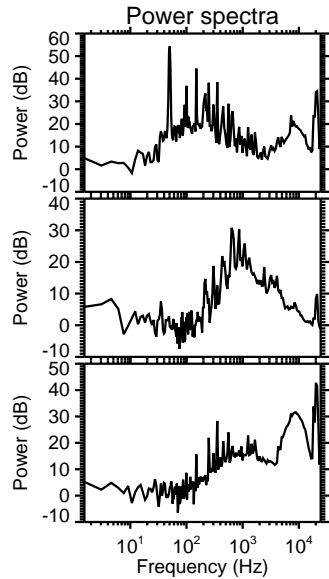
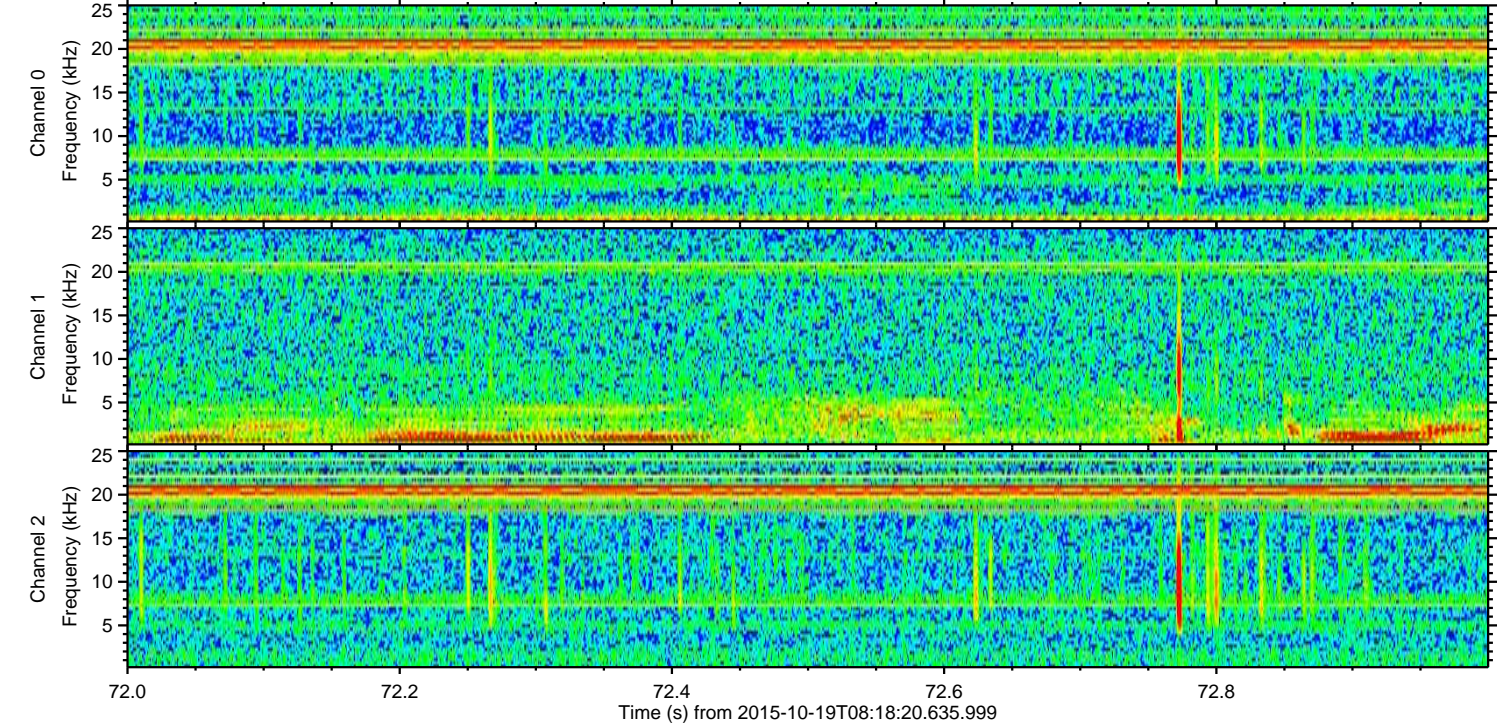
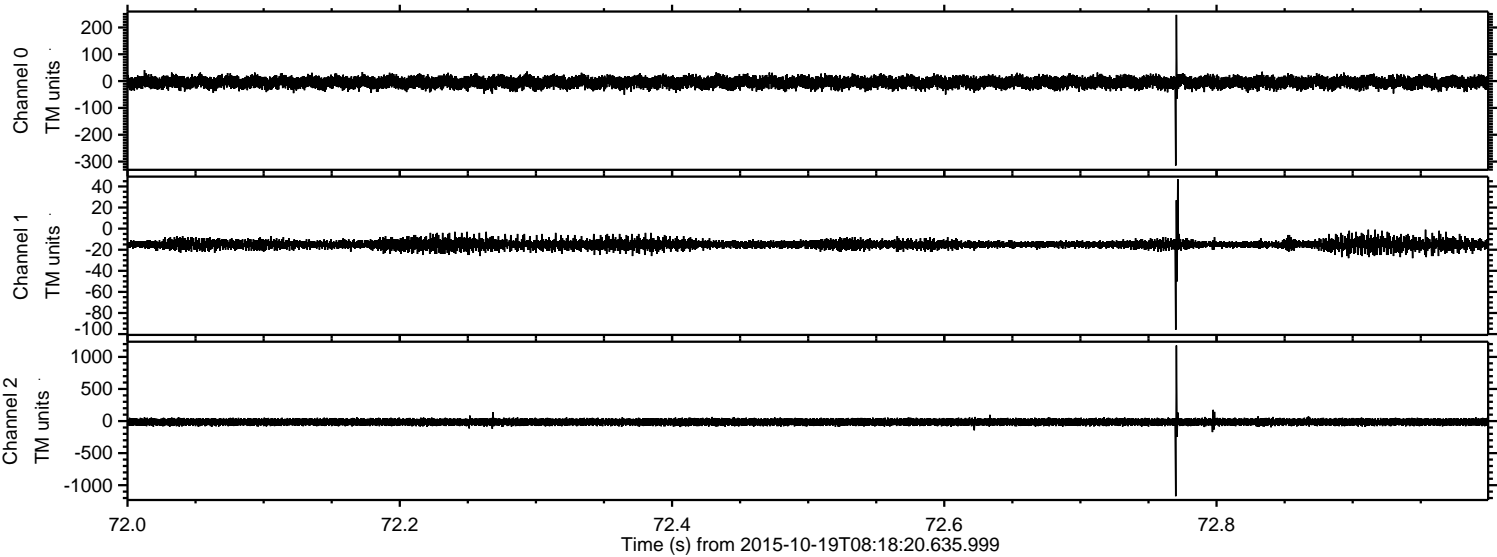


Processed Tue Oct 20 16:35:18 2015 by ELM ver.2012-10-06 from 001\_\_elm20151019\_081819\_\_dat00.bin





Processed Tue Oct 20 16:35:19 2015 by ELM ver.2012-10-06 from 001\_\_elm20151019\_081819\_\_dat00.bin





Processed Tue Oct 20 16:35:20 2015 by ELM ver.2012-10-06 from 001\_\_elm20151019\_081819\_\_dat00.bin

