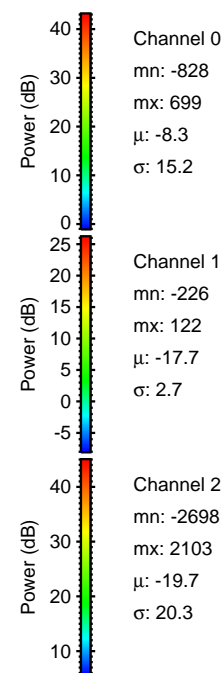
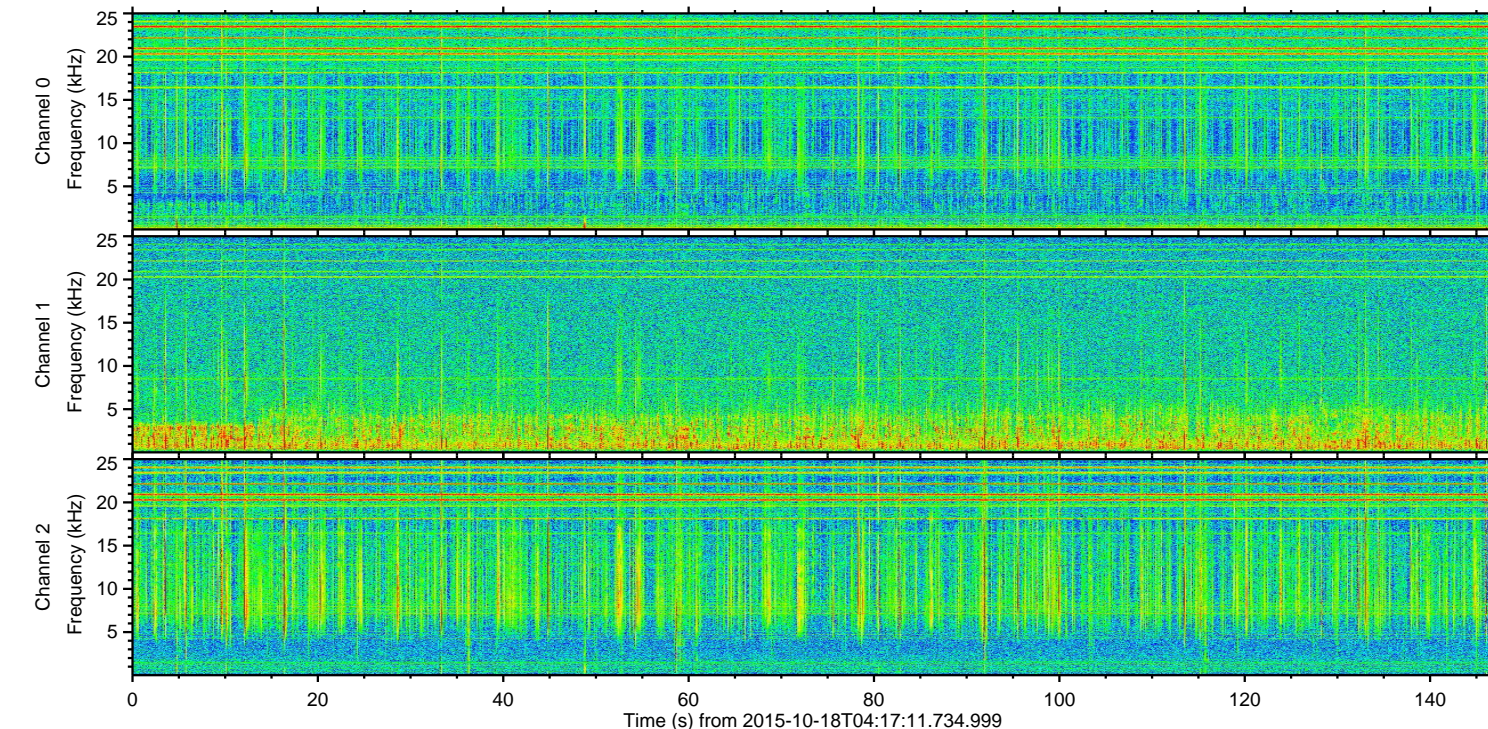
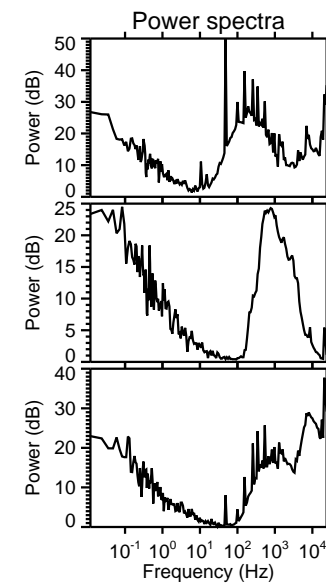
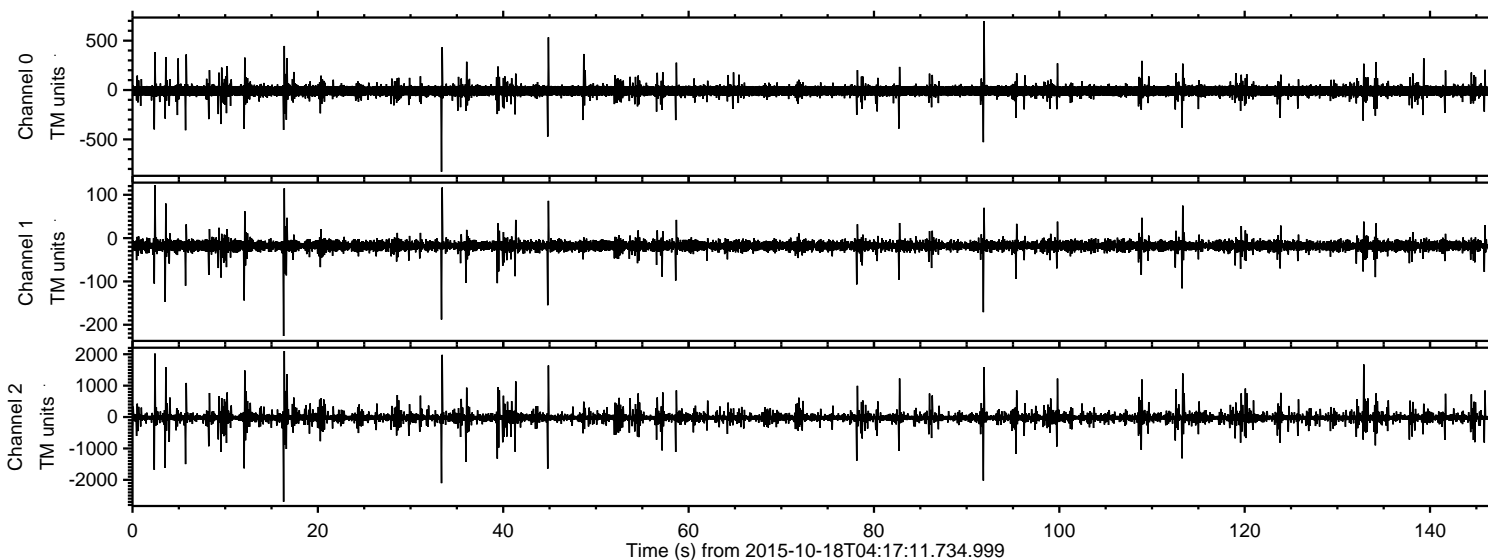


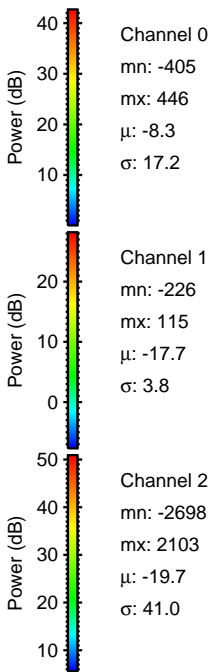
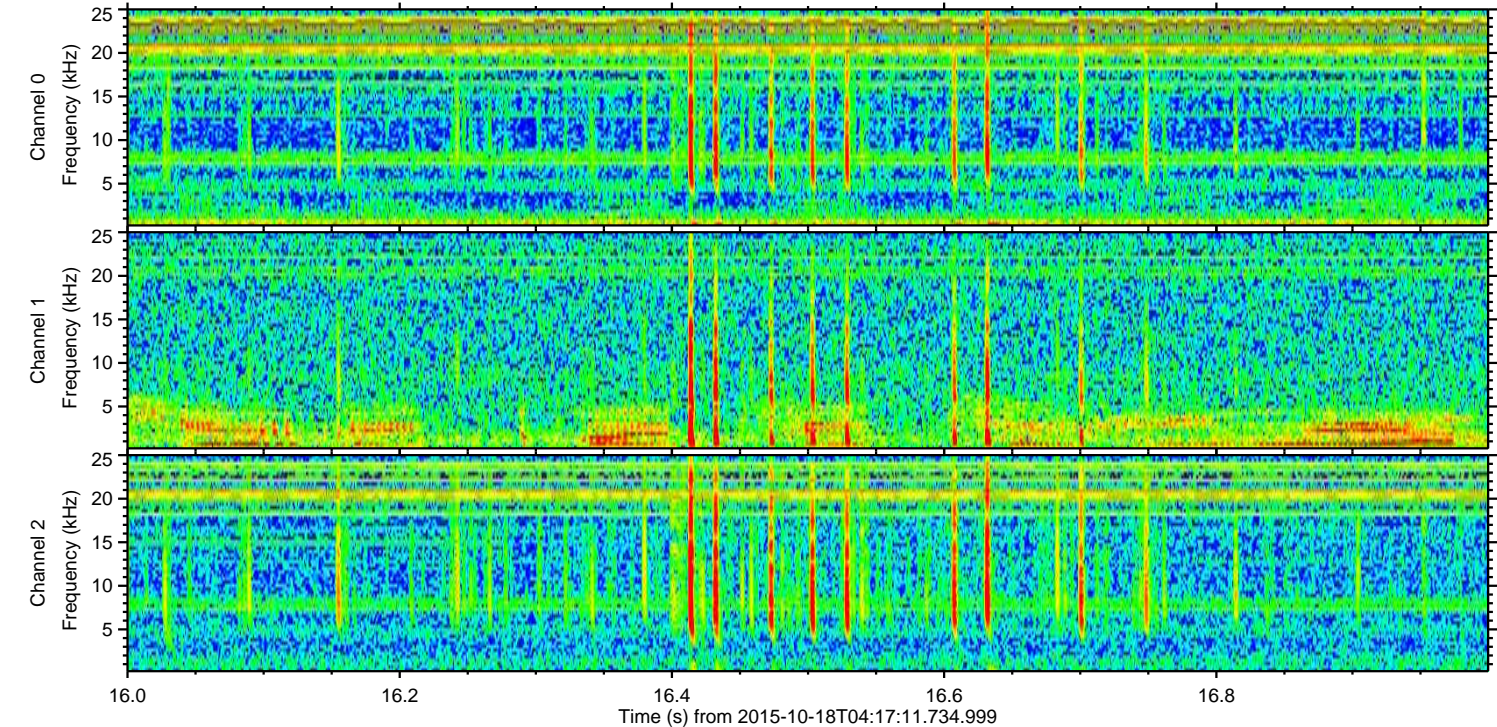
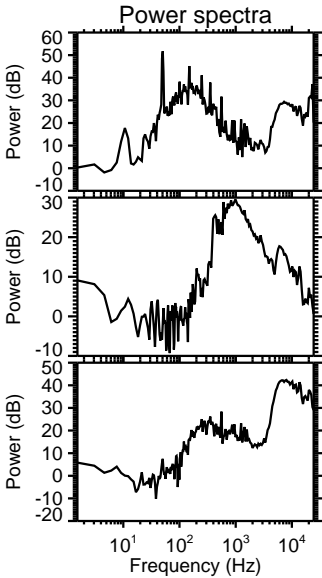
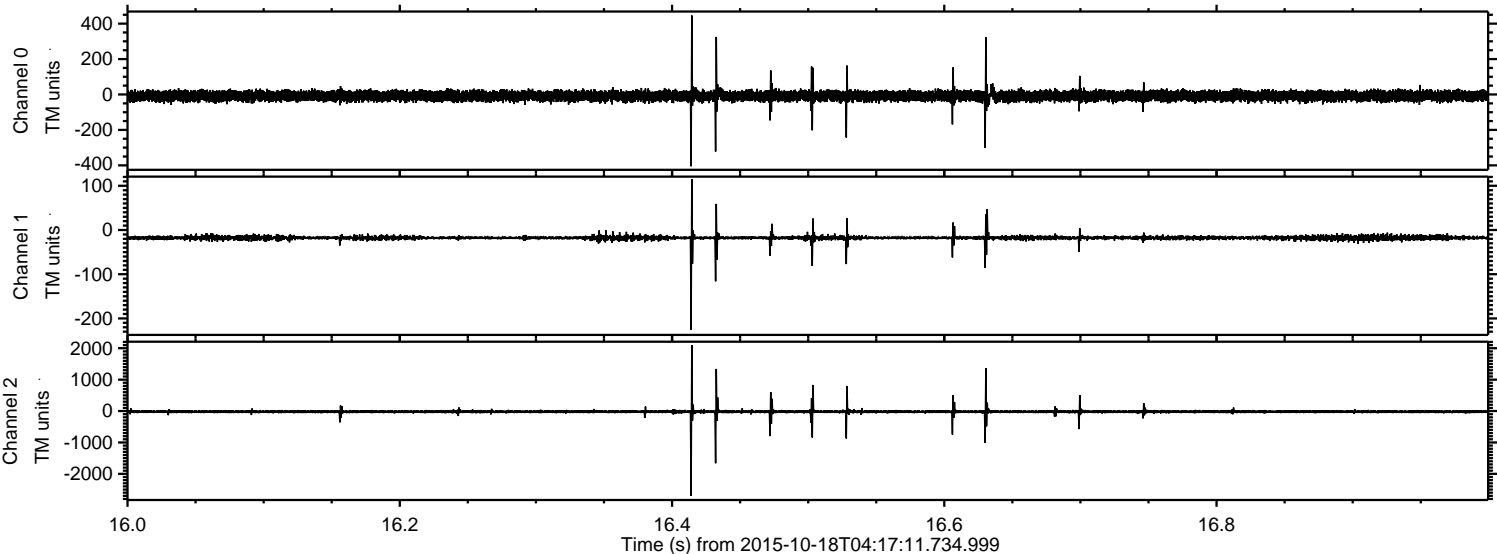
ELMAVAN 3D WAVEFORMS (Measured data sampled at 50 kHz) 51000 packets of 144 samples from 2015-10-18T04:17:11.734.999.

Processed Tue Oct 20 08:58:56 2015 by ELM ver.2012-10-06 from 001__elm20151018_041710__dat00.bin

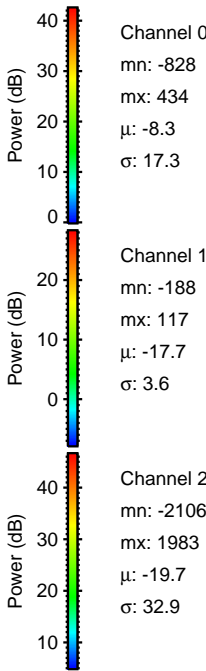
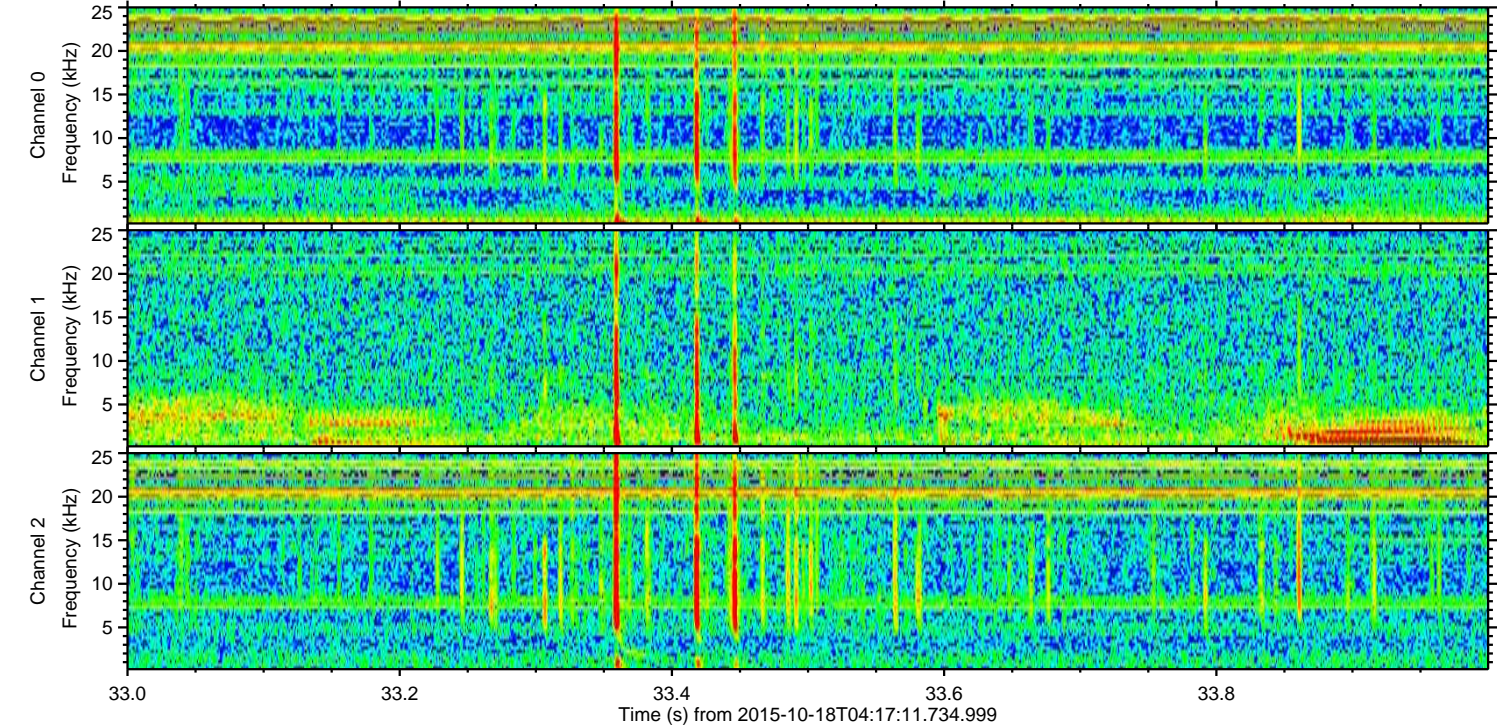
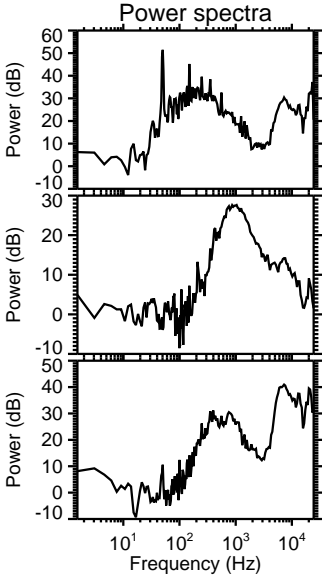
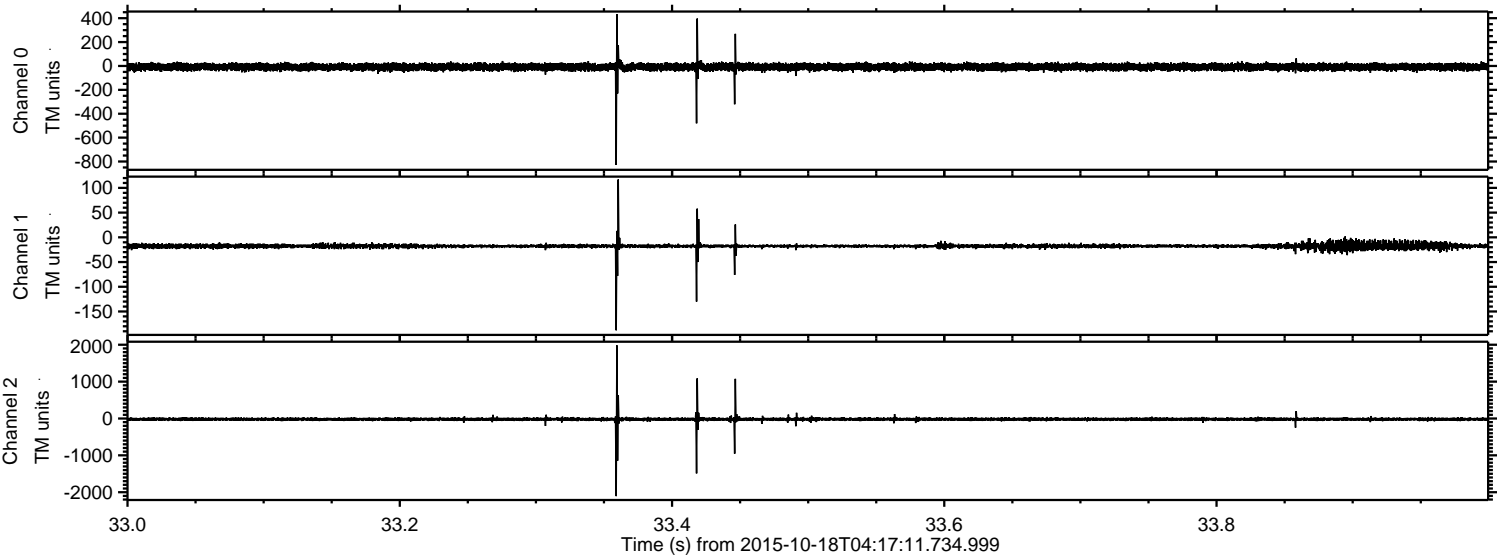


ELMAVAN 3D WAVEFORMS (Measured data sampled at 50 kHz) 51000 packets of 144 samples from 2015-10-18T04:17:11.734.999. Part 17/147

Processed Tue Oct 20 08:59:12 2015 by ELM ver.2012-10-06 from 001__elm20151018_041710__dat00.bin

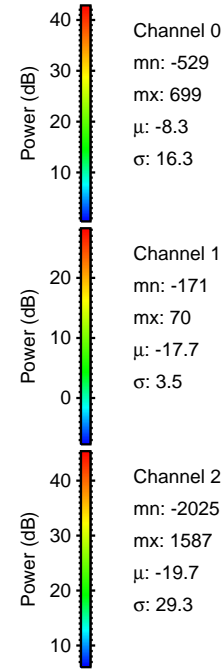
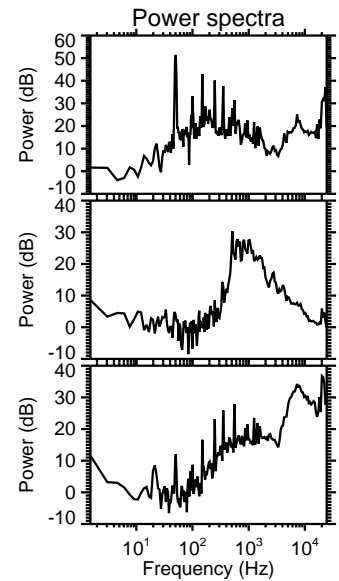
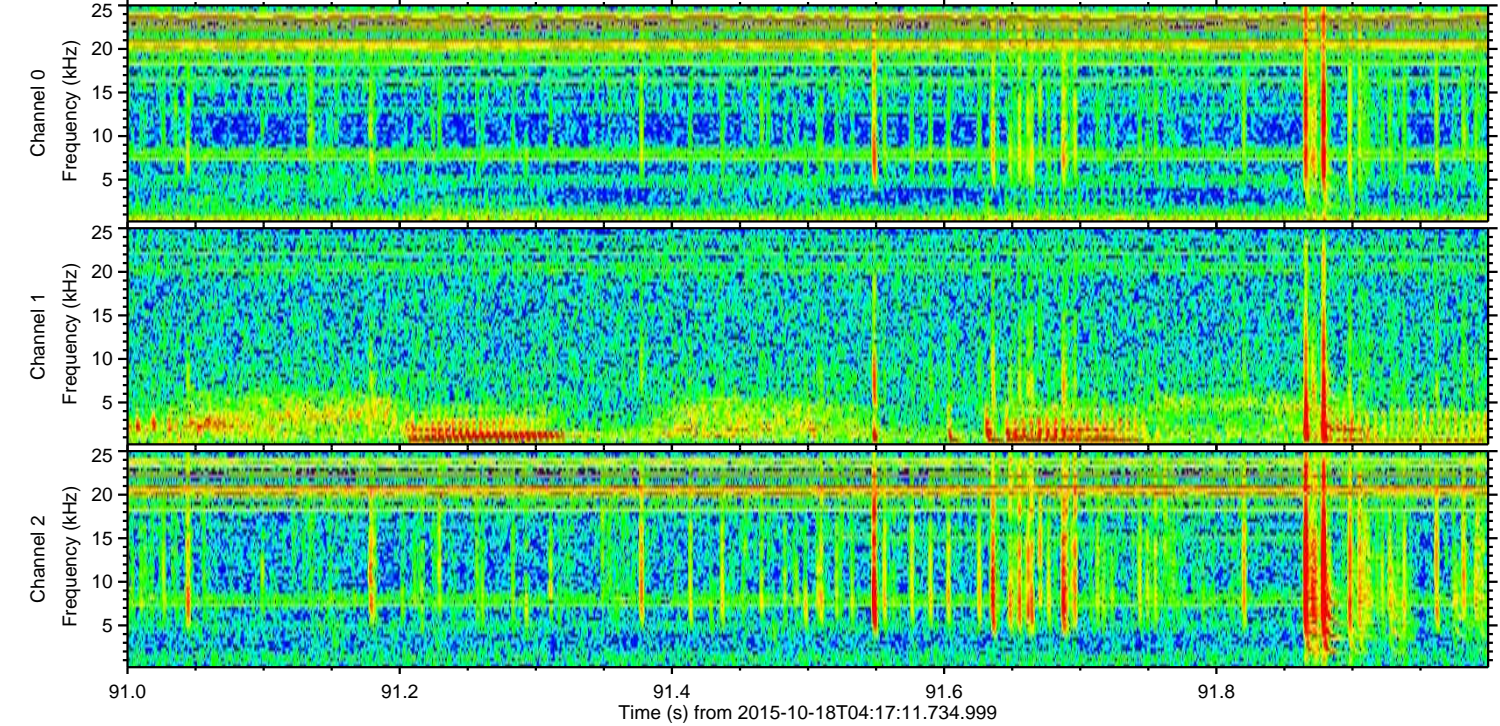
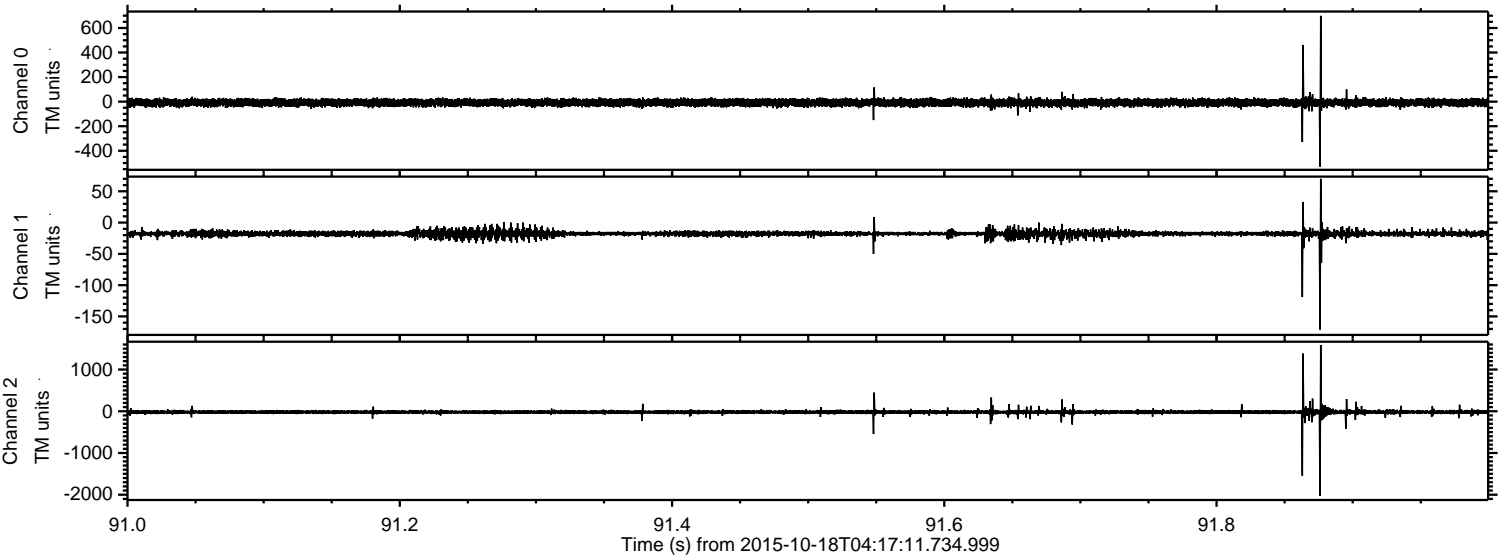


Processed Tue Oct 20 08:59:13 2015 by ELM ver.2012-10-06 from 001__elm20151018_041710__dat00.bin



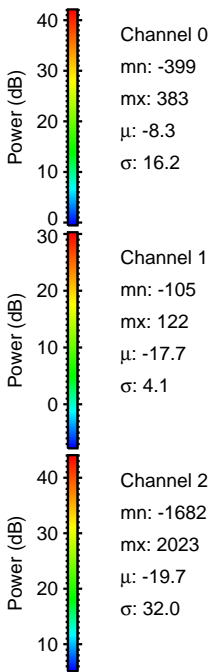
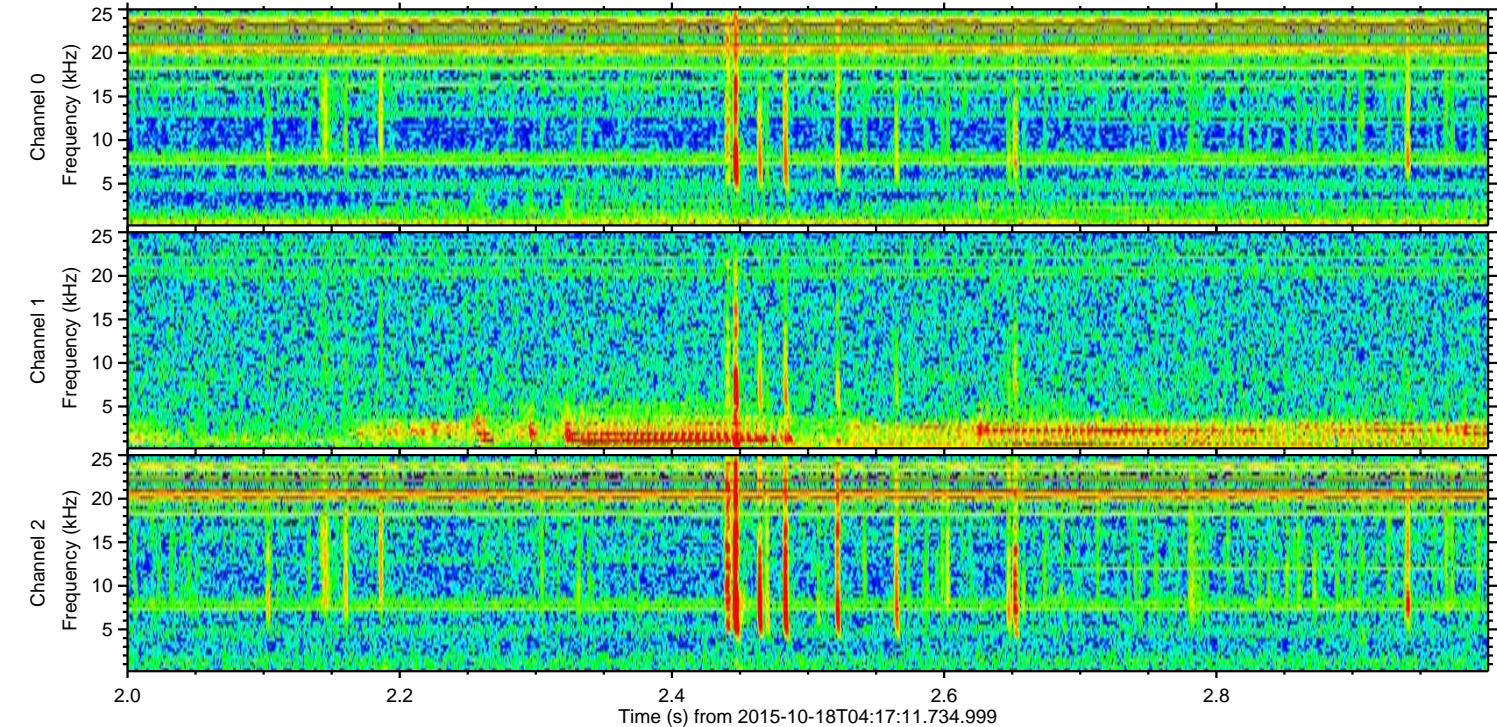
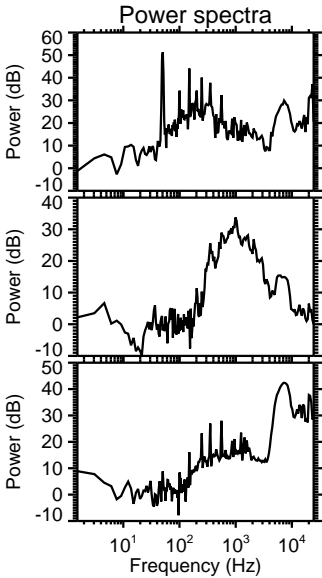
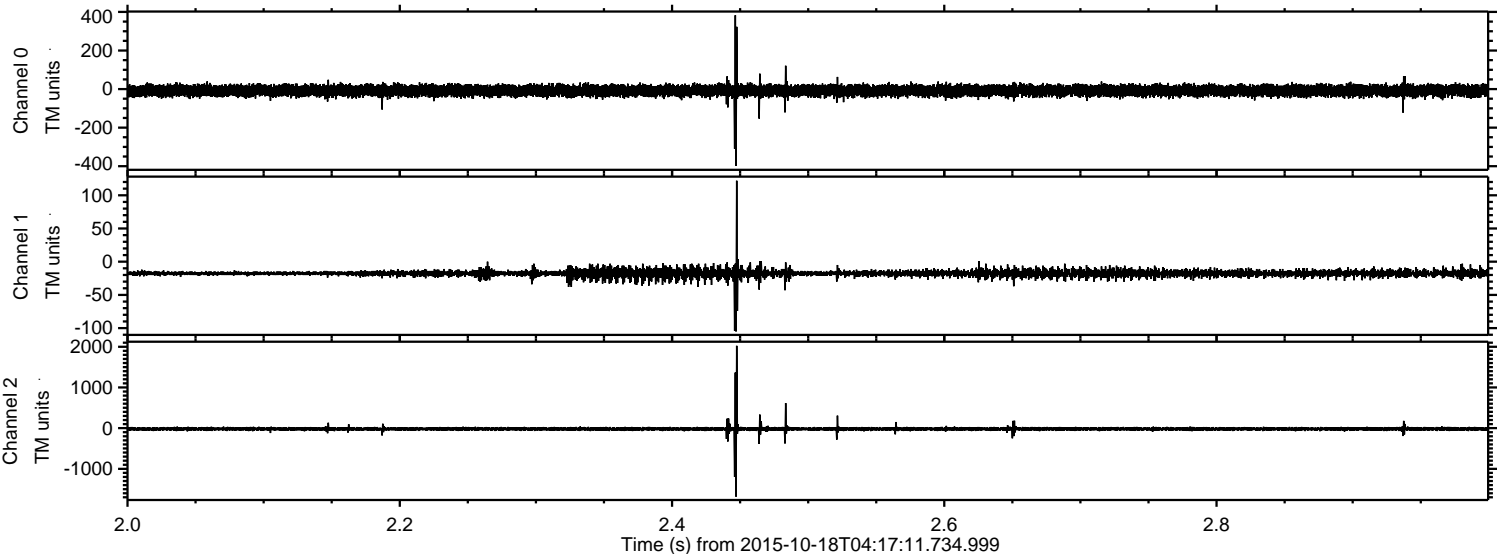
ELMAVAN 3D WAVEFORMS (Measured data sampled at 50 kHz) 51000 packets of 144 samples from 2015-10-18T04:17:11.734.999. Part 92/147

Processed Tue Oct 20 08:59:14 2015 by ELM ver.2012-10-06 from 001__elm20151018_041710__dat00.bin



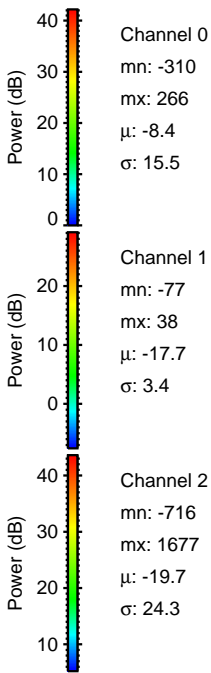
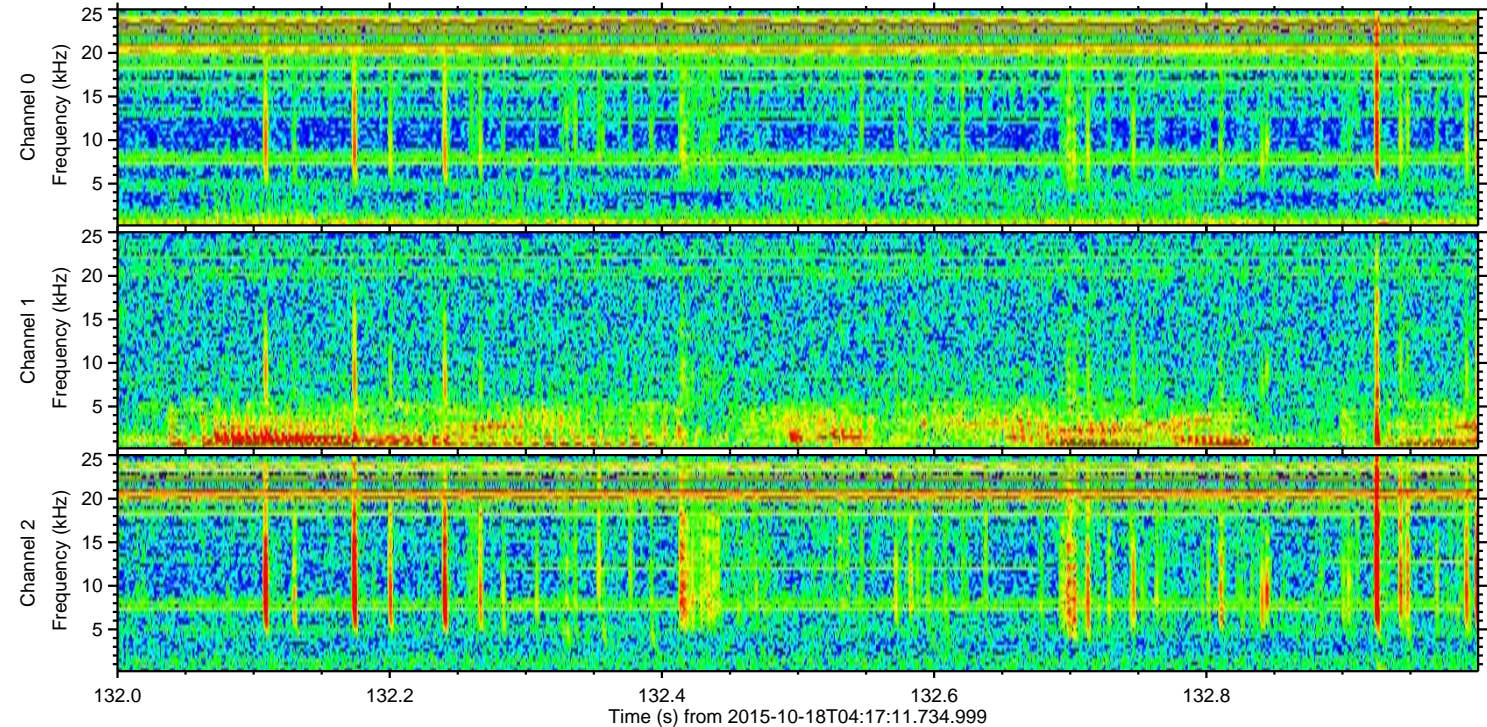
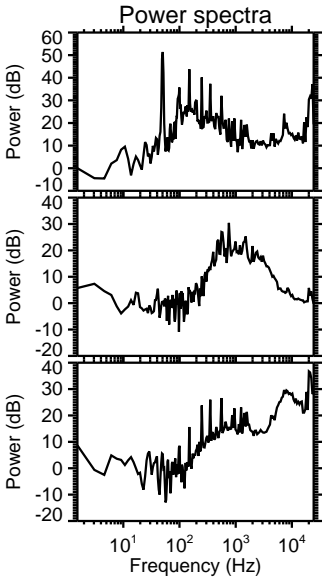
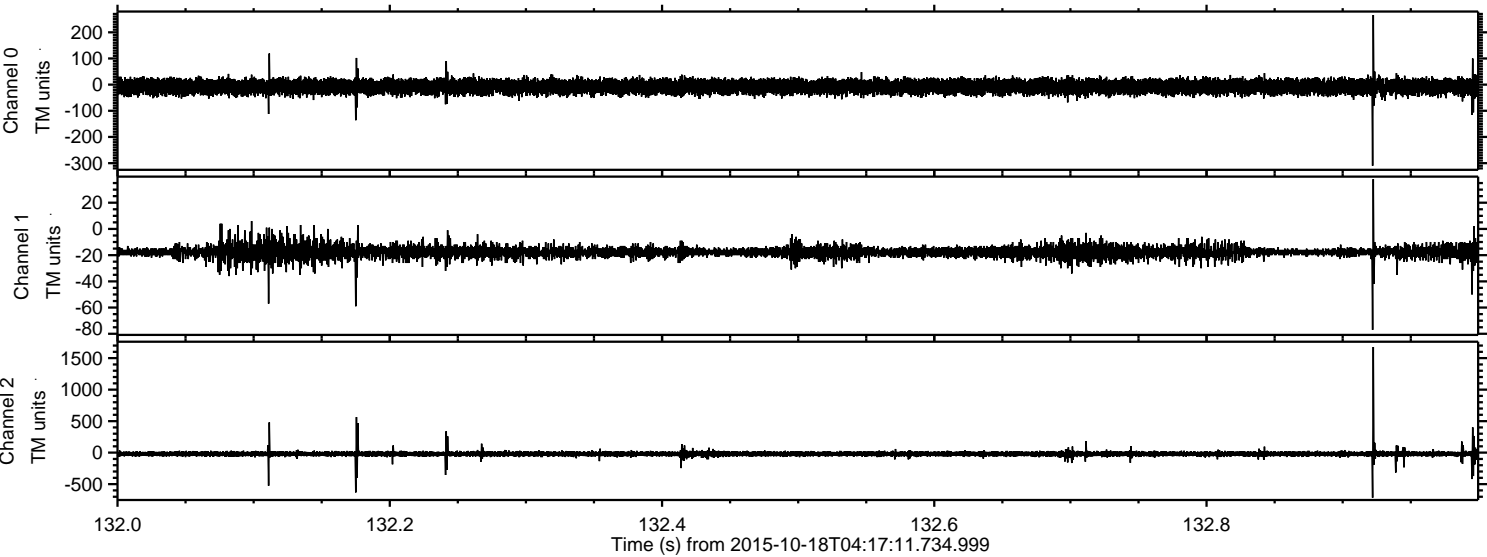
ELMAVAN 3D WAVEFORMS (Measured data sampled at 50 kHz) 51000 packets of 144 samples from 2015-10-18T04:17:11.734.999. Part 3/147

Processed Tue Oct 20 08:59:15 2015 by ELM ver.2012-10-06 from 001__elm20151018_041710__dat00.bin

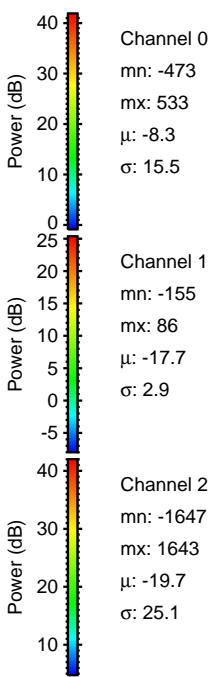
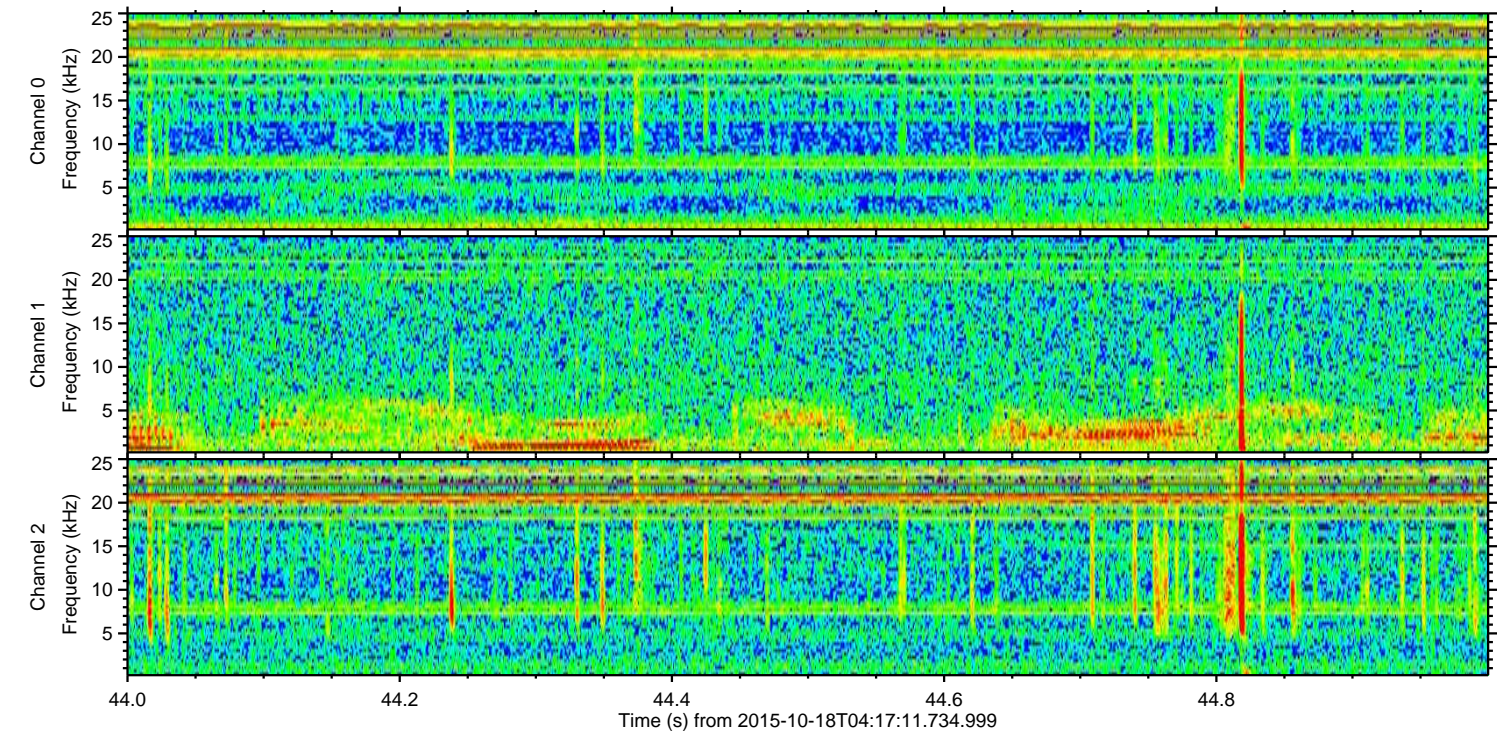
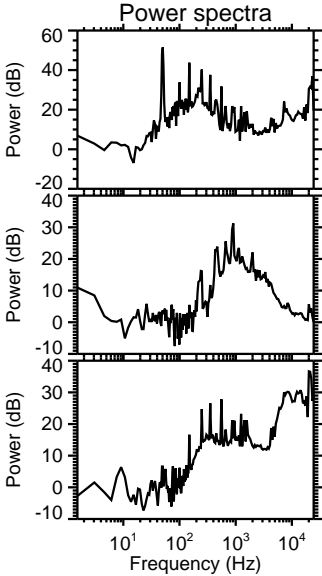
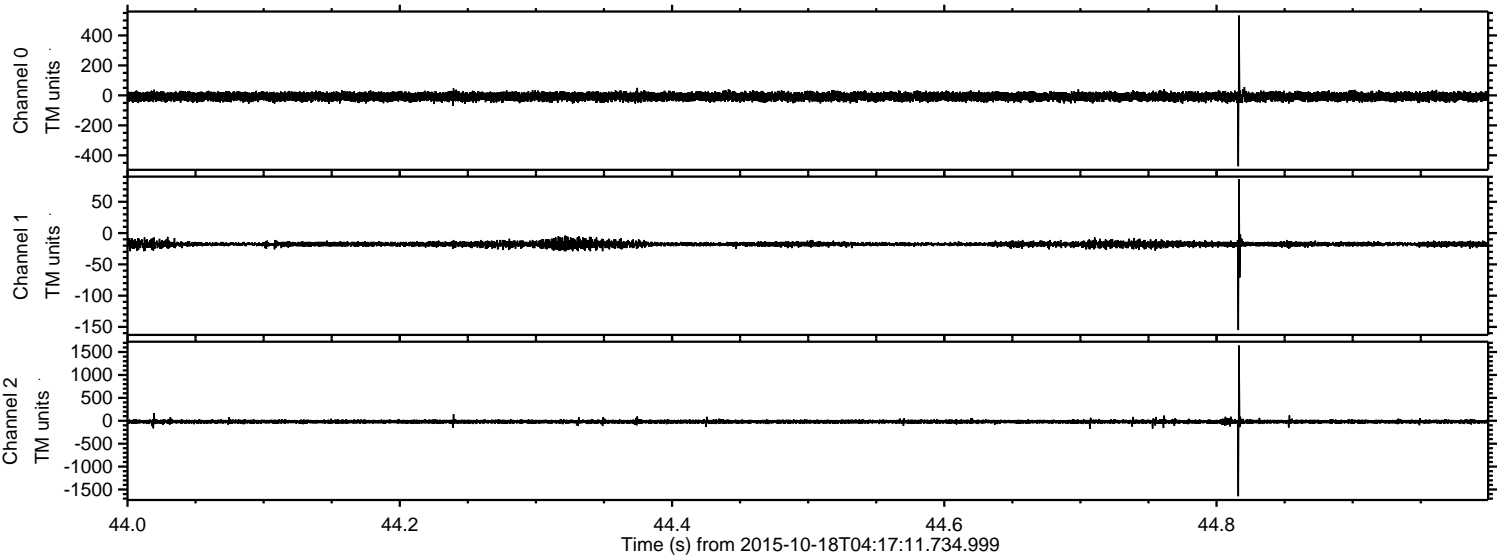


ELMAVAN 3D WAVEFORMS (Measured data sampled at 50 kHz) 51000 packets of 144 samples from 2015-10-18T04:17:11.734.999. Part 133/147

Processed Tue Oct 20 08:59:16 2015 by ELM ver.2012-10-06 from 001__elm20151018_041710__dat00.bin

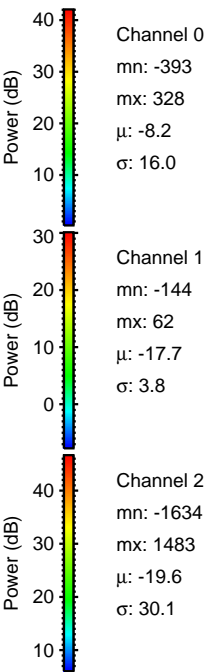
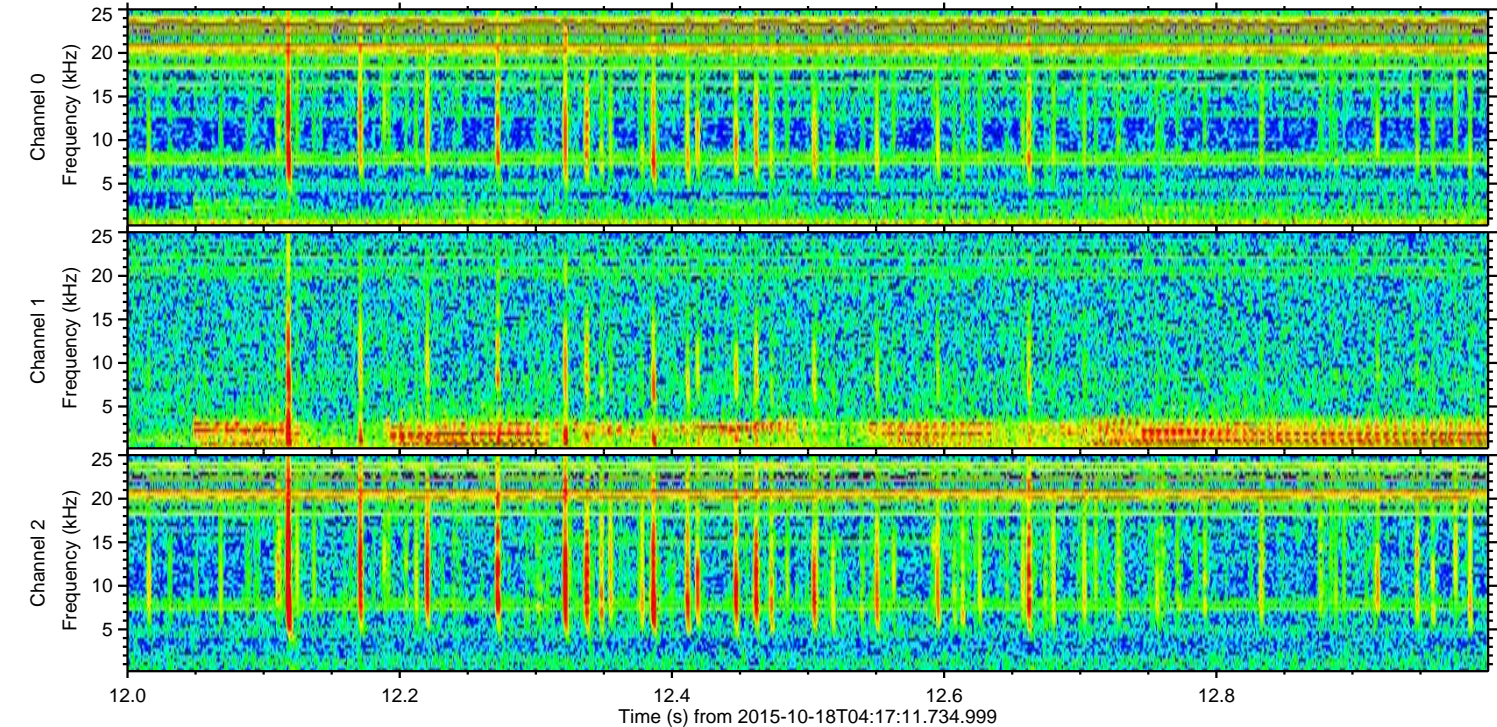
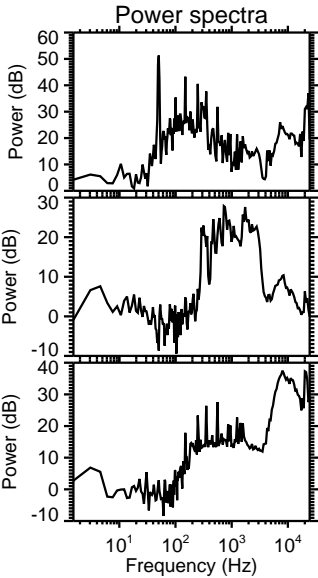
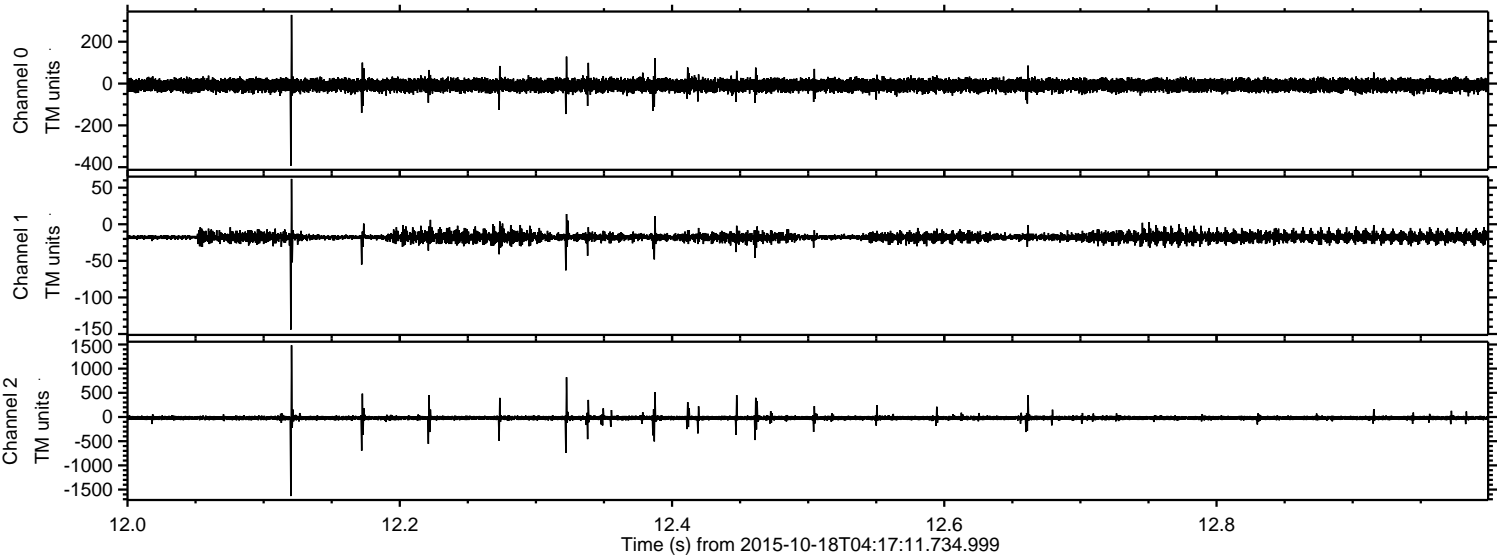


Processed Tue Oct 20 08:59:17 2015 by ELM ver.2012-10-06 from 001__elm20151018_041710__dat00.bin



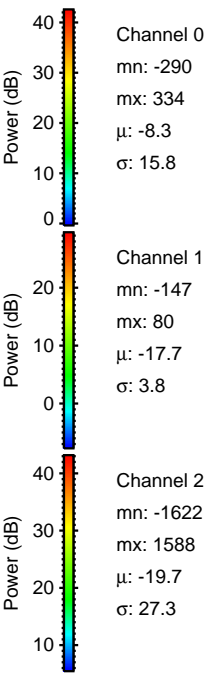
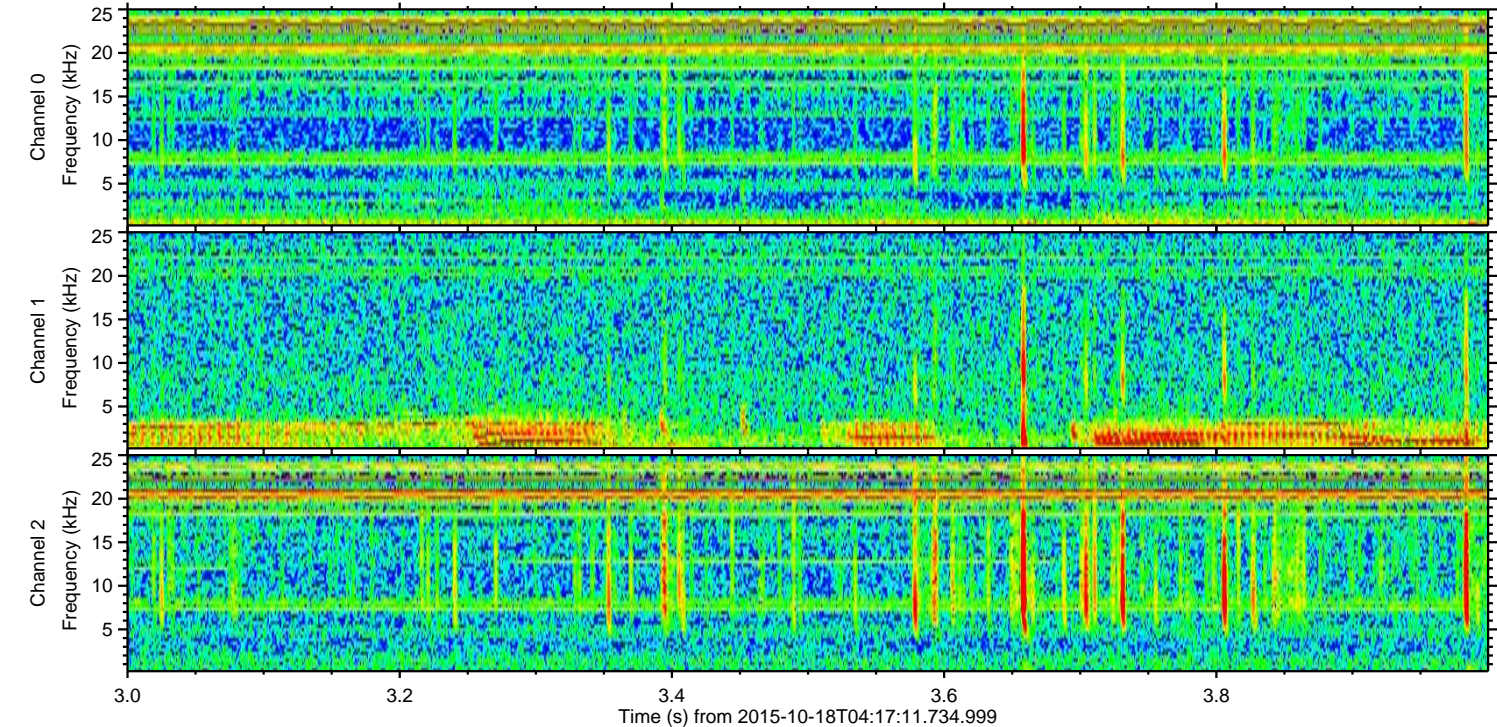
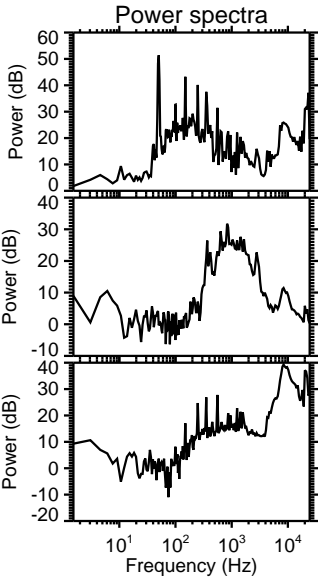
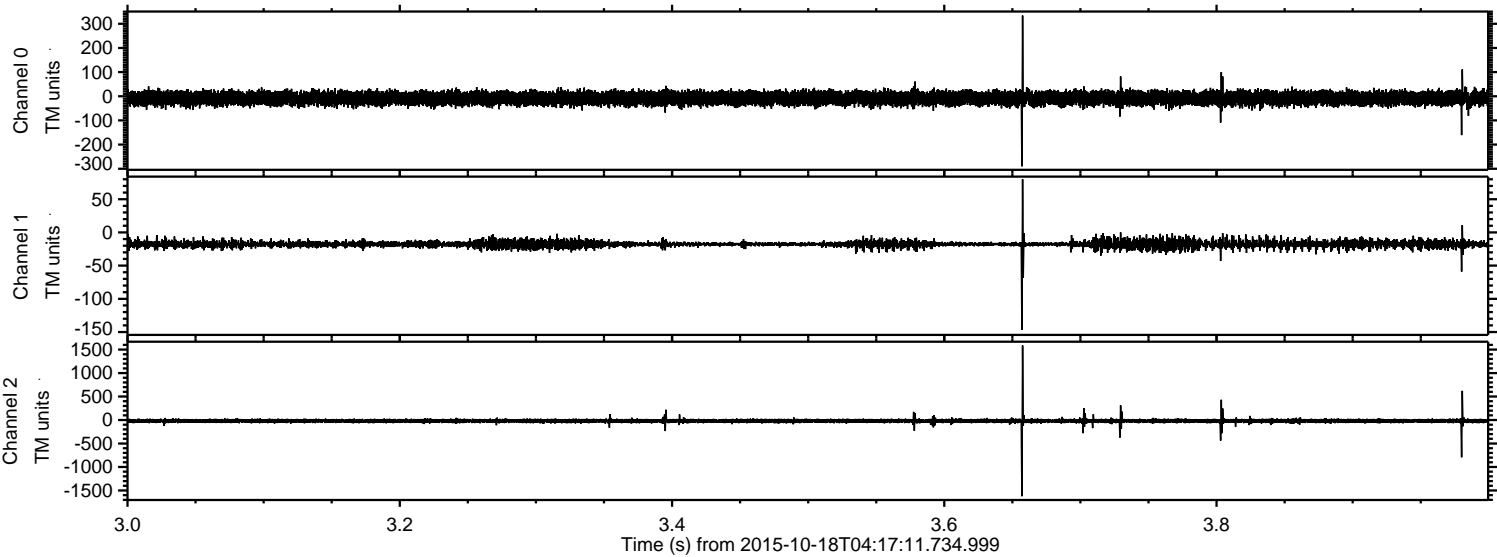
ELMAVAN 3D WAVEFORMS (Measured data sampled at 50 kHz) 51000 packets of 144 samples from 2015-10-18T04:17:11.734.999. Part 13/147

Processed Tue Oct 20 08:59:18 2015 by ELM ver.2012-10-06 from 001__elm20151018_041710__dat00.bin



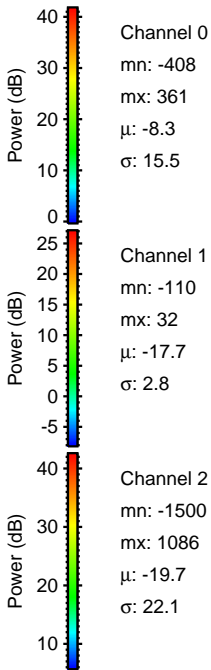
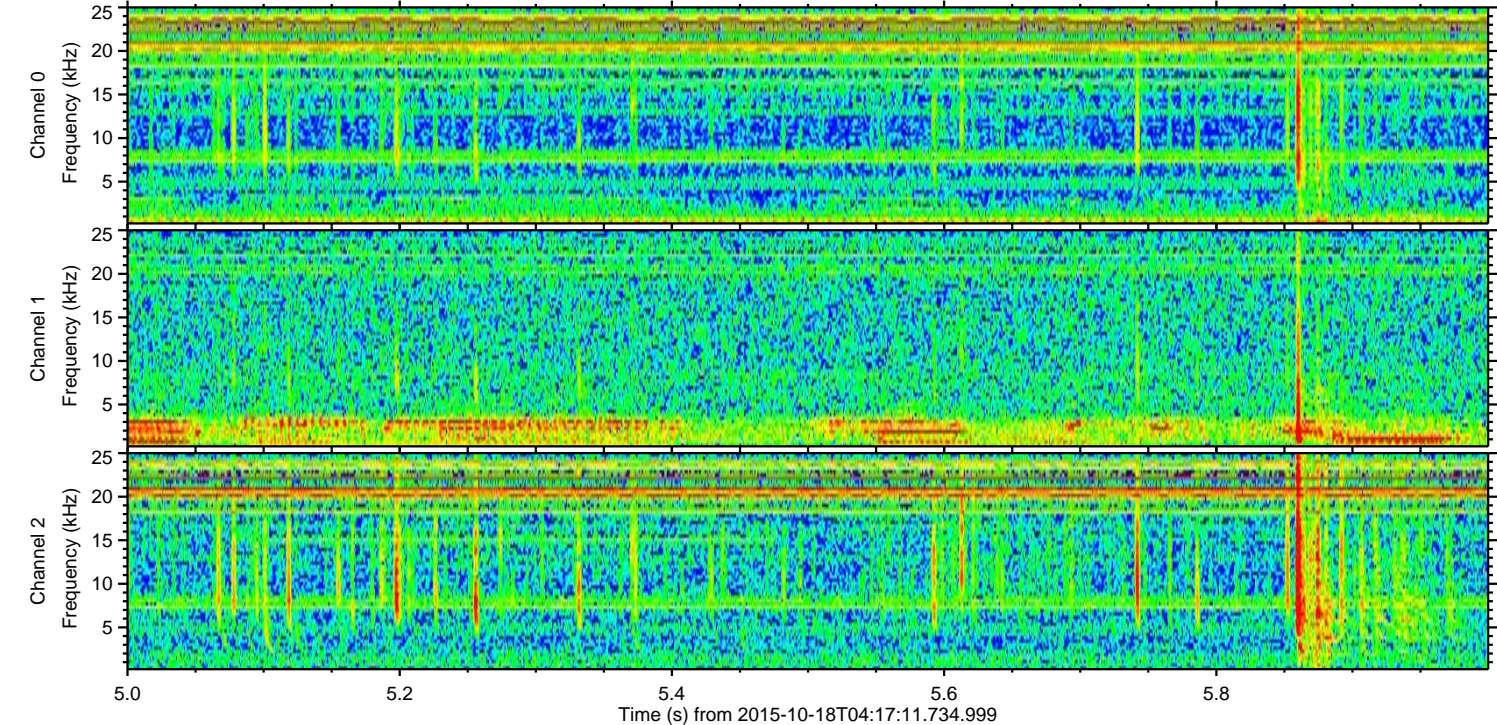
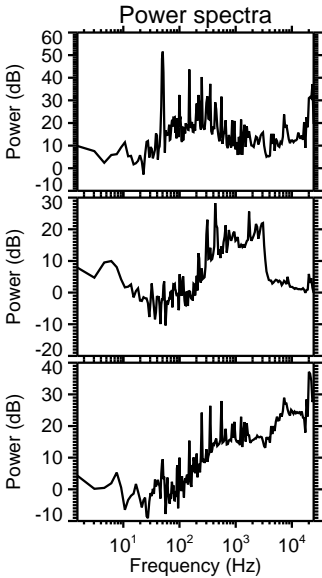
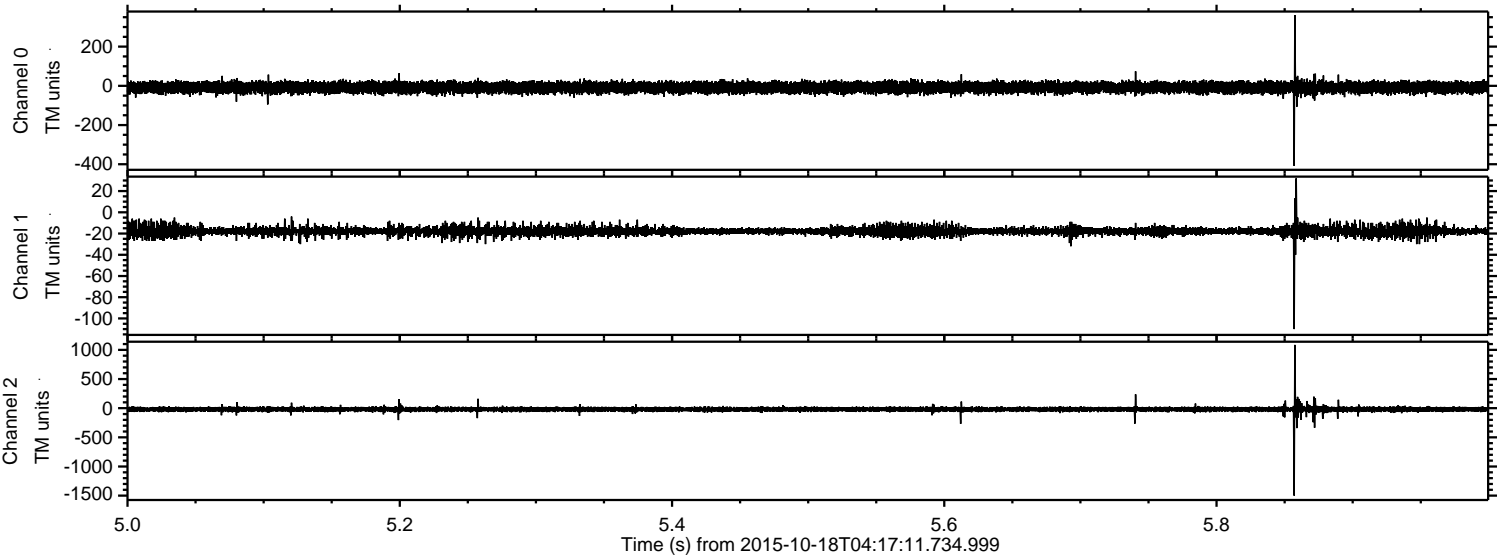
ELMAVAN 3D WAVEFORMS (Measured data sampled at 50 kHz) 51000 packets of 144 samples from 2015-10-18T04:17:11.734.999. Part 4/147

Processed Tue Oct 20 08:59:19 2015 by ELM ver.2012-10-06 from 001__elm20151018_041710__dat00.bin



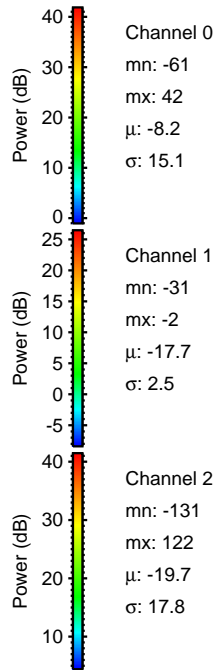
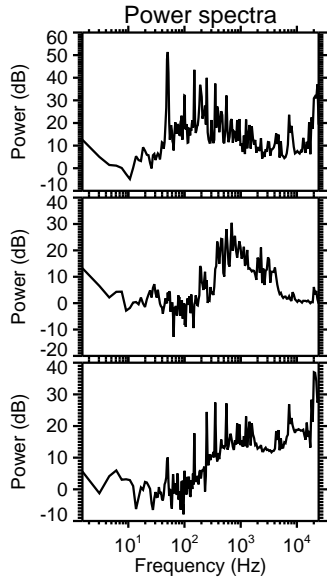
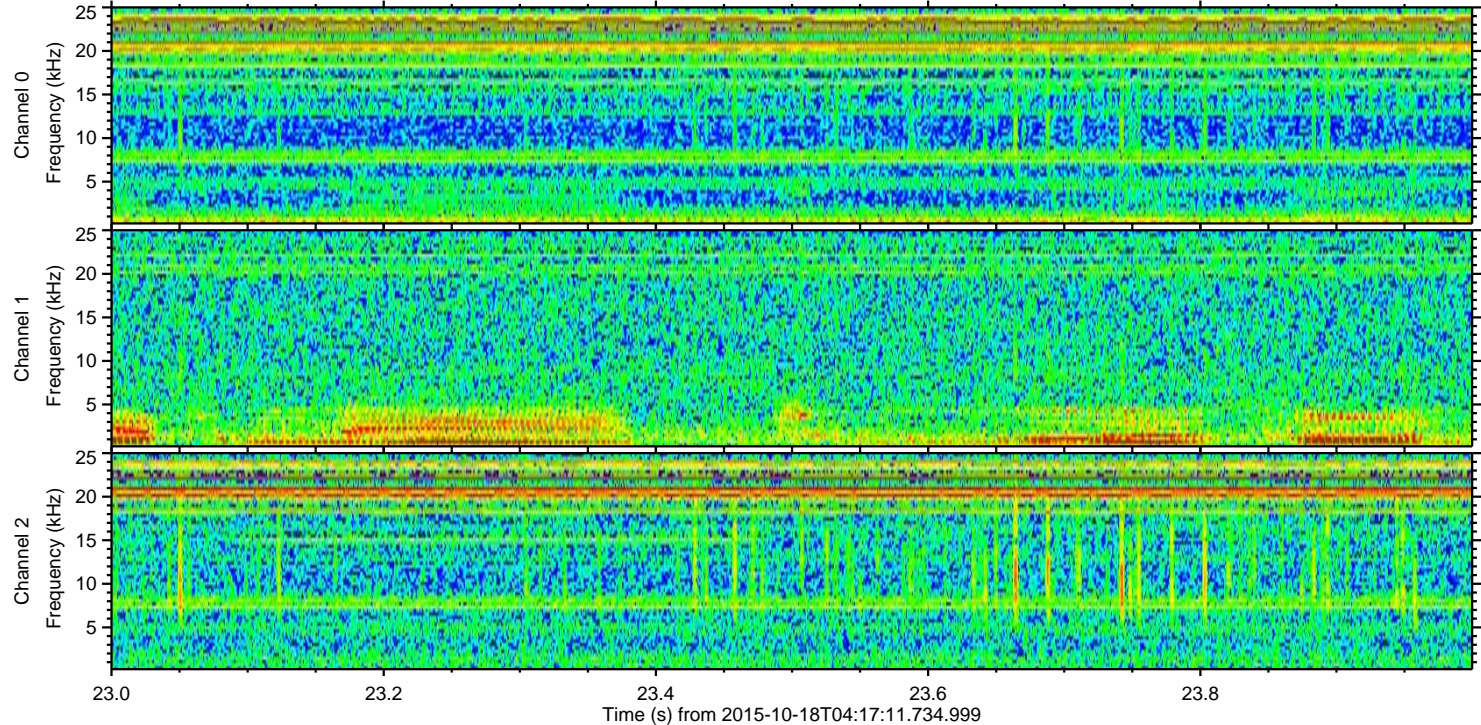
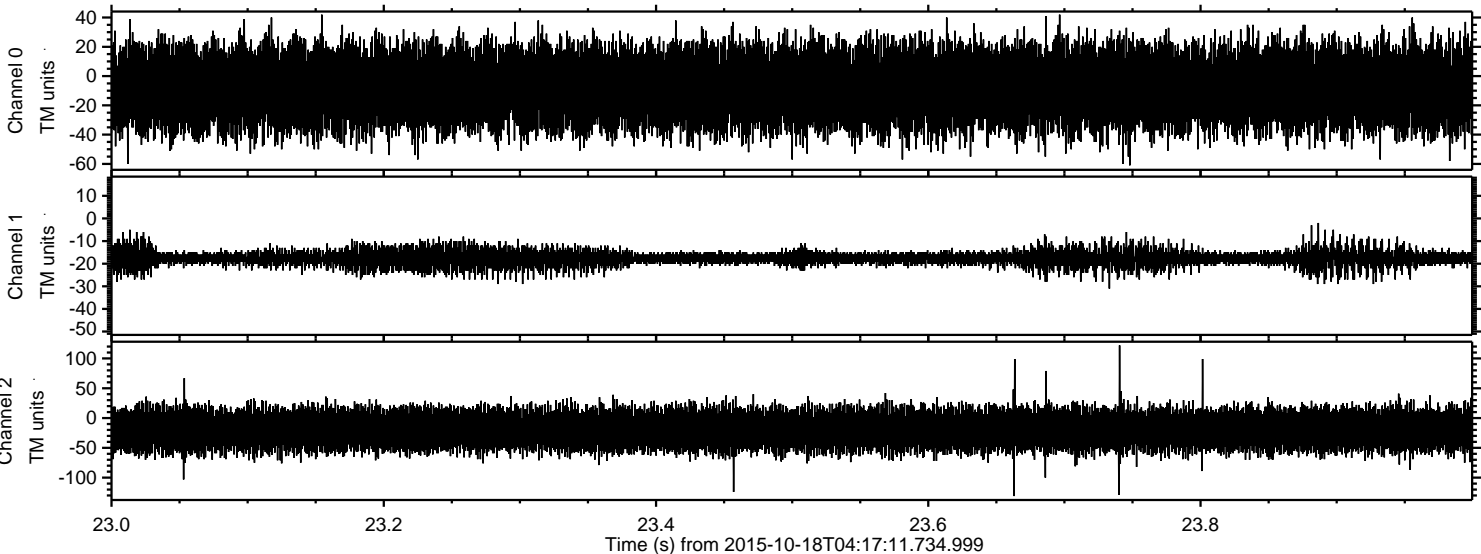
ELMAVAN 3D WAVEFORMS (Measured data sampled at 50 kHz) 51000 packets of 144 samples from 2015-10-18T04:17:11.734.999. Part 6/147

Processed Tue Oct 20 08:59:20 2015 by ELM ver.2012-10-06 from 001__elm20151018_041710__dat00.bin



ELMAVAN 3D WAVEFORMS (Measured data sampled at 50 kHz) 51000 packets of 144 samples from 2015-10-18T04:17:11.734.999. Part 24/147

Processed Tue Oct 20 08:59:21 2015 by ELM ver.2012-10-06 from 001__elm20151018_041710__dat00.bin



Power spectra

Channel 0
mn: -61
mx: 42
 μ : -8.2
 σ : 15.1

Channel 1
mn: -31
mx: -2
 μ : -17.7
 σ : 2.5

Channel 2
mn: -131
mx: 122
 μ : -19.7
 σ : 17.8