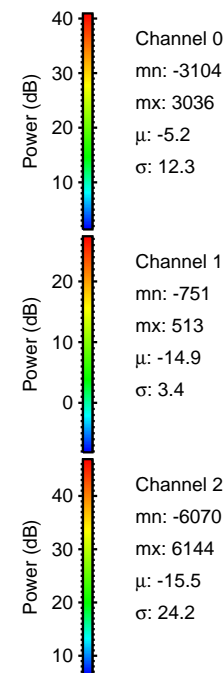
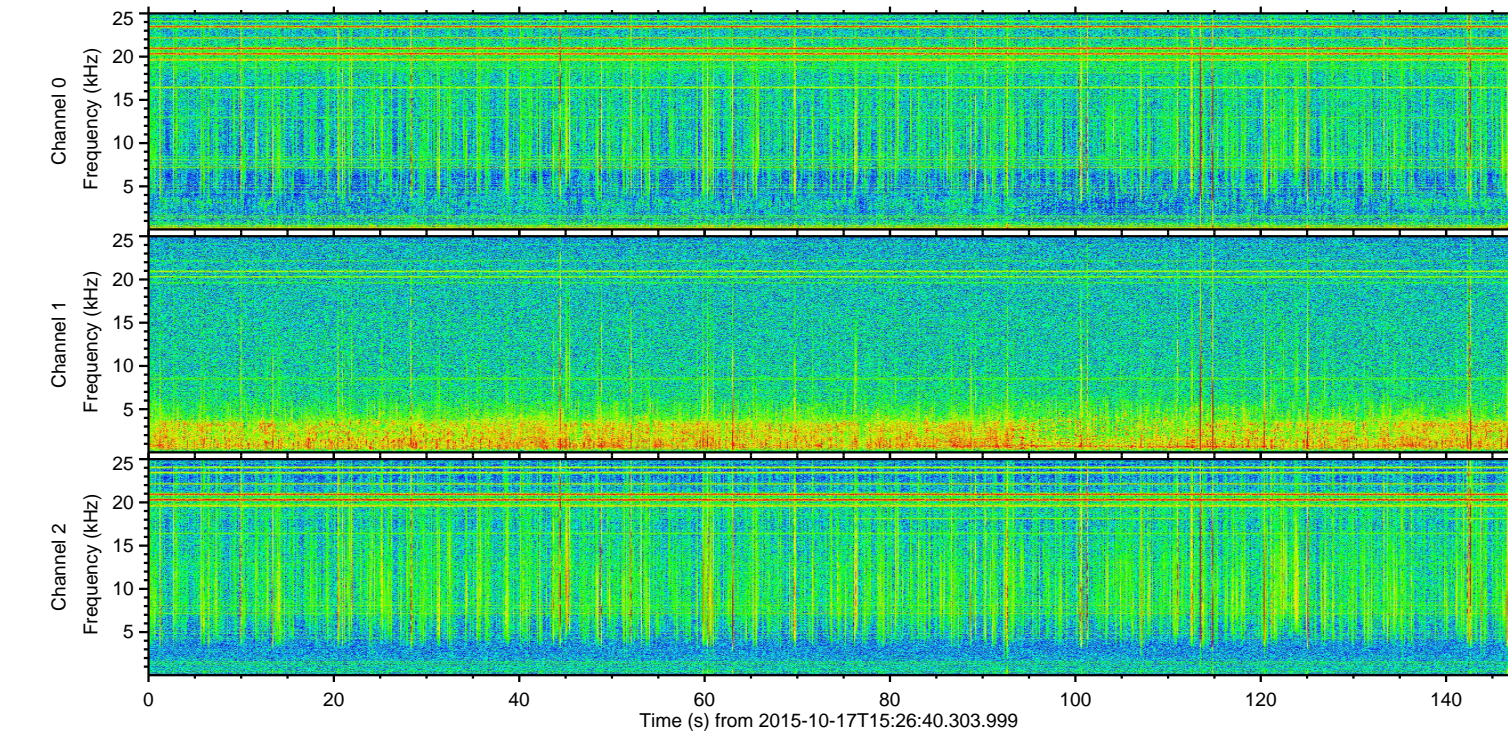
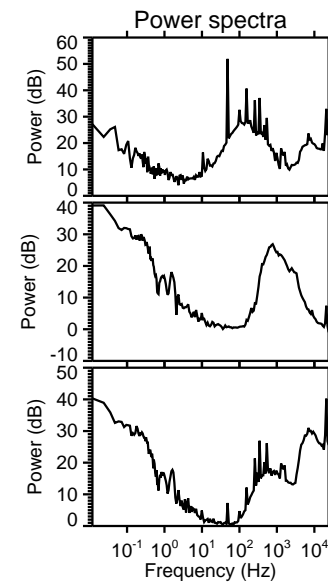
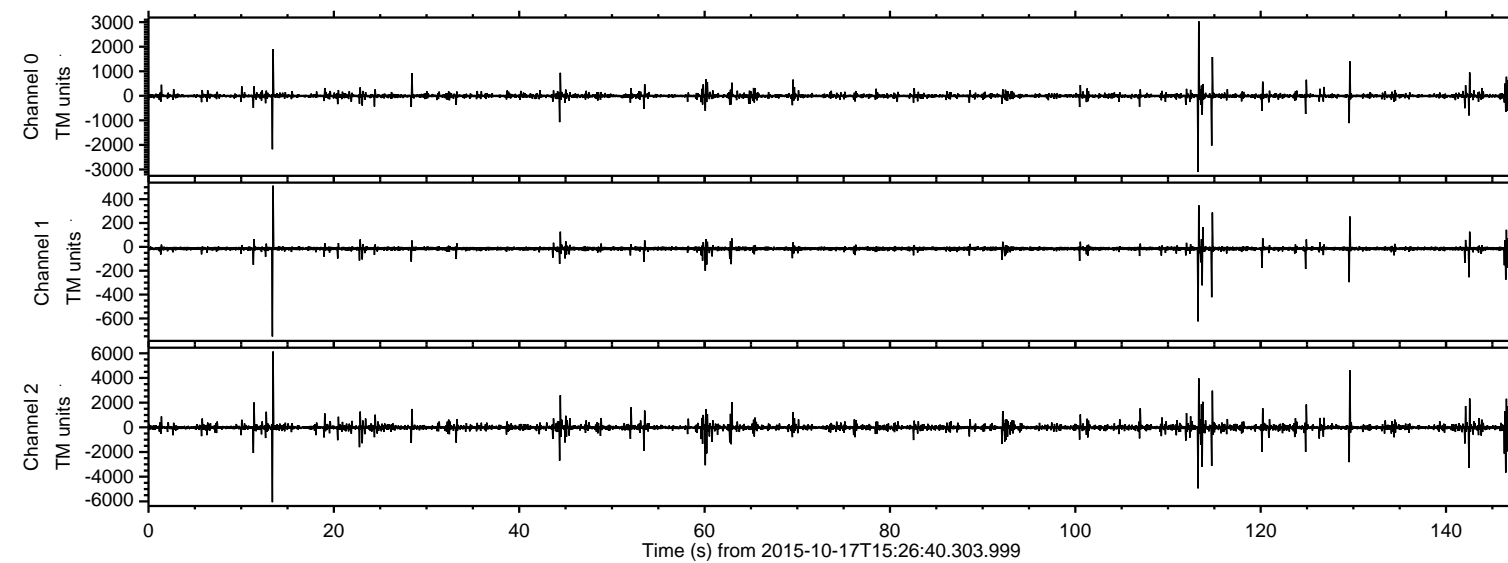
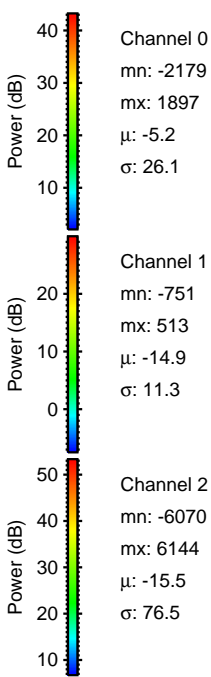
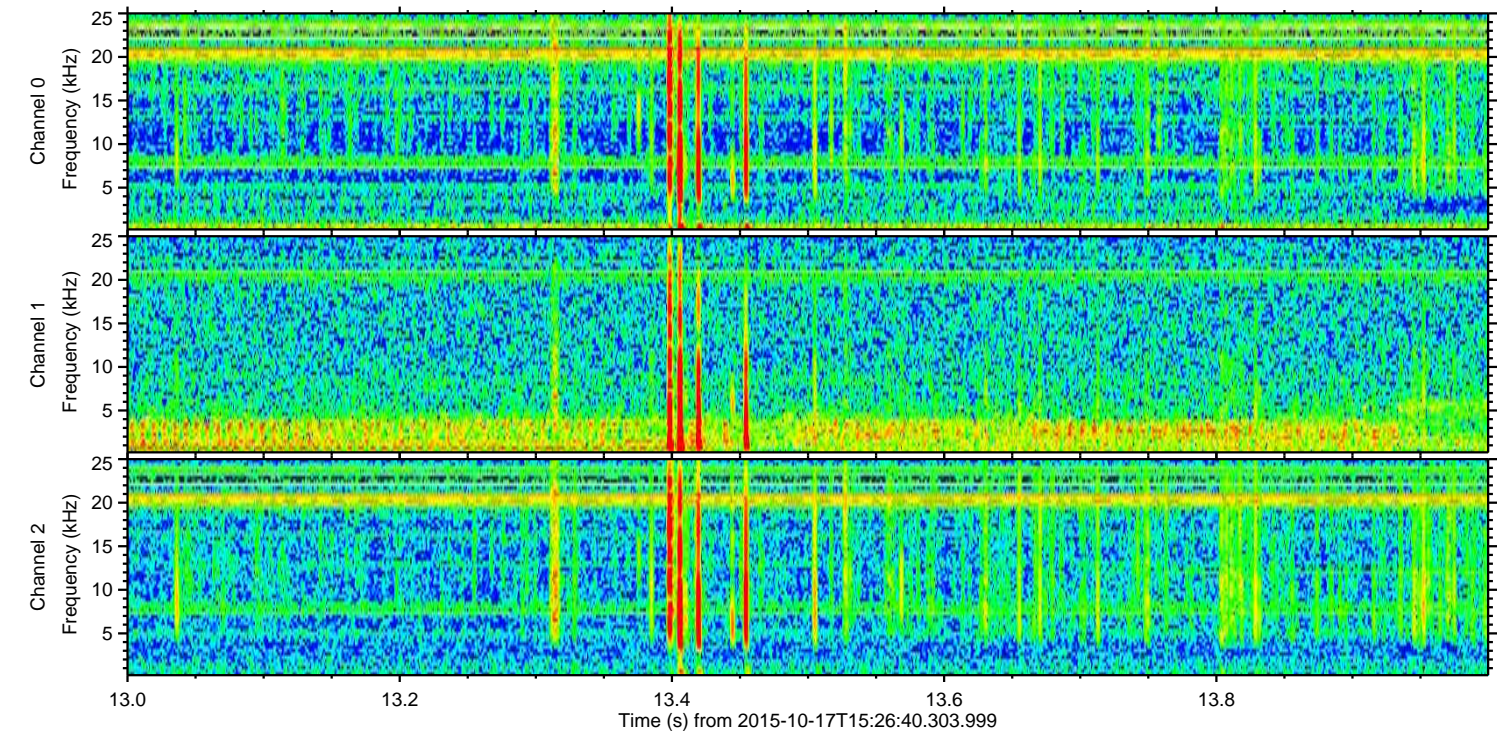
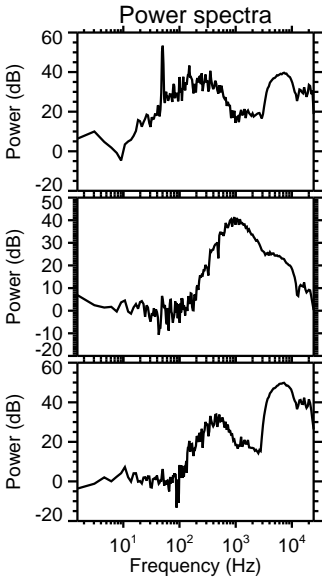
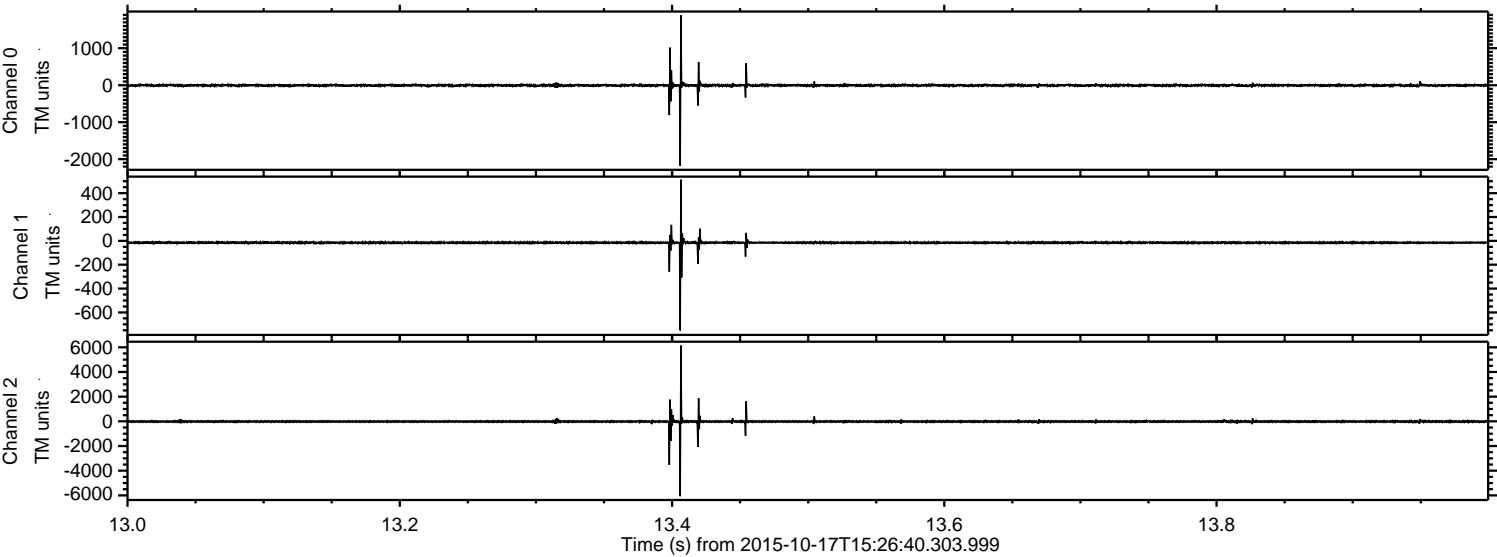


ELMAVAN 3D WAVEFORMS (Measured data sampled at 50 kHz) 51000 packets of 144 samples from 2015-10-17T15:26:40.303.999.

Processed Tue Oct 20 05:33:21 2015 by ELM ver.2012-10-06 from 001__elm20151017_152639__dat00.bin

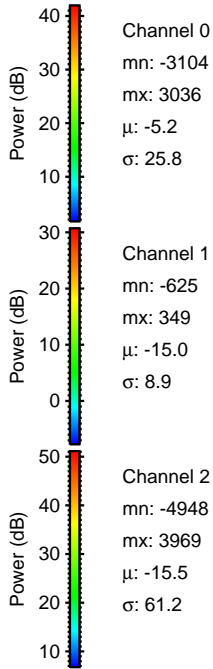
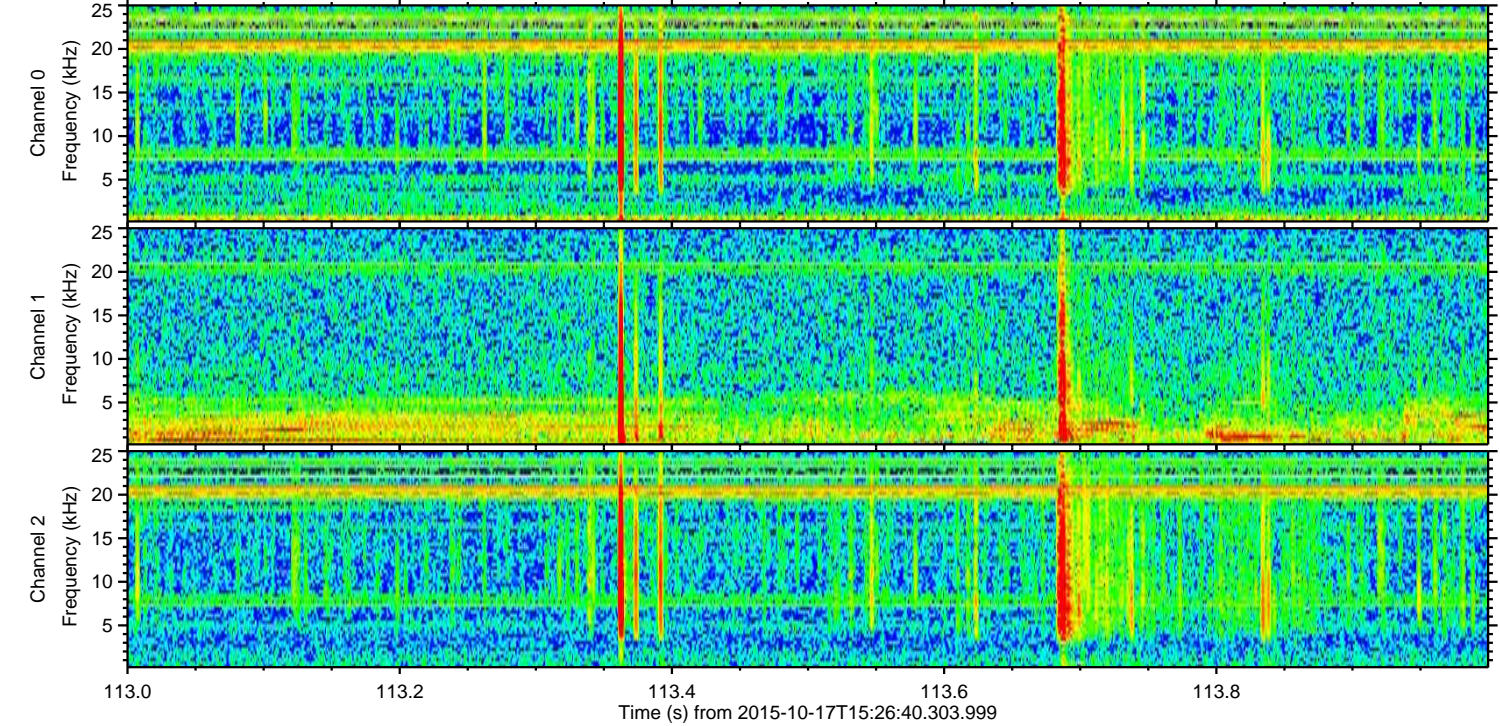
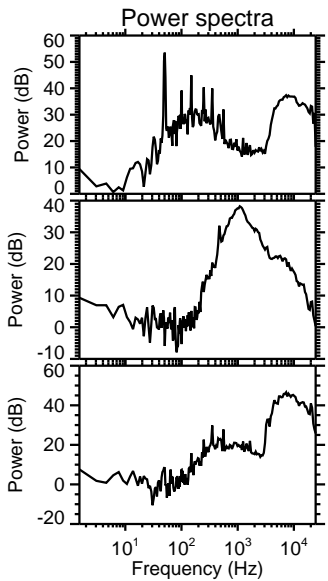
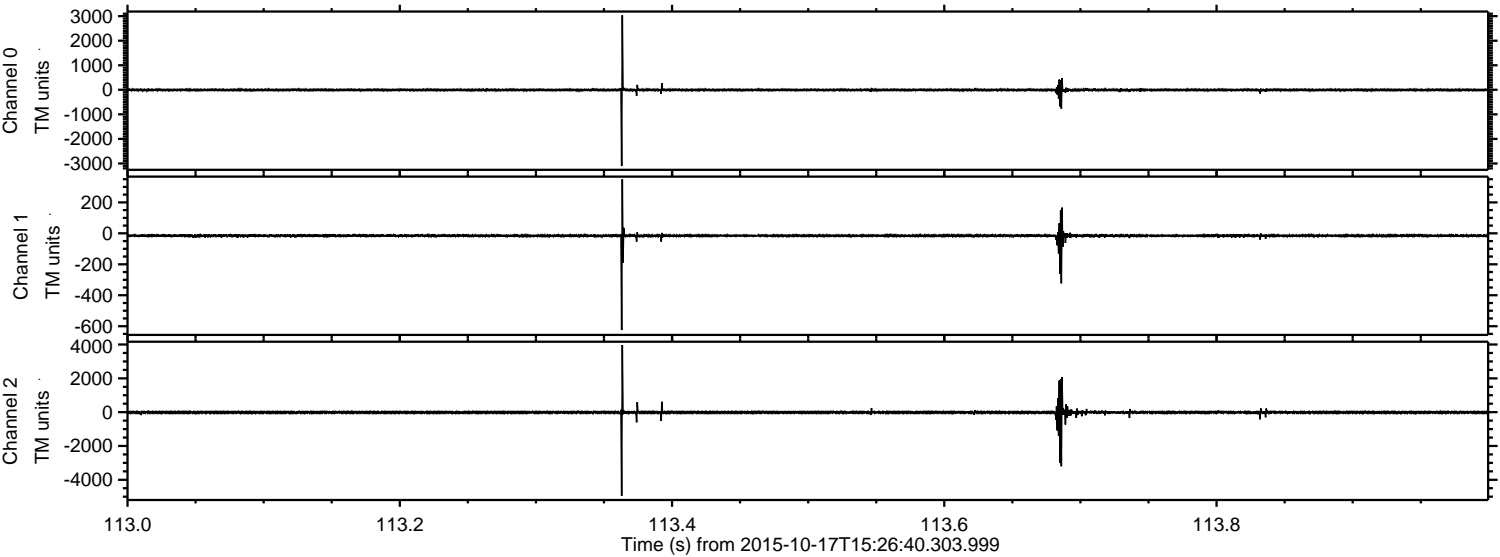


Processed Tue Oct 20 05:33:36 2015 by ELM ver.2012-10-06 from 001__elm20151017_152639__dat00.bin



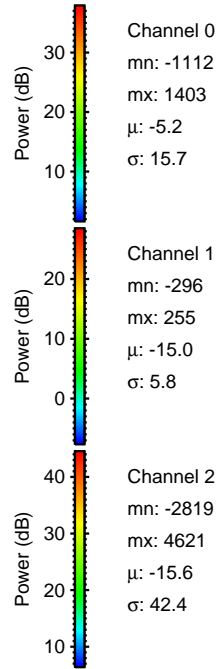
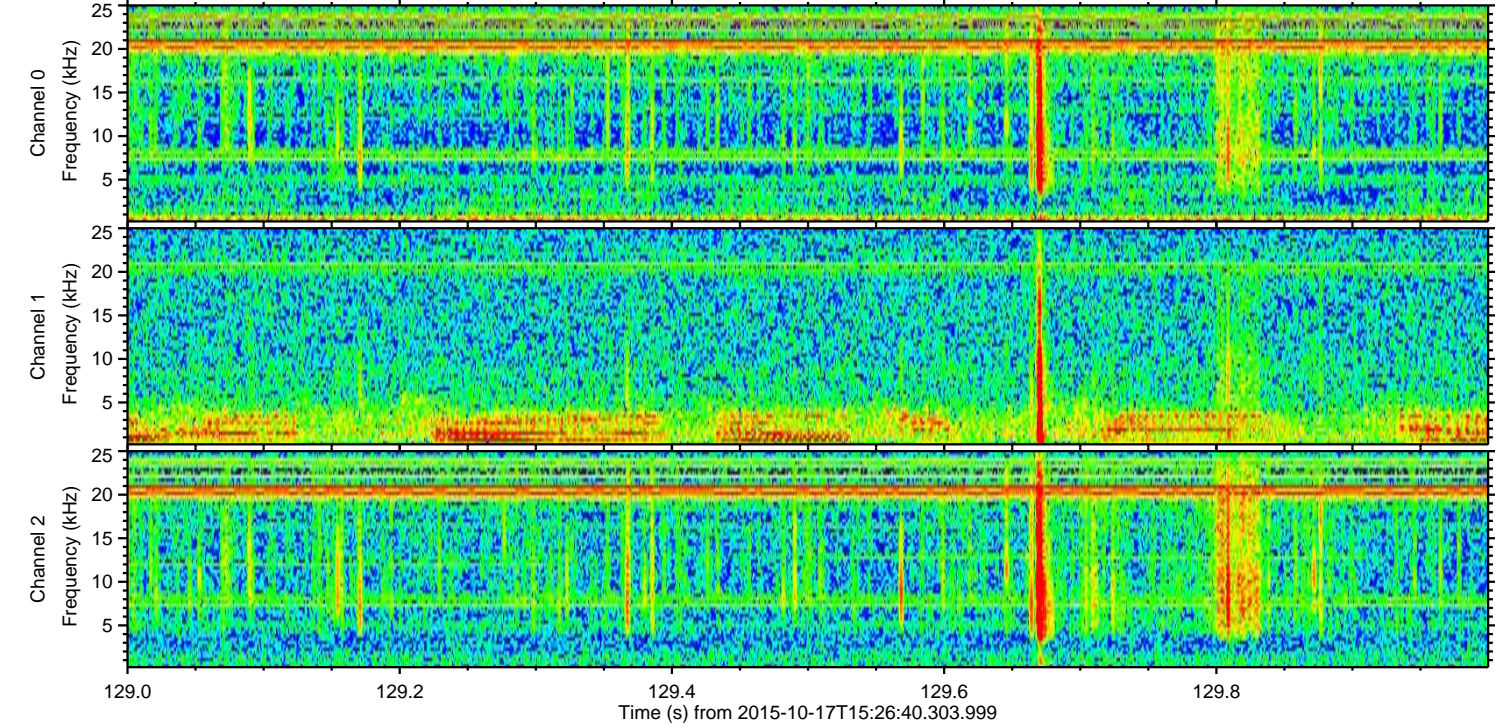
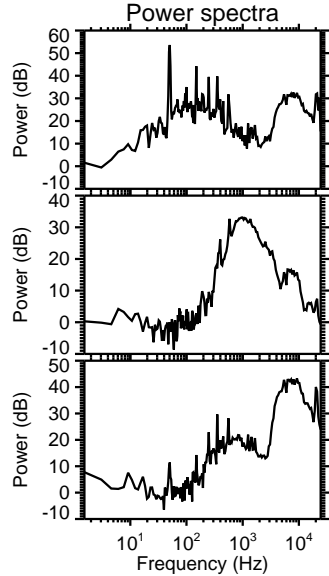
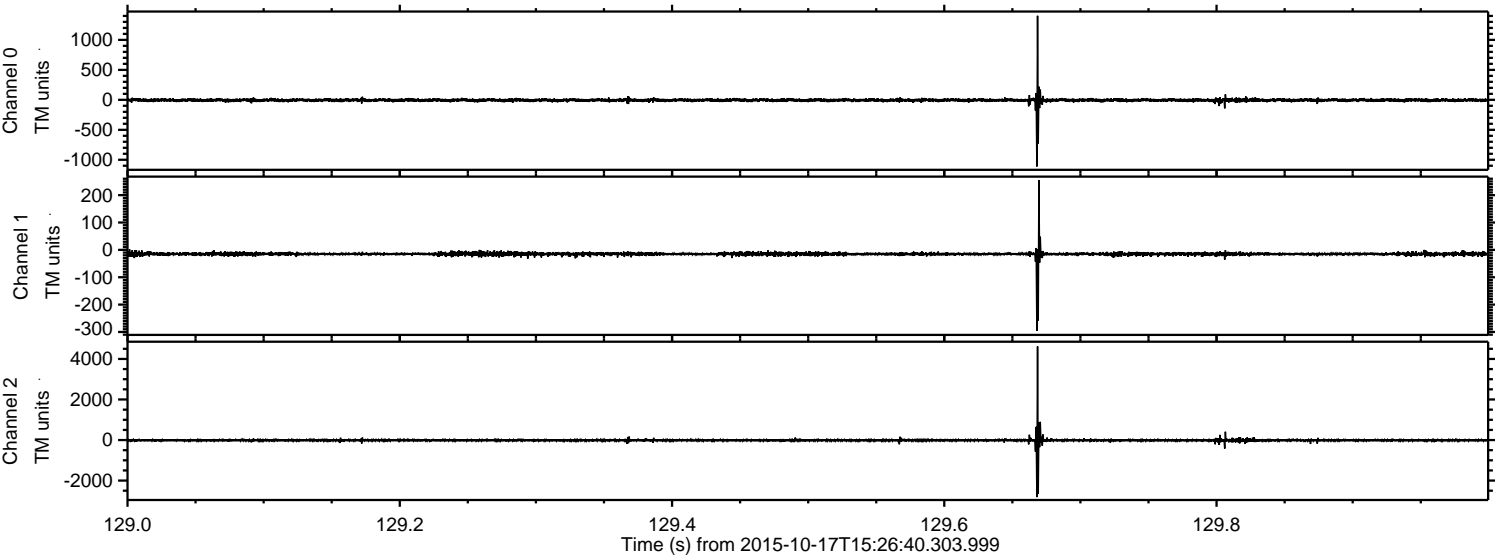
ELMAVAN 3D WAVEFORMS (Measured data sampled at 50 kHz) 51000 packets of 144 samples from 2015-10-17T15:26:40.303.999. Part 114/147

Processed Tue Oct 20 05:33:38 2015 by ELM ver.2012-10-06 from 001__elm20151017_152639__dat00.bin



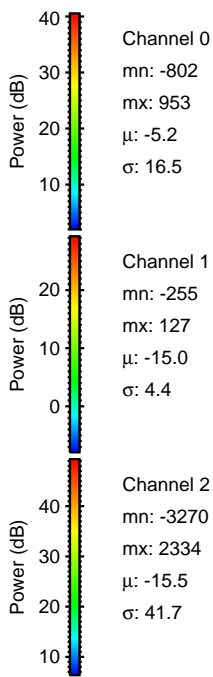
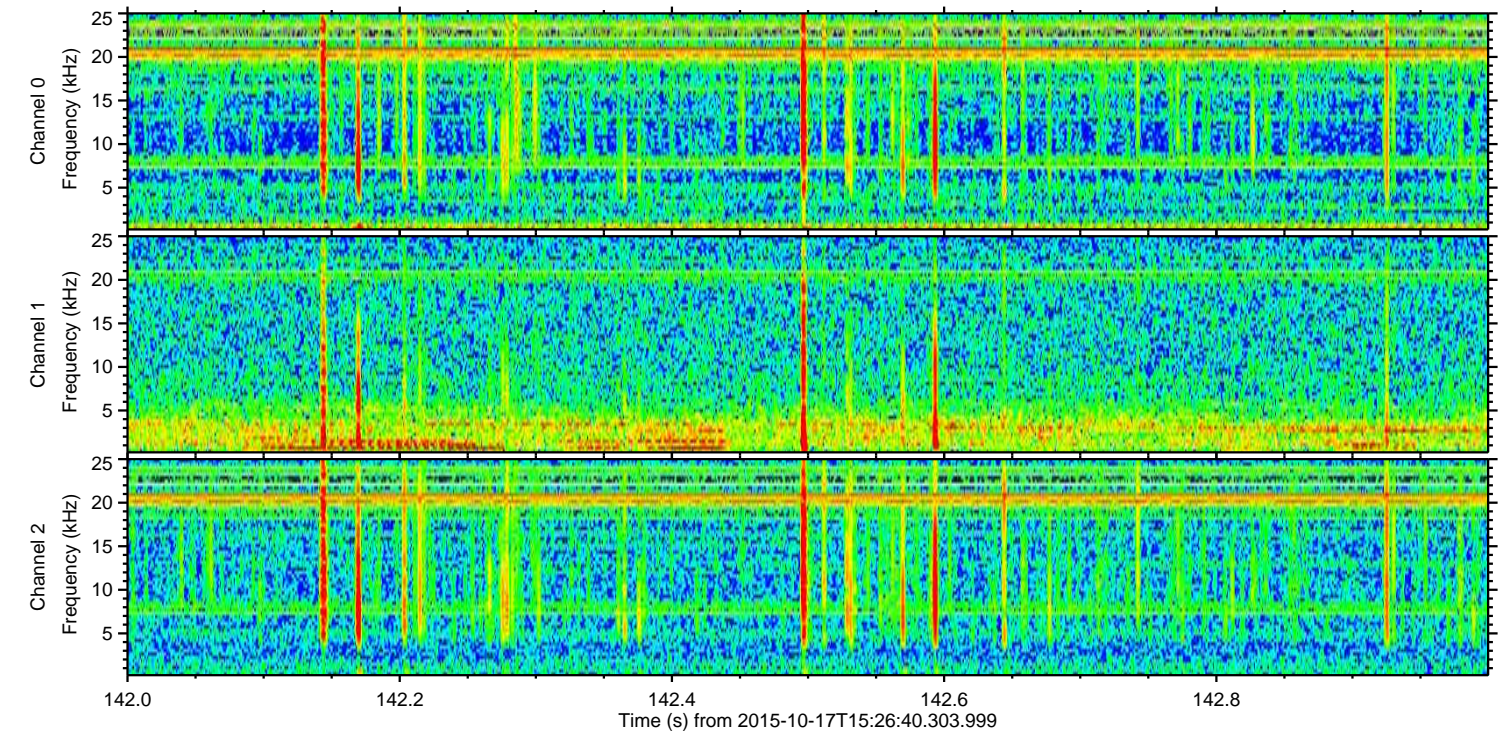
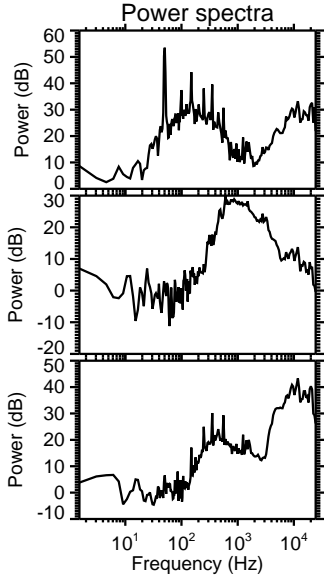
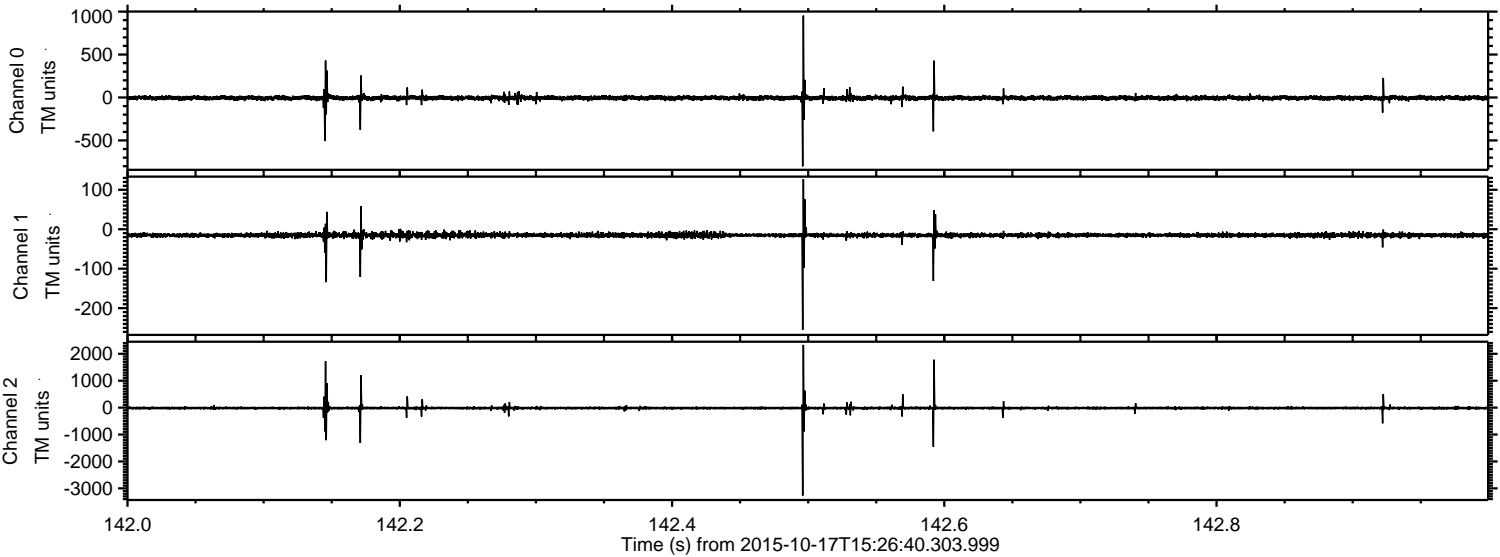
ELMAVAN 3D WAVEFORMS (Measured data sampled at 50 kHz) 51000 packets of 144 samples from 2015-10-17T15:26:40.303.999. Part 130/147

Processed Tue Oct 20 05:33:39 2015 by ELM ver.2012-10-06 from 001__elm20151017_152639__dat00.bin



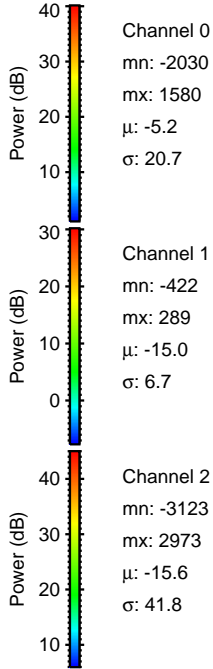
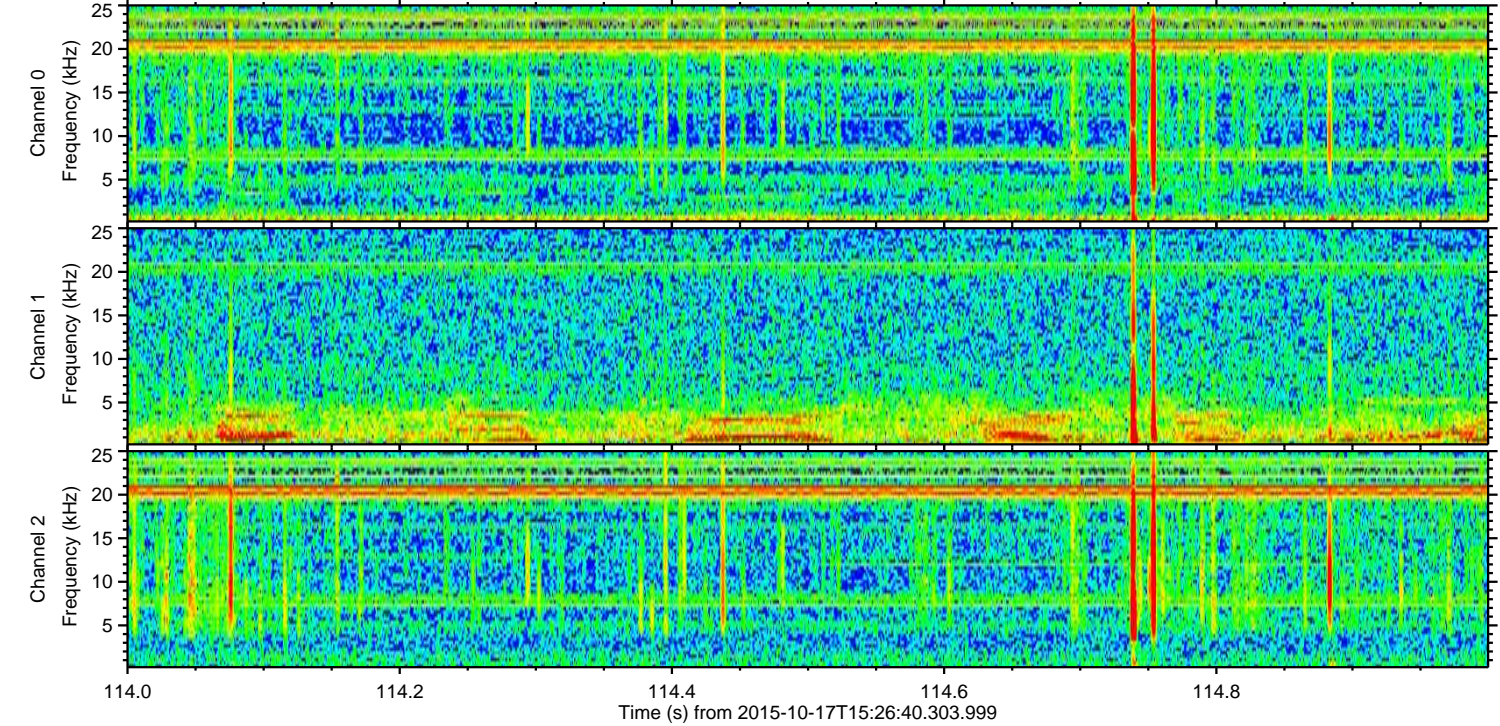
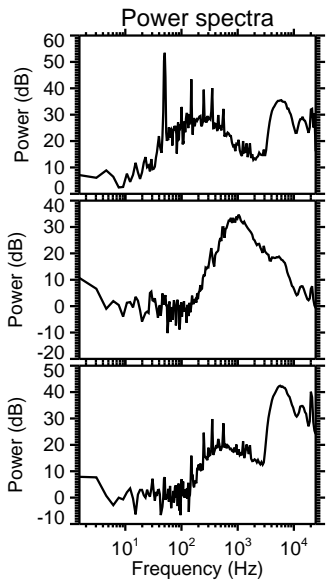
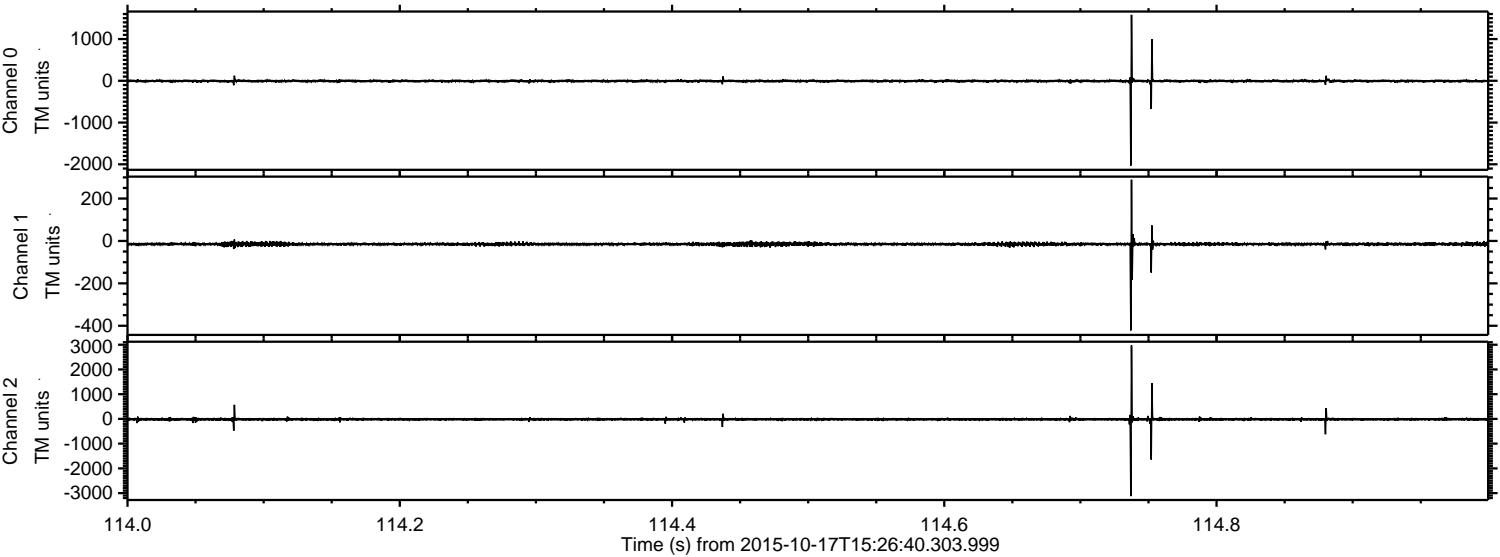
ELMAVAN 3D WAVEFORMS (Measured data sampled at 50 kHz) 51000 packets of 144 samples from 2015-10-17T15:26:40.303.999. Part 143/147

Processed Tue Oct 20 05:33:40 2015 by ELM ver.2012-10-06 from 001__elm20151017_152639__dat00.bin

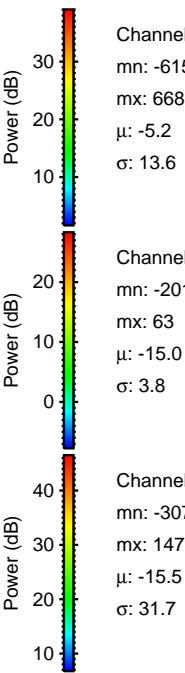
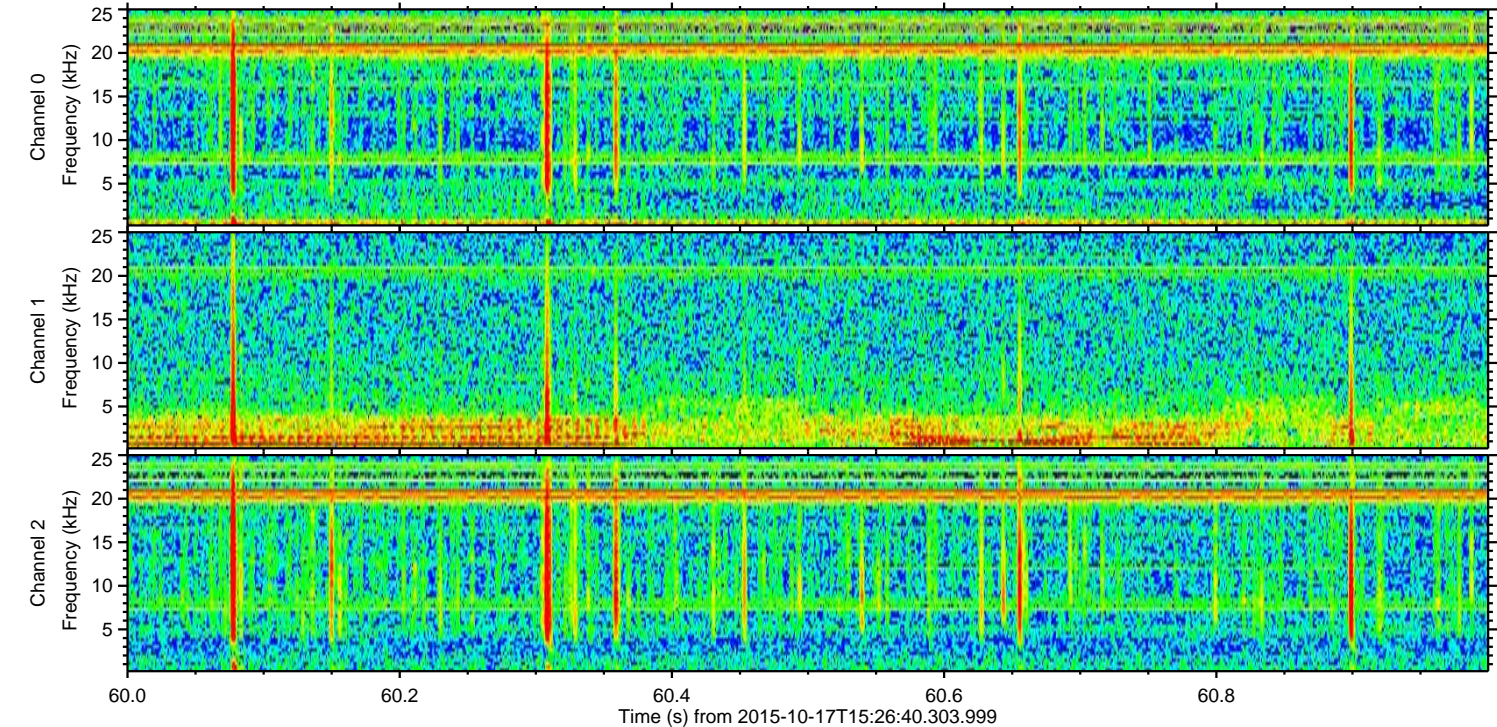
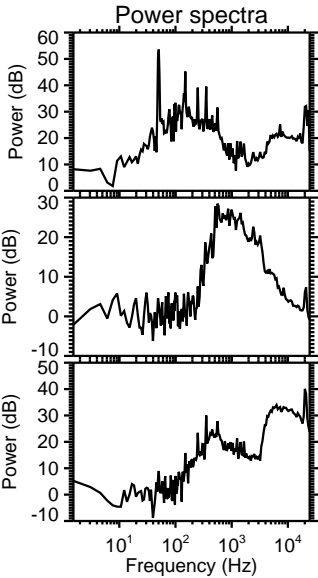
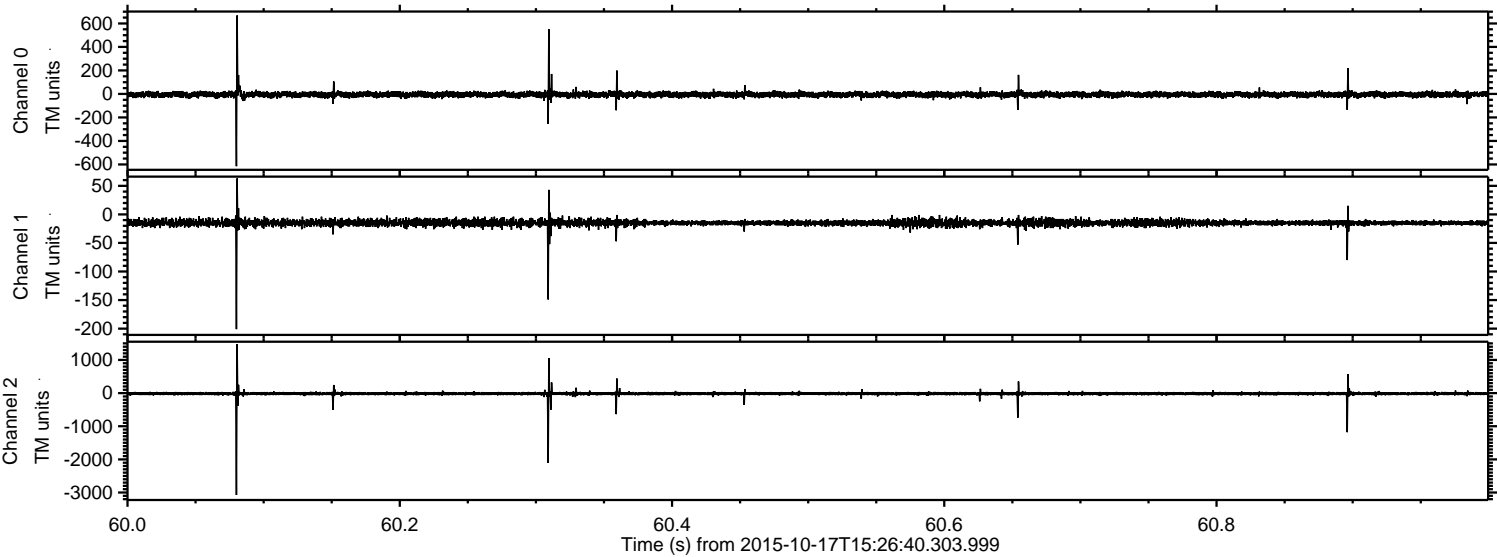


ELMAVAN 3D WAVEFORMS (Measured data sampled at 50 kHz) 51000 packets of 144 samples from 2015-10-17T15:26:40.303.999. Part 115/147

Processed Tue Oct 20 05:33:41 2015 by ELM ver.2012-10-06 from 001__elm20151017_152639__dat00.bin



Processed Tue Oct 20 05:33:43 2015 by ELM ver.2012-10-06 from 001__elm20151017_152639__dat00.bin

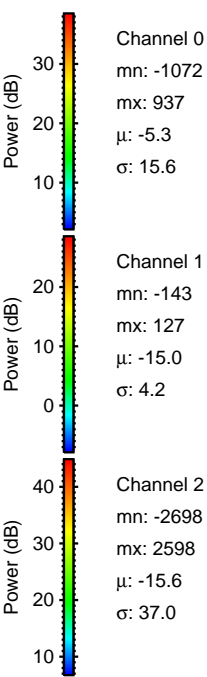
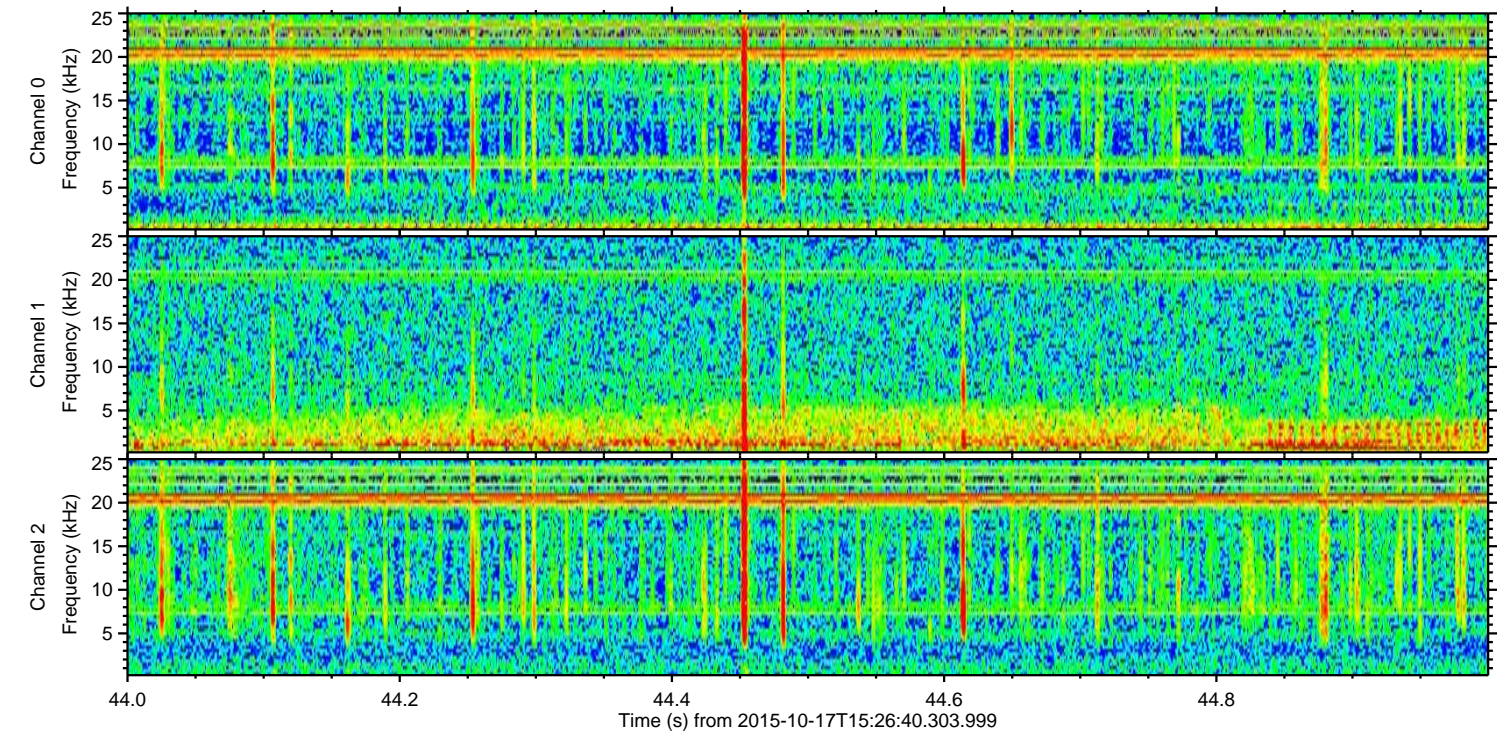
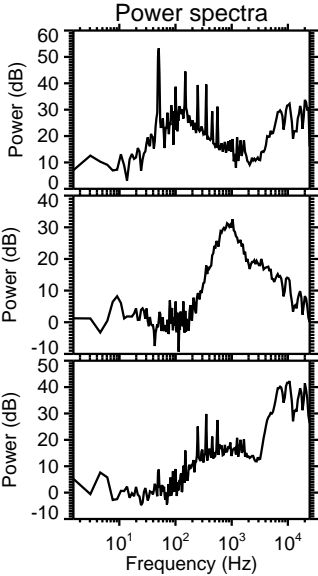
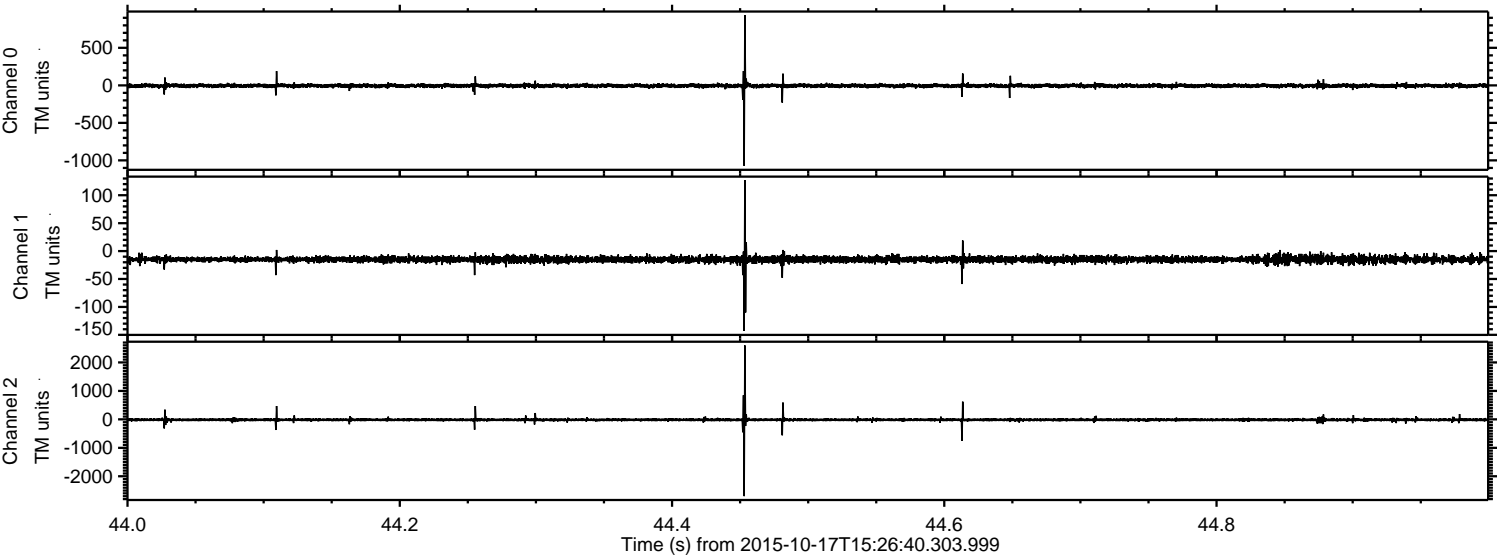


Channel 0
mn: -615
mx: 668
 μ : -5.2
 σ : 13.6

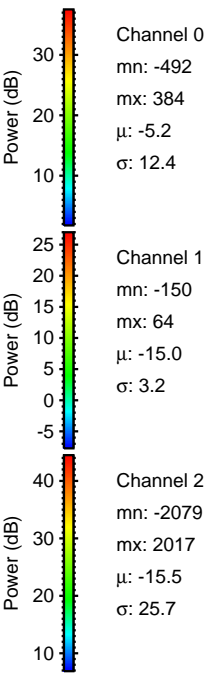
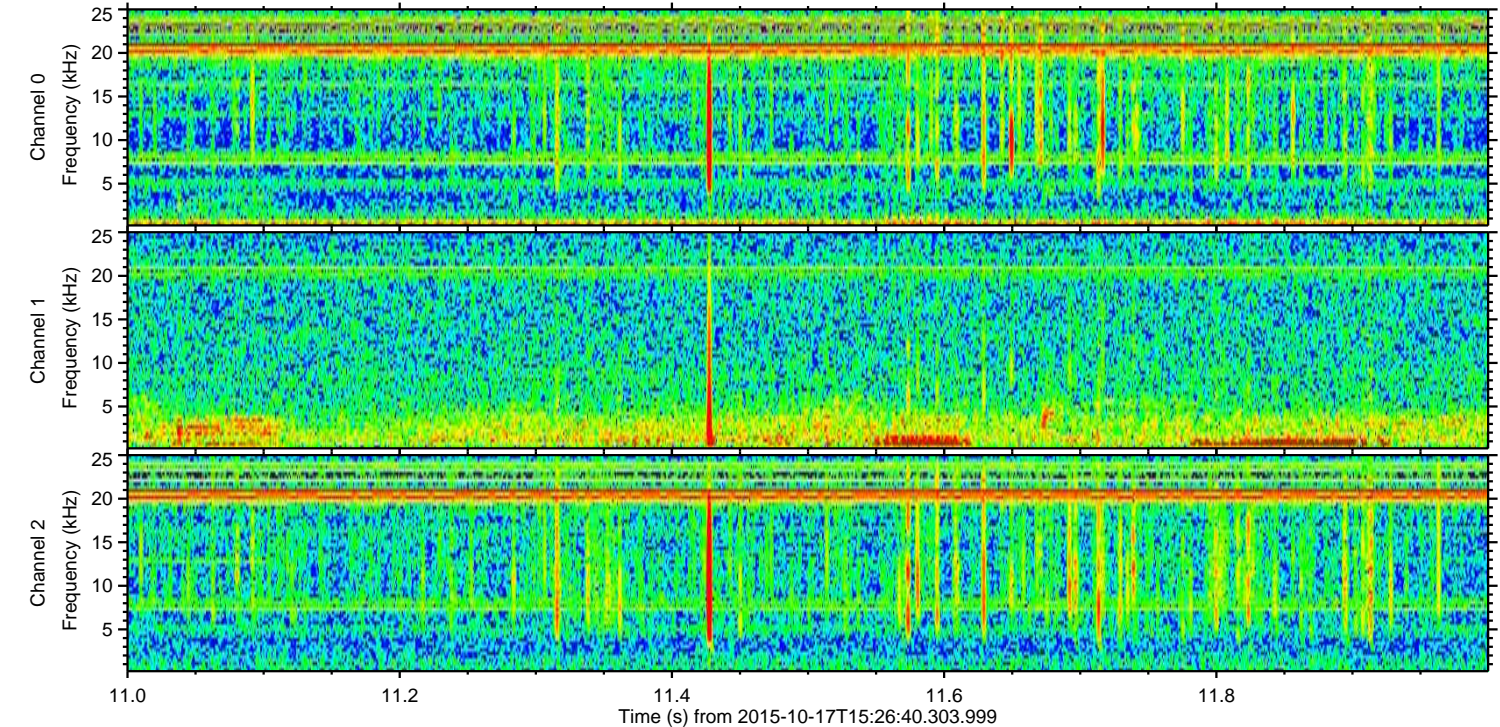
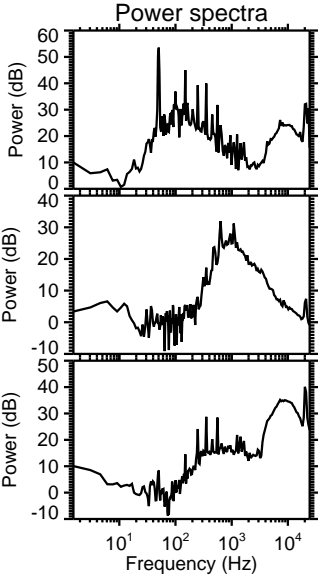
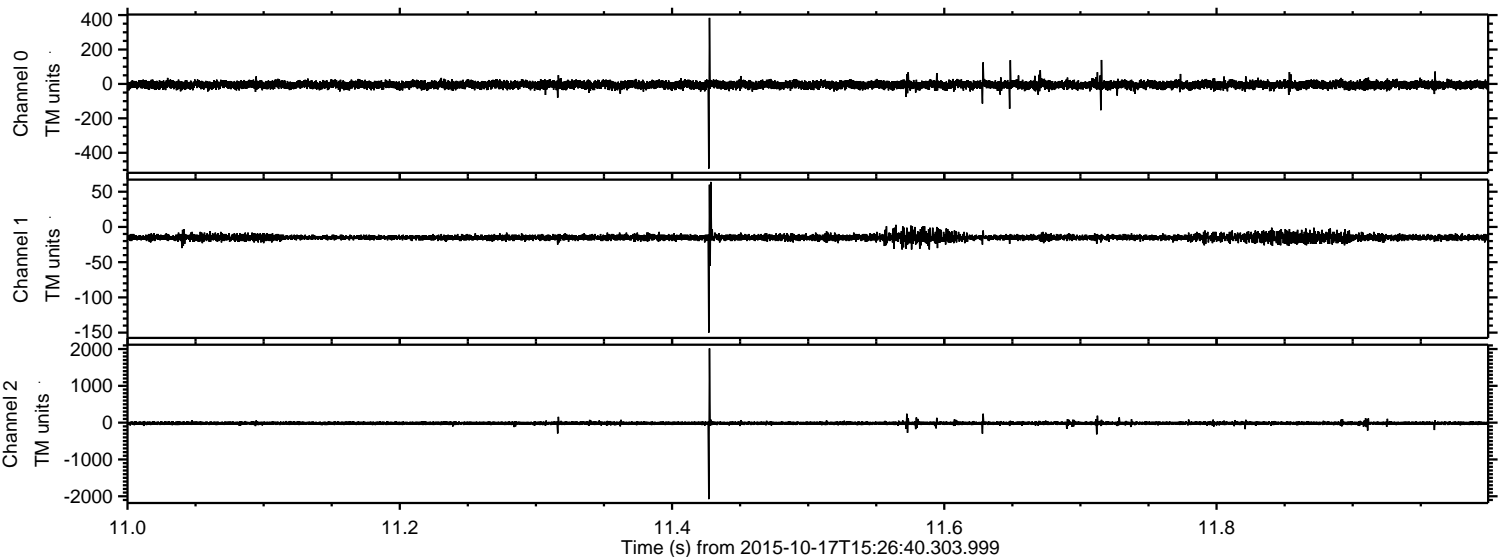
Channel 1
mn: -201
mx: 63
 μ : -15.0
 σ : 3.8

Channel 2
mn: -3072
mx: 1477
 μ : -15.5
 σ : 31.7

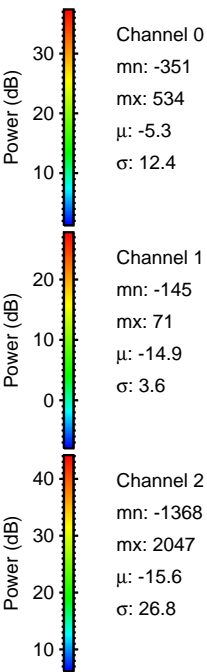
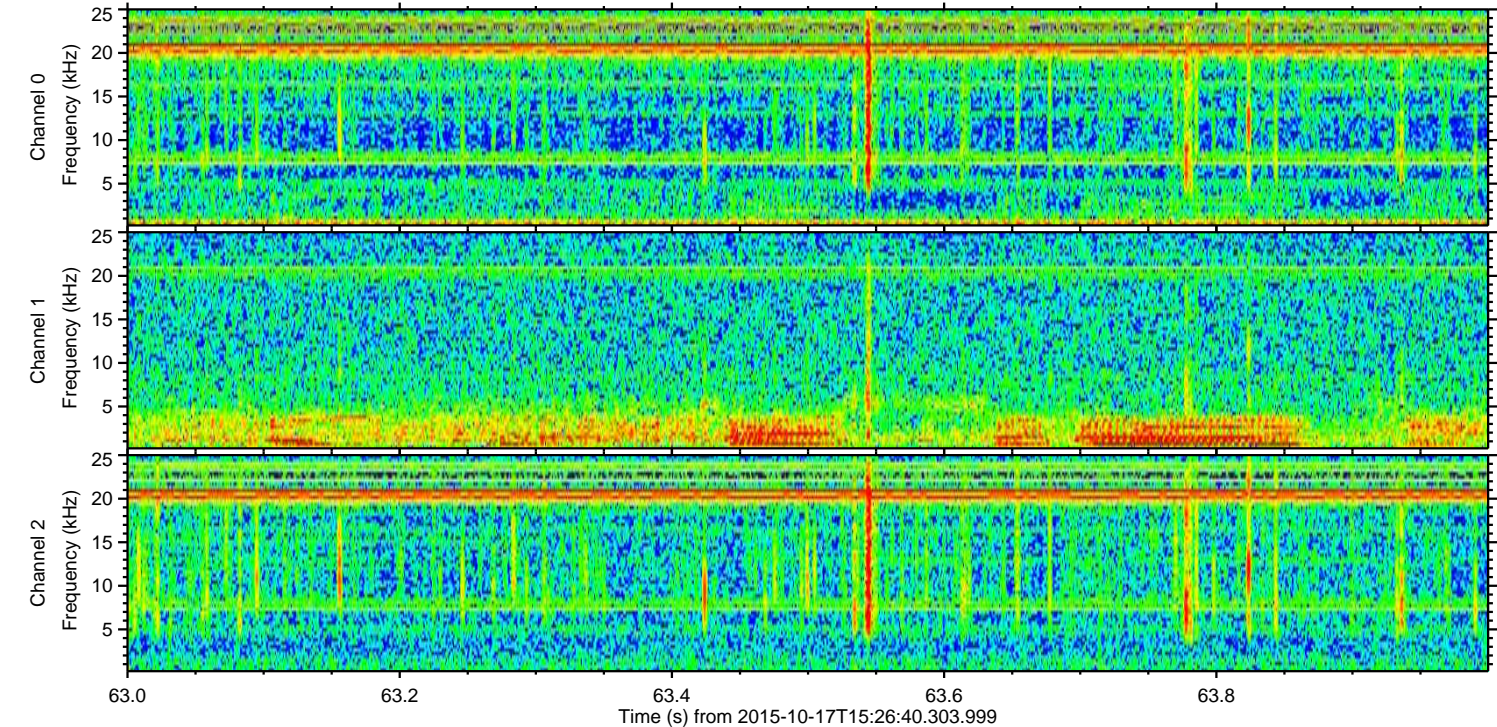
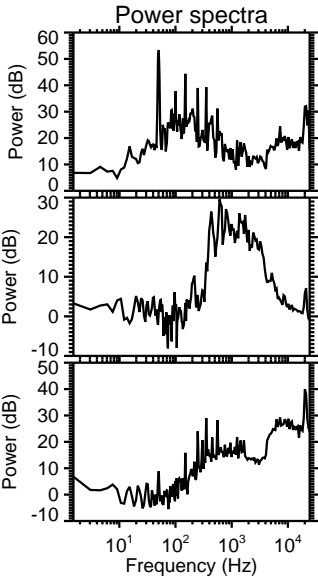
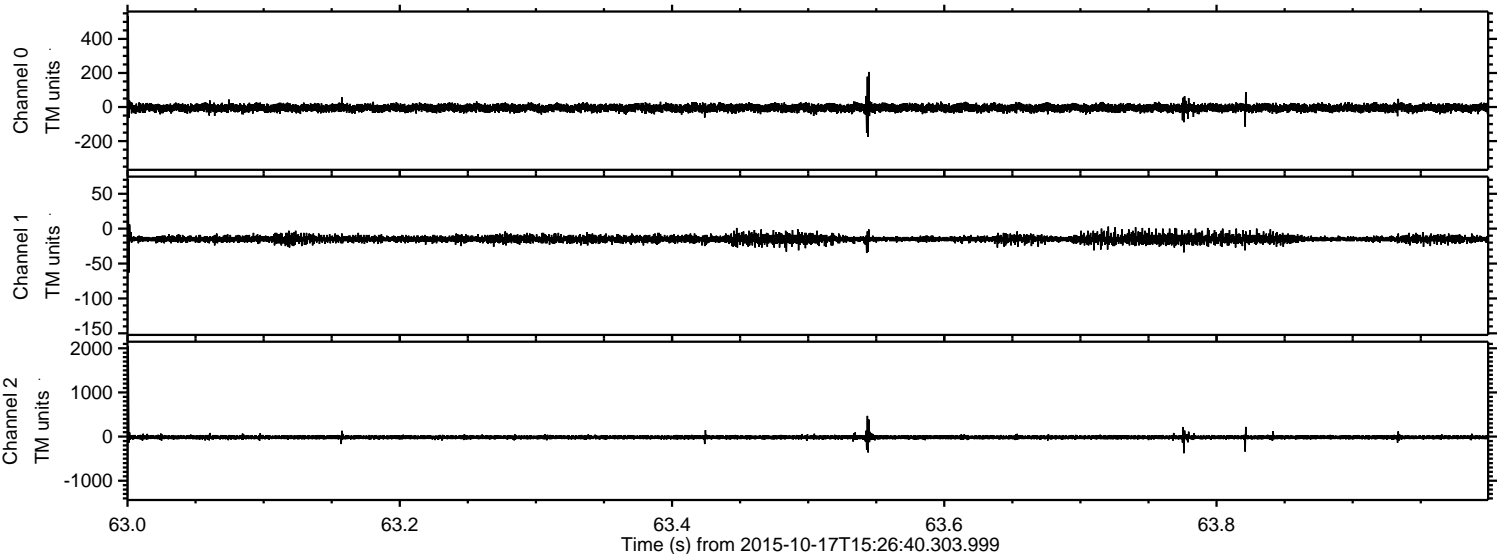
Processed Tue Oct 20 05:33:44 2015 by ELM ver.2012-10-06 from 001__elm20151017_152639__dat00.bin



Processed Tue Oct 20 05:33:45 2015 by ELM ver.2012-10-06 from 001__elm20151017_152639__dat00.bin



Processed Tue Oct 20 05:33:46 2015 by ELM ver.2012-10-06 from 001__elm20151017_152639__dat00.bin



Processed Tue Oct 20 05:33:47 2015 by ELM ver.2012-10-06 from 001__elm20151017_152639__dat00.bin

