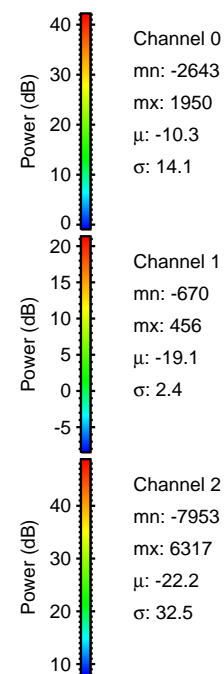
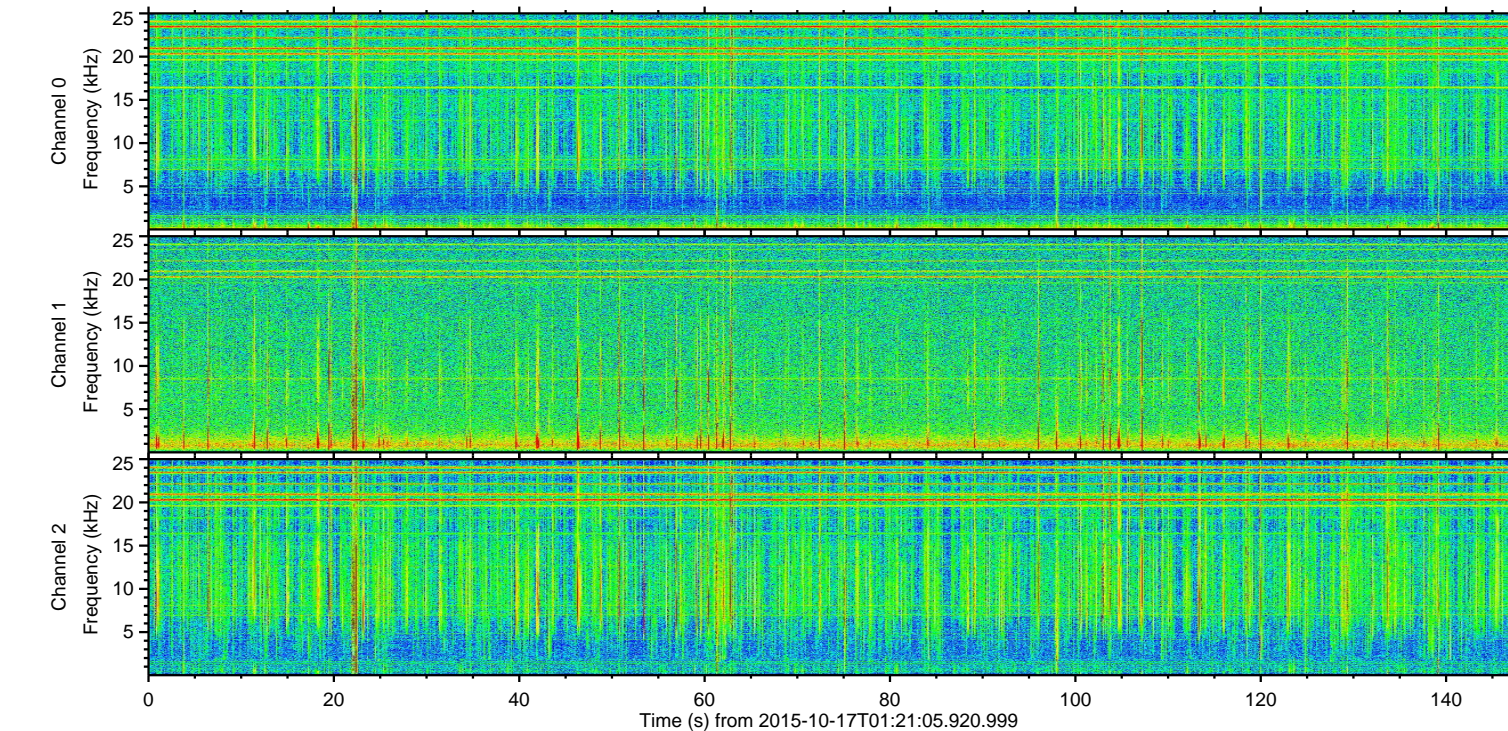
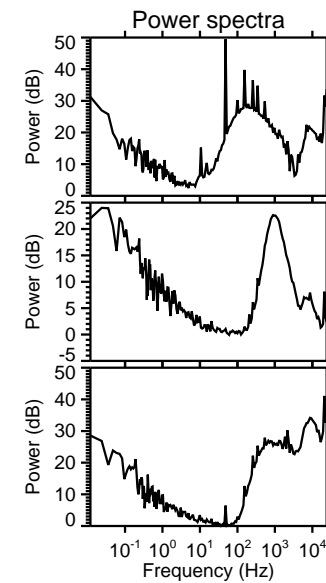
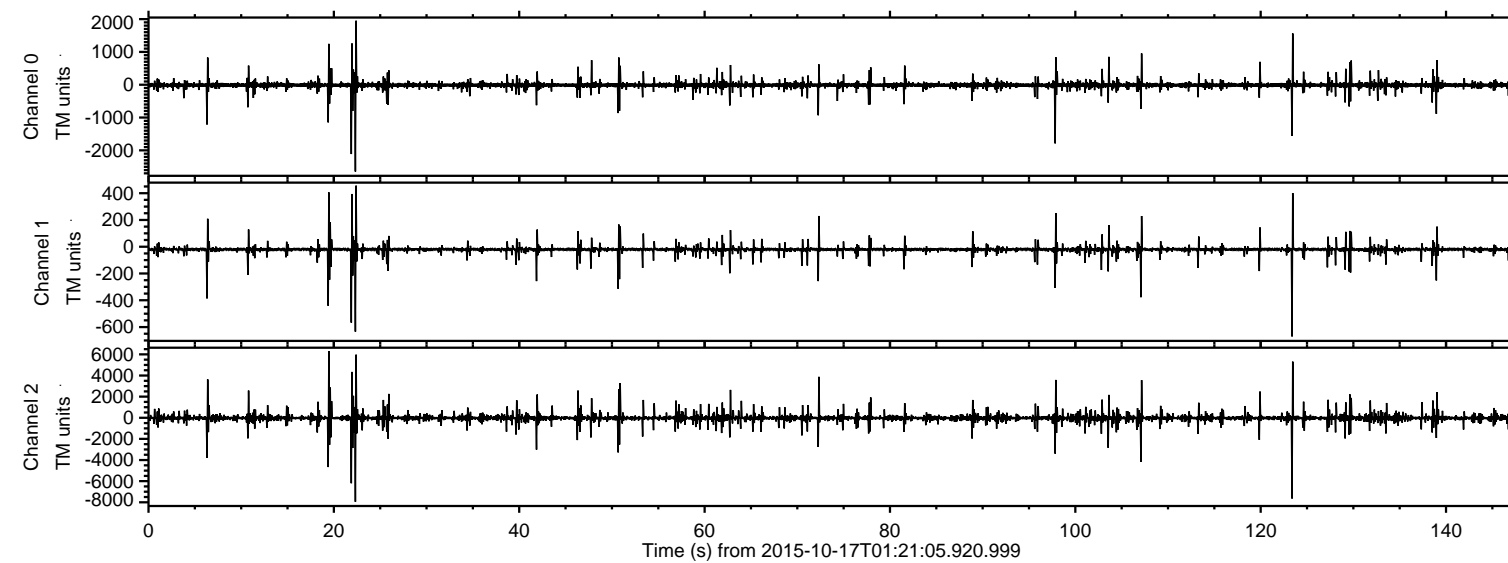
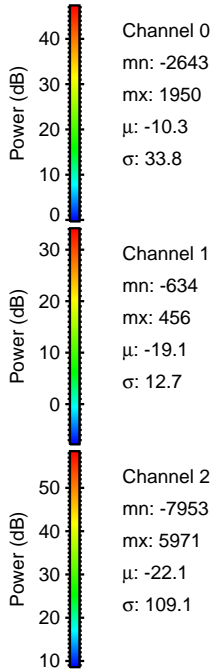
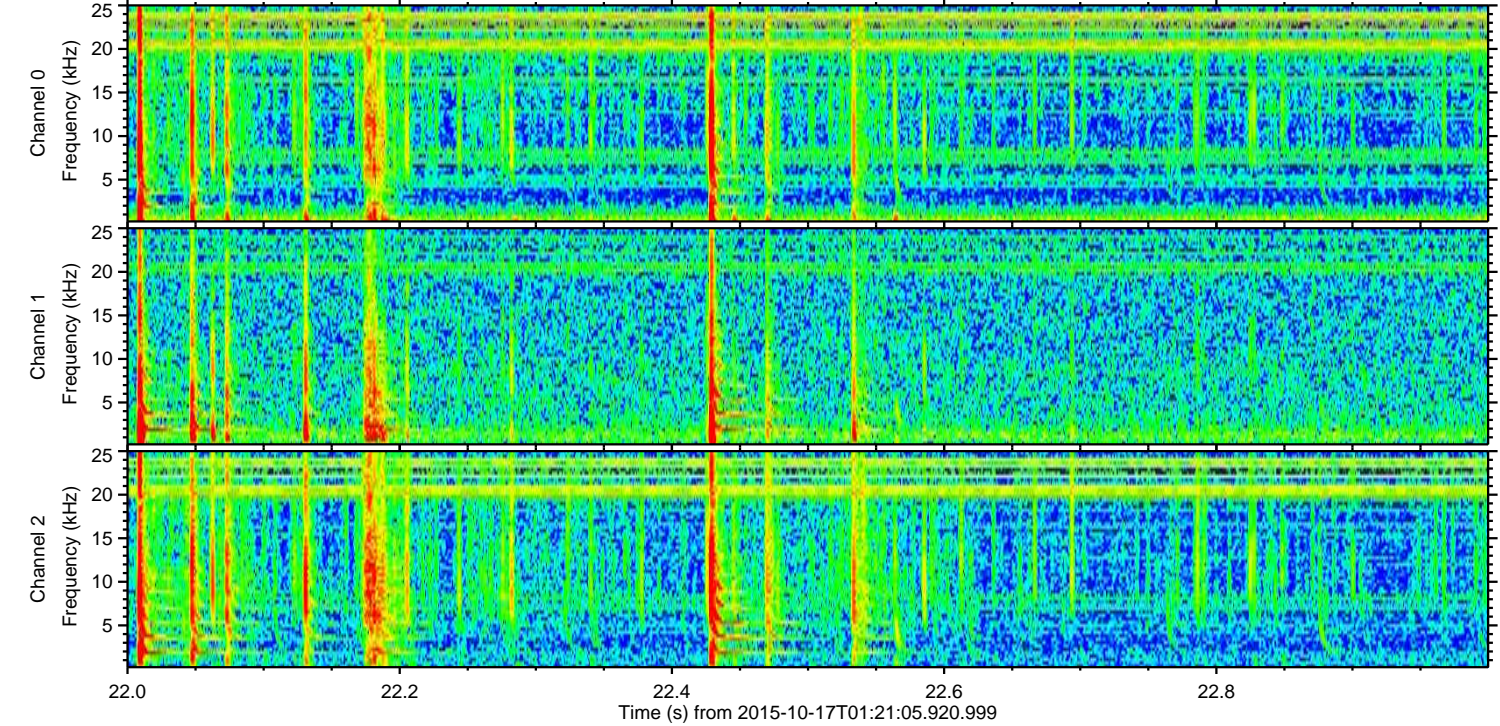
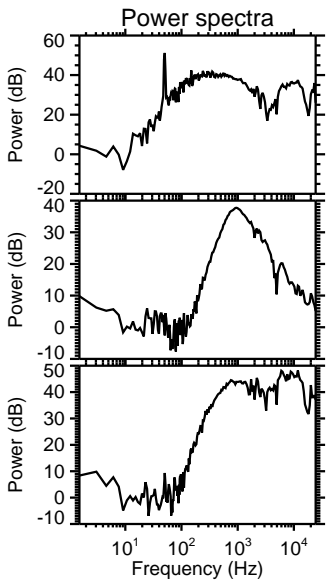
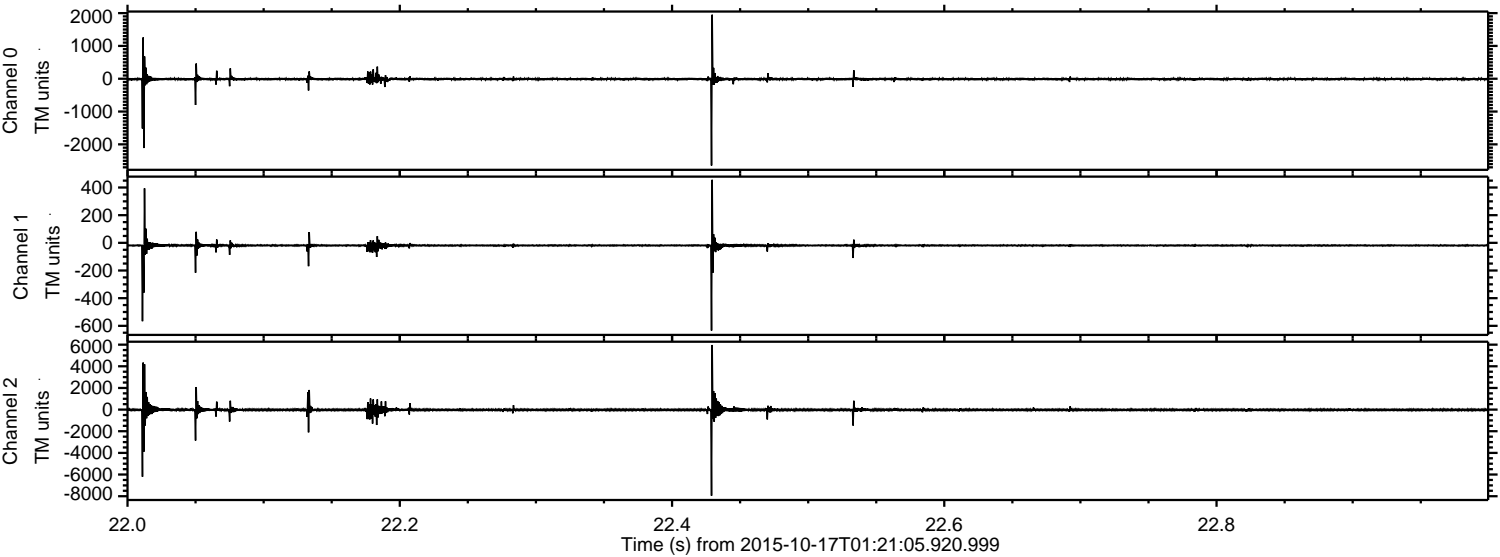


ELMAVAN 3D WAVEFORMS (Measured data sampled at 50 kHz) 51000 packets of 144 samples from 2015-10-17T01:21:05.920.999.

Processed Tue Oct 20 01:48:58 2015 by ELM ver.2012-10-06 from 001__elm20151017_012104__dat00.bin

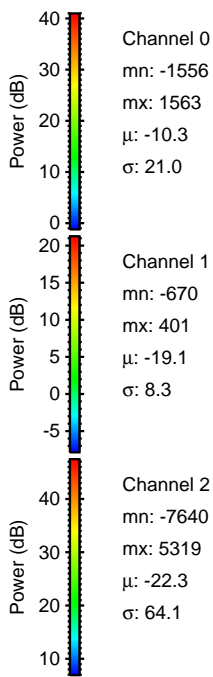
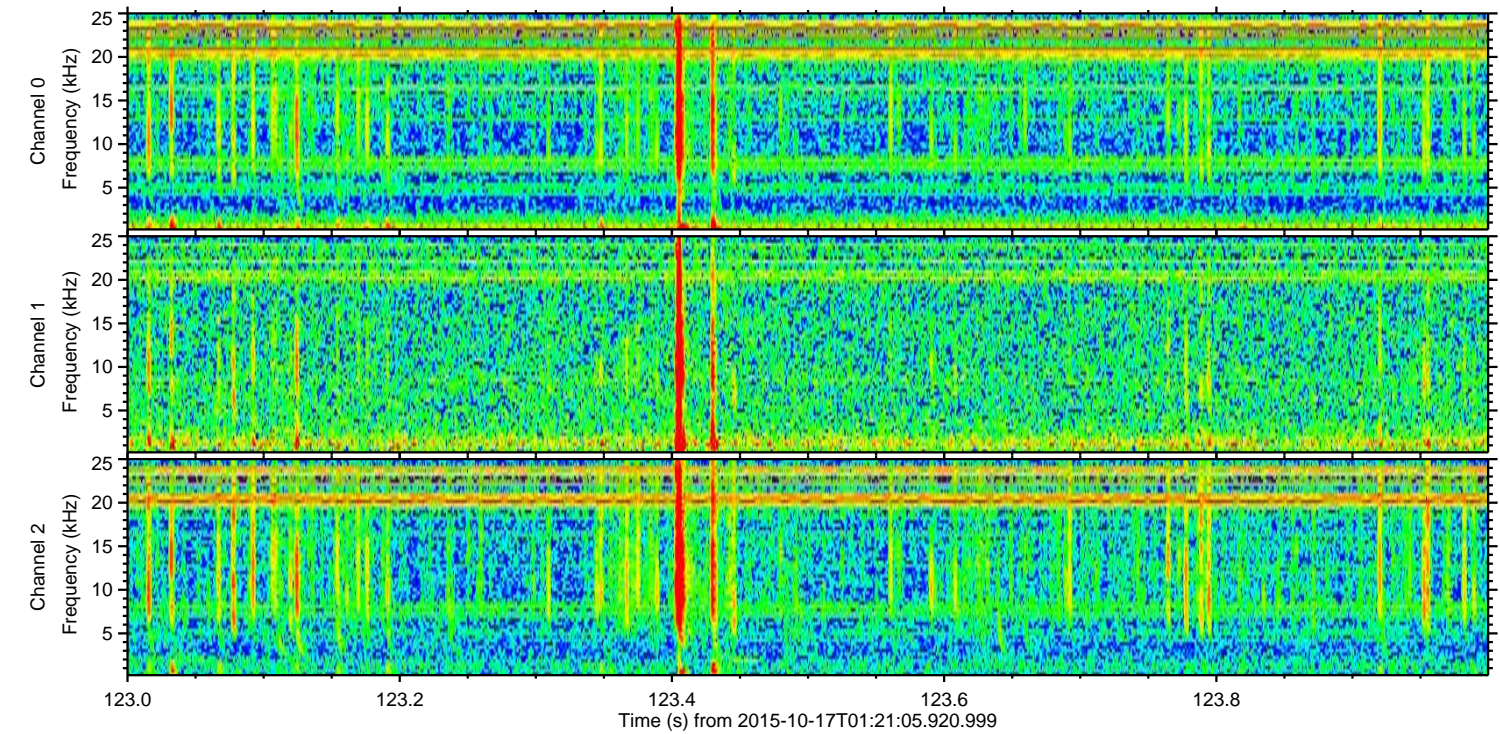
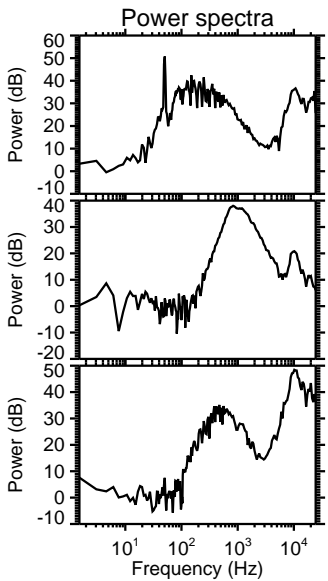
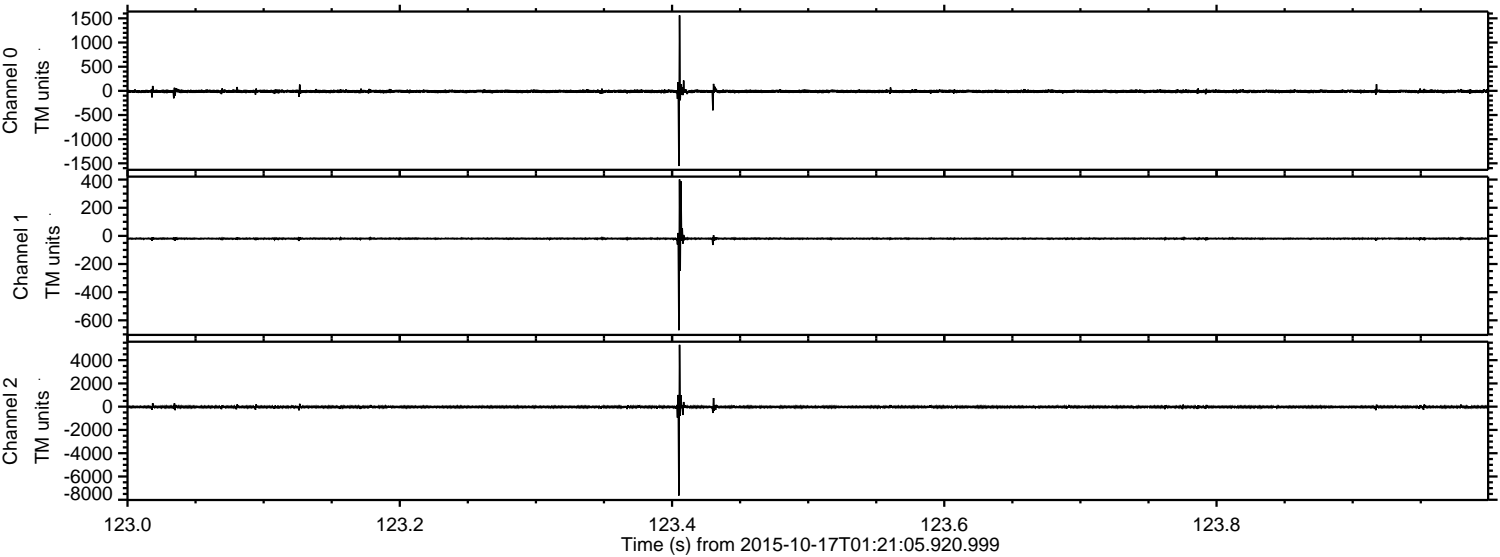


Processed Tue Oct 20 01:49:13 2015 by ELM ver.2012-10-06 from 001__elm20151017_012104__dat00.bin



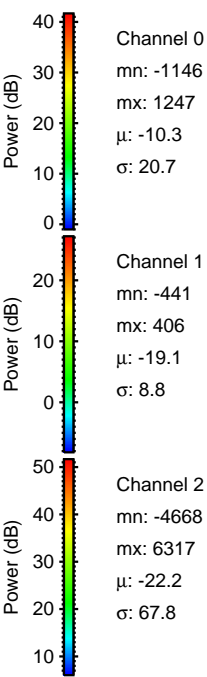
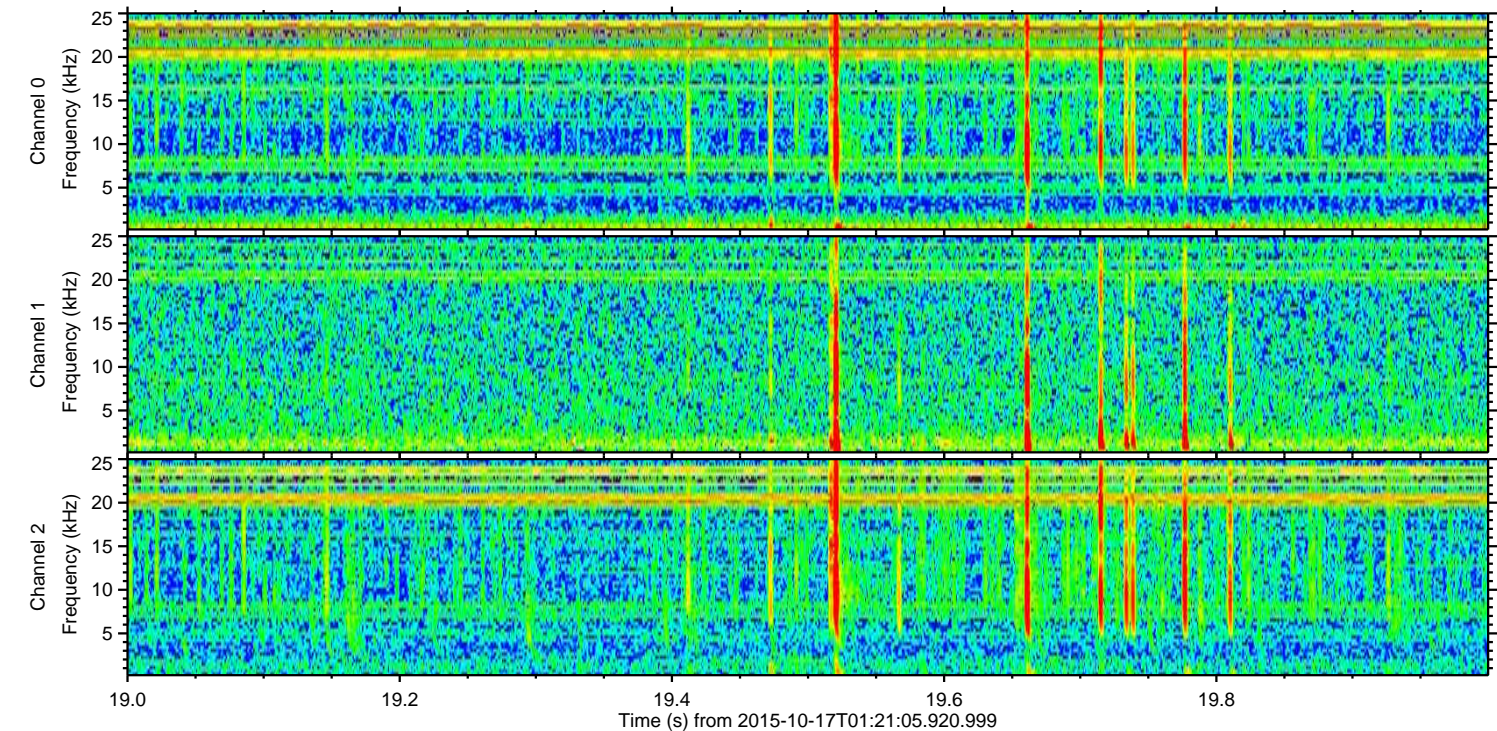
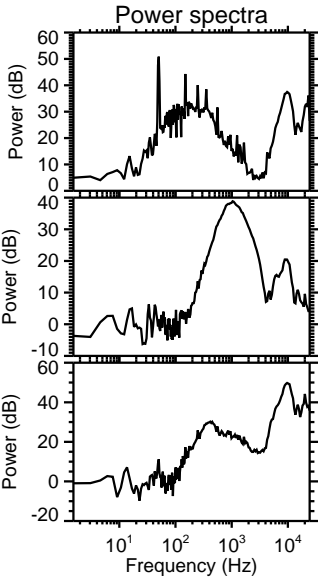
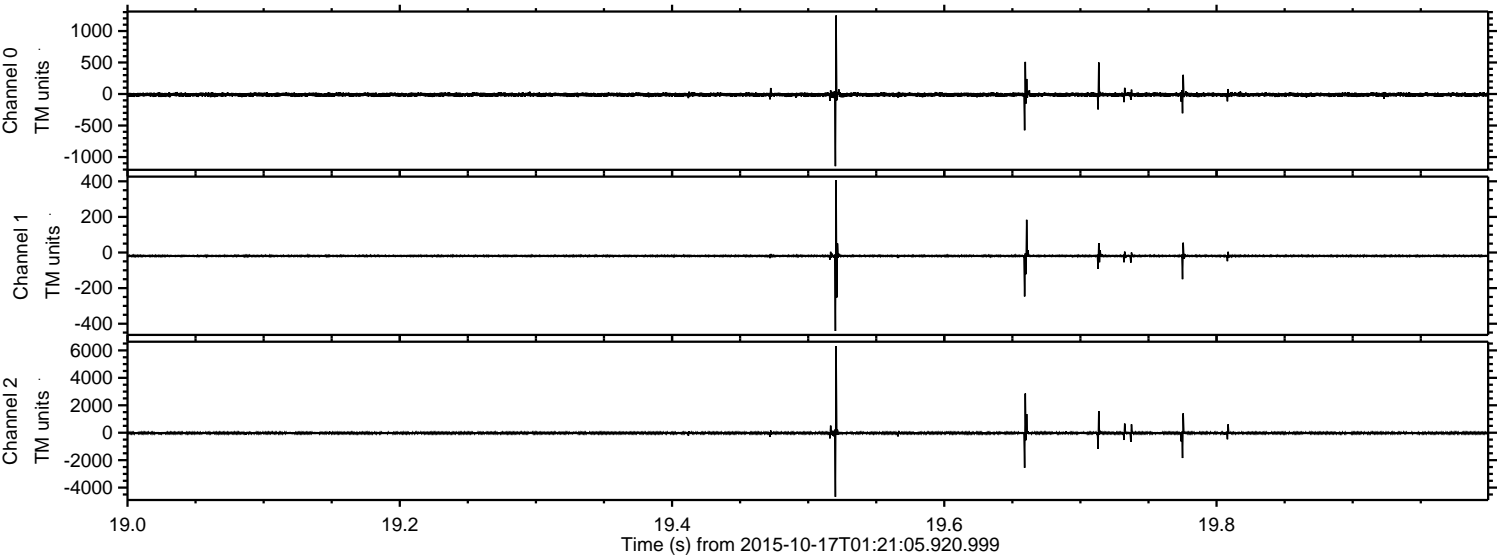
ELMAVAN 3D WAVEFORMS (Measured data sampled at 50 kHz) 51000 packets of 144 samples from 2015-10-17T01:21:05.920.999. Part 124/147

Processed Tue Oct 20 01:49:14 2015 by ELM ver.2012-10-06 from 001__elm20151017_012104__dat00.bin



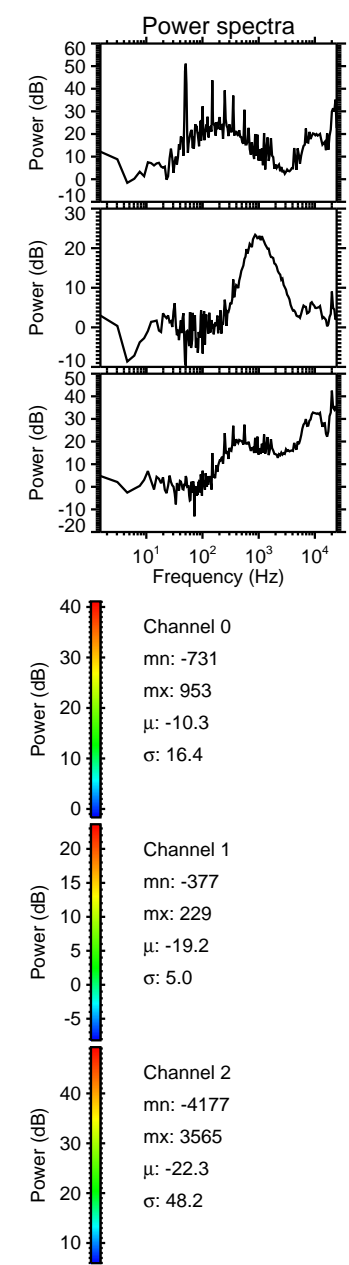
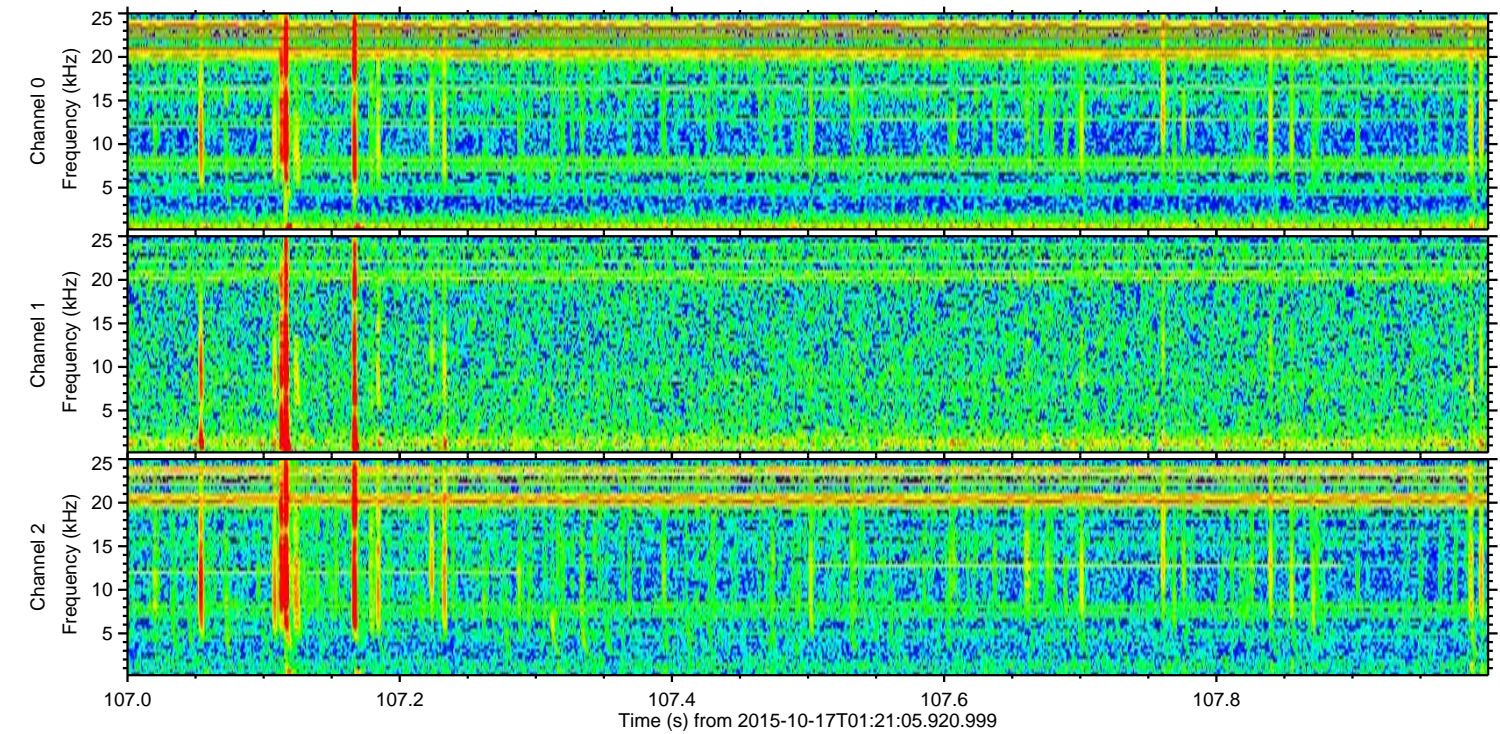
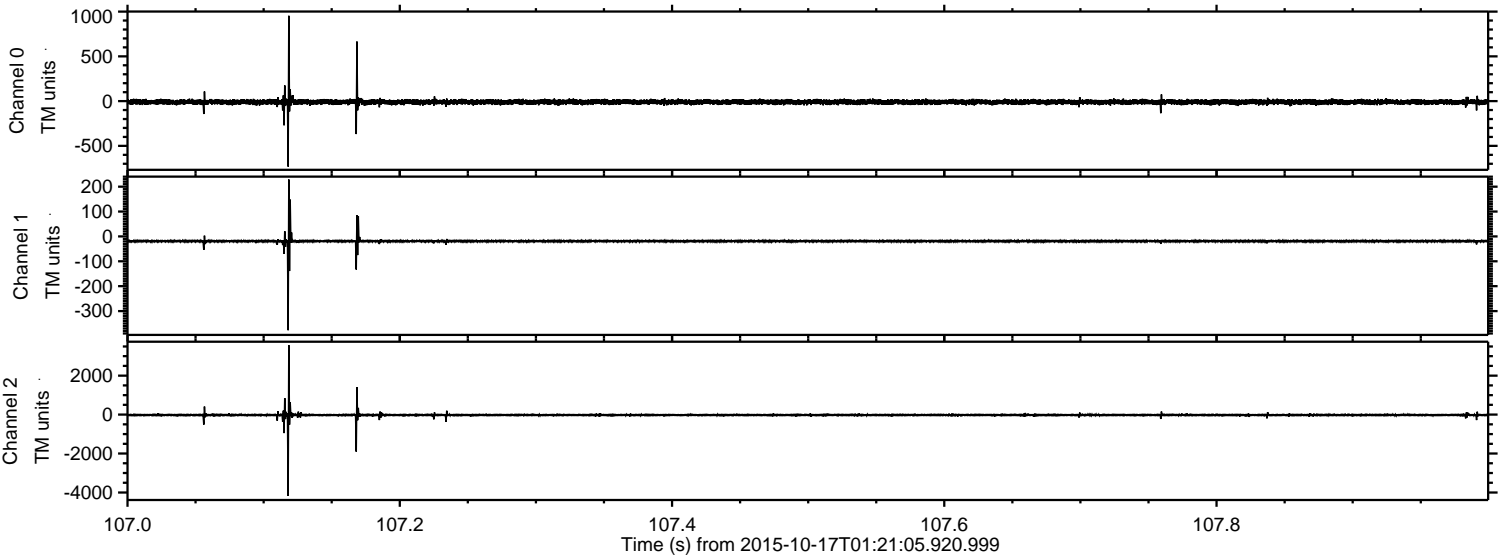
ELMAVAN 3D WAVEFORMS (Measured data sampled at 50 kHz) 51000 packets of 144 samples from 2015-10-17T01:21:05.920.999. Part 20/147

Processed Tue Oct 20 01:49:15 2015 by ELM ver.2012-10-06 from 001__elm20151017_012104__dat00.bin



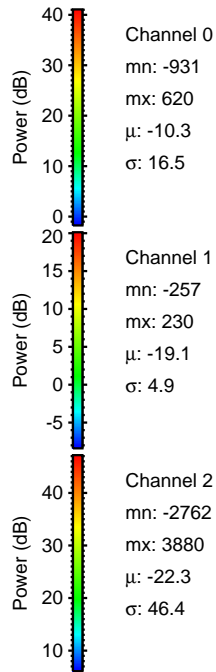
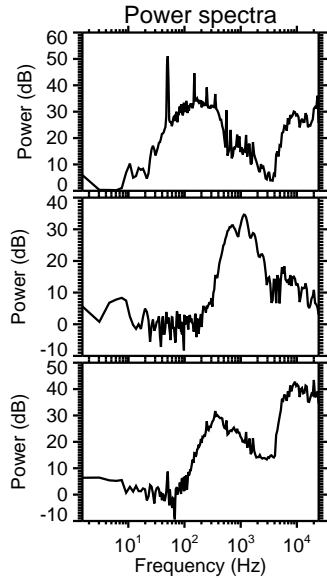
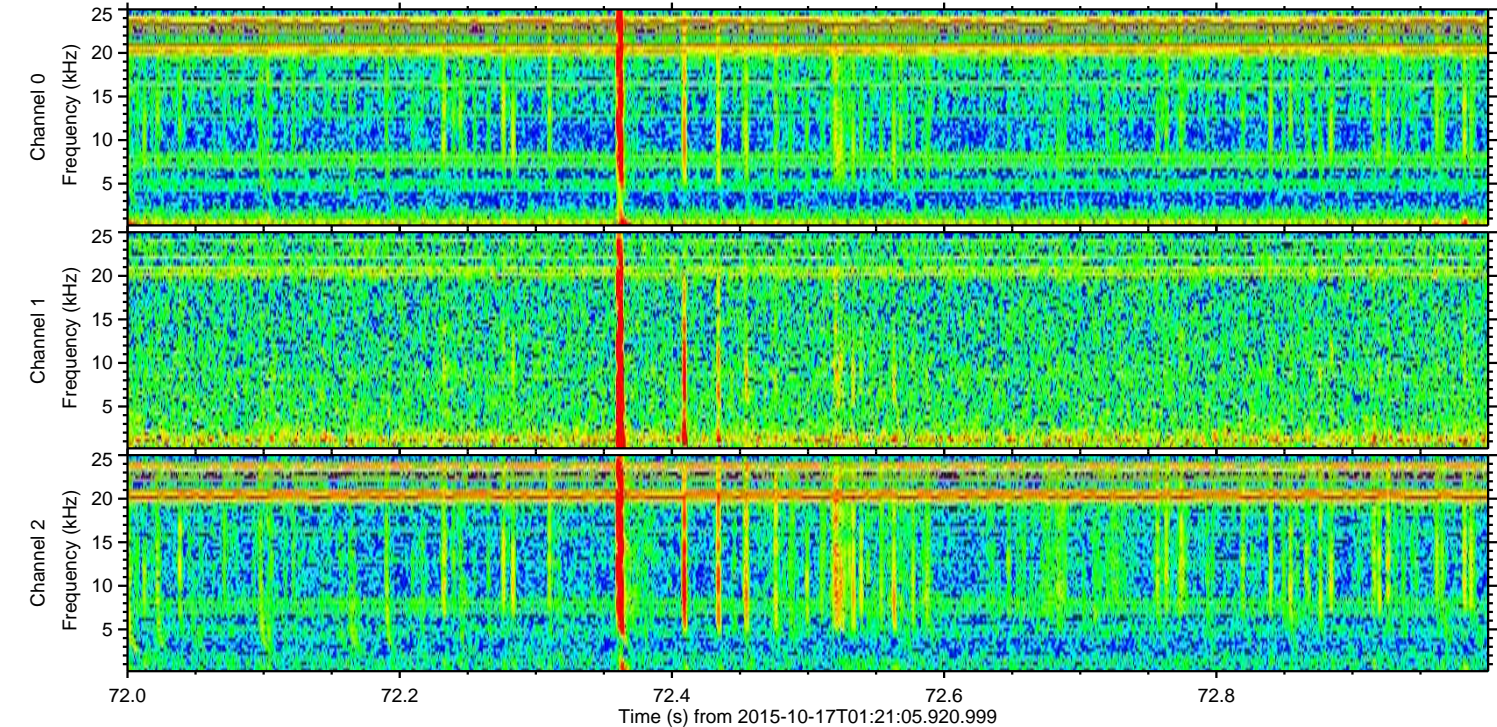
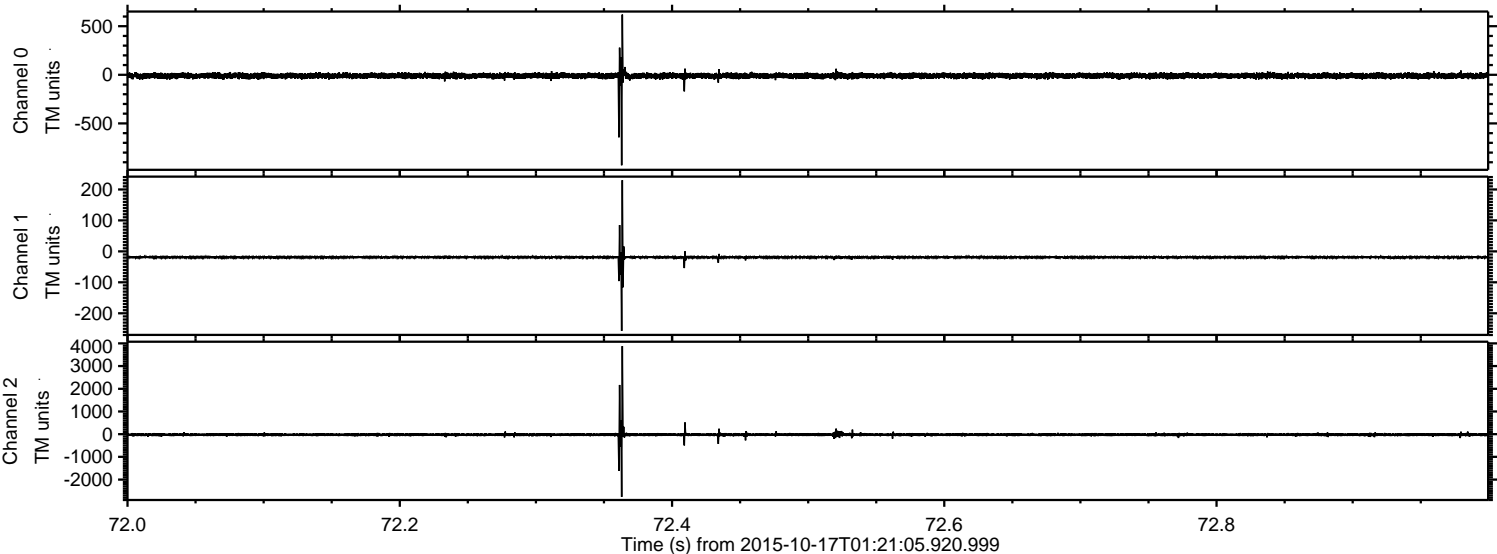
ELMAVAN 3D WAVEFORMS (Measured data sampled at 50 kHz) 51000 packets of 144 samples from 2015-10-17T01:21:05.920.999. Part 108/147

Processed Tue Oct 20 01:49:16 2015 by ELM ver.2012-10-06 from 001__elm20151017_012104__dat00.bin



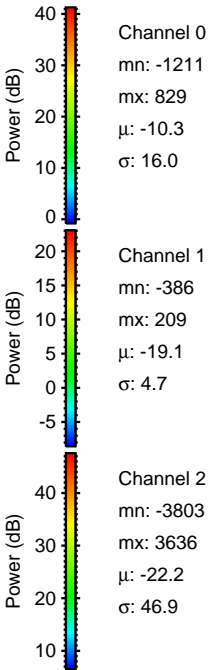
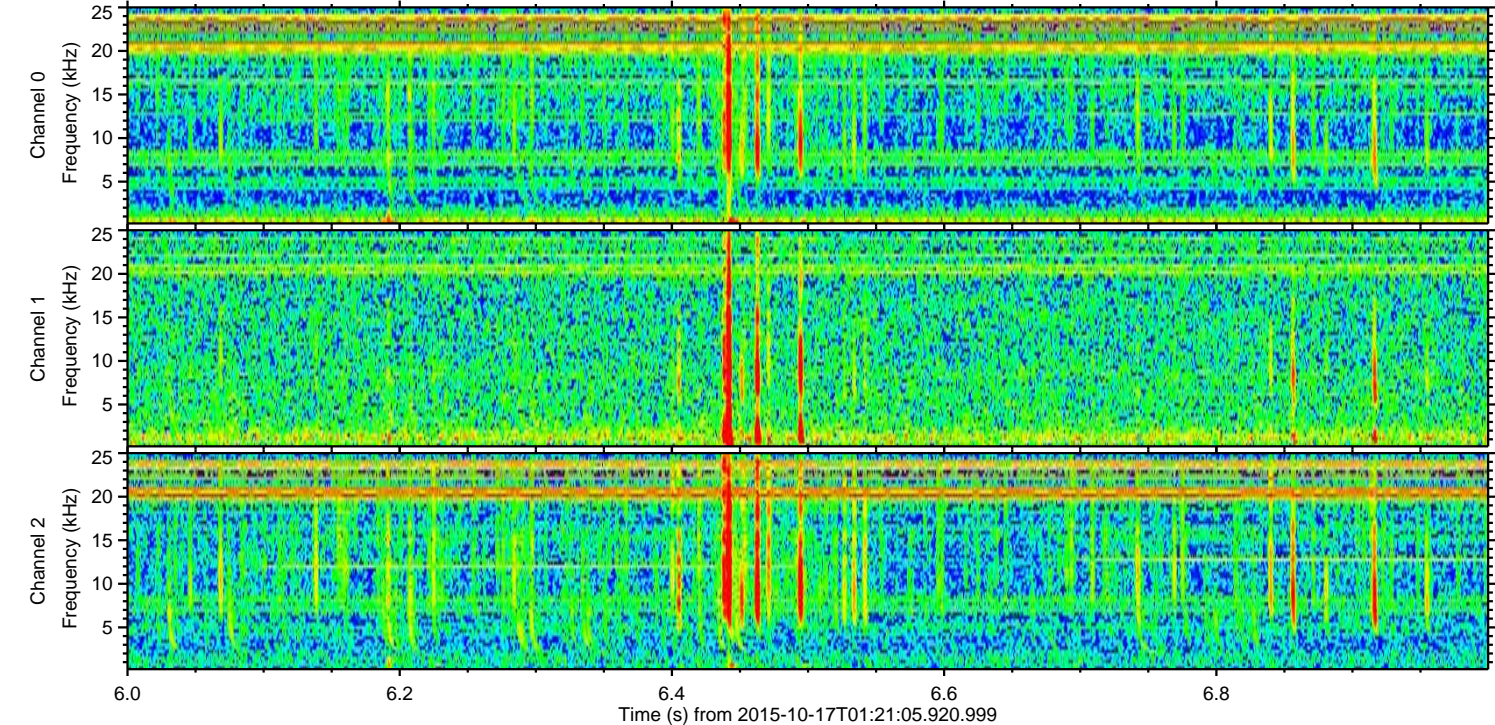
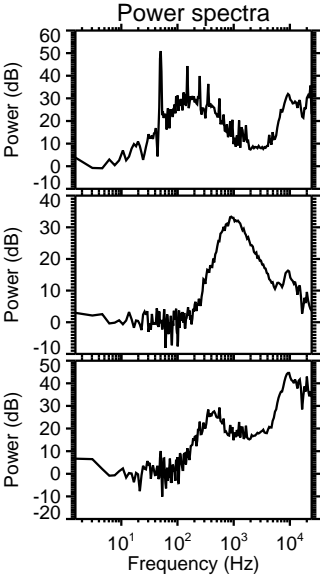
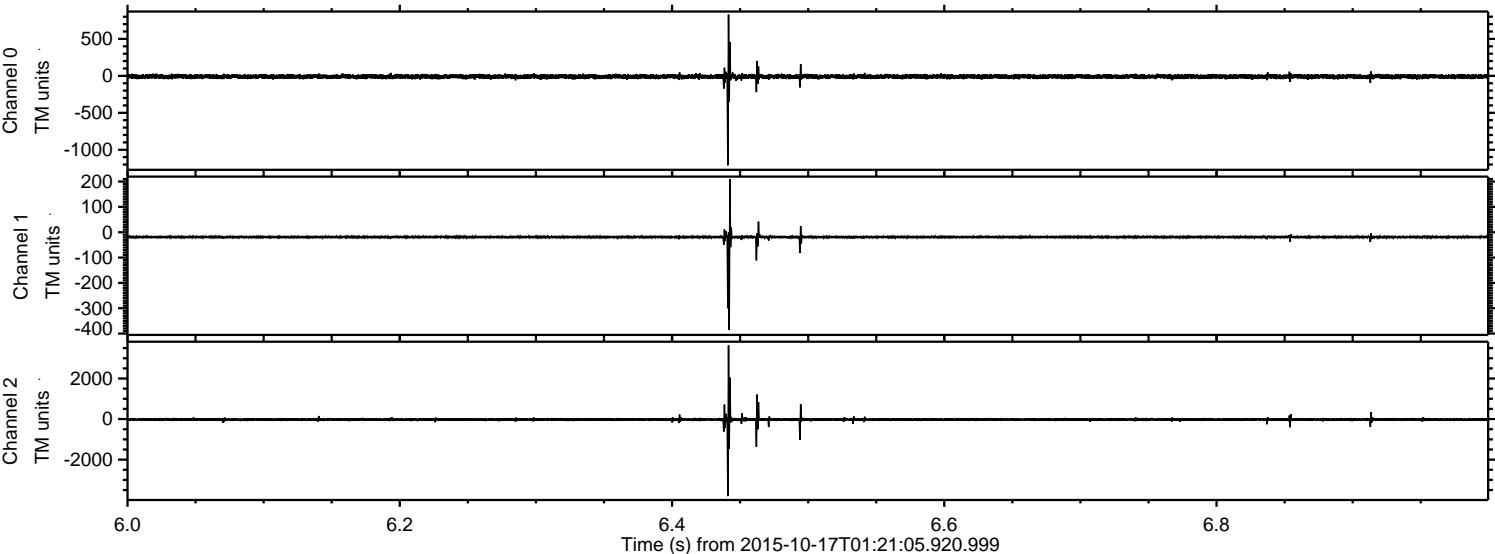
ELMAVAN 3D WAVEFORMS (Measured data sampled at 50 kHz) 51000 packets of 144 samples from 2015-10-17T01:21:05.920.999. Part 73/147

Processed Tue Oct 20 01:49:17 2015 by ELM ver.2012-10-06 from 001__elm20151017_012104__dat00.bin

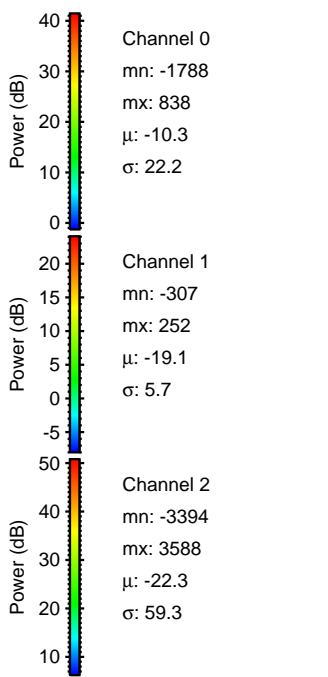
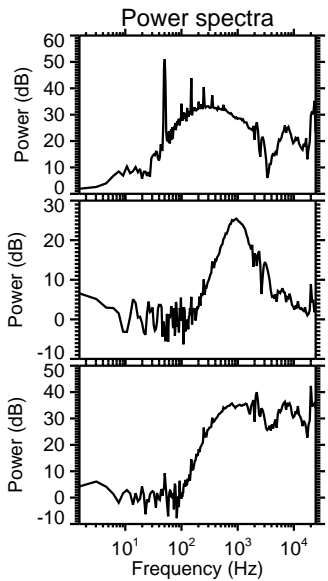
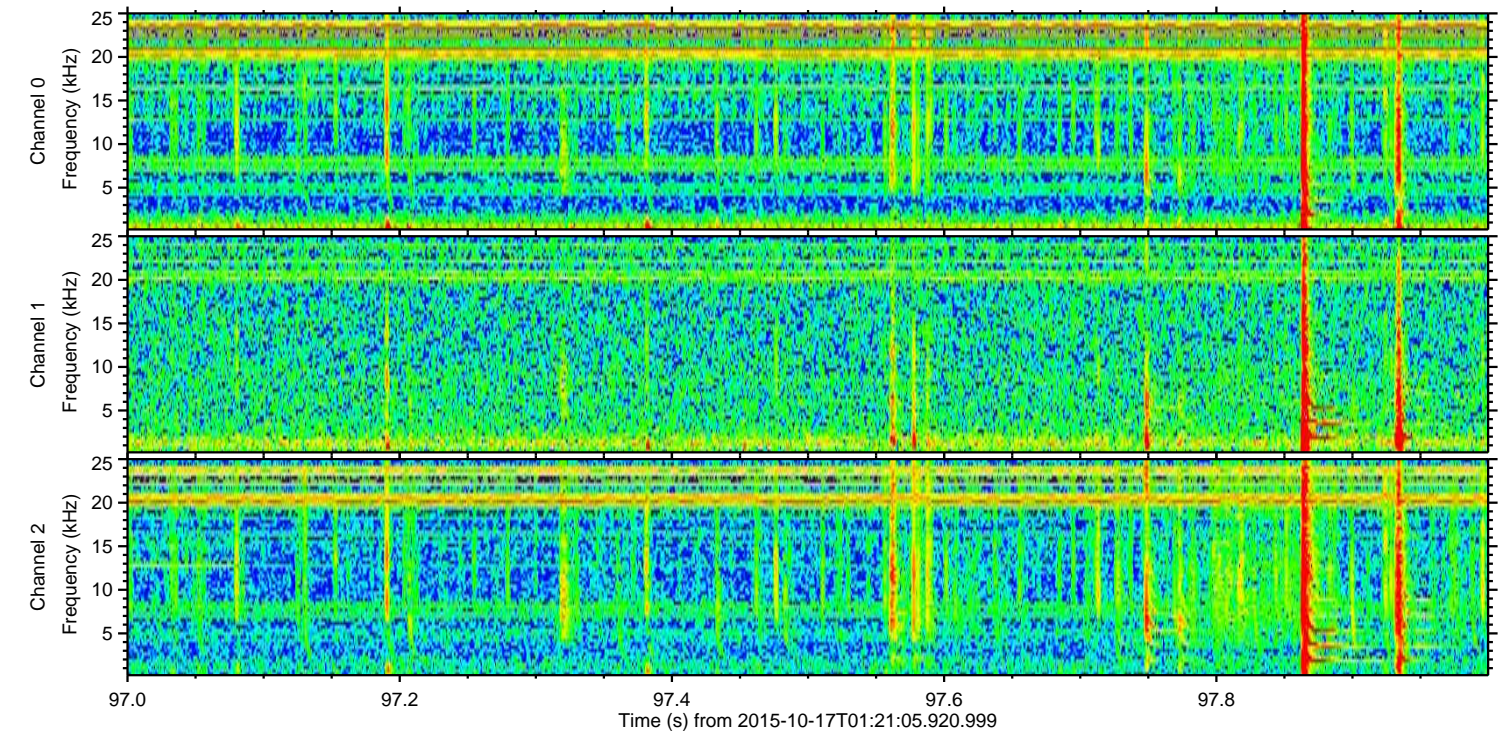
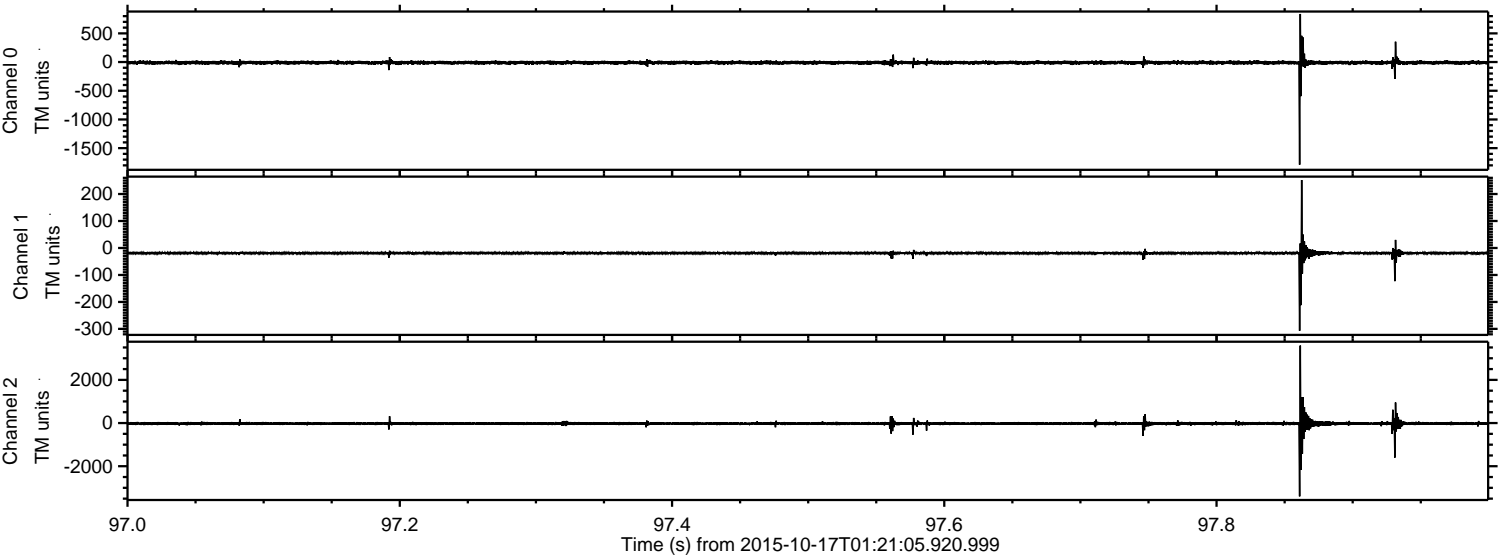


ELMAVAN 3D WAVEFORMS (Measured data sampled at 50 kHz) 51000 packets of 144 samples from 2015-10-17T01:21:05.920.999. Part 7/147

Processed Tue Oct 20 01:49:18 2015 by ELM ver.2012-10-06 from 001__elm20151017_012104__dat00.bin



Processed Tue Oct 20 01:49:19 2015 by ELM ver.2012-10-06 from 001__elm20151017_012104__dat00.bin



Power spectra

Channel 0

mn: -1788
mx: 838
 μ : -10.3
 σ : 22.2

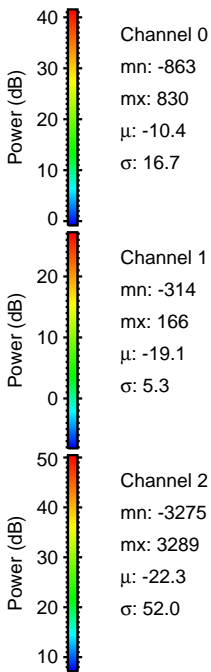
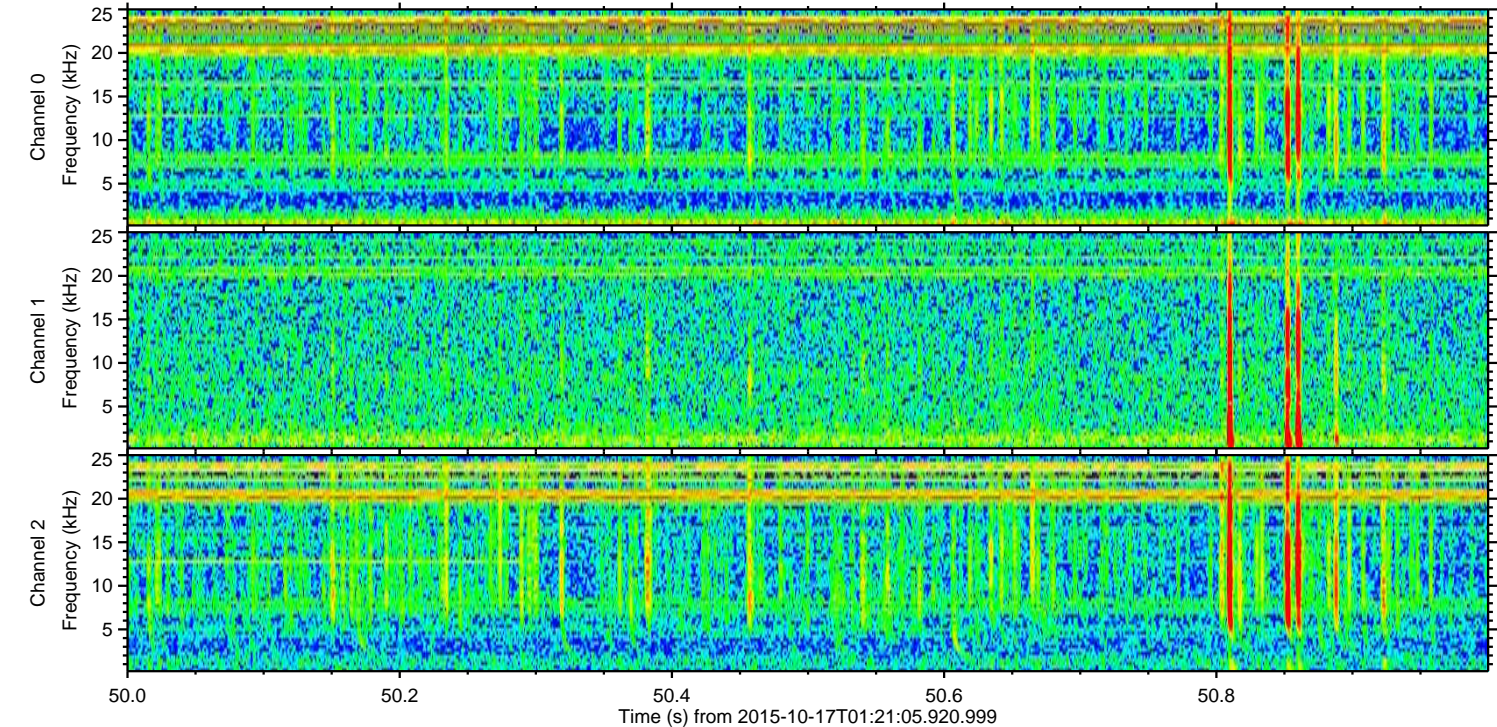
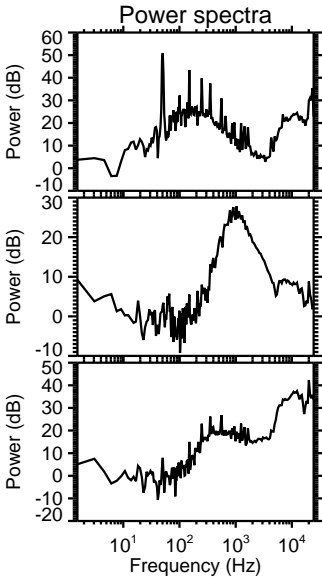
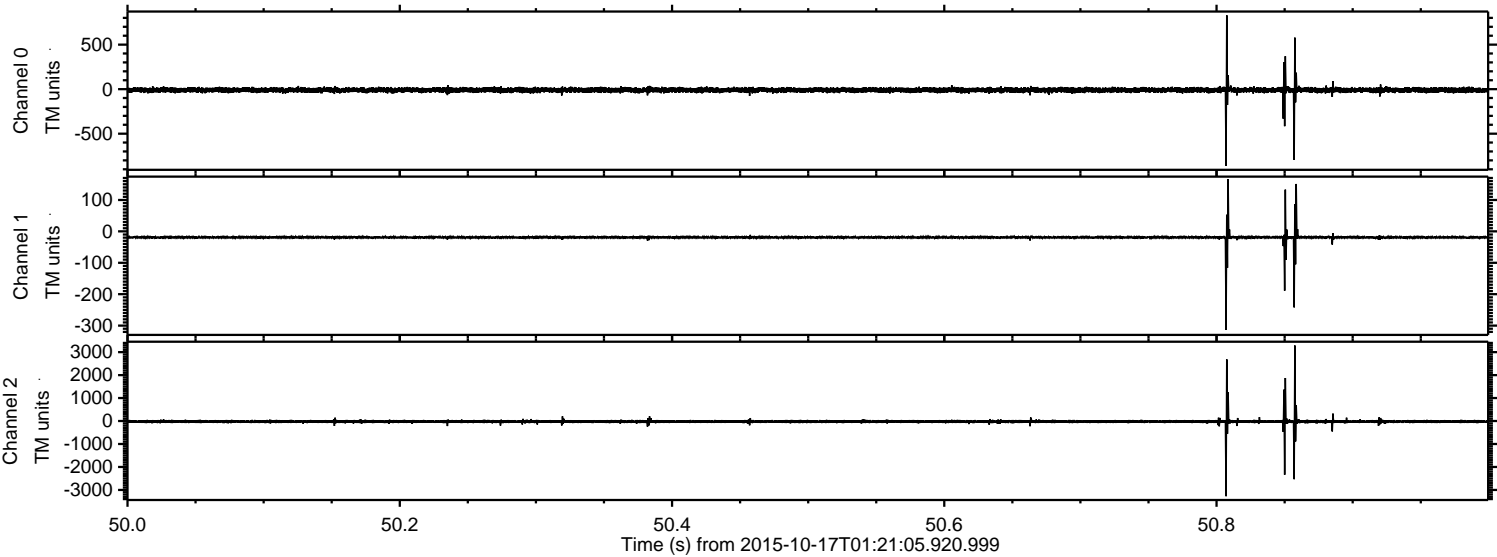
Channel 1

mn: -307
mx: 252
 μ : -19.1
 σ : 5.7

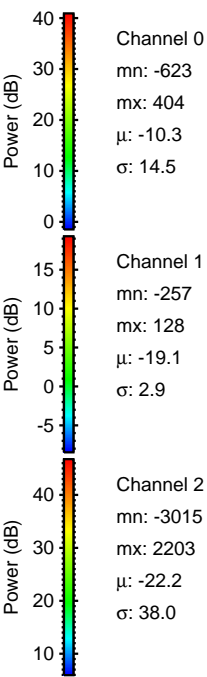
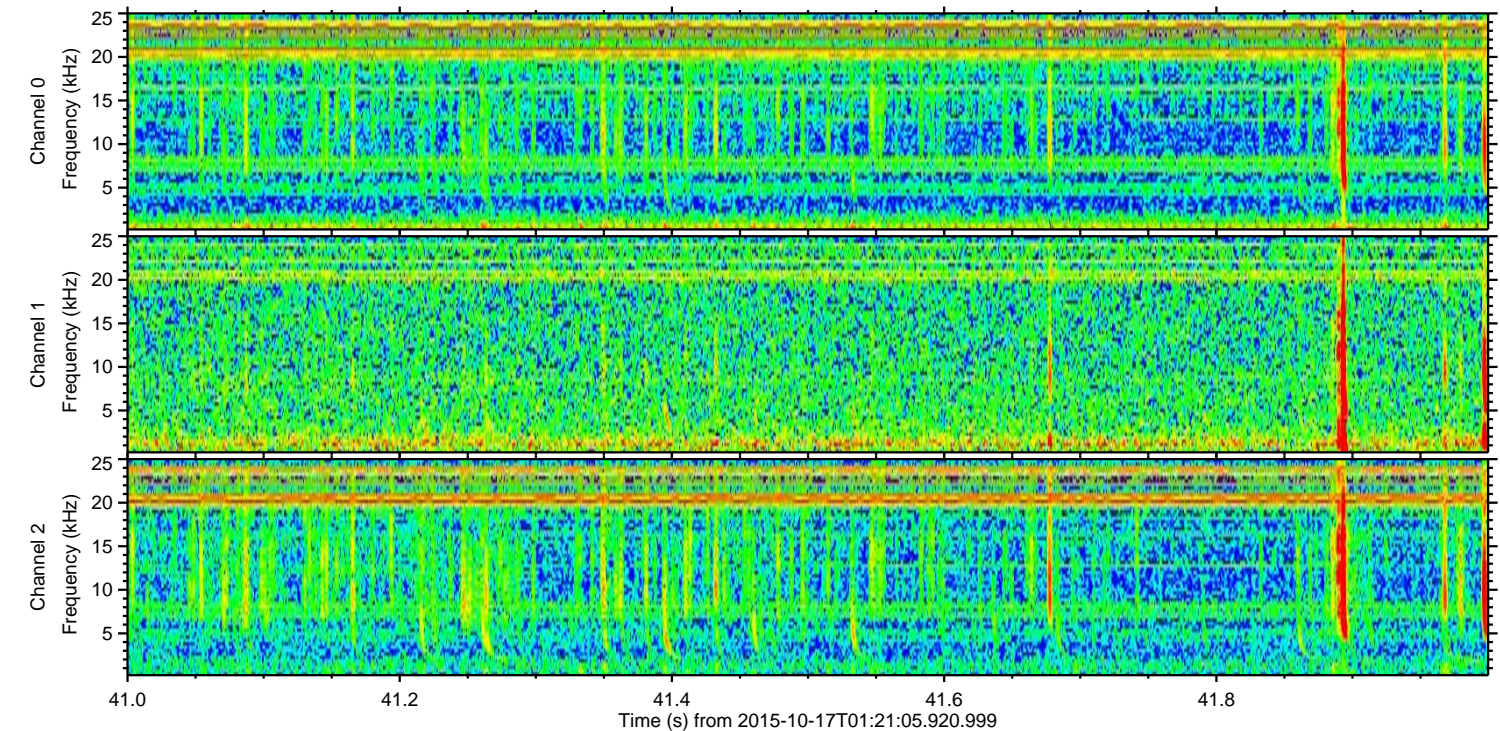
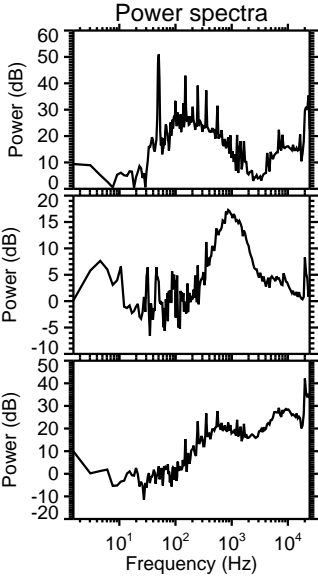
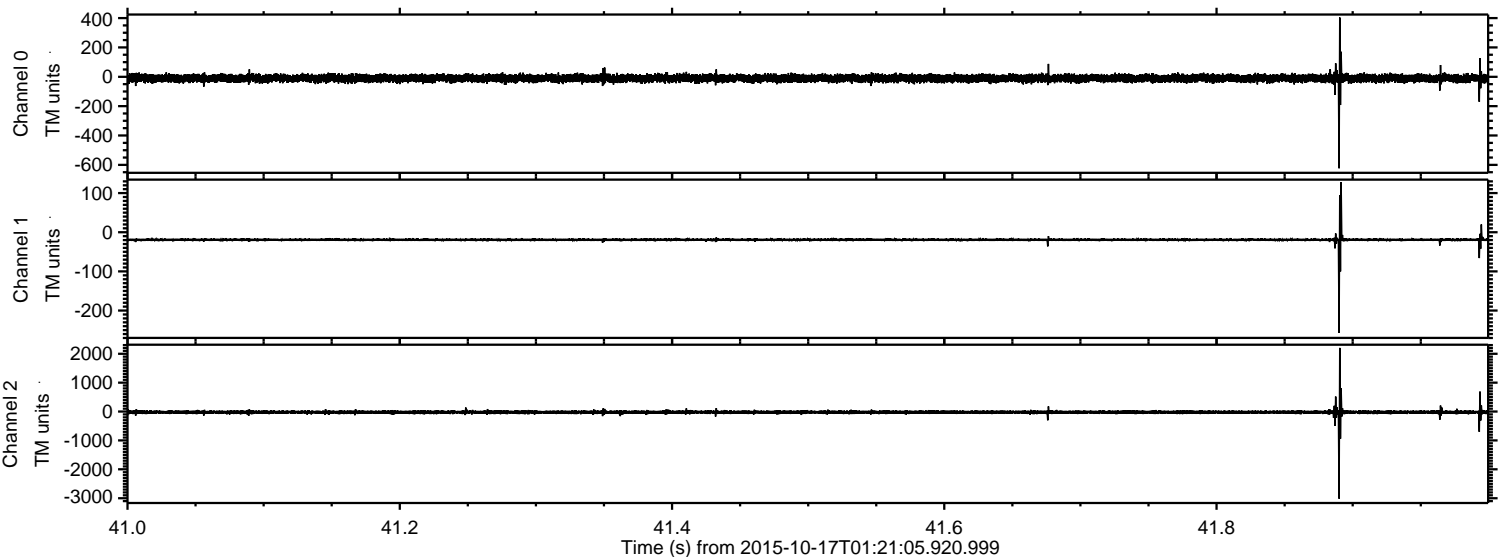
Channel 2

mn: -3394
mx: 3588
 μ : -22.3
 σ : 59.3

Processed Tue Oct 20 01:49:20 2015 by ELM ver.2012-10-06 from 001__elm20151017_012104__dat00.bin



Processed Tue Oct 20 01:49:21 2015 by ELM ver.2012-10-06 from 001__elm20151017_012104__dat00.bin



Processed Tue Oct 20 01:49:22 2015 by ELM ver.2012-10-06 from 001__elm20151017_012104__dat00.bin

