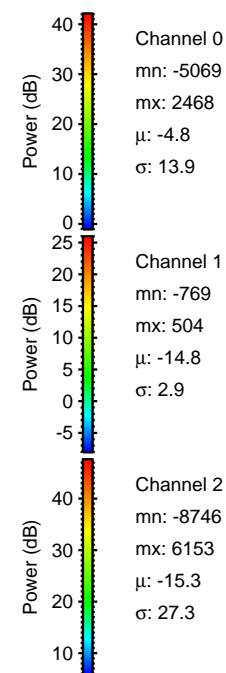
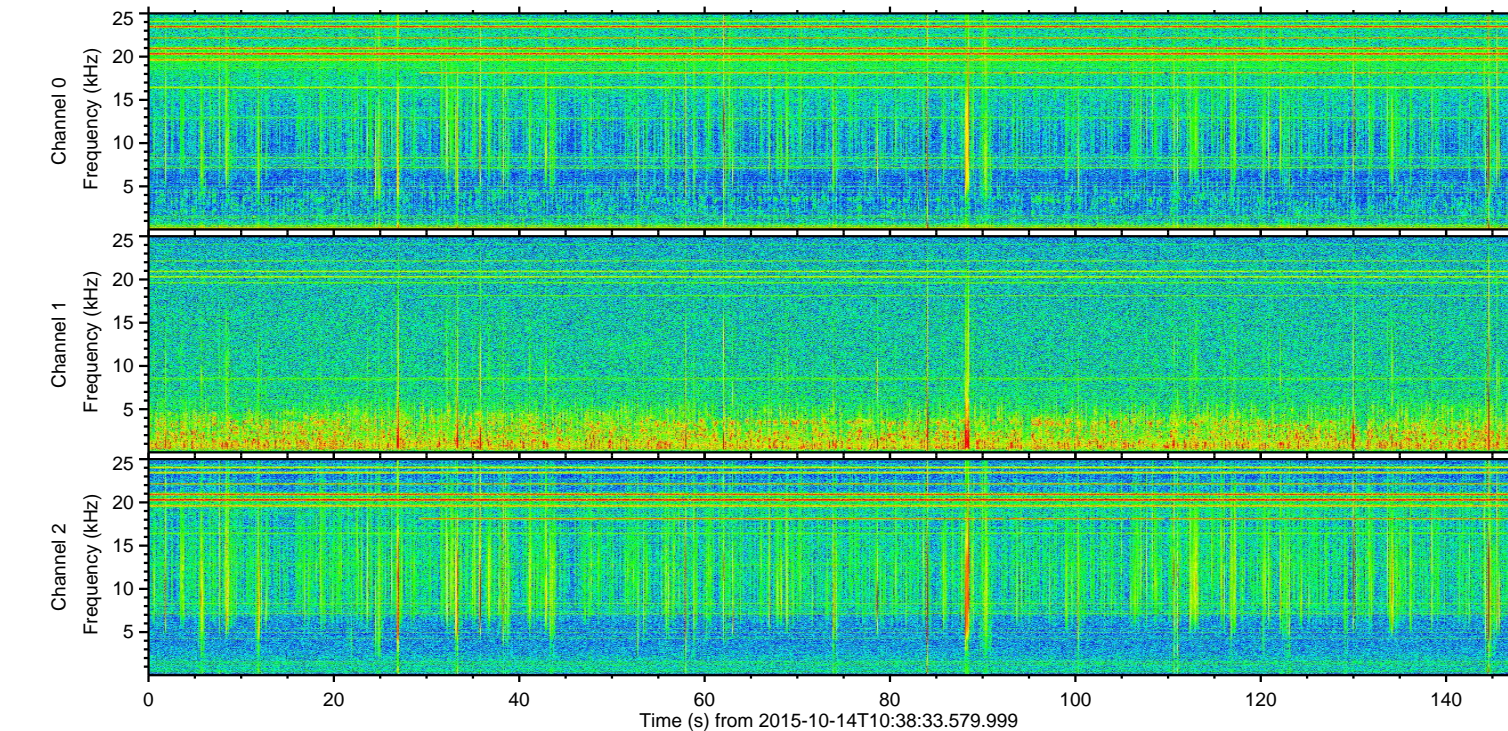
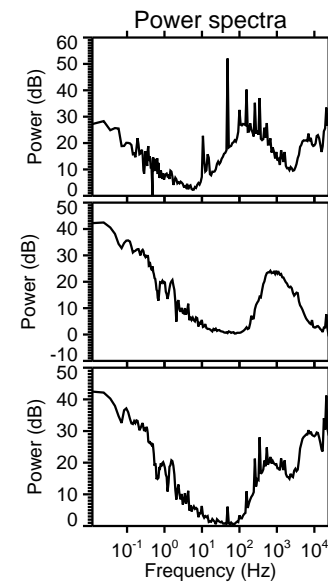
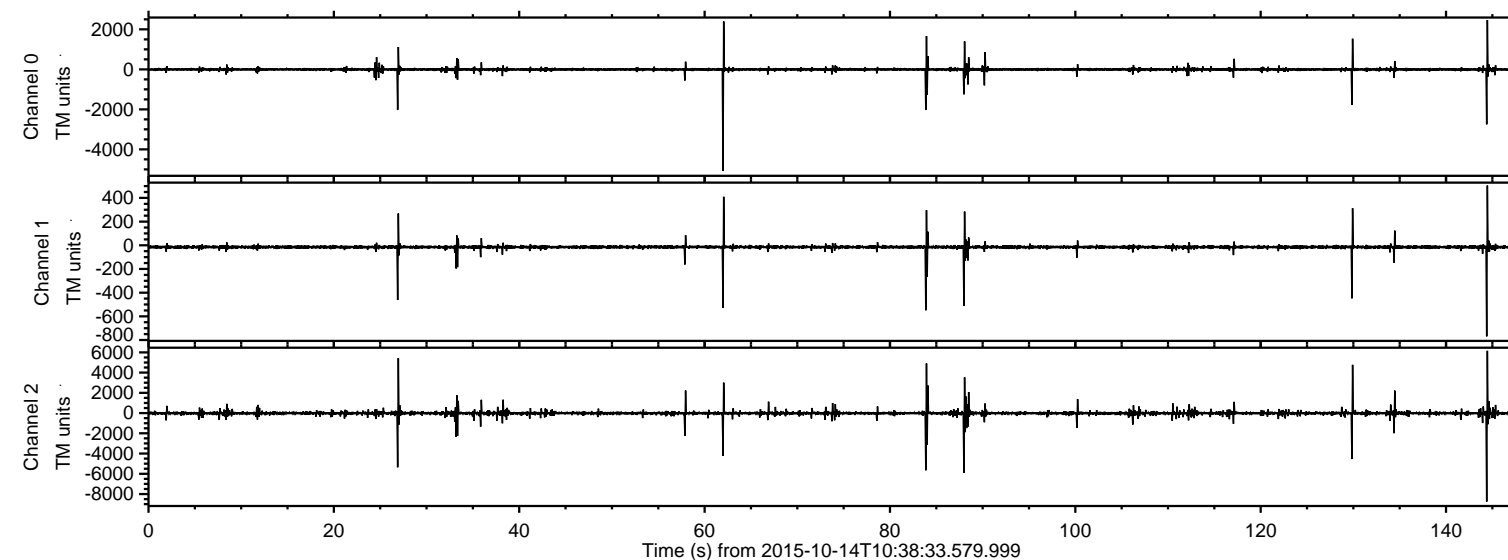


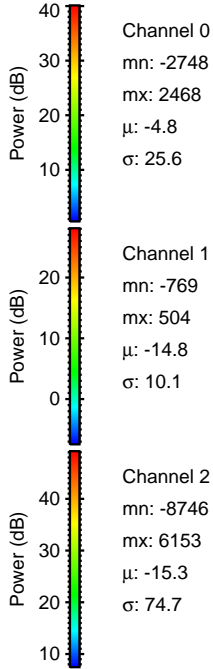
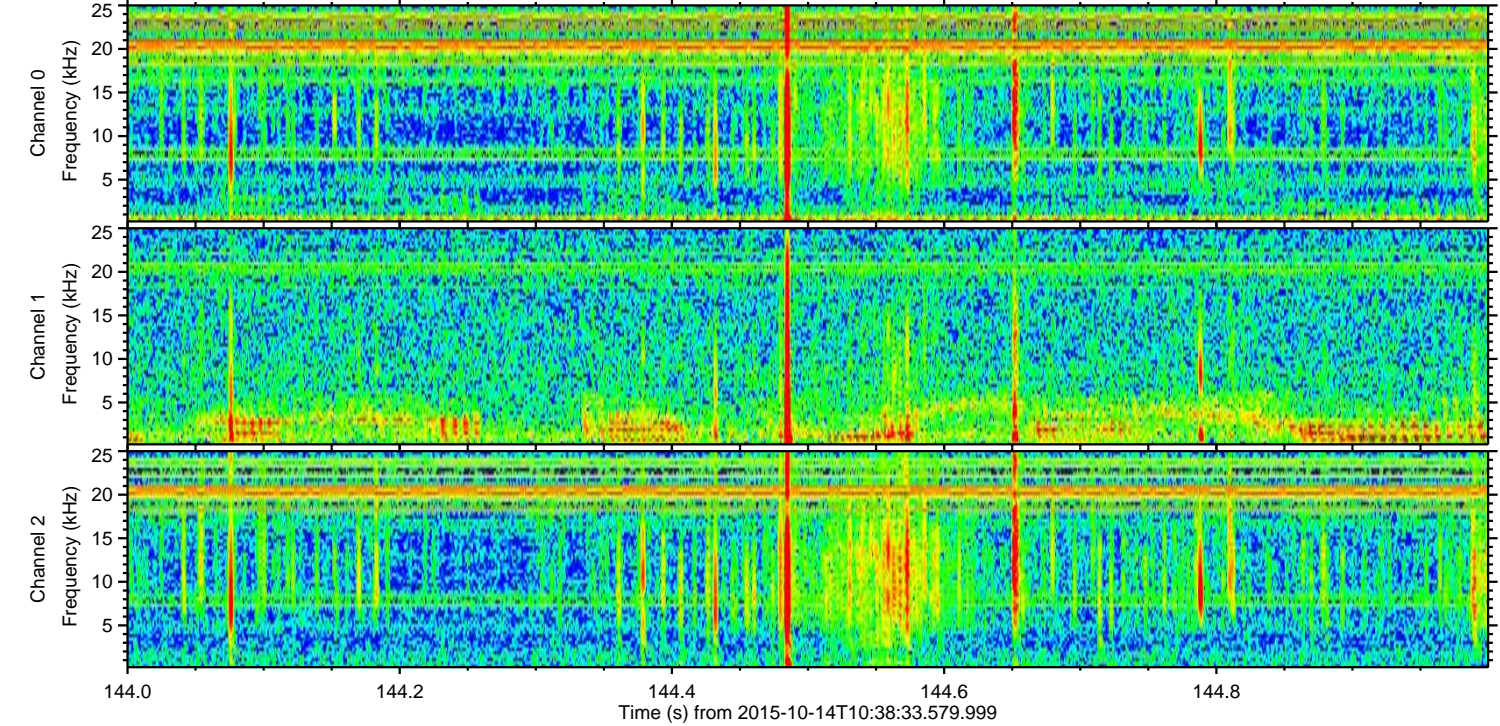
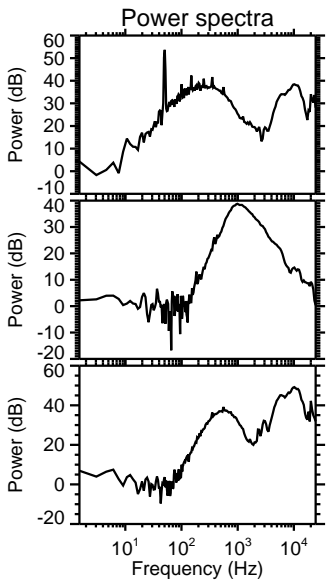
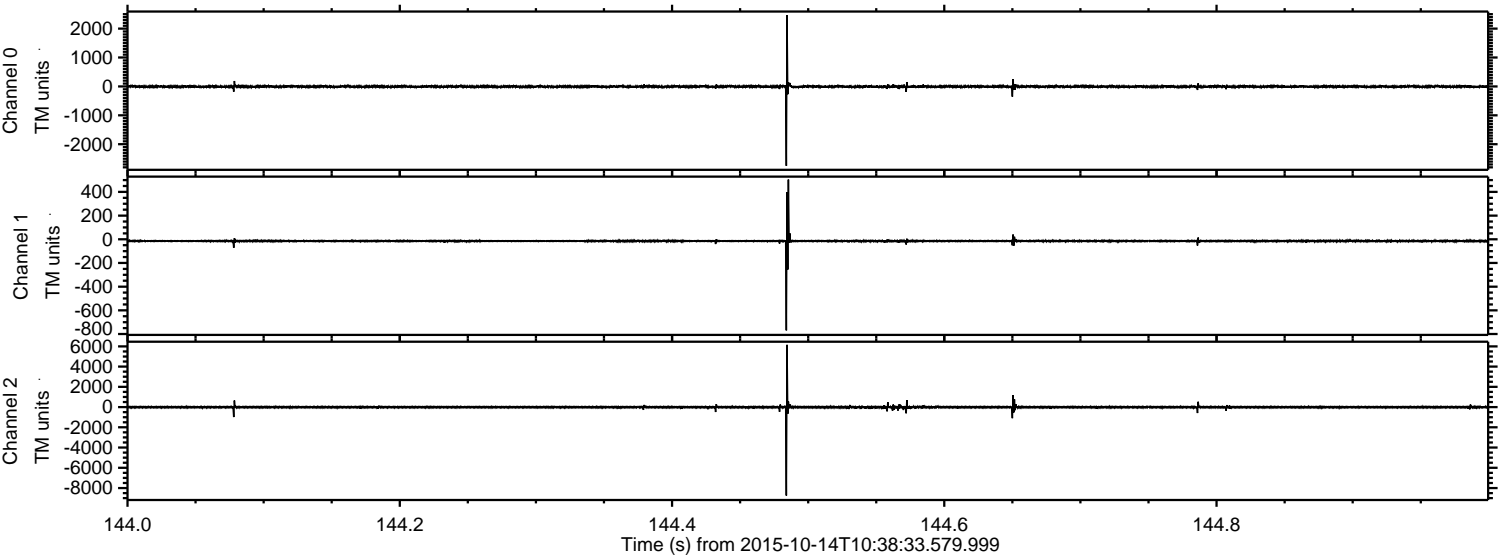
ELMAVAN 3D WAVEFORMS (Measured data sampled at 50 kHz) 51000 packets of 144 samples from 2015-10-14T10:38:33.579.999.

Processed Mon Oct 19 08:58:54 2015 by ELM ver.2012-10-06 from 001__elm20151014_103832__dat00.bin



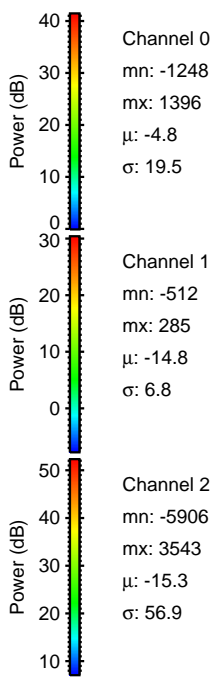
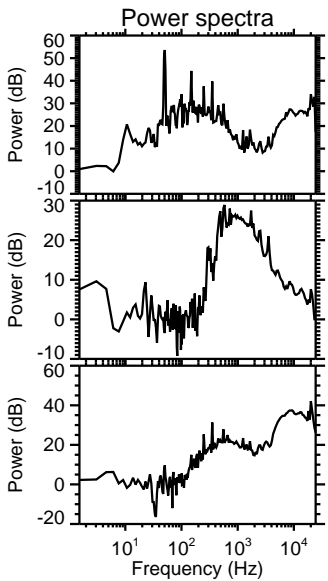
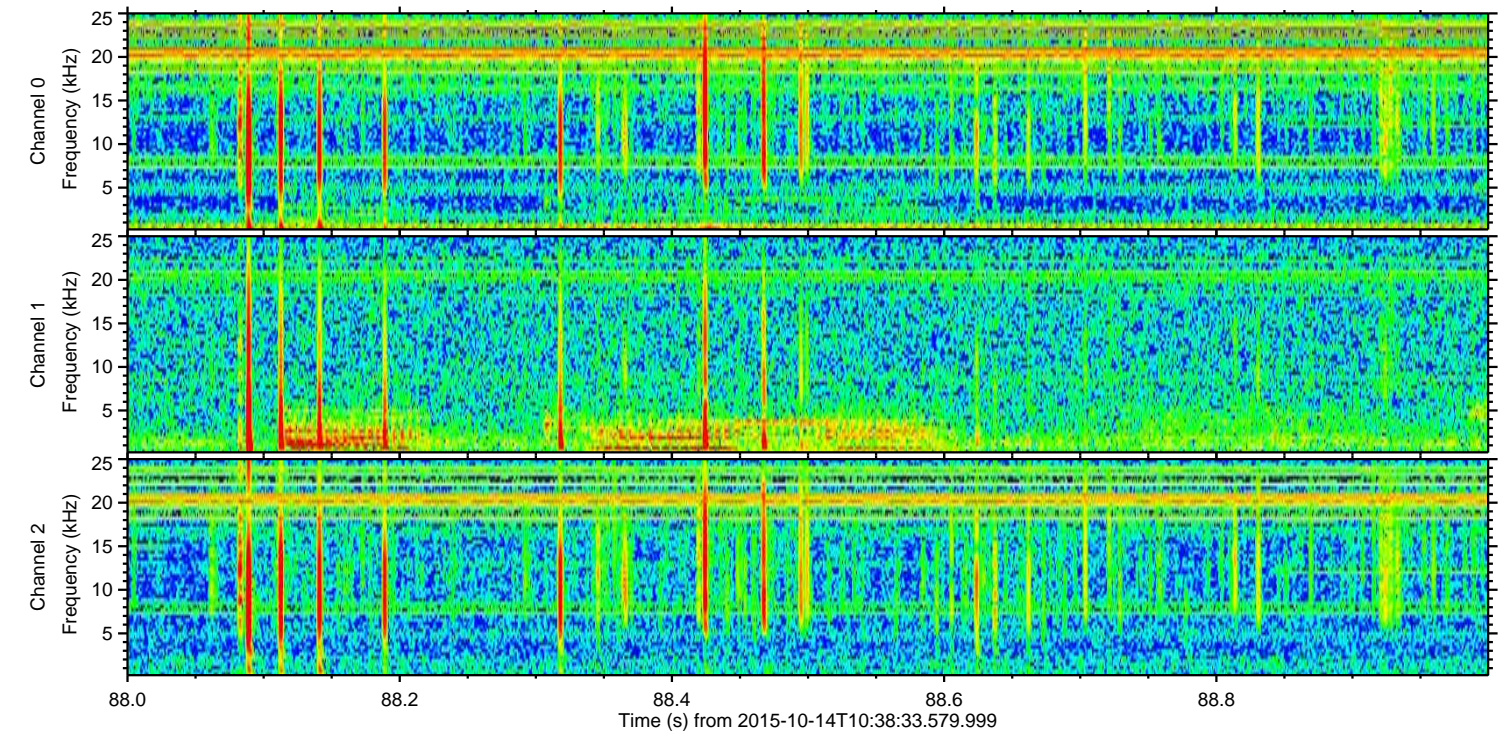
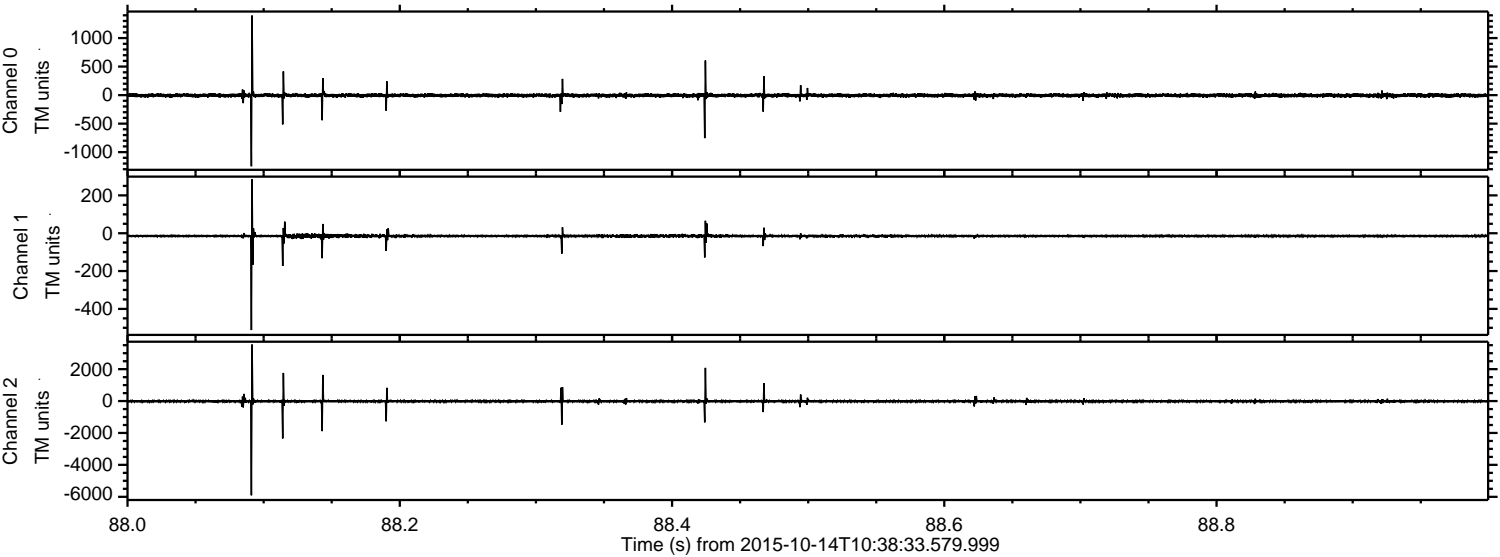
ELMAVAN 3D WAVEFORMS (Measured data sampled at 50 kHz) 51000 packets of 144 samples from 2015-10-14T10:38:33.579.999. Part 145/147

Processed Mon Oct 19 08:59:10 2015 by ELM ver.2012-10-06 from 001__elm20151014_103832__dat00.bin



ELMAVAN 3D WAVEFORMS (Measured data sampled at 50 kHz) 51000 packets of 144 samples from 2015-10-14T10:38:33.579.999. Part 89/147

Processed Mon Oct 19 08:59:11 2015 by ELM ver.2012-10-06 from 001__elm20151014_103832__dat00.bin



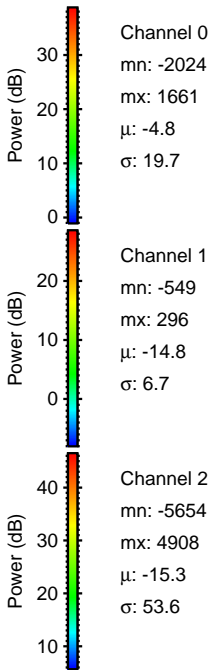
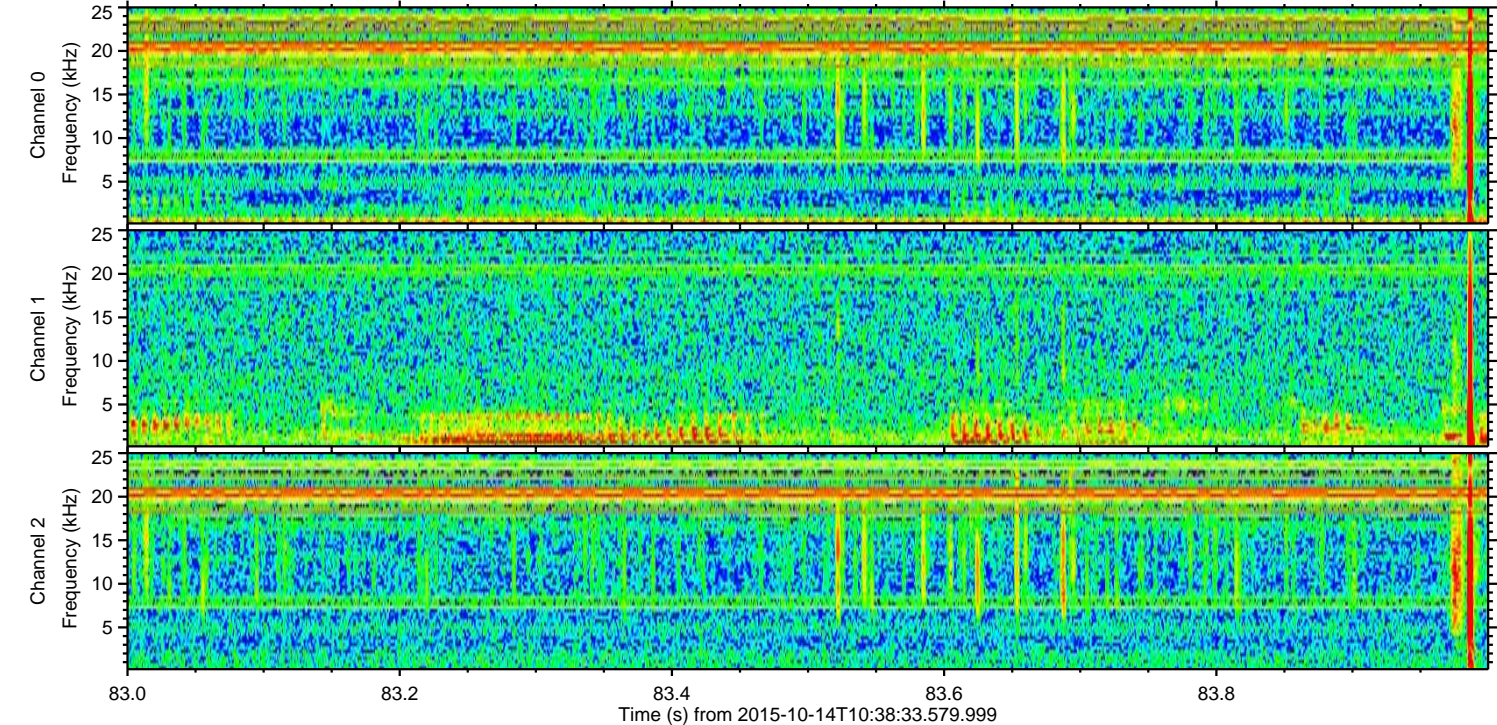
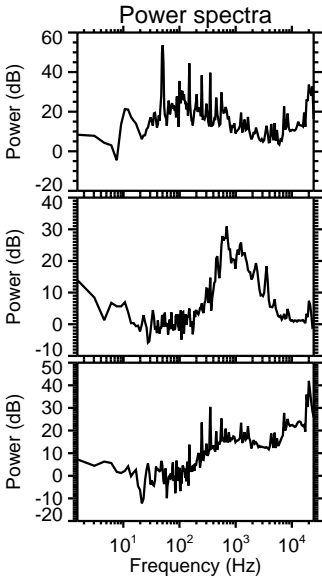
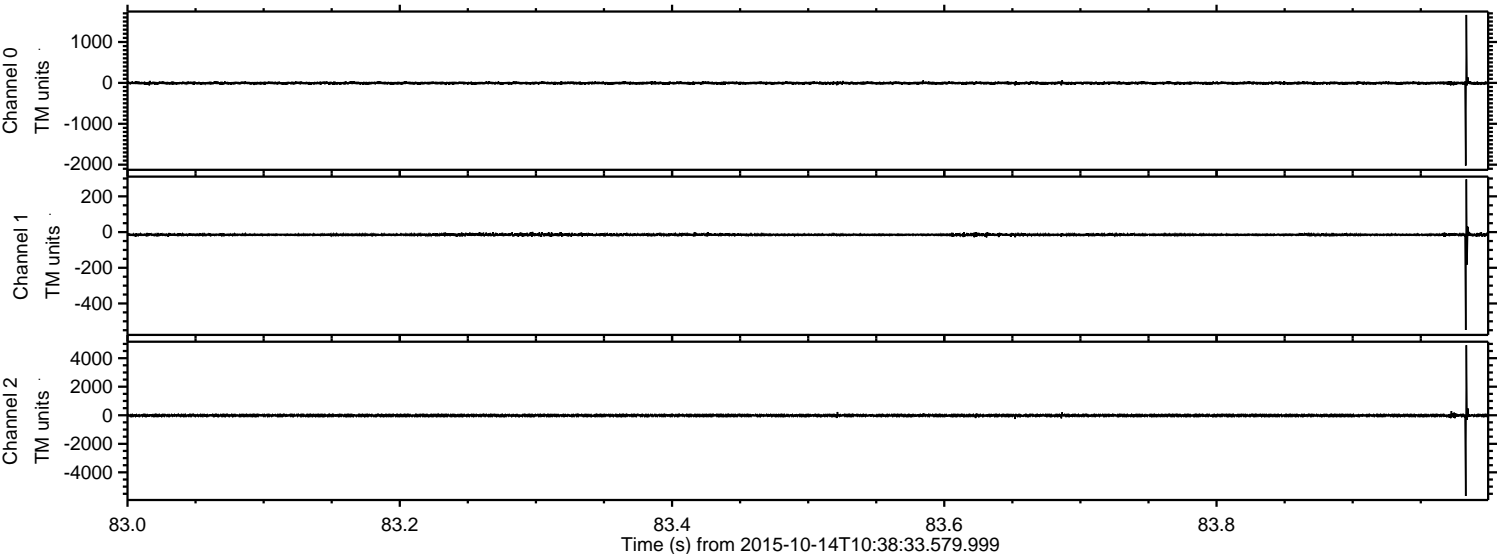
Channel 0
mn: -1248
mx: 1396
 μ : -4.8
 σ : 19.5

Channel 1
mn: -512
mx: 285
 μ : -14.8
 σ : 6.8

Channel 2
mn: -5906
mx: 3543
 μ : -15.3
 σ : 56.9

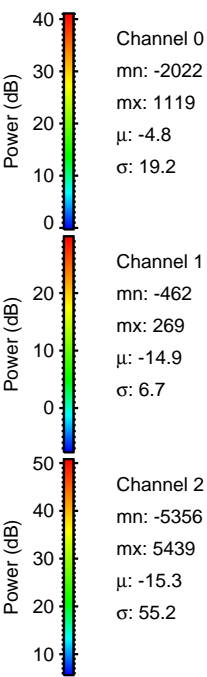
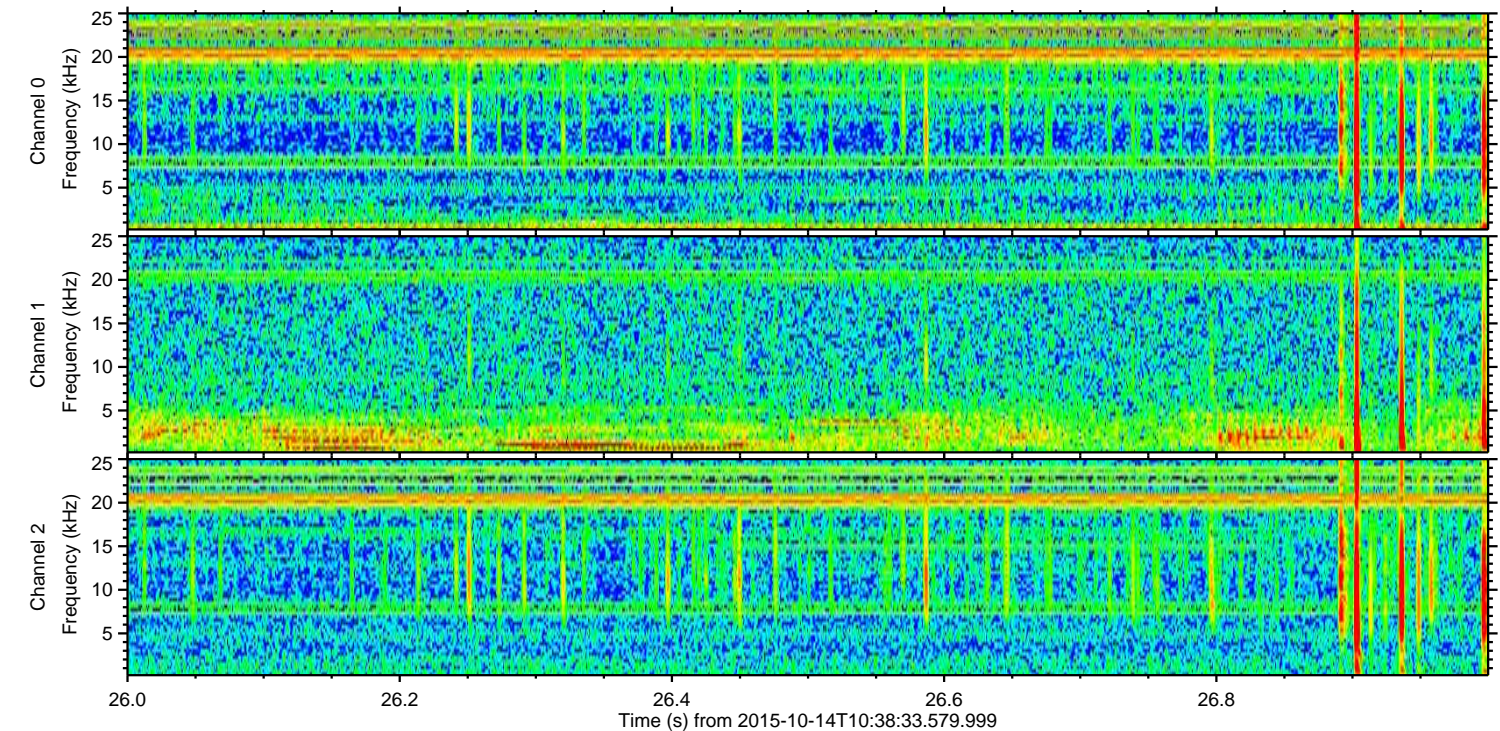
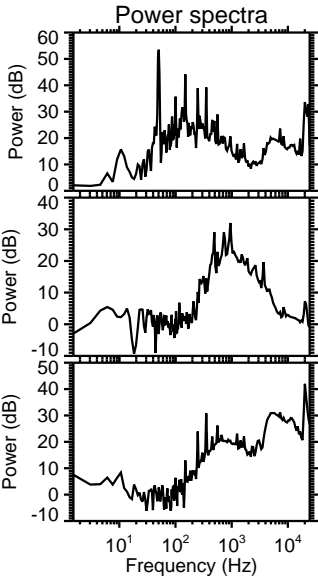
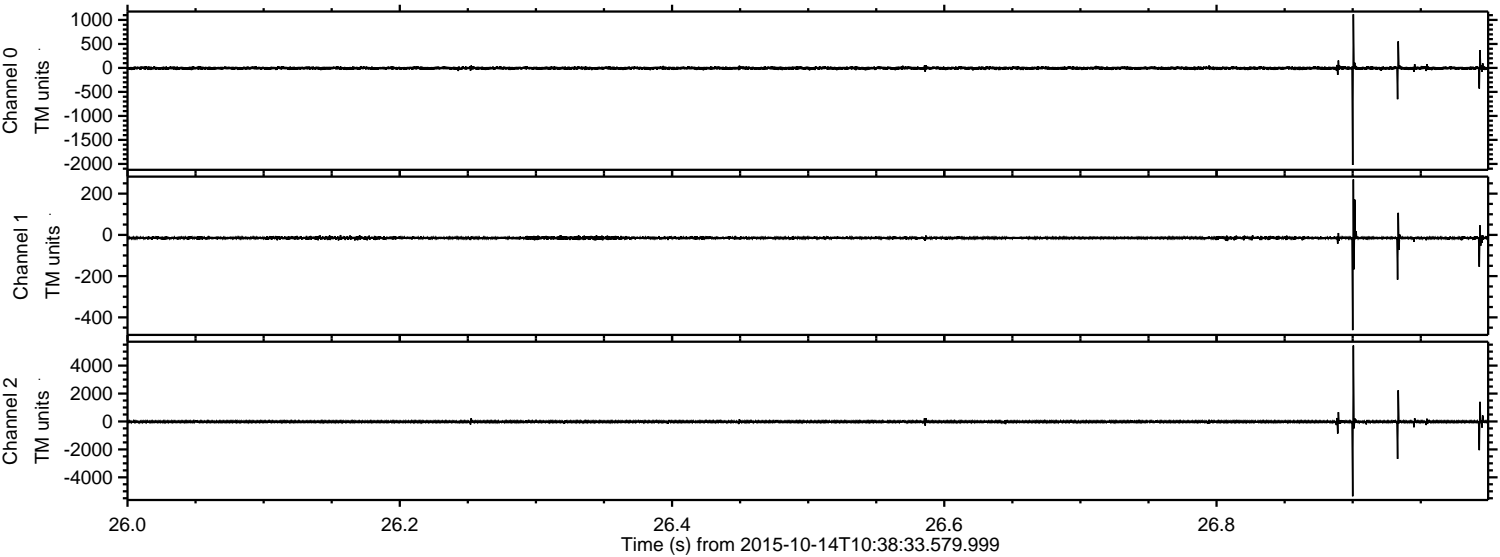
ELMAVAN 3D WAVEFORMS (Measured data sampled at 50 kHz) 51000 packets of 144 samples from 2015-10-14T10:38:33.579.999. Part 84/147

Processed Mon Oct 19 08:59:12 2015 by ELM ver.2012-10-06 from 001__elm20151014_103832__dat00.bin



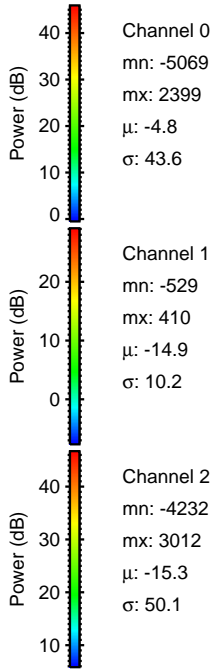
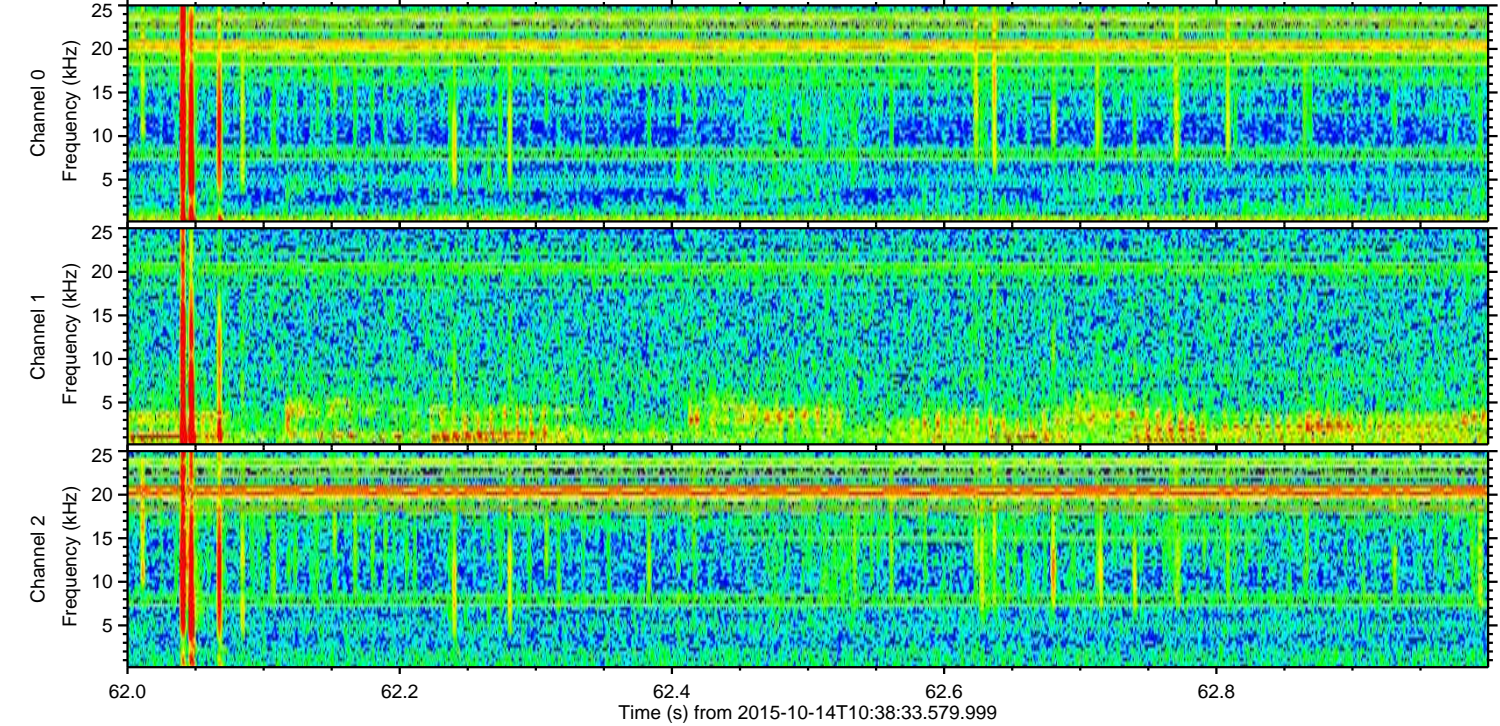
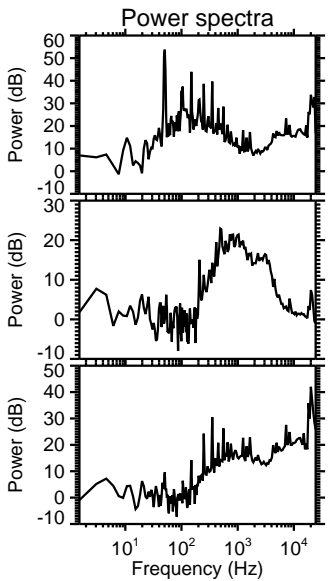
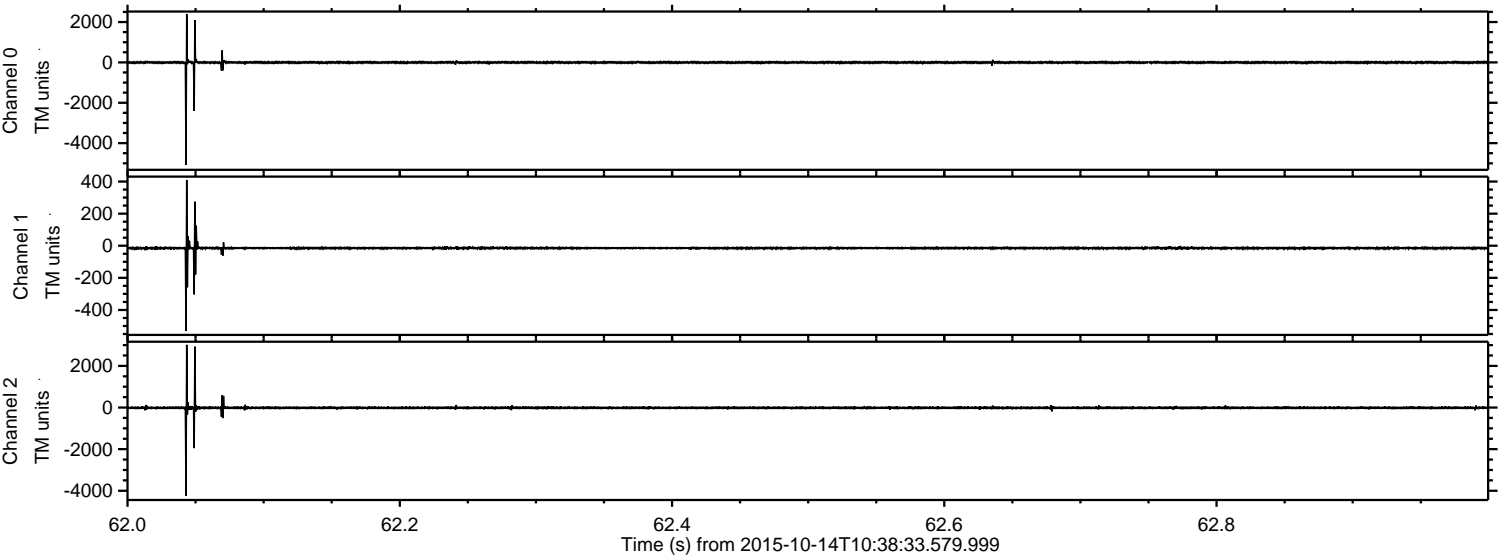
ELMAVAN 3D WAVEFORMS (Measured data sampled at 50 kHz) 51000 packets of 144 samples from 2015-10-14T10:38:33.579.999. Part 27/147

Processed Mon Oct 19 08:59:13 2015 by ELM ver.2012-10-06 from 001__elm20151014_103832__dat00.bin



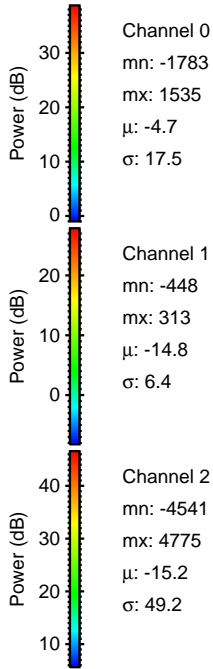
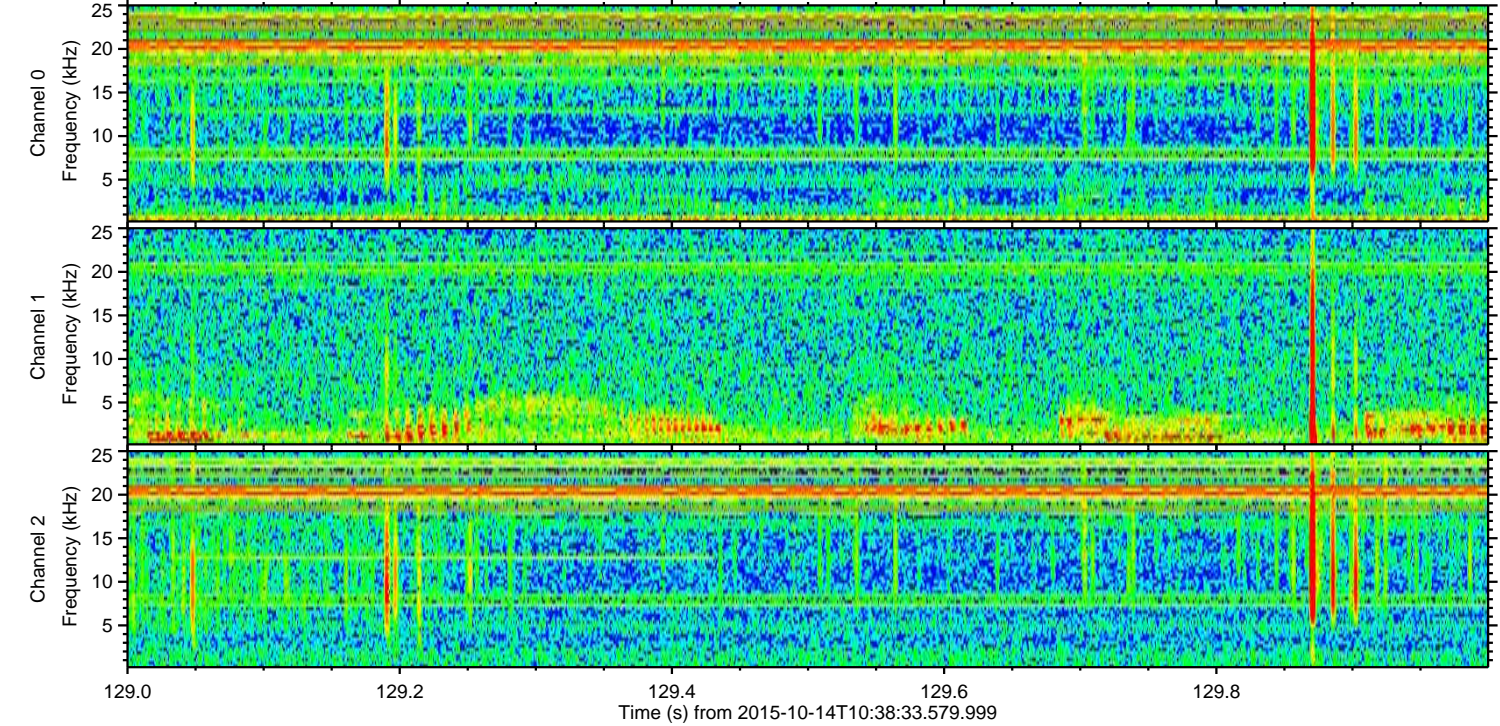
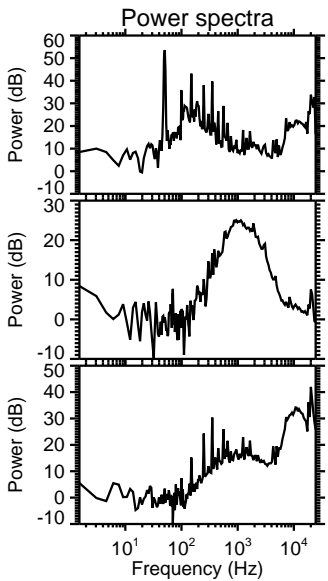
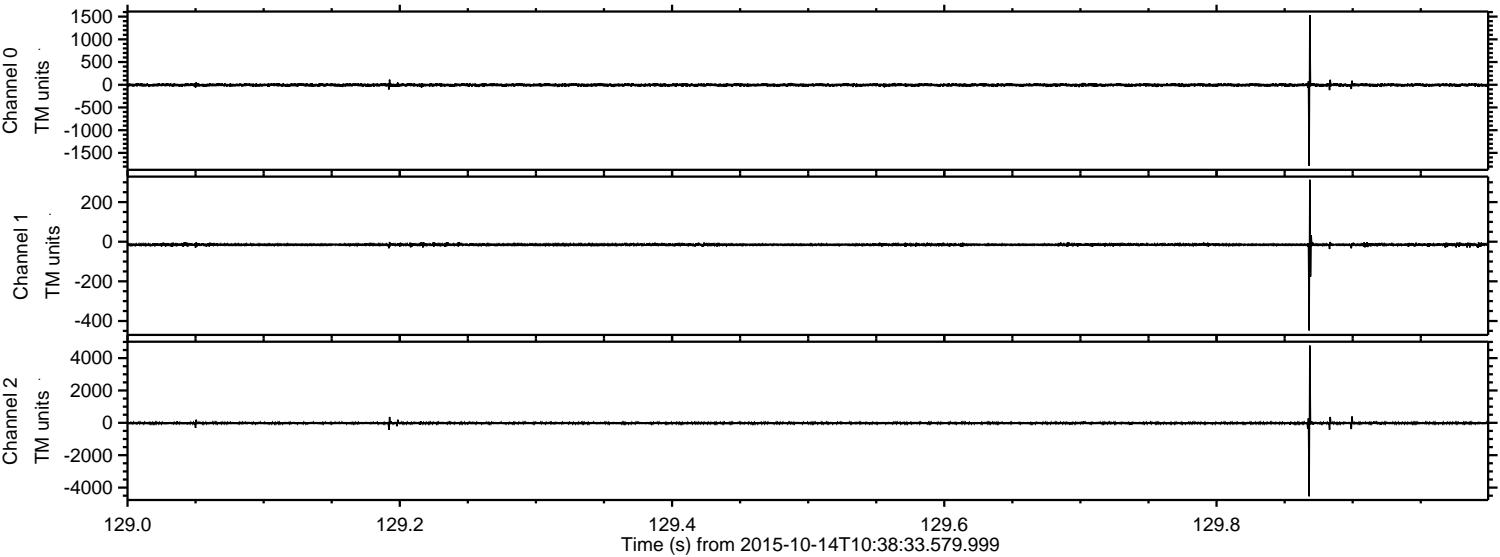
ELMAVAN 3D WAVEFORMS (Measured data sampled at 50 kHz) 51000 packets of 144 samples from 2015-10-14T10:38:33.579.999. Part 63/147

Processed Mon Oct 19 08:59:14 2015 by ELM ver.2012-10-06 from 001__elm20151014_103832__dat00.bin



ELMAVAN 3D WAVEFORMS (Measured data sampled at 50 kHz) 51000 packets of 144 samples from 2015-10-14T10:38:33.579.999. Part 130/147

Processed Mon Oct 19 08:59:15 2015 by ELM ver.2012-10-06 from 001__elm20151014_103832__dat00.bin

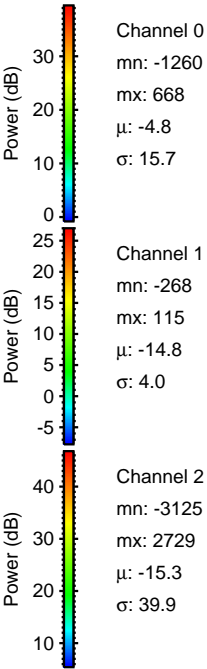
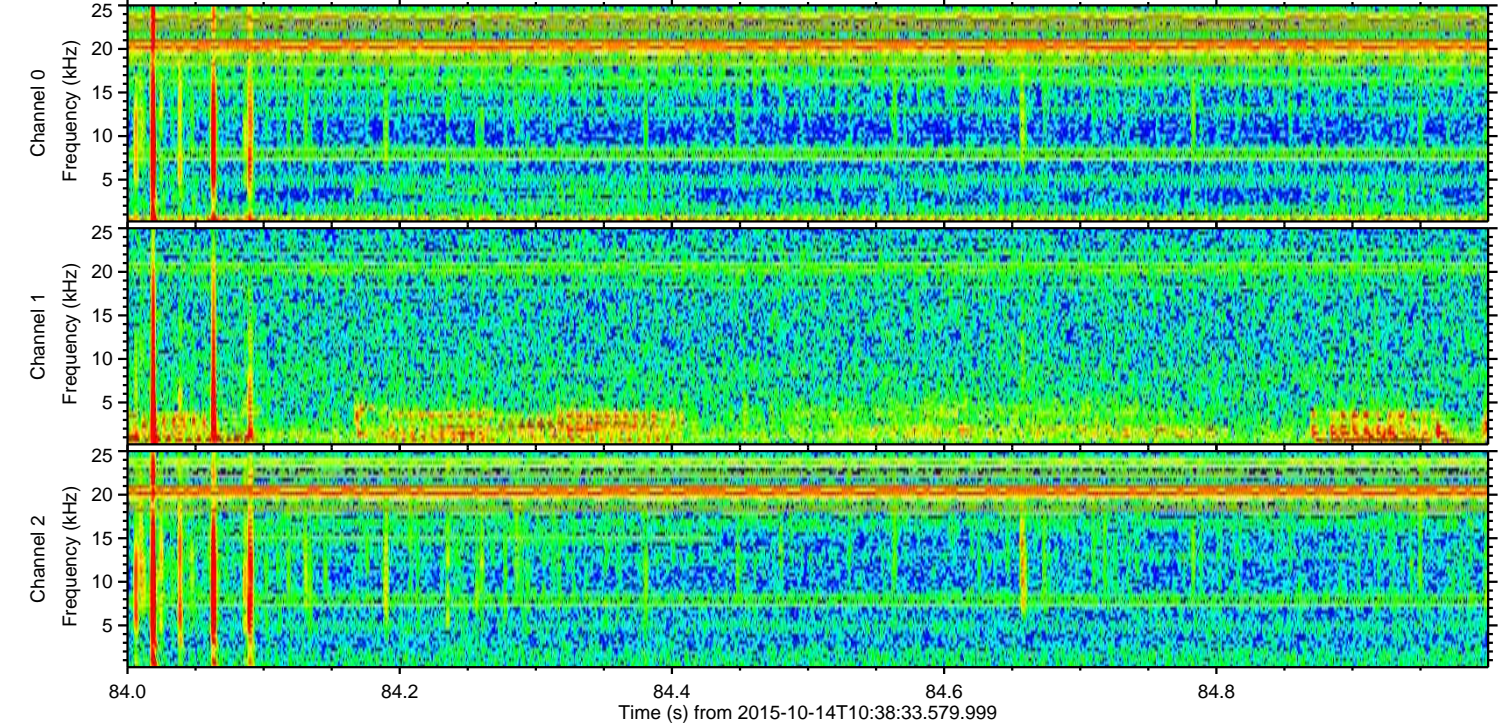
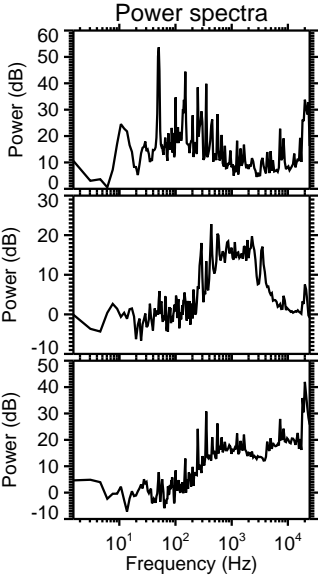
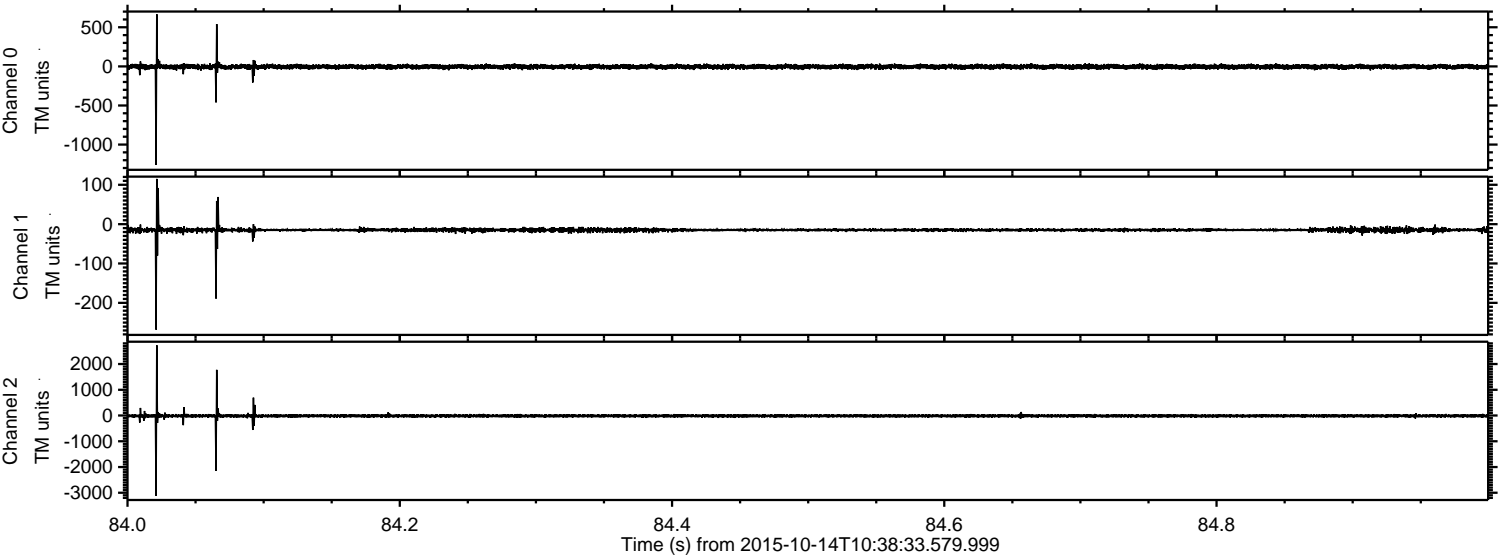


Channel 0
mn: -1783
mx: 1535
 μ : -4.7
 σ : 17.5

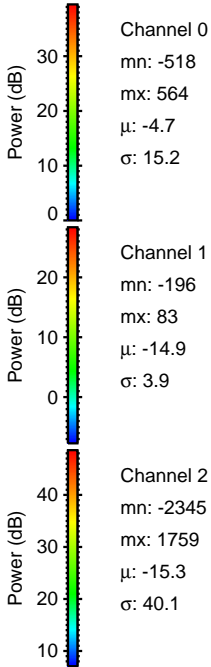
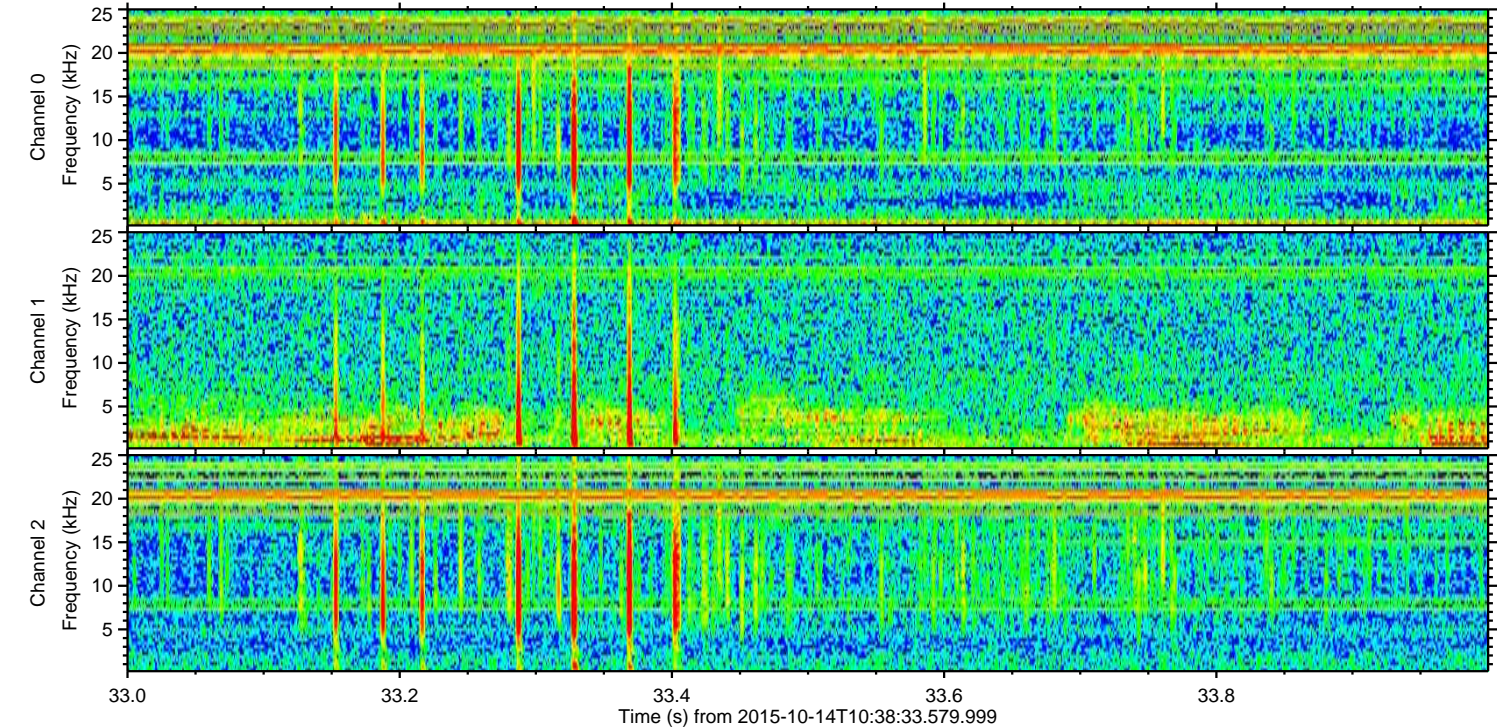
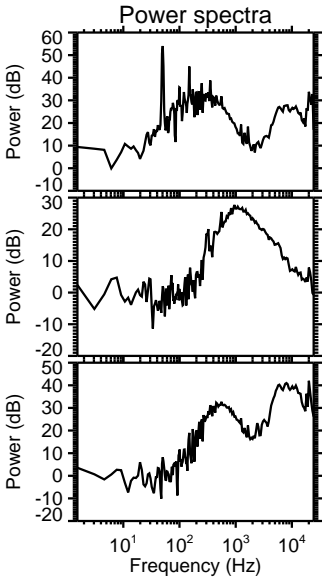
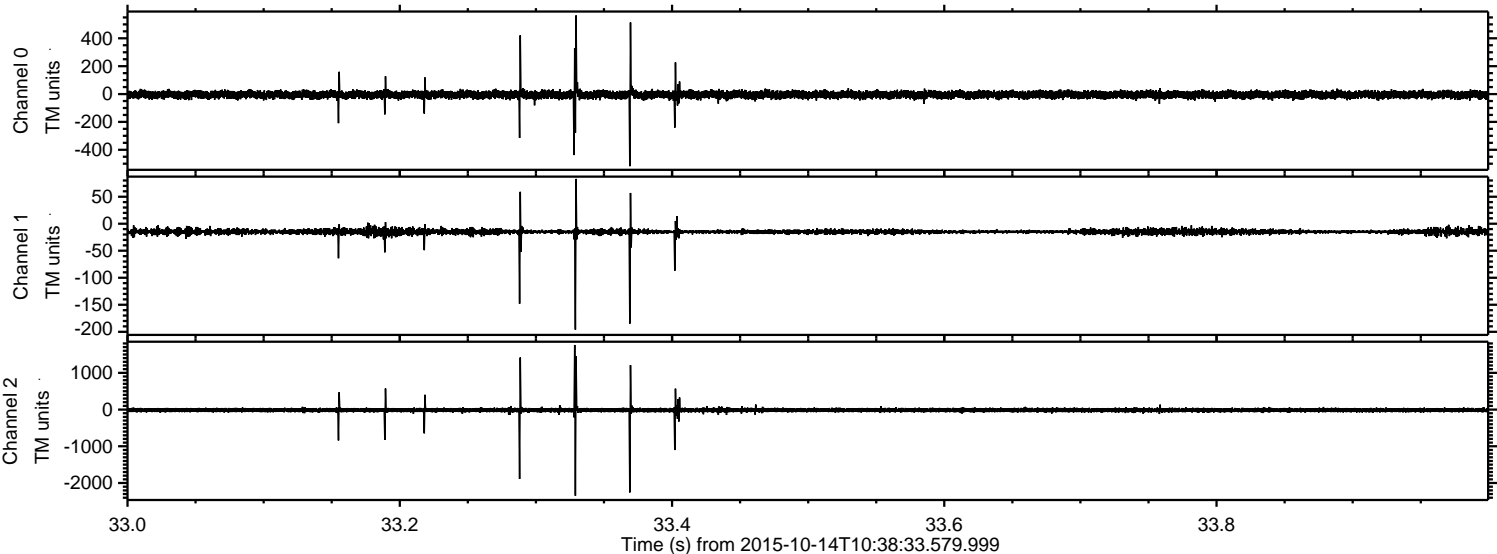
Channel 1
mn: -448
mx: 313
 μ : -14.8
 σ : 6.4

Channel 2
mn: -4541
mx: 4775
 μ : -15.2
 σ : 49.2

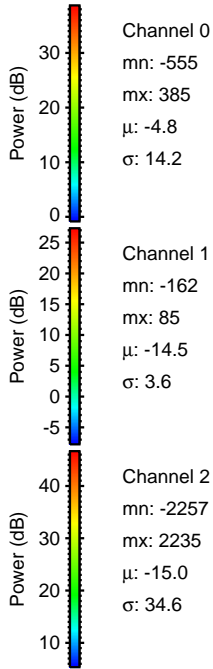
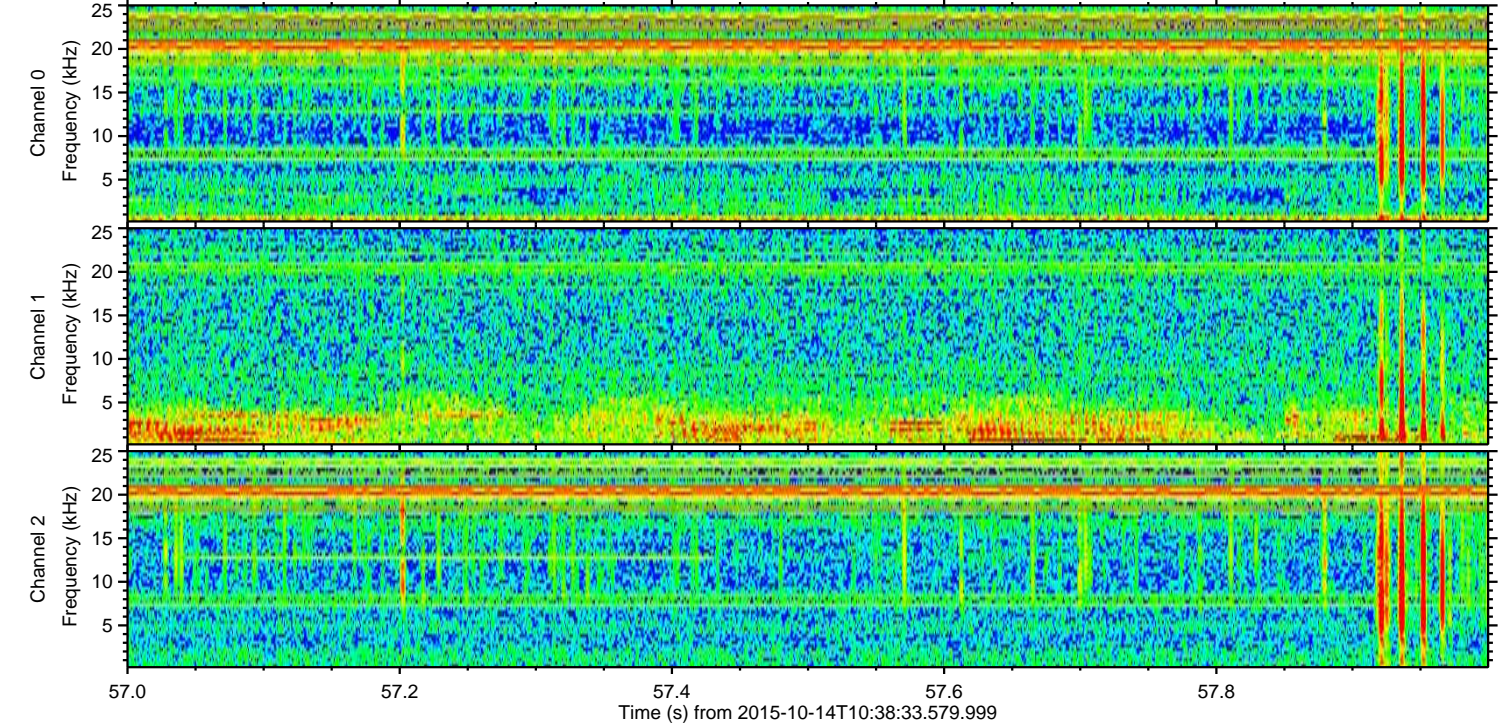
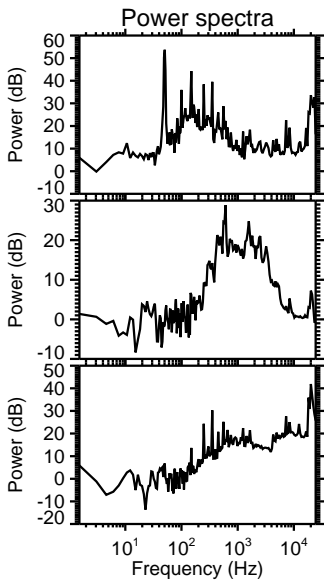
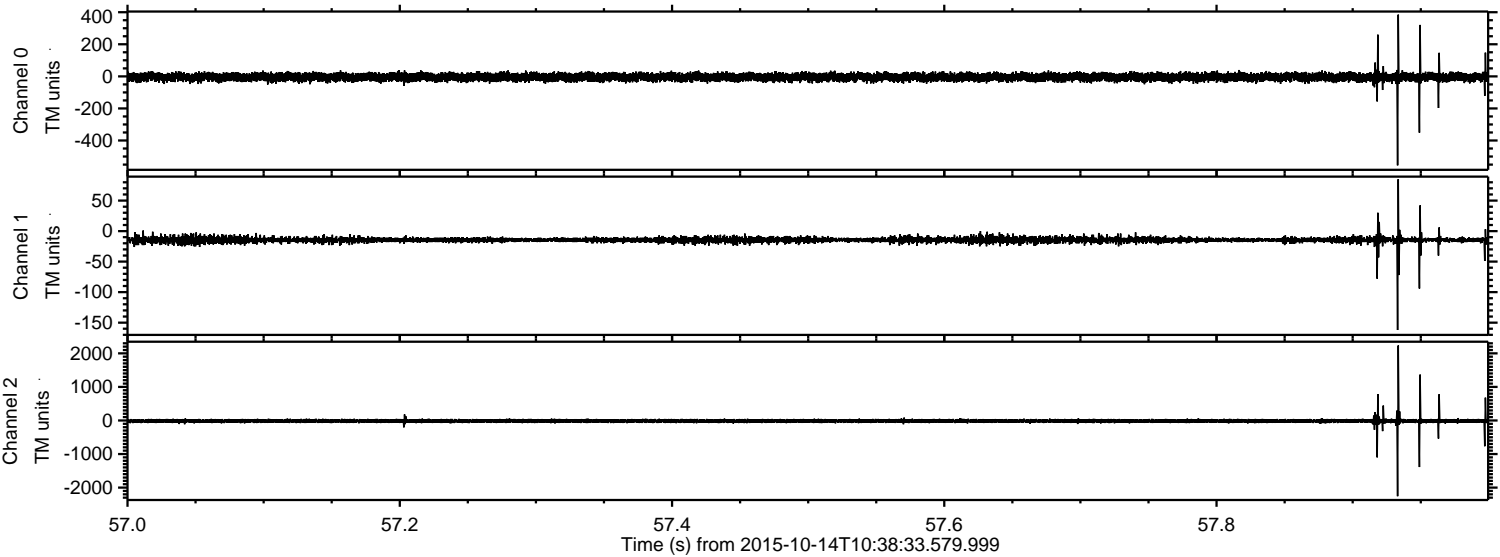
Processed Mon Oct 19 08:59:16 2015 by ELM ver.2012-10-06 from 001__elm20151014_103832__dat00.bin



Processed Mon Oct 19 08:59:17 2015 by ELM ver.2012-10-06 from 001__elm20151014_103832__dat00.bin



Processed Mon Oct 19 08:59:18 2015 by ELM ver.2012-10-06 from 001__elm20151014_103832__dat00.bin



Processed Mon Oct 19 08:59:19 2015 by ELM ver.2012-10-06 from 001__elm20151014_103832__dat00.bin

