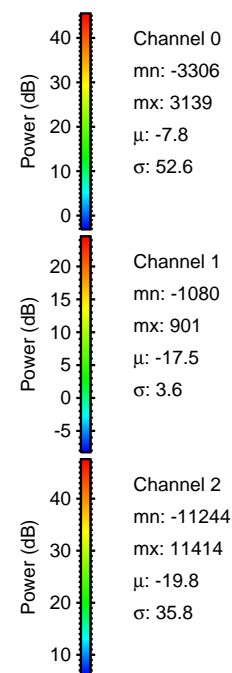
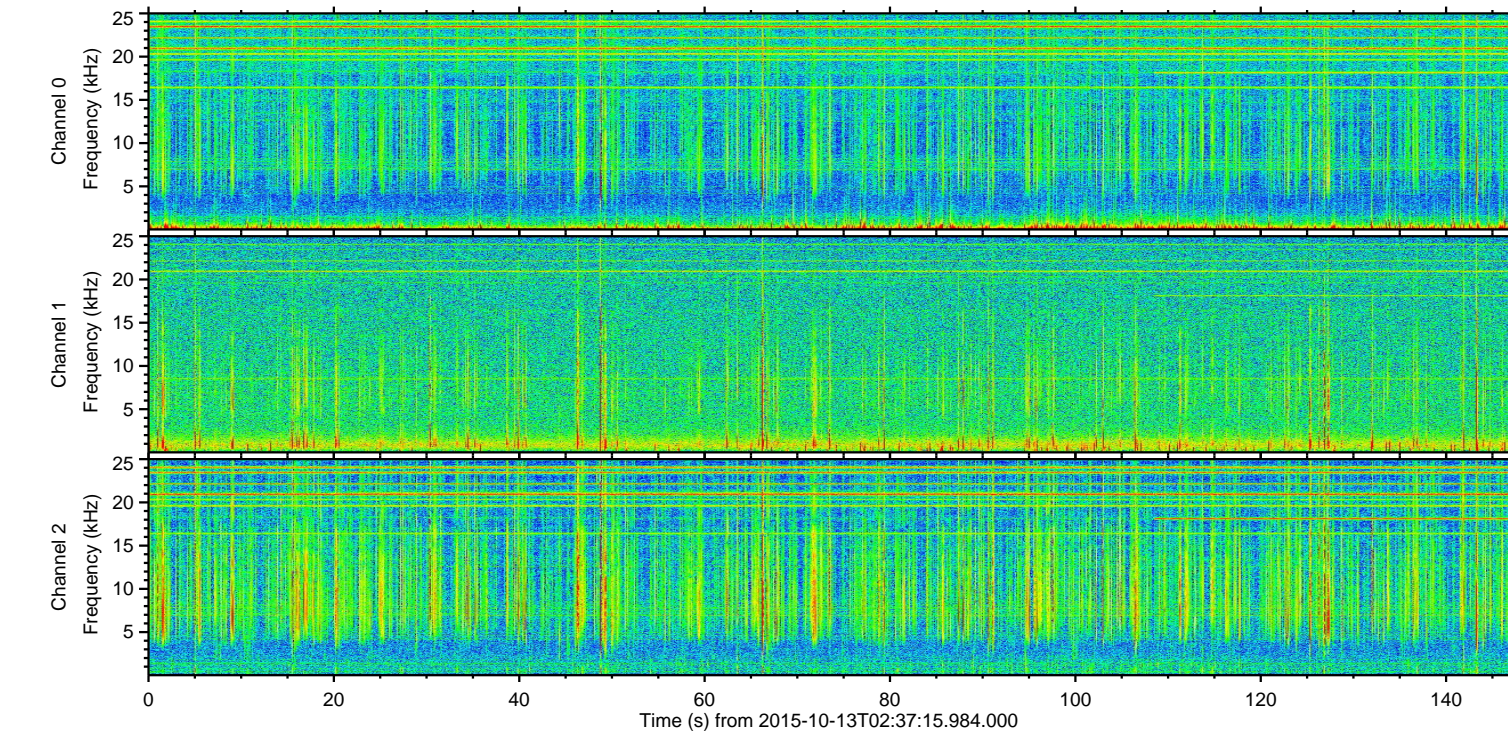
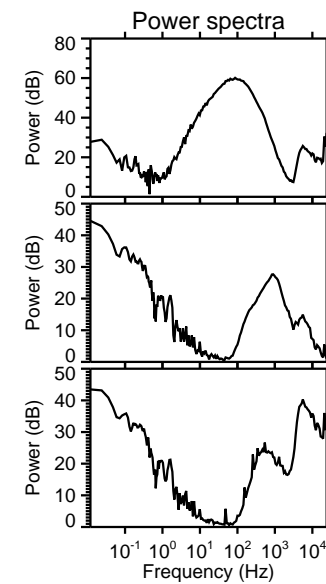
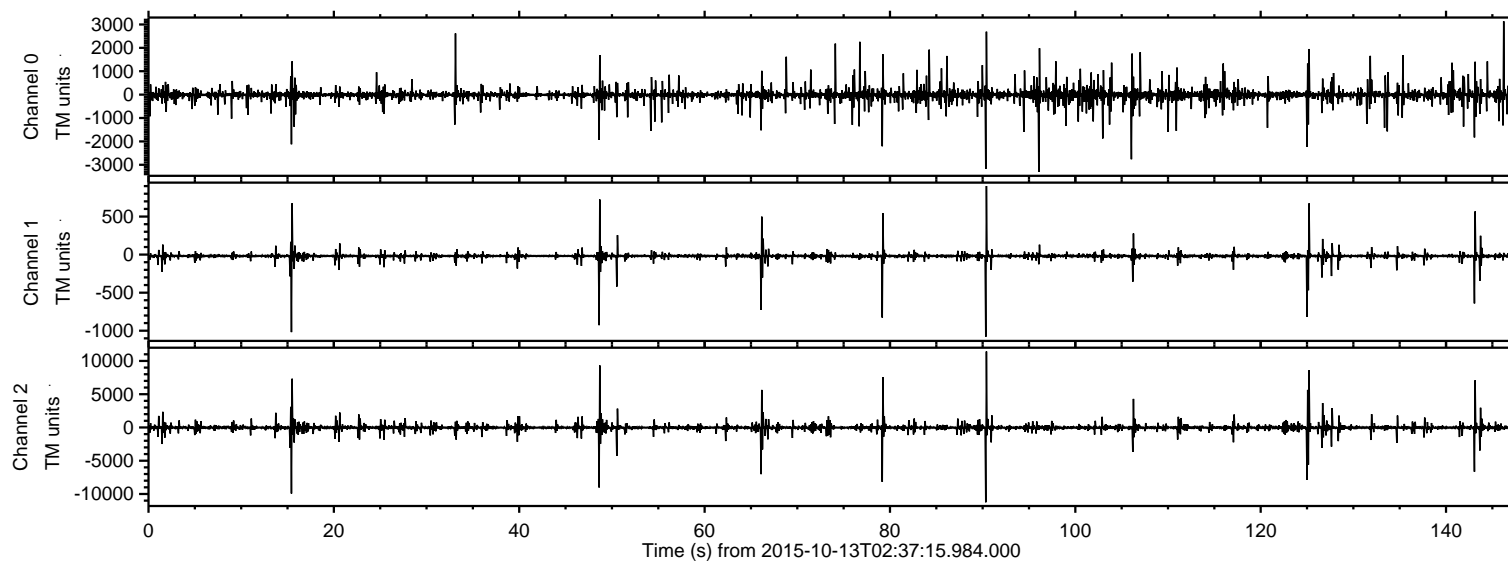
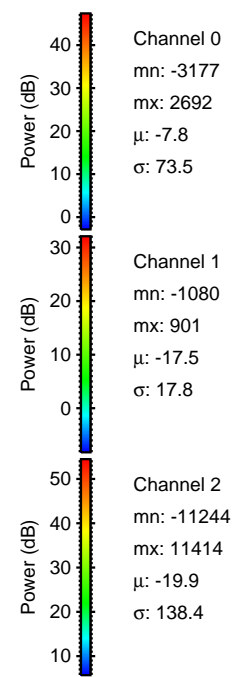
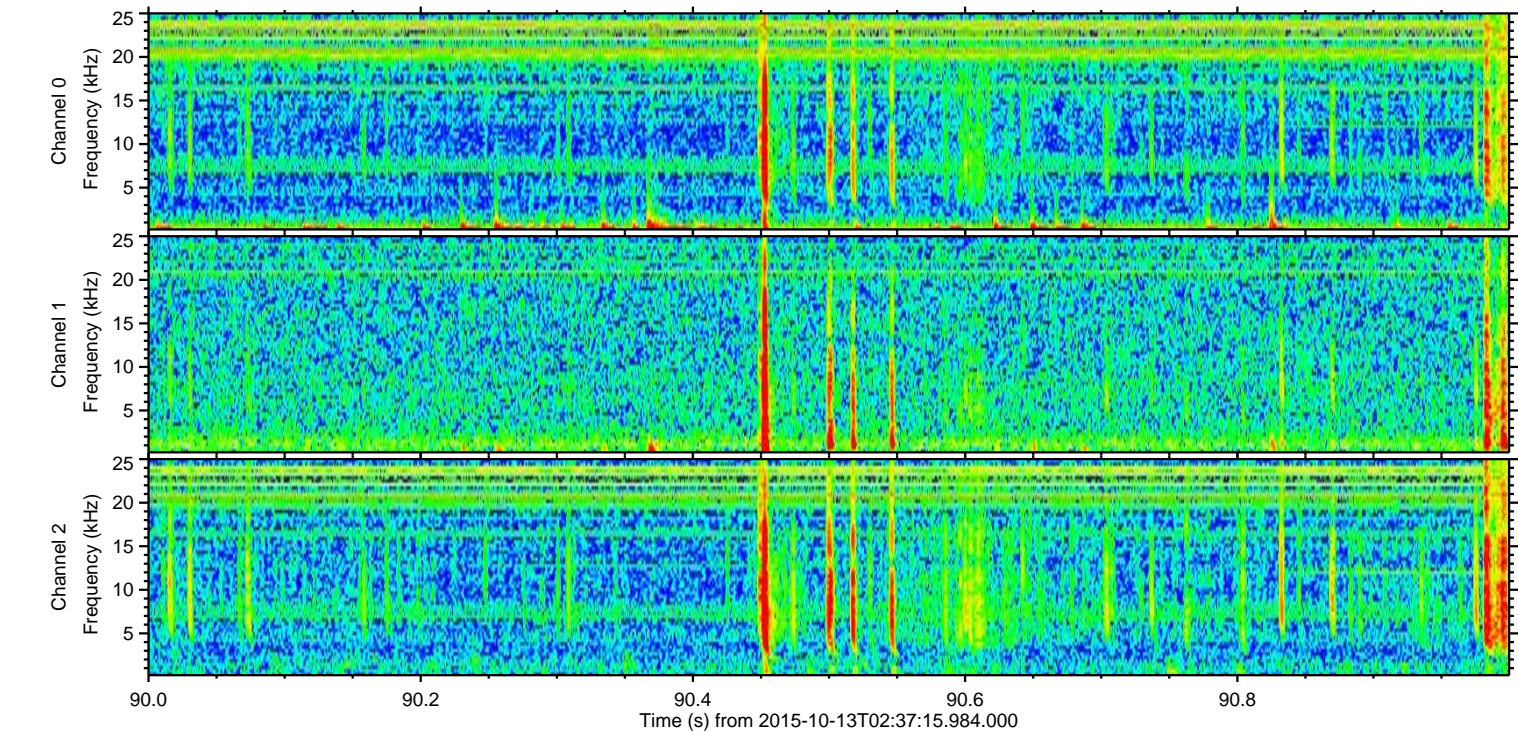
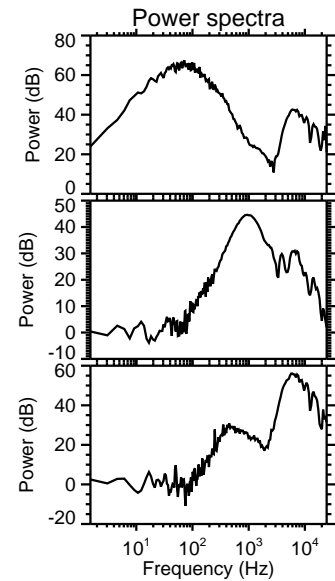
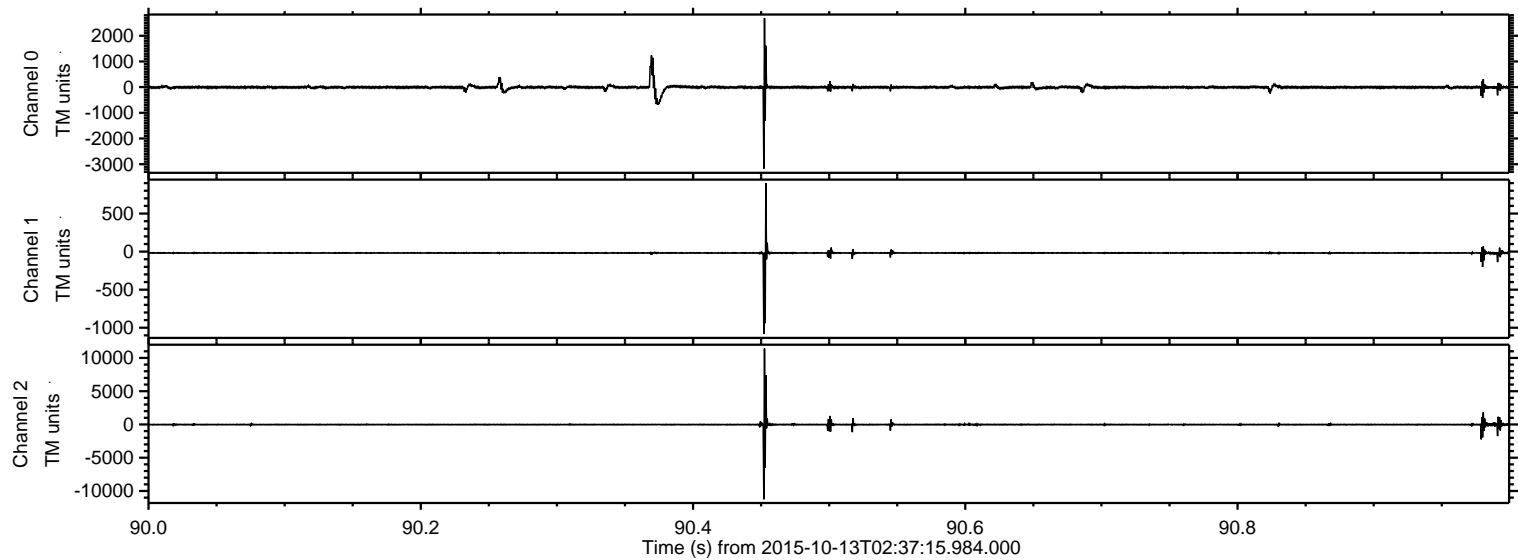


# ELMAVAN 3D WAVEFORMS (Measured data sampled at 50 kHz) 51000 packets of 144 samples from 2015-10-13T02:37:15.984.000.

Processed Mon Oct 19 00:21:32 2015 by ELM ver.2012-10-06 from 001\_\_elm20151013\_023714\_\_dat00.bin

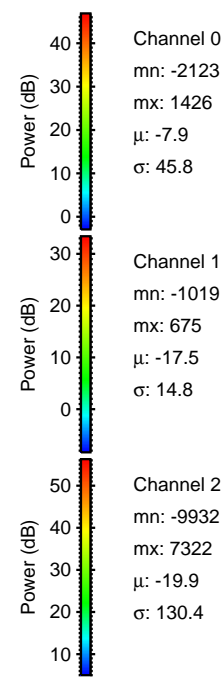
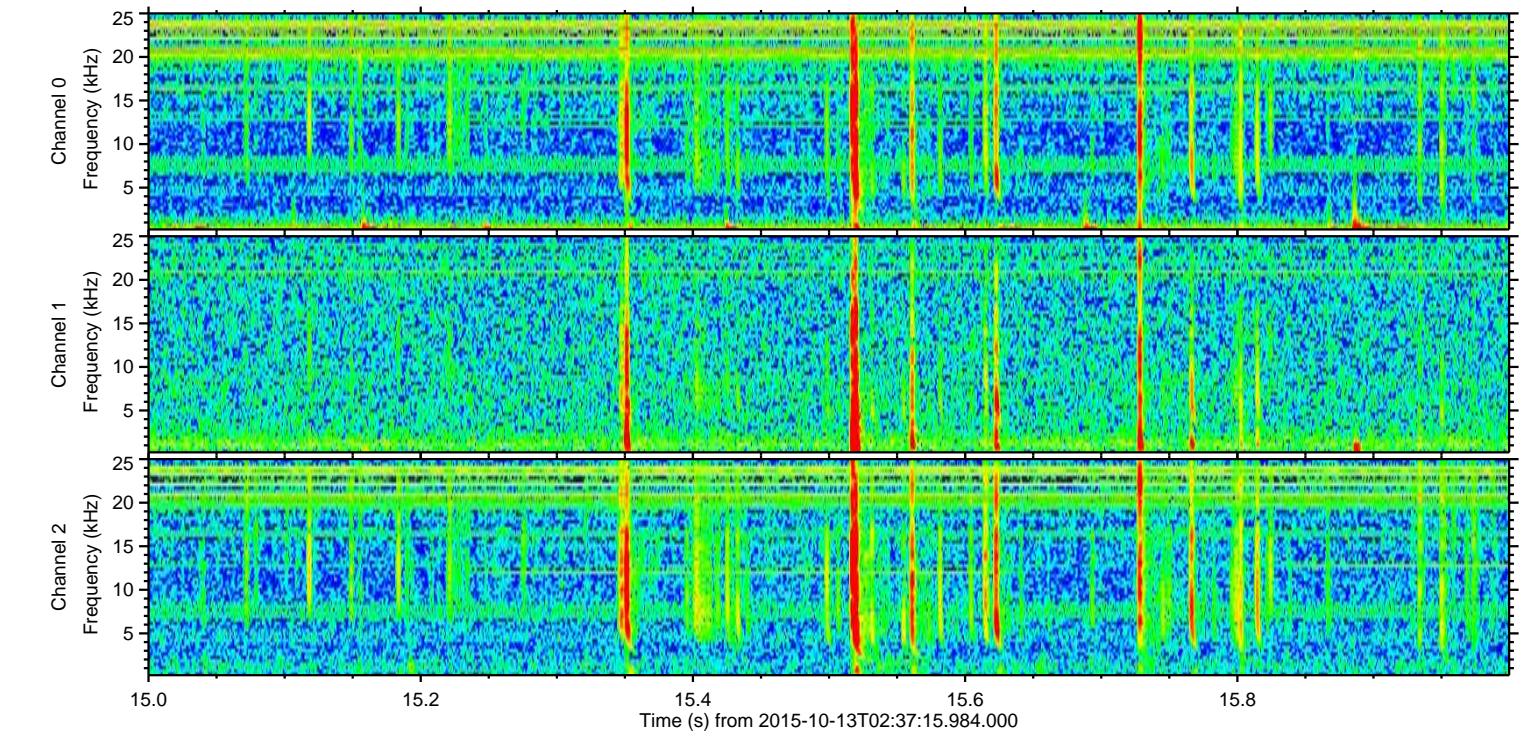
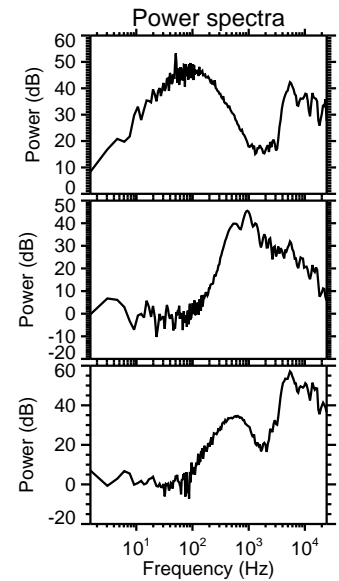
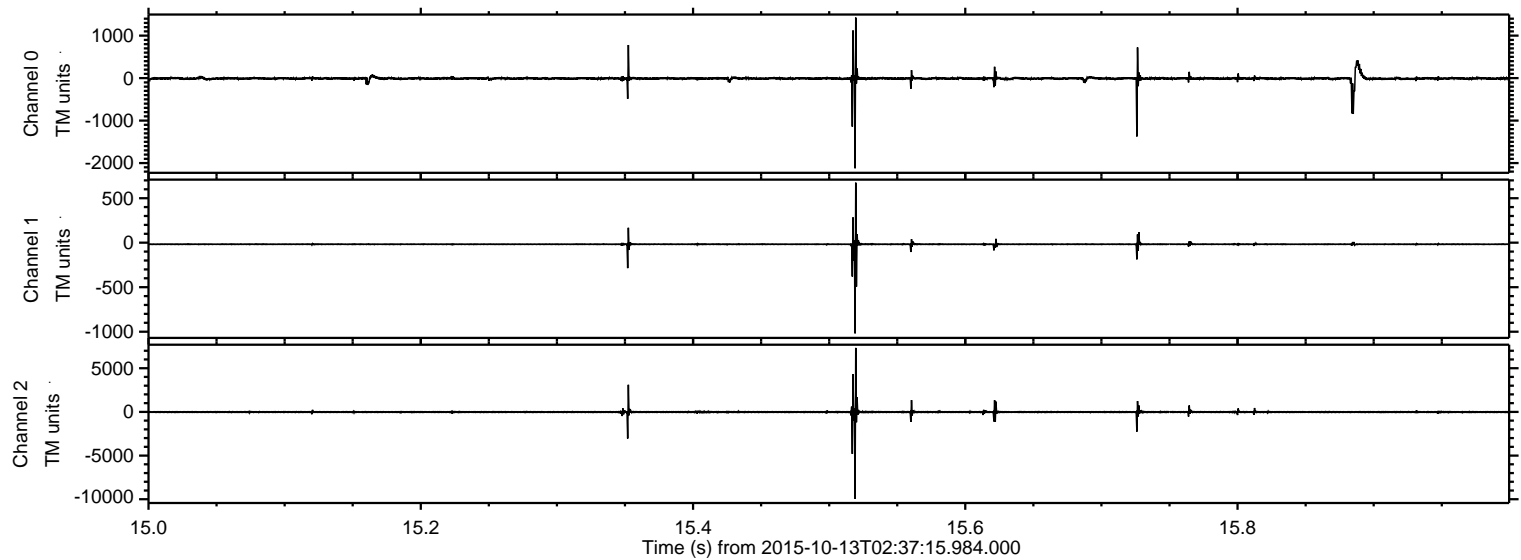


Processed Mon Oct 19 00:21:47 2015 by ELM ver.2012-10-06 from 001\_\_elm20151013\_023714\_\_dat00.bin



ELMAVAN 3D WAVEFORMS (Measured data sampled at 50 kHz) 51000 packets of 144 samples from 2015-10-13T02:37:15.984.000. Part 16/147

Processed Mon Oct 19 00:21:48 2015 by ELM ver.2012-10-06 from 001\_\_elm20151013\_023714\_\_dat00.bin

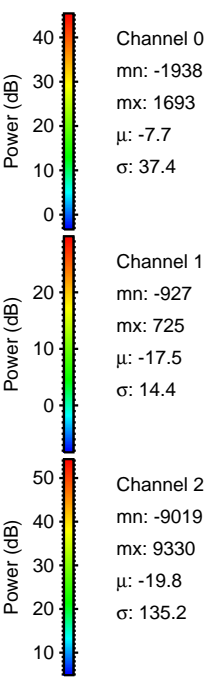
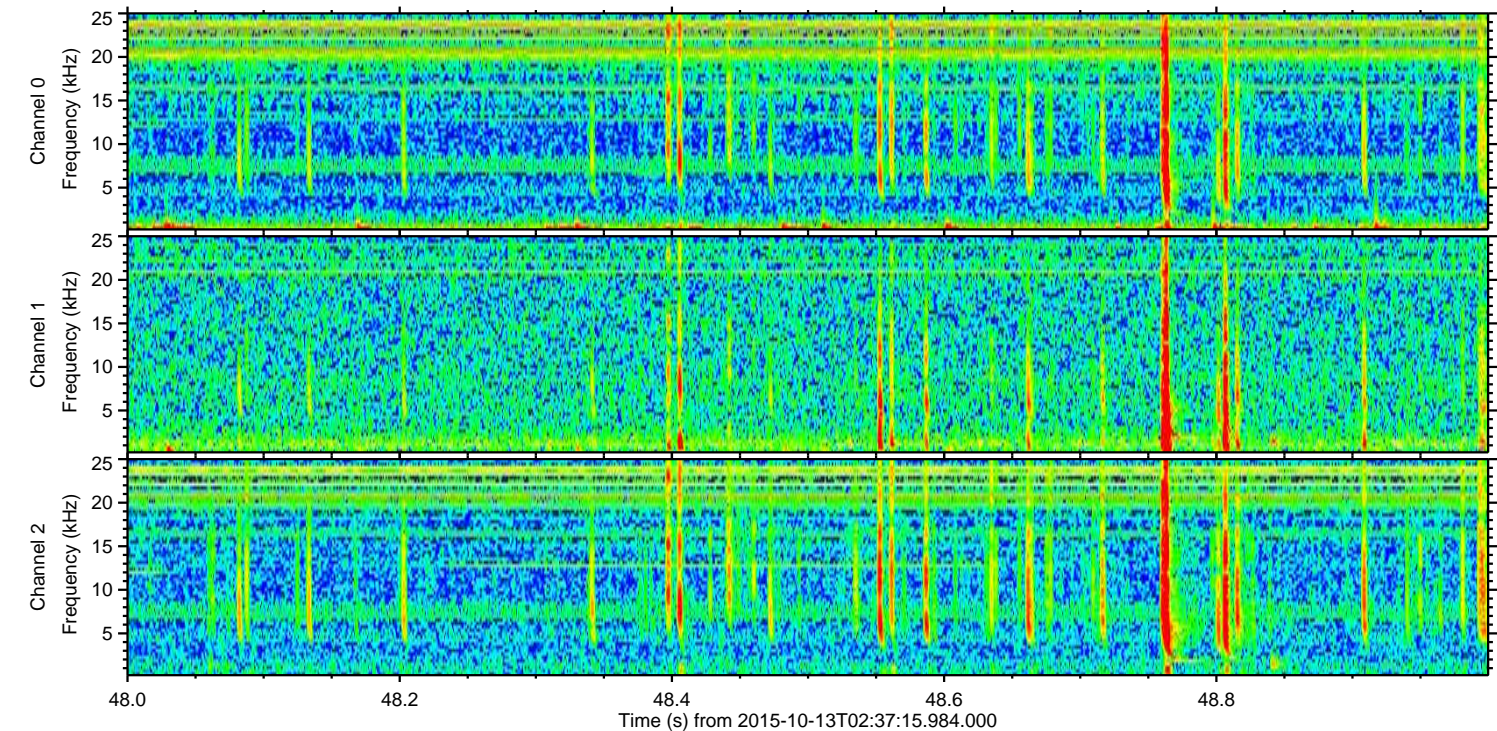
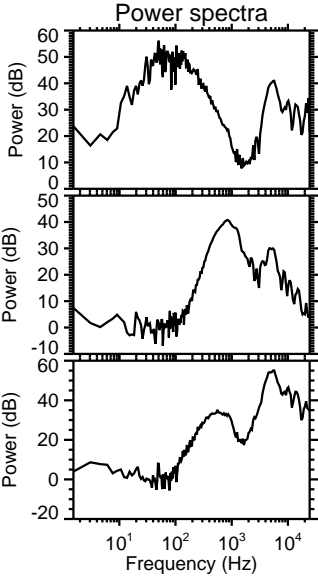
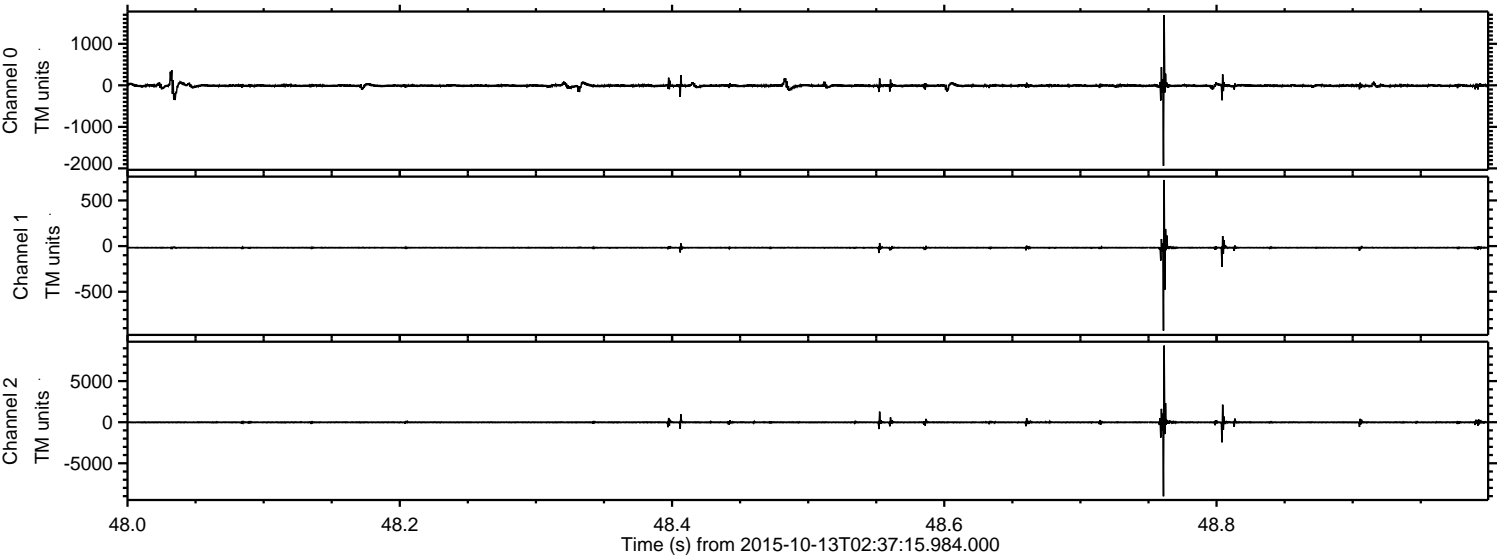


Channel 0  
mn: -2123  
mx: 1426  
 $\mu$ : -7.9  
 $\sigma$ : 45.8

Channel 1  
mn: -1019  
mx: 675  
 $\mu$ : -17.5  
 $\sigma$ : 14.8

Channel 2  
mn: -9932  
mx: 7322  
 $\mu$ : -19.9  
 $\sigma$ : 130.4

Processed Mon Oct 19 00:21:49 2015 by ELM ver.2012-10-06 from 001\_\_elm20151013\_023714\_\_dat00.bin



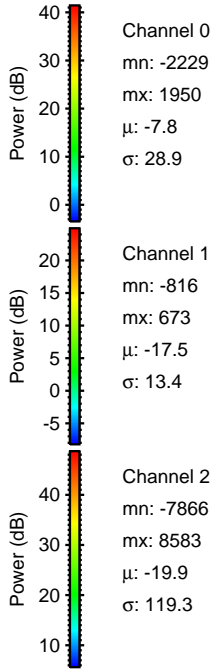
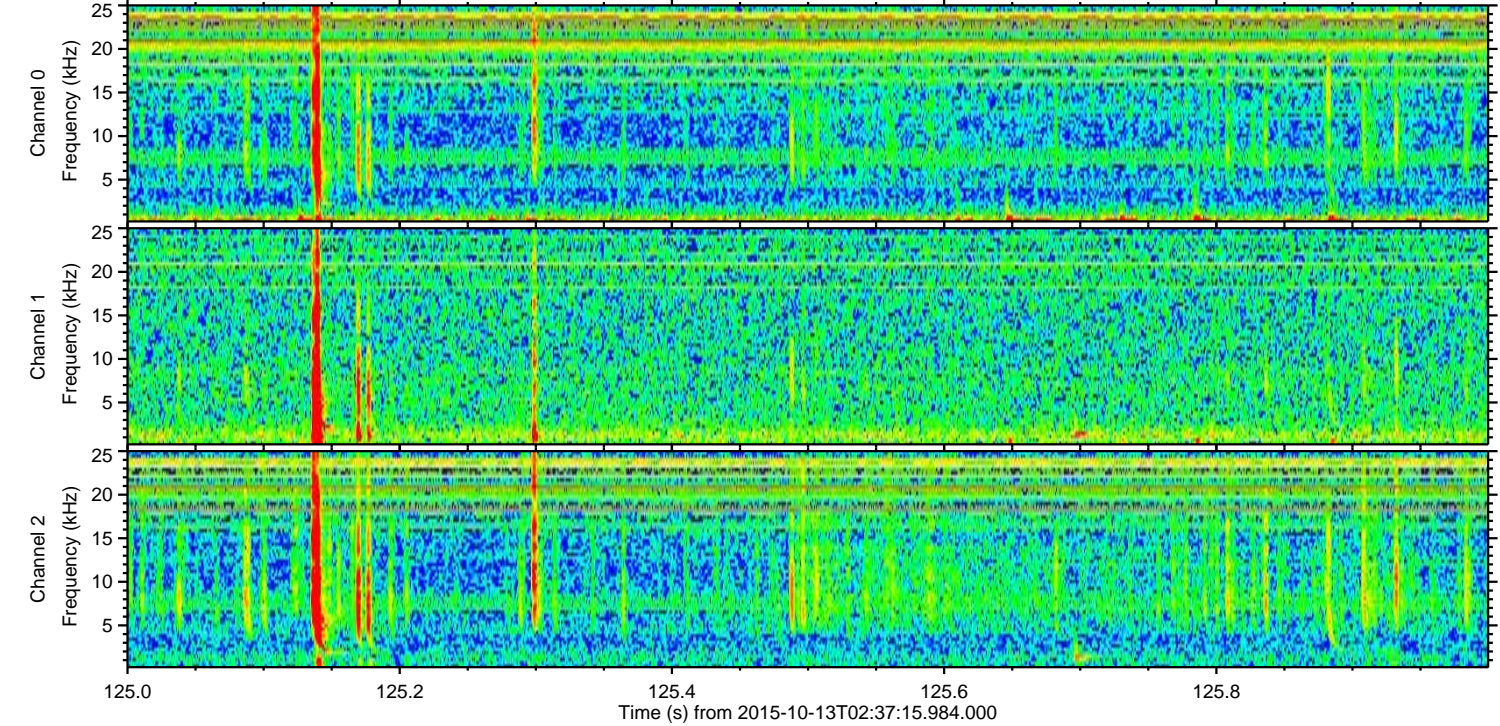
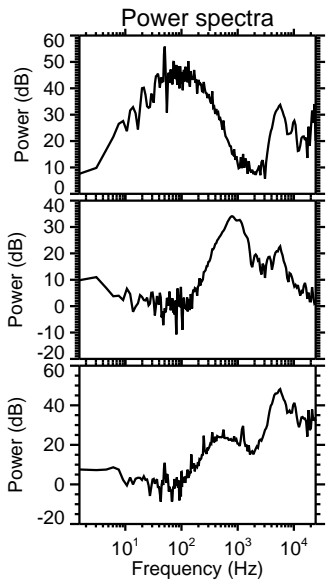
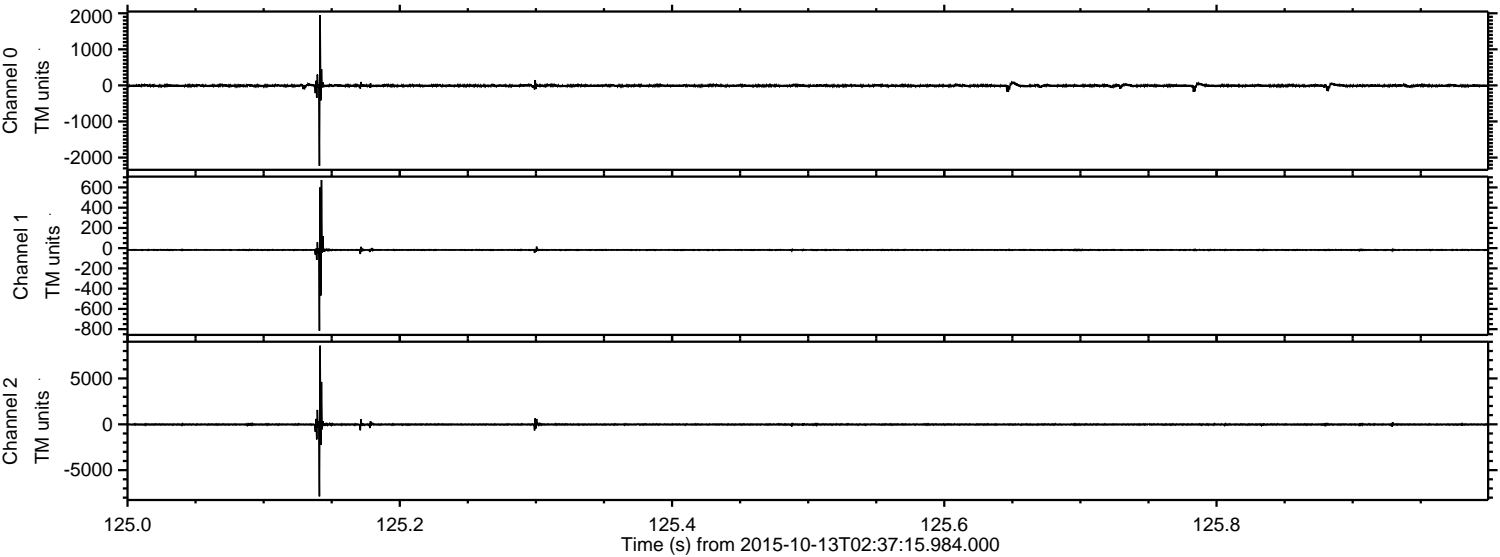
Channel 0  
mn: -1938  
mx: 1693  
 $\mu$ : -7.7  
 $\sigma$ : 37.4

Channel 1  
mn: -927  
mx: 725  
 $\mu$ : -17.5  
 $\sigma$ : 14.4

Channel 2  
mn: -9019  
mx: 9330  
 $\mu$ : -19.8  
 $\sigma$ : 135.2

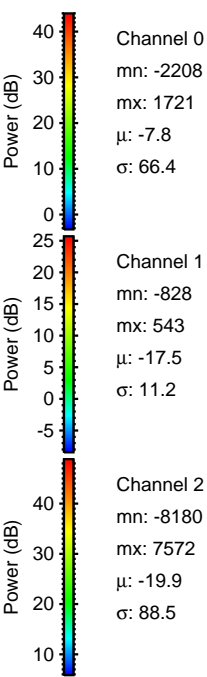
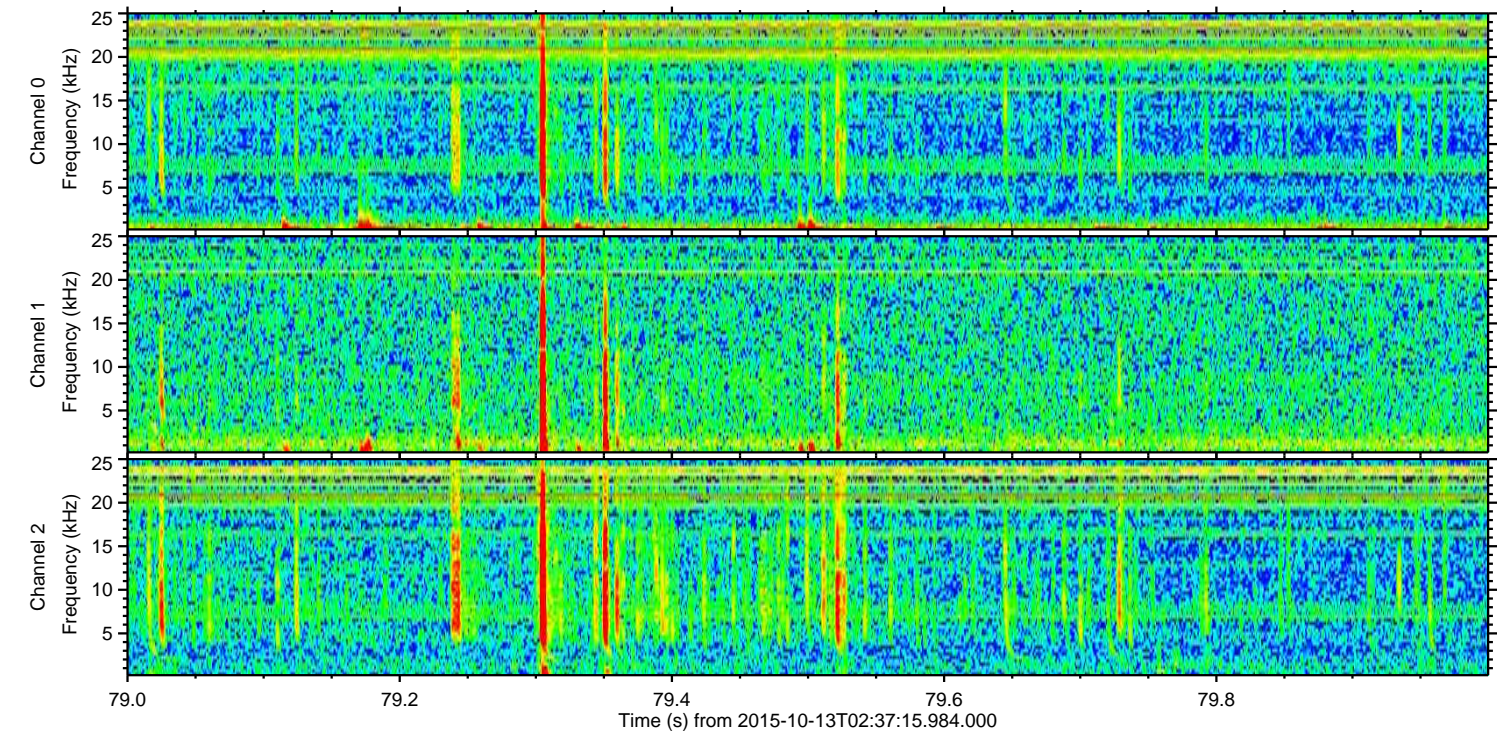
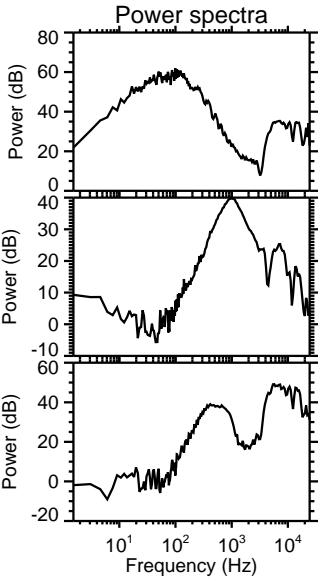
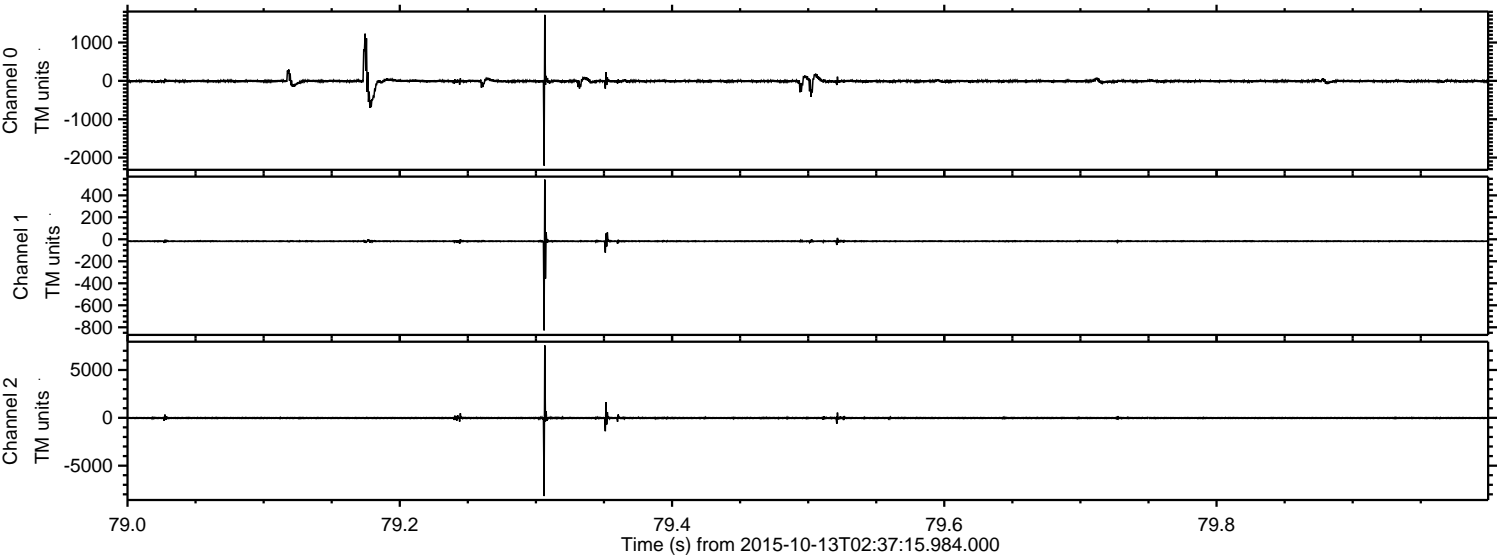
ELMAVAN 3D WAVEFORMS (Measured data sampled at 50 kHz) 51000 packets of 144 samples from 2015-10-13T02:37:15.984.000. Part 126/147

Processed Mon Oct 19 00:21:50 2015 by ELM ver.2012-10-06 from 001\_\_elm20151013\_023714\_\_dat00.bin



ELMAVAN 3D WAVEFORMS (Measured data sampled at 50 kHz) 51000 packets of 144 samples from 2015-10-13T02:37:15.984.000. Part 80/147

Processed Mon Oct 19 00:21:51 2015 by ELM ver.2012-10-06 from 001\_\_elm20151013\_023714\_\_dat00.bin



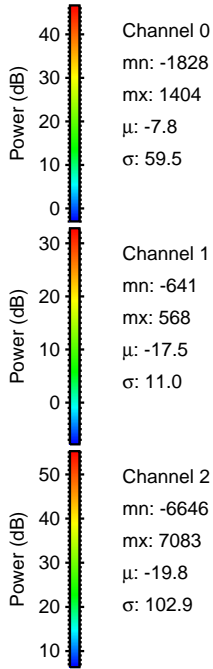
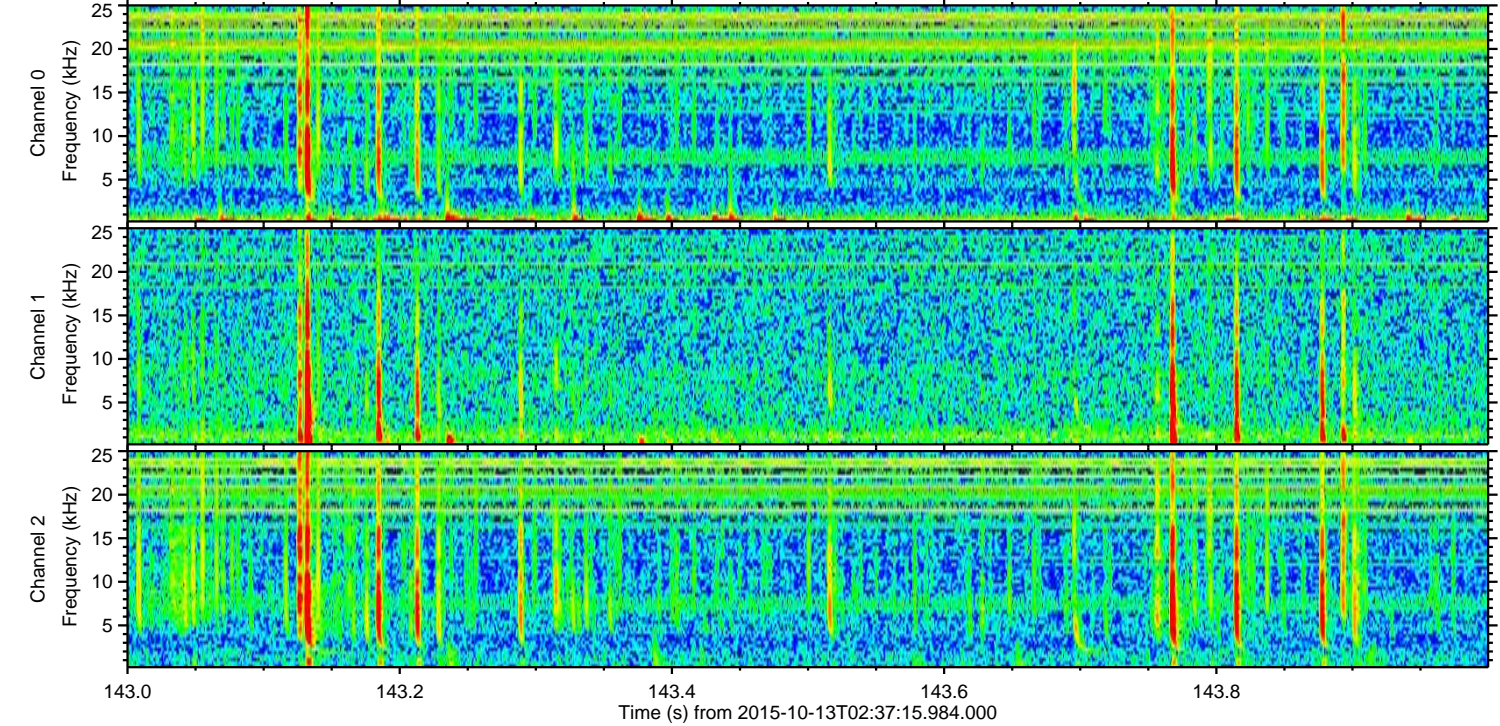
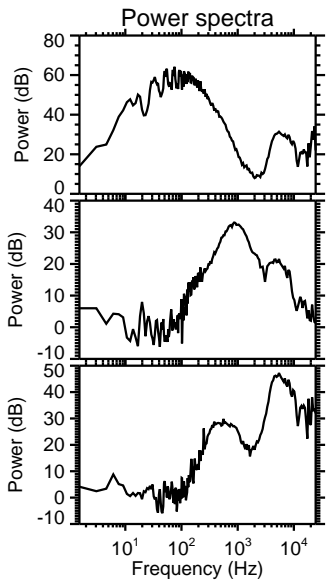
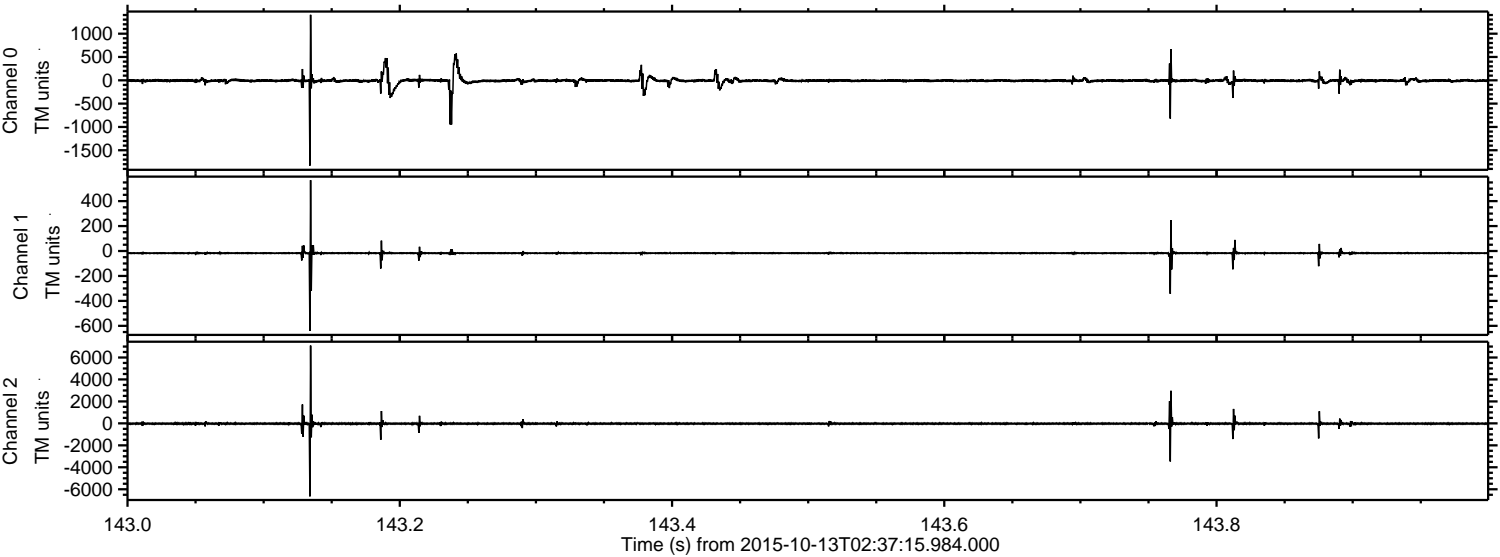
Channel 0  
mn: -2208  
mx: 1721  
 $\mu$ : -7.8  
 $\sigma$ : 66.4

Channel 1  
mn: -828  
mx: 543  
 $\mu$ : -17.5  
 $\sigma$ : 11.2

Channel 2  
mn: -8180  
mx: 7572  
 $\mu$ : -19.9  
 $\sigma$ : 88.5

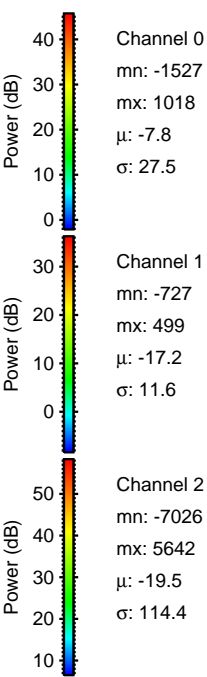
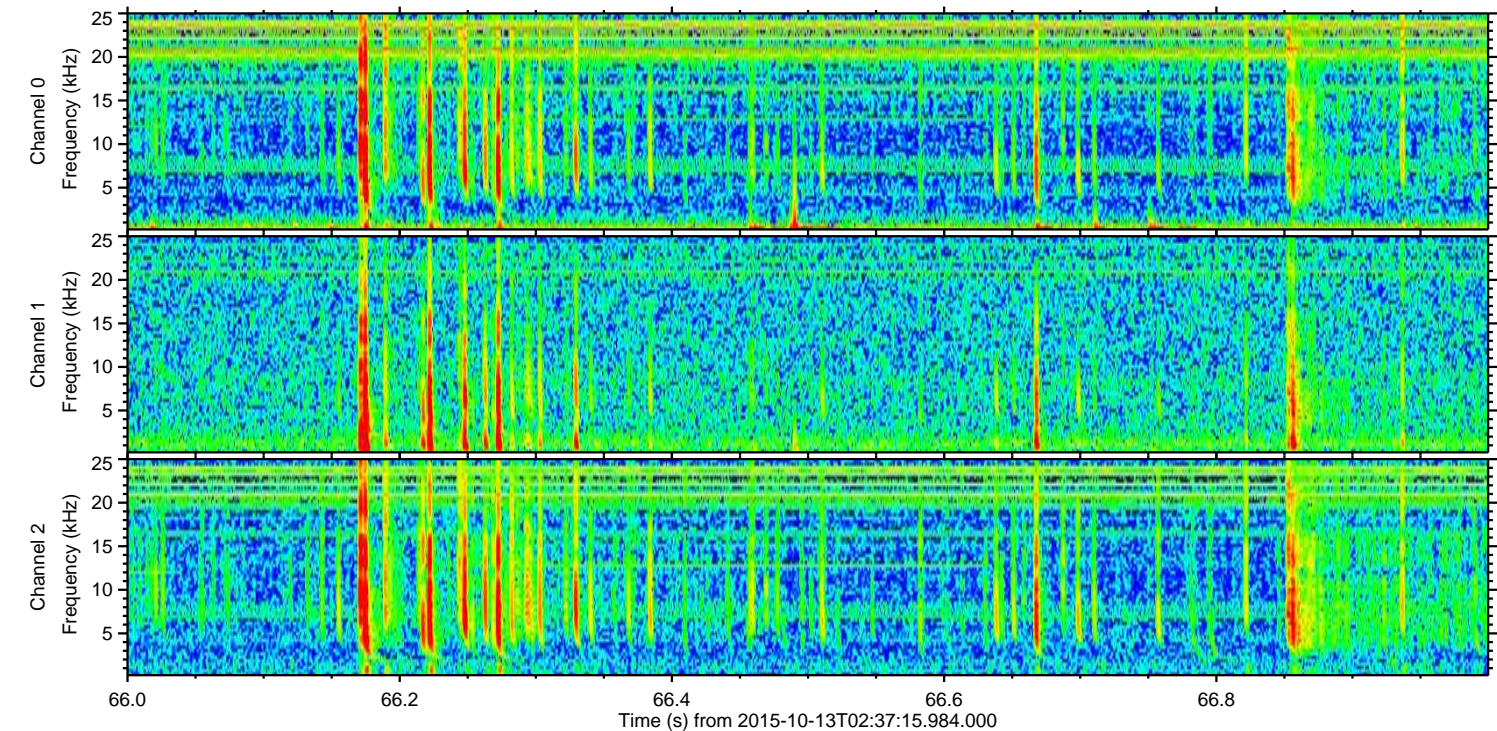
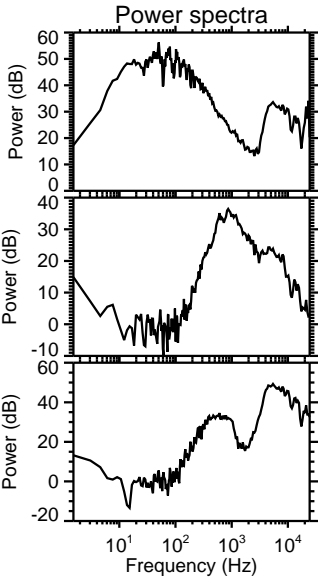
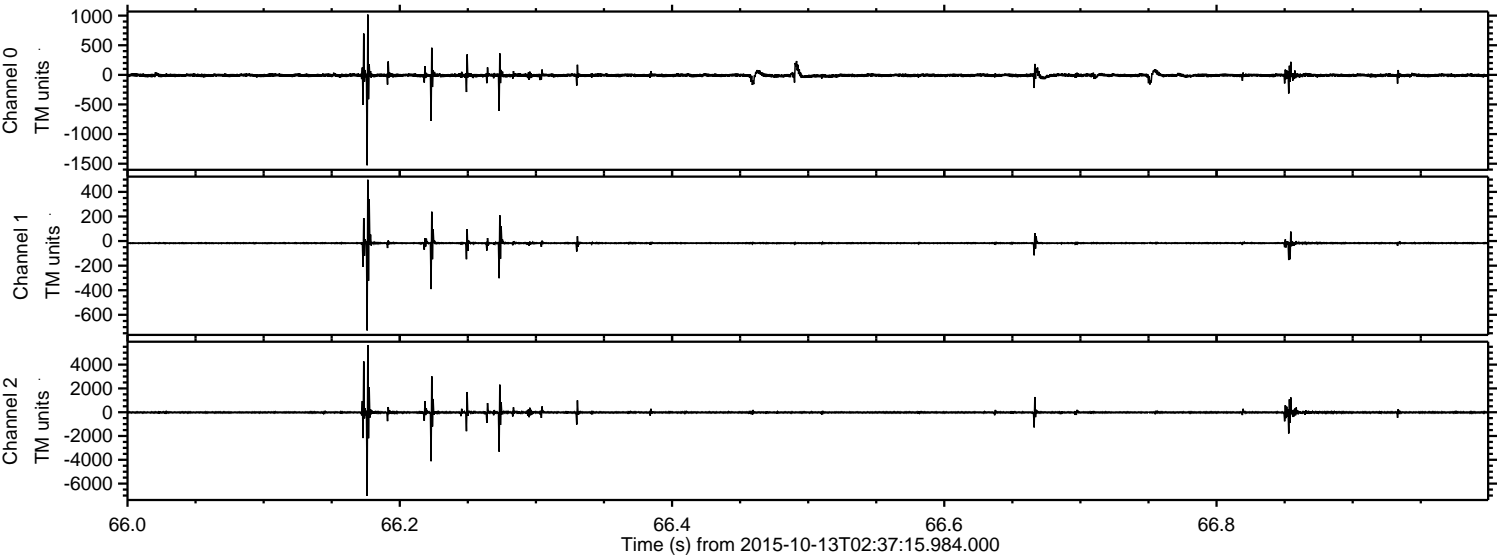
ELMAVAN 3D WAVEFORMS (Measured data sampled at 50 kHz) 51000 packets of 144 samples from 2015-10-13T02:37:15.984.000. Part 144/147

Processed Mon Oct 19 00:21:52 2015 by ELM ver.2012-10-06 from 001\_\_elm20151013\_023714\_\_dat00.bin



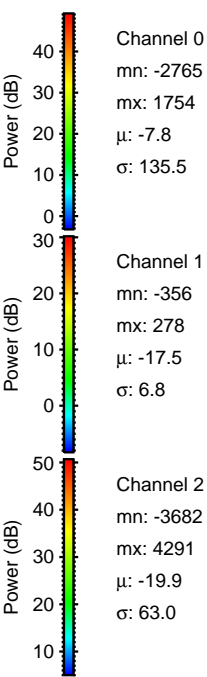
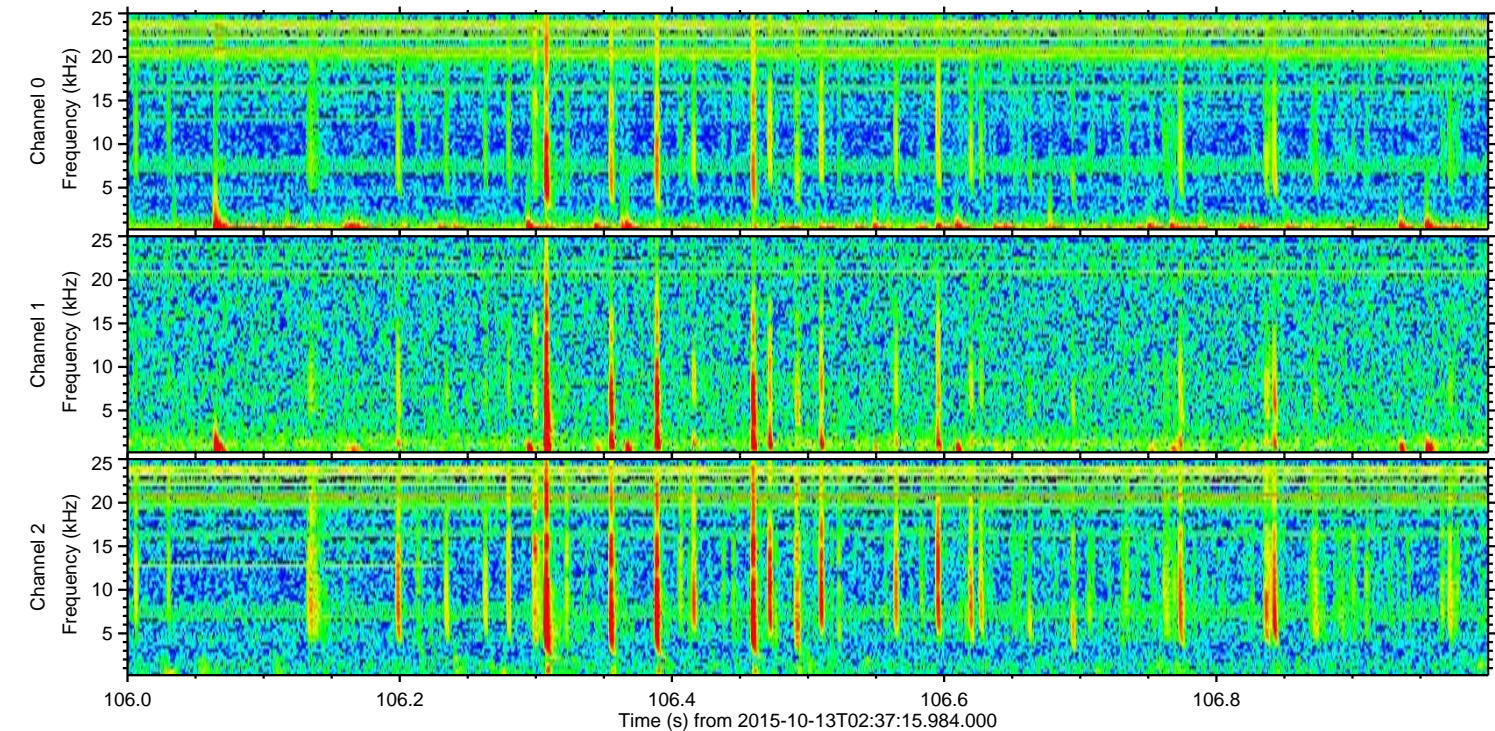
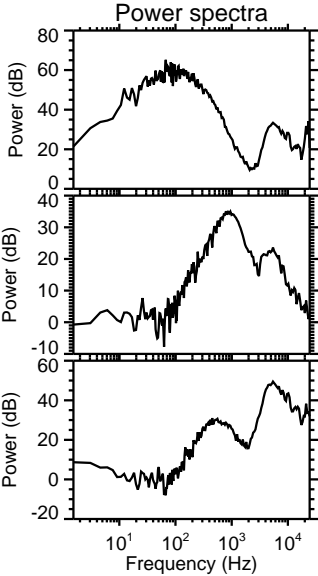
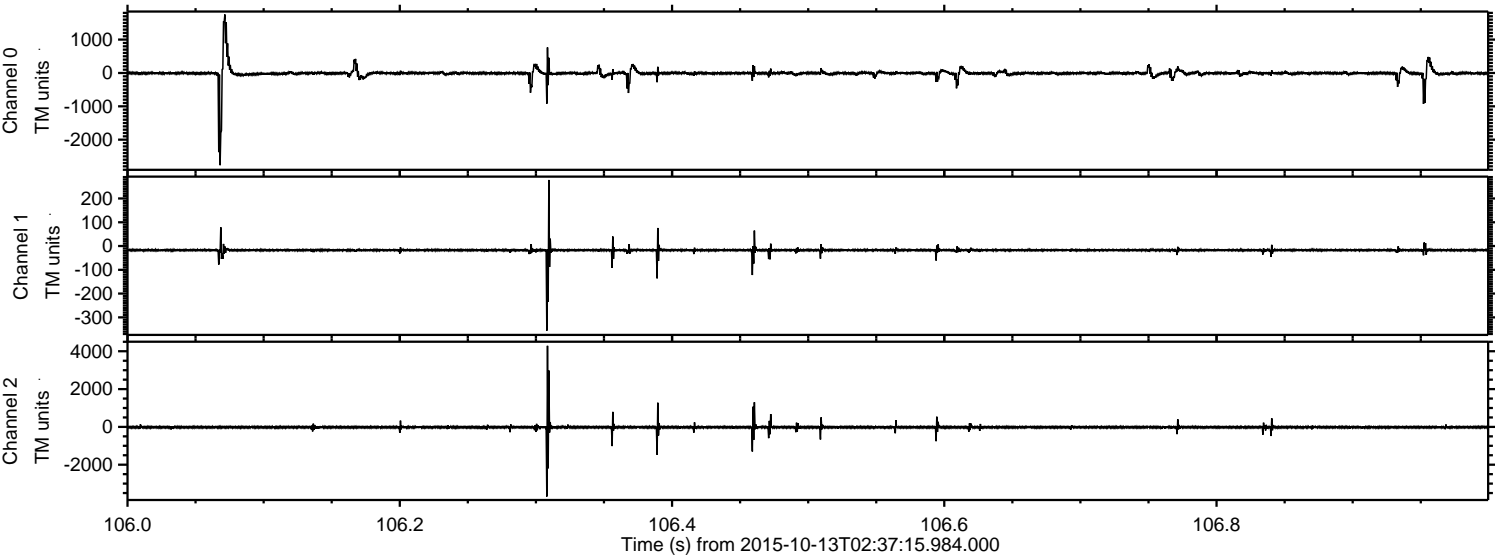
ELMAVAN 3D WAVEFORMS (Measured data sampled at 50 kHz) 51000 packets of 144 samples from 2015-10-13T02:37:15.984.000. Part 67/147

Processed Mon Oct 19 00:21:53 2015 by ELM ver.2012-10-06 from 001\_\_elm20151013\_023714\_\_dat00.bin



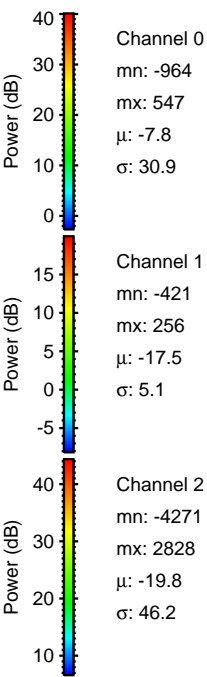
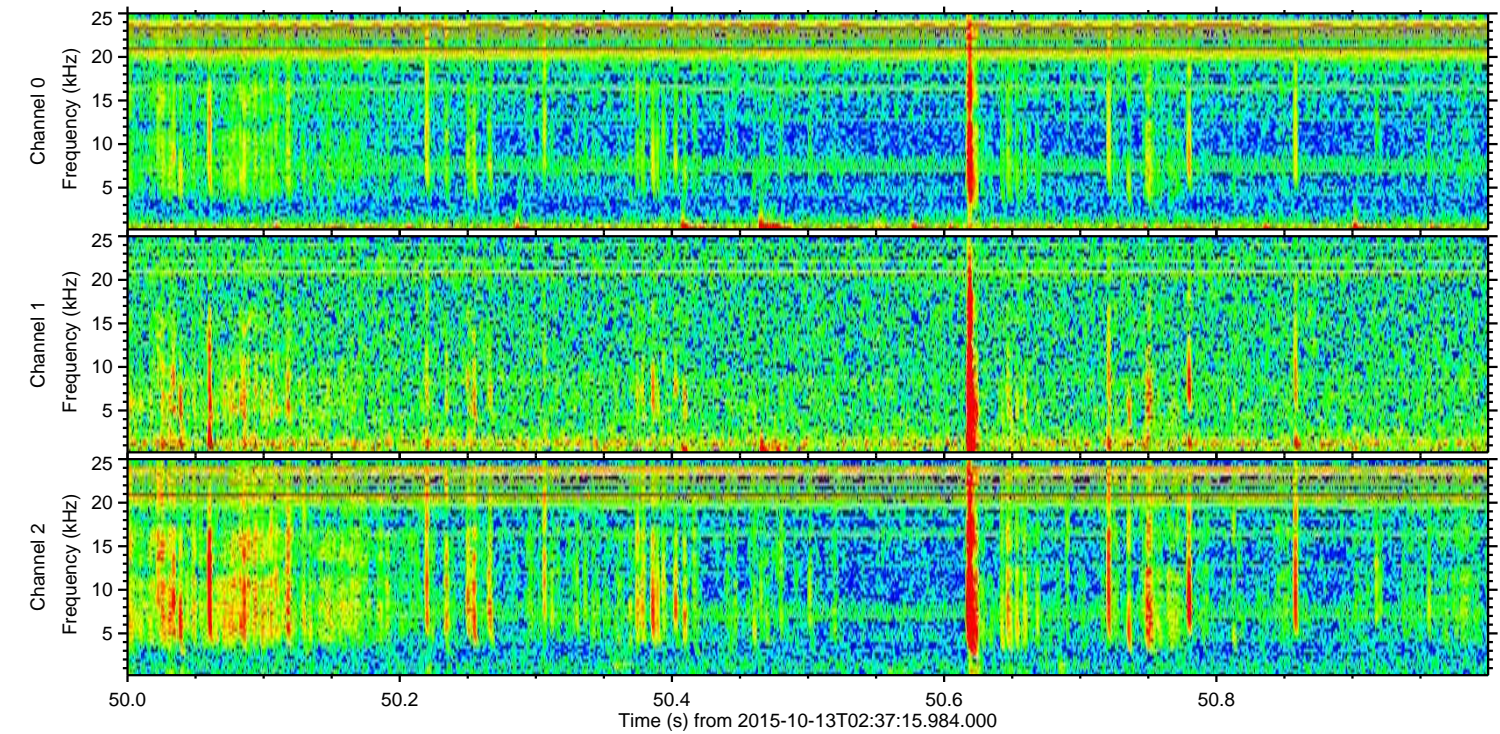
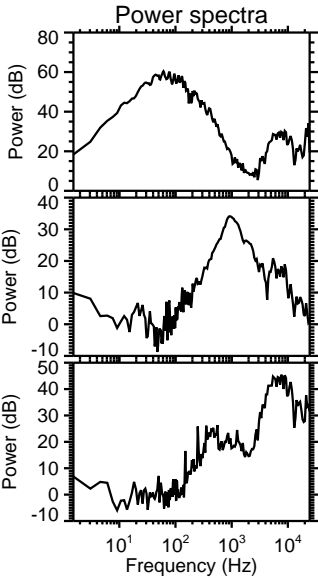
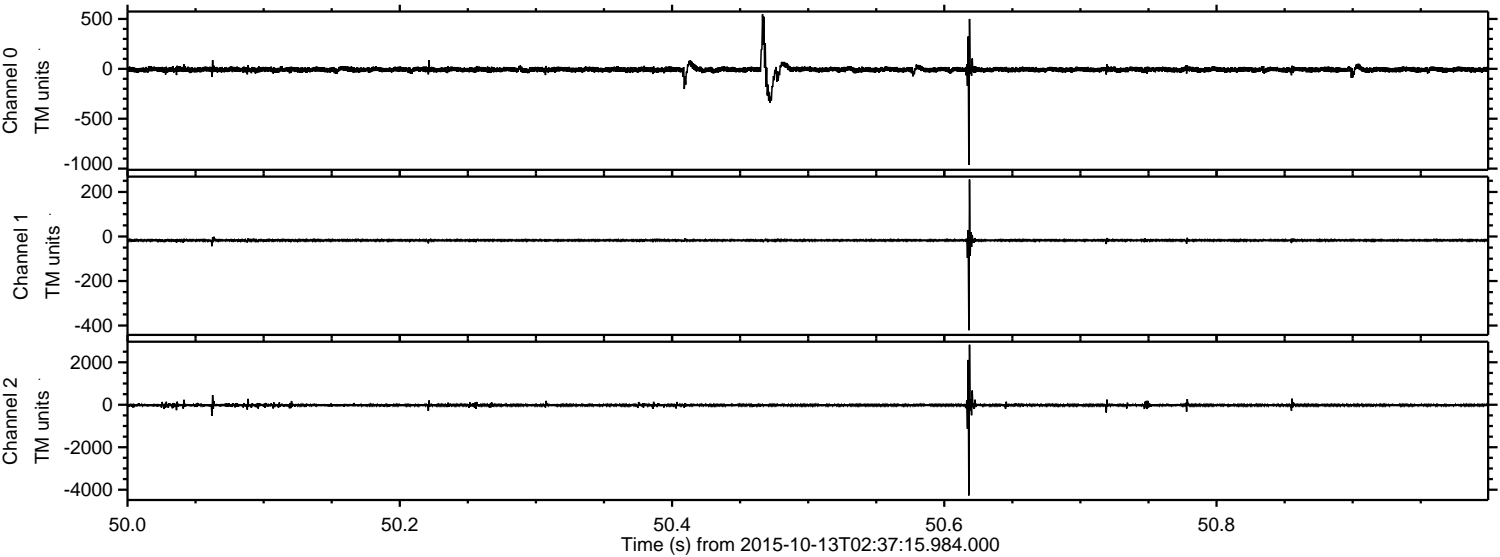
ELMAVAN 3D WAVEFORMS (Measured data sampled at 50 kHz) 51000 packets of 144 samples from 2015-10-13T02:37:15.984.000. Part 107/147

Processed Mon Oct 19 00:21:54 2015 by ELM ver.2012-10-06 from 001\_\_elm20151013\_023714\_\_dat00.bin



ELMAVAN 3D WAVEFORMS (Measured data sampled at 50 kHz) 51000 packets of 144 samples from 2015-10-13T02:37:15.984.000. Part 51/147

Processed Mon Oct 19 00:21:55 2015 by ELM ver.2012-10-06 from 001\_\_elm20151013\_023714\_\_dat00.bin



Channel 0  
mn: -964  
mx: 547  
 $\mu$ : -7.8  
 $\sigma$ : 30.9

Channel 1  
mn: -421  
mx: 256  
 $\mu$ : -17.5  
 $\sigma$ : 5.1

Channel 2  
mn: -4271  
mx: 2828  
 $\mu$ : -19.8  
 $\sigma$ : 46.2

ELMAVAN 3D WAVEFORMS (Measured data sampled at 50 kHz) 51000 packets of 144 samples from 2015-10-13T02:37:15.984.000. Part 43/147

Processed Mon Oct 19 00:21:56 2015 by ELM ver.2012-10-06 from 001\_\_elm20151013\_023714\_\_dat00.bin

