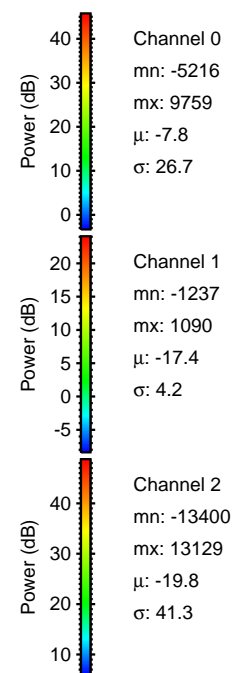
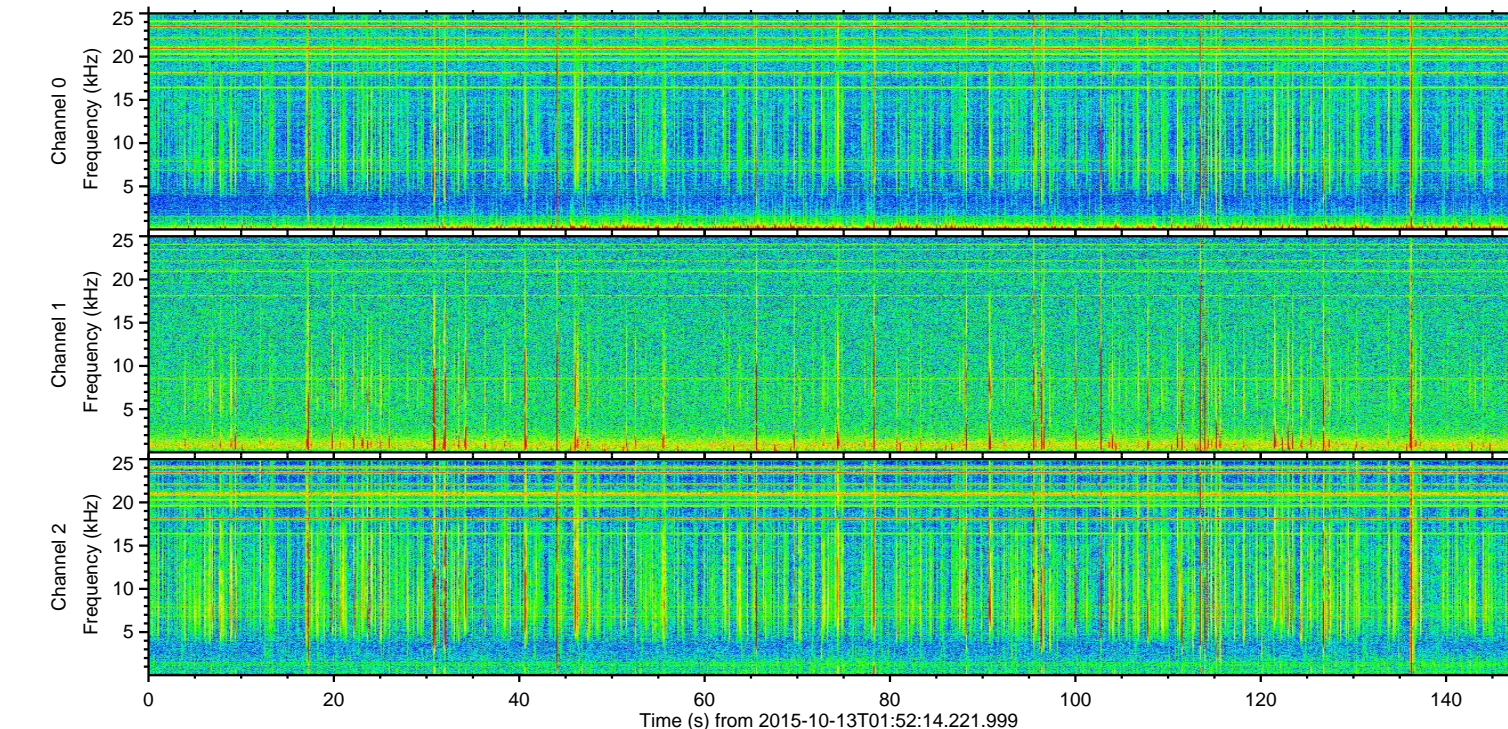
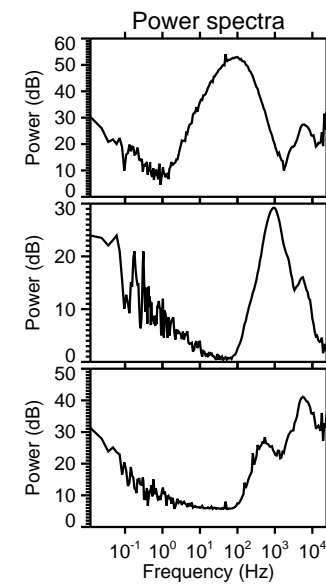
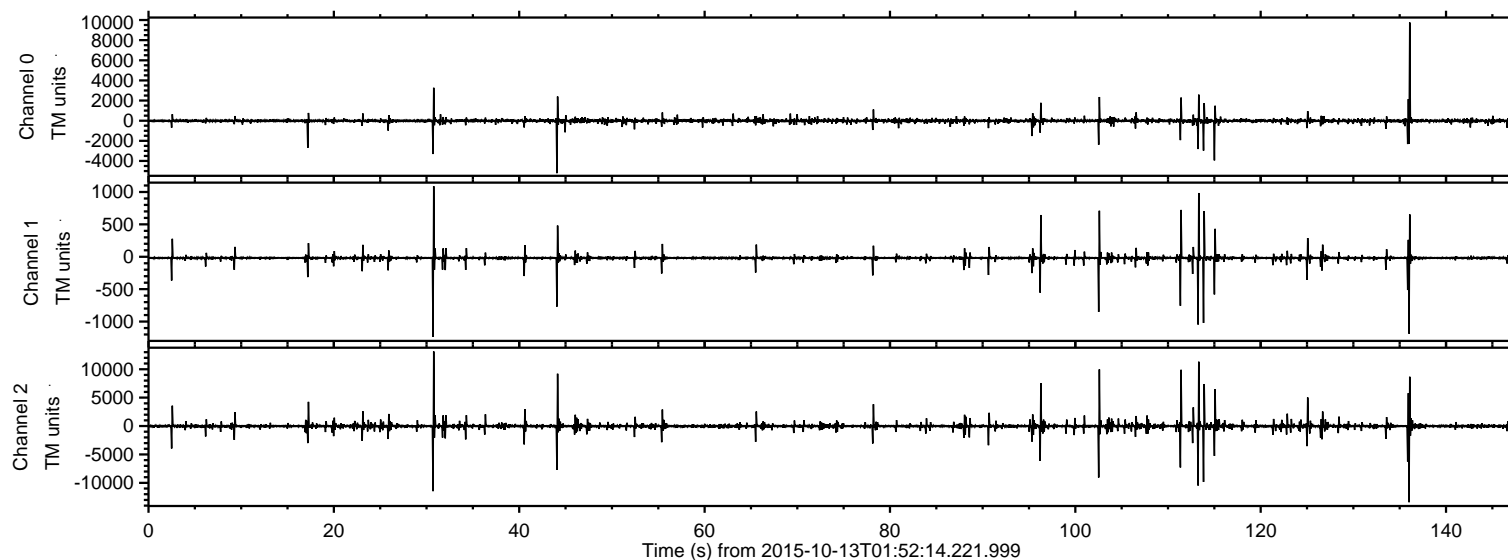


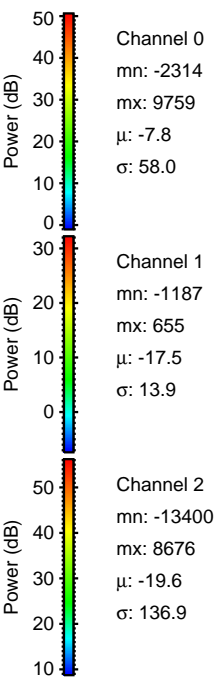
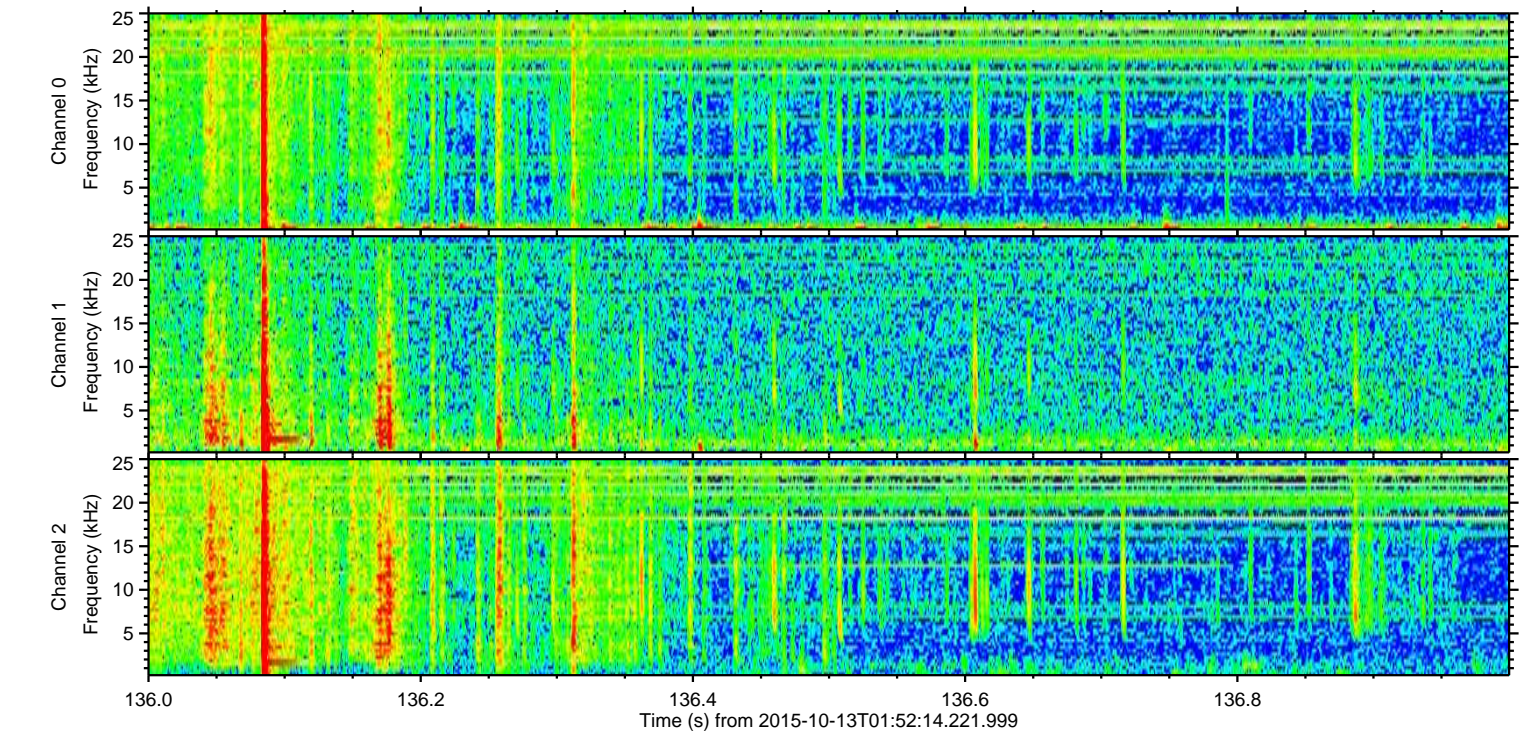
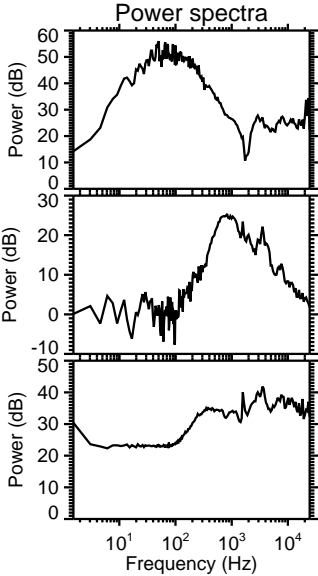
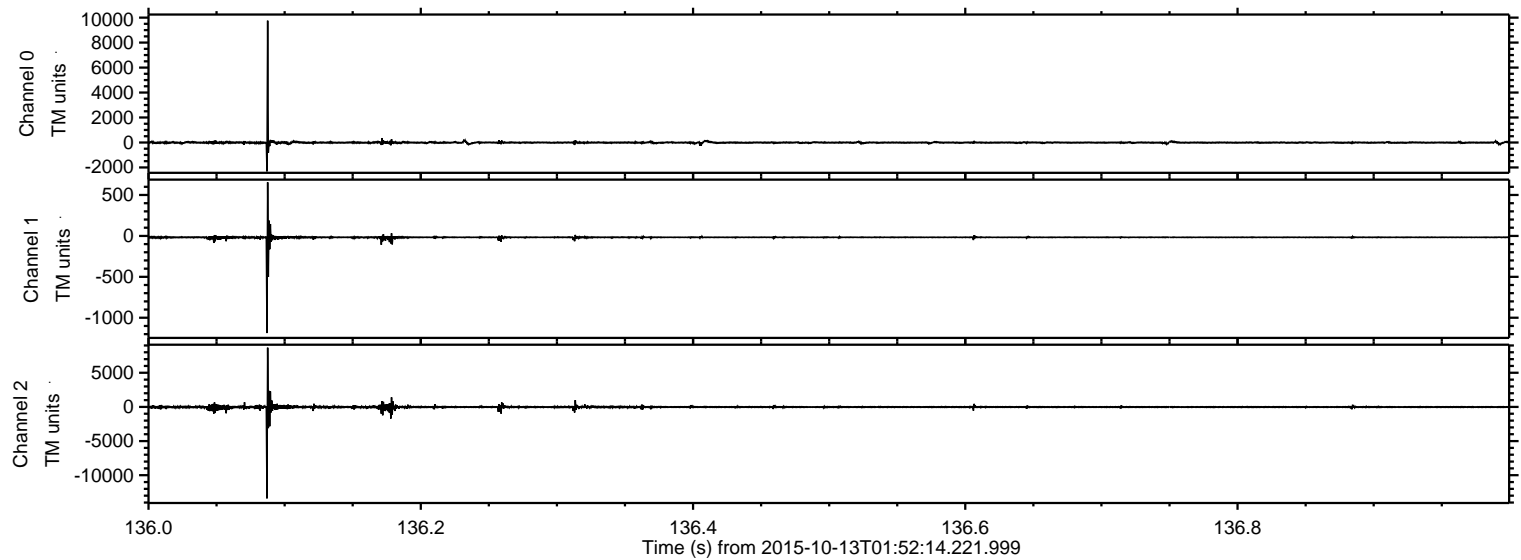
ELMAVAN 3D WAVEFORMS (Measured data sampled at 50 kHz) 51000 packets of 144 samples from 2015-10-13T01:52:14.221.999.

Processed Mon Oct 19 00:09:25 2015 by ELM ver.2012-10-06 from 001__elm20151013_015213__dat00.bin



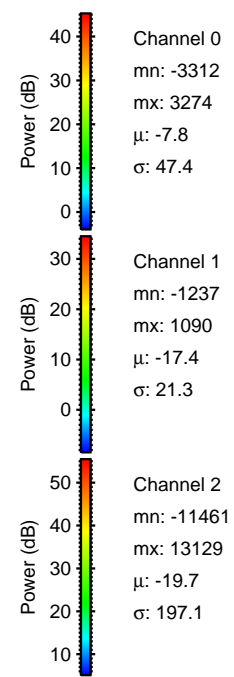
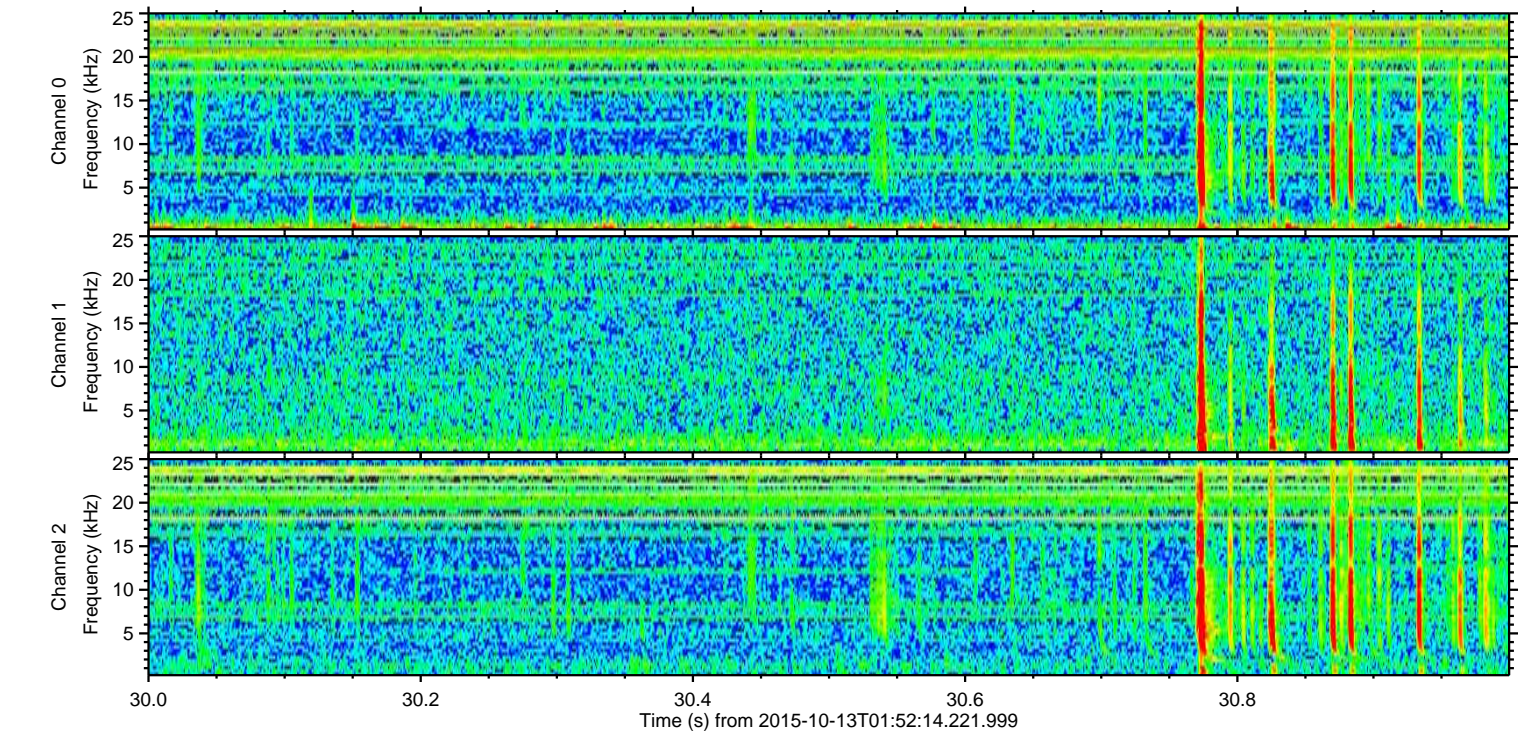
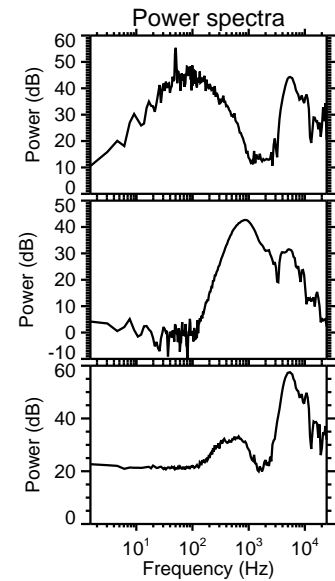
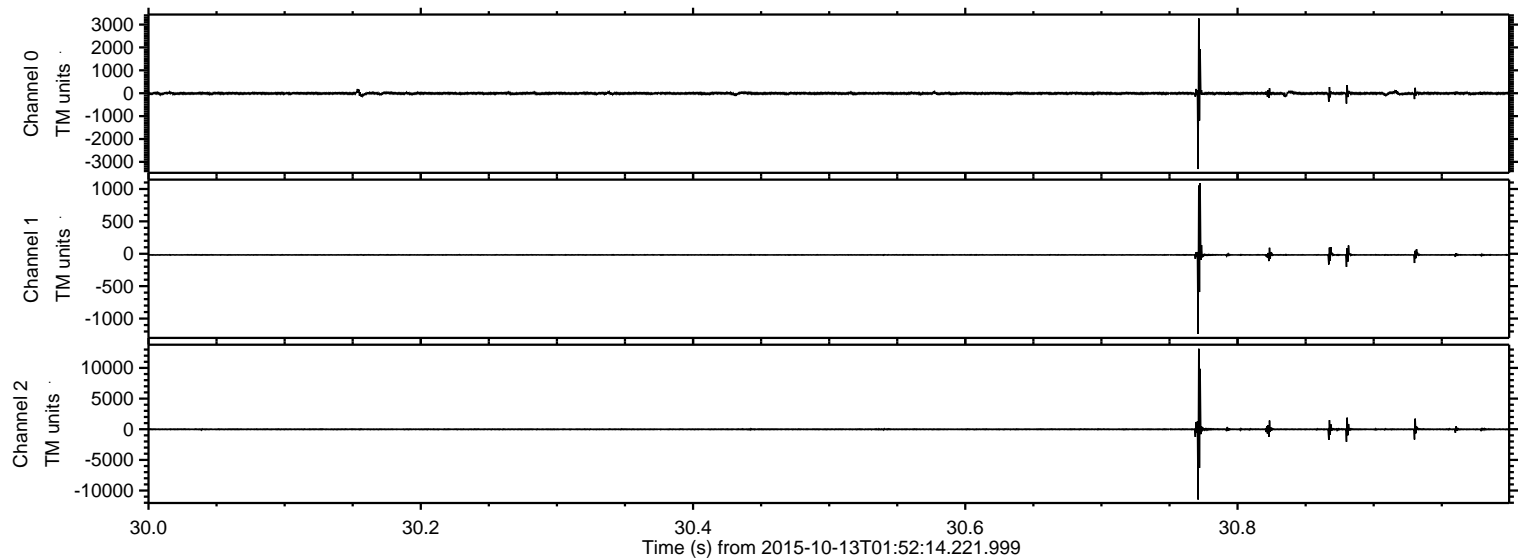
ELMAVAN 3D WAVEFORMS (Measured data sampled at 50 kHz) 51000 packets of 144 samples from 2015-10-13T01:52:14.221.999. Part 137/147

Processed Mon Oct 19 00:09:39 2015 by ELM ver.2012-10-06 from 001__elm20151013_015213__dat00.bin



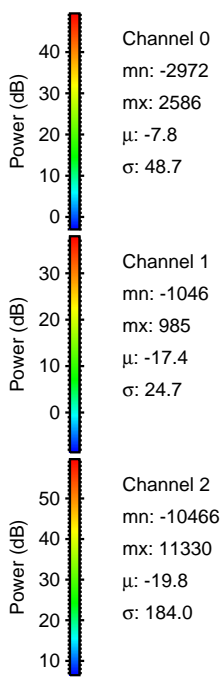
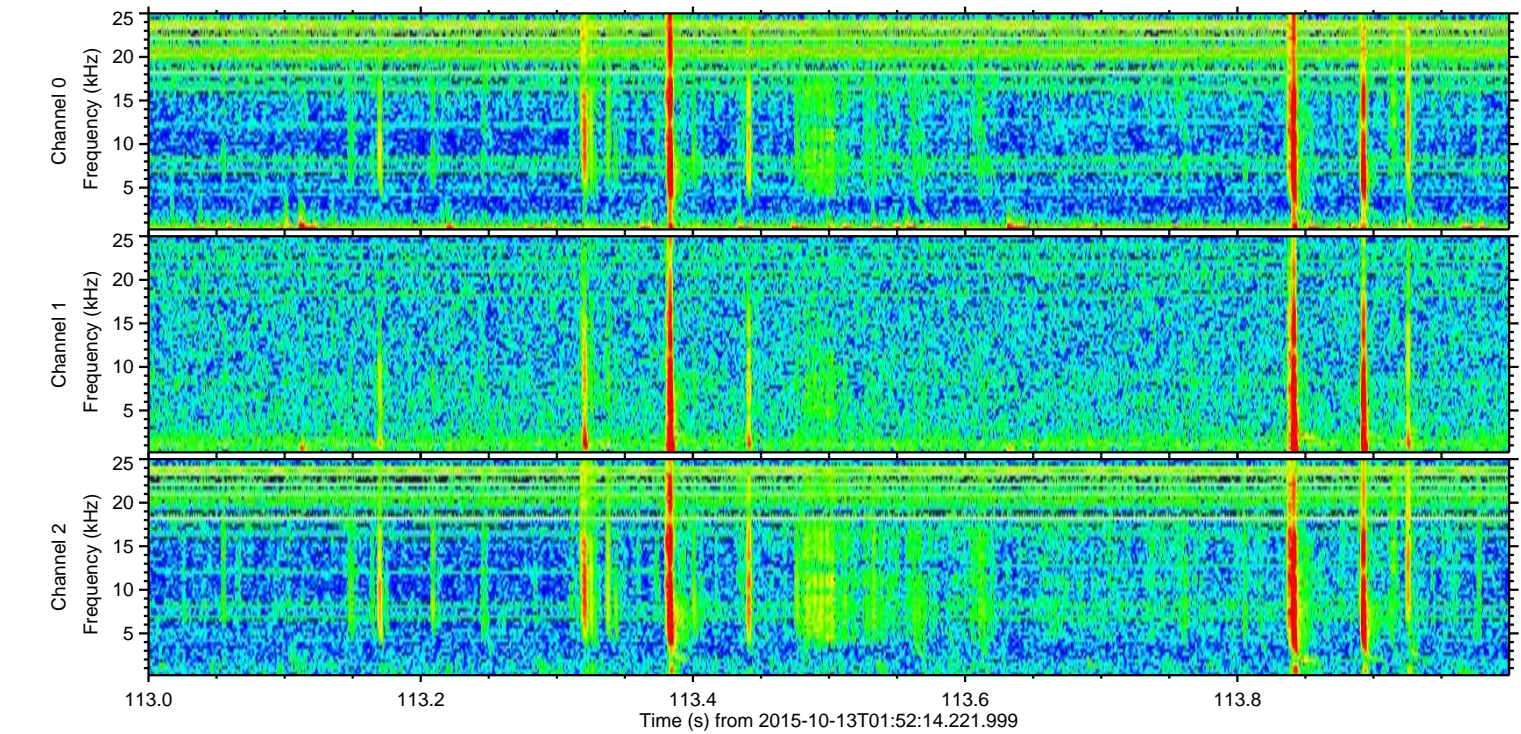
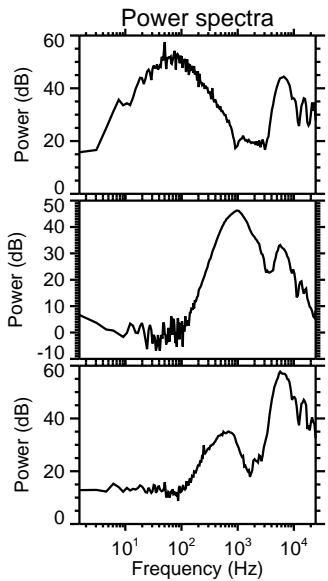
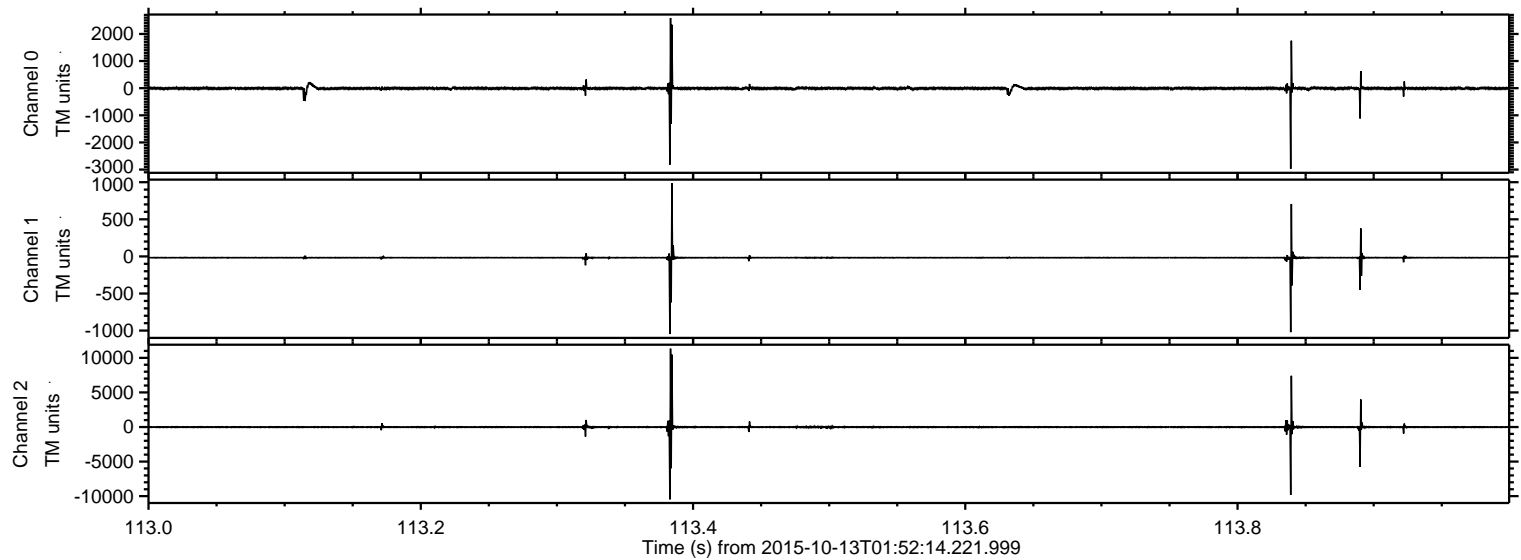
ELMAVAN 3D WAVEFORMS (Measured data sampled at 50 kHz) 51000 packets of 144 samples from 2015-10-13T01:52:14.221.999. Part 31/147

Processed Mon Oct 19 00:09:40 2015 by ELM ver.2012-10-06 from 001__elm20151013_015213__dat00.bin



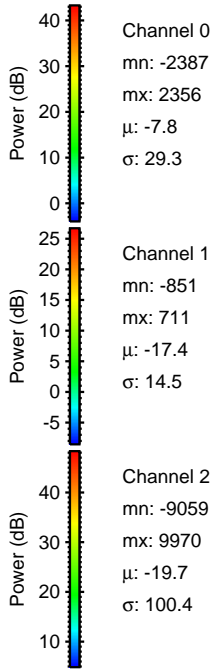
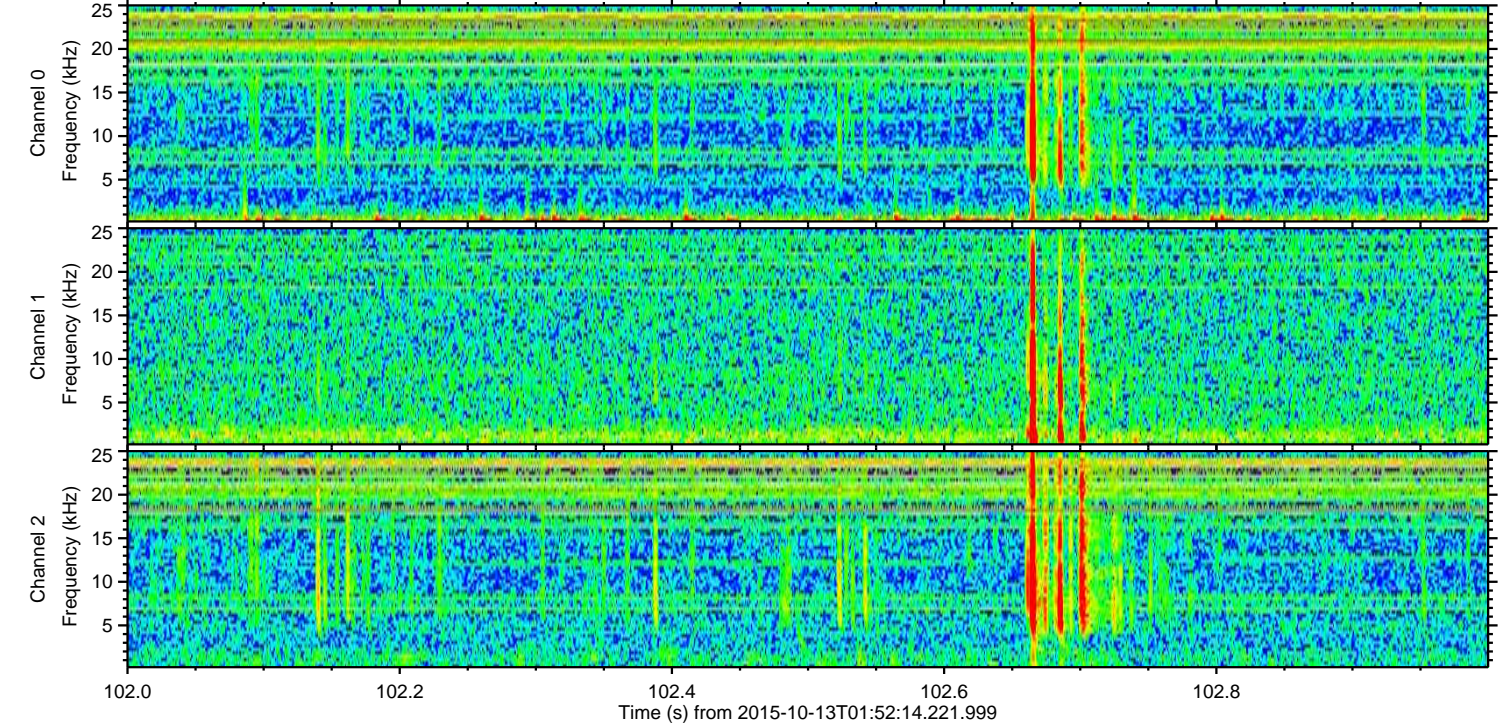
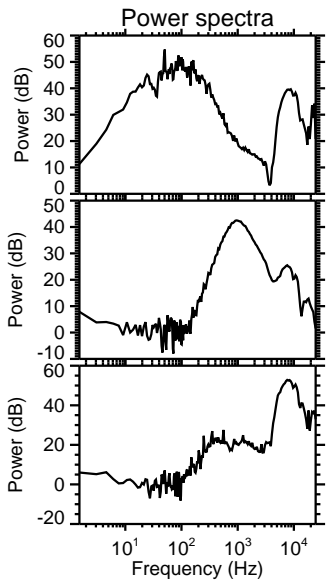
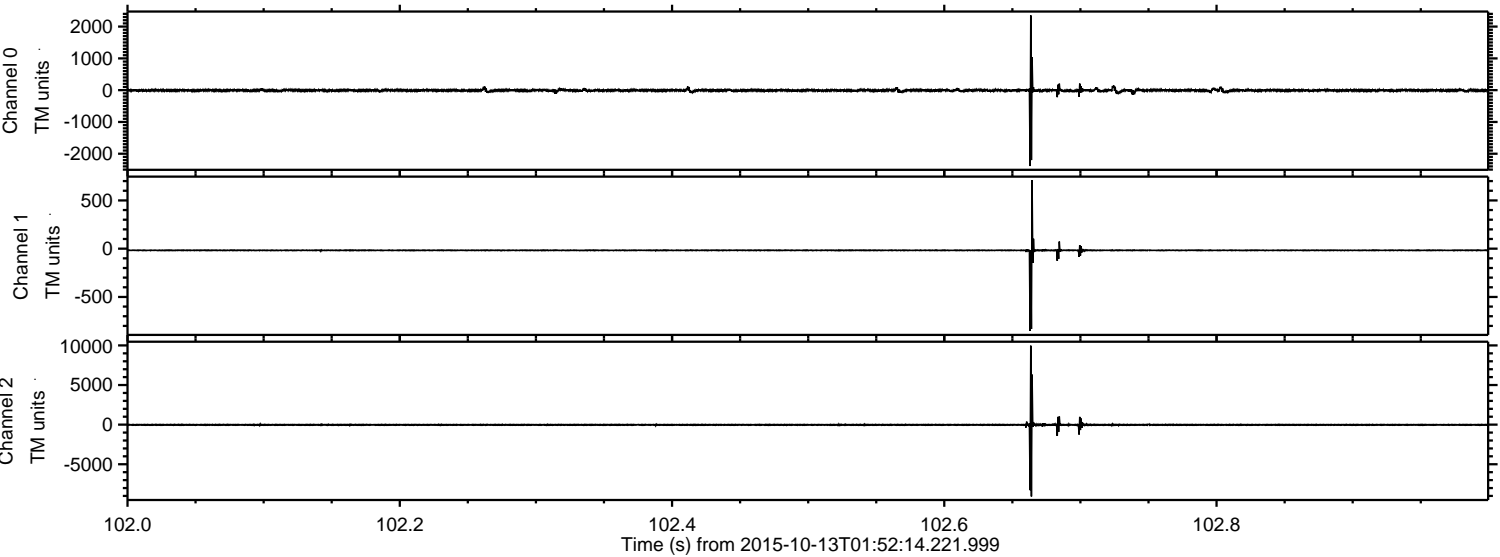
ELMAVAN 3D WAVEFORMS (Measured data sampled at 50 kHz) 51000 packets of 144 samples from 2015-10-13T01:52:14.221.999. Part 114/147

Processed Mon Oct 19 00:09:41 2015 by ELM ver.2012-10-06 from 001__elm20151013_015213__dat00.bin



ELMAVAN 3D WAVEFORMS (Measured data sampled at 50 kHz) 51000 packets of 144 samples from 2015-10-13T01:52:14.221.999. Part 103/147

Processed Mon Oct 19 00:09:43 2015 by ELM ver.2012-10-06 from 001__elm20151013_015213__dat00.bin



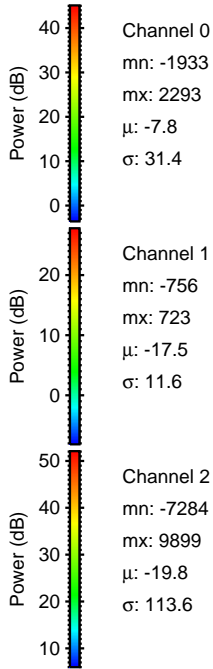
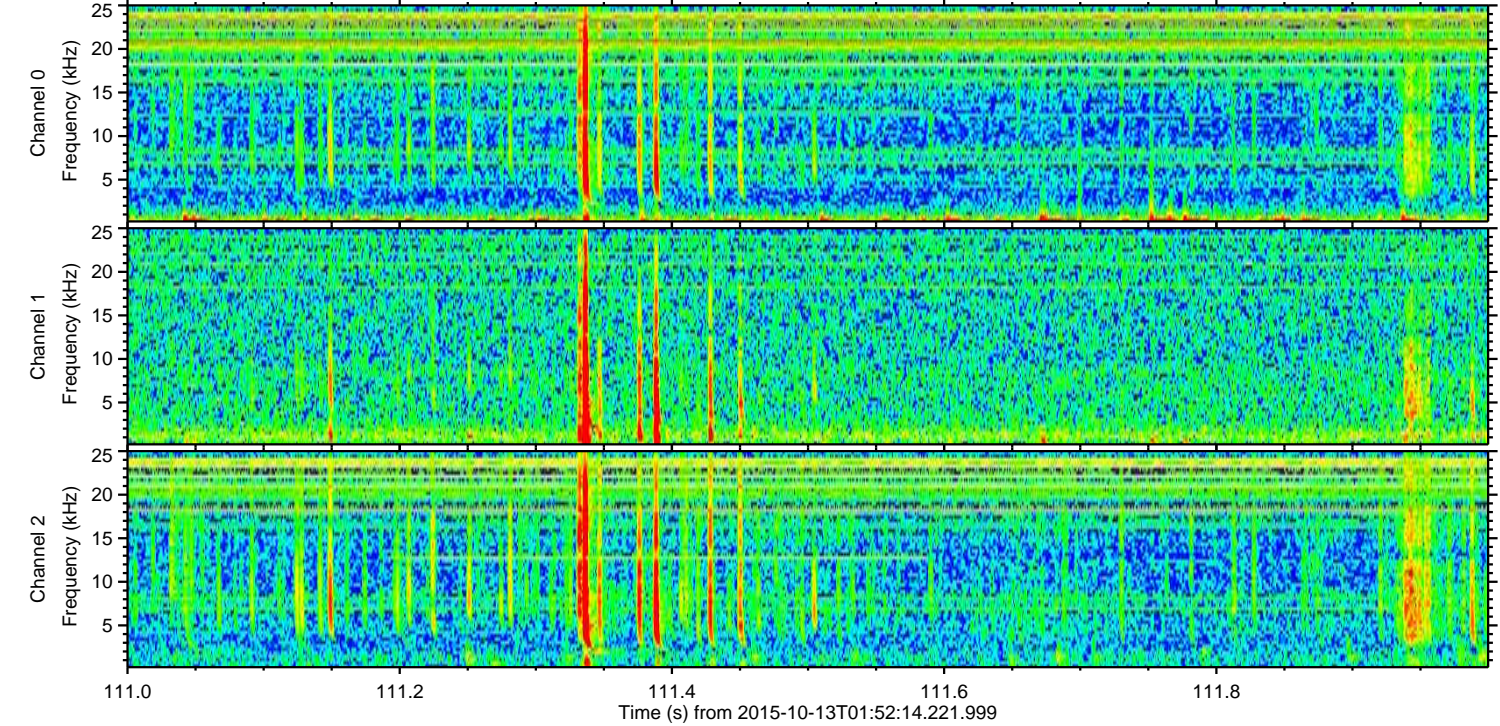
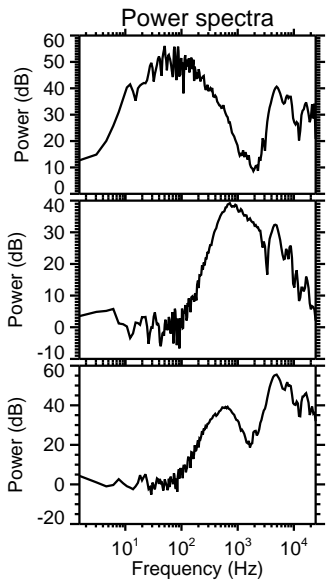
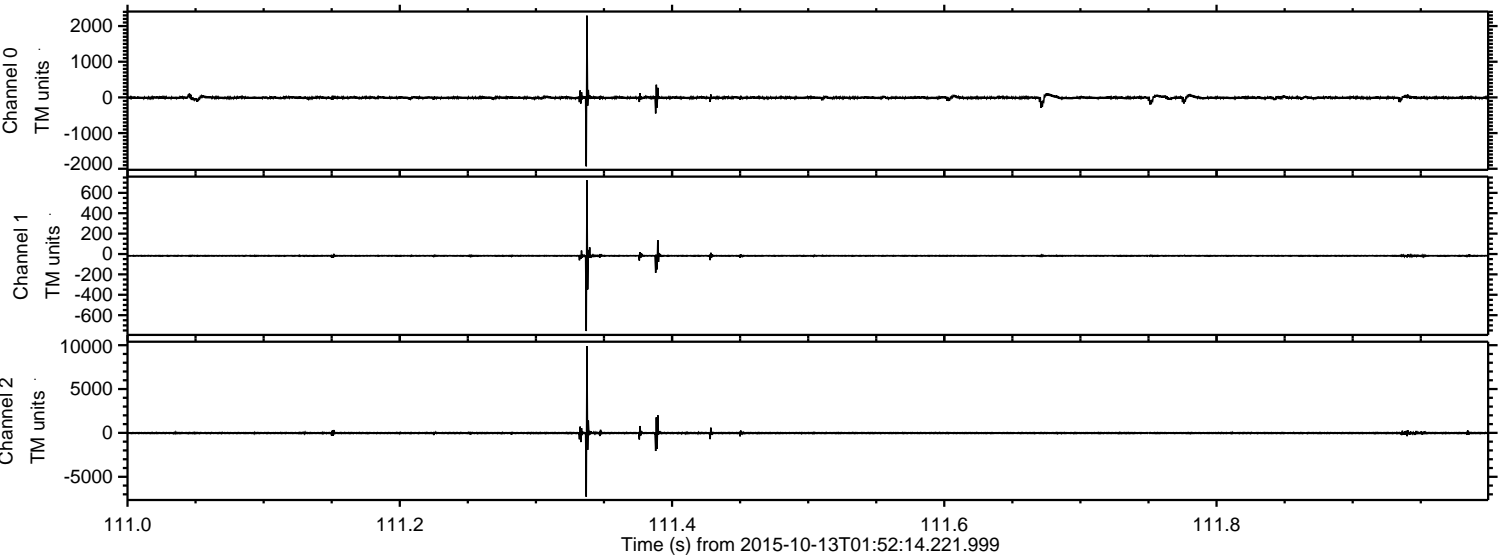
Channel 0
mn: -2387
mx: 2356
 μ : -7.8
 σ : 29.3

Channel 1
mn: -851
mx: 711
 μ : -17.4
 σ : 14.5

Channel 2
mn: -9059
mx: 9970
 μ : -19.7
 σ : 100.4

ELMAVAN 3D WAVEFORMS (Measured data sampled at 50 kHz) 51000 packets of 144 samples from 2015-10-13T01:52:14.221.999. Part 112/147

Processed Mon Oct 19 00:09:44 2015 by ELM ver.2012-10-06 from 001__elm20151013_015213__dat00.bin



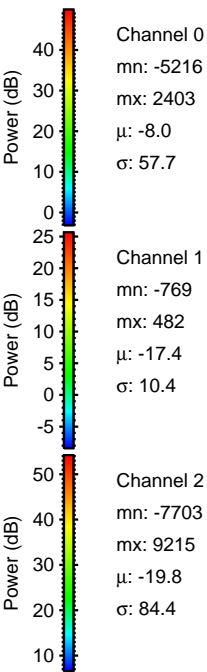
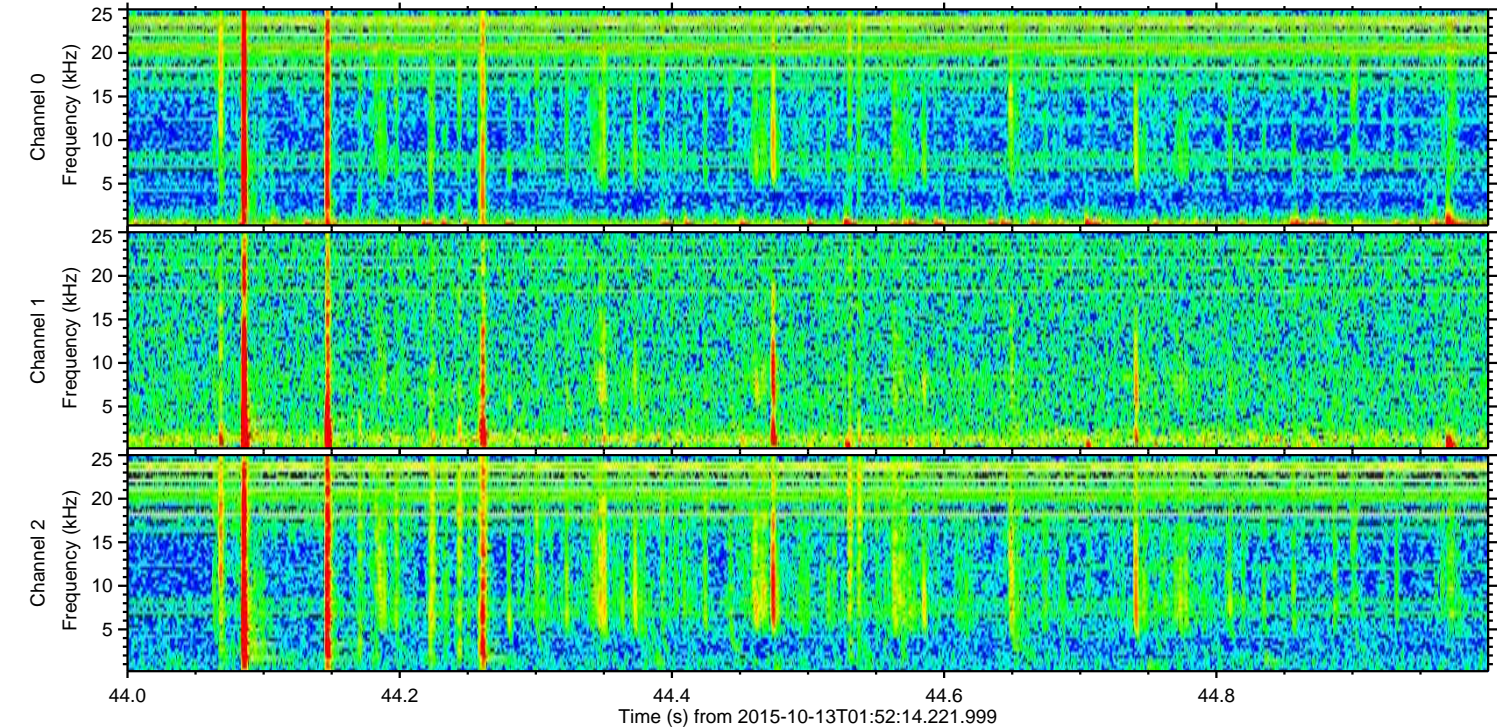
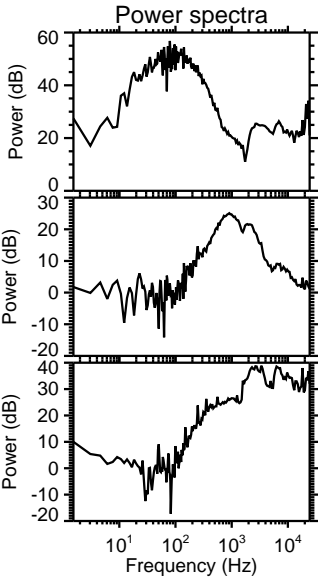
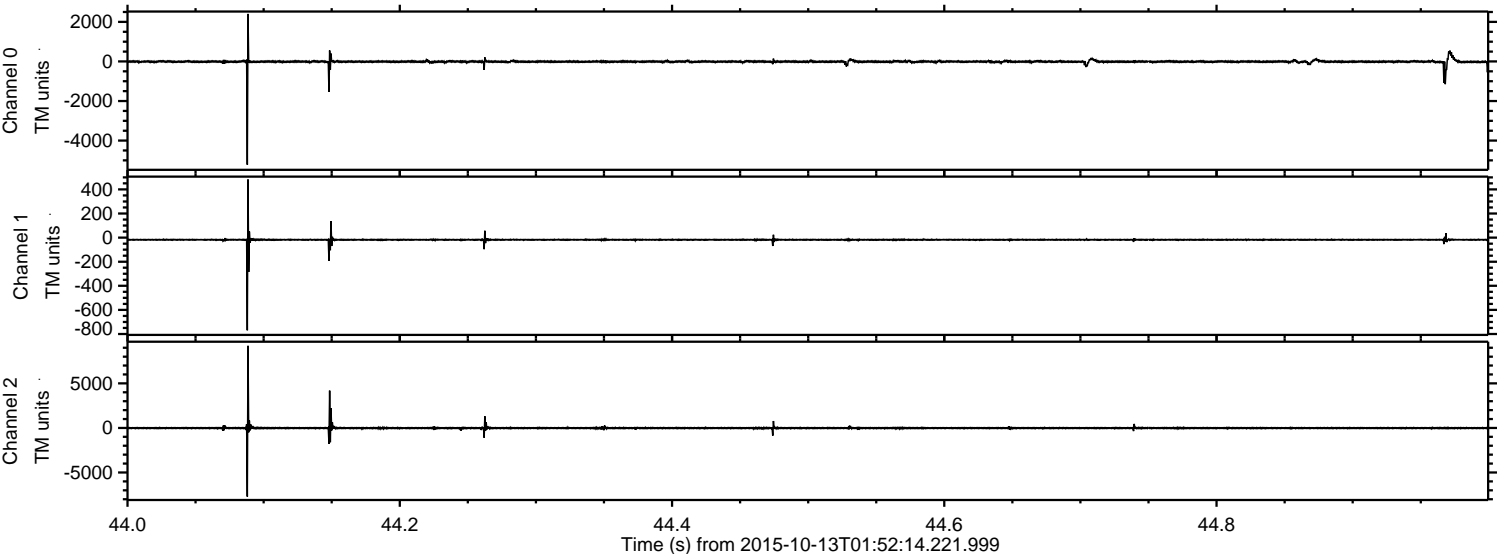
Channel 0
mn: -1933
mx: 2293
 μ : -7.8
 σ : 31.4

Channel 1
mn: -756
mx: 723
 μ : -17.5
 σ : 11.6

Channel 2
mn: -7284
mx: 9899
 μ : -19.8
 σ : 113.6

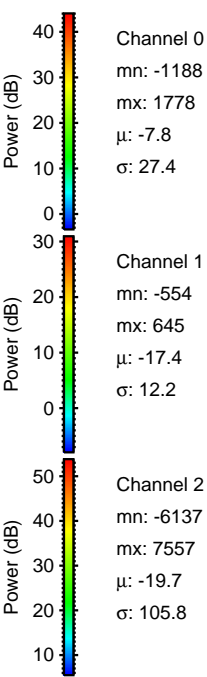
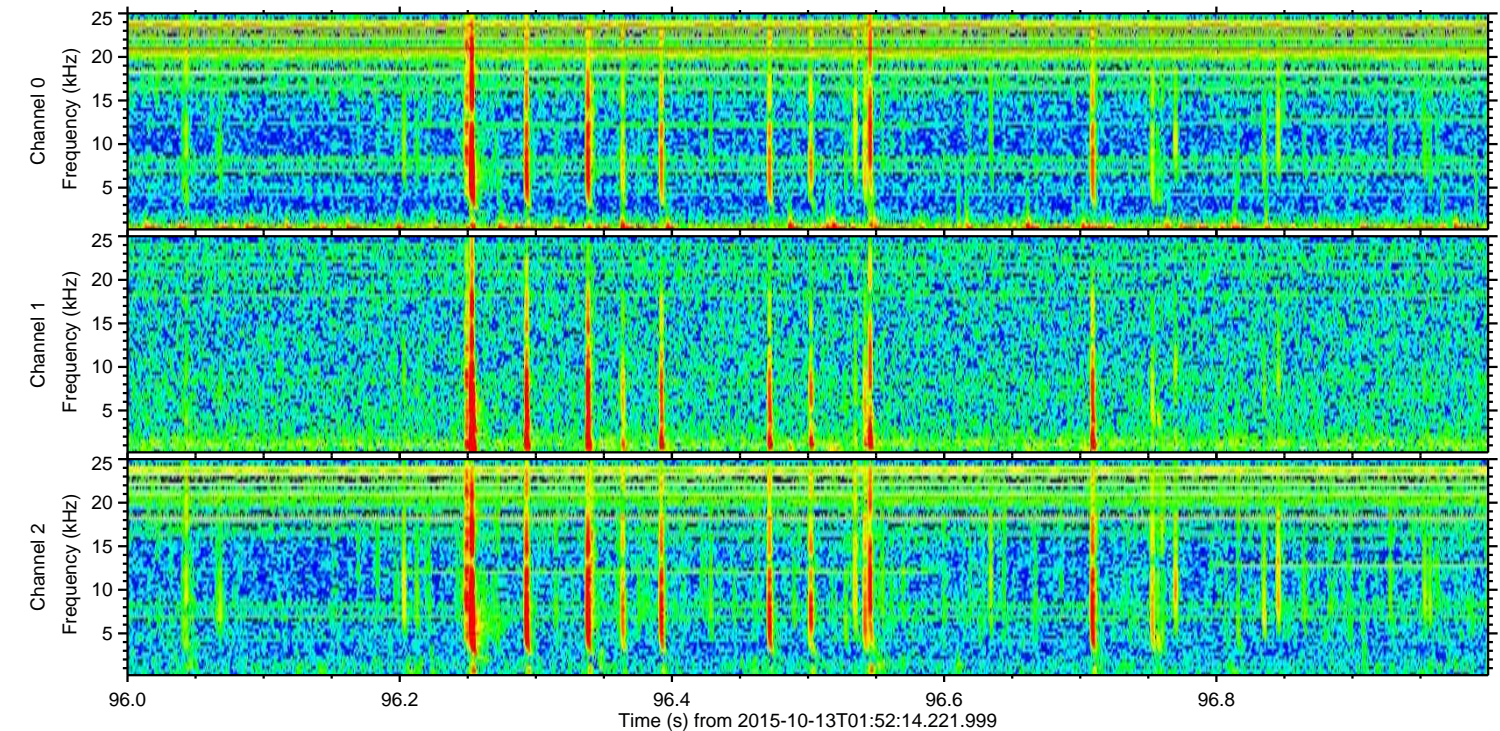
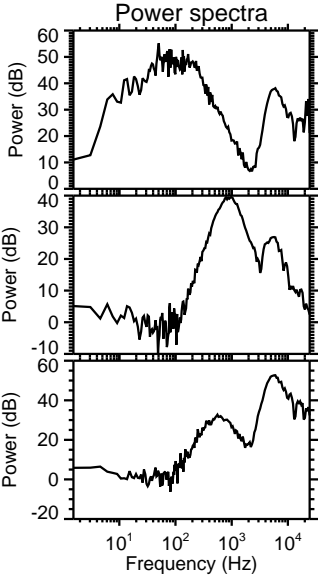
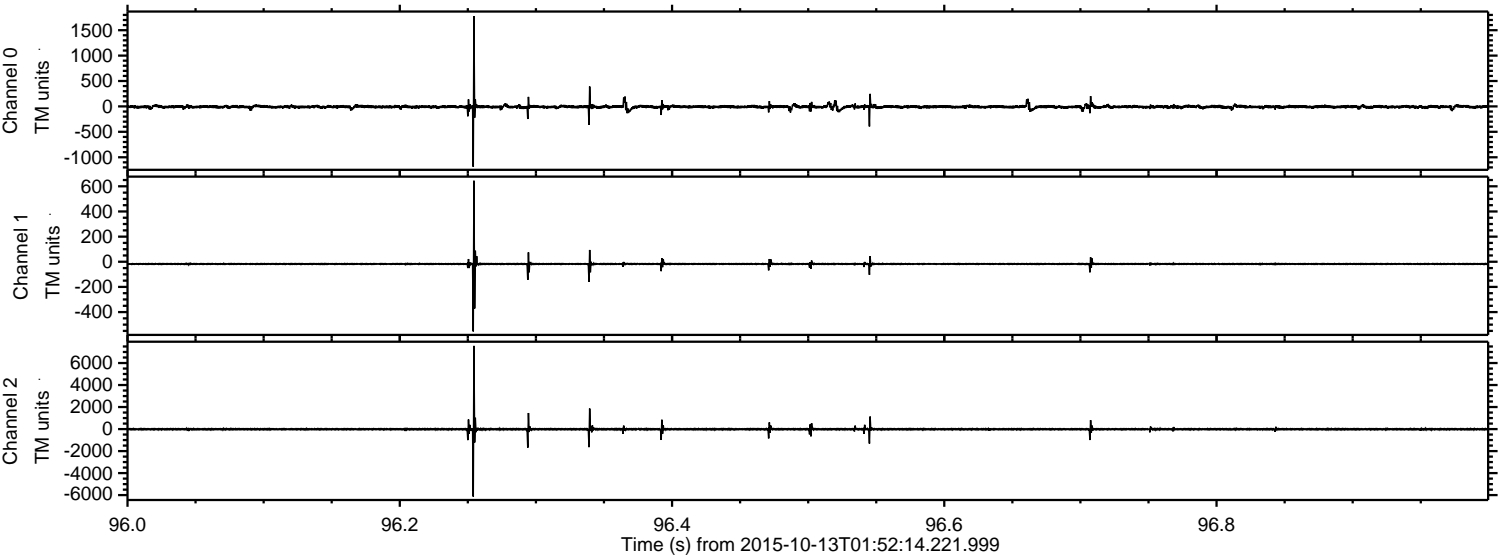
ELMAVAN 3D WAVEFORMS (Measured data sampled at 50 kHz) 51000 packets of 144 samples from 2015-10-13T01:52:14.221.999. Part 45/147

Processed Mon Oct 19 00:09:45 2015 by ELM ver.2012-10-06 from 001__elm20151013_015213__dat00.bin



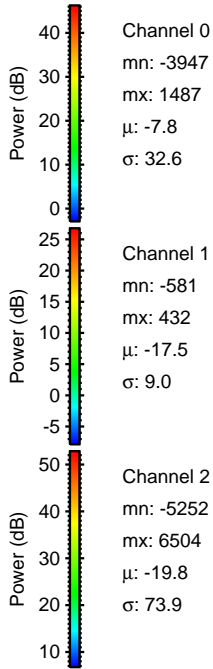
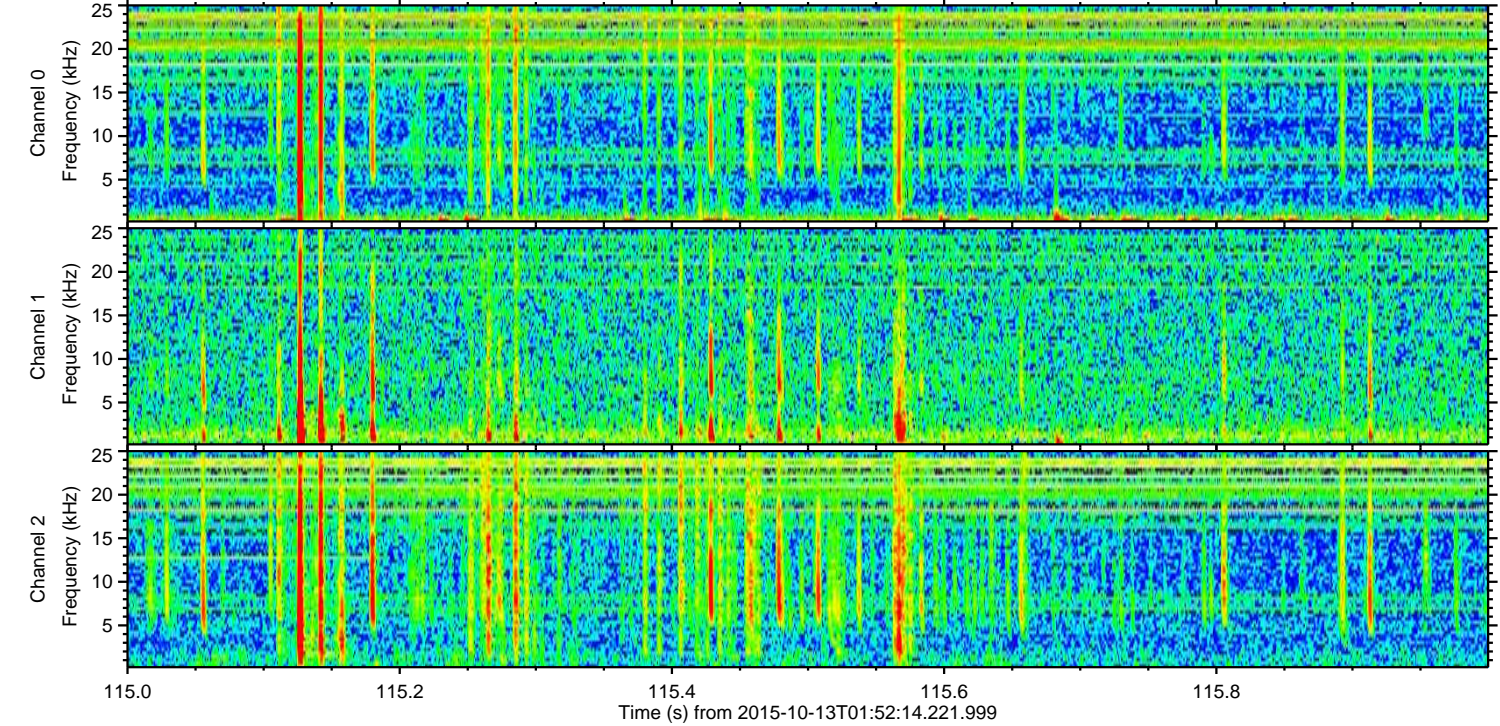
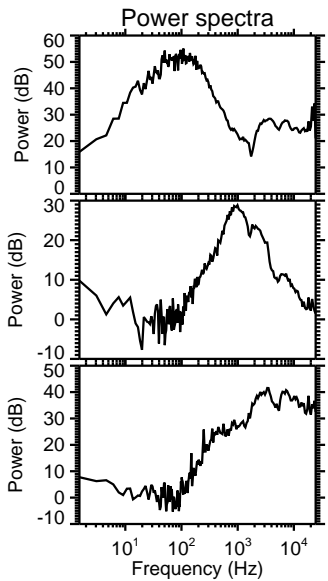
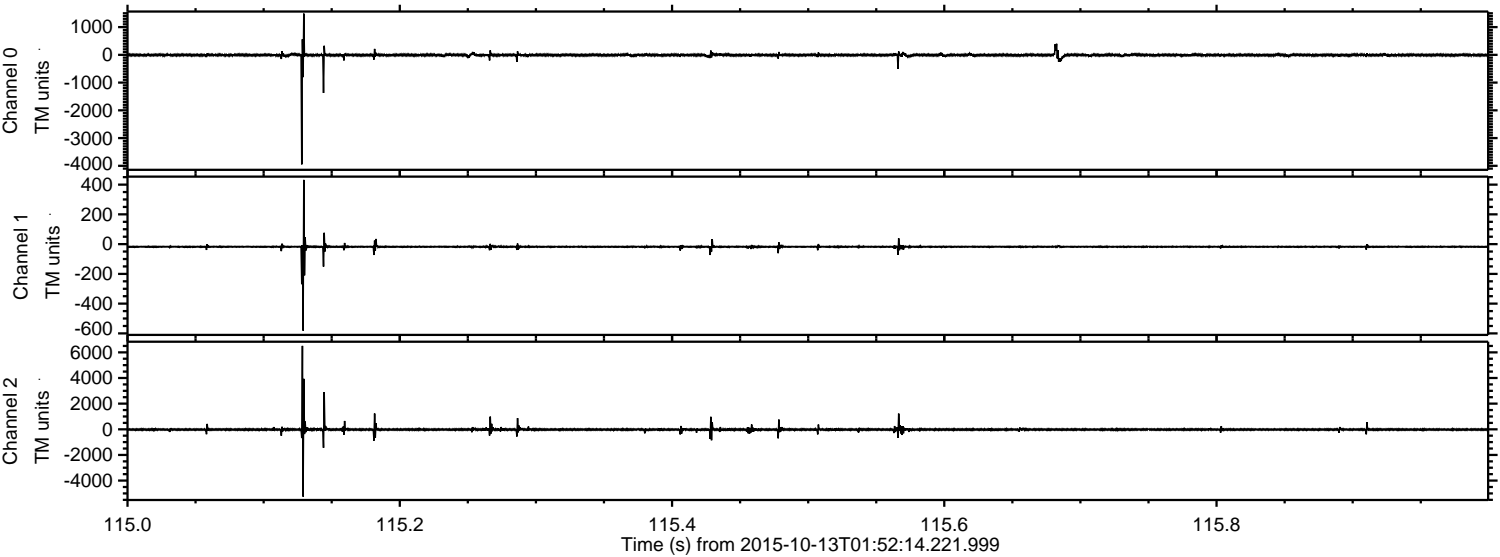
ELMAVAN 3D WAVEFORMS (Measured data sampled at 50 kHz) 51000 packets of 144 samples from 2015-10-13T01:52:14.221.999. Part 97/147

Processed Mon Oct 19 00:09:46 2015 by ELM ver.2012-10-06 from 001__elm20151013_015213__dat00.bin



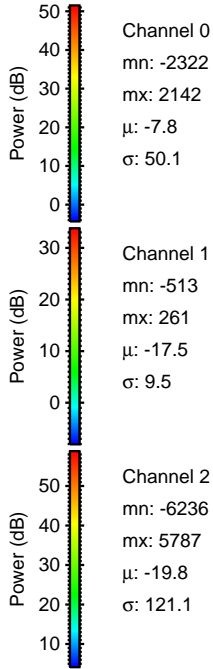
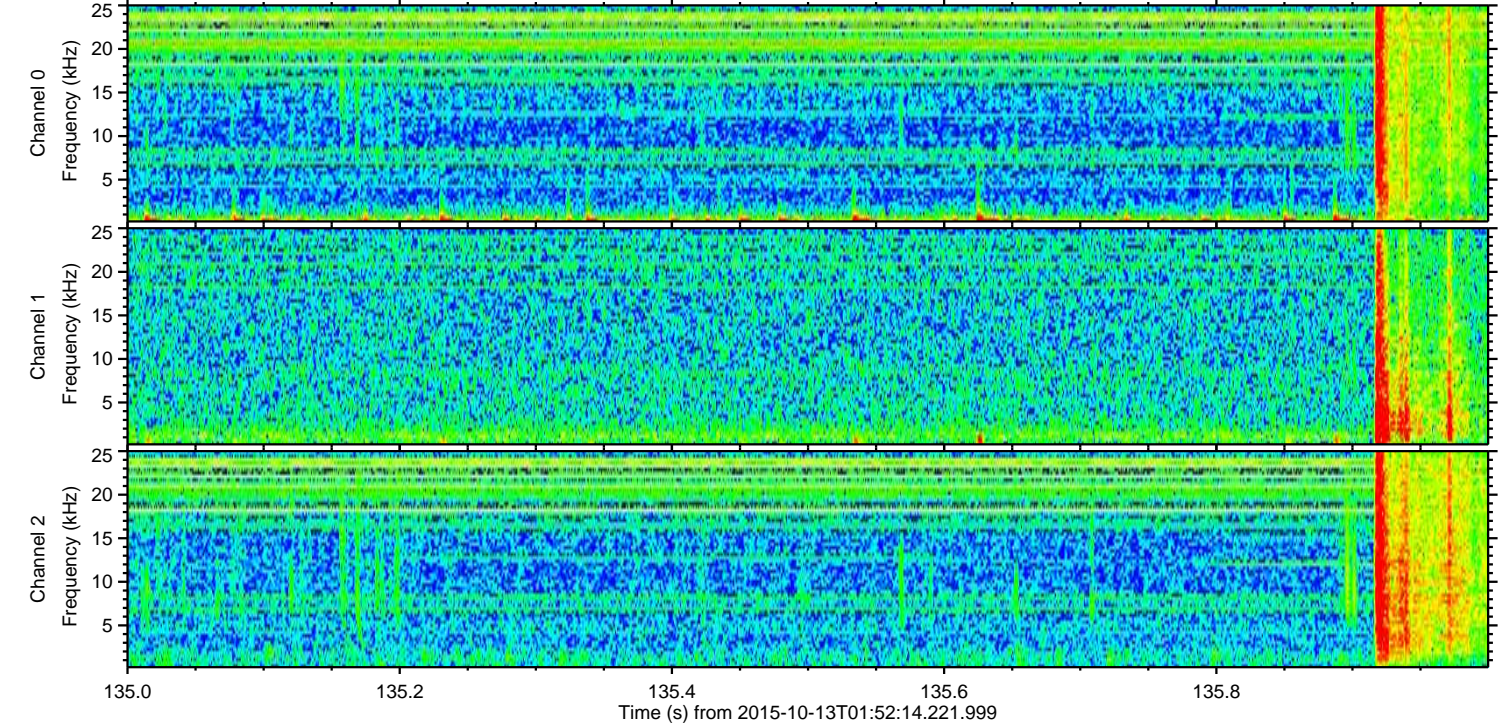
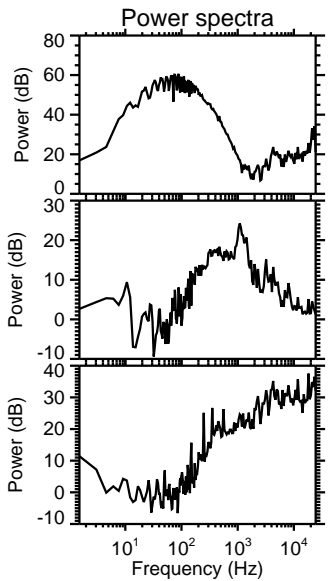
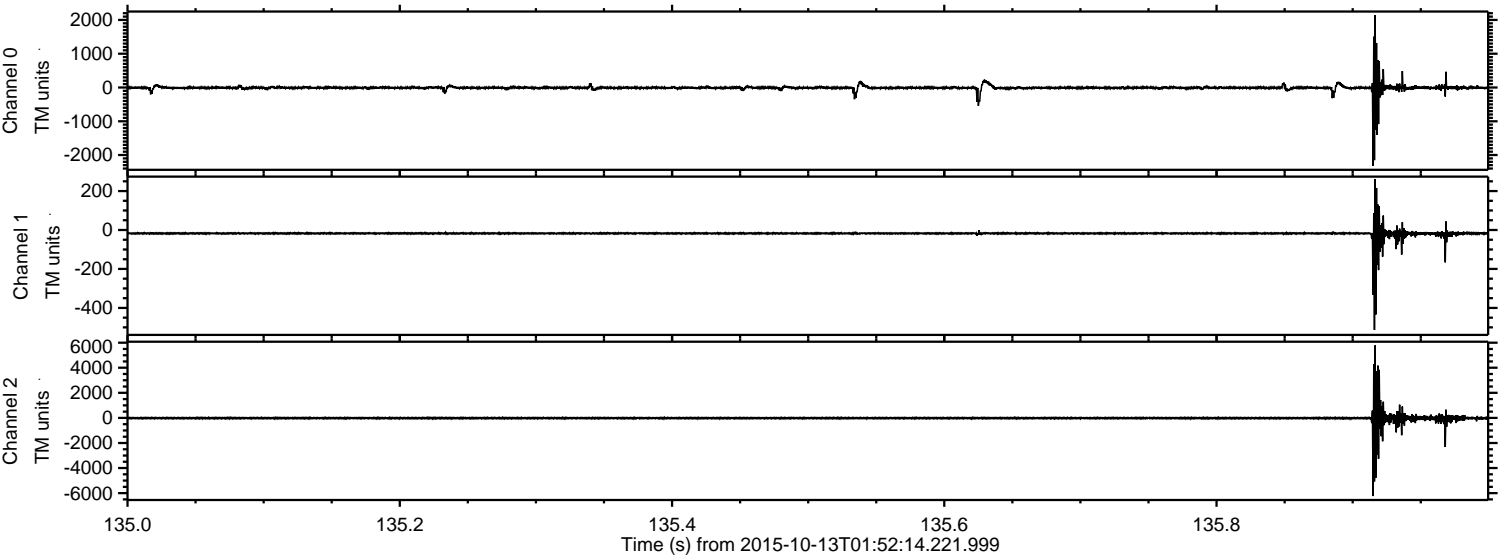
ELMAVAN 3D WAVEFORMS (Measured data sampled at 50 kHz) 51000 packets of 144 samples from 2015-10-13T01:52:14.221.999. Part 116/147

Processed Mon Oct 19 00:09:47 2015 by ELM ver.2012-10-06 from 001__elm20151013_015213__dat00.bin



ELMAVAN 3D WAVEFORMS (Measured data sampled at 50 kHz) 51000 packets of 144 samples from 2015-10-13T01:52:14.221.999. Part 136/147

Processed Mon Oct 19 00:09:48 2015 by ELM ver.2012-10-06 from 001__elm20151013_015213__dat00.bin



Channel 0
mn: -2322
mx: 2142
 μ : -7.8
 σ : 50.1

Channel 1
mn: -513
mx: 261
 μ : -17.5
 σ : 9.5

Channel 2
mn: -6236
mx: 5787
 μ : -19.8
 σ : 121.1

Processed Mon Oct 19 00:09:49 2015 by ELM ver.2012-10-06 from 001__elm20151013_015213__dat00.bin

