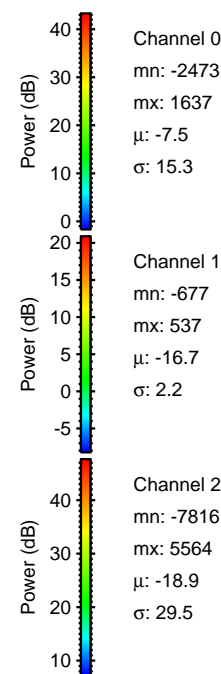
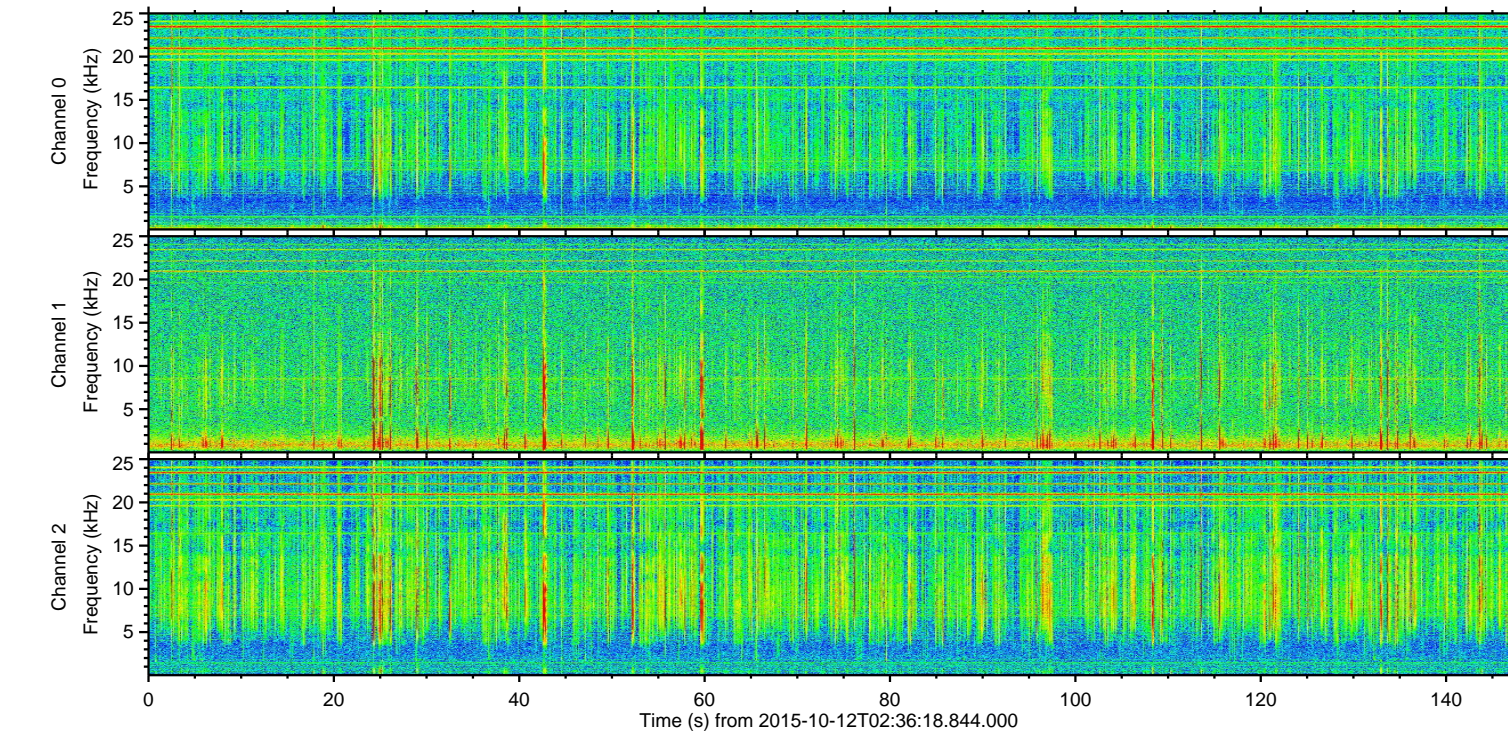
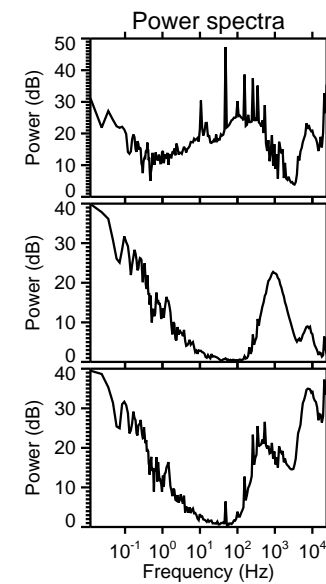
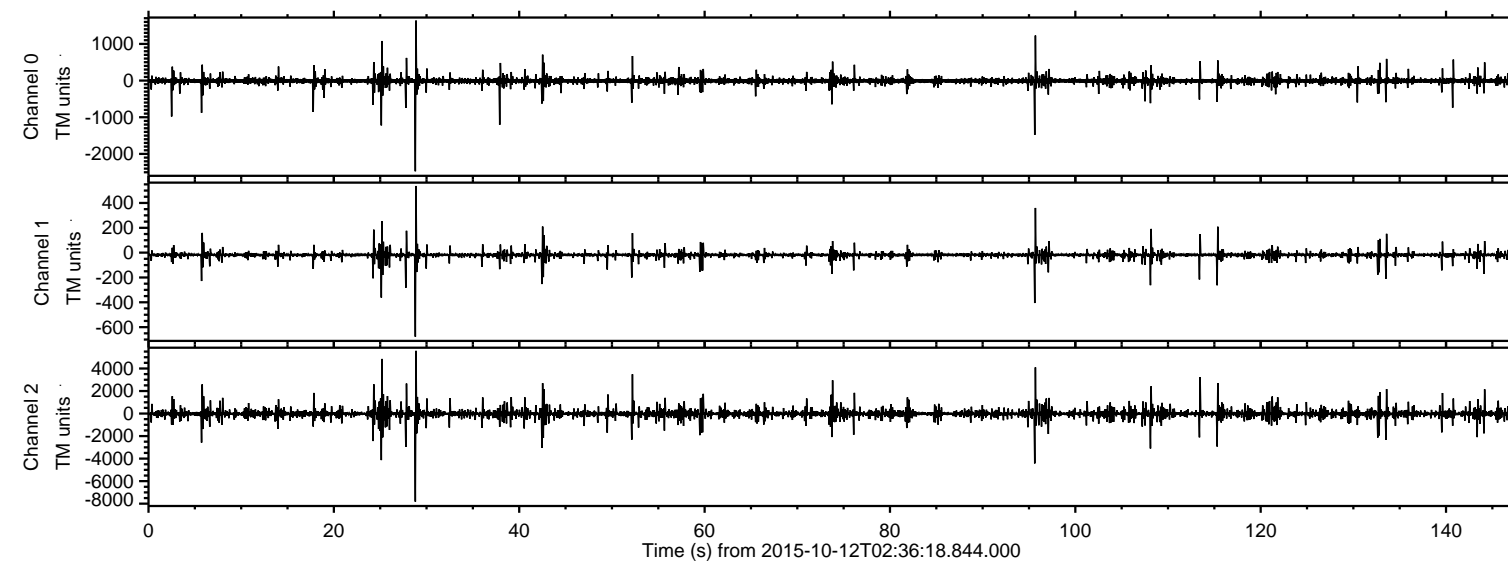


# ELMAVAN 3D WAVEFORMS (Measured data sampled at 50 kHz) 51000 packets of 144 samples from 2015-10-12T02:36:18.844.000.

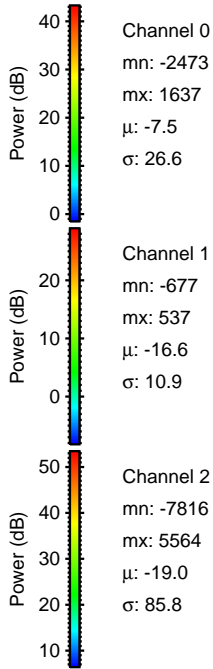
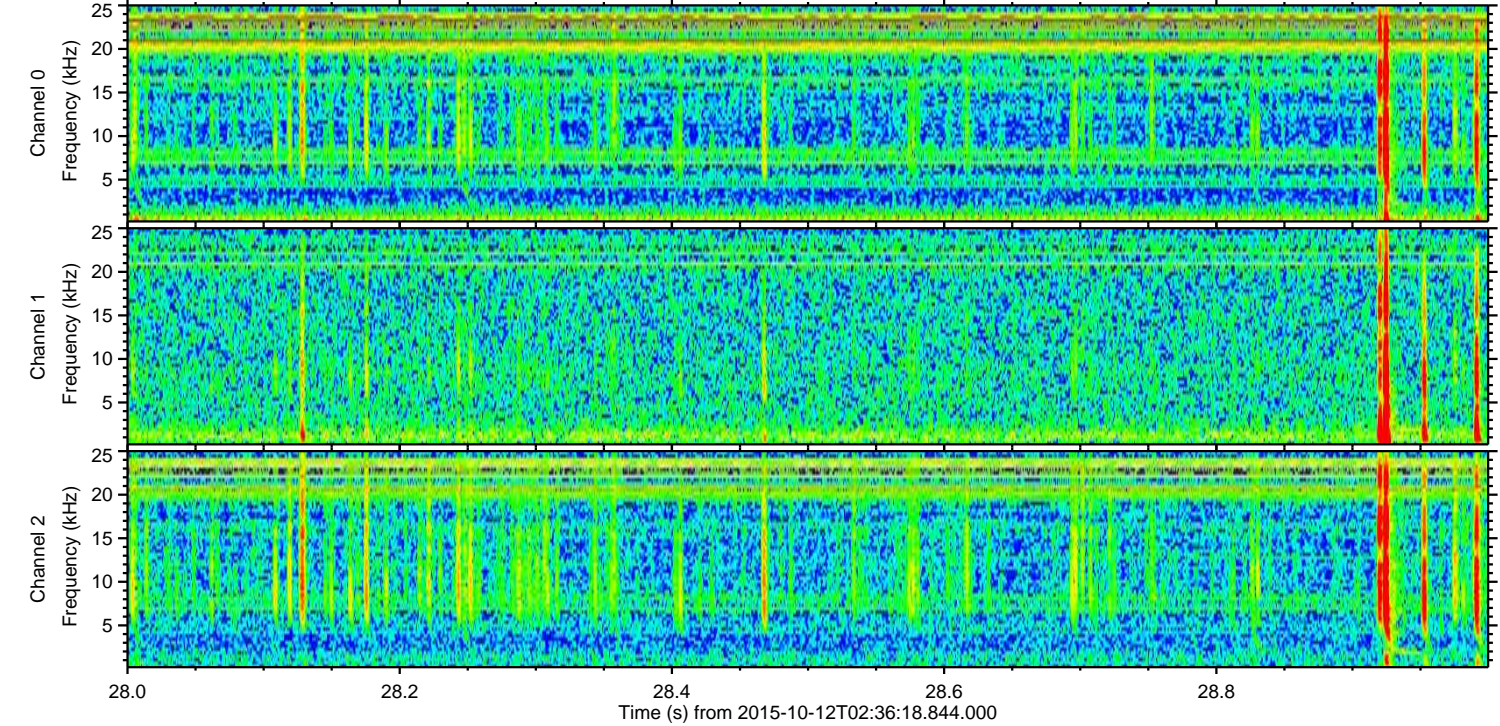
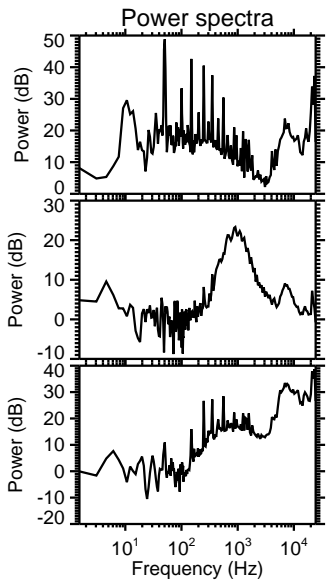
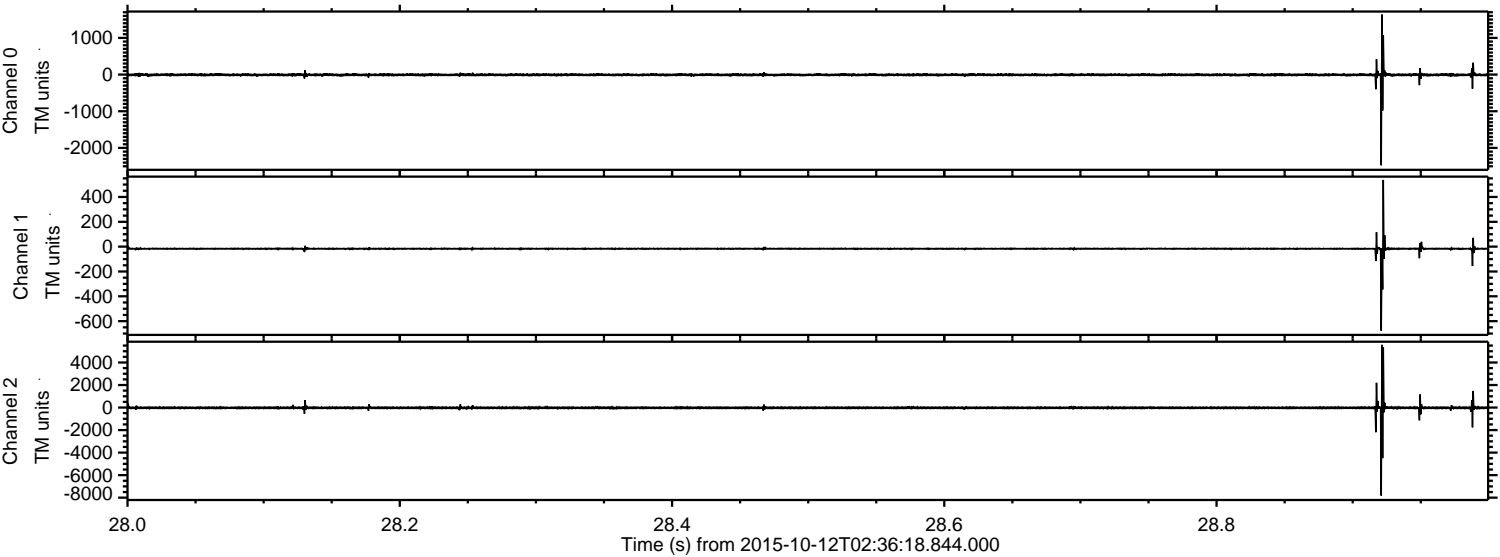
Processed Sun Oct 18 17:48:14 2015 by ELM ver.2012-10-06 from 001\_\_elm20151012\_023617\_\_dat00.bin





ELMAVAN 3D WAVEFORMS (Measured data sampled at 50 kHz) 51000 packets of 144 samples from 2015-10-12T02:36:18.844.000. Part 29/147

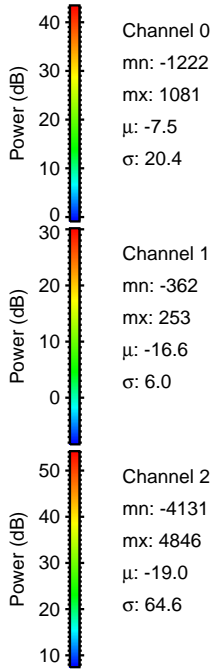
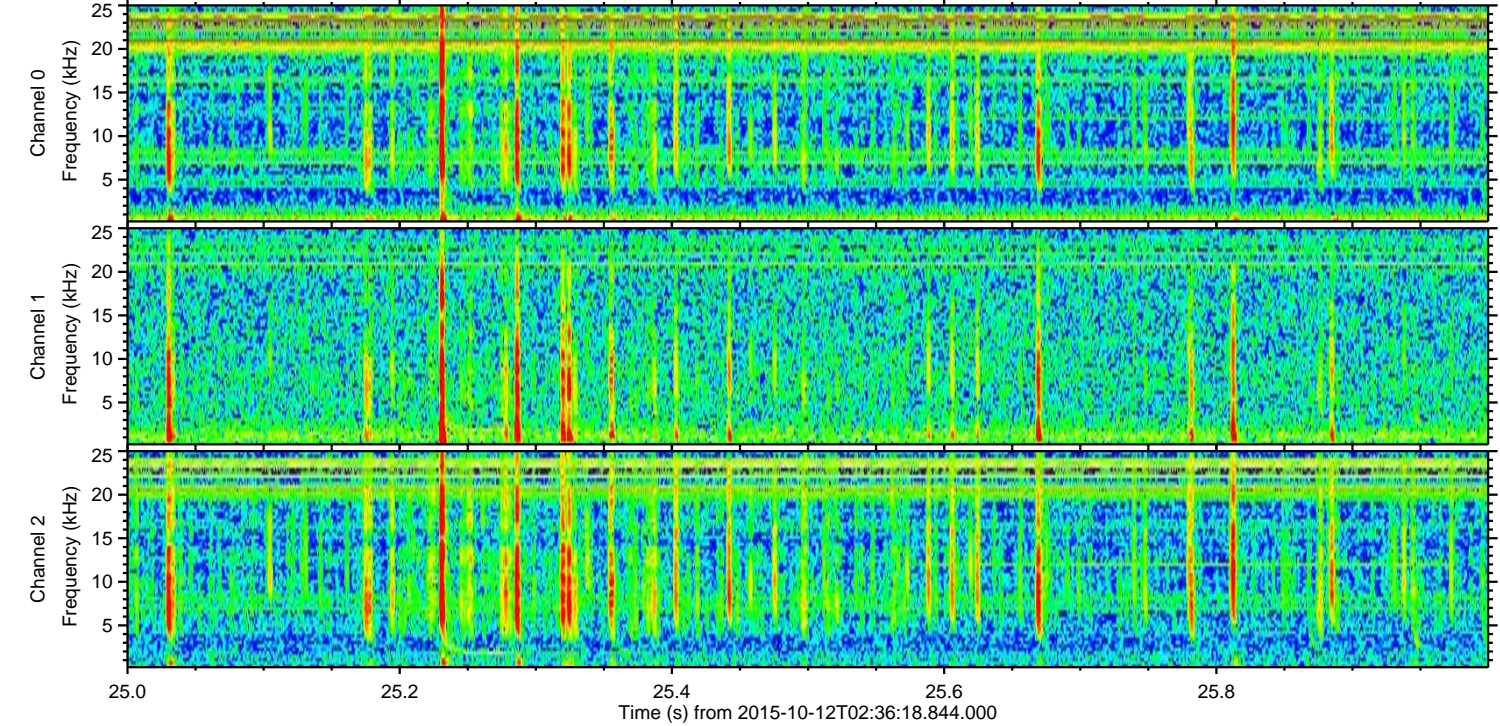
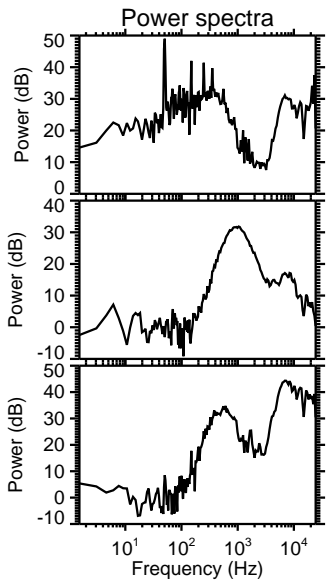
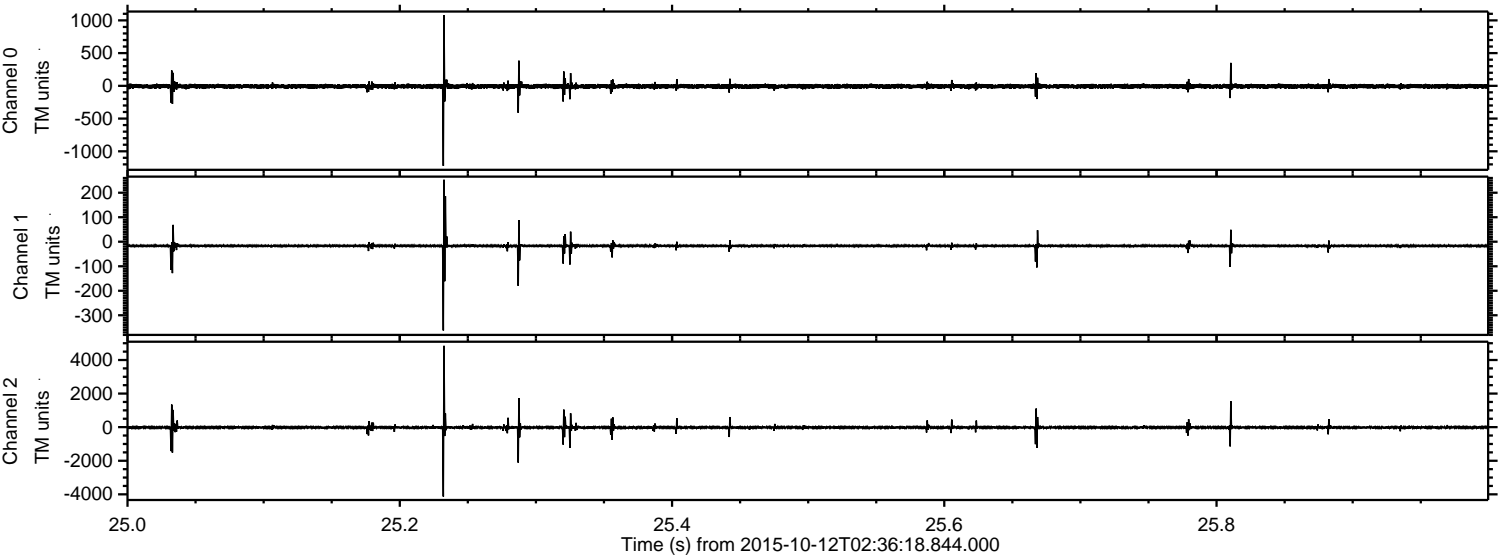
Processed Sun Oct 18 17:48:29 2015 by ELM ver.2012-10-06 from 001\_\_elm20151012\_023617\_\_dat00.bin





ELMAVAN 3D WAVEFORMS (Measured data sampled at 50 kHz) 51000 packets of 144 samples from 2015-10-12T02:36:18.844.000. Part 26/147

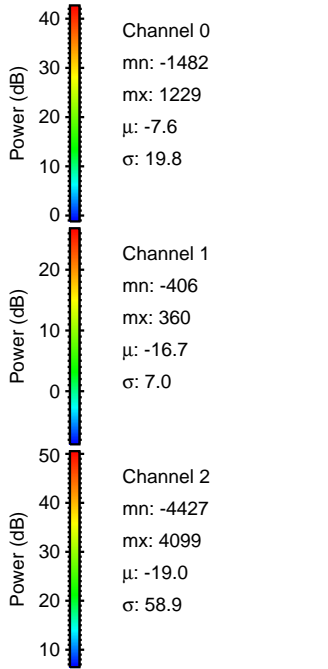
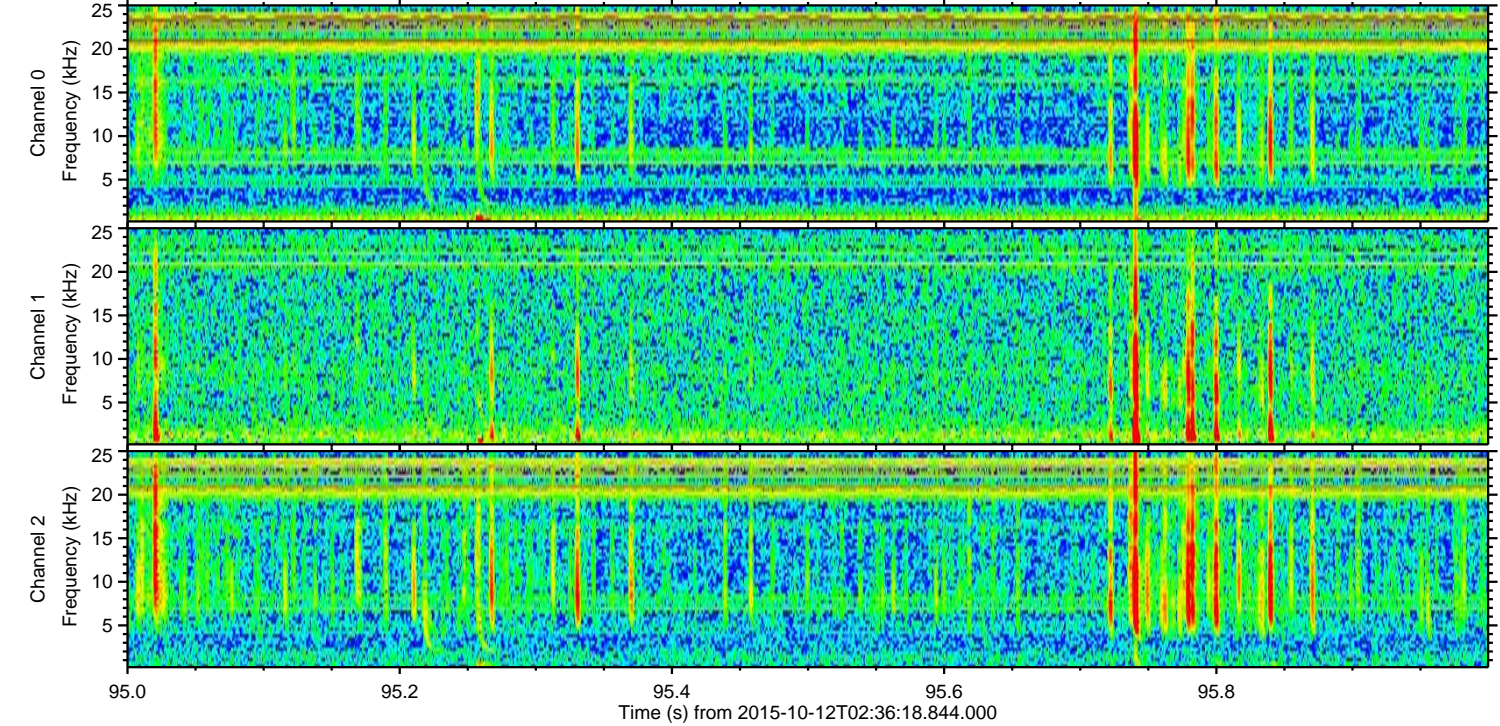
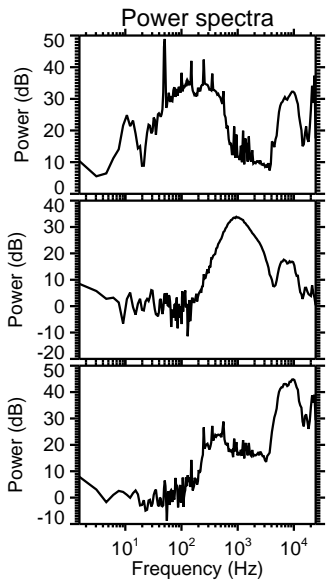
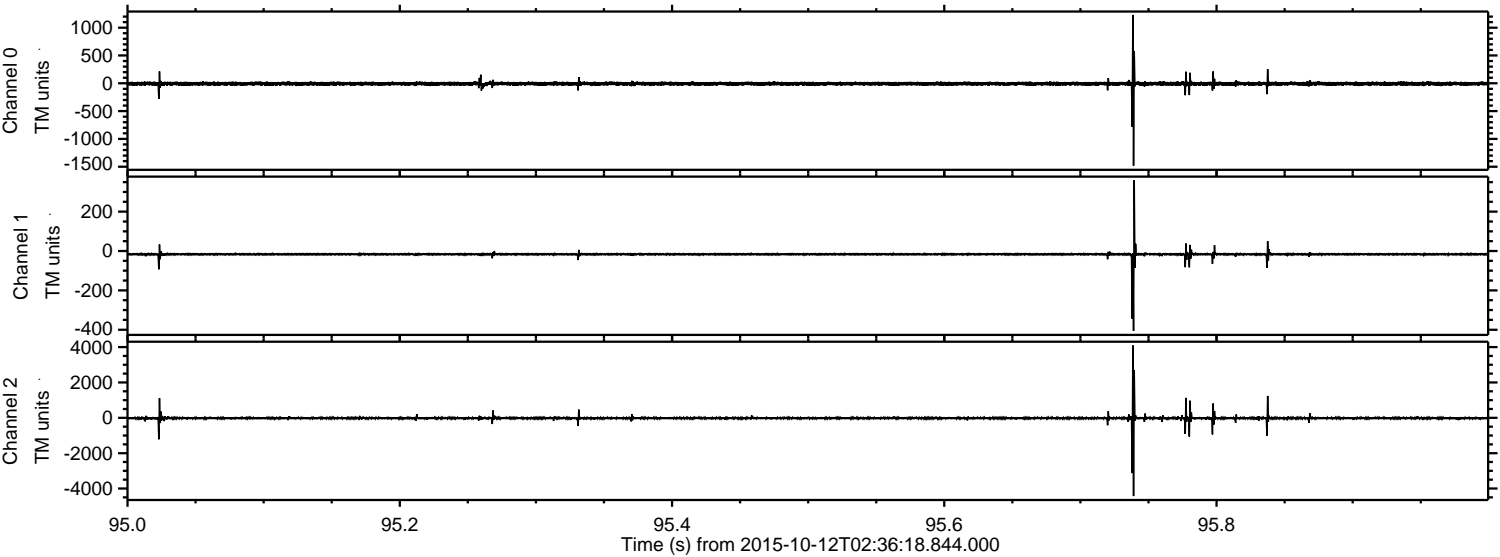
Processed Sun Oct 18 17:48:30 2015 by ELM ver.2012-10-06 from 001\_\_elm20151012\_023617\_\_dat00.bin





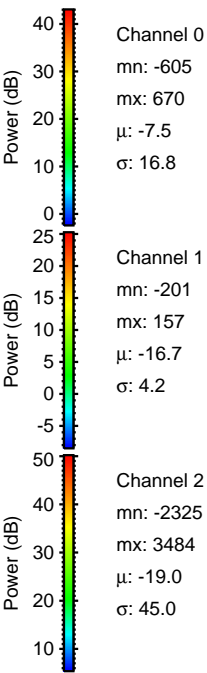
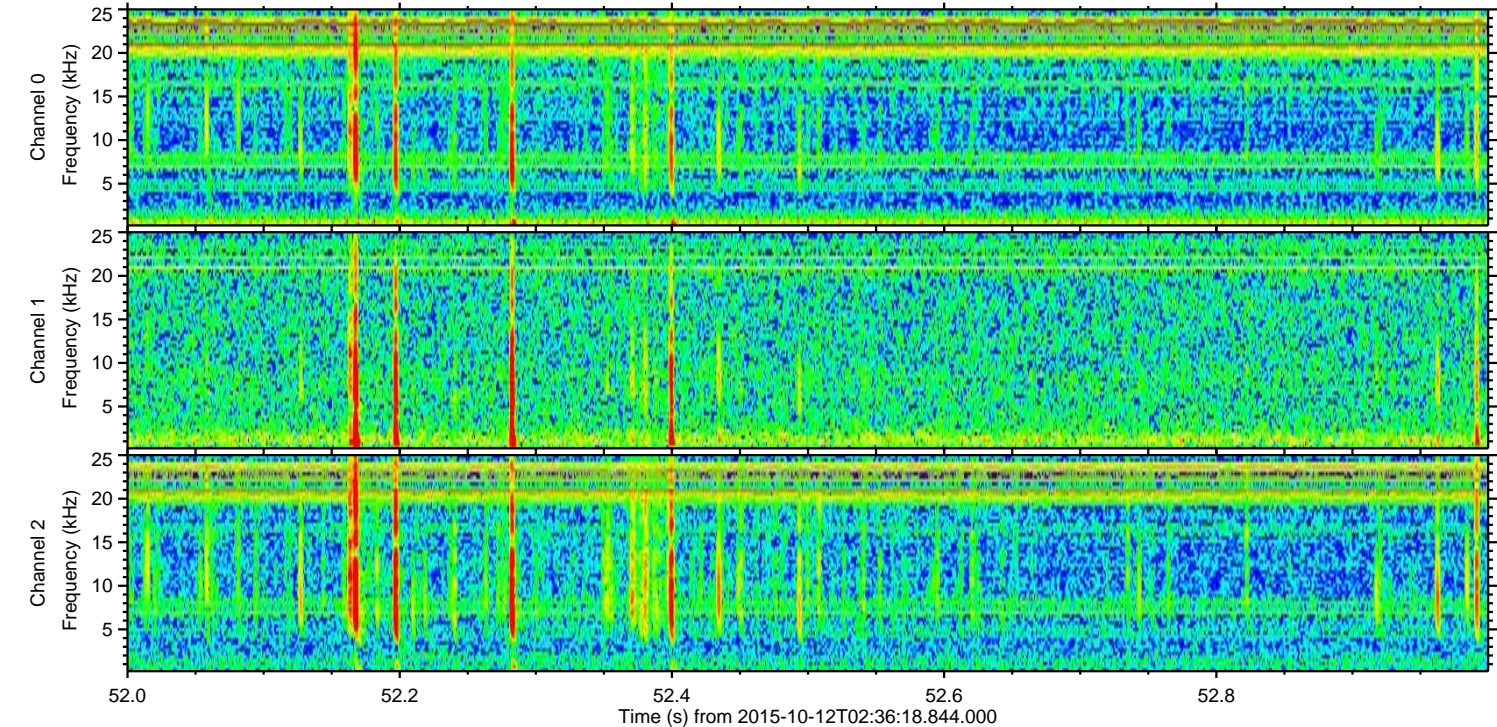
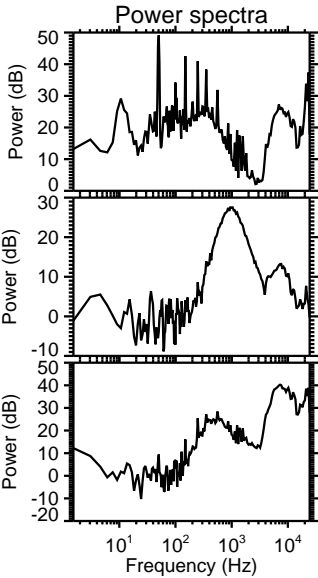
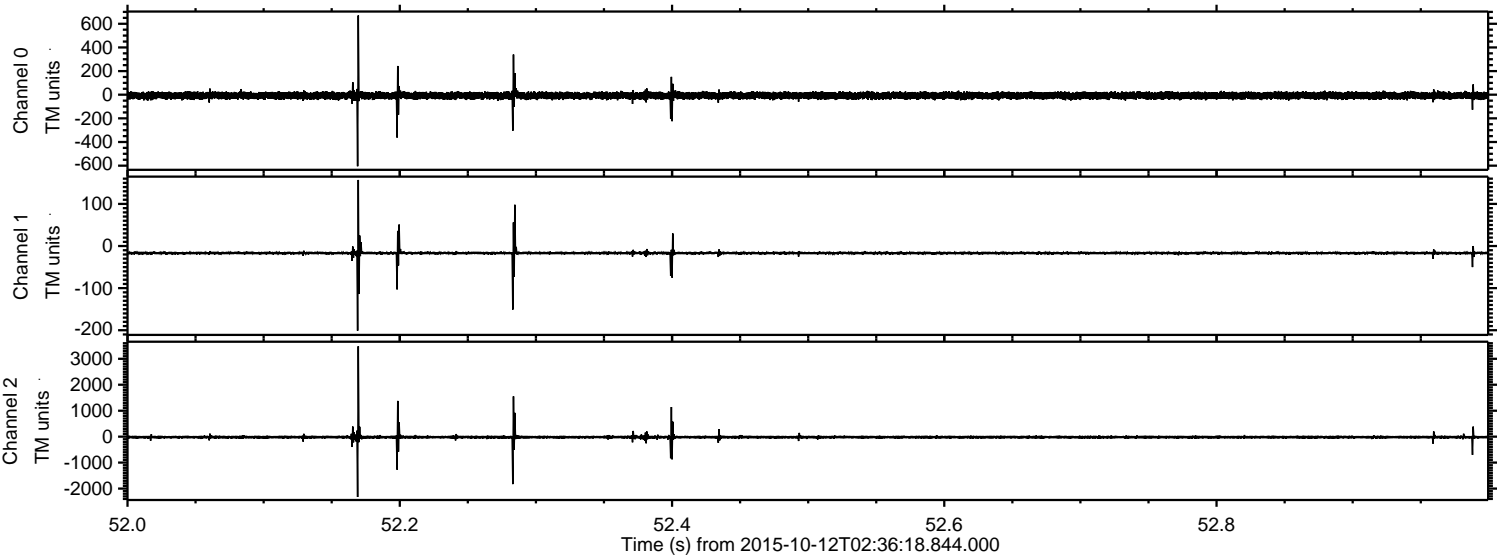
ELMAVAN 3D WAVEFORMS (Measured data sampled at 50 kHz) 51000 packets of 144 samples from 2015-10-12T02:36:18.844.000. Part 96/147

Processed Sun Oct 18 17:48:31 2015 by ELM ver.2012-10-06 from 001\_\_elm20151012\_023617\_\_dat00.bin





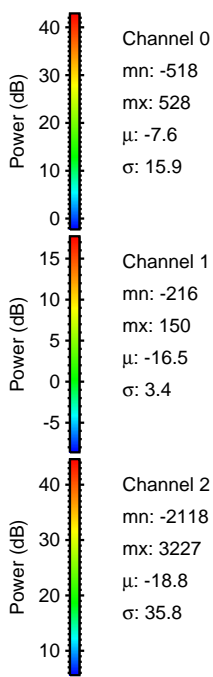
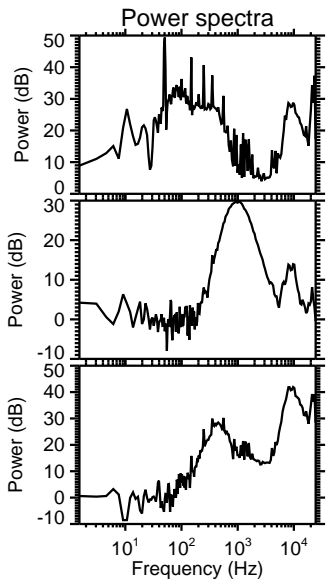
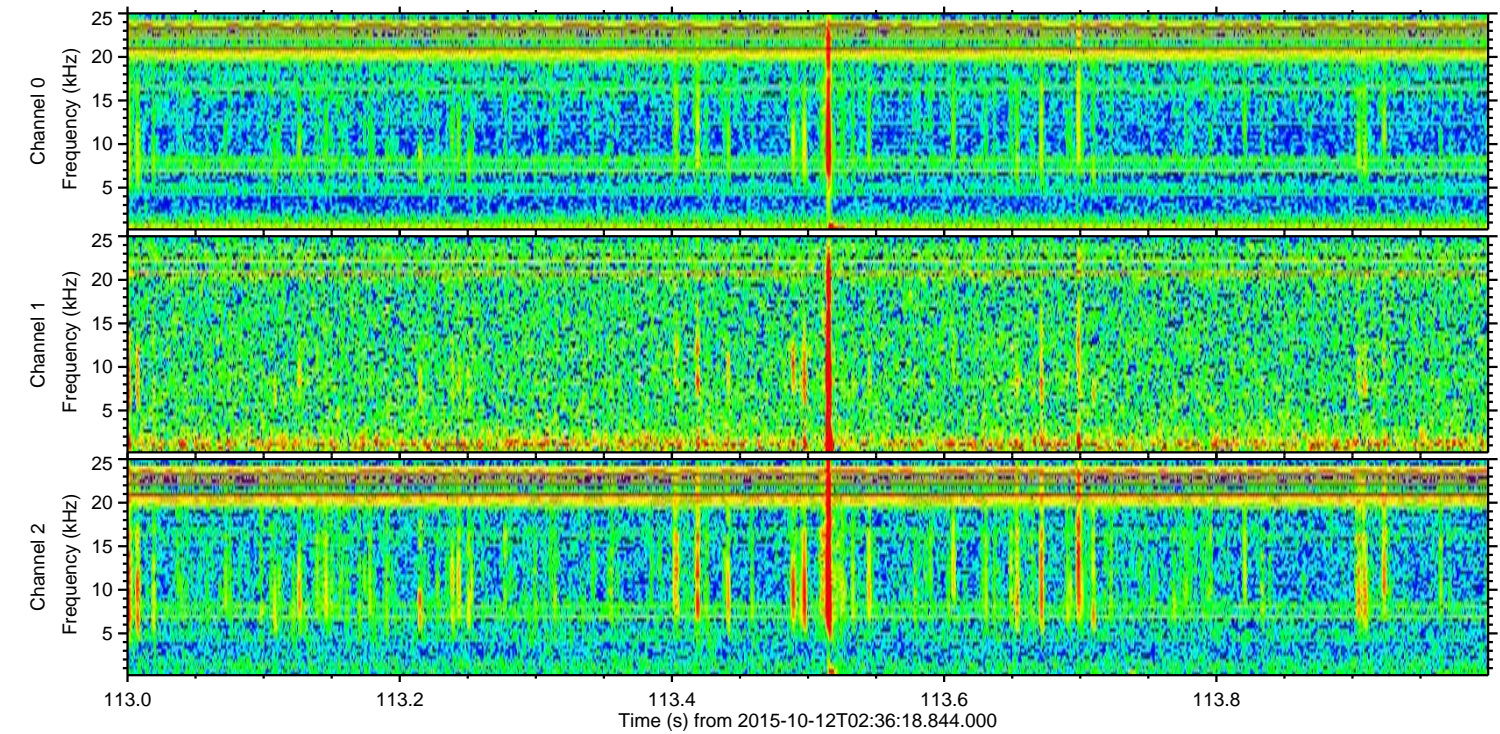
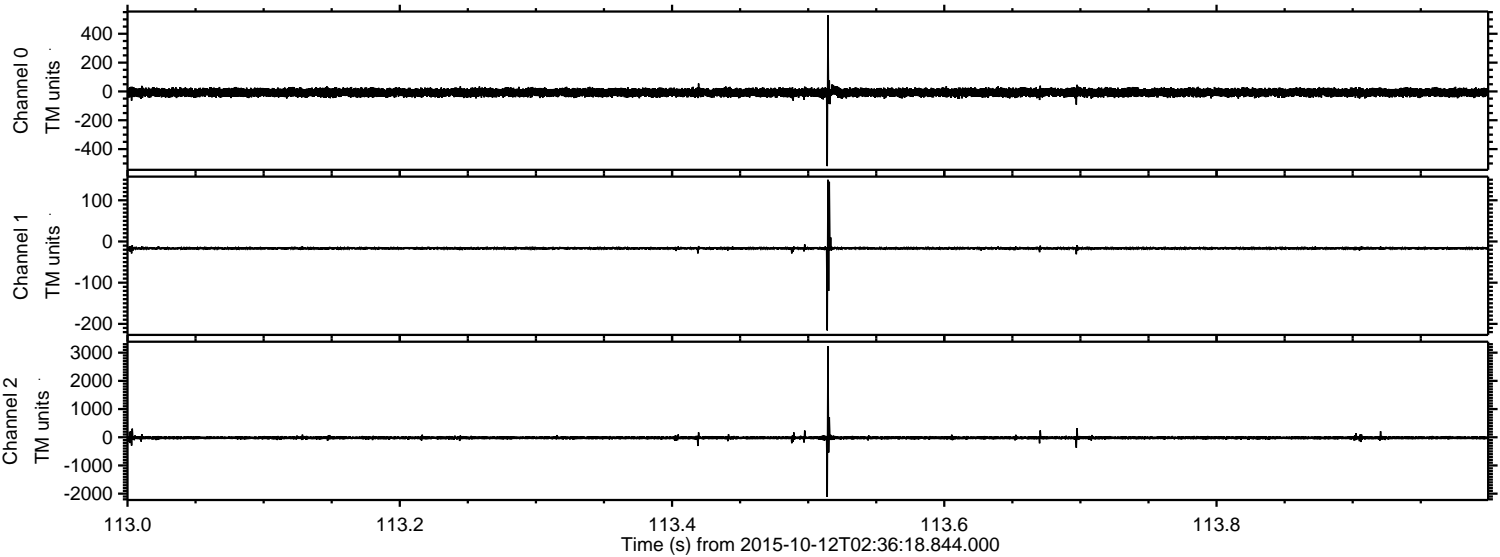
Processed Sun Oct 18 17:48:32 2015 by ELM ver.2012-10-06 from 001\_\_elm20151012\_023617\_\_dat00.bin





ELMAVAN 3D WAVEFORMS (Measured data sampled at 50 kHz) 51000 packets of 144 samples from 2015-10-12T02:36:18.844.000. Part 114/147

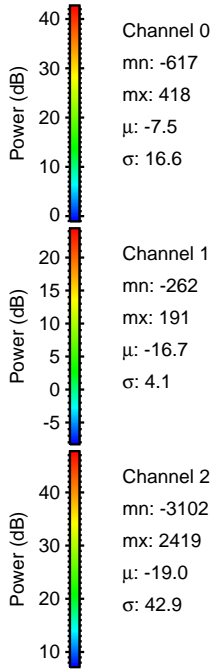
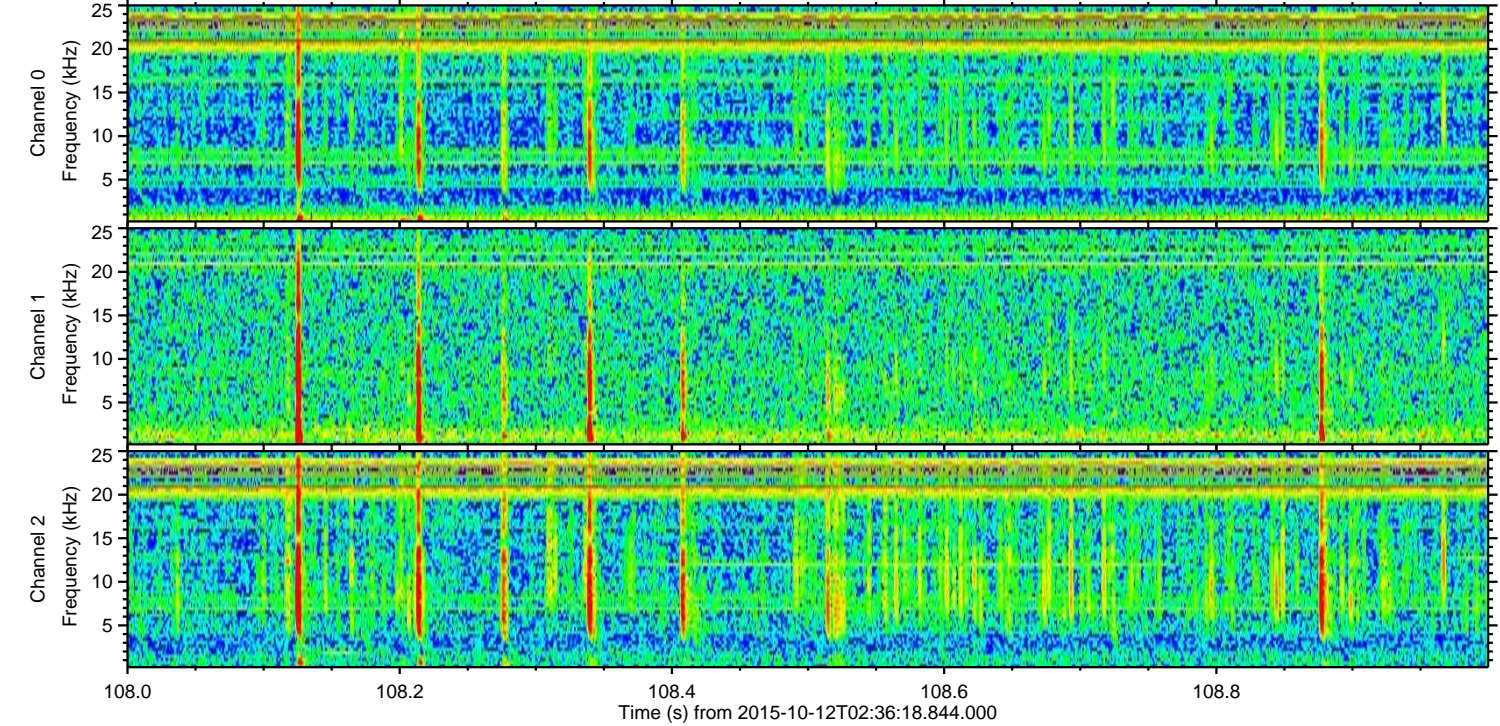
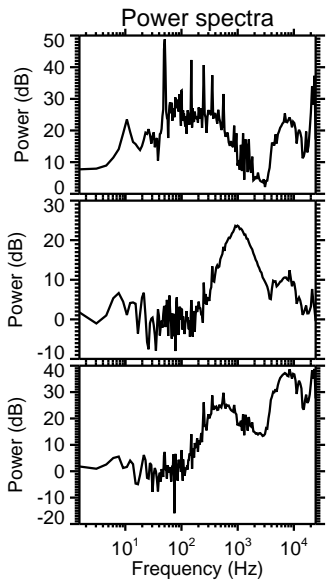
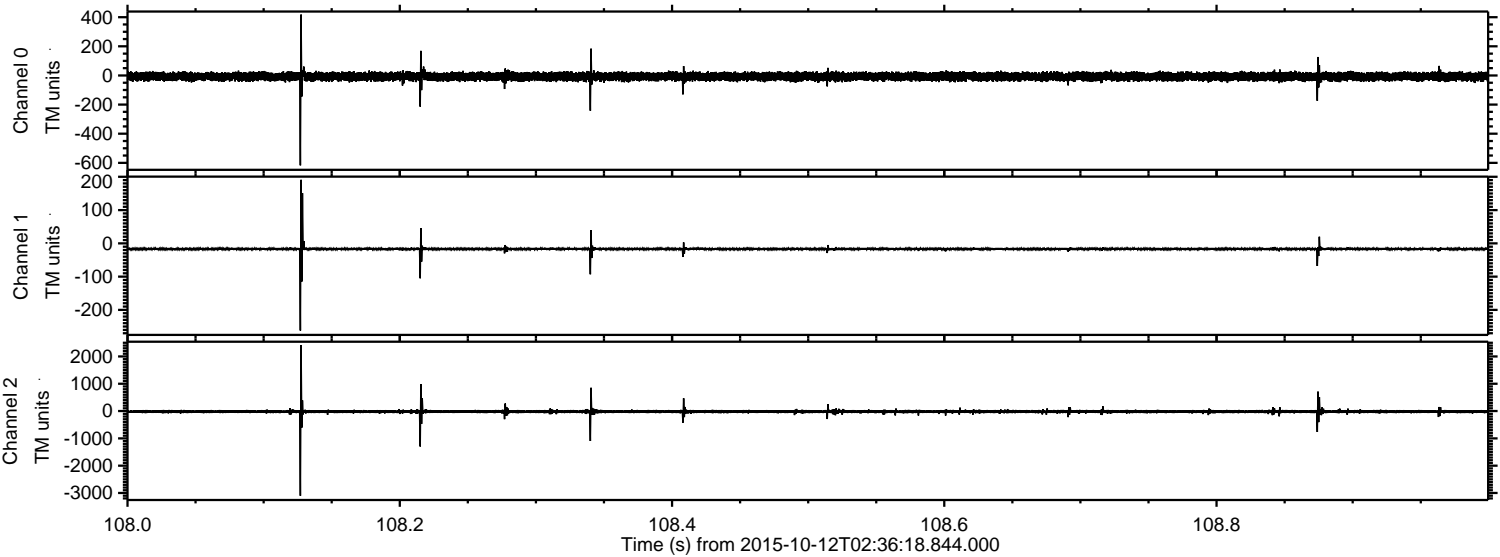
Processed Sun Oct 18 17:48:33 2015 by ELM ver.2012-10-06 from 001\_\_elm20151012\_023617\_\_dat00.bin





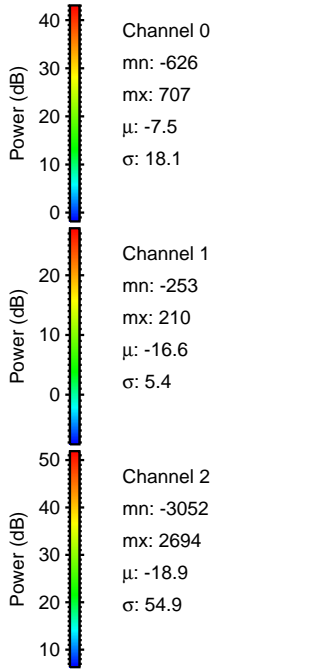
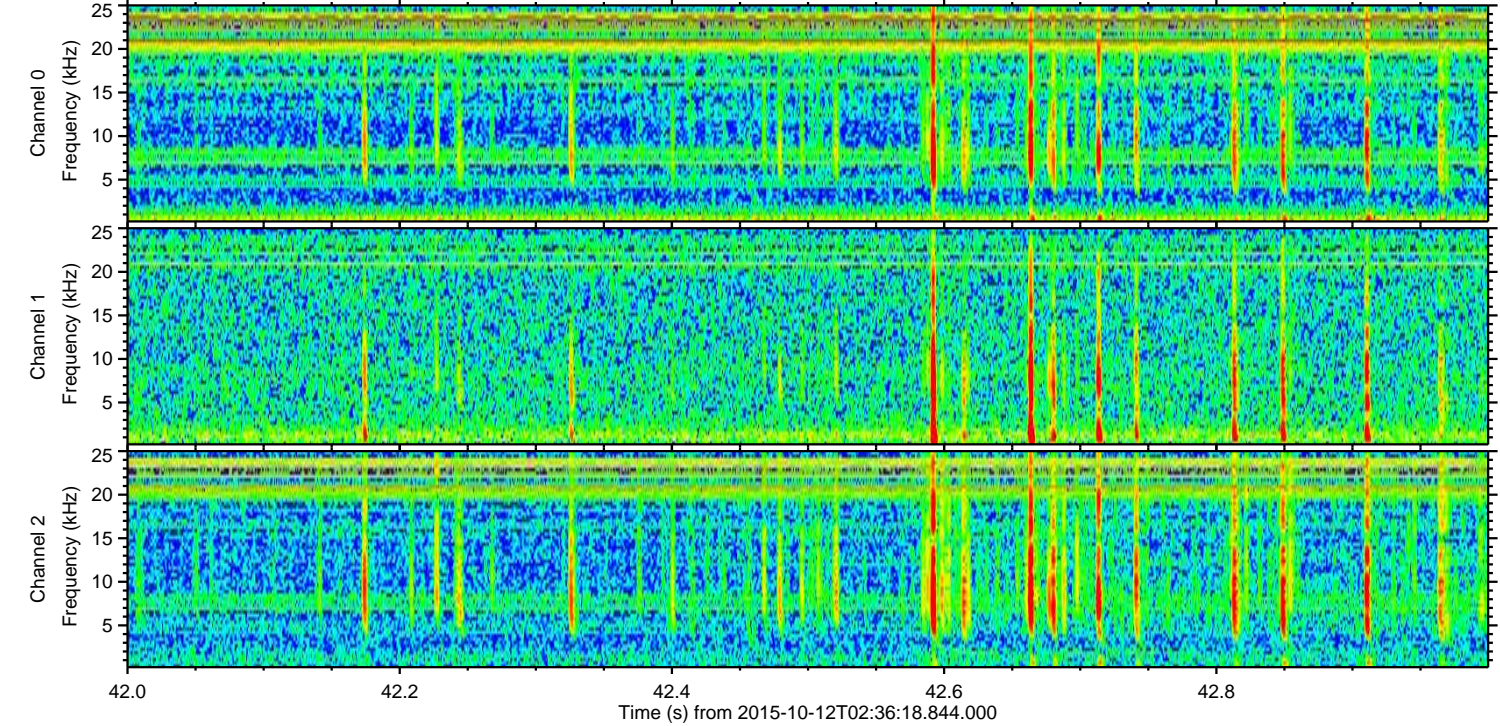
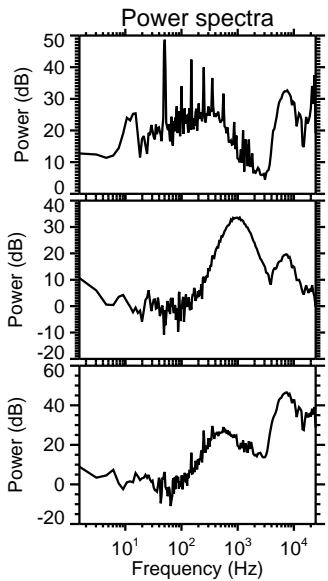
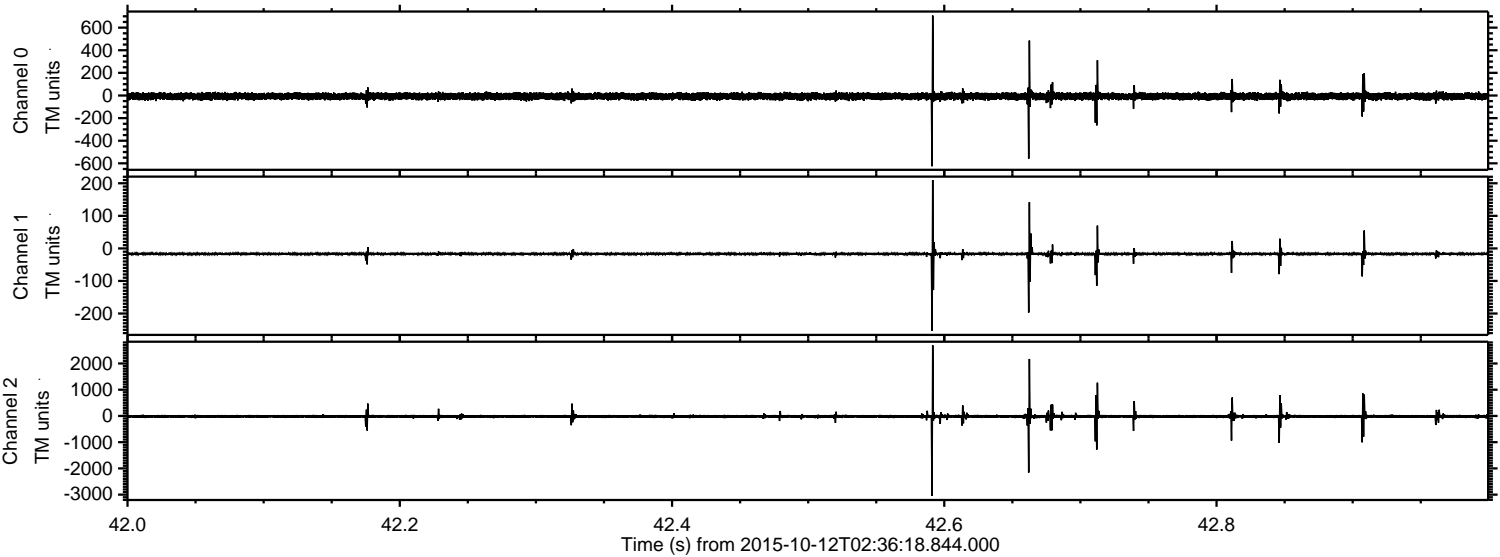
ELMAVAN 3D WAVEFORMS (Measured data sampled at 50 kHz) 51000 packets of 144 samples from 2015-10-12T02:36:18.844.000. Part 109/147

Processed Sun Oct 18 17:48:34 2015 by ELM ver.2012-10-06 from 001\_\_elm20151012\_023617\_\_dat00.bin



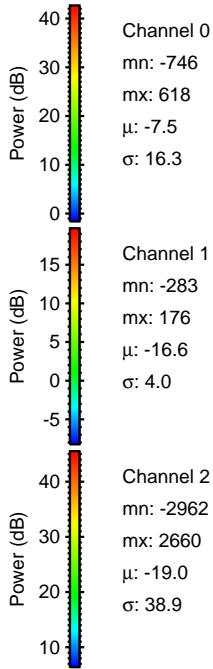
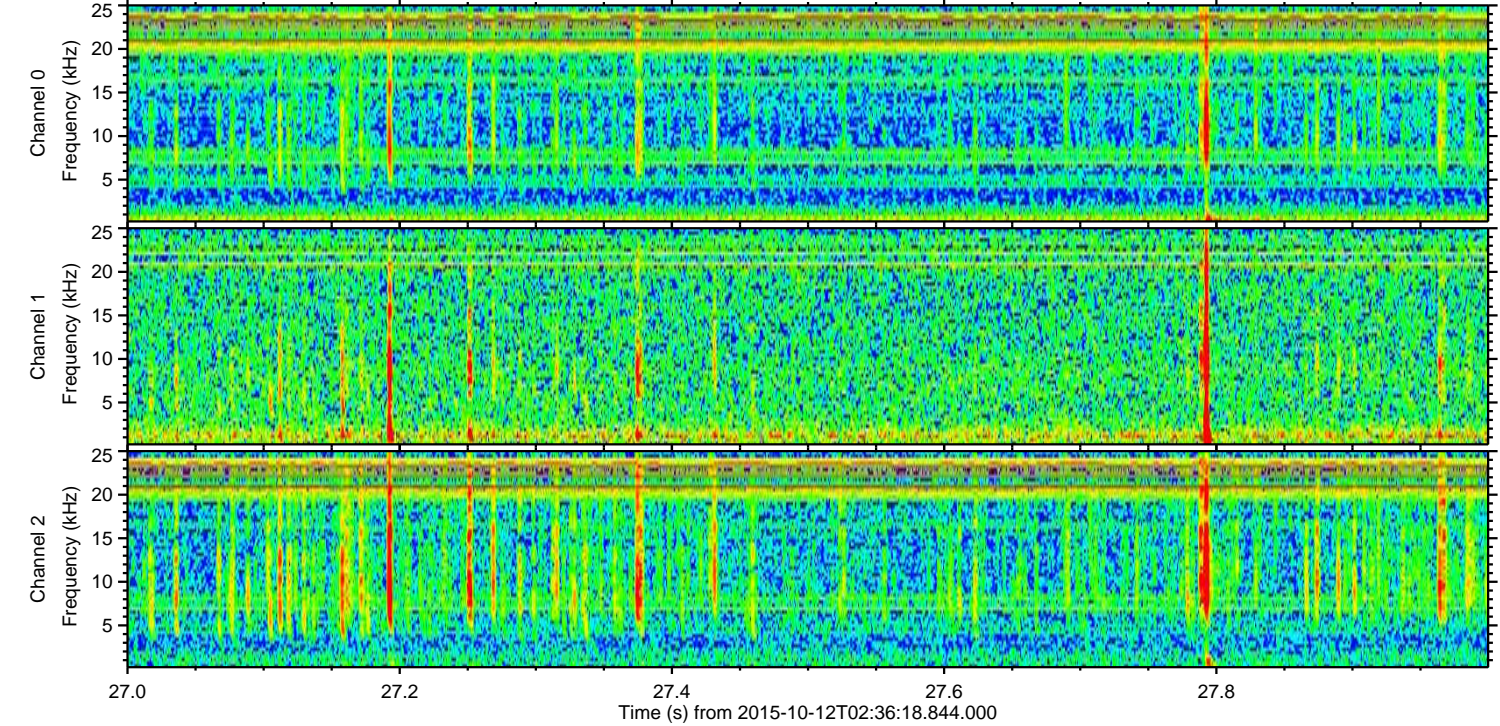
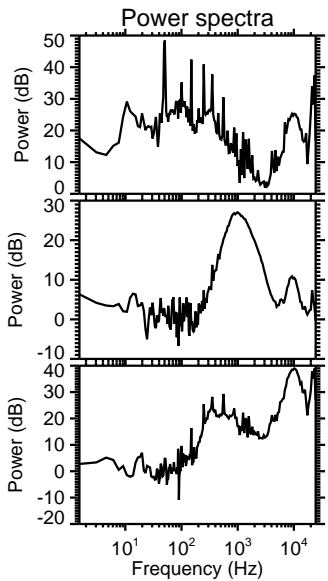
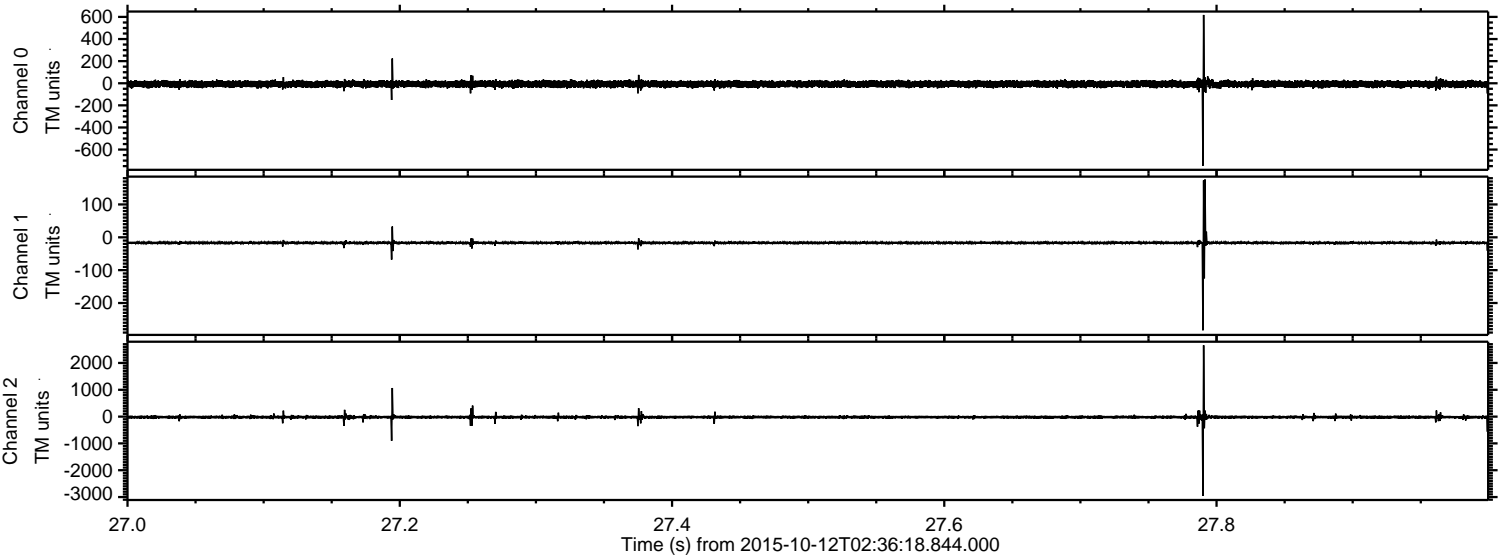


Processed Sun Oct 18 17:48:35 2015 by ELM ver.2012-10-06 from 001\_\_elm20151012\_023617\_\_dat00.bin



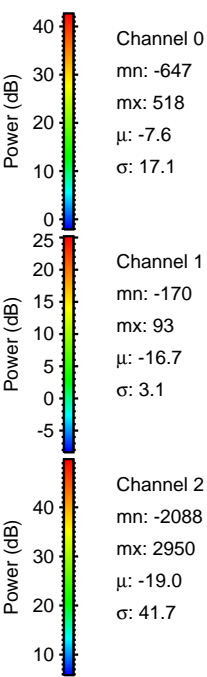
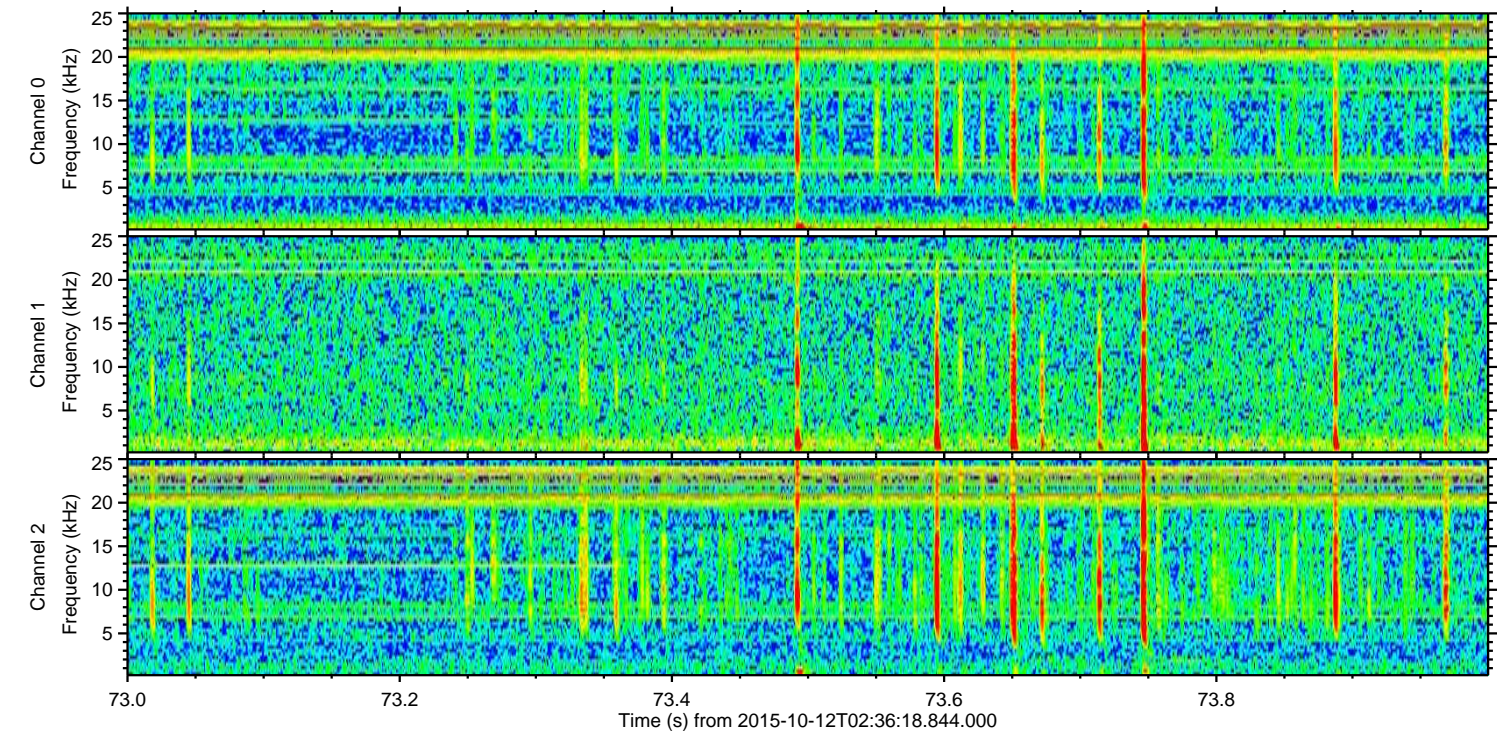
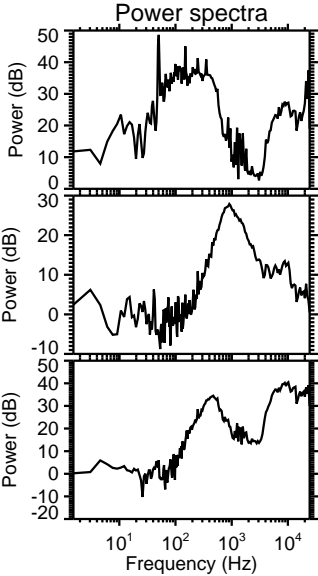
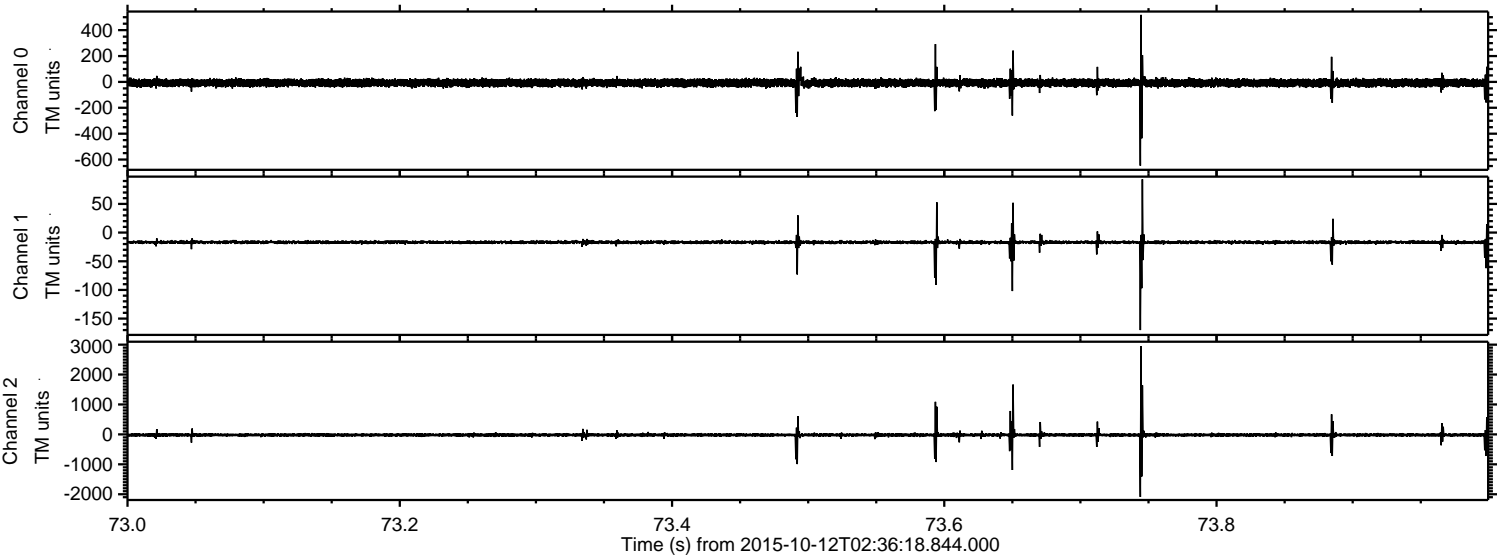


Processed Sun Oct 18 17:48:36 2015 by ELM ver.2012-10-06 from 001\_\_elm20151012\_023617\_\_dat00.bin



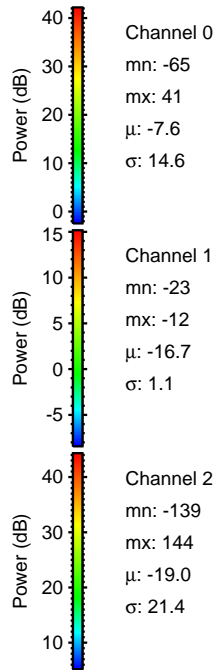
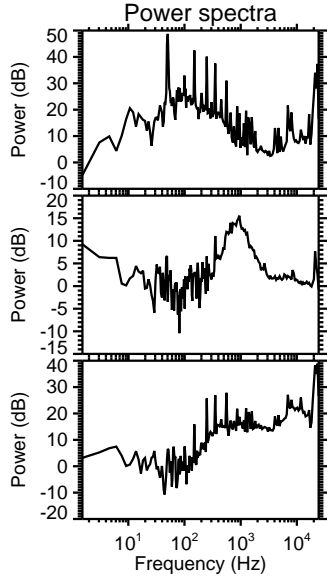
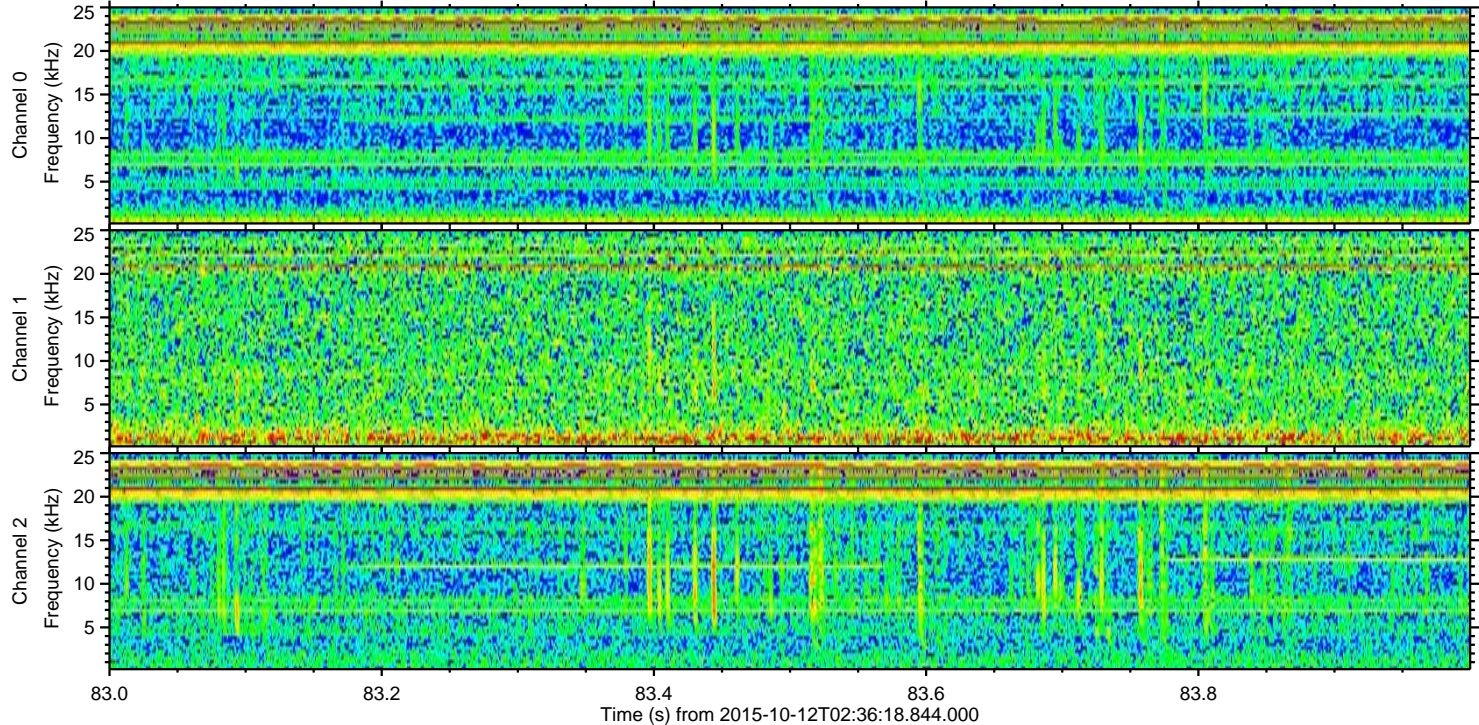
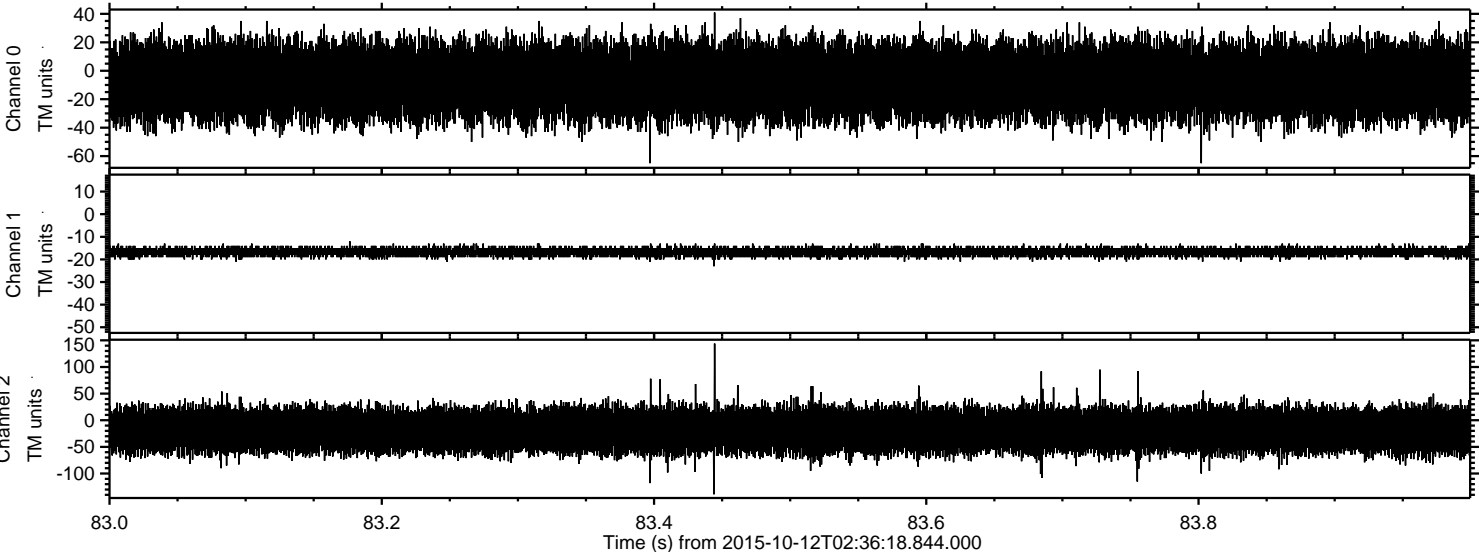


Processed Sun Oct 18 17:48:37 2015 by ELM ver.2012-10-06 from 001\_\_elm20151012\_023617\_\_dat00.bin





Processed Sun Oct 18 17:48:38 2015 by ELM ver.2012-10-06 from 001\_\_elm20151012\_023617\_\_dat00.bin



Channel 0  
mn: -65  
mx: 41  
 $\mu$ : -7.6  
 $\sigma$ : 14.6

Channel 1  
mn: -23  
mx: -12  
 $\mu$ : -16.7  
 $\sigma$ : 1.1

Channel 2  
mn: -139  
mx: 144  
 $\mu$ : -19.0  
 $\sigma$ : 21.4