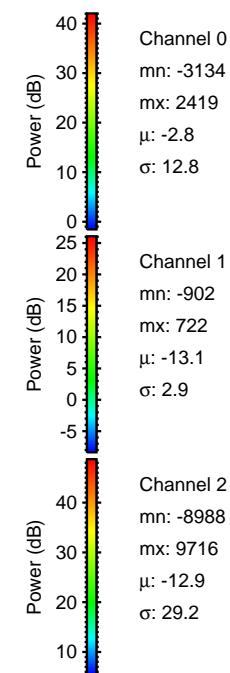
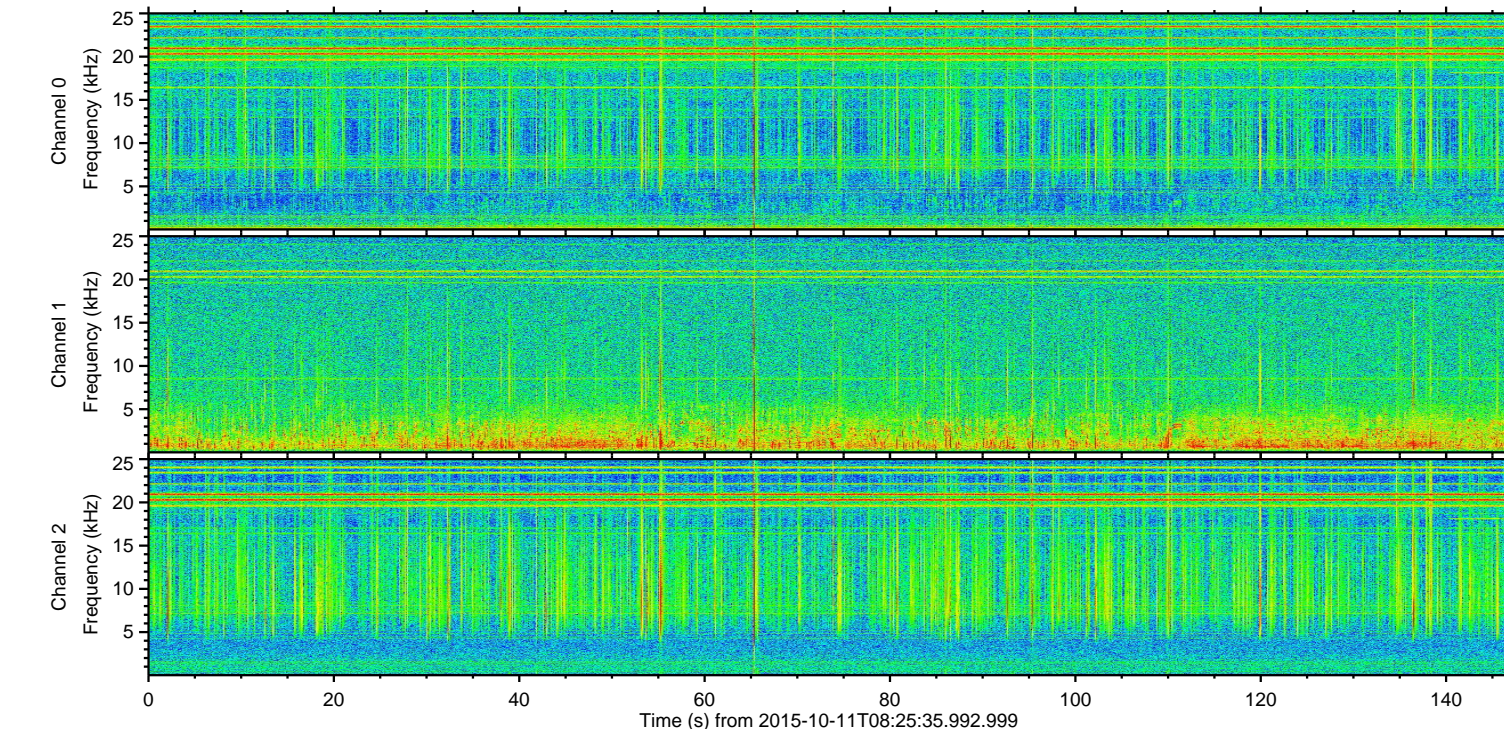
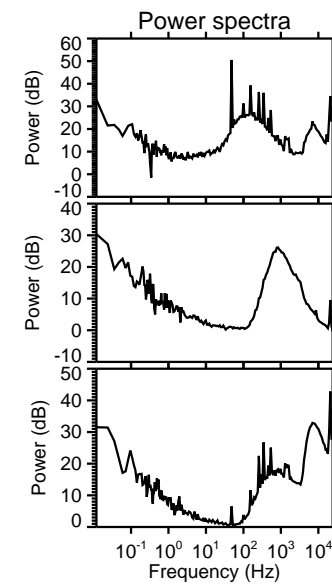
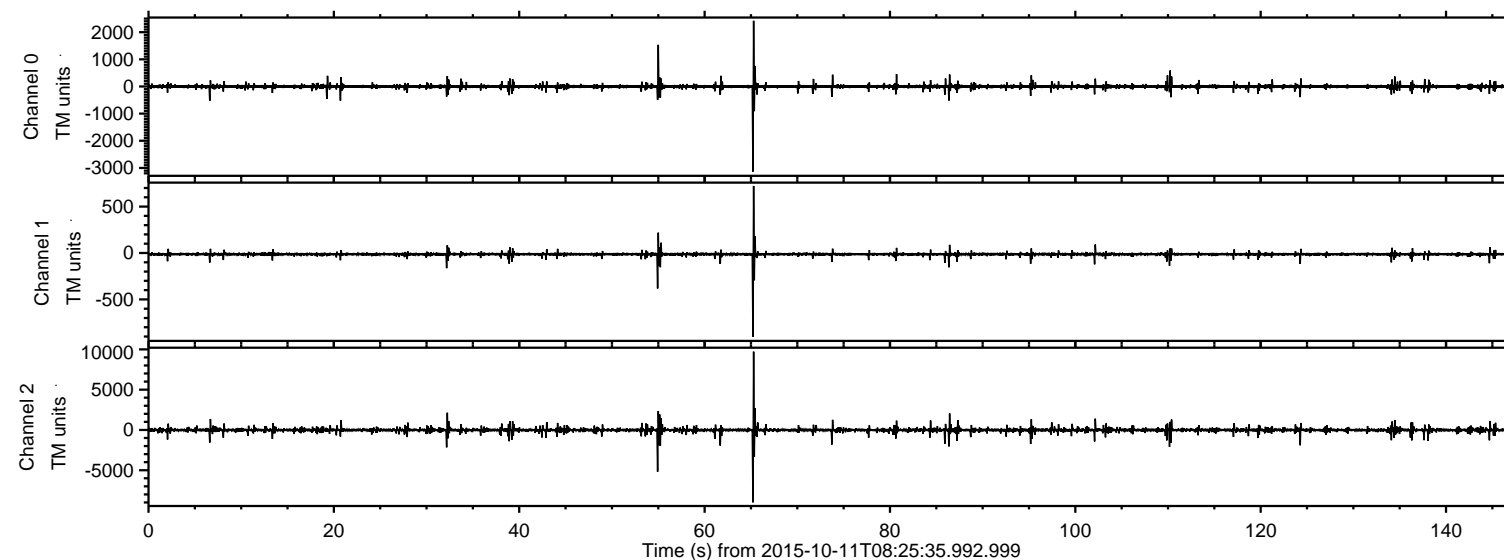
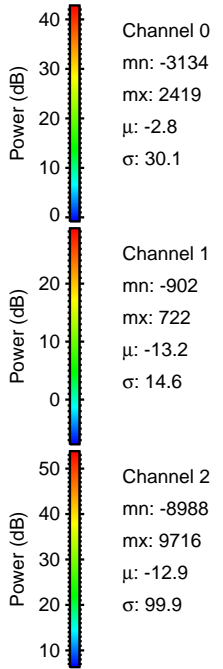
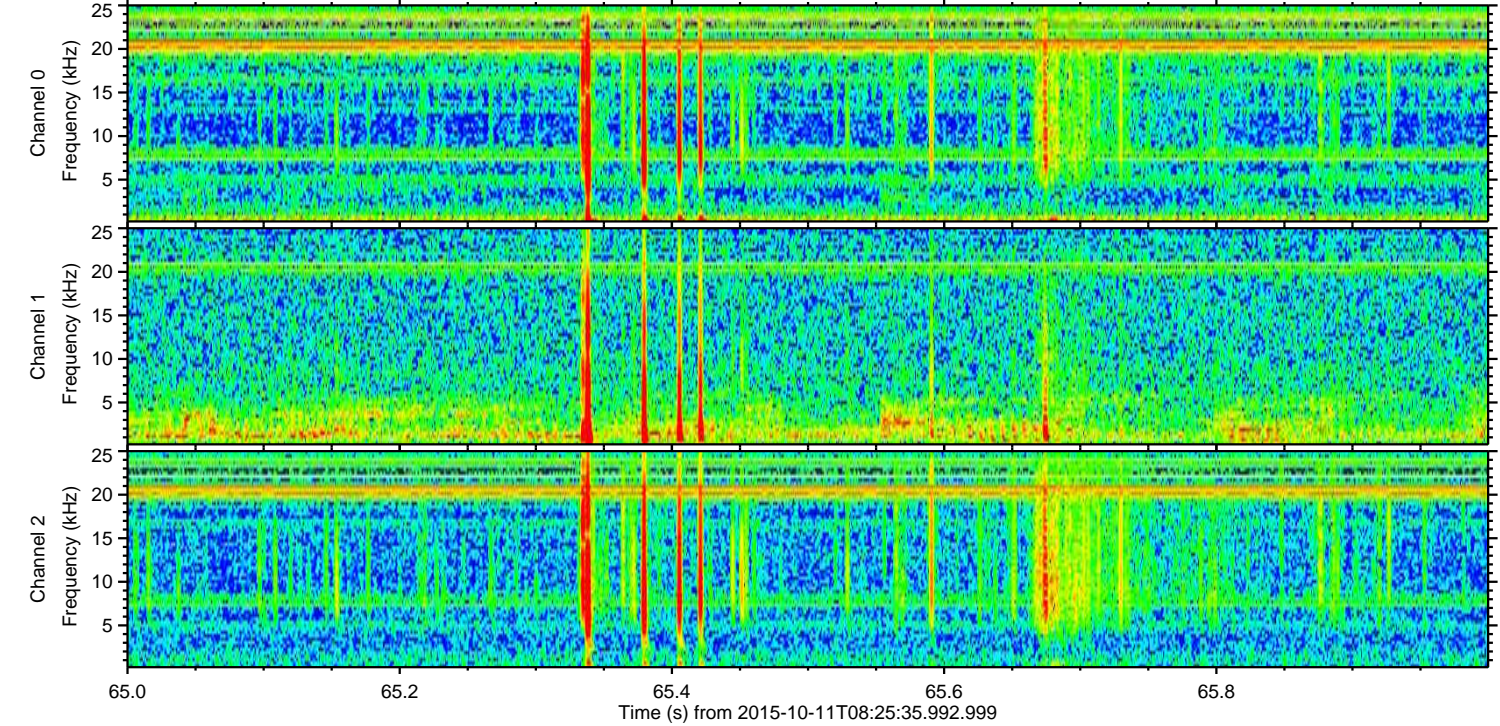
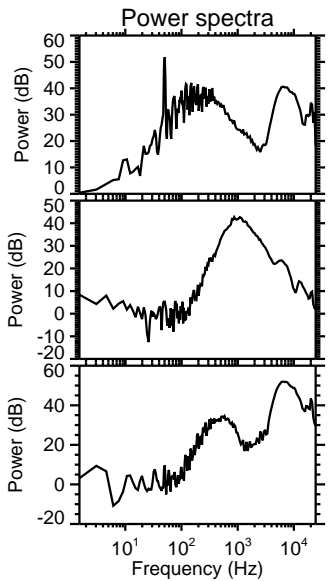
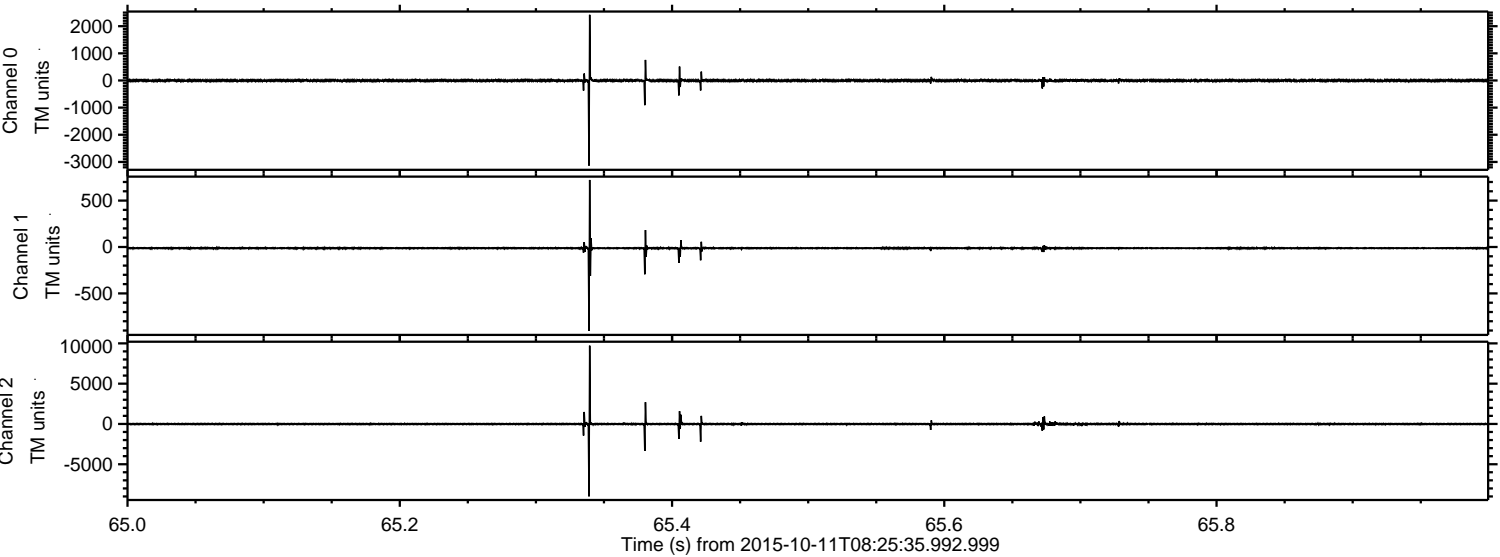


ELMAVAN 3D WAVEFORMS (Measured data sampled at 50 kHz) 51000 packets of 144 samples from 2015-10-11T08:25:35.992.999.

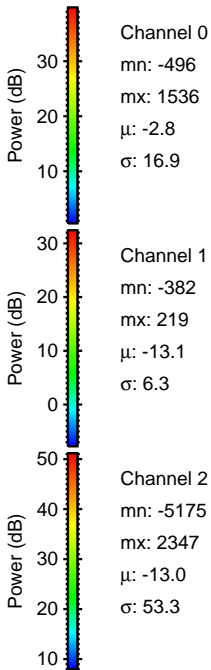
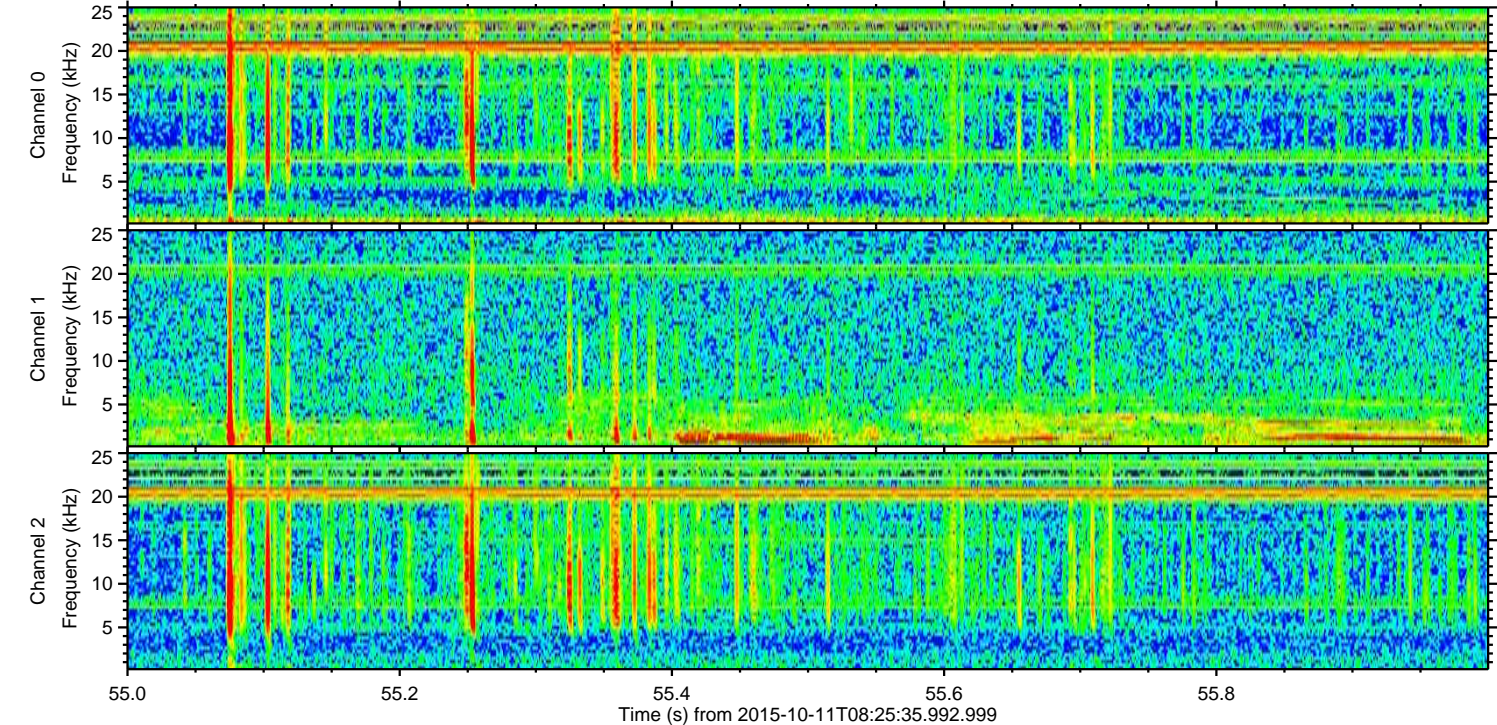
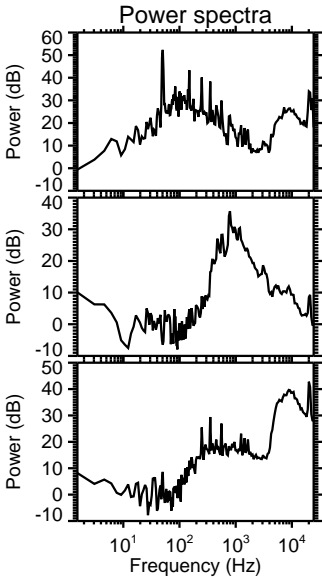
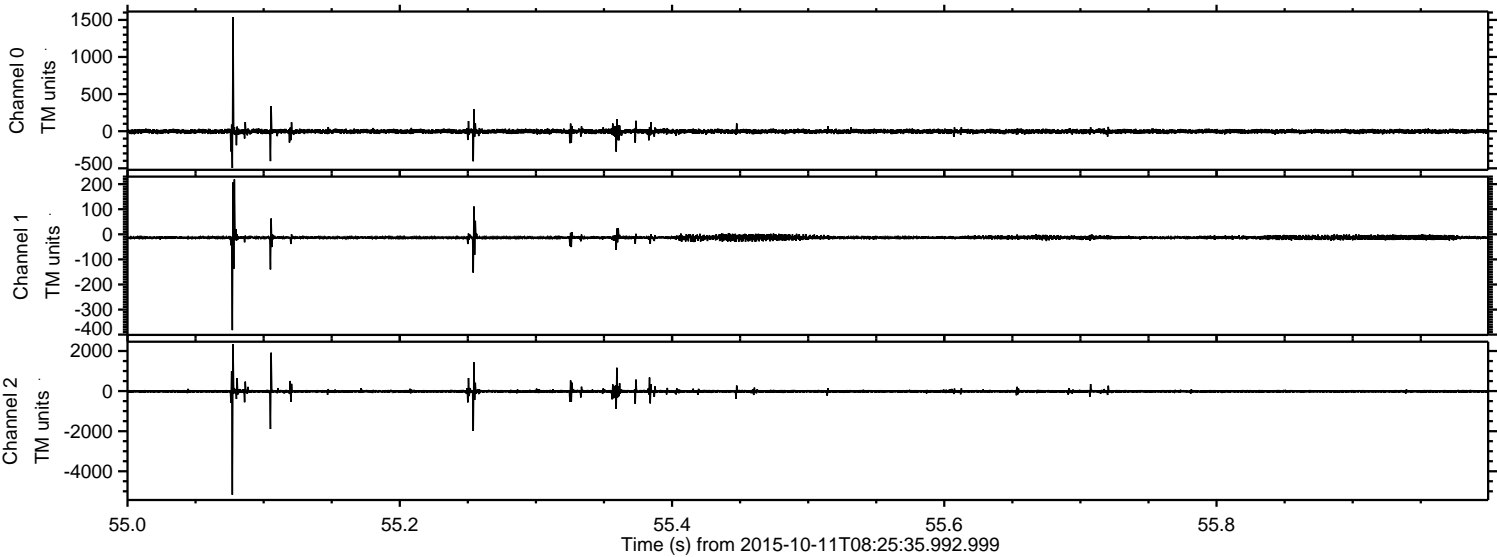
Processed Sun Oct 18 12:57:14 2015 by ELM ver.2012-10-06 from 001__elm20151011_082534__dat00.bin



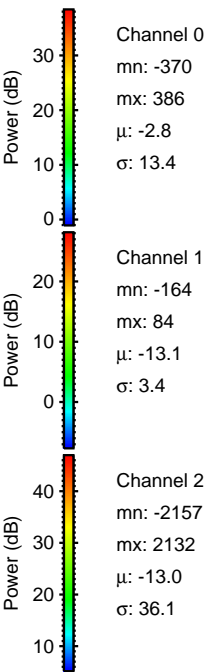
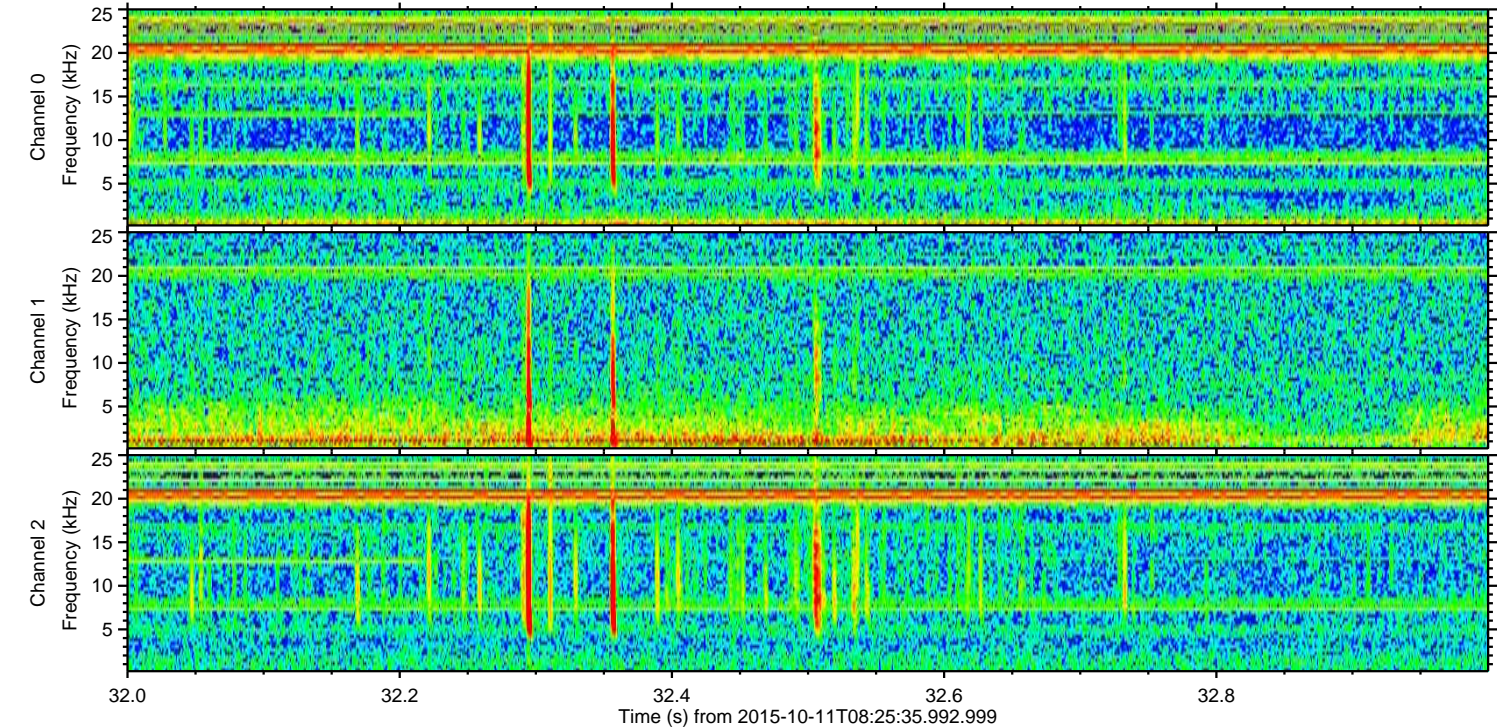
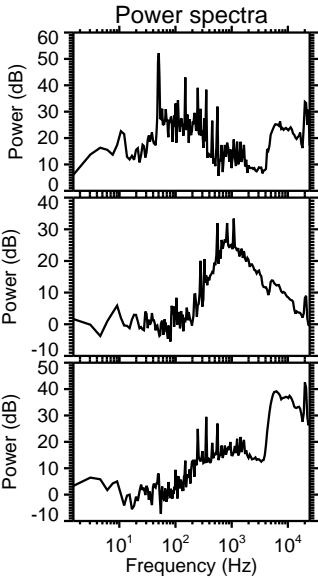
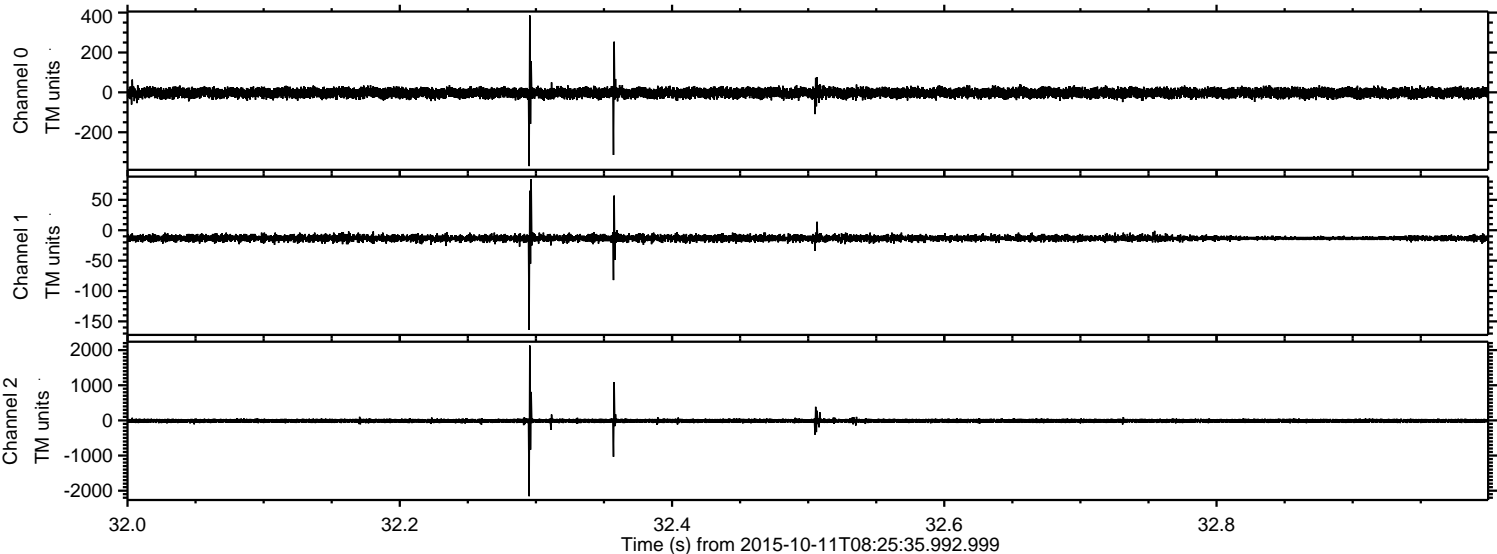
Processed Sun Oct 18 12:57:28 2015 by ELM ver.2012-10-06 from 001__elm20151011_082534__dat00.bin



Processed Sun Oct 18 12:57:29 2015 by ELM ver.2012-10-06 from 001__elm20151011_082534__dat00.bin

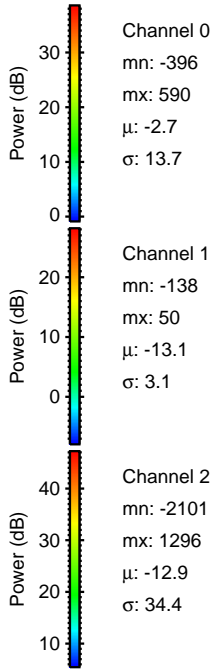
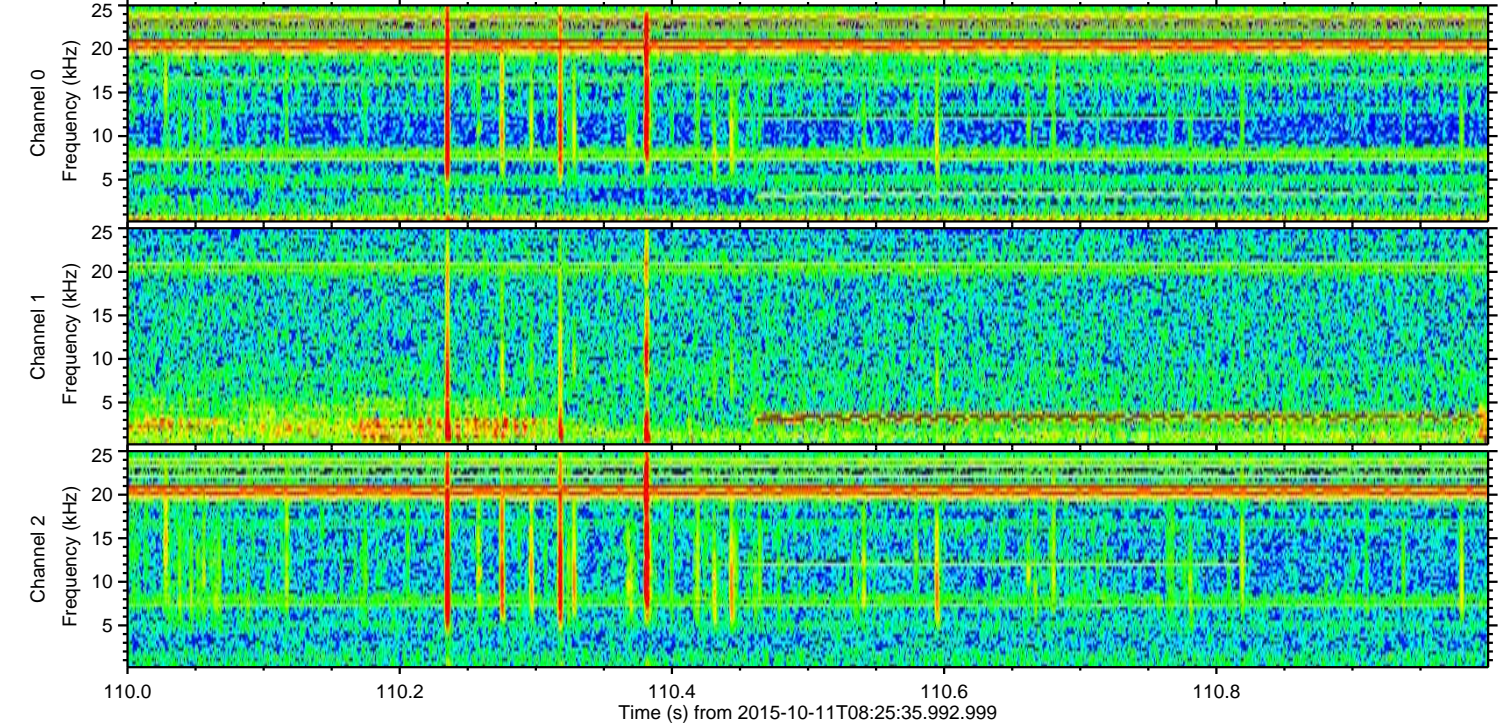
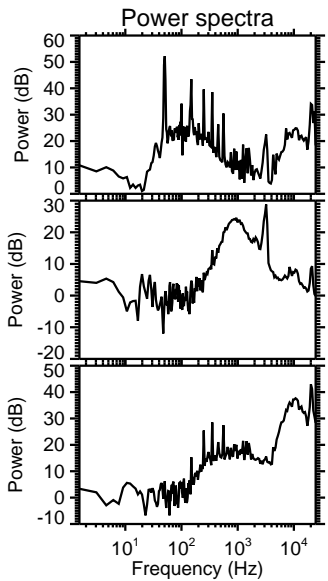
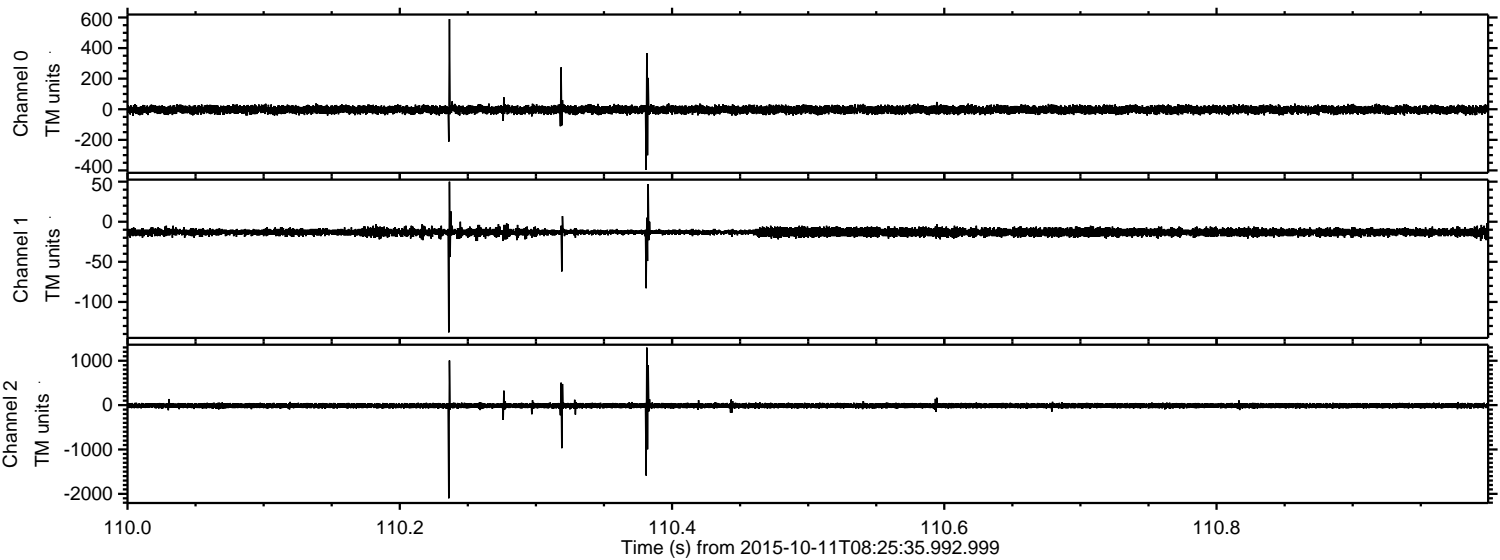


Processed Sun Oct 18 12:57:30 2015 by ELM ver.2012-10-06 from 001__elm20151011_082534__dat00.bin



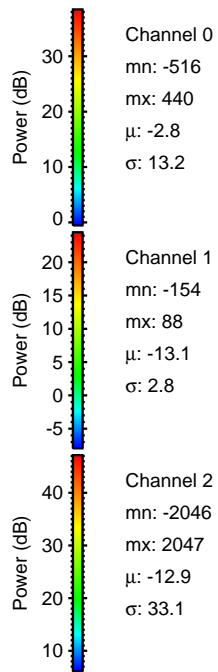
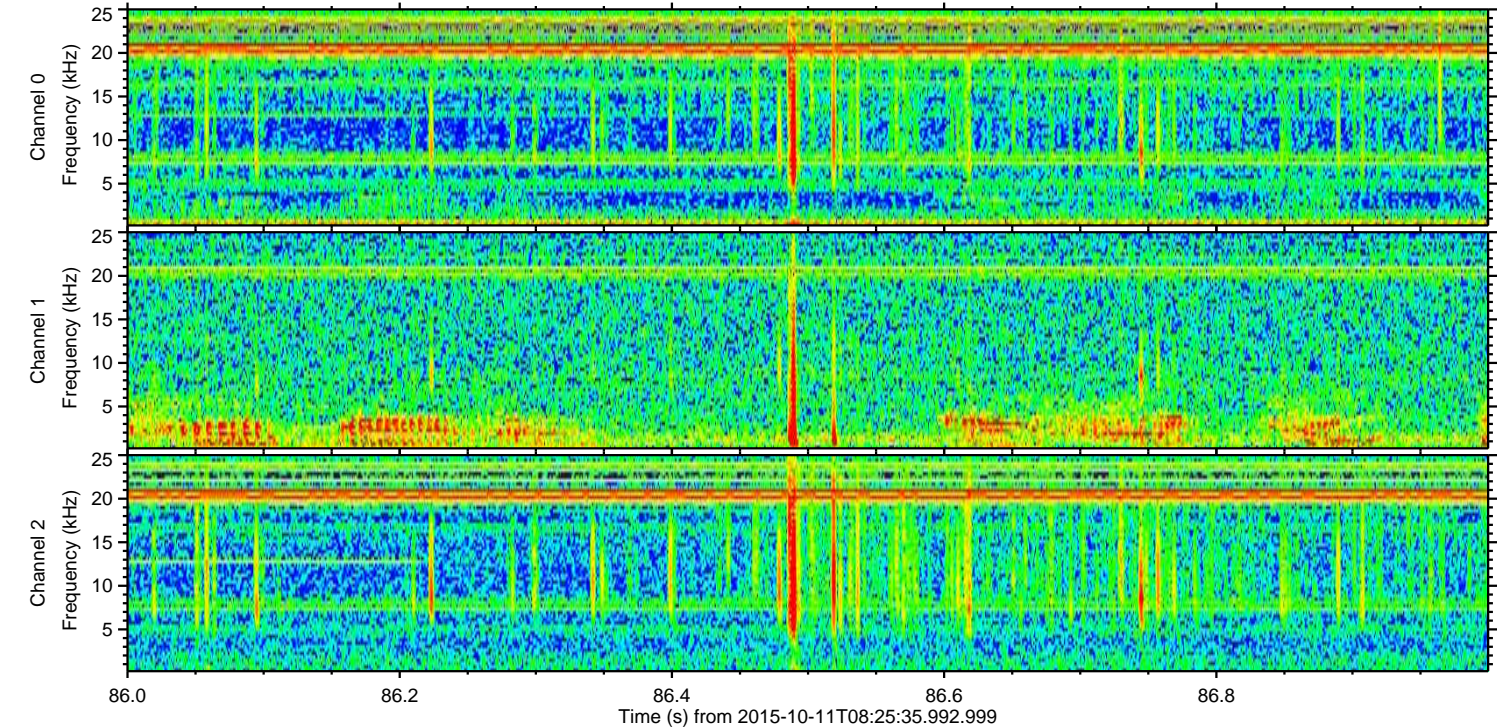
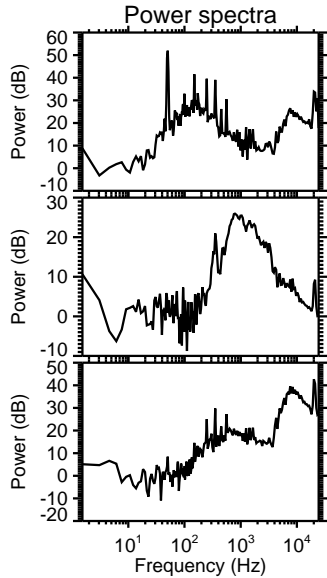
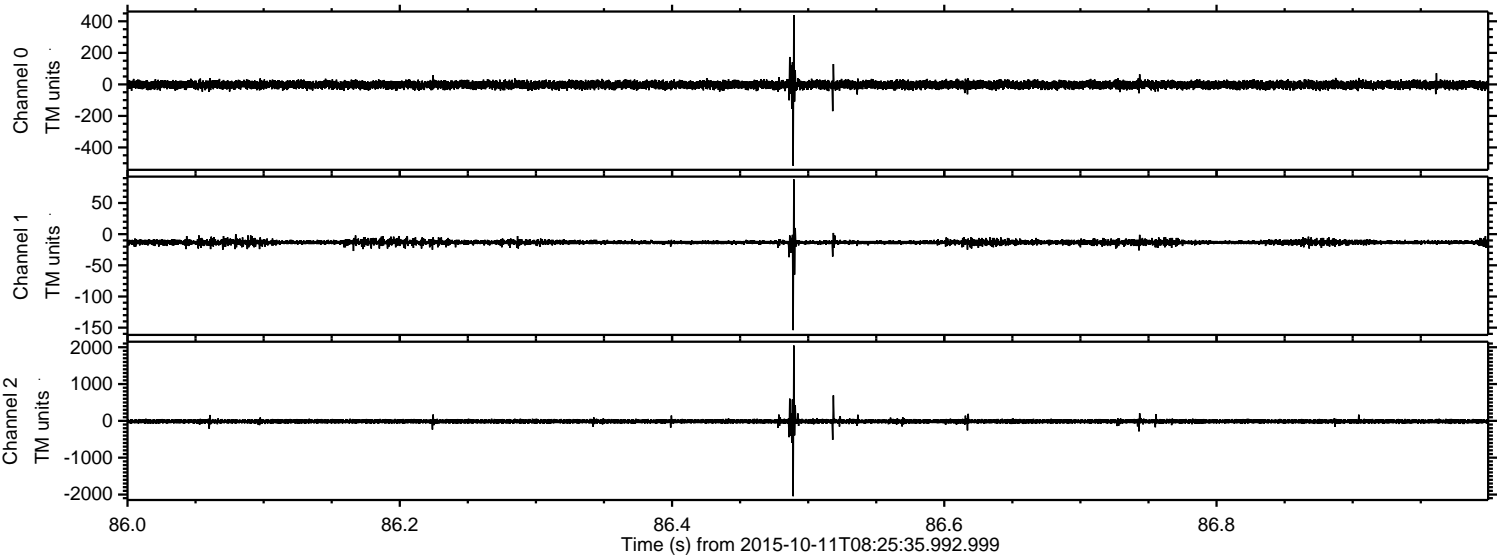
ELMAVAN 3D WAVEFORMS (Measured data sampled at 50 kHz) 51000 packets of 144 samples from 2015-10-11T08:25:35.992.999. Part 111/147

Processed Sun Oct 18 12:57:31 2015 by ELM ver.2012-10-06 from 001__elm20151011_082534__dat00.bin

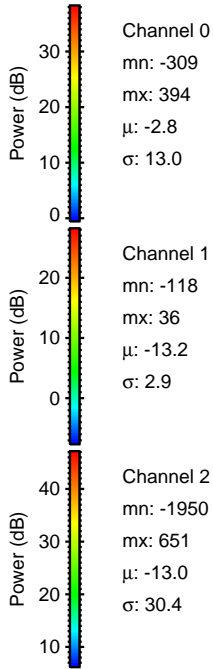
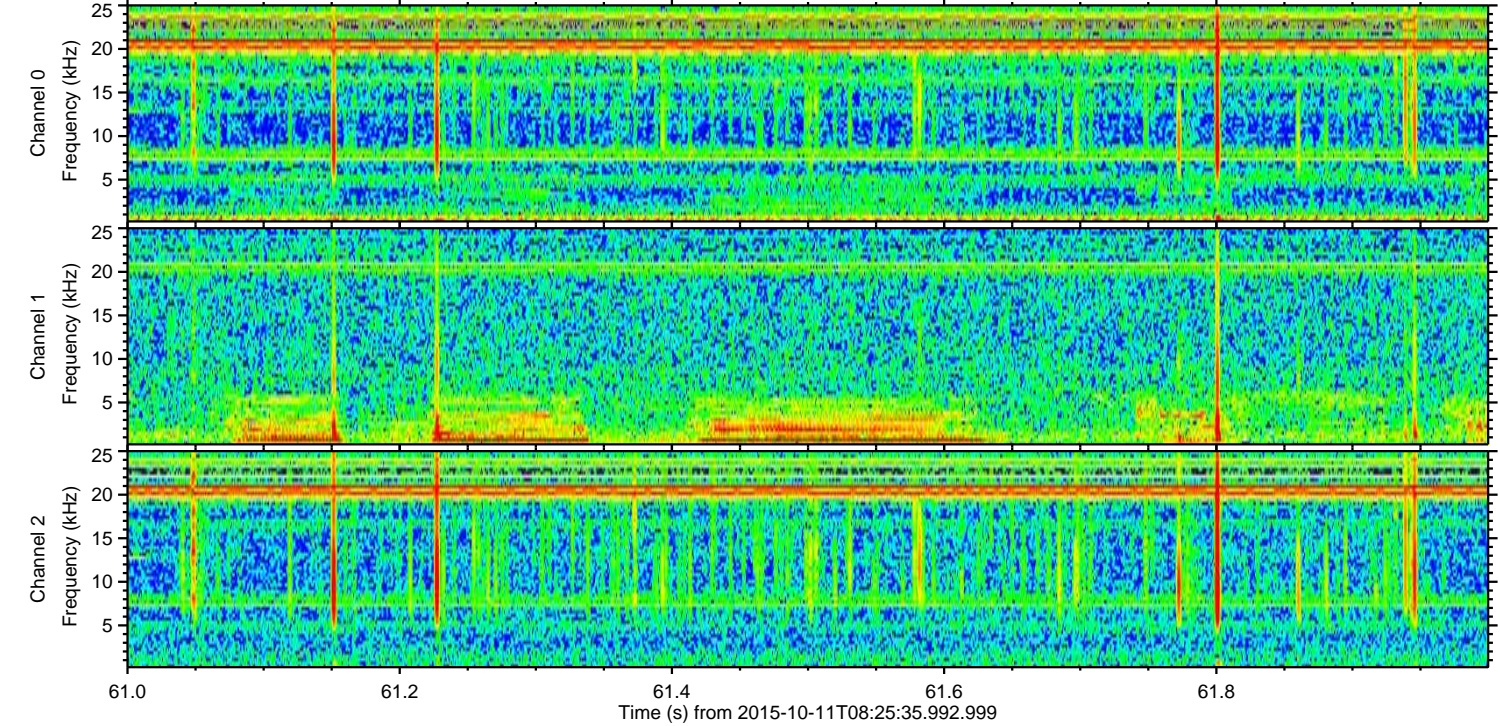
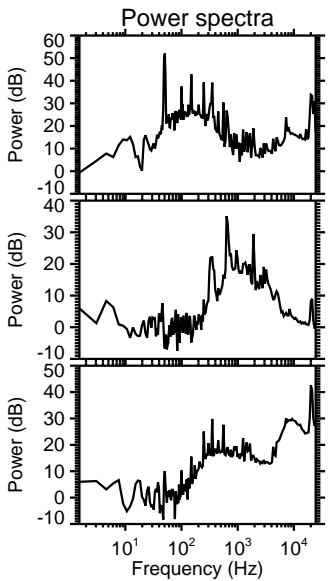
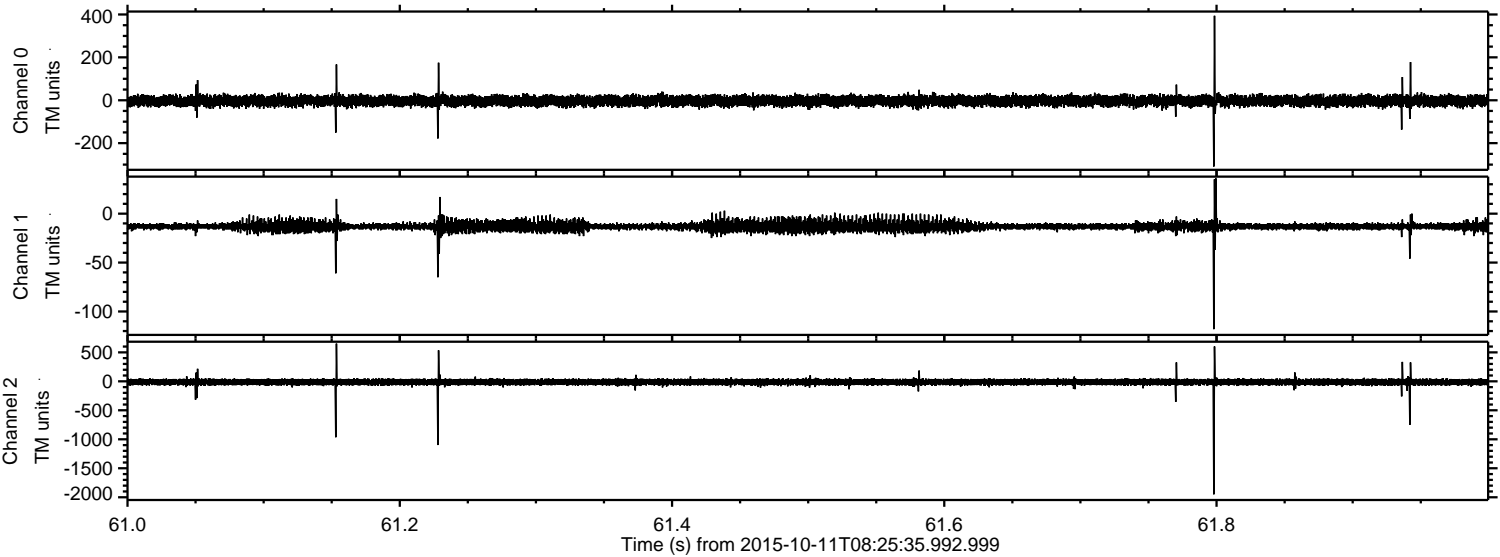


ELMAVAN 3D WAVEFORMS (Measured data sampled at 50 kHz) 51000 packets of 144 samples from 2015-10-11T08:25:35.992.999. Part 87/147

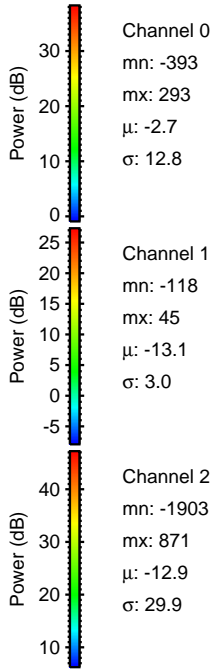
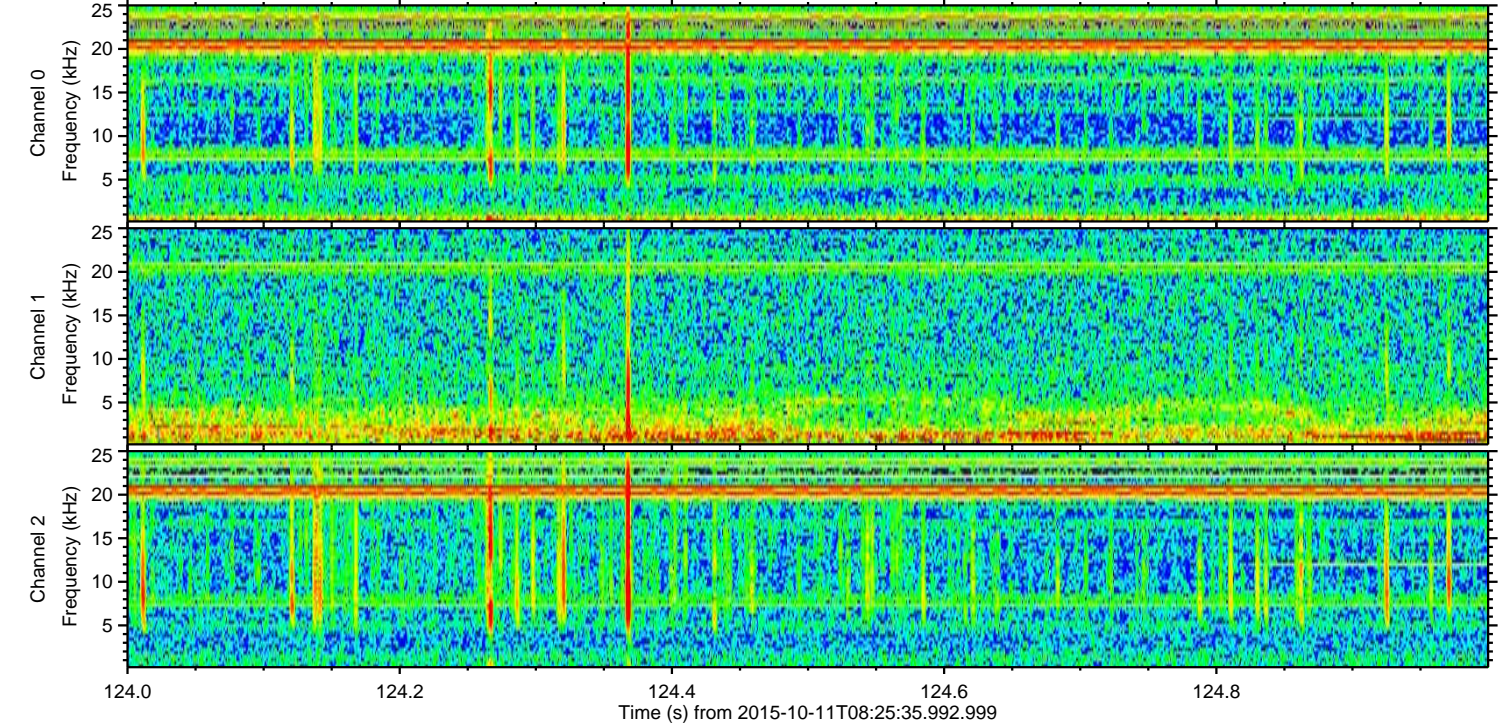
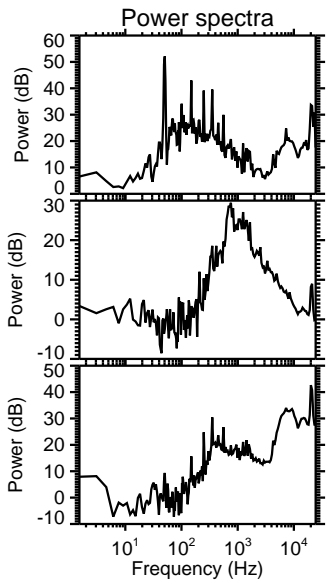
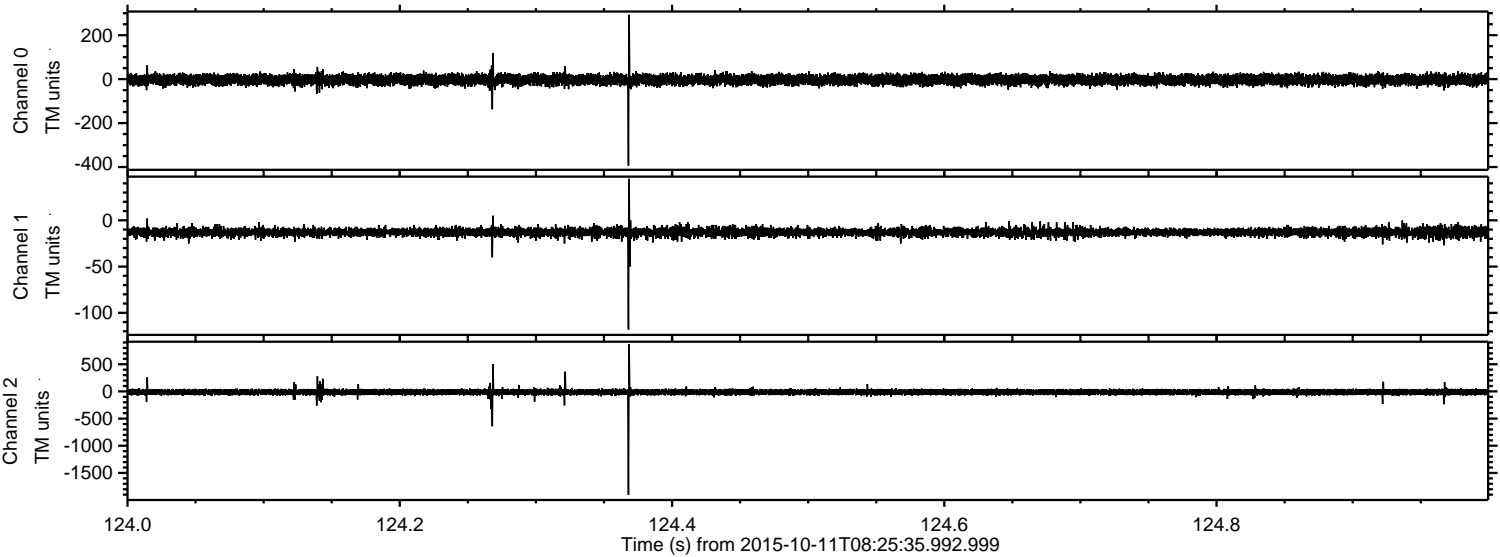
Processed Sun Oct 18 12:57:32 2015 by ELM ver.2012-10-06 from 001__elm20151011_082534__dat00.bin



Processed Sun Oct 18 12:57:33 2015 by ELM ver.2012-10-06 from 001__elm20151011_082534__dat00.bin

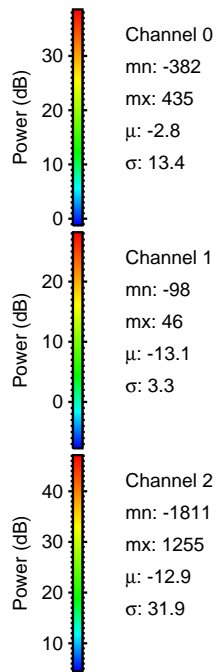
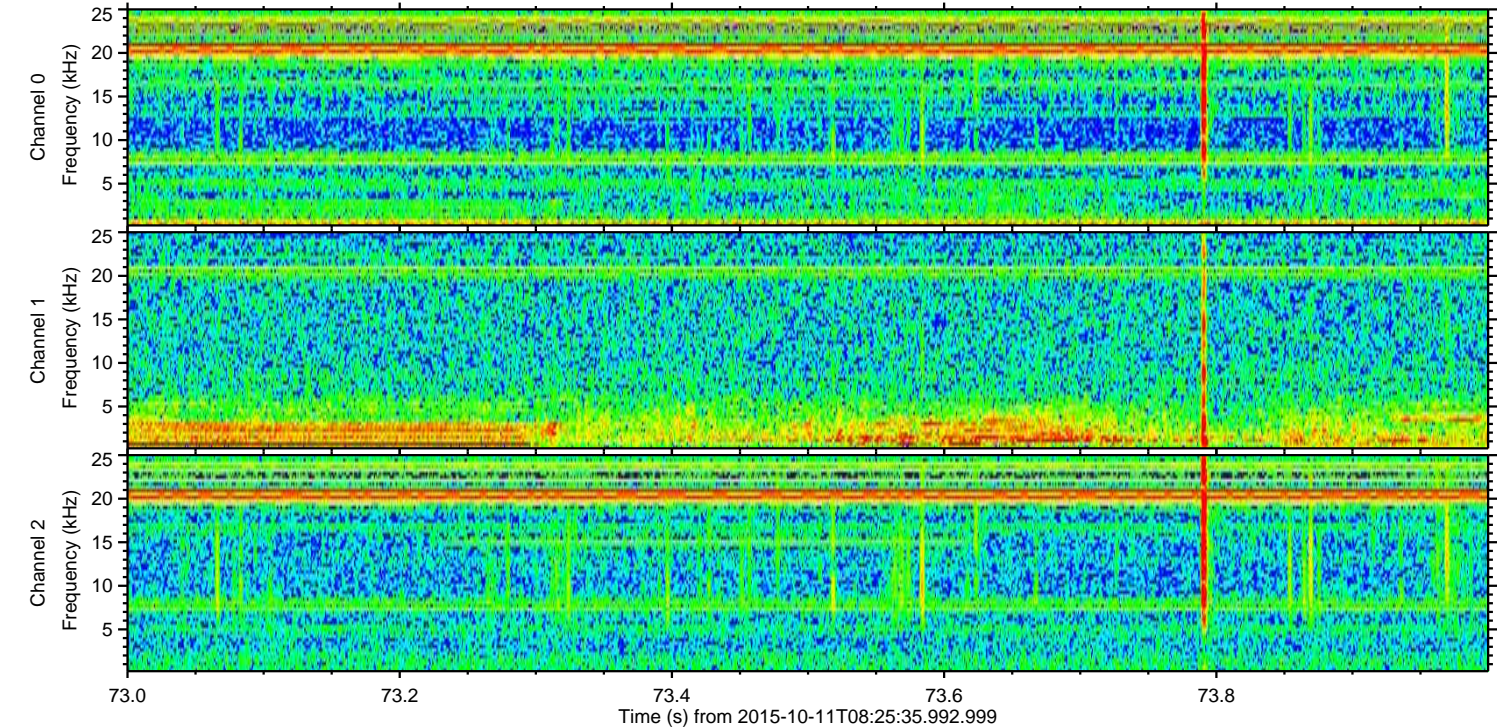
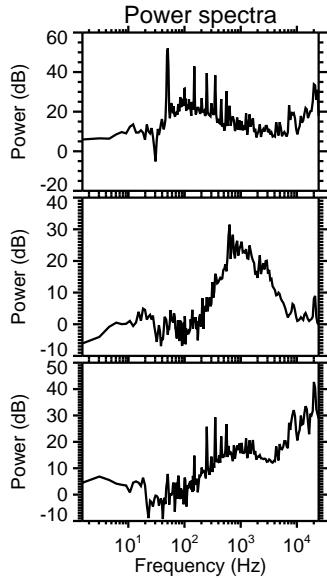
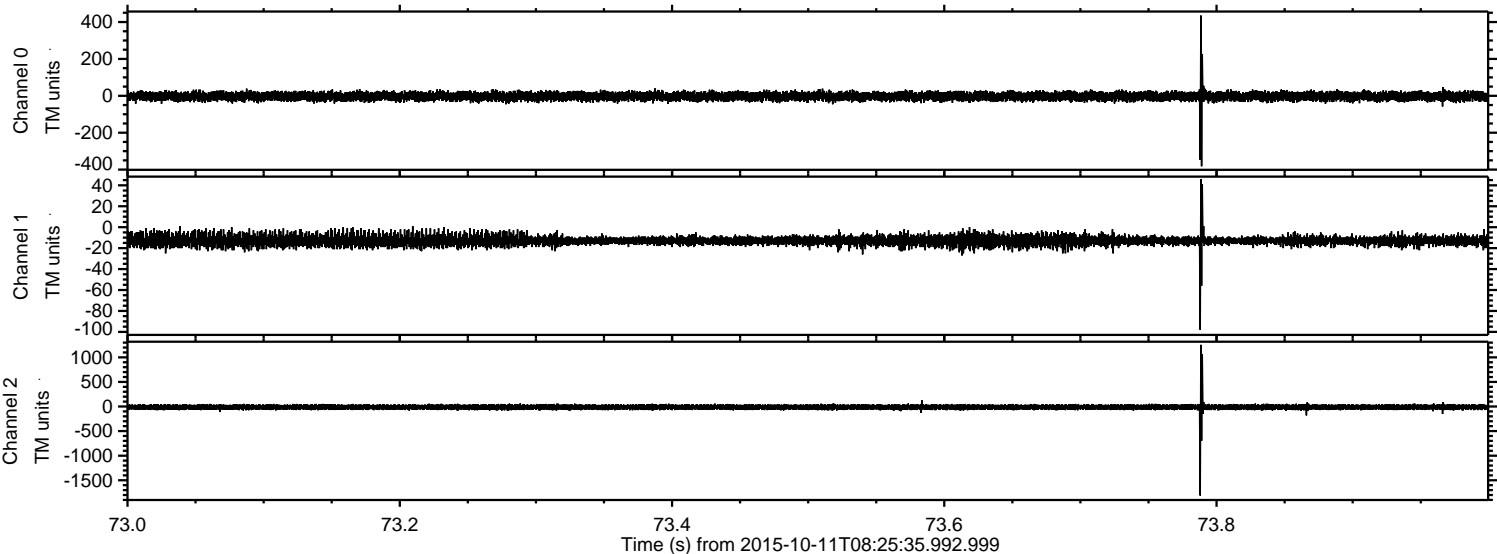


Processed Sun Oct 18 12:57:34 2015 by ELM ver.2012-10-06 from 001__elm20151011_082534__dat00.bin

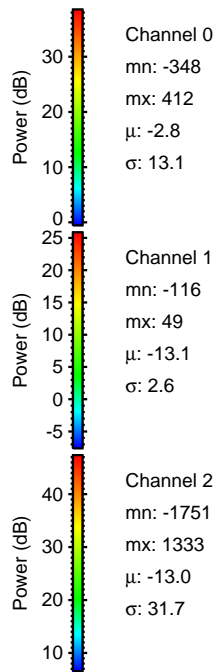
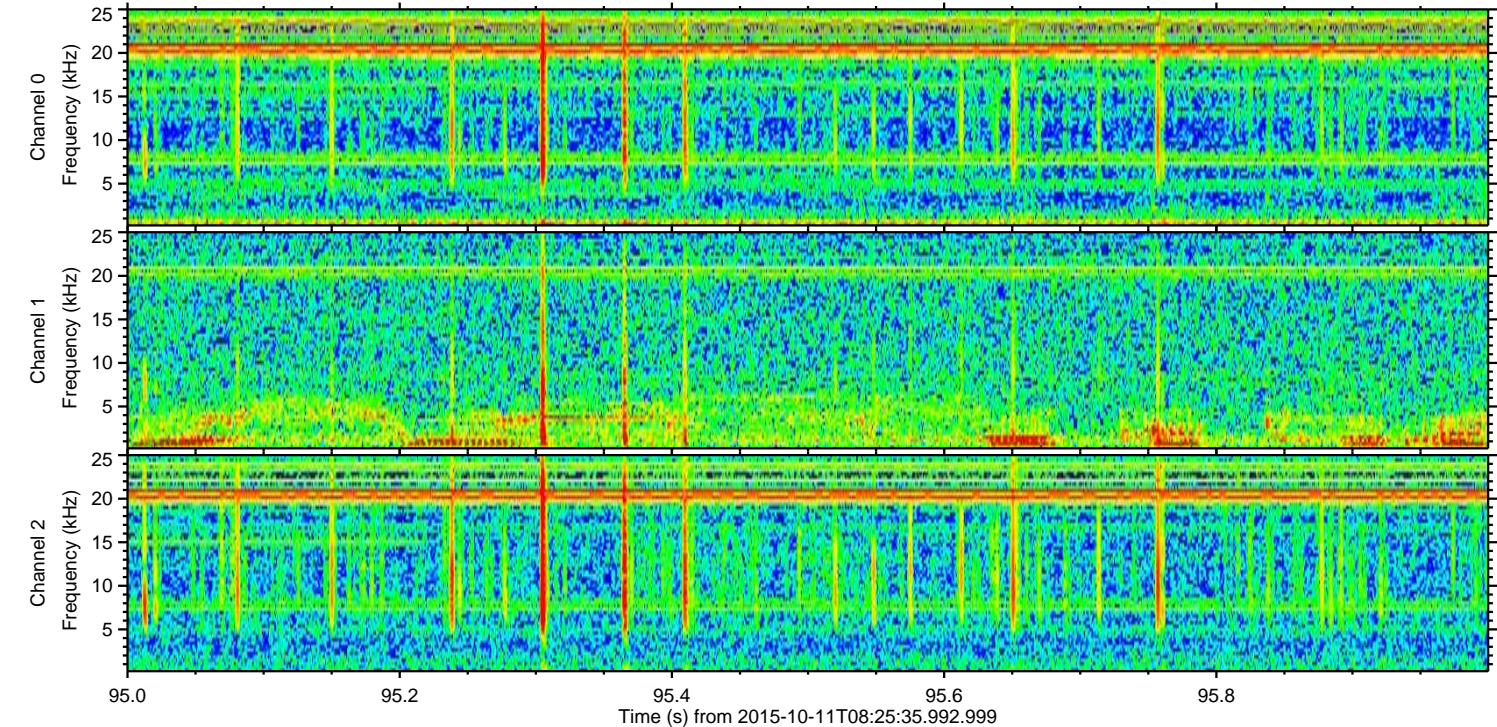
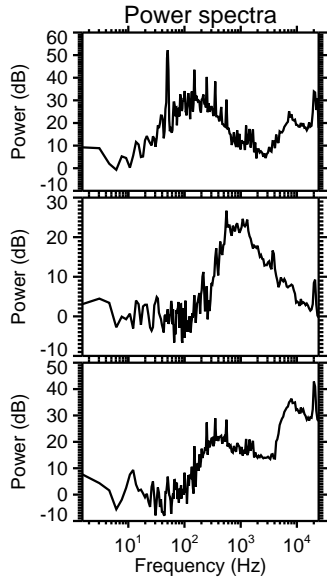
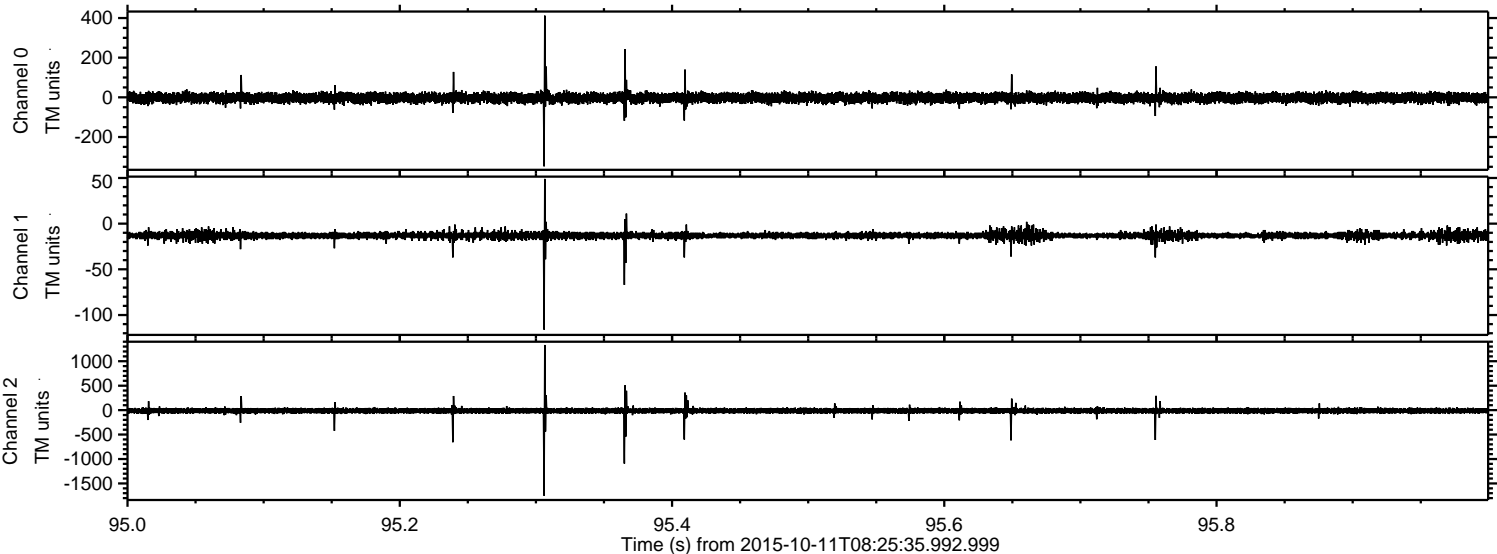


ELMAVAN 3D WAVEFORMS (Measured data sampled at 50 kHz) 51000 packets of 144 samples from 2015-10-11T08:25:35.992.999. Part 74/147

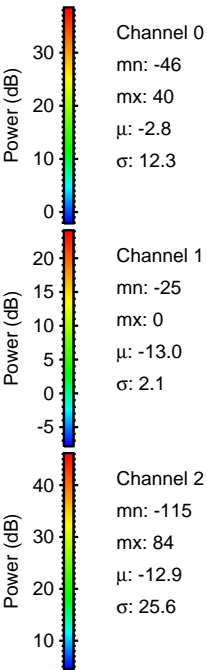
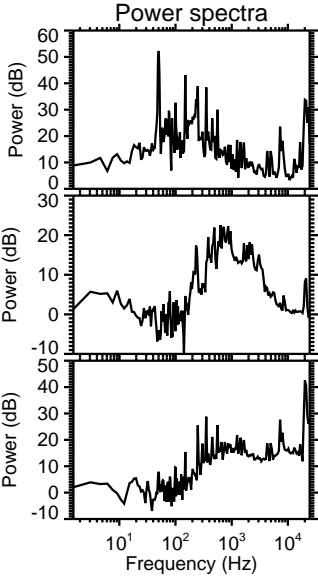
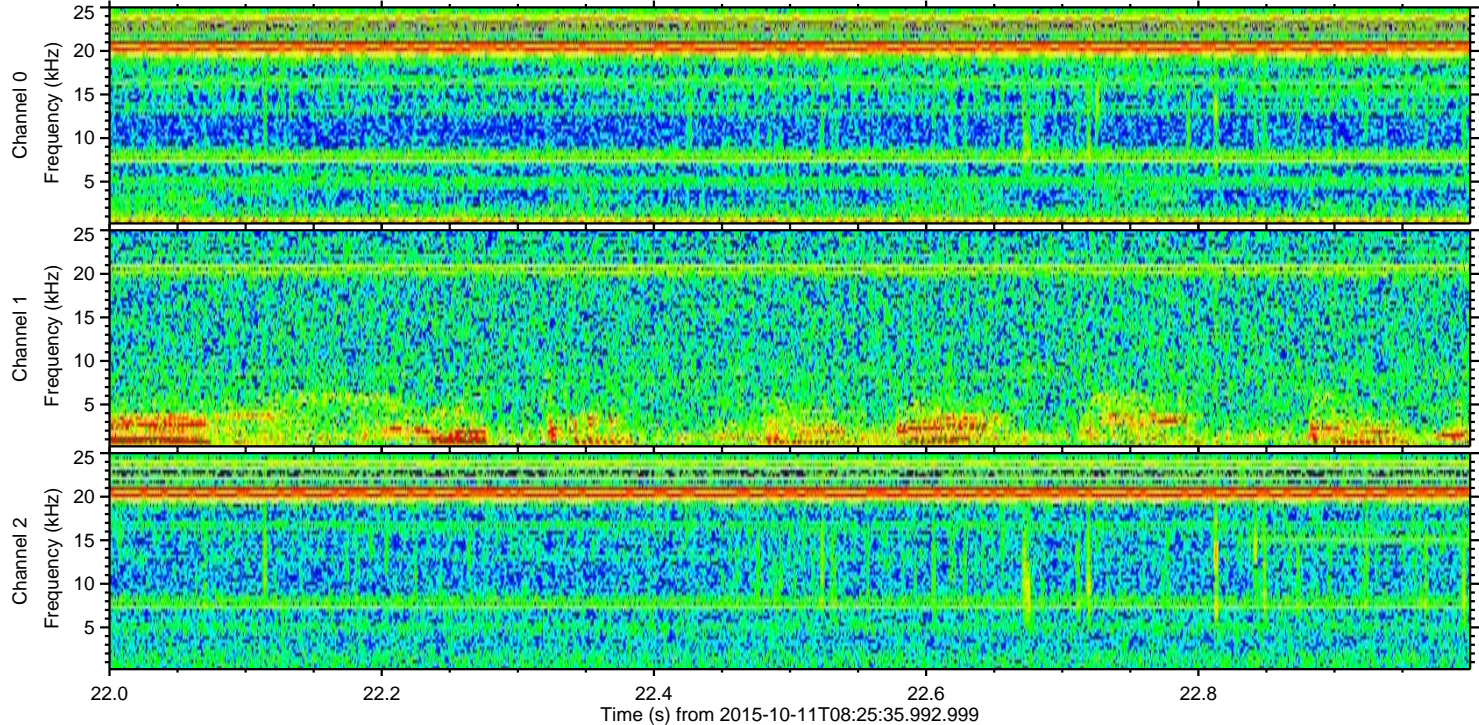
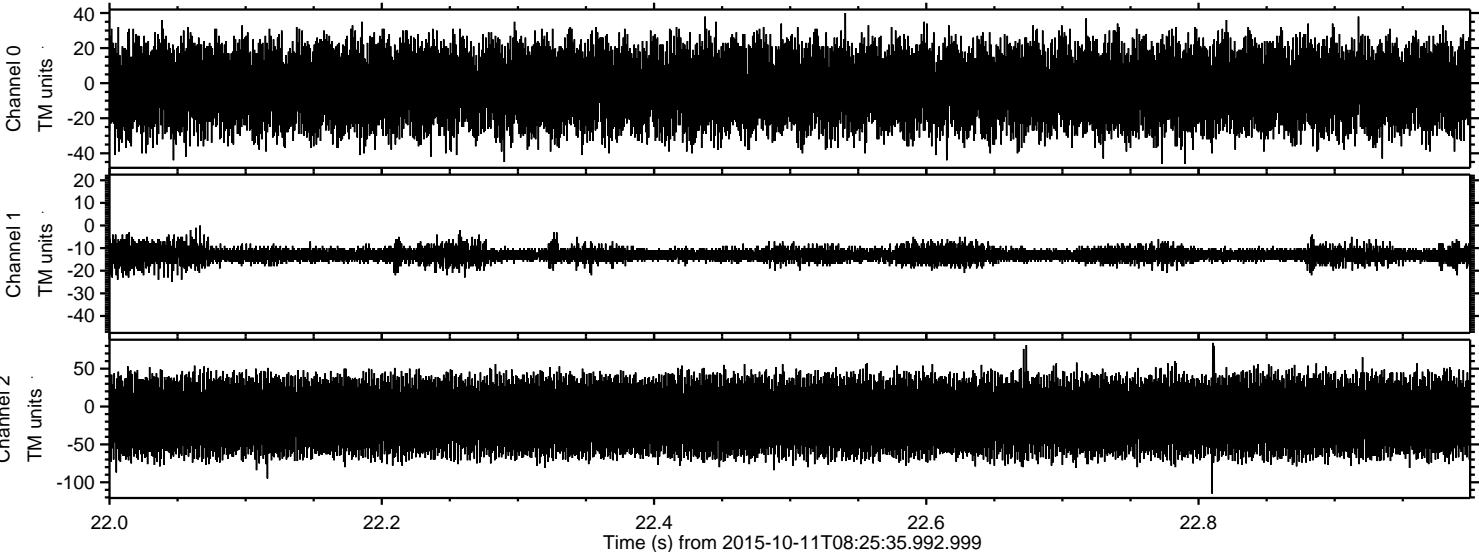
Processed Sun Oct 18 12:57:35 2015 by ELM ver.2012-10-06 from 001__elm20151011_082534__dat00.bin



Processed Sun Oct 18 12:57:36 2015 by ELM ver.2012-10-06 from 001__elm20151011_082534__dat00.bin



Processed Sun Oct 18 12:57:37 2015 by ELM ver.2012-10-06 from 001__elm20151011_082534__dat00.bin



Channel 0
mn: -46
mx: 40
 μ : -2.8
 σ : 12.3

Channel 1
mn: -25
mx: 0
 μ : -13.0
 σ : 2.1

Channel 2
mn: -115
mx: 84
 μ : -12.9
 σ : 25.6