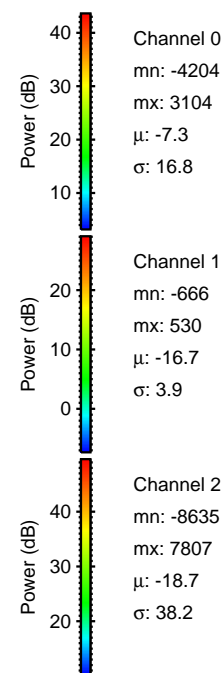
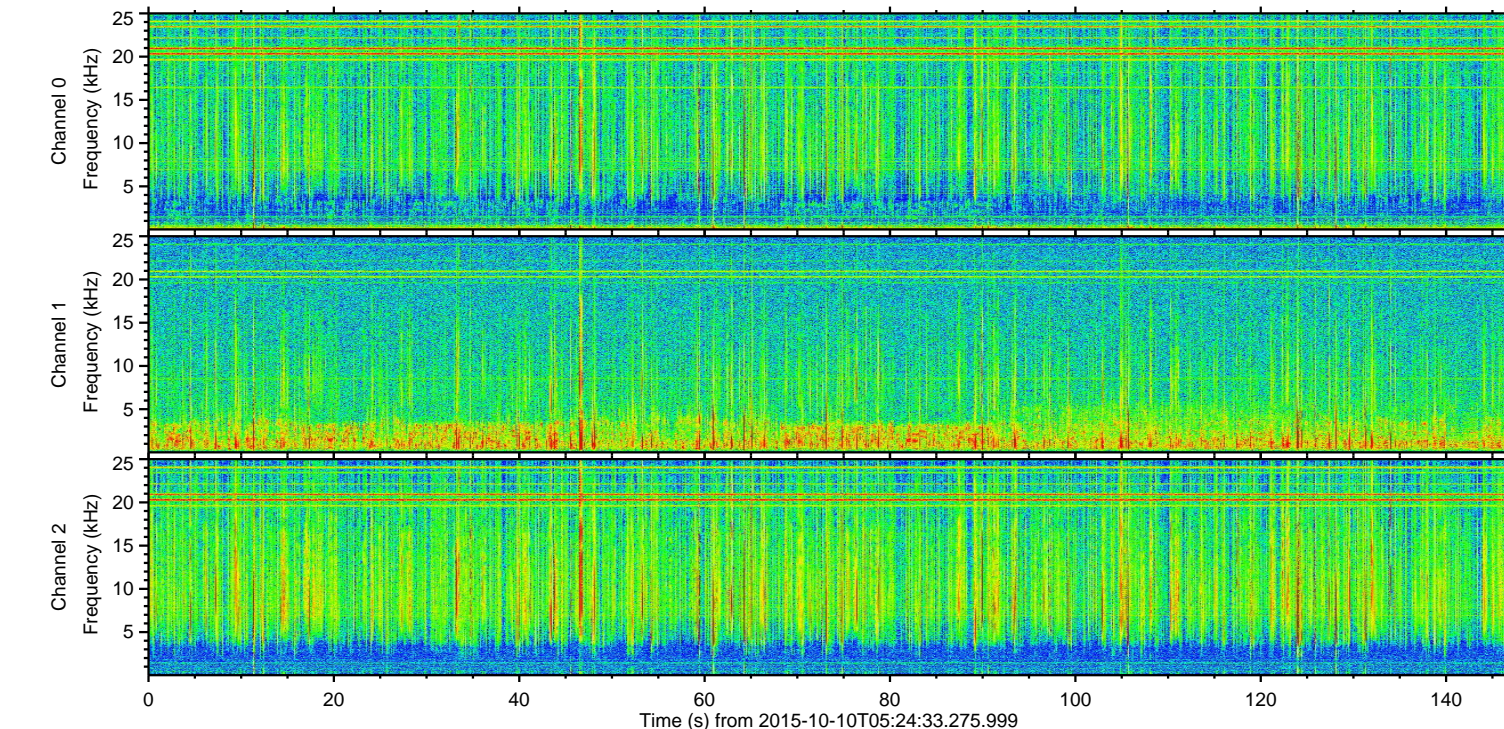
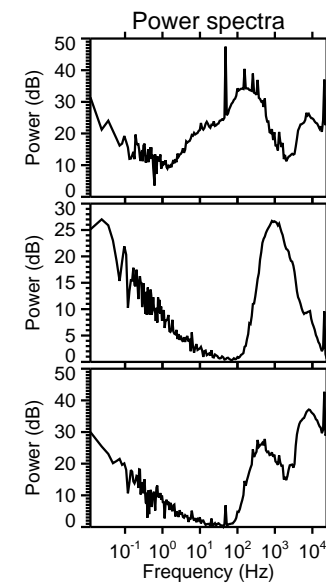
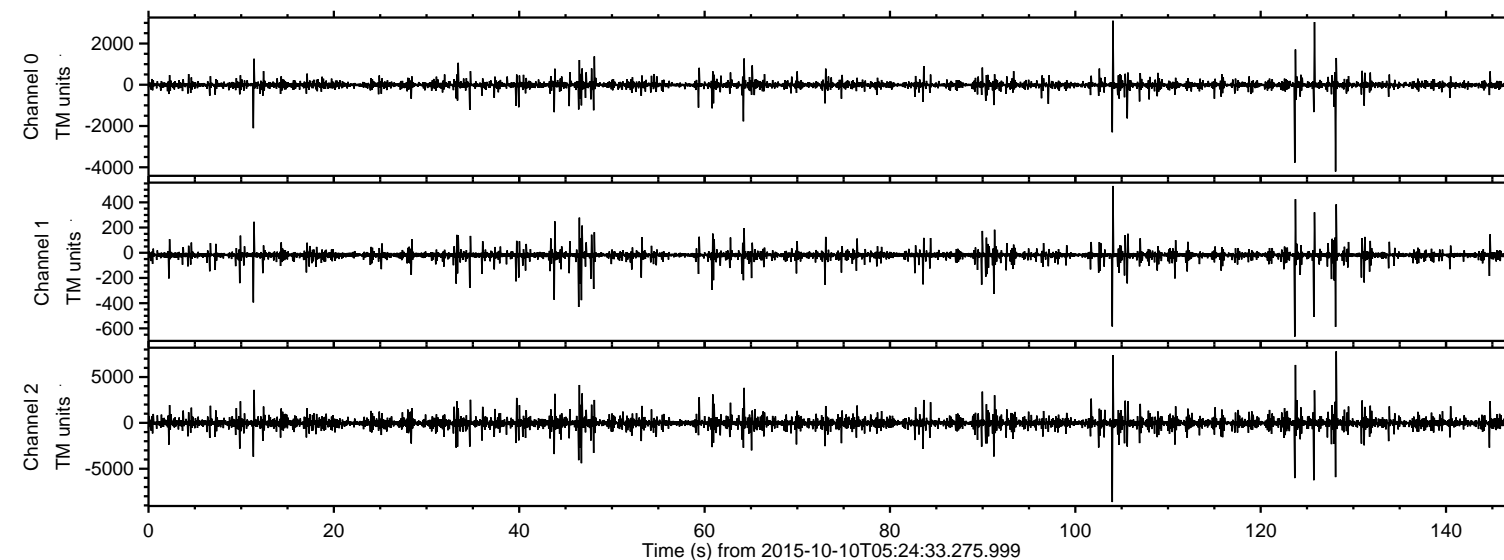


# ELMAVAN 3D WAVEFORMS (Measured data sampled at 50 kHz) 51000 packets of 144 samples from 2015-10-10T05:24:33.275.999.

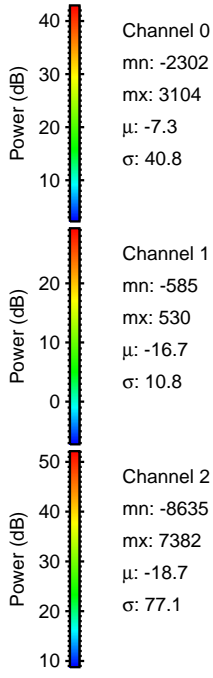
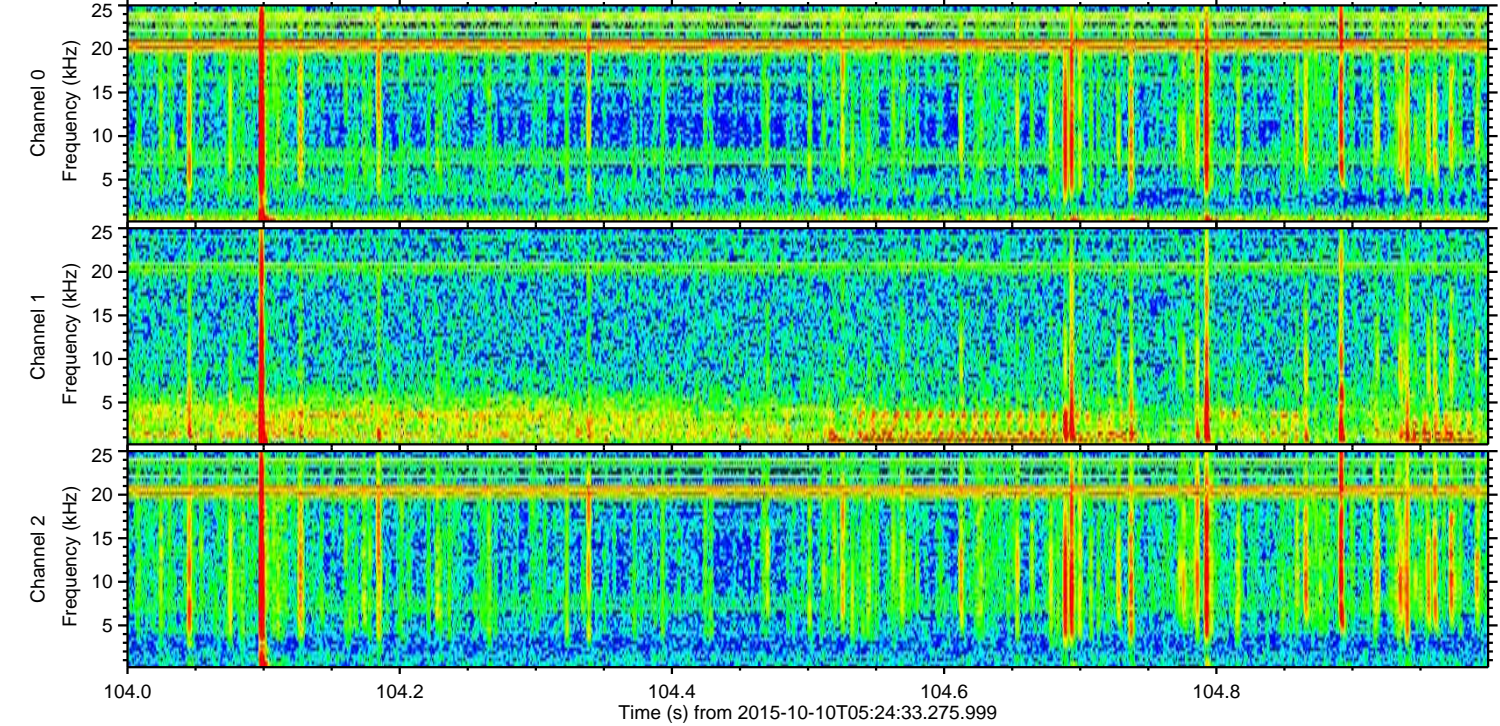
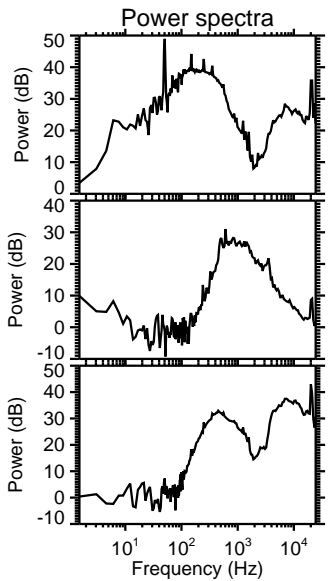
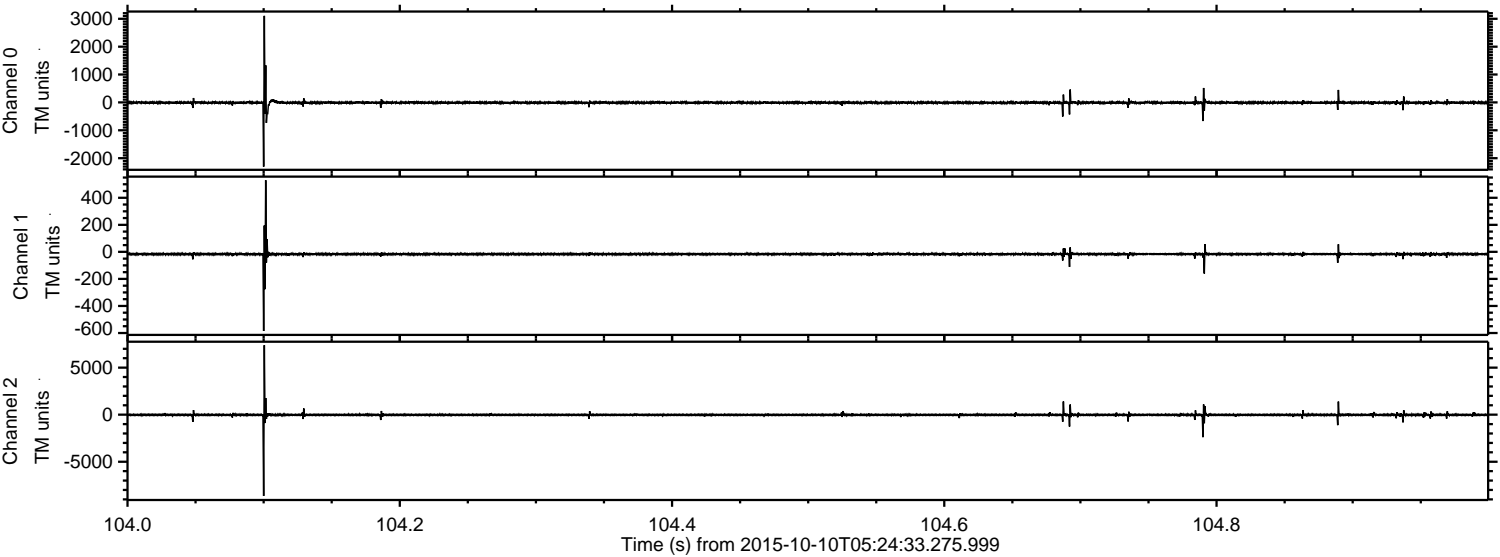
Processed Sun Oct 18 04:31:06 2015 by ELM ver.2012-10-06 from 001\_\_elm20151010\_052432\_\_dat00.bin





ELMAVAN 3D WAVEFORMS (Measured data sampled at 50 kHz) 51000 packets of 144 samples from 2015-10-10T05:24:33.275.999. Part 105/147

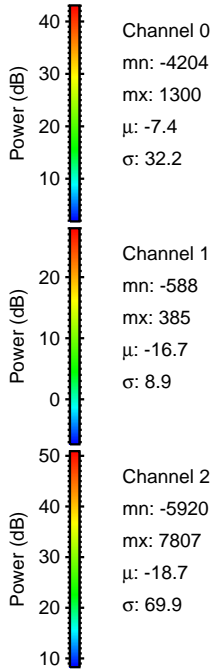
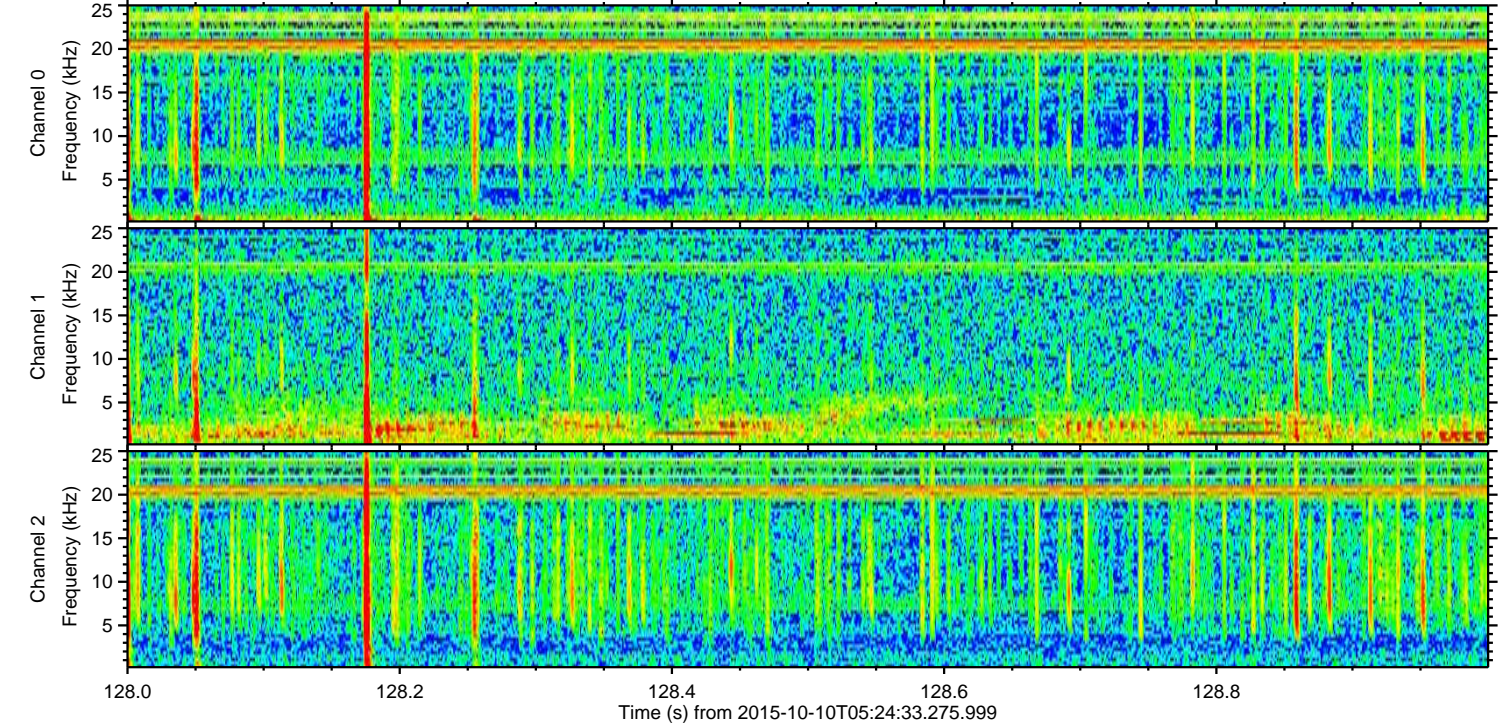
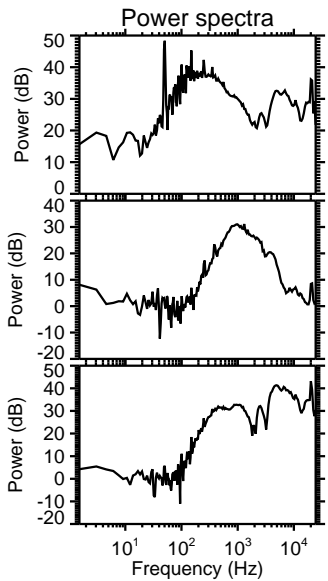
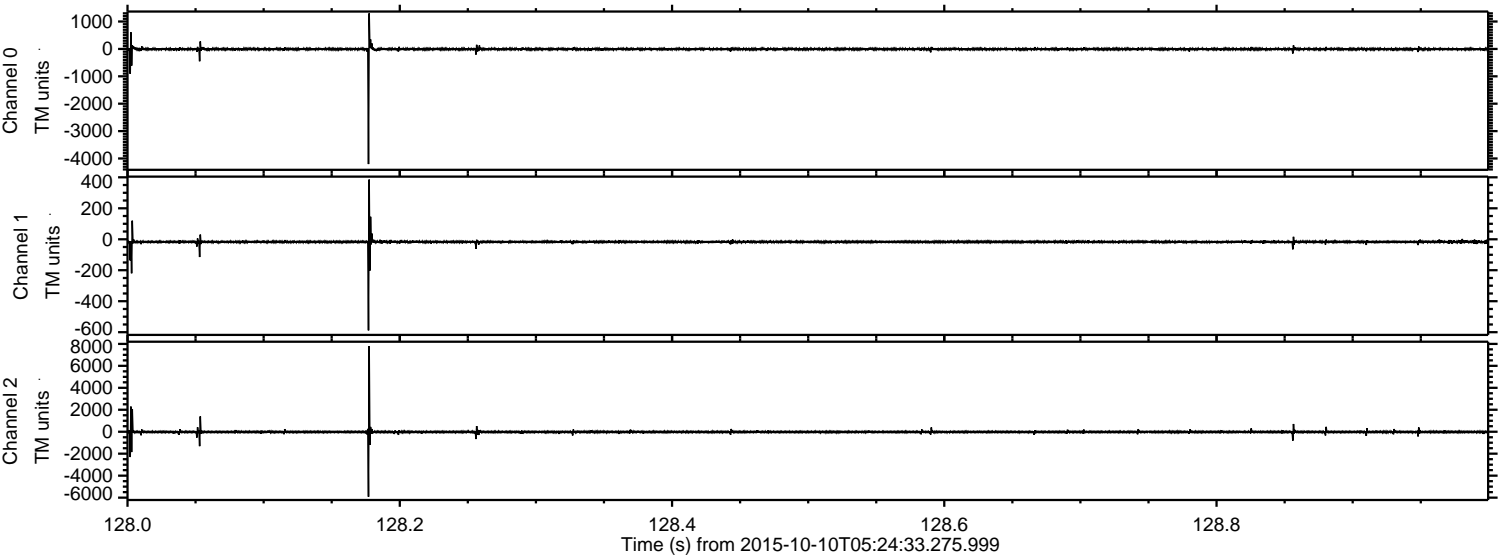
Processed Sun Oct 18 04:31:27 2015 by ELM ver.2012-10-06 from 001\_\_elm20151010\_052432\_\_dat00.bin





ELMAVAN 3D WAVEFORMS (Measured data sampled at 50 kHz) 51000 packets of 144 samples from 2015-10-10T05:24:33.275.999. Part 129/147

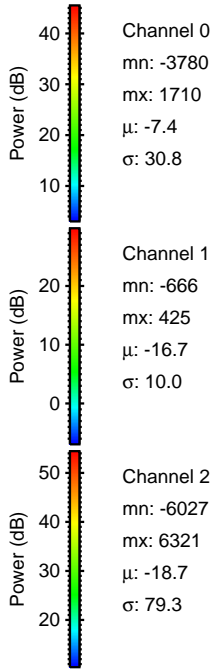
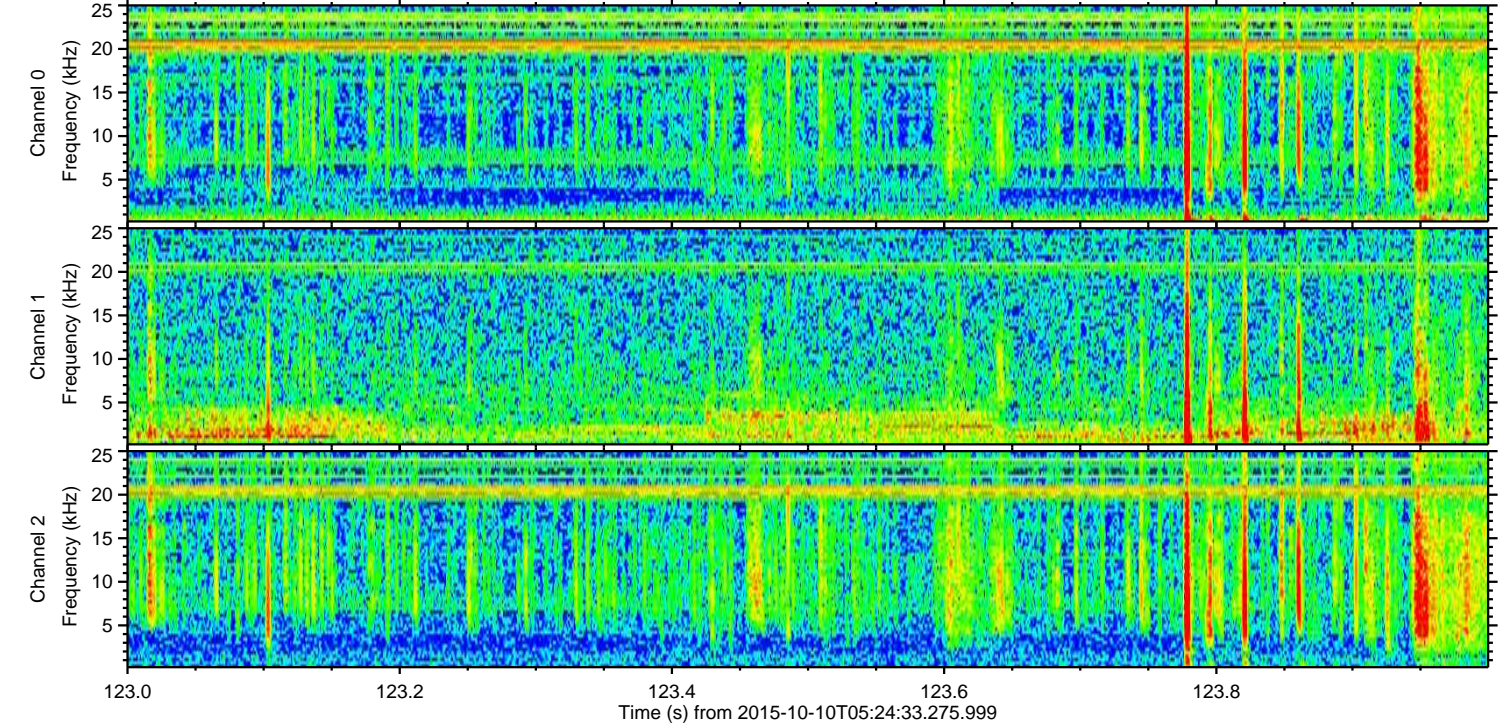
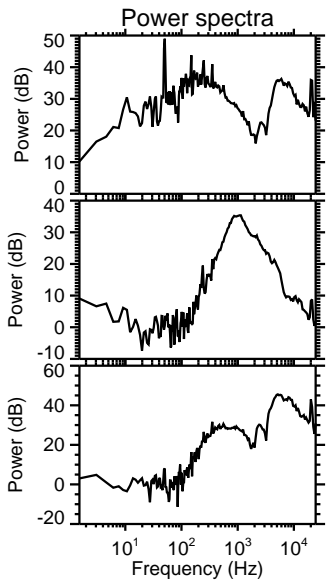
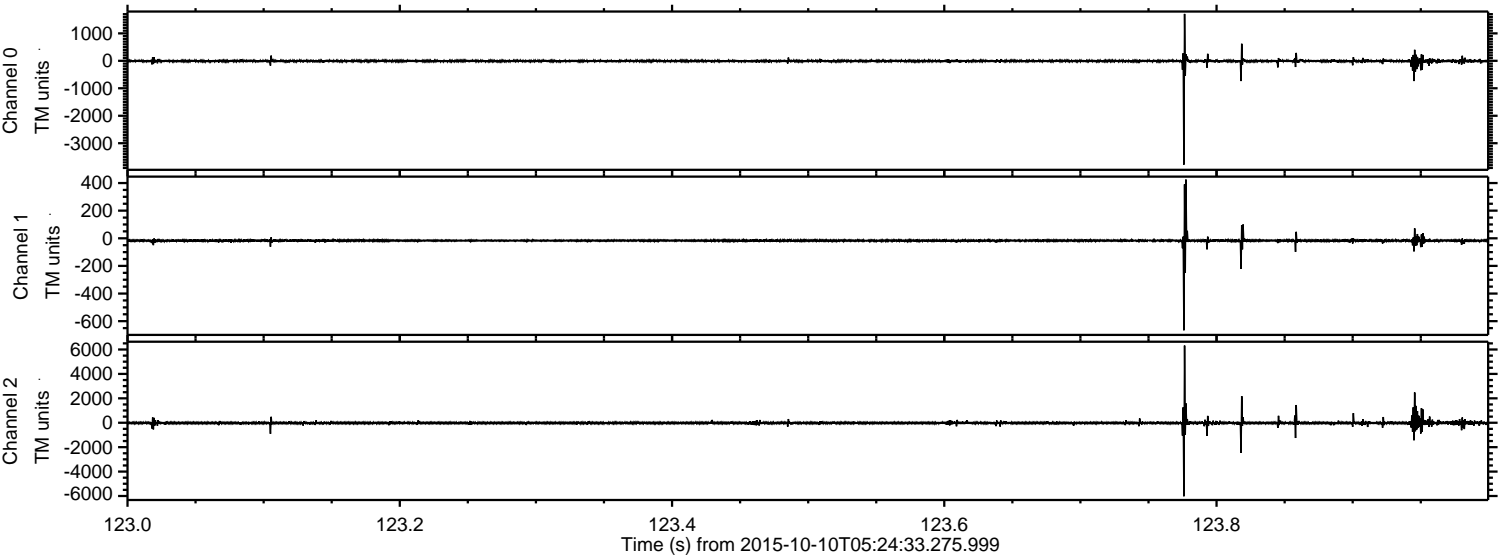
Processed Sun Oct 18 04:31:29 2015 by ELM ver.2012-10-06 from 001\_\_elm20151010\_052432\_\_dat00.bin





ELMAVAN 3D WAVEFORMS (Measured data sampled at 50 kHz) 51000 packets of 144 samples from 2015-10-10T05:24:33.275.999. Part 124/147

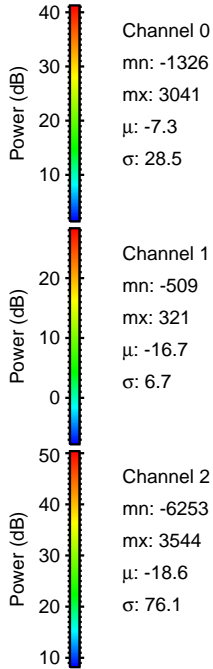
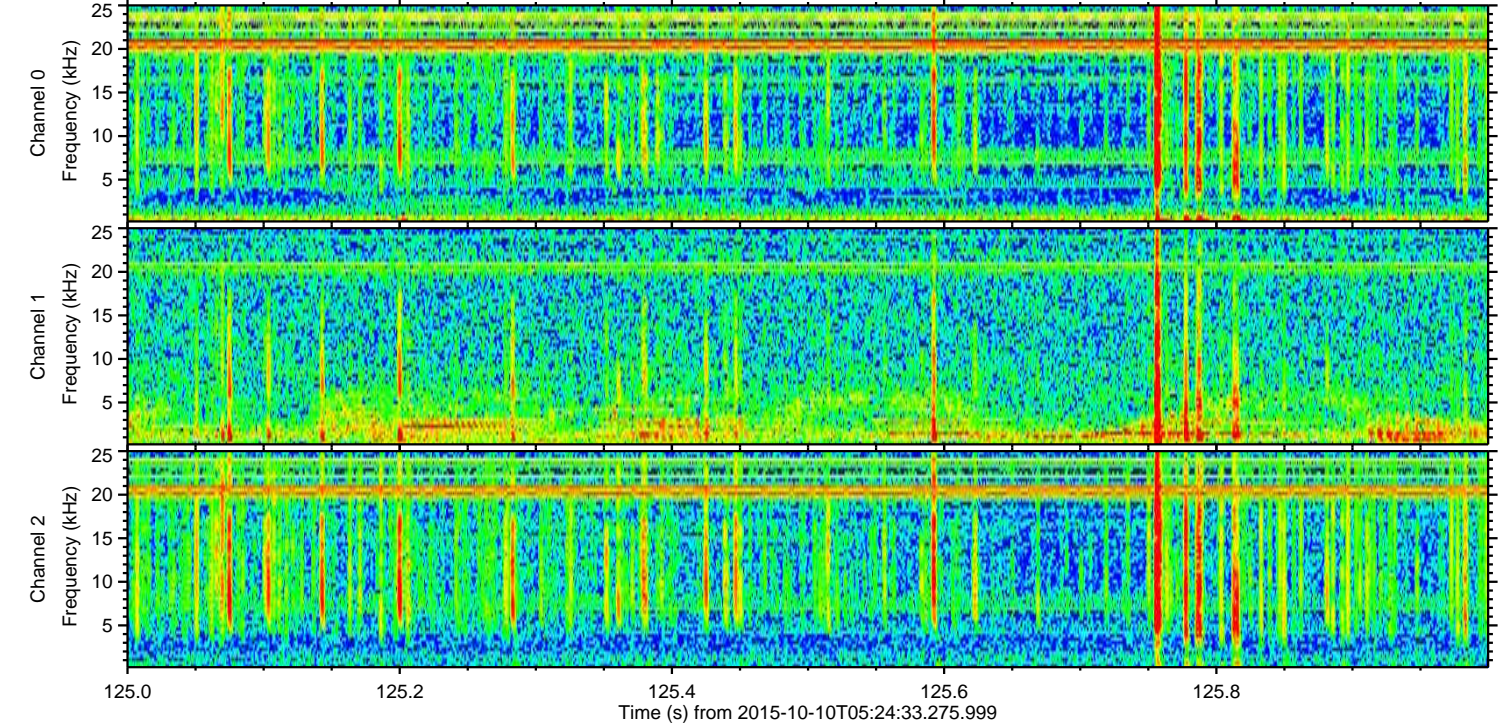
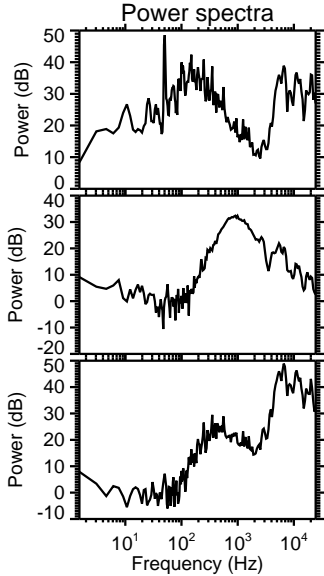
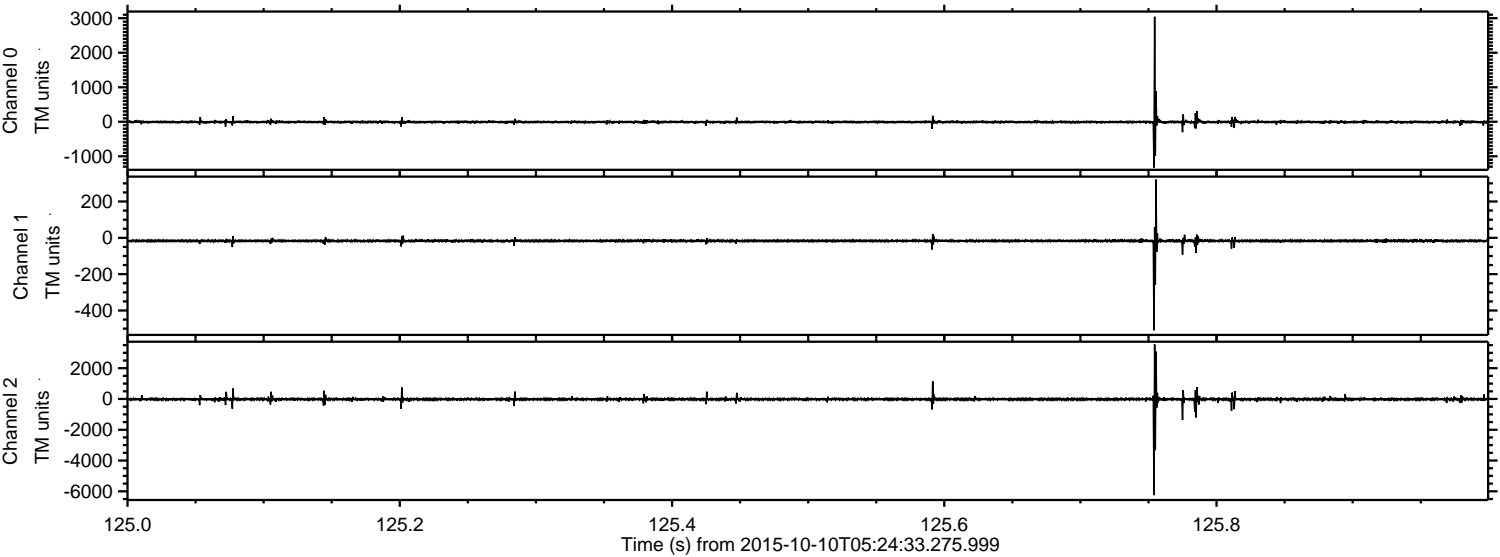
Processed Sun Oct 18 04:31:30 2015 by ELM ver.2012-10-06 from 001\_\_elm20151010\_052432\_\_dat00.bin





ELMAVAN 3D WAVEFORMS (Measured data sampled at 50 kHz) 51000 packets of 144 samples from 2015-10-10T05:24:33.275.999. Part 126/147

Processed Sun Oct 18 04:31:31 2015 by ELM ver.2012-10-06 from 001\_\_elm20151010\_052432\_\_dat00.bin



Channel 0  
mn: -1326  
mx: 3041  
 $\mu$ : -7.3  
 $\sigma$ : 28.5

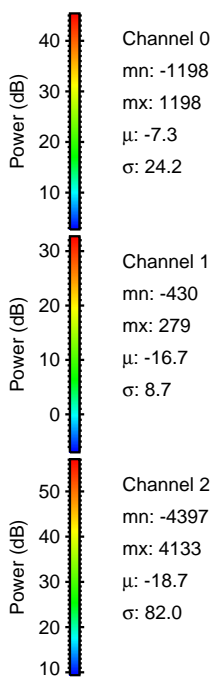
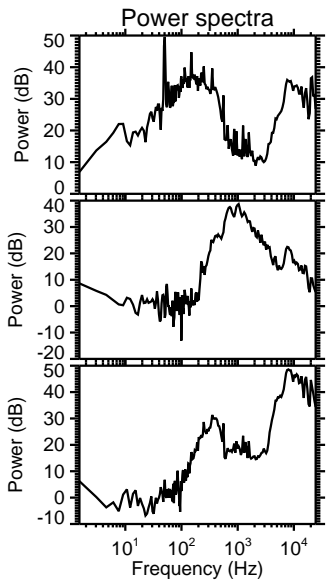
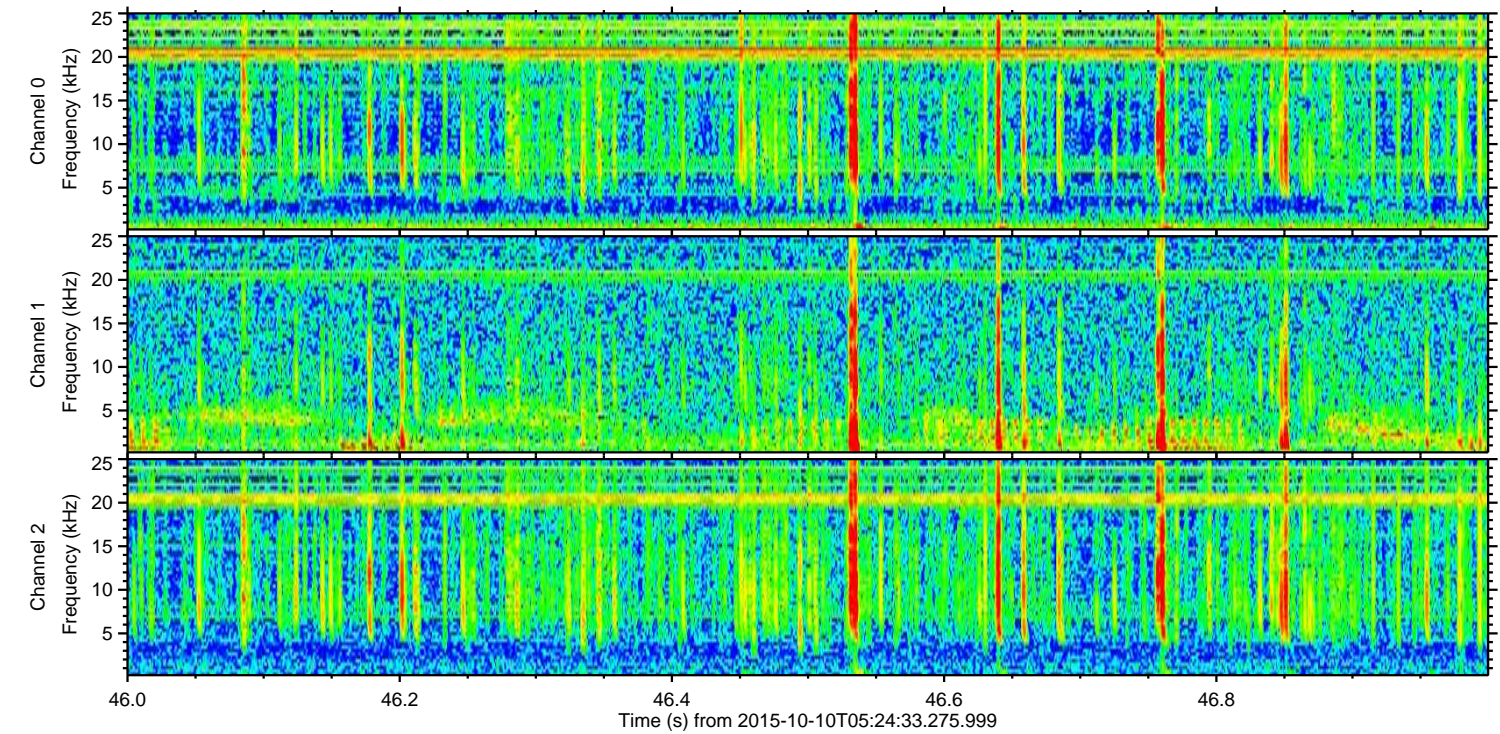
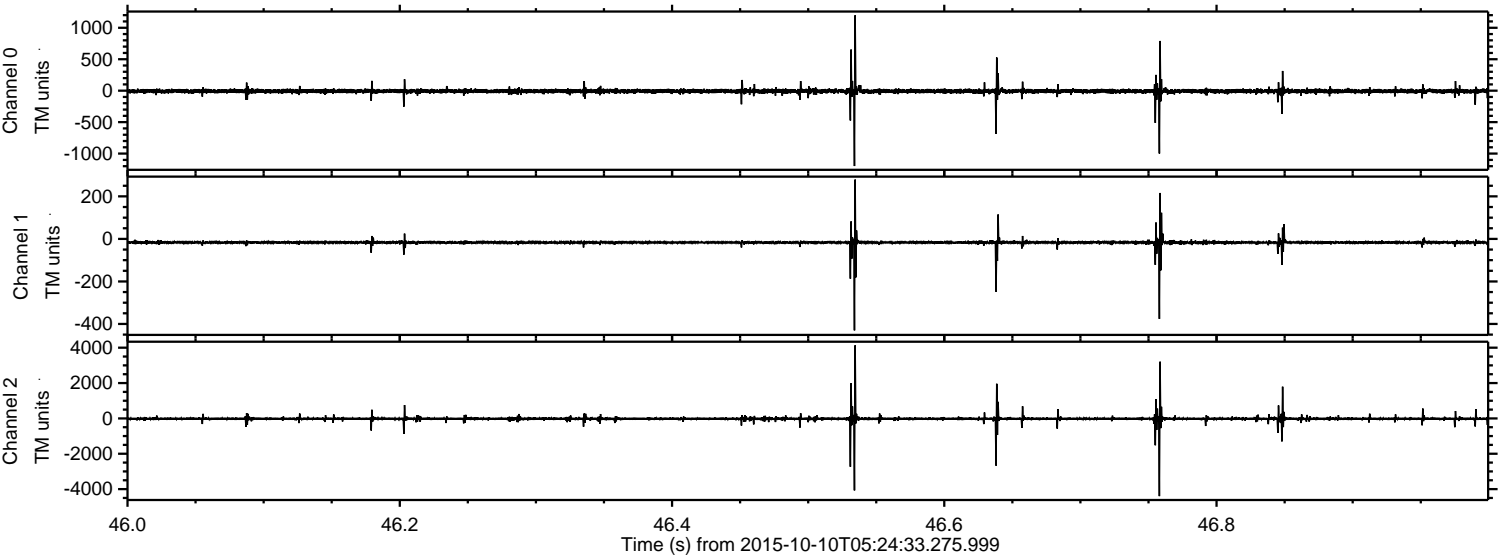
Channel 1  
mn: -509  
mx: 321  
 $\mu$ : -16.7  
 $\sigma$ : 6.7

Channel 2  
mn: -6253  
mx: 3544  
 $\mu$ : -18.6  
 $\sigma$ : 76.1



ELMAVAN 3D WAVEFORMS (Measured data sampled at 50 kHz) 51000 packets of 144 samples from 2015-10-10T05:24:33.275.999. Part 47/147

Processed Sun Oct 18 04:31:32 2015 by ELM ver.2012-10-06 from 001\_\_elm20151010\_052432\_\_dat00.bin



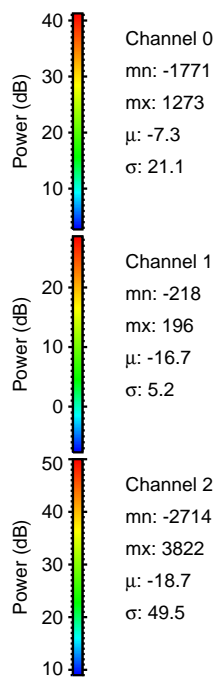
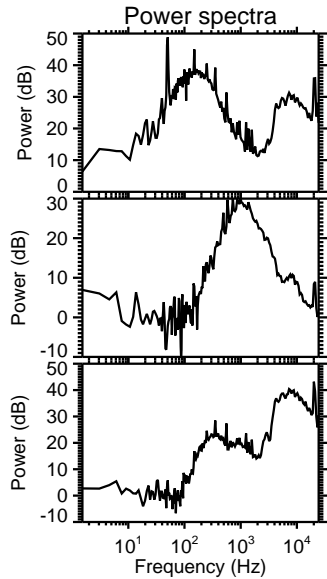
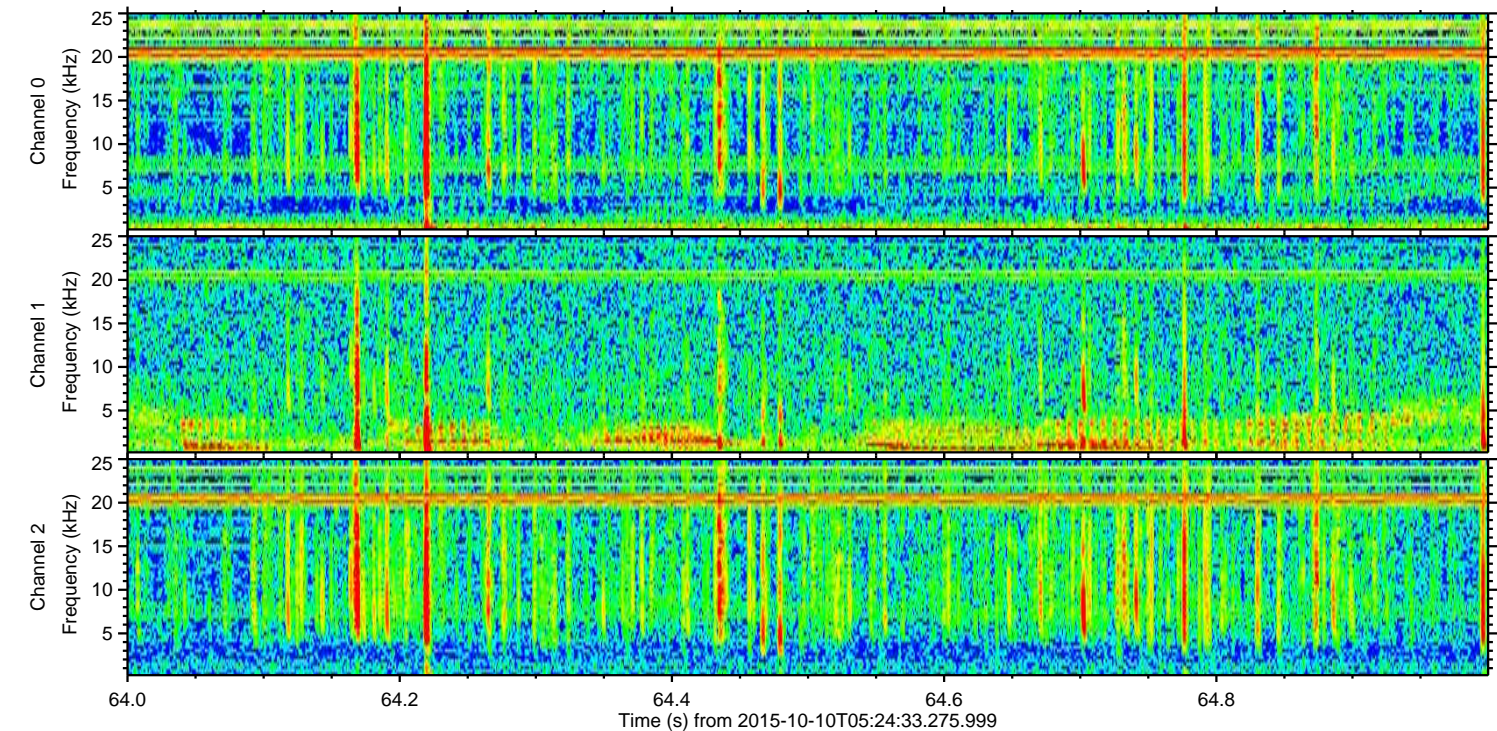
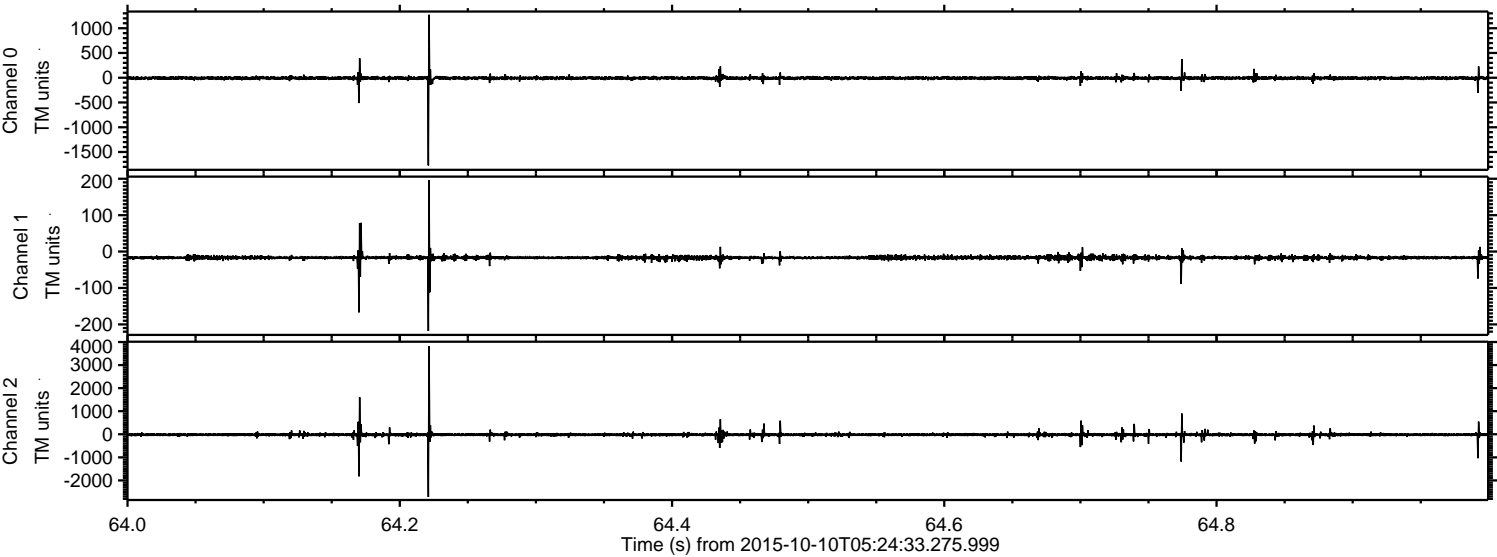
Channel 0  
mn: -1198  
mx: 1198  
 $\mu$ : -7.3  
 $\sigma$ : 24.2

Channel 1  
mn: -430  
mx: 279  
 $\mu$ : -16.7  
 $\sigma$ : 8.7

Channel 2  
mn: -4397  
mx: 4133  
 $\mu$ : -18.7  
 $\sigma$ : 82.0

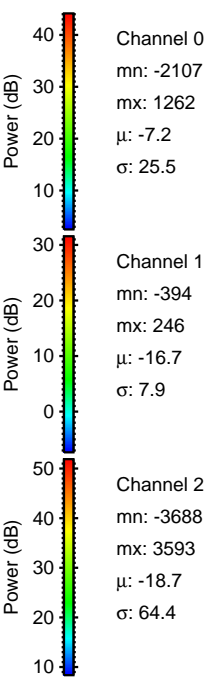
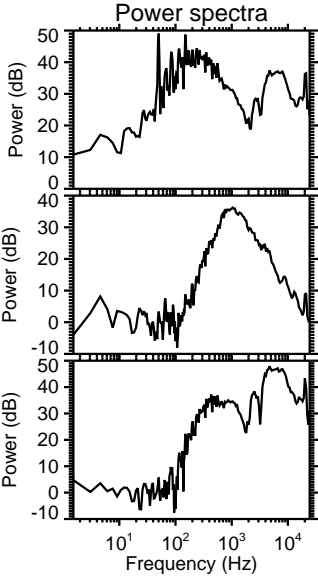
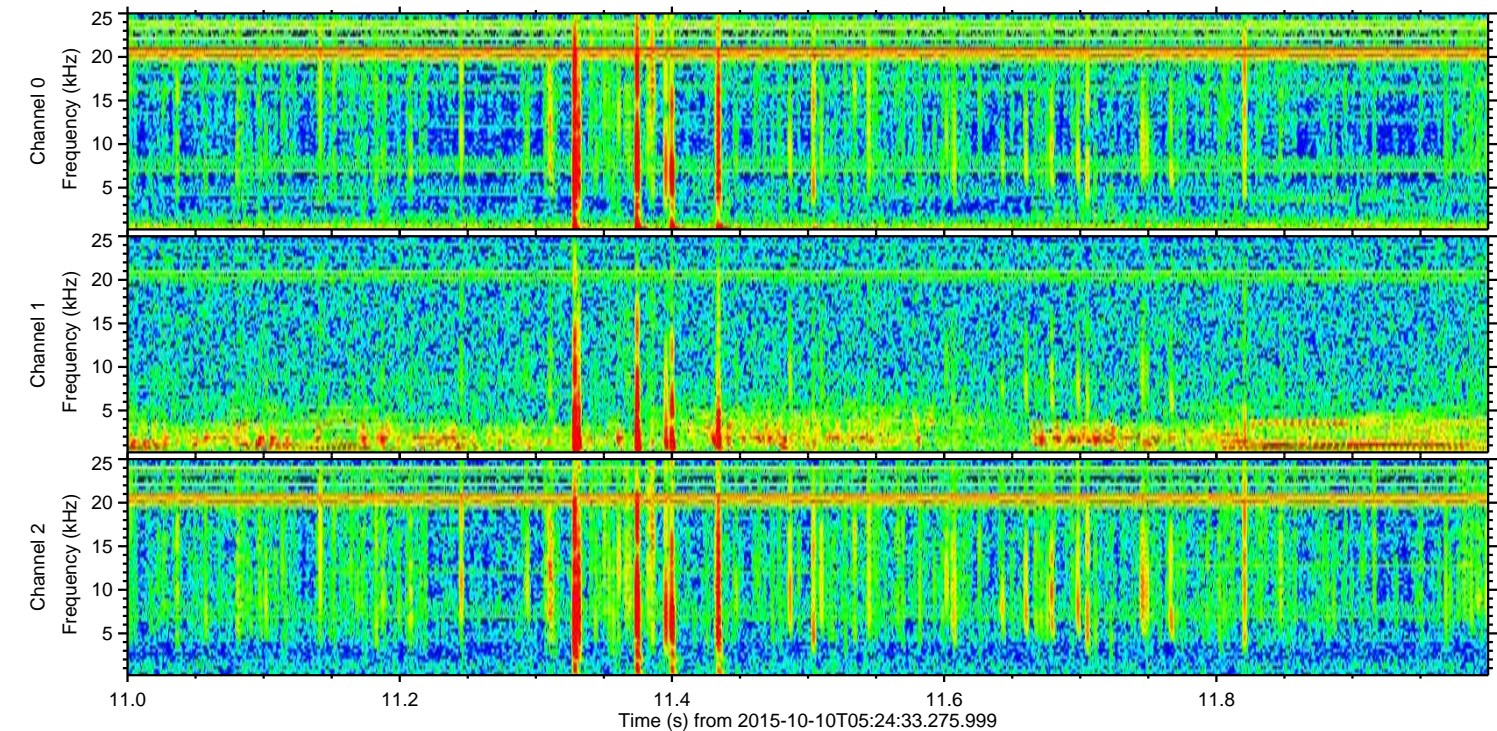
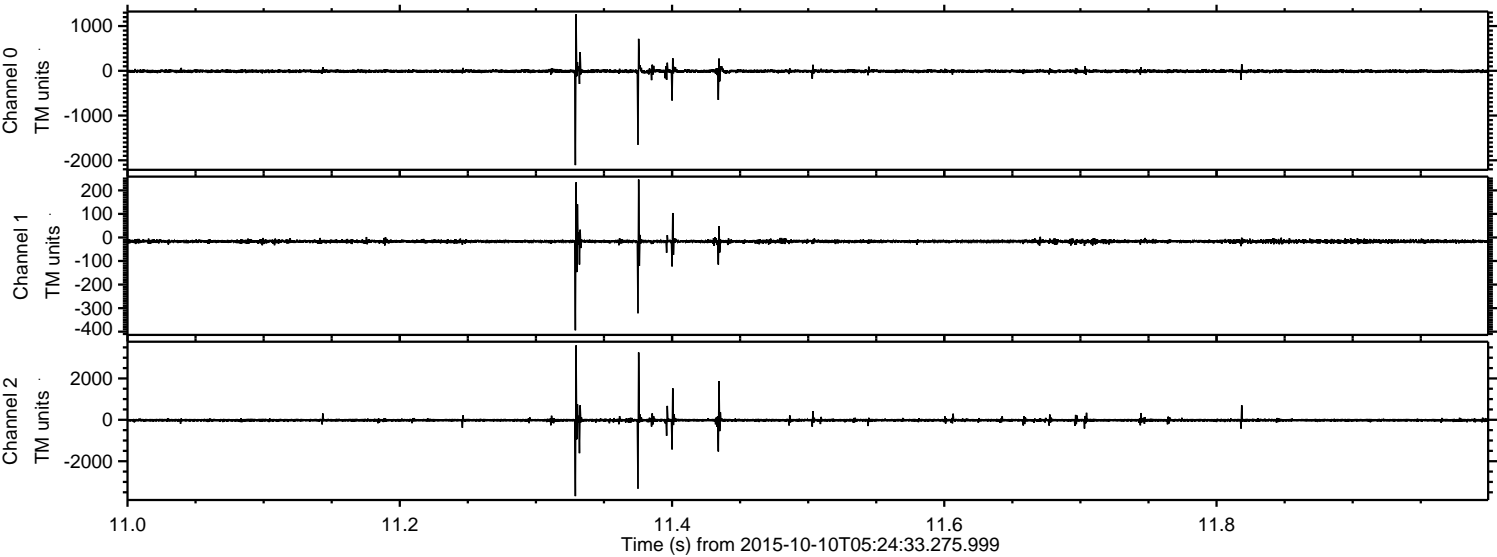


Processed Sun Oct 18 04:31:33 2015 by ELM ver.2012-10-06 from 001\_\_elm20151010\_052432\_\_dat00.bin



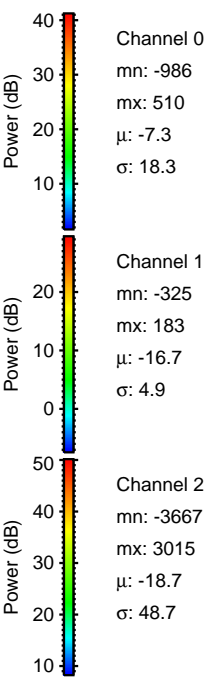
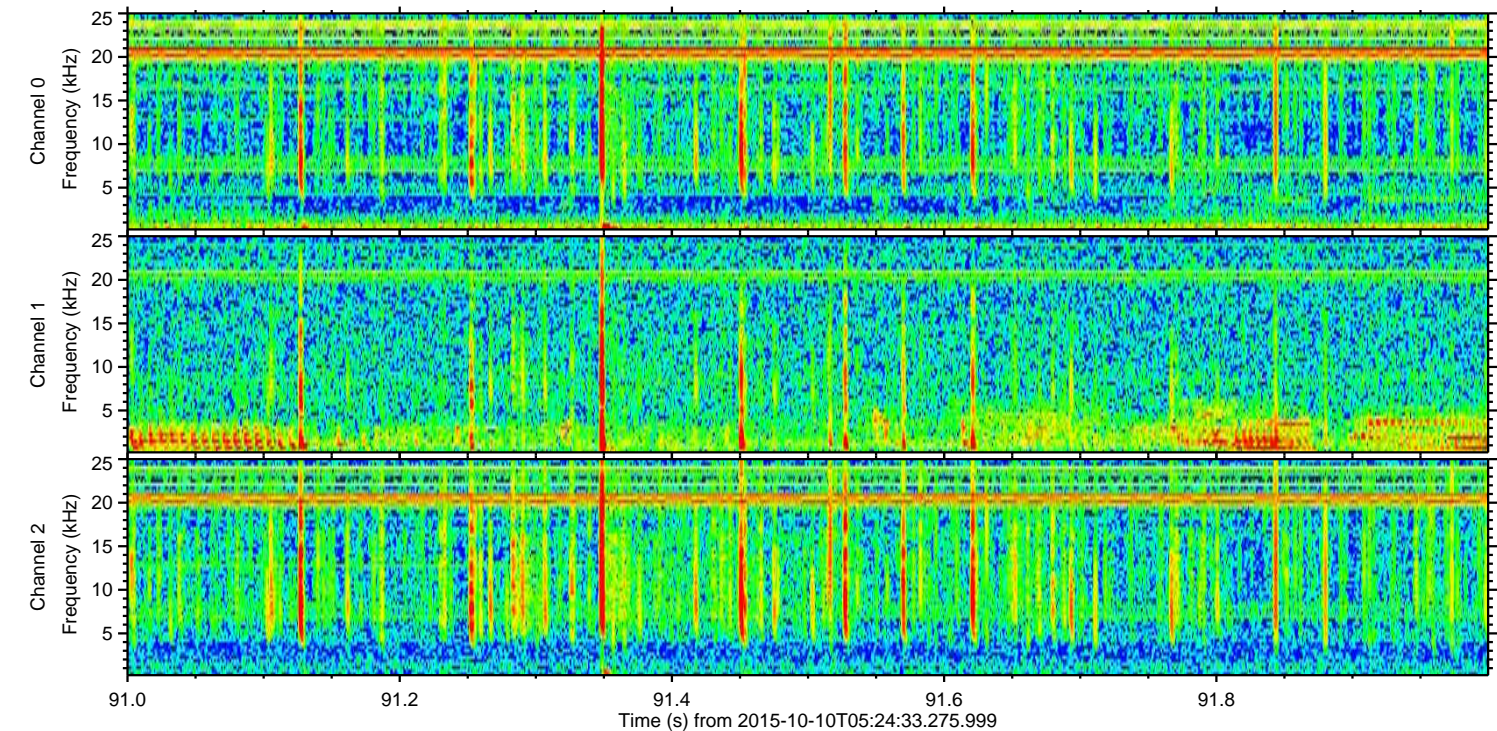
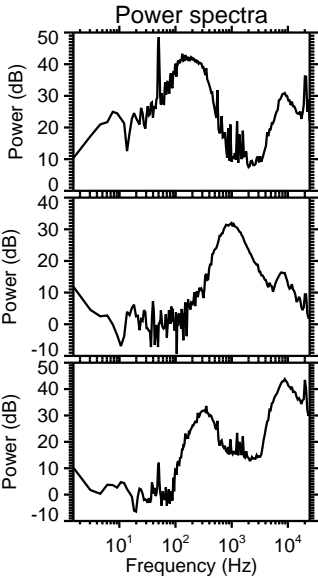
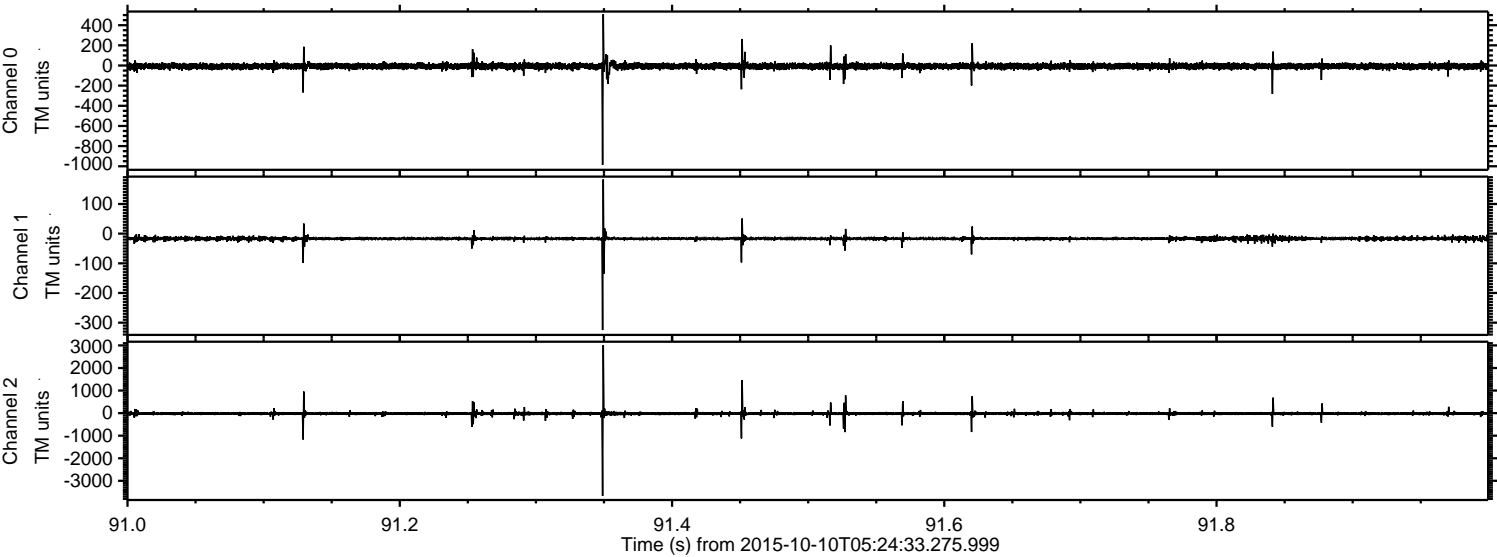


Processed Sun Oct 18 04:31:34 2015 by ELM ver.2012-10-06 from 001\_\_elm20151010\_052432\_\_dat00.bin



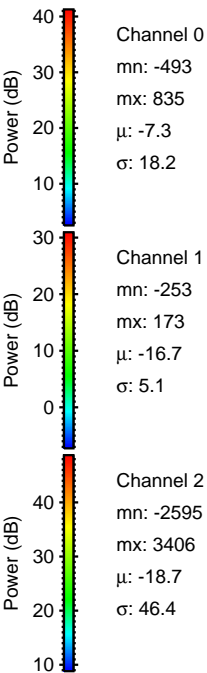
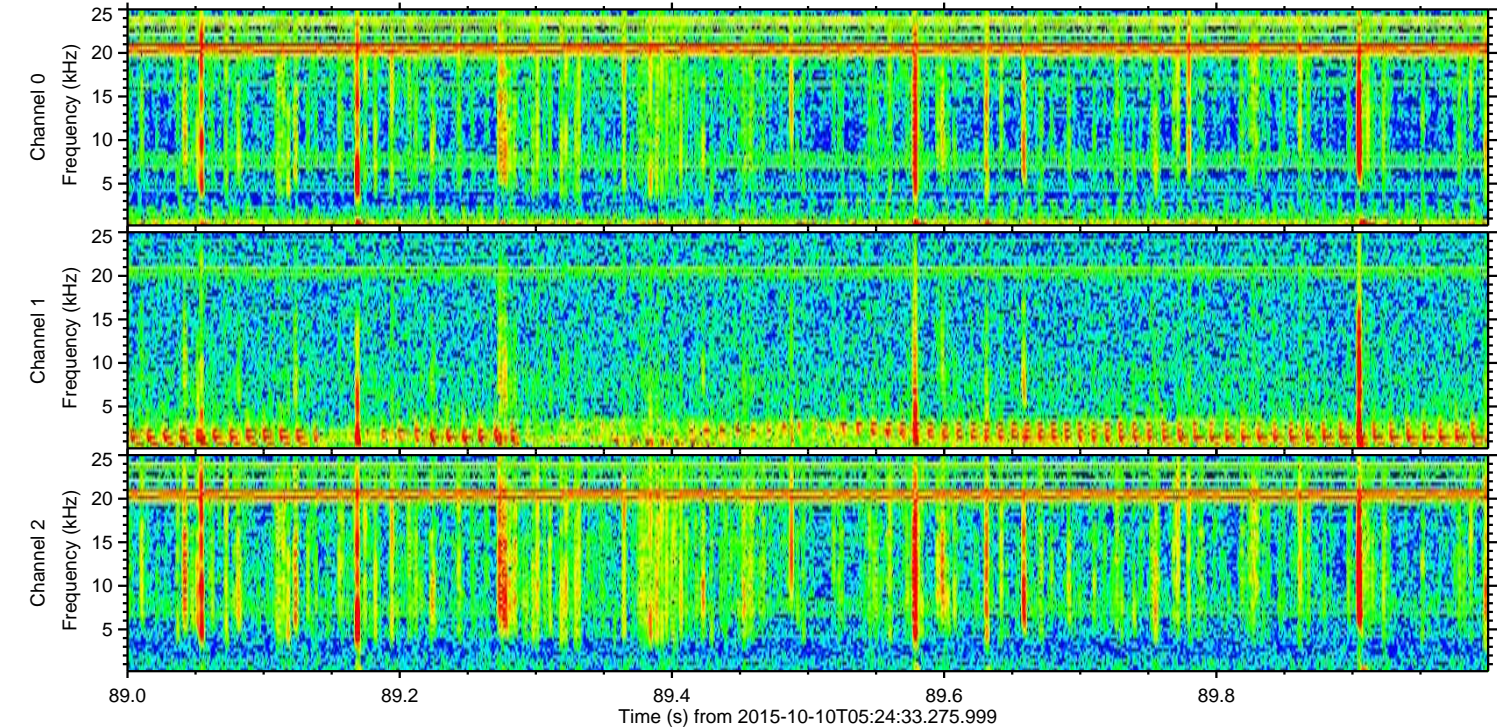
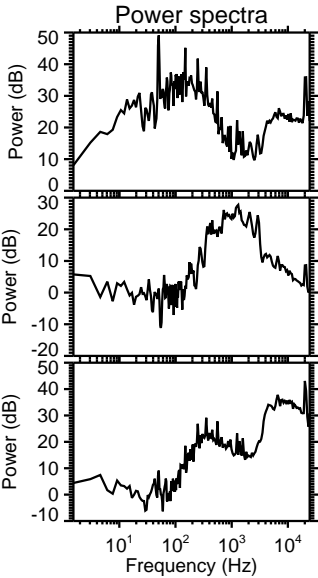
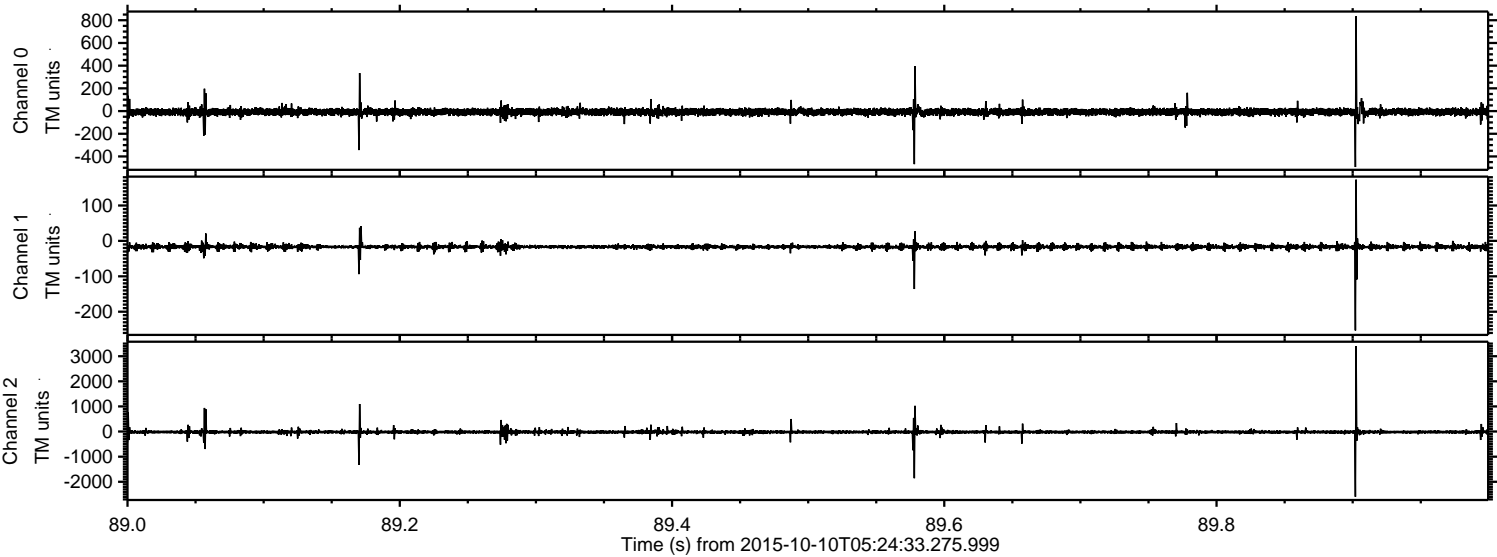


Processed Sun Oct 18 04:31:35 2015 by ELM ver.2012-10-06 from 001\_\_elm20151010\_052432\_\_dat00.bin





Processed Sun Oct 18 04:31:36 2015 by ELM ver.2012-10-06 from 001\_\_elm20151010\_052432\_\_dat00.bin





Processed Sun Oct 18 04:31:37 2015 by ELM ver.2012-10-06 from 001\_\_elm20151010\_052432\_\_dat00.bin

