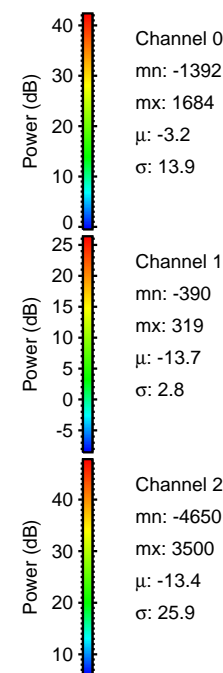
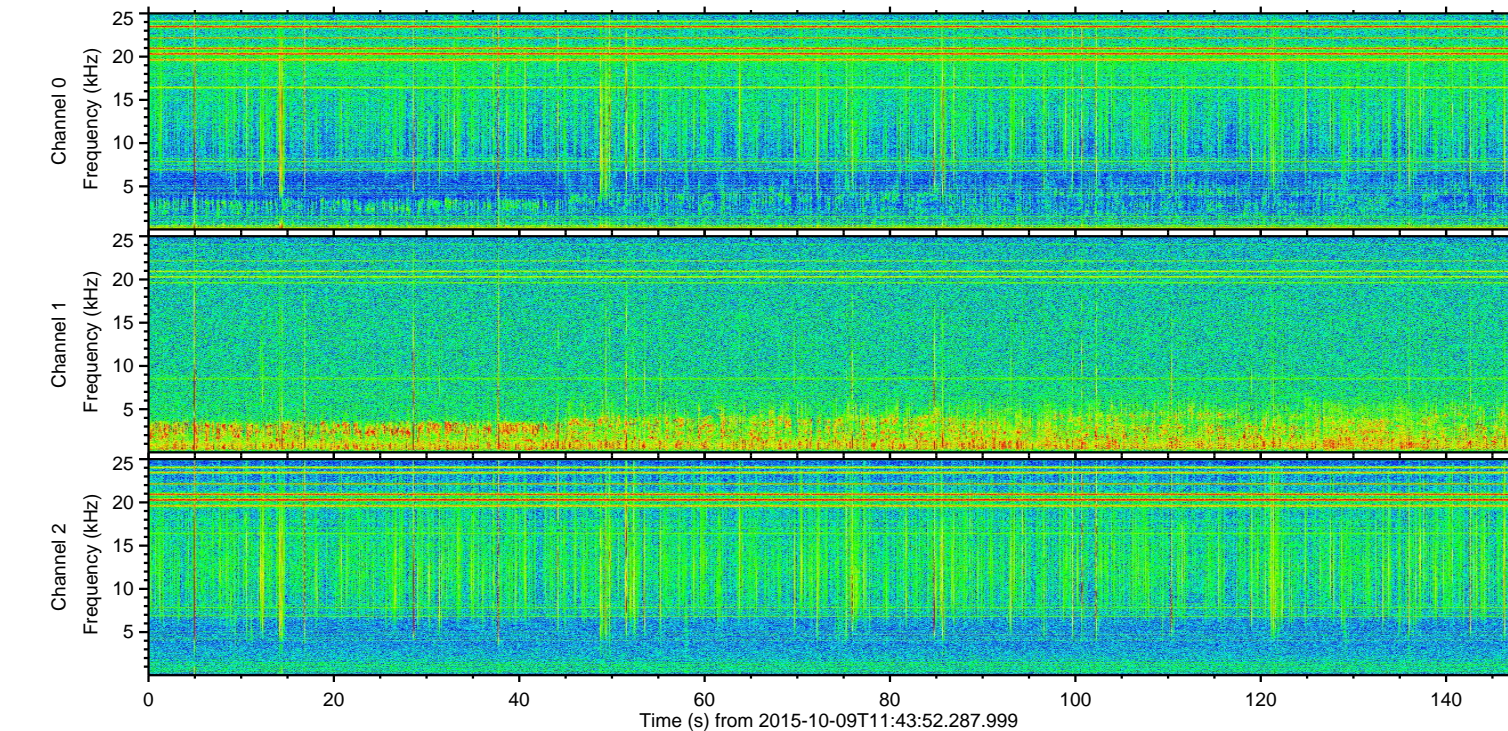
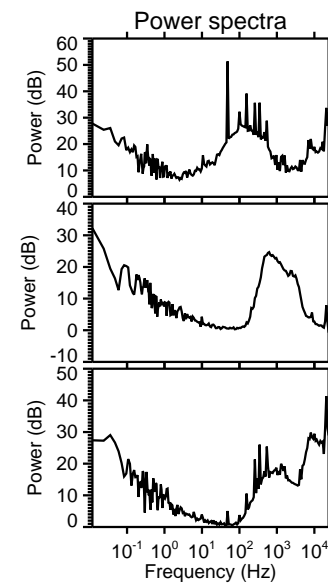
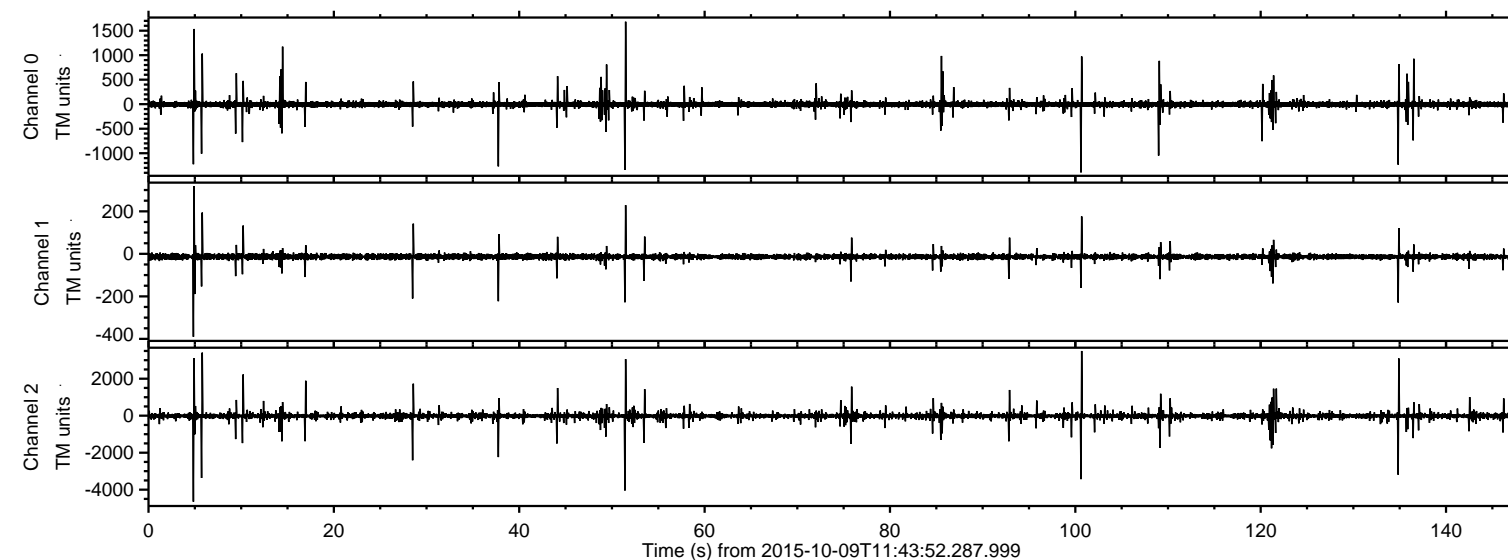


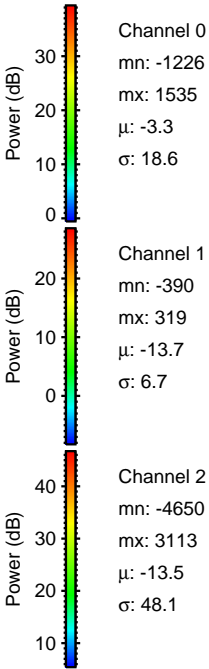
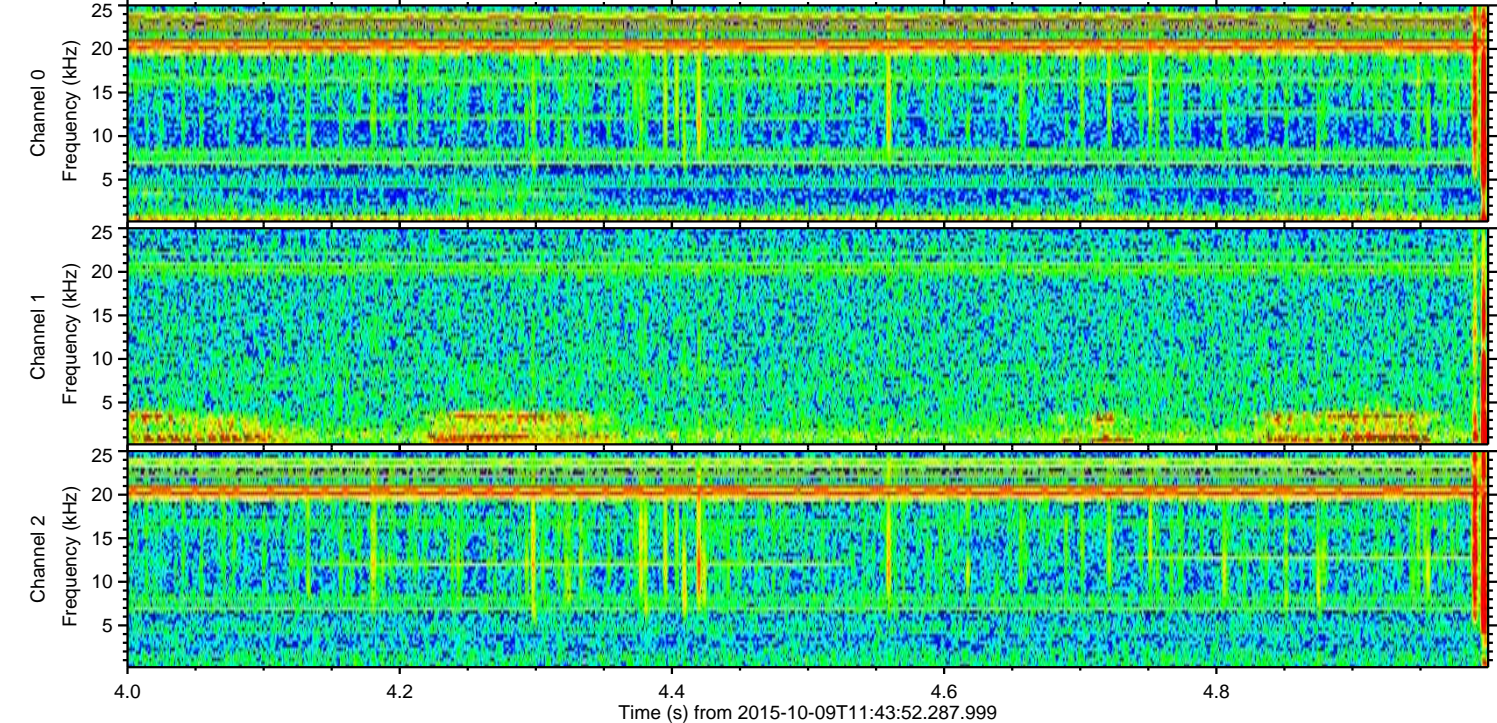
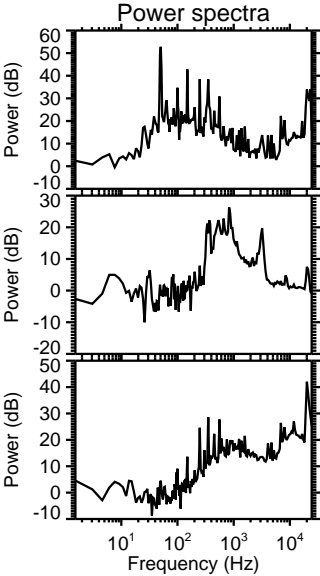
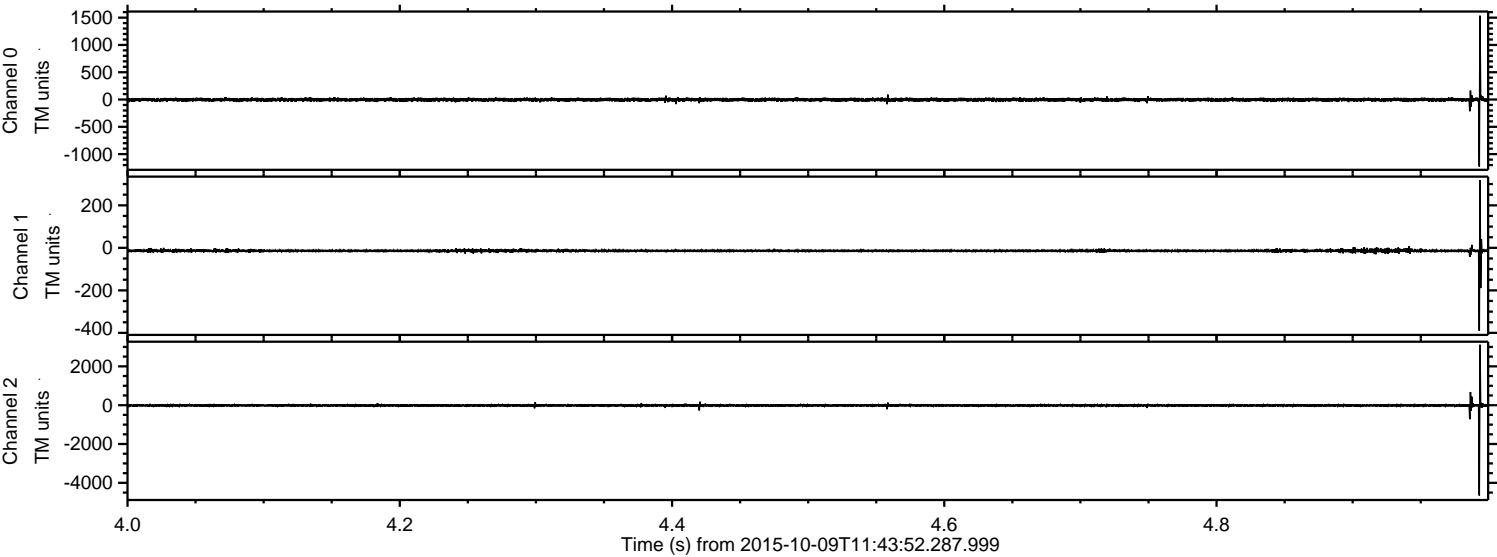
ELMAVAN 3D WAVEFORMS (Measured data sampled at 50 kHz) 51000 packets of 144 samples from 2015-10-09T11:43:52.287.999.

Processed Sat Oct 17 22:28:19 2015 by ELM ver.2012-10-06 from 001__elm20151009_114351__dat00.bin



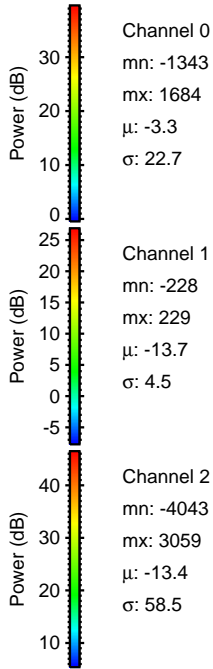
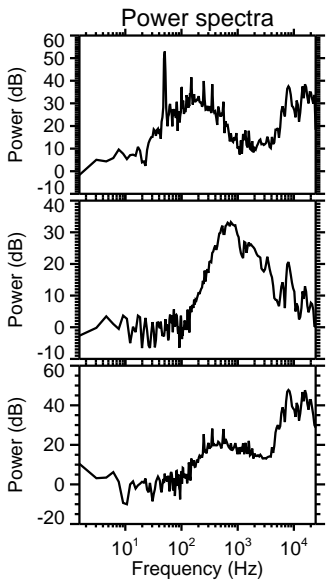
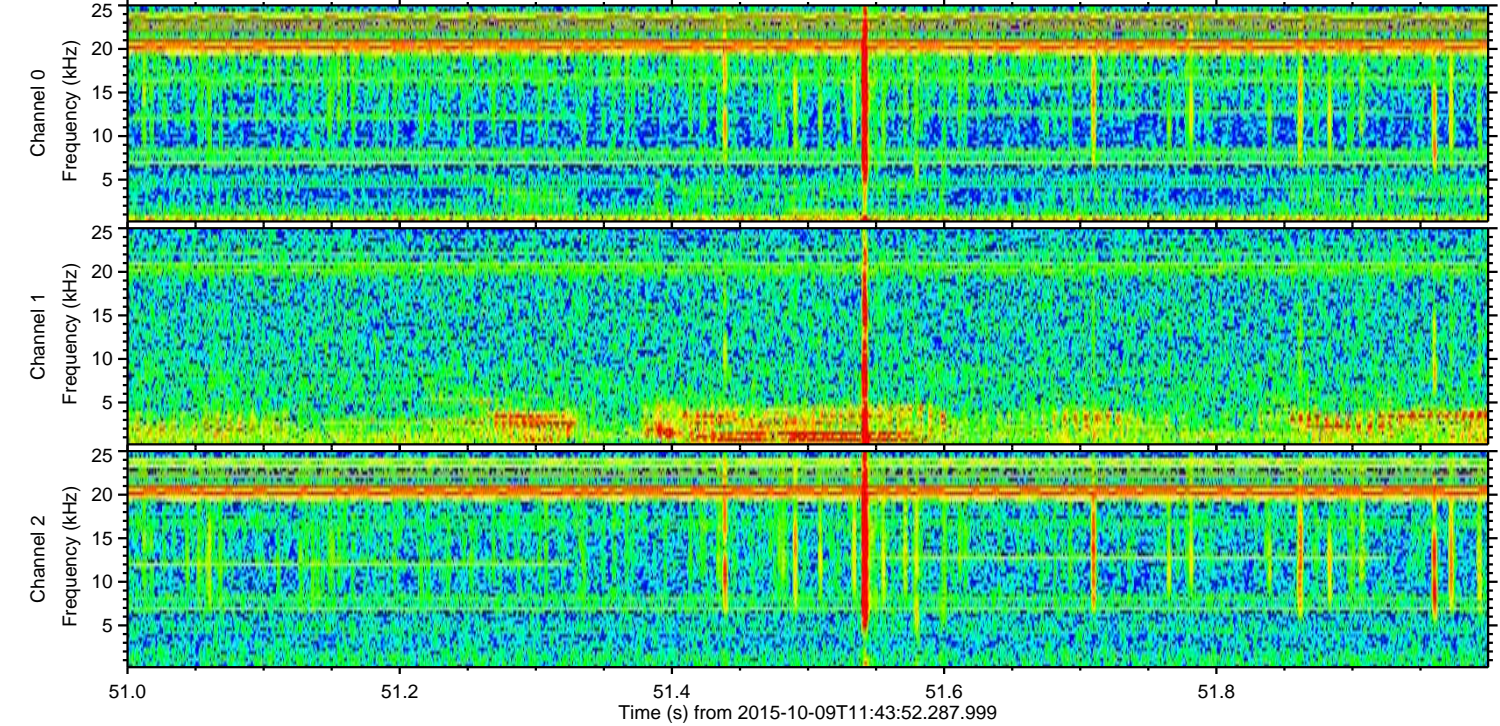
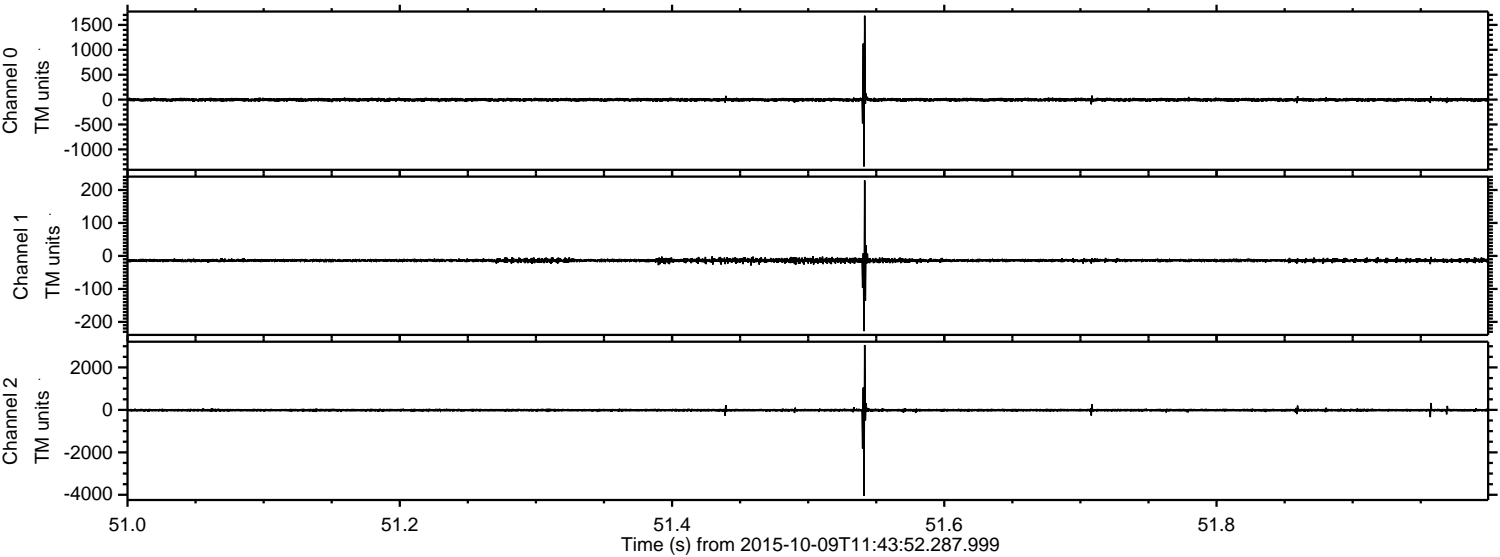
ELMAVAN 3D WAVEFORMS (Measured data sampled at 50 kHz) 51000 packets of 144 samples from 2015-10-09T11:43:52.287.999. Part 5/147

Processed Sat Oct 17 22:28:45 2015 by ELM ver.2012-10-06 from 001__elm20151009_114351__dat00.bin



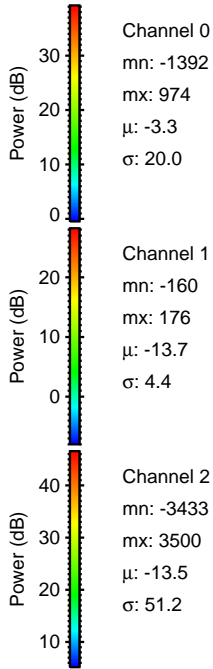
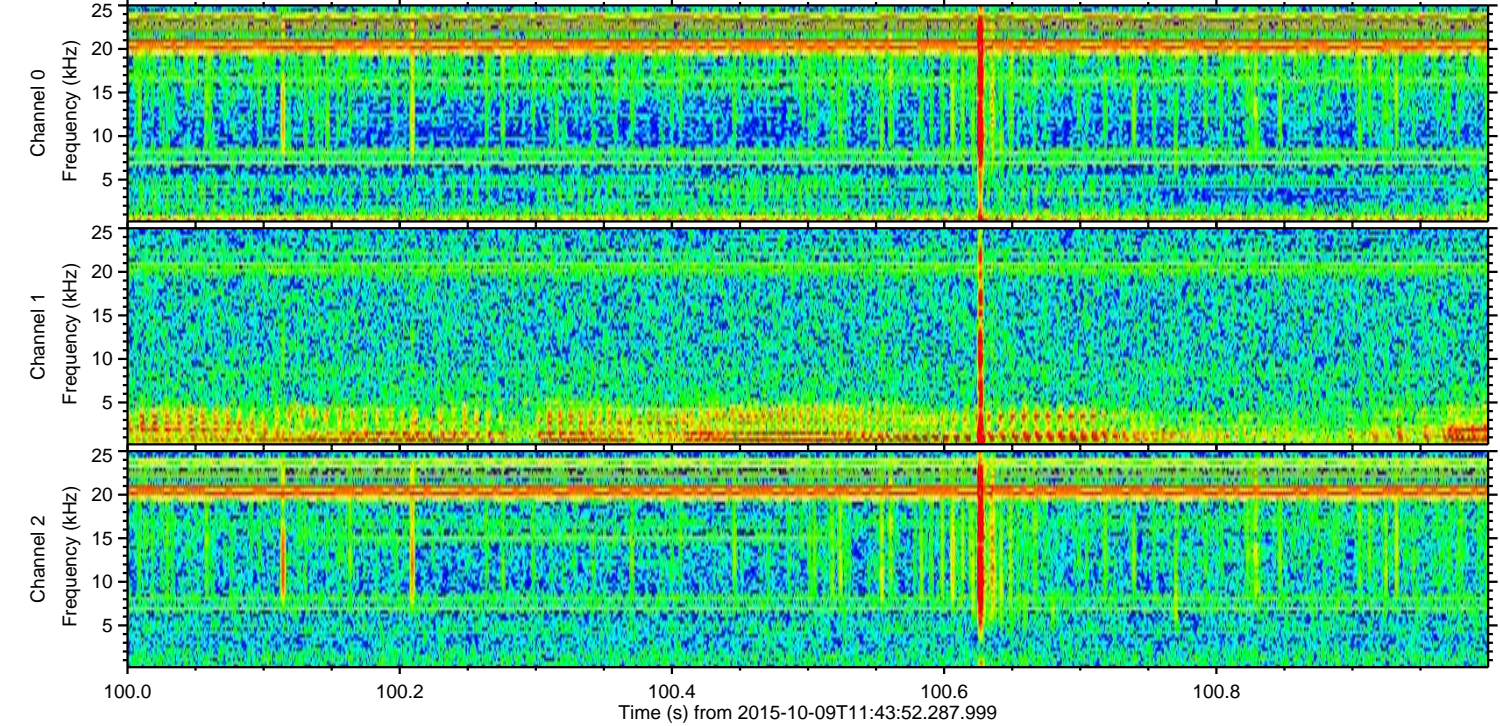
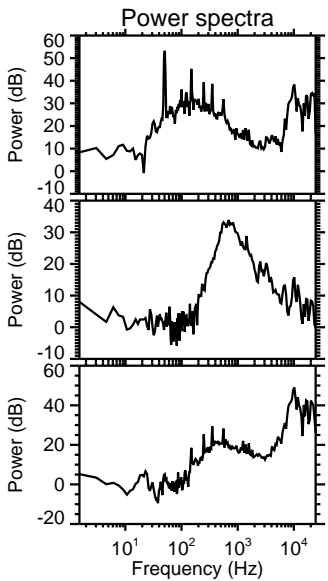
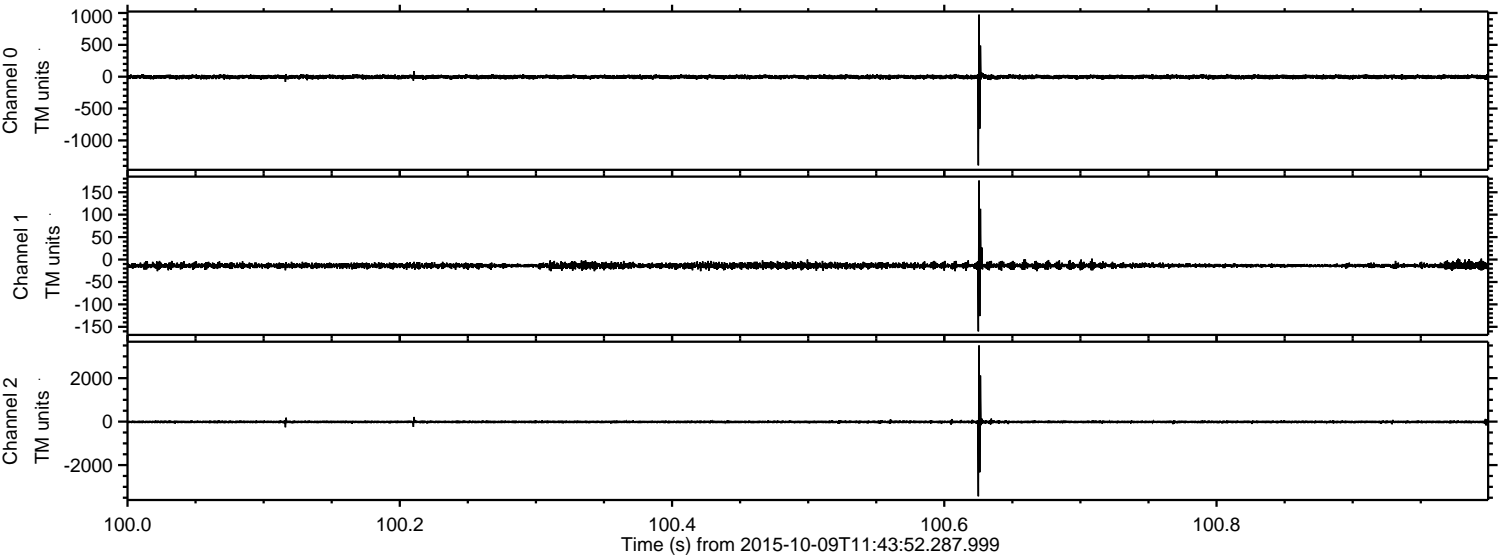
ELMAVAN 3D WAVEFORMS (Measured data sampled at 50 kHz) 51000 packets of 144 samples from 2015-10-09T11:43:52.287.999. Part 52/147

Processed Sat Oct 17 22:28:47 2015 by ELM ver.2012-10-06 from 001__elm20151009_114351__dat00.bin



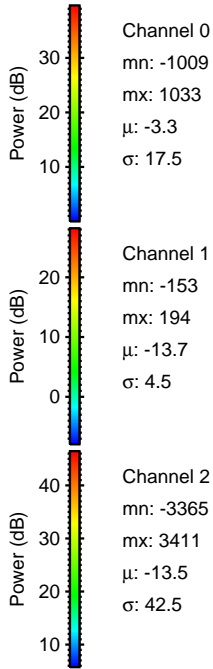
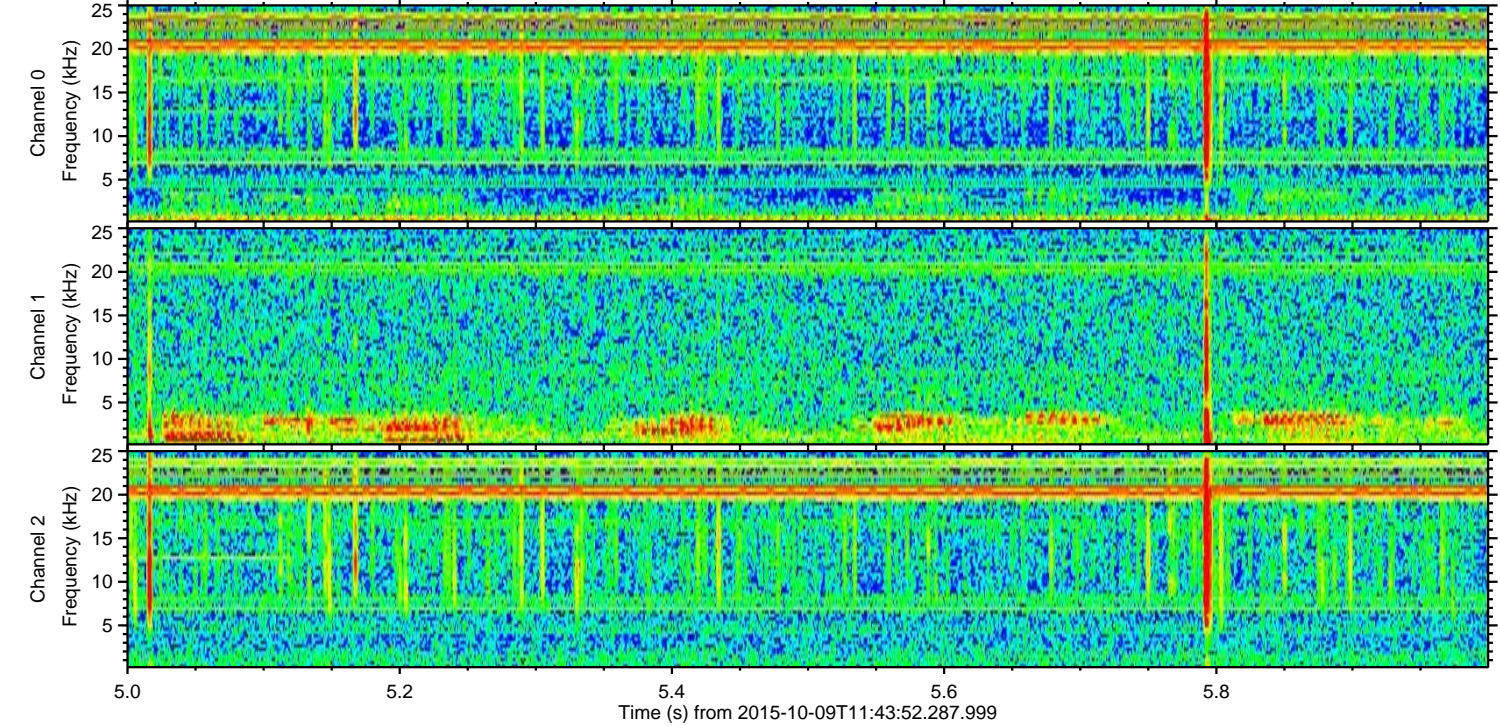
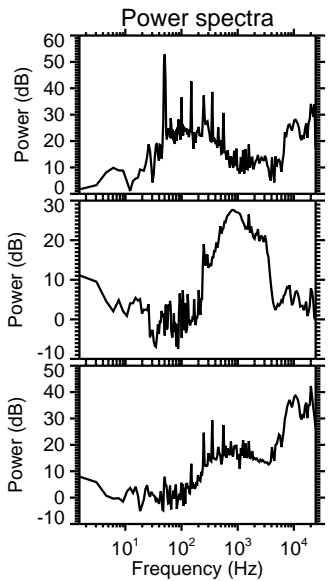
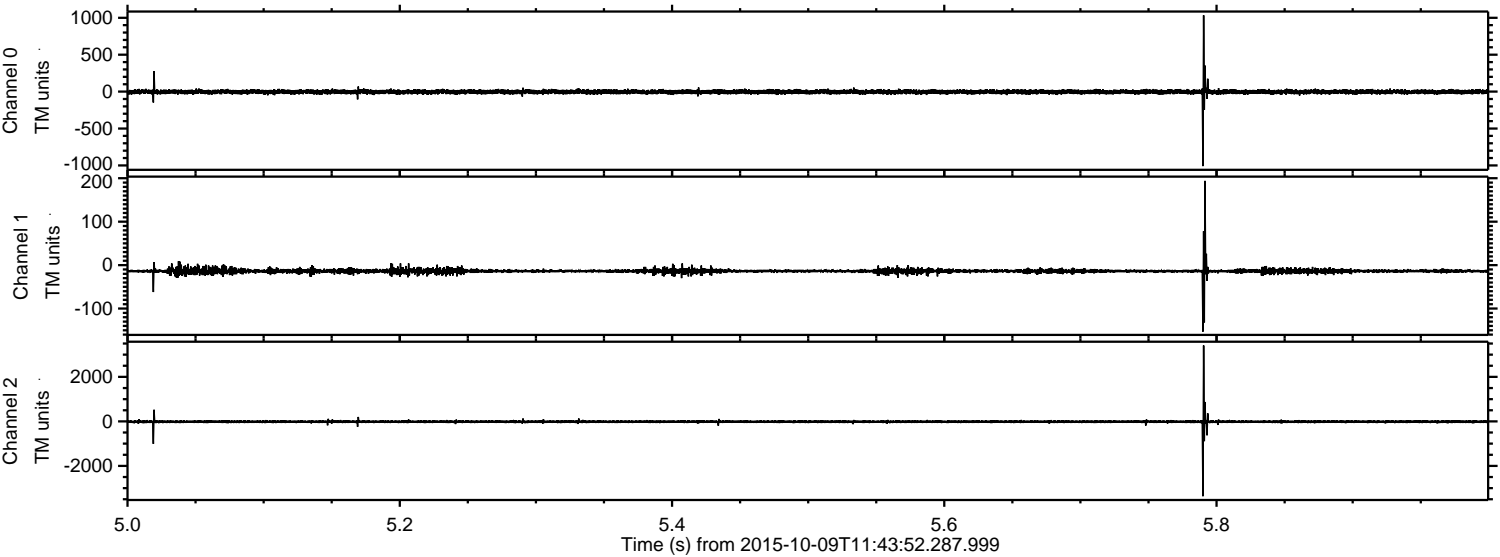
ELMAVAN 3D WAVEFORMS (Measured data sampled at 50 kHz) 51000 packets of 144 samples from 2015-10-09T11:43:52.287.999. Part 101/147

Processed Sat Oct 17 22:28:49 2015 by ELM ver.2012-10-06 from 001__elm20151009_114351__dat00.bin



ELMAVAN 3D WAVEFORMS (Measured data sampled at 50 kHz) 51000 packets of 144 samples from 2015-10-09T11:43:52.287.999. Part 6/147

Processed Sat Oct 17 22:28:51 2015 by ELM ver.2012-10-06 from 001__elm20151009_114351__dat00.bin



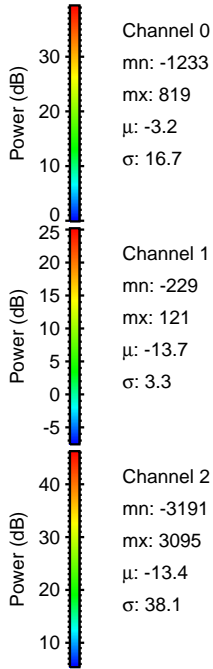
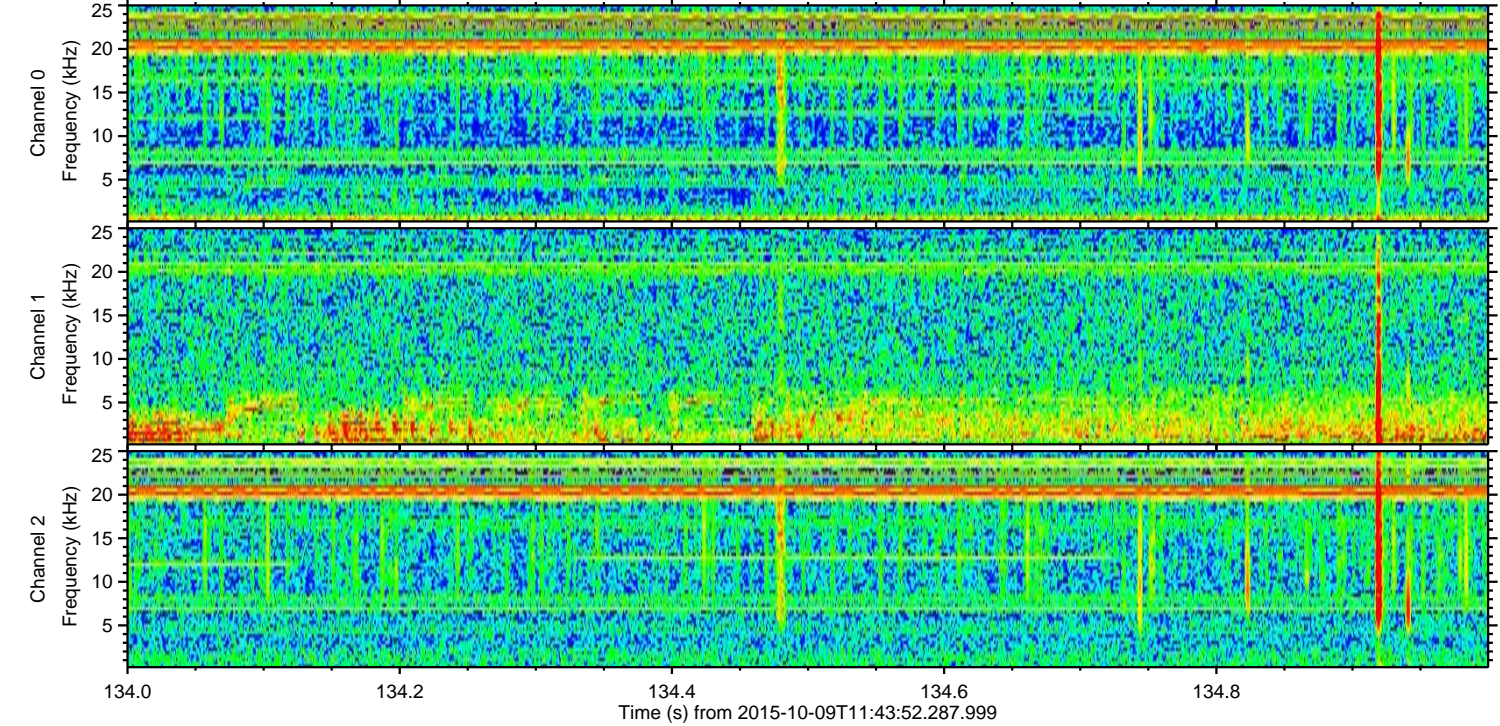
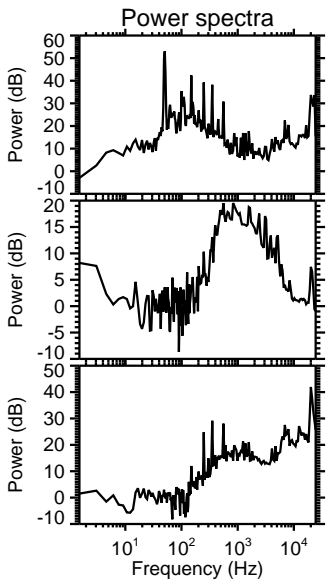
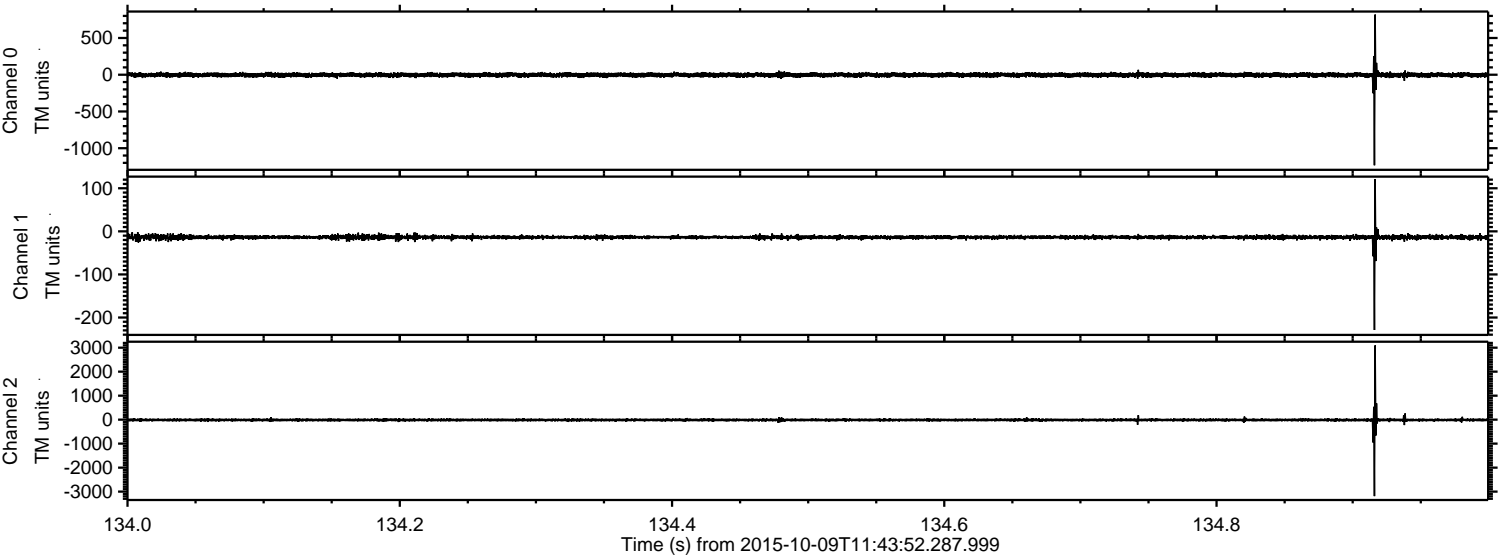
Channel 0
mn: -1009
mx: 1033
 μ : -3.3
 σ : 17.5

Channel 1
mn: -153
mx: 194
 μ : -13.7
 σ : 4.5

Channel 2
mn: -3365
mx: 3411
 μ : -13.5
 σ : 42.5

ELMAVAN 3D WAVEFORMS (Measured data sampled at 50 kHz) 51000 packets of 144 samples from 2015-10-09T11:43:52.287.999. Part 135/147

Processed Sat Oct 17 22:28:53 2015 by ELM ver.2012-10-06 from 001__elm20151009_114351__dat00.bin



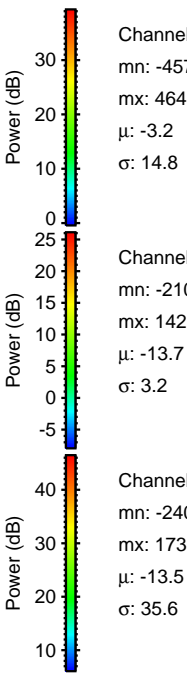
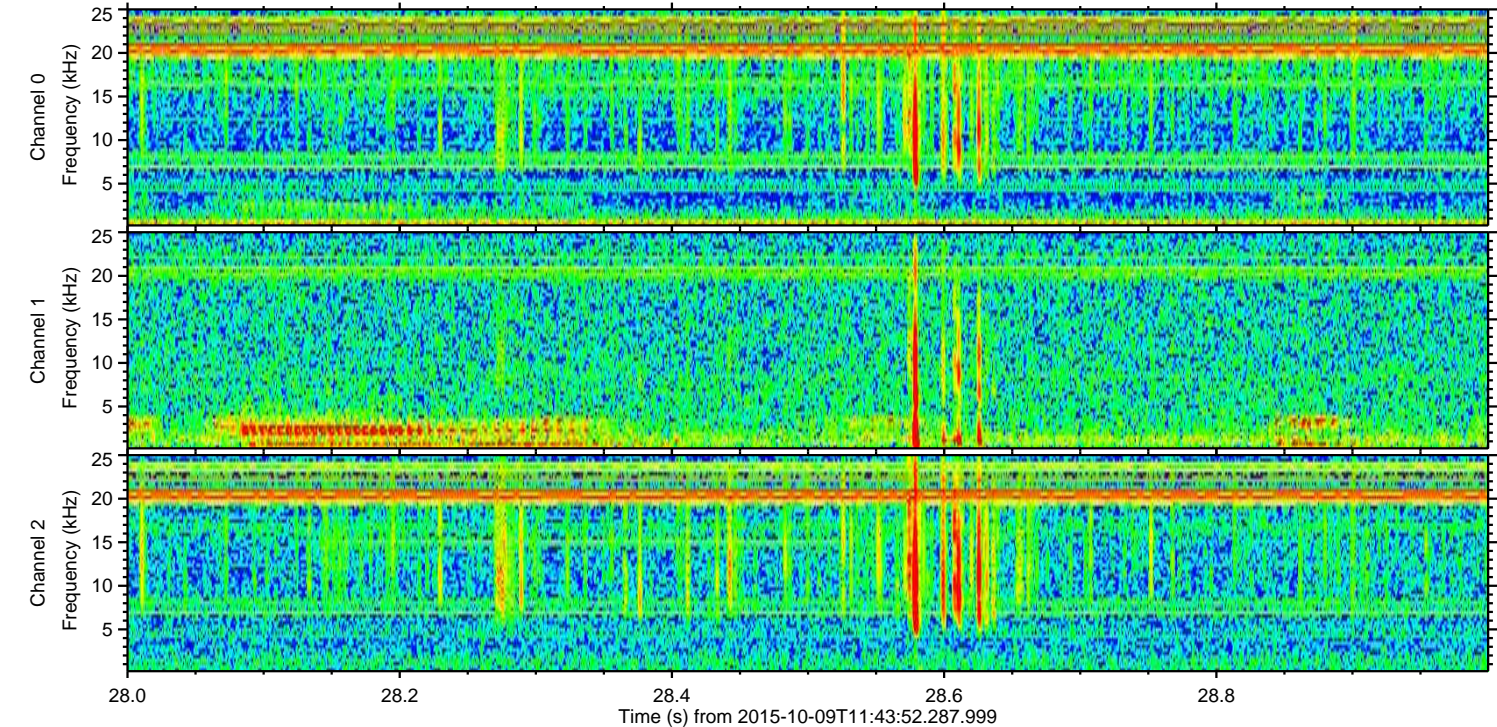
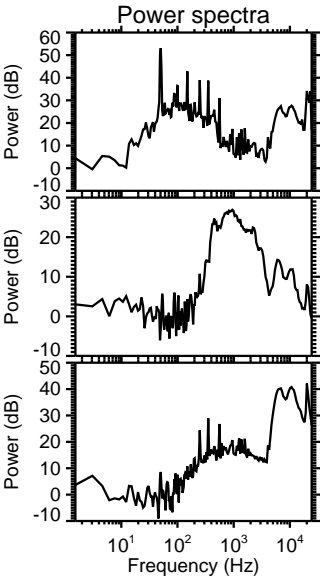
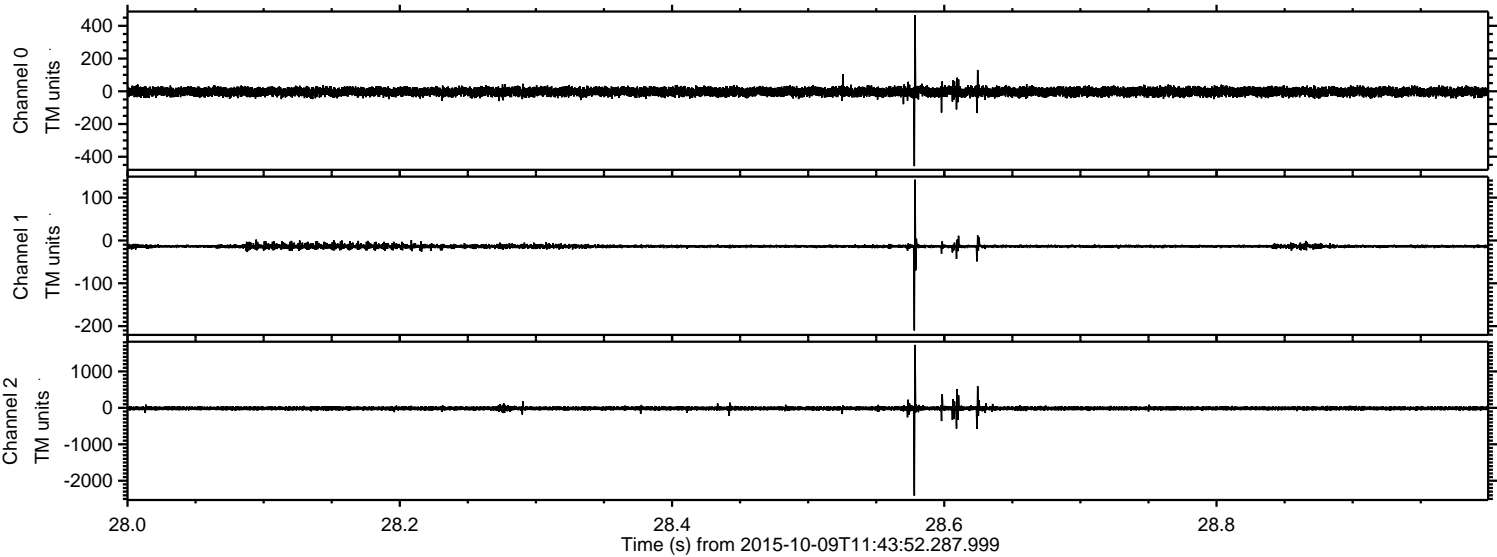
Channel 0
mn: -1233
mx: 819
 μ : -3.2
 σ : 16.7

Channel 1
mn: -229
mx: 121
 μ : -13.7
 σ : 3.3

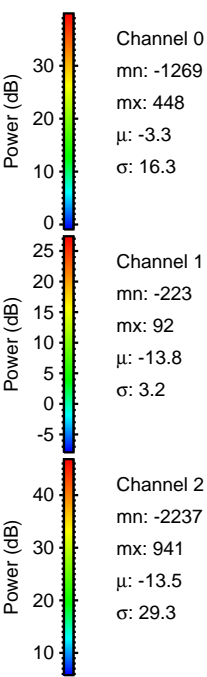
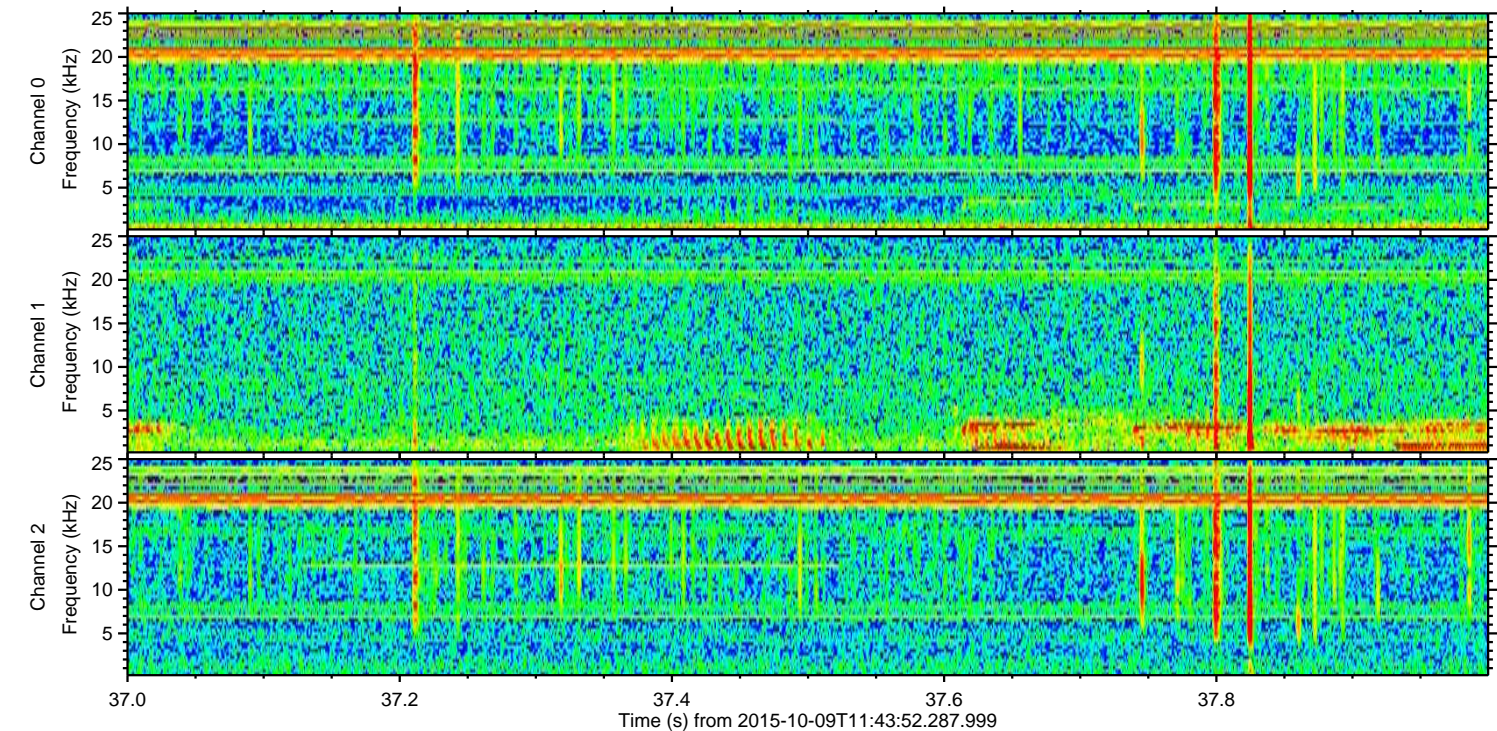
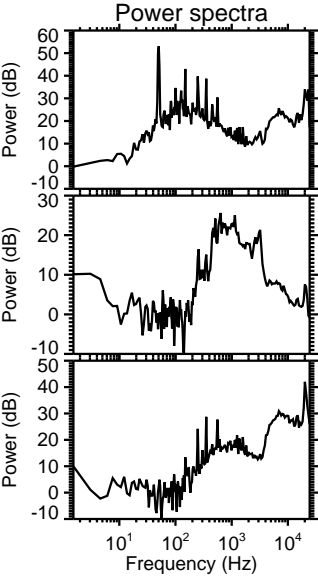
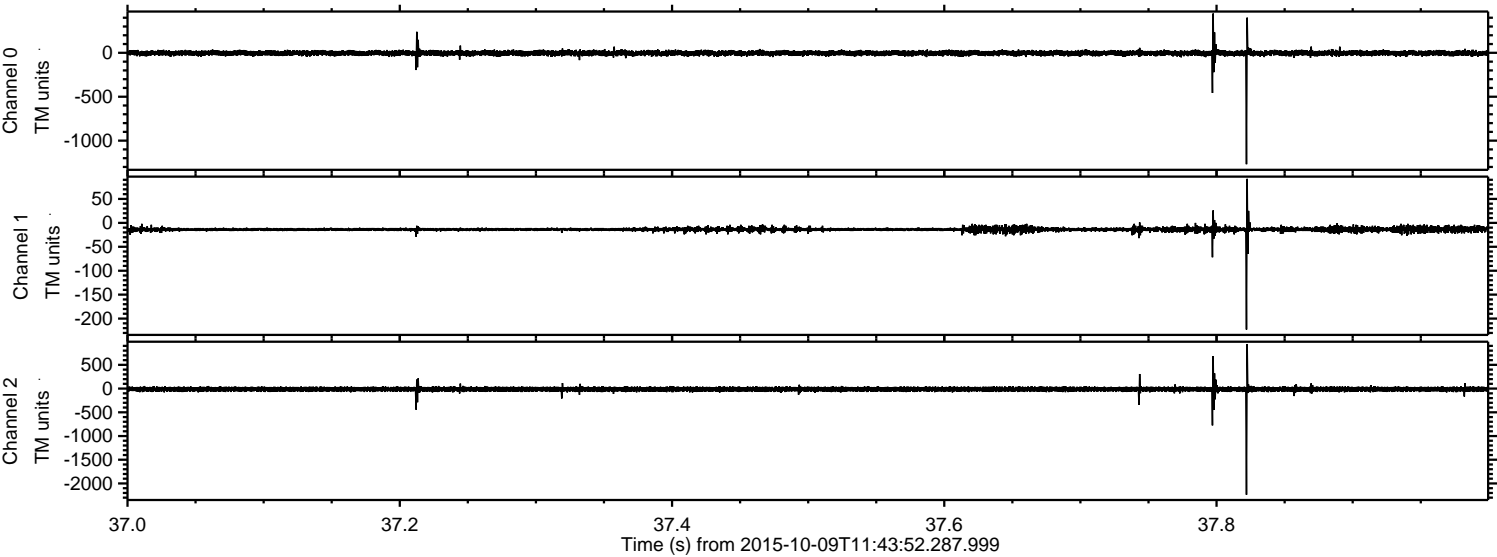
Channel 2
mn: -3191
mx: 3095
 μ : -13.4
 σ : 38.1

ELMAVAN 3D WAVEFORMS (Measured data sampled at 50 kHz) 51000 packets of 144 samples from 2015-10-09T11:43:52.287.999. Part 29/147

Processed Sat Oct 17 22:28:55 2015 by ELM ver.2012-10-06 from 001__elm20151009_114351__dat00.bin

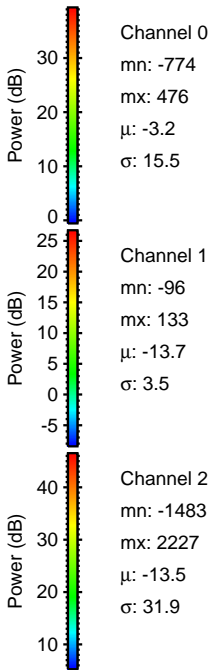
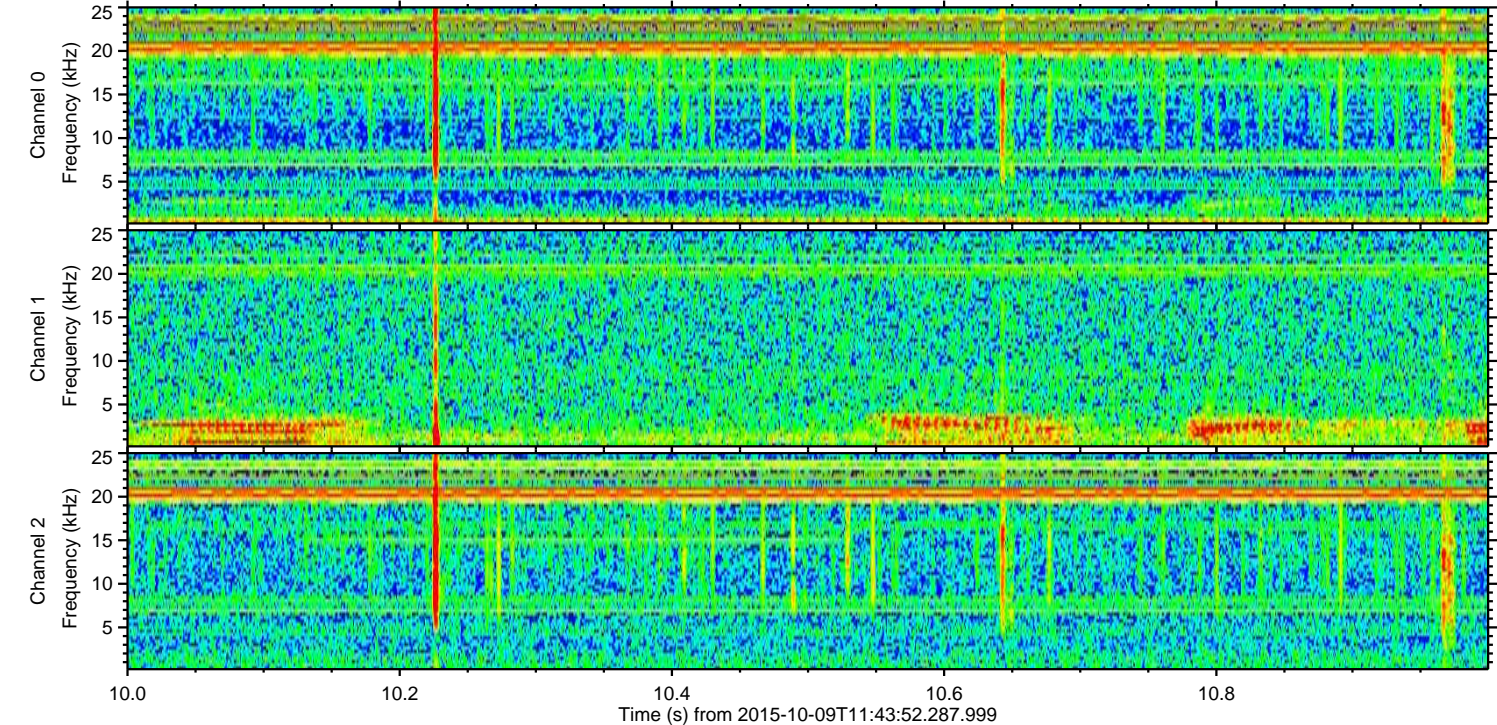
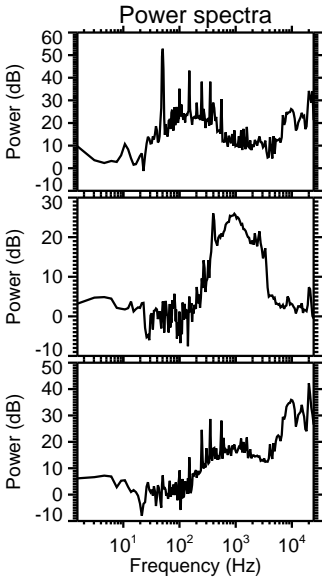
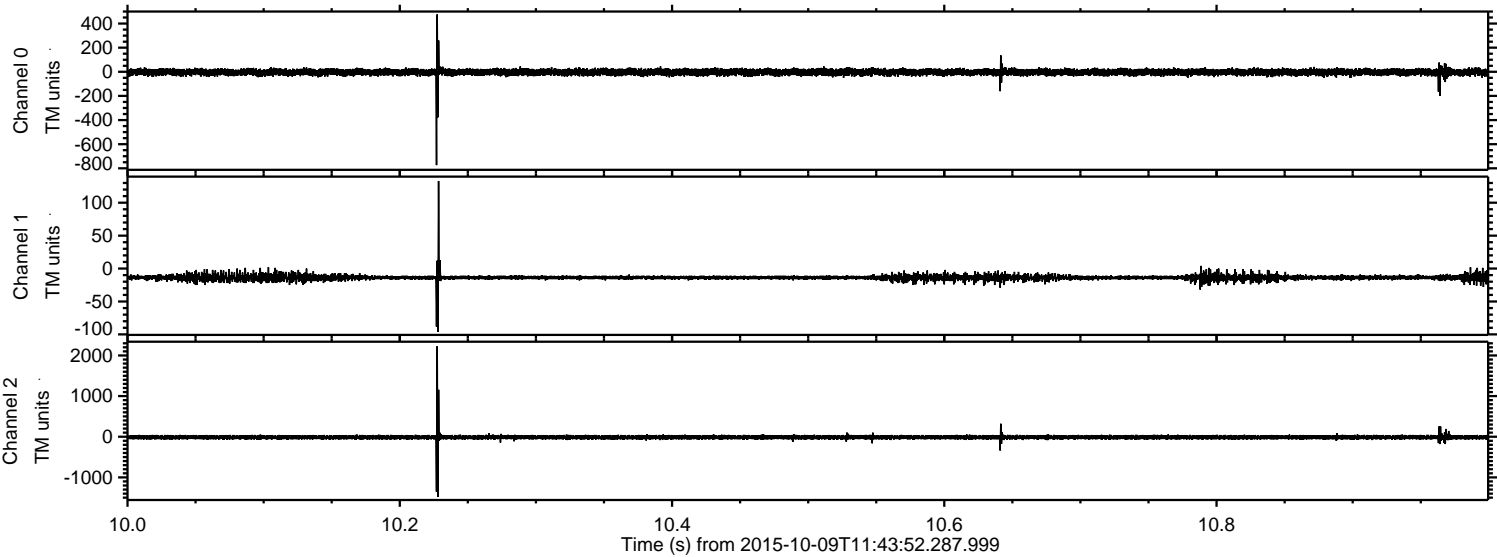


Processed Sat Oct 17 22:28:56 2015 by ELM ver.2012-10-06 from 001__elm20151009_114351__dat00.bin



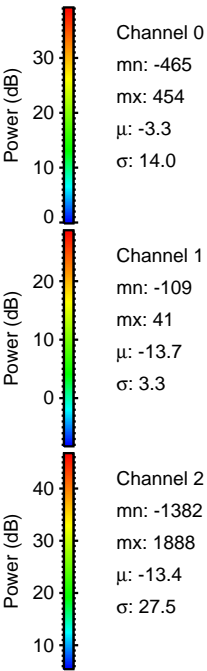
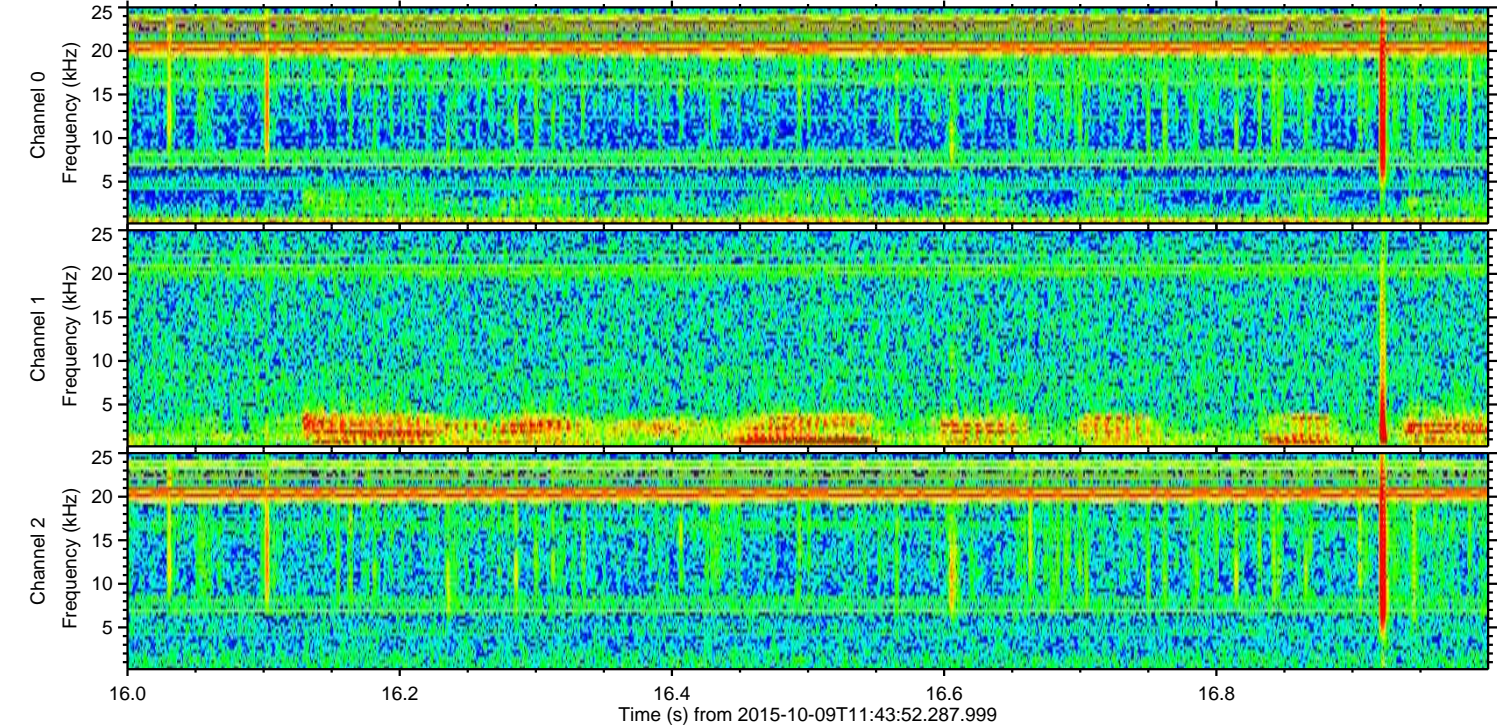
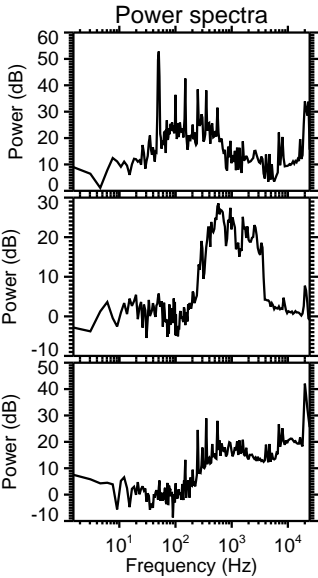
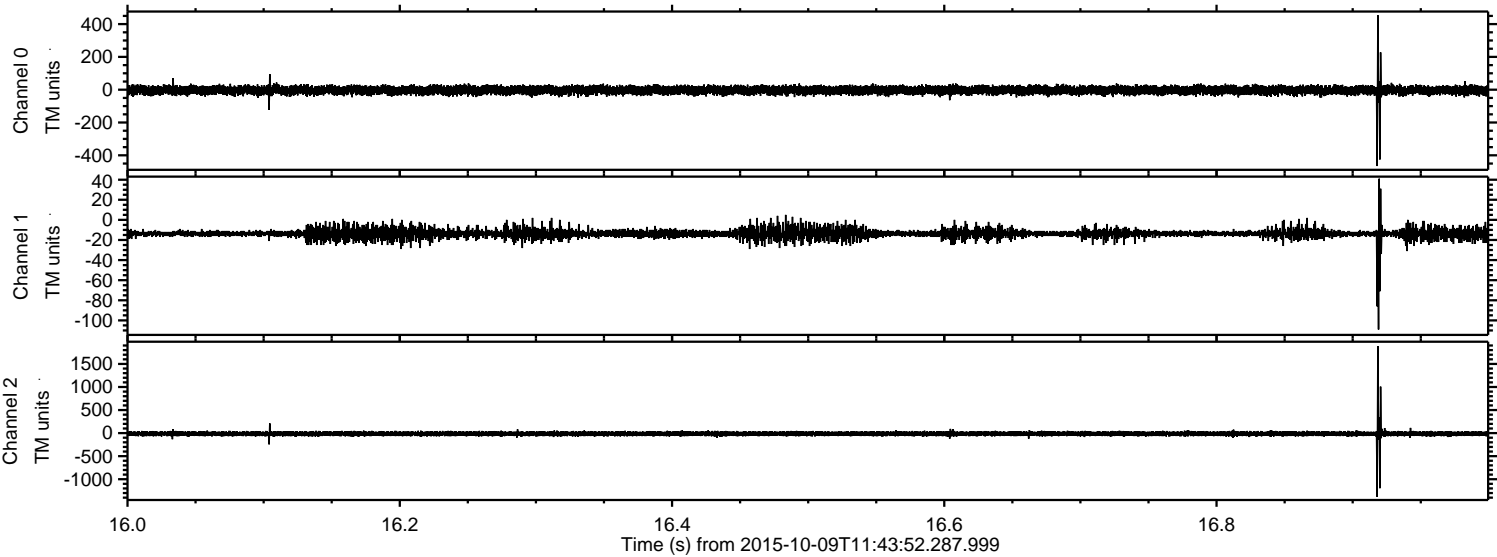
ELMAVAN 3D WAVEFORMS (Measured data sampled at 50 kHz) 51000 packets of 144 samples from 2015-10-09T11:43:52.287.999. Part 11/147

Processed Sat Oct 17 22:28:58 2015 by ELM ver.2012-10-06 from 001__elm20151009_114351__dat00.bin



ELMAVAN 3D WAVEFORMS (Measured data sampled at 50 kHz) 51000 packets of 144 samples from 2015-10-09T11:43:52.287.999. Part 17/147

Processed Sat Oct 17 22:29:00 2015 by ELM ver.2012-10-06 from 001__elm20151009_114351__dat00.bin



ELMAVAN 3D WAVEFORMS (Measured data sampled at 50 kHz) 51000 packets of 144 samples from 2015-10-09T11:43:52.287.999. Part 42/147

Processed Sat Oct 17 22:29:02 2015 by ELM ver.2012-10-06 from 001__elm20151009_114351__dat00.bin

