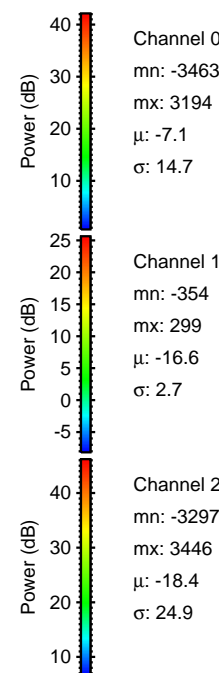
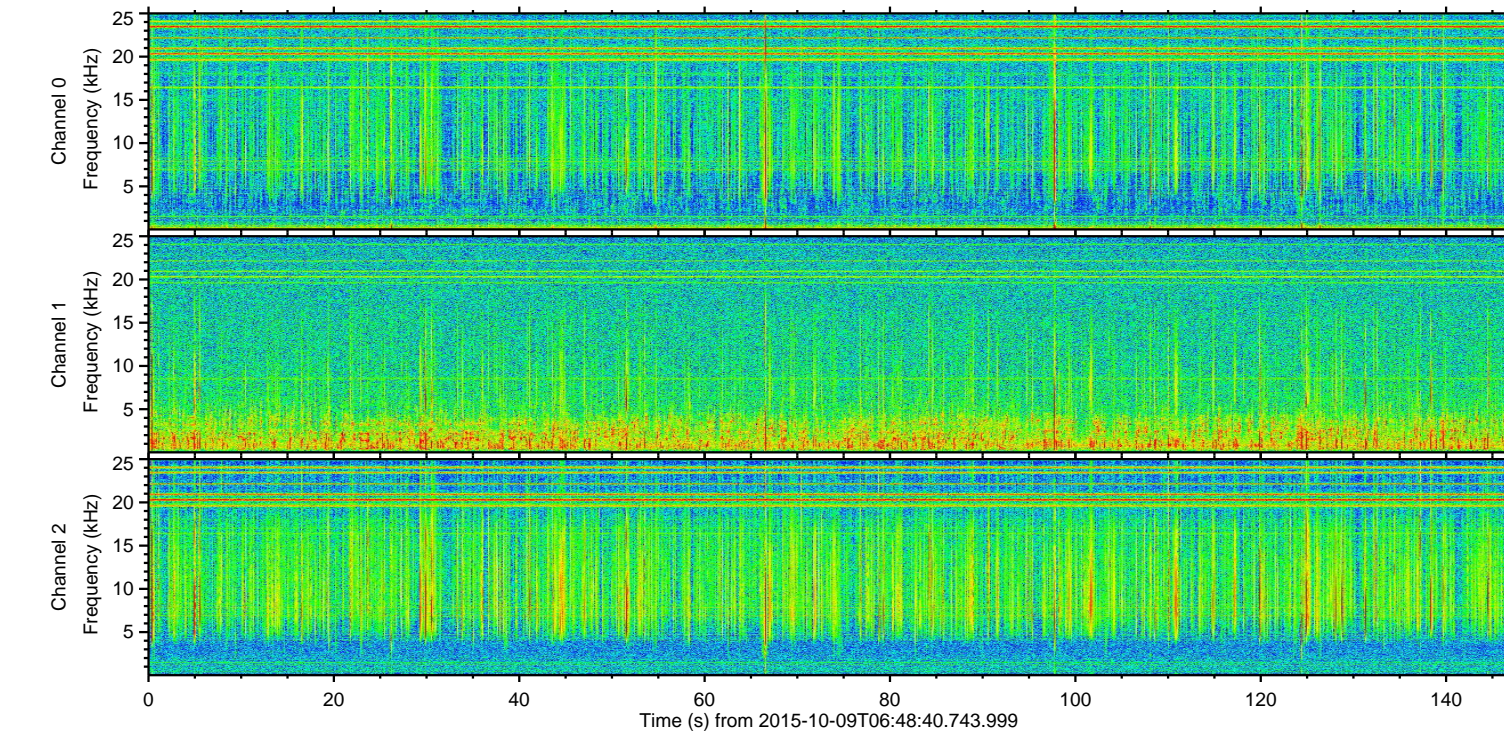
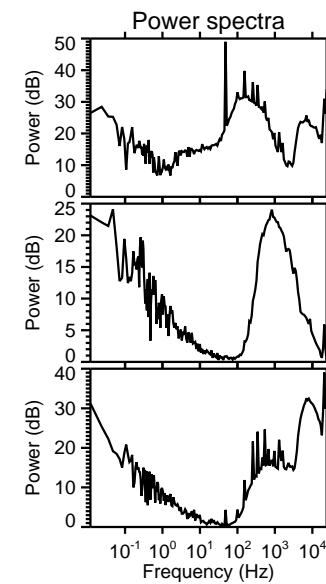
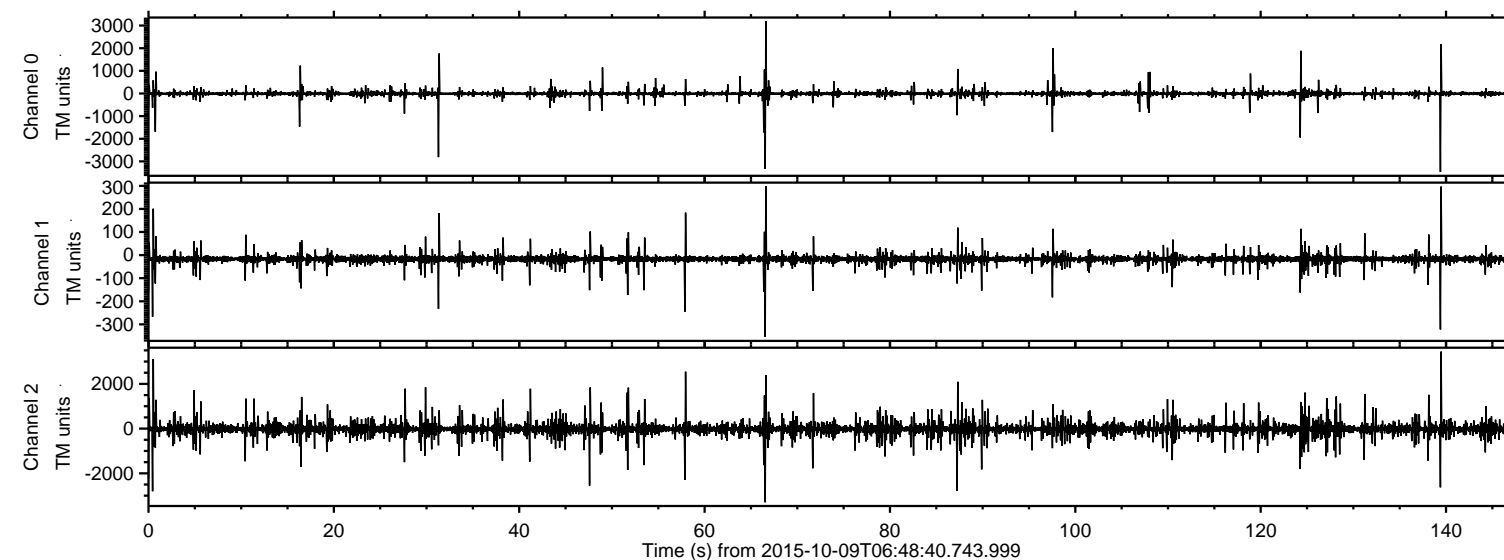


# ELMAVAN 3D WAVEFORMS (Measured data sampled at 50 kHz) 51000 packets of 144 samples from 2015-10-09T06:48:40.743.999.

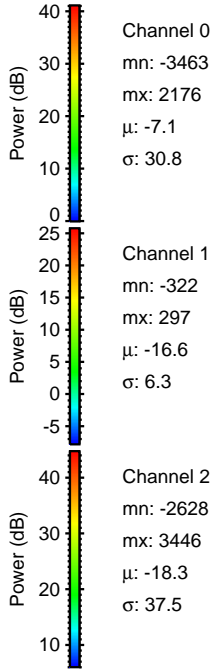
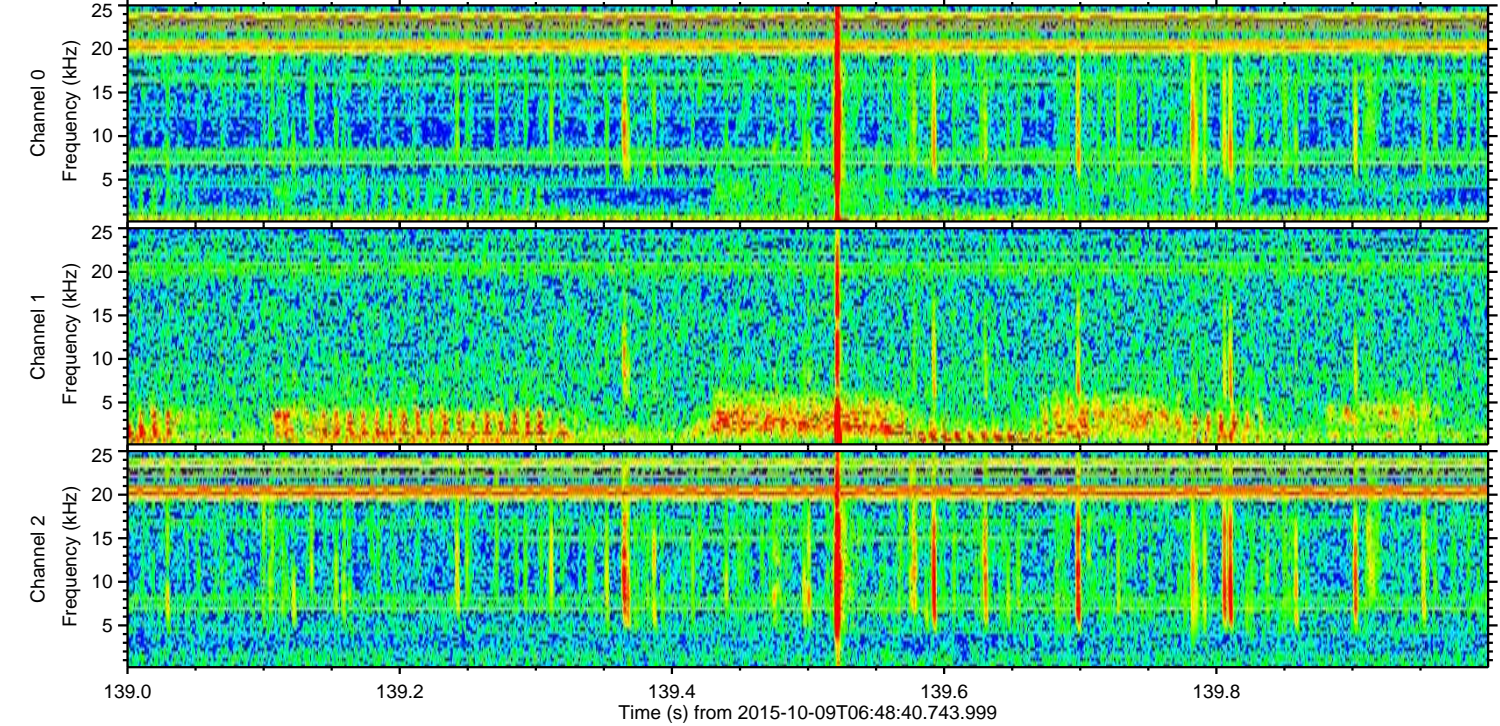
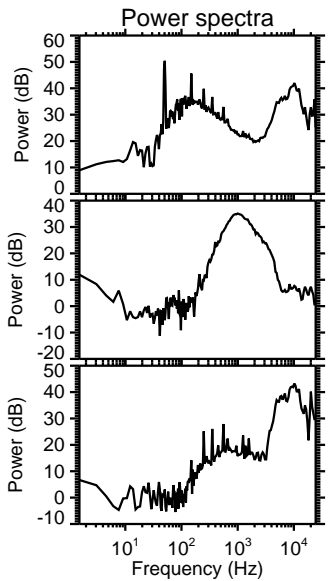
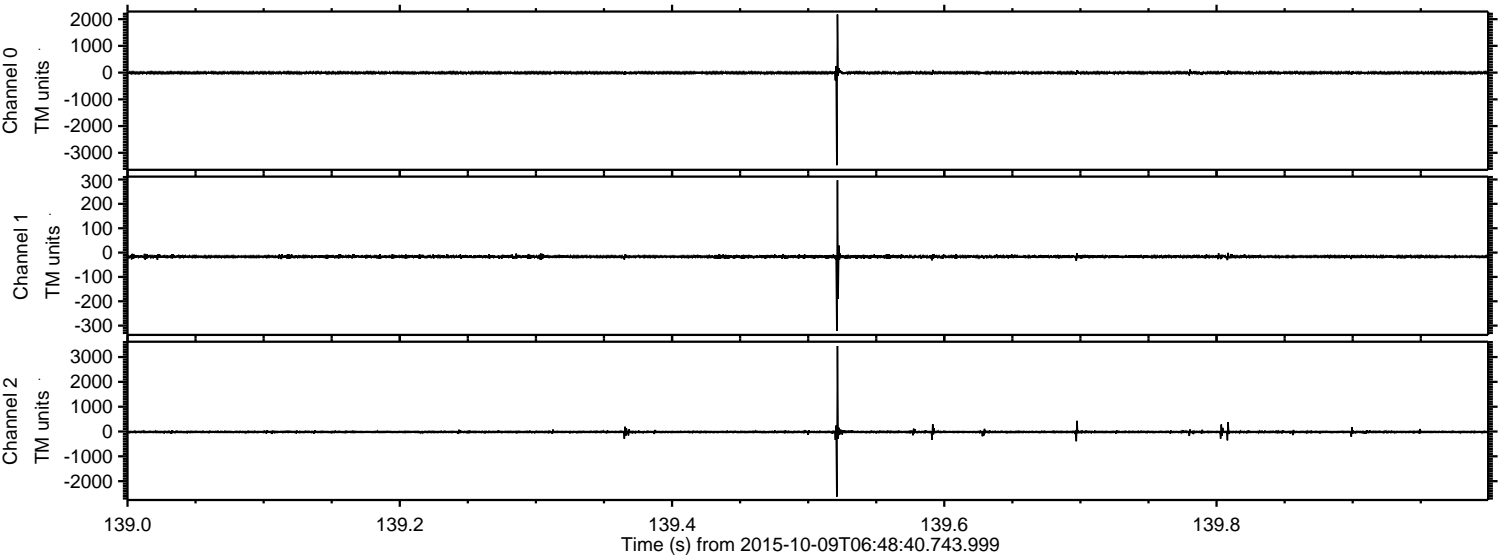
Processed Sat Oct 17 20:35:41 2015 by ELM ver.2012-10-06 from 001\_\_elm20151009\_064839\_\_dat00.bin





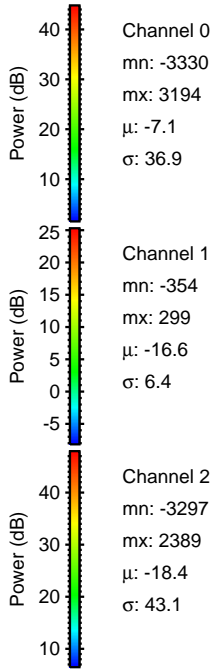
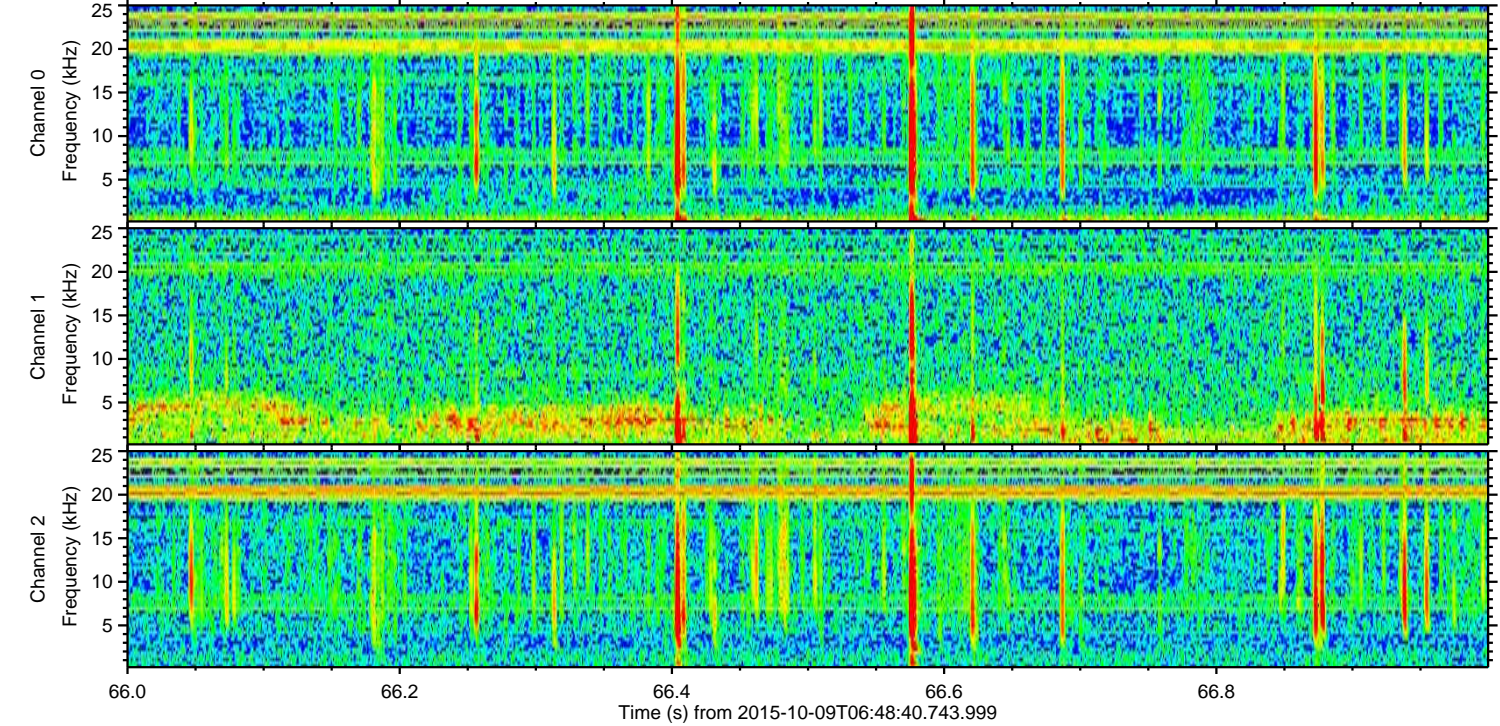
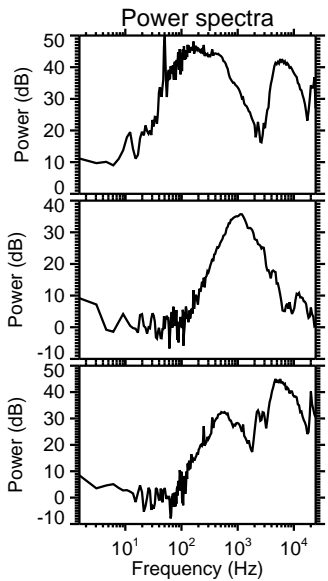
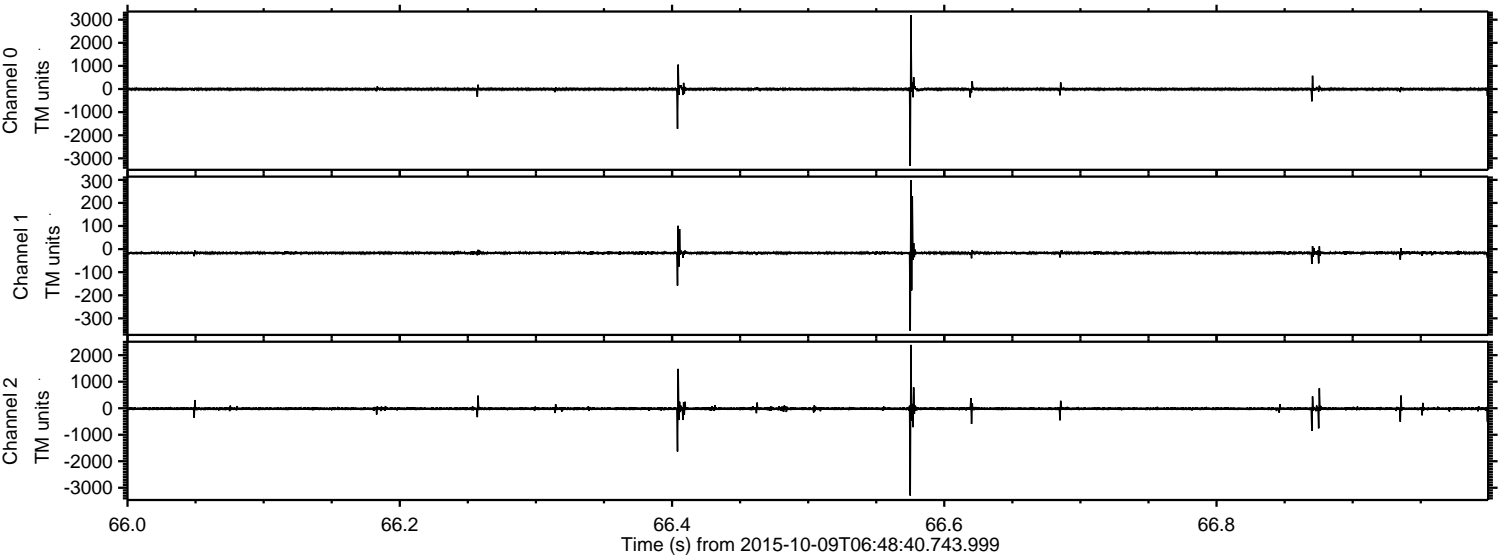
ELMAVAN 3D WAVEFORMS (Measured data sampled at 50 kHz) 51000 packets of 144 samples from 2015-10-09T06:48:40.743.999. Part 140/147

Processed Sat Oct 17 20:35:56 2015 by ELM ver.2012-10-06 from 001\_\_elm20151009\_064839\_\_dat00.bin





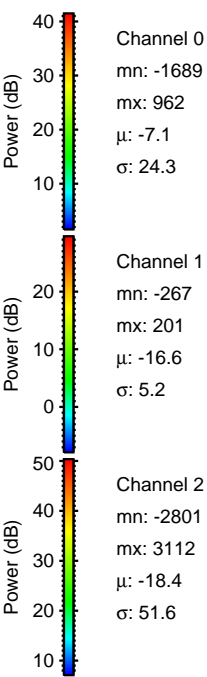
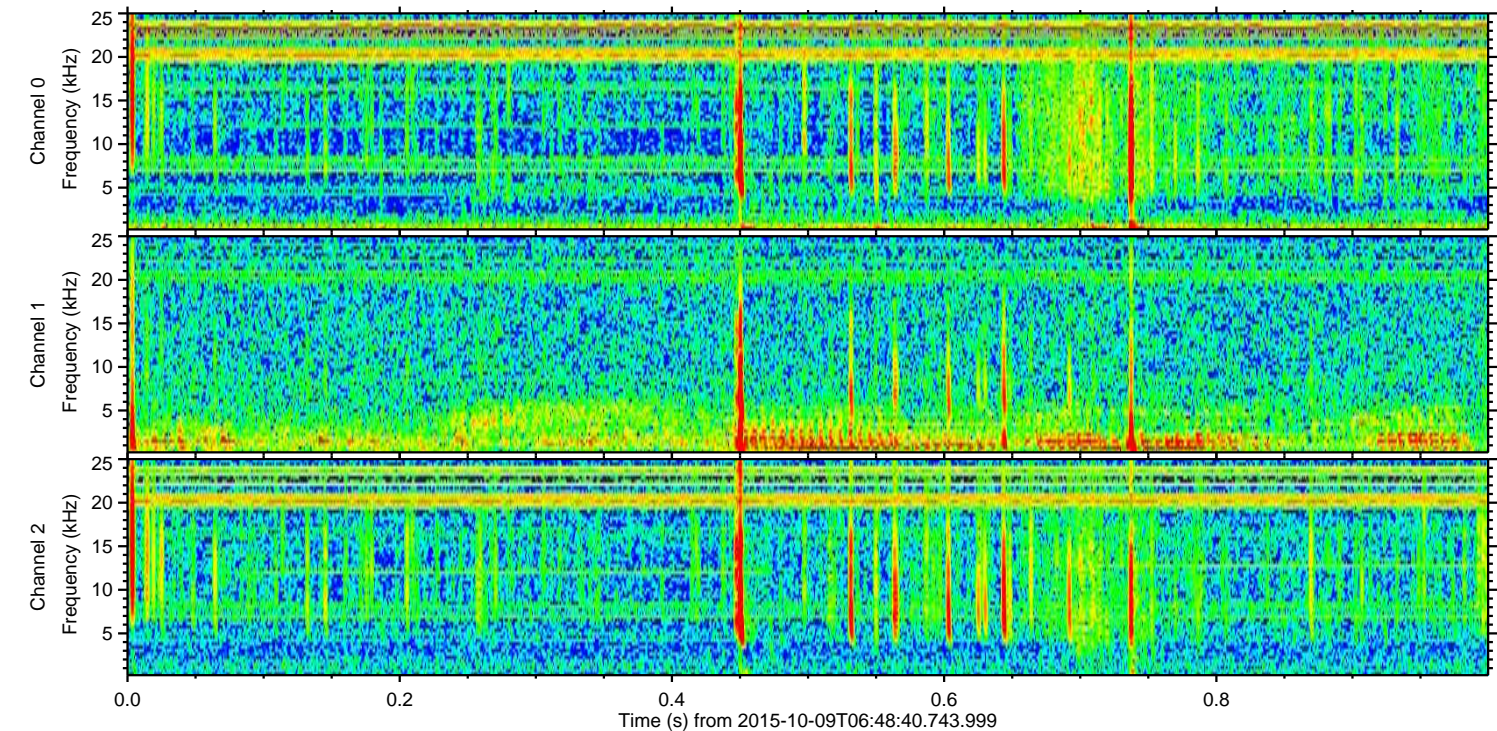
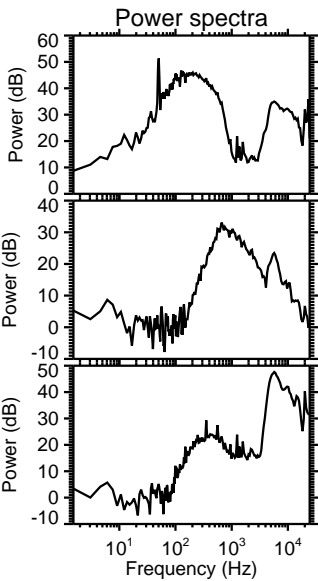
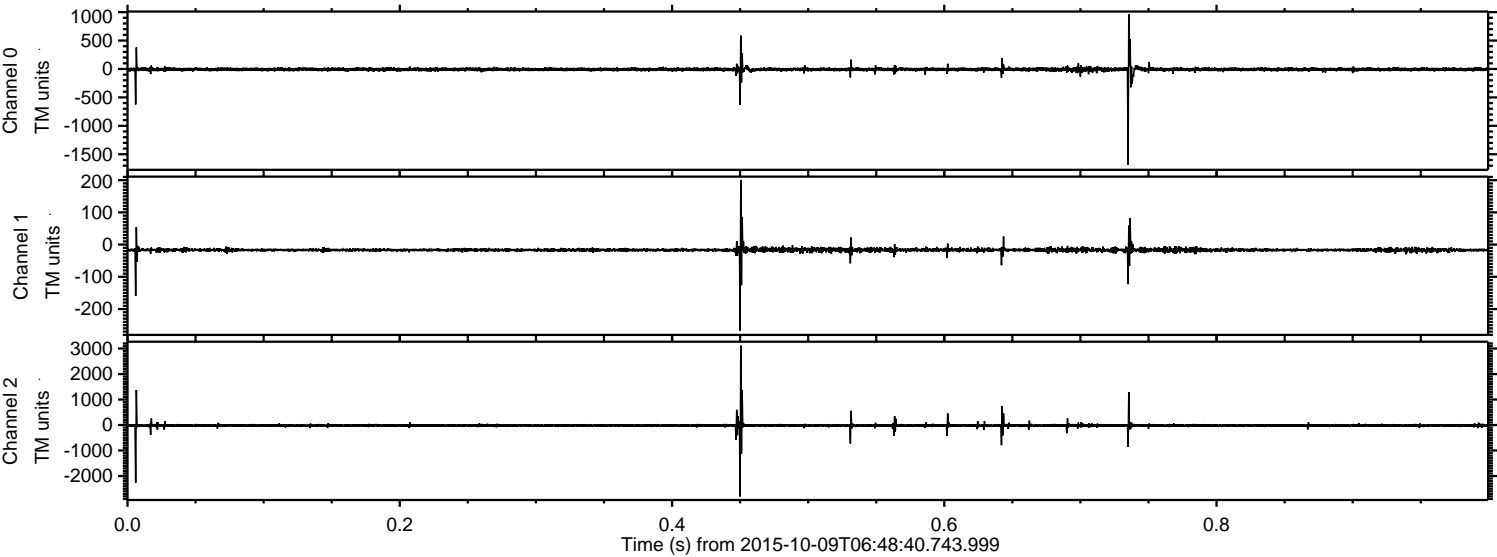
Processed Sat Oct 17 20:35:57 2015 by ELM ver.2012-10-06 from 001\_\_elm20151009\_064839\_\_dat00.bin





ELMAVAN 3D WAVEFORMS (Measured data sampled at 50 kHz) 51000 packets of 144 samples from 2015-10-09T06:48:40.743.999. Part 1/147

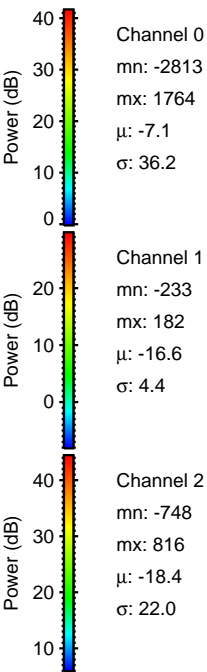
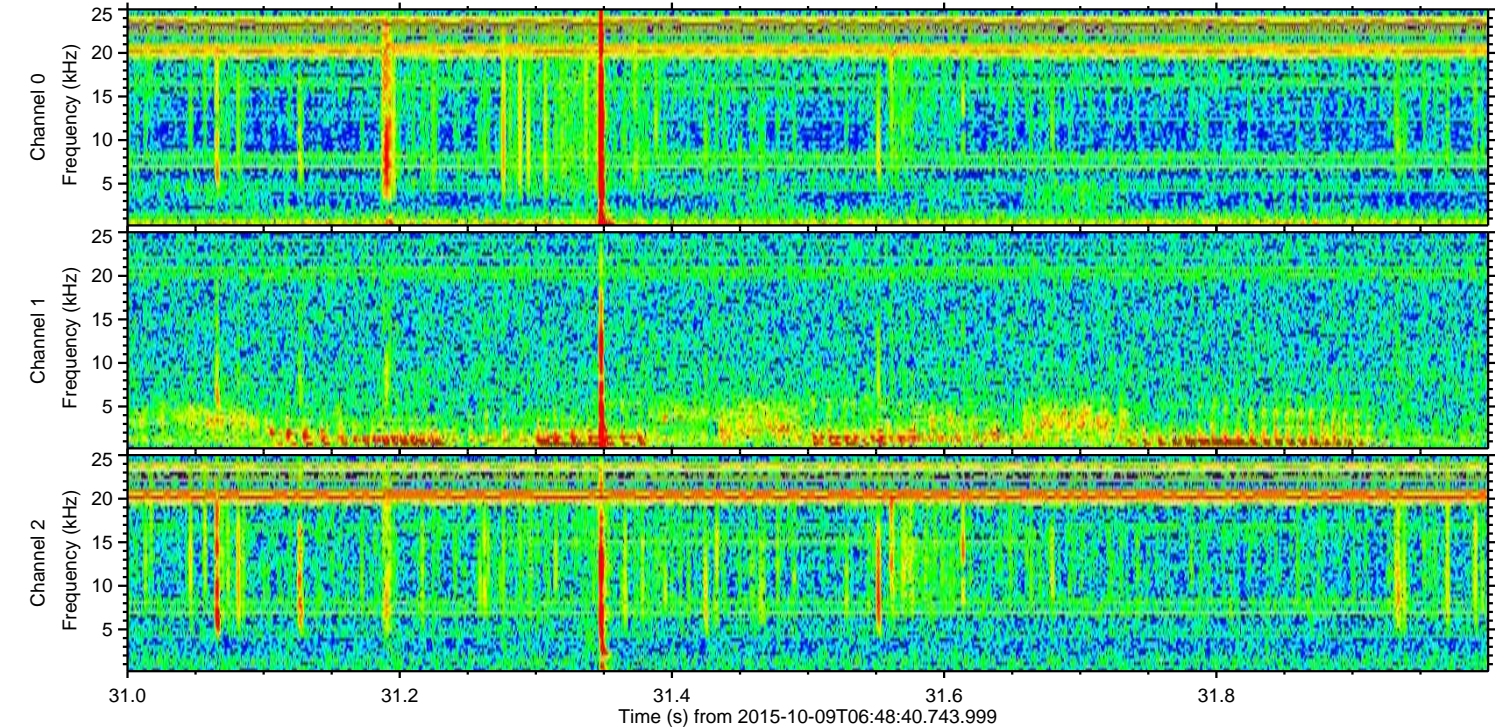
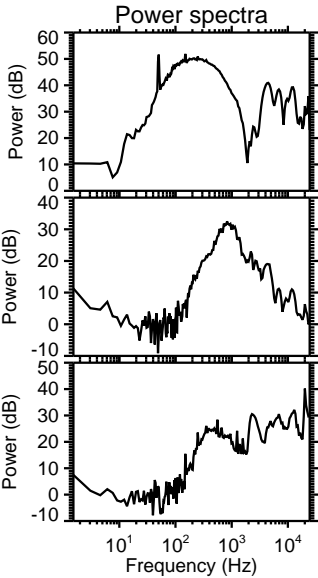
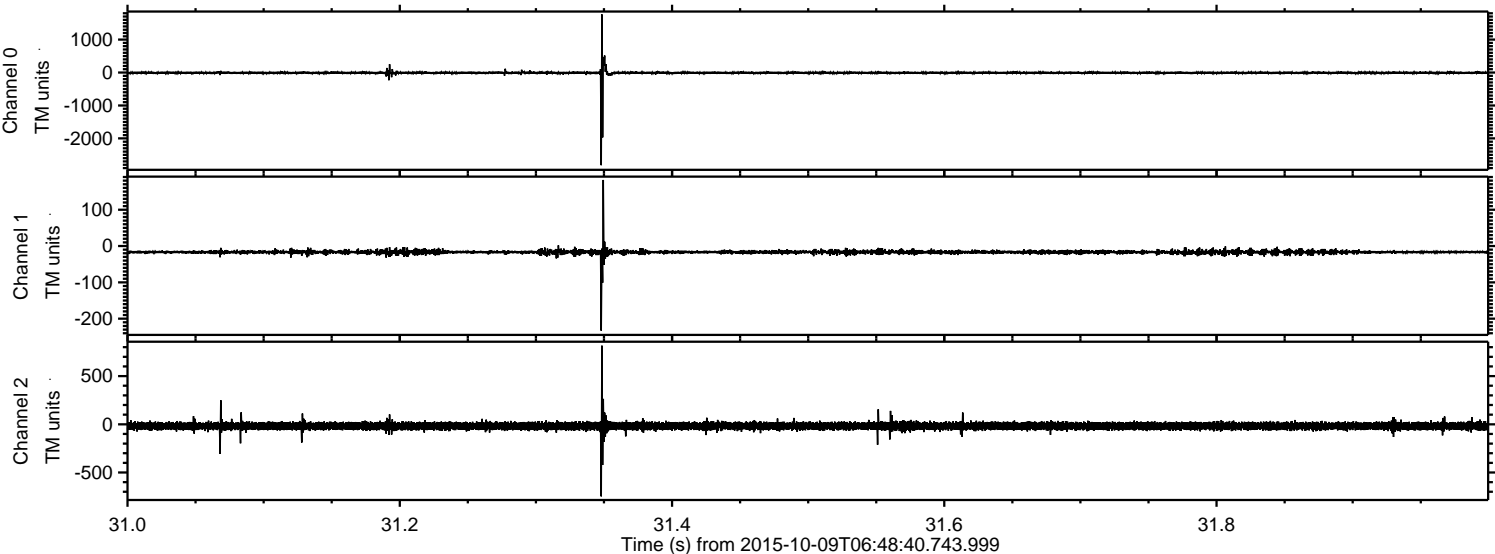
Processed Sat Oct 17 20:35:58 2015 by ELM ver.2012-10-06 from 001\_\_elm20151009\_064839\_\_dat00.bin





ELMAVAN 3D WAVEFORMS (Measured data sampled at 50 kHz) 51000 packets of 144 samples from 2015-10-09T06:48:40.743.999. Part 32/147

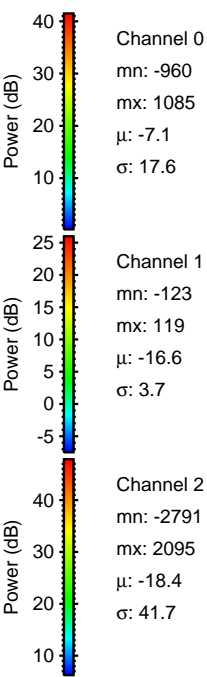
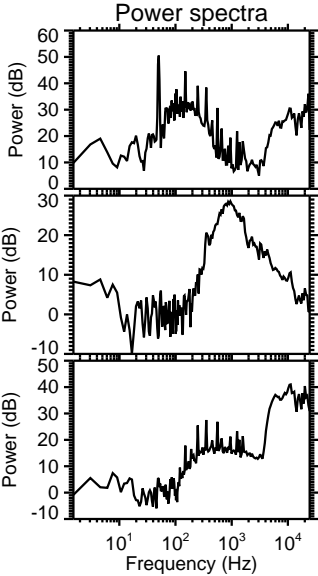
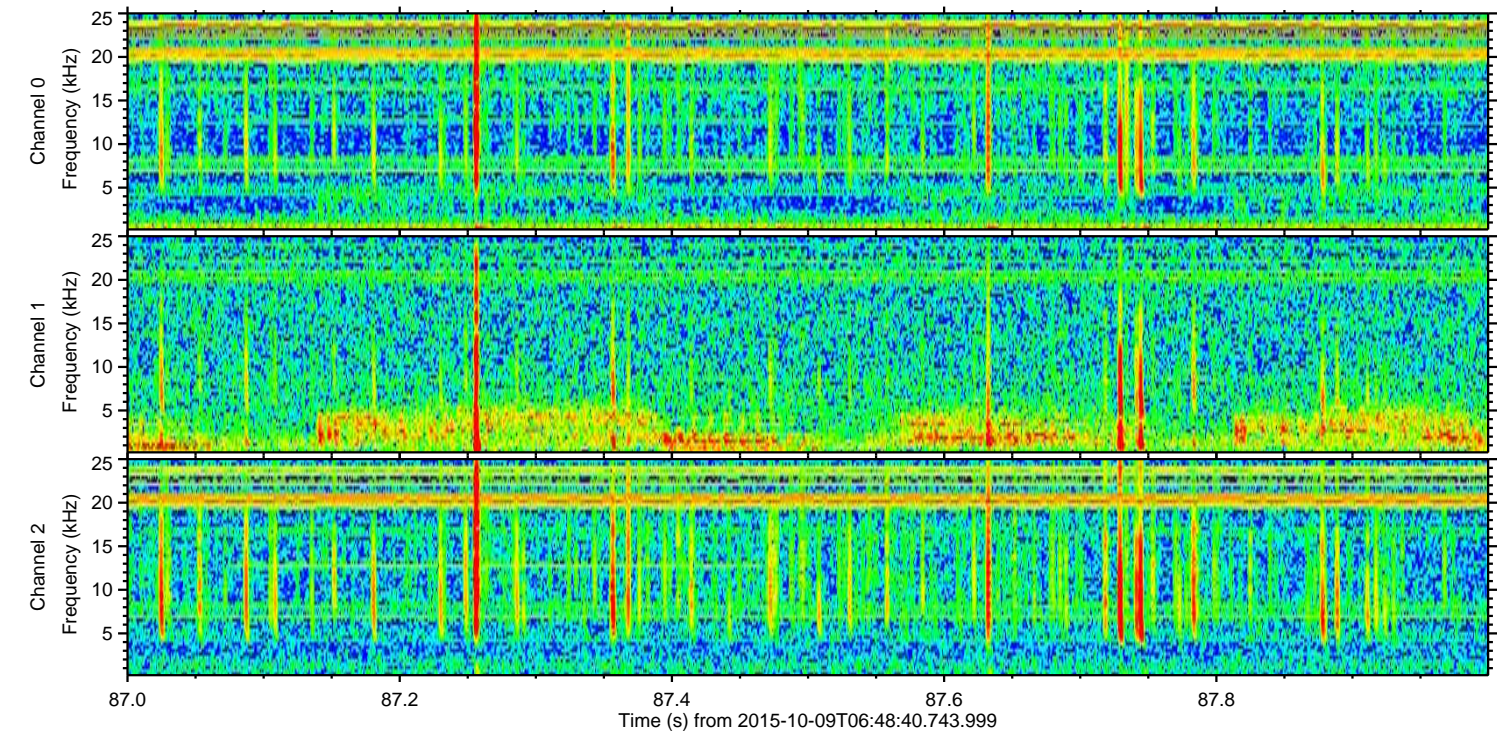
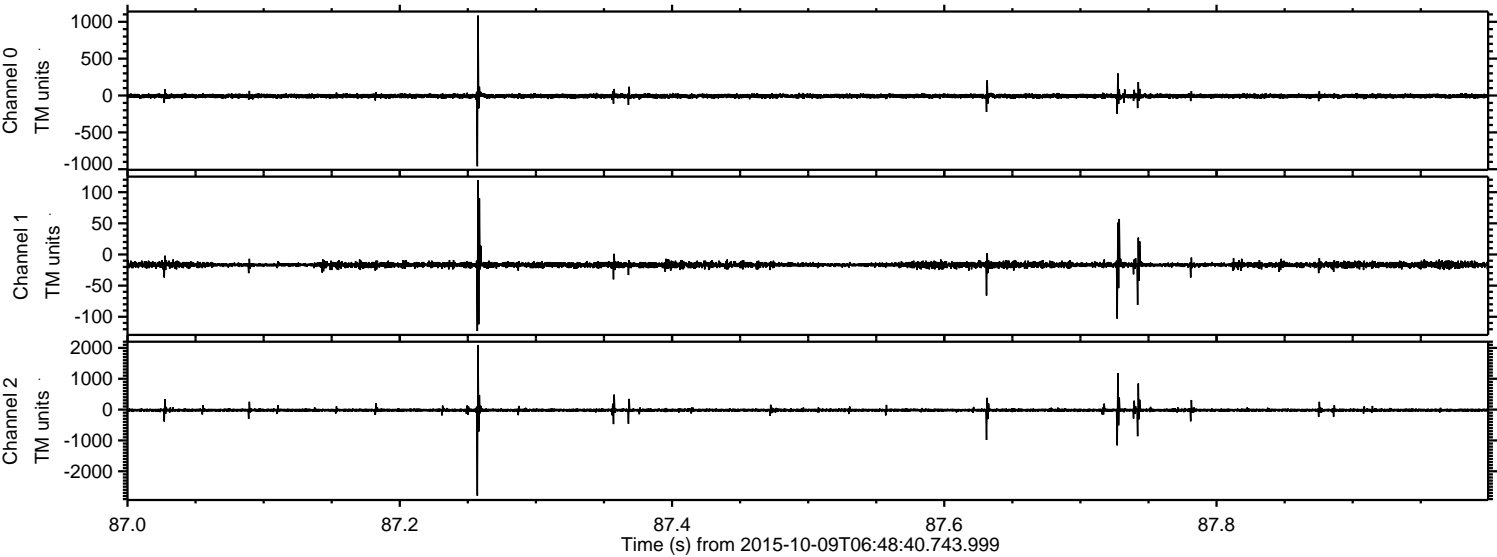
Processed Sat Oct 17 20:35:59 2015 by ELM ver.2012-10-06 from 001\_\_elm20151009\_064839\_\_dat00.bin





ELMAVAN 3D WAVEFORMS (Measured data sampled at 50 kHz) 51000 packets of 144 samples from 2015-10-09T06:48:40.743.999. Part 88/147

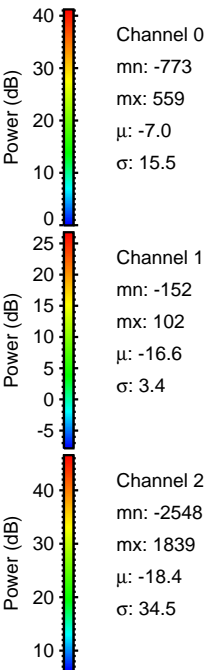
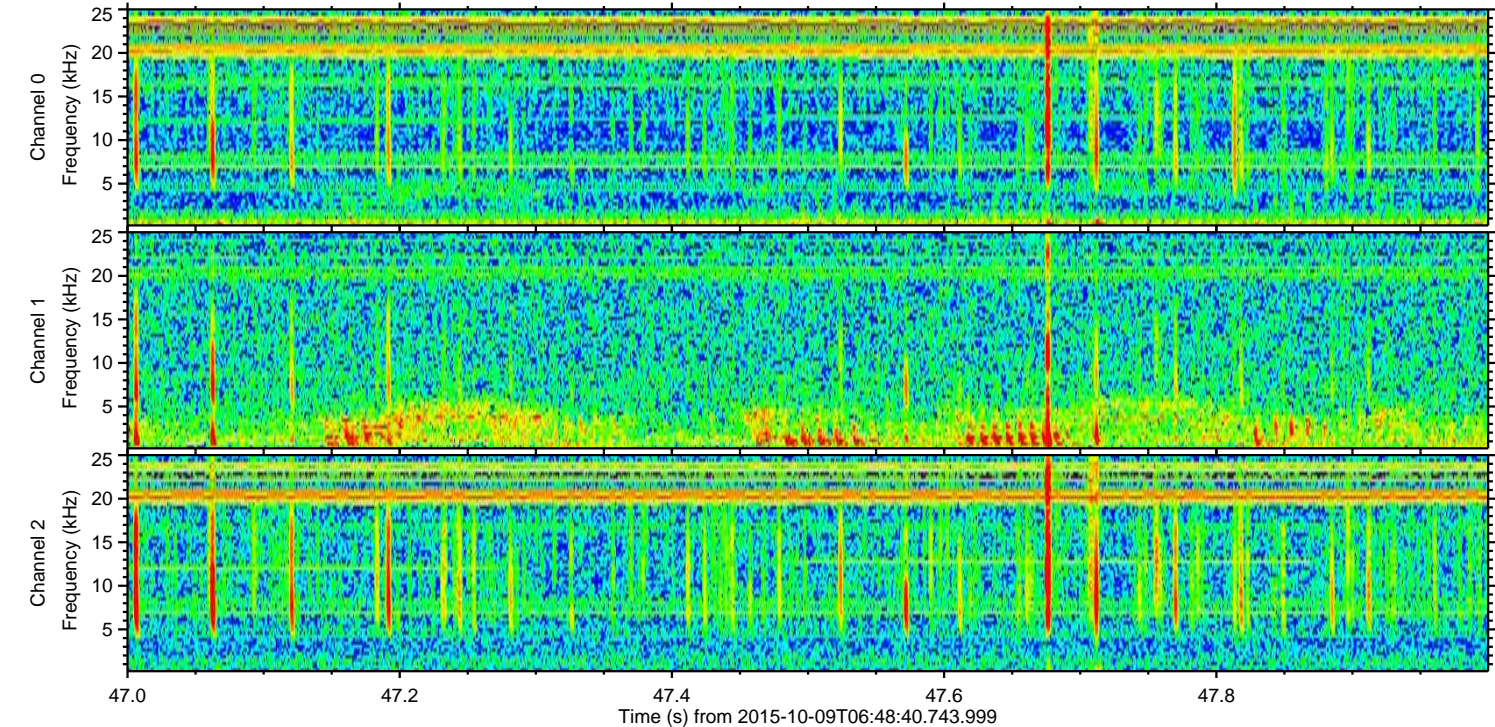
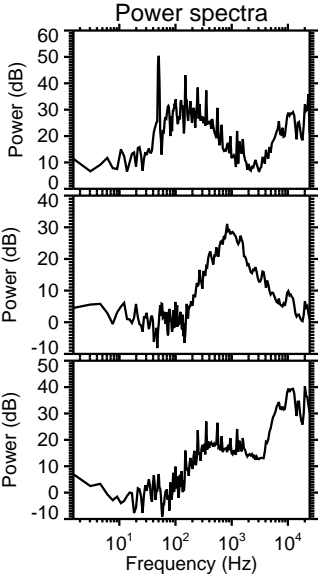
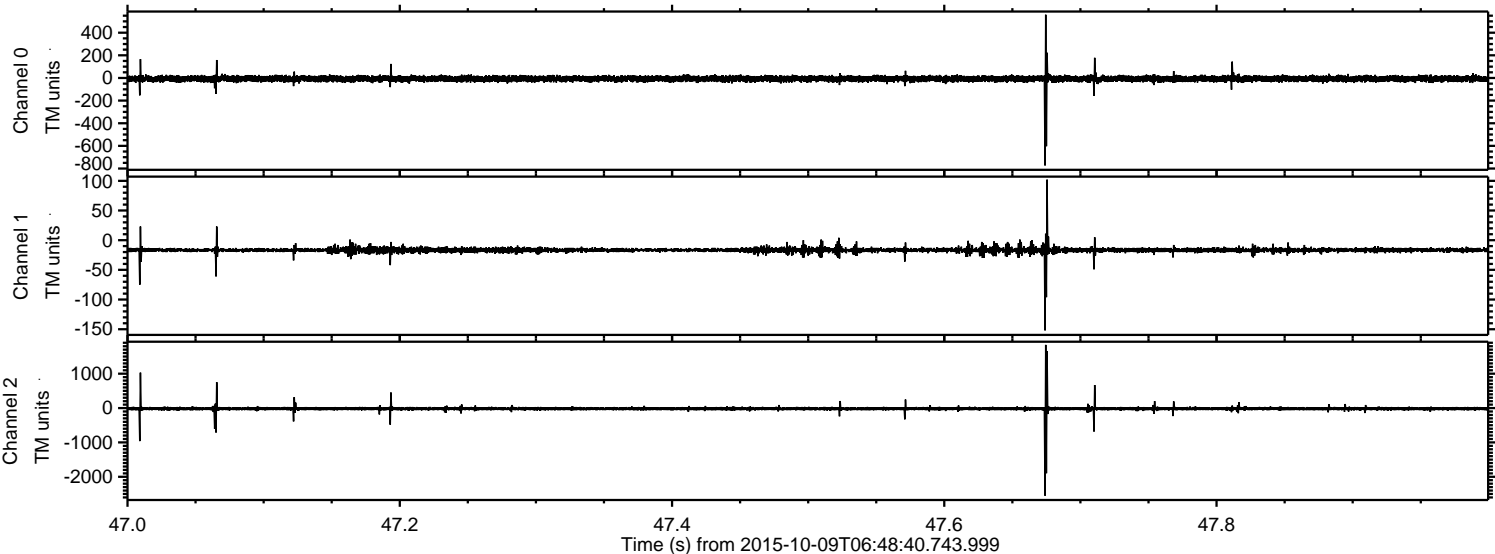
Processed Sat Oct 17 20:36:00 2015 by ELM ver.2012-10-06 from 001\_\_elm20151009\_064839\_\_dat00.bin





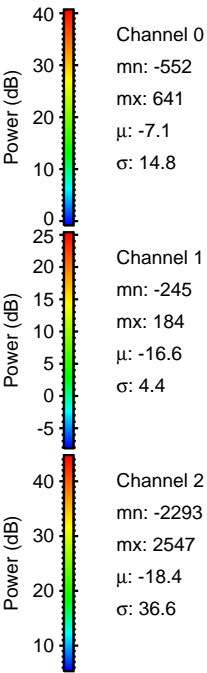
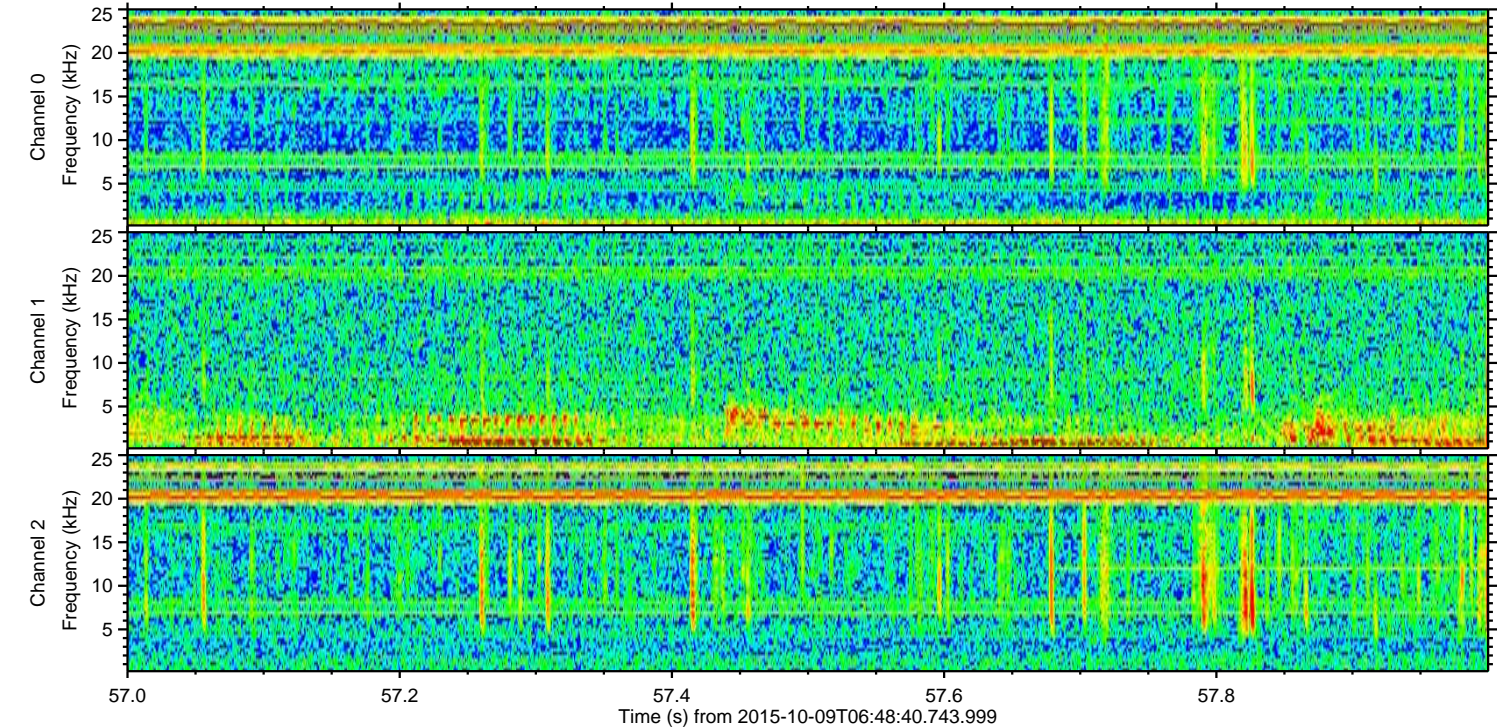
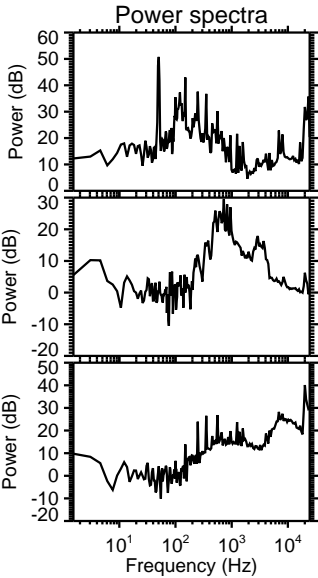
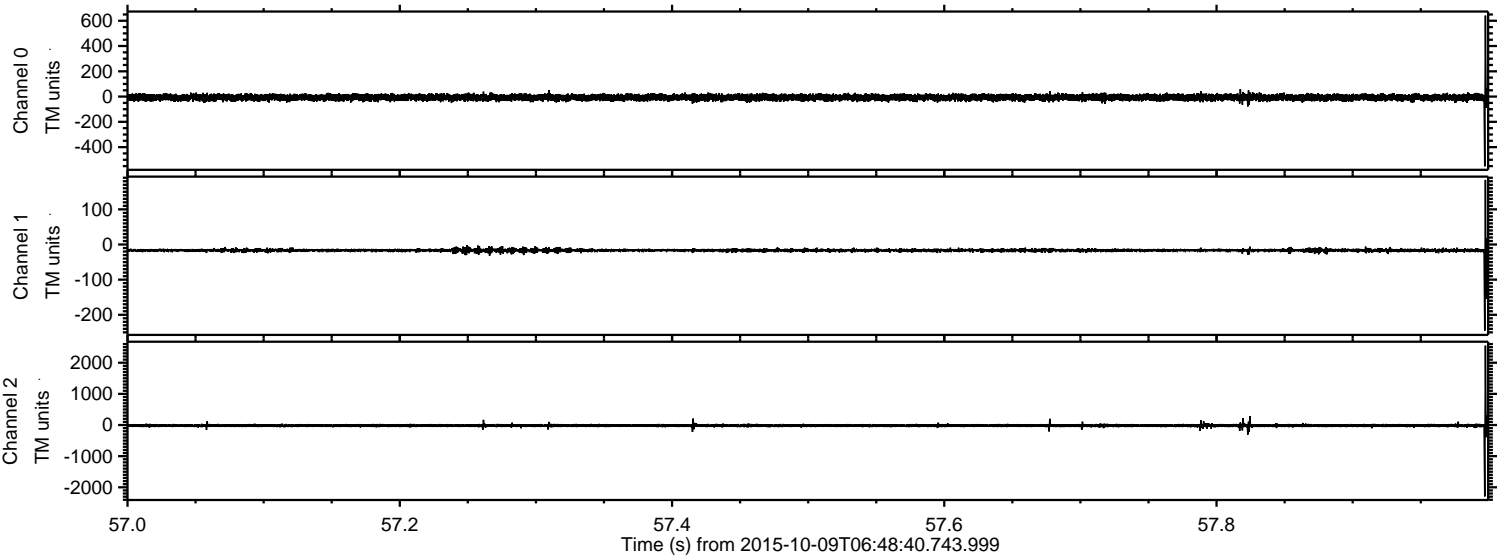
ELMAVAN 3D WAVEFORMS (Measured data sampled at 50 kHz) 51000 packets of 144 samples from 2015-10-09T06:48:40.743.999. Part 48/147

Processed Sat Oct 17 20:36:01 2015 by ELM ver.2012-10-06 from 001\_\_elm20151009\_064839\_\_dat00.bin



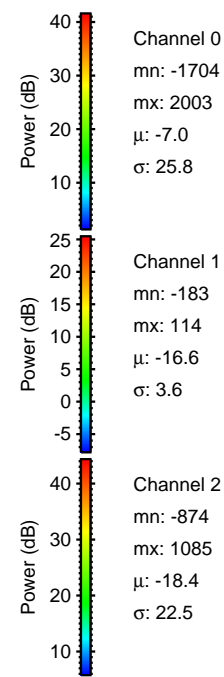
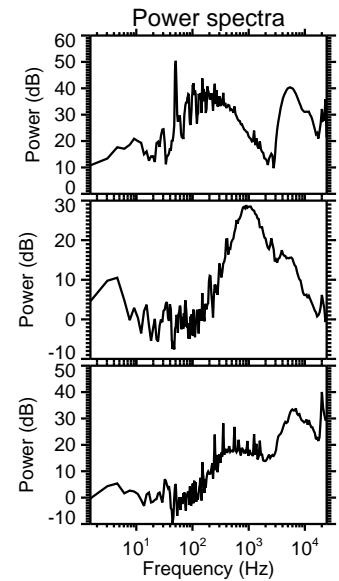
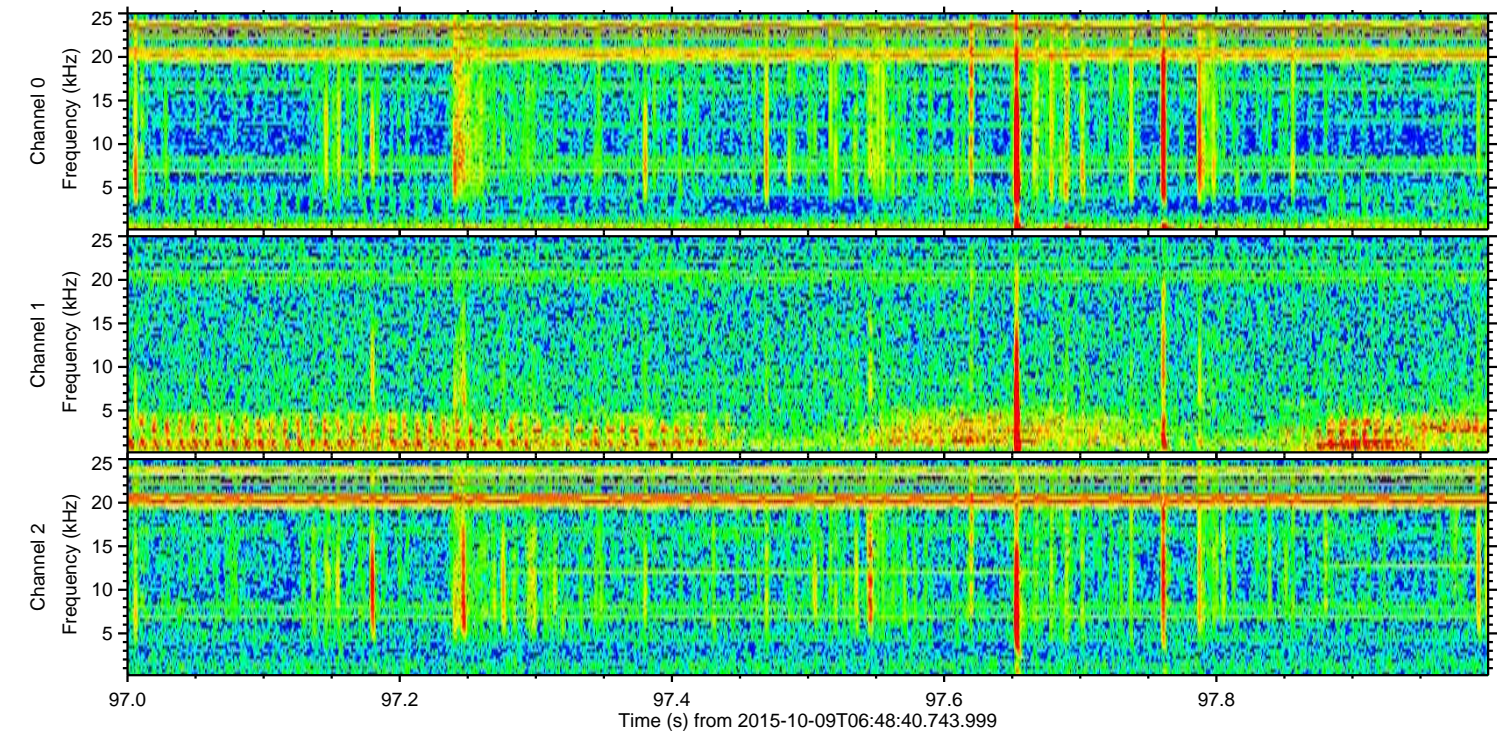
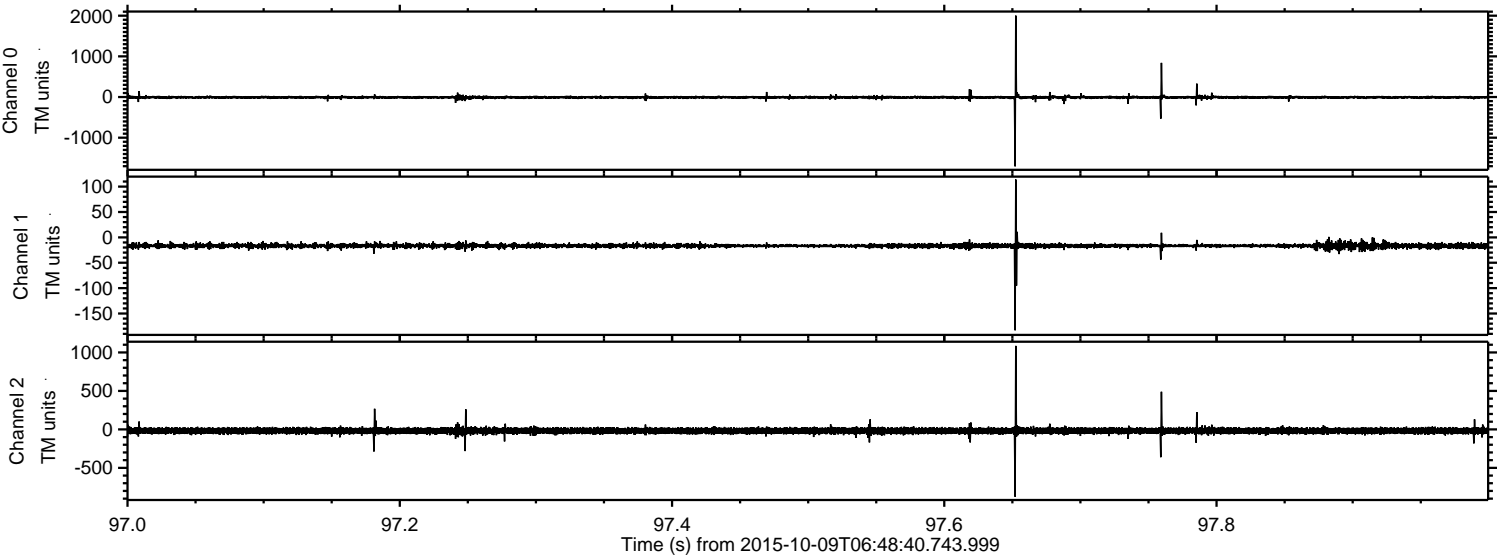


Processed Sat Oct 17 20:36:03 2015 by ELM ver.2012-10-06 from 001\_\_elm20151009\_064839\_\_dat00.bin





Processed Sat Oct 17 20:36:04 2015 by ELM ver.2012-10-06 from 001\_\_elm20151009\_064839\_\_dat00.bin



Channel 0  
mn: -1704  
mx: 2003  
 $\mu$ : -7.0  
 $\sigma$ : 25.8

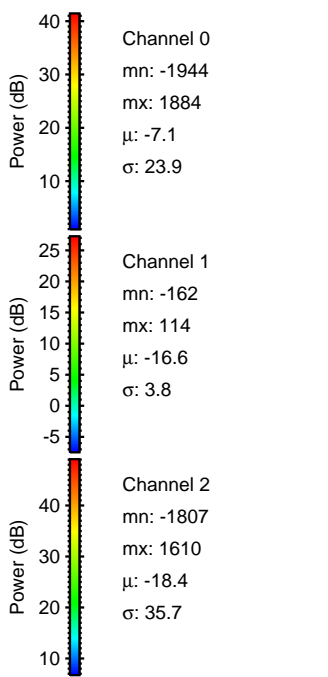
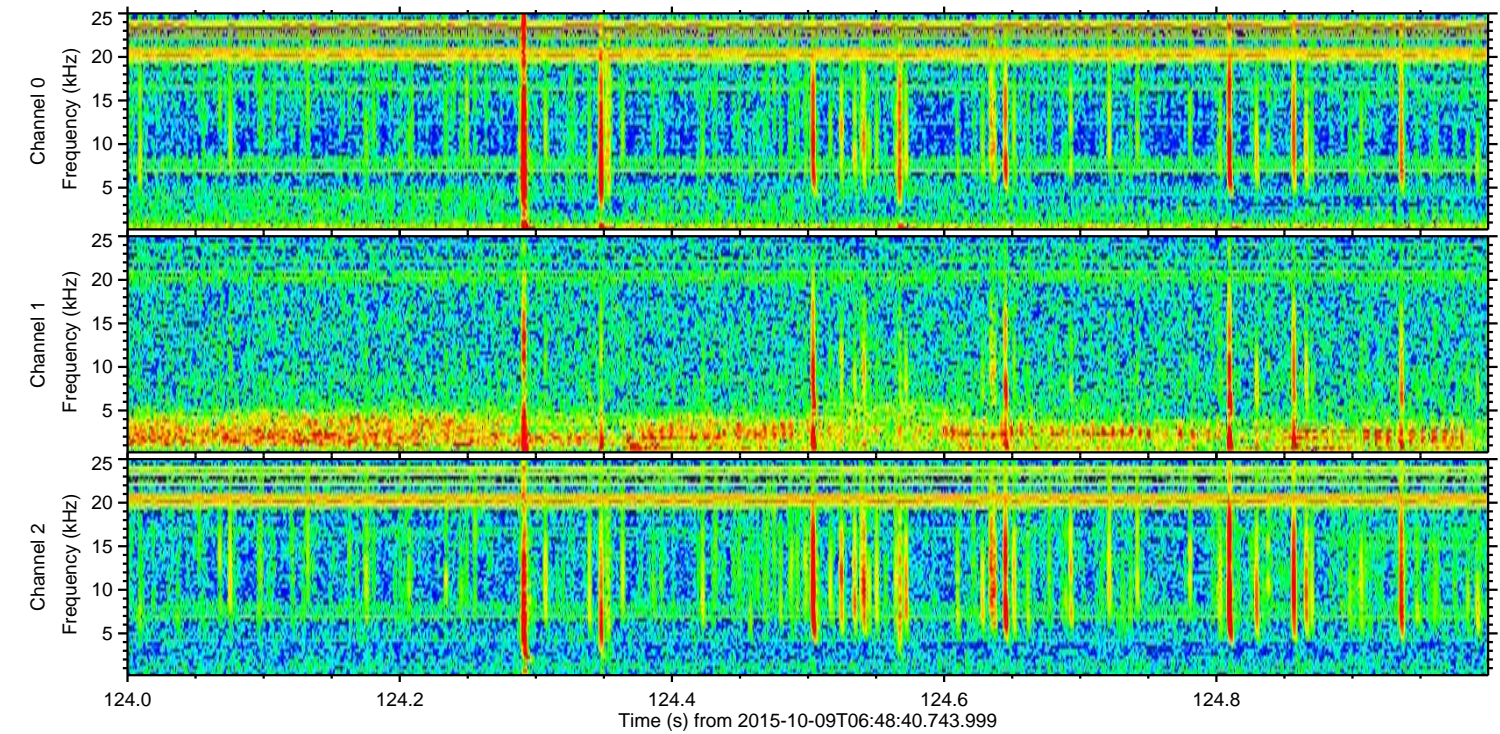
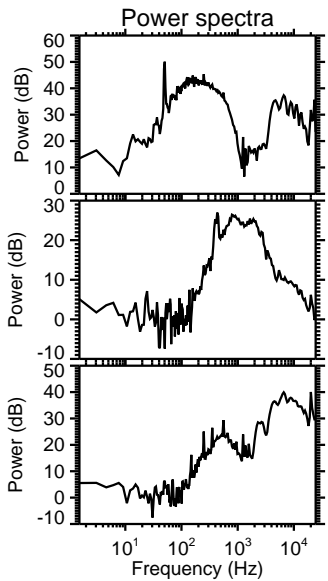
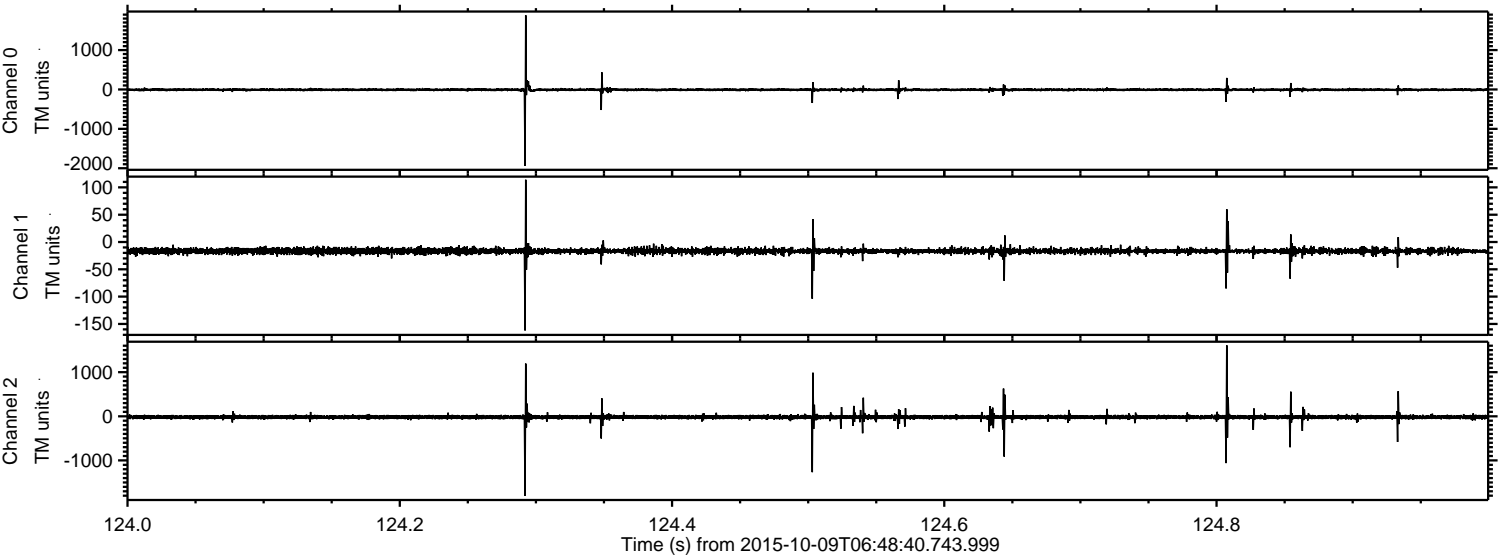
Channel 1  
mn: -183  
mx: 114  
 $\mu$ : -16.6  
 $\sigma$ : 3.6

Channel 2  
mn: -874  
mx: 1085  
 $\mu$ : -18.4  
 $\sigma$ : 22.5



ELMAVAN 3D WAVEFORMS (Measured data sampled at 50 kHz) 51000 packets of 144 samples from 2015-10-09T06:48:40.743.999. Part 125/147

Processed Sat Oct 17 20:36:05 2015 by ELM ver.2012-10-06 from 001\_\_elm20151009\_064839\_\_dat00.bin





ELMAVAN 3D WAVEFORMS (Measured data sampled at 50 kHz) 51000 packets of 144 samples from 2015-10-09T06:48:40.743.999. Part 29/147

Processed Sat Oct 17 20:36:06 2015 by ELM ver.2012-10-06 from 001\_\_elm20151009\_064839\_\_dat00.bin

