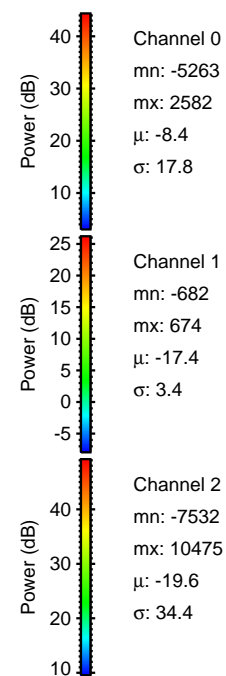
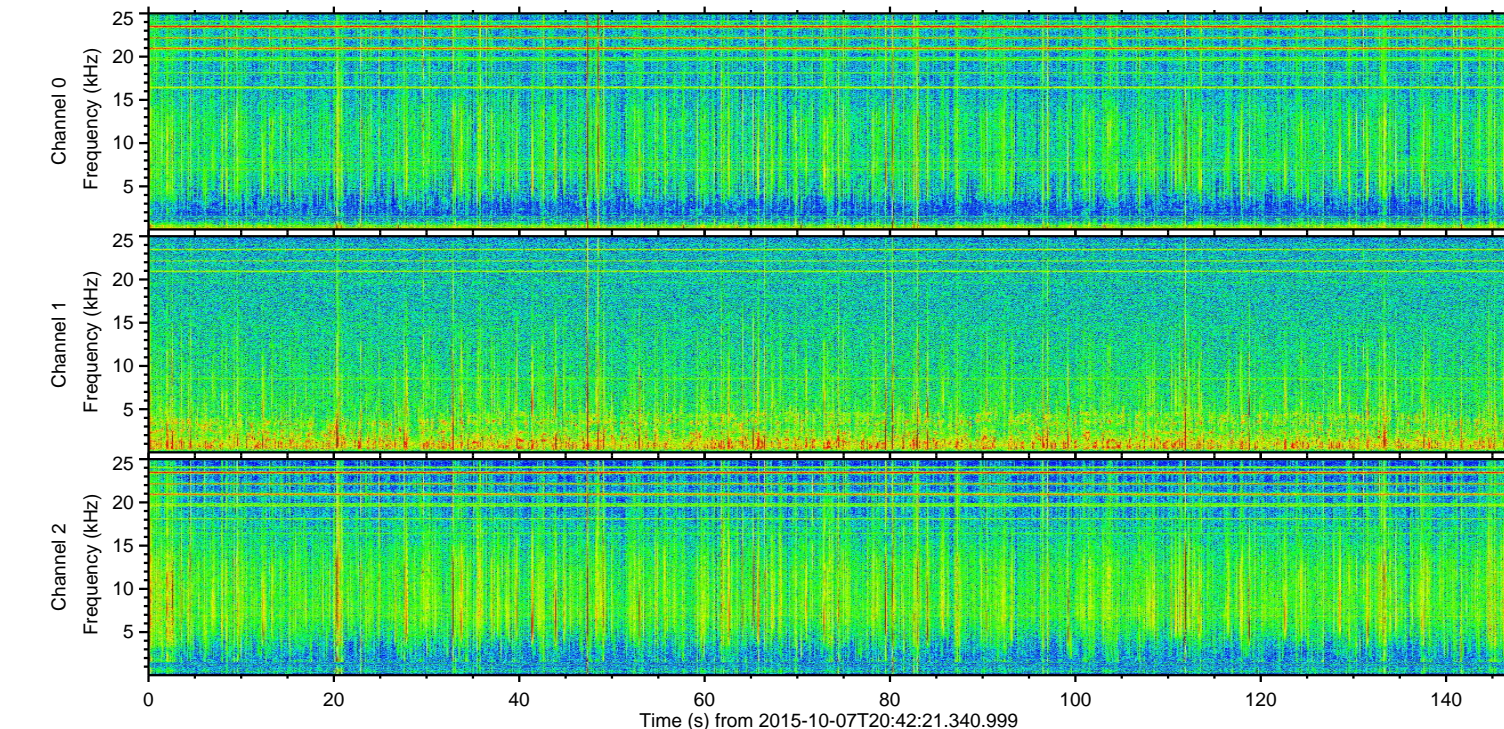
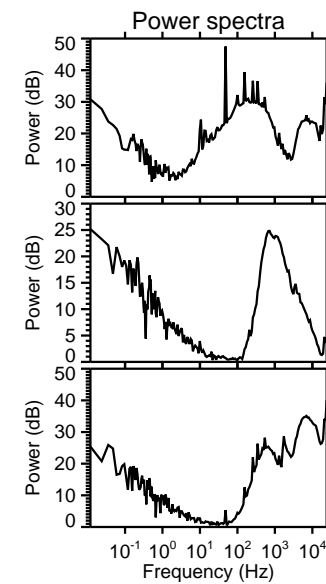
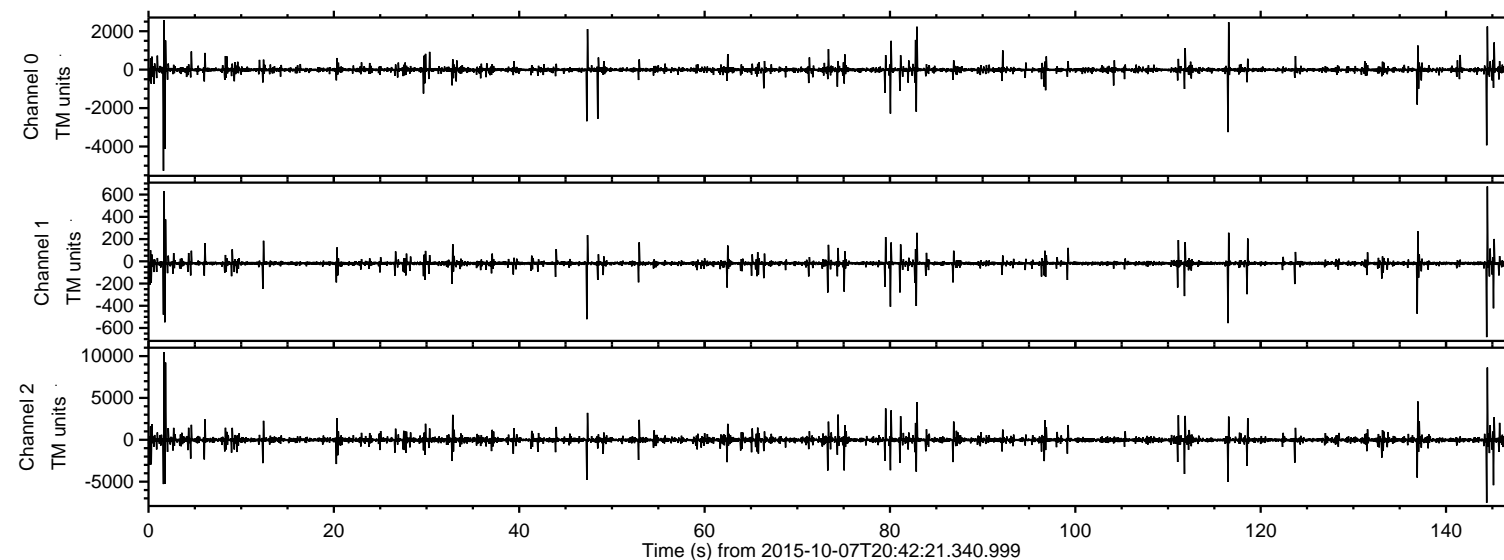


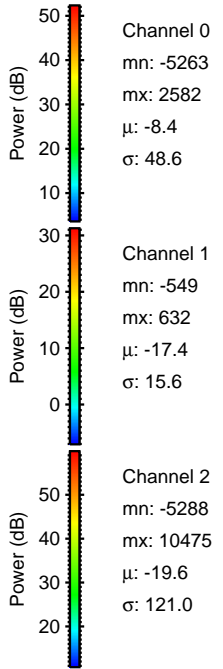
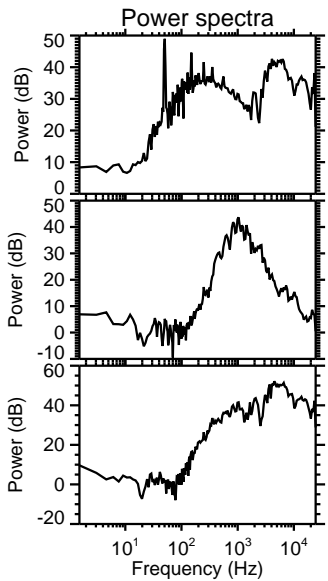
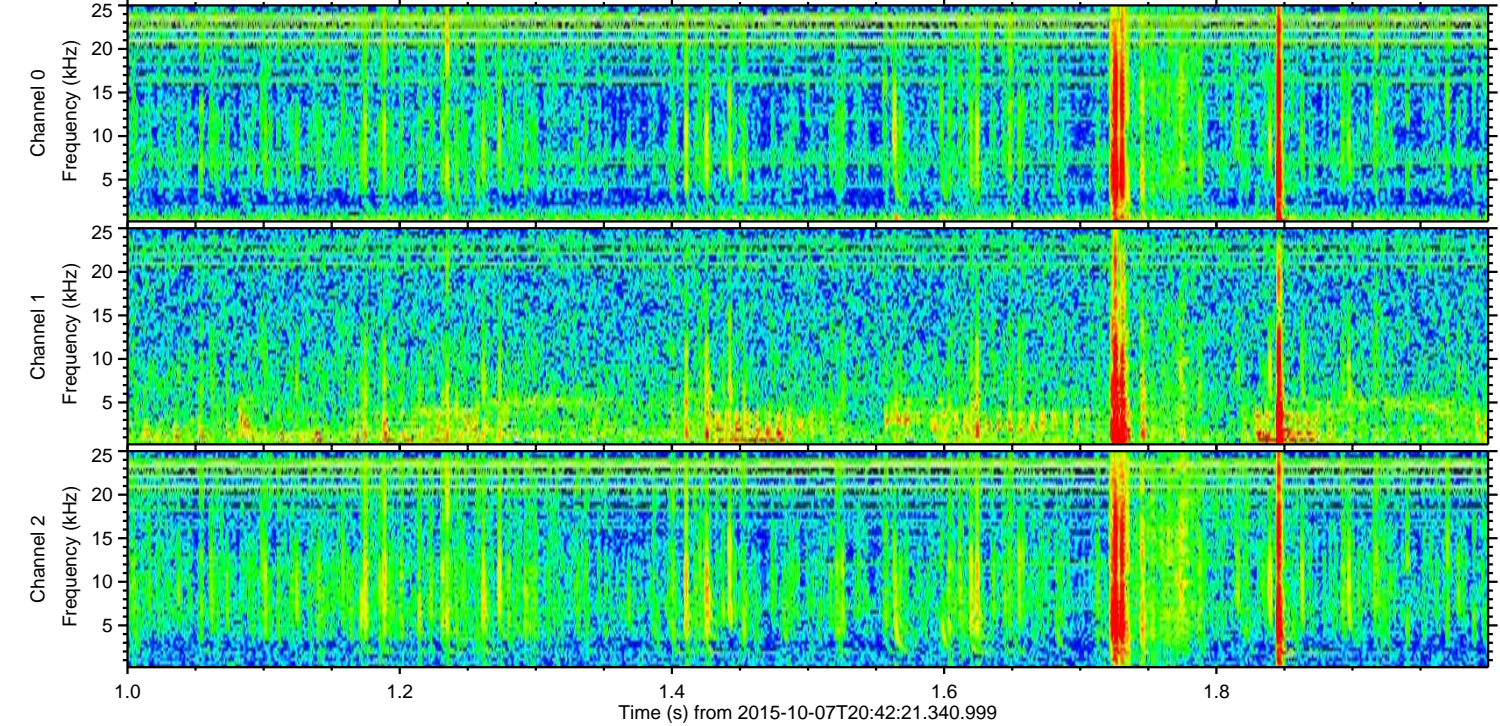
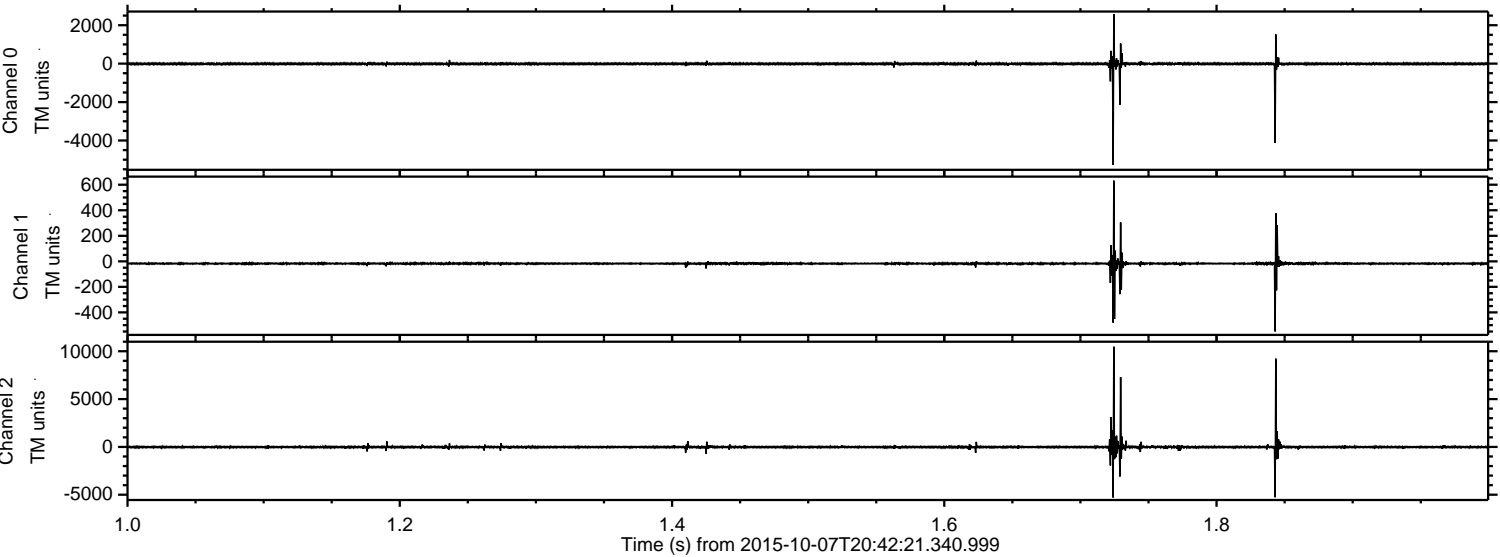
ELMAVAN 3D WAVEFORMS (Measured data sampled at 50 kHz) 51000 packets of 144 samples from 2015-10-07T20:42:21.340.999.

Processed Sat Oct 17 11:34:40 2015 by ELM ver.2012-10-06 from 001__elm20151007_204220__dat00.bin



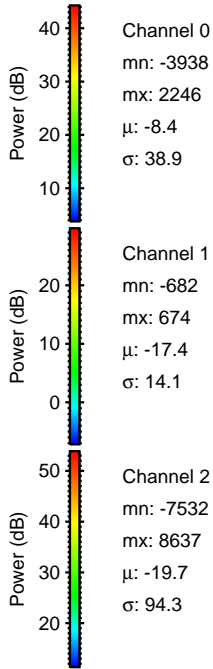
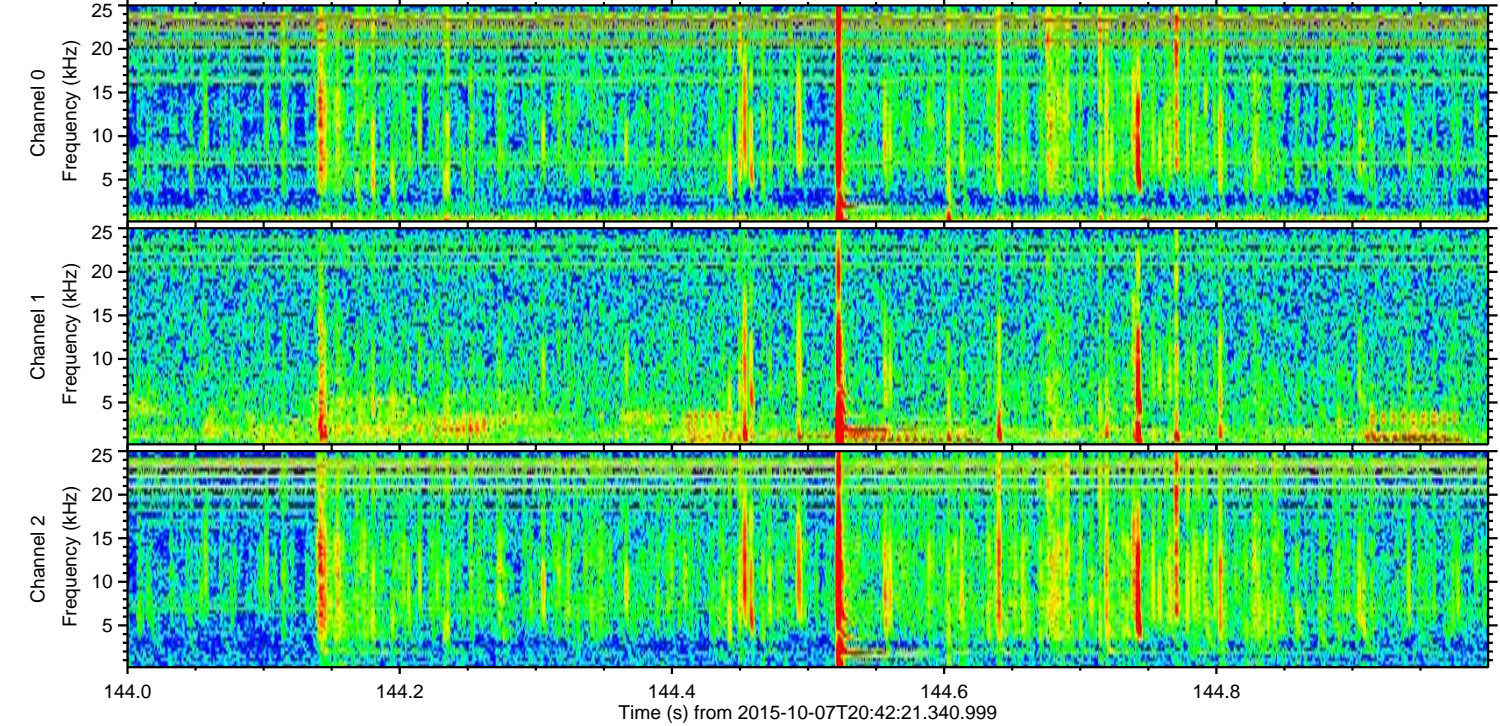
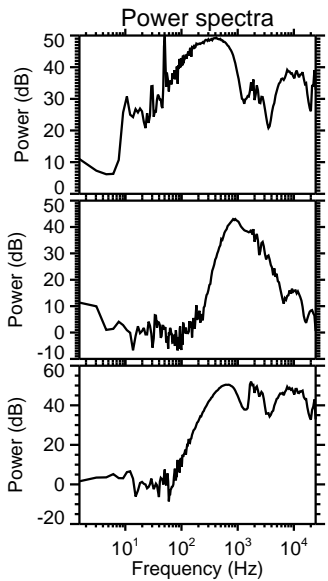
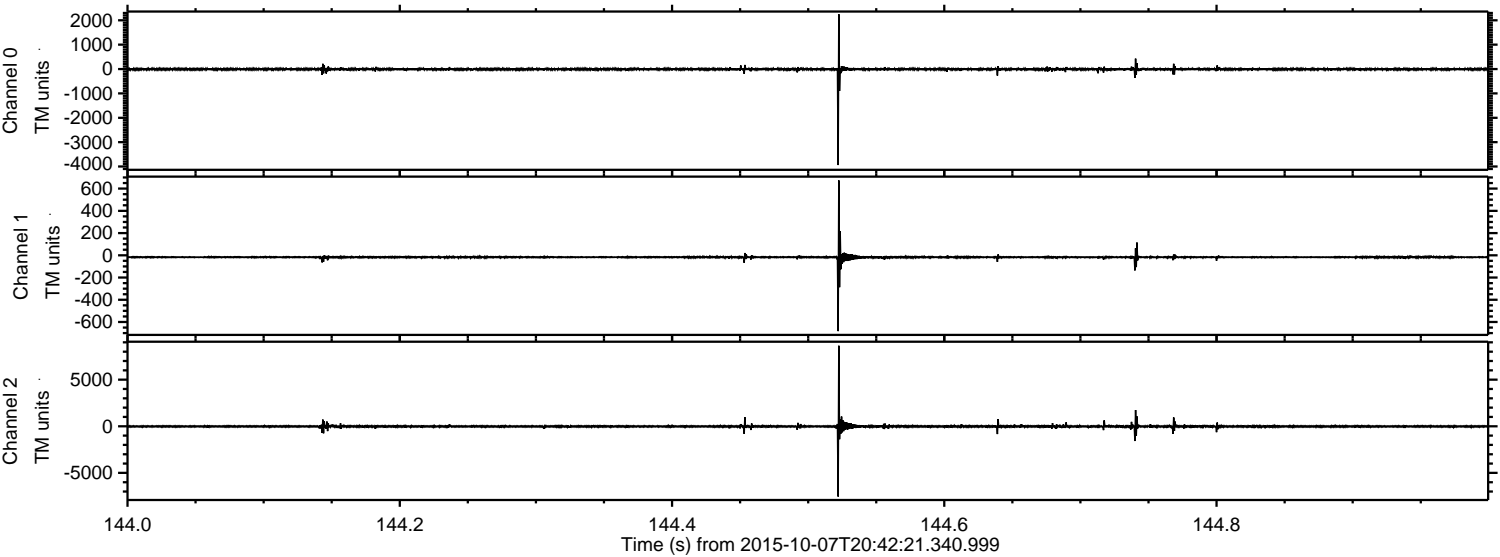
ELMAVAN 3D WAVEFORMS (Measured data sampled at 50 kHz) 51000 packets of 144 samples from 2015-10-07T20:42:21.340.999. Part 2/147

Processed Sat Oct 17 11:34:55 2015 by ELM ver.2012-10-06 from 001__elm20151007_204220__dat00.bin



ELMAVAN 3D WAVEFORMS (Measured data sampled at 50 kHz) 51000 packets of 144 samples from 2015-10-07T20:42:21.340.999. Part 145/147

Processed Sat Oct 17 11:34:56 2015 by ELM ver.2012-10-06 from 001__elm20151007_204220__dat00.bin



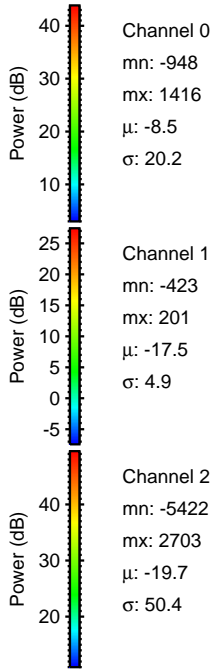
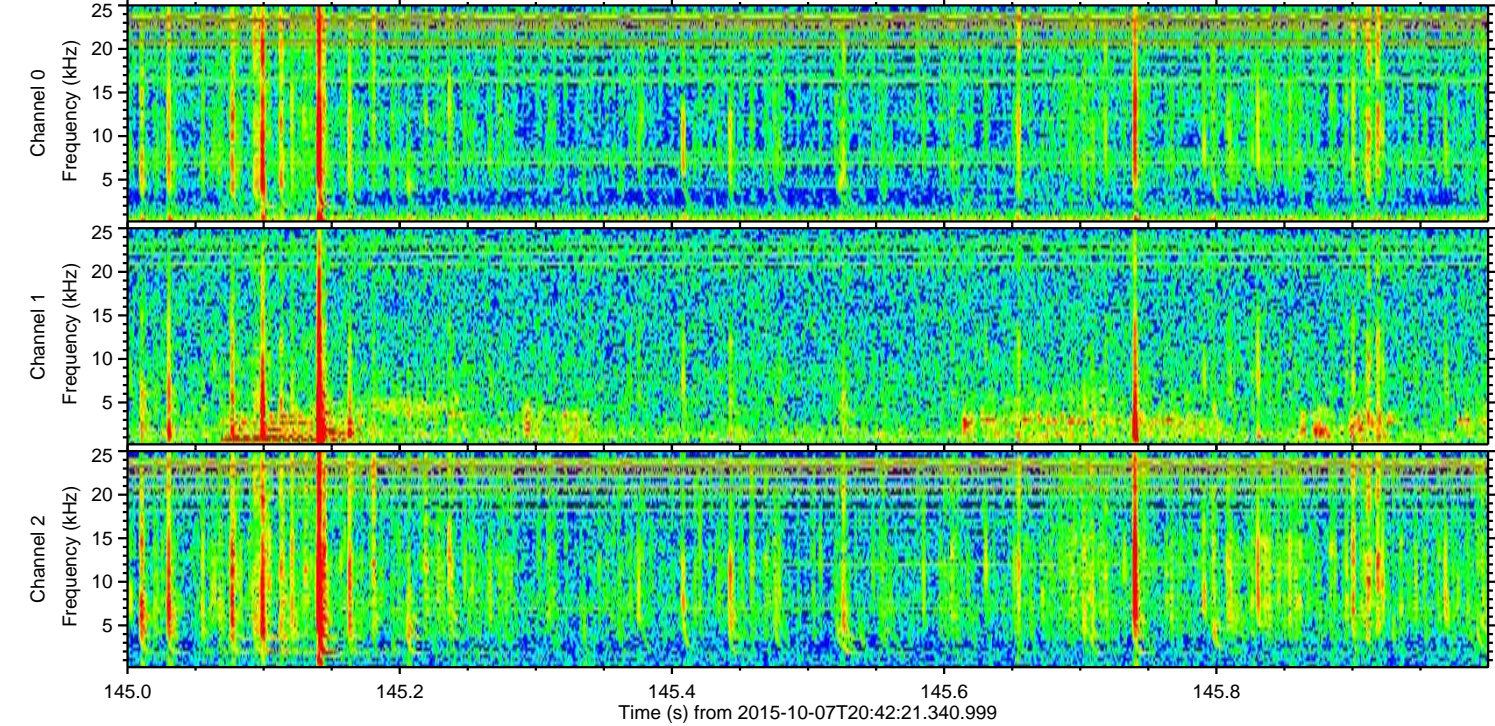
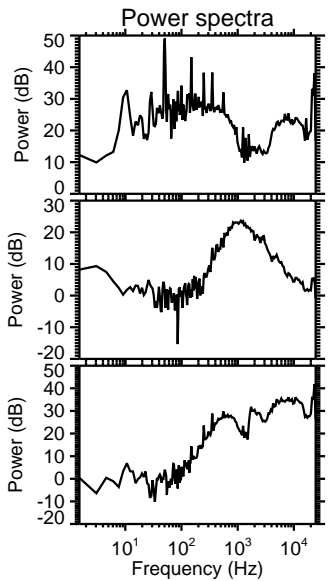
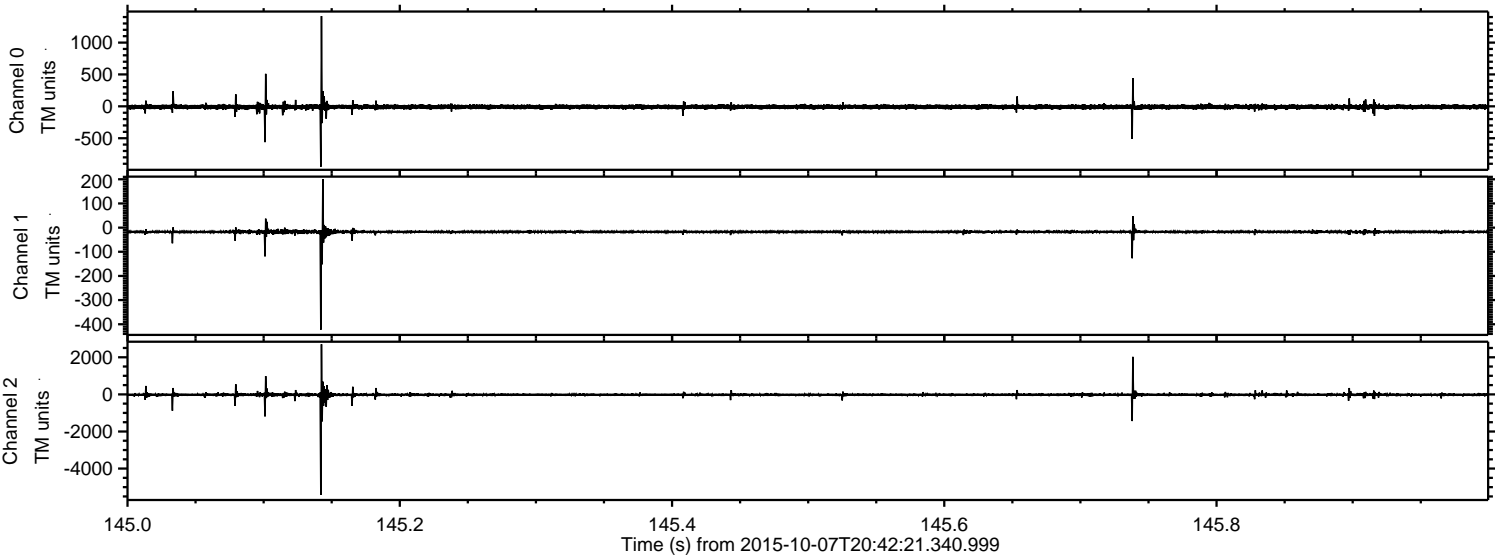
Channel 0
mn: -3938
mx: 2246
 μ : -8.4
 σ : 38.9

Channel 1
mn: -682
mx: 674
 μ : -17.4
 σ : 14.1

Channel 2
mn: -7532
mx: 8637
 μ : -19.7
 σ : 94.3

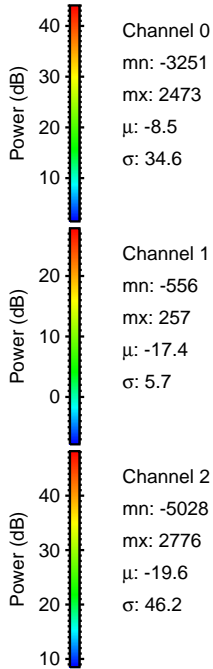
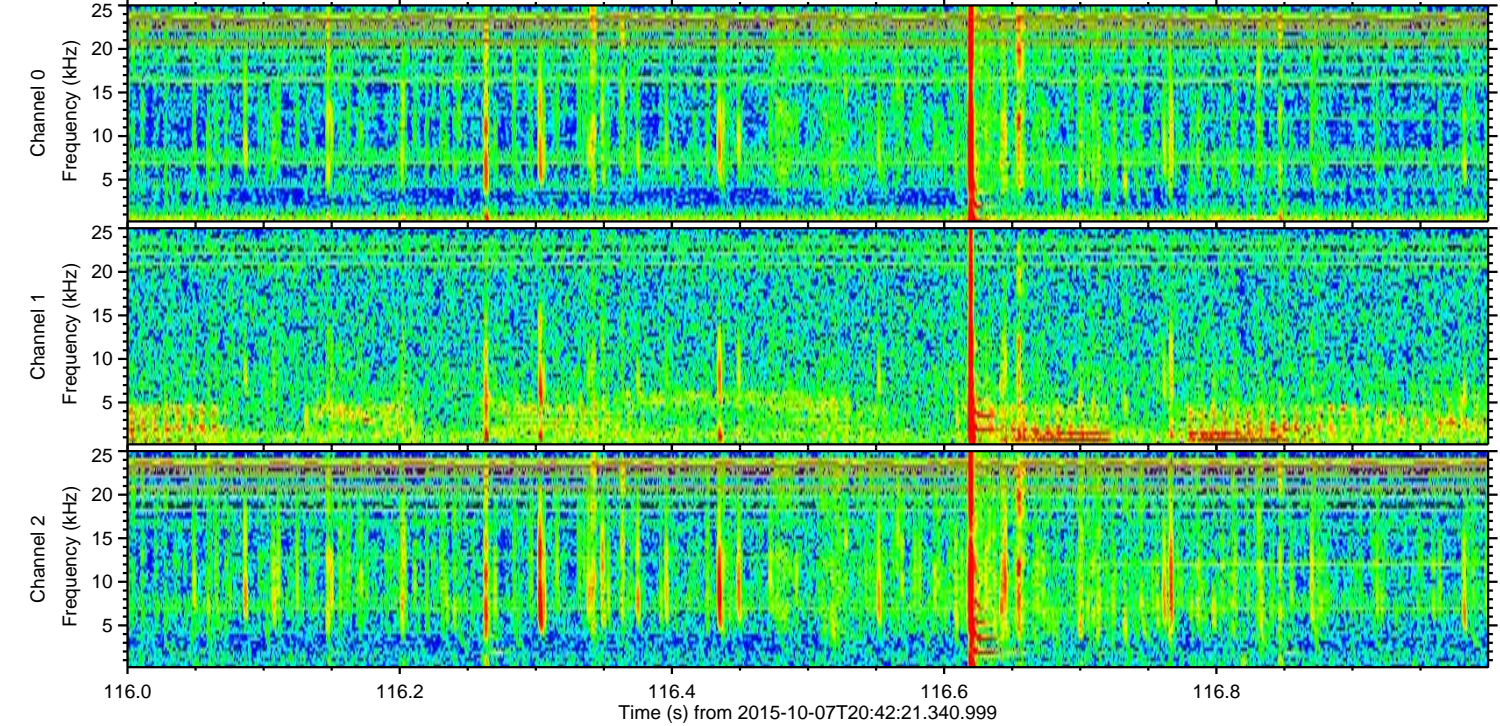
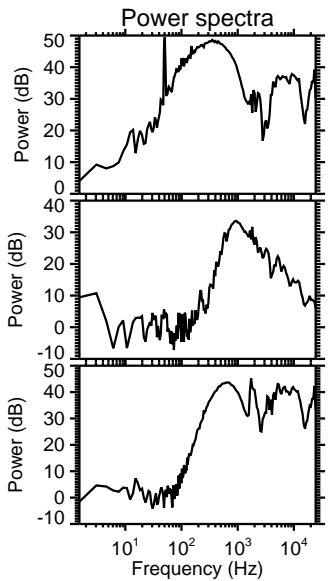
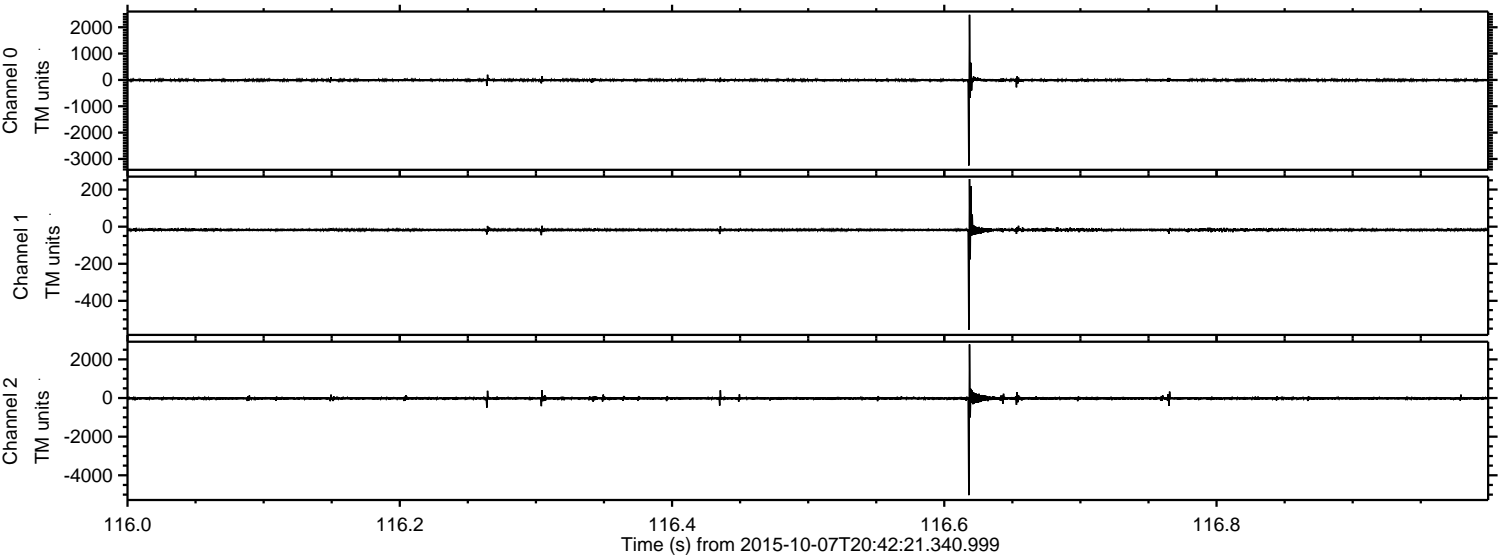
ELMAVAN 3D WAVEFORMS (Measured data sampled at 50 kHz) 51000 packets of 144 samples from 2015-10-07T20:42:21.340.999. Part 146/147

Processed Sat Oct 17 11:34:57 2015 by ELM ver.2012-10-06 from 001__elm20151007_204220__dat00.bin

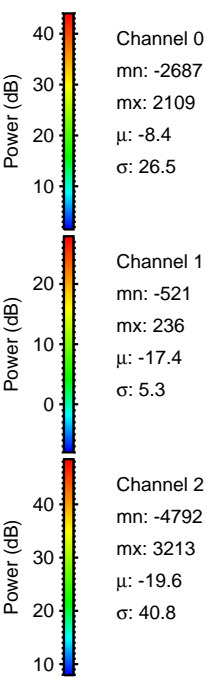
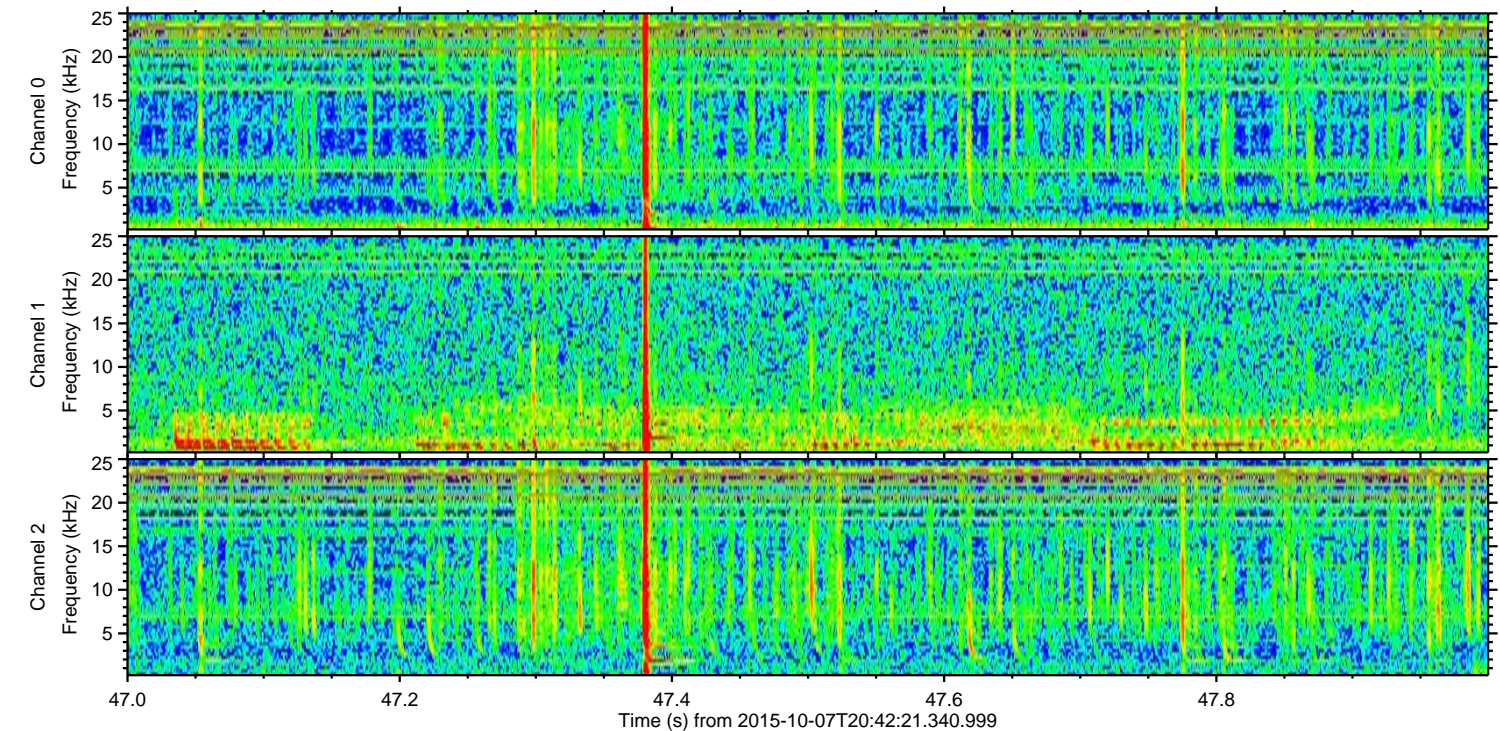
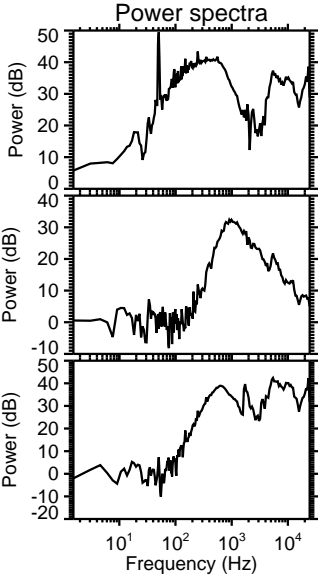
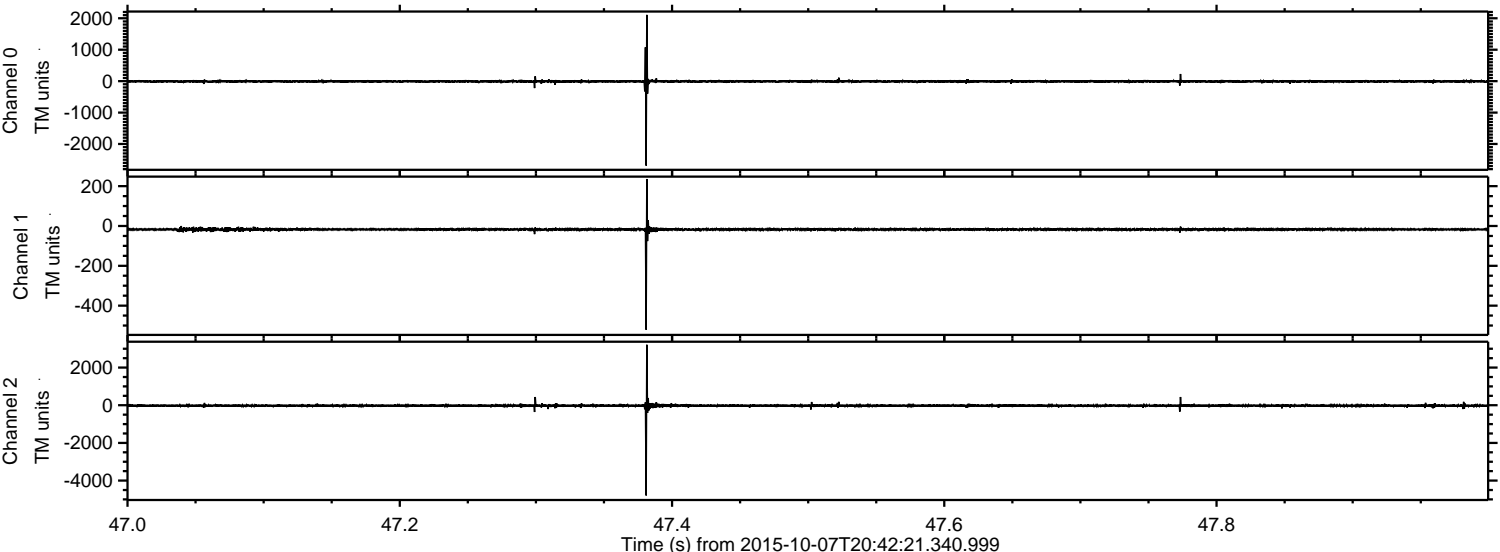


ELMAVAN 3D WAVEFORMS (Measured data sampled at 50 kHz) 51000 packets of 144 samples from 2015-10-07T20:42:21.340.999. Part 117/147

Processed Sat Oct 17 11:34:58 2015 by ELM ver.2012-10-06 from 001__elm20151007_204220__dat00.bin

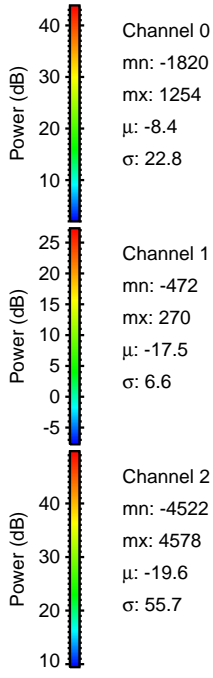
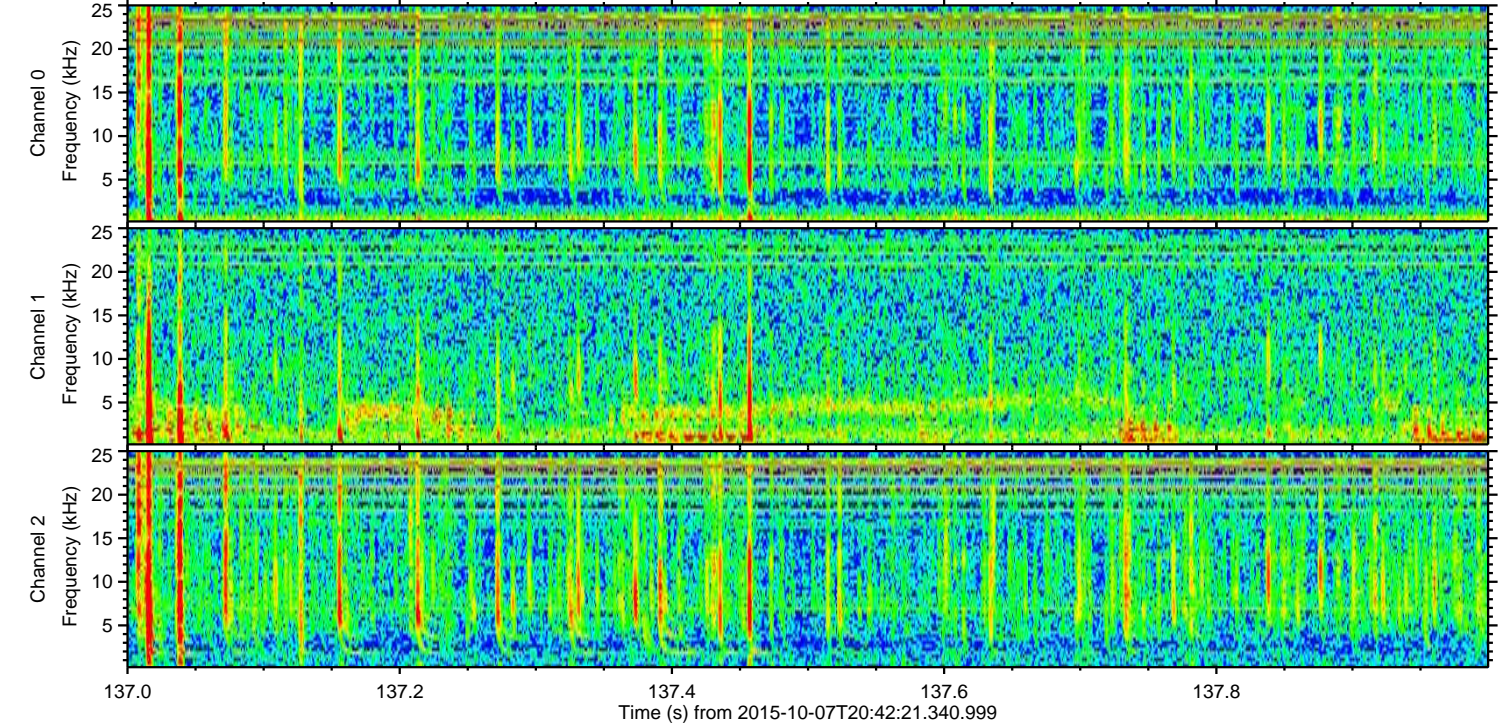
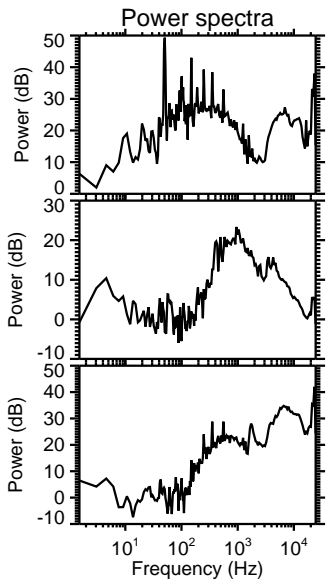
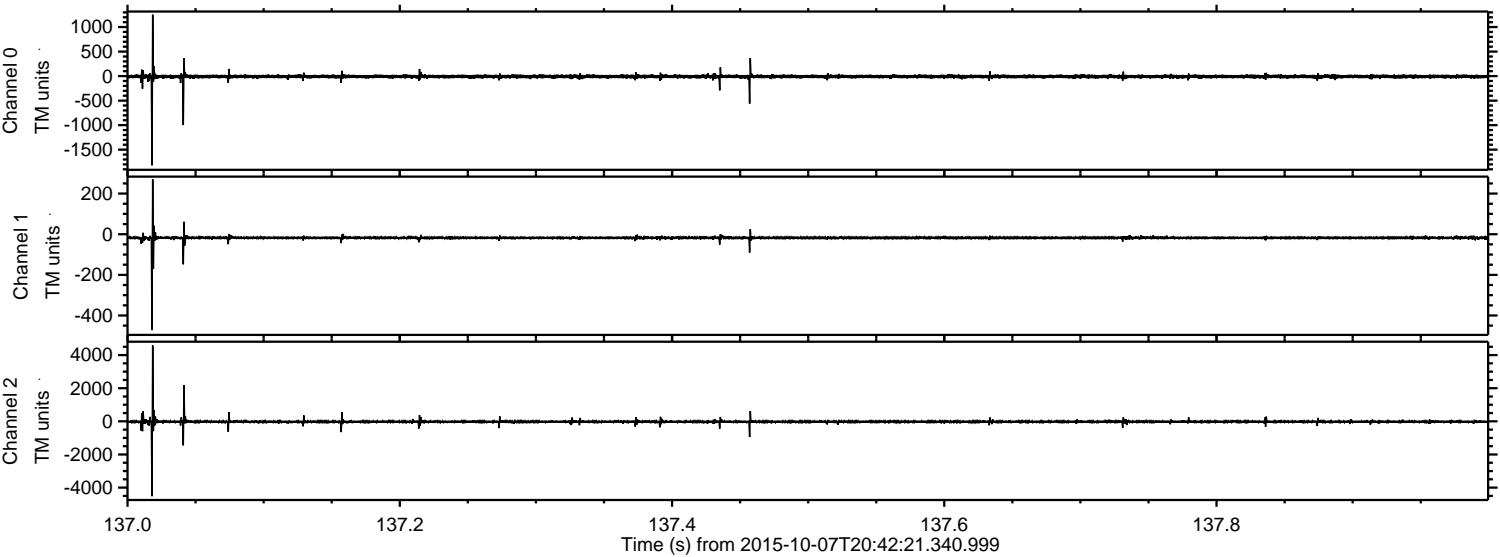


Processed Sat Oct 17 11:34:59 2015 by ELM ver.2012-10-06 from 001__elm20151007_204220__dat00.bin

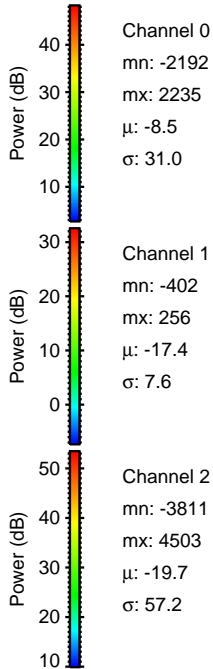
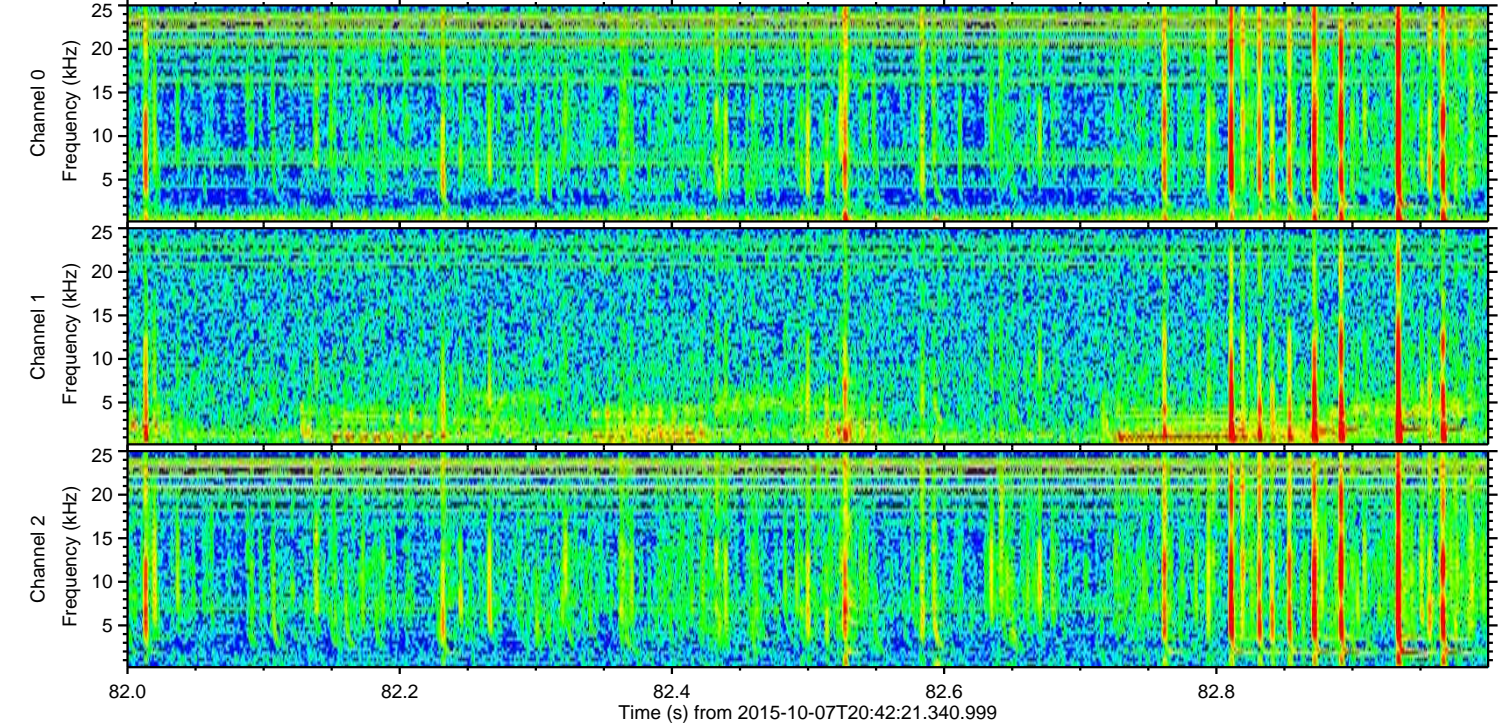
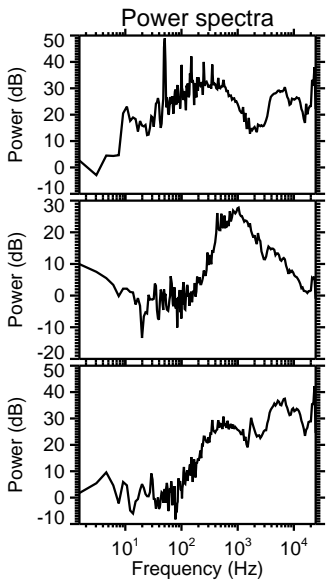
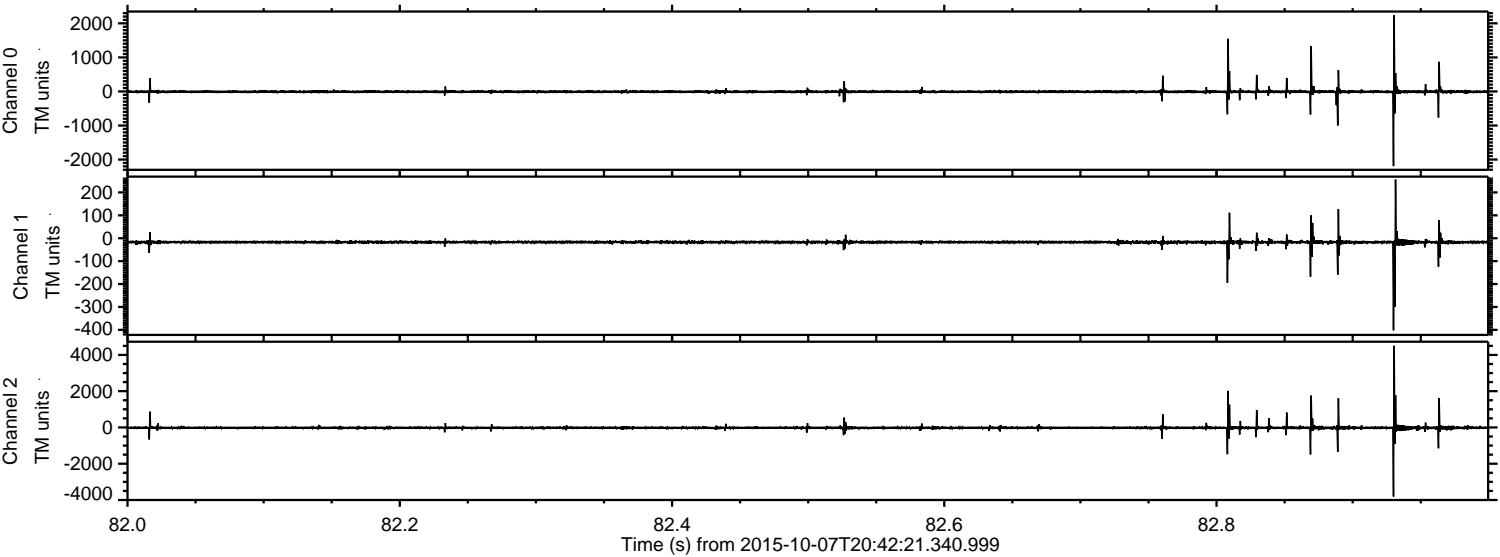


ELMAVAN 3D WAVEFORMS (Measured data sampled at 50 kHz) 51000 packets of 144 samples from 2015-10-07T20:42:21.340.999. Part 138/147

Processed Sat Oct 17 11:35:00 2015 by ELM ver.2012-10-06 from 001__elm20151007_204220__dat00.bin



Processed Sat Oct 17 11:35:01 2015 by ELM ver.2012-10-06 from 001__elm20151007_204220__dat00.bin



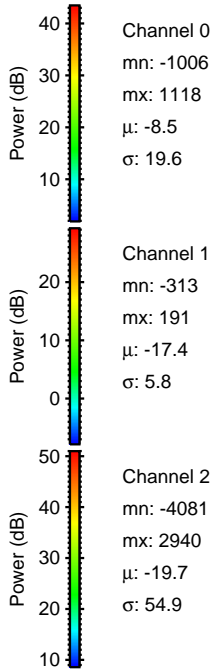
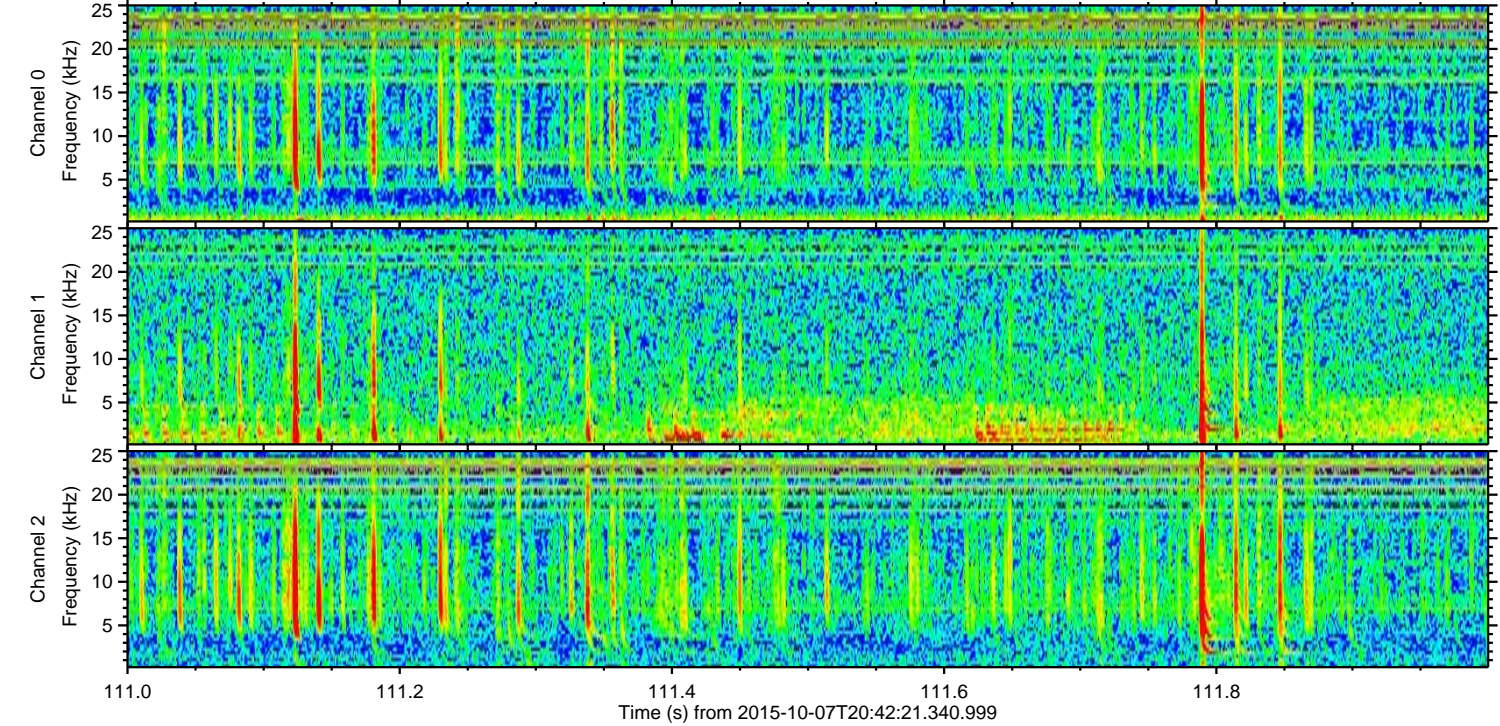
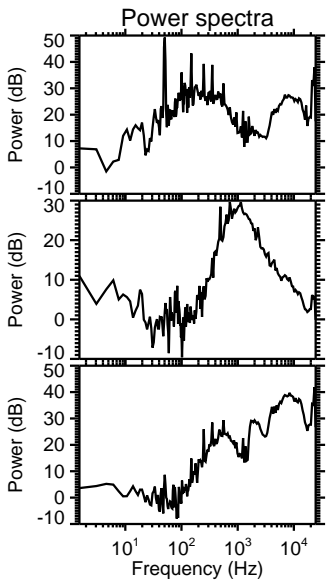
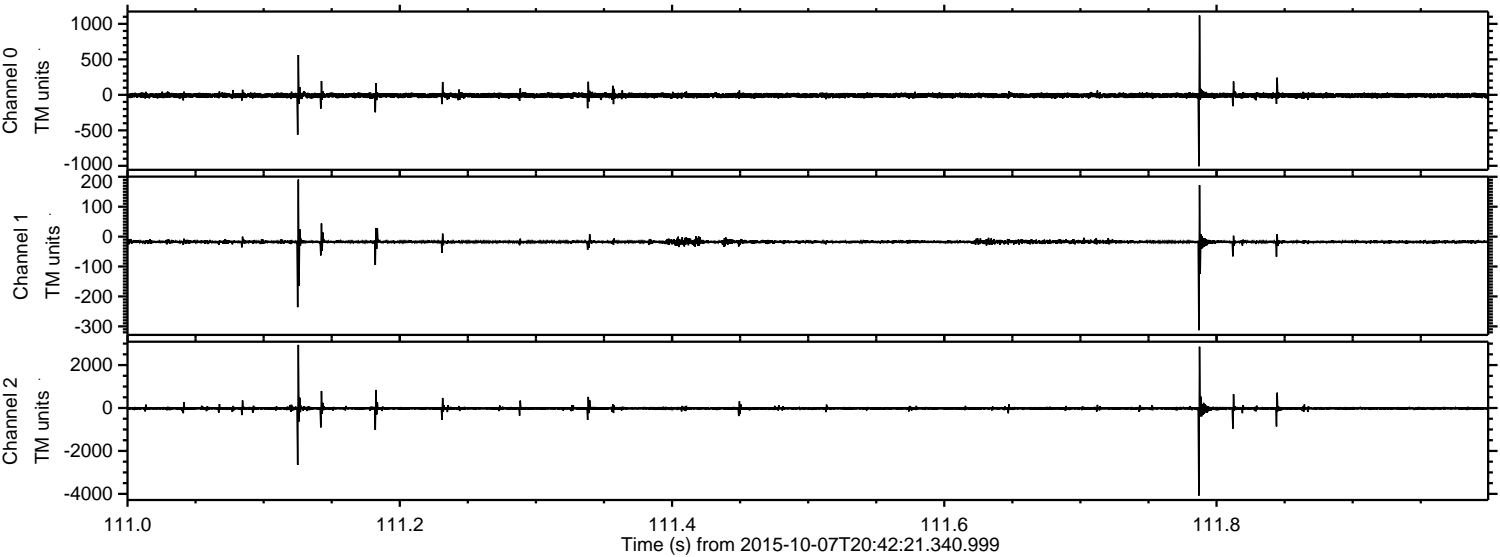
Channel 0
mn: -2192
mx: 2235
 μ : -8.5
 σ : 31.0

Channel 1
mn: -402
mx: 256
 μ : -17.4
 σ : 7.6

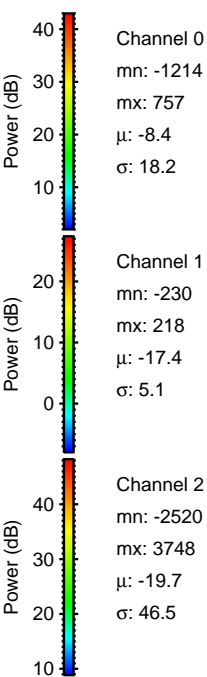
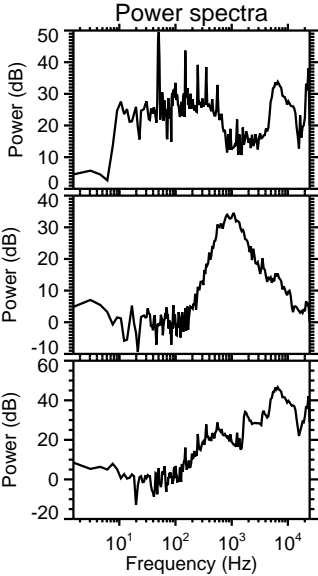
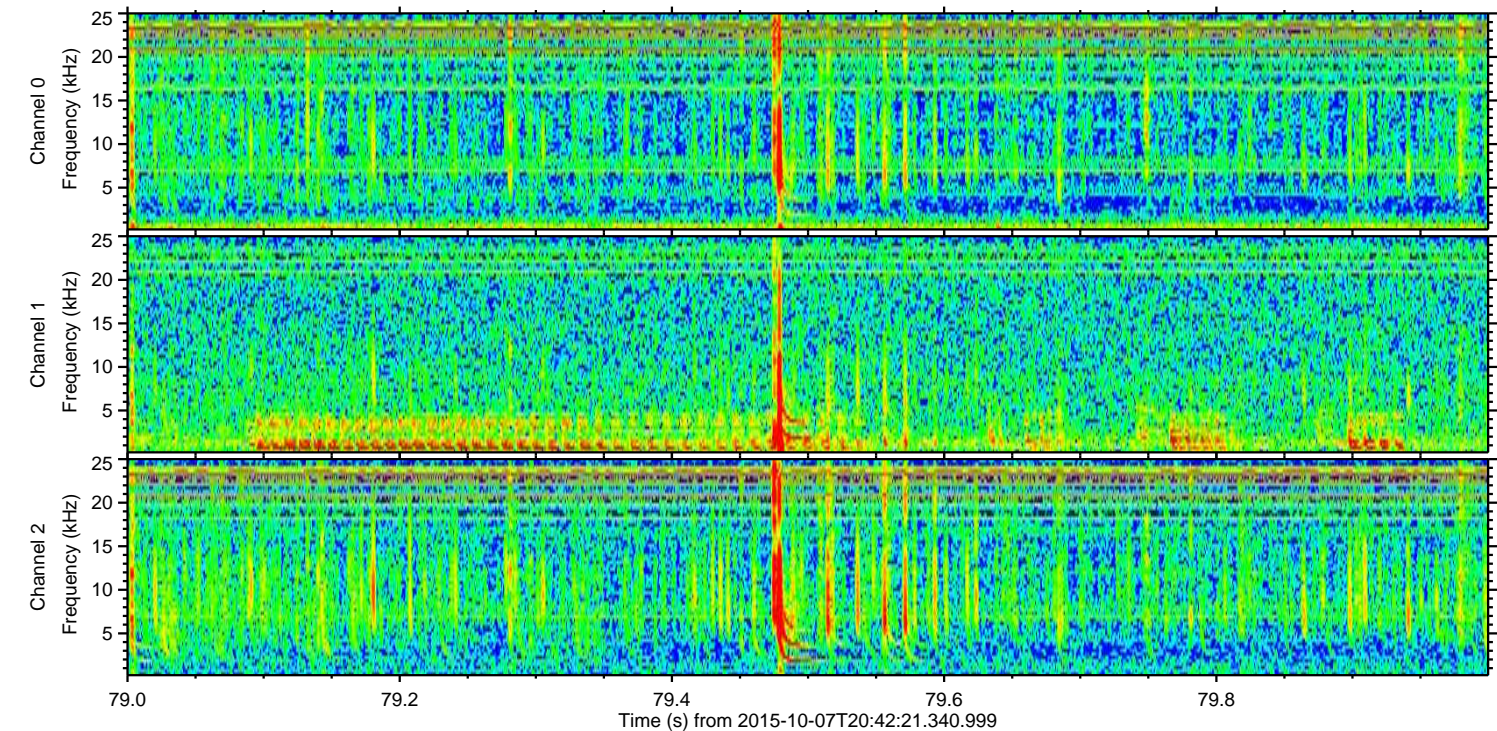
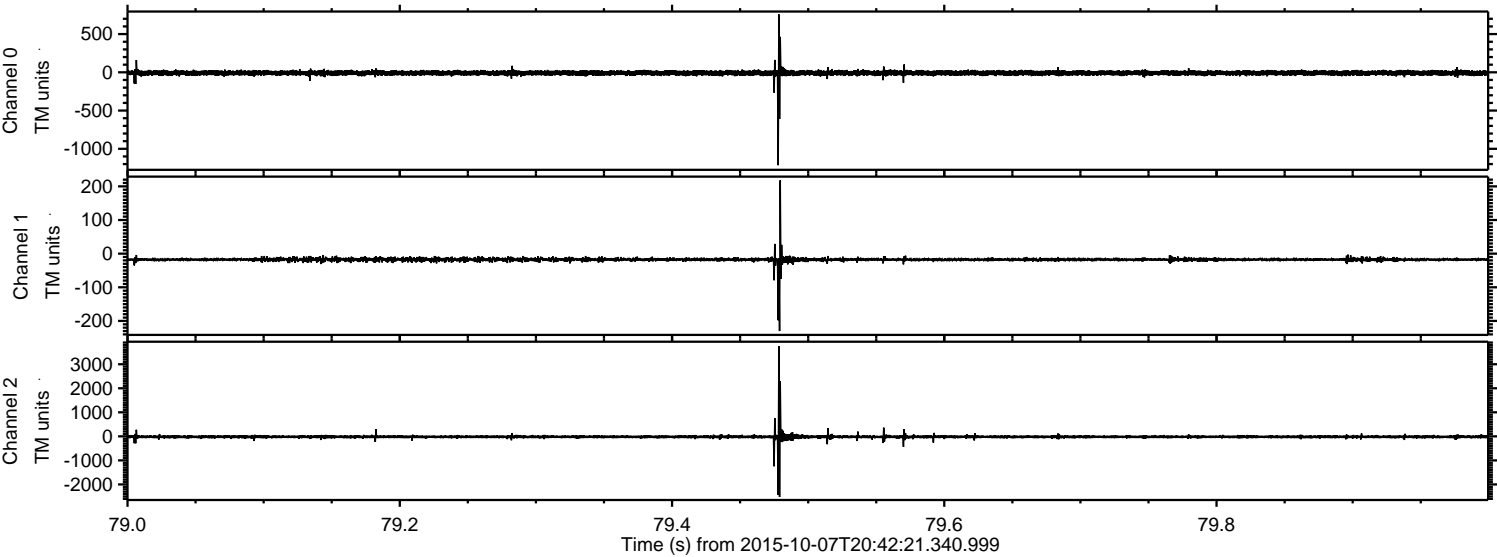
Channel 2
mn: -3811
mx: 4503
 μ : -19.7
 σ : 57.2

ELMAVAN 3D WAVEFORMS (Measured data sampled at 50 kHz) 51000 packets of 144 samples from 2015-10-07T20:42:21.340.999. Part 112/147

Processed Sat Oct 17 11:35:03 2015 by ELM ver.2012-10-06 from 001__elm20151007_204220__dat00.bin



Processed Sat Oct 17 11:35:04 2015 by ELM ver.2012-10-06 from 001__elm20151007_204220__dat00.bin



ELMAVAN 3D WAVEFORMS (Measured data sampled at 50 kHz) 51000 packets of 144 samples from 2015-10-07T20:42:21.340.999. Part 116/147

Processed Sat Oct 17 11:35:05 2015 by ELM ver.2012-10-06 from 001__elm20151007_204220__dat00.bin

