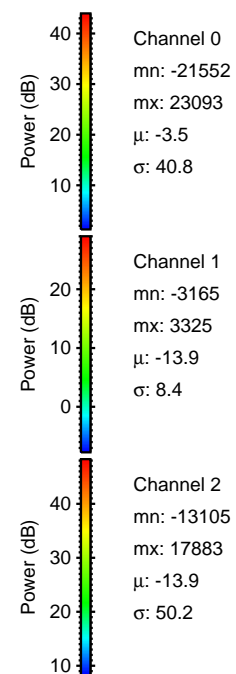
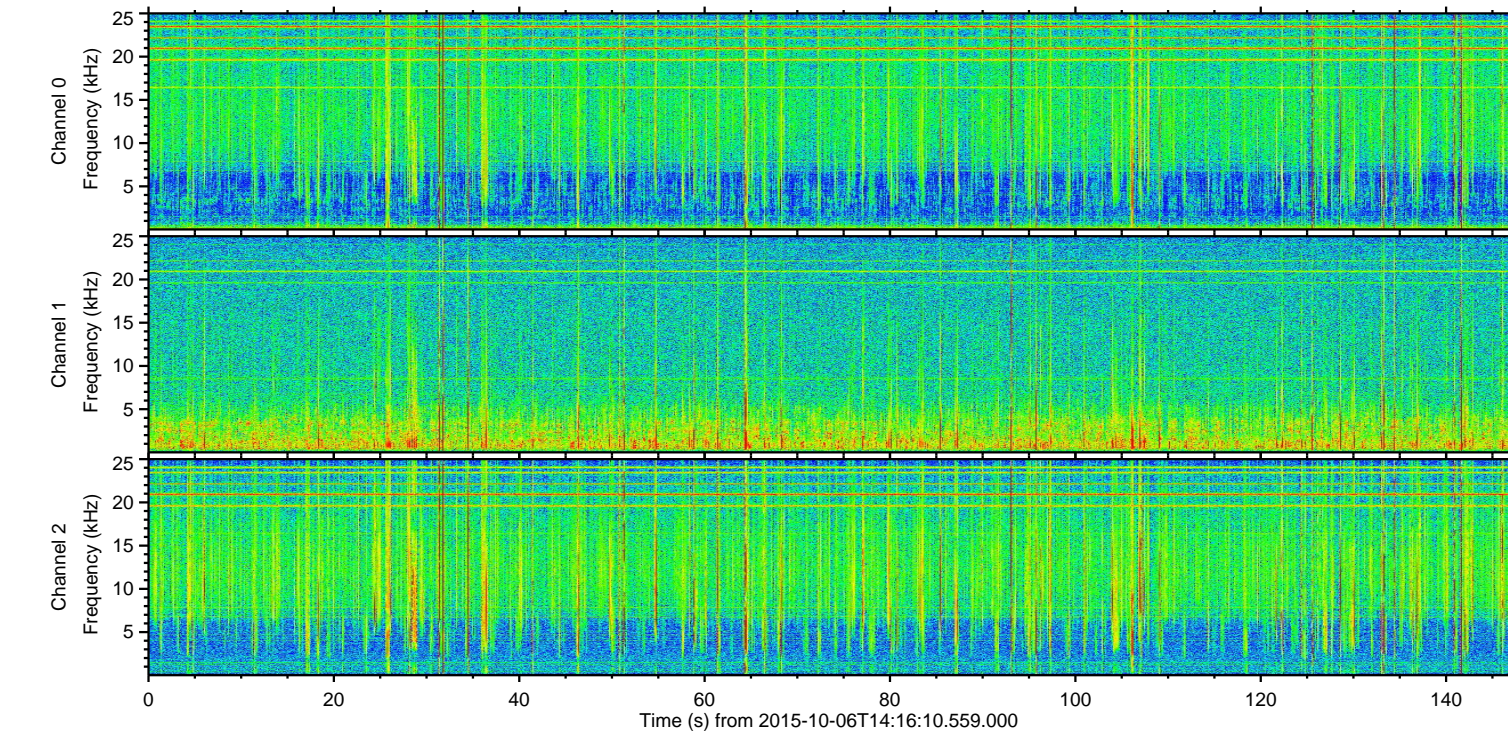
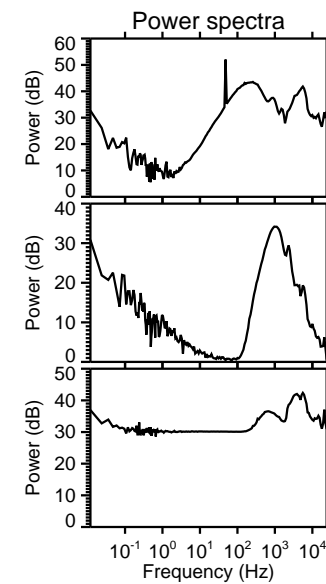
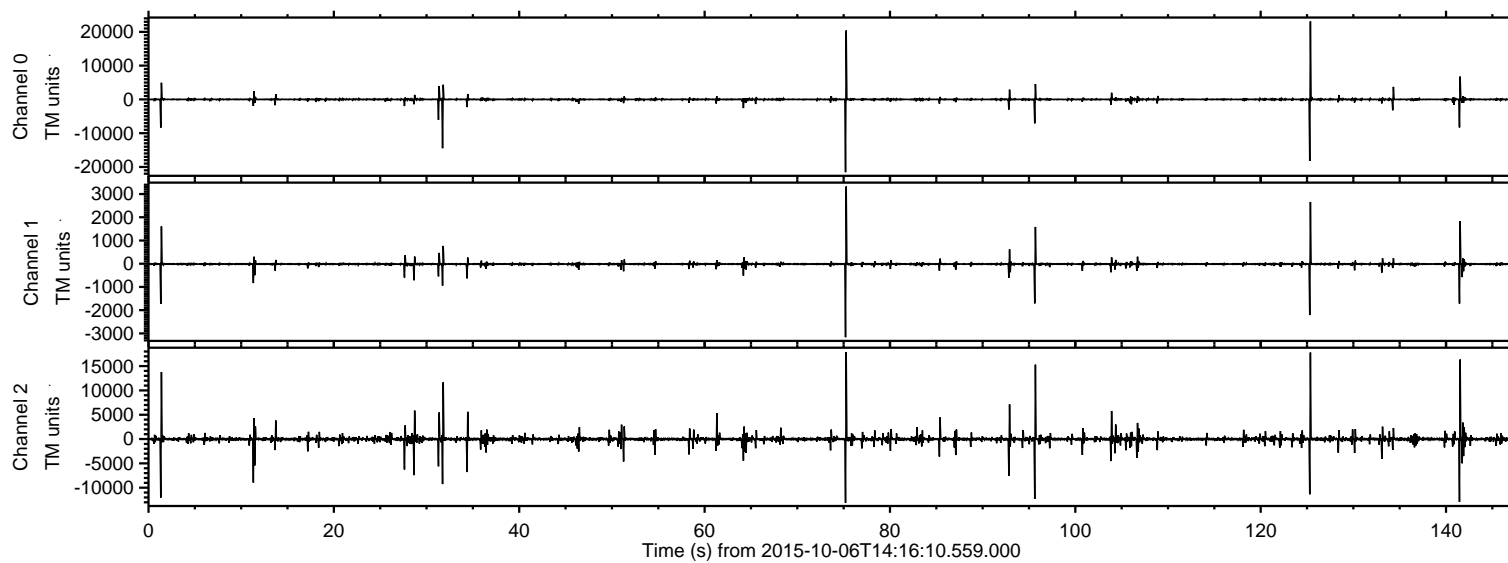


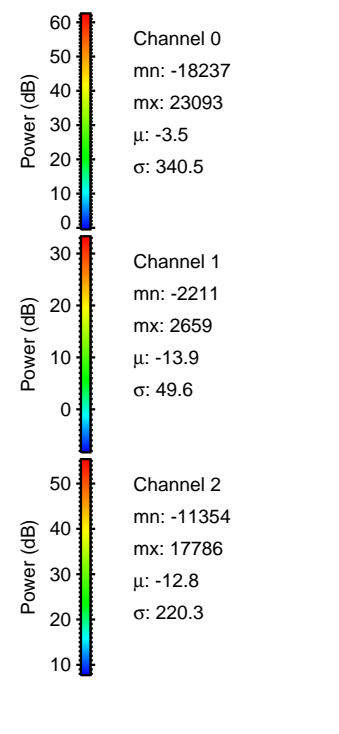
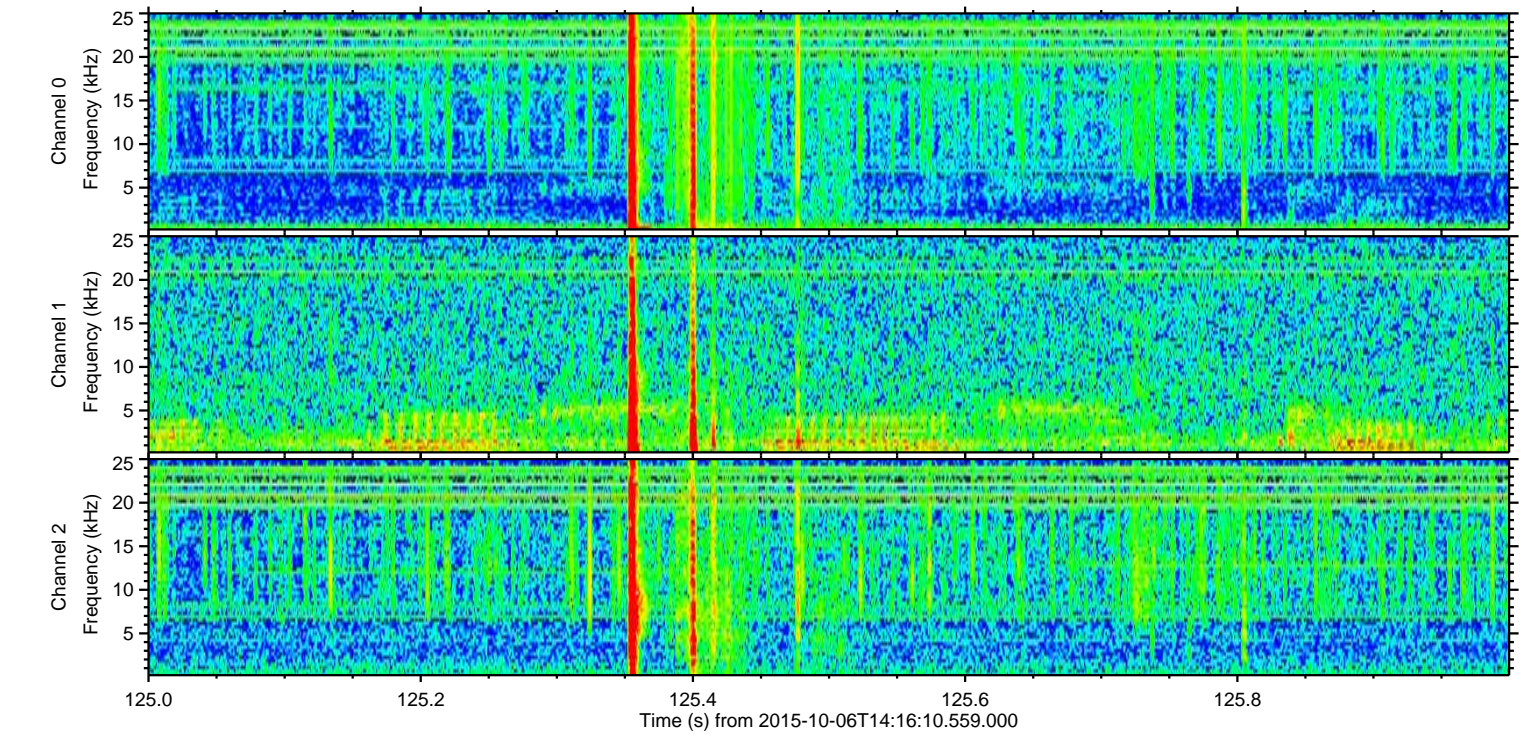
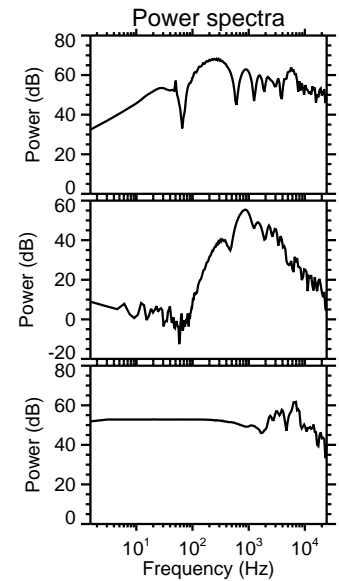
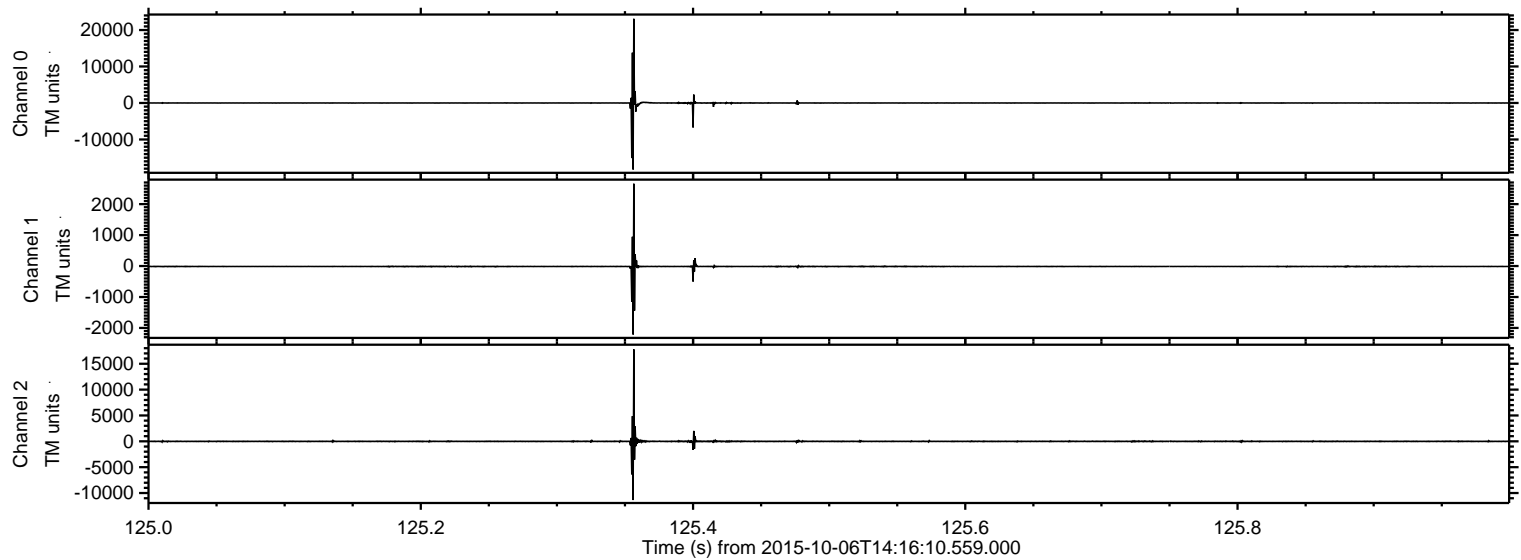
ELMAVAN 3D WAVEFORMS (Measured data sampled at 50 kHz) 51000 packets of 144 samples from 2015-10-06T14:16:10.559.000.

Processed Sat Oct 17 03:35:44 2015 by ELM ver.2012-10-06 from 001__elm20151006_141609__dat00.bin



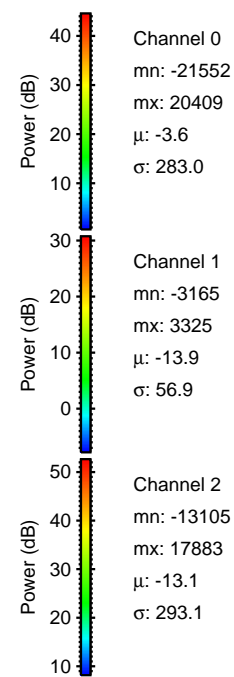
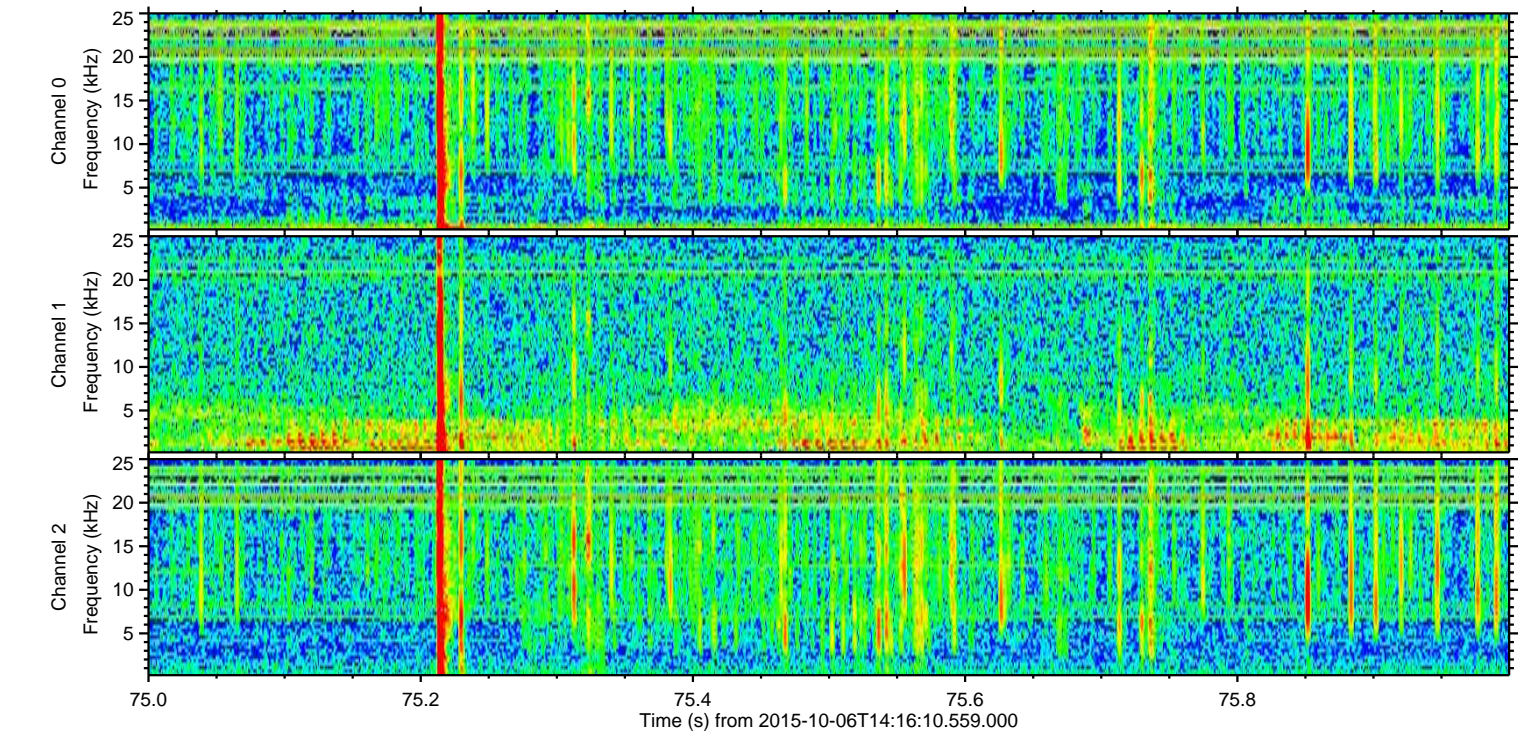
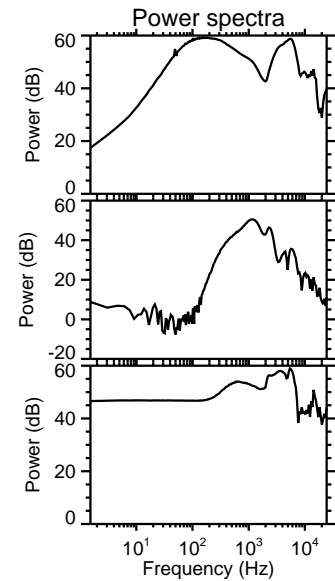
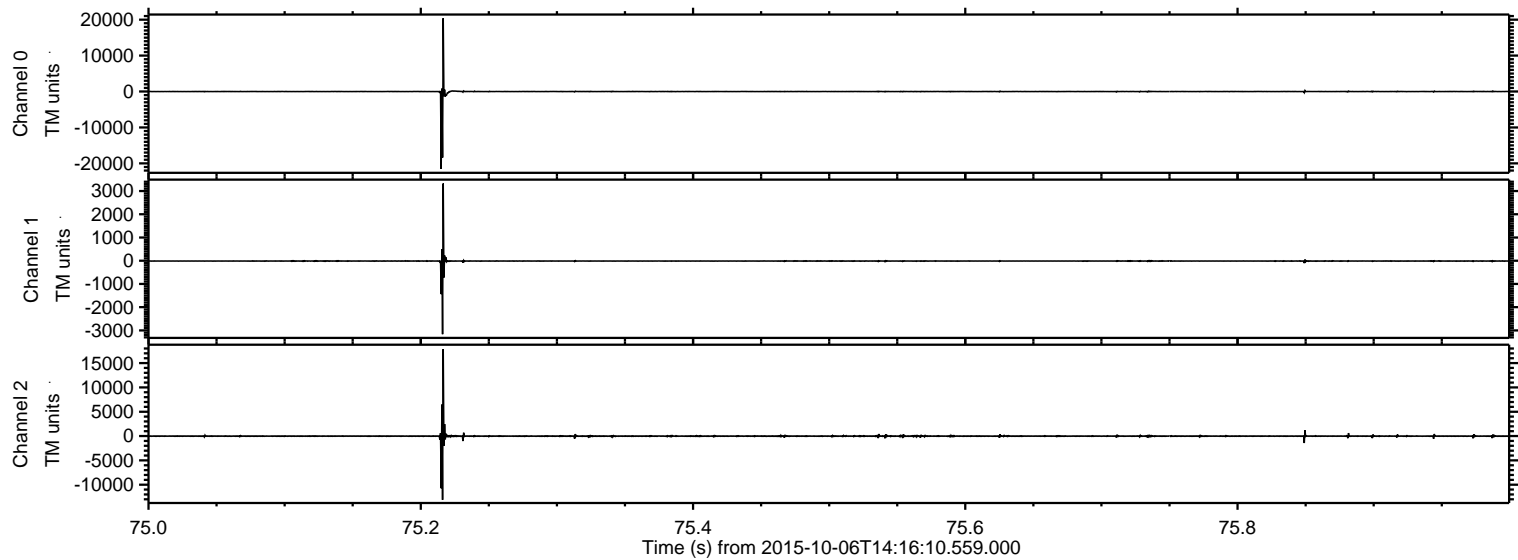
ELMAVAN 3D WAVEFORMS (Measured data sampled at 50 kHz) 51000 packets of 144 samples from 2015-10-06T14:16:10.559.000. Part 126/147

Processed Sat Oct 17 03:36:00 2015 by ELM ver.2012-10-06 from 001__elm20151006_141609__dat00.bin



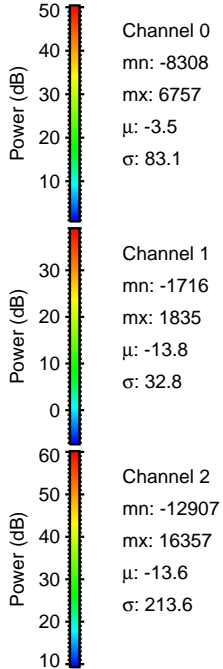
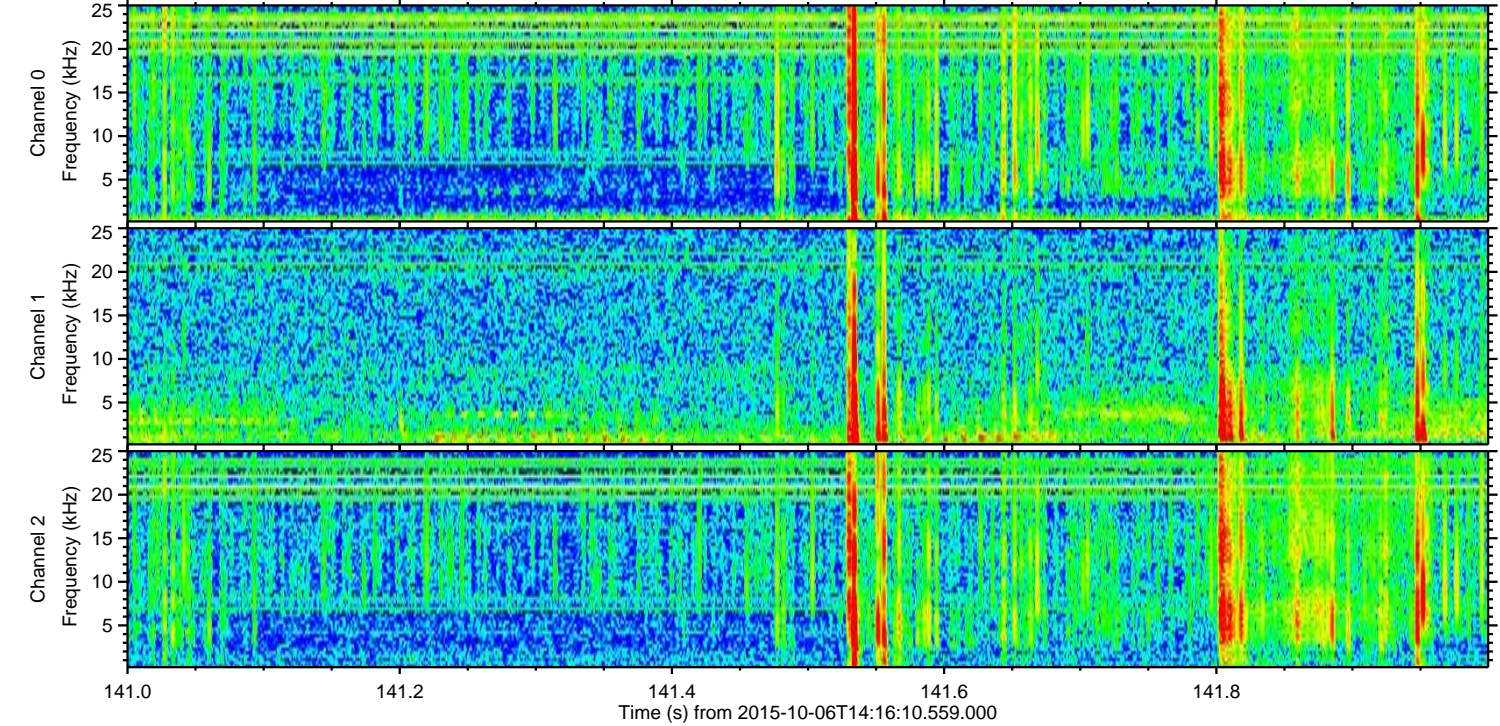
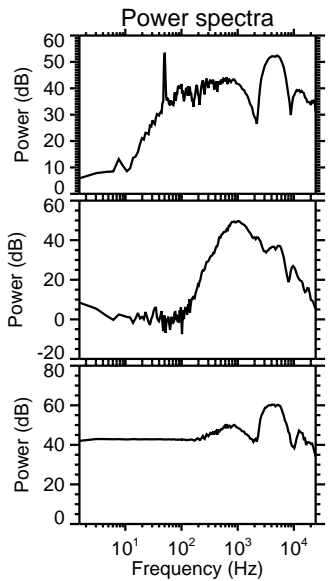
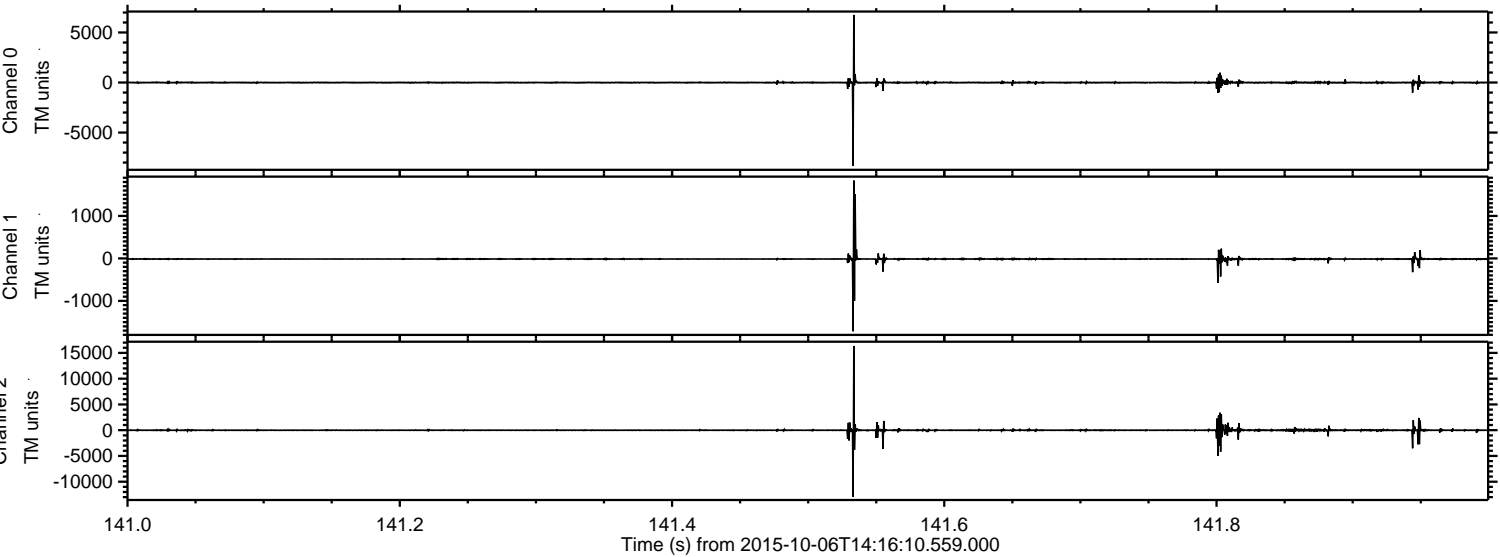
ELMAVAN 3D WAVEFORMS (Measured data sampled at 50 kHz) 51000 packets of 144 samples from 2015-10-06T14:16:10.559.000. Part 76/147

Processed Sat Oct 17 03:36:02 2015 by ELM ver.2012-10-06 from 001__elm20151006_141609__dat00.bin

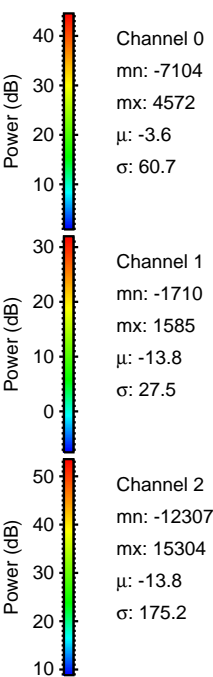
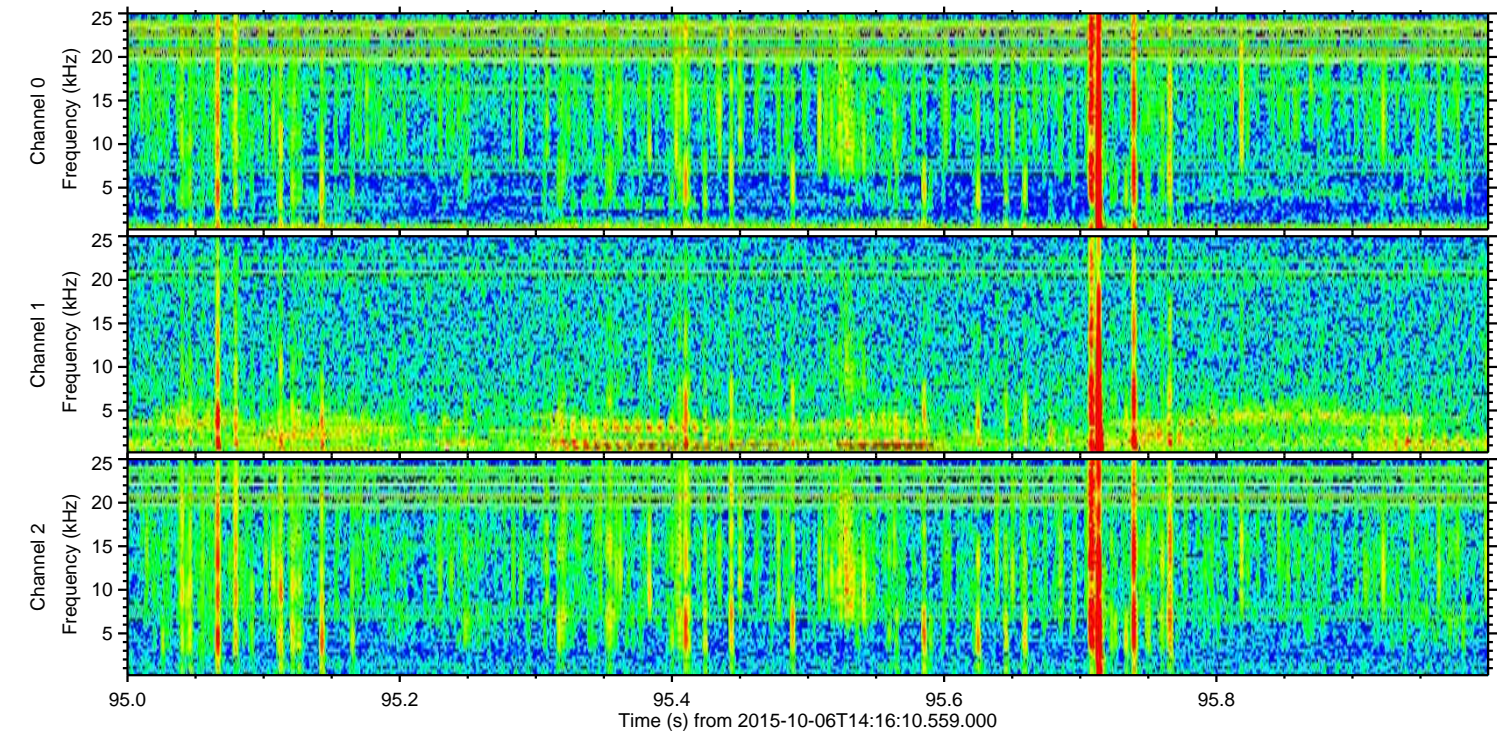
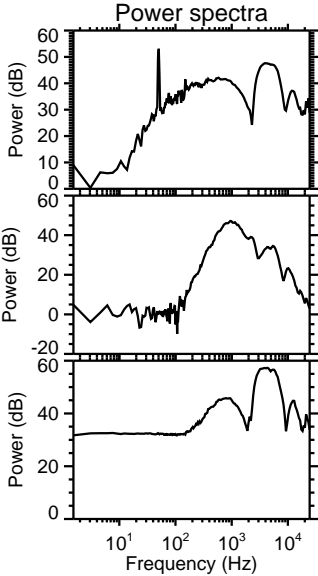
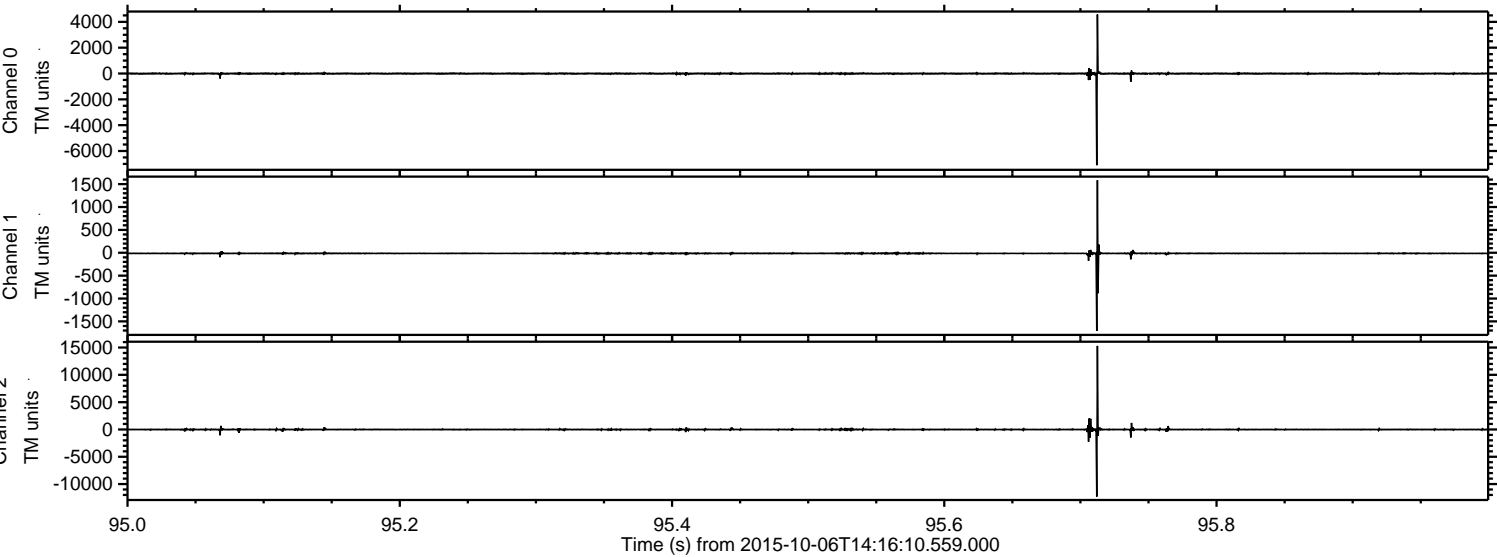


ELMAVAN 3D WAVEFORMS (Measured data sampled at 50 kHz) 51000 packets of 144 samples from 2015-10-06T14:16:10.559.000. Part 142/147

Processed Sat Oct 17 03:36:03 2015 by ELM ver.2012-10-06 from 001__elm20151006_141609__dat00.bin

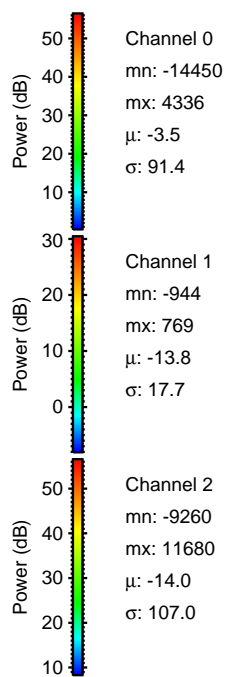
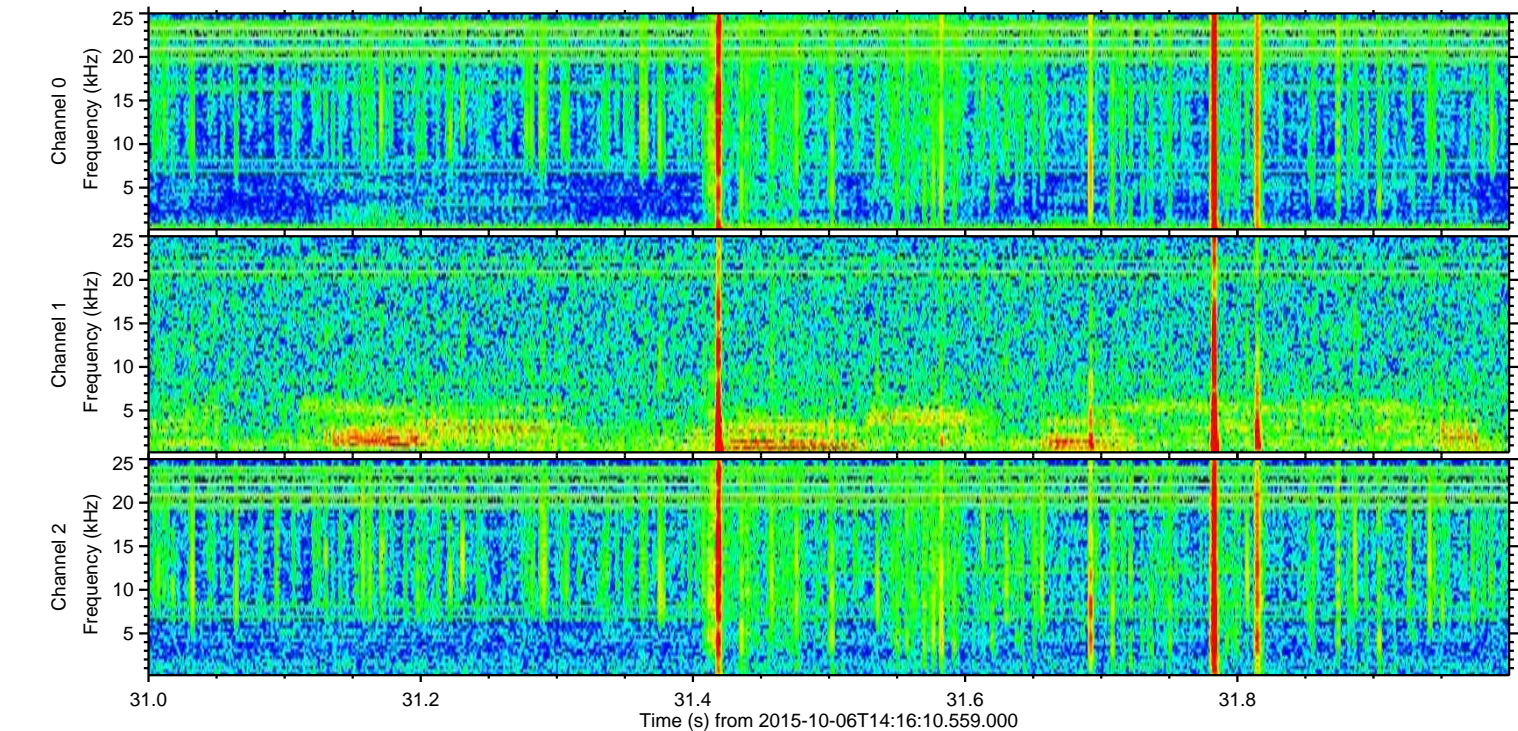
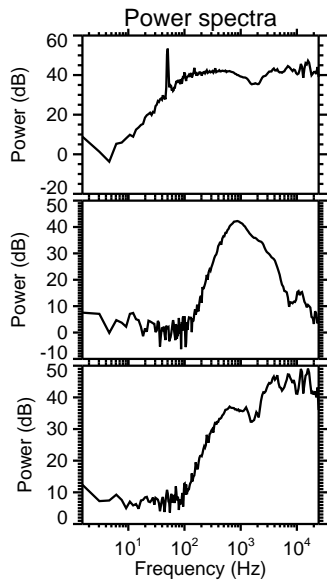
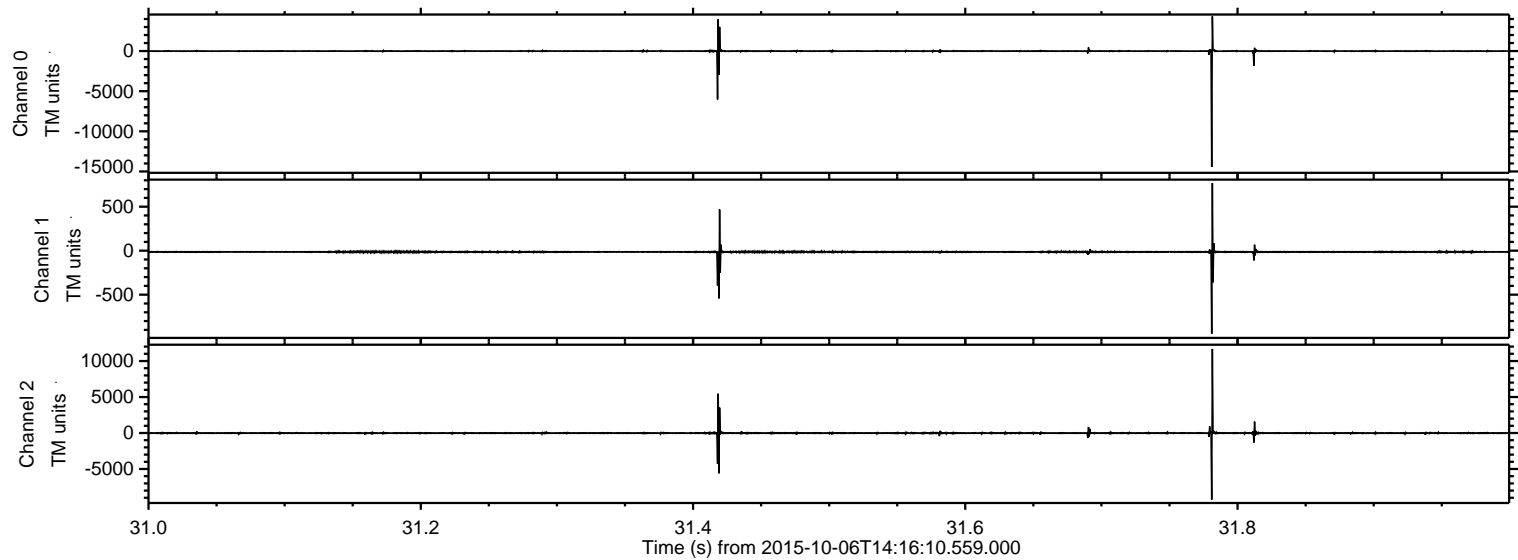


Processed Sat Oct 17 03:36:04 2015 by ELM ver.2012-10-06 from 001__elm20151006_141609__dat00.bin



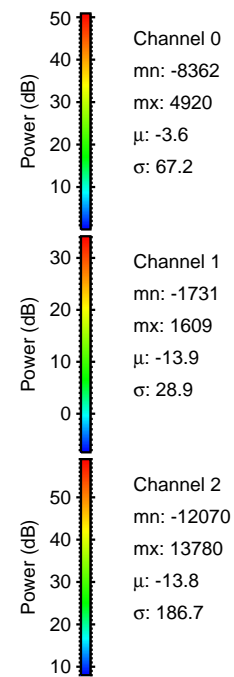
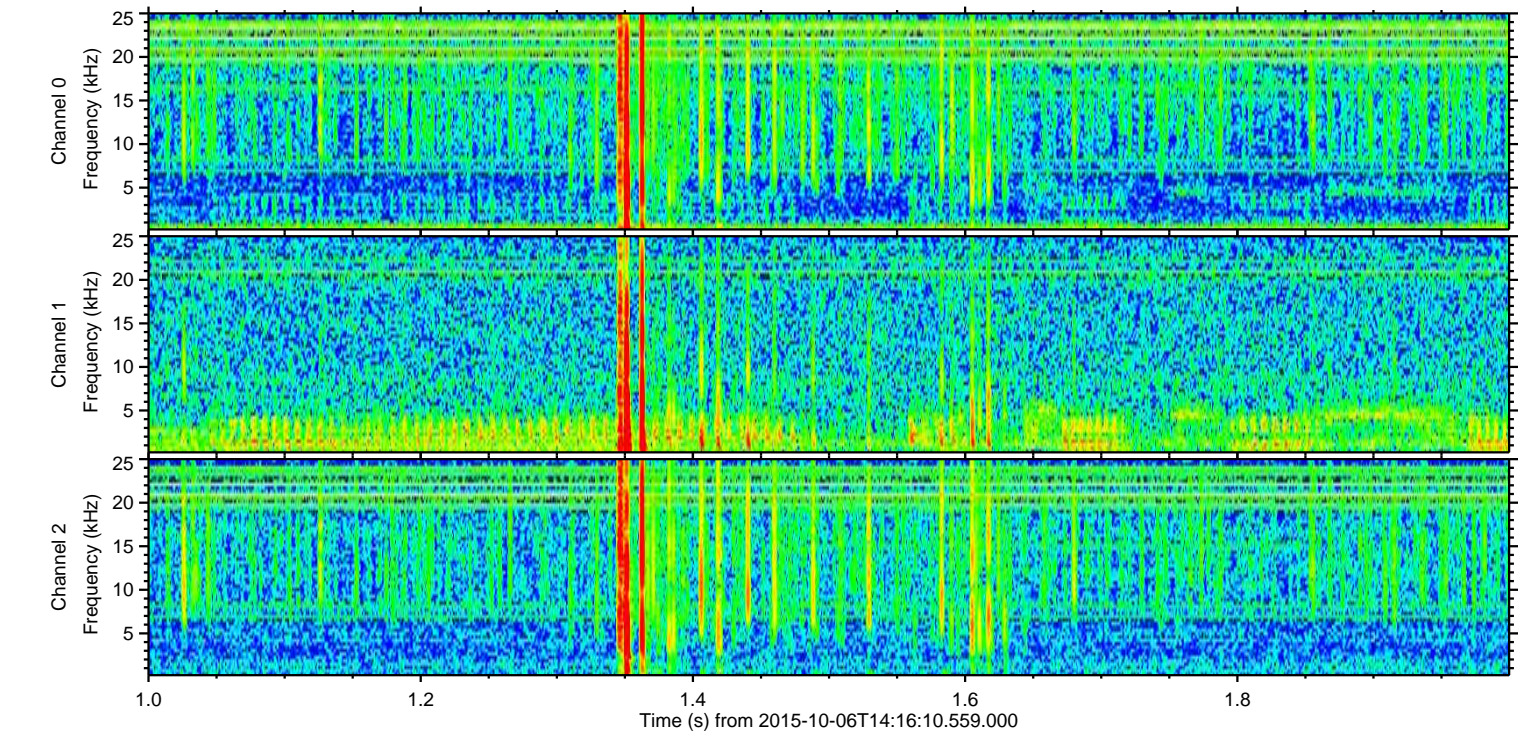
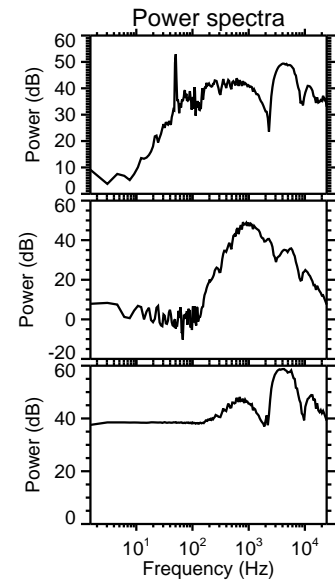
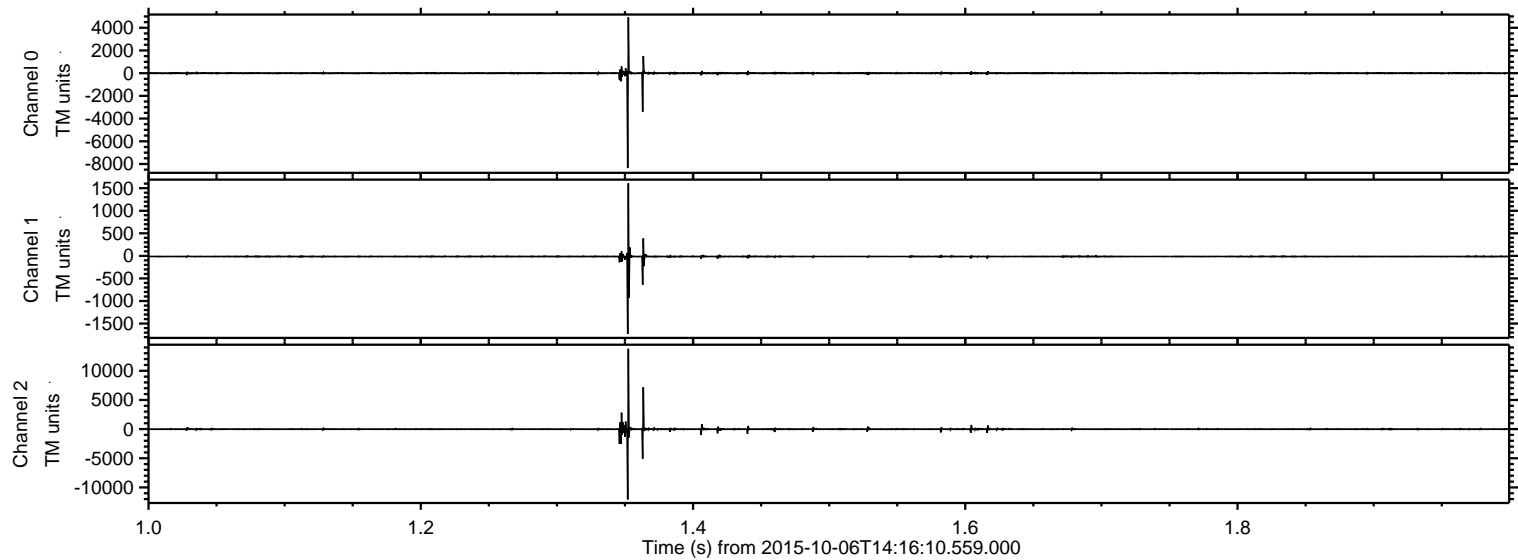
ELMAVAN 3D WAVEFORMS (Measured data sampled at 50 kHz) 51000 packets of 144 samples from 2015-10-06T14:16:10.559.000. Part 32/147

Processed Sat Oct 17 03:36:05 2015 by ELM ver.2012-10-06 from 001__elm20151006_141609__dat00.bin

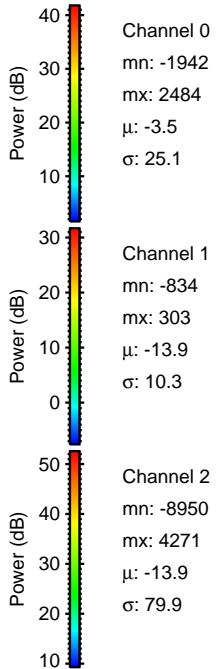
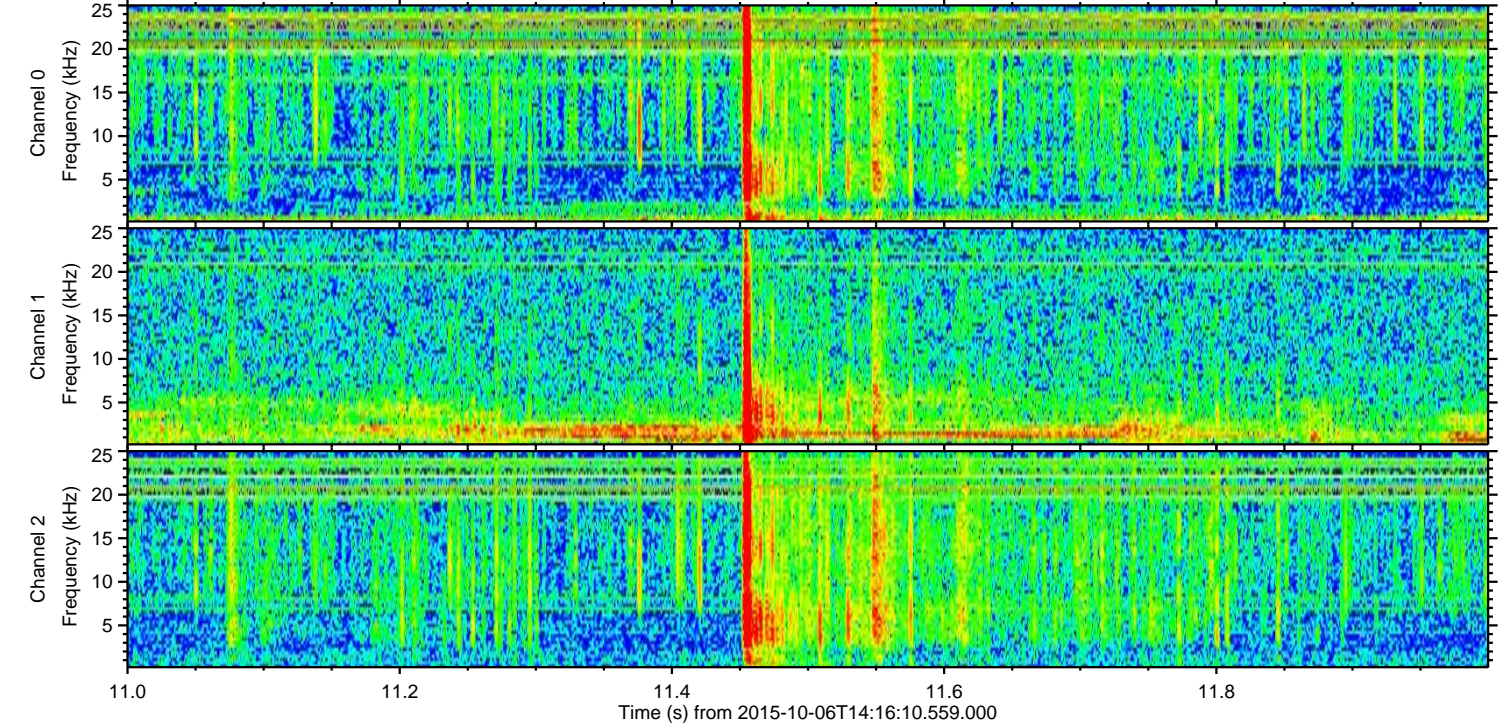
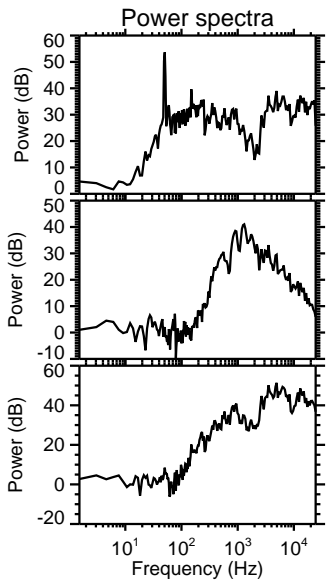
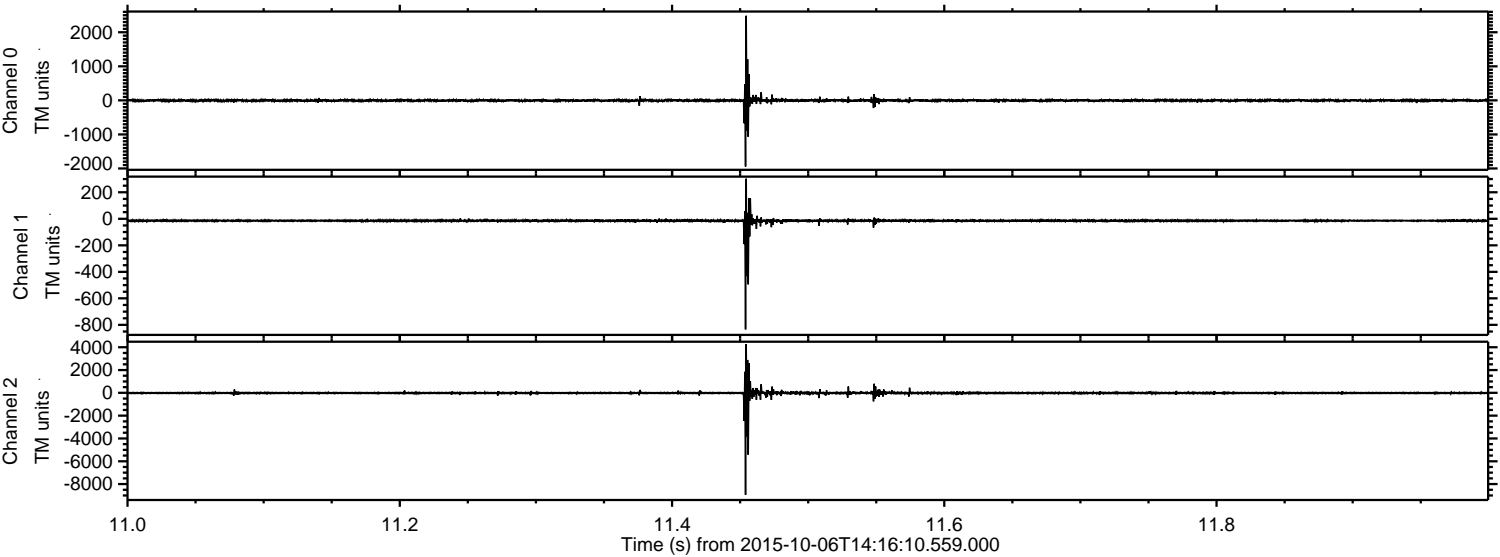


ELMAVAN 3D WAVEFORMS (Measured data sampled at 50 kHz) 51000 packets of 144 samples from 2015-10-06T14:16:10.559.000. Part 2/147

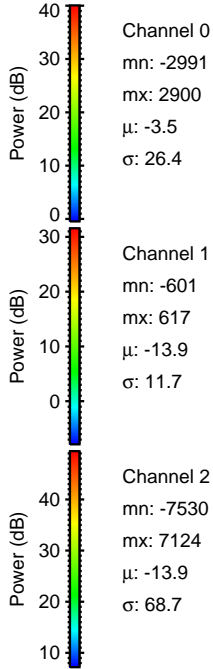
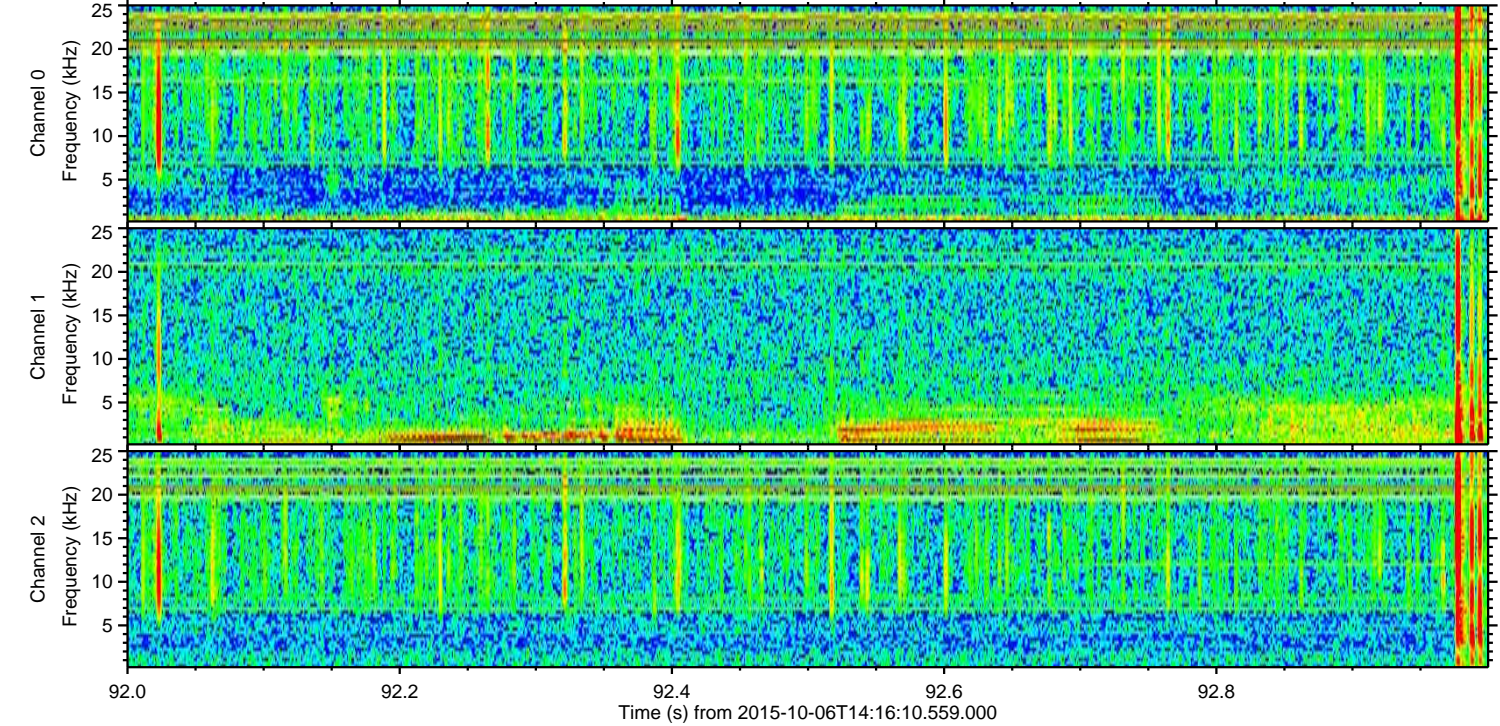
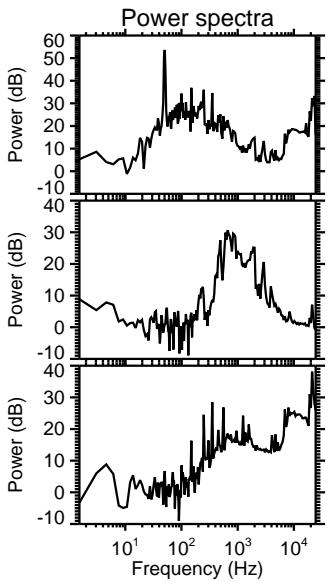
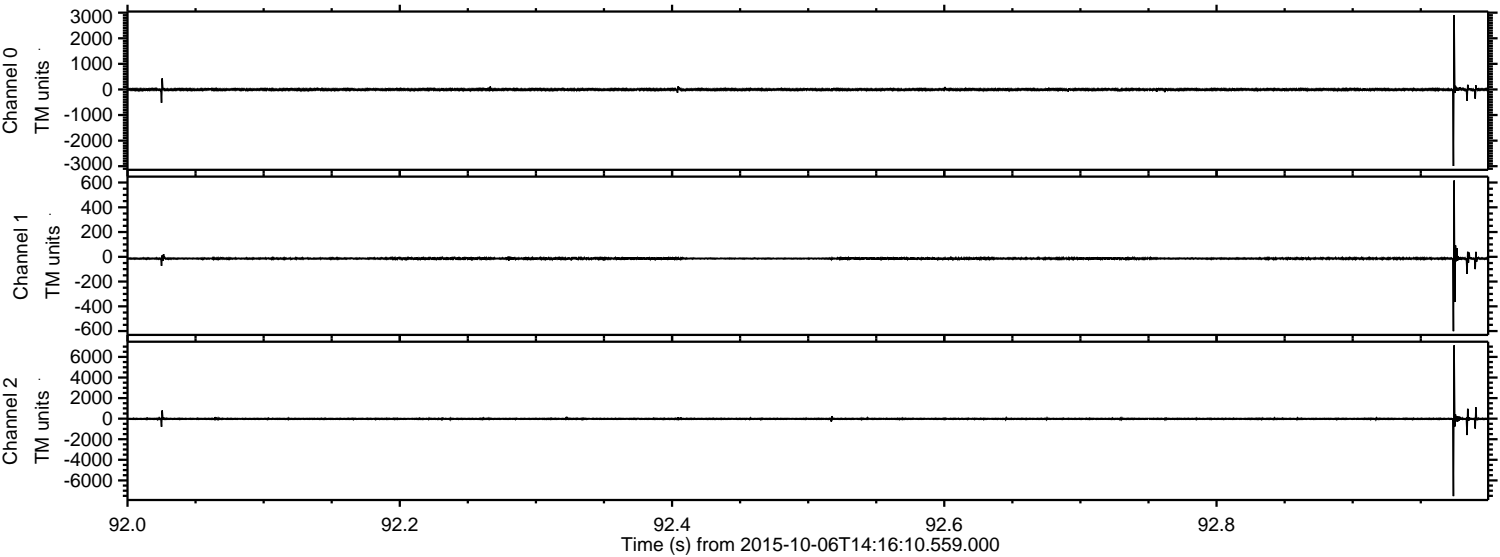
Processed Sat Oct 17 03:36:08 2015 by ELM ver.2012-10-06 from 001__elm20151006_141609__dat00.bin



Processed Sat Oct 17 03:36:10 2015 by ELM ver.2012-10-06 from 001__elm20151006_141609__dat00.bin



Processed Sat Oct 17 03:36:13 2015 by ELM ver.2012-10-06 from 001__elm20151006_141609__dat00.bin

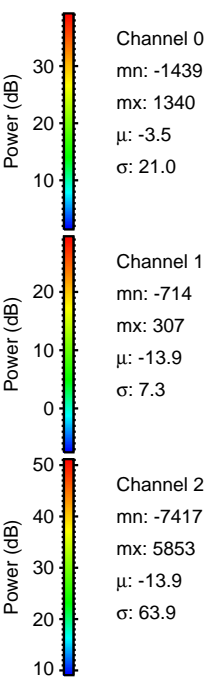
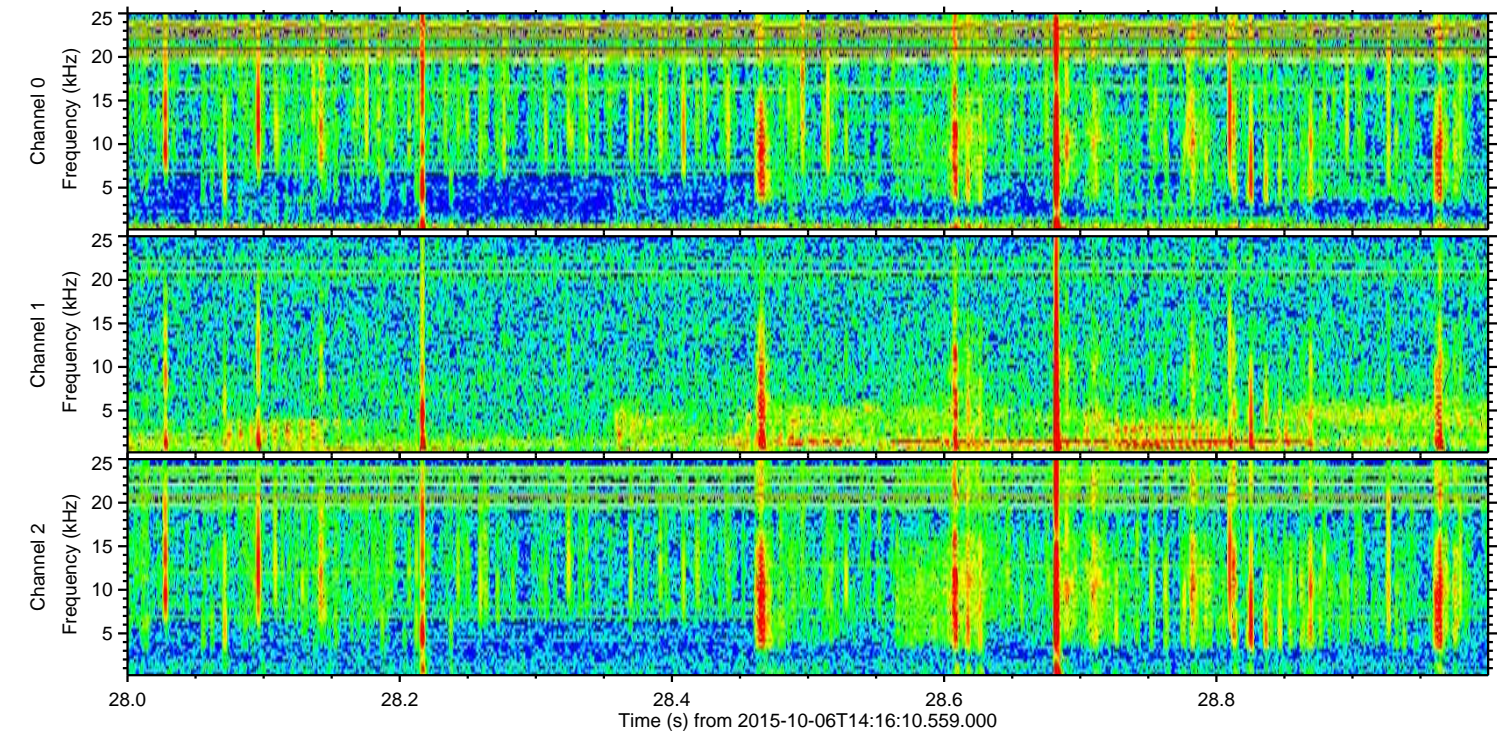
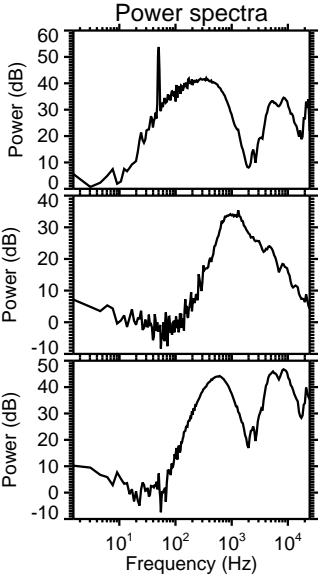
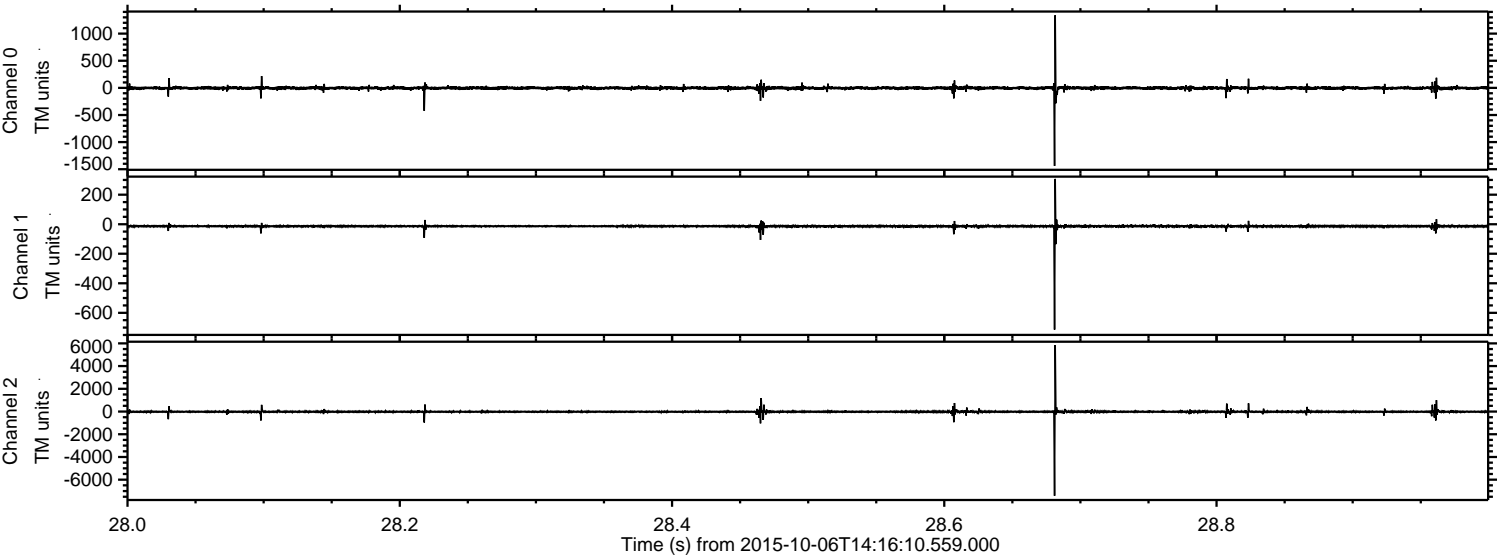


Channel 0
mn: -2991
mx: 2900
 μ : -3.5
 σ : 26.4

Channel 1
mn: -601
mx: 617
 μ : -13.9
 σ : 11.7

Channel 2
mn: -7530
mx: 7124
 μ : -13.9
 σ : 68.7

Processed Sat Oct 17 03:36:15 2015 by ELM ver.2012-10-06 from 001__elm20151006_141609__dat00.bin



Processed Sat Oct 17 03:36:16 2015 by ELM ver.2012-10-06 from 001__elm20151006_141609__dat00.bin

