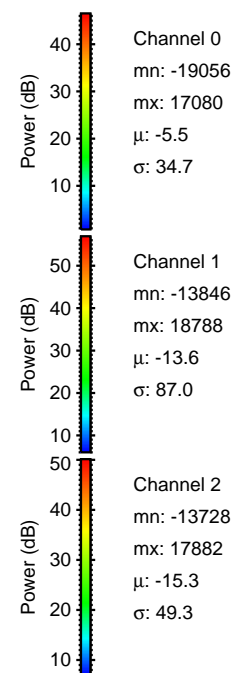
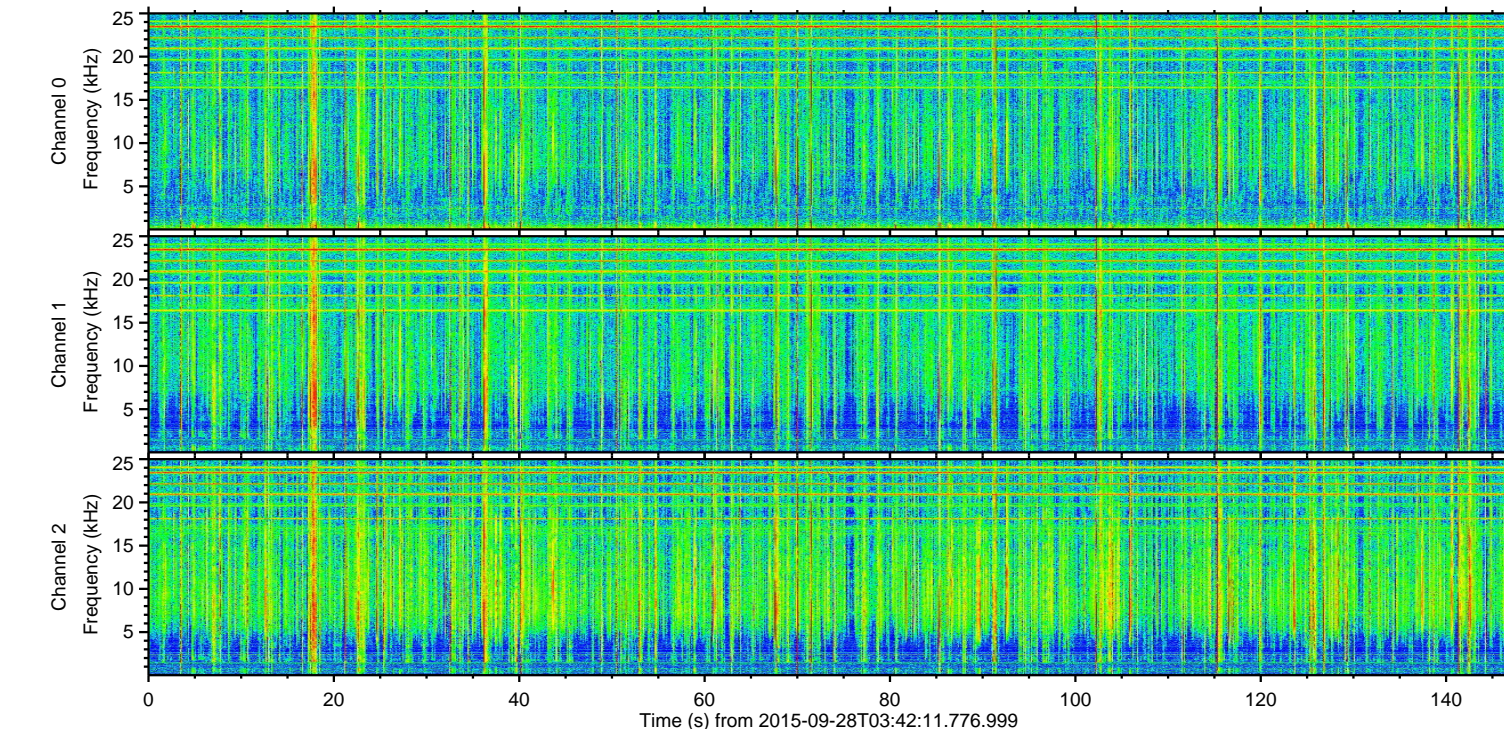
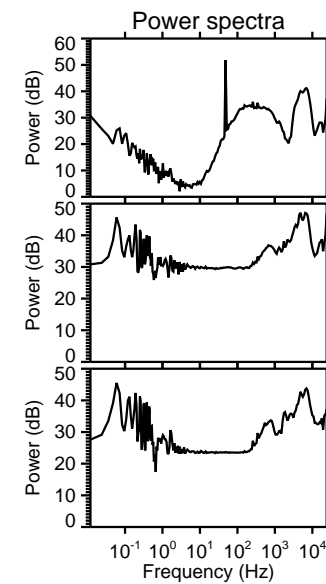
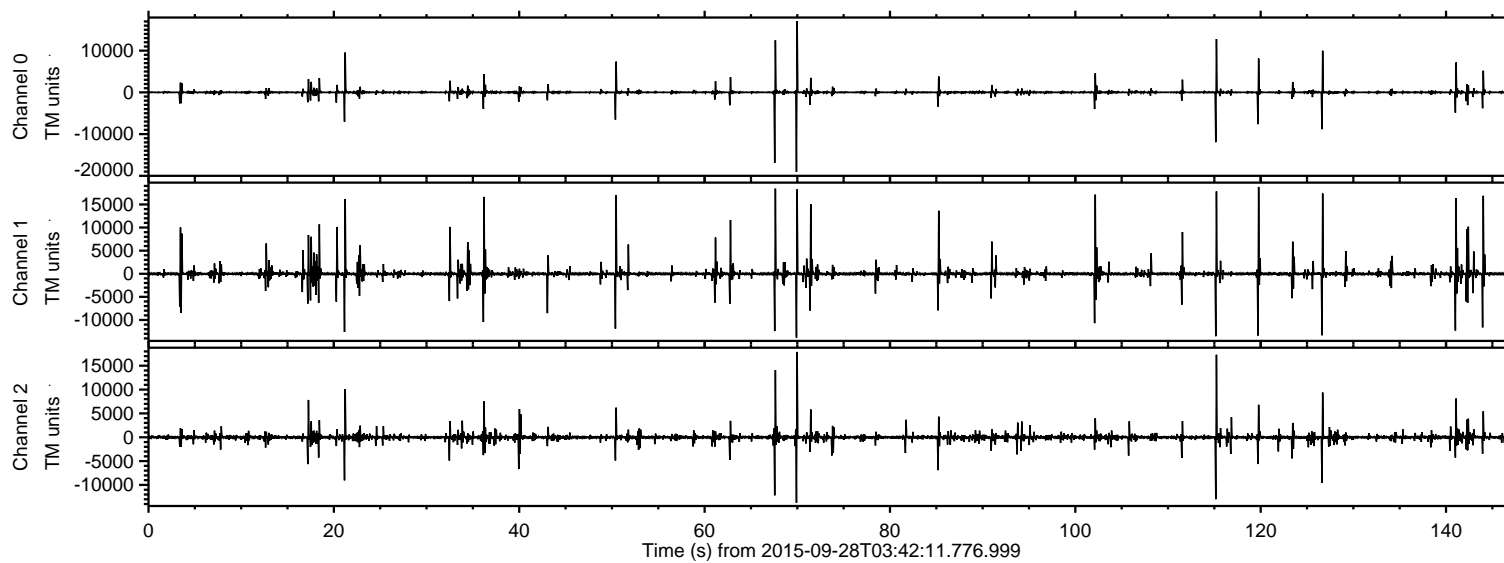
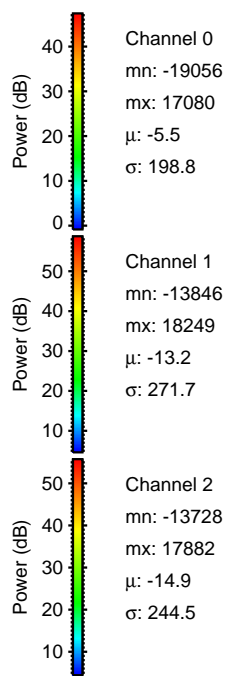
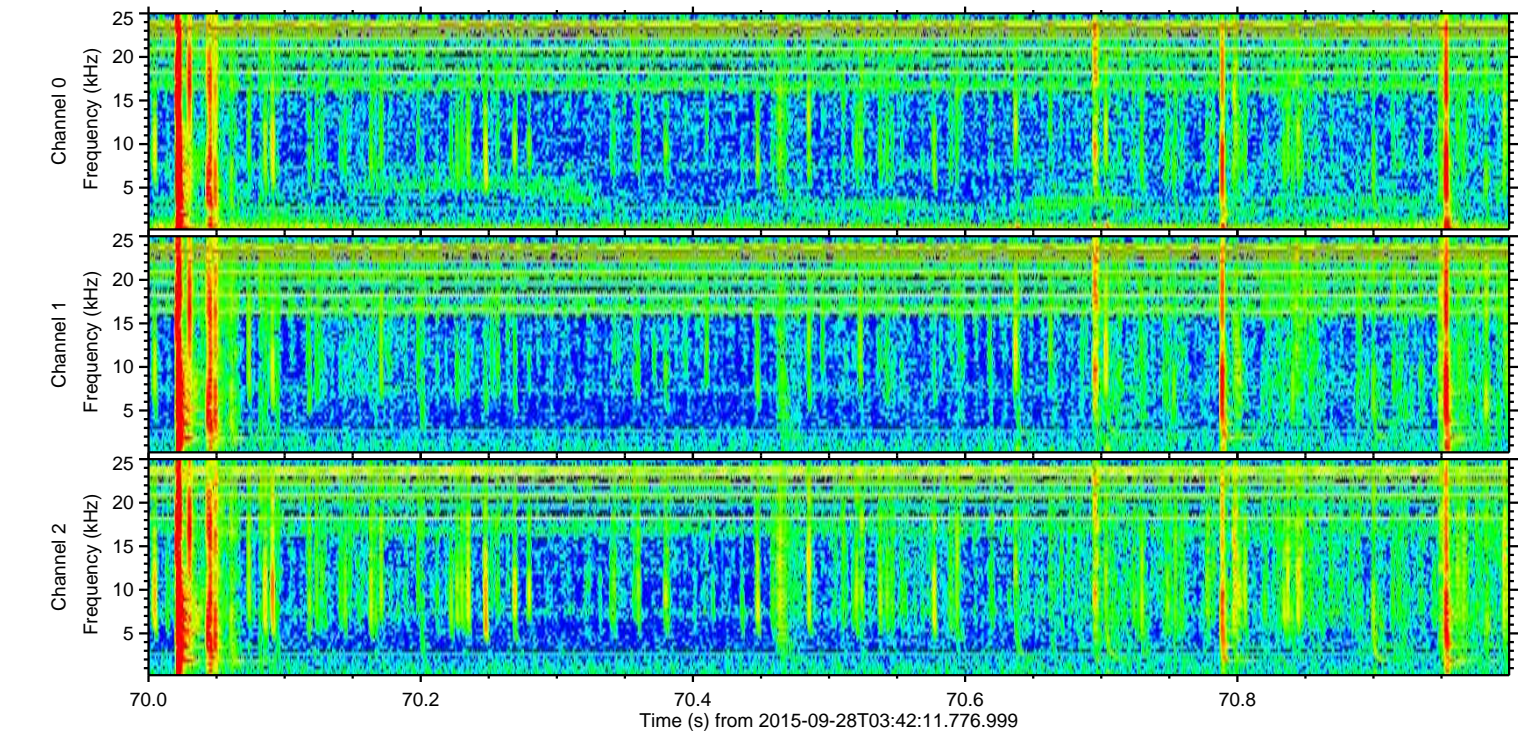
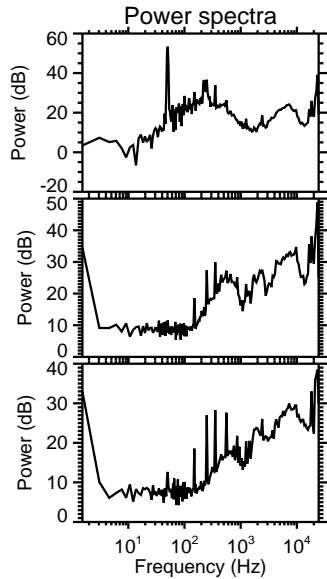
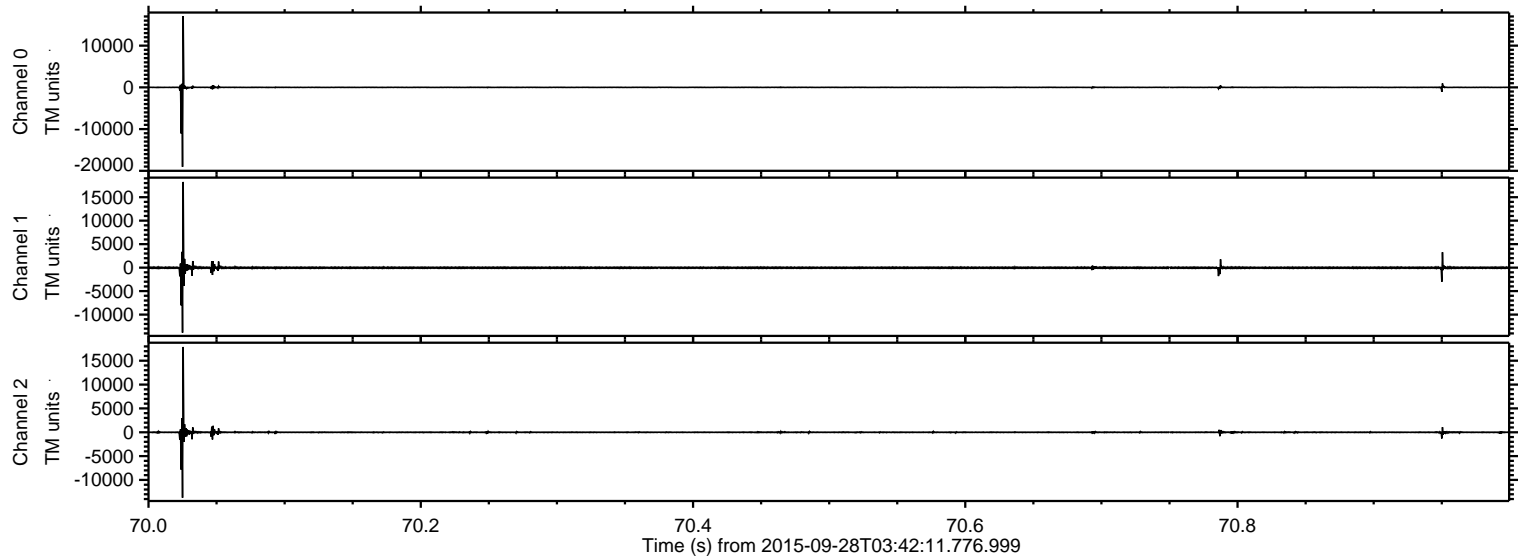


ELMAVAN 3D WAVEFORMS (Measured data sampled at 50 kHz) 51000 packets of 144 samples from 2015-09-28T03:42:11.776.999.

Processed Sat Oct 17 01:59:17 2015 by ELM ver.2012-10-06 from 001__elm20150928_034210__dat00.bin

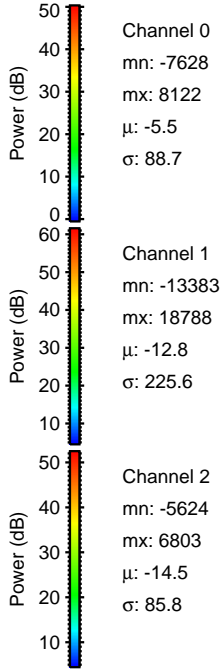
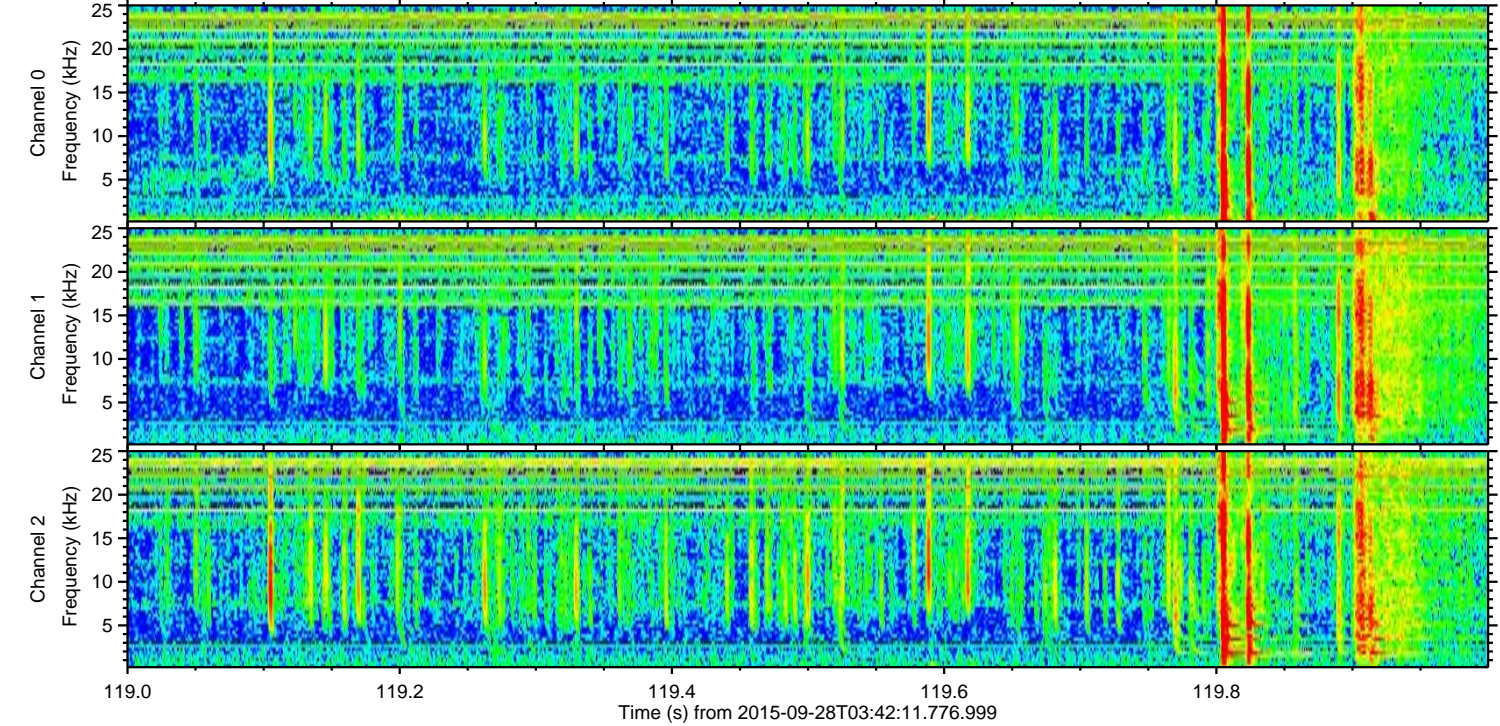
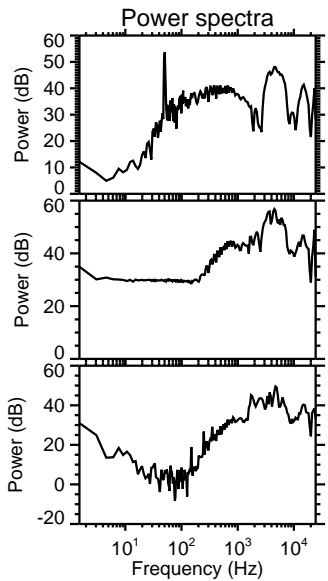
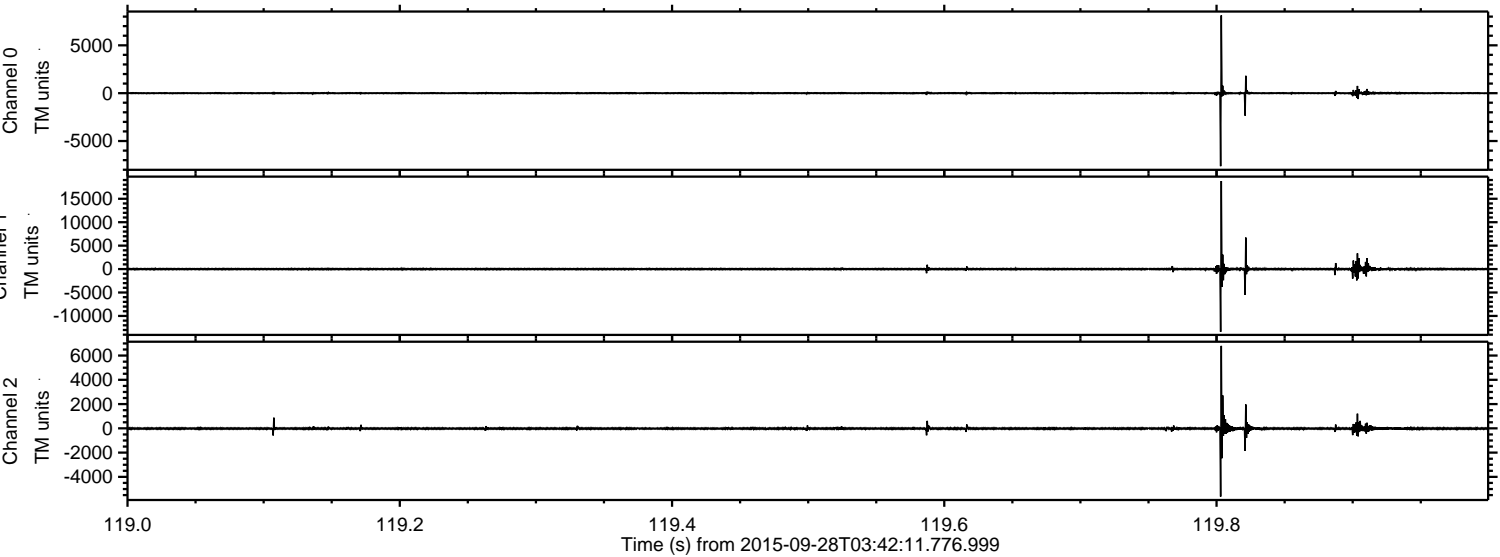


Processed Sat Oct 17 01:59:33 2015 by ELM ver.2012-10-06 from 001__elm20150928_034210__dat00.bin



ELMAVAN 3D WAVEFORMS (Measured data sampled at 50 kHz) 51000 packets of 144 samples from 2015-09-28T03:42:11.776.999. Part 120/147

Processed Sat Oct 17 01:59:34 2015 by ELM ver.2012-10-06 from 001__elm20150928_034210__dat00.bin



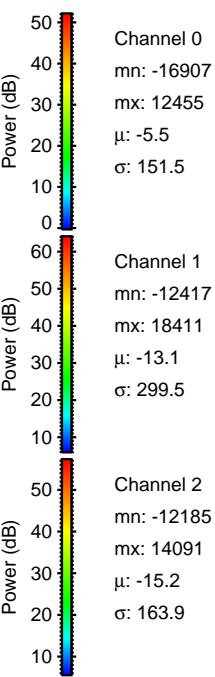
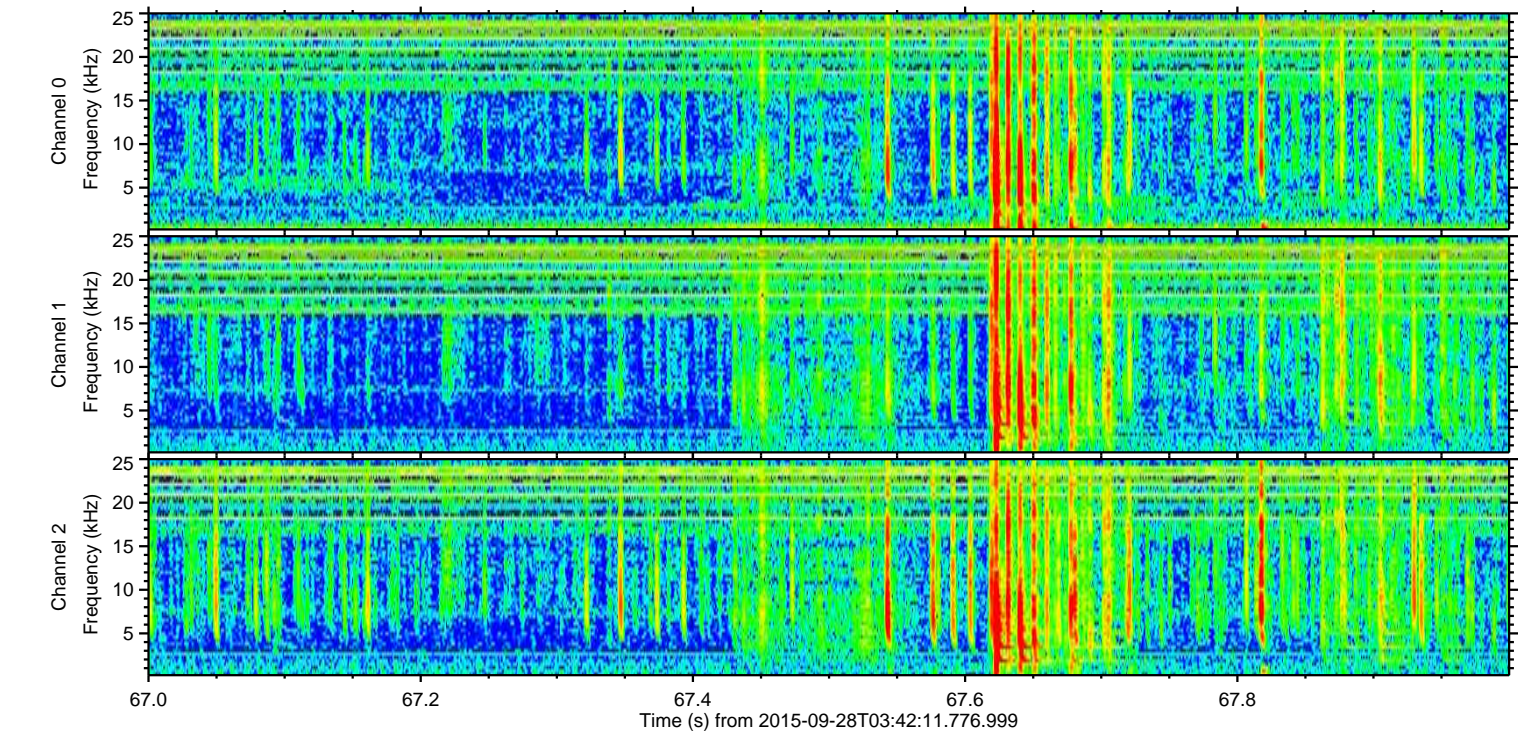
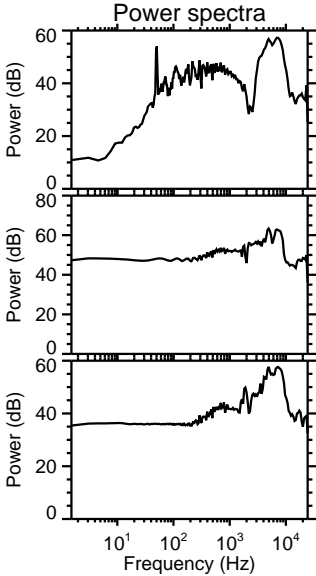
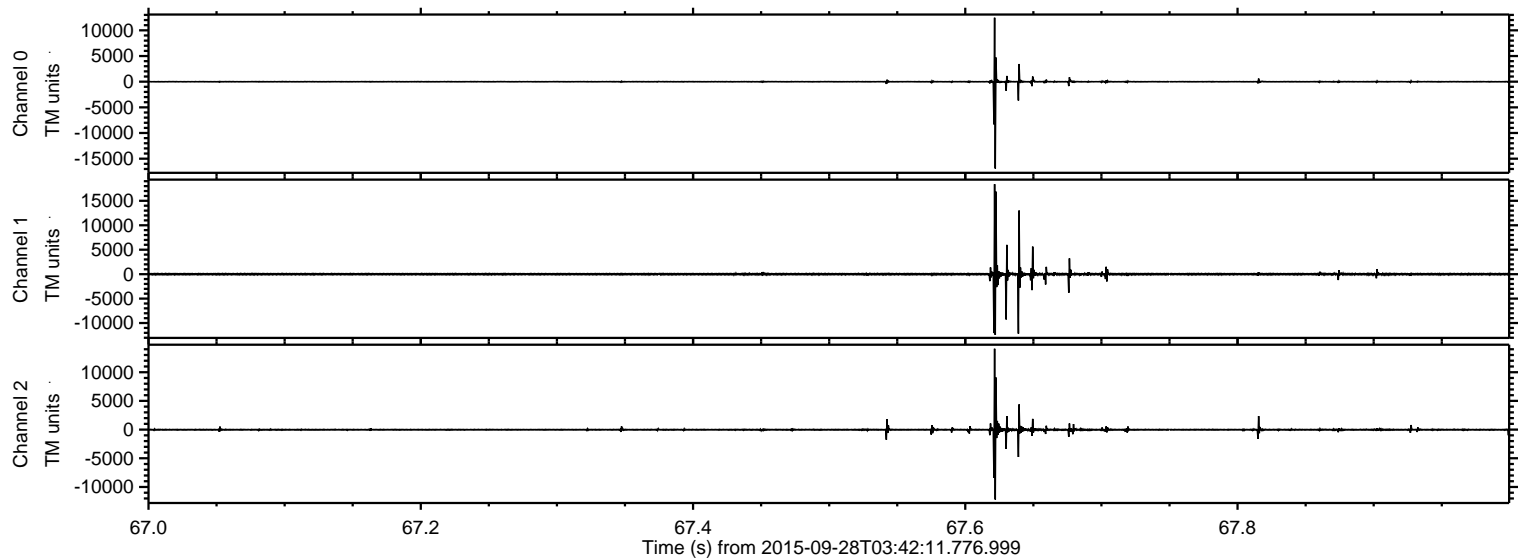
Channel 0
mn: -7628
mx: 8122
 μ : -5.5
 σ : 88.7

Channel 1
mn: -13383
mx: 18788
 μ : -12.8
 σ : 225.6

Channel 2
mn: -5624
mx: 6803
 μ : -14.5
 σ : 85.8

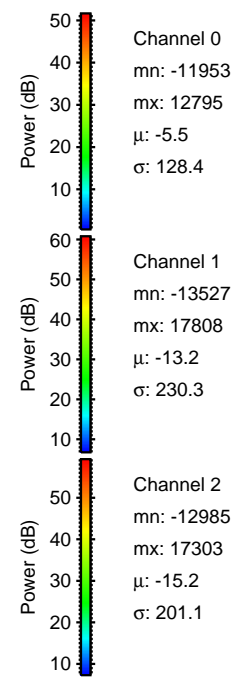
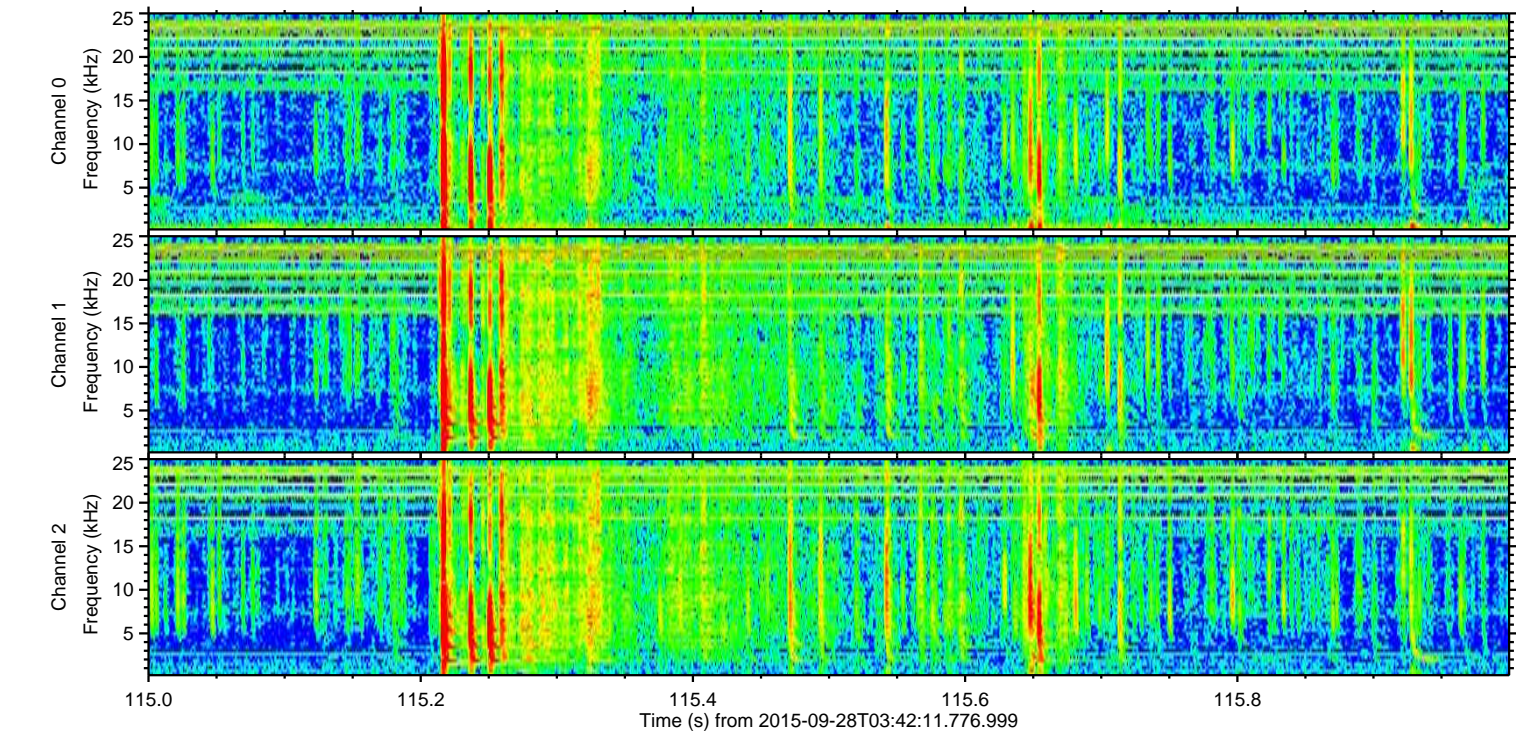
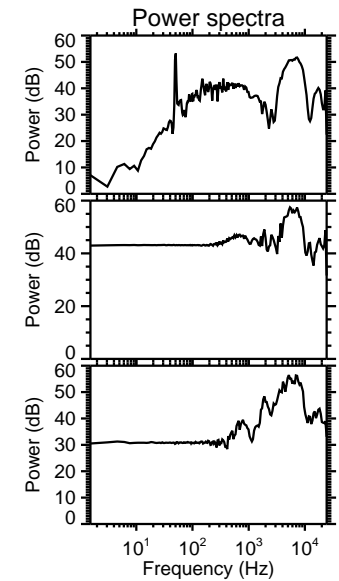
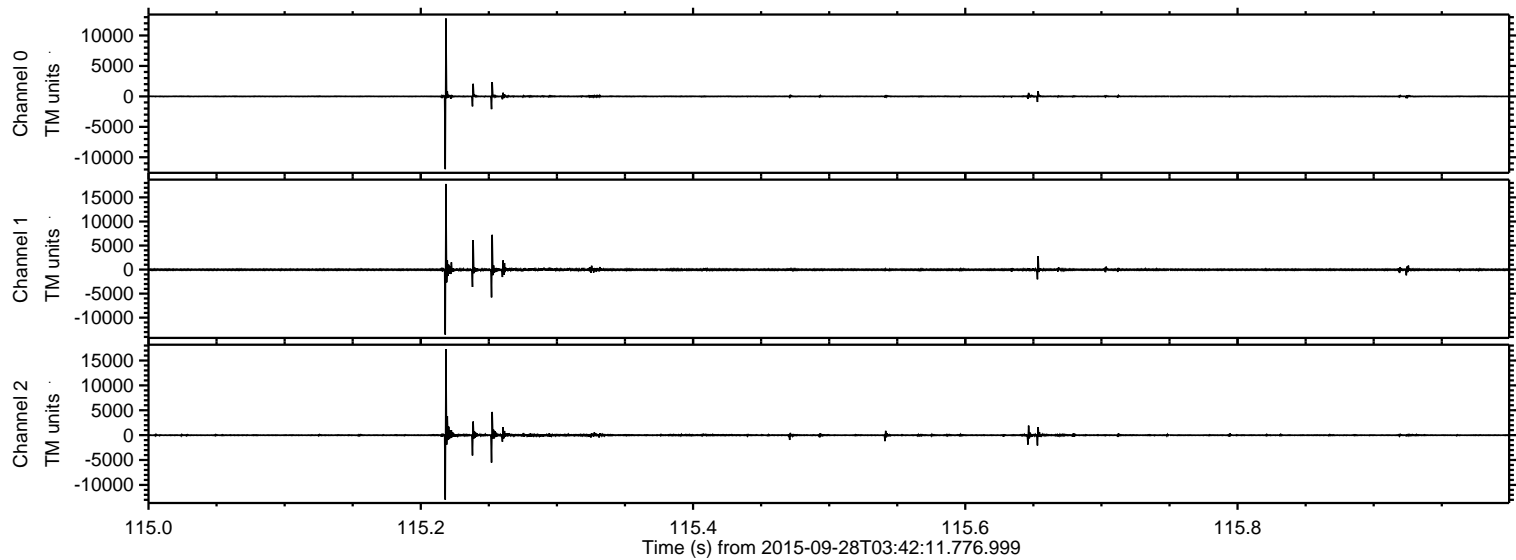
ELMAVAN 3D WAVEFORMS (Measured data sampled at 50 kHz) 51000 packets of 144 samples from 2015-09-28T03:42:11.776.999. Part 68/147

Processed Sat Oct 17 01:59:35 2015 by ELM ver.2012-10-06 from 001__elm20150928_034210__dat00.bin



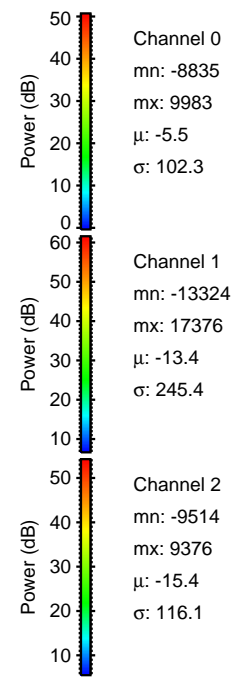
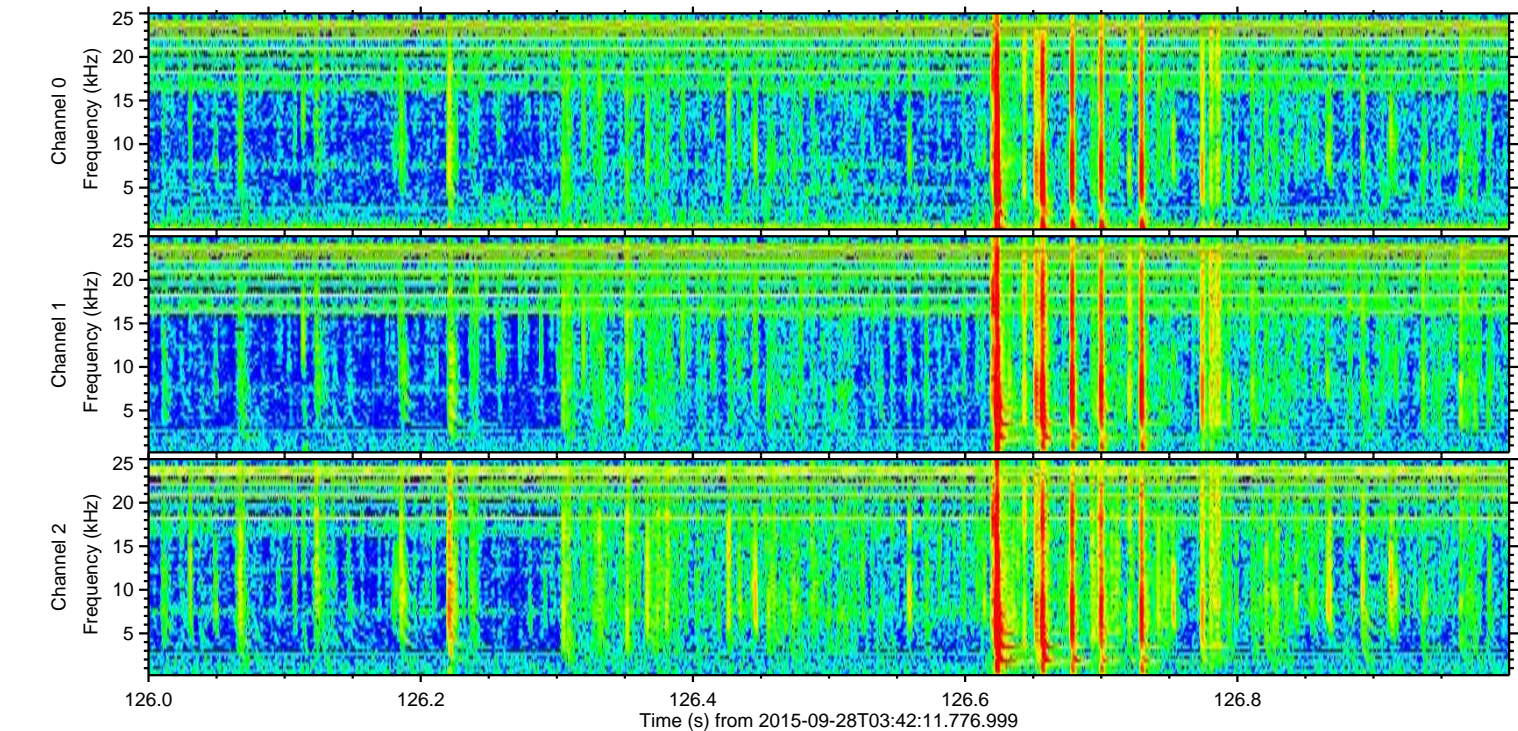
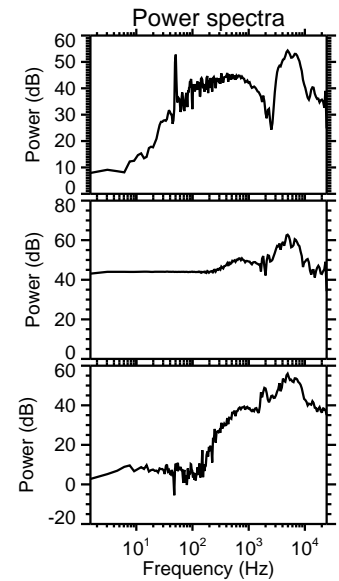
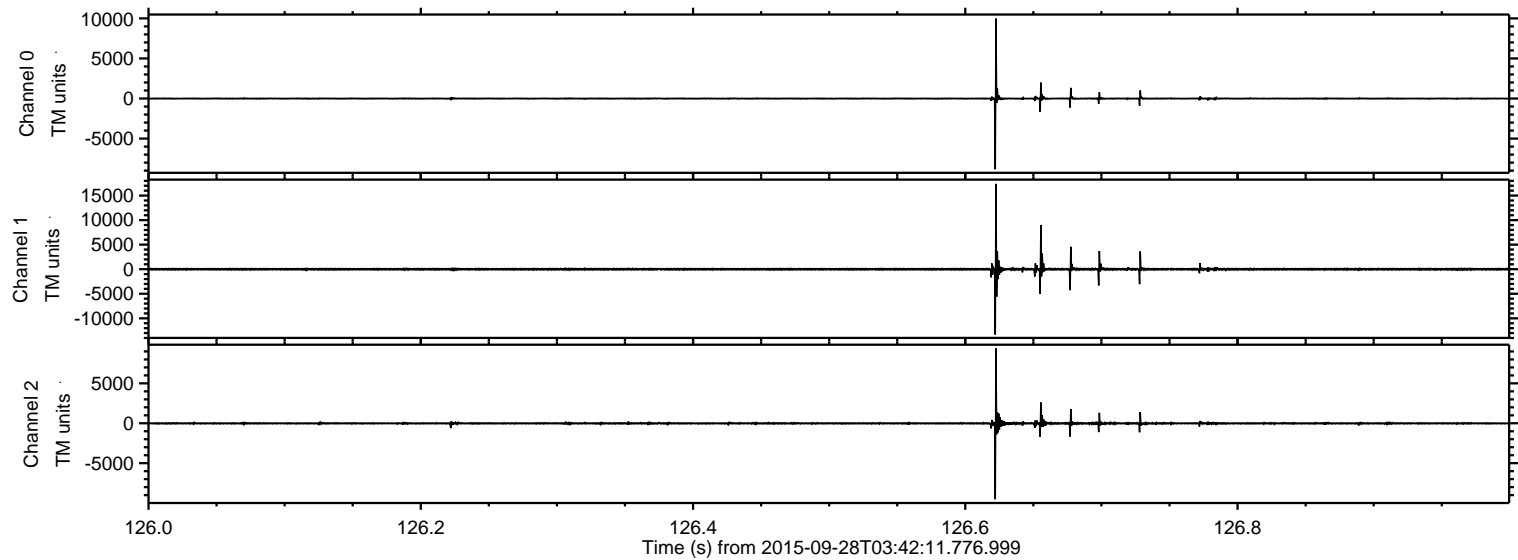
ELMAVAN 3D WAVEFORMS (Measured data sampled at 50 kHz) 51000 packets of 144 samples from 2015-09-28T03:42:11.776.999. Part 116/147

Processed Sat Oct 17 01:59:36 2015 by ELM ver.2012-10-06 from 001__elm20150928_034210__dat00.bin



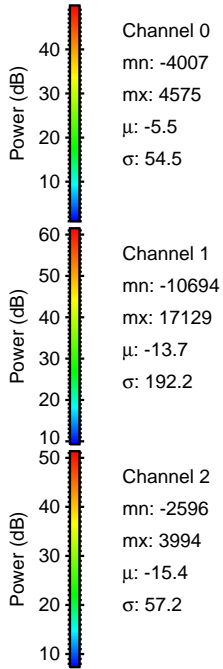
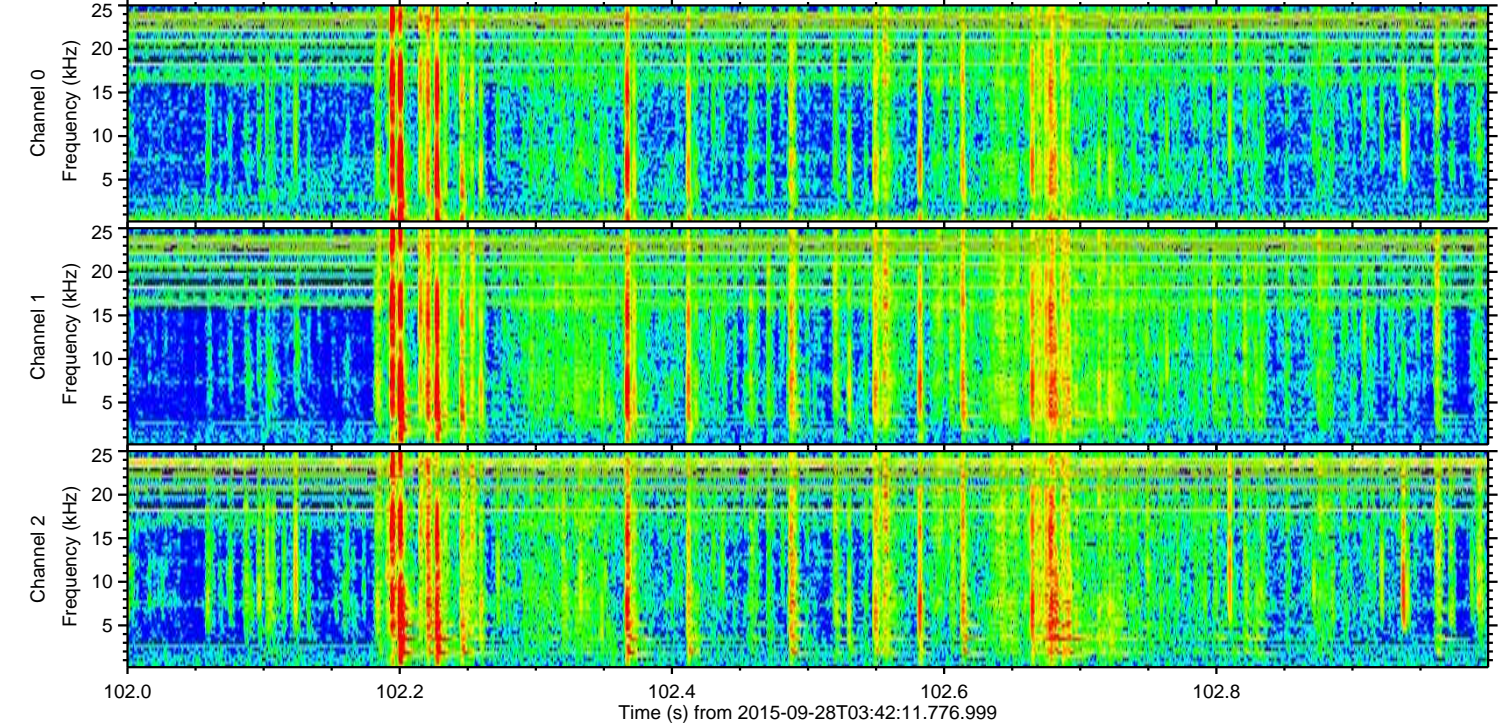
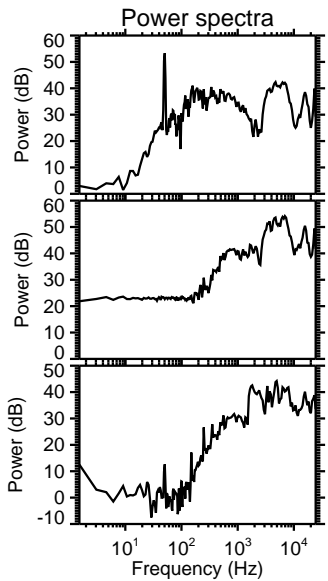
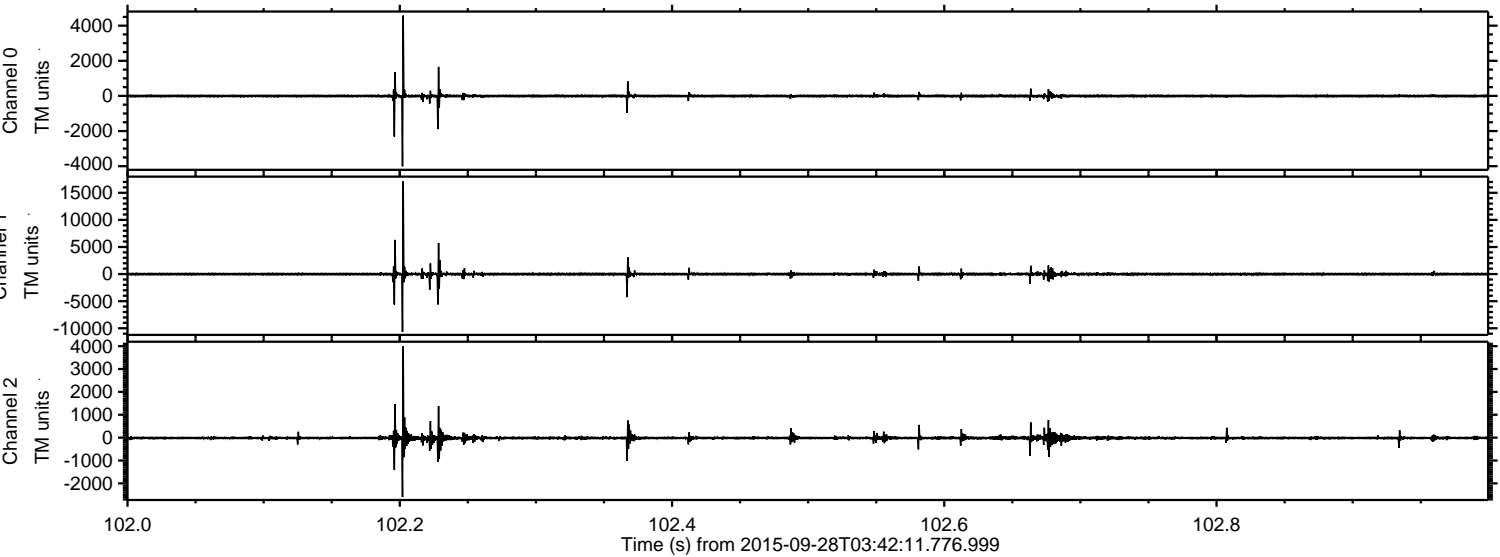
ELMAVAN 3D WAVEFORMS (Measured data sampled at 50 kHz) 51000 packets of 144 samples from 2015-09-28T03:42:11.776.999. Part 127/147

Processed Sat Oct 17 01:59:37 2015 by ELM ver.2012-10-06 from 001__elm20150928_034210__dat00.bin



ELMAVAN 3D WAVEFORMS (Measured data sampled at 50 kHz) 51000 packets of 144 samples from 2015-09-28T03:42:11.776.999. Part 103/147

Processed Sat Oct 17 01:59:38 2015 by ELM ver.2012-10-06 from 001__elm20150928_034210__dat00.bin

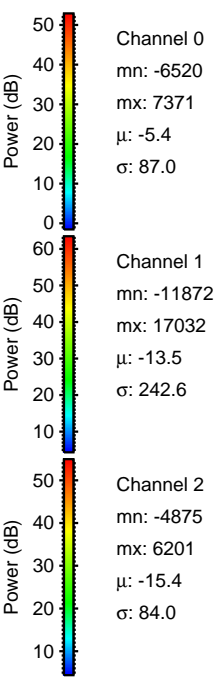
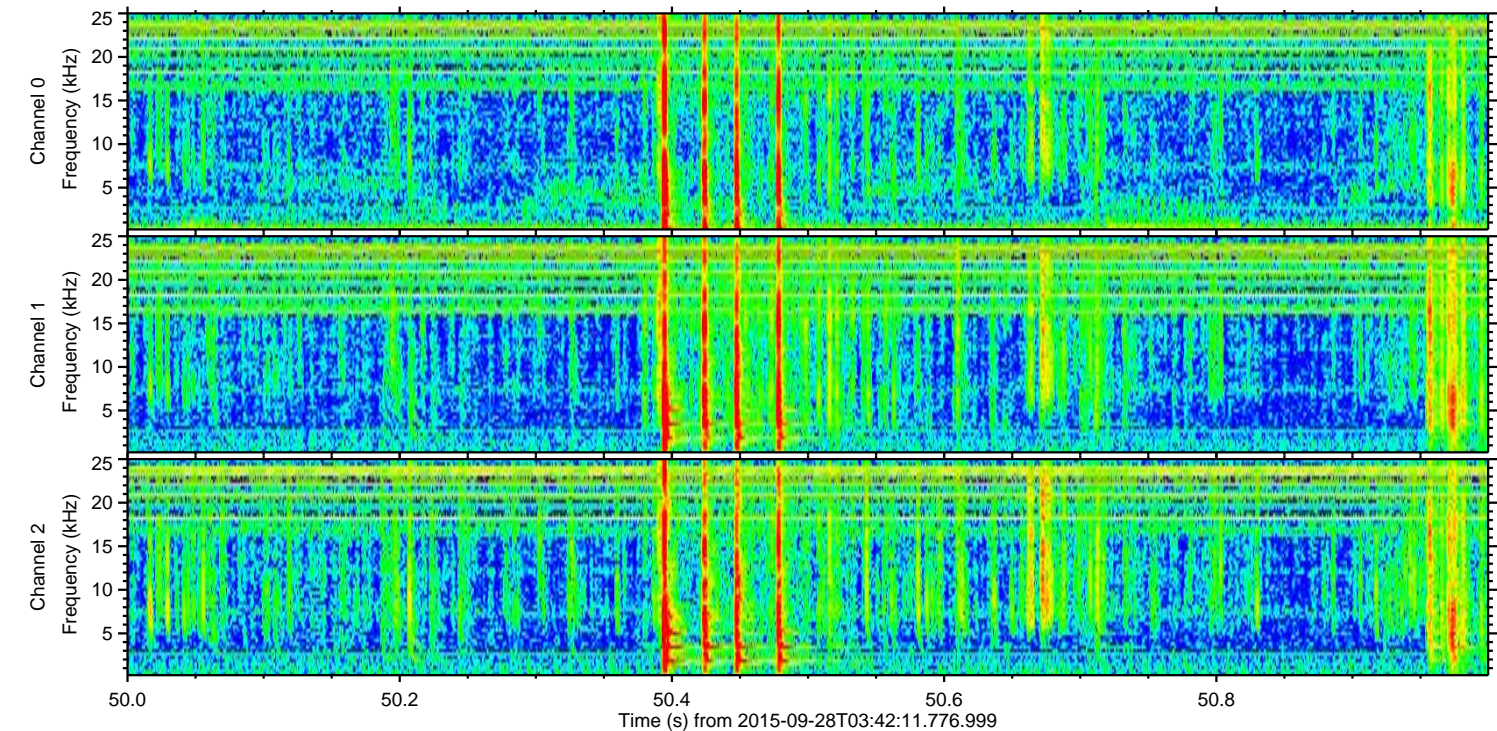
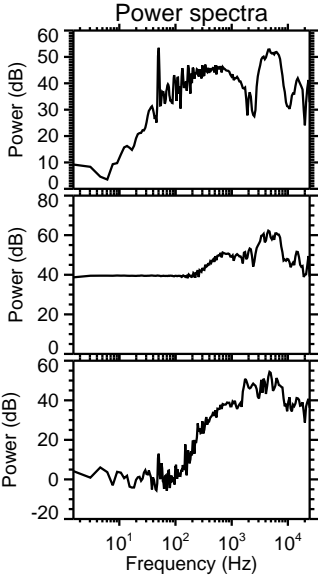
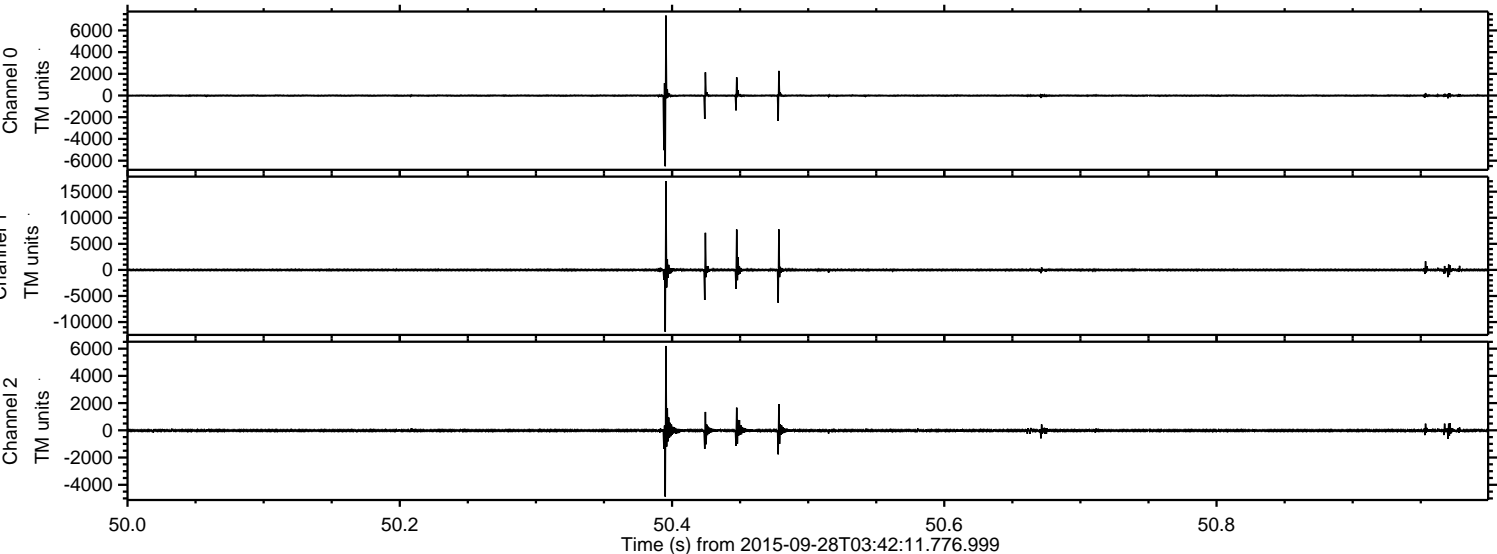


Channel 0
mn: -4007
mx: 4575
 μ : -5.5
 σ : 54.5

Channel 1
mn: -10694
mx: 17129
 μ : -13.7
 σ : 192.2

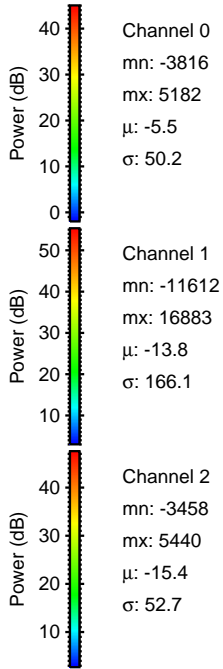
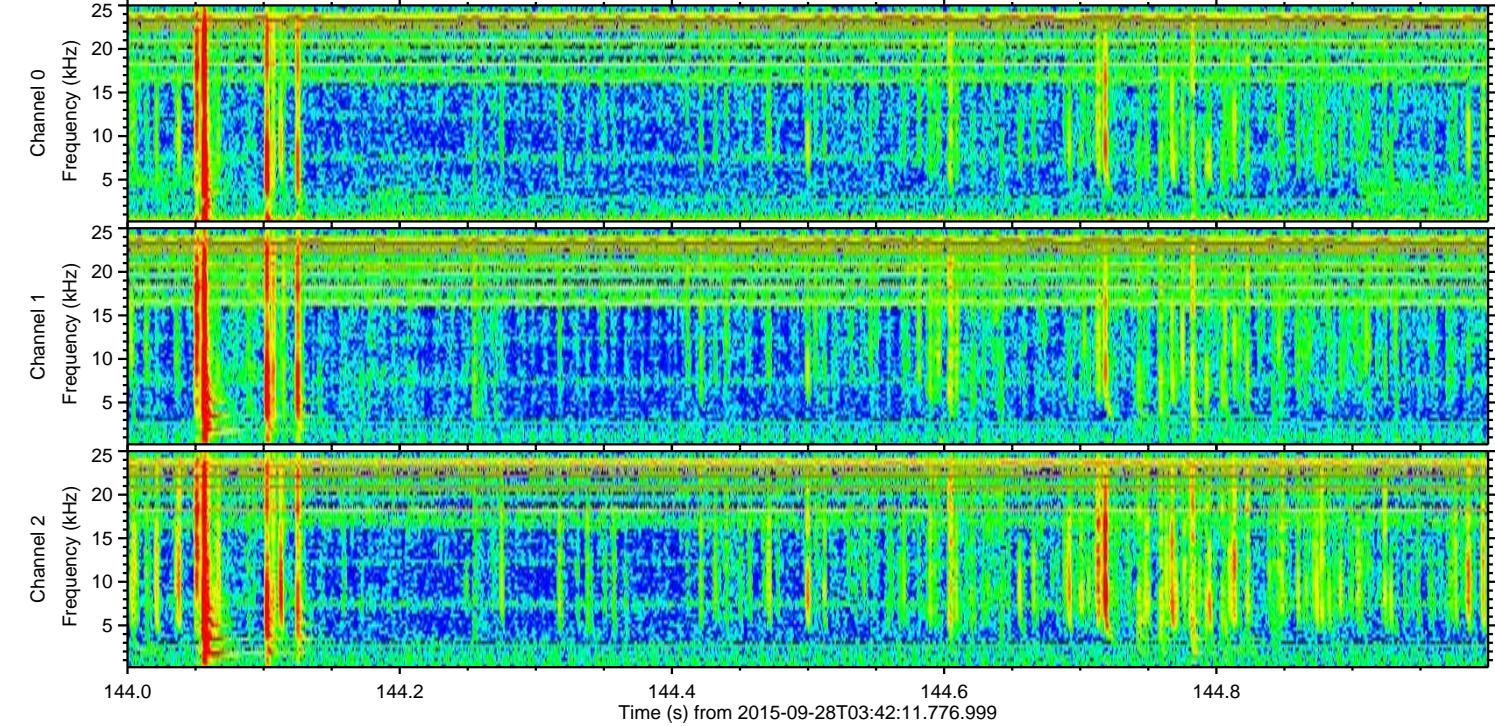
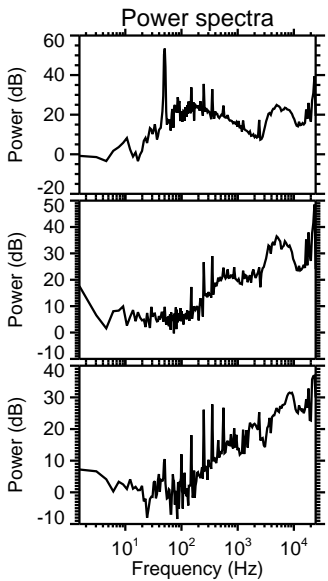
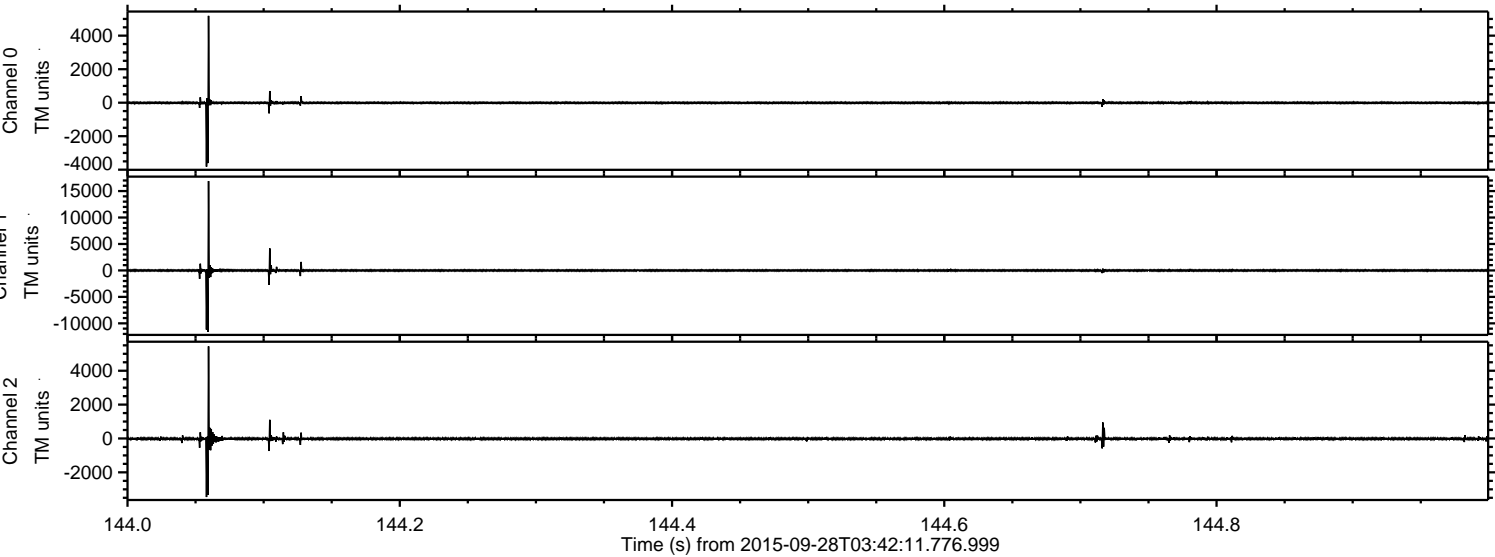
Channel 2
mn: -2596
mx: 3994
 μ : -15.4
 σ : 57.2

Processed Sat Oct 17 01:59:39 2015 by ELM ver.2012-10-06 from 001__elm20150928_034210__dat00.bin



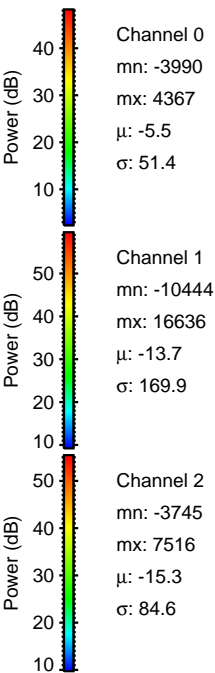
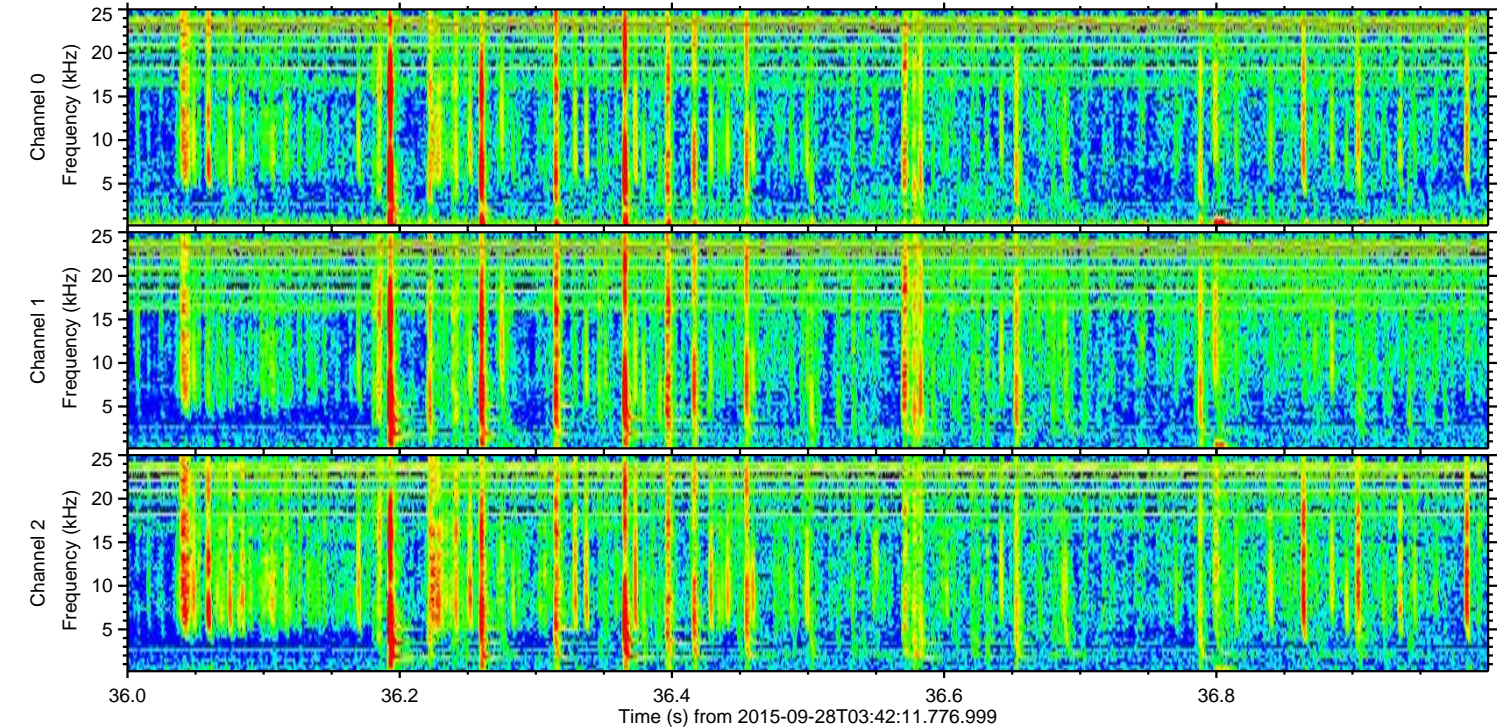
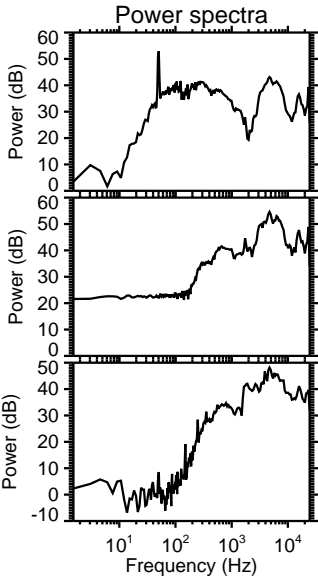
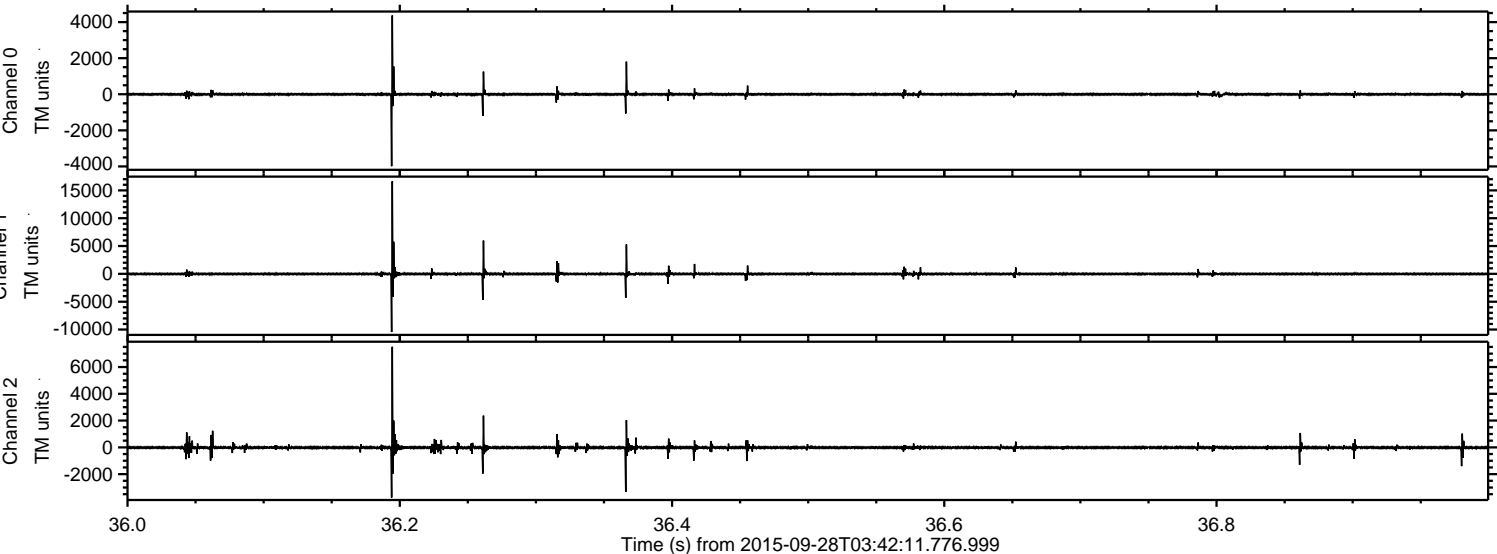
ELMAVAN 3D WAVEFORMS (Measured data sampled at 50 kHz) 51000 packets of 144 samples from 2015-09-28T03:42:11.776.999. Part 145/147

Processed Sat Oct 17 01:59:40 2015 by ELM ver.2012-10-06 from 001__elm20150928_034210__dat00.bin



ELMAVAN 3D WAVEFORMS (Measured data sampled at 50 kHz) 51000 packets of 144 samples from 2015-09-28T03:42:11.776.999. Part 37/147

Processed Sat Oct 17 01:59:41 2015 by ELM ver.2012-10-06 from 001__elm20150928_034210__dat00.bin



ELMAVAN 3D WAVEFORMS (Measured data sampled at 50 kHz) 51000 packets of 144 samples from 2015-09-28T03:42:11.776.999. Part 110/147

Processed Sat Oct 17 01:59:42 2015 by ELM ver.2012-10-06 from 001__elm20150928_034210__dat00.bin

