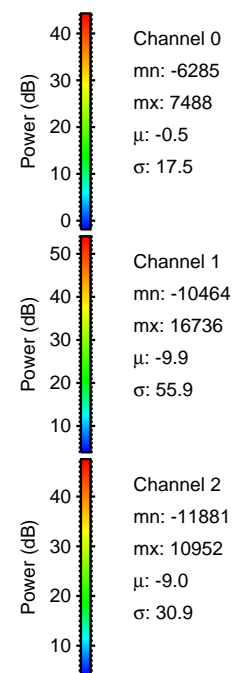
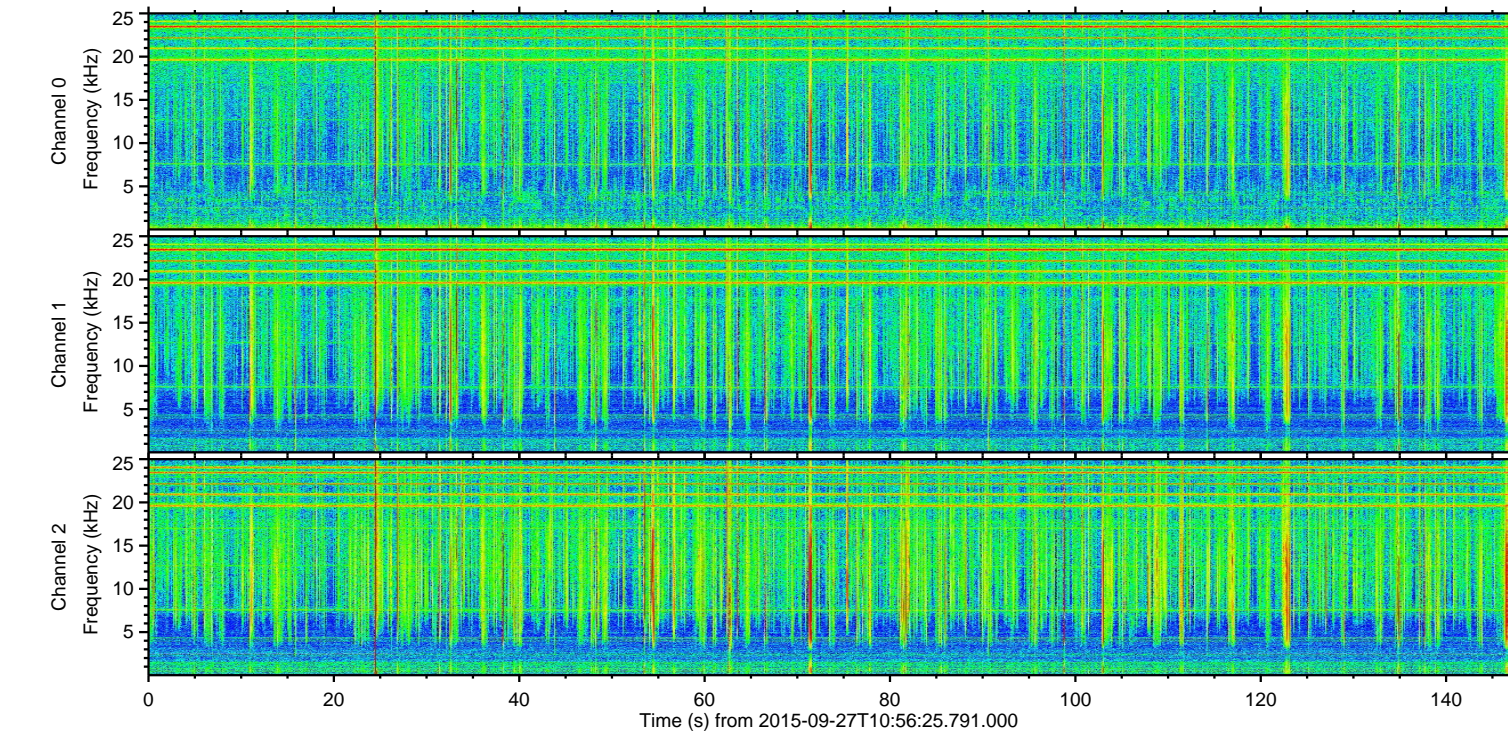
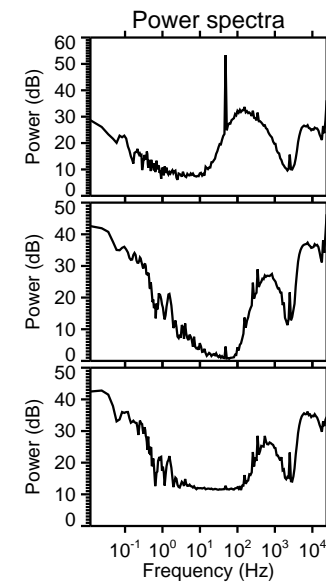
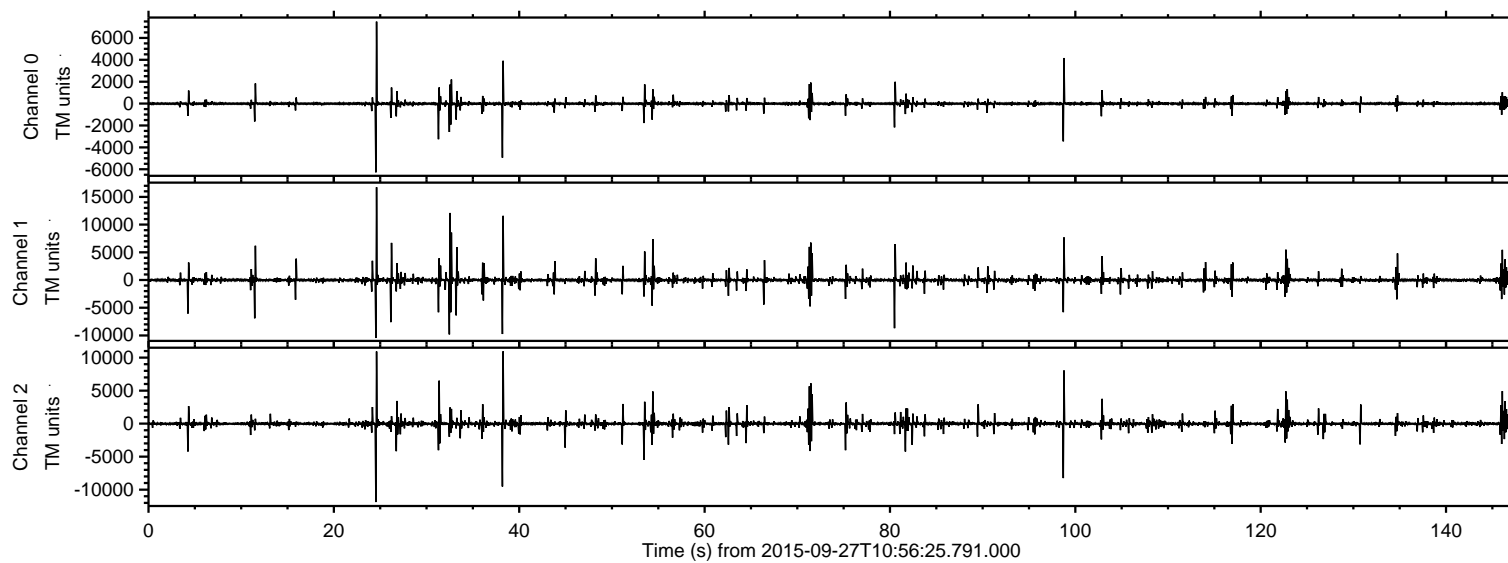


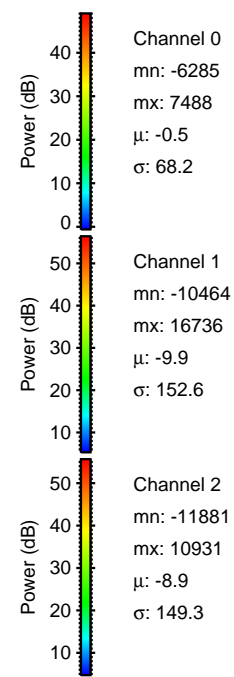
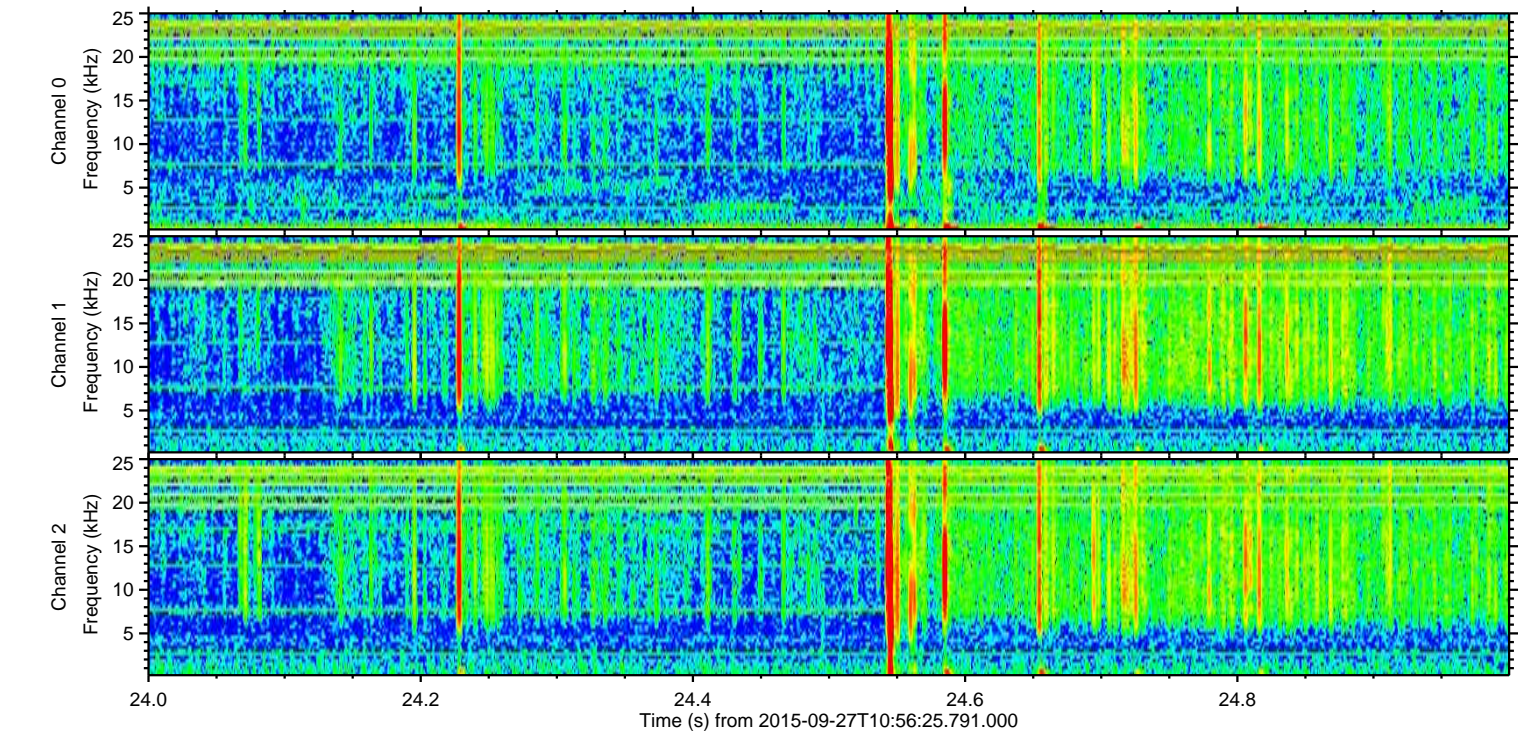
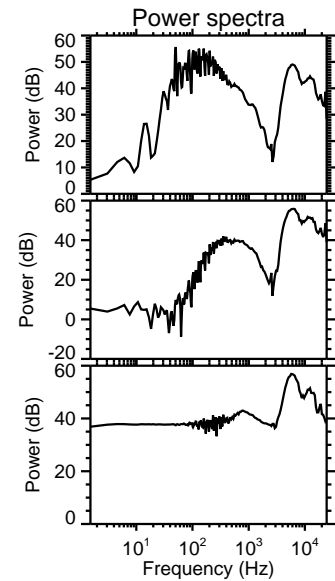
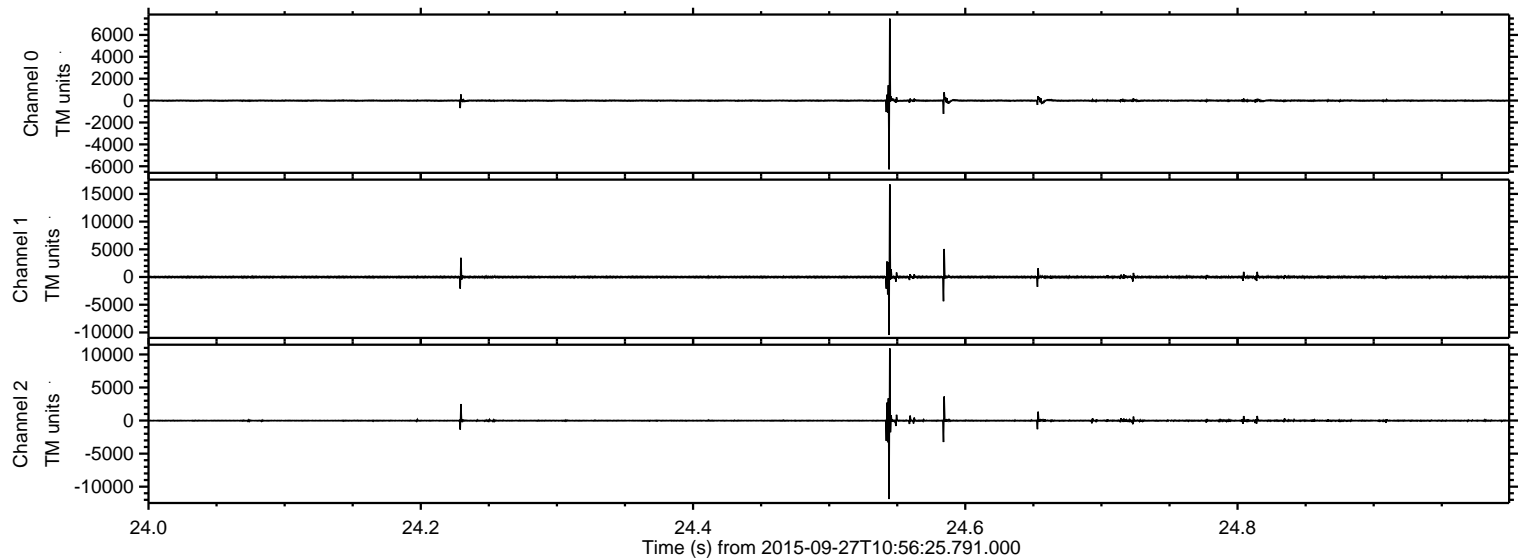
ELMAVAN 3D WAVEFORMS (Measured data sampled at 50 kHz) 51000 packets of 144 samples from 2015-09-27T10:56:25.791.000.

Processed Fri Oct 16 21:25:53 2015 by ELM ver.2012-10-06 from 001__elm20150927_105624__dat00.bin

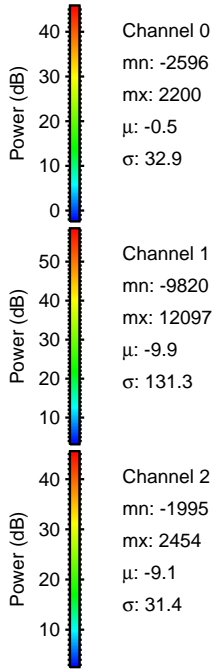
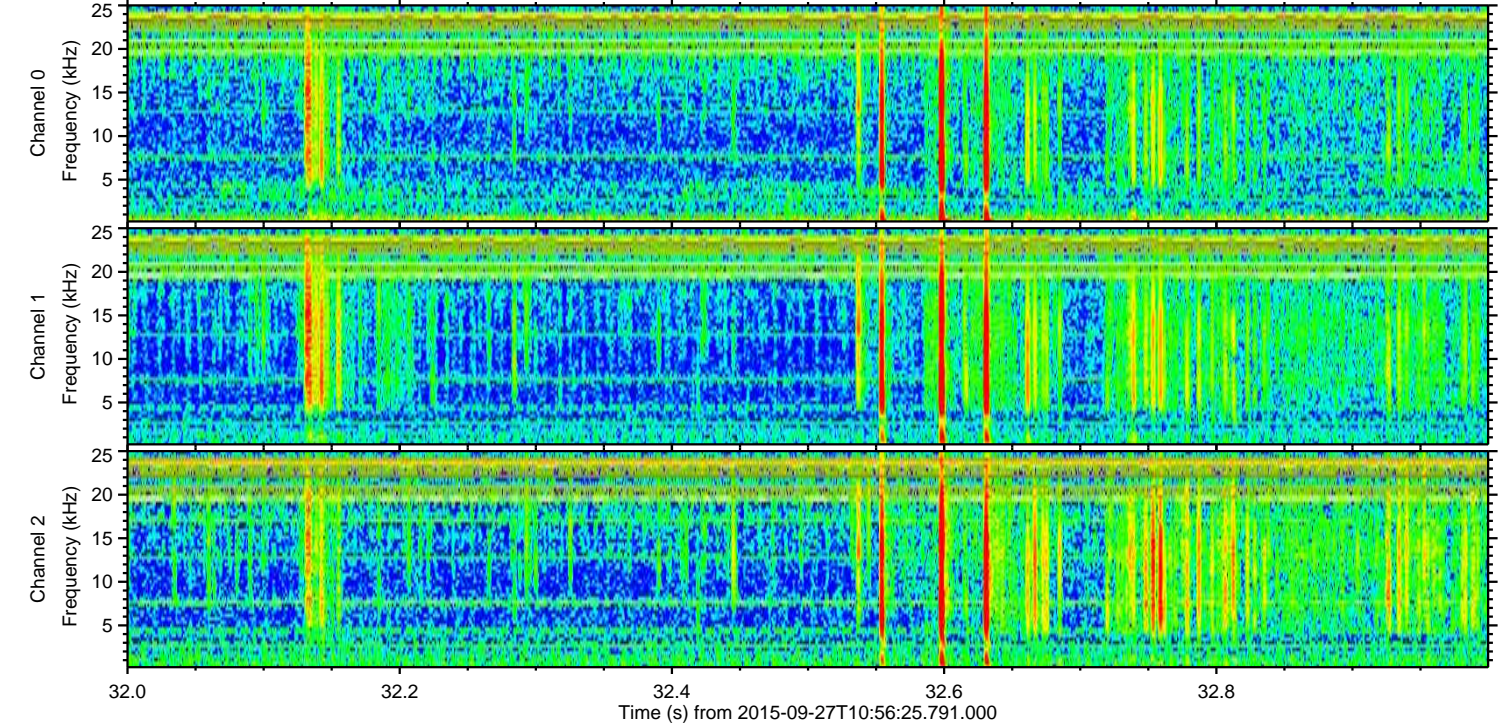
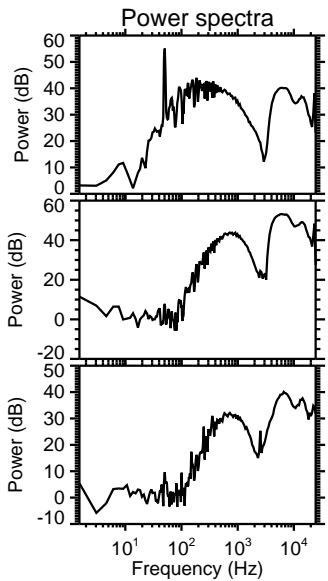
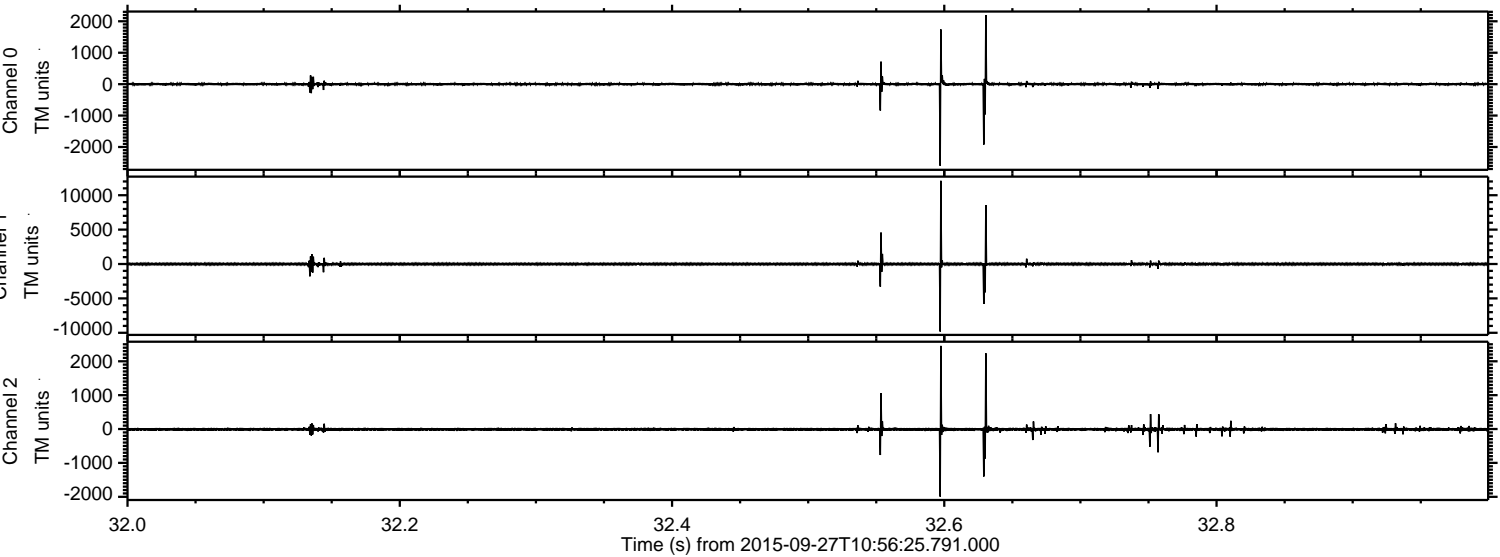


ELMAVAN 3D WAVEFORMS (Measured data sampled at 50 kHz) 51000 packets of 144 samples from 2015-09-27T10:56:25.791.000. Part 25/147

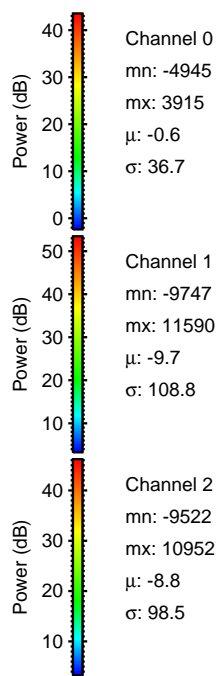
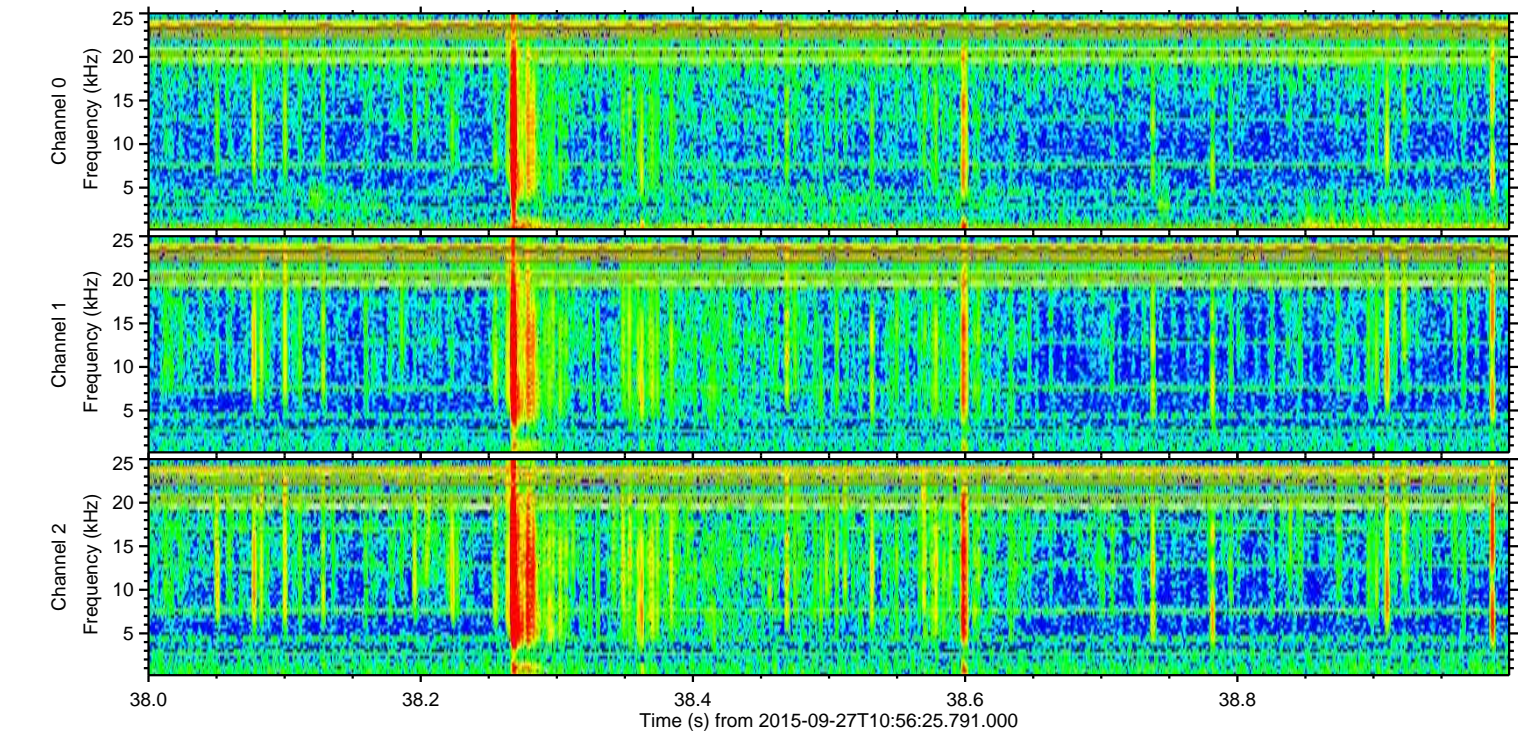
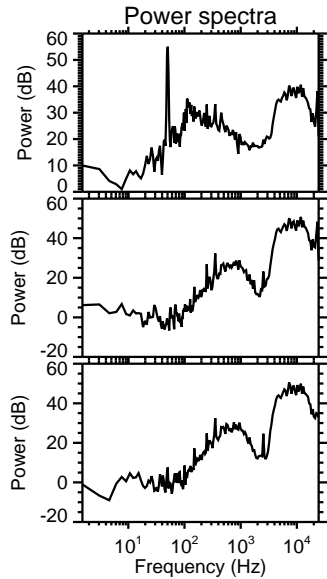
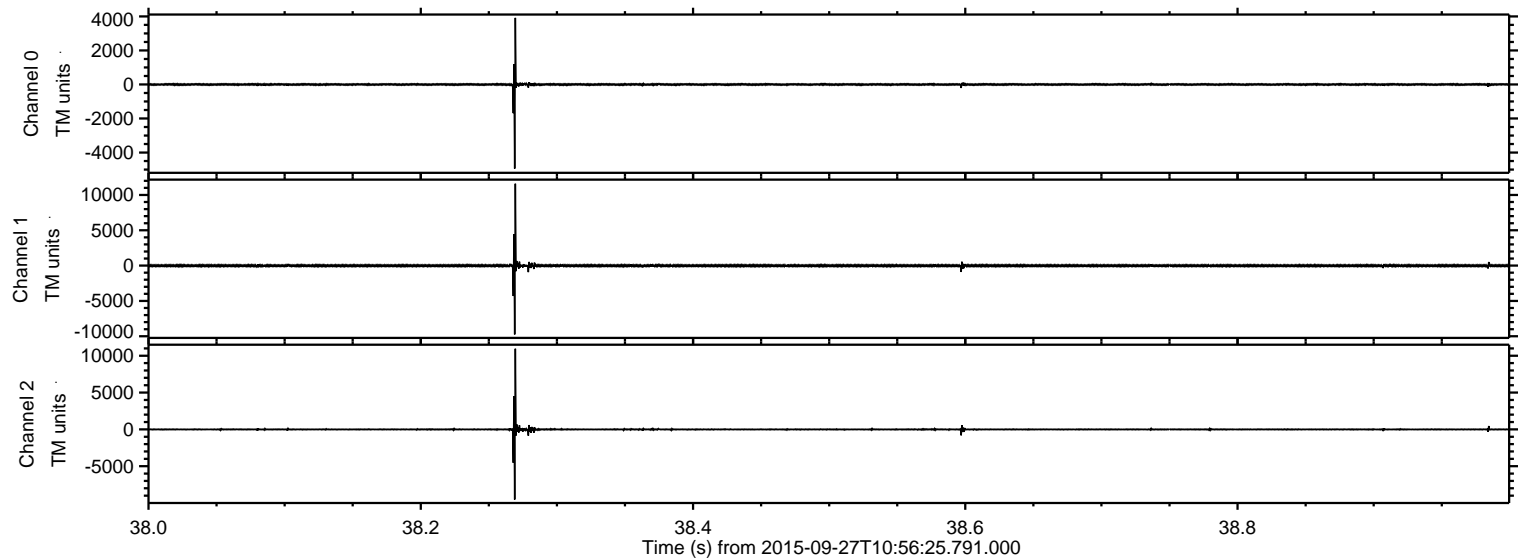
Processed Fri Oct 16 21:26:08 2015 by ELM ver.2012-10-06 from 001__elm20150927_105624__dat00.bin



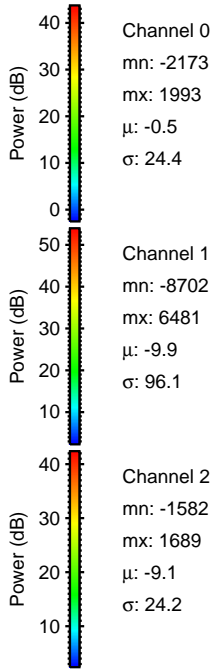
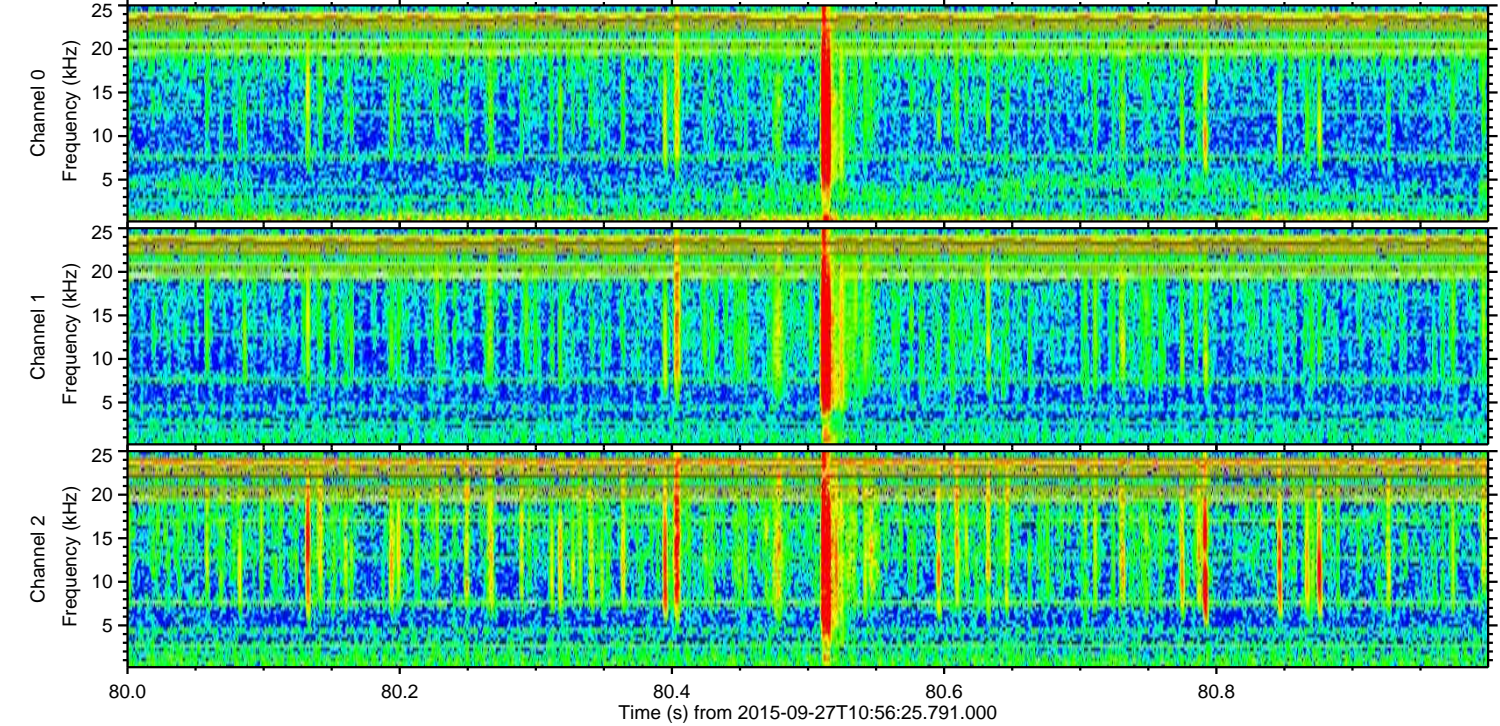
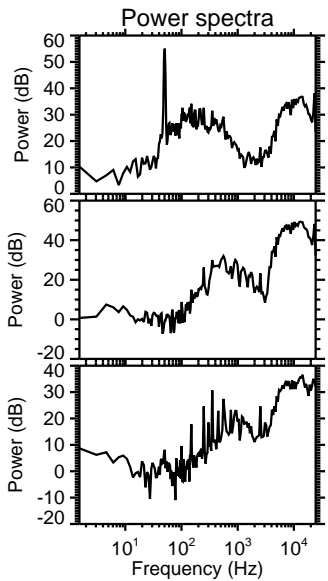
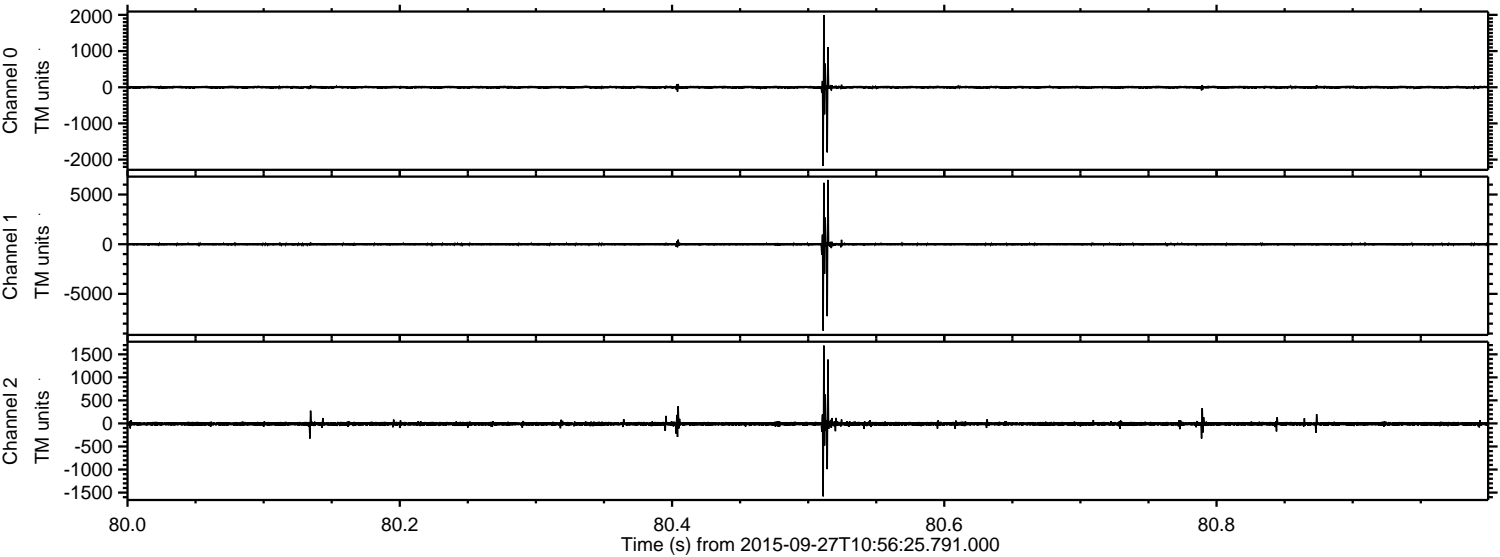
Processed Fri Oct 16 21:26:09 2015 by ELM ver.2012-10-06 from 001__elm20150927_105624__dat00.bin



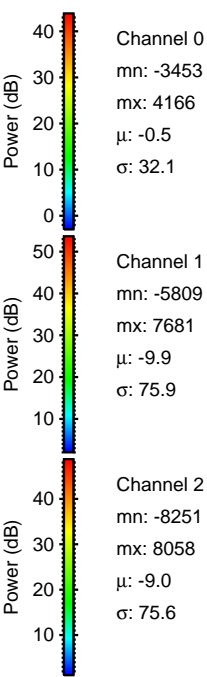
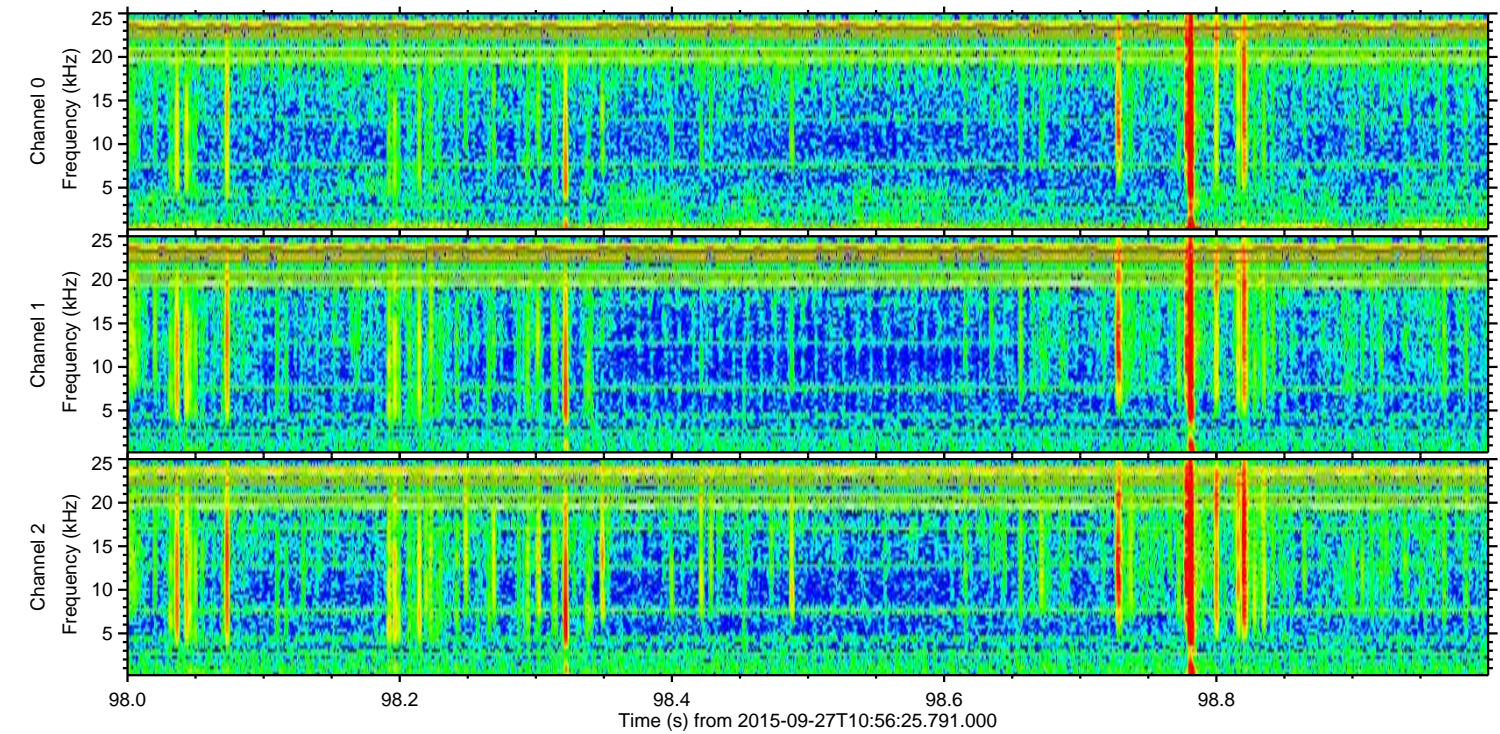
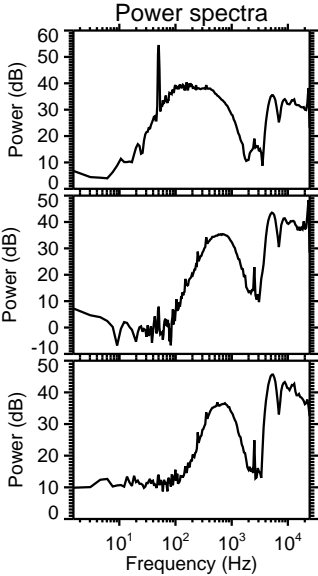
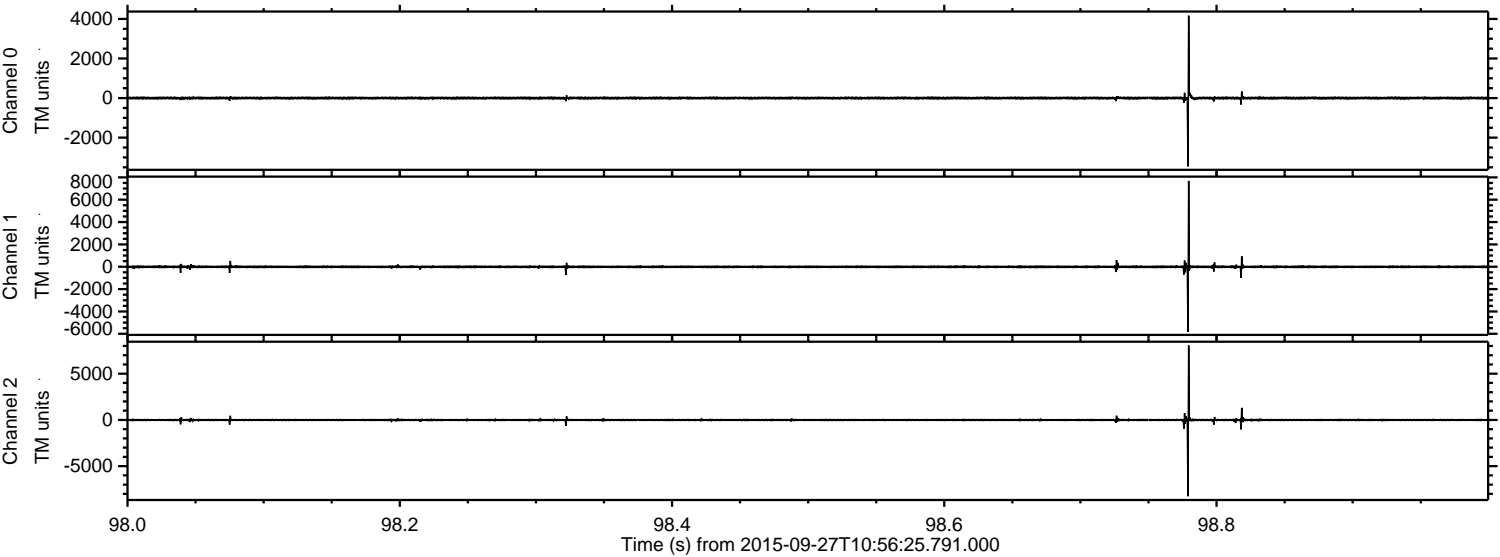
Processed Fri Oct 16 21:26:10 2015 by ELM ver.2012-10-06 from 001__elm20150927_105624__dat00.bin



Processed Fri Oct 16 21:26:11 2015 by ELM ver.2012-10-06 from 001__elm20150927_105624__dat00.bin

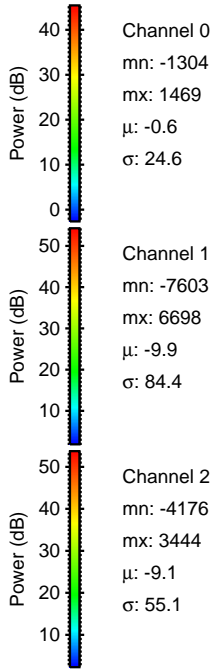
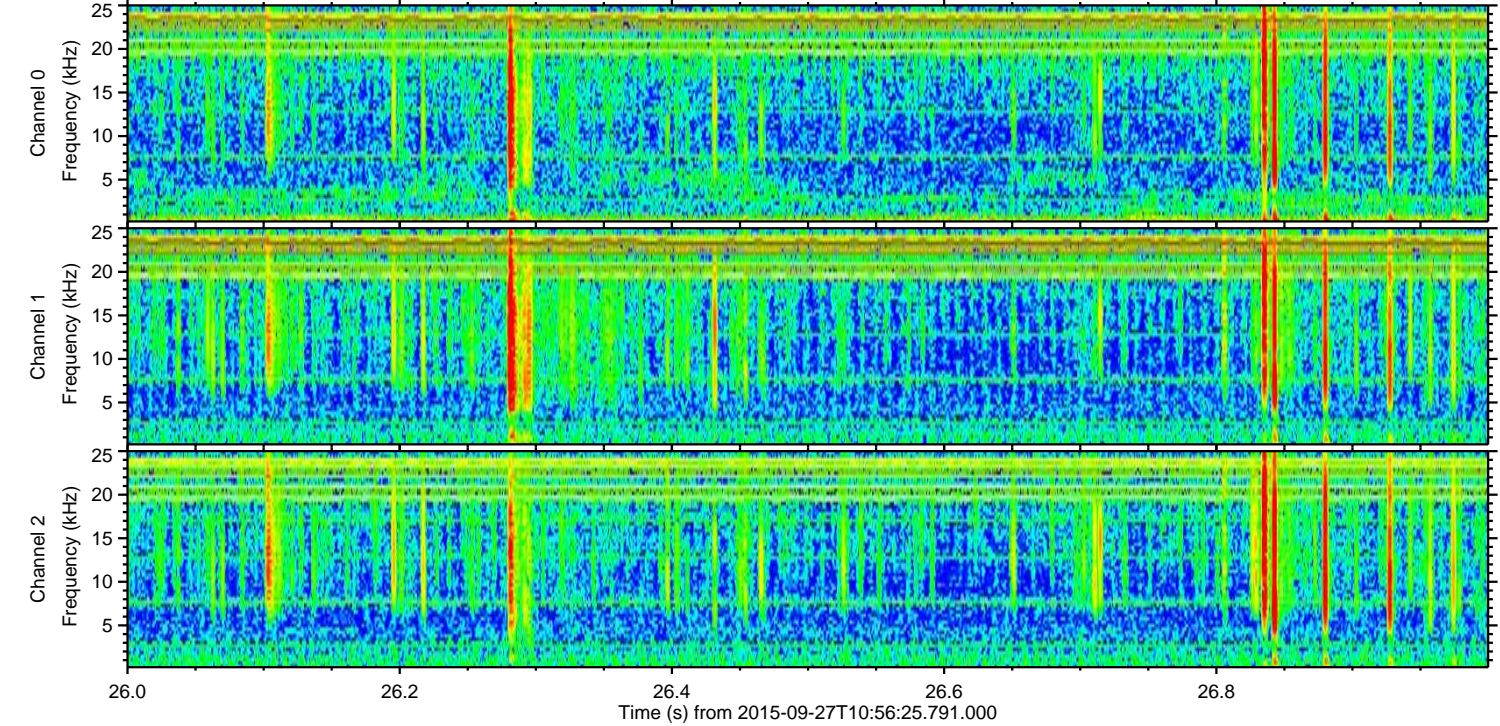
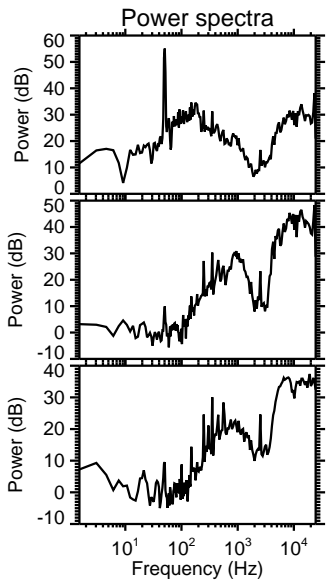
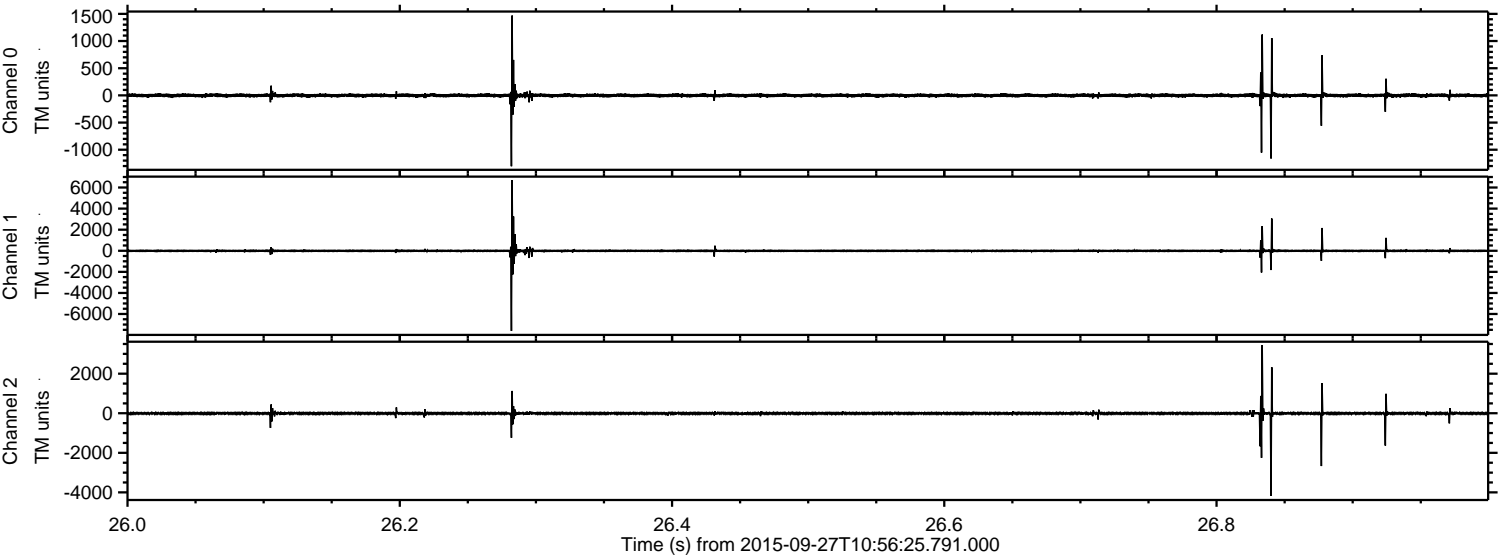


Processed Fri Oct 16 21:26:12 2015 by ELM ver.2012-10-06 from 001__elm20150927_105624__dat00.bin



ELMAVAN 3D WAVEFORMS (Measured data sampled at 50 kHz) 51000 packets of 144 samples from 2015-09-27T10:56:25.791.000. Part 27/147

Processed Fri Oct 16 21:26:13 2015 by ELM ver.2012-10-06 from 001__elm20150927_105624__dat00.bin

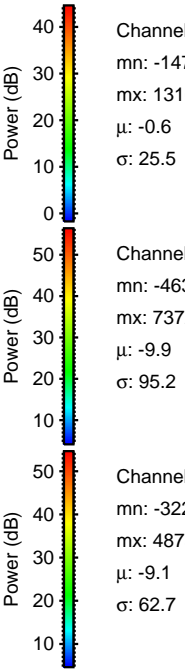
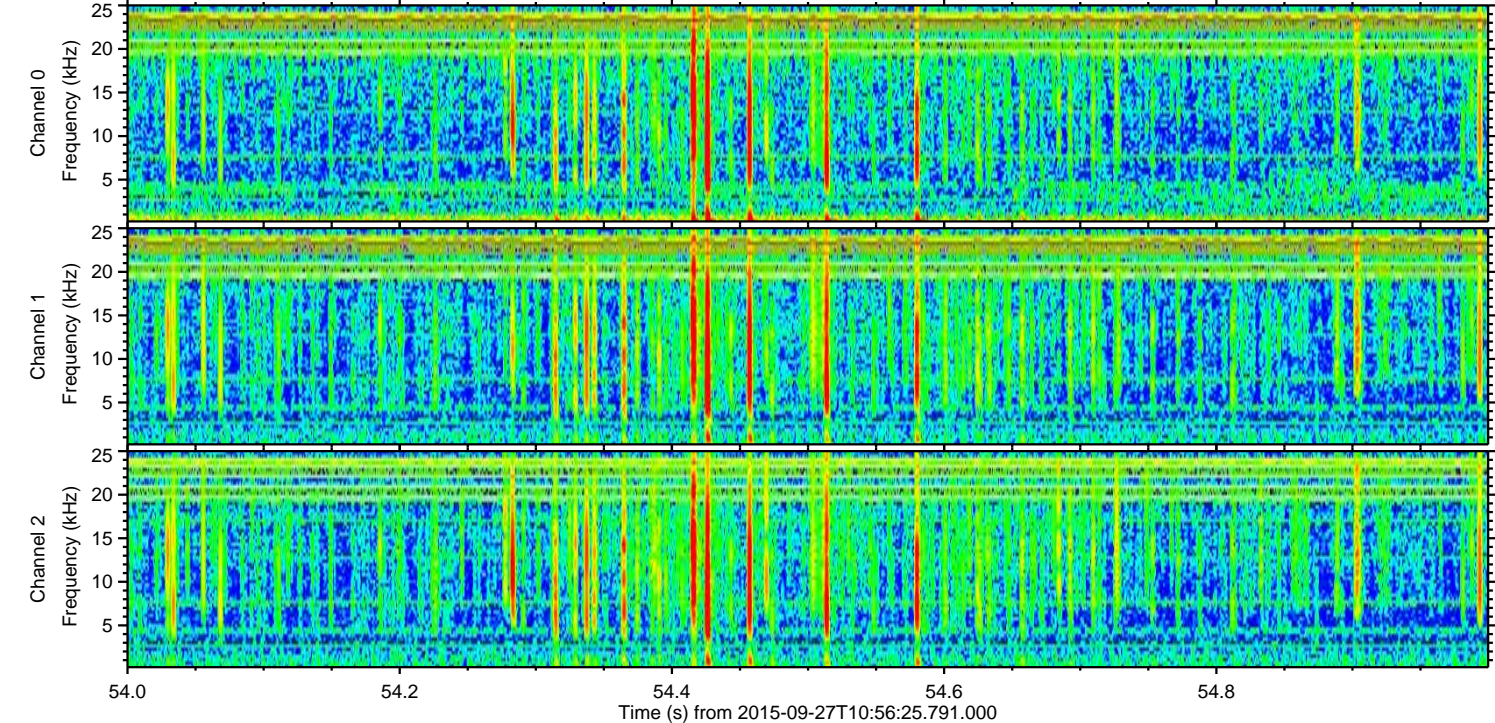
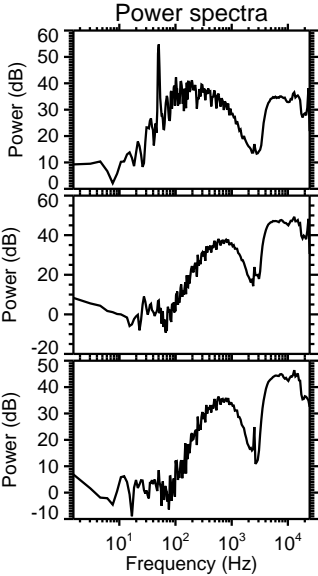
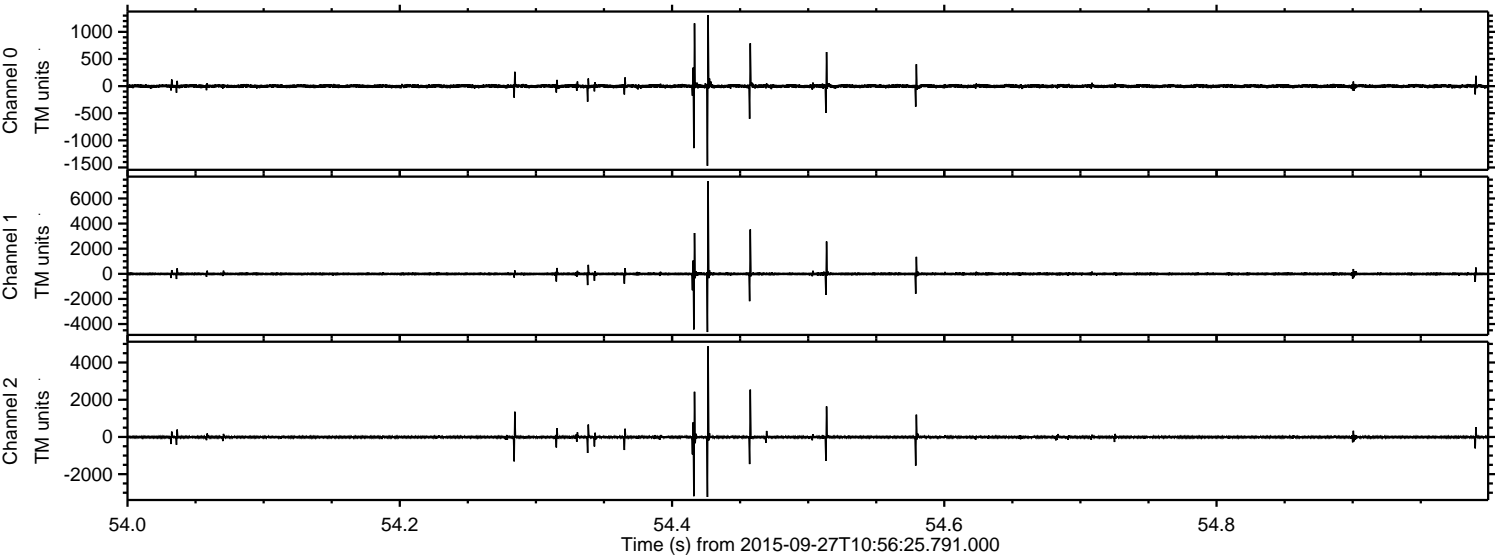


Channel 0
mn: -1304
mx: 1469
 μ : -0.6
 σ : 24.6

Channel 1
mn: -7603
mx: 6698
 μ : -9.9
 σ : 84.4

Channel 2
mn: -4176
mx: 3444
 μ : -9.1
 σ : 55.1

Processed Fri Oct 16 21:26:14 2015 by ELM ver.2012-10-06 from 001__elm20150927_105624__dat00.bin

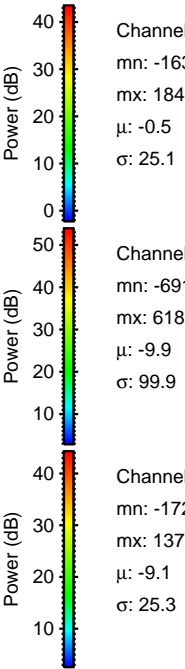
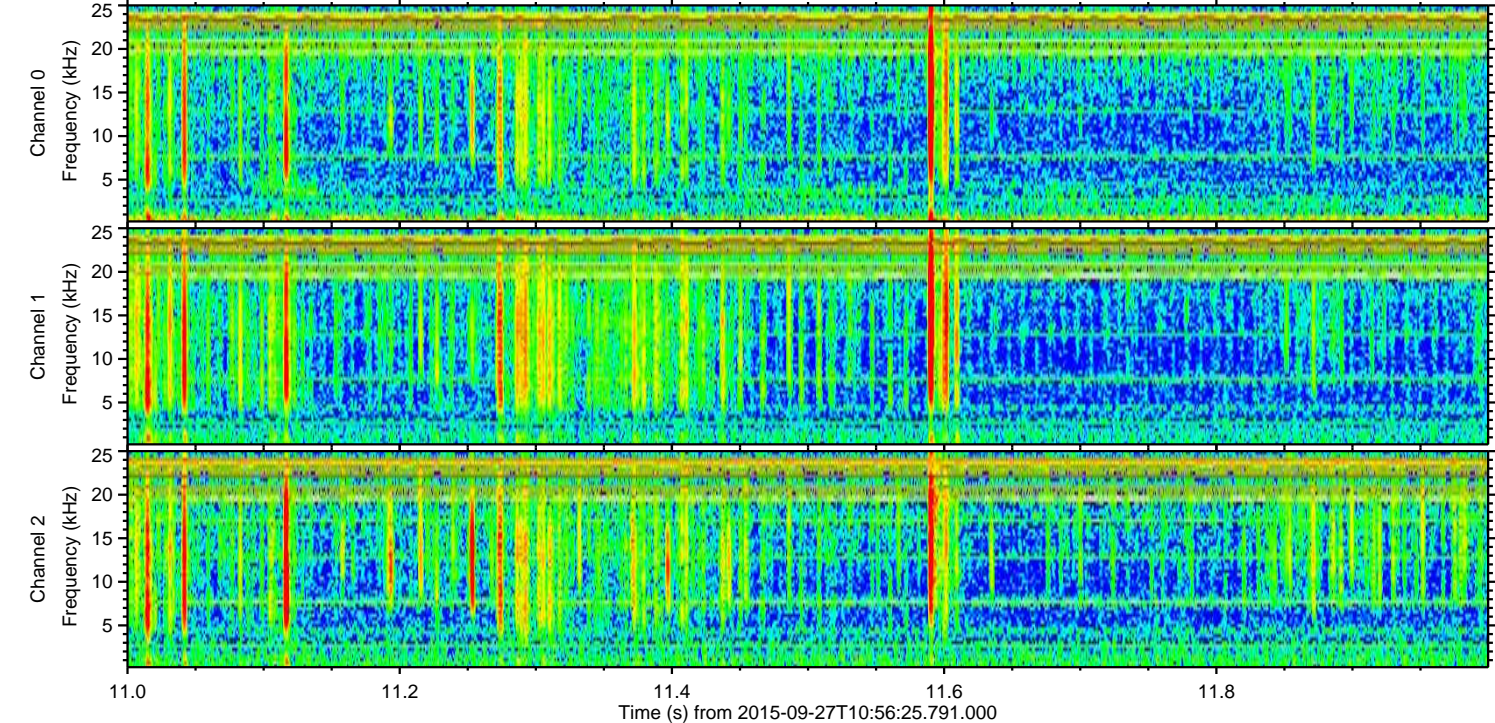
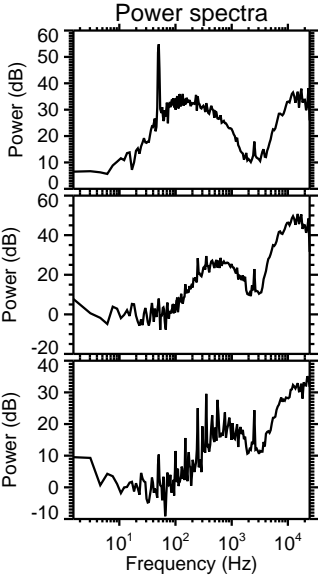
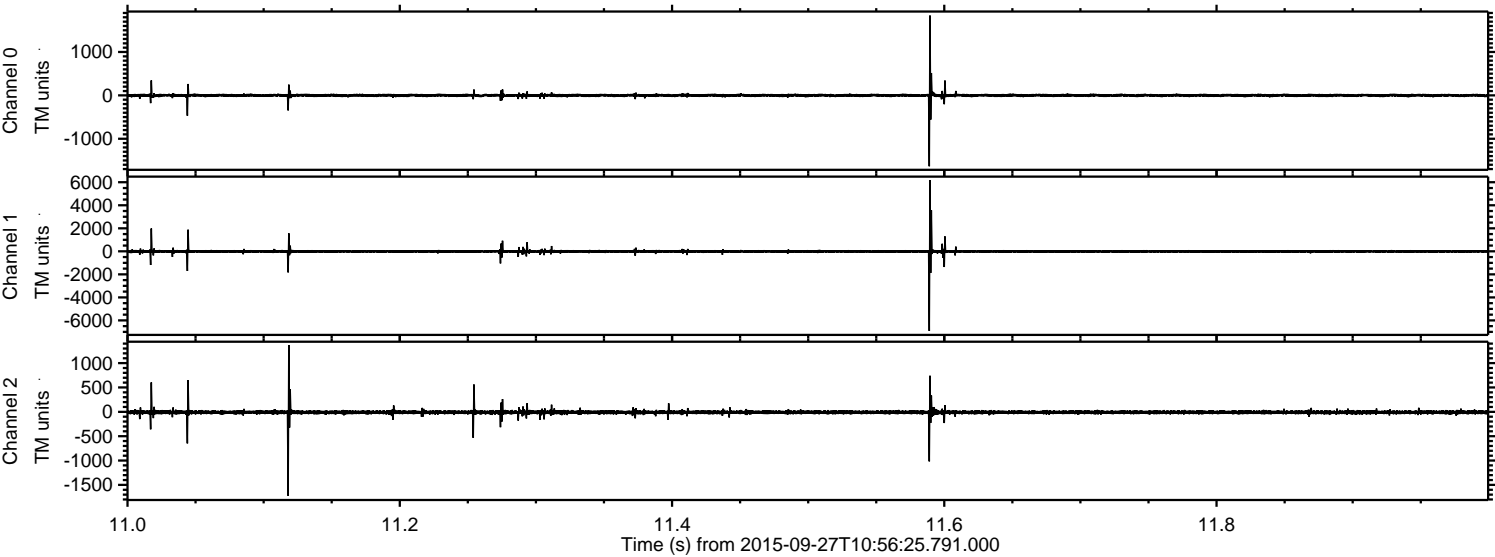


Channel 0
mn: -1470
mx: 1310
 μ : -0.6
 σ : 25.5

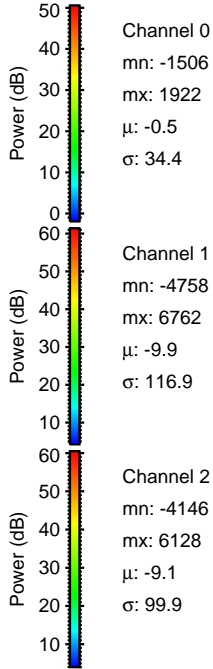
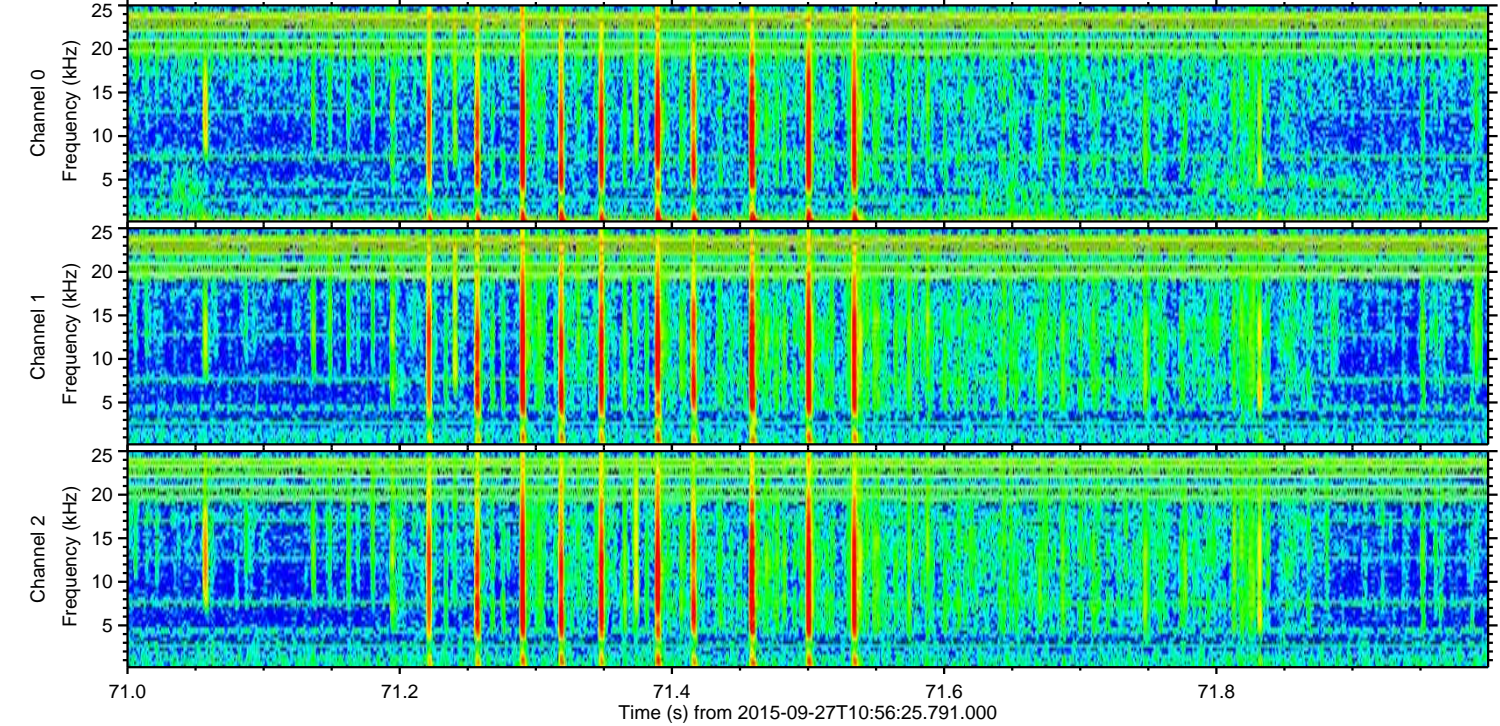
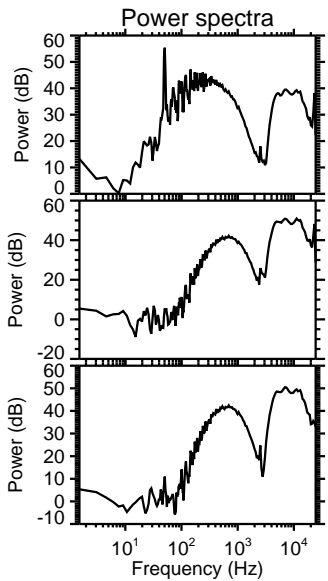
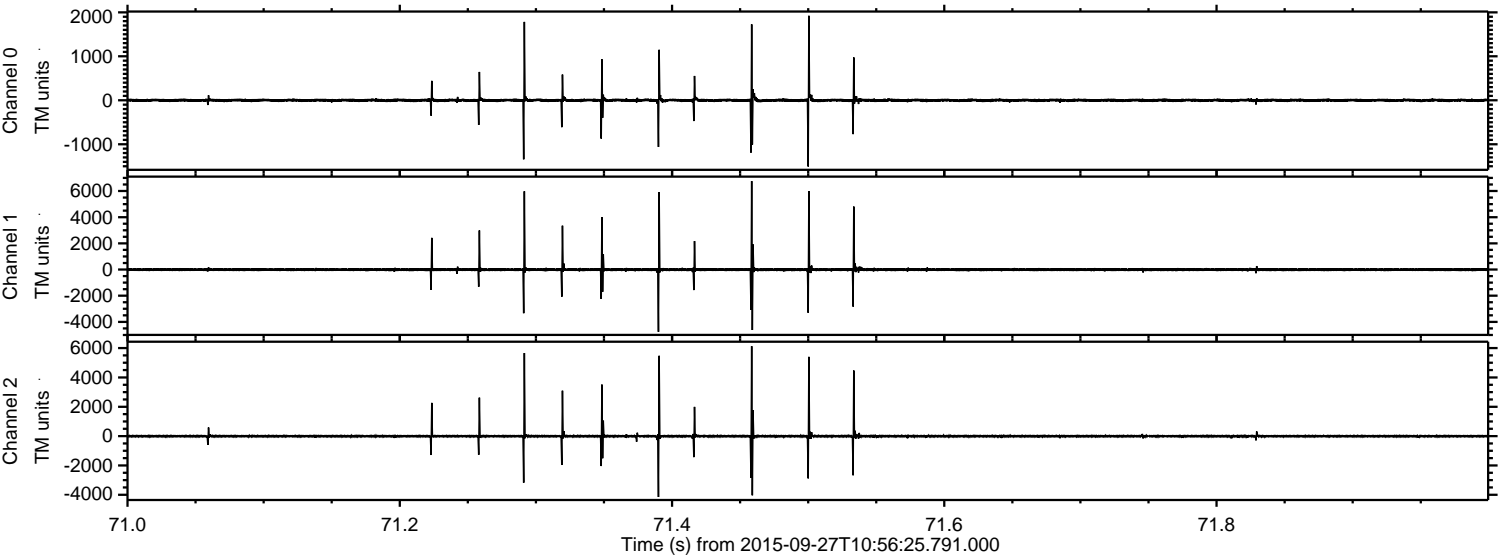
Channel 1
mn: -4635
mx: 7372
 μ : -9.9
 σ : 95.2

Channel 2
mn: -3227
mx: 4875
 μ : -9.1
 σ : 62.7

Processed Fri Oct 16 21:26:15 2015 by ELM ver.2012-10-06 from 001__elm20150927_105624__dat00.bin



Processed Fri Oct 16 21:26:16 2015 by ELM ver.2012-10-06 from 001__elm20150927_105624__dat00.bin



Processed Fri Oct 16 21:26:17 2015 by ELM ver.2012-10-06 from 001__elm20150927_105624__dat00.bin

