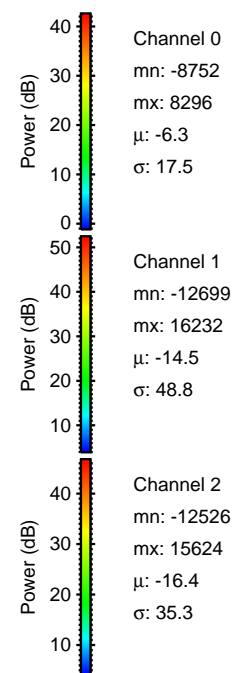
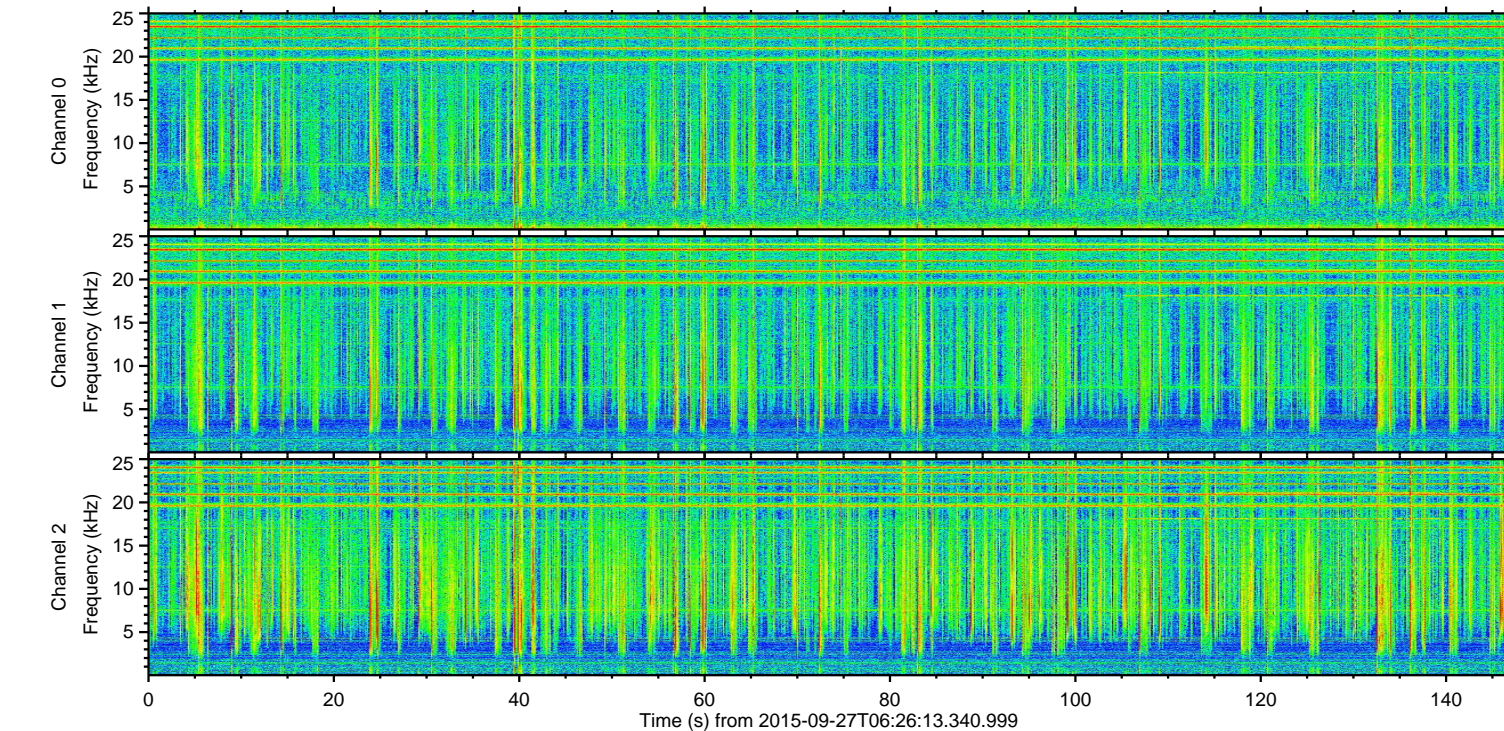
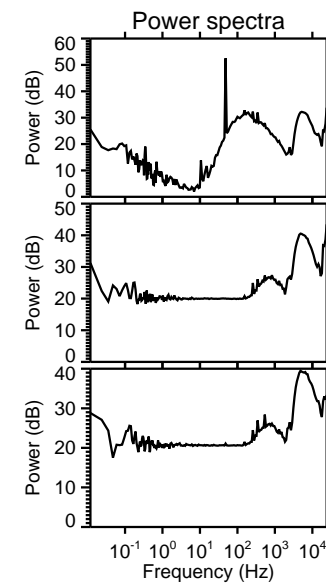
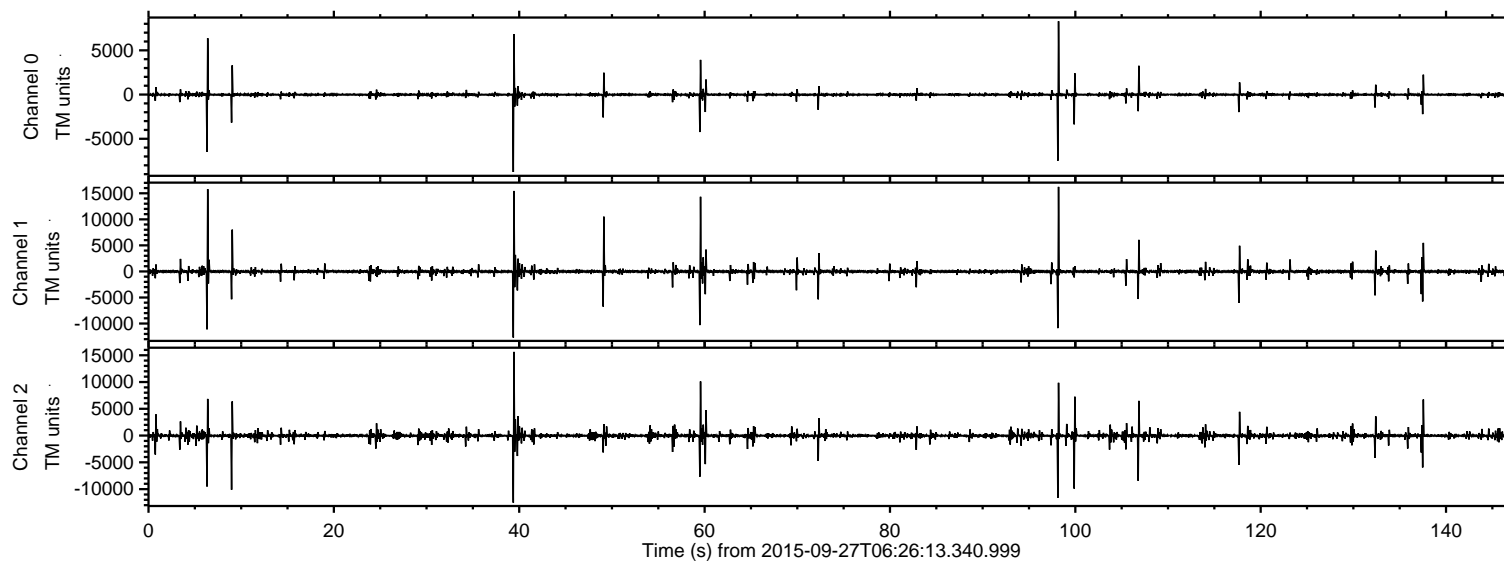
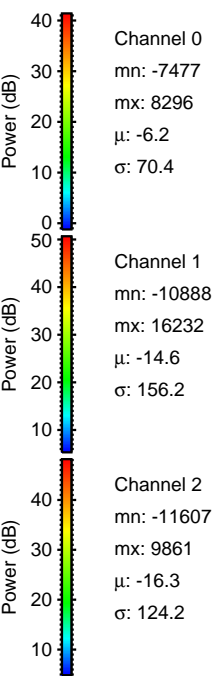
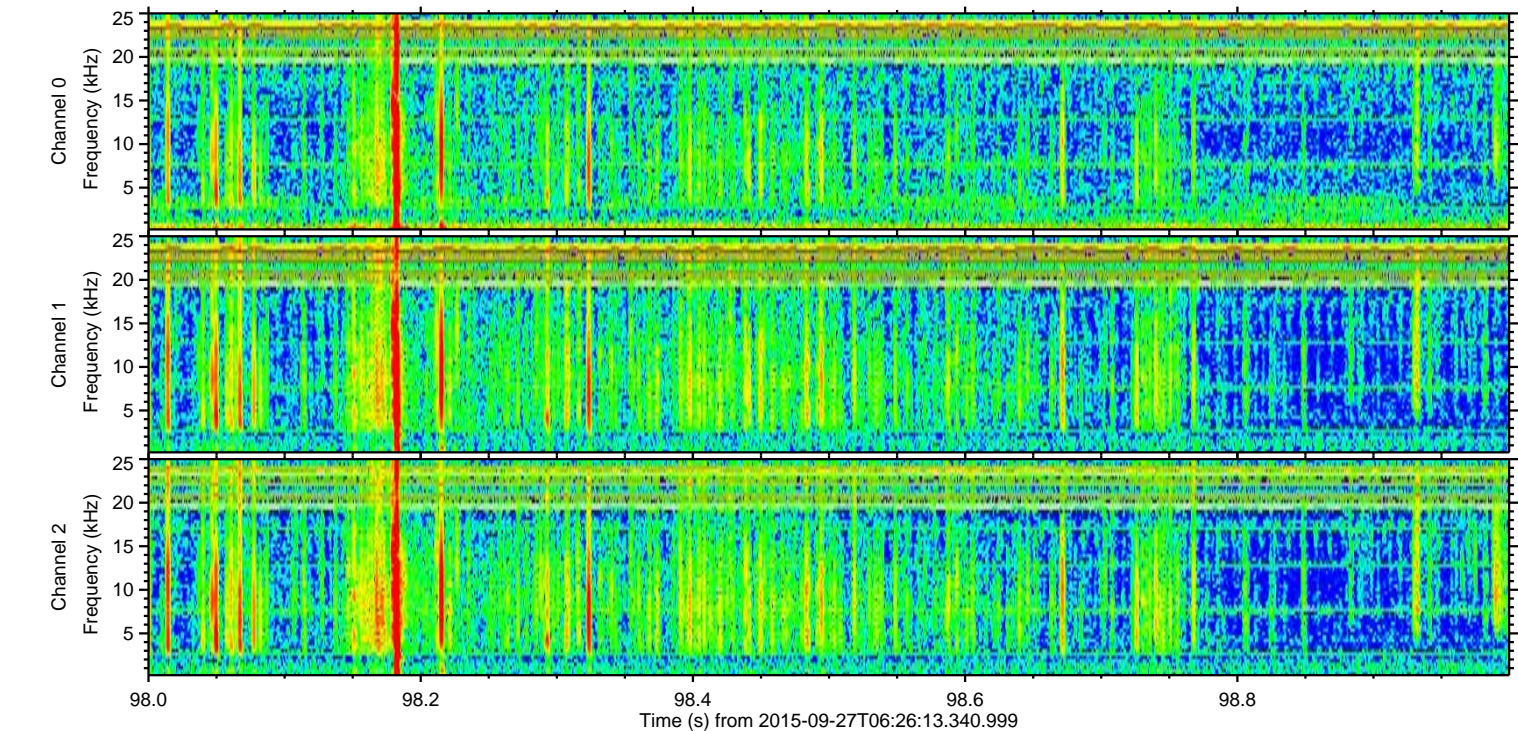
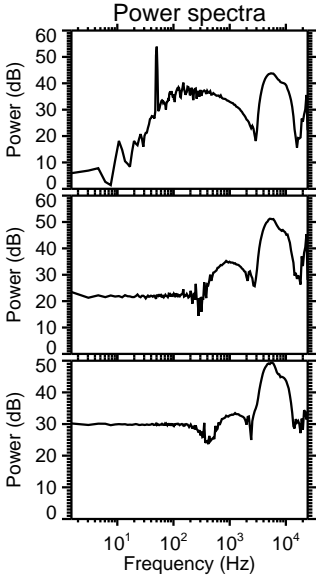
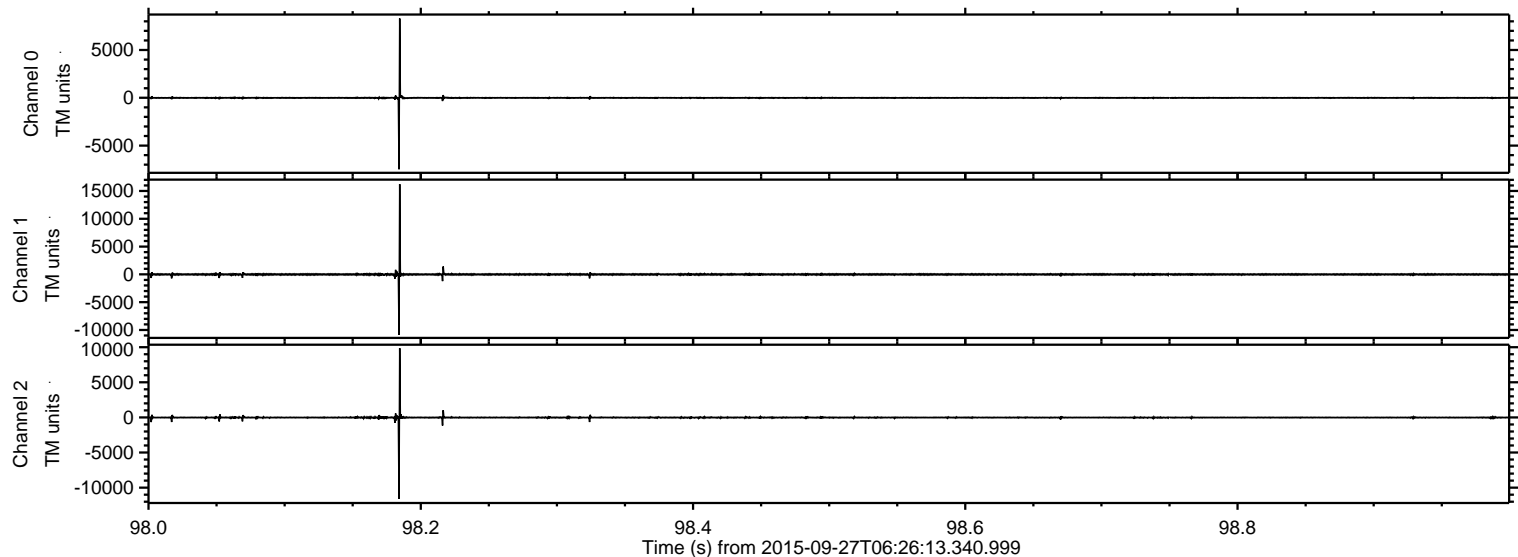


ELMAVAN 3D WAVEFORMS (Measured data sampled at 50 kHz) 51000 packets of 144 samples from 2015-09-27T06:26:13.340.999.

Processed Fri Oct 16 20:12:38 2015 by ELM ver.2012-10-06 from 001__elm20150927_062612__dat00.bin

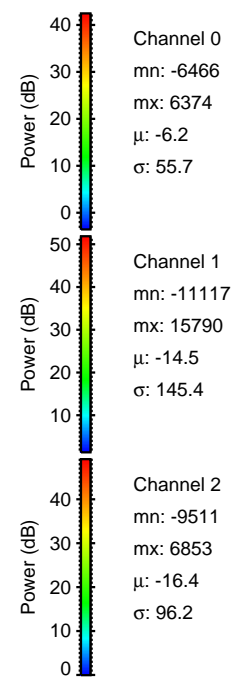
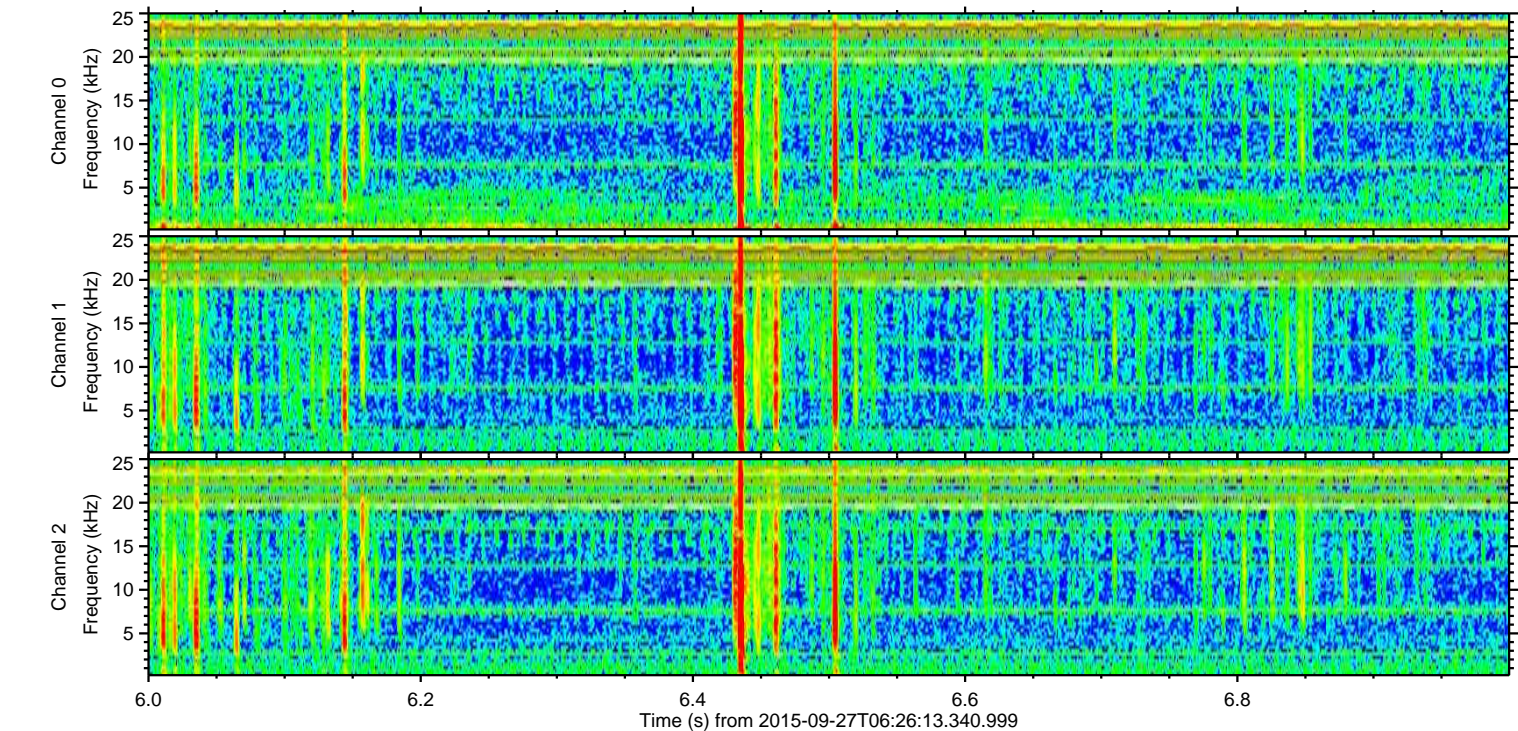
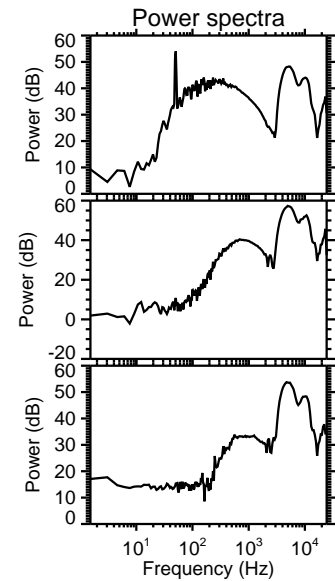
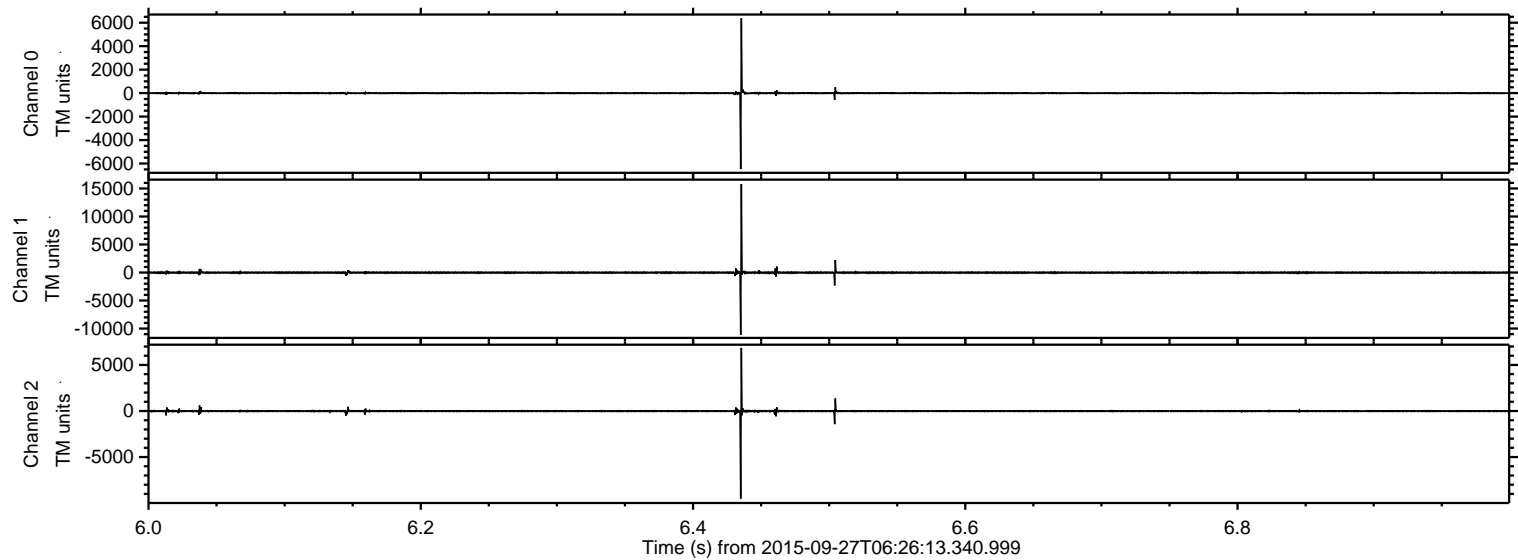


Processed Fri Oct 16 20:12:54 2015 by ELM ver.2012-10-06 from 001__elm20150927_062612__dat00.bin



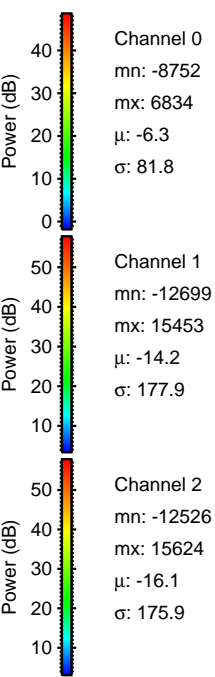
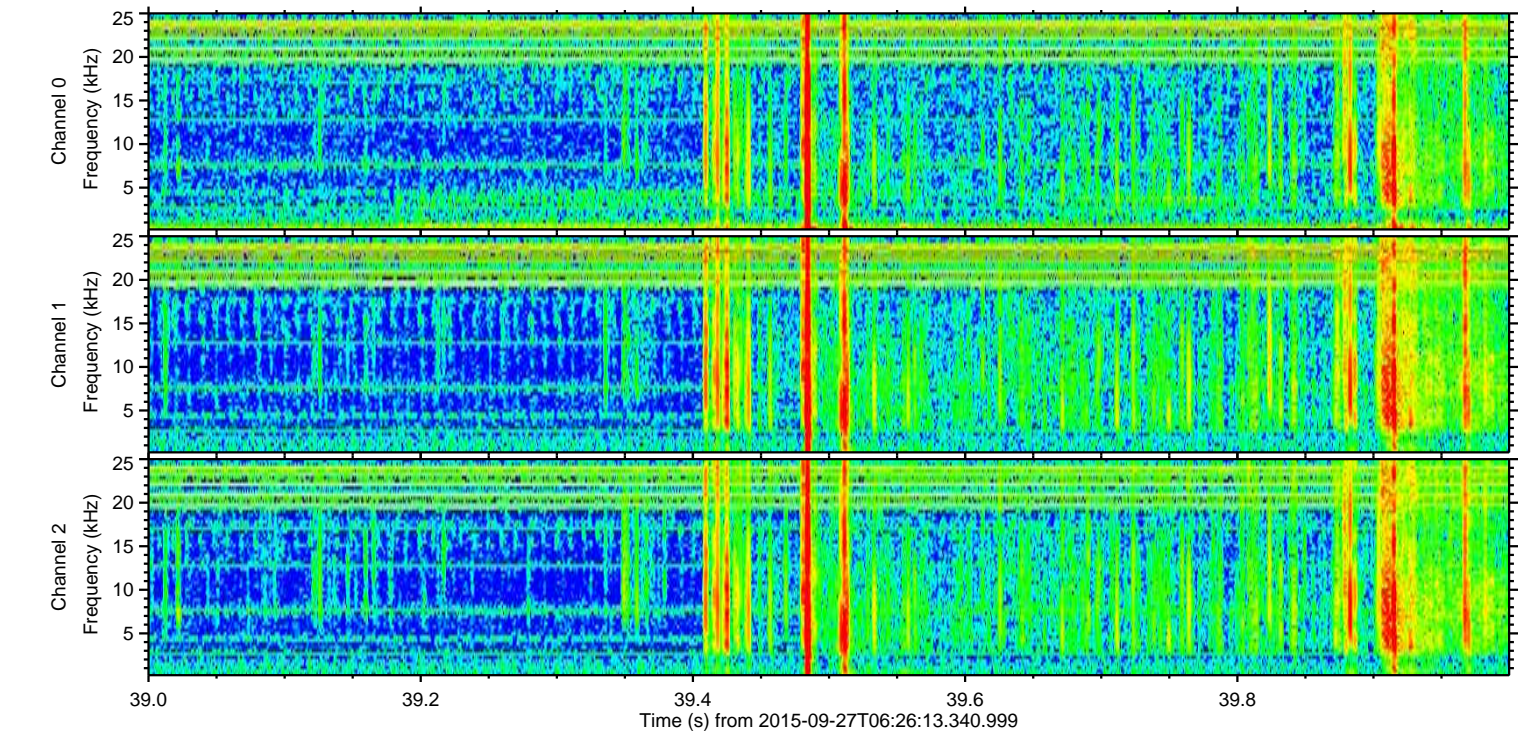
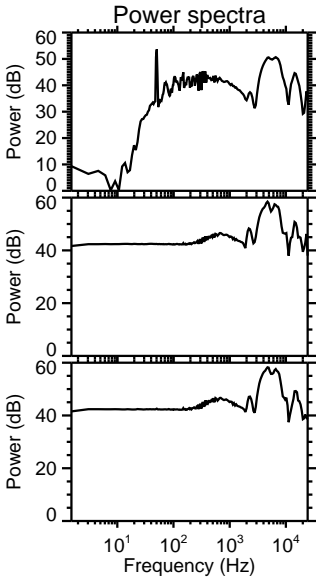
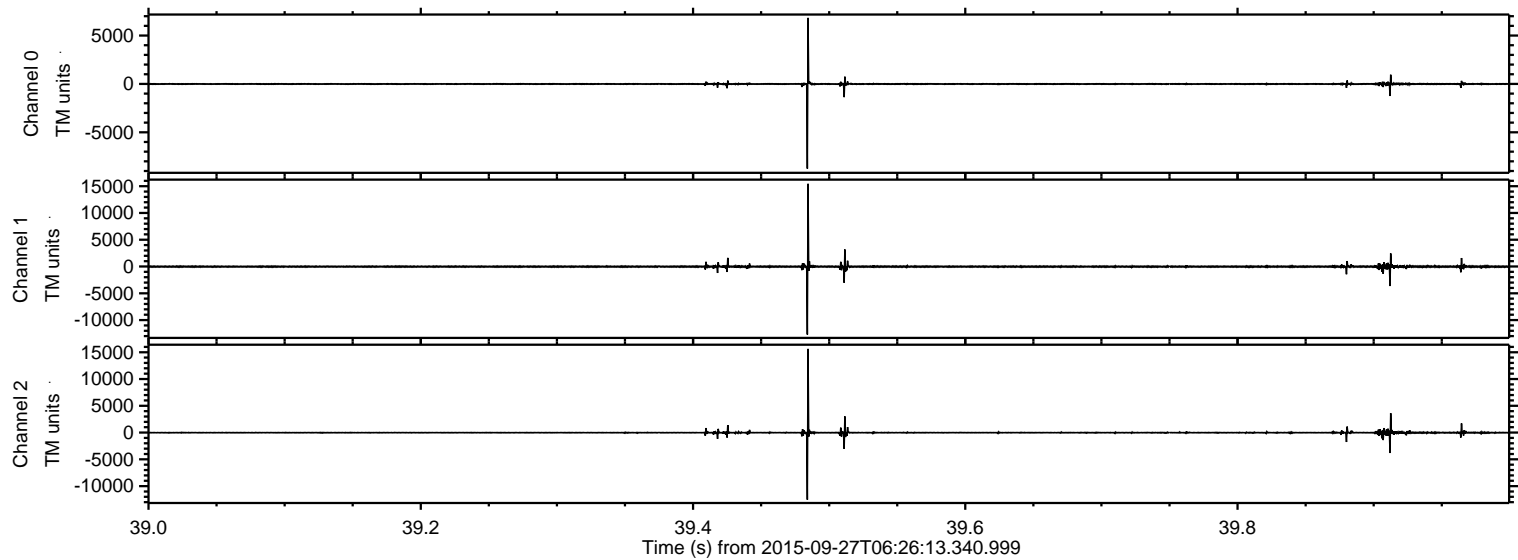
ELMAVAN 3D WAVEFORMS (Measured data sampled at 50 kHz) 51000 packets of 144 samples from 2015-09-27T06:26:13.340.999. Part 7/147

Processed Fri Oct 16 20:12:55 2015 by ELM ver.2012-10-06 from 001__elm20150927_062612__dat00.bin

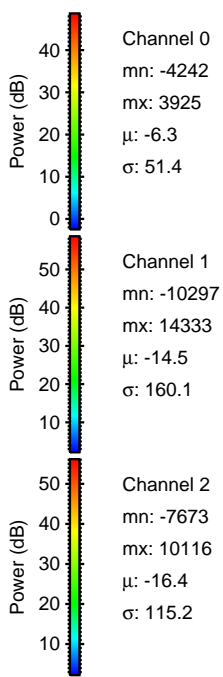
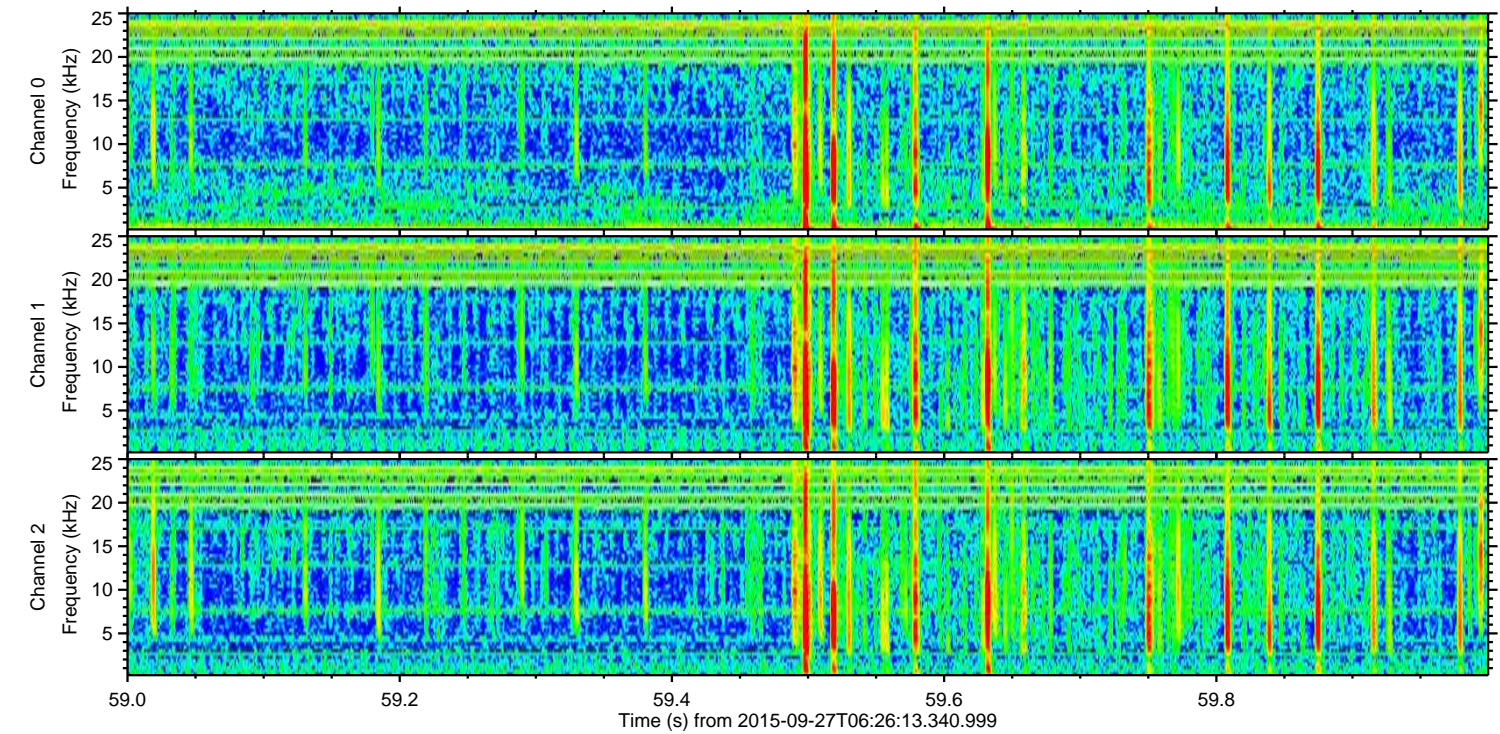
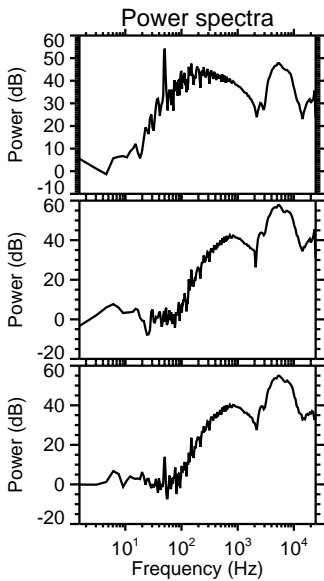
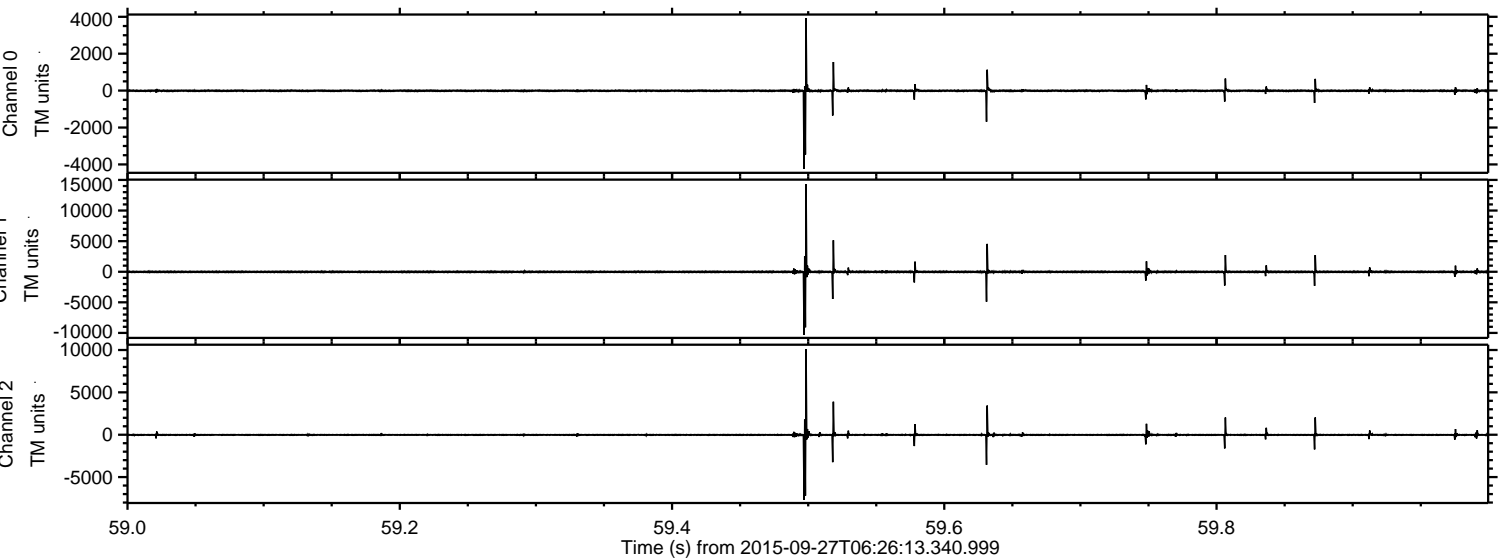


ELMAVAN 3D WAVEFORMS (Measured data sampled at 50 kHz) 51000 packets of 144 samples from 2015-09-27T06:26:13.340.999. Part 40/147

Processed Fri Oct 16 20:12:56 2015 by ELM ver.2012-10-06 from 001__elm20150927_062612__dat00.bin



Processed Fri Oct 16 20:12:57 2015 by ELM ver.2012-10-06 from 001__elm20150927_062612__dat00.bin

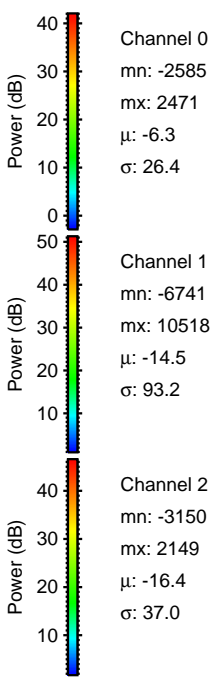
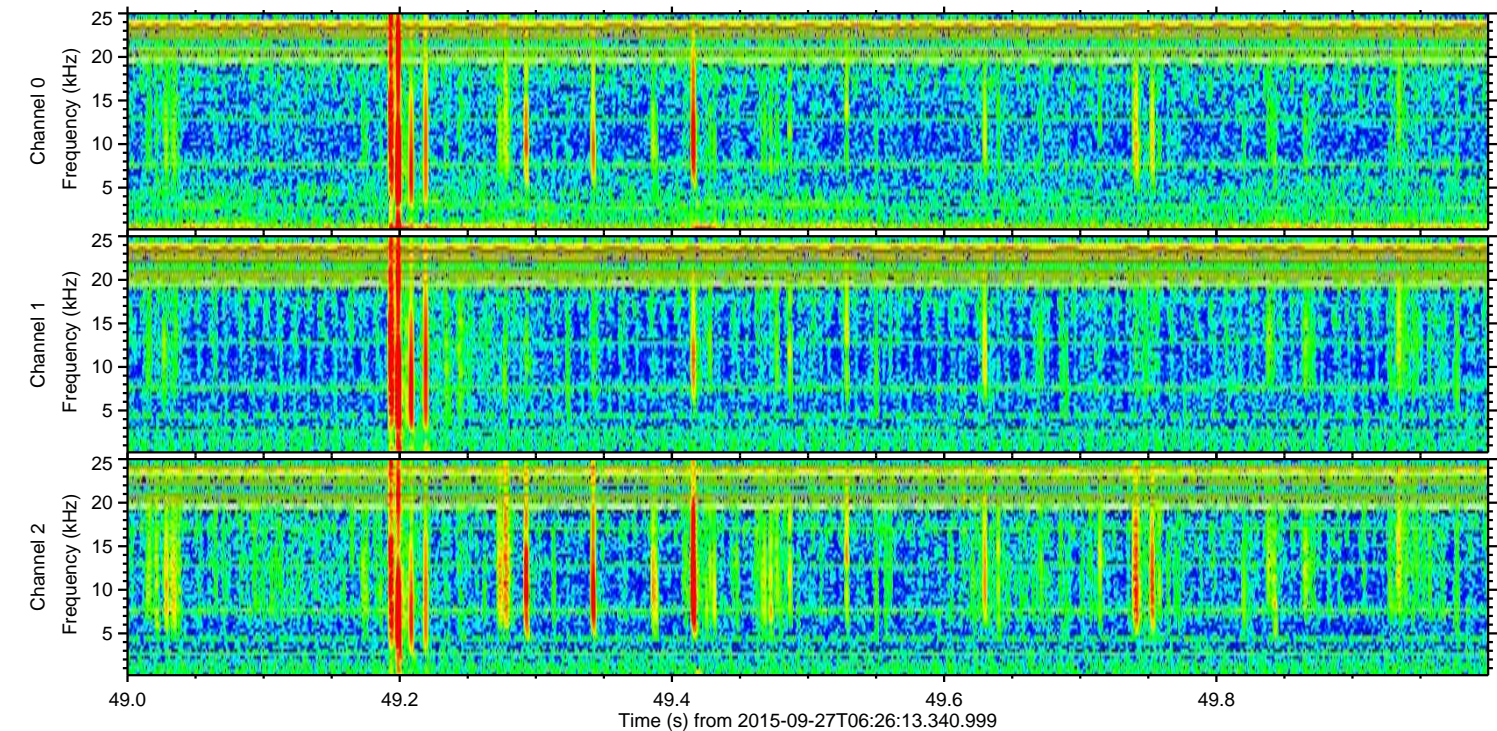
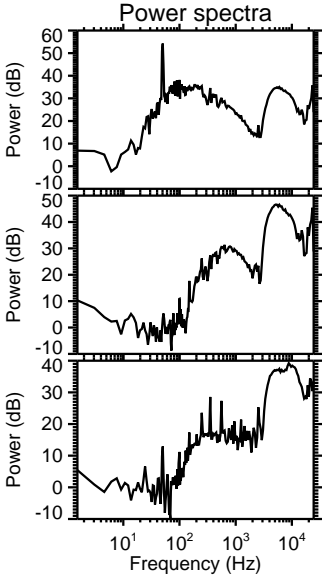
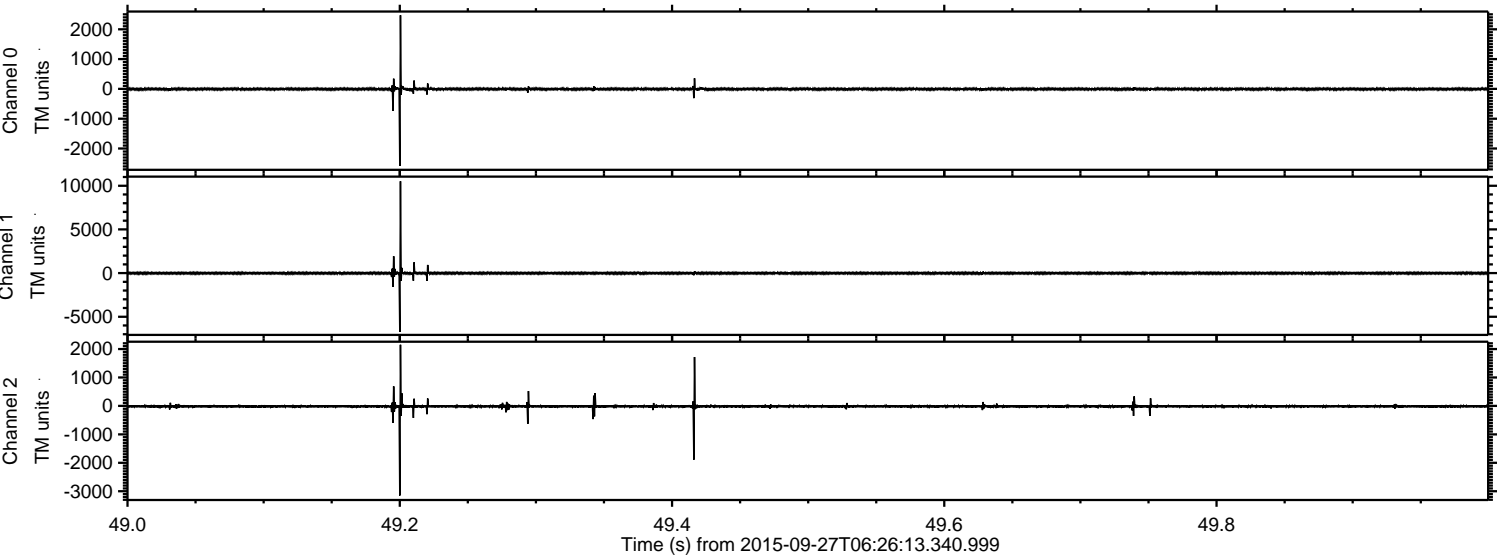


Channel 0
mn: -4242
mx: 3925
 μ : -6.3
 σ : 51.4

Channel 1
mn: -10297
mx: 14333
 μ : -14.5
 σ : 160.1

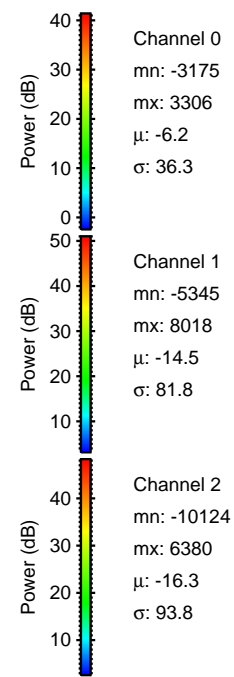
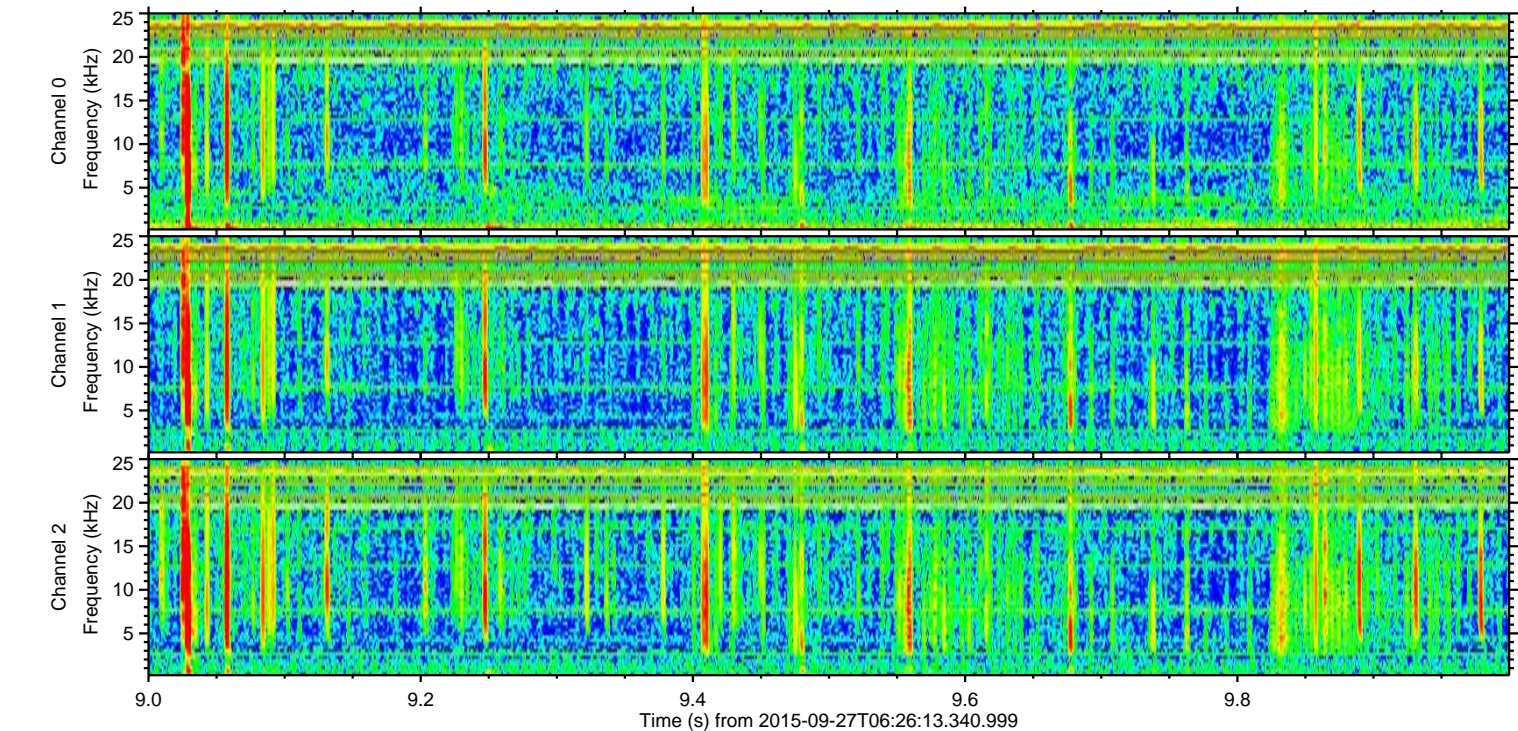
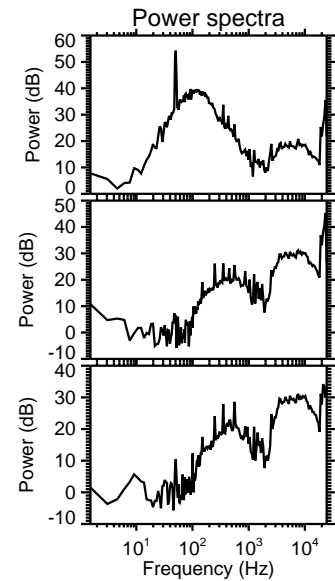
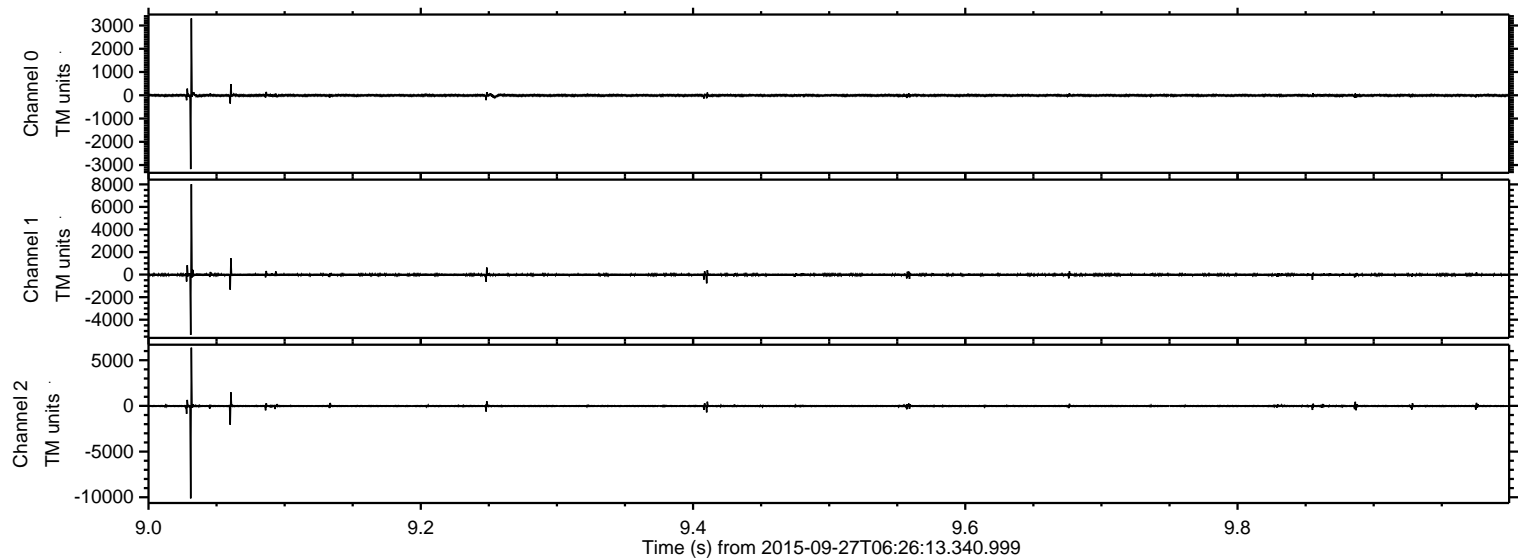
Channel 2
mn: -7673
mx: 10116
 μ : -16.4
 σ : 115.2

Processed Fri Oct 16 20:12:58 2015 by ELM ver.2012-10-06 from 001__elm20150927_062612__dat00.bin



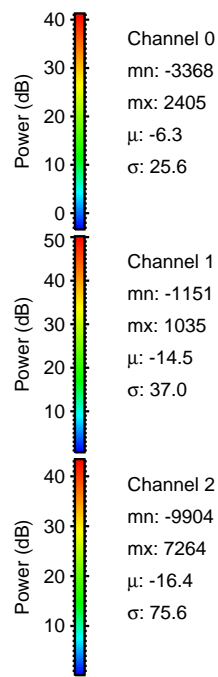
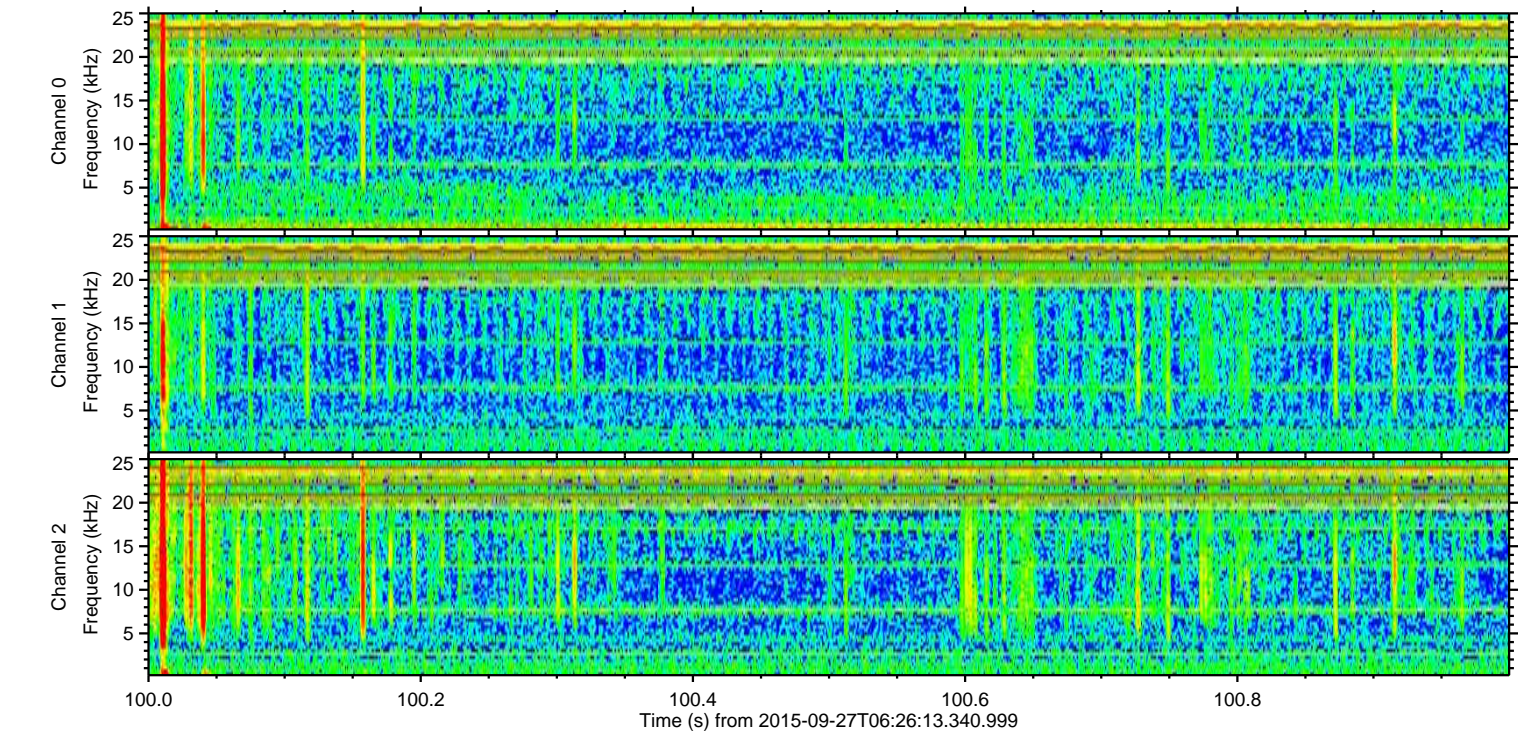
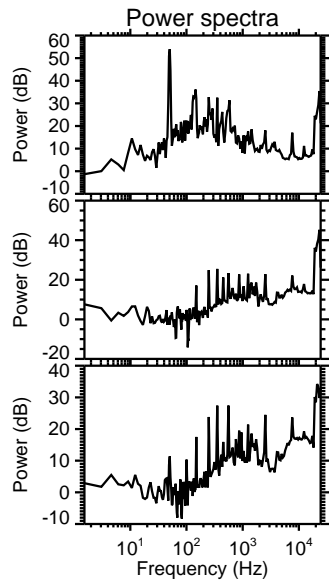
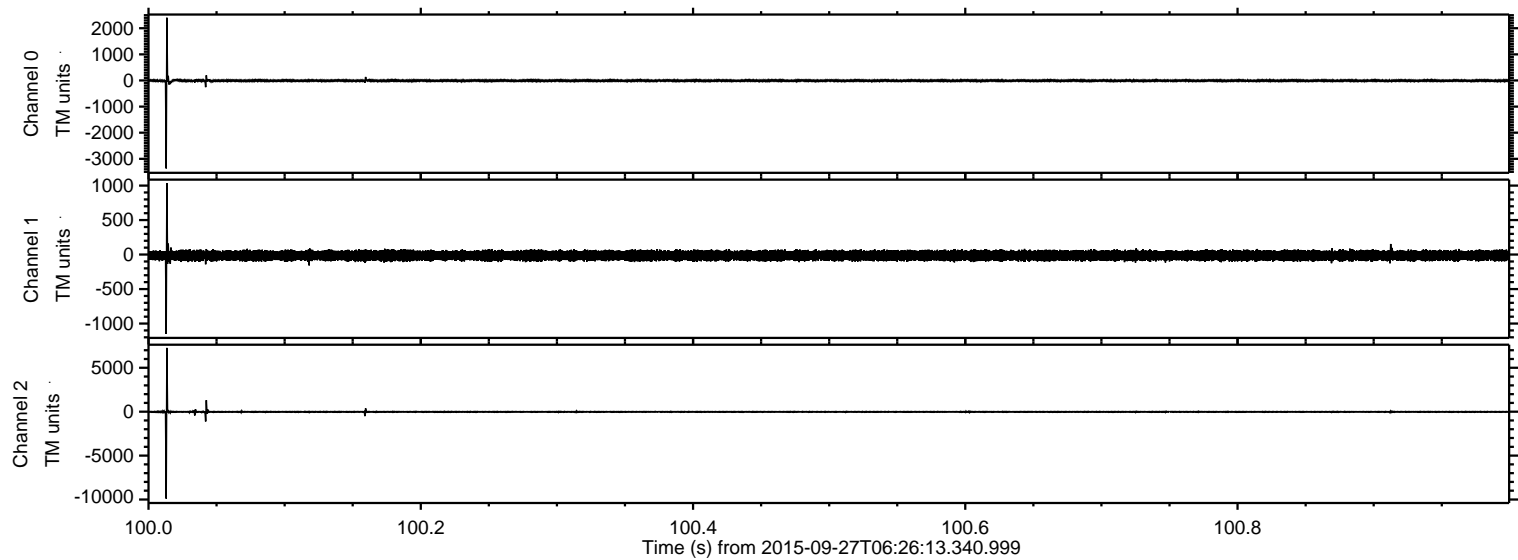
ELMAVAN 3D WAVEFORMS (Measured data sampled at 50 kHz) 51000 packets of 144 samples from 2015-09-27T06:26:13.340.999. Part 10/147

Processed Fri Oct 16 20:12:59 2015 by ELM ver.2012-10-06 from 001__elm20150927_062612__dat00.bin



ELMAVAN 3D WAVEFORMS (Measured data sampled at 50 kHz) 51000 packets of 144 samples from 2015-09-27T06:26:13.340.999. Part 101/147

Processed Fri Oct 16 20:13:00 2015 by ELM ver.2012-10-06 from 001__elm20150927_062612__dat00.bin



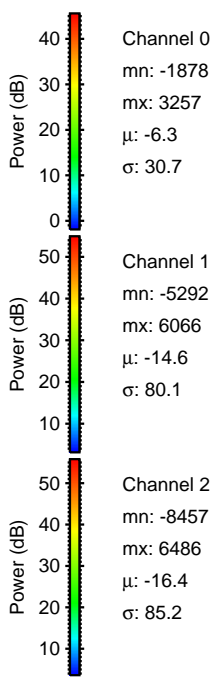
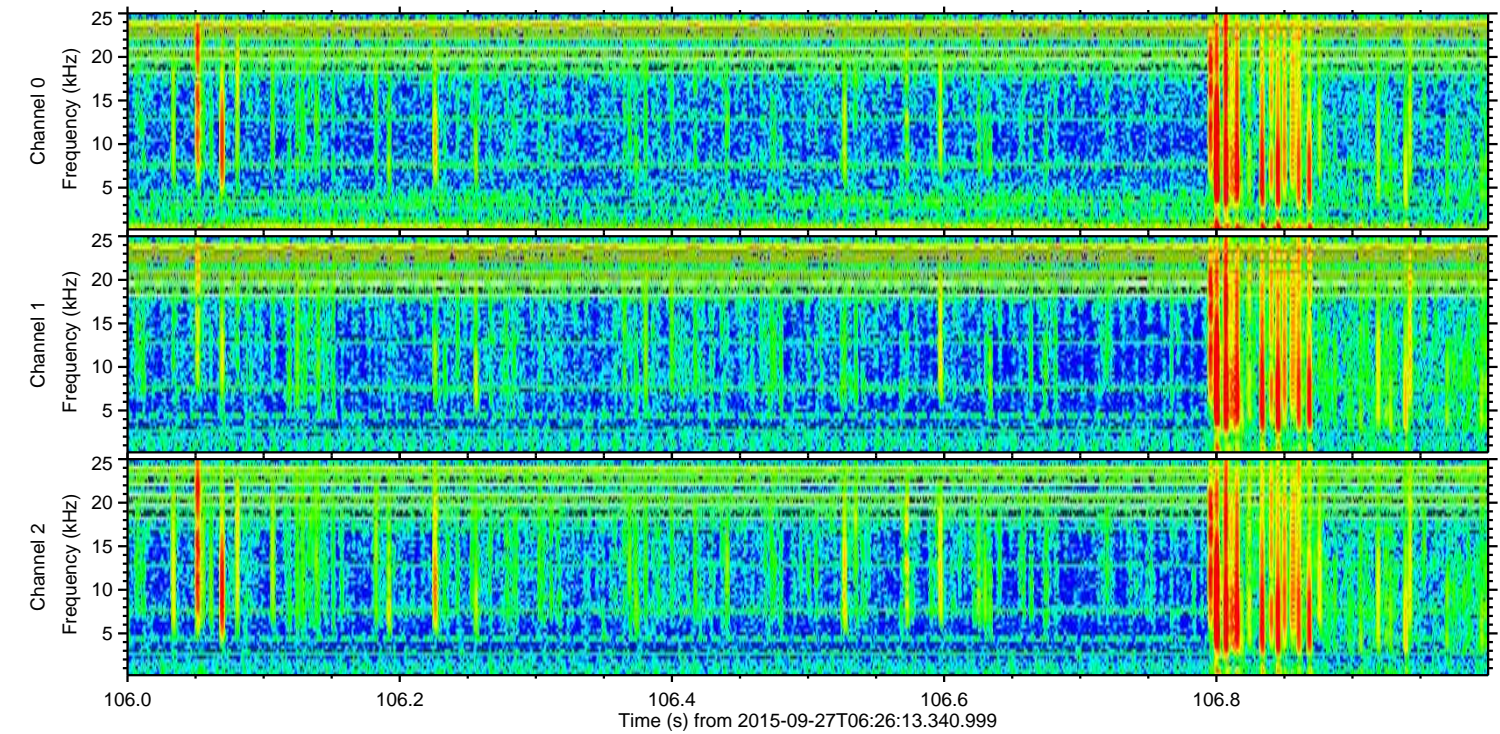
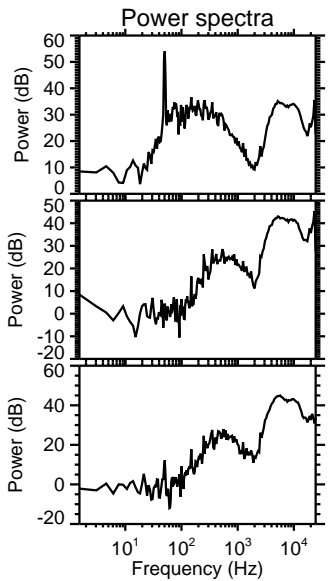
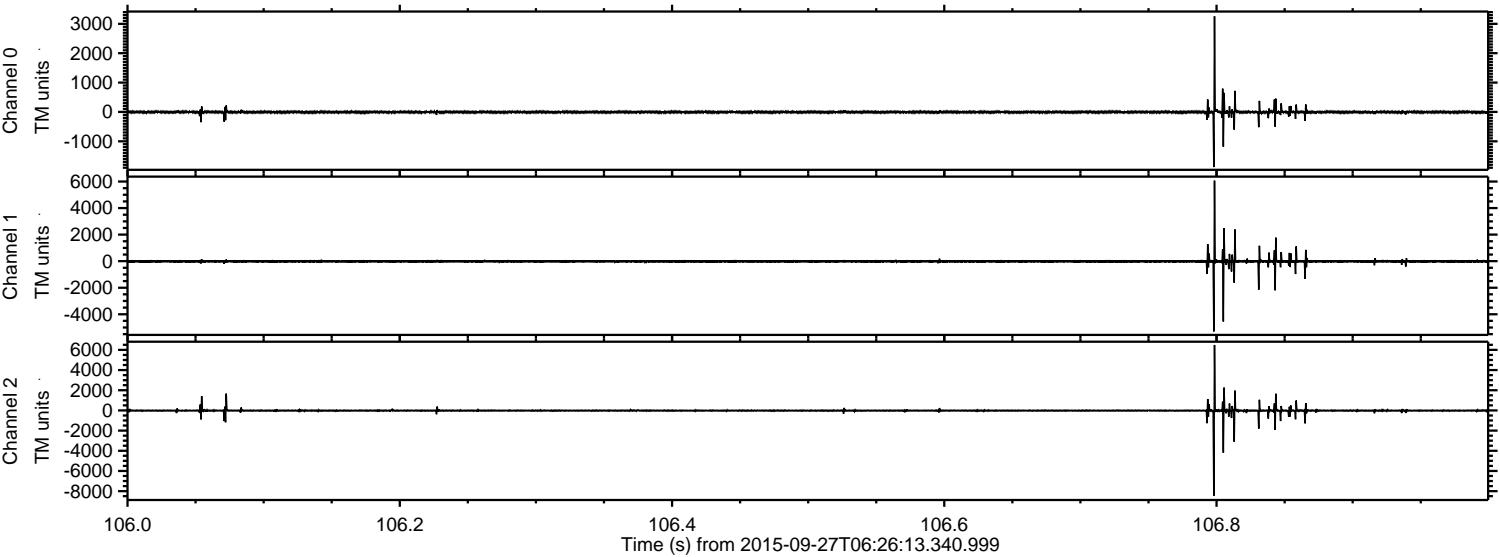
Channel 0
mn: -3368
mx: 2405
 μ : -6.3
 σ : 25.6

Channel 1
mn: -1151
mx: 1035
 μ : -14.5
 σ : 37.0

Channel 2
mn: -9904
mx: 7264
 μ : -16.4
 σ : 75.6

ELMAVAN 3D WAVEFORMS (Measured data sampled at 50 kHz) 51000 packets of 144 samples from 2015-09-27T06:26:13.340.999. Part 107/147

Processed Fri Oct 16 20:13:01 2015 by ELM ver.2012-10-06 from 001__elm20150927_062612__dat00.bin



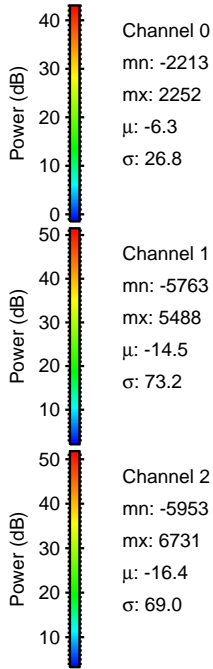
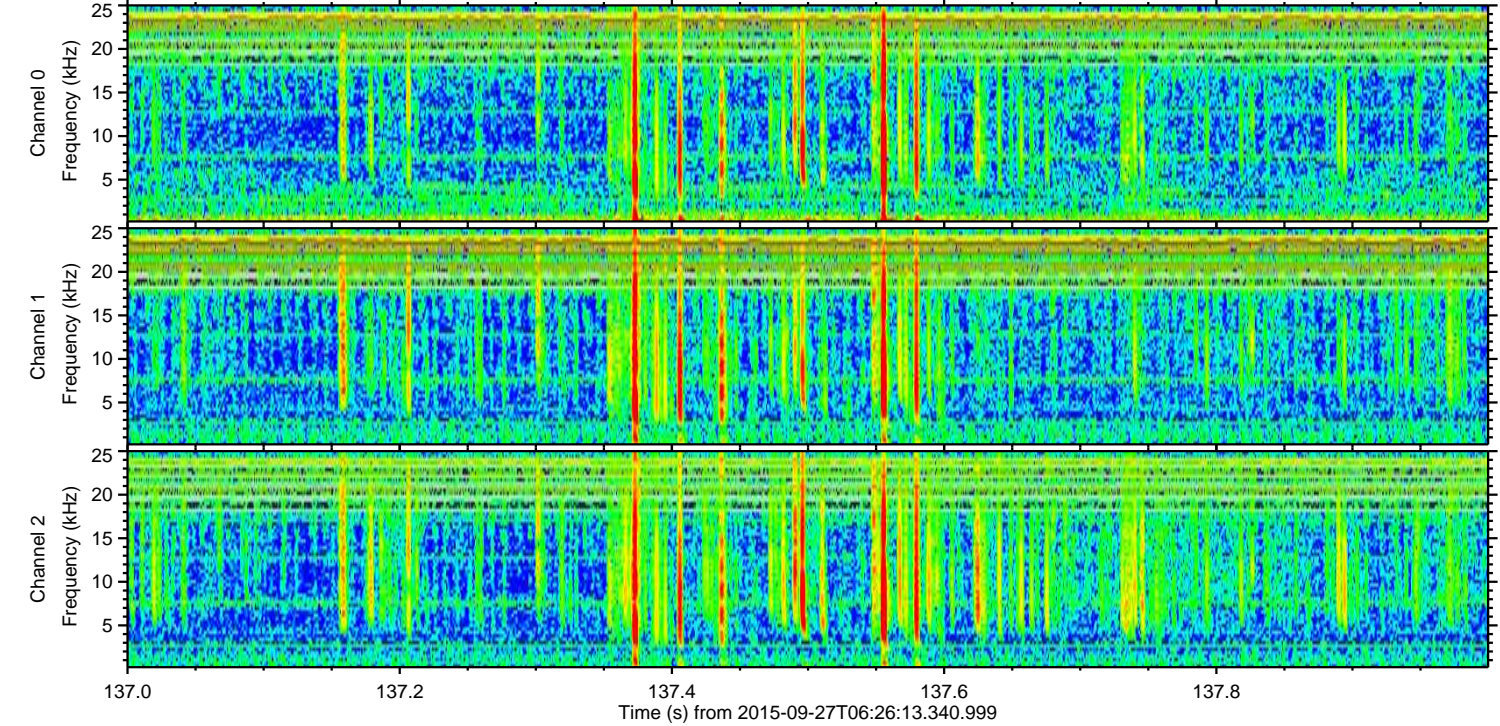
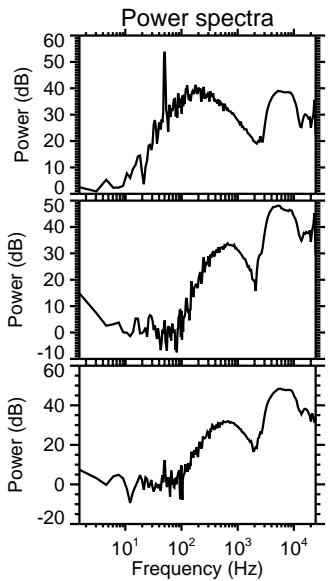
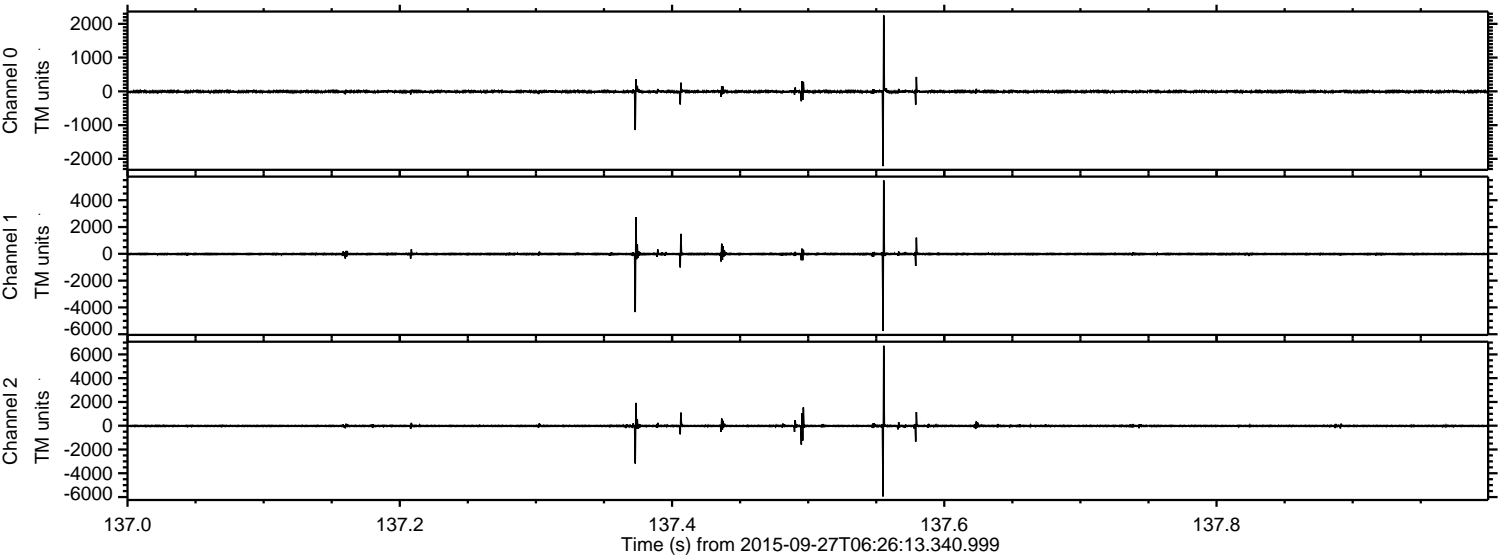
Channel 0
mn: -1878
mx: 3257
 μ : -6.3
 σ : 30.7

Channel 1
mn: -5292
mx: 6066
 μ : -14.6
 σ : 80.1

Channel 2
mn: -8457
mx: 6486
 μ : -16.4
 σ : 85.2

ELMAVAN 3D WAVEFORMS (Measured data sampled at 50 kHz) 51000 packets of 144 samples from 2015-09-27T06:26:13.340.999. Part 138/147

Processed Fri Oct 16 20:13:02 2015 by ELM ver.2012-10-06 from 001__elm20150927_062612__dat00.bin



Channel 0
mn: -2213
mx: 2252
 μ : -6.3
 σ : 26.8

Channel 1
mn: -5763
mx: 5488
 μ : -14.5
 σ : 73.2

Channel 2
mn: -5953
mx: 6731
 μ : -16.4
 σ : 69.0

Processed Fri Oct 16 20:13:03 2015 by ELM ver.2012-10-06 from 001__elm20150927_062612__dat00.bin

