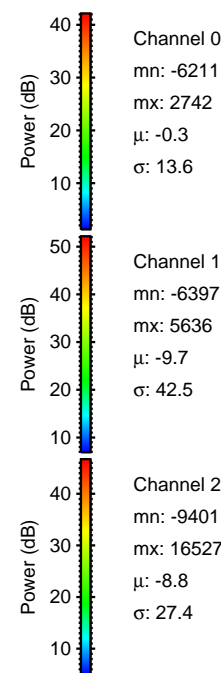
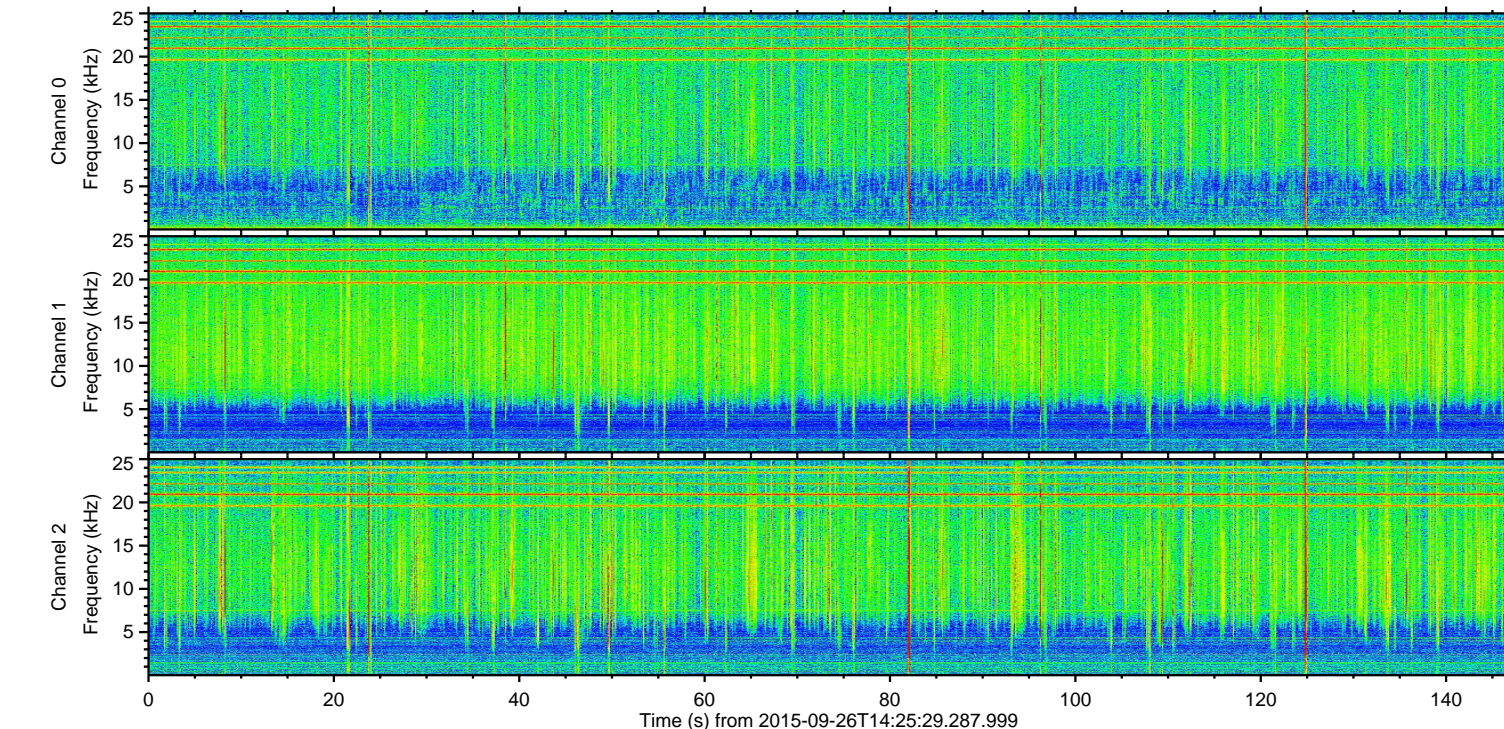
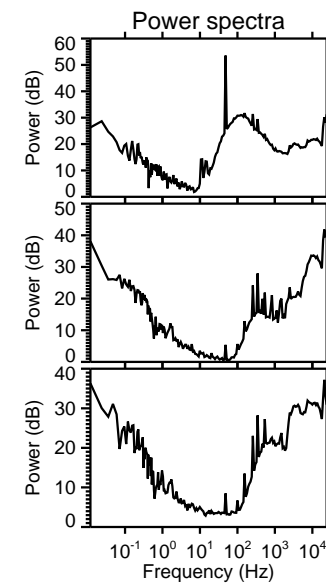
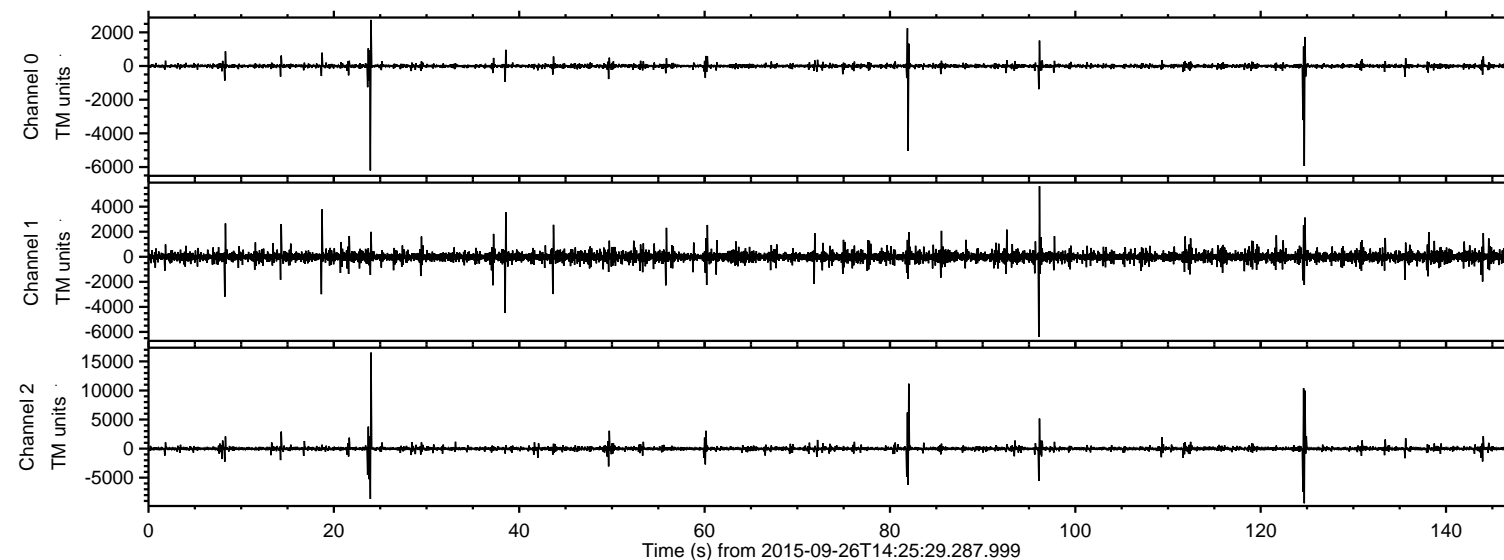
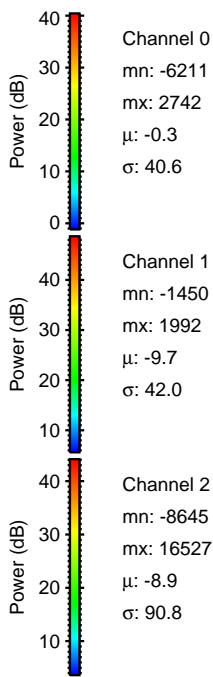
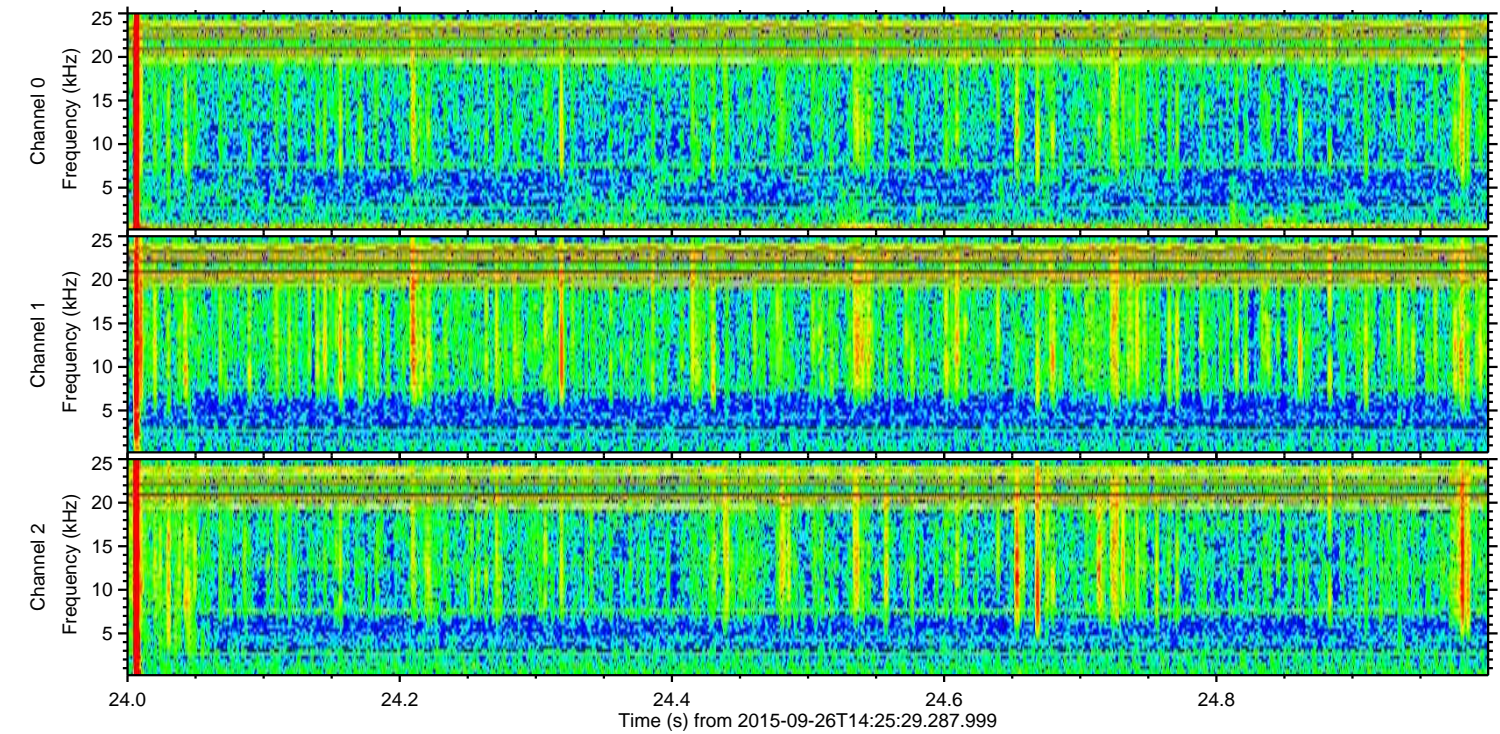
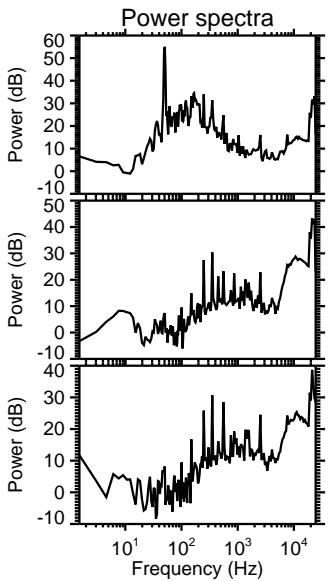
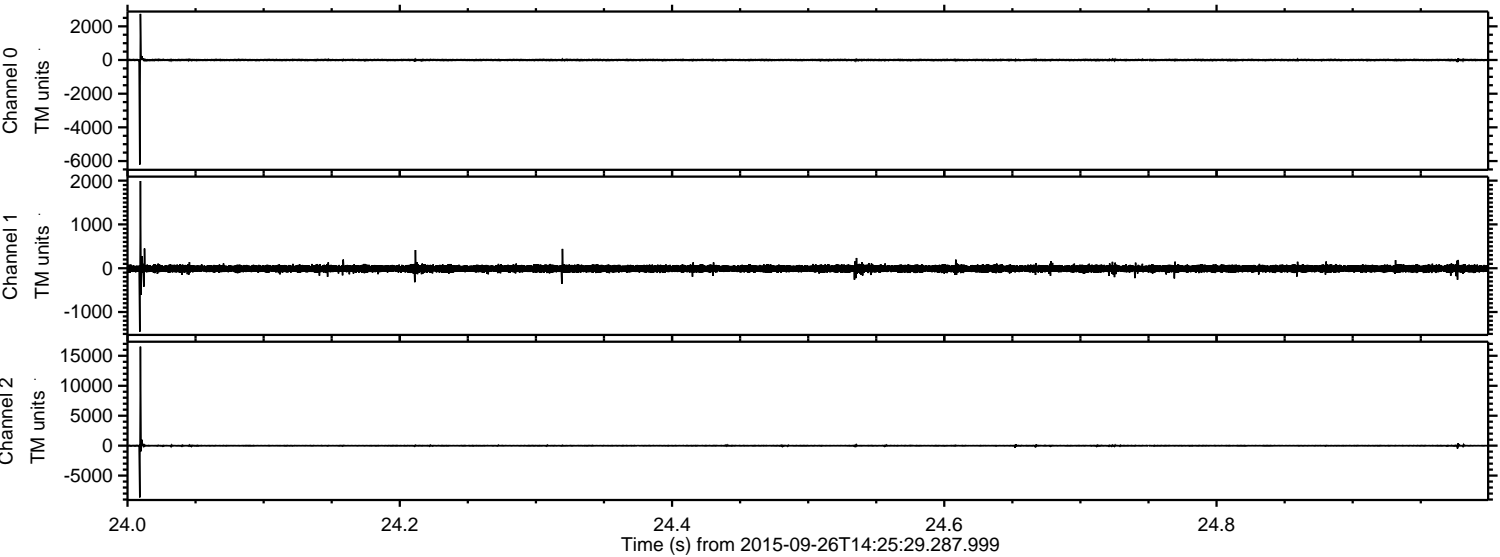


ELMAVAN 3D WAVEFORMS (Measured data sampled at 50 kHz) 51000 packets of 144 samples from 2015-09-26T14:25:29.287.999.

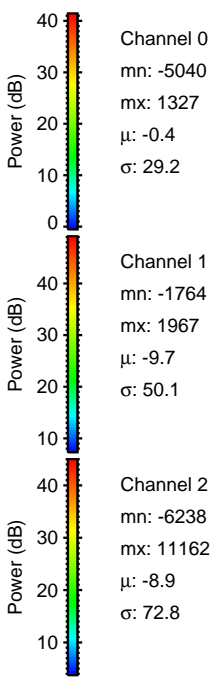
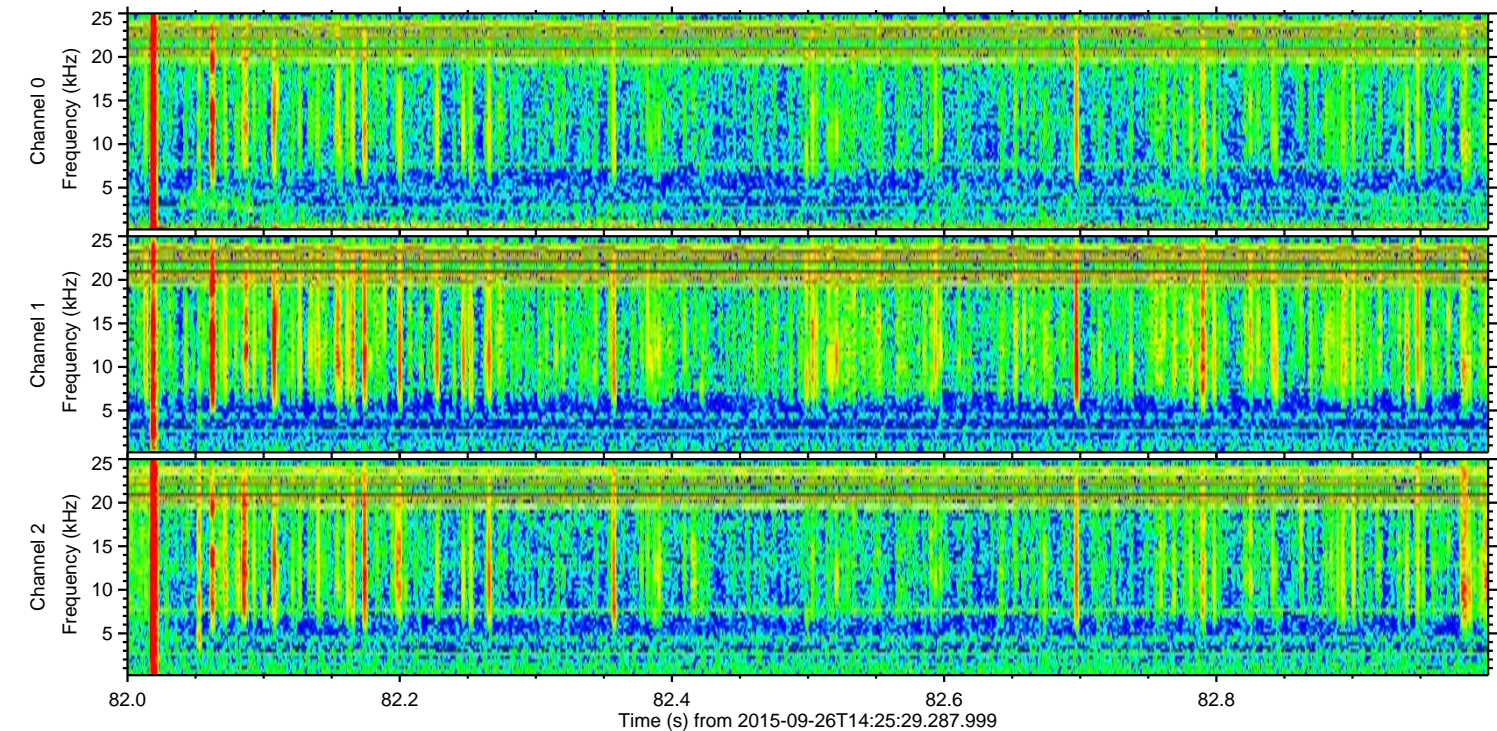
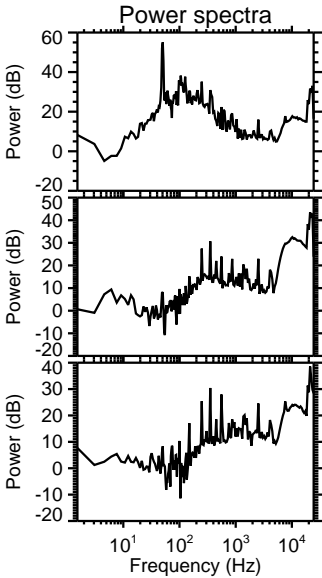
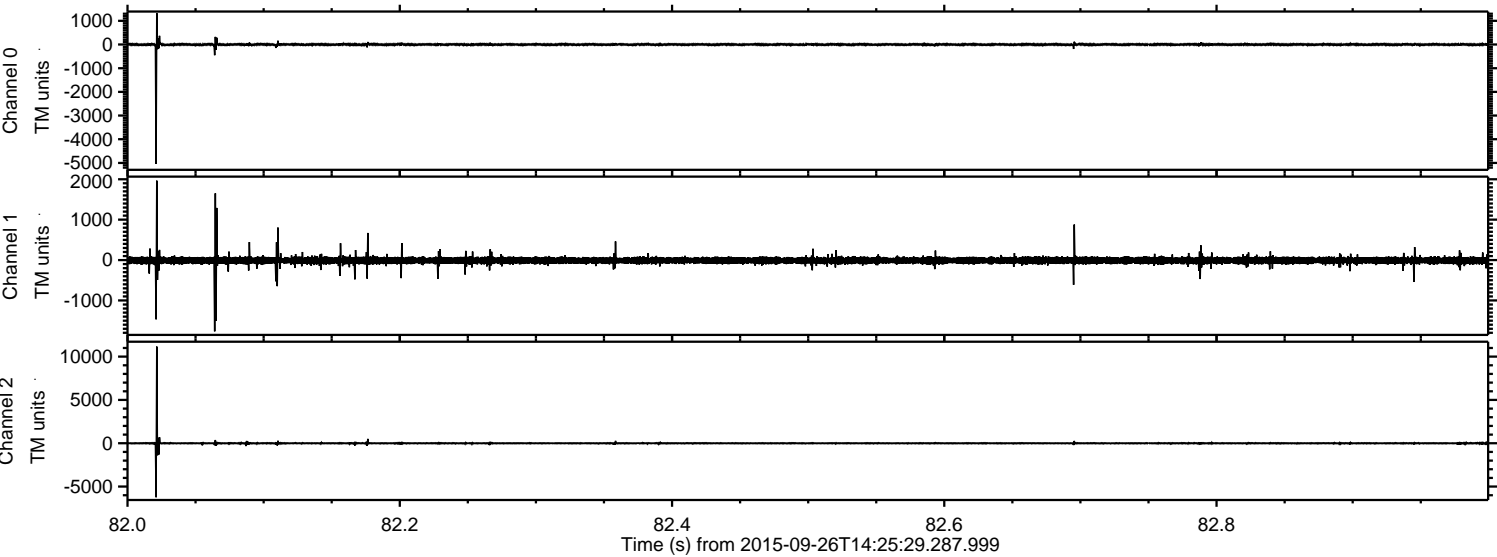
Processed Fri Oct 16 15:49:50 2015 by ELM ver.2012-10-06 from 001__elm20150926_142528__dat00.bin



Processed Fri Oct 16 15:50:06 2015 by ELM ver.2012-10-06 from 001__elm20150926_142528__dat00.bin

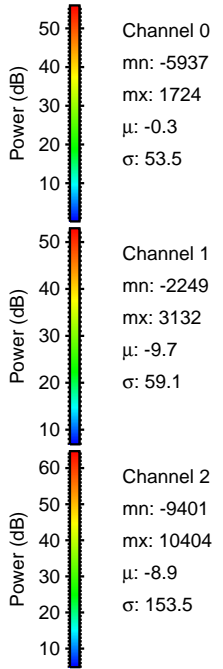
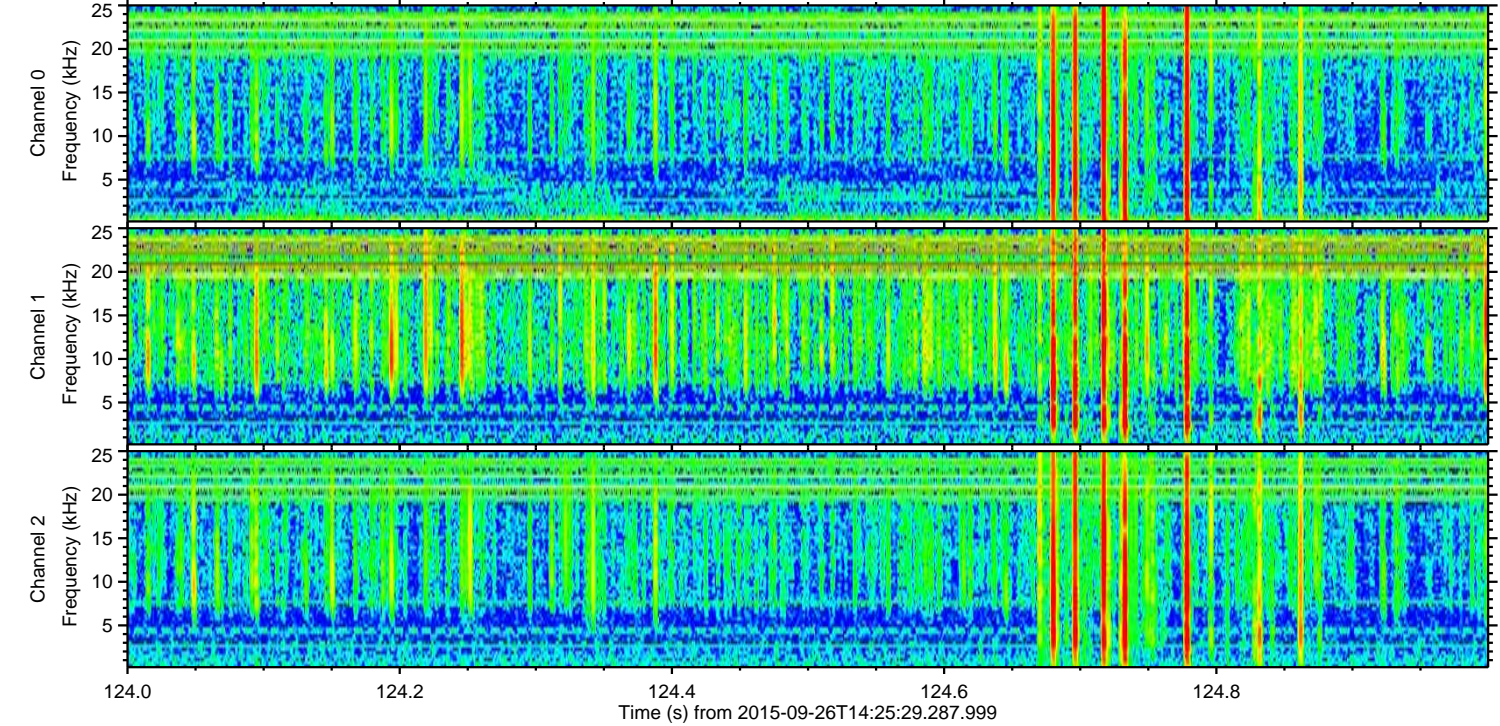
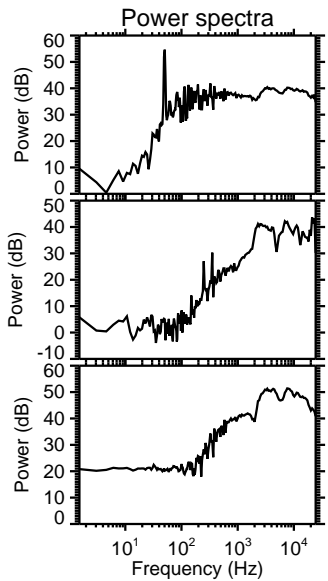
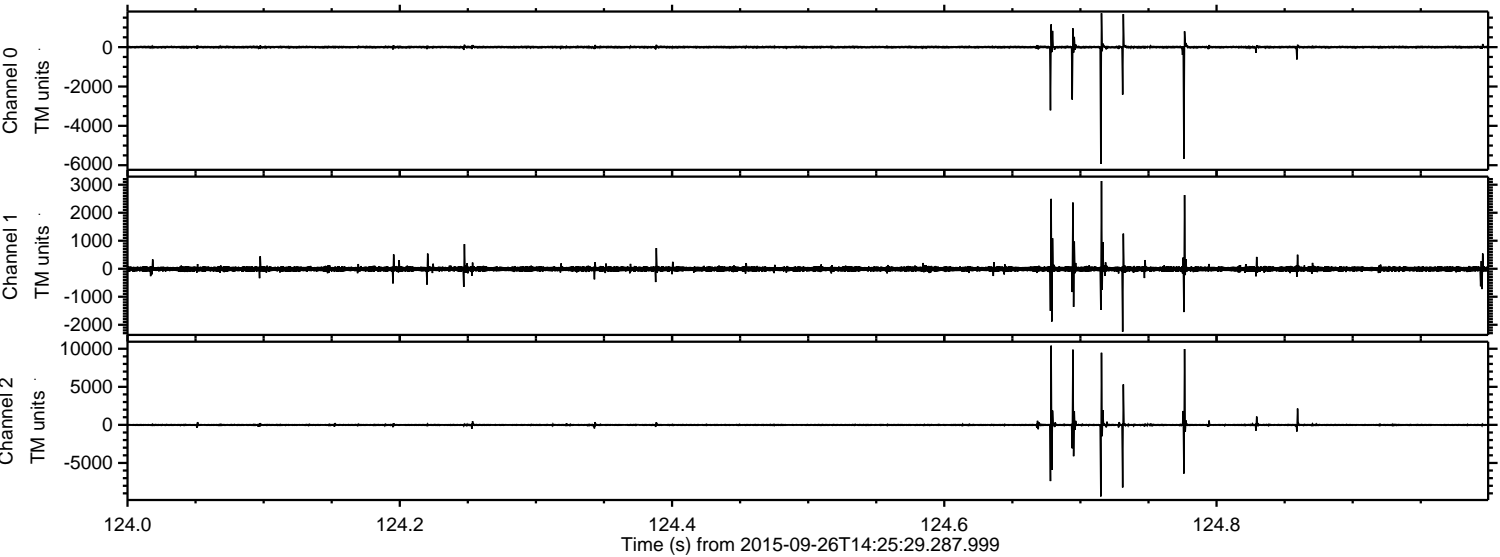


Processed Fri Oct 16 15:50:07 2015 by ELM ver.2012-10-06 from 001__elm20150926_142528__dat00.bin

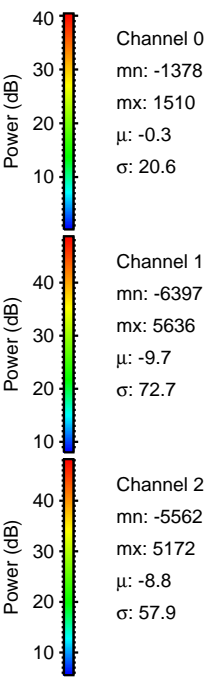
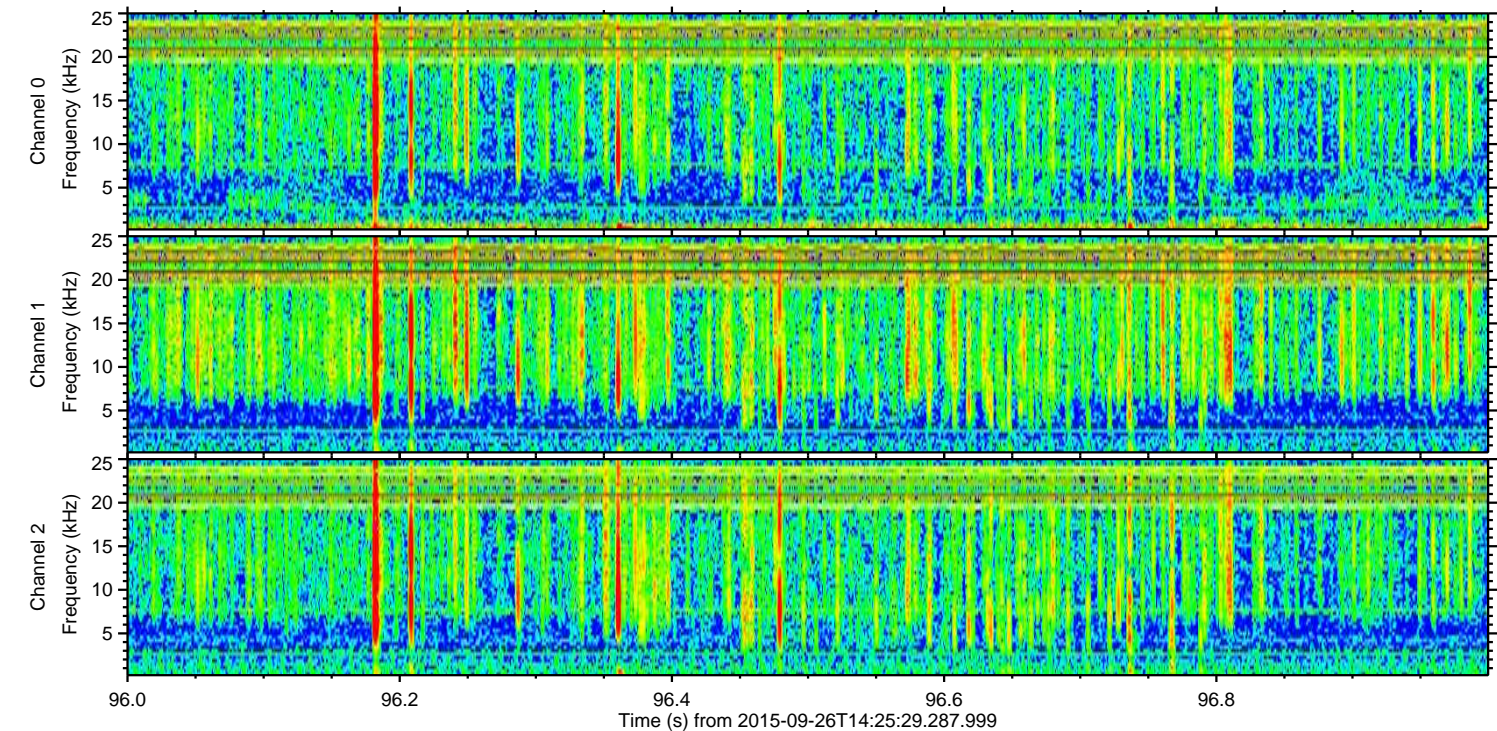
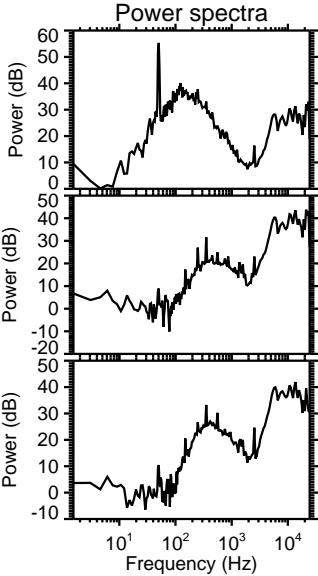
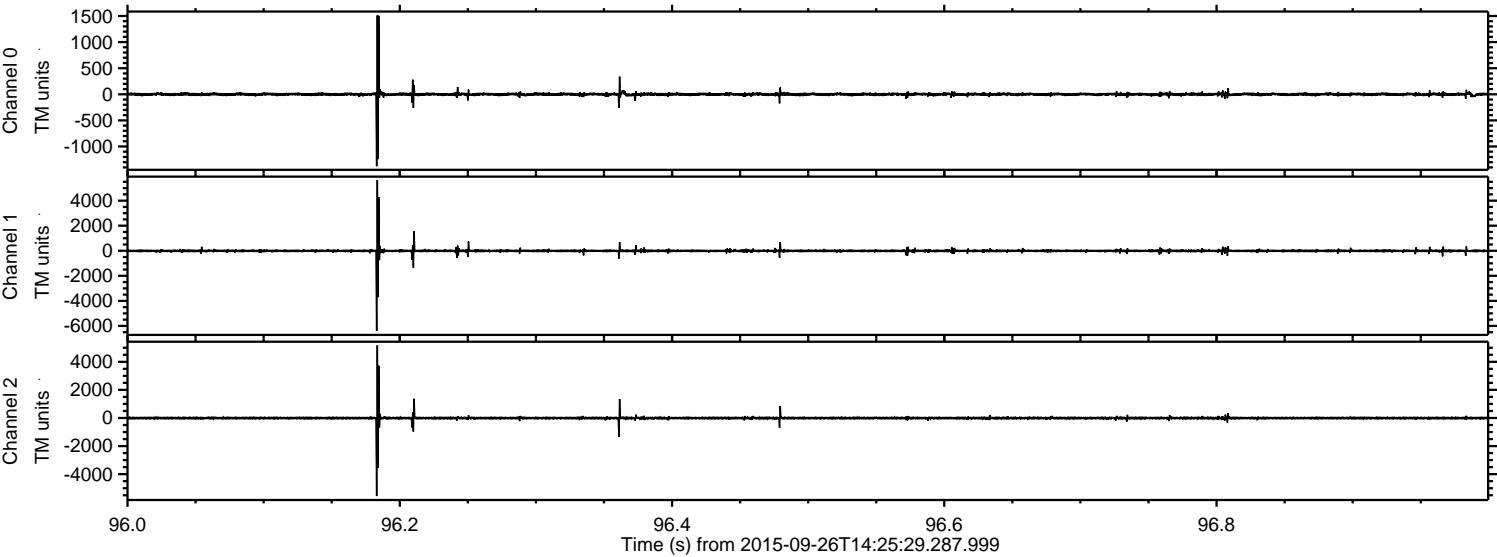


ELMAVAN 3D WAVEFORMS (Measured data sampled at 50 kHz) 51000 packets of 144 samples from 2015-09-26T14:25:29.287.999. Part 125/147

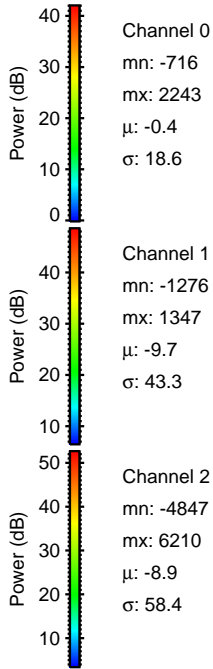
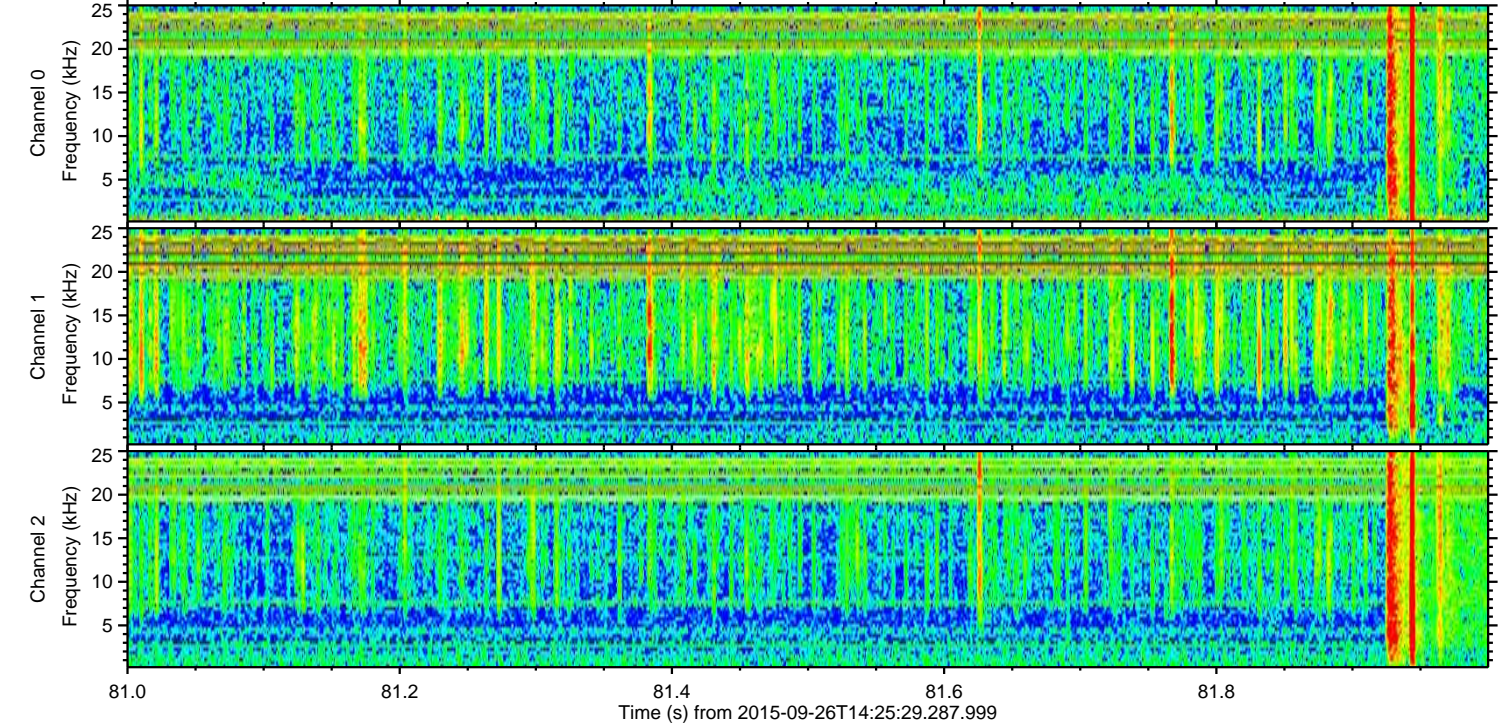
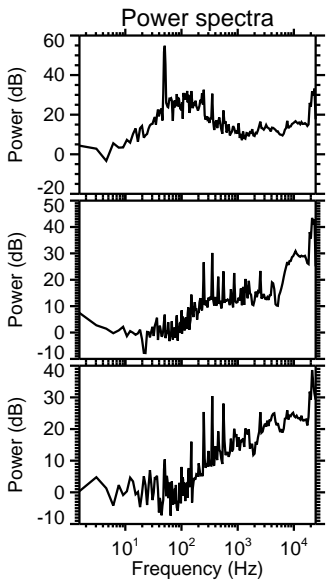
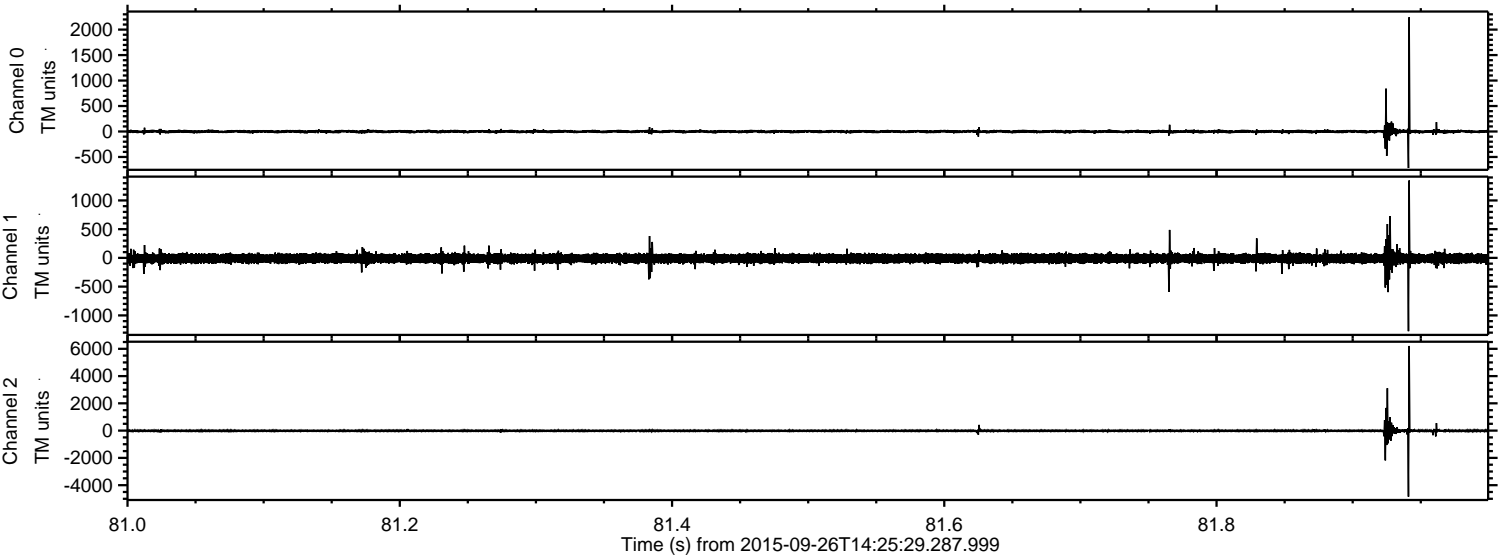
Processed Fri Oct 16 15:50:08 2015 by ELM ver.2012-10-06 from 001__elm20150926_142528__dat00.bin



Processed Fri Oct 16 15:50:09 2015 by ELM ver.2012-10-06 from 001__elm20150926_142528__dat00.bin



Processed Fri Oct 16 15:50:10 2015 by ELM ver.2012-10-06 from 001__elm20150926_142528__dat00.bin



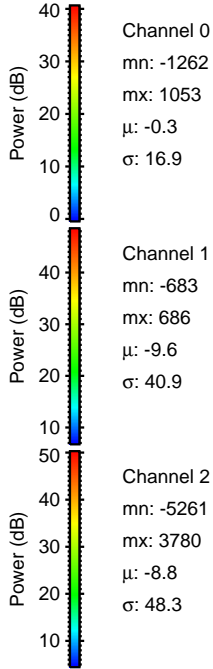
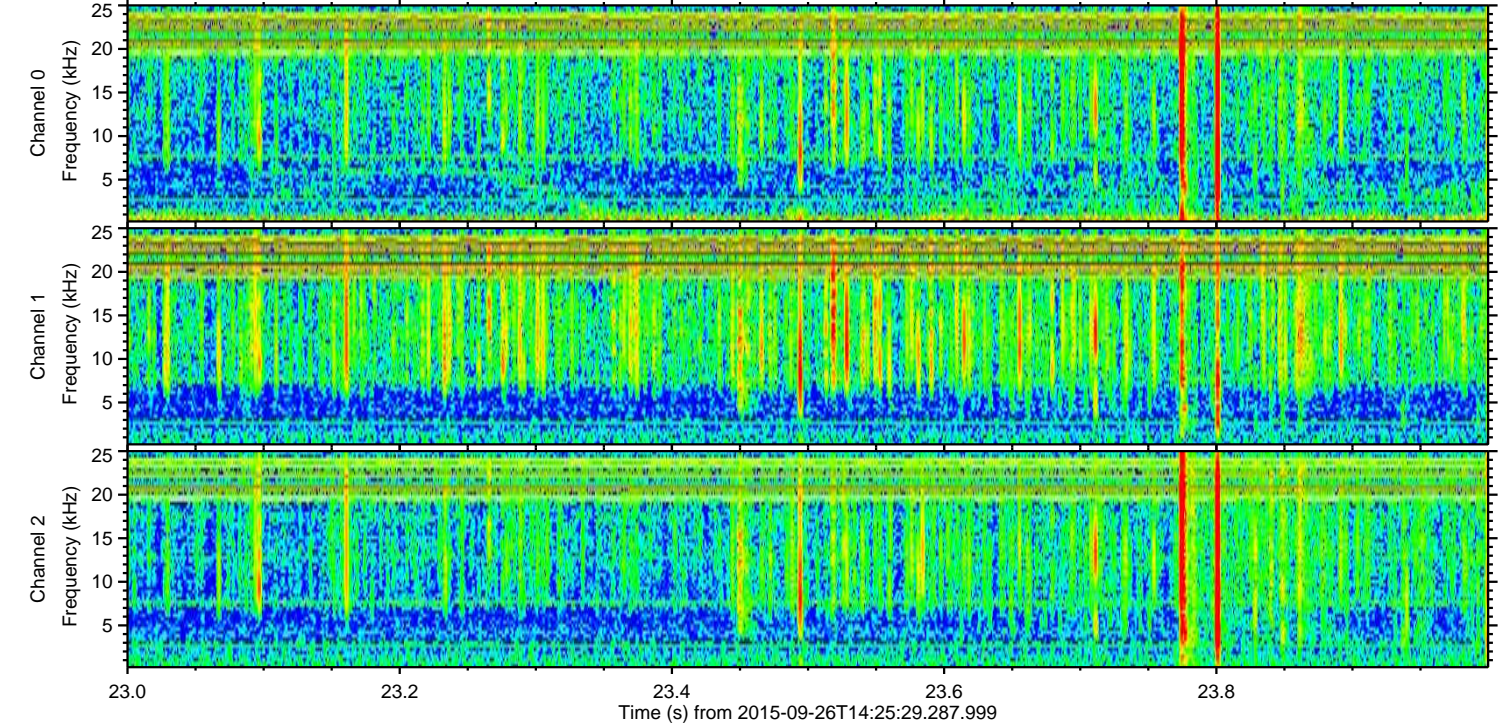
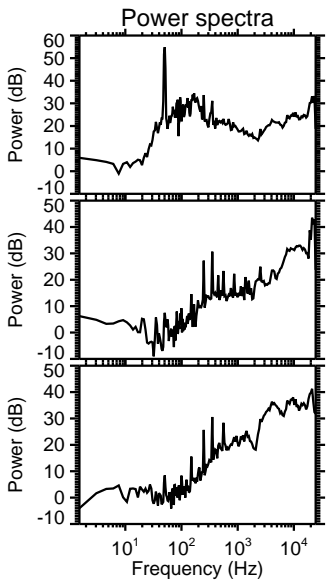
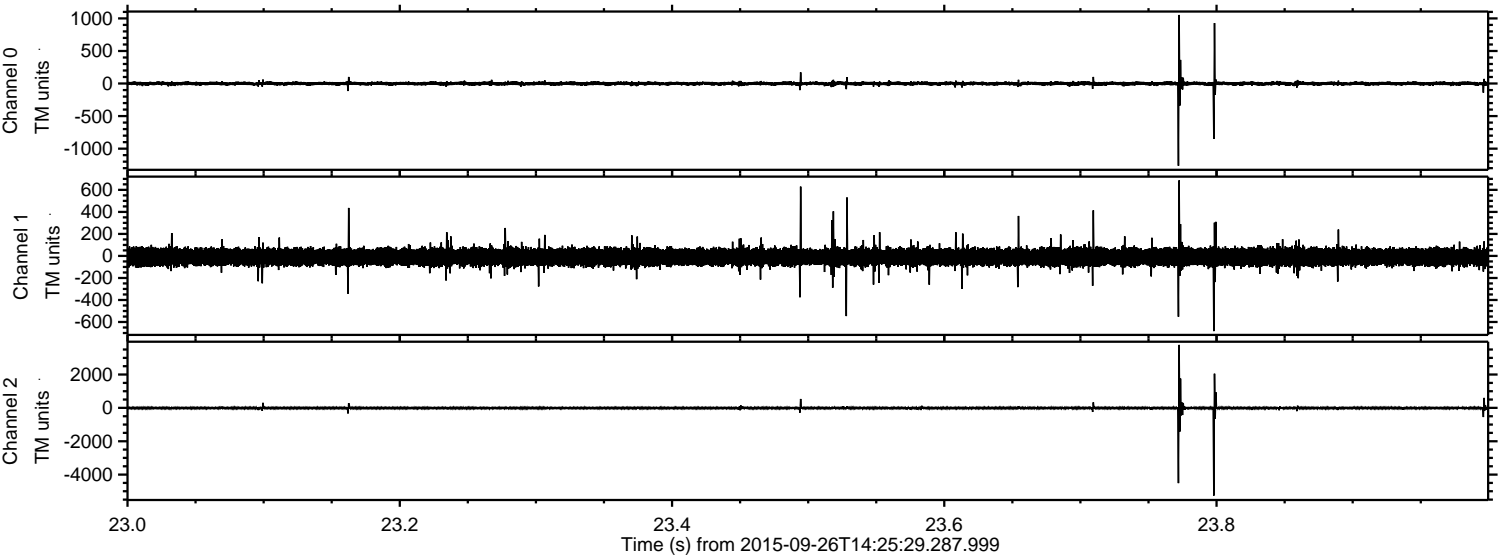
Channel 0
mn: -716
mx: 2243
 μ : -0.4
 σ : 18.6

Channel 1
mn: -1276
mx: 1347
 μ : -9.7
 σ : 43.3

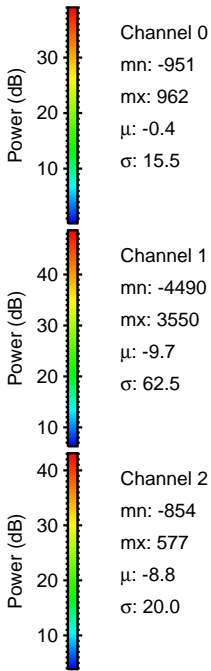
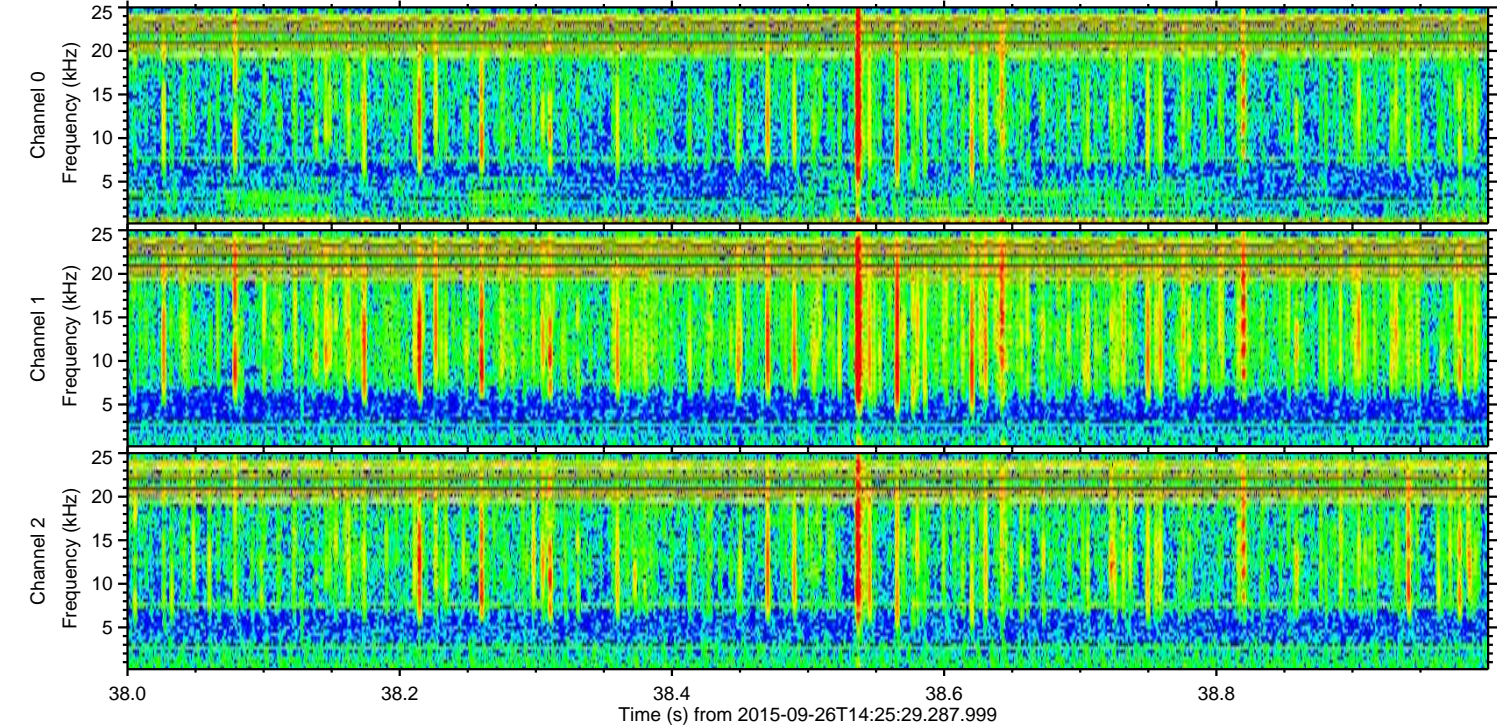
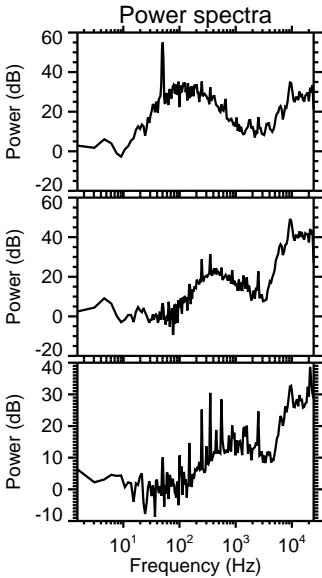
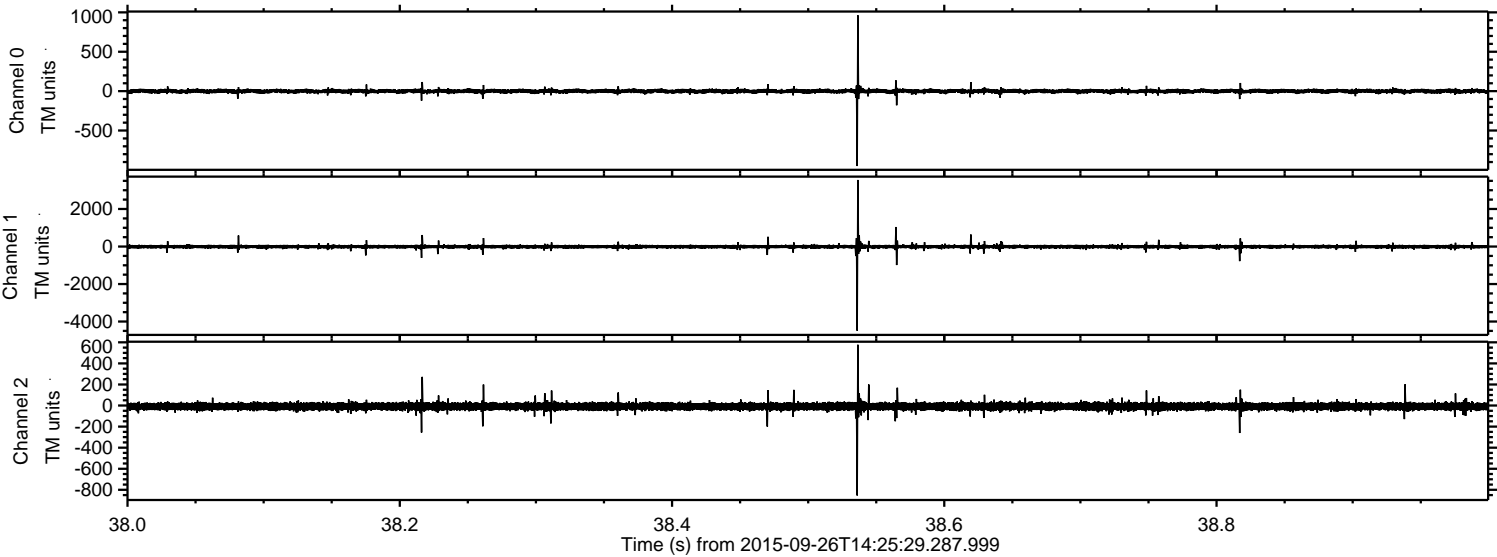
Channel 2
mn: -4847
mx: 6210
 μ : -8.9
 σ : 58.4

ELMAVAN 3D WAVEFORMS (Measured data sampled at 50 kHz) 51000 packets of 144 samples from 2015-09-26T14:25:29.287.999. Part 24/147

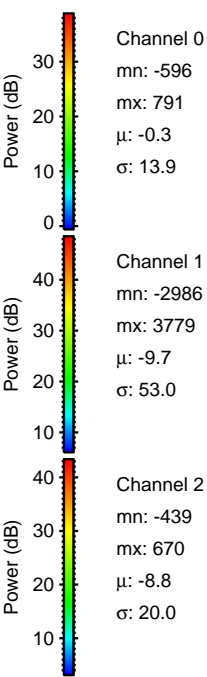
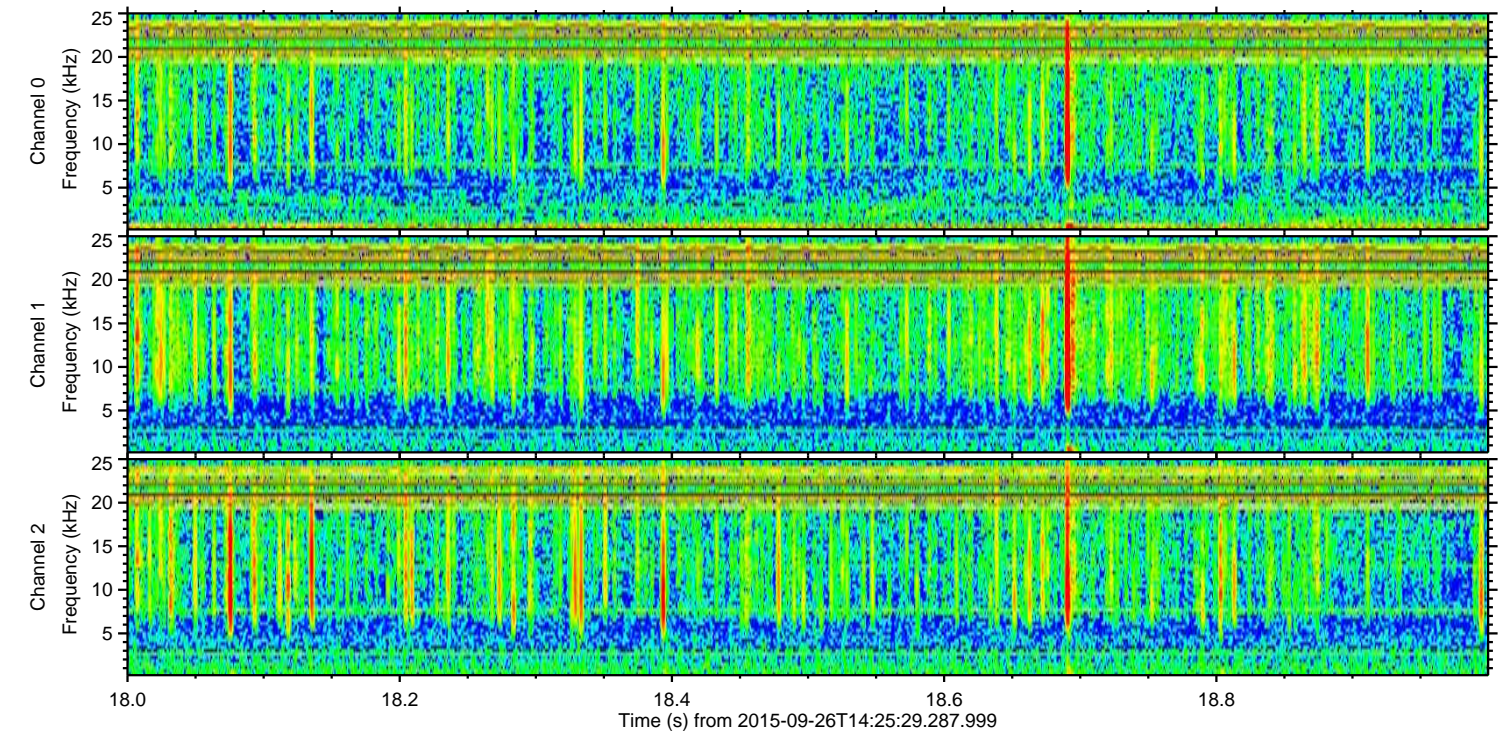
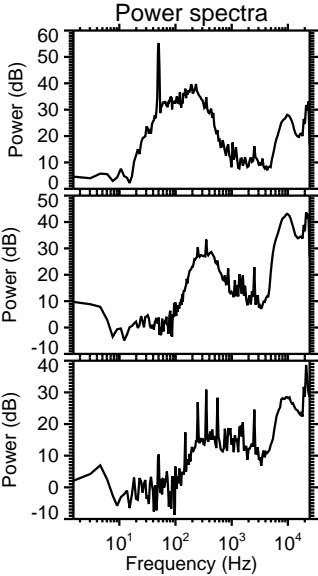
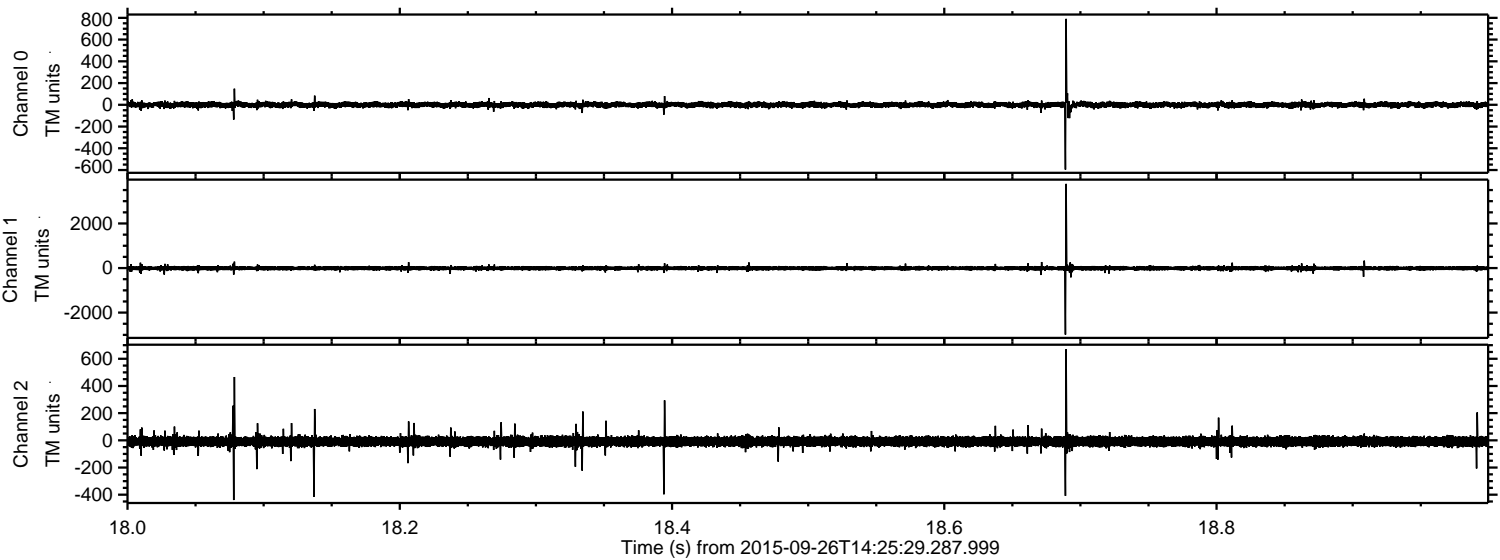
Processed Fri Oct 16 15:50:11 2015 by ELM ver.2012-10-06 from 001__elm20150926_142528__dat00.bin



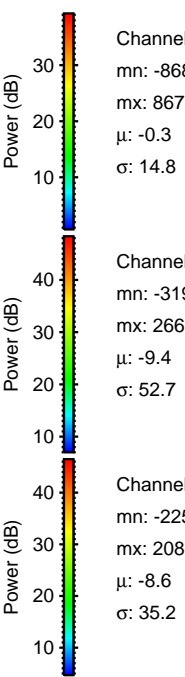
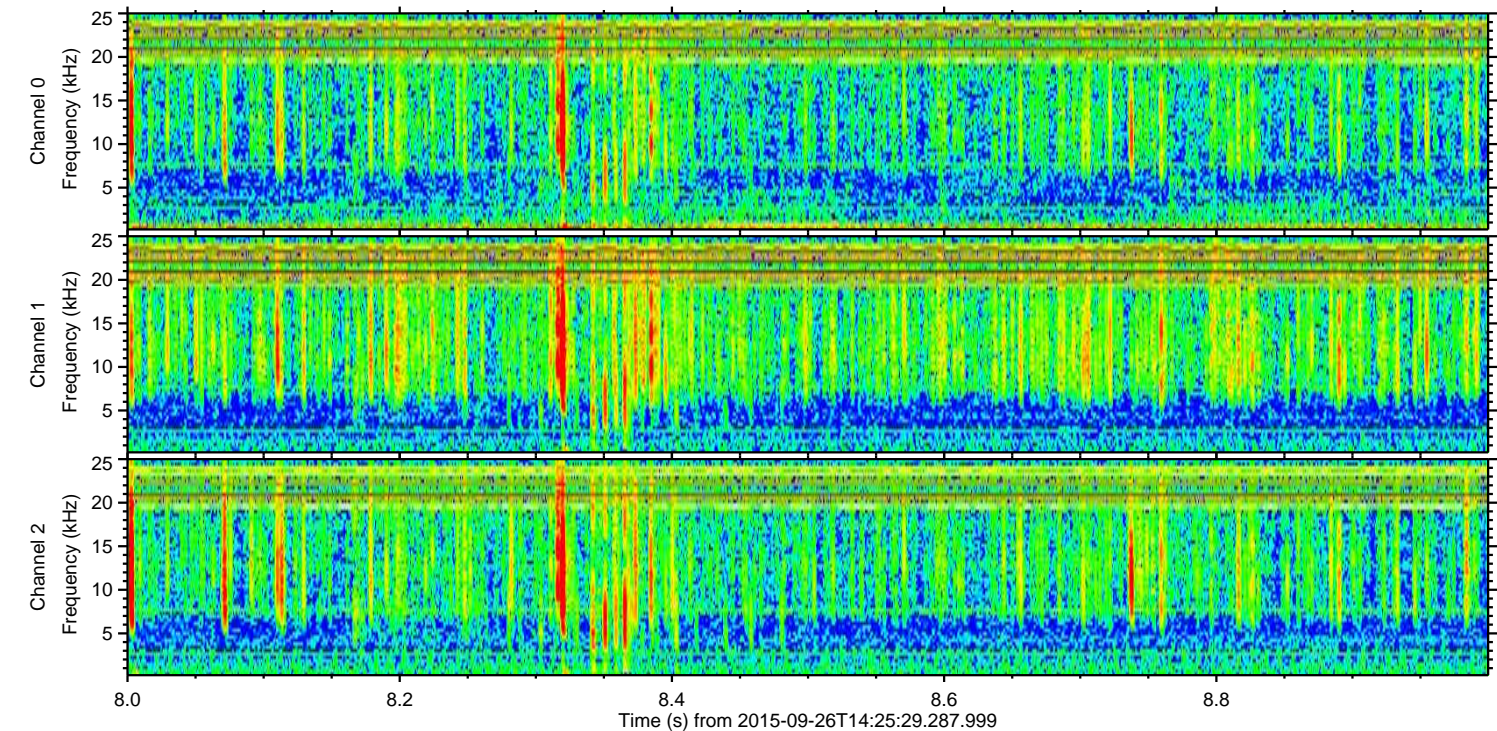
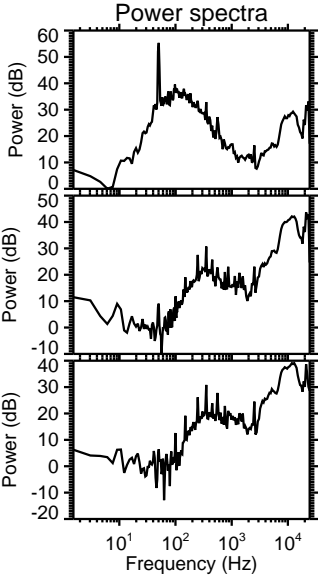
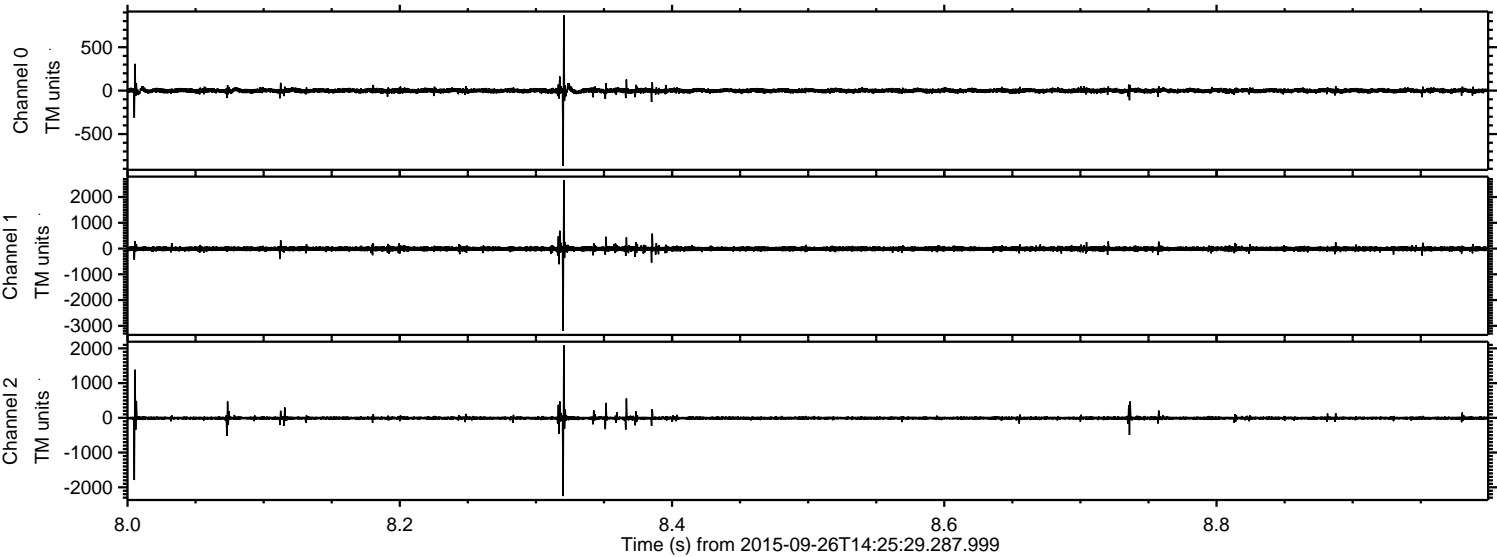
Processed Fri Oct 16 15:50:12 2015 by ELM ver.2012-10-06 from 001__elm20150926_142528__dat00.bin



Processed Fri Oct 16 15:50:13 2015 by ELM ver.2012-10-06 from 001__elm20150926_142528__dat00.bin



Processed Fri Oct 16 15:50:14 2015 by ELM ver.2012-10-06 from 001__elm20150926_142528__dat00.bin



Channel 0
mn: -868
mx: 867
 μ : -0.3
 σ : 14.8

Channel 1
mn: -3194
mx: 2661
 μ : -9.4
 σ : 52.7

Channel 2
mn: -2254
mx: 2088
 μ : -8.6
 σ : 35.2

